

Supplement of ‘The ICOS Ecosystem Station Loobos: a pine forest site exposed to atmospheric pollution’

5 Michiel K. van der Molen¹, Henk Snellen¹, Rupert Holzinger², Johannes G.M. Barten¹, Hong Zhao¹,
Laurens Ganzeveld¹, Julie Fry¹, Wouter Peters¹, Maarten Krol¹, Jordi Vila-Guerau de Arrellano¹, Bart
Kruijt³

¹Meteorology and Air Quality group, Wageningen University, Wageningen, the Netherlands

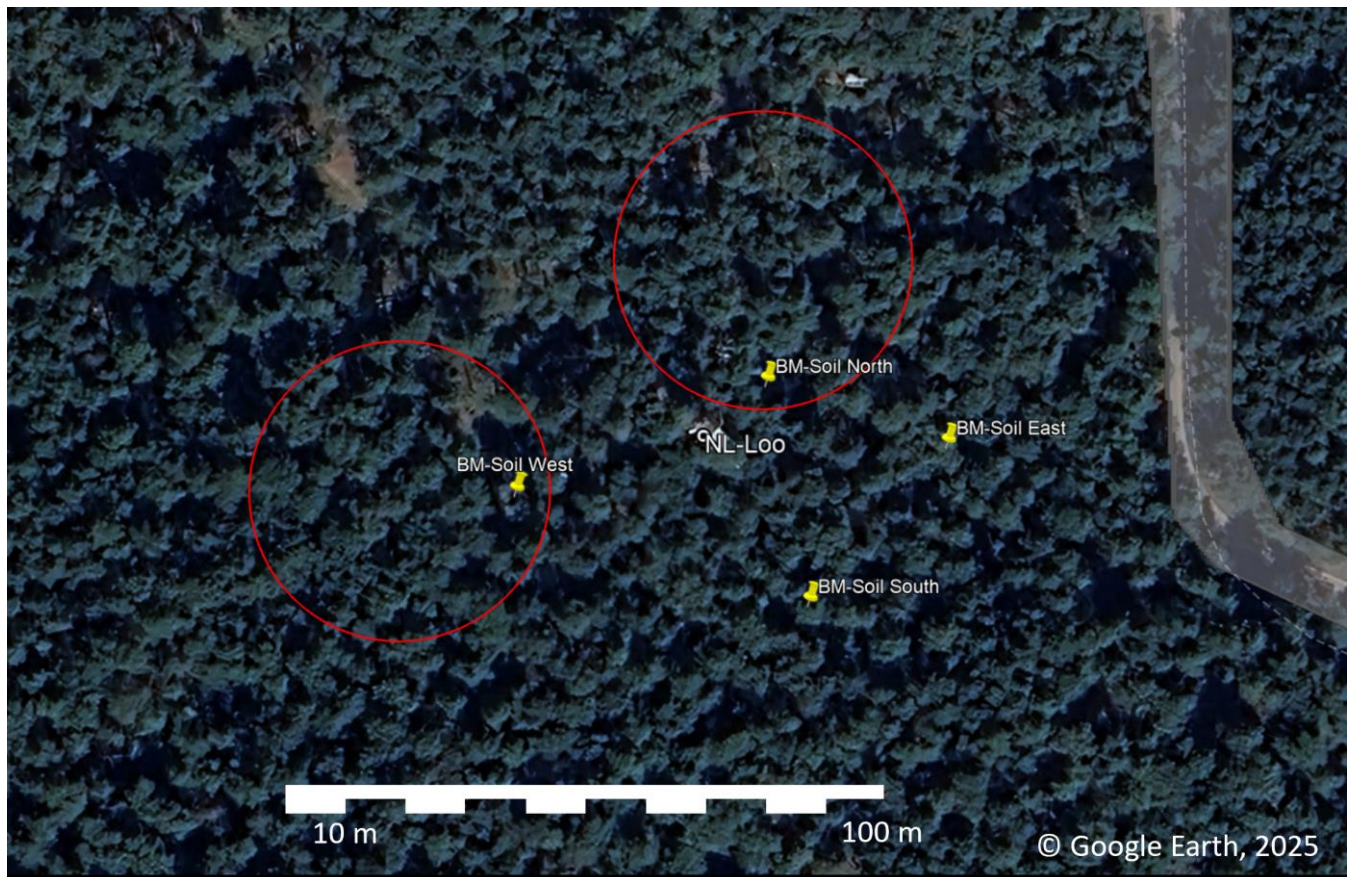
²Institute for Marine and Atmospheric Research (IMAU), Utrecht, The Netherlands.

10 ³Earth Systems and Global Change group, Wageningen University, Wageningen, the Netherlands

Correspondence to: Michiel K. van der Molen (Michiel.vanderMolen@wur.nl)

Supplementary information

S.1 Supplementary figures



15

Figure S.1. Location of the continuous soil measurement plots. 'NL-Loo' identifies the location of the tower. The red circle to the west indicates the location of CP_01 and the one to the North CP_02. The yellow pins show the locations of the 4 soil measurement locations. The West and North plots are on the flank and top of a dune, the East and South plots are in a valley between the dunes. Picture by © Google Earth (2026) annotated by authors.

20

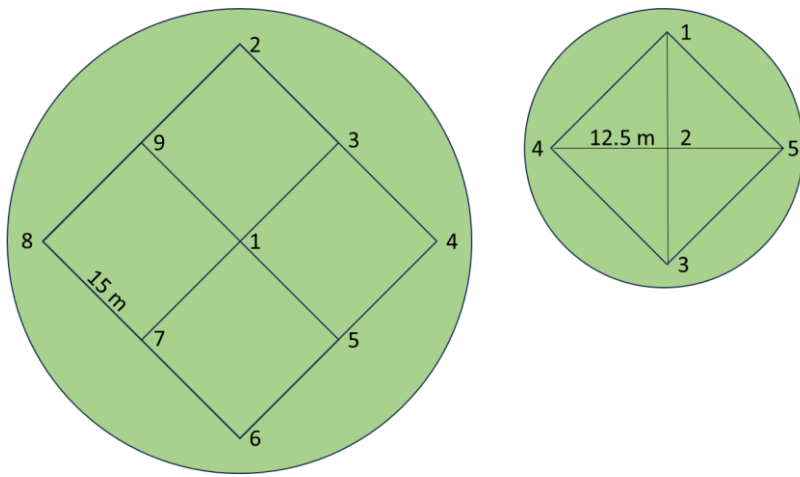


Figure S.2. The raster in which Digital Hemispheric Photographs are taken in the CP's (left) and SP's (right). The location numbers are included in the photograph filenames. The CP and SP schematics are to scale and oriented towards the North.

25

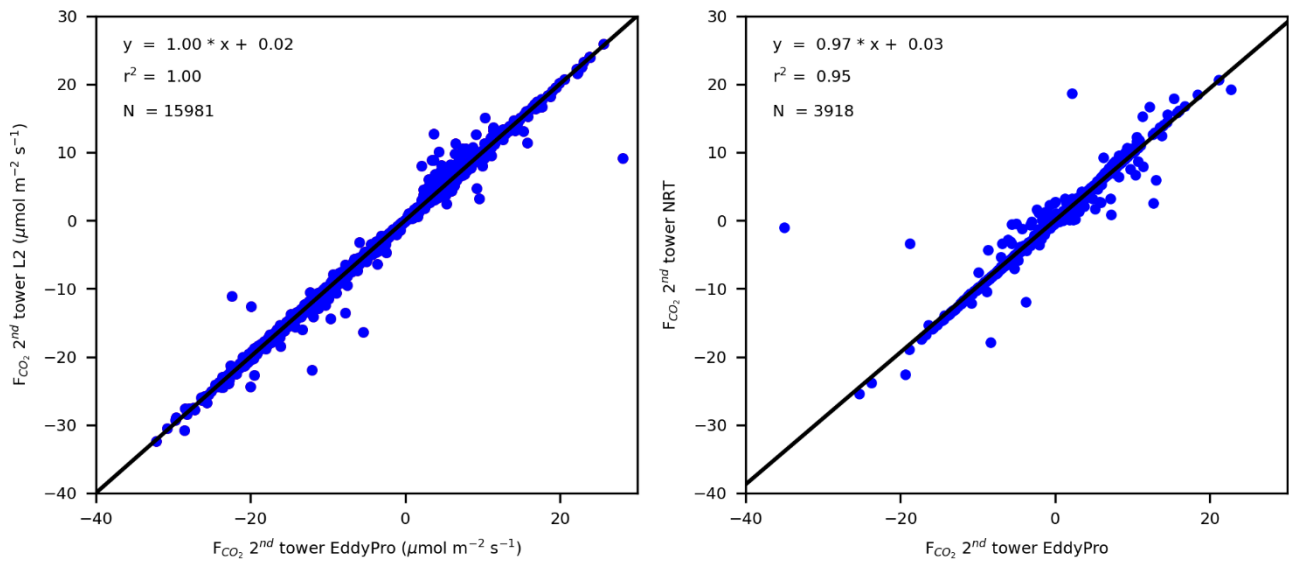


Figure S.3. Comparison of the CO₂ fluxes processed by our own EddyPro system and the ICOS ETC L2 product (right, 10 May 2023 to 31 December 2024) and the ICOS ETC Near Real Time (NRT) product (left, 1 January 2025 – 22 May 2025).