

Supplementary Information

Mapping 20-years winter wheat dynamics in global primary planting areas using Gaussian mixture models with adaptive thresholds

Yanan Wen^{1,2#}, Tuo Chen^{3#}, Xuecao Li^{3*}, Tiecheng Bai^{1*}, Ke Yao⁴, Liheng Zhong⁵, Han Chen⁶, Meiling Liu², Xieqin Huang^{7,8}, Shunlin Liang⁹, Shuangxi Miao⁴, Jianxi Huang^{4,10*}

¹ Key Laboratory of Tarim Oasis Agriculture (Tarim University), Ministry of Education, Alar, 843300, China

² School of Information Engineering, China University of Geoscience, Beijing, 100083, China

³ Guangdong Key Laboratory for Urbanization and Geo-simulation, School of Geography and Planning, Sun Yat-Sen University, Guangzhou, 510006, China

⁴ College of Land Science and Technology, China Agricultural University, Beijing, 100083, China

⁵ Ant Group, World Financial Center, Beijing, 100000, China

⁶ Swiss Reinsurance Company Ltd Beijing Branch, Beijing, 100022, China

⁷ Department of Computer Science and Technology, Tsinghua University, Beijing, 100190, China

⁸ School of Geospatial Engineering and Science, Sun Yat-Sen University, Guangzhou, 510275, China

⁹ Department of Geography, The University of Hong Kong, 999077, Hong Kong, China

¹⁰ Faculty of Geosciences and Engineering, Southwest Jiaotong University, Chengdu, 611756, China

These authors contributed equally.

Correspondence to: Xuecao Li (lixc26@mail.sysu.edu.cn); Tiecheng Bai (baitiecheng@taru.edu.cn); Jianxi Huang (jxhuang@cau.edu.cn)

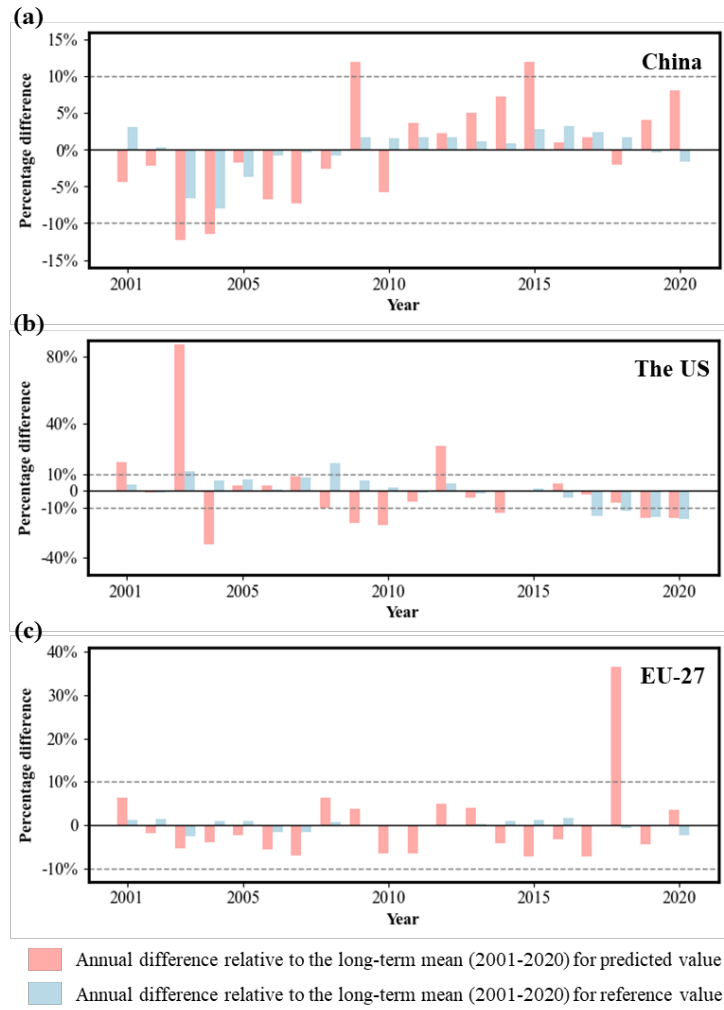


Fig S1. The annual difference relative to the long-term mean (2001-2020) for reference and predicted values in China (a), the US (b), and the EU-27 (c).

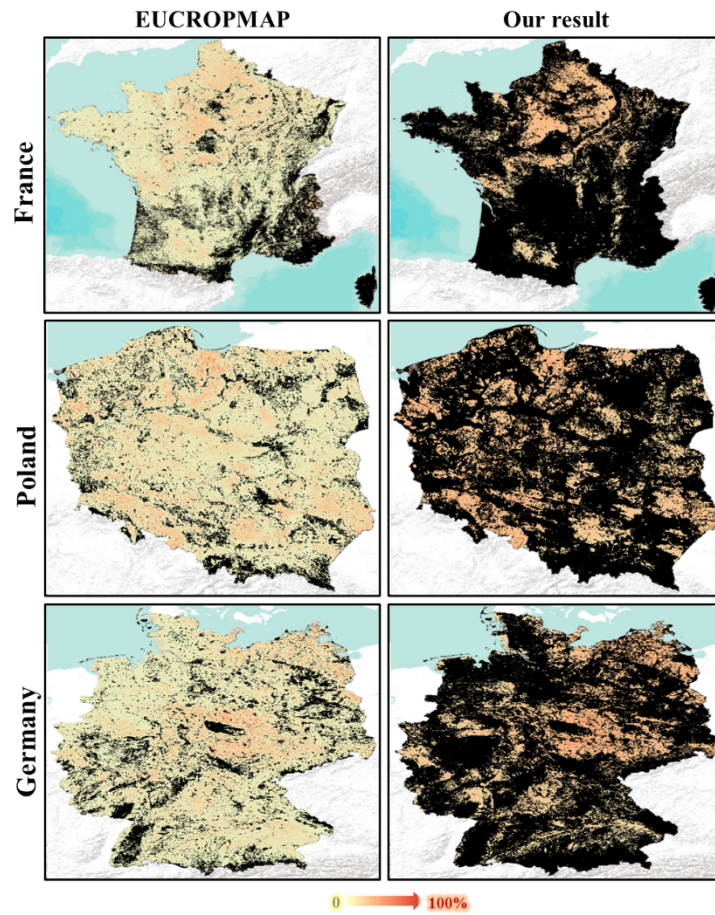


Fig S2. Mapping performance in our study area between the EUCROPMAP product (left) and our mapped results (right) in 2018.

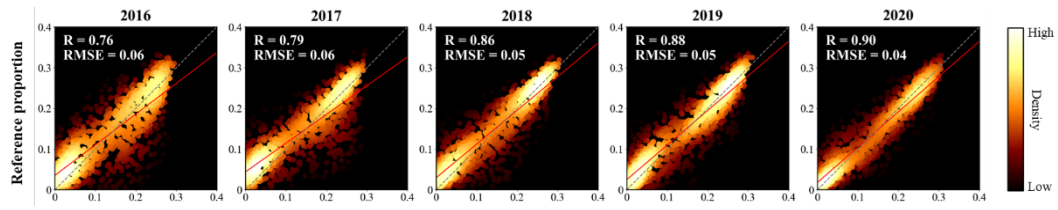


Fig S3. The Comparison of aggregated winter wheat fraction data at 5km between our results and the 30m winter wheat maps in China from 2016 to 2020.

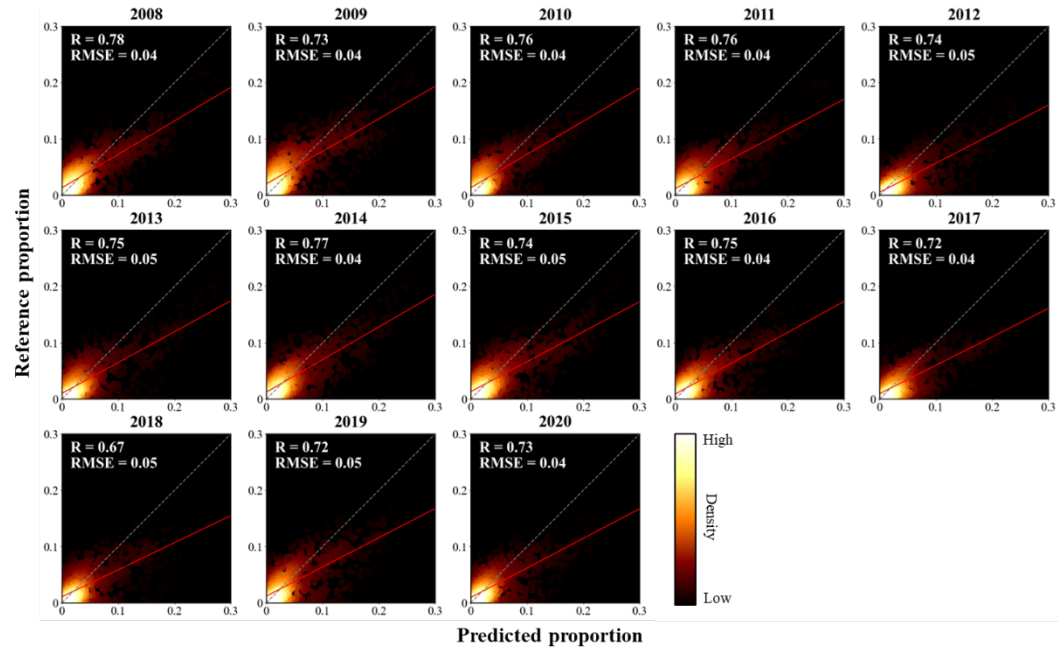


Fig S4. The Comparison of aggregated winter wheat fraction data at 5km between our results and the CDL data in the US from 2008 to 2020.

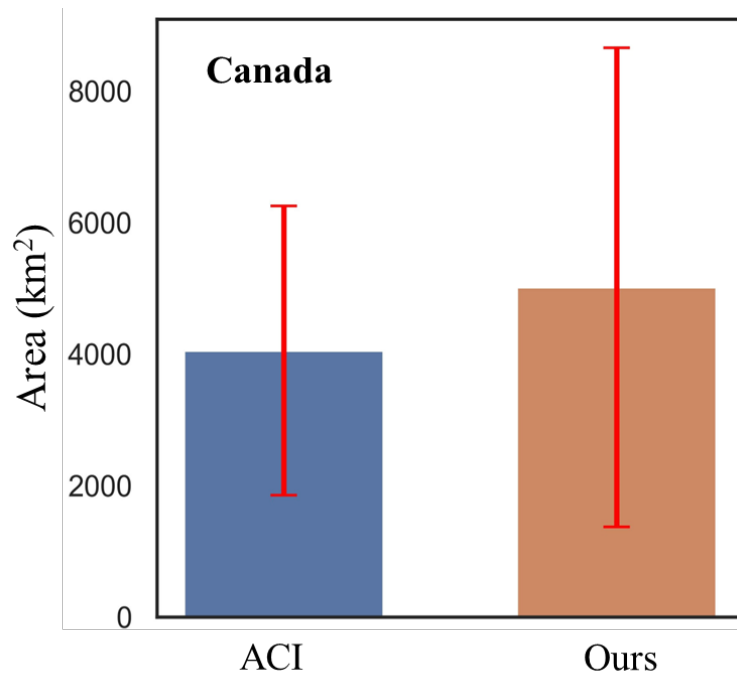


Fig S5. Comparison of region-scale winter wheat areas between our mapped results and the public crop datasets in Canada.