



C-PEAT's Global Peatland Carbon Database (v.2025)

Julie Loisel^{1,2}, Angela Gallego-Sala³, Daniela Ransby⁴, Emily Rabel¹, Cornelia Behrens⁵, Stefanie Schumacher⁴, Kathe Todd-Brown⁶, Vaasuki Marupaka⁶, C-PEAT Working Group Members[^]

5

¹ Dept. of Geography, Texas A&M University, College Station, USA.

² Dept. of Geography, University of Nevada, Reno, USA.

³ Dept. of Geography, University of Exeter, Exeter, UK.

⁴ PANGAEA, Alfred Wegener Institute, Helmholtz Centre for Polar and Marine Research, Bremerhaven, Germany.

10 ⁵ PANGAEA, MARUM – Center for Marine Environmental Sciences, University of Bremen, Germany.

⁶ Dept. of Environmental Engineering Sciences, University of Florida, Gainesville, USA.

[^] A full list of data contributors appears at the end of the paper.

Correspondence to: Julie Loisel (jloisel@unr.edu)

15 **Abstract.** Field-based measurements are foundational to the study of short- and long-term peatland carbon dynamics. For decades, the scientific community has amassed hundreds of valuable empirical datasets in the form of peat core records from around the world. Those records typically include peat depth, basal age, peat organic matter content, peat dry bulk density, peat organic density, and/or carbon and nitrogen content. Once combined with chronological constraints and models, peat core time series can be used to estimate changes in peat-carbon accumulation rates through time. Consolidating these peat records can help improve global peat-carbon stock estimates and quantifications of past, present, and future greenhouse gas exchanges between peatlands and the atmosphere. Large-scale synthesis can also shed light on the sensitivity of peat-carbon accumulation processes to climate change and provide context for current and future global environmental change. We can also use spatial and temporal peat data to inform, validate, and benchmark existing models that include peatland representations. This paper presents the first formal version of PAGES' C-PEAT Global Peatland Carbon Database (GD), which is available for download in the PANGAEA and International Soil Carbon Network (ISCN) data repositories. The C-PEAT GD contains 267 independently catalogued peat cores and a large number of observations from those cores, including: peat depths, organic matter content values, dry bulk density values, organic density values, as well as carbon and nitrogen content values. Raw and calibrated chronological data are included for each individual dataset when available. The metadata fields are easily searchable and interoperable, as per PANGAEA's standards. The main objective of this article is to describe the structure and content of the database, itself aimed at increasing the use, assimilation, and interoperability of peat-core data across disciplines. The C-PEAT GD can be accessed at the PANGAEA data repository (<https://doi.org/10.1594/PANGAEA.986891>; Loisel et al., 2025).

20
25
30

1 Introduction

35 Peatlands have stored a vast quantity of carbon (C) in their thick organic soils over the past ~10,000 years (Gorham 1991; Yu et al. 2010). The effect of this long-term C sink on the global climate system has been that of a net cooling (Smith et al. 2004; Frolking et al. 2006; Yu 2012), despite large methane (CH₄) emissions to the atmosphere (Spahni et al. 2013; Packalen et al. 2014; Treat et al. 2021). While peatlands only occupy 3% of the global land area, their current C store has been estimated at ~ 500-1000 gigatonnes (Gt) (Yu 2012; Nichols & Peteet 2019), with an apparent long-term averaged C accumulation rate (aCAR) of 23 gC/m²/yr (Loisel et al. 2014). We note that peat soil-c density and aCAR are known to vary over space and time, as they depend on a number of internal factors that include local vegetation communities, hydrological setting, and topography, as well as a suite of external factors such as air temperature, moisture regime, and climate seasonality (Jones & Yu 2010; Charman et al. 2013; Cobb et al. 2017; Hoyt et al. 2019). Other key agents capable of altering

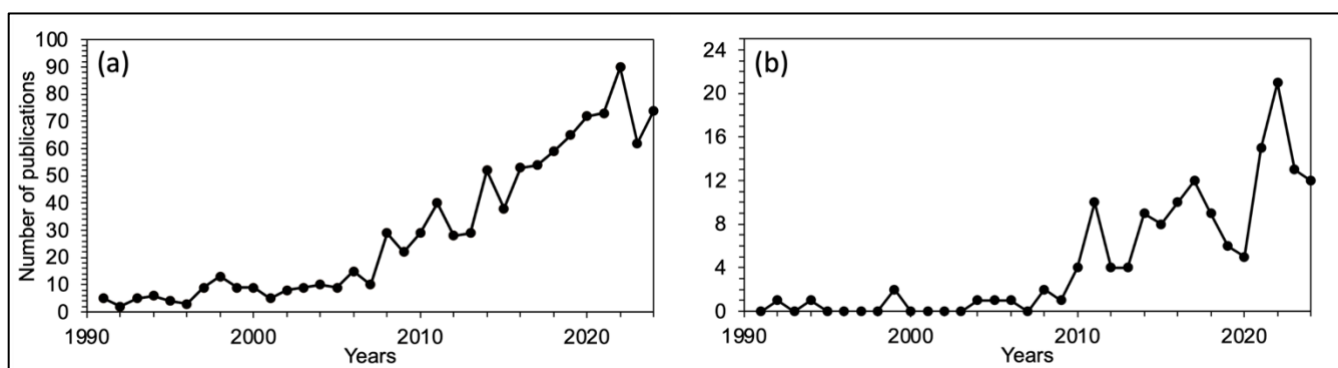
40



45 a peatland's C store include wildfire, permafrost dynamics, sea-level change, atmospheric pollution and dust deposition, and anthropogenic land-use change (Hooijer et al. 2012; Dommain et al. 2011; Gibson et al. 2018; Turetsky et al. 2020; Hoyt et al. 2020).

50 Over the past ~ 35 years, the literature has become rich with empirical- and model-based studies aimed at quantifying peatland C storage from around the world as well as their past, present, and future CARs (Fig. 1a). While the majority of these studies have focused on northern high-latitude peatlands (> 45° N; Gorham 1991; Turunen et al. 2002; Yu 2012), there has been an increase in the number of studies based in the temperate, tropical, and southern high-latitude regions (Kurnianto et al. 2015; Kock et al. 2020; Ruwaimana et al. 2020), as well as global assessments (Gallego-Sala et al. 2018; Loisel et al. 2021; Müller & Joos 2021a; Qiu et al. 2020). In particular, studies of tropical peatlands have been on the rise since 2010 (Fig. 1b).

55



60 **Figure 1.** Number of peer-reviewed publications that relate to peat carbon, per year (1991-2024), according to Web of Science. **(a)** Global peatlands (search terms: peat* AND carbon AND (stock* OR stor*) AND rate*). **(b)** Tropical peatlands (search terms: peat* AND carbon AND (stock* OR stor*) AND rate* AND tropic*).

65

70 The 2010s have also brought along many large-scale peat-data compilations (Fig. 2), perhaps in part thanks to the broad goals of increasing scientific availability/reproducibility (Ellison 2010; Bond-Lamberty et al. 2016). The need for transparency in methods, code, and data have also been fueling an increase in collaborative, open science (Adams 2012; Wolkovitch et al. 2012), which helps fulfill a growing need for integrated knowledge and actionable science, in addition to bringing an additional element of trust to the body of science (Grand et al. 2012). In particular, synthesis work has been contributing to initiating new collaborations and building working groups across the scientific community (Baron et al. 2017). In the case of ecological data, syntheses and meta-analyses increase visibility of, and accessibility to, individual case studies (Markowitz et al. 2015). These efforts may help the safeguarding, rescuing, and disseminating of ecological data that would otherwise be lost or remain inaccessible, particularly if unpublished (Vines et al. 2014; Dietze et al. 2014; Harden et al. 2017). Indeed, access to raw ecological data is generally thought to range between 1 and 10% (Reichman et al. 2011; Wolkovitch et al. 2012), making data curation, data accessibility, and data compatibility essential parts of a scientist's work today. This is particularly the case for field ecological observations and measurements that cannot be reproduced in a context of climate change (Wolkovitch et al. 2012).

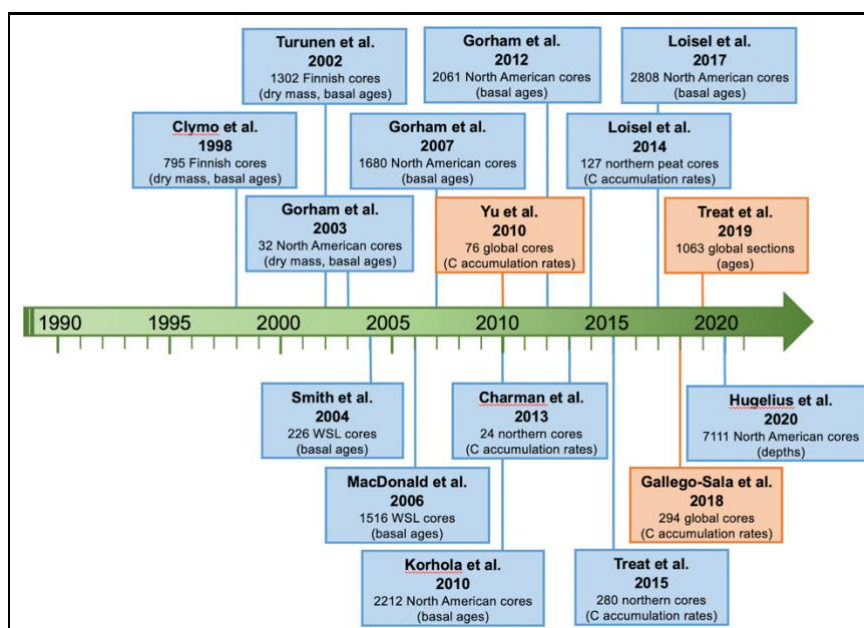
75

80 It has been argued that *synthesis work* provides critical knowledge to solving environmental problems and informing policy (Carpenter 2009; Hampton & Parker 2011; Dicks et al. 2014). By integrating multiple lines of evidence, the power of synthesis work lies in its ability to develop new knowledge that broadens perspectives. The synthesis of existing research provides means to assess individual case studies and explore generalities among datasets; it limits emphasis on specificities and instead focuses on distilling information to improve scientific understanding. In the case of peat core data, the combination of hundreds of peat records can help improve global peat-C stock estimates and quantifications of past, present,



and future greenhouse gas exchanges between peatlands and the atmosphere (e.g., MacDonald et al. 2006; Yu 2012; Yu et al. 2013). Large-scale synthesis can also shed light on the sensitivity of peat-C accumulation processes to climate change (e.g., Charman et al. 2013; Loisel et al. 2014; Treat et al. 2019) and provide context for current and future global environmental change (e.g., Gallego-Sala et al. 2018; Hugelius et al. 2020; Qiu et al. 2020). We can also use spatial and temporal peat data to inform, validate, and benchmark existing Earth System Models that include peatland representations (Kleinen et al. 2012; Spahni et al. 2013; Qiu et al. 2018; Alexandrov et al. 2020; Chaudhary et al. 2020; Müller & Joos 2021a, 2021b; Chadburn et al. 2022).

90 Here we present the first formal version of PAGES' C-PEAT Global Peatland Carbon Database (GD), which is now available for download on the PANGAEA data repository. The C-PEAT GD contains 267 previously published independent peat cores and a large number of observations from those cores: 267 peat depths, 43,467 peat dry bulk density values, 31,473 peat organic matter content values, 4,016 peat organic matter density values, 42,566 carbon content values, and 10,771 nitrogen content values. The main objective of this article is to describe the structure and content of the database, itself aimed at increasing the use, assimilation, and interoperability of peat-core data across disciplines. The database is made of four synthesis papers that were published as part of international community efforts deployed by the C-PEAT working group over the past decade. Those four synthesis papers are introduced below and in Fig. 2, with the latter also acknowledging a number of additional synthesis papers on long-term peatland dynamics and C stock. C-PEAT is a group of over 300 scientists dedicated to synthesizing data and knowledge on the evolution of peatlands through Earth's recent history via collaborations between international researchers. C-PEAT operates under the umbrella of the parent organizations Past Global Changes (PAGES) and Future Earth, and has received further support from the International Union of Quaternary Research (INQUA) and UNESCO's International Geoscience Programme (IGCP) to organize community workshops and training sessions.



105

Figure 2. Timeline of some key synthesis papers on peatland carbon. Blue: northern hemisphere; Orange: global.

110 *Yu et al. (2010)* compiled C accumulation records from 76 sites, which were used to reconstruct changes in the peat-C pool since the Last Glacial Maximum for the northern, tropical, and southern peatland regions. *Charman et al. (2013)* then focused on 24 well-dated peat profiles from the northern high-latitude regions to examine changes in C accumulation over

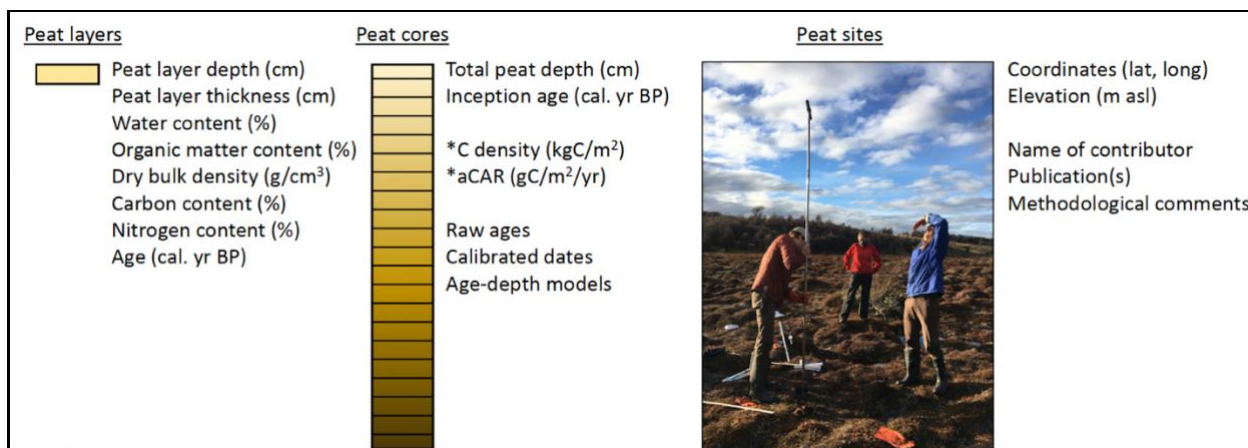


115 the past millennium. *Loisel et al. (2014)* augmented the *Yu et al.*'s northern dataset by using peat core data from over 200 sites to report Holocene peat properties (i.e., bulk density, organic matter, C, and nitrogen (N) content) and aCARs for 127 of those sites. *Gallego-Sala et al. (2018)* further extended the last millennium work from *Charman et al. (2013)* by combining
120 over 250 millennium-aged peat-core records from around the globe with a modeling approach to quantify the future global peatland carbon sink function. We note that the C-PEAT group has worked on other peatland databases worth mentioning here. For instance, *Treat et al. (2015)* looked at peatland plant macrofossil records from 280 sites across the northern permafrost zone and reported differences in peat properties as well as aCARs among the different vegetation types and environmental classes. *Yu et al. (2013)* and *Loisel et al. (2017)* combined 2808 basal peat ages from previously published papers to reconstruct spatial and temporal patterns of Holocene peatland area change. Lastly, *Treat et al. (2019)* used over
1000 stratigraphic records of buried peatlands from around the world to reconstruct peat-forming wetland dynamics over the past 130,000 years. The datasets from those last few papers are also available on PANGAEA, but the peat cores have not yet been cataloged individually.

125 2. Methods

2.1. Definitions and potential uses for the C-PEAT GD

The C-PEAT GD includes high-resolution peat-core geochemical and chronological data that can be used to calculate a number of soil C indices (Fig. 3). At the peat-core level, the information can be used to quantify peatland *C storage* (kgC) and *C density* (kgC/m²). These two indices are commonly used to estimate C stocks across biomes and the terrestrial
130 biosphere (e.g., Armentano & Menges 1986; Gorham 1991; Petrokofsky et al. 2012). *Apparent C accumulation rates* (aCAR; gC/m²/yr) can be obtained by dividing a core's C density by the basal age of that core (Tolonen & Turunen 1996); multiple ages and C measurements along a peat profile can also be used to estimate temporal changes in aCAR (e.g., Yu et al. 2010), though this technique has methodological limits; see below (Young et al. 2019, 2021). In previous synthesis work, aCAR was calculated for each peat layer (Fig. 3); the layer data were then combined into bins (e.g., 50, 100, 500, 1000
135 years) to provide time-weighted aCAR (Yu et al. 2010; Jones & Yu 2011; Loisel et al. 2014; Fig. 3). The latter makes it easier to compare apparent accumulation rates across sites and build regional assessments. It is important to note that aCAR is an imperfect measure of past accumulation rates because peatlands may be subject to secondary peat loss - from fire, erosion, a lasting drought, or management - that takes place long after initial peat deposition and early-stage diagenesis (Yu 2012; Frolking et al 2014; Young et al. 2019, 2021). Thus, a fundamental problem with aCAR is that it cannot rule out
140 whether secondary peat loss has taken place. Aggregating a large number of core site data for which multiple age determinations and C measurements are available can help alleviate the issue; indeed, secondary decomposition can be seen as site-specific "noise" that is subdued in a synthesis product. *Recent aCAR* calculations (past ~150 years; Figure 3) are technically possible using our database. But here again, the use of these datasets come with important limitations. For instance, we emphasize that near-surface records tend to represent incompletely decomposed, young peat, such that recent
145 aCAR should not be directly compared against longer-term aCAR (Piilo et al. 2019; Young et al. 2019). In fact, the past ~150 years of peat accumulation are often omitted from synthesis work (e.g., Charman et al. 2013; Gallego-Sala et al. 2018). Lastly, it should be mentioned that the C-PEAT GD database also includes N content; N stock, soil N density, and aNAR can thus be calculated.



150

Figure 3. Datasets available from the C-PEAT Global Peatland Carbon Database. The * denotes soil carbon indices that can be derived from the database. For additional details, refer to Tables 2-3-4.

155 **2.2. Peat carbon database architecture**

Here we present the first version (coined v.2025) of the C-PEAT GD. The following paragraphs provide the general database structure. We start with a brief introduction of the collaborative process that gave birth to the database. We then describe data aggregation and formatting, list the types of data/metadata that are available, and we finish by presenting data selection criteria as well as data coverage. The C-PEAT GD can be accessed via PANGAEA at:

160 https://www.pangaea.de/?q=project:label:PAGES_C-PEAT. The latter landing page contains links to download individual records; the entire database can also be mass-downloaded using R or Python (Ransby et al. 2025). Metadata and data can be obtained from the PANGAEA repository with scripts using the ‘pangaeear’ R package (Chamberlain et al. 2021) and the ‘pangaeapy’ Python library (Huber et al. 2025). More information on submission of new or revised datasets can be found in sect. 4.1.

165

This database is the product of approximately 10 years of collaborative work by the C-PEAT working group, which is endorsed by PAGES. This synthesis effort focuses on peatland-C records; it is a contribution to C-PEAT’s second developmental phase and fulfills the objective of making the community’s peat-C data widely available (Loisel & Gallego-Sala 2018). The C-PEAT GD is the culmination of multiple synthesis efforts that have taken place over the past decade (see section 1 and Fig. 2). For each one of these previous studies, calls for participation were widely distributed. Data inclusion criteria differed between papers to match their different scopes; in each case, decisions were made by a group of lead authors in consultation with the data contributors (Table 1). The workload for assembling the data and metadata that make up C-PEAT’s GD was coordinated at Texas A&M University. All data from the four compilation papers are included in the C-PEAT GD.

175

Table 1. Criteria for inclusion used by the four peat-data synthesis articles that form the C-PEAT Global Peatland Carbon Database (v.2025).

References	Chronological constraints	Geochemical constraints	Geographic constraints
Yu et al. 2010	multiple calibrated ages	some bulk density measurements	none



Charman et al. 2013	at least 3 evenly spaced dates spanning the last 1000 years	contiguous bulk density measurements at <5 cm resolution	latitude: >45N
Loisel et al. 2014	at least 1 date per thousand years (on average for the entire record)	some bulk density or organic matter density measurements	latitude: >45N
Gallego-Sala et al. 2018	at least 2 radiocarbon dates from the past 1000 years	contiguous bulk density measurements at <2 cm resolution	none

180

2.3. Data aggregation, formatting, and availability in PANGAEA

As a data publisher for Earth & Environmental Sciences, PANGAEA (Felden et al. 2023) has an almost 40-year history as an open-access library for archiving, publishing, and disseminating georeferenced data from the Earth, environmental, and biodiversity sciences. Originally evolving from a database for sediment cores, it is operated as a joint facility of the Alfred Wegener Institute, Helmholtz Centre for Polar and Marine Research, and the Center for Marine Environmental Sciences at the University of Bremen. PANGAEA has been certified with the Core Trust Seal since 2019. Each published dataset can be cited with a specific data citation and an associated unique Digital Object Identifier (DOI) to cross-link to related resources such as manuscripts and data. A broad spectrum of contextual information ('metadata') describing the where, how, when, and why of a measurement is given. Additionally, the methods and devices used for sampling and analysis as well as references of related literature and external resources are provided. All data and metadata are compiled in close collaboration between the scientists and trained field experts acting as data editors. Both data and metadata are checked for completeness and plausibility, ensuring high quality standards according to the FAIR data principles. Semantic interoperability during data curation is ensured through strict application and dynamic evolution of terminologies according to international protocols and standards. This harmonization and standardization promote not only readability and further processability by machines, but also a high degree of reusability of the data stock. In addition to the classic access to data via the website, an integrative use of data in the form of a DataWarehouse and a set of tools for programmatic data processing are available for this purpose. The two applications, 'pangaeapy' (Huber et al. 2025) and 'pangear' (Chamberlain et al. 2021), respectively, are written for the scripting languages Python and R, and make use of the well-developed interoperability framework of PANGAEA.

185

190

195

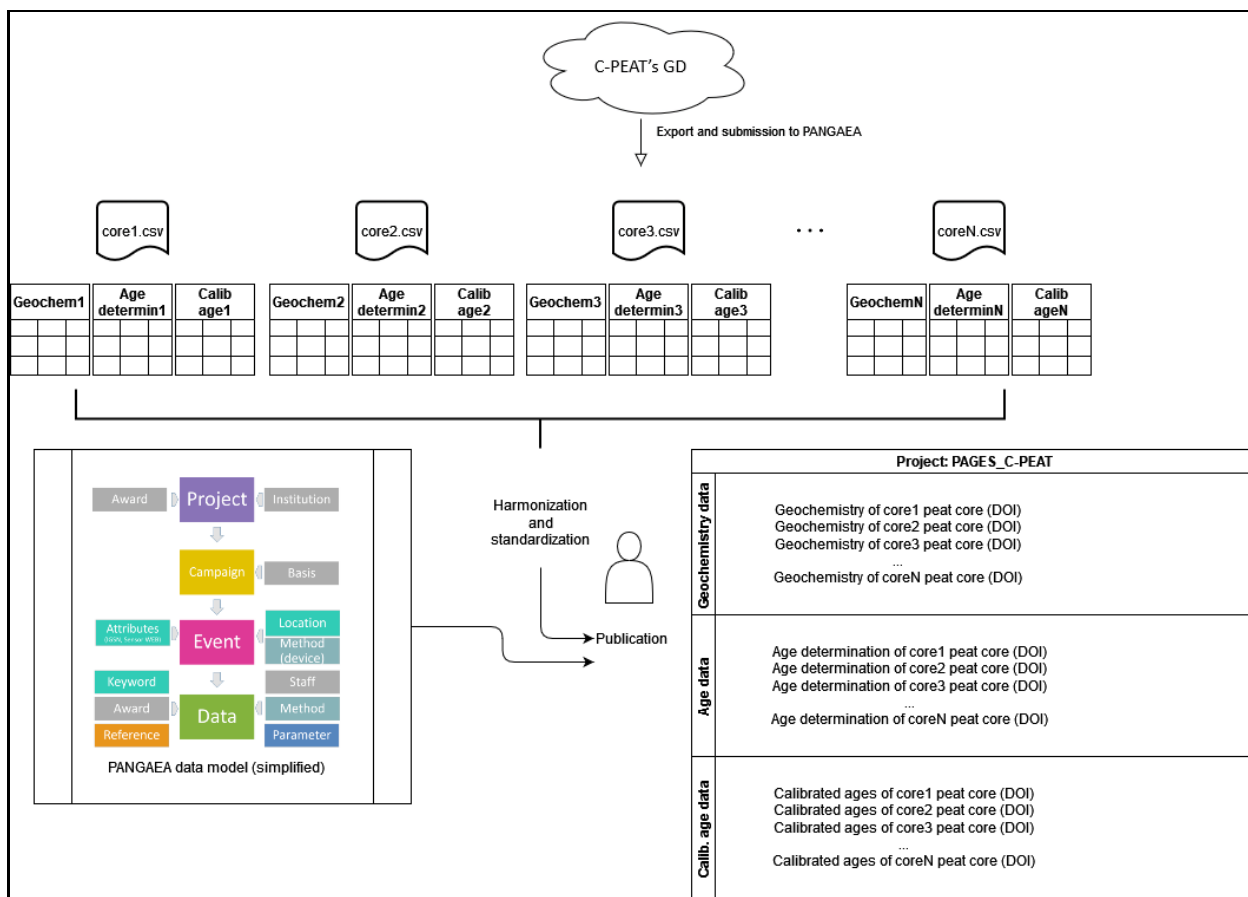
200

Each peat core record that is a part of our GD was either directly contributed by the original data owner or obtained from the published literature by the different synthesis author teams (Fig. 4). In most cases, records that were identified in the literature were then obtained from the corresponding author via email. In a few cases, datasets were digitized from publication tables, appendices, and supplementary materials. The synthesis team leads provided templates to the data contributors to facilitate aggregation. In the case of data acquired from publications, the synthesis teams entered the data into templates themselves. At this stage, data quality was manually assessed by said teams (Table 1). The data were then compiled and used for analysis. During the second stage - i.e., in preparation for the C-PEAT GD - the data and metadata were reviewed and formatted to harmonize and standardize them with the PANGAEA database. To date, PANGAEA hosts 758 C-PEAT datasets obtained from 267 distinct cores (267 geochemistry datasets, 264 age determination datasets, and 227 calibrated ages datasets). These datasets were authored by 81 individuals (or groups of individuals). The datasets refer to 84 journal articles as well as 4 thesis, dissertations, and conference papers. Each dataset is associated with an "Event", which is a metadata descriptor used by PANGAEA for characterizing the site / station where a physical sample or measurement took place. For the C-PEAT database, "Event" is a synonym for a "peat core". Mandatory metadata for each Event comprises a unique "Label" as well as "Latitude" and "Longitude" information (in decimal degrees). Further optional metadata include an additional / alternative core Label, Sampling method, Elevation (meters above sea level) and a Comment (free text) (Fig. 4).

205

210

215



220 **Figure 4.** Workflow to integrate C-PEAT data into PANGAEA. Each peat core (called an Event in PANGAEA) is linked to
 Location and Methods metadata. Each peat layer includes geochemical data, raw age determinations, and calibrated ages
 (referred to as Data in PANGAEA). 3 datasets per core are created, each with a distinct DOI. Those data are linked to
 Methods and References from the original publication (if published).

225 The geochemistry datasets contain the key peat geochemical properties along with the ancillary data that may complement,
 or help interpret, the data (Table 2). These ancillary data include entries such as the main peat type. Age determination
 datasets provide raw age control data such as radiocarbon (¹⁴C), Lead-210 or tephra chronostratigraphy, together with
 information on the type of dated material (bulk, wood, pollen etc.) (Table 3). Age-depth relationships of individual peat
 230 cores, including their upper and lower limits, are presented in the calibrated ages datasets (Table 4). These were obtained
 from the published papers and are based on different age-depth modeling techniques.

Geochemical metadata were obtained from the contributing authors (or extracted from the peer-reviewed articles) and they
 relate to study site and author information, as well as analytical and sampling methods (Table 2). Chronological metadata
 relate to the different types of dating methods, labs where the analysis were performed, and they also include additional
 235 sampling information (when available from the original articles) (Table 3).

Table 2. Geochemical parameters included in the C-PEAT Global Peatland Carbon Database, and associated metadata.



Parameter [unit]	Description	Parameter short name
DEPTH, sediment/rock [m]	Sample midpoint depth	Depth sed
AGE [ka BP]		Age
Sample thickness [cm]		Samp thick
Sample volume [cm ³]		Samp vol
Water content, wet mass [%]		Water wm
Peat type []		Peat type
Sedimentation rate per year [cm/a]		SR
Peat carbon accumulation rate per year [g/m ² /a]		PCAR
Organic matter [%] *	weight-%	OM
Carbon [%]	converted/calculated from other data such as LOI	C
Carbon, inorganic, total [%]	weight-%	TIC
Carbon, organic, total [%]	weight-%	TOC
Carbon, total [%]	weight-%	TC
Comment []		Comment
Cumulative mass [g/cm ²]		Cum mass
Density, dry bulk [g/cm ³]		DBD
Density, organic carbon [g/cm ³]		Corg dens
Density, organic matter [g/cm ³]		OM dens
Nitrogen, total [%]	weight-%	TN

240 * In some datasets the parameter is named Loss on ignition [%] - both were merged for the synthesis.

Table 3. Age determination parameters included in the C-PEAT Global Peatland Carbon Database, and associated metadata.

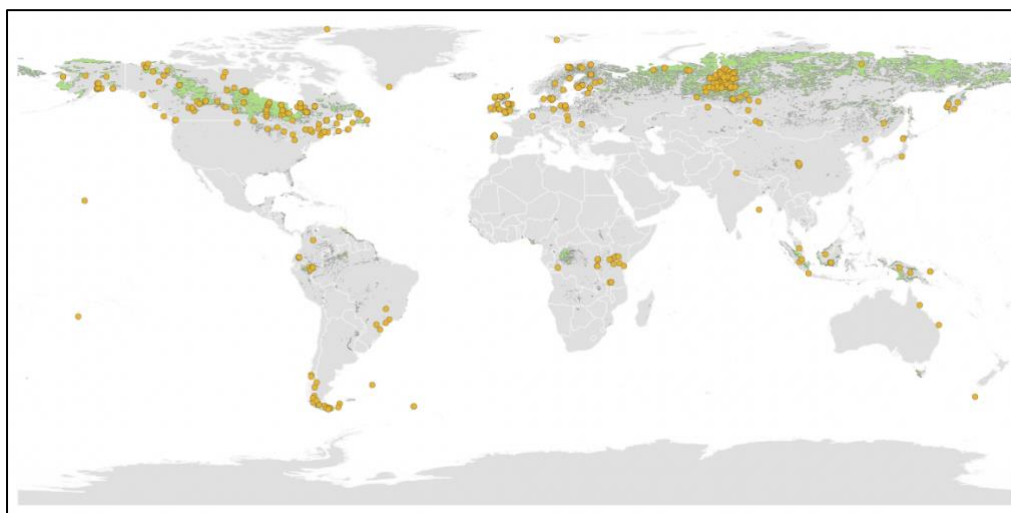
Parameter [unit]	Parameter short name
DEPTH, sediment/rock [m]*	Depth sed
Depth, top/min [m]	Depth top



Depth, bottom/max [m]	Depth bot
Sample code/label []	Sample label
Sample thickness []	Samp thick
Laboratory code/label []	Lab label
Method comment []	Method comm
Fraction modern carbon []	F14C
Fraction modern carbon, error [±]	F14C e
Δ14C [‰]	Δ14C
Δ14C, standard deviation [±]	Δ14C std dev
Activity of radiocarbon in percent of modern carbon [pMC]	Activity
Activity of radiocarbon in percent of modern carbon, standard deviation [±]	Activity std dev
Age, dated [ka]	Age dated
Age, dated, uncertainty [±]	Age dated unc
Age, dated standard deviation [±]	Age dated std dev
Age, dated material []**	Dated material
Age, comment []	Comm
Age model [ka]	Age model
Age, error [±]	Age e
Age [a]	Age
Age, uncertainty [±]	Age unc
Age, standard deviation [±]	Age std dev
Age [a AD/CE]	Age
Age, maximum/old [a AD/CE]	Age max
Age, minimum/young [a AD/CE]	Age min
Calendar age [ka BP]	Cal age



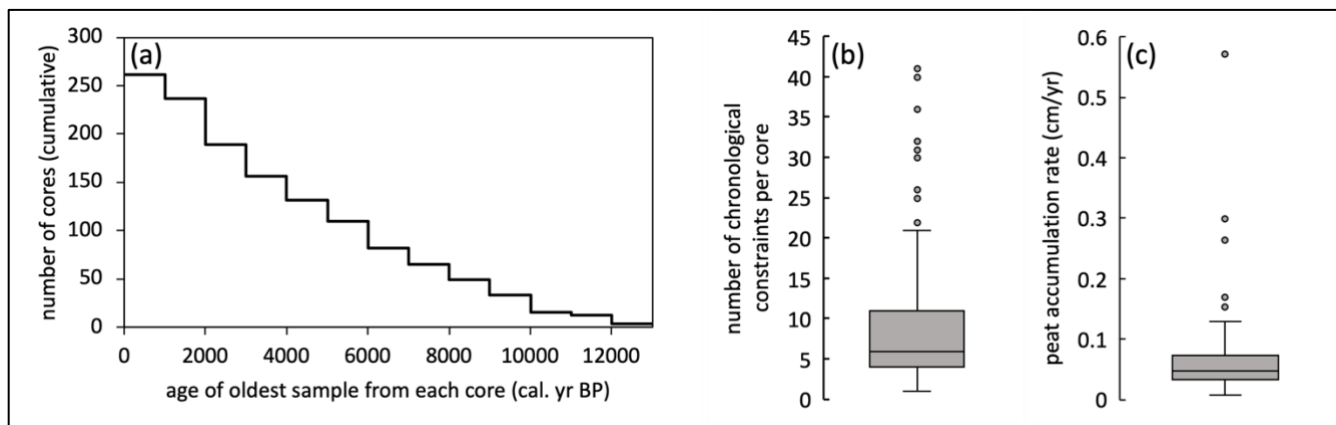
285 be of modern age (Fig. 6a). We note that the oldest age available along a peat core sets the record's duration; in most cases, peat cores extend back to peatland initiation, though many cores do not. In total, 24 peat core records are younger than 1000 years (of which 11 core chronologies were solely constrained by ^{210}Pb ages), 110 records are at least 5000 years old, and 16 cores initiated prior to 10,000 years ago. The oldest records are found in southern Patagonia and Alaska, presumably because of the earlier deglacial history of those regions. The oldest tropical site available in this database is approximately 11,600 years old, though we note that most of the tropical cores included in the dataset are less than 5000 years old (median = 2940 years).



290 **Figure 5.** Spatial distribution of peat cores included in the C-PEAT Global Peatland Carbon Database. Orange circles represent individual peat cores. The global peatland area (in black) is from UNEP (2022). Map source: Esri, TomTom, FAO, USGS | Powered by Esri.

295 The temporal resolution of the peat core records varies considerably. For instance, the number of chronological constraints along a single peat core varies from 1 to 41 (median = 6; Fig. 6b). Dividing the maximum age of a record by the number of dates available for said record yields an average of 0.76 dates / 1000 years, with 64 records characterized by an averaged temporal resolution that is greater than 1 date / 1000 years. In general, there are more chronological constraints for the late Holocene than the mid- and early-Holocene time periods, in part because the data from Gallego-Sala et al. (2018) focused on the past millennium. Peat accumulation rates also vary widely between sites. In general, the peatland archives therein offer a multi-decadal resolution, with an average peat accumulation rate of 0.057cm/yr, ranging from 0.005 to 0.5cm/yr (Fig. 6c).

300

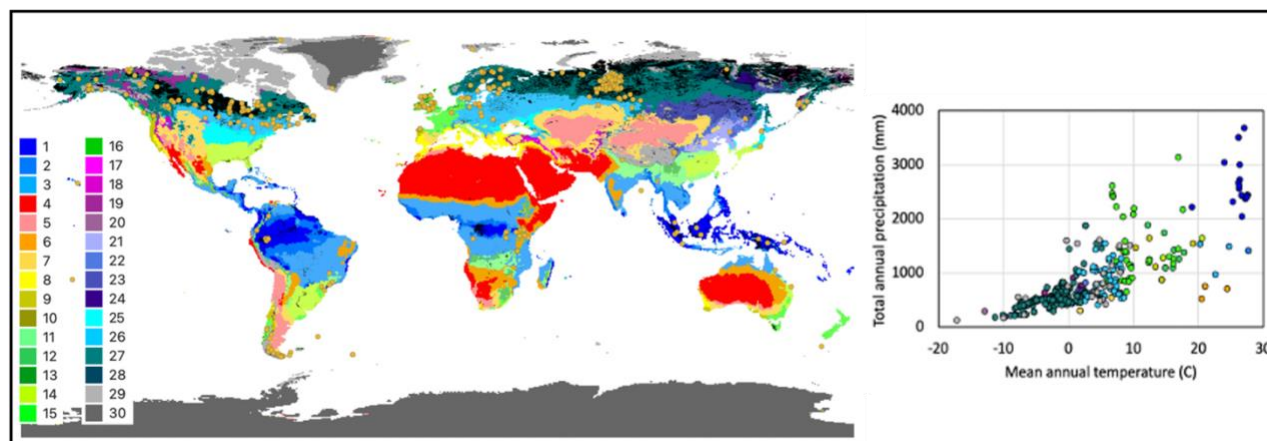


305 **Figure 6.** Temporal resolution of peat cores included in the C-PEAT Global Peatland Carbon Database. **(a)** Cumulative number of peat core records over time. **(b)** Number of chronological constraints per core. **(c)** Mean apparent rate of peat accumulation for each core (in cm/yr). On panels b) and c), the 25th-75th percentile ranges (IQR) are displayed as the boxes, with the medians (50th percentile) marked by horizontal black lines inside. The whiskers represent 1.5xIQR and the circles represent outliers.

310 **3.2. Data representativity**

The climate envelope and climate region analyses confirm that peatland sites within this database are found across a broad range of hydroclimatic conditions and climate classes, from the tropical rainforest and the tropical savannah to the polar tundra, and many other classes in between. It is clear that cold climate sites dominate the dataset (222/267 sites) and that more cores from the warmer bioclimatic regions would help balance representation in the database (Fig. 7).

315



320 **Figure 7.** Distribution of sites included in the C-PEAT Global Peatland Carbon Database in the context of the Koppen-Geiger climate classification. Peatland sites (orange circles on the map) are the same as on Fig. 6. The climate map is from Beck et al. (2023) and the global peatland area (in black) is from UNEP (2022). The biplot presents those same peatland sites (color-coded using the Koppen climate classes) in a climate space. The legend reads as follows (from Beck et al. 2023): 1 Af (Tropical, rainforest), 2 Am (Tropical, monsoon), 3 Aw (Tropical, savannah), 4 BWh (Arid, desert, hot), 5 BWk (Arid, desert, cold), 6 BSh (Arid, steppe, hot), 7 BSk (Arid, steppe, cold), 8 Csa (Temperate, dry summer, hot summer), 9 Csb (Temperate, dry summer, warm summer), 10 Csc (Temperate, dry summer, cold summer), 11 Cwa (Temperate, dry winter,



325 hot summer), 12 Cwb (Temperate, dry winter, warm summer), 13 Cwc (Temperate, dry winter, cold summer), 14 Cfa
(Temperate, no dry season, hot summer), 15 Cfb (Temperate, no dry season, warm summer), 16 Cfc (Temperate, no dry
season, cold summer), 17 Dsa (Cold, dry summer, hot summer), 18 Dsb (Cold, dry summer, warm summer), 19 Dsc (Cold,
dry summer, cold summer), 20 Dsd (Cold, dry summer, very cold winter), 21 Dwa (Cold, dry winter, hot summer), 22 Dwb
(Cold, dry winter, warm summer), 23 Dwc (Cold, dry winter, cold summer), 24 Dwd (Cold, dry winter, very cold winter), 25
330 Dfa (Cold, no dry season, hot summer), 26 Dfb (Cold, no dry season, warm summer), 27 Dfc (Cold, no dry season, cold
summer), 28 Dfd (Cold, no dry season, very cold winter), 29 ET (Polar, tundra), 30 EF (Polar, frost). Map source: Esri,
TomTom, FAO, USGS | Powered by Esri.

3.3. Key peat properties and characteristics

335 When combined, the peat records yield a total of 267 peat depths, 43,467 dry bulk density values, 31,473 organic matter
content values, 4,016 peat organic matter density values, 42,566 carbon content values (total carbon and carbon combined),
and 10,771 nitrogen content values. Descriptive statistics of the dataset are presented in the paragraphs below as well as in
Fig. 8 and Table 5.

340 Peat core depth is provided for all 267 cores and ranges from 0.30 to 10.95 m, with a mean value of 2.24 ± 1.9 m (1 standard
deviation (SD); Table 5). We note that ‘peat core depth’ refers to the deepest sample provided for a site; while most peat
cores in the dataset extend back to peatland initiation, many cores may not. When in doubt, it is recommended to refer to the
original publication to confirm whether the record starts at peat inception.

345 Peat dry bulk density values ($n = 43,467$) are available for 263 sites and range from 0.01 to 3.380 g/cm³, with a mean value
of 0.140 ± 0.178 g/cm³ (1 SD; Fig. 8a; Table 5). Organic matter content data ($n = 31,473$) are available for 174 sites and
range from 0 to 100% (though there are some data points > 100%), with a mean value of $88.5 \pm 20.1\%$ (1 SD; Fig. 8b; Table
5). Organic matter density values (OMD; $n = 4016$) are available for 20 sites and range from 0.008 to 0.399 g OM/cm³, with
a mean value of 0.117 ± 0.046 g OM/cm³ (1 SD; Table 5).

350 In the database, carbon content is presented as three distinct variables: C%, TC%, and TOC%. While C% refers to estimated
C content based on OM measurements, reports of TC (total carbon) and TOC (total organic carbon) data refer to values that
were measured directly, typically through elemental analysis. Here we report C% data from 151 sites ($n = 26,842$), TC%
from 114 sites ($n = 14,430$), and TOC% data from 11 sites ($n = 1532$), for a total of 42,804 measurements. We note that 16
355 sites report both C% and TC% values, that 7 sites report C% and TOC% values, that 1 site reports TC% and TOC% values,
and that 1 site reports C%, TC%, and TOC% values. Carbon content (C%) estimates range from 0.0 to 71.7%, with a mean
value of $46.7 \pm 10.5\%$ (1 SD; Fig. 8c; Table 5). Total carbon content (TC%) values range from 0.0 to 100%, with a mean
value of $45.4 \pm 16.4\%$ (1 SD; Fig. 8c; Table 5). Total organic carbon content (TOC%) values range from 0.0 to 77.0%, with
a mean value of $37.7 \pm 19.6\%$ (1 SD; Fig. 8c; Table 5). Lastly, organic carbon density values (OCD; $n = 3952$) are available
360 for 28 sites and range from 0.005 to 0.195 g C/cm³, with a mean value of 0.058 ± 0.024 g C/cm³ (1 SD; Table 5). We
acknowledge that a few individual data points are above the expected data ranges (e.g., %C > 60%); we did not exclude said
data points from the database. Data users can easily filter outliers as they see fit.

365 Total nitrogen content (TN) data are reported for 87 sites ($n = 10,770$) and range from 0 to 6.3% (there is an outlier at 56.6%
that was omitted from Fig. 8d), with a mean value of $1.2 \pm 0.7\%$ (1 SD; Fig. 8d; Table 5).

370 Overall, the central tendencies and data ranges presented therein are in line with previously published datasets (e.g., Loisel et
al. 2014). While the averaged data (Table 5) may be used as references, we advise data users to further dig into the dataset,
as the database structure allows for much finer analysis. For instance, it is possible (and simple) to query the dataset for a
particular region of the world and/or time period, with the goal to obtain more specific peat characteristics.



375
 380
 385
 390
 395
 400

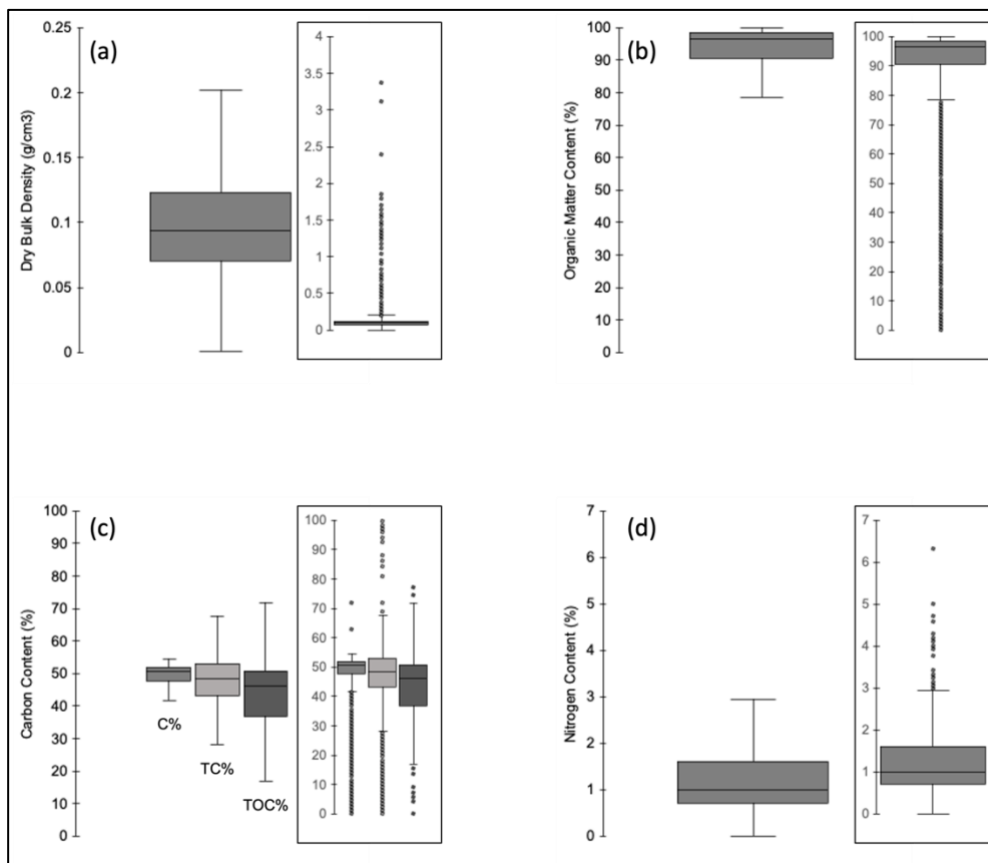


Figure 8. Descriptive statistics for the C-PEAT Global Peatland Carbon Database. **(a)** Dry bulk density; **(b)** Organic matter content; **(c)** Carbon content, where the 3 datasets are displayed (see sect. 3.3 for details), and **(d)** Nitrogen content. For each variable, the left inner panel displays the IQT (represented as the box, with the median shown as a horizontal black line) while the right inner panel presents the entire data range (including the outliers, denoted as circles). Whiskers present 1.5 x IQT.

Table 5. Central tendencies and dispersions for the C-PEAT Global Peatland Carbon Database (267 cores).

Variable name and sample count	n	Central tendencies		Dispersions		
		mean	median	minimum	maximum	SD
total peat depth (m)	267	2.24	1.61	0.30	10.95	1.90
DBD (g/cm ³)	43,467	0.140	0.098	0.001	3.380	0.178
OM (%)	31,473	88.5	96.5	0.0	100.0	20.1
OMD (g OM/cm ³)	4016	0.117	0.109	0.008	0.399	0.046

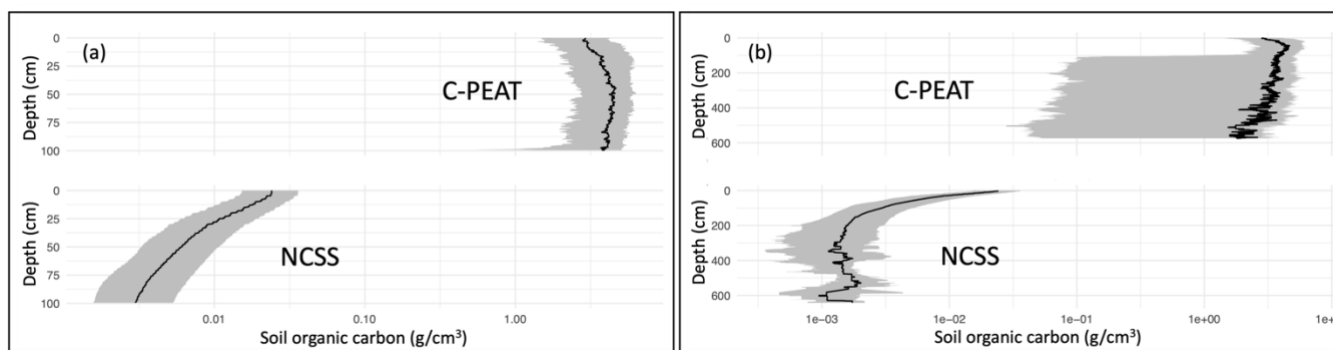


C (%)	26,842	46.7	50.8	0.0	71.7	10.5
TC (%)	14,430	45.4	48.4	0.0	100.0	16.4
TOC (%)	1532	37.7	46.0	0.0	77.0	19.6
OCD (g C/cm ³)	3952	0.058	0.055	0.005	0.195	0.024
TN (%)	10,771	1.2	1.0	0.0	56.6	0.7

410

3.4. Comparing peat vs. mineral soil data

415 The peat vs. mineral soil data comparisons provided a way to quantify key carbon stock differences between these two soil
 types. On average, soil organic carbon content for the top 100cm was 16 times greater in peat soils (17.53 g/cm² area mass)
 than in mineral soils (1.08 g/cm²). Most mineral soils in the NCSS database exhibit very low SOC stocks (0 - 1.33 g/cm²),
 with a skewed distribution for higher stocks (max = 55 g/cm²) (Table 6). The distribution of soil organic carbon over depth
 (top 100 cm) also highlighted key differences, with mineral soil data exhibiting a clear decreasing trend in organic carbon
 420 with depth that is absent from the peat soil data (Fig. 9a). Deeper records, which we limit to 600 cm because that is the
 deepest mineral soil data, show a similar trend (Fig. 9b). Overall, peat soils are rich in organic matter (Table 5) and therefore
 have higher concentrations of organic carbon compared to mineral soils (Table 6). This result is supported by the order-of-
 magnitude lower bulk density values for peat soils (mean: 0.14 g/cm³) compared to those of mineral soils (mean: 1.54
 g/cm³).



425 **Figure 9.** Comparison of soil organic carbon data between the C-PEAT Global Peatland Carbon Database (267 cores) and
 the NCSS soil pedons (15,819 pedons). **(a)** Depth distribution of soil organic carbon stocks for the top 100 cm soil profile for
 C-PEAT samples (top) vs. NCSS soils (bottom). **(c)** Depth distribution of soil organic carbon stocks down to 600 cm for C-
 PEAT samples (top) vs. NCSS soils (bottom).

430 **Table 6.** Central tendencies and dispersions for the NCSS soil pedons (15,819 pedons).

Variable name and sample count	Central tendencies	Dispersions
--------------------------------	--------------------	-------------



	n	mean	median	minimum	maximum	SD
Bulk density (oven dry)	78,551	1.5452	1.58	0.03	4.47	0.263
Soil Organic Carbon (g/cm ³)	78,551	0.0123	0.0063	-0.3746	0.6142	0.019
estimated_organic_carbon	30,634	1.3655	0.5	-3.9	62.4	3.419
Organic C walkley-black (%)	48,018	0.9304	0.4	-0.15	54	1.895
Total coarse fraction (wt_pct_gt_2_mm_ws)	78,551	8.96	1	0	4229	28.767

4. Usage notes

4.1. Database availability, updates, and submission of new datasets

435 The C-PEAT GD v.2025 presented therein can be accessed via PANGAEA, under the project label C-PEAT. There also
exist R and Python scripts that allow for mass-downloads of the entire dataset (Ransby et al. 2025). The database is expected
to keep evolving over time, as new datasets are integrated, existing datasets are extended (or corrected), and new sharing
standards are developed. Formal database updates will be tentatively initiated every two to three years; said updates will be
described online, directly within the data repository. Future updates will be reflected in the database identifier, which will
440 include the update year (e.g., v.2027, v.2030, etc.). Between updates, database users are asked to flag any existing issues by
contacting the PANGAEA editors through the contact form <https://www.pangaea.de/contact/>; a new version of the erroneous
data can then be published. The inclusion of new datasets or the expansion of existing ones are performed manually. Data
contributors interested in sharing one or a handful of datasets are asked to follow the instructions and use the templates
provided by PANGAEA (https://wiki.pangaea.de/wiki/Best_practice_manuals_and_templates). Contributors who wish to
445 share a larger quantity of datasets (> 10) should contact a PANGAEA editor through the contact form linked above.

Whether they used the database in its entirety or only a subset, users are asked to cite the C-PEAT GD v.2025. When
possible, and particularly when a subsequent product makes use of a few specific records, we request that the original
publication(s) from which the primary data were extracted be cited as well.

450

4.2. Outstanding usage notes

Lastly, it is important to recognize the limitations of this database. Most importantly, the dataset is incomplete, in that there
remain many peat core sites that have not yet been integrated into this dataset. As a reminder, the C-PEAT GD v.2025 only
includes sites that were already integrated to previously published data synthesis products. Second, and as mentioned in the
455 text, not all peat core records are complete, meaning that some of them may not have reached the bottom of the peatland.
Along those lines, we remind the users that peat cores are not necessarily representative of an entire peat basin; rather, their
record should be interpreted as a snapshot of an ecosystem's history. Additionally, individual research teams might have had
different research goals than the data users when they selected coring sites and collected their samples, such that some cores
therein could represent the deepest portion of a peatland basin, but others might have been purposefully collected near the
460 edge. It is always advised to read the primary data source to gain further knowledge about the study sites.

Appendices

n/a



465 Code and data availability

The database is publicly available via the PANGAEA data repository (<https://doi.org/10.1594/PANGAEA.986891>; Loisel et al. 2025). The datasets can be explored and queried at https://www.pangaea.de/?q=project:label:PAGES_C-PEAT. Code for accessing the data using Python and R is available on Zenodo (<https://doi.org/10.5281/zenodo.17465602>; Ransby et al. 2025).

470 Supplement link

n/a

Team list

^C-PEAT Working Group Members and data contributors:

475 A Korhola, A Lamarre, B Fiałkiewicz-Kozieł, B O'Reilly, B van Geel, C Bochicchio, C Tarnocai, D Anderson, D Hammarlund, D Large, D Mauquoy, D Peteet, DH Vitt, DJ Charman, DW Beilman, E Karofeld, E Klein, E-S Tuittila, F Chambers, F De Vleeschouwer, FJG Mitchell, G Le Roux, G Magnan, G Mallon, GM MacDonald, GT Swindles, I Bauer, IC Prentice, J Alm, J Bunbury, J Holmquist, J McCarroll, J Nichols, JA Christen, K Barber, L Ukonmaanaho, LR Belyea, M Amesbury, M Blaauw, M Gałka, M Garneau, M Lamentowicz, M Lavoie, M Mäkilä, M Packalen, M Rundgren, M Turetsky, M Väiliranta, M van der Linden, MC Jones, N Phadtare, N Rausch, P Camill, P Kuhry, P Mathijssen, P Oksanen, PDM
480 Hughes, PJH Richard, R Moschen, RK Booth, S Andersson, S Brewer, S Finkelstein, S Harrison, S Robinson, S van Bellen, ST Jackson, T Nieminen, T Ronkainen, T Thom, TR Moore, U Kokfelt, Ü Sillasoo, V Hohl, W Hinchcliffe, Y Corish, Y Huang, Z Yu, A Martínez Cortizas, ABK Sannel, C Courtney-Mustaphi, C Jones, C Massa, D Carless, E Cressey, E Githumbi, F Mitchell, G Wang, H Mackay, J Hribljan, J Uglow, J Zaragoza-Castells, K Marcisz, L Orme, M Clifford, N Sanderson, N Silva-Sánchez, N Steinberg, P Friedlingstein, P Moss, R Chimner, R de Jong, R Marchant, S Björck, S
485 Moreton, SE Page, T Blyakharchuk, T Lacourse, T Mighall, T Roland, TE Turner, W Zhou, Y Zhao.

Author contributions

490 JL & AGS built and managed the C-PEAT GD, and coordinated the broader C-PEAT network; JL, AGS, SU & ER assembled or entered datasets and/or metadata into the database; DR, CB & SS performed quality control, term standardization, database cleaning, and/or QC certification; JL, KTB & VM analyzed data and generated figures for this paper; JL wrote the manuscript; AGS, DR, SU, ER, CB, SS, KTB & VM reviewed and improved a preliminary version of this manuscript.

Competing interests

n/a

Disclaimer

495 Copernicus Publications remains neutral with regard to jurisdictional claims made in the text, published maps, institutional affiliations, or any other geographical representation in this paper. While Copernicus Publications makes every effort to



include appropriate place names, the final responsibility lies with the authors. Views expressed in the text are those of the authors and do not necessarily reflect the views of the publisher.

500 Acknowledgements

PAGES received support from the Swiss Academy of Sciences, the US National Science Foundation, and the Chinese Academy of Sciences at the time of database preparation and redaction of this manuscript.

Financial support

505 Support for this work includes NSF-2142177 and NSF-1802838 to JL. The C-PEAT working group acknowledges financial support from its parent organizations Past Global Changes (PAGES) and Future Earth, and support from the International Union of Quaternary Research (INQUA) and UNESCO's International Geoscience Programme (IGCP) for workshops and training events.

Review statement

510 n/a

References

- Adams J. 2012. The rise of research networks. *Nature*. 490(7420):335-6.
- Alexandrov GA, Brovkin VA, Kleinen T, Yu Z. 2020. The capacity of northern peatlands for long-term carbon sequestration. *Biogeosciences*. 17(1):47-54.
- 515 Armentano TV, Menges ES. 1986. Patterns of change in the carbon balance of organic soil-wetlands of the temperate zone. *The Journal of Ecology*. 755-74.
- 520 Baron JS, Specht A, Garnier E, Bishop P, Campbell CA, Davis FW, Fady B, Field D, Gross LJ, Guru SM, Halpern BS. 2017. Synthesis centers as critical research infrastructure. *BioScience*. 67(8):750-9.
- Beck HE, McVicar TR, Vergopolan N, Berg A, Lutsko NJ, Dufour A, Zeng Z, Jiang X, van Dijk AI, Miralles DG. 2023. High-resolution (1 km) Köppen-Geiger maps for 1901–2099 based on constrained CMIP6 projections. *Scientific data*. 10(1):724.
- 525 Bond-Lamberty B, Smith AP, Bailey V. 2016. Running an open experiment: transparency and reproducibility in soil and ecosystem science. *Environmental Research Letters*. 11(8):084004.
- 530 Carpenter SR, Armbrust EV, Arzberger PW, Chapin III FS, Elser JJ, Hackett EJ, Ives AR, Kareiva PM, Leibold MA, Lundberg P, Mangel M. 2009. Accelerate synthesis in ecology and environmental sciences. *BioScience*. 59(8):699-701.



- 535 Chadburn SE, Burke EJ, Gallego-Sala AV, Smith ND, Bret-Harte MS, Charman DJ, Drewer J, Edgar CW, Euskirchen ES, Fortuniak K, Gao Y. 2022. A new approach to simulate peat accumulation, degradation and stability in a global land surface scheme (JULES vn5. 8_accumulate_soil) for northern and temperate peatlands. *Geoscientific Model Development*. 15(4):1633-57.
- 540 Chamberlain S, Woo K, MacDonald A, Zimmerman N, Simpson G. 2021. pangaear: Client for the 'Pangaea' Database. R package version 1.1.0, <https://CRAN.R-project.org/package=pangaear>.
- Charman DJ, Beilman DW, Blaauw M, Booth RK, Brewer S, Chambers FM, Christen JA, Gallego-Sala A, Harrison SP, Hughes PD, Jackson ST. 2013. Climate-related changes in peatland carbon accumulation during the last millennium. *Biogeosciences*. 10(2):929-44.
- 545 Chaudhary N, Westermann S, Lamba S, Shurpali N, Sannel AB, Schurgers G, Miller PA, Smith B. 2020. Modelling past and future peatland carbon dynamics across the pan-Arctic. *Global Change Biology*. 26(7):4119-33.
- 550 Cobb AR, Hoyt AM, Gandois L, Eri J, Dommain R, Abu Salim K, Kai FM, Haji Su'ut NS, Harvey CF. 2017. How temporal patterns in rainfall determine the geomorphology and carbon fluxes of tropical peatlands. *Proceedings of the National Academy of Sciences*. 114(26):E5187-96.
- Dicks LV, Hodge I, Randall NP, Scharlemann JP, Siriwardena GM, Smith HG, Smith RK, Sutherland WJ. 2014. A transparent process for “evidence-informed” policy making. *Conservation Letters*. 7(2):119-25.
- 555 Dietze MC, Serbin SP, Davidson C, Desai AR, Feng X, Kelly R, Kooper R, LeBauer D, Mantooth J, McHenry K, Wang D. 2014. A quantitative assessment of a terrestrial biosphere model's data needs across North American biomes. *Journal of Geophysical Research: Biogeosciences*. 119(3):286-300.
- 560 Dommain R, Couwenberg J, Joosten H. 2011. Development and carbon sequestration of tropical peat domes in south-east Asia: links to post-glacial sea-level changes and Holocene climate variability. *Quaternary Science Reviews*. 30(7-8):999-1010.
- Ellison AM. 2010. Repeatability and transparency in ecological research. *Ecology*. 91(9):2536-9.
- 565 Felden J, Möller L, Schindler U, Huber R, Schumacher S, Koppe R, Diepenbroek M, Glöckner FO. 2023. PANGAEA-Data publisher for earth & environmental science. *Scientific Data*. 10(1):347.
- 570 Fick, S.E. and R.J. Hijmans, 2017. WorldClim 2: new 1km spatial resolution climate surfaces for global land areas. *International Journal of Climatology*. 37(12):4302-4315.
- Frolking S, Talbot J, Subin ZM. 2014. Exploring the relationship between peatland net carbon balance and apparent carbon accumulation rate at century to millennial time scales. *The Holocene*, 24(9):1167-73.
- 575 Frolking S, Roulet N, Fuglestedt J. 2006. How northern peatlands influence the Earth's radiative budget: Sustained methane emission versus sustained carbon sequestration. *Journal of Geophysical Research: Biogeosciences*, 111(G1).
- 580 Gallego-Sala AV, Charman DJ, Brewer S, Page SE, Prentice IC, Friedlingstein P, Moreton S, Amesbury MJ, Beilman DW, Björck S, Blyakharchuk T. 2018. Latitudinal limits to the predicted increase of the peatland carbon sink with warming. *Nature climate change*. 8(10):907-13.



- Gibson CM, Chasmer LE, Thompson DK, Quinton WL, Flannigan MD, Olefeldt D. 2018. Wildfire as a major driver of recent permafrost thaw in boreal peatlands. *Nature communications*. 9(1):3041.
- 585 Gorham E. 1991. Northern peatlands: role in the carbon cycle and probable responses to climatic warming. *Ecological applications*. 1(2):182-95.
- Grand A, Wilkinson C, Bultitude K, Winfield AF. 2012. Open science: a new “trust technology”?. *Science Communication*. 34(5):679-89.
- 590 Hampton SE, Parker JN. 2011. Collaboration and productivity in scientific synthesis. *BioScience*. 61(11):900-10.
- Harden JW, Hugelius G, Ahlström A, Blankinship JC, Bond-Lamberty B, Lawrence CR, Loisel J, Malhotra A, Jackson RB, Ogle S, Phillips C. 2017. Networking our science to characterize the state, vulnerabilities, and management opportunities of soil organic matter. *Global Change Biology*. 24(2):e705-18.
- 595 Hooijer A, Page S, Jauhiainen J, Lee WA, Lu XX, Idris A, Anshari G. 2012. Subsidence and carbon loss in drained tropical peatlands. *Biogeosciences*. 9(3):1053-71.
- Hoyt AM, Gandois L, Eri J, Kai FM, Harvey CF, Cobb AR. 2019. CO₂ emissions from an undrained tropical peatland: Interacting influences of temperature, shading and water table depth. *Global Change Biology*. 25(9):2885-99.
- 600 Hoyt AM, Chaussard E, Seppalainen SS, Harvey CF. 2020. Widespread subsidence and carbon emissions across Southeast Asian peatlands. *Nature Geoscience*. 13(6):435-40.
- 605 Huber, R; Röttenbacher, J; Selke, N; CodeShredder; Spreckelen, F; Balamurugan, A; Lowe, S; Stocker, M; Kempf, D; Iris-Hinrichs; Schindler, U & qays abou housien. (2025). *pangaea-data-publisher/pangaeapy: v1.1.0 (v1.1.0)*. Zenodo. <https://doi.org/10.5281/zenodo.15749619>
- Hugelius G, Loisel J, Chadburn S, Jackson RB, Jones M, MacDonald G, Marushchak M, Olefeldt D, Packalen M, Siewert MB, Treat C. 2020. Large stocks of peatland carbon and nitrogen are vulnerable to permafrost thaw. *Proceedings of the National Academy of Sciences*. 117(34):20438-46.
- 610 Jones MC, Yu Z. 2010. Rapid deglacial and early Holocene expansion of peatlands in Alaska. *Proceedings of the National Academy of Sciences*. 107(16):7347-52.
- 615 Kleinen T, Brovkin V, Schuldt RJ. 2012. A dynamic model of wetland extent and peat accumulation: results for the Holocene. *Biogeosciences*. 9(1):235-48.
- Kock ST, Schitteck K, Mächtle B, Maldonado A, Vos H, Lupo LC, Kulemeyer JJ, Wissel H, Schäbitz F, Lücke A. 2020. Multi-centennial-scale variations of South American summer monsoon intensity in the southern central Andes (24–27 S) during the late Holocene. *Geophysical research letters*. 47(4):e2019GL084157.
- 620 Kurnianto S, Warren M, Talbot J, Kauffman B, Murdiyarso D, Frohking S. 2015. Carbon accumulation of tropical peatlands over millennia: a modeling approach. *Global Change Biology*. 21(1):431-44.
- 625 Loisel J, Gallego-Sala A. 2018. New research directions for the PAGES C-PEAT working group. *Past Global Changes Magazine*, 26(2): 91.



- 630 Loisel J, Yu Z, Beilman DW, Camill P, Alm J, Amesbury MJ, Anderson D, Andersson S, Bochicchio C, Barber K, Belyea LR. 2014. A database and synthesis of northern peatland soil properties and Holocene carbon and nitrogen accumulation. *The Holocene*. 24(9):1028-42.
- 635 Loisel J, van Bellen S, Pelletier L, Talbot J, Hugelius G, Karran D, Yu Z, Nichols J, Holmquist J. 2017. Insights and issues with estimating northern peatland carbon stocks and fluxes since the Last Glacial Maximum. *Earth-Science Reviews*. 165:59-80.
- 640 Loisel J, Gallego-Sala AV, Amesbury MJ, Magnan G, Anshari G, Beilman DW, Benavides JC, Blewett J, Camill P, Charman DJ, Chawchai S. 2021. Expert assessment of future vulnerability of the global peatland carbon sink. *Nature Climate Change*. 11(1):70-7.
- Loisel J, Ransby D, Gallego-Sala AV (eds.) 2025. C-PEAT global database (v. 2025) [dataset editorial publication]. PANGAEA. <https://doi.org/10.1594/PANGAEA.986891>
- 645 MacDonald GM, Beilman DW, Kremenetski KV, Sheng Y, Smith LC, Velichko AA. 2006. Rapid early development of circumarctic peatlands and atmospheric CH₄ and CO₂ variations. *Science*. 314(5797):285-8.
- Markowitz VM, Chen IM, Chu K, Pati A, Ivanova NN, Kyrpides NC. 2015. Ten years of maintaining and expanding a microbial genome and metagenome analysis system. *Trends in microbiology*. 23(11):730-41.
- 650 Müller J, Joos F. 2021a. Global peatlands under future climate—seamless model projections from the last glacial maximum. *Biogeosciences*. 18:3657-87.
- 655 Müller J, Joos F. 2021b. Committed and projected future changes in global peatlands—continued transient model simulations since the Last Glacial Maximum. *Biogeosciences*. 18(12):3657-87.
- Nichols JE, Peteet DM. 2019. Rapid expansion of northern peatlands and doubled estimate of carbon storage. *Nature Geoscience*. 12(11):917-21.
- 660 Packalen MS, Finkelstein SA, McLaughlin JW. 2014. Carbon storage and potential methane production in the Hudson Bay Lowlands since mid-Holocene peat initiation. *Nature Communications*. 5(1):4078.
- 665 Petrokofsky G, Kanamaru H, Achard F, Goetz SJ, Joosten H, Holmgren P, Lehtonen A, Menton MC, Pullin AS, Wattenbach M. 2012. Comparison of methods for measuring and assessing carbon stocks and carbon stock changes in terrestrial carbon pools. How do the accuracy and precision of current methods compare? A systematic review protocol. *Environmental Evidence*. 1:1-21.
- Piilo SR, Zhang H, Garneau M, Gallego-Sala A, Amesbury MJ, Väiliranta MM. 2019. Recent peat and carbon accumulation following the Little Ice Age in northwestern Québec, Canada. *Environmental Research Letters*. 14(7):075002.
- 670 Qiu C, Zhu D, Ciais P, Guenet B, Krinner G, Peng S, Aurela M, Bernhofer C, Brümmer C, Bret-Harte S, Chu H. 2018. ORCHIDEE-PEAT (revision 4596), a model for northern peatland CO₂, water, and energy fluxes on daily to annual scales. *Geoscientific Model Development*. 11(2):497-519.
- 675 Qiu C, Zhu D, Ciais P, Guenet B, Peng S. 2020. The role of northern peatlands in the global carbon cycle for the 21st century. *Global Ecology and Biogeography*, 29(5):956-73.
- Ransby, D; Riemann-Campe, K & Sanderson, N (2025). C-PEAT data retrieval from PANGAEA (R & Python). Zenodo. <https://doi.org/10.5281/zenodo.17465602>



- 680 Reichman OJ, Jones MB, Schildhauer MP. 2011. Challenges and opportunities of open data in ecology. *Science*. 331(6018):703-5.
- Ruwaimana M, Anshari GZ, Silva LC, Gavin DG. 2020. The oldest extant tropical peatland in the world: a major carbon reservoir for at least 47 000 years. *Environmental Research Letters*. 15(11):114027.
- 685 Smith LC, MacDonald GM, Velichko AA, Beilman DW, Borisova OK, Frey KE, Kremenetski KV, Sheng Y. 2004. Siberian peatlands a net carbon sink and global methane source since the early Holocene. *Science*. 303(5656):353-6.
- Spahni R, Joos F, Stocker BD, Steinacher M, Yu Z. 2013. Transient simulations of the carbon and nitrogen dynamics in northern peatlands: From the Last Glacial Maximum to the 21st century. *Climate of the Past*. 9(3):1287-308.
- 690 Tolonen K, Turunen J. 1996. Accumulation rates of carbon in mires in Finland and implications for climate change. *The Holocene*. 6(2):171-8.
- 695 Treat CC, Jones MC, Camill P, Gallego-Sala A, Garneau M, Harden JW, Hugelius G, Klein ES, Kokfelt U, Kuhry P, Loisel J. 2015. Effects of permafrost aggradation on peat properties as determined from a pan-Arctic synthesis of plant macrofossils. *Journal of Geophysical Research: Biogeosciences*. 121(1):78-94.
- Treat CC, Kleinen T, Broothaerts N, Dalton AS, Dommain R, Douglas TA, Drexler JZ, Finkelstein SA, Grosse G, Hope G, 700 Hutchings J. 2019. Widespread global peatland establishment and persistence over the last 130,000 y. *Proceedings of the National Academy of Sciences*. 116(11):4822-7.
- Treat CC, Jones MC, Brosius L, Grosse G, Anthony KW, Frohling S. 2021. The role of wetland expansion and successional processes in methane emissions from northern wetlands during the Holocene. *Quaternary Science Reviews*. 257:106864.
- 705 Turetsky MR, Abbott BW, Jones MC, Anthony KW, Olefeldt D, Schuur EA, Grosse G, Kuhry P, Hugelius G, Koven C, Lawrence DM. 2020. Carbon release through abrupt permafrost thaw. *Nature Geoscience*. 13(2):138-43.
- Turunen J, Tomppo E, Tolonen K, Reinikainen A. 2002. Estimating carbon accumulation rates of undrained mires in 710 Finland—application to boreal and subarctic regions. *The Holocene*. 12(1):69-80.
- UNEP. 2022. Global Peatlands Assessment – The State of the World’s Peatlands: Evidence for action toward the conservation, restoration, and sustainable management of peatlands. Main Report. Global Peatlands Initiative. United Nations Environment Programme, Nairobi.
- 715 Vines TH, Albert AY, Andrew RL, Débarre F, Bock DG, Franklin MT, Gilbert KJ, Moore JS, Renaut S, Rennison DJ. 2014. The availability of research data declines rapidly with article age. *Current Biology*. 24(1):94-7.
- Wolkovich EM, Regetz J, O'Connor MI. 2012. Advances in global change research require open science by individual 720 researchers. *Global Change Biology*. 18(7):2102-10.
- Young DM, Baird AJ, Charman DJ, Evans CD, Gallego-Sala AV, Gill PJ, Hughes PD, Morris PJ, Swindles GT. 2019. Misinterpreting carbon accumulation rates in records from near-surface peat. *Scientific reports*. 9(1):17939.
- 725 Young DM, Baird AJ, Gallego-Sala AV, Loisel J. 2021. A cautionary tale about using the apparent carbon accumulation rate (aCAR) obtained from peat cores. *Scientific Reports*. 11(1):9547.
- Yu Z. 2012. Northern peatland carbon stocks and dynamics: a review. *Biogeosciences*. 9(10):4071-85.



- 730 Yu Z, Loisel J, Brosseau DP, Beilman DW, Hunt SJ. 2010. Global peatland dynamics since the Last Glacial Maximum. *Geophysical Research Letters*. 37(13).
- Yu Z, Loisel J, Turetsky MR, Cai S, Zhao Y, Frohking S, MacDonald GM, Bubier JL. 2013. Evidence for elevated emissions from high-latitude wetlands contributing to high atmospheric CH₄ concentration in the early Holocene. *Global Biogeochemical Cycles*. 27(1):131-40.
- 735