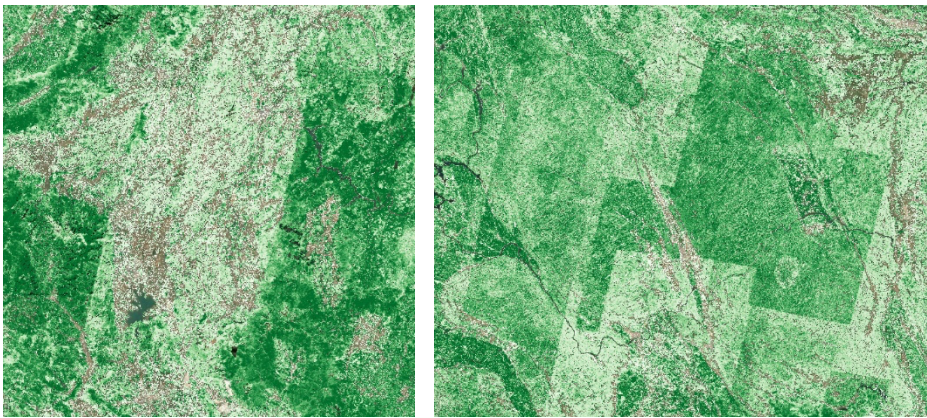


## Some problems observed in the FineKarstAGB

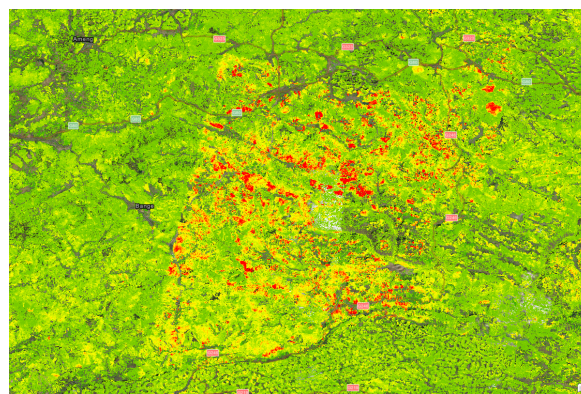
### Spatial continuousness problem

Due to the limited availability of Gaofen surface reflectance data, square-shaped artifacts similar to satellite image tiles appear in the produced biomass map. In the lower-left image, a distinct strip-shaped quality issue related to the satellite path appears in the middle of the scene; the example is located at 25.0624°N, 111.4193°E. The lower-right image also shows square-shaped details similar to image tiles; this example is located at 24.0165°N, 108.2380°E. When zooming in, this phenomenon occurs quite frequently (roughly estimated at 30%).



### Extreme high biomass values

Some regions show very high biomass values (see an example below)



Some extremely high biomass values  
(104.7949393°E, 23.6210800°N)

### Missing values caused by terrain

There are also accuracy issues in the spatial details caused by terrain. The invalid values in the middle of the image below are due to mountain shadows, which lead to an underestimation of AGB in this area, or even a complete failure to detect valid vegetation reflectance signals. This example is located at 26.167124°N, 112.090953°E.

