

25-year, quarterly land change maps of China's Loess Plateau reveal long-term and substantial **water-induced** soil erosion mitigation

Mofan Cheng¹, Zhuohong Li¹, Linxin Li¹, Wei He¹, Liangpei Zhang¹, and Hongyan Zhang^{1,2}

¹State Key Laboratory of Information Engineering in Surveying, Mapping and Remote Sensing, Wuhan University, Wuhan 430079, P.R. China

²School of Computer Science, China University of Geosciences, Wuhan, 430074, P.R. China

Correspondence: Wei He (weihe1990@whu.edu.cn) and Hongyan Zhang (zhanghongyan@cug.edu.cn)

Abstract. Unsustainable human activities have driven global ecological degradation. In China, decades of restoration policies have been implemented to reverse this trend in severely degraded regions with catastrophic soil erosion, transforming them into landscapes of ecological recovery. However, the evolution of soil erosion in these regions remains poorly quantified due to the absence of high-resolution, long-term, and high-frequency monitoring data. Here, to address this gap and provide a reliable spatiotemporal benchmark dataset, we conducted the first 10–30 m quarterly wall-to-wall land change mapping for China's flagship ecological restoration site: the Loess Plateau, based on the developed cross-temporal consistency-constraint deep learning framework. The dataset was generated using over 10 terabytes of Sentinel and Landsat imagery and documents land-cover dynamics across 100 quarterly time steps from 2000 to 2024, showing an overall accuracy of 81.44% based on 40,000 annotated samples and 79.8% for third-party validation sources. The resulting maps record pronounced land-cover dynamics, including forest expansion (+13,131 km²), cropland expansion (+28,095 km²), and bare land reduction (-65,029 km²) over the past decades. Furthermore, the produced dataset was combined with environmental factors to measure the 25-year water-induced soil erosion, where comparison with government survey data shows strong consistency, with a mean absolute error of 4.50%. The dataset further illustrates that long-term ecological interventions have substantially reduced erosion intensity in the region by 30% over the past 25 years, from 13.34 to 9.35 t/(hm²·a). Based on this benchmark, the long-term, fine-grained soil erosion becomes possible to estimate. The data-driven analysis indicates that current erosion is most severe in the central and southwestern Loess Plateau, and scenario modeling based on multiple factors suggests that optimized vegetation distribution—including grassland expansion and cropland-to-forest conversion—could potentially reduce future erosion intensity to 6.42 t/(hm²·a). This dataset provides a comprehensive benchmark for erosion mitigation in the Loess Plateau and its underlying drivers, providing critical insights for sustainable land management, ecological restoration, and policy development both in China and across fragile ecosystems worldwide. The land-cover maps and soil erosion maps is available at <https://doi.org/10.57760/sciencedb.33656> (Cheng et al., 2026).

1 Introduction

Soil is the bedrock of human sustenance, providing more than 98% of global food supply and hosting nearly 25% of Earth's biodiversity (Kraamwinkel et al., 2021). Meanwhile, Soil ecological functions result from the combined effects of aboveground

25 vegetation and land-cover / land-use dynamics, both of which are highly sensitive to unsustainable human activities. As a
consequence of their vulnerable environmental resilience, soil systems worldwide are experiencing unprecedented degradation
(Amundson et al., 2015), a trend that threatens not only agricultural productivity but also the continued functioning of key
ecosystem services (IPCC, 2019). Notably, existing evidence worldwide has identified soil erosion as the leading cause of
global land degradation (UNCCD, 2022), a process that is further intensified by human-induced land-cover changes (Borrelli
30 et al., 2017). Specifically, the spatial patterns of land-cover change, especially in regions susceptible to soil erosion, would
strongly reflect the severity and distribution of soil erosion (Nut et al., 2021; Zhu et al., 2022). Based on the context, intensive
monitoring of large-scale land-cover change and soil erosion at high temporal and spatial resolution can effectively reveal their
underlying connection, filling the knowledge gap in fine-scale and long-term monitoring of soil erosion.

Over the past several decades, China has experienced severe soil erosion and associated environmental challenges (Wen and
35 Zhen, 2020), particularly in the Loess Plateau, which has undergone sustained ecological decline characterized by widespread
soil erosion, deforestation, and land degradation (Jiang et al., 2019). In particular, unsustainable agricultural practices applied to
highly erodible soils have undermined agricultural productivity and disrupted local ecosystems in the region (Ge et al., 2020).
Accordingly, to counteract these adverse environmental conditions, a suite of nationally mandated soil and water conservation
measures has been implemented since the 1980s, including land-cover restructuring and large-scale vegetation restoration (Liu
40 et al., 2008). As a result, these interventions have yielded substantial ecological improvements. Based on statistical records,
vegetation coverage in the Loess Plateau has increased from 31.6% in 1999 to 63.6% in 2019 (Zhang et al., 2023a). This
ecological transformation has fundamentally reshaped the sediment regime of the Yellow River, which drains much of the
plateau, contributing to an approximately 90% reduction in its annual sediment load (Wang et al., 2016). In general, the
governance strategies developed in the Loess Plateau over the past decades offer insights of broad relevance for soil erosion
45 mitigation in arid and semi-arid regions worldwide (Feng et al., 2013; Yang et al., 2024). Nevertheless, systematic evaluation
of erosion mitigation and its ecological consequences remains hindered by the persistent lack of long-term, large-scale satellite
monitoring data products (Pettorelli et al., 2014).

Time-series satellite imagery constitutes a vital resource for monitoring large-scale land-cover dynamics because of its exten-
sive spatial coverage and frequent revisit capability. Thus, leveraging remote-sensing technologies to conduct a spatiotemporal
50 modeling of land-cover patterns has become increasingly important for soil-erosion research, such as disaster-induced erosion
(Di et al., 2010) and agricultural-driven erosion (Rafiei-Sardooi et al., 2025). However, limitations in the spatial coverage and
temporal continuity of existing land-cover datasets constrain their utility for large-scale long-term monitoring of soil erosion
dynamics (Kodl et al., 2024; Zweifel et al., 2019). Specifically, current map products are typically characterized by a trade-off
between spatial resolution and temporal continuity. Products offering high spatial resolution usually lack long-term consis-
55 tency, whereas long-term time-series products often operate at coarse spatial resolutions. In general, current approaches fall
into two categories:

1. *High-spatial-resolution mapping.* This category of approaches focuses on land-cover mapping conducted at fine spatial
resolutions, often finer than 10 meters (Gong et al., 2019; Zhang et al., 2020; Li et al., 2022; Zanaga et al., 2022) and in
some cases reaching approximately 1 meter (Li et al., 2023, 2024). Such datasets excel at capturing fine-scale landscape

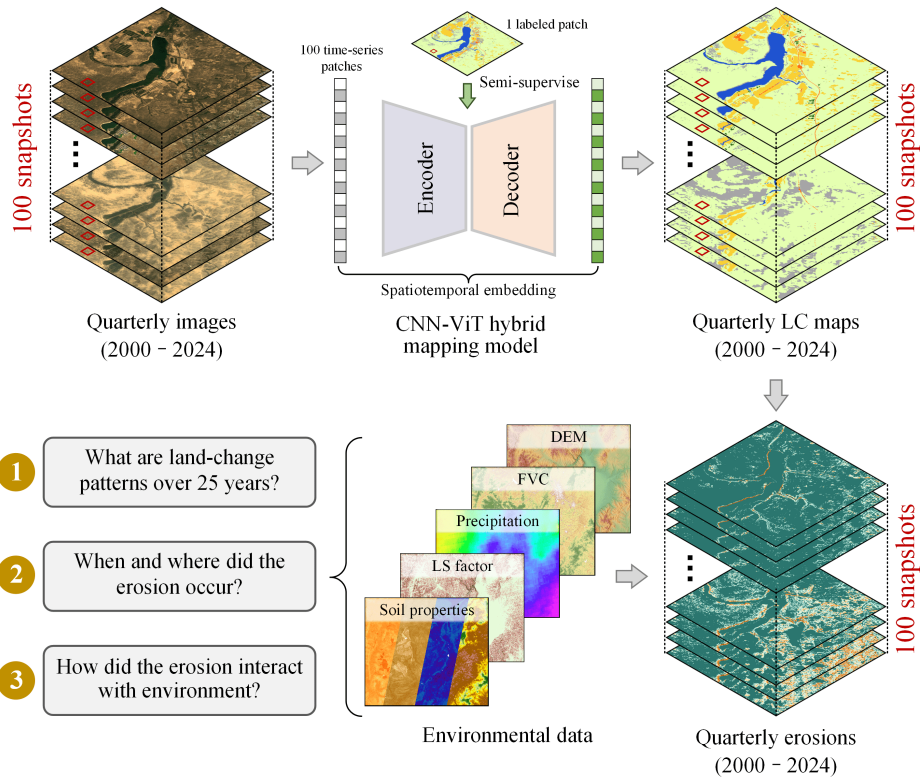


Figure 1. Workflow of the 25-year land-cover mapping and soil-erosion estimation. A hybrid model combining convolutional neural networks and Vision Transformers (CNN-ViT) was employed to generate quarterly land-cover maps. Subsequently, five environmental variables were integrated to estimate soil erosion from 2000 to 2024. Satellite imagery and environmental data used for visualization purposes were accessed from © Google Earth.

60 patterns and support detailed analyses, especially in urban environments. However, they typically provide only a single or a few temporal snapshots, which limits their ability to represent long-term land-surface dynamics.

2. *High-temporal-resolution mapping.* In contrast, high-temporal-resolution datasets allow systematic analyses of land-cover dynamics and enable interpretation of temporal trends. These datasets feature revisit cycles ranging from several days to months and have been adopted in hydrological modeling (Bohn and Vivoni, 2019), vegetation monitoring (Liu et al., 2024), and agricultural management (Zhang et al., 2022). However, since they are commonly derived from satellite
65 platforms such as MODIS and AVHRR, with spatial resolutions between hundreds and thousands of meters (Friedl et al., 2010), they lack the capacity to depict fine-scale landscape heterogeneity and thus fall short for detailed soil erosion assessments.

Monitoring soil erosion dynamics in the Loess Plateau hinges on the availability of high-resolution and dense temporal mapping data. Specifically, high spatial resolution is indispensable for resolving the heterogeneous landscape of the Loess Plateau,
70 where erosion processes are modulated by fine-scale features such as fragmented croplands, narrow gullies, and localized

vegetation restoration zones (Yang et al., 2019). Meanwhile, dense temporal observations are required to capture rapid intra-annual transitions driven by precipitation seasonality, vegetation phenology, and cropping cycles (Xiao et al., 2017; Sharma and Ehlers, 2023), with quarterly granularity being particularly valuable because most annual soil loss occurs within a narrow seasonal window. Consequently, integrating fine spatial detail with quarterly temporal coverage enhances the ability to delineate erosion patterns and interpret their spatiotemporal evolution, thereby supporting long-term monitoring and process-based understanding. Nevertheless, conducting quarterly high-resolution land-cover mapping is fundamentally limited by the difficulty of obtaining reliable annotations. In practice, producing multi-temporal labels typically requires expert interpretation (Hermosilla et al., 2022), while high-resolution mapping demands detailed labeling to describe inter-pixel relationships accurately (Li et al., 2024). Therefore, making large-scale, time-series annotation is prohibitively time-consuming and labor-intensive. To address these limitations, leveraging existing high-resolution map products as supervisory signals and extending them along the temporal dimension is an effective strategy, alleviating the need for extensive manual labeling.

Predicting long-term quarterly land-cover maps from existing high-spatial-resolution products inherently falls within a semi-supervised learning paradigm, where only a limited set of labeled samples is available relative to the abundance of multi-temporal observations. In this context, a central difficulty arises from the pronounced appearance variability observed in images of the same location across different times. Although only a small proportion of the Earth's land surface undergoes actual land-cover change each year (Zhu et al., 2017), multi-temporal satellite imagery still exhibits substantial fluctuations arising from illumination differences, atmospheric conditions, and sensor-related inconsistencies (Lin et al., 2022). In turn, this variability obscures true land-cover signals and potentially misleads models into focusing on transient, non-semantic differences. Consequently, developing methods capable of learning stable and temporally consistent representations, while remaining sensitive to meaningful land-cover transitions, is essential for capturing the dynamic interaction between soil erosion and its potential drivers.

In this work, to address the inherent trade-off between spatial resolution and temporal continuity in large-scale, long-term mapping, we presented a 25-year quarterly land-cover dataset for the Loess Plateau (LP-QLC10) through the combination of over 10 terabytes of multi-source satellite imagery and a proposed Consistency-Constrained Time-Series (CCTS) framework that enables high-resolution land-cover information to be extended along the temporal dimension (Figure 1). The resulting maps provide continuous coverage from 2000 to 2024 across 648,700 km² of the Loess Plateau, with a three-month interval, resulting in 100 phases in total. Meanwhile, spatial resolution is maintained at 10 m from 2016 onward and 30 m for earlier years, consistent with the native characteristics of the contributing sensors. Furthermore, to fill the knowledge gap of soil erosion monitoring in China's Loess Plateau, we integrated multi-source data—including precipitation, soil properties, the Digital Elevation Model (DEM), slope length and steepness factors, and Fractional Vegetation Cover (FVC)—to derive environmental and biophysical factors of erosion. Then, in accordance with the standards issued by the Ministry of Ecology and Environment of China, the spatiotemporal variations in water-induced soil erosion were quantified from 2000 to 2024. Finally, the resulting spatiotemporal dataset enables systematic investigation of erosion patterns, temporal evolution, and interactions among environmental factors, thereby providing a unified data basis for addressing three knowledge gaps: (1) *What* are the dominant

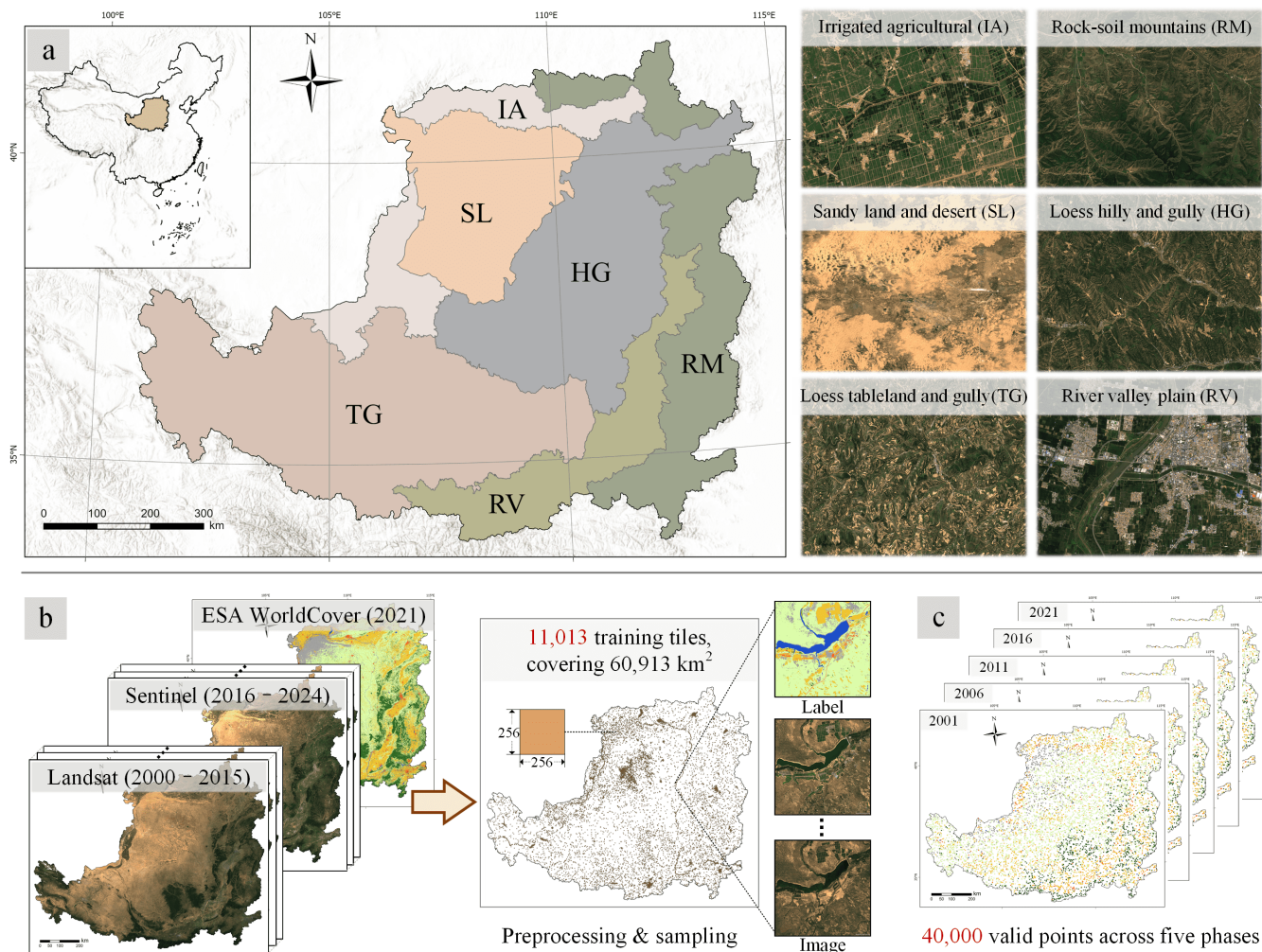


Figure 2. Illustration of the study area and using data. (a) The Loess Plateau and its six subregions. (b) The training data employed for land-cover classification. (c) Annotated samples used for validation across five temporal phases. The satellite images in the figure are from © Google Earth.

land-cover change patterns over the past 25 years in the Loess Plateau? (2) *Where* and *when* did the erosion occur? (3) *How* did the erosion dynamically interact with environmental factors?

2 Study area and data

2.1 Study area

110 The Loess Plateau, as shown in Figure 2 (a), is located in north-central China between latitudes 32° – 41° N and longitudes 107° – 114° E, covering more than $648,700 \text{ km}^2$. As the largest loess accumulation region in both China and the world, it

is distinguished by thick loess deposits and pervasive soil erosion. Elevations generally range from 500 to 3000 m, with mountains, hills, and plateaus constituting the dominant landforms (GPRC, 2010). The soils of the region originate from wind-blown loess that has accumulated since the Quaternary period, resulting in a loose texture that is highly susceptible to water erosion (Sheng and Ding, 2002). Besides, mean annual precipitation ranges from 150 to 800 mm, with 55–78% of rainfall concentrated between June and September (Liu et al., 2011). Consequently, water-induced erosion constitutes the principal erosion type on the Loess Plateau, accounting for approximately 86% of the total erosion area (Gao et al., 2016). The combined influence of climate, topography, soil properties, and long-term human activities has made the Loess Plateau one of the most severely eroded regions in the world.

Since the 1980s, the Chinese government has undertaken substantial efforts to control soil erosion and restore the ecosystem. Beginning in 1999, several large-scale ecological restoration initiatives were implemented to accelerate land rehabilitation, including the Grain for Green Program (GGP) and the Three-North Shelterbelt Forest Program (TSFP) (Wen and Zhen, 2020). Operating for nearly a quarter century, these programs have markedly improved ecological conditions across the Loess Plateau. According to government planning (GPRC, 2010), the Loess Plateau is divided into six comprehensive management areas: the irrigated agricultural region (IA), the sandy land and desert region (SL), the loess hilly and gully region (HG), the loess tableland and gully region (TG), the river valley plain region (RV), and the rock-soil mountainous region (RM).

2.2 Time-series images and multi-source data for mapping and validation

2.2.1 Satellite images (2000-2024) collected from Sentinel and Landsat missions

The 25-year imagery used for high-temporal-frequency land monitoring was compiled from multi-source satellite platforms, primarily Sentinel-2 (Drusch et al., 2012) and Landsat series missions (Chander et al., 2009; Roy et al., 2014). Sentinel-2 mission began launching satellites in 2015, comprising 13 spectral bands with spatial resolutions ranging from 10 to 60 m. For land-cover mapping, five representative bands were selected, including blue, green, red, near-infrared (NIR), and shortwave infrared-1 (SWIR1). These bands are vegetation-sensitive (Yu et al., 2019) and comparable to those of the Landsat series. Sentinel-2 images from 2016 to 2024 were accessed via the Google Earth Engine platform (Gorelick et al., 2017), where cloud removal, atmospheric correction, and median compositing were applied to generate one multispectral image every three months, yielding quarterly 10 m composites. To extend the dataset to the earlier period (2000–2015), imagery from Landsat 5 Thematic Mapper (TM), Landsat 7 Enhanced Thematic Mapper Plus (ETM+), and Landsat 8 Operational Land Imager (OLI) was incorporated, all acquired at 30 m spatial resolution. The same five spectral bands (blue, green, red, NIR, and SWIR1) were extracted, and the imagery were atmospherically corrected, cloud-masked, and converted to surface reflectance following the official guidelines (U.S. Geological Survey, 2020). In total, a dataset of quarterly composites from 2000 to 2024 was generated, comprising five-band imagery, with a spatial resolution of 30 m before 2016 and 10 m thereafter. [The acquisition periods and the number of images used from multiple platforms are detailed in Figure A2.](#) Finally, all images were normalized by calculating band-wise mean and standard deviation to provide standardized inputs for the training and inference of the land-cover mapping framework.

145 2.2.2 Training and validation data collected from well-established datasets

To overcome the substantial effort required for large-scale and multi-temporal high-resolution annotation, we guide the multi-temporal learning process using verified single-temporal 10 m land-cover labels. Accordingly, we employ the European Space Agency (ESA) WorldCover v200 product (Zanaga et al., 2022), which was generated from Sentinel-1 and Sentinel-2 imagery for 2021 and reports a global overall accuracy of 77%. The product provides 11 land-cover classes, 8 of which are present
150 in our study area. Moreover, it has been well assessed by the land-cover community and was applied in downstream analyses, including global green-space studies (Chen et al., 2022), urban land estimation (Chakraborty et al., 2024), and cropland cultivation dynamics (Wuyun et al., 2025).

The accuracy of the predicted land-cover maps was evaluated through point-based validation using three datasets: one multi-temporal reference set constructed in this study and two publicly available validation sets. First, the multi-temporal reference
155 set was constructed by random sampling and expert annotation across the Loess Plateau, as shown in Figure 2 (c). Specifically, over 8,000 points were randomly selected and visually interpreted at five time steps (2001, 2006, 2011, 2016, and 2021) by five remote-sensing experts, with cross-validation performed to ensure label reliability. This process yielded more than 40,000 manually annotated multi-temporal sample points, which were used to assess the accuracy of land-cover maps and to evaluate their temporal consistency.

160 Additionally, to provide an objective and fair evaluation, two additional public validation sets were employed. The SinoLC-1 validation set (Li et al., 2023) contains 106,852 manually annotated sample points distributed across China, most of which were labeled in 2020 into 12 land-cover categories, encompassing the eight land-cover categories relevant to our study area. Within the Loess Plateau, 7,382 points are available. Furthermore, Geo-Wiki global land-cover reference set was also used (Fritz et al., 2017), which consists of 151,942 crowdsourced land-cover points collected worldwide and primarily labeled in
165 2012. The annotations include ten land-cover categories, which encompass the eight categories present in the Loess Plateau, where 1,183 points are available for validation.

2.3 Environment and topographic data for soil erosion assessment

The intensity of water-induced soil erosion is governed by several environmental and biophysical factors, including rainfall erosivity, soil erodibility, topographic characteristics, cover management, and support practices. In this study, multi-source
170 datasets were integrated to quantify these factors.

Rainfall data: Daily rainfall data were obtained from the Climate Hazards Center Infrared Precipitation with Stations (CHIRPS) dataset (Funk et al., 2015). CHIRPS provides a global rainfall record from 1981 to the present by merging satellite-based thermal infrared observations with ground station measurements, resulting in a 0.05° gridded land-based time series. These rainfall data were used to derive rainfall erosivity.

175 **Soil composition data:** Soil property layers were derived from OpenLandMap, which supplies global predictions of soil composition at six standard depths (0, 10, 30, 60, 100, and 200 cm) with a spatial resolution of 250 m (Hengl, 2018; Hengl and

Wheeler, 2018). In this study, sand, silt, clay fractions, and organic carbon content in surface soils were extracted through the Google Earth Engine platform to calculate soil erodibility.

Slope length and steepness (LS) factor: The combined LS factor, which quantifies the effect of topography characteristics on soil erosion, was represented by a 30 m resolution dataset developed for mainland China (Jianghua et al., 2023).

Elevation data: Elevation information was obtained from the Copernicus Global Digital Elevation Model (GLO-30), published by the ESA. This DEM provides global elevation coverage at 30 m resolution and was used to compute the support practice factor.

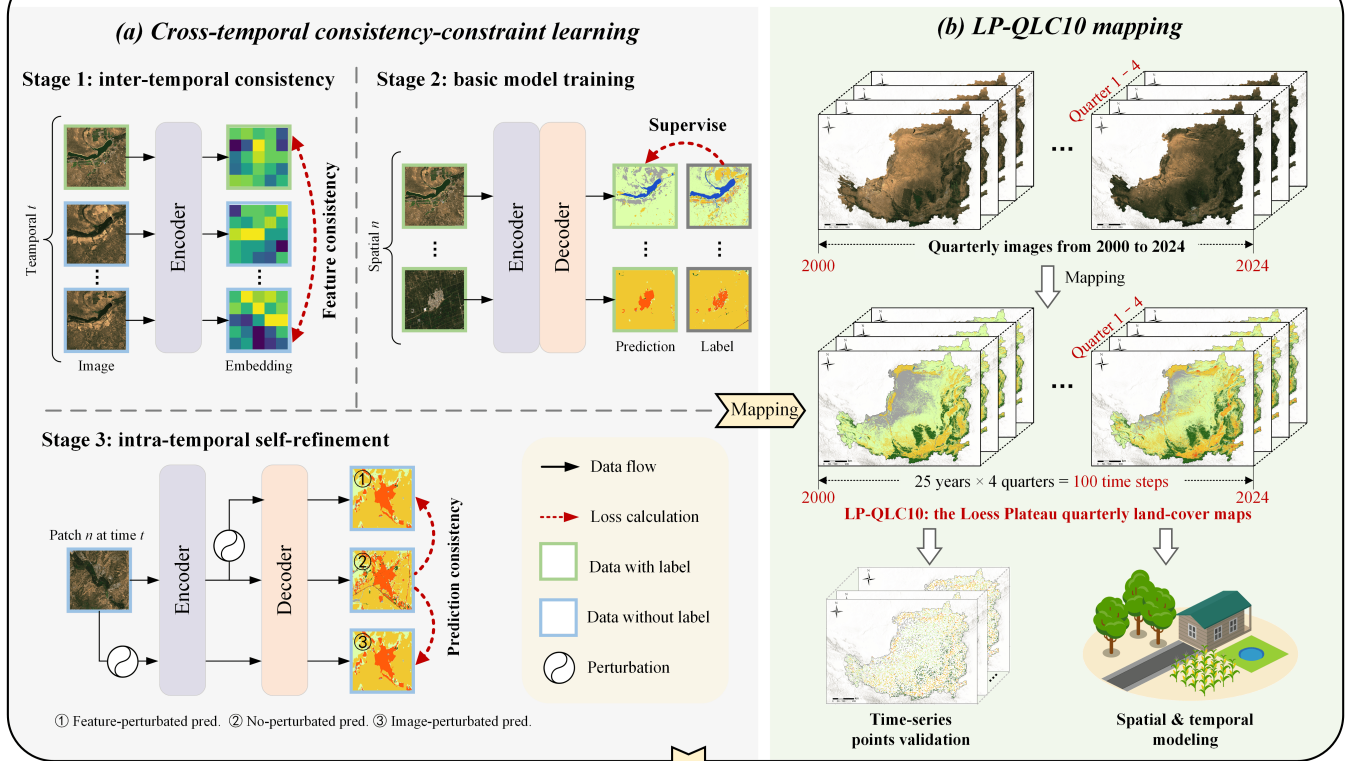
In addition, the *China Soil and Water Conservation Bulletin*, a official report compiled by the Ministry of Water Resources of China, was used to validate the accuracy of the derived erosion estimates. The bulletin provides authoritative annual statistics on soil erosion across the Loess Plateau and other regions of China since 2018, serving as an official benchmark for national soil conservation monitoring. Thus, data from 2018 onward were utilized in this study to quantitatively assess the consistency between our erosion estimates and officially reported values.

3 Methods

In semi-supervised learning, consistency regularization (Miyato et al., 2018) encourages the model to learn invariant but discriminative representations across varying input conditions. Meanwhile, enforcing such stability enables abundant unlabeled samples to serve as effective supervisory signals, thereby narrowing the performance gap between labeled and unlabeled data. Consequently, consistency-based methods have demonstrated strong efficacy across a range of image interpretation tasks, including image segmentation (Sohn et al., 2020), object detection (Hua et al., 2023), and change detection (Yang et al., 2023). Furthermore, in the context of long-term land-cover mapping, this principle becomes particularly valuable, because stabilizing both feature embeddings and predictions not only mitigates overfitting to the single-temporal annotated subset but also promotes the learning of class-discriminative representations that generalize across imaging conditions and temporal phases.

Inspired by these advances, we integrate both inter-temporal and intra-temporal consistency constraints into time-series land-cover mapping. As illustrated in Figure 3, the proposed Consistency-Constrained Time-Series (CCTS) framework is designed to enhance the temporal coherence and semantic stability of land-cover representations. Specifically, images acquired at different time phases over the same region are treated as style perturbations resulting from variations in observation conditions, upon which inter-temporal consistency constraint is imposed at the feature representation. Moreover, intra-temporal consistency is achieved by perturbing both the inputs and their latent representations, while prediction alignment is maintained through pseudo-label supervision, enabling the abundant unlabeled data to provide informative signals for model optimization. Together, by jointly optimizing these constraints, the model learns temporally robust and semantically consistent representations across multiple periods. Building upon this framework, we produced the LP-QLC10 dataset (Cheng et al., 2026)—the first quarterly land-cover record of the Loess Plateau—comprising 100 phases from 2000 to 2024. Furthermore, by integrating the LP-QLC10 dataset with multi-source environmental and topographic datasets, we derived the determinant factors of soil erosion. In accordance with the standards issued by the Ministry of Ecology and Environment of China, we produced quarterly

1. Long-term land-cover mapping using CCTS framework



LP-QLC10

2. Soil erosion assessment of the Loess Plateau

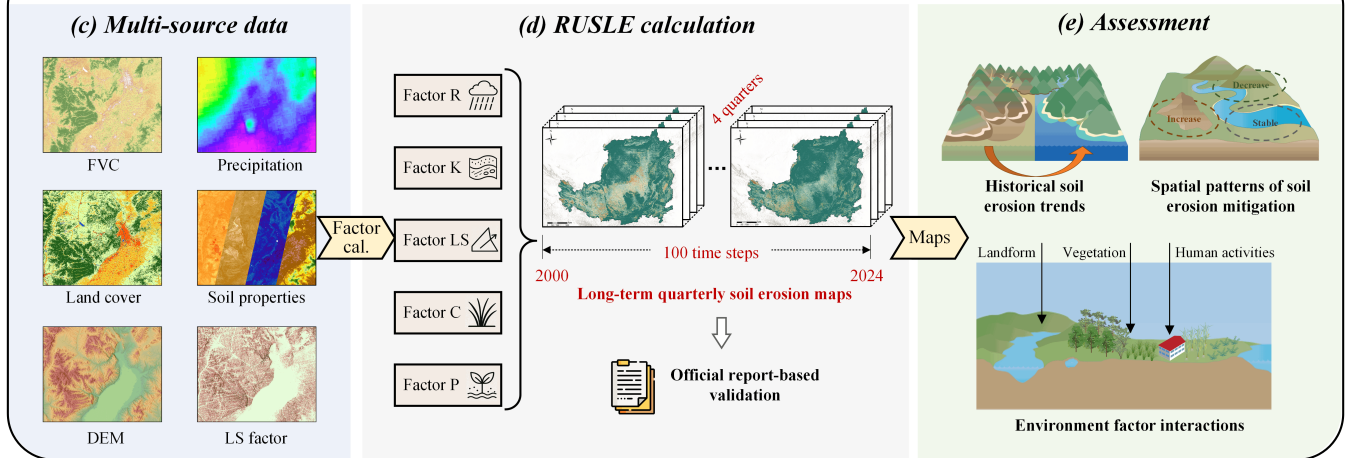


Figure 3. Overall workflow of the long-term land-cover mapping and soil erosion assessment, comprising two main steps: (1) long-term land-cover mapping using the proposed CCTS framework, and (2) soil erosion estimation based on quarterly datasets. The satellite images and environmental data in the figure are from © Google Earth.

210 estimates of water induced soil erosion across the Loess Plateau from 2000 to 2024. Finally, these results were analyzed to characterize the long-term spatiotemporal evolution of soil erosion.

3.1 Quarterly time-series land-cover mapping

3.1.1 Data preprocessing and organizing

To construct reliable and class-balanced training tiles for time-series land-cover mapping, we first divided the Loess Plateau
215 region into non-overlapping tiles of 256×256 pixels based on the land-cover products provided by the ESA WorldCover (Zanaga et al., 2022). According to the ESA’s classification system, eight land-cover classes were identified in the study area: "Forest", "Shrubland", "Grassland", "Cropland", "Built-up", "Bare land", "Water", and "Wetland", with class definitions consistent with the ESA product. The detailed definition is explained in Table A2. To achieve class balance, we randomly sampled 1,800 tiles for each class, individually. As shown in Figure 2 (b), after filtering out tiles that overlapped with regions
220 outside the study area, 11,013 training tiles (each with 256×256 pixels) were retained. Subsequently, the time-series Landsat and Sentinel imagery was then spatially aligned and cropped to match these tiles. Consequently, imagery acquired in 2021 was combined with ESA WorldCover tiles to construct labeled training pairs, and images from all other years were used as unlabeled training material.

3.1.2 Cross-temporal learning based on semi-supervised and consistency-constraint strategies

225 The preprocessed training data consists of limited labeled samples and a large amount of unlabeled data. Thus, exploiting the semantic relationships embedded within these multi-temporal data becomes essential for accurately inferring long-term land-cover maps. In our previous work (Cheng et al., 2024), we proposed a method that detects land-cover changes by constraining content-feature consistency within unchanged regions, thereby enabling the model to distinguish semantic variations associated with actual land-cover transitions. This approach has demonstrated potential for capturing cross-temporal semantic features in
230 disaster assessment applications. In this work, as illustrated in Figure 4, we extend consistency constraints to multi-temporal settings. Specifically, let $\mathbf{D}^l = \{(\mathbf{x}_n^l, \mathbf{y}_n)\}$ denote the labeled image-label pairs and $\mathbf{D}^u = \{\mathbf{x}_{n,t}^u\}$ denote the unlabeled images, where n and t represent spatial and temporal indices, respectively. Meanwhile, to generate land-cover maps from satellite imagery, we employ the High-Resolution Transformer (HRFormer) (Yuan et al., 2021) as the segmentation model, owing to its strong performance in dense prediction tasks. In addition, to effectively incorporate both intra-temporal and inter-temporal
235 consistencies, the training procedure was organized into three consecutive stages that jointly integrate labeled and unlabeled samples. The following subsections detail each stage of the training process.

Inter-temporal consistency in feature levels: In this stage, we promote inter-temporal consistency by regulating the behavior of the encoded feature representations. Multi-temporal land-cover mapping is characterized by a large proportion of unchanged areas. Therefore, images acquired at different times but covering the same location should share similar semantic
240 features. To exploit this property, all training samples, including both labeled and unlabeled images, are input to the segmentation encoder to obtain high-level feature embeddings. Subsequently, these embeddings are organized according to their spatial

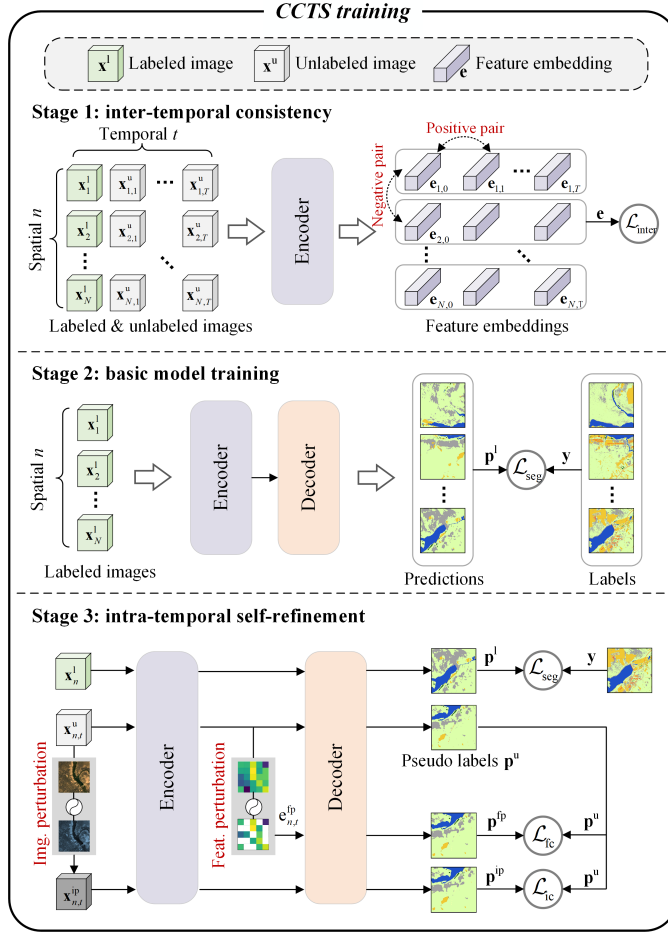


Figure 4. Training workflow of the CCTS framework. A three-stage training process is designed to incorporate inter-temporal and intra-temporal consistency. The satellite images in the figure are from © Google Earth.

positions: those originating from the same location but at different times are considered positive pairs, while embeddings from different locations are treated as negative pairs. To further enhance discrimination, we draw positive pairs closer in the representation space while separating negative pairs. Accordingly, we apply contrastive learning and optimize the encoder using the

245 InfoNCE loss (He et al., 2020), which is formulated as:

$$\mathcal{L}_{\text{inter}} = -\log \frac{\exp(\cos(\mathbf{e}_{n,t}, \mathbf{e}_{n,s})/\tau)}{\sum_{(n,t) \neq (m,s)} \exp(\cos(\mathbf{e}_{n,t}, \mathbf{e}_{m,s})/\tau)}, \quad (1)$$

where the pair $(\mathbf{e}_{n,t}, \mathbf{e}_{n,s})$ denotes a positive feature embedding pair, whereas $(\mathbf{e}_{n,t}, \mathbf{e}_{m,s})$ denotes a negative pair. The operator $\cos(\cdot)$ computes the cosine similarity, and τ is a hyper-parameter that modulates the sensitivity of the loss to similarity differences. This loss function encourages the encoder to align positive-paired embeddings closely in the representation space while

250 driving negative pairs apart, thereby guiding the encoder to learn inter-temporal and semantically consistent representations.

Basic model training with full supervision: In this stage, the segmentation model is initialized with the pretrained encoder obtained from Stage 1, thereby equipping it with the capability of semantic feature extraction. Subsequently, the entire model is trained on the labeled dataset \mathbf{D}^l . Following common practice in semantic segmentation, we adopt the cross-entropy loss as the supervision signal, which guides the model to perform dense land-cover prediction. The loss function \mathcal{L}_{seg} is formulated

255 as:

$$\mathcal{L}_{\text{seg}} = -\frac{1}{M} \sum_{j=1}^M \sum_{i=1}^C y_{j,i} \log(p_{j,i}^l), \quad (2)$$

where C denotes the number of land-cover classes (set to eight in this study), M is the number of pixels in the image, $y_{j,i}$ is the ground-truth label of pixel j for class i , and $p_{j,i}^l$ is the predicted probability that pixel j belongs to class i . This pixel-wise supervision enables the model to learn class-discriminative representations for accurate land-cover prediction.

260 **Intra-temporal self-refinement:** The first two stages of training equip the model to extract robust semantic features and generate land-cover maps. However, variations in imaging conditions and sensor characteristics introduce disturbances that challenge the temporal consistency of predictions. To address this issue, the final stage adopts an intra-temporal self-refinement strategy. Specifically, labeled data are used to provide direct supervision and prevent performance degradation during self-refinement, while perturbation-based augmentation is applied to both the unlabeled images and the encoded features to increase

265 data diversity, formulated as:

$$\mathbf{p}^{\text{ip}} = \text{Dec}(\text{Enc}(\mathcal{P}_i(\mathbf{x}^u))), \quad \mathbf{p}^{\text{fp}} = \text{Dec}(\mathcal{P}_f(\text{Enc}(\mathbf{x}^u))), \quad (3)$$

where $\mathcal{P}_i(\cdot)$ and $\mathcal{P}_f(\cdot)$ denote image-level and feature-level perturbations, $\text{Enc}(\cdot)$ and $\text{Dec}(\cdot)$ represent the encoder and decoder of the segmentation model, and \mathbf{p}^{ip} and \mathbf{p}^{fp} correspond to predictions under image and feature perturbations, respectively. Image perturbations include flipping, rotation, shifting, cropping, contrast adjustment, and Gaussian blur, whereas feature

270 perturbations are implemented by randomly dropping half of the feature channels. Additionally, the non-perturbed prediction \mathbf{p}^u serves as the pseudo-label. In turn, training is guided by a confidence-weighted cross-entropy loss, defined as:

$$\mathcal{L}_{\text{ic}} = \frac{1}{M} \sum_{j=1}^M \mathbb{1}(p_j^u \geq \lambda) \text{H}(p_j^u, p_j^{\text{ip}}), \quad \mathcal{L}_{\text{fc}} = \frac{1}{M} \sum_{j=1}^M \mathbb{1}(p_j^u \geq \lambda) \text{H}(p_j^u, p_j^{\text{fp}}), \quad (4)$$

where $\text{H}(\cdot)$ denotes the cross-entropy function, M is the number of pixels in the image, λ is the confidence threshold, and $\mathbb{1}(\cdot)$ is the indicator function used to filter high-confidence pseudo-labels. \mathcal{L}_{ic} and \mathcal{L}_{fc} represent the consistency losses under

275 image-level and feature-level perturbations, respectively. In total, the intra-temporal self-refinement loss is formulated as:

$$\mathcal{L}_{\text{intra}} = \frac{1}{2} \mathcal{L}_{\text{seg}} + \frac{1}{4} \mathcal{L}_{\text{ic}} + \frac{1}{4} \mathcal{L}_{\text{fc}}. \quad (5)$$

In this stage, multi-level perturbations improve the model’s robustness by forcing it to focus on intrinsic semantic information rather than cross-temporal variations. At the same time, the pseudo-label supervision mechanism allows the abundant unlabeled images to provide additional supervisory signals. Overall, the proposed three-stage training framework progressively

280 strengthens the model’s capacity to exploit both labeled and unlabeled multi-temporal data. By optimizing the three stages, the model effectively leverages cross-temporal semantic information to produce reliable and temporally consistent land-cover maps.

3.1.3 Time-series mapping with the well-trained model

To produce the time-series LP-QLC10 dataset, a crop–predict–merge workflow was adopted to process the satellite data. Firstly, as illustrated in Figure 3(b), satellite images over the Loess Plateau were chronologically organized to provide quarterly coverage from 2000 to 2024, totaling about 10 TB of data across 100 phases. Subsequently, the images were cropped into non-overlapping tiles of 256×256 pixels, which were batch-processed by the three-stage trained CCTS to generate land-cover predictions. Then, the prediction tiles were mosaicked into seamless maps at 30 m resolution for 2000–2015 and 10 m for 2016–2024, ultimately producing 100 quarterly phases covering the Loess Plateau from 2000 to 2024. In addition, a post-processing temporal refinement was performed using a five-step sliding window, which replaces each pixel’s label with the most frequent class in its local temporal neighborhood, thereby enhancing the temporal consistency of the final land-cover maps. As a result, this workflow yielded the LP-QLC10 dataset, a large-scale, seamless, and temporally dense land-cover record, forming a robust foundation for long-term soil erosion analysis.

3.2 Long-term soil erosion assessment

3.2.1 Multi-criteria assessment factors

The time-series land-cover maps enable the investigation of long-term soil erosion dynamics in the Loess Plateau, thereby underscoring the broader research significance of the mapping. Accordingly, in compliance with the *National Ecological Environment Standards* of China (MEE China, 2021b), water-induced soil erosion of the Loess Plateau was estimated using the Revised Universal Soil Loss Equation (RUSLE) (Renard, 1997; Zhang et al., 2008) method:

$$A = R \times K \times L \times S \times C \times P, \quad (6)$$

where A denotes the soil loss per unit area for a given calculation period ($t/(\text{hm}^2 \cdot \text{a})$). In this study, all time-varying factors were estimated at quarterly intervals so as to capture intra-annual variability. Since soil erosion is cumulative over time, the annual soil erosion used for subsequent assessment was obtained by summing the four quarterly estimates within each year. This strategy preserves seasonal information during the calculation process while ensuring consistency with annual-scale evaluation of long-term erosion dynamics. The subsequent subsections provide detailed descriptions of all factors involved in the calculation, including the rainfall erosivity factor (R), soil erodibility factor (K), topographic factors (L and S), cover management factor (C), and support practice factor (P).

Rainfall erosivity factor (R): The R factor reflects the potential of rainfall and surface runoff to cause soil erosion within a unit period. In this study, R was calculated following the method specified in the *Technical Specification for Investigation and Assessment of National Ecological Status* (MEE China, 2021a), an official guideline issued by the Ministry of Ecology and Environment of China. The calculation is given by:

$$\bar{R} = \sum_{k=1}^{24} \bar{R}_k, \quad \bar{R}_k = \frac{1}{n} \sum_{i=1}^n \sum_{j=0}^m (\alpha \cdot P_{i,j,k}^{1.7265}), \quad (7)$$

where \bar{R} denotes the multi-year average annual rainfall erosivity (MJ·mm/(hm²·h·a)), \bar{R}_k represents the erosivity of the k -th half-month ($k = 1, \dots, 24$), and α is an empirical coefficient (0.3937 for the warm season and 0.3101 for the cold season). $P_{i,j,k}$ denotes the rainfall (mm) of the j -th erosive rainfall event in the k -th half-month of year i . Daily rainfall data were obtained from CHIRPS, as described in Section 2.3. Moreover, to support quarterly soil-erosion assessment, the R factor was computed independently for each of the four quarters.

Soil erodibility factor (K): The K factor characterizes the susceptibility of soil particles to detachment and transport by water. In this study, it was computed in accordance with the national technical specifications (MEE China, 2021a) and is expressed as:

$$K_{\text{EPIC}} = \{0.2 + 0.3 \exp[-0.0256m_s(1 - m_{\text{silt}}/100)]\} \times [m_{\text{silt}} / (m_c + m_{\text{silt}})]^{0.3} \\ \times \{1 - 0.25m_o / [m_o + \exp(3.72 - 2.95m_o)]\} \\ \times \{1 - 0.7(1 - m_s/100) / \{(1 - m_s/100) + \exp[-5.51 + 22.9(1 - m_s/100)]\}\}, \quad (8)$$

$$K = (-0.01383 + 0.51575K_{\text{EPIC}}) \times 0.1317,$$

where K_{EPIC} is the soil erodibility output from the Erosion-Productivity Impact Calculator (EPIC) model (Sharpley and Williams, 1990), and K is the revised soil erodibility factor (t·hm²·h/(hm²·MJ·mm)) calibrated for Chinese soils (Zhang et al., 2008). The variables m_s , m_{silt} , m_c , and m_o denote the proportions (%) of sand, silt, clay, and organic carbon in the surface soil, respectively. Soil composition data were obtained from OpenLandMap.

Topographic factor (LS): The LS factor quantifies the combined influence of slope length and slope steepness on soil erosion. In this study, we adopted the 30 m resolution national slope length and steepness factor dataset for China (Jianghua et al., 2023), from which the portion covering the Loess Plateau was extracted for subsequent calculation.

Cover management factor (C): The C factor represents the influence of vegetation cover and land management on reducing soil erosion. To capture its seasonal variability, the C factor for each temporal phase was derived using the quarterly LP-QLC10 land-cover dataset. Specifically, According to the national technical specifications (MEE China, 2021a), fixed C values of 0, 0, 0.01, and 0.7 were assigned to water, wetland, built-up land, and bare land, respectively. Meanwhile, for other vegetation types, C values are determined according to the Fractional Vegetation Cover (FVC), which was calculated from the Normalized Difference Vegetation Index (NDVI) using a linear scaling approach between the bare-soil and full-vegetation thresholds (Carlson and Ripley, 1997), as shown in Eq. (9). Specifically, the C factors of forest, shrubland, and grassland are assigned according to Table 1, while cropland is estimated using Eq. (10):

$$c = \frac{\text{NDVI} - \text{NDVI}_{\text{bare}}}{\text{NDVI}_{\text{veg}} - \text{NDVI}_{\text{bare}}}, \quad (9)$$

$$C_{\text{crop}} = 0.221 - 0.595 \log c, \quad (10)$$

where c is the FVC value. NDVI_{veg} and $\text{NDVI}_{\text{bare}}$ correspond to the NDVI values of full-vegetation and bare-soil endmembers in the study area, respectively. NDVI was calculated from satellite imagery following its standard formulation (Tucker, 1979).

Support practice factor (P): The P factor represents the ratio of soil loss under erosion-control practices to that under natural slope conditions, thereby indicating the effectiveness of support measures. In this study, we adopted the P values

Table 1. *C* factor values under different levels of Fractional Vegetation Cover (FVC).

Category	FVC					
	<0.1	0.1–0.3	0.3–0.5	0.5–0.7	0.7–0.9	>0.9
Forest	0.100	0.080	0.060	0.020	0.004	0.001
Shrubland	0.400	0.220	0.140	0.085	0.040	0.011
Grassland	0.450	0.240	0.150	0.090	0.043	0.011

Table 2. *P* factor values assigned to different land-cover types and slopes.

Category	Slope (°)	<i>P</i>
Forest	-	1
Shrubland	-	0.29
Grassland	-	0.41
	0–5	0.49
	5–7	0.59
	7–9	0.65
Cropland	9–12	0.70
	12–20	0.81
	20–24	0.95
	>24	1
Built-up	-	0
Bare land	-	1
Water	-	0
Wetland	-	0

reported in national-scale soil erosion products (Yan et al., 2025) for the Loess Plateau. Accordingly, the assigned *P* values for different land-cover types and slope ranges are summarized in Table 2. Furthermore, slope values were computed from the
345 GLO-30 DEM using the Horn method (Horn, 2005).

3.2.2 Historical soil erosion map (2000-2024) derivation

Quarterly soil erosion estimates for the Loess Plateau were generated for the period 2000–2024. As outlined in Figure 3(d), the erosion modeling followed a structured multi-factor workflow. First, the time-invariant factors, including soil erodibility (*K*) and topographic influence (*LS*), were derived to characterize the inherent susceptibility of the regional soils and terrain
350 to erosion. Second, rainfall erosivity (*R*) was calculated by aggregating half-monthly erosivity values within each quarter, generating four seasonal indices that capture intra-annual rainfall variability while suppressing short-term fluctuations. Third, for each of the 100 quarterly land-cover phases from 2000 to 2024, the cover-management factor (*C*) and support-practice factor (*P*) were assigned to represent seasonal vegetation conditions and conservation interventions, respectively. Subsequently, all factor layers were integrated into the RUSLE formulation (Eq. (6)) to derive spatially explicit soil erosion intensity for each

355 quarterly interval across the 25-year period. Finally, quarterly estimates were aggregated to produce annual erosion maps, which were used for quantitative evaluation and cross-validation against officially reported government statistics. By combining quarterly and annual perspectives, the framework enables a high-resolution characterization of both seasonal fluctuations and long-term trajectories of erosion over the Loess Plateau.

4 Results

360 To address the three scientific questions outlined in the introduction—(1) *what* are the dominant land-cover change patterns over the past 25 years, (2) *where* and *when* soil erosion occurred, and (3) *how* erosion interacted dynamically with environmental factors—we begin this section by rigorously validating the land-cover and soil-erosion mapping products. Following the evaluation, we present (1) the spatiotemporal patterns of land-cover transitions, and (2) quantify the 25-year dynamics of soil erosion. In total, these results establish a solid foundation for subsequently (3) disentangling the mechanisms that shape
365 soil-erosion processes and their linkages with environmental drivers.

4.1 25-year quarterly land-cover maps of China's Loess Plateau

In this study, we present a land-cover dataset for the Loess Plateau covering 2000–2024 with a three-month temporal resolution, referred to as LP-QLC10. Specifically, the dataset comprises 100 temporal phases and was produced at a spatial resolution of 30 m for 2000–2015 and 10 m for 2016–2024, reflecting the native characteristics of the underlying satellite sensors. Furthermore,
370 to provide an overview of its temporal patterns and classification scheme, a subset of the quarterly maps is illustrated in Figure 5. Spatially, forest is mainly distributed in the southern and eastern portions of the Loess Plateau, whereas grassland dominates the central and western regions. Cropland occurs largely along the regional margins and is typically situated near water bodies and built-up areas. In contrast, the northwestern Loess Plateau is characterized by extensive bare land interspersed with patches of grassland. Temporally, bare land has exhibited a pronounced decline over the past 25 years, while cropland and built-up
375 areas have expanded, particularly in the southern and eastern regions. These trends reflect intensified land use and increasing human activities. In addition, the LP-QLC10 dataset developed under the CCTS framework significantly outperforms the baseline model in terms of both spatial accuracy and temporal continuity. Quantitatively, this advantage leads to an average overall accuracy (OA) improvement of 2.88%. Qualitatively, it demonstrates enhanced multi-temporal mapping stability for land-cover types, such as grassland, cropland, and forest, with details provided in Appendix A1.

380 To demonstrate the performance of the CCTS-derived LP-QLC10 products and its capability to capture temporal dynamics, we illustrate two representative regions for detailed analysis. As shown in Figure 6, these regions are situated in Yulin and Yan'an cities, Shaanxi Province. Moreover, land-cover maps from four temporal phases (2000, 2007, 2016, and 2024) are presented to visualize long-term changes in land-cover composition. In the first region, Yulin City lies within a transitional zone between the sandy lands and desert margins of the northern Loess Plateau, where extensive ecological restoration programs have been implemented to combat desertification, such as aerial seeding, afforestation, and grassland rehabilitation.
385 Correspondingly, the LP-QLC10 maps clearly depict these transformations. As illustrated in Figure 6(a), grassland areas have

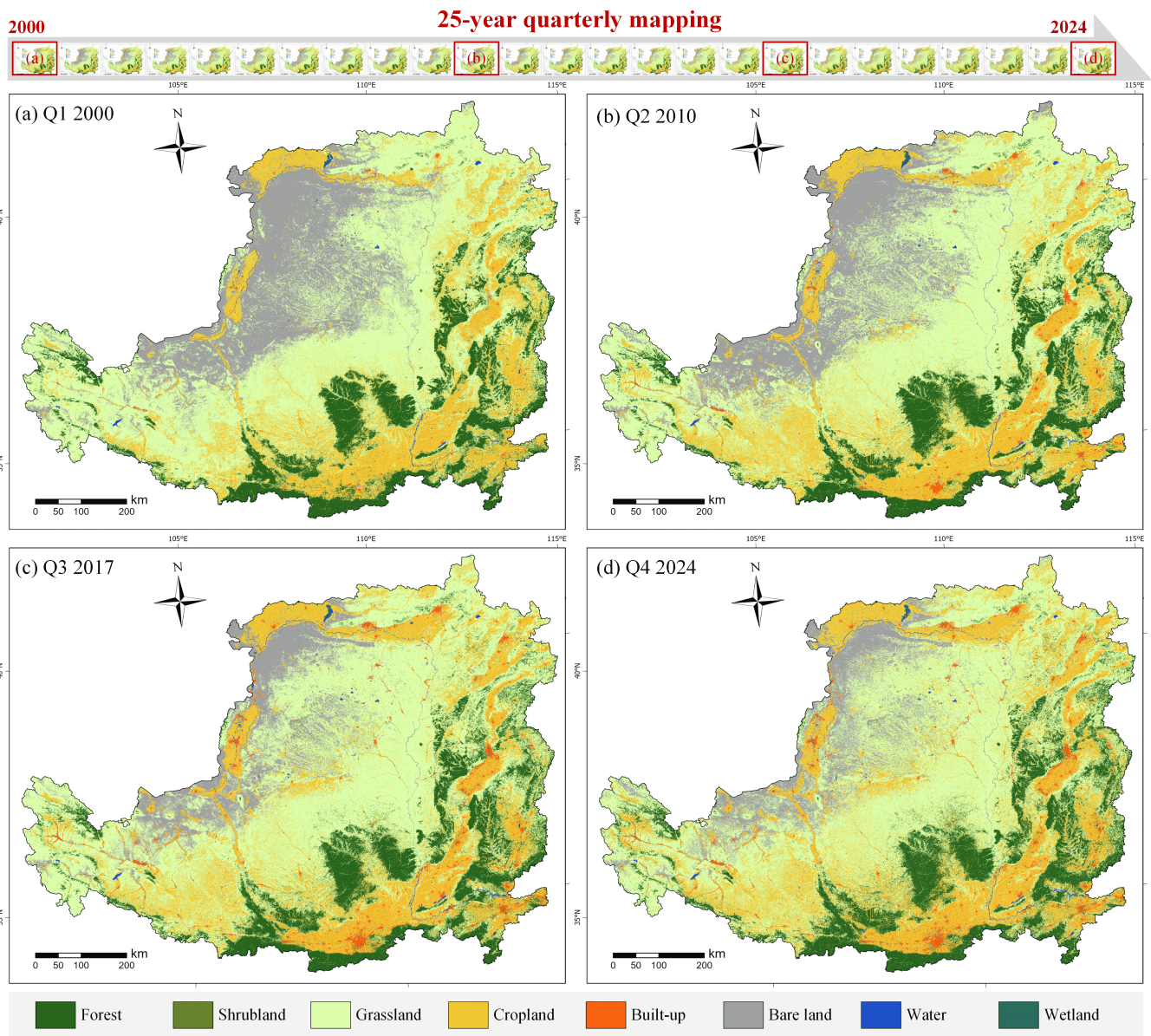


Figure 5. Demonstration of the LP-QLC10 product, showing representative temporal phases: (a) the first quarter of 2000, (b) the second quarter of 2010, (c) the third quarter of 2017, and (d) the fourth quarter of 2024.

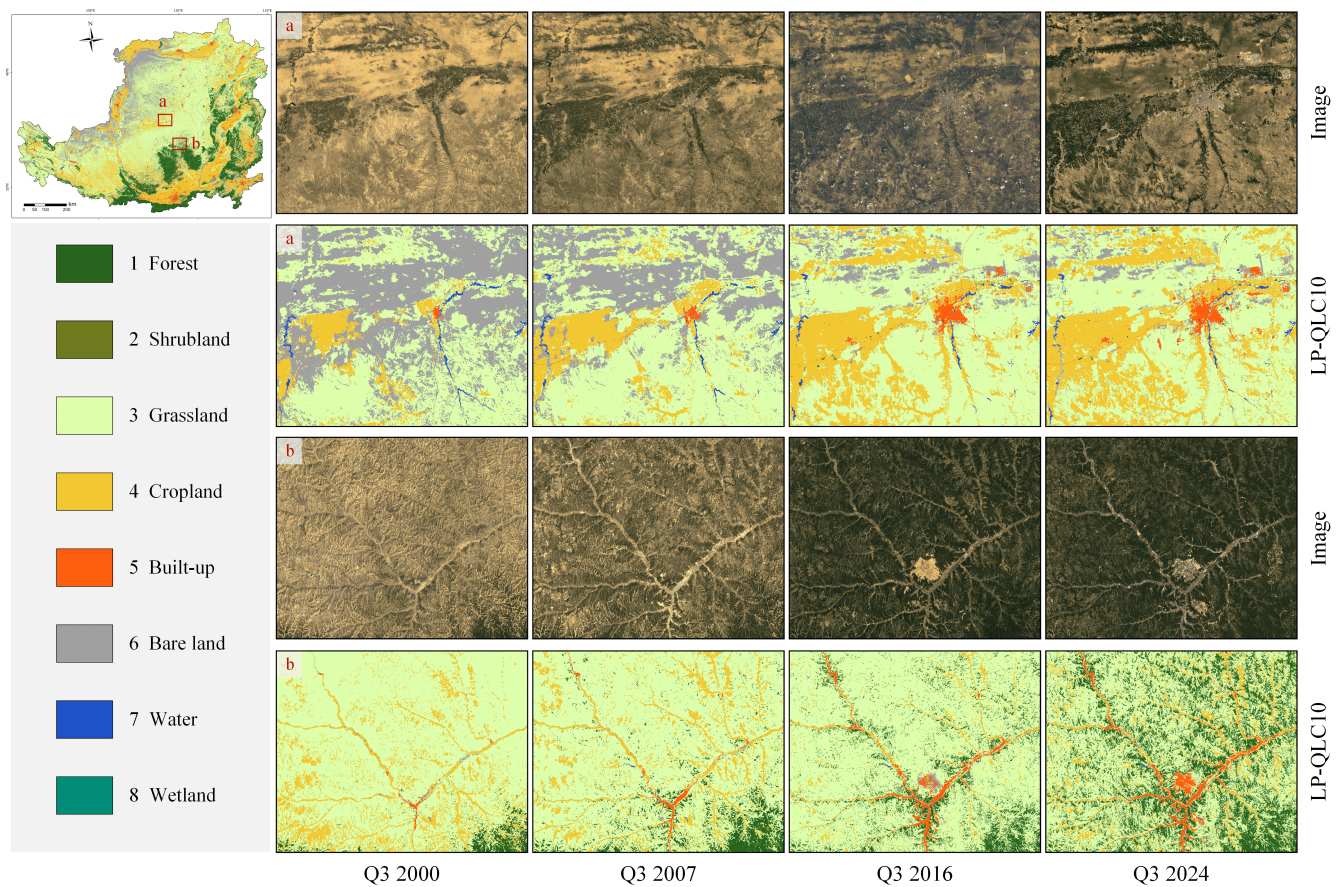


Figure 6. Representative examples of the LP-QLC10 land-cover maps: (a) Yulin City and (b) Yan’an City, illustrating land-cover evolution across four temporal phases (2000, 2007, 2016, and 2024). The satellite images in the figure are from © Google Earth.

expanded markedly owing to vegetation restoration projects, while the growth of cropland reduced the extent of bare land, together indicating a consistent decline in barren surfaces. In the second region, Yan’an City has been a key demonstration area for China’s Grain for Green Program since its initiation in 1999. Consequently, following more than two decades of continuous implementation, the region has undergone profound land-cover transitions driven by farmland-to-forest conversion. As shown in Figure 6(b), cropland areas have progressively decreased, whereas large tracts of forest have expanded into zones formerly dominated by grassland. Collectively, these findings highlight the ability of the LP-QLC10 dataset to faithfully capture long-term, human-induced ecological transformations across the Loess Plateau.

In addition, a qualitative comparison was conducted to compare the performance of the LP-QLC10 dataset with other widely used products. In particular, GLC_FCS30D (Zhang et al., 2023b), CLCDs (Yang and Huang, 2021), and YRCC_LPLC (Wang et al., 2025) as the time-series, large-scale land-cover products, were selected for visual comparison. In detail, GLC_FCS30D is a global 30 m land-cover dataset containing 10 primary categories and 35 subcategories, covering 1985–2022 with 26

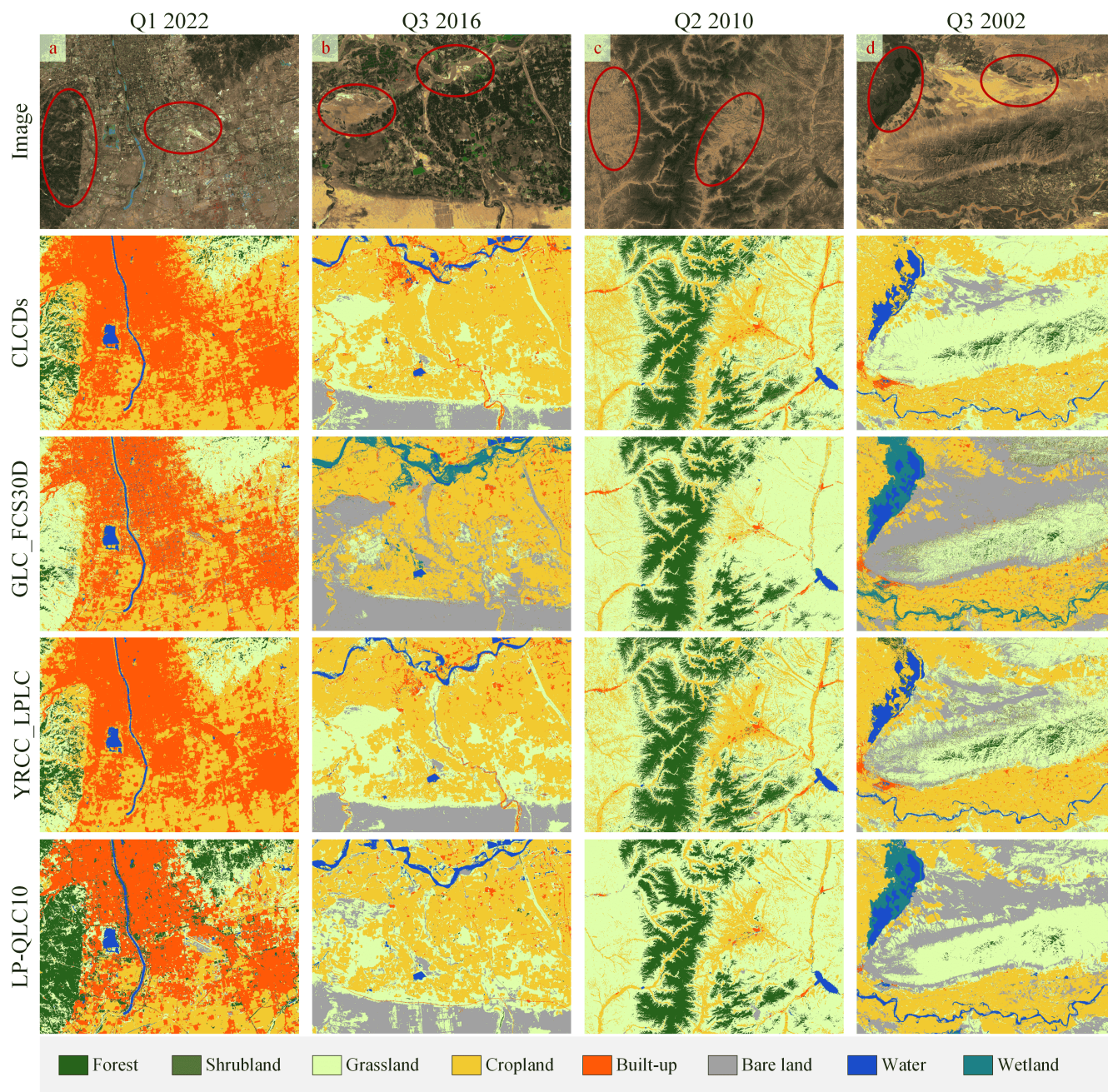


Figure 7. Visual comparison of land-cover classification results over four representative regions: (a) urban areas, (b) agricultural zones, (c) mountainous regions, and (d) wetlands. The satellite images in the figure are from © Google Earth.

temporal layers updated every five years before 2000 and annually thereafter. Meanwhile, CLCDs provide national-scale annual land-cover data for China at 30-m resolution from 1990 to 2021, comprising nine categories. Moreover, YRCC_LPLC was developed to characterize land-cover changes in the Loess Plateau induced by ecological restoration, providing annual land-cover maps at 30 m resolution from 1990 to 2022. All the datasets include the eight major land-cover types present in the Loess Plateau, making them suitable for direct comparison.

Representative results are shown in Figure 7 to provide a comprehensive comparison. First, Figure 7(a) illustrates an urban area. The Loess Plateau contains numerous small cities where built-up surfaces are tightly interwoven with cropland, grassland, and forest, creating a highly fragmented landscape. In this setting, LP-QLC10 accurately identified built-up areas and effectively distinguished adjacent forest and grassland patches. In contrast, the other three products misclassified forest as cropland and grassland. Second, Figure 7(b) depicts an agricultural landscape. In the Loess Plateau, cropland is typically located near water sources and interspersed with large patches of grassland. In this context, LP-QLC10 successfully distinguishes cropland, water bodies, and grassland with high spatial fidelity. By contrast, GLC_FCS30D misclassifies substantial grassland areas as cropland or bare land. Third, Figure 7(c) presents a mountainous region. LP-QLC10 delineated cropland boundaries accurately, whereas GLC_FCS30D mislabeled cropland as grassland. CLCDs and YRCC_LPLC exhibited similar performance and incorrectly classified grassland as cropland. Moreover, since the other three datasets were produced based on pixel-based classification methods such as the Random Forest algorithm (Breiman, 2001), they tend to produce fragmented and spatially inconsistent cropland patterns. In contrast, the object-based CCTS framework underlying LP-QLC10 benefits from long-range contextual modeling enabled by self-attention mechanisms (Yuan et al., 2021), yielding spatially coherent land-cover results. Finally, Figure 7(d) illustrates a wetland environment. GLC_FCS30D successfully identified wetland areas. However, errors were observed along rivers and their banks. Due to the fine-grained wetland classification system in GLC_FCS30D, confusion occurred among wetland subclasses. Specifically, cropland was misclassified as marshes, while water-covered surfaces were misidentified as flooded flats (sub-classes of wetland), particularly in sediment-rich river channels. In contrast, CLCDs and YRCC_LPLC failed to detect wetlands. Overall, LP-QLC10 demonstrates high classification reliability across diverse land-cover types and landscape settings, highlighting its superior spatial detail and temporal robustness compared to existing products.

4.2 Quantitative validation with multiple independent sources

To quantitatively evaluate the LP-QLC10 dataset, we conducted validation using (1) a human-annotated time-series reference dataset developed in this study; two publicly available validation point sets collected from (2) SinoLC-1 evaluation set (Li et al., 2023)—the first 1-m land-cover map of China, and (3) Geo-wiki—widely used global land-cover reference set (Fritz et al., 2017). For comparison, three widely used long-term land-cover products were also evaluated, including GLC_FCS30D, CLCDs, and Esri_GLC10 (Karra et al., 2021). Esri_GLC10 is a global 10-m dataset comprising 10 land-cover categories, available annually from 2017 to 2024. Meanwhile, three standard metrics were employed for evaluation, including Overall Accuracy (OA), Kappa coefficient, and Frequency Weighted Intersection over Union (FWIoU). OA and Kappa assess over-

Table 3. Quantitative results of the land-cover products on the time-series valuation points.

Datasets	Metrics	2001	2006	2011	2016	2021	Average
CLCDs		0.737	0.791	0.759	0.790	0.781	0.7716
GLC_FCS30D		0.753	0.743	0.757	0.749	0.742	0.7488
YRCC_LPLC	OA	0.707	0.752	0.757	0.791	0.784	0.7582
Esri_GLC10		–	–	–	–	0.744	–
LP-QLC10 (ours)		0.785	0.787	0.800	0.855	0.845	0.8144
CLCDs		0.610	0.668	0.651	0.685	0.669	0.6566
GLC_FCS30D		0.648	0.621	0.663	0.645	0.633	0.6420
YRCC_LPLC	Kappa	0.583	0.625	0.654	0.694	0.682	0.6476
Esri_GLC10		–	–	–	–	0.611	–
LP-QLC10 (ours)		0.686	0.673	0.715	0.783	0.772	0.7258
CLCDs		0.523	0.609	0.566	0.589	0.594	0.5762
GLC_FCS30D		0.556	0.548	0.555	0.556	0.570	0.5570
YRCC_LPLC	FWIoU	0.512	0.570	0.564	0.600	0.604	0.5700
Esri_GLC10		–	–	–	–	0.739	–
LP-QLC10 (ours)		0.663	0.643	0.582	0.647	0.692	0.6454

Table 4. Quantitative results of the land-cover products on the publicly available validation points.

Datasets	SinoLC-1 (7382 points in 2020)			Geo-wiki (1183 points in 2012)		
	OA	Kappa	FWIoU	OA	Kappa	FWIoU
CLCDs	0.696	0.559	0.520	0.480	0.311	0.317
GLC_FCS30D	0.662	0.529	0.501	0.475	0.307	0.326
YRCC_LPLC	0.706	0.581	0.535	0.496	0.330	0.334
Esri_LC10	0.699	0.555	0.623	–	–	–
LP-QLC10 (ours)	0.798	0.709	0.660	0.505	0.346	0.357

all classification performance, whereas FWIoU gives more weight to infrequent classes, thereby offering a more balanced assessment of classification reliability.

Table 3 reports the results for 40,000 manual annotations developed in this study, obtained by labeling 8,000 validation points at five-year intervals. Overall, LP-QLC10 consistently outperformed the comparison products across all three metrics. Specifically, its average OA (0.8144), Kappa (0.7258), and FWIoU (0.6454) were all substantially higher than those of CLCDs, GLC_FCS30D, and YRCC_LPLC, with LP-QLC10 ranking first in most evaluated years and showing particularly strong performance from 2001 to 2016. Although Esri_GLC10 surpassed LP-QLC10 in FWIoU for 2021, its applicability to long-term research is limited because the Esri product covers only the period 2017–2024. Besides, the transition of LP-QLC10 from 30-m imagery to 10-m imagery after 2016 resulted in a substantial improvement across all three metrics, highlighting the importance of higher spatial detail for accurately distinguishing fine-scale land-cover patterns in the Loess Plateau. Taken

Table 5. Confusion matrix on SinoLC-1 validation set with per-class Producer Accuracy (PA), User Accuracy (UA), and Intersection over Union (IoU).

Class	Forest	Shrubland	Grassland	Cropland	Built-up	Bare land	Water	Wetland	PA
Tree cover	831	0	42	6	1	0	0	0	0.944
Shrubland	2	15	41	0	0	1	0	1	0.250
Grassland	177	2	2882	90	1	102	0	0	0.886
Cropland	7	0	255	1424	2	14	2	0	0.836
Building & route	16	0	95	79	161	20	0	0	0.434
Barren & sparse veg.	3	1	378	97	40	546	4	0	0.511
Water	0	0	4	4	0	3	31	2	0.705
Wetland	0	0	0	0	0	0	0	0	0
UA	0.802	0.833	0.780	0.838	0.785	0.796	0.838	0	OA 0.798
IoU	0.766	0.238	0.708	0.719	0.388	0.452	0.620	0	

together, the long-term validation illustrates that LP-QLC10 provides both high classification accuracy and strong temporal stability.

To ensure a fairer and more objective evaluation, the comparison results of two publicly available validation datasets are reported in Table 4, where our LP-QLC10 product consistently outperformed the other products across both benchmarks. The SinoLC-1 validation set, derived from 1-m resolution Google Earth imagery, provided highly reliable reference labels. Therefore, despite the strong performance across all compared products, LP-QLC10 attained the highest OA, exceeding the second-best product by nearly 10%. In contrast, the Geo-Wiki dataset yielded lower accuracies for all methods, because the quality of crowdsourced annotations may decline when contributors lack sufficient expertise (Moltchanova et al., 2022). Nevertheless, LP-QLC10 still achieved the highest scores, demonstrating its robustness across diverse validation scenarios.

The confusion matrix provide a detailed class-specific evaluation of model performance. Accordingly, Table 5 presents the confusion matrix of LP-QLC10 derived from the SinoLC-1 validation set. Based on this matrix, Overall Accuracy (OA) and Intersection over Union (IoU) were computed to assess overall performance, while User Accuracy (UA) and Producer Accuracy (PA) were derived to characterize commission and omission errors, respectively. In terms of PA, the forest class achieved the highest accuracy (0.944), followed by grassland, cropland, water, and bare land. In contrast, shrubland, bare land, and built-up areas exhibited relatively low accuracies. First, the low PA for shrubland is mainly attributable to its extremely limited spatial extent in the Loess Plateau, accounting for about 0.2% of the total area (Zanaga et al., 2022), which results in severe sample imbalance. Meanwhile, the 10–30 m spatial resolution leads to substantial spectral confusion and reduces separability between shrubland and grassland. Second, the performance of built-up area is primarily constrained by image resolution. The imagery provide limited spatial detail to adequately characterize small buildings and narrow roads, thereby causing omission errors and blurred urban boundaries. Third, the low PA of bare land mainly arises from differences in class definitions between LP-QLC10 and SinoLC-1, as sparsely vegetated areas are classified as grassland in our dataset but are included in the "barren and sparse vegetation" category in SinoLC-1, as shown in Table A2, resulting in substantial confusion between bare land and grassland in the validation. When the mapping results were evaluated using the time-series validation set, which follows consistent

class definitions, the PA for bare land reached 0.741 (Table A3). Moreover, the IoU results further supported these findings: 465 vegetation types such as forest, grassland, and cropland exhibited high overlap scores, whereas shrubland and built-up areas were the most challenging categories for accurate delineation. Collectively, these superior and stable results demonstrate that the LP-QLC10 dataset provides the most accurate and temporally continuous land-cover maps of the Loess Plateau to date, thereby offering a robust foundation for subsequent analyses.

4.3 Spatiotemporal patterns of land-cover transitions

470 4.3.1 Temporal trends of land-cover transitions

The long-term land-cover transitions of the Loess Plateau reveal a pronounced shift toward increased vegetation cover and reduced surface degradation over the past 25 years. Overall, cropland and forest expanded by 22% and 15%, respectively, whereas bare land declined substantially by 51%. These broad trends were largely shaped by vegetation restoration and land management interventions. In particular, 8.6% (with estimates ranging 7.1–10.6% when accounting for land-cover uncertainty) 475 of the region was transformed from bare land to grassland, 3.5% from grassland to forest, and 5.7% from grassland to cropland. Collectively, these transitions illustrate a sustained regional greening process and a progressive replacement of degraded surfaces with more productive or ecologically stable land-cover types.

Detailed land-cover dynamics are illustrated in Figure 8(a) and (b). Over the past 25 years, the region has undergone systematic landscape restructuring, characterized by a coordinated expansion of forest, cropland, and built-up land alongside 480 a substantial reduction in bare land. Forest, cropland, and urban areas all exhibited sustained upward trends, with cropland showing the largest net gain (28,095 km²), followed by built-up land (17,163 km²) and forest (13,131 km²). Conversely, bare land decreased by 65,029 km², indicating the substantial success of large-scale ecological restoration and land-management initiatives. Although grassland remained the dominant land-cover type, its area fluctuated dynamically in response to both ecological restoration and land-use conversion. Besides, water and wetland together account for less than 1% of the Plateau's 485 area, underscoring the region's pronounced scarcity of surface water resources. When aggregated across categories, vegetated surfaces (forest, shrubland, grassland, and cropland) collectively expanded by approximately 6% of the Plateau's total area, underscoring a sustained shift toward greener and more stabilized landscapes.

Region-specific analyses in Figure 8(c)–(h) further reveal a spatially heterogeneous yet policy-responsive pattern of land-cover transition across the Loess Plateau. In the northern and central restoration zones (IA, SL, and HG), bare land declined 490 sharply, reflecting the sustained impact of desertification control and ecological rehabilitation initiatives. These reductions were accompanied by substantial gains in cropland and built-up land in IA, pronounced grassland expansion in SL, and concurrent increases in both forest and cropland in HG. Together, these shifts indicate large-scale conversion of previously degraded or sparsely vegetated surfaces into productive or revegetated landscapes. By contrast, TG exhibited a conversion of grassland to cropland, highlighting the pressure of agricultural intensification. In the southern subregions RV and RM, rapid urbanization 495 emerged as the dominant driver of land-cover change, with built-up areas expanding considerably. This urban growth occurred predominantly at the expense of grassland and forest in RV, whereas in RM, most newly urbanized land originated from

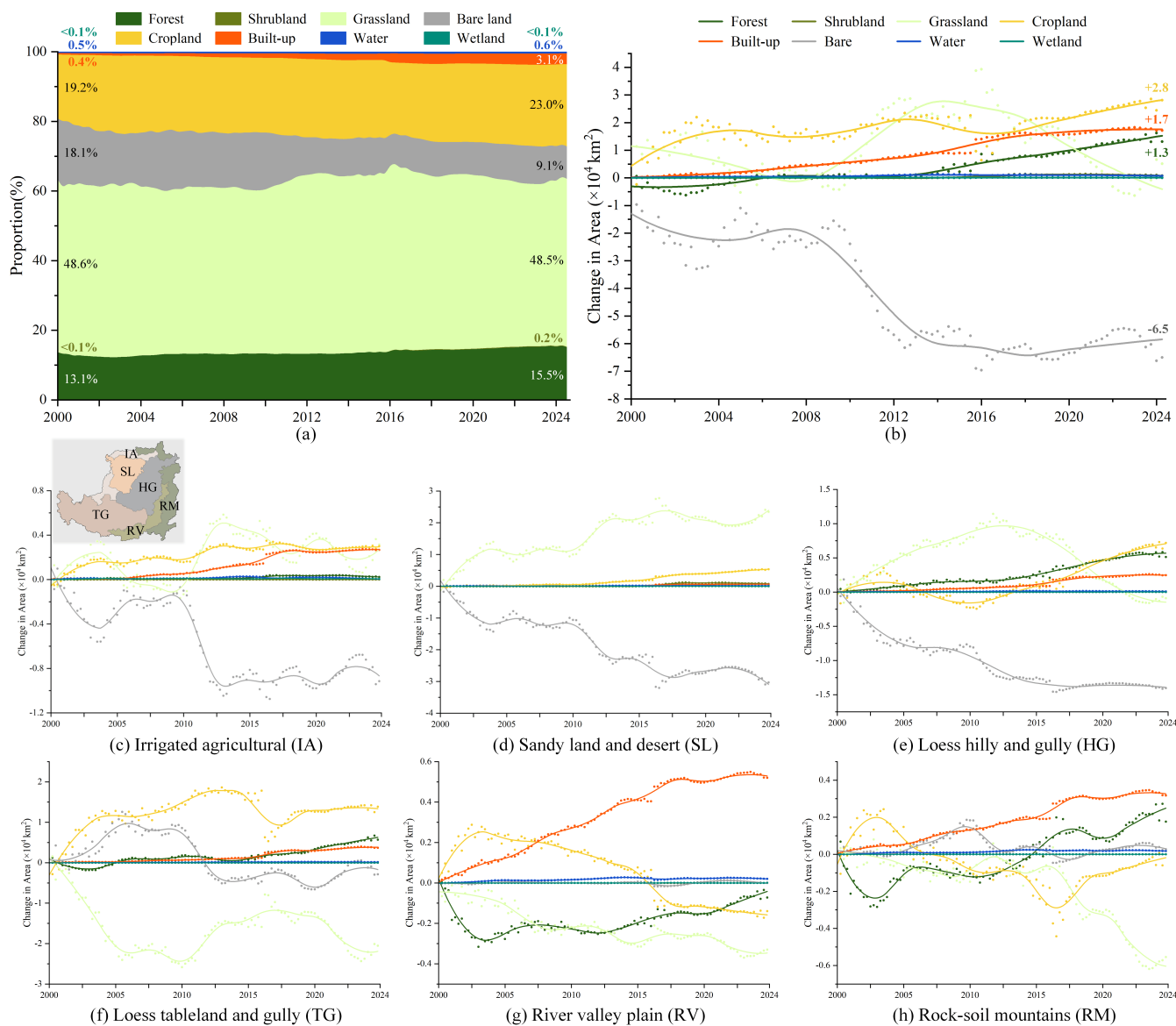


Figure 8. Temporal trends of land-cover composition from 2000 to 2024. (a) illustrates the proportional evolution of land-cover types, with the proportions in Q1 2000 and Q4 2024 annotated. (b) shows the change in coverage area of each class relative to the baseline year (2000), where points represent observed values and a fitted curve illustrates the long-term trend. (c)–(h) present region-specific variations across six subregions of the Loess Plateau.

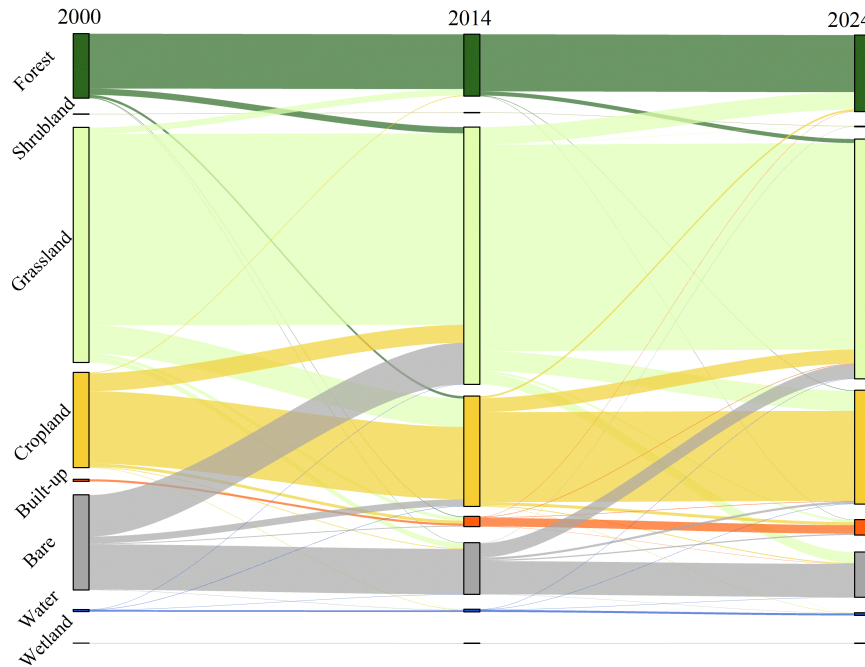


Figure 9. Sankey diagram of land-cover transitions in the LP-QLC10 dataset. Data from Q3 2000, Q3 2014, and Q3 2024 were used to construct the diagrams.

grassland, accompanied by localized forest recovery in recent years. Collectively, these regionally differentiated dynamics underscore the interplay between ecological restoration programs, agricultural demand, and urban development.

To strengthen ecological restoration, the Chinese government launched the second phase of the Three-North Shelterbelt Forest Program in 2001 and later implemented the National Soil and Water Conservation Plan (2015–2030), both of which designated the Loess Plateau as a priority region for vegetation recovery and erosion control. Accordingly, the land-cover transitions revealed by the Sankey diagrams (Figure 9) clearly reflect the ecological impacts of these policies. From 2000 to 2014, 8.6% (with estimates ranging 7.1–10.6% when accounting for land-cover uncertainty) of the region shifted from bare land to grassland, consistent with the program’s early emphasis on large-scale grassland restoration prior to extensive afforestation. During the same period, forest and cropland expanded primarily through conversions from grassland, contributing 1.3% and 5.7% of the regional area, respectively. After 2014, 3.5% of the area converted from grassland to forest, aligning with the intensified afforestation and slope-land conservation measures specified in the 2015 national plan. Meanwhile, dynamic exchanges persisted among grassland, cropland, and bare land, with grassland-to-cropland transitions (4%) becoming dominant. Notably, sparsely vegetated bare land in semi-arid zones often exhibits spectral similarity to low-cover grassland, causing the model to temporarily classify such areas as grassland. Consequently, some reclamation activities may appear as grassland-to-cropland transitions. Overall, forest and cropland expanded, bare land declined continuously, and grassland remained relatively stable.

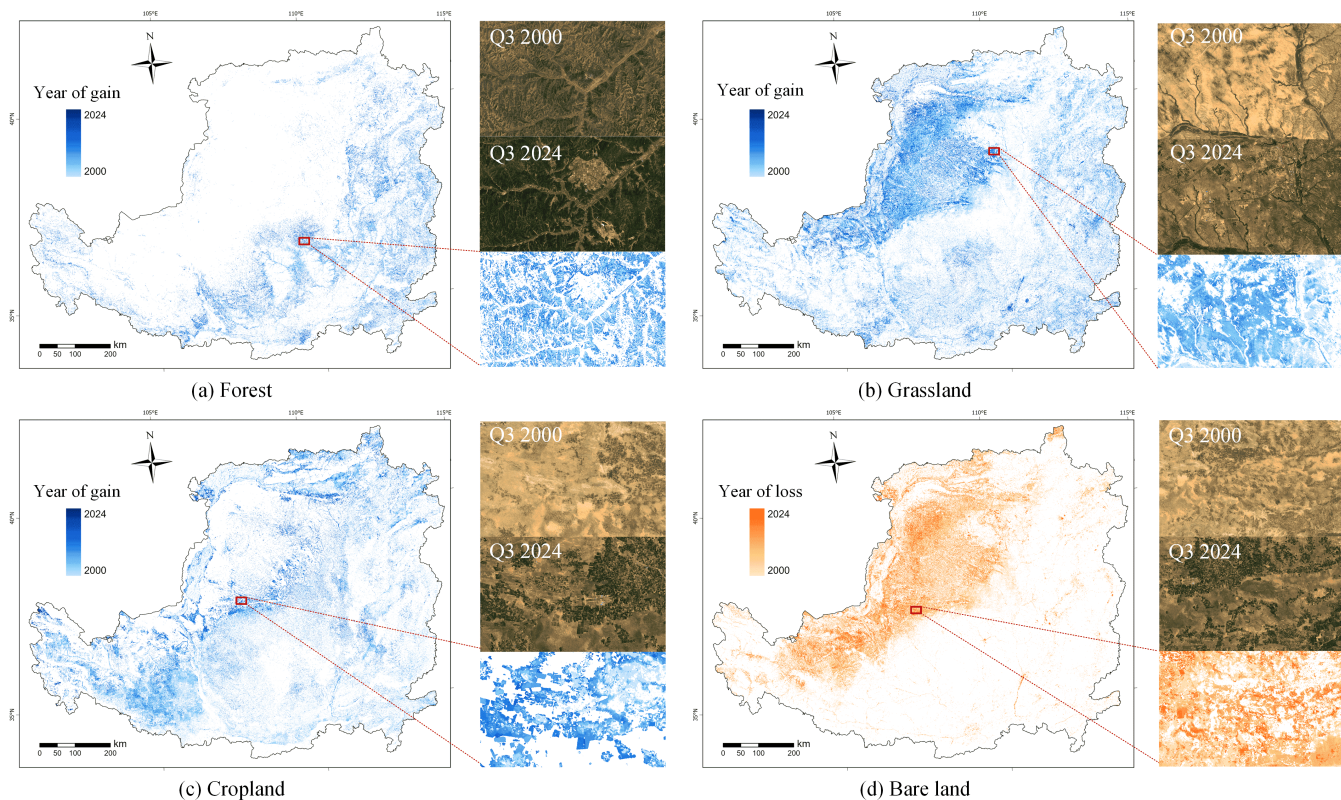


Figure 10. Spatial distribution of typical land-cover changes from 2000 to 2024: (a) Forest gain, (b) Grassland gain, (c) Cropland gain, and (d) Bare land loss. Blue and yellow represent the timing of gains and losses, respectively, with darker tones indicating later occurrences of change. The satellite images in the figure are from © Google Earth.

These temporally coherent patterns indicate that sustained national ecological policies have substantially reshaped land-cover patterns and improved environmental conditions across the Loess Plateau.

4.3.2 Spatial distribution of land-cover change

515 In this section, we analyzed the spatial distribution of individual land-cover transitions and identified three distinct regional patterns across the Loess Plateau. Forest expansion occurred predominantly in the southeast, where relatively high precipitation supports woodland development. In contrast, the northwest exhibited extensive increases in grassland, closely corresponding to the widespread reduction in bare land. Meanwhile, cropland expansion was concentrated in the central Loess Plateau, especially within gully-dense landscapes. These representative patterns are mapped in Figure 10, including: (a) Forest gain, (b) Grassland gain, (c) Cropland gain, and (d) Bare land loss.

520 As shown in Figure 10(a), forest gain was mainly distributed in the southeastern Plateau. This spatial pattern is strongly controlled by climatic gradients, as forest ecosystems generally require more than 450 mm of annual rainfall to sustain stable

growth (Wang et al., 2011). Given that rainfall gradually increases from the arid northwest toward the humid southeast, forest expansion is naturally concentrated in the better-watered southeastern region. In contrast, Figure 10(b) illustrates that grassland expansion occurred most extensively in the northwestern Plateau, with additional patches emerging in the southeast. This trend aligns with the broad climatic tolerance and ecological resilience of grasslands, which enable them to establish under wide ranges of temperature and precipitation (Sala et al., 2000). Moreover, the newly established grassland areas in the northwest were located within the Maowusu Desert, the largest sandy region of the Plateau. This transformation reflects the effectiveness of national ecological restoration policies, with sustained interventions including sand-control forest belts and grass-grid stabilization under the Three-North Shelterbelt Forest Program contributing to the rehabilitation of the sandy surface. As for cropland, its expansion was primarily concentrated in the central part of the Loess Plateau, exhibiting a northeast–southwest distribution pattern. This spatial trend is closely associated with the regional strategy of filling gullies to create cropland, whereby gully bottoms and gentle slopes were converted into arable land to mitigate erosion and enhance agricultural productivity (Liu et al., 2013). Conversely, cropland that is unsuitable for cultivation can be restored to grassland or forest through the Grain for Green Program. Finally, the loss of bare land, as shown in Figure 10(d), is predominantly concentrated in the northwest, coinciding with the areas of grassland increase—most notably within the Maowusu Desert. This spatial correspondence confirms that the reduction of bare land is driven by the expansion of grassland in this region.

Overall, the LP-QLC10 dataset demonstrates strong potential for revealing long-term land-cover changes. Its spatiotemporal patterns reflect the combined effects of climatic gradients and ecological restoration policies, which together have driven substantial vegetation recovery across the Loess Plateau.

4.4 Soil erosion estimation results

Based on the LP-QLC10 dataset and the RUSLE model, as shown in Figure 11, quarterly water-induced soil erosion maps for the Loess Plateau were generated for the period 2000–2024. Following the classification system defined in the *Technical Specification for Investigation and Assessment of National Ecological Status* (MEE China, 2021a), erosion intensity was categorized into six levels, ranging from slight to extreme. Among these, the slight level represents permissible conditions with negligible soil loss, whereas the light to extreme grades are considered eroded categories. The unit $t/(hm^2 \cdot q)$ denotes the amount of soil mass eroded per hectare of land per quarter. Annual soil erosion was obtained by summing the erosion values from all four quarters, expressed in $t/(hm^2 \cdot a)$, representing the soil mass eroded per hectare per year.

The spatial distribution of erosion exhibits a clear association with both topography and land cover. As shown in Figures 11(a)–(d), erosion is predominantly concentrated in the central and western Loess Plateau, particularly within gully-dense regions such as HG and TG. In contrast, areas with dense vegetation cover, especially the extensive forest in the south, remain largely in a slight erosion state, demonstrating the strong protective effect of forest ecosystems. From a temporal perspective, moderate to severe erosion in the central region improved substantially during the early years (before 2008), whereas the severely eroded zones in the west continued to shrink in the following years. In addition, seasonal erosion patterns are strongly controlled by the monsoonal climate of the Loess Plateau. Precipitation is highly uneven throughout the year and is concentrated mainly in summer, while vegetation cover reaches its minimum in winter and peaks in summer. These joint variations regulate

2000

2024

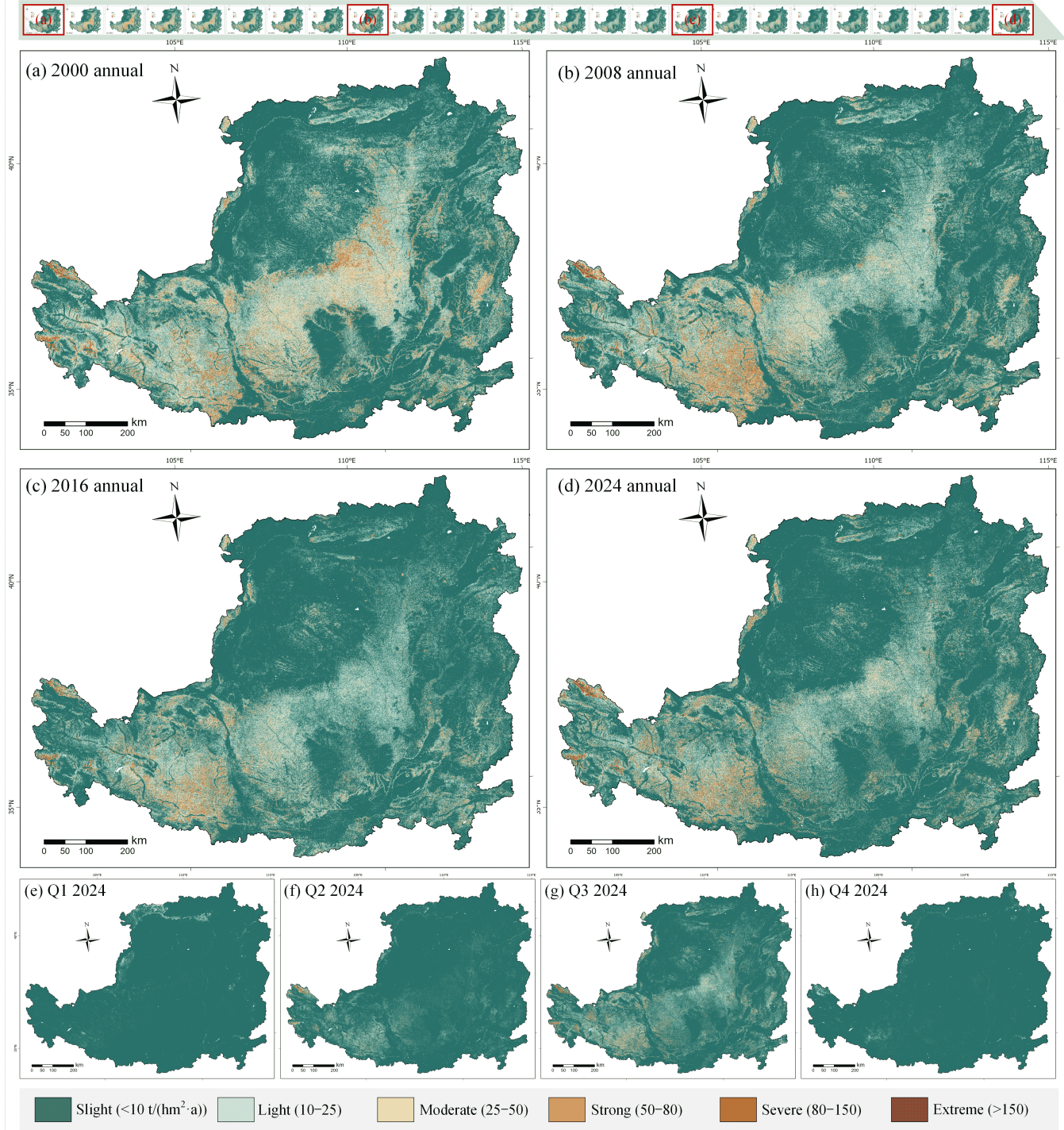


Figure 11. Illustration of the Loess Plateau soil erosion maps: (a)–(d) show annual maps for 2000, 2008, 2016, and 2024, respectively, whereas (e)–(h) depict the four quarterly maps of 2024. The soil erosion level legend is shown at the bottom.

Table 6. Quantitative comparison of the soil erosion maps derived from annual data and quarterly data. The reference data come from the *China Soil and Water Conservation Bulletin*, which has been published annually since 2018.

Time	Reference (%)	CSWED		CLCDs-based		LP-QLC10-based	
		Result (%)	Error	Result (%)	Error	Result (%)	Error
2018	28.34	14.89	-13.45	18.46	-9.88	19.54	-8.80
2019	27.82	11.88	-15.94	21.42	-6.40	22.70	-5.11
2020	27.52	14.98	-12.54	19.77	-7.75	21.26	-6.26
2021	27.17	17.61	-9.56	23.48	-3.69	23.70	-3.48
2022	26.65	12.83	-13.82	21.72	-4.93	23.26	-3.39
2023	26.04	–	–	23.48	-2.56	23.96	-2.09
2024	25.33	–	–	–	–	22.97	-2.36
MAE			13.06		5.87		4.50

the intra-annual evolution of erosion intensity. As shown in Figures 11(e)–(h), erosion is essentially negligible in the first and fourth quarters, with only localized moderate erosion in the second quarter. In contrast, the third quarter experiences widespread moderate to strong erosion.

560 As illustrated in the above analysis, the pronounced seasonal variations in rainfall and vegetation cover across the Loess Plateau highlight the need for high-temporal-frequency observations to accurately characterize soil erosion processes. Accordingly, to investigate the influence of temporal resolution on erosion estimation, we designed three experimental groups that differ in both their temporal update frequency and the source of their input data:

Annual-scale group (CSWED-based): This experiment adopted the Hydraulic Soil Erosion Dataset (CSWED) (Yan et al., 565 2025) as a representative annual-scale benchmark. CSWED provides 30 m soil erosion estimates for mainland China from 1990 to 2022, derived from annual rainfall, fractional vegetation cover (FVC), and land-cover inputs. Thus, similar to conventional annual erosion products, this group produces a single erosion map per year.

Quarterly-scale group (LP-QLC10-based): This experiment utilized the proposed LP-QLC10 dataset in combination with quarterly rainfall and vegetation cover data. By updating all RUSLE factors every three months, this group achieves four times 570 the temporal resolution of the annual approach, thereby capturing pronounced intra-annual variations in vegetation phenology, rainfall erosivity, and surface conditions.

Mixed-resolution control group (CLCDs-based): To isolate the specific contribution of land-cover temporal frequency, this control experiment employed the same quarterly rainfall and vegetation cover inputs as the LP-QLC10-based group, while substituting quarterly land-cover updates with annual CLCDs products. Correspondingly, this configuration allows us to 575 directly quantify how quarterly land-cover information enhances the accuracy of erosion estimates.

A quantitative comparison is presented in Table 6, with official statistics from the *China Soil and Water Conservation Bulletin* serving as the validation reference. The comparison between the CSWED and LP-QLC10-based results clearly illustrates the advantages of higher temporal resolution. Specifically, CSWED, which relies on annual inputs, substantially underestimated erosion intensity by more than 10% relative to the reference data, primarily because it failed to represent the pronounced sea-

580 sonal fluctuations in rainfall and vegetation that govern erosion processes. In contrast, the LP-QLC10-based estimates achieved a mean absolute error (MAE) of only 4.50 across all examined years. In addition, the CLCDs-based estimates exhibited larger deviations from the reference values than those produced using LP-QLC10. This discrepancy arises from the seasonal bias inherent in annual land-cover products, which are typically derived from imagery acquired during peak vegetation periods (e.g., spring or summer). Consequently, such imagery over-represents dense vegetation, leading to systematic underestimation of erosion intensity. Overall, these findings demonstrate that incorporating quarterly land-cover information substantially enhances 585 both the temporal representativeness and accuracy of soil erosion estimation, particularly in regions with strong intra-annual variability such as the Loess Plateau.

4.5 Spatiotemporal dynamics of soil erosion

In this section, we examined soil erosion dynamics from both temporal and spatial perspectives and identified a clear long-term 590 mitigation trend across the Loess Plateau. Approximately 37% of the region exhibits a statistically evident decrease in erosion, corresponding to a 30% reduction in mean erosion intensity and a 12% shrinkage of erosion-affected area over the past 25 years. Moreover, seasonal contrasts remain pronounced, with the third quarter alone contributes 68% of the annual erosion.

The 25-year erosion dynamics reveal a clear and persistent improvement in ecosystem stability. As shown in Figure 12(a), both mean annual erosion and the proportion of eroded land exhibited substantial declines, with mean erosion decreased 595 by 29.91% (from 13.34 t/(hm²·a) to 9.35 t/(hm²·a)), and eroded area shrinking from 34.73% to 22.97%, representing an 11.76% reduction. This sustained weakening of erosion intensity reflects the cumulative effects of vegetation restoration, land-management interventions, and landscape adjustments. Moreover, The seasonal pattern displayed in Figure 12(b) underscores the dominance of summer rainfall in shaping erosion dynamics. Erosion was negligible in the first and fourth quarters, but increased sharply in the second and third quarters, with the latter peaked at 6.41 t/(hm²·q), accounting for 68% of the annual 600 total. Correspondingly, Figure 12(c) shows that erosion declined most strongly in the third quarter, with a reduction of -3.53 t/(hm²·q). This long-term decrease is primarily driven by the continuous expansion of newly established vegetation, whose cover reaches its seasonal maximum during summer and thereby provides the strongest protection against intense rainfall events.

Besides, Figures 12(d) demonstrate that soil erosion across the Loess Plateau has undergone substantial mitigation over 605 the past 25 years, reflected by clear declines in both erosion extent and severity. Specifically, light erosion decreased from 133,434 km² (20.4% of the Loess Plateau) to 93,821 km² (14.4%), while moderate erosion declined from 59,362 km² (9.1%) to 32,483 km² (5.0%). Strong and above erosion dropped from 34,049 km² (5.3%) to 23,736 km² (3.6%). In contrast, slight erosion expanded significantly, indicating that increasingly large areas have transitioned into stable, permissible erosion conditions. Moreover, subregional patterns in Figure 12(e) further reveal pronounced spatial heterogeneity in erosion mitigation. The 610 loess hilly and gully region (HG) exhibits the most substantial improvements, with the largest reductions in both erosion area and mean erosion intensity. This trend is consistent with the substantial forest expansion, cropland reduction, and urban land conversion documented in Figure 8(e), all of which contributed to reduced bare land and enhanced soil and water conservation capacity. Meanwhile, the loess tableland and gully region (TG) and the sandy land and desert region (SL) show the next most

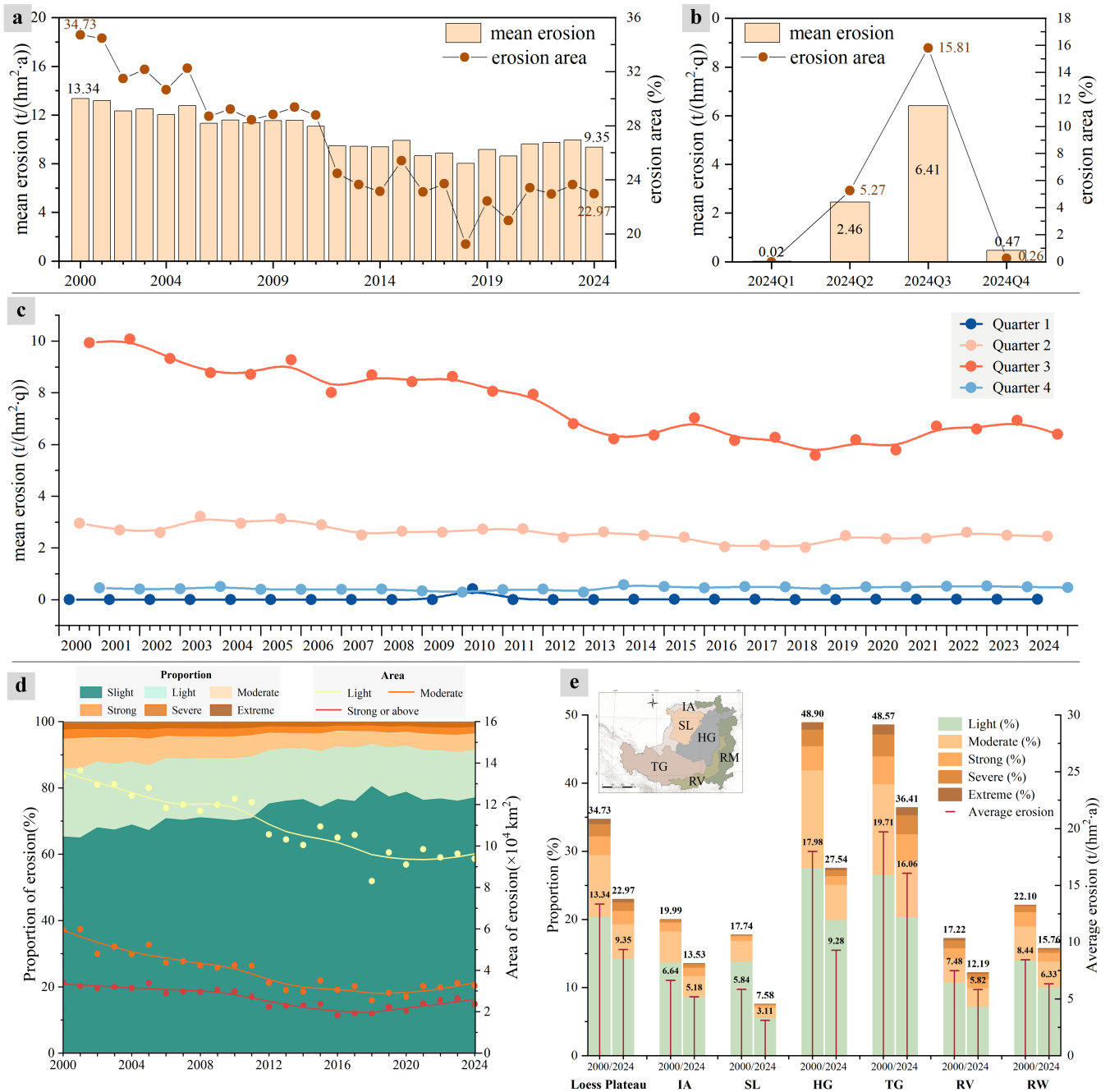


Figure 12. Illustration of the temporal trends in soil erosion. (a) presents the annual erosion trends from 2000 to 2024. (b) shows the intra-annual variation in erosion area and mean erosion in 2024. (c) details the quarterly change of the mean erosion from 2000 to 2024. (d) and (e) depict the overall and subregional changes in detailed erosion level across the Loess Plateau, respectively.

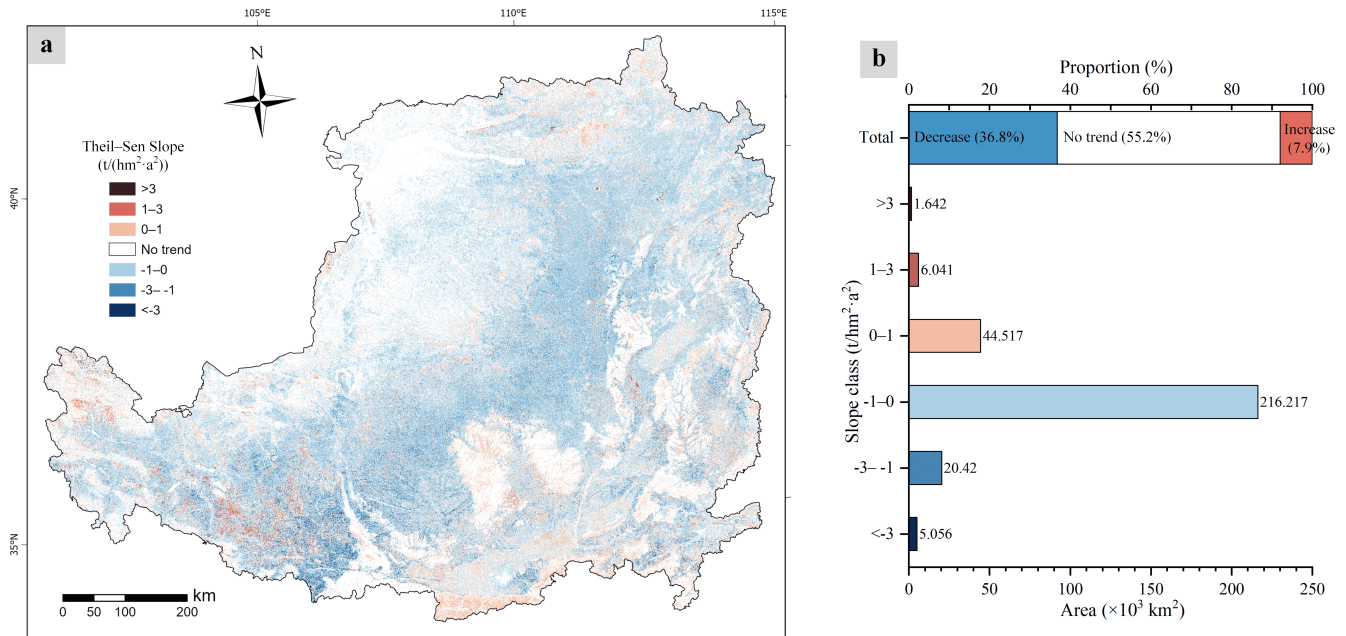


Figure 13. Spatial distribution of soil erosion trends across the Loess Plateau from 2000 to 2024. (a) Spatial patterns of the Theil–Sen slope and Mann–Kendall trend. Areas with increasing trends are shown in red, decreasing trends in blue, and areas without significant change are shown in white. (b) Statistical summary of the proportions of increasing, decreasing, and no trends.

notable declines. Although the remaining subregions also exhibit modest improvements, TG remains the most severely affected zone, with more than one-third of its surface still experiencing erosion and the highest mean erosion intensity on the Plateau. Overall, these patterns underscore the clear effectiveness of ecological restoration and land-cover restructuring in reducing soil erosion intensity, while also highlighting the persistent vulnerabilities in areas with complex topography and intensive human activities.

From a spatial distribution perspective, the Mann–Kendall (MK) trend test and Theil–Sen slope estimator provide a statistically robust method for assessing long-term erosion dynamics across the Loess Plateau. The MK test (Hamed and Ramachandra Rao, 1998) is a non-parametric method designed to detect the presence and significance of monotonic trends in time-series data. Complementarily, the Theil–Sen estimator (Sen, 1968) quantifies the magnitude of these trends by calculating the median slope across all pairwise observations. Together, these methods offer a reliable basis for diagnosing spatial variations in soil erosion dynamics. Accordingly, applying the MK test to annual soil erosion from 2000 to 2024 reveals a clear regional contrast in erosion dynamics. As shown in Figure 13, areas with no significant trend appear in white, while increasing and decreasing trends are displayed in red and blue, respectively. Overall, 36.8% of the Loess Plateau exhibit a decreasing trend in soil erosion, primarily concentrated in the central and southwestern Loess Plateau within the HG and TG subregions. Most decreasing areas show mild declines of $-1-0 t/(\text{hm}^2 \cdot \text{a}^2)$, collectively covering over $2.16 \times 10^5 \text{ km}^2$. Furthermore, several zones in the southern Plateau display more substantial reductions ($<-1 t/(\text{hm}^2 \cdot \text{a}^2)$). In contrast, only 7.9% of the plateau exhibit an increasing trend,

Table 7. Erosion changes associated with land-cover gains and losses, derived from comparisons between 2000 and 2024, along with the current erosion levels for each land-cover category.

Time	Erosion from LC gain($t/(hm^2 \cdot q)$)				Erosion from LC loss ($t/(hm^2 \cdot q)$)				Erosion in 2024 ($t/(hm^2 \cdot q)$)			
	Forest	Grass	Crop	Bare	Forest	Grass	Crop	Bare	Forest	Grass	Crop	Bare
Q1	-0.02	-0.02	0.10	0.03	0.05	0.05	-0.06	0.00	0.00	0.01	0.07	0.01
Q2	-3.50	-4.13	5.09	8.87	1.50	4.27	-7.74	-2.14	0.10	1.72	4.72	5.13
Q3	-10.66	-19.41	9.17	31.69	5.89	9.06	-27.42	-14.47	0.26	4.63	11.06	17.27
Q4	-0.68	-0.62	1.08	1.17	0.77	0.77	-1.42	-0.32	0.28	0.34	0.95	0.50
Annual	-14.86	-24.18	15.44	41.75	8.21	14.15	-36.64	-16.95	0.64	6.70	16.80	22.90

630 mainly distributed along the northern and southern margins, typically with slopes of $0-1 t/(hm^2 \cdot a^2)$. A few localized patches
in the southwest exhibit stronger increases ($>1 t/(hm^2 \cdot a^2)$), particularly in the TG region, where the conversion of grassland to
cropland has reduced vegetation protection. Overall, the spatial pattern of MK trends underscores the dominance of long-term
improvements in soil erosion across the Loess Plateau. The widespread decreasing trends reflect the cumulative effectiveness
of large-scale ecological restoration initiatives, while the localized increasing trends highlight remaining vulnerability zones
635 where targeted soil conservation measures are still needed.

5 Discussion

Based on the comprehensive validation and description of the land-cover and soil erosion mapping results presented in the
Result section, we are able to address the last scientific question of this study: **How** did soil erosion interact with environmental
factors? Subsequently, this section provides a detailed discussion of the mutual interactions among soil erosion, land-cover
640 types, rainfall, and landform conditions, revealing the key processes that jointly shape the erosion dynamics across the Loess
Plateau.

5.1 Dynamic interaction between soil erosion and environmental factors

In this section, we present a comprehensive assessment of how soil erosion interacts with major environmental factors. The
analyses reveal several key mechanisms: the transformation from bare land to grassland produces the most erosion reduction
645 in the Loess Plateau, while forests consistently exhibit the strongest soil conservation capacity. In contrast, cropland expansion
tends to intensify erosion. Furthermore, pronounced quarterly variations in erosion are primarily regulated by the concentration
of summer rainfall. Finally, erosion is preferentially amplified on sunny slopes, within mid-elevation belts, and on steeper
terrain. Together, these findings illustrate the coupled influence of ecological, climatic, and topographic factors on shaping
erosion dynamics across the Loess Plateau.

650 First, the interactions between vegetation dynamics and soil erosion exhibit a clear and quantitatively coherent pattern across
the Loess Plateau, including forest, grassland, cropland, and bare land. As revealed by the land-cover transition pathways in

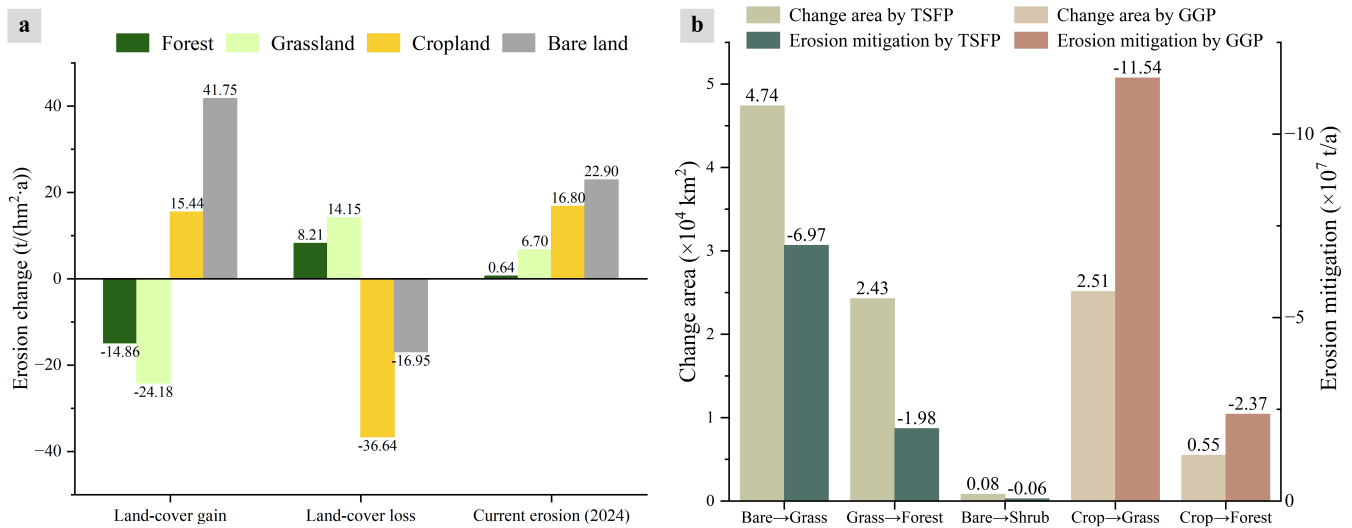


Figure 14. Soil erosion dynamics associated with the change of major vegetation types, based on comparative assessments from 2000 and 2024. (a) Erosion intensity change attributable to single-class gains and losses. (b) Total erosion reduction associated with the Three-North Shelter Forest Program (TSFP) and the Grain for Green Program (GGP).

Figure 9, forest expansion originates primarily from grassland, grassland expansion from bare land, and cropland expansion mainly from grassland. This hierarchical conversion structure provides the foundation for interpreting the erosion responses associated with different land-cover gains and losses. Figure 14(a) indicates that different transitions have distinct impacts on erosion intensity: grassland transitions to forest produced substantial soil-conserving effect (-14.86 t/(hm²·a)). Similarly, stronger mitigation occurs when bare land is converted to grassland (-24.18 t/(hm²·a)). In contrast, cropland expansion increased soil erosion by +15.44 t/(hm²·a), and bare land expansion results in the strongest erosion intensification (+41.75 t/(hm²·a)). Collectively, these results indicate that erosion mitigation in the Loess Plateau is primarily driven by grassland and forest gains, whereas cropland and especially bare land expansion serve as the primary contributors to erosion escalation. Further evidence from the erosion in 2024 reinforces this pattern. As shown in Table 7, forest exhibits the highest soil-conservation capacity (<1 t/(hm²·a)), followed by grassland and cropland, whereas bare land experiences the most severe erosion. Besides, cropland exhibits pronounced seasonal sensitivity under the dominant single-season crops on the Loess Plateau. Dense summer crops enhances protection, while largely bare fields in winter and spring increase vulnerability to water-induced erosion. This seasonality is reflected in quarterly erosion patterns that most land-cover types show an approximately fourfold increase from Q2 to Q3, whereas cropland rises more moderately from 5.09 to 9.17 t/(hm²·q). Importantly, cropland reduction associated with the Grain for Green Program (GGP) has substantially contributed to erosion mitigation by converting retired cropland to forest or grassland, yielding an average erosion decrease of -36.64 t/(hm²·a) in the converted areas and highlighting the strong conservation benefits of this restoration pathway.

Furthermore, ecological restoration on the Loess Plateau has been primarily guided by two national programs: the Three North Shelter Forest Program (TSFP) and the GGP. Based on their objectives and implementation priorities, we attribute

major land-cover transitions to these programs. Specifically, transitions from bare land to grassland, grassland to forest, and bare land to shrubland are mainly associated with the TSFP, whereas transitions from cropland to grassland and cropland to forest are mainly associated with the GGP. We note that these attributions may not capture all land-cover changes across the entire Loess Plateau, because additional environmental drivers and local human activities also contribute to the observed transitions. Nevertheless, this rule based attribution provides a practical approach for policy evaluation using the proposed LP-QLC10 dataset and offers a quantitative reference for assessing restoration effectiveness. As illustrated in Figure 14(b), the TSFP primarily promotes the conversion of bare land to grassland ($4.74 \times 10^4 \text{ km}^2$) and grassland to forest ($2.43 \times 10^4 \text{ km}^2$) across the Loess Plateau, with a smaller extent of bare land converting to shrubland. Among these transitions, conversion from bare land to grassland yields substantial erosion mitigation ($-6.97 \times 10^7 \text{ t/a}$, ranging -7.66 – $-6.50 \times 10^7 \text{ t/a}$ considering the land-cover uncertainty). In contrast, although the land cover changes associated with the GGP occur over a smaller total area, their erosion mitigation benefits are more pronounced. The cropland to grassland transition covers $2.51 \times 10^4 \text{ km}^2$ and reduces erosion by $-11.54 \times 10^7 \text{ t/a}$. The cropland to forest transition covers only $0.55 \times 10^4 \text{ km}^2$, yet it decreases erosion by $-2.37 \times 10^7 \text{ t/a}$. Overall, the estimated erosion reduction attributed to the GGP is approximately 1.5 times that attributed to the TSFP over 2000–2024.

Second, to assess the influence of soil erosion on land-cover changes, we mapped the cumulative soil erosion from 2000 to 2024 and analyzed the land-cover transitions within the top 10% most eroded areas. As shown in Figure 15(a), the Loess Plateau experienced an average cumulative erosion of 265.02 t/hm^2 . Meanwhile, the highest cumulative erosion concentrated in the southwest, particularly the loess tableland and gully regions. This spatial dominance arises primarily from the rugged terrain, where steep slopes and deeply incised gullies enhance runoff concentration and accelerate sediment transport. Furthermore, vegetation in these areas is largely composed of grassland and cropland, whose soil- and water-conservation capacities are markedly weaker than those of forest ecosystems, thereby further contributing to the elevated erosion intensity. In addition, Figures 15(b) and (c) illustrate the detailed land-cover changes within the top 10% erosion zones. Specifically, grassland experienced the dominate change, decreased by $7,735 \text{ km}^2$, while cropland and bare land increased by $2,768 \text{ km}^2$ and $5,169 \text{ km}^2$, respectively. The Sankey diagram in Figure 15(c) reveals that $10,354 \text{ km}^2$ of grassland degraded into bare land, and $5,712 \text{ km}^2$ was converted into cropland. Although $4,990 \text{ km}^2$ of bare land and $3,644 \text{ km}^2$ of cropland were restored to grassland, the dominant process is still a net transformation from vegetated surfaces (especially grassland) toward more erosive land types. Collectively, these patterns indicate that grassland not only provide insufficient protection in areas experiencing severe erosion, but also undergoes progressive ecological degradation as soil loss intensifies. Meanwhile, this finding is supported by the visual example in Figure 15(a), where a slope initially covered by grassland in 2001 becomes dominated by bare surfaces by 2024. Consequently, intense erosion accelerates vegetation loss, which in turn further exacerbates erosion, forming a self-reinforcing degradation cycle. This finding underscores the urgent need for targeted ecological restoration strategies, such as promoting deep-rooted woody vegetation and implementing slope-stabilization practices, to interrupt this degradation cycle in extreme erosion zones.

Third, the quarterly analysis reveals that soil erosion in the Loess Plateau is fundamentally shaped by the pronounced seasonality of rainfall and its associated rainfall–runoff erosivity. As shown in Figure 16, rainfall in 2024 was overwhelmingly

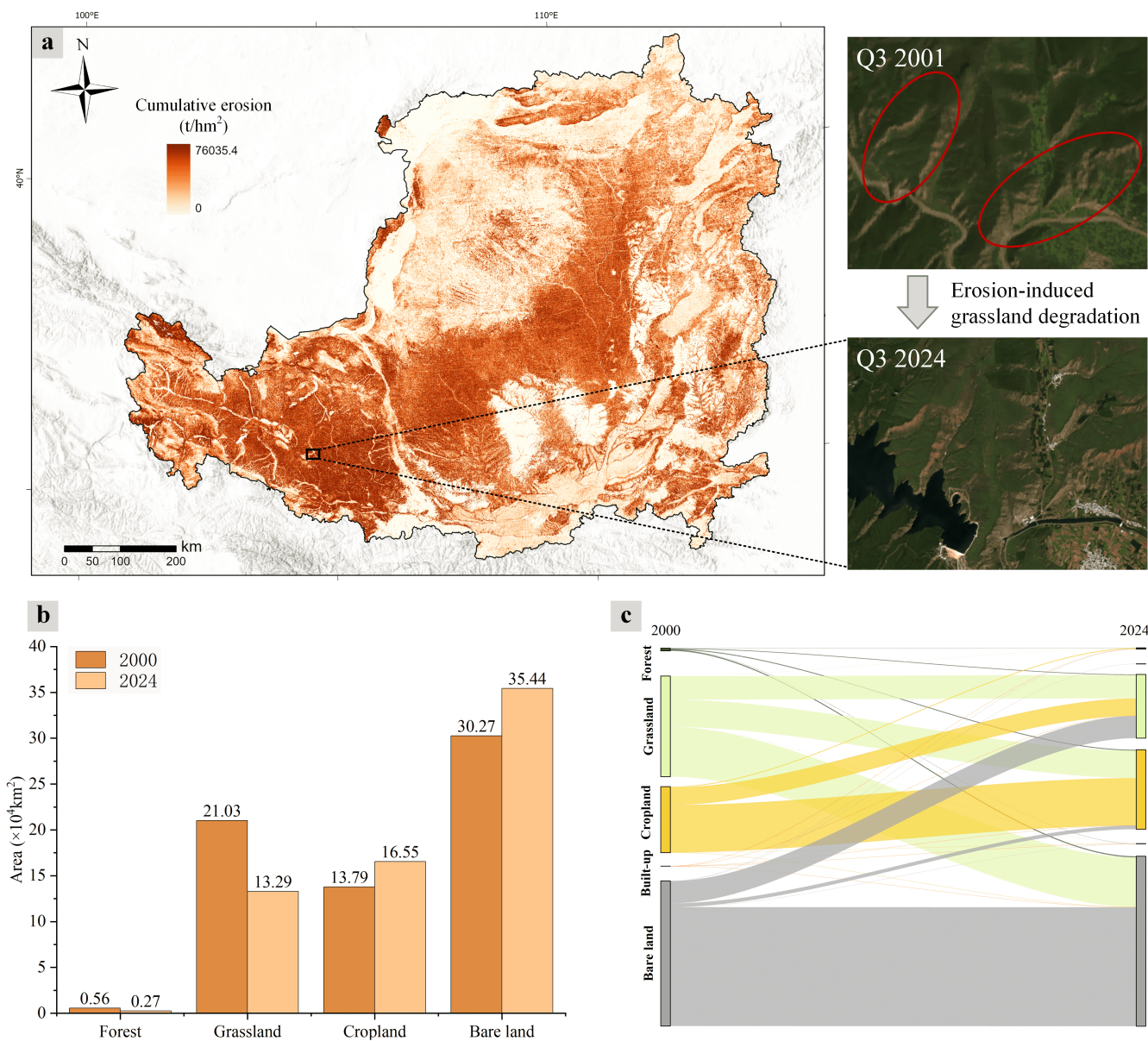


Figure 15. Impacts of soil erosion on land-cover changes: (a) cumulative erosion from 2000 to 2024, (b) land-cover transitions in the top 10% erosion areas, and (c) Sankey diagram of detailed transitions. The satellite images in the figure are from © Google Earth.

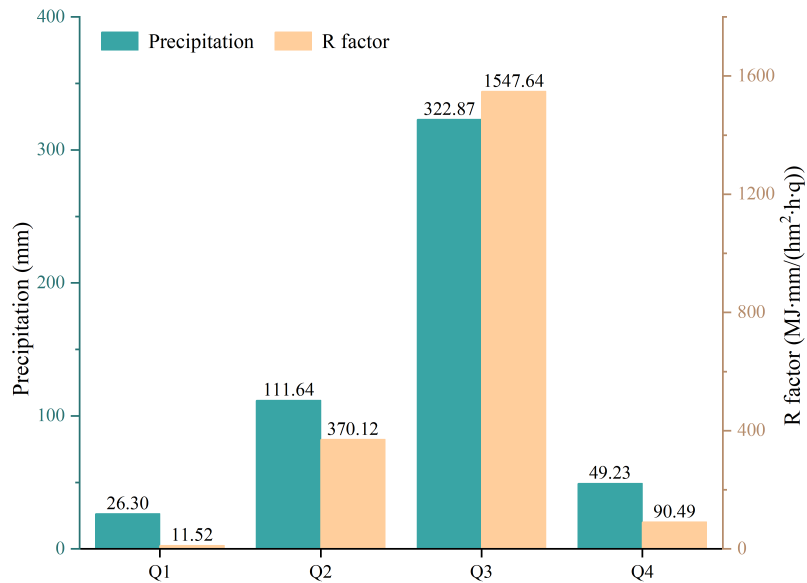


Figure 16. Quarterly rainfall in 2024 and the corresponding quarterly averaged R factor for the Loess Plateau.

concentrated in the second and third quarters, with the third quarter alone receiving 323 mm, more than 63% of the annual total. This concentration of rainfall led to a substantial increase in rainfall-runoff erosivity. This concentration of rainfall greatly increased erosive energy, and the quarterly *R* factor reached 1548 MJ·mm/(hm²·h·q), which is about 4.2 times higher than in the second quarter. By contrast, the first and fourth quarters exhibited only minimal erosivity, with values remaining very low throughout both periods. Although vegetation cover is relatively high during summer and offers partial protection, it cannot fully offset the sharp rise in erosive power associated with intense seasonal rainfall. Consequently, soil erosion displays pronounced quarterly variability, with the second and particularly the third quarter dominating annual erosion, as illustrated in Figure 12(b). These findings highlight the essential role of seasonal rainfall patterns in governing erosion dynamics and emphasize the importance of conducting erosion assessments at a quarterly temporal resolution.

Finally, terrain related controls on soil erosion intensity were assessed by examining how erosion varies with slope aspect, elevation, and slope gradient. In particular, Figure 17(a) presents the distribution of erosion in 2024 across different slope aspects, expressed as the proportion of eroded area within each aspect relative to the total area of the Loess Plateau. Erosion displays a pronounced north–south contrast, with southern sunny slopes experiencing substantially higher erosion intensity than the shaded slopes to the northwest. This pattern reflects the microclimatic advantages of shady slopes, where reduced solar radiation and lower evaporative demand support denser forest and grassland cover, thereby enhancing surface protection and suppressing runoff driven erosion. Furthermore, elevation gradients modulate erosion intensity. After normalizing erosion area by land area within each elevation band, Figure 17(b) shows that approximately 68% of total erosion is concentrated between 800 and 2400 m, where grassland and cropland dominate and human disturbance is relatively high. In contrast, although high-elevation regions above 4000 m contribute only a small fraction of total eroded area, they exhibit a disproportionately

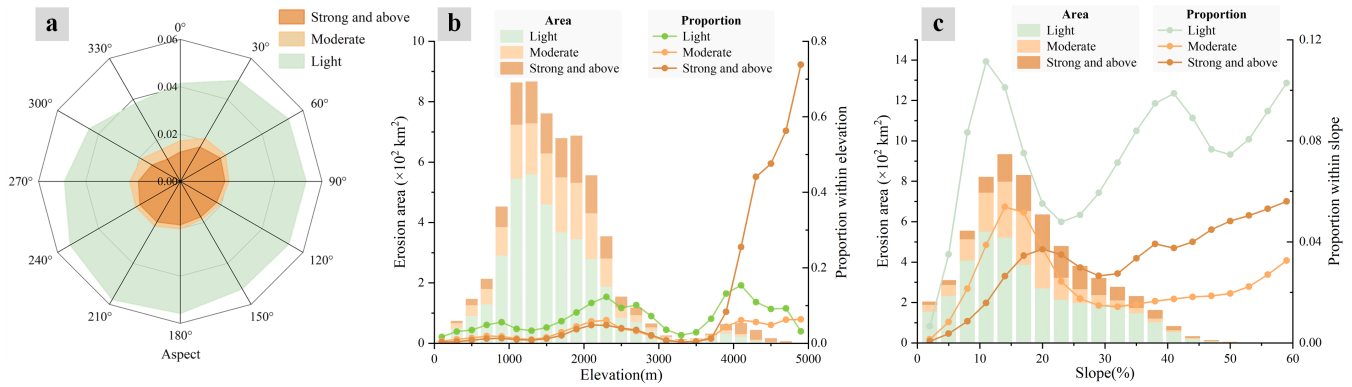


Figure 17. Erosion distribution across landforms, including (a) erosion patterns across slope aspects, (b) erosion patterns along elevation gradients, and (c) erosion patterns across slope classes.

725 large share of strong and above erosion due to steep slopes, sparse alpine vegetation, and highly efficient runoff pathways. Additionally, slope gradient imposes a strong control on erosion severity. As illustrated in Figure 17(c), gentle slopes are dominated by light erosion, whereas the proportion of strong erosion increases sharply with slope steepness. Notably, slopes steeper than 45% are primarily covered by grassland rather than forest, and the limited canopy density, shallow rooting depth, and weak soil reinforcement capacity of grass vegetation are insufficient to withstand intense rainfall episodes, leading to

730 accelerated soil loss. Collectively, these findings demonstrate that these terrain based patterns play a pivotal role in shaping the spatial heterogeneity of erosion intensity on the Loess Plateau, and underscore the need for topographically targeted soil and water conservation strategies in areas where steep slopes and sparse vegetation coincide.

5.2 Potential conservation of the Loess Plateau

In this section, we discussed the potential conservation benefits achievable through a rational redistribution of land-cover types across the Loess Plateau. Under an optimized vegetation configuration, the potential minimum erosion is estimated to be 6.42

735 $t/(hm^2 \cdot a)$, representing a 31% reduction compared to the erosion in 2024.

The potential capacity of a landscape to conserve soil and water defines the theoretical upper limit of erosion reduction that can be achieved through ecological management (Singh et al., 2025). Building on this concept, we delineated environmentally suitable zones for different restoration measures by integrating precipitation regimes, topographic conditions, and patterns of

740 human land use. These suitability zones represent areas where ecological interventions can operate, such as afforestation, grassland restoration, or cropland retention. Thus, given the relative erosion-mitigation capacities of land-cover types quantified in Section 5.1, we adopt the restoration hierarchy of *Forest–Grassland–Cropland* as the guiding principle for land-cover optimization on the Loess Plateau. By reallocating land-cover types according to this hierarchy and their environmental suitability, the region can theoretically attain its optimal soil conservation state, thereby defining the lowest achievable erosion level under

745 realistic ecological constraints.

Forest-suitable area: Forest development requires adequate rainfall and moderate temperature conditions. Studies have shown that forestry-favorable zones on the Loess Plateau typically located in areas with mean annual precipitation exceeding 450 mm (Li et al., 2008). Therefore, existing forest regions, together with grassland and bare land areas receiving more than 450 mm of precipitation and situated below 4000 m elevation (Peili et al., 2020), are identified as suitable for forest expansion.

750 **Cropland-suitable area:** Although cropland provides limited soil and water conservation benefits, it remains indispensable for sustaining the livelihoods of more than 100 million residents of the Loess Plateau. To ensure agricultural security while avoiding ecologically vulnerable terrain, existing cropland on slopes < 15% is classified as highly suitable, while those between 15–25% are considered conditionally suitable when the silt proportion is below 45% (Rossiter, 1996). In addition, bare land areas with precipitation > 350 mm, elevation < 3000 m, and slopes < 15% are also considered suitable for cropland use (Zeng
755 et al., 2018). Areas failing to meet these suitability thresholds are reassigned to forest or grassland categories to improve ecological stability.

Grassland-suitable area: Grassland exhibits broad ecological tolerance and can thrive under relatively low temperature and moisture conditions. Previous research indicates that grassland generally requires annual precipitation above 250 mm to maintain stable growth (Kang et al., 2007). Consequently, existing grassland, as well as cropland and bare land that meet this
760 precipitation threshold but are unsuitable for forest or cropland development, are classified as grassland suitable areas.

On the basis of the land cover patterns in Q4 2024, an optimized land cover map was generated using the defined environmental suitability conditions. Compared with the current land cover patterns in Figure 18(a), the optimized map in Figure 18(b) indicates substantial landscape reconfiguration. A detailed statistical summary is provided in Figure 18(c). The transitions can also be grouped by the two national programs: Bare to forest and bare to grassland transitions are consistent with the primary
765 objectives of the TSFP, whereas cropland to forest and cropland to grassland transitions align with the GGP. In addition, bare to cropland serves as a compensatory adjustment to offset cropland losses in the optimized scenario. Among these transitions, bare to grassland under the TSFP accounts for the largest converted area ($2.4 \times 10^4 \text{ km}^2$), concentrated in the central Plateau, including the SL and TG regions. Meanwhile, under the GGP, cropland to forest represents a particularly challenging transition: it not only involves $7 \times 10^3 \text{ km}^2$, but also typically requires sustained management over years to decades to establish stable
770 forest cover, underscoring the need for long-term planning and continued implementation.

Furthermore, applying the RUSLE model to the optimized land cover scenario demonstrates the ecological benefits of these transitions. As shown in Figures 19, compared with the current erosion pattern in 2024, the theoretical minimum erosion map exhibits a pronounced reduction in strong and severe erosion, especially in the central and southwestern Plateau where many grassland and cropland areas are replaced by forest. Moreover, in the northeastern Plateau, extensive bare land restoration to
775 grassland alleviates many zones previously classified as weak or moderate erosion. Besides, the erosion level distributions from 2000, 2024, and the optimized scenario reveal a clear long term improvement in Figure 19(c), with the minimum erosion state pushing most light and moderate erosion areas toward slight erosion. In general, the mean soil erosion of the Loess Plateau in 2024 is $9.35 \text{ t}/(\text{hm}^2 \cdot \text{a})$, whereas the optimized vegetation configuration lowers this value to $6.42 \text{ t}/(\text{hm}^2 \cdot \text{a})$, representing a 31% potential reduction. Achieving this minimum state requires substantial mitigation in high-intensity erosion zones, including a

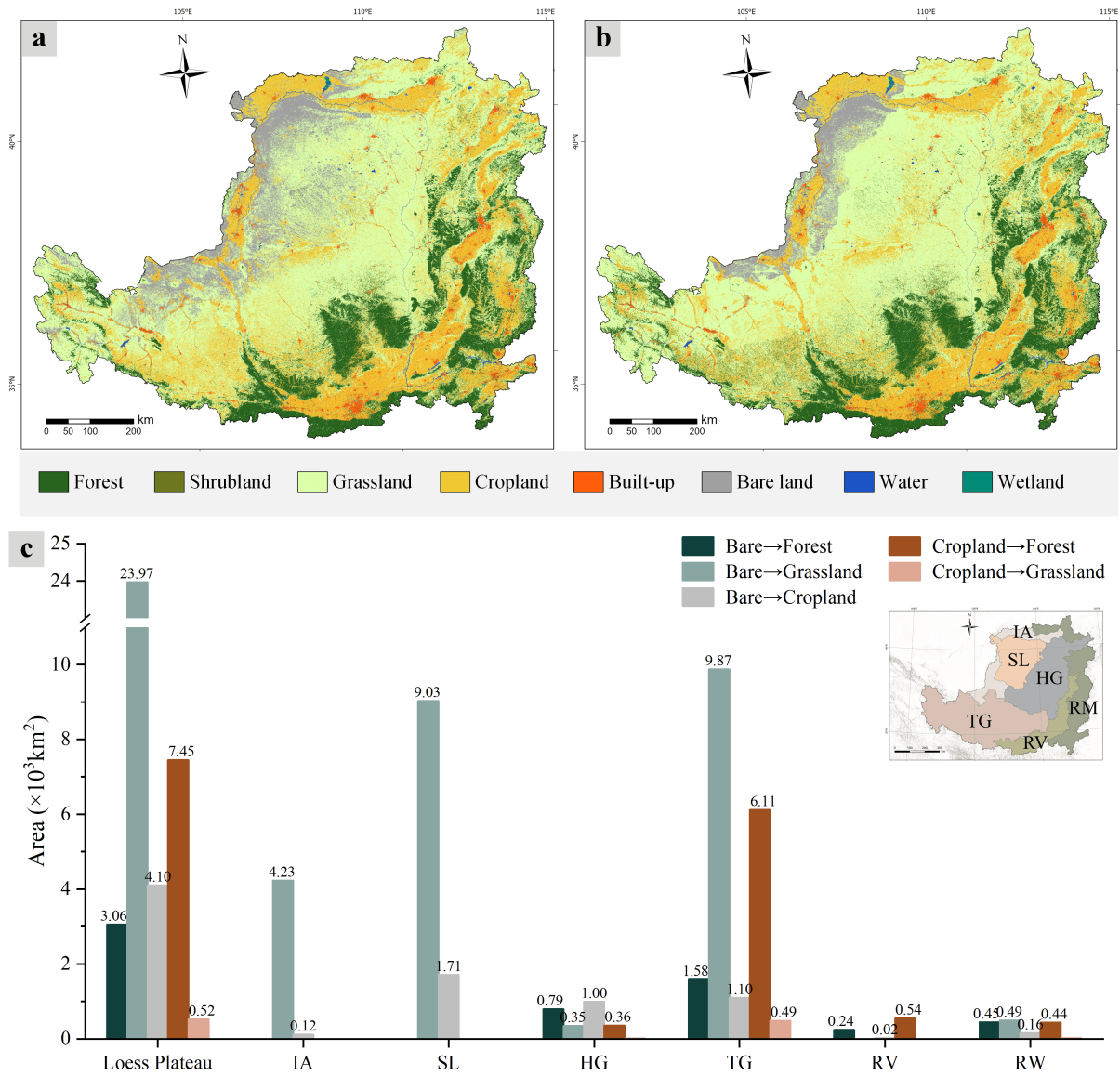


Figure 18. Optimized land-cover distributions based on the current land cover: (a) current land cover in Q4 2024, (b) optimized land-cover map, and (c) statistics of land-cover transitions.

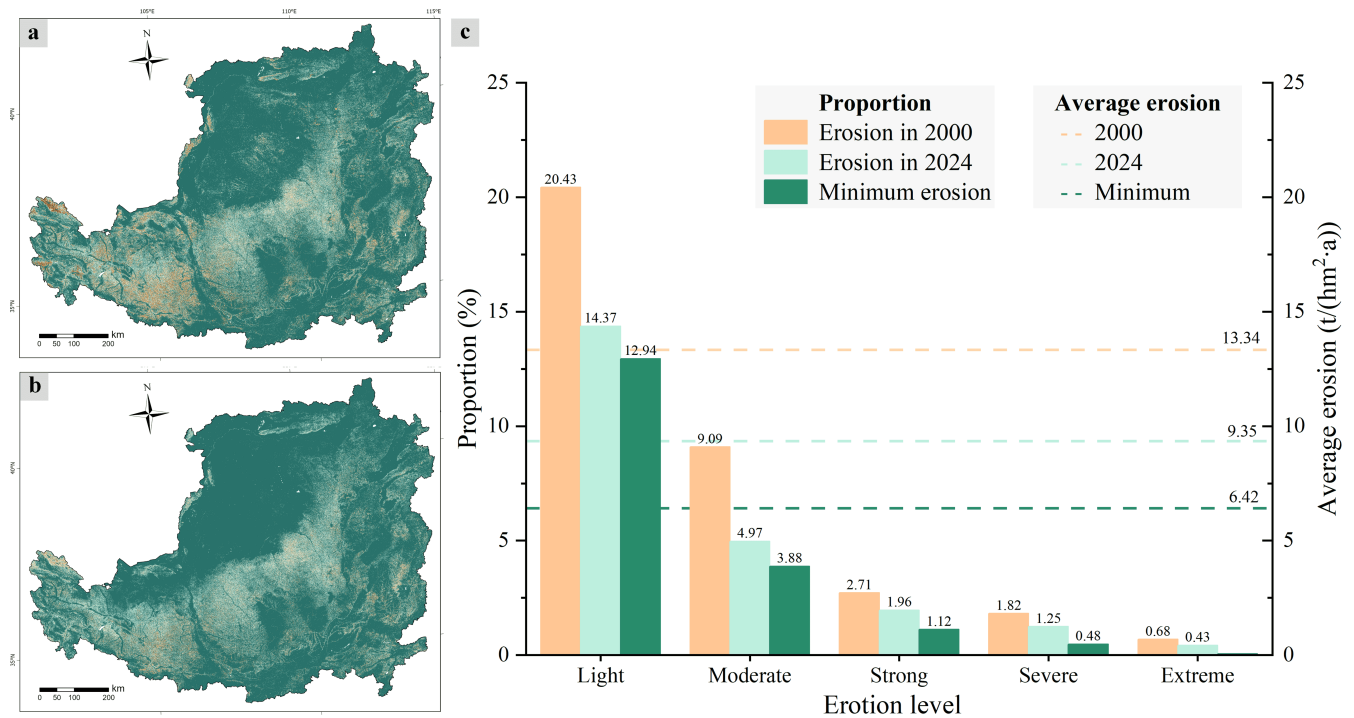


Figure 19. Potential minimum soil erosion in the Loess Plateau. (a) Current soil erosion in 2024, (b) estimated minimum soil erosion under optimized land-cover conditions, and (c) statistical distribution of erosion intensity levels.

780 43% reduction in strong erosion and a 61% reduction in severe erosion, while extreme erosion must be completely eliminated. These findings illustrate the magnitude of the improvement achievable through ecologically guided land cover management.

Overall, the results demonstrate that soil and water conservation initiatives in the Loess Plateau have achieved substantial progress over the past 25 years, leading to a marked reduction in erosion intensity and a significant expansion of vegetation cover. However, despite these notable improvements, further ecological restoration remains challenging. High-intensity erosion
 785 zones, particularly those classified as strong, severe, or extreme, continue to impede sustainable land management. Looking ahead, the SL and TG regions, which contain the largest concentrations of such erosion hotspots, should be prioritized for future remediation. Targeted ecological interventions in these high-risk areas will be essential for consolidating previous achievements and advancing the region toward long-term ecological stability.

6 Conclusions

790 Long-time-series monitoring of land-cover and soil erosion dynamics in the Loess Plateau remains a major challenge due to the lack of high-frequency temporal observation data. By filling three knowledge gaps—(1) *What* are the long-term land-cover change patterns? (2) *Where* and *when* did the erosion occur? (3) *How* did the erosion dynamically interact with environmental

factors?—this study conducted the first quarterly land-cover and soil erosion mapping for the Loess Plateau (LP-QLC10), covering the period from 2000 to 2024 in 100 time steps. Specifically, a semi-supervised learning framework based on consistency constraints (CCTS) was employed to learn semantically invariant representations from publicly available single-temporal labels, and then time-series land-cover maps were generated using Landsat and Sentinel multi-spectral imagery. Moreover, accuracy assessment was conducted in several independent sources, demonstrating accurate and spatiotemporal-consistent results. In general, the proposed LP-QLC10 dataset effectively captured the spatial–temporal dynamics of land-cover transitions across the Loess Plateau.

Building upon LP-QLC10, we further constructed a quarterly hydraulic soil erosion analysis using the RUSLE model. Owing to its high-frequency temporal attribute, the modeled erosion estimates exhibited strong agreement with the *China Soil and Water Conservation Bulletin* (2018–2024), yielding a mean absolute error of 4.50%. The results reveal a pronounced decline in soil erosion intensity over the past 25 years: the mean erosion intensity decreased by 30%, from 13.34 t/(hm²·a) to 9.35 t/(hm²·a), and the areas experiencing light, moderate, and strong or above erosion declined by 30%, 45%, and 30%, respectively. Meanwhile, erosion hotspots remained concentrated in the central and southwestern Loess Plateau, and the observed spatial and temporal variations were strongly linked to land-cover distribution, terrain characteristics, and precipitation patterns. Furthermore, scenario-based modeling indicated a potential minimum erosion intensity of 6.42 t/(hm²·a) under optimized and rational management practices, particularly through grassland expansion and cropland-to-forest conversion.

Overall, the LP-QLC10 dataset provides a fine-grained, large-scale, and long-term representation of land-cover evolution across the Loess Plateau, offering valuable support for regional environmental modeling and dynamic analysis. The associated soil erosion mapping and analysis provide a comprehensive characterization of erosion mitigation and its driving factors, serving as a crucial reference for sustainable land management, ecological restoration, and policy decision-making in fragile ecosystems.

Data availability. The LP-QLC10 land cover product and the corresponding soil erosion maps generated in this study are available at <https://doi.org/10.57760/sciencedb.33656> (Cheng et al., 2026).

Author contributions. LZ and HZ conceived the research. MC designed the methodology. MC and ZL conducted the experiments. ZL and LL analyzed the results. MC and WH prepared the original draft. LZ and HZ reviewed and edited the manuscript. HZ was responsible for project administration and funding acquisition.

Competing interests. The contact author has declared that none of the authors has any competing interests.

A1 Evaluation of the long-term stability of CCTS framework.

To evaluate the improvement of the long-term stability of the proposed CCTS framework, we conducted both quantitative and qualitative evaluations to assess the improvement of the CCTS in terms of accuracy and temporal stability for long-term land-cover mapping on the Loess Plateau. Since CCTS uses HRFormer (Yuan et al., 2021) as its backbone segmentation model, we trained HRFormer on 2021 satellite imagery using the ESA WorldCover v200 product (Zanaga et al., 2022) as labels, and then used the trained model to generate baseline land-cover maps from 2000 to 2024. The quantitative results, evaluated using the multi-temporal reference set constructed in this study, are presented in Table A1. The LP-QLC10 dataset generated by the CCTS framework consistently outperformed the baseline model across all evaluated years. Notably, the baseline achieved performance comparable to LP-QLC10 in 2021 because the training and evaluation data came from the same year and therefore had highly consistent feature distributions. However, this advantage did not generalize to other years. When applied to earlier periods, particularly those dominated by Landsat imagery, HRFormer was more sensitive to temporal differences in imaging conditions and sensor characteristics, resulting in lower performance in the 2001, 2006, and 2011 validations. In contrast, CCTS improved both accuracy and temporal stability by learning more consistent cross-year representations, achieving approximately 4% higher OA than the baseline in these years.

The qualitative comparison further reinforced this performance gap. As illustrated in Figure A1, variations in imaging conditions and sensor characteristics substantially compromised the stability of multi-temporal predictions generated by the baseline land-cover model. Figure A1(a) presents an area that experienced only limited land-cover change. Although the actual semantic changes were minor, the HRFormer results showed pronounced interannual fluctuations, particularly in vegetation-related categories such as grassland and cropland. In contrast, by incorporating consistency constraints during training, the CCTS framework produced temporally stable and spatially coherent predictions throughout the entire multi-year inference period. Furthermore, Figure A1(b) shows an area characterized by the gradual expansion of built-up area and forest. For categories such as forest, which generally require many years to establish, and built-up land, which typically changes incrementally, the baseline model produced markedly inconsistent predictions across years in some areas due to multi-temporal spectral variability, clearly indicating misclassification. This instability not only reduced spatial prediction accuracy but also introduced cumulative errors into area statistics, thereby limiting the ability to reliably characterize long-term land-cover change trajectories. Such limitations are especially problematic for analyses spanning multiple decades. By contrast, the CCTS framework enabled more temporally consistent inference and more faithfully captured the expansion of urban land and the increase in forest area from 2011 to 2015.

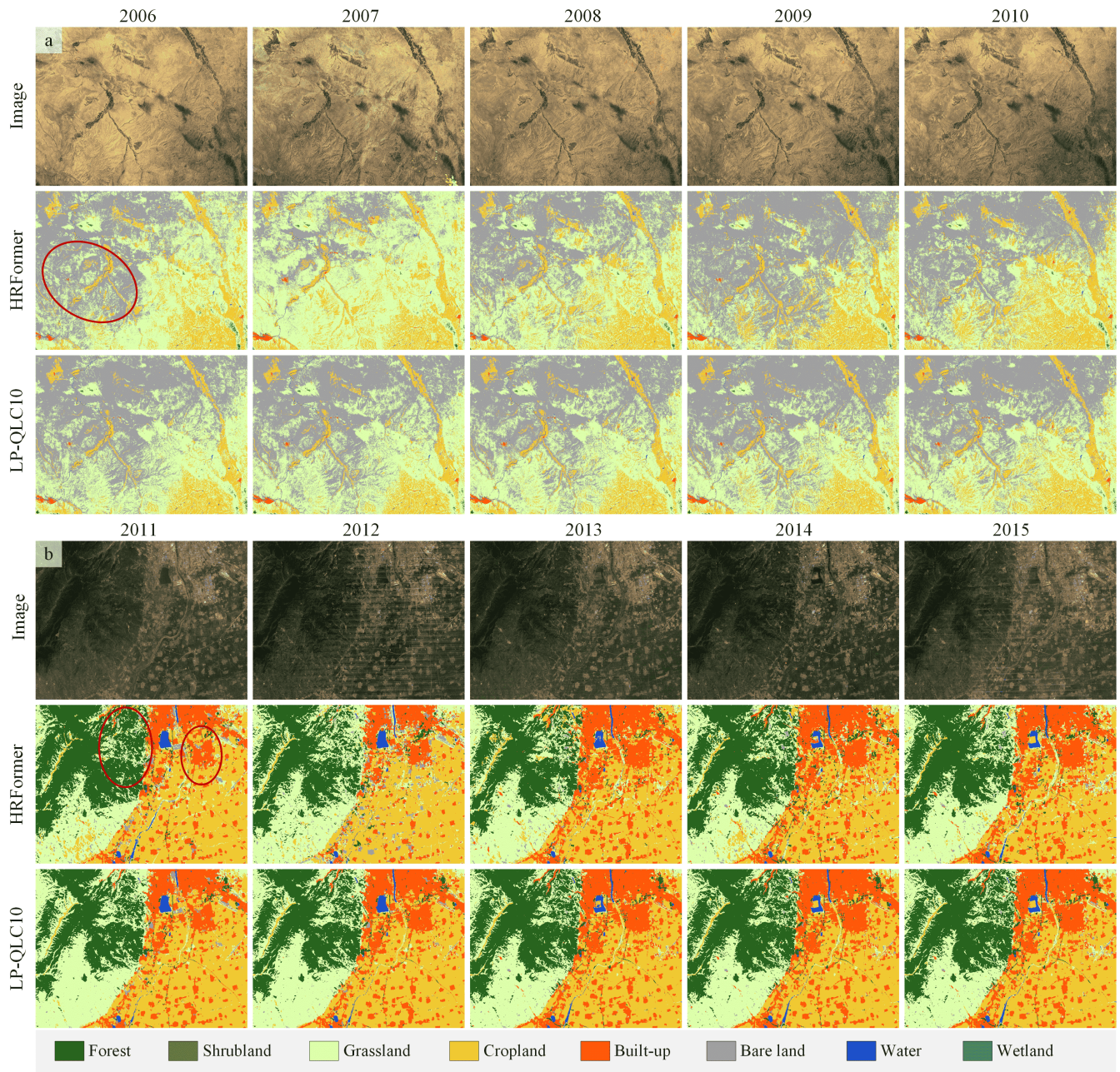


Figure A1. Qualitative comparison with/without CCTS. HRFormer serves as the baseline model without using CCTS, while LP-QLC10 denotes the dataset generated using CCTS. To facilitate the identification of actual land-cover categories in remote sensing imagery, all visualizations are based on composite images from the third quarter. The satellite images in the figure are from © Google Earth.

Table A1. Quantitative comparison with baseline model.

Method	Metrics	2001	2006	2011	2016	2021	Average
HRFormer (baseline)	OA	0.733	0.748	0.767	0.838	0.842	0.7856
LP-QLC10 (ours)		0.785	0.787	0.800	0.855	0.845	0.8144
HRFormer	Kappa	0.602	0.617	0.669	0.760	0.768	0.6832
LP-QLC10		0.686	0.673	0.715	0.783	0.772	0.7258
HRFormer	FWIoU	0.492	0.578	0.542	0.638	0.683	0.5866
LP-QLC10		0.663	0.643	0.582	0.647	0.692	0.6454

A2 Supplementary materials

Table A2. Land-cover types in LP-QLC10: value, definition, and correspondence with existing products. YRCC_LPLC and CLCDs share the same classification system.

Value	Category	Definition	Category relations with		
			CLCDs	GLC_FCS30D	SinoLC-1
1	Forest	Geographic areas dominated by trees ($\geq 10\%$ cover). Other land-cover types possibly present beneath the canopy.	Forest	Forest	Tree cover
2	Shrubland	Areas dominated by natural shrubs ($\geq 10\%$ cover). Shrubs are defined as woody perennial plants under 5 m tall with no distinct main stem.	Shrubland	Shrubland	Shrubland
3	Grassland	Geographic areas dominated by natural herbaceous vegetation ($\geq 10\%$ cover), possibly including uncultivated cropland.	Grassland	Grassland	Grassland
4	Cropland	Land covered with annual cropland that is sowed/planted and harvestable at least once within the 12 months.	Cropland	Cropland	Cropland
5	Built-up	Land covered by buildings, roads and other man-made structures. Urban green (parks, sport facilities) is not included.	Impervious	Impervious	Building & traffic route
6	Bare land	Lands with exposed soil, sand, or rocks and never has more than 10 % vegetated cover during any time of the year.	Barren	Bare areas	Barren and sparse vegetation
7	Water	Geographic area covered for most of the year (more than 9 months) by water bodies: lakes, reservoirs, and rivers.	Water	Water body	Water
8	Wetland	Land dominated by natural herbaceous vegetation ($\geq 10\%$ cover) that is permanently or regularly flooded by fresh, brackish or salt water.	Wetland	Wetland	Wetland

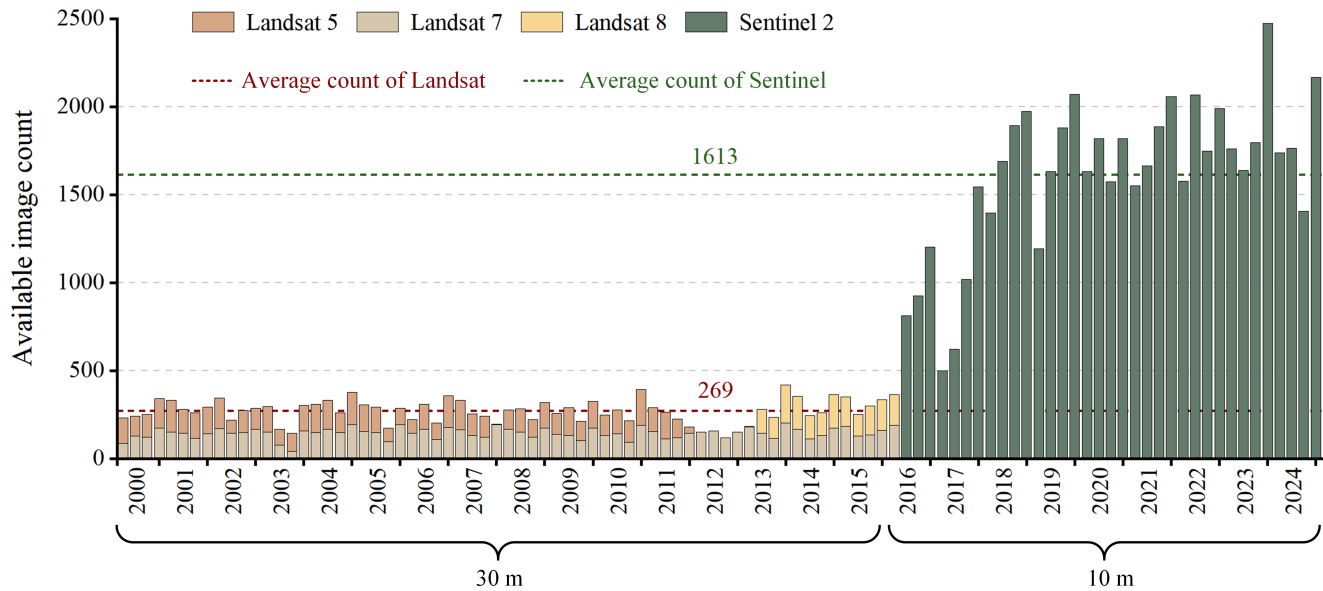


Figure A2. The obtained image count from multiple platforms within each temporal period. The statistic denotes the number of quality-screened satellite image tiles in Google Earth Engine that intersect the Loess Plateau. A Landsat scene covers approximately $3.3 \times 10^4 \text{ km}^2$, whereas a Sentinel tile covers approximately $1.0 \times 10^4 \text{ km}^2$.

Table A3. Confusion matrix of the 2021 mapping results, evaluated using the time-series validation set, with per-class Producer Accuracy (PA) and User Accuracy (UA).

Class	Forest	Shrubland	Grassland	Cropland	Built-up	Bare land	Water	Wetland	PA
Forest	947	0	82	10	1	0	0	0	0.911
Shrubland	0	18	53	1	1	2	0	0	0.240
Grassland	168	3	3310	150	7	136	2	1	0.876
Cropland	14	0	259	1656	1	15	2	0	0.850
Built-up	6	0	65	29	191	20	0	0	0.614
Bare land	3	1	151	34	18	591	0	0	0.741
Water	1	0	5	1	0	0	44	0	0.863
Wetland	0	0	0	0	0	0	0	3	1.000
UA	0.831	0.818	0.843	0.880	0.872	0.774	0.917	0.750	OA 0.845

850 References

- Amundson, R., Berhe, A. A., Hopmans, J. W., Olson, C., Sztein, A. E., and Sparks, D. L.: Soil and human security in the 21st century, *Science*, 348, 1261 071, 2015.
- Bohn, T. J. and Vivoni, E. R.: MOD-LSP, MODIS-based parameters for hydrologic modeling of North American land cover change, *Scientific Data*, 6, 144, 2019.
- 855 Borrelli, P., Robinson, D. A., Fleischer, L. R., Lugato, E., Ballabio, C., Alewell, C., Meusburger, K., Modugno, S., Schütt, B., Ferro, V., et al.: An assessment of the global impact of 21st century land use change on soil erosion, *Nature communications*, 8, 2013, 2017.
- Breiman, L.: Random forests, *Machine learning*, 45, 5–32, 2001.
- Carlson, T. N. and Ripley, D. A.: On the relation between NDVI, fractional vegetation cover, and leaf area index, *Remote Sensing of Environment*, 62, 241–252, [https://doi.org/https://doi.org/10.1016/S0034-4257\(97\)00104-1](https://doi.org/https://doi.org/10.1016/S0034-4257(97)00104-1), 1997.
- 860 Chakraborty, T., Venter, Z. S., Demuzere, M., Zhan, W., Gao, J., Zhao, L., and Qian, Y.: Large disagreements in estimates of urban land across scales and their implications, *Nature communications*, 15, 9165, 2024.
- Chander, G., Markham, B. L., and Helder, D. L.: Summary of current radiometric calibration coefficients for Landsat MSS, TM, ETM+, and EO-1 ALI sensors, *Remote sensing of environment*, 113, 893–903, 2009.
- Chen, B., Wu, S., Song, Y., Webster, C., Xu, B., and Gong, P.: Contrasting inequality in human exposure to greenspace between cities of
865 Global North and Global South, *Nature Communications*, 13, 4636, 2022.
- Cheng, M., He, W., Li, Z., Yang, G., and Zhang, H.: Harmony in diversity: Content cleansing change detection framework for very-high-resolution remote-sensing images, *ISPRS Journal of Photogrammetry and Remote Sensing*, 218, 1–19, 2024.
- Cheng, M., Li, Z., Li, L., He, W., Zhang, L., and Zhang, H.: LP-QLC10: 25-year quarterly land change mapping in China’s Loess Plateau reveals long-term and substantial soil erosion mitigation, <https://doi.org/10.57760/sciencedb.33656>, 2026.
- 870 Di, B., Zeng, H., Zhang, M., Ustin, S. L., Tang, Y., Wang, Z., Chen, N., and Zhang, B.: Quantifying the spatial distribution of soil mass wasting processes after the 2008 earthquake in Wenchuan, China: a case study of the Longmenshan area, *Remote Sensing of Environment*, 114, 761–771, 2010.
- Drusch, M., Del Bello, U., Carlier, S., Colin, O., Fernandez, V., Gascon, F., Hoersch, B., Isola, C., Laberinti, P., Martimort, P., et al.: Sentinel-2: ESA’s optical high-resolution mission for GMES operational services, *Remote sensing of Environment*, 120, 25–36, 2012.
- 875 Feng, X., Fu, B., Lu, N., Zeng, Y., and Wu, B.: How ecological restoration alters ecosystem services: an analysis of carbon sequestration in China’s Loess Plateau, *Scientific reports*, 3, 2846, 2013.
- Friedl, M. A., Sulla-Menashe, D., Tan, B., Schneider, A., Ramankutty, N., Sibley, A., and Huang, X.: MODIS Collection 5 global land cover: Algorithm refinements and characterization of new datasets, *Remote sensing of Environment*, 114, 168–182, 2010.
- Fritz, S., See, L., Perger, C., McCallum, I., Schill, C., Schepaschenko, D., Duerauer, M., Karner, M., Dresel, C., Laso-Bayas, J.-C., et al.: A
880 global dataset of crowdsourced land cover and land use reference data, *Scientific data*, 4, 1–8, 2017.
- Funk, C., Peterson, P., Landsfeld, M., Pedreros, D., Verdin, J., Shukla, S., Husak, G., Rowland, J., Harrison, L., Hoell, A., et al.: The climate hazards infrared precipitation with stations—a new environmental record for monitoring extremes, *Scientific data*, 2, 1–21, 2015.
- Gao, H., Li, Z., Jia, L., Li, P., Xu, G., Ren, Z., Pang, G., and Zhao, B.: Capacity of soil loss control in the Loess Plateau based on soil erosion control degree, *Journal of Geographical Sciences*, 26, 457–472, 2016.
- 885 Ge, J., Pitman, A. J., Guo, W., Zan, B., and Fu, C.: Impact of revegetation of the Loess Plateau of China on the regional growing season water balance, *Hydrology and Earth System Sciences*, 24, 515–533, 2020.

- Gong, P., Liu, H., Zhang, M., Li, C., Wang, J., Huang, H., Clinton, N., Ji, L., Li, W., Bai, Y., et al.: Stable classification with limited sample: Transferring a 30-m resolution sample set collected in 2015 to mapping 10-m resolution global land cover in 2017, *Science Bulletin*, 64, 370–373, 2019.
- 890 Gorelick, N., Hancher, M., Dixon, M., Ilyushchenko, S., Thau, D., and Moore, R.: Google Earth Engine: Planetary-scale geospatial analysis for everyone, *Remote sensing of Environment*, 202, 18–27, 2017.
- GPRC: Outline of Comprehensive Management Plan for the Loess Plateau Region (2010–2030), government of the People’s Republic of China, Beijing, 2010.
- Hamed, K. H. and Ramachandra Rao, A.: A modified Mann-Kendall trend test for autocorrelated data, *Journal of Hydrology*, 204, 182–196, 895 [https://doi.org/https://doi.org/10.1016/S0022-1694\(97\)00125-X](https://doi.org/https://doi.org/10.1016/S0022-1694(97)00125-X), 1998.
- He, K., Fan, H., Wu, Y., Xie, S., and Girshick, R.: Momentum contrast for unsupervised visual representation learning, in: *Proceedings of the IEEE/CVF conference on computer vision and pattern recognition*, pp. 9729–9738, 2020.
- Hengl, T.: Soil texture classes (USDA system) for 6 soil depths (0, 10, 30, 60, 100 and 200 cm) at 250 m (Version v0.2), Zenodo data set, <https://doi.org/10.5281/zenodo.2525817>, accessed: 2025-08-31, 2018.
- 900 Hengl, T. and Wheeler, I.: Soil organic carbon content in x 5 g/kg at 6 standard depths (0, 10, 30, 60, 100 and 200 cm) at 250 m resolution, Zenodo [data set], 2018.
- Hermosilla, T., Wulder, M. A., White, J. C., and Coops, N. C.: Land cover classification in an era of big and open data: Optimizing localized implementation and training data selection to improve mapping outcomes, *Remote Sensing of Environment*, 268, 112 780, 2022.
- Horn, B. K.: Hill shading and the reflectance map, *Proceedings of the IEEE*, 69, 14–47, 2005.
- 905 Hua, W., Liang, D., Li, J., Liu, X., Zou, Z., Ye, X., and Bai, X.: Sood: Towards semi-supervised oriented object detection, in: *Proceedings of the IEEE/CVF conference on computer vision and pattern recognition*, pp. 15 558–15 567, 2023.
- IPCC: Climate Change and Land: An IPCC Special Report on Climate Change, Desertification, Land Degradation, Sustainable Land Management, Food Security, and Greenhouse Gas Fluxes in Terrestrial Ecosystems, Intergovernmental Panel on Climate Change, Geneva, Switzerland, <https://www.ipcc.ch/srccl/>, 2019.
- 910 Jiang, C., Zhang, H., Wang, X., Feng, Y., and Labzovskii, L.: Challenging the land degradation in China’s Loess Plateau: Benefits, limitations, sustainability, and adaptive strategies of soil and water conservation, *Ecological Engineering*, 127, 135–150, 2019.
- Jianghua, Z., Xuezhi, W., and Yuanchun, Z.: A 30-Meter Resolution LS-Factor Dataset for Mainland China, <https://doi.org/10.57760/sciencedb.13123>, 2023.
- Kang, L., Han, X., Zhang, Z., and Sun, O. J.: Grassland ecosystems in China: review of current knowledge and research advancement, 915 *Philosophical transactions of the royal society B: Biological Sciences*, 362, 997–1008, 2007.
- Karra, K., Kontgis, C., Statman-Weil, Z., Mazzariello, J. C., Mathis, M., and Brumby, S. P.: Global land use/land cover with Sentinel 2 and deep learning, in: *2021 IEEE international geoscience and remote sensing symposium IGARSS*, pp. 4704–4707, IEEE, 2021.
- Kodl, G., Streeter, R., Cutler, N., and Bolch, T.: Arctic tundra shrubification can obscure increasing levels of soil erosion in NDVI assessments of land cover derived from satellite imagery, *Remote Sensing of Environment*, 301, 113 935, 2024.
- 920 Kraamwinkel, C. T., Beaulieu, A., Dias, T., and Howison, R. A.: Planetary limits to soil degradation, *Communications Earth & Environment*, 2, 249, 2021.
- Li, R., Yang, W., and Li, B.: *Research Progress and Prospect of the Chinese Loess Plateau*, 2008.
- Li, Z., Zhang, H., Lu, F., Xue, R., Yang, G., and Zhang, L.: Breaking the resolution barrier: A low-to-high network for large-scale high-resolution land-cover mapping using low-resolution labels, *ISPRS Journal of Photogrammetry and Remote Sensing*, 192, 244–267, 2022.

- 925 Li, Z., He, W., Cheng, M., Hu, J., Yang, G., and Zhang, H.: SinoLC-1: the first 1 m resolution national-scale land-cover map of China created with a deep learning framework and open-access data, *Earth System Science Data*, 15, 4749–4780, 2023.
- Li, Z., He, W., Li, J., Lu, F., and Zhang, H.: Learning without exact guidance: Updating large-scale high-resolution land cover maps from low-resolution historical labels, in: *Proceedings of the IEEE/CVF Conference on Computer Vision and Pattern Recognition*, pp. 27 717–27 727, 2024.
- 930 Lin, M., Yang, G., and Zhang, H.: Transition is a process: Pair-to-video change detection networks for very high resolution remote sensing images, *IEEE Transactions on Image Processing*, 32, 57–71, 2022.
- Liu, J., Li, S., Ouyang, Z., Tam, C., and Chen, X.: Ecological and socioeconomic effects of China’s policies for ecosystem services, *Proceedings of the National academy of Sciences*, 105, 9477–9482, 2008.
- Liu, Q., Wang, Y., Zhang, J., and Chen, Y.: Filling gullies to create farmland on the Loess Plateau, 2013.
- 935 Liu, Y., Liu, R., Chen, J., Wei, X., Qi, L., and Zhao, L.: A global annual fractional tree cover dataset during 2000–2021 generated from realigned MODIS seasonal data, *Scientific Data*, 11, 832, 2024.
- Liu, Z., Shao, M., and Wang, Y.: Effect of environmental factors on regional soil organic carbon stocks across the Loess Plateau region, China, *Agriculture, Ecosystems & Environment*, 142, 184–194, 2011.
- MEE China: Technical Specification for Investigation and Assessment of National Ecological Status – Ecosystem Services Assessment, 940 Tech. Rep. HJ 1173–2021, Ministry of Ecology and Environment of the People’s Republic of China, Beijing, in Chinese, 2021a.
- MEE China: Technical specification for investigation and assessment of national ecological status – Ecosystem problems assessment, Tech. Rep. HJ 1174–2021, Ministry of Ecology and Environment of the People’s Republic of China, Beijing, in Chinese, 2021b.
- Miyato, T., Maeda, S.-i., Koyama, M., and Ishii, S.: Virtual adversarial training: a regularization method for supervised and semi-supervised learning, *IEEE transactions on pattern analysis and machine intelligence*, 41, 1979–1993, 2018.
- 945 Moltchanova, E., Lesiv, M., See, L., Mugford, J., and Fritz, S.: Optimizing crowdsourced land use and land cover data collection: A two-stage approach, *Land*, 11, 958, 2022.
- Nut, N., Mihara, M., Jeong, J., Ngo, B., Sigua, G., Prasad, P. V., and Reyes, M. R.: Land use and land cover changes and its impact on soil erosion in Stung Sangkae catchment of Cambodia, *Sustainability*, 13, 9276, 2021.
- Peili, S., Ning, W., and Rawat, G. S.: The Distribution Patterns of Timberline and Its Response to Climate Change in the Himalayas., *Journal of Resources & Ecology*, 11, 2020.
- 950 Pettorelli, N., Laurance, W. F., O’Brien, T. G., Wegmann, M., Nagendra, H., and Turner, W.: Satellite remote sensing for applied ecologists: opportunities and challenges, *Journal of Applied Ecology*, 51, 839–848, 2014.
- Rafiei-Sardooi, E., Mirchooli, F., Azareh, A., and Clague, J. J.: Impact of soil erosion on agricultural sustainability based on crop water productivity in semi-arid Iran, *Scientific Reports*, 15, 40 462, 2025.
- 955 Renard, K. G.: Predicting soil erosion by water: a guide to conservation planning with the Revised Universal Soil Loss Equation (RUSLE), US Department of Agriculture, Agricultural Research Service, 1997.
- Rossiter, D. G.: A theoretical framework for land evaluation, *Geoderma*, 72, 165–190, 1996.
- Roy, D. P., Wulder, M. A., Loveland, T. R., Ce, W., Allen, R. G., Anderson, M. C., Helder, D., Irons, J. R., Johnson, D. M., Kennedy, R., et al.: Landsat-8: Science and product vision for terrestrial global change research, *Remote sensing of Environment*, 145, 154–172, 2014.
- 960 Sala, O. E., Stuart Chapin, F., Armesto, J. J., Berlow, E., Bloomfield, J., Dirzo, R., Huber-Sanwald, E., Huenneke, L. F., Jackson, R. B., Kinzig, A., et al.: Global biodiversity scenarios for the year 2100, *science*, 287, 1770–1774, 2000.

- Sen, P. K.: Estimates of the regression coefficient based on Kendall's tau, *Journal of the American statistical association*, 63, 1379–1389, 1968.
- Sharma, H. and Ehlers, T. A.: Effects of seasonal variations in vegetation and precipitation on catchment erosion rates along a climate and ecological gradient: insights from numerical modeling, *Earth Surface Dynamics*, 11, 1161–1181, 2023.
- 965 Sharpley, A. N. and Williams, J. R.: EPIC-erosion/productivity impact calculator: 1. Model documentation., 1990.
- Sheng, H. and Ding, A.: Historic evolution of Loess Plateau and its geomorphic features and soil and water conservation, *Res Soil Water Conserv*, 9, 83–86, 2002.
- Singh, D., Singh, N., Singh, H., Kumawat, A., Jeet, P., Yadav, D., Gupta, A. K., and Kumar, G.: Biological and mechanical measures for runoff and soil erosion control in India and beyond, *Discover Applied Sciences*, 7, 693, 2025.
- 970 Sohn, K., Berthelot, D., Carlini, N., Zhang, Z., Zhang, H., Raffel, C. A., Cubuk, E. D., Kurakin, A., and Li, C.-L.: Fixmatch: Simplifying semi-supervised learning with consistency and confidence, *Advances in neural information processing systems*, 33, 596–608, 2020.
- Tucker, C. J.: Red and photographic infrared linear combinations for monitoring vegetation, *Remote sensing of Environment*, 8, 127–150, 1979.
- 975 UNCCD: Global Land Outlook, Second Edition, United Nations Convention to Combat Desertification, Bonn, Germany, <https://www.unccd.int/resources/global-land-outlook>, 2022.
- U.S. Geological Survey: Landsat Collection 2 Level-2 Science Product Guide, Tech. rep., Department of the Interior, U.S. Geological Survey, <https://www.usgs.gov/landsat-missions/landsat-collection-2-level-2-science-products>, accessed: 2025-08-31, 2020.
- Wang, S., Fu, B., Piao, S., Lü, Y., Ciais, P., Feng, X., and Wang, Y.: Reduced sediment transport in the Yellow River due to anthropogenic changes, *Nature Geoscience*, 9, 38–41, 2016.
- 980 Wang, Y., Yu, P., Feger, K.-H., Wei, X., Sun, G., Bonell, M., Xiong, W., Zhang, S., and Xu, L.: Annual runoff and evapotranspiration of forestlands and non-forestlands in selected basins of the Loess Plateau of China, *Ecohydrology*, 4, 277–287, 2011.
- Wang, Z., Shi, X., Dou, S., Cheng, M., and Miao, L.: The 30 m land cover dataset for capturing land cover changes induced by ecological restoration from 1990 to 2022 on the Chinese Loess Plateau, *Scientific Data*, 12, 252, 2025.
- 985 Wen, X. and Zhen, L.: Soil erosion control practices in the Chinese Loess Plateau: A systematic review, *Environmental Development*, 34, 100493, 2020.
- Wuyun, D., Sun, L., Chen, Z., Li, Y., Han, M., Shi, Z., Ren, T., and Zhao, H.: A 10-meter resolution dataset of abandoned and reclaimed cropland from 2016 to 2023 in Inner Mongolia, China, *Scientific Data*, 12, 317, 2025.
- Xiao, B., Cui, B., Li, D., and Chang, X.: Temporal and spatial variations of precipitation in different climatic regions of the Loess Plateau, *Science of Soil and Water Conservation*, 15, 51–61, 2017.
- 990 Yan, J., Wang, S., Feng, J., He, H., Wang, L., Sun, Z., and Zheng, C.: New 30-m resolution dataset reveals declining soil erosion with regional increases across Chinese mainland (1990–2022), *Remote Sensing of Environment*, 323, 114681, 2025.
- Yang, J. and Huang, X.: The 30m annual land cover dataset and its dynamics in China from 1990 to 2019, *Earth System Science Data*, 13, 3907–3925, 2021.
- 995 Yang, L., Qi, L., Feng, L., Zhang, W., and Shi, Y.: Revisiting weak-to-strong consistency in semi-supervised semantic segmentation, in: *Proceedings of the IEEE/CVF conference on computer vision and pattern recognition*, pp. 7236–7246, 2023.
- Yang, L., Shi, L., Li, J., and Kong, H.: Spatio-temporal pattern change of LULC and its response to climate in the Loess Plateau, China, *Scientific Reports*, 14, 23 202, 2024.

- Yang, S., Guan, Y., Zhao, C., Zhang, C., Bai, J., and Chen, K.: Determining the influence of catchment area on intensity of gully erosion using high-resolution aerial imagery: A 40-year case study from the Loess Plateau, northern China, *Geoderma*, 347, 90–102, 2019.
- 1000 Yu, Z., Di, L., Yang, R., Tang, J., Lin, L., Zhang, C., Rahman, M. S., Zhao, H., Gaigalas, J., Yu, E. G., et al.: Selection of landsat 8 OLI band combinations for land use and land cover classification, in: 2019 8th International Conference on Agro-Geoinformatics (Agro-Geoinformatics), pp. 1–5, IEEE, 2019.
- Yuan, Y., Fu, R., Huang, L., Lin, W., Zhang, C., Chen, X., and Wang, J.: Hrformer: High-resolution vision transformer for dense predict, *Advances in neural information processing systems*, 34, 7281–7293, 2021.
- 1005 Zanaga, D., Van De Kerchove, R., Daems, D., De Keersmaecker, W., Brockmann, C., Kirches, G., Wevers, J., Cartus, O., Santoro, M., Fritz, S., et al.: ESA WorldCover 10 m 2021 v200, 2022.
- Zeng, Z., Estes, L., Ziegler, A. D., Chen, A., Searchinger, T., Hua, F., Guan, K., Jintrawet, A., and F. Wood, E.: Highland cropland expansion and forest loss in Southeast Asia in the twenty-first century, *Nature Geoscience*, 11, 556–562, 2018.
- 1010 Zhang, C., Dong, J., and Ge, Q.: Mapping 20 years of irrigated croplands in China using MODIS and statistics and existing irrigation products, *Scientific Data*, 9, 407, 2022.
- Zhang, H., Zhao, Y., and Chen, Y.: Vegetation trends and ecological effects on the Loess Plateau, China in the last forty years, *J. Earth Sci. Environ*, 45, 881–894, 2023a.
- Zhang, K., Shu, A., Xu, X., Yang, Q., and Yu, B.: Soil erodibility and its estimation for agricultural soils in China, *Journal of arid environments*, 72, 1002–1011, 2008.
- 1015 Zhang, X., Liu, L., Chen, X., Gao, Y., Xie, S., and Mi, J.: GLC_FCS30: Global land-cover product with fine classification system at 30 m using time-series Landsat imagery, *Earth System Science Data Discussions*, 2020, 1–31, 2020.
- Zhang, X., Zhao, T., Xu, H., Liu, W., Wang, J., Chen, X., and Liu, L.: GLC_FCS30D: The first global 30-m land-cover dynamic monitoring product with a fine classification system from 1985 to 2022 using dense time-series Landsat imagery and continuous change-detection method, *Earth System Science Data Discussions*, 2023, 1–32, 2023b.
- 1020 Zhu, X. X., Tuia, D., Mou, L., Xia, G.-S., Zhang, L., Xu, F., and Fraundorfer, F.: Deep learning in remote sensing: A comprehensive review and list of resources, *IEEE geoscience and remote sensing magazine*, 5, 8–36, 2017.
- Zhu, Y., Li, W., Wang, D., Wu, Z., and Shang, P.: Spatial pattern of soil erosion in relation to land use change in a rolling hilly region of Northeast China, *Land*, 11, 1253, 2022.
- 1025 Zweifel, L., Meusburger, K., and Alewell, C.: Spatio-temporal pattern of soil degradation in a Swiss Alpine grassland catchment, *Remote sensing of environment*, 235, 111 441, 2019.