

The intensity of human disturbance on the Tibetan Plateau

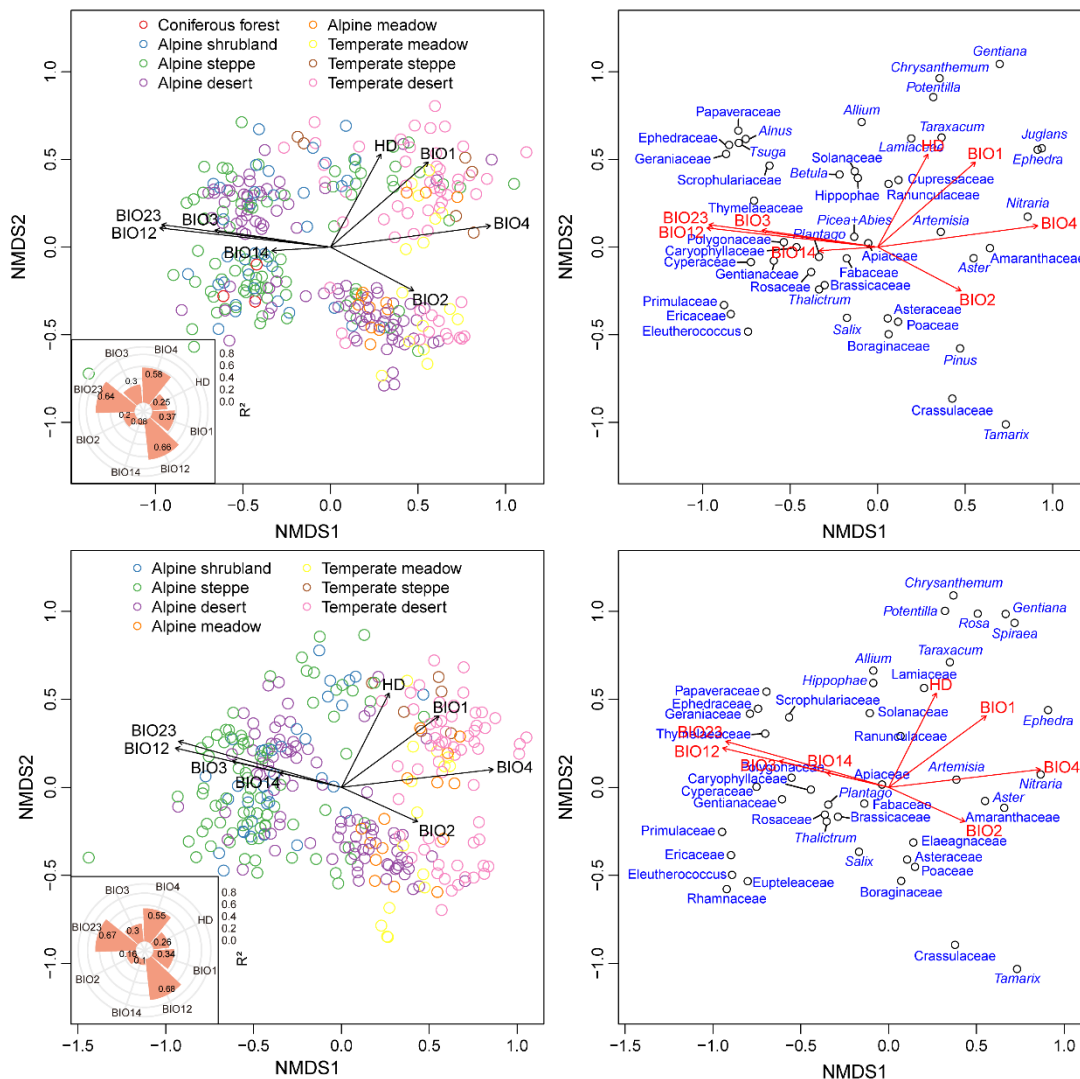


Figure 5: Biplots of non-metric multidimensional scaling (NMDS) showing the sites (left) and the main pollen taxa (right). The inserted polar plot showing the coefficient of determination ( $R^2$ ) of the first two ordination axes to each selected bioclimatic variables and intensity of human disturbance (HD). The upper panel displays the results from all sampling sites, while the lower panel shows the results excluding sites in coniferous forest, taxa from arboreal trees, and those with pollen counts of less than 200 grains. BIO1: Annual Mean Temperature, BIO2: Mean Diurnal Range, BIO3: Temperature Seasonality, BIO4: Isothermality, BIO12: Annual Precipitation, BIO14: Precipitation of Driest Month, BIO23: Moisture Index.