

# Austrian NIR Soil Spectral Library for Soil Health Assessments

Julia Fohrafellner<sup>1</sup>, Maximilian Lippl<sup>2</sup>, Armin Bajraktarevic<sup>1</sup>, Andreas Baumgarten<sup>1</sup>, Heide Spiegel<sup>1</sup>, Robert Körner<sup>1</sup>, Taru Sandén<sup>1</sup>

5 <sup>1</sup>Department for Soil Health and Plant Nutrition, Austrian Agency for Health and Food Safety (AGES), Vienna, 1220, Austria

<sup>2</sup>Department for Feed Analysis and Quality Testing, Austrian Agency for Health and Food Safety (AGES), Vienna, 1220, Austria

*Correspondence to:* Julia Fohrafellner (julia.fohrafellner@ages.at)

10 **Keywords:** dataset; EJP SOIL; near-infrared; ProbeField; spectroscopy

## Short summary

The first openly accessible Austrian near-infrared (NIR) Soil Spectral Library was developed, including over 2100 samples covering all Austrian environmental zones. ~~The prediction of soil properties via partial least square regression showed~~

15 ~~potential, but~~ At present, the predictive accuracy for most properties was insufficient compared to routine laboratory analyses; ~~however, several key properties showed predictive potential.~~ We encourage using the open Library as a foundation for further spectral analysis and modelling and we support future soil health assessments via spectroscopy.

## Abstract

20 The rise in demand for soil data and information calls for quick and cost-effective methodologies to quantify soil properties. This is particularly important in the realm of restoring soil health in Europe. Near-infrared (NIR) spectroscopy has demonstrated the ability to predict specific soil properties with high accuracy whilst being less costly and time-consuming than traditional methods. To fill gaps in national spectroscopic soil data, we compiled the first Austrian NIR Soil Spectral Library (680–2500 nm) based on legacy samples (n = 2129), covering all environmental zones of Austria. We then ~~applied~~ employed

25 partial least square regression (PLSR) modelling to test the usability of the dataset for soil health assessments at its current stage. Our analysis revealed that ~~the; application of the PLSR is not suitable for accurately estimating soil health indicators compared to routine laboratory analysis. at the present time, the Austrian NIR Soil Spectral Library is not suitable to predict most of the 14 soil properties with sufficient accuracy.~~ Nevertheless, among the 14 soil properties tested, total nitrogen, CaCO<sub>3</sub>, soil organic carbon and clay ~~showed~~ exhibited satisfactory/moderate predictive results/accuracy ( $R^2 > 0.7$ ). Most importantly,

30 the dataset containing sample meta-data (e.g., land use type, environmental zone or zip code), laboratory reference values and NIR spectra with 1 nm resolution can be used as a foundation for further spectral analysis and modelling. We make this work openly accessible to actively contribute to closing soil data gaps and promote the expansion of soil spectral libraries as a basis for soil health assessments.

# 1 Introduction

35 In 2021, the European Commission published the renewed Soil Strategy (European Commission, 2021), in which the vision for healthy soil ecosystems by 2030 was presented. Soil health, defined as “the continued capacity of soils to provide ecological functions for all forms of life, in line with the Sustainable Development Goals and the Green Deal” (European Commission et al., 2020), is still an evolving term and concept. It received heightened attention since the implementation of the EU Mission: A Soil Deal for Europe (European Commission et al., 2020) and particularly the discussed Soil Monitoring Law (European  
40 Commission, 2023). Narrowing down the definition of soil health and, most importantly, quantifying it has therefore become a key issue for soil scientists. Characterizing soil health in the form of multiple indicators and creating a “soil health index” (Lehmann et al., 2020) suitable to measure and monitor soil health in the EU (European Commission, 2023; Matson et al., 2024) are pivotal in achieving healthy soils until 2030. Efforts to define such an index are multi-fold (Matson et al., 2024; Wade et al., 2022; Rinot et al., 2019), but generally they agree on including chemical, physical and biological indicators that  
45 go beyond crop production to encompass soil ecosystem services (Shen and Teng, 2023). Properties such as soil organic carbon (SOC), soil nutrients, pH or cation-exchange capacity (CEC) are frequently included in soil health assessments (Lehmann et al., 2020). These properties are routinely analyzed in laboratories with traditional methods but are often time-consuming and require resources such as expensive equipment and chemicals. ~~Based on~~ The increasing requirements for soil health assessments and monitoring posed by the Soil Monitoring Law are creating a demand for less cost-intensive alternative  
50 methods ~~are in demand~~ (Safanelli et al., 2025).

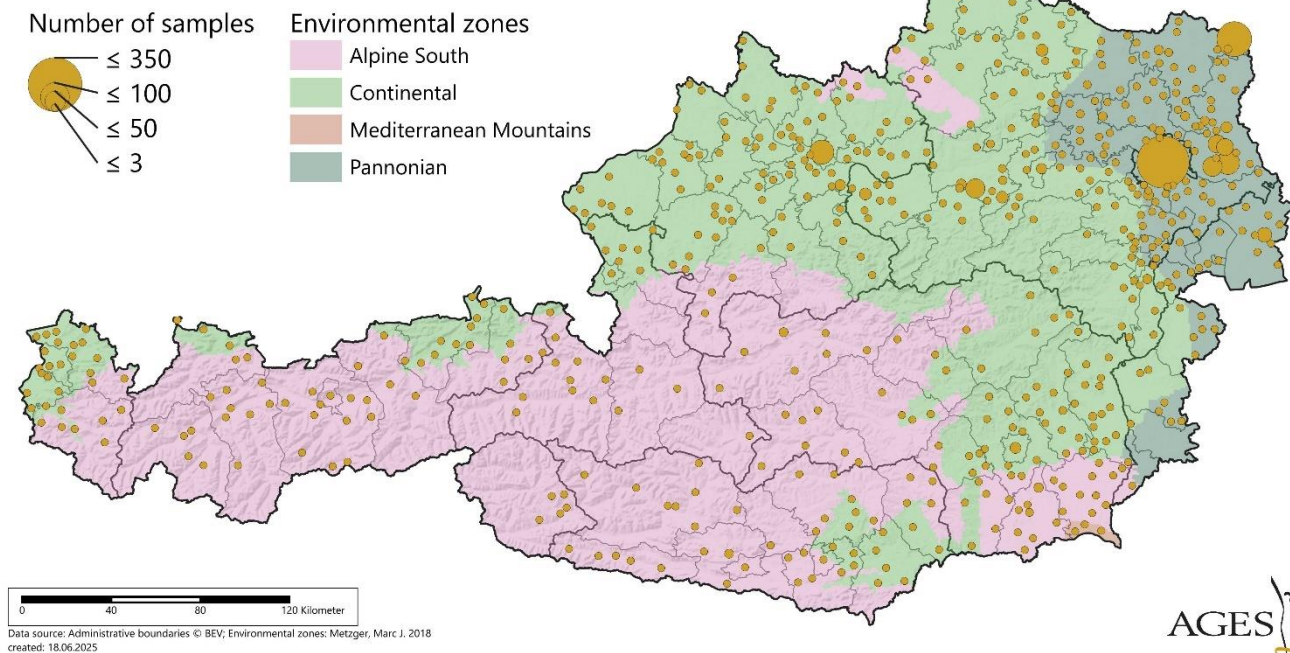
The application of soil visible (vis) and near infrared (NIR) spectroscopy to predict soil properties, particularly chemical ones, using statistical and machine learning methods has increased rapidly in recent decades (Viscarra Rossel et al., 2011; Gholizadeh et al., 2013; Stenberg et al., 2010). Spectroscopy was shown to generate fairly to very accurate estimates of e.g., total carbon (Ma et al., 2023), SOC (Guerrero et al., 2016) and its fractions (Jaconi et al., 2019b), as well as soil texture, specifically clay  
55 (Jaconi et al., 2019a), and carbonates (Tavakoli et al., 2023). This approach also bears great potential for soil fertility assessments of total nitrogen (Park et al., 2024) along with total and critical available phosphorus (Recena et al., 2019). Compared to traditional laboratory analyses, spectroscopy has many advantages because it is fast, simple, cost-effective, reproducible, repeatable, non-destructive and environmentally friendly (Viscarra Rossel et al., 2006; Nocita et al., 2015; Soriano-Disla et al., 2013). To improve predictions and fill data gaps, large reference training data sets, so-called soil spectral  
60 libraries (SSL), are being built and often made freely available. These extend from local, regional to national and even global scale (Fao, 2022), thereby helping to describe soils and their health whilst improving soil data availability (Cornu et al., 2023). Nevertheless, large areas without available data in the global coverage of NIR SSL remain, calling for active participation to fill these gaps (Viscarra Rossel et al., 2016; Safanelli et al., 2025). This is necessary because the predictive capacity of models relies on the number and diversity of soil samples and conditions represented in the spectra. Concurrently, new methods for  
65 coordinating existing SSL are being developed, enabling interoperability between labs, data harmonization, engagement of communities and model development (Safanelli et al., 2025; Peng et al., 2025).

The application of NIR spectroscopy for Austrian soils is limited so far. Beyond sample analysis within the LUCAS inventory (Fernandez Ugalde et al., 2022), Ludwig et al. (2023) tested the suitability of vis-NIR and MIR (mid infrared) spectroscopy for forest soils whilst comparing different modelling approaches. Moreover, the suitability of vis-NIR for measuring soil carbon contents and the effects of agricultural management methods was analyzed by Bieber (2023) on a regional scale. To date, no national SSL for Austria is openly available. By using available legacy soil samples, including their results from chemical and physical analysis, we wanted to fill this gap and analyzed them via NIR spectroscopy. Therefore, the objectives of this study were (i) to provide a first dataset on Austrian NIR soil spectra and reference laboratory analysis for several soil health properties, covering all Austrian environmental zones and (ii) to apply partial least square regression (PLSR) for model calibration and validation and test the model's applicability for national soil health assessments.

## 2 Soil sample selection

The selection of soil samples for the Austrian NIR Soil Spectral Library was based on a wide distribution of soils with different properties to strengthen the dataset usability and predictive power of applied models. The dataset includes legacy soil samples (analyzed and stored in the AGES archive) from several long-term field experiments, different project campaigns and from farmers' land. Moreover, samples from the so-called AGES "soil box" (Ages, 2025), which are sent in by private persons, were included. The soil box allows individuals to have their soils analyzed for common properties such as pH, SOC and phosphorus. These samples are special because they stem from a wide range of land uses including grassland, arable land, forests, orchards, hedges or lawn, but also compost or garden soils. This particularly promotes the diversity of included soils and enhances the geographical distribution and coverage throughout Austria. All included samples were collected between 2016 and 2023 and soil sampling depth ranged between 0 cm down to a maximum of 110 cm (mean: 24.5 cm). This yielded a total of 2129 samples which were considered for the soil spectral library ~~-, covering all environmental zones of Austria (Fig. 1).~~ Most samples represent the Pannonian zone (n = 1059), followed by the Continental (n = 778), Alpine South (n = 286) and Mediterranean Mountains (n = 5) zones (Fig. 1). For one sample, the location and environmental zone are unknown (Sample\_number 743), ~~hence it is not included in Figure 1.~~

### Soil samples per municipality



**Figure 1: The environmental zones in Austria according to Metzger et al. (2018; 2005) with sampling locations of the NIR spectral library (n = 2128) sampled between 2016 and 2023. Circle size indicates the number of soil samples per municipality.**

### 3 Dataset creation and description

Information about the soil samples included in the dataset was extracted from the AGES internal database “LISA”. Missing data regarding zip codes and land-use type was gathered by contacting responsible persons within and outside of AGES. MS Excel® (version 2410) and the statistical programming language R within the RStudio interface (version 2024.04.0) were used for data processing. The dataset contains 1846 columns, of which columns 1 to 11 provide information on the soil sample, columns 12 to 25 contain chemical and physical reference analysis results, and columns 26 to 1846 contain the measured absorbance from 680 nm to 2500 nm for every nm. Column “Sample\_number” assigns each sample a number, starting from one, and column “Sampling\_year” shows the year of soil sampling. In column “Experiment\_number” the samples were grouped into experiments which indicate that samples were collected on the same site. When several samples were sent in together but originated from different sites (e.g., many sites sampled within one research project), this was indicated by an underscore (e.g., 9\_1, 9\_2). Column “Sample\_source” provides information on the source of the soil sample, e.g. whether it was taken from a long-term experiment (LTE), part of a research project sampling campaign, or submitted by a private person or advisor for analysis. The columns “Zip\_code” and “Municipality\_code” indicate the location of the sampling site, which in some cases needed to be approximated due to limited location information. For the majority of samples, coordinates were not

~~available, as they were either sent by private individuals and farming advisers, or were taken by other research facilities than AGES. Therefore, only zip and municipality codes are provided in our dataset. Providing coordinates was not possible because the dataset includes samples sent in by private individuals and thereby classifies them as sensitive data.~~ The environmental zone (Metzger et al., 2005; Metzger, 2018) of the sampling location is shown in column “Environmental\_zone”. Sampling depths (sampling\_depth\_from and sampling\_depth\_to) are reported in columns 8 and 9, respectively, and land use types in column 10. Most samples were taken from arable land (n = 1485), followed by vegetable plots (n = 202) and lawn (n = 174). Other land use types (orchards, forests, grassland, hedges, ornamental plants and vineyards) were sampled less than 100 times. For 73 samples the land use type was unknown. Lastly, column 11 indicates whether samples were sent in for analysis with a “soil box”. As these samples are taken and submitted by private individuals, the land use type defined by those individuals might not always be accurate. Finally, such samples may contain artificial substrate, high amounts of compost or fertilizers. Regarding the chemical and physical reference analysis and NIR spectroscopy, the methodologies and results are described in detail in the following sections. The dataset is available at <https://zenodo.org/> in the form of an excel file, which is accompanied by document metadata and a legend (Fohrafellner et al., 2025).

## 4 Analysis of soil

### 4.1 Chemical and physical reference analysis

Chemical and physical soil properties were analyzed in the AGES soil laboratory for all soil samples (Table 1). The samples were air-dried at maximum 40°C for at least two days and sieved through a 2 mm stainless steel sieve (ÖNORM L 1053:2012-04-15). Soil organic carbon (SOC) and total carbon (TC) were analyzed by dry combustion in a LECO TruMac CN (LECO Corp., St. Joseph, MI, United States) at 650°C and 1250°C, respectively (ÖNORM L 1080:2013-03-15). The labile carbon was determined according to Tatzber et al. (2015). The carbonate content (CaCO<sub>3</sub>) was measured gas-volumetrically according to the “Scheibler method” (CO<sub>2</sub> evolution; ÖNORM L 1084:2016-07-01). Total N (TN) was determined via elemental analysis using a LECO Trumac CN at 1250° C (ÖNORM EN 16168:2012-10-01). Plant available phosphorus (hereafter referred to as “Phosphorus”) was determined by calcium-acetate-lactate (CAL) extraction (ÖNORM L 1087:2012-12-01). Soil pH was measured electrochemically (pH/mV Pocket Meter pH 340i, WTW, Weilheim, Germany) in 0.01 M CaCl<sub>2</sub> at a soil-to-solution ratio of 1:5 (ÖNORM EN 15933:2012-10-01) and in calcium acetate (Vdlufa, 1991) to compare the suitability of NIRS to predict the results of these methods. The cation exchange capacity (CEC) was determined by extracting the effective exchangeable cations Ca<sup>++</sup>, K<sup>+</sup>, Mg<sup>++</sup>, Na<sup>+</sup> and Al<sup>+++</sup>, Fe<sup>+++</sup>, Mn<sup>++</sup> and H<sup>+</sup> in barium chloride solution (ÖNORM L 1086-1:2014-03-15). Texture was determined according to ÖNORM L 1061-2:2002-02-01, and clay was further analyzed by density in soil suspension (ÖNORM EN ISO 17892-4).

The models for calibration and validation (section 5 “Spectroscopic modelling”) for each soil property were tested with the full range of SOC values, but also with subsets containing only samples with SOC values below 7%, as this is the upper limit for most agricultural mineral soils in Austria. The modelling results revealed that using only the latter subsets generated better

estimates the properties SOC, SOC/clay ratio and TC. We therefore provide the summary statistics for these properties using all samples or only samples with less than 7% SOC (Table 1).

**Table 1: Summary statistics of the measured soil properties of the Austrian NIR Soil Spectral Library for all samples and for the subset of samples with SOC below 7%. SOC is soil organic carbon, TC is total carbon, TN is total nitrogen, and CEC is the cation exchange capacity.**

Property	<i>n</i>	Min	Max	Median	Mean	SD	Skewness
<b>All samples</b>							
SOC (%)	2112	0.02	44.8	1.96	2.76	3.20	6.45
SOC/clay ratio	534	0.0009	1.59	0.103	0.199	0.241	2.37
TC (%)	92	1	39.1	4.90	6.54	6.23	2.79
Labile carbon (mg kg <sup>-1</sup> )	567	47	1516	558	600	194	1.57
CaCO <sub>3</sub> (%)	327	0.01	81.9	9.7	13.3	12.6	1.90
TN (%)	1036	0.029	2.42	0.192	0.253	0.206	3.95
Phosphorus (mg kg <sup>-1</sup> )	1643	1	1624	78	113	137	4.20
pH (CaCl <sub>2</sub> )	1917	3.18	7.93	7.26	6.92	0.848	-1.58
pH (Acetate)	304	5.59	7.42	6.48	6.53	0.391	0.29
CEC (cmolc kg <sup>-1</sup> )	641	2.88	85.4	21.0	20.9	8.75	2.33
Sand (%)	562	5.6	92.5	32.2	36.2	18.7	0.59
Silt (%)	562	5	75.7	47.1	45.7	14.3	- 0.37
Clay (%)	534	1.5	47.1	17.3	18	9.05	0.50
Clay in suspension (%)	381	10	40	20	21.4	5.19	0.77
<b>SOC &lt; 7%</b>							
SOC (%)	1997	0.02	6.94	1.91	2.20	1.17	1.60
SOC/clay ratio	518	0.0009	1.25	0.0978	0.182	0.214	2.37
TC (%)	71	1	8.82	3.93	3.92	1.68	0.229

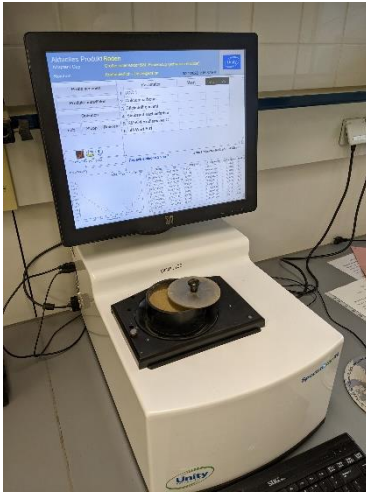
145

#### 4.2 Spectral measurement and preprocessing

The legacy soil samples from the AGES soil archive were prepared as for previous reference analysis and measured with the SpectraStar™ XL near-infrared spectrometer from Unity Scientific ([Brookfield, CT, USA](#)) (Fig. 2) between the range 680 to 2500 nm. This instrument was equipped with 2 detectors and provided a spectral resolution of 1.0 nm, with the sensor switch being between 1340 and 1341 nm. A matte-surface gold-plated metal reflector was used as an internal reference. The sample cup (8.5 cm diameter) was filled up to about one third with a soil sample and covered with the reflective lid, which was pressed slightly onto the sample. Each sample was scanned 24 times, and a mean was calculated. The same soil sample was then transferred to a new sample cup and the scanning was repeated. A mean was calculated from these two repetitions. The standard

150

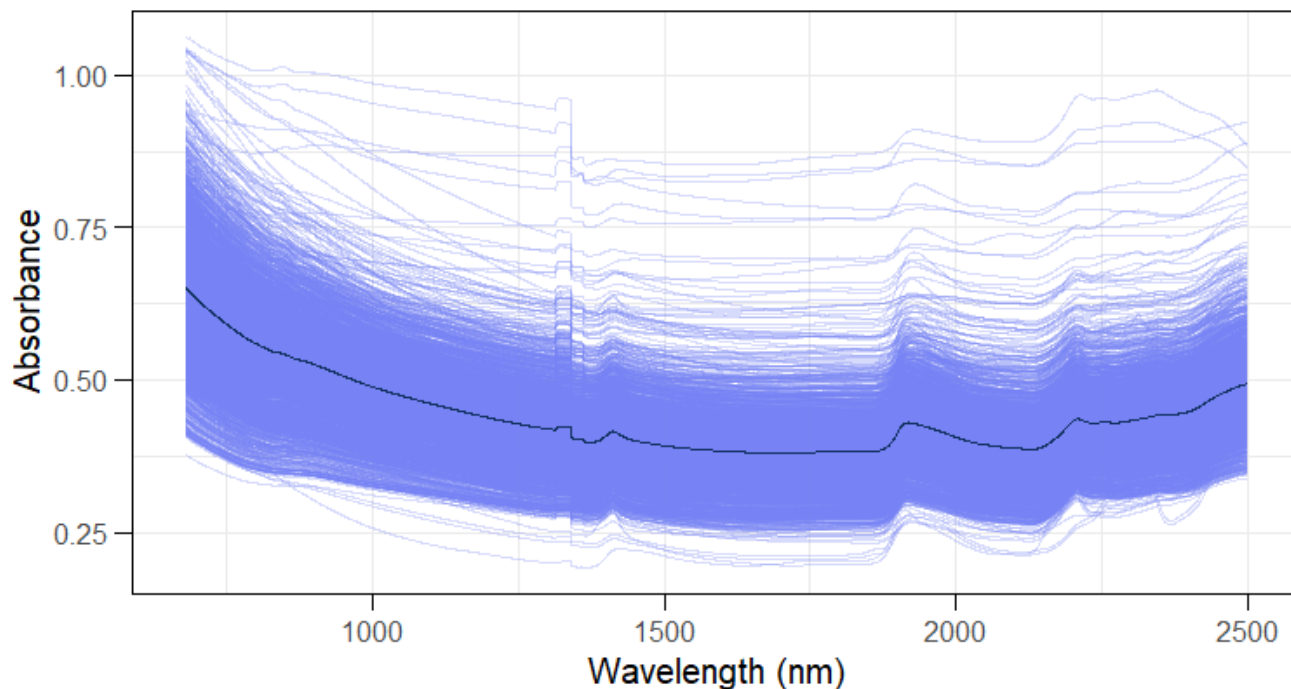
used was White Sand (Lucky Bay, Australia), which enables harmonizing results from different near-infrared spectrometers  
155 used within the ProbeField project.



**Figure 2: SpectraStar™ XL near-infrared spectrometer from Unity Scientific loaded with a soil sample.**

160 The accompanying UCal™ Chemometric Software ([Unity Scientific, Brookfield, CT, USA](#)) was used to pre-process the spectra. The reflectance ( $R$ ) spectra were converted to absorbance ( $A$ ) spectra by  $A = \log_{10}(1/R)$  (Fig. 3). Scatter correction was achieved by standard normal variate (SNV) transformation and detrending (Barnes et al., 1989). The first forward derivative was applied to remove ~~noise~~baseline shifts and to increase the resolution of superposed peaks (Duckworth, 2004).





165 **Figure 3: Raw near-infrared soil spectra excluding standards (n = 2129) with mean spectrum (dark line).**

## 5 Spectroscopic modelling

The Kennard–Stone algorithm (Kennard and Stone, 1969) of the “prospectr” [package \(version 0.2.7\)](#) (Stevens and Ramirez-Lopez, 2024) [package](#) in R Studio (version 2024.04.0) was used for calibration and validation [set sampling, as it allows to create sets that have a flat distribution over the spectral space](#) (Stevens and Ramirez-Lopez, 2025). The dataset was split into 80% calibration and 20% validation samples. To avoid pseudo-independence of spectra, grouped samples from the same sites were either assigned to the calibration or validation set via the algorithm. Simultaneously, a [uniform homogeneous](#) distribution of samples was ensured by applying the Mahalanobis distance, [which first performs a PCA on the input data and computes the Euclidean distance](#) (Stevens and Ramirez-Lopez, 2024). As these settings generated a very small validation set for clay in suspension (n = 7), a separate split using only samples with data of this soil property was conducted. Here, the Euclidean distance, [which selects points which are the farthest apart from its closest neighbor](#) (Stevens and Ramirez-Lopez, 2024), was used because the Mahalanobis distance requires more samples than individual spectra for point distance computation. The UCal™ Chemometric Software ([Unity Scientific, Brookfield, CT, USA](#)) was then used to apply the partial least square regression (PLSR) for model calibration and validation. A maximum of 15 factors were set, and outlier detection and removal were performed by calculating the Mahalanobis distance, which was set to a maximum global distance of 13 and 3 for the calibration and validation sets, respectively. The spectra were trimmed to the range of 780–2400 nm and sensor switches between 1330–1350 nm were removed. After model calibration, predictions were generated based on the validation set for each



soil property. Models were tested for all samples or for subsets, i.e., SOC values below 7%, as described in section 4.1. This was done as is the modelling results revealed that using subsets with SOC < 7% generated better estimates of the properties SOC, SOC/clay ratio and TC, as it is the upper limit for most agricultural mineral soils in Austria. Statistical measures used to  
185 determine the performance of the model were the standard error of prediction (SEP) and the coefficient of determination ( $R^2$ ) from linear regression as well as the ratio of performance to inter-quartile distance (RPIQ) (Bellon-Maurel et al., 2010).

## 6 Model performance

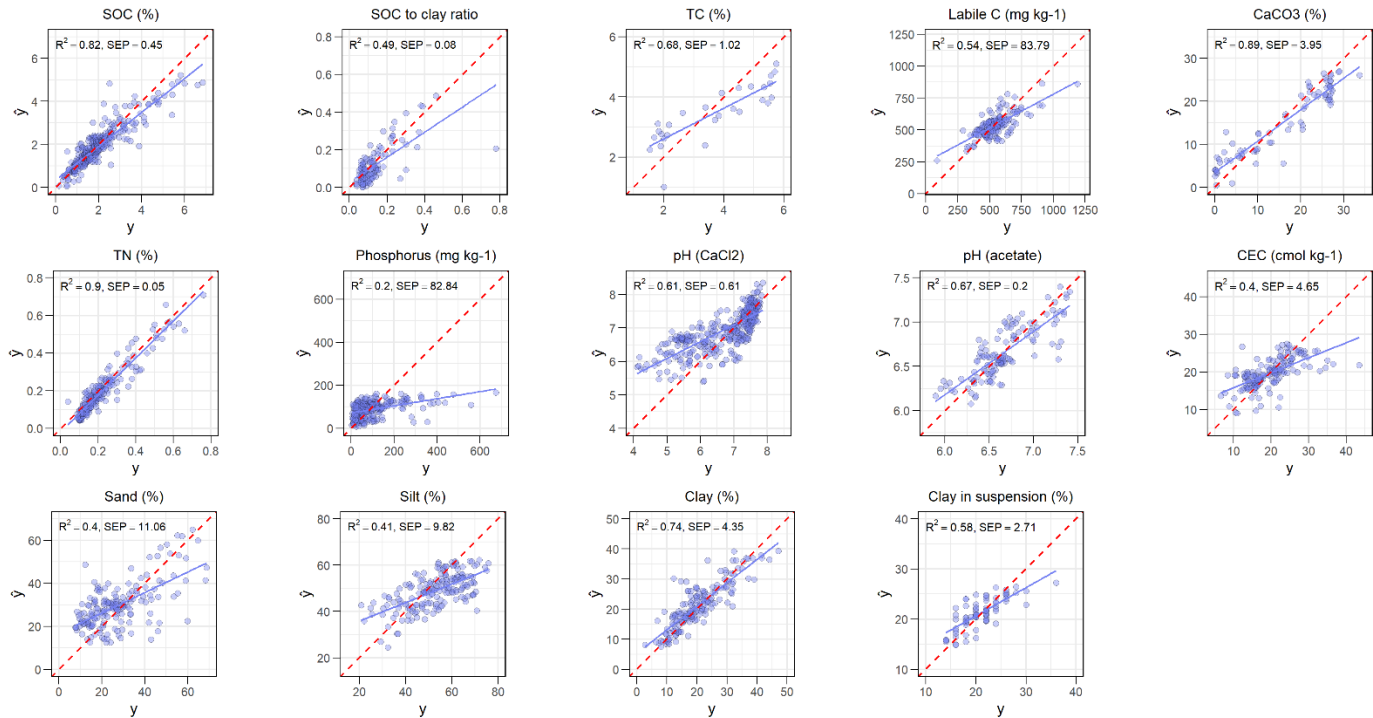
NIR estimates of the 14 soil health indicators (Table 2 and Figure 4) revealed that PLSR explained total nitrogen contents (TN) best ( $R^2 = 0.9$ , SEP = 0.05), followed by  $\text{CaCO}_3$  ( $R^2 = 0.89$ , SEP = 3.95), soil organic carbon (SOC) ( $R^2 = 0.82$ , SEP = 0.45)  
190 and clay ( $R^2 = 0.74$ , SEP = 4.35). Nonetheless, the standard error of prediction was large for these properties. This is a common issue in larger-scale spectral libraries because they can comprise a wide range of soils with high mineralogical variability (Nocita et al., 2015; Stenberg et al., 2010), as it is the case for Austria. Regarding SOC, the regression shows that up to concentrations of 4%, the model predicted SOC well, but with increasing concentrations it underestimated NIR predictions due to the limited number of samples. Such limited numbers of samples for “extreme” values impacted the predictive quality  
195 of several other soil parameters, particularly phosphorus or sand content. Although SOC and clay results were sufficient, the SOC-to-clay ratio was not well estimated by the model ( $R^2 = 0.49$ , SEP = 0.08); only narrow ratios showed good prediction by NIR spectroscopy. For total carbon (TC), only a small sample size for validation ( $n = 30$ ) was available, which nevertheless revealed potential for accurate prediction by NIR ( $R^2 = 0.68$ , SEP = 1.02). Labile C had few low and high reference values, which impacted the prediction on NIR negatively ( $R^2 = 0.54$ , SEP = 83.79). When comparing the results for soil pH, pH in  
200 acetate achieved better estimates than pH in  $\text{CaCl}_2$  ( $R^2 = 0.67$ , SEP = 0.2 and  $R^2 = 0.61$ , SEP = 0.61, respectively). Phosphorus values above 200  $\text{mg kg}^{-1}$  were underestimated by NIR, yielding overall poor model results ( $R^2 = 0.2$ , SEP = 82.84). Clay analyzed in suspension had a small-moderate coefficient of determination ( $R^2 = 0.58$ , SEP = 2.71). Other soil properties, i.e., cation exchange capacity (CEC), sand and silt, achieved  $R^2$  below 0.5.

We also calculated ratio of performance to inter-quartile distance (RPIQ) for all 14 soil health indicators. The proposed threshold for satisfactory model performance of a RPIQ of >1.89 (Ludwig et al., 2019) was used. Based on this metric,  $\text{CaCO}_3$  (RPIQ = 5.06) performed best, followed by TC (RPIQ = 3.33), clay (RPIQ = 2.52), clay in suspension (RPIQ = 2.21), pH in  $\text{CaCl}_2$  (RPIQ = 2.20), SOC (RPIQ = 2.09) and TN (RPIQ = 1.95). The other properties achieved RPIQs below 1.89. As previously described by Ludwig et al. (2019), it should be acknowledged that the threshold of 1.89 is predicated on the work by Chang et al. (2001), whose values were not based on theory or experiment, and that model performance must be evaluated  
210 according to the specific context. When assessing the suitability of NIR as a substitute for routine laboratory measurements, particular attention should be given to the SEP, since even high  $R^2$  or RPIQ values cannot compensate for a large SEP that indicates limited precision. Accordingly, we concentrated our assessment on  $R^2$  and SEP as key indicators of model performance.

215 **Table 2: Validated NIR estimates (780–2400 nm) of 14 soil properties derived from PLSR. SOC is soil organic carbon, TC is total carbon, TN is total nitrogen, CEC is the cation exchange capacity, SEP is the standard error of prediction and GD is the global distance.**

	SOC (%)	SOC/clay ratio	TC (%)	Labile C (mg kg <sup>-1</sup> )	CaCO <sub>3</sub> (%)	TN (%)	Phosphorus (mg kg <sup>-1</sup> )	pH CaCl <sub>2</sub>	pH Acetate	CEC (cmol kg <sup>-1</sup> )
Training strategy	SOC < 7	SOC < 7	SOC < 7	All samples	All samples	All samples	All samples	All samples	All samples	All samples
<i>n</i> initial	405	160	30	161	89	247	315	424	124	173
<i>n</i> kept	367	118	30	160	78	238	304	411	123	166
Number of factors	9	12	2	8	5	9	5	6	7	3
Range of reference values	0.15–6.85	0.03–0.78	1.54–6.17	87–1188	0.1–33.7	0.04–0.76	3–674	3.98–7.87	5.89–7.41	6.67–43.46
SEP	0.45	0.08	1.02	83.79	3.95	0.05	82.84	0.61	0.20	4.65
R <sup>2</sup>	0.82	0.49	0.68	0.54	0.89	0.90	0.20	0.61	0.67	0.40
<u>RPIQ</u>	<u>2.09</u>	<u>0.97</u>	<u>3.33</u>	<u>1.34</u>	<u>5.06</u>	<u>1.95</u>	<u>1.00</u>	<u>2.20</u>	<u>1.85</u>	<u>1.63</u>
Mean GD	1.17	0.58	0.32	0.75	0.95	0.96	1.16	0.99	0.60	0.42

	Sand (%)	Silt (%)	Clay (%)	Clay in suspension (%)
Training strategy	All samples	All samples	All samples	All samples
<i>n</i> initial	178	178	166	76
<i>n</i> kept	176	176	164	75
Number of factors	6	7	6	8
Range	7.7–68.7	20.8– <del>7</del> 5.7	2.8–47.1	14–36
SEP	11.06	9.82	4.35	2.71
R <sup>2</sup>	0.40	0.41	0.74	0.58
<u>RPIQ</u>	<u>1.50</u>	<u>1.73</u>	<u>2.52</u>	<u>2.21</u>
Mean GD	0.72	0.75	0.75	0.75



225

**Figure 4: Validation of the observed (y) versus predicted (ŷ) soil properties of the soil spectral library. SOC is soil organic carbon, TC is total carbon, TN is total nitrogen, CEC is the cation exchange capacity and SEP is the standard error of prediction. Blue line is the fitted line, while the red dashed line shows a regression of 1.**

**7 Usability of the Austrian NIR Soil Spectral Library and recommendations**

230

235

The results of data validation show that applying partial least square regression to the Austrian NIR Soil Spectral Library yields estimates of TN, CaCO<sub>3</sub>, SOC and clay contents with medium/moderate, and other properties with low accuracy. Although several properties were predicted with an  $R^2 > 0.7$ , standard errors of prediction were generally high. Considering the applicability for routine soil health analyses and monitoring, the predictive quality is currently insufficient compared to standard routine-laboratory analyses. Nevertheless, in cases where funding is limited or rough estimates are sufficient, the tested models could be of benefit. Other user-cases might include the validation of citizen science data or the estimation of soil texture, as laboratory analysis is a tedious process. Increasing the sample number, particularly in the Alpine South, and including samples with “extreme” values, could improve the predictions and reduce standard errors. Grouping by environmental zones or according to the parent material are further options to assess for model improvement. Testing the performance of other models, particularly more advanced machine learning algorithms such as random forest, cubist, artificial neural networks or support vector regression (Viscarra Rossel et al., 2016; Minasny et al., 2024; Minasny and Mcbratney,

2008), could further enhance the useability of the Austrian NIR Soil Spectral Library. Lastly, we encourage merging with other SSLs, for example by using transfer functions (e.g., calibration transfer (Feudale et al., 2002), harmonization functions (Francos et al., 2023)) or spiking for adaptation of models to the characteristics of the target sites (Guerrero et al., 2016) and using them for developing localized calibration sets for specified contexts and pedologic domains (Viscarra Rossel et al., 2022). A weakness of our dataset is the missing coordinates, which, due to inclusion of soil samples taken by private individuals, farming advisors, and external research organizations, were not available.

## 8 Data availability

245 The dataset described in this manuscript can be accessed at the repository <https://zenodo.org/> under the DOI 10.5281/zenodo.16261617 (Fohrafellner et al., 2025) and can be cited as follows: Fohrafellner, J., Lippl, M., Bajraktarevic, A., Baumgarten, A., Spiegel, H., Körner, R., and Sandén, T.: Dataset to: Austrian NIR Soil Spectral Library for Soil Health Assessments (Version 3) [dataset], 10.5281/zenodo.16261617, 2025.

## 9 Conclusions

250 We present a first Austrian near-infrared (NIR) Soil Spectral Library with over 2100 legacy samples and test the performance of the partial least square regression (PLSR) to predict 14 chemical and physical soil health indicators. Several properties, i.e., total nitrogen, soil organic carbon,  $\text{CaCO}_3$  and clay were estimated with ~~medium~~-moderate accuracy, whereas the potential for predicting other indicators varied. We conclude that applying the PLSR to the Austrian NIR Soil Spectral Library is currently not suitable for precisely estimating soil properties compared to routine laboratory analysis, but that the library presents a  
255 valuable foundation for future soil health assessments. Enlarging the spectral library would no doubt improve the predictions, specifically by including extreme values outside of common ranges and by including data from the Alpine South. Moreover, testing novel models using machine learning algorithms to train and validate the spectral library, for example, could improve predictions of soil health indicators. We therefore encourage the use of this open dataset and of merging the spectra with other existing or forthcoming libraries. This effort is an important step forward in supporting the expansion of soil spectral libraries  
260 globally, facilitating the amplification of NIR analysis as a fast and simple method to assess, monitor and map soil health.

## Author contributions

JF and TS conceptualized and developed the methodology of this paper. JF and AB curated the data. JF conducted formal analysis, developed the model code and visualizations and wrote the original draft. ML conducted formal analysis and validation. RK investigated reference samples. TS acquired funding and administered the project. All authors contributed to  
265 writing, reviewing and editing the manuscript.

## **Competing interests**

The authors declare that they have no conflict of interest.

## **Acknowledgements**

270 This research was conducted within the ProbeField project, which was part of the European Joint Program for SOIL ‘Towards  
climate-smart sustainable management of agricultural soils’ (EJP SOIL) funded by the European Union Horizon 2020 research  
and innovation programme (Grant Agreement N° 862695). We further would like to thank Georg Dersch for planning the  
sample selection, Michael Schwarz for creating the Austrian map and assisting in data extraction, as well as Günther Aust,  
Hans-Peter Haslmayr, Florian Forcher and Monika Tulipan for providing meta-data on the soil samples. Moreover, we want  
to thank Bo Stenberg and Fabio Castaldi for providing advice on this manuscript. Michael Stachowitsch helped with language  
275 editing.

## References

- AGES soil box: <https://www.ages.at/en/environment/soil/soil-survey#c6108>, last access: 18.07.2025.
- Barnes, R. J., Dhanoa, M. S., and Lister, S. J.: Standard Normal Variate Transformation and De-Trending of Near-Infrared  
280 Diffuse Reflectance Spectra, *Appl. Spectrosc.*, 43, 772-777, 10.1366/0003702894202201, 1989.
- [Bellon-Maurel, V., Fernandez-Ahumada, E., Palagos, B., Roger, J.-M., and McBratney, A.: Critical review of chemometric indicators commonly used for assessing the quality of the prediction of soil attributes by NIR spectroscopy, \*TrAC Trends in Analytical Chemistry\*, 29, 1073-1081, 10.1016/j.trac.2010.05.006, 2010.](#)
- Bieber, M.: VisNIR spectroscopy of agricultural soils for assessing carbon fractions and management practices, Master Thesis,  
285 BOKU University, Vienna, 2023.
- [Chang, C.-W., Laird, D. A., Mausbach, M. J., and Hurburgh, C. R.: Near-Infrared Reflectance Spectroscopy–Principal Components Regression Analyses of Soil Properties, \*Soil Science Society of America Journal\*, 65, 480-490, <https://doi.org/10.2136/sssaj2001.652480x>, 2001.](#)
- Cornu, S., Keesstra, S., Bispo, A., Fantappie, M., van Egmond, F., Smreczak, B., Wawer, R., Pavlů, L., Sobocká, J., Bakacsi,  
290 Z., Farkas-Iványi, K., Molnár, S., Møller, A. B., Madenoglu, S., Feiziene, D., Oorts, K., Schneider, F., da Conceição  
Gonçalves, M., Mano, R., Garland, G., Skalský, R., O'Sullivan, L., Kasparinskis, R., and Chenu, C.: National soil data in EU  
countries, where do we stand?, *Eur. J. Soil Sci.*, 74, 10.1111/ejss.13398, 2023.
- [Duckworth, J.: Mathematical data preprocessing., in: Near-Infrared Spectroscopy in Agriculture., edited by: Roberts, C., Workman, J., Reeves, J., ASA-CSSA-SSSA, Madison, WI., 115–132, 2004.](#)
- 295 European Commission: EU Soil Strategy for 2030 - Reaping the benefits of healthy soils for people, food, nature and climate,  
2021.
- European Commission: Proposal for a directive of the European parliament and of the council on soil monitoring and resilience  
(Soil Monitoring Law), 2023.
- European Commission, Directorate General for Research Innovation, Veerman, C., Pinto Correia, T., Bastioli, C., Biro, B.,  
300 Bouma, J., Cienciala, E., Emmett, B., Frison, E., Grand, A., Hristov, L., Kriauciūnienė, Z., Pogrzeba, M., Soussana, J., Vela,  
C., and Wittkowski, R.: Caring for soil is caring for life – Ensure 75% of soils are healthy by 2030 for healthy food, people,  
nature and climate – Interim report of the mission board for soil health and food, Publications Office, doi/10.2777/918775,  
2020.
- FAO: A primer on soil analysis using visible and near-infrared (vis-NIR) and mid-infrared (MIR) spectroscopy., Rome,  
305 <https://doi.org/10.4060/cb9005en>, 2022.
- Fernandez Ugalde, O., Scarpa, S., Orgiazzi, A., Panagos, P., Van Liedekerke, M., Marechal, A., and Jones, A.: LUCAS 2018  
Soil Module. Presentation of dataset and results, Luxembourg, 10.2760/215013, 2022.
- Feudale, R. N., Woody, N. A., Tan, H., Myles, A. J., Brown, S. D., and Ferré, J.: Transfer of multivariate calibration models:  
a review, *Chemometr. Intell. Lab.*, 64, 181-192, [https://doi.org/10.1016/S0169-7439\(02\)00085-0](https://doi.org/10.1016/S0169-7439(02)00085-0), 2002.

- 310 Fohrafellner, J., Lippl, M., Bajraktarevic, A., Baumgarten, A., Spiegel, H., Körner, R., and Sandén, T.: Dataset to: Austrian NIR Soil Spectral Library for Soil Health Assessments (Version 3) [dataset], 10.5281/zenodo.16261617, 2025.
- Francois, N., Heller-Pearlshtien, D., Demattê, J. A. M., Van Wesemael, B., Milewski, R., Chabrillat, S., Tziolas, N., Sanz Diaz, A., Yagüe Ballester, M. J., Gholizadeh, A., Ben-Dor, E., and Lisetskii, F.: A Spectral Transfer Function to Harmonize Existing Soil Spectral Libraries Generated by Different Protocols, *Appl. Environ. Soil Sci.*, 2023, 1-17, 10.1155/2023/4155390, 2023.
- 315 Gholizadeh, A., Boruvka, L., Saberioon, M., and Vasat, R.: Visible, near-infrared, and mid-infrared spectroscopy applications for soil assessment with emphasis on soil organic matter content and quality: state-of-the-art and key issues, *Appl. Spectrosc.*, 67, 1349-1362, 10.1366/13-07288, 2013.
- Guerrero, C., Wetterlind, J., Stenberg, B., Mouazen, A. M., Gabarrón-Galeote, M. A., Ruiz-Sinoga, J. D., Zornoza, R., and Viscarra Rossel, R. A.: Do we really need large spectral libraries for local scale SOC assessment with NIR spectroscopy?, *Soil Till. Res.*, 155, 501-509, 10.1016/j.still.2015.07.008, 2016.
- 320 Jaconi, A., Vos, C., and Don, A.: Near infrared spectroscopy as an easy and precise method to estimate soil texture, *Geoderma*, 337, 906-913, 10.1016/j.geoderma.2018.10.038, 2019a.
- Jaconi, A., Poeplau, C., Ramirez-Lopez, L., Van Wesemael, B., and Don, A.: Log-ratio transformation is the key to determining soil organic carbon fractions with near-infrared spectroscopy, *Eur. J. Soil Sci.*, 70, 127-139, 10.1111/ejss.12761, 2019b.
- 325 ~~John, B., Yamashita, T., Ludwig, B., and Flessa, H.: Storage of organic carbon in aggregate and density fractions of silty soils under different types of land use, *Geoderma*, 128, 63-79, 10.1016/j.geoderma.2004.12.013, 2005.~~
- Kennard, R. W. and Stone, L. A.: Computer Aided Design of Experiments, *Technometrics*, 11, 137-148, 10.1080/00401706.1969.10490666, 1969.
- 330 Lehmann, J., Bossio, D. A., Kogel-Knabner, I., and Rillig, M. C.: The concept and future prospects of soil health, *Nat. Rev. Earth Environ.*, 1, 544-553, 10.1038/s43017-020-0080-8, 2020.
- Ludwig, B., Greenberg, I., Vohland, M., and Michel, K.: Optimised use of data fusion and memory-based learning with an Austrian soil library for predictions with infrared data, *Eur. J. Soil Sci.*, 74, 10.1111/ejss.13394, 2023.
- 335 Ludwig, B., Murugan, R., Parama, V. R. R., and Vohland, M.: Accuracy of Estimating Soil Properties with Mid-Infrared Spectroscopy: Implications of Different Chemometric Approaches and Software Packages Related to Calibration Sample Size, *Soil Science Society of America Journal*, 83, 1542-1552, <https://doi.org/10.2136/sssaj2018.11.0413>, 2019.
- Ma, Y., Roudier, P., Kumar, K., Palmada, T., Grealish, G., Carrick, S., Lilburne, L., and Triantafilis, J.: A soil spectral library of New Zealand, *Geoderma Reg.*, 35, 10.1016/j.geodrs.2023.e00726, 2023.
- Matson, A., Fantappie, M., Campbell, G. A., Miranda-Velez, J. F., Faber, J. H., Gomes, L. C., Hessel, R., Lana, M., Mocali, S., Smith, P., Robinson, D. A., Bispo, A., van Egmond, F., Keesstra, S., Saby, N. P. A., Smreczak, B., Froger, C., Suleymanov, A., and Chenu, C.: Four approaches to setting soil health targets and thresholds in agricultural soils, *J. Environ. Manage.*, 371, 123141, 10.1016/j.jenvman.2024.123141, 2024.
- 340 Metzger, M. J.: The Environmental Stratification of Europe [dataset], <https://doi.org/10.7488/ds/2356>, 2018.



- Metzger, M. J., Bunce, R. G. H., Jongman, R. H. G., Múcher, C. A., and Watkins, J. W.: A climatic stratification of the  
 345 environment of Europe, *Global Ecol. Biogeogr.*, 14, 549-563, 10.1111/j.1466-822X.2005.00190.x, 2005.
- Minasny, B. and McBratney, A. B.: Regression rules as a tool for predicting soil properties from infrared reflectance  
 spectroscopy, *Chemometr. Intell. Lab.*, 94, 72-79, <https://doi.org/10.1016/j.chemolab.2008.06.003>, 2008.
- Minasny, B., Bandai, T., Ghezzehei, T. A., Huang, Y.-C., Ma, Y., McBratney, A. B., Ng, W., Norouzi, S., Padarian, J.,  
 Rudiyanto, Sharififar, A., Styc, Q., and Widyastuti, M.: Soil Science-Informed Machine Learning, *Geoderma*, 452,  
 350 10.1016/j.geoderma.2024.117094, 2024.
- Nocita, M., Stevens, A., van Wesemael, B., Aitkenhead, M., Bachmann, M., Barthès, B., Ben Dor, E., Brown, D. J., Clairotte,  
 M., Csorba, A., Dardenne, P., Demattê, J. A. M., Genot, V., Guerrero, C., Knadel, M., Montanarella, L., Noon, C., Ramirez-  
 Lopez, L., Robertson, J., Sakai, H., Soriano-Disla, J. M., Shepherd, K. D., Stenberg, B., Towett, E. K., Vargas, R., and  
 Wetterlind, J.: Soil Spectroscopy: An Alternative to Wet Chemistry for Soil Monitoring, in, *Adv. Agron.*, 139-159,  
 355 10.1016/bs.agron.2015.02.002, 2015.
- Park, S., Jeon, S., Kwon, N.-H., Kwon, M., Shin, J.-H., Kim, W.-C., and Lee, J. G.: Application of near-infrared spectroscopy  
 to predict chemical properties in clay rich soil: A review, *Eur. J. Agron.*, 159, 10.1016/j.eja.2024.127228, 2024.
- Peng, Y., Ben-Dor, E., Biswas, A., Chabrilat, S., Demattê, J. A. M., Ge, Y., Gholizadeh, A., Gomez, C., Guerrero, C., Herrick,  
 J., Maynard, J. J., Mouazen, A. M., Ma, Y., McBratney, A. B., Minasny, B., Ramirez-Lopez, L., Robertson, A. H. J., Viscarra  
 360 Rossel, R. A., Shi, Z., Stenberg, B., Wadoux, A. M. J. C., Winowiecki, L. A., and Zhang, G.: Spectroscopic solutions for  
 generating new global soil information, *Innov.*, 6, 100839, <https://doi.org/10.1016/j.xinn.2025.100839>, 2025.
- Recena, R., Fernández-Cabanás, V. M., and Delgado, A.: Soil fertility assessment by Vis-NIR spectroscopy: Predicting soil  
 functioning rather than availability indices, *Geoderma*, 337, 368-374, <https://doi.org/10.1016/j.geoderma.2018.09.049>, 2019.
- Rinot, O., Levy, G. J., Steinberger, Y., Svoray, T., and Eshel, G.: Soil health assessment: A critical review of current  
 365 methodologies and a proposed new approach, *Sci. Total Environ.*, 648, 1484-1491, 10.1016/j.scitotenv.2018.08.259, 2019.
- Safanelli, J. L., Hengl, T., Parente, L. L., Minarik, R., Bloom, D. E., Todd-Brown, K., Gholizadeh, A., Mendes, W. S., and  
 Sanderman, J.: Open Soil Spectral Library (OSSL): Building reproducible soil calibration models through open development  
 and community engagement, *PLoS One*, 20, e0296545, 10.1371/journal.pone.0296545, 2025.
- Shen, R. F. and Teng, Y.: The frontier of soil science: Soil health, *Pedosphere*, 33, 6-7, 10.1016/j.pedsph.2022.06.007, 2023.
- 370 Soriano-Disla, J. M., Janik, L. J., Viscarra Rossel, R. A., Macdonald, L. M., and McLaughlin, M. J.: The Performance of  
 Visible, Near-, and Mid-Infrared Reflectance Spectroscopy for Prediction of Soil Physical, Chemical, and Biological  
 Properties, *Appl. Spectrosc. Rev.*, 49, 139-186, 10.1080/05704928.2013.811081, 2013.
- Stenberg, B., Viscarra Rossel, R. A., Mouazen, A. M., and Wetterlind, J.: Visible and Near Infrared Spectroscopy in Soil  
 Science, in, *Adv. Agron.*, 163-215, 10.1016/s0065-2113(10)07005-7, 2010.
- 375 Stevens, A. and Ramirez Lopez, L.: An introduction to the prospectr package [code], 2024.
- [Stevens, A. and Ramirez-Lopez, L.: An introduction to the prospectr package. R package Vignette R package version 0.2.8.,  
 2025.](#)

- Tatzber, M., Schlatter, N., Baumgarten, A., Dersch, G., Körner, R., Lehtinen, T., Unger, G., Mifek, E., and Spiegel, H.:  $\text{KMnO}_4$  determination of active carbon for laboratory routines: three long-term field experiments in Austria, *Soil Res.*, 53, 10.1071/sr14200, 2015.
- 380 Tavaroli, H., Correa, J., Sabetizade, M., and Vogel, S.: Predicting key soil properties from Vis-NIR spectra by applying dual-wavelength indices transformations and stacking machine learning approaches, *Soil Till. Res.*, 229, 105684, <https://doi.org/10.1016/j.still.2023.105684>, 2023.
- VDLUFA: Methodenbuch Band 1: Die Untersuchung von Böden, 1991.
- 385 Viscarra Rossel, R. A., Chappell, A., De Caritat, P., and McKenzie, N. J.: On the soil information content of visible–near infrared reflectance spectra, *Eur. J. Soil Sci.*, 62, 442–453, 10.1111/j.1365-2389.2011.01372.x, 2011.
- Viscarra Rossel, R. A., Walvoort, D. J. J., McBratney, A. B., Janik, L. J., and Skjemstad, J. O.: Visible, near infrared, mid infrared or combined diffuse reflectance spectroscopy for simultaneous assessment of various soil properties, *Geoderma*, 131, 59–75, 10.1016/j.geoderma.2005.03.007, 2006.
- 390 Viscarra Rossel, R. A., Behrens, T., Ben-Dor, E., Chabrilat, S., Demattê, J. A. M., Ge, Y., Gomez, C., Guerrero, C., Peng, Y., Ramirez-Lopez, L., Shi, Z., Stenberg, B., Webster, R., Winowiecki, L., and Shen, Z.: Diffuse reflectance spectroscopy for estimating soil properties: A technology for the 21st century, *Eur. J. Soil Sci.*, 73, e13271, <https://doi.org/10.1111/ejss.13271>, 2022.
- Viscarra Rossel, R. A., Behrens, T., Ben-Dor, E., Brown, D. J., Demattê, J. A. M., Shepherd, K. D., Shi, Z., Stenberg, B., Stevens, A., Adamchuk, V., Aichi, H., Barthès, B. G., Bartholomeus, H. M., Bayer, A. D., Bernoux, M., Böttcher, K., Brodský, L., Du, C. W., Chappell, A., Fouad, Y., Genot, V., Gomez, C., Grunwald, S., Gubler, A., Guerrero, C., Hedley, C. B., Knadel, M., Morrás, H. J. M., Nocita, M., Ramirez-Lopez, L., Roudier, P., Campos, E. M. R., Sanborn, P., Sellitto, V. M., Sudduth, K. A., Rawlins, B. G., Walter, C., Winowiecki, L. A., Hong, S. Y., and Ji, W.: A global spectral library to characterize the world's soil, *Earth-Sci. Rev.*, 155, 198–230, 10.1016/j.earscirev.2016.01.012, 2016.
- 395 Wade, J., Culman, S. W., Gasch, C. K., Lazcano, C., Maltais-Landry, G., Margenot, A. J., Martin, T. K., Potter, T. S., Roper, W. R., Ruark, M. D., Sprunger, C. D., and Wallenstein, M. D.: Rigorous, empirical, and quantitative: a proposed pipeline for soil health assessments, *Soil Biol. Biochem.*, 170, 10.1016/j.soilbio.2022.108710, 2022.
- 400