

Mapping and spatial distribution of relict charcoal hearths across Poland

Michał Słowiński^{1*}, Agnieszka Halaś¹, Michał A. Niedzielski², Krzysztof Szewczyk¹, Jerzy Jonczak³, Dominika Łuców¹, Sebastian Tyszkowski⁴, Sandra Słowińska⁵, Agnieszka Gruszczyńska¹, Bogusława Kruczkowska³, Aleksandra Chojnacka⁶, Tomasz Polkowski¹, Krzysztof Sztabkowski⁷, Dariusz Brykała⁸, Jacek Wolski⁹, Tomasz Samojlik¹⁰, Adrian Kaszkiel⁵, Barbara Gmińska-Nowak⁸, Mateusz Kramkowski⁴, Tomasz Związek⁸

¹ Department of Past Landscape Dynamics, Institute of Geography and Spatial Organization, Polish Academy of Sciences, Warszawa, 00-818, Poland

² Department of Urban and Population Studies, Institute of Geography and Spatial Organization, Polish Academy of Sciences, Warszawa, 00-818, Poland

³ Department of Soil Science, Institute of Agriculture, Warsaw University of Life Sciences, Warszawa, 02-787, Poland

⁴ Department of Environmental Resources and Geohazards, Institute of Geography and Spatial Organization, Polish Academy of Sciences, Toruń, 87-100, Poland

⁵ Climate Research Department, Institute of Geography and Spatial Organization, Polish Academy of Sciences, Warszawa, 00-818, Poland

⁶ Department of Biochemistry and Microbiology, Institute of Biology, University of Life Sciences, Warszawa, 02-787, Poland

⁷ Laboratory of Natural Environment Chemistry, Forest Research Institute, Braci Leśnej 3, Sękocin Stary, 05-090, Poland

⁸ Laboratory for Interdisciplinary Research into the Anthropocene, Institute of Geography and Spatial Organization, Polish Academy of Sciences, Toruń, 87-100, Poland

⁹ Department of Geoecology, Institute of Geography and Spatial Organization, Polish Academy of Sciences, Warszawa, 00-818, Poland

¹⁰ Mammal Research Institute, Polish Academy of Sciences, Białowieża, 17-230, Poland

Correspondence to: Michał Słowiński (michal.slowinski@geopan.torun.pl)

Abstract. This study presents the first national-scale spatial inventory of relict charcoal hearths (RCHs) in Poland, based on high-resolution LiDAR data and digital terrain analysis. Using a combination of manual interpretation, GIS-based feature extraction, and K-prototypes clustering, we identified and classified 634,815 RCHs across forested regions of the country. Each feature was georeferenced and categorized by size, morphological characteristics, slope position, and environmental context, including current and potential vegetation and soil types. Spatial analyses revealed significant regional differences in hearth density, with the highest concentrations found in western and south-central Poland, particularly in the Lower Silesian, Stobrawa, and Świętokrzyskie forests. Cluster analysis distinguished three major types of RCHs, differing in their environmental settings and spatial organization: (1) lowland pine-dominated clusters on gentle terrain, (2) isolated features on steep slopes in mixed forests, and (3) high-density hearth groups in elevated areas. Although large portions of the country appear devoid of RCHs, we argue that this reflects limitations in preservation and detection – due to long-term agricultural activity in lowlands and erosion in mountainous areas – rather than an actual absence of charcoal production. The resulting ReCHAR database offers a unique, open-access tool for interdisciplinary research on forest history, human-environment interactions, and early industrial landscapes. Its modular design supports further expansion, including links to historical settlements and industries reliant on charcoal, such as metallurgy, glassmaking, and tar or potash production.

1. Introduction

In the preindustrial era, forests and their resources were crucial to the economic development of European countries (Słowiński et al., 2024; Przybylski et al., 2025; Ellis, 2021). Initially, the primary demand was for wood as a construction material; however, over time, the focus shifted to other forest products such as potash, tar, pitch, and especially charcoal. These pyrolysis products found wide-ranging applications in daily life and various industries. Charcoal, due to its high energy value, served as a primary source in metal smelting and glass production. Potash was essential for fabric bleaching, producing glass and gunpowder; moreover, it served as a cleaning agent or even medicine (Ciceri et al., 2015; White, 1859). Wood tar was used as a wood preservative, adhesive, grease and medicine (birch tar) (Ebert, 2024). The techniques for producing these pyrolysis products evolved significantly over time. Early charcoal production methods were relatively inefficient, carried out in small pits measuring from one to five meters in diameter and from one to two meters in depth. These pits were primarily filled with branches and roots before being covered with earth and mulch (Groenewoudt, 2005; Klein and Bauch, 1983). This method represents one of the earliest known forms of charcoal extraction worldwide. Such features can be traced back to Roman times in Europe. For example, in modern-day Germany, remains dating to the third century AD have been discovered (Codreanu-Windauer, 2019). In Western Europe, from the late 10th to the early 11th centuries, these

pits were increasingly replaced by elevated constructions known as charcoal hearths. Charcoal hearths varied significantly in size and construction (Raab et al., 2015b; Oliveira et al., 2021; Witharana et al., 2018). They were essentially stacked piles of wood, ranging in diameter from a few meters to over 20 m (Raab et al., 2015a; 65 Groenewoudt and Spek, 2016), covered with topsoil, turf, and forest litter from the surrounding area (Paschalis, 1973; Samojlik et al., 2013b; Rutkiewicz et al., 2019; Bielenin, 1959). These hearths were often encircled by a ditch or embankment approximately 40 cm in height or depth (Hirsch et al., 2020). The morphological characteristics of charcoal hearths – such as their size, shape, and function – often depended on the region, terrain, and period in which they were built (Hirsch et al., 2020). For example, hearths used for tar production were typically 70 found in forests dominated by pine and included small peripheral depressions for collecting tar in special bowls (Cembrzyński, 2014). Hearths constructed on slopes were generally smaller, averaging from eight to ten meters in diameter, and were built on artificial mounds often reused in subsequent burning cycles (Hirsch et al., 2018). The main advantage of charcoal is its ability to reach high combustion temperatures – from 900 to as much as 2000°C (Smil, 2017). Additionally, it burns almost smoke free and has an energy value 50% higher than that of air-dried 75 wood. It contains minimal moisture and is practically free of sulfur and phosphorus (Smil, 2017). Until the mid-19th century, charcoal remained the only widely available fuel in Europe capable of reaching the temperatures required to melt iron ore (Cleere et al., 1985). In the latter half of the 19th century, it was gradually replaced by more energy efficient fuels such as coal coke, hard coal, oil, and natural gas (Cembrzyński, 2014).

A single charcoal hearth could consume 48–100 m³ of wood (Marszałek and Kusiak, 2013). This resource 80 hungry way of manufacturing charcoal and other pyrolysis products have had a direct impact on the environment (Hensel et al., 1978). The most immediate effect was deforestation. Increasing demand for products like potash, steel, and glass led to large scale forest depletion (Hensel et al., 1978). Massive deforestation occurred at the turn of the 18th and 19th centuries, in what is now Poland, transformed the landscape dramatically (Hensel et al., 1978). Forest cover in the Kingdom of Poland was around 30% at the beginning of the 19th century, but by 1909, it had 85 decreased to 18.7%. Afterwards, deforested areas fell under the modern forestry management, with large areas reforested with pine or spruce monocultures, shifting the forest composition from deciduous to coniferous (Słowiński et al., 2019; Przybylski et al., 2025; Słowiński et al., 2024; Związek et al., 2023). At the same time, wetlands were drained, and former wastelands and forests were converted to farmland (Blackbourn, 2006; Surowiecki, 1811).

90 Charcoal production in hearths influenced soils both directly and indirectly. The direct impact involved thermal alteration (300–600°C) of soil beneath hearths during pyrolysis, leading to changes in mineral composition and loss of organic matter (Hirsch et al., 2018). These soils are rich in charcoal and often facilitate the reduction of

iron oxides to metallic iron. Typically classified as Technosols (WRB, 2022), they exhibit distinct physical and chemical properties resulting from pyrolysis byproducts (Hirsch et al., 2018; Schneider et al., 2022; Schneider et al., 2019; Jonczak et al., 2024). Indirect effects stemmed from deforestation in charcoal production areas, which enhanced surface runoff, erosion, and reduced soil moisture retention. This increased vulnerability to degradation and desertification (Pierik et al., 2018; Groenewoudt & Spek, 2016; Jonczak et al., 2024). On slopes, deforestation accelerated denudation and aeolian activity, hindering forest regeneration and plant growth (Groenewoudt & Spek, 2016). A further indirect and potentially long-lasting effect is visible in vegetation patterns. Elevated nitrogen levels under hearths, likely due to charcoal uptake, can influence plant community composition (Hirsch et al., 2017; Hardy et al., 2017). Additionally, trees growing in such soils often exhibit reduced vigour and lower timber quality (Buras et al., 2020; Hirsch et al., 2018; Buras et al., 2015).

Until recently, charcoal hearth remnants were usually encountered by chance during forestry or soil science work (Ludemann, 2012), or, in the best case, during field surveys (Samojlik et al., 2013a; Samojlik et al., 2013b). These structures appear as circular mounds or groups of mounds, often several meters in diameter across, consisting of soil mixed with charcoal particles or charcoal dust, covered with organic debris and recent sediments. Their detection has been greatly facilitated by Airborne Laser Scanning (ALS) and LiDAR (Light Detection and Ranging) technology and GIS based analysis (Suh et al., 2021; Suh et al., 2023). Such studies have been conducted in Germany (Raab et al., 2015a; Hirsch et al., 2017), USA (Suh et al., 2023; Der Vaart et al., 2022; Bonhage et al., 2023), Sweden (Davis and Lundin, 2021), France (Dupin et al., 2017), Italy (Garbarino et al., 2022), and Poland (Samojlik et al., 2013b; Rutkiewicz et al., 2019; Jonczak et al., 2024; Słowiński et al., 2022). Importantly, LiDAR allowed researchers to identify features beneath forest canopies and in areas previously inaccessible for field surveys. Previous studies have shown that hearths were rather preserved in less fertile soils, unsuitable for agriculture (Mikulski, 1994), than in areas with active cultivation. Importantly, this pattern reflects not only differential preservation under modern land use, but also the original placement of many RCHs in marginal landscapes with less productive soils, where forest use was favored over crop production. Due to that, many hearths were most likely destroyed by continuous farming practices like deep ploughing. Evidence for hearths in agricultural lands exists mainly in specific areas, such as in the Netherlands (Hardy et al., 2017).

Turning point in the research

Up to this point, research on charcoal hearths in Poland has primarily focused on individual sites or small groups of sites (Waga et al., 2022; Kałagate et al., 2012; Lasota et al., 2021; Samojlik et al., 2013b; Rutkiewicz et al., 2021). As a result, relatively little is known about their total number and spatial distribution on a much larger scale (e.g. the whole country), or the environmental conditions in which they occur. Given that the number and density

of such features can have important environmental implications, it is essential to maintain an open-access database containing their locations and basic attributes. The main objective of this study is therefore to develop a comprehensive database detailing the location, size, density, and environmental context of relict charcoal hearths (RCHs) in Poland (Słowiński et al., 2025). In addition, the research aims to identify regional differences in charcoal production practices, with a focus on morphological characteristics, site location, and key environmental variables such as slope and proximity to water. Although the number of identified charcoal hearths offers great scientific potential, meaningful analysis would not be possible without first constructing a basic database. Such a database serves as a fundamental resource for broader regional considerations such as the historical functioning of forest ecosystems as well as more local topics, such as site specific degradation and disturbance processes. To achieve this, we analyzed a region in northern Poland covering 186,905.7 km², which includes 60,107.9 km² of forested land. This effort led to the creation of the first nationwide database documenting RCH in Poland. The mapped sites were subsequently analyzed using geostatistical methods, linking the density and spatial distribution of RCHs to environmental conditions and potential vegetation. This newly developed database facilitates the investigation of regional variability in charcoal production techniques. Until now, it remained unclear whether distinct types of charcoal hearths existed, and to what extent production methods varied either regionally or as a function of hearth morphology. To address this knowledge gap, we applied clustering techniques to classify charcoal hearths based on both morphological and environmental parameters.

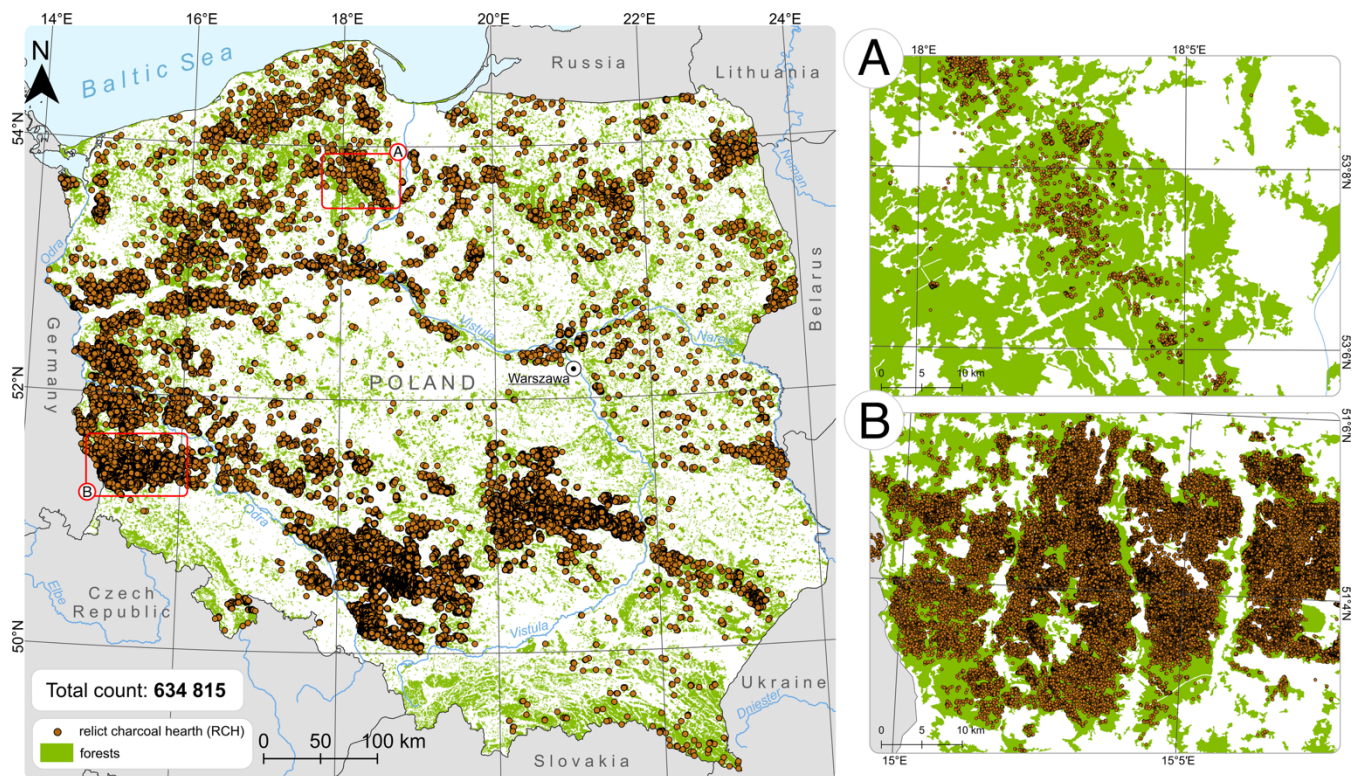
2. Data and methods

2.1. Study site

This study covers forested areas across the entire territory of Poland (Fig. 1). Outside forests particularly in farmland and other intensively transformed landscapes the detectability of charcoal hearth microrelief in ALS-derived Digital Terrain Model (DTMs) is very low and in many cases not feasible. Agricultural operations (ploughing, levelling, drainage, earthworks) and subsequent construction repeatedly disturb or obliterate these small relief features; therefore, our mapping was restricted to contemporary forests where such features are most likely to be preserved. As of 2023, forests in Poland covered approximately 9.3 million hectares, which corresponds to 29.6% of the country's land area (Forest Data Bank: <https://www.bdl.lasy.gov.pl/portal/>). Forest cover has increased significantly over the past century, rising from 21% in 1945 to nearly 30% today (Broda, 2000). This expansion has been largely driven by afforestation initiatives on former agricultural lands, particularly in lowland and central regions. The vast majority of forests in Poland are publicly owned. In 2021, public forests accounted for 80.7% of all forested land, with 76.9% managed by the State Forests National "Forest Holding" (Pol. *Państwowe Gospodarstwo Leśne "Lasy Państwowe"*). Forest composition is dominated by Scots pine (*Pinus*

155 *sylvestris*), which represents approximately 58.5% of all stands. These pine dominated monocultures, often established on poor sandy soils or reclaimed farmland, define much of the lowland forest landscape. Other tree species include birch (*Betula* spp.), oak (*Quercus* spp.), and beech (*Fagus sylvatica*), with spruce (*Picea abies*) and fir (*Abies alba*) commonly found in the mountainous regions (Matuszkiewicz, 1999).

Poland's geomorphology is the result of a complex history of glacial and tectonic processes. The northern and central lowlands were formed through a succession of Pleistocene glaciations particularly the Vistulian (Weichselian), Wartan, and older Odra and Sanian phases (Marks, 2005; Marks, 2002). These events left behind a wide range of glacial landforms including moraines, eskers, sandurs (outwash plains), and kettle lakes. In contrast, the southern part of the country is defined by tectonic uplift and erosion processes associated with the Sudetes and Carpathian Mountain ranges, leading to a more rugged and elevated landscape (Solon et al., 2018). The diversity of soils across Poland reflects this geomorphological variability. In the lowlands, particularly in the north and center, sandy and acidic soils are predominant. These include Arenosols (mainly Brunic Arenosols) and Podzols—soils typical for coniferous stands on fluvio-glacial, glacial and aeolian sandy substrates (e.g. Jankowski et al., 2011; Kabała et al., 2021). In upland and mountainous regions, Cambisols (brown earths) are widespread, developed from loess, weathered rocks, or glacial tills, often supporting mixed or deciduous forests (Gałka et al., 2013; Kacprzak and Derkowski, 2007). Rendzinas, shallow calcareous soils developed from limestone and marl, are found in smaller patches, particularly in southern uplands, and support unique plant communities (Lasota et al., 2018; Miechówka and Drewnik, 2018). Climatically, Poland lies within the humid continental zone (Dfb according to the Köppen classification), characterized by cold winters and warm summers. The average annual temperature ranges from 7°C to 9°C (Kottek et al., 2006). Annual precipitation is regionally differentiated, ranging from about 500 mm in the central lowlands to over 1,200 mm in mountainous regions (Institute of Meteorology and Water Management - National Research Institute). This combination of historical land use, ownership structure, glacial and tectonic legacy, and environmental heterogeneity provides a complex yet coherent context for analyzing the distribution of relict charcoal hearths (RCHs) across Polish forest landscapes.



180 **Figure 1.** Location of the study area within Poland with all identified relict charcoal hearths (RCHs). The figure includes zoomed-in illustrations showing forest cover based on CORINE Land Cover 2018 (European Environmental Agency). Panels (A) and (B) present contrasting densities of RCH distribution across forested regions of Poland.

2.2. Data collection

185 To identify and map all relict charcoal hearths (RCHs), we processed a DTM derived from light detection and ranging (LiDAR) data in QGIS 3.18. The DTM was inspected using relief-shaded visualizations (single- and multi-azimuth hillshade and slope shading) generated directly in QGIS. For a consistent and reproducible cartographic backdrop, we also consumed a public web map tile service (WMTS) provided by the national geoportal (<https://www.geoportal.gov.pl>) under its full name “The viewing of shaded relief for a digital terrain model”
190 (Geoportal, 2025).

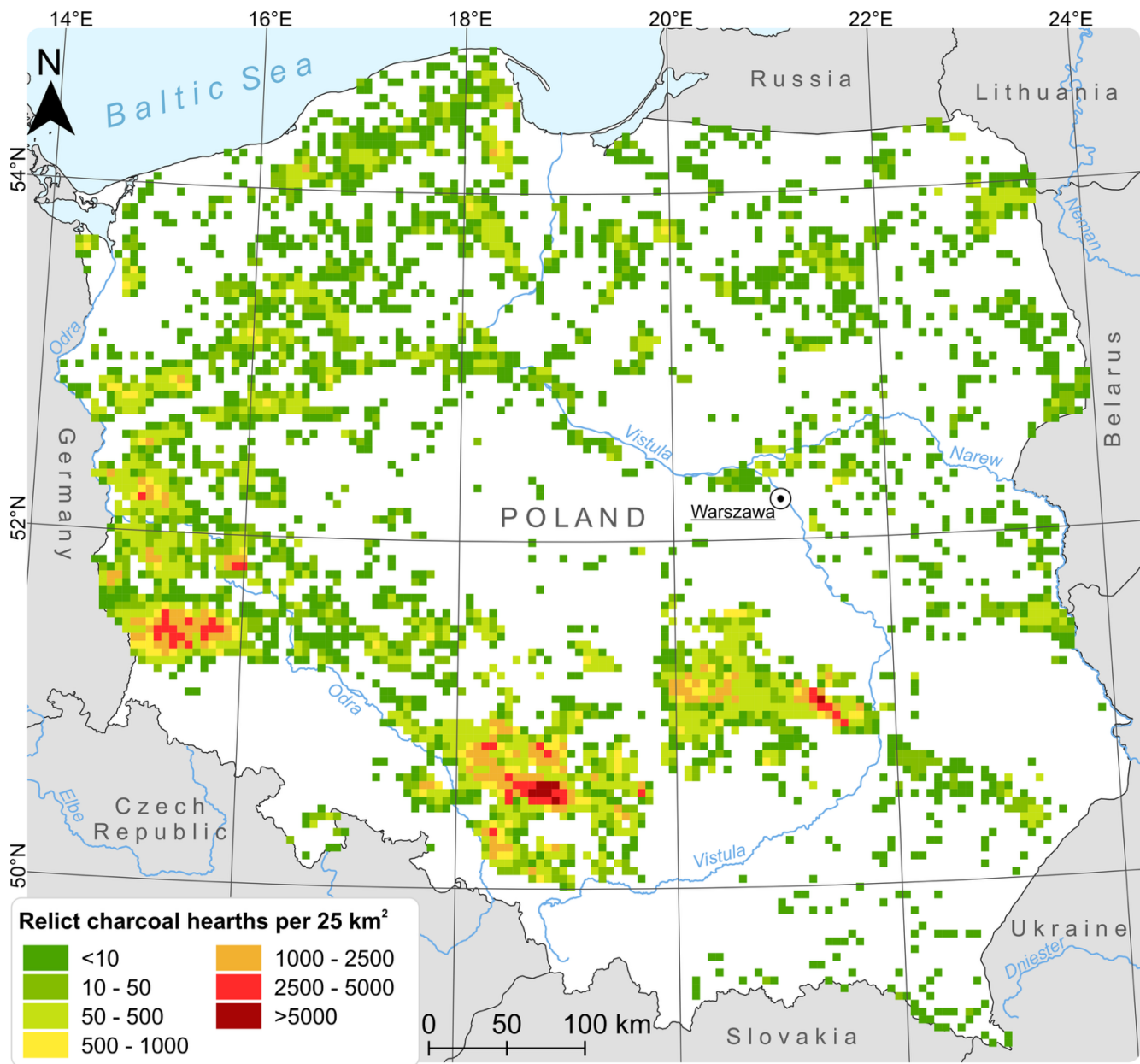
A transparent grid with a resolution of 500×500 meters was superimposed across the entire forested area (Fig. 2). This ensured comprehensive spatial coverage and minimized the risk of omissions during the manual interpretation of features. Charcoal hearths were visually recognized by their circular morphology and often occurred in dense clusters sometimes comprising several hundred objects within a single grid square.

195 Two primary morphological types were identified. The first type, commonly located on flat terrain, typically exceeded 15 meters in diameter and was often surrounded by a visible ditch. The second type was constructed on specially prepared platforms on slopes; these hearths were generally smaller (under 10 meters in diameter), lacked surrounding ditches, and appeared less prominently on LiDAR-derived surfaces. For analytical purposes, charcoal hearths were classified according to: (1) Size — small (<10 m), medium (10–15 m), and large (>15 m); (2) Surface
200 context and function — based on both topography and evidence of extracted material. Three categories were distinguished: (A) Hearths located on flat terrain; (B) Hearths on flat terrain associated with tar extraction, often identifiable by peripheral ditches several centimeters wide and deep; (C) Hearths located on slopes (Fig. 3). Charcoal hearths were exclusively identified within forested areas (Słowiński et al., 2025). In agricultural landscapes, these features have likely been destroyed due to soil disturbance caused by deep ploughing and other
205 farming practices (Hardy et al., 2017). To verify the reliability of the identification process, a random sample of 50 grid squares was reviewed manually.

Each relict charcoal hearth (RCH) was assigned a set of attributes to support further analysis. These included, in addition to the previously mentioned size, current land cover based on CORINE Land Cover 2018, level 3 (European Environment Agency, 2020), potential natural vegetation (Matuszkiewicz and Wolski, 2023), altitude
210 and slope derived from the Digital Elevation Model (DEM), (European Space Agency, 2000), as well as distances to the nearest other RCH and the nearest water body. Only rivers and lakes were considered in the latter, based on the Hydrographic Map of Poland (MPHP). Soil type information was obtained from two sources: the Forest Data Bank, following the Polish Soil Classification (Kabała et al., 2019), and the European Soil Database, based on the World Reference Base for Soil Resources (WRB) and FAO85 classification systems (Panagos, 2006; Liedekerke
215 et al., 2006). Additionally, information on contemporary forest ecosystems was also derived from the Forest Data Bank.

To assign environmental characteristics to each relict charcoal hearth (RCH), spatial joins were performed in QGIS 3.16.2 using the Join attributes by location (summary) tool. The point layer representing RCHs was used as the target layer, and relevant polygon layers (e.g., land cover, soil type, and potential natural vegetation) served as join
220 layers. The spatial relationship intersects was applied to associate each point with the polygon within which it was located. In cases where a point fell within multiple overlapping polygons, the first matching record was selected. If a point did not fall within the extent of a given polygon layer, a placeholder value of 9999 was assigned to the corresponding attribute. The resulting output layer included the original RCH attributes along with the relevant information extracted from the polygon layers.

- 225 To calculate the distance to the nearest neighboring RCH, the Distance to nearest hub (points) tool was used. The RCH layer was applied as both the source and destination layer, with a unique identifier field specified to distinguish individual points. The option to exclude each source point from its own candidate list was enabled to avoid self-matching. The output provided the Euclidean distance from each RCH to its nearest neighboring RCH, measured in meters.
- 230 Additionally, to determine the distance from each RCH to the nearest water body – including both rivers (line features) and lakes (polygon features) – the Distance to nearest hub (points) tool was again applied. The RCH layer was set as the source, and the vector version of the MPHP served as the destination layer. The tool calculated the shortest Euclidean distance from each point to the closest hydrographic feature, measured in meters.



235 **Figure 2.** Map of the spatial density of relict charcoal hearths across forested areas of Poland

2.3. Clustering

There are two main categories of clustering techniques: hierarchical and partitioning. The hierarchical approach creates clusters by iteratively grouping clusters with similar values, using a distance tolerance. In this method, each observation initially forms its cluster, and the number of final clusters is not predetermined. On the other hand, the

240

partitioning approach iteratively reassigns observations to clusters based on a distance tolerance, starting with initial, randomly placed cluster centroids. In this method, the number of clusters is predefined. Typically, the partitioning approach is tested across a range of cluster values, and several statistics are used to determine the optimal number of clusters for further analysis. Choosing between these techniques is largely a matter of choice preference; however, the partitioning approach is generally less computationally demanding and more efficient for handling large data sets (Rokach and Maimon, 2005). In both cases, a decision regarding the number of clusters is required—either when to stop in the hierarchical case or what initial number to set in the partitioning case. Given the large number of observations under consideration, as discussed below, the partitioning approach has been chosen to define charcoal hearth clusters. The selection of a specific partitioning algorithm is discussed in a subsequent section.

Clustering is carried out using six categorical (hearth diameter, land cover, potential vegetation, soil type, forest site type, tree species) and four numerical (distance to other charcoal hearths, distance to water, altitude, slope) morphological and environmental variables. Importantly, geographical coordinates are not used as input in the clustering analysis. To account for different measurement scales, the numerical variables are standardized using z-scores. Given the heterogeneous data types, the K-prototypes partitioning algorithm is employed (Huang, 1998; Rokach and Maimon, 2005). This algorithm combines the features of the K-means algorithm, which is designed for numerical variables, and the K-modes algorithm, which is geared toward categorical variables. The K-prototypes approach calculates two separate dissimilarity measures: one aims to minimize the sum of squared Euclidean distances between numerical values and their corresponding cluster means, while the other seeks to minimize the number of mismatches between categorical values and their respective cluster modes. Each mismatch increments the distance score by one. The overall dissimilarity measure is then obtained as a weighted sum of these K-means and K-modes dissimilarity scores. Clustering was conducted over a range of clusters, specifically from 2 to 8, using the k-modes package in Python.

3. Results

3.1. Characteristics of charcoal hearths

In the analyzed area, a total of 634,815 relict charcoal hearths (RCHs) were identified and mapped (Fig. 2). However, these features are preserved only in certain forested regions, typically those with limited anthropogenic disturbance. In other areas, traces of similar hearths have likely been lost due to erosion caused by agricultural activity, construction, or modern forestry practices. Three distinct types of charcoal hearths were identified: Type A, Type B, and Type C (Fig. 3, S1).

Types A and B are morphologically similar. Both present as convex, circular mounds rising up to 30 cm above ground level, with diameters ranging mostly between 5 and 20 meters. Each form is typically encircled by a shallow ditch, reaching depths of up to 40 cm. Charcoal fragments-sometimes exceeding 10 cm in size-are generally found a few centimetres below the surface. The key distinction between Type A and Type B hearths lies in the presence
275 of peripheral depressions.

Type B hearths exhibit 3 to 6 depressions, each several tens of centimetres in diameter, located near the surrounding ditch. These depressions were used for tar collection; ceramic or metal bowls (Fokt, 2012) were placed in them to gather tar, which would flow out during the pyrolysis of resin-rich wood, typically coniferous species such as *Pinus* spp.

280 Type C hearths differ in both size and location. They are smaller (typically 8–12 meters in diameter) and were built on specially constructed platforms on slopes to ensure a level combustion surface. In the study area, Type C hearths were recorded only in the northern region—in the Kartuski Forest—on moraine hills overlooking the Bay of Gdańsk (west of Gdańsk and Puck), within predominantly beech (*Fagus sylvatica*) forests. Uniquely, these are the only hearths documented in the field where hardwoods, rather than pines, were used. Due to slope erosion, charcoal
285 remnants from these hearths often lie directly on or just beneath the soil surface.

3.2. Mapping and spatial distribution of charcoal hearths

3.2.1. Size of charcoal hearths and their location (slope)

Across the study area, researchers identified and examined 634,815 relict charcoal hearths. The majority of RCHs were classified as medium-sized (10–15 m in diameter), representing 54.2% of the total. Small hearths (<10 m)
290 accounted for 35.3%, while large hearths (>15 m) made up 10.5%. Most hearths were located on gently sloping terrain, with frequency decreasing as slope increases. Specifically, 12.4% of hearths were found on slopes <1°, 43.9% on 1°, 23.4% on 2°, 10.8% on 3°, 4.9% on 4°, 2.3% on 5°, 1.1% on 6°, 0.5% on 7°, and 0.3% on 8°. Only 0.4% occurred on terrain with slopes between 8° and 58°, and just 46 hearths (0.007%) were located on slopes exceeding 20°.

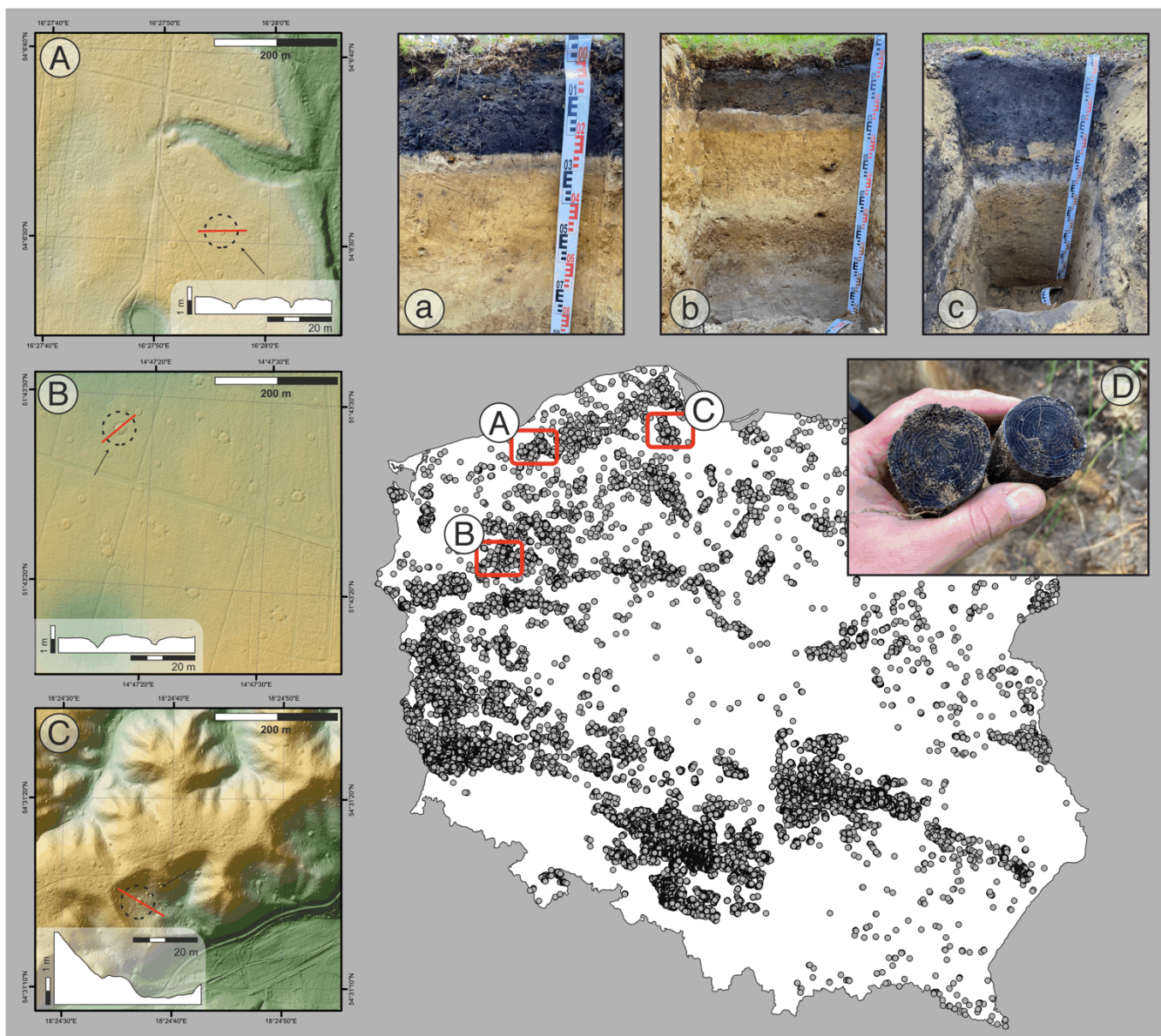
3.2.2. Charcoal hearths and their location in relation to potential and actual vegetation

Charcoal hearths were predominantly located in contemporary forest ecosystems dominated by Scots pine, which accounts for 84.8% of the forest stands where these features occur. Other common tree species include birch (*Betula* spp., 3.2%), oak (*Quercus* spp., 1.9%), and beech (*Fagus sylvatica*, 1.5%). Spruce, larch, and fir are less common, each representing 0.4% of the total. Based on current land cover, 80.3% of charcoal hearths are found in coniferous
300 forests, 9.7% in mixed forests, 5.6% in transitional woodland-shrub vegetation, 3.6% in broad-leaved forests, 0.4% in natural grasslands, approximately 0.1% in pastures, and remaining 0.2% in other land cover classes. Overlaying

hearth locations with the map of potential natural vegetation (Matuszkiewicz et al., 1995; Matuszkiewicz, 2008; Matuszkiewicz and Wolski, 2023) revealed considerable variation in historical forest types. The majority of hearths—41.2% (261,550)—occur in areas originally classified as suboceanic Middle-European pine forest. Other significant types include continental oak-pine mixed forest (26.4%; 167,465 hearths), acidophilous oak forest (11.9%; 75,310), and subcontinental colline lime-oak-hornbeam forest (4.1%; 26,329). Additional forest types are represented in smaller proportions, including lowland alder and ash-alder forest (3.5%), Sarmatian oak and pine-oak forest (3.5%), acidophilous beech-oak forest (1.5%), and lowland acidophilous beech forest (1.2%). Other units include submontane fir forests, alder fen forests, forb-rich beech forests, swamp pine forests, and various regional oak-hornbeam communities. In 0.2% (1,654) of the mapped hearths, the potential vegetation type could not be determined due to incomplete or unavailable data.

3.2.3.Charcoal hearths and soil types

Charcoal hearths were found on nine distinct soil types. The largest shares were located on Brunic Arenosols (Protospodic), accounting for 29.7% of all features, followed by Albic Podzols at 22.9%. Other soil classes included Brunic Arenosols (12.6%), Gleyic Albic Podzols (8.6%), Brunic Arenosols II (5.8%), Podzolic soils (2.4%), Umbric Podzols (1.7%), Gleysols (1.5%), and Dystric Cambisols (1.2%). In 6.2% of the cases, the soil type could not be determined due to insufficient or missing data.



320 **Figure 3.** Map of Poland with all identified Relict Charcoal Hearths with a schematic cross-section of three typical
 325 hearth configurations: (A) hearth located on flat terrain with visible hollows used for tar collection, (B) hearth built
 on a gentle slope without tar-extraction features, and (C) hearth situated on a steep incline, reflecting adaptation to
 challenging topographic conditions. Soil profiles (a), (b), and (c) correspond to field-recorded sections for each
 hearth type. Picture (D) shows macroscopic charcoal fragments preserved in the soil profile.

3.2.4. Density of charcoal hearths

The spatial distribution of charcoal hearths across the study area shows considerable variation in density (Fig. 2, S2). Local densities range from as low as 1 to as high as 9,230 hearths per 25 km², with an average of approximately 181 hearths per 25 km². In northern and northeastern Poland, densities generally remain below 50 hearths per 25 km², with only isolated hotspots reaching between 500 and 2,500 hearths per 25 km². In contrast, higher densities were observed in the western and southwestern regions of the study area. The highest concentrations of charcoal hearths were recorded in the Lower Silesian Forests (Bory Dolnośląskie), Stobrawa Forests (Bory Stobrawskie), and the Świętokrzyskie Forest (Puszcza Świętokrzyska). In these areas, local densities often exceeded 2,500 hearths per 25 km² and, in some locations surpassed 5,000. Additionally, we mapped and reported charcoal-hearth density using a finer 1 × 1 km grid, hearths per km² (S1).

3.2.5. Validation and limitations in the detectability of charcoal hearths

The spatial distribution of RCHs across Poland reveals several regions with no detected features, forming so-called “blank zones” in the dataset. Crucially, such absences should not be interpreted as evidence of no historical charcoal production, but as a consequence of preservation state and the detection limits of bare-earth, LiDAR-derived DTMs. In many places the characteristic rim-and-plateau microrelief has been degraded below our operational relief threshold (~0.15 m), precluding reliable detection particularly in long-term agricultural lowlands, where repeated ploughing, levelling, drainage and soil homogenization obliterate or mask these small forms, and in steep mountain settings, where erosion, colluviation and other mass wasting processes displace or bury remains beyond the reach of surface based remote sensing. To minimize false positives, we required a conservative morphological signature: round shape, flat top with a subtle peripheral rim, diameter 6–25 m and detectable local-relief amplitude in the bare-earth DTM. Features that did not meet the mandatory shape + flat-top criteria, or modern earthworks, were flagged as ambiguous and excluded from the analysis. This interpretation is supported by archival and historical sources documenting charcoal-related activity in regions where no RCHs are currently visible in the DTM data. Notable examples include the Mazovia region, the Bieszczady Mountains, the Karkonosze, the Izera Mountains, and other parts of the Sudetes, where charcoal production was historically linked to glassworks, iron smelting, tar distillation, and potash manufacture all industries reliant on large quantities of wood and charcoal (Słowiński et al., 2024). Although systematic country-wide field validation is infeasible, we conducted targeted checks during multiple field campaigns across different regions [n=9]: at accessible mounds we verified the flat-topped geometry and exposed charcoal-rich layers in shallow test pits and hand auger cores. To date, all [n=7] visited DTM-identified features [n>250] have been confirmed as RCHs in the field.”

3.2.6.Cluster analysis

After running the k-prototypes algorithm for 2 to 8 clusters, diagnostic tools suggested that a three-cluster solution would be most appropriate. Although the scree plot—representing the sum of the combined distances from all points to their respective cluster centroids (cost)—for varying numbers of clusters showed a close to linear decline in cost and thus did not show an obvious “elbow” where additional clusters barely change the cost which would indicate the optimal number of clusters (Fig. 4). The largest elbow occurs at a five cluster solution, with the second largest elbow at a three cluster solution. However, both the silhouette statistics and visual inspections of maps indicated that a three-cluster solution would be optimal. The silhouette coefficient compares the mean intracluster and the mean nearest-cluster distance. Higher values indicate denser and better-separated clusters. Silhouette values (Fig. 4) for two and three clusters were nearly identical; however, a three-cluster solution was preferred because one of the clusters in the three-cluster solution, with only 338 hearths, appears in all cluster solutions except two clusters, which clearly is distinctive and important. Furthermore, a three cluster solution has a positive value indicating better clustering while a five cluster solution has a negative value indicating poor separation of clusters. This three-cluster preference is further corroborated by a visual inspection of cluster maps (a map of a three-cluster only solution is presented below for brevity). Starting from a four-cluster solution, each new cluster merely becomes a spatial subset of one of the two large clusters evident in the three-cluster solution. For example, the third cluster in a three-cluster solution is divided into two clusters in a four-cluster solution, and the first cluster in the three and four-cluster solutions is divided into two clusters in the five-cluster solution. In other words, spatial intermixing of clusters never occurs as the number of clusters increases.

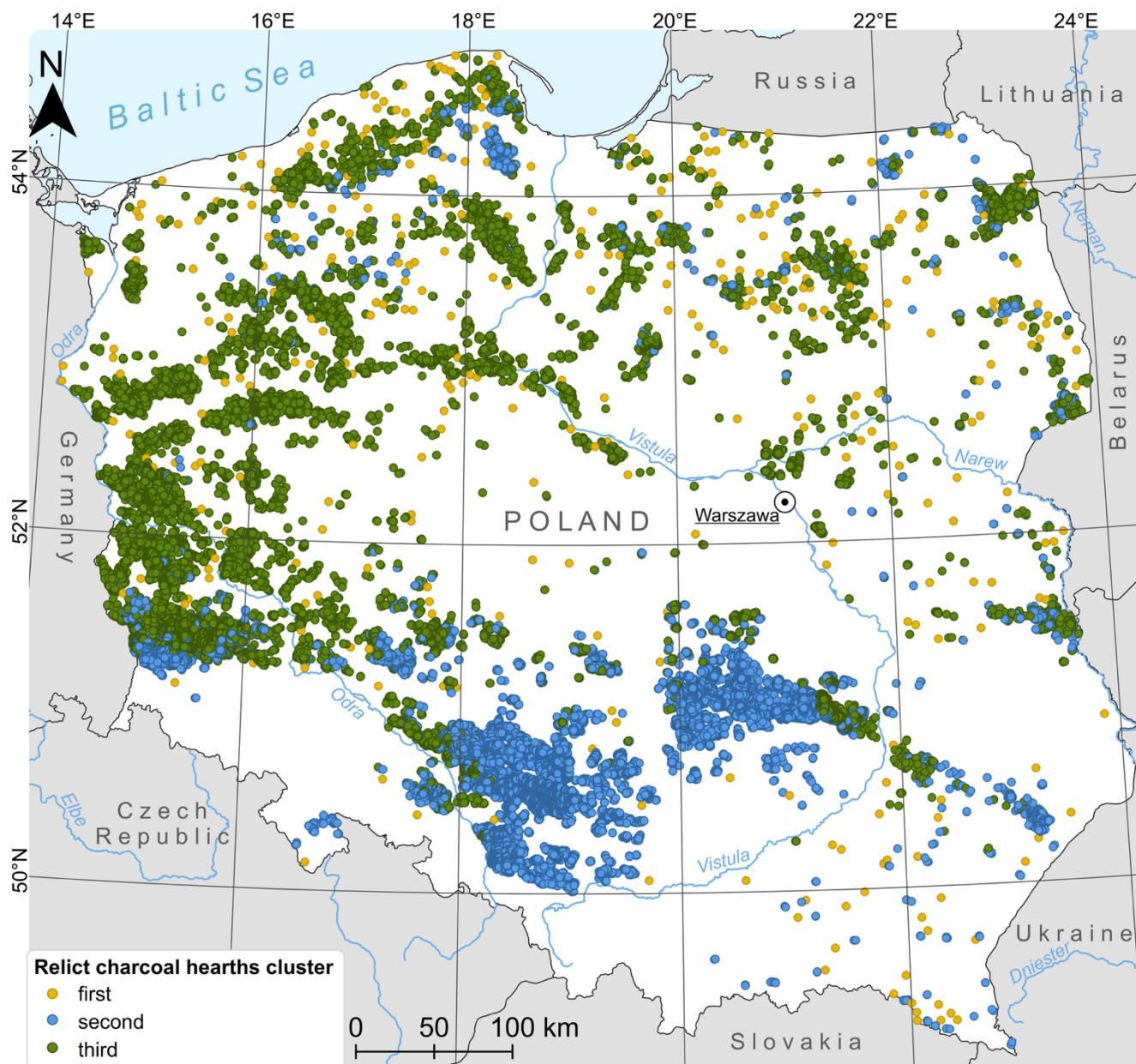


Figure 4. Spatial distribution of three identified types of charcoal hearth clusters across Poland

Additional support for a three-cluster solution comes from an analysis of cluster characteristics. Table 1 provides details on these characteristics, based on mode values and mean z-scores. Cluster 2 is distinct from the others, as it contains only 338 hearths and differs in potential vegetation. Moreover, the characteristics of the clusters beyond the three-cluster solution are driven mainly by numerical variables, as the mode values remain largely unchanged. In the three-cluster solution, clusters 1 and 3 share similar environmental characteristics, and these characteristics

385 remain largely constant regardless of the number of clusters considered, further validating the suitability of a three-
cluster approach.

Cluster characteristics are based on modes as well as the highest and lowest z-scores. Cluster 1 contains medium-sized hearths located in pine forests, close to other hearths, far from rivers and lakes, on gentle slopes and at low altitudes. Cluster 2 contains medium-sized hearths found in mixed forests, isolated from other hearths, and on steep slopes. Cluster 3 contains medium-sized hearths located in pine forests, in close proximity to other hearths, and at
390 high altitudes on steeper slopes.

Table 1. Modes and z-score means (minimum and maximum values highlighted) across clusters for a three-cluster solution.

Variables	Cluster 1	Cluster 2	Cluster 3
Cluster size	338	324 903	264 694
Hearth diameter	10–15 m	10–15 m	10–15 m
Corine Land Cover	Coniferous forests	Coniferous forests	Coniferous forests
Potential vegetation	Continental mixed pine-oak forests	Continental mixed pine-oak forests	Suboceanic pine forest
Dominant Soil Reference Group (WRB)	Brunic Arenosol	Brunic Arenosol	Brunic Arenosol
Forest site types	Fresh mixed forest	Fresh mixed coniferous forest	Fresh coniferous forest
Tree species	Scots pine	Scots pine	Scots pine
Distance to hearth	31.777 (5 744 m)	−0.058 (41 m)	0.029 (56 m)
Distance to water	−0.131 (1 055 m)	−0.429 (752 m)	0.527 (1 726 m)
Altitude	−0.563 (158 m)	0.706 (249 m)	−0.865 (136 m)
Slope	0.610 (2.60)	0.179 (1.97)	−0.219 (1.39)

4. Data availability

395 All data generated and analyzed during this study are publicly available through the ZENODO repository:
<https://doi.org/10.5281/zenodo.15630690> (Słowiński et al., 2025). The dataset includes raw and processed results,
metadata, and relevant documentation to ensure reproducibility. The ReCHAR database underlying this study is
hosted and maintained by the Institute of Geography and Spatial Organization, Polish Academy of Sciences. This
database is openly accessible; for inquiries regarding dataset structure, access support, or additional details, please
400 contact michal.slowinski@igipz.pan.pl and aj.halas@twarda.pan.pl.

5. Conclusion and future developments

The database developed in this study is the first comprehensive, high-resolution spatial dataset documenting
remnants of historical charcoal production in the form of Relict Charcoal Hearths across an entire country
405 (Słowiński et al., 2025). To our knowledge, there is currently no equivalent dataset of this scale and resolution
available elsewhere in Europe or globally. While regional charcoal hearth inventories do exist, none offer the
systematic national coverage, environmental context, and object-level detail provided here.

The ReCHAR dataset provides substantial value across a wide range of disciplines, including soil science, forestry,
ecology, environmental history, archaeology, anthropology, and cultural heritage studies. It not only preserves
410 evidence of past forest use but also enables new insights into long-term human impacts on forest ecosystems, soil
transformation processes, and landscape change.

The current version of the database includes 634,815 georeferenced entries, categorized by hearth size (small: <10
m; medium: 10–15 m; large: >15 m), and enriched with information on current and potential vegetation,
topography, proximity to water bodies, and soil types. The dataset was intentionally designed with a simple
415 structure to ensure broad compatibility, but its modular design allows for continuous expansion and integration
with other spatial datasets.

Importantly, future iterations of the ReCHAR database will also aim to incorporate other data types—such as the
historical names and locations of villages, hamlets, or industrial sites directly associated with charcoal production
and related industries. These include glassworks, iron smelters, potash and tar distilleries—industries that would
420 not have existed without wood and, later, charcoal as a primary fuels and chemical inputs. By connecting spatial
traces of forest exploitation with the socio-economic infrastructure it sustained, the database will support deeper
investigations into early industrialization, rural economies, and environmental transformations.

The long-term vision of the ReCHAR project is to develop an open-access, community-driven research platform supporting the documentation, analysis, and exchange of data related to anthropogenic forest disturbances and spatial landscape history. Development priorities include: (1) integration of interactive visualization tools, (2) a user-friendly interface for data submission and review, and (3) the inclusion of extended metadata to enable more detailed scientific analyses.

We invite researchers, practitioners, and forest managers to contribute additional datasets, share their expertise, and co-develop analytical tools using this resource. Ultimately, ReCHAR is envisioned as a foundational platform for interdisciplinary, spatially informed research into human-environment interactions over long timescales—locally, regionally, and globally.

6. Author Contributions

KSz mapped charcoal hearths from lidar data, analyzed the data, authored or reviewed drafts of the paper, and approved the final draft.

AH analyzed the data, prepared figures and tables, authored or reviewed drafts of the paper, and approved the final draft.

MN analyzed the data and performed cluster analysis, prepared figures and tables, authored or reviewed drafts of the paper, and approved the final draft.

DL analyzed the data, authored or reviewed drafts of the paper, and approved the final draft,

ST analyzed the data, authored or reviewed drafts of the paper, and approved the final draft,

AG analyzed the data, authored or reviewed drafts of the paper, and approved the final draft,

JJ analyzed the data, authored or reviewed drafts of the paper, and approved the final draft,

BK analyzed the data, authored or reviewed drafts of the paper, and approved the final draft,

ACh analyzed the data, authored or reviewed drafts of the paper, and approved the final draft,

SS analyzed the data, authored or reviewed drafts of the paper, and approved the final draft,

TP analyzed the data, authored or reviewed drafts of the paper, and approved the final draft,

KSz analyzed the data, authored or reviewed drafts of the paper, and approved the final draft,

DB analyzed the data, authored or reviewed drafts of the paper, and approved the final draft,

JW proposed website and repository description for ReCHAR, authored or reviewed drafts of the paper, and approved the final draft,

TS - analyzed the data, authored or reviewed drafts of the paper, and approved the final draft,

TZ - analyzed the data, authored or reviewed drafts of the paper, and approved the final draft,

BG-N analyzed the data, authored or reviewed drafts of the paper, and approved the final draft,
455 **AK** analyzed the data, authored or reviewed drafts of the paper, and approved the final draft,
MK analyzed the data, authored or reviewed drafts of the paper, and approved the final draft,
MS conceived and designed the project, analyzed the data, prepared figures and tables, authored or reviewed drafts
of the paper, and approved the final draft.

460 **7. Acknowledgments**

We would like to express our sincere gratitude to all individuals and institutions who contributed to the realization
of this research. We extend our special thanks to the staff of the Darwiński National Park. for their kindness,
support, and understanding during the course of the fieldwork. We also wish to thank the State Forests (Lasy
Państwowe) for their assistance and for their positive attitude toward the research activities carried out. Special
465 thanks go to Dorota Żelechowska for her commitment and support during her internship, particularly in the initial
development of the research database. Finally, we would like to note that, to improve the clarity and linguistic
consistency of selected parts of the text, we used a language tool based on artificial intelligence (ChatGPT). These
edits were purely linguistic and did not affect the scientific content of the work.

470 **8. Financial support**

The research was funded by the National Science Centre projects, “Impact of charcoal production on environmental
changes in Northern Poland - a novel "multi-proxy" approach” (no. 2018/31/B/ST10/02498) and “Anthropogenic
transformations of the environment in the context of modernization processes of the Congress Poland” (no.
2022/47/D/HS3/02947) and “Forest of the Anthropocene: the role of *Pinus sylvestris* in the formation of modern
475 states, societies and environments in the 18th and 19th centuries” (no. 2024/55/I/HS3/02551).

9. Figure captions

Figure 1. Location of the study area within Poland with all identified relict charcoal hearths (RCHs). The figure
includes zoomed-in illustrations showing forest cover based on CORINE Land Cover 2018 (European
480 Environmental Agency). Panels (A) and (B) present contrasting densities of RCH distribution across forested
regions of Poland.

Figure 2. Map of the spatial density of relict charcoal hearths across forested areas of Poland

Figure 3. Map of Poland with all identified Relict Charcoal Hearths with a schematic cross-section of three typical
hearth configurations: (A) hearth located on flat terrain with visible hollows used for tar collection, (B) hearth built

485 on a gentle slope without tar-extraction features, and (C) hearth situated on a steep incline, reflecting adaptation to
challenging topographic conditions. Soil profiles (a), (b), and (c) correspond to field-recorded sections for each
hearth type. Picture (D) shows macroscopic charcoal fragments preserved in the soil profile.

Figure 4. Spatial distribution of three identified types of charcoal hearth clusters across Poland

Table 1. Modes and z-score means (minimum and maximum values highlighted) across clusters for a three-cluster
490 solution.

10. Supplementary Figure

Supplementary Figure S1. Visibility of Relict Charcoal Hearth microrelief in ALS-derived bare-earth DTM:
495 effect of illumination azimuth (45°, 135°, 225°, 315°) and vertical exaggeration ($Z = 1-4$); example site (54°6'40"N;
16°28'E).

Supplementary Figure S2. Map of the spatial density of relict charcoal hearths across forested areas of Poland
(hearth km⁻²).

500 11. References:

Bielenin, K.: Starożytne mielerze świętokrzyskiego hutnictwa żelaza, *Kwartalnik Historii Kultury Materialnej*, 7, 467-472, 1959.

Blackbourn, D.: *The Conquest of Nature: Water, Landscape, and the Making of Modern Germany*, Norton 2006.

Bonhage, A., Raab, T., Schneider, A., Raab, A., Ouimet, W., Völkel, J., and Ramezany, S.: From site to state – Quantifying
505 multi-scale legacy effects of historic landforms from charcoal production on soils in Connecticut, USA, *Catena*, 232, 10.1016/j.catena.2023.107426, 2023.

Broda, J.: *History of forestry in Poland* [in Polish], Wydawnictwo Wydawnictwo Akademii Rolniczej w Poznaniu 2000.

Buras, A., Hirsch, F., Schneider, A., Scharnweber, T., van der Maaten, E., Cruz-Garcia, R., Raab, T., and Wilmking, M.:
510 Reduced above-ground growth and wood density but increased wood chemical concentrations of Scots pine on relict charcoal
hearth, *Sci Total Environ*, 717, 137189, 10.1016/j.scitotenv.2020.137189, 2020.

Buras, A., Hirsch, F., van der Maaten, E., Takla, M., Rübiger, C., Cruz Garcia, R., Schneider, A., Raab, A., Raab, T., and
Wilmking, M.: Charcoal kiln relicts – a favorable site for tree growth?, EGU, Vienna, 2015.

Cembrzyński, P.: *Miasta górnicze Europy Środkowowschodniej w XIII-XVII w.*, Jagiellonian University Kraków, 2014.

Ciceri, D., Manning, D. A., and Allanore, A.: Historical and technical developments of potassium resources, *Sci Total Environ*,
515 502, 590-601, 10.1016/j.scitotenv.2014.09.013, 2015.

Cleere, H., Crossley, D. W., and Worssam, B. C.: *The Iron Industry of the Weald*, Leicester University Press 1985.

Codreanu-Windauer, S.: *Holzkohlenmeiler-vergessene Denkmale?*, Erfassung und Bewertung von vorindustriellen
Meilerstandorten-Workshop, 19 Februar 2019, 143-157,

Davis, D. S. and Lundin, J.: Locating Charcoal Production Sites in Sweden Using LiDAR, Hydrological Algorithms, and Deep
520 Learning, *Remote Sensing*, 13, 10.3390/rs13183680, 2021.

der Vaart, W. V. v., Bonhage, A., Schneider, A., Ouimet, W., and Raab, T.: Automated large-scale mapping and analysis of
relict charcoal hearths in Connecticut (USA) using a Deep Learning YOLOv4 framework, *Archaeological Prospection*, 30,
251-266, 10.1002/arp.1889, 2022.

- Dupin, A., Girardclos, O., Fruchart, C., Laplaige, C., Nuninger, L., Dufraisie, A., and Gauthier, E.: Anthracology of charcoal kilns in the forest of Chailluz (France) as a tool to understand Franche-Comte forestry from the mid-15th to the early 20th century AD, *Quaternary International*, 10.1016/j.quaint.2017.03.008, 2017.
- Ebert, B.: Learning from the Past: Rediscovering Traditional Medieval Wood Tar Adhesives for Sustainable Stone Conservation and Built Heritage, *Studies in Conservation*, 69, 63-71, 10.1080/00393630.2024.2339728, 2024.
- Ellis, E. C.: Land Use and Ecological Change: A 12,000-Year History, *Annual Review of Environment and Resources*, 46, 1-33, 10.1146/annurev-environ-012220-010822, 2021.
- European Environment Agency: CORINE Land Cover 2018 (version 2020_20u1), Copernicus Land Monitoring Service [dataset], <https://doi.org/10.2909/71c95a07-e296-44fc-b22b-415f42acfd0>, 2020.
- European Space Agency: Environmental assessment report, 2000.
- Fokt, K.: Późnośredniowieczne osadnictwo wiejskie na Dolnym Śląsku w świetle badań archeologicznych [Late medieval rural settlement in Lower Silesia in the light of archaeological research], Księgarnia Akademicka, Kraków 2012.
- Gąłka, B., Podlaska, M., and Kabała, C.: Siedliskotwórcze właściwości gleb brunatnych kwaśnych wytworzonych z granitoidów w Górach Stołowych*, *Sylvan*, 157, 385–394, 2013.
- Garbarino, M., Morresi, D., Meloni, F., Anselmetto, N., Ruffinatto, F., and Bocca, M.: Legacy of wood charcoal production on subalpine forest structure and species composition, *Ambio*, 51, 2496-2507, 10.1007/s13280-022-01750-y, 2022.
- Geoportal: Map of Relief Shading (WMTS) [dataset], 2025.
- Groenewoudt, B.: Charcoal burning and landscape dynamics in the Early Medieval Netherlands, *Ruralia VI*, 327-337, <https://doi.org/10.1484/M.RURALIA-EB.3.1150>, 2005.
- Groenewoudt, B. and Spek, T.: Woodland Dynamics as a Result of Settlement Relocation on Pleistocene Sandy Soils in the Netherlands (200 BC–AD 1400), *Rural Landscapes: Society, Environment, History*, 3, 10.16993/rl.20, 2016.
- Hardy, B., Cornelis, J. T., Houben, D., Leifeld, J., Lambert, R., and Dufey, J. E.: Evaluation of the long-term effect of biochar on properties of temperate agricultural soil at pre-industrial charcoal kiln sites in Wallonia, Belgium, *European Journal of Soil Science*, 68, 80-89, 10.1111/ejss.12395, 2017.
- Hensel, W., Pazdur, J., Dembińska, M., Podwińska, Z., Rutkowska-Płachcińska, A., Keckowa, A., Molenda, D., Kamieńska, Z., Baranowski, B., and Kowecka, E.: Historia kultury materialnej Polski w zarysie: opracowanie zbiorowe, t. 1-6, Zakład Narod. im. Ossolińskich 1978.
- Hirsch, F., Schneider, A., Bauriegel, A., Raab, A., and Raab, T.: Formation, Classification, and Properties of Soils at Two Relict Charcoal Hearth Sites in Brandenburg, Germany, *Frontiers in Environmental Science*, 6, 10.3389/fenvs.2018.00094, 2018.
- Hirsch, F., Raab, T., Ouimet, W., Dethier, D., Schneider, A., and Raab, A.: Soils on Historic Charcoal Hearths: Terminology and Chemical Properties, *Soil Science Society of America Journal*, 0, 10.2136/sssaj2017.02.0067, 2017.
- Hirsch, F., Schneider, A., Bonhage, A., Raab, A., Drohan, P. J., and Raab, T.: An initiative for a morphologic-genetic catalog of relict charcoal hearths from Central Europe, *Geoarchaeology*, 10.1002/gea.21799, 2020.
- Huang, Z. X.: Extensions to the means algorithm for clustering large data sets with categorical values, *Data Mining and Knowledge Discovery*, 2, 283-304, Doi 10.1023/A:1009769707641, 1998.
- Jankowski, M., Przewoźna, B., and Bednarek, R.: Topographical inversion of sandy soils due to local conditions in Northern Poland, *Geomorphology*, 135, 277-283, 10.1016/j.geomorph.2011.02.005, 2011.
- Jonczak, J., Barbarino, V., Chojnacka, A., Kruczkowska, B., Szewczyk, K., Gmińska-Nowak, B., Kołaczowska, E., Łuców, D., Halaś, A., Mroczkowska, A., Słowińska, S., Kramkowski, M., Kowalska, A., and Słowiński, M.: Historical charcoal production as a factor in soil cover heterogeneity in a fluvio-glacial landscape – A case study from northern Poland, *Geoderma*, 445, 10.1016/j.geoderma.2024.116892, 2024.
- Kabała, C., Ksepko, M., and Musiał, P.: Typological and physicochemical variability of rusty soils (Brunic Arenosols) in the Białowieża Forests, eastern Poland, *Soil Science Annual*, 72, 1-14, 10.37501/soilsa/143900, 2021.
- Kabała, C., Charzyński, P., Chodorowski, J., Drewnik, M., Głina, B., Greinert, A., Hulisz, P., Jankowski, M., Jonczak, J., Łabaz, B., Łachacz, A., Marzec, M., Mendyk, Ł., Musiał, P., Musielok, Ł., Smreczak, B., Sowiński, P., Świtoniak, M., Uzarowicz, Ł., and Waroszewski, J.: Polish Soil Classification, 6th edition – principles, classification scheme and correlations, *Soil Science Annual*, 70, 71-97, 10.2478/ssa-2019-0009, 2019.
- Kacprzak, A. and Derkowski, A.: Cambisols developed from cover-beds in the Pieniny Mts. (southern Poland) and their mineral composition, *CATENA*, 71, 292-297, <https://doi.org/10.1016/j.catena.2007.01.004>, 2007.

- 575 Kałagate, S., Osypiński, P., and Stachowiak, P.: Relikty późnonowoząytnego mielerza odkryte na stanowisku nr 4 w Wilkowie, gm, Swidnica, pow. zielonogórski, woj. lubuskie. *Archeologia Środkowego Nadodrza*, 9, 241-249, 2012.
- Klein, P. and Bauch, J.: Aufbau einer Jahrringchronologie für Buchenholz und ihre Anwendung für die Datierung von Gemälden, *Holzforschung*, 35-39, 1983.
- Kottek, M., Grieser, J., Beck, C., Rudolf, B., and Rubel, F.: World map of the Köppen-Geiger climate classification updated, 2006.
- 580 Lasota, J., Błońska, E., and Pacanowski, P.: Forest sites and forest types on rendzinas in Poland, *Soil Science Annual*, 69, 121-129, 10.2478/ssa-2018-0012, 2018.
- Lasota, J., Błońska, E., Babiak, T., Piaszczyk, W., Stępniewska, H., Jankowiak, R., Boroń, P., and Lenart-Boroń, A.: Effect of Charcoal on the Properties, Enzyme Activities and Microbial Diversity of Temperate Pine Forest Soils, *Forests*, 12, 10.3390/f12111488, 2021.
- 585 Liedekerke, M., Jones, A., and Panagos, P.: ESDBv2 Raster Library [Data set]. Derived from the European Soil Database distribution v2.0., European Commission & European Soil Bureau Network (EUR 19945 EN, CD-ROM) [dataset], 2006.
- Ludemann, T.: Airborne laser scanning of historical wood charcoal production sites - A new tool of kiln site anthracology at the landscape level, *Wood and charcoal evidence for human and natural history*, *Papeles del Laboratorio de Arqueología de Valencia-Extra2012*.
- 590 Marks, L.: Last Glacial Maximum in Poland, *Quaternary Science Reviews*, 21, 103-110, Doi 10.1016/S0277-3791(01)00086-5, 2002.
- Marks, L.: Pleistocene river systems in the southern peribaltic area as indication of interglacial sea level changes in the Baltic Basin, *Quaternary International*, 130, 43-48, 10.1016/j.quaint.2004.04.029, 2005.
- Marszałek, E. and Kusiak, W.: Wypał węgla drzewnego w Bieszczadach w przeszłości i obecnie, *Roczniki Bieszczadzkie*, 21, 164-183, 2013.
- 595 Matuszkiewicz, J. M.: Potential natural vegetation of Poland, IGiPZ PAN, Warszawa, 2008.
- Matuszkiewicz, J. M. and Wolski, J.: Potential natural vegetation of Poland (vector version), IGSO PAS, Warszawa, 2023.
- Matuszkiewicz, W.: Szata roślinna, in: *Geografia Polski Środowisko Przyrodnicze*, edited by: Starkel, L., Wydawnictwo Naukowe PWN, Warszawa, 427-475, 1999.
- 600 Matuszkiewicz, W., Faliński, J. B., Kostrowicki, A. S., Matuszkiewicz, J. M., Olaczek, R., and Wojterski, T.: Potential natural vegetation of Poland. General map 1:300 000, IGSO PAS, Warszawa, 1995.
- Miechówka, A. and Drewnik, M.: Rendzina soils in the Tatra Mountains, central Europe: a review, *Soil Science Annual*, 69, 88-100, 10.2478/ssa-2018-0009, 2018.
- Mikulski, K.: Osadnictwo wiejskie województwa pomorskiego od połowy XVI do końca XVII wieku, v. 86, pt. 2, Towarzystwo Naukowe w Toruniu 1994.
- 605 Oliveira, C., Aravecchia, S., Pradalier, C., Robin, V., and Devin, S.: The use of remote sensing tools for accurate charcoal kilns' inventory and distribution analysis: Comparative assessment and prospective, *International Journal of Applied Earth Observation and Geoinformation*, 105, 10.1016/j.jag.2021.102641, 2021.
- Panagos, P.: The European soil database, *GEO: connexion*, 5, 32-33, 2006.
- 610 Paschalis, P.: O węglach do hut i kuźnic [About charcoal for steel mills and forges], *Sylwan*, 41-46, 1973.
- Przybylski, P., Związek, T., Kowalczyk, J., and Słowiński, M.: Research perspectives on historical legacy of the Scots pine (*Pinus sylvestris* L.): Genes as the silent actor in the transformation of the Central European forests in the last 200 years, *Elem Sci Anth*, 13, 10.1525/elementa.2024.00041, 2025.
- 615 Raab, A., Takla, M., Raab, T., Nicolay, A., Schneider, A., Rösler, H., Heußner, K. U., and Bönisch, E.: Pre-industrial charcoal production in Lower Lusatia (Brandenburg, Germany): Detection and evaluation of a large charcoal-burning field by combining archaeological studies, GIS-based analyses of shaded-relief maps and dendrochronological age determination, *Quaternary International*, 367, 111-122, 10.1016/j.quaint.2014.09.041, 2015a.
- Raab, T., Raab, A., Nicolay, A., Takla, M., Hirsch, F., Rösler, H., and Bauriegel, A.: Opencast mines in South Brandenburg (Germany)—archives of Late Quaternary landscape development and human-induced land use changes, *Archaeological and Anthropological Sciences*, 8, 453-466, 10.1007/s12520-015-0227-6, 2015b.
- 620 Rokach, L. and Maimon, O.: Clustering Methods, in: *Data Mining and Knowledge Discovery Handbook*, edited by: Maimon, O., and Rokach, L., Springer US, Boston, MA, 321-352, 10.1007/0-387-25465-X_15, 2005.

- Rutkiewicz, P., Kalicki, T., Kłusakiewicz, E., and Przepióra, P.: Historical Charcoal Burning in the Kamienna River Basin (Old Polish Industrial District, Central Poland) – First Results from Lidar Data, *Acta Geobalkanica*, 8, 103-108, 10.18509/AGB218-3103r, 2021.
- Rutkiewicz, P., Malik, I., Wistuba, M., and Osika, A.: High concentration of charcoal hearth remains as legacy of historical ferrous metallurgy in southern Poland, *Quaternary International*, 512, 133-143, 10.1016/j.quaint.2019.04.015, 2019.
- Samojlik, T., Rotherham, I. D., and Jedrzejewska, B.: Quantifying Historic Human Impacts on Forest Environments: A Case Study in Białowieża Forest, Poland, *Environmental History*, 18, 576-602, 10.1093/envhis/emt039, 2013a.
- Samojlik, T., Jedrzejewska, B., Michniewicz, M., Krasnodębski, D., Dulnicz, M., Olczak, H., Karczewski, A., and Rotherham, I. D.: Tree species used for low-intensity production of charcoal and wood-tar in the 18th-century Białowieża Primeval Forest, Poland, *Phytocoenologia*, 43, 1-12, 10.1127/0340-269x/2013/0043-0511, 2013b.
- Schneider, A., Hirsch, F., Raab, A., and Raab, T.: Temperature Regime of a Charcoal-Enriched Land Use Legacy Soil, *Soil Science Society of America Journal*, 83, 565-574, 10.2136/sssaj2018.12.0483, 2019.
- Schneider, A., Bonhage, A., Hirsch, F., Raab, A., and Raab, T.: Hot spots and hot zones of soil organic matter in forests as a legacy of historical charcoal production, *Forest Ecology and Management*, 504, 10.1016/j.foreco.2021.119846, 2022.
- Słowiński, M., Związek, T., Swoboda, P., Niedzielski, M. A., Słowińska, S., Konopski, M., Jonczak, J., Kruczkowska, B., Chojnacka, A., Róg, D., Szewczyk, K., and Brykała, D.: Human impacts on environment in the preindustrial forest landscapes in Poland—An overview, *Elementa: Science of the Anthropocene*, 12, 10.1525/elementa.2023.00065, 2024.
- Słowiński, M., Lamentowicz, M., Luców, D., Barabach, J., Brykała, D., Tyszkowski, S., Pieńczewska, A., Śnieszek, Z., Dietze, E., Jazdzewski, K., Obremska, M., Ott, F., Brauer, A., and Marcisz, K.: Paleoeological and historical data as an important tool in ecosystem management, *J Environ Manage*, 236, 755-768, 10.1016/j.jenvman.2019.02.002, 2019.
- Słowiński, M., Halaś, A., Niedzielski, M., Szewczyk, K., Jonczak, J., Łuców, D., Tyszkowski, S., Słowińska, S., Gruszczyńska, A., Kruczkowska, B., Chojnacka, A., Polkowski, T., Sztabkowski, K., Brykała, D., Wolski, J., Samojlik, T., Kaszkiel, A., Gminska-Nowak, B., and Związek, T.: ReCHAR database - spatial distribution of relict charcoal hearths across Poland [data set], <https://doi.org/10.5281/zenodo.15630690>, 2025.
- Słowiński, M., Szewczyk, K., Łuców, D., Róg, D., Konopski, M., Słowińska, S., Kruczkowska, B., Jonczak, J., Gmińska-Nowak, B., Noryskiewicz, A. M., Kołaczowska, E., Tyszkowski, S., Swoboda, P., Chojnacka, A., Brykała, D., Kowalska, A., Barbarino, V., Kardasz, C., Niedzielski, M., Halaś, A., Kramkowski, M., Związek, T., Ważny, T., Mroczkowska, A., and Obremska, M.: A novel multiproxy approach to detect the impact of charcoal production on the natural environment in NW Poland – project concept and preliminary results, *Geographia Polonica*, 95, 205-225, 10.7163/GPol.0233, 2022.
- Smil, V.: *Energy and Civilization: A History*, MIT Press 2017.
- Solon, J., Borzyszkowski, J., Bidłasik, M., Richling, A., Badora, K., Balon, J., Brzezińska-Wójcik, T., Chabudziński, Ł., Dobrowolski, R., Grzegorzczak, I., Jodłowski, M., Kistowski, M., Kot, R., Kraż, P., Lechnio, J., Macias, A., Majchrowska, A., Malinowska, E., Migoń, P., Myga-Piątek, U., Nita, J., Papińska, E., Rodzik, J., Strzyż, M., Terpiłowski, S., and Ziąja, W.: Physico-geographical mesoregions of Poland: Verification and adjustment of boundaries on the basis of contemporary spatial data, *Geographia Polonica*, 91, 143-170, 10.7163/GPol.0115, 2018.
- Suh, J. W., Ouimet, W. B., and Dow, S.: Reconstructing and identifying historic land use in northeastern United States using anthropogenic landforms and deep learning, *Applied Geography*, 161, 103121, <https://doi.org/10.1016/j.apgeog.2023.103121>, 2023.
- Suh, J. W., Anderson, E., Ouimet, W., Johnson, K. M., and Witharana, C.: Mapping Relict Charcoal Hearths in New England Using Deep Convolutional Neural Networks and LiDAR Data, *Remote Sensing*, 13, 10.3390/rs13224630, 2021.
- Surowiecki, W.: *O rzekach y spławach Kraiów Xięstwa Warszawskiego*, pkt 1, Drukarni rządowej 1811.
- Waga, J. M., Szypuła, B., Sendobry, K., and Fajer, M.: Ślady działalności człowieka na terenach leśnych Parku Krajobrazowego „Cysterskie Kompozycje Krajobrazowe Rud Wielkich” odczytane z obrazów LiDAR oraz ich znaczenie w ochronie dziedzictwa kulturowego i przyrodniczego, *Czasopismo Geograficzne*, 93, 107-138, 10.12657/czageo-93-05, 2022.
- WHITE, J. C.: On the Use of Potash in Some Cutaneous Diseases, *The Boston Medical and Surgical Journal*, 61, 229-233, doi:10.1056/NEJM185910200611201, 1859.
- Witharana, C., Ouimet, W. B., and Johnson, K. M.: Using LiDAR and GEOBIA for automated extraction of eighteenth–late nineteenth century relict charcoal hearths in southern New England, *GIScience & Remote Sensing*, 55, 183-204, 10.1080/15481603.2018.1431356, 2018.

Związek, T., Łuców, D., Popek, J., Klisz, M., Obremska, M., Sobechowicz, Ł., Solon, J., Słowiński, M., Przybylski, P., Tyburski, Ł., Zin, E., Jastrzębowski, S., Płaczowska, E., Pilch, K., Szewczyk, K., Konczal, A. A., Rutkowski, P., Główka, D., and Swoboda, P.: Addressing multiple perspectives in studying environmental changes in forest landscapes during the modernization period (18th–19th centuries), *The Anthropocene Review*, 10.1177/20530196231205485, 2023.