

An Annual Cropland Extent Dataset for Africa at 30m Spatial Resolution from 2000 to 2022

Zihang Lou¹, Dailiang Peng^{2,3,*}, Zhou Shi^{1,*}, Hongyan Wang⁴, Ke Liu⁴, Yaqiong Zhang⁵, Xue Yan^{6,7},
Zhongxing Chen¹, Su Ye¹, Le Yu⁸, Jinkang Hu^{2,3,10}, Yulong Lv^{2,3,10}, Hao Peng^{9,10}, Yizhou Zhang^{2,3,10},
5 Bing Zhang^{2,3,*}

¹Zhejiang Key Laboratory of Agricultural Remote Sensing and Information Technology, College of Environmental and
Resource Sciences, Zhejiang University, 866 Yuhangtang Road, Hangzhou 310058, China

²Key Laboratory of Digital Earth Science, Aerospace Information Research Institute, Chinese Academy of Sciences, Beijing
100094, China

³International Research Center of Big Data for Sustainable Development Goals, Beijing 100094, China

⁴Land Satellite Remote Sensing Application Center, Ministry of Natural Resources of P.R.China, Beijing 100048, China

⁵Satellite Application Center for Ecology and Environment, Ministry of Ecology and Environment, Beijing 100094, China

⁶Key Laboratory of Aquatic Botany and Watershed Ecology, Wuhan Botanical Garden, Chinese Academy of Sciences, Wuhan,
430074, China;

⁷Botany Department, Jomo Kenyatta University of Agriculture and Technology, P. O Box 62000, Nairobi, 00200, Kenya

⁸Department of Earth System Science, Tsinghua University, Beijing 100084, China

⁹State Key Laboratory of Desert and Oasis Ecology, Xinjiang Institute of Ecology and Geography, Chinese Academy of
Sciences, Urumqi, Xinjiang 830011, China

¹⁰University of Chinese Academy of Sciences, Beijing 100094, China

Correspondence to: Dailiang Peng (pengdl@aircas.ac.cn), Zhou Shi (shizhou@zju.edu.cn) and Bing Zhang
(zhangbing@aircas.ac.cn)

Abstract. Accurate cropland mapping is essential for understanding agricultural dynamics in Africa, critical for achieving
Sustainable Development Goals like Zero Hunger. Large-scale cropland mapping encounters several challenges, including the
25 varying landscape characteristics of cropland across different regions, extended cultivation periods, and the limited availability
of reference data. The study developed a 30-meter resolution African annual cropland distribution (namely AFCD) dataset
spanning the years 2000 to 2022. To extract this large-scale cropland distribution data, we employed random forest
classification and Continuous Change Detection algorithms on the Google Earth Engine platform. Robust training samples
were generated, and a locally adaptive model was applied for cropland extraction. The final output consists of annual binary
30 Crop/Non-Crop maps from 2000 to 2022. Independent validation samples from numerous third-party sources confirm that the
map's accuracy is 0.86 ± 0.01 . A comparison of the cropland area estimates from AFCD with those of the FAO for Africa
yielded an R^2 value of 0.86. According to our estimates, Africa's cropland expanded from 194.35 Mha in 2000 to 210.92 Mha
by 2022, marking a net increase of 8.53%. Prior to 2005, changes in Africa's cropland area were gradual, but after 2006, there
was a marked acceleration in cropland expansion. Despite this continued growth, Africa also experienced significant cropland
35 abandonment. By 2018, abandoned cropland accounted for 11.52% of the total active cropland area. AFCD also avoided the
misclassification of buildings, roads, and trees surrounding cropland, common in existing products. The study further

highlights the unique advantage of AFCD in providing a dynamic annual cropland dataset at 30-meter resolution for Africa. This dataset is a crucial resource for understanding the spatial-temporal dynamics of cropland and can support policies on food security and sustainable land management. The cropland dataset is available at <https://doi.org/10.5281/zenodo.14920706> (Lou et al., 2025).

1 Introduction

According to the Food and Agriculture Organization (FAO), croplands are of critical importance to global food sustainable development, and poverty alleviation. The FAO's State of Food Security and Nutrition in the World (SOFI) reported highlights that monitoring and managing agricultural lands was crucial for achieving the UN's Sustainable Development Goals (SDGs), particularly in addressing food security challenges and balancing agricultural production with ecosystem services (FAO et al., 2024). Agricultural land directly or indirectly contributes to 90% of global food calories (Cassidy et al., 2013). Beyond supplying food, cropland plays a crucial role as a provider of various ecosystem services (Pereira et al., 2018; Stephens et al., 2018), not only mitigating climate change through carbon sequestration and water and soil regulation (Lana-Renault et al., 2020), but also influencing biodiversity (Traba and Morales, 2019). Emerging agricultural paradigms prioritize climate-smart cultivation practices (Xiao et al., 2024), rational land-use policymaking (Duan et al., 2021), and productivity enhancement for smallholder farmers. The expansion and abandonment of croplands have long been focal points of research, as the extent, distribution, and characteristics of cropland often influence a region's agricultural development pathways, food security, and poverty alleviation efforts (Jayne et al., 2014).

The SOFI report revealed that 20.4% of Africa's population faces hunger, with one in five people undernourished, severely hindering progress toward SDGs such as "No Poverty and Zero Hunger" and sustainable agricultural-ecosystem balance (FAO et al., 2024; Ibrahim et al., 2023). While Africa accounted for 34% of global cropland expansion since 2000, driven by its perceived land abundance (Searchinger et al., 2015; Schneider et al., 2024), this growth had largely involved converting natural vegetation, causing significant deforestation and habitat destruction (Crawford et al., 2024; Kehoe et al., 2017). However, the economic and ecological trade-offs of such expansion remain understudied, necessitating nuanced land-use assessments (Chamberlin et al., 2014). Sub-Saharan Africa's food systems, dominated by small-scale farms (<1 hectare), grapple with stagnant yields and rising imports (Fader et al., 2013; Giller et al., 2021), while larger farms (>1 hectare) demonstrate higher productivity and food security through land consolidation (Nilsson, 2019). Yet unchecked agricultural intensification risks biodiversity and ecosystem stability (Adolph et al., 2023; Mano et al., 2020), highlighting the urgency to monitor cropland dynamics. Detailed annual mapping of land-use changes is critical for guiding sustainable policies on food security, resource management, and environmental protection (Debonne et al., 2021; Waldner et al., 2015), balancing Africa's agricultural needs with ecological preservation.

The rapid development of remote sensing technology has enabled accurate cropland mapping through synergistic use of multi-source satellite data. Moderate Resolution Imaging Spectroradiometer (MODIS) imagery offers unique advantages for large-

scale cropland extent monitoring (Xiong et al., 2017a; Zhang et al., 2015, 2022), while higher-resolution sensors aboard
70 Landsat and Sentinel-2 satellites provide precise boundary delineation capabilities. Global and regional land use/land cover
(LULC) products, such as MCD12Q1 (Friedl and Sulla-Menashe, 2022), CCI Land cover (2017), GLC_FCS30D (Zhang et
al., 2024b), and WorldCover, offer multi-scale data support for studying cropland distribution in Africa across a range of
spatial resolutions (10-500 meters). However, their accuracy is generally limited, and they exhibit significant spatial
inconsistencies (Cui et al., 2024; Song et al., 2022). These discrepancies arise from varying land cover definitions, temporal
75 gaps due to cloud cover interference in remote sensing data, and the highly fragmented nature of African cropland landscapes
(Xiong et al., 2017b). While specialized cropland products, such as the Landsat Global Cropland Extent (Potapov et al., 2022),
GFSAD Landsat-Derived Global Rainfed and Irrigated-Cropland Product (LGRIP) (Teluguntla et al., 2023), GFSAD Global
Cropland Extent Product (GCEP) (Thenkabail et al., 2021), and Digital Earth Africa (Burton et al., 2022), offer high spatial
resolution (ranging from 10 to 30 meters), allowing for detailed landscape characterization. However, their temporal coverage
80 is often limited to single years or sparse intervals, which significantly restricts their ability to track rapid interannual changes
in African agricultural systems (Kerner et al., 2024).

Key processes, such as cropland expansion into natural ecosystems and cyclical abandonment patterns, remain poorly
understood and inadequately quantified due to these temporal gaps. Current LULC products are mainly based on single or
multi-year remote sensing data, combined with expert-driven classification systems or machine learning algorithms such as
85 random forests. However, challenges such as the scarcity of ground validation samples and significant surface heterogeneity
in Africa hinder the improvement of classification accuracy. Notably, the successful application of sample generation methods
in crop recognition (Hu et al., 2024; Zhang et al., 2024a) and coastal zone monitoring (Zuo et al., 2025) demonstrates the
potential of overcoming data bottlenecks through innovative sample construction techniques. Therefore, there is an urgent
need to develop consensus label generation methods that integrate multiple LULC products (Kerner et al., 2024; Tubiello et
90 al., 2023a). By leveraging the strengths of existing cropland datasets, this would enable the creation of high temporal resolution
dynamic cropland maps for Africa. Furthermore, establishing a unified cropland classification standard system could
effectively reduce spatial inconsistencies across existing products, providing more accurate spatial information to support
sustainable agricultural development and food security decision-making in Africa.

In summary, in recent decades, a lot of global or regional cropland mapping and monitoring has been made significant progress.
95 However, a 30 m annual cropland extent time-series product derived from change-detection algorithms are still lacking. The
aims of this study are (1) to construct locally optimal consensus Crop/Non-crop labels using LULC/cropland extent products
from 2000 to 2022, which will serve as training samples; (2)utilizing the continuous change-detection (CCD) algorithm and
the full time series of Landsat observations to generate the first African 30m annual cropland extent product that covers the
period from 2000 to 2022, named as AFCD; (3) to quantitatively analyze the performance of AFCD product using multisource
100 validation datasets.

2 Datasets

2.1 Previous LUCC & Cropland Datasets

To investigate the spatial distribution of Africa within the study's temporal scope, we amassed a comprehensive dataset from Google Earth Engine (GEE) and its community platform encompassing global or Africa-specific land use/cover change (LUCC) datasets as well as cropland distribution, with a spatial resolution finer than 500 meters, spanning the period from 2000 to 2022 (as summarized in Table 1). However, definitions of cropland and other land use/cover types exhibit variations across different datasets. In this context, both GLC_FCS30D and ESA CCI employ the FAO's Land Cover Classification System (LCCS) (ESA, 2017; Zhang et al., 2024b). The LCCS has been utilized to define diverse land cover types, demonstrating both flexibility and effectiveness across various geographical contexts (Ahlqvist, 2008) while simultaneously promoting interoperability for land-cover data and facilitating the scrutiny of classification processes (Herold et al., 2006). ESRI LUCC、ESA WorldCover and Dynamic World all employ a multi-tiered land cover classification system, defining cropland as areas planted or sown by humans with cereals, grasses, and other crops that can be harvested within a year, excluding perennial woody crops (Karra et al., 2021; Van De Kerchove et al., 2021; Brown et al., 2022). Specialized cropland products define cropland as areas used for growing annual or perennial crops (Burton et al., 2022; Potapov et al., 2022), including forage and biofuel crops, under both rainfed and irrigated systems (Teluguntla et al., 2023), and also consider land permanently used for plantations like orchards and vineyards as cropland (Thenkabail et al., 2021).

Table 1 Description of map data products utilized in this study.

Dataset	Year(s)	Res. (m/px)	Coverage	Definition of cropland	Cropland class no.
GLC_FCS30D	1985; 1990; 1995; 2000- 2022	30m	Global	Irrigated cropland, Rainfed cropland, Herbaceous cover cropland, Tree or shrub cover cropland (Zhang et al., 2024b).	10, 11, 12, 20
ESRI 10m Annual Land Cover	2017-2023	10m	Global	Crops Human planted/plotted cereals, grasses, and crops not at tree height; examples: corn, wheat, soy, fallow plots of structured land (Karra et al., 2021).	5
ESA WorldCover	2020; 2021	10m	Global	Land covered with annual cropland that is sowed/planted and harvestable at least once within the 12 months after the sowing/planting date. The annual cropland produces a herbaceous cover and is sometimes combined with some tree or woody vegetation. Note that perennial woody crops will be classified	40

				as the appropriate tree cover or shrub land cover type. Greenhouses are considered as built-up (Zanaga et al., 2021, 2022).	
Dynamic World	2015-now	10m	Global	Estimated probability of complete coverage by crops(Brown et al., 2022).	4
ESA CCI	1992-2020	300m	Global	Rainfed cropland, irrigated or post-flooding cropland, Mosaic cropland (>50%) / natural vegetation (tree, shrub, herbaceous cover) (<50%) (ESA, 2017).	10, 20, 30
Digital Earth Africa Cropland Extent	2019	10m	Continent	Sowed/planted and harvestable at least once within the 12 months after the sowing/planting date (Burton et al., 2022).	1
GFSAD global cropland maps	2015	30m	Global	Rainfed cropland (cropland areas that are purely dependent on direct precipitation), irrigated cropland (cropland that had at least one irrigation during the crop growing period) (Thenkabail et al., 2021).	1, 2
GLAD Global Cropland Maps	2003, 2007, 2011, 2015, 2019	30m	Global	Land used for annual and perennial herbaceous crops for human consumption, forage (including hay) and biofuel. Perennial woody crops, permanent pastures and shifting cultivation are excluded from the definition. The fallow length is limited to 4 years for the cropland class (Potapov et al., 2022).	1
Africa Cropland Mask	2016	30m	Continent	Agricultural annual standing croplands, cropland fallows, and permanent plantation crops (Nabil et al., 2022).	1

2.2 Continuous Landsat imagery from 2000 to 2022

120 All available surface reflectance (SR) from Landsat imagery (Level 2, Collection 2, Tier 1) spanning 2000 to 2022, including Landsat 5, 7, 8, and 9, stored in the GEE computational platform, were collected to monitor the spatiotemporal dynamics of

cropland extent in Africa. To minimize the spectral discrepancies among different Landsat sensors, calibration coefficients were applied to recalibrate the surface reflectance data from TM and ETM+ to align with the comparable standards of OLI (Roy et al., 2016). Subsequently, the Landsat Ecosystem Disturbance Adaptive Processing System (LEDAPS) as well as the Land Surface Reflectance Code (LaSRC) algorithms were employed to perform atmospheric correction on Landsat imagery and construct a high-quality, continuous Landsat temporal dataset (Vermote and Saleous, 2007; Vermote and Kotchenova, 2008). As shown in Figure 1a–e, the spatial distribution of valid Landsat observations over five time periods exhibits significant spatiotemporal variability, which can directly affect the accuracy of cropland mapping. To mitigate this influence and enhance spatial consistency, we incorporated a cropland consensus layer derived from six global LULC/cropland products, where cropland agreement levels are categorized from SA1 to SA6 (Figure 1f) (Tubiello et al., 2023a, b). This consensus informed the construction of a $2^\circ \times 2^\circ$ grid framework, delineated by red lines in Figure 1f, with each grid cell served as the minimum classification unit for the cropland mapping process.

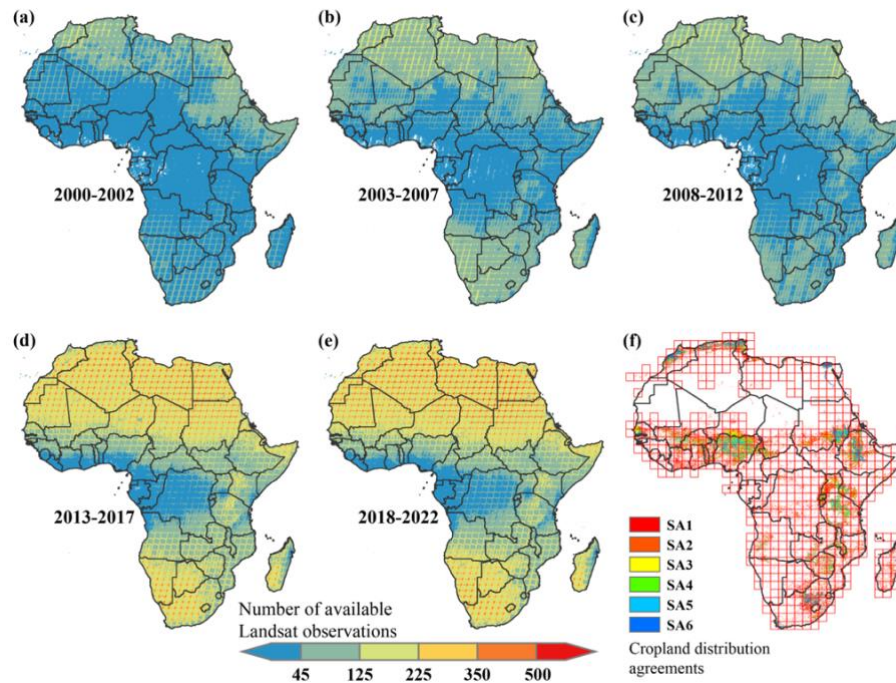


Figure 1 Temporal and Spatial Distribution of Available Landsat Imagery Data Over Africa and (a-e) and Spatial Distribution of Cropland derived from six global LULC/cropland products (f). In (f), SA1–SA6 represent increasing cropland agreement levels (Tubiello et al., 2023a, b).

2.3 Validation datasets

To comprehensively analyze the accuracy metrics of the AFCD map, we collected two validation datasets: cropland samples across Africa in 2016 and 2019. Initially, we utilized 3,386 independent validation samples provided by Kerner et al. (2024), collected through field surveys and visual interpretation across eight countries in sub-Saharan Africa (shown as Fig. 2 (a)).

Additionally, we utilized crowdsourced data provided by (Laso Bayas et al., 2017), collected via the Geo-Wiki platform, for validation (Fig. 2 (b)). The dataset includes 35,866 cropland samples collected globally through a crowdsourcing campaign on the Geo-Wiki platform, with 7,313 samples located in Africa. Each sample corresponds to a 300 m \times 300 m PROBA-V grid cell and records the proportion of cropland within the frame, based on visual interpretation by participants. To ensure data quality, a subset of samples was randomly selected for secondary validation by three trained students (provide as control samples). Samples with inconsistent results among the student interpretations were excluded. Additionally, experts further reviewed and validated the control samples to enhance the overall reliability of the dataset (provide as expert samples)(Laso Bayas et al., 2017).

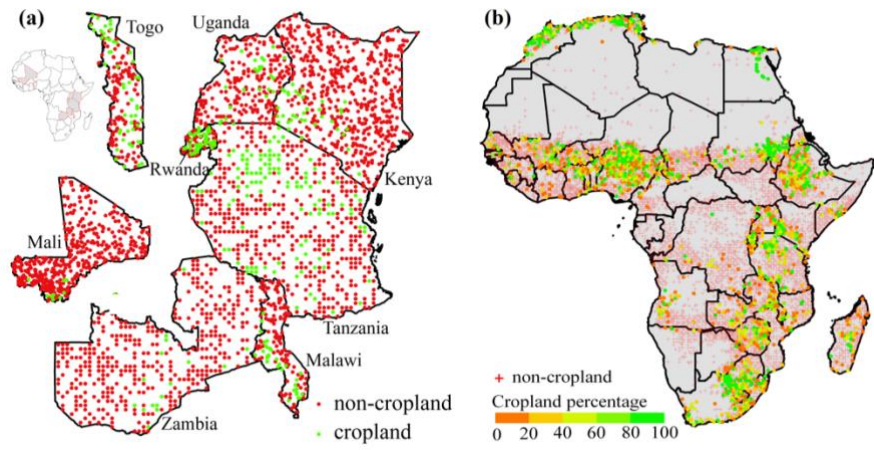


Figure 2 Spatial distribution of validation points for regional and time-series.

3. Methodology

As the framework shows in Figure 3, we have proposed a landcover change detection-based approach that combined machine learning and continuous change detection algorithm for mapping annual cropland extent in Africa. Therefore, we defined the cropland as land used for annual and perennial herbaceous crops for human consumption, forage (including hay) and biofuel. Perennial woody crops, permanent pastures, and crop rotations are excluded from the definition. The identification of active cropland relies on significant variations in vegetation signals within time-series remote sensing data over a 12-month period, indicating planting and harvesting activities. When periodic vegetation signals exhibit anomalies, we hypothesize that changes in cropping patterns or systems may have occurred.

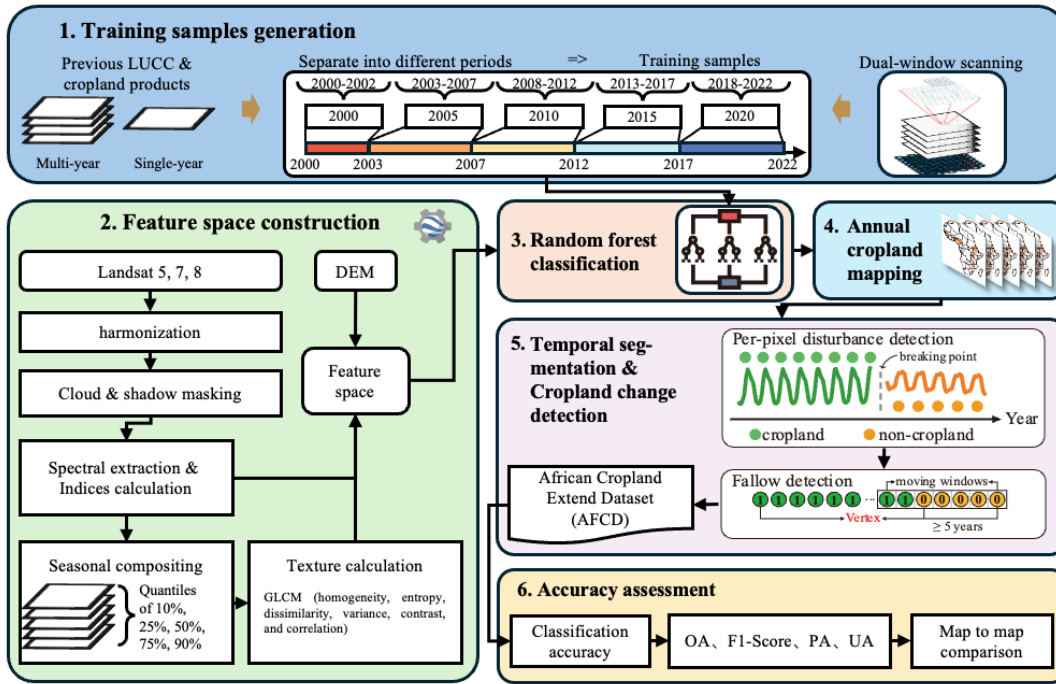


Figure 3 Flowchart of this study for mapping African annual cropland extent spanning the years 2000 to 2022.

3.1 Generate training datasets

In the process of generating training data, we employed a dual-window sliding window strategy for the creation of cropland and non-cropland training samples. Prior studies have revealed that the distribution of training data (proportional to area and equally distributed) as well as data balance significantly impact classification outcomes. Quantitative analyses have demonstrated that the proportional allocation method typically achieves higher overall accuracy compared to an equally distributed approach (Jin et al., 2014; Zhu et al., 2016). Specifically, our procedure for generating reference samples is as follows:

- All annual and multi-year products were categorized into five groups, centred around the years 2000, 2005, 2010, 2015, and 2020, each group encompassing the product from the respective centre year plus or minus two years.
- Based on the cropland definitions and class label numbers in Table 1, each LULC product was reclassified into cropland and non-cropland (excluding categories with significant discrepancies from other products). The data were then resampled to the WGS84 coordinate system with a spatial resolution of 0.0002875 degrees (approximately 30 meters at the equator). For multi-year products, areas where various land cover types had not changed were extracted; for single-year products, they were used directly.
- A dual-window methodology was applied to assess binary image classification, requiring complete category occupancy within a 150m×150m inner window for homogeneity, and at least 80% dominance in a 330m×330m outer window, ensuring spatial stability of the central pixel as a representative sample point.

- An evaluation was performed to ascertain the recognition consistency of the central pixel's classification across various products.
- A hexagonal grid dataset with a resolution of 0.01 degrees was employed to randomly filter the generated excess sample points. Within each grid cell, a maximum of 10 samples of the same category with the highest recognition level were retained.

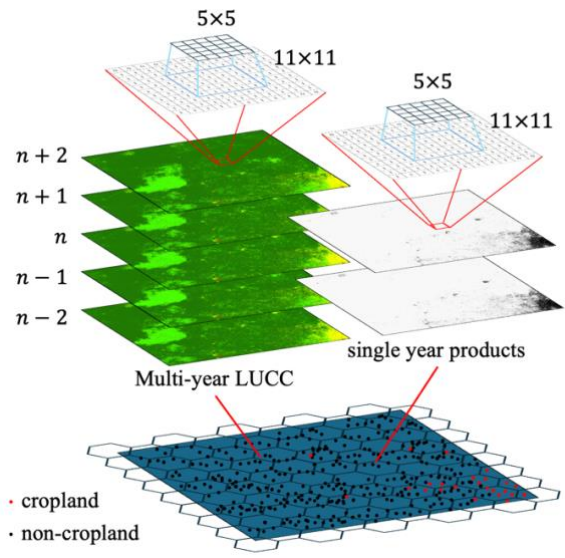


Figure 4 Schematic Diagram of Training Sample Dataset Generation Using a Dual-Window Approach.

Through the procedures, a total of five sets of sample datasets were generated, each corresponding to the classification sample data for a central year and the two preceding and following years.

3.2 Cropland Mapping with classification methods

3.2.1 Original cropland mapping

The temporal scope for cropland extraction was extended from 2000 to 2022. Utilizing multi-temporal Landsat Surface Reflectance (SR) imagery is a primary method for preprocessing in contemporary land use classification. This approach mitigates the limitations of single-scene imagery by facilitating the extraction of seasonal changes on the Earth's surface. Consequently, two methods for temporal data synthesis have been developed: seasonal composites (e.g., 16-day, monthly, and seasonal composites) and metrics composites. The metrics composite method, introduced by Hansen et al.(2013), captures phenological and land cover changes without requiring assumptions or prior knowledge about seasonal timing, making it globally applicable without location-specific modifications.

In this study, five spectral bands from Landsat, excluding the blue band, were used, along with four spectral indices: Enhanced Vegetation Index (EVI), Soil-Adjusted Vegetation Index (SAVI), Normalized Difference Water Index (NDWI), and

200 Normalized Burn Ratio (NBR). From these nine spectral features, five percentiles (10th, 25th, 50th, 75th, and 90th) were calculated, resulting in a total of 45 spectral features. Additionally, topographic parameters (elevation, slope, and aspect) were derived from the global 30m Digital Elevation Model (DEM) provided by ASTER GDEM. Texture features (variance, homogeneity, contrast, dissimilarity, entropy, and correlation) were generated from the gray-level co-occurrence matrix based on the Near Infrared (NIR) band, yielding a total of 54 feature parameters for subsequent classification tasks.

205 For classifier selection, we utilized the `ee.Classifier.smileRandomForest()` method available on the GEE cloud platform. This algorithm determines pixel class membership by adjusting two key parameters: the number of decision trees (Ntree) and the number of predictor variables (Mtry) at each node split, using a combination of training samples and multivariate features. Previous studies have shown that the classification accuracy of this algorithm is not significantly affected by the specific parameter values (Belgiu, 2016; Zhang et al., 2019). Therefore, Ntree was set to the default value of 500, and Mtry was set to

210 the square root of the total number of input features. A separate classifier was trained for each 2° grid (Fig. 1 f) cell using the Random Forest method, with training samples drawn from the four neighboring grid cells surrounding the target grid unit.

3.2.2 Change detection by CCD algorithm and updating changes

Changes in cropland are generally more complex than other forms of land use changes, such as deforestation and urban expansion. These changes can be categorized as follows: (1) Acquisition of new agricultural land, achieved through clearing

215 forests or converting savannah regions into arable land; (2) Short-term fallowing, which involves temporarily resting the land to restore soil fertility; (3) Abandonment, where agricultural land is left unused due to various factors; and (4) Urban replacement, where agricultural fields are progressively replaced by urban areas as a result of socio-economic development. In this study, the CCD algorithm (Zhu and Woodcock, 2014) was applied to identify changes in cropland areas. This algorithm employs Fourier transform techniques to model time-series observations using trend terms (to estimate trend changes) and

220 harmonic terms (to describe periodic changes), then identifies potential land use disruptions when the time-series reflectance data exhibits six consecutive outliers that significantly deviate from the model-fitted curve (Zhu and Woodcock, 2014). This detection criterion typically corresponds to substantial surface modifications, including but not limited to afforestation initiatives (Decuyper et al., 2022), agricultural reclamation projects (Chen et al., 2023), or spontaneous cropland abandonment, thereby facilitating precise detection of changes in cropland regions. Specifically, the algorithm decomposes the time-series

225 data into trend and periodic components using the Fourier transform, as shown in Eq. (1):

$$\hat{\rho}(i, t) = a_{0,i} + c_{1,i} \times t + \sum_{k=1}^n \left(a_{k,i} \times \cos\left(\frac{2k\pi}{T} t\right) + b_{k,i} \times \sin\left(\frac{2k\pi}{T} t\right) \right), \quad (1)$$

Where $\hat{\rho}(i, t)$ represents the estimated value at Julia day t and band i . The parameter $a_{0,i}$ is the intercept term at band i , reflecting the average level of the time series, while $c_{1,i}$ is the linear trend coefficient, indicating the linear change over time at that location. The summation $\sum_{k=1}^n$ includes the harmonic components, where n is the number of harmonics. The

230 coefficients $a_{k,i}$ and $b_{k,i}$ are the cosine and sine coefficients for the k -th harmonic, describing the amplitude and phase of

periodic changes. The functions $\cos\left(\frac{2k\pi}{T}t\right)$ and $\sin\left(\frac{2k\pi}{T}t\right)$ are the cosine and sine functions for the k -th harmonic, with T being the period length (default is 365.25), used to capture periodic variations (Xian et al., 2022).

In this study, we utilized the JavaScript API provided by the GEE platform, specifically the `ee.Algorithms.TemporalSegmentation.Ccdc()` function, to detect land use changes. This algorithm identifies change points in
 235 land use by analysing time-series data. In this study, we applied the CCD algorithm alongside continuous Landsat imagery data to determine the stable time intervals of agricultural land pixels and identify specific temporal points of land use changes. This approach also enabled the identification and correction of misclassifications occurring during these stable periods by majority voting.

3.3 Accuracy assessment

240 The validation of the African cropland product involved three complementary approaches. First, we evaluated the accuracy of AFCD by comparing its national-scale area statistics with official FAO reports and other existing cropland products, using R-square (R^2 , shown as Eq. 2) as the evaluation metric. Second, we performed sample-based validation using multiple independent datasets. Third, we performed spatial consistency analysis by comparing our product with existing remote sensing-derived cropland maps.

$$245 \quad R^2 = 1 - \frac{\sum (y_i - \hat{y}_i)^2}{\sum (y_i - \bar{y})^2} \quad (2)$$

For the sample-based validation, we employed three distinct strategies: (1) We reserved 30% of consensus samples from model training for internal validation of classification accuracy; (2) Utilized the cropland/non-cropland samples from sub-Saharan Africa compiled by Kerner et al., (2024) for independent accuracy assessment (as described in 2.3); and (3) Applied the global cropland sample dataset from Laso Bayas et al., (2017) for sample-based area estimation validation (as described in 2.3). The
 250 first two validation approaches employed four key accuracy metrics calculated through confusion matrix analysis, as shown in Eq. (3):

$$\begin{aligned} PA_k &= \frac{p_{kk}}{p_{k.}} \\ UA_k &= \frac{p_{kk}}{p_{.k}} \\ OA &= \frac{\sum_{k=0}^{m-1} p_{kk}}{N} \\ F1_k &= \frac{2 \cdot PA_k \cdot UA_k}{PA_k + UA_k} \\ Kappa &= \frac{N \sum_{k=0}^{m-1} p_{kk} - \sum_{k=0}^{m-1} p_{k.} p_{.k}}{N^2 - \sum_{k=0}^{m-1} p_{k.} p_{.k}} \end{aligned} \quad (3)$$

For binary classification (cropland vs. non-cropland), we define the number of classes as $m = 2$, corresponding to class labels 0 and 1. Let N be the total number of validation samples and p_{ij} denote the number of samples belonging to class i but
 255 classified as class j , with p_{kk} representing correctly classified cases. The marginal sums $p_{k.} = \sum_j p_{kj}$ and $p_{.k} = \sum_i p_{ik}$ correspond to row and column totals respectively.

For the Laso Bayas et al. (2017) dataset validation, we calculated mean absolute error (MAE) by comparing our mapped cropland area proportions against reference values within 300×300m sample units. The MAE computation is shown in Eq. (4):

$$MAE = \frac{1}{n} \sum |A_m - A_r| \quad (4)$$

260 Where A_m denotes the mapped cropland proportion, A_r is the reference proportion, and n is the sample count.

In addition, we evaluated the similarity of AFCD with other multi-source remote sensing cropland extent maps through comparative analysis. First, five representative agricultural zones were selected as sample areas based on cropland intensification levels and spatial continuity characteristics, including: (1) contiguous irrigated agricultural zones, (2) dispersed traditional rain-fed agricultural areas, (3) mountainous terrace farming systems, (4) semi-intensive agro-pastoral transition areas, and (5) fragmented transitional cropland regions (see Figure 2). Within each sample area, 1,500 validation points were systematically collected, with similarity matrices (Phalke et al., 2020) employed to compare our maps with other remote sensing-based land cover products. From these matrices, we computed standard accuracy metrics including PA, UA, F1-score, and overall similarity (equivalent in calculation to OA). It should be specifically noted that the comparative datasets (e.g., GLAD, as described in Section 2.1) exhibit significant discrepancies in cropland definitions, spatial resolution, mapping years, and classification methodologies. To mitigate the impacts of these disparities during comparison, spatial resampling of our map products was occasionally required, along with temporal alignment using outputs from identical reference years as comparator products.

4 Results

275 4.1 Classification results

The outcome of this study is an annual 30-m cropland dynamics map for Africa (Fig. 5), which demonstrates strong performance in capturing cultivated areas across diverse agricultural landscapes. As illustrated in Figure 5, five representative regions were selected to evaluate the AFCD's capability in recognizing varying cropland patterns under different agricultural conditions. The contiguous irrigated agricultural zones in Egypt, characterized by large, contiguous cropland due to intensive agriculture, were easily identified (Fig. 5b). Similarly, the dispersed traditional rain-fed agricultural areas in Senegal were accurately captured (Fig. 5b). The mountainous terrace farming systems in Rwanda were also well mapped (Fig. 5b), along with the semi-intensive agro-pastoral transition areas in Kenya (Fig. 5b). Lastly, the fragmented transitional cropland regions in Sudan were correctly identified, showcasing the AFCD's capacity to detect various agricultural systems across different landscapes.

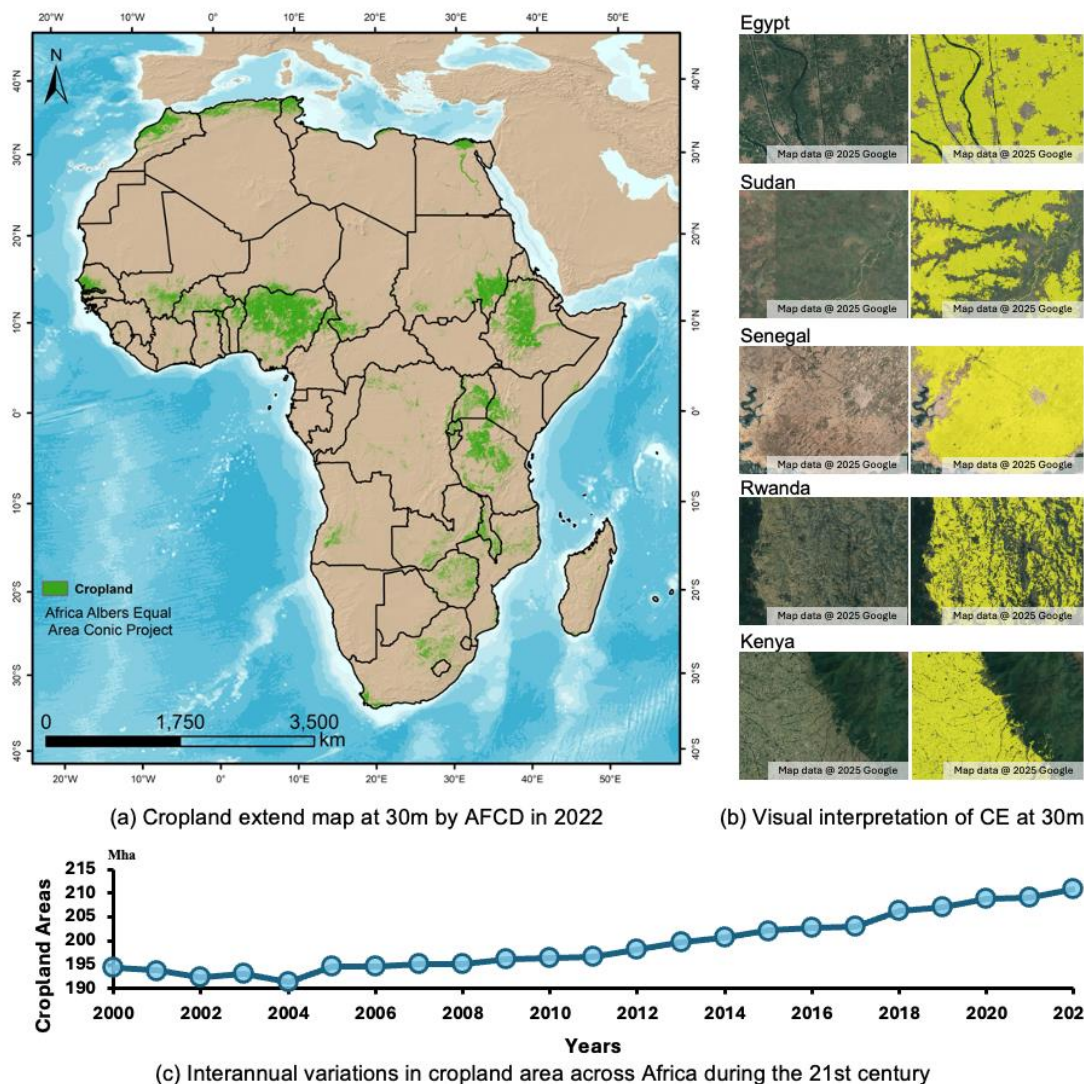


Figure 5 Cropland Extent Map of Africa in 2022 at 30m Resolution by the Africa Cropland Dynamic map (AFCD) Project (a); Visual Interpretation of Cropland Extent for Selected African Countries (b), and interannual variations in cropland areas across Africa during the 21st (c). Yellow colour represents the cropland mask, and background is the natural colour composite high-resolution imagery available in Google Earth Engine.

4.1 Independent accuracy assessment of AFCD map

We performed pixel-wise accuracy assessment of annual cropland map based on the validation sample set. The F1 score, OA, UA, PA, and Kappa coefficient of annual maps on average were 0.86 ± 0.01 , 0.97 ± 0.01 , 0.88 ± 0.07 , 0.77 ± 0.07 , and 0.93 ± 0.01 , respectively. Spatially, mapping accuracy can vary across different tiles, likely due to the sparse distribution of cropland. The overall classification accuracy of the model exceeds 90% across most regions, except for central and southern Niger, where the accuracy is lower. In most areas, the F1 scores are above 0.80, and both omission and commission errors are less

than 0.2. For the sample data provided by Kerner for eight countries in sub-Saharan Africa, the sample collection year is 2019. Consequently, we selected cropland extraction results from this time frame for validation. The outcomes and comparisons with other products are presented in Table 1. We primarily utilized this sample to evaluate our product, while the accuracy metrics for other products were sourced from the study by Kerner et al., (2024). Based on four evaluation metrics and results from eight target countries, we compared the performance of our product against other nations and the average level. Our cropland identification model performed exceptionally well in countries such as Kenya and Mali, achieving an accuracy of 0.96 and an F1 score of 0.92, indicating a strong balance between precision and recall. However, the model's performance was relatively weaker in Zambia, Togo, and Uganda, with accuracies of 0.82 and 0.78, respectively.

Table 2 Performance metrics and associated standard errors for our results and other maps based Kerner’s reference dataset. The highest value in each row is highlighted in bold blue and the second highest in bold black.

Country	Metric	Our Result	GFSAD	GLAD	Copernicus	GlobCover	ASAP	Mean
Kenya	Accuracy	0.96 ± 0.00	0.92 ± 0.01	0.95 ± 0.01	0.90 ± 0.01	0.76 ± 0.01	0.92 ± 0.01	0.91 ± 0.05
	F1	0.66 ± 0.02	0.63 ± 0.14	0.75 ± 0.19	0.50 ± 0.18	0.29 ± 0.11	0.62 ± 0.17	0.55 ± 0.13
	Precision (UA)	0.67 ± 0.03	0.47 ± 0.06	0.68 ± 0.07	0.38 ± 0.06	0.18 ± 0.03	0.48 ± 0.07	0.48 ± 0.16
	Recall (PA)	0.64 ± 0.02	0.95 ± 0.03	0.83 ± 0.05	0.73 ± 0.07	0.74 ± 0.07	0.85 ± 0.05	0.73 ± 0.15
Malawi	Accuracy	0.83 ± 0.00	0.77 ± 0.03	0.86 ± 0.03	0.84 ± 0.03	0.75 ± 0.03	0.77 ± 0.03	0.81 ± 0.04
	F1	0.61 ± 0.01	0.63 ± 0.19	0.66 ± 0.24	0.67 ± 0.22	0.50 ± 0.23	0.63 ± 0.17	0.59 ± 0.14
	Precision (UA)	0.55 ± 0.01	0.50 ± 0.07	0.71 ± 0.09	0.61 ± 0.08	0.43 ± 0.08	0.48 ± 0.07	0.58 ± 0.09
	Recall (PA)	0.68 ± 0.03	0.85 ± 0.05	0.62 ± 0.07	0.74 ± 0.07	0.61 ± 0.08	0.92 ± 0.05	0.67 ± 0.23
Mali	Accuracy	0.94 ± 0.01	0.91 ± 0.01	0.96 ± 0.01	0.93 ± 0.01	0.80 ± 0.01	0.95 ± 0.01	0.92 ± 0.05
	F1	0.23 ± 0.07	0.15 ± 0.20	0.33 ± 0.29	0.18 ± 0.23	0.07 ± 0.08	0.21 ± 0.38	0.21 ± 0.14
	Precision (UA)	0.16 ± 0.05	0.10 ± 0.05	0.23 ± 0.08	0.12 ± 0.06	0.04 ± 0.02	0.17 ± 0.11	0.14 ± 0.10
	Recall (PA)	0.42 ± 0.13	0.37 ± 0.15	0.61 ± 0.16	0.37 ± 0.15	0.42 ± 0.16	0.27 ± 0.15	0.44 ± 0.25
Rwanda	Accuracy	0.76 ± 0.00	0.74 ± 0.04	0.77 ± 0.04	0.77 ± 0.04	0.61 ± 0.05	0.71 ± 0.05	0.75 ± 0.07
	F1	0.63 ± 0.01	0.73 ± 0.18	0.72 ± 0.18	0.75 ± 0.18	0.61 ± 0.18	0.74 ± 0.16	0.69 ± 0.11
	Precision (UA)	0.82 ± 0.02	0.67 ± 0.07	0.84 ± 0.07	0.73 ± 0.07	0.53 ± 0.07	0.64 ± 0.07	0.77 ± 0.14
	Recall (PA)	0.51 ± 0.01	0.79 ± 0.05	0.64 ± 0.05	0.78 ± 0.05	0.72 ± 0.05	0.88 ± 0.04	0.68 ± 0.17
Tanzania	Accuracy	0.83 ± 0.01	0.88 ± 0.01	0.86 ± 0.01	0.86 ± 0.01	0.70 ± 0.01	0.83 ± 0.01	0.81 ± 0.06
	F1	0.72 ± 0.02	0.76 ± 0.06	0.69 ± 0.05	0.72 ± 0.06	0.51 ± 0.06	0.65 ± 0.05	0.61 ± 0.16
	Precision (UA)	0.89 ± 0.02	0.89 ± 0.02	0.95 ± 0.01	0.86 ± 0.02	0.60 ± 0.03	0.92 ± 0.02	0.87 ± 0.11
	Recall (PA)	0.61 ± 0.02	0.67 ± 0.02	0.54 ± 0.02	0.61 ± 0.02	0.45 ± 0.02	0.50 ± 0.02	0.49 ± 0.16
Togo	Accuracy	0.77 ± 0.01	0.77 ± 0.03	0.86 ± 0.03	0.78 ± 0.03	0.74 ± 0.03	0.69 ± 0.03	0.78 ± 0.06
	F1	0.45 ± 0.03	0.64 ± 0.18	0.75 ± 0.15	0.63 ± 0.19	0.46 ± 0.20	0.49 ± 0.20	0.55 ± 0.20
	Precision (UA)	0.68 ± 0.02	0.60 ± 0.07	0.88 ± 0.06	0.64 ± 0.07	0.56 ± 0.09	0.48 ± 0.07	0.70 ± 0.14
	Recall (PA)	0.33 ± 0.03	0.68 ± 0.05	0.66 ± 0.05	0.62 ± 0.05	0.38 ± 0.05	0.51 ± 0.06	0.50 ± 0.22
Uganda	Accuracy	0.86 ± 0.01	0.79 ± 0.02	0.84 ± 0.02	0.77 ± 0.02	0.57 ± 0.02	0.70 ± 0.02	0.78 ± 0.10
	F1	0.53 ± 0.02	0.48 ± 0.21	0.57 ± 0.23	0.40 ± 0.20	0.31 ± 0.12	0.38 ± 0.16	0.44 ± 0.08
	Precision (UA)	0.42 ± 0.02	0.35 ± 0.07	0.46 ± 0.08	0.29 ± 0.06	0.19 ± 0.04	0.25 ± 0.05	0.38 ± 0.15
	Recall (PA)	0.72 ± 0.01	0.73 ± 0.07	0.76 ± 0.07	0.67 ± 0.09	0.80 ± 0.07	0.79 ± 0.07	0.66 ± 0.18
Zambia	Accuracy	0.96 ± 0.00	0.94 ± 0.01	0.97 ± 0.01	0.94 ± 0.01	0.90 ± 0.01	0.91 ± 0.01	0.94 ± 0.03
	F1	0.51 ± 0.06	0.60 ± 0.23	0.73 ± 0.27	0.58 ± 0.24	0.20 ± 0.23	0.45 ± 0.21	0.56 ± 0.15
	Precision (UA)	0.47 ± 0.05	0.46 ± 0.09	0.68 ± 0.10	0.45 ± 0.09	0.15 ± 0.06	0.32 ± 0.07	0.49 ± 0.19
	Recall (PA)	0.58 ± 0.08	0.85 ± 0.07	0.79 ± 0.08	0.80 ± 0.08	0.29 ± 0.10	0.78 ± 0.08	0.71 ± 0.17
Mean	Accuracy	0.86 ± 0.01	0.84 ± 0.01	0.88 ± 0.01	0.85 ± 0.01	0.73 ± 0.01	0.81 ± 0.01	-
	F1	0.54 ± 0.03	0.58 ± 0.05	0.65 ± 0.08	0.55 ± 0.06	0.37 ± 0.07	0.52 ± 0.09	-
	Precision (UA)	0.58 ± 0.03	0.51 ± 0.02	0.68 ± 0.03	0.51 ± 0.02	0.34 ± 0.03	0.47 ± 0.03	-
	Recall (PA)	0.56 ± 0.04	0.74 ± 0.04	0.68 ± 0.04	0.67 ± 0.04	0.55 ± 0.04	0.69 ± 0.04	-

Secondly, we utilized the crowd sourced sample data provided by Laso Bayas et al. (2017) to extract the proportion of cropland area within a 300m × 300m radius around each point. We then calculated the MAE between the extraction results and visual interpretation, the result indicated that 15.07 ± 1.70% for all samples, 10.78 ± 1.56% for control samples, and 31.45 ± 8.47% for expert samples.

4.2 Comparison of cropland areas

The net cropland area for Africa were estimated from 19238.65 Mha in 2000 to 21092.43 Mha in 2022. This estimate is in line with other remote sensing-based estimates, although major differences exist. This study conducted cross-validation between national-scale cultivated land area estimations and statistical data from the FAO covering 50 African countries/regions (partial areas excluded due to data gaps), demonstrating strong concordance ($R^2 = 0.83$, Fig. 6a). It should be specifically noted that

our total cropland estimates exhibit a 10%–24% discrepancy range compared with official FAO statistics. This divergence may originate from two principal factors: (1) FAO's statistical framework heavily relies on self-reported national data, inherently constrained by inconsistent survey methodologies and update delays (Fritz et al., 2015); (2) our remote sensing interpretation protocol using growing-season NDVI threshold classification potentially underestimates intermittently followed croplands. Comparative analysis with independent remote sensing products (GLAD and IGRIP) revealed three critical findings: First, the 30-m resolution GLAD dataset showed optimal linear agreement with our estimates (intercept = 0.30×10^3 ha, $R^2 = 0.94$, Fig. 6b). Second, the 100-m resolution IGRIP dataset exhibited a larger intercept of 1.19×10^3 ha ($R^2 = 0.86$, Fig. 6c). Notably, the minimal area discrepancy between GLAD and our study (slope coefficient = 0.98 ± 0.03) primarily stems from mutual adoption of 30-m resolution detection criteria. However, the observed high consistency with IGRIP ($R^2 = 0.86$) mainly reflects mutual recognition of dominant cropland types, given IGRIP's emphasis on rainfed/irrigated classifications (unaddressed in our study) and Africa's overwhelming predominance of rainfed cultivation systems (FAO, 2020).

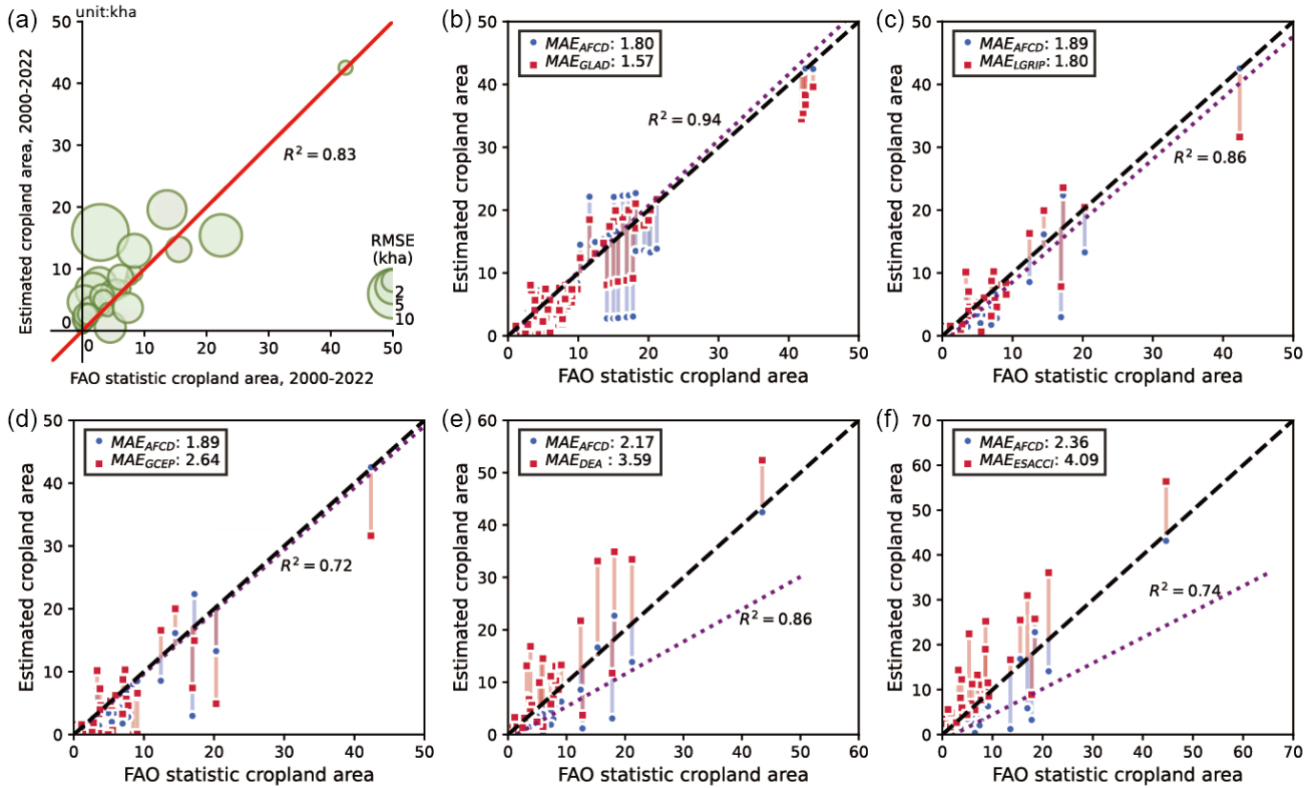


Figure 6 Comparison of AFCD with FAO Statistical Cropland Area (a) and Other LULC/Cropland Products (b-f) (2000–2022). In (b–f), blue and red dots show the differences from FAO estimates for AFCD and other products, respectively. The purple line indicates the linear fit between AFCD and each product.

4.3 Map to map comparison results

The comparison of cropland maps derived from this study with the cropland labels in GLAD2019 reveals a high level of agreement across the entire study area, with an overall similarity of 87.7%. Specifically, the producer's cropland similarity was 85.2% (corresponding to an omission error of 14.8%), while the user's cropland similarity was slightly higher at 86.9% (resulting in a commission error of 13.1%). Among the selected regions, Nigeria exhibited the highest similarity at 94.6%, with an F1-Score of 0.963. Senegal followed closely with an overall similarity of 94.4% (F1-Score = 0.858), while Rwanda showed the lowest similarity at 76.7% (F1-Score = 0.766). Visual comparisons highlighted the successful identification of major irrigated agricultural zones (such as in Egypt) and rainfed cultivation areas (notably in Nigeria).

When compared with the 10m African cropland product from Digital Earth Africa (DEA) for 2019, the similarity in Egypt was particularly high, with an overall similarity of 90.1% (F1-Score = 0.913). In this case, the producer's cropland similarity was 86.5% (omission error = 13.5%), while the user's cropland similarity reached 96.5% (commission error = 3.5%). The primary cause of discrepancies is the use of Sentinel-2 10m-resolution imagery in the DEA product, which improves boundary delineation between cropland and adjacent land covers, reducing mixed-pixel effects. As a result, our AFCD product tends to show more omission errors compared to DEA, while the commission errors remain below 5%, highlighting its strong performance in detecting cropland areas.

A cross-comparison with the LGRIP30 global 30m irrigated/rainfed cropland dataset (2015 vintage) in Nigeria's predominantly rainfed systems showed an overall similarity of 89.7% (F1-Score = 0.932). The producer's cropland similarity was notably high at 95.8% (omission error = 4.2%), while the user's cropland similarity was 88.4% (commission error = 11.6%). The discrepancy is mainly due to occasional misclassifications in the LGRIP30 dataset, where buildings, roads, and neighboring woodlands are sometimes incorrectly labeled as cropland. Nevertheless, the spatial agreement between the AFCD and LGRIP30 datasets remains substantial, with a similarity of nearly 90%.

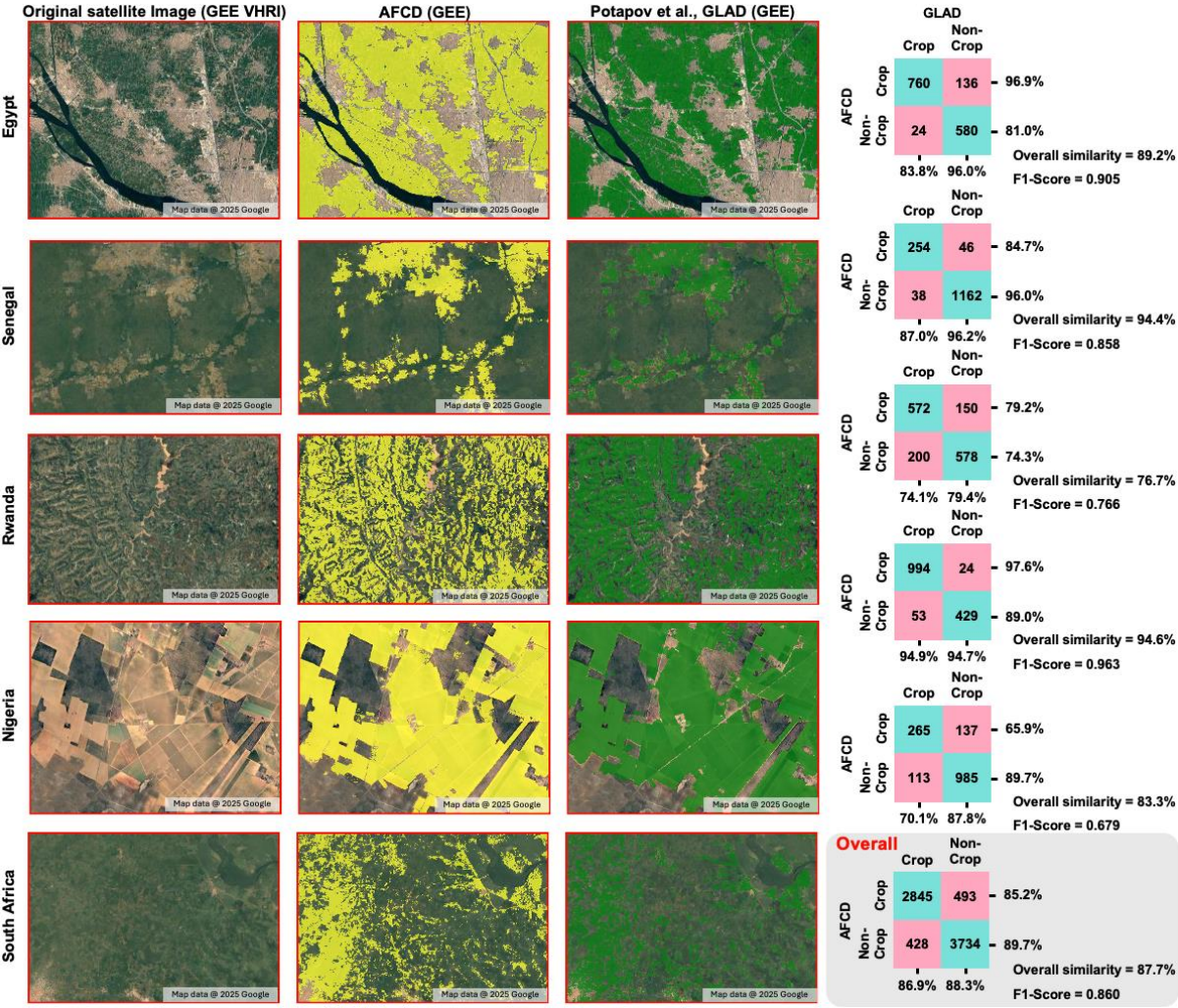


Figure 7 Visual comparison of cropland and non-cropland classification results from AFCD and Potapov et al. (glad) across multiple African countries, and background is the natural colour composite high-resolution imagery available in Google Earth Engine.

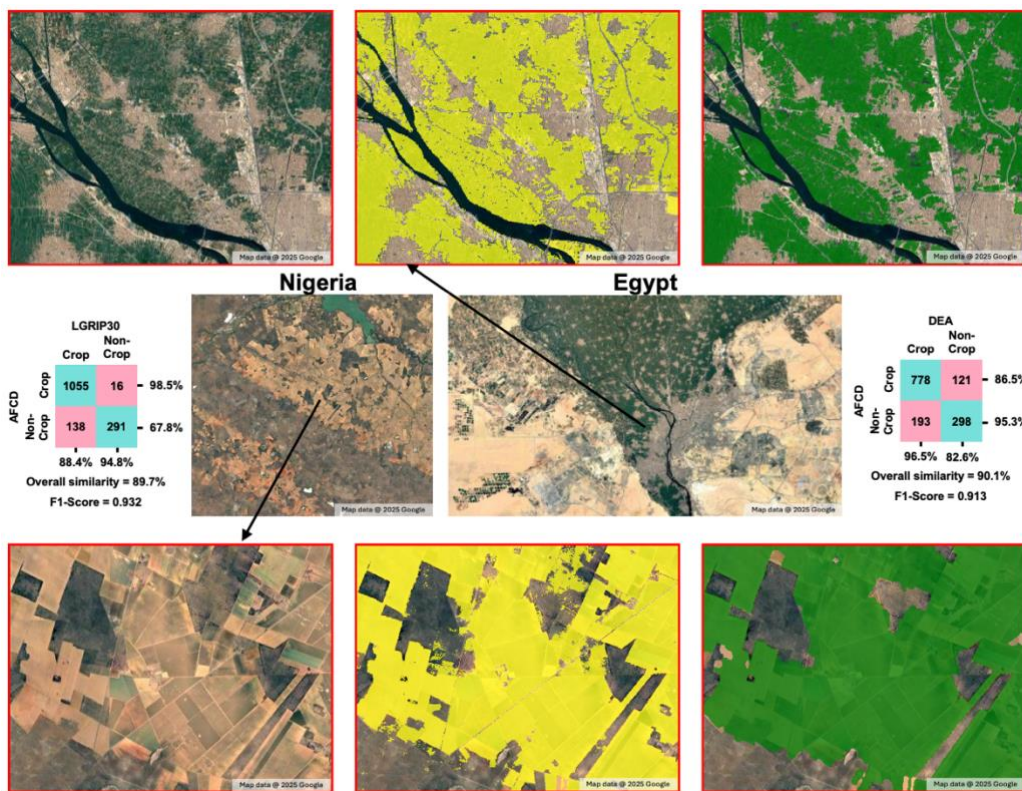


Figure 8 Map to map comparison of cropland extent develop by AFCD and LGRIP30 in Egypt and Nigeria, and background is the natural colour composite high-resolution imagery available in Google Earth Engine.

360 5. Discussion

5.1 Cropland dynamics in Africa

Based on the produced AFCD map, we calculated country-level net changes in cropland area between 2000 and 2022, and we plotted annual cropland area dynamics at the continental scale. Overall, Africa's total cropland grew from 194.35 Mha in 2000 to 210.92 Mha in 2022 (Fig. 5c), a net increase of 16.57 Mha (8.53%). In terms of temporal changes, before 2005, the changes in arable land followed a wave-like pattern, with gradual fluctuations. However, after 2006, a sharp increase was observed (as shown in Fig. 9b). As seen in Fig. 9a, the overall arable land area in Africa shows a spatial increasing trend. Countries such as the Democratic Republic of the Congo, Tanzania, and Mozambique have seen increases of over 1.5 million hectares (Mha), while most countries experienced an increase of less than 500,000 hectares (kha). For example, in the Democratic Republic of the Congo, 1,533.46 kha of land have been converted into arable land since the 21st century. In contrast, a few countries, including Zimbabwe (460.54 kha), South Sudan (88.70 kha), and Libya (0.25 kha), have seen a decline in arable land area.

This trend is linked to factors such as the growth of the mining industry in African nations, rural labor migration to mining areas, or regional conflicts leading to the abandonment of arable land.

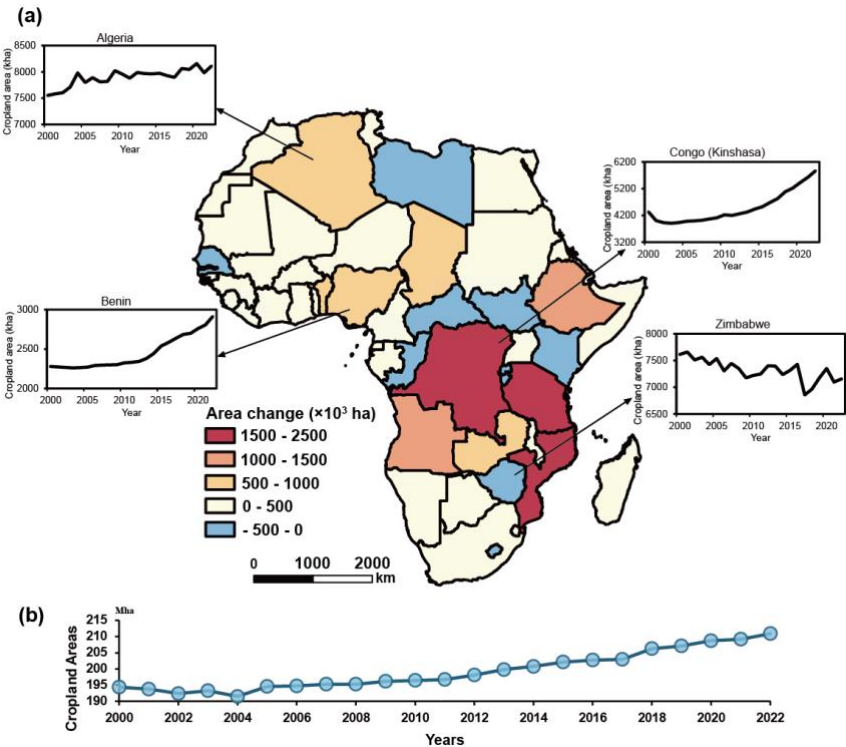


Figure 9 Cropland area changes in Africa between 2000 and 2022. (a) Country-level cropland change patterns based on AFCD data; (b) Continent-wide annual cropland dynamics.

From 2000 to 2022, Africa's cropland area steadily increased; however, the area of abandoned cropland also rose. According to the FAO, cropland abandonment refers to formerly cultivated land that has not been used for agricultural production for a period exceeding five consecutive years. By 2018, abandoned cropland accounted for 11.52% (24.70 Mha) of active cropland. In 2022, the increase in potentially abandoned cropland, projecting that abandoned cropland will constitute 13.31% of active cropland. The abandonment of cropland is driven by a combination of natural constraints, land degradation, demographic shifts, socio-economic factors, and institutional frameworks, which interact across different spatial and temporal scales (Zumkehr and Campbell, 2013). This study quantitatively evaluates the spatiotemporal trends and primary drivers of cropland abandonment in Africa (shown as Fig. 10). Countries situated between 23°E and 39°E, including Egypt, Sudan, South Sudan, Uganda, Malawi, and Zimbabwe, account for 50.1% of the continent's abandoned cropland. Nationally, we found that most abandoned cropland remains unused for over five years. South Africa and Sudan exhibit the highest reclamation rates, with 10% of active cropland regenerated from previously abandoned areas, while most other nations have rates below 5%. Cropland abandonment is influenced by a myriad of objective factors, encompassing agricultural conditions and the degree of regional development. Furthermore, economic circumstances, demographic shifts, and urban expansion also significantly

contribute to this phenomenon. A national-level analysis of cropland abandonment across Africa offers a spatial perspective on the magnitude of abandonment, simultaneously reflecting the alterations in socioeconomic variables that underlie this trend. The heatmap reveals that countries such as Burundi, the Central African Republic, and Ghana exhibit both low areas and ratios of cropland abandonment (< 5%). Conversely, nations like Algeria, Burkina Faso, Mali, and Zambia consistently maintain higher levels of cropland abandonment annually, with abandoned areas exceeding 25% of active cropland. Furthermore, South Africa, Nigeria, Zimbabwe, and Sudan demonstrate elevated abandonment levels, notably with Nigeria experiencing significant abandonment around 2015.

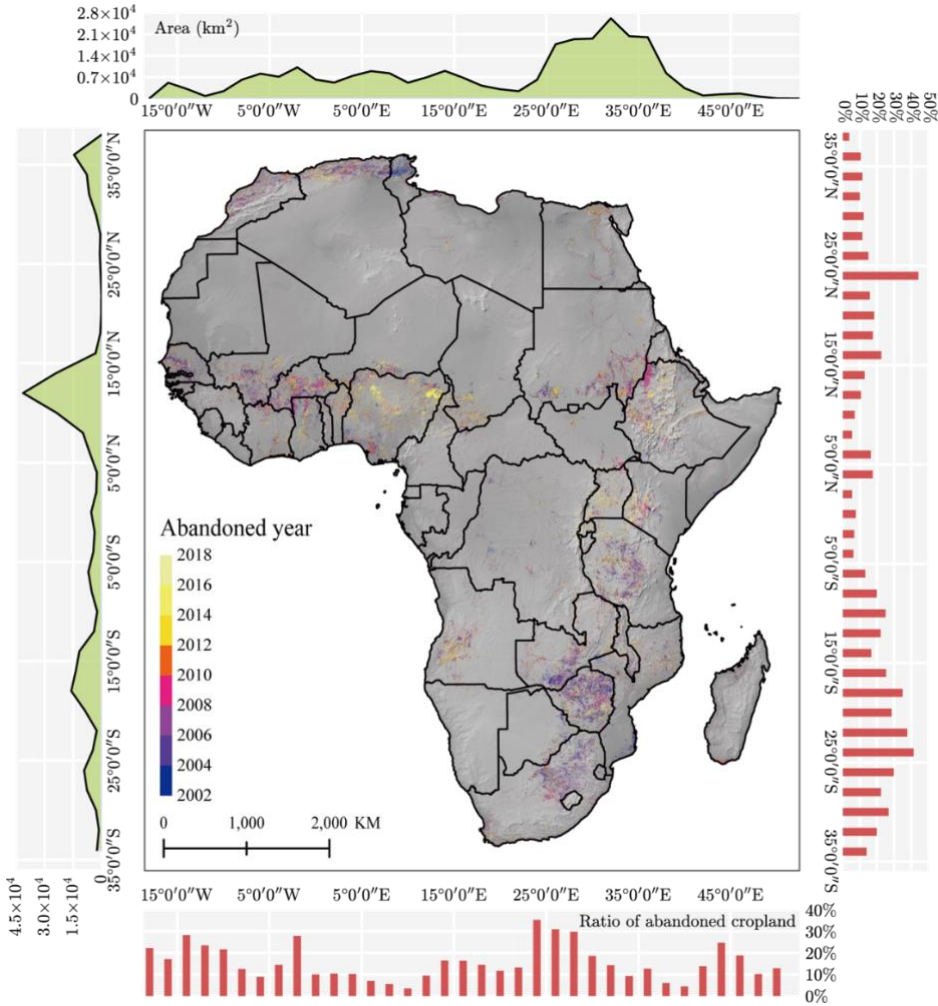


Figure 10 Spatial distribution of cropland abandonment in Africa, indicating the year abandonment began. Includes a summary of abandoned cropland area and the ratio of abandoned to active cropland at 2° longitude and latitude intervals.

Cropland, a heavily modified landscape within the wildland-urban interface (WUI), is a critical source of carbon emissions due to agricultural biomass burning, which substantially influences climate change (Mallet et al., 2024). In Africa, rain-fed cropland predominates over irrigated cropland. As a result, farming activities are concentrated in the rainy season when water

resources are abundant. During the dry season, arid conditions and natural vegetation growth create favorable conditions for wildfires, driven by meteorological and fuel moisture dynamics. Studies indicate a global rise in wildfire risk, with Africa's WUI being the most affected (Chen et al., 2024). However, wildfire detection using MODIS sensors underestimates burned areas smaller than 100 ha by over 200% due to limited spatial resolution (Ramo et al., 2021). Agricultural fire management, commonly used by African farmers to clear crop residues and reduce wildfire risk during fallow periods (Laris et al., 2023; Ramo et al., 2021), is often absent on abandoned cropland, significantly heightening wildfire risks. This study's long-term mapping of abandoned cropland in Africa offers a critical foundation for future research on fire management and monitoring wildfire risks in these areas.

Finally, cropland extraction in Africa is particularly challenging due to the complex crop planting structures in the region and the dynamic changes driven by climatic, environmental, and socio-economic factors. The long-term cropland data provided in this study is essential for understanding the interannual variation of cropland in Africa and its relationship to environmental, climatic, land use, and policy influences.

5.2 The advantages of the AFCD map

This study presents an algorithm developed using Landsat time series data (2000-2022) implemented on GEE with Random Forest and CCDC, producing a 30-meter resolution cropland extent map for Africa (Fig. 5). By integrating existing LUCC products with the CCDC algorithm, we developed a consistent cropland map for Africa. This approach minimizes the impact of seasonal false changes, ensuring stable and continuous identification of both active and abandoned croplands. Our method achieved an overall classification accuracy of 86% based on an independent validation dataset. Over the 22-year period, Africa experienced a net cropland expansion of 16.57 million hectares (Mha), representing nearly a 10% increase relative to the baseline levels at the start of the millennium. By comparing our product with other global and regional Land Use and Land Cover (LULC) or Cropland Extent (CE) products, we gain valuable insights into its strengths and limitations.

Existing LULC products, such as the ESRI 10m Annual Land Cover, GLAD's global cropland maps, and GlobeLand30, provide useful information; however, the AFCD product distinguishes itself through longer temporal coverage (2000–2022) and higher temporal frequency with Landsat-based annual observations at 30m resolution. This enables a more extended temporal observation of agricultural dynamics starting from the early 2000s. For example, compared to GLAD's quadrennial cropland extent product—aligned with FAO's five-year fallow land definition—the AFCD product offers enhanced temporal resolution. This improvement significantly boosts detection capabilities for long-term land abandonment patterns. Additionally, the AFCD map reduces misclassifications of roads and buildings near cropland, a common issue in products like LGRIP.

When compared to other 30m-resolution products such as GLAD, GCEP, and LGRIP, the AFCD product shows good consistency in terms of total cropland area. However, it tends to slightly underestimate cropland areas when compared to higher-resolution products like the 10m-resolution DEA or the 300m-resolution ESACCI. As shown in Figure 8, while AFCD preserves much of the object-level detail, the 30m resolution results in many mixed pixels, leading to small cropland areas being overlooked, especially when surrounded by vegetation.

435 A significant challenge in large-scale classification tasks is acquiring high-quality reference training and testing data. In this study, we generated a large number of sample data points and performed training and classification based on a grid approach. However, our training data relied on sample points derived from the limited overlap of different products. Cropland in sub-Saharan Africa is often fragmented, forming mosaics with savannas, woodlands, and grasslands. As a result, various products may identify the same pixel containing cropland in different ways, leading to inconsistencies. Regions with low classification consistency across products are especially vulnerable to misclassification. Consequently, we included these challenging samples with limited recognition in our training dataset. While this introduces some uncertainty, it is a necessary trade-off to minimize the omission of cropland as much as possible.

The AFCD product facilitates: 1) continuous temporal tracking of non-linear cropland system evolution; 2) precise identification of abandonment onset years and associated trigger events; and 3) robust attribution analysis of climate and anthropogenic impacts on agricultural landscapes. Serving as both a historical record of 21st-century cropland dynamics in Africa and a foundational dataset for future abandonment studies, this product contributes significantly to continental food security initiatives, hunger mitigation strategies, and sustainable land management efforts.

Cropland mapping is a complex and dynamic process, marked by gradual or abrupt changes in land cover due to human activities. Previous studies have employed soft classification approaches alongside the LandTrendr algorithm to track cropland change trajectories (Dara et al., 2018; Xie et al., 2024). However, these methods rely heavily on the accuracy of cropland probability distribution maps, which can be affected by seasonal variations in image quality and difficulties in determining classification thresholds. Additionally, most research has focused on developed regions like Europe, China, and the United States, leaving cropland change mapping in Africa, a region with diverse climates and complex land cover, a major challenge. The AFCD map provides more reliable information for cross-regional and cross-national comparisons and assessments. Such granular data is essential for understanding cropland transitions and guiding agricultural management practices in Africa.

5.3 The limitations and prospects of AFCD map

Our study acknowledges several limitations in terms of methodology and data. First, while we track cropland dynamics annually, we do not account for intra-annual variations in crops, such as differences in crop calendars or planting intensities. As a result, our approach may not effectively capture perennial crops or multi-cropping systems. Second, we map the general extent of cropland without distinguishing between specific types, which is crucial when assessing crop yields or cropland's responses to climate and anthropogenic factors. Future research will likely benefit from incorporating advanced techniques for high-resolution crop type mapping. Third, while AFCD performs above the average accuracy level for similar products in Africa, several factors contribute to its limitations. In terms of temporal accuracy, AFCD shows relatively lower precision in the early 21st century, mainly due to limited data availability for creating consensus label samples in the early 2000s, as well as uneven coverage of Landsat 5 data. Spatially, mapping accuracy varies by region, with relatively higher errors in countries near the Gulf of Guinea and in East Africa. This is due to local climate conditions and fragmented agricultural landscapes, which have long presented challenges for accurate cropland identification. Recent studies have highlighted the significant

discrepancies in cropland mapping across Africa (Kerner et al., 2024; Tubiello et al., 2023a). Additionally, the quality of Landsat data (e.g., unmasked cloud cover) and the sensitivity of the CCDC parameters have further impacted the mapping results. To improve cropland classification accuracy in these regions, future work should focus on comprehensive surveys and tailored strategies. Finally, it is important to note that the datasets used to generate consensus Crop/Non-crop samples define cropland differently, which may introduce noise and errors in our results. For instance, GLAD includes perennial herbaceous plants, while GFSAD may encompass plantation lands such as those cultivated with fruits, coffee, and tea. By relying on consistency across products, our consensus labeling process partially excludes these areas. Lastly, although we assume that land cover types should not change between breakpoints identified by CCDC, significant breaks caused by human activities can alter the classification of cropland's duration of use. This can lead to overestimation or underestimation of cropland areas in certain regions in different years within the AFCD dataset.

6 Data availability

The developed AFCD map dataset can be freely accessed via <https://doi.org/10.5281/zenodo.14920706> (Lou et al., 2025). To help users to navigate this dataset, it is saved as 23 independent files. Each file is named "AFCD_YYYY.tif", where YYYY is the year of cropland map. AFCD map contains 23 maps for time steps from 2000 to 2022, updated annually. In each TIFF file, a value of 1 indicates cropland area.

7 Conclusions

Cropland dynamics serve as a fundamental driver of human modification and adaptation to natural environments, while also constituting one of the ultimate objectives in Earth Observation research. Conducting large-scale and long-term cropland monitoring across Africa remains a significant challenge, particularly given the continent's complex agro-ecological conditions and persistent data limitations. This study generated an annual map of cropland extent at a 30-meter resolution for Africa (namely AFCD), utilizing Landsat-5, Landsat-7, and Landsat-8 data spanning from 2002 to 2022. It highlighted the efficacy of mapping croplands over extensive areas by employing high-resolution satellite data processed through pixel-based RF algorithms and CCD algorithms on the GEE. The research introduced a novel methodology for sample generation, incorporating crop and non-crop samples from previous LUCC and cropland extent products, alongside RF and CCD algorithms, to produce annual maps of cropland extent in Africa. An independent accuracy assessment revealed an overall map accuracy of 0.86. By 2022, Africa's cropland expanded from with a net increase of 8.53%. The high spatial and temporal resolution of the maps enabled detailed capture of cropland change across Africa, helping to uncover the impact of cropland on the climate, improve food security, and develop sustainable land management practices.

Author contributions. DP and ZL conceived the research idea. ZL designed the study, created the dataset, carried out the analysis, and wrote the first draft of the manuscript, under the supervision of other authors. All authors participated in the review and editing of the manuscript.

500

Competing interests. The contact author has declared that none of the authors has any competing interests.

Acknowledgements. The authors express their great gratitude to the following organizations for their contributions to this research: USGS for providing free access to Landsat imagery and GFSAD data, the University of Maryland for providing
505 GLAD data, the Aerospace information research institute for providing GLC_FCS30D, the ESA for providing WorldCover, Dynamic World and CCI Land cover data, the Esri for providing 10m annual land cover data (2017 - 2023), the Boston University for providing GLanCE samples and Geo-Wiki for sharing the third-party validation samples

Financial support. This study was supported by the National Key R&D Program of China (grant no. 2023YFE0207900).

510

References

Adolph, B., Jellason, N. P., Kwenye, J. M., Davies, J., Dray, A. G., Waeber, P. O., Jeary, K., and Franks, P.: Exploring farmers’ decisions on agricultural intensification and cropland expansion in Ethiopia, ghana, and Zambia through serious gaming, *Land*, 12, 556, <https://doi.org/10.3390/land12030556>, 2023.

515 Ahlqvist, O.: In Search of Classification that Supports the Dynamics of Science: The FAO Land Cover Classification System and Proposed Modifications, *Environ. Plan. B Plan. Des.*, 35, 169–186, <https://doi.org/10.1068/b3344>, 2008.

Belgiu, M.: Random forest in remote sensing: a review of applications and future directions, *ISPRS J. Photogramm. Remote Sens.*, 114, 24–31, <https://doi.org/10.1016/j.isprsjprs.2016.01.011>, 2016.

Brown, C. F., Brumby, S. P., Guzder-Williams, B., Birch, T., Hyde, S. B., Mazzariello, J., Czerwinski, W., Pasquarella, V. J.,
520 Haertel, R., Ilyushchenko, S., Schwehr, K., Weisse, M., Stolle, F., Hanson, C., Guinan, O., Moore, R., and Tait, A. M.: Dynamic World, Near real-time global 10 m land use land cover mapping, *Sci. Data*, 9, 251, <https://doi.org/10.1038/s41597-022-01307-4>, 2022.

Burton, C., Yuan, F., Ee-Faye, C., Halabisky, M., Ongo, D., Mar, F., Addabor, V., Mamane, B., and Adimou, S.: Co-production of a 10-m cropland extent map for continental africa using sentinel-2, cloud computing, and the open-data-cube, *Authorea*,
525 <https://doi.org/10.1002/essoar.10510081.1>, 2022.

Cassidy, E. S., West, P. C., Gerber, J. S., and Foley, J. A.: Redefining agricultural yields: from tonnes to people nourished per hectare, *Environ. Res. Lett.*, 8, 34015, <https://doi.org/10.1088/1748-9326/8/3/034015>, 2013.

- Chamberlin, J., Jayne, T. S., and Headey, D.: Scarcity amidst abundance? Reassessing the potential for cropland expansion in Africa, *Food Policy*, 48, 51–65, <https://doi.org/10.1016/j.foodpol.2014.05.002>, 2014.
- 530 Chen, B., Wu, S., Jin, Y., Song, Y., Wu, C., Venevsky, S., Xu, B., Webster, C., and Gong, P.: Wildfire risk for global wildland–urban interface areas, *Nat. Sustain.*, 7, 474–484, <https://doi.org/10.1038/s41893-024-01291-0>, 2024.
- Chen, S., Olofsson, P., Saphangthong, T., and Woodcock, C. E.: Monitoring shifting cultivation in Laos with landsat time series, *Remote Sens. Environ.*, 288, 113507, <https://doi.org/10.1016/j.rse.2023.113507>, 2023.
- Crawford, C. L., Wiebe, R. A., Yin, H., Radeloff, V. C., and Wilcove, D. S.: Biodiversity consequences of cropland
535 abandonment, *Nat. Sustain.*, 1–12, <https://doi.org/10.1038/s41893-024-01452-1>, 2024.
- Cui, Y., Dong, J., Zhang, C., Yang, J., Chen, N., Guo, P., Di, Y., Chen, M., Li, A., and Liu, R.: Validation and refinement of cropland map in southwestern china by harnessing ten contemporary datasets, *Sci. Data*, 11, 671, <https://doi.org/10.1038/s41597-024-03508-5>, 2024.
- Dara, A., Baumann, M., Kuemmerle, T., Pflugmacher, D., Rabe, A., Griffiths, P., Hölzel, N., Kamp, J., Freitag, M., and
540 Hostert, P.: Mapping the timing of cropland abandonment and recultivation in northern Kazakhstan using annual landsat time series, *Remote Sens. Environ.*, 213, 49–60, <https://doi.org/10.1016/j.rse.2018.05.005>, 2018.
- Debonne, N., Van Vliet, J., Ramkat, R., Snelder, D., and Verburg, P.: Farm scale as a driver of agricultural development in the kenyan rift valley, *Agric. Syst.*, 186, 102943, <https://doi.org/10.1016/j.agry.2020.102943>, 2021.
- Decuyper, M., Chávez, R. O., Lohbeck, M., Lastra, J. A., Tsendbazar, N., Hackländer, J., Herold, M., and Vågen, T.-G.:
545 Continuous monitoring of forest change dynamics with satellite time series, *Remote Sens. Environ.*, 269, 112829–112841, <https://doi.org/10.1016/j.rse.2021.112829>, 2022.
- Duan, J., Ren, C., Wang, S., Zhang, X., Reis, S., Xu, J., and Gu, B.: Consolidation of agricultural land can contribute to agricultural sustainability in China, *Nat. Food*, 2, 1014–1022, <https://doi.org/10.1038/s43016-021-00415-5>, 2021.
- ESA: Land Cover CCI Product User Guide Version 2, Tech. Rep., 2017.
- 550 ESA: Product user guide version 2.0, UCL-Geomat. Lond. UK, 685, 2017.
- Fader, M., Gerten, D., Krause, M., Lucht, W., and Cramer, W.: Spatial decoupling of agricultural production and consumption: quantifying dependences of countries on food imports due to domestic land and water constraints, *Environ. Res. Lett.*, 8, 14046, <https://doi.org/10.1088/1748-9326/8/1/014046>, 2013.
- FAO: The state of agricultural commodity markets 2020, FAO, Rome, 2020.
- 555 FAO, IFAD, UNICEF, WFP, and WHO: The State of Food Security and Nutrition in the World 2024 – Financing to end hunger, food insecurity and malnutrition in all its forms, FAO ; IFAD ; UNICEF ; WFP ; WHO ;, Rome, Italy, 2024.
- Friedl, M. and Sulla-Menashe, D.: MODIS/terra+ aqua land cover type yearly L3 global 500m SIN grid V061, NASA EOSDIS Land Process. DAAC, 10, 2022.
- Fritz, S., See, L., McCallum, I., You, L., Bun, A., Moltchanova, E., Duerauer, M., Albrecht, F., Schill, C., Perger, C., Havlik,
560 P., Mosnier, A., Thornton, P., Wood-Sichra, U., Herrero, M., Becker-Reshef, I., Justice, C., Hansen, M., Gong, P., Abdel Aziz, S., Cipriani, A., Cumani, R., Cecchi, G., Conchedda, G., Ferreira, S., Gomez, A., Haffani, M., Kayitakire, F., Malanding, J.,

- Mueller, R., Newby, T., Nonguierma, A., Olusegun, A., Ortner, S., Rajak, D. R., Rocha, J., Schepaschenko, D., Schepaschenko, M., Terekhov, A., Tiangwa, A., Vancutsem, C., Vintrou, E., Wenbin, W., van der Velde, M., Dunwoody, A., Kraxner, F., and Obersteiner, M.: Mapping global cropland and field size, *Glob. Change Biol.*, 21, 1980–1992, <https://doi.org/10.1111/gcb.12838>, 2015.
- Giller, K. E., Delaune, T., Silva, J. V., van Wijk, M., Hammond, J., Descheemaeker, K., van de Ven, G., Schut, A. G. T., Taulya, G., Chikowo, R., and Andersson, J. A.: Small farms and development in sub-saharan africa: farming for food, for income or for lack of better options?, *Food Secur.*, 13, 1431–1454, <https://doi.org/10.1007/s12571-021-01209-0>, 2021.
- Hansen, M. C., Potapov, P. V., Moore, R., Hancher, M., Turubanova, S. A., Tyukavina, A., Thau, D., Stehman, S. V., Goetz, S. J., Loveland, T. R., Kommareddy, A., Egorov, A., Chini, L., Justice, C. O., and Townshend, J. R. G.: High-Resolution Global Maps of 21st-Century Forest Cover Change, *Science*, 342, 850–853, <https://doi.org/10.1126/science.1244693>, 2013.
- Herold, M., Latham, J. S., Di Gregorio, A., and Schmullius, C. C.: Evolving standards in land cover characterization, *J. Land Use Sci.*, 1, 157–168, <https://doi.org/10.1080/17474230601079316>, 2006.
- Hu, J., Zhang, B., Peng, D., Huang, J., Zhang, W., Zhao, B., Li, Y., Cheng, E., Lou, Z., Liu, S., Yang, S., Tan, Y., and Lv, Y.: Mapping 10-m harvested area in the major winter wheat-producing regions of China from 2018 to 2022, *Sci. Data*, 11, 1038, <https://doi.org/10.1038/s41597-024-03867-z>, 2024.
- Ibrahim, R. L., Al-Mulali, U., Ajide, K. B., Mohammed, A., and Al-Faryan, M. A. S.: The implications of food security on sustainability: do trade facilitation, population growth, and institutional quality make or mar the target for SSA?, *Sustainability*, 15, 2089, <https://doi.org/10.3390/su15032089>, 2023.
- Jayne, T. S., Chamberlin, J., and Headey, D. D.: Land pressures, the evolution of farming systems, and development strategies in Africa: A synthesis, *Food Policy*, 48, 1–17, <https://doi.org/10.1016/j.foodpol.2014.05.014>, 2014.
- Jin, H., Stehman, S. V., and Mountrakis, G.: Assessing the impact of training sample selection on accuracy of an urban classification: a case study in Denver, Colorado, *Int. J. Remote Sens.*, 35, 2067–2081, <https://doi.org/10.1080/01431161.2014.885152>, 2014.
- Karra, K., Kontgis, C., Statman-Weil, Z., Mazzariello, J. C., Mathis, M., and Brumby, S. P.: Global land use / land cover with Sentinel 2 and deep learning, in: 2021 IEEE International Geoscience and Remote Sensing Symposium IGARSS, 2021 IEEE International Geoscience and Remote Sensing Symposium IGARSS, 4704–4707, <https://doi.org/10.1109/IGARSS47720.2021.9553499>, 2021.
- Kehoe, L., Romero-Muñoz, A., Polaina, E., Estes, L., Kreft, H., and Kuemmerle, T.: Biodiversity at risk under future cropland expansion and intensification, *Nat. Ecol. Evol.*, 1, 1129–1135, <https://doi.org/10.1038/s41559-017-0234-3>, 2017.
- Kerner, H., Nakalembe, C., Yang, A., Zvonkov, I., McWeeny, R., Tseng, G., and Becker-Reshef, I.: How accurate are existing land cover maps for agriculture in sub-saharan africa?, *Sci. Data*, 11, 486, <https://doi.org/10.1038/s41597-024-03306-z>, 2024.
- Lana-Renault, N., Romero, E. N., Cammeraat, E., and Llorente, J. Á.: Impact of farmland abandonment on water resources and soil conservation, *MDPI*, <https://doi.org/10.3390/books978-3-03936-612-5>, 2020.

- 595 Laris, P., Koné, M., Dembélé, F., Rodrigue, C. M., Yang, L., Jacobs, R., Laris, Q., and Camara, F.: The Pyrogeography of Methane Emissions from Seasonal Mosaic Burning Regimes in a West African Landscape, *Fire*, 6, 52, <https://doi.org/10.3390/fire6020052>, 2023.
- Laso Bayas, J. C., Lesiv, M., Waldner, F., Schucknecht, A., Duerauer, M., See, L., Fritz, S., Fraisl, D., Moorthy, I., McCallum, I., Perger, C., Danylo, O., Defourny, P., Gallego, J., Gilliams, S., Akhtar, I. ul H., Baishya, S. J., Baruah, M., Bungnamei, K.,
- 600 Campos, A., Changkakati, T., Cipriani, A., Das, K., Das, K., Das, I., Davis, K. F., Hazarika, P., Johnson, B. A., Malek, Z., Molinari, M. E., Panging, K., Pawe, C. K., Pérez-Hoyos, A., Sahariah, P. K., Sahariah, D., Saikia, A., Saikia, M., Schlesinger, P., Seidacaru, E., Singha, K., and Wilson, J. W.: A global reference database of crowdsourced cropland data collected using the geo-wiki platform, *Sci. Data*, 4, 170136, <https://doi.org/10.1038/sdata.2017.136>, 2017.
- Lou, Z., Peng, D., Shi, Z., Wang, Y., Zhang, Y., Yan, X., Chen, Z., Ye, S., Yu, L., Hu, J., Lv, Y., Peng, H., Zhang, Y., and
- 605 Zhang, B.: AFCD: a 30m resolution annual cropland extent dataset of Africa in recent decades of the 21st century, <https://doi.org/10.5281/zenodo.14920706>, 2025.
- Mallet, M., Voldoire, A., Solmon, F., Nabat, P., Drugé, T., and Roehrig, R.: Impact of biomass burning aerosols (BBA) on the tropical african climate in an ocean–atmosphere–aerosol coupled climate model, *Atmospheric Chem. Phys.*, 24, 12509–12535, <https://doi.org/10.5194/acp-24-12509-2024>, 2024.
- 610 Mano, Y., Takahashi, K., and Otsuka, K.: Mechanization in land preparation and agricultural intensification: the case of rice farming in the cote d’ivoire, *Agric. Econ.*, 51, 899–908, <https://doi.org/10.1111/agec.12599>, 2020.
- Nabil, M., Zhang, M., Wu, B., Bofana, J., and Elnashar, A.: Constructing a 30m African Cropland Layer for 2016 by Integrating Multiple Remote sensing, crowdsourced, and Auxiliary Datasets, *Big Earth Data*, 6, 54–76, <https://doi.org/10.1080/20964471.2021.1914400>, 2022.
- 615 Nilsson, P.: The role of land use consolidation in improving crop yields among farm households in Rwanda, *J. Dev. Stud.*, 55, 1726–1740, <https://doi.org/10.1080/00220388.2018.1520217>, 2019.
- Pereira, P., Brevik, E., and Trevisani, S.: Mapping the environment, *Sci. Total Environ.*, 610–611, 17–23, <https://doi.org/10.1016/j.scitotenv.2017.08.001>, 2018.
- Phalke, A. R., Özdoğan, M., Thenkabail, P. S., Erickson, T., Gorelick, N., Yadav, K., and Congalton, R. G.: Mapping croplands
- 620 of Europe, middle east, russia, and central asia using landsat, random forest, and google earth engine, *ISPRS J. Photogramm. Remote Sens.*, 167, 104–122, <https://doi.org/10.1016/j.isprsjprs.2020.06.022>, 2020.
- Potapov, P., Turubanova, S., Hansen, M. C., Tyukavina, A., Zalles, V., Khan, A., Song, X.-P., Pickens, A., Shen, Q., and Cortez, J.: Global maps of cropland extent and change show accelerated cropland expansion in the twenty-first century, *Nat. Food*, 3, 19–28, <https://doi.org/10.1038/s43016-021-00429-z>, 2022.
- 625 Ramo, R., Roteta, E., Bistinas, I., van Wees, D., Bastarrika, A., Chuvieco, E., and van der Werf, G. R.: African burned area and fire carbon emissions are strongly impacted by small fires undetected by coarse resolution satellite data, *Proc. Natl. Acad. Sci.*, 118, e2011160118, <https://doi.org/10.1073/pnas.2011160118>, 2021.

Roy, D. P., Kovalskyy, V., Zhang, H. K., Vermote, E. F., Yan, L., Kumar, S. S., and Egorov, A.: Characterization of landsat-7 to landsat-8 reflective wavelength and normalized difference vegetation index continuity, *Remote Sens. Environ.*, 185, 57–70, <https://doi.org/10.1016/j.rse.2015.12.024>, 2016.

Schneider, J. M., Delzeit, R., Neumann, C., Heimann, T., Seppelt, R., Schuenemann, F., Söder, M., Mauser, W., and Zabel, F.: Effects of profit-driven cropland expansion and conservation policies, *Nat. Sustain.*, 7, 1335–1347, <https://doi.org/10.1038/s41893-024-01410-x>, 2024.

Searchinger, T. D., Estes, L., Thornton, P. K., Beringer, T., Notenbaert, A., Rubenstein, D., Heimlich, R., Licker, R., and Herrero, M.: High carbon and biodiversity costs from converting Africa’s wet savannahs to cropland, *Nat. Clim. Change*, 5, 481–486, <https://doi.org/10.1038/nclimate2584>, 2015.

Song, W., Prishchepov, A. V., and Song, W.: Mapping the spatial and temporal patterns of fallow land in mountainous regions of China, *Int. J. Digit. Earth*, 15, 2148–2167, <https://doi.org/10.1080/17538947.2022.2148765>, 2022.

Stephens, E. C., Jones, A. D., and Parsons, D.: Agricultural systems research and global food security in the 21st century: an overview and roadmap for future opportunities, *Agric. Syst.*, 163, 1–6, <https://doi.org/10.1016/j.agsy.2017.01.011>, 2018.

Teluguntla, P., Thenkabail, P., Oliphant, A., Gumma, M., Aneece, I., Foley, D., and McCormick, R.: Landsat-Derived Global Rainfed and Irrigated-Cropland Product 30 m V001, <https://doi.org/10.5067/COMMUNITY/LGRIP/LGRIP30.001>, 2023.

Thenkabail, P. S., Teluguntla, P. G., Xiong, J., Oliphant, A., Congalton, R. G., Ozdogan, M., Gumma, M. K., Tilton, J. C., Giri, C., Milesi, C., Phalke, A., Massey, R., Yadav, K., Sankey, T., Zhong, Y., Aneece, I., and Foley, D.: Global cropland-extent product at 30-m resolution (GCEP30) derived from landsat satellite time-series data for the year 2015 using multiple machine-learning algorithms on Google earth engine cloud, Professional Paper, U.S. Geological Survey, <https://doi.org/10.3133/pp1868>, 2021.

Traba, J. and Morales, M. B.: The decline of farmland birds in Spain is strongly associated to the loss of fallowland, *Sci. Rep.*, 9, 9473, <https://doi.org/10.1038/s41598-019-45854-0>, 2019.

Tubiello, F. N., Conchedda, G., Casse, L., Hao, P., De Santis, G., and Chen, Z.: A new cropland area database by country circa 2020, *Earth Syst. Sci. Data*, 15, 4997–5015, <https://doi.org/10.5194/essd-15-4997-2023>, 2023a.

Tubiello, F. N., Conchedda, G., Casse, L., Pengyu, H., Zhongxin, C., De Santis, G., Fritz, S., and Muchoney, D.: Measuring the world’s cropland area, *Nat. Food*, 4, 30–32, <https://doi.org/10.1038/s43016-022-00667-9>, 2023b.

Van De Kerchove, R., Zanaga, D., Keersmaecker, W., Souverijns, N., Wevers, J., Brockmann, C., Grosu, A., Paccini, A., Cartus, O., Santoro, M., Lesiv, M., Georgieva, I., Fritz, S., Carter, S., Tsendbazar, N.-E., Li, L., Herold, M., and Arino, O.: ESA WorldCover: Global land cover mapping at 10 m resolution for 2020 based on Sentinel-1 and 2 data., 2021, GC45I-0915, 2021.

Vermote, E. and Saleous, N.: LEDAPS surface reflectance product description, Univ. Md. Coll. Park MD USA, 1–21, 2007.

Vermote, E. F. and Kotchenova, S.: Atmospheric correction for the monitoring of land surfaces, *J. Geophys. Res. Atmospheres*, 113, <https://doi.org/10.1029/2007JD009662>, 2008.

- Waldner, F., Fritz, S., Di Gregorio, A., and Defourny, P.: Mapping Priorities to Focus Cropland Mapping Activities: Fitness Assessment of Existing Global, Regional and National Cropland Maps, *Remote Sens.*, 7, 7959–7986, <https://doi.org/10.3390/rs70607959>, 2015.
- Xian, G. Z., Smith, K., Wellington, D., Horton, J., Zhou, Q., Li, C., Auch, R., Brown, J. F., Zhu, Z., and Reker, R. R.:
665 Implementation of the CCDC algorithm to produce the LCMAP Collection 1.0 annual land surface change product, *Earth Syst. Sci. Data*, 14, 143–162, <https://doi.org/10.5194/essd-14-143-2022>, 2022.
- Xiao, L., Wang, G., Wang, E., Liu, S., Chang, J., Zhang, P., Zhou, H., Wei, Y., Zhang, H., Zhu, Y., Shi, Z., and Luo, Z.: Spatiotemporal co-optimization of agricultural management practices towards climate-smart crop production, *Nat. Food*, 1–13, <https://doi.org/10.1038/s43016-023-00891-x>, 2024.
- Xie, Y., Spawn-Lee, S. A., Radeloff, V. C., Yin, H., Robertson, G. P., and Lark, T. J.: Cropland abandonment between 1986 and 2018 across the United States: spatiotemporal patterns and current land uses, *Environ. Res. Lett.*, 19, 44009, <https://doi.org/10.1088/1748-9326/ad2d12>, 2024.
- Xiong, J., Thenkabail, P. S., Gumma, M. K., Teluguntla, P., Poehnelt, J., Congalton, R. G., Yadav, K., and Thau, D.: Automated cropland mapping of continental africa using google earth engine cloud computing, *ISPRS J. Photogramm. Remote*
675 *Sens.*, 126, 225–244, <https://doi.org/10.1016/j.isprsjprs.2017.01.019>, 2017a.
- Xiong, J., Thenkabail, P. S., Tilton, J. C., Gumma, M. K., Teluguntla, P., Oliphant, A., Congalton, R. G., Yadav, K., and Gorelick, N.: Nominal 30-m cropland extent map of continental africa by integrating pixel-based and object-based algorithms using sentinel-2 and landsat-8 data on Google earth engine, *Remote Sens.*, 9, 1065, <https://doi.org/10.3390/rs9101065>, 2017b.
- Zanaga, D., Van De Kerchove, R., De Keersmaecker, W., Souverijns, N., Brockmann, C., Quast, R., Wevers, J., Grosu, A.,
680 Paccini, A., Vergnaud, S., Cartus, O., Santoro, M., Fritz, S., Georgieva, I., Lesiv, M., Carter, S., Herold, M., Li, L., Tsendbazar, N.-E., Ramoino, F., and Arino, O.: ESA WorldCover 10 m 2020 v100 (v100), <https://doi.org/10.5281/zenodo.5571936>, 2021.
- Zanaga, D., Van De Kerchove, R., Daems, D., De Keersmaecker, W., Brockmann, C., Kirches, G., Wevers, J., Cartus, O., Santoro, M., Fritz, S., Lesiv, M., Herold, M., Tsendbazar, N.-E., Xu, P., Ramoino, F., and Arino, O.: ESA WorldCover 10 m 2021 v200 (v200), <https://doi.org/10.5281/zenodo.7254221>, 2022.
- Zhang, C., Dong, J., and Ge, Q.: Mapping 20 years of irrigated croplands in China using MODIS and statistics and existing irrigation products, *Sci. Data*, 9, 407, <https://doi.org/10.1038/s41597-022-01522-z>, 2022.
- Zhang, G., Xiao, X., Dong, J., Kou, W., Jin, C., Qin, Y., Zhou, Y., Wang, J., Menarguez, M. A., and Biradar, C.: Mapping paddy rice planting areas through time series analysis of MODIS land surface temperature and vegetation index data, *ISPRS J. Photogramm. Remote Sens.*, 106, 157–171, <https://doi.org/10.1016/j.isprsjprs.2015.05.011>, 2015.
- Zhang, H., Lou, Z., Peng, D., Zhang, B., Luo, W., Huang, J., Zhang, X., Yu, L., Wang, F., Huang, L., Liu, G., Gao, S., Hu, J.,
690 Yang, S., and Cheng, E.: Mapping annual 10-m soybean cropland with spatiotemporal sample migration, *Sci. Data*, 11, 439, <https://doi.org/10.1038/s41597-024-03273-5>, 2024a.
- Zhang, X., Liu, L., Chen, X., Xie, S., and Gao, Y.: Fine land-cover mapping in China using landsat datacube and an operational SPECLib-based approach, *Remote Sens.*, 11, 1056, <https://doi.org/10.3390/rs11091056>, 2019.

695 Zhang, X., Zhao, T., Xu, H., Liu, W., Wang, J., Chen, X., and Liu, L.: GLC_FCS30D: the first global 30m land-cover dynamics
monitoring product with a fine classification system for the period from 1985 to 2022 generated using dense-time-series landsat
imagery and the continuous change-detection method, *Earth Syst. Sci. Data*, 16, 1353–1381, [https://doi.org/10.5194/essd-16-](https://doi.org/10.5194/essd-16-1353-2024)
1353-2024, 2024b.

Zhu, Z. and Woodcock, C. E.: Continuous change detection and classification of land cover using all available landsat data,
700 *Remote Sens. Environ.*, 144, 152–171, <https://doi.org/10.1016/j.rse.2014.01.011>, 2014.

Zhu, Z., Gallant, A. L., Woodcock, C. E., Pengra, B., Olofsson, P., Loveland, T. R., Jin, S., Dahal, D., Yang, L., and Auch, R.
F.: Optimizing selection of training and auxiliary data for operational land cover classification for the LCMAP initiative,
ISPRS J. Photogramm. Remote Sens., 122, 206–221, <https://doi.org/10.1016/j.isprsjprs.2016.11.004>, 2016.

Zumkehr, A. and Campbell, J. E.: Historical U.S. cropland areas and the potential for bioenergy production on abandoned
705 croplands, *Environ. Sci. Technol.*, 47, 3840–3847, <https://doi.org/10.1021/es3033132>, 2013.

Zuo, J., Zhang, L., Xiao, J., Chen, B., Zhang, B., Hu, Y., Mamun, M. M. A. A., Wang, Y., and Li, K.: GCL_FCS30: a global
coastline dataset with 30-m resolution and a fine classification system from 2010 to 2020, *Sci. Data*, 12, 129,
<https://doi.org/10.1038/s41597-025-04430-0>, 2025.