

Response to Figure S3 questions.

Thank you very much for your detailed explanation.

We generated the figure by overlaying our own data with the map library from Python. DOE ARM Data Center has implemented this quicklook plot with its data visualization tool under <https://dq.arm.gov/dq-zoom/>. We have updated the figure caption to the below. Please take a look and let us know if we need to modify further.

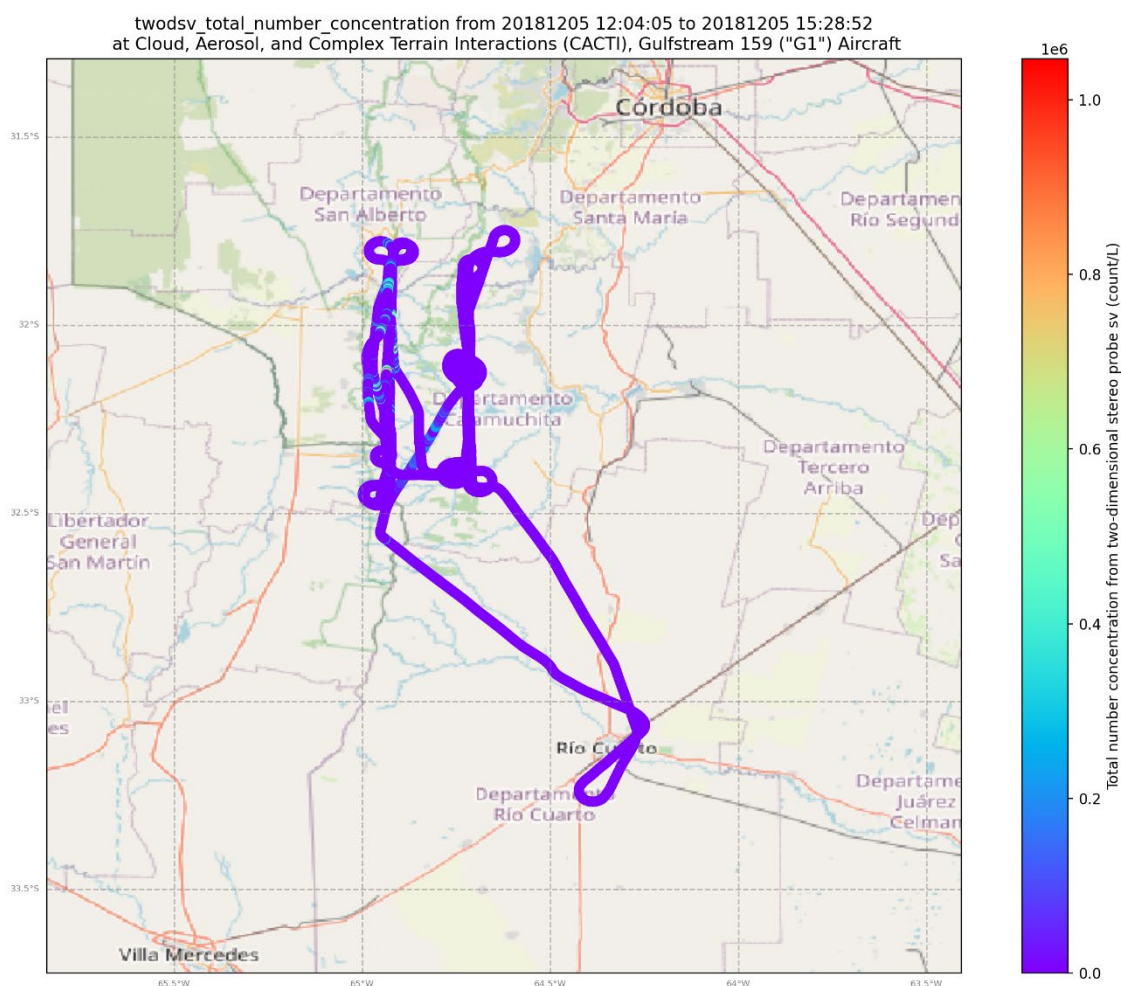


Figure S3. An example quicklook plot using ARM Atmospheric Data Community Toolkit developed using Python (<https://github.com/ARM-DOE/ACT>).