

We thank the Referee #1 for the helpful comments and suggestions. They will help improve the manuscript. We will address comments in the order discussed by the Referee. Our responses are in blue.

The study by Ying et al. sets out to upscale methane fluxes across the northern high latitudes (>45° N) with the use of machine learning (i.e., random forest). While there have been recent studies with similar approaches, this study is a useful addition to those existing ones, exploring some new directions. There is a lot of detail here, and I appreciate that the authors try to evaluate their results using different wetland maps.

That being said, the paper still needs quite some improvement. The writing is sometimes hard to follow, or imprecise, and this should be improved. I have suggested a large number of fixes down below, but it would be good if the language of the whole paper is checked thoroughly.

I was also surprised to see DEM coming on top as the most important variable in the LOOCV scheme (Fig. 6), which doesn't make sense to me. If I understand correctly, then DEM refers here only to elevation (since slope, spi and cti are defined separately). It is not explained properly how elevation would influence methane emissions. Temperatures become lower and precipitation increases with altitude, but temperature and wetness are already included as variables and score lower in this scheme. Is DEM simply a good predictor because most wetlands are found at low elevations rather than that it's a driver of emissions? I would like to see a better explanation for this result, and evidence that it's not an artificial signal.

Responses:

Thank you for this helpful comment. We agree that elevation should not be considered an ecological controlling factor for wetland CH₄ fluxes as it covaries with other meteorological variables. We found that the variable importance ranked by the impurity decreases in RF models affected the interpretation of real controlling variables when covariates existed. The collinearity among input variables (such as temperatures at different depths, DEM and air pressure, air temperature) allows some of the removed variable's information to be retained, potentially distorting its true importance. This highlights the need for careful interpretation of correlated features' importance and is the reason why DEM appeared so important in the previous variable importance analysis. To address this,

1, We updated input variables by using interpolated MERRA2 variables (at ~10 km spatial resolution) weighted by DEM for modeling and removing DEM from the input predictors. We clarified this on lines 291-296. Accordingly, we updated Table 1 to reflect this modeling spatial resolution change in MERRA2 data.

2, We improved our design of input feature settings at the grid-level modeling. We first built a baseline grid-level model with independent variables after a pairwise Pearson correlation test (Fig. S14) to exclude covariates. The resulting baseline features included air pressure (pa), latent heat flux (le), sensible heat flux (h), soil temperature (ts2), rootzone soil wetness

(sm_r_wetness), slope, spi, and cti. Then we designed four additional different model settings by changing predictor variables, including (1) baseline variables plus covariates, (2) only variables from MODIS NBAR, (3) baseline variables plus NBAR bands, and (4) all predictor variables. In this forward feature selection process, we evaluated the impacts of adding constraint variables from remote sensing products on model performance. RF models can enhance robustness when handling correlated input variables, so these collinear variables shouldn't negatively affect model performance, only the variable importance assessment. This is due to the RF algorithm randomly selecting subsets of input variables and choosing the best one for splitting nodes during tree constructions. We modified the description on lines 385-295. We demonstrated error reduction and model improvement as new variables, including physically independent MODIS NBAR observations, were added as shown in Fig. 3a.

3, We updated feature importances from the baseline model with non-covariates. We merged Fig. 3 and Fig. 6, and showed the importance of baseline features in Fig. 3b. The new result demonstrated the importance of soil temperature and moisture, as described in the revised manuscript on lines 539-546.

4, We updated the predictive performance metrics of the upscaling model (lines 526-537, 561-592) and ultimately the upscaling results from non-DEM ensemble models (the results section 3.2 Upscaled wetland CH₄ emissions). The new model improved performance at wet tundra sites but enlarged errors at a few fen and bog sites. Overall, it slightly overestimated CH₄ fluxes at the validation sites as shown by positive bias (mean ME). The upscaling results from the new model manifest slightly higher flux intensities in wet tundra and in the summer season (JJA), resulting in increases in the estimates of mean annual emissions by ~2 Tg CH₄ yr⁻¹ with WAD2M to ~5 Tg CH₄ yr⁻¹ with GLWD v1 and v2. No significant change in the absolute and relative interannual variability in subregions.

5, We added a discussion in the supporting materials Text 6 about the impact of elevation on explaining the intra-site variability within the existing wetland sites of northern high latitudes. We tested the impacts of elevation on model performance in explaining the inter-site variability of CH₄ upon the current locations of wetland EC sites. We recognized that elevation may act as a factor in discerning fen and bog sites with associated wetland attributes that may not be included by other input variables.

Other than that, I have some comments about definitions. First of all, the paper mentions a few times that it aims to be a study of the Arctic-Boreal region, while in fact it looks at the whole region north of 45° N and includes two sites from northern Germany, which are clearly outside of the Arctic-Boreal region. I see from Table S2 that multiple sites in Canada and the USA are also classified as temperate. Either restrict your domain to the Arctic-Boreal region or rephrase in the document that you are looking at northern high latitudes. In that case, please add information on methane emissions in temperate biomes to the introduction.

Responses: Thanks for your suggestion. We have rephrased the “Arctic-Boreal region” to “northern high latitudes” in the manuscript. We added mean methane fluxes in temperate biomes in the introduction.

Finally, I understand the use of WAD2M, and this manuscript covers some of its limitations, but this is a missed opportunity to improve the applicability of this product for high latitude wetlands. Correct me if I’m wrong but WAD2M shows a seasonal cycle, going towards zero where soils are frozen and underestimating ecosystems such as bogs where methane emissions occur also when the soil is not inundated. Also, northern wetlands are rather stable, in contrast to wetlands at lower latitudes, and observations show that methane can still be emitted in winter. So, a seasonal cycle in wetland extent is not that useful for these northern environments.

The authors have taken the average seasonal cycle for WAD2M, but this does not solve this problem. In fact, it may introduce new problems since you use SMAP soil wetness, which will correlate with the inundation dynamics in WAD2M. So why not keep wetland extent from WAD2M fixed throughout each year, for example by taking the maximum annual extent, and then model methane emissions according to your observations of soil moisture and other variables? Other solutions may be possible, and the authors acknowledge that WAD2M is not perfect (give the comparison to CALU on the North Slope). Since WAD2M is being used by many people in the community, I would have liked to have seen a discussion on how to improve its usefulness for cold climates from this paper.

Responses:

Thanks for pointing this out. Per your suggestion, we calculated the mean seasonal cycle of CH₄ fluxes within the maximum annual extent of WAD2M to separate the compound impacts of seasonal changes in WAD2M wetland extent and in flux intensities that were already affected by SMAP soil wetness.

We added seasonal cycle plots weighted by the annual maximum extent of WAD2M for 2016-2020 in subplot c). This can help separate the impacts of seasonal WAD2M on the seasonal cycles of CH₄ emissions from those of modeled flux rates. Please refer to:

Fig. 7 Multi-year average seasonal cycles of wetland CH₄ emissions: (a) comparison of ML upscaled mean seasonal cycles in reference wetland areas (WAD2Mv2) with the cycles from process-based models in the northern mid-high latitudes (45° - 90° N); (b) same comparison for northern high latitudes (60° - 90° N) and addition of atmospheric CarbonTracker-CH₄ attributed microbial emissions (2016-2022); (c) comparison of three ML upscaled mean seasonal cycles of CH₄ emissions with different wetland area maps (WAD2Mv2, WAD2Mv2 maximum extent, GIEMS2, GLWDv1); (d) comparison of WetCH₄ mean seasonal cycles over the land (black line), weighted by wetland of the CALU map (olive line), or weighted by fractions of WAD2Mv2 (green line), with estimates of CH₄ fluxes in growing seasons from CARVE retrievals in North Slope area of Alaska (Zona et al., 2016).

We added the following sentences to the results: “We decoupled the mean annual seasonal cycle for WAD2M from the emission seasonality by using a fixed maximum WAD2M extent. The resulting seasonal emissions primarily driven by soil temperatures and moisture manifested elevated emissions in all months and an intensified seasonal cycle.”

We also added in the discussion: “Incorporating wetland fractions derived from high-resolution thematic maps (e.g., CALU) can improve the use of WAD2M in cold regions.”

Detailed comments:

Line 79-80: please reference Thornton et al. (2016) who originally raised this issue of double counting:

Thornton, B. F., Wik, M., & Crill, P. M. (2016). Double counting challenges the accuracy of high latitude methane inventories. *Geophysical Research Letters*, 43(24), 12,569-12,577.
<https://doi.org/10.1002/2016GL071772>

Responses:

Thanks for your suggestion. We added the reference for double counting.

Line 81-89: This paragraph feels more like a list of bullet points rather than text. Please rewrite this to make it more readable.

Responses:

We rewrote this paragraph to provide an introduction to wetland types in northern high latitudes with a focus on the ecosystems and flux rates:

“Characterized by nutrient, moisture and hydrodynamic conditions, northern freshwater wetlands are classified as wet tundra in treeless permafrost areas, peat-forming bogs and fens in boreal biomes, and permafrost bogs (Olefeldt et al., 2021; Kuhn et al., 2021). Bogs were estimated to cover the largest area (1.38-2.41 million km²) in the boreal-Arctic region, followed by fens (0.76-1.14 million km²) and wet tundra (0.31-0.53 million km²) (Olefeldt et al. 2021). Climate change poses significant threats to these wetlands, affecting their extent and the duration of conditions suitable for wetland formation in permafrost zones (Avis et al., 2011). Distinct CH₄ fluxes have been observed from wet tundra (Fig. S4, mean ± standard deviation: 13 ±14 nmol m⁻² s⁻¹), bogs (22 ±26 nmol m⁻² s⁻¹) and fens (56 ±88 nmol m⁻² s⁻¹). The rates of CH₄ emissions may increase at a faster pace because of intensified warming in the Arctic (Masson-Delmotte et al., 2021; Rawlins et al., 2010; Rößger et al., 2022; Walsh, 2014; Z. Zhang, Poulter, et al., 2023).”

Line 82: “to wet tundra” should be “as wet tundra”

[Responses:](#)

Revised as suggested. Thanks!

Line 83: which exceptions?

[Responses:](#)

We revised our manuscript in line xx:

[“Characterized by nutrient, moisture and hydrodynamic conditions, northern freshwater wetlands are classified as wet tundra in treeless permafrost areas, peat-forming bogs and fens in boreal biomes, and permafrost bogs \(Olefeldt et al., 2021; Kuhn et al., 2021\).”](#)

Line 91-92: The wording “recent increase” suggests systematic change (i.e. a trend), but you talk only about the difference between 2019 and 2020. That’s interannual variability. Please rephrase.

[Responses:](#)

We revised the sentence as follows:

[“Northern wetlands may account for a portion of the exceptional global surface emissions in 2020 relative to 2019 \(\$6.0 \pm 2.3 \text{ Tg CH}_4 \text{ yr}^{-1}\$ \) \(S. Peng et al., 2022; Z. Zhang, Poulter, et al., 2023\).”](#)

Line 104: “half hourly” should be “at half-hourly intervals”.

[Responses:](#)

Thanks for pointing out. We revised the manuscript per your suggestion.

Line 107: “outside the network”: please change to “outside of the network”.

[Responses:](#)

Thank you and we revised the manuscript per your suggestion.

Line 113: Independent to what?

[Responses:](#)

We revised this sentence as follows:

[“Data-driven upscaling with empirical models \(Bodesheim et al., 2018; Jung et al., 2011\), including machine learning \(ML\) approaches, to compute CH₄ fluxes provide independent estimates to those](#)

from process-based models and atmospheric inversions (Bergamaschi et al., 2013; Spahni et al., 2011).”

Line 132: how would this approach lead to a bias? And in which direction?

Responses:

This approach uses highly synthesized flux intensities and lacks spatial and temporal variability in methane fluxes, which could lead to overestimates or underestimates. More importantly, this approach could not validate the generalized flux intensity per land-cover class and estimate a bias.

Line 141: “for the computation efficiency”: change to “for computation efficiency”

Responses:

Thank you! We corrected this sentence in the manuscript per your suggestion.

Line 163: The word “freshwater” can be removed here.

Responses:

Thank you! We removed “freshwater” in this sentence per your suggestion.

Line 174: “ensembled” should be “ensemble”

Responses:

Thank you! We revised the manuscript per your suggestion.

Line 187-188: please check the structure of this sentence, right now it’s rather confusing.

Responses:

We restructured this sentence as follows:

“The scalable framework of upscaling CH₄ fluxes from EC observations (referred to as WetCH₄ hereafter), which selects predictors at site level and constructs upscaling models at grid level, is illustrated in Fig. 1.”

Line 193: “model RF”: do you mean “model with RF”?

Responses:

Yes, we corrected this in the manuscript. Thanks!

Line 201: Don't you mean latitudes? Longitudinal width of grid cells becomes smaller the further North you get, but they stay the same width along latitudes.

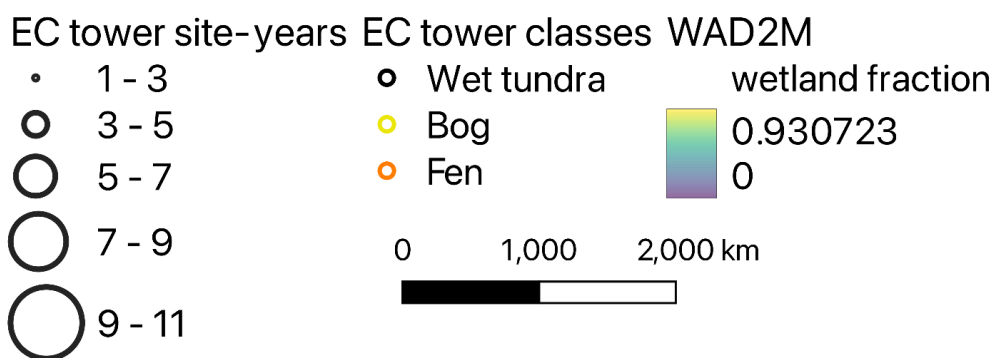
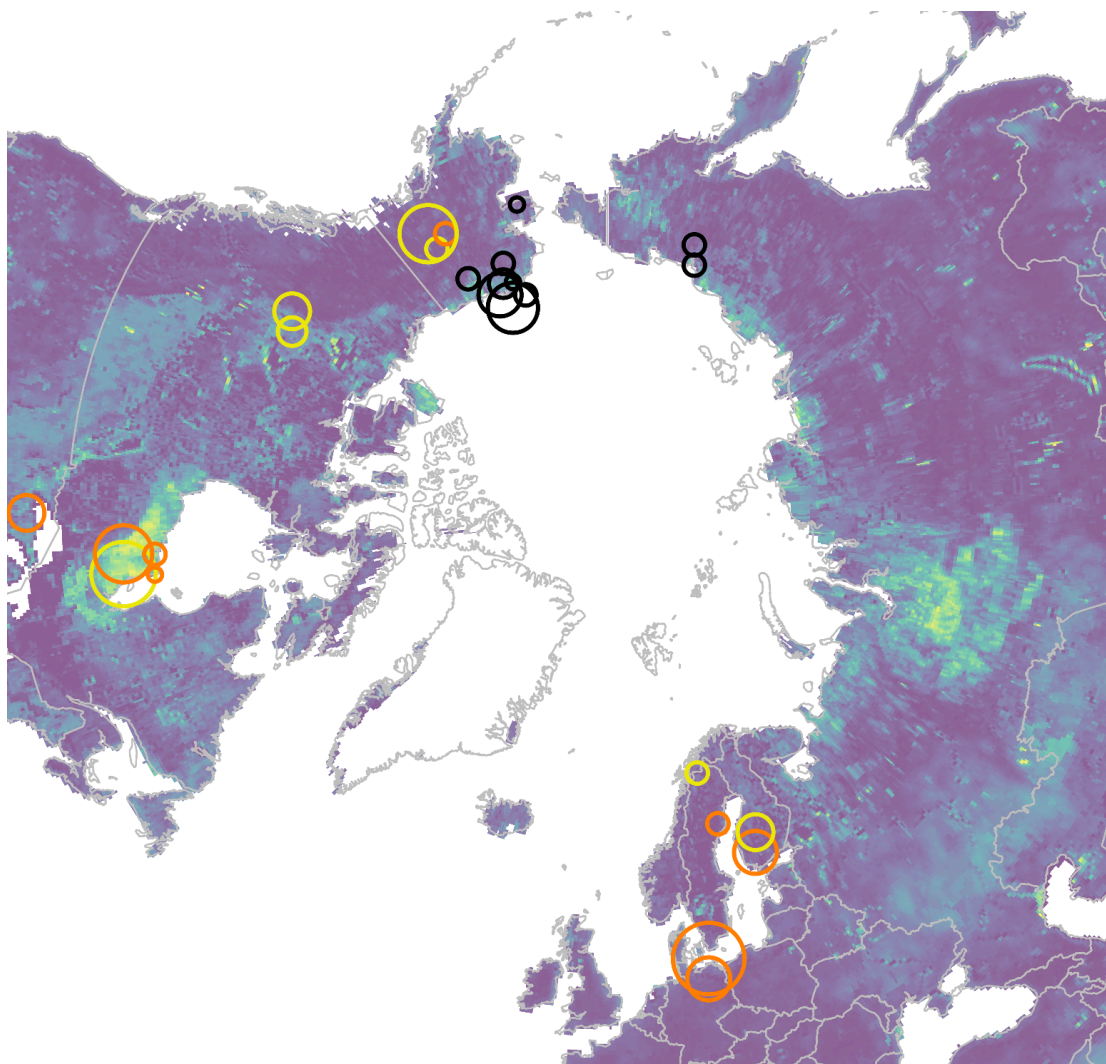
Responses:

Yes, we corrected it. The latitudinal segments of grid cells are the same. The longitudinal width gets smaller towards the North Pole.

Fig 2: It's very difficult to see from this map how many EC-towers you used. I count 19 circles, but the text mentions 26 sites? Also, please change the color for wet tundra. Very hard to distinguish this from the wetland fraction.

Responses:

Thanks for your helpful comments. We improved Figure 2 by displacing clustered sites apart and changing the symbol color for wet tundra:



Line 219: which 8 sites? Please mention the Fluxnet codes here.

[Responses:](#)

The 8 sites include US-ATQ, US-BEO, US-BES, US-BRW, US-IVO, US-NGB, US-NGC, US-UAF. We added this information in the revised manuscript.

Line 220: which 4 sites? Again, please mention with Fluxnet codes.

Responses:

The 4 sites are CA-ARB, CA-ARF, CA-PB1, CA-PB2. We added this information in the revised manuscript.

Line 22: “largest high latitude EC-data compilation”: please add “for methane. There are larger syntheses for CO₂.”

Responses:

Thanks for this suggestion. We added it to the sentence.

Line 238-239: Only 2.5% of sites had winter data? So only one in 40? Of your 26 sites?

Responses:

The daily data in winter (DJF) contains 317 entries after quality filtering, accounting for 2.5% of the total 12,784 daily data entries. We revised this sentence to reduce confusion that may cause to the audience:

“As a result, we identified 12,784 daily data entries for upscaling models (Table S2), spanning 2015-2021 with seasonal observation distributions of 44.0% in June-July-August (JJA), 29.0% in March-April-May (MAM), 24.5% in September-October-November (SON), and 2.5% in December-January-February (DJF) (Fig. S2).”

Line 248-249: This is a missed opportunity! Water table depth is a much better predictor than soil moisture. Why not run the site-level model for the subset of sites with water level data?

Responses:

Thanks for pointing this out. Unfortunately, we don't have enough water table depth (WTD) data in the current collection to perform a holistic analysis of the variable importance of WTD on CH₄ fluxes over all wetland sites and wetland types.

Upon further analysis, we found that water table depth (WTD) in site-level modeling did not enhance model performance in bogs and fens (comparable out-of-bag R² and RMSE). Adding soil water content (SWC) slightly improved the model's ability to explain spatiotemporal variability (larger out-of-bag R²) and reduced prediction errors (smaller RMSE).

To compare WTD, we examined WTD and SWC observations in our dataset. The 9 wetland sites that had WTD data included (CASCB, DEHTE, DEZRK, FIS12, FIS11, SEDEG, SEST0, USLOS, USUAF), only cover bogs and fens. There are also 9 sites with SWC data (CASC, FIS11, SEDEG, USATQ, USBES, USBZB, USBZF, USICS, USUAF) covering all three wetland types.

We tested site-level modeling with our existing candidate variables and additional WTD or SWC at the sites where WTD or SWC observations were available, respectively. The table below summarizes the model performances:

site-level	oob r2	RMSE (nmol CH4 m-2 s-1)
Existing input for all wetland sites	0.73	30.43
Existing input for all bog sites	0.85	7.2
Existing input for all fen sites	0.84	27.7
Existing input for sites with WTD	0.84	29.29
Adding WTD for sites with WTD	0.84	29.04
Existing input for sites with SWC	0.83	8.37
Adding SWC for sites with SWC	0.85	7.96

With this analysis, we modified our manuscript as below:

“We were unable to include water-table depth (WTD) or soil water content (SWC) in our site-level model as they were not available at many sites. However, we tested site-level modeling on candidate predictors with WTD or SWC at the sites where these variables were available (see Supporting Materials Text 2 for more details).”

We added a paragraph in the Supporting Materials Text 2:

“We examined water table depth (WTD) and soil water content (SWC) observations in our dataset. There are 9 wetland sites with WTD data (CA-SCB, DE-HTE, DE-ZRK, FI-SI2, FI-SII, SE-DEG, SE-ST0, US-LOS, US-UAF) covering bogs and fens. There are also 9 sites with SWC data (CA-SCC, FI-SII, SE-DEG, US-ATQ, US-BES, US-BZB, US-BZF, US-ICS, US-UAF) covering all three wetland types. We tested site-level modeling on our existing candidate variables and additional WTD or SWC at the sites where WTD or SWC observations were available, respectively. Adding WTD did not enhance model performance in bogs and fens. Adding SWC slightly improved the model’s ability to explain spatiotemporal variability and reduced prediction errors.”

Line 263: “modeling”: Grid-level or site-level?

Responses:

We added ‘grid-level’ in the sentence for clarification:

“Daily time series of the nearest 0.5° grid to each EC location were extracted for grid-level modeling.”

Line 264: how was this interpolation done? Does it use spatial data with a higher resolution?

Responses:

We interpolated MERRA2 data using the bilinear interpolation method weighted by 0.098° DEM that was averaged from 30m MERIT-DEM data. We modified the sentence:

“The MERRA2 data was further bilinearly interpolated from 0.5° to 0.098° grids weighted by higher resolution elevation data (see information on the digital elevation model below) for the 10-km upscaling products.”

Line 273: Did you check with MERRA that temperatures were below freezing for these gaps? That you're relatively confident that soils were indeed frozen? Might not be true for near-coastal areas.

Responses:

Thanks for mentioning this. The interpolated MERRA soil temperatures may not represent local areas of zero curtain and talik, or coastal areas, where gaps in winter SMAP could be filled with some values rather than zero. We added this limitation on data preprocessing in the revised manuscript:

“Gaps in winter SMAP data were filled with zero values to represent frozen soils for upscaling. This may limit the estimation in winter soil moisture gaps where local areas of zero curtain and talik were likely not represented by our interpolated soil temperatures, for example, in coastal areas.”

Line 284: This is a very deep root zone for the Arctic! Especially in wetlands that are dominated by sedges, rushes and grasses or in areas where the active layer never becomes deeper than half a meter or less. A root zone of 15 or 20 cm makes much more sense for high latitude wetlands. Maybe SMAP only gives this for the top meter? How does this affect your results?

Responses:

We used the SMAP level-4 assimilation product which was an outcome of assimilating SMAP L-band brightness temperature observations into the Catchment land surface model in an ensemble-based algorithm. Soil moisture and related land surface variables were reportedly estimated at the surface (0-5 cm) and root zone (0-100 cm) globally and validated at 43 core validation sites and 406 network sites (Reichle et al., 2017). The status of frozen ground was screened. Therefore, the assimilated values may reflect the status of a shallow active layer in the Arctic wetlands. Given that root zone soil wetness is an important predicting variable in our model, the variations in active layer depth during the freezing/thawing period over permafrost

regions can result in higher uncertainty in the root zone soil moisture estimates and therefore in the downstream upscaled fluxes.

Line 293: “existing upscaling models”: which?

Responses:

The existing upscaling models are listed in Table S1. We revised the manuscript to refer the audience to the table.

Line 305: “a multiple” should be “the multiple”.

Responses:

Thanks for pointing this out. We revised the manuscript per your suggestion.

Line 308: “based” should be “based on”

Responses:

Thanks for catching this. We corrected the phrase in our manuscript per your suggestion in line xx.

Line 331: “Rice paddies”? Or “a rice paddy”?

Responses:

We change it to “rice paddies” in the manuscript.

Line 411: Resampled how?

Responses: All wetland maps were resampled to 0.098° x 0.098° resolution with a conservative remapping method for producing the emission products.

Line 429-430: What is the motivation to say that GWLD is the maximum potential emission surface? There are other wetland maps out there. Does GWLD have the highest extent of them all?

Responses: According to Zhang et al. (2021), GWLD has the highest extent of five static global wetland maps. We modified this sentence to:

“Level 3 1-km resolution map excluding classes of lakes, rivers, and reservoirs (Lehner & Döll, 2004) was included to quantify the upper limit of wetland cover.”

Line 446: “thought to be”: by whom? And if GWLD underestimates in the north slope, then it is clearly not the maximum potential emission surface. Perhaps it underestimates elsewhere also? Can you show a comparison of CALU to WAD2M and GWLD for the North Slope?

Responses: We calculated the wetland area in the lowland of the North Slope (spanning between 69.8°N - 71.4°N, 164.4°W - 152.7°W) from CALU (10611 km²), the maximum extent month in July of WAD2Mv2 (4049 km²), and GLWDv2 (4800 km²). The Circum-Arctic Landcover Units produced unprecedented detail in wetland and vegetation distribution at 10m spatial resolution. Global wetland maps such as WAD2M and GLWD were created at coarser resolutions and represented wetland dynamics/status over a longer period. We agree that GLWDv2 may not accurately capture all potential emitting surfaces.

We modified this sentence in our manuscript as below:

“This regional wetland map was applied for CH₄ emission estimation in the North Slope region in Alaska to assess the impacts of different wetland maps on emission estimates in this area when compared against airborne measurements.”

We also added the sentence below in the results section:

“In the lowland area of the North Slope (74295 km² spanning between 69.8°N - 71.4°N, 164.4°W - 152.7°W), the wetland area was estimated at 10611 km² from CALU, 4800 km² from GLWDv2, and 4049 km² from the maximum extent month in July of WAD2Mv2, respectively.”

Line 521-525: if these mismatches are due to scale discrepancies, then why would this differ among ecotypes? In particular, why is it so large for fens?

Responses: We modeled the random forest regression across wetland types (or ecotypes), the limitation of which, as we mentioned in the manuscript, tended to underestimate the high flux type (e.g. fens) and overestimate the low flux types (e.g. wet tundra and permafrost bogs). The scale discrepancies would exaggerate this tendency and lead to further underestimation for fens.

Line 543-544: So, this site cannot be well represented by WAD2M since it assumes inundation?

Responses: The mean inundation fraction of the grid where the US-UAF site sits is 2%, which averages the status of wetland cover despite local variations. Therefore, we used all sites locally identified as wetlands at the stage of model development regardless of wetland fractions from coarse-resolution wetland maps.

Figure 4: Please add that these are grid-level model simulations.

Responses:

We edited the caption of Figure 4 as follows:

“Model predictive performance evaluation on RF modeled CH₄ fluxes at grid level and independent validations: (a) boxplots of R², MAE, and RMSE across validation sites by wetland types with mean values denoted in green triangles; (b) pooled daily means density scatter plot; (c) pooled monthly means density scatter plot.”

Table 2: What is the value of showing this in the main document? Can it be moved to the supplemental?

Responses: We moved the table to the supplementary.

Line 580 and Figure 6: I don't understand why DEM comes out as a good predictor. Elevation does not control methane emissions. It influences precipitation and temperature, but you already have those variables included.

Responses: We agree that elevation would not control methane emissions. We added experiments and modified our manuscript as described in our responses to the main comment above.

Line 605-606: It's no surprise that these spatial patterns are similar, since the models from the GCP use the same wetland map as you do!

Responses:

We agree with this point since we used the diagnostic model runs of GCP-CH₄ that incorporated prescribed wetland extents from WAD2M into the models.

Line 612: Why use monthly inundation data? Wetland extent at high latitudes does not vary much over the year (unlike tropical wetlands). Aren't you enforcing a seasonal cycle that could be better simulated by using temperature?

Responses: We agree that compared to tropical wetlands, dynamics in wetlands extent of high latitudes may show less interannual variability, and we used period means of monthly inundation of WAD2Mv2 and GIEMS2. Temperature is a driving factor of the seasonal cycle in flux intensities. Seasonal wetland extent is another factor that affects the seasonal dynamics in domain emissions in addition to the flux intensity. We modified this sentence to clarify we used mean monthly inundation data:

“Mean monthly wetland inundations are provided by WAD2Mv2 and GIEMS2, which set the dynamic limits for the wetland boundaries of the CH₄-emitting surface.”

Line 667-668: And large bursts of methane, see the paper by Mastepanov et al. that you cite later on.

Responses: We modified this sentence in our manuscript to:

“Reported emissions (Zona et al., 2016) and large bursts ([Mastepanov et al., 2008](#)) from the freezing active layer at permafrost areas in October (zero-curtain period) may not be well captured by our ML model.”

Line 689: Why would emissions double due to permafrost thaw? Very speculative, also because permafrost thaw changes the hydrology of the landscape. If this leads to more drainage, then it can lower emissions!

Responses: We agree that future emissions will depend on the state of local hydrology. If permafrost thaw leads to more drainage and less wetland area, emissions could be reduced. We revised the sentences as below:

“Remarkable increases could be in summer and winter if we assume wetland over this region, as indicated by the range between the green and the black lines in Fig. 8d. Yet, future emissions due to permafrost thaw still depend on the hydrological changes of the landscape.”

Line 708: remove “despite”

Responses: We removed the word “despite”.

Line 710-712: Not sure I agree. If I understand correctly, then WAD2M shows low wetland extent when soils are frozen. If you are using the mean over several years, then it is not possible to have higher emissions in years where spring thaw comes early and wetland extent in WAD2M would have been higher as a result.

Responses: With the mean seasonal dynamics of WAD2M, we agree that interannual variations in spring emissions from additional wetland areas due to early thaw could be missed. However, the higher emissions in existing wetland areas of WAD2M mean can be modeled due to higher flux rate responses to the earlier temperature increase.

Line 725 and Fig S11: the colors in S11 are very hard to distinguish from each other. Please use a more distinct palette.

Responses: We updated Figure S11 with a more distinct color palette.

Line 731: Which domain?

Responses: We use “domain emission” to represent the study domain, which denotes the wetlands of >45° N.

Line 732: “the percentage of a variation to the period mean of a subregion”. Very unclear. What does this mean?

Responses: We revised this sentence:

“The relative interannual variability, which was calculated as the percentage of a subregional variation to its period mean, was attributed to those from West Siberia, Fennoscandia, West Canada, and Alaska (Fig. 10b).”

Figure 10: I don't understand the numbers behind this graph. If the interannual variability is with respect to a mean, then how can the average be non-zero? Or are these boxplots showing medians? With so few years it's better to replot this in a similar style as Fig 9.

Responses: Yes, the lines in the boxes of boxplots show the medians of the data. We added a detailed explanation of the boxplots in the caption:

“The boxplots show the first quartile, the median, and the third quartile of the data with the whiskers denoting the largest variations from the period mean.”

Line 761: it's correct that soil temperature is more variable than air temperature, but I don't think that the coarse scale from MERRA can help there since it doesn't model snow cover at the resolution that you need. This goes against your argument in line 765. Perhaps the soil temperatures work better because they have a different amplitude and also perhaps showing a lag to air temperature?

Responses: We agree and express this point with a sentence added as below:

“Although the coarse resolution soil temperatures of MERRA2 may not represent the spatial variability at our upscaling scale, the different amplitudes and lagging responses to air temperatures may improve upscaling models.”

Line 792: Which performance requirements?

Responses: We revised this sentence with the requirement details:

“Validation of the SMAP level 4 soil moisture data assimilation product has shown that it meets the performance requirement of unbiased root-mean-square error $<0.04 \text{ m}^3/\text{m}^3$ (Colliander et al., 2022).”

Line 800: Is RF even useful for hysteresis effects?

Responses: The RF model simulated regional hysteresis. However, site-level hysteresis effects were not reconstructed at many sites.

Line 825: “Data deficiency in winter” is this the flux data? Or the limited applicability of WAD2M when soils are frozen?

Responses: We revised this sentence in line xx:

“Data deficiency in EC CH₄ flux observations in winter and under-represented areas limited the RF model's extrapolation ability.”

Line 880: How are they comparable? What's the difference on an annual basis?

Responses:

In the original manuscript, we used the numbers reported by Rocher-Ros et al., 2023 and Johnson et al., 2022 for estimated annual CH₄ emissions from rivers, streams, and lakes in the Arctic and boreal region (>50°N), where the regional numbers were provided in their papers but covered smaller areas than our study region (>45°N) and lake emissions from ice out and spring/fall turnover were not included.

To make a more precise comparison, we downloaded their published spatial data and calculated the annual emissions in areas that exactly match our study region and included emissions from all components of wetlands, rivers/streams, and lakes. We updated the numbers in our manuscript as below:

“CH₄ emissions were estimated at 5.5 Tg CH₄ yr⁻¹ from rivers and streams (Rocher-Ros et al., 2023) and 16.6 Tg CH₄ yr⁻¹ from lakes (Johnson et al., 2022) in the high latitudes (>45°N). The total emissions estimated from wetlands and open water are about 44.9 Tg CH₄ yr⁻¹, which is 4 Tg CH₄ yr⁻¹ more than the CarbonTracker-CH₄ estimate.”

Supplemental Text 2, line 16-27: please move this to the main document, because it answers a lot of questions that I had on why sites were missing from your analysis. Also, what was the quality control mentioned in line 26?

Responses:

Thanks for your suggestion. We moved the paragraph to the Data section.

The quality control we mentioned in line 26 is described further down in the manuscript:

“Daily data entries were only kept when the number of half-hourly EC tower observations per day was greater than 11.”