

Author's response

Title: A flux tower site attribute dataset intended for land surface modeling

No.: essd-2024-77

We sincerely thank the editor and all reviewers for their efforts. It is a great pleasure to have our work recognized. We sincerely thank the topic editor for pointing out our shortcomings. We have made changes in response to these comments.

The comments are presented in the italicized font and specific concerns are numbered. Our response is given in normal font. The list of all related changes is provided in blue text.

Comment 1: Figure 4: Please explain the symbols in the boxplot in the caption.

Response 1: Thank you for your careful examination. We have revised it.

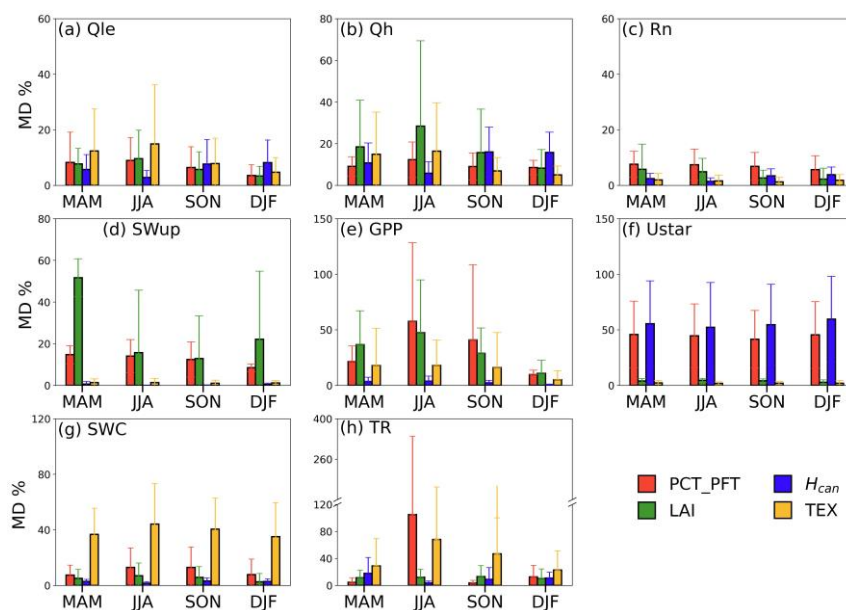
Add (Figure 4 caption):

“Boxes (25th and 75th percentiles) and whiskers (5th and 95th percentiles), with median (blue line) and mean (blue triangle). Hollow circles denote outliers defined as values greater than 1.5 times the interquartile range from the nearest 25th or 75th percentile.”

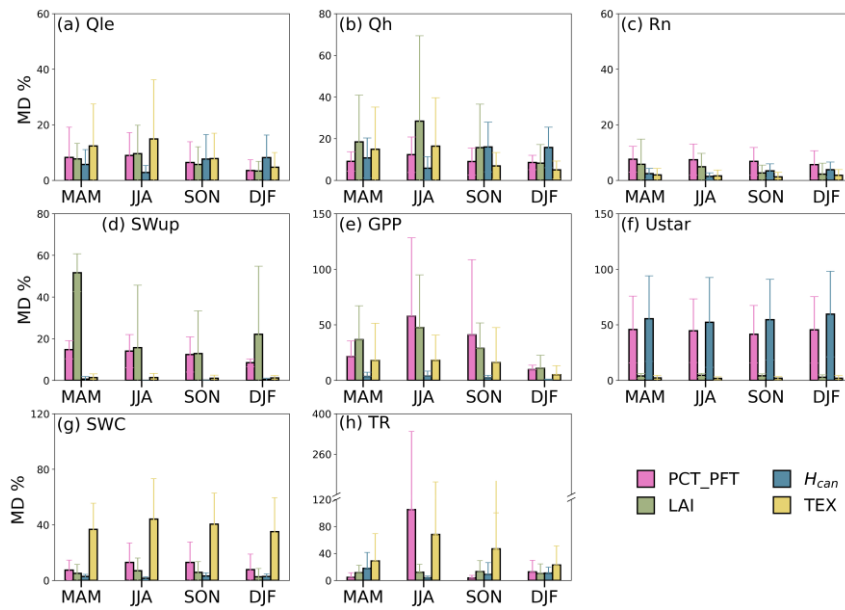
Comment 2: Figures 5 and 7: Please avoid the use of green-red pair.

Response 2: Thank you for your correction. We have used a new color scheme that is colorblind friendly.

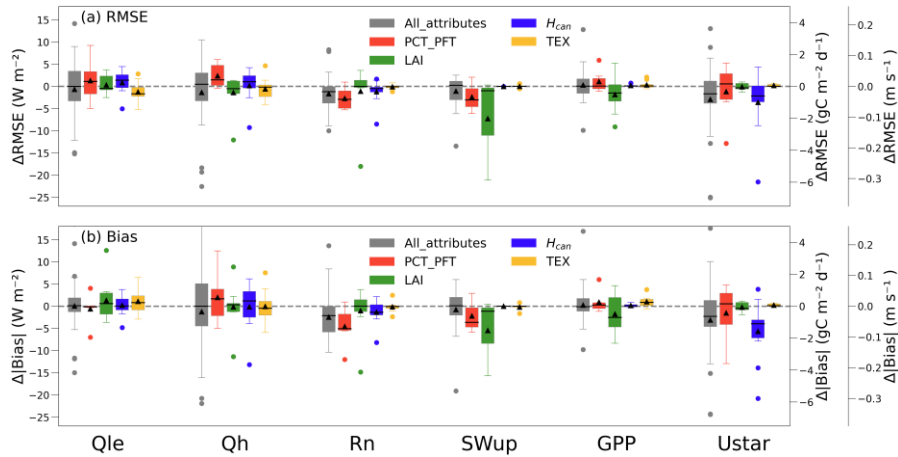
Origin (Figure 5):



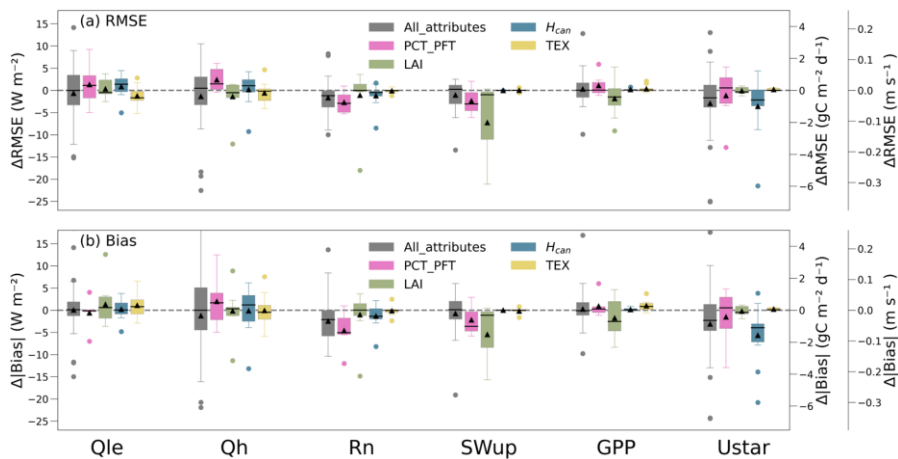
Revised (Figure 5):



Origin (Figure 7):



Revised (Figure 7):



These updates encompass all the revisions we have made. We are sincerely grateful for the time and effort that the topic editor dedicated to providing feedback on our manuscript.

We appreciate the Editors' warm work earnestly, and hope the correction made will meet with approval.