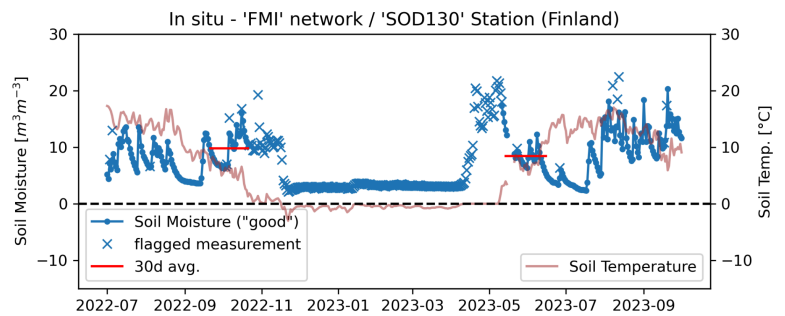


(a)



(b)

Fig. R1 - The impact of below or close-to freezing temperature on soil moisture signals which motivate the use of 30-day mean values for linear interpolation (red lines). (a) Time series from the HOBE network in Denmark; (b) Same for the FMI network (Finland); "x" indicate flagged / excluded measurements, which are not used for the 30d average.

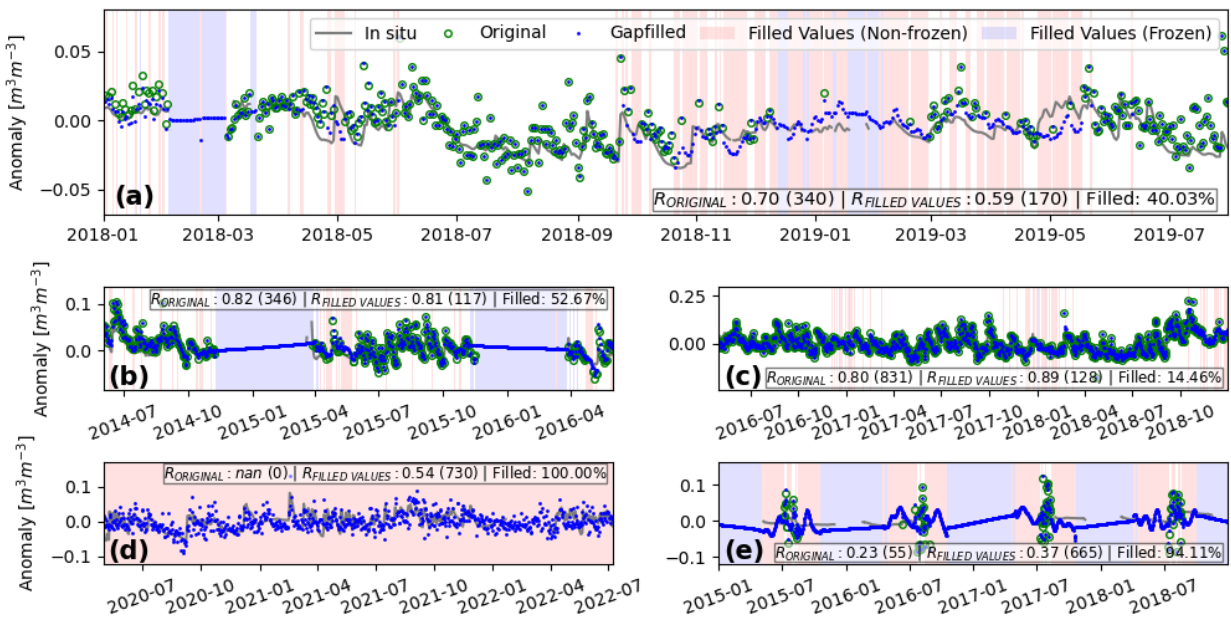


Fig. R2 - Proposed update to time series plots from manuscript Fig. 17, with the green circles (and additional stats) included in all subplots compared to the original figure.