

# Fluorescent aerosol particles in the Finnish sub-Arctic during the Pallas Cloud Experiment 2022 campaign

Jürgen Gratzl<sup>1</sup>, David Brus<sup>2</sup>, Konstantinos Doulgeris<sup>2</sup>, Alexander Böhmländer<sup>3</sup>, Ottmar Möhler<sup>3</sup>, Hinrich Grothe<sup>1</sup>

5 <sup>1</sup>Institute of Materials Chemistry, TU Wien, Vienna, 1060, Austria

<sup>2</sup>Finnish Meteorological Institute, Atmospheric Composition Research, Helsinki, FI-00560, Finland

<sup>3</sup>Institute of Meteorology and Climate Research, Atmospheric Aerosol Research (IMK-AAF),  
Karlsruhe Institute of Technology (KIT), Karlsruhe, 76021, Germany

*Correspondence to:* Hinrich Grothe (hinrich.grothe@tuwien.ac.at)

10 **Abstract.** Fluorescent aerosol particles (FAPs) as a fraction of total aerosol particles (TAPs) were measured online with a  
Wideband Integrated Bioaerosol Sensor 5/NEO (WIBS, Droplet Measurement Technologies) from mid-September to mid-  
December during the Pallas Cloud Experiment 2022 (PaCE22) at the Sammaltunturi station, located in the sub-Arctic region  
of Finnish Lapland. The WIBS measures particle size distributions from 0.5 to 30  $\mu\text{m}$  and fluorescence in three channels of  
15 single aerosol particles, as well as particle concentrations. Since biological aerosol particles can exhibit intrinsic fluorescence,  
FAP concentration can be used as a proxy for primary biological aerosol particles (PBAPs) like bacteria, fungal spores and  
pollen. The concentrations and size distributions of different fluorescent particles, together with meteorological data and air  
mass trajectories allow valuable insights to the emission of PBAPs from northern boreal forests and their dynamic in the  
atmosphere. We found a clear seasonal trend for most FAP types and a strong, sudden decrease in concentration after the  
surrounding ground is covered in snow. Caution should be taken in interpreting the data, as interference may be introduced by  
20 non-biological fluorescent particles like secondary organic aerosols or soot, as well as biological secondary organic aerosol.  
The data is available at the open data repository Zenodo under the doi 10.5281/zenodo.13885888 (Gratzl and Grothe, 2024).

## 1 Introduction

The atmosphere is a dynamic reservoir of diverse aerosol particles, influenced by both anthropogenic and biological sources.  
25 Aerosol particles play a vital role in the radiative balance of earth's atmosphere by scattering and absorbing sunlight, either  
directly or by changing cloud albedo and cloud lifetime (Lohmann and Feichter, 2005). A special subset of aerosols are the  
primary biological aerosol particles (PBAPs) which include, but are not limited to airborne viruses, bacteria, fungal spores,  
pollen grains and plant debris (Després et al., 2012). Due to the interaction of PBAPs with human, animal and plant health  
(e.g. disease transmission, allergic reactions, crop diseases), especially fungal spores and pollen grains have been monitored  
30 for decades by aerobiologists using traditional methods like the Hirst trap, first introduced in 1952 (Hirst, 1952). This method

relies on the capture of PBAPs on a slowly moving sticky microscope slide and subsequent analysis of pollen grains and fungal spores under an optical microscope. Other commonly used techniques involve examining PBAP concentrations with fluorescence microscopes after DNA staining of PBAPs on filters or by incubation on Agar plates (Després et al., 2012). However, these methods have limited time resolution, and require trained personnel, as well as a high expenditure of time to  
35 identify PBAPs.

Only in recent years PBAPs have gained more attention from atmospheric scientists, partly because a new technology was commercially available since the late 1990s, i.e. Laser/Light induced Fluorescence (LiF) of single aerosol particles. The first commercially available instrument was the UV-APS from TSI, first described by Hairston et al. (1997) and Brosseau and  
40 Measurement Technologies (DMT), which is used in this study. These instruments detect the intrinsic fluorescence of single aerosol particles, enabling the measurement of fluorescent aerosol particles with high time resolution and in near-real time. Particles of biological origin often contain bio-fluorophores like tryptophan, nicotinamide adenine dinucleotides (NAD(P)H) and riboflavin (Pöhlker et al., 2013) which can be detected using suitable excitation and emission wavelengths. Therefore, fluorescent aerosol particles (FAPs) can be interpreted as a proxy for PBAPs (Artaxo et al., 2022). For example, several field  
45 studies showed a good correlation between LiF-Instrument-obtained particle concentrations and fungal spores or fungal spore-tracers in the field (e.g. Healy et al., 2014, Fernández-Rodríguez et al., 2018, Gosselin et al., 2016, Yue et al., 2019, Yue et al., 2022, Markey et al., 2022).

Beyond an aerobiology and immunology perspective, bioaerosols are also studied in the context of cloud formation. Several  
50 laboratory- and field studies (for an overview, see Duan et al., 2023, Kanji et al., 2017, Fröhlich-Nowoiky et al., 2016, Després et al., 2012, Hoose and Möhler, 2012, Möhler et al., 2007) showed that biological particles are effective known ice nucleating particles (INPs), triggering the glaciation of water droplets at very high sub-zero temperatures: For example, the bacteria *Pseudomonas syringe* proofed to nucleate ice at -2°C (Maki et al., 1974) making it the most effective known ice nucleator. Besides bacteria, several atmospheric relevant fungal spores (Morris et al., 2013, Haga et al., 2013, Haga et al., 2014, Fröhlich-  
55 Nowoisky et al., 2015) and pollen grains (Pummer et al., 2012, Diehl et al., 2001) as well as their associated nanometer-sized macromolecules (Pummer et al., 2012, Augustin et al., 2013, Pummer et al., 2015, Wieland et al. 2024) can nucleate ice at high or moderate sub-zero temperatures. Other potentially atmospherically relevant bioparticles like plant debris (Puxbaum et al., 2003) or subpollen particles/pollen fragments (Taylor et al., 2004) can also be ice active (Schnell and Vali, 1976, Seifried et al., 2023, Burkart et al., 2021, Matthews et al., 2023). Thus, traditional methods of aerobiologists might not be suitable for  
60 ice nucleation research, as they only detect intact and big fungal spores and pollen grains with low time resolution. Therefore, these methods potentially overlook important contributors to biological INPs, especially in the size range below about 2 µm in diameter (Fernández-Rodríguez et al., 2018). To better understand biological atmospheric ice nucleation, Lif-Instruments are increasingly used in field studies addressing the question if and how biological particles actually play an important role in cloud glaciation and therefore precipitation (Fennelly et al., 2018). For instance, a strong link of biological particles measured

65 with Lif-Instruments and warm INPs has been found in a boreal forest in southern Finland (Schneider et al., 2021) and in the high arctic (Pereira Freitas et al., 2023).

However, certain non-biological aerosols show fluorescence as well and can therefore bias the measurement: Savage et al. (2017) characterized several biological and non-biological particles in the laboratory and showed that for instance, PAHs (Polyaromatic Hydrocarbons), and certain types of soot and brown carbon introduce false positives. In field studies, a correlation between eBC (elemental black carbon) mass concentrations and certain fluorescent particle types measured with the WIBS (see Table 1) was observed (Gao et al., 2024, Beck et al., 2023, Yue et al., 2022). In Table 1, possible contributors of biological and nonbiological aerosol particles that have been identified in both laboratory experiments and in field studies, are listed.

Pallas, as a clean continental background station with minimal anthropogenic influence, is an ideal site to study ambient fluorescent aerosol particles (Doulgeris et al., 2022). By choosing an appropriate fluorescent background threshold (Savage et al., 2017) only minor non-biological interferences are expected. An Introduction/overview of the Pallas Cloud Experiment 2022 (PaCE 2022) campaign is given in Brus et al. (2025).

## 2 Observation Site

The instrument was installed at the Sammaltunturi station, part of the Pallas Atmosphere-Ecosystem Supersite in Finnish Lapland, hosted by the Finnish Meteorological Institute. The station is located at 67.9733° N and 24.1157° E and approximately 170 km above the Arctic Circle. According to the Köppen climate classification (Köppen, 1931) the location is on the northern edge of the sub-Arctic climate zones (Beck et al., 2018). It is built at an altitude of 565 meters above sea level, at the summit of Sammaltunturi hill. The tree line is approximately 100 m below the station. Above the tree line, the vegetation is dominated by low vascular plants, lichen and moss (Hatakka et al., 2003). The boreal forest around the station consists of pine, spruce and birch (Komppula et al., 2005). The station is located within the Pallas-Yllästunturi-National Park. Local or regional sources of air pollution are scarce. Therefore, Sammaltunturi is an important station to measure background air in northern Europe (Lohila et al., 2015) and is an ideal place to observe biological aerosol particles using single particle fluorescence measurements, as the surrounding boreal forest is an important source of PBAPs (Schumacher et al., 2013) and false positives (non-biological fluorescent particles) are minimized due to the clean air conditions.

## 3 Instrumentation

Near-real-time measurements of fluorescent and total aerosol particles were conducted with the Wideband Integrated Bioaerosol Sensor WIBS 5/NEO (DMT), referred to hereafter as WIBS. The WIBS operated with an inlet flow of 0.3 l min<sup>-1</sup> and an internally produced sheath flow of 2.1 l min<sup>-1</sup>. A 635 nm Laser is used to measure the size of single particles via Mie scattering induced intensity reduction as well as a trigger signal for two xenon lamps firing at 280 and 370 nm used as a fluorescence excitation source. The emitted fluorescence is collected with two detectors in the wavelength ranges of 310-400 nm and 410-650 nm. Therefore, a fluorescence signal can be detected in three channels: FL1 (excitation at 280 nm and emission

at 310-400 nm), FL2 (excitation at 280 nm and emission at 410-650 nm) and FL3 (excitation at 380 and emission at 410-650 nm). The fourth option (excitation at 380 nm and emission at 310-400 nm) is omitted due to elastic scattering. A particle is considered fluorescent if it exceeds the fluorescence threshold in any channel. The threshold  $TH$  is obtained by the equation:

$$TH = \overline{FT} + n \cdot \sigma \quad (1)$$

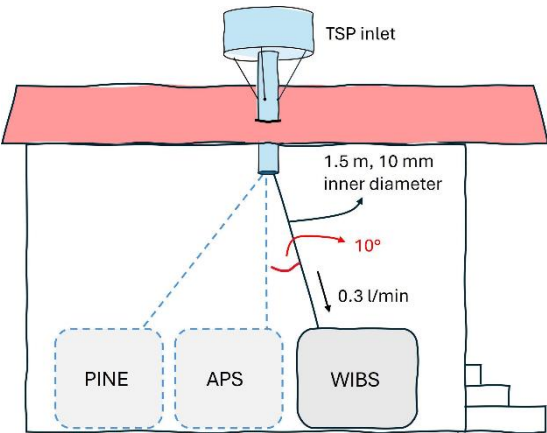
using the forced trigger mode of the WIBS during which the xenon lamps are triggered without any particles present. The mean fluorescence value of each channel  $\overline{FT}$  during the forced trigger mode plus a certain factor  $n$  of the standard deviation  $\sigma$  is calculated for each channel individually and used as the threshold of the channel.

In this data set, a particle is classified as a FAP if it exceeds the threshold calculated with  $3\sigma$ , whereas it is classified as a highly fluorescent aerosol particle (HFAP) when it exceeds the  $9\sigma$  threshold. The three channels can be combined using Perring nomenclature (Perring et al., 2015), where every possible combination of the three channels is considered. Thus, seven types of FAPs and HFAPs, can be defined, as described in Table 1. The maximum concentration is specified as 466 particles  $\text{cm}^{-3}$  for FAP counting (10% coincidence) and 9,500 particles  $\text{cm}^{-3}$  for sizing and counting (10% coincidence). A study on the counting efficiency and size accuracy of the WIBS NEO can be read in Lieberherr et al. (2021). In their study, the specific instrument used, seems to reach an upper detection limit for particle diameter larger than 10  $\mu\text{m}$ . However, the authors comment that this might be specific to this exact instrument. Laboratory experiments with pollen and microplastic particles > 10  $\mu\text{m}$  with the exact WIBS that is used in this study is not consistent with the findings of Lieberherr and colleagues, as pollen bigger than 40  $\mu\text{m}$  were detected (Gratzl et al., 2024).

Analysis was conducted with the WIBS toolkit (DMT) implemented in IGOR pro 9. Due to the deadtime of the two xenon lamps, a deadtime correction for FAPs is integrated in the toolkit. Therefore, the concentration of excited particles (those which get counted and sized and have their fluorescence intensity measured) is not reported here. Due to the generally low aerosol concentrations at the site, the ratio of excited particles to total particles is high, with a median value of 98.76 % (mean: 97.68 %) for the whole campaign.

The instrument was attached to an ACTRIS (Aerosol, Clouds and Trace Gases Research Infrastructure) approved, heated total air inlet. Cloud droplets (and crystals) enter the system but evaporate on the way to the instruments. The inlet was connected to the instrument with conductive tubing (I.D. = 10 mm and L ~ 1.5 m). Although the tubing to the WIBS was kept as vertical as possible, a slight angle of approximately 10° could not be avoided. Consequently, at a low flow rate of 0.3 l/min, we expect great losses for super-coarse (> 10  $\mu\text{m}$ ) particles due to sedimentation. Theoretical calculations with the Particle Loss Calculator (Weiden et al., 2009) from Max Planck Institute for Chemistry show particle losses of 7 % at 3  $\mu\text{m}$  and 26 % at 6  $\mu\text{m}$ , respectively, only for the 1.5 m tubing from the end of the TSP inlet to the instrument, assuming a particle density of 1  $\text{g cm}^{-3}$  and a shape factor of 1. For the low flow rate of 0.3  $\text{l min}^{-1}$ , no values for particle bigger than 6  $\mu\text{m}$  are available by the Particle Loss Calculator. Also connected to the TSP inlet, amongst other instruments, were an aerodynamic particle size

130 (APS, TSI model 3321) and the Portable Ice Nucleation Experiment (PINE, Bilfinger SE, Möhler et al., 2021) The setup is  
sketched in Fig. 1..



135 Figure 1. Schematic drawing of the setup in Sammallunturi station.

**4 Data evaluation and quality control**

The instrument was operated in forced trigger mode every six hours for one minute. The mean values of the forced trigger  
140 intensities (and standard deviations) from the four measurements each day (or less, if not all four were measured) was used to  
calculate the threshold every 24 hours. Over the whole campaign, the threshold calculated from the forced trigger intensity  
was relatively constant. A time series of the daily  $3\sigma$  threshold intensities is depicted in Fig. 2. The standard deviation of the  
 $3\sigma$  threshold mean was highest for the FL1 channel with a relative deviation of  $\pm 2.8 \%$  from the mean value. The highest  
deviation of a single, one day mean value was  $\pm 9.4 \%$ . The standard deviation for FL2 and FL3 is  $\pm 1.5 \%$  and  $\pm 2.3 \%$ ,  
145 respectively.

155 Table 1. WIBS particle classification using all possible combinations of the three channels. Biological and nonbiological particles that have been attributed to different channels in laboratory or field studies are listed. References: a: Savage et al., (2017) (laboratory), b: Hernandez et al., (2016) (laboratory), c: Markey et al., (2022), d: Beck et al., (2024), e: Gratzl et al., (2024) (laboratory), f: Stone et al, (2021) (laboratory), g: Hughes et al., (2020), h: Mampage et al., (2022), i: Yue et al., (2022), j: Yue et al., (2019), k: Markey et al., (2024), l: Gao et al., (2024), m: Sarangi et al., (2022), n: Fernandez-Rodriguez et al., (2018).

Particle type	Channels involved	Excitation (nm)	Emission (nm)	Biological contributors	Nonbiological contributors
A	FL1 only	280	310 – 400	Bacteria <sup>a,b</sup> , Fungal spores <sup>a,b,c</sup> , Pollen fragments <sup>a</sup>	Soot <sup>a</sup> , Microplastic <sup>e</sup>
B	FL2 only	280	420 – 650	Pollen fragments <sup>a,f,g,h</sup>	Black carbon <sup>a,d</sup> , Brown carbon <sup>a</sup> , Secondary organic aerosol <sup>i</sup>
C	FL3 only	370	420 – 650		
AB	FL1 and FL2 only	280	310 – 400, 420 – 650	Fungal spores <sup>a,b,c,j</sup> , Pollen fragments <sup>a,e,h</sup>	Microplastic <sup>e</sup>
AC	FL1 and FL3 only	280 370	310 – 400, 420 – 650		
BC	FL2 and FL3 only	280, 370	420 – 650	Fungal spores <sup>h,j</sup> , Pollen <sup>a</sup> , Pollen fragments <sup>a,f,g,h</sup> ,	Black carbon <sup>d,i,k,l</sup>
ABC	FL1, FL2 and FL3	280 370	310 – 400, 420 – 650 420 – 650	Fungal spores <sup>b,h,i,j,m,n</sup> , Pollen <sup>a,c</sup> , Pollen fragments <sup>a,f,g,h</sup>	Microplastic <sup>e</sup>

160

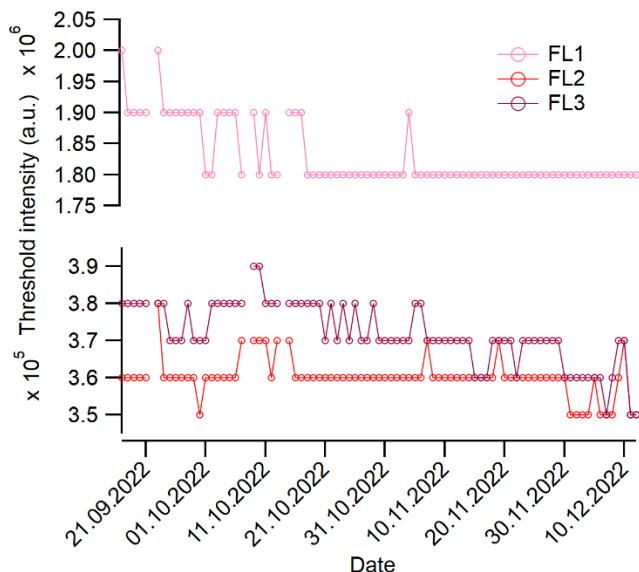


Figure 2. Temporal evolution of the  $3\sigma$  threshold intensities for the three channels. A particle was considered fluorescent if its intensity in any channel was higher than the threshold intensity.

This data set contains one file per day with the names TUV-WIBS\_N.b1.yyyyMMdd.hhmm.csv, where the date and time indicate the date of the measurement and the time of the first datapoint, respectively. The data set is accessible under the DOI [10.5281/zenodo.13885888](https://doi.org/10.5281/zenodo.13885888) (Gratzl and Grothe, 2024) at the Zenodo Open Science data archive (<http://zenodo.org>, last access: 18.11.2024). The files include number concentrations of total aerosol particles (TAPs), FAPs and HFAPs and the subtypes of the latter two of diameter 0.50 to 30  $\mu\text{m}$  (optical equivalent diameter), as well as number size distributions of TAPs, FAPs and HFAPs, and the subtypes of the latter two of diameter 0.50-30.42  $\mu\text{m}$  (optical equivalent diameter) in 15 logarithmically equidistant size channels: 0.50-0.66  $\mu\text{m}$ , 0.66-0.86  $\mu\text{m}$ , 0.86-1.14  $\mu\text{m}$ , 1.14-1.50  $\mu\text{m}$ , 1.50-1.97  $\mu\text{m}$ , 1.97-2.59  $\mu\text{m}$ , 2.59-3.40  $\mu\text{m}$ , 3.40-4.47  $\mu\text{m}$ , 4.47-5.88  $\mu\text{m}$ , 5.88-7.73  $\mu\text{m}$ , 7.73-10.17  $\mu\text{m}$ , 10.17-13.37  $\mu\text{m}$ , 13.37-17.59  $\mu\text{m}$ , 19.59-23.13  $\mu\text{m}$ , 23.13-30.42  $\mu\text{m}$ . The concentrations and size distributions are reported in  $\text{cm}^{-3}$ . In Tab. 2, a description of each variable can be found.

All data was carefully monitored and quality controlled. Missing or outlier datapoints were set to -9999.9. The values of the first data point of every day were deleted and set to -9999.9, since the data analysis software WIBS toolkit gave too low concentrations, or values of zero, due to the program code. In certain days, the first time stamp of the next day (the deleted

one) was also recorded as the last time stamp of the previous day and gave good values. In these cases, these values are used rather than deleting the data from this time stamp. The instrument experienced several breaks throughout the campaign due to software failure. For approximately two hours after restart, the size distributions of certain fluorescence channels were shifted to smaller sizes with the maximum always being in the lowest size channel. This effect was seen consistently after every break. Therefore, data from the first three hours after a restart was omitted. Although the total concentrations did not seem to be affected, number concentration values were also set to -9999.9 for these periods. Single data points for which the concentration of fluorescent particles was three times higher than the mean value of the three previous and three subsequent datapoints, were examined in detail to rule out artificial spikes. For some datapoints, the higher concentration compared to the neighboring ones originated from a single, less than two-second-long increase of detected particles by more than a factor of 100, which also showed higher fluorescence intensities. This clearly points to an unphysical event. These datapoints were interpreted as artefacts and the values were set to -9999.9. The origin of these artefacts is not clear.

A size calibration was carried out to test the instruments' ability of accurate particle sizing, before and after the campaign. Before the campaign, Polystyrene latex spheres (PSL) of physical diameter of 1  $\mu\text{m}$  were atomized and recorded by the instrument, which detected the peak of the size distribution within 4 % of the physical diameter at 1.04  $\mu\text{m}$ . After the campaign, PSL of 0.8  $\mu\text{m}$ , 1  $\mu\text{m}$  and 2  $\mu\text{m}$  were measured. The instruments response was within 10 % of the physical diameter for 2  $\mu\text{m}$  PSL at 1.8  $\mu\text{m}$  and below 3 % for the remaining sizes (0.995  $\mu\text{m}$  for 1  $\mu\text{m}$  PSL and 0.78  $\mu\text{m}$  for 0.8  $\mu\text{m}$  PSL).

200

## 5 Dataset Overview

Figure 3 provides an overview of concentrations of TAP and (H)FAP, fractions of (H)FAP, as well as wind speed, wind direction and snow depth over the whole measurement period. Figure 3 (a) shows wind speed and wind direction data measured at Sammaltunturi station. Figure 3 (b) displays the concentrations of TAP, FAP\_FL and HFAP\_FL. Both FAP\_FL and HFAP\_FL concentrations decrease over time by up to two orders of magnitude, while TAP concentrations exhibit no clear seasonal trend. The fraction of HFAP\_FL in TAP decreases much more substantially over time than the fraction of FAP\_FL (Fig. 3 (c)). Figure 3 (d) and Figure 3 (e), show the stacked fractions of FAP types within FAP\_FL and HFAP types within HFAP\_FL, respectively, revealing changes in the contribution of different particle types. The contribution of AB and ABC particles is much higher at the beginning of the campaign for both cases. ABC (and AB for HFAPs) dominate (H)FAPs until mid of October, after which A and B particles become the dominant contributors for the remainder of the campaign.

From October 24, 2022 the surrounding ground was covered in snow. Snow depth was measured at Kenttäröva research station located at 67.987° N, 24.243° E at 347 m above sea level inside a spruce forest approximately 5.5 km east of the Sammaltunturi station. In Fig. 3 (f), the concentration of HFAP\_ABC is plotted alongside snow depth. The data indicates that snow cover has a strong influence on (H)FAP concentrations, particularly for the ABC and AB types: Once the ground is snow-covered, the concentration of HFAP\_ABC decreases rapidly and remains low, with the exception of a brief increase coinciding with a short melting period.

215



Table 2. Description of variables in the data set. Variables 2 – 47 are reported in cm<sup>-3</sup>. Each size distribution variable (variables 25 – 47) consists of 15 values per time interval for the 15 size channels and is reported as dN/dlogDp. The size channels are indicated as “(lower limit\_upper limit)” in  $\mu\text{m}$  in the data set.

Number	Name	Description	Threshold
1	Starttime	Starting date and time of the 30 min measuring interval in dd.MM.yyyy hh:mm (UTC)	-
2	N_TAP	Conc. of total particles	-
3	N_FAP_FL	Conc. of total fluorescent particles	3 $\sigma$
4	N_FAP_FL1	Conc. of fluorescent particles in FL1	3 $\sigma$
5	N_FAP_FL2	Conc. of fluorescent particles in FL2	3 $\sigma$
6	N_FAP_FL3	Conc. of fluorescent particles in FL3	3 $\sigma$
7	N_FAP_A	Conc. of fluorescent particles in A	3 $\sigma$
8	N_FAP_B	Conc. of fluorescent particles in B	3 $\sigma$
9	N_FAP_C	Conc. of fluorescent particles in C	3 $\sigma$
10	N_FAP_AB	Conc. of fluorescent particles in AB	3 $\sigma$
11	N_FAP_AC	Conc. of fluorescent particles in AC	3 $\sigma$
12	N_FAP_BC	Conc. of fluorescent particles in BC	3 $\sigma$
13	N_FAP_ABC	Conc. of fluorescent particles in ABC	3 $\sigma$
14 - 24	N_HFAP_...	Same sequence as variables 3 – 13*	9 $\sigma$
25	SD_TAP	Size distribution of total particles	3 $\sigma$
26	SD_FAP_FL	Size distribution of total fluorescent particles	3 $\sigma$
27	SD_FAP_FL1	Size distribution of fluorescent particles in FL1	3 $\sigma$
28	SD_FAP_FL2	Size distribution of fluorescent particles in FL2	3 $\sigma$
29	SD_FAP_FL3	Size distribution of fluorescent particles in FL3	3 $\sigma$
30	SD_FAP_A	Size distribution of fluorescent particles in A	3 $\sigma$
31	SD_FAP_B	Size distribution of fluorescent particles in B	3 $\sigma$
32	SD_FAP_C	Size distribution of fluorescent particles in C	3 $\sigma$
33	SD_FAP_AB	Size distribution of fluorescent particles in AB	3 $\sigma$
34	SD_FAP_AC	Size distribution of fluorescent particles in AC	3 $\sigma$
35	SD_FAP_BC	Size distribution of fluorescent particles in BC	3 $\sigma$
36	SD_FAP_ABC	Size distribution of fluorescent particles in ABC	3 $\sigma$
37 - 47	SD_HFAP_...	Same sequence as variables 26 – 36*	9 $\sigma$

\*HFAP refers to particles exceeding the 9  $\sigma$  threshold

225 Figure 4 shows boxplots of the concentrations of TAPs, FAPs and HFAPs during the snow free period (September 9 – October  
23, 2022) and the snow-covered period (October 24 – December 13, 2022). Permanent snow cover leads to a pronounced  
decrease in the concentrations of FAPs (Fig. 4 (a)) and especially HFAPs (Fig. 4 (b)). In Fig. 5, the relative change of median  
concentrations from the snow free period to the snow-covered period is plotted for TAP, HFAP\_FL and most HFAP subtypes.  
While the median concentration for TAP is 33 % lower during snow-covered time compared to the snow free period (the mean  
230 concentration increases, see Fig. 3 (a)), the reduction is much more pronounced for the highly fluorescent particle types:  
HFAP\_AB and HFAP\_ABC both show reductions exceeding 94 %. The influence of other meteorological variables on HFAP  
concentrations is discussed in Gratzl et al. (2025), which includes evaluations based on this data set.

Figure 6 presents the mean size distributions ( $dN/d\log D_p$ ) of FAP\_FL, HFAP\_FL and selected types from the snow free period.  
235 For FAPs (Fig. 6 (a)), the maximum of the distribution occurs in the smallest size channel ( $0.50 - 0.66 \mu m$ ) for all types except  
FAP\_AB and FAP\_ABC. The higher fluorescence threshold applied to HFAPs results in the exclusion of most fluorescent  
particles  $< 1 \mu m$  (Fig. 6 (b)). Among the small particles that do exceed this higher fluorescence threshold, the majority are  
classified as B particles. A comparison of the size distributions of FAPs and HFAPs, indicates that the higher concentrations  
of FAPs, relative to HFAPs, can be attributed to the greater proportion of smaller fluorescent particles present in the FAP  
240 population.

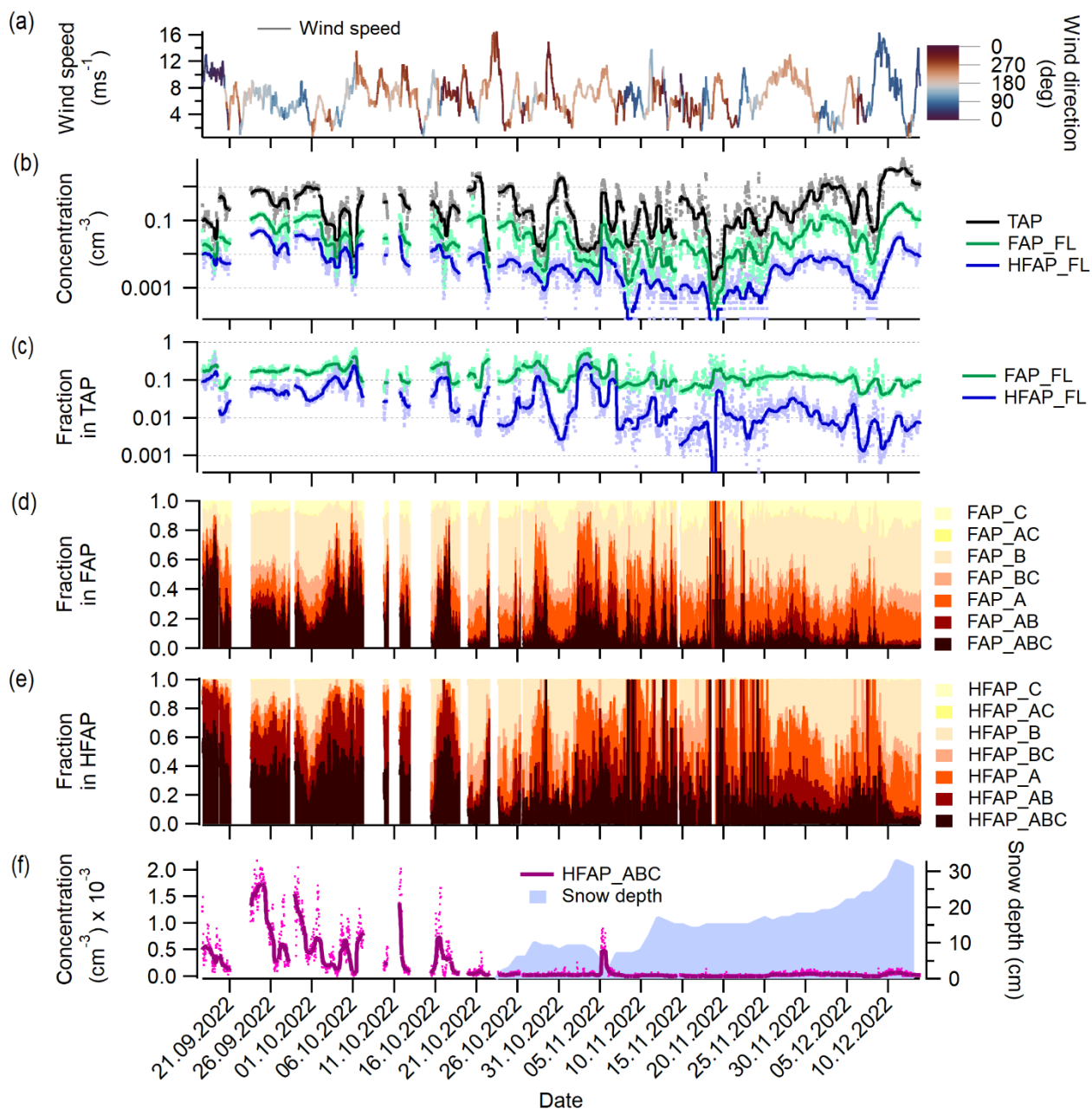


Figure 3. Overview over concentrations and fraction of TAPs, FAPs and HFAPs and meteorological variables. (a) Wind speed and wind direction, (b) TAP, FAP and HFAP concentrations, (c) FAP and HFAP fractions in TAP. Markers in (b) and (c) represent data with the temporal resolution of the data set, while lines represent 24 hour running medians. (d) Stacked fractions of all FAP types, (e) stacked fractions of HFAP types and (f) concentration of HFAP\_ABC and snow depth.

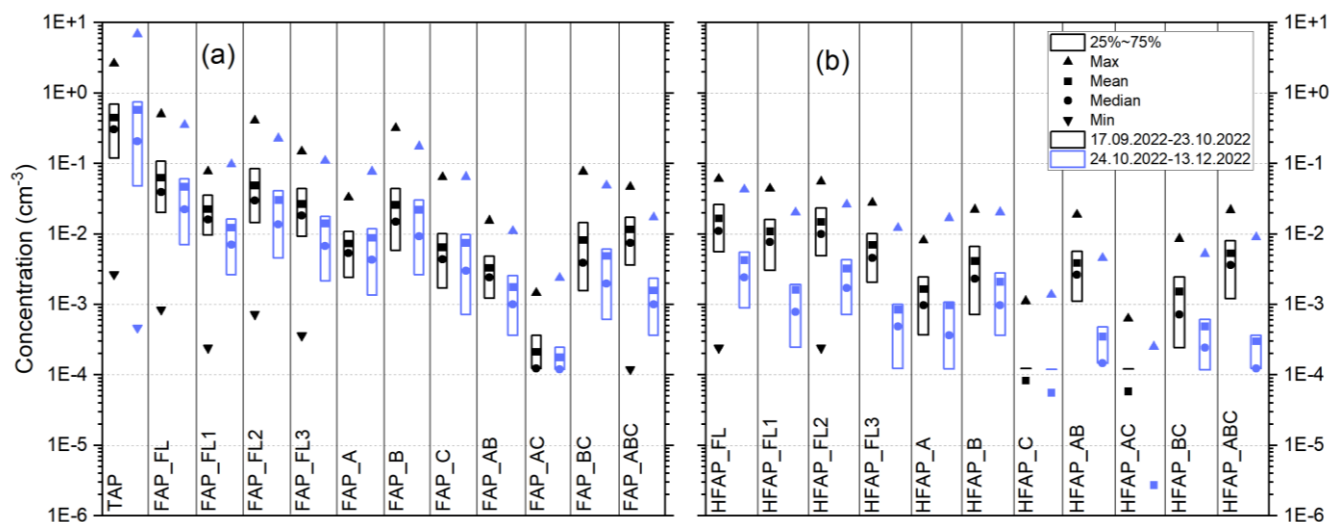


Figure 4. Boxplots of concentrations of (a) TAPs and all subtypes of FAPs and (b) all subtypes of HFAPs. In Black: Concentration from 17.09.2022-23.10.2022 (snow free period of the campaign) and in blue concentrations from 24.10.2022.-13.12.2022 (snow covered period). The horizontal bar in (b) for HFAP\_C and HFAP\_AC is the 25th percentile.

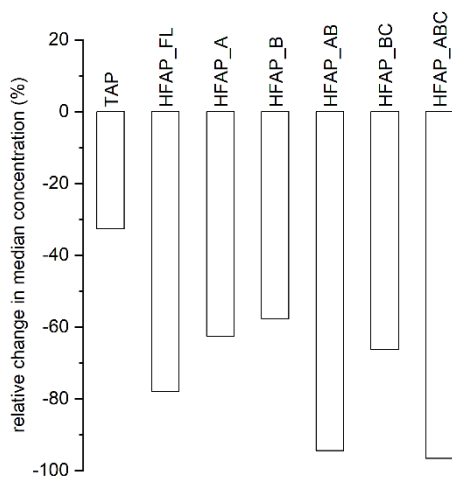


Figure 5. Relative change of median concentrations from the snow free period to the snow-covered period of the campaign for TAP, HFAP\_FL and the subtypes of HFAP, except of HFAP\_C and HFAP\_AC which medians are zero. Mean TAP concentrations decrease by 33 %, while the other particle types decrease more strongly. HFAP\_AB and HFAP\_ABC decrease the strongest with -94 % and -97 %, respectively.

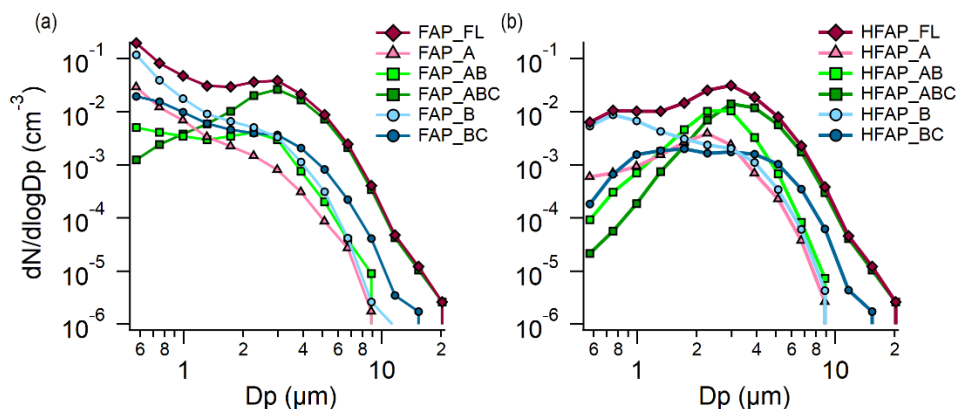


Figure 6. Mean size distributions for the snow free period of (a) FAP\_FL and some FAP types and (b) HFAP\_FL and some HFAP types.

260

## 6. Data availability

Datasets are archived under the DOI [10.5281/zenodo.13885888](https://doi.org/10.5281/zenodo.13885888) (Gratzl and Grothe, 2024) at the Zenodo Open Science data archive (<http://zenodo.org>, last access: 18.11.2024), where a dedicated community Pallas Cloud Experiment – PaCE2022 has been established (<https://zenodo.org/communities/pace2022/>, last access: 18.11.2024). This community houses the data files along with additional metadata on the datasets from the Pallas Cloud Experiment 2022 campaign.

265

Wind speed, wind direction and snow depth data were taken from <https://en.ilmatieteenlaitos.fi/download-observations> (last access: April 11, 2025).

## 7. Summary

The PaCE2022 campaign was conducted from September to December 2022 in Pallas in the Finnish sub-Arctic. This paper provides an overview of data on the concentration and size distribution of TAPs, FAPs and HFAPs during this campaign, collected at the Sammaltunturi station, at 565 meter above sea level. The station was located inside clouds about 50 % of the measurement period. In Sect. 2, we shortly describe the research site and the vegetation surrounding the location of the WIBS measurements. In Sect. 3, a short overview of the Instrument is provided. The measured variables and the quality control of the data were explained in Sect. 4.

270

275

These are the first such measurements of fluorescent aerosols at the Sammaltunturi research station. They provide valuable insights into the seasonal dynamics of fluorescent and biological particles and how snow cover is influencing their emission. FAPs and HFAPs concentrations can be used as a proxy for PBAPs. The size distributions of the different particle types, together with literature that characterized PBAPs in the laboratory or in field, studied with a WIBS instrument, could help

identify different types of PBAPs such as bacteria and fungal spores. Together with meteorological data and air mass backwards trajectories, the driving forces of the emission of PBAPs from the northern boreal forest can be examined. Caution should be exercised in interpreting particles as pollen grains, as they are usually larger than 10  $\mu\text{m}$ . A size range that is not well covered in this data set due to inlet losses. Comparison with other aerosol data, for instance black carbon (see Backman et al., 2025) could give valuable information on interfering particles which are detected as fluorescent but not necessarily originate from the biosphere. For example, B and BC particle concentrations have been shown to correlate with black carbon concentrations in previous field studies (Gratzl et al., 2025; Beck et al., 2024; Gao et al., 2024; Markey et al., 2024; Yue et al., 2022) and account for approximately 50 % of both FAPs and HFAPs in this data set. For further analysis it is also recommended to categorize the local emissions or potential far range contributions to FAPs and HFAPs (Gratzl et al., 2025). As PBAPs might play a crucial role in cloud glaciation processes, this dataset might also be valuable when compared to INP concentrations, measured with PINE (Böhmländer et al., 2025).

### **Author contribution**

JG performed the measurements with help from all authors. JG did the data analysis and wrote the manuscript. All authors contributed to the discussion of the data set and reviewed and edited the manuscript. DB and KD prepared and organized the PACE 2022 campaign. HG and OM funded the journey. HG purchased the WIBS as part of his appointment.

### **Competing interests**

The authors declare that they have no conflict of interest

### **Acknowledgements**

The authors would like to thank the team from Metsähallitus and Sammaltunturi station for their help with logistics and watch over our instrumentation during PaCE 2022 campaign.

### **Financial support**

We thank TU Wien and BMBWF for the purchase of the WIBS 5/NEO. We gratefully acknowledge support by the FFG (Austrian Research Promotion Agency) for funding under project no. 888109, the Vienna Science and Technology Fund (WWTF) through project VRG22-003 and TU Wien Bibliothek for financial support through its Open Access Funding Program.

### **References**

Artaxo, P., Hansson, H.-C., Andreae, M. O., Bäck, J., Alves, E. G., Barbosa, H. M. J., Bender, F., Bourtsoukidis, E., Carbone, S., Chi, J., Decesari, S., Després, V. R., Ditas, F., Ezhova, E., Fuzzi, S., Hasselquist, N. J., Heintzenberg, J., Holanda, B. A., Guenther, A., Hakola, H., Heikkinen, L., Kerminen, V.-M., Kontkanen, J., Krejci, R., Kulmala, M., Lavric, J. V., de Leeuw,

- G., Lehtipalo, K., Machado, L. A. T., McFiggans, G., Franco, M. A. M., Meller, B. B., Morais, F. G., Mohr, C., Morgan, W., Nilsson, M. B., Peichl, M., Petäjä, T., Praß, M., Pöhlker, C., Pöhlker, M. L., Pöschl, U., Von Randow, C., Riipinen, I., Rinne, J., Rizzo, L. V., Rosenfeld, D., Silva Dias, M. A. F., Sogacheva, L., Stier, P., Swietlicki, E., Sörgel, M., Tunved, P., Virkkula, A., Wang, J., Weber, B., Yáñez-Serrano, A. M., Zieger, P., Mikhailov, E., Smith, J. N., and Kesselmeier, J.: Tropical and Boreal Forest – Atmosphere Interactions: A Review, *Tellus B: Chemical and Physical Meteorology*, pp. 24 – 163, <https://doi.org/10.16993/tellusb.34>, 2022.
- 315 Augustin, S., Wex, H., Niedermeier, D., Pummer, B., Grothe, H., Hartmann, S., Tomsche, L., Clauss, T., Voigtländer, J., Ignatius, K., and Stratmann, F.: Immersion freezing of birch pollen washing water, *Atmospheric Chemistry and Physics*, 13, 10 989–11 003, <https://doi.org/10.5194/acp-13-10989-2013>, 2013.
- 320 Backman et al.: In-situ aerosol measurement during PaCE 2022, in preparation for this SI of ESSD, 2025.
- 325 Beck, H. E., Zimmermann, N. E., McVicar, T. R., Vergopolan, N., Berg, A., and Wood, E. F.: Present and future Köppen-Geiger climate classification maps at 1-km resolution, *Scientific Data*, 5, 180 214, <https://doi.org/10.1038/sdata.2018.214>, 2018.
- 330 Beck, I., Moallemi, A., Heutte, B., Pernov, J. B., Bergner, N., Rolo, M., Quéléver, L. L. J., Laurila, T., Boyer, M., Jokinen, T., Angot, H., Hoppe, C. J. M., Müller, O., Creamean, J., Frey, M. M., Freitas, G., Zinke, J., Salter, M., Zieger, P., Mirrieles, J. A., Kempf, H. E., Ault, A. P., Pratt, K. A., Gysel-Beer, M., Henning, S., Tatzelt, C., and Schmale, J.: Characteristics and sources of fluorescent aerosols in the central Arctic Ocean, *Elementa: Science of the Anthropocene*, 12, 00 125, <https://doi.org/10.1525/elementa.2023.00125>, 2024.
- 335 Brus, D., Doulgeris, K., Bagheri, G., Bodenschatz, E., Chávez-Medina, V., Pohorsky, R., Schmale, J., Lonardi, M., Favre, L., Böhmmländer, A., Möhler, O., Lacher, L., Girdwood, J., Gratzl, J., Grothe, H., Kaikkonen, V., O'Connor, E., Le, V., Backman, J., Luoma, K., Servomaa, H. and Asmi, E.: Data generated during the Pallas Cloud Experiment 2022 campaign: an introduction and overview, in preparation for this SI of ESSD, 2025.
- 340 Burkart, J., Gratzl, J., Seifried, T. M., Bieber, P., and Grothe, H.: Isolation of subpollen particles (SPPs) of birch: SPPs are potential carriers of ice nucleating macromolecules, *Biogeosciences*, 18, 5751–5765, <https://doi.org/10.5194/bg-18-5751-2021>, 2021.

- 345 Böhmländer, A., Lacher, L., Brus, D., Doulgieris, K., and Möhler, O.: Measurement of the ice-nucleating particle concentration with the Portable Ice Nucleation Experiment during the Pallas Cloud Experiment 2022, in preparation for this SI of ESSD, 2025.
- Després, V. R., Huffman, J. A., Burrows, S. M., Hoose, C., Safatov, A. S., Buryak, G., Fröhlich-Nowoisky, J., Elbert, W., Andreae, M. O., Pöschl, U., and Jaenicke, R.: Primary biological aerosol particles in the atmosphere: a review, *Tellus B: Chemical and Physical Meteorology*, <https://doi.org/10.3402/tellusb.v64i0.15598>, 2012.
- 350 Diehl, K., Quick, C., Matthias-Maser, S., Mitra, S., and Jaenicke, R.: The ice nucleating ability of pollen: Part I: Laboratory studies in deposition and condensation freezing modes, *Atmospheric Research*, 58, 75–87, [https://doi.org/10.1016/S0169-8095\(01\)00091-6](https://doi.org/10.1016/S0169-8095(01)00091-6), 2001.
- 355 Doulgieris, K. M., Lihavainen, H., Hyvärinen, A.-P., Kerminen, V.-M., and Brus, D.: An extensive data set for in situ microphysical characterization of low-level clouds in a Finnish sub-Arctic site, *Earth System Science Data*, 14, 637–649, <https://doi.org/10.5194/essd-14-637-2022>, 2022.
- 360 Duan, P., Hu, W., Wu, Z., Bi, K., Zhu, J., and Fu, P.: Ice nucleation activity of airborne pollen: A short review of results from laboratory experiments, *Atmospheric Research*, 285, 106 659, <https://doi.org/10.1016/j.atmosres.2023.106659>, 2023.
- Fennelly, M. J., Sewell, G., Prentice, M. B., O'Connor, D. J., and Sodeau, J. R.: Review: The Use of Real-Time Fluorescence Instrumentation to Monitor Ambient Primary Biological Aerosol Particles (PBAP), *Atmosphere*, 9, <https://doi.org/10.3390/atmos9010001>, 2018.
- 365 Fernández-Rodríguez, S., Tormo-Molina, R., Lemonis, N., Clot, B., O'Connor, D., and Sodeau, J. R.: Comparison of fungal spores concentrations measured with wideband integrated bioaerosol sensor and Hirst methodology, *Atmospheric Environment*, 175, 1–14, <https://doi.org/https://doi.org/10.1016/j.atmosenv.2017.11.038>, 2018.
- 370 Fröhlich-Nowoisky, J., Hill, T. C. J., Pummer, B. G., Yordanova, P., Franc, G. D., and Pöschl, U.: Ice nucleation activity in the widespread soil fungus *Mortierella alpina*, *Biogeosciences*, 12, 1057–1071, <https://doi.org/10.5194/bg-12-1057-2015>, 2015.
- 375 Fröhlich-Nowoisky, J., Kampf, C. J., Weber, B., Huffman, J. A., Pöhlker, C., Andreae, M. O., Lang-Yona, N., Burrows, S. M., Gunthe, S. S., Elbert, W., Su, H., Hoor, P., Thines, E., Hoffmann, T., Després, V. R., and Pöschl, U.: Bioaerosols in the Earth system: Climate, health, and ecosystem interactions, *Atmospheric Research*, 182, 346–376, <https://doi.org/10.1016/j.atmosres.2016.07.018>, 2016.



- 380 Gao, K., Vogel, F., Foskinis, R., Vratolis, S., Gini, M. I., Granakis, K., Billault-Roux, A.-C., Georgakaki, P., Zografou, O., Fetfatzis, P., Berne, A., Papayannis, A., Eleftheriadis, K., Möhler, O., and Nenes, A.: Biological and dust aerosols as sources of ice-nucleating particles in the eastern Mediterranean: source apportionment, atmospheric processing and parameterization, *Atmospheric Chemistry and Physics*, 24, 9939–9974, <https://doi.org/10.5194/acp-24-9939-2024>, 2024.
- 385 Gosselin, M. I., Rathnayake, C. M., Crawford, I., Pöhlker, C., Fröhlich-Nowoisky, J., Schmer, B., Després, V. R., Engling, G., Gallagher, M., Stone, E., Pöschl, U., and Huffman, J. A.: Fluorescent bioaerosol particle, molecular tracer, and fungal spore concentrations during dry and rainy periods in a semi-arid forest, *Atmospheric Chemistry and Physics*, 16, 15 165–15 184, <https://doi.org/10.5194/acp-16-15165-2016>, 2016.
- 390 Gratzl, J., Böhmländer, A., Pätz, S., Pogner, C.-E., Gorfer, M., Brus, D., Doulgeris, K. M., Wieland, F., Asmi, E., Saarto, A., Möhler, O., Stolzenburg, D., and Grothe, H.: Locally emitted fungal spores serve as high temperature ice nucleating particles in the European sub-Arctic, *EGUsphere* [preprint], <https://doi.org/10.5194/egusphere-2025-1599>, 2025.
- Gratzl, J., and Grothe, H.: Data of Fluorescent Aerosol Particles during the Pallas Cloud Experiment 2022 [Data set],  
 395 Zenodo, <https://doi.org/10.5281/zenodo.13885888>, 2024.
- Gratzl, J., Seifried, T. M., Stolzenburg, D., and Grothe, H.: A fluorescence approach for an online measurement technique of atmospheric microplastics, *Environmental Science: Atmosphere*, 4, 601–610, <https://doi.org/10.1039/D4EA00010B>, 2024.
- 400 Haga, D. I., Iannone, R., Wheeler, M. J., Mason, R., Polishchuk, E. A., Fetch Jr., T., van der Kamp, B. J., McKendry, I. G., and Bertram, A. K.: Ice nucleation properties of rust and bunt fungal spores and their transport to high altitudes, where they can cause heterogeneous freezing, *Journal of Geophysical Research: Atmospheres*, 118, 7260–7272, <https://doi.org/10.1002/jgrd.50556>, 2013.
- 405 Haga, D. I., Burrows, S. M., Iannone, R., Wheeler, M. J., Mason, R. H., Chen, J., Polishchuk, E. A., Pöschl, U., and Bertram, A. K.: Ice nucleation by fungal spores from the classes Agaricomycetes, Ustilaginomycetes, and Eurotiomycetes, and the effect on the atmospheric transport of these spores, *Atmospheric Chemistry and Physics*, 14, 8611–8630, <https://doi.org/10.5194/acp-14-8611-2014>, 2014.
- 410 Hairston, P. P., Ho, J., and Quant, F. R.: Design of an instrument for real-time detection of bioaerosols using simultaneous measurement of particle aerodynamic size and intrinsic fluorescence, *Journal of Aerosol Science*, 28, 471–482, [https://doi.org/10.1016/S0021-8502\(96\)00448-X](https://doi.org/10.1016/S0021-8502(96)00448-X), sampling and Rapid Assay of Bioaerosols, 1997.

- Hatakka, J., Aalto, T., Aaltonen, V., Aurela, M., Hakola, H., Komppula, M., Laurila, T., Lihavainen, H., Paatero, J., Salminen, K., and Viisanen, Y.: Overview of the atmospheric research activities and results at Pallas GAW station, *Boreal Environment Research*, 8, 365, 2003.
- Healy, D., Huffman, J., O'Connor, D. J., Pöhlker, C., Pöschl, U., and Sodeau, J.: Ambient measurements of biological aerosol particles near Killarney, Ireland: a comparison between real-time fluorescence and microscopy techniques, *Atmospheric Chemistry and Physics*, 14, 8055–8069, 2014.
- Hernandez, M., Perring, A. E., McCabe, K., Kok, G., Granger, G., and Baumgardner, D.: Chamber catalogues of optical and fluorescent signatures distinguish bioaerosol classes, *Atmospheric Measurement Techniques*, 9, 3283–3292, 2016.
- Hirst, J. M.: An automatic volumetric spore trap, *Annals of Applied Biology*, 39, 257–265, <https://doi.org/10.1111/j.1744-7348.1952.tb00904.x>, 1952.
- Hoose, C. and Möhler, O.: Heterogeneous ice nucleation on atmospheric aerosols: a review of results from laboratory experiments, *Atmospheric Chemistry and Physics*, 12, 9817–9854, <https://doi.org/10.5194/acp-12-9817-2012>, 2012.
- Hughes, D. D., Mampage, C. B., Jones, L. M., Liu, Z., and Stone, E. A.: Characterization of atmospheric pollen fragments during springtime thunderstorms, *Environmental Science and Technology Letters*, 7, 409–414, 2020.
- Kanji, Z. A., Ladino, L. A., Wex, H., Boose, Y., Burkert-Kohn, M., Cziczo, D. J., and Krämer, M.: Overview of Ice Nucleating Particles, *Atmospheric Processes Over Complex Terrain*, 58, 1.1 – 1.33, <https://doi.org/10.1175/AMSMONOGRAPHS-D-16-0006.1>, 2017.
- Komppula, M., Lihavainen, H., Kerminen, V.-M., Kulmala, M., and Viisanen, Y.: Measurements of cloud droplet activation of aerosol particles at a clean subarctic background site, *Journal of Geophysical Research: Atmospheres*, 110, <https://doi.org/10.1029/2004JD005200>, 2005.
- Köppen, W. P.: *Grundriss der klimakunde*, W. de Gruyter, 1931.
- Lieberherr, G., Auderset, K., Calpini, B., Clot, B., Crouzy, B., Gysel-Beer, M., Konzelmann, T., Manzano, J., Mihajlovic, A., Moallemi, A., O'Connor, D., Sikoparija, B., Sauvageat, E., Tummon, F., and Vasilatou, K.: Assessment of real-time bioaerosol

particle counters using reference chamber experiments, *Atmospheric Measurement Techniques*, 14, 7693–7706, <https://doi.org/10.5194/amt-14-7693-2021>, 2021.

450 Brosseau, L. M., Vesley, D., Rice, N., Goodell, K., Nellis, M., and Hairston, P.: Differences in Detected Fluorescence Among Several Bacterial Species Measured with a Direct-Reading Particle Sizer and Fluorescence Detector, *Aerosol Science and Technology*, 32 545–558, <https://doi.org/10.1080/027868200303461>, 2000.

Lohila, A., Penttilä, T., Jortikka, S., Aalto, T., Anttila, P., Asmi, E., Aurela, M., Hatakka, J., Hellén, H., Henttonen, H., Hänninen, P., Kilkki, J., Kyllönen, K., Laurila, T., Lepistö, A., Lihavainen, H., Makkonen, U., Paatero, J., Rask, M., and  
455 Viisanen, Y.: Preface to the special issue on integrated research of atmosphere, ecosystems and environment at Pallas, *Boreal Environment Research*, 20, 431–454, 2015.

Lohmann, U. and Feichter, J.: Global indirect aerosol effects: a review, *Atmospheric Chemistry and Physics*, 5, 715–737, <https://doi.org/10.5194/acp-5-715-2005>, 2005.

460 Maki, L., Galyan, E., Chang-Chien, M., and Caldwell, D.: Ice nucleation induced by *pseudomonas syringae*, *Applied Microbiology*, 28, 456–459, <https://doi.org/10.1128/am.28.3.456-459.1974>, 1974.

Mampage, C. B. A., Hughes, D. D., Jones, L. M., Metwali, N., Thorne, P. S. and Stone, E. A.: Characterization of sub-pollen  
465 particles in size-resolved atmospheric aerosol using chemical tracers, *Atmospheric Environment: X*, vol. 15, p. 100177, doi: <https://doi.org/10.1016/j.aeaoa.2022.100177>, 2022.

Markey, E., Hourihane Clancy, J., Martínez-Bracero, M., Neeson, F., Sarda-Estève, R., Baisnée, D., McGillicuddy, E. J., Sewell, G., and O'Connor, D. J.: A Modified Spectroscopic Approach for the Real-Time Detection of Pollen and Fungal  
470 Spores at a Semi-Urban Site Using the WIBS-4+, Part I, *Sensors*, 22, <https://doi.org/10.3390/s22228747>, 2022.

Markey, E., Hourihane Clancy, J., Martínez-Bracero, M., Sarda-Estève, R., Baisnée, D., McGillicuddy, E. J., Sewell, G., Skjøth, C. A., and O'Connor, D. J.: Spectroscopic detection of bioaerosols with the wibs-4+: Anthropogenic and meteorological impacts, *Science of The Total Environment*, 943, 173 649, <https://doi.org/10.1016/j.scitotenv.2024.173649>,  
475 2024.

Matthews, B. H., Alsante, A. N., and Brooks, S. D.: Pollen Emissions of Subpollen Particles and Ice Nucleating Particles, *ACS Earth and Space Chemistry*, 7, 1207–1218, <https://doi.org/10.1021/acsearthspacechem.3c00014>, 2023.

- 480 Möhler, O., DeMott, P. J., Vali, G., and Levin, Z.: Microbiology and atmospheric processes: the role of biological particles in cloud physics, *Biogeosciences*, 4, 1059–1071, <https://doi.org/10.5194/bg-4-1059-2007>, 2007.
- Möhler, O., Adams, M., Lacher, L., Vogel, F., Nadolny, J., Ullrich, R., Boffo, C., Pfeuffer, T., Hobl, A., Weiß, M., Vepuri, H. S. K., Hiranuma, N., and Murray, B. J.: The Portable Ice Nucleation Experiment (PINE): a new online instrument for laboratory  
485 studies and automated longterm field observations of ice-nucleating particles, *Atmospheric Measurement Techniques*, 14, 1143–1166, <https://doi.org/10.5194/amt14-1143-2021>, 2021.
- Morris, C. E., Sands, D. C., Glaux, C., Samsatly, J., Asaad, S., Moukahel, A. R., Gonçalves, F. L. T., and Bigg, E. K.: Urediospores of rust fungi are ice nucleation active at  $> -10^{\circ}\text{C}$  and harbor ice nucleation active bacteria, *Atmospheric  
490 Chemistry and Physics*, 13, 4223–4233, <https://doi.org/10.5194/acp-13-4223-2013>, 2013.
- Pereira Freitas, G., Adachi, K., Conen, F., Heslin-Rees, D., Krejci, R., Tobo, Y., Yttri, K. E., and Zieger, P.: Regionally sourced bioaerosols drive high-temperature ice nucleating particles in the Arctic, *Nature Communications*, 14, 5997, <https://doi.org/10.1038/s41467-023-41696-7>, 2023.  
495
- Perring, A. E., Schwarz, J. P., Baumgardner, D., Hernandez, M. T., Spracklen, D. V., Heald, C. L., Gao, R. S., Kok, G., McMeeking, G. R., McQuaid, J. B., and Fahey, D. W.: Airborne observations of regional variation in fluorescent aerosol across the United States, *Journal of Geophysical Research: Atmospheres*, 120, 1153–1170, <https://doi.org/10.1002/2014JD022495>, 2015.  
500
- Pöhlker, C., Huffman, J. A., Förster, J.-D., and Pöschl, U.: Autofluorescence of atmospheric bioaerosols: spectral fingerprints and taxonomic trends of pollen, *Atmospheric Measurement Techniques*, 6, 3369–3392, <https://doi.org/10.5194/amt-6-3369-2013>, 2013.
- 505 Pummer, B. G., Bauer, H., Bernardi, J., Bleicher, S., and Grothe, H.: Suspendable macromolecules are responsible for ice nucleation activity of birch and conifer pollen, *Atmospheric Chemistry and Physics*, 12, 2541–2550, <https://doi.org/10.5194/acp-12-2541-2012>, 2012.
- Pummer, B. G., Budke, C., Augustin-Bauditz, S., Niedermeier, D., Felgitsch, L., Kampf, C. J., Huber, R. G., Liedl, K. R.,  
510 Loerting, T., Moschen, T., Schauperl, M., Tollinger, M., Morris, C. E., Wex, H., Grothe, H., Pöschl, U., Koop, T., and Fröhlich-Nowoisky, J.: Ice nucleation by water-soluble macromolecules, *Atmospheric Chemistry and Physics*, 15, 4077–4091, <https://doi.org/10.5194/acp-15-4077-2015>, 2015.

- Puxbaum, H. and Tenze-Kunit, M.: Size distribution and seasonal variation of atmospheric cellulose, *Atmospheric Environment*, 37, 3693– 3699, [https://doi.org/10.1016/S1352-2310\(03\)00451-5](https://doi.org/10.1016/S1352-2310(03)00451-5), 2003.
- Sarangi, B., Baumgardner, D., Bolaños-Rosero, B., and Mayol-Bracero, O.L.: Measurement report: An exploratory study of fluorescence and cloud condensation nuclei activity of urban aerosols in San Juan, Puerto Rico, *Atmospheric Chemistry and Physics*, 22, 9647-9661, [10.5194/acp-22-9647-2022](https://doi.org/10.5194/acp-22-9647-2022), 2022.
- Savage, N. J., Krentz, C. E., Könemann, T., Han, T. T., Mainelis, G., Pöhlker, C., and Huffman, J. A.: Systematic characterization and fluorescence threshold strategies for the wideband integrated bioaerosol sensor (WIBS) using size-resolved biological and interfering particles, *Atmospheric Measurement Techniques*, 10, 4279–4302, 2017.
- Schneider, J., Höhler, K., Heikkilä, P., Keskinen, J., Bertozzi, B., Bogert, P., Schorr, T., Umo, N. S., Vogel, F., Brasseur, Z., Wu, Y., Hakala, S., Duplissy, J., Moiseev, D., Kulmala, M., Adams, M. P., Murray, B. J., Korhonen, K., Hao, L., Thomson, E. S., Castarède, D., Leisner, T., Petäjä, T., and Möhler, O.: The seasonal cycle of ice-nucleating particles linked to the abundance of biogenic aerosol in boreal forests, *Atmospheric Chemistry and Physics*, 21, 3899–3918, <https://doi.org/10.5194/acp-21-3899-2021>, 2021.
- Schnell, R. C. and Vali, G.: Biogenic Ice Nuclei: Part I. Terrestrial and Marine Sources, *Journal of The Atmospheric Sciences*, 33, 1554 – 1564, [https://doi.org/10.1175/1520-0469\(1976\)0332.0.CO;2](https://doi.org/10.1175/1520-0469(1976)0332.0.CO;2), 1976.
- Schumacher, C., Pöhlker, C., Aalto, P., Hiltunen, V., Petäjä, T., Kulmala, M., Pöschl, U., and Huffman, J.: Seasonal cycles of fluorescent biological aerosol particles in boreal and semi-arid forests of Finland and Colorado, *Atmospheric Chemistry and Physics*, 13, 11 987– 12 001, 2013.
- Seifried, T. M., Reysek, F., Bieber, P., and Grothe, H.: Scots Pines (*Pinus sylvestris*) as Sources of Biological Ice-Nucleating Macromolecules (INMs), *Atmosphere*, 14, <https://doi.org/10.3390/atmos14020266>, 2023.
- Stone, E. A., Mampage, C. B., Hughes, D. D., and Jones, L. M.: Airborne sub-pollen particles from rupturing giant ragweed pollen, *Aerobiologia*, pp. 1–8, 2021.
- Taylor, P. E., Flagan, R. C., Miguel, A. G., Valenta, R., and Glovsky, M. M.: Birch pollen rupture and the release of aerosols of respirable allergens, *Clinical and Experimental Allergy*, 34, 1591–1596, <https://doi.org/10.1111/j.1365-2222.2004.02078.x>, 2004.

von der Weiden, S.-L., Drewnick, F., and Borrmann, S.: Particle Loss Calculator – a new software tool for the assessment of the performance of aerosol inlet systems, *Atmospheric Measurement Techniques*, 2, 479–494, <https://doi.org/10.5194/amt-2-479-2009>, 2009.

Wieland, F., Bothen, N., Schwidetzky, R., Seifried, T. M., Bieber, P., Pöschl, U., Meister, K., Bonn, M., Fröhlich-Nowoisky, J., and Grothe, H.: Aggregation of ice-nucleating macromolecules from *Betula pendula* pollen determines ice nucleation efficiency, *Biogeosciences*, 22, 103–115, <https://doi.org/10.5194/bg-22-103-2025>, 2025.

Yue, S., Ren, L., Song, T., Li, L., Xie, Q., Li, W., Kang, M., Zhao, W., Wei, L., Ren, H., Sun, Y., Wang, Z., Ellam, R. M., Liu, C.-Q., Kawamura, K., and Fu, P.: Abundance and Diurnal Trends of Fluorescent Bioaerosols in the Troposphere over Mt. Tai, China, in Spring, *Journal of Geophysical Research: Atmospheres*, 124, 4158–4173, <https://doi.org/10.1029/2018JD029486>, 2019.

Yue, S., Li, L., Xu, W., Zhao, J., Ren, H., Ji, D., Li, P., Zhang, Q., Wei, L., Xie, Q., Pan, X., Wang, Z., Sun, Y., and Fu, P.: Biological and Nonbiological Sources of Fluorescent Aerosol Particles in the Urban Atmosphere, *Environmental Science and Technology*, 56, 7588–7597, <https://doi.org/10.1021/acs.est.1c07966>, 2022.