

HighResClimNevada: a High-resolution Climatological Dataset for a High-altitude Region in Southern Spain (Sierra Nevada)

Matilde García-Valdecasas Ojeda^{1,2,*}, Feliciano Solano-Farías¹, David Donaire-Montaño¹, Emilio Romero-Jiménez¹, Juan José Rosa-Cánovas^{1,2}, Yolanda Castro-Díez^{1,2}, Sonia Raquel Gámiz-Fortís^{1,2}, and María Jesús Esteban-Parra^{1,2}

¹Departamento de Física Aplicada, Universidad de Granada, Granada, Spain.

²Instituto Interuniversitario de Investigación del Sistema Tierra en Andalucía (IISTA-CEAMA), Granada, Spain

*correspondence to: mvaldecasas@ugr.es

Supplementary figures

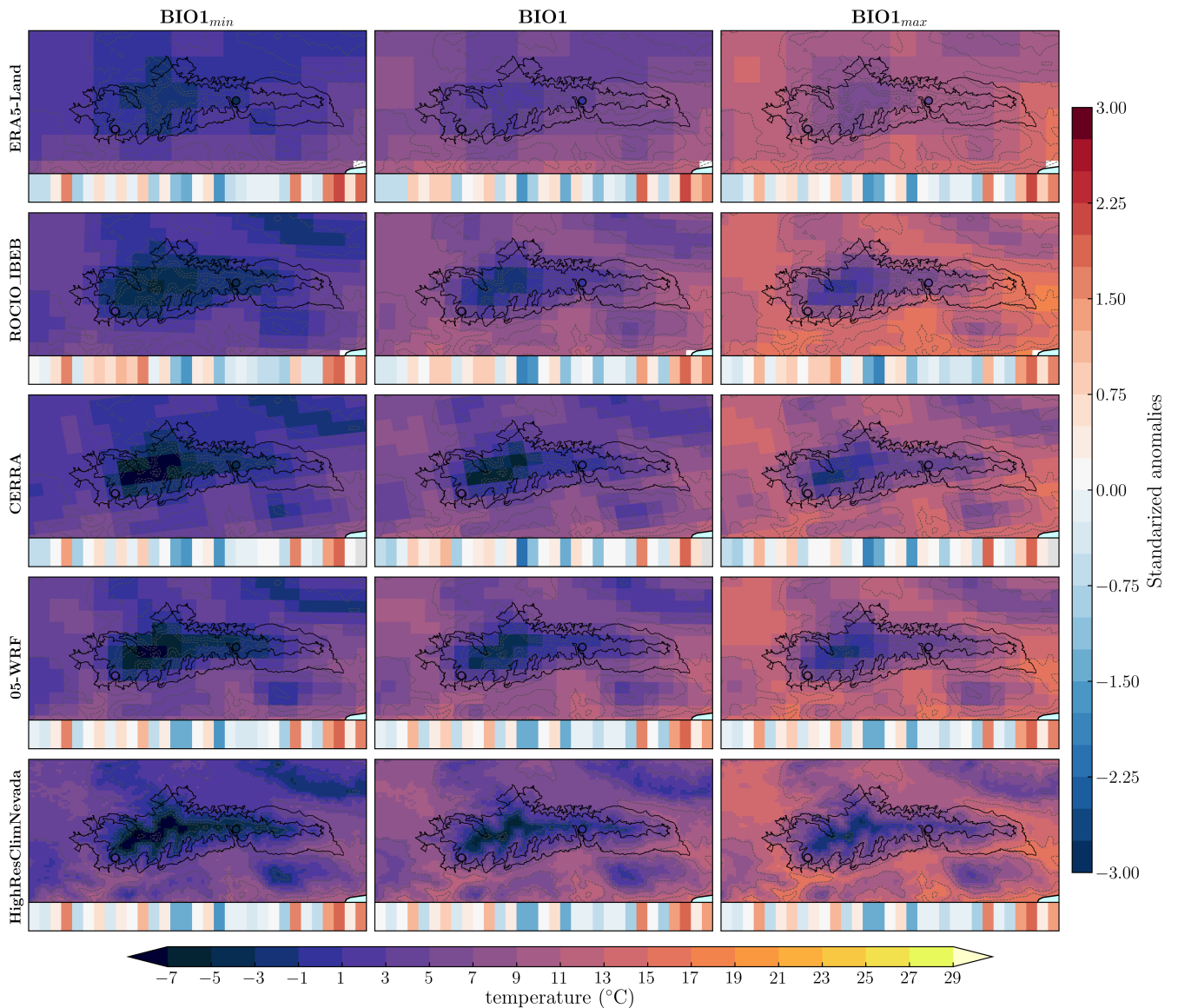


Fig. S1 Winter (DJF) average of daily maximum (tasmax), mean (tasmean), and minimum (tasmin) temperatures (°C). Below each panel, the annual temperature in Sierra Nevada is shown through *warming stripes* related to 2001-2020.

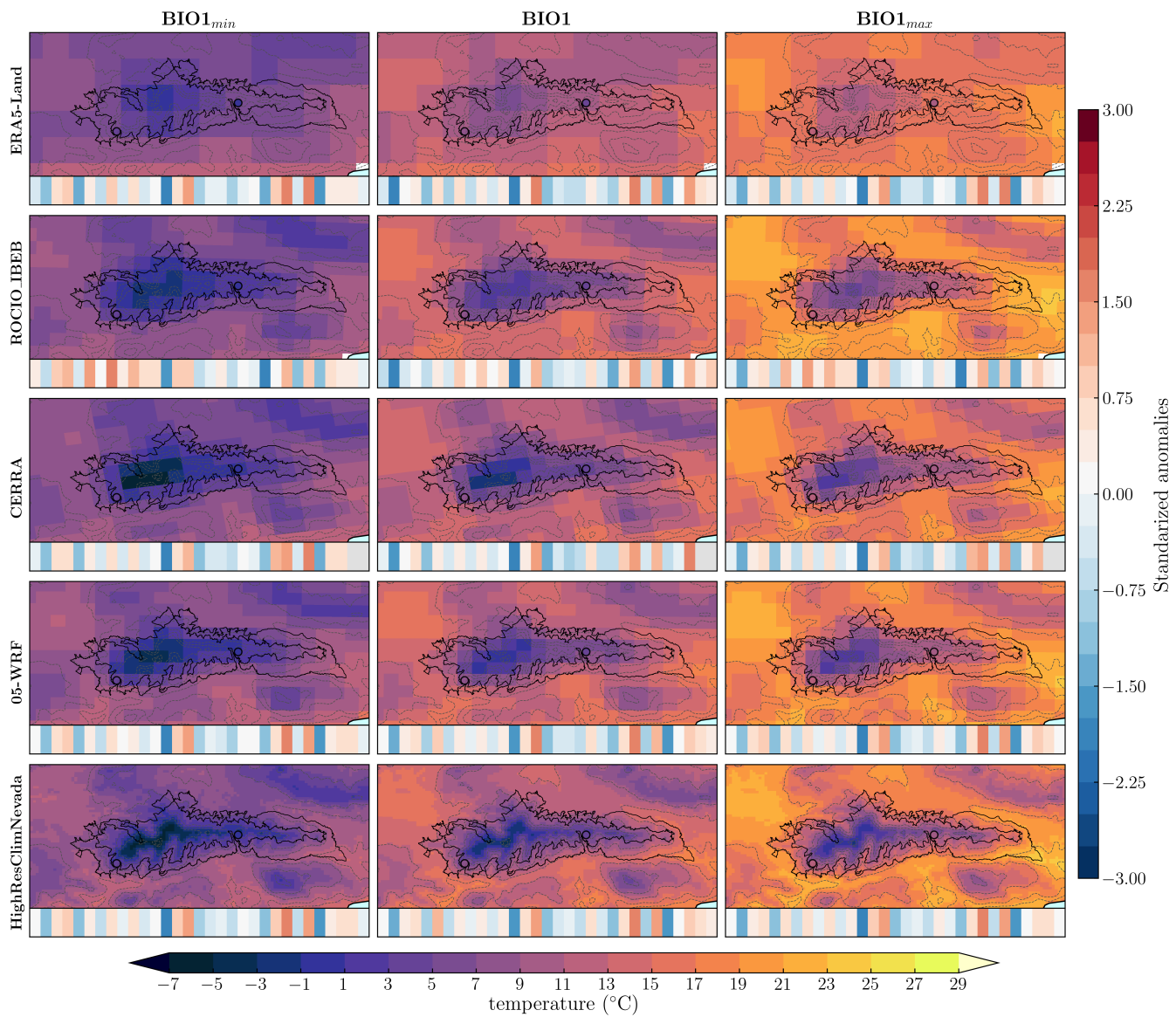


Fig. S2 Spring (MAM) average of daily maximum (tasmax), mean (tasmean), and minimum (tasmin) temperatures (°C). Below each panel, the annual temperature in Sierra Nevada is shown through *warming stripes* related to 2001-2020.

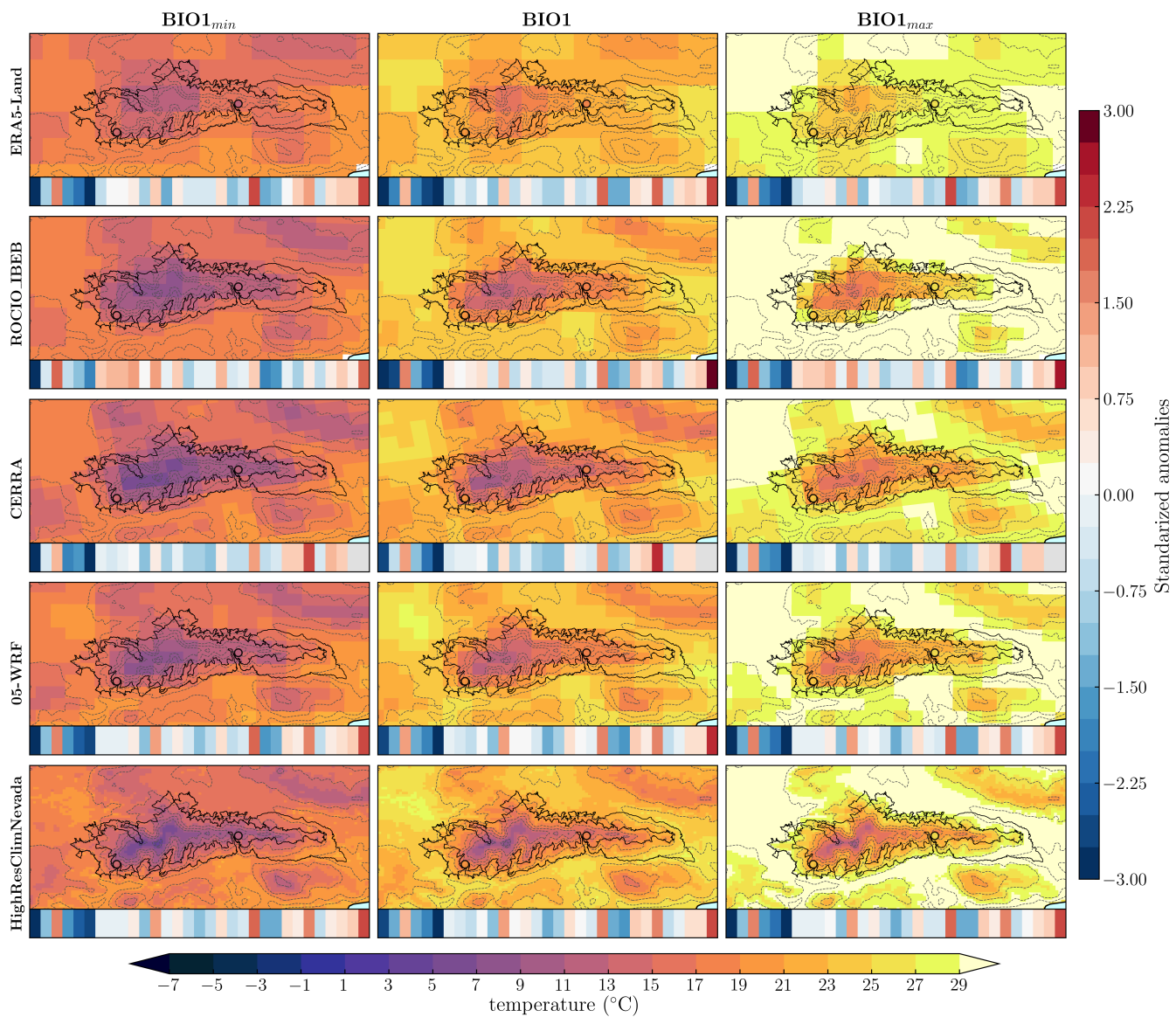


Fig. S3 Summer (JJA) average of daily maximum (tasmax), mean (tasmean), and minimum (tasmin) temperatures ($^{\circ}C$). Below each panel, the annual temperature in Sierra Nevada is shown through *warming stripes* related to 2001-2020.

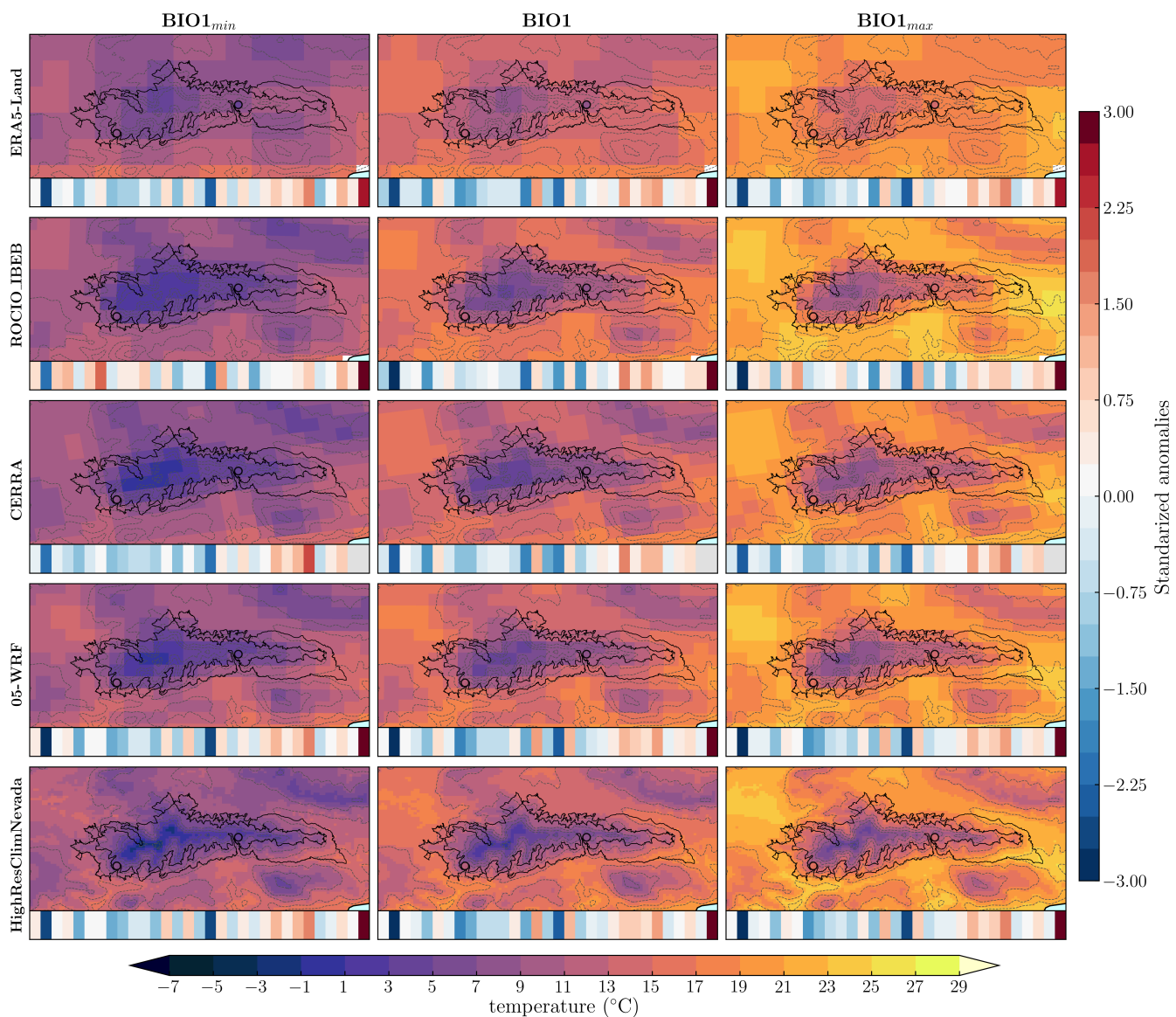


Fig. S4 Autumn (SON) average of daily maximum (tasmax), mean (tasmean), and minimum (tasmin) temperatures (°C). Below each panel, the annual temperature in Sierra Nevada is shown through *warming stripes* related to 2001-2020.

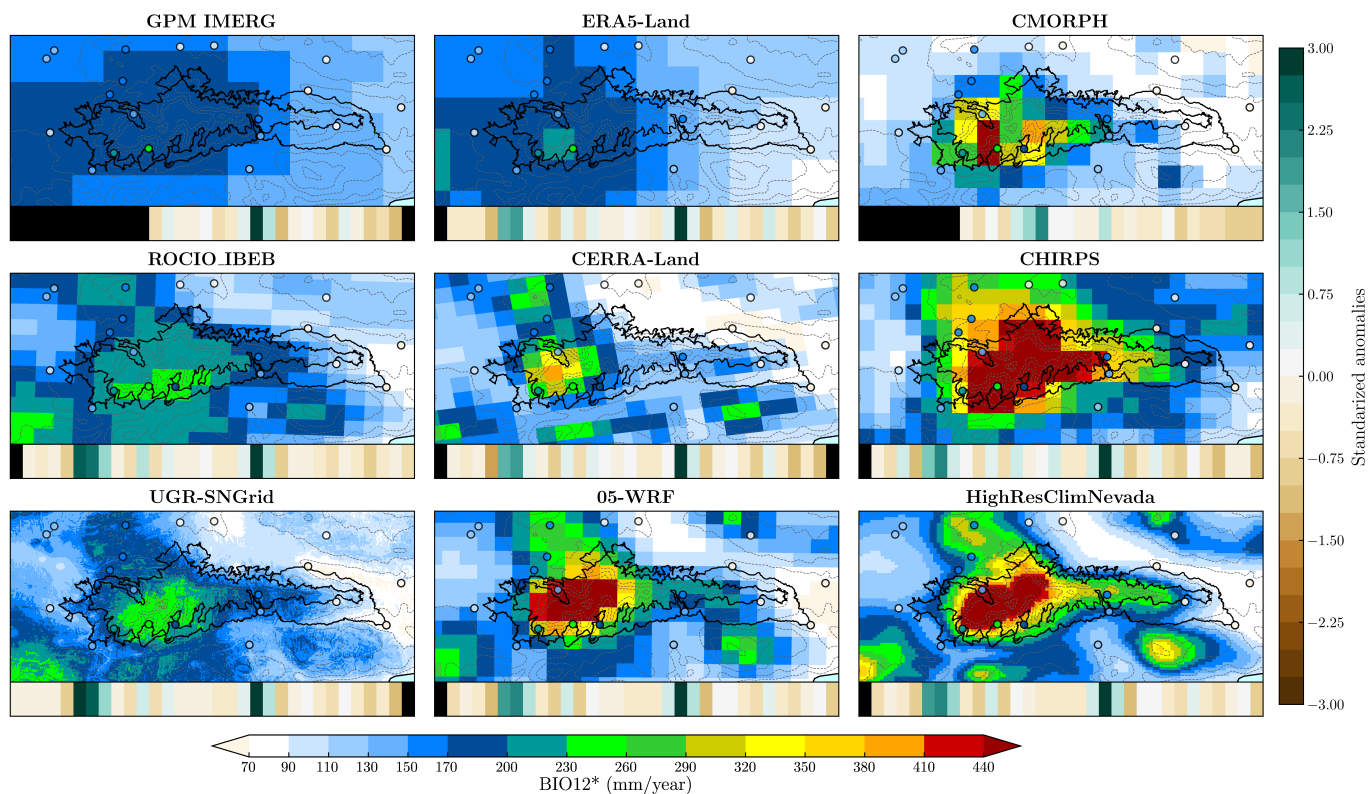


Fig. S5 Winter (DJF) amount of precipitation (mm) in Sierra Nevada. Below each panel, the annual precipitation in Sierra Nevada is shown through *drying stripes* related to 2001-2020.

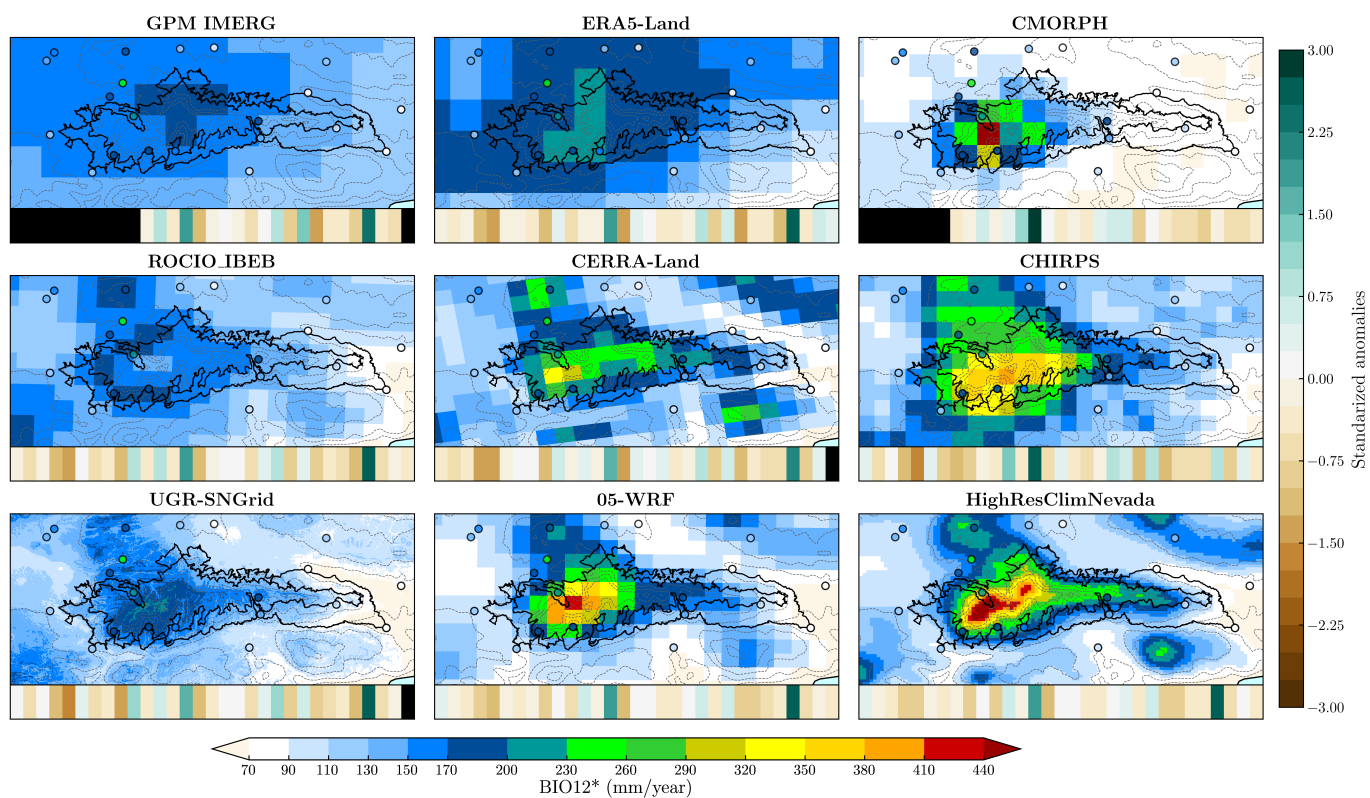


Fig. S6 Spring (MAM) amount of precipitation (mm) in Sierra Nevada. Below each panel, the annual precipitation in Sierra Nevada is shown through *drying stripes* related to 2001-2020.

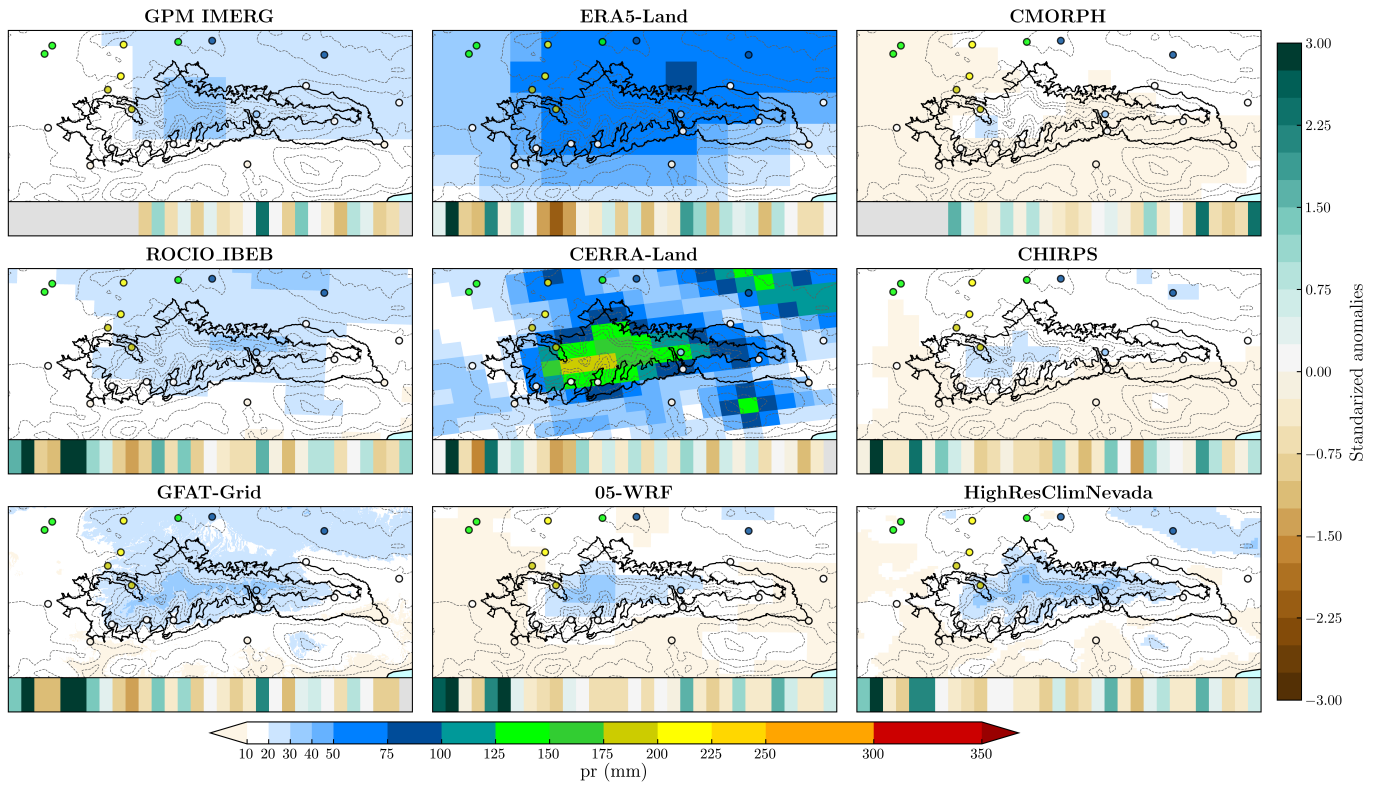


Fig. S7 Summer (JJA) amount of precipitation (mm) in Sierra Nevada. Below each panel, the annual precipitation in Sierra Nevada is shown through *drying stripes* related to 2001-2020.

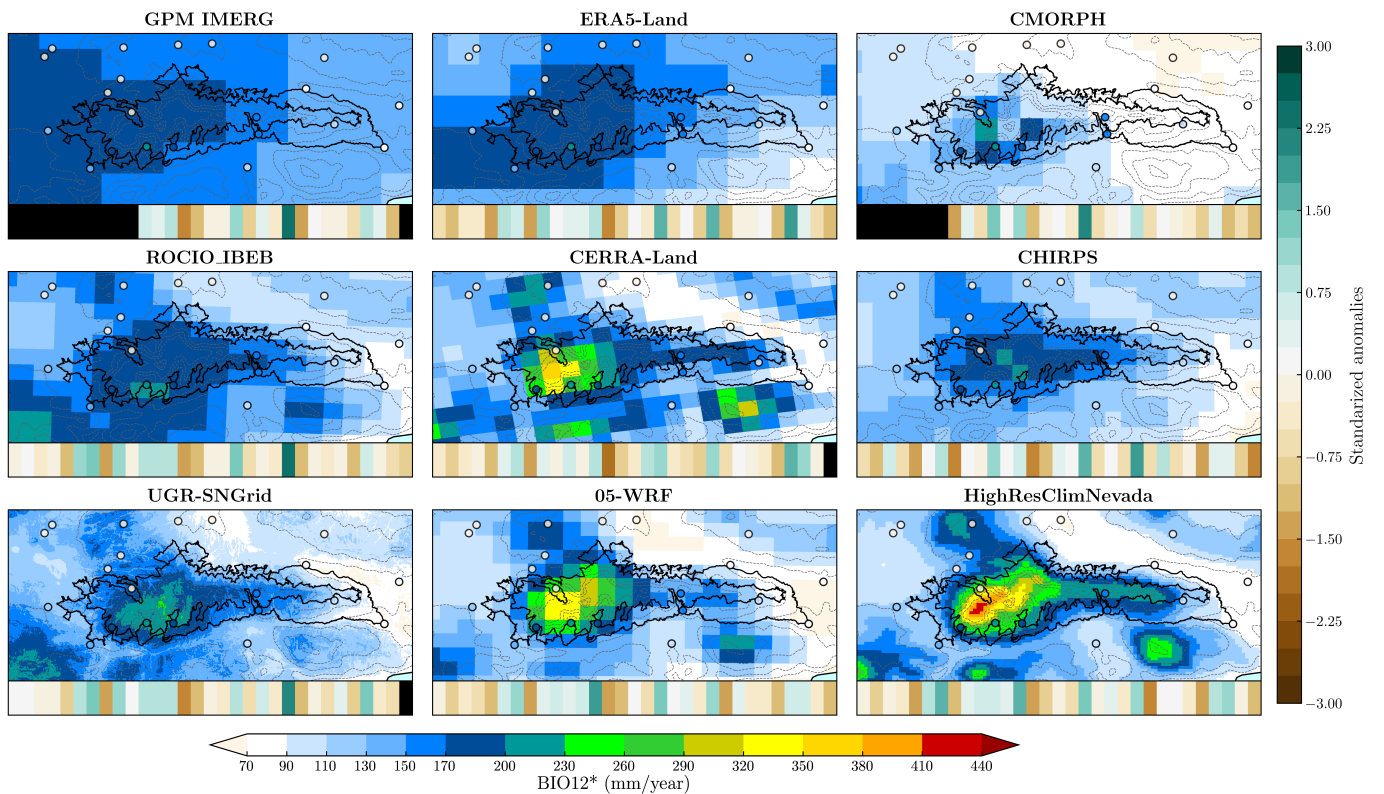


Fig. S8 Autumn (SON) amount of precipitation (mm) in Sierra Nevada. Below each panel, the annual precipitation in Sierra Nevada is shown through *drying stripes* related to 2001-2020.

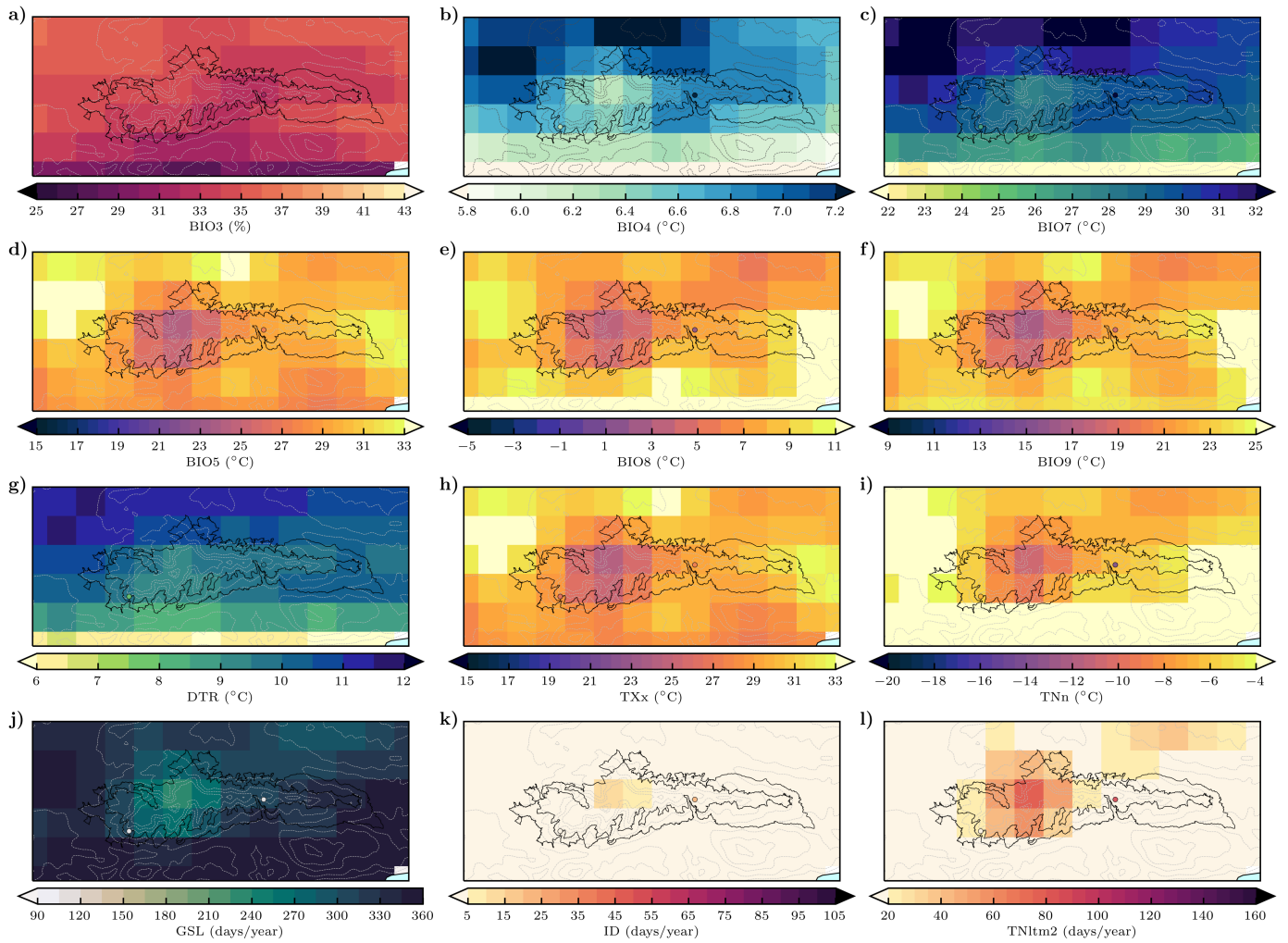


Fig. S9 ERA5-Land temperature bioclimatic variables and extremes: (a) isothermality (BIO3, %), (b) temperature seasonality (BIO4, °C), (c) annual temperature range (BIO7, °C), (d) daily temperature range (DTR, °C), (e) maximum TX (TXx, °C), (f) minimum TN (TNn, °C), (g) growing season length (GSL, days/year), (h) frost days* (FD, TNltm2), and (j) icing days (ID, days/year).

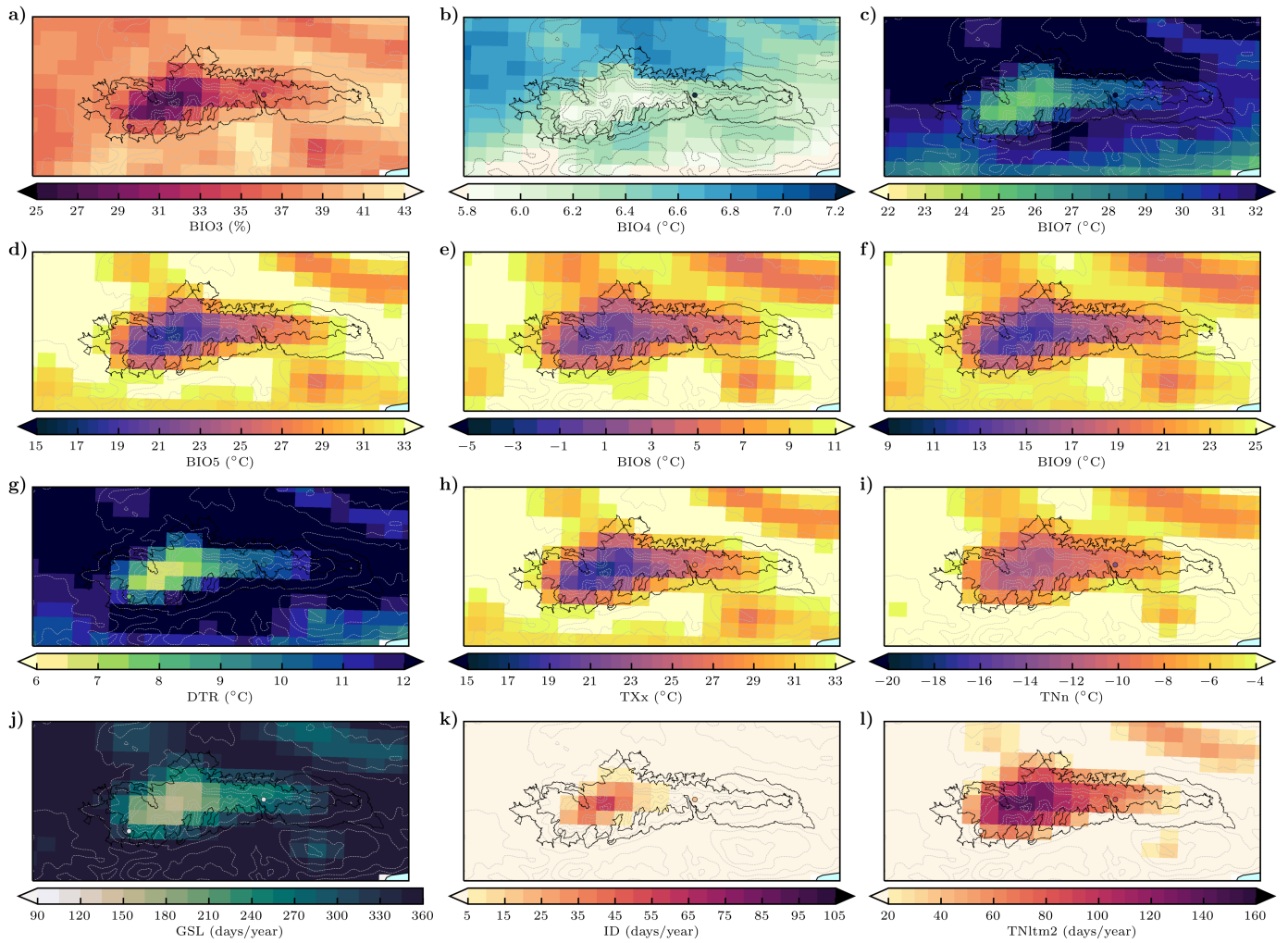


Fig. S10 ROCIO_IBEB temperature bioclimatic variables and extremes: (a) isothermality (BIO3, %), (b) temperature seasonality (BIO4, °C), (c) annual temperature range (BIO7, °C), (d) daily temperature range (DTR, °C), (e) maximum TX (TXx, °C), (f) minimum TN (TNn, °C), (g) growing season length (GSL, days/year), (h) frost days* (FD, TNltm2), and (j) icing days (ID, days/year).

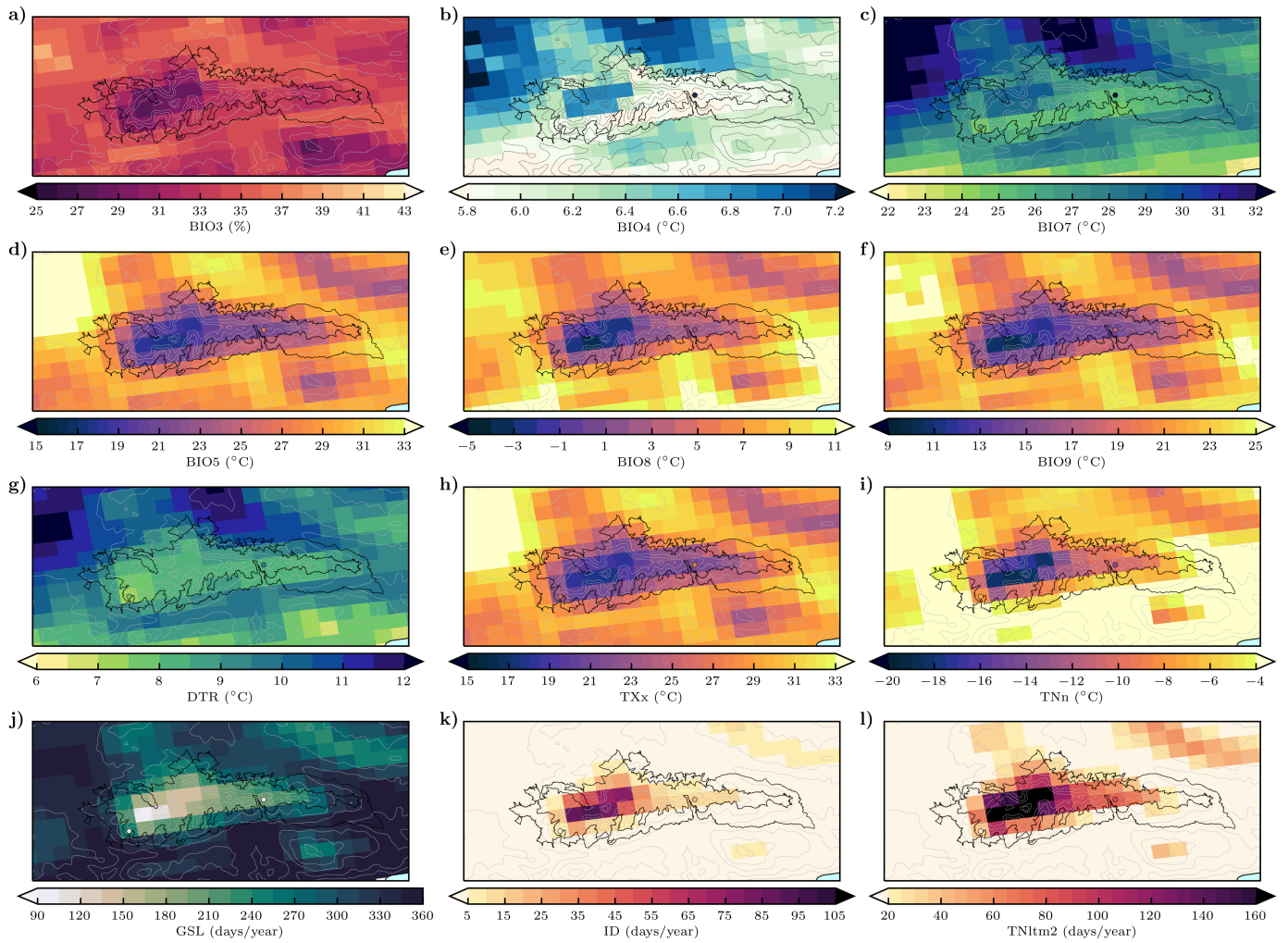


Fig. S11 CERRA temperature bioclimatic variables and extremes: (a) isothermality (BIO3, %), (b) temperature seasonality (BIO4, °C), (c) annual temperature range (BIO7, °C), (d) daily temperature range (DTR, °C), (e) maximum TX (TXx, °C), (f) minimum TN (TNn, °C), (g) growing season length (GSL, days/year), (h) frost days* (FD, TNltm2), and (j) icing days (ID, days/year).

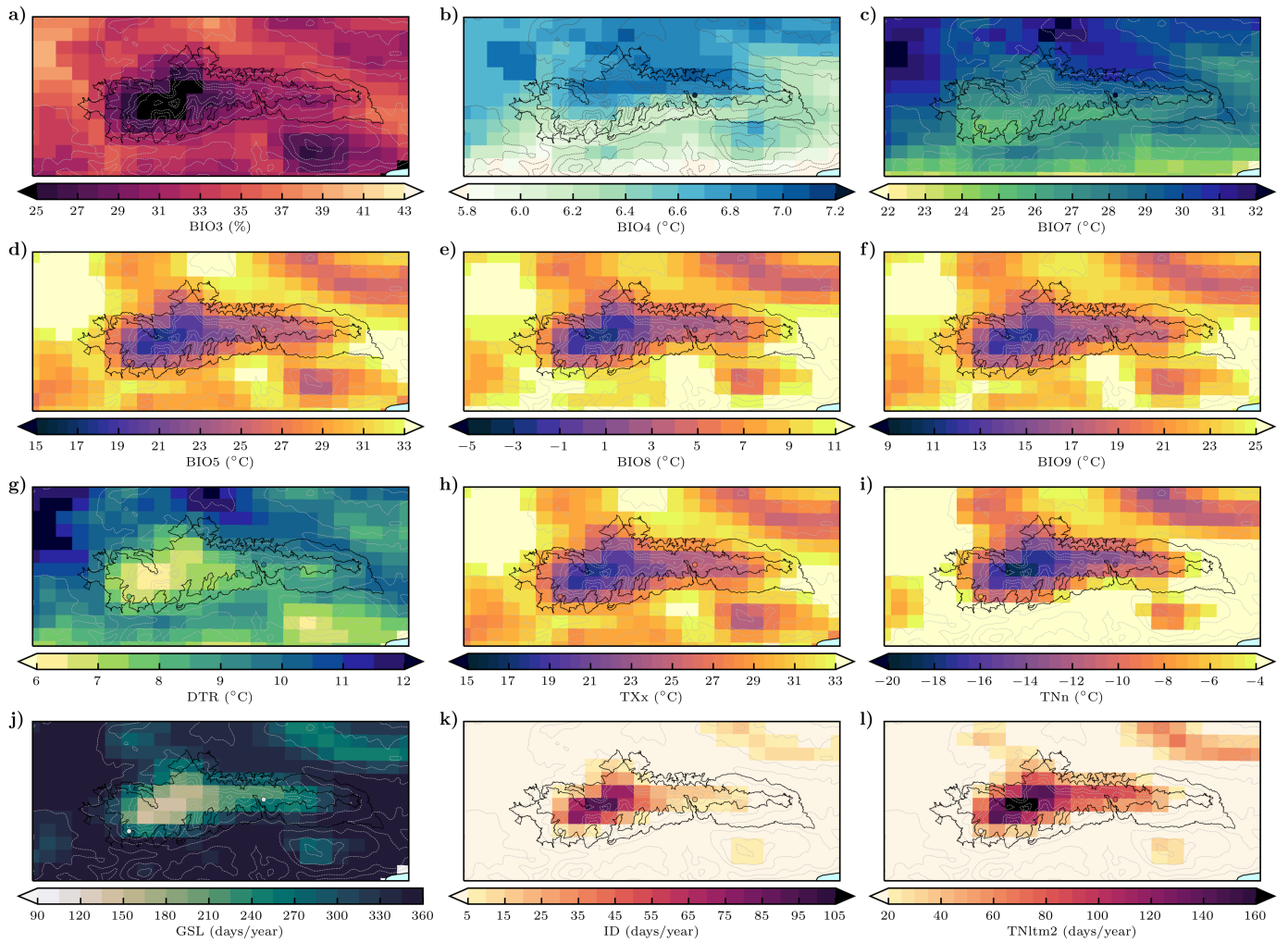


Fig. S12 05-WRF temperature bioclimatic variables and extremes: (a) isothermality (BIO3, %), (b) temperature seasonality (BIO4, °C), (c) annual temperature range (BIO7, °C), (d) daily temperature range (DTR, °C), (e) maximum TX (TXx, °C), (f) minimum TN (TNn, °C), (g) growing season length (GSL, days/year), (h) frost days* (FD, TNltm2), and (j) icing days (ID, days/year).

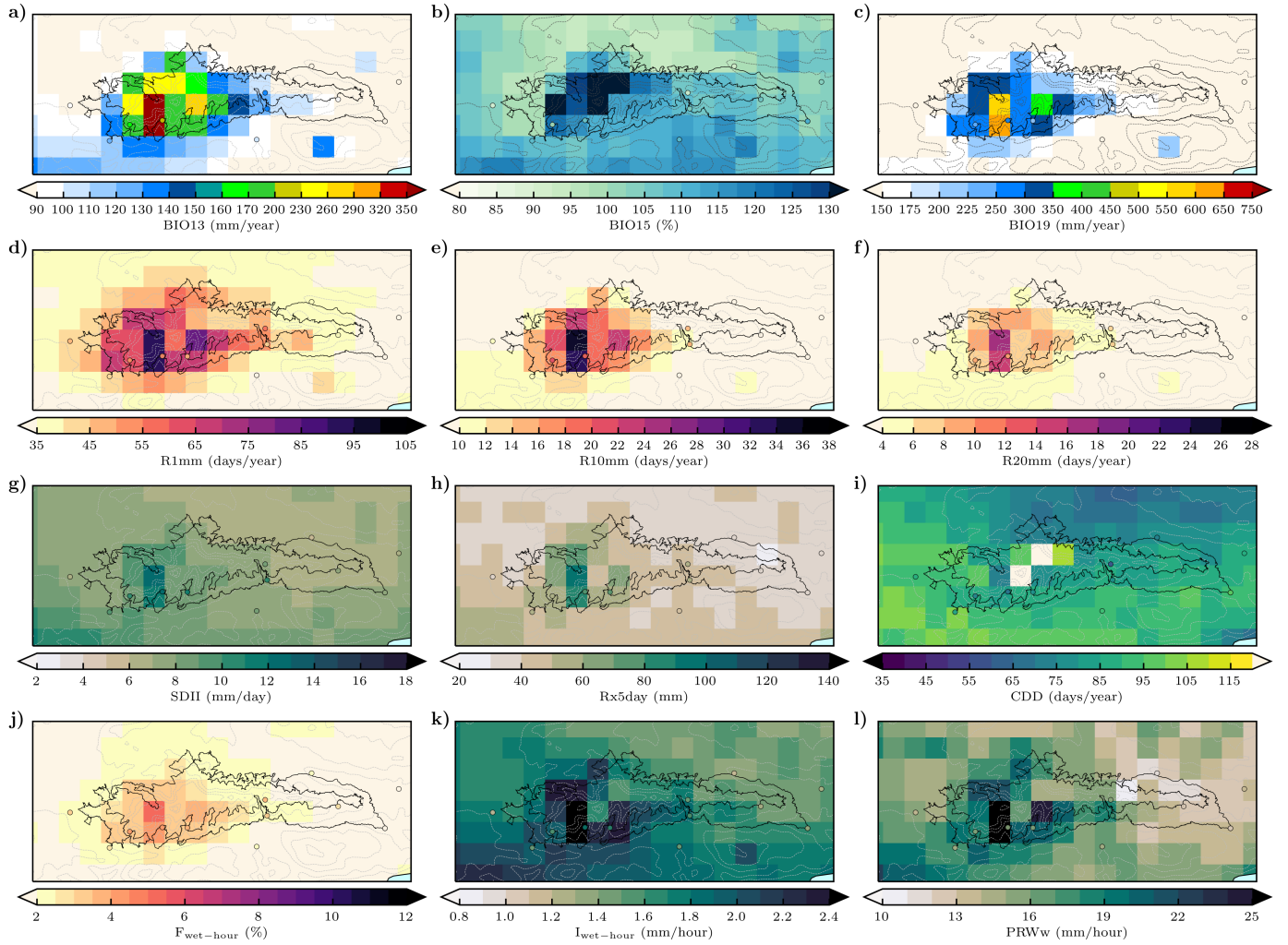


Fig. S13 GPM IMERG precipitation bioclimatic variables and extremes: (a) precipitation of wettest month (BIO13, mm/month), (b) precipitation seasonality (BIO15, mm/month), (c) precipitation in the coldest quarter (BIO19, mm/month), (d) wet days (R1mm, days/year), (e) heavy precipitation days (R10mm, days/year), (f) very heavy precipitation days (R20mm, days/year), (g) simple daily intensity index (SDII, mm/year), (h) maximum 5-day precipitation (Rx5day, mm), (i) consecutive dry days (CDD, days/year), (j) wet-hour frequency (F_{wet-hour}, %), (k) wet-hour intensity (I_{wet-hour}, mm/hour), and (l) maximum amount in the wettest month (PRWw, mm/hour).

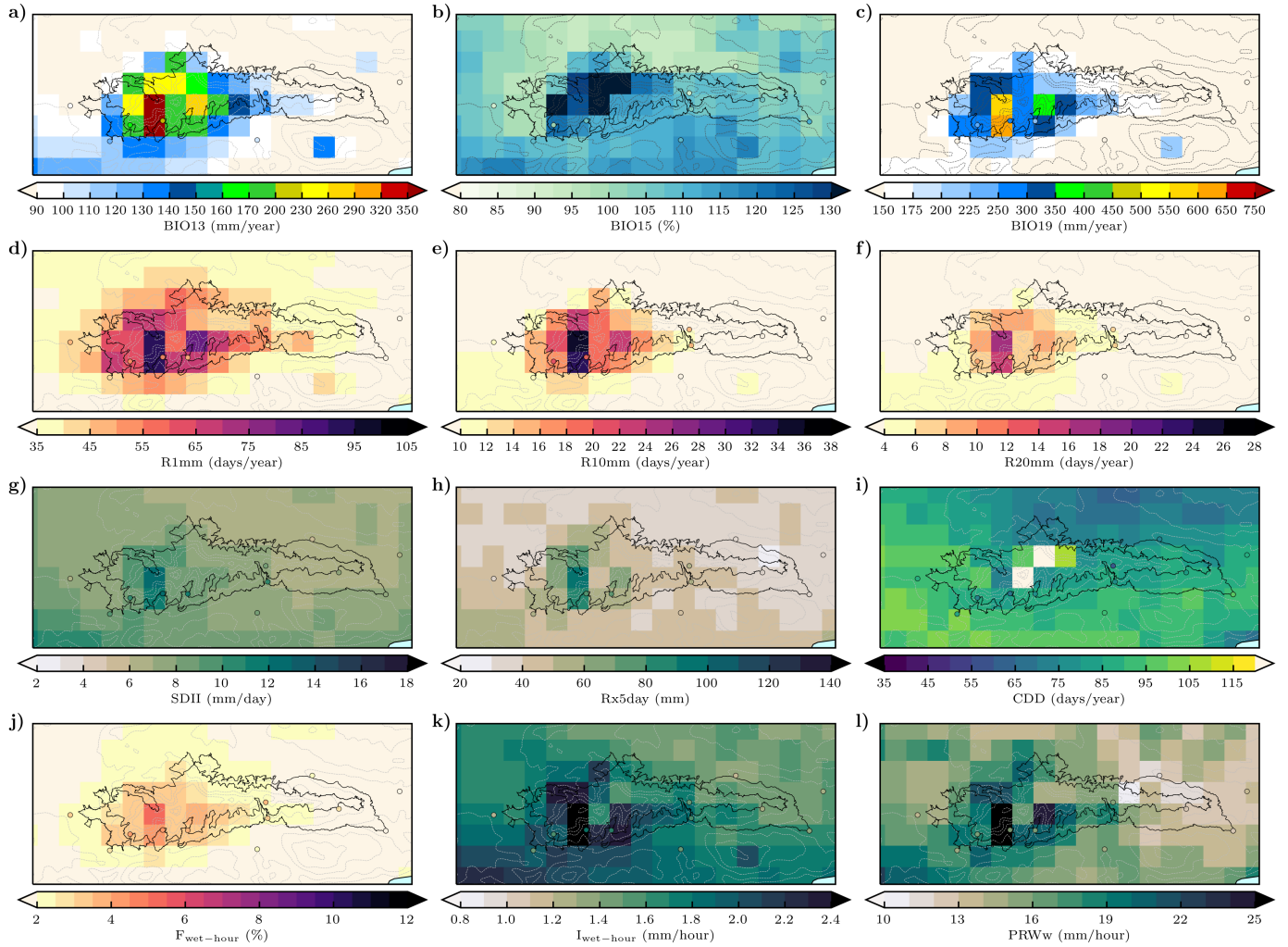


Fig. S14 ERA5-Land precipitation bioclimatic variables and extremes: (a) precipitation of wettest month (BIO13, mm/month), (b) precipitation seasonality (BIO15, mm/month), (c) precipitation in the coldest quarter (BIO19, mm/month), (d) wet days (R1mm, days/year), (e) heavy precipitation days (R10mm, days/year), (f) very heavy precipitation days (R20mm, days/year), (g) simple daily intensity index (SDII, mm/year), (h) maximum 5-day precipitation (Rx5day, mm), (i) consecutive dry days (CDD, days/year), (j) wet-hour frequency ($F_{\text{wet-hour}}$, %), (k) wet-hour intensity ($I_{\text{wet-hour}}$, mm/hour), and (l) maximum amount in the wettest month (PRWw, mm/hour).

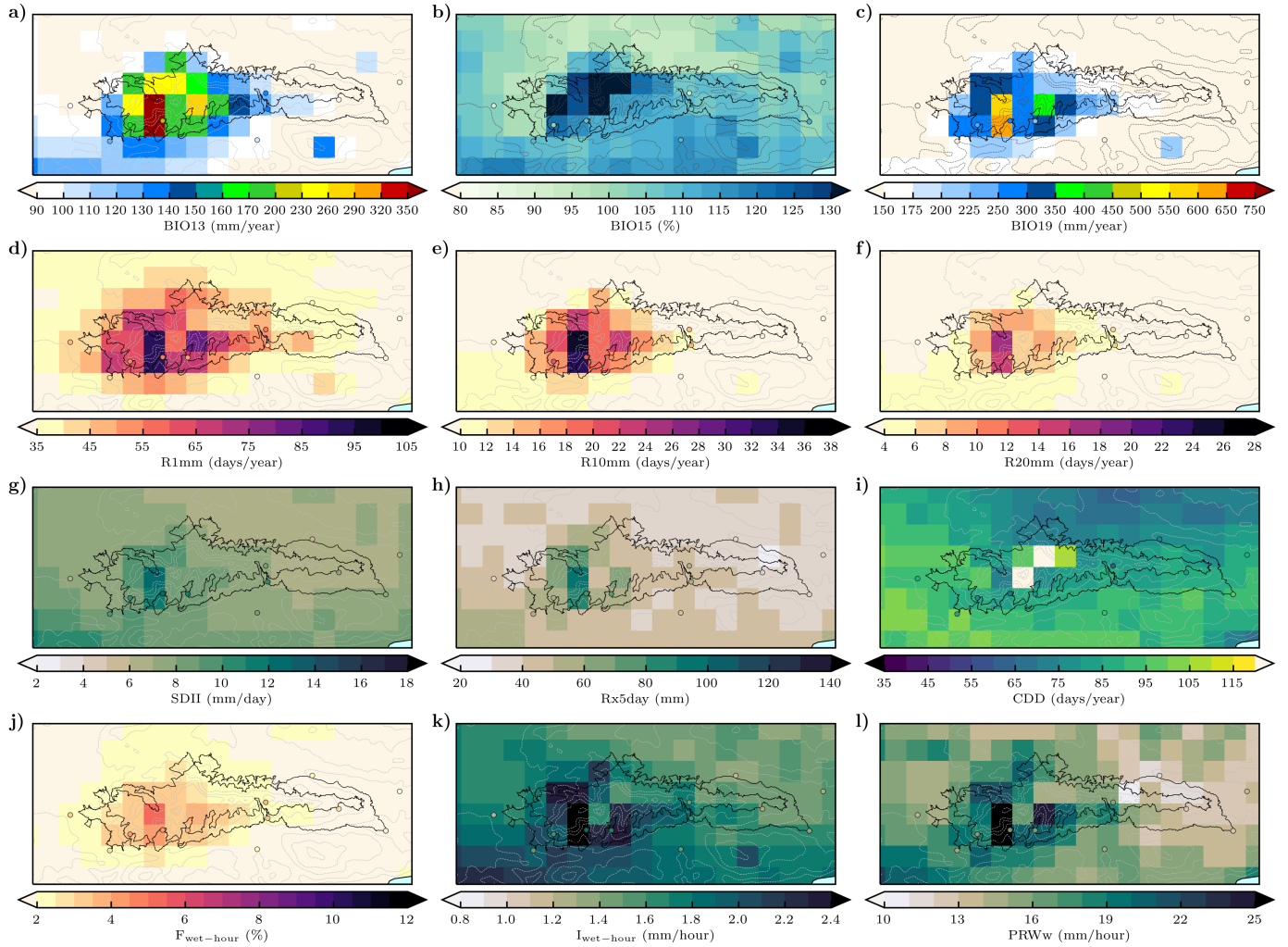


Fig. S15 CMORPH precipitation bioclimatic variables and extremes: (a) precipitation of wettest month (BIO13, mm/month), (b) precipitation seasonality (BIO15, mm/month), (c) precipitation in the coldest quarter (BIO19, mm/month), (d) wet days (R1mm, days/year), (e) heavy precipitation days (R10mm, days/year), (f) very heavy precipitation days (R20mm, days/year), (g) simple daily intensity index (SDII, mm/day), (h) maximum 5-day precipitation (Rx5day, mm), (i) consecutive dry days (CDD, days/year), (j) wet-hour frequency ($F_{\text{wet-hour}}$, %), (k) wet-hour intensity ($I_{\text{wet-hour}}$, mm/hour), and (l) maximum amount in the wettest month (PRWw, mm/hour).

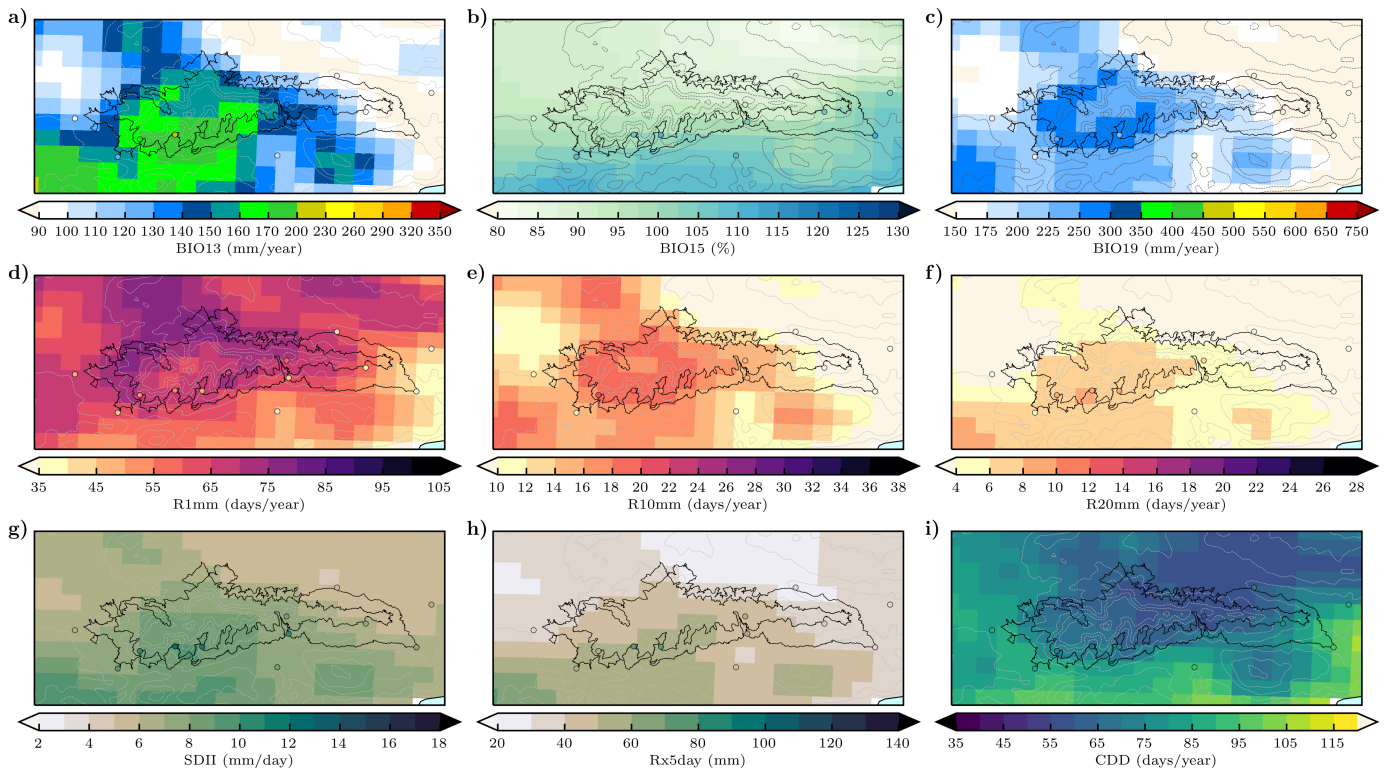


Fig. S16 ROCIO_IBEB precipitation bioclimatic variables and extremes: (a) precipitation of wettest month (BIO13, mm/month), (b) precipitation seasonality (BIO15, mm/month), (c) precipitation in the coldest quarter (BIO19, mm/month), (d) wet days (R1mm, days/year), (e) heavy precipitation days (R10mm, days/year), (f) very heavy precipitation days (R20mm, days/year), (g) simple daily intensity index (SDII, mm/day), (h) maximum 5-day precipitation (Rx5day, mm), (i) consecutive dry days (CDD, days/year).

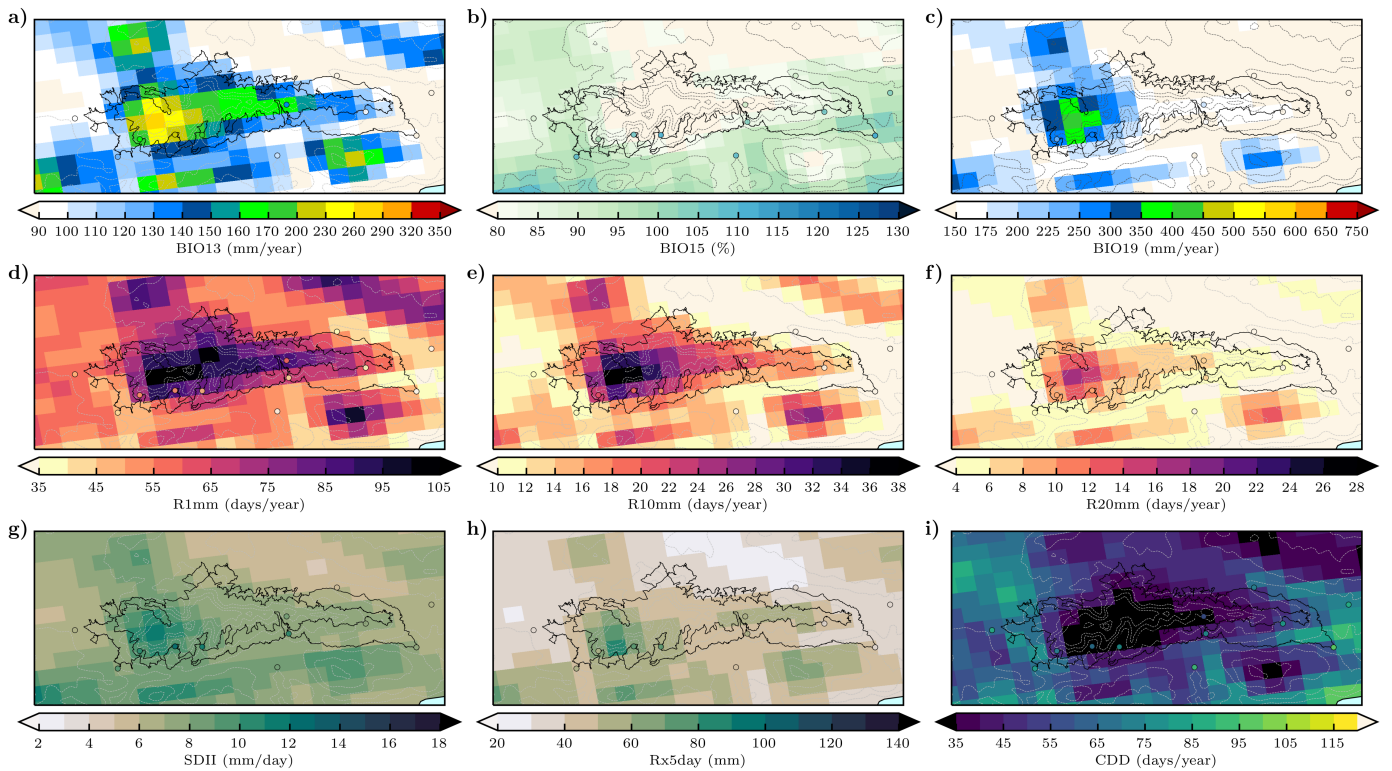


Fig. S17 CERRA-Land precipitation bioclimatic variables and extremes: (a) precipitation of wettest month (BIO13, mm/month), (b) precipitation seasonality (BIO15, mm/month), (c) precipitation in the coldest quarter (BIO19, mm/month), (d) wet days (R1mm, days/year), (e) heavy precipitation days (R10mm, days/year), (f) very heavy precipitation days (R20mm, days/year), (g) simple daily intensity index (SDII, mm/day), (h) maximum 5-day precipitation (Rx5day, mm), (i) consecutive dry days (CDD, days/year).

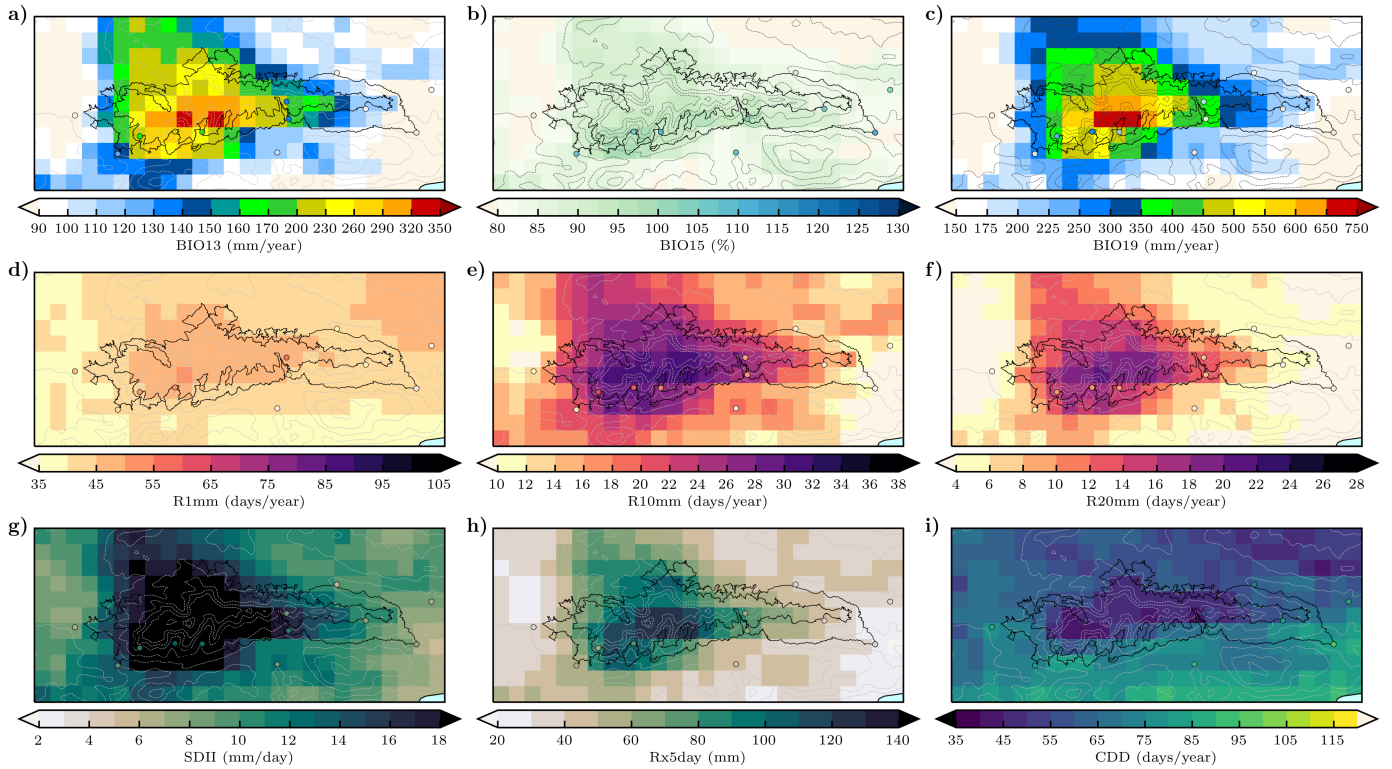


Fig. S18 CHIRPS precipitation bioclimatic variables and extremes: (a) precipitation of wettest month (BIO13, mm/month), (b) precipitation seasonality (BIO15, mm/month), (c) precipitation in the coldest quarter (BIO19, mm/month), (d) wet days (R1mm, days/year), (e) heavy precipitation days (R10mm, days/year), (f) very heavy precipitation days (R20mm, days/year), (g) simple daily intensity index (SDII, mm/year), (h) maximum 5-day precipitation (Rx5day, mm), (i) consecutive dry days (CDD, days/year).

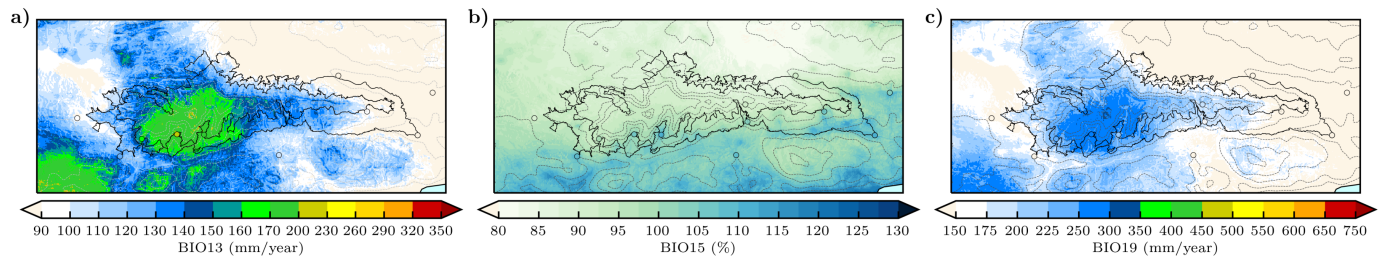


Fig. S19 GFAT-Grid precipitation bioclimatic variables and extremes: (a) precipitation of wettest month (BIO13, mm/month), (b) precipitation seasonality (BIO15, mm/month), and (c) precipitation in the coldest quarter (BIO19, mm/month).

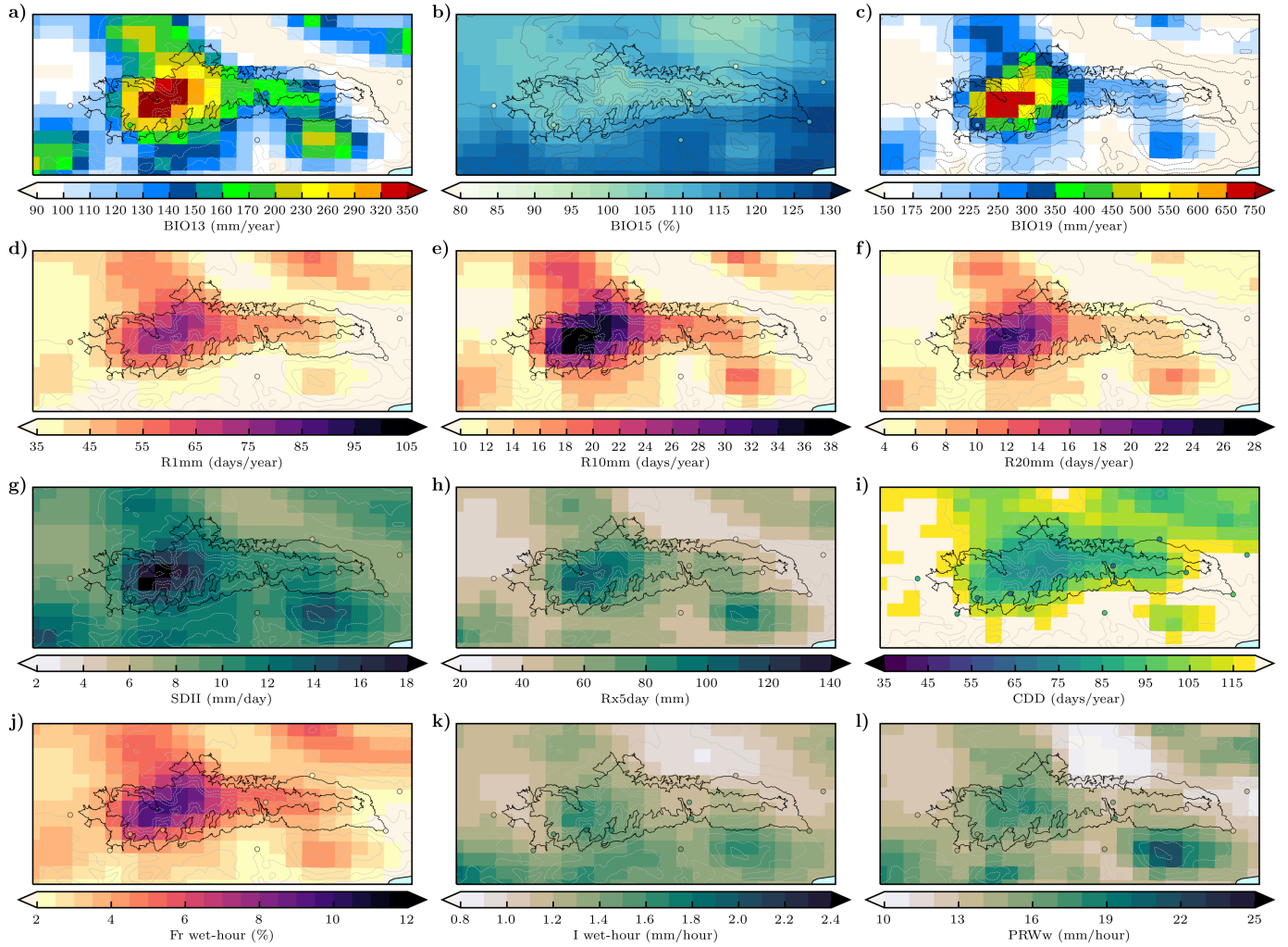


Fig. S20 05-WRF precipitation bioclimatic variables and extremes: (a) precipitation of wettest month (BIO13, mm/month), (b) precipitation seasonality (BIO15, mm/month), (c) precipitation in the coldest quarter (BIO19, mm/month), (d) wet days (R1mm, days/year), (e) heavy precipitation days (R10mm, days/year), (f) very heavy precipitation days (R20mm, days/year), (g) simple daily intensity index (SDII, mm/year), (h) maximum 5-day precipitation (Rx5day, mm), (i) consecutive dry days (CDD, days/year), (j) wet-hour frequency (F wet-hour, %), (k) wet-hour intensity (I wet-hour, mm/hour), and (l) maximum amount in the wettest month (PRWw, mm/hour).