

Compilation and Analysis of Thaw Settlement Test Results: Implications for Prediction Tools and Stress-Strain Characterization in Permafrost

5 Zakieh Mohammadi¹, Jocelyn L. Hayley¹

¹ Department of Civil Engineering, University of Calgary, Calgary, T2N 1N4, Canada

Correspondence to: Zakieh Mohammadi (seyedehzakieh.mohamm@ucalgary.ca)

10 **Abstract.** Climate change has already significantly impacted ~~infrastructures~~infrastructure built on permafrost, with thaw
settlement as the most frequently reported issue. By characterizing thaw settlement tests, an improved understanding of the
thaw settlement properties of permafrost sediment can be obtained. Thaw settlement tests involve thawing permafrost samples
under an initial load, followed by applying additional load to the thawed sample to characterize its volume change behaviour
15 upon thawing. In the absence of a standardized procedure for conducting thaw settlement tests, characterizing thaw settlement
properties has been done using various methods in the existing literature; however, to date, these data have not been broadly
compared. This is in part because they had not previously been compiled in a single dataset. This study presents a
comprehensive dataset of thaw settlement test results, digitized from published papers and reports. The data are standardized
and stored in an open-source repository. Aggregating the data enabled a cross-comparison of thaw settlement properties for
20 different soil types. This was achieved by constructing an idealized stress-strain curve for each test and deriving thaw
settlement parameters from the curves. These parameters were then used to compare the thaw settlement behaviour of fine-
grained, coarse-grained, and highly organic permafrost samples. Additionally, the compiled data ~~was~~were used to evaluate the
effectiveness of various empirical tools developed to predict thaw strain from index properties. The predicted thaw strain
values were compared with the measured thaw strains to determine which tool provided the most accurate and reliable
25 predictions for each soil type. The results suggest that a correlation developed by Nixon and Ladanyi (1987) for estimating
thaw strain based on frozen bulk density shows the smallest deviation from actual values and exhibits the least bias in its
predictions. This dataset ~~is expected to enhance the~~enhances understanding of thaw settlement ~~and improve its estimation.~~
~~Used alone or in conjunction with localized data, it can contribute to behaviour and provides a basis for~~developing ~~newand~~
~~improving~~ empirical ~~prediction tools for predicting thaw strain from index properties.~~ Additionally, ~~this dataset aids~~
30 ~~enhanced~~it facilitates more consistent characterization of stress-strain ~~behaviour~~response upon thawing, ~~facilitating~~supporting
future ~~efforts in the numerical modelling of the thaw settlement process efforts.~~ While the dataset is a valuable foundation for
~~preliminary analysis, its full utility is realized when combined with site-specific data.~~ The dataset is accessible at

<https://doi.org/10.5281/zenodo.1453852><https://doi.org/10.5281/zenodo.15192404>, and the results presented in this paper are based on version 1.2.01 of the dataset (Mohammadi and Hayley, 2024c).

35 While this dataset enhances preliminary assessment capabilities, it does not replace the need for site-specific investigations to accurately characterize local foundation conditions and stratigraphy.

Formatted: Justified, Line spacing: 1.5 lines

1 Introduction

Thaw settlement is a frequently reported issue for infrastructure built on permafrost and contributes to high maintenance costs, reduced life cycles, and compromised serviceability of infrastructure (Fortier et al. 2011, Flynn et al. 2015, Hjort et al. 2018, 2022, Brooks 2019, Deimling et al. 2020). Thaw settlement occurs when excess water, originating from melting ground ice, is expelled under the overburden loads, resulting in ground subsidence (Andersland and Ladanyi 2003). With increasing warming trends, and projections showing a substantial decrease in near-surface permafrost extent, it is expected that thaw settlement will become an even greater threat to infrastructure (Hjort et al., 2022). Improved understanding and estimation of thaw settlement are crucial for developing adaptive strategies, design, and management of new structures, as well as maintenance of stability and serviceability of existing infrastructure undergoing climate changes.

Thaw settlement properties at the site scale can be determined by conducting a comprehensive site investigation, obtaining an adequate number of minimally disturbed permafrost samples, and determining the thaw settlement parameters experimentally under controlled thermal and loading conditions for representative samples. This is, however, not feasible in many cases because of remoteness, harsh weather conditions, and high costs, limiting the capacity for thaw settlement testing when planning and budgeting. In light of these challenges, empirical methods correlating thaw strain to index properties of permafrost are commonly used for predicting thaw strains. The development of new tools, and improving the existing ones relies heavily on what experimental data there is to develop correlations between thaw strain and more easily acquirable index properties of permafrost samples. Thaw settlement test results, beyond their established role in developing thaw strain estimation tools, are also integral to characterizing the stress-strain behaviour of thawing permafrost, which is essential for accurate numerical modelling of thaw settlement. This type of data has previously been used to investigate the characteristics of stress-strain relationship in various permafrost soils (Dumais and Konrad, 2023, 2024; Mohammadi and Hayley, 2024a, b). While challenges in conducting thaw settlement tests have led to a scarcity of high-quality data, the lack of a standardized procedure for conducting the test has resulted in diverse test procedure across sources, introducing uncertainties and variability when consolidating data for conclusive analysis. Homogenizing thaw settlement data from various sources, as well as compiling them into larger datasets, is crucial for enhancing the understanding and prediction of thaw settlement.

This paper presents a repository of thaw settlement test results sourced from the literature, that had not previously been compiled in a single dataset. This repository aims to enhance the understanding of thaw settlement behaviour across various permafrost sediments. The compilation includes thaw settlement test results, corresponding sample properties, borehole data, and detailed particle size distribution. The thaw settlement test results and observed general stress-strain behaviour among three major groups of samples—fine-grained, coarse-grained, and organic—are discussed. The data is utilized to compare the effectiveness of existing empirical tools for estimating thaw strain and to identify the most fitting tools for various soil groups. This data provides a valuable source for inferring thaw settlement properties compiled dataset supports applications where site-specific data is unavailable or limited. Additionally, the compiled data is valuable for the development of new thaw strain,

offering a means to infer thaw settlement properties using regional analogues. Its standardized format also facilitates comparative studies and the refinement of empirical estimation tools and the improvement of existing ones.

2 Background

Thaw settlement is defined as the settling of the ground surface, buildings, or infrastructure caused by melt of ice within the soil" (Lewkowicz et al., 2024). It is technically defined as the compression of the ground due to thaw consolidation, where thaw consolidation is a time-dependent process involving the thawing of frozen ground and the subsequent drainage of excess pore water (Harris et al., 1988). The magnitude of thaw settlement can vary significantly depending on soil type and ice content. The settlement continues as long as the thawing front advances and until excess water generated during thawing is expelled and the potential pore pressure buildup, especially in relatively impermeable fine-grained soils, is dissipated.

The thaw settlement test is widely used to characterize the volume change behaviour of permafrost subjected to thawing. Figure 1 shows a typical void ratio versus vertical stress curve for a permafrost sample as it undergoes thawing and experiences additional vertical stress after thawing, obtained through this test.

Based on the theoretical concept established by Tsytovich (1960) thaw strain (measured as the percentage of volume change from point b to c) has three main components: (1) phase change, (2) drainage of excess water (meltwater in excess of what soil can retain in the thawed state), and (3) compression of the thawed soil under the applied initial pressure during thawing (σ_v). Additional volume change may occur if an additional load is applied after thawing (points c to d).

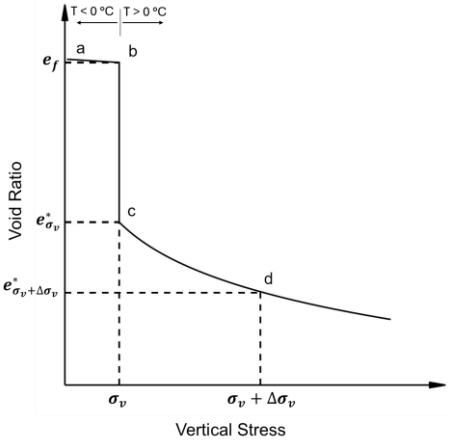


Figure 1: Typical void ratio (e) versus vertical stress (σ) curve for a permafrost sample with a frozen void ratio of e_f subjected to thawing under a vertical stress of σ_v and subjected to additional vertical stress of $\Delta\sigma_v$ after completion of thawing (adopted from Andersland and Ladanyi 2003).

Formatted: Font: Not Italic

Formatted: Font: Bold

Formatted: Font: Bold

Formatted: Font: Bold

The thaw settlement [test](#) typically involves subjecting the sample to an initial or seating load (generally equivalent to the overburden pressure) and then increasing the temperature to induce thawing. Once thawed, and deformation is stabilized, the loading can be increased incrementally to establish stress-strain behavior under the combined effects of overburden pressure and potential surface loading. Currently, there is no standardized procedure for conducting the test, which results in a variety of methodologies being adapted, introducing variability and uncertainty in the cross-comparison of data from different testing programs.

For a given permafrost stratum, a thaw settlement test on representative samples measures thaw strain, which is mostly controlled by ground ice content, soil composition, and overburden pressure. However, the magnitude of thaw settlement at the ground surface over a specific period is influenced by stratigraphy, the thickness of the thawed layers (controlled by climate forces and site conditions), the thaw strain of each thawed layer, and their confining conditions.

Thaw settlement test results are typically presented as either thaw strain versus vertical (effective) stress ([hereafter referred to as \$\varepsilon - \sigma_v\$ curve](#)) or void ratio versus vertical (effective) stress ([referred to \$e - \sigma_v\$ curve](#)), as shown in [Figure 2](#)Figure 2. In this paper, "vertical stress" refers interchangeably to vertical effective stress, given that sufficient time is allowed during each loading step for the dissipation of excess pore pressure and completion of consolidation. However, in relatively permeable coarse-grained soils, the development of pore pressure is expected to be negligible. From both representations, comparative parameters, termed thaw settlement parameters in this paper, can be derived that enable characterization of the stress-strain behaviour and cross-comparison of the test results obtained using various testing procedures. [These derived parameters offer a standardized basis for comparing thaw settlement behaviour across datasets, helping address variability introduced by non-standardized testing procedures.](#)

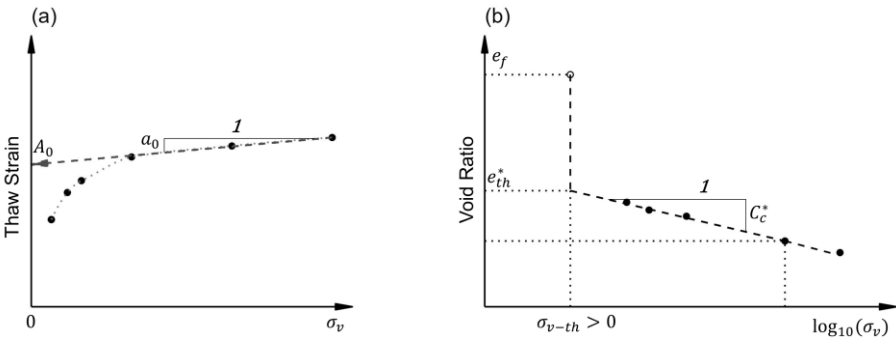


Figure 2: Schematic of typical thaw settlement test results (a) strain versus vertical stress (b) void ratio versus logarithm of vertical stress, where "f" represents the frozen state, "*" represents the thawed state, and "th" marks the threshold values (Figure adapted from Mohammadi and Hayley (2024a))

Previous experimental programs have identified a consistent pattern in the $\varepsilon - \sigma_v$ curve, marked by a relatively linear trend at higher pressure ranges. Linear curve fitting (as illustrated in [Figure 1](#)Figure 2.a) allows for the derivation of two parameters:

Formatted: Font: Bold

Formatted: Font: Bold

Formatted: Font: Bold

Formatted: Font: Bold

the coefficient of volume compressibility (a_0), corresponding to the slope of this linear segment, and thaw strain parameter (A_0), corresponding to the intercept of the linear portion and strain axis. In the case of the $e - \sigma_v$ curve, a linear semi-logarithmic trend is identified as more effective in characterizing stress-strain behaviour (Dumais and Konrad, 2023; Mohammadi and Hayley, 2024a; Nixon and Morgenstern, 1974; Yao et al., 2017). Following the approach proposed for fine-grained soils (i.e.g. Dumais, 2019; Dumais and Konrad, 2023, 2024), this idealization allows for the derivation of parameters such as the compressibility index of thawed soil (C_c^*), corresponding to the slope of the line, and the threshold thawed void ratio (e_{th}^*), corresponding to the thawed void ratio associated with a threshold vertical effective stress (σ_{v-th}) at which phase change and expulsion of excess water (if present) conclude and soil's compression as a result of increase in vertical stress initiates, as illustrated in Figure 2.b.

2.1 Thaw strain prediction

Several empirical studies have focused on developing correlations between thaw strain and index properties such as water content and frozen bulk density (Hanna et al., 1983; Luscher and Afifi, 1973; Nelson et al., 1983; Speer et al., 1973). Speer et al. (1973) established a correlation between thaw strain and frozen bulk density based on tests conducted on samples collected along the potential route for a buried warm pipeline, traversing various regions of the Arctic.. Nelson et al. (1983) developed empirical relationships between thaw strain and basic index properties of frozen soils for nine distinct soil groups. Nelson's equation used properties such as moisture content, porosity, and degree of saturation, to allow for thaw strain estimation in partially saturated soils. Luscher and Afifi (1973) developed bilinear relations between thaw strain (measured at σ_v of about 70 to 100 kPa) and frozen bulk density for three types of coarse-grained soils. Ladanyi (1996) derived a correlation between thaw strains measured at 100 kPa and frozen bulk density using test results on silt and sand samples from multiple sites along the Mackenzie River (Andersland and Ladanyi, 2003). Hanna et al. (1983) established relationships for predicting thaw strain from volumetric water content for six groups of soils (Gravel, High Plastic Fines, Low Plastic Soils, Organics, and Peat) using thaw settlement test results on samples subjected to thaw under a vertical stress of 50 kPa. Table 1 summarizes various established methods for thaw strain estimation and the range of their applicability.

Despite being derived from relatively large datasets, the developed correlations for predicting thaw strain exhibit intrinsic variability, indicating potential limitations in their predictive accuracy and introducing uncertainties into predictions. As shown on Figure 3.a, thaw strain estimates for relatively similar soil types can vary substantially between different methods, introducing uncertainties into the predictions. Additionally, while some tools use laboratory-measured thaw strains collected under a specific vertical stress, others rely on thaw strain values measured under pressures equivalent to the overburden pressure at each sample's depth, which varies for each sample. As thaw strain depends on the applied stress, particularly for highly compressible soils, the estimated thaw strain obtained using the latter approach lacks a clear stress reference. Moreover, even for tools that provide a clear stress reference for the estimated thaw strain, instructions are not provided for adjusting the estimation for stresses different from the reference value. In Sec. 5.5 of this paper, the compiled thaw settlement test results are used to critically evaluate the effectiveness of empirical method outlined in Table 1, for predicting thaw strain. This

evaluation will focus on identifying which methods yield the most accurate predictions for various soil types, taking into account the limitations and uncertainties discussed previously. By systematically comparing the predicted thaw strains with the actual test results, the strengths and weaknesses of each approach will be highlighted, ultimately guiding practitioners in selecting the most reliable method for thaw strain estimation in their specific applications.

150

Formatted: Font: 10 pt, Font color: Auto

Table 1: Summary of existing empirical relations for estimating thaw strain from index properties.

Method	Proposed Equation ^(a)	Experimental Data Used for Method Development		
		Vertical Stress (kPa)	Soil Type	Relevant USCS symbols
Speer et al. (1973)	$\varepsilon = 73.6 - 101.8 \ln(1000 \times \rho_f)$	Overburden pressure at the sample's depth	Mainly fine-grained samples	-
Nixon and Ladanyi (1978)	$\varepsilon = 90 - 86.8 \left(\frac{\rho_f}{\rho_w} - 1.15 \right)^{0.5} \pm 5$	~100 kPa	Silts and clayey silts within the interval of $-1.2 < \frac{\rho_f}{\rho_w} < 2$	-
Ladanyi (1996)	$\varepsilon = 85 - 85 \left(\frac{\rho_f}{\rho_w} - 1.1 \right)^{0.5} \pm 8$	~100 kPa	Silt and sand samples	-
Luscher and Afifi (1973)	Bilinear relation between ε_{th} and ρ_f	70 to 100 kPa	Soil-specific relation for three sub-group of coarse-grained soils See Figure 3.a	Clean Sand: SW or SP Silt: ML Silty Sand: SM
Nelson et al. (1983)	$\varepsilon = A_{n-1}n^2 + A_{n-2}n + A_{n-3}\frac{n^2w}{S_r} + A_{n-4}\frac{n}{S_r} + A_{n-5}\frac{n}{w} + A_{n-6}$	Overburden pressure at the sample's depth	Soil-specific relation for nine sub-group of soils. See Figure 3.a for a visualized version. Charts are created assuming $S_r = 100\%$ and $G_s = 2.7$ (for non-organic) and $G_s = 2.3$ (for organic)	Fat Clay: CH, CI Lean Clay: CL Silty Gravel: GM, GC ML Lowland: MH ML upland: ML Silty Sand: SC, SM Clen Sand: SP, SW Clean Gravel: GP, GW
Hanna et al. (1983)	Linear or bilinear relation between ε and volumetric water content	50 kPa	Soil-specific relation for five subgroups of soils (See Figure 3.b)	Gravel: GP, GW, SW, GM High Plastic Soils: CI, CH, MH Low Plastic Fines: SP, SC, SM, ML, CL Organic Silt: OL Peat: PT

a) Refer to Appendix A for the full list of symbols, their meaning, and the unit of each variable.

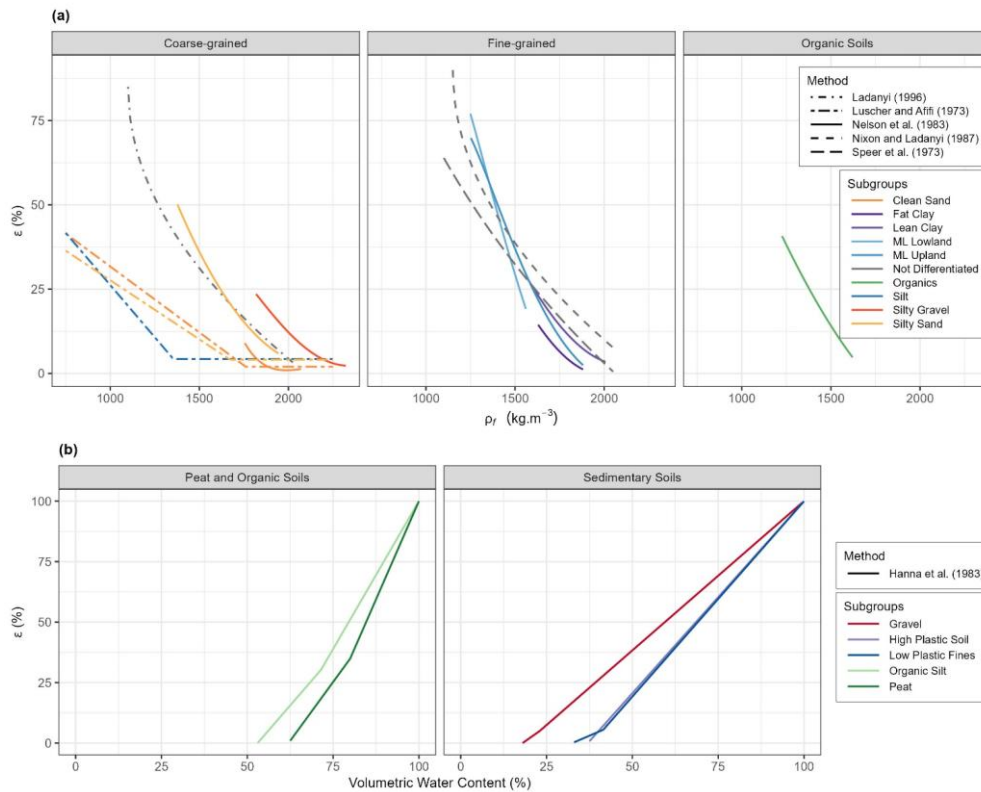
Formatted: Font: Not Italic

Formatted: Font: Not Italic

Formatted: Font: Not Italic

Formatted: Don't keep with next

Formatted Table



155 **Figure 3:- Empirical methods for estimating thaw strain (ϵ) from (a) frozen bulk density (ρ_f) and (b) volumetric water content. The correlations are grouped by major soil type. In each box, the line type represents the reference method, while the colour indicates the names of subgroups (if the major soil types are further divided). Although several methods have been developed using ρ_f , only one reference uses volumetric water content. Note the variability of ϵ for a given ρ_f across different methods developed in various references for coarse-grained and fine-grained soils.**

160 2.2 Formulating strain-stress relationship

Recent studies have focused on characterizing the stress-strain behaviour of thawing permafrost and developing correlations between comparative parameters and index properties. These efforts are crucial for constructing stress-strain relationships that facilitate the determination of thaw strain (or void ratio) as a function of vertical stress, as illustrated in Figure 2.

Formatted: Font: Not Italic

Field Code Changed

165 Dumais and Konrad (2023) developed a framework for thaw consolidation of fine-grained permafrost, providing insights into idealizing stress-strain behaviour of permafrost sediments. They employed the concept of residual stress, defined as the effective stress sustained by thawed soil under undrained conditions, to differentiate between ice-rich and ice-poor permafrost samples. Their findings suggest that a linear semilogarithmic relation between effective stress and void ratio is suitable for ice-poor permafrost, while an idealized bilinear relationship is more appropriate for ice-rich soils. Using thaw settlement test results from the Canadian Arctic Gas Pipeline Project conducted in the 1970s by Northern Engineering Services Company Limited (1976), they established correlations between index properties and the thaw settlement parameters.

170 Mohammadi and Hayley (2024a) conducted a comprehensive review of the thaw settlement behavior of coarse-grained permafrost samples. Their analysis incorporated thaw settlement test results from various sources, including Allard et al. (2020) and NESCL (1976, 1977b, a). Using thaw settlement data alongside experimental data on the minimum void ratio for granular soils, they developed empirical relations for predicting thawed void ratio at a specific effective stress of 15 kPa (e_{15}^*). They suggested that, similar to fine-grained soils, a linear semilogarithmic relation between effective stress and the void ratio can be adopted for coarse-grained soils. However, they noted that the C_c^* values for these sediments were small, with a mean value of 0.11, indicating minimal sensitivity of thaw strain to applied stress in these sediments. The empirical tools developed for predicting e_{15}^* relied on properties such as median particle size and coefficient of uniformity.

180 Despite the prevalence of highly organic permafrost in various regions such as the Hudson Bay Lowlands in Canada, studies on the thaw settlement behavior of organic soils are limited (Wang et al., 2023). Highly organic permafrost is particularly prone to thaw settlement due to its high compressibility and its occurrence in the upper layers of permafrost, which are more susceptible to thawing. Using thaw settlement test results on frozen peat samples sourced from NESCL (1976), Mohammadi and Hayley (2024b) showed that gravimetric water content can effectively predict thaw settlement parameters such as C_c^* and e_{th}^* (at an assumed threshold vertical stress of 1 kPa) for highly organic soils.

185 Building upon these studies and to enhance the applicability of the compiled dataset for a deeper understanding of the stress-strain behaviour across various soil types, an idealized stress-strain curve was developed, and comparative parameters were extracted for each test result in the dataset. A detailed comparison of these parameters across different soil types will be presented in Sec. 4, contributing to a more comprehensive understanding of thaw settlement evaluation and informing future research directions.

190

3 Data aggregation

To develop a comprehensive dataset of thaw settlement ~~datatests~~, a thorough review of the literature ~~reporting thaw settlement was carried out to identify and compile relevant~~ test results ~~was conducted~~. ~~Relevant~~, Key data, including test outcomes, sample properties, and borehole information, were extracted. Thaw settlement test results, such as void ratio and/or thaw strain versus vertical stress, were digitized from figures using PlotDigitizer software (~~https://plotdigitizer.com~~)(<https://plotdigitizer.com>) or extracted from tabulated data in various reports. For digitized figures

using PlotDigitizer, care was taken to align axes and scale references accurately. Reported reliability studies of this tool show high accuracy, with intercoder agreement reaching over 99.1% and intracoder reliability ranging from 99.3% to 99.5% across published and hypothetical graphs (Aydin and Yassikaya, 2022). Where tabulated values were available, they were used to validate or replace digitized data. This same procedure was applied to borehole data and particle size distributions, when available.

In total 446 test results were identified and extracted, primarily from two sources: a testing program by Northern Engineering Service Company Limited (NESCL) as part of the Canadian Arctic Gas Pipeline Project in the Mackenzie Valley (Canadian Arctic Gas Study Limited. and Northern Engineering Services Company., 1977; Northern Engineering Services Company Limited, 1976, 1977c, a, b, d) and a testing program by the Centre d'Études Nordiques (CEN) on samples collected from various villages in Nunavik, northern Quebec (Allard et al., 2020, 2023; Aubé-michaud et al., 2020b, a; Chiasson et al., 2020a, b; L'Hérault et al., 2014; St-amour et al., 2020).

In addition to these primary sources, test results were gathered from other data resources (indicated by ODS), including test results included in Watson et al. (1973a, b) and tests conducted as part of permafrost hazard mapping for different communities in Yukon (Benkert et al., 2015c, a, b, 2016). Figure 4 illustrates the locations of the boreholes collected from various data sources.

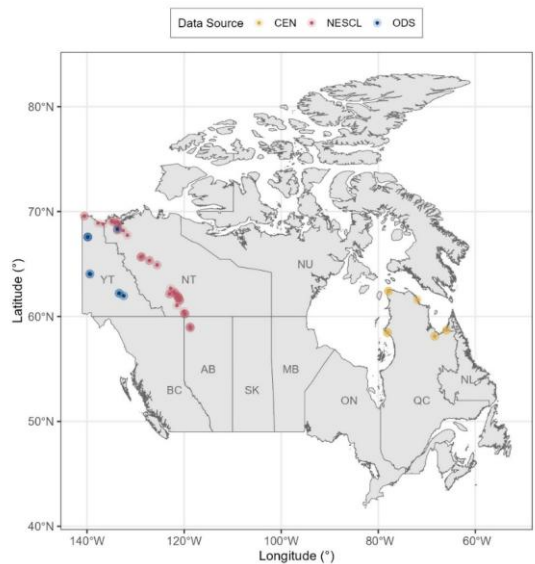


Figure 4: Locations of boreholes from various sources, including data collected by the Centre d'Études Nordiques (CEN), the Northern Engineering Services Company Limited (NESCL), and other data sources (ODS). The markers are rendered with

215 transparency; areas with higher concentrations of boreholes appear darker. ~~Map created using the *canadianmaps* R package (Joelle Cayen, 2023).~~

The collected data underwent thorough evaluation, homogenization, and merging processes to construct a comprehensive dataset, named the Permafrost Thaw Settlement Dataset (PTS), which is publicly available (DOI: ~~10.5281/zenodo.14538524~~;10.5281/zenodo.15192404).

220 on reported sample properties and test results. ~~Measurements of sample dimensions, mass, and deformation readings during thaw settlement test (if included in the original sources) were relied upon to derive or re-calculate sample properties and test results. This approach was adapted to add an extra layer of validation and mitigate potential errors in the reported values for these properties or test results in the original reports.~~

Each ~~sampletest~~ in the PTS dataset was assigned a unique identifier, referred to as "~~unique~~test_id," to ensure distinct identification across various datasets. To standardize the data, all reported values in different unit systems were converted to SI units. A quality control process was implemented using ~~values~~quality scores of 0, 1, and 2 to denote low (e.g. erroneous or insufficient data), moderate (e.g. contradictory properties), and high-quality data, respectively, ~~and each test was flagged accordingly.~~ These scores help users filter the dataset according to reliability: Level 2 data are suitable for parameter derivation and validation; Level 1 data may be used for general trends or exploratory comparisons but are excluded from regression analyses; Level 0 data are retained for completeness but are not recommended for quantitative analysis. ~~A detailed description of each variable included the PTS dataset, along with their units of measurement, and relevant notes, is outlined in Appendix A.~~

235 While subsets of this data have previously been used to investigate the characteristics of the stress-strain relationship in various permafrost soils (e.g. Dumais and Konrad 2023, 2024; Mohammadi and Hayley 2024b, 2024a), the data used have not been published or made publicly available. This underscores the significance of developing the PTS dataset, which centralizes this data and enhances its accessibility.

A detailed description of each variable included the PTS dataset, along with their units of measurement, and relevant notes, is outlined in Appendix A.

3.1 Thaw settlement test results

240 A compilation of thaw settlement test results, including unique ~~sampletest~~ ID, vertical stress, vertical deformation, thaw strain, void ratio during each loading step is stored in the “thaw_settlement_test_results.csv” file in the PTS dataset. In instances where the sample's deformation and initial height were available, thaw strain and void ratio were calculated based on these measurements. Where deformation was not included in the original reports, and only thaw strain or void ratio was reported, these values were directly included in the dataset. In cases where only one of these two variables (void ratio and thaw strain) was reported, the missing variable was calculated based on the available variable and sample’s properties. This approach was adopted to ensure consistency in the dataset format and to facilitate the extraction of various comparative parameters for each sample.

Formatted: English (United Kingdom)

Formatted: Font: Bold

Formatted: Font: Bold, English (United Kingdom)

Formatted: Font: Bold

Formatted: Font color: Black, English (United States)

Formatted: Font color: Auto, English (United Kingdom)

3.1.1 Testing procedure

Due to the lack of a standard procedure for conducting thaw settlement test, the test procedures adopted across the different sources vary. While the procedure usually involves thawing undisturbed permafrost samples in a modified oedometer cell and measuring the vertical deformation, different loading schemes in terms of the magnitude of the initial load, the number of loading steps, and the range of applied vertical stresses are used across various sources, and even within one testing program.

Figure 5 Figure 5 illustrate the variability in testing procedure in terms of minimum and maximum applied vertical stress during each test, and the frequency of the number of loading steps across various data sources in PTS dataset.

For the testing procedure adapted by NESCL, the applied vertical stress during thawing varied between 0.35 kPa and 38.3 kPa, with the majority of samples tested at initial vertical stress between 2.5 kPa and 9.3 kPa (representing 10th and 90th percentile of initial vertical stress, respectively). Most samples were then loaded up to vertical stresses of approximately 66.5 kPa to 77 kPa. However, in a limited number of tests, vertical stresses outside this range were used, with the overall range of maximum applied vertical stress varying between 8.7 kPa and 98.1 kPa. For CEN data, permafrost samples were subjected to thawing under vertical stress of 25 kPa, followed by two incremental loads at 50 kPa and then 100 kPa, resulting in a total of three deformation readings (L'Hérault et al. 2014).

Most tests from sources other than NESCL, are completed typically with three loading steps. In the case of NESCL data, more than 80% of tests are completed with four loading steps, 6.5% at five loading steps, and limited number of tests at 3, 6, or 7 loading steps. Tests with less than three loading steps were occasionally reported, however, they were excluded when calculating thaw settlement parameters, and were flagged as "0", indicating tests with insufficient/inaccurate data or sample properties.

In addition to variation in loading scheme, a variation in sample dimensions exist across different testing programs. The sample diameter for the CEN data was approximately 97 mm, with sample heights ranging from 70 mm to 150 mm, and most samples falling within the 120 mm to 140 mm range. For the NESCL data, a thaw settlement cell with an internal diameter of 63.5 mm and a height of about 50 mm was used. If available, sample or cell dimensions are included in the PTS dataset.

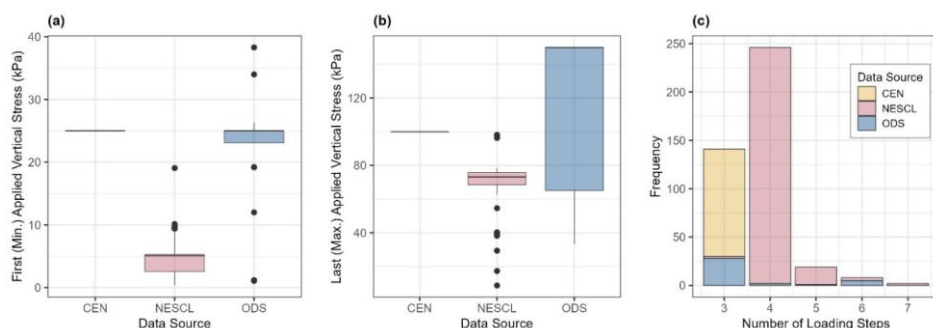


Figure 5: Variability of test procedure across different data sources (a) a box plot showing the range of minimum vertical stress (applied during first loading step) (b) a box plot showing the range of maximum vertical stress (applied during last loading step), and (c) a bar chart showing the frequency of tests completed with specific number of loading steps across all data sources

3.2 Sample information

3.2.1 Soil group

Based on the available information on samples particle size distribution and soil classification/description from the original sources, the samples were categorized into three main groups: Fine-grained, Coarse-grained, and Peat samples. For mineral soils, the Unified Soil Classification System (USCS) criteria were employed to assign soil category. Samples with more than 50% of particles larger than the No. 200 sieve size were categorized as coarse-grained, while those with less were classified as fine-grained. The soil symbols reported in the original sources, when available, are included in the PTS dataset. The supporting document detailing the methodologies used to obtain these symbols is included in Appendix A.

As organic content was reported for only a limited number of samples, a systematic classification of organic samples based on their organic content was not feasible. However, samples labelled as "peat" in the original NESCL reports were presumed to have significantly high organic content and were classified under the "Peat" soil category in the dataset. Figure 6 presents the relative proportions of different soil categories within the dataset.

Field Code Changed

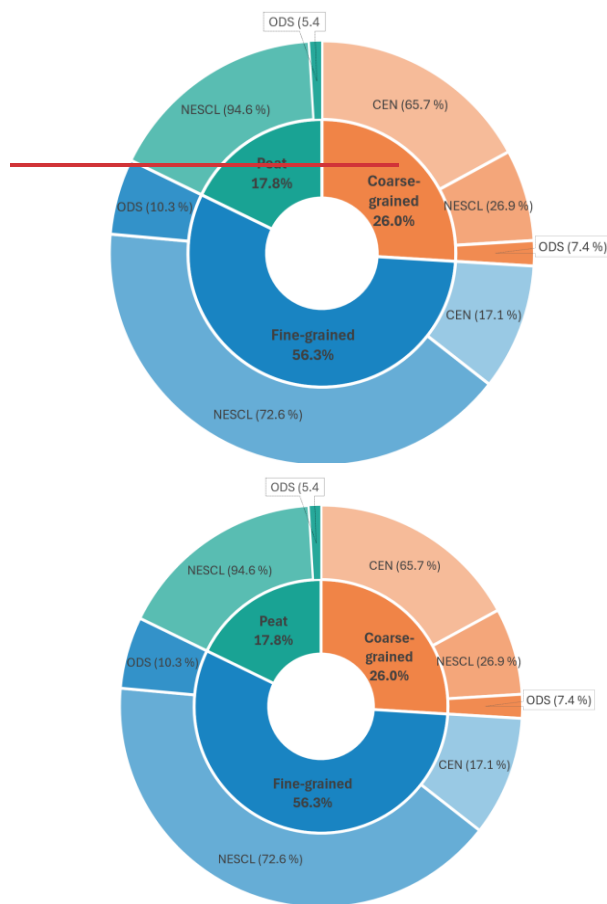


Figure 6. The relative proportions of three different soil categories within the PTS dataset and their distribution among various sources

3.2.2 Index properties

Information on soil texture, including the fractions of gravel, sand, and fines (and, in some cases, further divided into silt and clay), were among the properties most consistently reported in the original sources and included in PTS dataset. In some instances, Atterberg limits were reported for samples with significant fines content. However, these properties are not uniformly reported across all samples, resulting in incomplete data.

Measurements of sample dimensions and mass (if included in the original sources) were included in the dataset and used to calculate the gravimetric water content and frozen bulk density. If sample measurements were not reported, the reported values for gravimetric water content and frozen bulk density were directly included in the dataset. Gravimetric water content and frozen bulk density were among the most consistently reported properties for the samples. These properties facilitated the calculation of the frozen void ratio (e_f) for the samples. The determination of e_f also requires the specific gravity (G_s) of the soil, which was measured for only a limited number of samples. In cases where a measured G_s was not reported for sedimentary samples, specific gravity values ranging from 2.6 to 2.7 were assumed, based on recommendations from the original sources and typical values reported in the literature for sedimentary soils (Andersland and Ladanyi, 2003). For peat samples, a value of 1.5 was assumed, as recommended by the original data sources. For all the samples, the frozen void ratio (e_f) was calculated using the following equation:

$$e_f = \frac{(1+0.01 \times w) G_s \rho_w}{\rho_f} - 1 \tag{1}$$

Where w is the gravimetric water content (in %), G_s is the specific gravity of soil particles (dimensionless), ρ_w is the water density (1000 kg.m⁻³), and ρ_f is the frozen bulk density (in kg/m³).

Properties such as w , ρ_f , and e_f provide insight into permafrost conditions prior to thaw and serve as proxies for inferring the excess ground ice. These properties are commonly used as predictor variables to develop correlations for thaw strain. Table 2 summarises the descriptive statistics for w , ρ_f , and e_f across each soil group in the PTS dataset. Figure 7 illustrates the range and variability of these properties within each group, providing a visual comparison of their distribution. The data reveals that peat samples exhibit significantly different values compared to the other soil groups. For all three variables, fine-grained soils display the greatest variation around the mean, as evidenced by the higher coefficient of variation. Frozen bulk density shows less skewness compared to the other variables, with the greatest negative skewness observed in peat samples, followed by fine-grained and coarse-grained soils. For w and e_f , the distribution of data around the mean is more relatively uniform for peat samples but is skewed with a pronounced right tail for fine-grained and coarse-grained soils. Obtained from samples across vast regions and encompassing significant variation, these data are valuable for fitting statistical distributions that best represent the observed variability and shape of the data. This is crucial for accurately modelling uncertainty and conducting probabilistic analyses related to thaw settlement. Moreover, the descriptive statistics can help assign more realistic deterministic values to these variables based on soil type.

Table 2: Descriptive statics of index properties including gravimetric water content (w), frozen bulk density (ρ_f), and frozen void ratio (e_f) across three different soil groups in PTSD dataset

Variable	Soil Group	No. of Samples	Min.	Max.	Mean	Standard Deviation	COV (%)	Skewness
w (%)	Coarse-grained	108	15.6	120.3	42.7	23.5	55.0	1.4
	Fine-grained	234	12.0	513.4	59.8	63.7	106.5	4.2

Formatted: Don't keep with next

	Peat	74	117.6	2322.0	1006.2	499.0	49.6	0.4
$\rho_f \text{ (kg/m}^3\text{)}$	Coarse-grained	108	1151.0	2020.3	1677.6	212.7	12.7	-0.6
	Fine-grained	234	866.6	2087.2	1648.1	257.7	15.6	-0.7
	Peat	74	608.7	1102.1	907.9	76.3	8.4	-1.2
e_f	Coarse-grained	108	0.52	3.95	1.36	0.75	55.1	1.3
	Fine-grained	234	0.43	17.77	1.85	2.07	111.9	4.6
	Peat	74	1.99	39.41	17.77	8.67	48.8	0.4

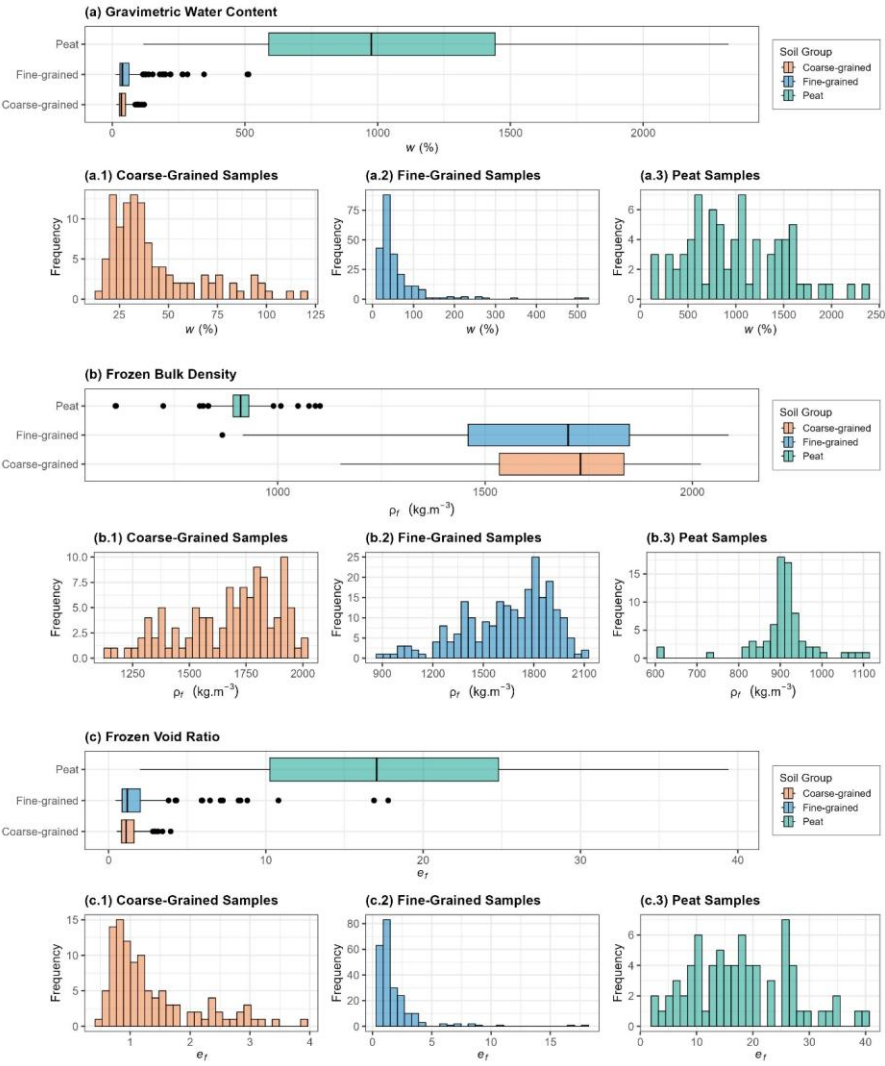


Figure 7: Detailed comparison of index properties across three distinct soil groups. The figure includes boxplots that illustrate the distribution of (a) gravimetric water content (w), (b) frozen bulk density (ρ_f), and (c) frozen void ratio (e_f) -within each group. Additionally, each box plot is accompanied by histograms for each variable illustrating its frequency distribution of corresponding index properties within each soil group.

330 For all three variables, fine-grained soils display the greatest variation around the mean, as evidenced by the higher coefficient
of variation. Frozen bulk density shows less skewness compared to the other variables, with the greatest negative skewness
observed in peat samples, followed by fine-grained and coarse-grained soils. For w and e_f , the distribution of data around the
mean is more relatively uniform for peat samples but is skewed with a pronounced right tail for fine-grained and coarse-grained
soils. Obtained from samples across vast regions and encompassing significant variation, these data are valuable for fitting
335 statistical distributions that best represent the observed variability and shape of the data. This is crucial for accurately modelling
uncertainty and conducting probabilistic analyses related to thaw settlement. Moreover, the descriptive statistics can help
assign more realistic deterministic values to these variables based on soil type.

3.2.3 Borehole data

Along with the tabulated data, the borehole logs were carefully examined, and relevant information were extracted. The PTS
340 dataset includes information such as the borehole name, sample depth, descriptions of soil and ground ice at the depths where
samples were collected, all extracted from borehole logs. The supporting documents detailing the methodologies used to
describe soil and ground ice are included in Appendix A.

Formatted: Not Highlight

3.3 Particle size distribution

Although the mass fractions of gravel, sand, and fines were consistently reported, detailed particle size distribution data was
345 available for only a subset of the samples. If available, detailed particle size distribution for the sample was extracted and
stored in the "particle_size_distribution.csv" file within the PTS dataset. Including detailed particle size distribution provides
a comprehensive view of soil texture and enables the derivation of various parameters, thereby enhancing the future application
of the data in diverse contexts.

3.4 Metadata and supplementary material

350 In addition to the sample properties and test results, the metadata, including the location of the boreholes and references to the
original reports containing data relevant to each borehole, is stored in the "borehole_locations_and_sources.csv" file within
the PTS dataset. If the exact coordinate of sampling location or borehole was not available, the approximate location of the
site as described in the main source is included in the metadata. The coordinates of borehole locations were originally reported
in different formats depending on the data source. For the NESCL data, coordinates were provided in Degrees-Minutes-
355 Seconds (DMS) format and were converted to decimal degrees for consistency. The CEN data typically reported coordinates
directly in decimal degrees, usually with three decimal places. For boreholes from Yukon hazard mapping reports, coordinates
were given in Universal Transverse Mercator (UTM) format, consisting of Easting and Northing values. All coordinates were
converted to decimal degrees to standardize the format across the dataset and support integration with GIS tools. In some cases,

while decimal precision may appear high (e.g., six decimal places), but actual precision is likely lower and may vary depending on original mapping techniques.

3.5 Idealized stress strain behaviour

Using the methods outlined in Sec. 2.2.2 for formulating the stress-strain behaviour for different soil types, existing test results were used to construct an idealized stress-strain curve, which allowed for extraction of thaw settlement parameters for each test such as the one shown in Figure 2. The idealization allowed for differentiating the ice-rich and ice-poor behaviour during each test and obtaining void ratio or thaw strain as a function of vertical stress. Additionally, efforts were made to distinguish the different components of thaw strain during each test including phase change, excess water expulsion and soil skeleton compression using the idealized behaviour.

3.5.1 Thaw settlement parameters

Two parameters (A_0 and a_0) were derived from $\varepsilon - \sigma_v$ plots using regression analysis. The linear segment of each curve was identified, and linear regression was applied to data points within this segment. A minimum of three loading steps was required for the regression. In cases where only three points were available, all were used. However, for tests with more than three points, an initial regression was performed using all points, and the R-squared (R^2) value was checked. If the R^2 was satisfactory (greater than an arbitrary value of 0.98), the model was accepted. Otherwise, points were iteratively removed, starting with the exclusion of the lowest vertical stress, until an acceptable R^2 was achieved or the minimum number of points was reached. In the final regression model, the intercept represented A_0 , and the slope represented a_0 .

In the context of void ratio-vertical stress plots, a linear relationship between the void ratio and the logarithm of vertical (effective) stress is generally identified as the best fit, as established in the literature (Dumais and Konrad, 2023; Nixon and Morgenstern, 1974; Yao et al., 2017). The onset of this linear relationship is marked by a threshold effective stress, commonly known as residual stress for soils with low permeability. Residual stress, an intrinsic soil characteristic, depends on soil texture and the initial ground ice content. It is believed that residual stress for ice-rich samples is relatively small but can be within a physically significant range for ice-poor samples (Dumais and Konrad, 2023; Nixon and Morgenstern, 1973).

To idealize void ratio-effective stress relationship for each sample, linear regression was applied after logarithmically transforming the vertical stress. The resulting slope of this regression model was extracted as C_c^* . Then, this regression model was used to differentiate between ice-rich and ice-poor behaviour, and define the residual stress (i.e., the threshold vertical stress) as outlined by Dumais and Konrad (2023). To achieve this vertical stress at the initial thawed void ratio, ($e_i^* = \frac{e_f}{1.09}$), was extrapolated to obtain a hypothetical threshold vertical stress for each sample. If the obtained value was greater than 1 kPa, the sample was classified as ice-poor, and this predicted vertical stress was considered as the threshold vertical stress. Conversely, if the predicted value was unrealistically small (lower than 1 kPa), ice-rich behaviour was assumed, and the threshold vertical stress was set to 1 kPa, representing a reasonably low and physically comprehensible value.

390 While for coarse-grained soils, the concept of residual stress is less relevant due to their high permeability, to ensure consistency in obtaining comparative parameters across all soil types, the method outlined by Dumais and Konrad (2023) to obtain residual stress in fine-grained soils was applied to all three soil types.

After defining the threshold vertical stress, the developed regression model was used to predict the threshold thawed void ratio (e_{th}^* , as shown in Figure 2.b) for each sample. For ice-poor samples, the threshold thawed void ratio is equal to the initial

395 thawed void ratio. For ice-rich samples, the threshold thawed void ratio is generally lower than the initial thawed void ratio, with the difference representing the excess ice within the sample.

For each sample, comparative parameters such as A_0 , a_0 , C_c^* , e_{th}^* , σ_{v-th} , and the sample condition (indicating ice-rich or ice-poor behaviour) have been stored in the PTS dataset. These parameters form a basis for future comparisons of thaw settlement characteristics across various soil types. A detailed comparison of these parameters is discussed in Sec. 4.

Field Code Changed

400 **3.5.2 Inferred sample condition (ice-rich versus ice-poor)**

Approximately 70% of coarse-grained, 60% of fine-grained, and 70% of peat samples were classified as exhibiting ice-rich behaviour. This high percentage may be partly due to a sampling and testing bias in thaw settlement tests, where the emphasis is often on ice-rich samples to better represent worst-case scenarios. ~~Figure 8~~Figure 8 provides a comparison of the distribution of frozen void ratios in ice-rich and ice-poor samples, along with a histogram showing the occurrence of these two conditions

405 across varying fines fractions and soil classifications, which serve as proxies for soil texture and composition.

The box plots in Figure 8 show that for both coarse-grained and fine-grained soils, the frozen void ratio in ice-poor samples exhibits a relatively narrow range. Additionally, ice-rich and ice-poor conditions are well differentiated by e_f , with minimal overlap between the two classes, especially in fine-grained soils. Conversely, the histograms in Figure 8 illustrate that ice-rich and ice-poor behaviour occurs uniformly across various fines fractions and soil classifications, indicating that the presence of

410 excess ice in samples is independent of soil composition based on PTS dataset. However, it is generally understood that fine-grained soils are more prone to higher ground ice content due to the formation of segregated ice.

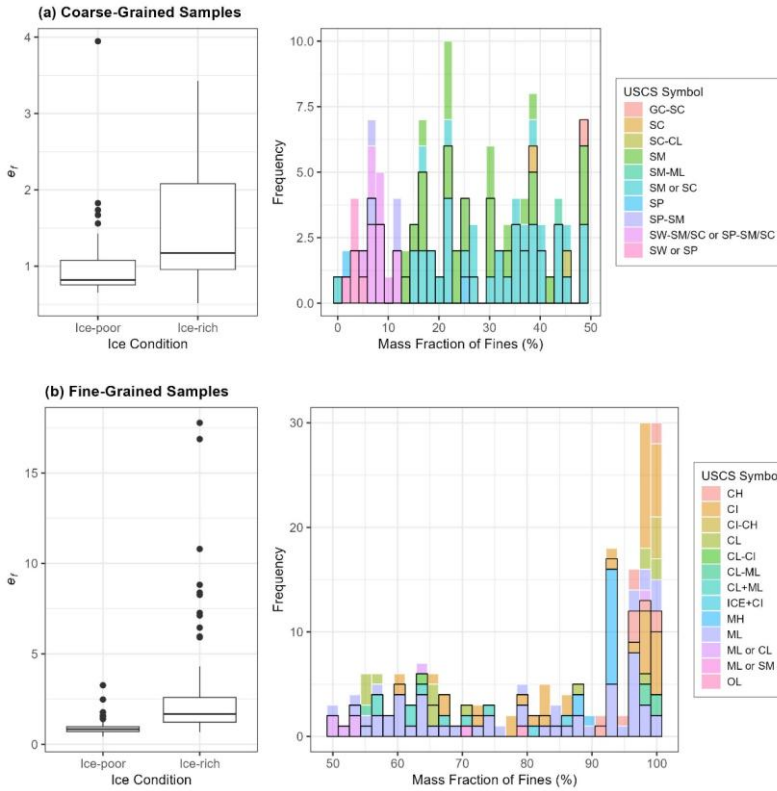


Figure 8: The boxplots on the left side illustrate the distribution of frozen void ratio (e_f) for ice-rich and ice-poor conditions in the PTS dataset for (a) coarse-grained samples and (b) fine-grained samples. The frequency histogram on the right side illustrates the distribution of fines content for (a) coarse-grained and (b) fine-grained samples. The histogram series represent multiple USCS soil symbols (with varying fill colors) and ice conditions (with different border styles) to demonstrate the relationship between soil type and ice condition across the samples.

3.5.3 Thaw strain estimation

The idealized void ratio-vertical stress relationship enables the approximate differentiation of various thaw strain components contributing to the total thaw strain under a given applied vertical stress. Utilizing the idealized $e - \log_{10}(\sigma_v)$ relationship, allows for the derivation of the portion of thaw strain attributed to phase change (ϵ_{pc}), the expulsion of excess water (ϵ_{ew}), and soil compression (ϵ_{sc}) at any given vertical stress. These components can be calculated using the equations summarized

in Table 3, based on parameters such as C_c^* , e_{th}^* , and σ_{v-th} and e_f . The detailed derivation of these equations is discussed in the [appendixAppendix A](#).

Table 3: Summary of equations used for calculating various components of thaw strain based on $e - \log_{10}(\sigma_v)$ idealization

Thaw Strain Component	Equation	Required inputs
Phase Change (ε_{pc})	$\varepsilon_{pc}(\%) = \frac{e_f - 0.917 \times e_f}{1 + e_f} \times 100$	e_f : Frozen void ratio
Expulsion of Excess Water (ε_{ew})	$\varepsilon_{ew}(\%) = \frac{0.917 \times e_f - e_{th}^*}{1 + e_f} \times 100$	e_f : Frozen void ratio e_{th}^* : Threshold thawed void ratio
Soil Compression (ε_{sc})	$\varepsilon_{sc}(\%) = \frac{C_c^* \times \log_{10}(\frac{\sigma_{v-th}}{\sigma_v})}{1 + e_f} \times 100$	e_f : Frozen void ratio C_c^* : Compression index of thawed soil σ_{v-th} : Threshold vertical stress σ_v : Vertical stress

In some thaw settlement tests from the PTS dataset, measured thaw strains were found to be lower than ε_{pc} , indicating that swelling exceeded the anticipated volume reduction due to phase change after thawing. These samples were flagged in the PTS dataset with a binary variable, “swelling_flag,” where a TRUE value was assigned to these samples. For most of these samples, swelling occurred only during the initial loading steps; however, in some cases, it persisted even after an additional load was applied to the thawed samples.

Swelling, when it occurred, was detectable only in ice-poor samples. In ice-rich conditions, swelling was not detectable, as it was fully compensated by the volume reduction due to phase change and the expulsion of excess water. Swelling was identified in 79 out of 148 samples classified as ice-poor, with approximately 80% being fine-grained, 14% coarse-grained, and 6% peat samples.

Figure 9Figure 9 illustrates the distribution of frozen void ratios for swelling and non-swelling samples in ice-poor coarse-grained and fine-grained categories, as well as the occurrence of swelling across varying fines fractions and soil classifications. The boxplots indicate that, in both soil categories, swelling was predominantly observed in denser samples. The histograms demonstrate that swelling was primarily noted in samples with higher fine fractions. For coarse-grained samples, swelling was most commonly observed in silty sands, while in fine-grained samples, it was primarily identified in those with over 90% fines content, classified as high or medium plasticity clay, indicating the dependency of swelling on the soil’s composition.

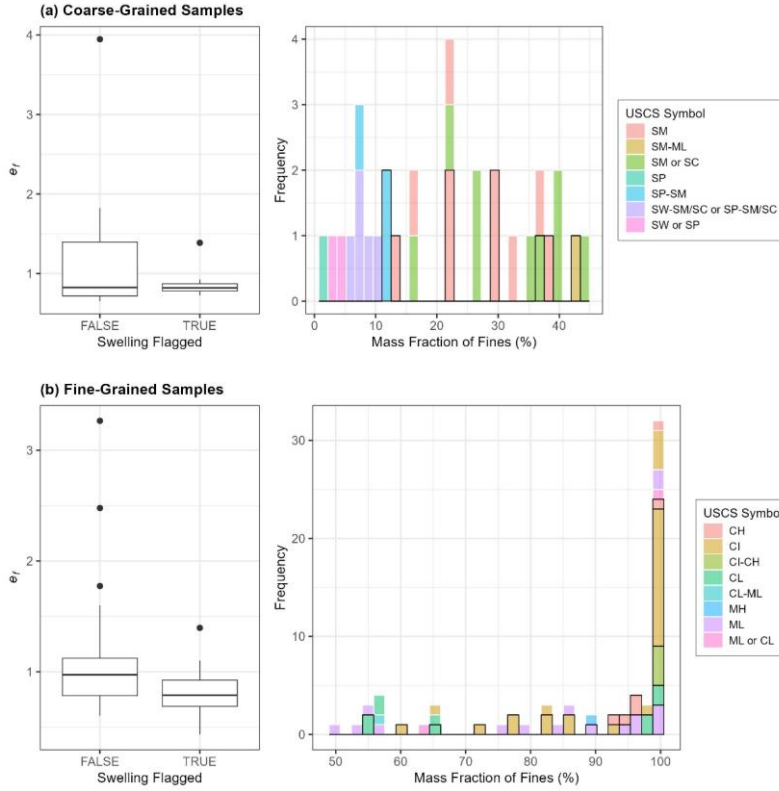


Figure 9: The boxplots on the left side illustrate the distribution of frozen void ratio (e_f) for samples in the PTS dataset, indicative of swelling (TRUE) and no swelling (FALSE) for (a) ice-poor coarse-grained samples and (b) ice-poor fine-grained samples. The frequency histogram on the right side shows the distribution of fines content for (a) ice-poor coarse-grained and (b) ice-poor fine-grained samples. The histogram series represent multiple USCS soil symbols (with varying fill colors) and swelling indication (with different border styles), highlighting the relationship between soil type and swelling occurrence across the samples.

Using the idealized $e - \log_{10}(\sigma_v)$ relationship, the total thaw strain at any given vertical stress can be calculated by summing the three main components of thaw strain (see Table 3) as follows:

$$\varepsilon_{total}(\%) = \left(\frac{e_f - e_{th}^* + C_c^* \times \log_{10} \left(\frac{\sigma_v - \sigma_{v-th}}{\sigma_v} \right)}{1 + e_f} \right) \times 100 \quad (2)$$

Where e_f is the frozen void ratio, e_{th}^* is threshold thawed void ratio, C_c^* is the compression index of thawed soil, σ_{v-th} is the threshold vertical stress, and σ_v is the vertical stress.

Alternatively, using the idealized $\varepsilon - \sigma_v$ relationship, the total thaw strain at any given vertical stress can be estimated as follows:

455
$$\varepsilon_{total}(\%) = A_0 + a_0 \sigma_v \tag{3}$$

Where A_0 is thaw strain parameter (in %), and a_0 is the coefficient of volume compressibility (in % per kPa).

Upon determining the thaw settlement parameters, both Eq. (2) and Eq. (3) can be used to estimate thaw strain at a given vertical stress. However, since the idealized $e - \log_{10}(\sigma_v)$ - relationship better captures the overall nonlinear stress-strain
460 behaviour of permafrost samples across a wider range of vertical stresses, Eq. (2) provides more accurate estimates of thaw strain, particularly at lower vertical stress values, compared to Eq. (3).

For each thaw settlement test, various components of thaw strain were calculated and included in the PTS dataset, providing insight into the contribution of each component to the total thaw strain. A vertical pressure of 100 kPa was selected to determine the portion of thaw strain attributed to soil compression. A visualization of these variables across different soil groups is
465 provided in Appendix A for further details.

4 Comparison of thaw settlement parameters across soil categories

~~Figure 10~~Figure 10 depicts the distribution of A_0 and a_0 values across various soil categories, while ~~Table 4~~Table 4 provides a summary of the descriptive statistics for these parameters within each category. An analysis of the overall range and mean value of A_0 reveals no significant differences between coarse-grained and fine-grained soils, with most samples having A_0
470 values below 30%. However, peat samples exhibit approximately double the mean value compared to other soil types, with A_0 value for the majority of samples exceeding 30%.

In coarse-grained and fine-grained soils, ~~Figure 10~~Figure 10.a demonstrates a marked disparity in A_0 values under ice-poor versus ice-rich conditions. The mean A_0 value for ice-rich samples is notably higher—about four times greater for coarse-grained soils and seven times greater for fine-grained soils—compared to ice-poor samples. Analysis of the 10th and 90th
475 percentiles of A_0 reveals minimal overlap in the range of A_0 for ice-poor and ice-rich conditions within these two soil categories. The midpoint of the 90th percentile for A_0 in ice-poor soils and the 10th percentile for A_0 in ice-rich soils serves as a practical threshold for differentiating between these conditions, approximately 12.6% for coarse-grained soils and 13.3% for fine-grained soils. For peat samples, there is some overlap in A_0 values between ice-rich and ice-poor conditions, specifically from 33.4% (the 10th percentile for ice-rich conditions) to 46.6% (the 90th percentile for ice-poor conditions).
480 The mean value of A_0 for ice-rich peat samples is almost two times greater than ice-poor samples. The distinction in A_0 values between ice-rich and ice-poor conditions, with less evident influence from soil type, highlights the parameter's strong dependence on ground-ice content, rather than soil composition.

Representing the compressibility of the samples, the range of a_0 is substantially different across the three soil groups, with notable distinctions between peat samples and mineral soils. Fine-grained samples exhibit a compressibility approximately 1.7
485 times higher than coarse-grained samples. Peat samples, in contrast, show compressibility values that are 7.1 times higher than

coarse-grained samples and 4.4 times higher than fine-grained samples. For each soil category, the a_0 values display only minor variations in range and mean values between ice-rich and ice-poor samples. The mean compressibility values are 0.047%, 0.076%, and 0.334% per kPa for coarse-grained, fine-grained, and peat samples, respectively. These mean compressibility values can be used to refine thaw strain estimation through empirical methods, allowing for adjustments based on the applied vertical stress and soil type.

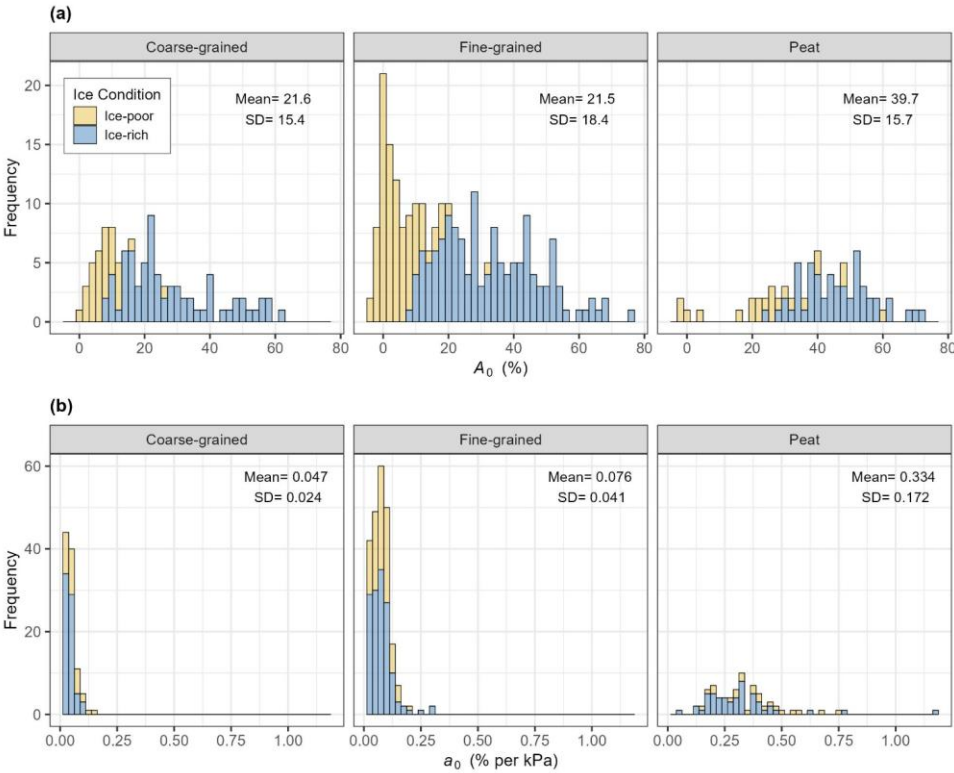


Figure 10: Frequency histograms of (a) the thaw strain parameter (A_0) and (b) the coefficient of volume compressibility (a_0) across three main soil groups. Different colors represent the ice conditions, highlighting the lower values of A_0 in ice-poor conditions compared to samples classified as ice-rich. For a_0 , both ice-rich and ice-poor samples exhibit similar ranges within each soil group; however, the mean value of a_0 is higher for peat compared to mineral soils, and for fine-grained soils compared to coarse-grained soils.

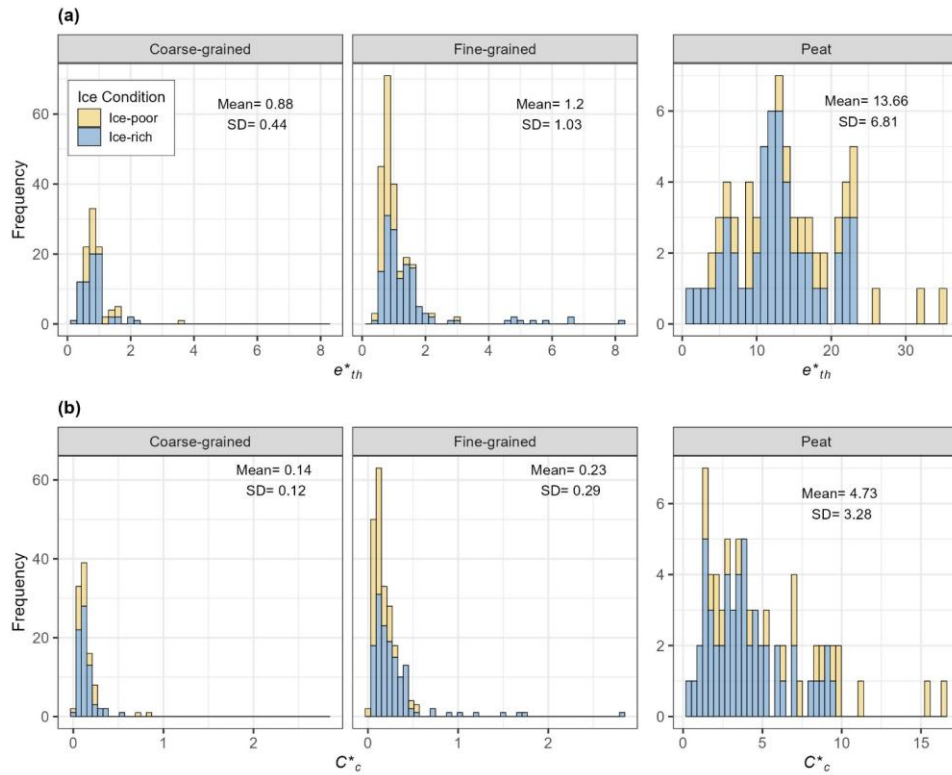
Table 4: The descriptive statistics for the thaw strain parameter (A_0) and the coefficient of volume compressibility (a_0)

Parameter	Soil Category	Ice Condition	10 th Percentile	90 th Percentile	Mean	SD	COV
A_0	Coarse-grained	Ice-poor	2.6	12.1	7.8	5.2	66.7
		Ice-rich	13.1	50.2	27.6	14.4	52.2
	Fine-grained	Ice-poor	-1	12.6	4.6	6.1	132.6
		Ice-rich	13.9	52.2	32.6	15	46
	Peat	Ice-poor	-0.4	46.6	25.5	16.2	63.5
		Ice-rich	33.4	58.5	45.7	10.9	23.9
a_0	Coarse-grained	Ice-poor	0.024	0.096	0.057	0.031	54.4
		Ice-rich	0.021	0.063	0.042	0.019	45.2
	Fine-grained	Ice-poor	0.029	0.114	0.076	0.033	43.4
		Ice-rich	0.031	0.118	0.076	0.046	60.5
	Peat	Ice-poor	0.194	0.575	0.388	0.154	39.7
		Ice-rich	0.167	0.439	0.312	0.175	56.1

Note: These measures are based on a subset of data with definitive A_0 and a_0 values obtained from linear regression models fitted to test results with R^2 values greater than 0.8. Models with R^2 values less than 0.8 were excluded, as the corresponding A_0 values may be inaccurate due to weak fit.

Figure 11 depicts the distribution of e_{th}^* and C_c^* values across various soil categories, while Table 5 provides a summary of the descriptive statistics for these parameters within each category. The analysis of e_{th}^* reveals minimal differences between coarse-grained and fine-grained soils, with most samples having e_{th}^* values below 1.5. Peat samples exhibit the highest e_{th}^* values, with a mean value of 13.66, which is 15.5 times higher than coarse-grained soils and 11.4 times higher than fine-grained soils. Unlike the A_0 parameter, e_{th}^* does not show a consistent trend when comparing ice-rich and ice-poor conditions.

When comparing the C_c^* values, which represents soil compressibility similarly to a_0 , notable variations are also observed between soil categories. Peat samples have the highest C_c^* values, with a mean value of 4.73, which is approximately 33.8 times higher than that of coarse-grained soils and 20.6 times higher than fine-grained soils. The coefficient of variation (COV) for C_c^* is highest in coarse-grained and fine-grained soils, indicating greater relative variability, while peat samples exhibit moderate variability. A comparison between ice-rich and ice-poor samples reveals no specific trends in C_c^* based on ice content, underscoring the parameter's dependence on soil composition rather than ice conditions.



515 **Figure 11:**Frequency histograms of (a) threshold thawed void ratio (e_{th}^*) and (b) compressibility index of thawed soil (C_c^*) across three main soil categories. Different colors represent the ice conditions.

Table 5: The descriptive statistics of e_{th}^* and C_c^*

Parameter	Soil Category	10 th Percentile	90 th Percentile	Mean	SD	COV
e_{th}^*	Coarse-grained	0.48	1.34	0.88	0.44	50.0
	Fine-grained	0.63	1.68	1.20	1.03	85.8
	Peat	5.39	22.78	13.66	6.81	49.9
C_c^*	Coarse-grained	0.05	0.23	0.14	0.12	85.7
	Fine-grained	0.06	0.43	0.23	0.29	126.1
	Peat	1.36	9.18	4.73	3.28	69.3

5 Validation of existing thaw strain prediction tools

Empirical correlations relating thaw strain to properties such as water content and frozen bulk density of permafrost samples have been widely used to estimate thaw settlement (Luscher and Afifi, 1973; Nelson et al., 1983; Speer et al., 1973; Watson et al., 1973a). These correlations offer a straightforward and cost-effective approach to estimating anticipated thaw strain upon thawing. However, estimations made using these methods exhibit inherent variability and significant scatter, despite using relatively large datasets to establish the correlations. Therefore, thaw strain estimates can vary substantially between different methods, introducing uncertainties into the predictions.

In this study, compiled data was used to assess the effectiveness of various existing methods and compare their performance in predicting thaw strain. To achieve this, thaw strain values estimated using the methods outlined in Table 1 were compared with corresponding measured values for each sample in the PTS dataset. The performance of each method in comparison to others was evaluated using measures such as the Root-Mean-Square Deviation (RMSD), and bias between estimated and actual thaw strain values. RMSD, a measure of average deviation between estimated and actual values, and bias, a measure of systematic deviation from the true values, both provide insights into the accuracy and reliability of predictive models. A lower RMSD indicates better agreement between estimated and actual values, while a bias closer to zero suggests that the method is not systematically overestimating or underestimating thaw strain. Table 6 summarizes the obtained metrics for each method across major soil categories, while Table 7 presents the metrics for methods that provide soil-specific correlations. Figure 12 visualizes this evaluation by presenting the predicted versus actual thaw strain for various empirical methods.

In this evaluation, careful attention was given to using only a subset of compiled data that fit the applicability range of each method, or each sub-group of soils (if applicable) in terms of soil type. Properties such as soil texture, plasticity limits and USCS classification (if available) were used to identify samples within the PTS dataset that matched each method or subgroup.

To ensure comparability between actual thaw strain and estimated values in relation to vertical stress, thaw strain corresponding to the vertical stress used to derive the correlations for each method was selected (see Table 1). For instance, for the correlations proposed by Ladanyi (1996) and Nixon and Ladanyi (1978), thaw strain measurements at 100 kPa were calculated for each test using Eq. (2) and used as the actual thaw strain for validation against predictions made by these methods. Similarly, the correlations by Hanna et al. (1983) were evaluated using thaw strain at 50 kPa for each soil type. The correlations by Luscher and Afifi (1973) were developed using thaw strain at vertical stresses ranging from 70 kPa to 100 kPa; therefore, thaw strain values at 100 kPa was used to obtain the metrics presented in Table 6 and Table 7. Both, Hanna's method and the Luscher and Afifi method, provide soil-specific correlations. In both cases, appropriate thaw strain correlations were applied after assigning each sample in the PTS dataset to one of the defined soil subgroups.

In the cases of Speer et al. (1973) and Nelson et al. (1983), thaw strains were not measured at a unique vertical stress; instead, they were measured at various vertical stresses, selected to replicate the overburden pressure at the sample depths. Therefore, during the validation process, the overburden pressure for each sample was first estimated using an approximate borehole

stratigraphy constructed based on the available data. Then, thaw strain values were calculated at these estimated overburden pressures, using Eq. (2), and were compared with predictions from Speer's and Nelson's methods. Speer's method was applied to all samples classified as fine-grained or coarse-grained in the PTS dataset. For Nelson's method, which provides soil-specific correlations, the appropriate correlations were applied after assigning each sample in the PTS dataset to one of the defined subgroups. Most samples were categorized into Fat Clay, Lean Clay, and ML upland/lowland subgroups, while fewer samples were classified into subgroups such as Clean Sand, Gravel, Silty Gravel, and Organics.

As shown in Table 6, among the existing correlations, the method proposed by Nixon and Ladanyi (1978) produced the lowest RMSD and bias when applied to both fine-grained and coarse-grained soils. The RMSD was significantly lower for fine-grained samples, likely due to the development of the original correlations mainly based on thaw strain measurements of silts and clayey silts. A correlation for peat samples was provided solely by Hanna et al. (1983); however, this correlation does not fit the peat sample data well, significantly underestimating thaw strain, as indicated by a high RMSD of approximately 22.66% and a bias of about -18.18%.

As shown in Table 6, a comparison of correlations developed for subgroups of coarse-grained soils by Nelson et al. (1983) and Luscher and Afifi (1973) reveals that, in general, Nelson's correlations resulted in lower RMSD, and bias compared to those of Luscher and Afifi. However, the correlations developed by Nixon and Ladanyi (1978) achieved the lowest RMSD and bias for both clean sand and silty/clayey sands. Although the number of gravel samples within the PTS dataset was limited, the correlation developed by Hannan et al. (1983) was found to be the most effective for this group, followed by the correlation proposed by Nixon and Ladanyi (1978). For sub-groups of fine-grained soils, correlations developed by Nelson et al. (1983) and Hanna et al. (1983) generally exhibited higher RMSD and bias compared to the Nixon and Ladanyi (1978) method, making the latter more effective for predicting thaw strain for different type of these soils. The correlations developed for organic soils are limited, as is the number of samples assigned to the organic subgroup in the PTS dataset. However, among the methods proposed by Nelson and Hannan, the Nelson yielded lower RMSD and bias for organic soils.

It also should be noted that, in general, correlations developed between thaw strain and frozen bulk density, such as Speer et al. (1973), Nixon and Ladanyi (1978), and Ladanyi (1996) showed comparable performance in terms of predicting thaw strain, with Nixon and Ladanyi (1978) marginally outperforming the other two correlation, indicated by a smaller RMSD and a smaller absolute bias. Moreover, the positive bias value for this method, which indicates an overestimation of thaw strain, is more favourable as it results in conservative estimations. The correlations developed by Hanna et al. (1983) are the recommended tools for predicting thaw strain in Canadian Foundation Engineering Manual (Canadian Geotechnical Society, CGS 2023), however the result of this evaluation suggests that other correlations may outperform these correlations, particularly in terms of bias, as this method has a significantly large negative bias, indicative of an underestimation of thaw strain.

Formatted: Font color: Black

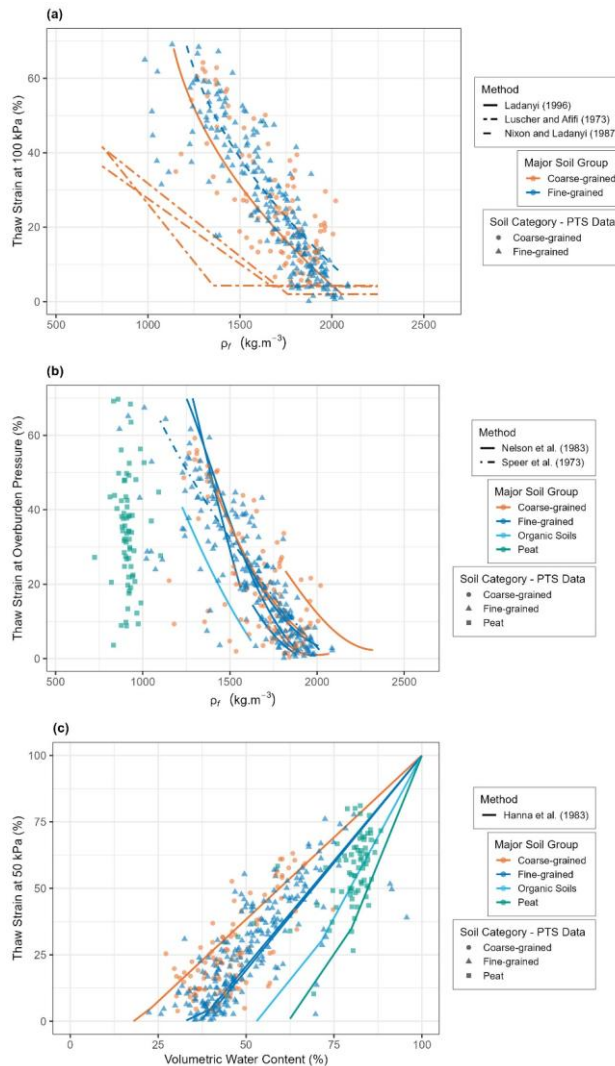


Figure 12: Visual comparison of empirical tools for predicting thaw strain against experimental data from the PTS dataset. Lines represent the correlations, while points depict the experimental data. Color represents major soil groups both for correlations and experimental data. The subplots include: (a) three methods, including Luscher & Afifi (1973), Nixon and Ladanyi (1978), and Ladanyi (1996); (b) two methods, including Nelson et al. (1983) and Speer et al. (1973); and (c) the Hannan et al. (1983) method.

Formatted: Font: Bold

Formatted: Font: Bold

Formatted: Font: Bold

Table 6: Root mean squared deviation (RMSD) and bias for thaw strain measurements from PTS dataset and predictions made using different empirical methods

Soil Group	Method	Subset size	RMSD	Bias	Note
Coarse-grained	Hannan et al. (1983)	107	15.18	-9.99	See Table 7 for various subgroups
	Ladanyi (1996)	107	12.03	-5.07	
	Luscher & Afifi (1973)	106	23.16	-19.46	See Table 7 for various subgroups
	Nelson et al. (1983)	107	12.75	-4.62	See Table 7 for various subgroups
	Nixon and Ladanyi (1978)	107	11.75	1.89	
	Speer et al. (1973)	107	12.36	2.37	
Fine-grained	Hannan et al. (1983)	234	13.18	-5.5	See Table 7 for various subgroups
	Ladanyi (1996)	224	10.17	-4.48	
	Luscher & Afifi (1973)	95	19.22	-25.05	See Table 7 for various subgroups
	Nelson et al. (1983)	234	16.19	-3.88	See Table 7 for various subgroups
	Nixon and Ladanyi (1978)	222	8.78	2.14	
	Speer et al. (1973)	234	10.65	3.15	
Peat	Hannan et al. (1983)	68	22.66	-18.18	

Formatted Table

Table 7: Root mean squared deviation (RMSD) and bias for thaw strain measurements from PTS dataset and predictions made using different empirical methods for various sub-groups of soils

Method	Subgroups	Subset size ^(a)	RMSD	Bias
Hannan et al. (1983)	Peat	68	22.66	-18.18
	Organic Silt	8	28	-16.15
	High Plastic Soil	117	11.28	-3.92
	Low Plastic Fines	214	14.56	-8.39
	Gravel	7	6.59	4.76
Luscher & Afifi (1973)	Silt	96	30.15	-25.09
	Silty Sand	98	23.67	-19.71
	Clean Sand	8	17.58	-16.38
Nelson et al. (1983)	Organics	8	13.75	-1.12
	Fat Clay	102	11.93	-8.53
	Lean Clay	33	10.94	-3.64
	Silt	95	21.06	1.06
	Silty Sand	98	12.18	-3.51
	Clean Sand	8	18.69	-17.87

Formatted Table

a) Subgroups with subset size of 5 or less are excluded.

595 **6 Uncertainty and Limitations**

The data used in this study were collected from a range of published sources rather than generated by the ~~author~~authors. As a result, several sources of uncertainty are inherent in the dataset. ~~One significant, including uncertainty in the original data, uncertainty introduced during data extraction and processing, and limitations due to incomplete or missing information.~~ A primary source ~~stems from~~of uncertainty lies in potential errors in the original sampling, testing, ~~and/or~~ reporting processes.

600 Ideally, undisturbed permafrost samples should be obtained for thaw settlement tests, but in practice, thermal disturbance and water loss can occur during sample collection, transport, and handling. ~~These~~Other contributing factors ~~introduce inaccuracies~~include human error during experimental procedures, subjectivity in the ~~measurements~~visual soil or ice classification, and, subsequently, the test results. Additionally, the inconsistencies in calculation or reporting. The lack of a standardized protocol for ~~conducting~~thaw settlement test~~testing~~ across different studies further contributes to variability.

605 Each source may have used different procedures, leading to inconsistent results that add another layer of uncertainty. To add a layer of validation to the reported test results, in cases where the original test results were provided, actual ~~improve~~reliability, original deformation and sample measurements were used, ~~where available~~, to verify the reported values for sample properties, such as thaw strain, and void ratio. Discrepancies were occasionally observed, and where necessary ~~If discrepancies were found~~, recalculated values ~~based on the original measurements were~~ were prioritized ~~to improve data reliability.~~

610 Additionally, a quality control process was ~~also~~ implemented to flag the reliability of ~~the data.~~ Values ~~each test result.~~ Each entry was assigned a quality score of 0, 1, and/or 2 ~~were used to denote~~indicate low, moderate, and high ~~data quality data~~, respectively. Low-quality data ~~generally represented~~entries typically involved erroneous or insufficient information, ~~while~~ moderate-quality data often had contradictory properties. High-quality data represented results with minimal ~~entries showed~~ inconsistencies in reported sample properties, and high-quality entries exhibited minimal issues and reliable sample properties.

615 To ~~In~~ several cases, thaw settlement results were available only as graphical plots in legacy reports. These were digitized using PlotDigitizer tool. While care was taken to follow best practices, some uncertainty remains, especially when figures were low resolution. Similar uncertainties apply to digitized particle size distributions. Additionally, to maintain consistency across the dataset, all reported values from various sources were converted to SI units, ~~which may introduce minor uncertainty during~~ unit conversion. Similarly, geographic coordinates, originally reported in various formats and a unique index was assigned ~~with~~ differing levels of precision, were converted to each ~~sample~~decimal degrees for easy identification. ~~In consistency.~~ Older records often lacked exact location precision, and in such cases ~~where data were incomplete or~~, coordinates should be considered approximate.

620 In some cases, ~~missing, such as when a~~ data required assumptions to allow for key parameter calculations. A notable example is the specific property was not measured or reported by a source, the missing gravity of soil particles, which is required for calculating frozen void ratio. Since specific gravity was only reported for a limited number of samples, assumed values were

625

Formatted: English (Canada)

Formatted: English (Canada)

Formatted: English (Canada)

denoted as "NA." This approach was applied based on soil type and typical literature values: 2.6–2.7 for mineral soils and 1.5 for peat.

Missing values for any variable were consistently applied across marked as "NA" in the dataset to ensure that data from different sources could be integrated smoothly. Additionally, if a variable was reported in one source but absent from another, it was still listed in the corresponding data table, with "NA" filling the gaps for missing entries. This consistent approach ensured that data from various sources could be integrated smoothly. Certain thaw settlement parameters could not be calculated for some of the test results due to an insufficient number of loading steps, which made regression analysis unfeasible. These sample tests were still included in the dataset but had "NA" assigned to the thaw settlement parameters.

Despite these uncertainties/limitations, the dataset provides a valuable foundation for understanding the thaw settlement behaviour of permafrost soils. The steps taken to standardize, verify, and flag data inconsistencies help to mitigate some of the uncertainties inherent in the collected sources, ensuring that the dataset remains robust for further analysis.

In addition to data-related uncertainties, it is important to define the intended scope of application for the dataset and acknowledge its broader limitations. This dataset is designed to support the estimation of thaw strain and the characterization of stress–strain behavior based on the material properties of permafrost soils. It provides standardized parameters and supports the development of empirical tools to facilitate material-level analysis. While thaw strain plays a key role in determining ground deformation, total thaw settlement also depends on the thickness of the thawed layer, which varies with local site conditions and long-term climatic trends. Estimating thaw depth requires thermal modelling or integration with climate-driven projections of permafrost change, which are beyond the scope of this study.

The dataset is intended primarily for inferring the strain-based response derived from material behaviour during thaw. It does not account for coupled hydrological or thermal processes that may influence thaw progression. For example, water infiltration through thawed layers may accelerate the thawing of deeper layers, resulting in more complex ground responses not captured by strain estimates alone.

Nevertheless, the dataset offers a valuable foundation for future work that integrates material-scale behavior with broader climate or geotechnical models. Its standardized format and open-access availability make it suitable for both empirical model development and inclusion in more comprehensive modelling frameworks.

Formatted: English (Canada)

Formatted: English (Canada)

Formatted: English (Canada)

Formatted: English (Canada)

7 Data availability

The original measurements and readings, as extracted from the original sources, are included in a the input directory of the GitHub repository associated with this paper:

GitHub repository: https://github.com/Zucchii/ThawSettlement_DataPaper

The processed and homogenized data, reduced to the necessary variables, are published as the Permafrost Thaw Settlement (PTS) dataset, supporting research on permafrost thaw settlement. The PTS dataset is publicly available on Zenodo: <https://doi.org/10.5281/zenodo.14538524> <https://doi.org/10.5281/zenodo.15192404> (Mohammadi and Hayley, 2024c).

Formatted: Font color: Auto

8 Code availability

The code used for this analysis, written in R (R Core Team, 2023), ~~used for this analysis~~, is available at https://github.com/Zucchi/ThawSettlement_DataPaper, specifically at commit 5678eed.; https://github.com/Zucchi/ThawSettlement_DataPaper/releases/tag/essd-pts-final
This version (essd-pts-final) was used to generate all scripts, figures, and datasets, presented in this paper. The repository also ~~contains links~~ includes a link to the associated dataset archived on Zenodo- (<https://doi.org/10.5281/zenodo.15192404>).

Formatted: Font color: Auto

9 Conclusions

Thaw settlement remains a significant concern for infrastructure stability in permafrost regions, and with the accelerating effects of climate change, it is increasingly crucial to improve our understanding and predictive capabilities regarding this phenomenon. ~~The comprehensive dataset presented in this study, compiled from various published thaw settlement tests, addresses both the scarcity of data and the lack of standardized procedures for conducting such tests. By aggregating and standardizing data from different sources, this study provides a valuable resource for cross-comparing thaw settlement properties across a wide range of permafrost soil types, including fine-grained, coarse-grained, and highly organic soils. This study addresses key challenges in permafrost research by compiling and standardizing thaw settlement data from diverse sources.~~

The dataset compiled in this study addresses key challenges in permafrost research, including the scarcity of data and the lack of standardized procedures for thaw settlement testing. The resulting dataset allows for meaningful comparison of soil behaviour across regions and soil types, serving as a foundation for both tool validation and empirical model development.

The dataset also contributes to enhancing existing empirical tools used to estimate thaw strain from easily measurable index properties. An evaluation of some existing tools using the experimental data in the PTS dataset highlighted the stronger predictive performance of the correlation developed by Nixon and Ladanyi (1978) for estimating thaw strain based on frozen bulk density. Additionally, ~~comparative thaw settlement parameters were derived from idealized~~ by enabling consistent stress-strain curves, offering insights into characterization, the stress-strain behaviour dataset supports improved integration of thawing permafrost. These curves are particularly useful for more accurate ~~thaw settlement data into numerical modelling of the thaw settlement process frameworks. Its open-access availability encourages future work in both research and for adjusting thaw strain estimates under various vertical stresses~~ practice, particularly when used in conjunction with site-specific data.

~~Beyond its immediate applications, the dataset serves as a foundation for future research. It can be used either independently or in conjunction with localized site data to develop new empirical tools or to refine the precision of existing models. The standardized and open-access nature of the dataset further supports the broader scientific community in its efforts to study thaw settlement and its impact on infrastructure.~~

In conclusion, this study contributes a critical resource to the field of permafrost research by offering a homogenized dataset that enhances our understanding of thaw settlement behaviour across different permafrost sediments. The findings are expected

to support more accurate predictions of thaw settlement and contribute to the design and maintenance of resilient infrastructure in permafrost regions, ~~particularly~~especially in the ~~face~~context of a warming climate ~~change~~.

10 Author contribution

695 Zakieh Mohammadi and Jocelyn Hayley conceptualized the study. Zakieh Mohammadi curated the data, performed the formal analysis, developed the methodology, and prepared the original draft of the manuscript. Jocelyn Hayley acquired the funding, supervised the project, and reviewed and edited the manuscript.

11 Competing interests

The authors declare that they have no conflict of interest.

12 Funding Statement

700 This research was funded by PermafrostNet, supported by the Natural Sciences and Engineering Research Council of Canada (NSERC) Strategic Partnership Grant for Networks (Funding Reference No. NETGP 523228-18).

13 Acknowledgements

705 We thank the original data collectors and institutions whose efforts made this dataset possible, including the Arctic Gas Pipeline project (1970s), the Centre for Nordic Studies at Université Laval, and the Yukon Research Centre at Yukon College. We also thank Dr. Simon Dumais for sharing his extracted data on fine-grained soils from the Arctic Gas Pipeline Project, which was used to cross-check and validate portions of the dataset, alongside the broader data extraction and compilation performed for this work.

14 References

- Allard, M., Chiasson, A., St-Amour, A. B., Aubé-Michaud, S., Mathon-Dufour, V., L'Hérault, E., Bilodeau, S., and Deslauriers, C.: Caractérisation géotechnique et cartographie améliorée du pergélisol dans les communautés nordiques du Nunavik, Rapport final. Québec, Centre d'études nordiques, Université Laval, 2020.
- Allard, M., L'Hérault, E., Aubé-Michaud, S., Carbonneau, A. S., Mathon-Dufour, V., B.-St-Amour, A., and Gauthier, S.: Facing the challenge of permafrost thaw in Nunavik communities: innovative integrated methodology, lessons learnt, and recommendations to stakeholders, *Arct Sci*, 9, 657–677, <https://doi.org/10.1139/as-2022-0024>, 2023.
- Andersland, O. B. and Ladanyi, B.: *Frozen ground engineering*, John Wiley & Sons, 2003.
- Aubé-michaud, S., Allard, M., Chiasson, A., St-amour, A. B., Mathon-Dufour, V., L'Hérault, E., Bilodeau, S., and Deslauriers, C.: Caractérisation géotechnique et cartographie améliorée du pergélisol dans les communautés nordiques du Nunavik Ivujivik, Ivujivik, Québec, 112 pp., 2020a.
- Aubé-michaud, S., Chiasson, A., Allard, M., St-amour, A. B., Mathon-Dufour, V., L'Hérault, E., Bilodeau, S., and Deslauriers, C.: Caractérisation géotechnique et cartographie améliorée du pergélisol dans les communautés nordiques du Nunavik, Kangiqsualujuaq, Québec, 121 pp., 2020b.
- [Aydin, O. and Yassikaya, M. Y.: Validity and reliability analysis of the PlotDigitizer software program for data extraction from single-case graphs, *Perspect Behav Sci*, 45, 239–257, 2022.](#)
- Benkert, B., Kennedy, K., Fortier, D., Lewkowicz, A. G., Roy, L.-P., Grandmont, K., de Grandpré, I., McKenna, K. M., and Moote, K.: Dawson City landscape hazards: Geoscience mapping for climate change adaptation planning, 2015a.
- Benkert, B., Fortier, D., Lipovsky, P. S., Lewkowicz, A. G., Roy, L.-P., de Grandpré, I., Grandmont, K., Turner, D. G., Laxton, S., and Moote, K.: Faro Landscape Hazards: Geoscience Mapping for Climate Change Adaptation Planning, 2015b.
- Benkert, B., Fortier, D., Lipovsky, P. S., Lewkowicz, A. G., de Grandpré, I., Grandmont, K., Turner, D. G., Laxton, S., Moote, K., and Roy, L.-P.: Ross River landscape hazards: Geoscience mapping for climate change adaptation planning, 2015c.
- Benkert, B., Kennedy, K., Fortier, D., Lewkowicz, A. G., Roy, L.-P., de Grandpré, I., Grandmont, K., Drukis, S., Colpron, M., and Light, E.: Old Crow landscape hazards: Geoscience mapping for climate change adaptation planning, 2016.
- ~~Canadian Arctic Gas Study Limited. and Northern Engineering Services Company.: Thaw Settlement Test Data, Fort Simpson to Zama Lake, Northern Engineering Services, Calgary, 1977.~~
- Canadian Geotechnical Society: Canadian Foundation Engineering Manual, 5th Edition., Canadian Science Publishing, Vancouver, British Columbia, Canada, 2023.
- Chiasson, A., Allard, M., St-amour, A. B., Mathon-Dufour, V., Aubé-michaud, S., L'Hérault, E., Bilodeau, S., and Deslauriers, C.: Caractérisation géotechnique et cartographie améliorée du pergélisol dans les communautés nordiques du Nunavik, Kangiqsuaq, Québec, 109 pp., 2020a.

Formatted: Indent: Before: 0 cm, Hanging: 0.76 cm, No bullets or numbering

- Chiasson, A., Allard, M., Aubé-michaud, S., St-amour, A. B., Mathon-Dufour, V., L'Hérault, E., Bilodeau, S., and Deslauriers, C.: Caractérisation géotechnique et cartographie améliorée du pergélisol dans les communautés nordiques du Nunavik, Kuujuaq, Québec, 96 pp., 2020b.
- Dumais, S.: Modélisation de la consolidation au dégel à grandes déformations, PhD thesis, Laval University, Québec, Canada, 200 pp., 2019.
- Dumais, S. and Konrad, J.-M.: Framework for thaw consolidation of fine-grained soils, Canadian Geotechnical Journal, 61, 931–944, <https://doi.org/10.1139/cgj-2022-0502>, 2023.
- Dumais, S. and Konrad, J.-M.: Thaw Consolidation Properties of Fine-Grained Permafrost Soils of the Mackenzie Valley, Canada, Journal of Cold Regions Engineering, 38, 04023020, <https://doi.org/10.1061/JCRGEI.CRENG-720>, 2024.
- Hanna, A. J., Saunders, R. J., Lem, G. N., and Carlson, L. E.: Alaska highway gas pipeline project (Yukon) section thaw settlement design approach, ~~11Proceedings of the Fourth International Conference on Permafrost, Washington: National Academy Press~~in: Proceedings of the Fourth International Conference on Permafrost, 1983.
- Harris, S. A., French, H. M., Heginbottom, J. A., Johnston, G. H., Ladanyi, B., Sego, D., and Everdingen, R. O.: Glossary of permafrost and related ground-ice terms, Associate Committee on Geotechnical Research, National Research Council of Canada, Ottawa, 156, 1988.
- Hjort, J., Streletskiy, D., Doré, G., Wu, Q., Bjella, K., and Luoto, M.: Impacts of permafrost degradation on infrastructure, <https://doi.org/10.1038/s43017-021-00247-8>, 1 January 2022.
- Joelle Cayen: canadianmaps: Effortlessly Create Stunning Canadian Map-R package version 1.3.0, <https://CRAN.R-project.org/package=canadianmaps>, 2023.
- Ladanyi, B.: La conception et la réhabilitation des infrastructures de transports en régions nordiques, Études et Recherches en Transport, Ministère des Transports du Québec, Direction des communications, Rapport RTQ-94-07, Montréal, Canada, 1996.
- Lewkowicz, A. G., Wolfe, S. A., Roujanski V., Hoeve, E., O'Neill, H. B., Gruber, S., Roy-Léveillé, P., Brown, N., Koenig, C. E. M., Brooks, H., Rudy, A. C. A., Bonnaventure, P. P., and Paquette, M.: An Illustrated Permafrost Dictionary, <https://doi.org/10.52381/CPA.permafrostdictionary.1>, 2024.
- L'Hérault, E., Allard, M., Barrette, C., Doré, G., and Guimond, A.: Assessment of permafrost conditions and thermal disturbances diagnosis under airfields and access roads to support adaptation strategies to climate warming: case studies from northern Quebec, in: Prog. Fourth Eur. Conf. Perm., Évora, Portugal, 18–21, 2014.
- Luscher, U. and Afifi, S. S.: Thaw Consolidation of Alaskan Silts and Granular Soils, in: Second International Permafrost Conference, 325–334, 1973.
- Mohammadi, Z. and Hayley, J. L.: Estimating Thaw Settlement of Coarse-Grained Permafrost Sediments, Canadian Geotechnical Journal, <https://doi.org/https://doi.org/10.1139/cgj-2023-0492>, 2024a.
- Mohammadi, Z. and Hayley, J. L.: Estimating Thaw Settlement of Highly Organic Permafrost, in: Geo-Congress 2024, 780–790, 2024b.

- Mohammadi, Z. and Hayley, J. L.: Permafrost Thaw Settlement Dataset, (Version 1.2.1), <https://doi.org/10.5281/zenodo.14538524>, October 2024c.
- 775 Nelson, R. A., Luscher, U., Rooney, J. W., and Stramler, A. A.: Thaw Strain Data and Thaw Settlement Prediction for Alaskan Soils, in: Permafrost, 4th Int. Conf., 1983.
- Nixon, J. F. and Ladanyi, B.: Thaw Consolidation, in: Geotechnical Engineering for Cold Regions, edited by: Andersland, O. B. and Anderson, D. M., McGraw-Hill, 1978.
- Nixon, J. F. and Morgenstern, N. R.: The Residual Stress in Thawing Soils, Canadian Geotechnical Journal, 10, 571–580, 780 <https://doi.org/10.1139/t73-053>, 1973.
- Nixon, J. F. and Morgenstern, N. R.: Thaw–Consolidation Tests on Undisturbed Fine-grained Permafrost, Canadian Geotechnical Journal, 11, 202–214, <https://doi.org/10.1139/t74-012>, 1974.
- Northern Engineering Services Company Limited: Thaw-Settlement Test Data, Fort Simpson Area, ~~Calgary~~, 1976.
- Northern Engineering Services Company Limited: Laboratory Testing for Thaw Slope Stability: Discontinuous Permafrost 785 Zone, ~~Calgary~~, 1977a.
- Northern Engineering Services Company Limited: Laboratory Testing Program for Thaw-Slope Stability, Continuous Permafrost Zone, ~~Calgary~~, 1977b.
- Northern Engineering Services Company Limited: Thaw Settlement Studies, Proposed Arctic Gas Pipeline Route: ~~Prepared for Canadian Arctic Gas Study Limited, Calgary~~, 1977c.
- 790 Northern Engineering Services Company Limited: Thaw Settlement Studies, Proposed Arctic Gas Pipeline Route: Prepared for Canadian Arctic Gas Study Limited, Northern Engineering Services ~~Limited~~, Calgary, 1977d.
- ~~Canadian Arctic Gas Study Limited, R-Core Team: R: A Language and Environment for Statistical Computin, <https://www.R-project.org/>, 2023.~~
- 795 ~~and Northern Engineering Services Company.: Thaw-Settlement Test Data, Fort Simpson to Zama Lake, Northern Engineering Services, Calgary, 1977e.~~
- Speer, T. L., Watson, G. H., and Rowley, R. K.: Effects of ground-ice variability and resulting thaw settlements on buried warm-oil pipelines, in: Permafrost: North American Contribution, 746–752, 1973.
- St-amour, A. B., Allard, M., Chiasson, A., Aubé-michaud, S., Mathon-Dufour, V., L’Hérault, E., Bilodeau, S., and Deslauriers, C.: Caractérisation géotechnique et cartographie améliorée du pergélisol dans les communautés nordiques du Nunavik, 800 Inukjuak, Québec, 112 pp., 2020.
- Tsytoich, N. A.: Bases and foundations on frozen soil, National Academy of Sciences, National Research Council, 1960.
- Wang, Y., Way, R. G., Beer, J., Forget, A., Tutton, R., and Purcell, M. C.: Significant underestimation of peatland permafrost along the Labrador Sea coastline in northern Canada, Cryosphere, 17, 63–78, 2023.
- Watson, G. H., Slusarchuk, W., and Rowley, R. K.: Determination of some frozen and thawed properties of permafrost soils, 805 Canadian Geotechnical Journal, 10, 592–606, 1973a.

Watson, G. H., Rowley, R. K., and Slusarchuk, W.: Performance of warm-oil pipeline buried in permafrost, in: North American Contribution to the 2nd International Conference on Permafrost, 759–766, 1973b.

Yao, X., Qi, J., Liu, M., and Yu, F.: Pore Water Pressure Distribution and Dissipation During Thaw Consolidation, *Transp Porous Media*, 116, 435–451, <https://doi.org/10.1007/s11242-016-0782-z>, 2017.

Appendix A: Supplementary Information and Data

Zakieh Mohammadi¹, Jocelyn L. Hayley¹

815 ¹ Department of Civil Engineering, University of Calgary, Calgary, T2N 1N4, Canada
Correspondence to: Zakieh Mohammadi (seyedehzakieh.mohamm@ucalgary.ca)

820 **List of Symbols and Nomenclature in the Manuscript**

Symbol	Represents	Unit
COV	Coefficient of Variation	%
C_U	Coefficient of uniformity	1
a_0	Coefficient of volume compressibility	% per kPa
C_c^*	Compression index of thawed soil	1
S_r	Degree of saturation	%
ρ_w	Density of water	kg/m ³
ρ_f	Frozen bulk density	kg/m ³
e_f	Frozen void ratio	1
w	Gravimetric water content	%
e_i^*	Initial thawed void ratio	1
D_{50}	Median particle size	mm
n	Porosity	1
σ'_0	Residual stress	kPa
$RMSD$	Root Mean Square Deviation	Same as the unit of data
H_f	Sample height at the frozen state	mm
$H_{\sigma_v}^*$	Sample height at the thawed state at a vertical stress of σ_v	mm
SD	Standard deviation	Same as the unit of data
A_{n-i}	Soil-specific coefficients for the Nelson's method	Unitless
G_s	Soil's specific gravity	1
$\varepsilon_{\sigma_v}^*$	Thaw strain at a vertical stress of σ_v	%
A_0	Thaw strain parameter	%
ε_{pc}	Thaw strain component attributed to phase change	%
ε_{ew}	Thaw strain component attributed to expulsion of excess water	%
ε_{sc}	Thaw strain component attributed to soil compression	%
σ_{v-th}	Threshold vertical stress	kPa
e_{th}^*	Threshold thawed void ratio	1
$e_{\sigma_v}^*$	Thawed void ratio at a vertical stress of σ_v	1
θ	Volumetric water content	%
σ_v	Vertical stress	kPa

Note: In the symbols, an asterisk (*) as a superscript denotes the thawed state, the letter *f* as a subscript indicates the frozen state, and *th* as a subscript signifies threshold values.

An Overview of the Permafrost Thaw Settlement (PTS) Dataset

- 825 The PTS dataset comprises several files, each serving a distinct purpose:
- **borehole_locations_and_sources.csv**: This file contains geographic coordinates and source references for test results on samples collected from each borehole location.
 - **particle_size_distribution.csv**: This file contains particle size distribution for samples, provided it was included in the original sources.
 - **thaw_settlement_test_results.csv**: This file contains the results of thaw settlement tests conducted on various permafrost samples. Each row corresponds to a one loading step on a sample, detailing the applied vertical stress, deformation measurements, strain, and void ratio during that specific loading step.
 - **sample_details_with_derived_parameters.csv**: This file provides detailed properties of each sample, including both basic properties and comparative parameters derived from the test results. It serves as a comprehensive summary of the physical and mechanical characteristics of the samples.
- 830
- 835

For a detailed description of the variables included in the PTS dataset, please refer to the accompanying README.txt file. This document provides comprehensive explanations of each variable, along with their corresponding units. The variable names in the PTS dataset follow a structured naming convention, incorporating descriptors as outlined in Table A.1. These descriptors help distinguish between various types of values, such as initial and final measurements, reported and calculated values (derived from analyses conducted by the author), assumed values, and typical values.

840

Table A. 1: Descriptors added to variable names in the PTS dataset

Descriptor	Represents	Example of variable names	Explanation
init	Initial	gravimetric_wc_init, sample_volume_init	Used to mark the initial properties of the sample prior to the thaw settlement test.
ave	Average	sample_diameter_ave_or_typ	Represents the average value calculated from multiple measurements.
fin	Final	gravimetric_wc_fin	Used to mark the properties measured after the completion of the thaw settlement test.
rep	Reported	frozen_bulk_density_rep,	Values included as they were reported in the original sources, in contrast to those calculated or re-calculated in this study.
asm	Assumed	solid_grain_density_rep_or_asm	Used when a value was assumed for a property rather than measured.
calc	Calculated	frozen_dry_density_calc, frozen_void_ratio_calc	Values that have been calculated based on measurements or other input data.
typ	Typical	sample_height_ave_or_typ, sample_diameter_ave_or_typ	Marks typical values, such as the typical sample diameter, which corresponds to the diameter of the odometer cell rather than the measured value for each sample.

Visual Description of Soil and Ground Ice

The Unified Soil Classification System (USCS) or modified adaptations of this system were used to visually assess and classify samples in the original sources. Specifically, an adaptation of the USCS was employed to classify and describe samples in the NESCL reports. For detailed procedures regarding the description of soil samples, refer to the Geotechnical Data Report for the Proposed Arctic Gas Pipeline - Cross Delta Alternative (NESCL 1975).

For data sourced from NESCL reports, the ground ice descriptions were extracted from borehole logs and incorporated into the PTS dataset. This classification adhered to the NRC 7576 guidelines, categorizing ground ice into three major classes based on visual examination: non-visible (N class), visible (V class), and visible ice greater than one inch thick (ICE class). Table A.4 outlines the subgroup symbols used within each category along with their general descriptions as specified in the NRC 7576 guidelines.

Table A. 2: Ground ice classification symbols and descriptions based on visual examination following the NRC 7576 guideline

Category	Group Symbol	Subgroup Symbol	Description
Non-Visible	N	Nf	Poorly bonded or friable frozen soil.
		Nbn	Well bounded frozen soil with no excess ice.
		Nbe	Well bounded frozen soil with excess ice. Free water present when thawed.
Visible ice less than one inch tick	V	Vx	Individual ice crystals or inclusions.
		Vc	Ice coatings on particles.
		Vr	Random or irregularly oriented ice formations.
		Vs	Stratified or distinctly oriented ice formation.
Visible ice greater than one inch thick	ICE	ICE + "Soil Type"	Ice greater than one inch thick with soil inclusions.
		ICE	Ice greater than one inch thick without soil inclusions.

Homogenizing Thaw Settlement Test Results in the PTS Dataset

The test results in the original sources were reported in various formats. To homogenize these results, the following procedures were applied.

In cases where both the initial sample height and vertical deformation during each loading step were provided, thaw strain and void ratio were calculated using the following equations:

$$\varepsilon_{\sigma_v}^* = \frac{H_f - H_{\sigma_v}^*}{H_f} \times 100 \quad (\text{A.1})$$

$$e_{\sigma_v}^* = e_f - \varepsilon_{\sigma_v}^* (1 + e_f) \quad (\text{A.2})$$

860 Where H_f is the initial sample height at frozen state, and $H_{\sigma_v}^*$ is the height of thawed sample at vertical stress of σ_v .

In instances where only the void ratios or thaw strains at each vertical stress were reported, the missing variable for each loading step was derived using the following equation:

$$\varepsilon_{\sigma_v}^* = \frac{e_f - e_{\sigma_v}^*}{1 + e_f} \quad (\text{A.3})$$

865 Where $\varepsilon_{\sigma_v}^*$ is thaw strain measured at vertical stress of σ_v , $e_{\sigma_v}^*$ is thawed void ratio at vertical stress of σ_v , and e_f is the frozen void ratio.

To incorporate this information into the dataset, a variable, **reported_test_result_type**, was added to the PTS dataset. This variable differentiates between values that were directly reported and those derived through conversion from one variable to another. The following values were used to differentiate between various cases:

- **delta_h-sigma_v**: Deformation measurements and initial sample dimensions are available; used to obtain thaw strain and void ratio for each loading step.
- **e-sigma_v**: Test results were reported as void ratio against vertical stress; Eq. (A.2) was applied to derive thaw strain based on void ratios.
- **strain-sigma_v**: Test results were reported as thaw strain against vertical stress; Eq. (A.3) was applied to derive void ratio based on thaw strain.
- **e-sigma_v & strain-sigma_v**: Both void ratio and thaw strain at each loading step were reported in the original sources. Checks were conducted to ensure compatibility; in the case of discrepancies, test result was flagged.

Derivations of Various Thaw Stain Components

880 The idealized void ratio-vertical stress relationship (as depicted in Figure 2.b) was used to differentiate various thaw strain components, such as phase change, drainage of excess water, and compression of thawed soil, all contributing to the total thaw strain under a given applied vertical stress.

The portion of thaw strain attributed to phase change (ε_{pc}) can be calculated using the following equation:

$$\varepsilon_{pc}(\%) = \frac{e_f - e_i^*}{1 + e_f} \times 100 \quad (\text{A.4})$$

Where e_f is the frozen void ratio, and e_i^* denotes the initial thawed void ratio. Given that $e_i^* = \frac{e_f}{1.09}$, Eq. (2) can be simplified to:

$$\varepsilon_{pc}(\%) = \frac{e_f - 0.917 \times e_f}{1 + e_f} \times 100 \quad (\text{A.5})$$

The portion of thaw strain attributed to the expulsion of excess water (ε_{ew}) can be estimated using following equation:

$$\varepsilon_{ew}(\%) = \frac{e_i^* - e_{th}^*}{1 + e_f} \times 100 \quad (\text{A.6})$$

Where e_f is the frozen void ratio, and e_i^* denotes the initial void ratio after thawing. Given that $e_i^* = \frac{e_f}{1.09}$, Eq. (4) can be simplified to:

$$\varepsilon_{ew}(\%) = \frac{0.917 \times e_f - e_{th}^*}{1 + e_f} \times 100 \quad (\text{A.7})$$

Since, for ice-poor samples, $e_i^* = e_{th}^*$, this portion is zero for the samples classified as ice-poor.

The portion of thaw strain attributed to soil compression (ε_{sc}) at any given vertical stress can be calculated using the following equation:

$$\varepsilon_{sc}(\%) = \frac{C_c^* \times \log_{10} \left(\frac{\sigma_v - t_h}{\sigma_v} \right)}{1 + e_f} \times 100 \quad (\text{A.8})$$

Where e_f is the frozen void ratio, and C_c^* denotes the compression index of thawed soil, σ_{v-th} is the threshold vertical stress marking the initiation of soil's compression during each test, and σ_v is the vertical stress. For each thaw settlement test, various components of thaw strain were calculated to provide insight into the contribution of each to the total thaw strain. A vertical pressure of 100 kPa was applied to determine the portion of thaw strain attributed to soil compression and total thaw strain. Figure A.1 presents box plots of each component and the total thaw strain for two groups of samples—ice-poor and ice-rich—while comparing three main soil groups.

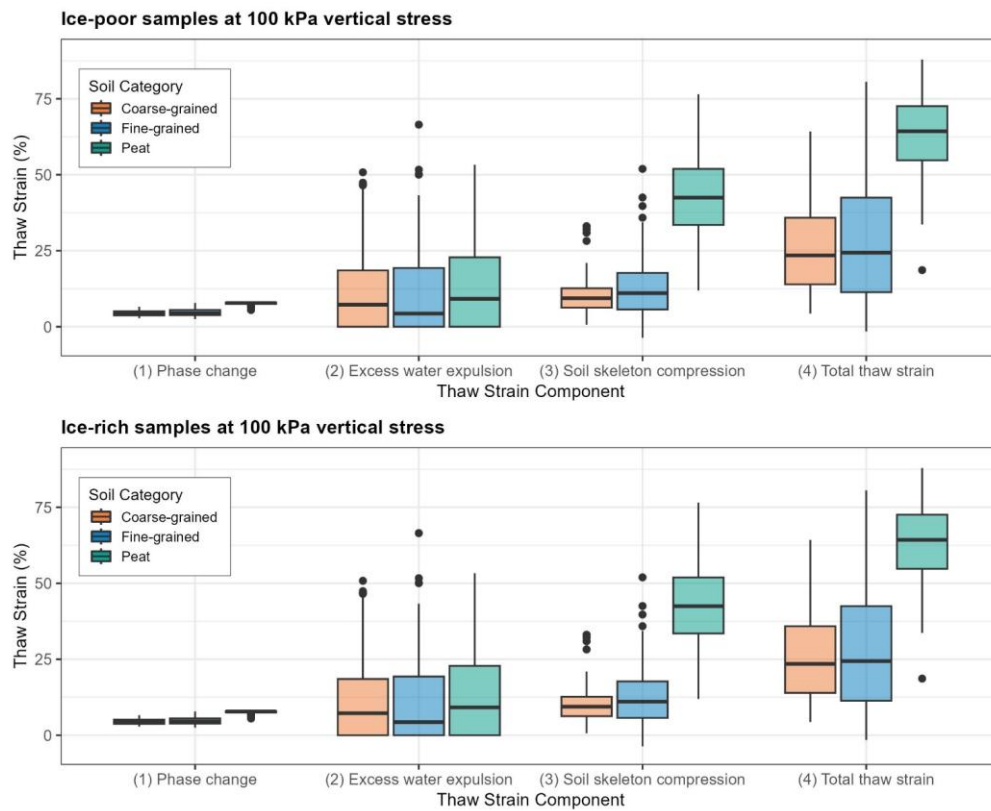


Figure A. 1: Box plots showing the distribution of thaw strain components in ice-poor and ice-rich samples, with a comparison between three main soil groups in the PTS dataset