

Distribution and Characteristics of Lightning-Ignited Wildfires in Boreal Forests - the BoLTFire database

Brittany Engle¹, Ivan Bratov², Morgan A. Crowley³, Yanan Zhu⁴, Cornelius Senf¹

¹Technical University of Munich, School of Life Sciences, Earth Observation for Ecosystem Management, Freising, Germany
²Technical University of Munich, School of Engineering and Design, Architectural Informatics, Munich, Germany
³Canadian Forest Service (Great Lakes Forestry Centre), Natural Resources Canada, Sault Sainte Marie, Ontario, Canada
⁴Advanced Environmental Monitoring (AEM), Germantown, Maryland, USA

Correspondence to: Brittany Engle (Brittany.Engle@tum.de)

Abstract. The frequency and severity of fire weather has been projected to increase under climate change, particularly in high-latitude boreal forests. Lightning, a key ignition source globally, is also expected to become more frequent with climate change and could significantly increase burn area. Current research on lightning-ignited wildfires (LIW) has a long history in boreal ecosystems but has typically focused on North America due to better data availability, while the lack of publicly available data for Eurasia has hindered our comprehensive understanding of important characteristics of LIW, such as holdover time, lightning-ignition efficiency, frequency, and spatial distribution of lightning-ignited wildfires in boreal forests. This study introduces the Temporal Minimum Distance (TMin) method, a novel approach to matching lightning strikes with wildfires without requiring ignition location, that outperformed current methodologies. As a result, we developed a comprehensive dataset of lightning-ignited wildfires across the entire boreal forest from 2012 to 2022, encompassing 6,902 fires — 4,201 in Eurasia and 2,701 in North America — each over 200 hectares in size. This dataset provides new opportunities to model ignition and spread dynamics of boreal wildfires and offers deeper insights into lightning-driven fire activity globally.

1. Introduction

Forest fires are the primary disturbance agent in global boreal forests, burning an estimated 10-15 million ha each year on average across Siberia, Canada, and Alaska (Flannigan et al., 2009). Boreal fires play a crucial role in shaping boreal forest composition and structure (Podur et al., 2003), and they also have a significant impact on the global carbon cycle (Stocks et al., 2001). The global boreal forests house roughly 32 % of terrestrial carbon stocks (Pan et al., 2011) and are considered to be globally important carbon sinks. However, due to the observed and predicted increases in temperatures in high latitudes (Melillo et al., 2014; Natali et al., 2019; Post et al., 2019; Soja et al., 2007), thawing of the permafrost, increase in vegetation stress due to drought, and an increase in fire frequency and burned area (Gillett et al., 2004; Flannigan et al., 2009), there is concern that boreal forests could be pushed to be a net positive carbon source (Watts et al., 2023 and references therein). Since at least 2000, carbon dioxide emissions from boreal forest fires have been on the rise, reaching a record high in 2021, where

Style Definition: Default Paragraph Font

Formatted: Font: +Headings (Times New Roman)

Formatted: Font: +Headings (Times New Roman), Font color: Auto

Formatted: Font: +Headings (Times New Roman)

Deleted: have increased

Formatted: Font: +Headings (Times New Roman)

Deleted: 228

Deleted: 186

Formatted: Font: +Headings (Times New Roman), Font color: Text 1

Formatted: Font: +Headings (Times New Roman), Font color: Text 1

Formatted: Font: +Headings (Times New Roman), Font color: Text 1

Deleted: 042

Formatted: Font: +Headings (Times New Roman), Font color: Text 1

Formatted: Font: +Headings (Times New Roman)

Formatted: Font: +Headings (Times New Roman), Font color: Auto

Formatted: Font: +Headings (Times New Roman)

35 they contributed to 23 % of global wildfire carbon dioxide emissions, a significant increase from the historical average of 10 % (Zheng et al., 2023). Additionally, Black carbon from boreal forest fires contributes to increased pollution levels in the Arctic (Bond et al., 2013; Lavoué et al., 2000; Stohl, 2006) and could accelerate losses of snow and ice (Hansen and Nazarenko, 2004). Kim et al.'s (2005) findings indicate, for example, that black carbon aerosols (soot) are rapidly transported from central Alaska to the Arctic Ocean, as well as to glaciers in southern Alaska, where up to 20 % of these aerosols may be deposited, 40 changing the albedo and possibly increase the melting of the arctic. All in all, increasing forest fires will challenge the boreal carbon sink and it is thus essential to understand global distribution and trends in boreal forest fires.

One of the major processes underlying the observed increase in forest fires in boreal regions is a notable rise in the frequency and intensity of fire weather, a trend that is projected to worsen with global warming (Hessilt et al., 2022; Jones et al., 2022). 45 This trend in fire weather frequency has already led to approximately 50 % increases in burned area between 2001–2019 in certain extratropical forest ecoregions, such as the Pacific US and high-latitude forests, with an expected increase in forest fire activity and severity in some higher-latitude regions (De Groot et al., 2013; Descals et al., 2022; Flannigan et al., 2000; Stocks et al., 1998; Zheng et al., 2023). Yet, for a forest to burn there needs to be a source of ignition, with lightning being a key source of wildfire ignition in boreal forests (Gao et al., 2024; Moris et al., 2020; Pérez-Invernón et al., 2023; Sofronov et al., 50 1998; Veraverbeke et al., 2017). Lightning-ignited wildfires are a significant cause of burn area in boreal forests (Hanes et al., 2019; Kasischke et al., 2002; Nash and Johnson, 1996; Veraverbeke et al., 2017), and they are more difficult to detect, suppress and extinguish than human-caused fires (Flannigan and Wotton, 1991; Kourtz and Todd, 1991; Podur et al., 2003; Wotton and Martell, 2005). Under the influence of climate change, the scale and occurrence of lightning-ignited wildfires in boreal forests are projected to increase significantly. Janssen et al. (2023), for instance, estimated that 77 % of the burned areas in 55 extratropical intact forests are attributable to lightning, with lightning occurrences projected to increase by 11 % to 31 % for each degree of warming. Additionally, Krause et al. (2014) suggest a potential 21.3 % rise in cloud-to-ground lightning activity by the end of the century under the RCP8.5 scenario, potentially doubling the burned area in high-latitude regions. That said, the lightning-ignition efficiency, i.e. the number of fires ignited per lightning, can differ significantly by region and land cover (Podur et al., 2003). Lightning storms can also result in concentrated clusters of large numbers of fires (Flannigan and Wotton, 60 1991; Kourtz and Todd, 1991; Podur et al., 2003; Woolford et al., 2021) and lightning-ignited wildfires can smoulder for long periods of time before igniting fully, in what is referred to as the holdover time (time between fire ignition and detection; Flannigan and Wotton, 1991; Wotton and Martell, 2005). Holdover time presents a true challenge for real-time lightning-ignited wildfire detection in boreal forests. They are still not fully understood and likely depend heavily on initial detection and ignition characteristics. Their duration can vary heavily, with some literature suggesting up to around a week (Anderson, 65 2002; Flannigan and Wotton, 1991; Moris et al., 2023), while others suggest they can last up to a few weeks in boreal forests (Moris et al., 2023; Nash and Johnson, 1996; Scholten et al., 2021; Wotton and Martell, 2005). From an Eurasian perspective, when reviewing lightning ignition in the boreal forests of northeast China, Gao et al. (2024) found that close to 80% of LIW occurred within 1km of the igniting lightning and within 24 hours; while Moris et al.'s (2023) analysis of Xu et al.'s (2022)

Deleted: Scholten et al.

70 LIW data in eastern Siberia shows a maximum holdover time of 8 days, with most occurring in 24-48 hours. Conversely, from
a North American perspective, Scholten et al., (2021) reported that fire managers in Alaska and Canada have started reporting
extreme holdover times, where fires “hibernate” over winter (up to seven or eight months) only to re-emerge the following fire
season as “overwintering fires.” The spatial distribution, characteristics and potentially complex interactions of lightning-
ignited wildfires in boreal forests are thus not fully understood, partly due to a lack of global data on lightning-ignited fires.

75 Recent advancements in remote sensing and lightning location systems have significantly enhanced our understanding of
lightning-ignited wildfires. More specifically, the precise geolocation of lightning paired with spatially explicit information on
wildfires allows us to better distinguish lightning from human-caused ignitions by matching wildfire and lightning location
data (Larjavaara et al., 2005; Nash and Johnson, 1996; Wotton and Martell, 2005). Current methods search for the most likely
80 individual lightning event based on its temporal and spatial distance to the fire’s ignition point. These methods use a buffer
area around the ignition point and a backward temporal window to account for location and holdover time and typically stem
from Larjavaara et al.’s (2005) proximity index: a spatio-temporal index to match candidate lightning to fires using holdover
time (t) and spatial distance (S). Unfortunately, it is currently not possible to use these methodologies to definitively identify
- with absolute certainty - that a fire was ignited by lightning. Testing the effectiveness of some of these variations, Moris et
85 al. (2020) found that the Maximum Index A (MaxA; Pineda et al., 2014) and the Daily Minimum Distance (DMin; Schultz et
al., 2019) produced a high match between candidate lightning (lightning that was most likely to start the ignition) and the
ignition, as well as the lowest values of distance and holdover time (ex: MaxA within a 10 km radius and a 14-day holdover
time to be highly effective, with 80 % of fires detected within 3 days). However, these existing methodologies rely on the
availability of ignition point locations, which are often absent in datasets produced without input from local fire and forest
90 authorities. Most research on lightning-ignited wildfires has thus been conducted in North America, where fire point and
polygon datasets are available from the Canadian National Fire Database (Canadian Forest Service, 2024) and the Bureau of
Land Management’s Alaska Fire Service (U.S. Department of the Interior, Bureau of Land Management, Alaska Fire Service,
2024a and b). Both datasets include key information such as fire start and end date and ignition cause and location, (Table 3A).
Unfortunately, at this time, there are no other publicly available agency datasets within the boreal biome that provide this
95 crucial information. Both existing products are built upon local context and knowledge provided by forest authorities and
personnel, which is not reproducible on a global scale. Although global remote sensing-based burned pixel datasets do exist,
such as Collection 6 MCD64A1 burned area (Giglio et al., 2018), and FIRECCI5 (Lizundia-Loiola et al., 2020) - as well as
global remote-sensing based fire patch datasets - such as FRY (Laurent et al., 2018) - they lack ignition location and cause.
Consequently, a comprehensive pan-boreal forest lightning-ignited wildfire dataset does not currently exist.

100 Here, we introduce the pan-boreal forest lightning-ignited wildfire dataset (BoLtFire), an Earth-observation-based database on
lightning-ignited wildfire across global boreal forests. Our database overcomes challenges with existing methods by

Formatted: Font: +Headings (Times New Roman)

Formatted: Font: +Headings (Times New Roman)

Deleted: Variations of lightning and wildfire matching methodologies are used often in scientific literature and have been implemented on a local, regional, and global scale; a few case studies specifically from a boreal perspective include: Finland (Larjavaara et al., 2005), northeastern China (Gao et al., 2024), North America (Hessilt et al., 2022; Nash and Johnson, 1996), and Siberia (Xu et al., 2022).

Formatted: Font: +Headings (Times New Roman)

Formatted: Font: +Headings (Times New Roman)

Formatted: Font: +Headings (Times New Roman)

Formatted: Font: +Headings (Times New Roman)

Deleted: &

Deleted: .

Formatted: Font: +Headings (Times New Roman)

Formatted: Font: +Headings (Times New Roman)

Formatted: Font: +Headings (Times New Roman)

Deleted: :

Deleted: wildfire

Deleted: like

Formatted: Font: +Headings (Times New Roman)

Formatted: Font: +Headings (Times New Roman)

Deleted:), FRY (Laurent et al., 2018),

Deleted:),

Formatted: Font: +Headings (Times New Roman)

Formatted: Font: +Headings (Times New Roman)

Formatted: Font: +Headings (Times New Roman)

Deleted:

Formatted: Font: +Headings (Times New Roman)

introducing a new methodology specifically designed for detecting lightning-ignited wildfires in boreal forests and without exact ignition location. More specifically, the objectives of our study were to:

- 120
- 125
- 130
- 135
- 140
- 145
- 146
- 147
- 148
- 149
- 150
- 151
- 152
- 153
- 154
- 155
- 156
- 157
- 158
- 159
- 160
- 161
- 162
- 163
- 164
- 165
- 166
- 167
- 168
- 169
- 170
- 171
- 172
- 173
- 174
- 175
- 176
- 177
- 178
- 179
- 180
- 181
- 182
- 183
- 184
- 185
- 186
- 187
- 188
- 189
- 190
- 191
- 192
- 193
- 194
- 195
- 196
- 197
- 198
- 199
- 200
- 201
- 202
- 203
- 204
- 205
- 206
- 207
- 208
- 209
- 210
- 211
- 212
- 213
- 214
- 215
- 216
- 217
- 218
- 219
- 220
- 221
- 222
- 223
- 224
- 225
- 226
- 227
- 228
- 229
- 230
- 231
- 232
- 233
- 234
- 235
- 236
- 237
- 238
- 239
- 240
- 241
- 242
- 243
- 244
- 245
- 246
- 247
- 248
- 249
- 250
- 251
- 252
- 253
- 254
- 255
- 256
- 257
- 258
- 259
- 260
- 261
- 262
- 263
- 264
- 265
- 266
- 267
- 268
- 269
- 270
- 271
- 272
- 273
- 274
- 275
- 276
- 277
- 278
- 279
- 280
- 281
- 282
- 283
- 284
- 285
- 286
- 287
- 288
- 289
- 290
- 291
- 292
- 293
- 294
- 295
- 296
- 297
- 298
- 299
- 300
- 301
- 302
- 303
- 304
- 305
- 306
- 307
- 308
- 309
- 310
- 311
- 312
- 313
- 314
- 315
- 316
- 317
- 318
- 319
- 320
- 321
- 322
- 323
- 324
- 325
- 326
- 327
- 328
- 329
- 330
- 331
- 332
- 333
- 334
- 335
- 336
- 337
- 338
- 339
- 340
- 341
- 342
- 343
- 344
- 345
- 346
- 347
- 348
- 349
- 350
- 351
- 352
- 353
- 354
- 355
- 356
- 357
- 358
- 359
- 360
- 361
- 362
- 363
- 364
- 365
- 366
- 367
- 368
- 369
- 370
- 371
- 372
- 373
- 374
- 375
- 376
- 377
- 378
- 379
- 380
- 381
- 382
- 383
- 384
- 385
- 386
- 387
- 388
- 389
- 390
- 391
- 392
- 393
- 394
- 395
- 396
- 397
- 398
- 399
- 400
- 401
- 402
- 403
- 404
- 405
- 406
- 407
- 408
- 409
- 410
- 411
- 412
- 413
- 414
- 415
- 416
- 417
- 418
- 419
- 420
- 421
- 422
- 423
- 424
- 425
- 426
- 427
- 428
- 429
- 430
- 431
- 432
- 433
- 434
- 435
- 436
- 437
- 438
- 439
- 440
- 441
- 442
- 443
- 444
- 445
- 446
- 447
- 448
- 449
- 450
- 451
- 452
- 453
- 454
- 455
- 456
- 457
- 458
- 459
- 460
- 461
- 462
- 463
- 464
- 465
- 466
- 467
- 468
- 469
- 470
- 471
- 472
- 473
- 474
- 475
- 476
- 477
- 478
- 479
- 480
- 481
- 482
- 483
- 484
- 485
- 486
- 487
- 488
- 489
- 490
- 491
- 492
- 493
- 494
- 495
- 496
- 497
- 498
- 499
- 500
- 501
- 502
- 503
- 504
- 505
- 506
- 507
- 508
- 509
- 510
- 511
- 512
- 513
- 514
- 515
- 516
- 517
- 518
- 519
- 520
- 521
- 522
- 523
- 524
- 525
- 526
- 527
- 528
- 529
- 530
- 531
- 532
- 533
- 534
- 535
- 536
- 537
- 538
- 539
- 540
- 541
- 542
- 543
- 544
- 545
- 546
- 547
- 548
- 549
- 550
- 551
- 552
- 553
- 554
- 555
- 556
- 557
- 558
- 559
- 560
- 561
- 562
- 563
- 564
- 565
- 566
- 567
- 568
- 569
- 570
- 571
- 572
- 573
- 574
- 575
- 576
- 577
- 578
- 579
- 580
- 581
- 582
- 583
- 584
- 585
- 586
- 587
- 588
- 589
- 590
- 591
- 592
- 593
- 594
- 595
- 596
- 597
- 598
- 599
- 600
- 601
- 602
- 603
- 604
- 605
- 606
- 607
- 608
- 609
- 610
- 611
- 612
- 613
- 614
- 615
- 616
- 617
- 618
- 619
- 620
- 621
- 622
- 623
- 624
- 625
- 626
- 627
- 628
- 629
- 630
- 631
- 632
- 633
- 634
- 635
- 636
- 637
- 638
- 639
- 640
- 641
- 642
- 643
- 644
- 645
- 646
- 647
- 648
- 649
- 650
- 651
- 652
- 653
- 654
- 655
- 656
- 657
- 658
- 659
- 660
- 661
- 662
- 663
- 664
- 665
- 666
- 667
- 668
- 669
- 670
- 671
- 672
- 673
- 674
- 675
- 676
- 677
- 678
- 679
- 680
- 681
- 682
- 683
- 684
- 685
- 686
- 687
- 688
- 689
- 690
- 691
- 692
- 693
- 694
- 695
- 696
- 697
- 698
- 699
- 700
- 701
- 702
- 703
- 704
- 705
- 706
- 707
- 708
- 709
- 710
- 711
- 712
- 713
- 714
- 715
- 716
- 717
- 718
- 719
- 720
- 721
- 722
- 723
- 724
- 725
- 726
- 727
- 728
- 729
- 730
- 731
- 732
- 733
- 734
- 735
- 736
- 737
- 738
- 739
- 740
- 741
- 742
- 743
- 744
- 745
- 746
- 747
- 748
- 749
- 750
- 751
- 752
- 753
- 754
- 755
- 756
- 757
- 758
- 759
- 760
- 761
- 762
- 763
- 764
- 765
- 766
- 767
- 768
- 769
- 770
- 771
- 772
- 773
- 774
- 775
- 776
- 777
- 778
- 779
- 780
- 781
- 782
- 783
- 784
- 785
- 786
- 787
- 788
- 789
- 790
- 791
- 792
- 793
- 794
- 795
- 796
- 797
- 798
- 799
- 800
- 801
- 802
- 803
- 804
- 805
- 806
- 807
- 808
- 809
- 810
- 811
- 812
- 813
- 814
- 815
- 816
- 817
- 818
- 819
- 820
- 821
- 822
- 823
- 824
- 825
- 826
- 827
- 828
- 829
- 830
- 831
- 832
- 833
- 834
- 835
- 836
- 837
- 838
- 839
- 840
- 841
- 842
- 843
- 844
- 845
- 846
- 847
- 848
- 849
- 850
- 851
- 852
- 853
- 854
- 855
- 856
- 857
- 858
- 859
- 860
- 861
- 862
- 863
- 864
- 865
- 866
- 867
- 868
- 869
- 870
- 871
- 872
- 873
- 874
- 875
- 876
- 877
- 878
- 879
- 880
- 881
- 882
- 883
- 884
- 885
- 886
- 887
- 888
- 889
- 890
- 891
- 892
- 893
- 894
- 895
- 896
- 897
- 898
- 899
- 900
- 901
- 902
- 903
- 904
- 905
- 906
- 907
- 908
- 909
- 910
- 911
- 912
- 913
- 914
- 915
- 916
- 917
- 918
- 919
- 920
- 921
- 922
- 923
- 924
- 925
- 926
- 927
- 928
- 929
- 930
- 931
- 932
- 933
- 934
- 935
- 936
- 937
- 938
- 939
- 940
- 941
- 942
- 943
- 944
- 945
- 946
- 947
- 948
- 949
- 950
- 951
- 952
- 953
- 954
- 955
- 956
- 957
- 958
- 959
- 960
- 961
- 962
- 963
- 964
- 965
- 966
- 967
- 968
- 969
- 970
- 971
- 972
- 973
- 974
- 975
- 976
- 977
- 978
- 979
- 980
- 981
- 982
- 983
- 984
- 985
- 986
- 987
- 988
- 989
- 990
- 991
- 992
- 993
- 994
- 995
- 996
- 997
- 998
- 999
- 1000
- 1001
- 1002
- 1003
- 1004
- 1005
- 1006
- 1007
- 1008
- 1009
- 1010
- 1011
- 1012
- 1013
- 1014
- 1015
- 1016
- 1017
- 1018
- 1019
- 1020
- 1021
- 1022
- 1023
- 1024
- 1025
- 1026
- 1027
- 1028
- 1029
- 1030
- 1031
- 1032
- 1033
- 1034
- 1035
- 1036
- 1037
- 1038
- 1039
- 1040
- 1041
- 1042
- 1043
- 1044
- 1045
- 1046
- 1047
- 1048
- 1049
- 1050
- 1051
- 1052
- 1053
- 1054
- 1055
- 1056
- 1057
- 1058
- 1059
- 1060
- 1061
- 1062
- 1063
- 1064
- 1065
- 1066
- 1067
- 1068
- 1069
- 1070
- 1071
- 1072
- 1073
- 1074
- 1075
- 1076
- 1077
- 1078
- 1079
- 1080
- 1081
- 1082
- 1083
- 1084
- 1085
- 1086
- 1087
- 1088
- 1089
- 1090
- 1091
- 1092
- 1093
- 1094
- 1095
- 1096
- 1097
- 1098
- 1099
- 1100
- 1101
- 1102
- 1103
- 1104
- 1105
- 1106
- 1107
- 1108
- 1109
- 1110
- 1111
- 1112
- 1113
- 1114
- 1115
- 1116
- 1117
- 1118
- 1119
- 1120
- 1121
- 1122
- 1123
- 1124
- 1125
- 1126
- 1127
- 1128
- 1129
- 1130
- 1131
- 1132
- 1133
- 1134
- 1135
- 1136
- 1137
- 1138
- 1139
- 1140
- 1141
- 1142
- 1143
- 1144
- 1145
- 1146
- 1147
- 1148
- 1149
- 1150
- 1151
- 1152
- 1153
- 1154
- 1155
- 1156
- 1157
- 1158
- 1159
- 1160
- 1161
- 1162
- 1163
- 1164
- 1165
- 1166
- 1167
- 1168
- 1169
- 1170
- 1171
- 1172
- 1173
- 1174
- 1175
- 1176
- 1177
- 1178
- 1179
- 1180
- 1181
- 1182
- 1183
- 1184
- 1185
- 1186
- 1187
- 1188
- 1189
- 1190
- 1191
- 1192
- 1193
- 1194
- 1195
- 1196
- 1197
- 1198
- 1199
- 1200
- 1201
- 1202
- 1203
- 1204
- 1205
- 1206
- 1207
- 1208
- 1209
- 1210
- 1211
- 1212
- 1213
- 1214
- 1215
- 1216
- 1217
- 1218
- 1219
- 1220
- 1221
- 1222
- 1223
- 1224
- 1225
- 1226
- 1227
- 1228
- 1229
- 1230
- 1231
- 1232
- 1233
- 1234
- 1235
- 1236
- 1237
- 1238
- 1239
- 1240
- 1241
- 1242
- 1243
- 1244
- 1245
- 1246
- 1247
- 1248
- 1249
- 1250
- 1251
- 1252
- 1253
- 1254
- 1255
- 1256
- 1257
- 1258
- 1259
- 1260
- 1261
- 1262
- 1263
- 1264
- 1265
- 1266
- 1267
- 1268
- 1269
- 1270
- 1271
- 1272
- 1273
- 1274
- 1275
- 1276
- 1277
- 1278
- 1279
- 1280
- 1281
- 1282
- 1283
- 1284
- 1285
- 1286
- 1287
- 1288
- 1289
- 1290
- 1291
- 1292
- 1293
- 1294
- 1295
- 1296
- 1297
- 1298
- 1299
- 1300
- 1301
- 1302
- 1303
- 1304
- 1305
- 1306
- 1307
- 1308
- 1309
- 1310
- 1311
- 1312
- 1313
- 1314
- 1315
- 1316
- 1317
- 1318
- 1319
- 1320
- 1321
- 1322
- 1323
- 1324
- 1325
- 1326
- 1327
- 1328
- 1329
- 1330
- 1331
- 1332
- 1333
- 1334
- 1335
- 1336
- 1337
- 1338
- 1339
- 1340
- 1341
- 1342
- 1343
- 1344
- 1345
- 1346
- 1347
- 1348
- 1349
- 1350
- 1351
- 1352
- 1353
- 1354
- 1355
- 1356
- 1357
- 1358
- 1359
- 1360
- 1361
- 1362
- 1363
- 1364
- 1365
- 1366
- 1367
- 1368
- 1369
- 1370
- 1371
- 1372
- 1373
- 1374
- 1375
- 1376
- 1377
- 1378
- 1379
- 1380
- 1381
- 1382
- 1383
- 1384
- 1385
- 1386
- 1387
- 1388
- 1389
- 1390
- 1391
- 1392
- 1393
- 1394
- 1395
- 1396
- 1397
- 1398
- 1399
- 1400
- 1401
- 1402
- 1403
- 1404
- 1405
- 1406
- 1407
- 1408
- 1409
- 1410
- 1411
- 1412
- 1413
- 1414
- 1415
- 1416
- 1417
- 1418
- 1419
- 1420
- 1421
- 1422
- 1423
- 1424
- 1425
- 1426
- 1427
- 1428
- 1429
- 1430
- 1431
- 1432
- 1433
- 1434
- 1435
- 1436
- 1437
- 1438
- 1439
- 1440
- 1441
- 1442
- 1443
- 1444
- 1445
- 1446
- 1447
- 1448
- 1449
- 1450
- 1451
- 1452
- 1453
- 1454
- 1455
- 1456
- 1457
- 1458
- 1459
- 1460
- 1461
- 1462
- 1463
- 1464
- 1465
- 1466
- 1467
- 1468
- 1469
- 1470
- 1471
- 1472
- 1473
- 1474
- 1475
- 1476
- 1477
- 1478
- 1479
- 1480
- 1481
- 1482
- 1483
- 1484
- 1485
- 1486
- 1487
- 1488
- 1489
- 1490
- 1491
- 1492
- 1493
- 1494
- 1495
- 1496
- 1497
- 1498
- 1499
- 1500
- 1501
- 1502
- 1503
- 1504
- 1505
- 1506
- 1507
- 1508
- 1509
- 1510
- 1511
- 1512
- 1513
- 1514
- 1515
- 1516
- 1517
- 1518
- 1519
- 1520
- 1521
- 1522
- 1523
- 1524
- 1525
- 1526
- 1527
- 1528
- 1529
- 1530
- 1531
- 1532
- 1533
- 1534
- 1535
- 1536
- 1537
- 1538
- 1539
- 1540
- 1541
- 1542
- 1543
- 1544
- 1545
- 1546
- 1547
- 1548
- 1549
- 1550
- 1551
- 1552
- 1553
- 1554
- 1555
- 1556
- 1557
- 1558
- 1559
- 1560
- 1561
- 1562
- 1563
- 1564
- 1565
- 1566
- 1567
- 1568
- 1569
- 1570
- 1571
- 1572
- 1573
- 1574
- 1575
- 1576
- 1577
- 1578
- 1579
- 1580
- 1581
- 1582
- 1583
- 1584
- 1585
- 1586
- 1587
- 1588
- 1589
- 1590
- 1591
- 1592
- 1593
- 1594
- 1595
- 1596
- 1597
- 1598
- 1599
- 1600
-

150 landscape mosaic (Turner, 2010). Fire-adapted forests can typically be classified into two distinct categories; (1) forests with
species that can regenerate independent of their species members and (2) forests that require species members to regenerate
(Rogers et al., 2015). The first category includes species such as conifers which store their seeds in insulated serotinous cones
that only open to heat, or hardwoods which regenerate from the root layer after a fire (Stocks et al., 2001). The second type are
conifers that release their seeds yearly as the cones mature (Stocks et al., 2001). North American boreal forests, for example,
155 contain Pinus banksiana (jack pine) and Picea mariana (black spruce), which both require fire to regenerate (Rogers et al.,
2015; Stocks et al., 2001; Van Wagner, 1983). In contrast, Eurasian boreal forests are dominated by non-serotinous conifers
and other species that release seeds annually, resulting in heterogeneous, uneven-aged forests (Stocks et al., 2001). Due to the
predominant tree species, Rogers et al. (2015) suggest that North American boreal forests are more prone to high-intensity
160 crown fires, which consume large amounts of vegetation and detritus, whereas Eurasian forests typically experience lower-
intensity surface fires that burn less vegetation and fewer trees (De Groot et al., 2013; Rogers et al., 2015).

2.3 Summary of datasets

2.3.1 Lightning data

The Earth Networks Total Lightning Network is a global network of 1800 sensors across more than 100 countries (Zhu et al.,
2022). Their network is further enhanced by an integration with the World Wide Lightning Location Network (Rodger et al.,
165 2004). The ENTLN detects wideband electric field signals (1 Hz to 12 MHz) that are emitted by cloud-to-ground and intracloud
lightning. Only cloud-to-ground flash data from 2012-2022 are used in this study. Each cloud-to-ground flash has at least one
return stroke (Liu and Heckman, 2011). Intracloud pulses occur within the cloud and do not strike the ground as a return
stroke, making them irrelevant for wildfire ignition. Using the time-of-arrival technique, they report the time in UTC, location
(latitude and longitude), type of discharge, peak current, and polarity (positive or negative), of each lightning event. Indi vidual
170 strokes are clustered into a flash if they are located within 10 kilometres and within 0.7s of each other (Liu and Heckman,
2011). For each flash, multiplicity, start time, end time, and duration are reported.

Detection efficiency refers to the percentage of flashes or strokes detected by the network and can vary depending on the
location and the distance between the sensors and the lightning event. Relative detection efficiency assumes a uniform
175 detection efficiency across the network. The ENTLN's cloud-to-ground stroke detection efficiency across the CONUS is
reported to be greater than 90 % (Lapierre et al., 2020), with relative detection efficiency values ranging from 85 % to 100 %
across the Americas and similar levels in Europe and Australia (Bui et al., 2015). Significant improvements have been observe d
over the years due to advancements in processor technology (Mallick et al., 2013; Mallick et al., 2015; Zhu et al., 2017; Zhu
et al., 2022). The most recent processor has achieved a stroke classification accuracy of 94 % and has reduced the median
180 location error from 215 meters to 92 meters when compared to ground truth data in Florida (Zhu et al., 2022). Globally, this
upgrade has resulted in a 149 % increase in the overall global detection of pulses, with North America showing a 145 % gain,

Deleted: independently
Deleted: .
Formatted: Font: +Headings (Times New Roman)
Formatted: Font: +Headings (Times New Roman)
Deleted: , and secondly,
Formatted: Font: +Headings (Times New Roman)
Formatted: Font: +Headings (Times New Roman)
Deleted:).
Formatted: Font: +Headings (Times New Roman)

Deleted: Liu and Heckman, 2011;
Formatted: Font: +Headings (Times New Roman)

Formatted: Font: +Headings (Times New Roman)

Formatted: Font: +Headings (Times New Roman)

Formatted: Font: +Headings (Times New Roman)

Deleted:
Formatted: Font: +Headings (Times New Roman)

Asia a 142 % gain, and Europe a 152 % gain. However, in more remote areas, detection efficiency tends to be lower, and location errors can extend up to several kilometres. ~~Due to both geopolitical limitations and the mid-range nature of the~~
190 ~~ENTLN, flash level detection in Russia is low. However, storm level detection remains around 50%. As~~ there are no sensors located in Russia, all lightning is detected by sensors in neighbouring countries. ~~▲~~

2.3.2 Wildfire data

The MODIS Collection 6 MCD64A1 burned area product (Giglio et al., 2018) utilizes daily 500-meter resolution MODIS surface reflectance data in conjunction with 1-kilometer resolution MODIS active fire observations (Giglio et al., 2020). The
205 GlobFire algorithm was applied to the MCD64A1 product to create the GlobFire Fire Perimeters [2002-2023] dataset (Artés et al., 2019). Each yearly fire shapefile has a unique fire id, an initial date, a final date, the geometry and the final area in hectares for each fire within. Within their algorithm, a fire event is a set of burned areas that are intersecting or touching. Each fire event comprises interconnected burned areas that are only treated as separate fires if there is a temporal distance of more than five days between each event. If there is no new burned area after 16 days, the fire is no longer considered active.

200 **2.3.3 Agency reference fire occurrence records**

We used the Canadian National Fire Database Fire Point and Polygon datasets along with the Alaska Fire History Location Points and Perimeter Polygons datasets to assess our BoLtFire dataset. ~~(Table A3).~~ The Canadian National Fire Database fire points and polygons are compiled from various jurisdictions, including provinces, territories, and Parks Canada; and represent a collaborative effort by all Canadian fire agencies. This database is the most comprehensive resource for fire points and
205 perimeters in Canada. The point data includes critical fire information such as fire ID, fire report date, out date, cause, and ignition point. Hanes et al. (2019) states that these points are just the presumed points of ignition. The polygon data includes similar information, with fire ID, fire report date, out date, cause, and map source, available until December 2020. ~~All report dates did not contain an exact discovery time and were reported in local time.~~ Fire perimeters are typically derived through the interpretation of Landsat (30m) or other satellite imagery, ~~and are sometimes derived from aerial or field surveys by fire~~
210 management agencies.

~~▲~~ The Bureau of Land Management’s Alaska Fire Service maintains a detailed record of all detected natural or human-caused wildfire events in Alaska from 1940 to 2023. ~~(Table 3A).~~ The Alaska Fire History Location Points dataset provides fire-specific information, including fire ID, discovery date ~~and exact discovery time in UTC,~~ out date, estimated fire size, and cause. The
215 perimeters in the Alaska Fire History Perimeter dataset were mapped using ground and airborne surveys, as well as aerial photography and Sentinel-2 satellite imagery (10m). This dataset includes details such as fire ID, estimated burned area size, map source, geographical coordinates, and fire out date, but does not include the fire start date or cause.

Deleted: Additionally,

Formatted: Font: +Headings (Times New Roman)

Formatted: Font: +Headings (Times New Roman)

Deleted: .

Formatted: Font: +Headings (Times New Roman)

Formatted: Font: +Headings (Times New Roman)

Deleted: .

Formatted: Font: +Headings (Times New Roman)

Formatted: Font: +Headings (Times New Roman)

Deleted: .

Formatted: Font: +Headings (Times New Roman)

Formatted: Font: +Headings (Times New Roman)

2.4 Processing of the lightning and wildfire datasets

Both the lightning and wildfire location datasets utilized in this study are global products and were initially filtered to only include those points which fell within the Boreal Forests/Taiga biome as defined by Ecoregions 2017 (Olson et al., 2001). Due to detection efficiency and location errors of lightning, the ENTLN was only filtered to the Biome location, while the GlobFire dataset went through additional filtering. Given MODIS burned area product’s inability to adequately detect smaller fires, those less than 200 ha were excluded from the analysis (Giglio et al., 2009). This should not significantly influence the overall outcome of this dataset, as typically within boreal forests, large fires account for 85 % of the burned area (Macias Fauria and Johnson, 2007). Fires were then filtered based on the majority land cover class using the MODIS MCD12Q1v061 Land Cover Type 1: Annual IGBP classification datasets from 2012-2022, with a 500 m spatial resolution (Friedl and Sulla-Menashe, 2022). Non-forest land covers (land covers that clearly have no dominance of trees; Table A1) were excluded from the analysis. Fire class size was then added based on Talucci et al. (2022) (Table A2). Each fire was then assigned a country using the same methodology along with the World Bank Official Boundaries dataset (World Bank, 2020). We removed three fires as they did not fall within a country boundary of the World Bank Official Boundaries dataset. A complete list of input datasets used can be found in Table 1. After the initial filtering, all fire start dates were set to 12:00 noon local time and then converted to UTC for the lightning matching process. Noon was selected as the start time for every fire, as this information is not available within the GlobFire dataset and 12:00 noon local time is when wildfire conditions are most favourable (Van Wagner, 1987; Vitolo et al., 2020).

Both the lightning and wildfire location datasets were then converted from their original coordinate system to their respective Global LANd Cover mapping and Estimation (GLANCE) Grids - Version 01 CRS (North American, Europe, and Asia) for the matching process (Arevalo et al., 2022). Though the ENTLN dataset was only filtered by its biome, it did receive land cover and country labels for additional analysis. The filtering process identified a total of 27,525,747 lightning flashes within the boreal forest biome, with 12,526,781 occurring in North America and 14,998,966 in Eurasia. Data for 4 November 2014, 9 May 2016, and 19 May 2019 were unavailable. Additionally, the process identified 21,019 total GlobFire events, comprising 3,659 in North America and 17,360 in Eurasia.

Table 1: Description of variables provided for each lightning-ignited wildfire within the BoLtFire dataset.

Column Name	Description
FireID	Unique fire identification number
StartDate	Start date of the fire
EndDate	End date of the fire

Deleted: in order
Formatted: Font: +Headings (Times New Roman)

Deleted: and non-native forest
Deleted: (Table A1).
Formatted: Font: +Headings (Times New Roman)
Formatted: Font: +Headings (Times New Roman)
Formatted: Font: +Headings (Times New Roman)
Deleted: have a country location. A complete list of input datasets used can be found in Table 1.

Formatted: Font: +Headings (Times New Roman)

Deleted: 31,363
Formatted: Font: +Headings (Times New Roman)
Deleted: 5,290
Deleted: 26,073
Formatted: Font: +Headings (Times New Roman)
Formatted: Font: +Headings (Times New Roman)
Formatted: Line spacing: single
Formatted Table
Formatted: Font: +Headings (Times New Roman)
Formatted: Line spacing: single
Formatted: Font: +Headings (Times New Roman)
Formatted: Line spacing: single
Formatted: Font: +Headings (Times New Roman)
Formatted: Line spacing: single

2.5 Processing of the agency reference datasets

To ensure a consistent assessment between the agency reference dataset and the BoLtFire dataset, the agency reference datasets were filtered by size, start date, and ignition cause. The Alaska Fire History Location Points dataset include the discovery time of each fire, to the second. Fire start times are not available within either of the Canadian agency reference datasets. The fire start times were also set to 12:00 noon local time then converted to UTC for the lightning matching process. Prescribed burns were removed. The fire perimeters and points from the agency references were initially joined based on their respective fire ID keys (Canadian National Fire Database: NFDBFIREID and CFS_REF_ID; Alaska Fire Service: ID and FIREID). Polygons without points were removed from the dataset. Points without corresponding perimeter IDs were categorized into two groups: those located within an existing fire perimeter and occurring within seven days of the fire start date and those that do not. For the latter (as not all fire parameters have been mapped yet; Canadian Forest Service, 2024), the fire area was used to determine the fire radius, which was then used to generate a fire buffer perimeter. For perimeters without corresponding point IDs, if there was an unmatched point within the perimeter within seven days of the fire start date, that became the fire's ignition point. If there were no points located within the perimeter, the fire was left without an ignition point and was removed from the dataset. Both datasets were then merged and filtered based on the majority land cover class. The filtering process yielded an agency reference dataset consisting of 2,424 fires across Alaska and Canada.

2.6 BoLtFire dataset creation method

Existing methodologies for fire ignition detection require an ignition point for each fire, which is not provided by the original MCD64A1 nor the GlobFire dataset. To address this, a Temporal Minimum Distance (TMin) methodology is proposed. Based on previous methodologies (Larjavaara et al., 2005; Nash and Johnson, 1996; Pineda et al., 2022; Wotton and Martell, 2005), this approach searches for a candidate lightning first within the fire's perimeter starting from its ignition date and searches until a candidate lightning is found or a 14-day window has been reached. If only one flash is found within the perimeter, it is designated as the candidate lightning and the ignition point. If multiple potential candidate lightnings are found, the one closest in time to the ignition date (12:00 noon local time, converted to UTC) is chosen. If no candidate lightning is found within the perimeter, the search extends to a 10 km radius outside the perimeter, following the same temporal process. If multiple potential candidate lightnings are found outside the perimeter, the stroke closest both spatially to the perimeter and temporally to the start date is selected as the ignition point. A visualization of the process can be seen in Fig. 1. The proposed TMin methodology was then applied to the filtered ENTLN and GlobFire datasets to create the BoLtFire dataset.

Deleted: ¶
Formatted: Font: +Headings (Times New Roman)

Formatted: Font: +Headings (Times New Roman)

Deleted: This

Formatted: Font: +Headings (Times New Roman)

Formatted: Font: +Headings (Times New Roman)

Deleted: The first candidate lightning

Formatted: Font: +Headings (Times New Roman)

Formatted: Font: +Headings (Times New Roman)

Formatted: Font: +Headings (Times New Roman)

Deleted: lightning

Formatted: Font: +Headings (Times New Roman)

Formatted: Font: +Headings (Times New Roman)

Deleted: (Larjavaara et al., 2005).

Formatted: Font: +Headings (Times New Roman)

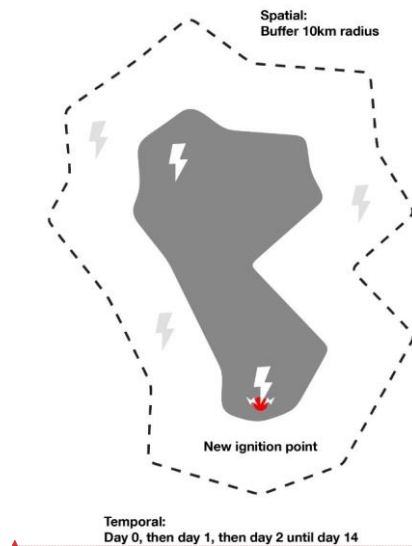


Figure 1: Visualization of the temporal minimum distance process, where lightning candidates are first searched for within the fire perimeter before then searching the buffered area if one is not found. The grey polygon depicts the fire and its associated perimeter, while the dotted line represents the 10km buffer.

2.7 Agency reference comparison and analysis

We conducted three different comparison assessments using the proposed TMin approach: (1) a candidate lightning methodology comparison, (2) a spatial and temporal accuracy comparison, and (3) fire count and size comparison. The matching lightning methodology comparison was implemented to gauge the performance of the proposed (TMin) methodology to currently established methodologies: MaxA and DMin. Max A, proposed by Pineda et al. (2014), selects the stroke with the maximum index A while setting the tmax to 7 days and the Smax to 14 days. The DMin, introduced by Schultz et al. (2019), searches backwards day-by-day from the reported start date until either a matching flash within a 15-day window (tmax) and 10km (Smax) is found or this temporal window is exhausted. If multiple flashes are found, then the one closest to the ignition point is selected. To compensate for possible misreporting of start dates, if no flash was found within the temporal window, then a day after the reported start date was searched. To align our methodologies to the current literature, all three methodologies were implemented using input parameters of tmax of 14 days and a Smax of 10 km. The methodologies were applied to the agency reference dataset as both datasets provide a start date and an ignition point, allowing for a more precise comparison of the candidate lightning's distance to ignition location and holdover time across the methodologies. As the Canadian agency reference dataset does not contain fires after 2020, these fires were also removed from the NA BoLtFire

Formatted: Font: +Headings (Times New Roman)

Formatted: Font: +Headings (Times New Roman)

Deleted: ¶
¶

Formatted: Font: +Headings (Times New Roman)

Deleted: (DMin and MaxA).

Formatted: Font: +Headings (Times New Roman)

dataset (allowing for a total of 2,072 fires; here after referred to as the North American BoLtFire Agency Reference Dataset Version, or NA BoLtFire ARD dataset) to conduct the comparisons; but are contained within the complete set. The following variables were analysed: candidate lightning agreement, fire count, fire size, holdover time, and distance to the ignition point. The mean, median, and histograms of distance and holdover time were also produced. Additionally, a detailed analysis of the location of the candidate lightning in or outside (and distance there-from) the fire perimeter was conducted, to gauge the approach's ability to accurately locate the ignition point. We conducted a secondary benchmark comparison, where we compared the temporal and spatial locations of the fire perimeters to determine the overlap and difference between both datasets (agency vs NA BoLtFire ARD Version). The NA BoLtFire ARD Version dataset successfully located a fire if it was within seven days (before or after the start date) and 10 km of the agency's fire perimeter. A large spatial and temporal window was used to encompass reporting errors by both the agencies and errors from MODIS. Multiple NA BoLtFire ARD Version fires could be matched to one agency fire. If a NA BoLtFire ARD Version fire was not within this spatial and temporal window, then it was unsuccessful. A confusion matrix was used to evaluate the performance of the dataset. A third and final comparison was conducted in line with that by Artés et al. (2019), where the total fire count and fire size between the NA BoLtFire ARD Version and the agency reference datasets were compared.

3 Results

3.1 Matching lightning methodology comparison

3.1.1 Candidate lightning agreement

The TMin method slightly outperformed the MaxA and DMin methods, matching 77.68 % of the total agency reference dataset fires while DMin matched 71.91 %, and MaxA matched 70.13 % (Table 2). Each methodology selected different candidate lightnings, with general agreement between all three methodologies at 36.01 %. DMin and MaxA selected 55.07 % of the same overlapping lightning. There was a general decreasing trend in identical candidate lightnings as fire size increased. For 20.79 % of the fires, all three methodologies failed to find a matching lightning candidate; and 43.19 % of the matched fires had different or no candidate lightning. Breaking down candidate lightning agreement by fire size, the TMin method shows the highest matching for all fire sizes, with improvement as fire size grows, achieving its highest matching for Mega fires at 92.00 %. The DMin method shows the second highest candidate lightning matching for Small, Moderate, and Large fires (74.25 %, 72.32 %, and 65.40 % respectively), but its performance declines significantly for larger fires, particularly for XLarge and Mega fires, where it drops to 57.14 % and 64.00 %, respectively. MaxA, while less accurate overall, shows a similar trend to DMin with a decreasing accuracy to increasing fire size, particularly for XLarge fires where it also drops to 57.14 %.

The average number of possible candidate lightning flashes per LIW was highest for MaxA and DMin for Small, Moderate, and Large fires (Table B1). Though for XLarge and Mega fires, TMin found more possible candidate lightning flashes. Though

Formatted: Font: +Headings (Times New Roman)

Deleted: North America (

Deleted:)

Formatted: Font: +Headings (Times New Roman)

Formatted: Font: +Headings (Times New Roman)

Formatted: Font: +Headings (Times New Roman)

Formatted: Font: +Headings (Times New Roman)

Deleted: The BoLtFire dataset successfully located a fire if it w...

Formatted

Formatted

Formatted

Formatted

Formatted

Formatted

Deleted: 74.71

Formatted

Deleted: 49

Deleted: 66.67

Formatted

Formatted

Deleted: 35.97

Deleted: 86

Formatted

Formatted

Deleted: 21.82

Formatted

Deleted: 42.20

Formatted

Deleted: small

Deleted: %),

Formatted

Formatted

Formatted

Formatted

Deleted: Conversely, the TMin method shows improvement wi...

Formatted

Deleted: 52.38 %.

Formatted

Formatted

365

this makes sense, as the TMin first searches within the fire perimeter, and if no flashes are found, then it searches a 10km buffer outside the perimeter; while the MaxA and DMin search inside a 10km buffer around the ignition point. If the fire is within a smaller perimeter, the TMin would only find flashes within that smaller perimeter as opposed to the MaxA's and DMin's 10km buffer.

370

Table 2: Total count and total burned area in hectares of the candidate lightnings found by the three methodologies: TMin, MaxA and DMin. The total count and burned area as percentages of the total count and total burned ha of the agency reference dataset are also included for all methodologies. Significant results are in bold.

Agency Reference Dataset			Matched Agency Reference Dataset Fires by Methodology									
Fire Size	LIW Count	Total Ha	TMin				MaxA				LIW Count	% Total
			LIW Count	% Total	Total Burned Area (Ha)	% Ha Total	LIW Count	% Total	Total Burned Area (Ha)	% Ha Total		
Small	932	460,119.82	707	75.86%	346,713.52	75.35%	673	72.21%	328,122.85	71.31%	696	74.68%
Moderate	1,084	3,768,131.15	843	77.77%	2,936,153.39	77.92%	767	70.76%	2,627,792.38	69.74%	784	72.32%
Large	341	7,096,947.69	276	80.94%	5,624,753.31	79.26%	220	64.52%	4,391,928.17	61.88%	223	65.40%
XLarge	42	2,972,699.20	34	80.95%	2,408,474.91	81.02%	24	57.14%	1,681,481.77	56.56%	24	57.14%
Mega	25	5,359,454.62	23	92.00%	5,002,774.83	93.34%	16	64.00%	3,309,407.70	61.75%	16	64.00%
Total	2,424	19,657,352.47	1,883	77.68%	16,318,869.96	83.02%	1,700	70.13%	12,338,732.88	62.77%	1,743	71.94%

3.1.2 Fire size (ha)

For Small fires, the TMin method matches more lightning candidates (75.35 % by total burned area) in the agency reference dataset compared to MaxA (71.31 % by ha) and slightly outperforms DMin (73.46%; Table 2). For Moderate and Large fires, TMin continues to perform better (77.92 %; 79.26 %) than MaxA (69.74 %; 61.88 %) and DMin (71.19 %; 63.23 %), showing a significant drop in accuracy for MaxA in regard to Large fires. XLarge fires exhibit a consistent pattern with TMin at 81.02 %, ahead of MaxA (56.56 %) and DMin (56.56 %), demonstrating the lowest accuracy for both MaxA and DMin. Mega fires also see the highest accuracy for TMin (93.34 %), outperforming both MaxA (61.75 %) and DMin (61.75 %).

3.1.3 Holdover times

In all three methods, the holdover time showed an exponential decrease over the observed period (Figure 2; Table B2). After being applied to the agency reference dataset, the holdover for over 50 % of candidate lightnings among the three methodologies (TMin: 57.51 %, MaxA: 58.88 %, and DMin: 65.75 %) were found within the first 3 days (Day +1/0-2); over 88 % within the first 10 days (TMin: 90.23 %, MaxA: 92.00 %, and DMin: 93.80 %). The largest frequencies for the TMin, MaxA, and DMin were found on Day 0 (469, 429, and 576 respectively). These results align with the overall trend that most wildfires occur within the first few days following a lightning event, with the majority occurring within two weeks. The TMin method shows the highest median and mean holdover times (2.65 and 4.01 days, respectively; Table B3), with overlapping confidence intervals for both medians and means when compared to MaxA, which has slightly lower values (2.6 and 3.81 days). The DMin method, while showing the shortest median and mean holdover times (1.88 and 3.22 days),

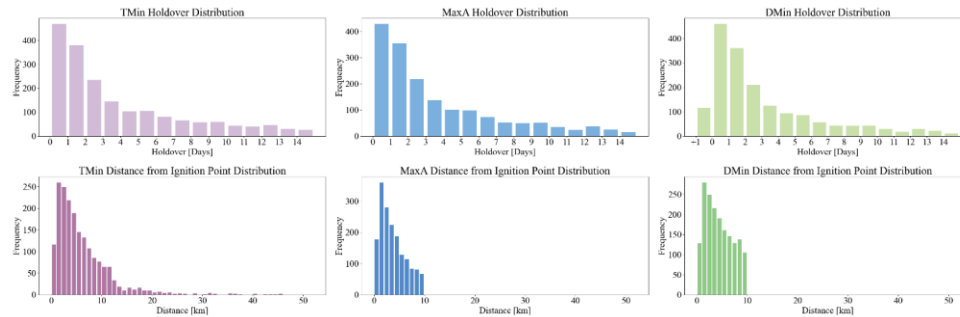


Figure 2: Distribution of lightning candidates by holdover time and distance to the agency reference dataset ignition point. Holdover time is calculated as the difference between the start date of each lightning-ignited wildfire and the time of the occurrence of the candidate lightning. Distance is calculated as the distance of the lightning candidate from the ignition point of each lightning-ignited wildfire.

3.1.4 Distance to the ignition point

The median distance of the selected candidate lightnings from the agency reference dataset ignition point varied greatly for all three methodologies. Both the MaxA and DMin methods identify candidate lightnings with shorter distances from the ignition point compared to the TMin method. The TMin has a median of 4,560 meters and a mean of 6,065. MaxA identified the lightning candidates closest to the ignition point with a median distance of 3,128 meters and a mean distance of 3,749 meters. DMin also identifies candidate lightnings with a shorter distance than TMin, with a median of 3,991 meters and a mean of 4,431 meters. These results were expected as both the MaxA and the DMin approaches rely on the ignition point in order to select the candidate lightning while the TMin looks to select the lightning candidate first within the fire perimeter, prioritizing candidates that are only closer temporally to the start date, before then checking outside the perimeter.

To better understand the capacity of the methodologies to locate the igniting flash within the perimeter, a review of the agency reference dataset was conducted as the dataset includes the ignition location. Within the agency reference dataset, 246 of the fires had ignition points located outside of the fire perimeter, and 2,178 are located within the fire perimeter (where the ignition of the fire should most likely occur). To determine the accuracy, the candidate lightnings of all three methodologies were compared to the actual ignition point location (inside vs outside the perimeter). All three methodologies show varying levels of effectiveness in selecting a lightning candidate point inside or outside the ignition perimeter. The TMin methodology offers the best overall performance with an overall accuracy of 36.26 % as is most accurate at selecting ignition points inside the fire perimeter (Table B4). While both the MaxA and DMin methodologies did the best locating points outside the fire perimeter (57.72 % and 61.79 % respectively), but both struggled to locate them inside the fire perimeter leading to an overall accuracy of 24.52 % and 20.11 % respectively. Overall, while all three struggle to accurately determine if the ignition point is inside or outside the perimeter, TMin appears to be the most consistent with a higher overall accuracy.

- Deleted: ground truth
- Formatted
- Deleted: .
- Deleted: 592.00
- Deleted: 110.32
- Formatted: Font: +Headings (Times New Roman)
- Formatted: Font: +Headings (Times New Roman)
- Formatted: Font: +Headings (Times New Roman)
- Deleted: 155.20
- Deleted: 771.49
- Formatted: Font: +Headings (Times New Roman)
- Formatted: Font: +Headings (Times New Roman)
- Deleted: (Table B2).
- Deleted: 968.77
- Formatted: Font: +Headings (Times New Roman)
- Formatted: Font: +Headings (Times New Roman)
- Deleted: 391.07
- Formatted: Font: +Headings (Times New Roman)
- Formatted
- Deleted: a balanced
- Deleted: a moderate
- Deleted: 32.29 %, making it the
- Deleted: reliable across both
- Deleted: and outside
- Formatted: Font: +Headings (Times New Roman)
- Formatted: Font: +Headings (Times New Roman)
- Formatted: Font: +Headings (Times New Roman)
- Formatted: Font: +Headings (Times New Roman)
- Formatted
- Deleted: B3). Both
- Deleted: well correctly
- Deleted: .
- Formatted: Font: +Headings (Times New Roman)
- Formatted: Font: +Headings (Times New Roman)
- Formatted: Font: +Headings (Times New Roman)
- Deleted: 26
- Deleted: and 24.50 %
- Formatted: Font: +Headings (Times New Roman)
- Formatted: Font: +Headings (Times New Roman)

3.2 Evaluation of TMin and the BoLtfire dataset

3.2.1 Confusion matrix results

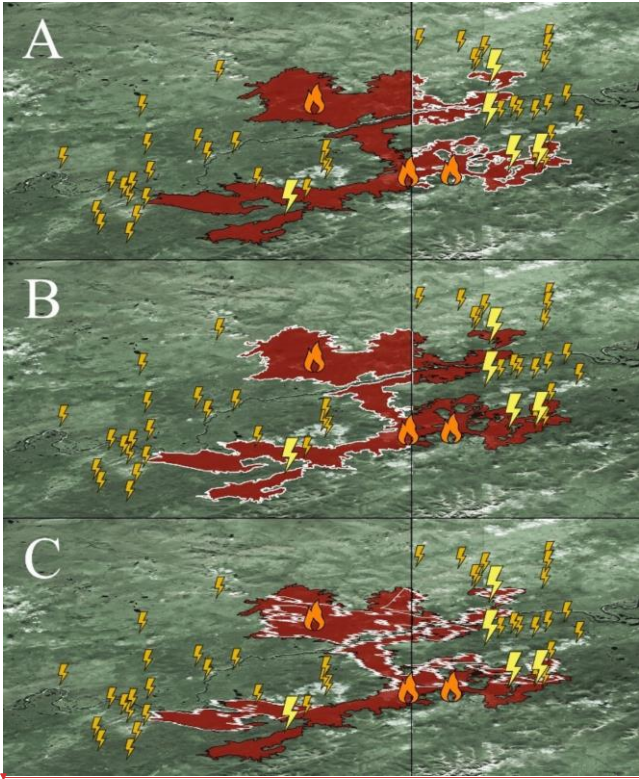
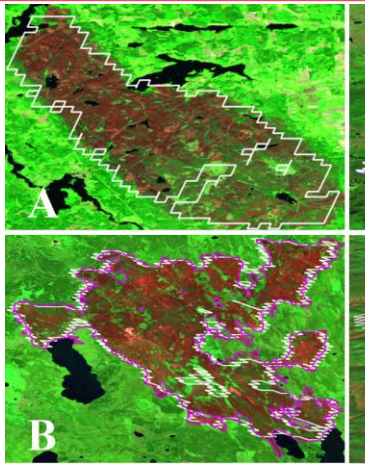


Figure 3: Lightning-Ignited Wildfires that occurred at the Alaskan Canadian border in the summer of 2017. (A) One LIW the Canadian side; Fire ID 2017OC010 ignited on 22 June and burned 97,102.29 ha. (B) Two LIW in Alaska: White Mountain Creek (fire #39800) ignited on 26 June and burned 37,846.33 ha and Campbell River (fire #3983), which began on 03 July and burned 31,912.67 ha. (C) Five NA BoLtfires with their ignition dates and burned areas: 19933837 (19 July: 2,053.58 ha), 19856818 (22 June: 1,448.33 ha), 19856822 (22 June: 972.65), 19933815 (01 July: 1,297.02 ha), 19856819 (29 July: 64,932.06 ha); totalling 70,704.23 ha. Orange fire icons indicate the official fire start locations from the agency reference dataset, the small gold lightnings are lightning flashes, while the larger yellow lightnings are the matched candidate lightning flashes. Base imagery is Landsat 8 ©USGS.

The overall accuracy was 63.39 %, commission error was 30.07 % and the omission error was 53.16 %, indicating that approx. 70 % of the fires detected in NA BoLtfire ARD Version were correctly classified, but that approx. 53 % of all occurring fires

Formatted: Font: +Headings (Times New Roman)



Deleted: Figure 3: Within this figure there are four different fires: A, B, C, D. Fire A: BoLtfire 16389528 ignited on 26 July 2014 and was extinguished on 12 August 2014. It burned 11,699.48 ha and was located in Sweden. Fire B: Visual comparison of matched agency reference dataset fire 15BN-MACK (magenta) and BoLtfire 17455090 (blue). The lightning-ignited wildfire, 15BN-MACK, occurred in Saskatchewan, Canada on 26 June 2015 and lasted until 29 July 2015 burning roughly 38,249.32 ha. Its perimeter was mapped and created using Aerial GPS. Fire C is unique as occurred on the border between both Alaska and Canada. On the Alaska side, Fire C shows two fires (blue), fire 39800 started on 26 June 2017 and burned 37,846.33 ha and fire 39832 started on 03 July 2017 and burned 31,912.67 ha. On the Canadian side (magenta), fire 2017OC010 started on 22 June 2017 and was 97102.29 ha. BoLtfire 19856819 shows these fires as one fire that started on 29 July 2017 but was only 67,932.6 ha in size. Fire D: BoLtfire 24442738 occurred on 22 August 2021 ...

Deleted: 04

Deleted: 06

Deleted: 63

Formatted: Font: +Headings (Times New Roman)

Formatted: Font: +Headings (Times New Roman)

Formatted: Font: +Headings (Times New Roman)

Formatted: Font: +Headings (Times New Roman)

Deleted: 54

Formatted: Font: +Headings (Times New Roman)

Formatted: Font: +Headings (Times New Roman)

Formatted: Font: +Headings (Times New Roman)

were missed (Table C1). The BoLtFire database is thus conservative in comparison to the agency datasets. Within the agency reference dataset, of the 2,424 lightning-ignited wildfires, 1,136 wildfires had a NA BoLtFire ARD Version match while 1,288 remained unmatched. Of the 2,072 lightning-ignited wildfires in the NA BoLtFire ARD Version dataset, 1,568 lightning-ignited wildfires were matched while 504 remained unmatched. Overall, the matched fires accounted for 46.86 % of the total fires in the agency reference dataset but covered only 68.81 % of the total burned area from the agency reference dataset. An example of agency fires and its matched NA BoLtFire ARD Version can be seen in Fig. 3. Within the agency reference dataset, fire count and size fluctuated drastically across the years, with a recorded total of 2,424 fires, burning approximately 19.66 million ha (Table C2). The year 2015 recorded the highest number of fires, with 514 incidents burning approximately 4.53 million ha, while 2021 witnessed the lowest number of fires, with only seven incidents, burning only around 30,259.57 ha, (most likely due to the fact that the Canadian agency reference dataset only includes fires until 2020). In terms of matched fires, 2017 had the highest match rate at 187 fires (55.49 % of the 2017 agency reference dataset total lightning-ignited wildfire count), and 2020 had the lowest, with just 11 of the 62 agency reference dataset lightning-ignited wildfires, representing 17.74 % of the total lightning-ignited wildfire count for that year.

One noticeable trend was that as fire size increased, both the number of total fires as well as total burned area generally improved. Small fires have the lowest matching success, as only 24.68 % of the total Small fires successfully matched the agency reference dataset (Table 3), with a delta of -71.03 % of the total burned area matched. Moderate and Large fires show moderate success, with about 57-69 % of fires and burned areas matched, while XLarge and Mega fires exhibit a strong matching performance, with 76.19 % of XLarge fires matched with 73.76 % of the total burned area and 80.00 % of the Mega fires matched with 77.35 % of the total burned area. The 10 unmatched XLarge and 5 unmatched Mega fires accounted for approximately 1.99 million unmatched hectares, representing 32.52 % of the total unmatched burned area. When Small and Moderate fires were removed, 286 of the remaining 408 fires were matched, increasing the overall matching from 46.86 % to 70.10 % of total fires, and increasing the matched total burn area from 68.81 % to 72.01 %. Overall, we found that the matching process is more effective for larger fires, both in terms of the number of fires and the total burned area matched.

Table 3: Compares the total number of fires and the total burned area by fire size category between the agency reference dataset (ARD) and matched fires in the North American BoLtFire dataset, using the total burned area for both from the agenda reference dataset.

Fire Size	Agency Reference Dataset		Matched Fires in the NA BoLtFire ARD Version Dataset				Delta (Agency Reference Dataset to NA BoLtFire ARD Version)			
	Total	Total Burned Area (Ha)	Total	Percent of Total	Total Burned Area from ARD (Ha)	Percent of Total Burned Area from ARD (Ha)	Total	Percent	Total Burned Area from ARD (Ha)	Percent Total Burned Area (Ha)
LIW										

Deleted: in BoLtFire

Formatted

Deleted: 124

Deleted: dataset

Deleted: 300

Formatted

Formatted

Formatted

Deleted: 042

Deleted: for North America

Deleted: 559

Formatted

Formatted

Formatted

Deleted: 483

Deleted: 37

Formatted

Formatted

Deleted: 70.15

Formatted

Deleted: 3B and Fig. 3C

Formatted

Deleted: .

Formatted

Deleted: 186

Deleted: 19

Formatted

Formatted

Deleted: 2019

Deleted: 30

Formatted

Formatted

Deleted: 158

Deleted: 18.99

Formatted

Formatted

Deleted: amount

Formatted

Deleted: 36

Formatted

Deleted: 53

Formatted

Deleted: 55-70

Formatted

Deleted: 82.30

Formatted

Small	932	460,119.82	230	24.68%	133,071.64	28.92%	702	-75.32%	327,048.18	-71.08%
Moderate	1,084	3,768,131.15	620	57.20%	2,282,327.67	60.57%	464	-42.80%	1,485,803.48	-39.43%
Large	341	7,096,947.69	234	68.62%	4,772,466.21	67.25%	107	-31.38%	2,324,481.48	-32.75%
XLarge	42	2,972,699.20	32	76.19%	2,192,740.13	73.76%	10	-23.81%	779,959.07	-26.24%
Mega	25	5,359,454.62	20	80.00%	4,145,337.40	77.35%	5	-20.00%	1,214,117.22	-22.65%
Total	2,424	19,657,352.47	1,136	46.86%	13,525,943.04	68.81%	1,288	-53.14%	6,131,409.43	31.19%

3.2.2 Fire count and fire size comparison

The agency reference dataset reports 2,424 fires, burning approximately 19.66 million ha, while the NA BoLtFire ARD Version dataset records 2,072 lightning-ignited wildfires with a total burned area of approximately 12.32 million ha (Table 4). Small fires were more frequently recorded in the NA BoLtFire ARD Version dataset (1,012 fires) compared to the agency reference dataset (932 fires), though the difference in the burned area for Small fires was relatively small. However, the agency reference dataset records a higher number of Moderate (delta of 272), Large fires (delta of 132), XLarge (delta of 21) and Mega (delta of 7) fires, burning significantly more hectares than in the NA BoLtFire ARD Version dataset. Moderate fires also show a significant difference, with the agency reference dataset reporting 272 more incidents and a 25.09 % larger total burned area. The most notable differences between the two datasets can be seen in the larger fire categories, with the agency reference dataset showing significantly more Large, XLarge, and Mega fires, resulting in a 35 % to 53 % larger burned area (39.03 %, 53.40 %, 35.54 % respectively). Overall, the NA BoLtFire ARD Version dataset reflects a higher total count while the agency reference dataset reflects a larger burned area. Though when looking at fire size categories, the NA BoLtFire ARD Version dataset is slightly higher in small fires but substantially lower across all other fire sizes in regard to both count and total burned area.

Table 4: Total count and total burned area of both the agency reference dataset and the NA BoLtFire ARD Version from 2012-2022 organized by fire size. The delta was calculated between the Agency Reference Dataset and the NA BoLtFire ARD Version Dataset.

	Agency Reference Dataset	NA BoLtFire ARD Version Dataset	Delta (Agency Reference Dataset to NA BoLtFire ARD Version)

Deleted: 227

Deleted: 36

Deleted: 130,977.77

Deleted: 47

Deleted: 705

Deleted: 64

Deleted: 329,142.05

Deleted: 53

Formatted

Formatted

Formatted

Formatted

Formatted

Formatted

Formatted

Formatted

Formatted

Deleted: 610

Deleted: 56.27

Deleted: 233,730.82

Deleted: 59.28

Deleted: 474

Deleted: 43.73

Deleted: 534,400.33

Deleted: 40.72

Formatted

Formatted

Formatted

Formatted

Formatted

Formatted

Formatted

Formatted

Deleted: 235

Deleted: 91

Deleted: 820,762.69

Deleted: 93

Deleted: 106

Deleted: 09

Deleted: 276,185.00

Deleted: 07

Formatted

Formatted

Formatted

Total Lightning-Ignited Wildfires in Boreal Forests

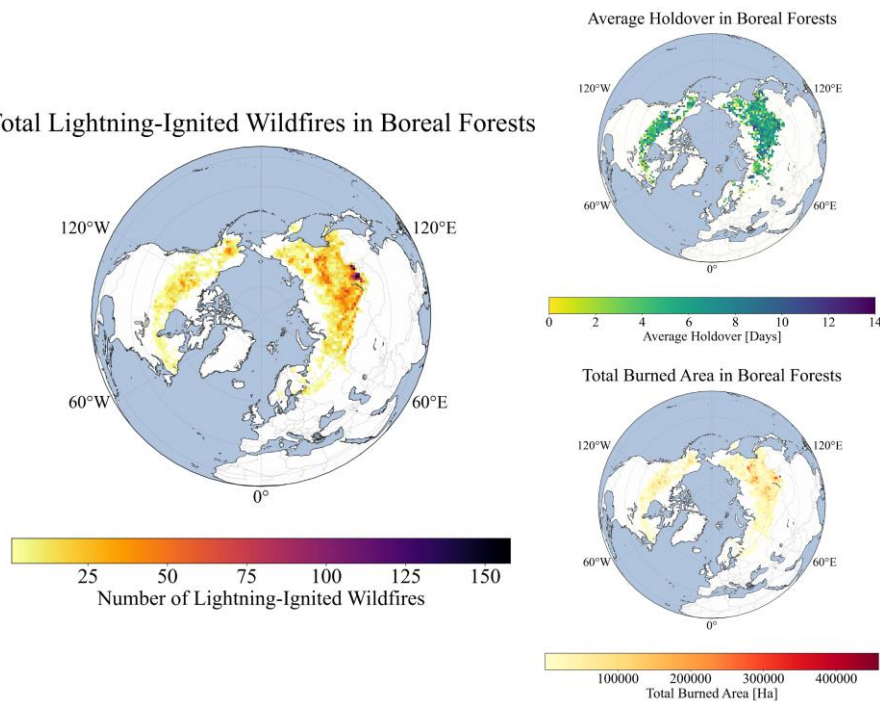


Figure 5: Visual depiction of all located in forest and forest-like land covers in boreal forests from 2012-2022 that are equal to or greater than 200 ha.

Of the original 21,816 total filtered GlobFire events, 6,902 were identified through the TMin methodology (within 14 days and 10 km of the GlobFire event) to be lightning ignited (31.63 %). The BoLtfire dataset encompasses lightning-ignited wildfires located in forest and forest-like land covers in boreal forests from 2012-2022 that are at least 200 ha in size. Of the 6,902 fires, 4,201 were located in Eurasia and 2,701 were located in North America (Figure 5). Within those 4,201 fires identified as lightning-ignited wildfires within Eurasia, 4,151 are located in Russia, 41 are in Mongolia, 8 are in Sweden and 1 is located in Finland. Of the 2,701 in North America BoLtfire, 2,421 are located in Canada and 280 are located in Alaska, United States. The BoLtfire dataset encompasses a total of approximately 36.65 million ha of burned area (21.09 million ha in Eurasia and 15.57 million ha in North America) with an overall average burned area per fire of 5,310.74 ha. The information included for each fire within the dataset can be found in Table 1.

Total Lightning-Ignited Wildfires in Boreal Forests 2012-2022
Deleted: 31,363
Formatted: Font: +Headings (Times New Roman)
Deleted: 228
Formatted: Font: +Headings (Times New Roman)
Deleted: -
Formatted: Font: +Headings (Times New Roman)
Deleted: 19.86
Formatted: Font: +Headings (Times New Roman)
Deleted: 228
Formatted: Font: +Headings (Times New Roman)
Deleted: 186
Formatted: Font: +Headings (Times New Roman)
Deleted: 042
Formatted: Font: +Headings (Times New Roman)
Deleted: 184
Formatted: Font: +Headings (Times New Roman)
Deleted: 137
Formatted: Font: +Headings (Times New Roman)
Deleted: 40
Formatted: Font: +Headings (Times New Roman)
Deleted: 042
Formatted: Font: +Headings (Times New Roman)
Deleted: 1,759
Formatted: Font: +Headings (Times New Roman)
Deleted: 283
Formatted: Font: +Headings (Times New Roman)
Deleted: 33.09
Formatted: Font: +Headings (Times New Roman)
Deleted: 07
Formatted: Font: +Headings (Times New Roman)
Deleted: 12.01
Formatted: Font: +Headings (Times New Roman)
Deleted: 312.84
Formatted: Font: +Headings (Times New Roman)
Deleted: 312.84
Formatted: Font: +Headings (Times New Roman)

3.4 Characterization of lightning-ignited wildfires

We summarized the following metrics for each continent: holdover time, distance to fire perimeter, lightning-ignition efficiency, frequency of fires per year and total burned area, area burned by fire size class, and total burned area per land cover.

3.4.1 Holdover

Similar to the agency reference dataset, the holdover time within the BoLtfire dataset exhibited an exponential decline, with the highest frequency occurring within the first 24 hours (Figure 4). Specifically, 734 lightning-ignited wildfires (10.63 %) were identified on the first day, and 2,137 lightning-ignited wildfires (30.96 %) ignited within the first three days (Day 0 to Day 2; Table D1). The cumulative number of lightning-ignited wildfires increased quickly, with over half of all fires recorded within 5 days (Day 0 to Day 4) and 79.24 % occurring within the first 10 days.

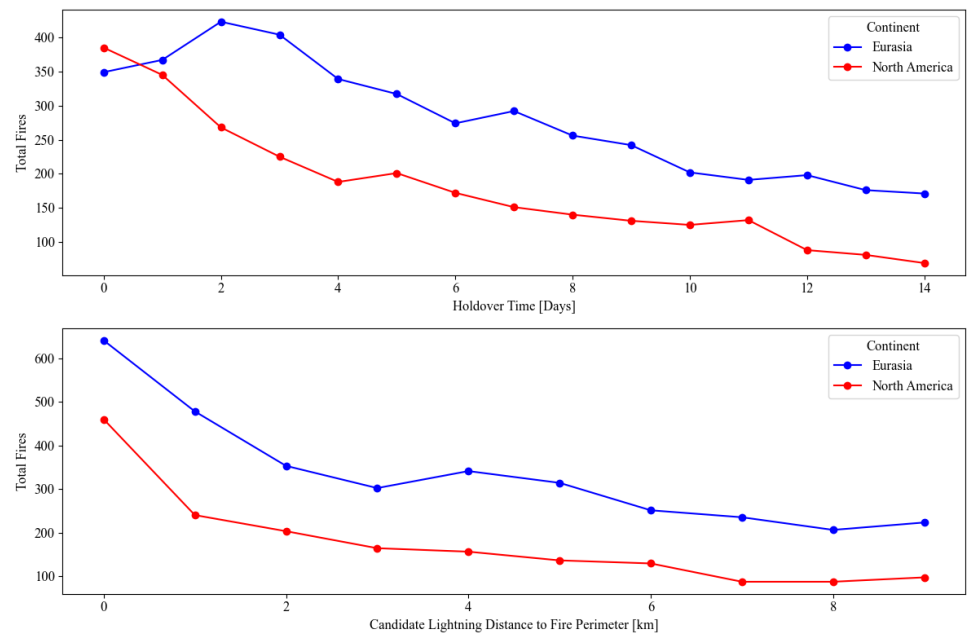


Figure 4: Top graph compares the holdover time for the total number of fires over a 15-day period between the Eurasia and North America BoLtfire dataset continents. Bottom graph compares the distance of the candidate lightning from the fire perimeter for all of the fires whose candidate lightning was located outside the fire perimeter within the Eurasia and North America BoLtfire dataset continents.

Formatted: Heading 2

Deleted: 711

Deleted: 11.42

Formatted: Font: +Headings (Times New Roman)

Formatted: Font: +Headings (Times New Roman)

Deleted: 1,963

Deleted: 31.52

Formatted: Font: +Headings (Times New Roman)

Formatted: Font: +Headings (Times New Roman)

Deleted: nearly

Formatted: Font: +Headings (Times New Roman)

Deleted: 78.23

Formatted: Font: +Headings (Times New Roman)

Total Fires

Holdover Time [Days]

Total Fires

Candidate Lightning Distance to Fire Perimeter [km]

Deleted:

Formatted: Font: +Headings (Times New Roman)

3.4.2 Distance to fire perimeter

The analysis of the distance of the ignition point from the perimeter of the fire revealed a pattern similar to that of the holdover, a decrease in total fires as the distance from the perimeter increases (Figure 4). A total of 1,799 of the ignition points were located within the perimeter of the fire. The remaining 5,103 ignition points were located outside of the perimeter, 208 were within 100 m of the fire perimeter, 1,101 (21.58 %) were within 1 km and over half (2,841, 55.67 %) were within 4 km (Table D2). This trend was mirrored in both Eurasia and North America.

3.4.3 Lightning-ignition efficiency

The BoLTFire dataset reveals variations in the incidence of lightning ignition efficiency (LIE) across both continents for fire sizes of at least 200 ha (Table D3). Eurasia recorded a higher number of total flashes (approximately 15 million) and a greater number of lightning-ignited wildfires (4,201), compared to North America's 12.53 million flashes and 2,701 lightning-ignited wildfires. Approximately 0.000280 of lightning flashes resulted in ignition in Eurasia, while 0.000216 of flashes led to an ignition in North America. Overall, the combined data across both continents shows a total of nearly 27.53 million flashes, resulting in 6,902 lightning-ignited wildfires, with an overall lightning-ignition efficiency of 0.000251. To better understand the lightning-ignition efficiency at a more regional level, it was calculated by country: The United States (Alaska) has the highest lightning-ignition efficiency at 0.005025. Mongolia has the next highest efficiency at 0.000769 with Russia following with 0.000291. Canada has a much lower lightning-ignition efficiency of 0.000194, while Sweden and Finland have the lowest lightning-ignition efficiencies at 0.000037 and 0.000003, respectively. This data suggests that the likelihood of lightning igniting wildfires varies considerably across these countries for larger fires.

3.4.4 Frequency of fires per year and total burned area

Understanding the number of fires per year is critical for assessing the frequency and trends of wildfire occurrences. The total frequency of lightning-ignited wildfires exhibited substantial year-to-year variability across both continents, with the most amount of lightning-ignited wildfires found in 2013 (942) and the least found in 2019 (105) (Table D4). From a total burned area perspective, even though 2013 had the most lightning-ignited wildfires, it burned only the third most amount of area at close to 4.53 million ha; while 2021 had the most burned area at 8.54 million ha and 2019 had the least at 840,774.68 total ha burned. In 2012, the dataset shows that Eurasia had no lightning-ignited wildfires, while North America had 223. This discrepancy is most likely due to the ENTNLN having fewer sensors available at the time, as only 244 total lightning flashes were found in that year in Eurasia (the average amount is approximately 1,363,542 per year). In 2013, despite Eurasia having more lightning-ignited wildfires, North America experienced a significantly larger burned area (2.81 million ha compared to 1.73 million ha in Eurasia).

Formatted	...
Deleted: 495	
Formatted	...
Deleted: 4,733	
Deleted: 174	
Formatted	...
Formatted	...
Deleted: 957 (20.22	
Deleted: 2585, 54.62	
Formatted	...
Formatted	...
Deleted: strokes	
Formatted	...
Formatted	...
Deleted: 186	
Formatted	...
Deleted: strokes	
Deleted: 042	
Formatted	...
Formatted	...
Deleted: 0279	
Deleted: strokes	
Deleted: just	
Deleted: 0163	
Deleted: strokes	
Formatted	...
Formatted	...
Formatted	...
Formatted	...
Formatted	...
Deleted: strokes	
Formatted	...
Deleted: 228	
Formatted	...
Deleted: 0226	
Formatted	...
Deleted: 5079	
Deleted: 075	
Formatted	...
Formatted	...
Deleted: 029	
Deleted: 0141	
Formatted	...
Formatted	...
Deleted: 0037	
Deleted: 0003	
Formatted	...

3.4.5 Area burned by fire size class

Within the BoLTFire dataset, Small fires are the most common, with 3,623 LIW, burning a total of approximately 1.71 million ha, resulting in an average of 155,516.33 ha per year and 472.17 ha per fire (Table D5 and D6). Moderate fires follow with 2,614 lightning-ignited wildfires, contributing to a total burned area of about 8.46 million ha, and an average of 769,264.20 ha per year and 3,237.15 ha per fire. Although Large fires are less frequent, with 555 incidents, they account for a significant burned area of approximately 11.6 million ha, averaging 1,054,329.48 ha per year and 20,896.62 ha per fire. XLarge and Mega fires are the least common (58 and 52 incidents respectively), but they contribute disproportionately to the total burned area. XLarge fires burned 3.96 million ha, with an average of 360,420.93 ha per year and 68,355.69 ha per fire, while Mega fires had the largest average burned area at 992,715.94 ha per year and 209,997.60 ha per fire, totalling approximately 10.92 million ha. When reviewing all fire sizes, North America has an average burned area of 5,762.97 ha per fire, which is relatively close to Eurasia's 5,019.98 ha per fire. When averaging the smaller fire sizes (Small and Moderate fires), North America has a higher average burned area of 1,765.82 ha per fire, compared to Eurasia's 1,547.53 ha per fire. When looking at just the larger fire sizes (Large, XLarge, and Mega), Eurasia has a significantly larger average burned area of 43,346.26 ha compared to North America's 35,931.28 ha burned area. Overall, North American Small and Moderate fires tend to be larger than Eurasia's, but Eurasia tends to have larger Large, XLarge, and Mega fires.

3.4.6 Total burned area per land cover

Within the BoLTFire dataset, Woody Savannas and Savannas are the most affected forest or forest-like land cover types, with 3,280 and 2,239 fires respectively, contributing to the largest total burned areas of approximately 18.66 million ha and 14.3 million ha; 89.89 % of the total burned area (Table D7). Evergreen Needleleaf Forests also had an impact, with 483 fires burning approximately 1.69 million ha, accounting for 4.6 % of the total burn area. Open Shrublands and Mixed Forests experienced moderate impacts, accounting for 3.31 % and 1.42 % of the total burn area, respectively. Unsurprisingly, Savannas had the largest average burn area per fire at 6,383 ha, followed closely by Woody Savannas at 5,687.98 ha, Evergreen Needleleaf Forests at 3,493.94 ha, and Open Shrublands at 3,067.32 ha. Deciduous Broadleaf Forests, Permanent Wetlands, and Deciduous Needleleaf Forests had the fewest total burned ha, and some of the smallest average burned area per ha. The total burned area was driven strongly by the Savannas and Woody Savannas land covers and this trend was also mirrored in both Eurasia and North America.

When all other land covers besides forest-specific ones (Deciduous Broadleaf Forests, Deciduous Needleleaf Forests, Evergreen Needleleaf Forests, and Mixed Forests) were removed, Eurasia, contained a total of 570 fires, contributing to a combined fire area of 1,110,743.72 ha, with an overall average fire size of 1,948.67 ha. In North America, there were 244 fires, with a total area burned of 1,192,083.51 ha and an overall average fire size of 4,885.59 ha. North America had on average larger Small (492.81 ha vs 459.92 ha, respectively), Moderate (3,671.42 ha vs 2,968.27 ha), and Large (20,704.42 ha vs

Deleted:	299
Deleted:	56
Formatted	...
Formatted	...
Deleted:	141,428.26
Deleted:	471.57
Formatted	...
Formatted	...
Deleted:	344
Deleted:	7.45
Deleted:	677,225.82
Formatted	...
Formatted	...
Formatted	...
Deleted:	178.11
Deleted:	484
Formatted	...
Formatted	...
Deleted:	10.15
Deleted:	923,008.77
Deleted:	977.47
Formatted	...
Formatted	...
Formatted	...
Deleted:	52
Formatted	...
Deleted:	49
Formatted	...
Deleted:	56
Deleted:	323,826.30
Deleted:	501.72
Formatted	...
Formatted	...
Formatted	...
Deleted:	942,543.65
Deleted:	211,591.43
Deleted:	totaling
Deleted:	37
Formatted	...
Formatted	...
Formatted	...
Formatted	...
Deleted:	883.93
Formatted	...
Deleted:	034.25
Formatted	...

1335 17,680.42 ha), Eurasia did not contain any forest-specific XLarge fires, while North America had five, XLarge totalling
517,610.42 ha with an average fire size of 20,704.42 ha. Neither Eurasia nor North America had forest-specific land cover
based Mega fires. While Eurasia experienced a significantly higher number of fires, North America had fewer but larger fires
on average. This suggests potential differences in fire management or environmental conditions influencing fire behaviour
between the two continents.

1340 4 Discussion

4.1 Agency reference dataset and NA BoLtFire ARD Version dataset comparison

The candidate lightning agreement highlighted the important methodological choices when matching lightning candidates
(Moris et al., 2020). Although all three methods performed relatively well, finding candidate lightnings for at least 71% of the
agency reference dataset, they had difficulty agreeing on the “correct” lightning candidate, with only 36.01% agreement across
all three methodologies. This discrepancy is likely due to the differences in methodological approaches, as MaxA and DMin,
who have similar methodologies, agreed on 55.07% of candidates, while TMin agreed with MaxA on only 44.31% and DMin
on 37.33%. Overall, the TMin matched the most lightning candidates (77.68%); while DMin and MaxA matched slightly
fewer at 71.91% and 70.13%, respectively. However, significant differences became clear in the total burned area matched:
out of approximately 19.66 million ha in the agency reference dataset, TMin identified candidate lightning for approximately
16.32 million ha, whereas DMin identified only 12.50 million ha (3.82 million ha less than TMin) and MaxA identified only
12.34 million ha (3.98 million ha less than TMin).

While TMin matched more large fire sizes, MaxA identified the lightning candidates closest to the ignition point but correctly
located only 24.52% within the fire perimeter. While the agency reference dataset did have 246 ignition locations outside the
fire perimeter, 89.85% of ignitions occurred within the fire perimeter. Of the 2,178 ignitions inside the fire perimeter, TMin
had the highest accuracy, correctly identifying 754 of those ignitions within the perimeter (34.62% accuracy). This low
accuracy could be attributed to several factors, one of which could be due to the TMin methodology, though it originally looks
for only candidate lightnings within the perimeter; if one is not found within a certain window (14 days), then it starts to look
outside the perimeter. The holdover for these fires could be longer than 14 days, as holdovers in boreal forests can last for a
significant period of time before flaming (Scholten et al., 2021). Additionally, it could be due to location error of the lightning
locations, as quite a large portion of the boreal forest is remotely located. Furthermore, as noted by Hanes et al. (2019), the
Canadian National Fire Database points are just the presumed points of ignition, which may also explain why 246 of the
ignition locations were not within their corresponding fire polygons. Furthermore, as Crowley et al. (2023) highlighted, both
points and perimeter polygons in the Canadian National Fire Database are compiled and submitted by different provinces,
potentially adding additional discrepancies and leading to variations in definitions across the datasets.

Deleted:	21,621.91
Deleted:) fires.
Deleted:	land cover-based
Deleted:	,
Deleted:	, totaling 321,079.76
Formatted	...
Formatted	...
Formatted	...
Formatted	...
Deleted:	64,216.95 ha
Formatted	...
Formatted	...
Deleted:	, particularly in the extreme fire size categories.
Deleted:	behavior
Formatted	...
Formatted	...
Formatted	...
Formatted	...
Formatted	...
Deleted:	66
Formatted	...
Deleted:	35.97
Formatted	...
Deleted:	86
Deleted:	41.50
Formatted	...
Formatted	...
Deleted:	13
Deleted:	74.71
Formatted	...
Formatted	...
Deleted:	49
Deleted:	66.67
Formatted	...
Formatted	...
Deleted:	15.83
Deleted:	47
Deleted:	36
Formatted	...
Formatted	...
Formatted	...
Deleted:	11.78
Deleted:	4.05
Formatted	...
Formatted	...
Formatted	...

1415 The results of the confusion matrix comparing the temporal and spatial overlap of the agency reference dataset and the NA
BoLtFire ARD Version dataset indicated that our proposed TMin methodology was promising; with low commission and
moderate omission errors of 30.07% and 53.16%, respectively. Interestingly, Small and Moderate fires matched the fewest
fires, and when they were removed, the overall matching increased from 46.86% to 70.10% of total fires; indicating that fires
that are less than 10,000 ha are more difficult to match than larger fires. This may be due to the difficulty MODIS has in
detecting smaller wildfires (discussed further in Sect. 4.3, Limitations). Another possible explanation could be the size of the
1420 matching temporal window. In their study, Fusco et al. (2019) used a seven-day window when spatially matching their MODIS
fires, which is what we also implemented. After applying this window, we had five unmatched Mega fires which we then
reviewed visually to better understand why they were unmatched. We noticed that three of the five had fire perimeters within
the agency reference dataset that matched well visually, but all had start dates outside of seven days, but within 30 days of the
agency reference fire. Due to the remoteness of some of these fires and possible fire recognition issues with the underlying
1425 MODIS data, an increase in the window size could include more fires. This increase in window size could also cause fires to
be incorrectly associated with neighbouring fires due to the increase in window size. Overall errors of omission are likely due
to the detailed limitations mentioned below, as well as differences in pixel resolution, satellite overpass time, and cloud and
smoke cover (Giglio et al., 2009; Hantson et al., 2013; Hawbaker et al., 2008; Johnston et al., 2018; Roy et al., 2005). Errors
of commission are likely due to fire-free surfaces that are highly reflective (Cardoso et al., 2005; Giglio et al., 2009; Hantson
1430 et al., 2013); though less likely in this study as both urban and agricultural land uses were removed. As we removed fires that
were smaller than 200 ha, our errors of omission and commission are likely to be lower than expected.

4.2 BoLtFire dataset

From a global perspective, the BoLtFire dataset provided interesting insights that could help enhance our understanding of
holdover time, lightning-ignition efficiency, primary characteristics, frequency, and spatial distribution of lightning-
1435 ignited wildfires in boreal forests. The holdover phenomenon poses a significant challenge to the real-time detection of lightning-
ignited wildfires. While our results generally align with current literature, as the frequency of the holdover decreased over
time, it differs in its initial detection, as the majority of lightning-ignited wildfires are typically detected within the first 24
hours (Gao et al., 2024; Moris et al., 2023). Our lightning-ignited wildfire holdovers resulted in just 10.63% occurring within
the first 24 hours, with 47.71% within a five-day window (Day 0 to Day 4) days. This could be due to a variety of factors,
1440 including the global scale of our results (most studies are done at a local or more regional level). Additionally, lightning-ignited
wildfire ignition is strongly influenced by fuel type, weather, and topography; holdover times could reflect this dependency.

The analysis of the distance of the ignition point from the perimeter of the fire also revealed a decrease in total fires as the
distance from the perimeter increased. While the agency reference dataset did have ignition points outside the fire perimeter,
1445 these accounted for 10.15 % of the total dataset. Within the BoLtFire dataset, 73.94 % of fires have an ignition point outside
the fire perimeter. This could be due to a couple of different reasons, either the ignition point was associated with the wrong

Formatted: Font: +Headings (Times New Roman)

Deleted: 06

Deleted: 63

Formatted: Font: +Headings (Times New Roman)

Formatted: Font: +Headings (Times New Roman)

Deleted: 37

Deleted: 34

Formatted: Font: +Headings (Times New Roman)

Formatted: Font: +Headings (Times New Roman)

Deleted: neighboring

Formatted: Font: +Headings (Times New Roman)

Deleted: 11.42

Formatted: Font: +Headings (Times New Roman)

Deleted: 80

Formatted: Font: +Headings (Times New Roman)

Commented [BE2]: Double check

Deleted: 76.00

Formatted: Font: +Headings (Times New Roman)

Formatted: Font: +Headings (Times New Roman)

1455 fire perimeter (i.e., the correct fire perimeter was not identified by MODIS, or was removed in the filtering process), the correct lightning candidate within the fire perimeter was not within the ENTLN dataset, or possibly, it could be due to spatial location errors from either, or both, the underlying MODIS dataset or the ENTLN dataset. Benali et al. (2016) found that there could be up to a 12-hr temporal and 2 km spatial lag between data reported by agencies and data that was derived by a satellite. We think it is most likely both, as within the 5,103 ignition points located outside the perimeter, 21.58% were located within 1 km of the perimeter, 35.65% were within 2 km, and over half were within 4 km.

While thunderstorms generate thousands of strikes a year, the likelihood of ignition occurring from a lightning strike is low, as only a few manage to persist long enough to enter a flaming stage (Wotton and Martell, 2005; Pineda and Rodríguez, 2023; Podur et al., 2003). Latham and Williams (2001) found that within much of North America, 0.01 to 0.04 actually ignites a fire; on average about 0.00167 caused an ignition in Alaska (Wendler et al., 2010), 0.001329 in Alberta and Saskatchewan (Nash and Johnson, 1996), 0.02 in British Columbia and 0.00071 in Alberta (Wierzchowski et al., 2002). Our lightning-ignition efficiency across North America and Eurasia varies from that found in the literature, though likely due to the regionality of the other studies and to our filtering process. When reviewed more closely, the lightning-ignition efficiency of our lightning-ignited wildfires in Canada were roughly 0.000194, and Alaska's lightning-ignition efficiency was roughly 0.005025, or 3/595. Though Canada's lightning-ignition efficiency rate is not in line with the literature, Alaska's is. This could be due to the 200-ha filter, which would have removed a significant amount of smaller fires. Additionally, this could be due to the filtering but could also indicate that lightning-ignition efficiency needs to be conducted at a more local and regional level. Furthermore, upon visual inspection, some lightning data was located within a country but was not labelled as such due to imperfections within the World Bank (2020) Official Boundaries dataset. This could lead to a higher lightning-ignited efficiency than what was reported.

There was no distinct increase or decrease in fire count and size over the years, with both variables experiencing high year-to-year variation. As mentioned, weather and other climatic factors play a significant role in lightning-ignited wildfire ignition; which could help explain the general variation between, and within, the total count and burned area in fire seasons. However, one of the most prevalent trends in the BoLTFire dataset shows that larger fires, despite the smaller overall fire count, are disproportionately responsible for the largest portion of the total burned area, whereas Small and Moderate fires represent 90.37% of the total fire count but account for just 27.75% of the total burned area. Conversely, Large, XLarge, and Mega fires make up 9.63% of the total fires but are responsible for 72.25% of the total burned area. This trend is also observed in the agency reference dataset, Small and Moderate fires constitute 83.17% of the total fire count but only contribute to 21.51% of the total burned area. In contrast, Large, XLarge, and Mega fires, although comprising only 16.83% of the total fires, are responsible for 78.49% of the total burned area. These results are in line with current literature (Grünig et al, 2022; Hane s et al., 2019; Stocks et al., 2002). Interestingly, when reviewing larger fire sizes (Large, XLarge, and Mega) between Eurasia and North America, Eurasian fires are on average 20.64% larger than fires in North America. This seems to be due to the dominant

Deleted:

Formatted: Font: +Headings (Times New Roman)

Deleted: 4.733

Deleted: 20.22

Formatted: Font: +Headings (Times New Roman)

Formatted: Font: +Headings (Times New Roman)

Deleted: 33.33

Formatted: Font: +Headings (Times New Roman)

Deleted: 000141

Deleted: 005079

Formatted: Font: +Headings (Times New Roman)

Formatted: Font: +Headings (Times New Roman)

Deleted:

Deleted: Canada's lightning-ignition efficiency is still not in line with more local studies. This

Deleted: still

Formatted: Font: +Headings (Times New Roman)

Formatted: Font: +Headings (Times New Roman)

Formatted: Font: +Headings (Times New Roman)

Deleted: ,

Formatted: Font: +Headings (Times New Roman)

Deleted: labeled

Formatted: Font: +Headings (Times New Roman)

Deleted: :

Formatted: Font: +Headings (Times New Roman)

Deleted: 61

Deleted: 22

Formatted: Font: +Headings (Times New Roman)

Formatted: Font: +Headings (Times New Roman)

Deleted: 39

Deleted: 28

Formatted: Font: +Headings (Times New Roman)

Formatted: Font: +Headings (Times New Roman)

Deleted: 16.90

Formatted: Font: +Headings (Times New Roman)

land cover type underlying the fires. The overwhelming majority of the burned area occurred within either the Savannas or Woody Savanna (accounting for a combined 89.89 % of the total burned land cover). When only reviewing forest-specific land covers, while Eurasia still had a larger total burned area, North America had on average fire sizes that were 250.71 % bigger.

4.3 Limitations

While our overall results were promising, there are several uncertainties and limitations that need to be considered when working with our data. First, it is important to emphasize that the comparison between the MODIS-based dataset and the agency reference dataset should be viewed as an assessment rather than a validation. The production of similar values between the datasets enhanced our confidence in the reliability of our resulting BoLtfire datasets. However, interpreting discrepancies between the results is complex due to a multitude of influencing factors. Second, our current understanding of global fire regimes relies heavily on satellite-based products, MODIS active fire and burned area products are one of the most widely used (e.g., Crowley et al., 2023). The efficacy of MODIS products, along with other satellite-based fire products, is constrained by limitations in resolution and sensitivity, as demonstrated by comparative validation with higher-resolution sensors like Landsat. Within the U.S., Hawbaker et al. (2008) found that MODIS active fire product detected 82 % of all Landsat reference fires, but their detection efficacy decreased with fire size and just 50 % of fires were detected at 105 ha. The mean detected fire sizes were 915 and 1,044 ha, which could heavily impact the frequency and size of fires found within BoLtfire datasets. When reviewing small (> 0.2 ha) sub-canopy fires in Canada, Johnston et al. (2018) found that coarser spatial resolution sensors would be incapable of early fire detection for 44 - 70 % of historic wildfires in boreal forests in Canada. Additionally, Loboda et al. (2011) found that MODIS burned area products can underestimate the extent of fires by 15 - 70 %. This could be an indication that the overall total count and fire size of the BoLtfire dataset are lower than expected. Furthermore, there are limitations within the agency reference datasets that affect the overall commission and omission errors. Some fires that were identified by MODIS might not be identified by an agency due to the remoteness of their location (Fusco et al., 2019), incomplete lightning data or incorrect occurrence date (Flannigan and Wotton, 1991), or misidentified as lightning-ignited due to a nearby thunderstorm activities (Müller et al., 2013). However, the former reason is unlikely due to the methods and experience of those investigating the fire (Schultz et al., 2019). Additionally, fires that are mapped later in the season could have fire scars that are insensitive to multiple fire events, making it difficult to distinguish between singular fire events and fire complexes. Yet, this is also an issue for agency databases as they can also fail to distinguish between the two (Benali et al., 2016). Third, since we used a lightning detection network, there is a possibility that not all lightning strikes were detected. As mentioned, in more remote areas, detection efficiency can be relatively low, and location errors are expected to be larger (up to several kilometers for the ENTLN). Additionally, as the ENTLN currently has no sensors located in Russia, this could create larger spatial errors or possibly not detect some lightning strikes. Since our lightning matching methodology heavily depends on the detection of lightning strikes, these factors could influence not only the likelihood of a correct match but also the selection of the candidate lightning strike in the absence of the “correct” match. Moreover, as there is currently not a

Deleted: 69

Formatted: Font: +Headings (Times New Roman)

Deleted: 64.18

Formatted: Font: +Headings (Times New Roman)

Deleted: 10 km

Formatted: Font: +Headings (Times New Roman)

1545 foolproof method for identifying lightning ignited wildfires using these methodologies, there is a chance that some of our
BoLtFire dataset fires have been misclassified. Based on the spatial and temporal window that was selected, we assume – but
1550 cannot definitively confirm (especially in Eurasia) – that these fires were ignited by lightning. To minimize the possibility of
these false positives, we deliberately selected a 14-day temporal window and a 10 km spatial window based on previous
research, and our own observations of our data. Had we increased the size of either of these windows, we could have
inadvertently matched a lightning candidate to a fire that may not have been ignited by lightning. Finally, as the currently
available reference datasets are limited to boreal forests, we were only able to assess the BoLtFire dataset with those resulting
fires within Canada and Alaska. Fire records from other agencies, especially those in Siberia and Russia are difficult to obtain
or might be inaccurate (Stocks et al., 2001). As tree canopies can obscure fires (Johnston et al., 2018; Kolden et al., 2012), and
as surface fires are more prevalent in Eurasia than the crown fires dominant in North America, omission rates could be higher
in Eurasia. Additionally, Talucci et al. (2022) found when comparing MODIS to Landsat fire detection in Siberia from 2001 -
2020, Landsat captured 47.9 % more burn area, which could indicate that our dataset does not fully reflect the true burn area
1555 in Siberia, and thus, within Eurasia.

Formatted: Font: +Headings (Times New Roman)

Deleted: datasets do

Formatted: Font: +Headings (Times New Roman)

4.4 Outlook

The effectiveness of lightning in igniting wildfires is expected to be amplified by climate change; under the RCP8.5 scenario,
Hessilt et al. (2022) predict that changes in fire weather and vegetation will increase the effectiveness of lightning ignition by
31 ± 28 % in Canada’s Northwest Territories and 14 ± 9 % in Alaska per 1°C of warming. Understanding the characteristics
1560 of these fires is crucial for improving our knowledge of where, why, and how they ignite, which could enhance our ability to
model and mitigate their occurrence in the future. Furthermore, research by Zhu et al. (2017) suggests that the effects of
Eurasian boreal wildfire emissions on Arctic warming may be underestimated. Given that lightning is a predominant cause of
wildfires in boreal forests, improving the identification of lightning-ignited fires will enhance our understanding of their
emissions and their contribution to global warming.

5 Data availability

All input data used in this dataset (Engle et al., 2024) was publicly available (with the exception of the lightning data, as this
data was provided by Earth Networks, Inc., an AEM company) and can be found in Table A3. Data described in this manuscript
can be accessed at Zenodo under data doi10.5281/zenodo.14940326.

Formatted: Font: +Headings (Times New Roman), Font color: Auto

Formatted: Font: +Headings (Times New Roman)

Deleted: doi 10

Deleted: 13897163

Formatted: Font: +Headings (Times New Roman)

Formatted: Font: +Headings (Times New Roman)

6 Code availability

1570 The code used in this dataset is available at https://github.com/BrittanyEngle/BoLtFire_Code.

Formatted: Font: +Headings (Times New Roman), Font color: Auto

Formatted: Font: +Headings (Times New Roman)

7 Conclusion

Challenges in identifying lightning-ignited wildfires, coupled with limitations in data availability, have hindered our understanding of the characteristics of these wildfires in boreal forests. In this paper, we introduced the Temporal Minimum Distance (TMin) methodology, a novel approach specifically developed to match lightning strikes without an ignition point. It outperformed current methods, allowing us to create the largest pan-boreal forest dataset. This groundbreaking dataset consists of 6,902 lightning-ignited wildfires located in forest and forest-like land covers from 2012-2022 that are at least 200 ha. When benchmarked to the agency reference dataset, this new dataset performed reasonably well, with an overall commission error was 30.07% and the omission error was 53.16%, though further fine-tuning of the TMin methodology and input parameters could lead to an even better performance. This dataset can be further used in conjunction with climate and additional environmental data to help better model lightning-ignited wildfire ignition characteristics and provide additional insights into lightning-ignited wildfires in boreal forests.

Acknowledgements

CS received funding from the European Space Agency through the Climate-Space RECCAP2 project (4000144908/24/I-LR).

Appendix A

Table A1: Descriptive list of which land cover types were either forest or forest-like and thus labelled “Forest”. Those labelled “Forest” were included within the dataset while those that were not, were removed.

Dominant Forest Land Covers	Non-Forest Land Covers
<ul style="list-style-type: none">Evergreen Needleleaf ForestsEvergreen Broadleaf ForestsDeciduous Needleleaf ForestsDeciduous Broadleaf ForestsMixed ForestsClosed ShrublandsOpen ShrublandsWoody SavannasSavannasGrasslandsPermanent Wetlands	<ul style="list-style-type: none">Urban and Built-up LandsCropland/Natural Vegetation MosaicsCroplandsWater BodiesBarrenPermanent Snow and Ice

Formatted: Font: +Headings (Times New Roman), Font color: Auto

Formatted: Font: +Headings (Times New Roman)

Deleted: 228

Formatted: Font: +Headings (Times New Roman)

Deleted: of

Deleted: 06

Deleted: of

Deleted: 63 %;

Formatted: Font: +Headings (Times New Roman)

Formatted: Font: +Headings (Times New Roman)

Formatted: Font: +Headings (Times New Roman)

Formatted: Font: +Headings (Times New Roman)

Formatted: Font: +Headings (Times New Roman)

Formatted: Font: +Headings (Times New Roman), Font color: Auto

Formatted: Font: +Headings (Times New Roman)

Deleted: ¶
¶
¶
¶
¶

Formatted: Font: +Headings (Times New Roman), Font color: Auto

Deleted: labeled

Deleted: labeled

Formatted: Font: +Headings (Times New Roman)

Formatted: Font: +Headings (Times New Roman)

Formatted: Font: +Headings (Times New Roman)

Formatted: Font: +Headings (Times New Roman)

Formatted: Font: +Headings (Times New Roman)

Formatted: Font: +Headings (Times New Roman)

Formatted: Font: +Headings (Times New Roman)

Formatted: Font: +Headings (Times New Roman)

Formatted: Font: +Headings (Times New Roman)

Deleted: ¶

Formatted: Font: +Headings (Times New Roman)

Table A2: Description of the total burned area per fire size class.

Fire Size Class	Size in HA
Small	$200 \leq 1,000$ ha
Moderate	$1,000 \leq 10,000$ ha
Large	$10,000 \leq 50,000$ ha
Extremely Large	$50,000 \leq 100,000$ ha
Mega Fires	$> 100,000$ ha

Table A3: List of every dataset used to create the BoLtfire dataset, their spatial and temporal extent, citation, and link to their location.

Dataset	Spatial extent	Temporal extent	Citation	Notes	Link
Alaska Fire Service Fire Perimeters	Alaska, USA	1942-2023	(U.S. Department of the Interior, Bureau of Land Management, Alaska Fire Service, 2024b)	Almost all of the fire perimeters had a matching fire point	https://fire.ak.blm.gov/
Alaska Fire Service All Fire Points	Alaska, USA	1939-2022	(U.S. Department of the Interior, Bureau of Land Management, Alaska Fire Service, 2024a)	Meaning of point locations unclear, no fire perimeters	https://fire.ak.blm.gov/

Formatted: Font: +Headings (Times New Roman)

Formatted: Font: +Headings (Times New Roman)

Formatted: Font: +Headings (Times New Roman)

Formatted: Font: +Headings (Times New Roman)

Formatted: Font: +Headings (Times New Roman)

Formatted: Font: +Headings (Times New Roman)

Deleted: ¶

Formatted: Font: +Headings (Times New Roman)

Formatted Table

Formatted: Font: +Headings (Times New Roman)

Formatted: Font: +Headings (Times New Roman), Font color: Auto

Formatted: Font: +Headings (Times New Roman)

Formatted: Font: +Headings (Times New Roman)

Formatted: Font: +Headings (Times New Roman), Font color: Auto

Formatted: Font: +Headings (Times New Roman)

Canadian National Fire Database - National Fire Database fire polygon data	Canada	1917-2020	(Canadian Forest Service, 2024)	Fire perimeters do not always have a matching fire point	https://cwfis.cfs.nrcan.gc.ca/ha/nfdb
Canadian National Fire Database - National Fire Database fire point data	Canada	1930-2022	(Canadian Forest Service, 2024)	Meaning of point locations differs across provinces, no fire perimeters	https://cwfis.cfs.nrcan.gc.ca/ha/nfdb
Ecoregions 2017	Global	2017	(Olson et al., 2001)	global classification of terrestrial ecoregions	https://ecoregions.appspot.com/
GlobFire Fire Perimeters	Global, 500m	2002-2023	(Artés et al., 2019)	Global, vectorized MODIS burned area product	https://gwjs.jrc.ec.europa.eu/apps/country.profile/downloads
World Bank Official Boundaries: Admin 0, 10 meter boundary Dataset	Global, 10m	2020	(World Bank, 2020)	Boundaries are 10 m, some imperfections along the borders found	https://datacatalog.worldbank.org/search/dataset/0038272/World-Bank-Official-Boundaries
Moderate Resolution Imaging Spectroradiometer (MODIS) Collection 6	Global, 500m	2000-11-01 - Present	(Giglio et al., 2018)	Global fire dataset, raster	https://lpdaac.usgs.gov/products/mcd64a1v061/

Formatted: Font: +Headings (Times New Roman)

Formatted: Font: +Headings (Times New Roman)

Formatted: Font: +Headings (Times New Roman)

Formatted: Font: +Headings (Times New Roman)

Formatted: Font: +Headings (Times New Roman)

Formatted: Font: +Headings (Times New Roman)

MCD64A1 burned area product					
MODIS MCD12Q1v061 Land Cover Type 1	Global, 500m	2001-01-01 - 2022-12-31	(Friedl and Sulla-Menashe, 2022)	Global land cover dataset, downloadable in small regions	https://lpdaac.usgs.gov/products/mcd12q1v061/
Global LAND Cover mapping and Estimation (GLANCE) Grids - Version 01 CRS	Global	-	(Arevalo et al., 2022)	Global land cover that splits North America, Europe and Asia	https://measures-glance.github.io/glance-grids/
Earth Networks Total Lightning Network (ENTLN)	Global	2012-2022	(Zhu et al., 2022)	Global dataset of lightning locations	https://www.earthnetworks.com/
Worldwide Lightning Location Network (WLLN)	Global	15 August 2004 to the present	(Rodger et al., 2004)	Global dataset of lightning locations	https://wwlln.net/

Formatted: Font: +Headings (Times New Roman)

Formatted: Font: +Headings (Times New Roman)

Deleted: Current

Formatted: Font: +Headings (Times New Roman)

Formatted: Font: +Headings (Times New Roman), Underline

Formatted: Font: +Headings (Times New Roman)

Formatted: Font: +Headings (Times New Roman)

Appendix B

Formatted: Font: +Headings (Times New Roman), Font color: Auto

Table B1: Cumulative count of the amount of candidate lightning flashes per LIW by fire class.

Formatted: Font: +Headings (Times New Roman)

Matched Agency Reference Dataset Fires by Methodology									
Fire Size	TMin			MaxA			DMin		
	LIW Count	Total Flashes for Matching	Average Flash per Fire	LIW Count	Total Flashes for Matching	Average Flash per Fire	LIW Count	Total Flashes for Matching	Average Flash per Fire
Small	707	9,013	12.75	673	12,963	19.26	696	13,793	19.82
Moderate	843	6,046	7.17	767	12,820	16.71	784	13,627	17.38
Large	276	2,182	7.91	220	2,907	13.21	223	3,102	13.91
XLarge	34	745	21.91	24	326	13.58	24	339	14.13
Mega	23	814	35.39	16	264	16.50	16	287	17.94

Total	1,883	18,800	9.98	1,700	29,280	17.22	1,743	31,148	17.87
-------	-------	--------	------	-------	--------	-------	-------	--------	-------

Table B2: Cumulative percentage values of the holdover time distribution for all three methodologies within the NA BoLFire ARD Version Dataset, TMin, MaxA and DMin. Holdover time is calculated as the difference between the start date of each lightning-ignited wildfire and the time of the occurrence of the candidate lightning.

Agency Reference Dataset After Applied Methodologies									
	TMin			MaxA			DMin		
Day	Per Day	Cumulativ e	Cumulativ e Percent	Per Day	Cumulativ e	Cumulativ e Percent	Per Day	Cumulativ e	Cumulativ e Percent
+1	-	-	-	-	-	-	116	116	6.66%
0	469	469	24.91%	429	429	25.24%	460	576	33.05%
1	380	849	45.09%	354	783	46.06%	360	936	53.70%
2	234	1083	57.51%	218	1001	58.88%	210	1146	65.75%
3	144	1227	65.16%	137	1138	66.94%	125	1271	72.92%
4	103	1330	70.63%	101	1239	72.88%	93	1364	78.26%
5	105	1435	76.21%	99	1338	78.71%	86	1450	83.19%
6	80	1515	80.46%	73	1411	83.00%	57	1507	86.46%
7	66	1581	83.96%	52	1463	86.06%	43	1550	88.93%
8	58	1639	87.04%	50	1513	89.00%	42	1592	91.34%
9	60	1699	90.23%	51	1564	92.00%	43	1635	93.80%
10	44	1743	92.57%	35	1599	94.06%	29	1664	95.47%

Formatted

Deleted:

Deleted: Holdover time for BoLFire dataset

Deleted Cells

Formatted

Formatted Table

Formatted

Formatted

Formatted

Deleted: 117

Deleted: 117

Deleted: 75

Formatted

Formatted

Formatted

Formatted

Formatted

Formatted

Formatted

Formatted

Formatted

Formatted

Deleted: 503

Deleted: 503

Deleted: 27.77

Deleted: 449

Deleted: 449

Deleted: 27.78

Formatted

Formatted

Formatted

Deleted: 546

Deleted: 663

Deleted: 38.26

Formatted

Formatted

Formatted

Formatted

Formatted

Formatted

Formatted

Formatted

Deleted: 317

Deleted: 820

Deleted: 28

Formatted

11	39	1782	94.64%	24	1623	95.47%	17	1681	96.44%
12	45	1827	97.03%	37	1660	97.65%	29	1710	98.11%
13	30	1857	98.62%	25	1685	99.12%	22	1732	99.37%
14	26	1883	100.00%	15	1700	100.00%	11	1743	100.00%

Table B3: Median and mean holdover time, rounded to the second decimal for the TMin, MaxA and DMin lighting matching methodologies. Holdover time is calculated as the difference between the start date of each lightning-ignited wildfire and the time of the occurrence of the candidate lightning. Median and mean distance from the agency reference dataset ignition point locations to each of the TMin, MaxA, and DMin’s candidate lightning.

Method	Holdover Time for the Agency Reference Dataset After Applied Methodologies		Distance from Ignition Point for the Agency Reference Dataset After Applied Methodologies	
	Median (days)	Mean (days)	Median (meters)	Mean (meters)
TMin	2.65	4.01	4.560	6.065
MaxA	2.60	3.81	3.128	3.749
DMin	1.88	3.22	3.991	4.431

Table B4: Comparison of ignition point location (inside or outside the perimeter) of the agency reference dataset with that predicted by the TMin, MaxA, and DMin methodologies.

Location of LIW	Agency Reference Dataset	Agency Reference Dataset After Applied Methodologies					
		TMin		MaxA		DMin	
0 (Outside fire Perimeter)	246						
Ignition Point Inside Perimeter (1)		67	27.24%	32	13.01%	25	10.16%
Ignition Point Outside Perimeter (0)		125	50.81%	142	57.72%	152	61.79%
No Matched Ignition Point		54	21.95%	72	29.27%	69	28.05%
1 (Inside fire Perimeter)	2,178						

Formatted

Deleted: 41

Deleted: 1,696

Deleted: 93.65

Deleted: 30

Deleted: 1,543

Deleted: 48

Deleted: 22

Deleted: 1,665

Deleted: 08

Formatted

Formatted

Formatted

Formatted

Formatted

Formatted

Formatted

Formatted

Formatted

Deleted: 39

Deleted: 1,735

Deleted: 95.80

Deleted: 26

Formatted

Formatted

Formatted

Formatted

Formatted

Deleted: 1,569

Deleted: 09

Deleted: 22

Deleted: 1,687

Deleted: 97.35

Formatted

Formatted

Formatted

Formatted

Formatted

Deleted: 45

Deleted: 1,780

Deleted: 29

Deleted: 35

Deleted: 1,604

Deleted: 26

Deleted: 34

Ignition Point Inside Perimeter (1)		754	34.62%	534	24.52%	438	20.11%
Ignition Point Outside Perimeter (0)		937	43.02%	992	45.55%	1,128	51.79%
No Matched Ignition Point		487	22.36%	652	29.94%	612	28.10%
Overall Accuracy	2,424	879	36.26%	676	27.89%	590	24.34%

Appendix C

Table C1: The table shows the Confusion Matrix for the Agency Reference Dataset and the NA BoLtFire ARD Version Dataset.

		Predicted			
		Positive	Negative		
Actual	Positive	1,139	1,288	0,468	
	Negative	504	NA	NA	
		0,692	NA	0,633	

Table C2: The table compares the total number of fires and total burned area in hectares from the agency reference dataset to the matched fires from 2012 to 2022, focusing on the percentage of fires and burned areas successfully matched to the NA BoLtFire ARD Version Dataset each year.

Agency Reference Dataset			Matched LIW in the NA BoLtFire ARD Version Dataset			
Year	Total LIW	Total Burned Area from ARD (Ha)	Total LIW	% of Total ARD LIW	Total Burned Area from ARD (Ha)	% of Total Burned Area of ARD LIW (Ha)
2012	277	1,194,093.07	133	48.01%	948,029.28	79.39%
2013	358	4,509,476.07	179	50.00%	3,438,868.40	76.26%
2014	260	3,681,170.78	136	52.31%	2,879,498.12	78.22%
2015	514	4,533,388.97	242	47.08%	2,770,759.59	61.12%
2016	185	790,941.98	74	40.00%	569,064.61	71.95%
2017	337	1,911,371.68	187	55.49%	1,327,237.94	69.44%

Formatted

Formatted

Deleted: Incorrectly Matched

Deleted: 903

Deleted: 41.46

Deleted: 952

Deleted: 43.71

Deleted: 1115

Deleted: 51.19

Formatted

Formatted

Formatted

Formatted

Formatted

Formatted

Formatted

Formatted

Formatted

Deleted: Correctly Matched

Formatted

Formatted

Formatted

Deleted: 719

Deleted: 33.01

Deleted: 494

Deleted: 22.68

Deleted: 440

Deleted: 20.20

Formatted

Formatted

Formatted

Formatted

Formatted

Formatted

Formatted

Formatted

Deleted: Not

Deleted: 556

Deleted: 25.53

Deleted: 732

Deleted: 33.61

Deleted: 623

Deleted: 60

Formatted

2018	194	770,780.33	99	51.03%	555,415.70	72.06%
2019	158	1,285,196.45	34	21.52%	397,548.86	30.93%
2020	62	76,127.56	11	17.74%	23,485.25	30.85%
2021	7	30,259.57	2	28.57%	7,102.05	23.47%
2022	72	874,546.02	39	54.17%	608,933.25	69.63%
Total	2,424	19,657,352.47	136	46.86%	13,525,943.04	68.81%

Appendix D

Table D1: Distribution of holdover time across the BoLtFire dataset. Holdover time refers to the time difference between when the fire was ignited by the lightning-ignited candidate and when it was detected. The detection time used was the start date.

BoLtFire Dataset Holdover			
Holdover Days	Count per Day	Cumulative Count	Cumulative % Total
0	734	734	10.63%
1	712	1,446	20.95%
2	691	2,137	30.96%
3	629	2,766	40.08%
4	527	3,293	47.71%
5	518	3,811	55.22%
6	446	4,257	61.68%
7	443	4,700	68.10%
8	396	5,096	73.83%
9	373	5,469	79.24%

Deleted: 96

Deleted: 49.48

Deleted: 545,100.90

Deleted: 70,...2

Formatted

Formatted

Formatted

Formatted

Formatted

Deleted: 30

Deleted: 18.99

Deleted: 387,674.26

Deleted: 16

Formatted

Formatted

Formatted

Formatted

Formatted

Deleted: 12

Deleted: 19.35

Deleted: ,499.31

Deleted: 33.50

Formatted

Formatted

Formatted

Formatted

Formatted

Deleted:

Deleted:

Formatted

Formatted

Formatted

Formatted

Formatted

Formatted

Deleted:

Deleted:

Formatted

Formatted

Formatted

Formatted

Deleted: 124

Deleted: 37

Deleted: 789,151.67

Deleted: 70.15

Formatted

10	327	5,796	83.98%
11	323	6,119	88.66%
12	286	6,405	92.80%
13	257	6,662	96.52%
14	240	6,902	100.00%

2240 Table D2: Distribution of candidate lightning ignition points relative to their corresponding fire perimeters, categorized by distance in kilometres. It shows the number of ignition points at each distance, along with their cumulative counts and cumulative percentages.

BoLtfire Dataset Distance to Perimeter			
Distance	Count	Cumulative Count	Cumulative % Total
100m	208	208	4.08%
1 km	893	1,101	21.58%
2 km	718	1,819	35.65%
3 km	556	2,375	46.54%
4 km	466	2,841	55.67%
5 km	497	3,338	65.41%
6 km	450	3,788	74.23%
7 km	380	4,168	81.68%
8 km	322	4,490	87.99%
9 km	293	4,783	93.73%
10 km	320	5,103	100.00%

2245 Table D3: Total count of lightning-ignited wildfires and total count of ENTNLN flashes per country and per region. Lightning-ignition efficiency was calculated as the percent of total flashes that caused an ignition.

Deleted: 304

Deleted: 176

Deleted: 11

Formatted

Formatted

Formatted

Formatted

Formatted

Deleted: 304

Deleted: 5,480

Deleted: 87.99

Formatted

Formatted

Formatted

Deleted: 257

Formatted

Formatted

Deleted: 5,737

Deleted: 12

Formatted

Formatted

Deleted: 258

Deleted: 5,995

Deleted: 26

Formatted

Formatted

Formatted

Formatted

Deleted: 233

Deleted: 228

Formatted

Formatted

Formatted

Deleted:

Formatted

Formatted

Deleted: North America

Deleted: dataset

Formatted

Formatted

Formatted

Formatted Table

Deleted: per Day

Formatted

Formatted

Formatted

		BoLtFire dataset	
Type	Total ENTLN Flashes	Total LIW	LIE
North America	12,526,781	2,701	0,000216
Eurasia	14,998,966	4,201	0,000280
Total	27,525,747	6,902	0,000251

Table D4: Total count of lightning-ignited wildfires and total burned area per continent across the study period

	Total BoLtFire Dataset		Eurasia BoLtFire Dataset		North America BoLtFire Dataset	
Fire Year	LIW Count	Total Burned Area (Ha)	LIW Count	Total Burned Area (Ha)	LIW Count	Total Burned Area (Ha)
2012	223	954,154.31			223	954,154.31
2013	942	4,534,309.14	581	1,729,146.95	361	2,805,162.20
2014	830	5,003,677.03	527	2,683,327.39	303	2,320,349.63
2015	892	4,094,200.67	430	1,515,978.53	462	2,578,222.13
2016	543	2,258,237.46	402	1,720,427.95	141	537,809.52
2017	879	3,552,703.22	610	2,087,621.79	269	1,465,081.42
2018	516	2,426,169.38	383	1,822,294.47	133	603,874.91
2019	105	840,774.68	22	4,557.63	83	791,217.05
2020	592	2,379,378.51	570	2,285,868.70	22	93,509.81
2021	398	6,013,560.34	395	6,007,380.56	377	2,530,215.39
2022	353	1,355,845.06	281	1,187,342.01	327	886,173.28

Total	6,273	33,413,009.79	4,201	21,088,945.98	2,701	15,565,769.66
l						

2495 Table D5: Overall view of both the Eurasia and North America BoLtfire datasets by total lightning-ignited wildfire count, total burned area, and average burned area, within the BoLtfire dataset by fire size.

	Total BoLtfire Dataset			Eurasia BoLtfire Dataset		
Fire Size	LIW Count	Total Burned Area (Ha)	Average Burned Area per Fire (Ha)	LIW Count	Total Burned Area (Ha)	Average Burned Area per Fire (Ha)
Small	3,623	1,710,679.63	472.17	2,295	1,072,913.25	467.50
Moderate	2,614	8,461,906.15	3,237.15	1,557	4,888,188.71	3,139.4
Large	555	11,597,624.25	20,896.62	285	6,074,228.95	21,313
XLarge	58	3,964,630.27	68,355.69	33	2,356,649.39	71,413
Mega	52	10,919,875.34	209,997.60	31	6,696,965.67	216,031
Total	6,902	36,654,715.64	5,310.74	4,201	21,088,945.98	5,019.9

Table D6: Total BoLtfire dataset count and average fire size by year.

Fire Size	LIW Count	Total Burned Area (Ha)	Average Burned Area Per Year
Small	3,623	1,710,679.63	155,516.33
Moderate	2,614	8,461,906.15	769,264.20
Large	555	11,597,624.25	1,054,329.48
XLarge	58	3,964,630.27	360,420.93
Mega	52	10,919,875.34	992,715.94

Formatted

Deleted: 228

Deleted: 088,360.88

Deleted: 186

Deleted: 073,381.44

Deleted: 2042

Deleted: 12,014,979.44

Formatted

Formatted

Formatted

Formatted

Formatted

Deleted: ¶

Formatted

Deleted: total

Formatted

Formatted

Formatted

Deleted: 299

Deleted: 555

Deleted: .84

Deleted: 471.67

Formatted

Formatted

Formatted

Formatted

Formatted

Deleted: 296

Deleted: 074,003.74

Deleted: 77

Deleted: 003

Deleted: 481,707.10

Deleted: 27

Formatted

Formatted

Formatted

Formatted

Formatted

Formatted

Formatted

Deleted: 344

Deleted: 7,449,484.07

Deleted: 178.11

Grand Total	6,902	36,654,715.64	3,332,246.88
-------------	-------	---------------	--------------

Table D7: Total count and average fire size of fires in the BoLtFire dataset.

BoLtFire Dataset			
Land Cover Type	LIW Count	Total Burned Area (Ha)	Average Burned Area per Fire (Ha)
Eurasia	4,201	21,088,945.98	5,019.98
Deciduous Broadleaf Forests	4	3,578.54	894.63
Deciduous Needleleaf Forests	68	85,986.17	1,264.50
Evergreen Needleleaf Forests	260	561,001.33	2,157.70
Grasslands	135	154,205.71	1,142.26
Mixed Forests	238	460,177.69	1,933.52
Open Shrublands	338	1,117,567.66	3,306.41
Permanent Wetlands	8	2,763.93	345.49
Savannas	1,326	9,335,106.72	7,040.05
Woody Savannas	1,824	9,368,558.23	5,136.27
North America	2,701	15,565,769.66	5,762.97
Deciduous Broadleaf Forests	3	1,208.39	402.80
Deciduous Needleleaf Forests	7	5,288.50	755.50
Evergreen Needleleaf Forests	223	1,126,573.76	5,051.90
Grasslands	13	23,630.80	1,817.75
Mixed Forests	11	59,012.85	5,364.80

Deleted: 228

Deleted: 33,088,360.88

Deleted: 008,032.81

Formatted

Formatted

Formatted

Formatted

Formatted

Formatted

Formatted

Deleted: ¶

Deleted: evergreen needleleaf forests

Formatted

Formatted

Formatted Table

Formatted

Deleted: 186

Formatted

Formatted

Formatted

Deleted: 073,381.44

Deleted: 034.25

Formatted

Formatted

Formatted

Formatted

Formatted

Formatted

Formatted

Formatted

Deleted: 71

Deleted: 90,233.37

Formatted

Formatted

Formatted

Formatted

Formatted

Deleted: 270.89

Formatted

Deleted: 259

Deleted: 551,094.26

Deleted: 127.78

Formatted

Formatted

Formatted

Open Shrublands	57	94,023.41	1,649.53
Permanent Wetlands	18	11,587.16	643.73
Savannas	913	4,956,426.85	5,428.73
Woody Savannas	1,456	9,288,017.93	6,379.13
Total	6,902	36,654,715.64	10,782.95

Author Contributions

BE developed the methodology and workflow with IB and CS. Supervision and oversight was provided by CS. BE and IB developed the code, curated and validated the data and created the visualizations. BE wrote the original draft, review and editing of the final draft was conducted by CS, IB, MC, and YZ.

Competing interests

The contact author has declared that none of the authors has any competing interests.

Acknowledgements

The authors would like to thank Steve Prinzivalli and Jeff Lapierre from Earth Networks for providing the data and for their valuable discussions on the limitations of the ENTLN data.

References

Anderson, K. A model to predict lightning-caused fire occurrences. *Int. J. Wildland Fire*, 11, 163–172. <https://doi.org/10.1071/wf02001>, 2002.

Arevalo, P., Stanimirova, R., Bullock, E., Zhang, Y., Tarrio, K., Turlej, K., Hu, K., McAvoy, K., Pasquarella, V., Woodcock, C., Olofsson, P., Zhu, Z., Gorelick, N., Loveland, T., Barber, C., and Friedl, M. Global Land Cover Mapping and Estimation Yearly 30 m V001. NASA EOSDIS Land Processes Distributed Active Archive Center. [data set]. <https://doi.org/10.5067/MEaSURES/GLanCE/GLanCE30.001>, 2022.

Deleted: 55

Deleted: 93,007.79

Deleted: 691.05

Formatted

Formatted

Formatted

Formatted

Formatted

Formatted

Deleted: 17

Deleted: 285.43

Deleted: 663.85

Formatted

Formatted

Formatted

Formatted

Formatted

Formatted

Deleted: 745

Deleted: 280,388.01

Deleted: 745.49

Formatted

Formatted

Formatted

Formatted

Formatted

Formatted

Formatted

Formatted

Deleted: 036

Deleted: 6,669,880.33

Formatted

Formatted

Formatted

Formatted

Formatted

Formatted

Deleted: 438.11

Formatted

Deleted: 228

Deleted: 33,088,360.88

Deleted: 5,312.84

Formatted

Formatted

Formatted

Formatted

Formatted

Benali, A., Russo, A., Sá, A., Pinto, R., Price, O., Koutsias, N., ~~and~~ Pereira, I.: Determining Fire Dates and Locating Ignition Points ~~with~~ Satellite Data. *Remote Sens.*, **8**, 326, <https://doi.org/10.3390/rs8040326>, 2016.

2835 Bond, T. C., Doherty, S. J., Fahey, D. W., Forster, P. M., Bernsten, T., ~~Deangelo~~, B. J., ~~Flanner~~, M. G., ~~Ghan~~, S., ~~Kärcher~~, B., ~~Koch~~, D., ~~Kinne~~, S., ~~Kondo~~, Y., ~~Quinn~~, P. K., ~~Sarofim~~, M. C., ~~Schultz~~, M. G., ~~Schulz~~, M., ~~Venkataraman~~, C., ~~Zhang~~, H., ~~Zhang~~, S., ~~Bellouin~~, N., ~~Guttikunda~~, S. K., ~~Hopke~~, P. K., ~~Jacobson~~, M. Z., ~~Kaiser~~, J. W., ~~Klimont~~, Z., ~~Lohmann~~, U., ~~Schwarz~~, J. P., ~~Shindell~~, D., ~~Storelvmo~~, T., ~~Warren~~, S. G., ~~and~~ Zender, C. S.: Bounding the role of black carbon in the climate system: A scientific assessment. *J. Geophys. Res.-Atmos.*, **118**, 5380–5552, <https://doi.org/10.1002/jgrd.50171>, 2013.

2840 Brandt, J. P.: The extent of the North American boreal zone. *Environ. Rev.*, **17**, 101–161, <https://doi.org/10.1139/a09-004>, 2009.

Brandt, J. P., Flannigan, M. D., Maynard, D. G., Thompson, I. D., ~~and~~ Volney, W. J. A.: An introduction to Canada’s boreal zone: ecosystem processes, health, sustainability, and environmental issues. *Environ. Rev.*, **21**, 207–226, <https://doi.org/10.1139/er-2013-0040>, 2013.

2845 Bui, V., Chang, L.-C., ~~and~~ Heckman, S.: A Performance Study of Earth Networks Total Lighting Network (ENTLN) and Worldwide Lightning Location Network (WWLLN). in: 2015 International Conference on Computational Science and Computational Intelligence (CSCI), Las Vegas, Nevada, USA, 2015, 386-391, <https://doi.org/10.1109/CSCI.2015.120>, 2015.

2850 Canadian Forest Service, Canadian National Fire Database – Agency Fire Data, Natural Resources Canada, Canadian Forest Service, Northern Forestry Centre, Edmonton, Alberta, http://cwfis.cfs.nrcan.gc.ca/en_CA/nfdb, 2024.

2855 Cardoso, M. F., Hurtt, G. C., Moore, B., Nobre, C. A., ~~and~~ Bain, H.: Field work and statistical analyses for enhanced interpretation of satellite fire data. *Remote Sens. Environ.*, **96**, 212–227, <https://doi.org/10.1016/j.rse.2005.02.008>, 2005.

Crowley, M. A., Stockdale, C. A., Johnston, J. M., Wulder, M. A., Liu, T., McCarty, J. L., Rieb, J. T., Cardille, J. A., ~~and~~ White, J. C.: Towards a whole-system framework for wildfire monitoring using Earth observations. *Glob. Chang. Biol.*, **29**, 1423–1436, <https://doi.org/10.1111/gcb.16567>, 2023.

2860 de Groot, W. J., Flannigan, M. D., ~~and~~ Cantin, A. S.: Climate change impacts on future boreal fire regimes. *For. Ecol. Manage.*, **294**, 35–44, <https://doi.org/10.1016/j.foreco.2012.09.027>, 2013.

Deleted: &
Deleted: . (2016).
Formatted
Formatted
Deleted: With
Formatted
Deleted: Sensing,
Deleted: (4),
Formatted
Formatted
Deleted: . doi:10.3390/rs8040326
Formatted
Deleted: DeAngelo
Deleted: ...
Formatted
Deleted: . (2013).
Formatted
Formatted
Deleted: . Journal of Geophysical Research: Atmospheres
Deleted: (11),
Formatted
Formatted
Deleted: . doi:10.1002/jgrd.50171
Formatted
Deleted: . (2009).
Deleted: . Environmental Reviews,
Deleted: (NA),
Deleted: . doi:10.1139/a09-004
Formatted
Formatted
Formatted
Formatted
Deleted: &
Deleted: . (2013).
Formatted
Formatted
Deleted: . Environmental Reviews, 21(4), 207–226.
Formatted
Deleted: ,
Deleted: &
Formatted
Formatted
Deleted: . (2015, December).
Formatted
Deleted:).
Formatted

2955 Descals, A., Gaveau, D. L. A., Verger, A., Sheil, D., Naito, D., ~~and~~ Peñuelas, I.; Unprecedented fire activity above the Arctic Circle linked to rising temperatures. *Science*, 378, 532–537, <https://doi.org/10.1126/science.abn9768>, 2022.

Engle, B., Bratov, I., Crowley, M. A., Zhu, Y., ~~and~~ Senf, C.; Distribution and Characteristics of Lightning-Ignited Wildfires in Boreal Forests - the BoLTFire database (3.0) [data set], Zenodo, <https://doi.org/10.5281/zenodo.14940326>, 2024.

2960 Friedl, M., ~~and~~ Sulla-Menashe, D.; MODIS/Terra+Aqua Land Cover Type Yearly L3 Global 500m SIN Grid V061. NASA EOSDIS Land Processes Distributed Active Archive Center, [data set], <https://doi.org/10.5067/MODIS/MCD12Q1.061>, 2022.

Flannigan, M. D., Stocks, B. J., ~~and~~ Wotton, B. M.; Climate change and forest fires. *Sci. Total. Environ.*, 262, 221–229, [https://doi.org/10.1016/s0048-9697\(00\)00524-6](https://doi.org/10.1016/s0048-9697(00)00524-6), 2000.

2965 Flannigan, M. D., Stocks, B. J., Turetsky, M. R., ~~and~~ Wotton, M.; Impacts of climate change on fire activity and fire management in the circumboreal forest. *Glob. Chang. Biol.*, 15, 549–560, <https://doi.org/10.1111/j.1365-2486.2008.01660.x>, 2009.

2970 Flannigan, M. D., ~~and~~ Wotton, B. M.; Lightning-ignited forest fires in northwestern Ontario. *Can. J. Forest. Res.*, 21(3), 277–287, <https://doi.org/10.1139/x91-035>, 1991.

Fusco, E. J., Finn, J. T., Abatzoglou, J. T., Balch, J. K., Dadashi, S., ~~and~~ Bradley, B. A.; Detection rates and biases of fire observations from MODIS and agency reports in the conterminous United States. *Remote. Sens. Environ.*, 220, 30–40, <https://doi.org/10.1016/j.rse.2018.10.028>, 2019.

2975 Gao, C., Shi, C., Li, J., Yuan, S., Huang, X., Zhang, Q., ~~Qiming, M., and~~ Wu, G.; Igniting lightning, wildfire occurrence, and precipitation in the boreal forest of northeast China. *Agr. Forest Meteorol.*, 354, 110081, <https://doi.org/10.1016/j.agrformet.2024.110081>, 2024.

2980 Giglio, L., Boschetti, L., Roy, D., Hoffmann, A., Humber, M., ~~and~~ Hall, I.; Collection 6 MODIS Burned Area Product User's Guide Version 1.3. National Aeronautics and Space Administration (NASA), https://lpdaac.usgs.gov/documents/875/MCD64_User_Guide_V6.pdf, 2020.

2985 Giglio, L., Boschetti, L., Roy, D. P., Humber, M. L., ~~and~~ Justice, C. O.; The Collection 6 MODIS burned area mapping algorithm and product. *Remote. Sens. Environ.*, 217, 72–85, <https://doi.org/10.1016/j.rse.2018.08.005>, 2018.

Deleted: &	
Deleted: . (2022).	
Formatted	...
Formatted	...
Deleted: .	
Deleted: (6619).	
Deleted: doi:10.1126/science.abn9768	
Formatted	...
Formatted	...
Formatted	...
Deleted: &	
Deleted: . (2024).	
Formatted	...
Formatted	...
Deleted: 1.0) [Dataset]. https://doi.org/10.5281/zenodo.13897163	
Formatted	...
Deleted: . (2022).	
Deleted: [Data set].	
Formatted	...
Formatted	...
Formatted	...
Deleted: . Accessed 2024-09-20 from	
Formatted	...
Deleted: &	
Deleted: . (2000).	
Deleted: . Science of The	
Deleted: Environment,	
Deleted: (3),	
Deleted: doi:10.1016/s0048-9697(00)00524-6	
Formatted	...
Formatted	...
Formatted	...
Formatted	...
Formatted	...
Formatted	...
Deleted: &	
Deleted: . (2009).	
Formatted	...
Formatted	...
Deleted: . Global Change Biology,	
Deleted: (3),	
Deleted: doi:10.1111/j.1365-2486.2008.01660.x	
Formatted	...
Formatted	...
Formatted	...
Deleted: &	

Giglio, L., Loboda, T., Roy, D. P., Quayle, B., and Justice, C. O.; An active-fire based burned area mapping algorithm for the MODIS sensor. Remote Sens. Environ., 113, 408–420. <https://doi.org/10.1016/j.rse.2008.10.006>, 2009.

Gillett, N. P., Weaver, A. J., Zwiers, F. W., and Flannigan, M. D.; Detecting the effect of climate change on Canadian forest fires. Geophys. Res. Lett., 31, <https://doi.org/10.1029/2004gl020876>, 2004.

Hanes, C. C., Wang, X., Jain, P., Parisien, M.-A., Little, J. M., and Flannigan, M. D.; Fire-regime changes in Canada over the last half century. Can. J. Forest. Res., 49, 256–269. <https://doi.org/10.1139/cjfr-2018-0293>, 2019.

Hansen, J., and Nazarenko, I.; Soot climate forcing via snow and ice albedos. Proc. Natl. Acad. Sci. U.S.A., 101, 423–428. <https://doi.org/10.1073/pnas.2237157100>, 2003.

Hantson, S., Padilla, M., Corti, D., and Chuvieco, E.; Strengths and weaknesses of MODIS hotspots to characterize global fire occurrence. Remote Sens. Environ., 131, 152–159. <https://doi.org/10.1016/j.rse.2012.12.004>, 2013.

Hawbaker, T. J., Radeloff, V. C., Syphard, A. D., Zhu, Z., and Stewart, S. I.; Detection rates of the MODIS active fire product in the United States. Remote Sens. Environ., 112, 2656–2664. <https://doi.org/10.1016/j.rse.2007.12.008>, 2008.

Hessilt, T. D., Abatzoglou, J. T., Chen, Y., Randerson, J. T., Scholten, R. C., van der Werf, G., and Veraverbeke, S.; Future increases in lightning ignition efficiency and wildfire occurrence expected from drier fuels in boreal forest ecosystems of western North America. Environ. Res. Lett., 17, <https://doi.org/10.1088/1748-9326/ac6311>, 2022.

Janssen, T. A. J., Jones, M. W., Finney, D., van der Werf, G. R., van Wees, D., Xu, W., and Veraverbeke, S.; Extratropical forests increasingly at risk due to lightning fires. Nat. Geosci., 16, 1136–1144. <https://doi.org/10.1038/s41561-023-01322-z>, 2023.

Jones, M. W., Abatzoglou, J. T., Veraverbeke, S., Andela, N., Lasslop, G., Forkel, M., Smith, A. J. P., Burton, C., Betts, R. A., van der Werf, G. R., Sitch, S., Canadell, J. G., Santín, C., Kolden, C., Doerr, S. H., and Le Quéré, C.; Global and Regional Trends and Drivers of Fire Under Climate Change. Rev. Geophys., 60, <https://doi.org/10.1029/2020rg000726>, 2022.

Johnston, L. M., Wooster, M. J., Brookes, A., McFayden, C., and Cantin, A. S.; Satellite Detection Limitations of Sub-Canopy Smouldering Wildfires in the North American Boreal Forest. Fire, 1, <https://doi.org/10.3390/fire1020028>, 2018.

Deleted: &
Deleted: . (2009).
Formatted
Formatted
Deleted: .
Deleted: Sensing of Environment,
Deleted: (2),
Deleted: . doi:10.1016/j.rse.2008.10.006
Formatted
Formatted
Formatted
Formatted
Deleted: &
Deleted: . (2004).
Formatted
Formatted
Deleted: . Geophysical Research Letters,
Deleted: (18). doi:10.1029/2004gl020876
Formatted
Formatted
Deleted: &
Deleted: . (2019).
Formatted
Formatted
Deleted: . Canadian Journal of
Formatted
Deleted: Research,
Deleted: (3),
Deleted: . doi:10.1139/cjfr-2018-0293
Formatted
Formatted
Formatted
Deleted: &
Deleted: . (2003).
Deleted: . Proceedings of the National Academy of Sciences,
Deleted: (2),
Deleted: . doi:10.1073/pnas.2237157100
Formatted
Formatted
Formatted
Formatted
Formatted
Formatted
Deleted: &
Deleted: . (2013).
Formatted
Formatted

3225 Kasischke, E. S., Williams, D., and Barry, D.: Analysis of the patterns of large fires in the boreal forest region of Alaska, Int. J. Wildland Fire, 11, 131, <https://doi.org/10.1071/wf02023>, 2002.

Kim, Y., Hatsushika, H., Muskett, R. R., and Yamazaki, K.: Possible effect of boreal wildfire soot on Arctic sea ice and Alaska glaciers, Atmos. Environ., 39, 3513–3520, <https://doi.org/10.1016/j.atmosenv.2005.02.050>, 2005.

3230 Kolden, C. A., Lutz, J. A., Key, C. H., Kane, J. T., and van Wagtenonk, J. W.: Mapped versus actual burned area within wildfire perimeters: Characterizing the unburned, For. Ecol. Manage., 286, 38–47, <https://doi.org/10.1016/j.foreco.2012.08.020>, 2012.

Kourtz, P. H. and Todd, J. B.: Predicting the daily occurrence of lightning-caused forest fires, PI-X, 112, Petawawa National Forestry Institute: Chalk River, Ont., Canada, 18pp., ISBN 0662199480, 1992.

3235 Krause, A., Kloster, S., Wilkenskjeld, S., and Paeth, H.: The sensitivity of global wildfires to simulated past, present, and future lightning frequency, J. Geophys. Res. Biogeo., 119, 312–322, <https://doi.org/10.1002/2013jg002502>, 2014.

Lapierre, J. L., Laughner, J. L., Geddes, J. A., Koshak, W., Cohen, R. C., and Pusede, S. E.: Observing U.S. Regional Variability in Lightning NO_x Production Rates, J. Geophys. Res. Atmos., 125, <https://doi.org/10.1029/2019JD031362>, 2020.

3240 Larjavaara, M., Pennanen, J., and Tuomi, T. J.: Lightning that ignites forest fires in Finland, Agr. Forest Meteorol., 132, 171–180, <https://doi.org/10.1016/j.agrformet.2005.07.005>, 2005.

3245 Latham, D. and Williams, E.: Chapter 11 - Lightning and Forest Fires, in: Forest Fires, edited by: Johnson, A. and Miyanishi, K., Academic Press, 375–418, <https://doi.org/10.1016/B978-012386660-8/50013-1>, 2001.

Laurent, P., Mouillot, F., Yue, C., Ciaia, P., Morenos, V.M., and Nogueira, J.M.P.: FRY, a global database of fire patch functional traits derived from space-borne burned area products, Sci. Data, 5, <https://doi.org/10.1038/sdata.2018.132>, 2018.

3250 Lavoué, D., Lioussé, C., Cachier, H., Stocks, B. J., and Goldammer, J. G.: Modeling of carbonaceous particles emitted by boreal and temperate wildfires at northern latitudes, J. Geophys. Res. Atmos., 105, 26871–26890, <https://doi.org/10.1029/2000jd900180>, 2000.

Deleted: &
Deleted: . (2002).
Deleted: . International Journal of
Formatted
Formatted
Deleted: (2),
Deleted: . doi:10.1071/wf02023
Formatted
Formatted
Formatted
Deleted: &
Deleted: . (2005).
Formatted
Formatted
Deleted: . Atmospheric Environment,
Deleted: (19),
Deleted: . doi:10.1016/j.atmosenv.2005.02.050
Formatted
Formatted
Formatted
Deleted: &
Deleted: . (2012).
Formatted
Formatted
Deleted: . Forest Ecology and Management,
Deleted: .
Formatted
Formatted
Deleted: :
Formatted
Formatted
Deleted: .,
Deleted: ., & Others. (1991).
Deleted: (Vol.
Deleted:).
Formatted
Formatted
Formatted
Formatted
Formatted
Formatted
Formatted
Deleted: &
Deleted: . (2014).
Formatted
Formatted
Deleted: . Journal of Geophysical Research: Biogeosciences,

Liu, C. and Heckman, S.: Using total lightning data in severe storm prediction: Global case study analysis from north America, Brazil and Australia, in: 2011 International Symposium on Lightning Protection, Fortaleza, Brazil, 2011, 20-24, <https://doi.org/10.1109/SIPDA.2011.6088433>, 2011.

3370 Lizundia-Loiola, J., Otón, G., Ramo, R. and Chuvieco, E.: A spatio-temporal active-fire clustering approach for global burned area mapping at 250 m from MODIS data, *Remote. Sens. Environ.*, 236, <https://doi.org/10.1016/j.rse.2019.111493>, 2020.

Loboda, T. V., Hoy, E. E., Giglio, L., and Kasischke, E. S.: Mapping burned area in Alaska using MODIS data: a data limitations-driven modification to the regional burned area algorithm, *Int. J. Wildland Fire*, 20, 487, <https://doi.org/10.1071/wf10017>, 2011.

3375 Macias Fauria, M., and Johnson, E. A.: Climate and wildfires in the North American boreal forest, *Philos. T. Roy. Soc. A.*, 363, 2315–2327, <https://doi.org/10.1098/rstb.2007.2202>, 2007.

3380 Mallick, S., Rakov, V. A., Hill, J. D., Gamera, W. R., Uman, M. A., Heckman, S., Sloop, C. D., and Liu, C.: Calibration of the ENTLN against rocket-triggered lightning data, in: 2013 International Symposium on Lightning Protection (XII SIPDA), Belo Horizonte, Brazil, 2013, 39–46, <https://doi.org/10.1109/sipda.2013.6729186>, 2013.

Martell, D. L., and Sun, H.: The impact of fire suppression, vegetation, and weather on the area burned by lightning-caused forest fires in Ontario, *Can. J. Forest. Res.*, 38, 1547–1563, <https://doi.org/10.1139/x07-210>, 2008.

3385 Melillo, J. M., Richmond, T. T., Yohe, G. W.: Climate change impacts in the United States, Third National Climate Assessment, U.S. Global Change Research Program, 841 pp., <https://doi.org/10.7930/J0Z31WJ2>, 2014.

3390 Moris, J. V., Álvarez-Álvarez, P., Conedera, M., Dorph, A., Hessilt, T. D., Hunt, H. G., Libonati, R., Menezes, L. S., Müller, M. M., Pérez-Invernón, F. J., Pezzatti, G. B., Pineda, N., Scholten, R. C., Veraverbeke, S., Wotton, B. M., and Ascoli, D.: A global database on holdover time of lightning-ignited wildfires, *Earth Syst. Sci. Data*, 15, 1151–1163, <https://doi.org/10.5194/essd-15-1151-2023>, 2023.

3395 Moris, J. V., Conedera, M., Nisi, L., Bernardi, M., Cesti, G., and Pezzatti, G. B.: Lightning-caused fires in the Alps: Identifying the igniting strokes, *Agr. Forest. Meteorol.*, 290, <https://doi.org/10.1016/j.agrformet.2020.107990>, 2020.

Müller, M. M., Vacik, H., Diendorfer, G., Arpacı, A., Formayer, H., and Gossow, H.: Analysis of lightning-induced forest fires in Austria, *Theor. Appl. Climatol.*, 111, 183–193, <https://doi.org/10.1007/s00704-012-0653-7>, 2012.

Formatted	...
Deleted: ., &	
Deleted: . (2011). The application of	
Formatted	...
Formatted	...
Deleted: detection and cell tracking for	
Deleted: weather	
Deleted: . 91st American Meteorological Society Annual Meeti	...
Formatted	...
Formatted	...
Formatted	...
Deleted: &	
Deleted: .	
Formatted	...
Formatted	...
Deleted: .	
Deleted: .	
Deleted: 111493 (
Deleted:).	
Formatted	...
Formatted	...
Formatted	...
Formatted	...
Deleted: &	
Deleted: . (2011).	
Formatted	...
Formatted	...
Deleted: . International Journal of	
Deleted: .	
Deleted: (4),	
Deleted: . doi:10.1071/wf10017	
Formatted	...
Formatted	...
Formatted	...
Formatted	...
Deleted: &	
Deleted: . (2007).	
Deleted: . Philosophical Transactions of the Royal Society B:	...
Formatted	...
Formatted	...
Deleted: (1501),	
Deleted: . doi:10.1098/rstb.2007.2202	
Formatted	...
Formatted	...
Formatted	...
Deleted: ... Liu	
Formatted	...

3510 Nash, C. H., and Johnson, E. A.: Synoptic climatology of lightning-caused forest fires in subalpine and boreal forests. *Can. J. Forest Res.*, 26, 1859–1874, <https://doi.org/10.1139/x26-211>, 1996.

3515 Natali, S. M., Watts, J. D., Rogers, B. M., Potter, S., Ludwig, S. M., Selbmann, A.-K., Sullivan, P. F., Abbot B. W., Arndt K. A., Birch L., Björkman, M. P., Bloom, A. A., Celis, G., Christensen, T. R., Christensen, C. T., Commane, R., Cooper, E. J., Crill, P., Czimczik, C., Davydov, S., Du, J., Egan, J. E., Elberling, B., Euskirchen, E. S., Friborg, T., Genet, H., Göckede, M., Goodrich, J. P., Grogan, P., Helbig, M., Jafarov, E. E., Jastrow, J. D., Kalhori, A. A. M., Kim, Y., Kimball, J., Kutzbach, L., Lara, M. J., Larsen, K. S., Lee, B.-Y., Liu, Z., Loranty, M. M., Lund, M., Lupascu, M., Madani, N., Malhotra, A., Matamala, R., McFarland, J., McGuire, A. D., Michelsen, A., Minions, C., Oechel, W. C., Olefeldt, D., Paramentier, F.-J. W., Pirk, N., Poulter, B., Quinton, W., Rezanezhad, F., Risk, D., Sachs, T., Schaefer, K., Schmidt, N. M., Schuur, E. A. G., Semenchuk, P., Shaver, G., Sonntag, O., Starr, G., Treat, C. C., Waldrop, M. P., Wang, Y., Welker, J., Wille, C., Xu, X., Zhang, Z., Zhuang, Q., and Zona, D.: Large loss of CO₂ in winter observed across the northern permafrost region. *Nat. Clim. Change*, 9, 852–857, <https://doi.org/10.1038/s41558-019-0592-8>, 2019.

3525 Olson, D. M., Dinerstein, E., Wikramanayake, E. D., Burgess, N. D., Powell, G. V. N., Underwood, E. C., D'amico, J. A., Itoua, I., Strand, H. A., Morrison, J. C., Loucks, C. J., Allnutt, T. F., Ricketts, T. H., Kura, Y., Lamoreux, J. F., Wettengel, W. W., Hedao, P., and Kassem, K. R.: Terrestrial Ecoregions of the World: A New Map of Life on Earth. *BioScience*, 51, [https://doi.org/10.1641/0006-3568\(2001\)051\[0933:teotwa\]2.0.co;2](https://doi.org/10.1641/0006-3568(2001)051[0933:teotwa]2.0.co;2), 2001.

3530 Pan, Y., Birdsey, R. A., Fang, J., Houghton, R., Kauppi, P. E., Kurz, W. A., Phillips, O. L., Shvidenko, A., Lewis, S. L., Canadell, J. G., Ciais, P., Jackson, R. B., Pacala, S. W., McGuire, A. D., Piao, S., Rautiainen, A., Sitch S., and Hayes, D.: A Large and Persistent Carbon Sink in the World's Forests. *Science*, 333, 988–993, <https://doi.org/10.1126/science.1201609>, 2011.

3535 Pérez-Invernón, F. J., Moris, J. V., Gordillo-Vázquez, F. J., Füllekrug, M., Pezzatti, G. B., Conedera, M., Lapierre, J., and Huntrieser, H.: On the Role of Continuing Currents in Lightning-Induced Fire Ignition. *J. Geophys. Res. Atmos.*, 128, <https://doi.org/10.1029/2023jd038891>, 2023.

3540 Pineda, N., Montanyà, J., and Van Der Velde, O. A.: Characteristics of lightning related to wildfire ignitions in Catalonia. *Atmos Res.*, 135–136, 380–387, <https://doi.org/10.1016/j.atmosres.2012.07.011>, 2014.

Pineda, N., Peña, J. C., Soler, X., Aran, M., and Pérez-Zaño, N.: Synoptic weather patterns conducive to lightning-ignited wildfires in Catalonia. *Adv Sci Res.*, 19, 39–49, <https://doi.org/10.5194/asr-19-39-2022>, 2022.

Deleted: &
Deleted: . (1996).
Deleted: Canadian Journal of
Formatted
Formatted
Formatted
Deleted: Research,
Deleted: (10),
Deleted: doi:10.1139/x26-211
Formatted
Formatted
Formatted
Deleted: ...
Deleted: . (2019).
Deleted: . Nature Climate
Deleted: (11),
Formatted
Formatted
Formatted
Formatted
Deleted: doi:10.1038/s41558-019-0592-8
Formatted
Deleted: ...
Deleted: . (2001).
Formatted
Formatted
Deleted: .
Deleted: (11), 933, doi:10.1641/0006-
Formatted
Formatted
Deleted: ...
Deleted: . (2011).
Formatted
Formatted
Deleted: .
Deleted: (6045),
Deleted: . doi:10.1126/science.1201609
Formatted
Formatted
Formatted
Deleted: ...
Formatted
Deleted: . (2023).
Deleted: . Journal of Geophysical Research: Atmospheres,
Deleted: (21), doi:10.1029/2023jd038891
Formatted
Formatted

3720

Soja, A. J., Tchebakova, N. M., French, N. H. F., Flannigan, M. D., Shugart, H. H., Stocks, B. J., [Sukhinin, A. I.](#), [Parfenova, E. I.](#), [Chapin III, F. S.](#), and [Stackhouse, P. W.](#): Climate-induced boreal forest change: Predictions versus current observations, [Global Planet. Change](#), 56, 274–296, <https://doi.org/10.1016/j.gloplacha.2006.07.028>, 2007.

3725

Stocks, B. J., Fosberg, M. A., Lynham, T. J., Mearns, L., Wotton, B. M., Yang, Q., [Jin, J-Z.](#), [Lawrence, K.](#), [Hartley, G. R.](#), [Mason, J. A.](#), and [McKenney D. W.](#): Climate Change and Forest Fire Potential in Russian and Canadian Boreal Forests, [Climatic Change](#), 38, 1–13, <https://doi.org/10.1023/a:1005306001055>, 1998.

3730

Stocks, B. J., Mason, J. A., Todd, J. B., Bosch, E. M., Wotton, B. M., Amiro, B. D., [Flannigan, M. D.](#), [Hirsch, K. G.](#), [Logan, K. A.](#), [Martell, D. L.](#), and [Skinner, W. R.](#): Large forest fires in Canada, 1959–1997, [J. Geophys. Res. Atmos.](#), 107, <https://doi.org/10.1029/2001jd000484>, 2002.

3735

Stocks, B. J., Wotton, B. M., Flannigan, M. D., Fosberg, M. A., Cahoon, D. R., and [Goldammer, J. G.](#): Boreal Forest Fire Regimes and Climate Change, in: [Advances in Global Change Research](#), Remote Sensing and Climate Modeling: Synergies and Limitations, edited by: [Beniston, M.](#) and [Verstraete, M. M.](#), Springer, Dordrecht, Netherlands, 233–246, https://doi.org/10.1007/0-306-48149-9_10, 2001.

3740

Stohl, A.: Characteristics of atmospheric transport into the Arctic troposphere, [J. Geophys. Res. Atmos.](#), 111, <https://doi.org/10.1029/2005jd006888>, 2006.

3745

Talucci, A. C., Loranty, M. M., and [Alexander, H. D.](#): Siberian taiga and tundra fire regimes from 2001–2020, [Environ. Res. Lett.](#), 17, <https://doi.org/10.1088/1748-9326/ac3f07>, 2022.

Turner, M. G.: Disturbance and landscape dynamics in a changing world, [Ecology](#), 91, 2833–2849, <https://doi.org/10.1890/10-0097.1>, 2010.

U.S. Department of the Interior, Bureau of Land Management (BLM), Alaska Fire Service: BLM AFS Alaska Statewide fire History Locations 1939-2023 points, NAD83 [data set], <https://fire.ak.blm.gov/>, (2024a).

U.S. Department of the Interior, Bureau of Land Management (BLM), Alaska Fire Service: BLM AFS Alaska Statewide Fire History Perimeters 1940-2023 Polygons, AKAibersNAD83 [data set], <https://fire.ak.blm.gov/>, (2024b).

Deleted: ...

Deleted: . (2007).

Deleted: .

Formatted ...

Formatted ...

Formatted ...

Deleted: and Planetary

Deleted: (3–4),

Deleted: . doi:10.1016/j.gloplacha.2006.07.028

Formatted ...

Formatted ...

Formatted ...

Deleted: ...

Deleted: . (1998).

Deleted: .

Formatted ...

Formatted ...

Formatted ...

Deleted: (1),

Formatted ...

Deleted: . doi:10.1023/a:1005306001055

Formatted ...

Deleted: ...

Deleted: . (2002).

Deleted: . Journal of Geophysical Research: Atmospheres,

Deleted: (D1). doi:10.1029/2001jd000484

Formatted ...

Formatted ...

Formatted ...

Formatted ...

Deleted:

Deleted:

Deleted:

Deleted:

Deleted: &

Formatted ...

Formatted ...

Formatted ...

Formatted ...

Formatted ...

Formatted ...

Deleted:

Deleted: . (2001).

Formatted ...

Formatted ...

49

Vajda, A., Venäläinen, A., Suomi, I., Junila, P., ~~and~~ Mäkelä, H. M.: Assessment of forest fire danger in a boreal forest environment: description and evaluation of the operational system applied in Finland, *Meteorol Appl.*, **21**, 879–887, <https://doi.org/10.1002/met.1425>, 2013.

Van Wagner, C.E.: Fire behaviour in northern conifer forests and shrublands, in: *The Role of Fire in Northern Circumpolar Ecosystems*, edited by: Wein, R. W., MacLean, D. A., John Wiley and Sons, New York, NY, USA, 65–80, 1983

Van Wagner, C. E.: Development and structure of the Canadian forest fire weather index system, in: *Canadian Forestry Service, Headquarters, Ottawa*, 36 pp., ISBN 0-662-15198-4, 1987

Veraverbeke, S., Rogers, B. M., Goulden, M., Jandt, R. R., Miller, C. E., Wiggins, E. B., ~~and~~ Randerson, J. T.: Lightning as a major driver of recent large fire years in North American boreal forests, *Nat. Clim. Change*, **7**, 529–534, <https://doi.org/10.1038/nclimate3329>, 2017.

Vitolo, C., Di Giuseppe, F., Barnard, C., Coughlan, R., San-Miguel-Ayanz, J., Libertá, G., and Krzeminski, B.: ERA5-based global meteorological wildfire danger maps, *Sci. Data.*, **7**, 216, <https://doi.org/10.1038/s41597-020-0554-z>, 2020.

Watts, J. D., Farina, M., Kimball, J. S., Schiferl, L. D., Liu, Z., Arndt, K. A., ~~Zona, D., Ballantyne, E. S., Parmentier, F-J. W., Helbig, M., Sonnentag, O., Tagesson, T., Rinne, J., Ikawa, H., Ueyama, M., Kobayashi, H., Sachs, T., Nadeau, D. F., Kochendorfer, J., Jackowicz-Korczynski, M., Virkkala, A., Aurela, M., Commane, R., Byrne, B., Birch, L., Johnson, M. S., Madani, N., Rogers, B., Du, J., Endsley, A., Savage, K., Poulter, B., Zhang, Z., Burhwiler, L. M., Miller, C. E., Goetz, S., and Oechel, W. C.~~ Carbon uptake in Eurasian boreal forests dominates the high-latitude net ecosystem carbon budget, *Glob. Chang. Biol.*, **29**, 1870–1889, <https://doi.org/10.1111/gcb.16553>, 2023.

Wendler, G., Conner, J., Moore, B., Shulski, M., ~~and~~ Stuefer, M.: Climatology of Alaskan wildfires with special emphasis on the extreme year of 2004, *Theor. Appl. Climatol.*, **104**, 459–472, <https://doi.org/10.1007/s00704-010-0357-9>, 2011.

Wierzchowski, J., Heathcott, M., ~~and~~ Flannigan, M. D.: Lightning and lightning fire, central cordillera, Canada, *Int. J. Wildland Fire*, **11**, 41, <https://doi.org/10.1071/wf01048>, 2002.

Woolford, D. G., Martell, D. L., McFayden, C. B., Evens, J., Stacey, A., Wotton, B. M., ~~and~~ Boychuk, D.: The development and implementation of a human-caused wildland fire occurrence prediction system for the province of Ontario, Canada, *Can. J. Forest. Res.*, **51**, 303–325, <https://doi.org/10.1139/cjfr-2020-0313>, 2021.

Deleted: &
Deleted: . (2013).
Formatted
Formatted
Formatted
Deleted: . Meteorological Applications, 21(4), 879–887.
Formatted
Formatted
Deleted: &
Deleted: . (2017).
Formatted
Formatted
Deleted: . Nature Climate
Deleted: (7),
Deleted: .
Formatted
Formatted
Formatted
Deleted: doi:10.1038/nclimate3329
Formatted
Formatted
Deleted: ...
Formatted
Deleted: . (2023).
Deleted: . Global Change Biology,
Formatted
Deleted: (7),
Formatted
Formatted
Deleted: doi:10.1111/gcb.16553
Formatted
Deleted: &
Deleted: . (2011).
Formatted
Formatted
Deleted: . Theoretical and Applied Climatology,
Deleted: (3),
Deleted: doi:10.1007/s00704-010-0357-9
Formatted
Formatted
Formatted
Deleted: &
Deleted: . (2002).
Deleted: International Journal of
Formatted
Formatted
Formatted

World Bank, World Bank Group: World Bank Official Boundaries: Admin 0, 10 meter boundary [data set], <https://datacatalog.worldbank.org/search/dataset/0038272/World-Bank-Official-Boundaries>, 2020.

3935 Wotton, B. M., and Martell, D. L.; A lightning fire occurrence model for Ontario, *Can. J. Forest Res.*, 35, 1389–1401, <https://doi.org/10.1139/x05-071>, 2005.

3940 Xu, W., Scholten, R. C., Hessilt, T. D., Liu, Y., and Veraverbeke, S.; Overwintering fires rising in eastern Siberia, *Environ. Res. Lett.*, 17, <https://doi.org/10.1088/1748-9326/ac59aa>, 2022.

Zheng, B., Ciais, P., Chevallier, F., Yang, H., Canadell, J. G., Chen, Y., Van Der Velde, I.R., Aben, I., Chuvieco, E., Favis, S.J., Deeter, M., Hong, C., Kong, Y., Xin Lin, H.L., He, K., and Zhang, Q.; Record-high CO₂ emissions from boreal fires in 2021, *Science*, 379, 912–917, <https://doi.org/10.1126/science.ade0805>, 2023.

3945 Zhu, C., Kobayashi, H., Kanaya, Y., and Saito, M.; Size-dependent validation of MODIS MCD64A1 burned area over six vegetation types in boreal Eurasia: Large underestimation in croplands, *Sci. Rep.*, 7, <https://doi.org/10.1038/s41598-017-03739-0>, 2017.

3950 Zhu, Y., Rakov, V. A., Tran, M. D., Stock, M. G., Heckman, S., Liu, C., Sloop, D.M., Uman, M.A., Caicedo, J.A., Kotovsky, D.A., Wilkes, R.A., Carvalho, F.L., Ngin, T., Gamerota, W.R., Pilkey, J.T. and Hare, B.M.; Evaluation of ENTLN Performance Characteristics Based on the Ground Truth Natural and Rocket-Triggered Lightning Data Acquired in Florida, *J. Geophys. Res. Atmos.*, 122, 9858–9866, <https://doi.org/10.1002/2017jd027270>, 2017.

3955 Zhu, Y., Stock, M., Lapierre, J., and DiGangi, E.; Upgrades of the Earth Networks Total Lightning Network in 2021, *Remote Sens.*, 14, 2209, <https://doi.org/10.3390/rs14092209>, 2022.

Formatted	...
Deleted: &	
Deleted: . (2005).	
Deleted: . Canadian Journal of	
Deleted: Research,	
Deleted: (6),	
Deleted: . doi:10.1139/x05-071	
Formatted	...
Formatted	...
Formatted	...
Formatted	...
Formatted	...
Formatted	...
Deleted: World Bank. (2020). World Bank Official Boundaries	...
Formatted	...
Deleted: &	
Deleted: . (2022).	
Deleted: . Environmental Research Letters, 17(4), 045005.	...
Formatted	...
Formatted	...
Formatted	...
Deleted: ...	
Deleted: . (2023).	
Formatted	...
Formatted	...
Deleted: .	
Deleted: (6635),	
Formatted	...
Formatted	...
Deleted: . doi:10.1126/science.ade0805	
Formatted	...
Deleted: &	
Deleted: . (2017).	
Formatted	...
Formatted	...
Deleted: . Scientific Reports, 7(1). doi:10.1038/s41598-017-	...
Formatted	...
Deleted: ...	
Deleted:	
Deleted: . (2017).	
Formatted	...
Formatted	...
Formatted	...
Deleted: . Journal of Geophysical Research: Atmospheres,	...
Formatted	...
Deleted: Yanan,	