

A high-quality Data Set for seismological studies in the East Anatolian Fault Zone, Türkiye

Leonardo Colavitti¹, Dino Bindi², Gabriele Tarchini^{1,3}, Davide Scafidi¹, Matteo Picozzi^{3,4},
Daniele Spallarossa¹

5 ¹University of Genoa, Department of Earth, Environment and Life Sciences - DISTAV, Genoa, Italy

²German Research Center for Geoscience - GFZ, Potsdam, Germany

³National Institute of Oceanography and Applied Geophysics - OGS, Trieste, Italy

⁴University of Naples Federico II, Physics Department “Ettore Pancini”, Naples, Italy

10 *Correspondence to:* Leonardo Colavitti (leonardo.colavitti@edu.unige.it)

Abstract. This work aims to develop and share a high-quality seismic data set for the East Anatolian Fault Zone (EAFZ), a highly active seismic area that is prone to earthquakes, as evidenced by the two major earthquakes of magnitude 7.8 and 7.6 that occurred on February 6, 2023 in central Türkiye and northern and western Syria.

The data set described here (available at <https://doi.org/10.5281/zenodo.13838992>, Colavitti et al., 2024) encompasses seismic
15 events from January 1, 2019, to February 29, 2024, focusing on small-to-moderate earthquakes from M_L between 2.0 and 5.5 and is intended as a useful tool for researchers working on seismic source characterization and strong motion parameters.

The data set consists of 9,442 events recorded by 271 stations and includes a total of 270,704 seismic phases (148,223 P and 122,481 S). The Complete Automatic Seismic Processor (CASP) software package ensures accurate arrival times and refined earthquake locations, while the local magnitude is calibrated using a non-parametric approach. In addition to the earthquake
20 catalog, the data set features strong motion parameters such as selected Peak Ground Acceleration (PGA), Peak Ground Velocity (PGV), as well as Fourier Amplitude Spectra (FAS) in the frequency range from 0.05 to 47.2 Hz.

The disseminated product aims to support applications in spectral decomposition using the Generalized Inversion Technique (GIT), promote investigations in Local Earthquake Tomography (LET) and contribute to the development of Ground Motion Prediction Equations (GMPEs). Long-term objectives include studying the spatio-temporal evolution of seismicity to identify
25 preparatory processes for significant earthquakes, integrating this data with geodetic investigations, and enhancing earthquake hazard assessments.

1 Introduction

On February 6, 2023 a seismic sequence hit southern and central Türkiye and northern and western Syria along the East Anatolian Fault Zone (EAFZ). The sequence was started by a moment magnitude M_w 7.8 earthquake along the Nurdag-Pazarcık fault and followed, about 9 hours later, by a M_w 7.6 earthquake occurred north-northeast from the first shock, in Kahramanmaraş province, involving the Sürgü and Çardak faults (Güvercin et al., 2022; Dal Zilio and Ampuero, 2023; Melgar et al., 2023; Petersen et al., 2023). According to the Disaster and Emergency Management Authority (*Afet ve Acil Durum Yönetimi Başkanlığı*, AFAD), the combined death contribution in Türkiye and Syria exceeds 60,000 people, with more than 120,000 injured and an amount of economic losses of 163.6 billion USD, representing the deadliest natural disaster in the modern history of Türkiye at present, since the 526 Antioch event (Sbeinati et al., 2005).

In this study, we focus on the EAFZ, which is a portion of a major fault zone that runs through eastern Türkiye as it accommodates the tectonic relative motion between the Arabian and Anatolian microplates (Ambraseys, 1989). According to Melgar et al. (2023), the first event nucleated on a previously unmapped fault before transitioning to the East Anatolian Fault, which ruptured over a length of approximately 350 km, while the second one ruptured the Sürgü fault for ~160 km.

The goal of this study is to describe the procedure that led to the creation of a high-quality seismic data set for the EAFZ where the 2023 Kahramanmaraş event occurred and its dissemination to the scientific community to promote high-quality seismological research. Indeed, the development of high-quality data sets is crucial for the investigation of critical open issues, such as the estimation of source parameters (e.g. the seismic energy and the stress drop), which represent fundamental information for understanding fault mechanics and obtaining rupture scenarios for seismic risk mitigation, but are difficult to estimate and affected by large uncertainties (Cotton et al., 2013; Abercrombie, 2015).

Recently, benchmark studies have been carried out to facilitate comparison of the results of different approaches to estimate source parameters applied to the same data set (e.g., Pennington et al., 2021; Shible et al., 2022; Morasca et al., 2022; Bindi et al. 2023a; Bindi et al. 2023b). Following these efforts, a data set for the 2019 Ridgecrest earthquake sequence was disseminated in the context of the community stress-drop validation study (Baltay et al., 2024).

We believe that the creation of high-quality, standardized and open-source seismic data sets including waveforms, Fourier Amplitude Spectra (FAS), Peak Ground Acceleration (PGA), and Peak Ground Velocity (PGV), is the key to promote the progress of the seismological and seismic engineering communities. In this paper, we describe in detail the procedures used to construct the data set and the criteria applied for selecting the data to be distributed.

The data set includes earthquakes that occurred along the EAFZ main segments (Fig.1) in the period from January 1, 2019 to February 29, 2024, and thus includes both the years preceding the 2023 Kahramanmaraş earthquake and the following aftershocks. The data set focuses on small-to-moderate earthquakes in the magnitude range from 2.0 to 5.5, which is typically used in studies focusing on source parameters (Parolai et al., 2000; Parolai et al., 2007; Picozzi et al., 2017). Larger earthquakes are not included (besides the 2 mainshocks of February 6, 2023, we did not consider other 22 events with magnitudes from 5.6

to 6.6) as they are already available in accelerometric databases such as the Engineering Strong-Motion Database (ESM) by Luzzi et al. (2020) or in a recent work by Sandıkkaya et al. (2024).

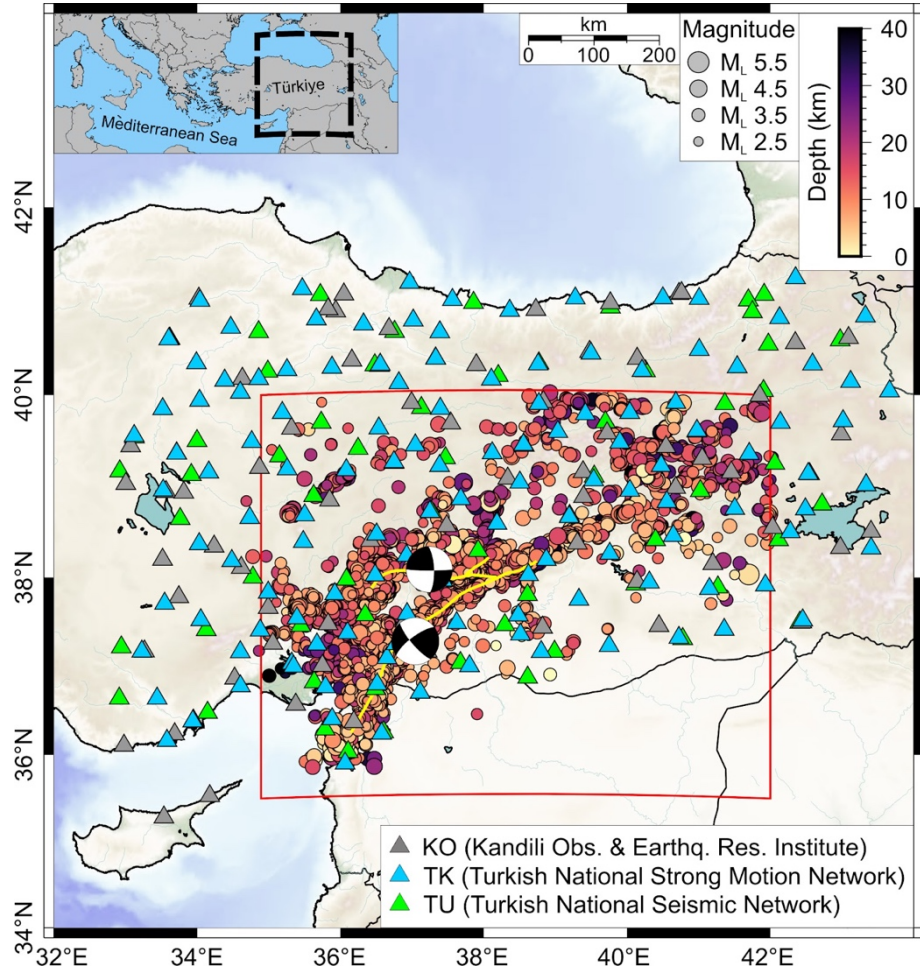


Figure 1: The data set for the East Anatolian Fault Zone (EAFZ) described in this work, bounded by the red box (Lon-Lat vertices, SW: 34.89 35.50; SE 42.00 35.50; NE 42.00 40.00; NW: 34.89 40.0). Dots represent the events with M_L between 2.0 and 5.5 in the period 01-01-2019 to 29-02-2024. The size is proportional to the magnitude; the color palette represents the event depth. The two beach balls lying in the Melgar faults (yellow lines) represent the Mw 7.8 Pazarcık earthquake and the Mw 7.6 Elbistan earthquake occurred on February 6, 2023, which are not considered in this catalog. The triangles show the different networks that recorded the events: KO (gray), TK (cyan) and TU (green).

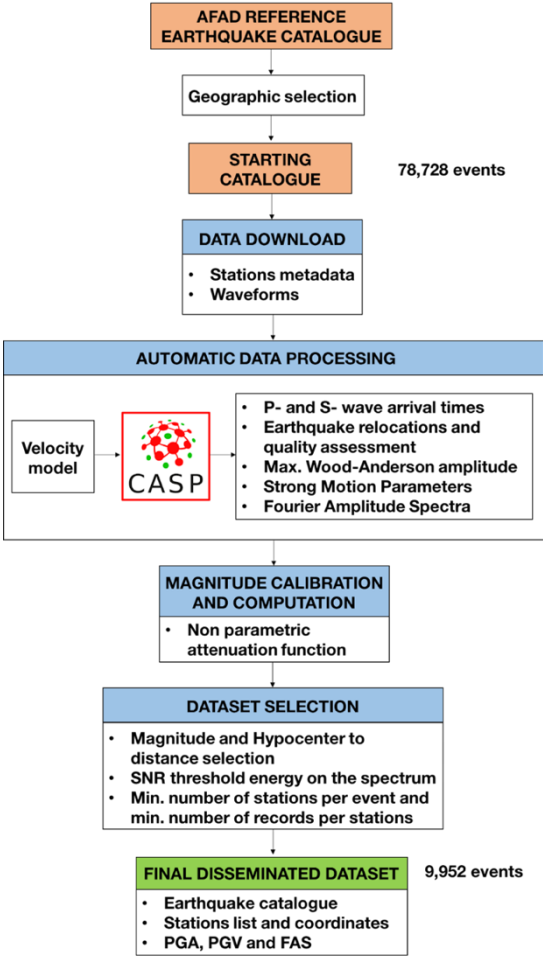
The distributed data set includes a selected seismic catalog, selected Peak Ground Acceleration (PGA), Peak Ground Velocity (PGV), and selected Fourier Amplitude Spectra (FAS) in the frequency range of 0.05-47.20 Hz.

The primary focus of the 2019-2024 EAFZ data set that we envision are the source parameters applications discussed previously. However, we believe it is particularly suitable for investigating the evolution of ground shaking patterns in space and time during seismic sequences.

75 Moreover, in the light of recent studies (Picozzi et al., 2022; Picozzi et al., 2023a; Picozzi et al., 2023b) on spatio-temporal
analysis of seismicity and ground motion parameters (i.e., GMA - Ground Motion Anomalies - defined in Picozzi et al. 2024),
the provided data set can support seismic studies for intercepting the preparatory phase of strong earthquakes.

2 Data set construction and selection

80 The flowchart in Fig. 2 shows the process that led to the creation and selection of the data set. We used the AFAD online
catalog to geographically select all earthquakes that occurred between 32 and 44° East Longitude and 34 to 43° North Latitude
(at this stage considering an area larger than the only EAFZ bounded by the red rectangle in Fig.1), at a depth of up to 120 km,
a M_L in the range 2.0-5.5 and for the period from January 1, 2019 to February 29, 2024. The initially selected reference catalog
consists of 78,728 events, which are shown in the map in **Supplementary Material SM1**.



85 Figure 2: Flowchart of the approach adopted in this work for the creation of the data set. Red boxes represent the catalogs of the
data set, blue boxes the main procedure of the calculations. Acronym abbreviation: CASP (Complete Automatic Seismic Processor).
The last box represents the disseminated data set discussed in this work.

90 The starting catalog was downloaded through the International Federation of Digital Seismograph Networks (FDSN, <https://www.fdsn.org/>) web service, using the *fdsnws-event* command to access event parameters via the AFAD repository (reference website: <https://deprem.afad.gov.tr/event-catalog>). We downloaded the metadata for the stations belonging to the KO (Kandilli Observatory And Earthquake Research Institute, Boğaziçi University, 1971), TK (Disaster and Emergency Management Authority, 1973) and TU (Disaster and Emergency Management Authority, 1990) networks implemented in the data centers of AFAD and European Integrated Data Archive (EIDA, <https://www.orfeus-eu.org/data/eida/>, last accessed on February 29, 2024).

100 All waveforms for the three ground motion components were downloaded in MiniSEED format from the EIDA and AFAD repositories using the *fdsnws-dataselect* command. The seismograms of the events were extracted by selecting segments from continuous seismic recordings and converting them into the Seismic Analysis Code (SAC) format. Each time window contains 30 seconds of noise before the theoretical P-wave first arrival and has a total duration of 90 seconds. The entire earthquake catalog, with around 78,000 events, contains waveforms of different quality.

While studies focusing on statistical seismology (e.g., deviations from the Gutenberg-Richter law, such as b-value studies) are sometimes less sensitive to certain aspects of data quality, ensuring high data quality is critical for the accurate derivation of source parameters and the calibration of ground motion models, making the implementation of thorough data selection and quality analysis procedures a priority.

105 Therefore, to generate a high-quality data set, which is the most innovative aspect of this work, we used the Complete Automatic Seismic Processor (CASP, Scafidi et al., 2019) software, which determines seismic phase arrival times with an advanced picker engine (RSNI-Picker₂, see Spallarossa et al., 2014; Scafidi et al., 2016; Scafidi et al., 2018). This process resulted in a massive set of accurate P- and S-wave arrival times consistent with earthquake locations. RSNI-Picker₂ provides a quality estimate for each computed parameter, such as the automatic pick weighting and standard location quality metrics. The search of reliable seismic phases arrival times in CASP is linked to and driven by seismic locations. To obtain reliable seismic locations, the Non-Linear Location (NLLoc, Lomax et al., 2000; Lomax et al., 2012) algorithm was used, which implements a regional 1-D velocity model specifically suited for the EAFZ (Güvercin et al., 2023).

115 As mentioned in Spallarossa et al. (2021a), CASP enhances detectability by improving the accuracy of arrival times, increasing reliability, minimizing the rate of false picks, and, in general, the accuracy of results. The final result of the CASP procedure is a data set of P- and S-phase arrival times and an earthquake catalog of origin time, location, depth and local magnitude M_L , all seamlessly linked together.

120 In the initial processing phase, M_L was calculated using a generic calibration relationship (Hutton and Boore, 1987). After processing the selected 2019-2024 EAFZ data set with CASP, a new calibration relationship was developed using a non-parametric approach (see Section 3.2), and magnitudes were recalculated for all events.

In this work, the automatic procedures of the CASP software also provide some strong motion parameters such as PGA, PGV and Fourier Amplitude Spectra (FAS).

The method used to calculate the FAS and to select the dataset is described in detail in [Pacor et al. \(2016\)](#) and has been applied in subsequent studies (e.g., [Picozzi et al., 2022](#); [Castro et al., 2022a](#)) to analyze seismic sequences in Central Italy.

125 The FAS were calculated considering 98 frequencies equally spaced on the logarithmic scale in the frequency range 0.05-47.2 Hz and smoothed using the [Konno and Ohmachi \(1998\)](#) algorithm, with the smoothing parameter b set to 40.

The selection of the high-quality data set is therefore based on the following criteria:

- (i) Events restricted to the EAFZ (see red box in **Fig. 1**, Lon-Lat vertices, SW: 34.89 35.50; SE 42.00 35.50; NE 42.00 40.00; NW: 34.89 40.0);
- 130 (ii) M_L between 2.0 and 5.5;
- (iii) Hypocentral distance up to 150 km;
- (iv) A recursive procedure ensuring that at least 60% of the Fourier spectra have a points that satisfy Signal to Noise Ratio (SNR) greater than 2.5;
- (v) Events recorded by at least 6 stations, with each station having a minimum of 6 recordings.

135

After selection, the final data set ready for distribution described in the following sections, consists of 9,442 events recorded by 271 stations, including 142 strong-motion (channel HN), 123 high-gain high-broadband (HH), 4 high-gain broadband (BH) and 2 short-period seismometers (EH). In total, the data set comprises 843,651 waveforms for the three ground-motion components.

140 The 2019-2024 EAFZ high-quality data set consists of an earthquake catalog, a table with the coordinates of the stations used and the values of strong motion parameter, such as PGA, PGV and FAS (see Supplementary Material **SM13 - Final earthquake data set** for more details).

3 Data set characteristics

145 As we can observe in **Fig. 3**, the data set is well sampled with approximately 50% of earthquakes recorded by 10 stations and about 50% of earthquakes having more than 100 records. More details on the distribution of the number of recordings per event and per station can be found in **SM2**.

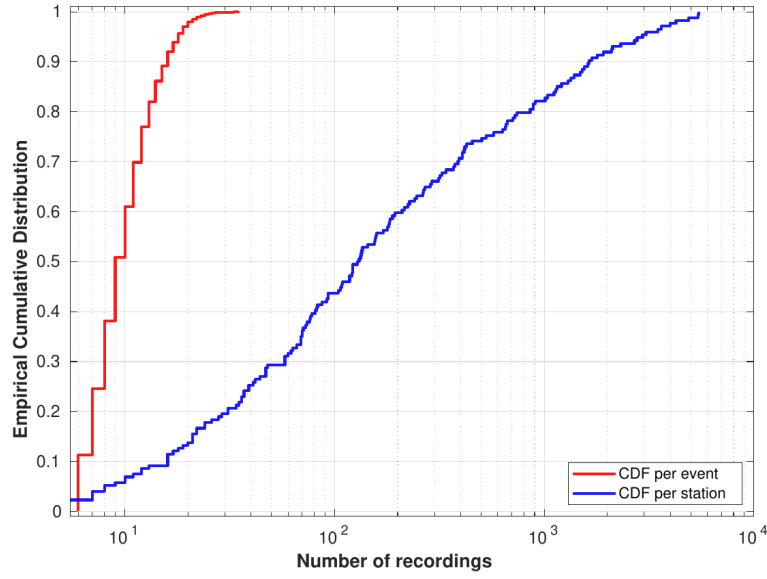


Figure 3: Cumulative Distribution Function (CDF) per event (blue) and per station (red) used in the data set.

150 **Figure 4** represents the heat map of the recordings in terms of hypocentral distance and M_L at the sampling frequency of 1 Hz (variations of the heat map at different frequencies can be found in Supplementary Material **SM3**). The figure shows that the most sampled area is at about 70 km hypocentral distance and M_L 3, with some cells (with a resolution of 4 km for hypocentral distance and 0.1 for magnitude) reaching up to 300 counts.

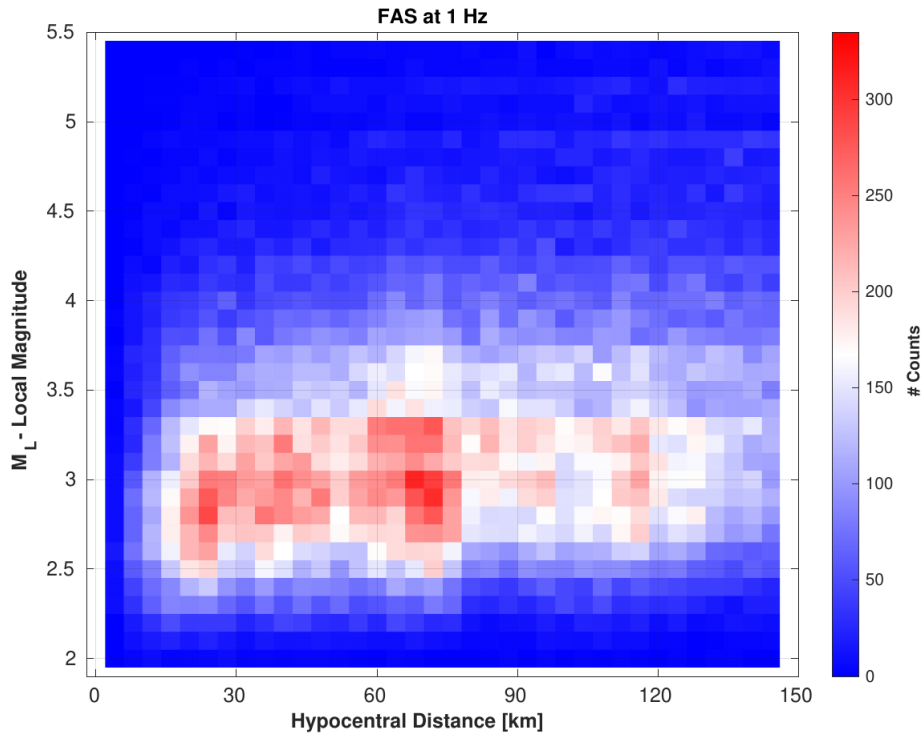


Figure 4: Local magnitude versus hypocentral distance of the recordings considered in this study at FAS = 1 Hz.

More than 50% of the records include a hypocentral distance < 80 km, about 67% a hypocentral distance of less than 100 km and more than 80% of the data are recorded at a hypocentral distance < 120 km. Regarding the magnitude distribution, about 50% of the observed recordings are below M_L 3.2, about 67% below M_L 3.5 and around 86% below M_L 4.0.

3.1 P and S Phase picking and event relocation using CASP

The event relocation is performed using the Complete Automatic Seismic Processor procedure (CASP) which has been described in details in previous studies (Scafidi et al., 2018; Scafidi et al., 2019).

CASP consists of 4 main steps, which can be summarized as follows:

- Step 1 (RSNI-trigger module): the signal is band-pass filtered to retrieve P onsets: a preliminary Short-Term Average/Long-Term Average (STA/LTA) is calculated. If the ratio exceeds a threshold value, a single-station trigger is declared: the final trigger time is then determined as the minimum of the Akaike Information Criterion (AIC) functions (Akaike, 1974). The output of the RSNI-trigger module is a list of trigger times for each station.
- Step 2 (RSNI-detect module) is designed to be effectively applied to different cases, from small local seismic networks to large and dense regional ones. The detector algorithm is based on a system defining the number of data channels that must have triggered within a coincidence window to declare the start of a potential event. The detector algorithm is based on a module that performs an additional check based on the comparison among earthquake

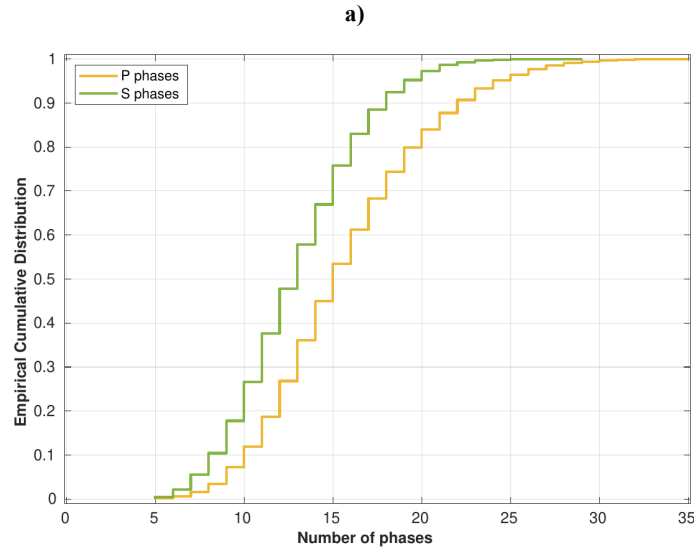
locations computed using the trigger times as P-phase picks by the NLLoc software (Lomax et al., 2000; Lomax et al., 2012), with a configuration optimized for the study area.

- Step 3 (RSNI-extract module): the seismograms of the detected potential events are extracted from the data set containing all continuous recordings and converted to SAC format.
- Step 4 (RSNI-picker₂ module): the extracted seismograms relevant to each recognized event are processed using the RSNI-picker₂ module (Spallarossa et al., 2014; Scafidi et al., 2018; Scafidi et al., 2019) to determine the P- and S-phase arrival times, and the earthquake locations, and to calculate the magnitude and strong-motion parameters. The first set of iterations for P- and S- phases is followed by a quality check of the location based on the number of phases and computed location errors, which controls the triggering of the second set of iterations for the S phases. The quality of the final solution is also assessed by considering time residuals and other predictors.

For the study area, the seismic locations were obtained using the EAFZ regional 1-D velocity model obtained by Local Earthquake Tomography by Güvercin et al. (2022), which is a multi-layer model using VELEST inversion code (Kissling et al., 1994) using 700 selected events have azimuthal gap $< 80^\circ$ and are relocated using at least 25 phase readings.

Detailed information on the velocity structure used as the initial model, can be found in **SM4**.

The distributed data set comprises a total of 270,704 phases selected by CASP (see **SM 5a**). **Figure 5** shows the distribution of the P and S phases.



195

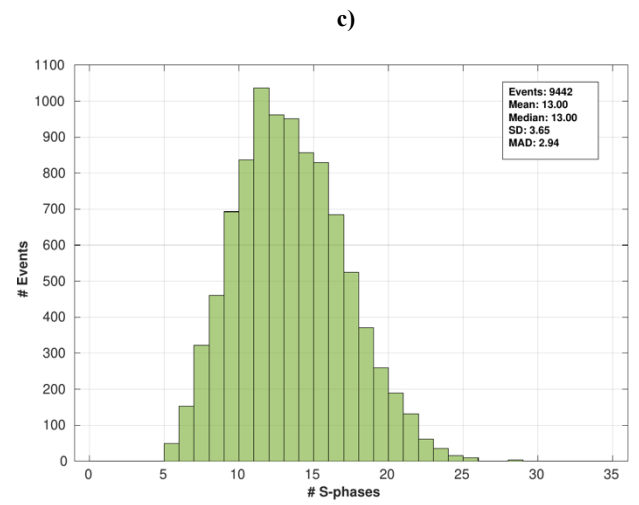
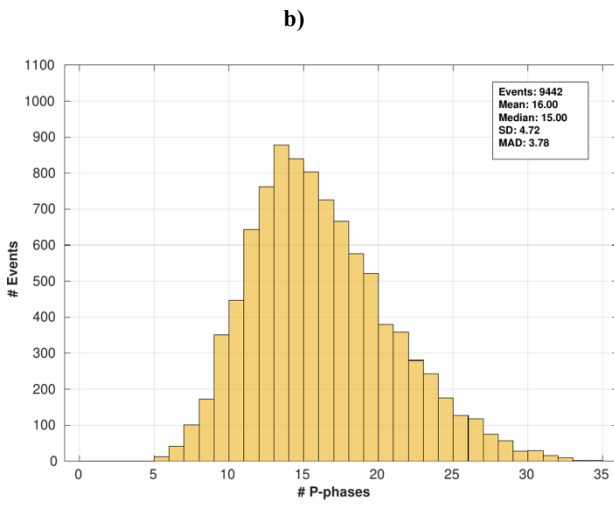


Figure 5: a) Empirical Cumulative Distribution of P and S phases in the present data set. b) Histogram of number of P-waves, in yellow b) and S-waves, in green c) picked by the Complete Automatic Seismic Processor procedure (CASP).

The minimum number of total seismic phases recorded per event is 10 (5 for the P-phase and 5 for the S-phase) and, as can be seen in **Fig. 5a**, 50% of the entire data set has at least 15 P-phases (yellow curve) and 13 S-phases (green curve). **Fig. 5b** and **Fig. 5c** show that the most frequent value in the distribution of histograms (i.e. the mode) is 13 for the P-phases and 11 for the S-phases. A total of 148,223 P- and 122,481 S-phases were used, which corresponds to a ratio of approximately 55% to 45% of the total seismic phases considered. This considerable amount of high-precision P- and S-phase arrival times can be well utilized by the seismological community involved in tomographic studies, especially in the context of Local Earthquake Tomography (LET) investigations.

3.1.1 Quality of earthquake location

NLLoc provides the quality and uncertainty of seismic locations through several parameters, including horizontal and depth error. The horizontal error (Err H) is expressed as a confidence region in the horizontal plane, indicating the area where the earthquake is located with a certain probability, while the depth error (Err Z) is derived from the vertical axis of the error ellipsoid. **Fig. 6a** shows the empirical distribution curve for the location error.

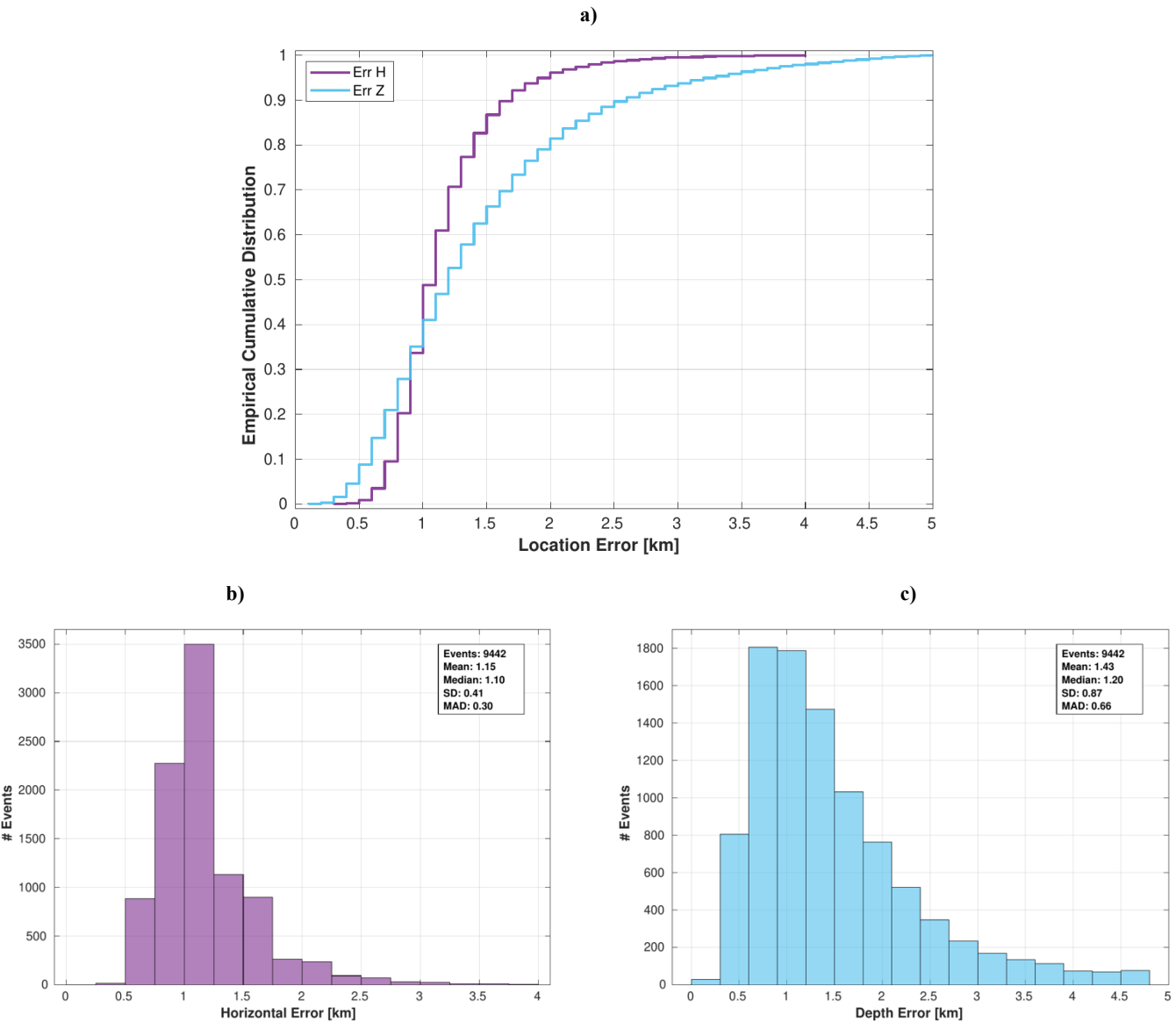


Figure 6: a) Empirical Cumulative Distribution of horizontal error and error in depth in the present dataset. b) Histogram of horizontal error (purple) and depth error (cyan) provided by Non-Linear Location (NLLoc).

The histograms of horizontal location error (**Fig. 6b**, in purple) and depth error (**Fig. 6c**, in cyan) show that the overall uncertainty is small and has a median error of 1.1 km for the horizontal location (min Err H: 0.30 km; max Err H: 4 km) and 1.2 km for the depth location (min Err Z: 0.1 km; max Err Z: 5 km).

220 Both horizontal and depth errors are influenced by several factors, including seismic network geometry, travel-time measurement accuracy and velocity model complexity. In general, we can affirm that the NLLoc algorithm can determine the epicentral location with a precision of ± 1 km, even in the presence of errors in crustal velocities, as observed in [Laporte et al. \(2024\)](#), who address uncertainties in earthquake location using different techniques derived from the Global Sensitivity Analysis (GSA) framework.

225 A further indicator of the high quality of the seismic locations obtained is the azimuthal gap, which reflects how well the seismic stations are distributed around the earthquake location. Approximately 98.5% of the events have gaps of less than 180° , with over 70% of the events having a gap below than 90° and the median gap being 75° (see histogram on **SM5b**).

Root Mean Square (RMS) error is also a key parameter for assessing the earthquake location quality. The RMS is defined as the difference between the observed and calculated seismic wave arrival times at the stations. In formula:

$$230 \quad RMS = \sqrt{\frac{1}{N} \sum_{i=1}^N (t_{obs,i} - t_{calc,i})^2} \quad (1)$$

where:

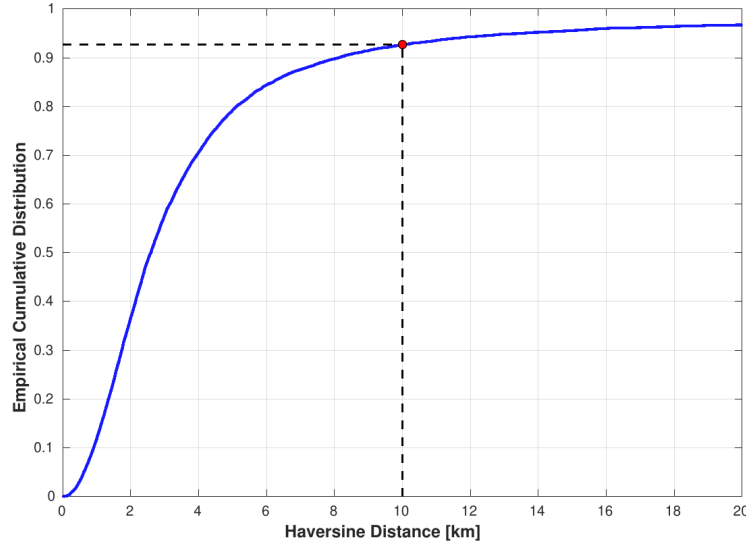
- $t_{obs,i}$ is the observed arrival time at the station i ;
- $t_{calc,i}$ is the computed arrival time at the station i ;
- N is the total number of stations that recorded the event.

235 Low RMS error values indicate good agreement between observed and calculated arrival times, suggesting accurate seismic location. Conversely, high RMS values indicate larger discrepancies and potential location errors. According to [Lienert and Havskov \(1995\)](#), an RMS value between 0 and 1 seconds indicates a highly accurate location. In this study (see **SM5c** for details), the maximum RMS values reached 0.89 seconds with a median of 0.27 s.

A further parameter providing indications about the reliability of seismic location reliability in the NLLoc ([Lomax, 2000](#))
 240 software is the covariance matrix, a square matrix describing the variance and covariance between residuals, which is solved for 4 unknowns: spatial coordinates x , y , depth z and time t . As in **Supplementary Material SM6**, which shows histograms for the covariance values, Cov_x and Cov_y are small, with a median around 0.5 and a mean around 0.75. In contrast, Cov_z and Cov_T exhibit higher values with median values of 1.5 and 1.9 and mean around 2.8 and 3.2, respectively.

3.1.2 Epicentral comparison with AFAD catalog

245 **Figure 7** compares event location of each event, computing the distance between the epicenters identified in this study and those given in the AFAD catalog. The distance is computed using the haversine formula (short for half versed sine, see [Robusto, 1957](#)), with the Earth radius fixed at 6371 km and the great circle distance between 2 points on a sphere based on their Longitude and Latitude.



250 **Figure 7: Cumulative Distribution Function (CDF) with the Haversine distance computed between the location obtained in this work and the one provided by the AFAD catalog. Black dashed line shows the distance at 10 km, corresponding to the 92.7% of the CDF (blue curve); red point shows the intercept.**

255 The CDF shows that about 80% of the entire data set has a location difference within 5 km, 92.7% of the events are below 10 km (marked by the red intersection point) and over 97% of the events are within 20 km. This again confirms the reliability and precision of the epicenters in our catalog.

3.1.3 Depth comparison with AFAD catalog

260 We compared the hypocentral depth estimates obtained with NLLoc with those from the AFAD EAFZ catalog. The latter shows that most events are located at about 7 km (i.e., 80% of the depths are between 6 and 8 km). Such clustering in the hypocentral depth estimates often indicates the presence of a high gradient in the velocity model used in the inversion procedure. This might also be the case for the AFAD catalog, as discussed by [Çivgin and Scordilis \(2019\)](#).

As shown in **Fig. 8a**, our study (red histogram) shows a more even distribution over different depths compared to the AFAD catalog (**Fig. 8b**).

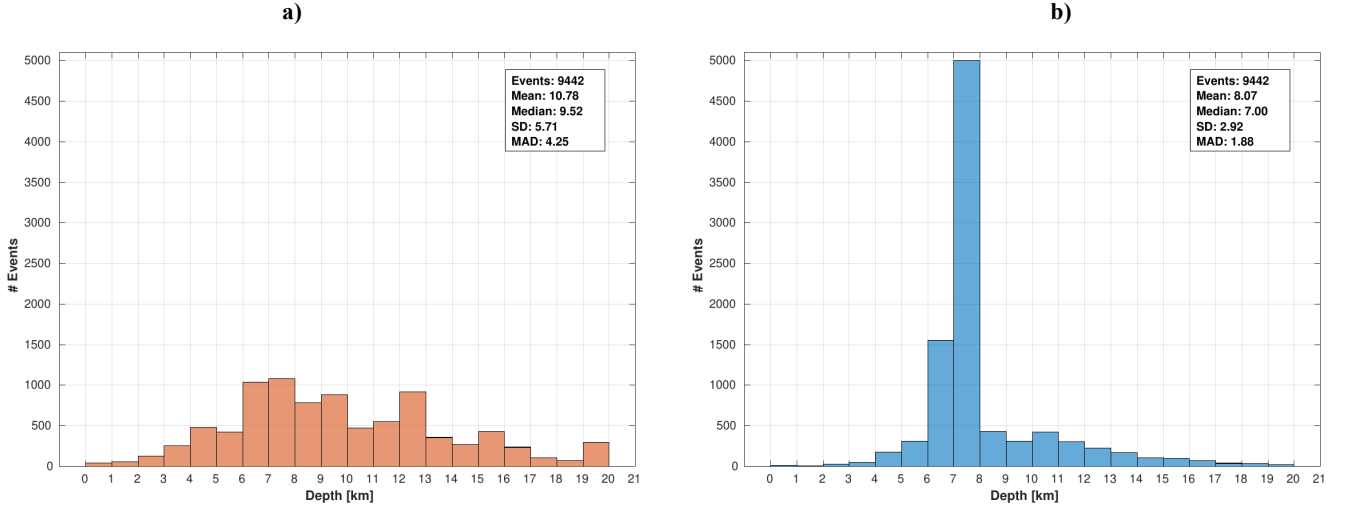


Figure 8: Depth comparison between this work (a) and AFAD catalog (b).

The median depth in this study is about 10 km, with no prominent peaks in the distribution. The relatively uniform depth estimates between 4 and 16 km appear to be consistent with the geometrical complexities of the fault segments in the 2023 Türkiye earthquake sequence (Gabriel et al., 2023).

3.2 Magnitude computation

To ensure a homogeneous magnitude for all considered earthquakes, we calibrated an M_L (Richter, 1935) following a non-parametric approach (Savage and Anderson, 1995; Spallarossa et al., 2002; Bindi et al., 2018; Bindi et al., 2019; Bindi et al., 2020). Magnitudes were determined by applying station corrections to account for local site effects, and to avoid biasing the amplitude measurements used for magnitude calculation. In our study (see SM7), corrections of more than 0.60 had to be applied to 2 out of 271 stations (TK.6802 and TK.6102), as they are located at sites with low $V_{s,30}$ (less than 250 m/s). The non-parametric approach was applied to all data downloaded from the AFAD catalog.

With our analyses, we computed and provided the Wood-Anderson maximum amplitudes, which were then used to calibrate a EAFZ M_L scale based to the following equation:

$$\log A_{ij}(R_{ij}) = M_{Li} + a_n \log A_0(R_n) + a_{n+1} \log A_0(R_{n+1}) + dM_{Lj}^C \quad (2)$$

where A_{ij} is the maximum Wood-Anderson amplitude (in mm) measured for event i recorded at the hypocentral distance R_{ij} . M_{Li} is the local magnitude of event i , A_0 is the zero-magnitude attenuation function defined as a table of values a_n linearly interpolated between nodes n and $n + 1$, with $R_n \leq R_{ij} \leq R_{n+1}$, while dM_{Lj}^C is the magnitude correction of station j . C can be either north-south or east-west, considering the two horizontal components as independent measurements (Uhrhammer et al.,

2011). As for the reference distance at which the attenuation function is anchored, we used a distance $R_{ref} = 17$ km (Hutton and Boore, 1987) and the mean value of all stations equal to zero. In Supplementary Material SM8, we show the output of the non-parametrically calibrated magnitude, with the comparison between the local magnitude M_L and the magnitude of the AFAD reference catalog M_{Lref} .

Figure 9 compares the calibrated $\log A_0$ function performed in the EAF (listed in Supplementary Table SM9) with the curve computed for the Southern California (Hutton and Boore, 1987).

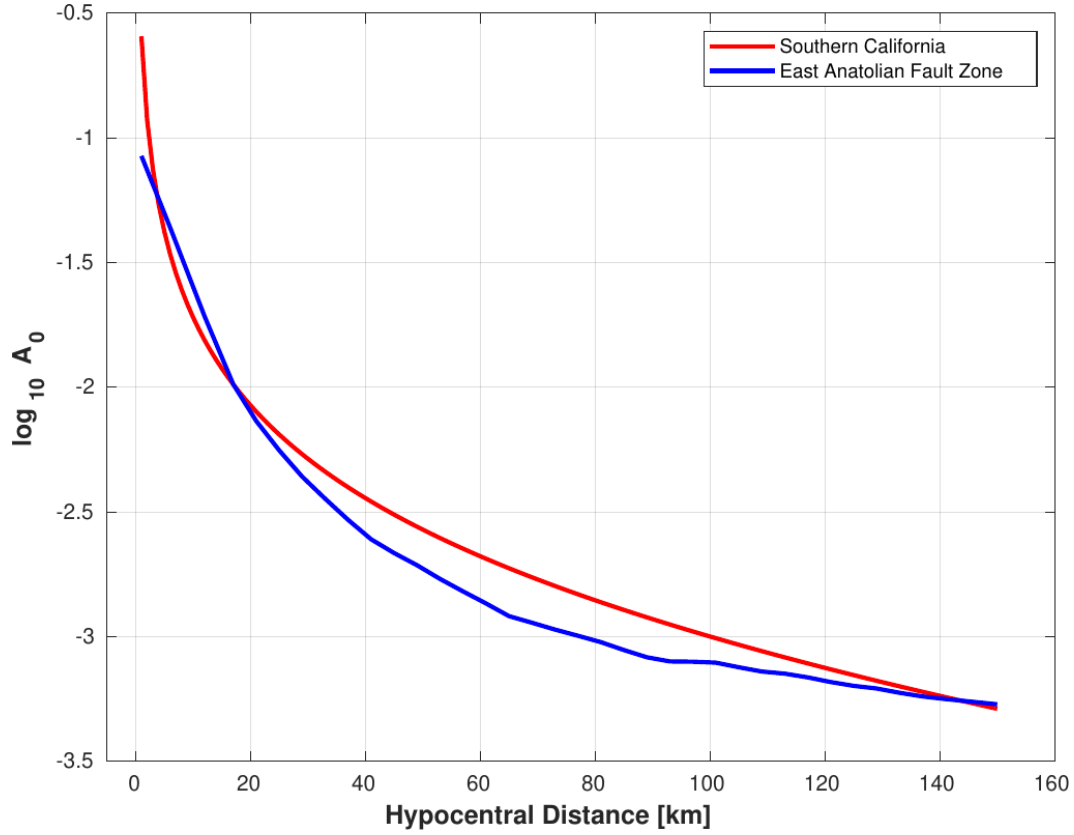


Figure 9: Nonparametric magnitude attenuation function $\log A_0$ calibrated in East Anatolian Fault (blue curve) and Southern California (red curve).

In the distance range between 20 and 100 km, the EAF curve shows a stronger attenuation than the one computed for Southern California region, but is similar at hypocentral distances of more than 100 km. For each M_L value, the standard deviation is also computed (Fig. 10). Both the mean and the median magnitudes of the analyzed events considered are around 3.1, with over 90% of the events having an M_L value below 4 (Fig. 10a).

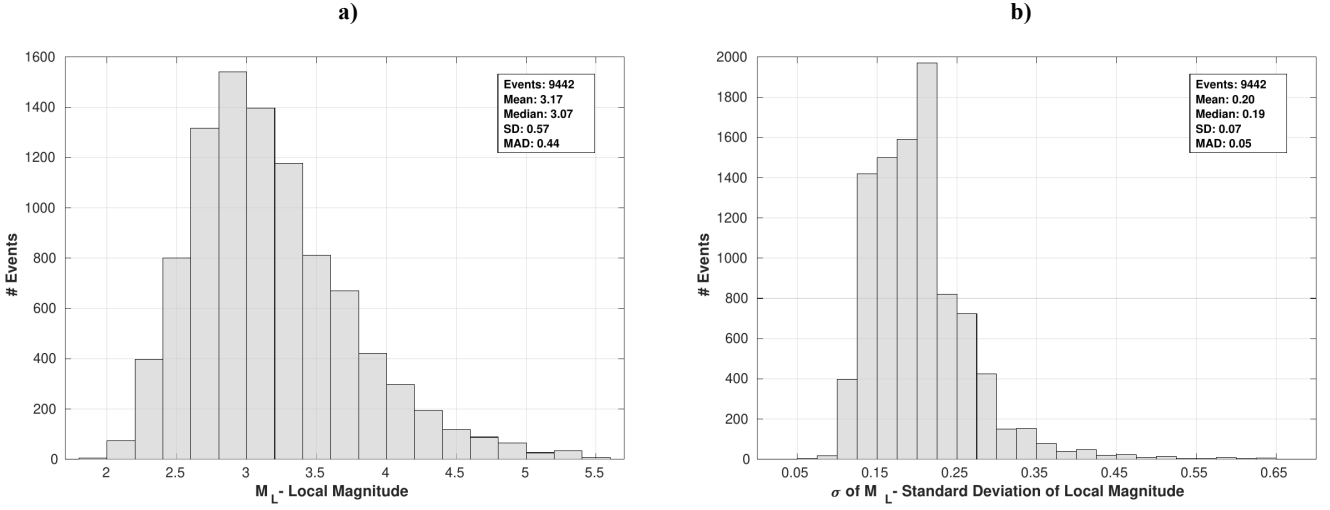


Figure 10: a) Distribution of the local magnitude a) and the standard deviation b) of the events presented in this work.

The standard deviation graph shows a median of 0.19 (mean 0.20) with generally low values, as less than 2% of the events have a magnitude uncertainty greater than 0.40, which shows that the M_L measurement is very accurate.

We have also analyzed the cumulative frequency magnitude (CFM) distribution analyzing the b -value using the maximum likelihood approach (Aki, 1965) while the uncertainty of the b -value is computed by means of a bootstrap approach (Efron, 1979) and b -positive applying the procedure proposed by van der Elst (2021).

As written in SM10 and SM11 the best estimates for the b -value is 0.89 ± 0.01 with b -positive 0.85 ± 0.01 considering all data set and 0.9 ± 0.01 for both b -value and b -positive considering the GIT distributed dataset.

3.2.1 Magnitude comparison with AFAD catalog

Figure 11 shows the comparison between M_L distribution the present data set (Fig. 11a) and with the magnitude of the AFAD catalog (Fig. 11b). It is worth mentioning that the AFAD catalog lacks a uniform parameter to characterize the earthquake size, so that other magnitudes types (e.g. duration magnitude, M_D are used in addition to M_L).

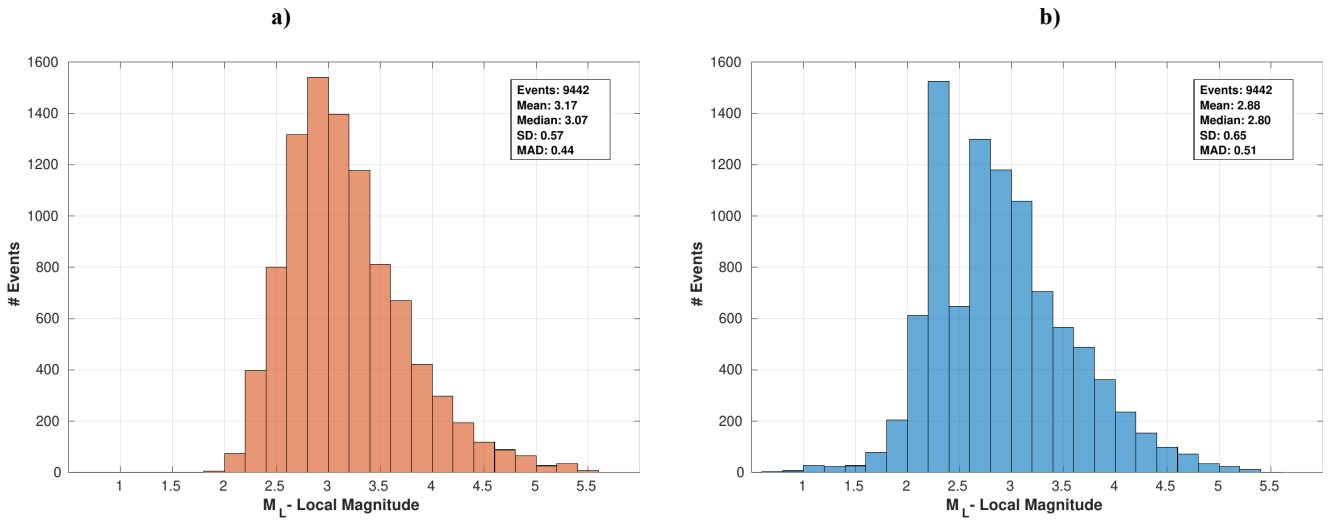


Figure 11: Magnitude comparison between this work (a) and AFAD catalog (b).

The magnitude distribution appears to be similar between the two data set. However, the median value in the AFAD catalog (around 2.8) is lower than in our dataset. Also, only a small part of the distribution, about 7%, includes magnitude values above 4, compared to 10% in our dataset.

3.3 Strong motion parameters

As mentioned before, we applied P and S onset detection to estimate M_L , and extract different several features from the recordings such as the peak displacement (PGD), the integral of the squared velocity (IVs2) evaluated over the S-wave window at local distances, the peak ground velocity (PGV) and the peak ground acceleration (PGA).

These features are extracted directly from the recordings and form the basis for the Rapid Assessment of MOMEnt and Energy Service - RAMONES project (Spallarossa et al., 2021b, web page: <https://distav.unige.it/rsni/ramones.php>). This service provides seismic moment M_0 and radiated energy E_r , and relies on the measurement of specific ground motion features directly from seismograms and their correction for propagation and site effects using empirical models previously calibrated for the region of interest.

Figure 12 shows an example of a three-component recording (N-S: North-South; E-W: East-West; Z: Vertical) relative to the record M_L 4.0 earthquake recorded at the station HASA occurred on March 20, 2023 at 15:40:34 UTC.

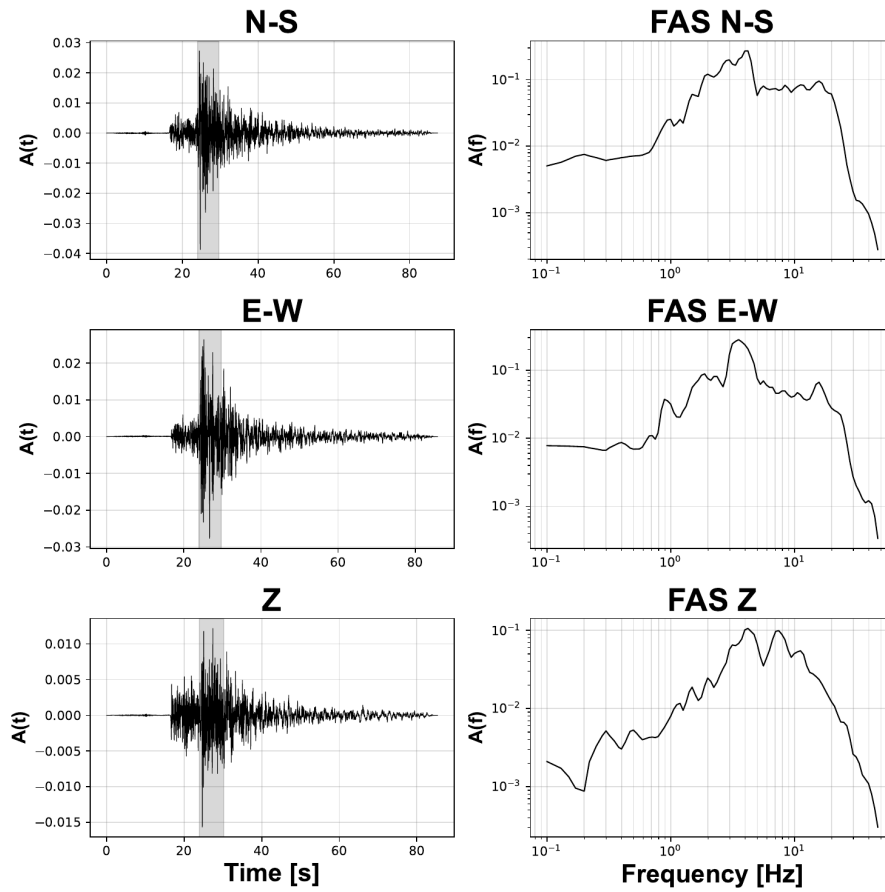


Figure 12: Record for the M_L 4.0 event occurred on 20 March 2023 at 15:40:34 UTC at the station HASA, where in gray is shown the portion of the signals for which FAS is computed. The panels on the left represent the seismic signals, on the right are the corresponding FAS. North-South component at the top, East-West component in the middle, vertical component at the bottom.

Fourier Amplitude Spectra (FAS) are calculated for all three signal components using a recursive procedure based on a distance-dependent energy criterion to determine the S-wave time window length. A frequency-dependent threshold to the signal-to-noise ratio ($SNR > 2.5$) is then used to select the spectral amplitudes for the inversion ([Pacor et al., 2016](#)).

The FAS calculation is performed on time windows starting 0.1 s before the S-wave onset and extending until 60% of the total energy of the full spectrum is reached. The spectral amplitudes are calculated considering 98 frequencies, equally spaced in the logarithmic scale, in the range between 0.05 and 47.2 Hz. In addition to FAS, PGV and PGA values are also distributed as they provide a comprehensive overview of seismic motion and its potential impact on structures ([Trifunac and Brady, 1975](#); [Aki and Richards, 2002](#)).

Figure 13a shows the values of $\log_{10}PGA$ as a function of hypocentral distance, defined for different magnitude ranges.

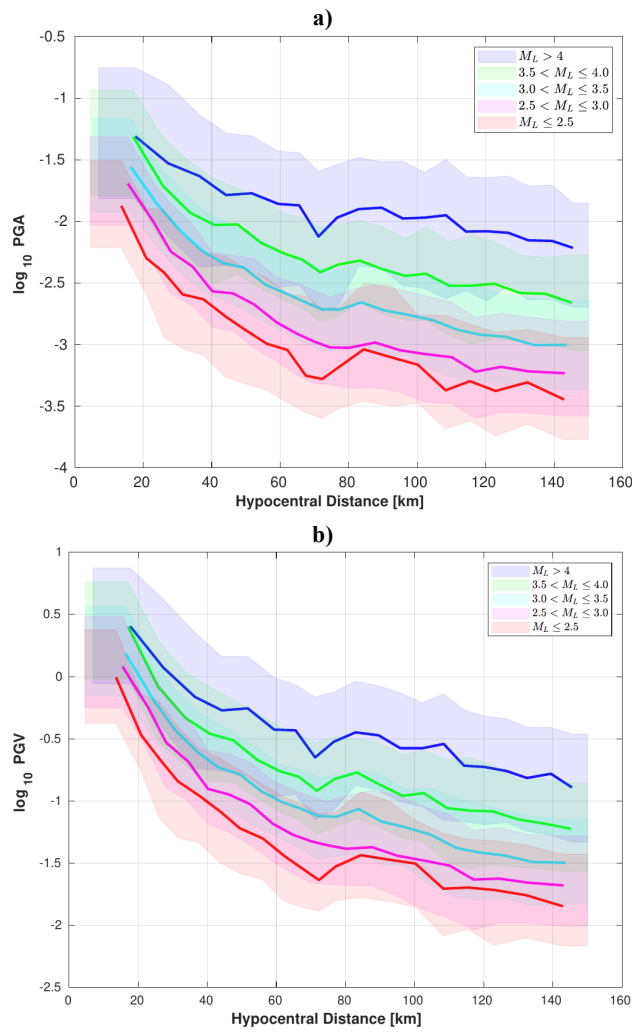
The solid line represents the median curve for a given magnitude, while the shaded areas indicate the variability within each of hypocenter bin distance, bounded by the lower quartile (25th percentile) and the upper quartile (75th percentile), respectively.

355 PGA here refers to PHA (Peak Horizontal Acceleration), which represents the vector composition of the horizontal components of strong ground motion:

$$PHA = \sqrt{(PGA_{N-S})^2 + (PGA_{E-W})^2} \quad (3)$$

360 where PGA_{N-S} is the component of PGA along the North-South direction, while PGA_{E-W} is the component of PGA along the East-West direction.

The distribution of all events for which PGA is available, can be found in **SM12**, while the detailed description of the dissemination parameters are described in detailed in **SM13**.



365

370 **Figure 13: Distribution with hypocentral distance of the \log_{10} PGA a) and \log_{10} PGV b) over the S-wave window. The trends of the parameters averaged over five narrow magnitude ranges as indicated in the panels ($M_L \leq 2.5$; $2.5 < M_L \leq 3$; $3 < M_L \leq 3.5$; $3.5 < M_L \leq 4.0$; $M_L > 4.0$) are also shown. Areas in transparency show the variability of each curve bounded by the lower quartile (25th percentile) and upper quartile (75th percentile).**

375 As expected, \log_{10} PGA values are highest at small hypocentral distances, with median values between -2 and -1 at hypocentral distances of less than 20 km. For intermediate hypocentral distances, between 20 and 80 km, \log_{10} PGA decreases, with median values between -3 and -1.5. For larger hypocentral distances, beyond 80 km, \log_{10} PGA values appears to reach a plateau. A similar trend is observed for PGV, as shown in **Fig. 13b**, in which the median \log_{10} PGV values are between -2 and 0.5. Curves representing 5 magnitude ranges (red, $M_L \leq 2.5$; pink, $2.5 < M_L \leq 3$; cyan, $3 < M_L \leq 3.5$; green, $3.5 < M_L \leq 4$; blue > 4.0) show that higher M_L values correspond to higher PGA. This effect is particularly evident at hypocentral distances greater than 40 km, where the curves are clearly separated by magnitude.

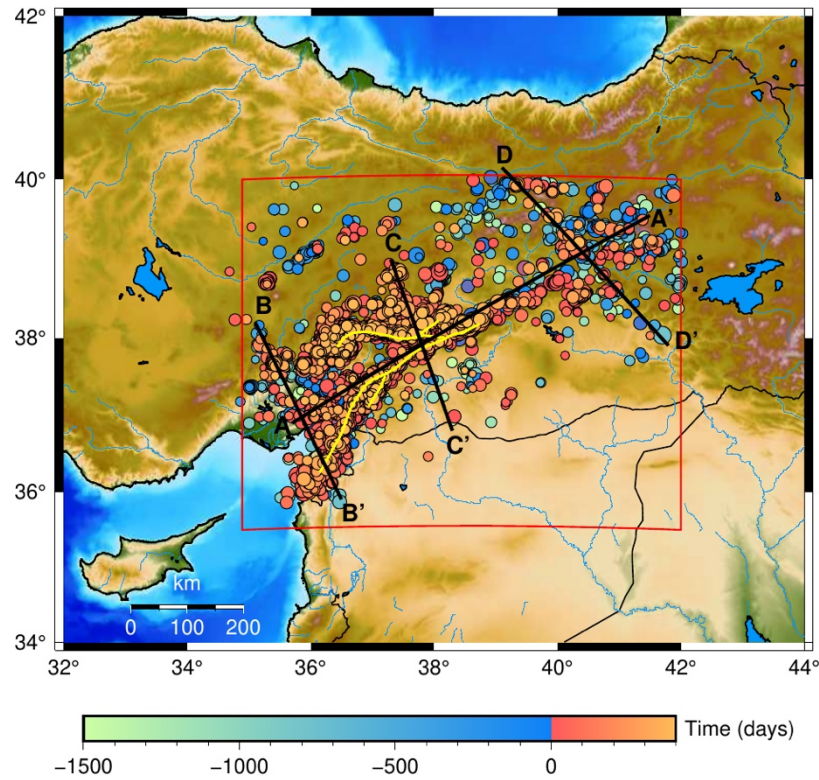
380

4 Discussions: Seismicity distribution in the EAFZ

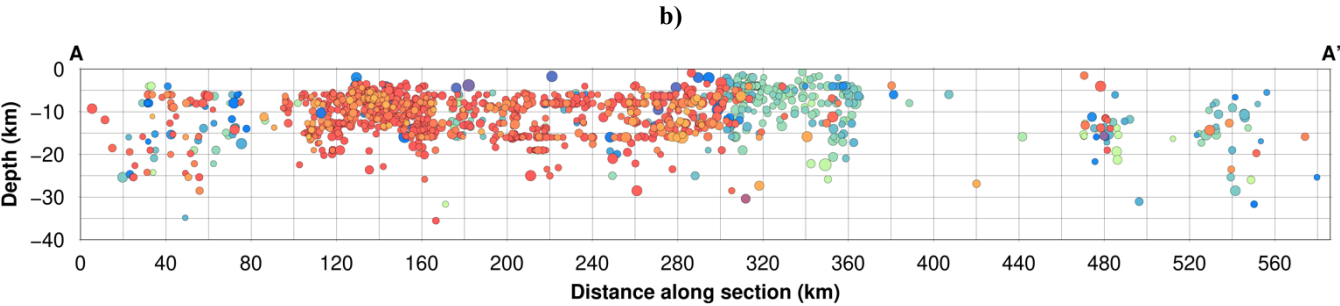
Although the primary objective of this study is not a spatio-temporal investigation of seismicity in the EAFZ, we have mapped seismic activity from this catalog to obtain a general assessment of its distribution in relation to the major active geological structures. **Figure 14** shows a map of our study area illustrating seismicity over time, with the first mainshock on February 6, 2023 at 01:17:35 UTC serving as a reference point (time zero). Light green to green colors represent events that occurred further in the past (four and three years before the mainshock, respectively), while bluish to blue colors indicate events closer to the first mainshock. Events in the immediate vicinity of the first mainshock are shown in shades of red, whereas aftershocks that occurred at a later date are shown in shades of orange.

The map shows that seismicity is mainly concentrated along the southern Nurdağı-Pazarcık Fault, where the first event occurred, and near the Sürgü Fault, where the Mw 7.6 Ekinözü earthquake struck on February 6, 2023 at 10:24:49 UTC. This high-magnitude event, which occurred on a separate fault structure, is considered part of a "doublet" rather than a traditional mainshock-aftershock sequence (see [Taymaz et al., 2022](#)). To better visualize the seismicity distribution, we created several cross-sections.

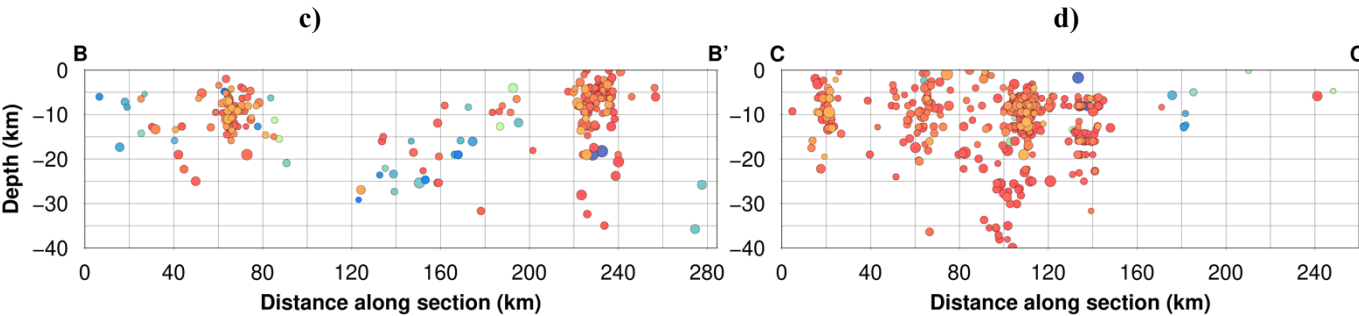
a)



400



405



410

Figure 14: **a)** Seismicity map of the distributed catalog. The color scale represents the temporal evolution of the seismicity, while the size of the point is proportional to the magnitude. In red is shown the rectangle surrounding the study area, in yellow we show the faults according to [Melgar et al. \(2023\)](#). Profiles are shown with black lines.
b) Section A-A', length 586 km, 1303 events. **c)** Section B-B', length 284 km, 202 events. **d)** Section C-C'; length 260 km, 433 events. **e)** Section D-D'; length 342 km, 118 events.
Each profile was performed considering the events 10 km further to the left and 10 km to the right with respect to the line track. Vertical exaggeration of the cross-sections is 2:1.

415

Section A-A' (**Fig. 14b**) extends from southwest to northeast, running parallel to the average strike of the faults that generated the two main earthquakes. In the first 80 km of the section, the seismicity appears to be scattered, while beyond 100 km, a clear cluster emerges in the hypocentral area of Nurdağı. Here, the aftershock are mainly concentrated at shallow depths (5-18

420

km), which is consistent with the results of previous investigations (e.g. [Melgar et al., 2023](#); [Rodríguez-Pérez and Zúñiga, 2024](#)).

Beyond 300 km along the profile, the aftershocks become much more sporadic. The first notable cluster corresponds to the
425 Mw 6.7 Elazığ earthquake, which occurred on January 24, 2020 at 17:55 UTC near the town of Sivrice ([Taymaz et al., 2021](#)).
Our catalog includes the largest aftershock from this sequence (a Mw 5.1 event that occurred on January 25, 2020) along with
17 other events of Mw 4.0 or higher, for a total of about 100 events in the 40 days following the mainshock. In the
northeasternmost part of the section, we observe a “seismicity gap” followed by an almost even distribution of foreshocks and
aftershocks at a depth of 10-30 km over the last 100 km. The presence of the seismic gap (also evident in [Melgar et al. \(2023\)](#))
430 is solely due to the time frame of our catalog, as [Karabulut et al. \(2023\)](#) shows that this section of the EAFZ has also
experienced moderate-magnitude earthquakes. In particular, the 2010 Kovancılar earthquake ruptured approximately 30 km
of the northeasternmost extent of the EAFZ ([Tan et al., 2011](#)). Additionally, the adjacent Palu segment (~80 km long) partially
ruptured between 2010 and 2011 producing two moderate-magnitude earthquakes (Mw 5.4 and Mw 6.1) and has remained
continuously active.

435 Section B-B’ (**Fig. 14c**) runs along the southwestern part of our study area: in its northern section, we find a cluster associated
with the second major event of 6 February 2023. As it progresses, the seismicity becomes more scattered at depths between
10 and 30 km before culminating in a well-defined cluster that extends over 20 km and is associated with aftershocks along
the Nurdagi-Pazarcik Fault.

Section C-C’ (**Fig. 14d**), which is located near the center of our study area, is particularly significant as it transversely intersects
440 the A-A’ trace and the two main faults: the Nurdağı-Pazarcık Fault to the North and the Sürgü Fault to the South. Aftershocks
are clearly visible along both faults, increasing in depth from north to south and reaching from the surface to a depth of about
40 km. In the last 100 km of the section, seismic activity is minimal, which is remarkable as this area is largely flat.

Finally, section D-D’ (**Fig. 14e**), which focuses on the northeastern part of the study area, shows diffuse seismicity at different
depths, including both very shallow and deep events, as also noted by [Güvercin \(2023\)](#). The temporal evolution of seismicity
445 in this section shows an almost even distribution of foreshocks and aftershocks.

In all these considerations, it should not be forgotten that the seismotectonic setting in the region is ruled by a complex fault
network that accommodates the stress generated by the relative motion at the triple junction of the Anatolian, Arabian, and
African plates ([Güvercin et al. 2022](#)). Therefore, while these considerations provide a general overview of seismicity, a more
detailed understanding requires in-depth studies of the mechanical behavior of the different EAF segments ([Palo and Zollo,](#)
450 [2024](#); [Wang and Barbot, 2024](#)).

5 Applications and Prospects

The 2019-2024 EAFZ high-quality data set offers numerous potential application and prospects. As we mentioned above, one of its main applications is spectral decomposition using the Generalized Inversion Technique (GIT), first introduced by Andrews (1986), Iwata and Irikura (1988) and Castro et al. (1990). The GIT is a reliable approach for the simultaneous investigation of source, path and site contributions to the observed ground motions in the frequency domain and plays a crucial role in improving the understanding of seismic processes and earthquake hazard assessment. This method is based on linear and time-invariant assumptions, for which the output is given by the convolution between the input with the transfer function of the system (Bindi et al., 2023b).

As we can see from **Fig. 15**, which shows the coverage map of the data set at 1 Hz, the study area is well sampled and dense of rays, especially along the main tectonic alignments of the EAF.

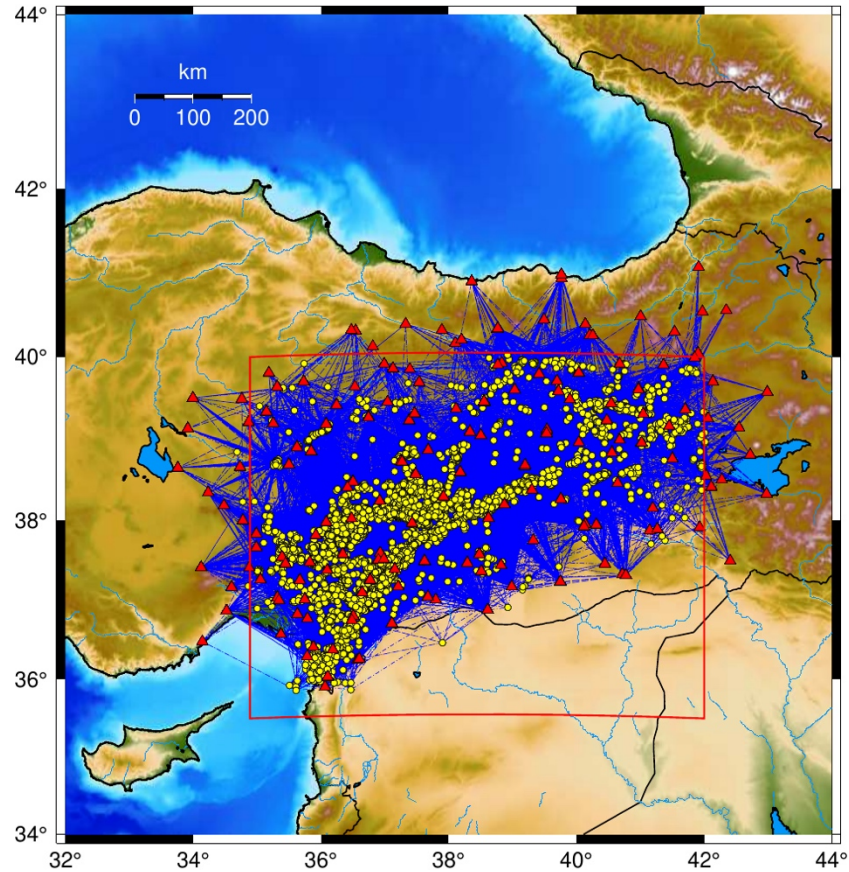


Figure 15: Ray coverage map at $f=1$ Hz. Events are represented by yellow dots, stations by red triangles and rays by blue lines.

One of the long-term objectives of the work is to provide a solid basis for the study of source parameters, similar to the efforts of the Southern California Earthquake Center (SCEC) community. There, spectral decomposition was applied to isolate source

spectra of events belonging to the 2019 Ridgecrest seismic sequence (Bindi et al., 2023b), with a comparison study providing an epistemic analysis of the results uncertainties (Bindi et al., 2023c).

From a spatial perspective, the data set provides excellent sampling across various frequencies (see SM14 and SM15).

470 Ensuring comprehensive ray coverage is essential to obtain robust and meaningful seismological results, and is crucial to the success of GIT studies as it directly impacts the accuracy and reliability of the derived source, path and site parameters. Such dense ray coverage can also benefit the tomography community, especially for application such as Local Earthquake Tomography (LET), which uses first arrival times (Gokalp 2012; Ozer et al., 2019; Medved et al., 2021; Güvercin, 2023), or attenuation tomography studies (Koulakov et al., 2010; Toker and Şakir, 2022) in the EAFZ and surrounding regions. In this
475 sense, the disseminated data set is highly valuable, both in terms of the amount of data, and the quality of earthquake location and dense frequency sampling, which can help us improve the mapping of seismic structures in such a complex geological area.

The presented data set can be a valuable resource for the development of the STATION (Seismic sTATION and sIte amplificatiON, web page: <https://distav.unige.it/rsni/station.php>) service (Tarchini et al., 2024), which is a product based on
480 the exchange and dissemination of seismological data from seismic stations in Italy and neighbouring regions. Starting from an automatic picking procedure of P and S phases, STATION guarantees a quasi-automatic elaboration of a selection of data records and is finalized to the calculation of Horizontal-to-Vertical Spectral Ratios (HVSr) and station specific M_L residuals. A similar procedure has already been started for the EAFZ using this data set (see SM16), with the aim of a precise site characterization.

485 In addition, the disseminated data set can significantly contribute to the development of the existing Ground Motion Prediction Equations (GMPEs) in the EAFZ and thus, to some extent to the improvement of earthquake hazard assessment (Akkar and Çağnan, 2010; Kale et al., 2015).

With over five years of recorded seismicity, the data set also enables the study of variations in the Q parameter which quantifies the attenuation of seismic energy through coda waves (Sertçelik, 2012) or, moving to higher frequencies, to support the
490 investigation of the kappa (κ) parameter, which depends on the geological characteristics of the sites (Biro, 2024). In this context, recent studies in Central Italy (Castro et al., 2022b; Castro et al., 2024) based on high quality data sets that include low-to-moderate seismicity (Spallarossa et al., 2022) have shown that the temporal study of κ can provide insights into the role of fluid circulation and contribute to the monitoring of seismic cycle.

One of the ultimate goals for which the data set was developed is to analyze the spatio-temporal evolution of seismicity and to
495 investigate whether a preparatory process for preceded the February 6, 2023, Mw 7.8 earthquake (see Kwiątek et al., 2023; Picozzi et al., 2023b) and to understand how the identification of microseismicity is crucial for the detection and triggering of major events.

In the last few years, a set of physics-based features aimed at intercepting the preparatory phase of strong earthquakes have been developed (Picozzi et al., 2022; Picozzi et al., 2023a). In general, seismic sequences are analyzed based on the time-space

500 intervals between earthquakes (Zaliapin et al., 2008; Zaliapin et al., 2016), which serve as an important tool for identifying seismic crises (see SM17).

For a more detailed investigation of the spatio-temporal evolution, a future study will focus on analyzing the systematic deviations of the PGAs generated by each earthquake from the values predicted by a reference GMM calibrated for background seismicity, referred to as event-specific ground motion anomalies (eGMSs), as shown in Picozzi et al. (2024).

505 Finally, the data set can be effectively integrated with geodetic investigations such as Interferometric Synthetic Aperture Radar (InSAR), which provides pre-, co- and post- seismic deformation images and offer valuable insights into slow-slip events and fault behavior (for EAF, see An et al., 2023; He et al., 2023).

By integrating InSAR data with seismological information, it is indeed possible to gain a more comprehensive understanding of active tectonic mechanisms and fault dynamics in the region, which improves which ultimately improves earthquake
510 processes analysis and seismic risk assessment.

5 Conclusions

This work presents a seismic catalog that covers the period between January 1, 2019 and February 29, 2024 and includes both the pre- and post-seismic periods of the devastating February 6, 2023 earthquake sequence that struck southern and central Türkiye and northern and western Syria along the EAFZ. The data set focuses on small-to-moderate earthquakes in the M_L
515 range 2.0–5.5 and is intended as a valuable tool for researchers investigating seismic source characterization and strong motion parameters.

The high-quality catalog of this was achieved with the application of the CASP (Scafidi et al., 2019) software, which allowed the identification of 270,704 seismic phases (148,223 P- and 122,481 S-wave first arrivals) for a total of 9,442 events recorded by 271 stations. All events were located with the NLLoc algorithm (Lomax et al., 2000; Lomax et al., 2012). An initial velocity
520 model specifically suited to the EAFZ was used, resulting in reliable earthquake locations with an uncertainty of ± 1 km for both horizontal and depth location. Notably, our depth estimates differ from those of the AFAD reference catalog and appear to be consistent with the geometrical complexities of the fault segments involved in the 2023 Türkiye earthquake sequence (Palo and Zollo, 2024). In addition, the distributed catalog contains M_L values calibrated using a non-parametric approach (Bindi et al., 2020).

525 The last section of this paper deals with possible applications of the data set. It was developed specifically for spectral decomposition, allowing for the separation and analysis of key factors such as source characteristics, attenuation and site effects. In addition, the new event locations can support research on attenuation in terms of Q factor or κ parameter. An important long-term goals of the catalog is to understand the spatio-temporal evolution of seismicity, identifying potential proxies to intercept the preparatory phase of strong earthquakes (Picozzi et al., 2023b).

530 We strongly believe that the creation of high-quality, standardized, and open-source seismic data sets, including FAS and
widely used strong motion parameters, such as PGA and PGV, is essential for the advancement of seismological and
earthquake engineering research.

Code and data availability

535 Most of the figures were generated using MatLab software (<https://mathworks.com/products/matlab.html>, MathWorks, 2023).
We used the Generic Mapping Tools (<https://www.generic-mapping-tools.org/>; Wessel et al., 2013) to produce **Figs. 1, 14** and
15. Figure 12 is done through the ObsPy package (<https://docs.obspy.org/>; Beyreuther et al., 2010), a Python framework for
processing seismological data. Seismic waveforms, pick observations and P and S travel times are available on request by
contacting the author. The data set is freely available at the Zenodo repository: <https://doi.org/10.5281/zenodo.13838992>
540 (Colavitti et al., 2024).

Author contribution

DSP, DB and MP conceptualized the study. DSP developed the code used to compile the disseminated data set, DB recalibrate
the local magnitude. LC developed the quality checks; LC realized the images of the manuscript, with the contribution of DSP
and GT.

545 LC organized the publication and, with the contribution of DB, GT, DSP, MP and DSP wrote the first draft of the manuscript.
All authors participated to the finalization of the article.

Competing interests

The contact author has declared that none of the authors has any competing interests.

Acknowledgements

550 The authors are very grateful to the handling topic editor Dr. Andrea Rovida and two anonymous reviewers for their valuable
comments that improved this manuscript.

Financial support

This research is supported by the Project PREPARED “PREparatory Phase of lARge earthquakes from seismic information
and gEodetic Displacement”, project code 2022ZHC9 in the frame of Bando PRIN 2022 - Progetto di Rilevante Interesse
555 Nazionale (D. D. MUR n. 746, 31-05-2023).

References

- Abercrombie, R. E.: Investigating uncertainties in empirical Green's function analysis of earthquake source parameters, *J. Geophys. Res. Solid Earth*, 120, 4263–4277, <https://doi.org/10.1002/2015JB011984>, 2015.
- 560 AFAD: Disaster and Emergency Management Presidency. National Seismic Network of Turkey (DDA), International Federation of Digital Seismograph Networks available at <http://tdvm.afad.gov.tr/> (last accessed February 2024).
- Akaike, H.: Markovian representation of stochastic processes and its application to the analysis of autoregressive moving average process, *Ann. Inst. Stat. Math.* 26(1), 363-387, 1974.
- Aki, K.: Maximum Likelihood Estimate of b in the Formula $\log_{10} N = a - bM$ and its confidence limits. *Bull. Earthq. Res.*, 565 43, 237-239, 1965.
- Aki, K., and Richards, P. G. (2nd Edition): Quantitative seismology, Univ. Sci. Books, Sausalito, California, 700 pp., ISBN 0935702962, 2002.
- Akkar, S., and Çağnan, Z.: A Local Ground-Motion Predictive Model for Turkey, and Its Comparison with Other Regional and Global Ground-Motion Models. *Bull. Seismol. Soc. Am.*, 100 (6), 2978-2995, <https://doi.org/10.1785/0120090367>, 2010.
- 570 Ambraseys, N.: Temporary seismic quiescence: SE Turkey, *Geophys. J. Int.* 96(2), 11-331, <https://doi.org/10.1111/j.1365-246X.1989.tb04453.x>, 1989.
- An, Q., Feng, G., He, L., Xiong, Z., Lu, H., Wang, X., and Wei, J.: Three-Dimensional Deformation of the 2023 Turkey Mw 7.8 and Mw 7.7 Earthquake Sequence Obtained by Fusing Optical and SAR Images, *Remote Sens.*, 15(10), 2656, <https://doi.org/10.3390/rs15102656>, 2023.
- 575 Andrews, D. J.: Objective determination of source parameters and similarity of earthquakes of different size. *Earthquake source mechanics*, 37, 25w9-267, <https://doi.org/10.1029/GM037p0259>, 1986.
- Baltay, A., Abercrombie, R., Chu, S., Taira, T.: The SCEC/USGS community stress drop validation study using the 2019 Ridgecrest earthquake sequence, *Seismica*, 3, 1, <https://doi.org/10.26443/seismica.v3i1.1009>, 2024.
- Beyreuther, M., Barsch, R., Krischer, L., Megies, T., Behr, Y., and Wassermann, J.: ObsPy: A Python Toolbox for 580 Seismology, *Seismol. Res. Lett.*, 81(3), 530-533, <https://doi.org/10.1785/gssrl.81.3.530>, 2010.
- Bindi, D., Spallarossa, D., Picozzi, M., Scafidi, D., Cotton, F.: Impact of magnitude selection on Aleatory variability associated with ground-motion prediction equations: Part I - Local, energy, and moment magnitude calibration and stress-drop variability in Central Italy, *Bull. Seismol. Soc. Am.*, 108, 3A, 1427-1442, <https://doi.org/10.1785/0120170356>, 2018.
- Bindi, D., Picozzi, M., Spallarossa, D., Cotton, F., Kotha, S. R.: Impact of magnitude selection on Aleatory variability 585 associated with ground motion prediction equations: Part II - Analysis of the between-event distribution in central Italy, *Bull. Seismol. Soc. Am.* 109, 251-262, <https://doi.org/10.1785/0120180239>, 2019.
- Bindi, D., Zaccarelli, R., Kotha, S. R.: Local and Moment Magnitude Analysis in the Ridgecrest Region, California: Impact on Interevent Ground-Motion Variability, *Bull. Seismol. Soc. Am.* 111, 339-355, <https://doi.org/10.1785/0120200227>, 2020.

- 590 Bindi, D., Zaccarelli, R., Cotton, F., Weatherill, G., and Kotha, S. R.: Source Scaling and Ground Motion Variability along the East Anatolian Fault, *The Seismic Record*, 34, 311-321, <https://doi.org/10.1785/0320230034>, 2023a.
- Bindi, D., Spallarossa, D., Picozzi, M., Oth, A., Morasca, P. and Mayeda, K.: The Community Stress-Drop Validation Study - Part I: Source, Propagation, and Site Decomposition of Fourier Spectra, *Seismol. Res. Lett.* 94(4), 1980-1991, <https://doi.org/10.1785/0220230019>, 2023b.
- 595 Bindi, D., Spallarossa, D., Picozzi, M., Oth, A., Morasca, P., Mayeda, K.: The Community Stress-Drop Validation Study - Part II: Uncertainties of the Source Parameters and Stress-Drop Analysis. *Seismol. Res. Lett.*, 94 (4), 1992-2002, <https://doi.org/10.1785/0220230020>, 2023c.
- Biro, Y.: Magnitude dependency of spectral decay parameter kappa in East Anatolian Fault related events, 18th World Conference on Earthquake Engineering, 2024.
- 600 Castro, R. R., Anderson, J. G., Singh, S. K.: Site response, attenuation and source spectra of S waves along the Guerrero, Mexico, subduction zone, *Bull. Seism. Soc. Am.*, 80 (6A), 1481-1503, <https://doi.org/10.1785/BSSA08006A1481>, 1990.
- Castro, R. R., Colavitti L., Vidales-Basurto, C. A., Pacor, F., Sgobba S., and Lanzano G.: Near-source attenuation and spatial variability of the spectral decay parameter kappa in central Italy, *Bull. Seismol. Soc. Am.*, 93(4), 2299-2310, <https://doi.org/10.1785/0220210276>, 2022a.
- 605 Castro, R. R., Spallarossa, D., Pacor, F., Colavitti, L., Lanzano, G., Vidales-Basurto, C. A., and Sgobba, S.: Temporal variation of the spectral decay parameter kappa detected before and after the 2016 main earthquakes in central Italy, *Bull. Seism. Soc. Am.*, 112, 3037-3045, <https://doi.org/10.1785/0120220107>, 2022b.
- Castro, R. R., Colavitti, L., Pacor, F., Lanzano, G., Sgobba, S., and Spallarossa, D.: Temporal variation of S-wave attenuation during the 2009 L'Aquila, central Italy, seismic sequence, submitted on *Geophys. J. Int.*, 2024.
- 610 Cıvgın, B., Scordilllis, E. M.: Investigating the consistency of online earthquake catalogs of Turkey and surroundings, *J. Seismol.*, 23, 1255-1278, <https://doi.org/10.1007/s10950-019-09863-w>, 2019.
- Colavitti, L., Bindi, D., Tarchini, G., Scafidi, D., Picozzi, M., Spallarossa, D.: Data Set of selected strong motion parameters and Fourier Amplitude Spectra for the East Anatolian Fault Zone, Türkiye (January 2019 - February 2024) [Data set], Zenodo, <https://doi.org/10.5281/zenodo.13838992>, 2024.
- 615 Cotton, F., Archuleta, R., and Causse, M. What is sigma of the stress drop?, *Seismol. Res. Lett.*, 84 (1), 42-48, <https://doi.org/10.1785/0220120087>, 2013.
- Dal Zilio, L., and Ampuero, J. P.: Earthquake doublet in Turkey and Syria, *Commun. Earth. Environ.* 4, 71. <https://doi.org/10.1038/s43247-023-00747-z>, 2023.
- Efron, B.: Bootstrap Methods: Another Look at the jackknife, *Ann. Stat.* 7, 1-26, 1979.
- 620 Gabriel, A. A., Ulrich, T., Merchandon M., Biemiller J., Rekoske J.: 3D Dynamic Rupture Modeling of the 6 February 2023, Kahramanmaraş, Turkey Mw 7.8 and 7.7 Earthquake Doublet Using Early Observations, *The Seismic Record* 3(4), 342-356, <https://doi.org/10.1785/0320230002>, 2023.

- Gokalp, H.: Local earthquake tomography of the Erzincan Basin and the surrounding area in Turkey, *Annals of Geophysics*, 50(6), 707-724, 2007.
- Güvercin, S. E., Karabulut, H., Konca, A. O., Doğan, U., and Ergintav, S.: Active seismotectonics of the East Anatolian Fault, *Geophys. J. Int.*, 230: 50-69. <https://doi.org/10.1093/gji/ggac045>, 2022.
- Güvercin, S. E.: A local earthquake tomography on the EAF shows dipping fault structure, *Turkish J. of Earth Sci.* 32 (3), art. 5, <https://doi.org/10.55730/1300-0985.1845>, 2023.
- He, L., Feng, G., Xu, W., Wang, Y., Xiong, Z., Gao, H., and Liu, X.: Coseismic kinematics of the 2023 Kahramanmaraş, Turkey earthquake sequence from InSAR and optical data, *Geophys. Res. Lett.*, 50, e2023GL104693, <https://doi.org/10.1029/2023GL104693>, 2023.
- Hutton L. K., and Boore D. M.: The M_L scale in southern California, *Bull. Seismol. Soc. Am.*, 77, 2074-2094, 1987.
- Iwata, T., and Irikura, K.: Source parameters of the 1983 Japan Sea earthquake sequence, *J. Phys. Earth* 36(4), 155-184, <https://doi.org/10.4294/jpe1952.36.155>, 1988.
- Kale, Ö, Akkar, S., Ansari, A., and Hamzehloo, H. A Ground-Motion Predictive Model for Iran and Turkey for Horizontal PGA, PGV, and 5% Damped Response Spectrum: Investigation of Possible Regional Effects. *Bull. Seism. Soc. Am.* 105 (2A), 963-980. <https://doi.org/10.1785/0120140134>, 2015.
- Karabulut, H. Güvercin, S. E., Hollingsworth, J., Özgün Konca, A: Long silence on the East Anatolian Fault Zone (Southern Turkey) ends with devastating double earthquakes (6 February 2023) over a seismic gap: implications for the seismic potential in the Eastern Mediterranean region, *J. Geol. Soc.* 180 (3), jgs2023–021. <https://doi.org/10.1144/jgs2023-021>, 2023.
- Kissling, E., Ellsworth, W. L., Eberhart-Phillips, D., and Kradolfer, U.: Initial reference models in local earthquake tomography, *J. Geophys. Res.: Solid Earth*, 99: 19635-19646. <https://doi.org/10.1029/93JB03138>, 1994.
- KO - Kandilli Observatory And Earthquake Research Institute, Boğaziçi University (KOERI) [Data set]. International Federation of Digital Seismograph Networks. <https://doi.org/10.7914/SN/KO>, 1971.
- Konno, K., and Ohmachi, T.: Ground-motion characteristics estimated from spectral ratio between horizontal and vertical components of microtremor, *Bull. Seism. Soc. Am.*, 88 (1), 228-241, <https://doi.org/10.1785/BSSA0880010228>, 1998.
- Koulakov, I., Bindi, D., Parolai, S., Grosser, H., and Milkereit, C.: Distribution of Seismic Velocities and Attenuation in the Crust beneath the North Anatolian Fault (Turkey) from Local Earthquake Tomography, *Bull. Seism. Soc. Am.*, 100, 207-224, <https://doi.org/10.1785/0120090105>, 2010.
- Kwiatek, G., Martínez-Garzón, P., Becker, D., Dresen G., Cotton F., Beroza, G., Acaarel, D., Ergintav, S., and Bohnoff, M.: Months-long seismicity transients preceding the 2023 Mw 7.8 Kahramanmaraş earthquake, Türkiye, *Nature comm.*, 14, 7534, <https://doi.org/10.1038/s41467-023-42419-8>, 2023.
- Laporte, M., Letort, J., Bertin, M., and Bollinger, L.: Understanding earthquake location uncertainties using global sensitivity analysis framework, *Geophys. J. Int.*, 237(2), 1048-1060, <https://doi.org/10.1093/gji/ggae093>, 2024.

- Lomax, A., Virieux, J., Volant, P., and Berge-Thierry, C.: Probabilistic earthquake location in 3D and layered models: Introduction of a Metropolis-Gibbs method and comparison with linear locations, in Adv. in Seismic Event Location, eds. Thurber, C. H. and Rabinowitz, 101-134, Kluwer Academic Publishers, 2000.
- Lomax, A., Michelini, A., and Curtis, A.: Earthquake location, direct, global-search methods, in Encyclopedia of Complexity and Systems Science, Ed. Meyers R. A., Springer-Verlag, New York, New York, 2449 - 2473.
- Lomax, A., Satriano, C. and Vassallo, M.: Automatic picker developments and optimization: FilterPicker - a robust, broadband picker for real-time seismic monitoring and earthquake early warning, *Seismol. Res. Lett.*, 83(3), 531-540, <https://doi.org/10.1785/gssrl.83.3.531>, 2012.
- Lienert, B. R., and Havskov, J.: A Computer Program for Locating Earthquakes Both Locally and Globally, *Seismol. Res. Lett.*, 66(5), 1995.
- Luzi L., Lanzano G., Felicetta C., D'Amico M. C., Russo E., Sgobba S., Pacor, F., and ORFEUS Working Group 5, Engineering Strong Motion Database (ESM) (Version 2.0), Istituto Nazionale di Geofisica e Vulcanologia (INGV), <https://doi.org/10.13127/ESM.2>, 2020.
- MathWorks: MATLAB version 9.15 (R2023b), Natick, Massachusetts: The MathWorks Inc., 2023.
- Medved, I., Polat, G., Koulakov, I.: Crustal Structure of the Eastern Anatolia Region (Turkey) Based on Seismic Tomography, *Geosciences*, 11, 91, <https://doi.org/10.3390/geosciences11020091>, 2021.
- Melgar, D., Taymaz, T., Ganas, A., Crowell, B. W., Öcalan, T., Kahraman, M., Tsironi, V., Yolsal-Çevikbilen, Valkaniotis, S., Irmak, T. S., Eken, T., Erman, C., Özkan, Doğan, A. H., Altuntaş, C.: Sub- and super-shear ruptures during the 2023 Mw 7.8 and Mw 7.6 earthquake doublet in SE Türkiye, *Seismica* 2, 3, <https://doi.org/10.26443/seismica.v2i3.387>, 2023.
- Morasca, P., Bindi, D., Mayeda, K., Roman-Nieves, J., Barno, J., Walter, W. R., and Spallarossa, D. Source scaling comparison and validation in Central Italy: data intensive direct S waves versus the sparse data coda envelope methodology, *Geophys. J. Int.* 231, 1573-1590, <https://doi.org/10.1093/gji/ggac268>, 2022.
- Ozer, C., Ozyazicioglu, M., Gok, E., and Polat, O.: Imaging the Crustal Structure Throughout the East Anatolian Fault Zone, Turkey, by Local Earthquake Tomography, *Pure Appl. Geophys.*, 176, 2235–2261, <https://doi.org/10.1007/s00024-018-2076-6>.
- Pacor, F., Spallarossa, D., Oth, A., Luzi, L., Puglia, R., Cantore, R., Mercuri, A., D'Amico, M., and Bindi, D.: Spectral models for ground motion prediction in the L'Aquila region (central Italy): Evidence for stress-drop dependence on magnitude and depth, *Geophys. J. Int.*, 204, 697-718, <https://doi.org/10.1093/gji/ggv448>, 2016.
- Palo, M., and Zollo, A.: Small-scale segmented fault rupture along the East Anatolian Fault during the 2023 Kahramanmaraş earthquake, *Comm. Earth & Environment* 5 (431), <https://doi.org/10.1038/s43247-024-01597-z>, 2024.
- Parolai, S., Bindi, D., Augliera, P.: Application of the Generalized Inversion Technique (GIT) to a Microzonation Study: Numerical Simulations and Comparison with Different Site-Estimation Techniques. *Bull. Seismol. Soc. Am.*, 90(2): 286-297, 2000.

- 690 Parolai, S., Bindi, D., Durukal, E., Grosser, H., Milkereit, C.: Source Parameters and Seismic Moment-Magnitude Scaling for Northwestern Turkey. *Bull. Seismol. Soc. Am.*, 97(2): 655-660, <https://doi.org/10.1785/0120060180>, 2007.
- Pennington, C. N., Chen, X., Abercrombie, R. E., and Wu, Q.: Cross validation of stress drop estimates and interpretations for the 2011 Prague, OK, earthquake sequence using multiple methods, *J. Geophys. Res.: Solid Earth*, 126, e2020JB020888, <https://doi.org/10.1029/2020JB020888>, 2021.
- 695 Petersen, G. M., Büyükakpınar, P., Vera Sanhueza, F. O., Metz, M., Cesca, S., Akbayram, K., Saul, J., and Dahm, T.: The 2023 Southeast Türkiye Seismic Sequence: Rupture of a Complex Fault Network, *The Seismic Record*, 3(2), 134–143, <https://doi.org/10.1785/0320230008>, 2023.
- Picozzi M., Oth A., Parolai S., Bindi D., De Landro G., and Amoroso O. Accurate estimation of seismic source parameters of induced seismicity by a combined approach of generalized inversion and genetic algorithm: Application to The Geysers geothermal area, California, *J. Geophys. Res. Solid Earth*, 122, 3916-3933, <https://doi.org/10.1002/2016JB013690>, 2017.
- 700 Picozzi, M., Spallarossa, D., Iaccarino, A. G., and Bindi, D.: Temporal evolution of radiated energy to seismic moment scaling during the preparatory phase of the Mw 6.1, 2009 L'Aquila Earthquake (Italy), *Geophys. Res. Lett.* 49, 7382, e2021GL097382, <https://doi.org/10.1029/2021GL097382>, 2022.
- Picozzi, M., Iaccarino, A.G., Spallarossa, D., Bindi, D.: On catching the preparatory phase of damaging earthquakes: an example from central Italy, *Sci. Rep.* 13, 14403, <https://doi.org/10.1038/s41598-023-41625-0>, 2023a.
- 705 Picozzi, M., Iaccarino, A.G., and Spallarossa, D.: The preparatory process of the 2023 Mw 7.8 Türkiye earthquake, *Sci. Rep* 13, 17853, <https://doi.org/10.1038/s41598-023-45073-8>, 2023b.
- Picozzi, M., Spallarossa, D., Iaccarino A. G., and Bindi, D.: Event-specific ground motion anomalies highlight the preparatory phase of earthquakes during the 2016-2017 Italian seismicity. *Comm. Earth Environ.* 5, 289, <https://doi.org/10.1038/s43247-024-01455-y>, 2024.
- 710 Richter, C.: An instrumental earthquake magnitude scale, *Bull. Seismol. Soc. Am.* 25, 1-32, 1935.
- Robusto, C. C.: The cosine-haversine formula. *The American Mathematical Monthly*, 64(1), 38-40, 1957.
- Rodríguez-Pérez, Q., Zúñiga, F.R.: Statistical and source characterization of the 2023 Kahramanmaraş Türkiye earthquake sequence, *Acta Geophys.*, <https://doi.org/10.1007/s11600-024-01428-x>, 2024.
- 715 Sandikkaya, M. A., Güryuva, B., Kale, Ö., Okçu, O., İçen, A., Yenier, E., and Akkar, S.: An updated strong-motion database of Türkiye (SMD-TR), *Earthq. Spectra*, 40(1), 847-870, <https://doi.org/10.1177/87552930231208158>, 2024.
- Savage, M. K., and Anderson, J. G.: A local-magnitude scale for the western great basin-eastern Sierra Nevada from synthetic Wood-Anderson seismograms, *Bull. Seismol. Soc. Am.* 85, 1236-1243, 1995.
- Sbeinati, M. R., Darawcheh, R., and Mouty, M.: The historical earthquakes of Syria: an analysis of large and moderate earthquakes from 1365 B.C. to 1900 A.D., *Ann. Geophysics*, 48 (3), 347-435, 2005.
- 720 Scafidi, D., Spallarossa, D., Tunino, C., Ferretti, G., Viganò, A.: Automatic P- and S-Wave Local Earthquake Tomography: Testing Performance of the Automatic Phase-Picker Engine “RSNI-Picker”, *Bull. Seismol. Soc. Am.*, 106(2), 526-536, <https://doi.org/10.1785/0120150084>, 2016.

- Scafidi, D., Viganò, A., Ferretti, G., and Spallarossa, D.: Robust picking and accurate location with RSNI-Picker₂: Real-Time Automatic Monitoring of Earthquakes and Non Tectonic Events, *Seism. Res. Lett.*, 89(4), 1478-1487, <https://doi.org/10.1785/0220170206>, 2018.
- Scafidi, D., Spallarossa, D., Ferretti, G., Barani, S., Castello, B., and Margheriti, L.: A Complete Automatic Procedure to Compile Reliable Seismic Catalogs and Travel-Time and Strong-Motion Parameters Datasets, *Seism. Res. Lett.* 90(3), 1308-1317, <https://doi.org/10.1785/0220180257>, 2019.
- Sertçelik, F.: Estimation of Coda Wave Attenuation in the East Anatolia Fault Zone, Turkey, *Pure Appl. Geophys.*, 169, 1189-1204, <https://doi.org/10.1007/s00024-011-0368-1>, 2012.
- Shible, H., Hollender, F., Bindi, D., Traversa, P., Oth, A., Edwards, B., Klin, P., Kawase, H., Grendas, I., Castro R. R., Theodoulis, N., Gueguen, P.: GITEC: A Generalized Inversion Technique Benchmark, *Bull. Seism. Soc. Am.* 112(2), 850-877, <https://doi.org/10.1785/0120210242>, 2022.
- Spallarossa, D., Bindi, D., Augliera, P., and Cattaneo, M.: An Ml scale in northwestern Italy, *Bull. Seismol. Soc. Am.* 92, 2205-2216, 2002.
- Spallarossa, D., Ferretti, G., Scafidi, D., Turino, C., and Pasta, M.: Performance of the RSNI-Picker, *Seismol. Res. Lett.*, 85(6), 1243-1254, <https://doi.org/10.1785/0220130136>, 2014.
- Spallarossa, D., Cattaneo, M., Scafidi, D., Michele, M., Chiaraluce, L., Segou, M., and Main, I. G.: An automatically generated high-resolution earthquake catalogue for the 2016-2017 Central Italy seismic sequence, including P and S phase arrival times, *Geophys. J. Int.*, 225, 555-571, <https://doi.org/10.1093/gji/ggaa604>, 2021a.
- Spallarossa, D., Picozzi, M., Scafidi, D., Morasca, P., Turino, C., and Bindi, D.: The RAMONES Service for Rapid Assessment of Seismic Moment and Radiated Energy in Central Italy: Concepts, Capabilities, and Future Perspectives, *Seismol. Res. Lett.*, 92(3), 1759-1772, <https://doi.org/10.1785/0220200348>, 2021b.
- Spallarossa D., Colavitti L., Lanzano, G., Sgobba S., Pacor F., Felicetta C.: CI-FAS_Flatfile: Parametric table of the Fourier Amplitude Spectra ordinates and associated metadata for the shallow active crustal events in Central Italy (2009-2018), [Data set], Istituto Nazionale di Geofisica e Vulcanologia (INGV), https://doi.org/10.13127/CI_dataset/CI-FAS_flatfile, 2022.
- Tan, O., Pabuççu, Z., Tapırdamaz, C. M., İnan S., Ergintav S., Eyidoğan, H., Aksoy, E., Kuluöztürk, F.: Aftershock study and seismotectonic implications of the 8 March 2010 Kovancılar (Elazığ, Turkey) earthquake (MW = 6.1), *Geophys. Res. Lett.*, 38, 4-9, 2011.
- Taymaz T., Ganas A., Yolsal-Çevikbilen S., Vera F., Eken T., Erman C., Keles D., Kapetadinis V., Valkaniotis S., Karasante I., Tsironi V., Gaebler P., Melgar D., Öcalan T. Source Mechanism and Rupture Process of the 24 January 2020 Mw 6.7 Doğanyol-Sivrice Earthquake obtained from Seismological Waveform Analysis and Space Geodetic Observations on the East Anatolian Fault Zone (Turkey), *Tectonophysics*, 804: 228745, 2021.
- Taymaz T., Ganas A., Berberian M., Eken T., Irmak T., Kapetanidis V., Yolsal-Çevikbilen S., Erman C., Keles D., Esmaeili C., Tsironi V., and Özkan B. The 23 February 2020 Qotur-Ravian Earthquake Doublet at the Iranian-Turkish Border:

- Seismological and InSAR Evidence for Escape Tectonics, *Tectonophysics*, 838: TECTO15364-229482, <https://doi.org/10.1016/j.tecto.2022.229482>, 2022.
- 760 Tarchini G., Scafidi, D., Parolai, S., Picozzi, M., Bindi, D., Spallarossa, D.: The Seismic Station and Site Amplification Service: Continuously Updated Information on Italian Seismic Stations, *Seismol. Res. Lett.*, <https://doi.org/10.1785/0220240291>, 2024.
- Toker, M., and Şakir, Ş.: Upper- to mid-crustal seismic attenuation structure above the mantle wedge in East Anatolia, Turkey: Imaging crustal scale segmentation and differentiation, *Physics of the Earth and Planet. Int.*, 329-330, 106908, 2022.
- 765 TK - Disaster and Emergency Management Authority: Turkish National Strong Motion Network [Data set]. Department of Earthquake, Disaster and Emergency Management Authority, <https://doi.org/10.7914/SN/TK>, 1973.
- Trifunac, M., D., and Brady, A. G.: A study on the duration of strong earthquake ground motion, *Bull. Seismol. Soc. Am.*, 65(3), 581-626, <https://doi.org/10.1785/BSSA0650030581>, 1975.
- TU - Disaster and Emergency Management Authority: Turkish National Seismic Network [Data set]. Department of Earthquake, Disaster and Emergency Management Authority, <https://doi.org/10.7914/SN/TU>, 1990.
- 770 Uhrhammer, R. A., Hellweg, M., Hutton, K., Lombard, P., Walters, A. W., Hauksson, E., and Oppenheimer, D.: California Integrated Seismic Network (CISN) local magnitude determination in California and vicinity, *Bull. Seismol. Soc. Am.* 101, 2685-2693, <https://doi.org/10.1785/0120100106>, 2011.
- van der Elst, N. J.: B-Positive: A Robust Estimator of Aftershock Magnitude Distribution in Transiently Incomplete Catalogs. *J. Geophys. Res.-Solid Earth* 126, e2020JB021027, <https://doi.org/10.1029/2020JB021027>, 2021.
- 775 Wang, B., Barbot S.: Rupture segmentation on the East Anatolian fault (Turkey) controlled by along-strike variations in long-term slip rates in a structurally complex fault system. *Geology* 52 (10): 779-783, <https://doi.org/10.1130/G52403.1>, 2024.
- Wessel, P., Smith, W. H. F., Scharroo, R., Luis, J., and Wobbe, F.: Generic Mapping Tools: Improved Version Released, *Eos*, 94, 409–410, <https://doi.org/10.1002/2013EO450001>, 2013.
- 780 Zaliapin I., Gabrielov, A., Keilis-Borok, V., and Wong, H.: Clustering analysis of seismicity and aftershock identification, *Phys. Rev. Lett.*, <https://doi.org/10.1103/PhysRevLett.101.018501>, 2008.
- Zaliapin, I., and Ben-Zion, Y.: A global classification and characterization of earthquake clusters, *Geophys. J. Int.* 207, 608-634, <https://doi.org/10.1093/gji/ggw300>, 2016.