

Global ocean surface heat fluxes ~~revisited: A new dataset derived from the maximum entropy production framework with accounting for ocean~~ Bowen ratio ~~optimizations~~ adjustments

Yong Yang¹, Huaiwei Sun^{1,2,3,4*}, Jingfeng Wang⁵, Wenxin Zhang⁶, Gang Zhao⁷, Weiguang Wang⁸, Lei Cheng⁹, Lu Chen¹, Hui Qin¹, Zhanzhang Cai⁶

¹School of Civil and Hydraulic Engineering, Huazhong University of Science and Technology, Wuhan 430074, China

²Hubei Key Laboratory of Digital River Basin Science and Technology, Huazhong University of Science and Technology, Wuhan 430074, China

³Institute of Water Resources and Hydropower, Huazhong University of Science and Technology, Wuhan 430074, China

⁴College of Water Conservancy and Architectural Engineering, Shihezi University, Shihezi 832003, China

⁵ School of Civil and Environmental Engineering, Georgia Institute of Technology, Atlanta 30318, USA

⁶ Department of Physical Geography and Ecosystem Science, Lund University, Lund 22100, Sweden

⁷ Key Laboratory of Water Cycle and Related Land Surface Processes, Institute of Geographic Sciences and Natural Resources Research, Chinese Academy of Sciences, Beijing 100101, China

⁸ College of Hydrology and Water Resources, Hohai University, Nanjing 210098, China

⁹ State Key Laboratory of Water Resources and Hydropower Engineering Science, Wuhan University, Wuhan 430074, China

*Correspondence to: Huaiwei Sun (hsun@hust.edu.cn) and Wenxin Zhang (wenxin.zhang@nateko.lu.se)

Abstract. Ocean evaporation ~~(, represented by latent heat flux, $-(LE)$)~~, plays a crucial role in global precipitation patterns, water cycle dynamics, and energy exchange processes. However, ~~current existing~~ bulk methods for quantifying ocean evaporation are ~~subject to significant associated with considerable~~ uncertainties. The Maximum Entropy Production (MEP) theory ~~offers provides~~ a novel ~~approach framework~~ for estimating surface heat fluxes, but its ~~effectiveness application~~ over ocean surfaces ~~has not been validated, remains largely unvalidated~~. Given the substantial heat storage capacity of the deep ocean, which ~~can create temporal mismatches between variations in heat fluxes and radiation, it is crucial to account for heat storage when estimating heat fluxes~~. This study ~~integrates heat storage effects and four empirical Bowen ratio formulas into the derived global ocean heat fluxes using the~~ MEP theory, ~~incorporating the effects of heat storage and adjustments to improve ocean LE estimation the Bowen ratio (the ratio of sensible heat to latent heat)~~. We ~~employed utilized~~ multi-source data from ~~129 globally distributed buoy stations and seven auxiliary turbulent flux datasets for validation and comparison. We and 129 globally distributed buoy stations~~

to refine and validate the MEP model. The model was first evaluated ~~the MEP method~~ using observed data from buoy stations, ~~identifying and the optimal~~ Bowen ratio formula ~~to enhance the model~~. Results indicate that ~~accounting for heat storage~~ most effectively enhances the model performance was identified. By incorporating the heat storage effect and adjusting the Bowen ratio within the MEP model, the accuracy of the estimated heat fluxes was significantly ~~improve heat flux accuracy, with improved~~, achieving an R^2 of 0.99 (regression slope: 0.97) and a root mean squared error (RMSE) of $4.7 \text{ W} \cdot \text{m}^{-2}$ compared to observations. Subsequently, we conducted a thorough evaluation of seven global turbulent flux datasets to identify the most accurate input variables (e.g., heat storage, net radiation, surface temperature) for applying the MEP method on a global ocean scale. ~~The enhanced MEP method provided~~ The improved MEP method successfully addressed the underestimation of LE and the overestimation of sensible heat by the original model, providing new global estimates of the annual average LE at $93 \text{ W} \cdot \text{m}^{-2}$ and sensible heat at $12 \text{ W} \cdot \text{m}^{-2}$ for the period annual average from 1988 to 2017. ~~Validation against observations from~~ Compared to the 129 buoy stations demonstrated that, the MEP-derived latent heat global LE dataset achieved the highest accuracy, with a mean error (ME) of $1.3 \text{ W} \cdot \text{m}^{-2}$, an RMSE of $15.9 \text{ W} \cdot \text{m}^{-2}$, and a Kling-Gupta Efficiency (KGE) of 0.89, outperforming four major long-term global heat flux datasets, including J-OFURO3, ERA5, MERRA2, and OAF flux. Additionally, we examined the Analysis of long-term spatiotemporal variability of trends revealed a significant increase in global ocean evaporation, ~~identifying a significant increasing trend~~ from 1988 to 2010 at a rate of $3.58 \text{ mm} \cdot \text{yr}^{-1}$, followed by a decline at a rate of $-2.18 \text{ mm} \cdot \text{yr}^{-1}$ from 2010 to 2017. The current This dataset provides a new benchmark for the ocean surface energy budget and is expected to be a valuable resource for research studies on global ocean warming, sea surface-atmosphere energy exchange, the water cycle, and climate change. The 0.25° monthly MEP global ocean heat flux dataset based on the Maximum Entropy Production method (GOHF-MEP) for 1988–2017, is publicly available accessible at <https://doi.org/10.6084/m9.figshare.26861767.v2> <https://doi.org/10.6084/m9.figshare.26861767.v2> (Yang et al., 2024; last access accessed: 28 August 2024).

1. Introduction

The ocean system plays a pivotal role in regulating the global climate by receiving and redistributing heat and freshwater, thereby influencing Earth's energy balance and the dynamics of the water cycle (Li et al., 2023; Von Schuckmann et al., 2023; Marti et al., 2022; Johnson et al., 2020). A key component of this regulation system is ocean evaporation (latent heat), which accounts for approximately 86% of atmospheric water vapor and is being the primary driver of the global hydrological cycle (Yu, 2011). As climate change warms the ocean, evaporation rates are anticipated expected to rise, potentially intensifying the global hydrological cycle (Masson-Delmotte et al., 2021). This intensification could alter precipitation patterns, affecting regional water availability and freshwater ecosystems (Konapala et al., 2020; Roderick et al., 2014).

Therefore, precise estimation of ocean evaporation is critical to understand and quantify the global energy and water budget (Iwasaki et al., 2014).

~~Current~~Existing methods for calculating surface latent heat (LE) and sensible heat flux (H) ~~employ~~rely on bulk transfer formulations ~~that necessitate, which require~~ extensive ~~parameterization inputs, including~~input variables and parameterizations, such as temperature gradients, humidity gradients, wind speed, and transfer coefficients (Fairall et al., 1996; Andreas et al., 2008). ~~Despite their widespread application~~Although widely used, these bulk methods encounter significant limitations primarily due to challenges in accurately parameterizing and empirically deriving transfer coefficients (Zeng et al., 1998; Robertson et al., 2020). These methods heavily depend on assumptions regarding atmospheric stability and boundary layer dynamics, which may not consistently apply across diverse and complex environmental conditions (Fairall et al., 2003; Andreas et al., 2013). Furthermore, uncertainties in estimating turbulent transfer coefficients can lead to substantial errors in the estimation of latent heat flux. The high demands for parameterization and challenges in data acquisition contribute to considerable uncertainties when implementing bulk methods for calculations. While numerous energy balance-based algorithms have been developed to estimate global terrestrial evapotranspiration (Wang et al., 2012; Yang et al., 2023), ~~similar efforts~~their application to ~~apply these algorithms for estimating~~ocean surface heat flux ~~remain unexplored~~estimation remains limited. Therefore, proposing an innovative method for estimating ocean surface heat flux based on ~~rational~~surface energy ~~allocation~~balance could yield significant theoretical and practical implications. ~~This~~Such an approach ~~may~~could serve as ~~an additional reference source for a~~valuable complement to existing bulk methods and their ~~derived~~associated datasets, ~~offering~~providing a ~~new~~fresh methodological perspective for quantifying ~~the uncertainty of~~ocean heat flux ~~estimation~~. Ultimately, ~~this could facilitate more accurate ocean flux estimation and~~. This advancement would not only enhance ~~research on~~our ability to estimate ocean energy ~~allocation patterns~~fluxes with greater accuracy but also deepen our understanding of their role in the global energy and water cycles.

The Maximum Entropy Production (MEP) model, an energy-balance-based approach, has recently emerged as a novel method for simulating surface heat fluxes. Developed from Bayesian probability theory and information theory, ~~the~~MEP prioritizes the most probable partitioning of radiation fluxes (Wang & Bras, 2011). The MEP model has been rigorously validated across diverse surface types and varying degrees

of surface wetness (Wang et al., 2014; Huang et al., 2017; Yang et al., 2022; Sun et al., 2022; Sun et al., 2023). Notably, the MEP model requires fewer input variables—net radiation, surface temperature, and specific humidity—yet provides accurate estimates of ~~latent heat, sensible heat~~ LE, H , and ground heat fluxes simultaneously. Unlike bulk methods (Fairall et al., 2003), which rely on wind speed, temperature gradient, and humidity gradient, the MEP model satisfies the energy balance constraint without these dependencies. This characteristic enhances its applicability and robustness across diverse environmental conditions. However, the previous application of the MEP model over ocean surfaces has revealed significant limitations, including notable underestimations of latent heat and overestimations of ~~sensible heat flux~~ H (Huang et al., 2017). The global multi-year averaged LE estimated by the MEP model ~~indicates~~ indicated a value around $58 \text{ W} \cdot \text{m}^{-2}$, much lower than the range of $92 \sim 109 \text{ W} \cdot \text{m}^{-2}$ reported by ~~other~~ remote sensing or reanalysis-based products. Conversely, MEP ~~estimates~~ estimated an averaged H of approximately $28 \text{ W} \cdot \text{m}^{-2}$, ~~which is significantly~~ substantially higher ~~compared to values ranging from the 6 to 18~~ $\text{W} \cdot \text{m}^{-2}$ found range reported in other ~~products~~ studies. These discrepancies highlight substantial uncertainties in applying the MEP model to oceanic energy partitioning, highlighting the urgent need for further refinement and rigorous validation. These substantial errors in MEP-estimated oceanic fluxes may be attributed to the lack of consideration of heat storage effects. The significant impact of heat storage in deep ocean water can introduce substantial bias in estimating seasonal evaporation rates when using the Penman combination-based method (McMahon et al., 2013; Bai & Wang et al., 2023). ~~efforts~~ For instance, deep-water bodies typically store heat during the spring and release it in the fall, which can lead to overestimation of evaporation in the summer and underestimation in the fall if changes in heat storage are not accounted for (Zhao & Gao, 2019; Morton, 1994). Therefore, when estimating heat fluxes using the Bowen ratio (B_o , defined as the ratio of H to LE) energy budget-based method (including the MEP method), it is essential to incorporate heat storage effects to ensure accurate partitioning of available energy.

~~The Bowen ratio (B_o), defined as the ratio of sensible heat to latent heat flux ($B_o = H/LE$), is crucial for understanding the global ocean energy partitioning process (Hicks & Hess, 1977). In the context of the energy balance-based MEP model, the significant overestimation of B_o suggests that focusing on this ratio can enhance our understanding of energy partitioning dynamics (Andreas et al., 1996). Studies have highlighted that the actual Bowen ratio over ocean surfaces (B_{oa}) often diverges from the equilibrium Bowen ratio (B_o^*)~~

observed under ideal conditions where the air is saturated with water vapor. The B_{oa} may deviate significantly from B_o^* under non-equilibrium conditions, which are typical in most environments (Jo et al., 2002; Andreas et al., 2013), posing challenges in establishing a robust relationship between B_{oa} and B_o^* (Liu & Yang, 2021). Therefore, developing an accurate $B_o^* \sim B_{oa}$ relationship is crucial for refining the energy partitioning process in the MEP model. The advancement of buoy observation networks has provided compelling evidence for validating ocean heat fluxes and ~~has~~ become crucial in assessing their associated uncertainties (Bourras, 2006; Smith et al., 2011; Bentamy et al., 2017; Liang et al., 2022; ~~Tang et al., 2023~~). This study utilizes the energy balance-based MEP method to estimate ocean evaporation, introducing a novel approach to redistributing surface energy budgets and offering a streamlined parameterization scheme distinct from conventional bulk methods used for estimating ocean heat fluxes. In contrast to existing approaches that using reanalysis-based schemes (e.g., NCEP, ECMWF, and GEOS) and their associated parameterizations (~~Tang et al., 2024~~) to estimate LE, this study employs satellite observations to directly estimate ocean heat fluxes, thereby minimizing error propagation associated with the model structures and assimilation schemes.

Current global ocean surface heat flux datasets can be classified into five categories based on their deriving approaches (Tang et al., 2023): remote sensing-based (e.g., J-OFURO3), atmospheric reanalysis-based (e.g., ERA5), machine learning-based (e.g., OHFv2), in-situ based (e.g., NOC), and hybrid-based (e.g., OAFlux) approaches. Compared to terrestrial flux products, these ocean flux products generally have a coarser spatial resolution ranging from 0.25° to 1.875°. Recent studies have conducted comprehensive assessments of global ocean heat flux datasets regarding their accuracy and error characteristics across spatial and temporal scales (Bentamy et al., 2017; Tang et al., 2023). However, substantial discrepancies remain among these datasets, particularly in terms of spatial patterns, annual means, and interannual variabilities. Therefore, developing a new global dataset using the innovative method could advance our understanding of deriving algorithms, improve temporal and spatial coverage of flux variables with a higher accuracy, and provide alternative reference to assess ocean surface heat fluxes in various applications. The primary objectives of this study are as follows: (1) to develop and validate the MEP approach for estimating ocean heat fluxes using observations from 129 stations; (2) to investigate the impact of heat storage on ocean energy allocation and the influence of the Bowen ratio on energy partitioning for heat flux estimations; (3) to produce

a MEP-derived ocean heat fluxes product (spatial resolution: 0.25°; temporal coverage: 1988-2017) and present its spatiotemporal patterns.

2. Methods

2.1 Components of ocean surface energy balance

The global ocean energy balance equation is as follows (Meehl, 1984; Wang et al., 2021):

$$R_n = LE + H + G \quad (1)$$

$$R_n = R_{ns} + R_{nl} = R_s^\downarrow - R_s^\uparrow + R_l^\downarrow - R_l^\uparrow \quad (2)$$

where R_n , R_{ns} , and R_{nl} are net radiation, net shortwave radiation (the difference of incoming radiation R_s^\downarrow and reflected solar radiation R_s^\uparrow), and net longwave radiation (the difference of incoming longwave radiation R_l^\downarrow and outgoing longwave radiation R_l^\uparrow), respectively. H is sensible heat, LE is latent heat, and G is the heat flow through the surface. Unlike terrestrial surfaces, the energy balance equation for the ocean surface accounts for distinct energy exchange processes, including the impact of seawater mixing and dynamics on energy transfer. For the ocean surface, the flux term G has two components,

$$G = G_t + G_v \quad (3)$$

where G_t is the change in the ocean heat content (ΔOHC , or heat storage), and G_v is the lateral heat transported by ocean currents and other processes. The G_t can be quantified as the vertical integration of temperature profile in a column of depth (Meehl, 1984; Li et al., 2023). Both the heat storage and the ocean heat transport G_v are difficult to quantify, which requires large masses of hydrographic variables and performing integrations at different depths. Since the ~~previous study overlooked lateral heat transport by ocean currents is zero at~~ the calculation of evaporation on a global scale (Wang et al., 2021), ~~leading to G can be regarded as equivalent to the G flux being equal to change in ocean heat content or~~ heat storage ~~at the global level~~. For the ~~convenience in description~~ consistency throughout the paper, this study will consider the concept of G flux as equivalent to the changes in the heat storage.

2.2 The Maximum Entropy Production theory

2.2.1 The original MEP model

The MEP model ~~simulates~~simulates ocean surface heat fluxes using inputs variables of net radiation (R_n), surface skin temperature (T_s), and surface specific humidity (q_s) under the constraint of the surface energy balance. The latent heat, sensible heat, and surface thermal energy flux (Q) are calculated as,

$$[1 + B(\sigma) + \frac{B(\sigma)}{\sigma} \frac{I_s}{I_0} |H|^{\frac{1}{6}}]H = R_n \quad (4)$$

$$E = B(\sigma)H \quad (5)$$

$$Q = R_{nl} - E - H \quad (6)$$

$$B(\sigma) = 6(\sqrt{1 + \frac{11}{36}\sigma} - 1), \quad \sigma = \frac{\lambda^2}{c_p R_v} \frac{q_s}{T_s^2} \quad (7)$$

$$I_0 = \rho_a c_p \sqrt{C_1 k z} (C_2 \frac{k z g}{\rho_a c_p T_r})^{\frac{1}{6}} \quad (8)$$

where $B(\sigma)$ is the reciprocal Bowen ratio, σ is a dimensionless parameter that characterizes the phase change at the ocean surface, λ ($\text{J}\cdot\text{kg}^{-1}$) is the latent heat of vaporization of liquid surface, c_p ($10^3 \text{ J}\cdot\text{kg}^{-1}\cdot\text{K}^{-1}$) is the specific heat of air under constant pressure, and R_v ($461 \text{ J}\cdot\text{kg}^{-1}\cdot\text{K}^{-1}$) is the gas constant of water vapor. I_0 is the “apparent thermal inertia” of air and describes the turbulent transport process of the boundary layer based on the Monin-Obukhov similarity theory (MOST) (Wang and Bras, 2010). I_s is the thermal inertia of the ocean surface ($\text{J}\cdot\text{m}^{-2}\cdot\text{K}^{-1}\cdot\text{s}^{-1/2}$), and can be parametrized as $I_s = \sqrt{\rho c \lambda}$ (with density ρ , the specific heat c) represents the physical property of surface ($I_s = 1.56 \times 10^3 \text{ J}\cdot\text{m}^{-2}\cdot\text{K}^{-1}\cdot\text{s}^{-1/2}$ for water surface and $1.92 \times 10^3 \text{ J}\cdot\text{m}^{-2}\cdot\text{K}^{-1}\cdot\text{s}^{-1/2}$ for ice surface).

Over the sea ice surface, assumed to be saturated, the specific humidity q_s can be derived as a function of surface temperature T_s using the Clausius-Clapeyron equation. (El Sharif et al., 2019; Shaman & Kohn, 2009).

$$q_s = \varepsilon \frac{e_s(T_s)}{P} = \varepsilon \frac{e_0}{P} \exp\left[\frac{\lambda_s}{R_v} \left(\frac{1}{T_0} - \frac{1}{T_s}\right)\right] \quad (9)$$

where ε ($= 0.622$) represents the ratio of the molecular weight of water vapor to that of dry air, $e_s(T_s)$ denotes the saturation vapor pressure at temperature T_s , e_0 is the saturation vapor pressure at the reference temperature T_0 (273.15 K), and P is the atmospheric pressure (mb).

2.2.2 Specific improvements on the MEP model

~~Equations (4)–(9) presented above represent the original formulas of the MEP model.~~ According to the MEP theory, the net solar radiation (R_{ns}) entering the water surface medium is absorbed by the water body, with the allocable radiation flux denoted as $R_{nl} = E + H + Q$ (Eq.6). Consequently, the expression for ocean heat uptake (heat storage) is derived as $G = R_n - E - H = R_{ns} + Q$. While this theory has received preliminary validation in shallower water bodies, such as lake surfaces (Wang et al., 2014), its applicability on deeper water bodies with larger heat storage capacities in ocean surfaces requires further evaluation. This study ~~introduces~~introduced two key hypotheses: (1) The substantial heat storage capacity of the ocean ~~can~~could exert a significant influence on seasonal latent and sensible fluxes, potentially introducing bias to the MEP equations, (2) The notable underestimation of latent heat flux and overestimation of sensible heat flux by the MEP model point to a significant deviation from the Bowen's ratio formula, necessitating a reasonable correction. To address this, the study ~~proposes~~proposed two approaches for enhancing the MEP formulas: (1) Considering the impact of heat storage in the MEP's energy balance equation, and (2) Adjusting the theoretical equilibrium Bowen ratio within the MEP model. This can be specifically represented as follows:

$$\left[1 + \frac{1}{B_o^*}\right]H = R_n - G \quad (10)$$

$$B_o^* = \frac{1}{B(\sigma)} \quad (11)$$

$$B_{oa} = a \times B_o^* + b \quad (12)$$

where B_o^* is the equilibrium Bowen ratio, which denotes the theoretical ratio of sensible heat flux to latent heat flux when the surface and the atmosphere are in equilibrium regarding water vapor. Correspondingly,

the corresponding evaporation at this condition is known as equilibrium evaporation (defined as the water vapor evaporating from a saturated surface into a saturated atmosphere). To accurately predict actual evaporation, a reliable functional relationship needs to be established to predict B_{oa} from B_o^* . Empirical studies have introduced coefficients to correlate B_o^* to B_{oa} under diverse environmental circumstances; for instance, the Priestley–Taylor coefficient ~~is was~~ expressed as (Priestley & Taylor, 1972).

$$B_{oa} = 0.79 \times B_o^* - 0.21 = \frac{0.79 - 0.21 \times B(\sigma)}{B(\sigma)} \quad (13)$$

Further studies have led to the emergence of more updated empirical coefficients. Hicks and Hess (1977) estimated the actual Bowen ratio as $B_{oa} = 0.63 \times B_o^* - 0.15$ by aligning it with direct observations of the fluxes. Yang & Roderick (2019) deduced an empirical coefficient of 0.24 and formulated it as $B_{oa} = 0.24 \times B_o^*$ through fitting Bowen ratio and surface temperature data across the global ocean surface. Furthermore, Liu & Yang (2021) derived a new equation as $B_{oa} = 0.37 \times B_o^* - 0.05$ based on the atmospheric boundary layer model. Given their favorable spatial applicability and representativeness, this study opted to utilize these four $B_{oa} \sim B_o^*$ formulas to refine the MEP model and assess their suitability. The revised reciprocal actual Bowen ratio ~~is was~~ represented as,

$$\left\{ \begin{array}{l} B(\sigma)_{a1} = \frac{1}{B_{oa}} = \frac{B(\sigma)}{0.79 - 0.21 \times B(\sigma)} \\ B(\sigma)_{a2} = \frac{1}{B_{oa}} = \frac{B(\sigma)}{0.63 - 0.15 \times B(\sigma)} \\ B(\sigma)_{a3} = \frac{1}{B_{oa}} = \frac{B(\sigma)}{0.24} \\ B(\sigma)_{a4} = \frac{1}{B_{oa}} = \frac{B(\sigma)}{0.37 - 0.05 \times B(\sigma)} \end{array} \right\} \quad (14)$$

where $B(\sigma)_{a1} \sim B(\sigma)_{a4}$ represent the four empirical Bowen ratio formulas for comparisons in this study.

Thus, the workflow of the improved MEP model ~~is complemented was conducted~~ as: replacing the original $B(\sigma)$ with the corrected $B(\sigma)_a$, then combining Eq. (5), (7)-(9), and (14) into the MEP energy balance equation considering heat storage (Eq. (10)), ultimately leading to the determination of latent and sensible heat flux.

2.3 Input data for MEP model

The performance of both the original and improved Maximum Entropy Production (MEP) models is evaluated using observed data from in situ buoy stations, as discussed in Section 3.1. Subsequently, the optimal empirical Bowen ratio formula for the MEP model is determined through multi-site assessments. The refined MEP model is then applied to estimate global heat fluxes based on long-term remote sensing observations, detailed in Sections 3.2 and 3.3, following a comprehensive evaluation of input parameters. Specifically, the input variables of net radiation, heat storage, and sea surface temperature driving the improved MEP model are derived from the J-OFURO3 dataset, covering the period from 1988 to 2017 at a spatial resolution of 0.25° (detailed in Section 4.3).

2.4.2.3 Sensitivity analysis

To quantify the influence of input variables in the MEP model on evaporation estimate at the ocean surface, the sensitivity coefficient (S) was computed as (Beven, 1979; Isabelle et al., 2021),

$$S_i = \frac{\partial LE}{\partial x_i} \frac{x_i}{LE} \quad (15)$$

where S_i represents the sensitivity coefficient of LE to each variable x_i . The magnitude of S_i reflects the degree of impact of the variable's changes on LE ; a larger absolute value indicates a greater influence of the variable on LE . A positive value signifies a positive correlation between evaporation and the variable's changes, while a negative value indicates a negative correlation. For example, a sensitivity coefficient of 0.5 represents that a 10% increase in the variable would result in a 5% increase in LE . The sensitivity levels can be categorized based on the absolute value $|S_i|$ (Lenhart et al., 2002; Yin et al., 2010): $|S_i| > 1$ indicates very high sensitivity, $1 > |S_i| > 0.2$ denotes high sensitivity, $0.2 > |S_i| > 0.05$ reflects moderate sensitivity, and $|S_i| < 0.05$ suggests negligible sensitivity.

2.5 Data fusion methods

To identify the globally optimal improved MEP model with high-quality input data, this study aims to obtain a heat storage input data (refer to Section 4.3), this study attempts to determine whether data fusion methods could yield results superior to dataset with optimal accuracy. The accuracy of the heat storage dataset was assessed using three approaches: (1) individual datasets. This includes dataset, (2) a fused dataset

generated using the Bayesian Three-Cornered Hat (BTCH) ~~Method~~method (He et al., 2020)), and ~~the Simple~~
Arithmetic Average(3) an ensemble means obtained through the arithmetic average (AA) method. ~~The Three-~~
~~Cornered Hat (TCH) method has been widely applied to improve~~Previous studies have demonstrated that the
BTCH method effectively quantifies uncertainties across diverse datasets and improves accuracy by
integrating ~~multi-source products, and it has been proven to outperform individual parent products~~multiple
datasets without requiring prior knowledge (Long et al., 2017; Liu et al., 2021; Duan et al., 2024). ~~Recent~~
~~evaluations of three distinct~~A recent study further evaluated various data fusion methods ~~(TCH, including~~
BTCH, and the AA) method, for addressing uncertainties in ~~consolidating global~~ evapotranspiration estimates
~~have affirmed their efficacy~~derived from different datasets. The findings revealed that while both BTCH and
AA are effective in ~~filtering poor~~identifying lower-quality ET products, ~~but~~datasets, their ability to ~~reliably~~
~~identify superior ET products~~consistently produce higher-accuracy datasets remains uncertain and, in some
cases, may even degrade the overall accuracy (Shao et al., 2022). The performance of these fusion methods
is highly sensitive to the selection of input datasets. For instance, the AA method ~~may yield better results~~
~~than the BTCH method in some instances~~is particularly susceptible to the influence of lower-quality datasets,
especially when the sample size is small. Similarly, the performance of BTCH diminishes as the error
covariance among the included datasets increases. Consequently, following a comparative analysis of the
accuracy of individual, BTCH, and AA fusion ~~products~~datasets, this study ~~selects~~selected the optimal heat
storage dataset to drive the MEP model. Since BTCH is not the primary focus of this study, detailed method
descriptions are referred to He et al. (2020).

3. Data materials

3.1.3.1 Input data for MEP model

The performance of both the original and improved Maximum Entropy Production (MEP) models was
evaluated using observed data from in-situ buoy stations, as described in Section 3.2. The optimal empirical
Bowen ratio formula for the MEP model was then determined through multi-site assessments. Subsequently,
the improved MEP model was applied to estimate global heat fluxes using long-term remote sensing data, as
detailed in Sections 3.3 and 3.4. Specifically, the input variables of net radiation, heat storage, and sea surface

temperature driving the improved MEP model were derived from the J-OFURO3 dataset, spanning 1988 to 2017 with a spatial resolution of 0.25°, as outlined in Section 4.3.

3.2 In situ buoy observations

A total of 129 in situ buoy sites were employed for ocean heat fluxes calculation and validation with MEP model and its modified version, as listed in Table 1. About 96% of selected sites (124 of 129 all sites) ~~are~~ were collected from the Global Tropical Moored Buoy Array (available at <https://www.pmel.noaa.gov/>), which consists of the TAO/TRION Pacific Ocean (69 buoys), PIRATA Atlantic Ocean (23 buoys), and RAMA Indian ocean (32 buoys), and the remaining sites including Upper Ocean Processes Group (3 buoys) consists of Project WHOTS - WHOI Hawaii Ocean Time-series Station (available at <https://uop.whoi.edu/ReferenceDataSets/whotsreference.html>), Project NTAS - Northwest Tropical Atlantic Station and Project STRATUS (<https://uop.whoi.edu/ReferenceDataSets/ntasreference.html>), and the Pacific ocean climate stations (2 buoys) consists of KEO and PAPA moorings (<https://www.pmel.noaa.gov/ocs/data/fluxdisdel/>). The availability of all buoy stations refers to the “Data availability” section. The observational sites ~~cover~~ covered the spatial range of 25°S~ 50.1°N latitude, temporal range span from 1989/12 to 2023/12. Observational meteorological variables and heat fluxes ~~includes~~ included the net longwave radiation, net shortwave radiation, sea surface skin temperature, specific humidity at 2m height (if available, or computed as the function of SST according to the Clausius-Clapeyron equation), latent heat flux and sensible heat flux. Limited by the availability of longwave radiation observations, the net radiation ~~has~~ had a relatively shorter time series length compared to latent and sensible heat fluxes. The surface air-sea fluxes of buoy observations ~~are~~ were computed using the COARE 3.0b algorithm, which have been widely applied for fluxes estimations and validations (Tang et al., 2023; Bentamy et al., 2017; Fairall et al., 2003). All the selected original buoy observation (except for KEO and Papa sites) records ~~are~~ were in monthly temporal resolution, and the original daily observations of KEO and Papa ~~has~~ had been aggregated to monthly by simple average method. The spatially distributed map of all selected sites ~~is~~ was illustrated in Fig.S1.

Table 1. Information about observational ocean surface heat fluxes of 129 buoy sites

Buoy array	Buoy amount	Spatial coverage	Temporal coverage	Number of $LE(H)$ records	Number of R_n records
TAO/TRION pacific	69	165°E-95°W 10°S-10°N	1989/12/16- 2023/12/16	12377	522
PIRATA Atlantic	23	40°W-10°E, 20°S-20°N	1997/9/16- 2023/12/16	2644	631
RAMA Indian	32	55°E-100°E, 25°S-15°N	2001/11/16- 2023/12/16	1862	286
WHOTS	1	158°W, 22.7°N	2004/08/15- 2021/08/15	205	205
NTAS	1	51°W, 15°N	2001-04/15- 2020/03/15	219	219
STRATUS	1	85.4°W, 19.6°S	2000/10/15- 2021/01/15	235	235
KEO	1	144.6°E, 32.3°N	2004/06/17- 2023/08/12	177	177
PAPA	1	144.9°W, 50.1°N	2007/06/08- 2023/11/14	181	181

Note: The number of records represents the effective count (excluding NA values) of latent and sensible heat flux observations.

3.2.3 Global turbulent heat flux datasets for evaluations

This study ~~evaluates~~evaluated and ~~compares~~compared 7 global turbulent heat flux products with observations, categorizing them into three types: Remote sensing-based, atmosphere reanalysis-based, and hybrid-based (Table 2). These seven products ~~encompass~~encompassed monthly data spanning from 1988 to 2017, with spatial resolutions ranging from 0.25° to 1°. The criterion for dataset filtering ~~prioritizes~~prioritized products ~~that feature~~with relatively ~~longer~~long time series, typically exceeding 15 years.

The Clouds and Earth's Radiant Energy Systems Synoptic Edition 4A (CERES SYN1deg_Ed4A, hereafter referred to as CERES4, available at <https://ceres.larc.nasa.gov/data/>) offers net radiation data, derived from clear-sky upward shortwave, downward shortwave flux, upward longwave, and downward longwave flux measurements (Wielicki et al., 1996; Rutan et al., 2015). Another remote sensing-based radiation product, the Global Energy and Water Cycle Experiment - Surface Radiation Budget (GEWEX-SRB, available at <https://asdc.larc.nasa.gov/project/SRB>) (Pinker et al., 1992), in conjunction with CERES4, ~~demonstrates~~demonstrated good accuracy in retrieving R_n , as validated by six global observing networks (Liang et al., 2022).

The J-OFURO3 is the third-generation dataset developed by the Japanese Ocean Flux Data Sets with use of the Remote-Sensing Observations (J-OFURO) research project (available at <https://j-ofuro.isee.nagoya-u.ac.jp/en/>) (Tomita et al., 2019). It ~~calculates~~calculated turbulent heat flux with the latest version of COARE3.0 algorithm, and ~~provides~~provided datasets for R_n , LE , H and SST in this study. Validation with in situ observations showed that J-OFURO3 offered a superior performance of latent heat compared to other 5 satellite products from 2002-2013 (Tomita et al., 2019).

Two Atmosphere reanalysis products including the fifth generation European Centre for Medium-Range Weather Forecasts (ECMWF) atmospheric Re-Analysis52 (ERA5, available at <https://cds.climate.copernicus.eu/cdsapp#!/dataset/reanalysis-era5-single-levels-monthly-means?tab=overview>) (Hersbach et al., 2020), and the Modern-Era Retrospective analysis for Research and Applications Version2 (MERRA2, available at https://disc.gsfc.nasa.gov/datasets/M2TMNXOCN_5.12.4/summary) (Gelaro et al., 2017). Both ERA5 and MERRA2 products ~~employ~~employed the bulk formula based on the MOST to calculate heat fluxes. Validation results from previous studies have demonstrated good consistency with buoy estimates regarding heat fluxes (Pokhrel et al., 2020; Chen et al., 2020).

The OAFlux (available at <https://oafux.whoi.edu/>), a hybrid-based product developed under the Objectively Analyzed Air-Sea Fluxes (OAFlux) project at the Woods Hole Oceanographic Institution (WHOI) (Yu et al., 2008), was utilized for comparisons with ocean heat fluxes derived from distinct methods. This product calculates fluxes based on the COARE3.0 bulk algorithm and employs a variational objective analysis to determine the optimal fitting of independent variables. Detailed descriptions on all utilized global turbulent heat fluxes products, and their validation performances against buoy observations with reported studies ~~are~~were available in Tang et al (2023).

Table 2. The information of the 7 used global radiation and heat fluxes products

Product	Variables	Spatial resolution	Time span	Type	Reference
CERES4	R_n	1°	2000-2017	Remote sensing	Rutan et al. (2015)
GEWEX-SRB	R_n	1°	1988-2017	Remote sensing	Pinker et al. (1992)

J-OFURO3	R_n, SST, LE, H	0.25°	1988-2017	Remote sensing	Tomita et al. (2019)
ERA5	R_n, LE, H, P	0.25°	1988-2017	Atmosphere reanalysis	Hersbach. et al. (2020)
MERRA2	R_n, LE, H	$1/2^\circ \times 2/3^\circ$	1988-2017	Atmosphere reanalysis	Gelaro et al. (2017)
OAFflux	LE, H	1°	1988-2017	Hybrid-based	Yu et al. (2008)
IAPv4-OHC	OHC	1°	1988-2017	Hybrid-based	Cheng et al. (2017)

358
359
360

3.3.4 Ocean heat content data

Remote sensing data for heat storage (G) ~~was~~ primarily ~~derived~~ derived from two categories: ~~one is the first~~ ~~category included data~~ obtained from the residual of the energy balance equation ($R_n - LE - H$), including J-OFURO3, ERA5, and MERRA2; the ~~other is second category was~~ calculated ~~as from~~ changes in Ocean Heat Content (OHC). The ocean heat content data ~~is was~~ obtained from IAP OHC gridded analysis (IAPv4, available at <http://www.ocean.iap.ac.cn/>) dataset, covering ocean depth of 0-6000m (Cheng et al., 2017), and has been extensively utilized in global ocean heat analysis, ocean warming, and climate change studies (Li et al., 2023; Cheng et al., 2022; Cheng et al., 2024). The delta OHC ~~is was~~ calculated using the numerical differentiation method (Xu et al., 2019) as $\Delta OHC(i) = \frac{OHC(i+1) - OHC(i-1)}{2\Delta i}$, i denotes the OHC of i -th month. At the WHOTS site, this study compared the OHC changes at different depths with the observed G (~~derived as $R_n - LE - H$~~) (Fig. (Table S1)). Since the OHC variation from 0~100m depth ~~exhibit~~ exhibited the smallest error with the observations, the data from 0~100m depth range were chosen as the heat storage. This study ~~assesses~~ assessed the suitability of G flux and ΔOHC for global evaporation estimations, with the aim of minimizing the errors introduced by input variable data in the MEP model.

This study ~~evaluates~~ evaluated the accuracy of all the variables R_n , T_s , and G using the aforementioned datasets on a global scale by comparing them against buoy observations (in Section 4.3), to optimize input accuracy for driving the MEP model. To maintain consistency in the analysis, this study ~~resamples~~ resampled all products to a 1° spatial resolution when comparing the Bowen ratio across multiple products. Nevertheless, when conducting site validations with buoy observations, the original resolution of the data ~~is was~~ preserved to minimize uncertainty attributable to scale effects.

4. Results

4.1 The new MEP model with heat storage and the revised Bowen ratio formulas

To demonstrate how the MEP model has been developed and improved, we ~~show~~ showed the comparisons of different MEP models in simulating heat fluxes across 129 global buoy stations (Fig.1). Limited by the availability of R_{nL} data, we used $LE + H$ instead of the available energy ($R_n - G$), enabling the utilization of more observational records to verify the MEP model. The original MEP model (without considering heat

storage) ~~show~~showed a significant negative correlation between LE and H (with R^2 ~~exceeds~~exceeding 0.65 as in Fig.1a & Fig.1c), with considerable errors, where the RMSE of LE ~~is~~was 134.6 $W \cdot m^{-2}$ and that of H ~~is~~was 37 $W \cdot m^{-2}$. ~~Upon modification by considering~~After incorporating the influence of heat storage effects (~~Represented~~represented as MEP_M , as depicted in Fig.1b & Fig.1h), the MEP-simulated LE ~~show~~showed a good consistency (~~$R^2 = 0.97$~~) with the buoy observations, ~~but an approximate 25% underestimation (slope = 0.75) was observed,~~ with RMSE ~~an~~ R^2 value of 0.97 and a reduced ~~to~~RMSE of 27 $W \cdot m^{-2}$. However, ~~it reveals an overall underestimation (approximate 25%)~~the MEP_M method revealed a significant bias in the partitioning of LE and H : ~~a large overestimation of H from the available energy.~~ Specifically, LE was underestimated by 25% (regression slope = 0.75), while H was overestimated by 46% ~~compared to observations.~~ This finding ~~agrees~~agreed with previous research findings that equilibrium evaporation ~~tend~~tended to underestimate actual evaporation from saturated surfaces by 20%~30% (Yang & Roderick, 2019; Philip, 1987). The ~~physical significance of this phenomenon can be explained~~significant difference between B_{oa} and B_o^* ~~could exist~~ as the equilibrium evaporation ~~being~~is considered ~~as~~ the lower limit of actual evaporation from saturated surfaces, ~~causing typically falls below the actual evaporation~~ (Priestley and Taylor, 1972). To address the deviation between B_{oa} and B_o^* , it is necessary to convert the equilibrium Bowen ratio into the actual Bowen ratio, allowing for a more reasonable and accurate allocation of surface energy budget.

After ~~modifying MEP's energy allocation using~~incorporating the effects of heat storage, four ~~variants of the MEP model were developed by replacing B_o^* with B_{oa} derived from four different empirical Bowen ratio formulas (denoted.~~ These variants were defined as follows: $M_{0.24}$, (where $B_{oa} = 0.24 B_o^*$), $M_{0.79}$, (where $B_{oa} = 0.79 B_o^* - 0.21$), $M_{0.63}$, (where $B_{oa} = 0.63 B_o^* - 0.15$), and $M_{0.37}$, ~~the accuracy of MEP predicated latent and sensible heat have been~~ (where $B_{oa} = 0.37 B_o^* - 0.05$). Adjusting the Bowen ratio significantly improved ~~the accuracy of the energy flux estimates.~~ The ~~MEP~~ simulated LE exhibited strong agreement with observations, with all R^2 exceeding 0.97 and RMSE ranging from 4.7 $W \cdot m^{-2}$ (for $M_{0.24}$) to 7.1 $W \cdot m^{-2}$ (for $M_{0.79}$), which ~~is~~was lower than that derived from ~~equilibrium Bowen ratios~~ B_o^* (RMSE = 27 $W \cdot m^{-2}$). Both $M_{0.79}$ and $M_{0.63}$ tended to underestimate LE , especially when LE exceeded 200 $W \cdot m^{-2}$ (Fig. 1d and Fig.1e). ~~The results for sensible heat flux simulated by MEP were similar to those for LE~~ For the simulated H , the $M_{0.24}$ outperformed the other three, showing the smallest errors and highest R^2 .

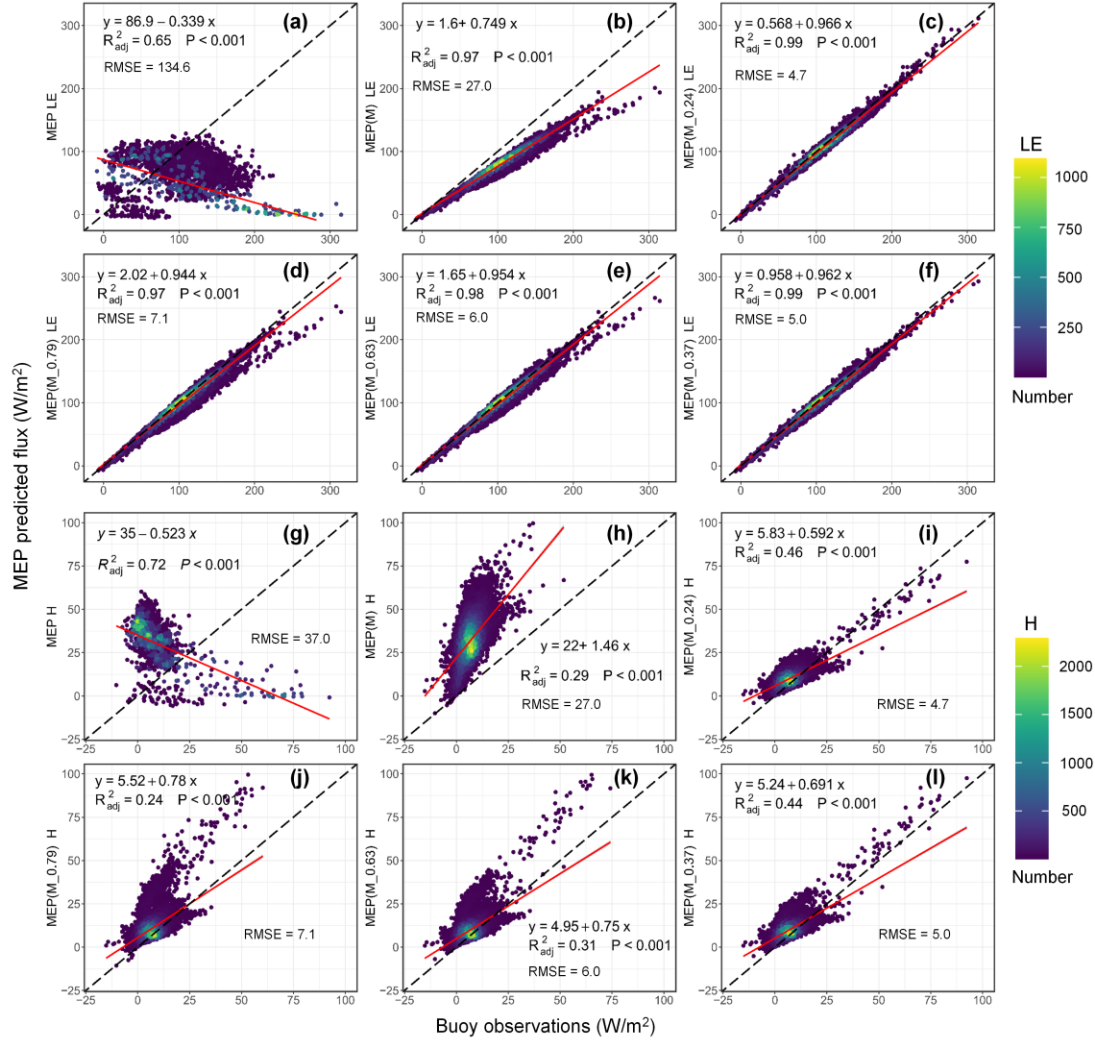


Figure 1. Scatter density plots of monthly latent heat flux (a~f) and sensible heat flux (g~l) derived by the original and modified MEP methods versus observations from 129 buoy stations (as in Table 1). (a) The original MEP method, (b) The modified MEP method considering the heat storage effect, (c) The modified MEP method considering both the heat storage and empirical Bowen ratio formula $B_{oa}=0.24B_o^*$, (d)~(f) for the modified MEP method considering both the heat storage and empirical Bowen ratio formulas $B_{oa}=0.79B_o^*-0.21$, $B_{oa}=0.63B_o^*-0.15$, and $B_{oa}=0.37B_o^*-0.05$. (g)~(l) are the same with (a)~(f) but for sensible heat flux.

Specifically, the spatial patterns of simulated errors for the four modified variants of the MEP formulas model were obtained (Fig. 2), as well as along with the prediction errors across various different observational buoy arrays (Fig. 3). Overall, the four modified variants of the improved MEP formulas exhibit models demonstrated relatively lower errors bias at low latitudes (10°S to 10°N) but they demonstrate exhibit larger discrepancies at bias in higher latitudes, especially for latitude regions (above 15°N), particularly

at the KEO, WHOTS, and STRATUS buoy sites. Comparing the four formulas across varying latitudes, the $M_{0.24}$ formula ~~exhibit~~exhibited the smallest RMSE (ranging from 3.6 to 12 $\text{W}\cdot\text{m}^{-2}$) (Fig. 3c), while the $M_{0.79}$ formula ~~shows~~showed the largest errors (RMSE ranging from 3.9 to 26.6 $\text{W}\cdot\text{m}^{-2}$). This consistency ~~is~~was also evident in the Kling-Gupta Efficiency (KGE) coefficient, with $M_{0.24}$ demonstrating superior performance in terms of accuracy, robustness, and adaptability. In term of $M_{0.24}$ formula, the prediction errors across observational arrays ranked as follows: RAMA < PIRATA < TAO/TRION < PaPa < KEO < STRATUS < WHOTS < NTAS. The arrays with relatively larger RMSE (NTAS in the Atlantic Ocean, WHOTS, and STRATUS in the Pacific Ocean) may originate from the larger observed values of LE (Fig. S2).

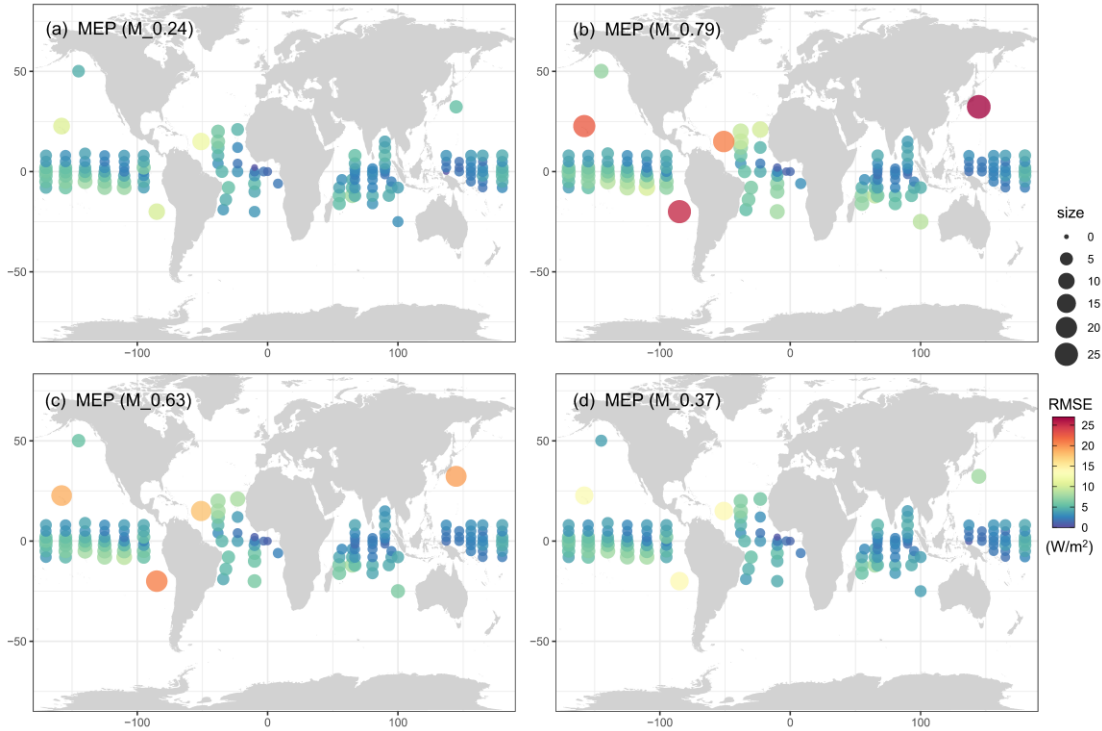


Figure 2. Spatial distribution of RMSE values in the comparison ~~of~~between latent heat flux estimated by the improved MEP method (modified by four different Bowen ratio formulas) ~~with~~and buoy observations from 129 stations.

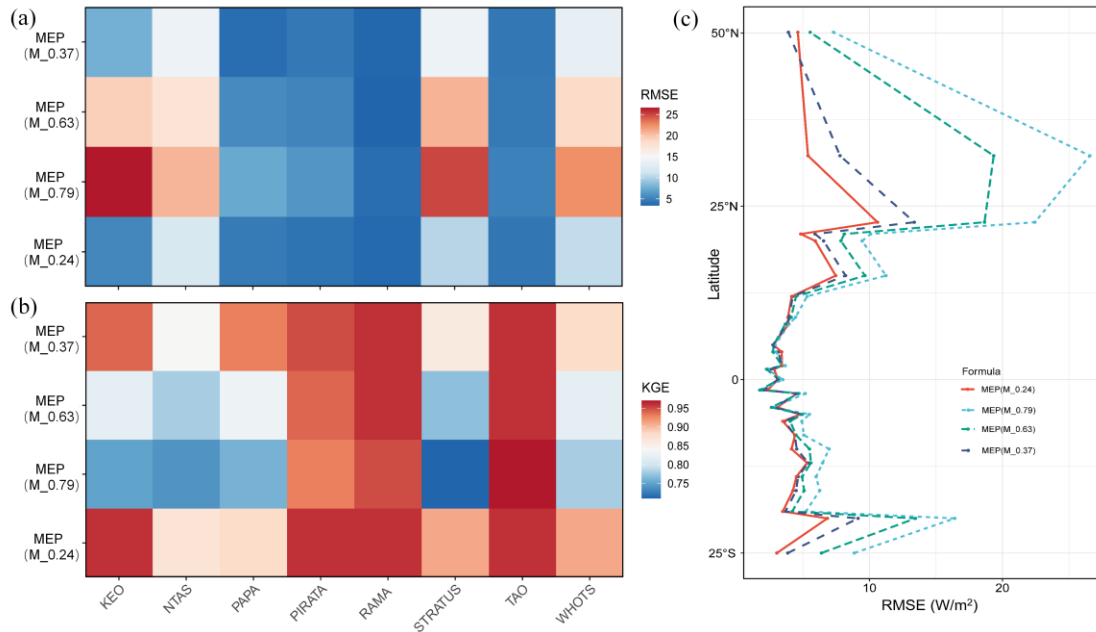


Figure 3. Comparisons ~~of between~~ latent heat flux estimated by the improved MEP method ~~with using four~~ empirical Bowen ratio formulas and the buoy observations from each buoy array in term of RMSE (a) KGE value (b), and latitudinal means of RMSE ~~of four empirical Bowen ratio formulas (c)-(c).~~ Latitudinal means are based on data from 129 available buoy sites.

4.2 Dynamics of heat fluxes and Bowen ratio between original and improved MEP model

To thoroughly investigate the role of heat storage in the partitioning of surface energy and its implications for the temporal dynamics of heat fluxes, we selected the KEO site for detailed analysis. This ~~decision selection~~ was based on the site's ~~extensive~~ long-term observational records and notable variability in flux patterns, which ~~offer offered~~ an ideal context for a rigorous comparison of model-simulated error margins.

The improved MEP methods demonstrated comparable performance in estimating heat fluxes at the KEO site when compared with ~~428~~ other 128 sites (Fig. S3, Fig. 1), with the MEP (M_0.24) model exhibited the most effective performance. Analysis of the time series data revealed significant variations in latent heat, sensible heat, and Bowen ratio (Fig. 4). In the original MEP theory, the estimated *LE* ~~exhibit exhibited~~ an opposite variation cycle (peak versus trough) compared to the observations. For instance, over a yearly period, the observed peak in *LE* occurred in January 2005 ($269 \text{ W} \cdot \text{m}^{-2}$) and the trough in June 2005 ($6.9 \text{ W} \cdot \text{m}^{-2}$). In contrast, the MEP simulated the peak in *LE* to occur in August 2005 ($105 \text{ W} \cdot \text{m}^{-2}$) and the trough in December 2004 ($0.7 \text{ W} \cdot \text{m}^{-2}$), resulting in a phase difference of 7 months for the peak and 6 months for the trough values.

Sensible heat flux (Fig. 4b) showed similar phase differences: observed H peaked in January 2005 ($79 \text{ W} \cdot \text{m}^{-2}$) and reached its minimum in June 2005 ($-3 \text{ W} \cdot \text{m}^{-2}$), whereas MEP simulated H to peak in August 2005 ($46 \text{ W} \cdot \text{m}^{-2}$) and reach its minimum in December 2004 ($0.6 \text{ W} \cdot \text{m}^{-2}$), consistent with the pattern observed for LE . It ~~is~~was noteworthy that the original MEP model simulated variations in LE and H align with R_n (Fig. S4), which ~~is~~was reasonable over land where the small G value can often be disregarded. However, over the ocean, the observed variations in R_n and LE do not align in terms of their cycles. The maximum R_n occurred in June 2004 ($329 \text{ W} \cdot \text{m}^{-2}$) and the minimum occurred in December 2004 ($142 \text{ W} \cdot \text{m}^{-2}$), with a 6-month delay in relation to the variations in LE . Specifically, the peak R_n corresponded to the trough of LE , and the trough R_n corresponded to the peak of LE . This delay ~~indicates~~indicated that the heat storage effect ~~delays~~delayed the peak of LE and ~~alters~~altered the seasonal variations of LE and H .

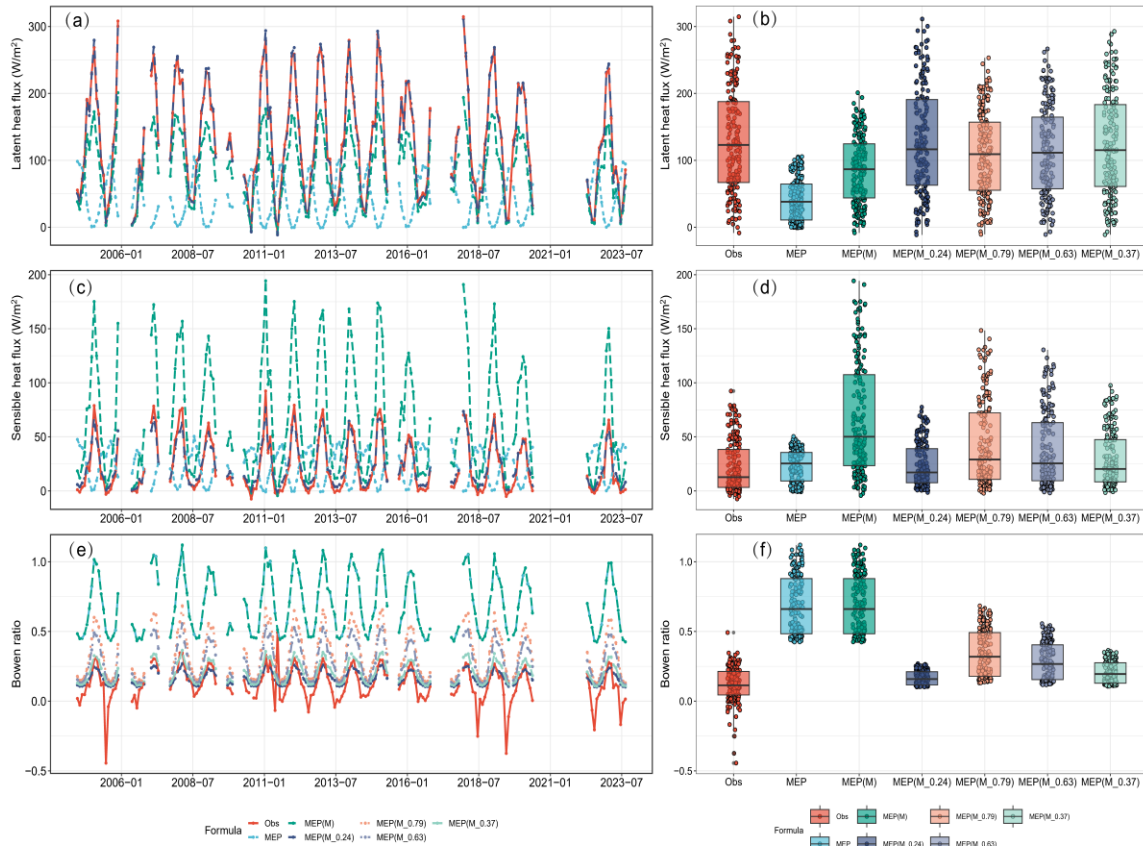


Figure 4. MEP model predicted the inter-annual variations (a, c and e) and variabilities (b, d, and f) for latent heat flux (a), sensible heat flux (c), and Bowen ratio (e) versus observations, and corresponding boxplots (b, d, f) of these variables at KEO site from June 17, 2004, to August 12, 2023. The fluxes in the comparison include observations and the estimates from MEP using the original formula (MEP), the formula incorporating the ocean heat storage (MEP(M)), and four other formula considering both ocean heat storage

and adjustment of Bowen ratio. Note that the (a) and (c) only display results using MEP ($M_{0.24}$) among all four empirical Bowen ratio formulas for clearer comparison.

For the ~~variation-pattern~~patterns of the Bowen ratio, both the original MEP formula and the modified formulas ~~exhibit~~exhibited consistent patterns with the observed values. The observed maximum Bowen ratio occurred in January 2005 (0.29~~7~~) and the minimum in June 2005 (-0.4). However, the original MEP formula simulated a maximum of 1.01 and a minimum of 0.44, indicating a significant overestimation compared to the observed Bowen ratio. This discrepancy ~~suggests~~suggested that on the ocean surface, the available energy ($R_n - G$) ~~is~~was predominantly allocated to LE (Fig.S4). Among ~~the~~ four empirical formulas, $M_{0.24}$ simulated LE , H , and Bowen ratio values ~~were~~ closest to the observed values. The median of the observed Bowen ratio was 0.11, while the original MEP Bowen ratio was 0.66. Among the four modified Bowen ratio formulas ($M_{0.24}$, $M_{0.79}$, $M_{0.63}$, $M_{0.37}$), their median Bowen ratios were 0.15, 0.32, 0.27, and 0.19 respectively, with $M_{0.24}$ being the closest to the observed Bowen ratio.

Heat storage is crucial for the energy distribution process over the ocean surface. While the original MEP formulas have been effectively validated when applied to surfaces with shallow depths such as water and snow (Wang et al., 2014), they exhibit significant uncertainty when applied to the ocean surface. This discrepancy primarily arises from the fact that land is a non-transparent medium with relatively small heat storage values at monthly scales. Similarly, shallow water bodies also exhibit small heat storage values that can often be ignored. In the study by Wang et al. (2014), for example, two lakes with depths of 2m (Lake Tämnen) and 4m (Lake Råksjö) still resulted in underestimated LE . However, for deeper lakes (generally > 3m depth), heat storage becomes significant and cannot be neglected (Zhao et al., 2016; Zhao & Gao, 2019). On deep ocean surfaces, with the most recent average depth estimate of 3,682 ~~meters~~682m from NOAA satellite measurements, heat storage variations can influence depths up to 6,000 ~~meters~~000m (Cheng et al., 2017). Therefore, the impact of heat storage ~~is~~was substantial and cannot be disregarded. In the original MEP theory, heat storage was not considered in the energy balance equation, where it was assumed that the net solar radiation (R_{ns}) is absorbed by the ocean and $R_{nL} = LE + H + Q$. Then, the heat storage was obtained as $G = R_{ns} + Q$. In this study, we compared the characteristics of MEP-derived G ($R_{ns} + Q$) with the observed G flux ($G = R_n - LE - H$) (Fig. S5). MEP-derived G ~~shows~~showed a good correlation ($R = 0.96$) and consistent trends with the observed values (Fig. S5a & b), ranging from -4 to 81 $W \cdot m^{-2}$. However, MEP-calculated Q

(ranged from -210 to -65 $\text{W}\cdot\text{m}^{-2}$) ~~exhibits~~exhibited a negative correlation with the observed G (which ranged from -386 to 200 $\text{W}\cdot\text{m}^{-2}$). Both MEP-derived G and Q fluxes ~~are~~were significantly underestimated. Therefore, the prediction errors in LE and H ~~originates~~originated from the inability to accurately quantify the heat storage. Hence, considering the influence of heat storage ~~is~~was crucial for accurately predicting LE and H over the ocean surface.

4.3 Evaluation of global radiation and heat storage flux

4.3.1 Evaluation of net radiation

After considering the effect of heat storage and the Bowen ratio, the improved MEP method demonstrated its high performance at the site scale. The results ~~suggests~~suggested that improved MEP method ~~holds~~held substantial promise for further application at a global scale. To facilitate this, we assessed the primary input variables of the improved MEP method (including R_n , G , and T_s) to identify datasets with the best accuracy.

Net radiation, as the primary variable in the energy balance equation, significantly ~~influencees~~influenced the uncertainty of the MEP model (Huang et al., 2017). Selecting a reliable R_n product ~~is~~was essential for accurately estimating global latent and sensible heat fluxes. Previous studies have evaluated the available global ocean surface R_n datasets at daily scales using observations from 68 moored buoy sites (Liang et al., 2022). In this study, we conducted a comprehensive evaluation of current ~~mainstream~~available monthly R_n products, including three remote sensing-based products (~~CERES~~CERES4, GEWEX-SRB, and JOFURO3) and two atmosphere reanalysis-based products (ERA5 and MERRA2~~)-~~at 129 buoy sites. All products exhibited good consistency with buoy observations (Table 3 and Fig. S6), with R^2 values greater than 0.78. In terms of RMSE, the error rankings for all products were as: J-OFURO3 ($10 \text{ W}\cdot\text{m}^{-2}$) < ERA5 ($39.03 \text{ W}\cdot\text{m}^{-2}$) < ~~CERES~~CERES4 ($40.67 \text{ W}\cdot\text{m}^{-2}$) < GEWEX-SRB ($41.83 \text{ W}\cdot\text{m}^{-2}$) < MERRA2 ($49.23 \text{ W}\cdot\text{m}^{-2}$). It ~~is~~was evident that J-OFURO3 demonstrated the highest accuracy, as indicated by RMSE, NSE, and KGE statistics. This ~~study is~~result was also consistent with previous assessments of global ~~radiation~~ R_n (Liang et al., 2022), emphasizing J-OFURO3 as the least erroneous among all individual products and superior to existing alternatives including CERES4, ERA5, MERRA2, GEWEX-SRB, JRA55, OAFflux, and TropFlux.

Table 3. Evaluation of global monthly net radiation products against buoy observations

Products	R^2	ME ($\text{W}\cdot\text{m}^{-2}$)	MAE ($\text{W}\cdot\text{m}^{-2}$)	RMSE ($\text{W}\cdot\text{m}^{-2}$)	PBIAS (%)	NSE	KGE
J-OFURO3	0.96	1.6	7.3	10.0	1.0	0.96	0.97

ERA5	0.79	28.8	30.3	39.0	17.8	0.45	0.77
MERRA2	0.78	39.7	41.2	49.2	24.8	0.15	0.68
CERES CERES4	0.81	31.4	32.6	40.6	19.6	0.42	0.76
GEWEX-SRB	0.78	32.6	33.8	41.8	20.2	0.37	0.76

Note: The evaluation period for all datasets is 1988-2017, except for ~~CERES~~CERES4, which spans from March 2000 to December 2017. The best-performed statistics are indicated in bold type.

4.3.2 Evaluation of heat storage

The study ~~undersecores~~underscores the importance of considering heat storage in simulating heat fluxes using the improved MEP model. For the first time, we assessed global heat storage using the J-OFURO3, ERA5, MERRA2, and Δ OHC datasets. In addition to assessing these individual datasets, we investigated the potential for enhancing accuracy through data fusion methods. We employed the BTCH and AA method to fuse heat storage data and compared the accuracy between individual datasets and fused datasets (Table 4). The results ~~reveal~~revealed that while using the AA method (e.g., AA4) to fuse yields smaller errors compared to ERA5, MERRA2, and Δ OHC, it still failed to achieve the accuracy of the J-OFURO3 product. Similarly, the BTCH method, despite fusing data from three or four sources, also does not match the accuracy of the J-OFURO3 method, as indicated by metrics of R^2 , RMSE, and KGE. The heat storage derived from J-OFURO3 data ~~shows~~showed high consistency with observations ($R^2=0.95$), as illustrated in Fig. 5 (spatial distribution of errors depicted in Fig.S7). Therefore, this study ~~adopts~~employed the heat storage data derived from the J-OFURO3 dataset as the input for the MEP model.

To ensure consistency with radiation data source, the Sea ~~surface temperature~~Surface Temperature (SST) data from J-OFURO3 ~~iswas~~ utilized for T_s inputs, which ~~iswas~~ derived as the ensemble median from 12 global SST products (Tomita et al., 2019). Ultimately, the input variables including net radiation, heat storage, and sea surface temperature for driving MEP model ~~arewere~~ all determined from the J-OFURO3 dataset spanning from 1988 to 2017. Saturated specific humidity ~~iswas~~ computed as a function of SST and surface air pressure (from ERA5) using the Clausius-Clapeyron equation. The reliability of gridded data for the variables R_n , G , and T_s ~~arewere~~ simultaneously examined at an observational site (Fig.S8), where all three variables demonstrated high consistency with observed data from August 2004 to December 2017 (with $R^2 > 0.96$), effectively capturing the monthly dynamics of R_n , G , and T_s .

Table 4. Assessment of monthly heat storage between global remote sensing datasets and buoy observations

Products	R ²	ME (W·m ⁻²)	MAE (W·m ⁻²)	RMSE (W·m ⁻²)	PBIAS (%)	NSE	KGE
J-OFURO3	0.95	-3.5	15.3	19.7	-7.4	0.94	0.91
ERA5	0.88	7.0	25.1	33.2	14.8	0.84	0.80
MERRA2	0.86	11.6	27.1	36.1	24.5	0.81	0.72
OHC	0.35	-48.2	64.4	86.9	-101.9	-0.11	-0.10
BTCH3-1 (E M J)	0.89	7.1	22.8	30.5	15.1	0.86	0.81
BTCH3-2 (E M O)	0.88	4.6	24.0	31.4	9.9	0.85	0.86
BTCH4	0.91	5.9	19.7	26.2	12.5	0.90	0.86
AA2(EM)	0.87	9.3	25.4	34.1	19.7	0.83	0.76
AA3 (EMJ)	0.91	4.7	20.2	26.7	10.1	0.90	0.87
AA4 (E M J O)	0.91	11.5	21.4	28.6	24.4	0.88	0.74

Note: BTCH3-1 represents the fusion of three products (ERA5, MERRA2, and J-OFURO3) using the BTCH method; TCH3-2 represents the fusion of ERA5, MERRA2, and OHC; BTCH4 represents the fusion of ERA5, J-OFURO3, MERRA, and OHC. AA denotes the Simple Arithmetic Average (AA) method. The evaluation period spans from 1988 to 2017, and the best-performed statistics are indicated in bold type.

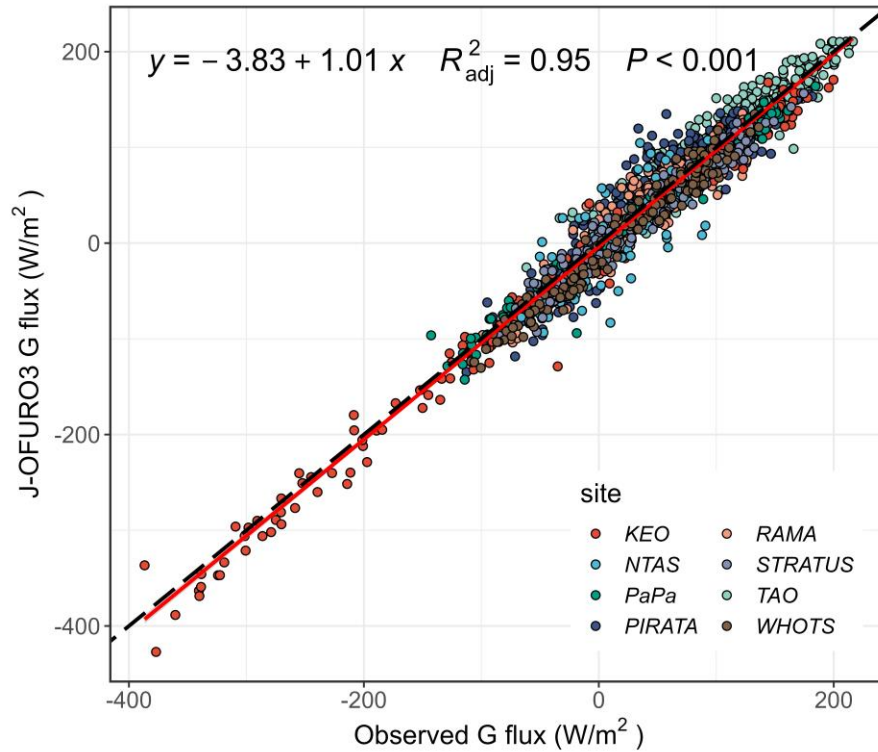


Figure 5. Assessment of heat storage (G) flux derived from remote sensed J-OFURO3 dataset against buoy observations. Distinct colors represent data collected from different buoy arrays.

4.4 Estimating long-term global ocean surface heat fluxes by improved MEP model

4.4.1 New estimate of global latent and sensible heat fluxes

After identifying the optimal driving dataset, this study ~~employ~~employed the best-performed improved MEP method (i. e., $M_{0.24}$, hereinafter referred to as MEP for simplicity, while the original MEP formula ~~is~~was denoted as $MEP (ori)$) for global scale estimation, producing new estimations of latent and sensible heat fluxes for the period 1988-2017 (Table 5). The MEP model calculated the multi-year average LE as $92.87 \text{ W}\cdot\text{m}^{-2}$ and the sensible heat flux as $12.27 \text{ W}\cdot\text{m}^{-2}$ from 1988 to 2017. In comparison, LE ~~range~~ranged from 88.95 (OAFlux) to $100.54 \text{ W}\cdot\text{m}^{-2}$ (MERRA2), and H ~~range~~ranged from 10.17 (J-OFURO3) to $13.16 \text{ W}\cdot\text{m}^{-2}$ (MERRA2) for the other four products. The original MEP method yielded estimates of LE as $52.70 \text{ W}\cdot\text{m}^{-2}$ and H as $25.07 \text{ W}\cdot\text{m}^{-2}$, significantly underestimating LE and overestimating H compared to estimates from other products. As previously demonstrated (Sections 4.1 & 4.2), the original MEP method overestimated G ($42.20 \text{ W}\cdot\text{m}^{-2}$) and exhibited notable deviations in the Bowen ratio. Therefore, the improved MEP method ~~provides~~provided a more reasonable global estimation of LE and H .

Regarding the global spatial pattern (Fig.6), the MEP-derived latent heat ~~show~~exhibited higher values in low-latitude regions but ~~notably decrease~~significantly decreased beyond 45° latitude. The highest LE values ~~are~~were observed in the southern Indian Ocean near Australia, the Pacific and Atlantic regions near South America, and the Indian Ocean near southern Africa. The peak values ~~are~~were observed within western boundary current systems (~~range~~ranged from 200 to $260 \text{ W}\cdot\text{m}^{-2}$), including the Gulf Stream in the North Atlantic and the Kuroshio in the western North Pacific. Impacted by the variations in oceanic currents near the equator, two general areas of higher LE have emerged (Yu et al., 2011), leading to notably low LE at the equator ($88 \text{ W}\cdot\text{m}^{-2}$), peaking at $\sim 18^\circ\text{S}$ at $132 \text{ W}\cdot\text{m}^{-2}$ (Fig. 6 & Fig. 7). The MEP estimated LE ~~exhibit~~exhibited a similar spatial pattern with other four products globally (Fig.6), particularly resembling OAFlux between 15°S and 15°N (Fig. 7). Overall, for the region between 30°S and 30°N , the ~~ranking of~~ LE values ~~is~~were ranked as follows: $\text{OAFlux} < \text{MEP} < \text{J-OFURO3} < \text{ERA5} < \text{MERRA2}$, which ~~is~~was consistent with the magnitude of available energy. For sensible heat, MEP-derived H closely ~~resembles~~resembled that of ERA5 and MERRA2, with higher values predominantly occurred in two western boundary current systems, the South Indian Ocean near Australia area, and the Arctic Ocean. The improved MEP method ~~mitigates~~mitigated the issue of overestimating H in mid-to-high latitudes compared to its original form

(Fig.6l), resulting in a more realistic spatial ~~patterns~~pattern. In high latitudes, J-OFURO3 ~~exhibits~~exhibited higher H values than MEP and other comparable products in the Northern Hemisphere, with negative values observed between 45°S and 55°S. MEP generally ~~estimates~~estimated H within an intermediate range compared to other products, displaying a distribution that ~~is~~was more reasonable than that of J-OFURO3 product.

Table 5. Global area-averaged multi-annual mean estimates of latent heat flux

<i>LE</i> products	<i>LE</i> (W·m ⁻²)	Evaporation (mm/yr)	<i>H</i> (W·m ⁻²)	<i>G</i> (W·m ⁻²)
MEP (0.24)	92.8	1195.5	12.2	19.7
ERA5	99.2	1277.8	12.0	34.2
MERRA2	100.5	1294.3	13.2	35.5
J-OFURO3	94.9	1222.2	10.1	19.7
OAflux	88.9	1145.1	10.4	/
MEP (ori)	52.7	678.5	25.1	42.2

Note: The period spans from 1988 to 2017. The MEP (0.24) denotes the improved MEP model, while MEP (ori) represents the original MEP model.

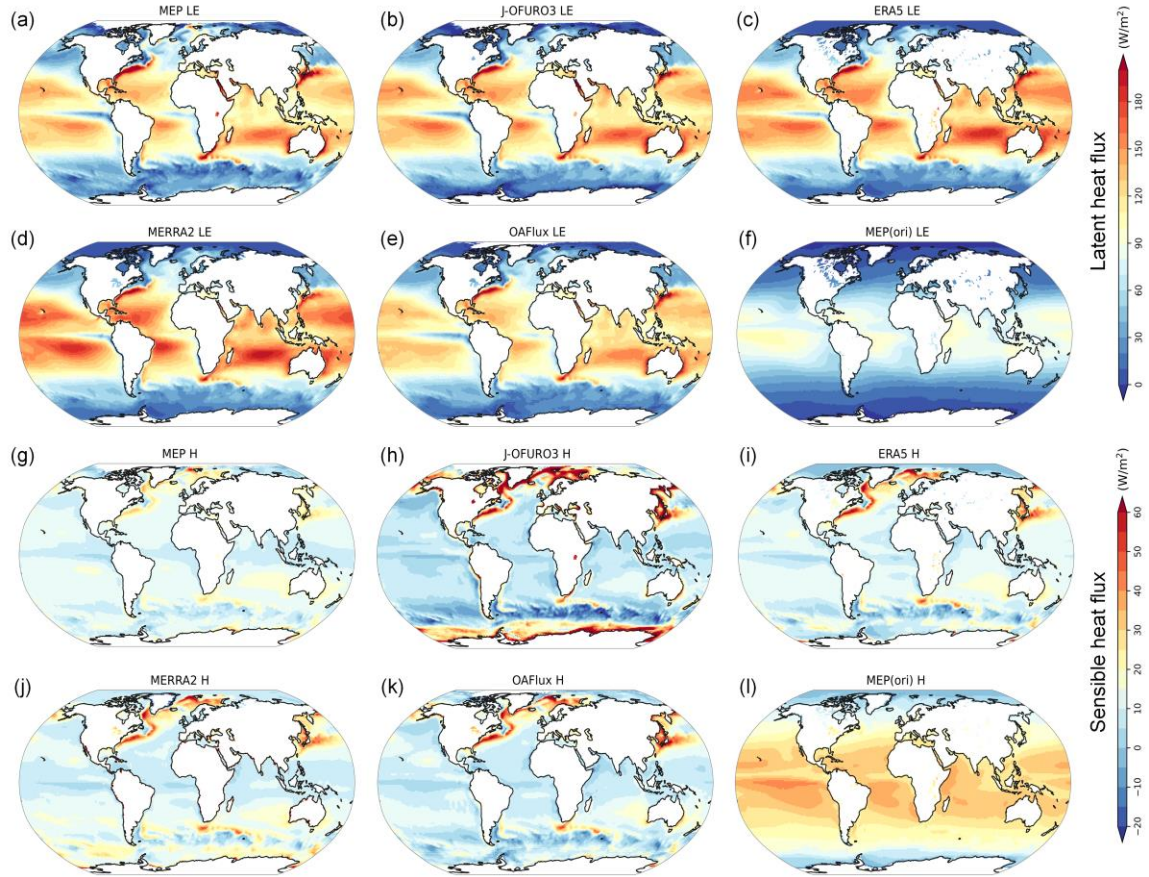
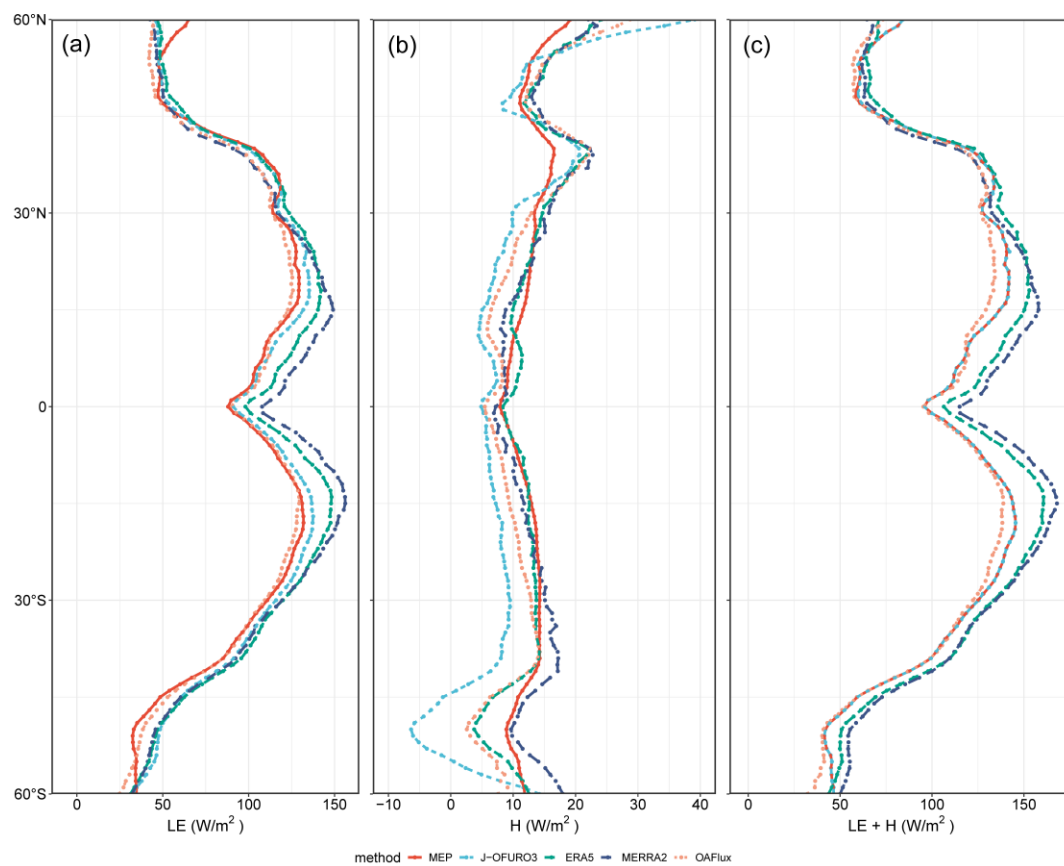


Figure 6. Global spatial maps of annual mean latent heat flux (LE) and sensible heat flux (H) during 1988-2017. Panels (a)-(f) depict latent heat flux derived from the improved MEP method, J-OFURO3, ERA5, MERRA2, OAFlux, and the original MEP method. Panels (g)-(l) show sensible heat flux from the same datasets.



621

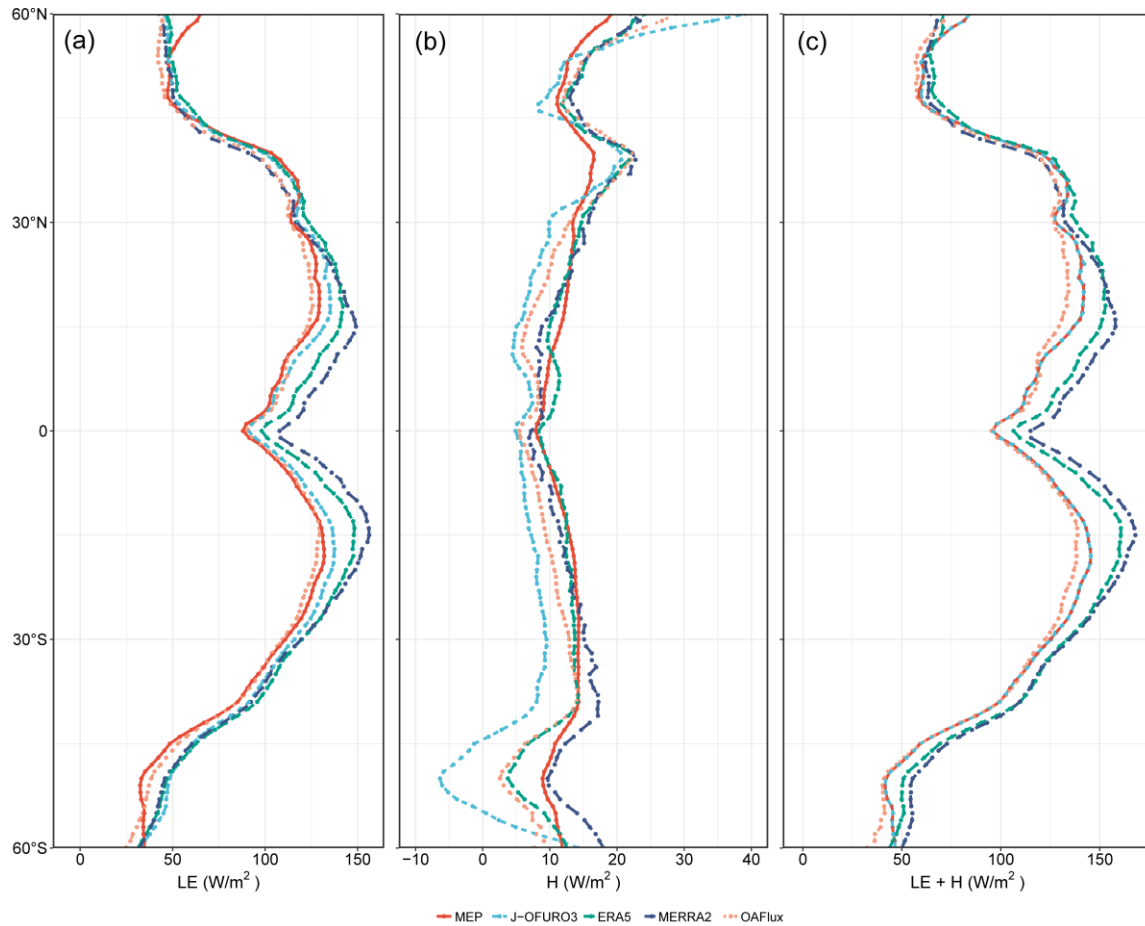
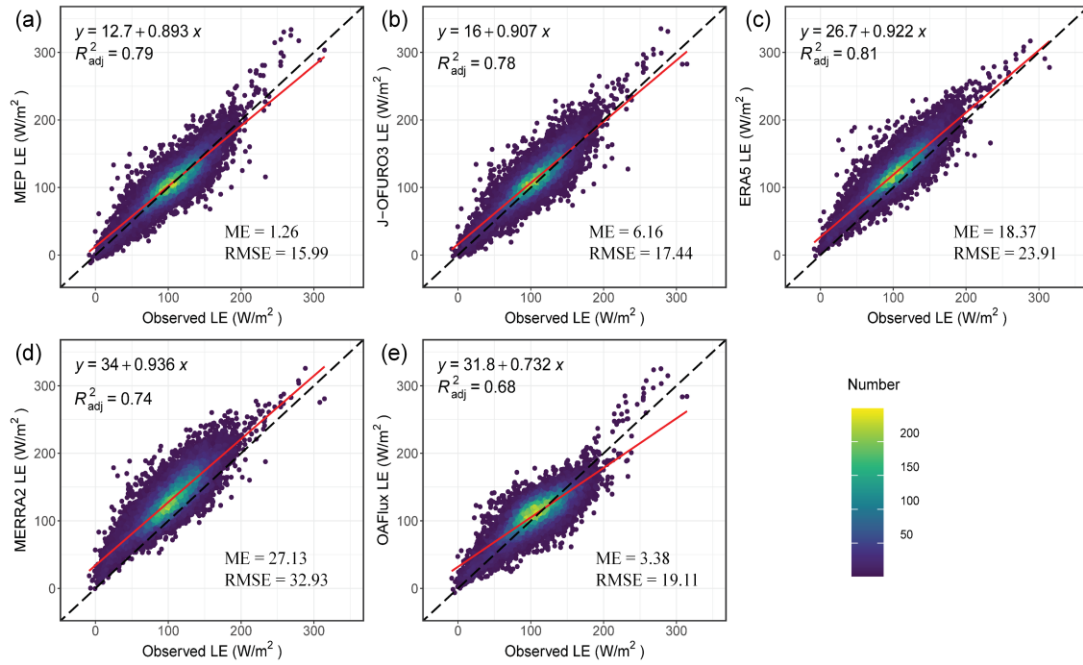


Figure 7. Meridional profiles of latent heat (left panel), sensible heat (middle panel) and their sum representing available energy (right panel) for the period 1988-2017, produced by MEP, J-OFURO3, ERA5, MERRA2, and OAFlux datasets.

4.4.2 Validation of global latent heat products against the observational sites

To evaluate the disparity/discrepancies between MEP estimates-of-estimated *LE* and those-of other existing products/datasets, this study validated global-scale *LE* using 129 observational sites (as depicted in Fig.8 & Table 6). MEP-estimated *LE* showed strong consistency with buoy observations, achieving an R^2 of 0.79, a ME of $1.26 \text{ W} \cdot \text{m}^{-2}$, and RMSE of $16 \text{ W} \cdot \text{m}^{-2}$, all surpassing those of alternative products, underscoring its superior performance. Moreover, the MEP method exhibited superior performance with a higher NSE value of 0.77 and KGE of 0.89, demonstrating enhanced accuracy, reliability, and robustness. According to the RMSE evaluation criterion, the ranking of best-performed *LE* products is/was as: MEP, J-OFURO3, OAFlux, ERA5, MERRA2. In a recent comprehensive assessment of 15 global ocean *LE* products (Tang et al., 2023), RMSE values ranged from 17.2 to $45.3 \text{ W} \cdot \text{m}^{-2}$, in which J-OFURO3 emerged as the best-performing product

with the lowest RMSE of $17.2 \text{ W}\cdot\text{m}^{-2}$, highest correlation coefficient (R) of 0.89, and ME of $6.5 \text{ W}\cdot\text{m}^{-2}$. Studies have also shown minimal bias ~~are~~were given by J-OFURO3 on daily scale (Bentamy et al., 2017). This superior performance of J-OFURO3 dataset can be attributed to the use of continuously updated bulk algorithms (COARE 3.0 version) ~~by J-OFURO3,~~ the ongoing optimization of near-surface parameters (Tomita & Kubota, 2018), as well as the improved spatial resolution (0.25°). In this study, the improved MEP ~~estimates~~estimation of LE outperformed that of J-OFURO3, demonstrating higher accuracy and lower error (ME= $1.26 \text{ W}\cdot\text{m}^{-2}$), thereby establishing it as the most accurate global LE product currently available.



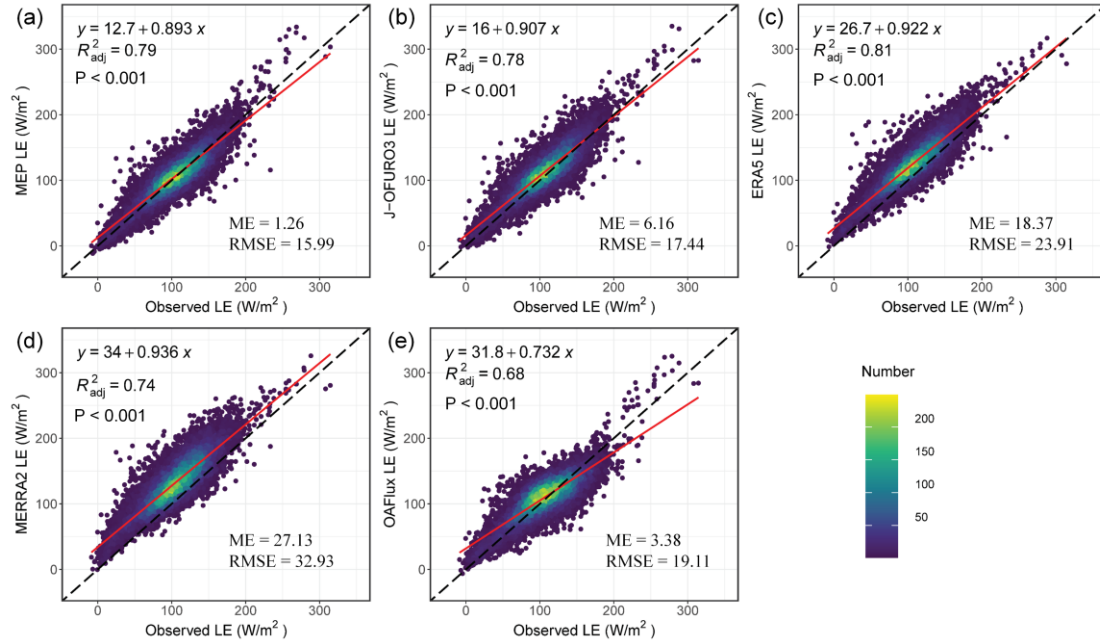


Figure 8. Scatter density plots of latent heat flux ~~derived taken~~ from ~~distinct methods~~ different products versus observations from 129 buoy stations during the period 1988-2017: (a) Improved MEP ~~method~~ model, (b) J-OFURO3, (c) ERA5, (d) MERRA2, and (e) OAFlux. A total of 15444 records of latent heat observations are included.

Table 6. Evaluation of latent heat flux from different methods against buoy observations

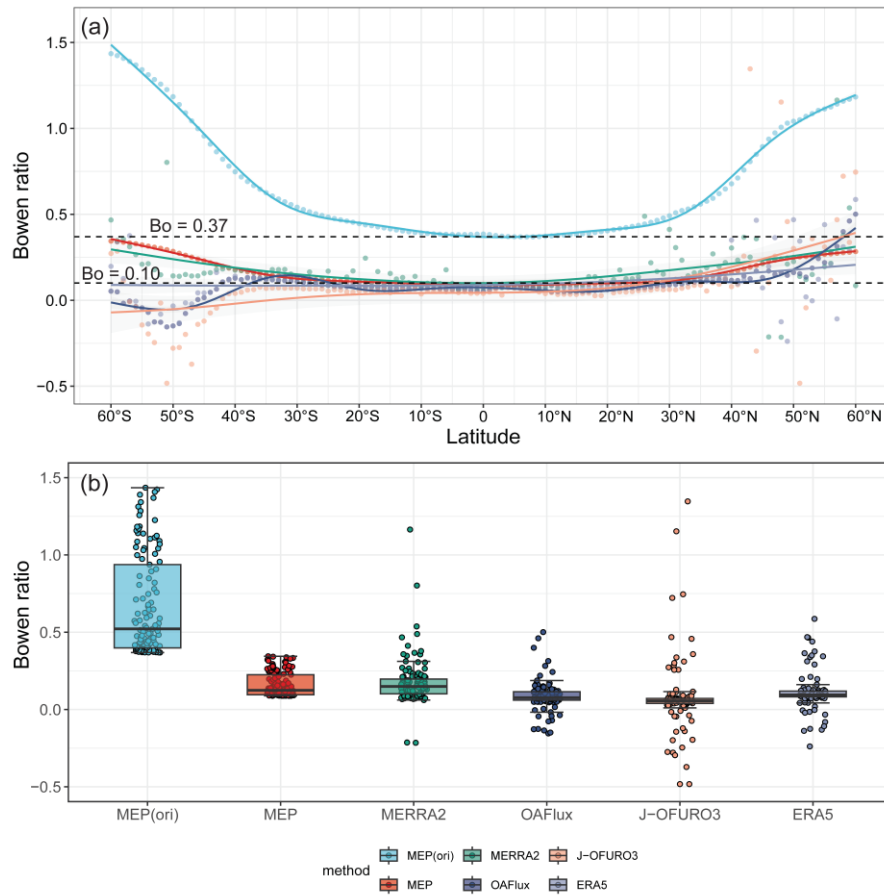
Products	R^2	ME ($W \cdot m^{-2}$)	MAE ($W \cdot m^{-2}$)	RMSE ($W \cdot m^{-2}$)	PBIAS (%)	NSE	KGE
MEP	0.79	1.3	12.2	15.9	1.2	0.77	0.89
J-OFURO3	0.78	6.3	13.4	17.4	5.8	0.73	0.87
ERA5	0.81	18.4	19.9	23.9	17.3	0.48	0.80
MERRA2	0.74	27.1	28.1	32.9	25.5	0.02	0.70
OAFlux	0.68	3.4	14.9	19.1	3.2	0.67	0.79

Note: The evaluation period spans from 1988 to 2017, and the best-performed statistics are indicated in bold type.

4.4.3 Comparisons of Bowen ratios

The improved MEP model ~~achieves~~ achieved accurate ~~LE estimates~~ estimation after refining the process of partitioning the surface energy budget, specifically through revisions to the Bowen ratio. The improved MEP method notably decreased the global-scale Bowen ratio, as illustrated in Fig. 9 and 10. Regarding latitude averages, the Bowen ratio of the original MEP formula ranged from 0.37 to 1.48 (with a median of 0.80), whereas the modified MEP Bowen ratio ranged from 0.09 to 0.35 (median of 0.18). Specifically, in the low-latitude region (10°S-10°N), the Bowen ratio of the modified MEP formula decreased from 0.37 to approximately 0.1, aligning closely with the Bowen ratios obtained from other reanalysis products (MERRA2,

ERA5, OAFlux, and J-OFURO3). Globally, the median Bowen ratios of the products ~~are~~were as follows: MERRA2 (0.15), MEP (0.12), ERA5 (0.09), OAFlux (0.08), and J-OFURO3 (0.06). Spatially, the MEP Bowen ratio ~~resembles~~resembled ERA5 in mid to low latitudes but ~~exhibit~~exhibited deviations from other products at high latitudes, where those products ~~show~~showed fluctuating changes in the Bowen ratio (Fig.10). For instance, other products ~~display~~displayed abrupt transitions from negative to positive Bowen ratios in the Arctic and Antarctic regions, whereas MEP-derived values ~~demonstrate~~demonstrated greater stability in variations at higher latitudes. This discrepancy ~~is~~was likely due to the reanalysis products relying on the bulk method, which ~~is~~was sensitive to variations in wind speed and temperature gradients, leading to errors in simulating high wind speeds at the poles and causing fluctuations in latent and sensible heat. In contrast, the MEP model strictly adheres to energy conservation principles and operates independently of wind speed and temperature gradients, resulting in a more accurate estimate of the Bowen ratio. For example (Fig.S9), at the high-latitude PAPA buoy site (144.9°W, 50.1°N), the Bowen ratio estimated by MEP (median 0.24) closely ~~matches~~matched the observed Bowen ratio (median 0.23). In contrast, all the other products underestimated the Bowen ratio, with J-OFURO3 (median -0.09) and OAFlux frequently exhibiting negative values. The Bowen ratio derived from MEP ~~fits~~fit well with a Generalized Additive Model (GAM) (Fig.9). The implicit functional relationship between Bowen ratio and latitude ~~is~~was expressed as ($R^2 = 0.996$, $p < 0.001$): $B_{oa}(lat) = 0.207218 + f(lat) + \varepsilon$, where $f(lat)$ represents a smoothing function derived from a smooth curve, and ε denotes the error term. However, the specific functional form of $f(lat)$ cannot be explicitly determined. Therefore, a polynomial regression method ~~is~~was employed to explicitly fit B_{oa} and lat , resulting in ($R^2 = 0.91$, $p < 0.001$): $B_{oa} = 9.97 \times 10^{-2} - 3.45 \times 10^{-4} \times lat + 4.71 \times 10^{-5} \times lat^2 + \varepsilon$ (as in Fig.S10). This equation ~~serves~~can serve as a reference for partitioning surface energy ~~over~~in data-sparse oceanic regions.



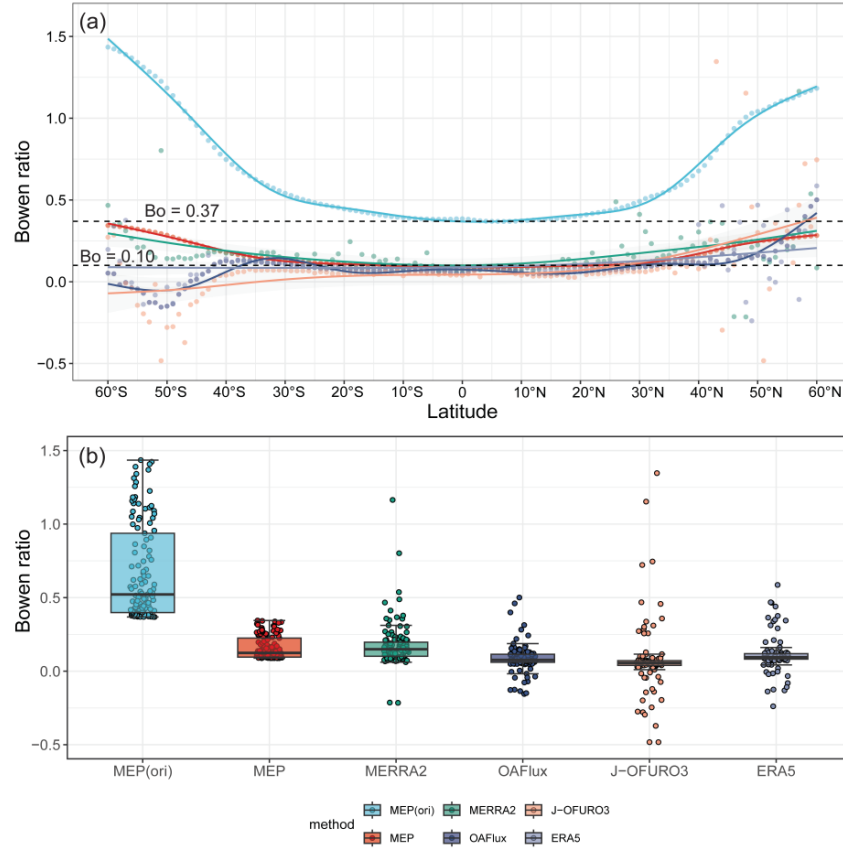


Figure 9. Global ocean latitudinal averaged Bowen ratio derived by the MEP method and four other products from 1988 to 2017. (a) Latitudinal averaged Bowen ratio derived from the MEP model using original and modified Bowen ratio formulas, with points fitted by a generalized additive model (GAM). (b) Statistical distribution of the latitudinal annual mean Bowen ratio.

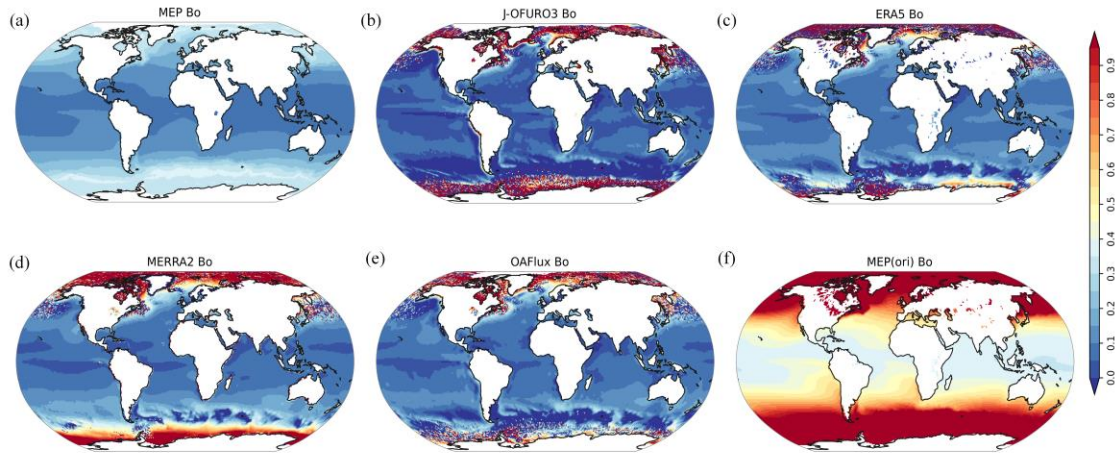


Figure 10. Global distribution of ocean annual mean Bowen ratio during 1988-2017: (a) Improved MEP method, (b) J-OFURO3, (c) ERA5, (d) MERRA2, (e) OAFflux, and (f) MEP original method.

4.5 Spatial-temporal variability of ocean evaporation

Heat flux reflects the energy exchange between the ocean and the atmosphere, while evaporation (*ET*) reflects moisture exchange within the water cycle. The spatiotemporal patterns of evaporation were analyzed using the Sen's slope and the Mann-Kendall test methods (Fig. 11). ~~Globally~~For the global ocean, approximately 74% ~~(of the regions showed an increasing trend, with about 27% of the grids exhibiting statistically significant)~~ showed an increasing trend, while increases ($p < 0.05$). In contrast, 26% ~~(displayed a decreasing trend, with 24% only 5% of the grids showing statistically significant)~~ exhibited a decreasing trend. The decrease ($p < 0.05$). For the whole periods, the regions with the highest increasing trends were predominantly observed near western boundary current systems, the convergence zones of the East Australian Current and the South Equatorial Current, and the convergence zones of the Eastern South Equatorial Current and the Brazil Current along South America. Decreasing trends were primarily observed in equatorial regions of the Pacific and Atlantic Oceans, as well as near the Labrador and Kuroshio currents and north of the Antarctic Circle. It ~~is was~~ indicated that regions with significant increases (decreases) in evaporation generally correspond closely to the distribution of major warm currents (cold currents) spatially. ~~However, global ocean evaporation experienced a notable shift around 2003, as illustrated in Figs. 11b and 11c. The downward trend observed from 2003 to 2017 counteracted a significant portion of the growth trend that occurred during the previous 16 years (1988-2003), particularly evident in the mid-latitude regions (15°S-20°N). In the middle-to-low latitudes (0°-30°N), nearly all ocean grids exhibited opposite trends around 2003. Spatially, regions that displayed the largest increasing trends during 1988-2003 transitioned to show the most substantial decreasing trends between 2003 and 2017. This includes regions associated with western boundary current systems, convergence zones of the East Australian Current and the South Equatorial Current, as well as equatorial regions of the Pacific and Atlantic Oceans (Fig. 11c). To further investigate the shift in ocean evaporation after 2003, we analyzed the interannual variability of global annual mean area-weighted evaporation using all available datasets (as shown in Fig. 12).~~

Over the multi-year ~~changes period~~ from 1988 and 2017, MEP, J-OFURO3, ERA5, and MERRA2 all exhibited significant increasing trends in *ET*. MEP estimated an evaporation ~~increased~~increase rate of 2.31 mm/year, whereas OAF flux showed a non-significant trend (Fig. 12). ~~This upward trend in ET can largely be attributed to changes in available energy, which increased at a rate of 0.274 W/(m²·year). For instance, during~~

peak ET years such as 1989, 1992, 2003, and 2008, R_e was also at its highest; conversely, during years of minimum ET like 1991 and 1997, R_e was minimal. This consistency is in line with previous findings (Huang et al., 2017), where more than 50% of the uncertainty in MEP-modeled fluxes was attributed to the radiation term. While different methods yield datasets revealed varying magnitudes of ET evaporation changes, they generally exhibit most exhibited a transition around 2010 similar temporal pattern: an increasing trend from 1988 to around 2010, followed by a hiatus during 2003-2010, and ultimately a decreasing trend thereafter after 2010 (Fig. 12a). Specifically, MEP indicated an ET increase-increasing trend in evaporation of 3.58 mm/year from 1988 to 2010, followed by a decrease at a rate of 2.18 mm/year after 2010. This shift primarily results from a decline in both available energy (Fig. 12a). The slowdown and transition of evaporation during 2003-2010 aligned with the concept of a “global warming hiatus” (Medhaug et al., 2017; Sung et al., 2023), referring to the period when global mean surface air temperatures did not continue to rise between 1988 and 2012. Previous studies have proposed four potential explanations for this global warming hiatus: internal variability, external drivers, the Earth’s response to CO_2 , and radiative forcing (Medhaug et al., 2017). This study indicates that changes in radiative forcing (Fig. 12b) can significantly affect the interannual variability of evaporation (Fig. 12a) and surface temperature starting around 2010 (Fig. 12c). This finding is consistent with previous research that attributed more than 50% of the uncertainty in MEP-modeled fluxes to the radiation term (Huang et al., 2017). Although T_s increased surface temperature began to increase after 2012, the significant decrease in available energy was remained the main primary driver behind the decline in ET evaporation.

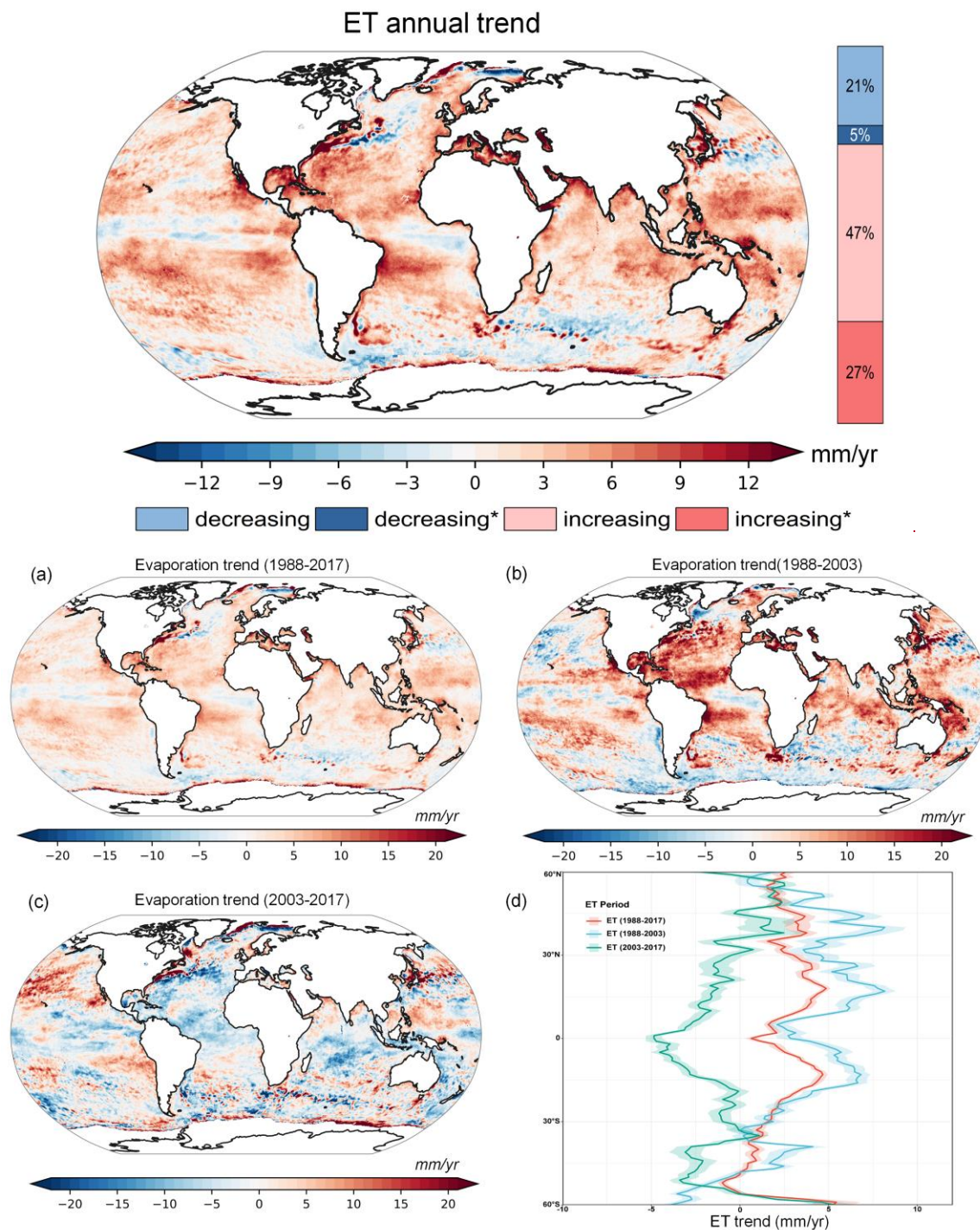


Figure 11. Spatial distribution of ~~the long term trend in the annual mean multi-year trends in~~ ocean evaporation ~~derived from~~ estimated by the improved MEP method during ~~1988-2017~~ (a) the period 1988-2017, (b) the period 1988-2003, (c) the period 2003-2017, and (d) the latitudinal average changes across three different periods.

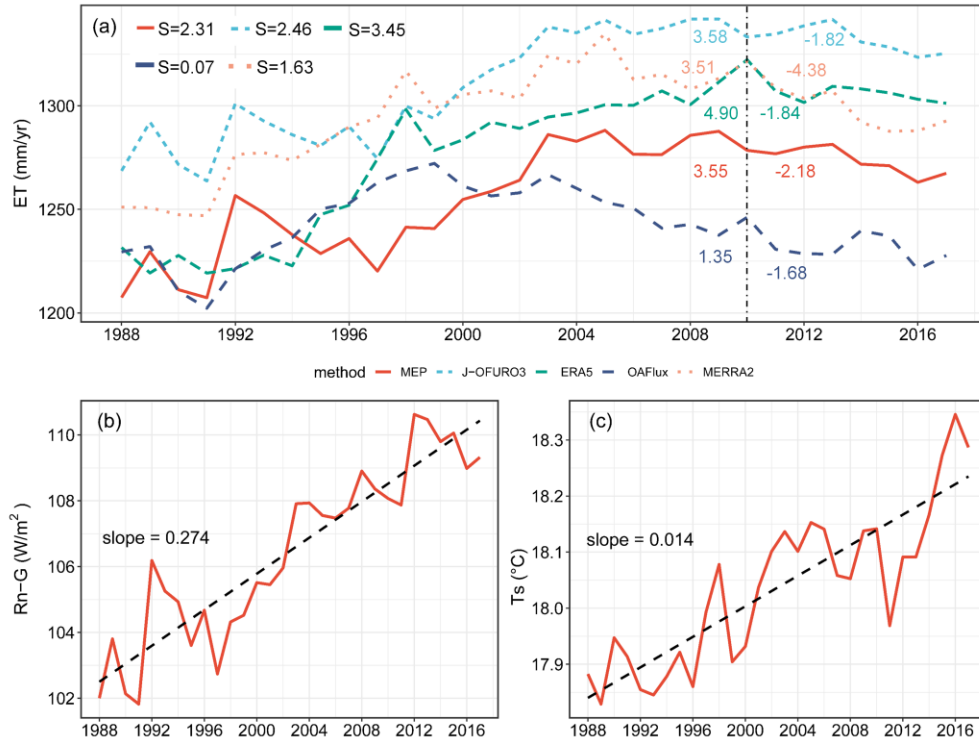


Figure 12. Time series of area-averaged multi-annual mean evaporation from the improved MEP method (a), available energy (b), and sea surface temperature (c) over the global oceans during 1988-2017. The black dotted line in panel (a) represents the year 2010, and the label “ $S = 2.31$ ” indicates that the MEP-estimated global multi-annual mean evaporation increased at a rate of 2.31 mm/year during 1988-2017, with change rates of different ET datasets represented by various colors. The black dashed lines in panels (b) and (c) represent the linear regression lines.

5. Discussion

5.1 Quantifying the impact of heat storage and radiation with sensitivity analysis

The sensitivity analysis revealed the significant influence of input variables on latent heat flux derived from the MEP model. Notably, the heat storage (G) exhibited seasonal variations with both positive and negative values (Fig. 13). Positive G values coincided predominantly with summer in the Northern Hemisphere (winter in the Southern Hemisphere), specifically from June to August (Fig. 4 and Fig. S5). During this season, intensified solar radiation enhances the net energy input (R_n) at the ocean surface, leading to heat absorption and retention. Consequently, the energy available ($R_n - G$) for evaporation diminishes. The analysis indicated that R_n significantly influenced the energy-driven evaporation process, with a sensitivity coefficient exceeding 1 (median 1.74), highlighting its pivotal role. In contrast, G negatively impacted evaporation, as indicated by a sensitivity coefficient of -0.74.

Specific humidity (median 0.08) and sea surface temperature ~~have had~~ relatively minor effects, consistent with previous MEP model findings focused on terrestrial surfaces (Isabelle et al., 2021).

Conversely, negative values of heat storage predominate during winter, particularly from December to February in the Northern Hemisphere (June to August in the Southern Hemisphere). Despite reduced solar radiation during this period, residual heat stored from summer gradually releases into the atmosphere, resulting in greater energy output than input. This surplus energy ~~augments~~increases the available energy for evaporation, leading to a positive sensitivity coefficient for G (median 0.29), second only to R_n (median 0.71). Consequently, this process generally reduces sea surface temperature, resulting in a negative sensitivity coefficient for surface temperature. Overall, these findings ~~underscore~~underscored the significant influence of R_n on latent heat flux, with G ranking as the second most influential variable in MEP estimates over ocean surfaces. For instance, a 10% decrease in positive G ~~yields~~yielded a 7.4% increase in evaporation, while a 10% increase in negative G ~~results~~resulted in a 2.9% increase in evaporation, assuming other variables remain constant. Thus, R_n and G ~~emerge~~emerged as two primary drivers of oceanic evaporation, with humidity and temperature exerting minimal influence.

~~Furthermore, the pivotal role of available energy in determining LE is underscored by its direct relationship with energy allocation. Thus, the~~ The accuracy of available energy estimates ~~directly influences~~significantly LE simulations. ~~Despite using,~~ as it serves as the direct energy source for partitioning latent and sensible heat fluxes. Although the bulk methods (e.g., COARE 3.0 algorithms) used for estimating heat fluxes are independent of ~~radiation partitioning~~surface energy budget allocation, discrepancies in LE ~~simulation~~estimation still correlate ~~with errors~~strongly with validated biases against observations in available energy estimates (see Tables 3 and 4). Notably, the MERRA2 product exhibited higher errors in simulating R_n and G compared to observations, leading to significant biases in LE estimation. In contrast, the ERA5 product demonstrated superior performance in simulating R_n and G , thereby achieving higher accuracy in LE estimation. Consequently, the energy-balance-based MEP model excels in accurately ~~computing~~estimating surface heat fluxes by directly reflecting energy allocation. Unlike bulk methods, the MEP approach reduces sensitivity to temperature and humidity gradients, thereby minimizing uncertainties in LE simulations (Pelletier et al., 2018). This advancement enhances the MEP model's utility in global energy and water cycle research, particularly pertinent for future climate change studies.

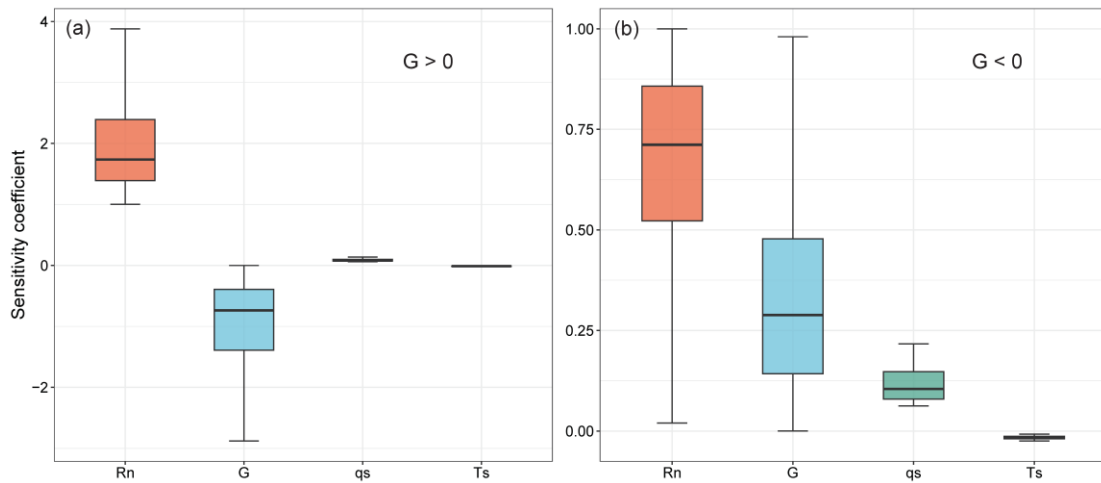


Figure 13. Sensitivity coefficient associated with inputs variables for the improved MEP method at all 129 buoy stations: (a) for positive G values, and (b) for negative G values.

5.2 Discrepancy of empirical Bowen ratio formulas

Bowen ratio B_o plays a crucial role in understanding the surface energy partitioning process. In this study, four empirical formulas were utilized to modify the MEP model and were evaluated against observations of latent heat flux the observed LE , each with distinct conditions of applicability and suitability for integration with the MEP model: (1) $B_{oa} = 0.63B_o^* - 0.15$ ~~is was~~ derived from direct observational data fitting (Hicks and Hess, 1977). This formula ~~is was~~ applicable for surface temperatures above 16°C , particularly within latitudes between 40°N and 40°S , making it more suitable for lower latitude regions. ~~Therefore, it is more suitable for lower latitude regions;~~ (2) $B_{oa} = 0.79B_o^* - 0.21$ ~~is was~~ derived using the Priestley–Taylor model under advection-free conditions (Priestley and Taylor, 1972). The coefficients ~~are were determined~~ based on a mean α value of 1.26 ~~(although this varies value can vary in practice)~~. ~~However, recent. Recent~~ studies have ~~shown revealed~~ significant discrepancies due to the neglect of ~~the~~ interaction between R_n and T_s variations ~~in R_n and T_s (Yang & Roderick, 2019);~~. To address this limitation, the equation (3) $B_{oa} = 0.24B_o^*$ was developed to address this limitation based on ~~athe~~ maximum evaporation theory ~~by,~~ considering the feedback mechanism mechanisms between R_n and T_s ~~(under the circumstances of while assuming that G to be is small ~~too~~ negligible)~~. The empirical coefficient ~~(0.24)~~ was determined by fitting Bowen ratio B and surface temperature data T_s across the global ocean surface (Yang & Roderick, 2019); and (4) $B_{oa} = 0.37B_o^* - 0.05$ was subsequently formulated based on principles derived from atmospheric boundary layer (ABL) theory (Liu &

Yang, 2021), with coefficients also fitted from relationships between B_{oa} and T_s . It should be noted that the derivations of $B_{oa}=0.24B_o^*$ and $B_{oa}=0.37B_o^*-0.05$ were based on fitting using ~~latent heat data~~LE from the OAFlux dataset rather than direct buoy observations. ~~Building upon the four empirical relationships between B_{oa} and B_o^* from previous studies, this study assessed the applicability of these four empirical Bowen ratio formulas in estimating latent heat flux. The findings indicate that~~Overall, the MEP model ~~refined~~incorporated with $B_{oa}=0.24B_o^*$, ~~exhibit~~exhibited superior accuracy at both localized and global scales, effectively mitigating the underestimation of LE in its original ~~formulation. Moreover, the results show that the improved MEP model closely aligns with buoy observations and achieves higher accuracy globally compared to OAFlux products (as depicted in Fig. 8), surpassing other bulk method based products as well.~~estimates.

5.3 Contributions and implications of this study

The main contributions of this study include: (1) The MEP model's energy balance equation over water surfaces was revised to explicitly consider heat storage effect. This correction highlights the importance of heat storage in estimating ~~latent heat flux~~LE. (2) The energy partitioning of the MEP model was revised to incorporate empirical Bowen ratio formulas, significantly improving the heat flux estimations. (3) This study conducted the first thorough global assessment of heat storage using extensive buoy observations and remote sensed data, enabling the MEP model to produce the most accurate global ~~latent heat flux~~LE estimates. This study addresses the issue of underestimating ~~latent heat flux~~LE by the original MEP model, increasing the global average LE from $53 \text{ W} \cdot \text{m}^{-2}$ to $93 \text{ W} \cdot \text{m}^{-2}$, while reducing sensible heat flux from $25 \text{ W} \cdot \text{m}^{-2}$ to $12 \text{ W} \cdot \text{m}^{-2}$, improving the partitioning of energy budget. The improved MEP model ~~provides~~provided precise LE estimates compared to existing datasets like J-OFURO3, ERA5, MERRA2, and OAFlux, enabling it to become a valuable benchmark dataset for global evaporation studies.

From a methodological perspective, the improved MEP method ~~present~~emerged as a ~~new~~novel approach for estimating ~~heat flux~~energy fluxes that diverges from ~~existing~~traditional bulk methods. The conventional bulk method ~~traditionally~~ requires multiple input parameters, including air temperature, specific humidity, wind speed, sea surface temperature, ~~and~~ atmospheric pressure, ~~as well as~~and the observational height of all parameters (Fairall et al., 2003; Tomita et al., 2021). ~~In contrast to the bulk~~This method, ~~which requires a high demand for driving demands numerous input variables, and shows lower sensitivity to the estimated fluxes are highly sensitive to changes in~~ temperature ~~variations. It~~and humidity gradients. In

contrast, the improved MEP model requires only net radiation, heat storage, ~~and~~ surface temperature, and atmospheric pressure to simultaneously ~~estimate~~obtain latent ~~heat~~ and sensible heat fluxes, making it more flexible to operate and robust against variations in input variables. Furthermore, the improved MEP model is not constrained by the magnitude of heat storage and theoretically can be applied across various temporal scales (including sub-daily and daily), beyond the monthly scale used in this study. This underscores the applicability of the MEP method in addressing the constraints of traditional bulk methods, providing another independent approach to estimating heat fluxes across diverse environmental conditions.

This study ~~applies~~applied the improved MEP model to ocean surface, with potential for future extension to lake and reservoir surfaces. Compared to the Penman model for water body evaporation (Tian et al., 2022; Zhao et al., 2022; Bai et al., 2023), the major advantage of MEP method lies in its independence from wind speed, ~~as long as the provided that~~ heat storage can be determined using an equilibrium temperature-based approach (McMahon et al., 2013; Zhao & Gao, 2019). The global *LE* dataset generated in this study, giving due to MEP's insensitivity to variations in air temperature and humidity, can be applied in ~~studies~~research related to ocean salinity (Liu et al., 2019), ocean warming (Cheng et al., 2022), and global climate change and water cycle ~~research~~studies (Konapala et al., 2020).

5.4 Limitations

The improved MEP method proposed in this study offers a novel approach for estimating ocean heat fluxes, producing a validated long-term global dataset with high accuracy and spatiotemporal continuity. Despite its advancements, the proposed MEP method has several limitations that require further refinement: (1) Uncertainty of Driving data: The input variables of net radiation, heat storage, and sea surface temperature for the MEP model were sourced from the state-of-the-art satellite-based J-OFURO3 dataset. This dataset was constructed using observations from multiple satellite sensors. The net radiation in J-OFURO3 was derived by combining data from the CERES and the International Satellite Cloud Climatology Project (ISCCP) via the creeping sea fill method, along with twelve global sea surface temperature products (Tomitta, 2019). Consequently, the uncertainty of the MEP-estimated fluxes may arise from biases in input data derived from various satellite sensors and their associated analysis methods. Therefore, it is essential to integrate multiple approaches to assess the uncertainty associated with the input datasets. Moreover, due to the limited temporal duration of the J-OFURO3 dataset, future work should utilize input datasets with longer time series,

finer spatio-temporal resolution (Liang et al., 2022), and higher accuracy to advance ocean heat flux estimations using the MEP method. (2) Heat Storage Determination: This study did not employ a direct calculation method to obtain heat storage. Given the unclear relationship between heat storage and changes in ocean heat content at varying depths (as shown in Table 4), we utilized an energy balance residual-based approach to indirectly estimate heat storage. Consequently, this may render the MEP method susceptible to uncertainties in heat storage data derived from auxiliary flux datasets. Future research should focus on understanding the relationship between ocean heat content changes in the upper 100m and heat storage, with the goal of establishing a functional relationship between water column temperature at different depths and heat storage. (3) Bowen Ratio Improvement: Accurate determination of the Bowen ratio in high-latitude regions remains challenging. The Bowen ratio derived from the MEP method showed significant discrepancies with other datasets in these areas (Fig. 10), particularly in sea-ice-covered Arctic regions, where other datasets exhibited notable overestimations and irregular fluctuations. Therefore, incorporating more observational data from high-latitude regions is essential for a better understanding of energy partitioning patterns.

6. Data availability

The GOHF-MEP dataset produced ~~using~~by the MEP method, which includes global latent heat flux and sensible heat flux at a monthly scale from 1988 to 2017, can be freely downloaded from the Figshare platform (<https://doi.org/10.6084/m9.figshare.26861767.v2>, Yang et al., 2024). All the datasets used in this study are publicly available online and are described in the “Data Materials” section.

7. Conclusions

In this study, we developed a new global ~~monthly latent ocean~~ heat flux product ~~for the ocean-(GOHF-MEP)~~ covering the period from 1988 to 2017. This product is ~~based on grounded in~~ a maximum entropy production theory framework, incorporating heat storage impacts and Bowen ratio ~~optimizations. It adjustments.~~ GOHF-MEP represents the first energy-balance-based dataset that ~~differs~~diverges from existing global ocean heat flux datasets derived from bulk methods. To assess the accuracy of the input variables for the maximum entropy production framework, we utilized five global datasets, including two remote sensing-based and

three from reanalysis-based, ~~alongside~~along with four global datasets of heat storage derived from the energy balance equation and ocean heat content changes. We employed data fusion methods, including arithmetic averaging and the Bayesian three-cornered hat method, to identify optimal input datasets through validation against observations. The performance of the newly produced GOHF-MEP dataset was evaluated against extensive observations from 129 globally distributed buoy stations using multiple statistical metrics,~~and it.~~ It was also compared with four auxiliary products: J-OFURO3, ERA5, MERRA2, and OAFlux. ~~Additionally~~Moreover, we analyzed the long-term spatial-temporal variability of ocean latent heat flux. Ultimately, we investigated the impacts of ocean heat storage, net radiation, and Bowen ratio changes on heat flux estimations and surface energy partitioning.

The MEP framework provides new estimates of global heat fluxes. The MEP-estimated long-term annual mean latent heat flux is $93 \text{ W} \cdot \text{m}^{-2}$ (equivalent to 1196 mm/year of evaporation) during the period from 1988 to 2017. This estimate is ~~at an intermediate level~~ compared to other global flux products, which range from $90 \text{ W} \cdot \text{m}^{-2}$ (OAFlux) to $101 \text{ W} \cdot \text{m}^{-2}$ (MERRA2). The MEP-estimated sensible heat flux is $12 \text{ W} \cdot \text{m}^{-2}$, falling within the range of $10.17 \text{ W} \cdot \text{m}^{-2}$ (J-OFURO3) to $13 \text{ W} \cdot \text{m}^{-2}$ (MERRA2) reported by other current products. Compared with previous heat flux products, the MEP-estimated latent heat demonstrated higher accuracy when validated against observations, with a ME of $1.26 \text{ W} \cdot \text{m}^{-2}$, a RMSE of $16 \text{ W} \cdot \text{m}^{-2}$, and a KGE value of 0.89, outperforming all other contemporary global products. Approximately 74% of oceanic regions experienced an increasing trend in evaporation from 1988 to 2017. ~~Regarding~~In terms of long-term temporal variability, the global annual mean evaporation exhibited an increase rate of $3.58 \text{ mm}/\text{year}$ from 1988 to 2010 but subsequently ~~decreased~~declined at a rate of $2.18 \text{ mm}/\text{year}$ from 2010 to 2017, which was consistent with changes in surface available energy.

This study demonstrates that the improved MEP framework has significantly improved the accuracy of the original MEP theory, addressing both the underestimation of latent heat and the overestimation of sensible heat flux. This improvement was achieved by incorporating the impact of heat storage and modifying the Bowen ratio formula within the MEP theory. The consideration of heat storage resolved the issue of seasonal phase mismatches (approximately 6-month lags) between MEP estimates and buoy observations. Building upon this improvement, this study further optimized the energy partitioning process by correcting the Bowen ratio, linearly adjusting the equilibrium Bowen ratio to align with actual conditions. Four empirical Bowen

ratio formulas for modifying the MEP method were assessed globally, identifying $B_{oa}=0.24B_o^*$ as the most accurate formula for estimating latent heat flux within MEP method. The impact of heat storage on estimating heat fluxes was quantified through ~~the~~ sensitivity analysis. Net radiation and heat storage were identified as the primary drivers of evaporation estimates. A 10% decrease in positive heat storage led to a 7.4% increase in evaporation, whereas a 10% increase in negative heat storage resulted in a 2.9% increase.

Compared to existing bulk methods, the MEP model offers several advantages, including the ~~need~~requirement for fewer input variables, independence from wind speed, and insensitivity to variations in temperature and humidity. The MEP-~~der~~ived ocean heat flux dataset has been validated and provides accurate estimates of latent heat flux. Additionally, this MEP method can be applied to estimate evaporation from other deep-water surfaces, such as lakes and reservoirs where heat storage is significant. Overall, the MEP-derived ocean heat flux dataset provides high global accuracy, fine spatial resolution (0.25°), and extensive long-term temporal records. This dataset is expected to be valuable for applications related to global ocean warming, hydrological cycles, and their interactions with other Earth system components in the context of climate change.

Supplement. The Supplementary material related to this article is submitted during submission.

Author contributions. YY and HS developed the methodology and designed the experiments, WZ contributed the conceptual design, YY and WZ collected and processed the data, YY wrote the first draft of the paper under the supervision of other authors. All authors participated in the ~~review~~revising and editing of the ~~paper~~manuscript.

Competing interests. The contact author has declared that none of the authors has any competing interests.

Acknowledgments. We acknowledge the GTMBA Project Office of NOAA/PMEL for providing the Global Tropical Moored Buoy Array observations. This study was primarily funded by the Third Xinjiang Scientific Expedition Program (Grant No.2022xjkk0105) (H.S.). The authors acknowledge funding from the NSFC project (52079055, 52011530128). H.S. and W.Z. acknowledges funding from the NSFC-STINT projects (No. 202100-3211 and CH2019-8281). W.-Z. was supported by the grants from Swedish Research Council VR (2020-05338), and Swedish National space Agency (209/19).

References

- Andreas, E. L., & Cash, B. A.: A new formulation for the Bowen ratio over saturated surfaces. *Journal of Applied Meteorology and Climatology*, 35(8), 1279-1289, [https://doi.org/10.1175/1520-0450\(1996\)035%3C1279:ANFFTB%3E2.0.CO;2](https://doi.org/10.1175/1520-0450(1996)035%3C1279:ANFFTB%3E2.0.CO;2), 1996.
- Andreas, E. L., Jordan, R. E., Mahrt, L., & Vickers, D.: Estimating the Bowen ratio over the open and ice-covered ocean. *Journal of Geophysical Research: Oceans*, 118(9), 4334-4345, <https://doi.org/10.1002/jgrc.20295>, 2013.
- Andreas, E. L., Persson, P. O. G., & Hare, J. E.: A bulk turbulent air–sea flux algorithm for high-wind, spray conditions. *Journal of Physical Oceanography*, 38(7), 1581-1596, <https://doi.org/10.1175/2007JPO3813.1>, 2008.
- Bai, P., & Guo, X.: Development of a 60-year high-resolution water body evaporation dataset in China. *Agricultural and Forest Meteorology*, 334, 109428, <https://doi.org/10.1016/j.agrformet.2023.109428>, 2023.
- Bai, P., & Wang, Y.: The importance of heat storage for estimating lake evaporation on different time scales: Insights from a large shallow subtropical lake. *Water Resources Research*, 59, e2023WR035123. <https://doi.org/10.1029/2023WR035123>, 2023.
- Bentamy, A., Piolle, J. F., Grouazel, A., Danielson, R., Gulev, S., Paul, F., ... & Josey, S. A.: Review and assessment of latent and sensible heat flux accuracy over the global oceans. *Remote Sensing of Environment*, 201, 196-218, <https://doi.org/10.1016/j.rse.2017.08.016>, 2017.
- Beven, K.: A sensitivity analysis of the Penman-Monteith actual evapotranspiration estimates. *Journal of Hydrology*, 44(3–4), 169-190, [https://doi.org/10.1016/0022-1694\(79\)90130-6](https://doi.org/10.1016/0022-1694(79)90130-6), 1979.
- Bosilovich, M. G., Robertson, F. R., & Chen, J.: Global energy and water budgets in MERRA. *Journal of Climate*, 24(22), 5721-5739, <https://doi.org/10.1175/2011JCLI4175.1>, 2011.
- Bourras, D.: Comparison of five satellite-derived latent heat flux products to moored buoy data. *Journal of Climate*, 19(24), 6291-6313, <https://doi.org/10.1175/JCLI3977.1>, 2006.
- Chen, X., Yao, Y., Li, Y., Zhang, Y., Jia, K., Zhang, X., ... & Guo, X.: ANN-based estimation of low-latitude monthly ocean latent heat flux by ensemble satellite and reanalysis products. *Sensors*, 20(17), 4773, <https://doi.org/10.3390/s20174773>, 2020.
- Cheng, L., Pan, Y., Tan, Z., Zheng, H., Zhu, Y., Wei, W., ... & Zhu, J.: IAPv4 ocean temperature and ocean heat content gridded dataset. *Earth System Science Data Discussions*, 1-56, <https://doi.org/10.5194/essd-16-3517-2024>, 2024.
- Cheng, L., Trenberth, K. E., Fasullo, J., Boyer, T., Abraham, J., & Zhu, J.: Improved estimates of ocean heat content from 1960 to 2015. *Science Advances*, 3(3), e1601545, <https://doi.org/10.1126/sciadv.1601545>, 2017.
- Cheng, L., von Schuckmann, K., Abraham, J. P., Trenberth, K. E., Mann, M. E., Zanna, L., ... & Lin, X.: Past and future ocean warming. *Nature Reviews Earth & Environment*, 3(11), 776-794, <https://doi.org/10.1038/s43017-022-00345-1>, 2022.

- Duan, S. B., Zhou, S., Li, Z. L., Liu, X., Chang, S., Liu, M., ... & Shang, G.: Improving monthly mean land surface temperature estimation by merging four products using the generalized three-cornered hat method and maximum likelihood estimation. *Remote Sensing of Environment*, 302, 113989, <https://doi.org/10.1016/j.rse.2023.113989>, 2024.
- Fairall, C. W., Bradley, E. F., Hare, J. E., Grachev, A. A., & Edson, J. B.: Bulk parameterization of air–sea fluxes: Updates and verification for the COARE algorithm. *Journal of climate*, 16(4), 571–591, [https://doi.org/10.1175/1520-0442\(2003\)016%3C0571:BPOASF%3E2.0.CO;2](https://doi.org/10.1175/1520-0442(2003)016%3C0571:BPOASF%3E2.0.CO;2), 2003.
- Fairall, C. W., Bradley, E. F., Rogers, D. P., Edson, J. B., & Young, G. S.: Bulk parameterization of air-sea fluxes for tropical ocean-global atmosphere coupled-ocean atmosphere response experiment. *Journal of Geophysical Research: Oceans*, 101(C2), 3747–3764, <https://doi.org/10.1029/95JC03205>, 1996.
- Gelaro, R., McCarty, W., Suárez, M. J., Todling, R., Molod, A., Takacs, L., ... & Zhao, B.: The modern-era retrospective analysis for research and applications, version 2 (MERRA-2). *Journal of climate*, 30(14), 5419–5454, <https://doi.org/10.1175/JCLI-D-16-0758.1>, 2017.
- Guo, J., Li, W., Chang, X., Zhu, G., Liu, X., & Guo, B.: Terrestrial water storage changes over Xinjiang extracted by combining Gaussian filter and multichannel singular spectrum analysis from GRACE. *Geophysical Journal International*, 213(1), 397–407, <https://doi.org/10.1093/gji/ggy006>, 2018.
- He, X., Xu, T., Xia, Y., Bateni, S. M., Guo, Z., Liu, S., ... & Zhao, J.: A Bayesian three-cornered hat (BTCH) method: improving the terrestrial evapotranspiration estimation. *Remote Sensing*, 12(5), 878, <https://doi.org/10.3390/rs12050878>, 2020.
- Hersbach, H., Bell, B., Berrisford, P., Hirahara, S., Horányi, A., Muñoz-Sabater, J., ... & Thépaut, J. N.: The ERA5 global reanalysis. *Quarterly Journal of the Royal Meteorological Society*, 146(730), 1999–2049, <https://doi.org/10.1002/qj.3803>, 2020.
- Hicks, B. B., & Hess, G. D.: On the Bowen ratio and surface temperature at sea. *Journal of physical oceanography*, 7(1), 141–145, [https://doi.org/10.1175/1520-0485\(1977\)007%3C0141:OTBRAS%3E2.0.CO;2](https://doi.org/10.1175/1520-0485(1977)007%3C0141:OTBRAS%3E2.0.CO;2), 1977.
- Huang, S. Y., Deng, Y., & Wang, J.: Revisiting the global surface energy budgets with maximum-entropy-production model of surface heat fluxes. *Climate Dynamics*, 49, 1531–1545, <https://link.springer.com/article/10.1007/s00382-016-3395-x>, 2017.
- Isabelle, P. E., Viens, L., Nadeau, D. F., Anctil, F., Wang, J., & Maheu, A.: Sensitivity analysis of the maximum entropy production method to model evaporation in boreal and temperate forests. *Geophysical Research Letters*, 48(13), e2020GL091919, <https://doi.org/10.1029/2020GL091919>, 2021.
- Iwasaki, S., Kubota, M., & Watabe, T.: Assessment of various global freshwater flux products for the global ice-free oceans. *Remote sensing of environment*, 140, 549–561, <https://doi.org/10.1016/j.rse.2013.09.026>, 2014.
- Jo, Y. H., Yan, X. H., Pan, J., He, M. X., & Liu, W. T.: Calculation of the Bowen ratio in the tropical Pacific using sea surface temperature data. *Journal of Geophysical Research: Oceans*, 107(C9), 17–1, <https://doi.org/10.1029/2001JC001150>, 2002.

- Johnson, G. C., & Lyman, J. M.: Warming trends increasingly dominate global ocean. *Nature Climate Change*, 10(8), 757-761, <https://doi.org/10.1038/s41558-020-0822-0>, 2020.
- Konapala, G., Mishra, A. K., Wada, Y., & Mann, M. E.: Climate change will affect global water availability through compounding changes in seasonal precipitation and evaporation. *Nature communications*, 11(1), 3044, <https://doi.org/10.1038/s41467-020-16757-w>, 2020.
- Lenhart, T., Eckhardt, K., Fohrer, N., & Frede, H. G.: Comparison of two different approaches of sensitivity analysis. *Physics and Chemistry of the Earth, Parts A/B/C*, 27(9-10), 645-654, [https://doi.org/10.1016/S1474-7065\(02\)00049-9](https://doi.org/10.1016/S1474-7065(02)00049-9), 2002.
- Li, Z., England, M. H., & Groeskamp, S.: Recent acceleration in global ocean heat accumulation by mode and intermediate waters. *Nature Communications*, 14(1), 6888, <https://doi.org/10.1038/s41467-023-42468-z>, 2023.
- Liang, H., Jiang, B., Liang, S., Peng, J., Li, S., Han, J., ... & Zhang, X.: a global long-term ocean surface daily/0.05 net radiation product from 1983–2020. *Scientific Data*, 9(1), 337, <https://doi.org/10.1038/s41597-022-01419-x>, 2022.
- Liu, C., Liang, X., Ponte, R. M., Vinogradova, N., & Wang, O.: Vertical redistribution of salt and layered changes in global ocean salinity. *Nature communications*, 10(1), 3445, <https://doi.org/10.1038/s41467-019-11436-x>, 2019.
- Liu, J., Chai, L., Dong, J., Zheng, D., Wigneron, J. P., Liu, S., ... & Lu, Z.: Uncertainty analysis of eleven multisource soil moisture products in the third pole environment based on the three-corned hat method. *Remote sensing of environment*, 255, 112225, <https://doi.org/10.1016/j.rse.2020.112225>, 2021.
- Liu, Z., & Yang, H.: Estimation of water surface energy partitioning with a conceptual atmospheric boundary layer model. *Geophysical Research Letters*, 48(9), e2021GL092643, <https://doi.org/10.1029/2021GL092643>, 2021.
- Long, D., Pan, Y., Zhou, J., Chen, Y., Hou, X., Hong, Y., ... & Longuevergne, L.: Global analysis of spatiotemporal variability in merged total water storage changes using multiple GRACE products and global hydrological models. *Remote sensing of environment*, 192, 198-216, <https://doi.org/10.1016/j.rse.2017.02.011>, 2017.
- Marti, F., Blazquez, A., Meyssignac, B., Ablain, M., Barnoud, A., Fraudeau, R., ... & Benveniste, J.: Monitoring the ocean heat content change and the Earth energy imbalance from space altimetry and space gravimetry. *Earth System Science Data*, 14(1), 229-249, <https://doi.org/10.5194/essd-14-229-2022>, 2022.
- Masson-Delmotte V, Zhai P, Pirani S, Connors C, Péan S, Berger N, et al.: IPCC, 2021: Summary for policymakers. in: *Climate change 2021: The physical science basis. contribution of working group I to the sixth assessment report of the intergovernmental panel on climate change*, pp.3–32, doi:10.1017/9781009157896.001, 2021.
- McMahon, T. A., Peel, M. C., Lowe, L., Srikanthan, R., & McVicar, T. R.: Estimating actual, potential, reference crop and pan evaporation using standard meteorological data: a pragmatic synthesis.

- Hydrology and Earth System Sciences, 17(4), 1331-1363, <https://doi.org/10.5194/hess-17-1331-2013>, 2013.
- Medhaug, I., Stolpe, M. B., Fischer, E. M., & Knutti, R.: Reconciling controversies about the ‘global warming hiatus’. *Nature*, 545 (7652), 41-47, <https://doi.org/10.1038/nature22315>, 2017.
- Meehl, G. A.: A calculation of ocean heat storage and effective ocean surface layer depths for the Northern Hemisphere. *Journal of physical oceanography*, 14(11), 1747-1761, [https://doi.org/10.1175/1520-0485\(1984\)014%3C1747:ACOOHS%3E2.0.CO;2](https://doi.org/10.1175/1520-0485(1984)014%3C1747:ACOOHS%3E2.0.CO;2), 1984.
- Pelletier, C.: [https://doi.org/10.1175/1520-0485\(1984\)014%3C1747:ACOOHS%3E2.0.CO;2](https://doi.org/10.1175/1520-0485(1984)014%3C1747:ACOOHS%3E2.0.CO;2), 1984.
- Morton, F. I.: Evaporation research—a critical review and its lessons for the environmental sciences. *Critical Reviews in Environmental Science and Technology*, 24(3), 237–280. <https://doi.org/10.1080/10643389409388467>, 1994.
- Pelletier, C., Lemarié, F., & Blayo, E.: Sensitivity analysis and metamodels for the bulk parametrization of turbulent air–sea fluxes. *Quarterly Journal of the Royal Meteorological Society*, 144(712), 658-669, <https://doi.org/10.1002/qj.3233>, 2018.
- Philip, J.R.: A physical bound on the Bowen ratio. *Journal of Climate and Applied Meteorology*, 26, 1043–1045, [https://doi.org/10.1175/1520-0450\(1987\)026%3C1043:APBOTB%3E2.0.CO;2](https://doi.org/10.1175/1520-0450(1987)026%3C1043:APBOTB%3E2.0.CO;2), 1987.
- Pinker, R. T., & Laszlo, I.: Modeling surface solar irradiance for satellite applications on a global scale. *Journal of Applied Meteorology and Climatology*, 31(2), 194-211, [https://doi.org/10.1175/1520-0450\(1992\)031%3C0194:MSSIFS%3E2.0.CO;2](https://doi.org/10.1175/1520-0450(1992)031%3C0194:MSSIFS%3E2.0.CO;2), 1992.
- Pokhrel, S., Dutta, U., Rahaman, H., Chaudhari, H., Hazra, A., Saha, S. K., & Veeranjanyulu, C.: Evaluation of different heat flux products over the tropical Indian Ocean. *Earth and Space Science*, 7(6), e2019EA000988, <https://doi.org/10.1029/2019EA000988>, 2020.
- Priestley, C. H. B., & Taylor, R. J.: On the assessment of surface heat flux and evaporation using large-scale parameters. *Monthly weather review*, 100(2), 81-92, [https://doi.org/10.1175/1520-0493\(1972\)100%3C0081:OTAOSH%3E2.3.CO;2](https://doi.org/10.1175/1520-0493(1972)100%3C0081:OTAOSH%3E2.3.CO;2), 1972.
- Robertson, F. R., Roberts, J. B., Bosilovich, M. G., Bentamy, A., Clayson, C. A., Fennig, K., ... & Slivinski, L. C.: Uncertainties in ocean latent heat flux variations over recent decades in satellite-based estimates and reduced observation reanalyses. *Journal of Climate*, 33(19), 8415-8437, <https://doi.org/10.1175/JCLI-D-19-0954.1>, 2020.
- Roderick, M. L., Sun, F., Lim, W. H., & Farquhar, G. D.: A general framework for understanding the response of the water cycle to global warming over land and ocean. *Hydrology and Earth System Sciences*, 18(5), 1575-1589, <https://doi.org/10.5194/hess-18-1575-2014>, 2014.
- Rutan, D. A., Kato, S., Doelling, D. R., Rose, F. G., Nguyen, L. T., Caldwell, T. E., & Loeb, N. G.: CERES synoptic product: Methodology and validation of surface radiant flux. *Journal of Atmospheric and Oceanic Technology*, 32(6), 1121-1143, <https://doi.org/10.1175/JTECH-D-14-00165.1>, 2015.

- Shaman, J., & Kohn, M.: Absolute humidity modulates influenza survival, transmission, and seasonality. *Proceedings of the National Academy of Sciences*, 106(9), 3243-3248, DOI: 10.1073/pnas.0806852106, 2009.
- Shao, X., Zhang, Y., Liu, C., Chiew, F. H., Tian, J., Ma, N., & Zhang, X.: Can indirect evaluation methods and their fusion products reduce uncertainty in actual evapotranspiration estimates?. *Water Resources Research*, 58(6), e2021WR031069, <https://doi.org/10.1029/2021WR031069>, 2022.
- Smith, S. R., Hughes, P. J., & Bourassa, M. A.: A comparison of nine monthly air–sea flux products. *International Journal of Climatology*, 31(7), 1002-1027, <https://doi.org/10.1002/joc.2225>, 2011.
- Sun, H., Chen, J., Yang, Y., Yan, D., Xue, J., Wang, J., & Zhang, W.: Assessment of long-term water stress for ecosystems across China using the maximum entropy production theory-based evapotranspiration product. *Journal of Cleaner Production*, 349, 131414, <https://doi.org/10.1016/j.jclepro.2022.131414>, 2022.
- Sun, H., Sun, X., Chen, J., Deng, X., Yang, Y., Qin, H., ... & Zhang, W.: Different types of meteorological drought and their impact on agriculture in Central China. *Journal of Hydrology*, 627, 130423, <https://doi.org/10.1016/j.jhydrol.2023.130423>, 2023.
- Sung, M. K., An, S. I., Shin, J., Park, J. H., Yang, Y. M., Kim, H. J., & Chang, M: Ocean fronts as decadal thermostats modulating continental warming hiatus. *Nature communications*, 14(1), 7777, <https://doi.org/10.1038/s41467-023-43686-1>, 2023.
- Tang, R., Wang, Y., Jiang, Y., Liu, M., Peng, Z., Hu, Y., ... & Li, Z. L.: A review of global products of air–sea turbulent heat flux: accuracy, mean, variability, and trend. *Earth-Science Reviews*, 104662, <https://doi.org/10.1016/j.earscirev.2023.104662>, 2023.
- Tian, W., Liu, X., Wang, K., Bai, P., Liu, C., & Liang, X.: Estimation of global reservoir evaporation losses. *Journal of Hydrology*, 607, 127524, <https://doi.org/10.1016/j.jhydrol.2022.127524>, 2022.
- Tomita, H., Hihara, T., & Kubota, M.: Improved satellite estimation of near-surface humidity using vertical water vapor profile information. *Geophysical Research Letters*, 45(2), 899-906, <https://doi.org/10.1002/2017GL076384>, 2018.
- Tomita, H., Hihara, T., Kako, S. I., Kubota, M., & Kutsuwada, K.: An introduction to J-OFURO3, a third-generation Japanese ocean flux data set using remote-sensing observations. *Journal of Oceanography*, 75(2), 171-194, <https://doi.org/10.1007/s10872-018-0493-x>, 2019.
- Tomita, H., Kutsuwada, K., Kubota, M., & Hihara, T.: Advances in the estimation of global surface net heat flux based on satellite observation: J-OFURO3 V1. 1. *Frontiers in Marine Science*, 8, 612361, <https://doi.org/10.3389/fmars.2021.612361>, 2021.
- Von Schuckmann, K., Minière, A., Gues, F., Cuesta-Valero, F. J., Kirchengast, G., Adusumilli, S., ... & Zemp, M.: Heat stored in the Earth system 1960–2020: where does the energy go?. *Earth System Science Data*, 15(4), 1675-1709, <https://doi.org/10.5194/essd-15-1675-2023>, 2023.

- Wang, F., Shen, Y., Chen, Q., & Wang, W.: ~~Bridging the gap between GRACE and GRACE follow-on monthly gravity field solutions using improved multichannel singular spectrum analysis. Journal of Hydrology, 594, 125972, <https://doi.org/10.1016/j.jhydrol.2021.125972>, 2021.~~
- Wang, J., & Bras, R. L.: A model of evapotranspiration based on the theory of maximum entropy production. *Water Resources Research*, 47(3), <https://doi.org/10.1029/2010WR009392>, 2011.
- Wang, J., & Bras, R. L.: An extremum solution of the Monin–Obukhov similarity equations. *Journal of the atmospheric sciences*, 67(2), 485-499, <https://doi.org/10.1175/2009JAS3117.1>, 2010.
- Wang, J., Bras, R. L., Nieves, V., & Deng, Y.: A model of energy budgets over water, snow, and ice surfaces. *Journal of Geophysical Research: Atmospheres*, 119(10), 6034-6051, <https://doi.org/10.1002/2013JD021150>, 2014.
- Wang, K., & Dickinson, R. E.: A review of global terrestrial evapotranspiration: Observation, modeling, climatology, and climatic variability. *Reviews of Geophysics*, 50(2), <https://doi.org/10.1029/2011RG000373>, 2012.
- Wang, W., Chakraborty, T. C., Xiao, W., & Lee, X.: Ocean surface energy balance allows a constraint on the sensitivity of precipitation to global warming. *Nature Communications*, 12(1), 2115, <https://doi.org/10.1038/s41467-021-22406-7>, 2021.
- Wentz, F. J., Ricciardulli, L., Hilburn, K., & Mears, C.: How much more rain will global warming bring?. *Science*, 317(5835), 233-235, DOI:10.1126/science.1140746, 2007.
- Wielicki, B. A., Barkstrom, B. R., Harrison, E. F., Lee III, R. B., Smith, G. L., & Cooper, J. E.: Clouds and the Earth's Radiant Energy System (CERES): An earth observing system experiment. *Bulletin of the American Meteorological Society*, 77(5), 853-868, [https://doi.org/10.1175/1520-0477\(1996\)077%3C0853:CATERE%3E2.0.CO;2](https://doi.org/10.1175/1520-0477(1996)077%3C0853:CATERE%3E2.0.CO;2), 1996.
- Xu, T., Guo, Z., Xia, Y., Ferreira, V. G., Liu, S., Wang, K., ... & Zhao, C.: Evaluation of twelve evapotranspiration products from machine learning, remote sensing and land surface models over conterminous United States. *Journal of Hydrology*, 578, 124105, <https://doi.org/10.1016/j.jhydrol.2019.124105>, 2019.
- Yang, Y., & Roderick, M. L.: Radiation, surface temperature and evaporation over wet surfaces. *Quarterly Journal of the Royal Meteorological Society*, 145(720), 1118–1129, <https://doi.org/10.1002/qj.3481>, 2019.
- Yang, Y., Roderick, M. L., Guo, H., Miralles, D. G., Zhang, L., Fatichi, S., ... & Yang, D.: Evapotranspiration on a greening Earth. *Nature Reviews Earth & Environment*, 4(9), 626-641, <https://doi.org/10.1038/s43017-023-00464-3>, 2023.
- Yang, Y., Sun, H., Zhu, M., Wang, J., & Zhang, W.: An R package of maximum entropy production model to estimate 41 years of global evapotranspiration. *Journal of Hydrology*, 614, 128639, <https://doi.org/10.1016/j.jhydrol.2022.128639>, 2022.

- Yin, Y., Wu, S., Chen, G., & Dai, E.: Attribution analyses of potential evapotranspiration changes in China since the 1960s. *Theoretical and applied climatology*, 101, 19-28, <https://doi.org/10.1007/s00704-009-0197-7>, 2010.
- Yu, L., X. Jin, and R. A. Weller.: Multidecade Global Flux Datasets from the Objectively Analyzed Air-sea Fluxes (OAFlux) Project: Latent and sensible heat fluxes, ocean evaporation, and related surface meteorological variables. Woods Hole Oceanograp, 2008.
- Yu, L.: A global relationship between the ocean water cycle and near-surface salinity. *Journal of Geophysical Research: Oceans*, 116(C10), <https://doi.org/10.1029/2010JC006937>, 2011.
- Zeng, X., Zhao, M., & Dickinson, R. E.: Intercomparison of bulk aerodynamic algorithms for the computation of sea surface fluxes using TOGA COARE and TAO data. *Journal of Climate*, 11(10), 2628-2644, [https://doi.org/10.1175/1520-0442\(1998\)011%3C2628:IOBAAF%3E2.0.CO;2](https://doi.org/10.1175/1520-0442(1998)011%3C2628:IOBAAF%3E2.0.CO;2), 1998.
- Zhao, G., & Gao, H.: Estimating reservoir evaporation losses for the United States: Fusing remote sensing and modeling approaches. *Remote Sensing of Environment*, 226, 109-124, <https://doi.org/10.1016/j.rse.2019.03.015>, 2019.
- Zhao, G., Gao, H., Naz, B. S., Kao, S. C., & Voisin, N.: Integrating a reservoir regulation scheme into a spatially distributed hydrological model. *Advances in Water Resources*, 98, 16-31, <https://doi.org/10.1016/j.advwatres.2016.10.014>, 2016.
- Zhao, G., Li, Y., Zhou, L., & Gao, H.: Evaporative water loss of 1.42 million global lakes. *Nature Communications*, 13(1), 3686, <https://doi.org/10.1038/s41467-022-31125-6>, 2022.