

ReefTEMPS: The Pacific Islands Coastal Temperature Network

Romain Le Gendre^{1,6}, David Varillon², Sylvie Fiat¹, Régis Hocdé³, Antoine de Ramon N’Yeurt⁴, Jérôme Aucan⁵, Sophie Cravatte⁶, Maxime Duphil¹, Alexandre Ganachaud⁶, Baptiste Gaudron², Elodie Kestenare⁶, Vetea Liao⁷, Bernard Pelletier⁸, Alexandre Peltier⁹, Anne-Lou Schaefer¹, Thomas Trophime⁷, Simon Van Wynsberge¹⁰, Yves Dandonneau⁸, Michel Allenbach⁸ and Christophe Menkes¹

¹UMR 9220 ENTROPIE (Ifremer, IRD, Univ. Réunion, Univ. Nouvelle-Calédonie, CNRS), BP 32078, 98897 Nouméa CEDEX, New Caledonia

²UAR 191 IMAGO (IRD. Nouvelle-Calédonie), BPA5, 98948 Nouméa, New Caledonia

³MARBEC (Univ Montpellier, CNRS, Ifremer, IRD), Montpellier, France

⁴Pacific Centre for Environment and Sustainable Development (PaCE-SD), the University of the South Pacific, Suva, Fiji

⁵Pacific Community Centre for Ocean Science (PCCOS), 98848 Nouméa, New Caledonia

⁶Université de Toulouse, LEGOS (IRD/UT3/CNES/CNRS), Toulouse, France

⁷Direction des Ressources Marines, Papeete, French Polynesia

⁸Retired

⁹Météo-France, interregional office in New Caledonia and Wallis-and-Futuna, Noumea, New Caledonia

¹⁰Ifremer, IRD, ILM, UPF, UMR 241 SECOPOL, Vairao, 98725, Tahiti, French Polynesia.

Correspondence to: Christophe Menkes (christophe.menkes@ird.fr) and Romain Le Gendre (romain.le.gendre@ifremer.fr)

41 **Abstract.** While the rise in global ocean temperature continues its course, reaching $1.45 \pm 0.12^{\circ}\text{C}$ above pre-industrial level
42 according to the World Meteorological Organization in 2023, marine heat waves frequencies and intensities increase.
43 Consequently, coral reef ecosystems which are among the most vulnerable environments are strongly impacted with dystrophic
44 events and corals experiencing increasing frequencies of bleaching events. That has devastating consequences for the Pacific
45 Island Countries and Territories (PICTS) that strongly rely on these ecosystems. In-situ observation remains the best alternative
46 for providing accurate characterization of long-term trends and extremes in these shallow environments. This paper presents
47 the coastal temperature dataset of the ReefTEMPS monitoring network in which moored stations are implemented over a
48 number of PICTS over a wide region in the Western and Central South Pacific from New Caledonia to French Polynesia.
49 These in situ temperature time series are unique in several ways: in the length of some historical stations dating back to 1958
50 for the oldest, thus providing more than 65 years of daily data; in the number of countries sampled (16 PICTS) ; and in the
51 variety of coral ecosystems monitored (from atolls to high islands and from barrier reef's external slopes to shallow and narrow
52 lagoons). Measurement devices have evolved over the years to provide increasingly precise and frequent observations so that
53 the ReefTEMPS network was endorsed as a French National Observation Service in 2020, a label ensuring quality controlled
54 and open access data of long-term observations. All stations are publicly available in ASCII or formatted NetCDF files, either
55 on the ReefTEMPS dedicated Information System which also allows quick visualisation of time series, or in the SEANOE
56 marine data platform. All links and accesses to these temperature time series are provided herein. The longevity of these
57 temperature time series allows diagnosing long-term trends, highlighting the influence of multiple processes on temperature
58 dynamics (e.g., internal waves, cyclones, seasonal and climate modes) and documenting the time evolution of extreme events.
59 All files are made publicly available in dedicated SEANOE repositories (DOI provided herein).

a supprimé:

61 1 Introduction

62 Sea temperature is a key variable in oceanic, atmospheric and coupled ocean-atmosphere studies. It is an essential variable to
63 be considered when characterising climate variability and climate change. In addition, it is also key for understanding marine
64 ecosystems responses to thermal variability because of its wide influence on marine biogeochemistry and diversity (Kurylyk
65 et Smith, 2023). It more particularly influences marine species spatial and temporal distributions (Pinsky et al., 2020; Righetti
66 et al., 2019) and their life cycles (Dahlke et al., 2020). Understanding the evolution of oceanic temperatures is crucial to infer
67 how global marine biodiversity and biomass will evolve as climate change is producing extremes that may not have been
68 experienced by marine life before (Smale et al., 2019).

69 Since the 1980s, the advent of satellites has provided a better knowledge on how surface oceanic temperatures evolve at scales
70 of $\sim 25\text{km}$ (Minnett et al., 2019). Products such as OISST offer a retrospective view back to 1982 at 0.25° resolution (Reynolds
71 et al., 2007). Lately, this synoptic capacity to observe surface temperature has strongly progressed into much higher spatial
72 resolution with international efforts producing blended daily products up to $\sim 1\text{km}$ resolution at global scale (e.g., MUR SST,
73 Chin et al., 2017). This new higher resolution surface products have been complemented, since 1999, by in situ observations

a supprimé: quality control and

of the water column temperature, with the launch of the global array of autonomous free-drifting profiling floats mainly in the open ocean (ARGO, Wong et al., 2020).

Yet, coastal and shallow water areas remain largely undersampled. First, Argo floats cannot drift in shallow waters, and at the coastal scale, even the highest resolution global satellite products are plagued by many sources of artefacts that cause remotely-borne temperature observations to strongly diverge from observed in situ estimates (Goebeler et al., 2022, Smit et al., 2013). Coastal areas often display high complexity and variability in terms of bathymetry, coastlines or freshwater inputs that create thermal micro-habitats that satellite data do not resolve properly. Resolution offered by satellites can also lead to a misrepresentation of true thermal extremes experienced at the coastal zone (Schlegel et al., 2017; Van Wynsberge et al., 2017). In addition, processes affecting infra-daily sea surface temperature variability (e.g diurnal heating signal, tidal signal or internal waves, Colin and Johnston, 2020) are invisible to most remotely-sensed techniques that only provide daily estimation of surface temperature. Some satellite measurements may provide these temporal scales (e.g Himawari, Kurihara, 2016) but over short time periods. Satellite products generally provide estimates of the upper 10-m temperature based on their radiometer measurements of the skin temperature and other parameters with inherent limitations to describe the water column or benthic thermal variability experienced by sessile organisms (Minnett et al., 2019).

At present, the only way to obtain true continuous temperature measurements in shallow water environments comes from moored observations. While those cannot assess the spatial scales that satellites cover, they provide ground truth temperature measurements of the water column at very high frequency and over long-time periods if moored observing systems are implemented in perennial manners. It is thus of crucial importance to maintain and enhance these arrays especially in small islands surrounded by coral reef environments where ecosystems goods and services are fundamental for people's well-being (Santavy et al., 2021).

Coastal observations are hence essential prerequisites to manage and mitigate risks, generate prediction of coastal hydrodynamics including temperature dynamics and create a continuous observing network from terrestrial to oceanic ecosystems (Malone et al., 2014). Knowledge about coastal sea water temperature variability is critical as it is part of the backbone of core biogeochemical and physical observations needed to inform management bodies and scientists on coastal events and processes (Bailey et al., 2019). In a warming world that exacerbates occurrence of extreme events such as marine heatwaves (IPCC, 2023), long term coastal monitoring of high-temporal-resolution-temperature is of crucial importance for making reliable assessment of these changes at all scales, from sub-diurnal to multidecadal (Goebeler et al., 2022; Salat et al., 2019). Shorter-term observations of temperature are also proving crucial for understanding mechanisms driving short-term temperature dynamics and for validating and setting up statistical or numerical modelling tools able to simulate thermal short-term variability (McCabe et al., 2010; Van Wynsberge et al., 2017). Misrepresentation of such short-term coastal processes may hamper our ability to perform long-term future projection for coastal ecosystems (Siedlecki et al., 2021)

Those general considerations on the need for in situ monitoring of temperature in coastal environments are particularly true for coral ecosystems. In these ecosystems, concerns about temperature effects have arisen since the 1998 global bleaching event. Although “localised” bleaching and dystrophic events have been reported since 1982 in the Pacific and Indian ocean as

110 well as in the Caribbean Sea (Goreau et al., 2000), the intensity and spatial extent of the 1998 event led to the awareness that
111 global coral ecosystems may be durably endangered by climate variability (Hughes et al., 2017). This also stressed the necessity
112 to better understand the complex relationships between coral bleaching and extreme ocean temperatures. In the tropical Pacific,
113 the health of coral reef ecosystems is a fundamental issue as it has a major impact on food security as well as sources of income
114 for Pacific islanders (Bell et al., 2017). As ocean warming and heatwaves are actually recognized as the most significant and
115 growing threats to coral reefs (IPCC, 2023), in situ temperature monitoring appears of fundamental importance to better assess
116 their fate in the future by being able to document lethal thresholds from in situ data and/or possibly find more heat-tolerant
117 coral reef populations (De Carlo et al., 2019; Rivera et al., 2022) for example.

118 Temperature variability within coral reef ecosystems (such as lagoons, outer reef slopes, reef flats or terraces) can be controlled
119 by a variety of physical drivers of both oceanic and atmospheric origins (Herdman et al., 2015; Grimaldi et al., 2023).
120 Moreover, interactions of physical processes (tides, wind, waves down to turbulence within coral canopy) with complex
121 bathymetry induced by coral reefs geomorphology can lead to thermal microclimates (Reid et al., 2020). The resulting local
122 thermal signatures can thus be observed only by the means of in situ monitoring and strongly supports field observations for
123 understanding coral bleaching (Safaie et al., 2018; Green et al., 2019) or coral cover spatial heterogeneity (Rogers et al., 2016).
124 Toward that end, several in situ coastal water temperature monitoring strategies have been launched since early 2000s in the
125 tropical Pacific, either at a regional scale (e.g Potemra et al., 2017 for the Pacific Island Ocean Observing System : PacIOOS),
126 or at country scales (e.g Palau – Coral Reef Research Foundation et Colin, 2018; Australia – Lynch et al., 2014; Federated
127 States of Micronesia, Pohnpei – Rowley et al., 2019; French Polynesia, Morea LTER Network – Leichter et al., 2013).

128 Along these lines, the ReefTEMPS initiative has been federating past and on-going coastal scale projects or temperature
129 datasets in the South-Central and South-West Pacific islands. One of the strengths of this network is to maintain long-time
130 observational efforts for quality measurements so that it gathers a number of in situ coastal temperature data dating back from
131 1958. The ReefTEMPS monitoring initiative is thus dedicated to documenting a range of temporal scales from long-term trends
132 of coastal ocean temperature associated with climate change and their impacts on coral reef systems to shorter time scale
133 processes shaping coastal thermal regimes within these ecosystems. In addition to honouring the observational effort, the
134 origins and scientific values of the past gathered datasets from different institutions, this paper aims to present the philosophy
135 and quality of this coastal reef monitoring current network and its future directions, in order to ensure the continuity of such
136 crucial observations. This paper is also a means by which to advocate future and more global collaborations on these
137 observations that will ensure the sustainability of the network regardless of the turmoils linked to funding uncertainties.

138 The paper is organised as follows. After a description of the history and current status of ReefTEMPS in section 2, section 3
139 provides details on sampling devices used since the beginning of observations. Section 4 sets out the overall strategy and
140 methods that ensure data quality while part 5 presents the philosophy of data management and dissemination. Finally, after a
141 brief presentation of some key applications of such temperature data in section 6, section 7 is dedicated to the perspectives and
142 future evolutions of ReefTEMPS.

143 **2 ReefTEMPS: Coastal temperature monitoring in Pacific Islands**

144 **2.1 History**

145 The ReefTEMPS (Pacific Islands Coastal Temperature Network) initiative, was officially launched in 2010 by the GOPS
146 (Grand Observatoire de l’environnement et de la biodiversité terrestre et marine du Pacifique Sud), by federating existing
147 coastal monitoring strategies and datasets and adding numerous sites of measurements in the South Pacific. In practice, the
148 adventure actually began much earlier. As early as 1958, in Nouméa (New Caledonia, NC), ORSTOM (Office de la Recherche
149 Scientifique et Technique Outre Mer, now IRD, Institute of Research for Sustainable Development)’s oceanographers were
150 convinced of the crucial value of repeated and prolonged measurements of sea parameters (temperature and salinity). Using
151 the material resources available at that time (oceanographic bucket), they worked hard to maintain daily observations of
152 temperature and salinity at the first long-term lagoon monitoring station of Anse Vata– Nouméa (Dandonneau, 1986, Fig. 1 -
153 Appendix B1). Ten years later, in 1967, a second historical station was set up, closer to the open ocean, on the islet of the
154 Amédée lighthouse (Fig. 1 - Appendix B1). The foundation of the ReefTEMPS network was born.

155 From 1992 to 2009, management and continuity of the existing monitoring network in New Caledonia lagoons has been steered
156 by IRD with the support of the Zoneco program (<https://www.zoneco.nc/>) with the start of new observation stations around
157 the mainland of NC, on both the west and east coasts and both northern and southern lagoons. This geographical extension
158 began mainly in 1997 when electronic sensors replaced manual sampling. 2010 was the official birth year of the ReefTEMPS
159 framework driven by the GOPS. In addition to major improvements on data archiving and dissemination infrastructures (Hocdé
160 & Fiat, 2013), ReefTEMPS expanded to other PICTS during 2011-2015. In 2011, with financial support from the Australian
161 Agency for International Development (AusAID), the Pacific Community (SPC) launched a project to help Pacific Island
162 countries in setting up pilot projects to monitor coastal fisheries and associated habitats. In this context, a dozen sensors were
163 deployed in Marshall Islands, Cook Islands, Papua New Guinea, Micronesia, Tuvalu and Kiribati and were integrated in
164 ReefTEMPS. In 2012, through a collaborative initiative, management of the historic stations on Wallis and Futuna was
165 entrusted to the University of New Caledonia. The same year, the Pacific Centre for Environment and Sustainable Development
166 (PaCE-SD) at the University of South Pacific in Fiji joined the ReefTEMPS initiative and began observations in Fijian coastal
167 waters, thus developing a long-lasting collaboration with ReefTEMPS which endures to this day. Finally, in 2021, the Direction
168 des Ressources Marines de Polynésie Française (DRM) also integrated ReefTEMPS by including their historical data from the
169 French Polynesian lagoon network RESOLAG (Liao et al., 2023) to the ReefTEMPS dataset and has since become another
170 major partner of the network.

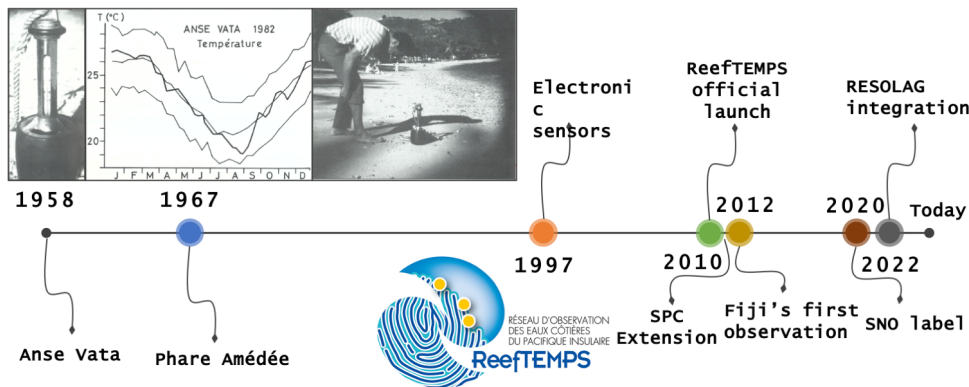
171 As an international observation network based in both the French Pacific territories and the Pacific Island states (Hocdé et al.,
172 2021), ReefTEMPS has been a key asset in the creation and design of France’s multi-agency Research Infrastructure for coastal
173 ocean observation ILICO (Cocquempot et al., 2019). Since 2019, ReefTEMPS has been one of the nine National Observation
174 Services (SNO) integrated in ILICO. These networks are accredited through a peer-reviewed evaluation process overseen by
175 French national research agencies every 5 years. ReefTEMPS was labelled as SNO by the french governmental “Ocean-

a supprimé: C1

a supprimé: C1

178 Atmosphere” commission for the 2020-2024 period and for the three parameters: temperature, conductivity and pressure. As
 179 a labelled network, ReefTEMPS is required to acquire and disseminate openly data of international quality standards.

180

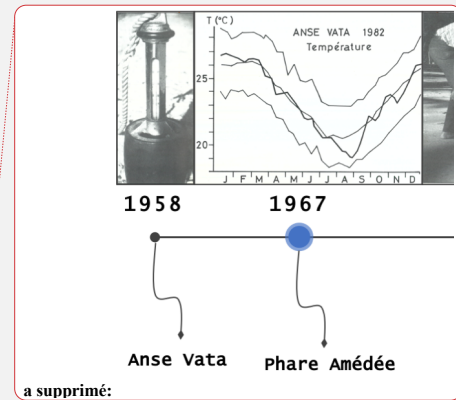


181

182 **Figure 1: Timeline of the main events of the ReefTEMPS Network.** During the first period until 1997, bucket measurements were
 183 done as depicted in the inserted photos from Dandonneau (1986). Left panel of the insert: zoom on an oceanographic bucket. Centre:
 184 seawater temperature at Anse Vata station using bucket (bold line: 1982 time series, lights lines represent average, minimum and
 185 maximum through the year from 1958 to 1982 observations). Right: scientist reading temperature value on an oceanographic bucket.

186 2.2 The current ReefTEMPS Network

187 The tropical and subtropical Pacific is the area of the world oceans that supports the largest habitat for coral reefs and is home
 188 to the greatest coral species richness (Maragos and Williams, 2011; Fig. 2 upper right panel). The ReefTEMPS temperature
 189 monitoring network encompasses the three regions of Oceania (Micronesia, Melanesia and Polynesia), covering 16 PICTS
 190 (see Fig. 2, Tables A1 & A4, Appendix B2) and extending roughly from 10 to 30°S and from 134°E (Palau) to 134°W (Gambier
 191 islands). Such huge spatial coverage is a challenge to maintain over time and some stations have been discontinued due to
 192 fluctuating collaborations and fundings (57 stations interrupted). The duration of time series ranges from 6-8 months for the
 193 shortest series to more than 65 years for the longest (Anse Vata station, New Caledonia). 26 stations have more than 10 years
 194 of observations (approx. 20% of the monitored sites). The total observation time, covering periods between the start and end
 195 dates of all stations sums actually to 320744 days, equivalent to approximately 878 years of data. The study sites that have the



a supprimé:

197 higher numbers of monitoring stations and currently contribute the most to the observations of coastal temperature are New
198 Caledonia, Fiji and French Polynesia, which constitute the secure and core observations of ReefTEMPS. New Caledonia (Fig.
199 2 - Bottom left), due to its history of coastal observations, represents the “backbone” of this network with both the largest
200 number of monitored sites (53) and the longest time series. Most stations are located in its southwest lagoon but some long-
201 term sites are also spread out further north and on the east coast of the mainland (“Grande Terre”), as well as on remote reefs
202 (e.g Entrecasteaux reefs, Chesterfield islands). Fiji currently has 15 monitored sites around Viti Levu Island, Beqa Island, the
203 Vatu-i-Ra Passage, the Lau Group and the northernmost island of Rotuma. In French Polynesia ReefTEMPS covers the 5 main
204 archipelagos, sampling both atolls and high islands lagoons with a total of 20 stations.
205 Overall, to date, the ReefTEMPS network currently comprises 118 monitoring temperature stations (61 currently active) with
206 mean duration of observations above 2430 days. Since time series are generated by instrument type, this corresponds to a total
207 of 132 files. In terms of depth, sensors are distributed between 0.5m and 60m (61 % in the 0-10m, 33% in the 10-20m, and 6%
208 > 20m) (see Appendix A - Table A4). The vast majority of observation stations consist of measurements at a single depth,
209 while two stations in New Caledonia (Uitoe and Hienghène) are equipped with multiple vertical levels of instrumentation.

a supprimé: 4

a supprimé: 2

a supprimé: 4

a supprimé: 5

a supprimé: 2600

a supprimé: 36

a supprimé: 5

a supprimé: 55

a supprimé: 5

a supprimé: 15

a supprimé: 9

a supprimé: 15

a supprimé: 1

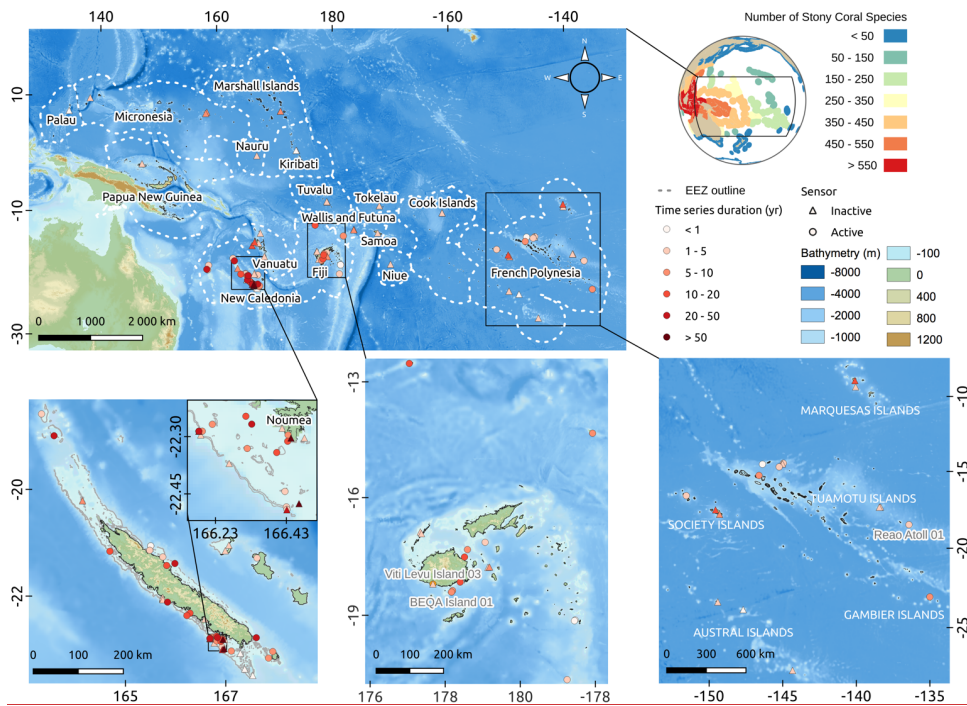


Figure 2: Overview of geographical distribution and length of time series (in years) of ReefTEMPS monitoring stations. Detailed zooms are provided for New Caledonia, Fiji and French Polynesia. Circles/triangles indicate respectively active/inactive stations. The upper right panels depict the number of stony coral species across the world (from The Atlas of Global Conservation, Hoekstra et al., 2010) illustrating the coral reef context in which ReefTEMPS is set. Bathymetric data used come from GEBCO grid (GEBCO Compilation Group, 2022).

3 Sampling devices

Due to the wide temporal range of the ReefTEMPS dataset, measurement methods have evolved over the years in line with technological advances. Starting from simple observations with an oceanographic bucket deployed from the shore by a human operator (see Fig. 1), the network has grown to include a variety of automatic sensors with increasing accuracy, frequency of acquisition and capacity of storage. Most of the instruments used now are autonomous compact loggers containing internal batteries and memories, deployed by scuba diving and fixed on the seabed (see Fig. 3). Moorings have been designed to be

235 adapted to the habitats and to withstand heavy agitation such as the ones induced by cyclones or storms. To prevent sensors
236 from biofouling, mechanical damage or wildlife, they are all deployed inside plastic cylinders with holes that allow water
237 circulation. A few sites (especially in French Polynesia, see buoys section) were also initially instrumented using buoys but
238 this sampling strategy is now replaced by moored sensors to be congruent with the whole network.

239 **3.1 Oceanographic bucket**

240 For the two long-term sites of New Caledonia, Anse Vata and the Amédée islet, data were first collected using the
241 oceanographic bucket (see Fig. 1). This device was as simple and robust as a water-taking bucket equipped with a thermometer
242 and deployed using a rope to collect water. It allowed temperature measurements to be taken with an accuracy close to 0.1°C
243 and had been used daily for nearly 47 years. The nominal acquisition time for both stations was 7am local time and the targeted
244 depth using the bucket was ~0.5m. That method was abandoned in 2005 to move to more automatic measurements. At the
245 Amédée station, the construction in 1977 and extension in 1993 of a pontoon slightly shifted the sampling point from the initial
246 position from the beach, moving it away from the shoreline by 44m, then 64m. That changed to 4.5m with the arrival of
247 autonomous electronic loggers. In French Polynesia, two stations had also been sampled daily using buckets in Tahiti (Society
248 Islands, from 1979 to 1989) and in Ua Pou (Marquesas Islands, from 1986 to 1989).

249 **3.2 Compact autonomous loggers**

250 From 1997 to 2009, a few main initial sensor brands were used for monitoring coastal temperatures in New Caledonia, French
251 Polynesia and Wallis Island. The first set of electronic and autonomous sensors deployed were HOBO®, for which various
252 models were successively used (Stowaway : <https://www.onsetcomp.com/resources/documentation/1513-stowaway-xti> ;
253 Optic Stowaway : <https://www.onsetcomp.com/resources/documentation/1086-k-man-optt> ; UTBI-001 TidBit :
254 <https://www.onsetcomp.com/products/data-loggers/utbi-001>; last access: 5 September 2024). Depending on the brand, the
255 accuracy ranged from 0.2 to 0.4°C, but these sensors provided a higher temporal resolution compared to the punctual
256 observation using a bucket. They provided infra-daily resolution, acquiring data continuously at frequencies between 10 and
257 30 min. Autonomous loggers from RBR Ltd, the RBR TD1060 were also initially deployed in New Caledonia. In addition to
258 temperature (accuracy 0.002°C, drift ~0.002°C/year; manufacturer’s manual), they also provided observations of pressure.
259 Due to several logger failures or drifts, these RBR sensors were gradually abandoned. At last, the Uitoë station (external slope
260 of the barrier reef, west of New Caledonia) was equipped since 1992 with a Seacat SBE16 from SEA-BIRD Electronics Inc.,
261 which samples temperature (accuracy 0.01°C, resolution 0.001°C) but also conductivity.
262 With the birth of ReefTEMPS in 2010 and its associated requirements, as well as the technological developments that occurred
263 in oceanographic instrumentation, the compact loggers fleet has evolved towards models with longer autonomy and greater
264 accuracy while measuring additional parameters. The GOPS has led a major effort to rejuvenate and homogenize the

a déplacé (et inséré) [1]

a supprimé: In 1977, a

a déplacé vers le haut [1]: The nominal acquisition time for both stations was 7am local time and the targeted depth using the bucket was ~0.5m.

a mis en forme : Non Surlignage

instrumental fleet. Depending on monitoring sites and scientific objectives (e.g additional observations of level and salinity), the choice fell on a new generation of robust devices that allows long-term deployments (from 6 month up to 2 years) with minimum battery costs while being strongly reliable. Since 2010, SBE56 temperature sensors were moored (SEA-BIRD Electronics Inc.; <https://www.seabird.com/sbe-56-temperature-sensor/product?id=54627897760>, last access: 5 September 2024). These SBE56 loggers allow recording fast (1min sampling rate), highly accurate temperature measurements (accuracy of 0.002°C, +- 0.002°C drift/year), and provide enough battery and storage autonomy to remain deployed underwater for up to 2 years. For monitoring stations where water level dynamics is of interest, the sensors used in ReefTEMPS are now two models from RBR Ltd. namely, RBRduo T.D and RBRduet T.D (<https://rbr-global.com/>, last access: 5 September 2024). These RBR loggers are used to record not only temperature (initial accuracy of 0.002°C, +- 0.002°C drift/year) but also pressure that provides information about sea-level dynamics. Finally, on stations impacted by massive freshwater inflows, temperature is monitored using the Infinity-ACTW loggers from JFE Advantech Co., Ltd. ([https://www.jfe-advantech.co.jp/eng/assets/img/products/ocean-infinity/INFINITY-CTW\(E\)_201704.pdf](https://www.jfe-advantech.co.jp/eng/assets/img/products/ocean-infinity/INFINITY-CTW(E)_201704.pdf), last access: 5 September 2024) which reliably samples temperature (accuracy +- 0.01°C, resolution 0.001°C) and conductivity (salinity).

3.3 Multi-parameter buoys

In French Polynesia, RESOLAG, a program dedicated to the long-term monitoring of pearl farming atolls, started in 2018 (Liao et al., 2023). The aims of the deployed sampling strategy were initially double: first to acquire multiple parameters (temperature, salinity, fluorescence, turbidity, dissolved oxygen) to understand the link between environment variability and performance of pearl farming activities (e.g spat collecting, pearl quality). The second objective was to provide pearl farmers and stakeholders with a real-time view of the lagoon’s state, particularly temperature data, to make their spat collection seasons more efficient by improving their understanding of precise interseasonal periods. For this purpose two kinds of real-time multi-parameters buoys by NKE (Smatch and Sambat models; <https://nke-instrumentation.com/>; last access: 16 May 2024) were deployed in 7 different lagoons, sampling parameters around 3m at 1 hour frequency. Concerning the thermistors, the manufacturer's manual for the thermistors indicates for both buoys an accuracy of 0.05°C and a maximal resolution of 0.003°C. In 2023, due to some problems with live transmission and sensor maintenance, the RESOLAG strategy shifted to the use of moored loggers and, to be consistent with the ReefTEMPS logger strategy, choice fell on SBE56 and RBR Duet instrument (see section 3.2 above).

4. Processing and quality control

4.1 Overall strategy

Figure 3 presents the global data life cycle of the ReefTEMPS temperature time series. Data processing and quality control have been conducted in a standardised manner since 2010 to ensure both consistency of observed time series and diffusion

a supprimé: D

300 using international oceanic data standards. Since 2010, maintenance and recalibration of instruments have been conducted at
 301 recommended intervals by or in accordance with the manufacturers (every 5 years for Seabird loggers, every 2-3 years for JFE
 302 Advantech and RBR loggers) to ensure reliability and quality of values observed. Recently, an intercomparison procedure for
 303 sensors compared with a reference SBE56 sensor was implemented to ensure that the sensors do not differ by more than
 304 0.005°C from the reference sensor. Prior to 2010, the reliability and accuracy of the devices used were lower (see Section 3)
 305 and maintenance frequency was not really fixed and fluctuated according to available funds.
 306 Early 2025, a major overhaul of the entire database, quality flags and processing states, has been carried out. Each temperature
 307 measurement of each time series now has an associated quality code (QC, see Table A5). Based on the knowledge on sensors
 308 and sampling devices accuracy, quality flags have been attributed to each measurement according to instrument type and
 309 family. Globally, buckets, Onset and NKE sensors have been flagged to “Probably good data” (this mainly concerns data prior
 310 to 2010). RBR and Seabird sensors have been flagged to good data since, in our opinion and with our expertise, they provide
 311 more reliable temperature data. A python graphical tool has been used for inspecting all temperature time series and modifying
 312 quality flags. This tool lets you zoom in to perform visual check of all time steps, display satellite temperatures (e.g OISST,
 313 OSTIA), perform basic statistical tasks (e.g remove eventual duplicate data, tests values over/below threshold) and finally
 314 assign a different quality code to desired measurement. This qualification stage will now be fully integrated in the data life
 315 cycle (see Figure 3) for future data integration in the temperature database.

316 Finally, a dedicated nomenclature for files based on international standards (either raw or processed) was also implemented
 317 (see tables A2, A3, A4 for information on stations, instrument types and processing states and Fiat et al. 2024). Dataset file
 318 names read as follows: ConventionFormat_CodeSite_Starttime_ParameterType ProcessingState_InstrumentType_Depth. For
 319 example, filename ‘OS_POINDI01_199710_TEMP 2B_TR_125.nc’ indicates that this time series is formatted following
 320 OceanSites conventions (OS : <https://repository.oceanbestpractices.org/handle/11329/874.2>; last access: 5 September 2024),
 321 taken at POINDI01 monitoring station (Poindimié station on NC east coast), beginning in October 1997, processed up to
 322 “Quality controlled data” (2B) processing state (See Appendix A Table 3), with instruments belonging to Thermistor class
 323 (See Appendix A Table 2), moored at a 12.5 meter-depth and provided in NetCDF (.nc). To avoid decimal numbers in the
 324 filenames we have chosen to indicate depths in decimeters. The global data life cycle (including processing and quality
 325 steps) is described hereafter and depicted in Figure 3 diagram. The files generated at each stage are stored on secure drives.

- 326 1. Instruments are replaced (or moored if this is a first deployment for a new station) by scuba diving at frequencies that
 327 depend on their characteristics (from 3 months up to 2 years in water). Each replacement is referred to in the database
 328 as a “measurement cycle”.
- 329 2. Upon replacement raw files are retrieved using dedicated manufacturer’s software and first converted in ASCII format
 330 and named following nomenclature rules.
- 331 3. Time series from each measurement cycle are then carefully visually inspected using specific softwares (ferret or
 332 matlab routines) to ensure removal of obviously “bad data” (e.g out of water observations), converted into NetCDF

a supprimé:

a supprimé:

a mis en forme : Anglais (E.U.)

a mis en forme : Normal, Gauche, Motif : Transparente

a supprimé: A1,

a supprimé: quality codes

a supprimé: QualityCode

a supprimé: 0C

a mis en forme : Police : (Par défaut) Times New Roman, 10 pt, Anglais (E.U.)

a mis en forme : Anglais (E.U.)

a supprimé: oindi

a supprimé: Visually checked

a supprimé: 0C

a supprimé: qualification

a supprimé: 2

a supprimé:

a supprimé: 3

a supprimé: :

a mis en forme : Police : 10 pt, Anglais (E.U.)

a supprimé: They are stored on secured drives.

a supprimé:

a supprimé: or outliers caused by a malfunction or biofouling...

cycles, and checked to ensure measurement cycles are properly connected. At this stage the corresponding processing state of the time series remains level 1A (see Appendix A3).

4. Measurement cycles are then imported into the DB Oceano database (PostgreSQL)

5. Datasets from each retrieval are then exported into NetCDF OceanSITES format (<https://repository.oceanbestpractices.org/handle/11329/874.2>; last access: 5 September 2024), with metadata following the Climate and Forecast metadata conventions (CF : <https://cfconventions.org/>; last access: 5 September 2024), and finally.

6. Using a python graphical tool, a qualification check (see above) is performed on the new cycle of observations and if necessary, modifications are performed on corresponding QC in the database. This qualification check, performed by a scientific expert in tropical coastal temperature dynamics, enables re-updating database and affecting processing state 2B to these temperature time series (see Appendix A3).

7. Fully processed NetCDF files are then exported into the ReefTEMPS Information System (IS) which allows delivering datasets in different formats and/or using different web services based on specific and standardised protocols (see 5.1).

On April 15, 2025, the global archive of temperature time series contains 132 quality-controlled temperature files: 125 files are at processing states level 2B and 7 files at 3B. The seven 3B files come from Temperature/Pressure sensors deployed at very high frequency (1Hz or 2Hz) to compute wave parameters. Temperature for these stations is therefore resampled to 30 minutes.

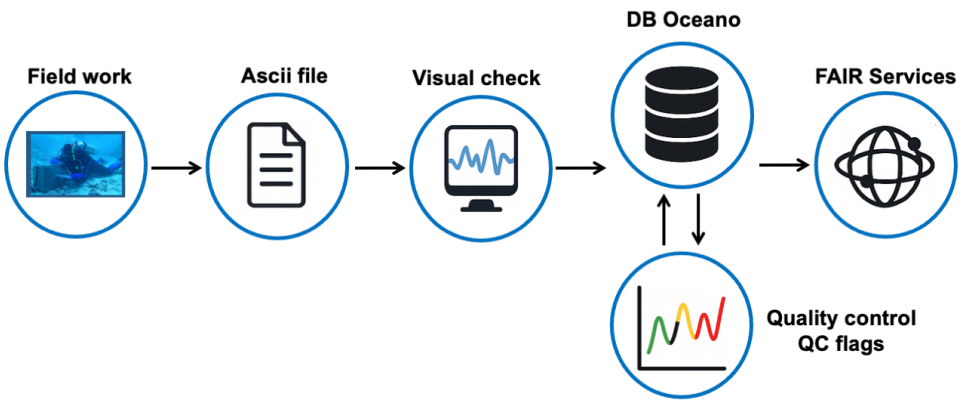


Figure 3: Data life cycle of ReefTEMPS temperature time series. Photo: Batiki island sensor installation (Credit: Partners in Community Development, Fiji).

a supprimé: .

a supprimé: visual

a supprimé: OC

a supprimé: 2

a supprimé: <#>Datasets from each retrieval are then converted into NetCDF OceanSITES format ... [1]

a supprimé: <#>imported

a mis en forme : Anglais (E.U.)

a mis en forme : Police : (Par défaut) Times New Roman, 10 pt, Couleur de police : Automatique

a mis en forme : Police : (Par défaut) Times New Roman, 10 pt, Couleur de police : Automatique

a mis en forme : Police : (Par défaut) Times New Roman, 10 pt, Couleur de police : Automatique

a mis en forme : Police : (Par défaut) Times New Roman, 10 pt, Couleur de police : Automatique

a mis en forme : Police : (Par défaut) Times New Roman, 10 pt, Couleur de police : Automatique

a mis en forme : Police : (Par défaut) Times New Roman, 10 pt, Couleur de police : Automatique

a mis en forme : Anglais (E.U.)

a mis en forme : Police : (Par défaut) Times New Roman, 10 pt, Couleur de police : Automatique

a mis en forme : Police : (Par défaut) Times New Roman, 10 pt, Couleur de police : Automatique

a mis en forme : Police : (Par défaut) Times New Roman, 10 pt, Couleur de police : Automatique

Each platform

Visually checked data NetCDF co

Calibrated data validated by PI data NetCDF co

a supprimé:

390 4.2 Long-term monthly homogenised files

391 The instrument precision and targets of ReefTEMPS have evolved over time, starting with studies of daily-to-seasonal
392 variability, then moving to longer term variability. Observations acquired before 2010 using oceanographic bucket or Hobo
393 sensors suffered from a lack of precision or potential drifts. However, studies of the effects of climate change on coastal
394 temperature require access to long homogeneous time series with sufficient precision as temperature trends detected since
395 1950 globally do not exceed a few tenth of degrees/decade (Cavarero et al., 2012; IPCC, 2023). Hence to avoid
396 misinterpretation in long-term trends due to sensor turnover, displacement or change in the sensor environment, an
397 homogenization procedure was applied to the two historical time series at Anse Vata and Phare Amédée stations in New
398 Caledonia. That allowed providing daily homogenised time series for the longest records with which to look at climate trends.
399 The procedure applied for building homogenised monthly long-term time series is described in depth in Guyennon (2010).
400 During the first decades of observations (1958-1997), measurements using buckets targeted a sampling at 7 a.m. local time
401 every day although some measurements were taken between 5 and 10 a.m. Depending on the month of the year, this sampling
402 time difference can lead to temperature differences of up to 0.4°C. Thus, the first part of the procedure was devoted to readjust
403 these data to be consistent. For that purpose, the HOBO sensor period (1998-2010) was used for each station to compute
404 average daily temperature variations for each month and then perform adjustment of bucket data to represent only the 7 a.m.
405 temperature regardless of sampling time. The second step of the homogenization procedure aimed to correct bucket data to be
406 representative of the daily mean for each day. Common measurement periods between sensors and buckets (80 months for
407 Anse Vata and approx 30 months for Phare Amédée) were used to quantify, for each month, the differences between bucket
408 values and daily sensor averages. These differences were then applied to the bucket period to provide data series representative
409 of the daily mean temperatures. Monthly mean temperature time series were computed for each station. Finally, detection and
410 correction of artificial shifts were performed using the PRODIGE software from Météo-France (theoretical basis presented in
411 Caussinus et Mestre, 2004) for the 1958-2010 period. After 2010, SBE56 sensor data (deemed much more accurate) were
412 averaged monthly and concatenated to finally obtain two monthly long-term series for Anse Vata (1958 - 2023) and Phare
413 Amédée (1967-2023). Homogeneity assessment tests were carried out using RHTest V4 (Wang et al, 2010) and revealed no
414 significant breakpoints. The figure B4 in appendix B displays the monthly homogenized data versus raw ones.

415 5. Data management and dissemination - Open access

416
417 Prior to ReefTEMPS, the data was centralised on a database referred to as “DB-Oceano” (PostgreSQL database management
418 system), which was developed by IRD in the early 2000s for managing data from marine sensors. The database framework
419 was inspired by the one initially built by the multi-partners Coriolis Project (<https://www.coriolis.eu.org/>). The first version of
420 the ReefTEMPS Information System (IS) was then put into production in 2011-2012 (Hocdé & Fiat, 2013). Then, several
421 updates of the information system took into account technological changes and offered new functionalities to both data

managers and users (Brissebrat et al., 2017). Now the ReefTEMPS IS uses DB-Oceano with a workflow manager (Apache Airflow, implemented in 2023) around which web servers are deployed to distribute/share data. The infrastructure is designed around the concept of micro-services and is fully containerized using docker technology, ensuring good system portability and the possibility of upgrading to distributed servers for better load balancing. The workflow manager automates the integration of new data by establishing a set of management rules according to the results of previous tasks (Appendix B Fig B.3). Overall, the architecture of the ReefTEMPS IS is designed to ensure data longevity, optimise accessibility, enable widespread dissemination and ensure interoperability with other systems (Fiat, 2015, Fiat et al., 2021). These concepts are in line with the FAIR principles: Findable, Accessible, Interoperable and Reusable (Wilkinson et al., 2016). The ReefTEMPS database is provided as an open resource under a Creative Commons Attribution-ShareAlike 4.0 International license (CC BY-SA). The core of the datasets diffusion engine used on the website (<https://www.reeftemps.science/>) consists of interactive map showing the location of monitoring stations via Web Map Service (WMS-OGC) and Web Feature Service (WFS-OGC) geographic services. Once a station has been selected by the user, datasets can be downloaded in multiple formats (NetCDF using OceanSites format, Ascii file, or Comma Separated Value files) via different sharing protocols/servers (Thredds server and OpenDAP protocol, Sensor Observation Service (SOS-OGC)). A dedicated visualisation service is also available to explore time series on the website, using ad hoc python web routines. Finally, the whole ReefTEMPS data archive is also accessible through Digital Object Identifiers (Varillon et al., 2024: DOI:10.17882/55128 and Liao et al., 2024: DOI:10.17882/82291) and is updated every six months on the Seanoe data repository. Each release of the semestrial whole dataset is identified by a specific and additional key (i.e <https://doi.org/10.17882/55128#107183> for the 2024-01 release, <https://doi.org/10.17882/55128#103428> for the 2023-07 release, etc). Nevertheless, the ReefTEMPS archive DOI is unique and common to all archive releases, which allows it to better track data usage statistics. The ReefTEMPS Data Management Plan describes the life cycle of ReefTEMPS data from their acquisition to their dissemination, including the steps of processing, archiving, etc. (Ilico, 2023). Figure 4 presents an overview of the data portal page and the associated services.

a supprimé: 1

a supprimé: (Appendix B Fig B1)

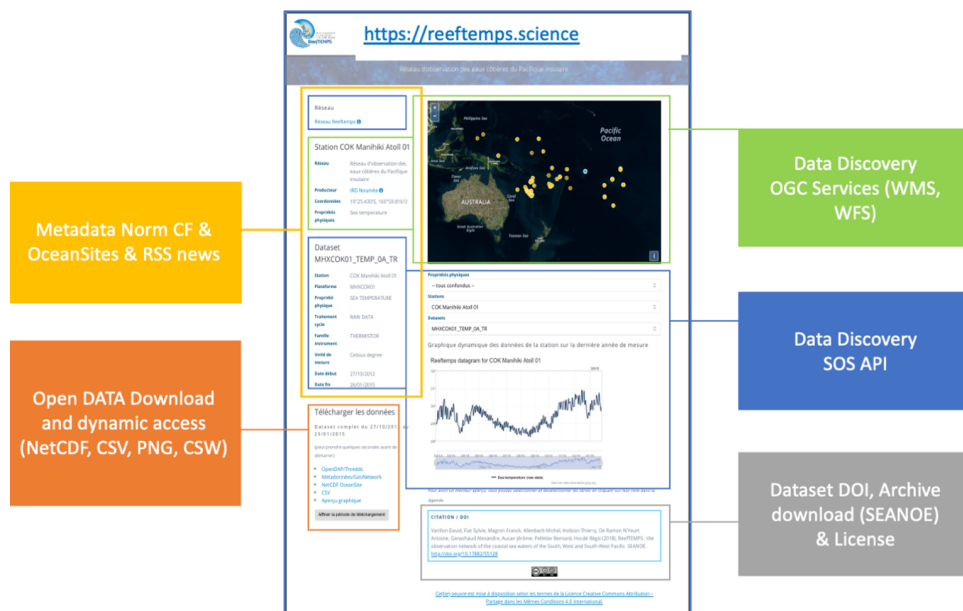


Figure 4: Data access portal page and associated services

6. Some examples of key applications

6.1 Capture and document extreme events

With the increasing frequency, intensity and duration of Marine Heatwaves (Oliver et al., 2018), in situ temperature observations are crucial for understanding the impact of true thermal variability on coral ecosystems. Figure 5 shows extracts from 3 chosen time series during austral summers 2016 (for Fiji and New Caledonia) and 2024 (for French Polynesia) where elevated temperature **negatively impacted** the health of ecosystems and wildlife (Holbrook et al., 2022; Dutheil et al., 2024). For the sake of illustrating the benefits of in situ observations, widely used daily L4 SST products are also displayed on each subplot for the nearest points to the ReefTEMPS stations. The two selected products are respectively OISST V2 (<https://psl.noaa.gov/data/gridded/data.noaa.oisst.v2.highres.html> ; last access: 5 September 2024) depicting SST at 1/4° and OSTIA SST (https://data.marine.copernicus.eu/product/SST_GLO_SST_L4_REP_OBSERVATIONS_010_011/description ; last access: 5 September 2024) at 0.05° resolution. First, Viti Levu 03 station in Fiji, moored at 12m depth on the oceanic side

a supprimé: played a key role

a supprimé: on

of the Votua lagoon, showed a sharp increase in temperature from January 15, peaking at nearly 31.25 °C on Monday 8th February 2016. On the same day, thousands of dead fish and invertebrates were found on the beaches near the village of Votua (Holbrook et al., 2022). Then category 5 tropical cyclone WINSTON re-entering the area on February 20th, induced a strong cooling by more than 5°C, participating in the demise of that massive marine heat wave (Dutheil et al., 2024). At the same time the Anse Vata station in New Caledonia, located more than 1250 km from Viti Levu and moored inside the south-west lagoon at 2m depth, showed the same tendencies of rising temperature prior to March 2016. There, temperatures began to rise rapidly from mid-January onwards and also peaked at 30.7 °C on Monday 8th February 2016. Daily maximum temperatures exceeded 30°C for about twenty days, which is between 2.5 and 3°C above the climatology computed for the 1997-2023 using Hobday et al. (2016) (see Figure 5.b). It had strong consequences on corals: the first documented massive coral bleaching event in New Caledonia's lagoons occurred during that February 2016, while that lagoon had been relatively unscathed until then (Payri et al., 2018). The third major event illustrated here occurred in 2024 in Reao atoll lagoon (orange line) in French Polynesia where the important population of giant clams (*Tridacna maxima*) provides significant incomes and food to inhabitants through fishing and aquaculture practices (IUCN, 2021). In 2024, daily maximum temperatures frequently reached or exceeded 31.5°C for about a month from the end of February onwards (even reaching max values of 31.8°C at the end of March), and always remained above 29.9°C during 40 consecutive days. The consequences of these prolonged high temperatures highly affected giant clams, with 57% of exploitable giant clams totally bleached, and 43% partially bleached, as estimated on April 1st 2024 in the area around the location of this thermistor. These three iconic examples associated with heat waves demonstrate the crucial importance of such in situ observations for a better understanding of thermal tolerance, physiological damages and resilience of tropical marine organisms towards heat stress. Indeed, while satellites tend to capture roughly the same low frequency temperature dynamics, large biases (more than 2°C) are present and may prevent the study of ecosystem vulnerability. Moreover, these time series (Fiji versus New Caledonia) also illustrate the potential of such a geographically extensive network for studying spatial variability of coastal temperatures across regions which can be very useful to study the regional heterogeneity of coastal thermal responses to climatic modes such as ENSO. Finally, at local scales, a high density of sensors inside the same lagoon for example can also provide valuable information for understanding smaller scale spatial variability which are not captured by state-of-art current satellite measurements such as MUR (Van Wylsberge et al., 2020).

a supprimé: with

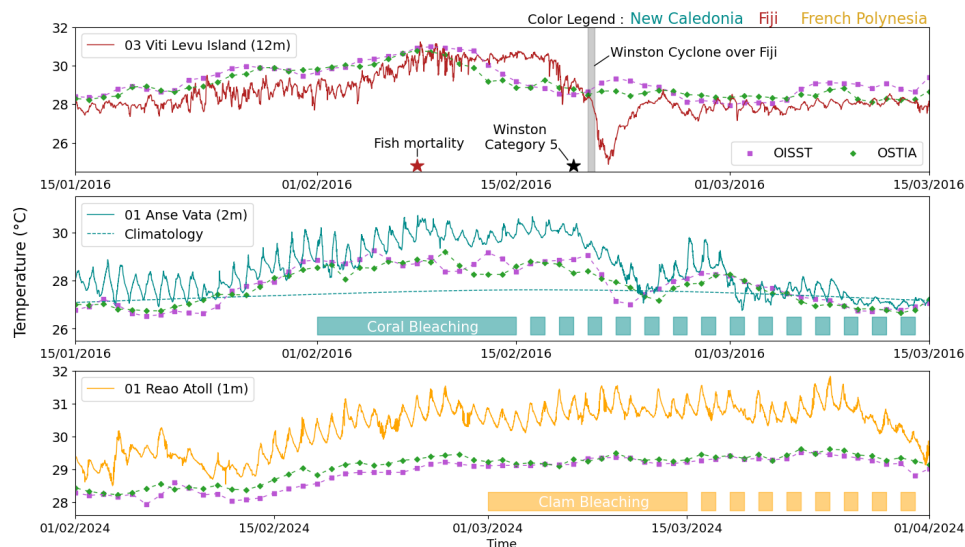
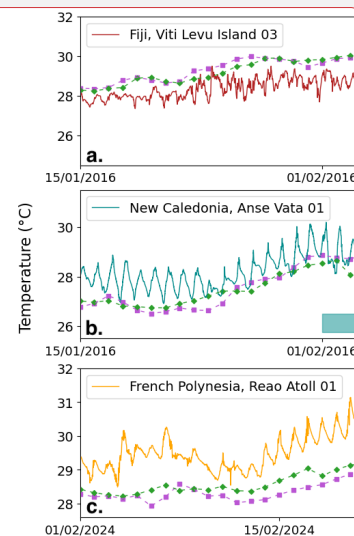


Figure 5 – a. Temperature time series during austral summer 2016 at Viti Levu Island 03 station (Fiji, 12m, red line) b. Temperature time series during austral summer 2016 at Anse Vata station (New Caledonia, depth 2m, dark cyan line) c. Temperature time series at Reao 01 station (Reao atoll lagoon, French Polynesia, depth 1m, orange line). Daily Sea Surface Temperature from Satellite products are plotted in purple for OISST V2 and green for OSTIA. Dates of the triggered ecosystem impacts are displayed on each subplot (red star for fish mortality in Fiji, dark cyan bar for coral bleaching in New Caledonia and orange bar for clam bleaching in French Polynesia). Dotted lines indicate that impacts on coral and clams have continued over time (with no precise end date to give).

6.2 Characterise physical processes at various timescales

Figure 6 shows examples of physical processes affecting temperature at different timescales as captured by the ReefTEMPS network. Here again, to highlight the crucial importance of in situ observation for temperature dynamics understanding, SST from OISST V2 and OSTIA satellites products are plotted on each time series. Fig. 6a shows a five-day temperature subset at Uiteo05 station (green curve), moored at 50m depth on the external slope of the South West lagoon barrier reef in New Caledonia, and the tidal elevation on the same period recomposed from FES2012 global tide solution (black curve). Temperature drops (by sometimes more than 2°C) are regularly observed at the M2 tidal wave frequency which suggests the influence of internal tides of high amplitude around New Caledonia (Bendinger et al., 2023). As expected, the in situ data shows that the satellite data at low and high resolution are neither able to capture the amplitude observed nor the time scale linked to internal waves illustrating the strong asset of the in situ observations. At a similar frequency, the ReefTEMPS time series can also be used to characterise the diurnal temperature cycle, as depicted in Fig. 6b that displays a two-week temperature



a supprimé:

512 series using data from a sensor moored in the Reao atoll lagoon in 2022. With an offset of more than 1.5°C, the satellite data
513 are not able to capture the level observed in the in-situ signal. In addition to their primary interest in understanding the physical
514 processes controlling daily and infra-daily temperature variability, documenting this range of variations may prove useful for
515 benthic species such as coral reefs which can benefit of some relief during stressing thermal conditions (Wyatt et al., 2020 ;
516 Oliver and Palumbi, 2011). Naturally, daily satellite products are not able to inform about infra-daily variability but Fig. 6a
517 and 6b also illustrate mean biases introduced when using such SST products at the coastal scale in coral reef lagoons especially
518 when calculating coral vulnerability indices such as bleaching indices (Van Wynsberge et al., 2017).
519 Another key process that can induce significant cooling on the outer slopes of barrier reefs is upwelling. One example is
520 provided in Fig. 6d where prolonged strong southeasterly trade winds flowing parallel to the coast triggered a wind-driven
521 coastal upwelling episode in 2021 at station Fausse Passe de Uitoe 05 in New Caledonia, leading to an approx. 4°C decrease
522 in a few days. This important upwelling feature off the south-west lagoon of New Caledonia can strongly shape biogeochemical
523 properties of the ocean in the direct vicinity of the lagoon (Alory et al., 2006; Ganachaud et al., 2010). Here again, in situ
524 observation proves to be essential as satellite SST products fail to reflect the drops of temperature. Finally, Fig. 6d, which
525 represents a 5-year subset of the temperature time series observed in Fiji (Beqa Island 01 station), highlights the usefulness of
526 long-term data for understanding seasonal to interannual variability.

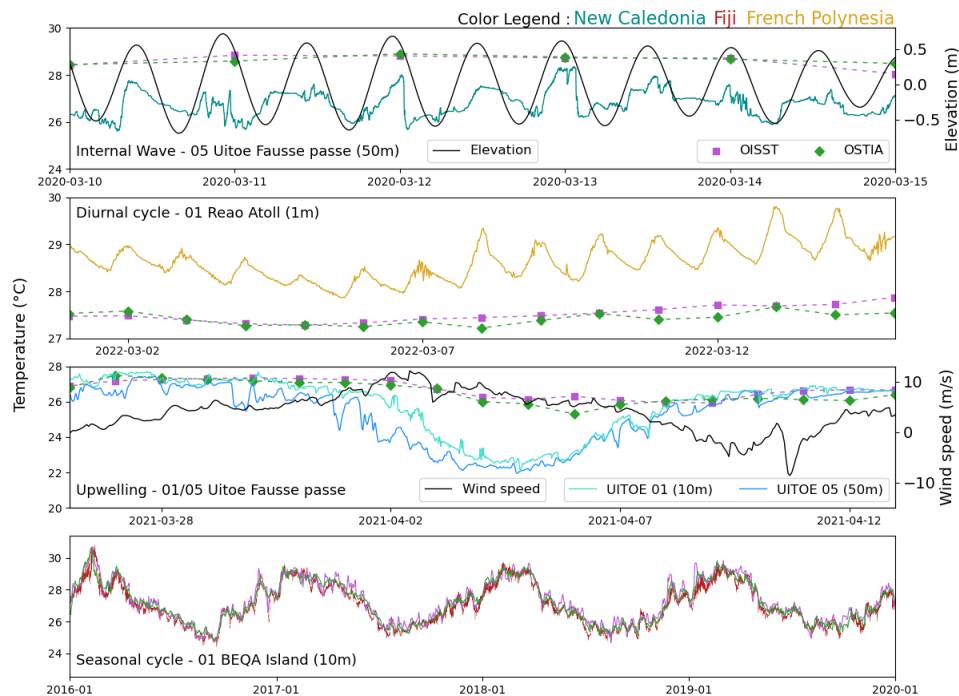
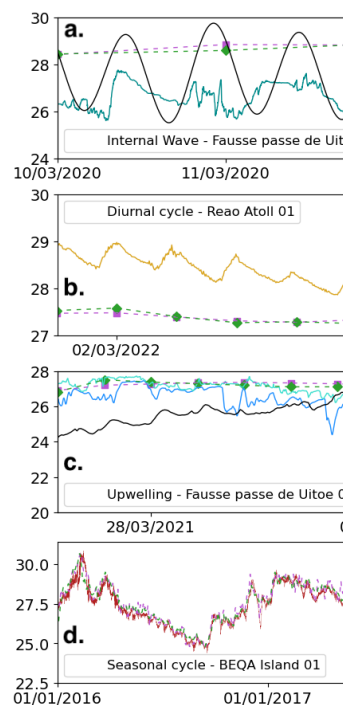


Figure 6: Illustrations of several typical thermal signatures characterised in situ and using L4 daily satellite products (OISST V2 and OSTIA, resp. purple and green points). a. temperature drops due to internal tides at the false passage of Uitoe 05 in New Caledonia (dark cyan curve) and tidal elevation (black curve) recomposed from FES2012 tidal solution at the same station. b. Diurnal cycle at Reao Atoll 01 (yellow curve) in French Polynesia c. upwelling episode at Fausse passe de Uitoe 01 and Uitoe 05 stations (resp. 10m and 50m depth). ERA5 wind speed projected along the northeast-southwest main axis of New Caledonia (Figure 2) is plotted in a plain curve to illustrate the upwelling event as the wind accelerates on 02/04/2021. d. seasonal and interannual variability of temperature at Beqa island 01 station in Fiji.

6.3 Long-term trends

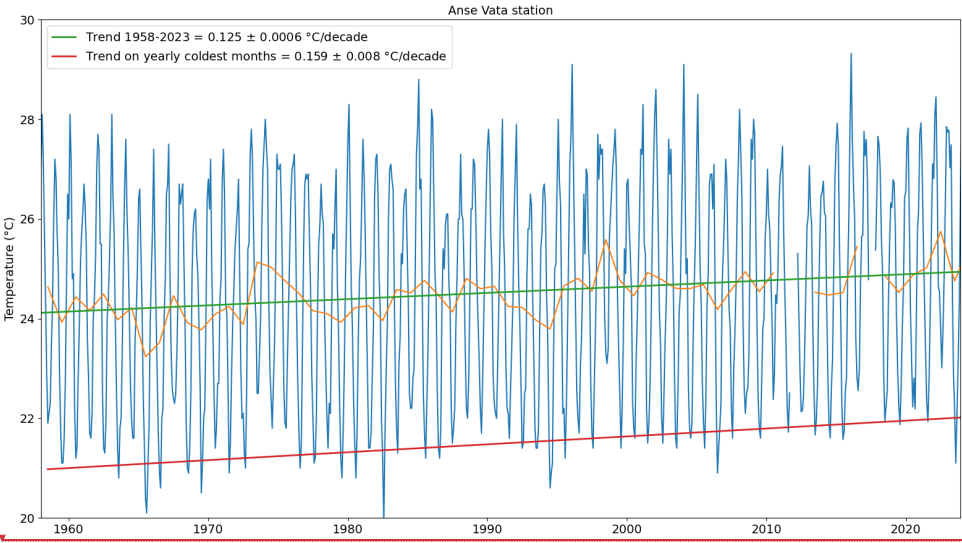
Some of the historical stations from the ReefTEMPS network date back several decades. These are invaluable observations to assess the warming trends. Two of these long-term monthly homogenised time series (see 4.2) and associated trends are presented in Figure 7a and 7b respectively. Both stations, at Anse Vata and Phare Amédée, are located inside the New Caledonia South-west lagoon but Anse Vata station is very close to the shore whereas Phare Amédée is next to the ocean (see 2.1). Decadal trend computations were performed using Mann-Kendall tests combined with Theil-Sen estimate of linear trend



a supprimé:

a supprimé:

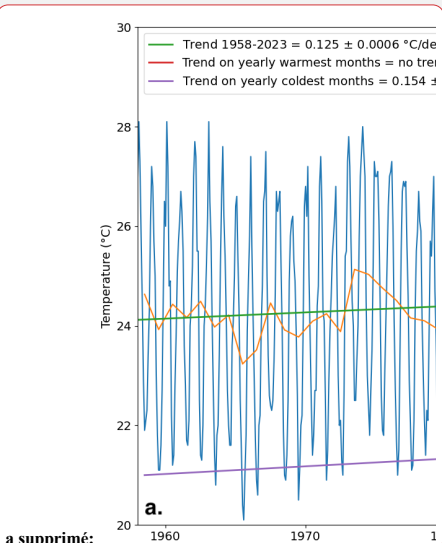
with the pyMannKendall Python package (Hussain and Mahmud, 2019). The original Mann-Kendall test was used to compute trends on coldest months and warmer months and the Seasonal Mann-Kendall test on the monthly time series. Considering the entire observation periods, both stations exhibit increasing trends of 0.125°C / decade and 0.127°C / decade for Anse Vata and Phare Amédée respectively ($p < 10e-10$ for both tests). Trends calculated using the warmest month of each year do not show any significant trend for any of the two stations. Conversely, trends on coldest months highlight a significant warming over the periods with a warming slightly higher next to the ocean (Phare Amédée: 0.185°C / decade) than close to the coast (Anse Vata : 0.159°C / decade). Finally, it is important to point out that Seager et al. (2022) found, over 5 datasets of global open-ocean SSTs analysed over 1958-2018, a mean SST trend of $\sim 0.1^\circ/\text{decade}$ around New Caledonia (see their Figure 2), which is weaker than our in-situ trends at Anse Vata and Phare Amédée.



a supprimé: 3

a supprimé: 76

a supprimé: 4



a. a supprimé:

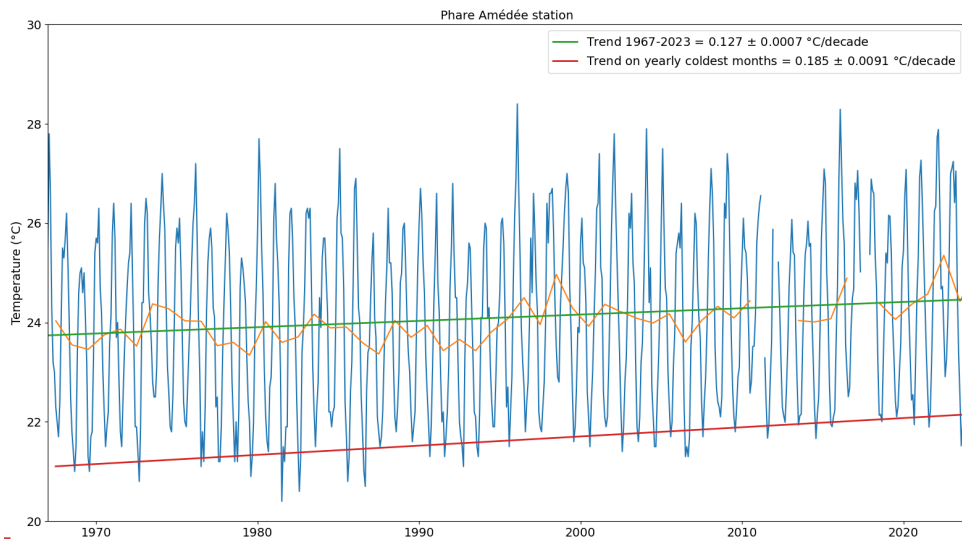
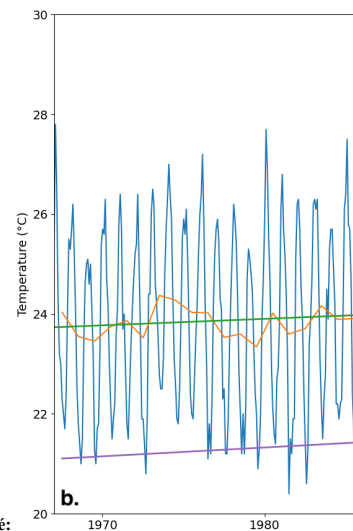


Figure 7 – Monthly temperature time series and trends at a. Anse Vata station (1958-2023) b. Phare Amédée station (1967-2023). Orange lines are the annual mean time series, green lines trends computed over the whole period, red lines the trend computed on the yearly coldest months over the whole period.



a supprimé:

a supprimé: purple

7. Ongoing developments and perspectives

Technical developments. As technologies and scientific needs are constantly evolving, the ReefTEMPS consortium develops new functionalities and methods to ensure data robustness, longevity of historical monitoring stations, improved way of disseminating information as well as establishment of new stations.

Concerning the IS and web portal, major evolutions have been underway since 2023 (see section 5) but new developments are still in progress. The next one will concern the data exchange process for which the deployment of OGC SensorThings API will replace the Sensor Observation Service former protocol (see Appendix B). Concerning the workflow manager decision have been made to shift to a workflow manager based on Apache Airflow open-source solution. Using a flow manager has the advantage of being able to adapt easily to the integration of new types of data such as real-time data.

With the increasing threats posed by marine heatwaves on coral reefs, efforts are being put into implementing access to real-time SST observation, which allows informing decision makers on the risks of incoming marine heatwaves. Such systems have already been implemented at Ilot Maître station (see Appendix C). For the first station deployed in New Caledonia at Maitre Island, it consists of an RBR Duet fixed underwater to a pile of one of the bungalows of the Hilton hotel and connected by an electronic cable to a Raspberry-type nanocomputer equipped with a LoRa transmission antenna. The measurements are

583 recorded on a memory card on the Raspberry and sent in packets every 15 minutes by LoraWan transmission. A Lora receiver
584 within radio range of the station recovers the data and transmits it over the internet. It is then recovered by the ReefTEMPS
585 information system and processed into the database. Two strategies are envisioned for the future deployment of such real-time
586 array:

- 587 1- A low-cost strategy whenever possible using Internet of Things (IoT) communication technology (Mattern and
588 Floerkemeier, 2010): a new station with such technology will be implemented at Phare Amédée during 2024.
- 589 2- A regular strategy with 4G or Iridium transmission for stations where IOT cannot be implemented.

590 Figure 8 presents the beta version of live data at Ilot Maitre available on the ReefTEMPS data portal web page. New
591 developments are underway to display visualisation of real-time indicators such as Degree Heating Week index (DHW) used
592 in many instances to indicate a risk for coral bleaching (ref) or Marine Heatwave real-time information. These potential
593 applications of real-time SST data can be crucial for public bodies and researchers to access information crucial for lagoon
594 ecosystems vulnerability in terms of preparedness and management.

595

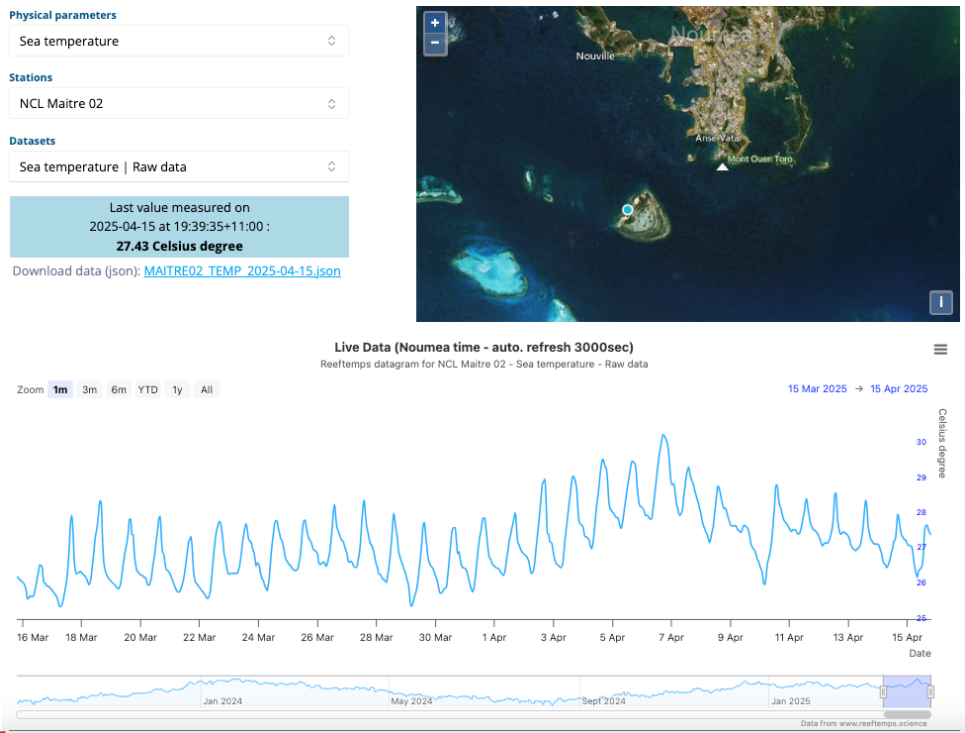
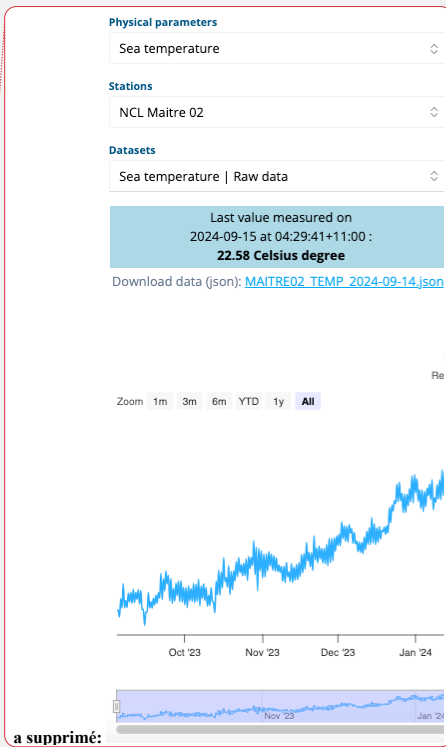


Figure 8 – Beta version of the live data webpage available on the ReefTEMPS. The temperature time series is plotted at the blue point (Ilot Maitre live station) on the map (<https://www.reeftemps.science/en/live/>).

Quality perspectives. To ensure more rapid and robust controls of accuracy of observations given the remote locations of the Pacific Countries to the instrument manufacturers, two new strategies have been introduced. First, a local SBE56 intercomparison protocol has been developed recently (Detandt and Varillon, 2024). The principle is that all SBE56 sensors are inter-compared in a temperature-controlled tank (from 20 to 32°C) with a reference sensor that has recently returned from calibration at the manufacturer (Seabird). The measured differences to the reference sensor must not exceed +/- 0.005°C from the calibrated sensor or that sensor is sent to the manufacturer for calibration. For stations in front of Nouméa, a second strategy that will enable a robust data quality control as well as a characterisation of the water column is a monthly visit of several stations to perform profiles over the water column with a calibrated SBE19PlusV2 CTD. Concerning long-term time series, a work has recently begun to convert raw data into daily (so far monthly) homogenised data to ensure a perfect reliability for



a supprimé:

computing trends and climate induced warming. Finally, the Python tool developed for the qualification will need to be continued, to provide a fully integrated tool that works directly on the DB-Oeano database and provides more statistical functionalities.

Future strategies for site selection. In all monitored PICTs, future strategy will first focus on maintaining historical long-term stations to provide a spatial view of the warming trends. In New Caledonia, the choice of new station locations will be guided to deeper investigate the signal deformation between open ocean temperature and lagoon temperature. In Fiji, efforts will be made to maintain unbroken time-series for the longest-established sites, such as Suva Reef and Rotuma, while expanding to new sites in the Lau Group and Vanua Levu. A major challenge has been the closing of some sites such as Batiki, Coral Coast and Yasawa, due to the loss of local partners. Another issue is the damage or loss of monitoring platforms (Beqa, Batiki) due to seasonal tropical cyclones. Furthermore, the ReefTEMPS working group also plans to deploy more vertical arrays on the external barrier reefs slopes for a more thorough understanding of the processes leading to cooling (e.g internal waves, upwelling). Future observation sites in French Polynesia will mainly be dedicated to important pearl farming atolls. In Fiji, such a pilot vertical array to 200m depth had already been deployed on a mooring off the Coral Coast of Viti Levu Island, as part of the VERTEMP Project under the IRD JEAI COPRA between May to November 2018, and January 2019 to January 2020, sampling at 30 second intervals with an array of ten SBE56 sensors (N'Yeurt et al., in prep.). Finally, the coastal monitoring sites on Wallis and Futuna will also be re-instrumented in the near future.

Diversifying observations and ocean in ReefTEMPS.

At present, ReefTEMPS is mostly based on an array of temperature sensors but the increasing challenge of long-term coastal observations is to couple these measurements with other key measurements such as salinity, pressure sensors for coastal vulnerability issues and biogeochemistry (e.g pH, fluorescence, turbidity, nutrients phytoplankton pigments, etc...) to monitor water quality and ecosystems. In our studies of the coral reef environment and bleaching surveillance, we perform regular in situ campaigns crossing ReefTEMPS stations with suites of physical and biological punctual measurements. The long-term plan for our coastal observing system is to systematically add to the automated temperature array, other automated sensors to provide a more complete monitoring of the environment facing climate change. Along these lines, a long-term, reliable funding system has to be secured, a key challenge that will require strong involvement of the government agencies for which these measurements are performed and that are lacking at present. Nevertheless, even if this paper targeted temperature observations, ReefTEMPS is also labelled by SNO (see 2.1) for other observables such conductivity and pressure. Therefore, in addition to temperature, conductivity and pressure time series are also available on many stations through the ReefTEMPS open database. Some other key in situ time series have also started in New Caledonia: pH continuous observations using in situ sensors for example at Fausse Passe de Uitoé or waves using spotter buoys. In Fiji, an experimental autonomous spectrophotometry-based pH sensor had been deployed on several occasions at the VELEVU02 site near Suva in collaboration with the National Oceanography Centre (NOC) of the United Kingdom, and preliminary datasets uploaded on the IOC-UNESCO SDG 14.3.1

data portal (<https://oa.iode.org/>, last access: 5 September 2024). It is hoped to continue such observations of in situ pH at this and other ReefTEMPS sites in Fiji. Finally, ReefTEMPS environment, quality observation and practices are now extended to the Indian Ocean in La Réunion Island as a first step with the will to continue that collaborative effort with other Indian Ocean Countries.

8. Data availability

All station time series are available individually on the ReefTEMPS web portal: <https://www.reeftemps.science/>. The whole ReefTEMPS dataset is freely available on the dedicated SEANOE repository (Varillon et al., 2024: <https://doi.org/10.17882/55128>) and updated every semester.

9. Conclusion

The ReefTEMPS network presented in this paper represents a unique source of knowledge for understanding coastal temperature, salinity and pressure dynamics in the South Pacific Ocean and for monitoring coral reef ecosystem thermal variability. The most striking feature that makes this network unique and extremely valuable is undoubtedly its geographical coverage (16 PICTS covered, 115 stations monitored) of temperature sensors and the duration of observations for some of its oldest monitoring stations (since 1958 for Anse Vata in New Caledonia). The network ensures open access and quality controlled in situ data that can be visualised and downloaded through the internet in ASCII and NetCDF formats according to the FAIR principles. Usefulness of these data is considerable as they can be used to investigate coastal and lagoon processes on different time scales such as waves dynamics, upwelling, extreme marine heatwave events, tropical cyclone impacts, long term interannual to decadal variabilities and climate warming trends. This in situ network is a key asset for validating the development of remotely-sensed observations, which, at present, cannot represent the fine-scale, high temporal resolution depicted by the ReefTEMPS network and these data can be used for ocean model tuning and evaluations. In addition to highlighting the scientific value of the ReefTEMPS dataset, this paper aimed at bringing the ReefTEMPS network to the attention of as many researchers as possible and inviting interested partners from the Pacific Island Countries and Territories to join the initiative.

Author contributions

RLG, ALS, CM, SC, SF and RH prepared the paper and designed the figures with contributions from all co-authors. All the co-authors have been strongly involved in the ReefTEMPS network at some points in its life (in situ operations, web portal, organisation, processing and checking of data) or helped to raise funds to support it.

Competing interests

677 The contact author has declared that none of the authors has any competing interests.

678 Acknowledgement

679 We would like to provide here our warmest thanks to all the researchers and technical staff (operators, scuba divers, boat
680 drivers...) who have contributed to the success of this network through the years, with special attention to the historical IRD
681 team in IRD Nouméa with special thanks to Pierre Waigna, Christian Hénin who greatly contributed to the development of the
682 initial network. Our sincere thanks also go to the entire UAR IMAGO over the years, and especially Céline Bachelier, Damien
683 Vignon, Guillaume Detandt, which have contributed so much to the continuity of this network. Discussions with G. Reverdin
684 on bucket sampling are also acknowledged.

686 Financial Support

687 Financial support has evolved over six decades but came mainly from the institutes themselves (ORSTOM/ the the French
688 National Research Institute for Sustainable Development (IRD)/ The University of South Pacific (USP) / The Pacific
689 Community (SPC), the Marine Resources Department of the French Polynesia (DRM)), with the support of external resources
690 (the ZONECO project of the New Caledonian Government, Ministère de l’Outre-Mer Français, the GOPS (Grand
691 Observatoire du Pacifique Sud)), and finally a long lasting and national support: the French Infrastructure for Coastal Oceans
692 and Seashores ILICO, with the French Ministry of Higher Education (MESR), Research and the CNRS-INSU.

694 References

- 695 Alory, G., Vega, A., Ganachaud, A., and Despinoy, M.: Influence of upwelling, subsurface stratification, and heat fluxes on
696 coastal sea surface temperature off southwestern New Caledonia, J. Geophys. Res., 111, C07023,
697 <https://doi.org/10.1029/2005JC003401>, 2006.
- 698
699 Bailey, K., Steinberg, C., Davies, C., Galibert, G., Hidas, M., McManus, M. A., Murphy, T., Newton, J., Roughan, M., and
700 Schaeffer, A.: Coastal Mooring Observing Networks and Their Data Products: Recommendations for the Next Decade, Front.
701 Mar. Sci., 6, 180, <https://doi.org/10.3389/fmars.2019.00180>, 2019.
- 702
703 Bell, J. D., Cisneros-Montemayor, A., Hanich, Q., Johnson, J. E., Lehodey, P., Moore, B. R., Pratchett, M. S., Reygondeau,
704 G., Senina, I., Virdin, J., and Wabnitz, C. C. C.: Adaptations to maintain the contributions of small-scale fisheries to food
705 security in the Pacific Islands, Marine Policy, 88, 303–314, <https://doi.org/10.1016/j.marpol.2017.05.019>, 2017.
- 706
707 Bendinger, A., Cravatte, S., Gourdeau, L., Brodeau, L., Albert, A., Tchilibou, M., Lyard, F. and Vic, C. Regional modeling of
708 internal-tide dynamics around New Caledonia–Part 1: Coherent internal-tide characteristics and sea surface height signature,
709 Ocean Science, 19(4), 1315–1338, <https://doi.org/10.5194/os-19-1315-2023>, 2023.
- 710
711 Brissebrat G., Fiat S., Andriatiana A., Grelet J., Pelletier B., Hocdé R. Sensor Observation System : optimization of a sensors-
712 oriented environmental information system - example of the SI of the ReefTEMPS observation network [Poster]. 12th edition

of JRES “Journey to the center of the virtual”, 14th to 17th November 2017, Nantes
<http://www.documentation.ird.fr/hor/fdi:010071792>, 2017.

Caussinus, H. and Mestre, O.: Detection and Correction of Artificial Shifts in Climate Series, Journal of the Royal Statistical Society Series C: Applied Statistics, 53, 405–425, <https://doi.org/10.1111/j.1467-9876.2004.05155.x>, 2004.

Cavarero, V., A. Peltier, X. Aubail, A. Leroy, B. Dubuisson, S. Jourdain, A. Ganachaud, et al. 2012. “Les Évolutions Passées Et Futures Du Climat De La Nouvelle-Calédonie.” La Météorologie 8, no. 77, 13p. doi:10.4267/2042/47371

Chin, T. M., Vazquez-Cuervo, J., and Armstrong, E. M.: A multi-scale high-resolution analysis of global sea surface temperature, Remote Sensing of Environment, 200, 154–169, <https://doi.org/10.1016/j.rse.2017.07.029>, 2017.

Cocquempot, L., Delacourt, C., Paillet, J., Riou, P., Aucan, J., Castelle, B., Charria, G., Claudet, J., Conan, P., Coppola, L., Hocdé, R., Planes, S., Raimbault, P., Savoye, N., Testut, L., and Vuillemin, R.: Coastal Ocean and Nearshore Observation: A French Case Study, Front. Mar. Sci., 6, 324, <https://doi.org/10.3389/fmars.2019.00324>, 2019.

Coral Reef Research Foundation and Colin, P.: Ocean Warming and the Reefs of Palau, Oceanog, 31, <https://doi.org/10.5670/oceanog.2018.214>, 2018.

Colin, P. L. and Johnston, T. M. S.: Measuring Temperature in Coral Reef Environments: Experience, Lessons, and Results from Palau, JMSE, 8, 680, <https://doi.org/10.3390/jmse8090680>, 2020.

Dahlke, F. T., Wohlrab, S., Butzin, M., and Pörtner, H.-O.: Thermal bottlenecks in the life cycle define climate vulnerability of fish, Science, 369, 65–70, <https://doi.org/10.1126/science.aaz3658>, 2020.

Dandonneau, Y.: Prendre sa température à la mer, ORSTOM Actualités, 16, 2-4, <https://www.documentation.ird.fr/hor/fdi:010026422>, 1986

DeCarlo, T. M., Harrison, H. B., Gajdzik, L., Alaguarda, D., Rodolfo-Metalpa, R., D’Olivo, J., Liu, G., Patalwala, D., and McCulloch, M. T.: Acclimatization of massive reef-building corals to consecutive heatwaves, Proc. R. Soc. B., 286, 20190235, <https://doi.org/10.1098/rspb.2019.0235>, 2019.

Detandt, G. et Varillon, D. (2024). [UAR191] Protocole d’inter comparaison de capteurs de température, de type SBE56, en cuve (1.0). Zenodo, <https://doi.org/10.5281/zenodo.11115833>

Dutheil, C., Lal, S., Lengaigne, M., Cravatte, S., Menkes, C., Receveur, A., Börgel, F., gröger, mathias, Houlbreque, F., Le Gendre, R., Mangolte, I., Peltier, A., Markus-Meir, H.E., 2024. The massive 2016 marine heatwave in the Southwest Pacific: an “El Niño - Madden-Julian Oscillation” compound event. Science Advances, under press.

Fiat S., Aucan J., Varillon D., Hocdé R. ReefTEMPS, FAIRs access to Reef ecosystem environmental measurements [poster]. [Amsterdam, Netherlands] : [s.n.], [1 p. multigr.]. International Conference on Marine Data and Information Systems, IMDIS 2021, 2021/04/12, <https://www.documentation.ird.fr/hor/fdi:010083020>, 2021.

Fiat, S., Varillon, D., Cordier, E., & Grelet, J. (2024). Vocabulaires des métadonnées utilisées par le SNO ReefTEMPS et leurs correspondances avec les vocabulaires nationaux et internationaux (1.0). Zenodo, <https://doi.org/10.5281/zenodo.11350556>

Ganachaud, A., Vega, A., Rodier, M., Dupouy, C., Maes, C., Marchesiello, P., Eldin, G., Ridgway, K., and Le Borgne, R.: Observed impact of upwelling events on water properties and biological activity off the southwest coast of New Caledonia, Marine Pollution Bulletin, 61, 449–464, <https://doi.org/10.1016/j.marpolbul.2010.06.042>, 2010.

Code de champ modifié

Code de champ modifié

Code de champ modifié

763 GEBCO Compilation Group (2022) GEBCO_2022 Grid (doi:10.5285/e0f0bb80-ab44-2739-e053-6c86abc0289e)
764
765 Goebeler, N., Norkko, A., and Norkko, J.: Ninety years of coastal monitoring reveals baseline and extreme ocean temperatures
766 are increasing off the Finnish coast, *Commun Earth Environ*, 3, 215, <https://doi.org/10.1038/s43247-022-00545-z>, 2022.
767
768 Goreau, T., McClanahan, T., Hayes, R., and Strong, A.: Conservation of Coral Reefs after the 1998 Global Bleaching Event,
769 *Conservation Biology*, 14, 5–15, <https://doi.org/10.1046/j.1523-1739.2000.00011.x>, 2000.
770
771 Green, R. H., Lowe, R. J., Buckley, M. L., Foster, T., and Gilmour, J. P.: Physical mechanisms influencing localized patterns
772 of temperature variability and coral bleaching within a system of reef atolls, *Coral Reefs*, 38, 759–771,
773 <https://doi.org/10.1007/s00338-019-01771-2>, 2019.
774
775 Grimaldi, C. M., Lowe, R. J., Benthuyssen, J. A., Cuttler, M. V. W., Green, R. H., and Gilmour, J. P.: Hydrodynamic and
776 atmospheric drivers create distinct thermal environments within a coral reef atoll, *Coral Reefs*, [https://doi.org/10.1007/s00338-](https://doi.org/10.1007/s00338-023-02371-x)
777 [023-02371-x](https://doi.org/10.1007/s00338-023-02371-x), 2023.
778
779 Guyennon, A. (2010), Homogénéisation des données de température de stations océaniques côtières autour de la Nouvelle-
780 Calédonie: évolution et projection climatique, Sciences de la Mer, Océanographie Physique, Rapport de stage M2, Institut de
781 Recherche pour le Développement, Nouméa.
782
783 Herdman, L. M. M., Hench, J. L., and Monismith, S. G.: Heat balances and thermally driven lagoon-ocean exchanges on a
784 tropical coral reef system (Moorea, French Polynesia), *J. Geophys. Res. Oceans*, 120, 1233–1252,
785 <https://doi.org/10.1002/2014JC010145>, 2015.
786
787 Hobday, A.J., Alexander, L.V., Perkins, S.E., Smale, D.A., Straub, S.C., Oliver, E.C., Benthuyssen, J.A., Burrows, M.T., Donat,
788 M.G., Feng, M., Holbrook, N.J., Moore, P.J., Scannell, H.A., Sen Gupta, A., and Wernberg, T. : A hierarchical approach to
789 defining marine heatwaves, *Progress in Oceanography*, 141, 227-238, <https://doi.org/10.1016/j.pocean.2015.12.014>, 2016.
790
791 Hocdé R., Fiat S. Le système d'information du « réseau de capteurs de température des eaux côtières dans la région du
792 Pacifique Sud et Sud-Ouest ». Netcom, Special issue « Les données environnementales en libre accès: politiques, expériences,
793 usages » 170–173, <http://dx.doi.org/10.4000/netcom.1294>, 2013.
794
795 Hocdé R., Sylvie Fiat S., Varillon D., Magron F., Allenbach M., Hoibian T., N'Yeurt A.D.R., Le Gendre R., Ganachaud A.,
796 Menkes C., Pelletier B., Aucan J. ReefTEMPS documente l'impact local du changement climatique et les paramètres qui
797 influent sur la résilience des écosystèmes récifaux. *EvolEco 2021 Long Term Evolution of Coastal Ecosystems*, La Rochelle,
798 France, 2-5 nov. 2021. HAL: <https://ird.hal.science/ird-03774373>, 2021.
799
800 Hoekstra, J. M., Molnar, J. L., Jennings, M., Revenga, C., Spalding, M. D., Boucher, T. M., Robertson, J.C., Heibel, T.J.,
801 Ellison, K. The atlas of global conservation: changes, challenges, and opportunities to make a difference, University of
802 California Press, 2010.
803
804 Holbrook, N. J., Hernaman, V., Koshiba, S., Lako, J., Kajtar, J. B., Amosa, P., and Singh, A.: Impacts of marine heatwaves on
805 tropical western and central Pacific Island nations and their communities, *Global and Planetary Change*, 208, 103680,
806 <https://doi.org/10.1016/j.gloplacha.2021.103680>, 2022.
807
808 Hong, C.-C., Wu, Y.-K., Li, T., and Chang, C.-C.: The climate regime shift over the Pacific during 1996/1997, *Clim Dyn*, 43,
809 435–446, <https://doi.org/10.1007/s00382-013-1867-9>, 2014.
810
811 Hughes, T. P., Kerry, J. T., Álvarez-Noriega, M., Álvarez-Romero, J. G., Anderson, K. D., Baird, A. H., Babcock, R. C.,
812 Beger, M., Bellwood, D. R., Berkelmans, R., Bridge, T. C., Butler, I. R., Byrne, M., Cantin, N. E., Comeau, S., Connolly, S.

a mis en forme : Anglais (E.U.)

a mis en forme : Anglais (E.U.)

a mis en forme : Anglais (E.U.)

Code de champ modifié

a mis en forme : Anglais (E.U.)

a mis en forme : Lien hypertexte, Police :12 pt, Anglais (E.U.)

a mis en forme : Anglais (E.U.)

Code de champ modifié

Code de champ modifié

R., Cumming, G. S., Dalton, S. J., Diaz-Pulido, G., Eakin, C. M., Figueira, W. F., Gilmour, J. P., Harrison, H. B., Heron, S. F., Hoey, A. S., Hobbs, J.-P. A., Hoogenboom, M. O., Kennedy, E. V., Kuo, C., Lough, J. M., Lowe, R. J., Liu, G., McCulloch, M. T., Malcolm, H. A., McWilliam, M. J., Pandolfi, J. M., Pears, R. J., Pratchett, M. S., Schoepf, V., Simpson, T., Skirving, W. J., Sommer, B., Torda, G., Wachenfeld, D. R., Willis, B. L., and Wilson, S. K.: Global warming and recurrent mass bleaching of corals, *Nature*, 543, 373–377, <https://doi.org/10.1038/nature21707>, 2017.

Hussain, Md. and Mahmud, I.: pyMannKendall: a python package for non parametric Mann Kendall family of trend tests., *JOSS*, 4, 1556, <https://doi.org/10.21105/joss.01556>, 2019.

IR ILICO, SNO ReefTEMPS (2023). Plan de gestion des données du SNO ReefTEMPS - Réseau d'observation des eaux côtières dans la région du Pacifique sud, ouest et sud-ouest. Ifremer. <https://doi.org/10.13155/94550>

Intergovernmental Panel On Climate Change (IPCC): Climate Change 2021 – The Physical Science Basis: Working Group I Contribution to the Sixth Assessment Report of the Intergovernmental Panel on Climate Change, 1st ed., Cambridge University Press, <https://doi.org/10.1017/9781009157896>, 2023.

IUCN (2021) FRENCH POLYNESIA CASE STUDY. Sustainable Use, Mariculture and Conservation of Giant Clams in the Marine Regulated Fishing Area of Reao Atoll, Tuamotu. Case study n° 4. Worldwide Catalogue of Case Studies on Aquaculture and Marine Conservation. Gland, Switzerland: IUCN. [03-aquamarin-polynesia-v04-final.pdf \(iucn.org\)](https://doi.org/10.1017/9781009157896), 2021.

Kurihara, Y., Murakami, H., and Kachi, M.: Sea surface temperature from the new Japanese geostationary meteorological Himawari-8 satellite, *Geophysical Research Letters*, 43, 1234–1240, <https://doi.org/10.1002/2015GL067159>, 2016.

Kurylyk, B. L. and Smith, K. A.: Stuck in the middle: thermal regimes of coastal lagoons and estuaries in a warming world, *Environ. Res. Lett.*, 18, 061003, <https://doi.org/10.1088/1748-9326/acd5e5>, 2023.

Leichter, J., Alldredge, A., Bernardi, G., Brooks, A., Carlson, C., Carpenter, R., Edmunds, P., Fewings, M., Hanson, K., Hench, J., Holbrook, S., Nelson, C., Schmitt, R., Toonen, R., Washburn, L., and Wyatt, A.: Biological and Physical Interactions on a Tropical Island Coral Reef: Transport and Retention Processes on Moorea, French Polynesia, *oceanog*, 26, 52–63, <https://doi.org/10.5670/oceanog.2013.45>, 2013.

Liao, V., Follin, Y., Costes, L., Germain, C., & Trophime, T. (2024). RESOLAG: The French Polynesian lagoon monitoring network [Data set]. SEANOE. <https://doi.org/10.17882/82291>

Lynch, T. P., Morello, E. B., Evans, K., Richardson, A. J., Rochester, W., Steinberg, C. R., Roughan, M., Thompson, P., Middleton, J. F., Feng, M., Sherrington, R., Brando, V., Tilbrook, B., Ridgway, K., Allen, S., Doherty, P., Hill, K., and Moltmann, T. C.: IMOS National Reference Stations: A Continental-Wide Physical, Chemical and Biological Coastal Observing System, *PLoS ONE*, 9, e113652, <https://doi.org/10.1371/journal.pone.0113652>, 2014.

Malone, T.C., DiGiacomo, P.M., Gonçalves, E., Knap, A.H., Talaue-McManus, L., de Mora, S.: A global ocean observing system framework for sustainable development. *Marine Policy* 43, 262–272. <https://doi.org/10.1016/j.marpol.2013.06.008>, 2014.

Maragos, J. E. and Williams, G. J.: Pacific Coral Reefs: An Introduction, in: *Encyclopedia of Modern Coral Reefs*, edited by: Hopley, D., Springer Netherlands, Dordrecht, 753–776, https://doi.org/10.1007/978-90-481-2639-2_122, 2011.

Mattern, F. and Floerkemeier, C.: From the Internet of Computers to the Internet of Things, in: *From Active Data Management to Event-Based Systems and More*, vol. 6462, edited by: Sachs, K., Petrov, I., and Guerrero, P., Springer Berlin Heidelberg, Berlin, Heidelberg, 242–259, https://doi.org/10.1007/978-3-642-17226-7_15, 2010.

McCabe, R. M., Estrade, P., Middleton, J. H., Melville, W. K., Roughan, M., and Lenain, L.: Temperature variability in a shallow, tidally isolated coral reef lagoon, *J. Geophys. Res.*, 115, 2009JC006023, <https://doi.org/10.1029/2009JC006023>, 2010.

Minnett, P. J., Alvera-Azcárate, A., Chin, T. M., Corlett, G. K., Gentemann, C. L., Karagali, I., Li, X., Marsouin, A., Marullo, S., Maturi, E., Santoleri, R., Saux Picart, S., Steele, M., and Vazquez-Cuervo, J.: Half a century of satellite remote sensing of sea-surface temperature, *Remote Sensing of Environment*, 233, 111366, <https://doi.org/10.1016/j.rse.2019.111366>, 2019.

Oliver, E. C. J., Donat, M. G., Burrows, M. T., Moore, P. J., Smale, D. A., Alexander, L. V., Benthuisen, J. A., Feng, M., Sen Gupta, A., Hobday, A. J., Holbrook, N. J., Perkins-Kirkpatrick, S. E., Scannell, H. A., Straub, S. C., and Wernberg, T.: Longer and more frequent marine heatwaves over the past century, *Nat Commun*, 9, 1324, <https://doi.org/10.1038/s41467-018-03732-9>, 2018.

Oliver, T. A. and Palumbi, S. R.: Do fluctuating temperature environments elevate coral thermal tolerance?, *Coral Reefs*, 30, 429–440, <https://doi.org/10.1007/s00338-011-0721-y>, 2011.

Payri, C. E., Benzoni, F., André, Laure. V., and Houlbrière, F.: Chapitre 25. Le blanchissement corallien de 2016, in: Nouvelle-Calédonie, edited by: Payri, C. E., IRD Éditions, 161–166, <https://doi.org/10.4000/books.irdeditions.28127>, 2018.

Pinsky, M. L., Selden, R. L., and Kitchel, Z. J.: Climate-Driven Shifts in Marine Species Ranges: Scaling from Organisms to Communities, *Annu. Rev. Mar. Sci.*, 12, 153–179, <https://doi.org/10.1146/annurev-marine-010419-010916>, 2020.

Reynolds, R. W., Smith, T. M., Liu, C., Chelton, D. B., Casey, K. S., and Schlax, M. G.: Daily High-Resolution-Blended Analyses for Sea Surface Temperature, *Journal of Climate*, 20, 5473–5496, <https://doi.org/10.1175/2007JCLI1824.1>, 2007.

Potemra, J., Maurer, J., & Burns, E. S.: Providing Oceanographic Data and Information to Pacific Island Communities. In *Oceanographic and Marine Cross-Domain Data Management for Sustainable Development*, 253–281, 2017.

Reid, E. C., Lentz, S. J., DeCarlo, T. M., Cohen, A. L., and Davis, K. A.: Physical Processes Determine Spatial Structure in Water Temperature and Residence Time on a Wide Reef Flat, *JGR Oceans*, 125, e2020JC016543, <https://doi.org/10.1029/2020JC016543>, 2020.

Righetti, D., Vogt, M., Gruber, N., Psomas, A., and Zimmermann, N. E.: Global pattern of phytoplankton diversity driven by temperature and environmental variability, *Sci. Adv.*, 5, eaau6253, <https://doi.org/10.1126/sciadv.aau6253>, 2019.

Rivera, H. E., Cohen, A. L., Thompson, J. R., Baums, I. B., Fox, M. D., and Meyer-Kaiser, K. S.: Palau’s warmest reefs harbor thermally tolerant corals that thrive across different habitats, *Commun Biol*, 5, 1394, <https://doi.org/10.1038/s42003-022-04315-7>, 2022.

Rogers, J. S., Monismith, S. G., Kowech, D. A., Torres, W. I., and Dunbar, R. B.: Thermodynamics and hydrodynamics in an atoll reef system and their influence on coral cover: Atoll Thermal & Hydro-Dynamics & Coral Effects, *Limnol. Oceanogr.*, 61, 2191–2206, <https://doi.org/10.1002/lno.10365>, 2016.

Rowley, S. J., Roberts, T. E., Coleman, R. R., Spalding, H. L., Joseph, E., and Dorricott, M. K. L.: Pohnpei, Federated States of Micronesia, in: *Mesophotic Coral Ecosystems*, vol. 12, edited by: Loya, Y., Puglise, K. A., and Bridge, T. C. L., Springer International Publishing, Cham, 301–320, https://doi.org/10.1007/978-3-319-92735-0_17, 2019.

Safaie, A., Silbiger, N. J., McClanahan, T. R., Pawlak, G., Barshis, D. J., Hench, J. L., Rogers, J. S., Williams, G. J., and Davis, K. A.: High frequency temperature variability reduces the risk of coral bleaching, *Nat Commun*, 9, 1671, <https://doi.org/10.1038/s41467-018-04074-2>, 2018.

Code de champ modifié

Code de champ modifié

- Salat, J., Pascual, J., Flexas, M., Chin, T. M., and Vazquez-Cuervo, J.: Forty-five years of oceanographic and meteorological observations at a coastal station in the NW Mediterranean: a ground truth for satellite observations, *Ocean Dynamics*, 69, 1067–1084, <https://doi.org/10.1007/s10236-019-01285-z>, 2019.
- Santavy, D. L., Horstmann, C. L., Sharpe, L. M., Yee, S. H., and Ringold, P.: What is it about coral reefs? Translation of ecosystem goods and services relevant to people and their well-being, *Ecosphere*, 12, e03639, <https://doi.org/10.1002/ecs2.3639>, 2021.
- Seager, R., Henderson, N., and Cane, M.: Persistent Discrepancies between Observed and Modeled Trends in the Tropical Pacific Ocean, *Journal of Climate*, 35, 4571–4584, <https://doi.org/10.1175/JCLI-D-21-0648.1>, 2022.
- Smale, D. A., Wernberg, T., Oliver, E. C. J., Thomsen, M., Harvey, B. P., Straub, S. C., Burrows, M. T., Alexander, L. V., Benthuyssen, J. A., Donat, M. G., Feng, M., Hobday, A. J., Holbrook, N. J., Perkins-Kirkpatrick, S. E., Scannell, H. A., Sen Gupta, A., Payne, B. L., and Moore, P. J.: Marine heatwaves threaten global biodiversity and the provision of ecosystem services, *Nat. Clim. Chang.*, 9, 306–312, <https://doi.org/10.1038/s41558-019-0412-1>, 2019.
- Schlegel, R. W., Oliver, E. C. J., Wernberg, T., and Smit, A. J.: Nearshore and offshore co-occurrence of marine heatwaves and cold-spells, *Progress in Oceanography*, 151, 189–205, <https://doi.org/10.1016/j.pocean.2017.01.004>, 2017.
- Siedlecki, S. A., Pilcher, D., Howard, E. M., Deutsch, C., MacCready, P., Norton, E. L., Frenzel, H., Newton, J., Feely, R. A., Alin, S. R., and Klingler, T.: Coastal processes modify projections of some climate-driven stressors in the California Current System, *Biogeochemistry: Coastal Ocean*, <https://doi.org/10.5194/bg-2020-279>, 2020.
- Smit, A. J., Roberts, M., Anderson, R. J., Dufois, F., Dudley, S. F. J., Bornman, T. G., Olbers, J., and Bolton, J. J.: A Coastal Seawater Temperature Dataset for Biogeographical Studies: Large Biases between In Situ and Remotely-Sensed Data Sets around the Coast of South Africa, *PLoS ONE*, 8, e81944, <https://doi.org/10.1371/journal.pone.0081944>, 2013.
- Varillon, D., Fiat, S., De Ramon N’Yeur, A., Le Gendre R., Ganachaud, A., Aucan, J., Hocdé, R., Menkes, C.: ReefTEMPS: The Pacific Island coastal ocean observation network. Seanoe Dataset. <https://doi.org/10.17882/55128>, 2024.
- Van Wynsberge, S., Menkes, C., Le Gendre, R., Passfield, T., and Andréfouët, S.: Are Sea Surface Temperature satellite measurements reliable proxies of lagoon temperature in the South Pacific?, *Estuarine, Coastal and Shelf Science*, 199, 117–124, <https://doi.org/10.1016/j.ecss.2017.09.033>, 2017.
- Van Wynsberge, S., Le Gendre, R., Sangare, N., Aucan, J., Menkes, C., Liao, V., and Andréfouët, S.: Monitoring pearl farming lagoon temperature with global high resolution satellite-derived products: An evaluation using Raroia Atoll, French Polynesia, *Marine Pollution Bulletin*, 160, 111576, <https://doi.org/10.1016/j.marpolbul.2020.111576>, 2020.
- Wang, X. L., Chen, H., Wu, Y., Feng, Y., and Pu, Q.: New Techniques for the Detection and Adjustment of Shifts in Daily Precipitation Data Series, *Journal of Applied Meteorology and Climatology*, 49, 2416–2436, <https://doi.org/10.1175/2010JAMC2376.1>, 2010.
- Wong, A. P. S., Wijffels, S. E., Riser, S. C., Pouliquen, S., Hosoda, S., Roemmich, D., Gilson, J., Johnson, G. C., Martini, K., Murphy, D. J., Scanderbeg, M., Bhaskar, T. V. S. U., Buck, J. J. H., Merceur, F., Carval, T., Maze, G., Cabanes, C., André, X., Poffa, N., Yashayaev, I., Barker, P. M., Guinehut, S., Belbéoch, M., Ignaszewski, M., Baringer, M. O., Schmid, C., Lyman, J. M., McTaggart, K. E., Purkey, S. G., Zilberman, N., Alkire, M. B., Swift, D., Owens, W. B., Jayne, S. R., Hersh, C., Robbins, P., West-Mack, D., Bahr, F., Yoshida, S., Sutton, P. J. H., Cancouët, R., Coatanoan, C., Dobbler, D., Juan, A. G., Gourrion, J., Kolodziejczyk, N., Bernard, V., Bourlès, B., Claustre, H., D’Ortenzio, F., Le Reste, S., Le Traon, P.-Y., Rannou, J.-P., Saout-Grit, C., Speich, S., Thierry, V., Verbrugge, N., Angel-Benavides, I. M., Klein, B., Notarstefano, G., Poulain, P.-M.,

963 Vélez-Belchí, P., Suga, T., Ando, K., Iwasaska, N., Kobayashi, T., Masuda, S., Oka, E., Sato, K., Nakamura, T., Sato, K.,
964 Takatsuki, Y., Yoshida, T., Cowley, R., Lovell, J. L., Oke, P. R., Van Wijk, E. M., Carse, F., Donnelly, M., Gould, W. J.,
965 Gowers, K., King, B. A., Loch, S. G., Mowat, M., Turton, J., Rama Rao, E. P., Ravichandran, M., Freeland, H. J., Gaboury,
966 I., Gilbert, D., Greenan, B. J. W., Ouellet, M., Ross, T., Tran, A., Dong, M., Liu, Z., Xu, J., Kang, K., Jo, H., et al.: Argo Data
967 1999–2019: Two Million Temperature-Salinity Profiles and Subsurface Velocity Observations From a Global Array of
968 Profiling Floats, *Front. Mar. Sci.*, 7, 700, <https://doi.org/10.3389/fmars.2020.00700>, 2020.
969
970 Wyatt, A. S. J., Leichter, J. J., Toth, L. T., Miyajima, T., Aronson, R. B., and Nagata, T.: Heat accumulation on coral reefs
971 mitigated by internal waves, *Nat. Geosci.*, 13, 28–34, <https://doi.org/10.1038/s41561-019-0486-4>, 2020.
972
973
974
975
976
983

a supprimé: Appendix A

Table A1. Countries and Territories codes

Country

... [2]

Page 12 : [1] a supprimé	Romain Le Gendre	15/04/2025 20:41:00
--------------------------	------------------	---------------------

Page 32 : [2] a supprimé	Romain Le Gendre	15/04/2025 21:15:00
--------------------------	------------------	---------------------