

1 **Additional Supporting Information**

2 **Database of phytoplankton species and other protists occurrence in North American Arctic: synthesis of recent**
3 **diversity of toxic and harmful algae**

4 Nicolas Schiffrine¹, Fatma Dhifallah¹, Kaven Dionne^{1, a}, Michel Poulin², Sylvie Lessard¹, André Rochon¹, Michel Gosselin¹

5 ¹Institut des sciences de la mer de Rimouski (ISMER), Université du Québec à Rimouski, Rimouski, QC G5L 3A1, Canada

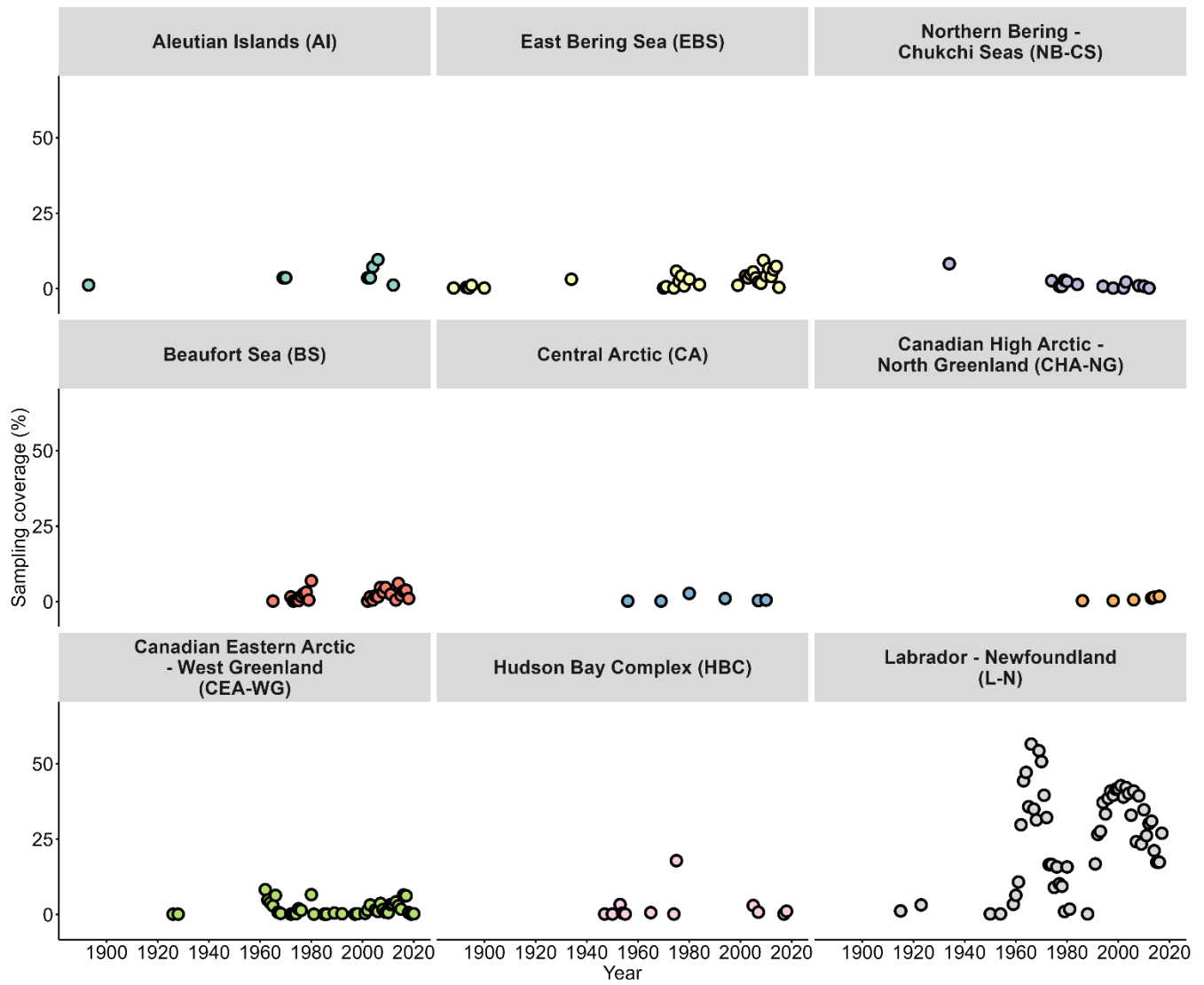
6 ²Recherche et collections, Musée canadien de la nature, C.P. 3443, Succ. D, Ottawa, ON K1P 6P4, Canada

7 ^apresent address: Réseau Québec Maritime, Université du Québec à Rimouski, Rimouski, QC G5L 3A1, Canada

8 *Corresponding author:* Nicolas Schiffrine (nicolas_schiffrine@uqar.ca)

9

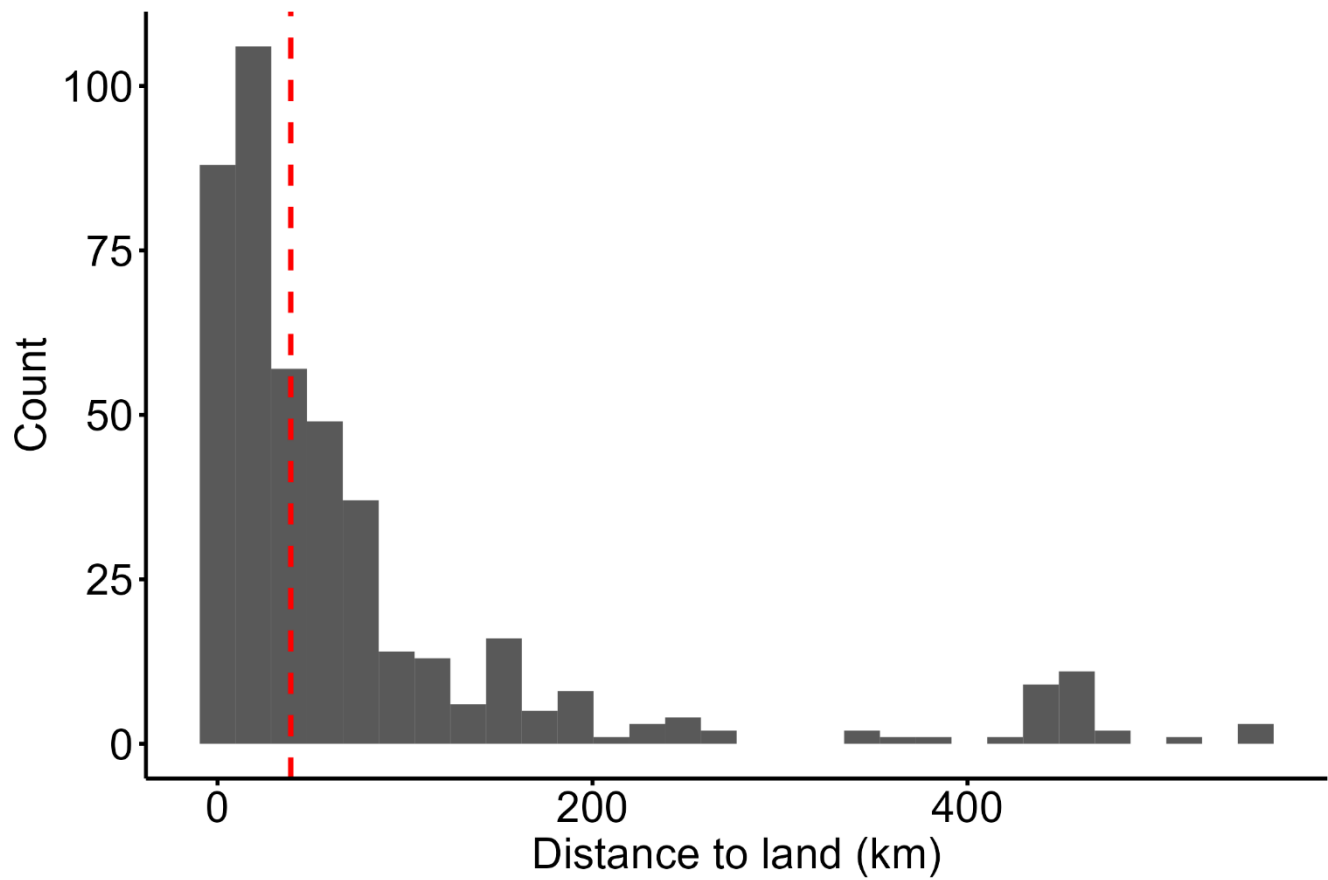
10 **Supplementary figures**



11

12 **Figure S1: Temporal variation of sampling coverage (%) for each Large Marine Ecosystem (LME) region. Abbreviations of the**
13 **LME regions are in parentheses.**

14

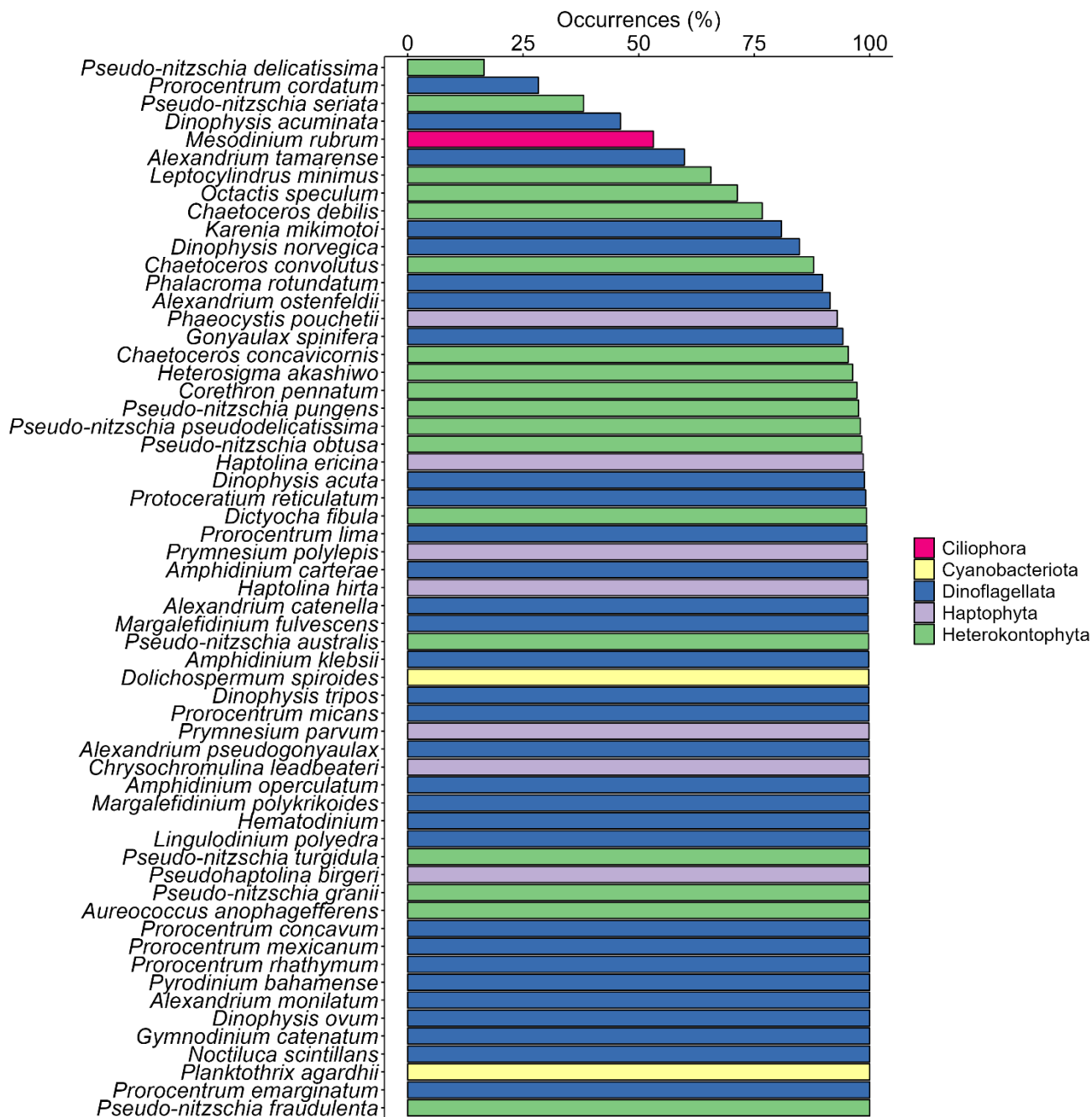


15

16 **Figure S2: Histogram of the distribution of distances to land (kilometers) for the sampled station in the Beaufort Sea (BS) region.**

17 **The red dashed line represents the median.**

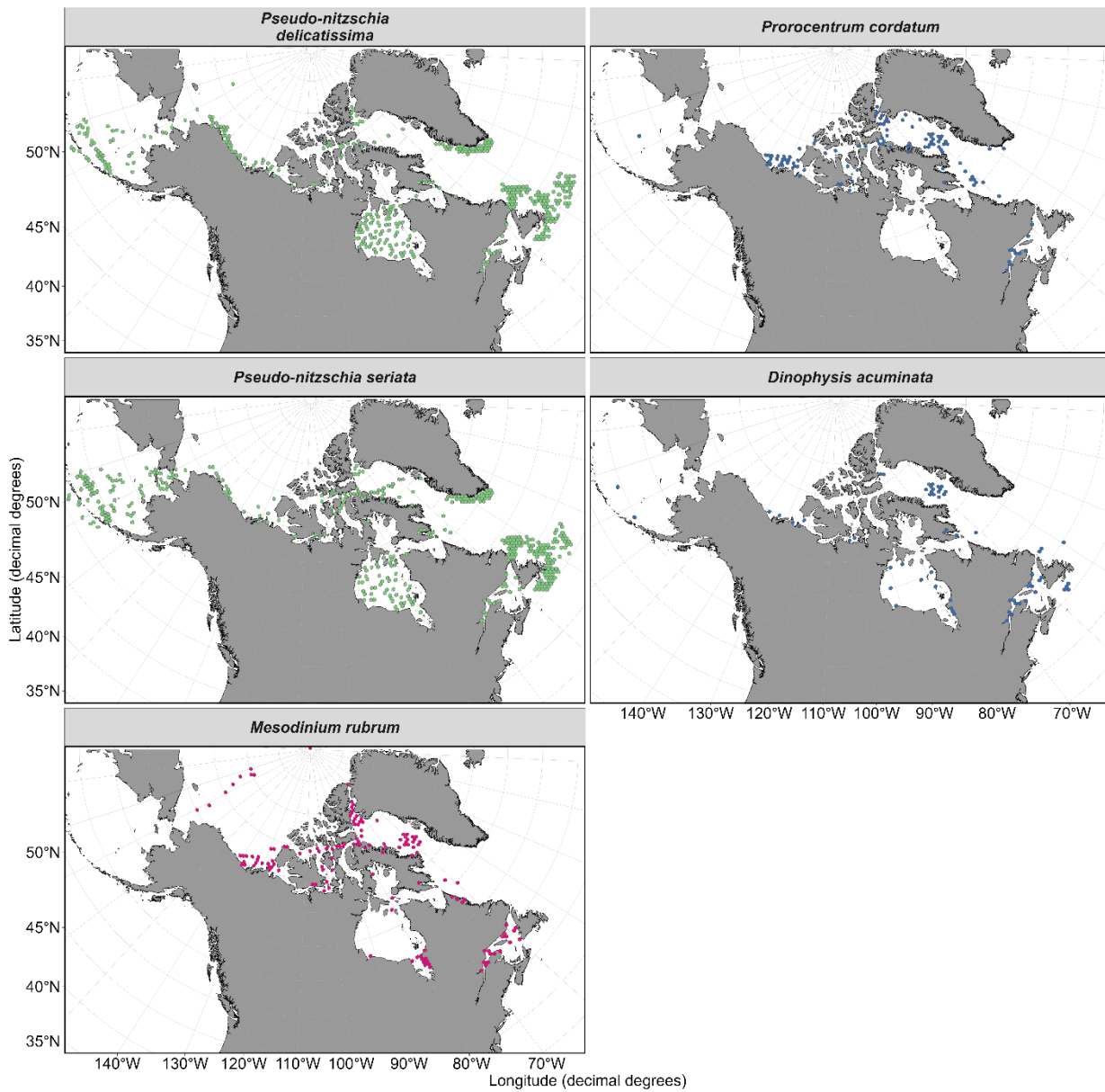
18



19

20 **Figure S3: Cumulative occurrences (%) of the HA taxa.**

21



22

23 **Figure S4: Geographical distribution of the five most occurring HA species.**