

# 1 **Microbial plankton occurrence database in the North American** 2 **Arctic region: synthesis of recent diversity of potentially toxic and/or** 3 **harmful algae**

4 Nicolas Schiffrine<sup>1</sup>, Fatma Dhifallah<sup>1</sup>, Kaven Dionne<sup>1, a</sup>, Michel Poulin<sup>2</sup>, Sylvie Lessard<sup>1</sup>, André Rochon<sup>1</sup>,  
5 Michel Gosselin<sup>1</sup>

6 <sup>1</sup>Institut des sciences de la mer (ISMER), Université du Québec à Rimouski, Rimouski, QC G5L 3A1, Canada

7 <sup>2</sup>Recherche et collections, Musée canadien de la nature, C.P. 3443, Succ. D, Ottawa, ON K1P 6P4, Canada

8 <sup>a</sup>present address: Réseau Québec Maritime, Université du Québec à Rimouski, Rimouski, QC G5L 3A1, Canada

9

10 *Correspondence to:* Nicolas Schiffrine ([nicolas\\_schiffrine@uqar.ca](mailto:nicolas_schiffrine@uqar.ca))

11 **Abstract.** The Arctic Ocean is currently undergoing significant transformations due to climate change, leading to profound  
12 changes in its microbial plankton communities, including photoautotrophic prokaryotes and eukaryotes (i.e., phytoplankton),  
13 as well as heterotrophic, phagotrophic, and mixotrophic protistan species. Among these unicellular organisms, potentially toxic  
14 and/or harmful algal species (hereafter referred to as "HA") are of particular concern, as they pose a threat to human and  
15 ecosystem health if they potentially spread into Arctic waters. Despite their importance, the spatial and temporal distribution  
16 of these communities in the North American Arctic is poorly understood. To address this gap, we compiled and synthesized a  
17 large dataset from various sources, partitioned into nine regions based on the Large Marine Ecosystem classification. Our  
18 dataset contains 385 348 georeferenced data points and 18 268 unique sampling events (Schiffrine et al., 2024), encompassing  
19 1442 unique taxa, with Heterokontophyta (notably diatoms) and Dinoflagellata being the most dominant phyla. Our results  
20 indicate distinct spatial patterns of diversity, with the highest diversity observed in Atlantic-influenced regions of the North  
21 American Arctic. An analysis of the maximum latitude of HA species over time shows a gradual increase, with a notable rise  
22 towards the 1990s. However, this trend is likely influenced by increased research in higher latitudes, meaning no substantial  
23 spread of HA species into the North American part of the Arctic. Our study underscores the importance of extensive and long-  
24 term sampling efforts to understand the Arctic's biodiversity, particularly in documenting the presence and distribution of HA  
25 species. While the occurrence of HA in the Arctic is recognized, our findings highlight the need for further detailed  
26 investigations to fully grasp their ecological impacts and variability in the region. Overall, our results provide new insights  
27 into the spatial patterns and biodiversity of the microbial plankton communities in the North American Arctic and have  
28 implications for understanding the ecological functioning and response of this region to ongoing climate change.

## 29 **1 Introduction**

30 The Arctic Ocean has become a focal point for climate change research due to its vulnerability to rapid and significant  
31 alterations in the environment (Meredith et al., 2019). As a result, the Arctic has been the focus of a growing number of  
32 scientific investigations aimed at understanding how these transformations affect the region's ecosystems, people, and global  
33 climate. In 2007, the Intergovernmental Panel on Climate Change recognized the Arctic as a region among the most vulnerable  
34 to climate change, highlighting the urgent need for further research in this area. Since then, a large body of scientific literature  
35 has emerged that explores the effects and implications of climate change on the Arctic marine ecosystem.

36  
37 The Arctic Ocean is undergoing rapid changes, with surface waters warming nearly four times faster than the global average  
38 (Rantanen et al., 2022), leading to significant reductions in sea ice extent and thickness (Hanna et al., 2021; Kacimi and Kwok,  
39 2022). This has resulted in increased melt pond formation (Rösel et al., 2012) and changes in ice dynamics, affecting energy  
40 absorption and water column stratification (Carmack et al., 2016), thereby reducing nutrient supply (Yamamoto-Kawai et al.,  
41 2009). Additionally, the Arctic Ocean is experiencing some of the fastest rates of ocean acidification (AMAP, 2018), adding  
42 to the numerous challenges already faced by this rapidly changing region. These dramatic environmental changes are reshaping  
43 the microbial plankton communities, including photoautotrophic prokaryotes and eukaryotes (i.e., phytoplankton), as well as  
44 heterotrophic, phagotrophic, and mixotrophic protistan species, with significant implications for ecosystem structure and  
45 function (e.g., Ardyna and Arrigo, 2020). The reduction in sea-ice cover has led in earlier phytoplankton blooms in some  
46 regions (Kahru et al., 2011), and increased open water periods, potentially leading to a second bloom in autumn (Ardyna et  
47 al., 2014). In the Barents Sea, shifts in the current surface velocities have driven poleward intrusions of *Gephyrocapsa huxleyi*  
48 (Lohmann) Reinhardt (previously called *Emiliana huxleyi* (Lohmann) Hay & Mohler; Bendif et al., 2019, 2023), a temperate  
49 marine calcifying phytoplankton species (Neukermans et al., 2018; Oziel et al., 2020). Conversely, in the less productive  
50 waters of the Canada Basin, increased freshwater inflow has led to a transition from nanophytoplankton/diatom communities  
51 to picophytoplankton due to altered nutrient availability in the surface layer (Li et al., 2009). The observed changes in physico-  
52 chemical conditions in the Arctic may also increase the potential risk of proliferation of potentially toxic and/or harmful algal  
53 species (hereafter abbreviated as HA). Numerous HA species have already been detected in several Arctic regions (Bates et  
54 al., 2020; McKenzie et al., 2020). Notably, various toxin-producing diatoms of the genus *Pseudo-nitzschia* H.Peragallo have  
55 been documented in Iceland, Western Greenland, Baffin Bay, Barrow Strait, Beaufort Sea, Bering Strait, and subarctic regions  
56 around Norway (Bates et al., 2020; Pućko et al., 2019). Similarly, toxic dinoflagellate species belonging to the genera  
57 *Alexandrium* Halim and *Dinophysis* Ehrenberg have been detected (Bates et al., 2020; Bruhn et al., 2021; Dhifallah et al.,  
58 2021; Okolodkov and Dodge, 1996; Pućko et al., 2019). Olsen et al. (2019) recently documented a red tide of the harmful  
59 phototrophic ciliate *Mesodinium rubrum* (Lohmann) Leegard at the interface between ice and water in newly formed pack ice  
60 north of Svalbard during early spring. Their findings suggest that ephemeral blooms of this species are increasingly probable  
61 under the context of thinning Arctic sea ice. Nöthig et al. (2015) also described a dominance shift towards the harmful

62 prymnesiophyte *Phaeocystis pouchetii* (Hariot) Lagerheim, driven by a warm-water anomaly in the Atlantic waters of the West  
63 Spitsbergen Current in Fram Strait. Moreover, the increase in maritime traffic due to growing economic and tourism  
64 development in the Arctic may elevate the risk of introducing non-native species, including HA species (Chan et al., 2019;  
65 Dhifallah et al., 2021). These shifts could have significant implications for the future of Arctic marine ecosystems, impacting  
66 the transfer of energy and organic matter through the pelagic food web.

67

68 The paucity of data on the diversity and richness of Arctic microbial plankton communities, particularly phytoplankton and  
69 other protist species, hinders our ability to fully understand their spatial and temporal variability. Additionally, the complex  
70 biogeography of the polar region exacerbates this issue. One way to address these challenges and track potential changes in  
71 community structure, dynamics, and phenology is through the use of long-term datasets. The emergence of digital archives of  
72 biological data, such as the Global Biodiversity Information Facility (GBIF; <https://www.gbif.org/>) and the Ocean  
73 Biogeographic Information System (OBIS; <https://www.obis.org/>), has enabled the identification of significant patterns in the  
74 global distribution of microbial plankton diversity as well as the occurrence, toxicity, and associated risks posed by HA species  
75 (Hallegraeff et al., 2021; Righetti et al., 2019). Despite numerous studies that have utilized long-term datasets to monitor  
76 changes in Arctic microbial plankton diversity and dominance, most of these studies have been conducted in specific regions  
77 of the Arctic (Blais et al., 2017; Freyria et al., 2021). Furthermore, previous reports on the diversity of Arctic microbial  
78 plankton communities have not included essential information, such as geographic coordinates and dates, limiting the ability  
79 to assess potential changes in diversity and dominance (e.g., Poulin et al., 2011). To date, there has been no effort to  
80 comprehensively combine data from various sources, such as OBIS, GBIF, and both published and unpublished datasets, into  
81 a unified database specifically for the North American Arctic. This study aims to fill this gap by creating an extensive database  
82 on a pan-American Arctic scale. This database will facilitate the investigation of global trends in the biogeography, diversity,  
83 and composition of microbial plankton taxa across the North American region of the Arctic Ocean, thereby addressing the  
84 limitations of existing quantitative data.

## 85 **2 Data and methods**

### 86 **2.1 Data acquisition**

87 Our database consists of microbial plankton occurrences (i.e., presences and abundances greater than zero), including  
88 photoautotrophic prokaryotes and eukaryotes (i.e., phytoplankton), as well as heterotrophic, phagotrophic, and mixotrophic  
89 protistan species. These data were compiled from web-based search engines and queries in online databases, such as OBIS  
90 (<https://obis.org>), GBIF (<https://www.gbif.org>) and PANGAEA (<https://www.pangaea.de/>). Occurrence data from OBIS (last  
91 accessed: November 20, 2020; n = 575 200) and GBIF (last accessed: November 16, 2020; n = 197 439) were first downloaded  
92 using the keywords “Chromista” and “Plantae”; from 45° N to 90° N and from 40° W to 180° W, without temporal restriction.  
93 Occurrence data from PANGAEA (last accessed: November 2020; n = 1994) were collected using the keywords: “Chromista”,

94 “Phytoplankton”, “Taxonomy”, “Harmful algal bloom”, “Arctic Ocean”, “Polar” and several combinations of these keywords.  
95 We supplemented the data with records from ArcticNet campaigns (n = 43 982) and individual studies (n = 90 479). We  
96 included the "sourceArchive" column (  
97 ) to specify the origin of each record (i.e., GBIF, OBIS, ArcticNet, or individual studies). We standardized the column names  
98 to ensure compatibility between different datasets and to adhere to the Darwin Core standard (<https://dwc.tdwg.org/>), resulting  
99 in a comprehensive dataset of 909 094 data points (Schiffrine et al., 2024).

100

## 101 **2.2 Biogeographic classification**

102 Our global database was divided into hexagonal bins using the R package *dggridR* (version 3.1.0; [https://github.com/r-](https://github.com/r-barnes/dggridR)  
103 [barnes/dggridR](https://github.com/r-barnes/dggridR); Barnes and Sahr, 2020), with a resolution of 2591.40183 km<sup>2</sup>. The chosen grid resolution strikes a balance  
104 between providing sufficient spatial resolution to capture ecological patterns and minimizing computational requirements.  
105 Each grid cell was then assigned a corresponding Large Marine Ecosystem (LME) region using the spatial polygons obtained  
106 from the “*mr\_shp*” function of the R package *mregions* (version 0.1.9; Chamberlain and Schepers, 2021). Arctic LMEs are  
107 defined by ecological criteria, including bathymetry, hydrography, productivity, and tropically linked populations, and are  
108 integral to ecosystem-based management approaches with a 5-module framework focused on productivity, fish and fisheries,  
109 pollution and ecosystem health, socioeconomics, and governance (PAME, 2013). Conserving only grid labelled as “arctic”  
110 according to the LME classification (PAME, 2013), this new dataset contains 4458 grid cells partitioned into nine different  
111 regions and 550 033 data points (Schiffrine et al., 2024).

## 112 **2.3 Data quality control**

113 Each record underwent a verification process to ensure the accuracy of taxonomic identification. First, we used the AlgaeBase  
114 database, and the API key provided by the AlgaeBase team to validate each record as an accepted name  
115 (<http://www.algaebase.org/>; AlgaeBase. World-wide electronic publication, 2023). If a record was not validated through this  
116 process, we performed a secondary verification using the “*wm\_records*” function from the R package *worms* (version 0.4.3;  
117 Chamberlain and Vanhoorne, 2023), using the World Register of Marine Species database (WoRMS;  
118 <http://www.marinespecies.org>; Ahyong et al., 2023). If the taxonomic identification could not be found in either of these  
119 databases, we assigned the record to the next higher taxonomic classification level (n = 39). These modifications were specified  
120 in the “ReduceName” column (Table 1). In order to maintain data quality and avoid loss of information, we manually adjusted  
121 a total of 249 taxonomic names, with the modified names indicated in the “ModifiedName” column (Table 1). Taxonomic  
122 records that included qualifiers such as “aff.” (n = 40) and “cf.” (n = 95) were categorized at the species level in our dataset to  
123 simplify taxonomic classification. While this simplification enhances dataset accessibility, it is crucial to acknowledge the  
124 potential introduction of errors due to a certain degree of uncertainty associated with species identification. To maintain  
125 transparency, qualifiers originally denoted by “cf.” and “aff.” were thoughtfully preserved in the “OpenNomenclature” column

126 (Table 1). This approach strikes a balance between simplification and taxonomic rigor, enabling users to recognize the initial  
 127 uncertainty in identification and facilitating further investigation or refinement of taxonomic assignments as necessary.  
 128 Taxonomic records with qualifiers such as “sp.” (n = 193) or “spp.” (n = 324), as well as those indicating a “group” (e.g.,  
 129 *Pseudo-nitzschia seriata* group; n = 27), “complex” (e.g., *Gymnodinium/Gyrodinium* complex; n = 3), or containing multiple  
 130 species names (e.g., *Pseudo-nitzschia delicatissima/Pseudo-nitzschia pseudodelicatissima*; n = 12), were categorized at the  
 131 genus level in the dataset. These qualifiers are denoted in the “OpenNomenclature” column (Table 1). Less than 1% of the  
 132 records in our dataset could not be identified in either the AlgaeBase or WoRMS databases. The original taxonomic names  
 133 were retained in the “verbatimScientificName” (Table 1), allowing for traceability to the harmonized names.

134  
 135 **Table 1: Detailed description of the columns. For details see: <https://dwc.tdwg.org/>**

| Variable name          | Definition   |
|------------------------|--|
| acceptedNameUsage      | Currently accepted name according to AlgaeBase and/or WoRMS  |
| eventDate              | Date and time of the event   |
| year                   | Integer representing the year in which the event occurred  |
| month                  | Integer representing the month in which the event occurred   |
| day                    | Integer representing the day of the month in which the event occurred                                    |
| DayOfYear              | Day of the year in which the event occurred  |
| decimalLongitude       | Geographic longitude in decimal degrees  |
| decimalLatitude        | Geographic latitude in decimal degrees   |
| depth                  | Depth in meters at which the event occurred  |
| individualCount        | Number or enumeration value representing the quantity of organisms                                       |
| Comments               | Additional comments or notes about the record  |
| datasetID              | Identifier for the dataset   |
| datasetName            | Name identifying the dataset from which the record is derived  |
| basisOfRecord          | Nature of the record, based on the Darwin Core terms   |
| sourceArchive          | Source from which the records were obtained  |
| institutionCode        | Name or acronym of the institution having custody of the object or information referred to in the record |
| seqnum                 | Identifier for the grid cell   |
| lme_name               | Name of the Large Marine Ecosystem (LME) region  |
| abbrev_lme_name        | Abbreviation of the Large Marine Ecosystem (LME) region name   |
| verbatimScientificName | Original scientific name recorded  |

|                             |  |
|-----------------------------|--|
| ModifiedName                | Taxonomic name after modification or correction to improve accuracy or consistency   |
| ReduceName                  | Taxonomic name after reduction to a higher taxonomic rank when the original name contained multispecies or complex designations  |
| parse.name                  | Taxonomic name used for verification with AlgaeBase and/or WoRMS, obtained through parsing and formatting processes to ensure compatibility and consistency with the databases |
| openNomenclature            | Uncertainty or provisional status of taxonomic identification  |
| acceptedNameUsageID         | Identifier for the current accepted scientific name details  |
| scientificName              | Scientific name according to AlgaeBase and/or WoRMS  |
| scientificNameID            | Identifier for scientific name details   |
| URI                         | Set of identifiers constructed according to the generic syntax for Uniform Resource Identifiers  |
| acceptedNameUsageAuthorship | The authorship information for the acceptedNameUsage formatted according to the conventions of the applicable nomenclatural Code   |
| taxonomicStatus             | Status of the use of the acceptedNameUsage as a label for a taxon  |
| nomenclaturalStatus         | Status related to the original publication of the name and its conformance to the relevant rules of nomenclature   |
| taxonRank                   | Taxonomic rank of the most specific name in the acceptedNameUsage  |
| taxonRankID                 | Identifier for the taxonomic rank of the most specific name in the acceptedNameUsage   |
| kingdom                     | Full scientific name of the kingdom in which the taxon is classified   |
| phylum                      | Full scientific name of the phylum or division in which the taxon is classified  |
| class                       | Full scientific name of the class in which the taxon is classified   |
| order                       | Full scientific name of the order in which the taxon is classified   |
| family                      | Full scientific name of the family in which the taxon is classified  |
| genus                       | Full scientific name of the genus in which the taxon is classified   |
| isMarine                    | Boolean flag indicating whether the taxon is a marine organism, i.e., can be found in/above sea water  |
| isBrackish                  | Boolean flag indicating whether the taxon is an organism that can be found in brackish water   |
| isFreshwater                | Boolean flag indicating whether the taxon occurs in freshwater habitats, i.e., can be found in/above rivers or lakes   |

|  |   |
|--|---|
| isTerrestrial                            | Boolean flag indicating the taxon is a terrestrial organism, i.e., occurs on land as opposed to the sea |
| isFossil                                 | Boolean flag indicating whether the taxon is an extinct organism  |
| isToxic                                  | Boolean flag indicating whether the taxon is a toxic organism   |
| isHarmful                                | Boolean flag indicating whether the taxon is a harmful organism   |
| bibliographicCitation                    | Bibliographic reference for the resource  |
| bibliographicCitation_ToxicHarmfulStatus | Bibliographic reference for the resource's toxic and harmful status                                     |
| modified                                 | Date on which the resource was changed  |
| database                                 | Database source used for scientific name verification   |

---

## 136 2.4 List of potentially toxic and/or harmful algal species

137 In the context of this study, “HA” is used as an abbreviation to refer collectively to potentially toxic and/or harmful algal  
138 species. Our comprehensive global list of HA species consists of the IOC-UNESCO taxonomic reference list  
139 (<http://www.marinespecies.org/hab/>; last accessed: June 20, 2023; Lundholm et al., 2009). We subsequently supplemented this  
140 list by incorporating the taxa list of Bates et al. (2020, 2019), which notably included the Ciliophora, *Mesodinium rubrum*  
141 (Lohmann) Leegard. We chose to retain *M. rubrum* due to its significant ecological implications (McKenzie et al., 2020; Olsen  
142 et al., 2019). We excluded the dinoflagellate *Protoperdinium crassipes* (Kofoid) Balech from Bates et al. (2020), since this  
143 heterotrophic species appears to act more as a toxin vector than a toxin producer (e.g., Tillmann et al., 2009). Each taxon was  
144 verified as described in the previous section and merged based on the “acceptedNameUsage” column. We assigned the toxic  
145 and/or harmful status to each record, following the criteria of Lundholm et al. (2009) and Bates et al. (2020, 2019). This  
146 compiled list includes 113 Dinoflagellata, 49 Heterokontophyta, 43 Cyanobacteriota, 11 Haptophyta, and one Ciliophora  
147 species. Of these, 205 species have been identified as toxic (indicated by a flag in the “isToxic” column; Table 1), seven are  
148 considered harmful (indicated by a flag in the “isHarmful” column; Table 1), and five species remain under debate regarding  
149 their toxic and/or harmful status (flagged in both “isToxic” and “isHarmful” columns; Table 1).

## 150 2.5 Data merger and synthesis

151 The filters implemented during the data merging and synthesis process aimed to ensure the quality and relevance of the dataset.  
152 The filters applied were as follows:

- 153     ▪ Records without year information were removed to ensure data quality and enable meaningful temporal analysis, as  
154         the absence of this crucial temporal component would limit the dataset’s usability for studying time-dependent  
155         patterns or trends.
- 156     ▪ Records with depths greater than 2500 meters were excluded, considering the specific characteristics and depth ranges  
157         of the Arctic region based on bathymetry data.

- 158     ▪ Records classified as “fossil only” or “fossil” in either the AlgaeBase or WoRMS databases (e.g., “isFossil” column;  
159     Table 1) were excluded to focus only on currently occurring microbial plankton species. However, records classified  
160     as freshwater or brackish according to the AlgaeBase or WoRMS databases (i.e., “isFreshwater” and “isBrackish”  
161     columns; Table 1) were retained to account for their ecological relevance and potential responses to changing Arctic  
162     conditions, given the Arctic’s connection to freshwater and brackish coastal regions.
- 163     ▪ Records not found in either AlgaeBase or WoRMS were excluded to ensure the inclusion of taxonomically validated  
164     and accepted names.
- 165     ▪ Taxa belonging to specific kingdoms (i.e., Animalia, Fungi, Acritarcha), phyla (i.e., Foraminifera, Oomycote,  
166     Rhodophyta, Retaria), and classes (i.e., Phaeophyceae, Ulvophyceae) were excluded to maintain the focus on  
167     microbial plankton species.
- 168     ▪ Records identified at a taxonomic level higher than genus were removed from the dataset to ensure consistent and  
169     accurate taxonomic classification at the genus level. Retaining records at the genus level allows for a more detailed  
170     understanding of the composition of microbial plankton communities in the study area.
- 171     ▪ Duplicate records were removed, using the following columns: “day”, “month”, “year”, “depth”, “decimalLatitude”,  
172     “decimalLongitude”, “verbatimScientificName”, “scientificName”, “acceptedNameUsage”, “basisOfRecord” and  
173     “individualCount” (Table 1). This step ensured that each unique sampling event was represented by a single record  
174     in the dataset.

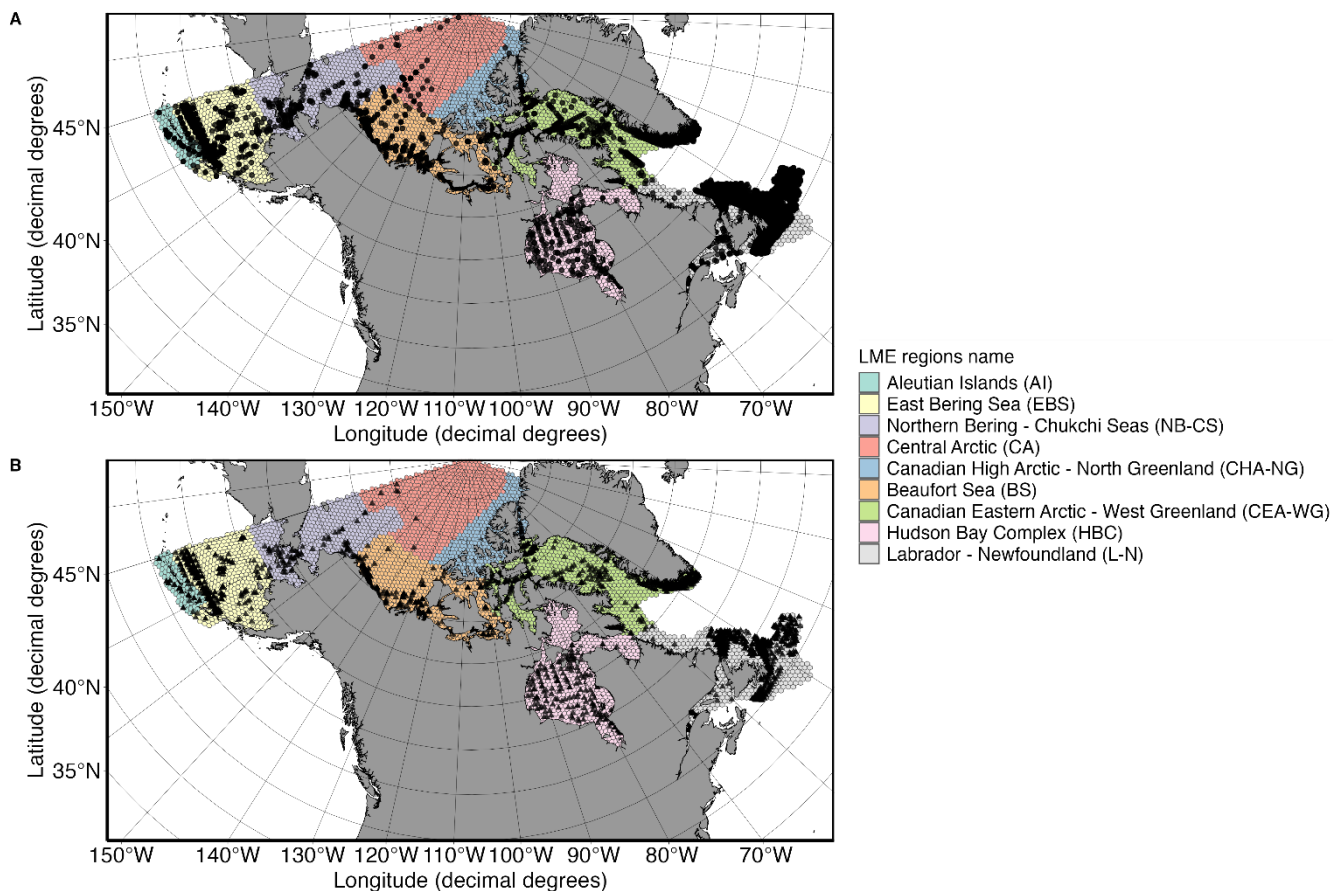
175

176 After applying these filters, the dataset contains 385 348 individual georeferenced data points and 18 268 unique sampling  
177 events (Fig. 1A; Schiffrine et al., 2024). To access the comprehensive diversity of HA species, we further subset the database  
178 based on the “isToxic” and “isHarmful” columns (Table 1), resulting in a dataset with a total of 48 555 georeferenced data  
179 points of HA species and 6744 unique sampling events (Fig. 1B; Schiffrine et al., 2024).

## 180 **2.7 Data analysis**

181 The size of each LME region was determined by calculating the total number of grid cells (i.e.,  $n_{total}$ ). For each LME region  
182 and each month, the number of grid cells containing records was counted and summed per year (i.e.,  $n_{sampled}$ ). This value was  
183 then divided by  $n_{total}$  to estimate the percentage of the region that was sampled, or sample coverage, that specific year within  
184 each LME region. The same method was applied to the HA sub-dataset, where  $n_{HA\ sampled}$  represents the number of grid cells  
185 containing HA records summed per year. Mapping and statistical analysis were performed on the filtered dataset (see section  
186 2.6) in R (R version 4.4.1; Team and R Development Core Team, 2019), using *tidyverse* (version 2.0.0; Wickham et al., 2019),  
187 *ggOceanMaps* (version 2.2.0; <https://mikkovihtakari.github.io/ggOceanMaps/>; Vihtakari, 2021), *vegan* (version 2.6-6.1;  
188 Oksanen et al., 2020), and *betapart* (version 1.6; Baselga and Orme, 2012) packages.





189

190 **Figure 1: (A) Global distribution of microbial plankton occurrence and (B) potentially toxic and/or harmful algal (HA) species**  
 191 **records. Abbreviations of the Large Marine Ecosystems (LME) regions are in parentheses.**

## 192 **3 Results and discussion**

### 193 **3.1 Spatiotemporal coverage**

194 The use of long-term datasets has significantly improved our understanding of microbial plankton taxa distribution and  
 195 diversity, as well as the underlying drivers of these patterns at both local (McKenzie et al., 2020; Nohe et al., 2020) and global  
 196 scales (Benedetti et al., 2021; Hallegraeff et al., 2021; Righetti et al., 2019). However, currently available databases on  
 197 microbial plankton occurrences only provide limited information on the Arctic Ocean. Although PhytoBase (i.e., Righetti et  
 198 al., 2020) is one of the most comprehensive and up-to-date sources of information on phytoplankton occurrence, data above  
 199 60° N are generally underrepresented. Furthermore, the recent study by Hallegraeff et al. (2021) did not specifically address  
 200 the evolution of HA blooms in the Arctic Ocean, but instead grouped the North American region of the Arctic Ocean within  
 201 the broader region of “East Coast America”.

202

203 Despite the existence of several published microbial plankton taxa lists specifically focused on the North American sector of  
204 the Arctic Ocean, there is currently a lack of a comprehensive and freely available standardized database accessible to the  
205 scientific community. To fill this gap, our project aimed to compile and integrate a large and diverse collection of data from  
206 multiple sources. The objective was to create a comprehensive database covering the distribution of microbial plankton  
207 including photoautotrophic prokaryotes and eukaryotes (i.e., phytoplankton), as well as heterotrophic, phagotrophic, and  
208 mixotrophic protistan species with a particular focus on HA species across the North American sector of the Arctic Ocean.  
209 Our efforts greatly expanded the spatial and temporal coverage of microbial plankton data across all LME regions in this sector  
210 of the Arctic Ocean compared to PhytoBase. Our database covers an impressive time span of 132 years, from 1888 to 2020,  
211 with 95% of the data collected after 1963. Sampling was mainly concentrated between the months of June to September,  
212 corresponding to reduced ice cover in the Arctic Ocean and better accessibility by ships to the Arctic. The spatial distribution  
213 of the records was highly unbalanced, with 82% of data records falling in the Labrador—Newfoundland region alone, followed  
214 by the Canadian Eastern Arctic—West Greenland with 8% (Figure S1). The remaining regions contribute smaller proportions,  
215 ranging from 0.1% to 5% of the data records (Figure S1). The dataset spans a depth range from 0 to 1010 meters. However,  
216 17% of the dataset lacks depth information, necessitating caution when interpreting the vertical distribution of phytoplankton  
217 and other protists. This is particularly significant in the Arctic marine environment, where subsurface chlorophyll *a* maxima  
218 are common (e.g., Martin et al., 2012). The scarcity of depth data may lead to an underestimation of biodiversity in these  
219 deeper layers. While 83% of the entries include depth information, allowing for some general statements regarding vertical  
220 distribution, the vast majority of data focuses on surface layers (95%), and the gaps in depth records impose certain limitations  
221 on our ecological interpretations. Regarding the types of records within the dataset (i.e., basisOfRecord column, Table 1), the  
222 majority (71%) are categorized under “HumanObservation”, which includes occurrences documented through field notes,  
223 literature, or records without physical or machine-recorded evidence. Another significant portion, 19% of the dataset falls  
224 under the “PreservedSpecimen” category, representing samples that have been treated with fixatives for preservation.

### 225 **3.2 Taxonomic coverage**

226 A total of 1442 unique taxa were recorded in our study. This number falls within the range reported by Archambault et al.  
227 (2010) and Poulin et al. (2011) for the same region (i.e., 1657 and 1229 taxa, respectively). It's essential to acknowledge that  
228 both Archambault et al. (2010) and Poulin et al. (2011) conducted their analyses based on literature reviews predominantly  
229 reliant on microscopic observations. In more recent comprehensive pan-Arctic taxonomic inventories using genomic  
230 techniques, Lovejoy et al. (2017) and Ibarbalz et al. (2023) reported 2241 and 3082 different OTU taxa, respectively. The  
231 discrepancy in reported taxa between our study and the aforementioned studies can be attributed to the fundamental differences  
232 in our respective approaches—our reliance on mainly microscopic observations (i.e., >90%) versus their exclusive use of  
233 genomic data. Genomic techniques possess the capacity to identify a broader spectrum of species, including those of smaller  
234 size or less conspicuous under microscopic examination, such as the Mamiellophyceae *Micromonas polaris* Simon, Foulon &  
235 Marin. Microscopic observations, which constitute a substantial portion of our dataset, inherently introduce certain biases.

236 They may overlook rare or small species (<3 µm) and encounter challenges related to precise species identification,  
237 compounded by considerations such as the choice of fixative (e.g., acidic Lugol's solution or formalin; Sournia, 1978). As a  
238 result, our study may not offer a fully comprehensive representation of total species richness, particularly concerning rare or  
239 molecularly detectable taxa.

240

241 In this study, Heterokontophyta and Dinoflagellata were the most commonly occurring phyla, accounting for approximately  
242 45% and 36% of total occurrences, respectively (Fig. 2A). Within the phylum Heterokontophyta, which notably included  
243 diatoms (Guiry et al., 2023), the genus *Chaetoceros* Ehrenberg was the most frequently observed, followed by *Thalassiosira*  
244 Cleve, which accounted for 24% and 14% of total Heterokontophyta occurrences, respectively (Fig. 2B). *Triplos* Bory and  
245 *Gyrodinium* Kofoid & Swezy were the two most abundant genera in the phylum Dinoflagellata, accounting for 20% and 16%  
246 of total Dinoflagellata occurrences, respectively (Fig. 2C). The observed predominance of Heterokontophyta in this study,  
247 particularly the genera *Chaetoceros* and *Thalassiosira*, is in line with the general understanding of Arctic phytoplankton and  
248 other protist diversity (Lovejoy et al., 2017; Poulin et al., 2011). On the other hand, the findings for phylum Dinoflagellata  
249 contrast with prior research that has highlighted the predominance of the genus *Protoperdinium* Bergh (Okolodkov and  
250 Dodge, 1996). The exceptionally high occurrence of *Triplos* and *Gyrodinium* should be interpreted with caution. These two  
251 genera are mainly observed in the Labrador—Newfoundland region, where the majority of the data collected originates from  
252 the Continuous Plankton Recorder (CPR; Figure S2). It is important to note that CPR uses a large mesh size (270 µm) (e.g.,  
253 Richardson et al., 2006), resulting in an over-representation of larger taxa, such as *Triplos* and *Gyrodinium*.

254

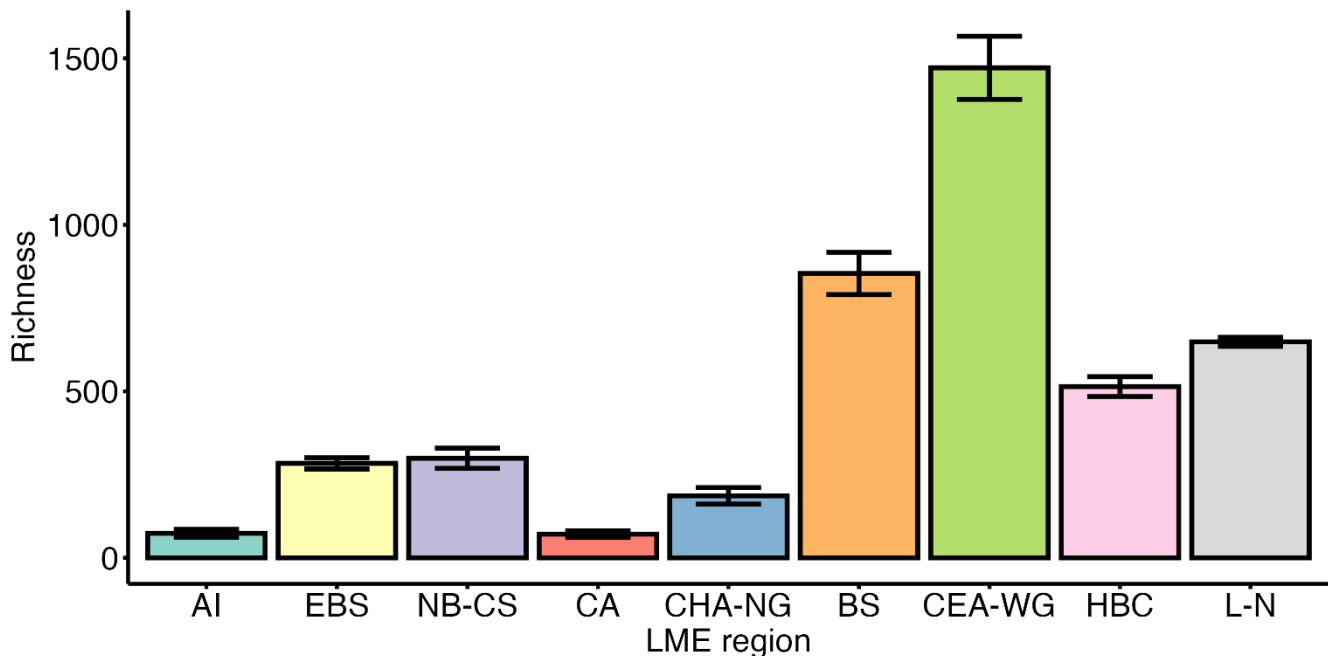
255 Cyanobacteria are notably scarce in Arctic waters, and their ecological roles appear to be taken over by picoeukaryotic algae  
256 (Buitenhuis et al., 2012; Pedrós-Alió et al., 2015). Studies indicate a marked decrease in the cell abundance of oceanic  
257 picocyanobacteria with increasing latitude in the northern and southern hemispheres. Among these, *Prochlorococcus*  
258 Chisholm, Frankel, Goericke, Olson, Palenik, Waterbury, West-Johnsrud & Zettler ex Komárek et al., the most abundant  
259 photosynthetic genus in tropical oceans, is notably absent from polar waters (Flombaum et al., 2013). The International Census  
260 of Marine Microbes (ICoMM) surveys retrieved fewer than 30 true Cyanobacterial tags overall, reflecting their scarcity in  
261 Arctic marine waters (Lovejoy et al., 2011). In addition, a study of molecular diversity in the Beaufort Sea identified  
262 picocyanobacteria that were mostly affiliated with freshwater and brackish *Synechococcus* Nägeli lineages rather than oceanic  
263 ones (Waleron et al., 2007). Similarly, a 16S rRNA gene study of bacterial communities in the Beaufort Sea and Amundsen  
264 Gulf found that cyanobacteria were not among the top 50 most abundant bacterial taxa (Comeau et al., 2011). Our study  
265 revealed the presence of 26 distinct cyanobacteria entries, with 12 identified at the genus level and 14 at the species level.  
266 These 26 taxa encompass a diverse range of Cyanobacteria, with *Synechococcus* Nägeli being the most frequently detected  
267 genus, accounting for 91% of the cyanobacterial occurrences. Overall, cyanobacterial occurrences represent a small fraction  
268 of the total (0.8%). These results are consistent with the hypothesis of an allochthonous origin of Cyanobacteria in the coastal  
269 Arctic Ocean, as all species observed in our study are labeled by AlgaeBase as freshwater species (Schiffrine et al., 2024). Our



280 universally consistent across all taxa. Chaudhary et al. (2016) has highlighted that for certain groups, diversity may exhibit a  
281 bimodal distribution, with peaks occurring in the mid-latitudes rather than at the equator, and a notable decline in species  
282 richness within equatorial regions. Furthermore, patterns of phytoplankton diversity exhibit significant variation between  
283 different Longhurst provinces (Hörstmann et al., 2024). The primary driver behind these patterns is likely ocean temperature  
284 variability (Chaudhary et al., 2017; Ibarbalz et al., 2019). While environmental conditions undoubtedly contribute to these  
285 diversity patterns, the scarcity of data may also account for the observed low diversity. Righetti et al. (2020) reported a total  
286 of 1704 phytoplankton species, including 239 species within the same grid used in our study. However, our study detected an  
287 additional 1359 taxa, of which 532 belonged to Heterokontophyta and 363 to Dinoflagellata. Our results indicate that previous  
288 research may have significantly underestimated the biodiversity of Arctic phytoplankton and other protists (Righetti et al.,  
289 2019). Such underestimation may bias our understanding of the latitudinal gradient of diversity.

### 290 **3.3 Difference in species richness according to the Arctic LME regions**

291 LME regions show substantial variation in the nature of the data (i.e., basisOfRecords column; Table 1; Figure S3A) and data  
292 provenance (i.e., sourceArchive column; Table 1; Figure S3A), resulting in high variation in sampling coverage (Figure S4).  
293 Regions with higher contributions from OBIS/GBIF, such as the Labrador—Newfoundland region (Figure S3A), tend to have  
294 more extensive datasets. This leads to greater sampling coverage (Figure S4) and a higher probability of capturing a wider  
295 range of species, providing a more comprehensive representation of local biodiversity. In contrast, regions with higher  
296 contributions from “Individual Studies”, such as the Aleutian Islands, Central Arctic, or Canadian High Arctic—North  
297 Greenland regions (Figure S3A), may have been the focus of more specific scientific research. This results in lower sampling  
298 coverage (Figure S4) and may underrepresent species richness, potentially leading to an incomplete understanding of the true  
299 species composition in these areas. To address this concern, we used the Chao2 index, a widely used nonparametric method  
300 for estimating species richness in a community (Chao and Shen, 2003). The Chao2 index is particularly valuable as it accounts  
301 for rare species, providing a more accurate estimate of species richness in datasets with uneven sampling effort. The application  
302 of the Chao2 index allows us to assess alpha diversity, i.e., diversity on a local scale, within each LME region, especially when  
303 working with frequency counts or presence/absence data. The Chao2 index reveals significant differences in diversity among  
304 the LME regions (Fig. 3). The Canadian Eastern Arctic—West Greenland and Beaufort Sea regions exhibited the highest  
305 values of the Chao2 index, indicating higher species richness and diversity within their phytoplankton and other protist  
306 communities. In contrast, the Aleutian Islands and Central Arctic regions had the lowest values, suggesting lower species  
307 richness and diversity in these areas. The East Bering Sea, Hudson Bay Complex, Labrador—Newfoundland, and Northern  
308 Bering—Chukchi Seas regions also showed moderate to high Chao2 index values, indicating varying levels of species richness  
309 and diversity across these regions.



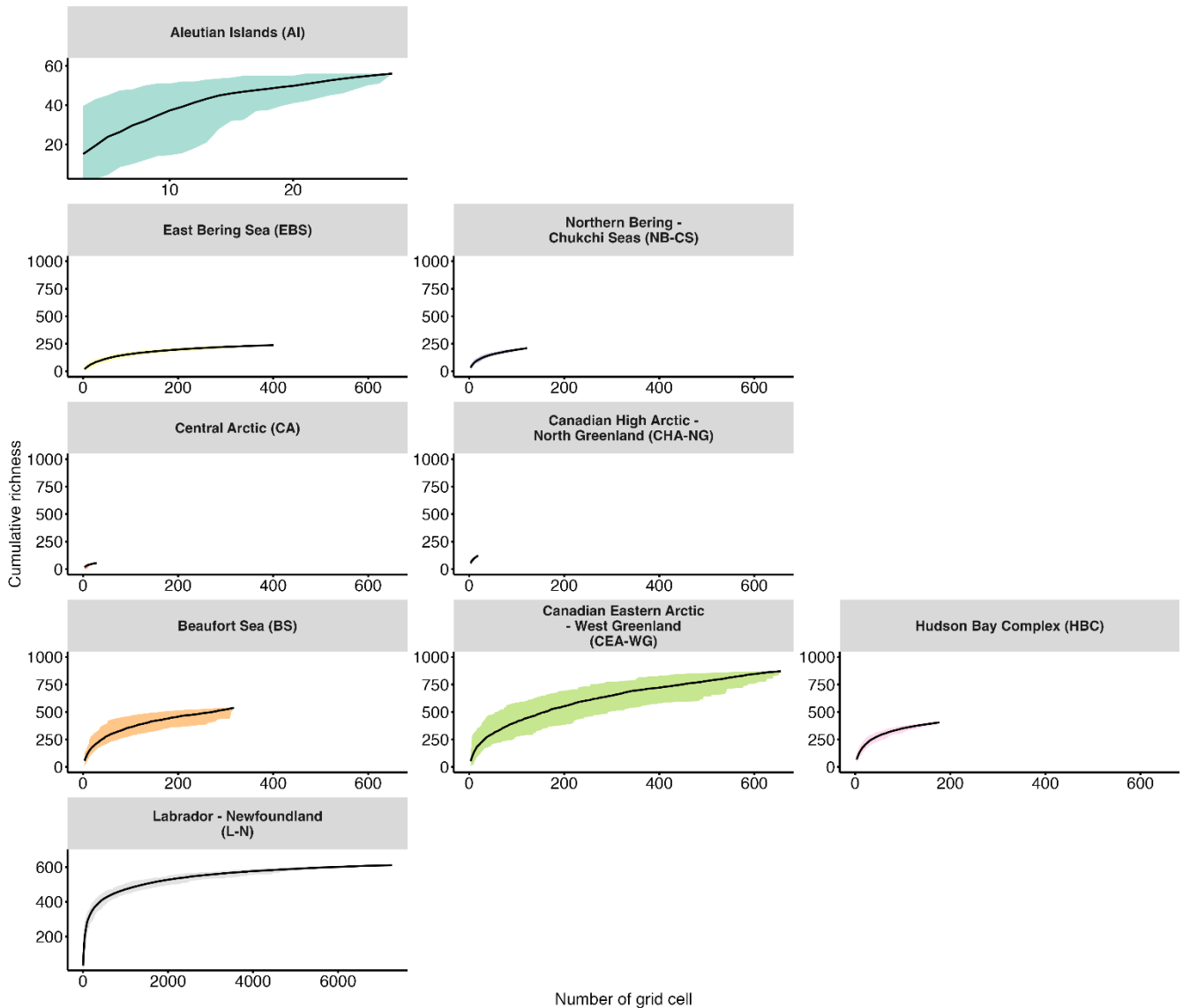
310

311 **Figure 3: Chao2 index for each Large Marine Ecosystem (LME) region. Error bars represent the standard error (i.e., SE). LME**  
 312 **regions are labeled as follows: AI (Aleutian Islands), n = 28; EBS (East Bering Sea), n = 401; NB-CS (Northern Bering—Chukchi**  
 313 **Seas), n = 122; BS (Beaufort Sea), n = 318; CA (Central Arctic), n = 29; CHA-NG (Canadian High Arctic—North Greenland), n =**  
 314 **19; CEA-WG (Canadian Eastern Arctic—West Greenland), n = 656; HBC (Hudson Bay Complex), n = 177; L-N (Labrador—**  
 315 **Newfoundland), n = 7268.**

316

317 To further analyze local diversity, we used species accumulation curves (SACs) to illustrate the number of species sampled  
 318 relative to the level of sampling effort (Thompson and Withers, 2003). SACs typically reach an asymptote when sufficient  
 319 sampling effort is achieved, enabling us to estimate the comprehensiveness of species richness detection. In our analysis, we  
 320 computed SACs based on the number of species observed in each grid cell for each month of every year, yielding valuable  
 321 insights into species richness and the extent of saturation (i.e., completeness of species richness detection) between regions  
 322 (Fig. 4). The Hudson Bay Complex and Labrador—Newfoundland regions exhibited saturation at cumulative richness levels  
 323 of around 400 and 600 taxa, respectively (Fig. 4), indicating that a significant proportion of the taxa present in these regions  
 324 had been sampled. Conversely, the SACs for other regions did not reach a plateau, suggesting that the sampling effort was  
 325 insufficient to capture the complete diversity (Fig. 4). This pattern was particularly pronounced in the northernmost regions,  
 326 such as Central Arctic and Canadian High Arctic—North Greenland (Fig. 4).

327



329

330 **Figure 4: Cumulative richness as a function of number of grid cell for each month of every year with standard deviation (i.e., SD;**  
 331 **colored area) for each Large Marine Ecosystem (LME) region. LME region abbreviations are in parentheses.**

332

333 The Central Arctic region, known for its extreme environmental conditions, such as low-nutrient concentrations and prolonged  
 334 annual sea-ice cover (Codispoti et al., 2013), exhibits a lower Chao2 index compared to other regions (Fig. 3). However, the  
 335 SAC did not saturate (Fig. 4), indicating that the actual diversity in this region may be higher than observed in this study.  
 336 Despite the inflow of nutrient-rich water through the Bering Strait (Torres-Valdés et al., 2013), which contributes to the high  
 337 productivity in the Pacific regions, such as East Bering Sea and Northern Bering—Chukchi Seas (Tremblay et al., 2015), these

338 regions display a relatively low Chao2 index (Fig. 3). One possible explanation for this observation is that the sampling effort  
339 conducted in these regions may not have been sufficient to capture the complete range of species diversity, leading to an  
340 underestimation of richness. This is supported by the SACs (Fig. 4), which show that the curves for both regions do not reach  
341 a plateau, indicating that the sampling effort was insufficient to fully assess the diversity present in these areas. The Labrador—  
342 Newfoundland region displays an intermediate Chao2 index (Fig. 3), although the SAC indicates that the majority of species  
343 have been recorded (Fig. 4). This saturation can be attributed to the provenance (i.e., “sourceArchive” column; Table 1; Figure  
344 S3A) and the nature (i.e., “basisOfRecords” column; Table 1; Figure S3B) of the data. Notably, 90% of the data come from  
345 OBIS, the majority of which were collected using the Continuous Plankton Recorder (CPR). The CPR's sampling methods,  
346 which involve a large mesh size (270  $\mu\text{m}$ ), fixed sampling depth (5–10 m), and high sampling speed (15–20 knots), are effective  
347 at capturing larger and more robust species but tend to miss smaller and more delicate species, as well as those that are not  
348 consistently present in the surface mixed layer (Richardson et al., 2006). As a result, the intermediate Chao2 index and the  
349 apparent saturation in the SACs may coexist. This is because the limitations of the CPR result in under-sampling of certain  
350 species, leading to apparent saturation in the species accumulation curves, while the Chao2 index may suggest that more  
351 species are present but not captured by the current sampling methods. The Chao2 index values for both the Beaufort Sea and  
352 the Canadian Eastern Arctic—West Greenland regions were remarkably high (Fig. 3). This is consistent with previous  
353 observations of relatively high diversity in the Canadian Eastern Arctic—West Greenland region (Joli et al., 2018;  
354 Kalenitchenko et al., 2019). However, it comes as a surprising result for the Beaufort Sea region, where, except during episodic  
355 upwelling events, the water column is highly stratified, and nutrient concentrations in the surface mixed layer are extremely  
356 low, especially in the northern part (Ardyna et al., 2017). This typically leads to a community with relatively low diversity and  
357 a high prevalence of picoeukaryotes, mostly represented by the psychrophilic prasinophyte *Micromonas polaris* N.Simon,  
358 Foulon & B.Marin (Balzano et al., 2012; Coupel et al., 2015; Tremblay et al., 2009). The relatively high Chao2 index value  
359 for the Beaufort Sea region may be explained by the fact that most of the samples were collected from nearshore areas (Figure  
360 S5). These nearshore areas are known for their high productivity (Ardyna et al., 2017), likely due to their exposure to nutrient-  
361 rich waters that can support the growth and diversity of microbial plankton communities. Another explanation could be the  
362 influence of stable surface mixed layer in the Beaufort Gyre that provide multiple ecological niches, further contributing to the  
363 observed high diversity. Nevertheless, the SACs for both regions indicate that sampling efforts in these areas are incomplete  
364 (Fig. 4). This implies that diversity may be underestimated and underscores the importance of further sampling to gain a more  
365 accurate understanding of local biodiversity in both the Beaufort Sea and the Canadian Eastern Arctic—West Greenland  
366 regions.

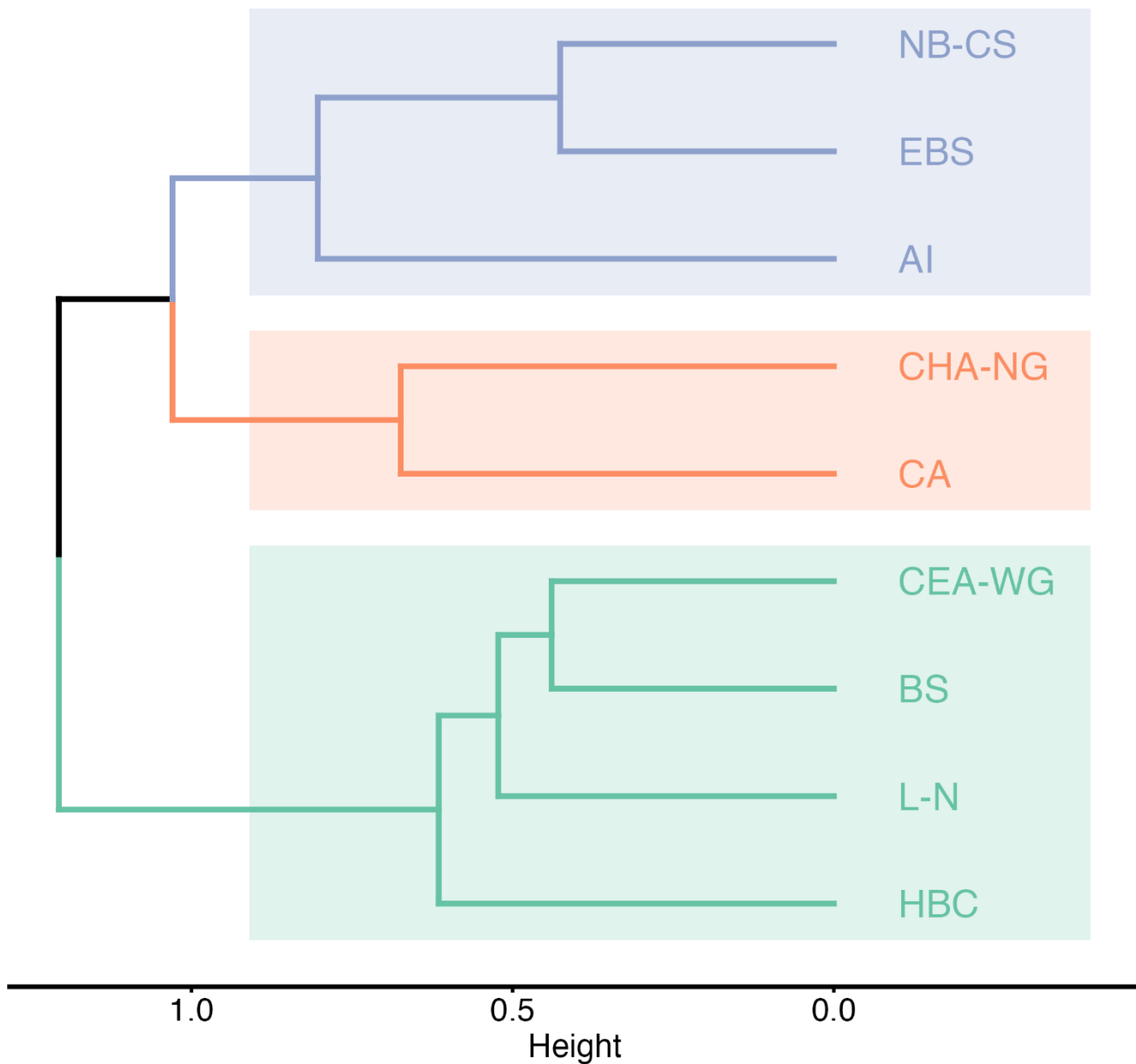
367

368 The beta diversity ( $\beta$ ) assessment provides valuable insights into the dissimilarity of taxa composition between multiple  
369 samples, enabling researchers to understand the variation in biodiversity across different spatial scales (Whittaker, 1972). In  
370 this study, we used the Sørensen dissimilarity index ( $\beta_{\text{SOR}}$ ) as the  $\beta$  diversity index to determine the proportion of taxa that are  
371 not shared between LME regions. The  $\beta_{\text{SOR}}$  values range from 0 to 1, where 0 indicates identical taxonomic composition at all



372 sites, and 1 represents completely different sets of taxa (Baselga, 2010). Our analysis revealed the subdivision of the LME  
373 regions into three distinct clusters based on their taxa composition (Fig. 5). The first cluster, known as the “Pacific Cluster”,  
374 includes the Aleutian Islands, East Bering Sea, and Northern Bering—Chukchi Seas regions. The second cluster, referred to  
375 as the “Northern Arctic Cluster”, encompasses the Central Arctic and Canadian High Arctic—North Greenland regions. Lastly,  
376 the third cluster, named the “Mixed Arctic Cluster”, consists of the Beaufort Sea, Canadian Eastern Arctic—West Greenland,  
377 Hudson Bay Complex, and Labrador—Newfoundland regions. The grouping of the Aleutian Islands, East Bering Sea, and  
378 Northern Bering—Chukchi Seas regions is anticipated owing to their common water supply and circulation patterns, which  
379 involve receiving water inflows from the Pacific Ocean through the Bering Strait (Rudels and Carmack, 2022). Consequently,  
380 this leads to comparable environmental conditions and nutrient inputs, which, in turn, explain the observed similarities in the  
381 composition of microbial plankton communities. Similarly, the Central Arctic and Canadian High Arctic—North Greenland  
382 regions share a common water circulation pattern in the Arctic Ocean (Rudels and Carmack, 2022). The common circulation  
383 pattern, combined with similar environmental characteristics, contributes to the similarities in taxonomic composition between  
384 these two regions. The inclusion of the Beaufort Sea region with Atlantic-dominant regions (i.e., Canadian Eastern Arctic—  
385 West Greenland, Hudson Bay Complex, and Labrador—Newfoundland) into one unique cluster may initially seem  
386 contradictory due to its geographic location outside the Atlantic side of the Arctic and lack of direct influence from Atlantic  
387 waters (Rudels and Carmack, 2022). However, this clustering is based on similarities in taxa composition rather than  
388 geographic proximity or environmental conditions. Despite its location, the Beaufort Sea region exhibits a higher resemblance  
389 in taxa composition to the Canadian Eastern Arctic—West Greenland, Hudson Bay Complex, and Labrador—Newfoundland  
390 regions compared to other regions in the dataset. This unexpected similarity may be attributed to oceanic circulation patterns  
391 and water mass transport mechanisms that connect these regions (Rudels and Carmack, 2022). These circulation patterns and  
392 transport mechanisms may facilitate the dispersal of taxa from the Beaufort Sea to Atlantic-dominated regions, thereby  
393 influencing the observed similarities in taxa composition (Wassmann et al., 2015). Such circulation-driven dispersal was  
394 documented by Reid et al. (2007), who observed the spread of the diatom *Neodenticula seminae* (Simonsen & T.Kanaya)  
395 Akiba & Yanagisawa from the Northwest Arctic to the Atlantic side, possibly through the Canadian Arctic Archipelago and/or  
396 Fram Strait. This observation provides additional support for the concept of shared microbial plankton composition influenced  
397 by oceanic circulation. These findings provide important insights into the biogeographic patterns of microbial plankton  
398 communities in the Arctic LME regions and highlight the importance of considering both geographic and ecological factors  
399 when interpreting these patterns.

400



401

402 **Figure 5: Cluster analysis of  $\beta$  diversity Sørensen dissimilarity index ( $\beta_{SOR}$ ) between the different Large Marine Ecosystem (LME)**  
 403 **region obtained with Ward's cluster method. LME regions are labeled as follows: NB-CS (Northern Bering—Chukchi Seas), EBS**  
 404 **(East Bering Sea), AI (Aleutian Islands), CHA-NG (Canadian High Arctic—North Greenland), CA (Central Arctic), CEA-WG**  
 405 **(Canadian Eastern Arctic—West Greenland), BS (Beaufort Sea), L-N (Labrador—Newfoundland) and HBC (Hudson Bay**  
 406 **Complex).**

407

### 408 3.4 Diversity of potentially toxic and/or harmful algal species

409 The presence of HA species has been a well-known concern in temperate marine and freshwater ecosystems, but their  
410 occurrence in the Arctic marine ecosystem is relatively new. With the ongoing climate change in the Arctic Ocean, there is a  
411 high probability that the frequency of HA occurrence will increase, notably by stimulating cyst germination (Anderson et al.,  
412 2021). Furthermore, the expansion of HA distributions from other regions due to increased ship traffic in the Arctic may further  
413 exacerbate this problem (e.g., Chan et al., 2019). HA species pose substantial risks to both human and ecosystem health, and  
414 can cause massive economic losses through fish kills. The phycotoxins produced by some of these organisms can  
415 bioaccumulate in higher trophic level organisms, including molluscs, seabirds, and marine mammals. When transferred to  
416 higher trophic levels, these phycotoxins can result in massive mortality, neurological or gastrointestinal adverse effects if  
417 consumed at concentrations that surpass safe thresholds. In the Alaskan sector of the Bering Sea, concentrations of these toxins  
418 have been detected in shellfish tissues that could pose a health risk to local populations (Gao et al., 2019). This issue is  
419 particularly important, as northern populations rely on traditional harvesting of fish, shellfish, and marine mammals for  
420 subsistence food.

421  
422 Of the 217 HA species compiled from Lundholm et al. (2009) and Bates et al. (2020, 2019) (see section 2.4 for details;  
423 Schiffrine et al., 2024), our database identified 59 species. Notably, our study detected a higher number of HA species  
424 compared to previous studies conducted by Poulin et al. (2011) and Pućko et al. (2019), who reported 36 and 27 species,  
425 respectively, after updating their species lists with revised taxonomy. It is noteworthy that both studies primarily aggregated  
426 data from literature reviews based on microscopic observations. Our study contributed an additional 25 species, including 16  
427 species from the phylum Dinoflagellata and seven species from the phylum Heterokontophyta. It is important to note that at  
428 least 11 species reported by Poulin et al. (2011) were not detected in the present work, as they occur in other Arctic regions  
429 not covered in our study, such as *Alexandrium minutum* Halim observed in the Russian and Scandinavian regions.

430  
431 Many of the species highlighted in our study are of particular concern for the Arctic Ocean due to their production of  
432 phycotoxins. Based on Lundholm et al. (2009) and Bates et al. (2020, 2019), we identified 48 potentially toxin-producing  
433 species, as indicated by the “isToxic” flag (Table 1). Of the 73 accepted species included in the genus *Pseudo-nitzschia*  
434 (AlgaeBase. World-wide electronic publication, 2023; last access June 2024), 28 are known to produce domoic acid (Bates et  
435 al., 2019; Lundholm et al., 2009), with nine of these toxin-producing species being present in our database (Schiffrine et al.,  
436 2024). Meanwhile, at least 16 of the 45 accepted species in the genus *Alexandrium* are known to be toxic (AlgaeBase. World-  
437 wide electronic publication, 2023; last access June 2024; Lundholm et al., 2009), but only five species have been recorded in  
438 our database (Schiffrine et al., 2024). The dinoflagellate genus *Dinophysis* has 276 phototrophic and heterotrophic accepted  
439 species worldwide (AlgaeBase. World-wide electronic publication, 2023; last access June 2024), and 10 of these species have  
440 been found to produce various toxins (Lundholm et al., 2009). Additionally, 14 out of the 133 accepted species of the genus

441 *Prorocentrum* Ehrenberg have been confirmed to produce a range of toxins (AlgaeBase. World-wide electronic publication,  
442 2023; last access June 2024; Lundholm et al., 2009). Our database contains at least six and five species from the genera  
443 *Dinophysis* and *Prorocentrum*, respectively (Schiffrine et al., 2024).

444

445 Surprisingly, we observed the presence of *Pyrodinium bahamense* Plate in our dataset, an occurrence published by MGnify  
446 (<https://www.ebi.ac.uk/metagenomics>; e.g., Mitchell et al., 2020) and hosted on GBIF  
447 (<https://www.gbif.org/dataset/b42d7c7f-43e5-4e24-abd7-fab3b4fceb09>). This observation is intriguing, as *P. bahamense* is  
448 typically associated with warm tropical waters (Morquecho, 2019), and its presence in Arctic waters is unexpected. The  
449 publication referenced by MGnify (e.g., Joli et al., 2018) does not mention the presence of *P. bahamense*, a fact also confirmed  
450 by the authors (pers. comm.), further adding to the uncertainty of this occurrence. This discrepancy suggests potential  
451 misidentifications when using data from platforms such as MGnify, which are primarily designed for microbiome analysis and  
452 may not always accurately identify species. Similarly, we observed the presence of the Pelagophyceae *Aureococcus*  
453 *anophagefferens* Hargraves & Sieburth, in the Canadian Eastern Arctic—West Greenland region. Unlike the occurrence of *P.*  
454 *bahamense*, this finding was published by Elferink et al. (2017b) as a supplement to their work (e.g., Elferink et al., 2017a).  
455 Therefore, this occurrence has undergone a peer-review process, reducing the likelihood of misidentification and increasing  
456 the credibility of the occurrence. Additionally, the presence of this species in the Arctic region was also reported by Ibarbalz  
457 et al. (2023), further supporting its presence in this region. Nevertheless, retaining such data is standard practice in scientific  
458 research to ensure transparency and data integrity. These occurrences underscore the critical importance of rigorous validation  
459 and verification processes in biodiversity studies, particularly when addressing unexpected findings in unique and sensitive  
460 environments like the Arctic. Ensuring the accuracy of species identification through meticulous peer-review and cross-  
461 referencing with established databases is essential. Such occurrences, if confirmed, could indicate significant ecological shifts  
462 driven by climate change, emphasizing the necessity for continuous, comprehensive monitoring to accurately assess and  
463 understand the broader impacts on species distributions and ecosystem dynamics.

464

465 Approximately 50% of all HA occurrences are primarily represented by only five species: *Pseudo-nitzschia delicatissima*  
466 (Cleve) Heiden, *P. seriata* (Cleve) H.Peragallo, *Dinophysis acuminata* Claparède & Lachmann, *Prorocentrum cordatum*  
467 (Ostenfeld) Dodge, and *Mesodinium rubrum* (Lohmann) Leegard (Figure S5). Among these species, *P. delicatissima*, *P.*  
468 *seriata*, *P. cordatum*, and *M. rubrum* showcase an extensive geographic distribution, aligning with their broad prevalence  
469 across different regions, including the Arctic (Figure S6) (Bates et al., 2020, 2018; Lassus et al., 2016). In contrast, *D.*  
470 *acuminata* demonstrates a more confined geographic range (Figure S6). While the presence of *M. rubrum*, which serves as  
471 prey for *D. acuminata* (Reguera et al., 2012), could potentially influence the distribution of this species, it cannot provide a  
472 comprehensive explanation for the constrained range of *D. acuminata*. This notion is underscored by the relatively broader  
473 geographic distribution observed for *M. rubrum* (Figure S6). Temperature is also unlikely to be another restricting factor, as  
474 *D. acuminata* demonstrates tolerance to a temperature range from 4 to 10 °C, which corresponds to the temperatures observed

475 in the region where this species occurred. The observed limited distribution of *D. acuminata* may therefore arise from a  
476 complex interplay of ecological and environmental factors that collectively shape its spatial pattern, a certainty that remains  
477 elusive in the scope of the present study. Additionally, this limited distribution could also be attributed to insufficient studies  
478 focused on this particular species.

479

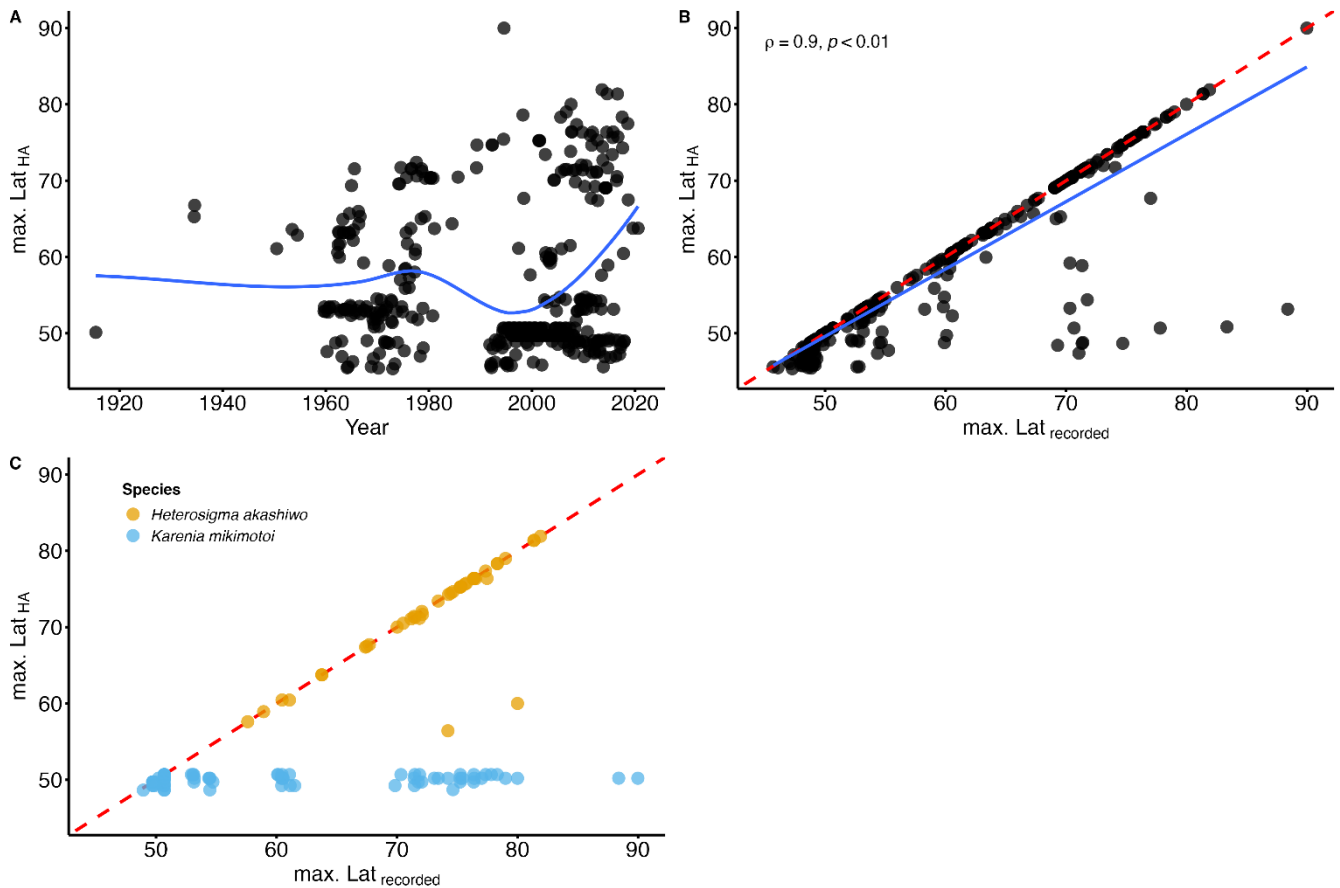
480 Climate change is expected to cause HA species to shift towards northern latitudes, increasing their prevalence in the North  
481 American Arctic region. In the Fram Strait, Nöthig et al. (2015) reported a dominance shift towards the harmful  
482 prymnesiophyte species *Phaeocystis pouchetii*, likely driven by a warm water anomaly in the Atlantic waters of the West  
483 Spitsbergen Current. Additionally, during a research cruise in the summer of 2022, an unprecedented bloom of *Alexandrium*  
484 *catenella* (Whedon & Kofoid) Balech, in terms of its scale, abundance, and toxicity, was tracked as it moved through the  
485 Bering Strait (Fachon et al., 2024). However, the extent of this northward progression of HA species in other Arctic regions,  
486 particularly the North American sector, remains relatively unexplored. To address this gap, we examined the temporal variation  
487 in the northernmost latitude where HA species are observed over the years. The analysis of maximum latitude of HA species  
488 for each month and year (i.e.,  $\max. Lat_{HA}$ ) reveals a gradual increase over time (Fig. 6A). To capture this trend more accurately,  
489 we applied LOESS (Locally Estimated Scatterplot Smoothing) regression. LOESS is particularly suitable for our dataset,  
490 which spans multiple decades and involves significant variability in sampling efforts. Unlike linear or polynomial regressions,  
491 LOESS does not assume a fixed functional form. Instead, it fits localized regressions to small subsets of the data, resulting in  
492 a smooth curve that better reflects the underlying patterns without imposing rigid assumptions about the data's structure. By  
493 using LOESS, we can visualize trends in the data while accounting for the inherent variability, allowing for a clearer picture  
494 of long-term patterns. The LOESS curve smooths out short-term fluctuations, revealing a marked increase towards the 90s  
495 (Fig. 6A), emphasizing the accelerated northward progression of HA species in recent years. However, this trend is likely  
496 influenced by heightened oceanographic research and expeditions in higher latitudes, as evidenced by the strong correlation  
497 between  $\max. Lat_{HA}$  and the maximum recorded latitude ( $\max. Lat_{recorded}$ ;  $\rho = 0.9$ ; p-value < 0.01; Fig. 6B). Nonetheless, this  
498 association appears to exhibit variability depending on the species (Table 2). It is noteworthy that among the species analyzed,  
499 there are 24 with insufficient available data to calculate the correlation (Table 2). For 12 species, there is a very weak Spearman  
500 rank correlation ( $-0.2 < \rho < 0.2$ ; Table 2), indicating no meaningful linkage between  $\max. Lat_{HA}$  and  $\max. Lat_{recorded}$ . One such  
501 example is the dinoflagellate species *Karenia mikimotoi* (Miyake & Kominami ex Oda) Hansen & Moestrup, which  
502 consistently maintains a near-constant  $\max. Lat_{HA}$  despite increasing  $\max. Lat_{recorded}$  (Fig. 6C). This pattern suggests that while  
503 the sampling efforts expand northward, *K. mikimotoi* seems to be restricted to a specific latitude range. This limited latitudinal  
504 distribution is possibly attributed to its temperature tolerance range (4–30°C) (Li et al., 2019). The colder temperatures in the  
505 North American Arctic align with the lower thermal limit of this species, likely acting as a thermal barrier to the dispersal of  
506 *K. mikimotoi*. Conversely, 12 species demonstrate a strong positive correlation ( $\rho > 0.6$ ; Table 2) that emphasizes a significant  
507 relationship between  $\max. Lat_{HA}$  and  $\max. Lat_{recorded}$ . For instance, the  $\max. Lat_{HA}$  of the raphidophyte species *Heterosigma*  
508 *akashiwo* (Hada) Hada ex Hara & Chihara appears to be closely linked to  $\max. Lat_{recorded}$  (Fig. 6C; Table 2). This suggests the

509 possibility of *H. akashiwo* being a permanent resident of the North American Arctic algal community. However, there remains  
510 uncertainty about whether the species observed in the database correspond to those found in temperate regions, as records of  
511 *H. akashiwo* in our database are identified with qualifiers such as “cf.” or “aff.” (Bérard-Therriault et al., 1999), indicating  
512 some uncertainty in their identification. In addition, Arctic conditions may not be conducive to its growth (Edvardsen and  
513 Imai, 2006; Mehdizadeh Allaf, 2023). In particular, toxin production is lowest at 30 °C, and blooms of *H. akashiwo* have been  
514 observed at temperatures  $\geq 15$  °C (Edvardsen and Imai, 2006; Mehdizadeh Allaf, 2023), suggesting that toxin production in  
515 the Arctic might be significantly reduced due to lower temperatures. The findings concerning the constrained latitudinal  
516 distribution of *K. mikimotoi* and the potential permanent residency of *H. akashiwo* in North American Arctic waters highlight  
517 the significance of investigating environmental factors and biological traits that shape the distribution and abundance of HA  
518 species Arctic Ocean and adjacent seas. In particular, gaining insights into thermal limits, growth requirements, and toxin  
519 production of these species can provide valuable information on their responses to the evolving Arctic climate and potential  
520 risks to human health and ecosystems. Further research is needed to investigate the population dynamics and ecological roles  
521 of these HA species within the Arctic context, as well as their interactions with other marine organisms and the physical  
522 environment. In addition, utilizing molecular techniques to confirm the identity of these species would help clarify whether *H.*  
523 *akashiwo* is indeed a permanent resident of the North American Arctic algal community or if the records are due to  
524 misidentifications or persistent contamination.

525

526 While studies have detected phycotoxins in the North American Arctic (Baggesen et al., 2012; Elferink et al., 2017a; Gao et  
527 al., 2019; Hubbard et al., 2023; Li et al., 2016; Pućko et al., 2023), there are no reports of HA events at high latitudes (>60° N)  
528 in the Harmful Algal Event Database (HAEDAT; <http://haedat.iode.org/index.php>; last accessed: October 2023). HAEDAT’s  
529 criteria for a HA event are strict, including toxin accumulation in seafood above safe levels, discoloration or scum in the water  
530 causing ecosystem or socioeconomic damage, negative effects on humans, animals, or other organisms, or precautionary  
531 closures of harvesting areas based on predefined thresholds of toxic phytoplankton cells in the water. This suggests that these  
532 events may not meet the HAEDAT criteria and raises questions about reconsidering and potentially revising the criteria used  
533 to monitor harmful algal blooms (HABs) in this unique region, particularly in the context of rapid environmental changes. The  
534 impacts of HABs in the Arctic may be more subtle, chronic, and ecosystem-specific, and therefore might not trigger the  
535 HAEDAT thresholds designed for more temperate regions. For instance, the Arctic marine ecosystem is particularly sensitive  
536 to changes, and even low-level toxin presence can have significant impacts on local wildlife and indigenous communities that  
537 rely heavily on marine resources. To address these unique challenges, it may be important to develop Arctic-specific  
538 monitoring criteria that consider the distinct ecological and socioeconomic context of the region. Such criteria could include  
539 lower thresholds for toxin levels, more sensitive indicators of ecosystem health, and an emphasis on the cumulative effects of  
540 low-level exposures over time. Additionally, incorporating traditional ecological knowledge from indigenous communities  
541 could enhance monitoring efforts, as these communities have long-standing observations and insights into local environmental  
542 changes. Encouraging the adoption of these tailored criteria would support more comprehensive monitoring efforts, ensuring

543 that all relevant harmful algal events are documented. This would not only improve our understanding of HABs in the Arctic  
544 but also inform better management and mitigation strategies to protect the Arctic marine ecosystem and the communities that  
545 depend on it.  
546



547  
548 **Figure 6:** (A) Temporal variation of the maximum latitude of HA species for each month and year ( $\text{max. Lat}_{\text{HA}}$ ); the blue line  
549 represents the locally estimated scatterplot smoothing (LOESS). (B) Relationship between maximum latitude of HA species for each  
550 month and year ( $\text{max. Lat}_{\text{HA}}$ ) and the maximum latitude recorded for each month and year ( $\text{max. Lat}_{\text{recorded}}$ ); the blue line represents  
551 the linear model; the red dashed line represents the 1:1 slope. (C) Relationship between the maximum latitude of HA species for  
552 each month and year ( $\text{max. Lat}_{\text{HA}}$ ) and the maximum latitude recorded for each month and year ( $\text{max. Lat}_{\text{recorded}}$ ) for *Heterosigma*  
553 *akashiwo* (yellow circle) and *Karenia mikimotoi* (blue circle); the red dashed line represents the 1:1 slope.

#### 554 4 Data availability

555 The dataset described in this work is published in the Zenodo repository: <https://zenodo.org/records/13376814> (Schiffrine et  
556 al., 2024).

557 **5 Code availability**

558 The code used in this study is publicly accessible on Zenodo <https://zenodo.org/records/13376814> (Schiffrine et al., 2024).

559 This repository contains the scripts and tools used for various aspects of our study, including data conversion, data quality  
560 control, analysis, and visualization.

561

562 **Table 2: Summary of the Spearman rank correlation ( $\rho$ ) analysis between the maximum latitude of HA species for each month and**  
563 **year (max. Lat<sub>HA</sub>) and the maximum latitude recorded for each month and year (max. Lat<sub>recorded</sub>) for each HA taxon.**

| Phylum                | Class        | Species  | $\rho$ | p-value |
|-----------------------|--------------|--|--------|---------|
| <b>Ciliophora</b>     | Litostomatea | <i>Mesodinium rubrum</i> Lohmann   | 0.381  | ***     |
| <b>Cyanobacteria</b>  | Cyanophyceae | <i>Dolichospermum spiroides</i> (Klebahn) Wacklin, L.Hoffmann & Komárek                            | —      | —       |
|                       |              | <i>Planktothrix agardhii</i> (Gomont) Anagnostidis & Komárek                                       | —      | —       |
| <b>Dinoflagellata</b> | Dinophyceae  | <i>Alexandrium catenella</i> (Whedon & Kofoid) Balech  | —      | —       |
|                       |              | <i>Alexandrium monilatum</i> (J.F.Howell) Balech   | —      | —       |
|                       |              | <i>Alexandrium ostenfeldii</i> (Paulsen) Balech & Tangen   | -0.042 | NS      |
|                       |              | <i>Alexandrium pseudogonyaulax</i> (Biecheler) Horiguchi ex K.Yuki & Y.Fukuyo                      | -0.177 | NS      |
|                       |              | <i>Alexandrium tamarense</i> (Lebour) Balech   | 0.026  | NS      |
|                       |              | <i>Amphidinium carterae</i> Hulburt  | -0.097 | NS      |
|                       |              | <i>Amphidinium klebsii</i> Kofoid & Swezy  | —      | —       |
|                       |              | <i>Amphidinium operculatum</i> Claparède & Lachmann  | —      | —       |
|                       |              | <i>Dinophysis acuminata</i> Claparède & Lachmann   | 0.322  | ***     |
|                       |              | <i>Dinophysis acuta</i> Ehrenberg  | 0.46   | ***     |
|                       |              | <i>Dinophysis norvegica</i> Claparède & Lachmann   | 0.144  | *       |
|                       |              | <i>Dinophysis ovum</i> F.Schütt  | —      | —       |
|                       |              | <i>Dinophysis tripos</i> Gourret   | -0.7   | *       |
|                       |              | <i>Gonyaulax spinifera</i> (Claparède & Lachmann) Diesing  | 0.078  | NS      |
|                       |              | <i>Gymnodinium catenatum</i> H.W.Graham  | —      | —       |
|                       |              | <i>Karenia mikimotoi</i> (Miyake & Kominami ex Oda) Gert Hansen & Moestrup                         | 0.164  | **      |
|                       |              | <i>Lingulodinium polyedra</i> (F.Stein) J.D.Dodge  | —      | —       |
|                       |              | <i>Margalefidinium fulvescens</i> (M.Iwataki, H.Kawami & Matsuoka) F.Gómez, Richlen & D.M.Anderson | —      | —       |
|                       |              | <i>Margalefidinium polykrikoides</i> (Margalef) F.Gómez, Richlen & D.M.Anderson                    | —      | —       |



|                         |                     |   |        |     |
|-------------------------|---------------------|---|--------|-----|
|                         |                     | <i>Phalacroma rotundatum</i> (Claparède & Lachmann) Kofoid & J.R.Michener   | 0.014  | NS  |
|                         |                     | <i>Prorocentrum concavum</i> Y.Fukuyo                                       | —      | —   |
|                         |                     | <i>Prorocentrum cordatum</i> (Ostenfeld) J.D.Dodge                          | 0.561  | *** |
|                         |                     | <i>Prorocentrum emarginatum</i> Y.Fukuyo                                    | —      | —   |
|                         |                     | <i>Prorocentrum lima</i> (Ehrenberg) F.Stein                                | 0.038  | NS  |
|                         |                     | <i>Prorocentrum mexicanum</i> Osorio-Tafall                                 | —      | —   |
|                         |                     | <i>Prorocentrum micans</i> Ehrenberg  | -0.536 | *   |
|                         |                     | <i>Prorocentrum rhathymum</i> A.R.Loeblich III, Sherley & R.J.Schmidt       | —      | —   |
|                         |                     | <i>Protoceratium reticulatum</i> (Claparède & Lachmann) Bütschli            | 0.515  | *** |
|                         |                     | <i>Pyrodinium bahamense</i> L.Plate   | —      | —   |
|                         | Noctilucomphyceae   | <i>Noctiluca scintillans</i> (Macartney) Kofoid & Swezy                     | —      | —   |
|                         | Syndiniophyceae     | <i>Hematodinium</i> Chatton & Poisson                                       | —      | —   |
| <b>Haptophyta</b>       | Coccolithophyceae   | <i>Chrysochromulina leadbeateri</i> Estep, Davis, Hargraves & Sieburth      | —      | —   |
|                         |                     | <i>Haptolina ericina</i> (Parke & Manton) Edvardsen & Eikrem                | 0.005  | NS  |
|                         |                     | <i>Haptolina hirta</i> (Manton) Edvardsen & Eikrem                          | 0.867  | *** |
|                         |                     | <i>Phaeocystis pouchetii</i> (Hariot) Lagerheim                             | 0.638  | *** |
|                         |                     | <i>Prymnesium parvum</i> N.Carter   | -0.489 | *   |
|                         |                     | <i>Prymnesium polylepis</i> (Manton & Parke) Edvardsen, Eikrem & Probert    | -0.014 | NS  |
|                         |                     | <i>Pseudohaptolina birgeri</i> (Hällfors & Niemi) Ribeiro & Edvardsen       | 0.8    | *   |
| <b>Heterokontophyta</b> | Bacillariophyceae   | <i>Pseudo-nitzschia australis</i> Frenguelli                                | —      | —   |
|                         |                     | <i>Pseudo-nitzschia delicatissima</i> (Cleve) Heiden                        | 0.681  | *** |
|                         |                     | <i>Pseudo-nitzschia fraudulenta</i> (Cleve) Hasle                           | —      | —   |
|                         |                     | <i>Pseudo-nitzschia granii</i> (Hasle) Hasle                                | —      | —   |
|                         |                     | <i>Pseudo-nitzschia obtusa</i> (Hasle) Hasle & Lundholm                     | 0.881  | *** |
|                         |                     | <i>Pseudo-nitzschia pseudodelicatissima</i> (Hasle) Hasle                   | 0.703  | *** |
|                         |                     | <i>Pseudo-nitzschia pungens</i> (Grunow ex Cleve) Hasle                     | 0.68   | *** |
|                         |                     | <i>Pseudo-nitzschia seriata</i> (Cleve) H.Peragallo                         | 0.695  | *** |
|                         |                     | <i>Pseudo-nitzschia turgidula</i> (Hustedt) Hasle                           | 0.803  | *   |
|                         | Coccinodiscophyceae | <i>Corethron pennatum</i> (Grunow) Ostenfeld                                | 0.69   | *** |
|                         | Dictyochophyceae    | <i>Dictyocha fibula</i> Ehrenberg   | 0.688  | *** |
|                         | Dictyochophyceae    | <i>Octactis speculum</i> (Ehrenberg) F.H.Chang, J.M.Grieve & J.E.Sutherland | 0.673  | *** |
|                         | Mediophyceae        | <i>Chaetoceros concavicornis</i> Mangin                                     | 0.4    | *** |
|                         |                     | <i>Chaetoceros convolutus</i> Castracane                                    | 0.175  | **  |

|                |   |       |     |
|----------------|---|-------|-----|
|                | <i>Chaetoceros debilis</i> Cleve                            | 0.387 | *** |
|                | <i>Leptocylindrus minimus</i> Gran                          | 0.367 | *** |
| Pelagophyceae  | <i>Aureococcus anophagefferens</i> Hargraves & Sieburth     | —     | —   |
| Raphidophyceae | <i>Heterosigma akashiwo</i> (Hada) Hada ex Y.Hara & Chihara | 0.868 | *** |

564 NS,  $p$ -value > 0.05; \*,  $p$ -value < 0.05; \*\*,  $p$ -value < 0.01; \*\*\*,  $p$ -value < 0.001; — indicates not tested.

## 565 6 Conclusion

566 Several databases exist that document the occurrence of microbial plankton taxa in temperate marine ecosystems. However,  
567 these resources often have limited representation of polar ecosystems or may lack such data entirely. Given the substantial  
568 environmental changes in the Arctic Ocean and their impact on microbial plankton communities, it is crucial to expand our  
569 understanding of Arctic phytoplankton biodiversity and biogeography. This study compiled various sources of digital  
570 biological records, both published and unpublished, to create a comprehensive dataset for North American Arctic marine  
571 microbial plankton occurrences. This dataset encompasses 385 348 individual georeferenced data points and 18 266 unique  
572 sampling events, covering 1422 species, including key phyla like Heterokontophyta, Dinoflagellata, Haptophyta, Ciliophora,  
573 and others. This effort addresses the historical limitations of Arctic microbial plankton data, which were often confined to  
574 specific regions or lacked comprehensive geographic and date-referenced records (Poulin et al., 2011).

575

576 Our study provides the largest database to date on the occurrence of microbial plankton species, including photoautotrophic  
577 prokaryotes and eukaryotes (i.e., phytoplankton), as well as heterotrophic, phagotrophic, and mixotrophic protistan species in  
578 the North American part of the Arctic. This dataset can serve as a valuable resource for investigating the biogeography and  
579 phenology of microbial plankton taxa in the region, particularly when integrated with other published datasets. Through the  
580 application of geostatistical methods, our database contributes to a refined understanding of potential changes in Arctic  
581 microbial plankton communities in the future. Additionally, by supplementing our dataset with information concerning the  
582 toxicity or harmful nature of species, it facilitates assessments of the potential proliferation of toxic and/or harmful species  
583 within the Arctic Ocean.

584

585 Moreover, in light of the comprehensive analysis conducted in this study, it becomes evident that routine phycotoxin  
586 monitoring should encompass the North American Arctic. Historically, this region has been overlooked, driven by the  
587 assumption that high-latitude Arctic areas are not prone to significant toxic algal blooms or phycotoxin contamination.  
588 Nevertheless, our research, which sheds light on the diversity, distribution, and prevalence of HA species within this distinct  
589 area, emphatically underscores the urgency to reassess this perspective. The conspicuous presence of HA species underscores  
590 the imperative for a comprehensive and proactive monitoring strategy.

591 **Author contributions**

592 NS led the study, the data processing and archiving, and the writing. FD, MP, SL, AR, and MG provided the quality-controlled  
593 data from different Arctic regions. KD initiated the collection of data in Iqaluit and surrounding areas of Frobisher Bay as part  
594 of the Baseline program in 2019. All authors reviewed and commented the manuscript.

595 **Competing interests**

596 The authors declare that no competing interests are present.

597 **Acknowledgements**

598 This work was supported by Fisheries and Oceans Canada (DFO) (Ocean Protection Plan and Ocean and Freshwater Science  
599 Contribution Program), Natural Sciences and Engineering Research Council of Canada, ArcticNet (Network of Centres of  
600 Excellence of Canada) and Fonds de recherche du Québec—Nature et technologies through the strategic cluster Québec-  
601 Océan to M. Gosselin and A. Rochon. We are grateful to local community members, DFO and university collaborators who  
602 participated in sampling and taxonomic analysis. We thank the AlgaeBase team for their invaluable assistance in providing  
603 us with an API key. This is a contribution to the research programs of the Institut des sciences de la mer of UQAR and  
604 Québec-Océan.

605 **References**

606 Ahyong, S., Boyko, C. B., Bailly, N., Bernot, J., Bieler, R., Brandão, S. N., Daly, M., De Grave, S., Gofas, S., Hernandez, F.,  
607 Hughes, L., Neubauer, T. A., Paulay, G., Boydens, B., Decock, W., Dekeyser, S., Vandepitte, L., Vanhoorne, B., Adlard, R.,  
608 Agatha, S., Ahn, K. J., Akkari, N., Alvarez, B., Amler, M. R. W., Amorim, V., Anderberg, A., Andrés-Sánchez, S., Ang, Y.,  
609 Antić, D., Antonietto, L. S. , Arango, C., Artois, T., Atkinson, S., Auffenberg, K., Baldwin, B. G., Bank, R., Barber, A.,  
610 Barbosa, J. P., Baron-Szabo, R. C., Bartsch, I., Bellan-Santini, D., Bergh, N., Berta, A., Bezerra, T. N., Blanco, S., Blasco-  
611 Costa, I., Blazewicz, M., Błędzki, L. A., Bock, P., Bonifacino, M., Böttger-Schnack, R., Bouchet, P., Boury-Esnault, N.,  
612 Bouzan, R., Boxshall, G., Bray, R., Bruce, N. L., Bruneau, A., Budaeva, N., Bueno-Villegas, J., Cairns, S., Calvo Casas, J.,  
613 Camilo de Oliveira, J. P., Carballo, J. L., Cárdenas, P., Carstens, E., Chan, B. K., Chan, T. Y., Cheng, L., Choong, H.,  
614 Christenhusz, M., Churchill, M., Collins, A. G., Collins, G. E., Collins, K., Consorti, L., Copilaş-Ciocianu, D., Corbari, L.,  
615 Cordeiro, R., Cornils, A., Costa Corgosinho, P. H., Coste, M., Costello, M. J., Crandall, K. A., Cremonte, F., Cribb, T.,  
616 Cutmore, S., Dahdouh-Guebas, F., Daneliya, M., Dauvin, J. C., Davie, P., De Broyer, C., de Lima Ferreira, P., de Mazancourt,  
617 V., de Voogd, N. J., Decker, P., Defaye, D., Dekker, H., d’Hondt, J. L., et al.: World Register of Marine Species (WoRMS),  
618 2023.

619 AMAP: AMAP Assessment 2018: Arctic Ocean Acidification., Arctic Monitoring and Assessment Programme (AMAP),  
620 Tromsø, Norway, vi+187 pp., 2018.

621 Anderson, D. M., Fachon, E., Pickart, R. S., Lin, P., Fischer, A. D., Richlen, M. L., Uva, V., Brosnahan, M. L., McRaven, L.,  
622 Bahr, F., Lefebvre, K., Grebmeier, J. M., Danielson, S. L., Lyu, Y., and Fukai, Y.: Evidence for massive and recurrent toxic

- 623 blooms of *Alexandrium catenella* in the Alaskan Arctic, *Proceedings of the National Academy of Sciences*, 118,  
624 <https://doi.org/10.1073/pnas.2107387118>, 2021.
- 625 Archambault, P., Snelgrove, P. V. R., Fisher, J. A. D., Gagnon, J.-M., Garbary, D. J., Harvey, M., Kenchington, E. L., Lesage,  
626 V., Levesque, M., Lovejoy, C., Mackas, D. L., McKindsey, C. W., Nelson, J. R., Pepin, P., Piché, L., and Poulin, M.: From  
627 Sea to Sea: Canada's Three Oceans of Biodiversity, *PLoS ONE*, 5, e12182, <https://doi.org/10.1371/journal.pone.0012182>,  
628 2010.
- 629 Ardyna, M. and Arrigo, K. R.: Phytoplankton dynamics in a changing Arctic Ocean, *Nature Climate Change*, 10, 892–903,  
630 <https://doi.org/10.1038/s41558-020-0905-y>, 2020.
- 631 Ardyna, M., Babin, M., Gosselin, M., Devred, E., Rainville, L., and Tremblay, J.-É.: Recent Arctic Ocean sea ice loss triggers  
632 novel fall phytoplankton blooms, *Geophysical Research Letters*, 41, 6207–6212, <https://doi.org/10.1002/2014GL061047>,  
633 2014.
- 634 Ardyna, M., Babin, M., Devred, E., Forest, A., Gosselin, M., Raimbault, P., and Tremblay, J.-É.: Shelf-basin gradients shape  
635 ecological phytoplankton niches and community composition in the coastal Arctic Ocean (Beaufort Sea), *Limnology and*  
636 *Oceanography*, 62, 2113–2132, <https://doi.org/10.1002/lno.10554>, 2017.
- 637 Baggesen, C., Moestrup, Ø., Daughbjerg, N., Krock, B., Cembella, A. D., and Madsen, S.: Molecular phylogeny and toxin  
638 profiles of *Alexandrium tamarense* (Lebour) Balech (*Dinophyceae*) from the west coast of Greenland, *Harmful Algae*, 19,  
639 108–116, <https://doi.org/10.1016/j.hal.2012.06.005>, 2012.
- 640 Balzano, S., Marie, D., Gourvil, P., and Vaultot, D.: Composition of the summer photosynthetic pico and nanoplankton  
641 communities in the Beaufort Sea assessed by T-RFLP and sequences of the 18S rRNA gene from flow cytometry sorted  
642 samples, *The ISME Journal*, 6, 1480–1498, <https://doi.org/10.1038/ismej.2011.213>, 2012.
- 643 Barnes, R. and Sahr, K.: dggridR: Discrete Global Grids, 2020.
- 644 Baselga, A.: Partitioning the turnover and nestedness components of beta diversity, *Global Ecology and Biogeography*, 19,  
645 134–143, <https://doi.org/10.1111/j.1466-8238.2009.00490.x>, 2010.
- 646 Baselga, A. and Orme, C. D. L.: betapart: an R package for the study of beta diversity, *Methods in Ecology and Evolution*, 3,  
647 808–812, <https://doi.org/10.1111/j.2041-210X.2012.00224.x>, 2012.
- 648 Bates, S., Beach, D., Comeau, L., Haigh, N., Lewis, N., Locke, A., Martin, J., McCarron, P., Mckenzie, C., Michel, C., Miles,  
649 C., Poulin, M., Quilliam, M., Rourke, W., Scarratt, M., Starr, M., and Wells, T.: Marine harmful algal blooms and phycotoxins  
650 of concern to Canada., *Canadian Technical Report of Fisheries and Aquatic Sciences*, 3384, x + 322, 2020.
- 651 Bates, S. S., Hubbard, K. A., Lundholm, N., Montresor, M., and Leaw, C. P.: *Pseudo-nitzschia*, *Nitzschia*, and domoic acid:  
652 New research since 2011, *Harmful Algae*, 79, 3–43, <https://doi.org/10.1016/j.hal.2018.06.001>, 2018.
- 653 Bates, S. S., Lundholm, N., Hubbard, K. A., Montresor, M., and Leaw, C. P.: Toxic and Harmful Marine Diatoms, in: *Diatoms:*  
654 *Fundamentals and Applications*, John Wiley & Sons, Ltd, 389–434, <https://doi.org/10.1002/9781119370741.ch17>, 2019.
- 655 Bendif, E. M., Nevado, B., Wong, E. L. Y., Hagino, K., Probert, I., Young, J. R., Rickaby, R. E. M., and Filatov, D. A.:  
656 Repeated species radiations in the recent evolution of the key marine phytoplankton lineage *Gephyrocapsa*, *Nature*  
657 *Communications*, 10, 4234, <https://doi.org/10.1038/s41467-019-12169-7>, 2019.

- 658 Bendif, E. M., Probert, I., Archontikis, O. A., Young, J. R., Beaufort, L., Rickaby, R. E., and Filatov, D.: Rapid diversification  
659 underlying the global dominance of a cosmopolitan phytoplankton, *The ISME Journal*, 17, 630–640,  
660 <https://doi.org/10.1038/s41396-023-01365-5>, 2023.
- 661 Benedetti, F., Vogt, M., Elizondo, U. H., Righetti, D., Zimmermann, N. E., and Gruber, N.: Major restructuring of marine  
662 plankton assemblages under global warming, *Nature Communications*, 12, 5226, <https://doi.org/10.1038/s41467-021-25385->  
663 [x](https://doi.org/10.1038/s41467-021-25385-x), 2021.
- 664 Bérard-Therriault, L., Poulin, M., and Bossé, L.: Guide d'identification du phytoplancton marin de l'estuaire et du golfe du  
665 Saint-Laurent: incluant également certains protozoaires, Publication spéciale canadienne des sciences halieutiques et  
666 aquatiques, Ottawa, Ont., 387 pp., 1999.
- 667 Blais, M., Ardyna, M., Gosselin, M., Dumont, D., Bélanger, S., Tremblay, J.-É., Gratton, Y., Marchese, C., and Poulin, M.:  
668 Contrasting interannual changes in phytoplankton productivity and community structure in the coastal Canadian Arctic Ocean,  
669 *Limnology and Oceanography*, 62, 2480–2497, <https://doi.org/10.1002/lno.10581>, 2017.
- 670 Bruhn, C. S., Wohlrab, S., Krock, B., Lundholm, N., and John, U.: Seasonal plankton succession is in accordance with  
671 phycotoxin occurrence in Disko Bay, West Greenland, *Harmful Algae*, 103, 101978,  
672 <https://doi.org/10.1016/j.hal.2021.101978>, 2021.
- 673 Buitenhuis, E. T., Li, W. K. W., Lomas, M. W., Karl, D. M., Landry, M. R., and Jacquet, S.: Picoheterotroph (*Bacteria* and  
674 *Archaea*) biomass distribution in the global ocean, *Earth System Science Data*, 4, 101–106, <https://doi.org/10.5194/essd-4->  
675 [101-2012](https://doi.org/10.5194/essd-4-101-2012), 2012.
- 676 Carmack, E. C., Yamamoto-Kawai, M., Haine, T. W. N., Bacon, S., Bluhm, B. A., Lique, C., Melling, H., Polyakov, I. V.,  
677 Straneo, F., Timmermans, M. L., and Williams, W. J.: Freshwater and its role in the Arctic Marine System: Sources,  
678 disposition, storage, export, and physical and biogeochemical consequences in the Arctic and global oceans, *Journal of*  
679 *Geophysical Research: Biogeosciences*, 121, 675–717, <https://doi.org/10.1002/2015JG003140>, 2016.
- 680 Chamberlain, S. and Schepers, L.: mregions: Marine Regions Data from “Marineregions.org,” 2021.
- 681 Chamberlain, S. and Vanhoorne, B.: worrms: World Register of Marine Species (WoRMS) Client, 2023.
- 682 Chan, F. T., Stanislawczyk, K., Sneekes, A. C., Dvoretzky, A., Gollasch, S., Minchin, D., David, M., Jelmert, A., Albretsen,  
683 J., and Bailey, S. A.: Climate change opens new frontiers for marine species in the Arctic: Current trends and future invasion  
684 risks, *Global Change Biology*, 25, 25–38, <https://doi.org/10.1111/gcb.14469>, 2019.
- 685 Chao, A. and Shen, T.-J.: Nonparametric estimation of Shannon's index of diversity when there are unseen species in sample,  
686 *Environmental and Ecological Statistics*, 10, 429–443, <https://doi.org/10.1023/A:1026096204727>, 2003.
- 687 Chaudhary, C., Saeedi, H., and Costello, M. J.: Bimodality of Latitudinal Gradients in Marine Species Richness, *Trends in*  
688 *Ecology & Evolution*, 31, 670–676, <https://doi.org/10.1016/j.tree.2016.06.001>, 2016.
- 689 Chaudhary, C., Saeedi, H., and Costello, M. J.: Marine Species Richness Is Bimodal with Latitude: A Reply to Fernandez and  
690 Marques, *Trends in Ecology & Evolution*, 32, 234–237, <https://doi.org/10.1016/j.tree.2017.02.007>, 2017.
- 691 Codispoti, L. A., Kelly, V., Thessen, A., Matrai, P., Suttles, S., Hill, V., Steele, M., and Light, B.: Synthesis of primary  
692 production in the Arctic Ocean: III. Nitrate and phosphate based estimates of net community production, *Progress in*  
693 *Oceanography*, 110, 126–150, <https://doi.org/10.1016/j.pocean.2012.11.006>, 2013.

- 694 Comeau, A. M., Li, W. K. W., Tremblay, J.-É., Carmack, E. C., and Lovejoy, C.: Arctic Ocean Microbial Community Structure  
695 before and after the 2007 Record Sea Ice Minimum, PLOS ONE, 6, e27492, <https://doi.org/10.1371/journal.pone.0027492>,  
696 2011.
- 697 Coupel, P., Matsuoka, A., Ruiz-Pino, D., Gosselin, M., Marie, D., Tremblay, J.-É., and Babin, M.: Pigment signatures of  
698 phytoplankton communities in the Beaufort Sea, Biogeosciences, 12, 991–1006, <https://doi.org/10.5194/bg-12-991-2015>,  
699 2015.
- 700 Dhifallah, F., Rochon, A., Simard, N., McKindsey, C. W., Gosselin, M., and Howland, K. L.: Dinoflagellate communities in  
701 high-risk Canadian Arctic ports, Estuarine, Coastal and Shelf Science, 107731, <https://doi.org/10.1016/j.ecss.2021.107731>,  
702 2021.
- 703 Edvardsen, B. and Imai, I.: The ecology of harmful flagellates within Prymnesiophyceae and Raphidophyceae, in: Ecology of  
704 Harmful Algae, edited by: Granéli, E. and Turner, J. T., Springer, Berlin, Heidelberg, 67–79, [https://doi.org/10.1007/978-3-540-32210-8\\_6](https://doi.org/10.1007/978-3-540-32210-8_6), 2006.
- 706 Elferink, S., Neuhaus, S., Wohlrab, S., Toebe, K., Voß, D., Gottschling, M., Lundholm, N., Krock, B., Koch, B. P., Zielinski,  
707 O., Cembella, A., and John, U.: Molecular diversity patterns among various phytoplankton size-fractions in West Greenland  
708 in late summer, Deep Sea Research Part I: Oceanographic Research Papers, 121, 54–69,  
709 <https://doi.org/10.1016/j.dsr.2016.11.002>, 2017a.
- 710 Elferink, S., Neuhaus, S., Wohlrab, S., Toebe, K., Voß, D., Gottschling, M., Lundholm, N., Krock, B., Koch, B. P., Zielinski,  
711 O., Cembella, A., and John, U.: Operational taxonomic units and taxonomy of a phytoplankton community during Maria S.  
712 Merian cruise MSM21/3 - Greenland (ARCHEMHAB), <https://doi.org/10.1594/PANGAEA.857405>, 2017b.
- 713 Fachon, E., Pickart, R. S., Sheffield, G., Pate, E., Pathare, M., Brosnahan, M. L., Muhlbach, E., Horn, K., Spada, N. N.,  
714 Rajagopalan, A., Lin, P., McRaven, L. T., Lago, L. S., Huang, J., Bahr, F., Stockwell, D. A., Hubbard, K. A., Farrugia, T. J.,  
715 Lefebvre, K. A., and Anderson, D. M.: Tracking a large-scale and highly toxic Arctic algal bloom: Rapid detection and risk  
716 communication, Limnology and Oceanography Letters, n/a, <https://doi.org/10.1002/lol2.10421>, 2024.
- 717 Flombaum, P., Gallegos, J. L., Gordillo, R. A., Rincón, J., Zabala, L. L., Jiao, N., Karl, D. M., Li, W. K. W., Lomas, M. W.,  
718 Veneziano, D., Vera, C. S., Vrugt, J. A., and Martiny, A. C.: Present and future global distributions of the marine Cyanobacteria  
719 *Prochlorococcus* and *Synechococcus*, Proceedings of the National Academy of Sciences, 110, 9824–9829,  
720 <https://doi.org/10.1073/pnas.1307701110>, 2013.
- 721 Freyria, N. J., Joli, N., and Lovejoy, C.: A decadal perspective on north water microbial eukaryotes as Arctic Ocean sentinels,  
722 Scientific Reports, 11, 8413, <https://doi.org/10.1038/s41598-021-87906-4>, 2021.
- 723 Gao, C., Lin, S., Chen, M., Hong, J., and Liu, C.: Prevalence of phycotoxin contamination in shellfish from the Northern  
724 Bering Sea and the Chukchi Sea, Toxicon, 167, 76–81, <https://doi.org/10.1016/j.toxicon.2019.06.001>, 2019.
- 725 AlgaeBase. World-wide electronic publication: <https://www.algaebase.org/about/>, last access: 22 June 2023.
- 726 Guiry, M. D., Moestrup, Ø., and Andersen, R. A.: Validation of the phylum name *Heterokontophyta*, Notulae Algarum, 1–5,  
727 2023.
- 728 Hallegraeff, G. M., Anderson, D. M., Belin, C., Bottein, M.-Y. D., Bresnan, E., Chinain, M., Enevoldsen, H., Iwataki, M.,  
729 Karlson, B., McKenzie, C. H., Sunesen, I., Pitcher, G. C., Provoost, P., Richardson, A., Schweibold, L., Tester, P. A., Trainer,  
730 V. L., Yñiguez, A. T., and Zingone, A.: Perceived global increase in algal blooms is attributable to intensified monitoring and  
731 emerging bloom impacts, Communications Earth & Environment, 2, 1–10, <https://doi.org/10.1038/s43247-021-00178-8>, 2021.

- 732 Hanna, E., Nolan, J. E., Overland, J. E., and Hall, R. J.: Climate Change in the Arctic, in: Arctic Ecology, John Wiley & Sons,  
733 Ltd, 57–79, <https://doi.org/10.1002/9781118846582.ch3>, 2021.
- 734 Hörstmann, C., Hattermann, T., Thomé, P. C., Buttigieg, P. L., Morel, I., Waite, A. M., and John, U.: Biogeographic gradients  
735 of picoplankton diversity indicate increasing dominance of prokaryotes in warmer Arctic fjords, *Communications Biology*, 7,  
736 1–11, <https://doi.org/10.1038/s42003-024-05946-8>, 2024.
- 737 Hubbard, K. A., Villac, M. C., Chadwick, C., DeSmidt, A. A., Flewelling, L., Granholm, A., Joseph, M., Wood, T., Fachon,  
738 E., Brosnahan, M. L., Richlen, M., Pathare, M., Stockwell, D., Lin, P., Bouchard, J. N., Pickart, R., and Anderson, D. M.:  
739 Spatiotemporal transitions in *Pseudo-nitzschia* species assemblages and domoic acid along the Alaska coast, *PLoS ONE*, 18,  
740 e0282794, <https://doi.org/10.1371/journal.pone.0282794>, 2023.
- 741 Ibarbalz, F. M., Henry, N., Brandão, M. C., Martini, S., Busseni, G., Byrne, H., Coelho, L. P., Endo, H., Gasol, J. M., Gregory,  
742 A. C., Mahé, F., Rigonato, J., Royo-Llonch, M., Salazar, G., Sanz-Sáez, I., Scalco, E., Soviadan, D., Zayed, A. A., Zingone,  
743 A., Labadie, K., Ferland, J., Marec, C., Kandels, S., Picheral, M., Dimier, C., Poulain, J., Pisarev, S., Carmichael, M., Pesant,  
744 S., Acinas, S. G., Babin, M., Bork, P., Boss, E., Bowler, C., Cochrane, G., de Vargas, C., Follows, M., Gorsky, G., Grimsley,  
745 N., Guidi, L., Hingamp, P., Iudicone, D., Jaillon, O., Kandels, S., Karp-Boss, L., Karsenti, E., Not, F., Ogata, H., Pesant, S.,  
746 Poulton, N., Raes, J., Sardet, C., Speich, S., Stemann, L., Sullivan, M. B., Sunagawa, S., Wincker, P., Babin, M., Boss, E.,  
747 Iudicone, D., Jaillon, O., Acinas, S. G., Ogata, H., Pelletier, E., Stemann, L., Sullivan, M. B., Sunagawa, S., Bopp, L., de  
748 Vargas, C., Karp-Boss, L., Wincker, P., Lombard, F., Bowler, C., and Zinger, L.: Global Trends in Marine Plankton Diversity  
749 across Kingdoms of Life, *Cell*, 179, 1084–1097.e21, <https://doi.org/10.1016/j.cell.2019.10.008>, 2019.
- 750 Ibarbalz, F. M., Henry, N., Mahé, F., Ardyna, M., Zingone, A., Scalco, E., Lovejoy, C., Lombard, F., Jaillon, O., Iudicone, D.,  
751 Malviya, S., Tara Oceans Coordinators, Sullivan, M. B., Chaffron, S., Karsenti, E., Babin, M., Boss, E., Wincker, P., Zinger,  
752 L., de Vargas, C., Bowler, C., and Karp-Boss, L.: Pan-Arctic plankton community structure and its global connectivity,  
753 *Elementa: Science of the Anthropocene*, 11, 00060, <https://doi.org/10.1525/elementa.2022.00060>, 2023.
- 754 Joli, N., Gosselin, M., Ardyna, M., Babin, M., Onda, D. F., Tremblay, J.-É., and Lovejoy, C.: Need for focus on microbial  
755 species following ice melt and changing freshwater regimes in a Janus Arctic Gateway, *Scientific Reports*, 8, 1–11,  
756 <https://doi.org/10.1038/s41598-018-27705-6>, 2018.
- 757 Kacimi, S. and Kwok, R.: Arctic snow depth, ice thickness, and volume from ICESat-2 and CryoSat: 2018–2021, *Geophysical*  
758 *Research Letters*, 49, e2021GL097448, <https://doi.org/10.1029/2021GL097448>, 2022.
- 759 Kahru, M., Brotas, V., Manzano-Sarabia, M., and Mitchell, B. G.: Are phytoplankton blooms occurring earlier in the Arctic?,  
760 *Global Change Biology*, 17, 1733–1739, <https://doi.org/10.1111/j.1365-2486.2010.02312.x>, 2011.
- 761 Kalenitchenko, D., Joli, N., Potvin, M., Tremblay, J.-É., and Lovejoy, C.: Biodiversity and Species Change in the Arctic Ocean:  
762 A View Through the Lens of Nares Strait, *Frontiers in Marine Science*, 6, <https://doi.org/10.3389/fmars.2019.00479>, 2019.
- 763 Lassus, P., Chomérat, N., Hess, P., and Nézan, E.: Toxic and harmful microalgae of the World Ocean / Micro-algues toxiques  
764 et nuisibles de l'océan mondial, International Society for the Study of Harmful Algae / Intergovernmental Oceanographic  
765 Commission of UNESCO., Denmark, 523 pp., 2016.
- 766 Li, A., Chen, H., Qiu, J., Lin, H., and Gu, H.: Determination of multiple toxins in whelk and clam samples collected from the  
767 Chukchi and Bering seas, *Toxicon*, 109, 84–93, <https://doi.org/10.1016/j.toxicon.2015.11.016>, 2016.
- 768 Li, W. K. W., McLaughlin, F. A., Lovejoy, C., and Carmack, E. C.: Smallest Algae Thrive As the Arctic Ocean Freshens,  
769 *Science*, 326, 539–539, <https://doi.org/10.1126/science.1179798>, 2009.

- 770 Li, X., Yan, T., Yu, R., and Zhou, M.: A review of *Karenia mikimotoi*: Bloom events, physiology, toxicity and toxic  
771 mechanism, *Harmful Algae*, 90, 101702, <https://doi.org/10.1016/j.hal.2019.101702>, 2019.
- 772 Lovejoy, C., Galand, P. E., and Kirchman, D. L.: Picoplankton diversity in the Arctic Ocean and surrounding seas, *Mar Biodiv*,  
773 41, 5–12, <https://doi.org/10.1007/s12526-010-0062-z>, 2011.
- 774 Lovejoy, C., von Quillfeldt, C., Hopcroft, R. R., Poulin, M., Thaler, M., Arendt, K., Debes, H., Gíslason, Á., and Kosobokova,  
775 K.: State of the Arctic Marine Biodiversity Report: chapter 3.2: Plankton, in: State of the Arctic Marine Biodiversity Report,  
776 62–83, 2017.
- 777 Lundholm, N., Churro, C., Escalera, L., Fraga, S., Hoppenrath, M., Iwataki, M., Larsen, J., Mertens, K., Moestrup, Ø., and  
778 Zingone, A.: IOC-UNESCO Taxonomic Reference List of Harmful Micro Algae. Accessed at  
779 <https://www.marinespecies.org/hab>, <https://doi.org/10.14284/362>, 2009.
- 780 Martin, J., Tremblay, J.-É., and Price, N. M.: Nutritive and photosynthetic ecology of subsurface chlorophyll maxima in  
781 Canadian Arctic waters, *Biogeosciences*, 9, 5353–5371, <https://doi.org/10.5194/bg-9-5353-2012>, 2012.
- 782 McKenzie, C. H., Bates, S. S., Martin, J. L., Haigh, N., Howland, K. L., Lewis, N. I., Locke, A., Peña, A., Poulin, M., Rochon,  
783 A., Rourke, W. A., Scarratt, M. G., Starr, M., and Wells, T.: Three decades of Canadian marine harmful algal events:  
784 Phytoplankton and phycotoxins of concern to human and ecosystem health, *Harmful Algae*, 101852,  
785 <https://doi.org/10.1016/j.hal.2020.101852>, 2020.
- 786 Mehdizadeh Allaf, M.: *Heterosigma akashiwo*, a Fish-Killing Flagellate, *Microbiology Research*, 14, 132–147,  
787 <https://doi.org/10.3390/microbiolres14010012>, 2023.
- 788 Meredith, M., Sommerkorn, M., Cassotta, C., Derksen, A., Ekaykin, A., Hollowed, A., Kofinas, A., Mackintosh, A.,  
789 Melbourne-Thomas, J., Muelbert, M. M. C., Ottersen, G., Pritchard, H., and Schuur, E. A. G.: Polar Regions (chapitre 28), in:  
790 IPCC Special Report on the Ocean and Cryosphere in a Changing Climate, edited by: Pörtner, Hans-Otto, D.C. Roberts, V.  
791 Masson-Delmotte, P. Zhai, M. Tignor, E. Poloczanska, K. Mintenbeck, A. Alegría, M. Nicolai, A. Okem, J. Petzold, B. Rama,  
792 N.M. Weyer, Cambridge University Press, 2019.
- 793 Mitchell, A. L., Almeida, A., Beracochea, M., Boland, M., Burgin, J., Cochrane, G., Crusoe, M. R., Kale, V., Potter, S. C.,  
794 Richardson, L. J., Sakharova, E., Scheremetjew, M., Korobeynikov, A., Shlemov, A., Kunyavskaya, O., Lapidus, A., and Finn,  
795 R. D.: MGnify: the microbiome analysis resource in 2020, *Nucleic Acids Research*, 48, D570–D578,  
796 <https://doi.org/10.1093/nar/gkz1035>, 2020.
- 797 Morquecho, L.: *Pyrodinium bahamense* One the Most Significant Harmful Dinoflagellate in Mexico, *Frontiers in Marine*  
798 *Science*, 6, <https://doi.org/10.3389/fmars.2019.00001>, 2019.
- 799 Neukermans, G., Oziel, L., and Babin, M.: Increased intrusion of warming Atlantic water leads to rapid expansion of temperate  
800 phytoplankton in the Arctic, *Global Change Biology*, 24, 2545–2553, 2018.
- 801 Nohe, A., Goffin, A., Tyberghein, L., Lagring, R., De Cauwer, K., Vyverman, W., and Sabbe, K.: Marked changes in diatom  
802 and dinoflagellate biomass, composition and seasonality in the Belgian Part of the North Sea between the 1970s and 2000s,  
803 *Science of The Total Environment*, 716, 136316, <https://doi.org/10.1016/j.scitotenv.2019.136316>, 2020.
- 804 Nöthig, E.-M., Bracher, A., Engel, A., Metfies, K., Niehoff, B., Peeken, I., Bauerfeind, E., Cherkasheva, A., Gäbler-Schwarz,  
805 S., Hardge, K., Kiliyas, E., Kraft, A., Mebrahtom Kidane, Y., Lalande, C., Piontek, J., Thomisch, K., and Wurst, M.:  
806 Summertime plankton ecology in Fram Strait—a compilation of long- and short-term observations, *Polar Research*, 34, 23349,  
807 <https://doi.org/10.3402/polar.v34.23349>, 2015.



- 808 Okolodkov, Y. B. and Dodge, J. D.: Biodiversity and biogeography of planktonic dinoflagellates in the Arctic Ocean, *Journal*  
809 *of Experimental Marine Biology and Ecology*, 202, 19–27, [https://doi.org/10.1016/0022-0981\(96\)00028-7](https://doi.org/10.1016/0022-0981(96)00028-7), 1996.
- 810 Oksanen, J., Blanchet, F. G., Friendly, M., Kindt, R., Legendre, P., McGlenn, D., Minchin, P. R., O'Hara, R. B., Simpson, G.  
811 L., Solymos, P., Stevens, M. H. H., Szoecs, E., and Wagner, H.: *vegan: Community Ecology Package*, 2020.
- 812 Olsen, L. M., Duarte, P., Peralta-Ferriz, C., Kauko, H. M., Johansson, M., Peeken, I., Róžańska-Pluta, M., Tatarek, A., Wiktor,  
813 J., Fernández-Méndez, M., Wagner, P. M., Pavlov, A. K., Hop, H., and Assmy, P.: A red tide in the pack ice of the Arctic  
814 Ocean, *Scientific Reports*, 9, 9536, <https://doi.org/10.1038/s41598-019-45935-0>, 2019.
- 815 Oziel, L., Baudena, A., Ardyna, M., Massicotte, P., Randelhoff, A., Sallée, J.-B., Ingvaldsen, R. B., Devred, E., and Babin,  
816 M.: Faster Atlantic currents drive poleward expansion of temperate phytoplankton in the Arctic Ocean, *Nature*  
817 *Communications*, 11, 1705, <https://doi.org/10.1038/s41467-020-15485-5>, 2020.
- 818 PAME: Large Marine Ecosystems (LMEs) of the Arctic area: revision of the Arctic LME map 15th of May 2013, Akureyri,  
819 Iceland: Conservation of Arctic Flora and Fauna (CAFF) and Protection of the Arctic Marine Environment (PAME), 2013.
- 820 Pedrós-Alió, C., Potvin, M., and Lovejoy, C.: Diversity of planktonic microorganisms in the Arctic Ocean, *Progress in*  
821 *Oceanography*, 139, 233–243, <https://doi.org/10.1016/j.pocean.2015.07.009>, 2015.
- 822 Poulin, M., Daugbjerg, N., Gradinger, R., Ilyash, L., Ratkova, T., and von Quillfeldt, C.: The pan-Arctic biodiversity of marine  
823 pelagic and sea-ice unicellular eukaryotes: a first-attempt assessment, *Marine Biodiversity*, 41, 13–28,  
824 <https://doi.org/10.1007/s12526-010-0058-8>, 2011.
- 825 Pućko, M., Dionne, K., and Michel, C.: Occurrence of toxin-producing marine algae in the Canadian Arctic and adjacent  
826 waters, *Canadian Manuscript Report Fisheries And Aquatic Sciences* 3180., 2019.
- 827 Pućko, M., Rourke, W., Husserr, R., Archambault, P., Eert, J., Majewski, A. R., Niemi, A., Reist, J., and Michel, C.:  
828 Phycotoxins in bivalves from the western Canadian Arctic: The first evidence of toxigenicity., *Harmful Algae*, 102474,  
829 <https://doi.org/10.1016/j.hal.2023.102474>, 2023.
- 830 Rantanen, M., Karpechko, A. Y., Lipponen, A., Nordling, K., Hyvärinen, O., Ruosteenoja, K., Vihma, T., and Laaksonen, A.:  
831 The Arctic has warmed nearly four times faster than the globe since 1979, *Communications Earth & Environment*, 3, 1–10,  
832 <https://doi.org/10.1038/s43247-022-00498-3>, 2022.
- 833 Reguera, B., Velo-Suárez, L., Raine, R., and Park, M. G.: Harmful *Dinophysis* species: A review, *Harmful Algae*, 14, 87–106,  
834 <https://doi.org/10.1016/j.hal.2011.10.016>, 2012.
- 835 Reid, P. C., Johns, D. G., Edwards, M., Starr, M., Poulin, M., and Snoeijs, P.: A biological consequence of reducing Arctic ice  
836 cover: arrival of the Pacific diatom *Neodenticula seminae* in the North Atlantic for the first time in 800 000 years, *Global*  
837 *Change Biology*, 13, 1910–1921, <https://doi.org/10.1111/j.1365-2486.2007.01413.x>, 2007.
- 838 Richardson, A. J., Walne, A. W., John, A. W. G., Jonas, T. D., Lindley, J. A., Sims, D. W., Stevens, D., and Witt, M.: Using  
839 continuous plankton recorder data, *Progress in Oceanography*, 68, 27–74, <https://doi.org/10.1016/j.pocean.2005.09.011>, 2006.
- 840 Righetti, D., Vogt, M., Gruber, N., Psomas, A., and Zimmermann, N. E.: Global pattern of phytoplankton diversity driven by  
841 temperature and environmental variability, *Science Advances*, 5, eaau6253, <https://doi.org/10.1126/sciadv.aau6253>, 2019.
- 842 Righetti, D., Vogt, M., Zimmermann, N. E., Guiry, M. D., and Gruber, N.: PhytoBase: A global synthesis of open-ocean  
843 phytoplankton occurrences, *Earth System Science Data*, 12, 907–933, <https://doi.org/10.5194/essd-12-907-2020>, 2020.

- 844 Rösler, A., Kaleschke, L., and Birnbaum, G.: Melt ponds on Arctic sea ice determined from MODIS satellite data using an  
845 artificial neural network, *The Cryosphere*, 6, 431–446, <https://doi.org/10.5194/tc-6-431-2012>, 2012.
- 846 Rudels, B. and Carmack, E.: Arctic Ocean Water Mass Structure and Circulation, *Oceanography*,  
847 <https://doi.org/10.5670/oceanog.2022.116>, 2022.
- 848 Schiffrine, N., Dhifallah, F., Dionne, K., Poulin, M., Lessard, S., Rochon, A., and Gosselin, M.: Microbial plankton occurrence  
849 database in the North American Arctic region: synthesis of recent diversity of potentially toxic and harmful algae – Code and  
850 Dataset, <https://doi.org/10.5281/zenodo.13376814>, 2024.
- 851 Sournia, A.: *Phytoplankton Manual*, Unesco, 1978.
- 852 Team, R. D. C. and R Development Core Team, R.: *R: A Language and Environment for Statistical Computing*, R Foundation  
853 for Statistical Computing, Vienna, Austria, 409 pp., <https://doi.org/10.1007/978-3-540-74686-7>, 2019.
- 854 Thompson, G. G. and Withers, P. C.: Effect of species richness and relative abundance on the shape of the species accumulation  
855 curve, *Austral Ecology*, 28, 355–360, <https://doi.org/10.1046/j.1442-9993.2003.01294.x>, 2003.
- 856 Tillmann, U., Elbrächter, M., Krock, B., John, U., and Cembella, A.: *Azadinium spinosum* gen. et sp. nov. (Dinophyceae)  
857 identified as a primary producer of azaspiracid toxins, *European Journal of Phycology*, 44, 63–79,  
858 <https://doi.org/10.1080/09670260802578534>, 2009.
- 859 Torres-Valdés, S., Tsubouchi, T., Bacon, S., Naveira-Garabato, A. C., Sanders, R., McLaughlin, F. A., Petrie, B., Kattner, G.,  
860 Azetsu-Scott, K., and Whitledge, T. E.: Export of nutrients from the Arctic Ocean, *Journal of Geophysical Research: Oceans*,  
861 118, 1625–1644, <https://doi.org/10.1002/jgrc.20063>, 2013.
- 862 Tremblay, G., Belzile, C., Gosselin, M., Poulin, M., Roy, S., and Tremblay, J.-É.: Late summer phytoplankton distribution  
863 along a 3500 km transect in Canadian Arctic waters: strong numerical dominance by picoeukaryotes, *Aquatic Microbial*  
864 *Ecology*, 54, 55–70, <https://doi.org/10.3354/ame01257>, 2009.
- 865 Tremblay, J.-É., Anderson, L. G., Matrai, P., Coupel, P., Bélanger, S., Michel, C., and Reigstad, M.: Global and regional  
866 drivers of nutrient supply, primary production and CO<sub>2</sub> drawdown in the changing Arctic Ocean, *Progress in Oceanography*,  
867 139, 171–196, <https://doi.org/10.1016/j.pocean.2015.08.009>, 2015.
- 868 Vihtakari, M.: ggOceanMaps: Plot Data on Oceanographic Maps using “ggplot2,” 2021.
- 869 Waleron, M., Waleron, K., Vincent, W. F., and Wilmotte, A.: Allochthonous inputs of riverine picocyanobacteria to coastal  
870 waters in the Arctic Ocean, *FEMS Microbiology Ecology*, 59, 356–365, <https://doi.org/10.1111/j.1574-6941.2006.00236.x>,  
871 2007.
- 872 Wassmann, P., Kosobokova, K. N., Slagstad, D., Drinkwater, K. F., Hopcroft, R. R., Moore, S. E., Ellingsen, I., Nelson, R. J.,  
873 Carmack, E., Popova, E., and Berge, J.: The contiguous domains of Arctic Ocean advection: Trails of life and death, *Progress*  
874 *in Oceanography*, 139, 42–65, <https://doi.org/10.1016/j.pocean.2015.06.011>, 2015.
- 875 Whittaker, R. H.: Evolution and Measurement of Species Diversity, *TAXON*, 21, 213–251, <https://doi.org/10.2307/1218190>,  
876 1972.
- 877 Wickham, H., Averick, M., Bryan, J., Chang, W., McGowan, L. D., François, R., Golemund, G., Hayes, A., Henry, L., Hester,  
878 J., Kuhn, M., Pedersen, T. L., Miller, E., Bache, S. M., Müller, K., Ooms, J., Robinson, D., Seidel, D. P., Spinu, V., Takahashi,

879 K., Vaughan, D., Wilke, C., Woo, K., and Yutani, H.: Welcome to the tidyverse, *Journal of Open Source Software*, 4, 1686,  
880 <https://doi.org/10.21105/joss.01686>, 2019.

881 Yamamoto-Kawai, M., McLaughlin, F. A., Carmack, E. C., Nishino, S., Shimada, K., and Kurita, N.: Surface freshening of  
882 the Canada Basin, 2003–2007: River runoff versus sea ice meltwater, *Journal of Geophysical Research*, 114, C00A05,  
883 <https://doi.org/10.1029/2008JC005000>, 2009.

884