

ARMTRAJ: A Set of Multi-Purpose Trajectory Datasets Augmenting the Atmospheric Radiation Measurement (ARM) User Facility Measurements

Israel Silber¹, Jennifer M. Comstock², Michael R. Kiebert², Lynn M. Russell³

5 ¹ Atmospheric, Climate, and Earth Sciences Division, Pacific Northwest National Laboratory, Richland, WA, 99352, USA

² Advanced Computing, Mathematics, and Data Division, Pacific Northwest National Laboratory, Richland, WA, 99352, USA

³ Scripps Institution of Oceanography, University of California, San Diego, CA, 92093, USA

Correspondence to: Israel Silber (israel.silber@pnnl.gov)

Abstract. Ground-based instruments offer unique capabilities such as detailed atmospheric thermodynamic, cloud, and aerosol
10 profiling at a high temporal sampling rate. The U.S. Department of Energy Atmospheric Radiation Measurement (ARM) user
facility provides comprehensive datasets from key locations around the globe, facilitating long-term characterization and
process-level understanding of clouds, aerosol, and aerosol-cloud interactions. However, as with other ground-based datasets,
the fixed (Eulerian) nature of these measurements often introduces a knowledge gap in relating those observations with air mass
hysteresis. Here, we describe ARMTRAJ, a set of multi-purpose trajectory datasets that helps close this gap in ARM
15 deployments. Each dataset targets a different aspect of atmospheric research, including the analysis of surface, planetary
boundary layer, distinct liquid-bearing cloud layers, and (primary) cloud decks. Trajectories are calculated using the Hybrid
Single-Particle Lagrangian Integrated Trajectory (HYSPPLIT) model informed by the European Centre for Medium-Range
Weather Forecasts ERA5 reanalysis dataset at its highest spatial resolution (0.25 degrees) and are initialized using ARM
datasets. The trajectory datasets include information about air mass coordinates and state variables extracted from ERA5 before
20 and after the ARM site overpass. Ensemble runs generated for each model initialization enhance trajectory consistency, while
ensemble variability serves as a valuable uncertainty metric for those reported air mass coordinates and state variables.
Following the description of dataset processing and structure, we demonstrate applications of ARMTRAJ to a case study and
a few bulk analyses of observations collected during ARM's Eastern Pacific Cloud Aerosol Precipitation Experiment
(EPCAPE) field deployment. ARMTRAJ is expected to become a near real-time product accompanying new ARM
25 deployments and an augmenting product to ongoing and previous deployments, promoting reaching science goals of research
relying on ARM observations.

1 Introduction

Synergistic use of ground-based, airborne, and satellite observations with continuously improving models promotes a better understanding of cloud and aerosol source and sink processes, aerosol-cloud interactions (ACI), and cloud-climate feedbacks, and helps refine climate projection. Nevertheless, even though high-resolution and Earth system models are becoming more sophisticated, our knowledge about some of these multi-scale processes and their associated intensities and rates is still deficient; ergo, they remain the leading source of uncertainty in climate model predictions (Forster et al., 2021). Cutting-edge ground-based observations and their synthesis thereof provide opportunities to study cloud and aerosol processes in great detail. The US Department of Energy Atmospheric Radiation Measurement (ARM) user facility operates multiple comprehensive suites of such instruments, which are deployed to key locations around the globe, including, for example, densely-populated urban environments and high-interest regions such as the Southern Ocean, the Antarctic and Arctic, and the Atlantic and Pacific oceans' upwelling regions (Dorsey et al., 2024). ARM's mobile, fixed, and aerial facilities include, among other instruments, surface aerosol observing systems covering a wide range of sizes and properties (Uin and Smith, 2020), a range of profiling and scanning radars and lidars (e.g., Muradyan and Coulter, 2020; Widener et al., 2012a, b; Widener and Bharadwaj, 2012), and uncrewed aerial vehicles (Schmid and Ivey, 2016), which promote atmospheric dynamic, thermodynamic, and radiative process research with a specific focus on clouds and aerosols.

In recent years, there has been a growing community recognition of the importance of Lagrangian considerations for acquiring causal understanding wherever atmospheric dynamics play a crucial role. This recognition is manifested in the integration of Lagrangian components in numerous aerosol and cloud, observational, and/or model simulation-based studies. For example, a comprehensive understanding of cloud lifecycles often necessitates knowledge about the hysteresis and origin of cloudy airmasses. Trajectory analyses support studies focused on warm, mixed-phase, and cold clouds, from low to high latitudes (e.g., Christensen et al., 2020; Ilotoviz et al., 2021; Mohrmann et al., 2019; Silber and Shupe, 2022; Svensson et al., 2023; Wernli et al., 2016). Back-trajectories can inform on potential cloud formation mechanisms (e.g., Silber and Shupe, 2022; Svensson et al., 2023), be used to evaluate the influence of airmass intrusions on cloud evolution (e.g., Christensen et al., 2020; Ilotoviz et al., 2021; Mohrmann et al., 2019), and generally support process understanding through modeling studies by providing boundary conditions and observationally-based benchmarks (e.g., Neggers et al., 2019; Silber et al., 2019; Tornow et al., 2022).

Estimations of airmass trajectories and origin are also highly valuable for understanding aerosol hysteresis and potential indirect effects. For example, back-trajectory analyses were previously used to examine dust ice nucleating particle (INP) processing before entraining into a cloud (e.g., Wiacek and Peter, 2009), to quantify periods of chemical reactions experienced by aerosol prior to their transport to ground-based stations (e.g., Hawkins and Russell, 2010), to estimate source contribution functions and similarity of source regions (e.g., Day et al., 2010; Liu et al., 2011), and to study long-range transport of aerosols onto surface sites (e.g., Zheng et al., 2020).

While ARM field deployments provide a high-end, unique, and comprehensive suite of measurements, most samples are collected at fixed sites; that is, from an Eulerian perspective. Certain field campaigns include multiple deployment sites along climatological flow patterns (e.g., Geerts et al., 2022), yet a knowledge gap often still exists, which can be ameliorated using trajectory calculations. Here we describe ARMTRAJ, a set of Lagrangian trajectory data products for ARM fixed sites and mobile deployments, which can be used to close some of the gaps ensuing from the Eulerian nature of many ARM cloud, aerosol, and other atmospheric measurements, thereby enhancing the versatility of ARM datasets. [For example, understanding the impact of pollution upwind of ARM deployment sites on measured aerosol properties versus clean upwind conditions; the effect of aerosols entrained at cloud top on sink processes in clouds observed over ARM sites using ARM measurements as observational constraints on model simulations initialized using ARMTRAJ data; and the estimation of cloud lifecycles before and after overpassing ARM sites by synthesizing ARM, satellite, and ARMTRAJ data.](#) ARMTRAJ is based on the HYSPLIT model (Stein et al., 2015) informed by the European Centre for Medium-Range Weather Forecasts (ECMWF) ERA5 reanalysis (Hersbach et al., 2020) at its highest spatial resolution (0.25 degrees; ~31 km). ARMTRAJ datasets provide information about air mass coordinates upwind and (in certain datasets) downwind, together with their thermodynamic properties and overpassed surface characteristics. Varying-size ensemble run results are also reported, facilitating the evaluation of trajectory consistency, robustness, and uncertainty [while mitigating potential near-surface artifacts and errors](#). In sect. 2, we describe ARMTRAJ's four dataset types, focusing on the surface, planetary boundary layer (PBL), and observed clouds over ARM sites. In sect. 3, we demonstrate ARMTRAJ dataset applications using ARMTRAJ data for the ARM Eastern Pacific Cloud Aerosol Precipitation Experiment (EPCAPE; Russell et al., 2021) available on the ARM Data Discovery (<https://adc.arm.gov/discovery/>). Conclusions and a short outlook are given in sect. 4.

2 ARMTRAJ Processing and Dataset Structure

ARMTRAJ's four datasets include a surface, PBL, liquid cloud layer, and primary cloud deck datasets, hereafter referred to as ARMTRAJ-SFC, ARMTRAJ-PBL, ARMTRAJ-CLD, and ARMTRAJ-ARSCL. Datasets are organized in daily files. Each file is in NetCDF format and follows ARM standards (see Palanisamy, 2016), including full metadata for each variable field. Each dataset contains sets of the following variables and properties extracted and derived from ERA5 data along each air mass trajectory:

- Date and time.
- Air mass coordinates: latitude, longitude, altitude above mean sea level (AMSL), and height above ground level (AGL).
- Thermodynamic variables: air mass pressure, temperature, potential temperature, equivalent potential temperature (excluding condensate from the calculation), virtual potential temperature, specific humidity, relative humidity (RH), and RH with respect to ice.
- Hourly-mean air mass ascent rate (vertical motion).

- PBL height (PBLH) in airmass column and airmass height-to-PBLH ratio (greater than 1 when airmass is above the PBL, and vice versa).
- Land-sea mask (land area fraction) and daily (00 UTC) sea-ice cover in airmass column (based on ERA5's associated ~31 km native grid-cell).
- Other surface properties in the airmass column: terrain orientation and distortion in the horizontal plane, standard deviation and slope of orography within the ERA5 grid cell (using a minimum horizontal feature scale of 5 km), low and high vegetation type and cover, and soil type.

While the trajectory calculations in all datasets are performed with HYSPLIT, reading the same ERA5 global data files in pressure-level vertical coordinates supplemented with single-level reanalysis data fields such as PBLH and surface altitude, winds, and roughness length. Each ARMTRAJ dataset they are initialized and configured differently to align with their purpose, potential use, and the characteristics of the ARM dataset required for initialization (see Table 1). Each of the ARMTRAJ datasets are discussed in detail below.

Table 1: ARMTRAJ dataset summary. The dataset names ARMTRAJ-SFC, ARMTRAJ-PBL, ARMTRAJ-CLD, and ARMTRAJ-ARSCL refer to the surface, planetary boundary layer, liquid cloud layer, and primary cloud deck datasets, respectively.

Dataset name	Initialized at	Initialization time	Includes a free tropospheric run	Ensemble size	Back trajectory period	Forward trajectory period	Potential application examples
ARMTRAJ-SFC	surface	3-h increments (00, 03, 06, ... UTC)	No	18	10 days	-	Long-range aerosol transport; estimation of periods of chemical reactions
ARMTRAJ-PBL	11 equally distant heights from the surface to the PBLH	same as ARM radiosondes	Yes	99*	5 days	-	PBL airmass hysteresis (aerosol sources, interactions with the surface, etc.)
ARMTRAJ-CLD	center of each detected cloud layer	same as ARM radiosondes	No	27**	5 days	5 days	Evaluation of cloud formation mechanisms; boundary conditions for model simulations
ARMTRAJ-ARSCL	11 equally distant heights between the hourly mean base and top of the lowest (typically primary) cloud deck 11 equally distant heights between 1 h	3-h increments (00, 03, 06, ... UTC)	Yes	99*	5 days	5 days	Cloud deck and free tropospheric (entrained) airmass sources; boundary conditions for model simulations

mean-lowest
(typically
primary)-cloud
deck-base-and
top

* Ensemble size of 9 in free-tropospheric runs (see sect. 2.2)

** Per detected liquid-bearing cloud layer (see sect. 2.3)

2.1 Surface Trajectory Dataset (ARMTRAJ-SFC)

The ARMTRAJ-SFC dataset is designed to support research using ARM's surface measurements, with an emphasis on aerosol observations. While ground-based remote-sensing measurements and retrievals are made regularly and airborne in-situ aerosol observations occur episodically during intensive observing periods, surface measurements are typically the most informative about the sampled aerosol chemical, morphological, microphysical, and radiative properties. For a given day at a given ARM site, ARMTRAJ-SFC is initialized at the surface every 3 hours. Each run includes a 10-day back trajectory. The 10-day period is sufficient to determine potential long-range aerosol transport sources and/or estimate periods of relevant chemical reactions (e.g., Hawkins and Russell, 2010; Lata et al., 2021; Zheng et al., 2020). While some studies examined back trajectories extending even 15 days, tests we performed using an ensemble approach (not shown) suggested that trajectory dispersion consistently becomes so substantial that the air mass information is no longer consistent and robust. [This dispersion is most likely driven by the propagation of errors stemming from multiple factors, such as the integration time step and the limited vertical resolution of the ERA5 pressure-level data used by HYSPLIT, especially near the surface.](#)

In addition to the information for the trajectory initialized at the ARM site (surface level), the mean and standard deviation of ensemble results are reported for each of the variables listed above, except for the orographic, vegetation, and soil properties, the values of which are reported for the ensemble mean coordinates. The ensemble is initialized using two starting heights (surface and 50 m AGL) and 9 starting horizontal locations (combinations of site coordinates ± 7.5 km in the east-west and north-south directions, defining a 3×3 grid) for a total of 18 ensemble members. The fixed geodetic distance in metric units rather than in arc degrees is used to ensure ARMTRAJ's ensemble configuration consistency when initialized in different geographic regions; for example, in ARM's North Slope of Alaska site (Verlinde et al., 2016), where a given longitudinal arc length translates to shorter geodetic distances relative to lower-latitude sites. The ensemble starting horizontal extent covers roughly half of the horizontal dimension of ERA5 grid cells, allowing the evaluation of ensembles' physical variability yet keeping them initially constrained to the site vicinity. In practice, the ensemble results, specifically the standard deviation of reported ensemble variables, can be treated as a measure of trajectory estimated uncertainty and potentially serve as tests for general trajectory robustness. We note that ARMTRAJ-SFC data files are supplemented with 1-hour mean and standard deviation values (starting at trajectory initialization time) of surface observations from the corresponding ARM site Surface Meteorology System (Ritsche, 2011).

2.2 Planetary Boundary Layer Trajectory Dataset (ARMTRAJ-PBL)

ARMTRAJ-PBL, which could support PBL cloud and aerosol research in addition to other PBL research topics, includes 5-day back trajectory calculations for the base (surface), middle, and top of the PBL (i.e., the PBLH). The PBLH used in HYSPLIT initialization is determined from ARM radiosonde measurements (Holdridge, 2020) using a bulk Richardson number method (Troen and Mahrt, 1986; Vogelezang and Holtslag, 1996) with a critical threshold value of 0.25, as reported in ARM's PBLH value-added product (VAP) (Sivaraman et al., 2013). Therefore, ARMTRAJ-PBL trajectories are initialized at radiosonde release times rounded to the nearest whole hour, resulting in 2 to 4 trajectory starting times for a given day, depending on sounding measurement availability.

There are other methods to determine the PBLH, the radiosonde-based retrievals of which are reported in ARM's VAP (see Sivaraman et al., 2013) and included in ARMTRAJ-PBL. However, the utilized bulk Richardson number method and its threshold value were evaluated by Seidel et al. (2012), who suggested they are suitable for both convective and stable PBLs, though we note that Zhang et al. (2022) recently suggested this method better compares to ceilometer-based PBLH determination method under stable PBL conditions. Moreover, the same method and threshold values are consistent with the PBLH implementation in ERA5 diagnostics used here.

The ensemble in the ARMTRAJ-PBL dataset is much greater than ARMTRAJ-SFC's ensemble. It consists of 11 equally distant heights from the surface to the PBLH combined with a similar 3×3 grid, totaling 99 ensemble members. This extensive ensemble configuration ameliorates the lack of explicit mixing in the ECMWF Integrated Forecasting System (IFS) model used to drive ERA5 [and](#) the limited near-surface resolution (~250 m) at the ERA5 pressure level grid, ~~and the lowest PBLH of 100 m AGL set in HYSPLIT calculations.~~

The PBL and its associated cloud and aerosol fields are known to interact with the free troposphere above the PBLH, with a potentially pronounced indirect impact on properties and processes such as cloud lifecycles, aerosol scavenging, and the PBLH (e.g., Jiang et al., 2002; Raes, 1995; Raes et al., 2000; Sorooshian et al., 2020; Tornow et al., 2022). ARMTRAJ-PBL also includes free-tropospheric runs for each trajectory starting time, initialized 200 m above the reported PBLH to support and augment studies focusing on free-tropospheric entrainment effects. The free-tropospheric run results include all variables listed at the beginning of this section, as well as results for a small 9-member ensemble, initialized at the same height with the 3×3 grid as in the other ensembles.

2.3 Liquid-Bearing Cloud Layer Trajectory Dataset (ARMTRAJ-CLD)

ARMTRAJ-CLD aims to augment liquid-bearing cloud studies from warm to mixed-phase clouds. The 5-day back and forward trajectories reported in this dataset broadly cover the typical residence time of moisture in the atmosphere (see Ent and Tuinenburg, 2017; Läderach and Sodemann, 2016; Woods and Caballero, 2016) and can, therefore, promote the evaluation of cloud formation mechanisms and cloudy airmass hysteresis. The dataset provides essential information for the configuration and initialization of modeling exercises (e.g., Silber et al., 2019; Tornow et al., 2022), and in some cases, the reported

165 trajectories can even inform on other overpassed ground-based observational sites upwind or downwind (e.g., Ali and Pithan, 2020), further constraining modeling efforts.

Like ARMTRAJ-PBL, ARMTRAJ-CLD’s initialization depends on ARM radiosonde data (see Table 1) for determining liquid-bearing cloud layers and, therefore, has the same starting times. A leading advantage of using radiosonde-based cloud detections for initialization is that we can examine full tropospheric profiles and are not confined to the first few to several optical depths, as in the case of lidars that are commonly used to detect liquid-bearing cloud layers from the bottom-up in the case of ground-based observations (or top-down in the case of satellite and aircraft observations). Liquid-bearing cloud layers are determined from radiosonde RH profiles using the following steps:

1. Set radiosonde samples as “cloud” if RH values exceed 96%. This threshold value considers the radiosonde vendor’s uncertainty (Holdridge, 2020) and ~~is consistent with previous comparisons to~~ [was previously validated using lidar-based](#) cloud layer detections ~~based on other instruments~~ (Silber et al., 2020, Fig. S1; e.g., Silber and Shupe, 2022; Stanford et al., 2023, Appendix D). We have also qualitatively examined detection consistency using higher RH thresholds against other remote-sensing measurements for different observed cases (not shown) and came to the same conclusion regarding the 96% threshold value validity.
2. Concatenate “cloud” samples distant by less than 50 m from each other.
- 180 3. Remove resulting layers if their total thickness (including the thickness of the cloud-top sample) is smaller than 25 m.

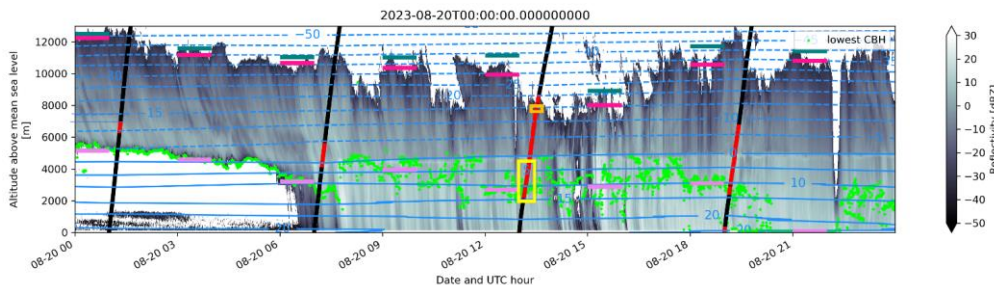
ARMTRAJ-CLD can report trajectories for up to 10 detected overlying liquid-bearing layers per initialization time step. The initialization height is set to the center of each detected cloud layer. In this case, the ensemble results are based on 27 members per detected cloud layer: 3 vertical starting heights (cloud layer center and center \pm 50 m), and 9 horizontal coordinates using the same 3 \times 3 grid as in the other datasets. The detected liquid-bearing cloud layer boundaries and the utilized radiosonde thermodynamic and wind measurements are also reported in ARMTRAJ-CLD to support cloud-related analysis further.

2.4 Primary Cloud Deck Trajectory Dataset (ARMTRAJ-ARSCL)

Many studies, e.g., marine stratocumulus cloud studies, often focus on primary cloud decks, referred to here as the optically and geometrically thickest cloud decks in atmospheric columns. Those primary cloud decks typically produce a significant radiative effect, impacting the surface and atmospheric energy budgets. ARMTRAJ-ARSCL’s objective is to support studies focusing on those cloud decks while still providing analysis flexibility by running the trajectory calculations 5 days backward and forward in time. The ARSCL suffix in the dataset’s name refers to the Active Remote Sensing of CLOUDs (Clothiaux et al., 2001), a widely-used ARM VAP, which combines data from ARM radars and lidars to produce an objective determination of cloud deck and hydrometeor vertical boundaries together with associated radar moments. In this context, a primary cloud deck can contain multiple liquid-bearing layers vertically connected by precipitation detectable by the profiling radar (e.g., Figure 1).

The ARMTRAJ-ARSCL dataset is initialized every 3 hours, similar to ARMTRAJ-SFC. The cloud deck base for trajectory initialization is determined as the 1-hour mean (starting at the initialization time stamps) cloud base height (“cloud base best estimate” field in ARSCL). ~~This ARSCL field which~~ is processed using a ceilometer-micropulse lidar combination with a general tendency towards the ceilometer data product, ~~which was previously evaluated against high spectral resolution lidar data and found to have a small positive bias typically under 50 m~~ (Silber et al., 2018). ~~This small bias should be, in most cases, insignificant, given that cloud deck geometrical depths are commonly significantly greater~~ (e.g., Lu et al., 2021). The cloud deck top is set as the 1-hour mean first radar top (first radar echo with an overlying clear-sky range gate), the samples of which are included in the averaging only if, at a given time step, they are above the cloud deck base. Among other similarities to ARMTRAJ-PBL, we also run the trajectory calculations for the free troposphere to address community interest in processes such as cloud-top entrainment. Because the cloud top can be fairly variable over a 1-hour period, we set the free-tropospheric height as the sum of the 1-hour mean cloud top, its 1-hour standard deviation (using the same samples as in the first radar-top averaging), and 200 m. ~~Figure 1 exemplifies The resulting 8 sets of cloud deck base, top, and free-tropospheric heights used to initialize the ARMTRAJ-ARSCL trajectories over a 24-hour period~~ ~~are demonstrated in Figure 1.~~ ~~Because a cloud deck was observed throughout the depicted day, the 3-hour initialization interval translates to the eight illustrated sets.~~ Note the consistency between the cloud base markers and the initialized cloud deck base height, as well as the variable distance between the cloud deck top and free-tropospheric height, depending on the cloud deck top’s temporal variability.

Similar to ARMTRAJ-PBL, ARMTRAJ-ARSCL reports trajectory data for the cloud deck base, middle, and top and includes 99-member ensemble results using 11 equally distant heights between the cloud deck base and top combined with the same 3×3 grid as in the other datasets (9-member ensemble results are reported for the free troposphere). Hourly means of auxiliary data used and reported by ARSCL, such as hydrometeor field boundaries and liquid water path retrieved by ARM’s microwave radiometer (Morris, 2006) are included in ARMTRAJ-ARSCL data files.



220 **Figure 1:** ARSCL radar reflectivity (color-scale) on August 20, 2023, depicting the landfall of tropical storm Hilary at the ARM EPCAPE deployment in La Jolla, San Diego, California. The green markers denote the ARSCL-reported cloud deck base. Blue contours represent temperatures (in degrees Celsius) from the ARM interpolated-sounding VAP (Fairless et al., 2021). Slanted black lines illustrate sounding profiles, with the red sections delineating sounding-based liquid-bearing cloud layer detections. The violet, pink, and teal horizontal lines designate the cloud deck base, top, and free-tropospheric heights for ARMTRAJ-ARSCL’s HYSPLIT

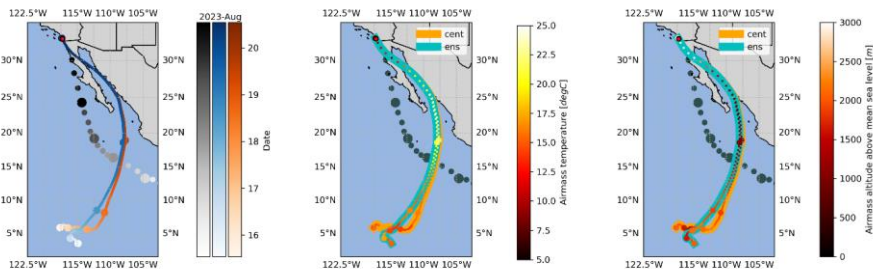
225 trajectory initialization. The line lengths (a fixed one hour) represent the ARSCL data averaging period. The yellow and orange
230 rectangles highlights the liquid-bearing cloud layers analyzed in sect. 3.1.

3 ARMTRAJ Application Examples Using the ECAPE Datasets

The ARMTRAJ datasets currently cover the full ECAPE deployment, from February 2023 to February 2024 (ARMTRAJ-
230 ARSCL starting from March 2023). Given the diverse potential usage options of ARMTRAJ, here we limit ourselves to
exemplify 4 four short analyses utilizing each of ARMTRAJ's 4 datasets. We first briefly describe a case study using
ARMTRAJ-CLD where we exemplify the value of ARMTRAJ's ensemble runs in evaluating trajectory confidence and
uncertainties. followed by We then briefly present three bulk analyses of ARMTRAJ-SFC, ARMTRAJ-PBL, and ARMTRAJ-
ARSCL.

235 3.1 Case Study: A Mid- and Upper-Level Liquid-Bearing Cloud Layers in Tropical Storm Hilary

Hurricane Hilary was the first tropical cyclone to hit Southern California as a tropical storm since 1939. By chance, this landfall
occurred during the 1-year long ARM ECAPE deployment, most instruments of which were operating during the event.
Profiling radar observations, for example, captured the cloud deck evolution over La Jolla from a cirrus-topped mixed-phase
cloud to a heavily-precipitating deep cloud deck with multiple embedded liquid-bearing layers, indicated by the sounding
240 measurements (Figure 1). Figure 2 depicts a 5-day back trajectory of a cloudy airmass detected using the 13 UTC radiosonde,
which extended from an altitude of ~2,300 to 4,250 m (yellow rectangle in Figure 1). The trajectory for the cloud middle
section starting at the ARM deployment coordinates appears largely collocated with the ensemble mean up to 4
days backward in time (Figure 2, left). This trajectory consistency and relatively small variability in airmass ensemble
coordinates (examined using the ensemble standard deviation; not shown) are indicative of the single site coordinates'
245 trajectory being representative in this specific scenario, though not necessarily beyond the 4-day mark.



250 **Figure 2: ARMTRAJ-CLD 5-day back trajectory properties of a cloudy layer detected on August 20, 2023, using the 13 UTC sounding measurements (see yellow rectangle in Figure 1). (Left) Airmass trajectory using the ARM deployment coordinates (orange tints), ensemble-mean trajectory (blue shades), and 6-hourly markers of Hurricane Hillary's track (transitioned to a tropical storm on August 20; grey tints). (Middle) The same trajectories overlaid with hourly airmass temperature and (right) altitude AMSL. Larger markers denote 24-hour increments from the trajectory initialization time. The red marker designates the ARM EPCAPE deployment site.**

255 Examination of the trajectory timing against the center of Hilary (Figure 2) suggests that the airmass entrained into the rear-right flank of the cyclone roughly 1-2 days prior to the EPCAPE overpass. Forced by the cyclone, the airmass strongly accelerated (increasing distance between large markers in Figure 2), and gradually subsided and warmed until ~18 hours from the EPCAPE overpass (Figure 2, middle and right). From that point, being much closer to the cyclone center, the airmass was lofted (Figure 2, right), cooled, likely adiabatically (Figure 2, middle), and eventually reached water vapor equilibrium,
260 resulting in condensation, as evident from the sounding observations.

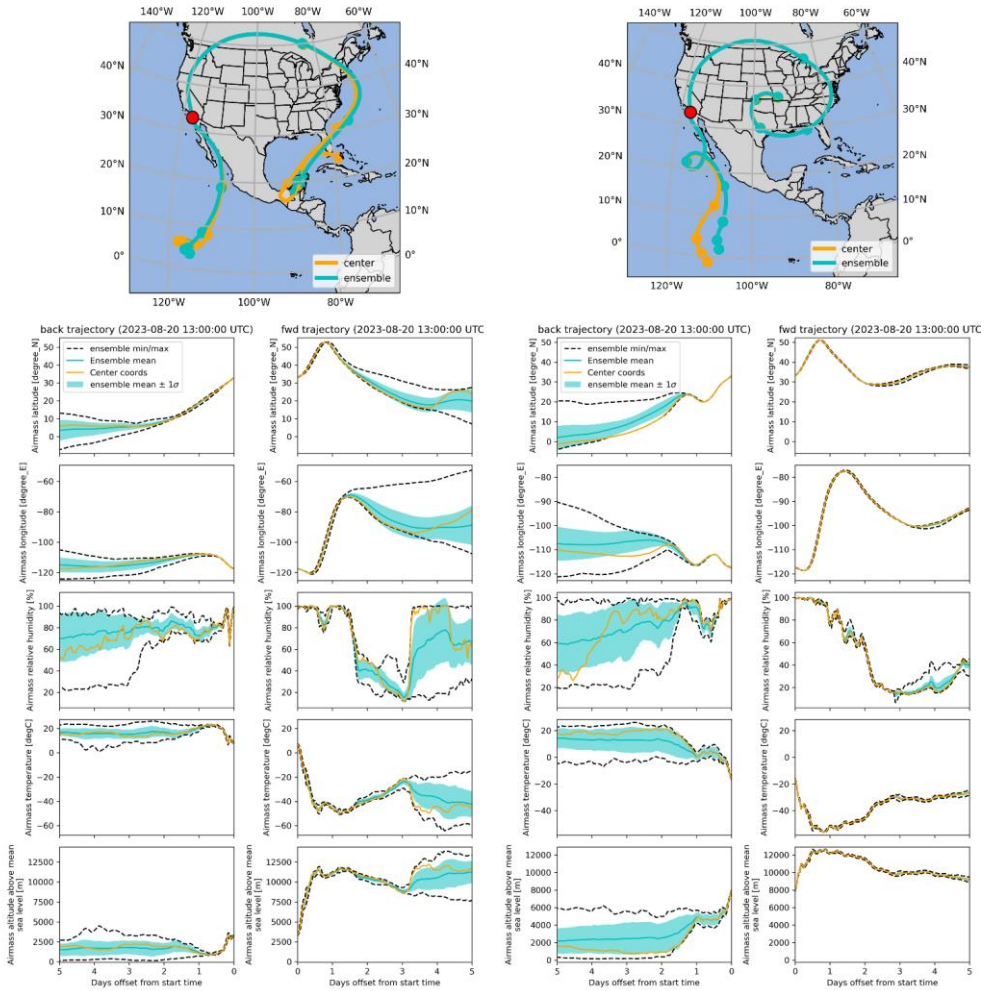


Figure 3: Two sets of back and forward trajectories of cloudy airmasses detected on August 20, 2023 using the 13 UTC sounding. The top two panels depict trajectory maps (larger markers denote 24-hour increments from initialization time), and the bottom panels illustrate (from top to bottom) time series of airmass latitude and longitude coordinates, relative humidity, temperature, and altitude AMSL. The back trajectory of the airmass in the left set of panels is the same as in Figure 2, whereas the right set of panels represents a cloudy airmass detected over the EPCAPE deployment at a higher altitude (see orange rectangle in Figure 1). Each time series plot shows the temporal evolution of airmass parameters along trajectories initialized at the center coordinates together with the ensemble mean, minimum, maximum, and the mean ± 1 standard deviation (σ) (see legend).

265

270 The left set of panels in Figure 3 expands the analysis of center coordinates trajectories versus ensemble results by depicting
time series plots of both back and forward trajectories of the same mid-level cloudy airmass. The right set of panels illustrates
back and forward trajectory calculations initialized for a thin (~100 m deep) high-level supercooled cloud layer detected at
~7800 m using the same 13 UTC EPCAPE sounding profile (orange rectangle in Figure 1). In both cases, the airmasses are
275 forced upward by the cyclone on the first day following the EPCAPE overpass, thereby cooling, producing more condensate,
and converting into a cirrus cloud, as suggested from the airmass relative humidity, temperature, and altitude time series panels.
Specifically, all ARMTRAJ ensemble members are consistently characterized by airmass relative humidity remaining at
~100% and temperature decreasing and staying below -38 °C. During this significant ascent of the cloudy airmasses to the
tropopause region, they are entrained into the polar jet stream, which carries them several thousand kilometers (mostly
280 eastward) in the following few days (see maps and the airmass latitude and longitude panels).

In the case of the back-trajectories for the mid-level cloudy airmass (left set of Figure 3 panels), the airmass parameters for the
center coordinates and ensemble mean stay collocated for roughly four days, as noted above. However, the uncertainty of the
airmass origin and thermodynamic properties generally increases backward in time, evident by the increasing ensemble
standard deviation and the range between the ensemble member minimum and maximum. Similarly, the uncertainty of the
285 forward trajectory parameters significantly increases starting roughly one day following the EPCAPE overpass. At the 5-day
mark, the coordinate uncertainties are on the order of 10 degrees in latitude and longitude, and the ensemble member range is
on the order of several tens of degrees; relative humidity uncertainty is ~20% and temperature uncertainty is greater than 10
°C, compared to ~5% and ~2 °C at the 3-day mark, respectively. Taken together, these ensemble results suggest low confidence
in the airmass forward trajectory properties, especially beyond 2-3 days.

290 The back trajectory ensemble spread in the right set of panels in Figure 3, representing the upper-level cloudy airmass is more
extensive than the spread of the mid-level cloud layer discussed above. For example, 3 days prior to the EPCAPE overpass,
this upper-level cloudy airmass exhibits relative humidity, temperature, and altitude uncertainties roughly double those of the
mid-level cloudy airmass, with values of ~27%, ~10 °C and ~1830 m compared to ~14%, 4 °C, and ~850 m, respectively.
However, given the ensemble temperature, relative humidity, and altitude largely monotonic tendencies, we can still deduce
295 that this high-altitude airmass is most likely of warm and moist low-latitude low-level oceanic origin forced upward by the
cyclone, as also suggested by the spiraling movement depicted in the top-right panel. Unlike the mid-level layer back
trajectories (left set of panels), in this case, the center coordinates' airmass trajectory is one of the ensemble extremes at certain
times; that is, even though the center coordinates are at the center of the ensemble latitude-longitude-height initialization mesh.
As an additional contrast to the mid-level cloud case, the forward trajectory ensemble remains consistent with very little
300 variance throughout the 5-day period. The differences in ensemble spread between those somewhat similar trajectories
calculated for cloudy airmasses exemplify the case-specific nature of trajectory robustness and the value of ensemble data.

3.2 Bulk Analysis of Surface Back Trajectories

While the cloudy air mass observed during Hilary's EPCAPE overpass originated south to south-east of the deployment site, closer to the surface, the La Jolla region often experiences marine flow from the north-west directions (e.g., Liu et al., 2011). Here, we briefly examine the potential source origin and properties of air masses reaching the EPCAPE deployment. We focus on ensemble mean variables, which are more robust than single trajectories for the deployment site coordinates, and provide uncertainty estimates, though these are largely excluded from this analysis for brevity.

Analysis of hourly-mean winds, taken in three-hour increments per ARMTRAJ-SFC's structure (sect. 2.1), indicates a westerly to north-westerly component dominance (Figure 4Figure-3a). A joint probability density function (PDF) of 12-36 hour back-trajectory coordinates supports the surface measurement indications of marine air mass sources, specifically of coastal origin (Figure 4Figure-3c). This proximity of air masses to densely-populated regions could suggest that aerosol properties might be strongly influenced by the proximity to these more polluted regions, especially considering that more than 90% of hourly air mass samples in this 12-36 hour period were within the PBL (when accounting for ensemble standard deviation of air mass height).

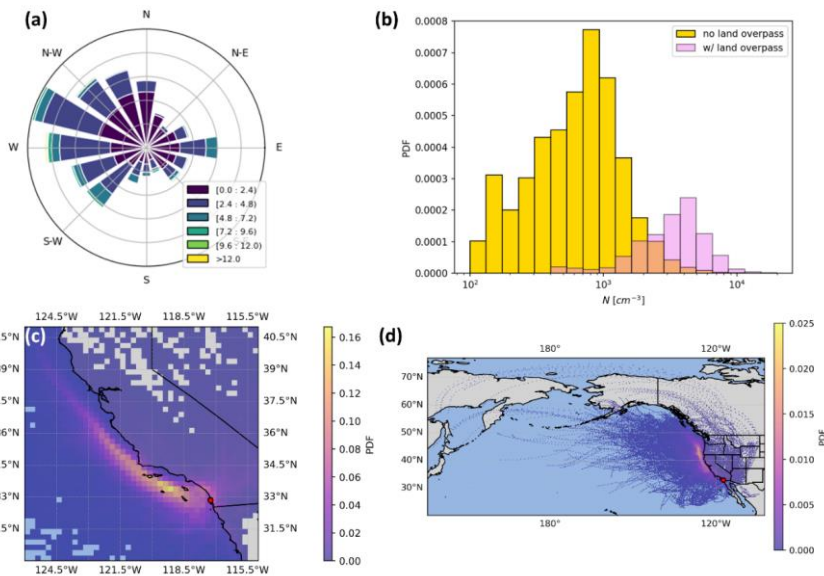


Figure 43: ARMTRAJ-SFC bulk analysis: (a) Wind rose based on hourly-mean data from the ARM Surface Meteorology System (legend values are in m/s), (b) sub-micron total number concentration histogram (logarithmic bin width of 0.121) using SMPS data

320 partitioned based on whether 12-36 hour surface back trajectories had any land overpass (see text), (c) probability density function
of 12-36 hour back-trajectory samples (bin dimensions of 0.25×0.25 degrees), and (d) same, but for 48-96 hour back-trajectories.

Indeed, the distribution of sub-micron aerosols (10-500 nm in diameter) measured by the ARM scanning mobility particle
sizer (SMPS; Kuang, 2016) illustrates a distinct picture. When partitioned based on whether a given 12-36 hour back trajectory
325 overpassed a land surface grid cell (defined here as an overpass of ERA5 grid cell with land area fraction exceeding 0.5 for at
least 1 hour), a clear separation is observed in total aerosol number concentration with cases of airmasses overpassing land
having notably higher concentrations (Figure 4Figure 3b). This number concentration separation was also distinct when only
trajectories corresponding to westerly surface wind direction measurements were used and, to a lesser extent, when the
partitioning was performed using earlier periods such as 72-96 hours, 96-120 hours, etc. (not shown). This sensitivity to land
330 proximity, even in more distant periods in airmass hysteresis, is supported by the general consistency of surface airmasses
sampled at EPCAPE to follow coastal flow patterns even several days before the arrival at the deployment site (Figure 4Figure
3d).

3.3 Potential PBL Airmass Aerosol Sources Based on Bulk Statistics

We can further evaluate potential aerosol sources by examining surface and vegetation types airmasses overpassed. Here, we
335 consider that aerosols are continuously mixed within the PBL along their trajectory path until they are eventually sampled at
the ground-based deployment site. We use the ARMTRAJ-PBL ensemble mean path and generate a pie chart of average
surface and vegetation properties (implemented in the IFS model and reported in ERA5) along the trajectories during the 5
days preceding the arrival at EPCAPE's coordinates. We only count samples where the airmass ensemble mean height minus
the ensemble mean standard deviation is within the PBL (~92% of all ARMTRAJ-PBL samples). Vegetation and surface
340 property samples are weighted based on their corresponding cover fraction. The resulting pie chart (Figure 5Figure 4) indicates
the dominating marine sources. This result is generally expected given the marine source dominance suggested in the
ARMTRAJ-SFC combined with the median (average) PBLH of 180 (255) m calculated from the ARM surface measurements.
On average, airmasses are influenced more than 4% of the time by Evergreen shrubs and needleleaf trees, known to be a
significant sources of natural volatile organic compounds that can form secondary organic aerosols (SOA) (see Guenther et
345 al., 1995; Shrivastava et al., 2017). A detailed analysis beyond the scope of this study might be able to robustly characterize
the influence of these airmass overpasses on surface aerosol observations.

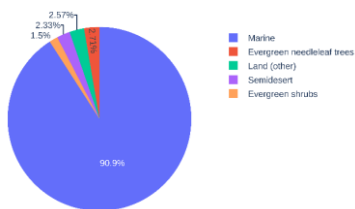
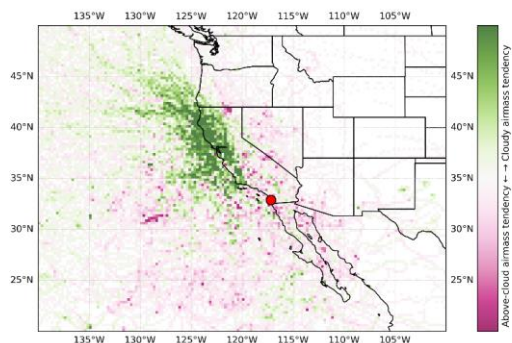


Figure 54: ARMTRAJ-PBL bulk analysis of average surface and vegetation properties overpassed by EPCAPE PBL airmasses (see text).

3.4 Bulk Analysis of Potential Airmass Origin Differences Between Cloud-Deck and Free-Tropospheric Airmasses

Aerosols such as SOA are commonly formed and transported within the PBL or other elevated mixed layers, serve as cloud condensation nuclei, and eventually influence cloud properties. Due to different hysteresis (flow patterns, atmospheric residence time due to chemical reactions, scavenging, etc.), free tropospheric aerosols often differ in their properties and source origin from mixed-layer aerosols in the same atmospheric column. This source origin difference can be demonstrated by analyzing the difference in potential source origin between cloudy and free-tropospheric air mass trajectories in the ARMTRAJ-ARSCL dataset. Figure 6 qualitatively illustrates this in-cloud and above-cloud air mass trajectory difference using 3-5 day ensemble mean coordinate PDFs. Some specific trajectories can be observed in the plot as distinct patterns. Similar to ARMTRAJ-SFC, in-cloud air masses tend to concentrate along the Pacific coast, though with greater spread. This spread is likely the result of variable flow patterns between cloud-deck boundaries, which only partially overlap with the near-surface flow patterns or the PBL depth in general, as defined by the bulk Richardson number method. Unlike the in-cloud deck air masses, the above-cloud (or free-tropospheric) air masses tend to originate (within the 3-5 day range) in northeastern Pacific marine areas generally west to southwest of the deployment site as well as inland regions along the Great Basin and Mojave Deserts and the California part of the Sierra Nevada range. We can expect that aerosol properties of these in- and above-cloud deck air masses would be different. However, such detailed studies likely involving airborne measurements such as those collected during the Southern California Interactions of Low cloud and Land Aerosol (SCILLA) experiment complementing EPCAPE, are beyond the scope of this study.



370

Figure 65: ARMTRAJ-ARSCL cloudy (in-cloud deck) and free-tropospheric (above cloud deck) air mass source origin tendency qualitatively demonstrated by the difference between 3-5 day ensemble mean trajectory PDFs. The **large-red** marker denotes the EPCAPE main deployment site.

375 4 Conclusions and Outlook

ARMTRAJ datasets provide essential support for the utilization of ARM deployments. They mitigate the gap ensuing from the typically fixed nature of ground-based deployments, give context to collected measurements, enable better synthesis of ARM observations with satellite observations, and could provide boundary conditions for modeling studies constrained by ARM measurements. Here, we showcased only a limited number of analyses that can be performed by synergizing ARM measurements with ARMTRAJ datasets. [The case study example emphasizes the value of ensemble statistics provided in ARMTRAJ datasets to evaluate uncertainties and level of confidence in the trajectory model results. It demonstrates that the level of confidence in trajectory calculations is case-specific but typically tends to decrease with the trajectory period and that conclusions drawn from a trajectory initialized at a single point can be misleading. We suggest that ensemble results should be preferred in most cases, especially when analyzing trajectories over several day periods.](#)

385

While we presented an analysis of ARMTRAJ datasets generated only for the recently completed EPCAPE field campaign, [the implementation and application of ARMTRAJ will not end at that single site. ARMTRAJ recently reached an operational level such that datasets will begin production for past, ongoing, and future ARM deployments through the ARM infrastructure and will be continuously updated and made available via the ARM Data Discovery, with near-real-time production of fully annotated files.](#)

Commented [SI1]: Verify this is the status upon submission

390 **Data Availability**

Current and future releases of ARMTRAJ datasets (Silber, 2024a, b, c, d) are and will be available on the ARM Data Discovery (<https://adc.arm.gov/discovery/#/results/s::armtraj>). Sounding (Keeler et al., 2022), meteorological station (Kyrouac et al., 2021), PBLH (Zhang, 2021), interpolated sounding (Jensen et al., 2021), ARSCL (Johnson et al., 2014), and SMPS (Kuang et al., 2021) data from the ARM EPCAPE deployment are available on the ARM Data Discovery (<https://adc.arm.gov/discovery/>;

395 last access: 14 April 2024). Hurricane Hilary's tracking data (Kruk et al., 2010) are available at the International Best Track Archive for Climate Stewardship (IBTrACS) website (<https://doi.org/10.25921/82ty-9e16>).

Author Contribution

Conceptualization, formal analysis, investigation, methodology, visualization, and original draft preparation: IS

Project administration: JMC

400 Data curation and validation: IS and MRK

Manuscript review and editing: IS, JMC, MRK, and LMR

Competing Interests

The authors declare that they have no competing interests

405 **Acknowledgments**

The authors thank Krista Gaustad, Damao Zhang, John Shilling, Peng Wu, Jingjing Tian, and Scott Giangrande for valuable feedback. This research was supported by and data were obtained from the ARM user facility, a U.S. Department of Energy (DOE) Office of Science user facility managed by the Biological and Environmental Research (BER) program. The authors gratefully acknowledge the NOAA Air Resources Laboratory (ARL) for the provision of the HYSPLIT transport model used

410 in this publication.

References

Ali, S. M. and Pithan, F.: Following moist intrusions into the Arctic using SHEBA observations in a Lagrangian perspective, Q. J. R. Meteorol. Soc., 146, 3522–3533, <https://doi.org/10.1002/qj.3859>, 2020.

415 Christensen, M. W., Jones, W. K., and Stier, P.: Aerosols enhance cloud lifetime and brightness along the stratus-to-cumulus transition, Proc. Natl. Acad. Sci., 117, 17591–17598, <https://doi.org/10.1073/pnas.1921231117>, 2020.

- Clothiaux, E. E., Miller, M. A., Perez, R. C., Turner, D. D., Moran, K. P., Martner, B. E., Ackerman, T. P., Mace, G. G., Marchand, R. T., Widener, K. B., Rodriguez, D. J., Uttal, T., Mather, J. H., Flynn, C. J., Gaustad, K. L., and Ermold, B.: The ARM Millimeter Wave Cloud Radars (MMCRs) and the Active Remote Sensing of Clouds (ARSCL) Value Added Product (VAP), ARM user facility, Pacific Northwest National Laboratory, Richland, WA, United States, <https://doi.org/10.2172/1808567>, 2001.
- Day, D. A., Liu, S., Russell, L. M., and Ziemann, P. J.: Organonitrate group concentrations in submicron particles with high nitrate and organic fractions in coastal southern California, *Atmos. Environ.*, **44**, 1970–1979, <https://doi.org/10.1016/j.atmosenv.2010.02.045>, 2010.
- Dorsey, K. S., Ireland, C. B., Mundy, M. E., Stafford, R. A., Palmer, K. K., Wasem, M. R., Prichard, M. E., Comstock, J. M., and Silber, I.: 2023 Atmospheric Radiation Measurement (ARM) Annual Report, United States, 2024.
- Ent, R. J. van der and Tuinenburg, O. A.: The residence time of water in the atmosphere revisited, *Hydrol. Earth Syst. Sci.*, **21**, 779–790, <https://doi.org/10.5194/hess-21-779-2017>, 2017.
- Fairless, T., Jensen, M., Zhou, A., and Giangrande, S. E.: Interpolated Sounding and Gridded Sounding Value-Added Products, United States, <https://doi.org/10.2172/1248938>, 2021.
- Forster, P., Storelvmo, T., Armour, K., Collins, W., Dufresne, J.-L., Frame, D., Lunt, D., Mauritsen, T., Palmer, M., Watanabe, M., Wild, M., and Zhang, H.: Chapter 7: The Earth's energy budget, climate feedbacks, and climate sensitivity, <https://doi.org/10.25455/wgtn.16869671.v1>, 2021.
- Geerts, B., Giangrande, S. E., McFarquhar, G. M., Xue, L., Abel, S. J., Comstock, J. M., Crewell, S., DeMott, P. J., Ebell, K., Field, P., Hill, T. C. J., Hunzinger, A., Jensen, M. P., Johnson, K. L., Juliano, T. W., Kollias, P., Kosovic, B., Lackner, C., Luke, E., Lüpkes, C., Matthews, A. A., Negggers, R., Ovchinnikov, M., Powers, H., Shupe, M. D., Spengler, T., Swanson, B. E., Tjernström, M., Theisen, A. K., Wales, N. A., Wang, Y., Wendisch, M., and Wu, P.: The COMBLE Campaign: A Study of Marine Boundary Layer Clouds in Arctic Cold-Air Outbreaks, *Bull. Am. Meteorol. Soc.*, **103**, E1371–E1389, <https://doi.org/10.1175/BAMS-D-21-0044.1>, 2022.
- Guenther, A., Hewitt, C. N., Erickson, D., Fall, R., Geron, C., Graedel, T., Harley, P., Klinger, L., Lerdau, M., McKay, W. A., Pierce, T., Scholes, B., Steinbrecher, R., Tallamraju, R., Taylor, J., and Zimmerman, P.: A global model of natural volatile organic compound emissions, *J. Geophys. Res. Atmospheres*, **100**, 8873–8892, <https://doi.org/10.1029/94JD02950>, 1995.
- Hawkins, L. N. and Russell, L. M.: Oxidation of ketone groups in transported biomass burning aerosol from the 2008 Northern California Lightning Series fires, *Atmos. Environ.*, **44**, 4142–4154, <https://doi.org/10.1016/j.atmosenv.2010.07.036>, 2010.
- Hersbach, H., Bell, B., Berrisford, P., Hirahara, S., Horányi, A., Muñoz-Sabater, J., Nicolas, J., Peubey, C., Radu, R., Schepers, D., Simmons, A., Soci, C., Abdalla, S., Abellan, X., Balsamo, G., Bechtold, P., Biavati, G., Bidlot, J., Bonavita, M., Chiara, G. D., Dahlgren, P., Dee, D., Diamantakis, M., Dragani, R., Flemming, J., Forbes, R., Fuentes, M., Geer, A., Haimberger, L., Healy, S., Hogan, R. J., Hólm, E., Janisková, M., Keeley, S., Laloyaux, P., Lopez, P., Lupu, C., Radnoti, G., Rosnay, P. de, Rozum, I., Vamborg, F., Villaume, S., and Thépaut, J.-N.: The ERA5 global reanalysis, *Q. J. R. Meteorol. Soc.*, **146**, 1999–2049, <https://doi.org/10.1002/qj.3803>, 2020.
- Holdridge, D.: Balloon-Borne Sounding System (SONDE) Instrument Handbook, ARM-TR-029, DOE Office of Science, Office of Biological and Environmental Research, <https://doi.org/10.2172/1020712>, 2020.
- Ilotoviz, E., Ghate, V. P., and Raveh-Rubin, S.: The Impact of Slantwise Descending Dry Intrusions on the Marine Boundary Layer and Air-Sea Interface Over the ARM Eastern North Atlantic Site, *J. Geophys. Res. Atmospheres*, **126**, e2020JD033879, <https://doi.org/10.1029/2020JD033879>, 2021.

- 455 Jensen, M., Giangrande, S., Fairless, T., and Zhou, A.: Interpolated Sonde (INTERPOLATEDSONDE), Atmospheric Radiat. Meas. ARM User Facil., <https://doi.org/10.5439/1095316>, 2021.
- Jiang, H., Feingold, G., and Cotton, W. R.: Simulations of aerosol-cloud-dynamical feedbacks resulting from entrainment of aerosol into the marine boundary layer during the Atlantic Stratocumulus Transition Experiment, *J. Geophys. Res. Atmospheres*, 107, AAC 20-1, <https://doi.org/10.1029/2001JD001502>, 2002.
- 460 Johnson, K., Giangrande, S., and Toto, T.: Active Remote Sensing of CLOUDS (ARSCL) product using Ka-band ARM Zenith Radars (ARSCLKAZRIKOLLIAS), Atmospheric Radiat. Meas. ARM User Facil., <https://doi.org/10.5439/1393437>, 2014.
- Keeler, E., Burk, K., and Kyrouac, J.: Balloon-Borne Sounding System (SONDEWNP), Atmospheric Radiat. Meas. ARM User Facil., <https://doi.org/10.5439/1595321>, 2022.
- Kruk, M. C., Knapp, K. R., and Levinson, D. H.: A Technique for Combining Global Tropical Cyclone Best Track Data, *J. Atmospheric Ocean. Technol.*, 27, 680–692, <https://doi.org/10.1175/2009JTECHA1267.1>, 2010.
- 465 Kuang, C.: TSI Model 3936 Scanning Mobility Particle Spectrometer Instrument Handbook, United States, <https://doi.org/10.2172/1245993>, 2016.
- Kuang, C., Singh, A., Howie, J., Salwen, C., and Hayes, C.: Scanning mobility particle sizer (AOSSMPS), Atmospheric Radiat. Meas. ARM User Facil., <https://doi.org/10.5439/1476898>, 2021.
- 470 Kyrouac, J., Shi, Y., and Tuftedal, M.: Surface Meteorological Instrumentation (MET), Atmospheric Radiat. Meas. ARM User Facil., <https://doi.org/10.5439/1786358>, 2021.
- Läderach, A. and Sodemann, H.: A revised picture of the atmospheric moisture residence time, *Geophys. Res. Lett.*, 43, 924–933, <https://doi.org/10.1002/2015GL067449>, 2016.
- 475 Lata, N. N., Zhang, B., Schum, S., Mazzoleni, L., Brimberry, R., Marcus, M. A., Cantrell, W. H., Fialho, P., Mazzoleni, C., and China, S.: Aerosol Composition, Mixing State, and Phase State of Free Tropospheric Particles and Their Role in Ice Cloud Formation, *ACS Earth Space Chem.*, 5, 3499–3510, <https://doi.org/10.1021/acsearthspacechem.1c00315>, 2021.
- Liu, S., Day, D. A., Shields, J. E., and Russell, L. M.: Ozone-driven daytime formation of secondary organic aerosol containing carboxylic acid groups and alkane groups, *Atmospheric Chem. Phys.*, 11, 8321–8341, <https://doi.org/10.5194/acp-11-8321-2011>, 2011.
- 480 Lu, X., Mao, F., Rosenfeld, D., Zhu, Y., Pan, Z., and Gong, W.: Satellite retrieval of cloud base height and geometric thickness of low-level cloud based on CALIPSO, *Atmospheric Chem. Phys.*, 21, 11979–12003, <https://doi.org/10.5194/acp-21-11979-2021>, 2021.
- Mohrmann, J., Bretherton, C. S., McCoy, I. L., McGibbon, J., Wood, R., Ghate, V., Albrecht, B., Sarkar, M., Zuidema, P., and Palikonda, R.: Lagrangian Evolution of the Northeast Pacific Marine Boundary Layer Structure and Cloud during CSET, *Mon. Weather Rev.*, 147, 4681–4700, <https://doi.org/10.1175/MWR-D-19-0053.1>, 2019.
- 485 Morris, V. R.: Microwave radiometer (MWR) handbook, ARM-TR-016, DOE Office of Science, Office of Biological and Environmental Research, <https://doi.org/10.2172/1020715>, 2006.
- Muradyan, P. and Coulter, R.: Micropulse Lidar (MPL) Handbook, PNNL; Richland, WA, <https://doi.org/10.2172/1020714>, 2020.

- 490 Neggers, R. A. J., Chylik, J., Egerer, U., Griesche, H., Schemann, V., Seifert, P., Siebert, H., and Macke, A.: Local and Remote Controls on Arctic Mixed-Layer Evolution, *J. Adv. Model. Earth Syst.*, 11, 2214–2237, <https://doi.org/10.1029/2019MS001671>, 2019.
- Palanisamy, G.: ARM Data File Standards Version 1.2, DOE ARM Climate Research Facility, Pacific Northwest National Laboratory, Richland, WA, United States, <https://doi.org/10.2172/1253898>, 2016.
- 495 Raes, F.: Entrainment of free tropospheric aerosols as a regulating mechanism for cloud condensation nuclei in the remote marine boundary layer, *J. Geophys. Res. Atmospheres*, 100, 2893–2903, <https://doi.org/10.1029/94JD02832>, 1995.
- Raes, F., Dingenen, R. V., Vignati, E., Wilson, J., Putaud, J.-P., Seinfeld, J. H., and Adams, P.: Formation and cycling of aerosols in the global troposphere, *Atmos. Environ.*, 34, 4215–4240, [https://doi.org/10.1016/S1352-2310\(00\)00239-9](https://doi.org/10.1016/S1352-2310(00)00239-9), 2000.
- Ritsche, M.: ARM Surface Meteorology Systems Instrument Handbook, PNNL; Richland, WA, United States, <https://doi.org/10.2172/1007926>, 2011.
- 500 Russell, L. M., Lubin, D., Silber, I., Eloranta, E., Muelmenstaedt, J., Burrows, S., Aiken, A., Wang, D., Petters, M., Miller, M., Ackerman, A., Fridlind, A., Witte, M., Lebsock, M., Painemal, D., Chang, R., Liggio, J., and Wheeler, M.: Eastern Pacific Cloud Aerosol Precipitation Experiment (EPCAPE) Science Plan, United States, <https://doi.org/10.2172/1804710>, 2021.
- Schmid, B. and Ivey, M.: ARM Unmanned Aerial Systems Implementation Plan, ARM Climate Research Facility, Pacific Northwest National Laboratory, Richland, WA, United States, 2016.
- 505 Seidel, D. J., Medeiros, B., Zhang, Y., Golaz, J., Beljaars, A., and Jacobson, A. R.: Climatology of the Planetary Boundary Layer over the Continental United States and Europe, in: AGU Fall Meeting Abstracts, A23C-0233, 2012.
- Shrivastava, M., Cappa, C. D., Fan, J., Goldstein, A. H., Guenther, A. B., Jimenez, J. L., Kuang, C., Laskin, A., Martin, S. T., Ng, N. L., Petaja, T., Pierce, J. R., Rasch, P. J., Roldin, P., Seinfeld, J. H., Shilling, J., Smith, J. N., Thornton, J. A., Volkamer, R., Wang, J., Worsnop, D. R., Zaveri, R. A., Zelenyuk, A., and Zhang, Q.: Recent advances in understanding secondary organic aerosol: Implications for global climate forcing, *Rev. Geophys.*, 55, 509–559, <https://doi.org/10.1002/2016RG000540>, 2017.
- Silber, I.: Back and forward trajectories for liquid-bearing cloud layers in full tropospheric profiles (ARMTRAJCLD), *Atmospheric Radiat. Meas. ARM User Facil.*, <https://doi.org/10.5439/2309851>, 2024a.
- Silber, I.: Back and forward trajectories for primary cloud decks based on ARSCL (ARMTRAJARSL), *Atmospheric Radiat. Meas. ARM User Facil.*, <https://doi.org/10.5439/2309849>, 2024b.
- 515 Silber, I.: Back trajectories for ARM surface deployments supporting aerosol studies (ARMTRAJSFC), *Atmospheric Radiat. Meas. ARM User Facil.*, <https://doi.org/10.5439/2309850>, 2024c.
- Silber, I.: Back trajectories for PBL and related aerosol and cloud studies (ARMTRAJPBL), *Atmospheric Radiat. Meas. ARM User Facil.*, <https://doi.org/10.5439/2309848>, 2024d.
- 520 Silber, I. and Shupe, M. D.: Insights on sources and formation mechanisms of liquid-bearing clouds over MOSAiC examined from a Lagrangian framework, *Elem. Sci. Anthr.*, 10, 000071, <https://doi.org/10.1525/elementa.2021.000071>, 2022.
- Silber, I., Verlinde, J., Eloranta, E. W., Flynn, C. J., and Flynn, D. M.: Polar liquid cloud base detection algorithms for high spectral resolution or micropulse lidar data, *J. Geophys. Res. Atmospheres*, <https://doi.org/10.1029/2017JD027840>, 2018.

- 525 Silber, I., Fridlind, A. M., Verlinde, J., Ackerman, A. S., Chen, Y.-S., Bromwich, D. H., Wang, S.-H., Cadeddu, M., and Eloranta, E. W.: Persistent Supercooled Drizzle at Temperatures below -25°C Observed at McMurdo Station, Antarctica, *J. Geophys. Res. Atmospheres*, <https://doi.org/10.1029/2019JD030882>, 2019.
- Silber, I., Fridlind, A. M., Verlinde, J., Russell, L. M., and Ackerman, A. S.: Nonturbulent Liquid-Bearing Polar Clouds: Observed Frequency of Occurrence and Simulated Sensitivity to Gravity Waves, *Geophys. Res. Lett.*, <https://doi.org/10.1029/2020GL087099>, 2020.
- 530 Sivaraman, C., McFarlane, S., Chapman, E., Jensen, M., Toto (Fairless), T., Liu, S., and Fischer, M.: Planetary Boundary Layer Height (PBL) Value Added Product (VAP): Radiosonde Retrievals, ARM user facility, Pacific Northwest National Laboratory, Richland, WA, United States, <https://doi.org/10.2172/1808688>, 2013.
- Sorooshian, A., Corral, A. F., Braun, R. A., Cairns, B., Crosbie, E., Ferrare, R., Hair, J., Kleb, M. M., Hossein Mardi, A., Maring, H., McComiskey, A., Moore, R., Painemal, D., Scarino, A. J., Schlosser, J., Shingler, T., Shook, M., Wang, H., Zeng, X., Ziemba, L., and Zuidema, P.: Atmospheric Research Over the Western North Atlantic Ocean Region and North American East Coast: A Review of Past Work and Challenges Ahead, *J. Geophys. Res. Atmospheres*, 125, e2019JD031626, <https://doi.org/10.1029/2019JD031626>, 2020.
- 540 Stanford, M. W., Fridlind, A. M., Silber, I., Ackerman, A. S., Cesana, G., Mülmenstädt, J., Protat, A., Alexander, S., and McDonald, A.: Earth-system-model evaluation of cloud and precipitation occurrence for supercooled and warm clouds over the Southern Ocean’s Macquarie Island, *Atmospheric Chem. Phys.*, 23, 9037–9069, <https://doi.org/10.5194/acp-23-9037-2023>, 2023.
- Stein, A. F., Draxler, R. R., Rolph, G. D., Stunder, B. J. B., Cohen, M. D., and Ngan, F.: NOAA’s HYSPLIT Atmospheric Transport and Dispersion Modeling System, *Bull. Am. Meteorol. Soc.*, 96, 2059–2077, <https://doi.org/10.1175/BAMS-D-14-00110.1>, 2015.
- 545 Svensson, G., Murto, S., Shupe, M. D., Pithan, F., Magnusson, L., Day, J. J., Doyle, J. D., Renfrew, I. A., Spengler, T., and Vihma, T.: Warm air intrusions reaching the MOSAiC expedition in April 2020—The YOPP targeted observing period (TOP), *Elem. Sci. Anthr.*, 11, 00016, <https://doi.org/10.1525/elementa.2023.00016>, 2023.
- 550 Tornow, F., Ackerman, A. S., Fridlind, A. M., Cairns, B., Crosbie, E. C., Kirschler, S., Moore, R. H., Painemal, D., Robinson, C. E., Seethala, C., Shook, M. A., Voigt, C., Winstead, E. L., Ziemba, L. D., Zuidema, P., and Sorooshian, A.: Dilution of Boundary Layer Cloud Condensation Nucleus Concentrations by Free Tropospheric Entrainment During Marine Cold Air Outbreaks, *Geophys. Res. Lett.*, 49, e2022GL098444, <https://doi.org/10.1029/2022GL098444>, 2022.
- Troen, I. B. and Mahrt, L.: A simple model of the atmospheric boundary layer; sensitivity to surface evaporation, *Bound.-Layer Meteorol.*, 37, 129–148, <https://doi.org/10.1007/BF00122760>, 1986.
- 555 Uin, J. and Smith, S.: Southern Great Plains (SGP) Aerosol Observing System (AOS) Instrument Handbook, United States, <https://doi.org/10.2172/1756406>, 2020.
- Verlinde, J., Zak, B. D., Shupe, M. D., Ivey, M. D., and Stamnes, K.: The ARM North Slope of Alaska (NSA) Sites, *Meteorol. Monogr.*, 57, 8.1-8.13, <https://doi.org/10.1175/AMSMONOGRAPHS-D-15-0023.1>, 2016.
- Vogelezang, D. H. P. and Holtslag, A. A. M.: Evaluation and model impacts of alternative boundary-layer height formulations, *Bound.-Layer Meteorol.*, 81, 245–269, <https://doi.org/10.1007/BF02430331>, 1996.

560 Wernli, H., Boettcher, M., Joos, H., Miltenberger, A. K., and Spichtinger, P.: A trajectory-based classification of ERA-Interim ice clouds in the region of the North Atlantic storm track, *Geophys. Res. Lett.*, 43, 6657–6664, <https://doi.org/10.1002/2016GL068922>, 2016.

Wiacek, A. and Peter, T.: On the availability of uncoated mineral dust ice nuclei in cold cloud regions, *Geophys. Res. Lett.*, 36, <https://doi.org/10.1029/2009GL039429>, 2009.

565 Widener, K. and Bharadwaj, N.: C-Band Scanning ARM Precipitation Radar (C-SAPR) Handbook, ARM-TR-121, DOE Office of Science, Office of Biological and Environmental Research, <https://doi.org/10.2172/1054629>, 2012.

Widener, K. B., Bharadwaj, N., and Johnson, K.: Ka-Band ARM Zenith Radar (KAZR) Instrument Handbook, ARM-TR-106, DOE Office of Science, Office of Biological and Environmental Research, <https://doi.org/10.2172/1035855>, 2012a.

570 Widener, K. B., Bharadwaj, N., and Johnson, K.: Scanning ARM Cloud Radar (X/Ka/W-SACR), ARM-TR-113, DOE Office of Science, Office of Biological and Environmental Research, <https://doi.org/10.2172/1043296>, 2012b.

Woods, C. and Caballero, R.: The Role of Moist Intrusions in Winter Arctic Warming and Sea Ice Decline, *J. Clim.*, 29, 4473–4485, <https://doi.org/10.1175/JCLI-D-15-0773.1>, 2016.

Zhang, D.: Planetary Boundary Layer Height (PBLHTSONDE1MCFARL), Atmospheric Radiat. Meas. ARM User Facil., <https://doi.org/10.5439/1991783>, 2021.

575 Zhang, D., Comstock, J., and Morris, V.: Comparison of planetary boundary layer height from ceilometer with ARM radiosonde data, *Atmos Meas Tech*, 15, 4735–4749, <https://doi.org/10.5194/amt-15-4735-2022>, 2022.

Zheng, G., Sedlacek, A. J., Aiken, A. C., Feng, Y., Watson, T. B., Raveh-Rubin, S., Uin, J., Lewis, E. R., and Wang, J.: Long-range transported North American wildfire aerosols observed in marine boundary layer of eastern North Atlantic, *Environ. Int.*, 139, 105680, <https://doi.org/10.1016/j.envint.2020.105680>, 2020.

580