

1 LCM2021 – The UK Land Cover Map 2021

2 Christopher G. Marston¹, Aneurin W. O’Neil¹, R. Daniel Morton¹, Claire M. Wood¹, Clare S. Rowland¹

3 ¹UK Centre for Ecology and Hydrology, Lancaster Environment Centre, Library Avenue, Bailrigg, Lancaster, LA1 4AP,
4 UK

5 *Correspondence to:* Christopher G. Marston (cmarston@ceh.ac.uk)

6 **Abstract.** Land cover is a key environmental variable, underpinning widespread environmental research and decision-
7 making. The UK Centre for Ecology and Hydrology (UKCEH) have provided reliable land cover information since the early
8 1990’s; this supports multiple scientific, government and commercial objectives. Recent advances in computation and
9 satellite data availability have enabled annual UKCEH land cover maps since 2017. Here we introduce the latest, annual
10 UK Land Cover Map, representing 2021 (LCM2021) and describe its production and validation. LCM2021 methods
11 replicate those for LCM2017 to LCM2020 with minor deviations in cloud-masking processes and training data sourcing to
12 enhance accuracy. LCM2021 is based on the classification of satellite and spatial context data into 21 land cover/habitat
13 classes, from which a product suite is derived. The production of LCM2021 involved three highly automated key stages:
14 pre-processing of input data, image classification and production of the final data products. Google Earth Engine scripts
15 were used to create an input data stack of satellite and context data. A set of training areas was created, based on data
16 harvested from historic UKCEH land cover maps. The training data were used to construct a Random Forest classifier,
17 which yielded classified images. Compiled results were validated against 35,182 reference samples, with correspondence
18 tables indicating variable class accuracy and an overall accuracy of 82.6 % for the 21-class data and 86.5 % at a 10
19 aggregated-class level.

20 The UK Land Cover Map product suite includes a set of raster products in various projections, thematic and spatial
21 resolutions (10 m, 25 m and 1 km) and land-parcel/vector product. The data are provided in 21-class (all configurations)
22 and aggregated 10-class versions (1 km raster products only). All raster products are freely available for academic and non-
23 commercial research. The data for Great Britain (GB) are provided in the British National Grid projection
24 (<https://epsg.io/27700>) and the Northern Ireland (NI) data are in the TM75 Irish National Grid (<https://epsg.io/29903>).
25 Information on how to access the data is given in the Data Availability section of the paper.

26 1 Introduction

27 Monitoring and managing environmental change is one of the key challenges for the 21st century (Turner et al., 2007; Allen
28 et al., 2021). Land cover change is both a key cause, and consequence, of environmental change (Lambin et al., 2001;
29 Foley et al., 2005), and as such it is recognised as a key variable for characterising the environment (Rockström et al., 2009;
30 Bojinski et al., 2014). Land cover affects all aspects of the environment (Foley et al., 2005), including the hydrosphere
31 (Teixeira et al., 2014), atmosphere (Allen et al., 2017) and biosphere (Oliver & Morecroft, 2014), as well as being able to

32 compound or mitigate climate change (Morecroft et al., 2019). Land cover data are therefore an important starting point in
33 many environmental projects and analyses, as they form a basis against which other data sets may be integrated and
34 understood (e.g. Coxon et al., (2020)). Consequently, there is a demand nationally and internationally for accurate, timely
35 data on land cover. In the United Kingdom (UK), the demand for land cover data has been met by the UK Land Cover Map
36 (LCM) series, comprising LCMs for 1990, 2000, 2007, 2015, 2017, 2018, 2019, 2020 and now 2021. The UK LCMs are a
37 core part of the UK environmental data infrastructure providing data for a wide range of environmental applications and for
38 a diverse range of users, including academics, businesses, and government departments and agencies. Government use of
39 land cover data includes informing government decision-making by exploring the impact of different land-use scenarios
40 (Harrison et al., 2022), creating new data sets to aid implementation of conservation objectives (Natural England, 2022),
41 and providing for the UK's Natural Capital accounts (Office for National Statistics, 2021).

42

43 UK LCM data have proven valuable for commercial applications, typically in combination with other data and modelling,
44 to enable companies to better manage resources and target interventions. For example, water companies have used LCM
45 and modelling to optimise water quality monitoring in areas with high levels of agricultural run-off (United Utilities, 2017).
46 Additionally, telecommunications companies mapped locations of TV 'white space' (low/no signal) to target improvements
47 in poor signal areas using LCM and elevation data (Ishizu & Tran, 2014). LCM data has also enabled companies to make
48 better use of their land, with Highways England using LCM and data modelling to identify and remedy key gaps in
49 biodiversity corridors in their land holdings around roads across SW England (UKCEH, 2021). LCM has also been used in
50 data services for different sectors of UK industry, including underpinning flood modelling, where LCM data are used in the
51 Flood Estimation Handbook web service, the industry standard for assessing UK flood risk (FEH, 2018). The data have also
52 been used to conserve a protected species, by enabling the mapping of Great Crested Newt risk zones (Natural England,
53 2022) enabling a conservation partnership to sustainably manage the impact of development on newt populations (Tew &
54 Nicolet, 2019), and are increasingly used by environmental consultancies for estimating Natural Capital accounts (White et
55 al., 2015).

56

57 Academic uses of LCM data are wide-ranging, including applications in pollution, ecology, hydrology, meteorology and
58 climate change, with research topics motivated by both science and policy-related questions. Ecological applications have
59 included epidemiology (Gulliver et al., 2011), conservation (Hooftman & Bullock, 2012) and modelling spatial distributions
60 for mammals (Croft et al., (2017), insects (Mair et al., 2014), birds (Carrasco et al., 2018), invasive species (Fraser et al.,
61 2015) and pollination (Senapathi et al., 2015; Baude et al., 2016). Whilst hydrological applications have included assessing
62 impacts of catchment land-use on rivers and lakes (Bussi et al., 2016), determining flood risk (Reynard et al., 2001; FEH,
63 2018) and modelling impacts of farming on water quality (Taylor et al., 2016). Spatial variability in health has also been
64 explored through modelling of hayfever risk (McInnes et al., 2017), air pollution impacts on human health (Stedman et al.,
65 1997) and bovine tuberculosis (Wint et al., 2002). In recent years, the LCM has also been used increasingly for mapping

66 ecosystem service provision (Emmett et al., 2016) and natural capital (Norton et al., 2018), and to aid creation of new data
67 sets such as the UKCEH Land Cover Plus: Pesticides 2012-2017 maps (Jarvis et al., 2020).

68

69 This paper describes the methods and data used to produce the UK Land Cover Map 2021 (LCM2021), as well as the derived
70 LCM2021 data products. LCM2021 was created by classifying satellite data into 21 land cover classes, with these classes
71 based on the UK Biodiversity Action Plan Broad Habitat definitions (Jackson, 2000). The LCM2021 production process
72 involved three stages: pre-processing of input data, image classification and production of the final data products. We present
73 the results of the classification and the validation of 21-class and 10-class versions of the data set. We describe the different
74 data products available and explain how they can be accessed.

75 **2 Input data sets**

76 Producing a Land Cover Map requires a range of data sets, typically including satellite data and context data, as well as
77 training and validation data. These data sets are described here, followed by the methods in Section 3.

78 **2.1 Satellite data**

79 LCM2021 used Sentinel-2 MultiSpectral Instrument (MSI) Level-2A surface reflectance satellite data (Drusch et al., 2012;
80 Claverie et al., 2018) acquired and pre-processed in Google Earth Engine (Gorelick et al., 2017). The images were acquired
81 between the 1st December 2020 and the 31st January 2022. All 10 and 20 m spectral bands, comprising bands 2 (490 nm), 3
82 (560 nm), 4 (665 nm), 5 (705 nm), 6 (740 nm), 7 (783 nm), 8 (842 nm), 8a (865 nm), 11 (1610 nm) and 12 (2190 nm) were
83 used.

84 **2.2 Context data**

85 Context data were used as additional inputs to the classification process to enable better classification of the required land
86 cover classes (Rogan et al., 2003). The context data included a digital elevation model (DEM), coastline, foreshore and tidal
87 water layers (to aid coastal classification), building and road layers (to reduce confusion between arable and urban areas)
88 (Table 1), and freshwater and forest layers. The DEM was used to calculate slope and aspect, which were also included as
89 context layers. National cartographic products for Great Britain (GB) were provided by the Ordnance Survey (OS), the
90 national mapping agency of GB, whereas for Northern Ireland (NI) products were provided by a number of government
91 organisations including the NI Statistics and Research Agency (NISRA), Ordnance Survey Northern Ireland (OSNI) and
92 the NI Department of Agriculture, Environment and Rural Affairs (DAERA). Slightly different context products were
93 available for NI compared to GB (Table 1). The main difference between the OS NI and OS GB context data, is the lack of
94 a NI equivalent to the GB buildings layer. The OS layers were converted from vector to raster data, with distance from
95 layers created for buildings, roads, rivers and water bodies. Distance from products were used to allow the context data

96 products to influence a wider area, rather than just the pixels they intersected with. The 10 m NEXTMap Digital Elevation
 97 Model (DEM) was used to calculate slope and aspect, with all three included as context layers.

98

99 **Table 1:** Context data set details, including comments on accessibility, data quality and timeliness. ¹ Slope and aspect were
 100 derived from the DEM data. Abbreviations: Great Britain (GB), Northern Ireland (NI). ² data used subject to licensing
 101 conditions, ³ data used under an open license. Ordnance Survey GB open data from: <https://osdatahub.os.uk/>, Ordnance
 102 Survey NI data from: <https://www.nidirect.gov.uk/articles/osni-open-data-product-list>, NI Statistics and Research Agency
 103 data from: <https://www.opendatani.gov.uk/dataset/settlement-development-limits-2015>, DAERA data sets from:
 104 <https://www.daera-ni.gov.uk/articles/wmu-digital-dataset-downloads>, Copernicus Land Monitoring Service data sets from:
 105 <https://land.copernicus.eu/pan-european/corine-land-cover/clc-2012>.

| Type of data set | Rationale | Extent | Data provider: | Data set name |
|----------------------|--|--------|---|--|
| Topographical | Constrain land cover classes to appropriate slopes and altitudes. | GB | Nextmap ² | Digital elevation data ¹ |
| | | NI | Ordnance Survey Northern Ireland (OSNI) ³ | 10m Digital Terrain Model height data |
| Urban extent | Distance from urban and roads, used to limit spectral confusion, especially between arable and urban. | GB | Ordnance Survey (OS) ³ | OS Vectormap District, building polygons; OS Open roads |
| | | | Copernicus Land Monitoring Service ³ | Corine Land Cover 2012, airport polygons |
| | | NI | OSNI ³ NI Statistics and Research Agency ³ | Open Data 50k Transport Lines; Settlement development limits |
| | | | Copernicus Land Monitoring Service ³ | Corine Land Cover 2012, airport polygons |
| Coastal | Constrain coastal classes so they do not appear inland. Coastal context layer include foreshore extent, tidal water extent and distance to mean high water line. | GB | OS ³ | OS Terrain 50 |
| | | NI | Department of Agriculture, Environment and Rural Affairs (DAERA) ³ | Marine Digital Datasets |
| Water | Distance from water used to improve classification of | GB | OS ³ | Open Map Local, surface water area polygons |

| | | | | |
|---------------|--|----|--------------------|---|
| | habitats often associated with proximity to rivers (e.g. Fen, Marsh and Swamp, and Neutral Grassland). | NI | DAERA ³ | Rivers Digital Datasets – River segments; Lakes Digital Datasets – Lake water bodies. |
| Forest | Improve extent of forest, especially for recently harvested forest and newly planted forest. | GB | OS ³ | OS Vectormap District woodland polygons |

106

107 **2.3 Training area data**

108 LCM2021 is produced through supervised classification of satellite images, an empirical process that requires training areas
 109 of known land cover type. The training areas for the classification were widely distributed to capture the range of spectral
 110 signatures typical of each class. For LCM2021 training areas were primarily harvested from existing vector data from
 111 LCM2018 (Morton et al., 2020a, b), LCM2019 (Morton et al., 2020c, d) and LCM2020 (Morton et al., 2021e, f). The method
 112 is described in section 3.2.1.

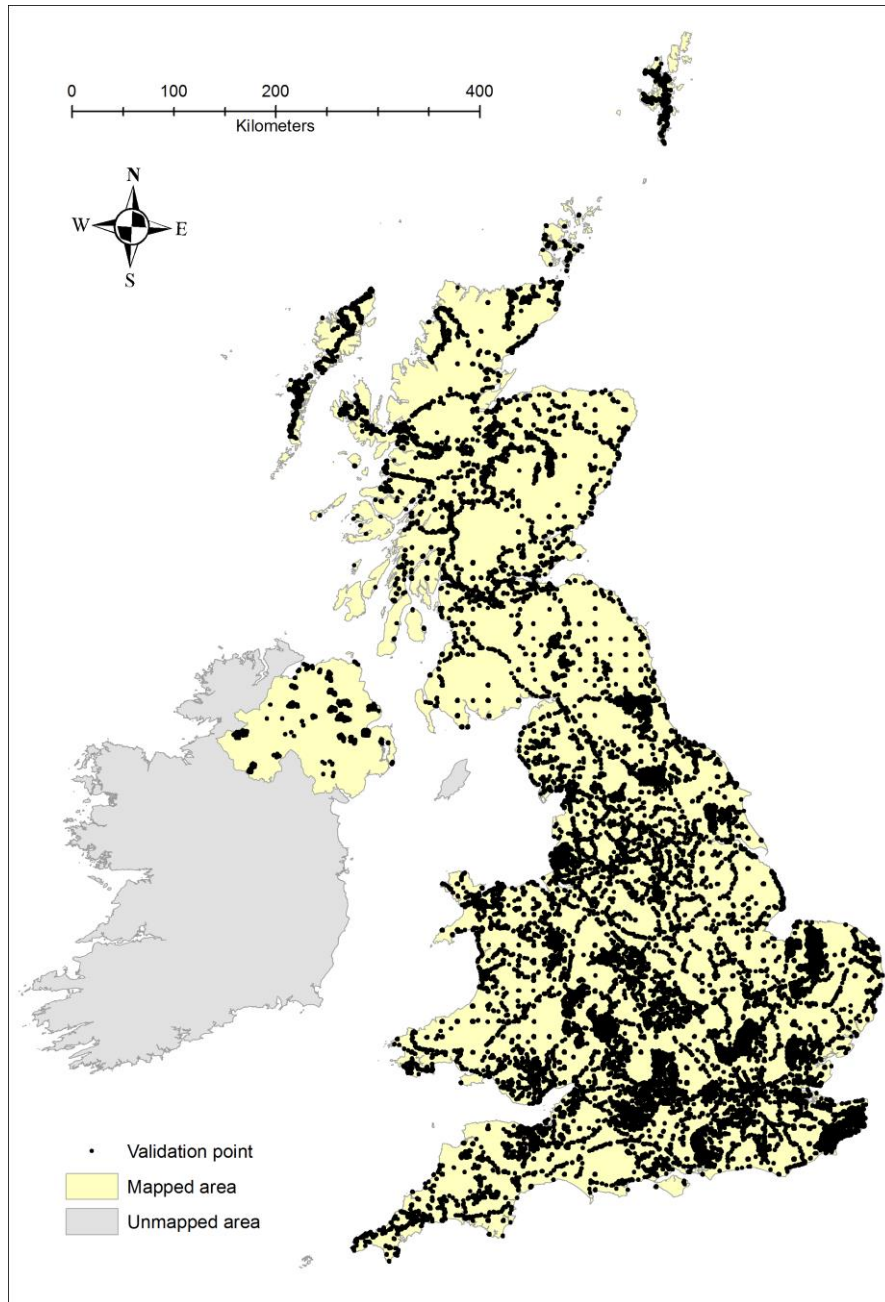
113 **2.4 Spatial framework**

114 The LCM spatial framework is a set of land parcel polygons summarising the landscape of the UK into real world objects
 115 such as lakes, fields, woodlands and urban sites. It was derived from generalised digital cartography (Ordnance Survey
 116 MasterMap™ topographic layer (OSMM) for GB and Ordnance Survey of Northern Ireland (OSNI) Large-scale Vector for
 117 NI), supplemented with rural payment boundary data (Smith et al., 2007; Morton et al., 2011,). The spatial framework was
 118 first generated for LCM2007 and revised for LCM2015 onwards, by fixing some minor spatial errors and additional
 119 simplifications of land parcel structure. The spatial framework is used to derive a land parcel dataset from which 25 m and
 120 1 km raster datasets are generated.

121 **2.5 Validation data sets**

122 Validation data are necessary to establish the accuracy of land cover classifications (Foody et al., 2002). LCM2021
 123 validation used a UK-wide data set of 35,182 points gathered from field observations, manual interpretation of aerial
 124 photography and quality assured third party data sets (Fig. 1). The validation data, included habitat mapping and plot data
 125 from Countryside Survey data (Wood et al., 2017), supplemented with additional points for arable land (8589 points)
 126 collected in 2020 by the Rural Payments Agency. Data from the National Forest Inventory (NFI, 2019) was used to validate
 127 the broadleaved woodland and coniferous woodland classes for GB. Further data were gathered from the 2007 LCM
 128 validation field survey (Morton et al., 2011a) checked against current (circa-2021) aerial photography to ensure no change

129 had occurred, some additional manually derived points (interpreted from aerial photography) were also added, particularly
130 for water and urban-classes.
131

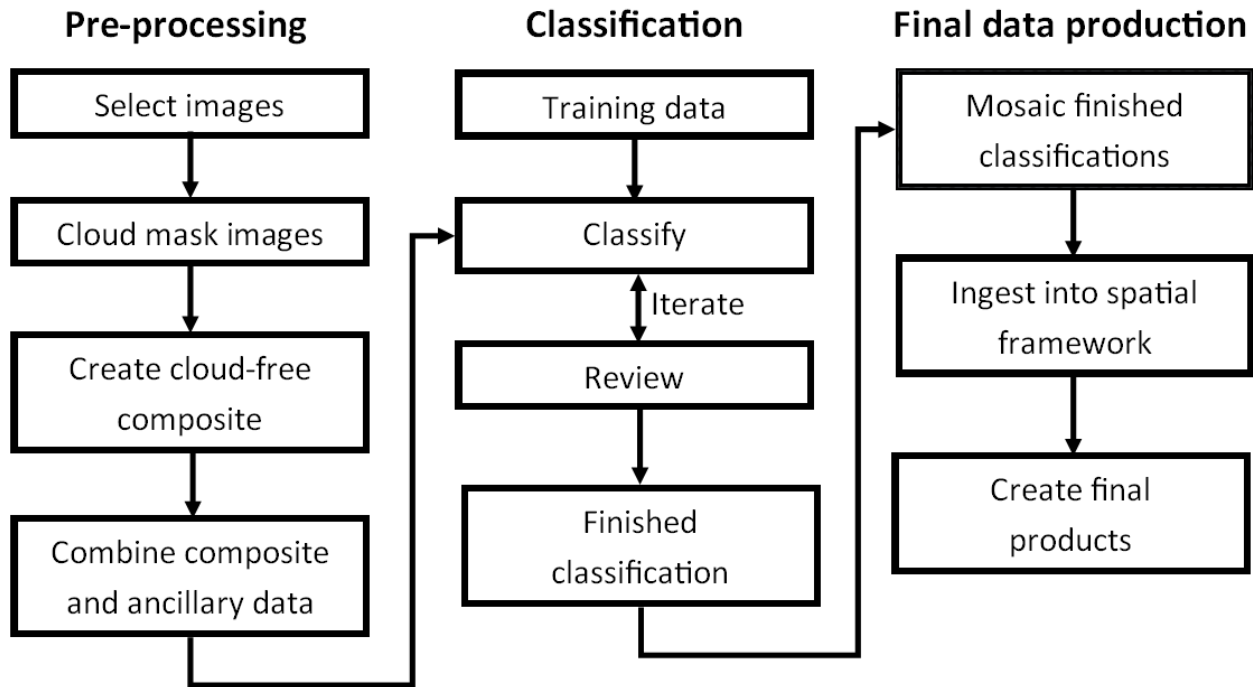


132

133 **Figure 1: Distribution of the 35,182 validation points for LCM2021.**

134 **3 Methods**

135 Figure 2 shows the key stages in the creation of LCM2021, from image acquisition through to the creation of the final suite
136 of data products.
137



138
139 **Figure 2: Overview of the processing workflow, showing the three main production phases.**

140

141 **3.1 Composite image creation**

142 Temporal composite images (also known as temporal aggregations) are increasingly used to compress voluminous image
143 collections and overcome problems of data gaps caused by clouds in optical imagery (Carrasco et al., 2019; Holben, 1986).
144 Cloud computation platforms, such as Google Earth Engine (Gorelick et al., 2017), provide users with tools to create
145 composite images aggregated over user-defined intervals (e.g. annually, monthly, bi-monthly) and for user-defined
146 properties (e.g. raw bands, spectral indices) and with user-defined functions (e.g. median, maximum, mean).

147

148 Seasonal composites images of Sentinel-2 Multi-Spectral Instrument (MSI) Level 2-A data (Drusch et al., 2012) were
149 created using Google Earth Engine, with cloud-masking based on the Sentinel-2 Cloud Probability layer, s2cloudless
150 (Skakun et al., 2022) and snow-masking based on the QA attributes performed. Images representing median surface
151 reflectance were aggregated over four composite periods; 1st Dec 2020 - 31st March 2021; 1st April 2021 – 30th June 2021;

152 1st July 2021 – 31st September 2021; and 1st October 2021 – 31st Jan 2022. Periods one and four were extended by a month
 153 into the previous and following years to reduce cloud effects. Seasonal composites were used as they capture the variability
 154 in vegetation phenology through the year, which aids separation of the different land cover classes (Carrasco et al., 2019),
 155 and for the UK, aggregation of Sentinel-2 data for four seasons provides data for all four seasons in over 99.9% of pixels
 156 (see SI). Context layers including slope, aspect, elevation distance to coast, distance to building, distance to road, distance
 157 to freshwater, plus a foreshore mask, tidal water mask and a forest mask (GB only) were integrated with the composite
 158 period satellite imagery (see Table 1 for details of the context data layers, which varied slightly between GB and NI). The
 159 addition of context layers reduces spectral confusion between different classes with similar spectral characteristics. The
 160 seasonal composites, with the added context data, were then classified.

161 3.2 Classification

162 LCM2021 is based on the 21-class nomenclature presented in Table 2. The 21 Land Cover classes are based on UK Broad
 163 Habitat definitions (Jackson, 2000) and are designed to cover the range of habitats found in the UK that can be reliably
 164 mapped from satellites. Detailed descriptions of the classes are given in Appendix 1. Production of the classifications is split
 165 into two stages, first developing the core training areas (section 3.2.1), and second the classification process (section 3.2.2).
 166

167 **Table 2. Relationship between the 21 LCM2021 classes, the 10 Aggregate classes and the underlying Broad Habitat classes. Italic**
 168 **text highlights classes meeting the Broad Habitats classes as documented in Jackson (2000). ^{1,2} LCM2021 and Aggregate class**
 169 **numbers are used for raster data sets.**

| LCM2021 Aggregate class | LCM2021 aggregate class number ¹ | LCM2021 Target class | LCM2021 target class number ² | Associated Broad Habitat |
|-------------------------|---|----------------------------------|--|--|
| Broadleaf woodland | 1 | Broadleaved woodland | 1 | <i>'Broadleaved, mixed and yew woodland'</i> |
| Coniferous woodland | 2 | <i>'Coniferous woodland'</i> | 2 | <i>'Coniferous woodland'</i> |
| Arable | 3 | <i>'Arable and horticulture'</i> | 3 | <i>'Arable and horticulture'</i> |
| Improved grassland | 4 | <i>'Improved grassland'</i> | 4 | <i>'Improved grassland'</i> |
| Semi-natural grassland | 5 | <i>'Neutral grassland'</i> | 5 | <i>'Neutral grassland'</i> |
| | | <i>'Calcareous grassland'</i> | 6 | <i>'Calcareous grassland'</i> |
| | | Acid grassland | 7 | <i>'Acid grassland'</i> |
| | | <i>'Fen, marsh and swamp'</i> | 8 | <i>'Fen, marsh and swamp'</i> |
| Mountain, heath, bog | 6 | Heather | 9 | <i>'Dwarf shrub heath'</i> |
| | | Heather grassland | 10 | |
| | | <i>'Bog'</i> | 11 | <i>'Bog'</i> |
| | | <i>'Inland rock'</i> | 12 | <i>'Inland rock'</i> |
| Saltwater | 7 | Saltwater | 13 | Saltwater |

| | | | | |
|----------------------------|----|---------------------------|----|------------------------------|
| Freshwater | 8 | Freshwater | 14 | Freshwater |
| Coastal | 9 | 'Supra-littoral rock' | 15 | 'Supra-littoral rock' |
| | | 'Supra-littoral sediment' | 16 | 'Supra-littoral sediment' |
| | | 'Littoral rock' | 17 | 'Littoral rock' |
| | | Littoral sediment | 18 | 'Littoral sediment' |
| Built-up areas and gardens | 10 | Saltmarsh | 19 | |
| | | Urban | 20 | 'Built-up areas and gardens' |
| | | Suburban | 21 | |

170

171

172 3.2.1 Core training areas

173 Selecting appropriate training areas is crucial for accurate classification of satellite data and has traditionally been time-
 174 consuming. LCM2021 used a method based on training areas that remained stable across the three previous maps
 175 (LCM2018, LCM2019 and LCM2020) on the assumption that many areas such as woodland and urban areas remain stable
 176 over decades. Identifying such areas provides a core data set as a starting point for each classification, with this core dataset
 177 undergoing edits where required to produce the final classification.

178

179 When selecting training polygons from this spatial framework, as well as identifying polygons classified as the same land
 180 cover class for LCM2018/19/20, these polygons were also required to have a purity value of >80% in each of the three land
 181 cover classifications to be included. The purity value of a polygon is a measure of the percentage of the modal land cover
 182 class, over the total number of pixels corresponding to that polygon. The 80% threshold was selected to retain a high level
 183 of purity within the training polygons, but to retain a large enough set of polygons within each classification extent, with
 184 the aim of achieving a spatially distributed training data set with a good representation of all land cover classes. Some
 185 incorrect training polygons were present within this core training data set, due to either misclassifications in the earlier Land
 186 Cover Maps, or because of changes in land cover. Systematic visual checks of the training data and the resultant
 187 classifications aided in identifying and removing inappropriate polygons.

188 3.2.2 Classification algorithm

189 The composite images were classified using the Random Forest algorithm (Breiman, 2001) in the WEKA package (Hall et
 190 al., 2009; Frank et al., 2016). For each of the tiles, a Random Forest classifier based on 200 trees was trained. When building
 191 a Random Forest classifier it is important to balance the training samples. An unbalanced classifier will bias towards
 192 common classes and rare classes may be lost from results completely. Balance was achieved by bagging all training pixels

193 per class, then from each bag sampling 10000 pixels with replacement. For each pixel the balanced RF classifier yields a
194 probability of membership for all 21 land cover classes. Land cover per pixel is assigned by highest probability.

195

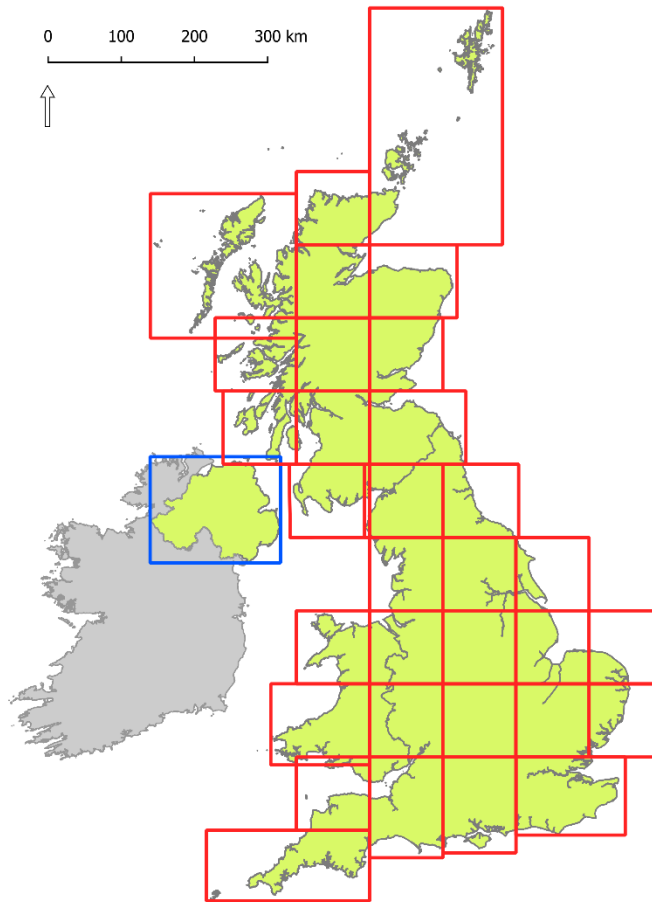
196 **3.3 Product construction**

197 Classifications for all tiles were compiled into a full UK spatial coverage at 10 m pixel resolution. This produced a two-
198 band image. Band one is the most likely land cover; band two the probability associated with this land cover, but rescaled
199 into a integer over the interval 0 to 100. Rescaling to an integer enables classification results to be stored in 8-bit, thereby
200 reducing data size without degrading information. The 10 m raster is the precursor for all derived products.

201

202 The ingestion into the spatial framework involved determining the majority (modal) class for each polygon. Separate GB
203 and NI data sets were created to accommodate the different map projections. Figure 3 shows the extents of the 32 composites
204 used to achieve complete coverage of the UK. The approximate 100x100 km tile size, based on a modified version of the
205 Ordnance Survey 100 km tile grid was chosen as this provides a manageable size for processing. Some tiles such as those
206 encompassing the Western Isles, Orkney and Shetland, and Cornwall and the Scilly Isles are intentionally enlarged to avoid
207 a sparsity of training data due to the extensive presence of sea in these tiles. Occasionally where tile extents are modified,
208 overlap between adjacent tiles does occur.

209



210

211 **Figure 3: Composite images extents comprising LCM2021 for Great Britain (red) and Northern Ireland (blue).**

212

213 Once the GB and NI classification mosaics were complete, a series of minor knowledge-based corrections were applied.

214 These included reclassification of misclassified arable pixels to improved grassland in urban green space areas (as denoted
 215 by the OS Open Greenspace data set), and of coastal classes being misclassified inland using a coastal mask.

216

217 **3.4 Validation**

218 The LCM2021 class was extracted for each of the validation points. From this data, confusion matrices were plotted for the
 219 21 target classes and the 10 aggregate classes used for LCM2021.

220 4 Results

221 4.1 Validation results

222 The 25 m rasterised polygon version of LCM2021 (Marston et al., 2022e, f) was validated using 35,182 points distributed
223 across the UK (Table 3). The results are summarised in a confusion matrix, which shows how reference points for each of
224 the classes were classified. Ideally, all the points would fall along the main diagonal (highlighted in green in Table 3),
225 showing complete agreement between the reference data and the classification. Table 3 shows that LCM2021 has an overall
226 accuracy of 82.6%, with the accuracy of individual classes varying. The results of the validation are shown in a confusion
227 matrix (Table 3), with the reference data in the columns and the classification data in the rows. The confusion matrix shows
228 the level of agreement between the classification and the reference data, as well as the areas of disagreement or confusion.
229 The accuracy varies with class, with the Producer's Accuracy ranging between high and low values of 93.9% (saltmarsh)
230 and 35.4% (heather grassland), and the User's Accuracy varying between 96.1% (arable) and 42.6% (heather grassland).
231 For the products that use the 10 aggregate classes (see section 5 for more details about the aggregate class products) the
232 validation suggests an overall accuracy of 86.5% (Table 4).

233

234 **Table 3. Confusion matrix for LCM2021 against 35,182 reference points. The main diagonal is highlighted green. BW =**
235 **Broadleaved woodland; CW = Coniferous woodland; AR = Arable; IG = Improved grassland; NG = Neutral grassland; CG =**
236 **Calcareous grassland; AG = Acid grassland; FMS = Fen, marsh, swamp; H = Heather; HG = Heather grassland; B = Bog; IR =**
237 **Inland rock; SW = Saltwater; FW = Freshwater; SLR = Supra-littoral rock; SLS = Supra-littoral sediment; LR = Littoral rock;**
238 **LS = Littoral sediment; SM = Saltmarsh; U = Urban; SU = Suburban; PA = Producer's accuracy; UA = User's accuracy; OA =**
239 **Overall accuracy.**

| Classified Data | Reference Data | | | | | | | | | | | | | | | | | | | | | Total | UA (%) |
|-----------------|----------------|-------------|-------------|-------------|-------------|-------------|-------------|-------------|-------------|-------------|-------------|-------------|-------------|-------------|-------------|-------------|-------------|-------------|-------------|-------------|-------------|--------------|-------------|
| | BW | CW | AR | IG | NG | CG | AG | FMS | H | HG | B | IR | SW | FW | SLR | SLS | LR | LS | SM | U | SU | | |
| BW | 1704 | 218 | 19 | 73 | 24 | 0 | 10 | 0 | 5 | 26 | 2 | 4 | 0 | 9 | 1 | 0 | 0 | 1 | 1 | 2 | 13 | 2112 | 80.7 |
| CW | 55 | 649 | 3 | 1 | 1 | 1 | 4 | 0 | 5 | 16 | 3 | 0 | 0 | 0 | 0 | 0 | 0 | 0 | 0 | 1 | 0 | 739 | 87.8 |
| AR | 22 | 3 | 10102 | 306 | 28 | 1 | 2 | 0 | 0 | 3 | 1 | 10 | 0 | 6 | 0 | 0 | 0 | 0 | 1 | 13 | 13 | 10511 | 96.1 |
| IG | 100 | 4 | 1027 | 4835 | 186 | 55 | 175 | 18 | 1 | 82 | 29 | 4 | 0 | 8 | 0 | 26 | 1 | 0 | 4 | 9 | 24 | 6588 | 73.4 |
| NG | 18 | 11 | 39 | 230 | 503 | 0 | 13 | 19 | 2 | 4 | 0 | 0 | 0 | 3 | 0 | 0 | 0 | 1 | 0 | 2 | 0 | 845 | 59.5 |
| CG | 30 | 4 | 26 | 47 | 4 | 946 | 15 | 0 | 1 | 6 | 0 | 13 | 0 | 0 | 0 | 0 | 0 | 0 | 0 | 1 | 0 | 1093 | 86.6 |
| AG | 20 | 1 | 88 | 177 | 6 | 55 | 1245 | 0 | 29 | 228 | 39 | 1 | 0 | 1 | 0 | 0 | 0 | 0 | 0 | 0 | 4 | 1894 | 65.7 |
| FMS | 15 | 0 | 5 | 14 | 2 | 1 | 4 | 577 | 0 | 0 | 2 | 0 | 0 | 8 | 0 | 0 | 0 | 0 | 0 | 0 | 0 | 628 | 91.9 |
| H | 7 | 1 | 9 | 1 | 0 | 0 | 30 | 1 | 819 | 104 | 121 | 0 | 0 | 0 | 1 | 0 | 0 | 0 | 0 | 0 | 0 | 1094 | 74.9 |
| HG | 17 | 3 | 9 | 12 | 0 | 5 | 158 | 3 | 81 | 299 | 106 | 4 | 0 | 3 | 0 | 1 | 0 | 0 | 0 | 0 | 1 | 702 | 42.6 |
| B | 0 | 3 | 0 | 3 | 0 | 3 | 31 | 4 | 27 | 71 | 877 | 0 | 0 | 1 | 0 | 0 | 0 | 0 | 0 | 0 | 0 | 1020 | 86.0 |
| IR | 0 | 0 | 10 | 2 | 1 | 9 | 4 | 0 | 3 | 2 | 2 | 125 | 0 | 0 | 0 | 0 | 0 | 0 | 0 | 8 | 0 | 166 | 75.3 |
| SW | 0 | 0 | 0 | 0 | 0 | 0 | 0 | 0 | 0 | 0 | 0 | 0 | 73 | 0 | 0 | 0 | 0 | 13 | 0 | 0 | 0 | 86 | 84.9 |
| FW | 13 | 0 | 1 | 4 | 1 | 0 | 1 | 2 | 0 | 0 | 0 | 0 | 0 | 548 | 0 | 0 | 0 | 0 | 0 | 0 | 2 | 572 | 95.8 |
| SLR | 0 | 0 | 0 | 5 | 0 | 0 | 7 | 0 | 0 | 0 | 0 | 0 | 0 | 0 | 42 | 6 | 11 | 6 | 0 | 0 | 0 | 77 | 54.5 |
| SLS | 1 | 0 | 3 | 2 | 4 | 0 | 1 | 0 | 0 | 0 | 0 | 0 | 0 | 0 | 1 | 178 | 0 | 7 | 1 | 0 | 0 | 198 | 89.9 |
| LR | 0 | 0 | 0 | 0 | 0 | 0 | 0 | 0 | 0 | 1 | 0 | 1 | 0 | 0 | 16 | 5 | 86 | 17 | 0 | 1 | 0 | 127 | 67.7 |
| LS | 0 | 0 | 0 | 0 | 0 | 0 | 0 | 0 | 0 | 0 | 0 | 0 | 9 | 0 | 0 | 11 | 7 | 211 | 3 | 0 | 0 | 241 | 87.6 |
| SM | 2 | 0 | 0 | 5 | 1 | 0 | 0 | 13 | 0 | 1 | 0 | 0 | 0 | 2 | 1 | 8 | 1 | 9 | 169 | 0 | 0 | 212 | 79.7 |
| U | 19 | 0 | 12 | 29 | 15 | 0 | 1 | 1 | 0 | 0 | 0 | 26 | 0 | 3 | 0 | 7 | 1 | 2 | 1 | 2343 | 303 | 2763 | 84.8 |
| SU | 151 | 1 | 17 | 223 | 44 | 0 | 2 | 0 | 1 | 1 | 2 | 10 | 0 | 3 | 0 | 3 | 0 | 0 | 0 | 329 | 2727 | 3514 | 77.6 |
| Total | 2174 | 898 | 11370 | 5969 | 820 | 1076 | 1703 | 638 | 974 | 844 | 1184 | 198 | 82 | 595 | 62 | 245 | 107 | 267 | 180 | 2709 | 3087 | 35182 | |
| PA (%) | 78.4 | 72.3 | 88.8 | 81.0 | 61.3 | 87.9 | 73.1 | 90.4 | 84.1 | 35.4 | 74.1 | 63.1 | 89.0 | 92.1 | 67.7 | 72.7 | 80.4 | 79.0 | 93.9 | 86.5 | 88.3 | | |
| OA (%) | | | | | | | | | | | | | | | | | | | | | | 82.6 | |
| Kappa | | | | | | | | | | | | | | | | | | | | | | 0.794 | |

240

241

242

243 **Table 4: Confusion matrix for LCM2021 aggregate classes against 35,182 reference points. The main diagonal is highlighted**
244 **green. BW = Broadleaved woodland; CW = Coniferous woodland; AR = Arable; IG = Improved grassland; SNG = Semi-natural**
245 **grassland; MHB = Mountain, heath and bog; SW = Saltwater; FW = Freshwater; C = Coastal; BU = Built-up and gardens; PA =**
246 **Producer's accuracy; UA = User's accuracy; OA = Overall accuracy.**

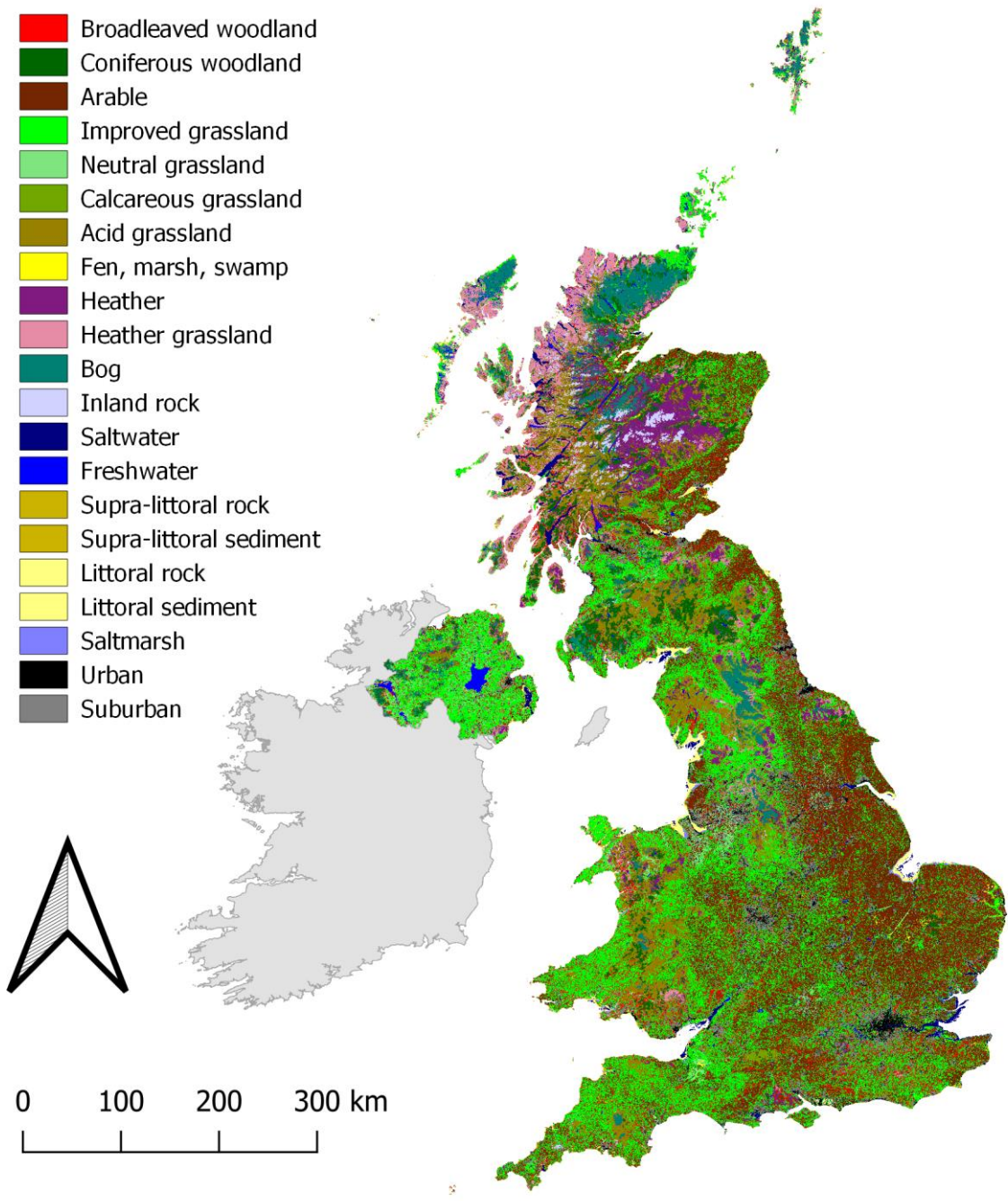
| Classified Data | Reference Data | | | | | | | | | | | Total | UA (%) |
|-----------------|----------------|-----|-------|------|------|------|----|----|----|----|-------|-------------|--------|
| | BW | CW | AR | IG | SNG | MHB | SW | FW | C | BU | | | |
| BW | 1704 | 218 | 19 | 73 | 34 | 37 | 0 | 9 | 3 | 15 | 2112 | 80.7 | |
| CW | 55 | 649 | 3 | 1 | 6 | 24 | 0 | 0 | 0 | 1 | 739 | 87.8 | |
| AR | 22 | 3 | 10102 | 306 | 31 | 14 | 0 | 6 | 1 | 26 | 10511 | 96.1 | |
| IG | 100 | 4 | 1027 | 4835 | 434 | 116 | 0 | 8 | 31 | 33 | 6588 | 73.4 | |
| SNG | 83 | 16 | 158 | 468 | 3390 | 325 | 0 | 12 | 1 | 7 | 4460 | 76.0 | |
| MHB | 24 | 7 | 28 | 18 | 249 | 2641 | 0 | 4 | 2 | 9 | 2982 | 88.6 | |
| SW | 0 | 0 | 0 | 0 | 0 | 0 | 73 | 0 | 13 | 0 | 86 | 84.9 | |

| | | | | | | | | | | | | |
|---------------|-------------|-------------|-------------|-------------|-------------|--------------|-------------|-------------|-------------|-------------|-------|-------------|
| FW | 13 | 0 | 1 | 4 | 4 | 0 | 0 | 548 | 0 | 2 | 572 | 95.8 |
| C | 3 | 0 | 3 | 12 | 26 | 3 | 9 | 2 | 796 | 1 | 855 | 93.1 |
| BU | 170 | 1 | 29 | 252 | 63 | 40 | 0 | 6 | 14 | 5702 | 6277 | 90.8 |
| Total | 2174 | 898 | 11370 | 5969 | 4237 | 3200 | 82 | 595 | 861 | 5796 | 35182 | |
| PA (%) | 78.4 | 72.3 | 88.8 | 81.0 | 80.0 | 82.5 | 89.0 | 92.1 | 92.5 | 98.4 | | |
| OA (%) | | | | | | 86.5 | | | | | | |
| Kappa | | | | | | 0.834 | | | | | | |

247

248 **4.2 LCM2021 map**

249 The final LCM2021 product shows the expected distribution of classes across the UK (Fig. 4). At the scale shown in Fig. 4
250 the differences between the grassland of the west, and the arable areas in the east are clear, as are the uplands in Wales and
251 Scotland, with London, the UK's largest urban area, clearly visible.



252

253 **Figure 4: LCM2021 in standard colour palette (see Table B2 for palette details) (see Appendix B for LCM2021 in revised colour**
 254 **palette).**

255 **4.3 LCM statistics**

256 One of the uses of LCM2021 is to produce country level statistics (Table 5), although land cover statistics can also be
 257 produced for other types of spatial units, such as river or lake catchments, or national parks and protected areas.

258

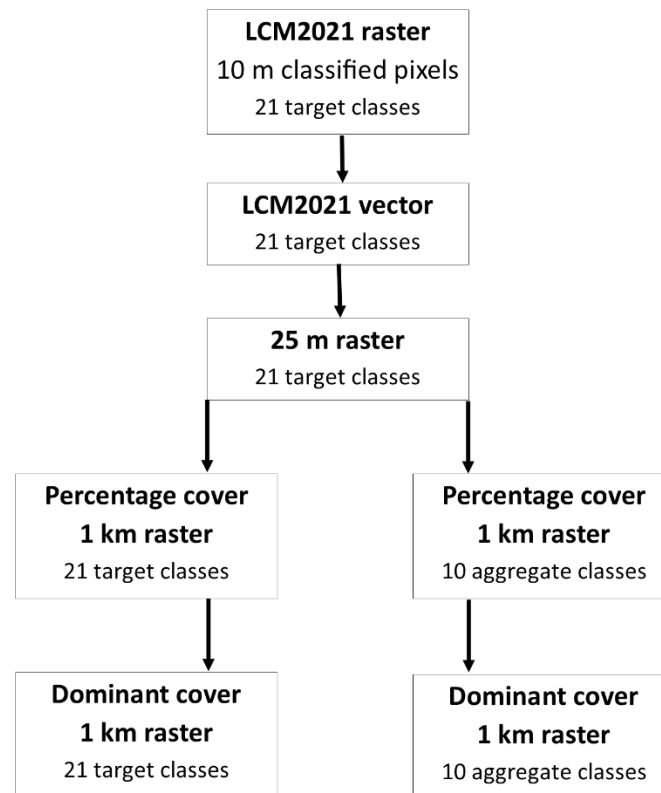
259 **Table 5: UK Land Cover Statistics derived from LCM2021 in area (km²) calculated from the 10 m raster product.**

| Land Cover | | | | | | Northern |
|------------|-------------------------------|--------|---------|----------|-------|----------|
| Code | Land cover class | UK | England | Scotland | Wales | Ireland |
| 1 | Broadleaved woodland | 21045 | 12322 | 5330 | 2555 | 838 |
| 2 | Coniferous woodland | 13830 | 2788 | 9022 | 1422 | 598 |
| 3 | Arable | 49121 | 41867 | 5960 | 841 | 453 |
| 4 | Improved grassland | 66394 | 39304 | 13053 | 7765 | 6272 |
| 5 | Neutral grassland | 4200 | 1659 | 105 | 525 | 1911 |
| 6 | Calcareous grassland | 2561 | 2387 | 31 | 11 | 132 |
| 7 | Acid grassland | 21873 | 4448 | 12281 | 4404 | 740 |
| 8 | Fen | 783 | 471 | 68 | 182 | 62 |
| 9 | Heather | 11562 | 2081 | 8636 | 566 | 279 |
| 10 | Heather grassland | 11842 | 1433 | 9719 | 409 | 281 |
| 11 | Bog | 10457 | 1986 | 7255 | 251 | 965 |
| 12 | Inland rock | 2685 | 245 | 2362 | 63 | 15 |
| 13 | Saltwater | 935 | 720 | 53 | 4 | 158 |
| 14 | Freshwater | 3267 | 1093 | 1499 | 96 | 579 |
| 15 | Supra-littoral rock | 390 | 62 | 252 | 66 | 10 |
| 16 | Supra-littoral sediment | 723 | 169 | 340 | 102 | 112 |
| 17 | Littoral rock | 432 | 84 | 340 | 1 | 7 |
| 18 | Littoral sediment | 1444 | 1248 | 78 | 34 | 84 |
| 19 | Saltmarsh | 923 | 552 | 272 | 95 | 4 |
| 20 | Urban | 4901 | 4066 | 482 | 227 | 126 |
| 21 | Suburban | 17539 | 13669 | 1812 | 1308 | 750 |
| | Total area (km ²) | 246902 | 132651 | 78949 | 20927 | 14375 |

260

261 **5 LCM2021 data products**

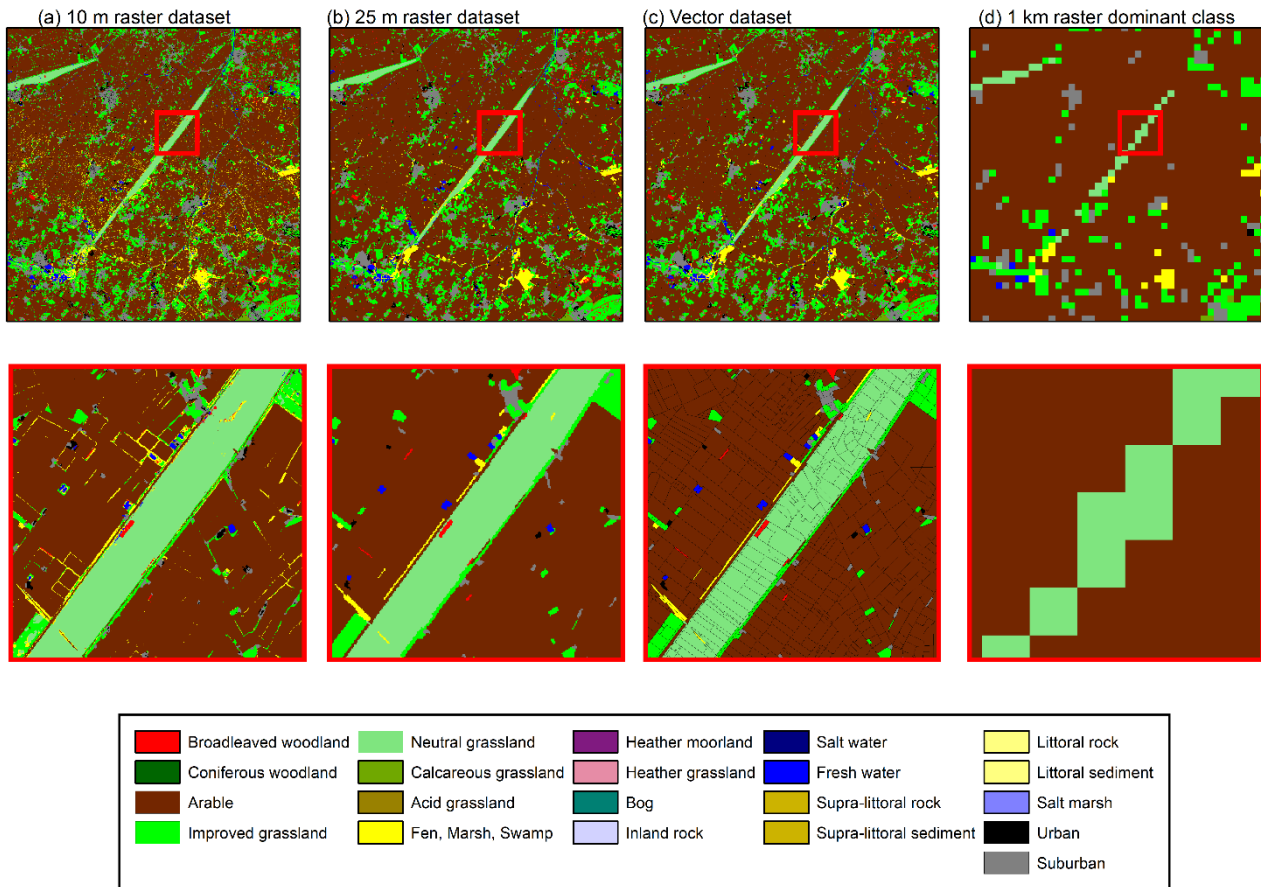
262 LCM2021 is provided in a range of open data formats and at a range of thematic and spatial resolutions to support the needs
263 of a wide range of users and applications. There are 21 target classes in the full thematic resolution product and 10 classes
264 in the aggregated products (Table 2). The ‘base’ product is the 10 m raster (Marston et al., 2021a, b) from which all other
265 products are derived (Fig. 5). The LCM2021 10 m raster is ingested into the spatial framework to produce a vector version
266 of the data set (Marston et al., 2021 c, d). The vector version of the data set is then used to create a rasterised polygon version
267 of the data set with a 25 m pixel size (Marston et al., 2022 e, f). The 25 m version is effectively the ‘legacy’ style land cover
268 map and maintains a spatial consistency with the earlier Landsat-based Land Cover Maps of LCM1990 (Rowland et al.,
269 2020a, b), LCM2007 (Morton et al., 2011b; Morton et al., 2014) and LCM2015 (Rowland et al., 2017a, b); LCM2000
270 (Fuller et al., 2002 a, b) currently uses a different spatial structure. The 25 m raster product is then used to produce the 1 km
271 percentage cover and dominant cover products for both the 21 target classes and the 10 aggregate classes (Marston et al.,
272 2022g). The Great Britain and Northern Ireland data sets are provided separately, with the GB data in British National Grid
273 projection (EPSG:27700) and the Northern Ireland data in the Irish National Grid projection (EPSG:29903).
274



275

276 **Figure 5: Overview of the LCM2021 data set production process. The vector version of the data set is constrained by licensing**
277 **restrictions due to the inclusion of national mapping agency data**

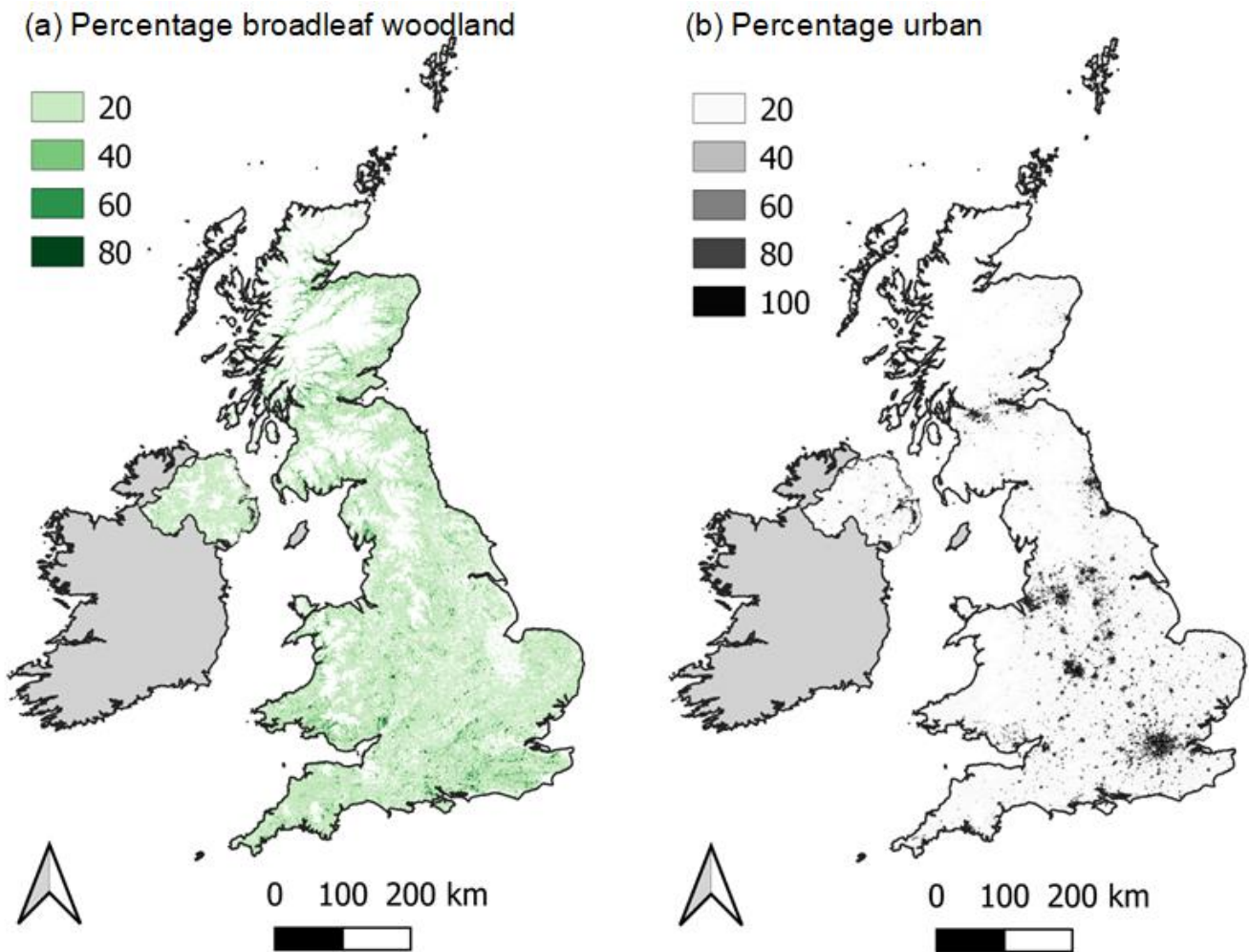
279 LCM2021 is produced in a range of spatial resolutions (Fig. 6) to support different types of analysis. The 10 m data set is a
 280 relatively new data set (first produced in LCM2020) and enabled by the 10 m resolution of the optical Sentinel-2 bands. The
 281 higher spatial resolution products capture the fine detail of the landscape and are often used for assessment of landscape
 282 features requiring fine resolution, such as habitat connectivity (Hooftman & Bullock, 2012) or for detailed studies of small
 283 areas (e.g. Miller et al., 2020). The 1 km data sets are primarily used for national-scale modelling, often in conjunction with
 284 a range of other coarser resolution environmental data sets (e.g. Coxon et al., 2020; Jordan et al., 2022) and are useful for
 285 showing the distribution of a particular class across the UK. For example, Fig. 7 shows the distribution of the broadleaf
 286 woodland class and the urban class from the aggregated 1 km percentage data sets for the UK.



287

288 **Figure 6: Examples of the level of spatial detail provided by the (a) 10 m raster; (b) 25 m rasterised polygons; (c) vector data set,**
 289 **and; (d) 1 km raster data sets. Top panels shows zoomed out view, red box shows the location of the zoomed in area in the lower**
 290 **panels.**

291



293

294 **Figure 7: Examples of the UK-wide distribution of (a) Broadleaf woodland and (b) Built-up areas and gardens percentage cover,**
 295 **based on the 1 km aggregate class percentage data sets for GB and NI (Marston et al., 2021g).**

296 **6 Data availability**

297 The LCM2021 data products (Table 6) have digital object identifiers (DOI) and are available via the NERC Environmental
 298 Data Service (<https://eds.ukri.org/environmental-data-service>), with all versions listed on the LCM2021 data collection page
 299 (UKCEH, 2022a). Raster data are provided as uncompressed GeoTiffs and are supplied with data set documentation, and
 300 QGIS files for displaying the classifications in the LCM-standard palette (used since LCM2000) (see Appendix B, B1 for
 301 example) and a palette designed to aid users affected by colour-vision deficiency (see Fig. B1 for example). The 10 m raster
 302 data sets are also viewable via a Web Mapping Service (UKCEH, 2022b).

303

304 Table 6: Digital Object Identifier (DOI) for the LCM2021 openly available products.

| Product | Region | DOI | Reference |
|-------------------------------------|-----------|---|------------------------|
| 10 m classified pixels | GB | https://doi.org/10.5285/a22baa7c-5809-4a02-87e0-3cf87d4e223a | Marston et al. (2022a) |
| | NI | https://doi.org/10.5285/e44ae9bd-fa32-4aab-9524-fbb11d34a20a | Marston et al. (2022b) |
| 25 m rasterised land parcels | GB | https://doi.org/10.5285/a1f85307-cad7-4e32-a445-84410efdfa70 | Marston et al. (2022e) |
| | NI | https://doi.org/10.5285/f3310fe1-a6ea-4cdd-b9f6-f7fc66e4652e | Marston et al. (2022f) |
| 1 km summary raster data | GB and NI | https://doi.org/10.5285/a3ff9411-3a7a-47e1-9b3e-79f21648237d | Marston et al. (2022g) |

305

306 All LCM raster datasets are available under a single common licence without charge for non-commercial use which includes
 307 non-commercial research and use within public bodies and charities and their contractors. Alternative licensing can be
 308 arranged on request with commercial organisations who wish to use the datasets within their own internal business
 309 operations or to develop commercial products or services.

310 The LCM2021 data products (Table 6) have digital object identifiers (DOI) and are available via the NERC Environmental
 311 Data Service (<https://eds.ukri.org/environmental-data-service>), with all versions listed on the LCM2021 data collection page
 312 (UKCEH, 2022a). Raster data are provided as uncompressed GeoTiffs and are supplied with data set documentation, and
 313 QGIS files for displaying the classifications in the LCM standard palette (used since LCM2000) (see Appendix B, B1 for
 314 example) and a palette designed to aid users affected by colour vision deficiency (see Fig. B1 for example). The 10 m raster
 315 data sets are also viewable via a Web Mapping Service

316 To download the LCM2021 datasets for review purposes, anonymous data access is possible using the login credentials
 317 username ‘reviewer@eide.ac.uk’ and password ‘reviewlem2021’. This login (valid for 3 months) enables data access using
 318 the following links: Great Britain 10 m classified pixels: [https://catalogue.ceh.ac.uk/datastore/eidchub/a22baa7c-5809-](https://catalogue.ceh.ac.uk/datastore/eidchub/a22baa7c-5809-4a02-87e0-3cf87d4e223a/gblem10m2021.tif)
 319 [4a02-87e0-3cf87d4e223a/gblem10m2021.tif](https://catalogue.ceh.ac.uk/datastore/eidchub/a22baa7c-5809-4a02-87e0-3cf87d4e223a/gblem10m2021.tif); Northern Ireland 10 m classified pixels:
 320 <https://catalogue.ceh.ac.uk/datastore/eidchub/e44ae9bd-fa32-4aab-9524-fbb11d34a20a/nilem10m2021.tif>; Great Britain 25
 321 m rasterised land parcels: [https://catalogue.ceh.ac.uk/datastore/eidchub/a1f85307-cad7-4e32-a445-](https://catalogue.ceh.ac.uk/datastore/eidchub/a1f85307-cad7-4e32-a445-84410efdfa70/gblem25m2021.tif)
 322 [84410efdfa70/gblem25m2021.tif](https://catalogue.ceh.ac.uk/datastore/eidchub/a1f85307-cad7-4e32-a445-84410efdfa70/gblem25m2021.tif); Northern Ireland 25 m rasterised land parcels:
 323 <https://catalogue.ceh.ac.uk/datastore/eidchub/f3310fe1-a6ea-4cdd-b9f6-f7fc66e4652e/nilem25m2021.tif>; and 1 km
 324 summary raster data: <https://data-package.ceh.ac.uk/data/a3ff9411-3a7a-47e1-9b3e-79f21648237d.zip>

325

326 **7 Conclusion**

327 The UK Land Cover Map series, comprising LCM1990 (formerly LCMGB) (Fuller *et al.*, 1994), LCM2000 (Fuller et al.,
328 2002c), LCM2007 (Morton et al., 2011), LCM2017, LCM2018, LCM2019 and LCM2020 underpin a wide range of UK
329 environmental science analysis and LCM2021 is expected to continue this trend. The accuracy of LCM2021 varies with
330 class, but it has an overall accuracy of 82.6% for the 21 target classes and 86.5% for the 10 aggregate classes.

331

332 **Author contribution:** DM and CR acquired funding. CM, CR and DM pre-processed the data and conducted classifications.
333 DM designed and implemented the Random Forest classification software and supporting computation structures with input
334 from the whole team. CR, DM and CM developed code for pre-processing the satellite data. CM, CR and AO reviewed the
335 classifications. CR, CM and AO prepared the validation data. CR and CM prepared the manuscript with contributions from
336 all co-authors, DM, CR and CM designed the project. CM led the production of LCM2021.

337 **Competing interests**

338 The authors declare that they have no conflict of interest.

339 **Acknowledgements**

340 The authors would like to thank all the data collectors, processors, and providers who made this work possible, specifically:
341 Satellite data provision: Contains modified Copernicus Sentinel data 2021.

342 Cartographic and DEM data for NI: Settlement development limits © Northern Ireland Statistics and Research Agency
343 (NISRA) 2015. NI open data layers for Coastal water and Fresh water © Department of Agriculture, Environment and Rural
344 Affairs, Northern Ireland. OSNI Digital Elevation Data and road network data Contains public sector information licensed
345 under the terms of the Open Government Licence v3.0. Urban greenspace correction used greenspace areas for NI identified
346 from OpenStreetMap data provided by OpenStreetMap and available under the Open Database License.

347 Cartographic data and DEM data for GB: Digital elevation data © Intermap Technologies Inc. or its suppliers 2003. OS
348 open data layers - Contains OS data © Crown copyright and database right (2015). Boundaries from Rural Payments Agency
349 © Crown copyright and database right and/or © third party licensors. Boundaries from Welsh Government, Department of
350 Rural Affairs © Crown Copyright and database right and/or © third party licensors. Boundaries from Scottish Government
351 © Crown Copyright and database right and/or © third party licensors. Contains OS Greenspace data © Crown Copyright
352 [and database right] (2021).

353 Validation data: National Forest Inventory (NFI) Woodland GB 2018 data provided by the Forestry Commission, contains
354 Forestry Commission information licensed under the Open Government License v3.0. Defra and the Rural Payments Agency
355 are thanked for access to the IACS Agricultural data and Rural Payment Agency field survey data. We thank the Countryside

356 Survey team for provision of the Countryside Survey data. Countryside Survey data owned by UK Centre for Ecology &
357 Hydrology.
358 In addition, we thank Robbie Still of Kent Wildlife Trust for provision of the revised colour palette, and we thank all who
359 have been involved in the UK LCM since 1990, as this LCM builds on their hard work.
360

361 **Financial support**

362 This work was supported by the Natural Environment Research Council award number NE/R016429/1 as part of the UK-
363 SCAPE programme delivering National Capability.

364 **References**

365 Allen, C., Smith, M., Rabiee, M. and Dahmm, H.: A review of scientific advancements in datasets derived from big data for
366 monitoring the Sustainable Development Goals. *Sustain. Sci.*, 16(5), 1701-1716, [https://doi.org/10.1007/s11625-021-](https://doi.org/10.1007/s11625-021-00982-3)
367 [00982-3](https://doi.org/10.1007/s11625-021-00982-3), 2021.

368 Allen, D. J., Tomlin, A. S., Bale, C. S. E., Skea, A., Vosper, S., and Gallani, M. L.: A boundary layer scaling technique for
369 estimating near-surface wind energy using numerical weather prediction and wind map data, *Appl. Energ.*, 208, 1246-1257,
370 <https://doi.org/10.1016/j.apenergy.2017.09.029>, 2017.

371 Baude, M., Kunin, W.E., Boatman, N.D., Conyers, S., Davies, N., Gillespie, M.A., Morton, R.D., Smart, S.M. and
372 Memmott, J.: Historical nectar assessment reveals the fall and rise of floral resources in Britain, *Nature.*, 530(7588), 85-88,
373 <https://doi.org/10.1038/nature16532>, 2016.

374 Bojinski, S., M. Verstraete, T.C. Peterson, C. Richter, A. Simmons, and M. Zemp, 2014: The Concept of Essential Climate
375 Variables in Support of Climate Research, Applications, and Policy. *Bull. Amer. Meteor. Soc.*, 95, 1431–1443,
376 <https://doi.org/10.1175/BAMS-D-13-00047.1>, 2014.

377 Breiman, L.: Random forests, *Mach Learn.*, 45, 5–32, <https://doi.org/10.1023/A:1010933404324>, 2001.

378 Bussi, G., Dadson, S. J., Prudhomme, C., and Whitehead, P. G.: Modelling the future impacts of climate and land-use change
379 on suspended sediment transport in the River Thames (UK). *J. Hydrol.*, 542, 357-372.
380 <https://doi.org/10.1016/j.jhydrol.2016.09.010>, 2016.

381 Carrasco, L., Norton, L., Henrys, P., Siriwardena, G. M., Rhodes, C. J., Rowland, C., and Morton, D.: Habitat diversity and
382 structure regulate British bird richness: Implications of non-linear relationships for conservation. *Biol. Conserv.*, 226, 256-
383 263. <https://doi.org/10.1016/j.biocon.2018.08.010>, 2018.

384 Carrasco, L., O'Neil, A. W., Morton, R. D., and Rowland, C. S.: Evaluating combinations of temporally aggregated Sentinel-
385 1, Sentinel-2 and Landsat 8 for land cover mapping with Google Earth Engine. *Remote Sensing*, 3(3) 288.
386 <https://doi.org/10.3390/rs11030288>, 2019.

387 Claverie, M., Ju, J., Masek, J.G., Dungan, J.L., Vermote, E.F., Roger, J.C., Skakun, S.V. and Justice, C.: The Harmonized
388 Landsat and Sentinel-2 surface reflectance data set. *Remote Sens. Environ.*, 219, pp.145-161.
389 <https://doi.org/10.1016/j.rse.2018.09.002>, 2018.

390 Coxon, G., Addor, N., Bloomfield, J.P., Freer, J., Fry, M., Hannaford, J., Howden, N.J., Lane, R., Lewis, M., Robinson,
391 E.L. and Wagener, T.: CAMELS-GB: hydrometeorological time series and landscape attributes for 671 catchments in Great
392 Britain. *Earth Syst. Sci. Data.*, 12(4), pp.2459-2483. <https://doi.org/10.5194/essd-12-2459-2020>, 2020.

393 Croft, S., Chauvenet, A. L., and Smith, G. C.: A systematic approach to estimate the distribution and total abundance of
394 British mammals. *PloS one.*, 12(6), e0176339. <https://doi.org/10.1371/journal.pone.0176339>, 2017.

395 Drusch, M., Del Bello, U., Carlier, S., Colin, O., Fernandez, V., Gascon, F., Hoersch, B., Isola, C., Laberinti, P., Martimort,
396 P. and Meygret, A.: Sentinel-2: ESA's optical high-resolution mission for GMES operational services. *Remote. Sens.*
397 *Environ.*, 120, pp.25-36. <https://doi.org/10.1016/j.rse.2011.11.026>, 2012.

398 Emmett, B.A., Cooper, D., Smart, S., Jackson, B., Thomas, A., Cosby, B., Evans, C., Glanville, H., McDonald, J.E.,
399 Malham, S.K. and Marshall, M.: Spatial patterns and environmental constraints on ecosystem services at a catchment scale.
400 *Sci. Total. Environ.*, 572, pp.1586-1600, <https://doi.org/10.1016/j.scitotenv.2016.04.004>, 2016.

401 FEH: Flood Estimation Handbook Web Service, <https://fehweb.ceh.ac.uk/>, accessed 28/11/2018, 2018.

402 Foley, J.A., DeFries, R., Asner, G.P., Barford, C., Bonan, G., Carpenter, S.R., Chapin, F.S., Coe, M.T., Daily, G.C.,
403 Gibbs, H.K., Helkowski, J.H., Holloway, T., Howard, E.A., Kucharik, C.J., Monfreda, C., Patz, J.A., Prentice, C.I.,
404 Ramankutty, N., and Snyder, P.K.: Global Consequences of land Use, *Science*, 309, 570-574,
405 <https://doi.org/10.1126/science.1111772>, 2005.

406 Foody, G.M.: Status of land cover classification accuracy assessment, *Remote. Sens. Environ.*, **80**, pp. 185-201,
407 [https://doi.org/10.1016/S0034-4257\(01\)00295-4](https://doi.org/10.1016/S0034-4257(01)00295-4), 2002.

408 Frank, E., Hall, M.A., and Witten, I.H.: The WEKA Workbench. Online Appendix for "Data Mining: Practical Machine
409 Learning Tools and Techniques", Morgan Kaufmann, Fourth Edition, Online at:
410 https://www.cs.waikato.ac.nz/ml/weka/Witten_et_al_2016_appendix.pdf, 2016.

411 Fraser, E. J., Lambin, X., Travis, J. M., Harrington, L. A., Palmer, S. C., Bocedi, G., and Macdonald, D. W.: Range
412 expansion of an invasive species through a heterogeneous landscape—the case of American mink in Scotland. *Divers.*
413 *Distrib.*, 21(8), 888-900. <https://doi.org/10.1111/ddi.12303>, 2015.

414 Fuller, R.M., Groom, G.B. and Jones, A.R.: The Land Cover Map of Great Britain: an automated classification of Landsat
415 Thematic Mapper data. *Photogramm. Eng. & Rem. S.*, **60**, 553-562, 1994.

416 Fuller, R.M., Smith, G.M., Sanderson, J.M., Hill, R.A. and Thomson, A.G.: The UK Land Cover Map 2000: construction
417 of a parcel-based vector map from satellite images. *Cartogr. J.*, 39(1), pp.15-25. <https://doi.org/10.1179/caj.2002.39.1.15>,
418 2002c.

419 Fuller, R.M., Smith, G.M., Sanderson J.M., Hill, R.A., Thomson, A.G., Cox, R., Brown, N.J., Clarke, R.T., Rothery, P.,
420 and Gerard, F.F.: Land Cover Map 2000 (vector, GB), NERC Environmental Information Data Centre,
421 <https://doi.org/10.5285/b79e887e-a2a7-4224-8fd7-e78066b950b3>, 2002a.

422 Fuller, R.M., Smith, G.M., Sanderson J.M., Hill, R.A., Thomson, A.G., Cox, R., Brown, N.J., Clarke, R.T., Rothery, P.,
423 and Gerard, F.F.: Land Cover Map 2000 (vector, N.Ireland), NERC Environmental Information Data Centre,
424 <https://doi.org/10.5285/9f043047-d1c7-4852-b513-aa00204022a8>, 2002b.

425 Gorelick, N., Hancher, M., Dixon, M., Ilyushchenko, S., Thau, D., and Moore, R.: Google Earth Engine: Planetary-scale
426 geospatial analysis for everyone, *Remote Sens. Environ.*, 202, 18-17. <https://doi.org/10.1016/j.rse.2017.06.031>, 2017.

427 Goslee, S.: Analyzing Remote Sensing Data in R: The Landsat Package, *J. Stat. Softw.*, 43(4),
428 <https://doi.org/10.18637/jss.v043.i04>, 2011.

429 Gulliver, J., de Hoogh, K., Fecht, D., Vienneau, D., and Briggs, D.: Comparative assessment of GIS-based methods and
430 metrics for estimating long-term exposures to air pollution, *Atmos. Environ.*, 45(39), 7072-7080,
431 <https://doi.org/10.1016/j.atmosenv.2011.09.042>, 2011.

432 Hall, M., Frank, E., Holmes, G., Pfahringer, B., Reutemann, P. and Witten, I.H.: The WEKA data mining software: an
433 update. *SIGKDD Explor. Newsl.* 11, 1 (November 2009), 10-18. <http://dx.doi.org/10.1145/1656274.1656278>, 2009.

434 Harrison, P.A., Dunford R., Whittaker, F., Mondain-Monval, T., Beauchamp, K., Cooper, J., Dickie, I., Fitch, A., Gooday,
435 R., Hollaway, M., Holman, I.P., Jones, L., Matthews, R., Sandars, D., Seaton, F., Siriwardena, G.M., Smart, S.M., Thomas,
436 A.R.C., Trembath, P., Vieno, M., West, B. and Williams, A.G.: Environment and Rural Affairs Monitoring & Modelling
437 Programme (ERAMMP). ERAMMP Technical Annex-2 Report-60TA2: ERAMMP Integrated Modelling Platform (IMP)
438 Land Use Scenarios Quality Assurance. Report to Welsh Government (Contract C210/2016/2017) (UK Centre for Ecology
439 & Hydrology Projects 06297 & 06810). [https://erammp.wales/sites/default/files/ERAMMP%20Rpt-
440 60TA2%20IMP%20Land%20Use%20Scenarios%20QA%20Annex.pdf](https://erammp.wales/sites/default/files/ERAMMP%20Rpt-60TA2%20IMP%20Land%20Use%20Scenarios%20QA%20Annex.pdf), last access: 15 December 2022, 2022.

441 Holben, B.N.: Characteristics of maximum-value composite images from temporal AVHRR data. *Int. J. Remote Sens.*,
442 7(11), pp.1417-1434. <https://doi.org/10.1080/01431168608948945>, 1986.

443 Hooftman, D. A. P., and Bullock, J. M.: Mapping to inform conservation: a case study of changes in semi-natural habitats
444 and their connectivity over 70 years. *Biol. Conserv.*, 145(1), 30-38. <https://doi.org/10.1016/j.biocon.2011.09.015>, 2012.

445 Ishizu, K., and Tran, H. N.: TV white space communication system: NICT's device and database technologies and
446 prototypes. In Presentation at ETSI RRS Workshop, Spectrum management issues on the use of white spaces by cognitive
447 radio systems, Geneva (Vol. 20),
448 https://docbox.etsi.org/Workshop/2014/201412_RRSWORKSHOP/Demonstrations/Ha-Nguyen_NICT.pdf last access: 15
449 December 2022, 2014.

450 Jackson D.L.: Guidance on the interpretation of the Biodiversity Broad Habitat Classification (terrestrial and freshwater
451 types): Definitions and the relationship with other classifications, JNCC Report 307, 73 pages, Peterborough, UK, ISSN
452 0963 8091, <http://www.jncc.gov.uk/page-2433>, last access: 15 December 2022, 2000.

453 Jarvis, S.G.; Redhead, J.W.; Henrys, P.A.; Risser, H.A.; Da Silva Osório, B.M.; Pywell, R.F. CEH Land Cover plus:
454 Pesticides 2012-2017 (England, Scotland and Wales). NERC Environmental Information Data Centre. 2020.

455 Jordon, M.W., Smith, P., Long, P.R., Bürkner, P.C., Petrokofsky, G. and Willis, K.J.: Can Regenerative Agriculture increase
456 national soil carbon stocks? Simulated country-scale adoption of reduced tillage, cover cropping, and ley-arable integration
457 using RothC. *Sci. Total Environ.*, 825, p.153955. <https://doi.org/10.1016/j.scitotenv.2022.153955>, 2022.

458 Lambin, E.F., Turner, B.L., Geist, H.J., Agbola, S.B., Angelsen, A., Bruce, J.W., Coomes, O.T., Dirzo, R., Fischer, G.,
459 Folke, C., George, P.S., Homewood, K., Jacques Imbernon, J., Rik Leemans, R., Xiubin Li, X., Emilio F. Moran, E.F.,
460 Michael Mortimore, M., Ramakrishnan, P.S., Richards, J.F., Skånes, H., Steffen, W., Stone, G.D., Svedin, U., Veldkamp,
461 T.A., Vogel, C., and Xu, J.: The causes of land-use and land-cover change: moving beyond the myths, *Global Environ.*
462 *Chang.*, 11, 261-269, [https://doi.org/10.1016/S0959-3780\(01\)00007-3](https://doi.org/10.1016/S0959-3780(01)00007-3), 2001.

463 Mair, L., Hill, J. K., Fox, R., Botham, M., Brereton, T., and Thomas, C. D.: Abundance changes and habitat availability
464 drive species' responses to climate change. *Nat. Clim. Change.*, 4(2), 127. <https://doi.org/10.1038/nclimate2086>, 2014.

465 McInnes, R.N., Hemming, D., Burgess, P., Lyndsay, D., Osborne, N.J., Skjøth, C.A., Thomas, S. and Vardoulakis, S.:
466 Mapping allergenic pollen vegetation in UK to study environmental exposure and human health. *Sci. Total Environ.*, 599,
467 pp.483-499. <https://doi.org/10.1016/j.scitotenv.2017.04.136>, 2017.

468 Marston, C., Rowland, C.S., O'Neil, A.W., and Morton, R.D.: Land Cover Map 2021 (10m classified pixels, GB). NERC
469 EDS Environmental Information Data Centre. <https://doi.org/10.5285/a22baa7c-5809-4a02-87e0-3cf87d4e223a>, 2022a.

470 Marston, C., Rowland, C.S., O'Neil, A.W., and Morton, R.D.: Land Cover Map 2021 (10m classified pixels, N. Ireland).
471 NERC EDS Environmental Information Data Centre. <https://doi.org/10.5285/e44ae9bd-fa32-4aab-9524-fbb11d34a20a>,
472 2022b.

473 Marston, C., Rowland, C.S., O'Neil, A.W. and Morton, R.D.: Land Cover Map 2021 (land parcels, GB). NERC EDS
474 Environmental Information Data Centre. <https://doi.org/10.5285/398dd41e-3c08-47f5-811f-da990007643f>, 2022c.

475 Marston, C., Rowland, C.S., O'Neil, A.W. and Morton, R.D.: Land Cover Map 2021 (land parcels, N. Ireland). NERC EDS
476 Environmental Information Data Centre. <https://doi.org/10.5285/abe1f414-6168-4e04-9dc9-4a658a3136ca>, 2022d.

477 Marston, C., Rowland, C.S., O'Neil, A.W., and Morton, R.D.: Land Cover Map 2021 (25m rasterised land parcels, GB).
478 NERC EDS Environmental Information Data Centre. <https://doi.org/10.5285/a1f85307-cad7-4e32-a445-84410efdfa70>,
479 2022e.

480 Marston, C., Rowland, C.S., O'Neil, A.W., and Morton, R.D.: Land Cover Map 2021 (25m rasterised land parcels, N.
481 Ireland). NERC EDS Environmental Information Data Centre. [https://doi.org/10.5285/f3310fe1-a6ea-4cdd-b9f6-
482 f7fc66e4652e](https://doi.org/10.5285/f3310fe1-a6ea-4cdd-b9f6-f7fc66e4652e), 2022f.

483 Marston, C., Rowland, C.S., O'Neil, A.W. and Morton, R.D.: Land Cover Map 2021 (1km summary rasters, GB and N.
484 Ireland). NERC EDS Environmental Information Data Centre. [https://doi.org/10.5285/a3ff9411-3a7a-47e1-9b3e-](https://doi.org/10.5285/a3ff9411-3a7a-47e1-9b3e-79f21648237d)
485 [79f21648237d](https://doi.org/10.5285/a3ff9411-3a7a-47e1-9b3e-79f21648237d), 2022g.

486 Miller, J.D., Stewart, E., Hess, T. and Brewer, T.: Evaluating landscape metrics for characterising hydrological response to
487 storm events in urbanised catchments. *Urban Water J.*, 17(3), pp.247-258.
488 <https://doi.org/10.1080/1573062X.2020.1760320>, 2020.

489 Morecroft, M. D., Duffield, S., Harley, M., Pearce-Higgins, J. W., Stevens, N., Watts, O., and Whitaker, J.: Measuring the
490 success of climate change adaptation and mitigation in terrestrial ecosystems. *Science*, 366(6471), eaaw9256.
491 <https://doi.org/10.1126/science.aaw9256>, 2019.

492 Morton, D., Rowland, C., Wood, C. Meek, L., Marston, C., Smith, G., Wadsworth, R., and Simpson, I.C.: Final Report for
493 LCM2007 - the new UK land cover map. Countryside Survey Technical Report No 11/07 NERC/Centre for Ecology &
494 Hydrology, Wallingford, 2011a.

495 Morton, R.D., Rowland, C., Wood, C.M., Meek, L., Marston, G., Smith, G., Wadsworth, R., and Simpson, I.: Land Cover
496 Map 2007 (vector, N. Ireland). NERC Environmental Information Data Centre. [https://doi.org/10.5285/fdc3fd67-a0bc-](https://doi.org/10.5285/fdc3fd67-a0bc-4e94-950e-9cabd4e636bb)
497 [4e94-950e-9cabd4e636bb](https://doi.org/10.5285/fdc3fd67-a0bc-4e94-950e-9cabd4e636bb), 2011b.

498 Morton, R.D., Rowland, C.S., Wood, C.M., Meek, L., Marston, C.G., and Smith, G.M.: Land Cover Map 2007 (vector, GB)
499 v1.2. NERC Environmental Information Data Centre. <https://doi.org/10.5285/2ab0b6d8-6558-46cf-9cf0-1e46b3587f13>,
500 2014.

501 Morton, D., and Rowland, C.S.: Developing and Evaluating an Earth Observation-enabled ecological land cover time series
502 system, JNCC Report No. 563, JNCC, Peterborough 69pp., 2015.

503 Morton, R.D., Marston, C.G., O'Neil, A.W., and Rowland, C.S.: Land Cover Map 2018 (land parcels, GB), NERC
504 Environmental Information Data Centre, <https://doi.org/10.5285/9f7f7f70-5137-4bfc-a6a3-f91783d5a6a6>, 2020a.

505 Morton, R.D., Marston, C.G., O'Neil, A.W., and Rowland, C.S.: Land Cover Map 2018 (land parcels, N. Ireland), NERC
506 Environmental Information Data Centre, <https://doi.org/10.5285/35f15502-d340-4ab5-a586-abd42f238b6e>, 2020b.

507 Morton, R.D., Marston, C.G., O'Neil, A.W., and Rowland, C.S.: Land Cover Map 2019 (land parcels, GB), NERC
508 Environmental Information Data Centre, <https://doi.org/10.5285/44c23778-4a73-4a8f-875f-89b23b91ecf8>, 2020c.

509 Morton, R.D., Marston, C.G., O'Neil, A.W., and Rowland, C.S.: Land Cover Map 2019 (land parcels, N. Ireland), NERC
510 Environmental Information Data Centre, <https://doi.org/10.5285/6e67cba0-c872-4146-bc09-d6c98731f3b3>, 2020d.

511 Morton, R.D., Marston, C.G., O'Neil, A.W., and Rowland, C.S.: Land Cover Map 2020 (land parcels, GB), NERC EDS
512 Environmental Information Data Centre, <https://doi.org/10.5285/0e99d57e-1757-451f-ac9d-92fd1256f02a>, 2021e.

513 Morton, R.D., Marston, C.G., O'Neil, A.W., and Rowland, C.S.: Land Cover Map 2020 (land parcels, N. Ireland), NERC
514 EDS Environmental Information Data Centre, <https://doi.org/10.5285/36343ace-d56a-43ea-9d48-2f434dafcb26>, 2021f.

515 Natural England (2022) GCN - Risk Zones (Shropshire), [https://www.data.gov.uk/dataset/998ebd5a-e0f5-4fbc-a349-](https://www.data.gov.uk/dataset/998ebd5a-e0f5-4fbc-a349-719e8a71ab37/gcn-risk-zones-shropshire#licence-info)
516 [719e8a71ab37/gcn-risk-zones-shropshire#licence-info](https://www.data.gov.uk/dataset/998ebd5a-e0f5-4fbc-a349-719e8a71ab37/gcn-risk-zones-shropshire#licence-info), last access: 15 December 2022, 2022.

517 NFI, National Forest Inventory GB 2018 data set, downloaded from [https://data-](https://data-forestry.opendata.arcgis.com/datasets/d3d7bfba1cba4a3b83a948f33c5777c0_0/)
518 [forestry.opendata.arcgis.com/datasets/d3d7bfba1cba4a3b83a948f33c5777c0_0/](https://data-forestry.opendata.arcgis.com/datasets/d3d7bfba1cba4a3b83a948f33c5777c0_0/), 2019.

519 Norton, L. R., Smart, S. M., Maskell, L. C., Henrys, P. A., Wood, C. M., Keith, A. M., Emmett, B.A., Cosby, B.J., Thomas,
520 A., Scholefield, P.A., Greene, S., Morton, R.D., and Rowland, C.S.: Identifying effective approaches for monitoring national
521 natural capital for policy use. *Ecosyst. Serv.*, 30, 98-106. <https://doi.org/10.1016/j.ecoser.2018.01.017>, 2018.

522 Office for National Statistics (ONS) Semi-natural habitat natural capital accounts, UK: 2021, Published online at:
523 <https://www.ons.gov.uk/economy/environmentalaccounts/bulletins/seminaturalhabitatnaturalcapitalaccountsuk/2021>, last
524 access: 15 December 2022, 2021.

525 Oliver, T. H., and Morecroft, M. D.: Interactions between climate change and land use change on biodiversity: attribution
526 problems, risks, and opportunities. *Wires Clim. Change.*, 5(3), 317-335. <https://doi.org/10.1002/wcc.271>, 2014.

527 Reynard, N. S., Prudhomme, C., and Crooks, S. M.: The flood characteristics of large UK rivers: potential effects of
528 changing climate and land use. *Climatic Change.*, 48(2-3), 343-359. <https://doi.org/10.1023/A:1010735726818>, 2001.

529 Rockström, J., Steffen, W., Noone, K., Persson, Å., Chapin, F.S., Lambin, E.F., Lenton, T.M., Scheffer, M., Folke, C.,
530 Schellnhuber, H.J. and Nykvist, B.: A safe operating space for humanity. *Nature.*, 461(7263), 472-475.
531 <https://doi.org/10.1038/461472a>, 2009.

532 Rogan, J., Miller, J., Stow, D., Franklin, J., Levien, L. and Fischer, C.: Land-cover change monitoring with classification
533 trees using Landsat TM and ancillary data, *Photogramm. Eng. & Rem. S.*, 69(7), 793-804,
534 <https://doi.org/10.14358/PERS.69.7.793>, 2009.

535 Rowland, C.S., Marston, C.G., Morton, R.D., O'Neil, A.W.: Land Cover Map 1990 (vector, GB), NERC Environmental
536 Information Data Centre, <https://doi.org/10.5285/304a7a40-1388-49f5-b3ac-709129406399>, (2020a).

537 Rowland, C.S., Marston, C.G., Morton, R.D., O'Neil, A.W.: Land Cover Map 1990 (vector, N. Ireland), NERC
538 Environmental Information Data Centre, <https://doi.org/10.5285/d6a3588b-23a8-4715-88e9-e21ab0060727>, (2020b).

539 Rowland, C.S., Morton, R.D., Carrasco, L., McShane, G., O'Neil, A.W., Wood, C.M.: Land Cover Map 2015 (vector, GB).
540 NERC Environmental Information Data Centre. <https://doi.org/10.5285/6c6c9203-7333-4d96-88ab-78925e7a4e73>,
541 (2017a).

542 Rowland, C.S., Morton, R.D., Carrasco, L., McShane, G., O'Neil, A.W., Wood, C.M.: Land Cover Map 2015 (vector, N.
543 Ireland). NERC Environmental Information Data Centre. [https://doi.org/10.5285/60764028-adeb-4316-987a-
544 14b3b21a8f9a](https://doi.org/10.5285/60764028-adeb-4316-987a-14b3b21a8f9a), (2017b).

545 Senapathi, D., Carvalho, L.G., Biesmeijer, J.C., Dodson, C.A., Evans, R.L., McKerchar, M., Morton, R.D., Moss, E.D.,
546 Roberts, S.P., Kunin, W.E. and Potts, S.G.: The impact of over 80 years of land cover changes on bee and wasp pollinator
547 communities in England. *Proc. Royal Soc. B.*, 282(1806), p.20150294. <http://dx.doi.org/10.1098/rspb.2015.0294>, 2015.

548 Smith, G., Beare, M., Boyd, M., Downs, T., Gregory, M., Morton, D., Brown, N. and Thomson, A.: UK land cover map
549 production through the generalisation of OS MasterMap®. *Cartogr. J.*, **44**, pp.276-283,
550 <https://doi.org/10.1179/000870407X241827>, 2007.

551 Stedman, J.R., Anderson, H.R., Atkinson, R.W. and Maynard, R.L.: Emergency hospital admissions for respiratory disorders
552 attributable to summer time ozone episodes in Great Britain. *Thorax.*, **52**(11), pp.958-963.
553 <http://dx.doi.org/10.1136/thx.52.11.958>, 1997.

554 Taylor, S.D., He, Y. and Hiscock, K.M.: Modelling the impacts of agricultural management practices on river water quality
555 in Eastern England, *J. Environ. Manage.*, 180, 147-163, <https://doi.org/10.1016/j.jenvman.2016.05.002>, 2016.

556 Teixeira, Z., Teixeira, H., and Marques, J. C.: Systematic processes of land use/land cover change to identify relevant driving
557 forces: Implications on water quality, *Sci. Total Environ.*, 470, 1320-1335. <https://doi.org/10.1016/j.scitotenv.2013.10.098>,
558 2014.

559 Tew, T., and Nicolet, P.: District Licensing for Great Crested Newts – A Successful First Year for the South Midlands
560 Scheme. In *Practice: Bulletin of the Chartered Institute of Ecology and Environmental Management*, 103: 28-32.
561 <https://naturespaceuk.com/download/2419/> last access: 15 December 2022, 2019.

562 Turner, B.L., Lambin, E.F., and Reenberg, A.: The emergence of land change science for global environmental change and
563 sustainability, *PNAS.*, **104** (52) 20666-20671; <https://doi.org/10.1073/pnas.0704119104>, 2007.

564 United Utilities: River Dee Catchment – Using Data and Evidence to Target Water Quality Measures, online at:
565 https://issuu.com/westcountryrivertrust/docs/uu_dee_catchment_report_11-09-17_we (accessed: 25 August 2022), 2017.

566 White, C., Dunscombe, R., Dvarskas, A., Eves, C., Finisdore, J., Kieboom, E., Maclean, I., Obst, C., Rowcroft, P. and
567 Silcock, P.: ‘Developing ecosystem accounts for protected areas in England and Scotland: Main Report’, Department for
568 Food, Environment & Rural Affairs/The Scottish Government,
569 [http://sciencesearch.defra.gov.uk/Default.aspx?Menu=Menu&Module=More&Location=None&Completed=0&ProjectID](http://sciencesearch.defra.gov.uk/Default.aspx?Menu=Menu&Module=More&Location=None&Completed=0&ProjectID=19271)
570 [=19271](http://sciencesearch.defra.gov.uk/Default.aspx?Menu=Menu&Module=More&Location=None&Completed=0&ProjectID=19271), last access: 15 December 2022, 2015.

571 Wint, G.W., Robinson, T.P., Bourn, D.M., Durr, P.A., Hay, S.I., Randolph, S.E. and Rogers, D.J.: Mapping bovine
572 tuberculosis in Great Britain using environmental data. *Trends Microbiol.*, **10**(10), pp.441-444.
573 [https://doi.org/10.1016/S0966-842X\(02\)02444-7](https://doi.org/10.1016/S0966-842X(02)02444-7), 2002.

574 Wood, C. M., Smart, S. M., Bunce, R. G. H., Norton, L. R., Maskell, L. C., Howard, D. C., Scott, W. A., and Henrys, P. A.:
575 Long-term vegetation monitoring in Great Britain – the Countryside Survey 1978–2007 and beyond, *Earth Syst. Sci. Data*,
576 9, 445–459, <https://doi.org/10.5194/essd-9-445-2017>, 2017.

577 UKCEH: Impact CASE STUDY: Informing government and business decision-making by mapping how land is used across
578 the UK, [https://www.ceh.ac.uk/sites/default/files/2021-06/UKCEH-Case-study-Informing-decision-making-by-mapping-](https://www.ceh.ac.uk/sites/default/files/2021-06/UKCEH-Case-study-Informing-decision-making-by-mapping-land-cover.pdf)
579 [land-cover.pdf](https://www.ceh.ac.uk/sites/default/files/2021-06/UKCEH-Case-study-Informing-decision-making-by-mapping-land-cover.pdf), last access: 15 December 2022, 2021.

580 UKCEH: LCM2021 Data Collection, <https://catalogue.ceh.ac.uk/documents/017313c6-954b-4343-8784-3d61aa6e44da>,
581 last access: 15 December 2022, 2022a.

582 UKCEH: Land Cover Map 2021 10m web map service - EIDC (ceh.ac.uk),
583 <https://catalogue.ceh.ac.uk/documents/2ad19a50-b940-469e-a40d-17818b77020c>, last access: 15 December 2022, 2022b.

584

586 Table A1: Discussion and commentary on each of the UK LCM2021 land cover and habitat classes. See Jackson (2000) for
587 description of the underlying Broad Habitat classes.

| LCM2021 land cover class | Notes |
|--------------------------|---|
| Broadleaved woodland | <p>In the UK BAP <i>Broadleaved, mixed and yew woodland</i> broad habitat definition (Jackson, 2000) the broadleaved woodlands are characterised by stands >5 m high with tree cover >20%. Scrub (<5 m) requires a cover >30 % for inclusion. Such fine distinctions cannot be made through optical remote sensing. Open-canopy woodland (stands with trees <50 %) is a particular problem, albeit occurring relatively rarely in the UK; such areas are likely to be confused with other classes due to the dominance of the non-woodland vegetation and the sparsity of training areas representing these areas.</p> <p>In the UK, broadleaved evergreen trees rarely occur in stands >0.5 hectares; an area large enough to create training areas suitable for classification. Consequently the classifier is likely to struggle with this land cover. These stands may be classified as Coniferous woodland because of the full-year chlorophyll signal.</p> <p>Mixed woodland stands of broad-leaved or evergreen trees exceeded the minimum mappable unit, they were treated as separate blocks within the woodland; in many parts of the UK, truly ‘mixed woodlands’ as opposed to those with mosaic-blocks of broadleaved and coniferous trees, are unusual. Stands with near-closed canopies can be interpreted easily in the field and pure examples can normally be found for training the classifier.</p> |
| Coniferous woodland | <p>The UK BAP <i>Coniferous woodland</i> class includes semi-natural stands and plantations, with cover >20 %. Classification of coniferous woodland is generally straightforward, but rare examples of open canopy semi-natural pinewoods are likely to be classified according to the dominant understorey class.</p> <p>The UK BAP includes new plantation and recently felled areas. These are land use, not land cover. Newly felled areas are often dominated by grass, heather and encroaching vegetation and more likely to be classified as these, instead of coniferous woodland. Deciduous larch has potential for confusion with broadleaved deciduous woodland but is generally correctly identified.</p> |
| Arable and horticulture | <p>The BAP Broad Habitat <i>Arable and horticulture</i> includes annual crops, perennial crops such as berries and orchards and freshly ploughed land. This is a very broad class and as a consequence has large potential for spectral confusion with non-arable surfaces. The main confusion between arable and other classes occurs between arable land and improved grassland. This is especially likely when grassland is managed by cutting, followed by periods of low growth and reflectance from chlorophyll. When this happens the observed seasonal reflectance pattern can be similar to graminid crops, such as wheat and</p> |

| | |
|--------------------------------|--|
| | barley. Indeed grass managed in this way is technically a crop, so an arable classification is not necessarily wrong. |
| Improved grassland | Improved grassland is distinguished from semi-natural grasslands based on its higher productivity, lack of winter senescence, location and/or context. Grasslands lie on a continuum, so some confusion with other grassland types is inevitable. Confusion with grass-like crops will also occur. |
| Neutral grassland | The UK BAP Broad Habitat <i>Neutral grassland</i> is expected to be challenging for satellite-based classification. BAP <i>Neutral grassland</i> is defined by botanical composition and includes semi-improved grasslands managed for silage, hay or pasture (Jackson, 2000). There is not generally an obvious spectral difference between these and other productive grass types. However, the inclusion of Context Rasters for slope and distance to rivers appear to have helped greatly with Neutral Grassland detection. |
| Calcareous grassland | Calcareous grassland class is mapped spectrally. However, the inclusion of context layers for slope is expected to improve results. UKCEH does not have free access to a highly resolved soil PH/soil type layer, which we would expect to help further. For regions know to contain substantial coverage of Calcareous Grassland, for example Limestone Dales of Derbyshire and North Yorkshire, the South Downs and Salisbury Plain our results match expectations. |
| Acid grassland | The UK BAP <i>Acid grassland</i> can be spectrally variable, depending on dominant species composition. Deciduous acid grassland, dominated by <i>Molinia caerulea</i> has a distinct signal from acid grasslands dominated by mixtures other grasses, rushes, mosses, herbs and sedges. In other work we have been able to refine this class successfully. However, we did not make this separation in historical maps, so we are not able to retrieve suitable observations from Bootstrap Training. Bracken has a very distinctive spectral signal, but only at certain times of the year when its foliage begins to dominate its grassland understory. Historically, with restricted availability of satellite images we could not reliably separate the UK BAP <i>bracken</i> class from <i>acid grassland</i> so we combined these into a single land cover class. With the greater image frequency and therefore better access to seasonal signals it may now be possible to overcome this historic limitation, but to do this we will need novel training data as we will not be able to retrieve a signal from Bootstrap Training. |
| Heather; and heather grassland | For LCM2007 we refined the BAP <i>Dwarf shrub and heath</i> into two classes, depending on the density of heather, producing the heather and heather grassland classes (it is heather when there is greater than 25 % Heather Cover). This was to retain some consistency between the LCM1990 and LCM2000 classes open shrub heath and dense shrub heath. In some parts of the UK, significant areas of low-lying non-heather shrubs occur. For example, gorse can form a dominant shrub layer. |

| | |
|----------------------|---|
| | <p>Note: the land cover maps typically show confusion over heather, heather grassland and bog. However, they are often difficult to separate in the field. It is challenging to accurately estimate coverage above and below the defining threshold.</p> |
| Fen, marsh and swamp | <p>The UK BAP <i>Fen, marsh and swamp</i> includes fen, fen meadows, rush pasture, swamp, flushes and springs. From a remote sensing perspective fen, marsh and swamp is problematic as it can be comprised of a wide range of vegetation types and many patches are below the MMU of the UKCEH land parcel spatial framework. The small size of many fen, marsh and swamp patches, plus their typically mosaic nature make it difficult to find reliable training data. Consequently, fen, marsh and swamp is likely to be underestimated in some regions. However, substantial areas of contiguous reed dominated fenland appear to be well detected.</p> |
| Bog | <p>The UK BAP <i>Bog</i> includes ericaceous, herbaceous and mossy swards in areas with a peat depth >0.5 m. We cannot detect peat depth from satellites. Vegetation on deep peat soils represent a continuum involving acid grassland, dwarf shrub heath and some types of fen, marsh and swamp and the separation of continuously varying land cover into discrete types can be difficult, especially when they exist in a complex small patch mosaic and their definitions are vague.</p> <p>We retain the bog class to maintain consistency with historical LCM products and the random forest classifier learns bog presence based on training data automatically generated from these. The predicted distribution occurs in regions where it is expected, so is a good indicator of where bog is likely to be occurring. However, bog and the range of upland vegetation classes expected to occur on peaty soils (acid grassland, fen marsh and swamp, heather, and heather grassland), potentially causing interclass confusion. This is partly due fine-scale variation but largely an effect of ambiguous definitions. UK BAP Broad Habitats (on which UKCEH land cover classes are based) were not defined with satellite remote sensing in mind.</p> |
| Saltwater | <p>Saltwater is rarely different spectrally from freshwater, and the saltwater distribution predicted by the random forest classifier is determined by coastal context rasters in Classification Scenes. There will be some confusion between saltwater and freshwater in tidal rivers, but not substantial. Occasionally, saltwater is confused with non-vegetated surfaces close to the coast and this happens because the automatically generated saltwater training classes coincide with the tide being out in the satellite view. The effect has so far been trivial but the result is that we predict saltwater with slightly lower accuracy than freshwater. Our main goal is to map land cover so coastal water and intertidal regions are not high priority.</p> |
| Freshwater | <p>The UKCEH Freshwater class comes from merging two BAP BHs (<i>Standing open water and canals</i>, and <i>Rivers and streams</i>) since they cannot be separated by spectra. In many cases, small and/or narrow water</p> |

bodies fall below the MMU of the UKCEH land parcel spatial framework so effectively disappear into the dominant surrounding vegetation. Where these features are appropriately aligned and sufficiently wide, pixels they may be detected and if so will be available in the Raster Classification datasets. Water bodies >0.5 ha and wider than 40 m are mapped with very high accuracy. The exceptions are temporary water bodies and quarries. Water in some quarries is strongly affected by the minerals in the rock and can result in atypical colours and misclassification.

| | |
|----------------------------------|--|
| Inland rock | The BAP Broad Habitat <i>Inland rock</i> covers both natural and artificial exposed rock surfaces which are >0.25 ha, such as inland cliffs, caves, screes and limestone pavements, as well as various forms of excavations and waste tips such as quarries and quarry waste. Opportunistic vegetation is common amongst rocky landscapes. We classify UKCEH inland rock if rock has the dominant signature. |
| Urban; and suburban | Within the <i>Built-up areas and gardens</i> BAP Broad Habitat we can reliably separate two UKCEH categories: urban and suburban. Urban includes dense urban, such as town and city centres, where there is little, if any, vegetation. Urban also includes areas such as dock sides, car parks and industrial estates. It is sometimes confused with other non-vegetated surfaces; for example open cast quarries or more rarely coastal rocks or ploughed fields. Suburban includes suburban areas where the spectral signature is a mix of urban and vegetation signatures. suburban and urban lie on a continuum and confusion is expected. |
| Supra-littoral rock | Features that may be present in this coastal class include vertical rock, boulders, gullies, ledges and pools generally forming a narrow band when viewed from above. Only limited areas can be mapped using satellite remote sensing. |
| Supra-littoral sediment | This class includes sand dunes, which are reliably mapped. Areas of coastal sand may be confused between this class and the littoral sediment class. Supralittoral sediments can stabilise and from increasing volumes of vegetation. Heavily vegetated littoral sediment is likely to be classified as a vegetation class. |
| Littoral rock | These classes are those in the maritime zone on a rocky coastline. They are generally more extensive than supralittoral rock and thus more readily detected using satellite images. |
| Littoral sediment; and saltmarsh | The BAP Broad Habitat <i>Littoral sediment</i> has a subclass, the BAP Priority Habitat <i>Saltmarsh</i> . Saltmarsh is generally distinct from nearby vegetation and only occurs near the coast. As a consequence we can map this well with remote sensing. The saltmarsh class is occasionally subject to commission error, when we mistake other vegetation in the coastal zone (mainly Arable) as saltmarsh. The littoral sediment is sometimes confused with the supra-littoral sediment class. |

589 **Appendix B: Display of LCM products**

590 The UK Land Cover Map can be displayed however users require. However, standard and revised colour palettes are
 591 available (Tables B1 and B2) and are supplied as QGIS symbology files to enable users to rapidly display products.

592

593 **Table B1: Standard LCM colour palette.**

| Land cover class | Land cover class number | Red | Green | Blue |
|-------------------------|-------------------------|-----|-------|------|
| Broadleaved woodland | 1 | 255 | 0 | 0 |
| Coniferous woodland | 2 | 0 | 102 | 0 |
| Arable and horticulture | 3 | 115 | 38 | 0 |
| Improved grassland | 4 | 0 | 255 | 0 |
| Neutral grassland | 5 | 127 | 229 | 127 |
| Calcareous grassland | 6 | 112 | 168 | 0 |
| Acid grassland | 7 | 153 | 129 | 0 |
| Fen, marsh and swamp | 8 | 255 | 255 | 0 |
| Heather | 9 | 128 | 26 | 128 |
| Heather grassland | 10 | 230 | 140 | 166 |
| Bog | 11 | 0 | 128 | 115 |
| Inland rock | 12 | 210 | 210 | 255 |
| Saltwater | 13 | 0 | 0 | 128 |
| Freshwater | 14 | 0 | 0 | 255 |
| Supra-littoral rock | 15 | 204 | 179 | 0 |
| Supra-littoral sediment | 16 | 204 | 179 | 0 |
| Littoral rock | 17 | 255 | 255 | 128 |
| Littoral sediment | 18 | 255 | 255 | 128 |
| Saltmarsh | 19 | 128 | 128 | 255 |
| Urban | 20 | 0 | 0 | 0 |
| Suburban | 21 | 128 | 128 | 128 |

594

595 **Table B2: Revised colour palette avoiding use of red.**

| Land cover class | Land cover class number | Red | Green | Blue |
|-------------------------|-------------------------|-----|-------|------|
| Broadleaved woodland | 1 | 51 | 160 | 44 |
| Coniferous woodland | 2 | 0 | 80 | 0 |
| Arable and horticulture | 3 | 240 | 228 | 66 |
| Improved grassland | 4 | 1 | 255 | 124 |
| Neutral grassland | 5 | 220 | 153 | 9 |
| Calcareous grassland | 6 | 255 | 192 | 55 |
| Acid grassland | 7 | 178 | 145 | 0 |

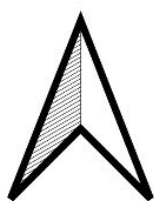
| | | | | |
|------------------------|----|-----|-----|-----|
| Fen, marsh and swamp | 8 | 253 | 123 | 238 |
| Heather | 9 | 128 | 26 | 128 |
| Heather grassland | 10 | 230 | 140 | 166 |
| Bog | 11 | 205 | 59 | 181 |
| Inland rock | 12 | 210 | 210 | 255 |
| Saltwater | 13 | 0 | 0 | 92 |
| Freshwater | 14 | 0 | 0 | 255 |
| Supralittoral rock | 15 | 152 | 125 | 183 |
| Supralittoral sediment | 16 | 204 | 179 | 0 |
| Littoral rock | 17 | 255 | 255 | 128 |
| Littoral sediment | 18 | 255 | 255 | 128 |
| Saltmarsh | 19 | 128 | 128 | 255 |
| Urban | 20 | 0 | 0 | 0 |
| Suburban | 21 | 128 | 128 | 128 |

596

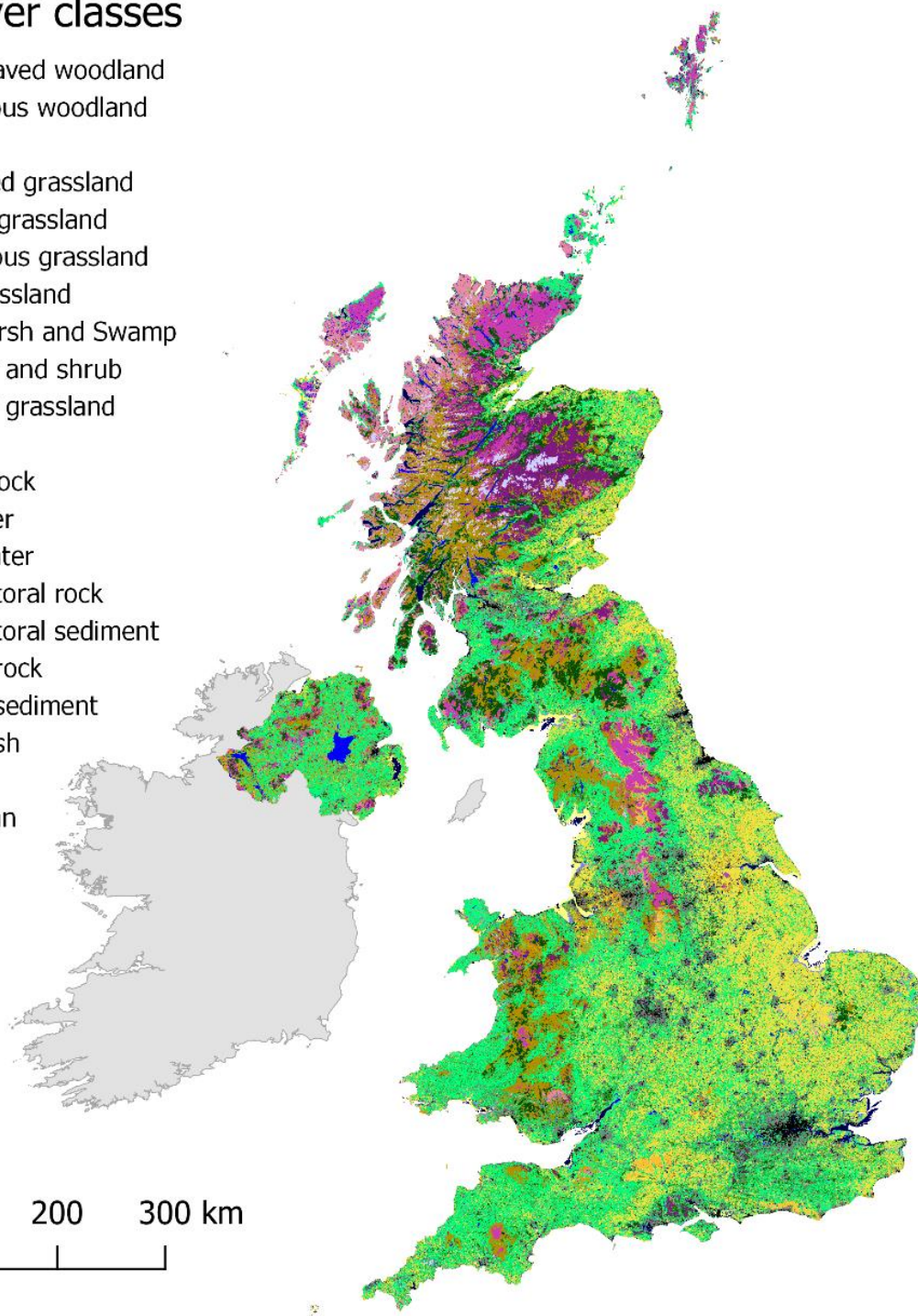
597

Land cover classes

- Broadleaved woodland
- Coniferous woodland
- Arable
- Improved grassland
- Neutral grassland
- Calcareous grassland
- Acid grassland
- Fen, Marsh and Swamp
- Heather and shrub
- Heather grassland
- Bog
- Inland rock
- Saltwater
- Freshwater
- Supralittoral rock
- Supralittoral sediment
- Littoral rock
- Littoral sediment
- Saltmarsh
- Urban
- Suburban



0 100 200 300 km



598

599 **Figure B1: Land Cover Map 2021 in revised colour palette (details of revised colour palette in Table B2).**