

Spatiotemporally consistent global dataset of the GIMMS Leaf Area Index (GIMMS LAI4g) from 1982 to 2020

Sen Cao^{1,2,†}, Muyi Li^{1,†}, Zaichun Zhu^{1,2,*}, Junjun Zha¹, Weiqing Zhao¹, Zeyu Duanmu¹, Jiana Chen¹,
Yaoyao Zheng¹, Yue Chen¹

5 ¹School of Urban Planning and Design, Shenzhen Graduate School, Peking University, Shenzhen 518055, China

²Key Laboratory of Earth Surface System and Human—Earth Relations, Ministry of Natural Resources of China, Shenzhen Graduate School, Peking University, Shenzhen 518055, China.

[†]These authors contributed equally to this work

Correspondence: Zaichun Zhu (zhu.zaichun@pku.edu.cn)

10 **Abstract:** Leaf Area Index (LAI) with an explicit biophysical meaning is a critical variable to characterize terrestrial ecosystems. Long-term global datasets of LAI have served as fundamental data support for monitoring vegetation dynamics and exploring its interactions with other Earth components. However, current LAI products face several limitations associated with spatiotemporal consistency. In this study, we employed the Back Propagation Neural Network (BPNN) and a data consolidation method to generate a new version of the half-month 1/12° Global Inventory Modeling and Mapping Studies
15 (GIMMS) LAI product, i.e., GIMMS LAI4g, for the period 1982–2020. The significance of the GIMMS LAI4g was the use of the latest PKU GIMMS NDVI product and 3.6 million high-quality global Landsat LAI samples to remove the effects of satellite orbital drift and sensor degradation and to develop spatiotemporally consistent BPNN models. **The results showed that the GIMMS LAI4g exhibited overall higher accuracy and lower underestimation than its predecessor (GIMMS LAI3g) and two mainstream LAI products (Global Land Surface Satellite [GLASS] LAI and Long-term Global Mapping [GLOBMAP]
20 LAI) using field LAI measurements and Landsat LAI samples. Its validation against Landsat LAI samples revealed an R^2 of 0.95, root mean squared error of $0.36 \text{ m}^2/\text{m}^2$, mean absolute error of $0.18 \text{ m}^2/\text{m}^2$, and mean absolute percentage error of 14.9% which meets the accuracy target proposed by the Global Climate Observation System.** It outperformed other LAI products for most vegetation biomes in a majority area of the land. It efficiently eliminated the effects of satellite orbital drift and sensor degradation and presented a better temporal consistency before and after the year 2000 and a more reasonable global vegetation
25 trend. The GIMMS LAI4g product could potentially facilitate mitigating the disagreements between studies of the long-term global vegetation changes and could also benefit the model development in Earth and environmental sciences.

Keywords: GIMMS LAI4g; PKU GIMMS NDVI; Landsat LAI samples; MODIS LAI; BPNN

1. Introduction

Leaf Area Index (LAI), defined as half of the total green leaf area per unit of horizontal surface, is a key variable in
30 vegetation change monitoring (Piao et al., 2015; Valderrama-Landeros et al., 2016; Zhu et al., 2016), land surface modeling
(Boussetta et al., 2013; Boussetta et al., 2015; Chen et al., 2015), crop yield estimation (De Wit et al., 2012; Dente et al., 2008),
etc. It is one of the basic terrestrial climate variables selected by the Global Climate Observation System (GCOS) (Gcos, 2011).
Remote sensing observation has been the only reliable means of obtaining spatiotemporally continuous LAI products at the
global scale (Ma and Liang, 2022). The common practice is to relate remote sensing data with ground LAI measurements or
35 other remote sensing products of higher reliability (as LAI reference), using methods including statistical modeling (Liu et al.,
2012; Kimura et al., 2004; Broge and Leblanc, 2001), physical modeling (Myneni et al., 2002), and machine learning (Xiao et
al., 2014; Zhu et al., 2013; Ma and Liang, 2022; Kang et al., 2021). Over past years, a number of long-term global LAI products,
such as the third generation Global Inventory Modeling and Mapping Studies (GIMMS) LAI (GIMMS LAI3g) (Zhu et al.,
2013), the Global LAnd Surface Satellite (GLASS) LAI (Xiao et al., 2016), the Long-term Global Mapping (GLOBMAP) LAI
40 (Liu et al., 2012), and the Terrestrial Climate Data Record (TCDR) LAI (Claverie et al., 2016), have been released. These
products have provided many in-depth insights into how global vegetation responds to human disturbances and global warming
(Zhu et al., 2016; Piao et al., 2015; Chen et al., 2019a). Specifically, the GIMMS LAI3g has been one of core data reference
in IPCC Sixth Assessment Report for the assessment of global vegetation changes (Eyring et al., 2021).

However, the accuracies of the current LAI products have been limited by uncertainties primarily in the remote sensing
45 data and the LAI reference data (Fang et al., 2019; Jiang et al., 2017). First, remote sensing data being used have some common
issues. For example, false gradual signals and mutations have been widely observed in the LAI time series prior to the late
1990s for mainstream long-term LAI products, as most of them utilized data from the Advanced Very High Resolution
Radiometer (AVHRR) (Wang et al., 2022). The AVHRR sensors onboard National Oceanic and Atmospheric Administration
(NOAA) satellites were the only remote sensing data sources before the late 1990s that provided spatiotemporally continuous
50 observations over the globe. Nevertheless, they suffered from issues of NOAA satellite orbital drift and AVHRR sensor
degradation, particularly in the tropical area of evergreen broadleaf forests (Pinzon and Tucker, 2014). Second, the LAI
reference data used to build LAI models have been scarce, particularly before the late 1990s. After the year of 2000, global
LAI products became increasingly available from advanced sensors such as the Moderate Resolution Imaging
Spectroradiometer (MODIS) (Myneni et al., 2002), the Système Pour l'Observation de la Terre (SPOT) (Baret et al., 2007),
55 and the Visible Infrared Imaging Radiometer Suite (VIIRS) (Yan et al., 2018). These LAI products have been elaborately and
collaboratively validated despite with a short time span. Current studies employed them as LAI reference to build post-2000
AVHRR-LAI models and extrapolated the models onto pre-2000 AVHRR data so that long-term LAI product could be
produced (Chen et al., 2019a). Nonetheless, the legality of the extrapolation remains questioned since the AVHRR-LAI
relationship could change with time.

60 The uncertainties in the remote sensing and LAI reference data, together with the differences in modeling algorithms,
have led the performance of long-term global LAI products to vary from one to another. Inconsistencies were continually found
between LAI products regardless of the remote sensing data source used (Jiang et al., 2017). For example, four popular global
data sets of LAI (1982–2010s), namely the GLASS LAI, GLOBMAP LAI, GIMMS LAI3g, and TCDR LAI, showed
significant differences in LAI trends, interannual variabilities, and uncertainty variations (Jiang et al., 2017; Xiao et al., 2017).
65 In tropical areas, the average LAI difference can be up to one unit (Yan et al., 2016). These differences between LAI products
have raised many concerns about the robustness of existing vegetation change analysis and land surface modeling (Alkama et
al., 2022; Jiang et al., 2017; Piao et al., 2015).

Recent advances in land data products have provided pathways to address the uncertainties. In particular, the PKU
GIMMS Normalized Difference Vegetation Index (NDVI) product (1982–2020) by Li et al. (in review) efficiently eliminated
70 the evident NOAA orbital drift and AVHRR sensor degradation effects. It demonstrates higher accuracy than the predecessor
(GIMMS NDVI3g) and shows a high temporal consistency with MODIS NDVI. Zha et al. (in preparation) compiled a set of
global reference LAI (before the year 2000) and created ~ 4.9 million high-quality Landsat LAI samples over the globe from
1984 to 2020. The validation against LAI field measurements showed an R^2 of 0.76. Although these Landsat LAI samples can
hardly be used to characterize the global vegetation change because they are not spatiotemporally continuous, they can serve
75 as reliable LAI references.

In this context, the objective of this study is to derive a new generation of GIMMS LAI products (GIMMS LAI4g,
1982–2020) using machine learning models based on the PKU GIMMS NDVI product and massive high-quality Landsat LAI
samples and a data consolidation method based on the Reprocessed MODIS LAI product. We employ the PKU GIMMS NDVI
and the Landsat LAI samples to address the uncertainties in remote sensing and LAI reference data. With these data, biome-
80 specific Back Propagation Neural Network (BPNN) models are developed with additional explanatory variables (the longitude
and latitude, the NDVI month, and the NOAA number and years since launch). The GIMMS LAI4g product is then generated
from the BPNN models. Finally, the GIMMS LAI4g is consolidated with the Reprocessed MODIS NDVI product via a pixel-
wise fusion method to extend the temporal coverage to the year 2020. We evaluate the GIMMS LAI4g's accuracy by a direct
validation method and compare its accuracy to those of three other global LAI products, i.e., GIMMS LAI3g, GLASS LAI,
85 and GLOBMAP LAI. The temporal consistency of the global LAI products and their LAI trends are also analyzed.

2. Data

A total of **eight** global datasets were used in this study, namely, the PKU GIMMS NDVI, Landsat LAI sample dataset,
MODIS Land-Cover Type, Reprocessed MODIS LAI, GLASS LAI, GLOBMAP LAI, GIMMS LAI3g, **and field LAI
measurements**. The PKU GIMMS NDVI was the primary data source from which the GIMMS LAI4g was generated. The

90 Landsat LAI sample dataset was used as the LAI reference in machine learning model establishment and product evaluation. The field LAI measurements were also employed for product evaluation. The MODIS Land-Cover Type product provided vegetation biome types in the LAI modeling. The Reprocessed MODIS LAI was used to extend the temporal coverage of the GIMMS LAI4g. The GLASS LAI, GLOBMAP LAI, and GIMMS LAI3g are three mainstream global LAI products that were included for an inter-comparison purpose.

95 2.1 PKU GIMMS NDVI

The PKU version of the GIMMS NDVI product (PKU GIMMS NDVI) was employed in this study (Li et al., in review). It has a spatial resolution of $1/12^\circ$ and a temporal resolution of half-month. In the generation of PKU GIMMS NDVI, Landsat NDVI from Thematic Mapper (TM), Enhanced Thematic Mapper Plus (ETM+), and Operational Land Imager (OLI) were first cross-calibrated. Then, massive high-quality Landsat NDVI samples were extracted by considering a series of factors including clouds, cloud shadows, water, snow, aerosol, and radiation performance. The Landsat NDVI samples were employed to calibrate the GIMMS NDVI3g product with other explanatory variables using biome-specific machine learning models. The calibrated NDVI product was finally consolidated with the MODIS NDVI product to extend the temporal coverage to the year 2020. The major improvement of PKU GIMMS NDVI over its counterparts is that it well removed the NOAA orbital drift and AVHRR sensor degradation effects, especially in tropical regions (Figure S1). Its overall R^2 , Mean Absolute Error (MAE), and Mean Absolute Percentage Error (MAPE) are 0.975, 0.033, and 9%, respectively. It is highly consistent with MODIS NDVI in terms of pixel value ($R^2 = 0.962$, MAE = 0.032, and MAPE = 6.5%) and global vegetation trend. PKU GIMMS NDVI inherited the quality control (QC) information from the GIMMS NDVI3g. A QC value of 0, 1, and 2 indicates NDVI of good quality, NDVI retrieved from spline interpolation, and NDVI retrieved from average seasonal profile, respectively. The PKU GIMMS NDVI record during AVHRR missions from 1982 to 2015 (before consolidation with MODIS NDVI) was used in this study. It is available at <https://zenodo.org/record/7441559#.Y7J7y3ZByCo>.

110 2.2 Landsat LAI sample dataset

The Landsat LAI sample dataset provides approximately 4.9 million high-quality samples with a spatial resolution of $1/12^\circ$ and a temporal resolution of half a month (Zha, in preparation). It covers the global vegetated area with all vegetation biome types defined in the MODIS land cover product (the third classification scheme; see section 2.4) and a long-time span from 1984 to 2020. In the generation of Landsat LAI samples, 70,000 sample locations for Deciduous Needleleaf Forests [DNF] and 100,000 sample locations for each of the other vegetation biome types were randomly selected based on the MODIS land cover product. At the sample locations, Reprocessed MODIS LAI (in 500 m resolution; see Section 2.3) and Landsat surface reflectance from TM, ETM+, and OLI scenes (20×20 pixels in 30 m resolution) were extracted, creating massive sample pairs. The sample pairs were then rigorously screened by criteria that were not limited to those mentioned in Section

120 2.1 (i.e., clouds, cloud shadows, etc.) but also included Landsat sample purity, NDVI-LAI relationship, and the saturation state
of the MODIS LAI. Biome- and Landsat sensor-specific Random Forest models with other explanatory variables were built
based on the sample pairs. The models were applied to historical Landsat data at 40,000 random sample locations ($1/12^\circ$) to
create the final Landsat LAI sample dataset. Validation of the dataset through observations from the BENCHMARK Land Multisite
ANalysis and Intercomparison of Products (BELMANIP) network (Baret et al., 2006) and the Oak Ridge National Laboratory
125 (ORNL) (Scurlock et al., 2001) showed high absolute accuracies ($R^2 = 0.76$, $MAE = 0.45 m^2/m^2$, Root Mean Square Error
(RMSE) = $0.66 m^2/m^2$). The inter-comparison with the Reprocessed MODIS LAI shows a high temporal consistency. This
study selected 3.6 million Landsat LAI samples between 1984 and 2015.

2.3 Reprocessed MODIS LAI product

The latest version of the Reprocessed MODIS LAI product (version 6) has a time span of 2000–2020, a temporal
130 resolution of 8-day or one-month, and a spatial resolution ranging from 500 m to 0.5° . The product was derived from the
MODIS LAI Version 6 products (Myneni, 2015b, a) and MODIS Land Cover Type product (Friedl, 2019) using an integrated
two-step method (Yuan et al., 2011). Compared to the original MODIS LAI products, it is more spatiotemporally continuous
and consistent as verified by 44 LAI reference maps which contain true LAI values collected over a subset of 26 ground sites.
We downloaded the 8-day 0.05° data from <http://globalchange.bnu.edu.cn/research/laiiv6#download>, and resampled the data
135 to have the same spatial resolution ($1/12^\circ$) and temporal resolution (half a month) as the GIMMS LAI4g. The temporal subset
of 2004–2020 was used in this study because the LAI data in the evergreen broadleaf forest were found exceptional low
between 2000 and 2003 than other years (Figure S2).

2.4 MODIS Land-Cover Type product (MCD12Q1)

The MODIS Land Cover Type Product (MCD12Q1, version 6) supplies global maps of annual land cover with a spatial
140 resolution of 500 m between 2001 and 2019 (Friedl et al., 2002; Friedl, 2019). It includes five legacy classification schemes.
This study selected the third classification scheme (Annual LAI classification). The Annual LAI classification scheme includes
eight natural vegetation types (Evergreen Needleleaf Forests [ENF], Evergreen Broadleaf Forests [EBF], DNF, Deciduous
Broadleaf Forests [DBF], SHRublands [SHR], SAVannas [SAV], GRASSlands [GRA], CROplands [CRO]), and three non-
vegetated lands (WATER bodies [WAT], Non-VeGetated lands [NVG], and URban and Built-up lands [URB]). This study also
145 used [GLO] in data analysis to represent the global vegetation biome (the ensemble of the eight vegetation types). The spatial
resolution of MCD12Q1 was spatially aggregated to $1/12^\circ$ in this study to match that of PKU GIMMS NDVI. For each $1/12^\circ$
grid, the aggregation was conducted by calculating frequencies of each biome type between 2001 and 2019 and identifying the
most frequent one. This generated a global land cover map that was considered static from 1982 through 2020 in this study
(Figure S3). With potential errors, this strategy could be the best option at the time.

150 2.5 GLASS LAI

The GLASS LAI (version 4) with a temporal resolution of 8 days was generated from the 0.05° resolution NOAA/AVHRR surface reflectance dataset provided by NASA's Long Term Data Record (LTDR) project (1982–2000) and the 1 km resolution Terra/MODIS surface reflectance dataset (MOD09) (2000–2018) (Xiao et al., 2016). In the algorithm, biome-specific general regression neural networks were built between the surface reflectance data and LAI reference data which were created by fusing Terra/MODIS LAI (MOD15) with clump-corrected CYCLOPES LAI over BELMANIP sites (Xiao et al., 2016). The neural networks were then used to predict global LAI (Xiao et al., 2014). The GLASS LAI (V4) product was acquired from <ftp://ftp.glcg.umd.edu/>. It should be noted that version 5 and version 6 of the GLASS LAI product have been available when our study has been prepared (Liang et al., 2021; Ma and Liang, 2022).

2.6 GLOBMAP LAI

160 The latest GLOBMAP LAI product (version 3) with a spatial resolution of 1/13.75° and temporal resolutions of half-month (1982–2000) or 8-day (2001–now) was generated based on GIMMS NDVI product (1982–2000) (Tucker et al., 2005) and Terra/MODIS surface reflectance (MOD09A1 C6) (2001–now). The algorithm established relationships between MODIS LAI and GIMMS NDVI in a pixel-wise manner during their overlapping period of 2000–2006. The relationships were then applied to GIMMS NDVI before 2000 (Liu et al., 2012). The GLOBMAP LAI (V3) product was acquired from <https://zenodo.org/record/4700264#.YH6QD-gzbOk>.

2.7 GIMMS LAI3g

170 The GIMMS LAI3g product (version 4) (1982–2016) was generated biweekly in a 1/12° spatial resolution (Zhu et al., 2013). It is available at <https://drive.google.com/drive/folders/0BwL88nwumpqYaFJmR2poS0d1ZDQ?resourcekey=0-9IRE9s-0tFGfwB5qTpLjZw&usp=sharing/>. The algorithm related the GIMMS' third-generation NDVI (NDVI3g) to MODIS LAI of Beijing Normal University (BNU) version via feed-forward neural networks (Yuan et al., 2011). Twelve neural networks, one for each month, were built using monthly averaged LAI and NDVI data between 2000 and 2009. The GIMMS LAI3g was then produced from GIMMS NDVI3g by applying the neural networks to the period of 1982 to 2016.

2.8 Field LAI measurements

175 The field LAI measurements were from three projects namely, BELMANIP 2.1 (available at <https://calvalportal.ceos.org/web/olive/site-description>) (Baret et al., 2006), DIRECT 2.1 (available at <https://calvalportal.ceos.org/lpv-direct-v2.1>) (Garrigues et al., 2008), and ORNL (available at https://daac.ornl.gov/VEGETATION/guides/LAI_guide.html) (Scurlock et al., 2001). The BELMANIP 2.1 and DIRECT 2.1

provide $3 \text{ km} \times 3 \text{ km}$ averaged LAI values derived from sites in networks of FLUXNET, AERONET, VALERI, BigFoot, etc. The upscaling from site-based LAI to $3 \text{ km} \times 3 \text{ km}$ LAI used high spatial resolution imageries such as Landsat and SPOT. Most global long-term LAI products have utilized the BELMANIP and DIRECT LAI as ground truth for product evaluation (Myneni et al, 2002; Liu et al., 2012; Xiao et al., 2016; Zhu et al., 2013), yet the LAI measurements in both projects were available only after the late 1990s. Note that GLASS LAI (version 4) also employed BELMANIP sites for LAI model training (Xiao et al., 2016). This study further incorporated ORNL sites which provide field LAI measurements during 1932–2020 despite possible scaling effects due to spatial heterogeneity. We prudently examined all the sites and measurements in BELMANIP 2.1, DIRECT 2.1, and ORNL, and removed measurements that were acquired from heterogeneous sites or coincident among the three projects. Eventually, 113 field LAI measurements from 49 sites were obtained. Information on selected field LAI measurements can be found in Table S1.

3. Methodology

The methodology includes three key steps (Figure 1): 1) generating the GIMMS LAI4g product from biome-specific Back Propagation Neural Network (BPNN) models based on PKU GIMMS NDVI, Landsat LAI sample, and other explanatory variables; 2) consolidating the GIMMS LAI4g product with the MODIS LAI product using a pixel-wise fusion method in their overlapping timespan (2004–2015); and 3) evaluating the GIMMS LAI4g product using Landsat LAI samples and comparing it with other global LAI products.

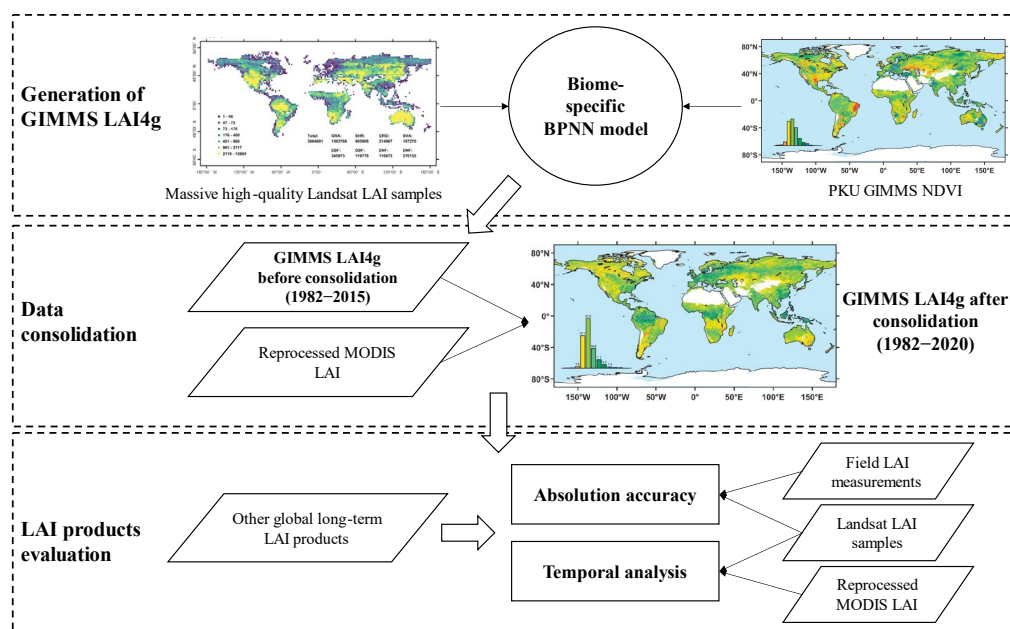


Figure 1. Schematic diagram of the generation and evaluation of the GIMMS LAI4g product.

3.1 Generation of GIMMS LAI4g using Back Propagation Neural Network (BPNN)

The artificial neural network (ANN) is a machine-learning algorithm inspired by the structure and function of biological neural networks (Basheer and Hajmeer, 2000; Zhang et al., 1998). It has been frequently used in ecological studies and the generation of global LAI products (Panda et al., 2010; Jahan and Gan, 2011; Zhu et al., 2013; Xiao et al., 2014; Claverie et al., 2016). For example, a typical ANN, general regression neural network, and Back Propagation Neural Network (BPNN) was employed in the production of TCDR LAI (version 5) (Claverie et al., 2016), GLASS LAI (version 4) (Xiao et al., 2014), and GIMMS LAI3g (Zhu et al., 2013), respectively. A typical ANN comprises input, output, and hidden layers, with each containing several artificial neurons. During the model training process, signals flowed from the input layer to the output layer, after likely passing through several hidden layers. Errors in the output layer propagate backward to the previous layers until they satisfy the user-defined threshold, and the network attempts to minimize the discrepancies between observations and predictions (Basheer and Hajmeer, 2000; Zhang et al., 1998).

This study used the BPNN model to predict LAI values from the PKU GIMMS NDVI (1982–2015). Individual BPNN models were developed for each vegetation biome. The target variable in BPNN models was mainly from the Landsat LAI samples (1984–2015) but also included a small number of MODIS LAI values in regions where Landsat LAI samples were lacking. These regions were mostly located in northern high latitudes that suffer from polar night phenomena and low solar altitude angles in the winter. Corresponding PKU GIMMS NDVI values of the same time and at the same locations with the LAI samples were extracted as the explanatory variable. The LAI samples and associated PKU GIMMS NDVI were further refined. Locations with negative NDVI values (e.g., contaminated by snow and inland water bodies) and non-zero QC values in the PKU GIMMS NDVI product were removed. After the refinement, the samples were randomly divided into two groups, i.e., the dataset for BPNN construction (80%) and the dataset for LAI product evaluation (20%).

In the BPNN models, we also incorporated spatial information (the longitude and latitude at the sample location), temporal information (the NDVI month), and NOAA satellite information (NOAA satellite number and years since launch; not applicable for MODIS LAI) as additional explanatory variables. A stepwise method was employed to determine the best combination of explanatory variables for each vegetation biome. The PKU GIMMS NDVI data were first included and evaluated in the BPNN models (Scenario 1 or S1). Then, the spatial information that accounts for spatial autocorrelation (S2), temporal information that accounts for vegetation dynamic (S3), NOAA satellite number (S4), and years since NOAA launch (S5) that accounts for potential satellite and sensor issues were added one by one. In model establishment, we repeatedly (50 times) selected 50,000 random samples with replacement for each vegetation biome. The 50,000 samples were split into 90% for model training and 10% for model evaluation, in which four error metrics of R^2 , RMSE, MAE, and MAPE, were calculated. The error metrics determined the optimum combination of explanatory variables and the optimum parameters for the final BNPP model of each biome.

3.2 Consolidation of GIMMS LAI4g and MODIS LAI

230 The GIMMS LAI4g product derived from the PKU GIMMS NDVI (1982–2015) which was based on AVHRR data did not include LAI data since 2015. As such, it can hardly be used to characterize recent vegetation dynamics. A couple of global products have provided up-to-date LAI data using satellite sensors available since the late 1990s (Baret et al., 2007). A common practice to generate the long-term LAI product is to consolidate the AVHRR-based LAI product with the post-2000 LAI product. For example, both GLASS LAI and GLOBMAP LAI consolidated LAI products from AVHRR and MODIS. MODIS has been one of the most popular and verified data sources for LAI production. In this study, the Reprocessed MODIS LAI product (2004–2020) was employed to extend the time span of the GIMMS LAI4g.

240 The consolidation method was inherited from the pixel-wise linear fusion method proposed by Mao et al. (2012). Compared to the global or biome-specific regression models, the pixel-wise method has demonstrated excellent accuracies, especially in regulating the temporal consistency between datasets (Mao et al., 2012). First, LAI values in the overlapping period of 2004–2015 were extracted from the GIMMS LAI4g and the MODIS LAI. Then, the most appropriate Random Forest regression model (Breiman, 2001) (instead of the linear model) was determined from the LAI values at an 11×11 window (approximately 1° equivalent) around each pixel location, with GIMMS LAI4g data and the pixel coordinates as the explanatory variables and MODIS LAI data as the target variable. The final LAI product comprised the GIMMS LAI4g (after consolidation) (1982–2003) and the Reprocessed MODIS LAI (2004–2020).

3.3 Evaluation of the GIMMS LAI4g product

245 In this study, the LAI reference samples were evaluated in terms of their number, spatial distribution, and temporal distribution under different vegetation biome types. To assess the representativeness of the samples, we also compared LAI reference values at the sample locations to those from the GIMMS LAI3g, GLASS LAI, and GLOBMAP LAI using a frequency histogram.

250 The performance of our GIMMS LAI4g product generated from the BPNN model was evaluated and compared with three other global long-term LAI products (i.e., the GIMMS LAI3g, GLASS LAI, and GLOBMAP LAI) using field LAI measurements and Landsat LAI samples. Four measures of error were used: R^2 , RMSE (m^2/m^2), MAE (m^2/m^2), and MAPE (%). R^2 measures the percentage of variations that models can explain; RMSE quantifies variance of errors; and MAE and MAPE measure absolute and relative error values at the sample level. For inter-comparison between the GIMMS LAI4g and other LAI products, the spatial resolution and temporal resolution of all LAI products have been unified to $1/12^\circ$ and half a month, respectively. In the validation against Landsat LAI samples, the remaining 20% Landsat sample points with a spatial resolution of $1/12^\circ$ were employed for each vegetation biome. Based on the Landsat sample points, we used a dominance map to demonstrate the global distribution of products with higher accuracy. The map was drawn with $2^\circ \times 2^\circ$ grids using MAE values from the GIMMS LAI4g, GIMMS LAI3g, and GLASS LAI. The color of each grid was composed of reciprocal MAE

averages of the LAI products, i.e., a lower MAE average can lead to a higher weight in the composite. The GLOBMAP LAI was not included because of its much higher MAE than other products. We also showcased the spatial consistencies between the four global LAI products by their spatial average along latitude (at an interval of 1°) in January and July of the years 1990, 2000, and 2010.

The temporal consistency of the GIMMS LAI4g was evaluated from three perspectives. First, LAI bias was used to examine whether the NOAA orbital drift and AVHRR sensor degradation effects were alleviated in different vegetation biomes. The bias was calculated as the mean value of LAI deviation relative to Landsat LAI in percentage (Helder et al., 2013). If there is orbital drift or sensor degradation, the bias will drastically fluctuate; otherwise, it remains constant. Seasonal fluctuations in the time series of NDVI bias were first removed via the multi-year averaging method. Then, inter-annual trends of the bias were extracted via the Ensemble Empirical Mode Decomposition (EEMD) approach (Huang et al., 1998). Second, the efficiency of data consolidation between the GIMMS LAI4g and MODIS LAI was reported. We also checked self-consistency of the GIMMS LAI4g product over time in some hotspot regions including Europe (Ciais et al., 2005), Amazon (Wang et al., 2013), Congo (Zhou et al., 2014), China, and India (Chen et al., 2019a). Third, we used the Landsat LAI samples as the reference to evaluate the consistency of the GIMMS NDVI4g between different periods (p1: 1984–2015; p2: 1984–2000; and p3: 2001–2015) and compared the consistency with other three LAI products. The consistency was quantified by temporal changes in R^2 , MAE, and MAPE. To investigate whether the data consolidation alter the LAI trend, we compared the annual anomalies and trends of GIMMS LAI4g before consolidation (1982–2015), GIMMS LAI4g after consolidation (1982–2020), Reprocessed MODIS LAI (2004–2020), and PKU GIMMS NDVI (1982–2015).

The LAI trends between 1982 and 2015 were derived and compared between the four global LAI products. Linear regression analysis was performed on the LAI time series at the pixel level. The trend was calculated as the slope of the fitting line, which indicates greening (positive slope) or browning (negative slope). This produced a global map of LAI trending. We also analyzed annual LAI variations during 1982–2015 and paid a special attention to vegetation trends before and after 2000 for all vegetation biome types. The annual LAI value is an area-weighted average based on the vegetation biome type.

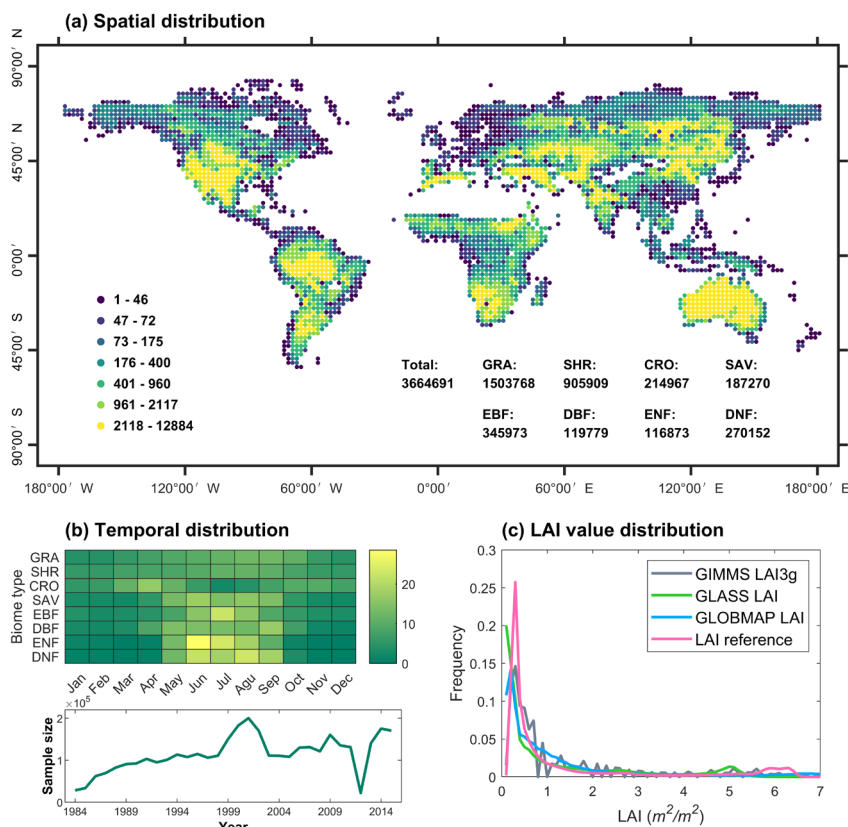
4. Results

4.1 Examination of LAI reference data

The spatial and temporal distributions of the LAI reference data were determined mostly by the availability of Landsat images but also by the occurrence of cloud cover, aerosol, and other factors. Figure 2a shows the spatial distribution of the 3.6 million LAI samples primarily from the Landsat LAI dataset. The sample size for each vegetation biome, ranging from 116,873 (ENF) to 1,503,768 (GRA) is also listed. The sample locations spanned all latitudes of the vegetated area, and no samples were selected from non-vegetation regions. The sample size per biome was approximately proportionate to the biome area (Figure

290 2b). In northern high latitudes, Landsat images were scarce throughout the winter due to the polar night phenomenon and the low solar altitude angle; and in the tropical area, Landsat images were frequently contaminated by precipitation and clouds. As a result, the number of available samples was limited in these two areas (Figure 2a). We addressed this issue by introducing 40,000 samples from the Reprocessed MODIS LAI at locations and months when Landsat LAI samples were scarce. During 1984–2015, the Landsat LAI sample size per year increased from 28,323 in 1984, peaked at 200,315 in 2001 when both Landsat 5 and Landsat 7 were available, and then leveled off until 2012 (sample size: 22,106) (Figure 2b). From November 2011 to May 2012, very few images were acquired with Landsat 5’s decommissioning, (<https://www.usgs.gov/centers/eros/science/usgs-eros-archive-landsat-archives-landsat-4-5-thematic-mapper-tm-level-1-data>). Since the launch of Landsat 8 in 2013, the Landsat LAI sample became steadily available again.

295 To evaluate the representativeness of the Landsat LAI samples, we calculated a frequency histogram based on all Landsat LAI sample values between 1984–2015 and compared it to those based on GIMMS LAI3g, GLASS LAI, and GLOBMAP LAI (Figure 2c). During 1984–2015, the LAI value distribution in the Landsat samples was similar to those in the other three products at global vegetation pixels (Figure 2c), indicating that the Landsat LAI samples used in this study have good representativeness.



305 **Figure 2.** Spatial and temporal distribution of the LAI reference data. (a) The global distribution of LAI samples in 2° grids. The LAI sample size for each vegetation is listed. (b) **The temporal distribution of LAI samples for the eight vegetation biome types and the annual variation of LAI sample size.** (c) The distribution of LAI values in percentage (bin width = 0.1) for Landsat LAI samples, GIMMS LAI3g, GLASS LAI, and GLOBMAP LAI. It should be noted that 40,000 Reprocessed MODIS LAI samples were introduced at locations and months when Landsat LAI samples were scarce.

4.2 The optimum BPNN models

310 For each vegetation biome, different combinations of explanatory variables (S1 to S5, see section 3.1) were tested in BNPP models. The variations in accuracy are shown in **Figure 3** and Table 1. The inclusion of spatial information and temporal information has significantly improved the model performance with much higher R^2 , **lower RMSE**, lower MAE, and lower MAPE for most vegetation biomes (**Figure 3**). The improvement from spatial information was slight for DNF, probably because of its relative concentration in certain middle- and high-latitudes of Eurasia (**Figure S3**). The inclusion of NOAA satellite number and years since its launch brought subtle but discernible improvements towards the accuracy of BPNN models.

315 Using all explanatory variables in the BPNN model (S5) has resulted in R^2 values > 0.80 for most biome types except EBF (0.53) and ENF (0.68), **RMSE values $< 0.66 m^2/m^2$** , MAE $< 0.51 m^2/m^2$ and MAPE values $< 20\%$ (Table 1). MAPE of EBF was as low as 3.43%. For the global vegetation biome as a whole, accuracies of the BPNN model in S5 were R^2 of 0.95, **RMSE of $0.45 m^2/m^2$** , MAE of $0.27 m^2/m^2$, and MAPE of 11.98% (Table 1). As such, the BPNN models adopted the combination of all explanatory variables, including NDVI, longitude, latitude, month, NOAA satellite number, and NOAA satellite in orbit duration.

320

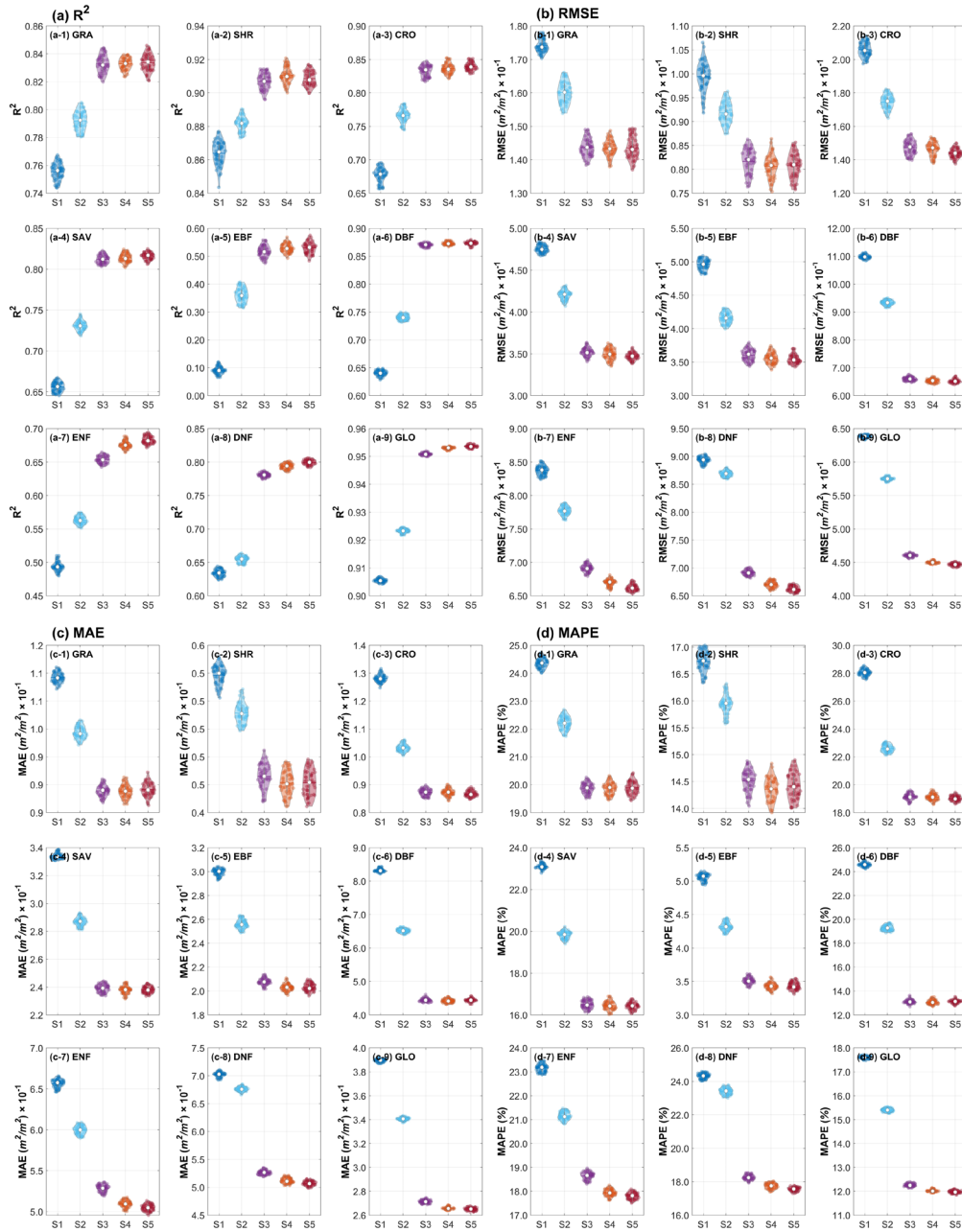


Figure 3. Performance of different combinations of explanatory variables (S1 to S5) in BPNN models for each vegetation biome. (a), (b), (c), and (d) shows the R^2 , RMSE, MAE, and MAPE, respectively, calculated based on Landsat LAI samples. GLO represents the global vegetation biome. The combinations of explanatory variables are (S1) NDVI alone; (S2) NDVI and spatial information (longitude and latitude); (S3) NDVI, spatial information, and temporal information (month); (S4) NDVI, spatial information, temporal information, and NOAA satellite number; and (S5) NDVI, spatial information, temporal information, NOAA satellite number and years since its launch.

330

Table 1 Error metric values for different combinations of explanatory variables (S1 to S5) in BPNN of each vegetation biome. Values in this table correspond to **Figure 3**. The combinations of explanatory variables are (S1) NDVI alone; (S2) NDVI and spatial information (longitude and latitude); (S3) NDVI, spatial information, and temporal information (month); (S4) NDVI, spatial information, temporal information, and NOAA satellite number; and (S5) NDVI, spatial information, temporal information, NOAA satellite number and years since its launch. GLO represents the global vegetation biome.

Metrics	combinations	Biome type								
		GRA	SHR	CRO	SAV	EBF	DBF	ENF	DNF	GLO
R ²	S1	0.76	0.86	0.68	0.66	0.09	0.64	0.49	0.63	0.91
	S2	0.79	0.88	0.77	0.73	0.36	0.74	0.56	0.65	0.92
	S3	0.83	0.91	0.83	0.81	0.52	0.87	0.65	0.78	0.95
	S4	0.83	0.91	0.84	0.81	0.53	0.87	0.68	0.79	0.95
	S5	0.83	0.91	0.84	0.82	0.53	0.87	0.68	0.80	0.95
RMSE (m^2/m^2)	S1	0.17	0.10	0.21	0.48	0.50	1.10	0.84	0.89	0.64
	S2	0.16	0.09	0.17	0.42	0.42	0.93	0.78	0.87	0.57
	S3	0.14	0.08	0.15	0.35	0.36	0.66	0.69	0.69	0.46
	S4	0.14	0.08	0.15	0.35	0.36	0.65	0.67	0.67	0.45
	S5	0.14	0.08	0.14	0.35	0.36	0.65	0.66	0.66	0.45
MAE (m^2/m^2)	S1	0.11	0.05	0.13	0.33	0.30	0.83	0.66	0.70	0.39
	S2	0.10	0.05	0.10	0.29	0.26	0.65	0.60	0.68	0.34
	S3	0.09	0.05	0.09	0.24	0.21	0.45	0.53	0.53	0.27
	S4	0.09	0.05	0.09	0.24	0.20	0.44	0.51	0.51	0.27
	S5	0.09	0.05	0.09	0.24	0.20	0.45	0.50	0.51	0.27
MAPE (%)	S1	24.36	16.75	28.06	23.09	5.06	24.60	23.16	24.33	17.61
	S2	22.18	15.95	22.59	19.82	4.33	19.29	21.16	23.40	15.40
	S3	19.85	14.55	19.17	16.50	3.51	13.15	18.64	18.26	12.27
	S4	19.88	14.36	19.11	16.45	3.44	13.09	17.94	17.73	12.02
	S5	19.88	14.45	19.03	16.46	3.43	13.16	17.79	17.56	11.98

4.3 Validation of the GIMMS LAI4g and other LAI products

335

Based on field LAI measurements, GIMMS LAI4g generated from the BPNN models presented comparable accuracies ($R^2 = 0.69$, $RMSE = 0.86 m^2/m^2$, $MAE = 0.61 m^2/m^2$, $MAPE = 33\%$) with GIMMS LAI3g ($R^2 = 0.71$, $RMSE = 0.78 m^2/m^2$, $MAE = 0.55 m^2/m^2$, $MAPE = 30\%$), and GLASS LAI ($R^2 = 0.68$, $RMSE = 0.82 m^2/m^2$, $MAE = 0.60 m^2/m^2$, $MAPE = 33\%$) (Figure 4). GIMMS LAI3g had the best performance in error measures (i.e., R^2 , RMSE, MAE, and MAPE), but GIMMS LAI4g had the lowest underestimation for the fitting line with a slope of 0.87 and an intercept of 0.05 (Figure 4). GLOBMAP LAI presented the largest discrepancies from the LAI measurements.

340

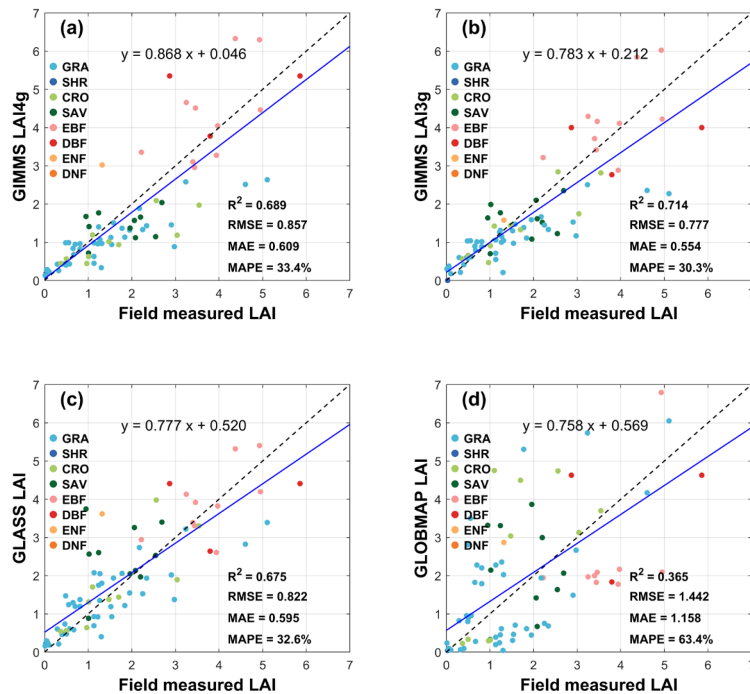


Figure 4. Validation of the (a) GIMMS LAI4g, (b) GIMMS LAI3g, (c) GLASS LAI, and (d) GLOBMAP LAI products using 113 field LAI measurements from 49 sites in the projects of BELMANIP 2.1, DIRECT 2.1, and ORNL. Sites of different vegetation biome types are marked by colors. The error metrics are R^2 , RMSE, MAE, and MAPE. The blue fitting lines and dashed 1:1 lines are drawn.

345

Figure 5 shows the validation results for the four global LAI products using the remaining 20% Landsat sample points. In general, GIMMS LAI4g ($R^2 = 0.95$, RMSE = $0.36 \text{ m}^2/\text{m}^2$, MAE = $0.18 \text{ m}^2/\text{m}^2$, MAPE = 14.9%) had the highest accuracy, followed by GIMMS LAI3g ($R^2 = 0.92$, RMSE = $0.47 \text{ m}^2/\text{m}^2$, MAE = $0.26 \text{ m}^2/\text{m}^2$, MAPE = 22%) and GLASS LAI ($R^2 = 0.91$, RMSE = $0.50 \text{ m}^2/\text{m}^2$, MAE = $0.29 \text{ m}^2/\text{m}^2$, MAPE = 24%). GLOBMAP LAI ($R^2 = 0.77$, RMSE = $0.84 \text{ m}^2/\text{m}^2$, MAE = $0.46 \text{ m}^2/\text{m}^2$, MAPE = 39%) had the lowest accuracy. The MAPE value of 14.9% in GIMMS LAI4g achieves the LAI accuracy target proposed by GCOS.

350

Regarding individual vegetation biome types, the GIMMS LAI4g product outperformed the other three except for DBF (**Figure 5**). In DBF, the GLASS LAI ($R^2 = 0.75$, RMSE = $0.93 \text{ m}^2/\text{m}^2$, MAE = $0.70 \text{ m}^2/\text{m}^2$, MAPE = 21%) has slightly higher accuracies than the GIMMS LAI4g ($R^2 = 0.67$, RMSE = $1.10 \text{ m}^2/\text{m}^2$, MAE = $0.74 \text{ m}^2/\text{m}^2$, MAPE = 22%). The most accurate vegetation biome varied with error metrics for all LAI products. In the GIMMS LAI4g, GIMMS LAI3g, and GLOBMAP LAI products, SHR had the highest accuracies in R^2 , RMSE, and MAE ($R^2 = 0.90, 0.74$, and 0.57 , respectively; RMSE = $0.09, 0.14$, and $0.25 \text{ m}^2/\text{m}^2$, respectively; MAE = $0.06, 0.09$, and $0.20 \text{ m}^2/\text{m}^2$, respectively); meanwhile, DBF had the highest accuracies in MAPE (MAPE = 4%, 10%, and 24%, respectively). The most accurate vegetation biome in GLASS LAI could be DBF, SHR, or EBF, determined by R^2 , RMSE/MAE, or MAPE, respectively. This discrepancy was attributed to the nature of the

355

error metrics. For instance, EBF with higher absolute LAI values generally produced the lowest MAPE. However, the R^2 , **RMSE**, and MAE proposed that EBF could be the most inaccurate vegetation biome ($R^2 = 0.59, 0.07, 0.20$, and 0.05 , respectively; **RMSE = 0.38, 0.80, 0.88, and 1.95 m^2/m^2 , respectively**; MAE = 0.22, 0.61, 0.77, and $1.40 m^2/m^2$, respectively). The LAI accuracy in EBF was low because it is primarily distributed in tropical areas where the quality of remote sensing data is poor owing to frequent clouds and rains.

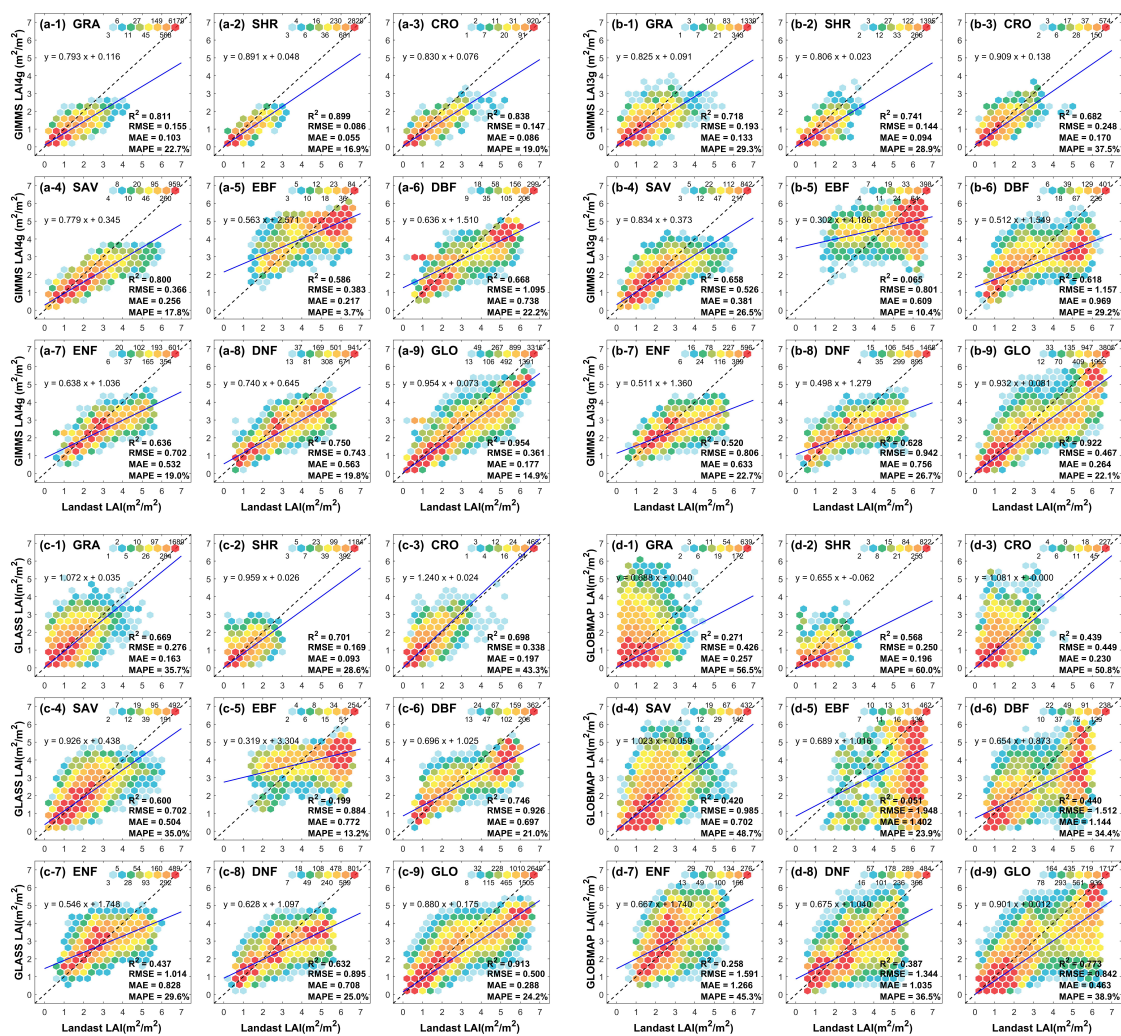


Figure 5. Validation of the (a) GIMMS LAI4g, (b) GIMMS LAI3g, (c) GLASS LAI, and (d) GLOBMAP LAI products in different vegetation biomes using Landsat LAI samples from 1984 to 2015. The error metrics are R^2 , **RMSE**, MAE, and MAPE. GLO represents the global vegetation biome. The color of the dots represents LAI value frequencies in a $0.5 m^2/m^2$ interval.

370 Compared to Landsat LAI samples, the four global LAI products were underestimated in almost all the vegetation types
except for CRO of GLASS LAI (Figure 5). We found certain levels of saturation in GIMMS LAI4g and GIMMS LAI3g, such
375 as for high values of GRA, SHR, CRO, and SAV and medium values of EBF, DBF, ENF, and DNF (Figure 5). This could be
attributed to the use of NDVI data in LAI models. However, we also observed the saturation effect in EBF, DBF, ENF, and
DNF of GLASS LAI, which was not derived from NDVI data. For GIMMS LAI4g, the saturation was relatively subtle at a
majority of sample locations (red dots) and was obvious for locations whose LAI values deviated from the average (yellow
and blue dots). The LAI fitting line of the global vegetation biome in GIMMS LAI4g (Figure 5a-9) was close to the 1:1 line.

Figure 6 shows the dominance map of global LAI products composited by reciprocal averages of MAE from
GIMMS LAI4g (green), GIMMS LAI3g (red), and GLASS LAI (blue). Grids with a small Landsat LAI sample size (<
100) were excluded as they may not provide a reliable evaluation. Within each valid $2^\circ \times 2^\circ$ grid, the color was
380 determined by the LAI products with a lower MAE, i.e., a higher absolute LAI accuracy. An immediate observation from
Figure 6 is that the absolute LAI accuracy of GIMMS LAI4g was significantly higher than others in most parts of the
world. However, this advantage was relatively weak in the northern latitudes of the Eurasian continent (40° – 60°). The
GIMMS LAI3g and GLASS LAI could show higher accuracy at rather random locations. We acknowledged that the
number of Landsat LAI samples in certain $2^\circ \times 2^\circ$ grids might not be sufficient for robust accuracy assessment, but that
385 would not alter the overall outperformance of the GIMMS LAI4g.

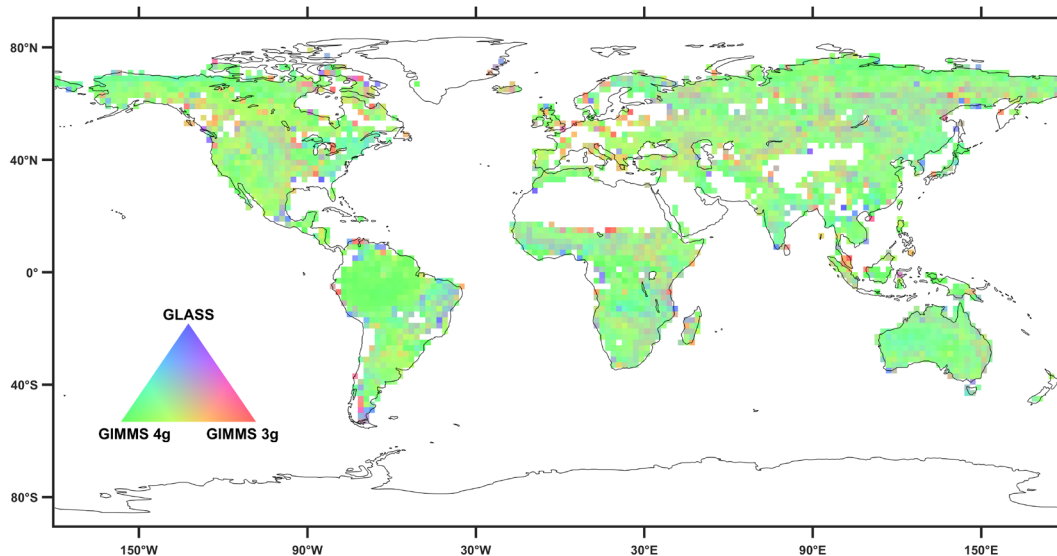


Figure 6. Dominance map of the GIMMS LAI3g, GIMMS LAI4g, and GLASS LAI based on their MAE. The map was drawn in $2^\circ \times 2^\circ$ grids whose colors were composed of reciprocal averages of MAE from the GIMMS LAI4g (green), GIMMS LAI3g (red), and GLASS

390

LAI (blue). Non-vegetated grids and grids with small Landsat LAI sample size (< 100) were filled white. A greener grid, for example, indicates that the GIMMS LAI4g has a lower MAE (or a higher absolute LAI accuracy).

395

Figure 7 showcases the spatially averaged LAI along latitude in January and July of the years 1990, 2000, and 2010 for GIMMS LAI4g, GIMMS LAI3g, GLASS LAI, and GLOBMAP LAI, respectively. The four LAI products were overall consistent. The GIMMS LAI4g and GIMMS LAI3g had lower values at northern middle latitudes ($35^{\circ}\text{N} - 65^{\circ}\text{N}$) in July (Figure 7b; Figure 7d; Figure 7f). Also in July, the GLOBMAP LAI and GLASS LAI in the Northern Hemisphere maintained good consistency for the years 1990 and 2010 (Figure 7b; Figure 7f), but the GLOBMAP LAI was systematically lower than GLASS LAI for the year 2000 (Figure 7d).

400

Figure 7. Inter-comparison of spatially averaged LAI along latitude between the GIMMS LAI4g, GIMMS LAI3g, GLASS LAI, and GLOBMAP LAI in January and July of the years 1990, 2000, and 2010. The spatial average was calculated at an interval of 1° .

4.4 Temporal consistency analysis

Figure 8 shows the variations of LAI bias in EBF for the GIMMS LAI4g and other three LAI products. The LAI bias during different NOAA satellite missions was distinguished. The GIMMS LAI4g demonstrated an outstanding temporal consistency with minimum bias variations (Figure 8a), indicating an efficient removal of satellite orbital drift and sensor

18

405 degradation effects. LAI bias significantly fluctuated in the GIMMS LAI3g, GLASS LAI, and GLOBMAP LAI with different
patterns. The GIMMS LAI3g relied on AVHRR data only and its bias varied with NOAA missions. The evident AVHRR
degradation after the year 2012, as argued by Wang et al. (2022) can be also observed in our results (Figure 8b). The GLASS
LAI and GLOBMAP LAI used different data sources before (AVHRR) and after (MODIS) in the year 2000. For the GLASS
LAI, bias variations before 2000 were much larger than those after 2000 (Figure 8c). The reason is likely that the data quality
410 from MODIS is better than AVHRR. For the GLOBMAP LAI, however, bias variations remained large for all periods of NOAA
missions (Figure 8d). Similar results were found in other vegetation biome types (Figure S4-S10).

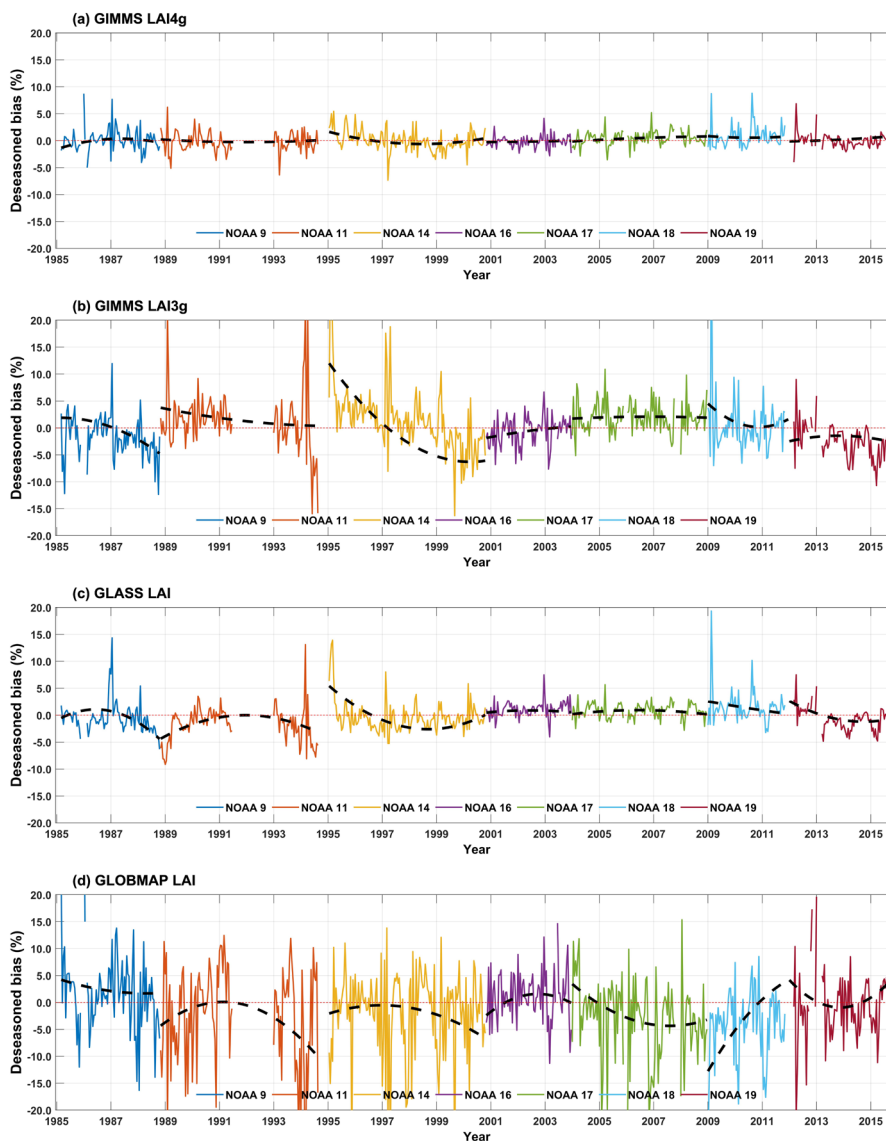


Figure 8. Temporal variations of LAI bias% in EBF for (a) the GIMMS LAI4g, (b) GIMMS LAI3g, (c) GLASS LAI, and (d) GLOBMAP LAI. The black dash line represents the interannual trend extracted by the EEMD method. Values from different NOAA satellite missions were distinguished with colors.

415

Figure 9 shows the GIMMS LAI4g time series before (thin black line) and after (bold colored line) data consolidation at the global scale and in selected hotspot regions of Europe, Amazon, Congo, India, and China from 1982 to 2020. The GIMMS LAI4g shares the same footprint with the Reprocessed MODIS LAI after the year 2004. Before consolidation, there was a systematic deviation between the GIMMS LAI4g and MODIS LAI products during 2004–2015 in all regions. The pixel-wise fusion method has successfully matched the GIMMS LAI4g time series with MODIS LAI, eliminating abnormal shifts in vegetation phenology. This is especially true for the Amazon rainforests, where the phenological curve has been substantially corrected and enhanced by the MODIS LAI (Figure 9d). As a result, the temporal variations of the GIMMS LAI4g after consolidation were self-consistent in all periods. This temporal consistency has also been evaluated regarding the vegetation biome type and similar results were found (Figure S11).

420

425

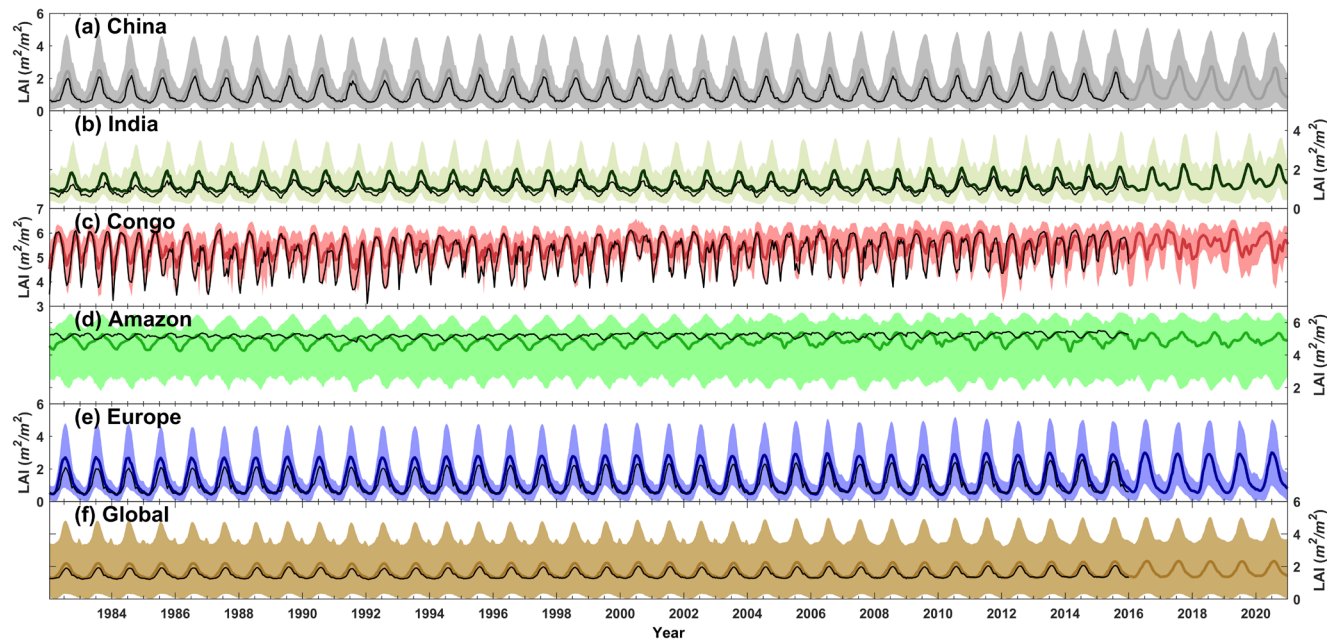


Figure 9. Temporal variations of the GIMMS LAI4g during 1982–2020 in selected hotspot regions of China (a), India (b), Congo (c), Amazon (d), and Europe (e) and at the global scale (f). GLO represents the global vegetation biome. The bold colored line represents the LAI average of GIMMSLAI4g after data consolidation, with shadow covering the value range between 10% and 90% quantiles. The thin black line represents the LAI average of GIMMSLAI4g before consolidation. It should be noted that the GIMMS LAI4g after consolidation shared the same footprint with the Reprocessed MODIS LAI after the year 2004.

430

435

440

Figure 10 shows the LAI accuracies in three periods, i.e., 1984–2015 (p1), 1984–2000 (p2), and 2001–2015 (p3), for the four global LAI products. The results show good temporal consistency for the GIMMS LAI4g and GIMMS LAI3g. Their accuracy differences between p2 and p3 (i.e., 1984–2000 and 2001–2015) were minimum for most vegetation biomes. In particular, the global vegetation biome shows constant R^2 values (GIMMS LAI4g: 0.96 (p2) vs. 0.95 (p3); GIMMS LAI3g: 0.92 vs. 0.92) (Figure 10a) and a small difference in RMSE (GIMMS LAI4g: $0.34 \text{ m}^2/\text{m}^2$ vs. $0.38 \text{ m}^2/\text{m}^2$; GIMMS LAI3g: $0.45 \text{ m}^2/\text{m}^2$ vs. $0.48 \text{ m}^2/\text{m}^2$) (Figure 10b), MAE (GIMMS LAI4g: $0.17 \text{ m}^2/\text{m}^2$ vs. $0.19 \text{ m}^2/\text{m}^2$; GIMMS LAI3g: $0.25 \text{ m}^2/\text{m}^2$ vs. $0.27 \text{ m}^2/\text{m}^2$) (Figure 10c), and MAPE (GIMMS LAI4g: 14.99% vs. 14.82%; GIMMS LAI3g: 22.62% vs. 21.79%) (Figure 10d). The temporal consistency of GLOBMAP LAI in different periods was relatively low. For the GLASS LAI and GLOBMAP LAI that used different data sources before (AVHRR) and after (MODIS) the year 2000, data quality after 2000 was higher than that before 2000 because of the improvement in satellite sensors. The GIMMS LAI4g product used Landsat LAI samples that covered the whole period from 1984 to 2015. This consistency in LAI reference data resulted in a minimum difference between periods.

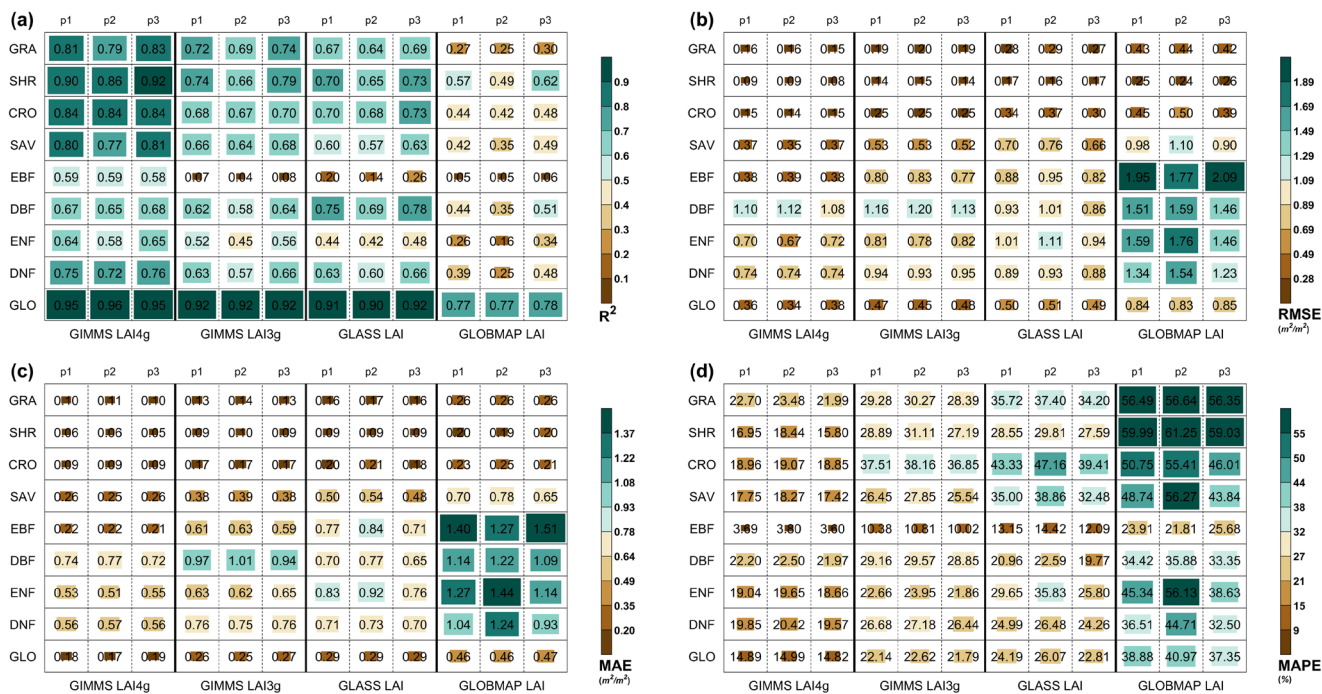
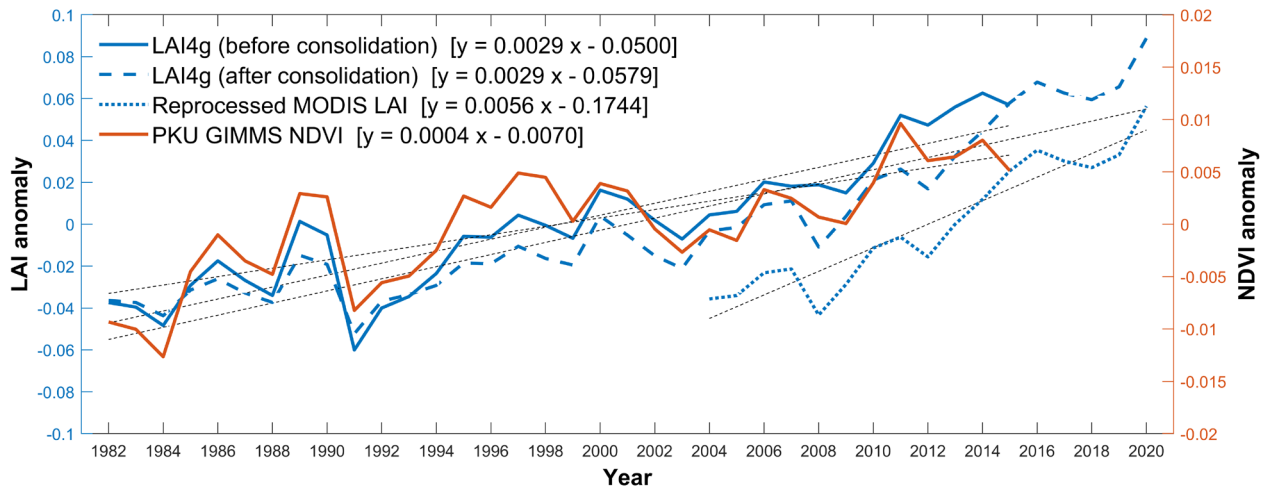


Figure 10. Temporal consistencies between different periods for the global LAI products. The global LAI products include GIMMS LAI4g, GIMMS LAI3g, GLASS LAI, and GLOBMAP LAI. The periods are 1984–2015 (p1), 1984–2000 (p2), and 2001–2015 (p3). The consistencies were evaluated at the biome level using R^2 (a), RMSE (b), MAE (c), and MAPE (d) calculated based on Landsat LAI samples. GLO represents the global vegetation biome.

450

455

Figure 11 demonstrates a good consistency in the overlapping periods between annual variations of the final GIMMS LAI4g product (GIMMS LAI4g after consolidation) and the input and intermediate products. The shapes of the anomalies were similar. The LAI trends for GIMMS LAI4g remained constant before and after consolidation ($2.9 \times 10^{-3} m^2 m^{-2} yr^{-1}$), despite Reprocessed MODIS LAI presenting a high greening trend during 2004–2020. The consistency has also been found in a biome-specific manner (Figure S12). This result indicates that both BPNN modeling (PKU GIMMS NDVI vs GIMMS LAI4g before consolidation) and data consolidation (GIMMS LAI4g before consolidation vs GIMMS LAI4g after consolidation) preserved the LAI anomaly and trend.



460

Figure 11. Annual anomalies and trends of GIMMS LAI4g before consolidation (1982–2015), GIMMS LAI4g after consolidation (1982–2020), Reprocessed MODIS LAI (2004–2020), and PKU GIMMS NDVI (1982–2015).

4.5 LAI trend analysis

465

Figure 12a to Figure 12d show the slope maps of the LAI time series from the GIMMS LAI4g (after consolidation), GIMMS LAI3g, GLASS LAI, and GLOBMAP in the period of 1982–2015. Figure 12e to Figure 12g shows the slope differences between the GIMMS LAI4g and the other three LAI products. In general, the GIMMS LAI4g, GIMMS LAI3g, and GLASS LAI showed a similar spatial pattern that agreed on the greening trend in global hotspot areas such as China and India. The GIMMS LAI4g demonstrated a more significant greening trend in the high-latitude regions of northern Europe and Asia.

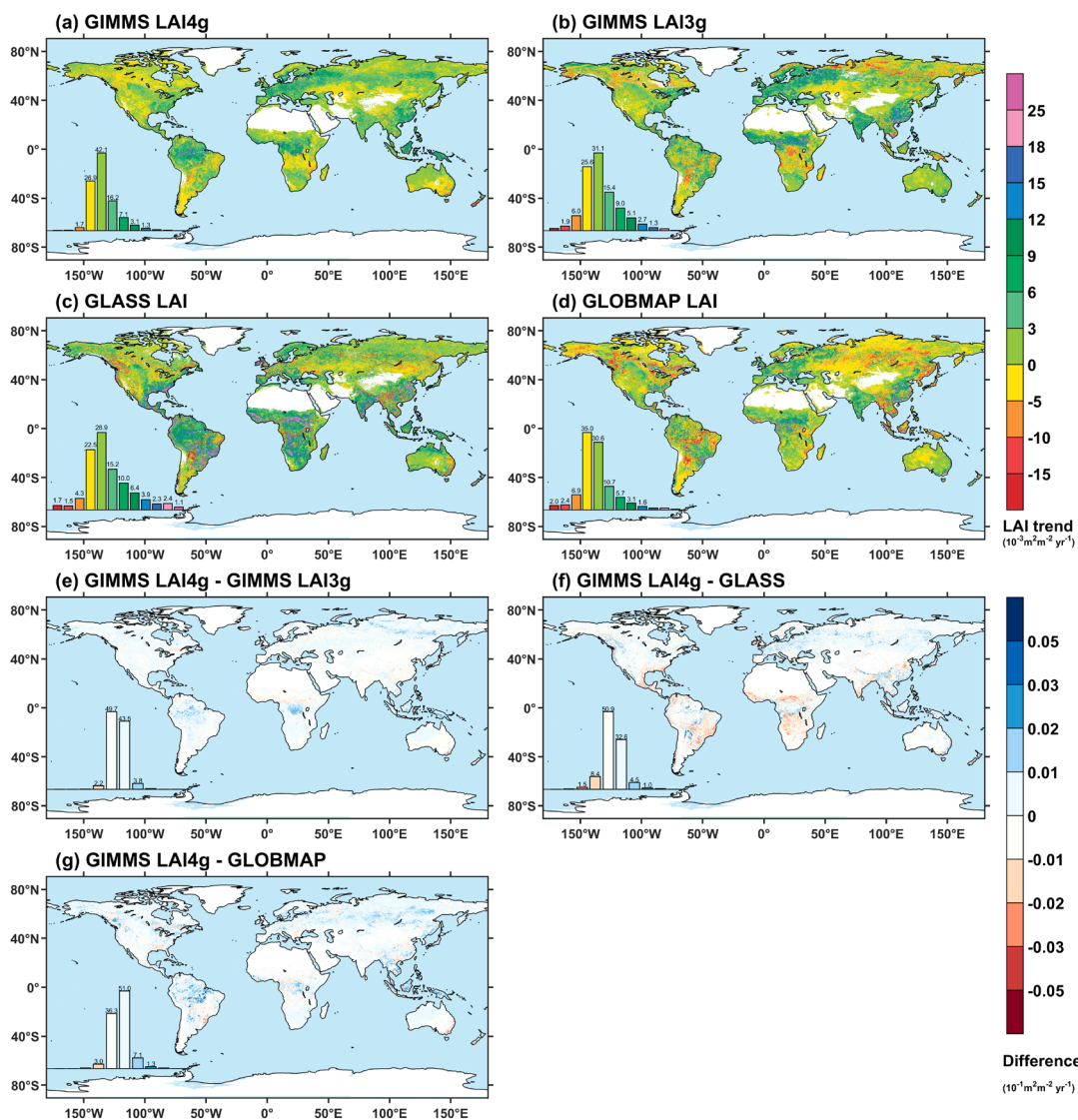
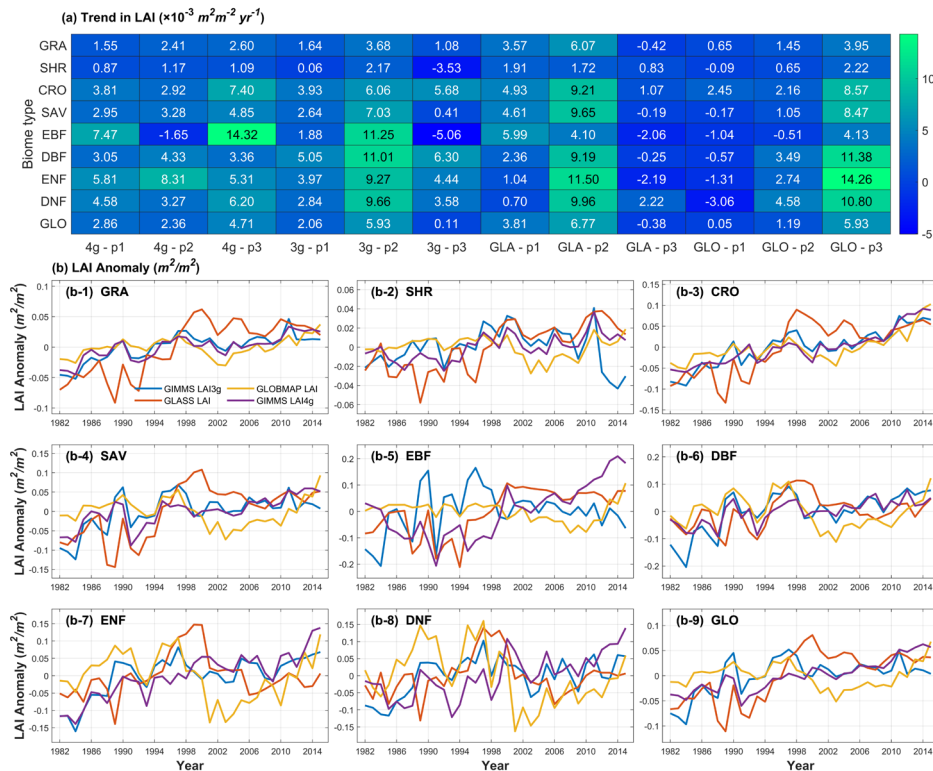


Figure 12. Global maps of LAI trends and their differences between the global LAI products during 1982–2015. The LAI products include GIMMS LAI4g after consolidation (a), GIMMS LAI3g (b), GLASS LAI (c), and GLOBMAP LAI (d). The trend was calculated as the slope of a linearly fitted LAI time series. (e) to (g) show the slope differences between the GIMMS LAI4g and the other three LAI products.

Figure 13a shows the annual average LAI trends during 1982–2020 (p1), 1982–2000 (p2), and 2001–2020 (p3) for different vegetation biomes of the four LAI products. For the whole period domain (1982–2020), the GIMMS LAI3g, GIMMS LAI4g, and GLASS LAI products presented a similar greening trend for the global vegetation biome, with a slope

value of $2.06 \times 10^{-3} \text{ m}^2 \text{ m}^{-2} \text{ yr}^{-1}$, $2.86 \times 10^{-3} \text{ m}^2 \text{ m}^{-2} \text{ yr}^{-1}$, and $3.81 \times 10^{-3} \text{ m}^2 \text{ m}^{-2} \text{ yr}^{-1}$, respectively. The greening trend in the GLOBMAP LAI product was significantly lower, with a value of $0.05 \times 10^{-3} \text{ m}^2 \text{ m}^{-2} \text{ yr}^{-2}$. GIMMS LAI4g had the maximum global LAI trends in forest types of EBF, ENF and DNF; and its trends in other biomes were in-between the maximum and minimum trends of GIMMS LAI3g, GLASS LAI, and GLOBMAP LAI. Before 2000, the four LAI products generally demonstrated greening trends except for EBF in GIMMS LAI4g ($-1.65 \times 10^{-3} \text{ m}^2 \text{ m}^{-2} \text{ yr}^{-1}$) and GLOBMAP LAI ($-0.51 \times 10^{-3} \text{ m}^2 \text{ m}^{-2} \text{ yr}^{-1}$). The LAI products showed few agreements in vegetation trends after 2000. GIMMS LAI4g and GLOBMAP LAI exhibited continuous greening in all biomes, GIMMS LAI3g exhibited browning in SHR and EBF, and GLASS LAI was dominated by a browning trend in GRA, SAV, EBF, DBF, and ENF.

Figure 13b shows the annual LAI variations of the four LAI products for different vegetation biomes. The GIMMS LAI3g and GLASS LAI showed remarkable differences in trends before and after the year 2000. Their LAI values significantly increased before 2000 but turned stagnant after 2000. The GIMMS LAI4g demonstrated continuous global greening trends around the year 2000. For EBF in GIMMS LAI4g, although its trend during 1982–2000 was overall negative (browning) (Figure 13a), it has sustained a greening trend since 1991 (Figure 13b-5). The GIMMS LAI3g had opposite trends to the GIMMS LAI4g after the year 2000, which may be caused by AVHRR sensor degradation (Wang et al., 2022), as MODIS LAI also showed a greening trend (Wang et al., 2022; Jiang et al., 2017) in this period.



495 **Figure 13.** Variations of annual LAI anomaly of different vegetation biomes in the global LAI products during 1982–2015. The LAI products include GIMMS LAI4g, GIMMS LAI3g, GLASS LAI, and GLOBMAP LAI. (a) shows the slope values of the annual LAI during 1982–2020 (p1), 1982–2000 (p2), and 2001–2020 (p3). In the x-axis, 4g, 3g, GLA, and GLO stands for GIMMS LAI4g, GIMMS LAI3g, GLASS LAI, and GLOBMAP LAI, respectively. (b) shows the annual LAI time series.

5. Discussion

5.1 Improvements over other long-term global LAI products

500 The remote sensing data source and LAI reference data are critical inputs for the accurate derivation of long-term and large-scale LAI products. The first improvement in this study was the use of a more reliable remote sensing product, i.e., the PKU GIMMS NDVI product. Some global LAI products (e.g., GLASS LAI and GLOBMAP LAI) directly used remote sensing surface reflectance as the data source (Ma and Liang, 2022; Kang et al., 2021; Xiao et al., 2016), but some others (e.g., GIMMS LAI3g) argued that NDVI could be more robust against the terrain, atmospheric conditions, and BRDF effects (Zhu et al., 2013; Pinzon and Tucker, 2014; Zeng et al., 2022). More importantly, the PKU GIMMS NDVI product essentially addresses the issue related to the NOAA satellite orbital drift and AVHRR sensor degradation (Li et al., in review), which had widely existed in current long-term global LAI products (Zhu et al., 2013) (Figure 8) since the AVHRR data were the only data source before the late 1990s that provided spatiotemporal observations over the globe. Our GIMMS LAI4g thereby was also free from this issue (Figure 8). The second improvement in our LAI product was the use of massive and high-quality Landsat LAI samples. In current long-term global LAI products (e.g., GLASS LAI, GLOBMAP LAI, and GIMMS LAI3g), the LAI reference data were either ground measurements which were spatially and temporally insufficient or LAI values derived from advanced sensors unavailable before the year 2000 (Zhu et al., 2013; Chen et al., 2019a). In the LAI model generalization, uncertainties could be hard to determine over locations and dates when the LAI reference data were basically absent. The Landsat LAI samples used in this study had a large number (3.6 million), a long time series (1984–2015), and global coverage (Figure 2). These two improvements in this study guaranteed that our GIMMS LAI4g product is more spatiotemporally consistent, as demonstrated in our results (sections 4.3 and 4.4).

510 Besides, incorporating other explanatory variables, including spatial, temporal, and satellite-based information, further improved the robustness of LAI models. Specifically, the role of spatial information (longitude and latitude) and temporal information (month) has been underscored in explaining global LAI variations (Figure 3 and Table 1). In this study, individual BNPP models were developed for vegetation biomes. We chose not to include the vegetation biome type as an explanatory variable (GIMMS LAI3g did) because the values of the vegetation biome type are deterministic rather than continuous (like month). The deterministic NOAA satellite number was used as an explanatory variable so that the temporal consistency of the BPNN models can be ensured.

Compared to its predecessor (GIMMS LAI3g; 1982–2016) which relied on AVHRR data only, our GIMMS LAI4g (1982–2020) provides up-to-date LAI data by consolidating with the MODIS LAI (the Reprocessed MODIS LAI product). This extension of temporal coverage could help interpret recent global vegetation dynamics. Two other LAI products, namely the GLASS LAI (1982–2018) and GLOBMAP LAI (1982–2020), also incorporated MODIS data (reflectance). However, they did not explicitly calibrate systematic deviations between AVHRR and MODIS data (Liu et al., 2012; Xiao et al., 2014). Our study employed a pixel-wise fusion method to match the GIMMS LAI4g with the MODIS LAI product. The results showed an excellent consistency between the GIMMS LAI4g (after consolidation) and MODIS LAI.

5.2 Potential applications of the GIMMS LAI4g product

With an explicit physical meaning, LAI was proposed to be more accurate in characterizing vegetation dynamics than spectral indices such as NDVI and Enhanced Vegetation Index (EVI) (Zhang et al., 2004; Verger et al., 2016). Our results demonstrated that the GIMMS LAI4g product could be more spatiotemporally consistent and reliable than other long-term global LAI products. One important role of the GIMMS LAI4g is to mitigate the disagreements between current global LAI products and gain robust knowledge about long-term vegetation changes. For the past 40 years, the long-term analysis based on the global LAI products has shown an overall greening trend in most vegetated areas. However, significant variations existed between different LAI products at the regional scale (Wang et al., 2022; Jiang et al., 2017). In the evergreen broadleaf forests of Africa, for instance, the GIMMS LAI3g exhibited a decreasing trend from the year 2000 while the MODIS LAI exhibited an increasing trend (Wang et al., 2022). The GIMMS LAI4g provides an opportunity to better understand the spatial pattern of vegetation greening (or browning) and its drivers (Zhu et al., 2016; Piao et al., 2015; Chen et al., 2019a).

LAI is also a popular proxy for many important ecosystem attributes and functions, such as carbon stock and sink (Chen et al., 2019b), nutrition cycle (Pierce et al., 1994), and evapotranspiration (Wang et al., 2014). It serves as a fundamental parameter in many ecosystem models (Boussetta et al., 2013; Boussetta et al., 2015; Chen et al., 2015), earth system models (Mahowald et al., 2016), and climate models (Boussetta et al., 2013; Boussetta et al., 2015). The GIMMS LAI4g is expected to benefit the development of these models and provide a powerful data basis for a more accurate and reliable land surface characterization.

5.3 Uncertainty source of GIMMS LAI4g product

The PKU GIMMS NDVI product and the Landsat LAI samples comprise this study's primary sources of uncertainty. Despite the efforts by Zha et al. (in preparation), the number of Landsat LAI samples was small in certain regions, e.g., the northern high latitudes and tropical areas. This was attributed to the low solar altitude angle, polar night phenomenon, and climate conditions such as frequent clouds and rains at the time of Landsat observation. The PKU GIMMS NDVI product suffers from the same issues as it was also derived from Landsat samples (Li et al., in review). Although both Li et al. (in

review) and the current study have used MODIS data as compensation, the relative lack of Landsat samples in the northern high latitudes and tropical areas may still lower the robustness of models in the generation of GIMMS LAI4g to a certain extent. The use of PKU GIMMS NDVI could also result in the saturation effect in GIMMS LAI4g as NDVI data tend to saturate at high values (Figure 5). This study established biome-specific models that incorporate multiple explanatory variables besides PKU GIMMS NDVI to account for the LAI variations in space, time, biome, and satellite. This effort could help alleviate the saturation effect though the effect still exists.

Other sources of uncertainty could be from the BPNN model structure in which more explanatory variables such as temperature and precipitation could be incorporated, the static vegetation biome map which could be replaced by annual maps if available, and the Reprocessed MODIS LAI product. It should be noted that, however, these uncertainties also existed in other LAI products and this study has tried its best to mitigate their influence on the GIMMS LAI4g.

6. Conclusions

This study developed a new generation of the GIMMS LAI product (GIMMS LAI4g, 1982–2020) based on Back Propagation Neural Network (BPNN) models and a pixel-wise consolidation method. The GIMMS LAI4g was featured by the use of the PKU GIMMS NDVI product and the massive high-quality Landsat LAI samples. The recently published PKU GIMMS NDVI efficiently removed the effects of NOAA orbital drift and AVHRR sensor degradation, which has been a critical issue in existing LAI products. The high-quality global Landsat LAI samples, with a total number of 3.6 million and temporal coverage of 1984–2015, facilitated the creation of spatiotemporally consistent BPNN models. The spatiotemporally consistent GIMMS LAI4g product covers a time span of 1982 to 2020, with a spatial resolution of $1/12^\circ$ and a temporal resolution of half-month. It can potentially provide strong data support for long-term vegetation monitoring and model development with high accuracy and reliability, as shown below:

- Evaluated by the Landsat LAI samples, the GIMMS LAI4g product ($R^2=0.95$, $RMSE = 0.36 \text{ m}^2/\text{m}^2$, $MAE=0.18 \text{ m}^2/\text{m}^2$, $MAPE=14.9\%$) was overall more accurate than the mainstream global LAI products, including the GIMMS LAI3g ($R^2=0.92$, $RMSE = 0.47 \text{ m}^2/\text{m}^2$, $MAE=0.26 \text{ m}^2/\text{m}^2$, $MAPE=22\%$), GLASS LAI ($R^2=0.91$, $RMSE = 0.50 \text{ m}^2/\text{m}^2$, $MAE=0.29 \text{ m}^2/\text{m}^2$, $MAPE=24\%$), and GLOBMAP LAI ($R^2=0.77$, $RMSE = 0.84 \text{ m}^2/\text{m}^2$, $MAE=0.46 \text{ m}^2/\text{m}^2$, $MAPE=39\%$). Its accuracy meets the target proposed by the Global Climate Observation System (GCOS).
- Evaluated by field LAI measurements, GIMMS LAI4g ($R^2 = 0.69$, $RMSE = 0.86 \text{ m}^2/\text{m}^2$, $MAE = 0.61 \text{ m}^2/\text{m}^2$, $MAPE = 33\%$) had comparable accuracies with GIMMS LAI3g ($R^2 = 0.71$, $RMSE = 0.78 \text{ m}^2/\text{m}^2$, $MAE = 0.55 \text{ m}^2/\text{m}^2$, $MAPE = 30\%$) and GLASS LAI ($R^2 = 0.68$, $RMSE = 0.82 \text{ m}^2/\text{m}^2$, $MAE = 0.60 \text{ m}^2/\text{m}^2$, $MAPE = 33\%$) and lowest underestimation among all global long-term LAI products.

- The GIMMS LAI4g outperformed the other LAI products in most regions of the globe and most vegetation biomes (R^2 : 0.59 to 0.90; **RMSE: $0.86 \text{ m}^2/\text{m}^2$ to $1.10 \text{ m}^2/\text{m}^2$** ; MAE: $0.06 \text{ m}^2/\text{m}^2$ to $0.74 \text{ m}^2/\text{m}^2$; MAPE: 4% to 23%) except the deciduous broadleaf forests (next to GLASS LAI).
- The GIMMS LAI4g product removed the effects of NOAA orbital drift and AVHRR sensor degradation, which can be observed in other LAI products.
- The GIMMS LAI4g after consolidation with the Reprocessed MODIS LAI was more temporally consistent between the three periods of 1984–2015, 1984–2000, and 2001–2015 than other LAI products. It more reasonably depicted global vegetation trends (greening or browning) **and demonstrated a continuous global greening trend before and after 2000.**

Data availability

The spatiotemporally consistent global dataset of the GIMMS Leaf Area Index (GIMMS LAI4g) generated in this study is openly available at <https://doi.org/10.5281/zenodo.8035760> (Cao et al., 2023). It covers the whole global vegetation area at half-month temporal resolution and $1/12^\circ$ spatial resolution from 1982 to 2020. It is available in Geographic Lat/Lon projection and TIFF format. **In the same repository, we have also provided the version of GIMMS LAI4g that is solely based on AVHRR data, which means that its generation was free from the consolidation with Reprocessed MODIS LAI and it used the version of PKU GIMMS NDVI before consolidation with MODIS NDVI.**

Author contributions. ZZ conceptualized and supervised the project. ZZ, ML, SC, and JZ designed the workflow of methodology to product the dataset. ML, JZ, WZ, ZD, JC, YZ, and YC conducted the work in data acquisition and processing. ZZ, ML, SC, and JZ performed data analysis. SC, ML, and ZZ prepared the manuscript. SC and ZZ reviewed and edited the draft. All authors contributed to the interpretation of the results.

Competing interests. The authors declare that they have no known competing financial interests or personal relationships that could have influenced the work reported in this study.

Disclaimer. Publisher's note: Copernicus Publications remains neutral with regard to jurisdictional claims in published maps and institutional affiliations.

Acknowledgments. We would like to thank NASA for providing MODIS data products, Zhiqiang Xiao for providing GLASS LAI data, Yang Liu and Ronggao Liu for providing GLOBMAP LAI data, and Hua Yuan for providing reprocessed MODIS

LAI product. We gratefully acknowledge the Landsat data support from USGS and Google Earth Engine (<https://earthengine.google.com/>). We are also grateful to the anonymous reviewers for their constructive comments and suggestions. The updated algorithm with the reviewers' suggestions has been used for generating the GIMMS LAI4g product.

615

Financial support. This work was supported by the National Natural Science Foundation of China (42271104, 41901122, 42001355), the Shenzhen Fundamental Research Program (GXWD20201231165807007-20200814213435001), and the Shenzhen Science and Technology Program (JCYJ20220531093201004).

620

References

Alkama, R., Forzieri, G., Duveiller, G., Grassi, G., Liang, S., and Cescatti, A.: Vegetation-based climate mitigation in a warmer and greener World, *Nat. Commun.*, 13, 606, <https://doi.org/10.1038/s41467-022-28305-9>, 2022.

Baret, F., Hagolle, O., Geiger, B., Bicheron, P., Miras, B., Huc, M., Berthelot, B., Niño, F., Weiss, M., Samain, O., Roujean, J. L., and Leroy, M.: LAI, fAPAR and fCover CYCLOPES global products derived from VEGETATION: Part 1: Principles of the algorithm, *Remote Sens. Environ.*, 110, 275-286, <https://doi.org/10.1016/j.rse.2007.02.018>, 2007.

625

Baret, F., Morisette, J. T., Fernandes, R. A., Champeaux, J. L., Myneni, R. B., Chen, J., Plummer, S., Weiss, M., Bacour, C., Garrigues, S., and Nickeso, J. E.: Evaluation of the representativeness of networks of sites for the global validation and intercomparison of land biophysical products: proposition of the CEOS-BELMANIP, *IEEE Trans. Geosci. Remote Sens.*, 44(7), 1794-1803. <https://doi.org/10.1109/TGRS.2006.876030>, 2006.

630

Basheer, I. A. and Hajmeer, M.: Artificial neural networks: fundamentals, computing, design, and application, *J. Microbiol. Methods*, 43, 3-31, [https://doi.org/10.1016/s0167-7012\(00\)00201-3](https://doi.org/10.1016/s0167-7012(00)00201-3), 2000.

Boussetta, S., Balsamo, G., Beljaars, A., Kral, T., and Jarlan, L.: Impact of a satellite-derived leaf area index monthly climatology in a global numerical weather prediction model, *Int. J. Remote Sens.*, 34, 3520-3542, <https://doi.org/10.1080/01431161.2012.716543>, 2013.

635

Boussetta, S., Balsamo, G., Dutra, E., Beljaars, A., and Albergel, C.: Assimilation of surface albedo and vegetation states from satellite observations and their impact on numerical weather prediction, *Remote Sens. Environ.*, 163, 111-126, <https://doi.org/10.1016/j.rse.2015.03.009>, 2015.

Breiman, L.: Random Forests, *Mach. Learn.*, 45(1), 5-32, <https://doi.org/10.1023/A:1010933404324>, 2001.

Broge, N. H. and Leblanc, E.: Comparing prediction power and stability of broadband and hyperspectral vegetation indices for estimation of green leaf area index and canopy chlorophyll density, *Remote Sens. Environ.*, 76, 156-172, [https://doi.org/10.1016/s0034-4257\(00\)00197-8](https://doi.org/10.1016/s0034-4257(00)00197-8), 2001.

640

Ciais, Ph., Reichstein, M., Viovy, N., Granier, A., Ogee, J., Allard, V., Aubinet, M., Buchmann, N., Bernhofer, Chr., Carrara, A., Chevallier, F., De Noblet, N., Friend, A.D., Friedlingstein, P., Grünwald, T., Heinesch, B., Keronen, P., Knohl, A., Krinner, G., Loustau, D., Manca, G., Matteucci, G., Miglietta, F., Ourcival, J.M., Papale, D., Pilegaard, K., Rambal, S.,

- 645 Seufert, G., Soussana, J.F., Sanz, M.J., Schulze, E.D., Vesala, T., and Valentini, R.: Europe-wide reduction in primary productivity caused by the heat and drought in 2003, *Nature*, 437, 529-533, <https://doi.org/10.1038/nature03972>, 2005.
- Cao, S., Li, M., Zhu, Z., Zha, J., Zhao, W., Duanmu, Z., Chen, J., Zheng, Y., and Chen, Y.: Spatiotemporally consistent global dataset of the GIMMS Leaf Area Index (GIMMS LAI4g) from 1982 to 2020 (V1.1), Zenodo [dataset], <https://doi.org/10.5281/zenodo.8035760>, 2023.
- 650 Chen, C., Park, T., Wang, X. H., Piao, S. L., Xu, B. D., Chaturvedi, R. K., Fuchs, R., Brovkin, V., Ciais, P., Fensholt, R., Tommervik, H., Bala, G., Zhu, Z. C., Nemani, R. R., and Myneni, R. B.: China and India lead in greening of the world through land-use management, *Nat. Sustainability*, 2, 122-129, <https://doi.org/10.1038/s41893-019-0220-7>, 2019a.
- Chen, J. M., Ju, W., Ciais, P., Viovy, N., Liu, R., Liu, Y., and Lu, X.: Vegetation structural change since 1981 significantly enhanced the terrestrial carbon sink, *Nat. Commun.*, 10, 4259, <https://doi.org/10.1038/s41467-019-12257-8>, 2019b.
- 655 Chen, M., Willgoose, G. R., and Saco, P. M.: Investigating the impact of leaf area index temporal variability on soil moisture predictions using remote sensing vegetation data, *J. Hydrol.*, 522, 274-284, <https://doi.org/10.1016/j.jhydrol.2014.12.027>, 2015.
- Claverie, M., Matthews, J. L., Vermote, E. F., and Justice, C. O.: A 30+ year AVHRR LAI and FAPAR climate data record: algorithm description and validation, *Remote Sens.*, 8, 263, <https://doi.org/10.3390/rs8030263>, 2016.
- 660 de Wit, A., Duveiller, G., and Defourny, P.: Estimating regional winter wheat yield with WOFOST through the assimilation of green area index retrieved from MODIS observations, *Agric. For. Meteorol.*, 164, 39-52, <https://doi.org/10.1016/j.agrformet.2012.04.011>, 2012.
- Dente, L., Satalino, G., Mattia, F., and Rinaldi, M.: Assimilation of leaf area index derived from ASAR and MERIS data into CERES-Wheat model to map wheat yield, *Remote Sens. Environ.*, 112, 1395-1407, <https://doi.org/10.1016/j.rse.2007.05.023>, 2008.
- 665 Eyring, V., Gillett, N. P., Achutarao, K., Barimalala, R., Barreiro Parrillo, M., Bellouin, N., Cassou, C., Durack, P., Kosaka, Y., McGregor, S., Min, S.-K., Morgenstern, O., and Sun, Y.: Human Influence on the Climate System, in: *Climate Change 2021: The Physical Science Basis. Contribution of Working Group I to the Sixth Assessment Report of the Intergovernmental Panel on Climate Change* [Masson-Delmotte, V., Zhai, P., Pirani, A., Connors, S.L., Péan, C., Berger, S., Caud, N., Chen, Y., Goldfarb, L., Gomis, M.I., Huang, M., Leitzell, K., Lonnoy, E., Matthews, J.B.R., Maycock, T.K., Waterfield, T., Yelekçi, O., Yu, R., and Zhou, B. (eds.)], Cambridge University Press, Cambridge, United Kingdom and New York, NY, USA, 423–552, <https://doi.org/10.1017/9781009157896.005>, 2021.
- Fang, H., Baret, F., Plummer, S., and Schaepman-Strub, G.: An overview of global Leaf Area Index (LAI): methods, products, validation, and applications, *Rev. Geophys.*, 57, 739-799, <https://doi.org/10.1029/2018RG000608>, 2019.
- 675 Friedl, M., Sulla-Menashe, D.: MCD12Q1 MODIS/Terra+Aqua Land Cover Type Yearly L3 Global 500m SIN Grid V006, NASA EOSDIS Land Processes DAAC [dataset], 10.5067/MODIS/MCD12Q1.006, 2019.
- Friedl, M. A., McIver, D. K., Hodges, J. C. F., Zhang, X. Y., Muchoney, D., Strahler, A. H., Woodcock, C. E., Gopal, S., Schneider, A., Cooper, A., Baccini, A., Gao, F., and Schaaf, C.: Global land cover mapping from MODIS: algorithms and early results, *Remote Sens. Environ.*, 83, 287-302, [https://doi.org/10.1016/s0034-4257\(02\)00078-0](https://doi.org/10.1016/s0034-4257(02)00078-0), 2002.

- 680 Garrigues, S., Lacaze, R., Baret, F., Morisette, J.T., Weiss, M., Nickeson, J.E., Fernandes, R., Plummer, S., Shabanov, N.V.,
Myneni, R.B., Knyazikhin, Y., and Yang, W.: Validation and intercomparison of global Leaf Area Index products derived
from remote sensing data: GLOBAL LAI PRODUCTS INTERCOMPARISON, *J. Geophys. Res.*, 113, G02028,
<https://doi.org/10.1029/2007JG000635>, 2008.
- GCOS: Systematic observation requirements for satellite-based products for climate, 2011 update, 2011.
- 685 Helder, D., Thome, K. J., Mishra, N., Chander, G., Xiong, X. X., Angal, A., and Choi, T.: Absolute radiometric calibration of
Landsat using a pseudo invariant calibration site, *IEEE Trans. Geosci. Remote Sens.*, 51, 1360-1369,
<https://doi.org/10.1109/tgrs.2013.2243738>, 2013.
- Huang, N. E., Shen, Z., Long, S. R., Wu, M. L. C., Shih, H. H., Zheng, Q. N., Yen, N. C., Tung, C. C., and Liu, H. H.: The
empirical mode decomposition and the Hilbert spectrum for nonlinear and non-stationary time series analysis, *Proc. R.*
690 *Soc. A*, 454, 903-995, <https://doi.org/10.1098/rspa.1998.0193>, 1998.
- Jahan, N. and Gan, T. Y.: Modelling the vegetation-climate relationship in a boreal mixedwood forest of Alberta using
normalized difference and enhanced vegetation indices, *Int. J. Remote Sens.*, 32, 313-335,
<https://doi.org/10.1080/01431160903464146>, 2011.
- Jiang, C., Ryu, Y., Fang, H., Myneni, R., Claverie, M., and Zhu, Z.: Inconsistencies of interannual variability and trends in
695 long-term satellite leaf area index products, *Global Change Biol.*, 23, 4133-4146, <https://doi.org/10.1111/gcb.13787>, 2017.
- Kang, Y., Ozdogan, M., Gao, F., Anderson, M. C., White, W. A., Yang, Y., Yang, Y., and Erickson, T. A.: A data-driven approach
to estimate leaf area index for Landsat images over the contiguous US, *Remote Sens. Environ.*, 258, 112383,
<https://doi.org/10.1016/j.rse.2021.112383>, 2021.
- Kimura, R., Okada, S., Miura, H., and Kamichika, M.: Relationships among the leaf area index, moisture availability, and
700 spectral reflectance in an upland rice field, *Agric. Water Manage.*, 69, 83-100,
<https://doi.org/10.1016/j.agwat.2004.04.009>, 2004.
- Li, M., Cao, S., and Zhu, Z.: Spatiotemporally consistent global dataset of the GIMMS Normalized Difference Vegetation
Index (PKU GIMMS NDVI) from 1982 to 2020, *Earth Syst. Sci. Data*, in review. [see *review asset*]
- Liang, S., Cheng, J., Jia, K., Jiang, B., Liu, Q., Xiao, Z., Yao, Y., Yuan, W., Zhang, X., Zhao, X., and Zhou, J.: The Global Land
705 Surface Satellite (GLASS) Product Suite, *Bull. Am. Meteorol.*, 102, E323–E337. <https://doi.org/10.1175/BAMS-D-18-0341.1>, 2021.
- Liu, Y., Liu, R., and Chen, J. M.: Retrospective retrieval of long-term consistent global leaf area index (1981-2011) from
combined AVHRR and MODIS data, *J. Geophys. Res.: Biogeosci.*, 117, <https://doi.org/10.1029/2012jg002084>, 2012.
- Ma, H. and Liang, S.: Development of the GLASS 250-m leaf area index product (version 6) from MODIS data using the
710 bidirectional LSTM deep learning model, *Remote Sens. Environ.*, 273, 112985,
<https://doi.org/10.1016/j.rse.2022.112985>, 2022.
- Mahowald, N., Lo, F., Zheng, Y., Harrison, L., Funk, C., Lombardozzi, D., and Goodale, C.: Projections of leaf area index in
earth system models, *Earth Syst. Dyn.*, 7, 211-229, <https://doi.org/10.5194/esd-7-211-2016>, 2016.

- 715 Mao, D., Wang, Z., Luo, L., and Ren, C.: Integrating AVHRR and MODIS data to monitor NDVI changes and their relationships with climatic parameters in Northeast China, *Int. J. Appl. Earth Obs. Geoinf.*, 18, 528-536, <https://doi.org/10.1016/j.jag.2011.10.007>, 2012.
- Myneni, R., Knyazikhin, Y., Park, T.: MOD15A2H MODIS/Terra Leaf Area Index/FPAR 8-Day L4 Global 500m SIN Grid V006, NASA EOSDIS Land Processes DAAC [dataset], 10.5067/MODIS/MOD15A2H.006, 2015a.
- 720 Myneni, R., Knyazikhin, Y., Park, T.: MCD15A2H MODIS/Terra+Aqua Leaf Area Index/FPAR 8-day L4 Global 500m SIN Grid V006, NASA EOSDIS Land Processes DAAC [dataset], 10.5067/MODIS/MCD15A2H.006, 2015b.
- Myneni, R. B., Hoffman, S., Knyazikhin, Y., Privette, J. L., Glassy, J., Tian, Y., Wang, Y., Song, X., Zhang, Y., Smith, G. R., Lotsch, A., Friedl, M., Morisette, J. T., Votava, P., Nemani, R. R., and Running, S. W.: Global products of vegetation leaf area and fraction absorbed PAR from year one of MODIS data, *Remote Sens. Environ.*, 83, 214-231, [https://doi.org/10.1016/S0034-4257\(02\)00074-3](https://doi.org/10.1016/S0034-4257(02)00074-3), 2002.
- 725 Panda, S. S., Ames, D. P., and Panigrahi, S.: Application of Vegetation Indices for Agricultural Crop Yield Prediction Using Neural Network Techniques, *Remote Sens.*, 2, 673-696, <https://doi.org/10.3390/rs2030673>, 2010.
- Piao, S., Yin, G., Tan, J., Cheng, L., Huang, M., Li, Y., Liu, R., Mao, J., Myneni, R. B., Peng, S., Poulter, B., Shi, X., Xiao, Z., Zeng, N., Zeng, Z., and Wang, Y.: Detection and attribution of vegetation greening trend in China over the last 30 years, *Global Change Biol.*, 21, 1601-1609, <https://doi.org/10.1111/gcb.12795>, 2015.
- 730 Pierce, L. L., Running, S. W., and Walker, J.: Regional-scale relationships of leaf area index to specific leaf area and leaf nitrogen content, *Ecol. Appl.*, 4, 313-321, <https://doi.org/10.2307/1941936>, 1994.
- Pinzon, J. E. and Tucker, C. J.: A non-stationary 1981-2012 AVHRR NDVI3g yime series, *Remote Sens.*, 6, 6929-6960, <https://doi.org/10.3390/rs6086929>, 2014.
- Scurlock, J. M. O., G. P. Asner, and S. T. Gower.: Global Leaf Area Index from Field Measurements, 1932-2000. Data set. Available on-line [<http://www.daac.ornl.gov>] from Oak Ridge National Laboratory Distributed Active Archive Center, Oak Ridge, Tennessee, U.S.A. doi:10.3334/ORNLDAAC/584, 2001.**
- Tucker, C. J., Pinzon, J. E., Brown, M. E., Slayback, D. A., Pak, E. W., Mahoney, R., Vermote, E. F., and El Saleous, N.: An extended AVHRR 8 - km NDVI dataset compatible with MODIS and SPOT vegetation NDVI data, *Int. J. Remote Sens.*, 26, 4485-4498, <https://doi.org/10.1080/01431160500168686>, 2005.
- 740 Valderrama-Landeros, L. H., España-Boquera, M. L., and Baret, F.: Deforestation in Michoacan, Mexico, from CYCLOPES-LAI time series (2000–2006), *IEEE J. Sel. Top. Appl. Earth Obs. Remote Sens.*, 9, 5398-5405, <https://doi.org/10.1109/JSTARS.2016.2597742>, 2016.
- Verger, A., Filella, I., Baret, F., and Penuelas, J.: Vegetation baseline phenology from kilometeric global LAI satellite products, *Remote Sens. Environ.*, 178, 1-14, <https://doi.org/10.1016/j.rse.2016.02.057>, 2016.
- 745 Wang, L., Good, S. P., and Caylor, K. K.: Global synthesis of vegetation control on evapotranspiration partitioning, *Geophys. Res. Lett.*, 41, 6753-6757, <https://doi.org/10.1002/2014GL061439>, 2014.
- Wang, W., Ciais, P., Nemani, R.R., Canadell, J.G., Piao, S., Sitch, S., White, M.A., Hashimoto, H., Milesi, C., and Myneni, R.B.: Variations in atmospheric CO₂ growth rates coupled with tropical temperature, *Proc. Natl. Acad. Sci. U.S.A.*, 110, 13061-13066, <https://doi.org/10.1073/pnas.1219683110>, 2013.**

- 750 Wang, Z., Wang, H., Wang, T., Wang, L., Liu, X., Zheng, K., and Huang, X.: Large discrepancies of global greening: Indication of multi-source remote sensing data, *Global Ecol. Conserv.*, 34, e02016, <https://doi.org/10.1016/j.gecco.2022.e02016>, 2022.
- Xiao, Z., Liang, S., and Jiang, B.: Evaluation of four long time-series global leaf area index products, *Agric. For. Meteorol.*, 246, 218-230, <https://doi.org/10.1016/j.agrformet.2017.06.016>, 2017.
- 755 Xiao, Z. Q., Liang, S. L., Wang, J. D., Xiang, Y., Zhao, X., and Song, J. L.: Long-time-series global land surface satellite leaf area index product derived from MODIS and AVHRR surface reflectance, *IEEE Trans. Geosci. Remote Sens.*, 54, 5301-5318, <https://doi.org/10.1109/tgrs.2016.2560522>, 2016.
- Xiao, Z. Q., Liang, S. L., Wang, J. D., Chen, P., Yin, X. J., Zhang, L. Q., and Song, J. L.: Use of general regression neural networks for generating the GLASS leaf area index product from time-series MODIS surface reflectance, *IEEE Trans. Geosci. Remote Sens.*, 52, 209-223, <https://doi.org/10.1109/tgrs.2013.2237780>, 2014.
- 760 Yan, K., Park, T., Yan, G., Liu, Z., Yang, B., Chen, C., Nemani, R. R., Knyazikhin, Y., and Myneni, R. B.: Evaluation of MODIS LAI/FPAR product collection 6. Part 2: validation and intercomparison, *Remote Sens.*, 8, 460, <https://doi.org/10.3390/rs8060460>, 2016.
- Yan, K., Park, T., Chen, C., Xu, B., Song, W., Yang, B., Zeng, Y., Liu, Z., Yan, G., Knyazikhin, Y., and Myneni, R. B.: Generating global products of LAI and FPAR from SNPP-VIIRS data: theoretical background and implementation, *IEEE Trans. Geosci. Remote Sens.*, 56, 2119-2137, <https://doi.org/10.1109/TGRS.2017.2775247>, 2018.
- 765 Yuan, H., Dai, Y., Xiao, Z., Ji, D., and Shangguan, W.: Reprocessing the MODIS Leaf Area Index products for land surface and climate modelling, *Remote Sens. Environ.*, 115, 1171-1187, <https://doi.org/10.1016/j.rse.2011.01.001>, 2011.
- Zeng, Y. L., Hao, D. L., Huete, A., Dechant, B., Berry, J., Chen, J. M., Joiner, J., Frankenberg, C., Bond-Lamberty, B., Ryu, Y., Xiao, J. F., Asrar, G. R., and Chen, M.: Optical vegetation indices for monitoring terrestrial ecosystems globally, *Nat. Rev. Earth Environ.*, 3, 477-493, <https://doi.org/10.1038/s43017-022-00298-5>, 2022.
- 770 Zha, J., Li, M., Zhu, Z., Cao, S., Zhang, Y., Zhao, W., and Chen, Y.: Spatiotemporally consistent global Landsat leaf area index validation dataset, in preparation. [see *review asset*]
- Zhang, G. Q., Patuwo, B. E., and Hu, M. Y.: Forecasting with artificial neural networks: The state of the art, *Int. J. Remote Sens.*, 14, 35-62, [https://doi.org/10.1016/s0169-2070\(97\)00044-7](https://doi.org/10.1016/s0169-2070(97)00044-7), 1998.
- 775 Zhang, P., Anderson, B., and Barlow, M.: Climate-related vegetation characteristics derived from Moderate Resolution Imaging Spectroradiometer (MODIS) leaf area index and normalized difference vegetation index, *J. Geophys. Res.: Atmos.*, 109, <https://doi.org/10.1029/2004jd004720>, 2004.
- Zhou, L., Tian, Y., Myneni, R.B., Ciais, P., Saatchi, S., Liu, Y.Y., Piao, S., Chen, H., Vermote, E.F., Song, C., and Hwang, T.: Widespread decline of Congo rainforest greenness in the past decade, *Nature*, 509, 86-90, <https://doi.org/10.1038/nature13265>, 2014
- 780 Zhu, Z., Bi, J., Pan, Y., Ganguly, S., Anav, A., Xu, L., Samanta, A., Piao, S., Nemani, R. R., and Myneni, R. B.: Global data sets of vegetation Leaf Area Index (LAI)3g and Fraction of Photosynthetically Active Radiation (FPAR)3g derived from Global Inventory Modeling and Mapping Studies (GIMMS) Normalized Difference Vegetation Index (NDVI3g) for the period 1981 to 2011, *Remote Sens.*, 5, 927-948, <https://doi.org/10.3390/rs5020927>, 2013.
- 785

Zhu, Z., Piao, S., Myneni, R. B., Huang, M., Zeng, Z., Canadell, J. G., Ciais, P., Sitch, S., Friedlingstein, P., Arneth, A., Cao, C., Cheng, L., Kato, E., Koven, C., Li, Y., Lian, X., Liu, Y., Liu, R., Mao, J., Pan, Y., Peng, S., Peñuelas, J., Poulter, B., Pugh, T. A. M., Stocker, B. D., Viovy, N., Wang, X., Wang, Y., Xiao, Z., Yang, H., Zaehle, S., and Zeng, N.: Greening of the Earth and its drivers, *Nat. Clim. Change*, 6, 791-795, <https://doi.org/10.1038/nclimate3004>, 2016.

Supplementary materials for “Spatiotemporally consistent global dataset of the GIMMS Leaf Area Index (GIMMS LAI4g) from 1982 to 2020”

Sen Cao^{1,2,†}, Muyi Li^{1,†}, Zaichun Zhu^{1,2,*}, Junjun Zha¹, Weiqing Zhao¹, Zeyu Duanmu¹, Jiana Chen¹, Yaoyao Zheng¹, Yue Chen¹

¹School of Urban Planning and Design, Shenzhen Graduate School, Peking University, Shenzhen 518055, China

²Key Laboratory of Earth Surface System and Human—Earth Relations, Ministry of Natural Resources of China, Shenzhen Graduate School, Peking University, Shenzhen 518055, China.

[†]These authors contributed equally to this work

Correspondence: Zaichun Zhu (zhu.zaichun@pku.edu.cn)

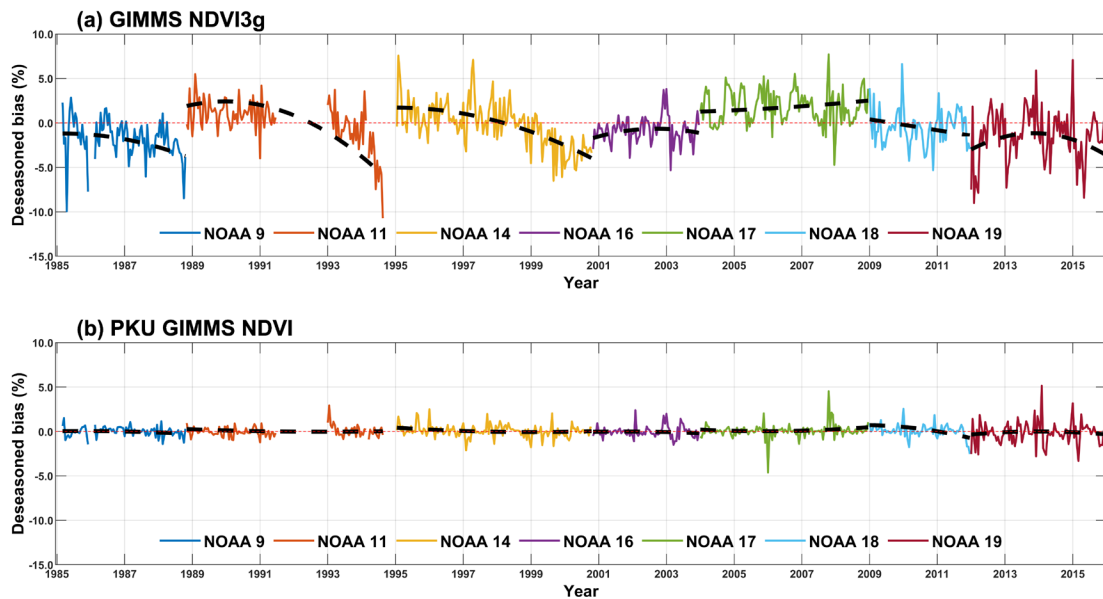


Figure S1. Temporal variations of NDVI bias% in EBF for (a) the GIMMS NDVI3g product and (b) the PKU GIMMS NDVI product. The black dash line represents the interannual trend extracted by the EEMD method. Values from different NOAA satellite missions are distinguished with colors. The figure illustrates that the effects of NOAA satellite orbital drift and AVHRR sensor degradation were efficiently removed in the PKU GIMMS NDVI product.

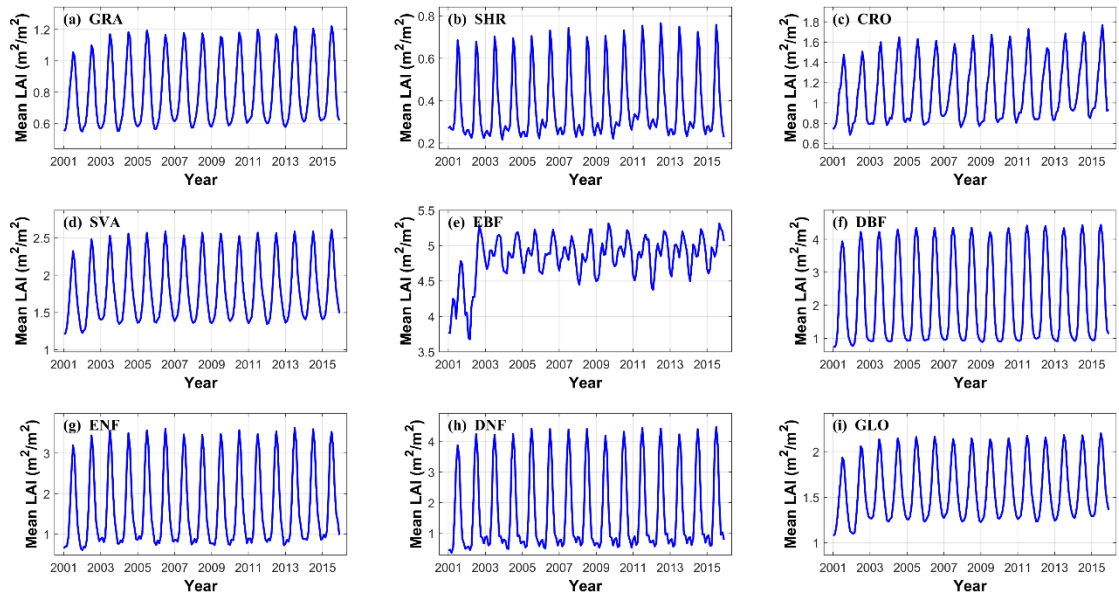


Figure S2. Annual LAI averages from the Reprocessed MODIS LAI product (version 6) for different vegetation biome types. The vegetation biome types use the third classification scheme in the MODIS Land-Cover Type product (MCD12Q1, version 6) (see section 2.4). GLO represents the global vegetation biome. This figure demonstrates unexpected low LAI values for evergreen broadleaf forests (EBF) between 2000 and 2003.

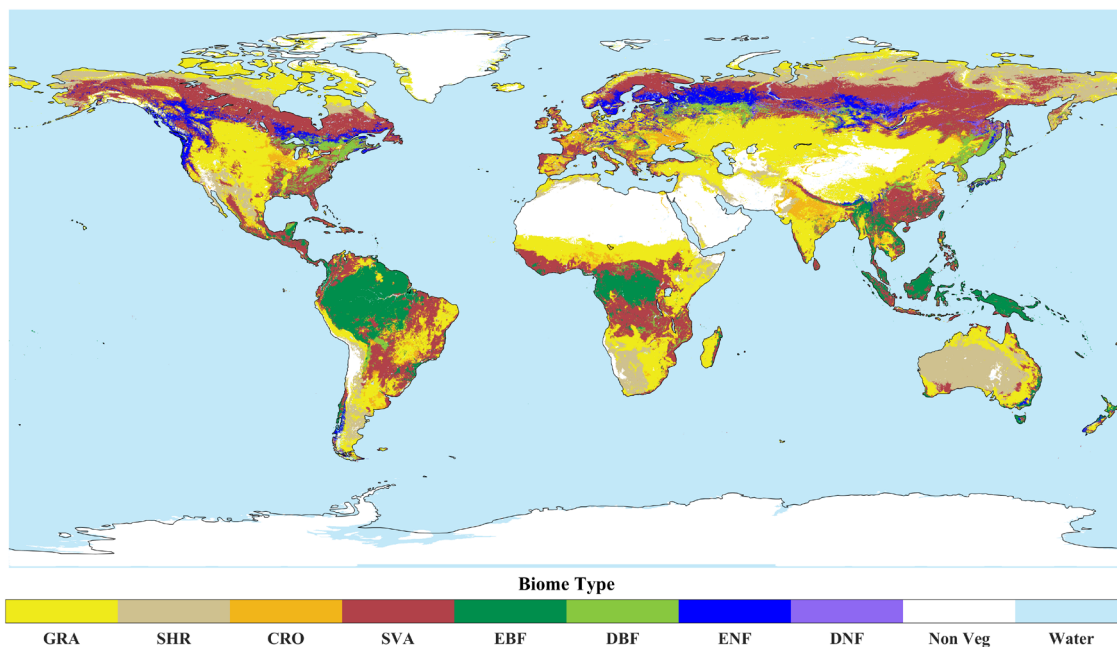


Figure S3. The global land cover map derived from the MODIS Land-Cover Type product (MCD12Q1, version 6). The third classification scheme in MCD12Q1 was adopted. Each grid ($1/12^\circ$) in the map was labeled as the most frequent land cover type between 2001 and 2019.

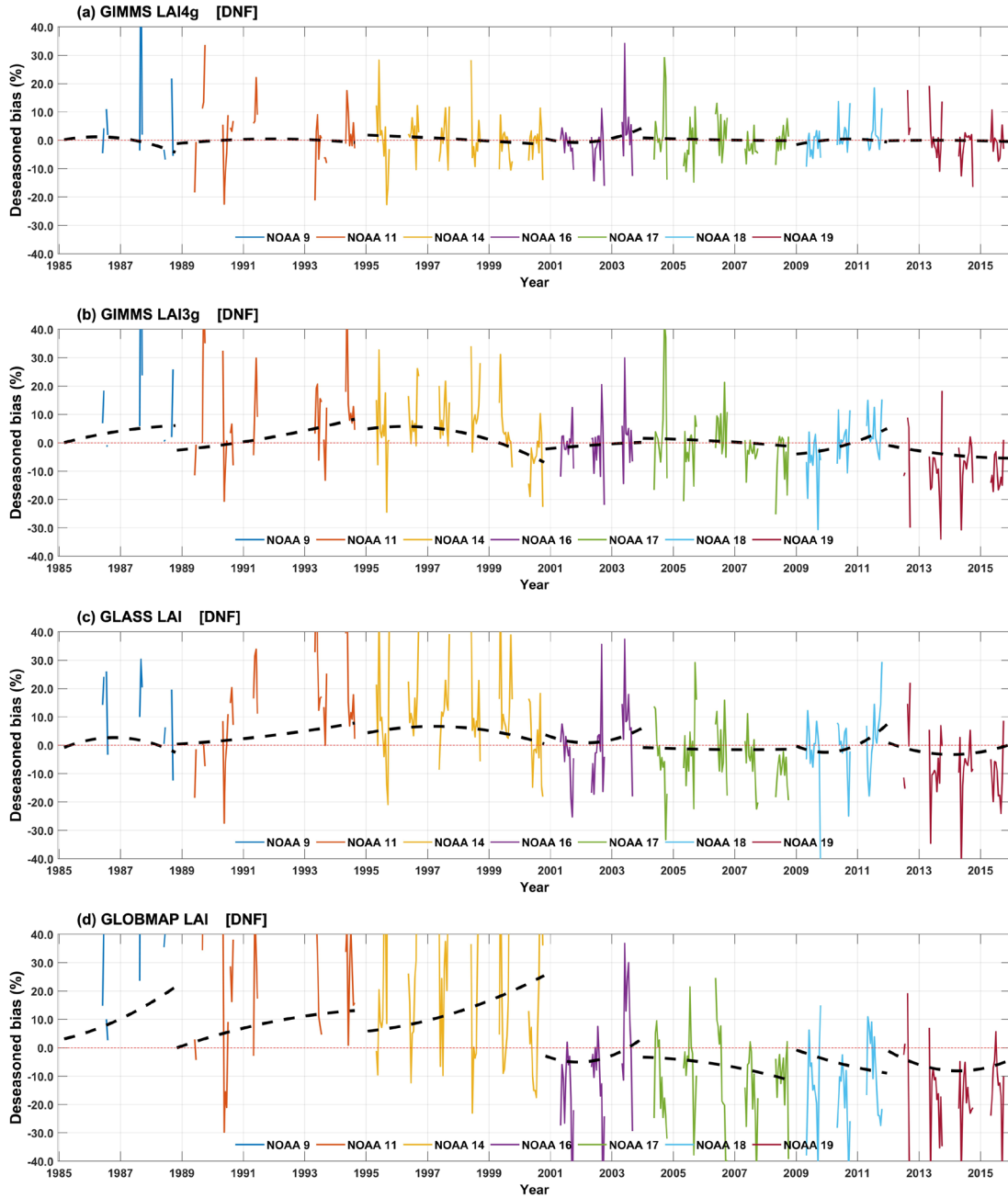


Figure S4. Temporal variations of LAI bias% in **DNF** for (a) the GIMMS LAI4g, (b) GIMMS LAI3g, (c) GLASS LAI, and (d) GLOBMAP LAI. The black dash line represents the interannual trend extracted by the EEMD method. Values from different NOAA satellite missions were distinguished with colors.

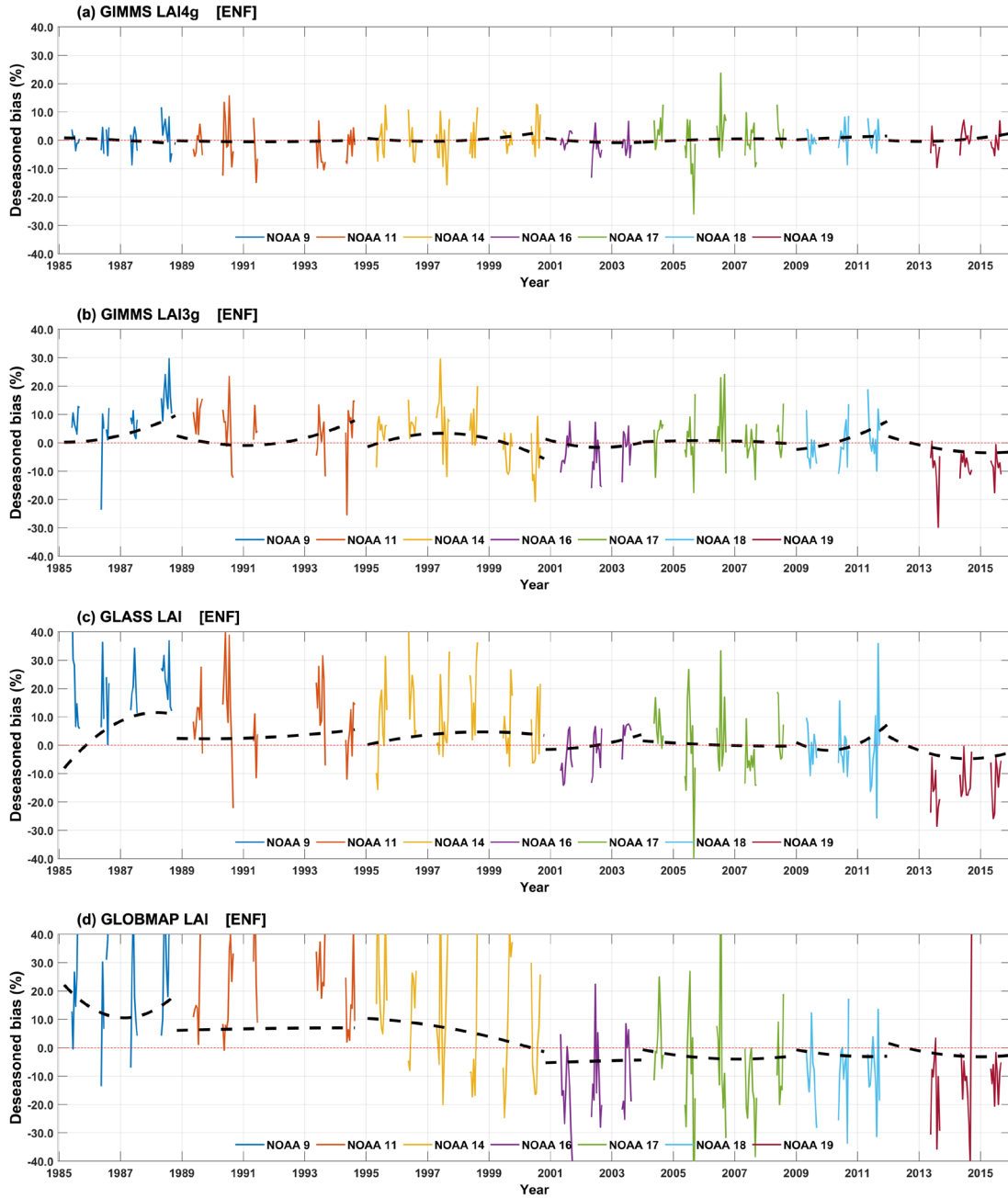


Figure S5. Temporal variations of LAI bias% in ENF for (a) the GIMMS LAI4g, (b) GIMMS LAI3g, (c) GLASS LAI, and (d) GLOBMAP LAI. The black dash line represents the interannual trend extracted by the EEMD method. Values from different NOAA satellite missions were distinguished with colors.

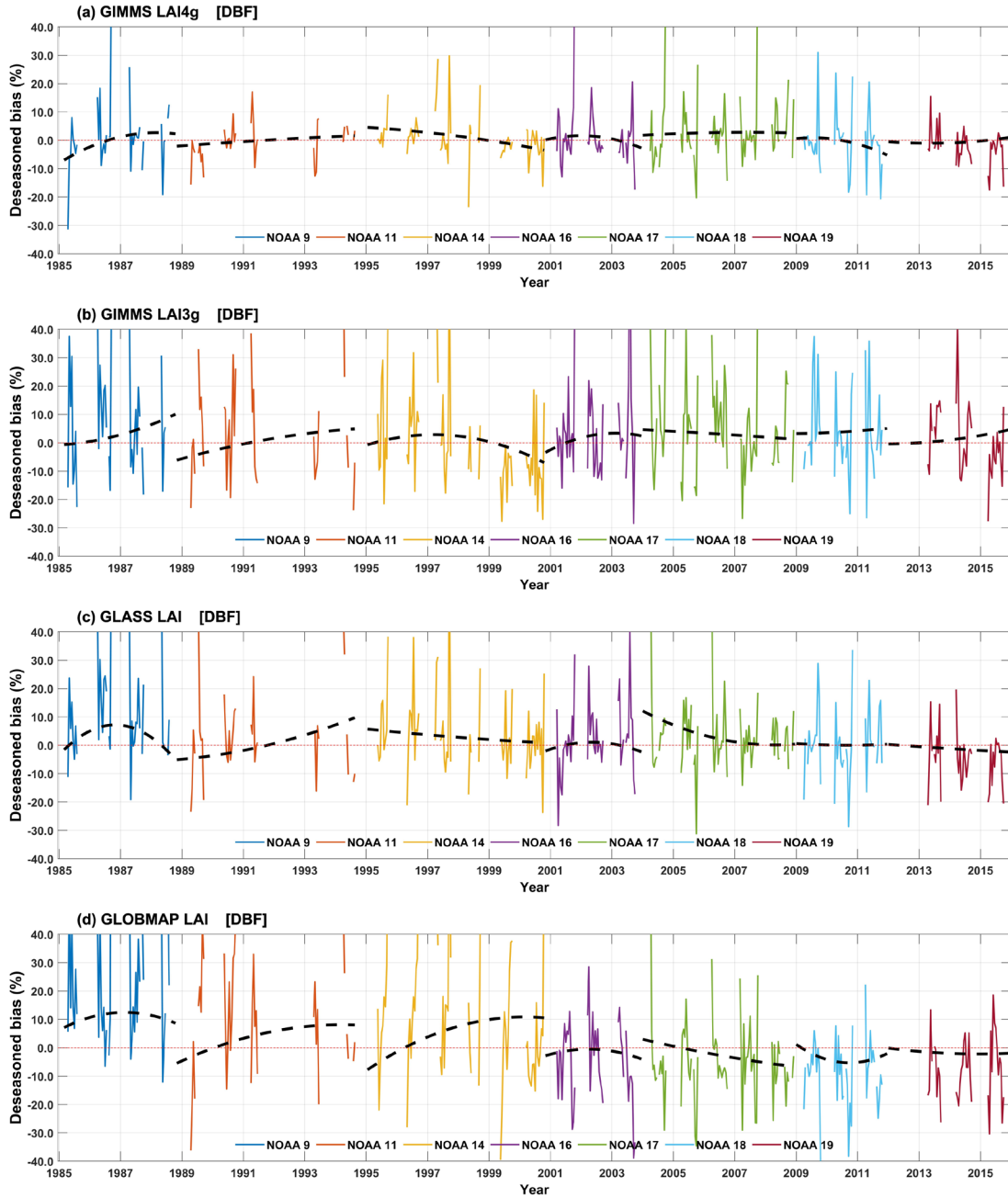


Figure S6. Temporal variations of LAI bias% in **DBF** for (a) the GIMMS LAI4g, (b) GIMMS LAI3g, (c) GLASS LAI, and (d) GLOBMAP LAI. The black dash line represents the interannual trend extracted by the EEMD method. Values from different NOAA satellite missions were distinguished with colors.

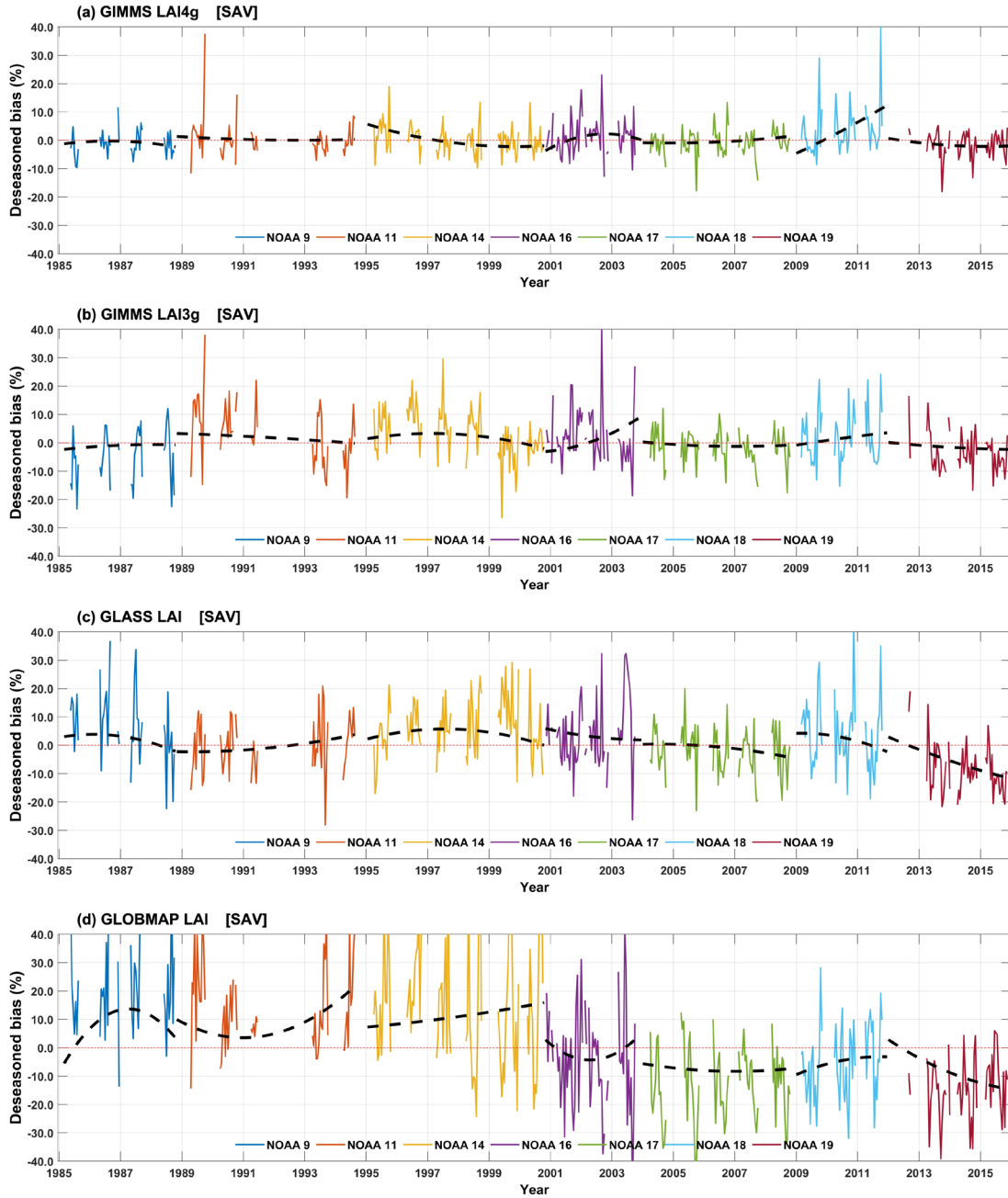


Figure S7. Temporal variations of LAI bias% in SAV for (a) the GIMMS LAI4g, (b) GIMMS LAI3g, (c) GLASS LAI, and (d) GLOBMAP LAI. The black dash line represents the interannual trend extracted by the EEMD method. Values from different NOAA satellite missions were distinguished with colors.

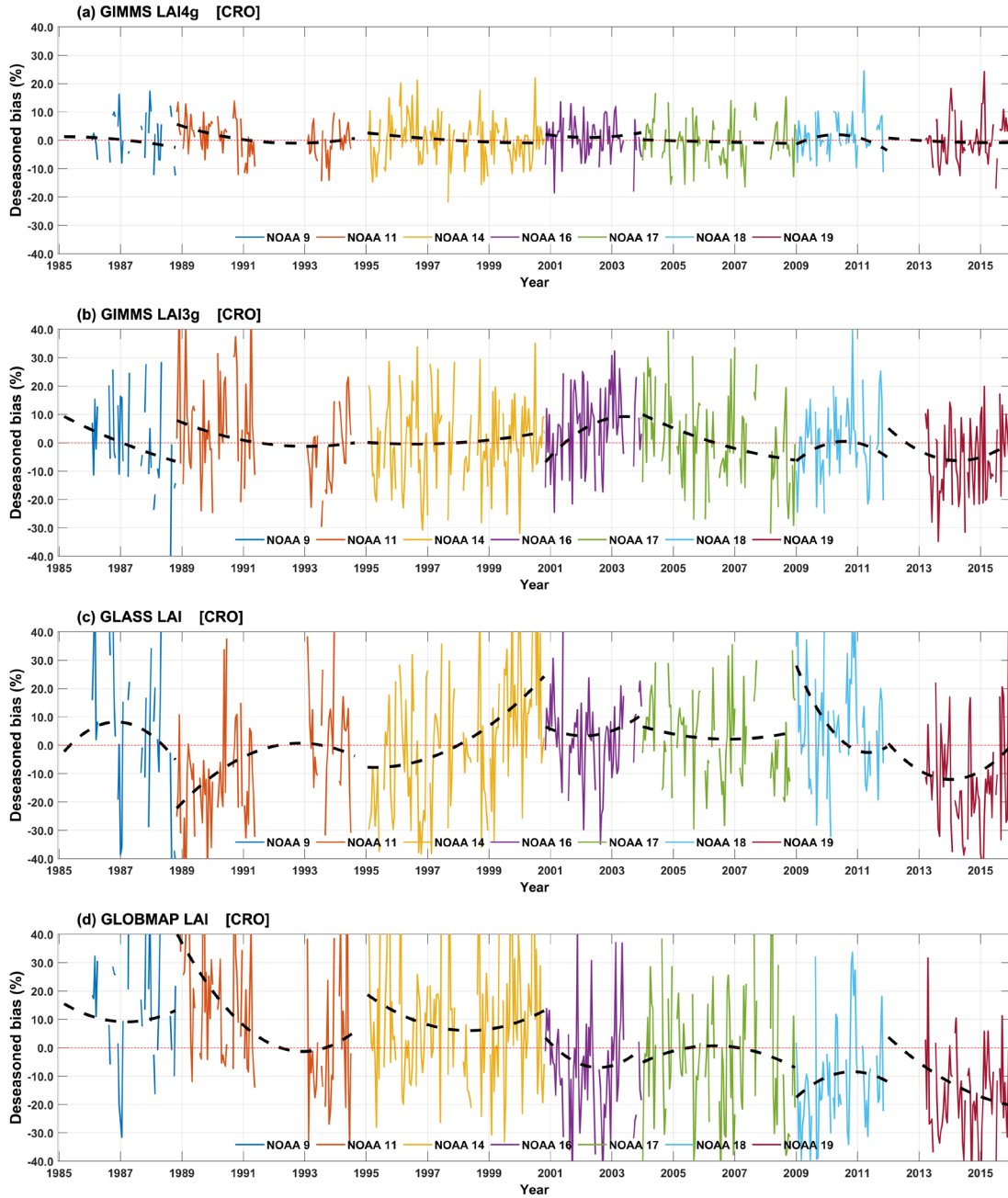


Figure S8. Temporal variations of LAI bias% in CRO for (a) the GIMMS LAI4g, (b) GIMMS LAI3g, (c) GLASS LAI, and (d) GLOBMAP LAI. The black dash line represents the interannual trend extracted by the EEMD method. Values from different NOAA satellite missions were distinguished with colors.

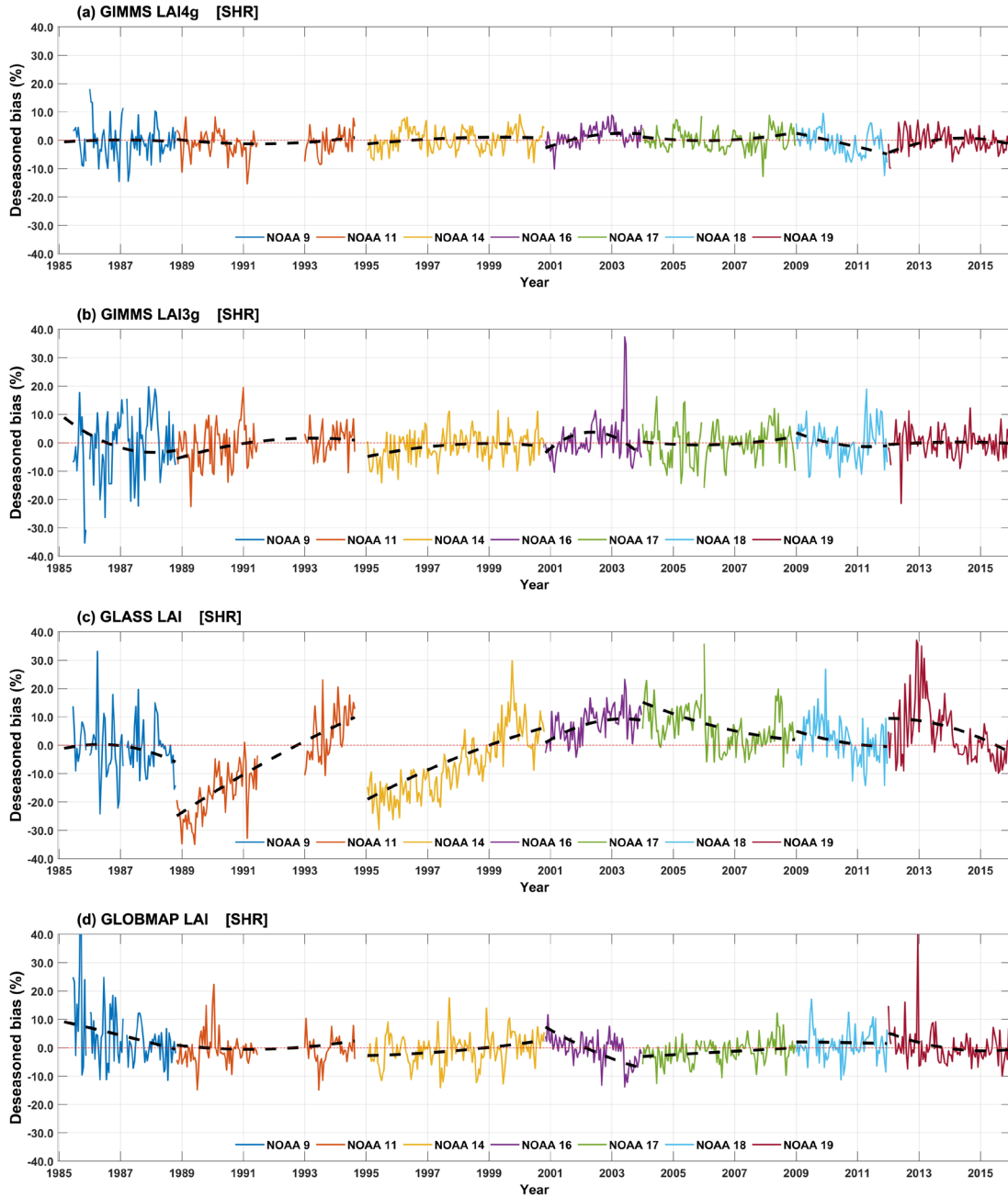


Figure S9. Temporal variations of LAI bias% in SHR for (a) the GIMMS LAI4g, (b) GIMMS LAI3g, (c) GLASS LAI, and (d) GLOBMAP LAI. The black dash line represents the interannual trend extracted by the EEMD method. Values from different NOAA satellite missions were distinguished with colors.

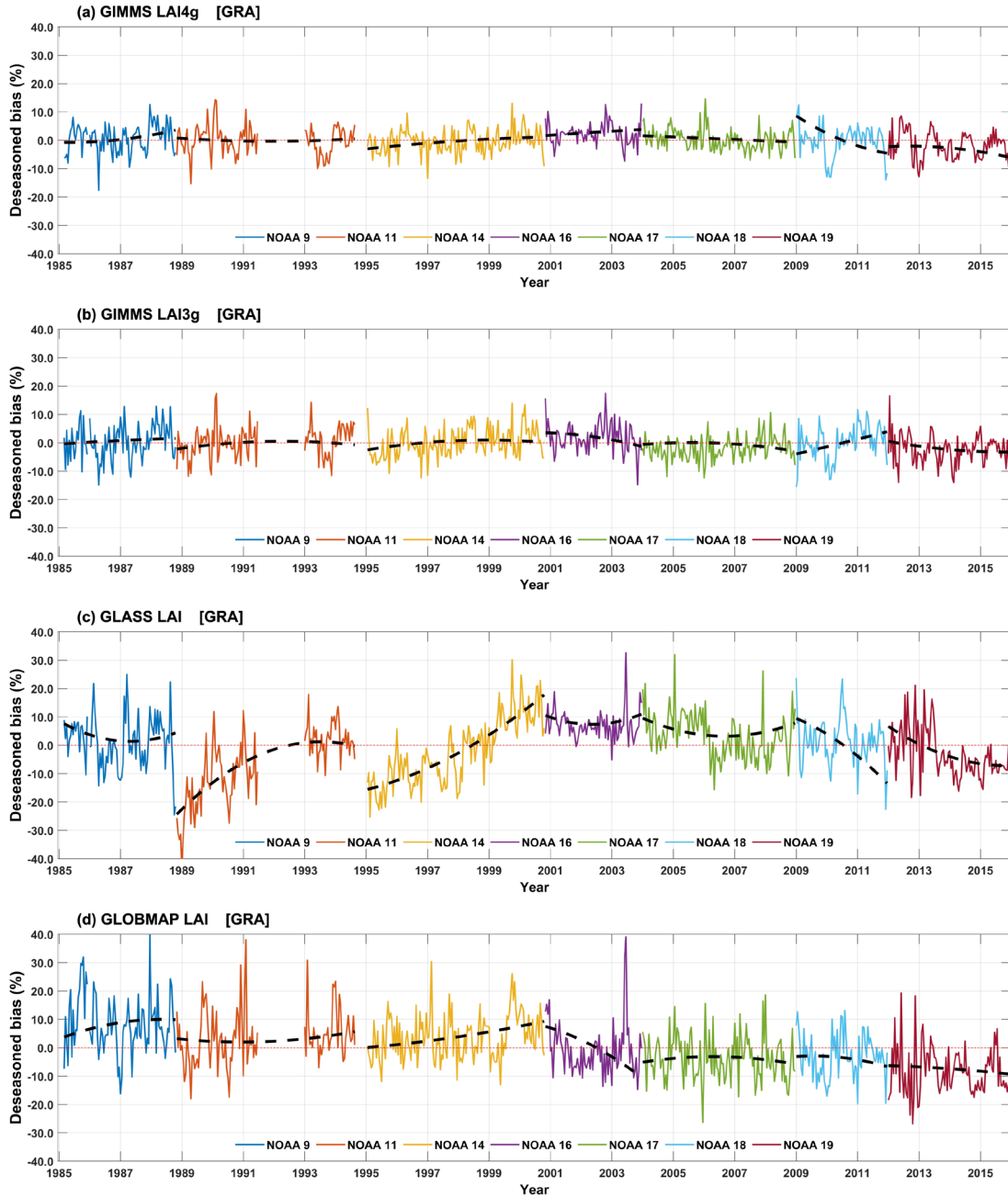


Figure S10. Temporal variations of LAI bias% in GRA for (a) the GIMMS LAI4g, (b) GIMMS LAI3g, (c) GLASS LAI, and (d) GLOBMAP LAI. The black dash line represents the interannual trend extracted by the EEMD method. Values from different NOAA satellite missions were distinguished with colors.

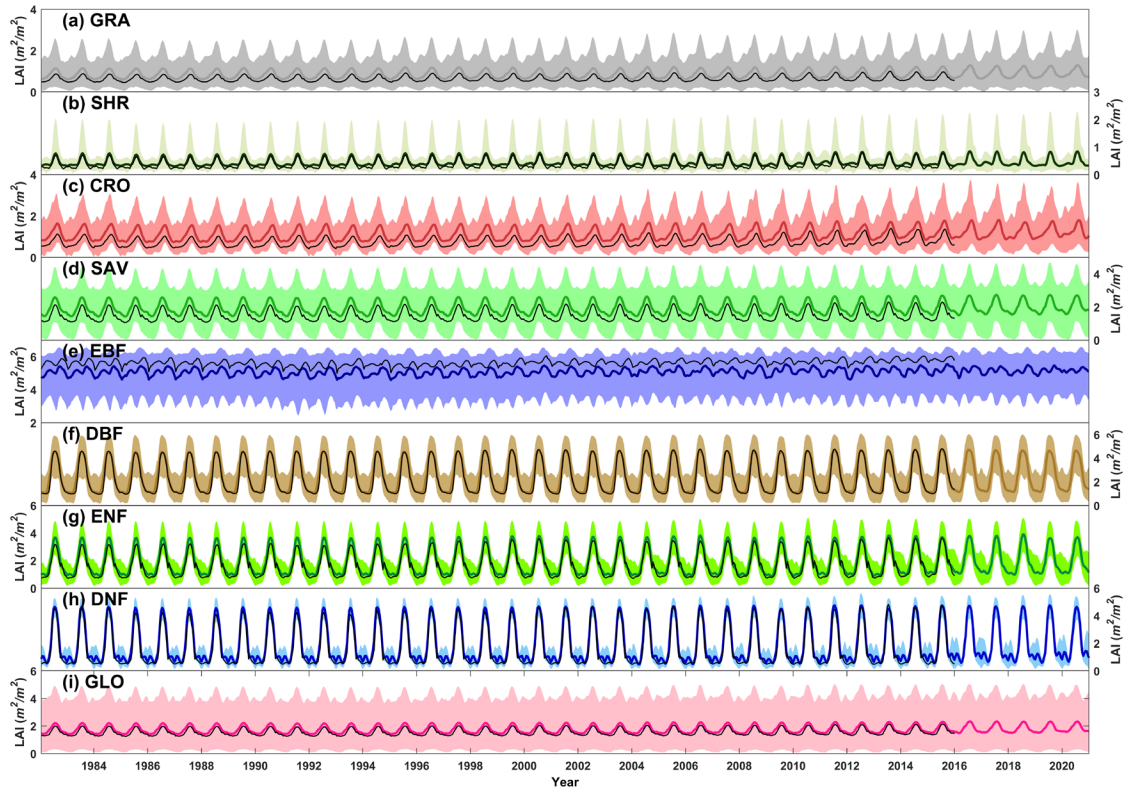


Figure S11. Temporal variations of the GIMMS LAI4g for different vegetation biome types during 1982–2020. GLO represents the global vegetation biome. The bold colored line represents the LAI average of GIMMSLAI4g after data consolidation, with shadow covering the value range between 10% and 90% quantiles. The thin black line represents the LAI average of GIMMSLAI4g before consolidation. It should be noted that the GIMMS LAI4g after consolidation shared the same footprint with the Reprocessed MODIS LAI after the year 2004.

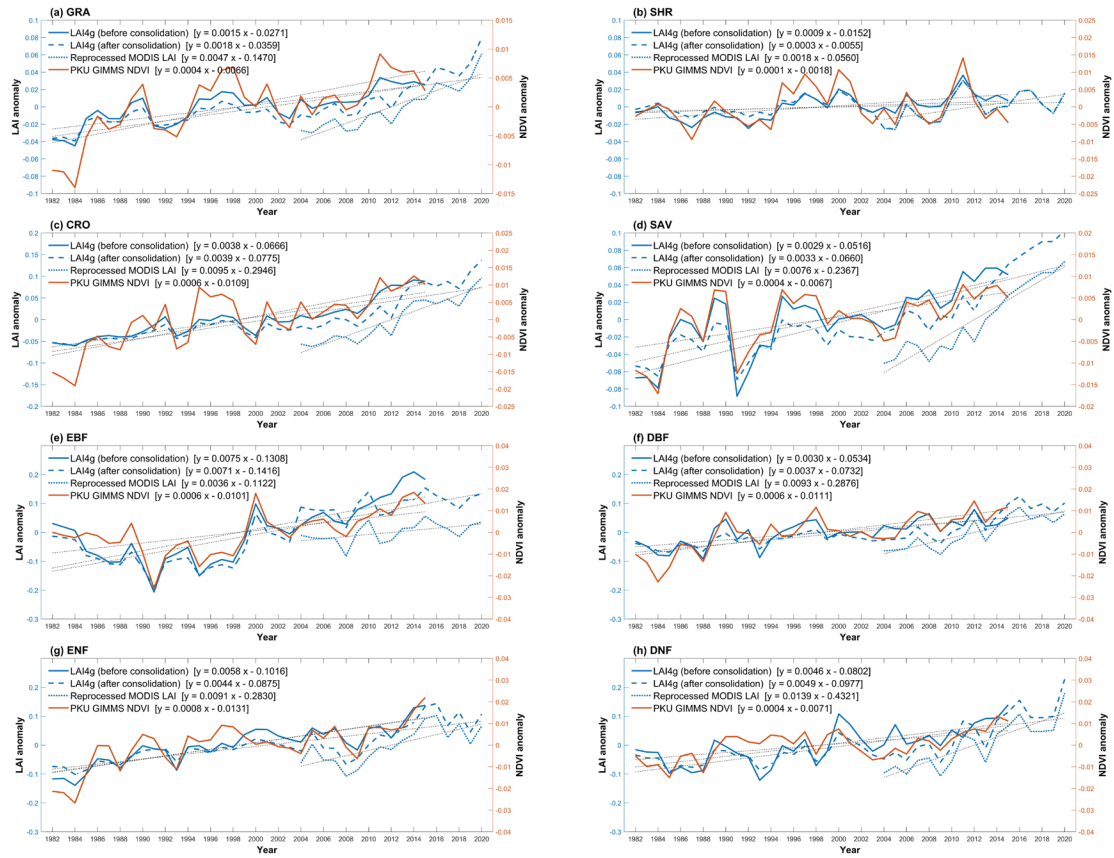


Figure S12. Annual anomalies and trends of GIMMS LAI4g before consolidation (1982–2015), GIMMS LAI4g after consolidation (1982–2020), Reprocessed MODIS LAI (2004–2020), and PKU GIMMS NDVI (1982–2015) for different vegetation biome types.

Table S1. Information of field LAI measurements used for validation. A total of 113 measurements from 49 distinct sites were available. In the “Source” column, B stands for BELMANIP V2.1, D for DIRECT V2.1, O for ORNL, and B &D indicates that the measurements can be found both in BELMANIP V2.1 and DIRECT V2.1.

Site_name	Biome	Latitude	Longitude	Source	Year	Month	Day	LAI
Camerons	EBF	-32.60	116.25	B	2004	3	3	2.084
AGRO	Crops	40.01	-88.29	B & D	2000	7	4	2.56
AGRO	Crops	40.01	-88.29	B & D	2000	8	11	3.543
KONZ	Herb.	39.09	-96.57	B & D	2000	6	7	2.175
KONZ	Herb.	39.09	-96.57	B & D	2001	8	16	2.907
SEVI	Shrubs	34.35	-106.69	B & D	2002	9	9	0.402
SEVI	Shrubs	34.35	-106.69	B & D	2002	11	15	0.323
SEVI	Shrubs	34.35	-106.69	B & D	2003	6	23	0.061
SEVI	Shrubs	34.35	-106.69	B & D	2003	7	28	0.047
SEVI	Shrubs	34.35	-106.69	B & D	2003	9	15	0.05
SEVI	Shrubs	34.35	-106.69	B & D	2003	11	21	0.103
Larose2	Mixed F.	45.38	-75.17	B & D	2003	8	15	2.868
Barrax	Crops	39.07	-2.10	B & D	2005	7	13	0.37
Barrax	Crops	39.07	-2.10	B & D	2009	6	22	0.968
Barrax	Crops	39.07	-2.10	B & D	2010	6	16	0.5
Counami	EBF	5.35	-53.24	B & D	2001	9	26	4.929
Counami	EBF	5.34	-53.24	B & D	2002	10	13	4.373
Fundulea	Crops	44.41	26.58	B & D	2001	5	8	3.04
Fundulea	Crops	44.41	26.58	B & D	2002	5	24	1.476
Gnangara	EBF	-31.53	115.88	B & D	2004	3	1	1.007
Larose	Mixed F.	45.38	-75.22	B & D	2003	8	7	5.858
Nezer	NLF	44.57	-1.04	B & D	2002	4	17	2.547
Plan_De_Dieu	Crops	44.20	4.95	B & D	2004	7	7	1.133
Turco	Shrubs	-18.24	-68.18	B & D	2001	7	27	0.03
Wankama	Herb.	13.65	2.64	B & D	2005	6	23	0.014
Zhang_Bei	Herb.	41.28	114.69	B & D	2002	8	9	1.263
Pandamatenga	DBF	-18.65	25.50	B & D	2000	3	4	1.579
Maun	Shrubs	-19.92	23.59	B & D	2000	3	8	1.24
Mongu	Shrubs	-15.44	23.25	B & D	1999	8	18	0.67
Mongu	Shrubs	-15.44	23.25	B & D	2000	2	29	2.34
Mongu	Shrubs	-15.44	23.25	B & D	2000	4	19	2.25
Mongu	Shrubs	-15.44	23.25	B & D	2000	5	17	1.84
Mongu	Shrubs	-15.44	23.25	B & D	2000	6	14	1.54
Mongu	Shrubs	-15.44	23.25	B & D	2000	9	1	1.12
Mongu	Shrubs	-15.44	23.25	B & D	2000	9	27	1.142
Mongu	Shrubs	-15.44	23.25	B & D	2000	10	17	1.22
Mongu	Shrubs	-15.44	23.25	B & D	2000	11	6	1.38
Mongu	Shrubs	-15.44	23.25	B & D	2000	11	20	1.66
Mongu	Shrubs	-15.44	23.25	B & D	2000	12	19	1.95

Harth Forest	DBF	47.81	7.45	B & D	2013	9	4	3.795
SouthWest_1	Crops	43.55	1.09	B & D	2013	7	10	1.01
SouthWest_1	Crops	43.55	1.09	B & D	2013	7	26	1.19
SouthWest_1	Crops	43.55	1.09	B & D	2013	8	18	1.7
25de								
Mayo_Alfalfa	Crops	-37.91	-67.75	B & D	2014	2	9	1.3
Barrax-								
LasTias	Crops	39.05	-2.10	B & D	2015	5	27	1.01
SanFernando	Crops	-34.72	-71.00	B & D	2015	1	19	1.96
Honghe_B	Rice	47.66	133.53	D	2012	6	19	0.578
Honghe_B	Rice	47.66	133.53	D	2012	6	24	1.720
Honghe_B	Rice	47.66	133.53	D	2012	6	29	2.888
Honghe_B	Rice	47.66	133.53	D	2012	7	25	5.183
Honghe_B	Rice	47.66	133.53	D	2012	8	13	3.293
Honghe_B	Rice	47.66	133.53	D	2012	8	30	3.405
Honghe_B	Rice	47.66	133.53	D	2012	9	16	2.929
Honghe_B	Rice	47.66	133.53	D	2013	8	27	4.672
Honghe_C	Rice	47.65	133.52	D	2012	6	19	0.615
Honghe_C	Rice	47.65	133.52	D	2012	6	24	1.778
Honghe_C	Rice	47.65	133.52	D	2012	6	29	2.850
Honghe_C	Rice	47.65	133.52	D	2012	7	25	5.110
Honghe_C	Rice	47.65	133.52	D	2012	8	13	3.100
Honghe_C	Rice	47.65	133.52	D	2012	8	30	3.395
Honghe_C	Rice	47.65	133.52	D	2012	9	16	3.037
Honghe_C	Rice	47.65	133.52	D	2013	8	27	4.636
Honghe_D	Rice	47.64	133.52	D	2012	6	19	0.675
Honghe_D	Rice	47.64	133.52	D	2012	6	24	1.883
Honghe_D	Rice	47.64	133.52	D	2012	6	29	3.064
Honghe_D	Rice	47.64	133.52	D	2012	7	25	5.094
Honghe_D	Rice	47.64	133.52	D	2012	8	13	3.103
Honghe_D	Rice	47.64	133.52	D	2012	8	30	3.430
Honghe_D	Rice	47.64	133.52	D	2012	9	16	3.141
Honghe_D	Rice	47.64	133.52	D	2013	8	27	4.627
Honghe_E	Rice	47.64	133.53	D	2012	6	19	0.672
Honghe_E	Rice	47.64	133.53	D	2012	6	24	1.864
Honghe_E	Rice	47.64	133.53	D	2012	6	29	2.723
Honghe_E	Rice	47.64	133.53	D	2012	7	25	5.036
Honghe_E	Rice	47.64	133.53	D	2012	8	13	2.842
Honghe_E	Rice	47.64	133.53	D	2012	8	30	3.334
Honghe_E	Rice	47.64	133.53	D	2012	9	16	2.796
Honghe_E	Rice	47.64	133.53	D	2013	8	27	4.484
HLJ_barley_1	Crops	46.80	131.81	D	2007	6	14	1.135
HLJ_barley_2	Crops	46.80	131.90	D	2007	6	14	1.338
HLJ_barley_3	Crops	46.79	131.89	D	2005	5	23	0.763
HLJ_barley_3	Crops	46.79	131.89	D	2006	6	2	0.702

HLJ_barley_3	Crops	46.79	131.89	D	2007	6	14	1.202
HLJ_barley_4	Crops	46.79	131.98	D	2005	5	23	0.466
HLJ_barley_4	Crops	46.79	131.98	D	2006	6	2	0.812
HLJ_barley_8	Crops	46.74	131.76	D	2006	6	2	0.812
HLJ_barley_13	Crops	46.71	131.72	D	2006	6	2	0.654
HLJ_barley_14	Crops	46.75	131.84	D	2005	5	23	0.375
HLJ_barley_16	Crops	46.73	131.90	D	2007	6	14	1.312
HLJ_barley_19	Crops	46.70	131.87	D	2005	5	23	0.293
HLJ_wheat_1	Crops	46.97	131.97	D	2006	6	2	0.521
HLJ_wheat_2	Crops	46.96	131.99	D	2006	6	2	0.569
HLJ_wheat_3	Crops	46.94	131.97	D	2006	6	2	0.565
HLJ_wheat_6	Crops	46.90	131.98	D	2006	6	2	0.483
HLJ_wheat_8	Crops	46.79	131.91	D	2005	5	23	0.709
HLJ_wheat_14	Crops	46.76	131.74	D	2005	5	23	0.505
HLJ_wheat_15	Crops	46.76	131.85	D	2005	5	23	0.438
HLJ_wheat_16	Crops	46.74	131.71	D	2005	5	23	0.492
Jadraas, plot C15	Forest / BoENL	60.82	16.50	O	1990	8	\	1.32
N/A	Forest / BoDBL	56.42	-98.07	O	1994	7	\	2.2
BOREAS NSA, Thompson	Forest / BoENL	55.92	-97.69	O	1994	7	\	0.95
BOREAS NSA, Thompson	Forest / BoENL	55.89	-99.03	O	1994	7	\	1.24
Tienhoven	Grassland	52.17	5.08	O	1987	5	6	1.02
Tienhoven	Grassland	52.17	5.08	O	1987	7	23	2.69
Tienhoven	Grassland	52.17	5.08	O	1987	6	11	2.06
Kioloa State Forest, NSW	Forest / TeEBL	-35.35	150.18	O	1988	2	25	3.46
Kioloa State Forest, NSW	Forest / TeEBL	-35.35	150.18	O	1986	10	1	3.97
Kioloa State Forest, NSW	Forest / TeEBL	-35.35	150.18	O	1986	2	19	4.95
Kioloa State Forest, NSW	Forest / TeEBL	-35.35	150.18	O	1985	6	24	3.4
Kioloa State Forest, NSW	Forest / TeEBL	-35.35	150.18	O	1985	8	11	3.44
Kioloa State Forest, NSW	Forest / TeEBL	-35.35	150.18	O	1984	7	7	3.94
Kioloa State Forest, NSW	Forest / TeEBL	-35.35	150.18	O	1983	7	13	2.22
Kioloa State Forest, NSW	Forest / TeEBL	-35.35	150.18	O	1982	12	12	3.25