

ITALICA, an extensive and accurate spatio-temporal catalogue of rainfall-induced landslides in Italy

Silvia Peruccacci¹, Stefano Luigi Gariano¹, Massimo Melillo¹, Monica Solimano², Fausto Guzzetti^{1,3}, Maria Teresa Brunetti¹

¹Istituto di Ricerca per la Protezione Idrogeologica, Consiglio Nazionale delle Ricerche, Perugia, 06128, Italy

²Agenzia Regionale per la Protezione dell'Ambiente Ligure, Genova, 16149, Italy

³Presidenza del Consiglio dei Ministri, Dipartimento della Protezione Civile, Roma, 00189, Italy

Correspondence to: Silvia Peruccacci (Silvia.Peruccacci@irpi.cnr.it)

Abstract. Italy is frequently hit and damaged by landslides, resulting in substantial and widespread disruptions. In particular, slope failures have a high impact on the population, communication infrastructure and the economic and productive sectors. The hazard posed by landslides requires adequate responses for landslide risk mitigation, with special attention to the risk to the population. In 2006 the Italian Department of Civil Protection, an Office of the Prime Minister, commissioned the Research Institute for Geo-Hydrological Protection (*Istituto di Ricerca per la Protezione Idrogeologica*), a research institute of the Italian National Research Council, to carry out operational forecasting of rainfall induced-landslides.

Collecting landslide information in a catalogue is a preliminary action toward landslide forecasting. The use of spatially and temporally inaccurate landslide catalogues results in an uncertain and unreliable operational landslide forecasting. Consequently, accurate catalogues are needed to reduce the uncertainties, which are to some extent unavoidable. To this end, over the last 15 years many researchers have been involved in compiling a catalogue called ITALICA (ITALian rainfall-induced Landslides Catalogue), which currently lists 6312 records with information on rainfall-induced landslides that occurred over the Italian territory between January 1996 and December 2021. Overall, more than a third of the catalogue has very high geographic accuracy (less than 1 km²) and hourly temporal resolution. In contrast, less than 2% of the catalogue have low and very low geographical accuracy and daily temporal resolution. This makes ITALICA the largest catalogue of rainfall-induced landslides accurately located in space and time available in Italy. Without this high level of accuracy, the precipitation responsible for the initiation of landslides cannot be reliably reconstructed, thus making the prediction of landslide occurrence ineffective.

ITALICA's information on rainfall-induced landslides in Italy places a special emphasis on their spatial and temporal location, making the catalogue especially suitable for defining the rainfall conditions capable of triggering future landslides on the Italian territory. This information is fundamental for decision-making in landslide risk management. [A previous version of the catalogue has been used to calculate national and regional rainfall thresholds implemented in early warning systems in Italy \(Guzzetti et al., 2020\).](#)

Formattato: Colore carattere: Verde

1 Introduction

Italy has a long history of landslides and of related ~~catastrophes disasters~~. Landslides are complex and diverse phenomena triggered by ~~multiple a variety of~~ causes, including natural (meteorological or geophysical) and anthropogenic ~~ones factors~~. Rainfall-induced landslides are more widespread than any other geological event, and occur anywhere in Italy with serious consequences for people and property. Between 1972- ~~and~~ 2021, landslides ~~caused-made~~ 145,548 ~~people~~ homeless ~~and-or~~ evacuees and ~~caused~~ 2504 casualties (Polaris report, Bianchi and Salvati, 2023, <https://polaris.irpi.cnr.it/report/last-report/>, last access ~~2 February~~ ~~May 25,~~ 2023, in Italian). In the four-year period 2017-2020, the Italian Institute for Environmental Protection and Research (ISPRA) counted 645 "major landslide events", defined as those that cause deaths, injuries, evacuations, and damage to buildings, cultural heritage, and infrastructures (Trigila et al., 2021).

To mitigate landslide risk in Italy, in 2006 the Italian Department of Civil Protection (DPC), an Office of the Prime Minister, commissioned the Research Institute for Geo-Hydrological Protection of the Italian National Research Council (CNR IRPI) to carry out operational forecasting of rainfall induced-landslides.

The prediction of the possible spatial and temporal occurrence of shallow rainfall-induced landslides ~~in-over~~ large areas is accomplished by using empirical rainfall thresholds (Guzzetti et al., 2022). This simplified approach aims to identify an empirical relationship between rainfall and ~~the occurrence of landslide occurrences~~, explicitly neglecting knowledge of the physical laws governing slope instability mechanisms. Thresholds are calculated on a statistical basis by compiling historical catalogues of past documented failures and analysing the triggering rainfall conditions. They are well suited for predicting the occurrence of shallow landslides (~~e.g. slides, flows, and falls~~), ~~where there is a direct~~ ~~for which the correlation between rainfall and landslide initiation is direct~~ (Guzzetti et al., 2007; Segoni et al., 2018) ~~(Guzzetti et al., 2007; Segoni et al., 2018)~~. However, ~~T~~ thresholds are not as effective in predicting the occurrence of deep-seated landslides because of the lack of specific information and knowledge on the behaviour and hydrological characteristics of the subsurface of unstable slopes.

Although statistical and probabilistic methods for defining reliable and reproducible empirical rainfall thresholds are well-established (e.g., Berti et al., 2012; Segoni et al., 2014; Melillo et al., 2018), the availability of information required for the development of sub-regional and local ~~regional~~ thresholds is not as satisfactory. More effort and resources need to be devoted to the retrieval of information on rainfall events that have triggered landslides. To this end, since 2007 CNR IRPI has been involved in collecting historical data of rainfall-induced landslides in order to identify the critical triggering conditions. This activity has involved many of the institute's researchers over the years in different geographical and climatic contexts of Italy.

The use of a standardised methodology for collecting and classifying data has resulted in a homogenous catalogue ~~that includesincluding~~ accurate information on the geographic location and timing of landslide initiation. The catalogue is called ITALICA (ITALian rainfall-induced Landslides Catalogue) and currently lists 6312 records with information on rainfall-induced landslides that occurred over the Italian territory between January 1996 and December 2021. ~~ITALICA provides the scientific community a useful example on how to build accurate spatio-temporal catalogues elsewhere.~~

Formattato: Colore carattere: Verde

Formattato: Colore carattere: Verde

Formattato: Colore carattere: Verde

Formattato: Colore carattere: Verde

Formattato: Colore carattere: Verde

Formattato: Colore carattere: Verde

Formattato: Colore carattere: Verde

Formattato: Nessuna sottolineatura

Formattato: Colore carattere: Colore personalizzato(RGB(204;0;255))

Formattato: Colore carattere: Verde

Formattato: Colore carattere: Verde

Formattato: Colore carattere: Colore personalizzato(RGB(204;51;0))

Formattato: Colore carattere: Verde

Formattato: Colore carattere: Verde

Formattato: Inglese (Stati Uniti)

Formattato: Colore carattere: Verde, Inglese (Stati Uniti)

Formattato: Inglese (Stati Uniti)

Formattato: Colore carattere: Verde

Formattato: Colore carattere: Verde

Formattato: Colore carattere: Verde

Formattato: Colore carattere: Verde

Formattato: Colore carattere: Verde

Formattato: Colore carattere: Verde

Formattato: Colore carattere: Verde

2 Background

Numerous examples of national landslide catalogues, databases, or inventories are available in the literature, which are briefly reviewed in this paper a brief review of which is given in this work. The three terms are often used as synonyms, even if they have different meanings. The Oxford Learner's English Dictionary defines a "catalogue" as "a long series of things that happen (usually bad things)", a "database" as "an organised set of data that is stored in a computer and can be looked at and used in various ways", an "inventory" as "a written list of all the objects, furniture". In particular, a landslide inventory is defined as "a record of recognized landslides, distinguished by typology, geometry and activity, in a particular area" (Corominas et al., 2015). Generally, a landslide catalogue should usually contains temporal information on landslide occurrences and does not necessarily include geometrical data, on the other hand in contrast, a landslide inventory typically contains includes spatial and geometrical data, while leaving out precise the dates of occurrence of the landslides. Therefore, the first one catalogues can be used for temporal prediction of landslides, e.g., for calculating rainfall thresholds, while the second whereas inventories are usually used employed for spatial landslide-prediction of landslides, e.g. for landslide-susceptibility analyses. A landslide database can include both temporal and spatial information, although even if the examples in the literature are not homogenous somehow inconsistent in this regard. In the following a brief review of landslide catalogues is given along with some representative examples of inventories and databases, from the global to the national scale.

Two main global catalogues were compiled and published. Kirschbaum et al., (2010) compiled filled out a catalogue of global-scale rainfall-triggered landslides that occurred in the years 2003, 2007, and 2008, drawing on news, scientific articles, and related hazard databases. The methodology used to catalogue landslide events was also presented. The same catalogue was subsequently updated by (Kirschbaum et al., (2015) reaching 5741 records in the period 2007–2013 (Kirschbaum et al., 2015). Froude and Petley, (2018) published the Global Fatal Landslide Database, collecting 4862 non-seismic landslides that caused 55,997 deaths worldwide from January 2004 to December 2016. Information was collected found mostly from mass media reports, and secondarily using in government and aid agency reports, and scientific articles. The records include the date of occurrence and the location (coordinates and country) of the landslides, the number of fatalities and injuries, and the trigger. In Nicaragua (central America), a bibliographical and archive inventory of landslides and floods in Italy (southern Europe) covering the period 1917–1990 was prepared as part of the national project (AVI - Aree Vulnerate Italiane (an acronym for Areas Affected by Landslides or Floods) national project (Guzzetti et al., 1994); subsequently the inventory was upgraded to cover the period 1900–2002 (Guzzetti and Tonelli, 2004). (Guzzetti, 2000) compiled a catalogue of historical landslides with consequences for the Italian population from 1279 to 1999. The catalogue was revised and expanded by (Salvati et al., (2010, 2018). The IFFI Project (an Italian acronym for the Inventory of Landslide Phenomena in Italy) was launched in 1999 with the aim of identifying and mapping landslides over the national territory (Trigila et al., 2010). As of 2022, the IFFI inventory contains 620,808 landslides.

Formattato: Colore carattere: Verde

Formattato: Colore carattere: Verde

Formattato: Colore carattere: Verde

Formattato: Colore carattere: Verde

Formattato: Colore carattere: Verde

Formattato: Colore carattere: Verde

Formattato: Colore carattere: Verde

Formattato: Colore carattere: Verde

Formattato: Colore carattere: Verde

Formattato: Colore carattere: Verde

Formattato: Colore carattere: Verde

Formattato: Colore carattere: Verde

Formattato: Colore carattere: Verde

Formattato: Colore carattere: Verde

Formattato: Colore carattere: Verde

Formattato: Colore carattere: Verde

Formattato: Colore carattere: Colore personalizzato(RGB(204;0;255))

Formattato: Colore carattere: Colore personalizzato(RGB(204;0;255))

Formattato: Colore carattere: Colore personalizzato(RGB(204;0;255))

Formattato: Colore carattere: Colore personalizzato(RGB(204;0;255))

Formattato: Colore carattere: Colore personalizzato(RGB(204;0;255))

Formattato: Colore carattere: Colore personalizzato(RGB(204;0;255))

Formattato: Colore carattere: Colore personalizzato(RGB(204;0;255))

Formattato: Colore carattere: Colore personalizzato(RGB(204;0;255))

Formattato: Colore carattere: Colore personalizzato(RGB(204;0;255))

Formattato: Colore carattere: Colore personalizzato(RGB(204;0;255))

Formattato: Colore carattere: Colore personalizzato(RGB(204;0;255))

Formattato: Colore carattere: Colore personalizzato(RGB(204;0;255))

Formattato: Colore carattere: Colore personalizzato(RGB(204;0;255))

Formattato: Colore carattere: Colore personalizzato(RGB(204;0;255))

Formattato: Colore carattere: Colore personalizzato(RGB(204;0;255))

Formattato: Colore carattere: Colore personalizzato(RGB(204;0;255))

Formattato: Colore carattere: Colore personalizzato(RGB(204;0;255))

Formattato: Colore carattere: Verde

covering an area of approximately 23,700 km², about 8% of the Italian territory. A digital landslide database was prepared for Nicaragua (central America), containing spatial information for approximately 17,000 landslides that occurred in the period 1826–2003, was prepared by (Devoli et al., (2007). Information was searched from historical documents, technical reports and inventory maps, and included: date; location; landslide type; trigger; meteorological, geological, and morphological details; and damage.

In New Zealand (Oceania), Rosser et al. (2017) prepared a landslide database, bringing together existing landslide data stored in aerial photographs, field and media reports. The database comprised 22,575 landslide records (mapped as either points, lines, or polygons) including information on locations and, where available, timing, type, triggering event, volume and area data, and consequences.

In USA, The U.S. geological survey realized an openly accessible (<https://www.usgs.gov/tools/us-landslide-inventory>) inventory of landslides has been prepared by the U.S. geological survey (Belair et al., 2022) across the entire USA territory (Belair et al., 2022; <https://www.usgs.gov/tools/us-landslide-inventory>). To date the inventory currently includes more than 121,000 thousand landslide points and almost 55,000 thousand polygons across the entire USA territory, with details on date (with different varying accuracies, passing from the day of occurrence to an non-undefined period, e.g. pre-1974), fatalities (if any), degree of confidence degree in the extent or nature of landslide, and source of information (data includes past inventories created by both USGS and non-USGS authors.)

Looking at Europe, The IFFI Project (an Italian acronym for the Inventory of Landslide Phenomena in Italy) was launched in 1999 with the aim of identifying and mapping landslides over the national territory (Trigila et al., 2010). As of 2022, the IFFI inventory contains 620,808 landslides, covering an area of approximately 23,700 km², about 8% of the Italian territory. Van Den Eeckhaut and Hervás (2012) published a detailed analysis of (then) existing national landslide databases existing (at the time) in Europe the continent. They found that 22 out of the 37 European countries contacted had national databases, containing a total of 633,696 landslides, of which 485,004 were located in Italy. (Herrera et al., (2018) provided an update of the previous European recognition, collecting 20 national landslide databases including 849,543 landslides of different types (528,903 in Italy). Most of these databases were geomorphological inventories, which therefore did not contain temporal information on landslide occurrence and details about the triggers. Information on landslide locations was collected by traditional methods such as field surveys, interpretation of aerial photos and analysis of historical documents. In addition, Herrera et al., Haque et al., (2016) presented thea European landslides database containing 476 fatal landslides that affected 27 European countries from January 1995 to December 2014, resulting in 1370 deaths.

In Norway, (Jaedicke et al., (2009) Jaedicke et al., (2009) collected a database of more than 33,000 rapid mass movements of different types, e.g. including also snow avalanches and subaqueous slides, without detailed temporal information (only the year of occurrence is often now).

A landslide database for In Great Britain, a landslide database (western Europe) was developed by the British Geological Survey (Foster et al., 2012; Pennington et al., 2015), relying upon a variety of sources including maps, other databases, reports,

Formattato: Colore carattere: Colore personalizzato(RGB(204;0;255))

Formattato: Colore carattere: Colore personalizzato(RGB(204;0;255))

Formattato: Colore carattere: Colore personalizzato(RGB(204;0;255))

Formattato: Bordo: Superiore: (Nessun bordo), Inferiore: (Nessun bordo), A sinistra: (Nessun bordo), A destra: (Nessun bordo), Tra : (Nessun bordo)

Codice campo modificato

Formattato: Colore carattere: Verde

Formattato: Evidenziato

Formattato: Colore carattere: Verde

Formattato: Colore carattere: Rosso scuro

Formattato: Colore carattere: Colore personalizzato(RGB(204;0;255))

Formattato: Colore carattere: Colore personalizzato(RGB(204;51;0))

Formattato: Non Evidenziato

Formattato: Colore carattere: Colore personalizzato(RGB(204;51;0)), Non Evidenziato

Formattato: Colore carattere: Rosso scuro

Formattato: Colore carattere: Rosso scuro, Evidenziato

Formattato: Colore carattere: Rosso scuro, Non Evidenziato

Formattato: Colore carattere: Colore personalizzato(RGB(204;51;0)), Non Evidenziato

Formattato: Colore carattere: Colore personalizzato(RGB(204;51;0)), Inglese (Regno Unito)

Formattato: Colore carattere: Colore personalizzato(RGB(204;51;0)), Inglese (Regno Unito)

Formattato: Colore carattere: Colore personalizzato(RGB(204;51;0)), Inglese (Regno Unito)

Formattato: Colore carattere: Colore personalizzato(RGB(204;51;0))

Formattato: Colore carattere: Colore personalizzato(RGB(204;0;255))

130 research theses, and newspaper articles. ~~It included~~ To date it includes over 17,000 records of landslide events with more than 35 attributes, with capability to include ~~comprising~~ location, landslide size and type, trigger mechanism, damage, and material. The database is not temporally limited between set dates; it includes also historic (preglacial) undated landslide event deposits. Temporal information (and occurrence date) is stored only when available, especially for recent events, for which social media are also used to collect temporal information (Pennington et al., 2015). In Poland, Mrozek et al. (2014) published a ~~landslide inventory~~ of landslides in Poland (central Europe), containing about 40,000 landslides, covering 1031.9 km², mapped in 161 municipalities, ~~until from 2008 to April 2014~~. The inventory contained spatial information (mostly collected during geomorphological field mapping) on landslide location, and size, as well as information on trigger,ing events and landslide-related damage. Temporal information on the phenomena was lacking. In Germany, A national landslide database for Germany (central Europe) was produced by Damm and Klose (2014, 2015) ~~produced a national landslide database that~~ included 1,720 landslide events (more than 13,000 individual data files) caused by several triggers during in the period 1820–2013, ~~and was based on different sources such as scientific publications, field data, and agency archives~~. The data collected from different sources (scientific publications, field data, and agency archives) in their database included information on the occurrence date or time of the failures; and geographic coordinates and landslide location; administrative region, as well as, and available data sources. In Slovenia, Komac and Hribernik (2015) presented the national landslide inventory database of Slovenia (central Europe), which started in 2013 and at the time of publication contained a total of 6234 records entered into the database in point format. ~~(project started in 2013)~~. ~~The national database put together information from administrative sources such as the Slovenian Geological Survey, Environment Agency, Roads Agency, and several municipalities~~. Various details were included in the database, with emphasis on landslide sizes and volumes. The Swiss Federal Research Institute compiled a database of naturally triggered floods, landslides, and debris flows with a particular focus on the financial damage caused by such events (Andres and Badoux, 2019). The national database is also based on comprehensive regional landslide inventories (Hess et al., 2014). At the time of publication, the database contained 3690 landslides and 660 debris flows occurred in Switzerland in the period 1972–2016. The minimum information stored in the database was: date, time, location, municipality and canton, trigger, number of dead, injured or evacuated people, and estimation of the caused damage. A historical landslide database for Czechia (central Europe) was compiled by Bil et al. (2021), counting 699 records over the period 1132–1989. The records were characterised by several attributes, among which the type, location, beginning and end of movement, accuracy and source were mandatory. Information was gathered from national and local chronicles, technical reports, and photo interpretation. In Denmark, A national landslide inventory for Denmark (northern Europe) was prepared by Luetzenburg et al. (2022) based on a manual expert-based mapping approach on a high-resolution DEM and orthophotos. Overall, the inventory contained 3202 landslide polygons with attributes regarding location, size, type of movement, and accuracy. Information on the time of occurrence of the phenomena, as well as their triggering causes, ~~were~~ was not systematically included.
 Rosser et al. (2017) prepared a landslide database for New Zealand, bringing together existing landslide data stored in a variety of sources including aerial photographs, field and media reports, and proposing a unified data model. The database comprised

Formattato: Colore carattere: Blu

Formattato: Colore carattere: Blu

Formattato: Colore carattere: Blu

Formattato: Colore carattere: Blu

Formattato: Colore carattere: Verde

Formattato: Colore carattere: Blu

Formattato: Colore carattere: Verde

Formattato: Colore carattere: Verde

Formattato: Colore carattere: Colore personalizzato(RGB(204;0;255))

Formattato: Colore carattere: Colore personalizzato(RGB(204;0;255))

Formattato: Colore carattere: Blu

Formattato: Colore carattere: Colore personalizzato(RGB(204;0;255))

Formattato: Colore carattere: Colore personalizzato(RGB(204;0;255))

Formattato: Colore carattere: Colore personalizzato(RGB(204;0;255))

Formattato: Colore carattere: Colore personalizzato(RGB(204;0;255))

Formattato: Colore carattere: Colore personalizzato(RGB(204;0;255))

Formattato: Colore carattere: Colore personalizzato(RGB(204;0;255))

Formattato: Colore carattere: Colore personalizzato(RGB(204;0;255))

Formattato: Colore carattere: Colore personalizzato(RGB(204;0;255))

Formattato: Colore carattere: Blu

Formattato: Colore carattere: Colore personalizzato(RGB(204;0;255))

Formattato: Colore carattere: Colore personalizzato(RGB(204;0;255))

Formattato: Colore carattere: Colore personalizzato(RGB(204;0;255))

165 22,575 landslide records (mapped as either points, lines, or polygons) including information on locations and, where available, timing, type, triggering event, volume and area data, and consequences when available. As for Italy, a bibliographical and archive inventory of landslides and floods covering the period 1917–1990 was prepared as part of a national project (AVI – *Are*

170 *Are* *Vulnerate Italiane*, an acronym for Areas Affected by Landslides or Floods; Guzzetti et al., 1994); subsequently the inventory was upgraded to cover the period 1900–2002 (Guzzetti and Tonelli, 2004). Guzzetti (2000) compiled a catalogue of historical landslides with consequences for the Italian population from 1279 to 1999. The catalogue was revised and expanded

175 by Salvati et al. (2010, 2018), and is used to publish yearly reports of fatal landslides and floods in Italy in the Polaris website (<https://polaris.irpi.cnr.it/>, last access May 25, 2023; Bianchi and Salvati, 2023). The IFFI Project (an Italian acronym for the Inventory of Landslide Phenomena in Italy) was launched in 1999 with the aim of identifying and mapping landslides over the national territory and is currently managed by ISPRA (Trigila et al., 2010). As of 2022, the IFFI inventory contains 620,808 landslides, covering an area of approximately 23,700 km², about 8% of the Italian territory. Innocenzi et al., (2017) compiled a database containing information on 1054 landslides that occurred in Italy in the 4-year period 2012–2015, by searching the internet using Google Alerts (<https://www.google.com/alerts>). Each landslide was assigned a location (possible only in 808 cases); and a date (daily resolution, in all cases), a region and a nearest city; only 808 landslides had geographic information. Consulting online news sources from 2010 onwards, Calvello and Pecoraro (2018) published a georeferenced catalogue of 8931 landslides affecting the Italian territory from 2010 to 2017. Information collected in the catalogue includes: location and occurrence day, source of information, and number of landslides in case of areal events. Indeed, the records were classified as “single landslide events” (records only reporting one landslide) and “areal landslide events” (records including multiple landslides triggered by the same cause in the same area). Events were also classified in three classes according to the damage caused (very severe, severe, or minor). The Swiss Federal Research Institute compiled a database of naturally triggered floods, landslides, and debris flows with a particular focus on the financial damage caused by such events (Andres and Badoux, 2019). The national database is also based on comprehensive regional landslide inventories (Hess et al., 2014). At the time of publication, the database contained 3690 landslides and 660 debris flows occurred in Switzerland in the period 1972–2016. The minimum information stored in the database was: date, time, location, municipality and canton, trigger, number of dead, injured or evacuated people, and estimation of the caused damage. A historical landslide database for Czechia (central Europe) was compiled by Bíl et al. (2021), counting 699 records over the period 1132–1989. The records were characterised by several attributes, among which the type, location, beginning and end of movement, accuracy and source were mandatory. Information was gathered from national and local chronicles, technical reports, and photo interpretation. A national landslide inventory for Denmark (northern Europe) was prepared by Luetzenburg et al. (2022) based on a manual expert-based mapping approach on a high-resolution DEM and orthophotos. Overall, the inventory contained 3202 landslide polygons with attributes regarding location, size, type of movement, and accuracy. Information on the time of occurrence of the phenomena, as well as their triggering causes, were not systematically included.

185

190

195

Formattato: Colore carattere: Verde

Formattato: Colore carattere: Verde

Formattato: Colore carattere: Colore personalizzato(RGB(204;0;255))

Formattato: Colore carattere: Colore personalizzato(RGB(204;0;255))

Formattato: Colore carattere: Colore personalizzato(RGB(204;0;255))

Formattato: Car. predefinito paragrafo, Colore carattere: Colore personalizzato(RGB(204;0;255))

Formattato: Car. predefinito paragrafo, Colore carattere: Colore personalizzato(RGB(204;0;255))

Formattato: Colore carattere: Colore personalizzato(RGB(204;0;255))

Formattato: Colore carattere: Colore personalizzato(RGB(204;0;255))

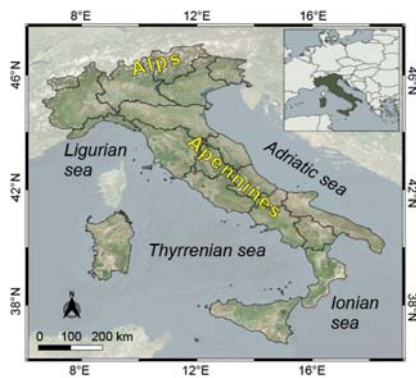
Formattato: Colore carattere: Verde

Two main global catalogues were compiled and published. Kirschbaum et al., (2010) compiled a catalogue of global seale rainfall triggered landslides that occurred between in the years 2003, 2007, and 2008, drawing on news, scientific articles, and related hazard databases. A methodology to catalogue landslide events was also presented. The catalogue was subsequently updated, reaching 5741 records in the period 2007–2013 (Kirschbaum et al., 2015). Froude and Petley, (2018) published the Global Fatal Landslide Database, collecting 4862 non-seismic landslides that caused 55,997 deaths worldwide from January 2004 to December 2016. Information was collected mostly from mass media reports, and secondarily using government and aid agency reports, scientific articles. The records include the date of occurrence and the location (coordinates and Country) of the landslides; the number of fatalities and injuries, and the trigger. Looking at Europe, Haque et al., (2016) presented the European landslides database containing 476 fatal landslides that affected 27 European countries from January 1995 to December 2014, resulting in 1370 deaths.

As for Italy, none of the available catalogues have a level of accuracy as high as ITALICA. This characteristic makes it particularly suitable for use in operational landslide forecasting at the regional scale.

3 Study area

Italy is a boot-shaped peninsula, which covers covering 301,336 km² in southern Europe, from 7° to 19° E, and from 37° to 47° N (Fig. 1). Physiographically, Italy is characterised by two main mountain chains ranges, the Alps and the Apennines. The Alps sweep in a west-to-east are covering across the northern tip of the country and extend 1200 km from E to W reaching an altitude of over 4,800 m a.s.l. and dividing separating the Italian peninsula from the rest of Europe. The Apennines is are a mountainous and hilly chain extending longitudinally from NW to SE for 1200 km along the Italian peninsula. Elsewhere Italy deeps plunges into the Mediterranean Sea and, in particular it is surrounded by the Adriatic, Ionian, Thyrranian, and Ligurian Seas, which are home to numerous islands, the largest of which are Sicily and Sardinia. The latter also have a hilly/mountainous territory.



Formattato: Colore carattere: Verde

Formattato: Colore carattere: Verde

Formattato: Colore carattere: Verde

Formattato: Colore carattere: Verde

Formattato: Colore carattere: Verde

Formattato: Colore carattere: Verde

Formattato: Colore carattere: Verde

Formattato: Colore carattere: Verde

Formattato: Colore carattere: Verde

Formattato: Colore carattere: Verde

Formattato: Colore carattere: Verde

Figure 1. Study area; the entire Italian territory. Background from © Microsoft; EPSG: 4326.

Italy is almost entirely seismically active, being located at the meeting point of as it lies at the boundary between the Eurasian and African plates. Sedimentary, metamorphic and igneous rocks of Paleozoic to Recent age are present, covered by different soil types with thicknesses from < 1 m to several metres. Given the conformation and moderate variation in latitude of the territory, the climate in Italy is quite variable. In the nNorth it is generally colder and wetter, and locally alpine in the mountainous area. Along the peninsula, the climate is temperate, with the duration of dry summers increasing toward the Southsouth. The eastern alpine and prealpine areas, as well as the northern Apennines have higher precipitation, with mean annual precipitation values exceeding 2,000 mm. In contrast, areas with lower precipitation, between 400 and 600 mm per year, are mainly found in southern Sicily, Puglia and southern Sardinia. Almost everywhere in Italy, November and July are the wettest and driest months, respectively (Fioravanti et al., 2022).

The abundance of relief and climatic characteristics make landslides a frequent and widespread phenomenon in Italy, where they are triggered primarily by rainfall, secondarily by rapid snowmelt, and earthquakes (Guzzetti, 2000; Guzzetti and Tonelli, 2004).

4 Data and methods

To introduce the data used for the catalogue, it is important to state that the collected landslides are mostly those that had a direct or indirect impact on the population (structures and facilities, such as buildings, roads, railways). Landslides that occurred in not anthropized uninhabited areas or for which there are no institutional or news reports are seldom rarely included in the ITALICA catalogue.

Data on landslides are, in general, difficult to retrieve and not fully reliable in terms of completeness and temporal and spatial accuracy. In order to gather in depth obtain detailed and up-to-date information on the location and timing of landslides in Italy, it has been necessary to concentrate efforts and human resources on various sources of information. Information was collected through the systematic reading of local newspapers, both printed and electronic, blogs and online information sources; consultation of texts and periodicals held in municipal libraries and newspaper libraries; event reports, and reports following surveys; research in archives of at different levels of government (municipal, provincial and statenational); examination of online archival sources available from research organisations (e.g., SICI: an Italian acronym for Information System on Hydrological and Geomorphological Catastrophes; Guzzetti and Tonelli, 2004); consultation and involvement of Institutions in charge of land management, protection and surveillance (e.g., Regional Functional Centres, Provincial Commands of the National Fire and Rescue Service and State Forestry Corps).

The analysis of sources on rainfall-induced landslides is challenging because the information is generally incomplete, uneven inconsistent and sometimes conflicting contradictory. For example, one source allows the accurate location of a landslide to be pinpointed by showing one or more photos of the surrounding landscape, or of the kilometre marker in the case of a slope

Formattato: Colore carattere: Verde

Formattato: Colore carattere: Verde

Formattato: Colore carattere: Verde

Formattato: Colore carattere: Verde

Formattato: Colore carattere: Verde

Formattato: Colore carattere: Verde

Formattato: Colore carattere: Verde

Formattato: Colore carattere: Verde

Formattato: Colore carattere: Verde

Formattato: Colore carattere: Verde

Formattato: Colore carattere: Verde

Formattato: Colore carattere: Verde

Formattato: Colore carattere: Verde

Formattato: Colore carattere: Verde

Formattato: Colore carattere: Verde

failure along a road. Another source may instead report details on the time or part of the day when the landslide occurred (late morning, evening); still others may indicate the type of the landslide movement. Hopefully, with the help of the different sources, the reconstruction of where and when the landslide occurred can be established. In the event of a discrepancy, the search for additional sources continues until an agreed reconstruction is found. In the absence of minimum information such as the broad-general location and the day of occurrence of the landslide, the event is discarded. Landslides were excluded from the catalogue if: (1) the triggering factors were unknown or other than rainfall; (2) there was evidence of other causes operating along with rainfall in the activation (e.g., freeze-thaw cycles, rain-on-snow or snowmelt, seismic vibrations, anthropogenic influence); (3) the landslide location both in space or time had low-poor accuracy, thus preventing the likely reconstruction of the triggering rainfall conditions (Palladino et al., 2018).

The catalogue contains the following information for each record~~In the catalogue, for each record the information includes:~~ (i) source of information; (ii) landslide type (if available from the source of information); (iii) landslide location (coordinates, municipality, province, region, geographic accuracy); (iv) temporal information (day, month, year, time, full date, temporal accuracy). Table 1 summarises the main fields included in ITALICA. ~~The rainfall that likely triggered the landslides contained in the catalogue will be included and analysed in a forthcoming publication.~~

Formattato: Colore carattere: Verde

Formattato: Colore carattere: Colore personalizzato(204;0;255)

Formattato: Colore carattere: Verde

Formattato: Colore carattere: Verde

Formattato: Colore carattere: Verde

Formattato: Colore carattere: Verde

Formattato: Colore carattere: Verde

Formattato: Colore carattere: Verde

Table 1. Summary of fields included in the-ITALICA.

Category	Information on category
ID	Unique ID for each reported rainfall-induced landslide.
Information sources	Source of report information, including news reporting (NR) and institutions reporting (IR).
Landslide type	Landslide types are included if known or specified in the source and includes: debris flow (DF), earth flow (EF), mud flow (MF), rock fall (RF), generic shallow landslide (SL).
Longitude & latitude	Longitude and latitude of the reported failures.
Municipality, Province & Region	Municipality, Province and Region in which the landslide occurred.
Geographic accuracy	This field assigns a qualitative level for the landslide geographic accuracy based on the area over which the landslide realistically occurred (in square kilometres), described as a radius R from the coordinates of the failures (in kilometres): <ul style="list-style-type: none"> • very high, P_0 exact landslide location, $R=0$; • high, $P_1 < 1 \text{ km}^2$; $R < 0.6 \text{ km}$; • medium, $1 \leq P_{10} < 10 \text{ km}^2$; $0.6 \text{ km} < R < 1.8 \text{ km}$; • low, $10 \leq P_{100} < 100 \text{ km}^2$; $1.8 \text{ km} \leq R < 5.6 \text{ km}$; and • very low $100 \leq P_{300} < 300 \text{ km}^2$; $5.6 \text{ km} \leq R < 9.8 \text{ km}$.
Day, Month & Year	Reported day, month and year of the landslide, in separate columns.
Local Time	Reported hour and minute of the landslide, recorded as HH:MM (24 clock, local time). This field may also include an approximate time of day if known (e.g. morning, early/late morning, afternoon, evening, night, etc.).
Local date	This field summarises the date and local time of the reported landslides.
UTC date	This field summarises the date and the UTC time of the reported landslides.
Temporal accuracy	This field assigns a qualitative level for the landslide temporal accuracy, in three classes: <ul style="list-style-type: none"> • level T_1 when the time (minute to hour) of the failure is known; • level T_2 when the part of the day (e.g., early or late morning, midday, early or late afternoon, middle of the night) is known or the time is inferred from the online news publication; • and level T_3 when only the day of occurrence is known.

Formattato: Colore carattere: Blu

Formattato: Colore carattere: Blu

Formattato: Colore carattere: Blu

Formattato: Colore carattere: Blu

Formattato: Colore carattere: Blu

Formattato: Colore carattere: Blu

Formattato: Colore carattere: Blu

Formattato: Colore carattere: Blu

The information sources were classified into two categories: (i) news reporting, and (ii) institutions reporting. News reporting includes information from online and printed newspapers, news websites, social media and blogs. Information from newspapers was initially gathered through systematic searches of regional and local online archives. For this purpose, we used Google Alerts, which allows receiving alerts whenever a predefined keyword or combinations thereof is mentioned somewhere on the web. We used various terms linked to bad weather conditions with all possible synonyms of landslides (Table 2). The Google Alerts search returns results when a rainfall-related term (e.g., "rainfall", "downpour") and a landslide-related term (e.g., "mass movement", "collapse") are found simultaneously in a webpage. Specifically, Table 2 shows all the possible 136 combinations searched for on the internet. The same search was done by including the plural of terms, if any.

Formattato: Colore carattere: Verde

Formattato: Colore carattere: Verde

Formattato: Colore carattere: Verde

Table 2. Key terms used to select information on rainfall-induced landslides in Google Alerts search tool. The double and triple check marks indicate the number of possible cross-combinations. Terms translated from Italian language.

	Rainfall	Cloudburst	Precipitation	Bad weather	Downpour	Shower	Flash flood	Storm
Landslide/slide	✓✓	✓✓	✓✓	✓✓	✓✓	✓✓	✓✓	✓✓
Landsliding	✓	✓	✓	✓	✓	✓	✓	✓
Mass movement	✓	✓	✓	✓	✓	✓	✓	✓
Slope failure/instability	✓✓	✓✓	✓✓	✓✓	✓✓	✓✓	✓✓	✓✓
Collapse	✓	✓	✓	✓	✓	✓	✓	✓
Boulder	✓	✓	✓	✓	✓	✓	✓	✓
Slump	✓	✓	✓	✓	✓	✓	✓	✓
Earth/debris/mud flow	✓✓✓	✓✓✓	✓✓✓	✓✓✓	✓✓✓	✓✓✓	✓✓✓	✓✓✓
Earth/Debris slide	✓✓	✓✓	✓✓	✓✓	✓✓	✓✓	✓✓	✓✓
Rock fall/slide/avalanche	✓✓✓	✓✓✓	✓✓✓	✓✓✓	✓✓✓	✓✓✓	✓✓✓	✓✓✓

Formattato: Colore carattere: Verde

Formattato: Colore carattere: Verde

News about landslides was also retrieved from social media posts, often accompanied by photographs taken shortly after the failure. Examples of such information are blogs, Facebook and Twitter posts from users who experienced traffic jams due to landslides blocking roads. This kind of information makes it possible to better locate landslides in both space and time.

Formattato: Colore carattere: Verde

Institutions reporting comes from interventions following weather-related landslides carried out by institutional authorities, including the provincial Commands of the National Fire and Rescue Service, the regional civil protection functional centres and State Forestry Corps. News about road disruptions caused by geo-hydrological phenomena were provided by ANAS (Azienda Nazionale Autonoma delle Strade), an Italian company that manages national road and motorway network, and CCISS (Centro Coordinamento Informazioni Sicurezza Stradale), an Italian agency that provides traffic and travel information. Information about landslides occurring along the Italian railway network are provided by RFI (Rete Ferroviaria Italiana). Institutional authorities have proved to be particularly useful, as they provide reliable and accurate information about the exact or approximate landslide location in space and time, usually being the first responders at the scene of the event. Institutions reporting were often cross-referenced with news derived from chronicle sources, and this made it possible, in most cases, to improve the temporal and spatial accuracy of the slope failures.

Formattato: Colore carattere: Verde

Formattato: Colore carattere: Verde

Where available, information on the landslide type was also collected. This was a critical task, because some of the sources (e.g., newspapers, firefighter reports, blogs) often used untechnical and therefore imprecise language to describe a slope failure. According to the categories defined by Cruden and Varnes (1996), we classified the landslides as debris flow (DF), earth-flow (EF), mud-flow (MF), rock fall (RF), and generic shallow landslide (SL). The latter class was assigned in the cases where the description of the type of landslide was missing in the information sources.

Formattato: Colore carattere: Verde

The catalogue provides the geographic coordinates (longitude and latitude in WGS84) of individual failures along with administrative information, including municipality, province and region. Landslides then result are then represented as points on a map (not polygons) with an associated geographic accuracy depending on the type and quality of the information. Using the details provided in the information sources, the landslides were mainly located using Google Earth to retrieve their coordinates, taking advantage of its multi-temporal set of images. The services of the Italian National Geoportal

Formattato: Colore carattere: Verde

(<http://www.pcn.minambiente.it/viewer/>), which ~~allow make it possible to consult~~ all the maps (1:25,000 scale) provided by the Italian Army Geographical Support Office ~~to be viewed~~, were also used to search for some ambiguous or unknown toponyms.

From Peruccacci et al. (2017), we identified five categories of decreasing geographic accuracy P: P₀ (very high); P₁ < 1 km² (high); 1 ≤ P₁₀ < 10 km² (medium); 10 ≤ P₁₀₀ < 100 km² (low); and 100 ≤ P₃₀₀ < 300 km² (very low). The geographic accuracy is assigned based on the maximum circular area within which the landslide realistically occurred. A level P₀, corresponding to the exact location of the landslide, was assigned to those failures for which the information source directly reported the geographic coordinates, or the road with ~~an the exact~~ an the exact ~~kilometric indication, or even, in the case of a landslide occurring in a built-up area, the street and the approximate house number.~~ In particular, the road kilometre was obtained by searching for kilometre markers in Google Street View; ~~in a few cases, the landslide body was clearly sighted visible.~~ Level P₁ corresponds to a landslide located within a radius of less than about 0.6 km ~~(i.e., 1 km² or less)~~, e.g. the name of the street was known, but not the exact location. A medium level of geographic accuracy P₁₀ was assigned when the information obtained from the source allowed the identification of a large road sector, or a city block affected by the landslide (within a radius of less than about 1.8 km). A low level of geographic accuracy P₁₀₀ was attributed when the information source mentioned the district, borough or hamlet of a municipality where the landslide occurred. ~~Finally, a very low level of geographic accuracy P₃₀₀ was given in the few cases where only the municipality is mentioned.~~

The date of occurrence (year, month, and day) is given for each failure. As for the geographic accuracy, we defined a temporal accuracy T in three classes: T₁ when the time (from minutes to one hour) of the event is known; ~~T₂ when the part of the day is known or the the inferred occurrence time is known~~ T₂ when the part of the day is known ~~can be inferred~~; T₃ when only the day of occurrence is known. The time of the T₁ class can be derived from both news reporting and institutional reporting, assuming that the authorities involved (e.g., Fire and Rescue Service, RFI) are warned immediately after the landslide event. The T₂ class is assigned in two cases. When the news specifies that the landslide occurred in a time slot (e.g., late morning, early afternoon), an inferred time is given according to Table 3, which provides four main subdivisions of the day into nine time slots. In the case of online news reporting, the time at which the news was first published is used to determine the inferred time ~~when of the failure took place~~, when of the failure took place, assuming that the landslide certainly occurred before the news was posted. Lastly, ~~where if the news only reports only~~ where if the news only reports only the day on which the event occurred, the landslide is assigned a daily temporal accuracy of T₃ ~~and is conventionally assumed to have occurred~~ at the end of the day (23:59).

Formattato: Colore carattere: Verde

Formattato: Colore carattere: Verde

Formattato: Colore carattere: Verde

Formattato: Colore carattere: Verde

Formattato: Colore carattere: Verde

Formattato: Colore carattere: Verde

Formattato: Colore carattere: Verde

Formattato: Colore carattere: Verde

Formattato: Colore carattere: Verde

Formattato: Colore carattere: Verde

Table 3. Inferred time of the landslide based on the time slot derived from the sources.

Time slot	Inferred time
Early morning	8:00
Morning	11:00
Late morning	13:00
Early afternoon	15:00
Afternoon	17:00
Late afternoon	19:00
Evening	21:00
Late evening	23:59
Night	05:00

335 Information was collected and entered into the catalogue by several operators, who were assigned one or more administrative regions within which to conduct the search. The size of the team varied over time, with a minimum of five and a maximum of nine operators working simultaneously. In order to limit subjectivity in the compilation of the catalogue, several workshop and training courses were organised to ensure the adoption of uniform criteria by all operators. A validation of the landslides added in the catalogue was carried out by assigning a random sample of the records from one operator to another one. In most cases
 340 the records were filled in with the same details. In case of discrepancies, they were double-checked by the team. The catalogue records were stored in a spreadsheet and converted in comma-separated-values (.csv) and geoPackage (.gpkg) files to be analysed and visualised in a GIS environment.

5 Description of the catalogue

345 ITALICA lists 6312 records with information on rainfall-induced landslides that occurred over on the Italian territory between January 1996 and December 2021. Figure 2a shows the distribution of the 6312 slope failures classified by type (according to Cruden and Varnes, 1996). The landslides are fairly evenly distributed in the mountainous and hilly areas of the Countrycountry. Some areas exhibit have a higher concentration of events due to specific agreements with local authorities aimed at improving landslide forecasting. Overall, about three-quarters (4762) of the catalogued mass movements were classified as generic shallow landslides (SL); while 13% (818) of the phenomena are rock falls (RF), which are homogeneously distributed over the whole territory. Debris, earth and mud flows (DF, EF and MF, respectively) cover together less than 12% (732) of the catalogue. DF are mainly located in the northern part of the Countrycountry, particularly in the Alps mountain chain. Figure 2b shows the number of landslides collected in each of the 20 administrative Italian regions. Overall, half of the regions count more than 200 landslides. In two regions, namely Liguria and Marche, more than 1000 landslides were collected recorded, thanks to specific agreements with the regional civil protection offices.

Formattato: Colore carattere: Verde

Formattato: Colore carattere: Verde

Formattato: Colore carattere: Verde

Formattato: Colore carattere: Verde

Formattato: Colore carattere: Verde

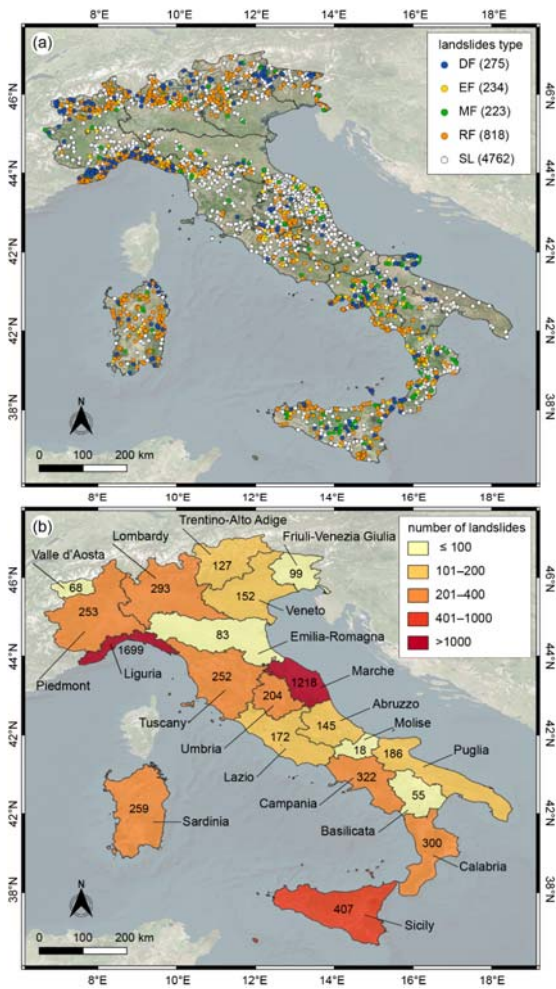


Figure 2. (a) Location of the catalogued landslides, classified according to type. Key: DF, debris flow; EF, earth flow; MF, mud flow; RF, rock fall; SL, unspecified shallow landslide. The number of landslides for each type is given in brackets in the legend. (b) Number of landslides for each of the 20 Italian administrative regions (names in Italian). Colours of the regions are associated with the number of landslides in 5 classes. Background from © Microsoft; EPSG: 4326.

Formattato: Colore carattere: Verde

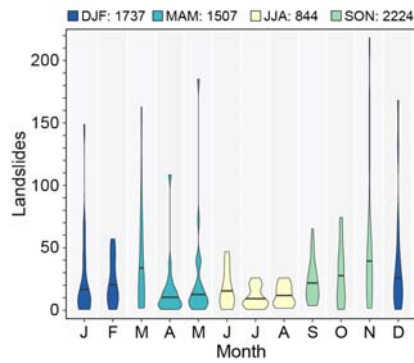
Formattato: Colore carattere: Verde

Formattato: Colore carattere: Verde

360

Figure 3 shows the monthly distribution of the landslides, grouped by season. November, May, December, March, and January are in descending order characterised by high variability in the number of landslides. Table 4 lists the mean, median and total number of landslides per month. November is the month with the highest statistics on the number of failures. The monthly median varies by a factor 2.5, thus evidencing the seasonality of the process. The difference between the mean and the median values is significant for all months, indicating that the monthly distributions are not normal, as depicted by the violin plots in Figure 3. Summer months (JJA) are characterised by a lower variability. Overall, 35.2% of the catalogued landslides occurred in autumn (SON), 27.5% in winter (DJF), 23.9% in spring (MAM), and only 13.4% in JJA. Landslides that occurred in JJA are mostly located in the Alps while those that occurred in DJF are mainly found in the Apennine chain.

365



370

Figure 3. Violin plot of the monthly distribution of landslides *in ITALICA*. Months are grouped into four seasons: *winter*, DJF (December–January–February); *spring*, MAM (March–April–May); *summer*, JJA (June–July–August); *autumn*, SON (September–October–November). The number of landslides in each season is shown in the legend.

Formattato: Colore carattere: Verde

Formattato: Colore carattere: Verde

Formattato: Colore carattere: Verde

Formattato: Colore carattere: Verde

Formattato: Colore carattere: Verde

Formattato: Colore carattere: Verde

Table 4. Monthly statistics of number of landslides

month	Number of landslides		
	median	mean	total
Jan	11	23.67	544
Feb	15.5	22.9	457
Mar	16	35.3	670
Apr	7.5	15.6	312
May	10	23.9	525
Jun	12	17.3	363
Jul	7.5	10.6	234
Aug	11.5	12.4	247
Sep	17	23.4	491
Oct	19	28.6	658
Nov	30.5	48.9	1075
Dec	20	35.0	736

Figure 4 plots the number of landslides in each month in the entire observation period January 1996–December 2021. For each year, the mean and median values of the monthly number of landslides are shown in the corresponding panel. The mean and median values of the annual number of landslides are reported. The first six years show much lower monthly and annual values than the following 20 years: only 65 landslides were collected between 1996 and 2001. The limited number of events/landslides does not depend on particular weather conditions during the period, but on the fact that historical data were available for only a few regions. Overall, large variations are observed between monthly and annual values. In particular, four years, namely 2008, 2009, 2010, and 2014, have significantly higher mean and median values than the other years. Except for the years 2013, 2014, and 2019, all others show similar mean and median values. Four years, from between 2007 to and 2021, are characterised by less intra-annual variability, thus displaying very similar mean and median values. We excluded the period 1996–2001 from the successive analysis due to the small (not representative) number of events (Fig. 4), and identified two 10-year sub-periods, 2002–2011 and 2012–2021, which present a comparable number of landslides, 3127 and 3120 respectively. Table 4 lists the mean, median and total number of landslides per month in the period 2002–2021, which is the most representative period (Fig. 4) from 2002 to 2021. November is the month with the highest statistics on the number of failures. The monthly median varies by a factor of 2.5 greater than 4, thus evidencing the seasonality of the process. The difference between the mean and the median values is significant for the all-months (except August) from November to May, indicating that the monthly distributions are not normal, as depicted by the violin plots in Figure 3. Summer/Other months (JJA) are characterised by a lower variability. Overall, 35.21% of the catalogued landslides occurred in autumn (SON), 27.57% in winter

- Formattato: Colore carattere: Verde
- Formattato: Colore carattere: Verde
- Formattato: Colore carattere: Verde
- Formattato: Colore carattere: Verde
- Formattato: Colore carattere: Verde
- Formattato: Colore carattere: Colore personalizzato(RGB(204;0;255))
- Formattato: Colore carattere: Colore personalizzato(RGB(204;0;255))
- Formattato: Colore carattere: Colore personalizzato(RGB(204;0;255)), Evidenziato
- Formattato: Colore carattere: Colore personalizzato(RGB(204;0;255))
- Formattato: Non Evidenziato
- Formattato: Colore carattere: Colore personalizzato(RGB(204;0;255)), Non Evidenziato
- Formattato: Non Evidenziato
- Formattato: Colore carattere: Colore personalizzato(RGB(204;0;255))
- Formattato: Colore carattere: Colore personalizzato(RGB(204;0;255)), Non Evidenziato
- Formattato: Colore carattere: Colore personalizzato(RGB(204;0;255))
- Formattato: Colore carattere: Colore personalizzato(RGB(204;0;255)), Non Evidenziato
- Formattato: Colore carattere: Colore personalizzato(RGB(204;0;255))
- Formattato: Colore carattere: Colore personalizzato(RGB(204;0;255)), Non Evidenziato
- Formattato: Colore carattere: Colore personalizzato(RGB(204;0;255))
- Formattato: Colore carattere: Colore personalizzato(RGB(204;0;255)), Non Evidenziato

(DJF), 23.9% in spring (MAM), and only 13.43% in JJA. Landslides that occurred in JJA are mainly located in the Alps while those that occurred in DJF are mainly found in the Apennine chain.

Formattato: Colore carattere: Colore personalizzato(204;0;255)
Formattato: Colore carattere: Colore personalizzato(204;0;255), Non Evidenziato

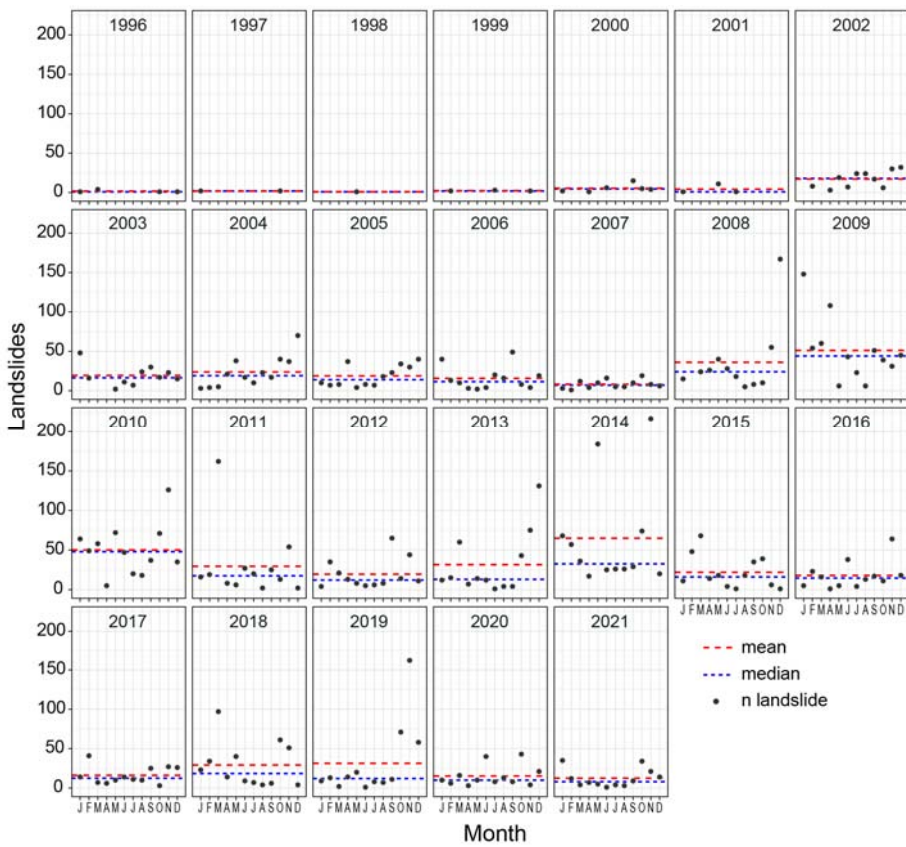


Figure 4. Monthly distribution of landslides in the observation period January 1996–December 2021. The mean and median number of landslides per each year are also shown.

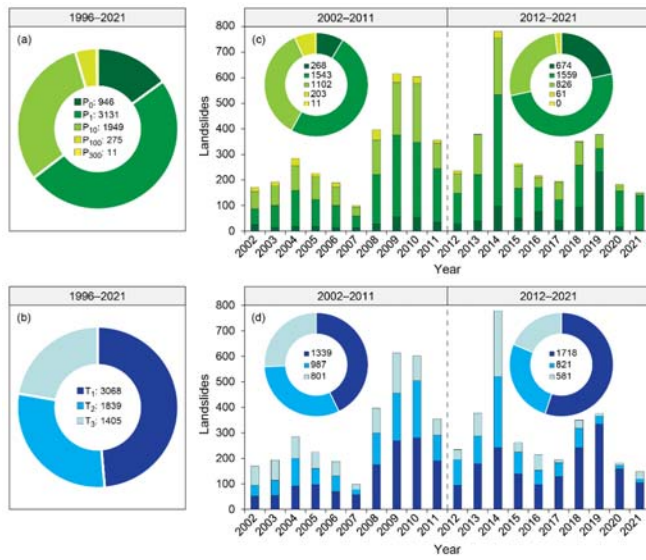
Table 4. Monthly statistics of number of landslides for in the period 2002-2021

month	Number of landslides (2002-2021)		
	median	mean	total
Jan	13	26.9	538
Feb	16	22.8	455
Mar	16	33.3	666
Apr	8	15.6	311
May	10	25.7	513
Jun	13	17.9	357
Jul	8	11.5	230
Aug	12	12.4	247
Sep	20	23.8	476
Oct	34	32.5	650
Nov	34	53.5	1069
Dec	21	36.8	735

- Formattato: Giustificato
- Formattato: Colore carattere: Verde
- Formattato: Colore carattere: Verde
- Formattato: Colore carattere: Verde
- Formattato: Colore carattere: Verde
- Formattato: Colore carattere: Verde
- Formattato: Colore carattere: Verde
- Formattato: Colore carattere: Verde
- Formattato: Colore carattere: Verde
- Formattato: Colore carattere: Verde
- Formattato: Colore carattere: Verde
- Formattato: Colore carattere: Verde
- Formattato: Colore carattere: Verde
- Formattato: Colore carattere: Verde

Figure 5 shows the number of landslides with different levels of geographic and temporal accuracy (see Table 1 for descriptions) over the entire observation period 1996–2021, and two 10-year sub-periods 2002–2011 and 2012–2021, which present have a comparable number of landslides, 3127 and 3120, respectively. The number of landslides collected each year is also depicted. About half of the landslide records (3131) have a high geographic accuracy (Fig. 5a) and more than 95% (6026) of the landslides were located with an uncertainty of less than 10 km². Only 285 (4.5%) landslides have a low and very low geographic accuracy. On the other hand in contrast, for almost half of the catalogued landslides (30698) the exact time of occurrence is known (Fig. 5b). For another quarter of the catalogue, the part of the day is known. Only 22% of the landslides (14051399) are characterised by a lower temporal accuracy.

- Formattato: Colore carattere: Verde
- Formattato: Colore carattere: Colore personalizzato(RGB(204;0;255))
- Formattato: Colore carattere: Colore personalizzato(RGB(204;0;255))
- Formattato: Colore carattere: Colore personalizzato(RGB(204;0;255))
- Formattato: Colore carattere: Verde
- Formattato: Colore carattere: Blu
- Formattato: Colore carattere: Colore personalizzato(RGB(204;0;255))
- Formattato: Colore carattere: Colore personalizzato(RGB(204;0;255))



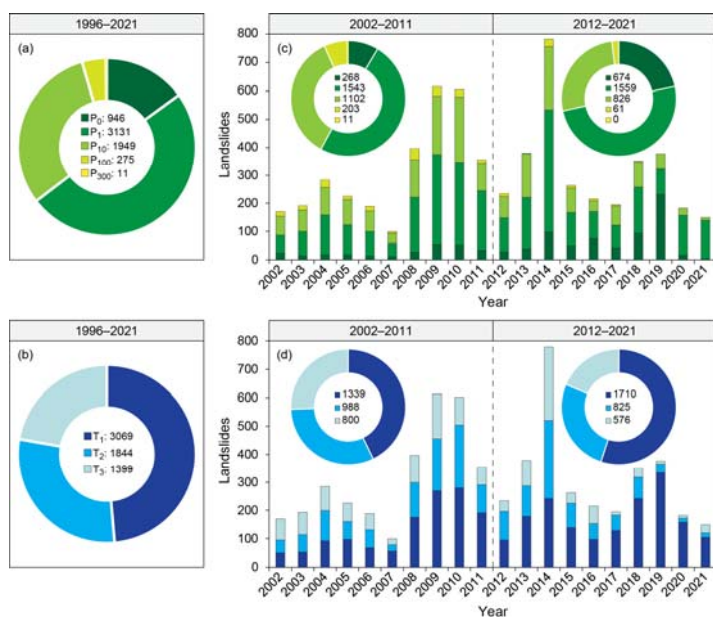


Figure 5. (a,b) Donut charts of the number of landslides with different levels of geographic (P₀, P₁, P₁₀, P₁₀₀, P₃₀₀) and temporal accuracy (T₁, T₂, T₃) in the overall observation period 1996–2021. (c,d) Bar charts of the annual number of landslides for the different geographic and temporal accuracy levels over the period 2002–2021. The donut charts in the insets show the comparison of the number of landslides in each class in two sub-periods 2002–2011 and 2012–2021. Refer to Tables 1 for a description of the geographic and temporal accuracy levels.

We excluded the period 1996–2001 from the analysis due to the small (not representative) number of events (Fig. 4) and identified two 10-year sub-periods, 2002–2011 and 2012–2021, which present a comparable number of landslides, 3127 and 3120 respectively. Figures 5c,d show that both geographic and temporal accuracy have improved in the most recent sub-period. The number of landslides with very high geographic accuracy has more than doubled from 2002–2011 to 2012–2021 period (Fig. 5c). Specifically, in the recent 2012–2021 sub-period, the location of about three quarters of the listed failures is known with an accuracy of less than 1 km² and the time of occurrence with an uncertainty of less than 2–3 hours. In addition, the number of landslides for which only the day of occurrence is known (T₃) decreased from 25.2% to 19% of the total records (Fig. 5d).

Formattato: Colore carattere: Verde

Formattato: Colore carattere: Verde

Formattato: Colore carattere: Verde

Formattato: Colore carattere: Colore personalizzato(204;0;255)

Overall, more than a third of the entire catalogue (21765) is highly accurate both in space (P_0 and P_1) and time (T_1), whereas less than 2% of the catalogue (114) has concurrently low and very low (P_{100} and P_{300}) geographic accuracy and only daily (T_3) temporal resolution. These last records were collected mainly in the first years of the catalogue's compilation.

Figure 6 shows the subdivision of the records according to the source of information: institutional reports (IR) or news (NR). Overall, 58% of the landslides were catalogued thanks to the information gathered from news reports. The same figure also shows how the information source affects the geographic and temporal accuracy of the landslide records. Among all 946 landslides having very high geographic accuracy, 766 (81%) were catalogued from information in institutional reports. On the other hand, About 75% (22869 out of 30683069) of all landslides with very high temporal accuracy (T_1) came from institutional reports. Both geographic and temporal accuracy substantially decrease when the landslides information is collected from news reports.

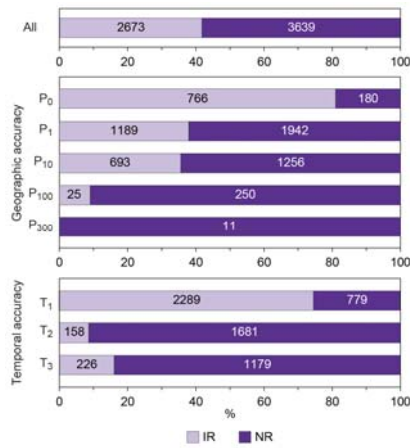


Figure 6. Bar chart of the number of landslides (1996-2021) whose for which information was gathered obtained from institutional (IR) or news (NR) reports, divided into the classes of geographic and temporal accuracy.

6 Data availability

ITALIA-ITALICA catalogue is available at <https://doi.org/10.5281/zenodo.8009366> <https://zenodo.org/record/7646106#Y-4I-HbMJPY> (Brunetti et al., 2023).

Formattato: Colore carattere: Verde

Formattato: Colore carattere: Colore personalizzato(204;0;255)

Formattato: Colore carattere: Verde

Formattato: Colore carattere: Blu

Formattato: Colore carattere: Colore personalizzato(204;0;255)

Formattato: Colore carattere: Verde

Formattato: Colore carattere: Verde

Formattato: Colore carattere: Colore personalizzato(204;0;255)

Formattato: Colore carattere: Colore personalizzato(204;0;255)

7 Remarks and conclusions Concluding remarks

450 ITALICA is the largest catalogue of rainfall-induced landslides ~~accurately located in space and time with accurate spatial and~~
~~temporal localisation~~ currently available in Italy. ~~The selection criteria are relatively strict compared to other inventories.~~ In
particular, ~~in at~~ the lowest ~~acceptable~~ geographic accuracy level P_{300} the location of the landslide ~~can still be indicated within~~
~~a radius of less than may be inaccurate for less than 10 km-radius~~. Similarly, the worst ~~level~~ temporal accuracy T_3 still requires
455 knowing at least the day of occurrence of the landslide ~~which is the usual maximum accuracy in most catalogues which is the~~
~~habitual maximum accuracy in most of the catalogues~~. These two constraints, combined with the requirement for specific
reference to rainfall as the sole triggering factor of the landslides, significantly ~~limits~~ the number of events suitable for the
catalogue. As a result, ~~on an average, of 40% of the analysed news reporting items are is~~ discarded. These strict and stringent
criteria limit the use of many technical reports ~~prepared-produced~~ in the aftermath of severe weather events in which generally
460 only the date of the inspection and not the date of occurrence of the landslide is reported. In this regard, particularly useful are
the reports provided by firefighters, which are accurate both in space and time. Unfortunately, the availability of such data is
not uniform across the ~~territory-country~~ due to the different data sharing ~~policy-policies~~ of provincial and regional authorities.
We noticed how both geographic and temporal accuracy increase substantially when information on landslides is ~~gathered~~
~~collected~~ from institutional reports (Fig. 6). We can therefore state that a higher availability of such data sources would result
in a more thorough catalogue.

465 Gathering information on rainfall-induced landslides that is accurate in both space and time requires a large amount of human
resources and time. For example, in order to get an accurate spatial location of landslides along roads, we explored the area
using Google Street View until we found the proper sites, recognizable either through the images accompanying the
information source or from the mileage information. The collection of such information can only be partially automated as
expert supervision remains necessary.

470 ~~The high spatial and temporal accuracy of ITALICA's elevated spatial and temporal accuracy~~ is its main strength. The demand
for accuracy in landslide catalogues is critical for effective and operational landslide prediction through rainfall thresholds
(Segoni et al., 2018; Guzzetti et al., 2020, 2022). Without this high level of accuracy, the rainfall responsible for triggering
landslides cannot be reliably reconstructed. ~~For this application, we suggest to excludeing the records with a geographic~~
~~accuracy level low (P_{100}) and very low (P_{300}) geographic accuracy.~~ ~~Subsets of the catalogue have been already used to calculate~~
475 ~~national and regional rainfall thresholds implemented in early warning systems in Italy (Guzzetti et al., 2020).~~ ITALICA can
~~also be exploited to calibrate and/or validate various models for temporal prediction of rainfall induced landslides.~~

Another strength of the catalogue is that the collection was made according to strict objective and homogeneous criteria
throughout the ~~Country-country~~, which limits the inherent subjectivity in compiling catalogues from different sources and by
multiple operators.

480 As with other landslide catalogues available in the literature (e.g., Kirschbaum et al., 2010, and references therein), this
catalogue also exhibits some spatial inhomogeneity (Fig. 2), which may have implications for users. The main reason ~~for this~~

Formattato: Colore carattere: Verde

Formattato: Colore carattere: Verde

Formattato: Colore carattere: Verde

Formattato: Colore carattere: Verde

Formattato: Colore carattere: Verde

Formattato: Colore carattere: Verde

Formattato: Colore carattere: Verde

Formattato: Colore carattere: Verde

Formattato: Colore carattere: Verde

Formattato: Colore carattere: Verde

Formattato: Colore carattere: Verde

Formattato: Colore carattere: Verde

Formattato: Colore carattere: Verde

Formattato: Colore carattere: Verde

Formattato: Colore carattere: Verde

Formattato: Colore carattere: Verde

Formattato: Colore carattere: Verde

Formattato: Colore carattere: Verde

Formattato: Colore carattere: Verde

Formattato: Colore carattere: Colore personalizzato(204;0;255)

Formattato: Colore carattere: Colore personalizzato(204;0;255)

Formattato: Colore carattere: Colore personalizzato(204;0;255)

Formattato: Colore carattere: Colore personalizzato(204;0;255)

Formattato: Colore carattere: Verde

Formattato: Colore carattere: Verde

Formattato: Colore carattere: Verde

Formattato: Colore carattere: Verde

Formattato: Colore carattere: Verde

is ~~attributable to~~ the regional scale at which the search for information was conducted as a result of collaboration agreements with some Italian administrative regions (i.e., Liguria, Marche, Sardinia). For instance, the catalogue lists information on 1703 (27% ~~of all entries~~) and 1220 (19%) rainfall-induced landslides in the Liguria and Marche region, respectively. ~~Excluding years recognized as extremely dry, a~~ possible functional definition of completeness requires that a historical landslide catalogue includes a substantial number of landslides in any year. According to this definition, ITALICA is substantially complete for the regions Liguria, Marche and Sardinia, for which there has been continuity in data collection from 2012 onwards. Despite the inhomogeneity of the data, ITALICA provides sufficient numbers of rainfall-induced landslides at the scale of administrative regions (Fig. 3b), which can be used for landslide prediction models. As an example, as stated in Peruccacci et al., (2017), reliable rainfall thresholds for the possible landslide initiation can be defined in areas where the number of available records is larger than or equal to 100. The catalogue is continuously being updated ~~by us~~, and future collaboration with other Italian regions will hopefully increase the spatial homogeneity of the data.

Compared to other catalogues of landslides in Italy, ITALICA stands out because: (i) it contains exclusively landslides induced by rainfall, ~~contrarily unlike datasets presented in to~~ Guzzetti et al., (1994), Innocenzi et al., (2017), Calvello and Pecoraro, (2018), which contain information on landslides triggered by all causes; (ii) it covers a longer period (26 years, 1996–2021) than that covered by Innocenzi et al., (2017) (4 years, 2012–2015) and Calvello and Pecoraro, (2018) (8 years, 2010–2017); (iii) it is based on both technical and chronicle sources of information; and (iv) it is highly accurate both in space and time.

ITALICA cannot be compared with the IFFI inventory, as the two products are structurally different. The IFFI inventory includes landslides induced by multiple causes (e.g., anthropogenic, seismic) and mostly lacks information on the temporal occurrence of the mapped failures. ~~On the other hand, a~~ comparison with ~~the~~ Polaris (Bianchi and Salvati, 2023) and ISPRA (Trigila et al., 2021) catalogues is not advisable, since the two contain information on landslides induced by all types of triggers that caused deaths, injuries, evacuations, and damage. As a matter of fact, in the four-year period 2017–2020, ITALICA lists 1102 landslides, while the Polaris and ISPRA catalogues contain 94 landslides with deaths and injuries and 645 landslides with deaths, injuries, evacuations, and damage, respectively.

Global and continental catalogues available in ~~the~~ literature report a ~~searee-small~~ number of landslides ~~oeeurred~~ on the Italian territory, i.e. 45 landslides in the period 2008–2013 according to Kirschbaum et al., (2015); 72 landslides in ~~the period~~ 2005–2014 according to Haque et al., (2016); 39 in ~~the period~~ 2004–2016 according to Froude and Petley, (2018). As expected, a national catalogue is certainly more comprehensive than the global catalogues in the area of interest addressed.

Recently, projects have been launched that involve citizens in providing reports of natural disasters that take lives and destroy roads, buildings, and other property, such as Landslide Reporter, a NASA citizen science project that asks citizen scientists from around the world to report landslides ~~near them in their area, allowing providing~~ continuous ~~feedbacks~~ from the real world (<https://gpm.nasa.gov/landslides/index.html>). In the near future, we plan to use similar initiatives. Additionally, the usefulness of social media data is being tested and seems promising, suggesting ~~their-its~~ possible future integration in a multiple information source catalogue (Franceschini et al., 2022a, b).

Formattato: Colore carattere: Verde

Formattato: Colore carattere: Verde

Formattato: Colore carattere: Colore personalizzato(RGB(204;51;0))

Formattato: Colore carattere: Verde

Formattato: Colore carattere: Verde

Formattato: Colore carattere: Verde

Formattato: Colore carattere: Verde

Formattato: Colore carattere: Verde

Formattato: Colore carattere: Verde

Formattato: Colore carattere: Verde

Formattato: Colore carattere: Verde

Formattato: Colore carattere: Verde

Formattato: Colore carattere: Verde

515 In general, ITALICA's information on rainfall-induced landslides in Italy, with special emphasis on their spatial and temporal
location, can be crucial for decision-making in landslide risk management. The methodology used to populate ITALICA has
already been applied in a standardised way by various operators in different geographic and climatic contexts ~~of in~~ Italy and
can be easily ~~be~~ used to compile new catalogues ~~of high spatial and temporal accuracy~~ ~~accurate in space and time~~ in other
520 countries. ~~We hope that ITALICA will~~ ~~can certainly serve as an example for the collection of new accurate data for setting~~
~~rainfall thresholds~~ ~~of how the collection of new accurate data should be done for rainfall threshold definition.~~

Author contribution

525 SP, MTB: conceptualization, data curation, formal analysis, investigation, supervision, visualization, writing - original draft
preparation, review & editing. SLG, MM: conceptualization, data curation, formal analysis, investigation, visualization,
writing - original draft preparation, review & editing. MS: data curation, investigation. FG: funding acquisition, writing -
review & editing.

Competing interests

The authors declare that they have no conflict of interest.

Acknowledgements

530 Work financially supported by the Italian National Department for Civil Protection (DPC) (Intese Operative DPC n. 619, 672,
1015, 1181; Accordi di Collaborazione 2014, 2015, 2016), environment department of the Liguria region (Convenzione 2013),
the Apulia Region (Accordo di Collaborazione 2016) regional agency for the protection of the environment of the Liguria
region (Accordi di Collaborazione 2017, 2018, 2021), civil protection department of the Sardinia region (Accordi di
535 Collaborazione 2016, 2021). Devis Bartolini, Francesca Brutti, Cinzia Bianchi, Costanza Calzolari, Barbara Denti, Eleonora
Gioia, Silvia Luciani, Maria Elena Martinotti, Michela Rosa Palladino, Luca Pisano, Anna Roccati, Monica Solimano, Carmela
Vennari, Giovanna Vessia, and Alessia Viero contributed to collect landslide information. We thank the functional centre for
civil protection of the Marche region, provincial commands of the national fire and rescue service, *Centro Coordinamento*
Informazioni Sicurezza Stradale, Rete Ferroviaria Italiana for providing landslide information. ~~We thank the editor and the~~
~~three anonymous reviewers for their helpful comments and suggestions that significantly improved the manuscript.~~

References

540 ~~Belair, G. M., Jones, E. S., Slaughter, S. L., and Mirus, B. B.: Landslide Inventories across the United States version 2,~~
~~<https://doi.org/10.5066/P9FZUX6N>, 2022.~~

Formattato: Colore carattere: Verde

Formattato: Colore carattere: Verde

Formattato: Colore carattere: Verde

Formattato: Colore carattere: Colore personalizzato(RGB(204;51;0))

Formattato: Colore carattere: Colore personalizzato(RGB(204;51;0))

Formattato: Colore carattere: Colore personalizzato(RGB(204;51;0))

Formattato: Colore carattere: Colore personalizzato(RGB(204;51;0))

Formattato: Colore carattere: Colore personalizzato(RGB(204;51;0))

Formattato: Colore carattere: Colore personalizzato(RGB(204;51;0))

Formattato: Colore carattere: Colore personalizzato(RGB(204;0;255))

Formattato: Colore carattere: Colore personalizzato(RGB(204;0;255))

Guzzetti, F., Peruccacci, S., Rossi, M., and Stark, C. P.: Rainfall thresholds for the initiation of landslides in central and southern Europe, *Meteorol. Atmos. Phys.*, 98, 239–267, <https://doi.org/10.1007/s00703-007-0262-7>, 2007.

Herrera, G., Mateos, R. M., Garcia-Davalillo, J. C., Grandjean, G., Poyiadji, E., Maftai, R., Filipeiue, T. C., Jemec-Auflis, M., Jež, J., Podolszki, L., Trigila, A., Iadanza, C., Raetzo, H., Kociu, A., Przyłucka, M., Kulak, M., Sheehy, M., Pellicer, X. M., McKeown, C., Ryan, G., Kopačková, V., Frei, M., Kuhn, D., Hermanns, R. L., Koulermou, N., Smith, C. A., Engdahl, M., Buxó, P., Gonzalez, M., Dashwood, C., Reeves, H., Cigna, F., Liščák, P., Paudits, P., Mikulénas, V., Demir, V., Raha, M., Quental, L., Sandić, C., Fusi, B., and Jensen, O. A.: Landslide databases in the Geological Surveys of Europe, *Landslides*, 15, 359–379, <https://doi.org/10.1007/s10346-017-0902-z>, 2018.

Jaedicke, C., Lied, K., and Kronholm, K.: Integrated database for rapid mass-movements in Norway, *Natural Hazards and Earth System Sciences*, 9, 469–479, <https://doi.org/10.5194/nhess-9-469-2009>, 2009.

Kirschbaum, D., Stanley, T., and Zhou, Y.: Spatial and temporal analysis of a global landslide catalog, *Geomorphology*, 249, 4–15, <https://doi.org/10.1016/j.geomorph.2015.03.016>, 2015.

Segoni, S., Picciullo, L., and Gariano, S. L.: A review of the recent literature on rainfall thresholds for landslide occurrence, *Landslides*, 15, 1483–1501, <https://doi.org/10.1007/s10346-018-0966-4>, 2018.

Andres, N. and Badoux, A.: The Swiss flood and landslide damage database: Normalisation and trends, *J. Flood Risk Manag.*, 12, <https://doi.org/10.1111/jfr3.12510>, 2019.

[Belair, G. M., Jones, E. S., Slaughter, S. L., and Mirus, B. B.: Landslide Inventories across the United States version 2, *https://doi.org/10.5066/P9FZUX6N.2022*](https://doi.org/10.5066/P9FZUX6N.2022)

Berti, M., Martina, M. L. V., Franceschini, S., Pignone, S., Simoni, A., and Pizziolo, M.: Probabilistic rainfall thresholds for landslide occurrence using a Bayesian approach, *J. Geophys. Res. Earth Surf.*, 117, <https://doi.org/10.1029/2012JF002367>, 2012.

[Bianchi, C. and Salvati, P.: Rapporto Periodico sul Rischio posto alla Popolazione italiana da Frane e Inondazioni. Anno 2022, Istituto di Ricerca per la Protezione Idrogeologica \(IRPI\), Consiglio Nazionale delle Ricerche \(CNR\). doi:10.30437/REPORT2021_2023 \(in Italian\)](https://doi.org/10.30437/REPORT2021_2023)

Bil, M., Raška, P., Dolák, L., and Kubeček, J.: CHILDA – Czech Historical Landslide Database, *Nat. Hazards Earth Syst. Sci.*, 21, 2581–2596, <https://doi.org/10.5194/nhess-21-2581-2021>, 2021.

Brunetti, M. T., Melillo, M., Gariano, S. L., Guzzetti, F., Bartolini, D., Brutti, F., Bianchi, C., Calzolari, C., Denti, B., Gioia, E., Luciani, S., Martinotti, M. E., Palladino, M. R., Pisano, L., Roccati, A., Solimano, M., Vennari, C., Vessia, G., Viero, A., and Peruccacci, S.: ITALICA (ITALian rainfall-induced Landslides CAtalogue), <https://doi.org/10.5281/zenodo.8009366><https://doi.org/10.5281/zenodo.7646106>, 2023.

Calvello, M. and Pecoraro, G.: FraneItalia: a catalog of recent Italian landslides, *Geoenvironmental Disasters*, 5, 13, <https://doi.org/10.1186/s40677-018-0105-5>, 2018.

Codice campo modificato

Codice campo modificato

Codice campo modificato

Formattato: Car. predefinito paragrafo, Colore carattere: Colore personalizzato(GB(204;0;255)), Inglese (Regno Unito)

- 575 Corominas, J., Einstein, H., Davis, T., Strom, A., Zuccaro, G., Nadim, F., and Verdel, T.: Glossary of Terms on Landslide Hazard and Risk, in: *Engineering Geology for Society and Territory - Volume 2*, edited by: Lollino, G., Giordan, D., Crosta, G. B., Corominas, J., Azzam, R., Wasowski, J., and Sciarra, N., Springer International Publishing, Cham, 1775–1779, https://doi.org/10.1007/978-3-319-09057-3_314, 2015.
- Cruden, D. and Varnes, D.: *Landslide Types and Processes*. Chapter 3 in *Landslides: Investigation and Mitigation*. Special Report 247. Washington, DC: National Research Council, Spec. Rep. Natl. Res. Council. Transp. Res. Board, 36–75, 1996.
- 580 Damm, B. and Klose, M.: Landslide Database for the Federal Republic of Germany: A Tool for Analysis of Mass Movement Processes, in: *Landslide Science for a Safer Geoenvironment*, Cham, 787–792, https://doi.org/10.1007/978-3-319-05050-8_121, 2014.
- Damm, B. and Klose, M.: The landslide database for Germany: Closing the gap at national level, *Geomorphology*, 249, 82–93, <https://doi.org/10.1016/j.geomorph.2015.03.021>, 2015.
- 585 Devoli, G., Strauch, W., Chávez, G., and Høeg, K.: A landslide database for Nicaragua: a tool for landslide-hazard management, *Landslides*, 4, 163–176, <https://doi.org/10.1007/s10346-006-0074-8>, 2007.
- Fioravanti, G., Frascchetti, P., Lena, F., Perconti, W., Piervitali, E.: I normali climatici 1991–2020 di temperatura e precipitazione in Italia, ISPRA, Stato dell'Ambiente 99/2022, ISBN 978-88-448-1120-4, [2022](#) (in Italian).
- Foster, C., Pennington, C. V. L., Culshaw, M. G., and Lawrie, K.: The national landslide database of Great Britain: development, evolution and applications, *Environ. Earth Sci.*, 66, 941–953, <https://doi.org/10.1007/s12665-011-1304-5>, 2012.
- Franceschini, R., Rosi, A., Catani, F., and Casagli, N.: Exploring a landslide inventory created by automated web data mining: the case of Italy, *Landslides*, 19, 841–853, <https://doi.org/10.1007/s10346-021-01799-y>, 2022a.
- Franceschini, R., Rosi, A., del Soldato, M., Catani, F., and Casagli, N.: Integrating multiple information sources for landslide hazard assessment: the case of Italy, *Sci. Rep.*, 12, 20724, <https://doi.org/10.1038/s41598-022-23577-z>, 2022b.
- 595 Froude, M. J. and Petley, D. N.: Global fatal landslide occurrence from 2004 to 2016, *Nat. Hazards Earth Syst. Sci.*, 18, 2161–2181, <https://doi.org/10.5194/nhess-18-2161-2018>, 2018.
- Guzzetti, F.: Landslide fatalities and the evaluation of landslide risk in Italy, *Eng. Geol.*, 58, 89–107, [https://doi.org/10.1016/S0013-7952\(00\)00047-8](https://doi.org/10.1016/S0013-7952(00)00047-8), 2000.
- Guzzetti, F. and Tonelli, G.: Information system on hydrological and geomorphological catastrophes in Italy (SICI): a tool for managing landslide and flood hazards, *Nat. Hazards Earth Syst. Sci.*, 4, 213–232, <https://doi.org/10.5194/nhess-4-213-2004>, 2004.
- 600 Guzzetti, F., Cardinali, M., and Reichenbach, P.: The AVI project: A bibliographical and archive inventory of landslides and floods in Italy, *Environ. Manage.*, 18, 623–633, <https://doi.org/10.1007/BF02400865>, 1994.

Formattato: Colore carattere: Colore personalizzato(RGB(204;0;255))

605 [Guzzetti, F., Peruccacci, S., Rossi, M., and Stark, C. P.: Rainfall thresholds for the initiation of landslides in central and southern Europe. Meteorol. Atmos. Phys., 98, 239–267, <https://doi.org/10.1007/s00703-007-0262-7>, 2007.](#)

Formattato: SpazioDopo: 6 pt, Interlinea: 1.5 righe

Guzzetti, F., Gariano, S. L., Peruccacci, S., Brunetti, M. T., Marchesini, I., Rossi, M., and Melillo, M.: Geographical landslide early warning systems, *Earth-Sci. Rev.*, 200, 102973, <https://doi.org/10.1016/j.earscirev.2019.102973>, 2020.

Guzzetti, F., Gariano, S. L., Peruccacci, S., Brunetti, M. T., and Melillo, M.: Rainfall and landslide initiation, in: *Rainfall*, Elsevier, 427–450, <https://doi.org/10.1016/B978-0-12-822544-8.00012-3>, 2022.

610 Haque, U., Blum, P., da Silva, P. F., Andersen, P., Pilz, J., Chalov, S. R., Malet, J.-P., Auflič, M. J., Andres, N., Poyiadji, E., Lamas, P. C., Zhang, W., Peshevski, I., Pétursson, H. G., Kurt, T., Dobrev, N., García-Davalillo, J. C., Halkia, M., Ferri, S., Gaprindashvili, G., Engström, J., and Keellings, D.: Fatal landslides in Europe, *Landslides*, 13, 1545–1554, <https://doi.org/10.1007/s10346-016-0689-3>, 2016.

615 [Herrera, G., Mateos, R. M., García-Davalillo, J. C., Grandjean, G., Poyiadji, E., Maftai, R., Filipciuc, T.-C., Jemec Auflič, M., Jež, J., Podolski, L., Trigila, A., Iadanza, C., Raetzo, H., Kociu, A., Przyłucka, M., Kulak, M., Sheehy, M., Pellicer, X. M., McKeown, C., Ryan, G., Kopačková, V., Frei, M., Kuhn, D., Hermanns, R. L., Koulermou, N., Smith, C. A., Engdahl, M., Buxó, P., Gonzalez, M., Dashwood, C., Reeves, H., Cigna, F., Liščák, P., Pauditš, P., Mikulénas, V., Demir, V., Raha, M., Qental, L., Sandić, C., Fusi, B., and Jensen, O. A.: Landslide databases in the Geological Surveys of Europe. *Landslides*, 15, 359–379, <https://doi.org/10.1007/s10346-017-0902-z>, 2018.](#)

Formattato: SpazioDopo: 6 pt, Interlinea: 1.5 righe

620 [Hess, J., Rickli, C., McArdell, B., and Stähli, M.: Investigating and Managing Shallow Landslides in Switzerland, in: *Landslide Science for a Safer Geoenvironment*, Cham, 805–808, \[https://doi.org/10.1007/978-3-319-05050-8_124\]\(https://doi.org/10.1007/978-3-319-05050-8_124\), 2014.](#)

Formattato: Car. predefinito paragrafo

Innocenzi, E., Greggio, L., Frattini, P., and de Amicis, M.: A Web-Based Inventory of Landslides Occurred in Italy in the Period 2012–2015, in: *Advancing Culture of Living with Landslides*, edited by: Mikos, M., Tiwari, B., Yin, Y., and Sassa, K., Springer International Publishing, Cham, 1127–1133, https://doi.org/10.1007/978-3-319-53498-5_128, 2017.

625 [Jaedicke, C., Lied, K., and Kronholm, K.: Integrated database for rapid mass movements in Norway. *Natural Hazards and Earth System Sciences*, 9, 469–479, <https://doi.org/10.5194/nhess-9-469-2009>, 2009.](#)

Formattato: SpazioDopo: 6 pt, Interlinea: 1.5 righe

Kirschbaum, D., Stanley, T., and Zhou, Y.: Spatial and temporal analysis of a global landslide catalog, *Geomorphology*, 249, 4–15, <https://doi.org/10.1016/j.geomorph.2015.03.016>, 2015.

630 Kirschbaum, D. B., Adler, R., Hong, Y., Hill, S., and Lerner-Lam, A.: A global landslide catalog for hazard applications: method, results, and limitations, *Nat. Hazards*, 52, 561–575, <https://doi.org/10.1007/s11069-009-9401-4>, 2010.

Komac, M. and Hribernik, K.: Slovenian national landslide database as a basis for statistical assessment of landslide phenomena in Slovenia, *Geomorphology*, 249, 94–102, <https://doi.org/10.1016/j.geomorph.2015.02.005>, 2015.

- Luetzenburg, G., Svennevig, K., Bjørk, A. A., Keiding, M., and Kroon, A.: A national landslide inventory for Denmark, *Earth Syst. Sci. Data*, 14, 3157–3165, <https://doi.org/10.5194/essd-14-3157-2022>, 2022.
- 635 Melillo, M., Brunetti, M. T., Peruccacci, S., Gariano, S. L., Roccati, A., and Guzzetti, F.: A tool for the automatic calculation of rainfall thresholds for landslide occurrence, *Environ. Model. Softw.*, 105, 230–243, <https://doi.org/10.1016/j.envsoft.2018.03.024>, 2018.
- Mrozek, T., Kułak, M., Grabowski, D., and Wójcik, A.: Landslide Counteracting System (SOPO): Inventory Database of Landslides in Poland, in: *Landslide Science for a Safer Geoenvironment*, Cham, 815–820, https://doi.org/10.1007/978-3-319-05050-8_126, 2014.
- 640 Palladino, M. R., Viero, A., Turconi, L., Brunetti, M. T., Peruccacci, S., Melillo, M., Luino, F., Deganutti, A. M., and Guzzetti, F.: Rainfall thresholds for the activation of shallow landslides in the Italian Alps: the role of environmental conditioning factors, *Geomorphology*, 303, 53–67, <https://doi.org/10.1016/j.geomorph.2017.11.009>, 2018.
- Pennington, C., Freeborough, K., Dashwood, C., Dijkstra, T., and Lawrie, K.: The National Landslide Database of Great Britain: Acquisition, communication and the role of social media, *Geomorphology*, 249, 44–51, <https://doi.org/10.1016/j.geomorph.2015.03.013>, 2015.
- 645 Peruccacci, S., Brunetti, M. T., Gariano, S. L., Melillo, M., Rossi, M., and Guzzetti, F.: Rainfall thresholds for possible landslide occurrence in Italy, *Geomorphology*, 290, 39–57, <https://doi.org/10.1016/j.geomorph.2017.03.031>, 2017.
- Rosser, B., Dellow, S., Haubrock, S., and Glassey, P.: New Zealand’s National Landslide Database, *Landslides*, 14, 1949–1959, <https://doi.org/10.1007/s10346-017-0843-6>, 2017.
- 650 Salvati, P., Bianchi, C., Rossi, M., and Guzzetti, F.: Societal landslide and flood risk in Italy, *Nat. Hazards Earth Syst. Sci.*, 10, 465–483, <https://doi.org/10.5194/nhess-10-465-2010>, 2010.
- Salvati, P., Petrucci, O., Rossi, M., Bianchi, C., Pasqua, A. A., and Guzzetti, F.: Gender, age and circumstances analysis of flood and landslide fatalities in Italy, *Sci. Total Environ.*, 610–611, 867–879, <https://doi.org/10.1016/j.scitotenv.2017.08.064>, 2018.
- 655 Segoni, S., Rossi, G., Rosi, A., and Catani, F.: Landslides triggered by rainfall: A semi-automated procedure to define consistent intensity–duration thresholds, *Comput. Geosci.*, 63, 123–131, <https://doi.org/10.1016/j.cageo.2013.10.009>, 2014.
- Segoni, S., Piciullo, L., and Gariano, S. L.: A review of the recent literature on rainfall thresholds for landslide occurrence, *Landslides*, 15, 1483–1501, <https://doi.org/10.1007/s10346-018-0966-4>, 2018.
- 660 Trigila, A., Iadanza, C., and Spizzichino, D.: Quality assessment of the Italian Landslide Inventory using GIS processing, *Landslides*, 7, 455–470, <https://doi.org/10.1007/s10346-010-0213-0>, 2010.

Trigila, A., Iadanza, C., Lastoria, B., Bussettini, M., and Barbano, A.: Dissesto idrogeologico in Italia: pericolosità e indicatori di rischio - Edizione 2021, ISPRA, Rapporti 356/2021, 2021 (in Italian).

Van Den Eeckhaut, M. and Hervás, J.: State of the art of national landslide databases in Europe and their potential for assessing landslide susceptibility, hazard and risk, *Geomorphology*, 139–140, 545–558, <https://doi.org/10.1016/j.geomorph.2011.12.006>, 2012.

Codice campo modificato

Codice campo modificato

Codice campo modificato

665

Pagina 3: [1] Formattato Stefano Luigi Gariano 31/05/2023 12:11:00

Colore carattere: Colore personalizzato(RGB(204;0;255))

▲
Pagina 3: [2] Formattato Stefano Luigi Gariano 25/05/2023 10:37:00

Colore carattere: Colore personalizzato(RGB(204;0;255))

▲
Pagina 3: [3] Formattato Stefano Luigi Gariano 25/05/2023 10:38:00

Colore carattere: Colore personalizzato(RGB(204;0;255))

▲
Pagina 3: [4] Formattato Stefano Luigi Gariano 25/05/2023 10:38:00

Colore carattere: Colore personalizzato(RGB(204;0;255))

▲
Pagina 3: [5] Formattato Stefano Luigi Gariano 25/05/2023 10:38:00

Colore carattere: Colore personalizzato(RGB(204;0;255))

▲
Pagina 3: [6] Formattato Stefano Luigi Gariano 25/05/2023 10:38:00

Colore carattere: Colore personalizzato(RGB(204;0;255))

▲
Pagina 3: [7] Formattato Stefano Luigi Gariano 25/05/2023 10:39:00

Colore carattere: Colore personalizzato(RGB(204;0;255))

▲
Pagina 3: [8] Formattato Silvia Peruccacci 06/06/2023 08:46:00

Colore carattere: Colore personalizzato(RGB(204;0;255)), Italiano (Italia)