

# SHIFT: A DEM-Based Spatial Heterogeneity Improved Mapping of Global Geomorphic Floodplains

Kaihao Zheng<sup>1</sup>, Peirong Lin<sup>1,2,\*</sup>, Ziyun Yin<sup>1</sup>

1. Institute of Remote Sensing and GIS, School of Earth and Space Sciences, Peking University,  
5 Beijing, China.

2. International Research Center of Big Data for Sustainable Development Goals, Beijing,  
China.

\* Corresponding author: Peirong Lin ([peironglinlin@pku.edu.cn](mailto:peironglinlin@pku.edu.cn))

Manuscript submitted to *ESSD*, December 29<sup>th</sup>, 2023

10 Revised manuscript submitted to *ESSD*, June 16<sup>th</sup>, 2024

## Abstract

Floodplain is a vital part of the global riverine system. Among all the global floodplain delineation strategies empowered by remote sensing, DEM-based delineation is considered computationally  
15 efficient with relatively low uncertainties, but the parsimonious model struggles with incorporating basin-level spatial heterogeneity of the hydrological and geomorphic influences into the ~~floodplain~~ map. In this study, we propose a globally applicable thresholding scheme for DEM-based floodplain delineation to improve the representation of spatial heterogeneity. Specifically, we develop a stepwise approach to estimate the Floodplain Hydraulic Geometry (FHG) scaling  
20 parameters for ~~269~~-river basins worldwide at the scale of Level-3 HydroBASINS to best respect the scaling law while approximating the spatial extent of two publicly available global flood maps derived from hydrodynamic modeling. The estimated FHG exponent exhibits a significant positive relationship with the basins' hydroclimatic conditions, particularly in 33 of the world's major river basins, indicating the ability of the approach to capture fingerprints from heterogeneous  
25 hydrological and geomorphic influences. Based on the spatially-varying FHG parameters, a ~90-m resolution global floodplain map named Spatial Heterogeneity Improved Floodplain by Terrain analysis (SHIFT) is delineated, which takes the hydrologically corrected MERIT-Hydro dataset as the DEM inputs and the Height Above Nearest Drainage (HAND) as the terrain attribute. Our results demonstrate that SHIFT validates well~~better~~ with reference maps ~~with the overall accuracy~~

30 ~~exceeding 0.85. At the same time, it shows superior consistencies with several other datasets sourced from independent~~than both hydrodynamic modeling and DEM-based approaches. ~~SHIFT effectively captures the global patterns of the geomorphic floodplains, with better regional details than existing data. with universal parameters.~~ The ~~estimated FHG exponent exhibits a significant positive relation with the improved delineation is mainly with better differentiation between mainstreams and tributaries in major~~  
 35 ~~basins' climatic aridity conditions, particularly for 34 world's major~~ and a more comprehensive representation of stream networks in aggregated river basins, suggesting the ability of the scaling exponents in capturing more spatial heterogeneity. SHIFT estimates global floodplain area to be 8.29.91 million km<sup>2</sup>, representing 5.56.6% of the world's total land area, ~~and we anticipate.~~ SHIFT, data layers are available at two spatial resolutions (90-m and 1-km), along with the updated parameters, at  
 40 <https://zenodo.org/records/1044060911835133> (Zheng et al., 2024). We anticipate SHIFT to be used to support a range of applications requiring boundary delineations of the global geomorphic floodplains.

## Highlights

- 45
- We develop a globally applicable thresholding scheme for DEM-based floodplain mapping that improves the integration of floodplain spatial heterogeneity.
  - We create a new 90-m geomorphic floodplain map named Spatial Heterogeneity Improved Floodplain by Terrain analysis (SHIFT).
- ~~• SHIFT exhibits better consistency with existing floodplain maps.~~
- 50
- SHIFT has better delineation of mainstreams in major river basins and more comprehensive representation of stream networks in aggregated river basins.
  - The estimated exponent in Floodplain Hydraulic Geometry (FHG) exhibits a statistically significant ~~a~~ positive relation with ~~climatic aridity~~hydroclimatic factors.
  - Global floodplain area is estimated to be 8.29.91 million km<sup>2</sup>, representing 5.56.6% of the world's total land area.
- 55

# 1. Introduction

Floodplain is an integral component of the global riverine system – it acts as a river’s ecological buffer, and offers conveniences for human settlements while also harboring flood risks (Di Baldassarre et al., 2013). Floodplains accommodate over half of the world’s human habitation and development due to their favorable nature (Andreadis et al., 2022; Best, 2019). Thus, accurate delineation of floodplain boundaries has attracted wide attention among ecologists, flood practitioners/engineers, and geomorphologists (Wohl, 2021). Among various mapping efforts across different scales and resolutions (Dhote et al., 2023), global-scale floodplain maps are particularly valuable as they require a consistent and spatially continuous framework, which can be leveraged to offer insights into the changing global floodplain characteristics and flood risks (Du et al., 2018; Lindersson et al., 2020; Rajib et al., 2021, 2023; Rentschler et al., 2022, 2023).

Terrestrial observation empowered by satellite remote sensing provides essential data that allow for the delineation of global-scale floodplain by estimating inundation caused by flood extremes. One strategy for the delineation is to directly detect the flood inundation areas from optical or Synthetic Aperture Radar (SAR) remote sensing imageries (e.g., Tellman et al., 2021). This requires historical occurrence of a flood event to define a floodplain, but such an event-based approach often results in spatially discrete global floodplain maps limited by satellite data quality and accessibility. It also overlooks unflooded yet at-risk locations, potentially underestimating floodplain extents. Other strategies involve running hydrodynamic or hydraulic models, which takes input data from terrain and runoff forcing and then simulate detailed flood inundation dynamics in a computationally demanding manner (Bates et al., 2018; Trigg et al., 2021). This method derives continuous floodplain maps, and it emphasizes the inundation area under different flood return periods (e.g., 100-year floodplain), which is more commonly used in engineering and hazard mitigation practices (Wohl, 2021). Various global floodplain maps are available from different hydrodynamic models, including the European Commission’s Joint Research Centre (JRC) (Dottori et al., 2016), the CIMA-UNEP model from the Global Assessment Report (GAR) (Rudari et al., 2015), CaMa-Flood (Yamazaki, 2014), Fathom Global (Sampson et al., 2015) and GLOFRIS (Winsemius et al., 2013). Yet due to the uncertainties that concern the forcing inputs, model structure and parameters, notable inconsistencies are reported across these datasets (Bates, 2023; Bernhofen et al., 2022; Trigg et al., 2016). Thus, the uncertainties associated with the above

approaches highlight the need for continuous efforts to improve global floodplain mapping strategies.

90

Recent advancements in remote sensing offer ever-growing spatial coverage, refined resolution and improved accuracy of global terrain products, motivating the third strategy to directly delineate floodplains with satellite-derived terrain data. The Digital Elevation Models (DEMs)-based or terrain analysis approach is often considered to exhibit higher computational efficiencies as it takes less data and parameters, and the sufficiently accurate DEMs are already recognized as the least uncertain component compared to other uncertainty sources in global floodplain mapping with hydrodynamic models (Bates, 2023). As a result, the parsimonious DEM-based floodplain mapping method receives growing attention in large-scale studies and ungauged basins (Manfreda et al., 2014; Nardi et al., 2013, 2018; Tavares da Costa et al., 2019). DEM-based floodplain mapping generally consists of two steps. First, essential terrain attributes such as Height Above Nearest Drainage (i.e., HAND), Topography Wetness Index, Slope Position, or their derivatives are calculated from DEMs to represent river proximity (Beven and Kirkby, 1979; Rennó et al., 2008; Weiss, 2001; Xiong et al., 2022). Second, thresholding schemes are applied to these attributes to delineate the floodplain boundary (Dhote et al., 2023). For example, the GFPlain algorithm, a widely applied method for terrain-based floodplain delineation (Knox et al., 2022; Manfreda et al., 2014; Nardi et al., 2006; Rajib et al., 2023), adopts such an approach to create the GFPlain250m dataset (Nardi et al., 2019). In a recent comparative study, GFPlain250m was proved to show the highest consistency with several existing floodplain maps, highlighting the potential of geomorphic floodplain delineation in reducing model uncertainties (Lindersson et al., 2021).

110

However, DEM-based mapping methods also face challenges particularly in characterizing spatial heterogeneity (Annis et al., 2019), or spatial variations of floodplain characteristics and processes discovered across scales such as topography, morphology, climate, stratigraphy, biodiversity and river fluxes (Iskin and Wohl, 2023; Wohl, 2021; Wohl and Iskin, 2019). In a DEM-based mapping approach, one ~~needs to address~~generally addresses the impact of heterogeneous factors on floodplain extents through thresholding schemes, but currently there is no universal large-scale thresholding scheme available (Dhote et al., 2023). Many previous attempts assume homogeneous determining factors within the study area and directly assume a universal threshold (e.g., a specific HAND

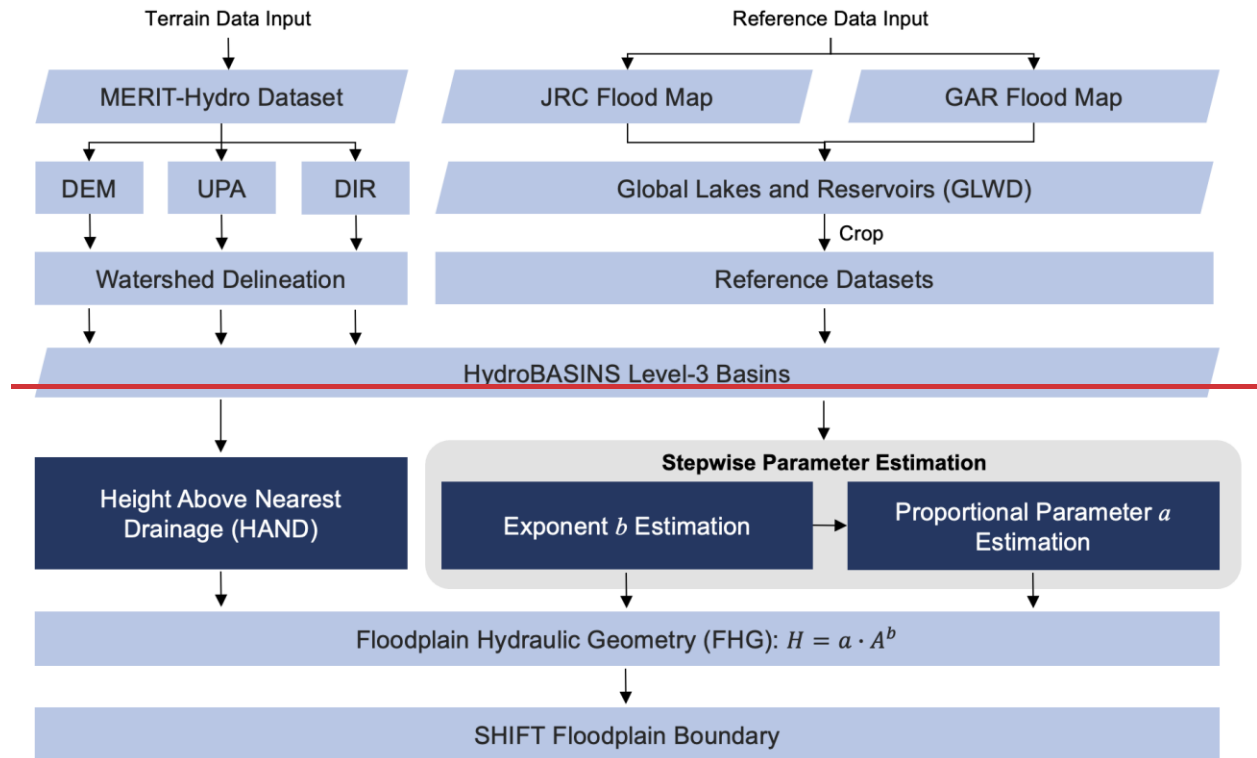
115

threshold for all pixels) in obtaining geomorphic floodplains, which may suffice at smaller scales  
120 but could significantly skew results in large-scale studies (Afshari et al., 2018; Hocini et al., 2021;  
Manfreda et al., 2014; Nardi et al., 2013). To better account for spatial heterogeneity, the  
aforementioned GFPlain algorithm (Nardi et al., 2006) applied the floodplain hydraulic geometry  
(hereafter FHG, Bhowmik, 1984) as the [foundation of their](#) thresholding scheme. In the FHG  
scaling law relationship, the floodplain extent scales exponentially with the river's upstream  
125 drainage area (UPA), which adds UPA as the primary determining factor in deriving floodplain  
maps. However, it often adopts universal values for FHG parameters across basins (Nardi et al.,  
2019), implying that other sources of heterogeneity encapsulated by the FHG scaling parameters  
is ignored. While studies attempting to estimate the empirical parameters of FHG with statistical  
fitting methods exist, it remains difficult to derive FHG parameters worldwide and to offer further  
130 physical interpretations for the parameters. Such inadequate representation and understanding of  
spatial heterogeneity in FHG parameters may lead to inaccurate delineations in less well-  
documented regions; for example, overestimated floodplains in arid or semi-arid area as reported  
by existing assessments of geomorphic floodplains (Lindersson et al., 2021).

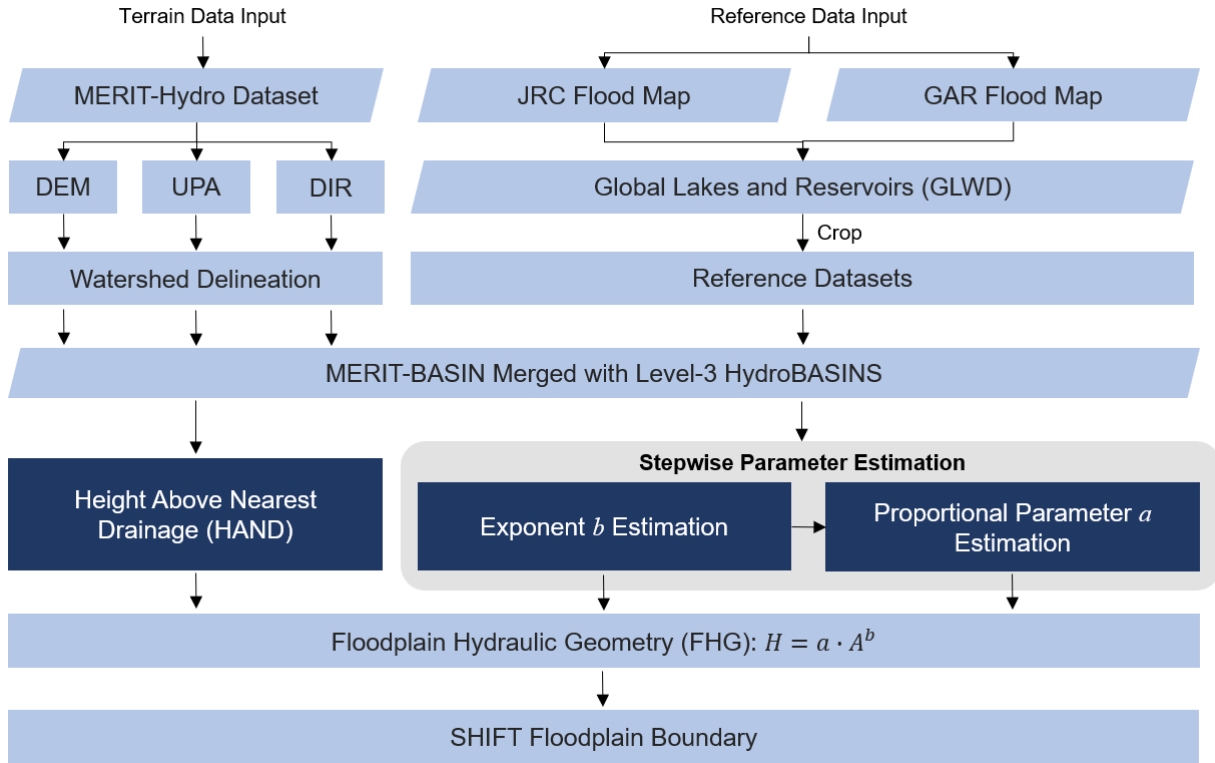
135 To complement existing studies, here we develop a globally applicable framework to estimate  
FHG parameters that better integrate spatial heterogeneity into our thresholding scheme. It takes  
two publicly available hydrodynamic floodplain maps as the reference to estimate spatially varied  
FHG parameters across [269all](#) global river basins [at the scale of Level-3 HydroBASINS](#). Based on  
this, we develop a 90-m global geomorphic floodplain map named Spatial Heterogeneity Improved  
140 Floodplain by Terrain analysis (SHIFT). SHIFT calculates HAND above the nearest river pixel to  
which it drains by utilizing the hydrologically corrected MERIT-Hydro (Yamazaki et al., 2019)  
dataset. Due to the use of the MERIT-Hydro dataset, [due to which](#) SHIFT also addresses limitations  
of existing global geomorphic mapping that used uncorrected DTM with limited spatial coverages  
(60°N to 60°S) and relatively low spatial resolutions. Our manuscript is organized as the follows.  
145 Section 2 introduces our methods and data in detail. Section 3 presents our geomorphic floodplain  
data and the accuracy assessment against several reference maps. Sections 4 & 5 close with  
discussions and conclusions of this study.

## 2. Methods and Data

150 SHIFT is developed following the technical flowchart in **Fig. 1**. Below we will describe our data and methods in detail.



**Fig**



155

**Figure 1. Technical workflow of the study.** Parallelograms denote data; rectangles denote processing; highlighted rectangles are the key features of SHIFT. Stepwise parameter estimation is marked in the grey box.

160 **2.1 Data**

**2.1.1 Terrain Data**

(1) *MERIT-Hydro hydrography map.* We take terrain inputs (i.e., elevation, d-8 flow direction and upstream drainage area) from the MERIT-Hydro dataset (Yamazaki et al., 2019). It is a 90-m resolution global dataset that combines data from the Space Shuttle Radar Topography Mission (SRTM) and airborne LiDAR, which has undergone rigorous error correction processes to remove various types of errors such as striping noise, speckle noise, absolute errors, as well as biases in tree heights. Multiple remote sensing datasets and Volunteer Geographic Information System (Volunteer GIS) water data are used to further enhance its ability to identify river locations. Specifically, it combines OpenStreetMap river vector data, SRTM waterbody data, and Landsat-

165

170 derived water data to calculate the likelihood of a grid cell representing a water body. In areas with  
a high likelihood of water, the elevation is adjusted lower. This approach effectively improves the  
accuracy of flow direction calculations and minimizes deviations in flat areas. The dataset is  
georeferenced to the WGS84 and EGM96 geodetic reference systems, with a spatial resolution of  
3 arc-seconds (approximately 90 meters at the equator).

175

(2) *HydroBASINS ~~Level-3~~ Global Basins*. We applied basin boundary data from the ~~level~~Level-3  
HydroBASINS dataset to introduce the basin-by-basin spatial variability in parameter estimation.  
It is a multi-level global basin dataset derived from the SRTM DEM data as part of the  
HydroSHEDS project (Lehner and Grill, 2013). HydroBASINS is structured into 12 levels of  
180 basins, with higher levels representing finer basins. The dataset applies the Pfafstetter coding  
system to support analysis of watershed topology including upstream and downstream connectivity.  
The first three levels are assigned with ~~Level-1~~Level-1 categorizing continents, ~~Level-2~~Level-2 dividing  
continents into major sub-units, and Level 3 delineating the largest river basins on each continent  
(Lehner, 2014). The Level-3 sub-basins in HydroBASINS consist of 269 units globally with an  
185 average size of 555,600 km<sup>2</sup>. ~~Among them, 34 major river basins with complete coverage between 60°N to  
60°S (the spatial extent of our reference maps, see below)~~Level-4 and Level-5 boundaries are used also  
applied for further analysis ~~in Section 4.1. on scales.~~

(3) *MERIT-Basins*. MERIT-Basins is a global vector hydrography database derived from the 90-m  
190 MERIT-Hydro product, based on a 25 km<sup>2</sup> threshold for drainage areas (Lin et al., 2019)3. It aligns  
well with the MERIT-Hydro dataset. To obtain the corresponding boundaries for parameter  
estimation, we combined MERIT-Basins into groups equivalent to Level-3 to Level-5 of  
HydroBASINS. We aggregated MERIT-Basins based on its spatial relationship with basins from  
HydroBASINS, ensuring that the centroid of a MERIT-Basin falls within the corresponding  
195 boundary. This approach accounts for slight differences in boundaries due to the use of different  
terrain data, preventing confusion in hydrological representation. Among the Level-3 basins, the  
40 largest hydrologically connected basins were manually selected, based on the hypothesis that  
connected basins better apply the scaling law due to shared attributes within the same hydrological  
system. Seven of these 40 basins, with centroid located above 60°N, were excluded since one of  
200 our reference maps does not cover regions above 60°N.



### 2.1.2 Reference and benchmark datasets

(1) *JRC flood map*. The flood hazard map created by the European Commission's JRC is selected as part of the reference and validation dataset. It is based on the 3-arcsecond SRTM DEM, which combines hydrological simulations from the Global Flood Awareness System (GloFAS) with a two-dimensional CA2D hydraulic model for flood inundation mapping. The GloFAS simulations utilize ERA-Interim data, covering the period from 1980 to 2013, and operate at a resolution of 0.1 degrees (approximately 11 km at the Equator). The system simulates streamflow by coupling two distributed global models: HTESSSEL, which estimates surface water and energy fluxes in response to atmospheric forcing, and LISFLOOD Global, which uses the output from HTESSSEL to simulate routing processes and streamflow. The flood hazard maps produced are at a 30-second resolution and focus on river channels with an upstream catchment area greater than 5000 km<sup>2</sup> (Dottori et al., 2016). The JRC dataset provides flood hazard maps with different return periods from 10 years to 1000 years. Here we used the 500-year flood map as a reference floodplain map based on the notion that geomorphic floodplains are dominantly shaped by high-impact yet low-possibility events (Annis et al., 2019; Bhowmik, 1984; Lindersson et al., 2021).

(2) *GAR flood map*. We also select the 500-year flood map by hydrodynamic model from the GAR of the United Nations Office for Disaster Risk Reduction (UNDRR) and the CIMA foundation as a reference and validation dataset. The GAR data employs a global database of discharge data from over 8000 stations to estimate extreme streamflows and DEM from HydroSHEDS for hydraulic modeling. This one-dimensional model applies Manning's equation to calculate river stages. The GAR flood map also considers artificial flood defense by assuming target return periods of flood defenses based on the GDP distribution, thereby locally reducing the estimated flooded volume within the estimated protected area. The dataset is characterized by return periods of 25, 50, 100, 200, 500, and 1000 years, a coverage of 60°N to 60°S, with a native resolution of 90 meters from the SRTM DEM, later aggregated to 1-km for risk computation (Rudari et al., 2015).—

230 ~~(53)~~ *GFPlain250m floodplain map*. The aforementioned geomorphically delineated GFPlain250m floodplain map is used as the benchmark and another validation dataset (Nardi et al., 2019). It shares the same coverage with GAR (60°N to 60°S). For each grid, it calculates the height above the lowest elevation grid within the same watershed (i.e., the basin outlet) as the terrain attribute rather than the nearest river grid to which it drains. This exaggerates the vertical distance to streams for upstream pixels and may thus lead to underestimation of floodplain ~~in upstream areas~~. FHG is applied as the thresholding scheme (Nardi et al., 2006), but the exponent takes universal values across different basins (i.e., exponential parameter  $b = 0.3$ , proportional parameter  $a = 0.01$ ) for convenient global applications. It takes the 250-m SRTM DTM as terrain input and implements the hydrological analysis workflow by using the ArcPy library.

240 ~~(64)~~ *GLWD lake and reservoir dataset*. We apply a global lake mask to crop the reference map before using it for parameter estimation, which helps to avoid inconsistent lake representations from our reference and validation datasets. To do that, the Global Lake and Wetland Dataset (GLWD) jointly developed by the World Wildlife Fund (WWF) and the Center for Environmental Systems Research at the University of Kassel (Lehner and Döll, 2004) is used. It consists of three layers and the Level-1 layer represents large lakes and reservoirs, including 3,067 lakes and 654 reservoirs with lake area  $\geq 50$  km<sup>2</sup> and storage capacity  $\geq 0.5$  km<sup>3</sup>, respectively. The dataset takes reference from multiple sources and is further refined with independent data from USGS and extensive visual inspections and quality control.

250

### ~~2.1.3~~ Datasets for correlation

~~(1)~~ *Global-AI\_PET\_v3 Aridity Index database*. We use the Aridity Index (AI) from the Global Aridity Index and Potential Evapotranspiration Database (Global-AI\_PET\_v3) to assess its linkage with the FHG parameter. The database provides 30 arc-second global Potential Evapotranspiration (ET<sub>0</sub>) and AI data. AI is calculated as the ratio of mean annual precipitation to mean annual reference ET<sub>0</sub>, which is estimated by the FAO Penman-Monteith Reference Evapotranspiration equation. It has been validated against various weather station data and shows an improved correlation with real-world data compared to previous versions (Zomer et al., 2022).

260 (2) LAI Climatology. Developed for a model intercomparison project (HighResMIP v1.0) of  
CMIP6, this dataset provides a global 0.25° x 0.25° gridded monthly mean leaf area index (LAI)  
climatology, averaged from August 1981 to August 2015 (Haarsma et al., 2016). Derived from the  
Advanced Very High Resolution Radiometer (AVHRR) Global Inventory Modeling and Mapping  
Studies (GIMMS) LAI3g version 2, it includes bi-weekly data from 1981 to 2015. The raw LAI3g  
265 version 2 data were regridded from 1/12° x 1/12° to 0.25° x 0.25°, processed to remove missing  
and unreasonable values, scaled to obtain LAI values, and averaged bi-weekly to monthly. The  
final product is a monthly long-term mean LAI (1981-2015) provided in a single NetCDF (.nc4)  
file.

270

## 2.2 Methods

This section introduces HAND, FHG and our parameter estimation scheme for SHIFT.

275 *(1) HAND as a terrain attribute.* HAND is a derivative terrain index that describes the relative  
elevation difference between any grid cell in a DEM and its nearest river grid (Rennó et al., 2008).  
River grid here is identified by applying a 1000 km<sup>2</sup> threshold to the Upstream Drainage Area  
(UPA), supported by previous studies (Nardi et al., 2019)). The threshold is determined by  
preliminary experiments to ensure that it is neither too small, which would misattribute large-river-  
dominated floodplains to small rivers, nor too large, which would overlook rivers with notable  
280 influence. Accurate HAND calculation requires defining the nearest river network grids either by  
flow direction or by distance. The flow direction model defines the first river network grid reached  
by tracing the d-8 flow as the nearest drainage, resulting in floodplain maps that capture regional  
hydrological characteristics but influenced by local terrain fluctuations. The distance model  
searches for the nearest drainage grid with a specific distance (e.g., two-dimensional or three-  
285 dimensional Euclidean distance), highlighting geometric considerations but ignores natural  
geomorphic separations. We adopt the flow direction method to avoid discontinuities in HAND  
introduced by the distance model (not shown); subsequent results in floodplain delineation are  
derived from using the d-8 flow directions obtained from the MERIT-Hydro dataset. —

290 (2) *FHG as a thresholding scheme.* FHG is an adapted form of the original river channel hydraulic geometry (Leopold and Maddock, 1953). It posits a power-law relationship between floodplain characteristics (width, depth, 100-year discharge) and river size (UPA or ~~strahler~~Strahler stream order). In the context of floodplain delineation, it considers a power-law relationship between the potential inundation depth ( $h$ ) of a river grid cell and its UPA:

295

$$h = a \cdot UPA^b \quad (1)$$

$$h = a \cdot UPA^b \quad \text{Eqn. (1)}$$

where  $a$  and  $b$  are empirical parameters containing heterogeneous factors determining floodplain extents. Then, the algorithm determines grid cells with HAND lower than  $h$  of the corresponding river grid ( $h_{river}$ ) as floodplain, which can be represented by EqEqn. (2):

305

$$f(HAND, h_{river}) = \begin{cases} 1, & HAND \leq h_{river} \\ 0, & HAND > h_{river} \end{cases} \quad (2)$$

$$f(HAND, h_{river}) = \begin{cases} 1, & HAND \leq h_{river} \\ 0, & HAND > h_{river} \end{cases} \quad \text{Eqn. (2)}$$

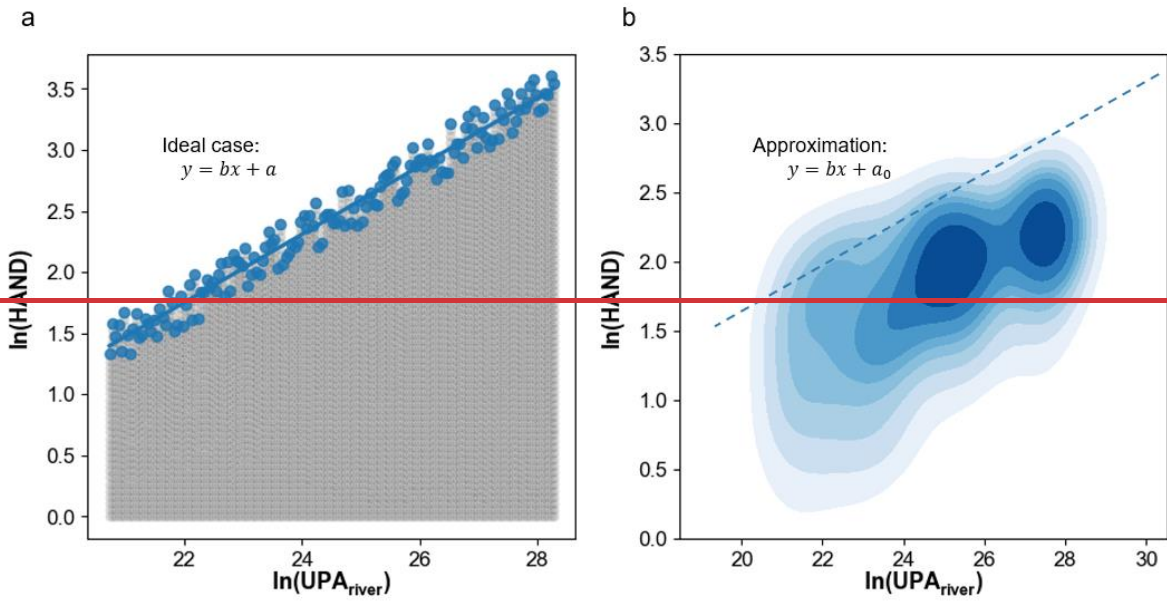
(3) *FHG parameter estimation.* Estimating FHG parameters requires either reference floodplain extents or estimated runoff as inputs (Annis et al., 2019; Nardi et al., 2013). We take two hydrodynamic model outputs as the reference map (i.e., the 500-year return period JRC and GAR flood maps) as they intrinsically contain floodplain spatial heterogeneity by feeding gauged streamflow observations or climate reanalysis data (Lindersson et al., 2021). ~~For areas where both maps are available, we take both the join and the interserction of JRC and GAR as the reference, as we consider the intersection map to be accurate and the union map to be comprehensive. For areas above 60°N, we take the JRC as the reference since it is the only map available..~~ The goal of using these reference datasets is to capture the information of spatial heterogeneity of these two datasets while trying our best to constrain model-related uncertainties.

310

315

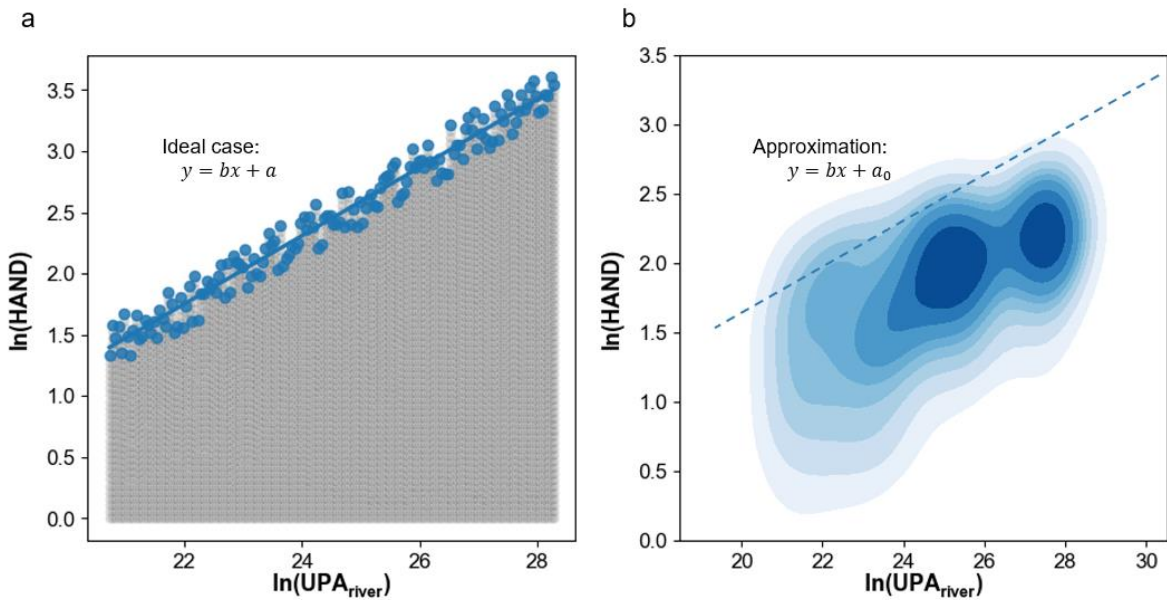
With the above reference map, two methods can be used to estimate FHG parameters: parameter space sampling (PSS) and logarithmic regression (LR). PSS defines a feasible range for two parameters in EqEqn. (1), and then samples the parameters from the parameter space and tests their





350

Fig



355

**Figure 2.** The expected and actual scenario of floodplain grids within a basin. X-axis represents  $\ln(\text{UPA}_{\text{river}})$ , y-axis represents  $\ln(\text{HAND})$ . a) shows the scatter plot of the expected linear relationship between maximum  $\ln(\text{HAND})$  and  $\ln(\text{UPA}_{\text{river}})$ . Blue scatters are the maximum HAND values while gray scatters are non-maximum reference floodplain grids. b) shows the mean actual scenario (i.e., the Yangtze River basin, ~~BasinID: 4002082~~ corresponding to the level-3

HydroBASINS, PFAF ID: 434) which approximately arrives at the power law relationship in kernel density plot.

360

Therefore, we develop a scheme to effectively mitigate data noises in estimating parameter  $b$  while maintaining the power law for the majority of grids. First, we take floodplain grids from the ~~less noisy~~-intersection of the two reference ~~maps as we suggest the intersection~~ map ~~and to be more accurate~~. Then we set a universal HAND threshold of 20 m to screen out the most obvious high anomalies. We then group HAND values by  $UPA_{river}$  and apply an iterative moving-window data-filtering scheme based on 3-sigma statistics where every grid would be filtered by 20 windows (window size = 1, step = 0.1). In each iteration, we compute the mean and standard deviation for the data within each window. A grid point is retained only if it consistently meets the 3-sigma criteria across all 20 windows. This iterative process stops either when every data point fits within

370 all moving windows, or if the procedure fails to converge towards a stable solution- (e.g., for highly noised or significantly non-normal data). Instead of directly performing LR, we calculate a sequence of theoretical  $b$  values from the maximum HAND of each  $UPA_{river}$  unit with a baseline estimate of  $a_0 = 0.01$  based on prior research (Nardi et al., 2019)- The binning parameter is tuned to effectively reduce data noise for all basins. As the optimal  $b$  will lean towards the higher end of our calculated sequence but not at the highest end as it could be possibly interfered by remaining high HAND anomalies, we evaluate the 10% to 50% percentiles of these  $b$  sequences across all

375 basins to identify the best percentile that centers around the previously estimated global  $b$  value of 0.3 (Nardi et al., 2019)-. The  $b$  value under this identified percentile is then chosen as the optimal parameter for each individual basin.

380

After  $b$  is determined, the coefficient  $a$  is optimized with an iterative PSS method. We take both ~~the intersection map and the union map~~ hydrodynamic maps as our reference dataset, as we would like to highlight the ‘consensus’ of existing maps while trying to ~~capture more spatial heterogeneity~~ achieve better consistency from both maps. ~~We apply~~ Numerous indices for the optimization target exist, including Overall Accuracy (OA) ~~as the target in the parameter estimation process:~~

385

$$OA = \frac{A + D}{A + B + C + D} \quad (5)$$

390 ~~A, B, C, D denote overlapping (True Positive), over-prediction (False Positive), under-prediction (False Negative), and correct rejection (True Negative), respectively. We select OA instead of kappa), Kappa~~  
 coefficient (Cohen, 1960), Fleiss's Kappa (Fleiss, 1971), Model Agreement Index (MAI, Trigg et  
 al., 2016) or measure-of-fit function (Nardi et al., 2019), ~~because other indices can be less appropriate~~  
 395 ~~in our case as we use a composite of two largely inconsistent hydrodynamic flood maps. Approximation by~~  
~~these indices would focus on predicted areas by either dataset and may overlook non floodplain areas, which~~  
~~could lead to overestimation in parameters and thus floodplain extents. While MAI and measure-of-fit~~  
~~function emphasize data overlap, they do not address overprediction. OA considers unpredicted~~  
~~areas but may overly reward non-floodplains since they are the major landmass type. Fleiss's~~  
~~Kappa can assess agreement among multiple datasets, but using it alone with two existing datasets~~  
 400 ~~may bias our estimated boundary towards the dataset with larger predictions as it maximizes~~  
~~mathematical consistency values. This is undesirable since we aim for agreement with each~~  
~~individual dataset to balance the information from both. Therefore, our target function is defined~~  
 as:

$$405 \quad \textit{Consistency} = FK - \sigma \cdot (MAI_{JRC} - MAI_{GAR})^2 \quad \textit{Eqn. (5)}$$

Here, Fleiss's Kappa (FK) represents how well the three datasets (including the product with the  
 parameter to be optimized) match. The penalty term, based on the squared difference between the  
 two MAI values, reduces bias towards one dataset over the other. The weight term ( $\sigma$ ), ranging  
 from 0 to 1, is determined by the normalized number of available reference data grids in the basin.  
 410 This assumes that basins with fewer common data grids have less reliable datasets, and thus  
 overemphasizing the penalty term would unnecessarily and overly influence FK.

Fleiss's Kappa ( $FK$ ) is calculated as:

$$415 \quad FK = \frac{P_o - P_e}{1 - P_e} \quad \textit{Eqn. (6)}$$

Where  $P_o$  and  $P_e$  are respectively calculated by:



$$P_o = \frac{1}{N} \sum_{i=1}^N \frac{\sum_{j=1}^C n_{ij}(n_{ij} - 1)}{K(K - 1)} \quad \text{Eqn. (7)}$$

$$P_e = \sum_{j=1}^C \left( \frac{\sum_{i=1}^K n_{ij}}{NK} \right)^2 \quad \text{Eqn. (8)}$$

In these equations,  $K$  is the number of models (3 here),  $N$  is the number of pixels,  $i$  represents each grid, and  $j$  represents different possible values (1 or 0 here). The MAI is calculated as:

$$MAI = \frac{A}{A + B + C} \quad \text{Eqn. (9)}$$

Where  $A$ ,  $B$ ,  $C$  denote overlapping (True Positive), over-prediction (False Positive), and under-prediction (False Negative) respectively. Considering the previously estimated  $a$  values range across 0.001 to 0.06 (Nardi et al., 2018), we first sample 20 equidistant  $a$  values between 0 and 1 against the reference data. Then the direct neighbor of the best-performing  $a$  value, constraining its precision to at least one decimal place, is used to search for the true optimal  $a$ . We apply ~~four~~five iterations, each with a new set of 20 equidistant  $a$  values within the estimated direct neighbors from the last iteration. The optimal  $a$  from the final iteration is then selected as the ~~as the~~ basin-specific coefficient.

(4) *Development of SHIFT.* Based on the above, we estimate the FHG parameter with the HydroBASINS level-3 basins, and derive the floodplain map for each basin and then integrate them into a 90-m global floodplain map. We use Python 3.10 libraries (e.g., Pandas, Numpy and Geopandas), the GDAL command line interface and the TauDEM toolkit (Tarboton, 2016) for the FHG parameter estimation and the thresholding. We also downsize the dataset to 1-km resolution floodplain map for convenient large-scale applications, ~~and~~ the 1-km resolution floodplain map is provided as part of the final output. We used median as the resampling method for continuous variables like UPA and HAND, and mode for categorical data, such as the reference maps, SHIFT, and watershed division. Permanent water bodies are removed for all processes.

(5) Validation, & Correlation. After getting the updated floodplain boundary with the optimized parameters (SHIFT), we conduct a pairwise consistency analysis among ~~four floodplain~~ five maps, i.e., SHIFT, GFPlain250m, UP (Universal Parameters, applying  $b = 0.3$  and  $a = 0.01$  on MERIT-Hydro), JRC and GAR. UP was generated to ensure allow the quality assessment of ~~SHIFT~~ how changes in parameters influence the results. We also apply ~~OA and Model Agreement Index~~ (both MAI, (see Eq. 6) Eqn. 9) and OA for this pairwise consistency analysis in reference to previous research (Lindersson et al., 2021). Note that MAI is a critical index: a MAI of 0.2 represents 20% to 33% overlapping between models, while a MAI of 0.5 represents 50% to 67% overlapping. Previous large-scale assessment of floodplain map consistencies revealed that the median MAI is at the range of 0.1 to 0.4 (Lindersson et al. 2021). OA is calculated as:

$$OA = \frac{A + D}{A + B + C + D} \quad \text{Eqn. (10)}$$

where  $D$  denotes non-prediction by both maps, and  $A$ ,  $B$ , and  $C$  in Eq. (6) are the same as Eq. (5).

$$MAI = \frac{A}{A + B + C} \quad (6)$$

$A$ ,  $B$ ,  $C$  denote the same as Eq. 5.  $b$  has defined in Eqn. (9). The two types of indices applied here have different influence on focuses: OA considers non-floodplain areas, while MAI focuses exclusively on overlapping floodplain areas. Considering the overall landmass is non-floodplain, we also calculated OA within 20-km buffer zones, with distance measured as the hydrological distance to the stream. In the pairwise comparison, group comparisons were conducted with JRC and GAR, where each hydrodynamic map was tested against SHIFT, GFPlain, and UP. The JRC-GAR pair serves as the baseline.

For our analysis, we focus on parameter  $b$ . Theoretically,  $b$  influences rivers depending differently based on their drainage area, i.e., large with larger  $b$  values highlighting the dominance of large rivers over tributaries in shaping floodplain extents. Thus, we expect  $b$  to be better closely associated with the spatial heterogeneity of floodplain basin-level hydrological and geomorphic characteristics. Our primary hypothesis is that  $b$  should be related to climate aridity, as more humid areas are expected to show stronger dominance of large rivers. Additionally, vegetation, indicated by LAI

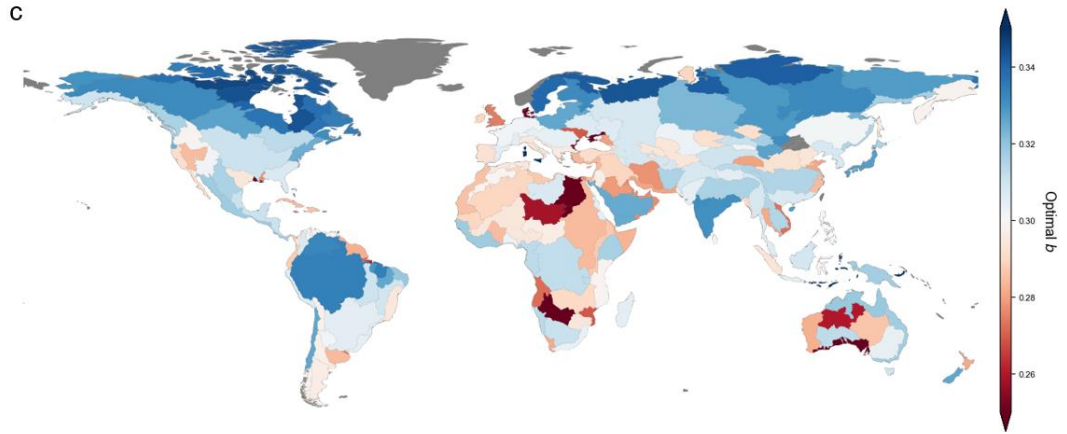
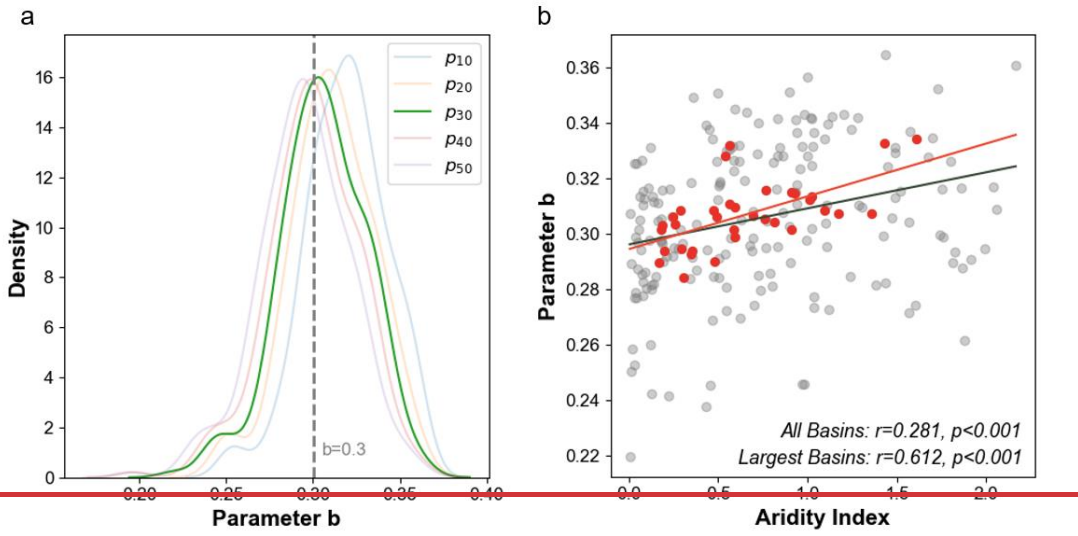
(Leaf Area Index), may also play a role since it is involved in the runoff generation process as well as modulating soil erosion that can be key to floodplain formation. Therefore, we also calculate the correlation of the exponent  $b$  with average AI (Aridity Index) and estimate aridity of LAI across all basins, which helps to validate whether our thresholding scheme can better capture the spatial heterogeneity of global floodplains floodplain characteristics.

### 3. Results

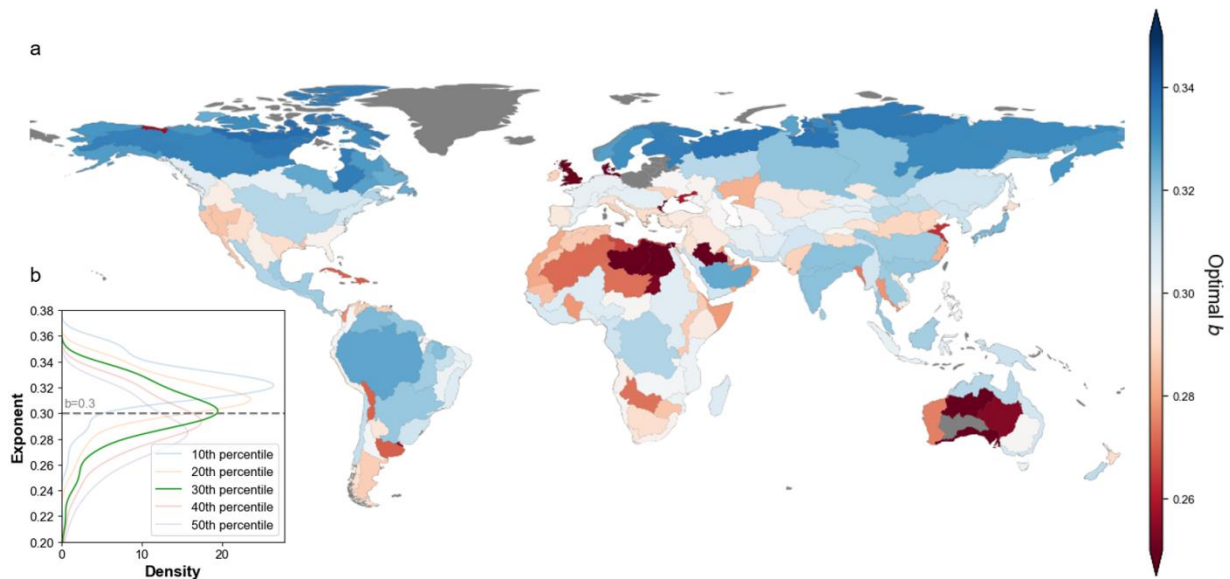
#### 3.1 Global FHG parameter estimation

Based on Following the stepwise parameter estimation scheme proposed in Section 2.2 (3), we obtain the statistical distributions of different  $b$  percentiles in Fig. 3a3b. While distributions from all percentiles exhibit similar patterns, especially for the 20<sup>th</sup> to 50<sup>th</sup> percentiles, we apply the 30<sup>th</sup> percentile worldwide as it best distributes around the previously estimated global  $b$  value of 0.3 (Nardi et al., 2019; see dashed line in Fig. 3b). Under this percentile, the majority of estimated parameter  $b$  values fall lies within the range of 0.225 and 0.35. Based on the estimation, the coefficient  $a$  is also optimized which varies from 0.0001 to a maximum of 0.412 across all 269 basins globally, and they exhibit a statistically significant but weak positive correlation ( $r = 0.281$ ) with the climatic aridity of all basins. Notably, it exhibits a reasonably strong correlation for 34 global major river basins ( $r = 0.612$ , Fig. 3b).

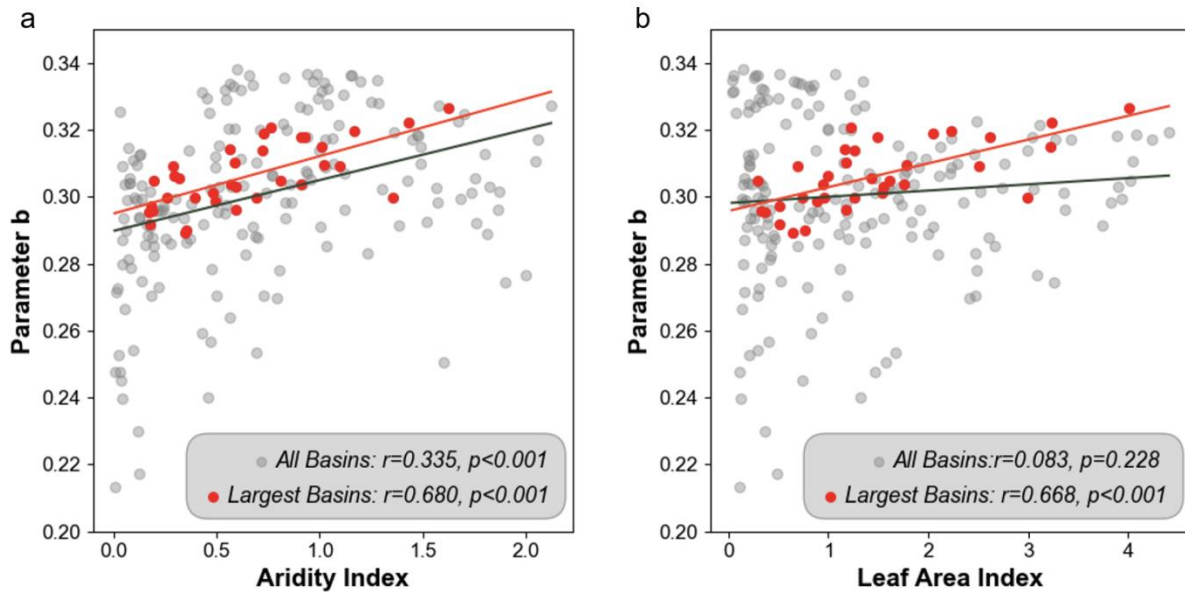
Spatially, the distribution of the estimated  $b$  (Fig. 3e3a) shows that regions characterized by abundant precipitation and water resources (e.g., southern East Asia, Southeast Asia, the Mississippi and Amazon) generally exhibit relatively higher  $b$  values. Conversely, regions such as Central-West Asia, the Arabian Peninsula, the Sahara region, and central Australia tend to have relatively lower  $b$  values. There are also exceptions, for instance the overall high  $b$  values in the arctic circle, and low values in river deltas (e.g., Red river the western Mississippi Delta in North America Louisiana, Jiaodong Peninsula Peninsula in Eastern Asia) along with the high anomalies. Estimated parameter  $a$  exhibits a less clear spatial pattern (Fig. S1) as it is less uniform in the Great Victoria Desert in Australia. Based unit and highly dependent on the estimated  $b$ , the coefficient  $a$  is also optimized which varies from 0.0001 to a maximum of 0.2 across all basins.



Fig



510 **Figure 3. Results** Statistical and spatial distribution of estimated FHG parameter b-estimation.  
a) Spatial distribution of parameter b across HydroBASINS level-3 basins. b) The distribution of  
parameter b across basins,  $p_{10}$  to  $p_{50}$  represent the percentiles during estimation,  $b = 0.3$   
line shows the universal value applied in previous research. b) Scatter plot with regression line for  
515 Statistically, results show that b from all basins exhibits significant but weak positive correlation  
with the AI (Aridity Index,  $r = 0.335$ , Fig. 4a), and parameter b, gray scatters stand for all basins and red  
scatters for an insignificant positive correlation with LAI (Leaf Area Index,  $r = 0.083$ , Fig. 4b). For  
the selected 33 major basins. c) Spatial distribution, which are hydrologically connected and thus  
expected to have more internally consistent hydrological characteristics, both correlations are  
520 stronger ( $r = 0.680$  for AI and  $r = 0.668$  for LAI) and significant. We investigate other potentially  
relevant factors (Fig. S1), but no significant and consistent linear correlations were observed,  
suggesting that more complex mechanisms may be involved that do not manifest as observable  
linear correlations.



525

**Figure 4. Scatter plots of parameter FHG parameter b against relevant hydroclimatic factors.** a) Scatter plot with AI (Aridity Index). b) across HydroBASINS-level-3) Scatter plot with LAI (Leaf Area Index). In each plot, gray points represent all basins, including the largest ones, while red points represent the 33 selected basins. Pearson's  $r$  and significance levels are indicated on the plots.

530

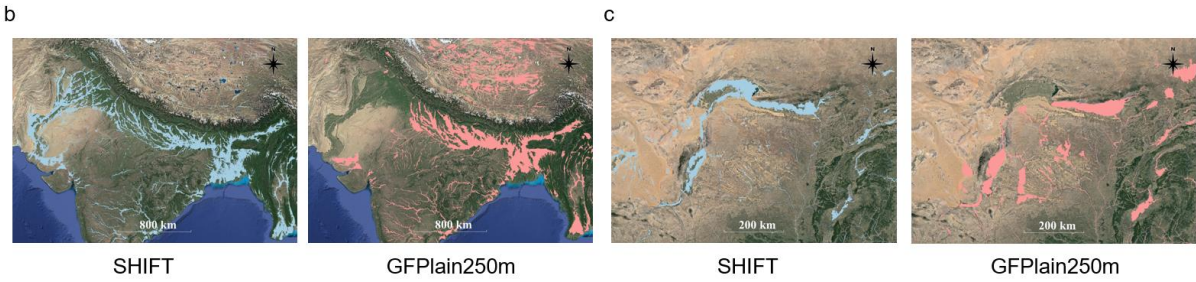
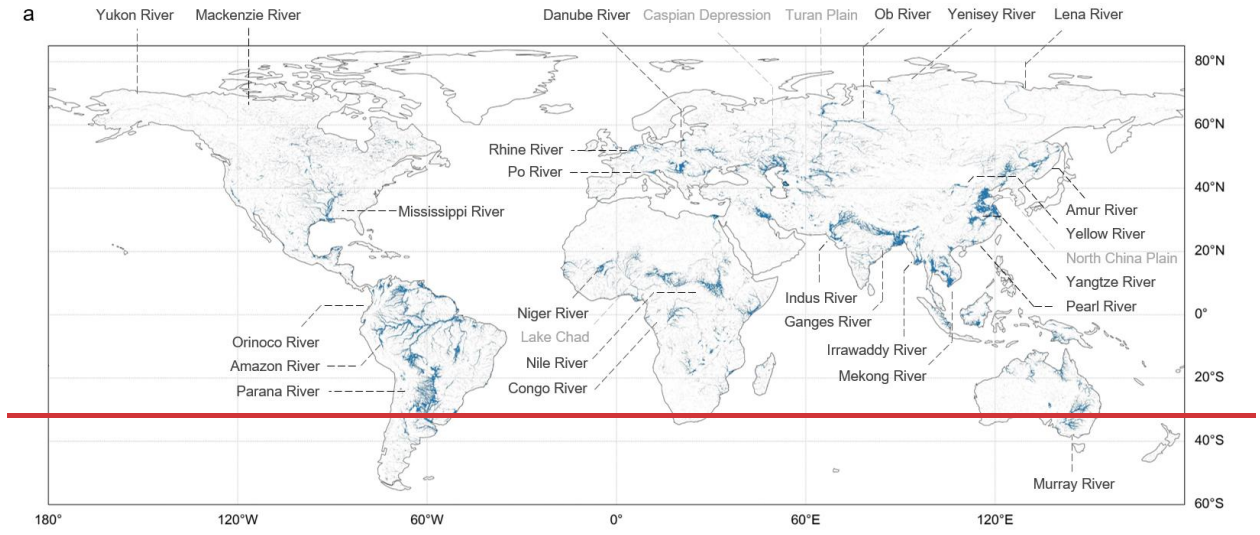
### 3.2 Global floodplain delineation

Based on the estimated FHG parameters, the global distribution of floodplain areas is delineated and shown in **Fig. 4a5a**. Overall, the spatial pattern of the floodplains aligns well with the low-lying areas in major river systems. More specifically, floodplains in Northern Asia are mainly distributed around the West Siberian Plain and the Central-West Siberian Plateau, e.g., the Ob and Yenisei River Basins. West and Central Asia's floodplains are primarily near the Caspian Sea, the Aral Sea, and the Mesopotamian Plain. In East Asia, the Yangtze River Basin dominates floodplains in the middle and lower reaches, along with contributions from the North China Plain, some Yellow River tributaries such as the Hetao Plain, and river mouths in the southeast. The Lancang-Mekong River Basin and the Salween-Irrawaddy River Basin in Southeast Asia also breed the largest floodplains worldwide, as well as the Indus and Ganges-Brahmaputra River Basins from South Asia. In Europe, the primary floodplains are concentrated in the Danube River

540

545 Basin between the Alps and the Carpathian Mountains, alongside the Rhine, Dnieper and Po River  
Basins. In Africa, floodplains are predominantly distributed in the upstream Nile River, including  
the Nile Delta and the Niger River Basin, as well as the Congo River Basin, the Chari River-Lake  
Chad Basin and around Lake Victoria, with additional areas near West and East Africa's coasts.  
North America's floodplains are mainly in the Mississippi River Basin and Alaska's Yukon River  
550 Basin. South America's floodplains are primarily in the Amazon River Basin, the Orinoco plain,  
and the La Plata plain. In Oceania, floodplains center in the interior lowlands around the Murray-  
Darling River Basin ~~in the interior lowlands~~.

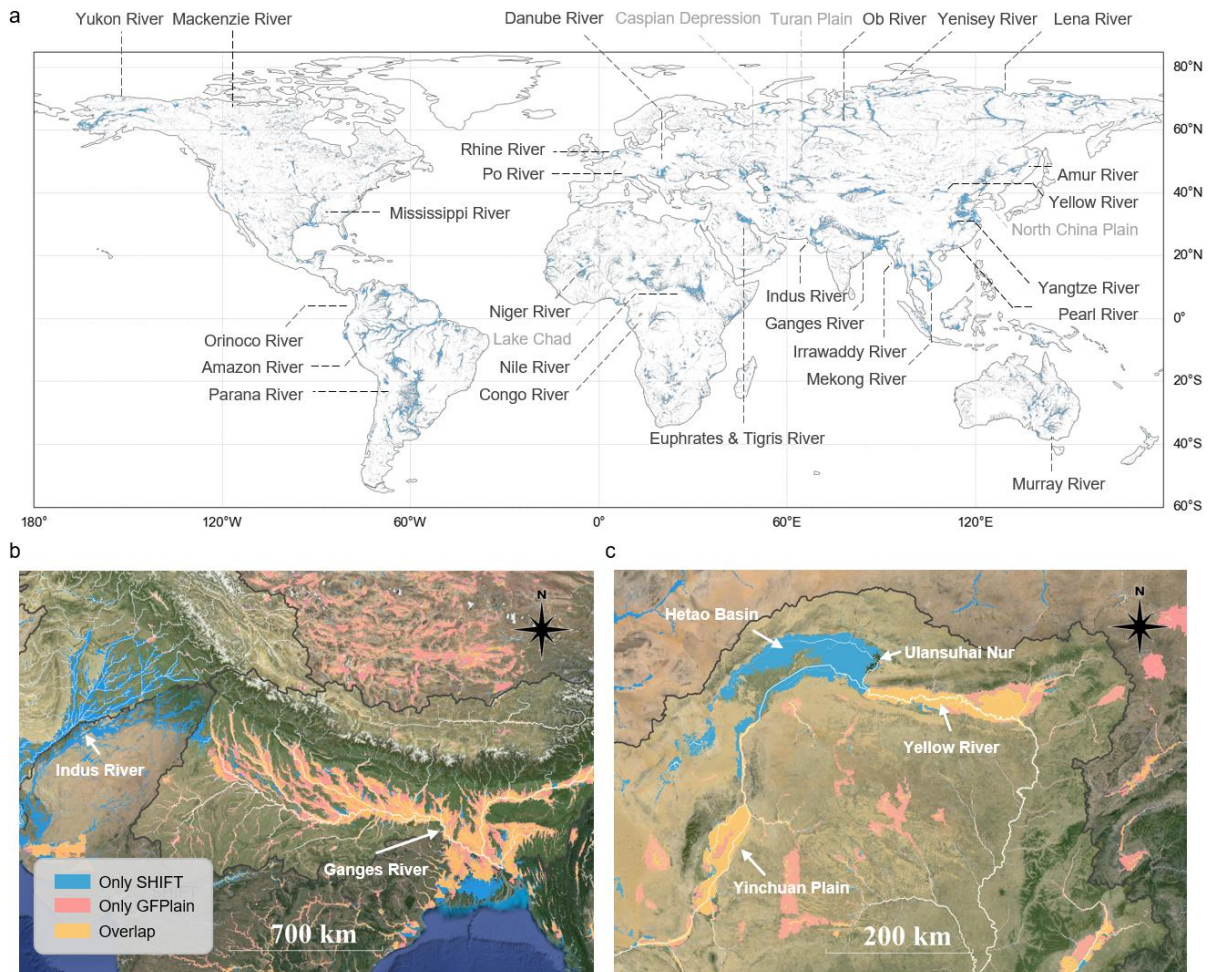
To show more regional details, we use two cases under different climatic conditions (**Figs. 4b- &**  
555 **4e5b & 5c**) to further illustrate the differences between SHIFT and the widely used GFPlain250m  
dataset. Case 1 (**Fig. 4b5b**) is the Indus-Ganges-Brahmaputra River basin which flows through  
Bangladesh, India, Pakistan, and Nepal. These countries are primarily characterized by frequent  
floods and are strongly influenced by the South Asia monsoon. SHIFT captures detailed  
floodplains in the Indus River basin, a major basin in South Asia where GFPlain250m leaves out.  
560 Additionally, SHIFT offers finer details in upstream areas and can better distinguish main river  
floodplains from those of the tributaries. Case 2 (**Fig. 4e5c**) is situated in the Yellow River basin  
(Hetao Plain) in Inner Mongolia, China, a region dominated by arid to semi-arid continental  
climate. Comparing the floodplain maps with visual interpretations of the satellite images suggests  
that SHIFT can provide a more comprehensive depiction of the Hetao Plain. The floodplains  
565 outside of the Hetao Plain in SHIFT are relatively limited, which aligns with its generally dry  
climate conditions.





Fig

4



570

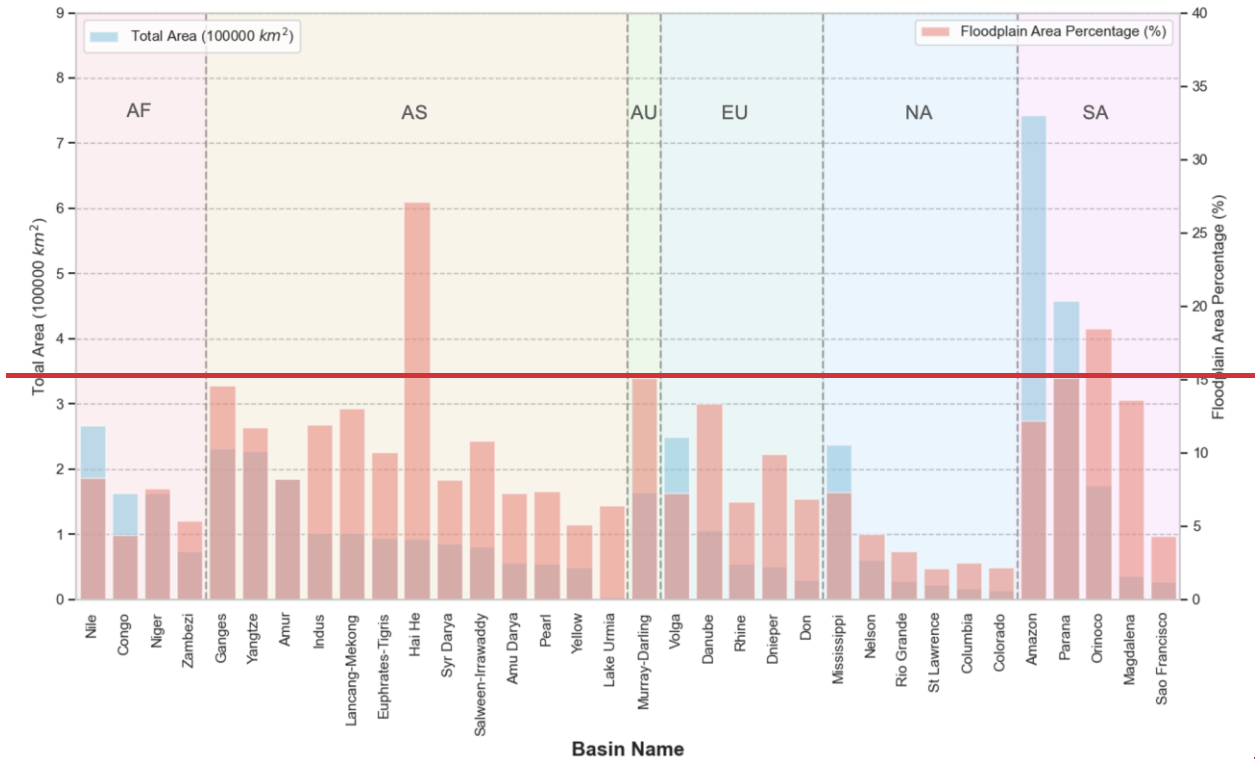
575

**Figure 5. Geomorphic floodplain extent in SHIFT.** a) Global spatial distribution of floodplains, with major river basins or plains marked out. b) and c) show two cases of ~~our floodplain delineation and the that compares~~ SHIFT with GFPlain250m-dataset, with background image from © Google Earth on EPSG: 3857 projection. b) locates in the humid Indian-Ganges ~~river~~ River basin, while c) locates in the semi-arid yellow river basin in inner Mongolia, China. Major rivers of the region is marked on the map. SHIFT delineates fewer areas in the upstream Ganges River (b) and reduces the floodplain extent outside the Yellow River mainstream (c). It also offers more comprehensive coverage, including the Indus River basin (b) and the Hetao basin (c).

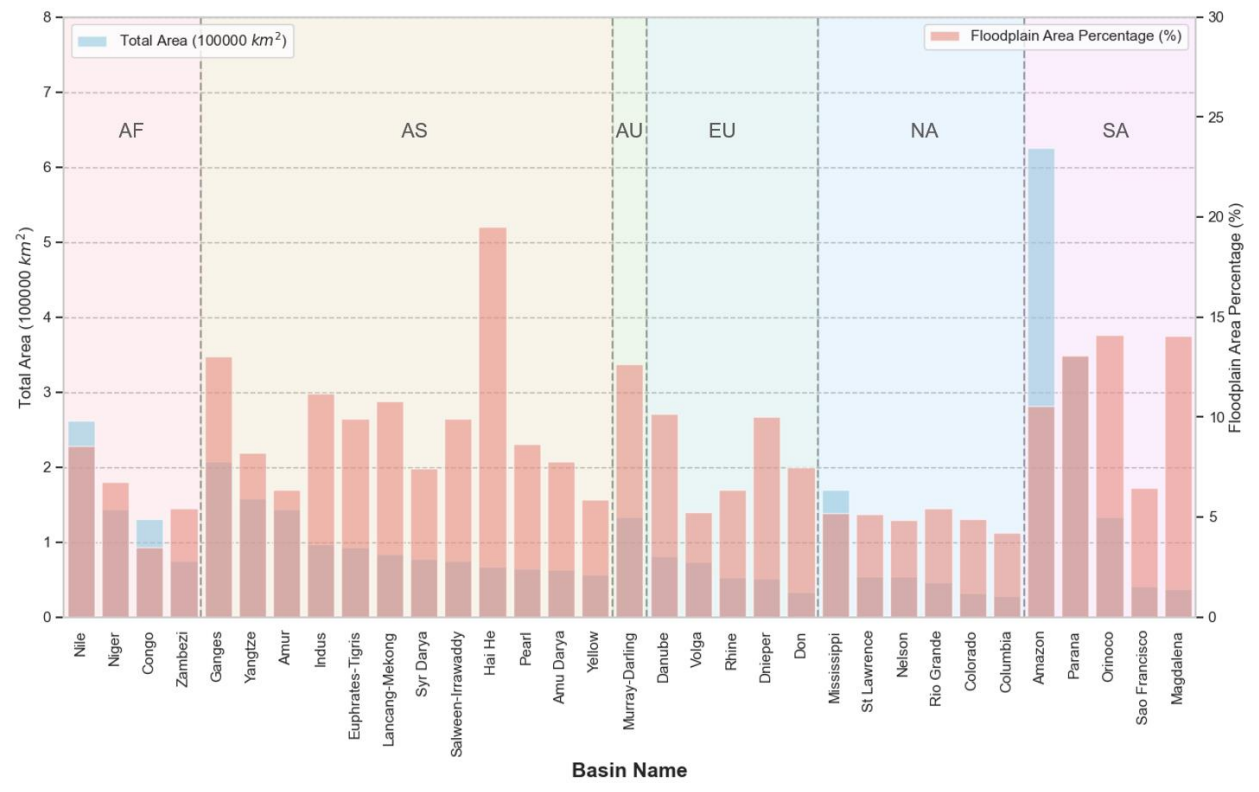
580

According to SHIFT, global floodplains take up approximately 8.29.91 million km<sup>2</sup>, representing 5.56.6% of the world's total land area. **Fig. 56** further shows the floodplain area and the percentage

of floodplains within each of the global major river basins. Overall, the Amazon River Basin possesses the largest total floodplain area globally (~~743,294~~625,431.3 km<sup>2</sup>), followed by the Parana, Nile, ~~Volga~~Ganges and Mississippi River basins. Floodplains in Haihe River Basin takes up the  
585 greatest area percentage (~~~27~~20%), highlighting the great geomorphic flood inundation potential of such basins. Comparing across continents, South America and Asia breed the most widespread floodplain extent worldwide, ~~while river basins in Asia and~~ tend to have the highest floodplain percentages.



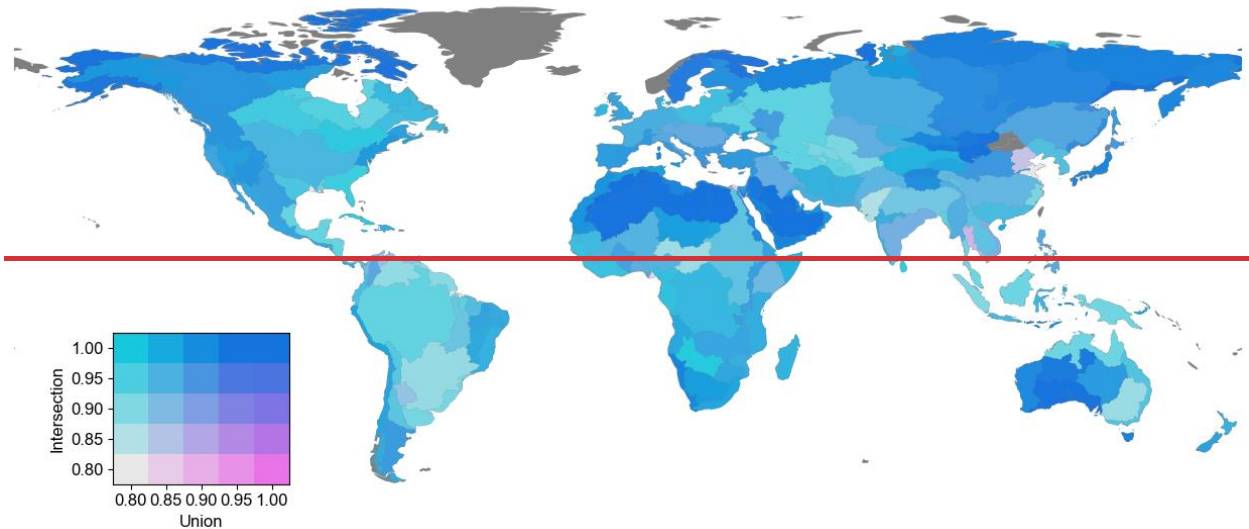
590



**Fig 5**Figure 6. Floodplain area statistics in major river basins. Blue bars stand for total floodplain area (left y-axis), red bars stand for the ratio of floodplain area to the total basin area (right y-axis). Basins are ranked by total floodplain area. AF: Africa, AS: Asia, AU: Australia, EU: Europe, NA: North America, SA: South America.

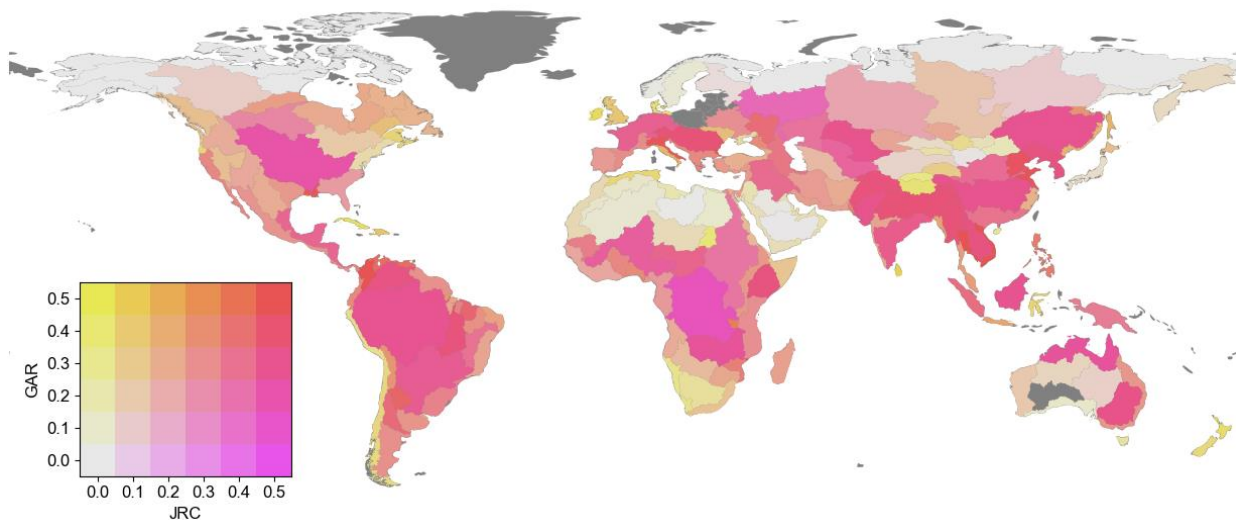
### 3.3 Validation and consistency analysis

**Figure 6** shows the global basin-level distribution of OA between SHIFT and the reference map that considers both the intersection and union of two hydrodynamic maps (Section 2.1). The results reveal that the algorithm achieves an accuracy of over 0.85 in the majority of global basins, proving the effectiveness of our parameter estimation scheme in capturing information from the reference maps. Regions with well-established floodplain mapping systems (e.g., Danube and Mississippi) tend to show better consistency between reference maps and thus present higher OA, while the lowest OA are seen in river deltas, including the delta of the Amazon River (OA=0.56) and the Nile River (OA=0.73), the Red River in North America (OA=0.81), as well as the Jiaodong Peninsula in East Asia (OA=0.81). Most basins perform better against the intersection map compared to the union map due to large inconsistency between the two reference maps themselves. The arctic basins and arid regions (e.g., the Sahara, Mongolia, and central Australia) present highest OA against both reference datasets due to the very limited floodplain distribution there.



**Fig 6**Figure 7 shows the basin-level distribution of MAI between SHIFT and the two hydrodynamic maps. It shows that: (1) SHIFT exhibits stabler consistency with the two maps in major basins (e.g., the Yangtze and the Amazon) compared to smaller basins; (2) Better consistency

615 between SHIFT and reference maps is found in humid basins, with some exceptions in arid areas (e.g., the Niger). These patterns may be attributed to the greater number of reference data grids in larger and wetter basins, which also have strong scaling relationships that support a geomorphic approach for floodplain mapping. In addition, SHIFT generally aligns better with JRC in major river basins, while consistency with GAR is higher in smaller basins and inland river basins. The median MAI with JRC is 0.271, while for GAR it is 0.308. For the 33 major basins, the median MAI with JRC and GAR are 0.415 and 0.289 respectively. This difference can be ascribed to the different river stream delineation strategies adopted by the two datasets. That is, JRC uses a stream threshold of 5000 km<sup>2</sup> for drainage area, while GAR uses 1000 km<sup>2</sup>. Consequently, JRC is less effective in capturing features of inland basins (e.g., the Tibetan Plateau) and fragmented river deltas (e.g., west of the Andes), where few rivers meet the 5000 km<sup>2</sup> threshold. For large basins, JRC performs better as it highlights the inundation of larger rivers (e.g., the Mississippi), while in GAR small rivers also yield large floodplain extents. Notably, SHIFT generally aligns better with JRC for the Arctic basins, as GAR lacks data north of 60°N.

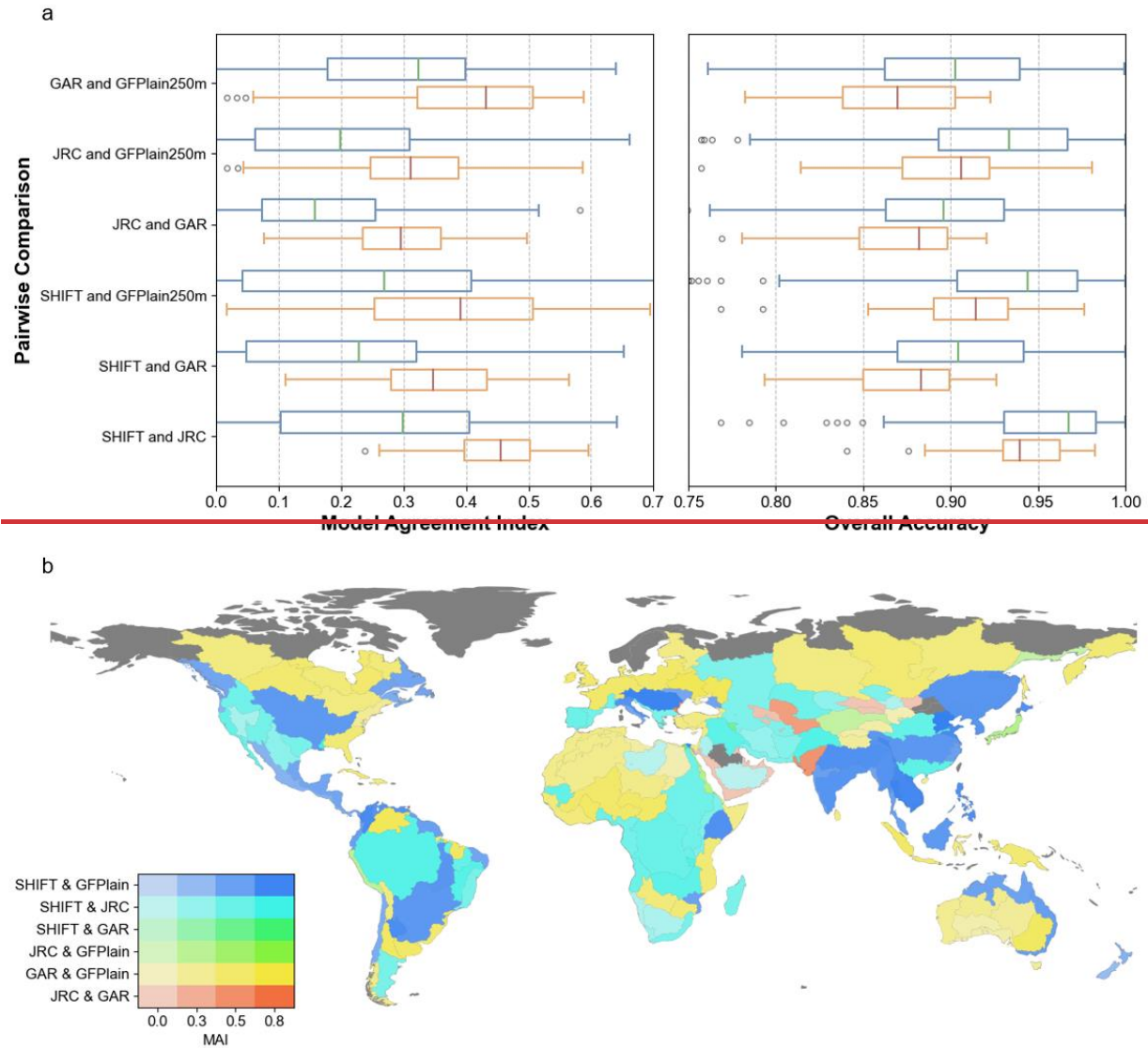


630 **Figure 7. Validation of SHIFT against two reference datasets.** Two variables in the bivariate map—, the two variables are the MAI against the JRC map (magenta) and the GAR map (cyan). Balanced OAs will result in yellow. A balanced MAI results in blueed basins.

635 Fig. 7a shows the statistics of the pairwise consistency analysis among different floodplain maps (i.e., SHIFT,

JRC, GAR, GFPlain250m). Overall, the highest MAI is observed between GAR and GFPlain250m, as well as the SHIFT and JRC pair (blue box, Fig. 7a), demonstrating the superiority of geomorphic mapping approaches, and such a pattern is more prominent when considering 34 major basins only (orange box, Fig. 7a). For example, the consistency between SHIFT and JRC surpassed that between GAR and GFPlain250m. In the remaining pairs, SHIFT consistently presents higher MAI with other validation datasets. The high MAI between GAR and GFPlain250m is likely the result of overestimation, especially in GAR, as evidenced by the lowest OA values for all pairs involving GAR. In contrast, SHIFT consistently shows the highest OA values with existing pairs, both in GAR pairs and non-GAR pairs. Such patterns of high MAI but low OA concerning GAR reveal the complex dynamics between consistency and accuracy.

To better understand the spatial variation in pairwise analysis, we plot the most consistent pair and corresponding MAI values for each basin (Fig. 7b). We find that basins with SHIFT as their highest consistency pair are typically located in humid to sub-humid basins, including most major basins such as the Mississippi, Amazon, Yangtze, and Nile. In contrast, basins with GAR and GFPlain as the highest consistency pairs are generally distributed in arctic basins and arid to semi-arid regions (e.g., the Sahara and Central Australia) where both maps delineate floodplains more extensively than expected. These results further prove that SHIFT can effectively capture spatial heterogeneity encapsulated in the reference datasets. At the same time, it also exhibits high consistency with existing datasets, while better distinguishing between regions with different hydroclimatic conditions.



**Fig 7. Figure 8a** shows the pairwise consistency analysis among different floodplain maps to more objectively document the pros and cons of each dataset. Prominently, it shows that the consistency between SHIFT and JRC significantly improves over UP and GFPlain, but that with GAR does not (as shown in MAI). The consistency pattern can be explained by delving into the inner working of each dataset. For large basins, SHIFT highlights the mainstems and reduces prediction of tributaries, thus aligning more closely with JRC as it highlights major rivers, leading to a decrease in consistency with GAR. UP and GFPlain align better with GAR in these regions, as they all tend to overpredict, especially in tributaries. For other basins, SHIFT strikes a balance between the two datasets. Comparing SHIFT with UP, SHIFT increases the lower interquartile range for JRC's OA and the upper interquartile range for GAR's OA, highlighting a general improvement with SHIFT.

660

665

670 For MAI, the upper quartile with GAR has decreased while the lower quartile has improved, suggesting a consistency trade-off between the two datasets. Notably, all geomorphic maps show a better consistency with the hydrodynamic outputs than the hydrodynamic pair, proving again that the hydrogeomorphic delineation method is a more globally consistent framework.

675 To better understand the impact of our estimated parameters on the consistency performance, we analyze the most consistent pair and corresponding MAI values for each basin. Among all pairs, SHIFT-JRC aligns the best in 62 basins, with SHIFT-GAR in 74, UP-JRC in 8, and UP-GAR in 37 (Fig. 8b). This validates that SHIFT exhibits better consistencies with the reference maps even though the difference between SHIFT and UP seems not statistically significant (Fig. 8a). Spatial patterns (Fig. 8b) show that SHIFT-JRC pairs aligns best in humid major basins (e.g., the Mississippi and Amazon) and very arid regions (e.g., the Taklamakan and central Australia).  
680 SHIFT-GAR pairs are the most consistent in mountainous regions (e.g., the Rockies and Andes), aggregated deltas (e.g., eastern Australia and southern Africa), islands (e.g., Indonesia), and inland river basins (e.g., the Tibetan Plateau) where few rivers meet the 5000 km<sup>2</sup> drainage area threshold of JRC. In contrast, cases where UP pairs align best are less common. UP aligns better with GAR due to their shared large prediction extents, such as around the Caspian Sea. In rare instances where  
685 UP-JRC pairs perform best, it is typically in deltas or regions where SHIFT-GAR performs well, such as deltas and islands. This is likely because our method balances consistency between the datasets, but GAR's wider prediction coverage makes this strategy less effective in these infrequent cases.

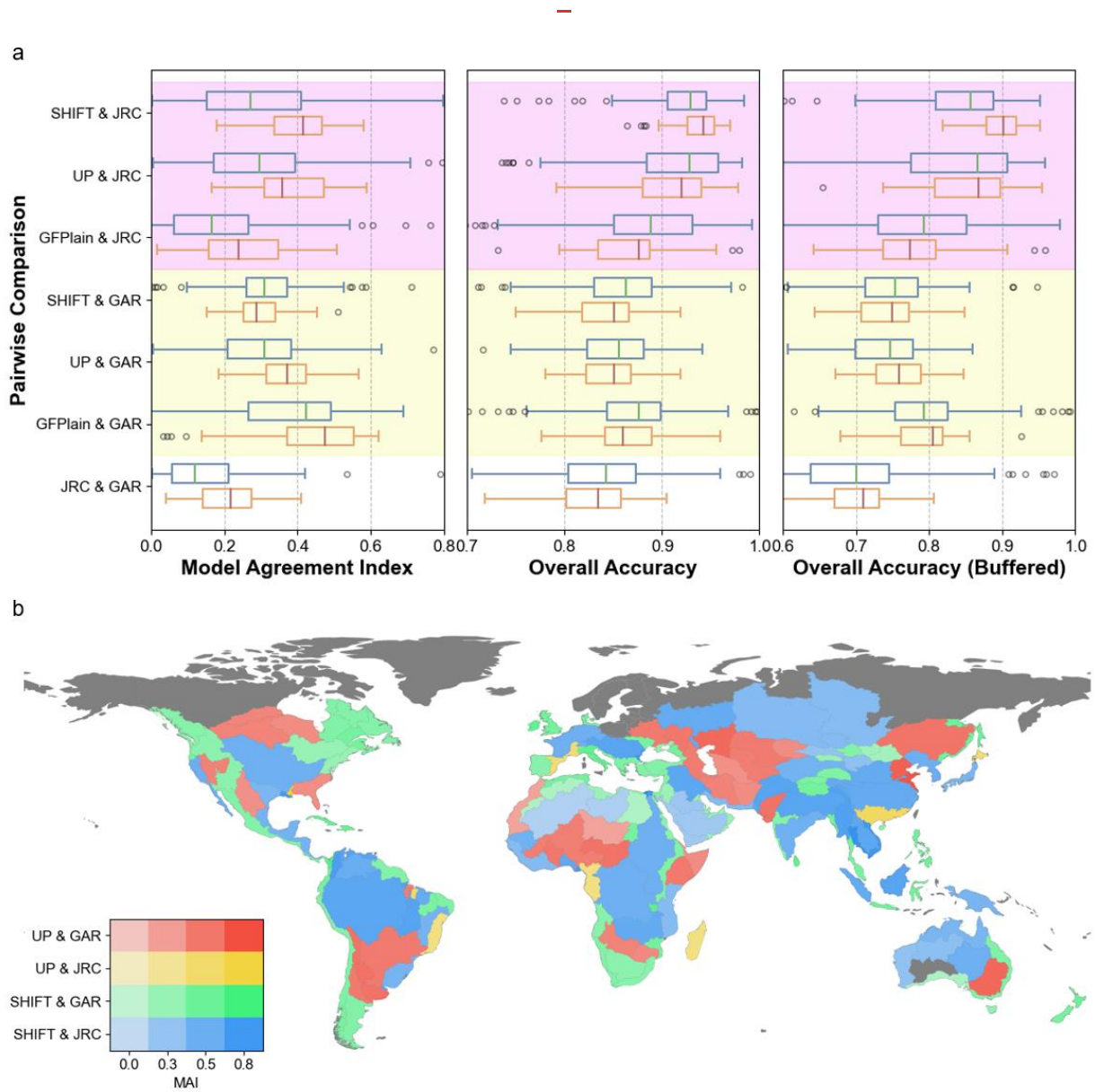
690 Note that GFPlain and UP use the same parameter for its geomorphic delineation, but their consistency with JRC and GAR differs significantly (Fig. 8a). This is because GFPlain uses 250-m SRTM as the terrain input, while UP uses MERIT-Hydro, which has undergone hydrological correction to lower the elevation of waterbody pixels, resulting in higher HAND values and smaller floodplain extents. GAR, which generally overpredicts floodplain extents especially in arid regions,  
695 aligns better with GFPlain. The overprediction of GAR is evidenced by GAR-pairs having the lowest OA, as OA strictly penalizes overprediction. At the same time, we found the difference between SHIFT and UP may be under-represented in the statistical plots (Fig. 8a) while the actual impact of variable parameters brought by SHIFT is substantial: the global floodplain extent



700

estimates are 14.95 million km<sup>2</sup> for UP and 9.91 million km<sup>2</sup> for SHIFT, showing a 50.85% difference in total predicted areas. Additionally, regions where UP-GAR has the highest consistency (**Fig. 8b**) generally coincide with regions where SHIFT-JRC aligns best. This reversed pattern of consistency further supports that the statistical differences between UP and SHIFT are underrepresented in **Fig. 8a**.

705



**Figure 8. Results of the consistency analysis.** a) ~~shows boxplots of pairwise~~ Boxplots of pairwise analysis among SHIFT, GFPlain, UP (MERIT-Hydro but with Universal Parameters), JRC, and GAR across three metrics: MAI (left), OA (middle), and OA within a 20-km buffer (right) ~~among SHIFT, GFPlain250, JRC and GAR.~~. Two group comparisons are marked in different colors (magenta for JRC and yellow for GAR). Statistics for all ~~269~~ basins with valid data inputs (see Methods) are shown in blue boxes, and ~~that those~~ for the 3433 major river basins are shown in orange. b) ~~shows~~ ~~bivariate~~ Bivariate choropleth map of the highest-performance MAI pair among four pairs (SHIFT & JRC, SHIFT & GAR, UP & JRC, UP & GAR) and the corresponding MAI value for each basin. ~~Higher MAI results~~ Different pairs are represented by different hues, with higher MAI values shown in higher saturation. Basins where a SHIFT-pair performs best are marked in cold colors, while those where a UP-pair performs best are represented in warm colors. Among all pairs, SHIFT-JRC performed best in 62 basins, SHIFT-GAR in 74, UP-JRC in 8, and UP-GAR in 37.

## 4. Discussions

~~Several conceptual and technical details warrant discussions when developing our improved geomorphic parameter estimation approach. Here, we discuss the pros and cons of SHIFT with respect to its FHG thresholding scheme, residual uncertainty, hydrogeomorphic floodplain boundary, and the spatial scale used in our methodological development.~~

### 4.1 FHG as a thresholding scheme

~~The primary contribution of this study is the estimation of localized parameters for the FHG model. In section 3.3, we compared the performance of localized versus global parameters, but several aspects require further clarification.~~

~~First, we believe the need for localized parameters arises from the role that empirical parameter in FHG plays in determining floodplain boundary. A higher  $b$  value emphasizes the influence of larger rivers in shaping geomorphic floodplains, reflecting hydrogeomorphic processes that vary across different basins and should be better represented. Given the absence of ground truth for floodplain boundaries, we attempt to improve representation of these heterogeneous processes by balancing~~

740 information from two existing reference maps from hydrodynamic modeling. Despite  
acknowledged inconsistencies, the hydrodynamic maps are informed by climatic forcing,  
providing a common basis more likely to spatially heterogeneous than universal geomorphic  
parameters. In other words, while we do acknowledge these maps can be uncertain, they contain  
useful information that can be applied to constrain geomorphic floodplain boundaries. This leads  
to our data filtering process to reduce inconsistency and to identify a scaling law from the  
references. By incorporating outputs from hydrodynamic maps, our approach optimizes the DEM-  
745 based model without altering its foundation, as evidenced by the overall better consistency  
regardless of parameters used (Fig. 8a). Although certain regions may benefit less from our  
strategy (e.g., where UP-JRC performs best), results (Fig. 8b) show convincing general  
improvements and consistency patterns. The estimated parameters derived here are also provided  
to support potential future studies with regionalized focuses.

750 Second, our estimated parameters aim to capture fingerprints from spatially varying hydrological  
and geomorphic processes that can influence the floodplain extent. We consider aridity as the  
primary factor influencing the spatial variability of  $b$ , based on the assumption that in humid basins,  
755 rivers with larger upstream drainage areas exert greater dominance over smaller segments in  
shaping floodplains. Vegetation also plays a role, as it influences runoff generation and modulates  
soil erosion, both key to floodplain formation. Additionally, factors such as terrain and soil  
composition might influence the results. Given the data uncertainties and the complex physical  
interpretations of  $b$ , it is important to note that we do not expect perfect relationships between these  
factors and the derived exponent  $b$ . The correlation analysis indeed aligns with our expectations:  
760 AI is statistically significant in explaining the spatial variability of  $b$ , while LAI plays a role and  
terrain does not show strong correlations with  $b$ . Soil compositions (Poggio et al., 2021) do not  
exhibit a consistent pattern across analyses done at different scales (Table S1). Despite the not-so-  
strong correlation with AI and LAI, its statistical significance supports the effectiveness of our  
proposed methods, which helps to derive spatially-varying parameters that are also physically  
765 meaningful. The parameter  $a$  could also encapsulate influences from relevant processes, but its  
physical interpretation is highly dependent on  $b$ , as its unit is less uniform (Nardi et al., 2006).  
Therefore, clarifying the influencing processes of  $a$  is beyond the scope of this study.

770 Third, although alternative thresholding methods that use river discharge and synthetic rating curves exist (e.g., those used by the US National Water Model, Zheng et al., 2018), these methods come with more sources of uncertainty by requiring high-quality data inputs (e.g., gauged discharge, Manning’s coefficient). Thus, while they may work well with in-situ observations, replicating this globally poses challenges and is conceptually different from our approach. Our proposed FHG method requires only terrain input, which is recognized as the least uncertain component in global floodplain mapping method (Bates, 2023). ~~Despite the demonstrated superiority in our approach, several caveats are worth mentioning.~~

#### 4.1 Uncertainties of the exponent $b$ estimation

780 ~~During the development of the thresholding scheme, we.~~ By providing the optimized parameters derived here, we consider the FHG thresholding as more globally consistent and easily applicable.

#### 4.2 Residual uncertainties associated with FHG parameter estimation

785 ~~We also recognize uncertainties with the FHG relation~~ several uncertainties associated with the FHG relation. The primary source of uncertainty comes from the inconsistency between the two reference hydrodynamic datasets across regions, which can be traced back to their model chain errors. Several measures are taken to mitigate the potential influence: we take the intersection of the two datasets as the reference, apply an iterative moving-window scheme to filter the data, and force scaling-law relationships to estimate the parameter  $b$ . However, residual uncertainties may still exist due to the inconsistencies between the reference maps as well as the data quality across regions.

790 ~~Thus~~ three aspects: (1) Inconsistencies in terrain data, as both JRC and GAR use SRTM as the inputs while we use MERIT-Hydro; (2) Potential intra-basin heterogeneity of scaling relationships which may lead to unstable estimates; (3) The lack of reference data in certain basins, which lowers our credibility in the estimated parameters. To evaluate how the residual uncertainty influences our FHG parameter estimation, we quantify the uncertainty of  $b$  by calculating the standard deviation among all possible  $b$  values derived at different percentiles, ~~based on the notion that high reference data quality would reduce abnormal HAND values, leading to.~~ This metric assesses how well the data conforms to the power law: a better-conforming set of data result in a narrower range of the estimated  $b$  sequence and, consequently, lower standard deviation. ~~While the uncertainty distribution~~

795

(Fig. 8) A lower standard deviation also supports the application uniform filtering percentiles globally (see Methods) and proves robustness of our approach.

**Figure 9** reveals a complex pattern that does not simply align with the expected  $b$  patterns shown in Fig. 3, areas with limited floodplain (e.g., Western the residual uncertainty in parameter  $b$ , which ranges from 0 to 0.03 with a median of 0.01. This is considered reasonable for a global median  $b$  of 0.3. The pattern is similar to that parameter  $b$  itself (Fig. 3), with lower uncertainties in large humid basins (blue color), and greatest uncertainty (red color) observed in arid regions (e.g., The Saharan Regions and western-central Australia, Central West Africa, and Central West Siberia) and mountainous regions (e.g., the Rocky Mountains and the Andes), and deltas (e.g., The Jiaodong Peninsula, the western Mississippi Delta and the Nile Delta). High residual uncertainty in these regions are possibly due to the particularly strong differences between the reference datasets. For deltas, the great inconsistencies in spatial extents are amplified by their different definition of rivers, as JRC and GAR respectively takes up a stream threshold of 5000 km<sup>2</sup> and 1000 km<sup>2</sup>. It also explains the unexpectedly low  $b$  values in deltas observed in Fig. 3. In contrast, the Arctic exhibits generally show higher uncertainties (red colors). Recall that we have applied uniform percentiles worldwide to filter data noise, the low uncertainties in regions such as Yangtze, Pearl, Ganges River basins likely suggest a rigorous filter and a subsequently underestimation of  $b$  may be applied. Yet in the absence of independent data to inform better strategies, we consider our proposed approach valid and effective. low uncertainty, likely because only one reference dataset is available above 60°N, reducing discrepancies and thus lowering remaining uncertainty.

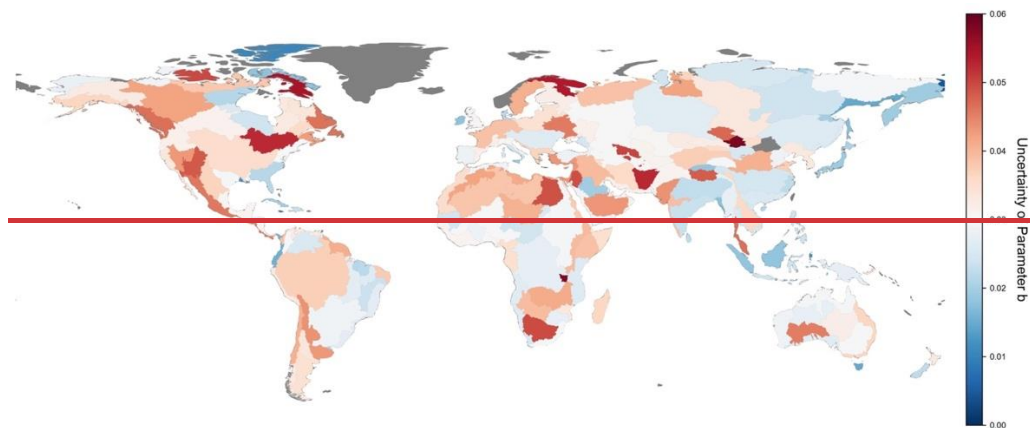
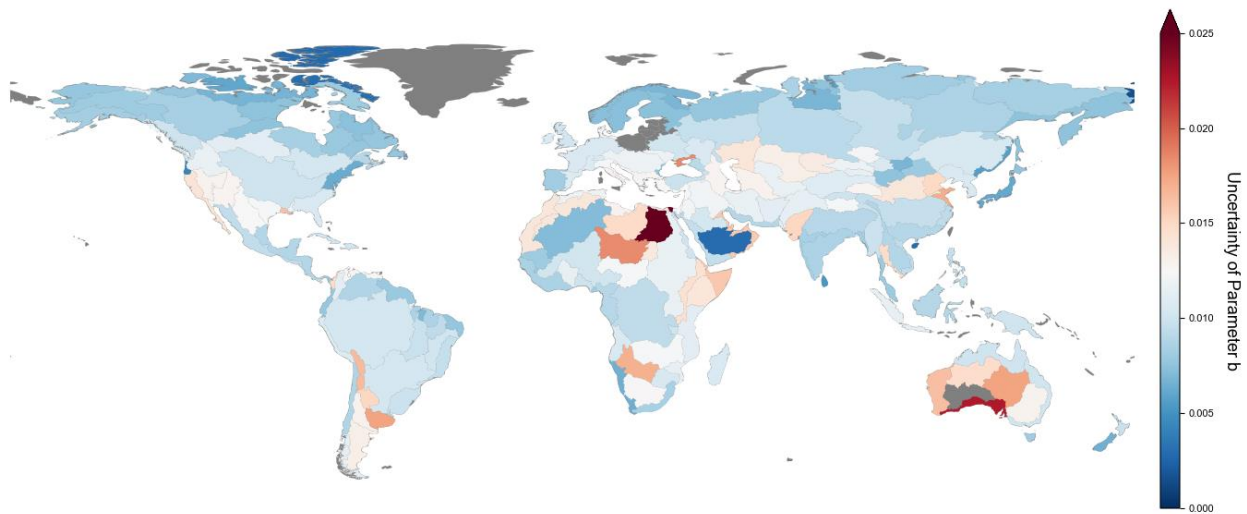


Fig 8. The\_



**Figure 9. Spatial pattern of the residual uncertainty of parameter  $b$  by basins.**

825 Residual uncertainty is quantified as the standard deviation among all possible  $b$  values derived at different percentiles (see Section 2.2 for methods details).

#### 4.3 Differentiation between flood-Floodplain definition and inundation and floodplain maps—

830 We also dedicate some discussions to the definition of floodplains here as numerous definitions exist for different intended uses. Geomorphically, a floodplain is an accumulation plain along a watercourse, formed by unconsolidated sediment transported and deposited by the stream, usually flooded during high flows (Brierley and Fryirs, 2013). This definition emphasizes the formation process. From a hydrologist or a flood manager's perspective, the floodplain is often associated with inundation attached to certain flood strengths (Krizek et al., 2006), which can be also referred to as the hydraulic floodplain. Alternatively, focusing on material flux exchanges yields different boundaries (Wohl, 2021). We consider these perspectives not contradictory but complementary in floodplain mapping processes as they highlight different aspects of floodplains. Specifically, geomorphic floodplains are predominantly shaped by low-probability but high-impact flood occurrences (Lindersson et al., 2021)

840 Geomorphic floodplain maps and inundation maps are fundamentally different, but delineation methods for the latter can be used to delineate the former. Inundation maps have been described as 'hydraulic floodplains' to highlight their engineering uses. In this study, we employ two 500-year return period flood inundation maps as the reference to estimate floodplain extents, as previous studies imply that geomorphic floodplains are predominantly shaped by low-probability but high-impact flood occurrences. It should be noted that our DEM-based approach can be applied to derive FHG parameters based on other return

845 ~~periods, but this study is primarily concerned with exploring the geomorphic characteristics of floodplains rather than focusing on inundation maps on different return periods.~~

4.3, which subsequently connects our goal of delineating a geomorphic floodplain with identifying a boundary that encompasses all potentially inundated areas under extreme conditions. Therefore, we have used two 500-year return period flood maps as references for estimating our parameters, only to ensure a sufficiently large boundary for the carrying out of this algorithm. This way, the geomorphic definition of a floodplain is still obeyed. While the FHG parameters can be approximated for various return periods (Nardi et al., 2006), our approach does not focus on nor involve a specific return period for inundation. In other words, our goal is not to provide a mere substitute for inundation maps. Instead, we aim to leverage a river's geographical characteristics and hydrological extreme conditions, to identify scaling relationships that align with geomorphic principles, and to offer a more comprehensive understanding of global floodplain extents.

#### 855 **4.4 Spatial scales of SHIFT**

860 ~~The spatially varying parameters for~~ **SHIFT**

~~The spatially varying parameters for SHIFT~~ are derived ~~based on~~ at the scale of HydroBASINS Level-3 basins, which depicts 269 river basins ~~in different continents~~ globally with some containing aggregations of smaller basins. These aggregated basins are not hydrologically connected and ~~do not share homogeneous determining factors, thus are~~ less suitable for our thresholding scheme that estimates one set of parameters for each basin, compared to the largest basins which shares internally consistency hydrogeomorphic processes. A possible strategy to improve the scheme is to further divide these basins into smaller sub-basins, but smaller-scale analysis can increase the impact of reference data uncertainties especially in delta regions with high floodplain discordance (**Fig. 5a**). Parameters for Level-4 and Level-5 basins were also calculated (statistics are given in Table S1), but many basins had insufficient reference grids to give reliable estimations. Considering the high data noise that may limit ~~the~~ further integration of sub-basin level heterogeneity in estimating parameters, the spatial disaggregation scheme used by SHIFT ~~is thought to mark a step forward~~ (i.e., level-03) is sufficient in improving heterogeneity while offering reasonable physical interpretations of the parameters.

875

880 Lastly, when calculating HAND as the terrain attribute for SHIFT, we set an UPA threshold of 1000 km<sup>2</sup> to delineate the river network grids following past studies (Nardi et al., 2019; Rudari et al., 2015). A sensitivity test on a smaller threshold (50 km<sup>2</sup>) not shown here suggests that more detailed floodplains around smaller rivers can be derived, but at the same time such a threshold can limit expected floodplains by large rivers. Conversely, a larger threshold, such as the 5000 km<sup>2</sup> used by the JRC dataset, imposes a stricter criterion on river streams, leading to fewer river networks and reduced floodplain boundaries in areas like deltas. Thus, this study considers the 1000 km<sup>2</sup> UPA threshold to be valid. Future large-scale studies can further investigate the above-mentioned ~~spatial~~ scale parameters, but we expect the gains to derive finer maps be minimal.

885

## 5 Conclusions

In this study, we develop an improved thresholding scheme for large-scale DEM-based floodplain delineation, the core of which being a stepwise estimation framework for Floodplain Hydraulic Geometry (FHG) parameters that respects the power law while better integrating spatial heterogeneity from two publicly available hydrodynamic flood maps. We ~~apply~~applied the framework at the scale equivalent to 269 HydroBASINS Level-3 basins worldwide to derive the ~~required~~localized FHG parameters, ~~and~~ as an update to previously global parameters that do not account for the heterogenous factors influencing floodplain extents. The optimized empirical exponent  $b$  in FHG exhibits ~~reasonable~~statistically significant positive correlations with hydroclimatic conditions, ~~especially for particularly in~~ major river basins, proving the effectiveness of our method in better capturing climatic heterogeneity compared to studies that adopt a homogeneous exponent worldwide. Based on the proposed framework, we created a global geomorphic floodplain map named SHIFT (Spatial Heterogeneity Improved Floodplain by Terrain analysis) using terrain inputs from the 90-m MERIT-Hydro dataset, where SHIFT is demonstrated to capture both the global patterns and regional details of geomorphic floodplains well. ~~Global consistency analysis with other floodplain or flood maps from independent data sources further show that SHIFT exhibits superior consistency with existing datasets on a pair-wise basis. We provide the SHIFT data layers at two spatial resolutions (i.e., 90 m and 1 km resolution) for the convenience of the users. Moreover, this research also offers a framework for better understanding FHG parameters and contributes a comprehensive geomorphic floodplain~~

895

900

905



~~dataset, allowing future large-scale floodplain studies to better capture global patterns and address regional floodplain characteristics.~~ The effectiveness of our framework is supported by:

1. The parameters show statistically significant but relatively weak relationships with hydroclimatic variables (e.g., AI, LAI), suggesting an enhanced representation of spatially heterogeneous hydrological and geomorphic information at the basin level.
2. The filtered data conforms to a relatively stable power law, suggesting a robust regionalized scaling relationship.
3. Parameter changes lead to improved consistency with existing maps, with better differentiation between mainstreams and tributaries in major basins and more comprehensive representation of stream networks in aggregated river basins.

We provide the SHIFT data layers at two spatial resolutions (i.e., 90-m and 1-km) for the convenience of the users. The optimized parameters are also provided to support future studies.

Overall, we offer a framework for estimating spatially varying FHG parameters, contribute an updated geomorphic floodplain dataset, provide a better understanding of observable influences in the FHG scaling relationships, and expand on discussing the different focuses and implications of various floodplain mapping techniques. We hope our analysis to be helpful to enhance the understanding of current methodologies for defining and identifying active floodplains, especially in the context of changing climate.

## Author Contribution

Conceptualization: PL, KZ. Data curation: KZ, PL, ZY. Formal Analysis: KZ. Funding Acquisition: PL, KZ. Investigation: KZ, PL. Methodology: KZ, PL. Writing – original draft: KZ, PL. Writing – review & editing: KZ, PL, ZY.

## Data and Code Availability

SHIFT is openly available at <https://zenodo.org/records/11835133> (Zheng et al., 2024). The core  
935 codes involved with terrain analysis and FHG parameter estimation is available at  
[https://github.com/Mostaaaaa/SHIFT\\_floodplain](https://github.com/Mostaaaaa/SHIFT_floodplain).

## Conflict of Interests

The authors declare no conflict of interests.

940

## Acknowledgements

This study is supported by the Open Research Program of International Research Center of Big  
Data for Sustainable Development Goals, Grant No. CBAS2022ORP05, the National Natural  
Science Foundation of China (42371481), ~~and~~ Yunnan Science and Technology Major Project  
945 (grant NO. 202302AO370012), and the Beijing Nova Program (20230484302). We acknowledge  
the funding support from the Fundamental Research Funds for the Central Universities, Peking  
University on ‘Numerical modelling and remote sensing of global river discharge’ (no.  
7100604136).

## 950 Reference

- Andreadis, K. M., Wing, O. E. J., Colven, E., Gleason, C. J., Bates, P. D., and Brown, C. M.:  
Urbanizing the floodplain: global changes of imperviousness in flood-prone areas, *Environ.  
Res. Lett.*, 17, 104024, <https://doi.org/10.1088/1748-9326/ac9197>, 2022.
- Annis, A., Nardi, F., Morrison, R. R., and Castelli, F.: Investigating hydrogeomorphic floodplain  
955 mapping performance with varying DTM resolution and stream, *Hydrol. Sci. J.*, 64, 515–538,  
2019.
- Bates: Fundamental limits to flood inundation modelling, *Nat. Water*, 1, 566–567,  
<https://doi.org/10.1038/s44221-023-00106-4>, 2023.
- Bates, P. D., Neal, J., Sampson, C., Smith, A., and Trigg, M.: Chapter 9 - Progress Toward  
960 Hyperresolution Models of Global Flood Hazard, in: *Risk Modeling for Hazards and*

- Disasters, edited by: Michel, G., Elsevier, 211–232, <https://doi.org/10.1016/B978-0-12-804071-3.00009-4>, 2018.
- Bernhofen, M. V., Cooper, S., Trigg, M., Mdee, A., Carr, A., Bhawe, A., Solano-Correa, Y. T., Pencue-Fierro, E. L., Teferi, E., Haile, A. T., Yusop, Z., Alias, N. E., Sa’adi, Z., Bin Ramzan, M. A., Dhanya, C. T., and Shukla, P.: The Role of Global Data Sets for Riverine Flood Risk Management at National Scales, *Water Resour. Res.*, 58, e2021WR031555, <https://doi.org/10.1029/2021WR031555>, 2022.
- Best, J.: Anthropogenic stresses on the world’s big rivers, *Nat. Geosci.*, 12, 7–21, <https://doi.org/10.1038/s41561-018-0262-x>, 2019.
- 970 Beven, K. J. and Kirkby, M. J.: A physically based, variable contributing area model of basin hydrology / Un modèle à base physique de zone d’appel variable de l’hydrologie du bassin versant, *Hydrol. Sci. Bull.*, 24, 43–69, <https://doi.org/10.1080/02626667909491834>, 1979.
- Bhowmik, N. G.: Hydraulic geometry of floodplains, *J. Hydrol.*, 68, 369–401, [https://doi.org/10.1016/0022-1694\(84\)90221-X](https://doi.org/10.1016/0022-1694(84)90221-X), 1984.
- 975 Brierley, G. J. and Fryirs, K. A.: *Geomorphology and River Management: Applications of the River Styles Framework*, John Wiley & Sons, 424 pp., 2013.
- Cohen, J.: A Coefficient of Agreement for Nominal Scales, *Educ. Psychol. Meas.*, 20, 37–46, <https://doi.org/10.1177/001316446002000104>, 1960.
- Dhote, P. R., Joshi, Y., Rajib, A., Thakur, P. K., Nikam, B. R., and Aggarwal, S. P.: Evaluating topography-based approaches for fast floodplain mapping in data-scarce complex-terrain regions: Findings from a Himalayan basin, *J. Hydrol.*, 620, 129309, <https://doi.org/10.1016/j.jhydrol.2023.129309>, 2023.
- 980 Di Baldassarre, G., Kooy, M., Kemerink, J. S., and Brandimarte, L.: Towards understanding the dynamic behaviour of floodplains as human-water systems, *Hydrol. Earth Syst. Sci.*, 17, 3235–3244, <https://doi.org/10.5194/hess-17-3235-2013>, 2013.
- 985 Dottori, F., Salamon, P., Bianchi, A., Alfieri, L., Hirpa, F. A., and Feyen, L.: Development and evaluation of a framework for global flood hazard mapping, *Adv. Water Resour.*, 94, 87–102, <https://doi.org/10.1016/j.advwatres.2016.05.002>, 2016.
- Du, S., He, C., Huang, Q., and Shi, P.: How did the urban land in floodplains distribute and expand in China from 1992–2015?, *Environ. Res. Lett.*, 13, 034018, <https://doi.org/10.1088/1748-9326/aaac07>, 2018.
- 990 Fleiss, J. L.: Measuring nominal scale agreement among many raters., *Psychol. Bull.*, 76, 378–382,

- <https://doi.org/10.1037/h0031619>, 1971.
- 995 Haarsma, R. J., Roberts, M. J., Vidale, P. L., Senior, C. A., Bellucci, A., Bao, Q., Chang, P., Corti, S., Fučkar, N. S., Guemas, V., von Hardenberg, J., Hazeleger, W., Kodama, C., Koenigk, T., Leung, L. R., Lu, J., Luo, J.-J., Mao, J., Mizielinski, M. S., Mizuta, R., Nobre, P., Satoh, M., Scoccimarro, E., Semmler, T., Small, J., and von Storch, J.-S.: High Resolution Model Intercomparison Project (HighResMIP v1.0) for CMIP6, *Geosci. Model Dev.*, 9, 4185–4208, <https://doi.org/10.5194/gmd-9-4185-2016>, 2016.
- 1000 Hocini, N., Payrastre, O., Bourgin, F., Gaume, E., Davy, P., Lague, D., Poinsignon, L., and Pons, F.: Performance of automated methods for flash flood inundation mapping: a comparison of a digital terrain model (DTM) filling and two hydrodynamic methods, *Hydrol. Earth Syst. Sci.*, 25, 2979–2995, <https://doi.org/10.5194/hess-25-2979-2021>, 2021.
- 1005 Iskin, E. P. and Wohl, E.: Beyond the Case Study: Characterizing Natural Floodplain Heterogeneity in the United States, *Water Resour. Res.*, 59, e2023WR035162, <https://doi.org/10.1029/2023WR035162>, 2023.
- Knox, R. L., Morrison, R. R., and Wohl, E. E.: Identification of Artificial Levees in the Contiguous United States, *Water Resour. Res.*, <https://doi.org/10.1029/2021WR031308>, 2022.
- 1010 Krizek, M., Hartvich, F., Chuman, T., Šefrna, L., Šobr, M., and Zádorová, T.: Floodplain and its delimitation, *Geografie*, 111, 260–273, <https://doi.org/10.37040/geografie2006111030260>, 2006.
- Lehner, B.: HydroBASINS, Global watershed boundaries and sub-basin delineations derived from HydroSHEDS data at 15 second resolution, Technical Documentation Version 1.c, 2014.
- 1015 Lehner, B. and Döll, P.: Development and validation of a global database of lakes, reservoirs and wetlands, *J. Hydrol.*, 296, 1–22, <https://doi.org/10.1016/j.jhydrol.2004.03.028>, 2004.
- Lehner, B. and Grill, G.: Global river hydrography and network routing: baseline data and new approaches to study the world’s large river systems, *Hydrol. Process.*, 27, 2171–2186, <https://doi.org/10.1002/hyp.9740>, 2013.
- 1020 Leopold, L. B. and Maddock, T.: The Hydraulic Geometry of Stream Channels and Some Physiographic Implications, U.S. Government Printing Office, 68 pp., 1953.
- Lin, P., Pan, M., Beck, H. E., Yang, Y., Yamazaki, D., Frasson, R., David, C. H., Durand, M., Pavelsky, T. M., Allen, G. H., Gleason, C. J., and Wood, E. F.: Global Reconstruction of Naturalized River Flows at 2.94 Million Reaches, *Water Resour. Res.*, 55, 6499–6516, <https://doi.org/10.1029/2019WR025287>, 2019.

- 1025 Lindersson, S., Brandimarte, L., Mård, J., and Di Baldassarre, G.: A review of freely accessible global datasets for the study of floods, droughts and their interactions with human societies, *WIREs Water*, 7, e1424, <https://doi.org/10.1002/wat2.1424>, 2020.
- Lindersson, S., Brandimarte, L., Mård, J., and Di Baldassarre, G.: Global riverine flood risk – how do hydrogeomorphic floodplain maps compare to flood hazard maps?, *Nat. Hazards Earth Syst. Sci.*, 21, 2921–2948, <https://doi.org/10.5194/nhess-21-2921-2021>, 2021.
- 1030 Manfreda, S., Nardi, F., Samela, C., Grimaldi, S., Taramasso, A. C., Roth, G., and Sole, A.: Investigation on the use of geomorphic approaches for the delineation of flood prone areas, *J. Hydrol.*, 517, 863–876, <https://doi.org/10.1016/j.jhydrol.2014.06.009>, 2014.
- Nardi, F., Vivoni, E. R., and Grimaldi, S.: Investigating a floodplain scaling relation using a hydrogeomorphic delineation method: HYDROGEOMORPHIC FLOODPLAIN DELINEATION METHOD, *Water Resour. Res.*, 42, <https://doi.org/10.1029/2005WR004155>, 2006.
- 1035 Nardi, F., Biscarini, C., Di Francesco, S., Manciola, P., and Ubertini, L.: Comparing a Large-Scale Dem-Based Floodplain Delineation Algorithm with Standard Flood Maps: The Tiber River Basin Case Study, *Irrig. Drain.*, 62, 11–19, <https://doi.org/10.1002/ird.1818>, 2013.
- 1040 Nardi, F., Morrison, R. R., Annis, A., and Grantham, T. E.: Hydrologic scaling for hydrogeomorphic floodplain mapping: Insights into human-induced floodplain disconnectivity: hydrologic scaling and geomorphic floodplain mapping in urban sbasins, *River Res. Appl.*, 34, 675–685, <https://doi.org/10.1002/rra.3296>, 2018.
- 1045 Nardi, F., Annis, A., Di Baldassarre, G., Vivoni, E. R., and Grimaldi, S.: GFPLAIN250m, a global high-resolution dataset of Earth’s floodplains, *Sci. Data*, 6, 180309, <https://doi.org/10.1038/sdata.2018.309>, 2019.
- Poggio, L., de Sousa, L. M., Batjes, N. H., Heuvelink, G. B. M., Kempen, B., Ribeiro, E., and Rossiter, D.: SoilGrids 2.0: producing soil information for the globe with quantified spatial uncertainty, *SOIL*, 7, 217–240, <https://doi.org/10.5194/soil-7-217-2021>, 2021.
- 1050 Rajib, A., Zheng, Q., Golden, H. E., Wu, Q., Lane, C. R., Christensen, J. R., Morrison, R. R., Annis, A., and Nardi, F.: The changing face of floodplains in the Mississippi River Basin detected by a 60-year land use change dataset, *Sci. Data*, 8, 271, <https://doi.org/10.1038/s41597-021-01048-w>, 2021.
- 1055 Rajib, A., Zheng, Q., Lane, C. R., Golden, H. E., Jay R. Christensen, Isibor, I. I., and Johnson, K.: Human alterations of the global floodplains 1992–2019, *Sci. Data*, 10, 499,

- <https://doi.org/10.1038/s41597-023-02382-x>, 2023.
- 1060 Rennó, C. D., Nobre, A. D., Cuartas, L. A., Soares, J. V., Hodnett, M. G., Tomasella, J., and Waterloo, M. J.: HAND, a new terrain descriptor using SRTM-DEM: Mapping terra-firme rainforest environments in Amazonia, *Remote Sens. Environ.*, 112, 3469–3481, <https://doi.org/10.1016/j.rse.2008.03.018>, 2008.
- Rentschler, J., Salhab, M., and Jafino, B. A.: Flood exposure and poverty in 188 countries, *Nat. Commun.*, 13, 3527, <https://doi.org/10.1038/s41467-022-30727-4>, 2022.
- 1065 Rentschler, J., Avner, P., Marconcini, M., Su, R., Strano, E., Vousdoukas, M., and Hallegatte, S.: Global evidence of rapid urban growth in flood zones since 1985, *Nature*, 622, 87–92, <https://doi.org/10.1038/s41586-023-06468-9>, 2023.
- Rudari, R., Silvestro, F., Campo, L., Rebora, N., Boni, G., CIMA Research Foundation, and Christian, C.: Improvement of The Global Flood Model For The [GAR] 2015, UNISDR, 2015.
- 1070 Sampson, C. C., Smith, A. M., Bates, P. D., Neal, J. C., Alfieri, L., and Freer, J. E.: A high-resolution global flood hazard model, *Water Resour. Res.*, 51, 7358–7381, <https://doi.org/10.1002/2015WR016954>, 2015.
- Tarboton, D. G.: *Terrain Analysis Using Digital Elevation Models (TAUDEM)*, 2016.
- Tavares da Costa, R., Manfreda, S., Luzzi, V., Samela, C., Mazzoli, P., Castellarin, A., and Bagli, S.: A web application for hydrogeomorphic flood hazard mapping, *Environ. Model. Softw.*, 1075 118, 172–186, <https://doi.org/10.1016/j.envsoft.2019.04.010>, 2019.
- Tellman, B., Sullivan, J. A., Kuhn, C., Kettner, A. J., Doyle, C. S., Brakenridge, G. R., Erickson, T. A., and Slayback, D. A.: Satellite imaging reveals increased proportion of population exposed to floods, *Nature*, 596, 80–86, <https://doi.org/10.1038/s41586-021-03695-w>, 2021.
- 1080 Trigg, M. A., Birch, C. E., Neal, J. C., Bates, P. D., Smith, A., Sampson, C. C., Yamazaki, D., Hirabayashi, Y., Pappenberger, F., Dutra, E., Ward, P. J., Winsemius, H. C., Salamon, P., Dottori, F., Rudari, R., Kappes, M. S., Simpson, A. L., Hadzilacos, G., and Fewtrell, T. J.: The credibility challenge for global fluvial flood risk analysis, *Environ. Res. Lett.*, 11, 094014, <https://doi.org/10.1088/1748-9326/11/9/094014>, 2016.
- 1085 Trigg, M. A., Bernhofen, M., Marechal, D., Alfieri, L., Dottori, F., Hoch, J., Horritt, M., Sampson, C., Smith, A., Yamazaki, D., and Li, H.: Global Flood Models, in: *Global Drought and Flood, American Geophysical Union (AGU)*, 181–200, <https://doi.org/10.1002/9781119427339.ch10>, 2021.
- Weiss, A. D.: *Topographic Position and Landforms Analysis*, ESRI User Conference, San Diego,

2001.

- 1090 Winsemius, H. C., Van Beek, L. P. H., Jongman, B., Ward, P. J., and Bouwman, A.: A framework for global river flood risk assessments, *Hydrol. Earth Syst. Sci.*, 17, 1871–1892, <https://doi.org/10.5194/hess-17-1871-2013>, 2013.
- Wohl, E.: An Integrative Conceptualization of Floodplain Storage, *Rev. Geophys.*, 59, <https://doi.org/10.1029/2020RG000724>, 2021.
- 1095 Wohl, E. and Iskin, E.: Patterns of Floodplain Spatial Heterogeneity in the Southern Rockies, USA, *Geophys. Res. Lett.*, 46, 5864–5870, <https://doi.org/10.1029/2019GL083140>, 2019.
- Xiong, L., Li, S., Tang, G., and Strobl, J.: Geomorphometry and terrain analysis: data, methods, platforms and applications, *Earth-Sci. Rev.*, 233, 104191, <https://doi.org/10.1016/j.earscirev.2022.104191>, 2022.
- 1100 Yamazaki, D.: The global hydrodynamic model CaMa-Flood (version 3.6. 2)., 2014.
- Yamazaki, D., Ikeshima, D., Sosa, J., Bates, P. D., Allen, G. H., and Pavelsky, T. M.: MERIT Hydro: A High-Resolution Global Hydrography Map Based on Latest Topography Dataset, *Water Resour. Res.*, 55, 5053–5073, <https://doi.org/10.1029/2019WR024873>, 2019.
- Zheng, K., Lin, P., and Yin, Z.: SHIFT: A DEM-Based Spatial Heterogeneity Improved Mapping of Global Geomorphic Floodplains, <https://doi.org/10.5281/zenodo.11835133>, 2024.
- 1105 Zheng, X., Tarboton, D. G., Maidment, D. R., Liu, Y. Y., and Passalacqua, P.: River Channel Geometry and Rating Curve Estimation Using Height above the Nearest Drainage, *JAWRA J. Am. Water Resour. Assoc.*, 54, 785–806, <https://doi.org/10.1111/1752-1688.12661>, 2018.
- Zomer, R. J., Xu, J., and Trabucco, A.: Version 3 of the Global Aridity Index and Potential Evapotranspiration Database, *Sci. Data*, 9, 409, <https://doi.org/10.1038/s41597-022-01493-1>, 2022.
- 1110