

GMIE-100: A global maximum irrigation extent and central pivot irrigation system dataset derived via irrigation performance during drought stress and ~~machine-learning~~ deep learning methods

Fuyou Tian¹, Bingfang Wu^{1,2,*}, Hongwei Zeng^{1,2}, Miao Zhang¹, Weiwei Zhu¹, Nana Yan¹, Yuming Lu^{1,2}
5 Yifan Li^{3,1}

¹State Key Laboratory of Remote Sensing Science, Aerospace Information Research Institute, Chinese Academy of Sciences, Beijing 100101, China;

²University of Chinese Academy of Sciences, Beijing 100049, China;

³School of Computer Science, China University of Geosciences, Wuhan 430078, China

10 *Correspondence to:* Bingfang Wu (wubf@aircas.ac.cn)

Abstract. Irrigation accounts for the major form of human water consumption and plays a pivotal role in enhancing crop yields and mitigating ~~the effects of drought~~drought effects. ~~Accurate mapping of irrigation distribution is essential~~The precise distribution of irrigation is crucial for effective water resource management and the assessment of food security. However, the resolution of the global irrigated cropland map is coarse, typically approximately 10 kilometres, ~~and lack regular updates~~and the map is not regularly updated. In our study, we present a robust methodology that leverages irrigation performance during drought stress as an indicator of crop productivity and water consumption to identify global irrigated cropland. Within each irrigation mapping zone (IMZ), we identified the dry months of the growing season from 2017 to 2019 or the driest months from 2010 to 2019. To delineate irrigated cropland, we utilized the collected samples to calculate normalized difference vegetation index (NDVI) thresholds for the dry months of 2017 to 2019 and the NDVI deviation from the ten-year average for
15 the driest month. By ~~integrating~~ combining the most accurate results ~~of from~~ these two methods, we generated the Global Maximum Irrigation Extent dataset at 100-metre resolution (GMIE-100), achieving an overall accuracy of $83.6\% \pm 0.6\%$. The GMIE-100 reveals that the maximum extent of irrigated cropland encompasses 403.17 ± 9.82 million hectares, accounting for $23.4\% \pm 0.6\%$ of the global cropland. Concentrated in fertile plains and regions adjacent to major rivers, the largest irrigated cropland areas are found in India, China, the United States, and Pakistan, which rank 1st to 4th, respectively. Importantly, the
20 spatial resolution of GMIE-100 surpasses that of the dominant irrigation map, offering more detailed information essential to support~~for supporting~~ estimates of agricultural water use and regional food security assessments. Furthermore, with the help of the deep learning (DL) method, the global central pivot irrigation system (CPIS) was identified using Pivot-Net, a novel convolutional neural network ~~built on the U-net architecture~~based on U-net. We found that there are 11.5 ± 0.01 million hectares of CPIS, accounting for approximately $2.90\% \pm 0.03\%$ of the total irrigated cropland. In Namibia, the US, Saudi
25 Arabia, South Africa, Canada, and Zambia, the CPIS proportion was greater than 10%. To our knowledge, this is the inaugural study to undertake a global identification of specific irrigation methods, with a focus on the CPIS.~~To our knowledge, this study~~

is the first attempt to ~~globally identify irrigation methods globally~~. The GMIE-100 dataset containing both the irrigated extent and CPIS distribution is ~~publicly available accessible~~ on Harvard Dataverse at <https://doi.org/10.7910/DVN/HKBAQQ> (Tian et al., 2023a).

35 1. Introduction

Irrigation plays a pivotal role in mitigating the impacts of drought events (Wang et al., 2021; Wu et al., 2022). As climate change ~~intensifies~~ ~~has intensified~~, droughts and heatwaves have become more frequent; thus, irrigation has emerged as an effective strategy to counter these extreme events and bolster the resilience of agricultural systems (Mcdermid et al., 2023). However, irrigation represents a significant human intervention in the global water cycle, as it accounts for 67% of global
40 freshwater withdrawal and 87% of total water consumption (Wu et al., 2022). Therefore, accurate information ~~about~~ ~~pertaining~~ ~~to~~ irrigation is ~~critical~~ ~~important~~ for both crop monitoring and water resource management purposes (Wu et al., 2023b; Tian et al., 2022). However, the highest available resolution for existing irrigation maps remains within a range of 500 metres to 10 kilometres (Nagaraj et al., 2021; Siebert et al., 2005; Siebert et al., 2013). ~~This resolution is insufficient to support effective~~ ~~This limitation falls far short of the resolution needed to adequately support~~ crop condition monitoring and sustainable water
45 resource management at the subbasin level (Zhang et al., 2022b; Xie and Lark, 2021).

Traditionally, two methods have been ~~used~~ ~~employed~~ for generating gridded irrigation maps. The first method involves the allocation of statistical data that uses specific indicators such as land cover area, peak normalized difference vegetation index (NDVI) values, and irrigation potential indices (Zhu et al., 2014; Pervez and Brown, 2010; Zajac et al., 2022). ~~For~~ ~~example~~ ~~Notably~~, the Food and Agriculture Organization (FAO) ~~applied~~ ~~utilized~~ this approach to produce the Global Map of
50 Irrigation Area (FAO-GMIA) from 1995 to 2005 at a 10-kilometre resolution; this renowned irrigation map is widely applied in global water resource management (Siebert et al., 2015). At the national scale, several irrigation maps for China have been produced with resolutions ranging from 500 to 1000 metres; these maps primarily utilize data from the Chinese Statistical Yearbook (Zhu et al., 2014; Zhang et al., 2022c). For the United States, Pervez and Brown (2010) developed an Irrigated Agriculture Dataset for the US (MIrAD-US) with a resolution of 250 metres. Zajac et al., 2022, produced the European
55 Irrigation Map for 2010 (EIM2010), albeit with a coarser 10-kilometre×10-kilometre resolution. Importantly, the accuracy of irrigated cropland maps generated through these methods relies heavily on the representativeness of the spatial allocation indicators and the precision of the statistical data. The indicators used to allocate irrigation areas to each grid often fail to capture the precise distribution of irrigated cropland, especially in humid regions (Pervez and Brown, 2010). ~~As a~~ ~~result~~ ~~Consequently~~, achieving higher-resolution irrigation maps ~~using~~ ~~via~~ this approach can be challenging. Furthermore, due
60 to variations in terrain types and irrigation techniques, census data may underestimate the actual irrigation area (Zhang et al., 2022b). Furthermore, data from different departments may exhibit discrepancies owing to differing statistical criteria. For

example, in 2010, the reported irrigation area in California differed by more than 10% between the US Geological Survey and the state's Department of Water Resources (Meier et al., 2018).

Scholars have sought to independently derive irrigated cropland ~~using via~~-spectral signatures (Thenkabail et al., 2009; Salmon et al., 2015). The peak values in time-series vegetation indices can serve as indicators of crop water stress, biomass, and chlorophyll content. Given that irrigated crops typically exhibit reduced water stress and elevated chlorophyll content, disparities in peak vegetation index values can be harnessed to differentiate between irrigated and rainfed croplands. Commonly employed vegetation indices for this approach include the NDVI, greenness index (GI), land surface water index (LSWI), chlorophyll vegetation index (GCVI), enhanced vegetation index (EVI), and others (Shahriar Pervez et al., 2014; Lu et al., 2021; Chen et al., 2018; Xiang et al., 2019; Dela Torre et al., 2021). The discrimination between irrigated and rainfed croplands is typically accomplished through thresholding or decision tree classification and relies on selected vegetation indices. Nevertheless, importantly, vegetation indices may not entirely capture crop water stress, leading to subtle differences in peak vegetation indices and complicating the mapping of large-scale irrigated farmland.

To ~~improve the delineation enhance the distinction~~ of irrigated cropland, supervised classification models incorporate climate variables and environmental factors, such as precipitation, temperature, surface temperature, and terrain (Salmon et al., 2015). For instance, Thenkabail et al. (2009) ~~combined~~utilized a set of factors, including AVHRR vegetation index time series, precipitation data, elevation information, and vegetation cover maps, as inputs to a decision tree classifier, resulting in the creation of the first global ~~irrigated irrigation~~-area map (IWMI-GIAM) at a 10-kilometre resolution based on remote sensing data. Salmon et al. (2015) employed MODIS vegetation indices and 19 climate variables to produce the Global Rainfed and Irrigated Cropland map (GRIPC-500) for 2005 at a resolution of 500 metres.

In recent years, the mapping of irrigated croplands at ~~the~~-national and regional scales has undergone significant advancements due to the availability of extensive meteorological and remote sensing data stored in Google Earth Engine (GEE) (Zhang et al., 2022b; Deines et al., 2019; Xie et al., 2019; Xie and Lark, 2021). Xie et al. (2021) developed a random forest model ~~that incorporates incorporating~~-a wide array of variables, including environmental factors (precipitation, Palmer drought severity index, soil moisture, aridity index, land surface and air temperature), vegetation indices (NDVI, NDWI, GCVI, WGI, and AGI), and ground irrigation samples. This model achieved an impressive 30-metre resolution irrigation dataset for the United States (LANID). Subsequently, Zhang et al. (2022a) applied this methodology to generate an irrigated cropland map for China from 2000 to 2019 with a resolution of 500 metres (IrriMap_CN). In the same year, Zhang et al. (2022c) enhanced the resolution of the irrigation cropland distribution map for China to 250 metres. However, this method heavily relies on ~~sample data~~samples, and the spatial representativeness of these irrigation and rainfed samples directly influences the accuracy of the results (Zhang et al., 2022b). Collecting ground sample points is a labour-intensive and time-consuming process, and ensuring their spatial representativeness across larger areas, including at a global scale, poses considerable challenges (Zhang et al., 2022c; Zhang et al., 2022d; Tian et al., 2022).

Though various irrigation maps exist at global and national scales, many of these maps suffer from either very low spatial resolution or outdated information, as outlined in [Table 1](#) (Dari et al., 2023). Among these data, the Landsat-derived Global Rainfed and Irrigated-area Product (LGRIP30) is a high-resolution irrigated cropland with an overall accuracy of 86.5% using advanced machine learning algorithms, which is released on Feb 2023 and available through NASA's Land Processes Distributed Active Archive Center (LP DAAC) (Teluguntla et al., 2023). The LGRIP30 data indicates a total global net irrigated area (TGNIA) of 0.71 billion hectares among all cropland area of 1.80 billion hectares of croplands, meaning the irrigation proportion was approximately 39.44%~~ie the irrigation proportion was about 39.44%~~, suggesting a relative high proportion compared ~~with to~~ existing result (Thenkabail et al., 2009; Siebert et al., 2015). While some high-resolution irrigation maps are annually updated, they are typically applicable only at a national level (Zhang et al., 2022b; Xie et al., 2021). ~~Thus~~~~the~~ essence, the challenge of generating a higher-resolution and up-to-date global irrigated cropland map via supervised methods persists.

An additional significant issue is the phenomenon of "mixed pixels" in MODIS data, which is particularly pronounced in regions with fragmented croplands, such as farmlands in southern China and Africa, where agricultural fields are often smaller than one MODIS pixel (0.25 hectares) (Zhang et al., 2022a). Consequently, global irrigation ~~maps map~~ with higher resolution are urgently needed to support both water resource management and food security assessments.

Inspired by the fundamental purpose of irrigation, which is to alleviate the impact of drought, we introduced the Global Maximum Irrigated Extent with 100-metre resolution (GMIE-100) dataset. This dataset leverages irrigation performance during periods of drought stress. When drought conditions prevail, disparities in crop conditions, as indicated by the peak NDVI values, become more pronounced between irrigated and rainfed farmlands. This amplification enables the precise identification of irrigated farmland across most regions while also reducing the ~~number~~ quantity of required training samples (Wu et al., 2023a).

Furthermore, considerable variations in irrigation efficiency are apparent among different irrigation types, with central pivot irrigation systems (CPISs), which achieve an efficiency rate exceeding 80% and are the predominant global sprinkler irrigation method~~which have an efficiency rate exceeding 80%, emerging as the predominant global sprinkler irrigation method~~ (Tian et al., 2023b). In contrast, gravity-flowing irrigation methods, while widespread, exhibit a comparatively lower efficiency rate of approximately 60% (Waller and Yitayew, 2016). Despite the important role of irrigation in agriculture, few studies have been dedicated to the remote sensing identification of various irrigation types, indicating a notable gap in scientific exploration. Notably, the unique circular configuration of CPISs facilitates their visual interpretation from satellite imagery, presenting an avenue for enhanced monitoring and analysis through remote sensing technologies. The advent of deep learning (DL) has opened avenues for the classification of types of irrigation methods based on distinctive spatial patterns, such as CPIS. In this study, Pivot-Net, a shape attention neural network designed for CPIS identification in satellite imagery, was used, and a global CPIS dataset (GCPIS) was generated to estimate the proportion of types of irrigation methods for CPIS.

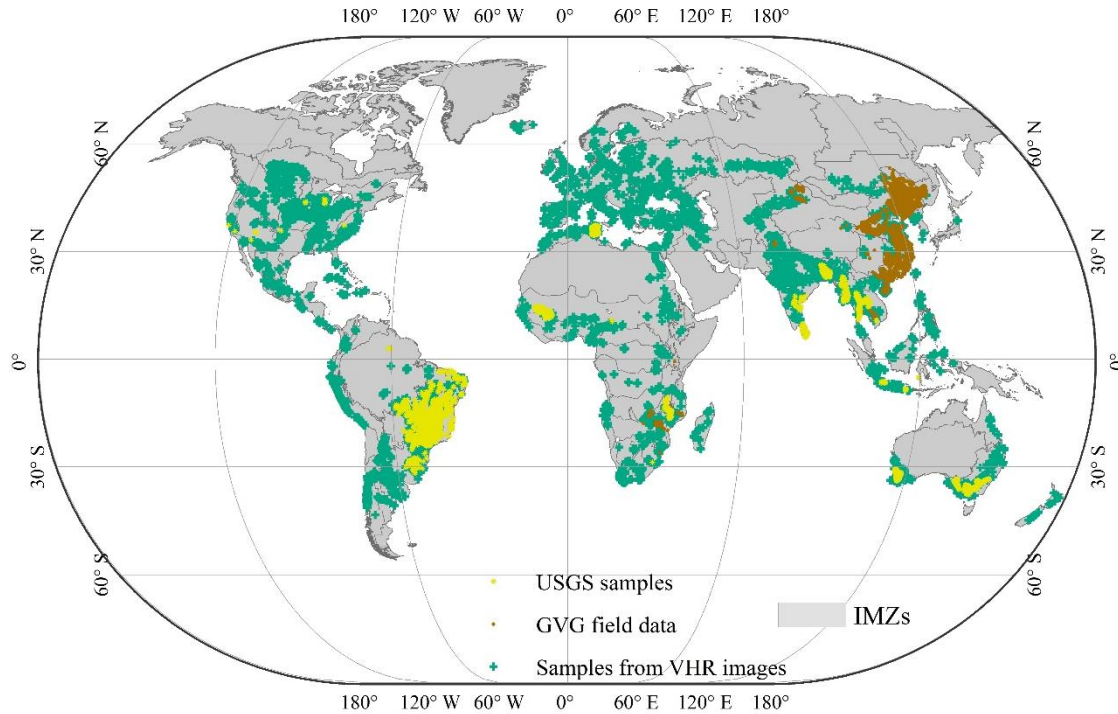
Table 1 List of existing irrigation maps at the global or national scale.

Dataset	Coverage	Spatial Resolution	Time	Method summary	Reference
Global Irrigated Area Map (IWMI-GIAM)	Global	10 km	2000,	Uses decision tree classifier with vegetation index & environmental data as input	(Thenkabail et al., 2009)
Global Map of Irrigation Area (FAO-GMIA)	Global	10 km	1995/2000/2005	Allocates census data based on landcover area	(Siebert et al., 2015)
Global Rainfed, Irrigated and Paddy Croplands (GRIPC-500)	Global	500 m	Single map 2005	Includes climate variables and environmental factors in a decision tree classifier	(Salmon et al., 2015)
Global Food-Support Analysis Data (GFSAD)	Global	1 km	2010	Created using multiple input data including satellite data, climatic and census data.	(Thenkabail et al., 2012)
Landsat-derived Rainfed and Irrigated-Cropland Product at nominal 30 m of the World (USGS-LGRIP30)	Global	30 m	2015	Landsat-derived global rainfed and irrigated cropland product within cropland extent	(Teluguntla et al., 2023)
Landsat-based Irrigation Dataset (LANID)	US	30 m	1997-2017	Random forest model based on environmental variables & vegetation indices	(Xie et al., 2021; Xie et al., 2019; Xie and Lark, 2021)
Annual irrigation maps across China (IrriMap_CN)	China	500 m	2000-2019	Random forest with remote sensing index and environmental index	(Zhang et al., 2022b)
Remotely sensed high resolution irrigated area in India	India	250 m	2000-2015	NDVI series in decision tree method	(Ambika et al., 2016)

2. Materials and methods

165 Taking inspiration from the fundamental purpose of irrigation, our aim is to identify periods of drought stress to highlight ~~accentuate the~~ disparities in crop conditions between irrigated and rainfed croplands. We began by utilizing ~~initiated this process by utilizing~~ the sixty-five monitoring and reporting units (MRUs) established by CropWatch (Wu et al., 2015; Gommès et al., 2016). These MRUs, which account for ~~consider~~ factors such as crop types, agricultural potential, and environmental conditions, served as the foundation for dividing ~~basis for further dividing~~ global cropland into 110 irrigation mapping zones (IMZs). The first-level 65 agroecological zones provide offer a ~~broad fundamental~~ global overview. To address limitations in representing depicting water stress and irrigation within zones, we introduced a more detailed classification, ~~a more detailed classification was introduced~~, creating second-level agroecological zones based on arid indices, water availability, soil types, and landforms. Ultimately, we utilized 110 IMZs as the foundational units for determining the specific timing of drought stress, as illustrated in Figure 1 ~~Figure 1~~. This comprehensive approach enabled ~~allowed~~ us to capture and amplify the distinctions in crop conditions between irrigated and rainfed croplands. Irrigated cropland is defined as ~~So, the Irrigated cropland is characterized as~~ agricultural land that benefits from human interventions and is equipped ~~outfitted~~ with irrigation infrastructure,

including facilities like canals and central pivot systems (Salmon et al., 2015; Meier et al., 2018). This definition includes
175 areas that receive irrigation at any time during the season, regardless of whether they are irrigated in every season or not.



180 **Figure 1** Samples of irrigated, rainfed and central pivot irrigation system (CPIS) from multiple sources and mapping units for
irrigation mapping and CPIS identification. GVG means GPS, Video, GIS system for collecting field data. VHR means very high
185 resolution. IMZs means Irrigation mapping zones.

The general framework for detecting drought stress and evaluating crop conditions in irrigated and rainfed cropland is
illustrated in [Figure 2](#). Inspired ~~by the from~~ purpose of irrigation, what is to mitigate the effect of water stress. Basically,
185 we assume that water stress can be regular or irregular. If there are crops during dry season, the irrigation should occur
~~regularly~~ regular. Otherwise, irrigation is just complementary to rainfall in extremely dry year, which means irrigation is
irregular. For regular irrigation, we could detect vegetation signal in the dry season (DM-NDVI) when precipitation
~~cannot~~ couldn't meet water demand for crops. For irregular irrigation, we compare the NDVI in extremely dry year ~~to with~~ 10-
year average level and calculate the deviation (NDVI_{dev}) to determine whether it is irrigated or not. To determine ~~whether a~~
190 ~~region has regular or irregular irrigation, whether, it is region with regular or irregular irrigation,~~ we used both of these two
indicators and choose the method get higher accuracy.

Then, with the support of the DL model, a CPIS identification model focused on circular shapes was trained and applied to the entire world to generate global CPIS distribution data. The extent of the CPIS was recognized as the extent of irrigation used to update the global extent of irrigation. Finally, we estimated the proportion of irrigation types of CPIS within irrigated cropland in the CPIS within irrigated cropland.

195

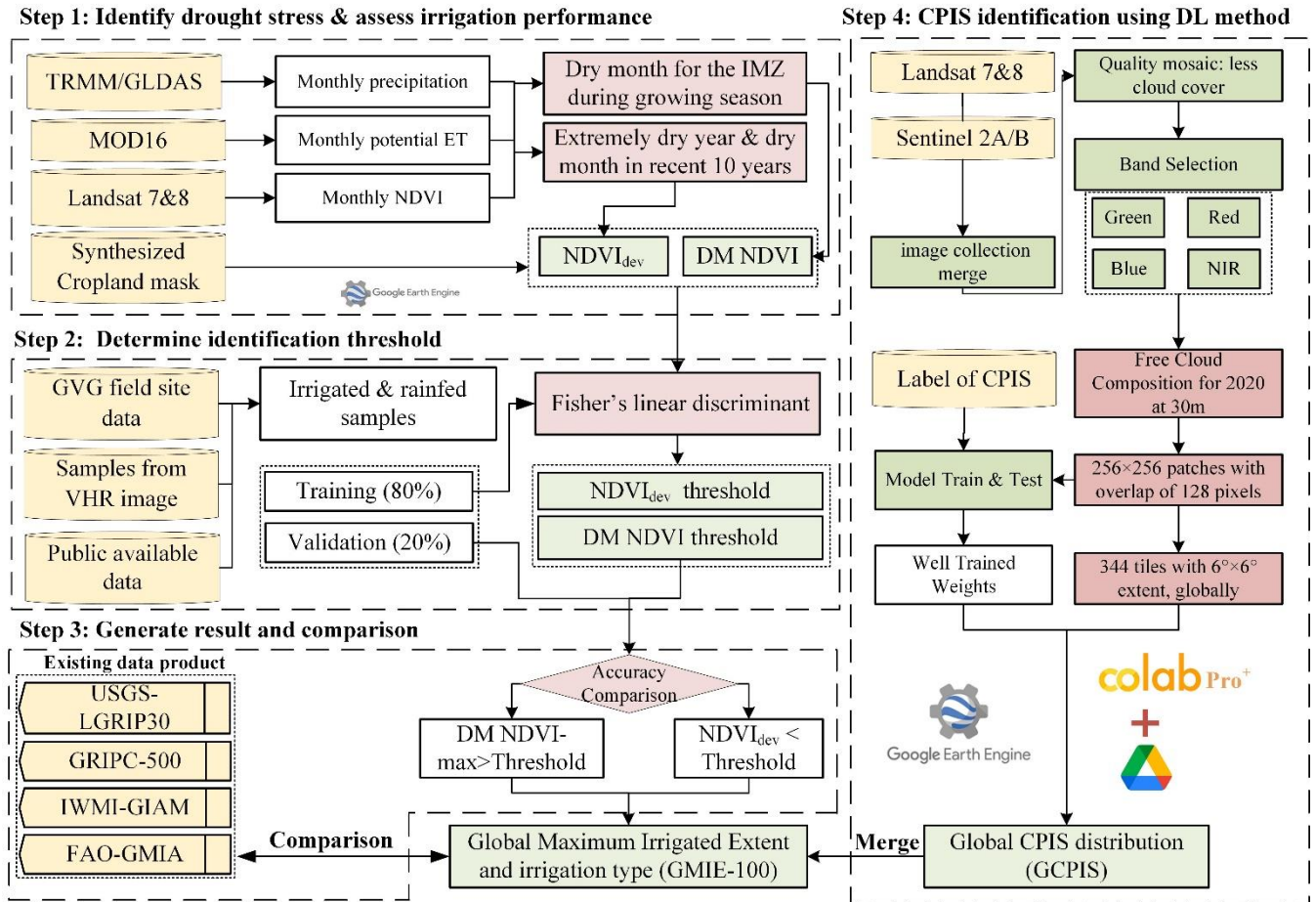


Figure 2 Flow chart of GMIE-100 with a typical irrigation type of CPIS. GVG means GPS, Video, GIS system for collecting field data. VHR means very high resolution. IMZs means Irrigation mapping zones. NDVI_{dev}: NDVI deviation in extremely dry year with 10-year average level. DM-NDVI: NDVI in the dry season.

200 **2.1 Input data**

In this research, the distribution of rainfall on a global scale plays a pivotal role in determining the necessity for crop irrigation. The focus of this study was the ten-year period from 2010 to 2019 and the aim was to identify the driest year within this timeframe. Two distinct sources of precipitation data were utilized: a) Tropical Rainfall Measuring Mission (TRMM) data from the TRMM collection TRMM/3B43V7, which provides monthly precipitation estimates, was employed for geographical areas ranging from 50°S to 50°N. This data source offers insights into precipitation

205

patterns within this specific region; b) ~~Global Land Data Assimilation System~~~~global land data assimilation system~~ (GLDAS) data for precipitation was used for areas outside the 50°S to 50°N range, as GLDAS provides information on precipitation in regions beyond the tropical band.

210 Additionally, the evapotranspiration product, MOD16A2.006, which was introduced by Mu et al. in 2013, was utilized. This product can determine the water surplus during the driest months within each IMZ. The MOD16A2.006 dataset is characterized by an 8-day composite timeframe and a pixel resolution of 500 metres. It is derived from the Penman–Monteith equation and incorporates both daily meteorological reanalysis data and remotely sensed data products from MODIS. This comprehensive dataset aids in the assessment of water availability and evapotranspiration dynamics during critical dry periods.

215 The 30-metre spatial resolution NDVI data from the Landsat sensors Thematic Mapper (TM), Enhanced Thematic Mapper Plus (ETM+), and Thermal Infrared Sensor (OLI-TIRS) onboard Landsat-5, Landsat-7, and Landsat-8, respectively, were ~~used~~ ~~utilized~~ in Google Earth Engine (GEE) (Gorelick et al., 2017) to differentiate irrigated and nonirrigated areas across various IMZs during a specific period. The NDVI data ~~were~~ ~~was~~ masked using the cloud and water mask in the flag file and rescaled into the same range between -1 and 1.

2.2 Sample Data

220 Acquiring irrigation samples on a global scale presents an enormous challenge ~~due to that is characterized by~~ significant labour and cost requirements, primarily attributable to the extensive geographic scope. To globally classify irrigated and nonirrigated cropland, a single dataset of adequately representative samples is needed; however, such a dataset ~~is currently~~ ~~unavailable~~~~does not currently exist~~. The scarcity of irrigation datasets tailored to specific crop types hinders precise differentiations between irrigated and nonirrigated croplands. In most countries, except for India, China, and Pakistan, the area
225 allocated to irrigated croplands constitutes a relatively minor fraction of the total cultivated area. This paucity of representation poses challenges in amassing a substantial sample size suitable for classification purposes. Contemporary irrigation maps often have coarse spatial resolutions, which curtail their efficacy in generating precise samples for classification endeavours. To overcome these limitations and establish a robust sample dataset, an integrative methodology was employed. This approach entailed the fusion of data originating from three independent sources, facilitating a more comprehensive and accurate appraisal
230 of global irrigated and nonirrigated croplands.

The first source ~~comprises~~ ~~involves~~ field data points collected using the GVG (GPS, Video, GIS) application in China (surveyed from 2010 to 2019), Cambodia (in 2019), Ethiopia (from 2018 to 2019), Zambia (from 2016 to 2019), Mozambique (from 2016 to 2019), and Zimbabwe (from 2016 to 2019). This application serves as a comprehensive field data collection system that integrates GPS for precise positioning, a video for capturing geo-tagged photographs, and a GIS system for
235 managing geographic information (Wu et al., 2023a; Wu et al., 2020), which can be ~~downloaded~~ ~~download~~ via <https://gvgsrver.cropwatch.com.cn/download>. By conducting observations of irrigation infrastructure, including irrigation canals, reservoirs, lakes, rivers, and irrigation wells, and through interactions with farmers, we were able to determine the types

of irrigation in the fields. ~~Additionally, irrigation~~Also, irrigated was applied for certain crop types, such as winter wheat in North China Plain, Cotton in Xinjiang and vegetable and tomatoes in most province, et.al. Meanwhile, irrigated crops usually appear greener and lush compared with near crops. Even it cannot be distinguished following above characteristics, the injury of local farmer could give the answer. The collected dataset comprises a total of 78,338 sample points, including 36,809 rainfed samples and 41,529 irrigation samples, with the majority of these points located in China, ~~totaling~~ ~~totaling~~ 72,224 points.

The second data source consists of validation points collected as part of the Global Food Security Analysis Data 30 (GFSAD30) project, which is made available to the public through the website <https://croplands.org/app/data/search>. This project is a collaborative effort involving the United States Geological Survey (USGS), various universities, research institutions, and companies such as Google. These sample points were collected or derived as part of the project's objective to support global food security analysis at a 30-metre spatial resolution. ~~Some samples were collected via~~ ~~Some of the sample points were gathered through~~ field surveys conducted using mobile applications. Others were derived ~~from interpretations of by interpreting~~ remote sensing imagery, such as MODIS and Landsat TM data, crop-specific thematic maps, foundational geographic data (e.g., road networks), and other geospatial information (e.g., elevation data layers). The dataset encompasses a total of 17,076 sample points, comprising 3,000 rainfed points and 14,076 irrigated points. The majority of these points are located in Brazil (13,368), Australia (2,192), Thailand (393), and Tunisia (389).

The third supplementary data source involved the acquisition of samples through visual interpretation of very high-resolution (VHR) images available in GEE. The following irrigation points were selected based on identifiable irrigation infrastructure: 1) central pivot irrigation systems, which are easy to identify due to their shapes; 2) clearly visible irrigation systems, which are clearly visible on VHR images; 3) rain-deficient cultivated areas, which are areas classified as cropland with insufficient rainfall but exhibiting NDVI values indicating vegetation presence and annual growth rings; and 4) high vegetation signals during dry seasons, ~~identified by elevated vegetation indices during these periods, which are areas displaying elevated vegetation signals during dry seasons.~~ The United Nations Food and Agriculture Organization's Global Map of Irrigation Areas (FAO GMIA) (Siebert et al., 2013) and the World Heritage Irrigation Structures (WHIS) list (https://www.icid.org/icid_his1.php#HIS) were used as reference sources. The FAO GMIA's Irrigation Areas of Interest (AEI) and WHIS listings were consulted to identify irrigation areas. Rainfed irrigation points were selected based on FAO GMIA's criteria. If a region lacked any irrigation infrastructure and the AEI value from the FAO GMIA was zero, the area was classified as a rainfed irrigation sample.

~~Figure 1~~Figure 1 illustrates a total of 115,379 sample points. Eighty percent of this dataset, or 92,303 points (comprising 37,650 rainfed and 54,653 irrigated points), was employed for training or calibrating the threshold. The remaining 20%, or 23,076 points (comprising 10,892 rainfed cropland points and 12,184 irrigated points), were used for result validation.

2.3 Land cover and cropland datasets

In this research, we delineated irrigated croplands within the extent of cropland. The definition of cropland was the same as that of the Joint Experiment of Crop Assessment and Monitoring (JECAM) network for Group on Earth Observations Global Agricultural Monitoring Initiative (GEOGALM), which defines the land used for seasonal crops (sowed/planted and harvested at least once within 12 months), such as cereals, root and tuber crops, for oil crops, and for economically significant crops, such as sugar, vegetables, and cotton (Waldner et al., 2016). Additionally, the land occupied by greenhouses was considered cropland. To achieve comprehensive global cropland coverage, the synthesized data were obtained from 16 recent national and regional datasets spanning 2015-2019, which were supplemented by two global satellite-derived land cover datasets, as listed in Table 2. In this study, all land cover classes that met the cropland definition were consolidated into a single category labelled "cropland." On the other hand, various nonvegetation land cover classes (e.g., urban or water) and vegetated classes (e.g., forest or grasslands), including agricultural categories (e.g., permanent crops, cultivated rangeland, and grassland), were amalgamated into one class as "noncropland." The cropland mask at a 30-metre resolution could be obtained from the International Research Center of Big Data for Sustainable Development Goals via https://data.casearth.cn/thematic/cbas_2022/158. This data integrated more than 10 cropland dataset including global cropland product: FROM-GLC (Yu et al., 2013), GFSAD30 (Thenkabail et al., 2021) as well as National and regional data sets, such as ChinaCover (Wu et al., 2017; Wu et al., 2024), Cropland Data Layers (Boryan et al., 2011), Agriculture and Agri-Food Canada Annual Crop Inventory (Fisette et al., 2013; Mcnairn et al., 2009), MapBiomass (Do Canto et al., 2020) et.al. More information about this cropland mask can be found in supplementary. These data have been utilized for their extensive validation by local experts, leading to their high precision in mapping cropland (Wu et al., 2023a). The overall accuracy of this cropland was 89.4%. Moreover, this mask has also been employed in other studies to map global crop intensity (Zhang et al., 2021a).

2.4 Irrigation mapping method

2.4.1 Identifying the dry months and dry years

The cumulative yearly rainfall and monthly rainfall (P) for 2010-2019 were calculated from the TRMM dataset for all the IMZs via GEE. Simultaneously, monthly potential evapotranspiration (PET) for the same time ~~were was~~ derived from the MOD16A2.006 product in GEE. The monthly water surplus (P - PET) was ~~calculated by subtracting established as the difference between~~ the monthly P and the monthly PET.

Within the growing seasons of 2017-2019, we identified the dry months by pinpointing the lowest differences between the monthly P and PET. Additionally, we determined the driest year from 2010-2019 based on the lowest annual P, and the corresponding driest month was identified as the month with the lowest P-PET value during the driest year within the growing season.

2.4.2 Identifying thresholds of NDVI and NDVI deviation

300 Irrigated cropland is characterized as cropland subjected to human interventions and equipped with irrigation infrastructure, including systems such as canals and CPISs (Wu et al., 2023a). The specific threshold for distinguishing between irrigated and nonirrigated cropland ~~varies across~~~~differs among~~ IMZs. The threshold for each IMZ was determined by training samples through visual interpretation of very high-resolution images from Google Earth.

For each IMZ, the maximum NDVI was calculated within the cropland extent during the dry month (NDVImax-DM) by 305 using Landsat-8 images in Google Earth Engine to detect vegetation signals. In regions where regular irrigation is necessary, irrigated cropland can be mapped annually. However, to avoid missing fallow land based on the results of a single year, ~~irrigated croplands were identified~~~~the irrigated lands represented irrigated croplands identified~~ through the NDVI threshold over a three-year period from 2017 to 2019.

For regions with ample rainfall, drought stress may not be a concern. Hence, satellite data spanning the 2010-2019 period 310 were utilized to identify the crop conditions during extreme drought events. The NDVI deviation ($NDVI_{dev}$) was calculated for the driest month of the driest year from 2010-2019 for the cropland pixels according to the following formula:

$$NDVI_{dev} = \frac{NDVI_{\max-DriestM} - 10YNDVI_{DM}}{10YNDVI_{DM}} \quad (1)$$

where $NDVI_{\max-DriestM}$ is the maximum NDVI value in the driest month over 10 years, and $10YNDVI_{DM}$ is the monthly average NDVI in the same month.

315 For each IMZ, the midpoint value for a cropland pixel was determined from the irrigated and nonirrigated training points via Fisher's linear discriminant (Duda et al., 2012):

$$N_{midpoint} = \frac{N_{irrigated} + N_{nonirrigated}}{2} \quad (2)$$

where $N_{irrigated}$ and $N_{non-irrigated}$ represent the mean values of the NDVI or $NDVI_{dev}$ at irrigated and nonirrigated points, respectively.

320 For each IMZ, the $N_{midpoint}$ ~~, which serves as the threshold value,~~ of the NDVI value and $NDVI_{dev}$ ~~, serving as the threshold value, was calculated~~ ~~was computed~~ using irrigated and rainfed samples. Subsequently, pixels exhibiting an NDVI exceeding their specific threshold values for dry months or an $NDVI_{dev}$ ~~below the threshold~~~~less than the threshold~~ during the driest month of the driest year were designated irrigated; otherwise, the pixels below the threshold were classified as nonirrigated.

325 The final threshold value was determined by selecting the NDVI or $NDVI_{dev}$ threshold that yielded the highest overall accuracy in distinguishing irrigated cropland in the validation samples. Subsequently, the chosen threshold value for either the NDVI or $NDVI_{dev}$ of the IMZ was applied to the respective pixels, which were accepted as the final results. If the maximum NDVI value in the dry month achieved ~~higher~~ ~~greater~~ accuracy for identifying irrigated cropland, the corresponding region

usually needs regular irrigation and thus is labelled as region irrigation regular (RIR). Otherwise, the region needs irrigation
 330 only occasionally for some years and thus is labelled as region irrigation occasional (RIO).

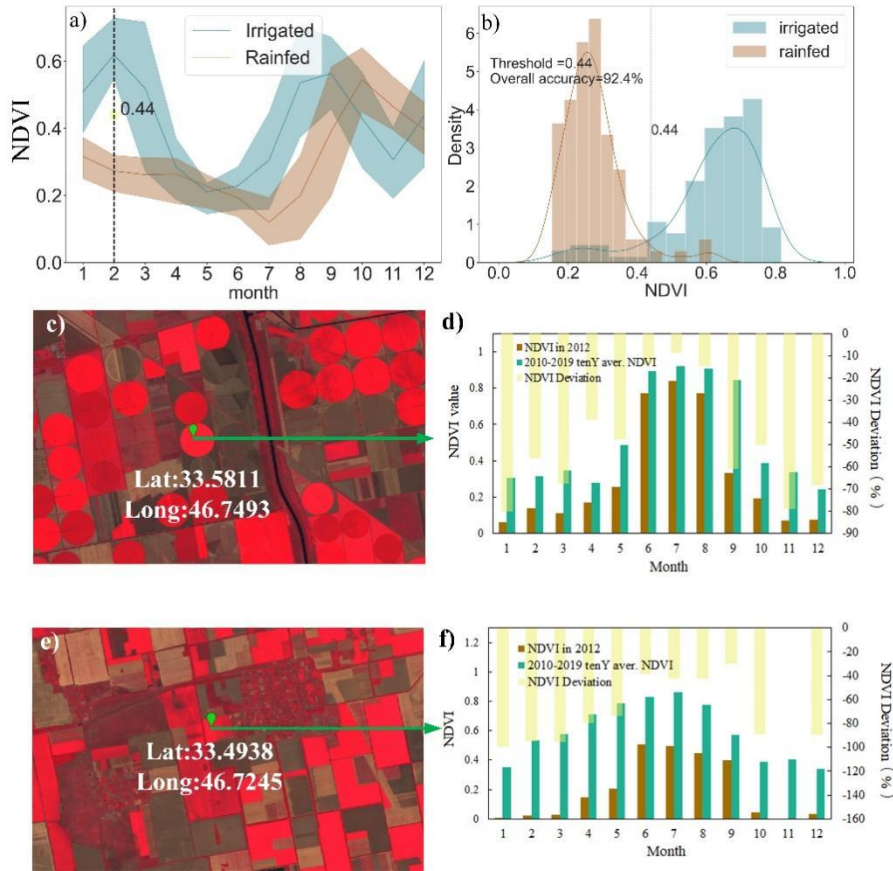


Figure 3. NDVI profile in 2017 (a); NDVI histogram in February 2017 (b) (Pakistan IMZ C48 as an example); monthly NDVI in an extremely dry year (2012), ten-year average NDVI, and $NDVI_{dev}$ for typical central pivot irrigated cropland (c, d) and rainfed cropland (e, f) in southern Ukraine (IMZ C58). The background images in c and e are Landsat-8 images. c and e are credited to @U.S. Geological Survey

335

Taking IMZ C48, primarily situated in Pakistan, as an example, Figure 4a illustrates the monthly NDVI profile for the year 2017 within Pakistan (IMZ C48, South Asia Punjab to Gujarat). It is evident that the discrepancy in NDVI values between irrigated and nonirrigated crops remained marginal for the majority of the months in 2017. However, in February 2017, during a period of drought stress characterized by a ~~meager meagre~~ meager precipitation of 4.4 mm or a precipitation-to-evapotranspiration ratio of 0.02, the disparity in NDVI values became notably more pronounced and distinguishable. Consequently, the optimal NDVI threshold of 0.44 was ascertained to be the most suitable for discriminating irrigated from nonirrigated regions, as depicted in Figure 4b.

340

For the RIO, IMZ C58 was chosen as an example. ~~Figure 3~~ Figure 3d and f illustrate show the monthly NDVI profiles for the extreme drought year of 2012, the ten-year average NDVI value, and the NDVI deviation of the extreme drought year from

345 the ten-year average. The comparison revealed that rainfed cropland exhibited more substantial fluctuations in the NDVI than did irrigated cropland. Consequently, the $NDVI_{dev}$ (NDVI deviation) during severe drought or extremely arid conditions was employed to differentiate irrigated cropland from other categories. The $NDVI_{dev}$ midpoint was established as 0.12 following equation (2).

350 By ~~combining~~ ~~amalgamating~~ these two categories of irrigated cropland, we created a comprehensive global irrigation map. For further detailed information, please refer to (Wu et al., 2023a). Originally, the Global Maximum Irrigated Extent (GMIE) dataset was established at a 30-metre resolution, featuring a binary classification into irrigated and rainfed cropland. This resolution was determined by the availability of cropland masks and NDVI data, both of which are at the 30-metre scale. However, the extent of irrigation may vary due to crop rotation and fallow cropland, which ~~are clearly observable~~ ~~can be distinctly observed~~ at a 30-metre resolution and impact the extent of irrigated cropland. We calculated the irrigated cropland proportion within $100\text{ m} \times 100\text{ m}$ to reduce these effects. The GMIE-100 dataset ranges from 0 to 1, with a no-data value set at -99.

2.5 CPIS Irrigation method identification

360 ~~Inspired~~ ~~Motivated~~ by the spatial attention gate, four attention blocks were incorporated into the connections between downsampling and upsampling within the U-Net architecture (~~Figure 4~~ ~~Figure 4~~). Pivot-Net ~~incorporates~~ ~~includes~~ four spatial attention gates to effectively capture information ~~about~~ ~~pertaining to~~ the round shape of the CPIS. To enhance the model's ability to understand shape-related intermediate features ~~model comprehension of shape-related intermediate representations~~ during boundary detection and segmentation tasks, a multitask learning approach was employed to train the model. This approach integrates pixelwise segmentation and boundary prediction ~~encompasses pixelwise segmentation and boundary prediction~~ as integral components of Pivot-Net's learning objectives. This method was successfully applied to identify ~~in identifying~~ CPIS for the whole US (Tian et al., 2023b).

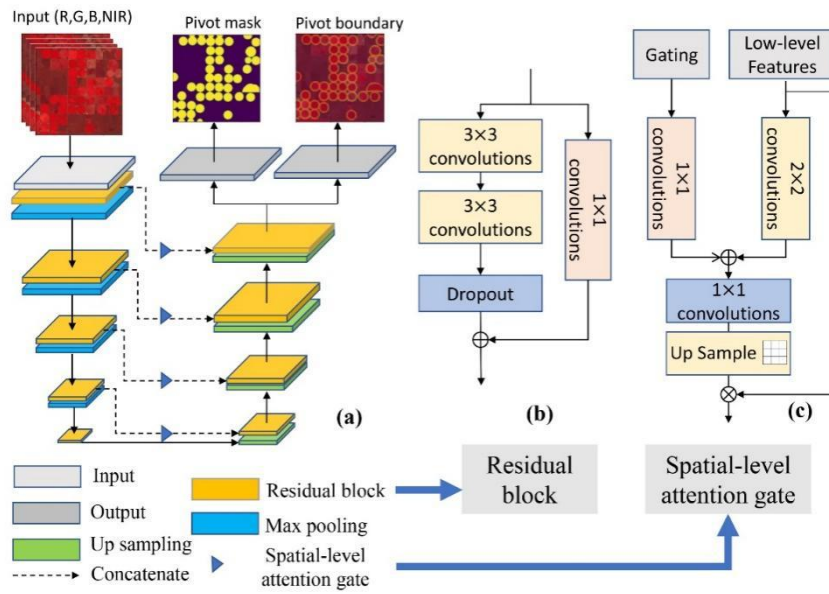
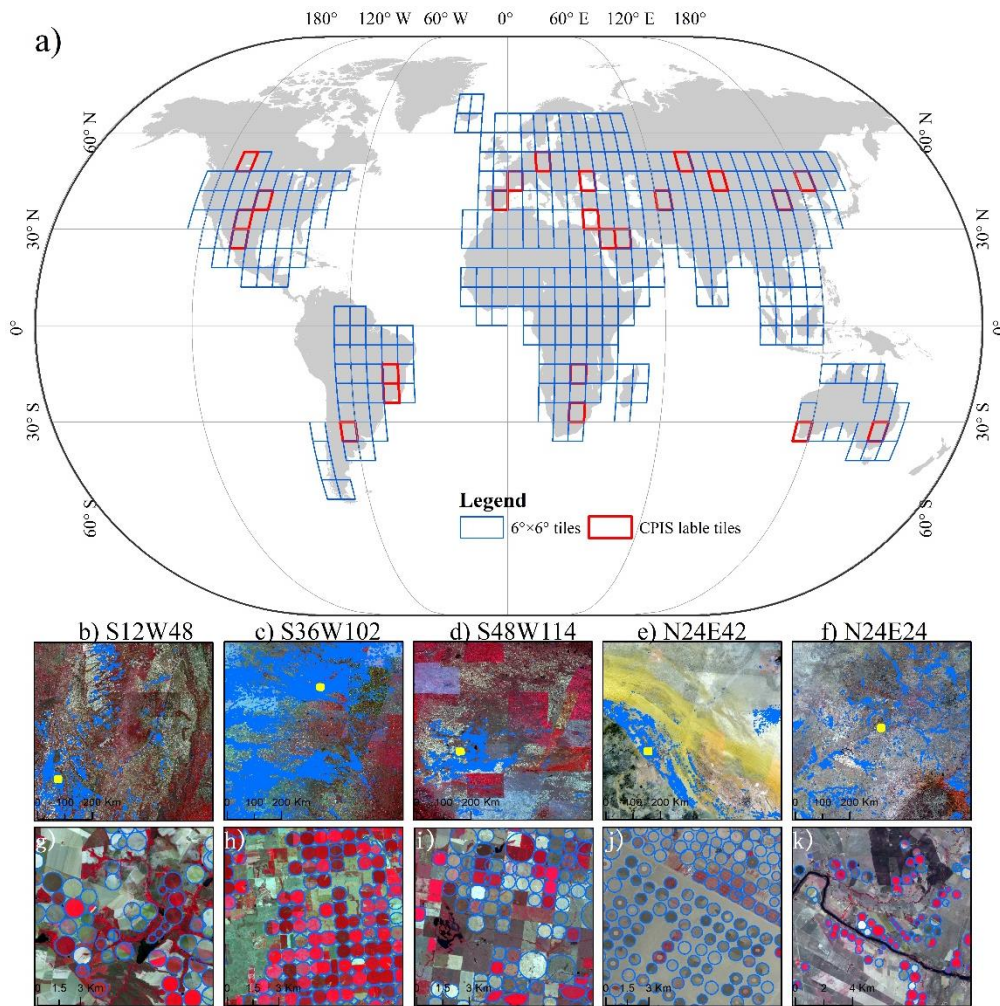


Figure 4 Architecture of the shape-attention Pivot-Net (Tian et al., 2023b).

370 We generated composite, cloud-free satellite data by utilizing optical images from Sentinel-2 and Landsat-8 for each tile within GEE from March to August 2020. All exported data from GEE were stored in Google Drive. The world was divided into 345 tiles of 345-6°×6°-tiles, 23 of which were annotated manually (Figure 5Figure 5). Eighty percent of all the CPIS labels or 9,140 patches with 256×256 pixels were used for training the model, and the remaining 20% of the CPIS labels or 2,284 patches were used for accuracy validation.



375 **Figure 5 a) Distribution of irrigation mapping zones and irrigated and rainfed cropland samples. b-f) 5 annotated tiles for CPIS labels and images. b-f are the coordinates of the lower left corner point of each tile. g-k are detailed maps of CPIS labels. Their locations are shown in b-f) as yellow rectangles. The background images in b-k are Landsat-8 images.**

Subsequently, we transferred the trained model, which was stored on a local high-performance computer, to Google Drive. By employing the robust computational capabilities of Google Colab Pro+ (<https://colab.research.google.com/>), which seamlessly accesses satellite data in Google Drive, we applied the well-trained Pivot-Net model across all tiles. The satellite data were partitioned into 256x256 patches with a 128-pixel overlap (Stride = 128 pixels). The final prediction was determined by selecting the maximum prediction probability within the overlap region.

380

3. Results and Discussion

3.1 Spatial pattern of irrigated cropland and GCPIS

385 The spatial distribution of GMIE-100 is ~~shown depicted~~ in ~~Figure 6~~ [Figure 6](#). The GMIE-100 revealed that the maximum extent of irrigated cropland is 403.17 \pm 9.82 million hectares (Mha), which accounts for 23.4% \pm 0.6% of the global cropland, equivalent to 1,724.08 Mha. This figure surpasses the total area equipped for irrigation reported by FAOSTAT for 2000–2008 (307.60 Mha) (Siebert et al., 2013) and closely aligns with the irrigated area estimated by IWMI–GIAM (406.40 Mha, representing 19.5% of global cropland in 2000) (Thenkabail et al., 2009). India (94.85 Mha, representing 50.4% of cropland) has the largest area of irrigated cropland in the world, with China (85.16 Mha, 50.0% of cropland) and Pakistan (18.04 Mha, 80.2% of cropland) ranking 2nd and 4th, respectively. In addition, the United States (26.54 Mha, 15.5% of cropland) ranks 3rd
390 globally in terms of irrigated cropland. For the remaining countries, less than 10 million hectares of cropland are irrigated.

The irrigated cropland is notably concentrated in regions characterized by expansive plains and proximity to rivers. These flat and river-proximal areas are well suited for irrigation due to easy access to water resources (Jianxi et al., 2015; Bingfang Wu et al., 2021). In fact, a substantial portion of the global irrigated cropland, encompassing 224 million hectares, or 55.6%
395 of the total irrigated cropland, is situated in such plain regions. Prominent examples include the Ganges Plain, the Indus Plain, and the North China Plain, all of which host significant expanses of irrigated cropland. Nevertheless, despite their close proximity to water sources, there are areas where the proportion of irrigated land remains low. For instance, regions such as the Danube estuary in Romania exhibit an irrigation proportion of 3.65%, despite experiencing high annual food production variability (Wriedt et al., 2009). Similarly, the Zambezi basin, which encompasses countries such as Zambia (4.1%) and
400 Mozambique (4.2%), struggles with food insecurity despite its access to water resources.

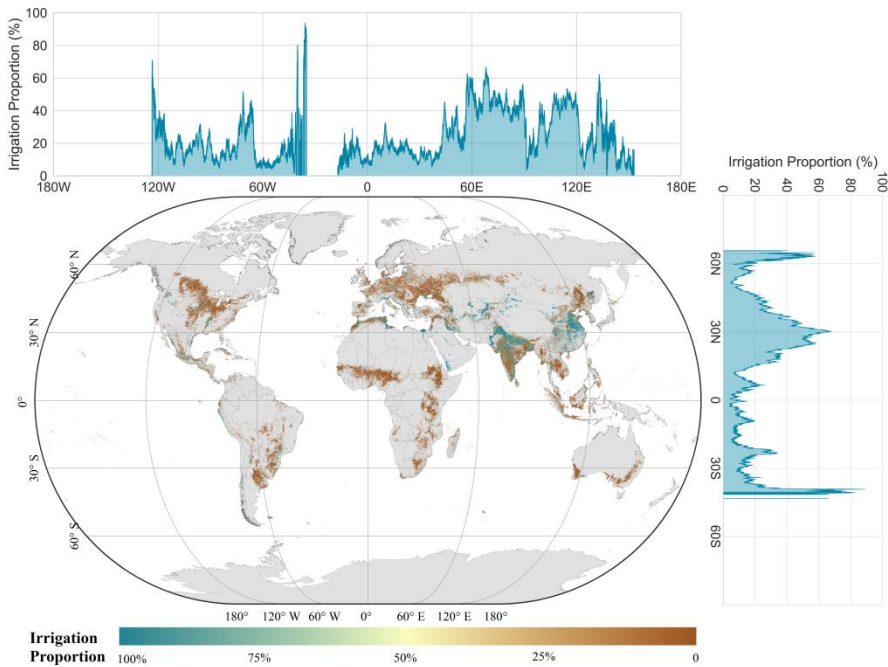


Figure 6 Global dataset of 100 m resolution irrigated cropland proportions.

Apart from plains, oases within arid zones represent a significant category of regions with extensive irrigated cropland. These areas are distinctive due to their limited precipitation but abundant sunlight and heat resources (Chen et al., 2023b). In
 405 oases, the availability of irrigation is crucial for crop survival. Approximately 31 million hectares of irrigated cropland are situated within arid zone oases, constituting 7.7% of the total irrigated cropland. Well-known oasis agricultural regions across the world include the Nile basin and the delta region in Egypt, the California Valley in the USA, and Xinjiang in China. These areas thrive due to their irrigation practices, which enable the productive use of scarce water resources amid arid conditions (Cui et al., 2024).

410 The distribution of irrigated cropland exhibits distinct patterns when examined from both latitude and longitude perspectives. Along the latitude/latitudinal axis, we observe exceptionally high irrigation proportions around the 30°N latitude/latitudinal line, which encompasses regions along the lower Yangtze River, Ganges River, Indus River, and Nile River. These river basins are characterized by dense concentrations of irrigated cropland, owing to the availability of water resources from these major river systems (Nagaraj et al., 2021). On the other hand, when assessing irrigation proportions along the
 415 longitude/longitudinal axis, we observe elevated levels of irrigation between 60°E and 120°E. This longitudinal span encompasses prominent regions such as the Indus-Ganges Plain and the North China Plain, which are renowned for their high levels of irrigated agriculture.

For the CPIS worldwide, the spatial pattern is depicted in [Figure 7](#). The total area of the CPIS is estimated to be 115,192.2 ±100.0 km², comprising 2.9% of the total irrigated area. The area in Chen's research is 107,232.8 km² (Chen et al., 2023a) in global arid regions. The CPIS is mainly distributed in the high plain aquifers (HPAs), including north Texas, Kansas and Nebraska, southern Brazil, South Africa, and the middle east region. Along the longitude, the CPIS proportion is high from 90°W to 120°W, which matches the range of HPA, while the CPIS proportion is relatively apparent between 30°N and 60°N with latitude.

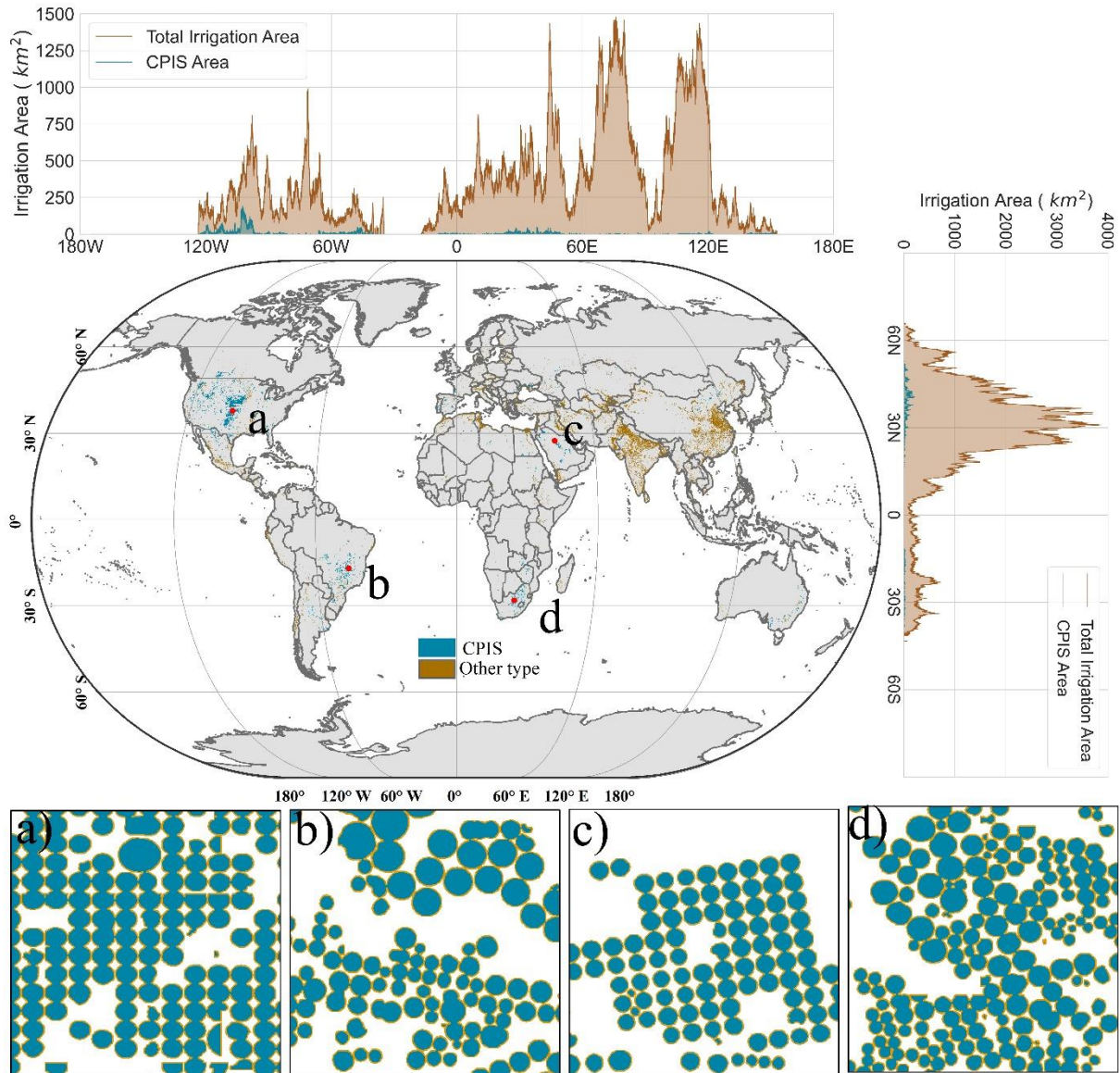


Figure 7 The distribution of irrigation types within the irrigation extent. Figure b to d are the detail map of CPIS. The location of each sub figure was ~~labelled~~ in the main global map.

The distributions of irrigated cropland and CPIS proportions across the six continents are depicted in ~~Figure 8~~ Figure 8a. Asia has the most irrigated area, covering 273.79 ~~million hectares~~ (Mha), with an irrigation proportion of 39.3%. North America ~~follows~~ followed with 16.9%, South America with 15.5%, Europe with 10.6%, Africa with 9.6%, and Oceania with

460 9.2%. For the [types of irrigation method](#), the CPIS proportion was highest in North America, with CPIS accounting for 13.8% of the total irrigated area, followed by South America at 5.0% and Oceania at 2.9%.

In [Figure 8](#)~~Figure 8b~~, we summarize the irrigation and CPIS proportions across different climate zones. We used the global aridity index and criteria in the literature to classify climate zones (Zomer et al., 2022). The irrigation proportion decreases significantly, from 91.8% in hyperarid zones to 20.7% in semihumid zones. It then exhibits a slight increase to 21.4% in humid zones. These variations in irrigation proportions correspond to the distinct water availability and climatic conditions in these regions. For the [irrigation methods](#)~~irrigation method~~, the CPIS proportion is highest in the hyperarid region (5.7%), followed by the semiarid region (3.9%).

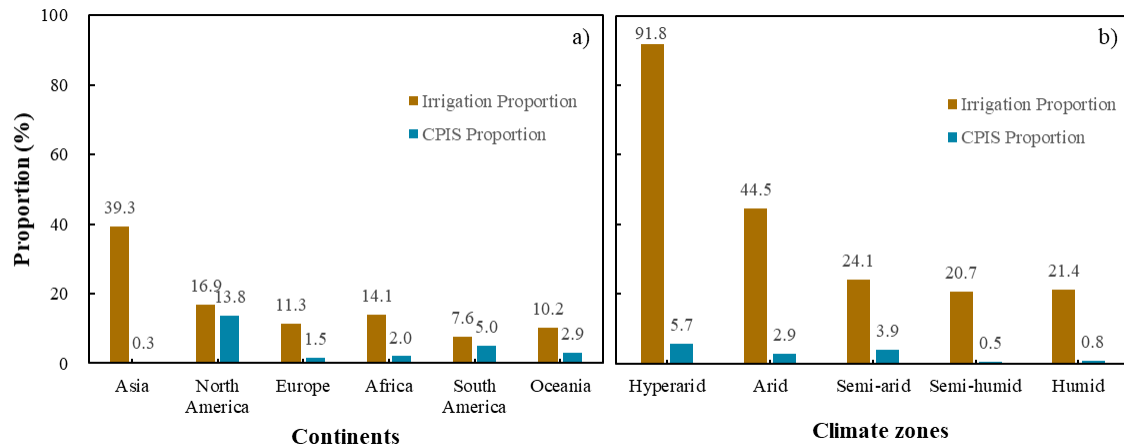


Figure 8 The irrigation proportion and CPIS proportion of total irrigated area for continents (a) and climate zones (b)

470 [Figure 9](#)~~Figure 9a~~ shows the irrigation proportion for each country. Notably, the irrigation proportion increases with geographical expansion from North Africa through West Asia, South Asia, and East Asia. In [Figure 9](#)~~Figure 9b~~, the irrigation proportions are presented for each IMZ. The spatial distribution aligns with the pattern depicted in [Figure 9](#)~~Figure 9a~~. Several countries in West Asia and North Africa, including Oman, Saudi Arabia, Qatar, and Egypt, boast irrigation proportions of 100%. Additionally, three countries surpassed an irrigation proportion of 80%, namely, Turkmenistan (89.4%), Uzbekistan (81.3%), and Pakistan (80.4%). Among all the AEZs, Gansu-Xinjiang in China has the highest irrigation proportion at 100.0%, followed by the Central Northern Andes (96.2%), Old World Deserts (90.5%), Southern Himalayas in India (84.0%), Semi-Arid Southern Cone (82.9%), and China Lower Yangtze (80.8%).

480 [Figure 9](#)~~Figure 9c~~ and 8d are the CPIS proportions for each country and the IMZ, respectively. CPISs are mainly concentrated in countries with intensified agricultural regions and extreme arid zones, such as the Middle East. The highest proportion of CPIS is in Namibia (23.4%), followed by the US (20.33%), Saudi Arabia (16.3%), South Africa (15.7%), Canada (12.6%), Zambia (12.5%), the Gaza Strip (12.2%) and Brazil (9.6%). For the IMZs, the proportions of CPIS were greatest in the Amazon (C24) at 81.2%, north of the High Plains (C12-4) at 42.5%, South Zambia (C09-3) at 41.6%, American

485 northwestern Great Plains (C12-3) at 36.0%, Western Mongolia (C47) at 25.0%, British Columbia to Colorado (C11) at 24.2%, American cotton belt to the Mexican coastal plain (C14-1) at 22.8%, and the southwest Mexican and northern Mexican highlands (C18) at 21.4%.

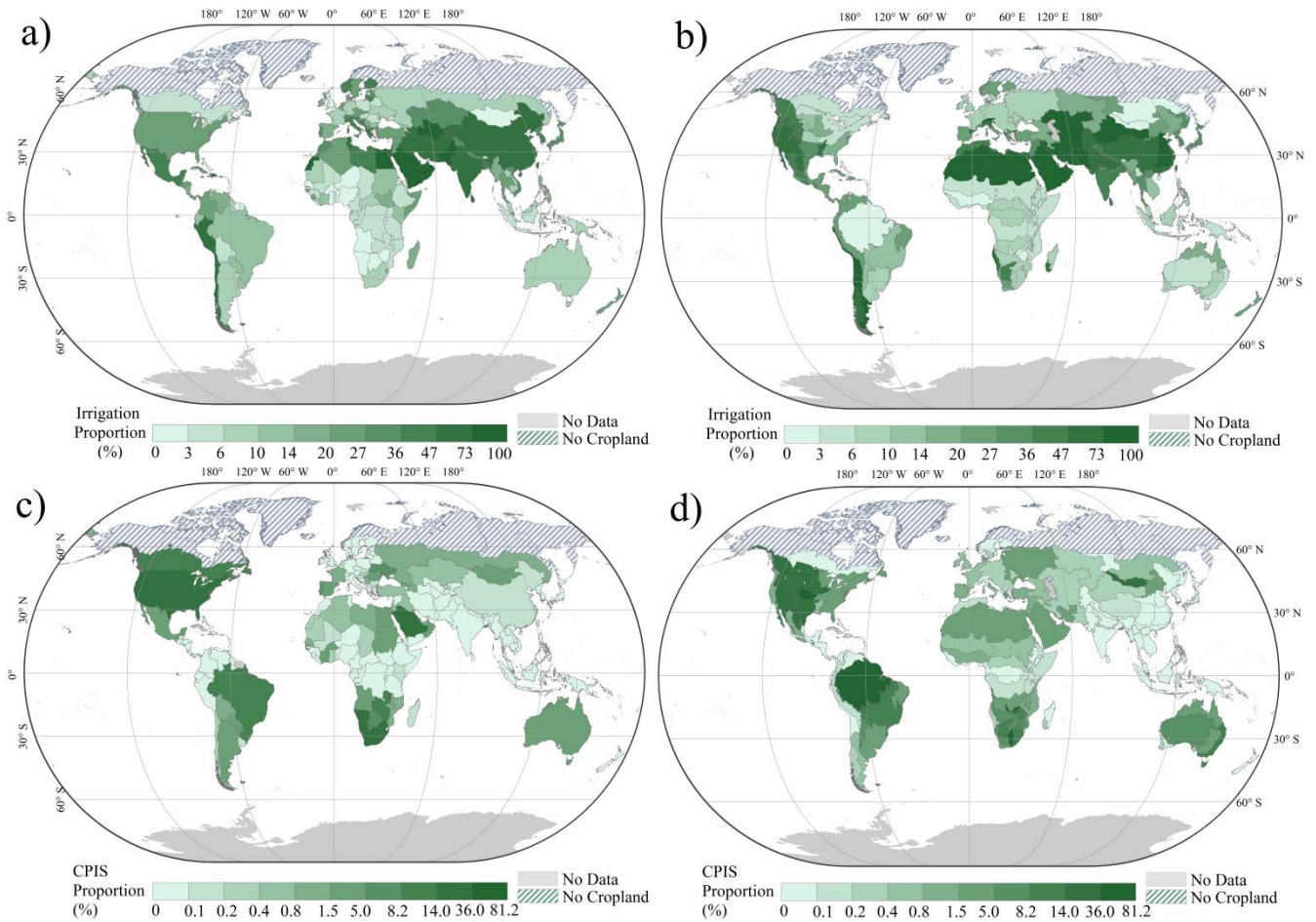


Figure 9 The irrigation proportion for each country (a) and IMZ (b) and the CPIS proportion of total irrigated cropland for each country (c) and IMZ (d)

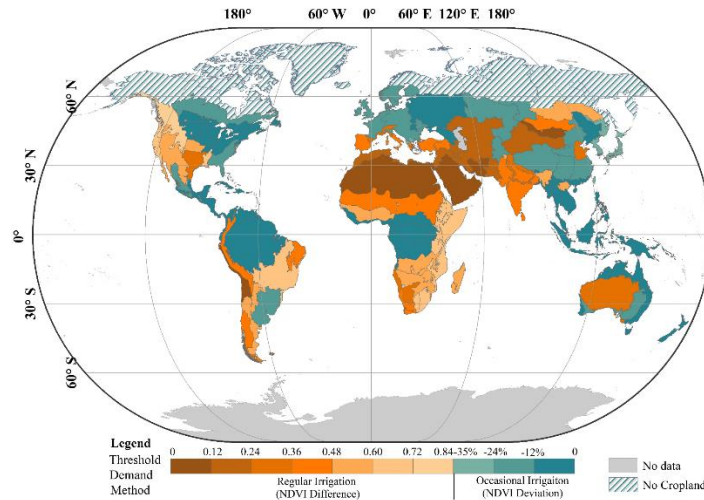


Figure 10 The thresholds of the NDVI difference and deviation for each IMZ

For each IMZ, the irrigation mapping method and threshold of the NDVI or $NDVI_{dev}$ are shown in [Figure 10](#). For the IMZ with a ~~consistent regular~~ dry season, the NDVI difference method was employed to determine the difference in amplification conditions between irrigated and rainfed cropland. To avoid the omission of fallow land and crop rotation, the maximum NDVI in the dry months of 2017-2019 was selected. The NDVI threshold for each IMZ was determined using training samples, which ranged from 0.10 in extremely arid regions, such as the Old-World Deserts (IMZ C64), to 0.74 in British Columbia to Colorado in North America (IMZ C11), as shown in orange in [Figure 10](#). These thresholds are integral to the accurate identification of irrigated cropland within each IMZ.

For regions without a significant dry season, the driest month of an extremely dry year among the 10 years (2010-2019) was selected to amplify the crop conditions between irrigated and rainfed cropland. The $NDVI_{dev}$ ~~was used as a proxy to measure crop condition deviations from the 10-year average as calculated as a proxy of crop condition departure from the 10-year average~~ by using collected training samples. The values ranged from -1.0% (Amazon, C24) to -37.0% (C60-10, northwestern Greece and southwestern Albania), as shown in blue in [Figure 10](#).

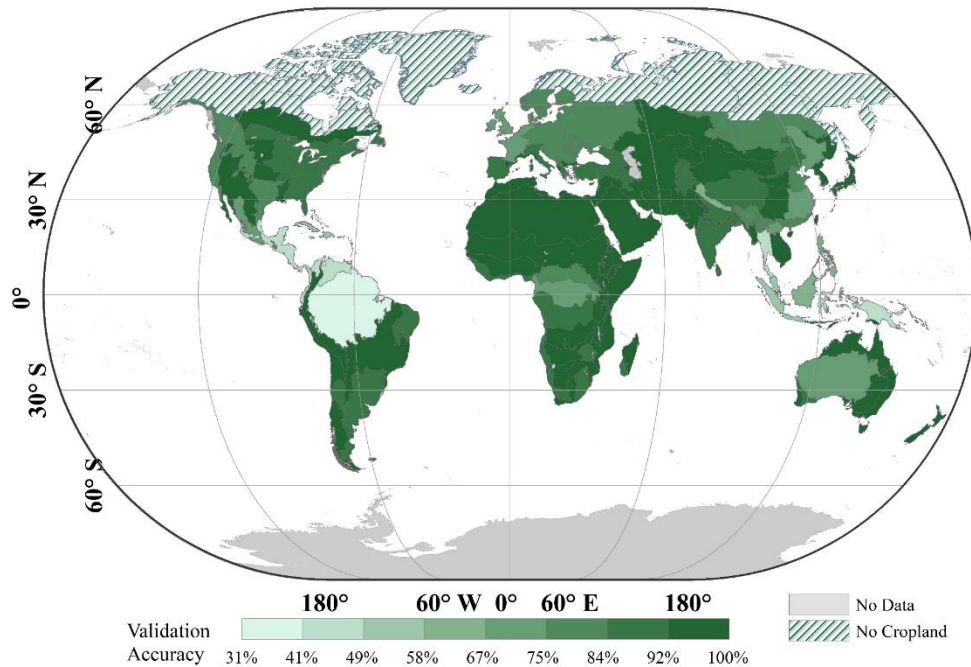


Figure 11 Training accuracy for each irrigation map zone

Figure 11 shows the training accuracy of each IMZ. The NDVI or $NDVI_{dev}$ threshold was determined using the Fisher discrimination method with 92,303 obtained samples. Then, the training accuracy was assessed, which was between 0.31% in the Amazon (C24) and 100% in Western Asia (C31-2). Despite the accuracy in some humid regions, such as northern South and Central America (42%) and the Caribbean (49%), there are 89 IMZs with accuracies greater than 80% among the 105 IMZs with cropland. The specific accuracy for each IMZ is detailed in could refer to Table S1. The confusion matrix accuracy metrics of GMIE-100 are shown in Table 2. To validate the final accuracy of the GMIE-100, the remaining 20% of the samples totaling 23,076 points were used. The overall accuracy of GMIE-100 was 83.6%, with user accuracy of 86.1% and producer accuracy with a user accuracy of 86.1% and an accuracy of 82.2%.

Table 2 Confusion matrix and accuracy assessment of GMIE-100

		Field points			
Classes		Rainfed	Irrigation	Total	User accuracy
Predicted	Rainfed	9,270	2,170	11,440	81.0%
	Irrigated	1,622	10,014	11,636	86.1%
	Total	10,892	12,184	23,076	
	Producer accuracy	85.1%	82.2%		

Overall Accuracy: 83.6%

The accuracy of GMIE-100 was evaluated in 10 countries, and the results are presented in [Figure 12](#), which shows the overall accuracy, user accuracy and producer accuracy for each country. In China, the accuracy was assessed using 13,963 ground truth ~~data~~ points derived from multiyear GVG data. The overall accuracy was 85.5%, with a predicted accuracy of 86.7% and user accuracy of 83.3%. Commission and omission errors were prevalent~~Commissions and omissions were common~~ in humid areas, such as southern China, Cambodia and Myanmar. In other countries, the overall accuracy of the GMIE-100 datasets was generally~~basically~~ acceptable.

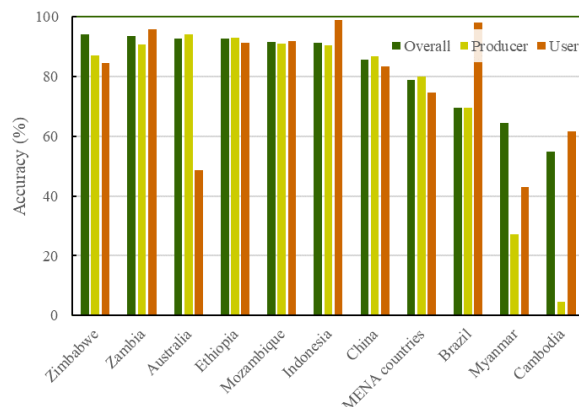
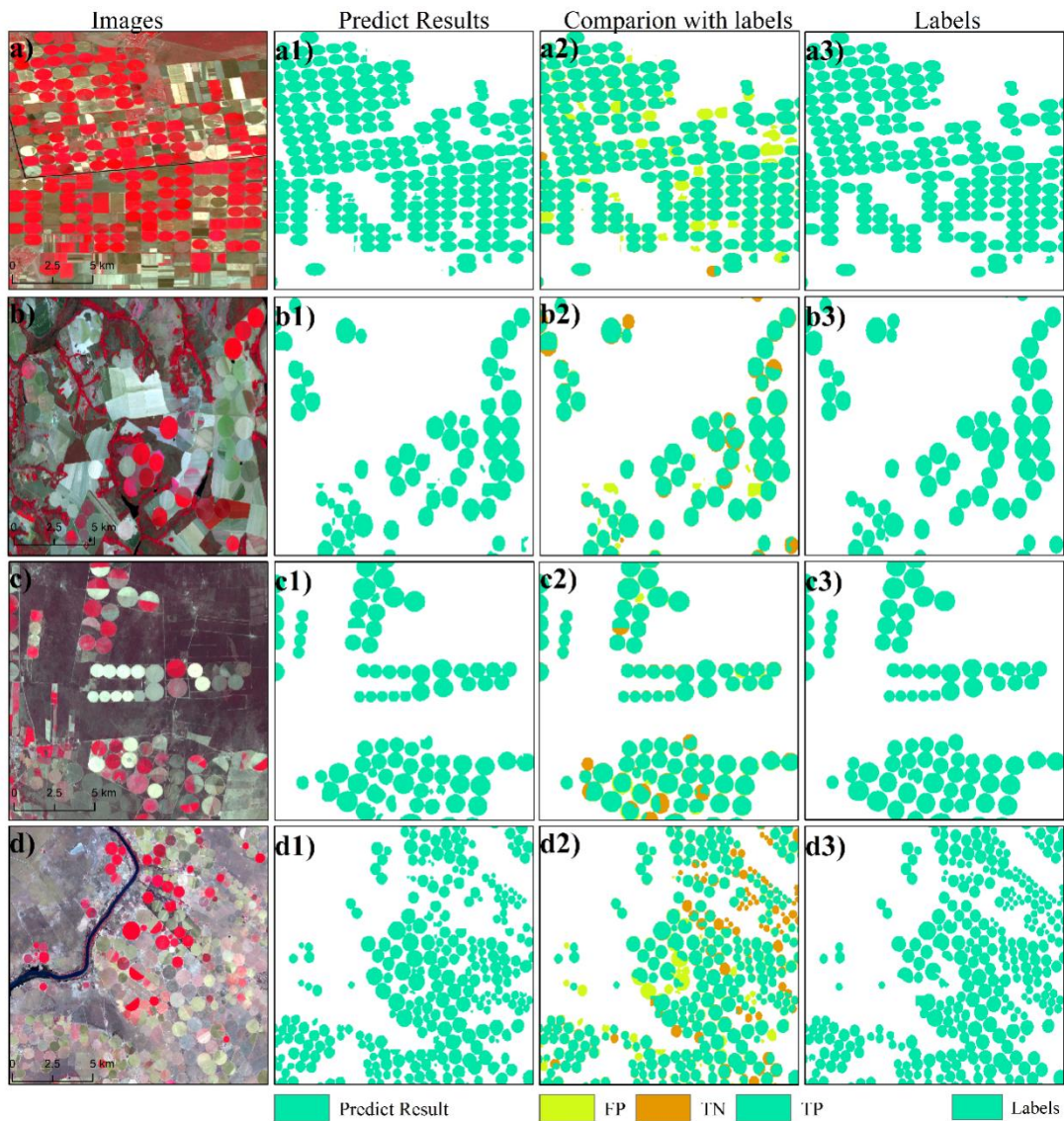


Figure 12 Accuracy for countries with GVG (GPS, Video, GIS) irrigation validation points

The accuracy metrics and confusion metrics for the CPIS are listed in [Table 3](#). The model achieved a high validation accuracy of 97.87% \pm 0.1%. The F1 score, which is a balance between precision and recall, is 86.87% \pm 0.1%. The mean intersection over union (IOU) is 87.25% \pm 0.2%. We visualized four patches with dense CPIS in [Figure 13](#). Overall, the CPIS was accurately is well identified in most cases.

Table 3 Confusion matrix of GCPIS identified with Pivot-Net

		CPIS Predict		Recall
		0	1	
CPIS Label	0	119938874	735300	
	1	2077463	9303403	81.75% \pm 0.2%
Precision			92.68% \pm 0.1%	
Overall Accuracy				97.87% \pm 0.1%



530 **Figure 13 Accuracy assessment for the CPIS identification results. a-d are the composted images; a1-d1 are the prediction results of Pivot-Net; a2-d2 are the comparisons between our results and the labels. TP represents true positive pixels, while TN represents true negative pixels. FP means false positive samples. a3-d3 are the labels. The central point coordinates of a-d are (33.86, 46.37), (-47.34, 16.41), (-65.74, 32.03), and (25.11, 28.06), respectively. The background images in a-d are Landsat-8 images. a-d are credited to @U.S. Geological Survey**

3.3.1 Comparison of irrigated cropland

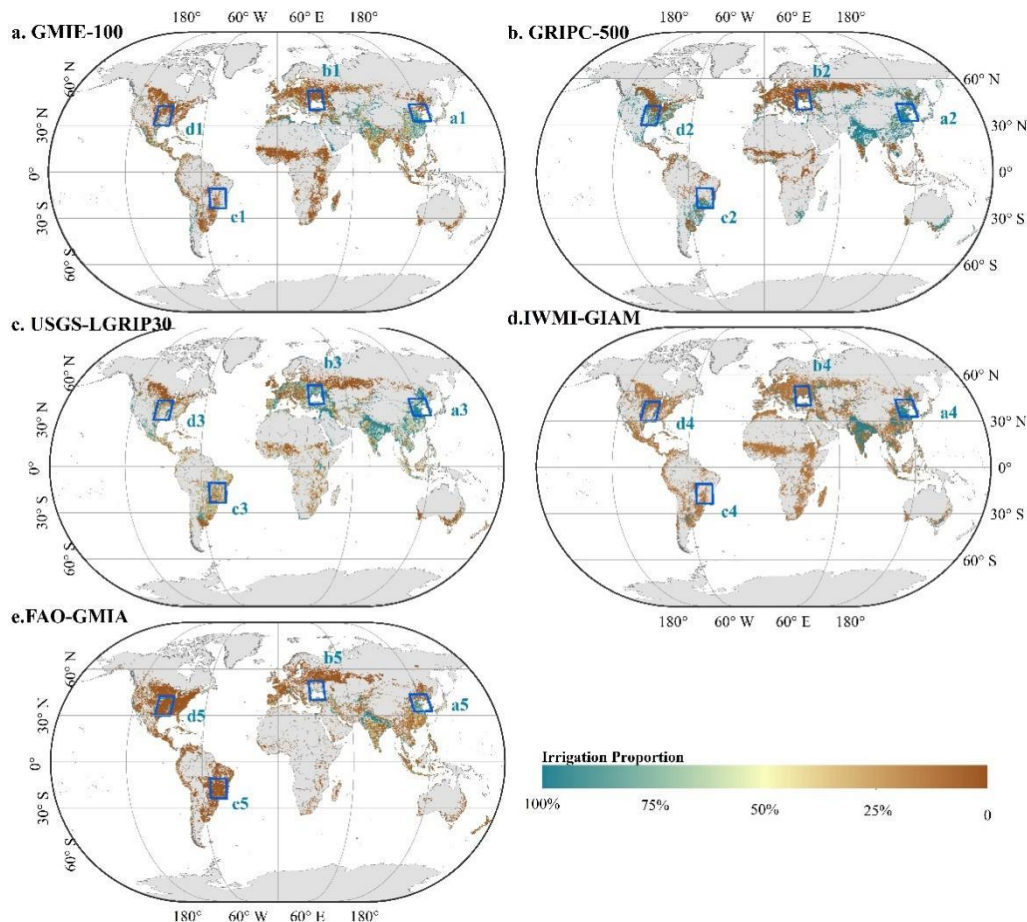


Figure 14 Comparison of existing irrigation production at 1 km (GMIE-100, GRIPC-500, USGS-LGRIP30) or 10 km resolution (IWMI-GIAM and FAO-GMIA)

To compare GMIE-100 ~~against with~~ four existing irrigation products, we downscaled GMIE-100 and GRIPC-500 and USGS-LGRIP30 to a 1 km resolution and scaled IWMI-GIAM and FAO-GMIA to a 1 km resolution via the bilinear interpolation method. The results are shown in ~~Figure 14~~ [Figure 14](#). The spatial pattern of irrigated cropland in GMIE-100 generally coincided with that of the other products. Irrigated cropland was most concentrated in the North China Plain and Ganges ~~and &~~ Indus River basin worldwide.

Nevertheless, there were ~~notable discrepancies~~ ~~discernible differences~~ in the detailed distributions of irrigated cropland patches, such as those in Northeast China, the Eastern European Plain, the Planicie de la Plata of South America and the lower Mississippi River basin (~~Figure 15~~ [Figure 15](#)). In the Northeast China Plain, the irrigated cropland ~~appears denser within~~ ~~is~~

denser in USGS-LGRIP30 and GRIPC-500 than in the other products. According to census data from China, the average irrigation proportion for three provinces (Heilongjiang, Jilin, Liaoning Province) is 39.32%. According to the GMIE-100 results, the irrigation proportion is 27.45%, which is closer to the census data. For the irrigated cropland in the Eastern European Plain, USGS-LGRIP30 illustrates a broader distribution of widely distributed irrigated cropland, which is significantly denser than that portrayed what is portrayed in GMIE-100 and the other three datasets (Figure 15 Figure 15 b1-b4). Notably, the GRIPC-500 dataset indicates a considerable extent of irrigated cropland in the Planicie de la Plata region when compared to GMIE-100 and the other products (Figure 15 Figure 15 c1-c4). According to census data from Brazil, the reported irrigation proportion is 6%, whereas it is 58% and 72% in USGS-LGRIP30 and GRIPC-500, respectively.

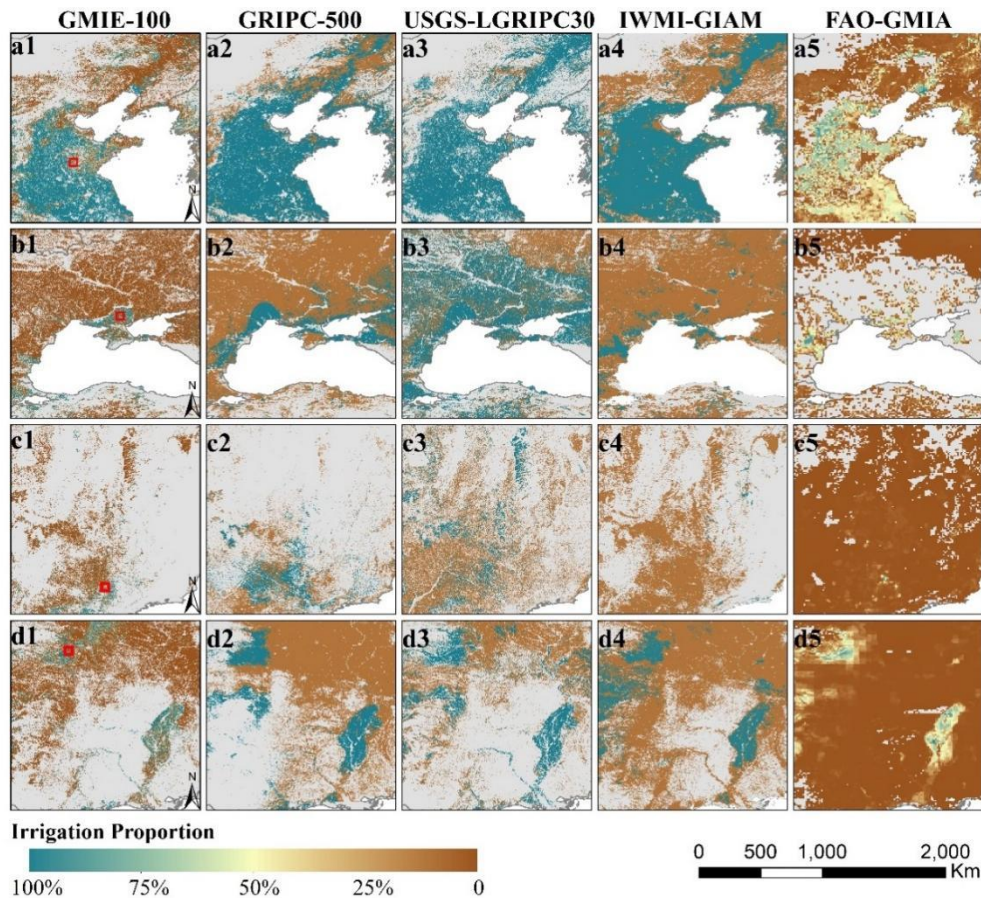
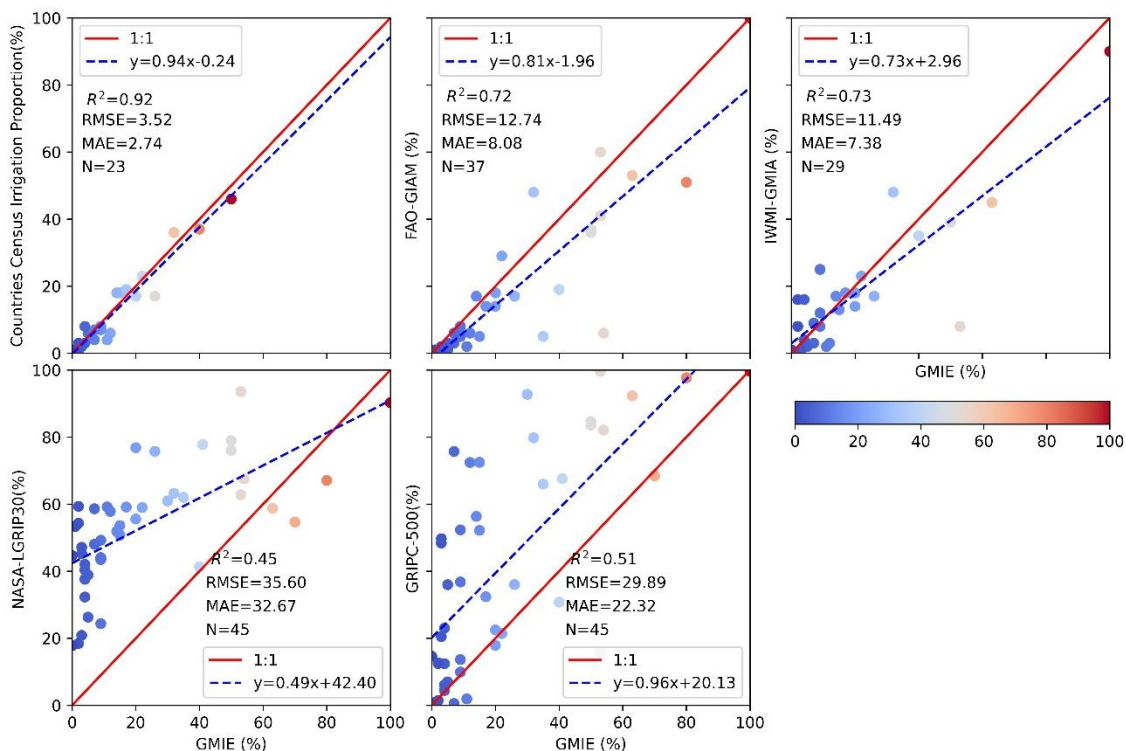


Figure 15 Comparison with existing irrigation production for the hot-point region of irrigation. The corresponding location is labelled in Figure 14 Figure 14 with a blue rectangle.

To validate the proposed GMIE-100, we compared compare it with national census data. The results are shown in Figure 16 Figure 16. For comparison with existing global irrigation products, we also compared GMIE-100 against with FAO-GIAM, IWMI-GMIA, USGS-LGRIP30 and GRIPC-500. The R^2 between the GMIE-100 and 23 national census datasets was 0.92,

565 with an RMSE of 3.52% and an MAE of 2.74%. For FAO-GIAM and IWMI-GMIA, the R^2 values with GMIE-100 were 0.72 and 0.73, respectively. The determination coefficient between USGS-LGRIP30 and GMIE-100 was only 0.45, with an RMSE of 35.6%, the lowest value among these three existing irrigation products. When we compared USGS-LGRIP30 with the national census, the R^2 value was only 0.25. When comparing GMIE-100 with GRIPC-500, the R^2 value was 0.51, with an RMSE of 29.89%. The scatterplot shows that GRIPC-500 was consistently overestimated in comparison with overestimated compared to GMIE-100.



570

Figure 16 Comparison of national irrigation proportions between GMIE-100 and national census data (a), FAO-GMIA (b), IWMI-GMIA (c), USGS-LGRIP30 (d) and GRIPC-500 (e).

3.4 Advantages and limitations of GMIE-100

575 We used irrigation performance to map irrigation at regular intervals. Irrigation areas exhibit significant have a high level of variability in irrigation water use (Puy et al., 2021; Puy et al., 2022). Thus, changes in the irrigated area could reflect variations in agricultural water use, which is important for local water resource management. Due to a lack of updated information, global maps of irrigated areas often rely on estimates from approximately 2000 (Nagaraj et al., 2021). For RIR

regions, irrigation maps can be updated every three years by collecting the vegetation ~~signals during each dry season~~~~signal in each dry season~~. For RIO regions, irrigation maps can be updated every ten years based on crop status during extremely dry events. Although the irrigated cropland extent during the dry season can be identified from 2010 to 2019, our aim was to provide the most up-to-date information based on satellite data over the 2017–2019 period.

Periodic cropland fallowing refers to the practice of not cultivating or tilling all croplands within a single year. This approach is often employed to restore soil fertility as part of a crop rotation scheme or to prevent excess agricultural production. The use of the NDVI or NDVI_{dev} ~~thresholds~~~~threshold~~ enables the identification of only those lands that have been actively cultivated. Subsequently, these cultivated lands can be further categorized into either irrigated or rainfed land. An area is designated as irrigated if it has been cultivated at least once during the driest month over a span of three years. This criterion aids in discerning areas that are actively managed for crop production from those temporarily left fallow or unplanted.

The spatial resolution of this dataset was 100 m, which is greater than that of the dominant irrigation data map. High-resolution irrigated cropland data are essential for quantifying agricultural water use (Wu et al., 2022). The resolution of most existing irrigation data is very coarse, varying between 500 m and 10 km (Xie et al., 2019). As shown in ~~Figure 17~~~~Figure 17~~, GRIPC-500, IWMI-GIAM and FAO-GMIA ~~fail to capture~~~~are not able to present~~ detailed information on irrigated cropland. Even though the resolution of USGS-LGRIPC-30 was greater than that of GMIE-100, the latter descriptions of heterogeneous irrigated cropland distributions in the North China Plain (~~Figure 17~~~~Figure 17~~ a1 and a3) and the US Plateau (~~Figure 17~~~~Figure 17~~ d1 and d3) were better than the former. ~~The~~ evapotranspiration, precipitation product with 500-meter resolution was used to determine the driest months within each IMZ. ~~a~~ And the time period was used to detect irrigation performance and detect irrigated cropland. ~~Within~~ ~~In~~ each IMZ, 30-meter NDVI data was used as major input. Then to avoid effect fallow land and crop rotation, we calculate the irrigation proportion within 100 meters.

As for the maximum extent should be understood separately for RIR and RIO. For RIR, the largest area ~~refers to~~~~means~~ the cropland area irrigated ~~at least once over the past three years~~~~one time at least for last three years~~ (2017-2019). Because we detect irrigation every year for this region. To avoid missing fallow land, we identify the largest extent ~~fover the three-year period~~~~or last three years~~ (2017-2019). For RIO, it means the cropland area irrigated ~~at least once in the last decade~~~~one time at least for last ten years~~ (2010-2019). For RIO, irrigation occurs occasionally. We ~~determine~~~~detect~~ whether the cropland is irrigated in the driest year. But in the normal year, the irrigation maybe not necessary in this area. ~~Thus~~~~So~~, this means the largest extent area for last ten years (2010-2019). On the other hand, when we compare our result with nation census data, the result shows high consistent. Compared with USGS-LGRIPC30 and GRIPC-500, our result ~~does not exhibit significant~~~~didn't show much~~ overestimation.

When discussing irrigation extents, it is crucial to differentiate between “net irrigated area” and “gross irrigated cropland area.” The net irrigated area refers to the actual land area equipped with irrigation facilities and receiving irrigation, while the gross irrigated cropland area encompasses all the land that ~~can potentially be~~~~could be~~ irrigated during a crop’s growing season, regardless of whether it is continuously irrigated throughout the season. For instance, if a plot of land is planted and irrigated

twice in one growing season, that land ~~should would~~ be counted twice, reflecting in the gross irrigated cropland area. Therefore, the gross irrigated area ~~typically exceeds may exceed~~ the net irrigated area because it accounts for instances of multiple plantings and irrigations. This distinction is vital for accurately assessing the use of water resources and planning agricultural production. In our research, we ~~estimated estimate~~ maximum irrigation extent under the assumption that irrigation equipment is ~~specifically primarily~~ deployed to mitigate the most water-stressed conditions. ~~ThusSo~~, we ~~estimatedjust estimate~~ the net irrigation area for selected growing season, whose value should be largest during that ~~decade or three-year period decades or three years~~. For RIR, we estimate the net irrigation in the dry season & growing season that experiences the greatest water stress ~~each year for every year~~. Similarly, for RIO, we evaluate net irrigation area based on a single growing season that has undergone an extreme drought event in the last decade.

Furthermore, with the support of the DL method, we ~~successfully mapped CPIS globally achieved CPIS mapping worldwide~~, which enabled our investigation of ~~specific~~ irrigation methods. We found 11.5 ± 0.1 Mha of CPISs worldwide, composing $2.90\% \pm 0.03\%$ of the total irrigated cropland. To the best of our knowledge, this is the first study ~~to map in which~~ the CPIS irrigated method was mapped, despite Chen's research on CPI mapping in global arid regions (Chen et al., 2023a). GMIE comprises both the irrigated cropland extent and ~~specific some~~ irrigation method (CPIS) distributions with relatively high resolution, thus providing subbasin water consumption and withdrawal estimations for all sectors (Wu et al., 2022). Due to the variation in irrigation efficiency ~~among for~~ different ~~types of~~ irrigation methods, CPISs demonstrate an efficiency exceeding 80%, while gravity-flowing irrigation methods exhibit a comparatively low efficiency of approximately 60% (Waller and Yitayew, 2016). Therefore, irrigation efficiency can be estimated ~~based on in relation to~~ ~~types of~~ irrigation methods in the future. This process could enhance the understanding of the irrigation paradox (Grafton et al., 2018), which indicates that technological advancement increases irrigation efficiency, but crop water levels do not decrease. However, this study ~~excluded didn't include~~ the other irrigation types, because the identification of CPIS was relied on the circle shape in the satellite data and other irrigation types ~~lack didn't show~~ this distinguish feature. The identification of other irrigation types in the future ~~will be is definitely~~ important for water use estimations (Boutsioukis and Arias-Moliz, 2022), maybe with the help of big-geo data. In the maximum irrigation extent, we include all the irrigation types that could mitigate water stress.

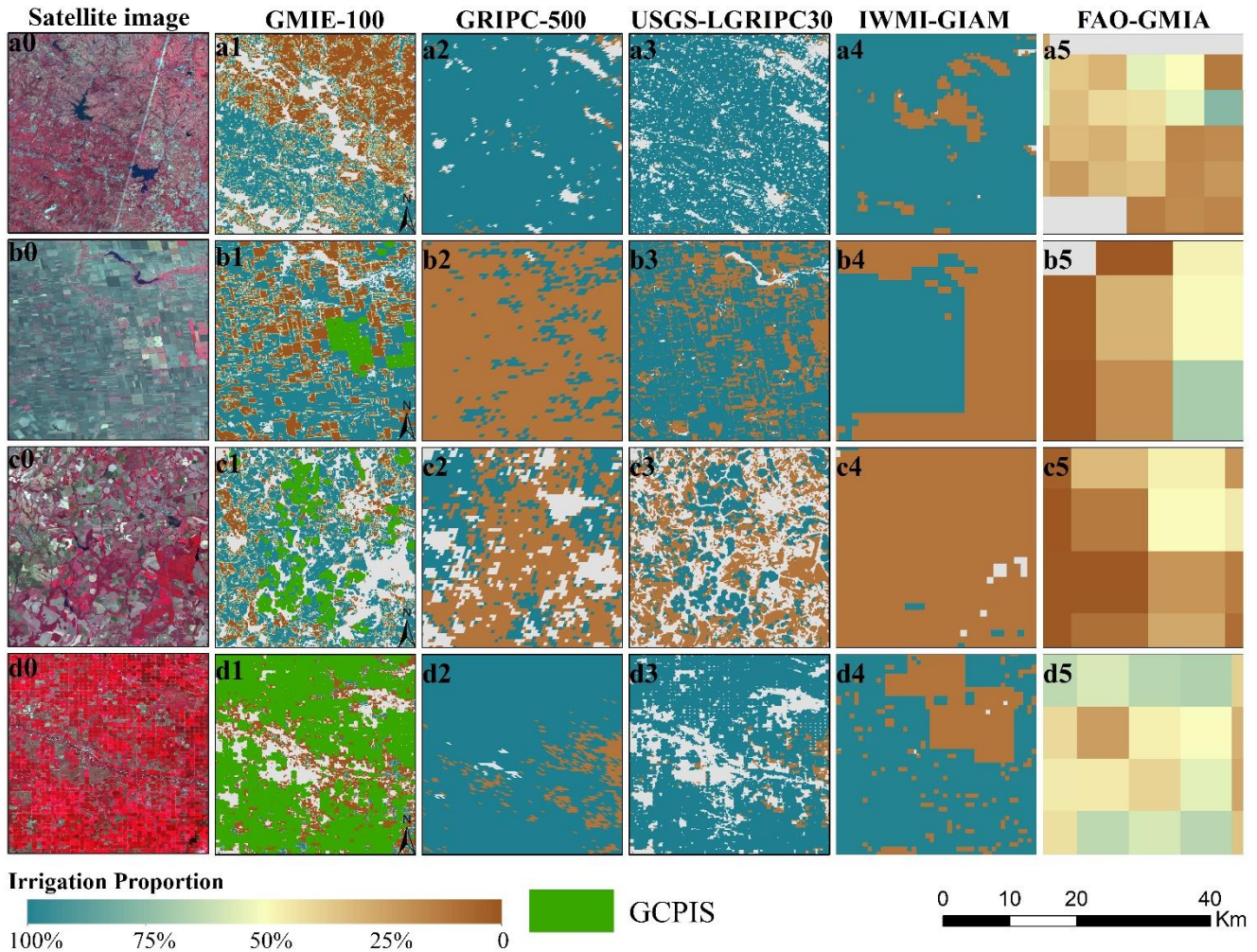


Figure 17 Comparison between GMIE-100 and existing global irrigation products in detail; their specific locations are labelled in the corresponding subfigure [Figure 15](#) [Figure-15](#) with red rectangles.

640 Compared to the surveillance classification method, our method requires fewer samples. However, due to a lack of
 645 expertise, all spectral characteristics of irrigated farmland were studied using training samples, which increased the required
 number of samples. Xie's research used 20,000 samples for irrigation mapping in the United States (Xie et al., 2019). Zhang's
 research used approximately 100,000 samples to identify irrigated croplands in China (Zhang et al., 2022b). By determining
 the NDVI ~~NDV~~-difference and NDVI deviation between irrigated and rainfed cropland, the required amount of training
 samples could be drastically reduced. In this study, a total of 92,303 samples were used to determine the NDVI threshold and
 the NDVI deviation threshold at the global scale. Moreover, training samples in China were mostly collected on site, which is
 more precise than visual interpretation.

650 Additionally, there are several limitations to this method. Firstly, the accuracy of our method ~~varies significantly~~ indeed ~~varies~~ across different regions due to the variability in climate, soil types, crop species, and irrigation practices among different areas. According to the accuracy reports for each irrigation mapping zone, cropland is present in 105 out of the total 110 irrigation mapping zones, with 96 of them exhibiting an accuracy greater than 70%. There are only 9 divisions with ~~accuracies below accuracy less than~~ 70%, most of which are situated in the Southeast Asian island countries, regions such as Thailand, Myanmar, Laos, and the tropical rainforest areas of South America, notably the Amazon, ~~characterized by which are characterized by~~ their humid conditions. We acknowledge that there is significant uncertainty in these aforementioned regions; however, the proportion of irrigation in these areas is typically not as substantial compared to arid and semi-arid regions. The task of identifying irrigation in these regions using machine learning methods is also challenging, as it is not straightforward to fully distinguish between irrigated and rainfed cropland without accurate phenological inputs. A potential solution for improving accuracy in humid regions could involve the integration of irrigation performance assessments to select optimal time windows, coupled with advanced machine learning techniques. Additionally, the representativeness of sample points can be further improved, e.g., by identifying CPISs via DL methods (Tian et al., 2023b; Chen et al., 2023a), which are commonly used in the US, Brazil and the Middle East.

660 Second, Although GMIE-100 provides a relatively high-resolution distribution of irrigated cropland, it ~~produces~~ ~~does produce~~ some mixed pixels with cropland or noncropland and irrigated or rainfed cropland. This is especially true for regions with extremely small agricultural fields (Fritz et al., 2015). The cropland masks had the greatest influence on the GMIE-100 dataset (Salmon et al., 2015; Meier et al., 2018), despite the selection of 16 distinct cropland datasets derived from country- and region-level sources as high-priority inputs. These datasets often ~~demonstrate exhibit~~ disparities in estimating the distribution of cropland, particularly in African countries, due to the complex landscape, frequent cloud cover, and the presence of small agricultural fields (Nabil et al., 2020). Consequently, inaccuracies within the cropland datasets ~~transferred were transposed~~ onto the GMIE-100 dataset. Nevertheless, importantly, these datasets remain the primary sources of cost-effective and up-to-date information covering vast geographical areas. Actually, we just focus on seasonal cropland, because the permanent crops ~~are generally used for were usually for~~ fruit trees, nut trees, coffee, tea, and some types of vines, which is recognized as shrub or tree in most landcover system such as ESRI (Karra et al., 2021), FROM-GLC (Yu et al., 2013), GLAD_Map (Potapov et al., 2022), GLC-FCS30 (Zhang et al., 2021b) and WORDCOER (Zanaga et al., 2022). ~~Conversely On the contrary,~~ harvest crops, maize, soybean, wheat, and rice ~~are was~~ most important for food security. ~~Therefore So,~~ we choose this definition to distinguish irrigated and rainfed cropland, rather than the definition from FAO's. Different ~~crop definitions definition of crop~~ as input data may produce varied irrigated cropland area, which will definitely introduce uncertainty in the final result. A consistent, high resolution cropland mask with high accuracy is urgently needed to solve this problem.

670 Thirdly, it is ~~challenging hard~~ to collect the ~~global field samples filed samples globally~~, we fused three sources of samples. From different country, there is varied dominant samples source. ~~For instance, in China, most samples were collected Such as in China, most of samples was obtained~~ from GVG field survey. While in Brazil, major samples were from USGS samples.

680 Except country with GVG and USGS-samples, the visual interpretation data was dominant sources of samples. This also
ensures ~~ensure~~ the represented manner of irrigated cropland. Overall, the number of samples was very large. Basically, this
irrigated and rain-fed samples database ~~esuffices for~~ ~~ould meet~~ the globally irrigated cropland mapping compared with global
cropland expansion mapping research (Potapov et al., 2022), which achieved cropland mapping globally with thousands of
samples. Meanwhile, this fused samples maybe introduce some uncertainty in terms of representation. This effect should be
685 acceptable in arid and semi-arid regions because the irrigation performance is relatively easy to identify. However, the
uncertainty ~~may increase~~ ~~maybe enlarged~~ in wet region due to ~~complexity~~ ~~complex manner~~ of irrigated cropland. Also, a parcel
of land is designated as irrigated if it receives any supplemental artificial water supply to support crop cultivation at least once
during the growing season. The Global Maximum Irrigated Extent (GMIE) dataset, initially developed at a 30-meter resolution,
categorizes each pixel as either irrigated or rainfed cropland. Thus, even if a pixel contains less than 100% irrigated cropland,
690 it is classified as an irrigated pixel within that 30×30-meter area. ~~As a result~~ ~~As the result~~, there may be a tendency towards
overestimation due to the mixed pixels at the 30-meter resolution, particularly in regions with smaller fields such as Southern
China, Southeast Asia, and parts of Africa. However, the relatively high resolution of the pixels helps to mitigate this
uncertainty to a certain extent.

4. Conclusion

695 High-resolution and updated irrigation maps are important for tracking regional water use and food production situations.
Using irrigation performance data collected during the dry season of the growing season and during extreme drought events,
we produced the GMIE-100 ~~with a 100-meter resolution~~ ~~at 100 m~~ with the support of GEE. In this study, the entire globe was
divided into 110 zones based on variations in climate and phenology. In each IMZ, we identified the dry months during the
growing seasons from 2017-2019, or alternatively, the driest months during the most arid year from 2010 ~~to~~ -2019. To
700 distinguish irrigated cropland, we employed 92,303 samples to determine thresholds for the NDVI during the dry months of
2017 ~~to~~ -2019 and the NDVI deviation from the ten-year average for the driest month (NDVI_{dev}). The NDVI or NDVI_{dev}
threshold that achieved the highest overall accuracy was selected to distinguish irrigated and rainfed cropland. All the
algorithms were conducted using GEE with the code
<https://code.earthengine.google.com/eaafaab35dde9bbe37f443e80c716479>.

705 With the support of the DL method, the global CPIS was identified using Pivot-Net. We identified 11.5 million hectares
of CPIS irrigated cropland, accounting for approximately $2.90\% \pm 0.03\%$ of the total irrigated cropland. However, in Namibia,
the US, Saudi Arabia, South Africa, Canada and Zambia, the proportion of CPIS was greater than 10%. To our knowledge,
this is the first attempt to identify [types of](#) irrigation methods globally, although other types of irrigation methods, such as
gravity flow, are still dominant [types of](#) irrigation methods. ~~Nevertheless~~ ~~However~~, ~~our approach facilitates~~ ~~our method can~~

710 ~~facilitate~~ the estimation of irrigation efficiency based on different [types of](#) irrigation method proportions to support high-accuracy subbasin-scale water resource management.

Finally, the GMIE-100 was produced ~~with a 100-meter resolution at 100 metres~~. Using 23,076 points to validate the results, we found that the overall accuracy of GMIE-100 was $83.6\% \pm 0.6\%$, but it varied among the different IMZs. The GMIE-100 indicates that the largest extent of irrigated cropland reached 403.17 ± 9.82 million hectares, which accounts for $23.4\% \pm 0.6\%$ of the total global cropland. Spatially, irrigated cropland is concentrated in great plains regions and regions near rivers. A total of 224 million hectares of irrigated cropland, accounting for 55.6% of the total irrigated cropland, ~~is was~~ in the plains regions. The Ganges Plain, the Indus Plain and the North China Plain all have large amounts of irrigated cropland worldwide. The GMIE-100 provides more detailed information about irrigated and rainfed cropland and ~~thereby improves its ability to thus~~ ~~can better~~ support agricultural water use estimation and regional food situation assessment.

720 **5. Code and data availability**

The data are publicly accessible through the following link: <https://doi.org/10.7910/DVN/HKBAQQ> (Tian et al., 2023a). The GMIE-100 dataset spans values ranging from 0 to 1, with a designated no-data value of -99. Globally, there are 67 tiles available, each with a maximum extent of $21^\circ \times 21^\circ$. In cases where these tiles overlap with land, they maintain the standard extents; however, adjustments are made to the tile extents as needed to accommodate the terrestrial range. The GCPIS was stored in shapefile format in zip files. The irrigation unit zone can be downloaded from <http://cloud.cropwatch.com.cn/>

Author contributions

HZ and BW conceptualized the study. FT designed the experiments and carried out the experiments. BW and HZ were responsible for funding acquisition. MZ and WZ conducted the investigation and formal analysis. FT prepared the original draft of the manuscript. FT, BW, HZ, MZ, WZ, NY, YL, and YL reviewed and edited the manuscript.

730 **Competing interests**

The authors declare that they have no conflicts of interest.

Acknowledgements

We gratefully acknowledge the support of the Google Earth Engine platform, which provided essential computational and storage resources, simplifying access to archived datasets such as TM/ETM/OLI satellite data, TRMM and GLDAS for precipitation data, and MOD16A2.006 for evapotranspiration data. These resources greatly facilitated program calculations

and data retrieval. We thank the data provider for the abovementioned data and the GFSAD30 team for publishing the irrigated and rainfed samples. Furthermore, we would like to express our gratitude to the authors of existing irrigation datasets, namely, GRIPC-500, USGS-LGRIP30, IWMI-GIAM, and FAO-GMIA, for their foundational work, which has significantly contributed to our research in this field. Their efforts have provided essential background information for our study.

740 **Financial support**

This research was supported by the Natural Science Foundation of China (No. 41861144019, No. 42301409, [42071271](#)), ~~the Agricultural Remote Sensing Innovation Team Project of AIRCAS (No. E33D0201-6)~~, [CAS-MPG research project \(HZXM20225001MI\)](#), [the strategic consulting project of the Alliance of International Science Organizations \(ANSO-SBA-2022-02\)](#) and the National Key Research and Development Program of China (2016YFA0600304, ~~2016YFA0600302~~).

745 **References**

- Ambika, A. K., Wardlow, B., and Mishra, V.: Remotely sensed high resolution irrigated area mapping in India for 2000 to 2015, *Sci Data*, 3, 160118, [10.1038/sdata.2016.118](#), 2016.
- Bingfang Wu, Fuyou Tian, Mohsen Nabil, José Bofana, Yuming Lu, Abdelrazek Elnashar, Awetahegn Niguse Beyene, Miao Zhang, Hongwei Zeng, and Zhu, W.: Global mapping of actual irrigation capacity using the irrigation performances under drought stress capacity, *Global Environmental Change* (minor revision), 2021.
- 750 Boryan, C., Yang, Z., Mueller, R., and Craig, M.: Monitoring US agriculture: the US Department of Agriculture, National Agricultural Statistics Service, Cropland Data Layer Program, Geocarto International, 26, 341-358, [10.1080/10106049.2011.562309](#), 2011.
- Boutsoukias, C. and Arias - Moliz, M. T.: Present status and future directions - irrigants and irrigation methods, *Int. Endod. J.*, 755 55, 588-612, 2022.
- Chen, F., Zhao, H., Roberts, D., Van de Voorde, T., Batelaan, O., Fan, T., and Xu, W.: Mapping center pivot irrigation systems in global arid regions using instance segmentation and analyzing their spatial relationship with freshwater resources, *Remote Sensing of Environment*, 297, 113760, [10.1016/j.rse.2023.113760](#), 2023a.
- Chen, P., Wang, S., Liu, Y., Wang, Y., Wang, Y., Zhang, T., Zhang, H., Yao, Y., and Song, J.: Water availability in China's oases 760 decreased between 1987 and 2017, *Earth's Future*, 11, e2022EF003340, 2023b.
- Chen, Y., Lu, D., Luo, L., Pokhrel, Y., Deb, K., Huang, J., and Ran, Y.: Detecting irrigation extent, frequency, and timing in a heterogeneous arid agricultural region using MODIS time series, Landsat imagery, and ancillary data, *Remote Sensing of Environment*, 204, 197-211, [10.1016/j.rse.2017.10.030](#), 2018.
- Cui, B., Gui, D., Liu, Q., Abd - Elmabod, S. K., Liu, Y., and Lu, B.: Distribution and growth drivers of oases at a global scale,

- 765 Earth's Future, 12, e2023EF004086, 2024.
- Dari, J., Brocca, L., Modanesi, S., Massari, C., Tarpanelli, A., Barbetta, S., Quast, R., Vreugdenhil, M., Freeman, V., Barella-Ortiz, A., Quintana-Seguí, P., Bretreger, D., and Volden, E.: Regional data sets of high-resolution (1 and 6 km) irrigation estimates from space, *Earth System Science Data*, 15, 1555-1575, 10.5194/essd-15-1555-2023, 2023.
- Deines, J. M., Kendall, A. D., Crowley, M. A., Rapp, J., Cardille, J. A., and Hyndman, D. W.: Mapping three decades of annual irrigation across the US High Plains Aquifer using Landsat and Google Earth Engine, *Remote Sensing of Environment*, 233, 111400, 10.1016/j.rse.2019.111400, 2019.
- 770 dela Torre, D. M. G., Gao, J., Macinnis-Ng, C., and Shi, Y.: Phenology-based delineation of irrigated and rain-fed paddy fields with Sentinel-2 imagery in Google Earth Engine, *Geo-spatial Information Science*, 24, 695-710, 10.1080/10095020.2021.1984183, 2021.
- 775 do Canto, A. C. B., Marques, R., Leite, F. F. G. D., da SILVEIRA, J., DONAGEMMA, G., and RODRIGUES, R.: Land use and cover maps for Mato Grosso from 1985 to 2019, Duda, R. O., Hart, P. E., and Stork, D. G.: *Pattern classification*, John Wiley & Sons 2012.
- Fisette, T., Rollin, P., Aly, Z., Campbell, L., Daneshfar, B., Filyer, P., Smith, A., Davidson, A., Shang, J., and Jarvis, I.: AAFC annual crop inventory, 2013 Second International Conference on Agro-Geoinformatics (Agro-Geoinformatics), 270-274,
- 780 Fritz, S., See, L., McCallum, I., You, L., Bun, A., Moltchanova, E., Duerauer, M., Albrecht, F., Schill, C., and Perger, C.: Mapping global cropland and field size, *Global change biology*, 21, 1980-1992, 2015.
- Gommes, R., Wu, B., Li, Z., and Zeng, H.: Design and characterization of spatial units for monitoring global impacts of environmental factors on major crops and food security, *Food and Energy Security*, 5, 40-55, 2016.
- Gorelick, N., Hancher, M., Dixon, M., Ilyushchenko, S., Thau, D., and Moore, R.: Google Earth Engine: Planetary-Scale Geospatial Analysis for Everyone, *Remote Sensing of Environment*, 202, 18-27, 2017.
- 785 Grafton, R. Q., Williams, J., Perry, C. J., Molle, F., Ringler, C., Steduto, P., Udall, B., Wheeler, S., Wang, Y., and Garrick, D.: The paradox of irrigation efficiency, *Science*, 361, 748-750, 2018.
- Jianxi, H., Li, L., Chao, Z., Wenju, Y., Jianyu, Y., and Dehai, Z.: Evaluation of cultivated land irrigation guarantee capability based on remote sensing evapotranspiration data, *Transactions of the Chinese Society of Agricultural Engineering*, 31, 2015.
- 790 Karra, K., Kontgis, C., Statman-Weil, Z., Mazzariello, J. C., Mathis, M., and Brumby, S. P.: Global land use/land cover with Sentinel 2 and deep learning, 2021 IEEE international geoscience and remote sensing symposium IGARSS, 4704-4707, Lu, Y., Song, W., Lü, J., Chen, M., Su, Z., Zhang, X., and Li, H.: A pixel-based spectral matching method for mapping high-resolution irrigated areas using EVI time series, *Remote Sensing Letters*, 12, 169-178, 2021.
- McDermid, S., Nocco, M., Lawston-Parker, P., Keune, J., Pokhrel, Y., Jain, M., Jägermeyr, J., Brocca, L., Massari, C., Jones, A. D., Vahmani, P., Thiery, W., Yao, Y., Bell, A., Chen, L., Dorigo, W., Hanasaki, N., Jasechko, S., Lo, M.-H., Mahmood, R., Mishra, V., Mueller, N. D., Niyogi, D., Rabin, S. S., Sloat, L., Wada, Y., Zappa, L., Chen, F., Cook, B. I., Kim, H., Lombardozzi, D., Polcher, J., Ryu, D., Santanello, J., Satoh, Y., Seneviratne, S., Singh, D., and Yokohata, T.: Irrigation in the Earth system,

- Nature Reviews Earth & Environment, 4, 435-453, 10.1038/s43017-023-00438-5, 2023.
- McNairn, H., Champagne, C., Shang, J., Holmstrom, D., and Reichert, G.: Integration of optical and Synthetic Aperture Radar (SAR) imagery for delivering operational annual crop inventories, *ISPRS Journal of Photogrammetry and Remote Sensing*, 64, 434-449, 10.1016/j.isprsjprs.2008.07.006, 2009.
- Meier, J., Zabel, F., and Mauser, W.: A global approach to estimate irrigated areas – a comparison between different data and statistics, *Hydrology and Earth System Sciences*, 22, 1119-1133, 10.5194/hess-22-1119-2018, 2018.
- Nabil, M., Zhang, M., Bofana, J., Wu, B., Stein, A., Dong, T., Zeng, H., and Shang, J.: Assessing factors impacting the spatial discrepancy of remote sensing based cropland products: A case study in Africa, *International Journal of Applied Earth Observation and Geoinformation*, 85, 102010, 2020.
- Nagaraj, D., Proust, E., Todeschini, A., Rulli, M. C., and D'Odorico, P.: A new dataset of global irrigation areas from 2001 to 2015, *Advances in Water Resources*, 152, 103910, 10.1016/j.advwatres.2021.103910, 2021.
- Pervez, M. S. and Brown, J. F.: Mapping Irrigated Lands at 250-m Scale by Merging MODIS Data and National Agricultural Statistics, *Remote Sensing*, 2, 2388-2412, 10.3390/rs2102388, 2010.
- Potapov, P., Turubanova, S., Hansen, M. C., Tyukavina, A., Zalles, V., Khan, A., Song, X.-P., Pickens, A., Shen, Q., and Cortez, J.: Global maps of cropland extent and change show accelerated cropland expansion in the twenty-first century, *Nature Food*, 3, 19-28, 2022.
- Puy, A., Borgonovo, E., Lo Piano, S., Levin, S. A., and Saltelli, A.: Irrigated areas drive irrigation water withdrawals, *Nat Commun*, 12, 4525, 10.1038/s41467-021-24508-8, 2021.
- Puy, A., Sheikholeslami, R., Gupta, H. V., Hall, J. W., Lankford, B., Lo Piano, S., Meier, J., Pappenberger, F., Porporato, A., Vico, G., and Saltelli, A.: The delusive accuracy of global irrigation water withdrawal estimates, *Nat Commun*, 13, 3183, 10.1038/s41467-022-30731-8, 2022.
- Salmon, J. M., Friedl, M. A., Froelking, S., Wissler, D., and Douglas, E. M.: Global rain-fed, irrigated, and paddy croplands: A new high resolution map derived from remote sensing, crop inventories and climate data, *International Journal of Applied Earth Observation and Geoinformation*, 38, 321-334, 10.1016/j.jag.2015.01.014, 2015.
- Shahriar Pervez, M., Budde, M., and Rowland, J.: Mapping irrigated areas in Afghanistan over the past decade using MODIS NDVI, *RSEnv*, 149, 155-165, 10.1016/j.rse.2014.04.008, 2014.
- Siebert, S., Henrich, V., Frenken, K., and Burke, J.: Update of the digital global map of irrigation areas to version 5, Rheinische Friedrich-Wilhelms-Universität, Bonn, Germany and Food and Agriculture Organization of the United Nations, Rome, Italy, 2013.
- Siebert, S., Döll, P., Hoogeveen, J., Faures, J.-M., Frenken, K., and Feick, S.: Development and validation of the global map of irrigation areas, 2005.
- Siebert, S., Kummu, M., Porkka, M., Döll, P., Ramankutty, N., and Scanlon, B. R.: A global data set of the extent of irrigated land from 1900 to 2005, *HESS*, 19, 1521-1545, 2015.

- Teluguntla, P., Thenkabail, P., Oliphant, A., Gumma, M., Aneece, I., Foley, D., and McCormick, R.: Landsat-Derived Global Rainfed and Irrigated-Cropland Product 30 m V001 [dataset], <https://doi.org/10.5067/Community/LGRIP/LGRIP30.001>, 2023.
- 835 Thenkabail, P. S., Knox, J. W., Ozdogan, M., Gumma, M. K., Congalton, R. G., Wu, Z., Milesi, C., Finkral, A., Marshall, M., and Mariotto, I.: Assessing future risks to agricultural productivity, water resources and food security: How can remote sensing help?, *PE&RS, Photogrammetric Engineering & Remote Sensing*, 78, 773-782, 2012.
- Thenkabail, P. S., Teluguntla, P. G., Xiong, J., Oliphant, A., Congalton, R. G., Ozdogan, M., Gumma, M. K., Tilton, J. C., Giri, C., and Milesi, C.: Global cropland-extent product at 30-m resolution (GCEP30) derived from Landsat satellite time-series data for the year 2015 using multiple machine-learning algorithms on Google Earth Engine cloud, *US Geological Survey*2330-7102, 2021.
- 840 Thenkabail, P. S., Biradar, C. M., Noojipady, P., Dheeravath, V., Li, Y., Velpuri, M., Gumma, M., Gangalakunta, O. R. P., Turrall, H., Cai, X., Vithanage, J., Schull, M. A., and Dutta, R.: Global irrigated area map (GIAM), derived from remote sensing, for the end of the last millennium, *International Journal of Remote Sensing*, 30, 3679-3733, 10.1080/01431160802698919, 2009.
- Tian, F., Wu, B., Zeng, H., Watmough, G. R., Zhang, M., and Li, Y.: Detecting the linkage between arable land use and poverty using machine learning methods at global perspective, *Geography and Sustainability*, 3, 7-20, 10.1016/j.geosus.2022.01.001, 845 2022.
- Tian, F., Wu, B., Zeng, H., Zhang, M., Zhu, W., Yan, N., Lu, Y., and Li, Y.: GMIE: a global maximum irrigation extent and central pivot irrigation system dataset derived through irrigation performance during drought stress and machine learning method (V2), *Harvard Dataverse [dataset]*, doi:10.7910/DVN/HKBAQQ, 2023a.
- Tian, F., Wu, B., Zeng, H., Zhang, M., Hu, Y., Xie, Y., Wen, C., Wang, Z., Qin, X., Han, W., and Yang, H.: A Shape-attention 850 Pivot-Net for Identifying Central Pivot Irrigation Systems from Satellite Images using a Cloud Computing Platform: An application in the contiguous US, *GIScience & Remote Sensing*, 10.1080/15481603.2023.2165256, 2023b.
- Waldner, F., De Aballeyra, D., Verón, S. R., Zhang, M., Wu, B., Plotnikov, D., Bartalev, S., Lavreniuk, M., Skakun, S., and Kussul, N.: Towards a set of agrosystem-specific cropland mapping methods to address the global cropland diversity, *International Journal of Remote Sensing*, 37, 3196-3231, 2016.
- 855 Waller, P. and Yitayew, M.: Center Pivot Irrigation Systems, in: *Irrigation and Drainage Engineering*, edited by: Waller, P., and Yitayew, M., Springer International Publishing, Cham, 209-228, 10.1007/978-3-319-05699-9_12, 2016.
- Wang, X., Muller, C., Elliot, J., Mueller, N. D., Ciaais, P., Jagermeyr, J., Gerber, J., Dumas, P., Wang, C., Yang, H., Li, L., Deryng, D., Folberth, C., Liu, W., Makowski, D., Olin, S., Pugh, T. A. M., Reddy, A., Schmid, E., Jeong, S., Zhou, F., and Piao, S.: Global irrigation contribution to wheat and maize yield, *Nat Commun*, 12, 1235, 10.1038/s41467-021-21498-5, 2021.
- 860 Wriedt, G., Der Velde, M. V., Aloe, A., and Bouraoui, F.: A European irrigation map for spatially distributed agricultural modelling, *Agricultural Water Management*, 96, 771-789, 2009.
- Wu, B., Tian, F., Zhang, M., Zeng, H., and Zeng, Y.: Cloud services with big data provide a solution for monitoring and tracking sustainable development goals, *Geography and Sustainability*, 1, 25-32, 10.1016/j.geosus.2020.03.006, 2020.

- 865 Wu, B., Fu, Z., Fu, B., Yan, C., Zeng, H., and Zhao, W.: Dynamics of land cover changes and driving forces in China's drylands since the 1970 s, *Land Use Policy*, 140, 107097, 10.1016/j.landusepol.2024.107097, 2024.
- Wu, B., Tian, F., Zhang, M., Piao, S., Zeng, H., Zhu, W., Liu, J., Elnashar, A., and Lu, Y.: Quantifying global agricultural water appropriation with data derived from earth observations, *Journal of Cleaner Production*, 358, 131891, 10.1016/j.jclepro.2022.131891, 2022.
- 870 Wu, B., Gommes, R., Zhang, M., Zeng, H., Yan, N., Zou, W., Zheng, Y., Zhang, N., Chang, S., and Xing, Q.: Global Crop Monitoring: A Satellite-Based Hierarchical Approach, *Remote Sensing*, 7, 3907-3933, 2015.
- Wu, B., Qian, J., Zeng, Y., Zhang, L., Yan, C., Wang, Z., Li, A., Ma, R., Yu, X., and Huang, J.: Land Cover Atlas of the People's Republic of China (1: 1 000 000), *Science Bulletin*, 65, 1125-1136, 2017.
- 875 Wu, B., Tian, F., Nabil, M., Bofana, J., Lu, Y., Elnashar, A., Beyene, A. N., Zhang, M., Zeng, H., and Zhu, W.: Mapping global maximum irrigation extent at 30m resolution using the irrigation performances under drought stress, *Global Environmental Change*, 79, 102652, 10.1016/j.gloenvcha.2023.102652, 2023a.
- Wu, B., Zhang, M., Zeng, H., Tian, F., Potgieter, A. B., Qin, X., Yan, N., Chang, S., Zhao, Y., Dong, Q., Boken, V., Plotnikov, D., Guo, H., Wu, F., Zhao, H., Deronde, B., Tits, L., and Loupian, E.: Challenges and opportunities in remote sensing-based crop monitoring: a review, *Natl Sci Rev*, 10, nwac290, 10.1093/nsr/nwac290, 2023b.
- 880 Xiang, K., Ma, M., Liu, W., Dong, J., Zhu, X., and Yuan, W.: Mapping Irrigated Areas of Northeast China in Comparison to Natural Vegetation, *Remote Sensing*, 11, 825, 10.3390/rs11070825, 2019.
- Xie, Y. and Lark, T. J.: Mapping annual irrigation from Landsat imagery and environmental variables across the conterminous United States, *RSEnv*, 260, 112445, 10.1016/j.rse.2021.112445, 2021.
- Xie, Y., Gibbs, H. K., and Lark, T. J.: Landsat-based Irrigation Dataset (LANID): 30 m resolution maps of irrigation distribution, frequency, and change for the US, 1997–2017, *Earth System Science Data*, 13, 5689-5710, 2021.
- 885 Xie, Y., Lark, T. J., Brown, J. F., and Gibbs, H. K.: Mapping irrigated cropland extent across the conterminous United States at 30 m resolution using a semi-automatic training approach on Google Earth Engine, *ISPRS Journal of Photogrammetry and Remote Sensing*, 155, 136-149, 10.1016/j.isprsjprs.2019.07.005, 2019.
- Yu, L., Wang, J., and Gong, P.: Improving 30 m global land-cover map FROM-GLC with time series MODIS and auxiliary data sets: a segmentation-based approach, *Int. J. Remote Sens.*, 34, 5851-5867, 2013.
- 890 Zajac, Z., Gomez, O., Gelati, E., van der Velde, M., Bassu, S., Ceglar, A., Chukaliev, O., Panarello, L., Koebler, R., van den Berg, M., Niemeyer, S., and Fumagalli, D.: Estimation of spatial distribution of irrigated crop areas in Europe for large-scale modelling applications, *Agr Water Manage*, 266, 107527, 10.1016/j.agwat.2022.107527, 2022.
- Zanaga, D., Van De Kerchove, R., Daems, D., De Keersmaecker, W., Brockmann, C., Kirches, G., Wevers, J., Cartus, O., Santoro, M., and Fritz, S.: ESA WorldCover 10 m 2021 v200, 2022.
- 895 Zhang, C., Dong, J., and Ge, Q.: Mapping 20 years of irrigated croplands in China using MODIS and statistics and existing irrigation products, *Scientific Data*, 9, 407, 2022a.

- Zhang, C., Dong, J., and Ge, Q.: IrriMap_CN: Annual irrigation maps across China in 2000–2019 based on satellite observations, environmental variables, and machine learning, *RSEnv*, 280, 113184, 10.1016/j.rse.2022.113184, 2022b.
- Zhang, C., Dong, J., and Ge, Q.: Mapping 20 years of irrigated croplands in China using MODIS and statistics and existing irrigation products, *Sci Data*, 9, 407, 10.1038/s41597-022-01522-z, 2022c.
- Zhang, L., Zhang, K., Zhu, X., Chen, H., and Wang, W.: Integrating remote sensing, irrigation suitability and statistical data for irrigated cropland mapping over mainland China, *JHyd*, 613, 128413, 10.1016/j.jhydrol.2022.128413, 2022d.
- Zhang, M., Wu, B., Zeng, H., He, G., Liu, C., Tao, S., Zhang, Q., Nabil, M., Tian, F., and Bofana, J.: GCI30: a global dataset of 30 m cropping intensity using multisource remote sensing imagery, *Earth System Science Data*, 13, 4799-4817, 2021a.
- 905 Zhang, X., Liu, L., Chen, X., Gao, Y., Xie, S., and Mi, J.: GLC_FCS30: Global land-cover product with fine classification system at 30 m using time-series Landsat imagery, *Earth System Science Data*, 13, 2753-2776, 2021b.
- Zhu, X., Zhu, W., Zhang, J., and Pan, Y.: Mapping irrigated areas in China from remote sensing and statistical data, *IEEE Journal of Selected Topics in Applied Earth Observations and Remote Sensing*, 7, 4490-4504, 2014.
- Zomer, R. J., Xu, J., and Trabucco, A.: Version 3 of the Global Aridity Index and Potential Evapotranspiration Database, *Sci Data*, 9, 409, 10.1038/s41597-022-01493-1, 2022.
- 910