

Supplementary Material

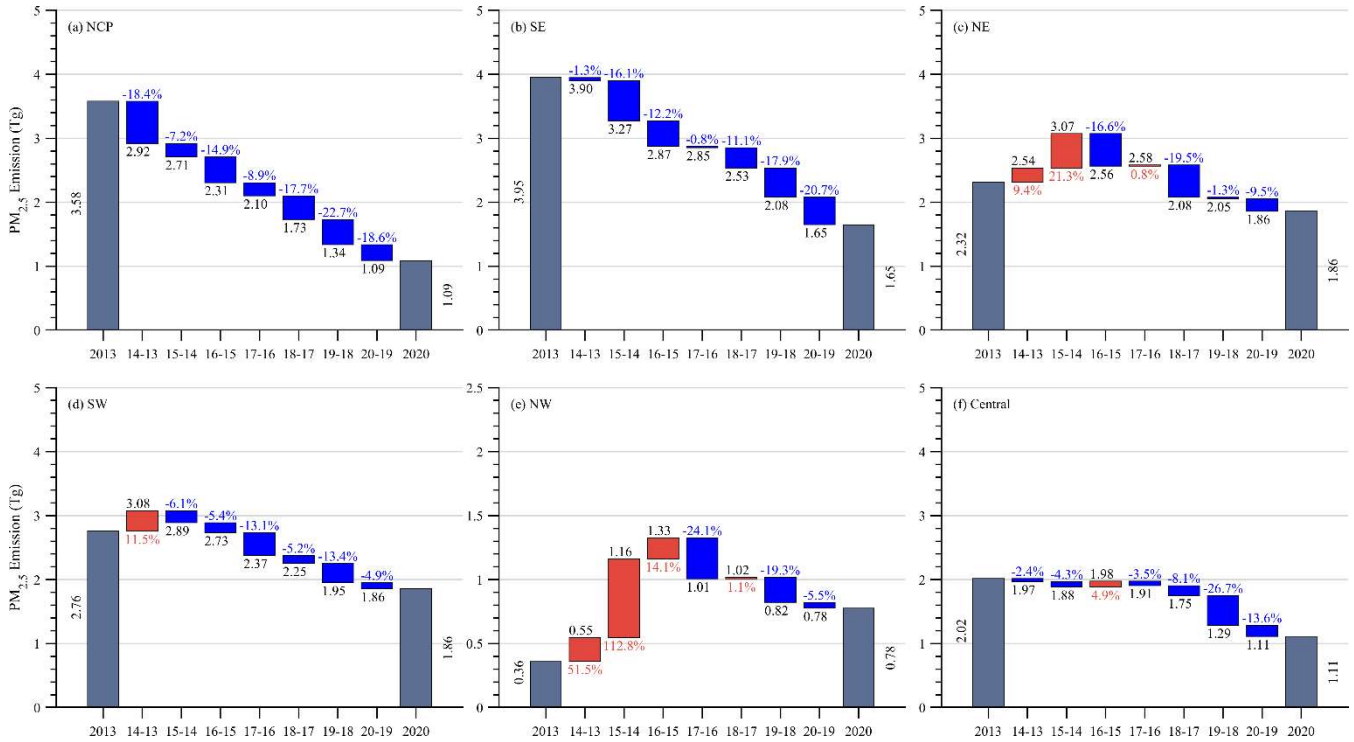


Figure S1: Emission changes of PM_{2.5} from 2013 to 2020 over different regions of China obtained from CAQIEL.

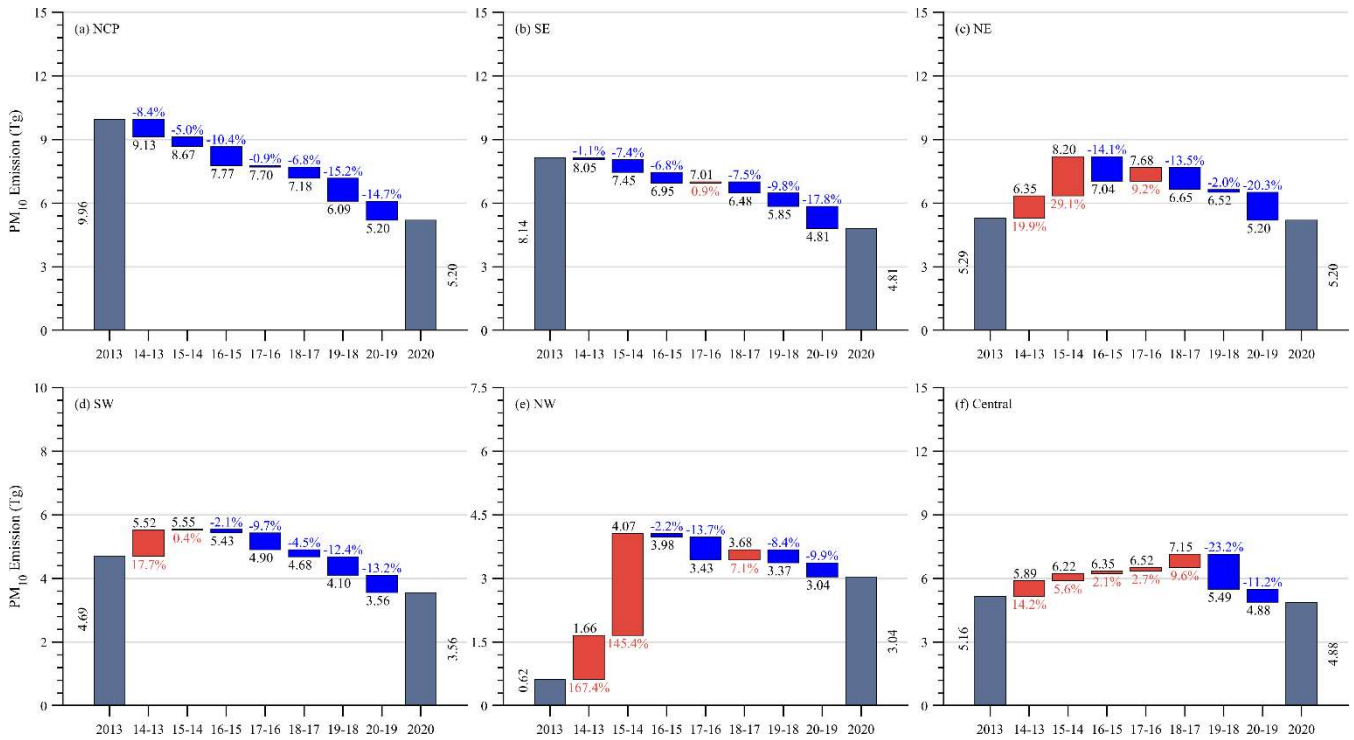


Figure S2: Same as Fig. S1 but for PM₁₀.

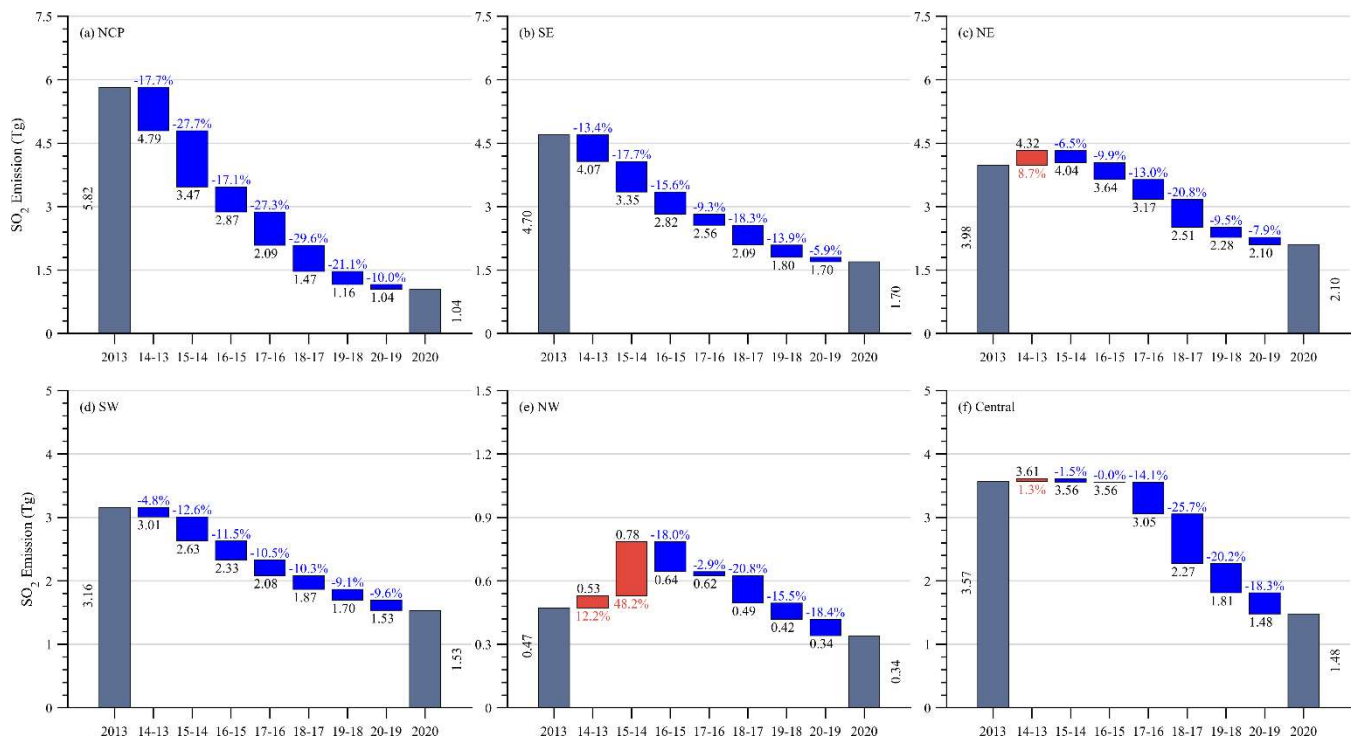


Figure S3: Same as Fig. S1 but for SO₂.

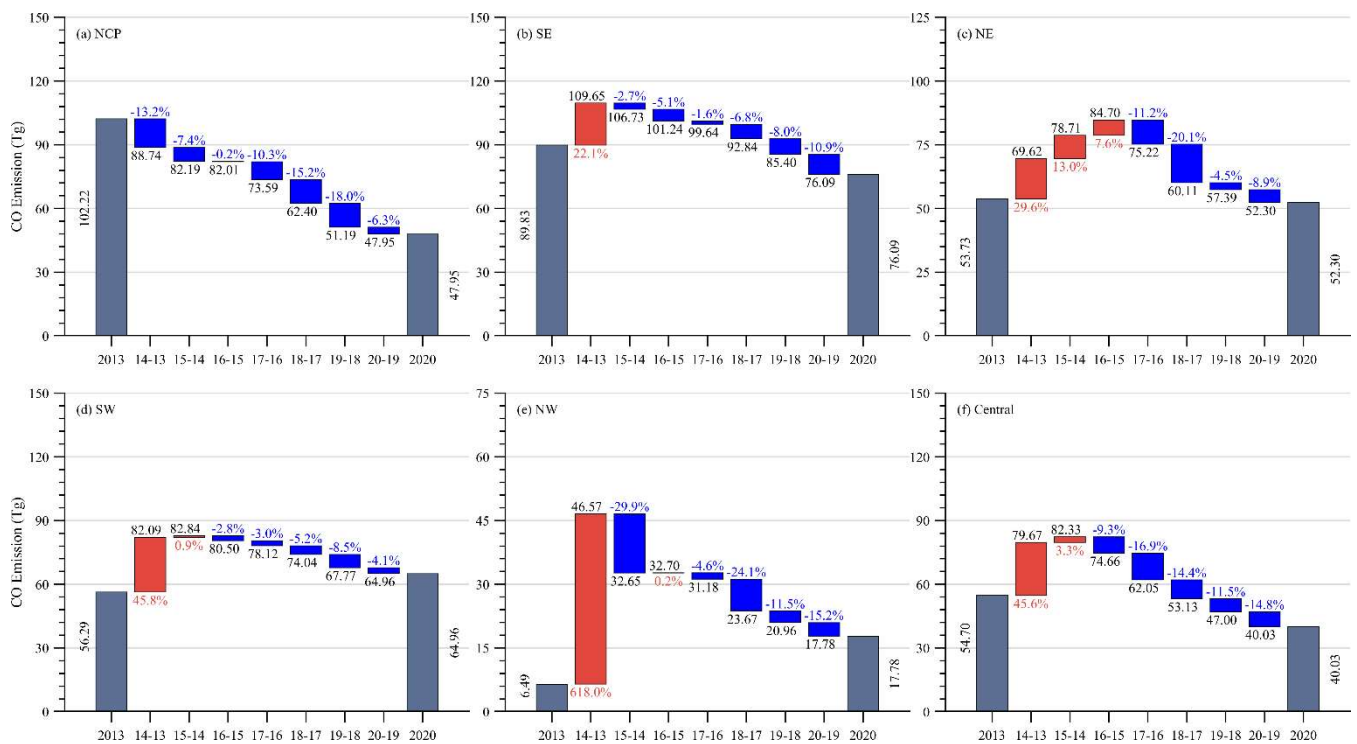


Figure S4: Same as Fig. S1 but for CO.

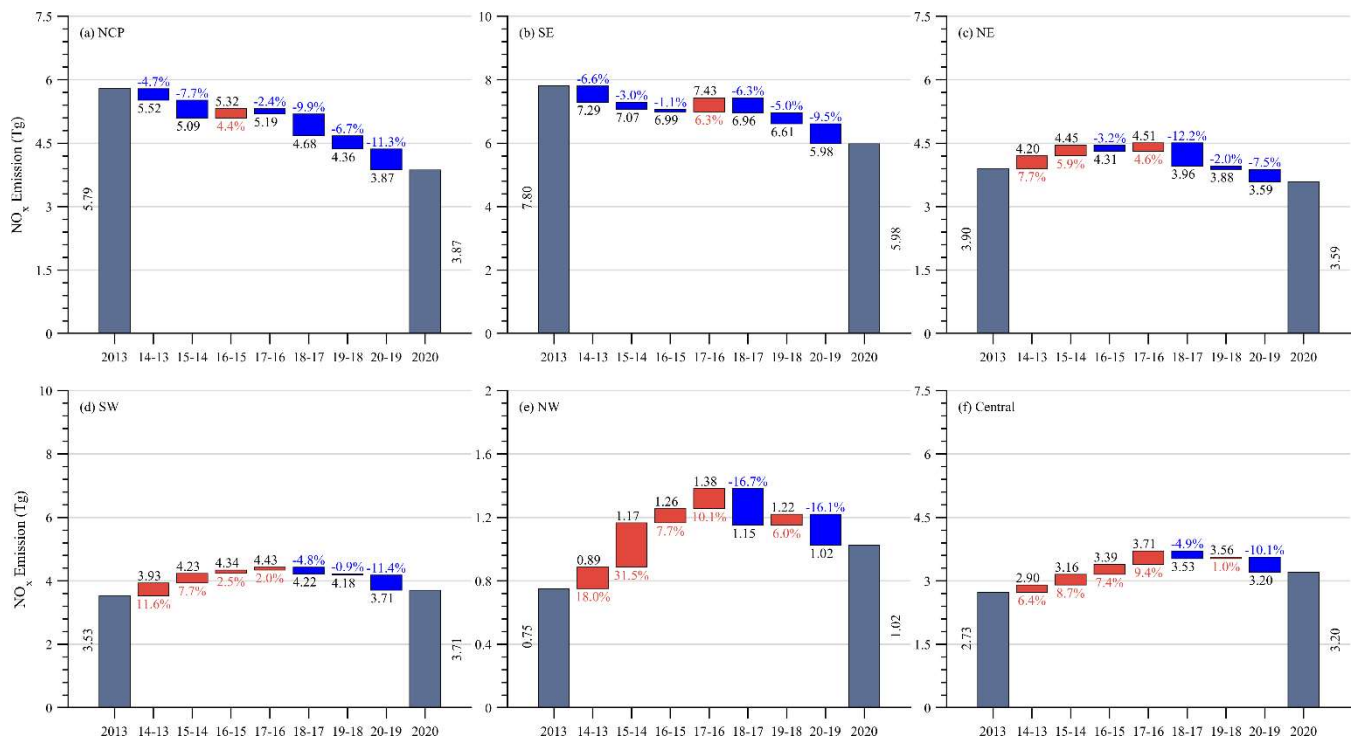


Figure S5: Same as Fig. S1 but for NO_x.

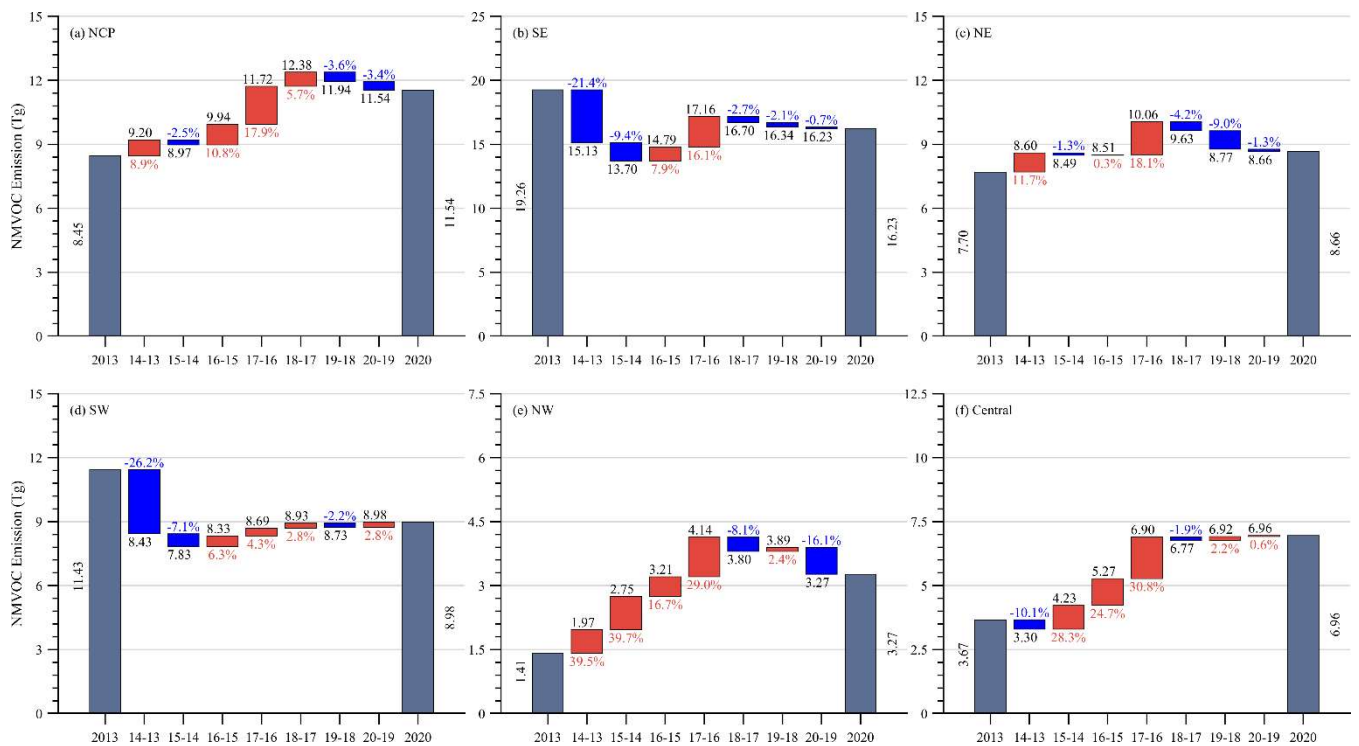


Figure S6: Same as Fig. S1 but for NMVOC.

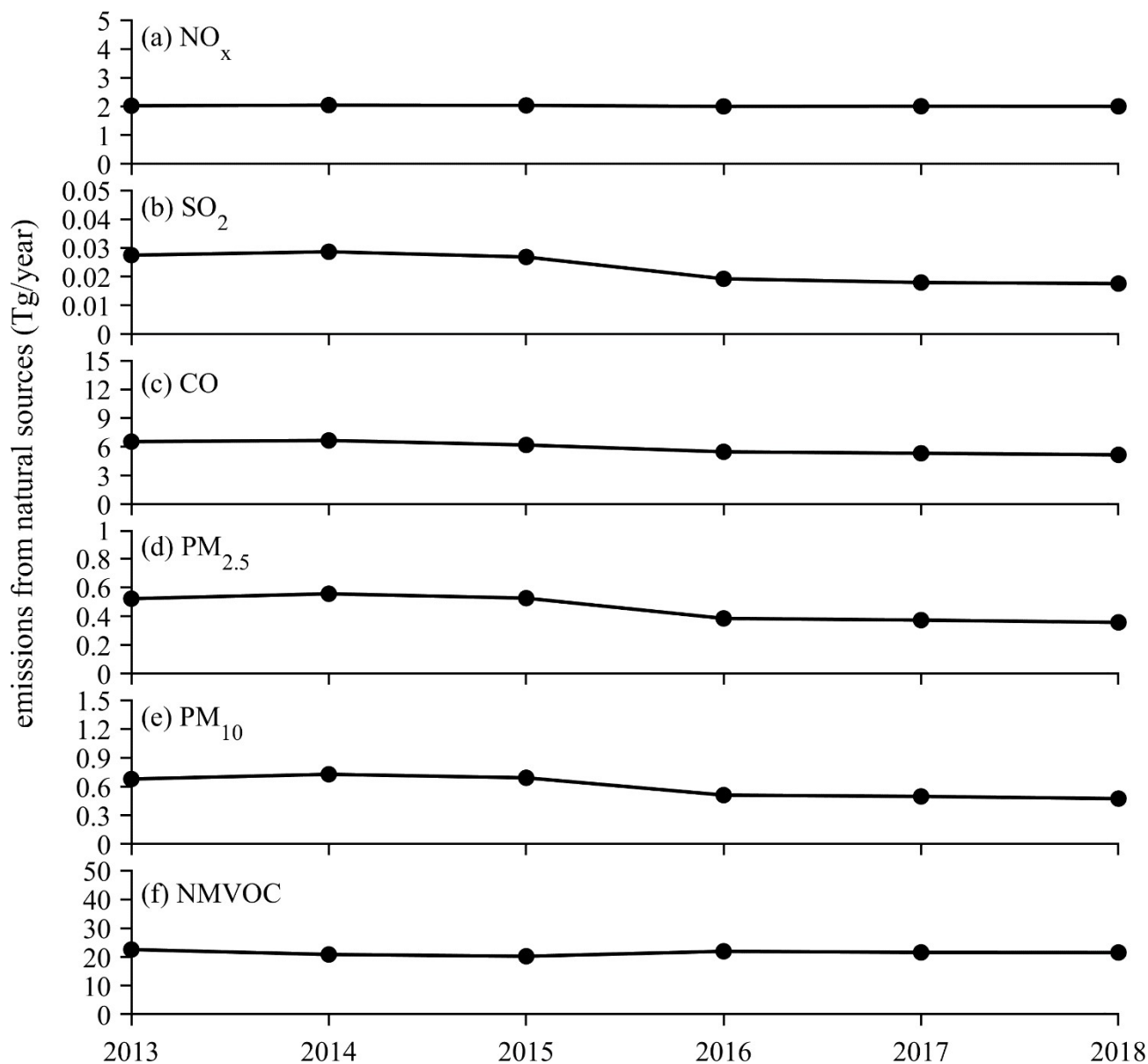


Figure S7: Time series of annual natural emissions of (a) NO_x, (b) SO₂, (c) CO, (d) PM_{2.5}, (e) PM₁₀ and (f) NMVOC in China from 2013 to 2018. The considered natural sources includes the biogenic, biomass burning and soil emissions.

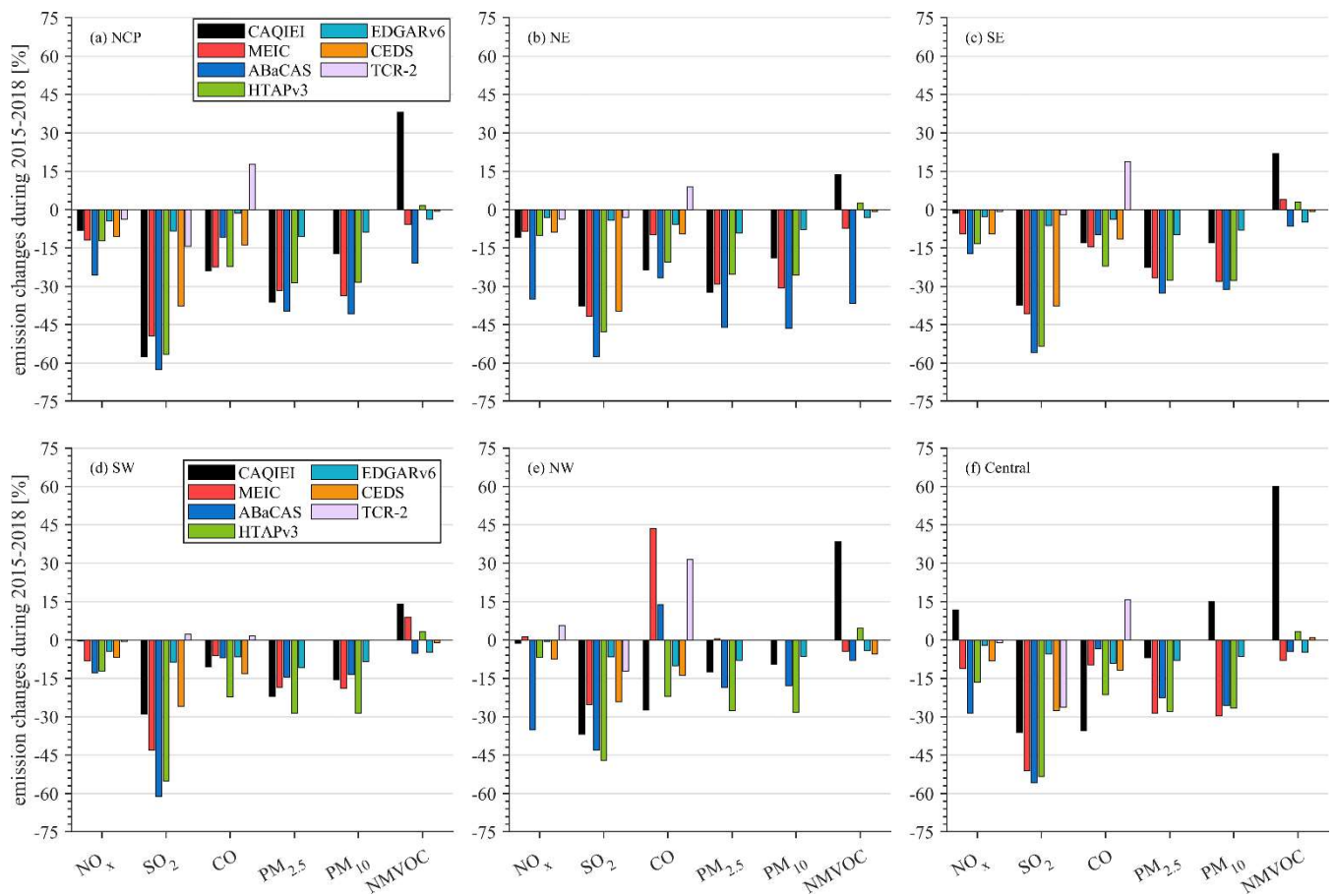


Figure S8: Comparisons of the calculated emission changes of (a) NO_x, (b) SO₂, (c) CO, (d) PM_{2.5}, (e) PM₁₀, and (f) NMVOCs over different regions of China from 2015 to 2018 between CAQIEI and previous inventories.