

A global 5km monthly potential evapotranspiration dataset (1982–2015) estimated by the Shuttleworth-Wallace model

Shanlei Sun¹, Zaoyin Bi¹, Jingfeng Xiao², Yi Liu³, Ge Sun⁴, Weimin Ju⁵, Chunwei Liu⁶, Mengyuan Mu⁷, Jinjian Li⁸, Yang Zhou¹, Xiaoyuan Li¹, Yibo Liu⁶, Haishan Chen¹

¹Collaborative Innovation Center on Forecast and Evaluation of Meteorological Disasters/Key Laboratory of Meteorological Disaster, Ministry of Education/International Joint Research Laboratory on Climate and Environment Change, Nanjing University of Information Science and Technology, Nanjing, China

²Earth Systems Research Center, Institute for the Study of Earth, Oceans, and Space, University of New Hampshire, Durham, USA

³School of Civil and Environmental Engineering, University of New South Wales, Sydney, Australia

⁴Eastern Forest Environmental Threat Assessment Center, Southern Research Station, USDA Forest Service, Raleigh, USA

⁵International Institute for Earth System Science, Nanjing University, Nanjing, China

⁶Jiangsu Key Laboratory of Agricultural Meteorology, School of Applied Meteorology, Nanjing University of Information Science and Technology, Nanjing, China

⁷ARC Centre of Excellence for Climate Extremes and Climate Change Research Centre, University of New South Wales, Sydney, Australia

⁸School of Atmospheric Sciences/Plateau Atmosphere and Environment Key Laboratory of Sichuan Province, Chengdu University of Information Technology, Chengdu, China

Correspondence to: Shanlei Sun (sun.s@nuist.edu.cn)

Abstract. As the theoretical upper bound of evapotranspiration (ET) or water use by ecosystems, potential ET (PET) has always been widely used as a variable linking a variety of disciplines, such as climatology, ecology, hydrology, and agronomy. However, substantial uncertainties exist in the current PET methods (e.g., empiric models and single-layer models) and datasets, because of unrealistic configurations of land surface and unreasonable parameterizations. Therefore, this study comprehensively considered interspecific differences in various vegetation-related parameters (e.g., plant stomatal resistance and CO₂ effects on stomatal resistance) to calibrate and parametrize the Shuttleworth-Wallace (SW) model for forests, shrubland, grassland and cropland. We derived the parameters using identified daily ET observations with no water stress (i.e., PET) at 96 eddy covariance (EC) sites across the globe. Model validations suggest that the calibrated model could be transferable from known observations to any location. Based on four popular meteorological datasets, relatively realistic canopy height and time-varying land use/land cover and Leaf Area Index, we generated a global 5 km ensemble mean monthly PET dataset that includes two components of potential transpiration (PT) and soil evaporation (PE) for the 1982–2015 time period. Using this new dataset, the climatological characteristics of PET partitioning and the spatio-temporal changes in PET, PE and PT were investigated. The global mean annual PET was 1198.96 mm with PT/PET of 41% and PE/PET of 59%, and moreover controlled by PT and PE over 41% and 59% of the globe, respectively. Globally, the annual PET and PT significantly ($p < 0.05$) increases by 1.26 mm/yr and 1.27 mm/yr over the last 34 years, followed by a slight decrease in the annual PE. Overall, the annual PET changes over 53%

删除了: 1200

删除了: 40

删除了: 60

删除了: 43

删除了: 57

删除了: 25

删除了: 22

删除了: increase

of the globe could be attributed to PT, and the rest to PE. The new PET dataset may be used by academic communities and various agencies to conduct climatological analyses, hydrological modelling, drought studies, agricultural water management, and biodiversity conservation. The dataset is available at <https://doi.org/10.11888/Terre.tpd.300193> (Sun et al., 2023).

1 Introduction

Potential evapotranspiration (PET) is the maximum amount of water that can be transferred to the air from a given land cover (e.g., land and water), providing an upper limit of the evaporative losses from this land cover (Allen et al., 1998; Milly and Dunne, 2016; Xiang et al., 2020). Commonly, it consists of potential evaporation from soils (PE) and/or transpiration by plants (PT) when the soil water supply for evapotranspiration (ET) process is non-limiting (Thornthwaite, 1948; Xiang et al., 2020). The spatio-temporal differences of PET mainly depend on those of climatic conditions, including net radiation, wind speed, the atmospheric vapour deficit, and thus PET is usually regarded as an accepted proxy for the atmospheric evaporative demand. Additionally, PET has been widely used to estimate actual ET (Sun et al., 2011a; Rao et al., 2011; Liu et al., 2017), a critical variable that links water, energy, and carbon cycles (Sun et al., 2011b), and thus is a key variable for a variety of disciplines, such as climatology, ecology, hydrology and agronomy (Allen et al., 1998; Espadafor et al., 2011; Beven, 2012).

Historically, numerous PET models have been proposed (Singh and Xu, 1997; Xu and Singh, 2000, 2001; Xiang et al., 2020).

In general, the PET models can be grouped into four types: mass-transfer-based ones (e.g., Dalton-type models in Table S1; Singh and Xu, 1997), which are based on Dalton's law and take observed wind speed and water vapour pressure as inputs; temperature-based ones (e.g., Thornthwaite equation in Table S1; Thornthwaite, 1948), which take temperature as a proxy for the radiative energy available, along with extraterrestrial radiation estimated from the date of the year and latitude; radiation-based ones (e.g., Turc and Hargreaves models in Table S1; Turc, 1961; Hargreaves and Samani, 1983), which use measured data such as net solar radiation, sunshine hours or cloudiness factors; and combination ones (e.g., Penman-Monteith models, including its original type and variants in Table S1; Penman, 1948; Monteith, 1965; Allen et al., 1998), which combine the energy balance with the mass transfer method. Despite low requirement of climatic variables for the former three types of the PET model, they are lack of comprehensive physical considerations of ET process and heavily rely on empirical factors which are dependent on historical or present-day climate for calibration (Tabari and Talaei, 2011; Aschonitis et al., 2015; Tanguy et al., 2018; Xiang et al., 2020). By contrast, the combination models (e.g., Penman-Monteith models) involve relatively comprehensive physical basis, and thus have been widely used by various scientific communities (McVicar et al., 2007; Mu et al., 2013; Sun et al., 2017, 2022). As one of the most famous Penman-Monteith model variant, the Food and Agriculture Organization of the United Nations (FAO)-56 Penman-Monteith model has been validated against lysimeter data across the globe, obtaining reliable results (Jensen et al., 1990; Itenfisu et al., 2000; Berengena and Gavilán, 2005; Trajkovic, 2007; Liu

et al., 2017; Gong et al., 2017), and recommended as a standard tool for calculating PET with climatic data by the International Commission on Irrigation and Drainage (ICID), the FAO and the American Society of Civil Engineers (ASCE).

Despite the relatively satisfactory performance, the Penman-Monteith models still have inherent shortages for parameterization scheme of land surface. For example, these models set the evaporating and/or transpiration surfaces as a whole (i.e., a so-called “big-leaf”), regardless of differences in processes of soil evaporation and plant transpiration (Stannard, 1993; Yang and Shang et al., 2012; Liu et al., 2015). Over a large region, however, the big leaf assumption is rarely valid. Usually, many vegetation

types co-exist over the land, and there are always some parts or periods where or when the vegetation not “closed” (i.e., open canopy that light can penetrate to the ground). The big leaf assumption potentially limits the applicability of the Penman-Monteith models under various vegetation distribution conditions, e.g., better (worse) performance under complete and homogeneous (sparse and inhomogeneous) vegetation distribution conditions (Shuttleworth and Wallace, 1985; Stannard, 1993; Yang and Shang, 2012; Huang et al., 2020).

Comprehensively considering differences in processes of soil evaporation and plant transpiration, Shuttleworth and Wallace (1985) extended the Penman-Monteith single-layer models to two-layer model [i.e., Shuttleworth-Wallace (SW) model]. This model divided ET into plant and soil components based on surface resistances to regulate the heat and mass transfer from plant and soil surfaces, as well as aerodynamic resistance to regulate fluxes to the atmosphere (Lagos et al., 2013; Liu et al., 2015; Zhao et al., 2015; Huang et al., 2020). Relative to the Penman-Monteith models, the SW model is the first analytical model combining transpiration and soil evaporation by formulating the different

media via which evaporative flux travels as resistances (Kool et al., 2014). This partitioning is crucial for reasonably describing and understanding ET processes (Zhou et al., 2016, 2018). The SW model is generally considered to be more accurate and more physically-based, and has been extensively used at point and regional scales (Brisson et al., 1998; Hu et al., 2009; Kool et al., 2014; Liu et al., 2015; Huang et al., 2020).

It should be noted that there are two major difficulties to run the SW model. Firstly, it has high requirement for meteorological data inputs, including the maximum and minimum air temperatures, relative humidity, wind speed and solar radiation or their proxy data. Commonly, the maximum and minimum air temperatures are measured at meteorological sites, while observations of the other elements are scarce, especially when long time series and large spatial coverage are required for climate studies.

This may be a major reason that some temperature-based and radiation-based PET models (e.g., Priestley-Taylor and Hargreaves-Samani models) are still widely-used at present, especially for regions with sparse meteorological observations (Aschonitis et al., 2017; Tanguy et al., 2018). Secondly, the SW model is hard to parameterize given the large number of parameters (Brisson et al., 1998; Odhiambo and Irmak, 2011; Kool et al., 2014), and therefore this model is often applied at point and regional scales (Iritz et al., 1999; Yang and Shang, 2012; Liu et al., 2015; Huang et al., 2020; Chen et al., 2022).

Fortunately, with the development of observation and numerical simulation technology during the past decades, various global datasets have become available, including meteorological datasets (e.g., Harris et al., 2020; Molod et al., 2015; Hersbach et

删除了: “closed” means that vegetation forms a ceiling and then ...

删除了: barely

删除了: reach

删除了: Some studies have pointed out that such

删除了: heterogeneous

al., 2020; Beck et al., 2022), vegetation height [datasets](#) (e.g., Simard et al., 2011; Wang et al., 2016; Potapov et al., 2020; Lang et al., 2021, 2022), land use/land cover (LULC) datasets (e.g., Liu et al., 2020), Leaf Area Index [datasets](#) (LAI; e.g., Friedl et al., 2010; Liu et al., 2012; Zhu et al., 2013; Xiao et al., 2014), and eddy covariance (EC) flux observations across various ecosystems (e.g., LaThuile, <https://fluxnet.org/data/la-thuile-dataset/>; FLUXNET2015, <http://fluxnet.fluxdata.org/data/fluxnet2015-dataset/>; OzFlux, <https://data.ozflux.org.au/portal/home.jspx>; and AsiaFlux, http://asiaflux.net/?page_id=23). These released datasets provide a valuable opportunity for parameterizing and driving the SW model at the global scale.

Previous studies have suggested that land surface properties could play a dominant role in controlling variations of the ET process (Sun et al., 2021, 2022). Of the land surface properties, vegetation is the most ever-changing due to plant growth, natural disturbances and anthropogenic disturbances (Liu et al., 2016a, 2016b; Papagiannopoulou et al., 2017; Cavalcante et al., 2019; Zhang et al., 2020). Recently, with climate change and/or intensified human activities, vegetation has greatly changed on regional and even the global scales (Zhu et al., 2016; Chen et al., 2019), including shifts in vegetation types and vegetation greening (i.e., increases in LAI or other vegetation indices), which have altered the allocation of available water and energy (Zhou et al., 2016, 2018; Sun et al., 2022). As an important biophysical parameter of vegetation, the plant stomatal resistance has been widely evidenced to increase with the elevated atmospheric CO₂ concentration by numerous observations and numerical simulations, but the increasing magnitudes differed among vegetation types (Wang et al., 1999; Medlyn et al., 2001; Norby et al., 2005; Franks and Beerling, 2008; Lin et al., 2015; Gardner et al., 2022). The increased plant stomatal resistance could in turn reduce plant transpiration and thereby change the water cycle on regional and even global scales (Gedney et al., 2006; Piao et al., 2007; Sun et al., 2014; Zhao and Cao, 2022; Zhan et al., 2022). Especially, such impacts of elevated CO₂-induced plant stomatal resistance increase on hydrological processes have been proved to be of significance, especially for the future climate change scenarios with the high CO₂ emission (Roderick et al., 2015; Milly and Dunne, 2016; Scheff, 2018; Yang et al., 2019). These suggested that the temporal changes in vegetation (i.e., vegetation types, LAI and plant stomatal resistance) should be involved into the models for accurate PET estimates. However, it is unfortunate that the various existing PET products, such as Climatic Research Unit (CRU) Time-Series (TS) 4.06 (CRU TS4.06; Harris et al., 2020), MOD16 (Running et al., 2017), Global Land Evaporation Amsterdam Model (GLEAM) v3.6 (Miralles et al., 2011; Marten et al., 2017), Priestly-Taylor Jet Propulsion Laboratory (PT-JPL) Model (Fisher et al., 2011) and hPET (Singer et al., 2021), did not fully considered impacts of such vegetation changes on PET, potentially resulting in biases of the estimates from the truth values and then introducing uncertainties into the studies based on these products. As a result, to produce a new PET dataset based on more reasonable parameterizations and more realistic configurations of land surface, is needed.

Through making use of various existing datasets, this study comprehensively considered spatio-temporal differences in land surfaces and elevated CO₂-induced biophysical effects on plant stomatal resistance to parameterize the SW model, and

produced a new global monthly PET dataset. Specifically, our objectives are: (1) to calibrate the SW model with the EC flux observations to obtain key parameters for each LULC type, and to evaluate the performance of the calibrated model, (2) to generate a global monthly PET product (including PE and PT) from 1982 to 2015 with the calibrated SW model and various inputs, and (3) to investigate the climatological characteristics of PET partitioning and the spatio-temporal changes in PET and its two components across the globe during 1982–2015.

2. Material and methods

2.1 Data sources

2.1.1 Eddy-covariance measurements

For fully utilizing the existing EC measurements, this study collected the half-hourly or hourly FLUXNET2015 Tier-2 (<http://fluxnet.fluxdata.org/data/fluxnet2015-dataset/>), LaThuile (<https://fluxnet.org/data/la-thuille-dataset/>), AsiaFlux (http://asiaflux.net/?page_id=23), and OzFlux (<https://data.ozflux.org.au/portal/home.jsp>) datasets. Following Maes et al. (2019), we processed the four datasets to provide the necessary inputs and the ET observations without water limits (i.e., PET) for calibrating the SW model.

First, we screened the measurements using data quality control. Sites lacking one or more of the basic measurements required for our analysis [i.e., latent heat (LE), sensible heat (H), soil heat flux (G), the net radiation fluxes (Rn), wind speed (u), air temperature, and relative humidity (RH)/actual vapour pressure (e_a)/atmospheric water concentration/vapour pressure deficit (D)] were not considered further. Considering potential impacts of surface energy imbalance on the results, the corrected half-hourly or hourly LE and H (Pastorello et al., 2020) were used here. Regarding the major heat fluxes (LE , H and G), good gap-filled records were retained according to the quality flags provided by the four datasets. When the flags for Rn observations were unavailable, the flags of the downward shortwave radiation were used instead. Mainly due to impacts of interception loss and condensation on accuracy of H or LE measurements (Mizutani et al., 1997), the negative values were masked out. Likewise, all Rn negative values were masked out.

Second, the half-hourly or hourly measurements were aggregated to daytime records. Only days in which more than 70% of the basic data were measured directly were retained, and days with rainfall during midnight-sunset were excluded from the analyses for removing the effects of rainfall interception. Moreover, we only retained sites with 80 or more days for the processing below. Taking 5 W/m^2 of top-of-atmosphere incoming shortwave radiation as a minimum threshold, the half-hourly or hourly measurements were aggregated to daytime composites, and then the daytime values were obtained through subtracting measurements at the first and last (half-)hours for these aggregates.

Third, we identified days with no soil water limits. This study employed an energy balance-based approach to select unstressed days rather than the soil moisture criterion. The major considerations were three-fold: (a) no soil moisture measurements

existed at most of EC sites, (b) the energy balance-based method could effectively remove days in which the ecosystem is not limited by soil moisture availability but stressed by other environment factors (e.g., insect plagues, phenological leaf-out, fires, heat and atmospheric dryness stress, nutrient limitations), and (c) soil moisture may be not a good indicator of water stress due to variable rooting depth and its inaccurate measurements (Powell et al., 2006; Douglas et al., 2009; Martínez-Vilalta et al., 2014). The evaporative fraction [i.e., $EF = LE/(LE + H)$] was selected as the energy balance criterion, and we assumed that under conditions of no water limits a larger fraction of the available energy should be used for evaporating water (Gentine et al., 2007, 2011; Maes et al., 2011). Taking a site as an example, a day was identified to have no water limits when its corresponding EF exceeded the 95th percentile EF threshold. Notably, if fewer than 15 days fulfilled this criterion at some particular sites, the 15 days with the highest EF were used as unstressed days.

Finally, the sites used for further analyses were selected. Despite usage of the corrected half-hourly or hourly LE and H here, we found that evident surface energy imbalance still existed on daytime with Bowen ratio between 0.60 and 1.80. For further reducing potential impacts of this issue, we retained records with Bowen ratio between 0.90 and 1.10. After this, if a certain site had fewer than 8 unstressed days, it was removed. Because the LAI and CO_2 concentration were unavailable at some sites, the Global Land Surface Satellite (GLASS) LAI and CO_2 concentration (ρ_{CO_2} , ppm) observed at Mauna Loa were used instead. At last, 96 sites were retained, including 73, 5, 3 and 18 sites from FLUXNET2015 Tier-2, AsiaFlux, OzFlux, and LaThuile datasets, respectively (Figure 1). Their basic information was shown in Table [S2](#).

2.1.2 Meteorological data

Meteorological inputs are necessary to generate the SW PET, and moreover for reducing uncertainties we collected four monthly or 3-hourly meteorological datasets, i.e., Multi-Source Weather (MSWX)-Past (Beck et al., 2022), National Aeronautics and Space Administration (NASA) Modern Era Reanalysis for Research and Applications (MERRA)-2 (Molod et al., 2015), European Centre for Medium-Range Weather Forecasts Reanalysis (ERA)-5 (Hersbach et al., 2020) and [Climatic Research Unit \(CRU\) TS4.06](#) (Harris et al., 2020). The detailed information of these datasets is shown in Table 1. The directly used meteorological variables to drive the SW model mainly include air temperature, u , D , Rn and G . Except for air temperature and u , the meteorological datasets provide different D -related and radiation-related variables (Table 1), and therefore different methods were utilized to estimate D and Rn (details in Texts S1 and S2). Regarding G , the mean air temperature-based method was used here (Allen et al., 1998; details in Text S3). Notably, because the CRU TS4.06 lacked direct radiation records, the algorithm of Reddy (1974) was employed here to estimate Rn based on the Clouds and the Earth's Radiant Energy System (CERES) satellite-based monthly net shortwave radiation records (<https://asdc.larc.nasa.gov/project/CERES>) and the CRU TS4.06 cloud cover data (algorithm and validation in Text S1 and Figure S1, respectively). Moreover, due to no wind speed records in CRU TS4.06, we used the mean wind speed from the other three meteorological datasets as a proxy.

删除了: S1

删除了: and Table S1

2.1.3 Land use/land cover, LAI, saturated water content in soil and CO₂ concentration

205 Considering time span of the available LULC products at present, the 1982–2015 yearly GLASS-Global Land Cover (GLC) dataset developed by Liu et al. (2020) at a spatial resolution of 5000 m was used here (Table 1), though it has a coarse LULC classification ecosystem (including cropland (CRO), forests (FR), grassland (GRA), shrubland (SHRB), tundra, barren land, and snow/ice). Some studies stated that the accuracy of the GLASS LAI is clearly better than that of others [e.g., Moderate-resolution Imaging Spectroradiometer (MODIS) LAI], especially for forested areas with more realistic and reasonable trajectories representing seasonal variations (Fang et al., 2013; Liang et al., 2013; Xiao et al., 2014, 2016, 2017). Thus, the 210 1981–2018 8-day GLASS Advanced Very High Resolution Radiometer (AVHRR) LAI product at a spatial resolution of 0.5° was selected in this study (Xiao et al., 2016, 2017; Table 1). The global saturated soil water content in the first soil layer (i.e., 0–0.0451 m) was collected from <http://globalchange.bnu.edu.cn/research/soil5.jsp> (Dai et al., 2019a, 2019b; Table 1), while the 1850–2013 monthly CO₂ concentration at 1° × 1° spatial resolution was downloaded from <https://doi.org/10.5281/zenodo.5021361> (Cheng et al., 2022; Table 1). Because this CO₂ dataset missed the data in 2014 and 215 2015, the 1985–2021 monthly Global CO₂ Distribution (GCD) product from Japan Meteorological Agency at a 2° × 2° spatial resolution (https://www.data.jma.go.jp/ghg/kanshi/co2data/co2_mapdata_e.html; Maki et al., 2010; Nakamura et al., 2015; Table 1) was used to estimate the monthly CO₂ concentration in the two missing years by the linear regression method. In detail, we firstly resampled the GCD data into 1° × 1° resolution, and used the 1985–2013 GCD as independent variable, and 220 Cheng's data as dependent variable, to fit the linear regressions for each month and each grid. Subsequently, based on the GCD data, these regressions were used to calculate the monthly CO₂ concentration at each grid in 2014 and 2015. The validation results of the established regression were in Figure S2.

2.1.4 Vegetation canopy height

To date, the vegetation canopy height (*h*) maps to fully cover the whole globe still lack, although it is needed for the SW model 225 to estimate some key parameters. Therefore, we made use of the existing datasets, mainly including remote sensing-based forest *h* datasets of Potapov et al. (2020), Wang et al. (2016), Simard et al. (2011) and Lang et al. (2020, 2022; respectively named as *h*-Potapov, *h*-Wang and *h*-Simard, and *h*-Lang; Table 1), and Spatial Production Allocation Model (SPAM) V2.0 crop distribution map (Yu et al., 2020; Table 1), to reconstruct the global vegetation *h* maps. For each year, the detailed procedures are four-fold: (1) Mapping FR and SHRB *h*. For reducing uncertainties related to retrieval algorithms and source data, the *h*-Potapov, *h*-Wang, *h*-Simard and *h*-Lang datasets were used in this procedure. Notably, we ignored differences in 230 periods of source data for producing the forest *h* datasets. That is, we assumed that the changes in forest *h* due to vegetation natural growth were limited during study period. To match GLASS-GLC, the four forest *h* datasets were firstly resampled to a spatial resolution of 5000 m. If two or more *h* dataset/s showed non-missing values at a certain FR (SHRB) grid cell, the average of these non-missing values represented the final *h* at this grid cell. After this, if some FR (SHRB) grid cells still had

- 删除了: soil at
- 删除了: and the monthly CO₂ concentration
- 删除了: ere
- 删除了: with
- 删除了:
- 删除了: lacked
- 删除了: monthly CO₂ concentration in
- 删除了: with
- 删除了:
- 删除了: selected
- 删除了: here
- 删除了: using
- 删除了: for meeting the resolution of Cheng's data
- 删除了: (i.e.
- 删除了:)
- 删除了: (i.e.,
- 删除了:)
- 删除了: linear regression coefficients
- 删除了: efficiencies
- 删除了: in
- 删除了: at
- 删除了: were be employed
- 删除了: based on the GCD data
- 删除了: could be found
- 删除了: and <https://gml.noaa.gov/ccgg/trends/data.html> (Thoning et al., 2022), respectively.

missing values, and then the h value at each of these grid cells was filled with the mean h at the four nearest FR (SHRB) grid cells around this grid cell. (2) Mapping GRA and tundra h . Although the h -Lang product provided GRA and tundra h values over few regions, there were still large areas with missing values and even large uncertainties existed (Huang et al., 2017). Therefore, we specified the GRA and tundra h mainly based on the Comprehensive Sequential Classification System (CSCS)-based GRA groups, and the typical GRA and tundra h measured at the EC sites and records from literatures. Using vegetation bioclimate characteristics and hydrothermal indicators (e.g., temperature and precipitation), the CSCS method was employed to classify the GLASS-GLC GRA and tundra into 10 groups (Li and Ma, 2009; Liang et al., 2011; Gang et al., 2016). According to the map of the CSCS-based GRA groups and locations of the EC sites, the h value for each CSCS-based GRA group was estimated as mean h from the EC sites with such GRA group, and lastly the h values for 7 CSCS-based GRA groups were determined. As for the remaining 3 CSCS-based GRA groups (i.e., frigid desert GRA, warm desert GRA, and tropical zonal forest steppe GRA), their h values were from White (1983), Suttie et al. (2005), Kadeba et al. (2015), Yin et al. (2019) and Prakash et al. (2020). The h values of all the CSCS-based GRA groups could be found in Table S3. (3) Mapping CRO h . Through overlaying the SPAM V2.0 and GLASS-GLC maps, the CRO were further classified into 42 types, and the h for each type was specified based on Table S4 (Allen et al., 1998). (4) Mapping h of barren land and snow/ice. As for barren land and snow/ice regions, the h was set as 0. Notably, regardless of the h map reconstructed at each year, this dataset could not reflect inter-annual variations of h except for regions with LULC changes, where the h values varied due to LULC changes. In the grid with LULC changes in a certain year, its new h value was assigned as the mean h value of its four nearest neighboring grids with the same LULC. An example of the reconstructed canopy h map in 1982 was shown in Figure S3.

2.2. Analysis methods

The workflow of this study mainly included three parts (Figure 2): (1) calibrating the SW model based on the identified EC observations without water limits at 96 EC sites, and validating its performance in site-calibration and cross-validation modes (cyan color in Figure 2), (2) generating the global monthly PET using the calibrated SW model with the final minimum stomatal resistance (r_{smin} , s/m) values and various inputs (orange color in Figure 2), and lastly (3) conducting related analyses, i.e., climatological characteristics and spatio-temporal changes of PET and its two components, and climatological characteristics of PET partitioning (green color in Figure 2).

2.2.1 Description of the Shuttleworth-Wallace (SW) model

Based on assumption that the water vapour arriving at the reference height is a mixture of evaporation from soil and transpiration from vegetation layer (Figure 3; Shuttleworth and Wallace, 1985, 1990), the SW model can be expressed as:

删除了: S2

删除了: S3

删除了: The canopy h map was shown in Figure S2.

删除了: f

删除了: a

删除了: had

删除了: corresponding

删除了: obtained

删除了: blue

删除了: /

删除了: yellow-green

$$\begin{cases} \lambda ET = \lambda T_r + \lambda E & (1a) \\ \lambda T_r = C_c PM_c & (1b) \\ \lambda E = C_s PM_s & (1c) \\ PM_c = \frac{\Delta A + (\rho c_p D - \Delta r_a^c A_{soil}) / (r_a^a + r_a^c)}{\Delta + \gamma [1 + r_s^c / (r_a^a + r_a^c)]} & (1d) \\ PM_s = \frac{\Delta A + [\rho c_p D - \Delta r_a^s (A - A_{soil})] / (r_a^a + r_a^s)}{\Delta + \gamma [1 + r_s^s / (r_a^a + r_a^s)]} & (1e) \\ C_c = [1 + \frac{R_c R_a}{R_s (R_c + R_a)}]^{-1} & (1f) \\ C_s = [1 + \frac{R_s R_a}{R_c (R_s + R_a)}]^{-1} & (1g) \\ R_a = (\Delta + \gamma) r_a^a & (1i) \\ R_s = (\Delta + \gamma) r_s^s + \gamma r_s^c & (1j) \\ R_c = (\Delta + \gamma) r_c^c + \gamma r_s^c & (1k) \end{cases}$$

where λET is the total latent heat flux (W/m^2), i.e., the sum of canopy (λT_r) and vegetation latent heat fluxes (λE), where T_r and E represent transpiration and soil evaporation, respectively; PM_c and PM_s are the closed vegetation and bare soil latent heat fluxes (W/m^2), respectively, which can be calculated by the Penman formulas under conditions of bare soil (i.e., EQ. 1d) and closed canopy (i.e., EQ. 1e); C_c and C_s represent soil surface resistance (i.e., EQ. 1f; unitless) and canopy resistance coefficients (i.e., EQ. 1g; unitless), respectively; Δ denotes the slope of the saturated vapor pressure curve (kPa/K); γ is the humidity constant (kPa/K); λ is the latent heat of evaporation (MJ/kg); ρ is the air density (kg/m^3); c_p is the constant pressure specific heat (1013 J/kg/K); r_a^a , r_a^c and r_a^s are the aerodynamic resistance (s/m), the vegetation boundary layer resistance (s/m) and the soil boundary layer resistance (s/m), respectively; r_s^s is the soil surface resistance, while r_s^c is the vegetation canopy resistance (s/m). Based on EQ. 1b (EQ. 1c), T_r (E) can be obtained with $C_c PM_c$ ($C_s PM_s$) divide by λ .

In EQs. 1b and 1c, A and A_{soil} are the available energy for canopy and soil layers (W/m^2), respectively, and are defined as:

$$\begin{cases} A = R_n - G & (2a) \\ A_{soil} = R_{n,soil} - G & (2b) \\ R_{n,soil} = R_n \exp(-k_{ex} LAI) & (2c) \end{cases}$$

where $R_{n,soil}$ is the net radiation fluxes into the soil (W/m^2), and can be computed with Beer's Law (i.e., EQ. 2c; Mo et al., 2004); k_{ex} represents light extinction coefficient, which varies with LULC types (Table S5).

Previous studies have stated that determining the five resistance parameters is the key to successfully run the SW model (Hu et al., 2009; Chen et al., 2022). Of these resistance parameters, r_a^a and r_a^s are estimated using Shuttleworth and Gurney (1990), while r_a^c and r_s^s are calculated based on Shuttleworth and Wallace (1985) and Brisson et al. (1998), and Villagarcía et al. (2010), respectively. Detailed information about equations for parameterizing the four resistance parameters can be found in Texts S4–6 and Table S5. Considering large uncertainties of r_s^c (Fisher et al., 2005; Hu et al., 2009, 2013; Wei et al., 2020), this study used the EC measurements to calibrate its value for each LULC type, and the detailed procedures can be found in section 2.2.2.

2.2.2 Determination of canopy resistance (r_s^c)

In this study, the parameterization of r_s^c is mainly based on a Jarvis-type model, which is based on the hypothesis that stomatal resistance is independently affected by every environmental variable (Jarvis, 1976; Shuttleworth and Wallace, 1985). Here, we

删除了: $C_c PM_c + C_s PM_s$

删除了: $PM_c = \Delta A + (\rho c_p D - \Delta r_a^c A_{soil}) / (r_a^a + r_a^c) \Delta + \gamma [1 + r_s^c / (r_a^a + r_a^c)]$
(1b)...

删除了: $PM_s = \Delta A + [\rho c_p D - \Delta r_a^s (A - A_{soil})] / (r_a^a + r_a^s) \Delta + \gamma [1 + r_s^s / (r_a^a + r_a^s)]$
(1c)...

删除了: d

删除了: e

删除了: f

删除了: g

删除了: h

删除了: $\lambda PT = \frac{\Delta(A - A_{soil}) + \rho c_p D_0 / r_a^c}{\Delta + \gamma [1 + r_s^c / r_a^c]}$

$\lambda PE = \frac{\Delta A_{soil} + \rho c_p D_0 / r_a^s}{\Delta + \gamma [1 + r_s^s / r_a^s]}$

删除了: , while

删除了: while PM_c and PM_s are the soil and vegetation latent heat fluxes

删除了: 1b

删除了: 1c

删除了: 1d

删除了: 1e

删除了: 0.6

删除了: among

删除了: S4

considered effects of LAI, D , air temperature (T , °C), soil moisture and ρ_{CO_2} on r_s^c , which correspond to stress functions of F_1 (Noilhan and Planton, 1989), F_2 (Raab et al., 2015), F_3 (Zhou et al., 2005), F_4 and F_5 (Neitsch et al., 2002). Notably, this study focuses on ET under condition with no soil water limits (namely PET), and thus F_4 is set to 1 here. The specific equations are shown as follows:

$$r_s^c = \frac{r_{smin}}{LAIe \prod_{i=1}^{N=5} F_i} \quad (3a)$$

$$LAIe = \begin{cases} LAI, & LAI \leq 2 \\ 2, & 2 < LAI < 4 \\ LAI/2, & LAI \geq 4 \end{cases} \quad (3b)$$

$$F_1 = \frac{0.55 \frac{R_{ds}}{R_{ds,dbl}} LAI + \frac{r_{smin}}{r_{smax}}}{0.55 \frac{R_{ds}}{R_{ds,dbl}} LAI + 1} \quad (3c)$$

$$F_2 = \exp(-0.5D) \quad (3d)$$

$$F_3 = 1 - 0.0016(24.84 - T)^2 \quad (3e)$$

$$F_4 = 1 \quad (3f)$$

$$F_5 = 1 + \left(1 - \frac{\rho_{CO_2}}{330}\right) \Delta g_{1,CO_2} \quad (3g)$$

where r_{smax} is the maximum canopy resistance (s/m), and is fixed at 5000 s/m here (Crow et al., 2008); $LAIe$ denotes the effective LAI (Gardiol et al., 2003); R_{ds} is the downward shortwave radiation (W/m^2); $R_{ds,dbl}$ is the minimum shortwave radiation threshold for vegetation to carry out photosynthesis (W/m^2), which is set to 30 W/m^2 for forests and 100 W/m^2 for other vegetation (Noilhan and Planton, 1989; Lo Seen et al., 1997); $\Delta g_{1,CO_2}$ is the multiple of leaf stomatal conductance reduction when ρ_{CO_2} is doubled (Table S5; Morison and Gifford, 1984; Field et al., 1995; Saxe et al., 1998; Neitsch et al., 2002; Eckhardt and Ulbrich, 2003; Wu et al., 2017).

Finally, we determined the values of r_{smin} . Here, the Monte Carlo method was used to calibrate this parameter using the identified PET observations at each EC site (Hu et al., 2009). The following five steps were taken to determine the r_{smin} values:

- (1) giving a rough range for r_{smin} (i.e., r_{smin} between 1 s/m and 500 s/m) with references to previous studies (e.g., Zhou et al., 2006; ECWMF, 2007),
- (2) conducting 5,000 Monte Carlo simulations with the parameter sets randomly sampled from uniform distributions within the given ranges,
- (3) comparing the estimated SW model-based PET (SW PET) and the EC PET after each simulation based on a validation metric of the Kling-Gupta Efficiency (KGE ; seen EQ. 4d; Gupta et al., 2012; 5,000 parameter sets corresponded to 5,000 KGE after this step),
- (4) selecting the mean of r_{smin} with the 10 highest KGE as the optimal value for each site, and
- (5) classifying the 96 EC sites into 4 types (i.e., FR, SHRB, CRO and GRA) based on the GLASS-GLC classification system (Liu et al., 2020), and then determining the best-fit parameter sets for a given LULC type through averaging the optimal parameter values at the sites with this LULC type. In this way, the final parameter values for FR, CRO, GRA and SHRB were obtained and illustrated in Table S6. Notably, the r_{smin} for tundra, barren land and snow/ice types of the GLASS-GLC are from Zhou et al. (2006) and Zhang et al. (2008), mainly due to lack of the corresponding EC observations.

删除了: 2

删除了: 2

删除了: 2

删除了: 2

删除了: 2

删除了: 2

删除了: 2

删除了: r_{smin} represents the minimum canopy resistance (m/s); ...

删除了: S1

删除了: 3d

删除了: S5

2.2.3 Model validation

Several validation metrics were employed to evaluate the performance of the simulated SW PET. Mean error (ME) provides a way to quantify the biases of the estimates relative to measurements, while unbiased Root-Mean-Square-Error ($ubRMSE$) describes the accuracy of estimations. Besides, correlation coefficient (R) and KGE [with a range between $-\infty$ and 1.0 (the optimal value)] were used to measure capability of capturing the spatio-temporal variability and the overall performance of the SW PET, respectively. The metrics are expressed as:

$$ME = \frac{\sum_{i=1}^N (S_i - O_i)}{N} \quad (4a)$$

$$ubRMSE = \sqrt{\frac{\sum_{i=1}^N [(S_i - S) - (O_i - O)]^2}{N}} \quad (4b)$$

$$R = \frac{\sum_{i=1}^N [(S_i - S)(O_i - O)]}{\sqrt{\sum_{i=1}^N (S_i - S)^2 \sum_{i=1}^N (O_i - O)^2}} \quad (4c)$$

$$KGE = 1 - \sqrt{(1 - R^2) + (1 - \alpha^2) + (1 - \beta^2)} \quad (4d)$$

where N is the sample number; S denotes the mean of the SW PET averaged N samples; O is for the measured PET; i is the i th sample; α is S/O ; β is σ_S/σ_O , where σ_S and σ_O are the standard deviations of the estimated and the measured PET, respectively.

These metrics were first computed based on the daily estimates with the optimal parameters for each site [i.e., parameters obtained in step (4) of the Monte Carlo method] and the observations from the 96 EC sites, and then validation in site-calibration mode was performed. Notably, to evaluate the transferability of the calibrated parameters from known observations to any location and then robustness of the established SW model, the “leave-one-out” cross-validation method was utilized here (Zhang et al., 2019). For each LULC type, the data from one “ ungauged ” observation was excluded from the Monte Carlo method-based optimization while the data from all other observations of the same LULC type were used for model calibration to obtain the simulated at the “ ungauged ” position. All four LULC types were actualized in this way. Then, the daily SW PET estimates in the cross-validation mode were compared against the daily observations from the 96 EC sites to further explore the model performance.

2.2.4 Development of 5 km global monthly PET (1982–2015) and related analyses

Considering that the SW model was calibrated with the daily EC measurements, it was necessary to examine whether this model could be applicable at the monthly scale. Therefore, we firstly compared the monthly PET estimated based on the daily and monthly meteorological variables from MSWX-Past, MERRA-2 and ERA-5 (not including CRU TS4.06 mainly due to it with a monthly scale). Various validation metrics showed that there were generally no evident differences in the two PET estimates (Figure S4). That is, the model established with the daily EC measurements could be driven using the monthly meteorological variables. Mainly due to the GLASS-GLC with the shortest time span, the global SW PET was produced at GLASS-GLC grid and monthly scale during 1982–2015. Therefore, before running the calibrated SW model, the meteorological, the GLASS LAI, and the CO₂ concentration datasets were resampled to a spatial resolution of 5000 m. The

删除了: unRMSE

删除了: 3

删除了: n

删除了: 3

删除了: 3

删除了: 3

设置了格式: 非突出显示

删除了: The

删除了: (mainly due to the GLASS-GLC with the shortest time span)

删除了: and

monthly mean meteorological and LAI datasets were taken as inputs to run the calibrated model for estimating the monthly mean SW PET, PT and PE. At last, the total SW PET (PT and PE) at a certain month were obtained through monthly mean value multiplying days of this month. Additionally, to reduce uncertainties from meteorological datasets, the ensemble means of PET, PT and PE based on four meteorological datasets were provided. Using the ensemble mean PET, PT and PE, we analyzed climatological characteristics and spatio-temporal changes of PET and its two components, and climatological characteristics of PET partitioning. Notably, the area-weighted method was used to estimate the regional mean PET, PT and PE.

3. Results

3.1 Performance of established SW model

The simulated daily PET from the SW model was first evaluated against EC measurements aggregated for all of 96 EC sites (Figures 4a and 4c). In both site-calibration and cross-validation modes, the SW model could well simulate the daily PET with most of data points around the 1:1 line, while it should be noted that overestimation and underestimation existed for the lower and the higher measurements, respectively (Figure 4a). Based on the selected validation metrics, we could conclude that the model had excellent performance in the two modes, with R , ME , $\mu bRMSE$ and KGE values above 0.85, between -0.03 and -0.01 mm/day, below 0.80 mm/day and above 0.85, respectively. Regarding the mean values of each site (Figures 4b and 4d), the simulated daily PET could also well follow changes of the observed PET among 96 sites in both modes, as evidenced by R above 0.88, ME between -0.09 and -0.03 mm/day, $\mu bRMSE$ below 0.60 mm/day and KGE above 0.85. Moreover, little changes in the validation metrics from site-calibration to cross-validation indicated limited degradation of the calibrated model (i.e., Figure 4a vs. 4c, and Figure 4b vs. 4d).

Figure 5 indicates that in site-calibration and cross-validation modes the SW model estimated daily PET very well for FR, SHRB, GRA and CRO. The model slightly overestimated lower daily PET but slightly underestimated higher daily PET. The performance of this model slightly differed among LULC types. R was above 0.83, indicating that the model could successfully simulated spatio-temporal variability of the daily PET, especially for FR, SHRB and GRA in site-calibration mode. Although negative and positive ME existed in CRO and GRA and the other two LULC types, respectively, the ME magnitudes were all below 0.15 mm. According to $\mu bRMSE$, the simulated GRA daily PET performed best in each mode, while larger values (between 0.53 mm/day and 0.85 mm/day) occurred in other three LULC types, especially for CRO in site-calibration mode and FR in cross-validation mode. The KGE was always larger than 0.80 for each LULC type in site-calibration and cross-validation modes, which indicated that the calibrated model overall had a high performance. When it came to validation based on site mean values (Figure 6), the simulated PET well followed changes of the observed PET for each LULC type in the two modes, with R above 0.74, ME between -0.12 and 0.11 mm, $\mu bRMSE$ below 0.70 mm and KGE above 0.74. For each LULC

删除了: 3a

删除了: 3c

删除了: 3a

删除了: unRMSE

删除了: 3b

删除了: 3d

删除了: 06

删除了: unRMSE

删除了: 88

删除了: 87

删除了: 3a

删除了: 3c

删除了: 3b

删除了: 3d

删除了: 4

删除了: 84

删除了: unRMSE

删除了: (>

删除了: 70

删除了: SHRB

删除了: 75

删除了: 11

删除了: unRMSE

type, the cross-validation mode had slightly lower performance than the site-calibration mode (Figure 6a vs. 6c, Figure 6b vs. 6f, Figure 6c vs. 6g, and Figure 6d vs. 6h).

删除了: 4a ...a vs. 4e...e, Figure 4b ...b vs. 64..., Figure 4c ...c vs. 4g...g, and Figure 4d ...d vs. 4h

For further evaluating the performance of the established SW model, we also computed the validation metrics at each site for each LULC type in site-calibration and cross-validation modes, which are shown in Figure 7. Except for several sites for SHRB, GRA and CRO, the R values were all above 0.80 and more than 50% of the sites had a value above or around 0.90, which indicated that the model had excellent performance in capturing the temporal variability of daily PET (Figure 7a). As for ME, the majority of the sites for each LULC type showed a range between -0.50 mm and 0.50 mm (Figure 7b). Moreover, the daily PET for SHRB (other three LULC types) was overestimated (underestimated) by the SW model at more than 50% of the sites. Except for few sites, the $ubRMSE$ values were below 0.80 mm at more than 75% of the sites for each LULC type, and comparably the $ubRMSE$ -based performance for CRO was the worst generally with $ubRMSE$ above 0.50 mm (Figure 7c). The majority of the sites had a KGE value above 0.60, and especially for GRA and CRO, more than 75% of the sites had KGE larger than 0.70 (Figure 7d). In general, the model performance in the cross-validation model was similar to only slightly lower than that in the calibration model for each LULC type.

删除了: 6... Except for several sites for FR ...HRB, GRA and CRO, the R values were all above 0.80 and more than 50% of the sites had a value above or around 0.90, which indicated that the model had excellent performance in capturing the temporal variability of daily PET (Figure 6a...a). As for ME, the majority of the sites for each LULC type showed a range between -0.50 mm and 0.50 mm (Figure 6b...b). Moreover, the daily PET for SHRB (other three LULC types) was overestimated (underestimated) by the SW model at more than 50% of the sites. Except for few sites, the $unRMSE$... $brMSE$ values were below 0.80 mm at more than 75% of the sites for each LULC type, and comparably the $unRMSE$... $brMSE$ -based performance for SHRB ...RO was the worst generally with $unRMSE$... $brMSE$ above 0.50 mm (Figure 6c...c). The majority of the sites had a KGE value above 0.60, and especially for GRA and CRO, more than 75% of the sites had KGE larger than 0.70 (Figure 6d

To sum up, the above evaluation indicated that the calibrated parameter of r_{smin} could be transferable from known observations to any location and then the established SW model could well simulate PET across different LULC types. This gave us confidence to employ it to produce a global PET dataset. Notably, for maximizing data utilization, the final values of r_{smin} for each LULC type were determined based on all the EC observations (Table S6), and the related validation results could be found in Figure S5.

删除了: S5...6), and the related validation results could be found in Figure S3

3.2 Climatological characteristics of PET, PT and PE

As seen from Figures 8a, 8c and 8e, the global mean climatological annual PET, PT and PE were 1198.96 mm, 481.12 mm and 717.74 mm, respectively. Compared to Northern Hemisphere (NH), larger mean climatological annual PT and thus PET appeared in Southern Hemisphere (SH) where a larger proportion of the land surface was covered by vegetation. Among the five KG climate regions, mean climatological annual values of PET and its two components showed evident differences, with a range from 319.29 mm in Polar region to 1590.57 mm in Tropical region for PET, from 37.95 mm in Polar region to 1122.42 mm in Tropical region for PT, and from 248.31 mm in Cold region to 1379.16 mm in Arid region for PE. Except for the Tibetan Plateau with a lower value, climatological annual PET was generally larger than 1000 mm between 60°S and 45°N, covering 62% of the globe (Figure 8b). Especially, climatological annual PET exceeded 1800 mm over northern Africa, Arabian Peninsula, Indian Peninsula, Indo-China Peninsula and northern Australia. The lowest climatological annual PET (< 400 mm) was generally located to the north of 60°N. As seen in Figure 8d, the spatial distribution of climatological annual PT differed from that of climatological annual PET. Due to sparse and even no vegetation and/or unfavorable climate conditions, lower climatological annual PT (< 400 mm) was widely distributed to the north of 18°N and to the south of 18°S, corresponding to

删除了: 7a...a, 7d ...c and 7g...e, the global mean climatological annual PET, PT and PE were 1200 ...198.96 mm, 472 ...81.12 mm and 728 ...17.74 mm, respectively. Compared to Northern Hemisphere (NH), larger mean climatological annual PT and thus PET appeared in Southern Hemisphere (SH) where a larger proportion of the land surface was covered by vegetation. Among the five KG climate regions, mean climatological annual values of PET and its two components showed evident differences, with a range from 319.47 ...9 mm in Polar region to 1595...590.94 ...7 mm in Tropical region for PET, from 37.75 ...5 mm in Polar region to 1105...122.88 ...2 mm in Tropical region for PT, and from 253...48.46...1 mm in Cold region to 1384...379.71 ...6 mm in Arid region for PE. for the Tibetan Plateau with a lower value, climatological annual PET was generally larger than 1000 mm between 60°S and 45°N, covering 62% of the globe (Figure 7b...b). Especially, climatological annual PET exceeded 1800 mm over northern Africa, Arabian Peninsula, Indian Peninsula, Indo-China Peninsula and northern Australia. The lowest climatological annual PET (< 400 mm) was generally located to the north of 60°N. As seen in Figure 7c

an area percentage of 55%. By contrast, 16% of the globe with larger climatological annual PT (> 1200 mm) was mainly located in Caribbean, Amazon Basin, Congo Bains and Indo-China Peninsula. As for climatological annual PE (Figure 8f), larger values (> 1000 mm) were generally clustered in northwestern North America and South America, northern Africa, western Asia and most of Australia, which corresponded to sparse and even no vegetation and covered 36% of the globe. Notably, lower climatological annual PE (< 400 mm) appeared in tropical rain forests near the Equator, possibly because the dense vegetation limited available energy for PE.

As expected, climatological monthly PET, PT and PE generally exhibited strong seasonal fluctuations because of the combined influences from many environmental factors (Figure 9). The globe and NH showed a similar seasonal cycle for climatological monthly PET, PT and PE, i.e., increasing from January, peaking in July, and afterwards declining, while an opposite seasonal fluctuation existed in SH with a valley in June (Figures 9a-c). Mainly due to differences in environmental factors, the seasonal cycles of climatological monthly PET, PE and PT obviously differed among various KG climate regions (Figures 9d-h). As for Tropical region, no evident seasonal fluctuations existed for the three variables, which slightly fluctuated around 136 mm for monthly PET, 88 mm for monthly PT and 40 mm for monthly PE, respectively (Figure 9d). In Arid, Cold and Polar regions, climatological monthly PE, PT and PE were generally characterized by a peak in July or August (Figures 9e, 9g, and 9h), while Temperate region showed larger values in April–November (Figure 9f).

3.3 Climatological characteristics of PET partitioning

In order to know PET partitioning, we estimated the ratios of PT and PE to PET (i.e., PT/PET and PE/PET) at annual and monthly scales (Figures 9 and 10). As depicted in Figures 10a and 10c, the global mean annual PT/PET and PE/PET were 41% and 59%, respectively, indicating that globally the annual PE greatly contributed to the annual PET. Likewise, the annual PE was also the major contributor in NH and SH, with the PE/PET of 62% and 50%, respectively. Overall, the annual PT/PET (PE/PET) had evident regional differences, and was above 53% (below 47%) in Tropical, Temperate and Cold regions but below 12% (above 88%) in other two climate regions (Figures 10a and 10c). These indicated that the annual PET in Tropical, Temperate and Cold regions (Arid and Polar regions) was controlled by PT (PE). Spatially, the annual PE/PET was above 50% mainly in regions to the north of 65°N, western North America, the Patagonia and the Andes of South America, western and central Asia, northern and southern Africa, and Australia (Figure 10d), while the remaining regions showed PT/PET larger than 50%, especially for Amazon Basin, Congo Basin and southeastern Asia with a value exceeding to 90%. Compared to the annual PT/PET, the annual PE/PET corresponded to an opposite spatial distribution (Figure 10b). In short, the annual PET was dominated by PE and PT over 59% and 41% of the globe, respectively.

In general, the seasonal cycle of PT/PET (PE/PET) for the globe, each hemisphere, and each KG climate region was different from that of PT (PE; Figure 9). As for the globe, NH and Polar region (Figures 9a, 9b and 9h), the monthly PT/PET had two bottoms in April and October and a peak in July, corresponding to tow peaks and a bottom of the monthly PE/PET. In SH and

删除了: (Figure 7h)

删除了: 8

删除了: 8a

删除了: 8d

删除了: 8d

删除了: 8e

删除了: 8g

删除了: 8h

删除了: 8f

删除了: Partitioning

删除了: 8

删除了: 9

删除了: 9a

删除了: 9c

删除了: 40

删除了: 60

删除了: 63

删除了: 51

删除了: 52

删除了: Polar

删除了: 9a

删除了: 9c

删除了: Polar

删除了: Cold

删除了: 9c

删除了: 9d

删除了: 60

删除了: 40

删除了: 8

删除了: 8a

删除了: 8b

删除了: 8h

Temperate (Cold region), the monthly PT/PET firstly increased from January, peaked in July (June), and after that declined, while the monthly PE/PET showed opposite fluctuations (Figures 9c, 9f and 9g). No evident fluctuations of the monthly PT/PET and PE/PET existed in Tropical and Arid regions (Figures 9d and 9e). Comparing the monthly PT/PET and PE/PET in the globe, NH, Arid region and Polar region (Figures 9a, 9b, 9e and 9h), it was not difficult to find that the former was always smaller the latter, indicating that the monthly PE greatly contributed to the monthly PET. Oppositely, the larger monthly PT/PET in Tropical and Temperate regions suggested that PT dominated PET in these regions (Figures 9d and 9f). In particular, the major contributor to the monthly PET for SH (Cold region) varied throughout a year, i.e., PT dominating PET in March–July (May–September) but PE dominating PET in other months (Figures 9c and 9g).

3.4 Spatio-temporal changes in PET, PT and PE

Globally, annual PET and PT significantly ($p < 0.05$) increased by 1.26 mm/yr and 1.27 mm/yr, respectively, with a slight and insignificant decrease in annual PE (Figures 11a, 11c and 11e). Regarding annual PET and PT, both NH and SH had significant ($p < 0.05$) increases, while annual PE oppositely changed in the two hemispheres, i.e., increases for NH but decreases for SH (Figures 11b and 11c). Among various KG climate regions, annual PET (except for Tropical region) and PT were all found to significantly ($p < 0.05$) increase but with evident regional differences in magnitudes, i.e., larger PET increases (> 1.32 mm/yr) in Arid, Temperate and Cold regions and a maximum increase (1.83 mm/yr) in PT in Temperate region (Figures 11a, 11c and 11e). Except for Polar region, the other climate regions all showed significant ($p < 0.05$) changes in annual PE, followed by decreases in Tropical and Temperate regions but increases in Arid and Cold regions. Comparisons between annual trends of PT and PE suggested that the increases in PET could be attributed to increased PT for the globe, each hemisphere and each climate region. Spatially, increases in annual PET covered 78% of the globe, accompanied by 41% of the globe with significant ($p < 0.05$) increases and larger values (> 4.00 mm/yr) in western US, Amazon Basin, Congo Basin, eastern Europe and eastern China (excluding northeastern part; Figure 11b). As for annual PET, only 5% of the globe had significant ($p < 0.05$) reductions. No considering non-vegetation regions, the spatial pattern of annual PT trends was similar to that of annual PET trends (Figure 11d). Overall, significant ($p < 0.05$) increases and decreases in annual PT were observed for 28% and 4% of the globe, respectively, especially for Amazon Basin, Congo Basin, southern Africa, Indian Peninsula, eastern Europe and eastern China (excluding northeastern part) with larger increases exceeding to 4.00 mm/yr. As shown in Figure 11f, the increasing trends of annual PE had a wide distribution but significant ($p < 0.05$) increases only covered over 26% of the globe and the increases were generally below 3.00 mm/yr. Relative to annual PET and PT, annual PE had more regions showing decreases, with significant ($p < 0.05$) reductions over 17% of the globe mainly in northern South America and Australia, southern Africa, and Indian Peninsula. In general, the spatial distribution of major contributors to annual PET trends was similar to that of major contributors to annual PET (Figure 11g vs. Figures 10b and 10d). For example, the major contributor of PE was mainly located in Greenland, southwestern North America, the Patagonia and the Andes of South America, western and central Asia, northern

删除了: 8c

删除了: 8f

删除了: 8g

删除了: 8d

删除了: 8e

删除了: 8a

删除了: 8b

删除了: 8e

删除了: 8h

删除了: 8d

删除了: 8f

删除了: 8c

删除了: 8g

删除了: 25

删除了: 22

删除了: increase

删除了: 10a

删除了: -

删除了: 10b

删除了: 10c

删除了: 36

删除了: 84

删除了: Figures 10a–c

删除了: 10d

删除了: 10e

删除了: 10f

删除了: 13

删除了: 10g

删除了: 9b

删除了: 9d

and southern Africa, and most of Australia (Figure 11g). Oppositely, the remaining regions showed the dominant factor of PT. Overall, the annual PET changes were dominated by PT and PE over 53% and 47% of the globe, respectively.

710 In general, the globe mean monthly PET and PT significantly ($p < 0.05$) increased throughout a year with larger trends (> 0.10 mm/yr) during April–October, while the global mean monthly PE insignificantly changed in each month (Figure 12a). For NH (Figures 12b), all months showed significant ($p < 0.05$) increases in PET and PT, especially for March–September with trends generally larger than 0.10 mm/yr. Despite most of months with increased PE, only March had significant ($p < 0.05$) increases in NH. In SH (Figure 12c), monthly PET showed larger (> 0.10 mm/yr) and significant ($p < 0.05$) increases during June–October but generally decreases in other months. The SH PT significantly ($p < 0.05$) increased in most of months, with larger values (> 0.12 mm/yr) during August–October. As for the SH PE, August and October, and January–March and December corresponded to significant ($p < 0.05$) increases and reductions, respectively. Among the five KG climate regions (Figures 12d–h), the monthly PET and PT increased throughout a year except for PET of Tropical region in several months with decreases, and moreover the increases in most of months were significant ($p < 0.05$). When it came to the monthly PE changes, most of or all months exhibited decreases in Tropical and Temperate regions but generally increases in other three KG climate regions. Despite that, no more than 6 months exhibited significant ($p < 0.05$) increases or decreases in the monthly PE for each climate regions. Furthermore, we compared trends of the monthly PT and PE for identifying major contributors to the monthly PET changes of the globe, each hemisphere, and each KG climate region (Figure 12). Overall, the monthly PET changes were generally dominated by PT in most of or all months for the globe and each region. However, it should be noted that PE was the major contributor of PET for some months, i.e., January–March for SH, February–May for Tropical region, March and December for Cold region, and February–May, October and November for Polar region.

4. Discussion

4.1 Advantages of this new PET dataset and its potential implications

730 Through considering the joint effects of various ET process-related factors, we have developed a new global PET dataset based on the SW model in this study. This dataset has several advantages relative to existing global PET datasets, e.g., CRU TS4.06 (Harris et al., 2020), MOD16 (Running et al., 2017), Global Land Evaporation Amsterdam Model (GLEAM) v3.6 (Miralles et al., 2011; Marten et al., 2017), Priestly-Taylor Jet Propulsion Laboratory (PT-JPL) Model (Fisher et al., 2011), and hPET (Singer et al., 2021). First, the dataset considered more realistic land surface information, including spatial differences in LULC and vegetation parameters (e.g., canopy height and r_{smin}), and time-varying LULC and LAI datasets, leading the new PET estimates more realistic. Second, the established SW model used in this study was based on more realistic physical processes and rendered the SW PET dataset an explicit physical significance, and meanwhile provided the PT and PE, which are crucial for understanding PET and ET. Third, a number of studies have found that the elevated atmospheric CO₂ concentration could

删除了: 10g

删除了: 11a

删除了: 1

删除了: 11c

删除了: June–October

删除了: 11d

删除了: 11

删除了: comprehensively

删除了: gridded

删除了: of PET

删除了: we

删除了: and relevant parameters in this study

删除了: . Thus,

删除了: is

删除了: dataset could provide

删除了: PET estimates

删除了: more

删除了: improved

删除了: physically-based

删除了: fo

删除了: r estimating PET indicated that

删除了: had

删除了: and

删除了: moreover

删除了: two important components

删除了: PT and PE)

删除了: of PET were also provided,

删除了: physically

删除了: in

删除了: then

删除了: processes

770 exert ~~clear~~ impacts on ET process through controlling plant stomatal resistance (Gedney et al., 2006; Piao et al., 2007; Sun et al., 2014; Roderick et al., 2015; Milly and Dunne, 2016; Yang et al., 2019; Zhao and Cao, 2022). ~~Through introducing a stress function of CO₂ concentration on r_s^c , our~~ SW PET dataset is able to reflect impacts of elevated CO₂ on ET.

In view of these advantages, our global PET dataset can ~~apply to multiple properties, e.g., the analysis of~~ rainfall, agriculture, drought, hydrology and biodiversity. First, our SW PET can provide ~~realistic and physical~~ datasets to further understand the ~~impacts of~~ spatio-temporal differences in rainfall changes from perspective of scaling effects of the Clausius-Clapeyron relation between air temperature and moisture-holding capacity (IPCC, 2014; Barbero et al. 2017). For example, through exploring the relationships between evaporative demand (even PT and PE) and rainfall, one can re-untangle different scaling effects of the Clausius-Clapeyron relation between air temperature and moisture-holding capacity. Second, considering PET partitioning into two components of PT and PE, this dataset will be convenient for the agriculture managers to directly use PT estimates for effective agricultural management practices (e.g., seeding, fertilization, irrigation planning and scheduling) and finally for sustaining the grain yield (Allen et al., 1998; Tomas-Burguera et al., 2019). Third, our SW PET dataset provides an opportunity to further understand drought mechanisms, e.g., how and what magnitudes different PET components (i.e., PT and PE), LULC changes, vegetation greening and elevated CO₂-induced vegetation physiological effects (e.g., increased stomatal resistance) impact droughts, which are still unclear until now (Vicente-Serrano et al., 2020). One can use this dataset as inputs to compute drought indices [i.e., Standardized Precipitation-Evapotranspiration Index (SPEI) and self-calibrating Palmer Drought Severity Index (scPDSI); Wells et al., 2004; Vicente-Serrano et al., 2010], and separate the impacts of the aforementioned factors on drought evolution. Fourth, the PET as a crucial input for many hydrological models is closely related to performance of these models (Lu et al., 2003, 2005; Rao et al., 2011; Aouissi et al., 2016; Seiller and Anctil, 2016; Dallaire et al., 2021), and therefore more realistic ~~physical~~ PET estimates ~~will~~ benefit for accurate hydrological modellings and physically understanding hydrological responses to environment changes (e.g., changes in climate and LULC). Fifth, the new PET dataset is of significance for understanding biodiversity responses to local environment changes ~~such as LULC, and PET,~~ usually as an effective measure of climatic energy limits organisms directly and/or influences primary productivity and thus food availability (Kerr, 2001; Hawkins et al., 2003; Phillips et al., 2010).

4.2 Uncertainties

795 The estimated SW PET may involve uncertainties from various sources, such as parameterizations of the SW model and inputs for calibrating and driving the model. These uncertainties are discussed in the following sections.

4.2.1 Uncertainties in parameterizations of the SW model

A relatively simple Jarvis-type empirical formula was employed here to describe the impacts of environmental conditions (i.e., temperature, vapor pressure deficit, solar radiation, soil moisture content and CO₂ concentration) on r_a^c . Whereas the better

删除了: great

删除了: ,

删除了: and therefore the

删除了: process through introducing a stress function of CO₂ concentration on r_s^c

删除了: , gridded

删除了: be useful for many

删除了: ications

删除了: more

删除了: and

删除了: (i.e., our datasets)

删除了: (including changes in

删除了: and vegetation)

删除了: because

删除了: this variable

performance of the Jarvis-type formula in simulating the impacts of environmental conditions on water and carbon fluxes (Jarvis, 1976; Lhomme, 2001; Wang et al., 2020), the interactive effects between environmental factors on r_a^c are not taken into account by this empirical formula. In reality, environmental factors are interdependent and hence their interaction in the Jarvis-type empirical formula cannot be easily separated. In one word, the “multiplication” form of the Jarvis-type empirical formula potentially biases the estimated r_a^c (Damour et al., 2010; Chen et al. 2022) and then the SW PET estimates.

As an important and undetermined parameter within the Jarvis-type empirical formula for estimating r_a^c , r_{smin} was optimized for FR, SHRB, GRA and CRO and the calibrated SW model performance was satisfactory (details in section 3.1). However, it should be noted that this optimized parameter may be the main hindrance for the SW model application over the globe (Liu et al., 2003; Mo et al., 2004; Chen et al., 2022). First, r_{smin} was estimated using EC observations that generally cover the period after 2000 assuming stationary environment conditions. Environment conditions were evidenced to have greatly changed during the past several decades, especially climate conditions, such as global warming (IPCC, 2014), brightening/dimming (Wild, 2009) and frequent extreme events (e.g., droughts; Sheffield et al., 2012; Trenberth et al., 2012). Therefore, r_{smin} may have inter-annual variations due to the changes in these variables (Wever et al., 2002; Winkel et al., 2001), and this finally introduces biases into the PET product, particularly for years with evidently different environment conditions relative to the period after 2000 (Aschonitis et al., 2017). Second, r_{smin} was fixed throughout the year in the SW model, regardless of seasonal variations of this parameter with environmental and vegetation conditions (Winkel et al., 2001; Wever et al., 2002; Douglas et al., 2009). Therefore, no consideration of seasonal cycle of r_{smin} may impact the quality of the PET product (Hu et al., 2009; Zhu et al., 2013; Elfarkh et al., 2021). For instance, Hu et al. (2009) and Zhu et al. (2013) found that ET was systematically overestimated or underestimated using the SW model with fixed parameters.

The canopy light extinction coefficient of k_{ex} , which represents a partitioning of radiant energy over vegetation canopy and soil surface, is a key factor affecting ecosystem carbon, water, and energy processes (Tahiri et al., 2006; Zhang et al., 2014). As a result, the accuracy of the SW model was believed to be associated with the k_{ex} parameterization used in this study. Considering the physiological and morphological differences among terrestrial ecosystems (Emami-Bistghani et al., 2012; Zhang et al., 2014), we followed the popular biogeochemical models and remote sensing models of ET and gross primary productivity (e.g., Lund-Potsdam-Jena Dynamic Global Vegetation Model, and Vegetation Photosynthesis Model; Xiao et al., 2004; Sitch et al., 2003), and assumed this coefficient as a constant for every LULC type (Table S1). Despite that, it is notable that the k_{ex} values vary with the growth of plant and/or vegetation coverages (Lindroth and Perttu, 1981; Aubin et al., 2000; Maddoni et al., 2001; Emami-Bistghani et al., 2012; Fauset et al., 2017). Emami-Bistghani et al. (2012) stated that with an increase of vegetation coverages, the k_{ex} values decreased especially in early reproductive stage in sunflower cultivars. It suggested that the fixed k_{ex} within the SW model existed limitations, potentially leading to uncertainties of the PET estimates. Implied by Tahiri et al. (2006), relative to the variable k_{ex} values, the fixed values gave a less precise estimation of plant

- 删除了: between
- 设置了格式: 字体: 倾斜
- 设置了格式: 字体: 倾斜, 下标
- 删除了: in
- 删除了: habits
- 删除了: some
- 删除了: each
- 删除了: the fact
- 删除了: stage of
- 删除了: growth
- 删除了: should be kept in mind
- 删除了: For example,
- 删除了: ing
- 删除了: in sunflower cultivars
- 删除了: These
- 删除了: For instance,
- 删除了: pointed out that

860

transpiration under irrigated maize.

Noteworthy, the SW model only focuses on two processes of ET, namely soil evaporation and vegetation transpiration (Shuttleworth and Wallace, 1985). Another parts of ET, vegetation canopy interception and nighttime ET are ignored in this study.

865

It is reported that vegetation canopy interception can occupy a certain proportion in total ET, especially for regions with high LAI and frequent rainfall (Gash et al., 1995; Tourula and Heikinheimo, 1998; Lawrence et al., 2007; Wang and Dickinson, 2012). On rainy days, the vegetation canopy interception may account for a considerable fraction of the total ET (Tourula and Heikinheimo, 1998; Hu et al., 2009). Padrón et al. (2020) showed that on average the fraction of nighttime ET accounts for approximately 6.3% of the total ET informed by the FLUXNET2015 dataset while 7.9% based on multiple global models. Notably, this fraction may exceed to 15% in mountain forest with snowy and windy winter. Ignoring vegetation canopy

870

interception and nighttime ET may underestimate PET (Tourula and Heikinheimo, 1998; Lawrence et al., 2007; Mu et al., 2011; Padrón et al., 2020; Singer et al., 2021). Subsequent research will be done to integrate these two processes in the SW model to further enhance the model's physical mechanism.

4.2.2 Uncertainties in datasets for calibrating and driving the SW model

The uncertainties in the EC observations for calibrating the SW model and in inputs for producing the global PET can be propagated into the PET estimates. As for the EC observations, the uncertainties mainly come from the selection of unstressed days for obtaining the observed PET. issue of non-closure of the energy balance at the EC system level and the gap-filling methods (e.g., marginal distribution sampling method; Reichstein et al., 2005). The energy balance-based criterion employed in this study was proved to be efficient to select unstressed days (Maes et al., 2019), but this method may still result in two

875

uncertainties. First, we should note that the higher the LAI/Normalized Difference Vegetation Index (NDVI) is, the larger the EF will be (Gentine et al., 2007; Nutini et al., 2014). This suggests that the larger EF would like to frequently happen during the growing season, which usually correspond to higher LAI/NDVI. Therefore, the identified unstressed days tended to involve less ones within non-growing season, potentially introducing large biases in estimated PET during this season. Second, due to usual water deficits in arid regions, the EF threshold may exceed to the 95th percentile of EF. Thus, the identified unstressed days based on this criterion may actually include the stressed days. This potentially biased the PET estimates in arid regions. Through increasing the EF threshold (e.g., 96th and 98th; not shown here) for several EC sites in arid regions, we found that

880

selecting 95th percentile as threshold has limited impact on the PET estimates. In order to reduce the impacts of the non-closure of the energy balance in the EC system (Wilson et al., 2002; Foken, 2008), we used the corrected half-hourly or hourly EC LE and H observations and only retained daytime records with Bowen ratio between 0.90 and 1.10 to calibrate the SW model. Although such processing could reduce uncertainties, the imbalance of energy was not fully solved in our study and

885

may lead to inevitable errors in the calibrated parameter of r_{smin} and therefore the global PET estimates (Hu et al., 2009; Elfarkh et al., 2020; Chen et al., 2022). In this study, for maximizing the use of data, the marginal distribution sampling method was

890

删除了: is...ignored in this study, ... although ...t is reported that vegetation canopy interception it ...an occupy a certain proportion in total ET, especially for regions with high LAI and frequent rainfall (Gash et al., 1995; Tourula and Heikinheimo, 1998; Lawrence et al., 2007; Wang and Dickinson, 2012). On rainy days, the vegetation canopy interception may account for a considerable fraction of the total ET (Tourula and Heikinheimo, 1998; Hu et al., 2009).

删除了: ing...for the total ET was ...pproximately 6.3% of the total ET informed by based on ...he FLUXNET2015 dataset but...hile 7.9% based on multiple global models. Notably, this fraction may exceed to 15% in mountain forest with snowy and windy winter. Undoubtedly, i

删除了:). Subsequent research will be done to integrate the vegetation interception

删除了: and... issue of non-closure of the energy balance at the EC system level and the gap-filling methods (e.g., marginal distribution sampling method; Reichstein et al., 2005). The energy balance-based criterion employed in this study was proved to be efficient to select unstressed days (Maes et al., 2019), but we should note

删除了: the fact that

删除了: the fact that

删除了: always with limited water supply... their...he corresponding ...F threshold may exceed to the 95th percentile of EF,...and ...t...us, the identified unstressed based on this criterion may actually include the stressed days., which

删除了: t

删除了: the

删除了: of

删除了: EF ...n did impact

删除了: is

删除了: limited... In order to reduce the impacts of the non-closure of the energy balance at

删除了: level on our study

删除了: imbalance issue ...as not essentially ...ully solved here ...n our study and may lead to inevitable errors in the calibrated parameter of r_{smin} and lastly

删除了: has been

employed to fill the gaps in the EC LE measurements. However, it should be noted that even though the controlling thermodynamic and kinetic factors of the atmosphere are similar between the missing and retrieved moments (Jiang et al., 2022), the gap-filled LE may be of low confidence, especially when soil moisture has abrupt changes. To quantify potential impacts of the gap-filled values, the SW model was re-calibrated and re-validated against the data points without gap-filling. Relative to the SW model used in this study, the new r_{smin} and the validation metrics changed insignificantly (not shown here), suggesting that the uncertainties induced by the gap-filled LE were limited.

The SW model used various datasets as inputs, including LULC, LAI, canopy height and meteorological data (e.g., MSWX-Past, CRU TS4.06, ERA5 and MERRA-2) while with certain uncertainties (Fang et al., 2013; Xiao et al., 2017; Liu et al., 2018; Xu et al., 2018). As the reflection of vegetation growth, the accuracy of LAI can affect several key parameters (e.g., τ_s^c , τ_a^c , and τ_a^s) and input variables (e.g., A and A_{soil}) and influence the quality of the PET estimates. To reduce uncertainties from LAI datasets, this study selected the GLASS AVHRR LAI product with a better overall performance (relative to other popular products, e.g., MODIS, FSGOM, GLOBMAP and GIMMS3g; Fang et al., 2013; Xiao et al., 2017; Liu et al., 2018; Xu et al., 2018). However, we should note that this LAI product slightly underperformance over grassland compared to other products (Liu et al., 2018). Considering that this LAI product was based on the 8-day maximum value composite for removing impacts of cloudy days, the LAIe (based on EQ. 3b) was potentially larger than its authentic value due to some leaves covered by rain or snow. Thus, from EQ. 3b, τ_a^c may be slightly underestimated, leading to an overestimation in PT and PET.

Considering impacts of LULC changes on PET across the globe, we used the 1982–2015 yearly GLASS-GLC dataset developed by Liu et al. (2020) to separately estimate PET for each LULC type. Although the average overall accuracy for the 34 years each with seven classes is 83% based on 2431 test sample units, the misclassification issues still existed, e.g., Africa, eastern and southern South America, southern Alaska, northern and eastern Australia and south-western Indonesia (Liu et al., 2020). The reconstructed global vegetation canopy height also has limitations, which may raise from (1) uncertainties in the retrieval algorithms and remote sensing data (Simard et al., 2011; Wang et al., 2016; Potapov et al., 2020; Lang et al., 2021, 2022), (2) neglecting the spatial differences in CRO and GRA heights and using an alternative specific value, and (3) not considering the inter-annual changes in the FR and SHRB canopy heights and the intra-annual cycle in the CRO and GRA heights. These limitations undermine the accuracy of the PET estimates. A series of evaluations of various meteorological datasets across the world suggested the discrepancies among these datasets (Urraca et al., 2018; Hinkelman, 2019; Jourdiar, 2020; Zhang et al., 2021). Although the ensemble mean used here may reduce uncertainties from the meteorological datasets, there is still likelihood that the remaining uncertainties might be propagated into the PET estimates. In this study, even though soil does experience water stress, we assumed that the soil water supply for ET was unconstrained in estimating PET. As a result, the two conditions with and without soil water stress corresponded to different meteorological variables, when considering land-atmosphere interaction (Crago and Crowley, 2005; Kahler, and Brutsaert, 2006; Aminzadeh et al., 2016; Maes

删除了: within...n the EC LE measurements. However, it should be noted that even though the controlling thermodynamic and kinetic factors of the atmosphere are similar between the missing and retrieved moments (Jiang et al., 2022), the gap-filled LE may be of low confidence, especially when soil moisture has abrupt changes, even though the controlling thermodynamic and kinetic factors of the atmosphere are similar between the missing and retrieved moments (Jiang et al., 2022)... For...o quantifying...potential impacts of the gap-filled values, the SW model was re-calibrated and re-validated based on...against the data points without gap-filling. Relative to the SW model used in this study, the new r_{smin} and the validation metrics exhibited...hanged

删除了:

删除了: much

删除了: , in which...certainsome...uncertainties exist...(Fang et al., 2013; Xiao et al., 2017; Liu et al., 2018; Xu et al., 2018). As a critical variable describin...he reflection of g...egetation condition

删除了: further

删除了: affects

删除了: the performance of...this LAI product was ...lightly underperformance slightly unsatisfactory in ...ver grassland plots ...ompared to other products (Liu et al., 2018). Moreover, c...onsidering that this LAI product was produced ...ased on the 8-day maximum value composite for removing impacts of cloudy days, the LAIe (based on EQ. 3b) was potentially larger than its truth

删除了:

删除了: seen

删除了: lower than its truth value ... leading to and finally...n overestimation in PT and PET were overestimated... Considering impacts of LULC changes on PET across the globe, we used the 1982–2015 yearly GLASS-GLC dataset developed by Liu et al. (2020) to separately estimate PET for each LULC type. Although the average overall accuracy for the 34 years each with seven classes is 83% based on 2431 test sample units, the misclassification issues still existed, e.g., Africa, eastern and southern South America, southern Alaska, northern and eastern Australia and south-western Indonesia (Liu et al., 2020). The reconstructed global vegetation canopy height

设置了格式

et al., 2019). For example, air temperature under the unstressed condition would like to be lower than that under the stressed condition, because of the lower sensible heating and the stronger evaporative cooling from the wetter land surface to atmosphere (Maes and Steppe, 2012; Maes et al., 2019). Thus, the mismatch between the assumption of no soil water stress and the observed meteorological variables would like to introduce biases into our PET estimates.

删除了: even though soil does experience water stress, unconstrained in. However, soil wetness in deed associates with the circumstances without soil water stress can the one with soil water since the dryness of soil can reduce the evaporative cooling effect over and lower atmosphere. Thus, assuming no soil water stress impact on meteorology

5 Conclusions

This study developed a global 5 km monthly PET dataset during 1982–2015 using the calibrated SW model. The model has been well-calibrated against observations at 96 EC flux sites across four major LULC types: forests, shrubland, cropland, and grassland. We mapped spatio-temporal changes in PET and its components (i.e., PT and PE) across the globe.

删除了: land cover

Our PET product has three major improvements relative to the existing PET datasets: (1) it provides more realistic the PET estimates by clearer physical processes, since we take the spatial differences and temporal changes of land surface properties into consideration, (2) it provides not only PET estimates but also PT and PE, and moreover (3) it can take the impacts of elevated CO₂ into PET estimation through introducing the stress function of CO₂ on r_s^c . This dataset can be used by various scientific disciplines (e.g., agronomy, ecology, climatology, hydrology and so on) and policy makers for different operational applications.

删除了: because

删除了: are

删除了: ed

删除了: includes

删除了: reflect

删除了: on

6 Data availability statement

The product named SW PET with monthly and 5 km resolutions from 1982 to 2015 is freely available at the National Tibetan Plateau Data Center (<https://doi.org/10.11888/Terre.tpd.c.300193>, Sun et al., 2023).

Author contributions

SS and ZB designed the research. ZB, YL and XL collected the EC observations and other input data. JX, YL, GS, WJ, CL, MM, JL, YZ, and HC revised the paper.

Competing interests

The authors declared that they have no conflict of interest.

Acknowledgments

This work was jointly supported by the National Key Research and Development Program of China (Grant No. 2022YFF0801603), National Natural Science Foundation of China (Grant NOs. 42075189 and 42130609), and Natural Science

1225 Foundation of Sichuan Province of China (2022NSFSC0215). We thank the data developers, their managers, and funding agencies, whose work and support were essential to data access. The source code for the model used in this study and input files necessary to reproduce the simulations is available from the authors upon request (sun.s@nuist.edu.cn).

References

1230 Allen, R. G., Pereira, L. S., Raes, D. and Smith, M.: Crop Evapotranspiration: Guidelines for computing crop water requirements, Irrigation and Drainage Paper 56, Food and Agriculture Organization of the United Nations, Rome, 1998.

[Aminzadeh, M., Roderick, M. L., and Or, D.: A generalized complementary relationship between actual and potential evaporation defined by a reference surface temperature. *Water Resources Research*, 52, 385–406, 2016.](#)

1235 Aouissi, J., Benabdallah, S., Chabaâne, Z. L., and Cudennec, C.: Evaluation of potential evapotranspiration assessment methods for hydrological modelling with SWAT—Application in data-scarce rural Tunisia. *Agricultural Water Management*, 174, 39–51, 2016.

Aschonitis, V. G., Papamichail, D., Demertzi, K., Colombani, N., Mastrocicco, M., Ghirardini, A., Castaldelli, G. and Fano, E. –A.: High-resolution global grids of revised Priestley-Taylor and Hargreaves-Samani coefficients for assessing ASCE-standardized reference crop evapotranspiration and solar radiation. *Earth System Science Data*, 9, 615–638, 2017.

1240 Aschonitis, V. G., Demertzi, K., Papamichail, D., Colombani, N. and Mastrocicco, M.: Revisiting the Priestley-Taylor method for the assessment of reference crop evapotranspiration in Italy. *Italian Journal of Agrometeorology*, 20, 5–18, 2015.

[Aubin, I., Beaudet, M. and Messier, C.: Light extinction coefficients specific to the understory vegetation of the southern boreal forest, Quebec. *Canadian Journal of Forest Research*, 30, 168–177, 2000.](#)

Barbero, R., Fowler, H. J., Lenderink, G. and Blenkinsop, S.: Is the intensification of precipitation extremes with global warming better detected at hourly than daily resolutions? *Geophysical Research Letters*, 44, 974–983, 2017.

1245 Beck, H. E., Zimmermann, N. E., McVicar, T. R., Vergopolan, N., Berg, A., and Wood, E. F.: Present and future Köppen-Geiger climate classification maps at 1-km resolution. *Scientific Data*, 5, 180214, 2018. <https://doi.org/10.1038/sdata.2018.214>

Berengena, J. and Gavilán, P.: Reference evapotranspiration estimation in a highly advective semiarid environment. *Journal of Irrigation and Drainage Engineering*, 131, 147–163, 2005.

Beven, K.: *Rainfall-runoff modelling. The primer*, 2nd Edn., John Wiley & Sons Ltd, Oxford (UK), 457 pp., 2012.

1250 Brisson, N., Itier, B., L'Hotel, J. C. and Lorendeau, J. Y.: Parameterisation of the Shuttleworth-Wallace model to estimate daily maximum transpiration for use in crop models. *Ecological Modelling*, 107, 159–169, 1998.

Brisson, N., Ltier, B., L'Hotel, J. C. and Lorendeau, J. V.: Parameterisation of the Shuttleworth-Wallace model to estimate daily maximum transpiration for use in crop models. *Ecological Modelling*, 107(2–3), 159–169, 1998.

Chen, C., Park, T., Wang, X., Piao, S., Xu, B., Chaturved, R. K., Fuchs, R., Brovkin, V., Ciacis, P., Fensholt, R., Tømmervik,

1255 H., Bala, G., Zhu, Z., Nemani, R. R. and Myneni, R. B.: China and India lead in greening of the world through land-use management. *Nature Sustainability*, 2, 122–129, 2019.

Chen, H., Jiang, A. Z., Huang, J. J., Li, H., McBean, E., Singh, V. P., Zhang, J., Lan, Z., Gao, J. and Zhou, Z.: An enhanced Shuttleworth-Wallace model for simulation of evapotranspiration and its components. *Agricultural and Forest Meteorology*, 313, 108769, <https://doi.org/10.1016/j.agrformet.2021.108769>, 2022.

1260 [Cheng, W., Dan, L. i., Deng, X., Feng, J., Wang, Y., Peng, J., Tian, J., Qi, W., Liu, Z., Zheng, X., Zhou, D., Jiang, S., Zhao, H. and Wang, X.: Global monthly gridded atmospheric carbon dioxide concentrations under the historical and future scenarios. *Scientific Data*, 9\(1\), <https://doi.org/10.1038/s41597-022-01196-7>, 2022.](#)

[Crago, R. and Crowley, R.: Complementary relationships for near-instantaneous evaporation. *Journal of Hydrology*, 300, 199–211, 2005.](#)

1265 Crow, W. T. and Kustas, W. P.: Monitoring root-zone soil moisture through the assimilation of a thermal remote sensing-based soil moisture proxy into a water balance model. *Remote Sensing of Environment*, 112(4), 1268–1281, 2008.

Dai, Y., Wei, N., Yuan, H., Zhang, S., Shanguan, W., Liu, S., Lu, X. and Xin, Y.: Evaluation of soil thermal conductivity schemes for use in land surface modelling. *Journal of Advances in Modeling Earth Systems*, 11(11), 3454–3473, 2019a.

1270 Dai, Y., Xin, Q., Wei, N., Zhang, Y., Shanguan, W., Yuan, H., Zhang, S., Liu, S. and Lu, X.: (2019b), A global high-resolution dataset of soil hydraulic and thermal properties for land surface modeling. *Journal of Advances in Modeling Earth Systems*, 11(9), 2996–3023, 2019b.

Dallaire, G., Poulin, A., Arseneault, R., and Brissette, F.: Uncertainty of potential evapotranspiration modelling in climate change impact studies on low flows in North America. *Hydrological Sciences Journal*, 66(4), 689–702, 2021.

1275 Damour, G., Simonneau, T., Cochard, H. and Urban, L.: An overview of models of stomatal conductance at the leaf level. *Plant, Cell and Environment*, 33(9), 1419–1438, 2010.

Douglas, E. M., Jacobs, J. M., Sumner, D. M. and Ray, R. L.: A comparison of models for estimating potential evapotranspiration for Florida land cover types. *Journal of Hydrology*, 373, 366–376, 2009.

Eckhardt, K. and Ulbrich, U.: Potential impacts of climate change on groundwater recharge and streamflow in a central European low mountain range. *Journal of Hydrology*, 284(1–4), 244–252, 2003.

1280 ECMWF: IFS Documentation-Cy31r1 Part IV: Physical Processes. <http://www.ecmwf.int/sites/default/files/elibrary/2007/9221-part-iv-physical-processes.pdf>, 2007.

Elfarkh, J., Er-Raki, S., Ezzahar, J., Chehbouni, A., Aithssaine, B., Amazirh, A., Khabba, S. and Jarlan, L.: Integrating thermal stress indexes within Shuttleworth-Wallace model for evapotranspiration mapping over a complex surface. *Irrigation Science*, 39, 45–61, 2021.

1285 [Emami-Bistghani, Z., Siadat, S. A., Torabi, M., Bakhshande, A., Alami, S. K. and Shiresmaeili, H.: Influence of plant density](#)

设置了格式: 行号, 字体: (默认) + 西文正文 (等线), 五号

[on light absorption and light extinction coefficient in sunflower cultivars. *Research on Crops*, 13\(1\), 174–179, 2012.](#)

Espadafor, M., Lorite, I. J., Gavilán, P. and Berengena, J.: An analysis of the tendency of reference evapotranspiration estimates and other climate variables during the last 45 years in Southern Spain. *Agricultural Water Management*, 98, 1045–1061, 2011.

Fang, H., Jiang, C., Li, W., Wei, S., Baret, F., Chen, J. M., Garcia-Haro, J., Liang, S., Liu, R., Myneni, R. B., Pinty, B.,

Xiao, Z. and Zhu, Z.: Characterization and intercomparison of Global Moderate Resolution Leaf Area Index (LAI) products: Analysis of climatologies and theoretical uncertainties. *Journal of Geophysical Research: Biospheres*, 118(2), 529–548, 2013.

[Fauset, S., Gloor, M. U., Aidar, M. P. M., Freitas, H. C., Fyllas, N. M., Marabesi, M. A., Rochelle, A. L. C. A., Shenkin, Vieira, S. A. and Joly, C. A.: Tropical forest light regimes in a human-modified landscape. *Ecosphere* 8\(11\): e02002. <https://doi.org/10.1002/ecs2.2002>, 2017.](#)

Field, C. B., Jackson, R. B. and Mooney, H. A.: Stomatal responses to increased CO₂: implications from the plant to the global scale. *Plant, Cell & Environment*, 18(10), 1214–1225, 1995.

Fisher, J. B., DeBiase, T. A., Qi, Y., Xu, M. and Goldstein, A. H.: Evapotranspiration models compared on a Sierra Nevada forest ecosystem. *Environmental Modelling & Software*, 20, 783–796, 2005.

Fisher, J. B., Whittaker, R. J. and Malhi, Y.: ET come home: potential evapotranspiration in geographical ecology. *Global Ecology and Biogeography*, 20, 1–18, 2011.

Foken, T.: The energy balance closure problem: an overview. *Ecological Applications*, 18(6), 1351–1367, 2008.

Franks, P. J. and Beerling, D. J.: Maximum leaf conductance driven by CO₂ effects on stomatal size and density over geologic time. *Proceedings of the National Academy of Sciences*, 106(25), 10343–10347, 2008.

Friedl, M. A., Sulla-Menashe, D., Tan, B., Schneider, A., Ramankutty, N., Sibley, A. and Huang, X.: MODIS Collection 5 global land cover: algorithm refinements and characterization of new datasets. *Remote Sensing of Environment*, 114(1), 68–182, 2010.

Gang, C. –C., Wang, Z. –Q., Yang, Y., Chen, Y. –Z., Zhang, Y. –Z., Li, J. –L. and Cheng, J. –M.: The NPP spatiotemporal variation of global grassland ecosystems in response to climate change over the past 100 years. *Acta Prataculturae Sinica*, 25(11), 1–14, 2016. (in Chinese with English Abstract)

Gardiol, J. M., Serio, L. A. and Maggiora, A. I. D.: Modeling evapotranspiration of corn (*Zea mays*) under different plant densities. *Journal of Hydrology*, 217, 188–196, 2003.

Gardner, A., Jiang, M., Ellsworth, D., MacKenzie, A. R., Pritchard, J., Bader, M. K. –F., Barton, C., Bernacchi, C., Calfapietra, C., Crous, K. Y., Dusenage, M. E., Gimeno, T. E., Hall, M., Lamba, S., Leuzinger, S., Uddling, J., Warren, J., Wallin, G. and Medlyn, B.: Optimal stomatal theory predicts CO₂ responses of stomatal conductance in both gymnosperm and angiosperm trees. *New Phytologist*, 153, 477–484, 2022.

Gash, J. H. C., Lloyd, C. R. and Lachaud, G.: Estimating sparse forest rainfall interception with an analytical model. *Journal*

of Hydrology, 170(1–4), 79–86, 1995.

Gedney, N., Cox, P. M., Betts, R. A., Boucher, O., Huntingford, C. and Stott, P. A.: Detection of a direct carbon dioxide effect in continental river runoff records. *Nature*, 439(7078), 835–838, 2006.

1320 Gentine, P., Entekhabi, D. and Polcher, J.: The diurnal behavior of evaporative fraction in the soil-vegetation-atmospheric boundary layer continuum, *Journal of Hydrometeorology*, 12, 1530–1546, 2011.

Gentine, P., Entekhabi, D., Chehbouni, A., Boulet, G. and Duchemin, B.: Analysis of evaporative fraction diurnal behavior. *Agricultural and Forest Meteorology*, 143, 13–29, 2007.

1325 Gong, X., Liu, H., Sun, J., Gao, Y., Zhang, X., Jha, S. K., Zhang, H., Ma, X. and Wang, W.: A proposed surface resistance model for the Penman-Monteith formula to estimate evapotranspiration in a solar greenhouse. *Journal of Arid Land*, 9, 530–546, 2017.

Gupta, H. V., Kling, H., Yilmaz, K. K., Martinez, G. F.: Decomposition of the mean squared error and NSE performance criteria: Implications for improving hydrological modelling. *Journal of Hydrology*, 377, 80–91, 2012.

1330 Hargreaves, G. H. and Samani, Z. A.: Estimating potential evapotranspiration. *Journal of the Irrigation and Drainage Division, Proceedings of the American Society of Civils Engineers*, 108, 225–230, 1983.

Harris, I., Osborn, T. J., Jones, P. and Lister, D.: Version 4 of the CRU TS monthly high-resolution gridded multivariate climate dataset. *Scientific Data*, 7, 109, <https://doi.org/10.1038/s41597-020-0453-3>, 2020.

1335 Hersbach, H., Bell, B., Berrisford, P., Hirahara, S., Horányi, A., Muñoz-Sabater, J., Nicolas, J., Peubey, C., Radu, R., Schepers, D., Simmons, A., Soci, C., Abdalla, S., Abellan, X., Balsamo, G., Bechtold, P., Biavati, G., Bidlot, J., Bonavita, M., De Chiara, G., Dahlgren, P., Dee, D., Diamantakis, M., Dragani, R., Flemming, J., Forbes, R., Fuentes, M., Geer, A., Haimberger, L., Healy, S., Hogan, R. J., Hólm, E., Janisková, M., Keeley, S., Laloyaux, P., Lopez, P., Lupu, C., Radnoti, G., Rosnay, P., Rozum, I., Vamborg, F., Villaume, S. and Thépaut, J. -N.: The ERA5 global reanalysis. *Quarterly Journal of the Royal Meteorological Society*, 146, 1999–2049, 2020.

1340 Hawkins, B.A., Field, R., Cornell, H.V., Currie, D.J., Guégan, J.F., Kaufman, D.M., Kerr, J.T., Mittelbach, G.G., Oberdorff, T., and O'Brien, E.M.: Energy, water, and broad-scale geographic patterns of species richness. *Ecology*, 84(12), 3105–3117, 2003.

Hinkelman, L. M.: The Global Radiative Energy Budget in MERRA and MERRA-2: Evaluation with Respect to CERES EBAF Data. *Journal of Climate*, 32, 1973–1994, 2019.

Hu, Z., Li, S., Yu, G., Sun, X., Zhang, L. and Han, S.: Modeling evapotranspiration by combing a two-source model, a leaf stomatal model, and a light-use efficiency model. *Journal of Hydrology*, 501, 186–192, 2013.

1345 Hu, Z., Yu, G., Zhou, Y., Sun, X., Li, Y. and Shi, P.: Partitioning of evapotranspiration and its controls in four grassland ecosystems: application of a two-source model. *Agricultural and Forest Meteorology*, 149(9), 1410–1420, 2009.

Hu, Z., Yu, G., Zhou, Y., Sun, X., Li, Y., Shi, P., Wang, Y., Song, X., Zheng, Z., Zhang, L. and Li, S.: Partitioning of

evapotranspiration and its controls in four grassland ecosystems: Application of a two-source model. *Agricultural and Forest Meteorology*, 149(9), 1410–1420, 2009.

1350 Huang, H., Liu, C., Wang, X., Biging, G. S., Chen, Y., Yang, J. and Gong, P.: Mapping vegetation heights in China using slope correction ICESat data, SRTM, MODIS-derived and climate data. *ISPRS Journal of Photogrammetry and Remote Sensing*, 129, 189–199, 2017.

Huang, S., Yan, H., Zhang, C., Wang, G., Acquah, S. J., Yu, J., Li, L., Ma, J. and Darko, R. O.: Modeling evapotranspiration for cucumber plants based on the Shuttleworth-Wallace model in a Venlo-type greenhouse. *Agricultural Water Management*, 1355 228, 105861, <https://doi.org/10.1016/j.agwat.2019.105861>, 2020.

International Food Policy Research Institute: Global spatially-disaggregated crop production statistics data for 2010 version 2.0. Harvard Dataverse [dataset], <https://doi.org/10.7910/DVN/PRFF8V>, 2019.

IPCC: Summary for policymakers. In: Field, C. B., Barros, V. R., Dokken, D. J., Mach, K. J., Mastrandrea, M. D., Bilir, T. E., Chatterjee, M., Ebi, K. L., Estrada, Y. O., Genova, R. C., Girma, B., Kissel, E. S., Levy, A. N., MacCracken, S., Mastrandrea, P. R., White, L. L. (eds.). *Climate change 2014: impacts, adaptation, and vulnerability. part a: global and sectoral aspects. contribution of working group ii to the fifth assessment report of the intergovernmental panel on climate change*. Cambridge University Press, Cambridge, pp. 1–32, 2014.

Iritz, Z., Lindroth, A., Heikinheimo, M., Grelle, A. and Kellner, E.: Test of a modified Shuttleworth-Wallace estimate of boreal forest evaporation. *Agricultural and Forest Meteorology*, 98–99, 605–619, 1999.

1365 Itenfisu, D., Elliot, R., Allen, R. and Walter, I.: Comparison of reference evapotranspiration calculations across a range of climates, in: *Proceedings of the 4th National Irrigation Symposium*, St. Joseph, ASAE Edn., 216–227, 2000.

Jarvis, P. G.: Interpretation of variations in leaf water potential and stomatal conductance found in canopies in field. *Philosophical Transactions of the Royal Society B Biological Sciences*, 273(927), 593–610, 1976.

Jensen, M., Burman, R. and Allen, R.: *Evapotranspiration and irrigation water requirements*, in: ASCE manual No. 70, p. 332, New York, ASCE Edn., 1990.

1370 [Jiang, Y., Tang, R. and Li, Z. L.: A physical full-factorial scheme for gap-filling of eddy covariance measurements of daytime evapotranspiration. *Agricultural and Forest Meteorology* 323, 109087. <https://doi.org/10.1016/j.agrformet.2022.109087>, 2022.](#)

Jourdier, B.: Evaluation of ERA5, MERRA-2, COSMO-REA6, NEWA and AROME to simulate wind power production over France. *Advances in Science and Research*, 17, 63–77, 2020.

1375 Kadeba, A., Nacoulma, B. M. I., Ouédraogo, A., Bachmann, Y., Thiombiano, A., Schmidt, M. and Boussim, J. I.: Land cover change and plants diversity in the Sahel: a case study from northern Burkina Faso. *Annals of Forest Research*, 58(1), 109–123, 2015.

设置了格式: 行号, 字体: (默认) + 西文正文 (等线), 五号

Kerr, J.: 2001. Butterfly species richness patterns in Canada: energy, heterogeneity, and the potential consequences of climate change. *Conservation Ecology*, 5(1), <https://doi.org/10.5751/ES-00246-050110>, 2001.

[Kahler, D. M. and Brutsaert, W.: Complementary relationship between daily evaporation in the environment and pan evaporation. *Water Resources Research*, 42, W05413, <https://doi.org/10.1029/2005WR004541>, 2006.](#)

Kool, D., Agam, N., Lazarovitch, N., Heitman, J. L., Sauer, T. J. and Ben-Gal, A.: A review of approaches for evapotranspiration partitioning. *Agricultural and Forest Meteorology*, 184, 56–70, 2014.

Lagos, L. O., Martin, D. L., Verma, S. B., Irmak, S., Irmak, A., Eisenhauer, D. and Suyker, A.: Surface energy balance model of transpiration from variable canopy cover and evaporation from residue-covered or bare soil systems: model evaluation. *Irrigation Science*, 31(2), 135–150, 2013.

Lang, N., Kalischek, N., Armston, J., Schindler, K., Dubayah, R. and Wegner, J. D.: Global canopy height regression and uncertainty estimation from GEDI LIDAR waveforms with deep ensembles. *Remote Sensing of Environment*, 268, 112760, <https://doi.org/10.1016/j.rse.2021.112760>, 2022.

Lang, N., Kalischek, N., Armston, J., Schindler, K., Dubayah, R., and Wegner, J. D.: Global canopy top height estimates from GEDI LIDAR waveforms for 2019. Zenodo [dataset], <https://doi.org/10.5281/zenodo.5112903>, 2021.

Lawrence, D. M., Thornton, P. E., Oleson, K. W. and Bonan, G. B.: The partitioning of evapotranspiration into transpiration, soil evaporation, and canopy evaporation in a GCM: impacts on land-atmosphere interaction. *Journal of Hydrometeorology*, 8(4), 862–880, 2007.

Lhomme, J. P.: Stomatal control of transpiration: Examination of the Jarvis-type representation of canopy resistance in relation to humidity. *Water Resources Research*, 37(3), 689–699, 2001.

Li, H. and Ma, Y.: Application on classification of Qinghai grassland by advanced comprehensive and sequential classification. *Acta Prataculturae Sinica*, 18(2), 76–82, 2009. (in Chinese with English Abstract)

Liang, S., Zhao, X., Liu, S., Yuan, W., Cheng, X., Xiao, Z., Zhang, X., Liu, Q., Cheng, J., Tang, H., Qu, Y., Bo, Y., Qu, Y., Ren, H., Yu, K. and Twonshend, J.: A long-term Global LAnd Surface Satellite (GLASS) data-set for environmental studies. *International Journal of Digital Earth*, 6, 5–33, 2013.

Liang, T. G., Feng, Q. S., Huang, X. D. and Ren, J. D.: Review in the study of comprehensive sequential classification system of grassland. *Acta Prataculturae Sinica*, 20(5), 252–258, 2011. (in Chinese with English Abstract)

Lin, Y. –S., Medlyn, B. E., Duursma, R. A., Prentice, I. C., Wang, H., Baig, S., Eamus, D., de Dios, V. R., Mitchell, P., Ellsworth, D. S., de Beeck, M. O., Wallin, G., Uddling, J., Tarvainen, L., Linderson, M. –L., Cernusak, L. A., Nippert, J. B., Ocheltree, T. W., Tissue, D. T., Martin-StPaul, N. K., Rogers, A., Warren, J. M., De Angelis, P., Hikosaka, K., Han, Q., Onoda, Y., Gimeno, T. E., Barton, C. V. M., Bennie, J., Bonal, D., Bosc, A., Löw, M., Macinins-Ng, C., Rey, A., Rowland, L., Setterfield, S. A., Tausz-Posch, S., Zaragoza-Castells, J., Broadmeadow, M. S. J., Drake, J. E., Freeman, M., Ghannoum, O., Hutley, L. B., Kelly,

- 1410 J. W., Kikuzawa, K., Kolari, P., Koyama, K., Limousin, J. –M., Meir, P., da Costa, A. C. L., Mikkelsen, T. N., Salinas, N., Sun, W., and Wingate, L.: Optimal stomatal behaviour around the world. *Nature Climate Change*, 5, 459–464, 2015.
- [Lindroth, A. and Perttu, K.: Simple calculation of extinction coefficient of forest stands. *Agricultural Meteorology*, 25, 97–110, 1981.](#)
- Liu, C., Sun G., McNulty, S. G. and Kang, S.: An improved evapotranspiration model for an apple orchard in northwestern
1415 China. *Transactions of the American Society of Agricultural and Biological Engineers*, 58(5), 1253–1264, 2015.
- Liu, C., Sun, G., McNulty, S.G., Noormets, A. and Fang, Y.: Environmental controls on seasonal ecosystem evapotranspiration/potential evapotranspiration ratio as determined by the global eddy flux measurements. *Hydrology and Earth System Sciences*, 21(1), 311–322, 2017.
- Liu, H., Gong, P., Wang, J., Nicholas, C., Bai, Y., Liang, S.: Annual dynamics of global land cover and its long-term changes
1420 from 1982 to 2015. *Earth System Science Data*, 12(2), 1217–1243, 2020a.
- Liu, H., Gong, P., Wang, J., Nicholas, C., Bai, Y., Liang, S.: Annual dynamics of global land cover and its long-term changes from 1982 to 2015. PANGAEA [dataset], <https://doi.org/10.1594/PANGAEA.913496>, 2020b.
- Liu, J., Chen, J. M. and Cihlar, J.: Mapping evapotranspiration based on remote sensing: an application to Canada’s landmass. *Water Resources Research*, 39(7), <https://doi.org/10.1029/2002WR001680>, 2003.
- 1425 Liu, X., Xu, C., Zhong, X., Li, Y., Yuan, X. and Cao, J.: Comparison of 16 models for reference crop evapotranspiration against weighing lysimeter measurement. *Agricultural Water Management*, 184, 145–155, 2017.
- Liu, Y., Liu, R. and Chen, J. M.: Retrospective retrieval of long-term consistent global leaf area index (1981–2011) from combined AVHRR and MODIS data. *Journal of Geophysical Research: Biogeosciences*, 117, G04003, doi:10.1029/2012JG002084, 2012.
- 1430 Liu, Y., Xiao, J., Ju, W., Zhu, G., Wu, X., Fan, W., Li, D. and Zhou, Y.: Satellite-derived LAI products exhibit large discrepancies and can lead to substantial uncertainty in simulated carbon and water fluxes. *Remote Sensing of Environment*, 206, 174–188, 2018.
- Lo Seen, D., Chehbouni, A., Njoku, E., Saatchi, S., Mougou, E. and Monteny, B.: An approach to couple vegetation functioning and soil-vegetation-atmosphere-transfer models for semiarid grasslands during the HAPEX-Sahel experiment. *Agricultural and Forest Meteorology*, 83(1–2), 49–74, 1997.
- 1435 Lu, J., Sun, G., McNulty, S. G. and Amatya, D. M.: A comparison of six potential evapotranspiration methods for regional use in the southeastern United States. *Journal of the American Water Resources Association*, 41(3), 621–633, 2005.
- Lu, J., Sun, G., McNulty, S. G. and Amatya, D. M.: Modeling actual evapotranspiration from forested watersheds across the southeastern United States. *Journal of the American Water Resources Association*, 39(4), 886–896, 2003.
- 1440 Maes, W. H., Gentile, P., Verhost, N. E. C. and Miralles, D.: Potential evaporation at eddy-covariance sites across the globe.

Hydrology and Earth System Sciences, 23, 925–948, 2019.

Maes, W. H., Pashuysen, T., Trabucco, A., Veroustraete, F. and Muys, B.: Does energy dissipation increase with ecosystem succession? Testing the ecosystem exergy theory combining theoretical simulations and thermal remote sensing observations. *Ecological Modelling*, 23–24, 3917–3941, 2011.

1445 [Maes, W. H. and Steppe, K.: Estimating evapotranspiration and drought stress with ground-based thermal remote sensing in agriculture: a review. *Journal of Experimental Botany*, 63, 4671–4712, 2012.](#)

[Maki, T., Ikegami, M., Fujita, T., Hirahara, T., Yamada, K., Mori, K., Takeuchi, A., Tsutsumi, Y., Suda, K. and Conway, T.J.: New technique to analyse global distributions of CO₂ concentration and fluxes from non-processed observational data. *Tellus B: Chemical and Physical Meteorology*, 62\(5\), 797–809, <https://doi.org/10.1111/j.1600-0889.2010.00488.x>, 2010.](#)

1450 Martens, B., Miralles, D. G., Lievens, H., van der Schalie, R., de Jeu, R. A. M., Fernández-Prieto, D., Beck, H. E., Dorigo, W. A. and Verhoest, N. E. C.: GLEAM v3: satellite-based land evaporation and root-zone soil moisture. *Geoscientific Model Development*, 10, 1903–1925, 2017.

Martínez-Vilalta, J., Poyatos, R., Aguadé, D., Retana, J. and Mencuccini, M.: A new look at water transport regulation in plants. *New Phytologist*, 204, 105–115, 2014.

1455 McVicar, T. R., Van Niel, T. G., Li, L. T., Hutchinson, M. F., Mu, X. M. and Liu, Z. H.: Spatially distributing monthly reference evapotranspiration and pan evaporation considering topographic influences. *Journal of Hydrology*, 338, 196–220, 2007.

Medlyn, B. E., Barton, C. V. M., Broadmeadow, M. S. J., Ceulemans, R., De Angelis, P., Forstreuter, M., Freeman, M., Jackson, S. B., Kellomäki, S., Laitat, E., Rey, A., Roberntz, P., Sigurdsson, B. D., Strassmeyer, J., Wang, K., Curtis, P. S. and Jarvis, P. G.: Stomatal conductance of forest species after long-term exposure to elevated CO₂ concentrations: a synthesis. *New Phytologist*, 149, 247–264, 2001.

Milly, P. C. and Dunne, K. A.: Potential evapotranspiration and continental drying. *Nature Climate Change*, 6, 946–951, 2016.

Miralles, D. G., Holmes, T. R. H., de Jeu, R. A. M., Gash, J. H., Meesters, A. G. C. A. and Dolman, A. J.: Global land-surface evaporation estimated from satellite-based observations. *Hydrology and Earth System Sciences*, 15, 453–469, 2011.

1465 Mizutani, K., Yamanoi, K., Ikeda, T. and Watanabe, T.: Applicability of the eddy correlation method to measure sensible heat transfer to forest under rainfall conditions. *Agricultural and Forest Meteorology*, 86, 193–203, 1997.

Mo, X., Liu, S., Lin, Z. and Zhao, W.: Simulating temporal and spatial variation of evapotranspiration over the Lushi basin. *Journal of Hydrology*, 285, 125–142, 2004.

[Maddoni, G. A., Otegui, M. E. and Cirilo, A. G.: Plant population density, row spacing and hybrid effects on maize canopy architecture and light attenuation. *Field Crops Research*, 71, 183–193, 2001.](#)

1470 Molod, A., Takacs, L., Suarez, M. and Bacmeister, J.: Development of the GEOS-5 atmospheric general circulation model: Evolution from MERRA to MERRA-2. *Geoscientific Model Development*, 8, 1339–1356, 2015.

删除了: ,

Monteith, J. L.: Evaporation and environment, Symposia of the society for experimental biology, Cambridge University Press, Cambridge, 1965.

1475 Morison, J. I. L. and Gifford, R. M.: Plant growth and water use with limited water supply in high CO₂ concentrations. I. Leaf area, water use and transpiration. *Functional Plant Biology*, 11(5), 361–374, 1984.

Mu, Q. Z., Zhao, M. S. and Running, S.W.: Improvements to a MODIS global terrestrial evapotranspiration algorithm. *Remote Sensing of Environment*, 115(8), 1781–1800, 2011.

Mu, Q., Zhao, M. and Running, S. W.: MODIS Global Terrestrial Evapotranspiration (ET), Product (NASA MOD16A2/A3),
1480 Algorithm Theoretical Basis Document, Collection 5, NASA Headquarters, 2013.

[Nakamura, T., Maki, T., Machida, T., Matsueda, H., Sawa, Y. and Niwa, Y.: Improvement of atmospheric CO₂ inversion analysis at JMA, A31B-0033. In Proceedings of the AGU Fall Meeting, San Francisco, CA, USA, 14–18 December 2015.](#)

Neitsch, S. L., Arnold, J. G., Kiniry, J. R., Williams, J. R. and King, K. W.: Soil and Water Assessment Tool Theoretical Documentation, Version 2000. Soil and Water Research Laboratory and Blackland Research Center, Grassland, 2002.

1485 Noilhan, J. and Planton, S.: A simple parameterization of land surface processes for meteorological models. *Monthly Weather Review*, 117: 536–549, 1989.

Norby, R. J., Delucia, E. H., Gielen, B., Calfapietra, C., Giardina, C. P., King, J. S., Ledford, J., McCarthy, H. R., Moore, D. J., Ceulemans, R., De Angelis, P., Finzi, A. C., Karnosky, D. F., Kubiske, M. E., Lukac, M., Pregitzer, K. S., Scarascia-Mugnozza, G. E., Schlesinger, W. H. and Oren, R.: Forest response to elevated CO₂ is conserved across a broad range of
1490 productivity. *Proceedings of the National Academy of Sciences*, 102(50), 18052–18056, 2005.

Nutini, F., Boschetti, M., Candiani, G., Bocchi, S. and Brivio, P. A.: Evaporative fraction as an indicator of moisture condition and water stress status in semi-arid rangeland ecosystems. *Remote Sensing*, 6, 6300–6323, 2014.

Odhiambo, L. O. and Irmak, S.: Performance of extended Shuttleworth-Wallace model for estimating and partitioning of evapotranspiration in a partial residue-covered subsurface drip-irrigated soybean field. *Transactions of the American Society of Agricultural and Biological Engineers*, 54(3), 915-930, 2011.

[Padrón, R. S., Gudmundsson, L., Michel, D. and Seneviratne, S. I.: Terrestrial water loss at night: Global relevance from observations and climate models. *Hydrology and Earth System Sciences*, 24\(2\), 793–807, 2020.](#)

Pastorello, G., Trotta, C., Canfora, E., Chu, H., ... and Papale, D.: The FLUXNET2015 dataset and the ONEFlux processing pipeline for eddy covariance data. *Scientific Data*, 7, 225, <https://doi.org/10.1038/s41597-020-0534-3>, 2020.

1500 Penman, H. L.: Natural evaporation from open water, bare soil and grass. *Proceedings of the Royal Society of London. Series A: Mathematical and physical sciences*, 1032, 120–145, 1948.

Pereira, L. S., Perrier, A., Allen, R. G. and Alves, I.: Evapotranspiration: Concepts and future trends. *Journal of Irrigation and Drainage Engineering*, 125, 45–51, 1999.

Phillips, L.B, Hansen, A.J., Flather, C.H., and Robison-Cox, J.: Applying species-energy theory to conservation: a case study
1505 for North American birds. *Ecological Applications*, 20(7), 2007–2023, 2010.

Piao, S. L., Friedlingstein, P., Ciais, P., de Noblet-Ducoudré, N., Labat, D. and Zaehe, S.: Changes in climate and land use
have a larger direct impact than rising CO₂ on global river runoff trends. *Proceedings of the National Academy of Sciences*,
104(39), 5242–15247, 2007.

Potapov, P., Li, X., Hernandez-Serna, A., Tyukavina, A., Hansen, M. C., Kommareddy, A., Pickens, A., Turubanova, S., Tang,
1510 H., Silva, C. E., Armston, J., Dubayah, R., Blair, J. B. and Hofton, M.: Mapping and monitoring global forest canopy height
through integration of GEDI and Landsat data. *Remote Sensing of Environment*, 112165,
<https://doi.org/10.1016/j.rse.2020.112165>, 2020.

Powell, T. L., Bracho, R., Li, J., Dore, S., Hinkle, C. R. and Drake, B. G.: Environmental controls over net ecosystem carbon
exchange of scrub oak in central Florida. *Agricultural and Forest Meteorology*, 141, 19–34, 2006.

1515 Prakash, V., Bera, T., Pradhan, S. and Acharya, S. K.: Potential of *Syngonanthus nitens* fiber as a reinforcement in epoxy
composite and its mechanical characterization. *Journal of the Indian Academy of Wood Science*, 17, 73–81, 2020.

Raab, N., Meza, F. J., Frank, N. and Bambach, N.: Empirical stomatal conductance models reveal that the isohydric behavior
of an *Acacia caven* Mediterranean Savannah scales from leaf to ecosystem. *Agricultural and Forest Meteorology*, 213, 203–
216, 2015.

1520 Rao, L. Y., Sun, G., Ford, C. R. and Vose, J. M.: Modeling potential evapotranspiration of two forested watersheds in the
southern Appalachians. *Transactions of the ASABE*, 54(6), 2067–2078, 2011.

Reddy, S. J.: An empirical method for estimating sunshine from total cloud amount. *Solar Energy*, 15(4), 281–285, 1974.

[Reichstein, M., Falge, E., Baldocchi, D., Papale, D., Aubinet, M., Berbigier, P. and Valentini, R.: On the separation of net
ecosystem exchange into assimilation and ecosystem respiration: review and improved algorithm. *Global Change Biology*,
11\(9\), 1424–1439, 2005.](#)
1525

Roderick, M. L., Greve, P. and Farquhar G. D.: On the assessment of aridity with changes in atmospheric CO₂. *Water Resources
Research*, 51, 5450–5463, 2015.

Running, S., Mu, Q. and Zhao, M.: MOD16A2 MODIS/Terra Net Evapotranspiration 8-Day L4 Global 500m SIN Grid V006.
2017.

1530 Saxe, H., Ellsworth, D. and Heath, J.: Tree and forest functioning in an enriched CO₂ atmosphere. *New Phytologist*, 139(3),
395–436, 1998.

Scheff, J.: Drought indices, drought impacts, CO₂, and warming: A historical and geologic perspective. *Current Climate
Change Reports*, 4, 202–209, 2018.

Seiller, G. and Anctil, F.: How do potential evapotranspiration formulas influence hydrological projections? *Hydrological*

- 1535 Sciences Journal, 61(12), 2249–2266, 2016.
- Sheffield, J., Wood, E. F. and Roderick, M. L.: Little change in global drought over the past 60 years. *Nature*, 491(7424), 435–438, 2012.
- Shuttleworth, W. J. and Wallace, J. S.: Evaporation from sparse crops—an energy combination theory. *Quarterly Journal of the Royal Meteorological Society*, 111, 839–855, 1985.
- 1540 Shuttleworth, W. J. and Wallace, J. S.: Evaporation from sparse crops: An energy combination theory. *Quarterly Journal of the Royal Meteorological Society*, 111(469), 839–855, 1985.
- [Sitch, S., Smith, B., Prentice, I. C., Armeth, A., Bondeau, A., Cramer, W., Kaplan, J. O., Levis, S., Lucht, W., Sykes, M. T., Thonicke, K. and Venevsky, S.: Evaluation of ecosystem dynamics, plant geography and terrestrial carbon cycling in the LPJ dynamic global vegetation model. *Global Change Biology*, 9\(2\), 161–185, 2003.](#)
- 1545 Simard, M., Pinto, N., Fisher, J. B. and Baccini, A.: Mapping forest canopy height globally with spaceborne lidar. *Journal of Geophysical Research: Space Physics*, 116, G0402, <https://doi.org/10.1029/2011JG001708>, 2011.
- Singer, M. B., Asfaw, D. T., Rosolem, R., Cuthbert, M. O., Miralles, D. G., MacLeod, D., Quichimbo, E. A. and Michaelides, K.: Hourly potential evapotranspiration at 0.1° resolution for the global land surface from 1981–present. *Scientific Data*, 8, 224, <https://doi.org/10.1038/s41597-021-01003-9>, 2021.
- 1550 Singh, V. P. and Xu, C. –Y.: Evaluation and generalization of 13 equations for determining free water evaporation. *Hydrological Processes*, 11, 311–323, 1997.
- Stannard, D. I.: Comparison of Penman-Monteith, Shuttleworth-Wallace, and modified Priestley-Taylor evapotranspiration models for wildland vegetation in semiarid rangeland. *Water Resources Research*, 29(5), 1379–139, 1993.
- Sun, G., Alstad, K., Chen, J., Ford, C. R., Lin, G., Liu, C., Nan, L., McNulty, S. G. and Miao, H.: A general predictive model for estimating monthly ecosystem evapotranspiration. *Ecohydrology*, 4(2), 245–255, 2011a.
- 1555 Sun, G., Caldwell, P., Noormets, A., McNulty, S. G., Cohen, E., Myers, J. M., Domec, J. –C., Treasure, E., Mu, Q., Xiao, J., John, R. and Chen, J.: Upscaling key ecosystem functions across the conterminous United States by a water-centric ecosystem model. *Journal of Geophysical Research: Biogeosciences*, 116(G3), G00J05, <https://doi.org/10.1029/2010JG001573>, 2011b.
- Sun, S., Bi, Z., and Chen, H.: A global 5 km monthly potential evapotranspiration dataset (1982–2015) estimated by the Shuttleworth-Wallace model. *National Tibetan Plateau/Third Pole Environment Data Center*, <https://doi.org/10.11888/Terre.tpdc.300193>. <https://cstr.cn/18406.11.Terre.tpdc.300193>, 2023.
- 1560 Sun, S., Bi, Z., Zhou, S., Wang, H., Li, Q., Liu, Y., Wang, G., Li, S., Chen, H. and Zhou, Y.: Spatiotemporal shifts in key hydrological variables and dominant factors over China. *Hydrological Processes*, 35, e14319, <https://doi.org/10.1002/hyp.14319>, 2021.
- 1565 Sun, S., Chen, H., Ju, W., Yu, M., Hua, W. and Yin, Y.: On the attribution of the changing hydrological cycle in Poyang Lake

Basin, China. *Journal of Hydrology*, 514, 214–225, 2014.

Sun, S., Liu, Y., Chen, Ju, W., Xu, C. –Y., Liu, Y., Zhou, B., Zhou, Y., Zhou, Y. and Yu, M.: Causes for the increases in both evapotranspiration and water yield over vegetated mainland China during the last two decades. *Agricultural and Forest Meteorology*, 324, 109118, <https://doi.org/10.1016/j.agrformet.2022.109118>, 2022.

1570 Suttie, J. M., Reynolds, S. G. and Batello, C.: *Grasslands of the World*. Plant Production and Protection Series No. 34. Rome: Food and Agriculture Organization of the United Nations, 2005.

Tabari, H. and Talaei, P. H.: Local calibration of the Hargreaves and Priestley-Taylor equations for estimating reference evapotranspiration in arid and cold climates of Iran based on the Penman-Monteith model. *Journal of Hydrologic Engineering*, 16, 837–845, 2011.

1575 [Tahiri, A.Z., Anyoji, H. and Yasuda, H.: Fixed and variable light extinction coefficients for estimating plant transpiration and soil evaporation under irrigated maize. *Agricultural Water Management*, 84, 184–192, 2006.](#)

Tanguy, M., Prudhomme, C., Smith, K. and Hannaford, J.: Historical gridded reconstruction of potential evapotranspiration for the UK. *Earth System Science Data*, 10, 951–968, 2018.

1580 Tanguy, M., Prudhomme, C., Smith, K. and Hannaford, J.: Historical gridded reconstruction of potential evapotranspiration for the UK. *Earth System Science Data*, 10, 951–968, 2018.

Thorntwaite, C. W.: An approach toward a rational classification of climate. *Geographical Review*, 38, 55–94, 1948.

Tomas-Burguera, M., Vicente-Serrano, S. M., Beguería, S., Reig, F., and Latorre, B.: Reference crop evapotranspiration database in Spain (1961–2014). *Earth Science System Data*, 11, 1917–1930, 2019.

1585 Tourula, T. and Heikinheimo, M.: Modelling evapotranspiration from a barley field over the growing season. *Agricultural and Forest Meteorology*, 91(3–4), 237–250, 1998.

Trajkovic, S.: Hargreaves versus Penman-Monteith. *Journal of Irrigation and Drainage Engineering*, 133, 38–42, 2007.

Trenberth, K. E., Dai, A., van der Schrier, G., Jones, P. D., Barichivich, J., Briffa, K. R. and Sheffield, J.: Global warming and changes in drought. *Nature Climate Change*, 4, 17–22, 2012.

1590 Turc, L.: Estimation of irrigation water requirements, potential evapotranspiration: a simple climatic formula evolved up to date. *Annales Agronomiques*, 12, 13–49, 1961.

Urraca, R., Huld, T., Amillo, A. M. G., Martínez-de-Pison, F. J., Kaspar, F. and Sanz-García, A.: Evaluation of global horizontal irradiance estimates from ERA5 and COSMO-REA6 reanalyses using ground and satellite-based data. *Solar Energy*, 164, 339–354, 2018.

1595 Vicente-Serrano, S. M., Beguería, S. and López-Moreno, J.: A multiscalar drought index sensitive to global warming: the standardized precipitation evapotranspiration index. *Journal of Climate*, 23, 1696–1718, 2010.

Vicente-Serrano, S. M., McVicar, T. R., Miralles, D. G., Yang, Y. and Tomas-Burguera, M.: Unraveling the influence of

atmospheric evaporative demand on drought and its response to climate change. *WIREs Climate Change*, 11, e632, <https://doi.org/10.1002/wcc.632>, 2020.

Villagarcía, L., Were, A., García, M. and Domingo, F.: Sensitivity of a clumped model of evapotranspiration to surface resistance parameterisations: Application in a semi-arid environment. *Agricultural and Forest Meteorology*, 150, 1065–1078, 2010.

Wand, S. J. E., Midgley, G. F., Jones, M. H. and Curtis, P. S.: Responses of wild C₄ and C₃ grass (Poaceae) species to elevated atmospheric CO₂ concentrations: a metaanalytic test of current theories and perceptions. *Global Change Biology*, 5, 723–741, 1999.

Wang, H., Guan, H., Liu, N., Soulsby, C., Tetzlaff, D. and Zhang, X.: Improving the Jarvis-type model with modified temperature and radiation functions for sap flow simulations. *Journal of Hydrology*, 587, 124981, <https://doi.org/10.1016/j.jhydrol.2020.124981>, 2020.

Wang, K. C. and Dickinson, R. E.: A review on global terrestrial evapotranspiration: observation, modeling, climatology, and Climatic Variability, *Reviews of Geophysics*, 50, RG2005, <https://doi.org/10.1029/2011RG000373>, 2012.

Wang, Y., Li, G., Ding, J., Guo, Z., Tang, S., Wang, C., Huang, Q., Liu, R. and Chen, J. M.: A combined GLAS and MODIS estimation of the global distribution of mean forest canopy height. *Remote Sensing of Environment*, 74, 24–43, 2016.

Wei, G., Zhou, L., Liu, H., Tian, Q., Ding, L. and Ran, X.: Improving evapotranspiration model performance by treating energy imbalance and interaction. *Water Resources Research*, 56(9), e2020WR027367, <https://doi.org/10.1029/2020WR027367>, 2020.

Wells, N., Goddard, S. and Hayes, M. J.: A self-calibrating palmer drought severity index. *Journal of Climate*, 17, 2335–2351, 2004.

Wever, L. A., Flanagan, L. B. and Carlson, P. J.: Seasonal and interannual variation in evapotranspiration, energy balance and surface conductance in a northern temperate grassland. *Agricultural and Forest Meteorology*, 112(1), 31–49, 2002.

White, F.: *The vegetation of Africa*. Paris: Unesco., 1983

Wild, M.: Global dimming and brightening: A review. *Journal of Geophysical Research: Atmospheres*, 114, D10, <https://doi.org/10.1029/2008JD011470>, 2009.

Wilson, K., Goldstein, A., Falge, E., Aubinet, M., Baldocchi, D., Berbigier, P., Bernhofer, C., Ceulemans, R., Dolman, H., Field, C., Grelle, A., Ibrom, A., Law, B. E., Kowalski, A., Meyers, T., Moncrieff, J., Monson, R., Oechel, W., Tenhunen, J., Valentini, R. and Verma, S.: Energy balance closure at FLUXNET sites. *Agricultural and Forest Meteorology*, 113, 223–243, 2002.

Winkel, T., Payne, W. and Renno, J. F.: Ontogeny modifies the effects of water stress on stomatal control, leaf area duration and biomass partitioning of *Pennisetum glaucum*. *New Phytologist*, 149(1), 71–82, 2001.

Wu, L., Min, L. L., Shen, Y. J., Zhou, X. X. and Liu, F. G.: Simulation of maize evapotranspiration at different growth stages

using revised dual-layered model in arid Northwest China. *Chinese Journal of Eco-Agriculture*, 25(5), 634–646, 2017. (in Chinese with English Abstract)

1630 Xiang, K., Li, Y., Horton, R. and Feng, H.: Similarity and difference of potential evapotranspiration and reference crop evapotranspiration—A review. *Agricultural Water Management*, 232, 106043, <https://doi.org/10.1016/j.agwat.2020.106043>, 2020.

[Xiao, X. M., Zhang, Q. Y., Braswell, B., Urbanski, S., Boles, S., Wofsy, S., Moore, B. III. and Ojima, D.: Modeling gross primary production of temperate deciduous broadleaf forest using satellite images and climate data. *Remote Sensing of Environment*, 91\(2\), 256–270, 2004.](#)

1635 Xiao, Z., Liang, S. and Jiang, B.: Evaluation of four long time-series global leaf area index products. *Agricultural and Forest Meteorology*, 246, 218–230, 2017.

Xiao, Z., Liang, S., Wang, J. and Zhao, X.: Long time series Global Land Surface Satellite (GLASS) Leaf Area Index product derived from MODIS and AVHRR data. *IEEE Transactions on Geoscience and Remote Sensing*, 54(9), 5301–5318, 2016.

1640 Xiao, Z., Liang, S., Wang, J., Chen, P., Yin, X. and Song, J.: Use of general regression neural networks for generating the GLASS Leaf Area Index product from time-series MODIS surface reflectance. *IEEE Transactions on Geoscience and Remote Sensing*, 52(1), 209–223, 2014.

Xiao, Z., Liang, S., Wang, T. and Liu, Q.: Reconstruction of satellite-retrieved land-surface reflectance based on temporally-continuous vegetation indices. *Remote Sensing*, 7, 9844–9864, 2015.

1645 Xu, B., Li, J., Park, T., Liu, Q., Zeng, Y., Yin, G., Zhao, J., Fan, W., Yang, L. and Knyazikhin, Y.: An integrated method for validating long-term leaf area index products using global networks of site-based measurements. *Remote Sensing of Environment*, 209, 134–151, 2018.

Xu, B., Li, J., Park, T., Liu, Q., Zeng, Y., Yin, G., Zhao, J., Fan, W., Yang, L., Knyazikhin, Y. and Myneni, R. B.: An integrated method for validating long-term leaf area index products using global networks of site-based measurements. *Remote Sensing of Environment*, 209, 134–151, 2007.

1650 Xu, C. –Y. and Singh, V. P.: Evaluation and generalization of radiation-based methods for calculating evaporation. *Hydrological Processes*, 14, 339–349, 2000.

Xu, C. –Y. and Singh, V. P.: Evaluation and generalization of temperature-based methods for calculating evaporation. *Hydrological Processes*, 15, 305–319, 2001.

1655 Yang, Y., Roderick, M. L., Zhang, S., McVicar, T. R. and Donohue, R. J.: Hydrological implications of vegetation responses to elevated CO₂ in climate projections. *Nature Climate Change*, 9, 44–48, 2019.

Yang, Y. and Shang, S.: Comparison of dual-source evapotranspiration models in estimating potential evaporation and transpiration. *Transactions of the Chinese Society of Agricultural Engineering*, 28(24), 85–91, 2012.

1660 Yin, J., Feng, Q., Liang, T., Meng, B., Yang, S., Gao, J., Ge, J., Hou, M., Liu, J., Wang, W., Yu, H. and Liu, B.: Estimation of
grassland height based on the random forest algorithm and remote sensing in the Tibetan Plateau. *IEEE Journal of Selected
Topics in Applied Earth Observations and Remote Sensing*, 13, 178–186, 2019.

Yu, Q., You, L., Wood-Sichra, U., Ru, Y., Joglekar, A. K. B., Fritz, S., Xiong, W., Lu, M., Wu, W. and Peng, Y.: A cultivated
planet in 2010—Part 2: The global gridded agricultural-production maps. *Earth System Science Data*, 12(4), 3545–3572, 2020.

1665 Zhan, C., Orth, R., Migliavacca, M., Zaehle, S., Reichstein, M., Engel, J., Ramming, A. and Winkler, A. J.: Emergence of the
physiological effects of elevated CO₂ on land-atmosphere exchange of carbon and water. *Global Change Biology*, 28, 7313–
7326, 2022.

Zhang, B., Kang, S., Li, F. and Zhang, L.: Comparison of three evapotranspiration models to Bowen ratio-energy balance
method for a vineyard in an arid desert region of northwest China. *Agricultural and Forest Meteorology*, 148(10), 1629–1640,
2008.

1670 Zhang, J., Zhao, T., Li, Z., Li, C., Li, Z., Ying, K., Shi, C., Jiang, L. and Zhang, W.: Evaluation of Surface Relative Humidity
in China from the CRA-40 and Current Reanalyses. *Advances in Atmospheric Sciences*, 38(11), 1958–1976, 2021.

[Zhang, L., Hu, Z., Fan, J., Zhou, D. and Tang, F.: A meta-analysis of the canopy light extinction coefficient in terrestrial
ecosystems. *Frontiers of Earth Science*, 8, 599–609.](#)

1675 Zhang, Z., Arnault, J., Wagner, S., Laux, P., and Kunstmann, H.: Impact of lateral terrestrial water flow on land-atmosphere
interactions in the Heihe River Basin in China: Fully coupled modeling and precipitation recycling analysis. *Journal of
Geophysical Research: Atmospheres*, 124, 8401–8423, 2019.

Zhao, M. and Cao, L.: Regional response of land hydrology and carbon uptake to different amounts of solar radiation
modification. *Earth's Future*, 10, e2022EF003288, <https://doi.org/10.1029/2022EF003288>, 2022.

1680 Zhao, P., Li, S. E., Li, F. S., Du, T. S., Tong, L. and Kang, S. Z.: Comparison of dual crop coefficient method and Shuttleworth-
Wallace model in evapotranspiration partitioning in a vineyard of northwest China. *Agricultural Water Management*, 160, 41–
56, 2015.

Zhou, M. C., Ishidaira, H., Hapuarachchi, H. P., Magome, J., Kiem, A. S. and Takeuchi, K.: Estimating potential
evapotranspiration using Shuttleworth-Wallace model and NOAA-AVHRR NDVI data to feed a distributed hydrological
model over the Mekong River basin. *Journal of Hydrology*, 327(1–2), 151–173, 2006.

1685 Zhou, S., Yu, B., Zhang, Y., Huang, Y. and Wang, G.: Partitioning evapotranspiration based on the concept of underlying water
use efficiency. *Water Resources Research*, 52, 1160–1175, 2016.

Zhou, S., Yu, B., Zhang, Y., Huang, Y. and Wang, G.: Water use efficiency and evapotranspiration partitioning for three typical
ecosystems in the Heihe River Basin. *Agricultural and Forest Meteorology*, 253–254, 261–273, 2018.

Zhu, Z., Bi, J., Pan, Y., Ganguly, S., Anav, A., Xu, L., Samanta, A., Piao, S., Nemani, R. R. and Myneni, R. B.: Global data

1690 sets of vegetation Leaf Area Index (LAI)3g and Fraction of Photosynthetically Active Radiation (FPAR)3g derived from Global
Inventory Modeling and Mapping Studies (GIMMS) Normalized Difference Vegetation Index (NDVI3g) for the period 1981
to 2011. *Remote Sensing*, 5(2), 927–948, 2013.

Zhu, Z., Piao, S., Myneni, R. B., Huang, M., Zeng, Z., Canadell, J. G., Ciais, P., Sitch, S., Friedlingstein, P., Arneeth, A., Cao,
C., Cheng, L., Kato, E., Koven, C., Li, Y., Liu, Y., Liu, R., Mao, J., Pan, Y., Peng, S., Peñuelas, J., Poulter, B., Pugh, T. A. M.,
1695 Stocker, B. D., Viovy, N., Wang, X., Wang, Y., Xioa, Z., Yang, H., Zaehc, S. and Zeng, N.: Greening of the earth and its drivers.
Nature Climate Chang, 6(8), 791–795, 2016.

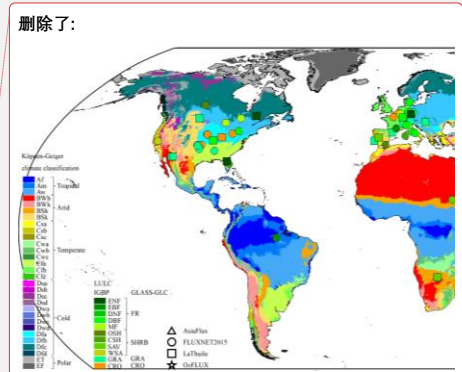
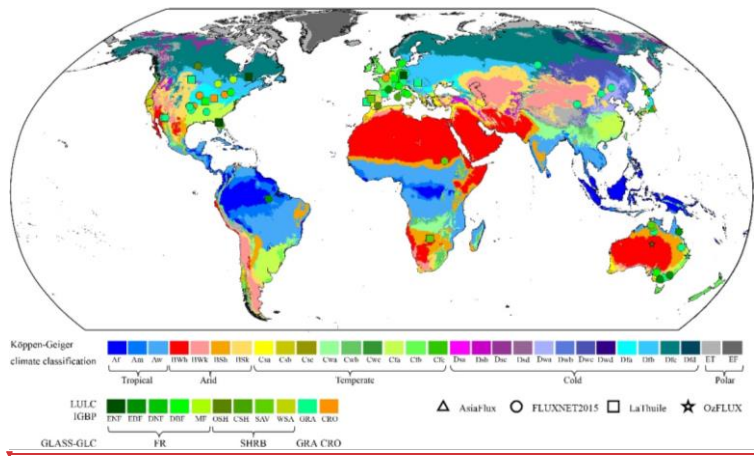


Figure 1: Locations of the used EC sites in this study over Köppen-Geiger (KG) climate regions (Beck et al., 2018). International Geosphere-Biosphere Programme (IGBP) classification system: CRO—cropland; GRA—grasslands; DBF—deciduous broadleaf forest; EBF—evergreen broadleaf forest; ENF—evergreen needleleaf forest; MF—mixed forest; CSH—closed shrubland; WSA—woody savannah; SAV—savannah; OSH—open shrubland. GLASS-GLC classification system: FR—ENF, EBF, DNE, DBF and MF; SHRB—SAV CSH, OSH and WSA; GRA; CRO.

1700

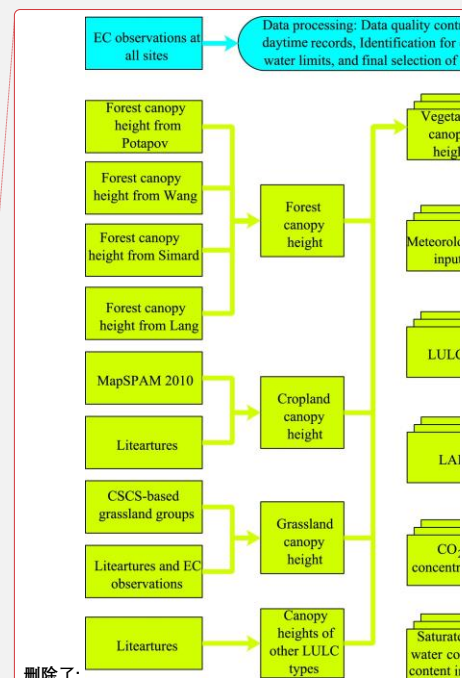
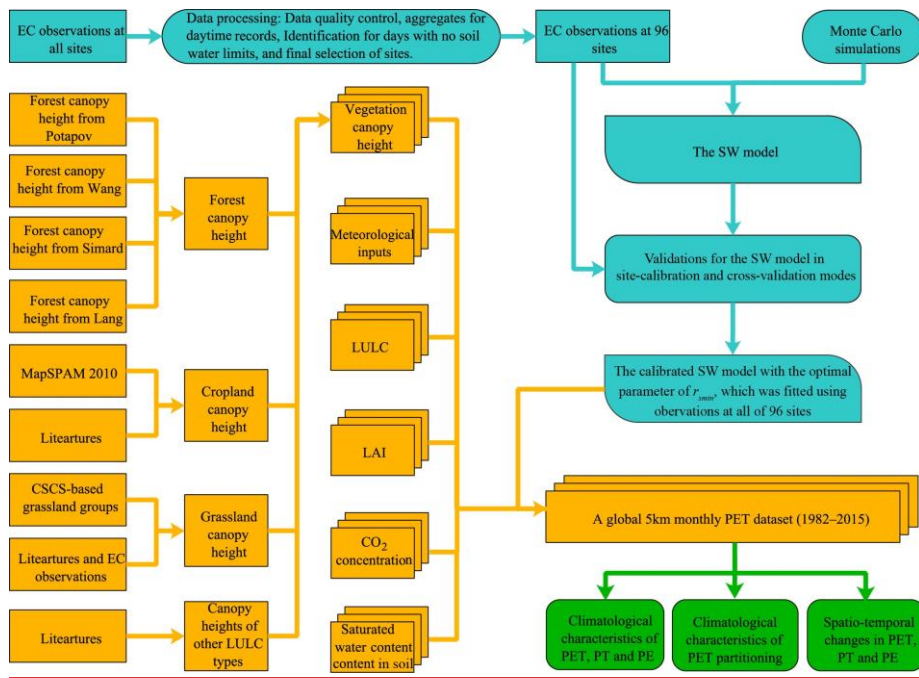


Figure 2: Workflow of this study. The blue and the yellow-green colors show operating procedures for calibrating and validating the SW model and for producing a global 5 km monthly PET dataset, respectively, while the green color presents the related analyses.

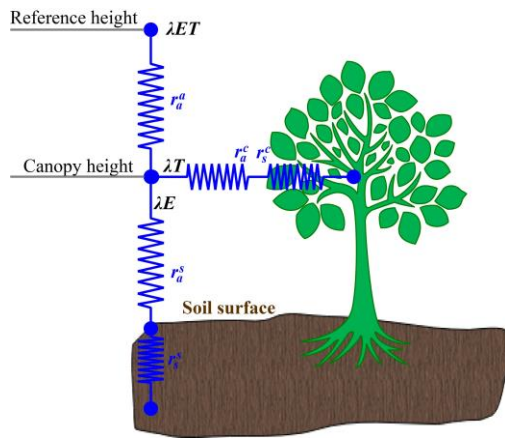
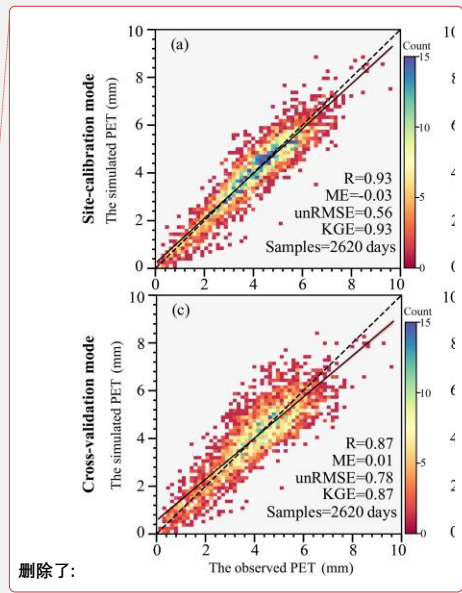
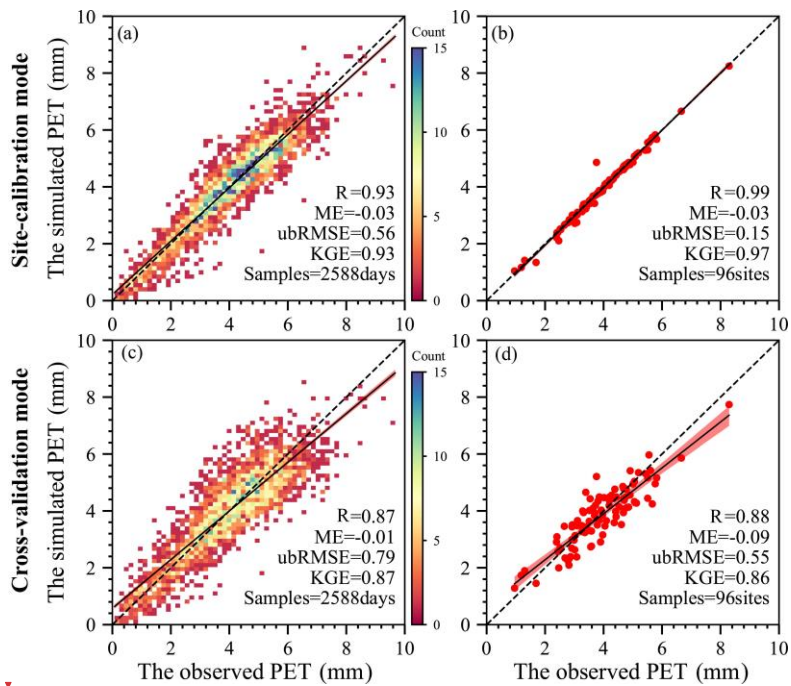


Figure 3: Schematic description of the energy partitioning for a canopy with the SW model.



删除了:

删除了: 3

Figure 4: Scatter-plots of observations against simulations aggregated for all of 96 EC sites. (a): Daily comparison in site-calibration mode. (b): Site mean comparison in site-calibration mode. (c): Daily comparison in cross-validation mode. (d): Site mean comparison in cross-validation mode. In these figures, the dash and the solid lines are the 1:1 line and the regression line with the least square method, while the shadow area represents 95% confidence interval.

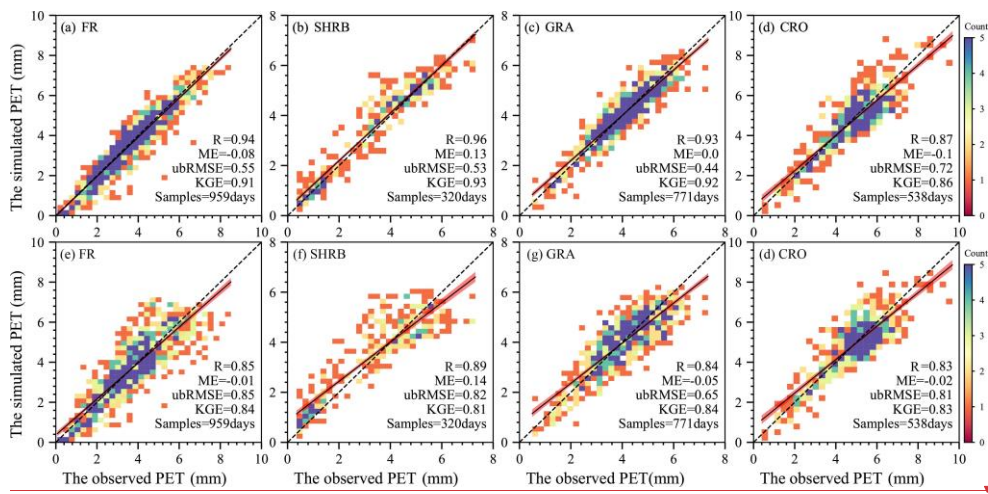
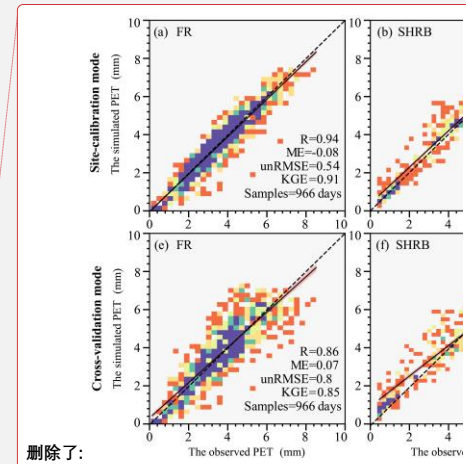


Figure 5: Scatter-plots of daily observations against simulations aggregated for different LULC types. (a–d): Comparison in site-calibration mode. (e–h): Comparison in cross-validation mode. In these figures, the dash and the solid lines are the 1:1 line and the regression line with the least square method, while the shadow area represents 95% confidence interval.



删除了:

删除了: 4

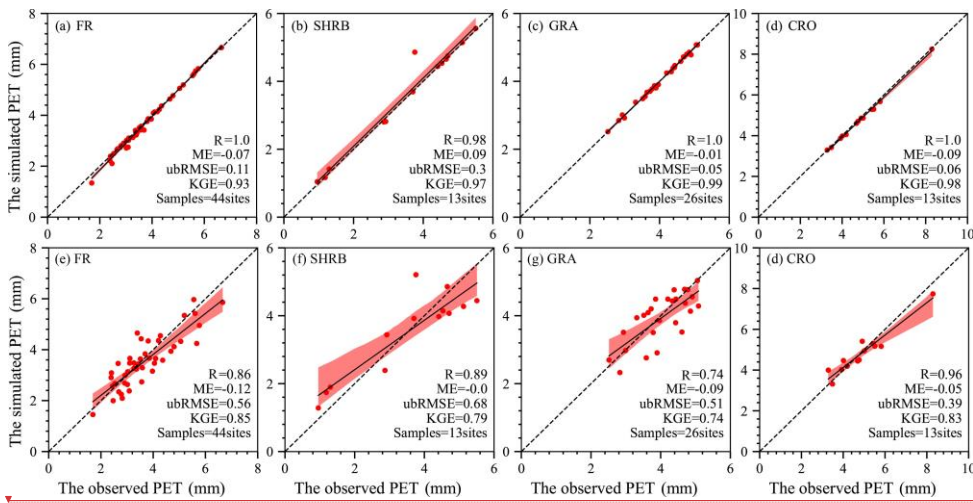
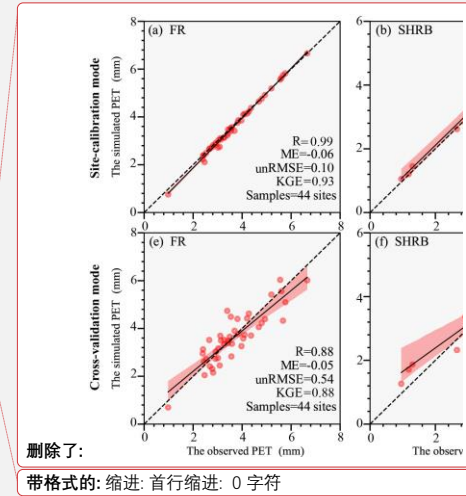


Figure 6: Scatter-plots of site mean observations against simulations for each LULC type. (a–d): Comparison in site-calibration mode. (e–h): Comparison in cross-validation mode. In these figures, the dash and the solid lines are the 1:1 line and the regression line with the least square method, while the shadow area represents 95% confidence interval.



删除了:

带格式的: 缩进: 首行缩进: 0 字符

删除了: 5

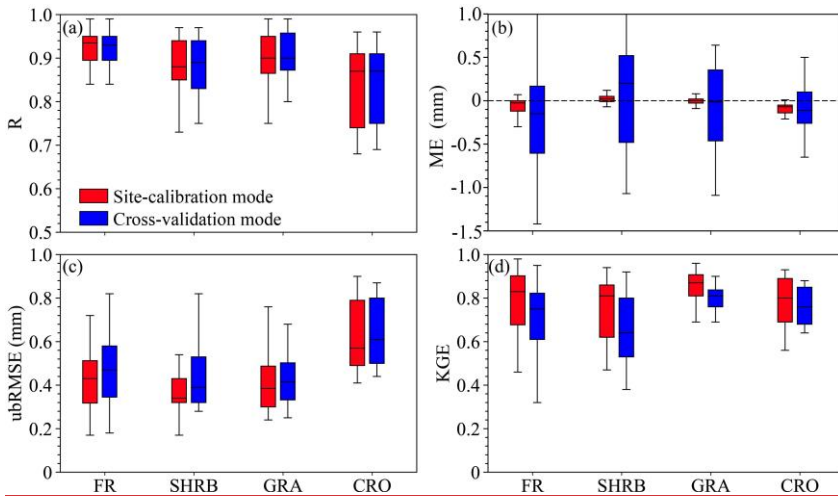
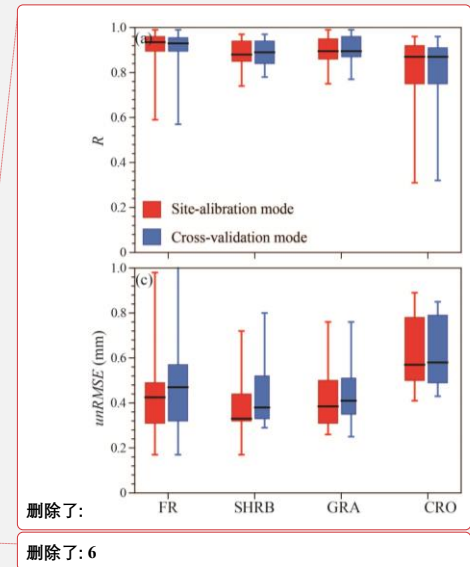


Figure 7: Boxplots of the validation metrics of daily PET simulations for each LULC type. The whiskers represent the minimum and maximum values of the model performance metrics. The outer edges of the boxes and the horizontal lines within the boxes indicate the 25th, 75th, and 50th percentiles of the validation metrics.



删除了:

删除了: 6

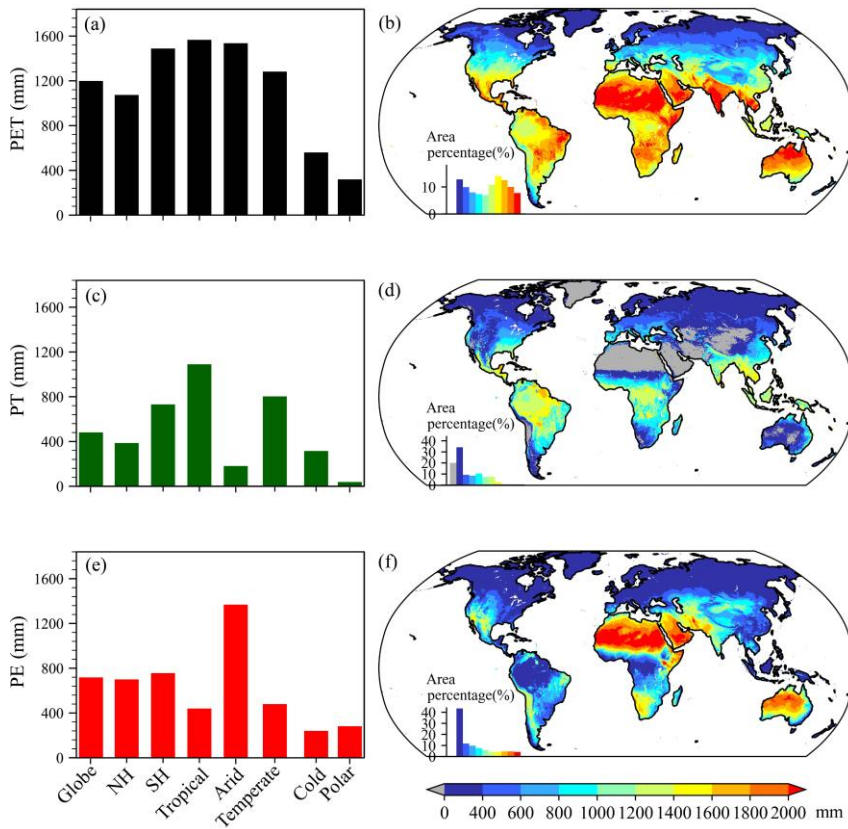
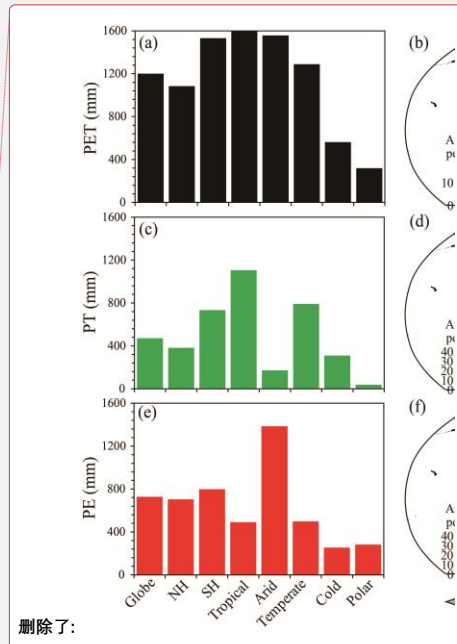


Figure 8. Climatological annual PET, PE and PT. (a): Climatological annual PET averaged over the globe, Northern Hemisphere (NH) and Southern Hemisphere (SH), and each KG climate region. (b): Spatial distribution of climatological annual PET. (c): Climatological annual PT averaged over the globe, NH and SH, and each KG climate region. (d): Spatial distribution of climatological annual PT. (e): Climatological annual PE averaged over the globe, NH and SH, and each KG climate region. (f): Spatial distribution of climatological annual PE. In (b), (d) and (f), the inset histogram shows area percentage stratified by the amount of annual PET, PT or PE.



删除了: 7

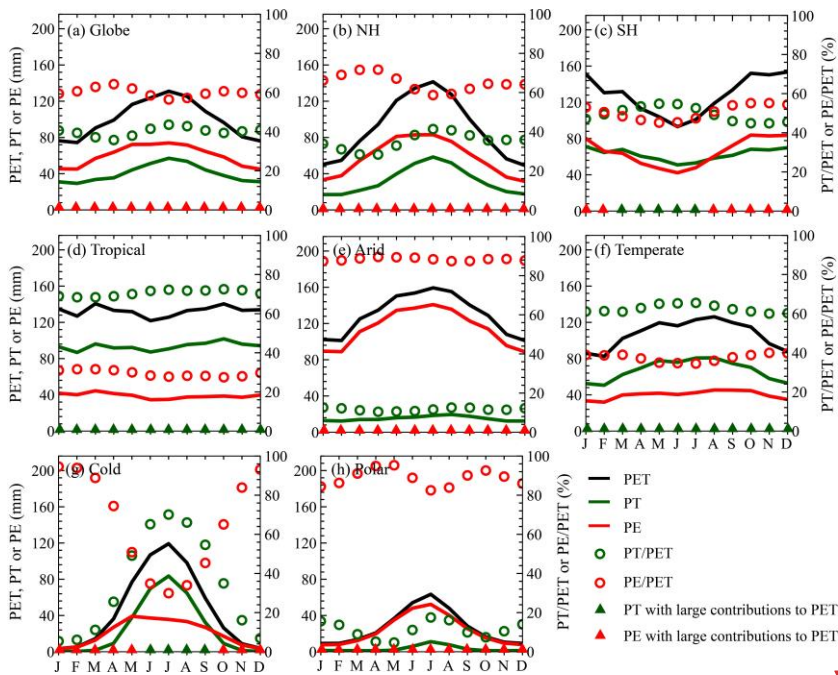
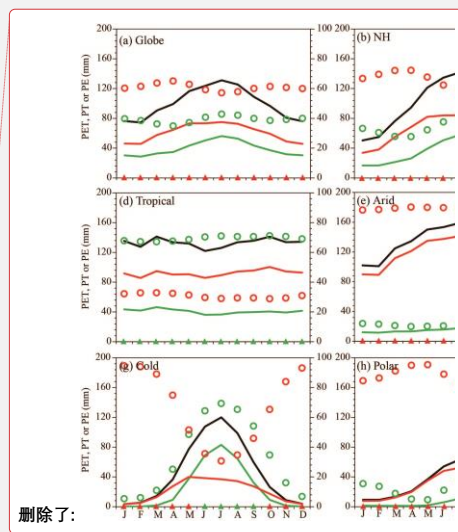


Figure 9: Climatological monthly PET, PE, PT, PE/PET and PT/PET averaged over the globe, each hemisphere, and each KG climate region.



删除了:

删除了: 8

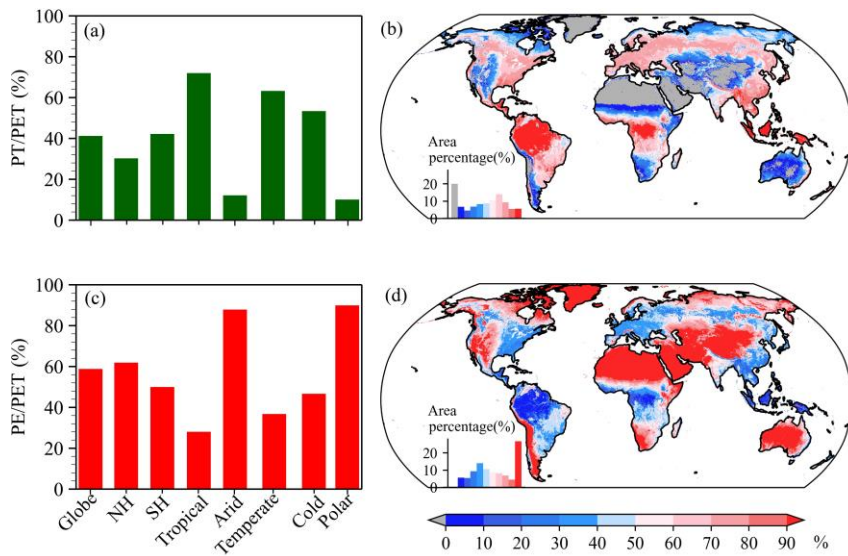
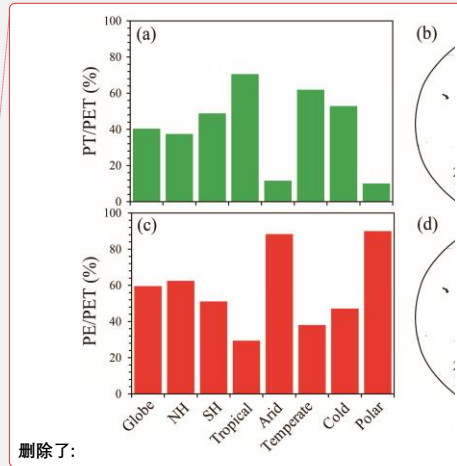


Figure 10: Characteristics of annual PT/PET and PE/PET. (a): Annual PT/PET averaged over the globe, each hemisphere, and each KG climate region. (b): Spatial distribution of annual PT/PET. (c): Annual PE/PET averaged over the globe, each hemisphere, and each KG climate region. (d): Spatial distribution of annual PE/PET. In (b) and (d), the inset histogram shows area percentage stratified by the amount of annual PT/PET or PE/PET.



删除了:

删除了: 9

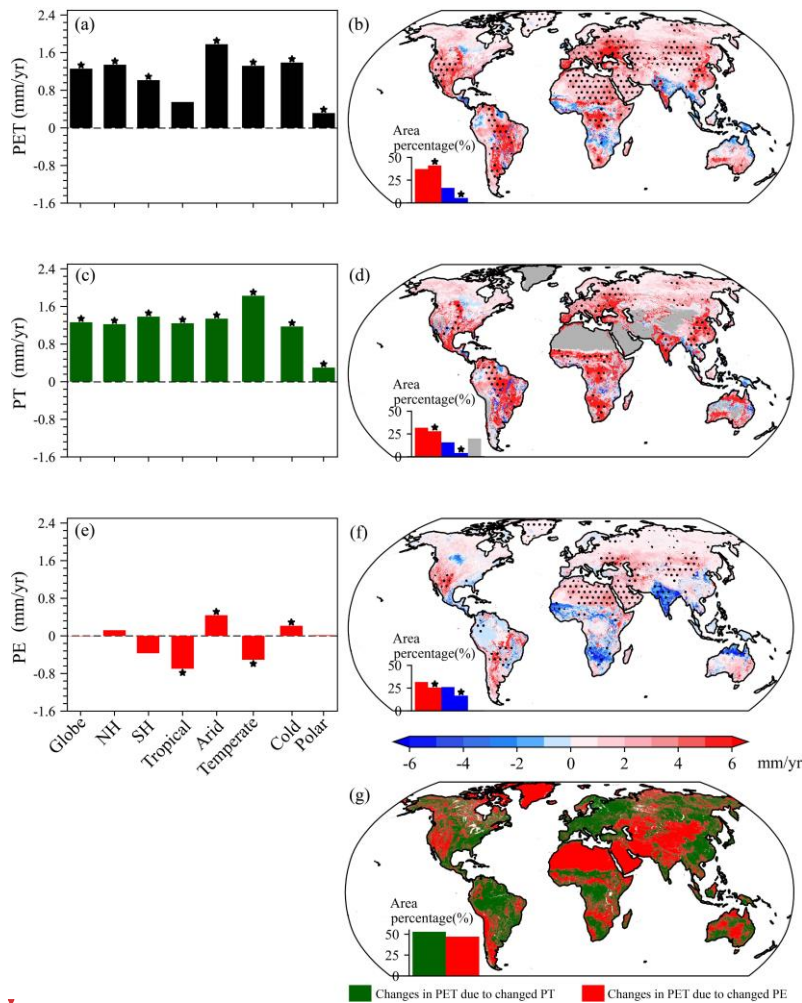
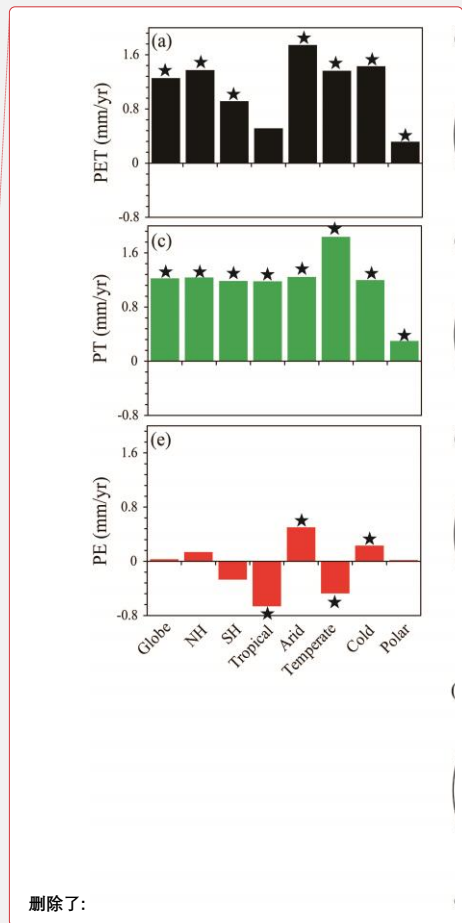


Figure 11: Characteristics of annual PET, PT and PE trends, and major contributors to annual PET trends. (a): Trends for annual PET averaged over the globe, each hemisphere, and each KG climate region. (b): Spatial distribution of annual PET trends. (c): Trends for annual PT averaged over the globe, each hemisphere, and each KG climate region. (d): Spatial distribution of annual PT trends. (e): Trends for annual PE averaged over the globe, each hemisphere, and each KG climate region. (f): Spatial distribution of annual PE trends. (g): Spatial distribution of major contributors to annual PET trends. In (a), (c) and (e), the star indicates that the trend is significant ($p < 0.05$). In (b), (d) and (f), the inset histogram suggests area percentage of insignificant increases (red bar without star), significant increases (red bar with star; $p < 0.05$), insignificant decreases (blue bar without star), and significant decreases (blue bar with star; $p < 0.05$).



删除了:

删除了: 10

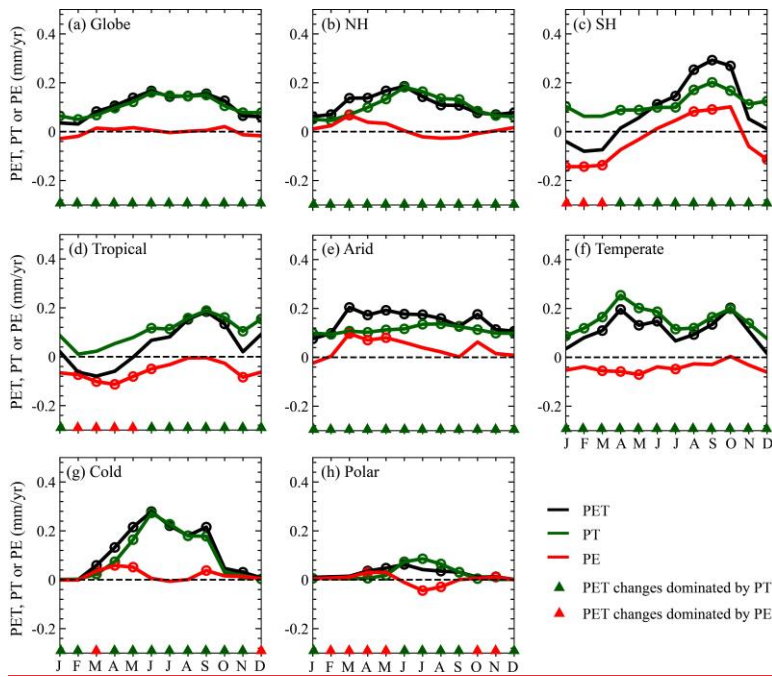
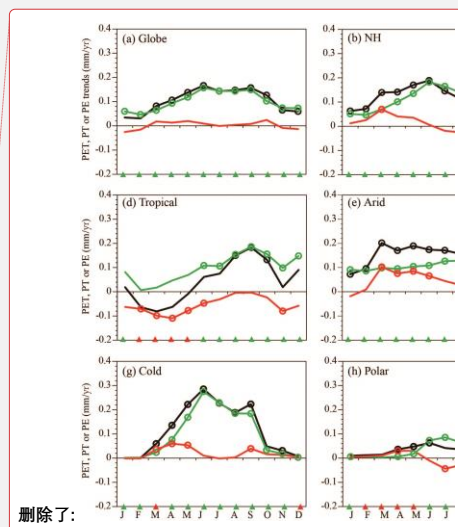


Figure 12: Changes in monthly PET, PT and PE for the globe, each hemisphere, and each KG climate region. The circle indicate that the trend is significant with $p < 0.05$.



删除了:

删除了: 11

1780 Table 1: Overview of major inputs for producing the global PET based on the calibrated SW model

Datasets	Basic information			Sources and references
	Spatio-temporal resolution and time coverage	Variables		
Meteorological datasets	MSWX-Past	0.1° × 0.1°; 3-hourly; 1979–present.	Mean, maximum and minimum temperatures, <i>RH</i> , <i>u</i> at 10 m, downward shortwave radiation and downward longwave radiation.	http://www.gloh2o.org/mswx/ ; Beck et al. (2022)
	CRU TS4.06	0.5° × 0.5°; monthly; 1901–2021.	Mean, maximum and minimum temperatures, cloud cover and <i>ea</i> .	https://crudata.uea.ac.uk/cru/data/hrg/ ; Harris et al. (2020)
	ERA-5	0.25° × 0.25°; monthly; 1959–present.	Mean, minimum , maximum and dewpoint temperatures, surface pressure, <i>u</i> at 10 m, net shortwave radiation and net longwave radiation.	https://cds.climate.copernicus.eu/cdsapp#!home/ ; Hersbach et al. (2020) and Berrisford et al. (2021)
	MERRA-2	0.5° × 0.625°; monthly; 1980–present.	Mean, minimuma and maximuma temperatures, specific humidity, surface pressure, <i>u</i> at 10 m wind speed, net shortwave radiation and net longwave radiation.	https://disc.gsfc.nasa.gov/ ; Molod et al. (2015)
GLASS AVHRR LAI	0.05° × 0.05°; 8-day; 1981–2018.	LAI		http://www.glass.umd.edu/ ; Xiao et al. (2016, 2017)
GLASS-GLC	5000 m × 5000 m; yearly; 1982–2015.	LULC		https://doi.org/10.1594/PANGAEA.913496 ; Liu et al. (2020b)
Saturated water content in soil	0.0833° × 0.0833°; static.		Saturated water content in the first soil layer (i.e., 0–0.0451 m)	http://globalchange.bnu.edu.cn/research/soil5.jsp ; Dai et al. (2019a, 2019b)
Forest canopy height from Potapov	30 m×30 m; static.		Forest canopy height	https://glad.umd.edu/dataset/gedi/ ; Potapov et al. (2020)
Forest canopy height from Wang	500 m × 500 m; static.		Forest canopy height	http://www.nsmc.org.cn/NewSite/NSMC/Home/Index.html ; Wang et al. (2016)
Forest canopy height from Simard	1000 m × 1000 m; static.		Forest canopy height	https://webmap.ornl.gov/wcsdown/dataset.jsp?ds_id=10023 ; Simard et al. (2011)
Forest canopy height from Lang	0.5° × 0.5°; static.		Forest canopy height	https://doi.org/10.5281/zenodo.5704852 ; Lang et al. (2021)
SPAM V2.0	0.0833° × 0.0833°; static.		Cropland distribution map	https://doi.org/10.7910/DVN/PRFF8 ; International Food Policy Research Institute (2019)
Cropland height	Static		Height for various cropland	Details in Table S4; Allen et al. (1998)
GRA and tundra height	Static		Typical height for the 5 CSCS-based GRA groups	Details in Table S3
CO ₂ concentration from Cheng	1° × 1°; Monthly; 1850–2013		CO ₂ concentration	https://doi.org/10.5281/zenodo.5021361 ; Cheng et al. (2022)
GD CO ₂ concentration	2° × 2°; Monthly; 1985–2021		CO ₂ concentration	https://www.data.jma.go.jp/ghg/kanshiki/co2data/co2_mapdata_e.html ; Nakamura et al. (2015)

删除了: minimuma

删除了: maximuma

删除了: S3

删除了: S2

删除了: 1958

删除了: present

删除了: .

删除了: <https://gml.noaa.gov/ccgg/trends/data.html>

删除了: Thoning

Note: Due to unavailable minimum and maximum temperatures for the monthly ERA5 and MERRA-2 datasets, monthly values of the two variables were extracted from their hourly datasets.