

The Physical and Biogeochemical Parameters along the Coastal Waters of Saudi Arabia during Field Surveys in Summer, 2021

- Yasser O. Abualnaja^{1*}, Alexandra Pavlidou^{2**}, James H. Churchill³, Ioannis Hatzianestis², Dimitris Velaoras², Harilaos Kontoyiannis², Vassilis P. Papadopoulos², Aristomenis P. Karageorgis², Georgia Assimakopoulou², Helen Kaberi², Theodoros Kannelopoulos², Constantine Parinos², Christina Zeri², Dionysios Ballas², Elli Pitta², Vassiliki Paraskevopoulou⁴, Afroditi Androni², Styliani Chourdaki², Vassileia Fioraki², Stylianos Iliakis², Georgia Kabouri², Angeliki Konstantinopoulou², Georgios Krokos², Dimitra Papageorgiou², Alkiviadis Papageorgiou², Georgios Pappas², Elvira Plakidi², Eleni Rousselaki², Ioanna Stavrakaki², Eleni Tzempelikou², Panagiota Zachioti², Anthi Yfanti⁴, Theodore Zoulias², Abdulah Al Amoudi⁵, Yasser Alshehri⁵, Ahmad Alharbi⁵, Hammad Raji Al Sulami⁵, Taha Boksmati⁵, Rayan Mutwalli⁵, Ibrahim Hoteit⁶
- 10 ¹ Red Sea Research Center, King Abdullah University of Science and Technology, Thuwal, Jeddah 23955-6900, Saudi Arabia
² Hellenic Centre for Marine Research - HCMR, Institute of Oceanography, Mavro Lithari, 19013, Greece
³ Department of Physical Oceanography, Woods Hole Oceanographic Institution, Woods Hole, MA 02543, USA
⁴ National and Kapodistrian University of Athens, Department of Chemistry, Laboratory of Environmental Chemistry, Zografou 15784, Greece
15 ⁵ National Center for Environmental Compliance, Jeddah, Saudi Arabia
⁶ Physical Sciences and Engineering Division, King Abdullah University of Science and Technology (KAUST), Thuwal, Saudi Arabia

Corresponding authors:

- 20 *Red Sea Research Center, King Abdullah University of Science and Technology - Yasser Abualnaja, e-mail: Yasser.abualnaja@kaust.edu.sa, Tel: +96654470622
***Hellenic Centre for Marine Research, Institute of Oceanography – Alexandra Pavlidou, e-mail: aleka@hcmr.gr, Tel: +30 22910 76365, Fax: +30 22910 76347.*

Abstract. During the last decades, the coastal areas of the Kingdom of Saudi Arabia, on the Red Sea and the Arabian Gulf, have been subjected to intense economic and industrial growth. As a result, it may be expected that the overall environmental status of Saudi Arabian coastal marine waters has been affected by human activities. As a consequence, adequate management of the Saudi Arabian coastal zone requires an assessment of how the various pressures within this zone impact the quality of seawater and sediments. To this end, environmental surveys were conducted over fifteen hotspot areas (areas subject to environmental pressures) in the Saudi Arabian coastal zone of the Red Sea and over three hotspot areas in the Saudi Arabian waters of the Arabian Gulf. The survey in the Red Sea, conducted in June/July 2021, acquired measurements from hotspot areas spanning most of the Saudi coastline, extending from near the Saudi–Jordanian border in the north to Al Shuqaiq and Jizan Economic City (close to the Saudi–Yemen border) in the south. The survey in the Arabian Gulf, carried out in September 2021, included the areas of Al Khobar, Dammam, and Ras Al Khair. The main objective of both cruises was to record the physical and biogeochemical parameters along the coastal waters of the Kingdom, tracing the dispersion of contaminants related to specific pressures. Taken together, these cruises constitute the first multidisciplinary and geographically comprehensive study of contaminants within the Saudi Arabian coastal waters and sediments. The measurements acquired revealed the influence of various anthropogenic pressures on the coastal marine environment of Saudi Arabia and also highlighted a strong influence of hydrographic conditions on the distribution of biochemical properties in the Red Sea and the Arabian Gulf. The data can be accessed at: SEANOE. <https://doi.org/10.17882/96463> (Abualnaja et al., 2023), whereas the details of the sampling stations at <https://mcep.kaust.edu.sa/cruise-postings>. The dataset includes the parameters shown in Tables 1(a,b) and 2(a).

1. Introduction

The Red Sea and the Arabian (Persian) Gulf are water bodies of importance to the Middle East and Northern Africa (MENA) region, and particularly to the Kingdom of Saudi Arabia, which has coastlines on both water bodies.

An elongated, marginal oceanic basin, the Red Sea is bordered by Northeast Africa and the Arabian Peninsula. Spanning almost 20° in latitude, the Red Sea is more than 2200 km long and is roughly 200 km wide on average. The bathymetry of the Red Sea is characterised by a deep axial trench, exceeding 3000 m in depth, bordered by shallow (100-200 m) and broad coastal shelf platforms that cover more than 40% of the basin (Rasul et al., 2015). The shallow coastal areas are particularly wide in the southern Red Sea, where they take the form of extended shallow banks riddled with coral reefs complexes. The coastal areas in the north are narrower than those to the south and reach depths of more than 200 m. The shallow

55 Gulf of Suez and the deeper and narrower Gulf of Aqaba are the natural extensions of the Red Sea to the north. The Red Sea communicates with the Mediterranean Sea through the Suez Canal in the Gulf of Suez; however, this water exchange is practically negligible, and the Red Sea relies on the Indian Ocean for its water renewal through the Bab-el-Mandeb Strait at its southernmost edge. In climatic terms, the Red Sea is divided into two distinct parts: the southern part, which is affected by the Arabian Sea
60 monsoon, and the northern part, where a seasonal cycle of warm and cold periods prevails (Abualnaja et al., 2015; Viswanadhapalli et al., 2017). The elongated shape of the basin, the water exchange with the Gulf of Aden (Indian Ocean), and local atmospheric forcing regulate the water properties and general circulation of the Red Sea. Relatively fresh seawater enters the basin at its southern end, counterbalancing the water deficit produced by excessive evaporation coupled with negligible precipitation and terrestrial
65 runoff. This fresher water from the south, with typical salinity values of 36–37.5, travels northwards through a complicated near-surface circulation (Sofianos and Johns, 2003; 2015; Yao et al., 2014; Zhan et al., 2014). The general northward surface circulation, which becomes stronger in winter, includes northward currents that flow near the east coast of the Red Sea and have been described previously as the Eastern Boundary Current (Sofianos and Jones, 2003). This boundary current affects all coastal regions,
70 creating small eddies and bifurcating currents along natural barriers in the shallow areas near the coasts. During winter, the already hypersaline water in the Gulf of Aqaba and Suez Gulf, along with the northern part of the Red Sea, cools and sinks to the intermediate and deep layers of the water column, depending on its density (e.g., Sofianos and Johns, 2003; 2015; Papadopoulos et al., 2013; 2015; Zhai et al., 2015; Yao and Hoteit, 2018; Asfahani et al., 2020). It must be mentioned that throughout most of the extent of
75 the Red Sea the tidal component of the flow has a minor contribution on the total large-scale flow in the offshore areas, as well as, the near-coast ones (Churchill et al., 2014; Pugh et al., 2019). The barotropic tidal flows at larger (up to ~30-50 cm/sec) near the area of the southern end of the Red Sea at the Bab al-Mandab Strait and also in the shallow Suez Gulf (Guo et al., 2018).

Within the Saudi Arabian coastal zone of the Red Sea, main drivers of pollution include: maritime
80 transport, fisheries, aquaculture, oil, gas and energy infrastructures, coastal industry, coastal and maritime tourism, municipal and industrial discharge, and urban development (Schröder et al., 2021).

In contrast to the Red Sea, the Arabian Gulf is a shallow plateau with relatively smooth bottom topography, especially in its northern and western parts. It is a semi-enclosed oceanic basin that extends between the eastern part of the Arabian Peninsula and the mountainous coastline of Iran. The gulf exchanges water with the Gulf of Oman (Indian Ocean) through the Strait of Hormuz at its south-eastern edge. The mean depth of the Arabian Gulf is 35 m, with its maximum depth of 120 m found close to the Strait of Hormuz. The physical properties of Arabian Gulf water are regulated by the water exchange with the Indian Ocean and the high evaporation rate. It can be considered as an idiosyncratic seawater basin, strongly influenced by its surrounding arid-to-hyper-arid areas. It is highly affected by dust storms, which transport large amounts of material and nutrients that influence the local ecosystems (Gherboudj and Ghedira, 2014). The gulf receives a small annual amount of precipitation, around 15 cm/year (Reynolds, 1993), and a river discharge estimated at 18 cm/year (Sheppard et al., 1992). However, damming of the major rivers in the region has resulted in substantial reductions in freshwater discharge (Sheppard et al., 2010). Evaporation is very high throughout the gulf, especially over the western part, and reaches approximately 200 cm/year, resulting in unusually high salinities compared to the open ocean (Johns et al., 2003). The Arabian Gulf features some of the highest temperatures and salinities observed in any marine water body worldwide (Sheppard et al., 2010). It is noteworthy that the maximum salinities within the gulf exceed 45 and are found along the Saudi Arabian, Bahraini, and Qatari coastal areas. Regarding the tidal regime of the areas studied in the Arabian Gulf in the frame of this work, the tidal amplitude ranges between 0.5 and 1 m (Neelamani et al., 2021).

The current environmental status of the Arabian Gulf is changing and is increasingly impacted by numerous adverse anthropogenic factors (Al Azhar et al., 2016). Notable among these factors is activity associated with the petroleum industry (Jones et al., 2008). More than 50% of the world's oil and natural gas reserves are located within the gulf. Other factors include desalination, reduced discharge from the two major rivers of the Tigris and the Euphrates (due to damming for the increased water demands), urbanisation and rapid industrial and residential development. The combination of these factors has substantially altered the environmental status of the Arabian Gulf, especially along the Saudi coast

(Vaughan et al., 2019), and have resulted in the Arabian Gulf being classified among the highest anthropogenically impacted regions in the world (Naser, 2013; 2014; 2015; Schröder et al., 2021).

110 Despite the economic and environmental importance of the Red Sea and Arabian Gulf to the MENA region, and the potential impact of anthropogenic activities on these water bodies, quality of marine environment of the Red Sea and the Arabian Gulf has not been extensively studied. Those studies that have been directed at the quality of the Saudi Arabian marine environment have largely been locally focused, for example on the marine area near Jeddah and the Jeddah lagoons. A number of studies have
115 focused on trace metals (Al Farawati et al., 2011; Yussef, 2015; Brima abd Albishri, 2017; Al Mur et al., 2017; Ali et al., 2017; Fallatah et al., 2018; Al Mur 2020; Mannaa et al., 2021; Halawani et al., 2022; El Zokm et al., 2022) and/or organic pollutants (PAHs) (El Maradny et al., 2023). Very few studies, also related mainly to metals and organic contaminants are limited to local marine environments as Al-Lith (Abu Zied and Harini, 2017; Buntan et al., 2020), Yambu (El Sorogy et al., 2023), Jazan (Ali Kanal et
120 al., 2020). The sporadic and geographically confined nature of contaminant measurements acquired in the Red Sea highlight the importance of the data set obtained in this work, since it extends along the whole Saudi Arabian coastline of the Red Sea.

Similarly, few studies of contaminants have been conducted in the Saudi Arabian waters of the Arabian Gulf. These deal mainly with metals and petroleum (Freije, 2015; Alharbi et al., 2017; Al Kahtany et al.,
125 2018; El Sorogy et al., 2018; Alharbi and El Sorogy, 2019;1017; Paparella et al., 2022; Amin and Almahasheer, 2022; Alharbi et al., 2022; Alzahrani et al 2023; Al Kahtany et al., 2023; Sohaib et al., 2023).

As part of the Vision 2030 for economic growth and development in the Kingdom of Saudi Arabia, the Marine and Coastal Environment Protection (MCEP) Initiative for Saudi Arabia was established
130 (<https://mcep.kaust.edu.sa/>). The objective of this project, a collaboration between the National Center for Environmental Compliance (NCEC) and King Abdullah University of Science and Technology (KAUST), was to provide a national status quo assessment to set priorities for protection of the Kingdom's coastal environment. The project was divided into 7 tiered tasks (<https://mcep.kaust.edu.sa/>). Guided by

the findings of Task 4, Hotspot Analysis, KAUST's partner - the Hellenic Centre for Marine Research (HCMR) - undertook field surveillance at a number of sites in the Red Sea and Arabian Gulf. The sites were selected in consultation with the NCEC on the basis of the findings from Task 4 (<https://mcep.kaust.edu.sa/>) (Schröder et al., 2021). The field surveillance, Task-6, was designed to trace the discrete sources of pollution in critical hotspot areas. These sources include: wastewater treatment plants, desalination plants, ports, industry, petroleum platforms, aquaculture facilities (floating cages and onshore operations), and urban development. A variety of hydrographic and chemical properties in the water column and sediment were measured in each area.

Here, we present physical and biochemical measurements obtained during the two surveillance cruises, conducted in June and September 2021. Together, these cruises constitute the first multidisciplinary and geographically comprehensive survey of contaminants in Saudi Arabian coastal zone. Here, these data are used to describe hydrographic conditions and the spatial variability of biochemical variables in the Red Sea and the Arabian Gulf. In addition, the baseline values for various pollutants, chlorophyll-a (Chl-a), nutrients, and rarely measured essential oceanographic variables, such as dissolved organic carbon, are presented along with their spatial distributions.

2. Data Provenance

The survey in the Red Sea was carried out from the R/V *AEGAEO* of the HCMR from 9 June to 6 July 2021, whereas the survey in the Arabian Gulf was carried out using small fishing boats from 17 to 22 September 2021. The cruise in the Red Sea was conducted over a north–south coastal transect from the area located in the northern part of the Gulf of Aqaba close to the Saudi Arabia–Jordan border (Haql) to the Jizan Economic City area located in the southern region of the Red Sea (Fig. 1a). The hot spots areas surveyed, from north to south, were: an area near the Saudi-Jordanian border (Phosphate Terminal in the Port of Aqaba in Jordan; cross-border pollution) and Haql (desalination, power and sewage-treatment plants; port activities), Magna (maritime traffic), Tabuk Fisheries (aquaculture activities), Duba (desalination plant), Al Wajh (port facilities; desalination plant), Red Sea Project Lagoon (north and west channels), Yanbu Cement Company (industrial discharge), Yanbu King Fahd Port (industrial and

160 shipping center -, the largest in Saudi Arabia on the basis of oil and overall cargo volume; Schröder et al.,
2021), Jeddah Lagoon System (wastewater inputs), Jeddah Mena (port operations), Al Khurma
(wastewater treatment plant), Al Lith (shrimp and fish farms), Al-Shuqaiq (desalination plant), and Jazan
Economic City (expanding industrial facility). During the cruise, measurements of hydrographic and
biochemical variables were acquired with traditional techniques (i.e., use of a CTD with companion
165 sensors, and Acoustic Doppler Current Profiler [ADCP] and collection of water samples). The sampling
strategy was aimed at resolving the dispersion of contaminants related to environmental pressures
impacting each area. For example, when sampling near desalination and wastewater treatment facilities,
we first conducted a CTD survey, acquiring data on temperature, salinity, dissolved oxygen (DO) and
turbidity to identify the signal of the discharge from these facilities. Subsequently, water and sediment
170 samples were obtained within the discharge signal suggested by the CTD data and at a point distant from
the signal (reference site). Samples of water and sediment, as well as CTD data, were acquired from both
R/V *AEGAEO* and *AEGAEO*'s support vessel (tender). At deeper (>10 m) stations, water samples and
vertical CTD profiles were acquired using *AEGAEO*'s rosette sampling system, which consists of a CTD
profiler with twelve 12-L Niskin bottles. Sediment samples at the deeper stations were acquired with the
175 ship's box corer. At shallower stations, the sampling was carried out using the tender. At these shallower
stations, sediment samples were acquired with a small grab sampler, and water samples were taken using
a single Niskin bottle lowered from the tender. Water samples were taken at discrete depths, such as
surface, 10 m, 20 m and near the bottom (roughly 0.5 m from the seabed), as well as from depths of
particular interest (e.g., where effluent plumes were identified) if they did not match with the discrete
180 depths.

The shipboard CTD system included a sensor suite for acquiring *in situ* data of salinity, temperature, DO,
pH, specific conductivity, total dissolved solids, turbidity, Chl-a and total suspended matter. Onboard
analysis was performed on the water samples for ammonium, DO, biological oxygen demand (BOD),
sulphides, fluoride and total chlorine. The water samples were also subjected to onboard particle filtration
185 and extraction of organic compounds.

The surveillance cruise in the Arabian Gulf covered the critical hotspot areas predefined by Schröder et
al. (2021). Three main areas were sampled: Al Khobar, Dammam and Ras Al Khair. Unfortunately, rough

sea conditions prevented surveying more areas, particularly in the northern part of the Saudi Arabian waters. These will hopefully be surveyed in future field surveillance work. The sampling entailed measurements of seawater properties using a portable CTD unit and the collection of seawater and sediment samples from which various types of contaminants and other properties were measured. Altogether, CTD data, as well as seawater and sediment samples, were obtained from 14 coastal stations (Fig. 1b). Similar to the Red Sea surveillance, the sampling strategy was aimed at resolving the dispersion of contaminants related to environmental pressures impacting each survey area. Sediment samples were acquired with a small grab sampler, and water samples were taken by individual Niskin bottles lowered from the boat. Water samples were taken at discrete depths: surface, 10 m and near the bottom (roughly 0.5 m from the seabed). The portable CTD data included *in situ* measurements of temperature, conductivity and turbidity. On-board chemical analyses were not performed, these were not possible on the small boat employed. Nevertheless, all samples were treated and were subjected to extraction of organic compounds onboard immediately after collection. The water samples were subjected to particle and Chl-a filtration at the ALS-Arabia laboratories

Data Coverage and Parameters Measured:

Coverage: 17–29° N, 34°–42° E

Location name: Red Sea

Date start: 9 June 2021

Date end: 6 July 2021

Table 1(a): List of sampling sites of the *AEGAEO* cruise in the Red Sea as seen in the National Center for Environmental Compliance (NCEC) database (<https://mcep.kaust.edu.sa/cruise-postings>); List of sampling stations: location, depth and date (CTD data have been measured at all stations).

Area	Station	Latitude_North (deg min)	Longitude_East (deg min)	Depth (m)	Date_June 2021
Cement Plant	HB01	24 15.499	37 33.048	603	16
	HB02	24 15.810	37 33.715	170	16
Yanbu	KF9	23 54.663	38 16.905	41	17
	KF8	23 55.278	38 15.550	30	17

	KF7	23 55.860	38 14.136	47	17
	KF5	23 55.197	38 11.796	104	17
	KF4	23 56.255	38 12.655	40	17
	KF6	23 57.383	38 11.590	29	17
	KF1	23 56.963	38 13.530	16	17
	KF3	23 56.500	38 12.865	38	17
Mena Jeddah	JM6	21 27.697	39 06.323	44	18
	JM5	21 27.775	39 08.548	32	18
	JM3	21 27.935	39 09.204	26	18
	JM2	21 28.673	39 09.618	15	18
	JM1	21 27.327	39 09.940	12	18
	JM4	21 27.220	39 09.318	15	18
Al Khumrah	JS4	21 19.300	39 05.701	81	18
	GH1	21 18.353	39 05.805	71	18
	JS8	21 19.335	39 05.653	80	18
	JS6	21 19.379	39 05.639	80	18
	JS10	21 19.245	39 05.725	80	18
	JS5	21 19.291	39 05.648	82	18
	JS9	21 19.280	39 05.750	75	18
	JS11	21 19.257	39 05.080	398	18
	JS12	21 19.271	39 05.347	295	18
	JS3	21 19.303	39 05.695	81	18
	JS13	21 19.930	39 05.410	80	18
Lagoon	L1	21 29.995	39 08.955	15	19
	L2 (off intended position)	21 29.665	39 09.123	10	19
	L2 (on position)	21 29.737	39 09.886	18	19
	L3	21 29.697	39 09.660	16	19
	L7	21 29.776	39 10.005	1.5	19
	L8	21 29.612	39 10.078	14	19
	L9	21 29.397	39 10.118	6	19
	L10	21 29.222	39 10.304	5	19
	L11	21 29.211	39 10.51	4	19
	L12	21 29.140	39 10.704	5	19
	L13	21 29.368	39 10.892	5	19
	L14	21 29.50	39 11.008	4.5	19

	NI1	21 28.965	39 10.667	4	19
	NI2	21 28.876	39 10.621	2	19
	NI3	21 29.286	39 10.330	3	19
Al Lith	AL7	20 08.500	40 12.090	43	20
	AL2	20 08.050	40 13.640	18	20
	AL1	20 06.930	40 12.170	60	20
	AL5	20 08.560	40 12.710	24	20
	AL8	20 08.501	40 15.279	9.6	20
	AL4	20 08.972	40 14.140	11	20
	AL3	20 08.967	40 14.831	8.6	20
Jazan Economic City	JZ1	17 21.610	42 15.590	15	22
	JZ2	17 20.970	42 15.680	16	22
	JZ3	17 20.270	42 15.840	15	22
	JZ4	17 19.600	42 16.000	15	22
	JZ5	17 18.950	42 16.090	14	22
	JZ6	17 18.290	42 16.260	14	22
	JZ7	17 17.610	42 16.400	10	22
	JZ8	17 16.970	42 16.550	12	22
	JZ9	17 16.290	42 16.710	15	22
	JZ10	17 15.640	42 16.850	15	22
	JZ11	17 15.000	42 17.000	12	22
	JZ12	17 14.320	42 17.170	12	22
	JZ13	17 13.700	42 17.300	15	22
Al Shuqaiq	SH8N OR SH8	17 36.588	42 05.061	15	22
	SH7	17 37.594	42 05.135	7	22
	SH6	17 37.928	42 04.390	8	22
	SH4N	17 38.386	42 04.643	4	22
	SH1N	17 39.395	42 04.108	5	22
	SH5	17 38.110	42 03.050	7	22
	SH4	17 38.643	42 03.395	8.6	22
RSP West	RSP3	25 27.020	36 42.210	17	27
	RSP5	25 24.860	36 41.470	22	27
	RSP6	25 25.370	36 46.470	20	27
	RSP1	25 33.361	36 40.688	13	27
	RSP2	25 29.181	36 40.776	10	27
	RSP4	25 26.969	36 41.145	29	27

RSP North	N5	25 55.920	36 37.850	20	27
	N1	25 53.736	36 40.507	5	27
	N2	25 53.492	36 39.258	11	27
	N3	25 53.015	36 38.035	15	27
	N4	25.51.758	36 37.147	7	27
Al Wajh	AW2	26 13.190	36 27.240	52	28
	AW3	26 13.710	36 26.890	185	28
	AW4	26 12.740	36 27.510	50	28
	AW1	26 13.479	36 27.652	9	28
	AW5	26 12.990	36 26.850	150	28
Duba Desalination	DBDS	27 21.180	35 39.640	258	28
Magna	MG	28 24.070	34 44.130	80	29
Haql	HQ1	29 17.600	34 55.670	78	29
	HQ2	29 17.650	34 55.310	295	29
	HQ3	29 17.070	34 55.540	81	29
	HQ4	29 18.120	34 55.790	180	29
	HQ5	29 21.120	34 56.700	270	29
Tabuk Fisheries	TB3	27 45.650	35 25.670	50	30
	TB4	27 45.100	35 25.890	100	30
	TB1	27 46.255	35 25.508	26	30
	TB2	27 46.089	35 25.775	21	30

210

Table 1(b): A list of the ADCP measurements.

Station	Time (local)	Latitude_North (deg min)	Longitude_East (deg min)	Depth (m)	Date_June 2021	ADCP type
HAB2	17:45	24 15.000	37 33.000	603	16	SADCP
HAB2	18:47	24 15.862	37 33.636	160	16	SADCP
KF9	03:18	23 54.663	38 16.905	44	17	Portable
KF8	04:03	23 55.284	38 15.455	38	17	Portable
KF7	05:05	23 55.880	38 14.153	49	17	Portable
KF5	06:15	23 55.176	38 11.796	103	17	SADCP
KF4	07:09	23 56.206	38 12.668	48	17	Portable
KF6	08:10	23 57.383	38 11.600	29	17	Portable
KF1	08:49	23 56.963	38 13.530	18	17	Portable

JM6	09:24	21 27.656	38 06.310	50	18	Portable
JM5	10:15	21 27.769	38 08.587	32	18	Portable
JM3	10:50	21 27.934	39 09.209	27	18	Portable
JM2	11:18	21 28.709	39 09.605	17	18	Portable
JM1	11:55	21 27.315	39 09.894	14	18	Portable
JM4	12:34	21 27.215	39 09.302	17	18	Portable
JS4	15:05	21 19.300	39 05.711	81	18	Portable
GH1	15:30	21 18.574	39 05.010	74	18	Portable
JS8	15:55	21 19.546	39 05.659	82	18	Portable
JS6	16:18	21 19.373	39 05.707	82	18	Portable
JS10	16:42	21 19.240	39 05.738	80	18	Portable
JS5	16:59	21 19.286	39 05.652	85	18	Portable
JS9	17:23	21 19.214	39 05.746	82	18	Portable
JS11	18:22	21 19.262	39 05.033	346	18	SADCP
JS3	19:00	21 19.303	39 05.659	77	18	SADCP
AL7	13:14	20 08.509	40 12.096	45	20	Portable
AL2NEW	14:08	20 08.068	40 13.610	20	20	Portable
AL1	15:46	20 06.570	40 12.090	60	20	SADCP
AL5	16:47	20 08.560	40 12.710	26	20	Portable
JZ13	06:00	17 13.687	42 17.302	17	22	Portable
JZ12	06:38	17 14.333	42 17.160	17	22	Portable
JZ11	06:59	17 15.007	42 17.000	13	22	Portable
JZ10	07:16	17 15.646	42 16.865	17	22	Portable
JZ9	08:16	17 16.303	42 16.727	17	22	Portable
JZ8	08:31	17 16.979	42 16.554	13	22	Portable
JZ7	08:46	17 17.626	42 16.403	14	22	Portable
JZ6	09:12	17 18.304	42 16.273	16	22	Portable
JZ5	09:30	17 18.962	42 16.102	17	22	Portable
JZ4	09:58	17 19.621	42 16.027	17	22	Portable

JZ3	10:17	17 20.303	42 15.860	17	22	Portable
JZ2	10:33	17 21.000	42 15.704	18	22	Portable
JZ1	11:02	17 21.624	42 15.618	18	22	Portable
SH5	19:50	17 38.116	42 03.049	15	22	Portable
RSP5	06:43	25 24.851	36 41.497	28	27	Portable
RSP6	07:44	25 25.380	36 46.471	22	27	Portable
RSP3	08:52	25 27.022	36 42.238	19	27	Portable
N5	16:37	25 55.936	36 37.880	22	27	Portable
AW5	06:20	26 13.029	36 26.868	156	28	SADCP
AW4	07:44	26 12.723	36 27.489	52	28	Portable
AW2	08:30	26 13.261	36 27.266	50	28	Portable
AW3	09:19	26 13.674	36 26.941	180	28	SADCP
MG	08:10	28 24.077	34 44.155	90	29	SADCP
MG	08:20	28 24.067	34 44.156	75	29	Portable
HQ5	14:31	29 21.095	34 55.685	270	29	SADCP
HQ4	15:45	29 18.075	34 55.475	180	29	SADCP
HQ1	16:24	29 17.599	34 55.675	83	29	Portable
HQ1	16:30	29 17.605	34 55.672	92	29	SADCP
HQ3	16:58	29 17.083	34 55.540	86	29	SADCP
HQ2	17:30	29 17.375	34 55.311	293	29	SADCP
TB3	12:43	27 45.638	35 25.658	43	30	Portable
TB4	13:30	27 45.092	35 25.897	114	30	SADCP

Table 1(c): List of biogeochemical parameters in the water column of the Red Sea cruise in June 2021 with R/V *AEGAEO* as seen in the NCEC database.

		Sampling depths in the water column (m)													
Area	Station	DO and Nutrients	BOD	Fluoride	Sulphides	TOC	Chl-a	SPM	Chlorine	Cyanide	TPH	Oil and Grease	Chlorophenols	Metals	
Cement Plant	HB01	2	2	2	2	2	2	2	2	2	2	2	2	2	
		20	20	20	20	20	20	20	20	20	20	20	20	20	
		50	50	50	50	50	50	50	50	50	50	50	50	50	
	HB02	2	2	2	2	2	2	2	2	2	2	2	2	2	
		20	20	20	20	20	20	20	20	20	20	20	20	20	
		50	50	50	50	50	50	50	50	50	50	50	50	50	
Yanbu	KF9	2	2	2	2	2	2	2	2	2	2	2	2	2	
		20	20	20	20	20	20	20	20	20	20	20	20	20	
		40	40	40	40	40	40	40	40	40	40	40	40	40	
	KF8	2	2	2	2	2	2	2	2	2	2	2	2	2	
		27	27	27	27	27	27	27	27	27	27	27	27	27	
	KF7	2	2	2	2	2	2	2	2	2	2	2	2	2	
		20	20	20	20	20	20	20	20	20	20	47	47	47	20
		47	47	47	47	47	47	47	47	47	47				47
	KF5	2	2	2	2	2	2	2	2	2	2	2	2	2	2
		20	20	20	20	20	20	20	20	20	20	20	20	20	20
		104	104	104	104										
	KF6	2	2	2	2	2	2	2	2	2	2	2	2	2	2
		27	27	27	27	27	27	27	27	27	27	27	27	27	27
	KF1	2	2	2	2	2	2	2	2	2	2	2	2	2	2
		16	16	16	16	16	16	16	16	16	16	16	16	16	16
	KF3	2	2	2	2	2	2	2	2	2	2	2	2	2	2
		20	20	20	20	20	20	20	20	20	20	20	20	20	20
		38	38	38	38	38	38	38	38	38	38	38	38	38	38

Mena Jeddah	JM6	2	2	2	2	2	2	2	2	2	2	2	2	2
		43	43	43	43	43	43	43	43	43	43	43	43	43
	JM5	2	2	2	2	2	2	2	2	2	2	2	2	2
		33	33	33	33	33	33	33	33	33	33	33	33	33
	JM3	2	2	2	2	2	2	2	2	2	2	2	2	2
		25	25	25	25	25	25	25	25	25	25	25	25	25
	JM2	2	2	2	2	2	2	2	2	2	2	2	2	2
	JM1	2	2	2	2	2	2	2	2	2	2	2	2	2
		12	12	12	12	12	12	12	12	12	12	12	12	12
	JM4	2	2	2	2	2	2	2	2	2	2	2	2	2
15		15	15	15	15	15	15	15	15	15	15	15	15	
Al Khumrah	JS9	2	2	2	2	2	2	2	2	2	2	2	2	2
		17	17	17	17	17	17	17	17	17	17	17	17	17
	JS11	2	2	2	2	2	2	2	2	2	2	2	2	2
		14	14	14	14	14	14	14	14	14	14	14	14	14
	JS3	2	2	2	2	2	2	2	2	2	2	2	2	2
		25	25	25	25	25	25	25	25	25	25	25	25	25
		36	36	36	36	36	36	36	36	36	36	36	36	
Lagoon	L1	2	2	2	2	2	2	2	2	2	2	2	2	2
											15	15	15	15
	L3	2	2	2	2	2	2	2	2	2	2	2	2	2
		15	15	15	15	15	15	15	15	15	15	15	15	15
	L9	2	2	2	2	2	2	2	2	2	2	2	2	2
		6	6	6	6	6	6	6	6	6	6	6	6	6
	L10	2	2	2	2	2	2	2	2	2	2	2	2	2
	L12	2	2	2	2	2	2	2	2	2	2	2	2	2
L14	2	2	2	2	2	2	2	2	2	2	2	2	2	
NI2	2	2	2	2	2	2	2	2	2	2	2	2	2	
Al Lith	AL7	2	2	2	2	2	2	2	2	2	2	2	2	2
		23	23	23	23	23	23	23	23	23	23	43	43	43
		30	30	30	30	30	30	30	30	30	30			30
		43	43	43	43	43	43	43	43	43	43			43
	AL2	2	2	2	2	2	2	2	2	2	2	2	2	2
		18	18	18	18	18	18	18	18	18	18	18	18	18
	AL1	2	2	2	2	2	2	2	2	2	2	2	2	2
		23	23	23	23	23	23	23	23	23	23	61	61	61
		61	61	61	61	61	61	61	61	61	61			61
	AL5	2	2	2	2	2	2	2	2	2	2	2	2	2
		24	24	24	24	24	24	24	24	24	24	24	24	24
	AL8	2	2	2	2	2	2	2	2	2	2	2	2	2
	AL4	2	2	2	2	2	2	2	2	2	2	2	2	2
		11	11	11	11	11	11	11	11	11	11	11	11	11

	AL3	2	2	2	2	2	2	2	2	2	2	2	2	2	
Jizan Econ City	JZ2	2	2	2	2	2	2	2	2	2	2	2	2	2	
		17	17	17	17	17	17	17	17	17	17	17	17	17	
	JZ5	2	2	2	2	2	2	2	2	2	2	2	2	2	2
		14	14	14	14	14	14	14	14	14	14	14	14	14	14
	JZ7	2	2	2	2	2	2	2	2	2	2	2	2	2	2
		12	12	12	12	12	12	12	12	12	12	12	12	12	12
	JZ10	2	2	2	2	2	2	2	2	2	2	2	2	2	2
		14	14	14	14	14	14	14	14	14	14	14	14	14	14
	JZ12	2	2	2	2	2	2	2	2	2	2	2	2	2	2
		15	15	15	15	15	15	15	15	15	15	15	15	15	15
JZ13	2	2	2	2	2	2	2	2	2	2	2	2	2	2	
	15	15	15	15	15	15	15	15	15	15	15	15	15	15	
Al Shuqaiq	SH8 N	2	2	2	2	2	2	2	2	2	2	2	2	2	
		14	14	14	14	14	14	14	14	14	14	14	14	14	
	SH6	2	2	2	2	2	2	2	2	2	2	2	2	2	
		5	5	5	5	5	5	5	5	5	5	5	5	5	
	SH4N	2	2	2	2	2	2	2	2	2	2	2	2	2	
	SH1N	2	2	2	2	2	2	2	2	2	2	2	2	2	
	SH4	2	2	2	2	2	2	2	2	2	2	2	2	2	2
		8	8	8	8	8	8	8	8	8	8	8	8	8	8
RSP	RSP3	2	2	2	2	2	2	2	2	2	2	2	2	2	
		16	16	16	16	16	16	16	16	16	16	16	16	16	
	RSP5	2	2	2	2	2	2	2	2	2	2	2	2	2	
		10	10	10	10	10	10	10	10	10	10	10	10	10	
	RSP6	21	21	21	21	21	21	21	21	21	21	21	21	21	21
		2	2	2	2	2	2	2	2	2	2	2	2	2	
		10	10	10	10	10	10	10	10	10	10	20	20	20	10
	RSP1	20	20	20	20	20	20	20	20	20	20				20
		2	2	2	2	2	2	2	2	2	2	2	2	2	2
	RSP2	12	12	12	12	12	12	12	12	12	12	12	12	12	12
		2	2	2	2	2	2	2	2	2	2	2	2	2	2
	RSP4	9	9	9	9	9	9	9	9	9	9	9	9	9	9
2		2	2	2	2	2	2	2	2	2	2	2	2	2	
RSP4	28	28	28	28	28	28	28	28	28	28	28	28	28	28	
	2	2	2	2	2	2	2	2	2	2	2	2	2	2	
RSP North	N5	2	2	2	2	2	2	2	2	2	2	2	2	2	
		18	18	18	18	18	18	18	18	18	18	18	18	18	
	N1	2	2	2	2	2	2	2	2	2	2	2	2	2	
	N2	2	2	2	2	2	2	2	2	2	2	2	2	2	
		11	11	11	11	11	11	11	11	11	11	11	11	11	
	N3	2	2	2	2	2	2	2	2	2	2	2	2	2	

		15	15	15	15	15	15	15	15	15	15	15	15	15	
	N4	2	2	2	2	2	2	2	2	2	2	2	2	2	
Al Wajh	AW2	2	2	2	2	2	2	2	2	2	2	2	2	2	
		20	20	20	20	20	20	20	20	20	20	50	50	50	20
		50	50	50	50	50	50	50	50	50	50				50
	AW3	2	2	2	2	2	2	2	2	2	2	2	2	2	2
		50	50	50	50	50	50	50	50	50	50	182	182	182	50
		100	100	100	100	100	100	100	100	100	100				100
		182	182	182	182	182		182	182	182	182				182
	AW4	2	2	2	2	2	2	2	2	2	2	2	2	2	2
		30	30	30	30	30	30	30	30	30	30	47	47	47	30
		47	47	47	47	47	47	47	47	47	47				47
	AW1	2	2	2	2	2	2	2	2	2	2	2	2	2	2
		8	8	8	8	8	8	8	8	8	8	8	8	8	8
	AW5	2	2	2	2	2	2	2	2	2	2	2	2	2	2
		30	30	30	30	30	30	30	30	30	30	145	145	145	30
		70	70	70	70	70	70	70	70	70	70				70
145		145	145	145	145	145		145	145	145				145	
Duba Desalination	DBDS	2	2	2	2	2	2	2	2	2	2	2	2	2	
		50	50	50	50	50	50	50	50	50	50	254	254	254	50
		100	100	100	100	100	100	100	100	100	100				100
		254	254	254	254	254	254		254	254	254				254
Magna	MG	2	2	2	2	2	2	2	2	2	2	2	2	2	
		20	20	20	20	20	20	20	20	20	20	80	80	80	20
		80	80	80	80	80	80	80	80	80	80				80
Haql	HQ1	2	2	2	2	2	2	2	2	2	2	2	2	2	
		78	78	78	78	78	78	78	78	78	78	78	78	78	
	HQ2	2	2	2	2	2	2	2						2	
		100	100	100	100	100	100	100						100	
		295	295	295	295	295	295		295					295	
	HQ3	2	2	2	2	2	2	2	2	2	2	2	2	2	
		81	81	81	81	81	81	81	81	81	81	81	81	81	
	HQ4	2	2	2	2	2	2	2	2	2	2	2	2	2	
		75	75	75	75	75	75	75	75	75	75	75	75	75	
	HQ5	2	2	2	2	2	2	2	2	2	2	2	2	2	
		20	20	20	20	20	20	20	20	20	20	270	270	270	20
		100	100	100	100	100	100	100	100	100	100				100
270		270	270	270	270	270		270	270	270				270	
Tabuk Fisheries	TB3	2	2	2	2	2	2	2	2	2	2	2	2	2	
		20	20	20	20	20	20	20	20	20	20	20	20	20	
		50	50	50	50	50	50	50	50	50	50	50	50	50	
	TB4	2	2	2	2	2	2	2	2	2	2	2	2	2	

		30	30	30	30	30	30	30	30	30	100	100	100	30	
		70	70	70	70	70	70	70	70	70				70	
		100	100	100	100	100	100	100	100	100				100	
	TB1	2	2	2	2	2	2	2	2	2	2	2	2	2	2
		25	25	25	25	25	25	25	25	25	25	25	25	25	25
	TB2	2	2	2	2	2	2	2	2	2	2	2	2	2	2
		18	18	18	18	18	18	18	18	18	18	18	18	18	18

215

Table 1(d): List of sediment parameters from the cruise in the Red Sea in June 2021 with R/V *AEGAEO* as seen in the NCEC database.

Area	Name	Date_ June	Metals_ Granulometry	Hydrocarbons	Cyanide	WS Cl	VOC	Phenols	PCB	Org. C/Carbonate	TN	
Yanbu	KF9	17	√	√	√	√	√	√	√	√	√	
	KF8	17	√	√	√	√	√	√	√	√	√	
	KF7	17	√	√	√	√	√	√	√	√	√	
	KF4	17	√	√	√	√	√	√	√	√	√	
	KF6	17	√	√	√	√	√	√	√	√	√	
	KF1	17	√	√	√	√	√	√	√	√	√	
	KF3	17	√	√	√	√	√	√	√	√	√	
Mena Jeddah	JM5	18	√	√	√	√	√	√	√	√	√	
	JM3	18	√	√	√	√	√	√	√	√	√	
	JM2	18	√	√	√	√	√	√	√	√	√	
	JM1	18	√	√	√	√	√	√	√	√	√	
Al Khumrah Lagoon	JS3	18	√	√	√	√	√	√	√	√	√	
	L3	19	√	√	√	√	√	√	√	√	√	
	L9	19	√	√	√	√	√	√	√	√	√	
	L10	19	√	√	√	√	√	√	√	√	√	
	L12	19	√	√	√	√	√	√	√	√	√	
	L14	19	√	√	√	√	√	√	√	√	√	
	NI2	19	√	√	√	√	√	√	√	√	√	
	Al Lith	AL7	20	√	√	√	√	√	√	√	√	√
		AL2	20	√	√	√	√	√	√	√	√	√
		AL1	20	√	√	√	√	√	√	√	√	√
AL5		20	√	√	√	√	√	√	√	√	√	
AL4		20	√	√	√	√	√	√	√	√	√	
	AL3	20	√	√	√	√	√	√	√	√	√	

Jazan Economic City	JZ2	22	√	√	√	√	√	√	√	√	√
	JZ5	22	√	√	√	√	√	√	√	√	√
	JZ7	22	√	√	√	√	√	√	√	√	√
	JZ10	22	√	√	√	√	√	√	√	√	√
	JZ12	22	√	√	√	√	√	√	√	√	√
	JZ13	22	√	√	√	√	√	√	√	√	√
Al Shuqaiq	SH8N	22	√	√	√	√	√	√	√	√	√
	SH6	22	√	√	√	√	√	√	√	√	√
	SH1N	22	√	√	√	√	√	√	√	√	√
	SH5	22	√							√	√
	SH4	22	√							√	√
RSP	RSP3	27	√	√	√	√	√	√	√	√	√
	RSP2	27	√	√	√	√	√	√	√	√	√
	RSP4	27	√	√	√	√		√	√	√	√
RSP North	N5A	27	√	√	√	√	√	√	√	√	√
	N1	27	√	√	√	√		√	√	√	√
	N2	27	√	√				√	√	√	√
Al Wajh	AW3	28	√	√	√	√	√	√	√	√	√
	AW4	28	√	√	√	√	√	√	√	√	√
	AW1	28	√	√	√	√	√		√	√	√
	AW5	28	√	√	√	√	√	√	√	√	√
Duba Desalination	TBDS	28	√	√	√	√	√	√	√	√	√
Magna	MG	29	√	√	√	√	√	√	√	√	√
Haql	HQ2	29	√	√	√	√	√	√	√	√	√
	HQ5	29	√	√	√	√	√	√	√	√	√
Tabuk Fisheries	TB3	30	√	√	√	√	√	√	√	√	√
	TB1	30	√	√	√	√	√	√	√	√	√
	TB2	30	√	√	√	√	√	√	√	√	√

A link to the summary page of the Red Sea cruise can be found in the NCEC database under <https://mcep.kaust.edu.sa/cruise-postings>.

Coverage: 26–27° N, 49°–50° E

Location name: Arabian Gulf

225 Date start: 17 September 2021

Date end: 22 September 2021

Table 2(a): List of sampling sites from the cruise in the Arabian Gulf in September 2021; location, depth, date and sampling information (CTD data have been measured at all stations).

Area	Latitude_North (deg min)	Longitude_East (deg min)	Name	Water Samples	Sediment Sample	Max Depth (m)	Samples Depth (m)
				(S: near surface)	(Sed)		
				(M: mid- water)			
				(B: near bottom)			
Ras Al Khair	27 33.282	49 08.574	RK1	S	Sed	5.3	2
	27 34.401	49 08.661	RK3		Sed	11	
	27 34.024	49 12.458	RK4	S	Sed	17.6	2
	27 40.434	49 20.584	RK7	S	Sed	13.5	2
	27 33.845	49 08.603	RK2			9	
Dammam	26 29.186	50 08.911	DM1	S	Sed	5.4	2
	26 31.080	50 09.289	DM2		Sed	6.5	
	26 32.109	50 09.738	DM3	S	Sed	7.7	2
	26 43.807	50 17.341	DM4	S, B	Sed	11	2, 10
Al Khobar	26 15.172	50 15.512	RJ1	S	Sed	7.2	2
	26 13.640	50 14.847	RJ2			8.2	
	26 12.315	50 14.310	RJ3	S		6.4	
	26 11.058	50 13.620	RJ4	S		7.2	5
	26 09.757	50 12.355	RJ5			8.2	

230

235 **Table 2(b):** List of biogeochemical parameters in the water column (sampling depth) from the cruise in the Arabian Gulf in September 2021

Area	Station	DO and Nutrients	Fluoride	TOC	Chl-a	SPM	Cyanide	TPH	Oil and Grease	Chlorophenols	Metals
Ras Al Khair	RK1	2	2	2	2	2	2	2	2	2	2
	RK4	2	2	2	2	2	2	2	2	2	2
	RK7	2	2	2	2	2	2	2	2	2	2
Dammam	DM1	2	2	2	2	2	2	2	2	2	2
	DM4	2	2	2	2	2	2	2	2	2	2
	DM4	10	10	10	10	10	10	10	10	10	10
Al Khobar	RJ1	2	2	2	2	2	2	2	2	2	2
	RJ3	2	2	2	2	2	2	2	2	2	2
	RJ4	5	5	5	5	5	5	5	5	5	5

Table 2(c): List of sediment parameters from the cruise in the Arabian Gulf in September 2021.

Area	Name	Metals Granulometry	Hydrocarbons	Cyanide	WS Cl	VOC	Phenols	PCB	Org. C/Carbonate	TN
Ras Al Khair	RK1	√	√	√	√	√	√	√	√	√
	RK3	√	√	√	√	√	√	√	√	√
	RK4	√	√	√	√	√	√	√	√	√
	RK7	√	√	√	√	√	√	√	√	√
Dammam	DM1	√	√	√	√	√	√	√	√	√
	DM2	√	√	√	√	√	√	√	√	√
	DM3	√	√	√	√	√	√	√	√	√
	DM4	√	√	√	√	√	√	√	√	√
Al Khobar	RJ1	√	√	√	√	√	√	√	√	√

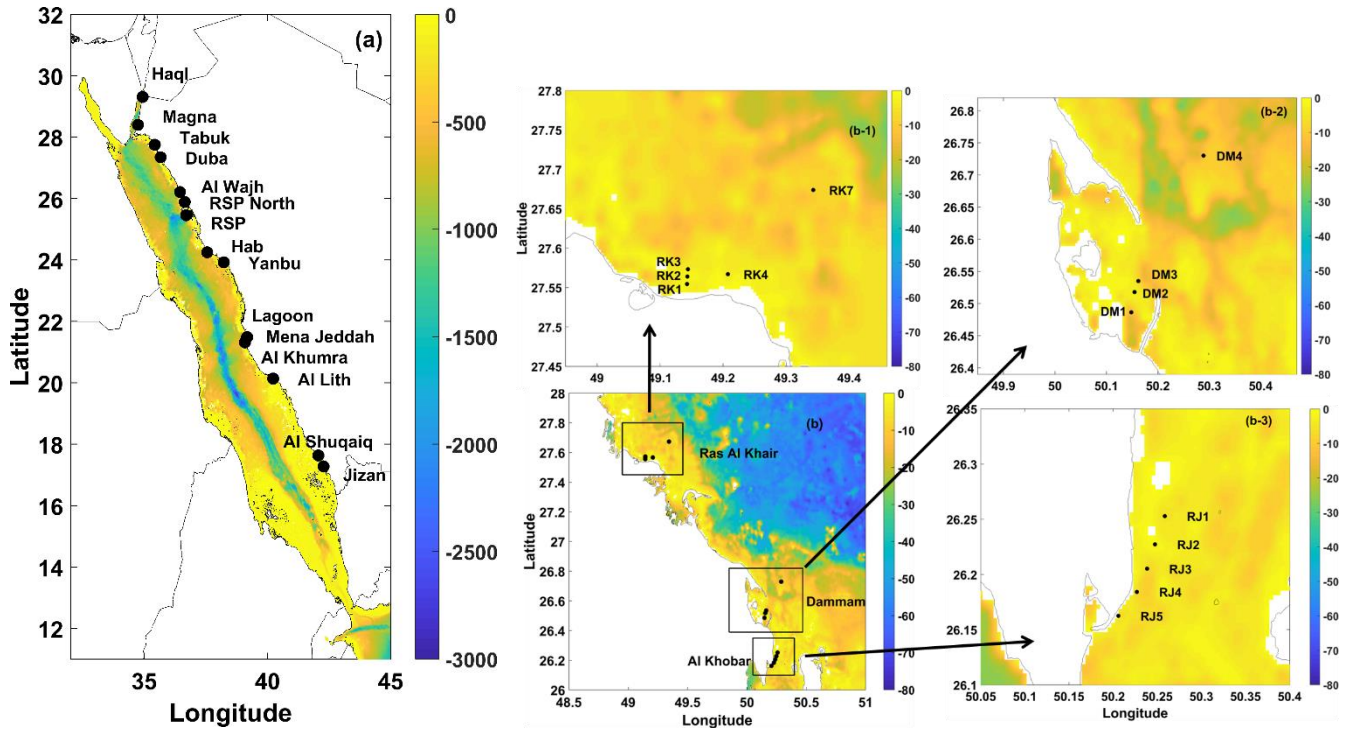


Figure 1: Station maps. (a) Sampling areas within the coastal zone of the Red Sea. A number of sampling stations were located in each area, as shown in Table 1a. (b) Sampling areas in the Arabian Gulf. Detailed station grid for each area is shown in Fig. 245 1b-1, 1b-2 and 1b-3. Bathymetry from GEMCO 2020.

3. Methods

3.1. *CTD - Rosette*

250 In the Red Sea, 96 CTD casts were performed. A total of 71 casts included Rosette/Niskin water sampling (full details are given in Table 1a and 1b) while the other 25 acquired only sensor data. A Seabird SBE 9plus CTD underwater unit (Sea-Bird Electronics, Inc.) connected to an SBE 11 deck unit was used. The SBE 9plus CTD system was equipped with a pressure sensor (DigiQuartz), temperature sensor (SBE 3), conductivity sensor (SBE 4), DO (SBE 43), transmissometer sensor (Chelsea AlphaTracka Mk II),
 255 fluorometer sensor (Chelsea AquaTracka III), pH sensor (SBE 18) and underwater and shipborne

photosynthetically active radiation (PAR) sensor (Satlantic). Temperature and conductivity sensors were calibrated before the cruise, in February/March 2021, at the manufacturers' facilities. Oxygen values were corrected post-cruise using the Winkler oxygen values. The underwater unit was attached to a metallic frame that supported 12 Niskin bottles of 12 L volume each. The bottles were connected to a carousel
 260 water sampler (SBE 32) linked to the CTD probe via a conductive cable.

In addition, a portable SBE 19 CTD underwater unit equipped with a pressure sensor (strain gauge), unit-embedded temperature sensor, unit-embedded conductivity sensor, transmissometer sensor (Chelsea/Seatech) and fluorometer sensor (WET Labs ECO-AFL/FL) was used in the shallow areas. Both CTD sensors recorded measurements in the whole water column from near surface to ~ 0.5 m above the
 265 sea bottom. Water samples for the Rosette system were taken for the Quality Control/ Quality Assurance (QC/QA) of the results derived from the CTD probes. Moreover, an inter-calibration test cast was conducted before sampling, in which both the SBE 9 and SBE 19 probes were attached to a frame and lowered in the water column. Minor adjustments were applied to correct the SBE19 sensors. In total, 36 casts were conducted with the tender's CTD unit. Raw CTD data were processed following the
 270 manufacturer's recommendations and procedures using the SBE Data Processing software. Accuracies of CTD sensors are shown in Table 3.

Table 3: Accuracy of the CTD sensors.

SBE 9	
Sensor	Accuracy
Temperature (SBE3)	± 0.001 °C
Conductivity (SBE4)	± 0.0003 S/m ($\sim \pm 0.003$ in salinity)
Oxygen (SBE43)	$\pm 2\%$ of saturation value
pH (SBE18)	± 0.1 pH
SBE 19	
Sensor	Accuracy
Temperature	± 0.005 °C
Conductivity	± 0.0005 S/m ($\sim \pm 0.005$ in salinity)

275 The physical properties derived from the CTD and companion sensor data provided indicators of pressure signals. For example, salinity, fluorescence and beam transmission were taken as tracers for brine water (e.g., from desalination plants), wastewater effluent (e.g., from effluent outfalls).

In the Arabian Gulf, data were acquired with a portable Idronaut Ocean Seven CTD unit equipped with pressure, temperature, conductivity, DO, pH and turbidity sensors. All sensors attached to the unit were calibrated before the cruise, in September 2021, at the Coastal and Marine Resources (CMR) Core Lab
280 of KAUST according to the manufacturer's instructions. Arabian Gulf water samples were taken using Niskin bottles.

3.2. ADCP

285 The R/V *AEGAEO* was equipped with a portable ADCP operating at 300 kHz. The ADCP (Teledyne Workhorse) measured water current magnitude and direction down to a depth of approximately 50 m in optimal conditions. The instrument was deployed on the side of the *AEGAEO* at shallow stations with the bottom tracking mode enabled. This ADCP was typically set up to measure velocities in 2-m depth bins, collecting 4–5 (ensemble) profiles at 6–8 min intervals. The average velocity profile at each station was
290 computed as a mean of these ensembles with questionable-quality (biased and noisy) measurements removed. At 15 deeper stations where depths ranged from ~70 to ~600 m, ADCP measurements were collected for 10–15 min via the shipboard ADCP (SADCP Teledyne Ocean Surveyor), a unit installed at the ship's hull and operating at 75 kHz. Averaged velocity profiles were obtained at a total of 59 stations. Unfortunately, ADCP measurements were not taken in the Arabian Gulf.

295 3.3. DO, Nitrogen and Phosphorus, Chl-a, Total Organic Carbon (TOC) and Total Suspended Solids (TSS)

Seawater samples were collected from the Rosette/Niskin sampling system with the typical precaution to prevent any biological activity and gas exchange with the atmosphere (Strickland and Parsons, 1968). Winkler glass bottles with bevelled glass stoppers and a measured capacity specification of ± 0.01 mL
300 were used. Chemical reagents were added immediately after sampling. DO was determined by titration

using the Winkler method, according to Carpenter (1965a,b). Reagent 1 (manganese) and reagent 2 (alkaline iodide) were added with semi-automated Eppendorf (Germany) dispensers, and the bottles were kept in the dark. Before titration, the precipitated hydroxides were dissolved with sulphuric acid, and the solution was carefully transferred to a titration beaker. The titration was carried out with a standardised thiosulphate solution using a Metrohm 876 Dosimat (Switzerland). QC/QA was performed daily by standardisation of the thiosulphate solution with a reference standard solution of potassium iodide. The precision of the method outlined above is estimated to be 2.2 $\mu\text{mol/L}$.

The onboard determination of DO concentration from the seawater samples provided data for QC/QA of the CTD DO sensor measurements and enabled calibration of the CTD's DO sensor (SBE 43) during the cruise.

For nutrient analysis, seawater samples were collected in tubes amenable to the QuAAtro nutrient autoanalyser (SEAL Analytical) and were also collected in 125 mL bottles. All sample containers were pre-treated with 10% HCl and distilled water. The samples were collected in triplicate and kept deep-frozen ($-20\text{ }^{\circ}\text{C}$) until their subsequent analysis in the HCMR biogeochemical laboratory, which is certified according to *EN ISO/IEC 17025:2017*. In the laboratory, the samples were analysed using the QuAAtro nutrient autoanalyser (SEAL Analytical) according to standard methods (Strickland and Parsons, 1968; Murphy and Riley, 1962). Ammonium was determined based on the spectrophotometric measurement of the blue-coloured indophenol complex formed by the reaction of phenol and hypochlorite in the presence of the NH_4^+ and NH_3 species (Koroleff, 1970). Absorbance was measured using a UV-2600 Shimadzu UV/Visible spectrometer (USA) with an 8 mL volume, 10 cm path length cell. QC samples were analysed together with the field samples. Results were calculated according to a calibration curve based on the *EN ISO/IEC 17025:2017* standard, followed by the HCMR Laboratory QUASIMEME inter-calibration exercise used for testing the accuracy of the method. The LOD values of the certified methods were 0.04 $\mu\text{mol/L}$ for nitrate+nitrite, 0.01 $\mu\text{mol/L}$ for nitrite, 0.03 $\mu\text{mol/L}$ for nitrate, 0.01 $\mu\text{mol/L}$ for phosphate and 0.02 $\mu\text{mol/L}$ for ammonium.

For organic phosphorus and nitrogen analysis, seawater was collected in 20 mL Teflon bottles (for phosphorus) and 50 mL glass bottles fitted with screw caps. These digestion bottles were previously

washed with 10% HCl. Preliminary digestion was performed to remove traces of organic matter. The bottles were then kept continuously in a deep freeze ($-20\text{ }^{\circ}\text{C}$) in the dark until their contents were analysed
330 in the HCMR laboratory. In the laboratory, digestion was performed by a persulphate wet-oxidation in low alkaline conditions at $120\text{ }^{\circ}\text{C}$ (1 bar) for 30 min. After cooling at room temperature, the assay mixture was analysed for nitrate and phosphate on a QuAAtro nutrient autoanalyser (Seal Analytical) according to the methods for nutrient analysis.

Samples for TOC analysis were collected in 20 mL acid-cleaned (10% HCl, 12 h) glass bottles fitted with
335 Teflon cups. Directly after sampling, 50 μL of 2N HCl was added to each bottle. The samples were then refrigerated until analysis. TOC concentrations were determined using a Shimadzu TOC-L organic carbon analyser following the high-temperature catalytic oxidation (HTCO) method described by Cauwet (1994) and Sugimura and Suzuki (1988). TOC concentration was calculated as the average value of three replicates that yielded a standard deviation $<2\%$. Analytical precision and accuracy were tested daily
340 against Deep Atlantic Seawater Reference Material provided by the DOC-CRM program (University of Miami—D.A. Hansell). The certified value of the reference material is 0.533–0.574 mg/L, and the measured values ($n = 10$) during the analysis of the samples were between 0.532 and 0.570 mg/L.

Water samples for the determination of Chl-a concentrations ($\mu\text{g/L}$) were collected by Niskin bottles principally near the surface of the water column and at the depth of the deep chlorophyll maximum (DCM)
345 concentrations. For the estimation of the phytoplankton biomass, seawater samples were filtered on board through Whatman GF/F microfiber filters. A volume of 1 or 2 L of seawater were filtered depending on the expected concentrations of Chl-a. The filters were kept in a deep freezer in the dark at $-15\text{ }^{\circ}\text{C}$, and were then analysed at the laboratory on a TURNER 00-AU-10 fluorometer.

TSS was determined by a standard method in which 4 L of seawater was collected in polyethylene bottles
350 and filtered on board through pre-weighed glass fibre filters.

3.4. BOD, Sulphide, Fluorine, Cyanide, Total Chlorine in Seawater

The determination of BOD was performed on board immediately after seawater sampling according to Standard Methods for the Examination of Water and Wastewater No. 5210b. Seawater samples were

355 taken from the Niskin bottles with the recommended precaution to prevent any biological activity and gas
exchange with the atmosphere (Strickland and Parsons, 1968). A WTW 208262 Respirometric BOD
Measuring System was used for the analysis. The bottles were incubated at 20 °C for 5 days. The accuracy
of the BOD method is ± 1 (± 3.55 hPa). The determination of sulphide concentration was performed on
board immediately after seawater sampling. Seawater samples were taken from the Niskin sampling
360 bottles, and sulphides were determined by using the photometric method of Cline (1969). Sulphides react
with *N,N*-diethyl-*p*-phenylenediamine (DPD) sulphate and ferric chloride to produce a blue colour
measured with a UV/Visible spectrophotometer at 670 nm. The limit of detection (LOD) was 1 $\mu\text{g/L}$.

For fluoride measurement, seawater samples were collected from the Niskin bottles in the special tubes
equipped for the ECION700/40S Eutech Ion 700 Meter with Integral Electrode Holder & 100/240 VAC
Adapter CE equipped with Eutech 9609BNWP Fluoride Ionplus Sure-Flow Combination Electrode with
365 a BNC connector.

For cyanide analysis, sea water samples were collected from the Niskin bottles in 125 ml polyethylene
bottles. The samples were preserved by adding NaOH until $\text{pH} > 12$ and stored at 4 °C until their analysis
at HCMR labs. The analytical methodology was based on the colorimetric method No 4500-CN- E in
Standard methods for the examination of water and wastewater. The detection limit is 0.2 $\mu\text{g CN/L}$.

370 Chlorine concentration was measured on board immediately (in exactly 2 min) after seawater sampling.
Seawater samples were taken from the Niskin bottles, and chlorine was determined by photometry
according to the Standard Methods for the Examination of Water and Wastewater No. 4500-C1 G.
Chlorine reacts with DPD to produce a red colour measured with a UV/Visible spectrometer at 515 nm.
The LOD of the method was 10 $\mu\text{g/L}$.

375 3.5. Total Petroleum Hydrocarbons (TPH), Oil/Grease and Chlorophenols in Seawater

Total petroleum hydrocarbons (TPH), oil, grease and chlorophenols were analysed in the HCMR organic
chemistry laboratory certified according to EN ISO/IEC 17025:2017. For TPH, oil and grease
determination, 2.5 L of seawater was collected in glass bottles and, after the addition of deuterated *n*-C24
as an internal standard, was immediately extracted on board with *n*-hexane. For chlorophenols, 1 L of

380 seawater was collected in high-density polyethylene bottles, 2-chlorophenol-3,4,5,6-D4 was added as an internal standard, and then the samples were acidified to pH < 4 and extracted on board with dichloromethane. All extracts were stored in a refrigerator and transferred to the HCMR laboratory.

In the laboratory, TPH was determined by gas chromatography–mass spectrometry-FID (Agilent 7890A/5975C GC-MS) based on the ISO 9377-2:2000 method, and oil/grease was determined
385 gravimetrically as the hexane extractable material using EPA method 1664. The hexane was distilled to dryness, and after further drying in an oven at 60 °C, the remaining residue was weighed in a 4-digit analytical balance. The LOD was 0.1 mg/L.

The analysis of chlorophenols was based on EPA method 528. In the laboratory, the extracts were dried with sodium sulphate, and their volume was reduced to about 1 mL using a rotary evaporator and finally
390 to 100 µL using a stream of ultraclean nitrogen. Chlorophenols were determined by gas chromatography–mass spectrometry (Agilent 7890A GC - 5975C MS). The following substances were quantified using the internal standard method: 2-chlorophenol, 3-chlorophenol, 4-chlorophenol, 2,3-dichlorophenol, 2,4-dichlorophenol, 2,5-dichlorophenol, 2,6-dichlorophenol, 3,4-dichlorophenol, 3,5-dichlorophenol, 2,3,4-trichlorophenol, 2,3,5-trichlorophenol, 2,3,6-trichlorophenol, 2,4,5-trichlorophenol, 2,4,6-
395 trichlorophenol, 3,4,5-trichlorophenol, 2,3,4,5-tetrachlorophenol, 2,3,4,6-tetrachlorophenol, 2,3,5,6-tetrachlorophenol and pentachlorophenol. The LOD for each compound was 0.01 µg/L.

3.6. Metals in Seawater

For the analysis of dissolved Cd, Co, Cr, Cu, Ni, Pb and Zn, 250 mL of seawater was collected in pre-cleaned polyethylene bottles and stored at –20 °C until analysis in the laboratory. After thawing, the
400 samples were filtered through 0.45 µm filters (Whatman sterile mixed cellulose ester membranes) and acidified with Suprapur HCl to pH < 2. Samples for Cd, Co, Cu, Ni, Pb and Zn determination were pre-concentrated by the Toyopearl AF Chelate 650M resin to separate these elements from interfering matrix components (Milne et al., 2010; Willie et al., 1998). The trace metals eluted on the resin were collected with 1 M Suprapur HNO₃ and determined using inductively coupled plasma mass spectrometry (ICPMS,
405 Thermo-Elemental X-series II) in a regular laboratory environment. Accuracy and precision were

assessed using the Cass-5 certified reference material for coastal water and acidified seawater samples of the QUASIMEME inter-laboratory exercise (AQ-3, Lab code 122, www.quasimeme.org). The results obtained for Cass-5 were in good agreement with the certified values (Tables S1 and S2), and the samples of the QUASIMEME tests had acceptable Z-scores ($-2 < Z < 2$).

410 A co-precipitation method was used for total dissolved Cr (Harper and Riley, 1985). The samples were precipitated with Fe(II) ammonium sulphate. Total dissolved Cr determination was performed by graphite furnace atomic absorption spectrometry (AAS, Shimadzu GFA-7000A) in a regular laboratory environment. The LOD of the method was 0.083 µg/L.

For the total Hg, 250 mL of seawater was collected in pre-cleaned glass bottles. After adding 1.2 mL of
415 37% HCl, the samples were stored in refrigeration until the analysis in the laboratory. Total Hg was determined by EPA method No 1631, which consisted of oxidation of all species to Hg(II), purging and trapping onto a gold trap, desorption and cold-vapor atomic fluorescence spectrometry (CVAFS) by a Tekran 2500 mercury analyser. The LOD was 0.2 ng/L, and the limit of quantification (LOQ) was 0.5
420 ng/L. On each day of analysis, the reference material was analysed at least once daily for recovery estimation (accuracy) (Tables S1 and S2). The reference material was a diluted sample from digested sediment with a certified Hg content of 412 µg/kg, an aliquot of which was spiked in purged seawater to reach a concentration of 2.0 ng/L. Thus, both accuracy and matrix spike checks were performed.

The samples' pre-treatment, the trace metal pre-concentration steps, the trace metal analyses and Hg
425 determination were carried out in U.S. FED-STD Class M5.5 (10,000) cleanroom environments using ultraclean handling techniques (EPA method 1669).

3.7. Sediments

Surface sediment samples were collected for the determination, using EPA methods, of aliphatic and polycyclic aromatic hydrocarbons (AHC and PAH), volatile organic compounds (VOC) benzene, toluene, ethylbenzene and xylene (BTEX), polychlorinated biphenyls (PCB), phenols, organic carbon and metals.
430 Organic compounds and metals were analysed in the HCMR organic chemistry laboratories certified according to EN ISO/IEC 17025:2017. An internal quality check was performed by means of analyses of

QUASIMEME samples. In order to identify the geochemical background of each area, additional sampling and analysis of sediment cores is needed.

The analysis of AHC and PAH in sediments was based on the recommendations of OSPAR (2013) and
435 UNEP/IOC/IAEA (1992). The sediments were frozen at $-20\text{ }^{\circ}\text{C}$ (UNEP, 1992) until they arrived at the
laboratory. In the laboratory, the sediment samples were dried at $40\text{ }^{\circ}\text{C}$, sieved through a 250 μm sieve
and homogenised. After the addition of a mixture of deuterated compounds, used as internal standards,
0.5–3 g of dried sediment was extracted with a mixture of methanol and dichloromethane (1:2, v/v) using
an accelerated solvent extractor (Dionex ASE 350). The extract was saponified with methanolic KOH.
440 and the unsaponified components were extracted with *n*-hexane and cleaned up and fractionated by
passing through a silica column. The final determination of total AHC and PAH was carried out by gas
chromatography–mass spectrometry (Agilent 7890A/5975C GC-MS). The quantitation was based on the
deuterated internal standards. Blanks were systematically checked to verify the absence of contamination
during analyses. Accuracy ranged from 79.8% to 96.5% for individual PAH compounds and was
445 systematically controlled using a reference material (NIST SRM 1941b), and the laboratory also
participates in QUASIMEME inter-laboratory exercises. Analytical uncertainties for each PAH ranged
from 12.1% to 37%, $k = 2$. The LOD for total AHC and PAH was $0.5\text{ }\mu\text{g/g}$ and 0.1 ng/g , respectively.
Individual PAHs determined were naphthalene, acenaphthylene, acenaphthene, fluorene,
dibenzothiophene, phenanthrene, anthracene, fluoranthene, pyrene, benzo(*a*)anthracene, chrysene,
450 benzo(*b*)fluoranthene, benzo(*k*)fluoranthene, benzo(*e*)pyrene, benzo(*a*)pyrene, perylene, indeno(1,2,3-*cd*)
pyrene, benzo(*ghi*)perylene, dibenzo(*ah*)anthracene and the methylated derivatives of naphthalene,
dibenzothiophene, phenanthrene, pyrene and chrysene.

For the analysis of PCB in sediments, 3 g of dried sediment were extracted, following the addition of a
mixture of CB112, CB155 and CB209 (used as internal standards), with a mixture of hexane and
455 dichloromethane (1:1, v/v) using an accelerated solvent extractor (Dionex ASE 350). The extract was
cleaned on an alumina glass column. The final determination of PCB was carried out by capillary gas
chromatography using a non-polar column and an electron capture detector (Agilent 7890A GC). The
quantitation was based on the abovementioned internal standards. Accuracy ranged from 69.3% to 83.5%

for each congener and was controlled using a reference material (NIST SRM 1941b). Analytical
460 uncertainties for each congener ranged from 27.1% to 39%, $k = 2$. The following individual congeners
were determined: CB28, CB52, CB101, CB118, CB105, CB138, CB153, CB128, CB156, CB170,
CB180, CB183 and CB194. The LOD for each congener was 0.01 ng/g.

The analysis of BTEX was performed using the equilibrium-based static headspace technique and gas
chromatography–mass spectrometry according to EPA methods 5021A and 8260. Briefly, ~3 g of wet
465 sediment was collected in 20 mL headspace vials and kept at $-20\text{ }^{\circ}\text{C}$ until arrival at the HCMR laboratory.
In the laboratory, VOC was determined using a headspace autosampler (HTA, HT2800T) and a gas
chromatography–mass spectrometry system (Shimadzu GCMS-QP2020 NX). The following substances
were quantified using an external standard mixture: benzene, toluene, ethylbenzene, *o*-, *m*- and *p*-xylenes.
The LOD was 0.05 $\mu\text{g}/\text{kg}$.

470 The analysis of phenols in sediments was based on the EPA (spectrophotometric) method 420.1. The
sediments were frozen at $-20\text{ }^{\circ}\text{C}$ until their arrival in HCMR labs. In the lab, 15 g of sediment were put in
500 mL of distilled water and pH was adjusted <4 using phosphoric acid. The sample was distilled and
total phenols were determined in the distillate by the 4-aminoantipyrine colorimetric method. The dye
was extracted with chloroform and absorbance was measured at 460 nm using a UV-2600 Shimadzu
475 UV/Visible Spectrometer and 100mm cell. The detection limit was 0.1 $\mu\text{g}/\text{g}$

Major elements and trace metals in marine sediments were measured by an accredited method (EN
ISO/IEC 17025:2017) using a wavelength-dispersive X-ray fluorescence (WDXRF) system. The LOD
for this XRF method was calculated from a series of measurements of 5 samples for major elements and
10 samples for trace elements using the certified reference sample PACS-2. The LOD measurements
480 were carried out in the same experimental conditions in which the sediment samples were analysed (Table
S3).

The calibration of the XRF method was carried out by scanning reference samples that contained a wide
spectrum of element concentrations. For this calibration analysis, several rock and sediment samples were
gathered, mainly from the U.S. Geological Survey and the National Research Council of Canada
485 Reference Materials. Fused beads and powder pellets were prepared carefully, and all samples were

scanned for major and trace elements. All measurement parameters were configured through the software, building two distinct "applications" and selecting the optimum settings for each element separately. Subsequently, element concentrations were plotted against the measured intensities, and a linear fit was generated by regression. Theoretical alpha corrections and possible line overlaps were carefully resolved until the lowest mean error of the fit was obtained. Accredited trace elements are As, Co, Cr, Cu, Mn, Mo, Ni, Pb, Sb, Sn, Sr, V, Zn, Ag, Ba, Bi, Br, Cd, Ce, Cs, Ga, Ge, Hf, Hr, I, La, Nb, Nd, Rb, Sb, Sc, Se, Sm, Sn, Sr, Ta, Te, Th, Tl, U, W, Y, Yb and Zr. Accredited major elements are Fe₂O₃, CaO, TiO₂, Al₂O₃, K₂O, MgO, Na₂O, P₂O₅, SO₃ and Si₂O.

4. Results and Discussion

Here, we present the essential physical and biochemical parameters related to the hydrography and the quality of seawater and sediments of the Arabian Gulf and Red Sea study areas (SEANOE. <https://doi.org/10.17882/96463>). A principal goal is to trace contaminants from pollution sources along the coastal zone of Saudi Arabia. In addition, the data establish the baseline for the future design of monitoring strategies of the Saudi Arabian coastal marine environment.

4.1. *Red Sea*

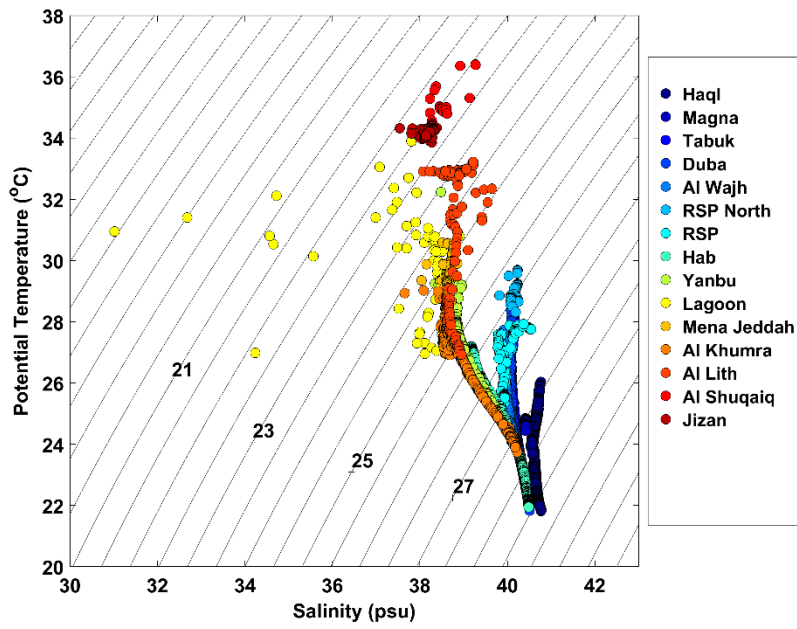
4.1.1. *Physical Parameters*

The water properties measured during the Red Sea cruise would be expected to conform with the general picture of the regional physical oceanography prevailing during the sampling period.

The temperature–salinity (T–S) diagram presenting all the CTD casts of the Red Sea surveys displays the general physical characteristics of the water masses (Fig. 2). Expectedly, general gradients in both temperature and salinity are evident, with temperature increasing and salinity decreasing from north to south, a trend consistent with the previous studies of Neumann and McGill (1962), Maillard and Soliman (1986), Sofianos and Johns (2007) and Ali et al. (2018). In particular, the densest water, with the highest salinity and lowest temperatures, is found within the Gulf of Aqaba (Fig 3). In general, the potential temperature (hereafter, temperature) values ranged between 21 and 36 °C which are typical for mid-summer period (Sofianos and Johns, 2008). The north-south gradient of surface salinity, typical for the

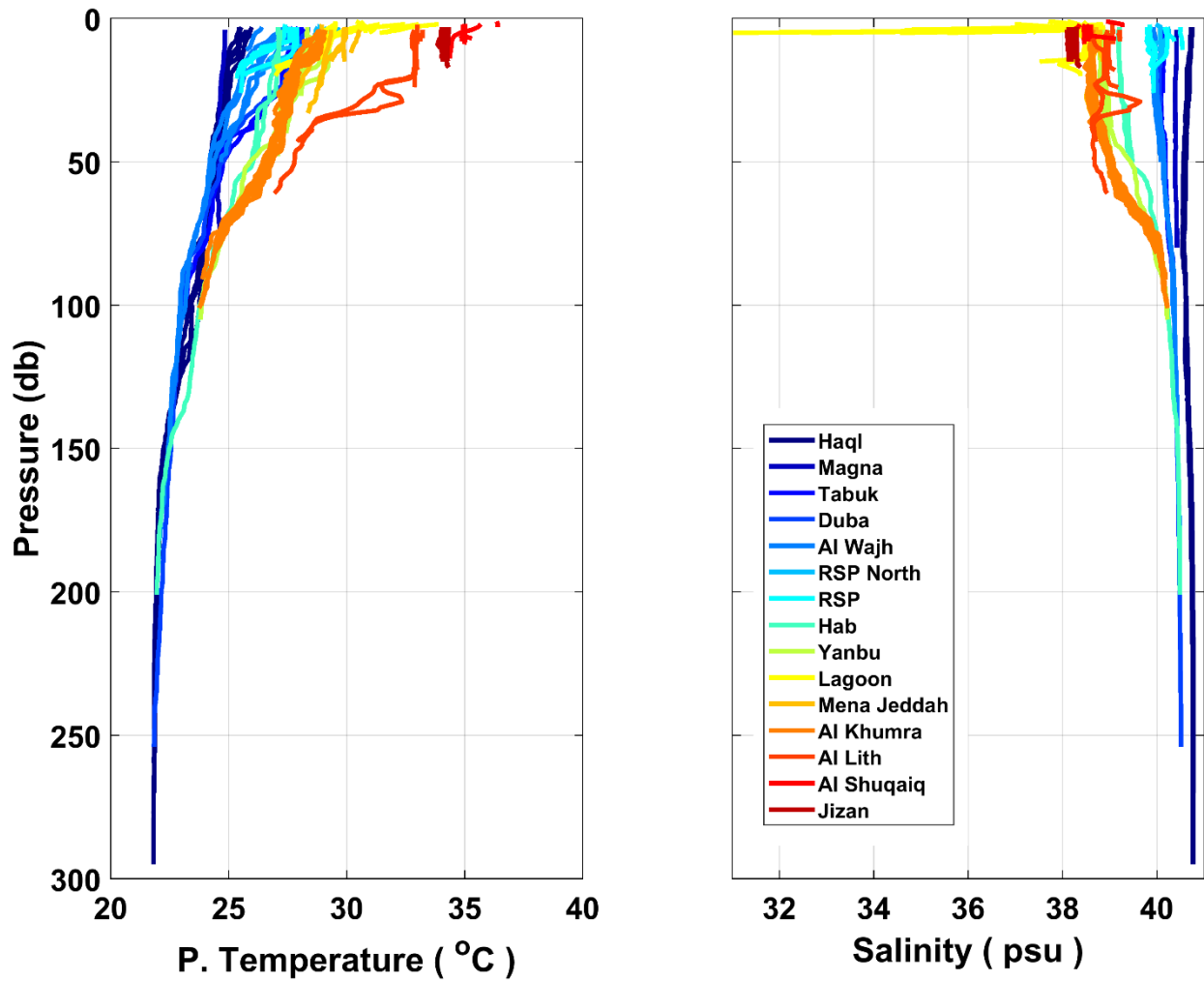
Red Sea due to the general northward propagation of relatively fresher water from the Gulf of Aden (Sofianos and Johns, 2007; Churchill et al., 2014), is evident, with high surface values (40.7) within the Gulf of Aqaba, decreasing to 38 towards the southern region near Jizan area. The CTD profiles acquired
515 at shallow stations (<100 m) show almost constant temperature and salinity with depth; whereas, at the deeper areas, the temperature tends to decrease while salinity increases with depth. Additionally, due to the shallow bathymetry of the coastal areas, they are more susceptible to local atmospheric forcing, with increased temperature compared to the offshore during the cruise period.

The T-S properties at the hotspot sites reveal potential signs of pressures on the coastal ecosystem. Low
520 salinity, detected within the Jeddah lagoon system, indicates the input of fresher water, possibly consisting of sewage effluent as observed by Garcia et al. (2014). A slight increase in temperature and salinity within the Islamic Port of Jeddah compared to the stations located outside the port, could be attributed to water stagnation in the port. Differences in temperature and salinity values at Al Shuqaiq and Al Lith, can be attributed to water discharges linked to desalination plant and aquaculture activities, respectively. In
525 general, the brine discharge at discharging plume in the Red Sea is getting diluted within 10 - 20 m (Raventós et al. 2006; Fallatah et al.2018). However, the accurate detection of the plume dispersion area would require a dedicated, denser grid of stations, which was beyond the implementation of this survey. In addition, an approximate estimation of the plume dispersion would require precise knowledge of the brine water supply from the desalination plants.

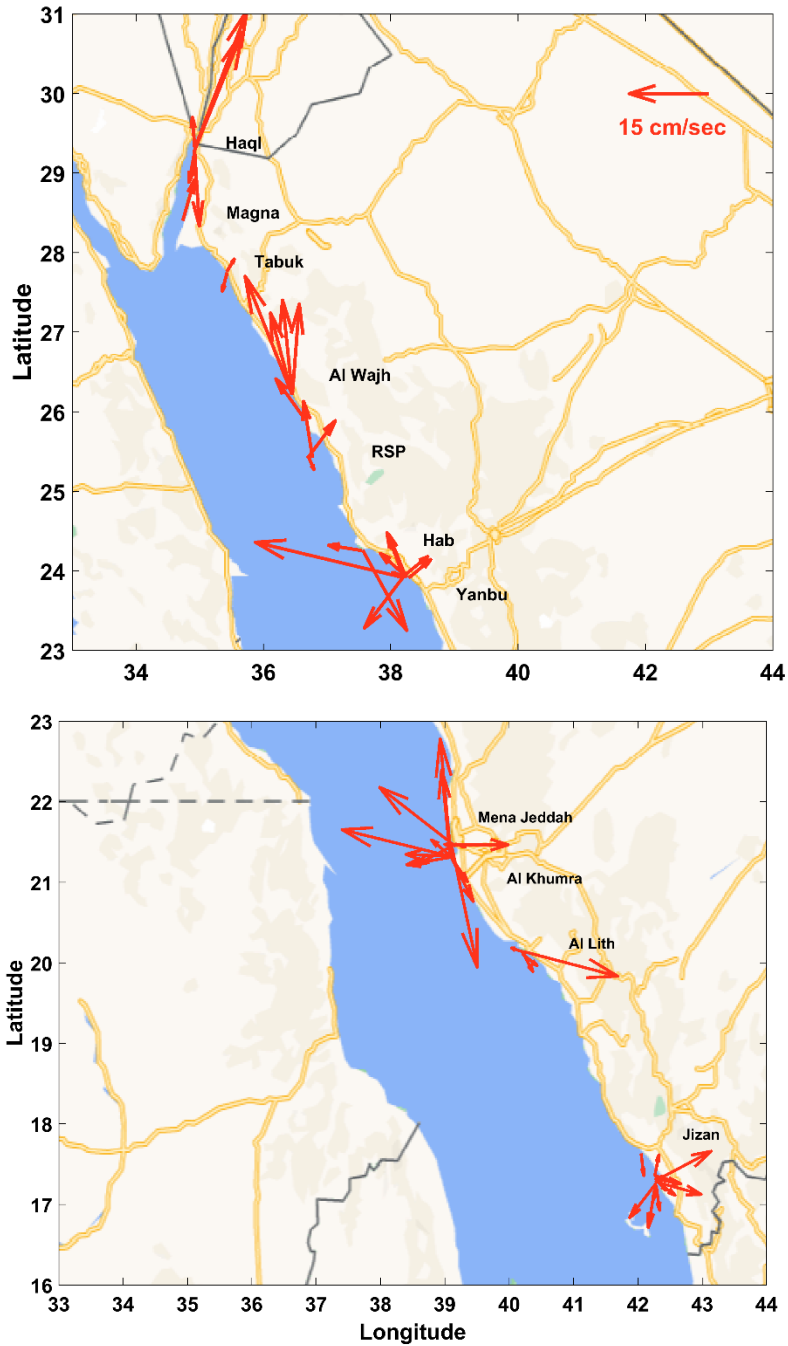


530

Figure 2: T–S diagram encompassing all data taken (averaged every 1 m) in the Red Sea. Dots of the same colour indicate measurements taken at the same site as shown on the map on the right (© Google Maps, 2021).



535 **Figure 3:** Vertical profiles of Potential Temperature and Salinity in the study areas of the Red Sea



540

Figure 4: Current vectors at 12 m at specific areas along the Saudi Arabian coast of Aqaba and Red Sea. Scale vector of a westward current with a speed of 15 cm/s appears in the upper right of the top panel (© Google Maps, 2021).

545 Regarding the current measurements, the surface currents range from weak, on the order of $\sim 2\text{--}3$ cm/s, to substantial, reaching values of $17\text{--}25$ cm/s. Dominant northward flow only appears at stations located in the north Red Sea, whereas, multi-directional flow seems to be the rule at most stations (Fig. 4). Pavlidou et al. (2021) have found that sub-surface currents in the depth range of $18\text{--}60$ m are mostly in the same direction as the near-surface ones and parallel to the nearby coast. Moreover, it should be
550 mentioned that, in practical terms, our velocity data were collected in June 2021 during lunar days, which were away from the spring tides near the new moon and the full moon days, which were on the 10th and the 24th of June, respectively, and the tidal influence is expected to be very low.

4.1.2. Biogeochemical Parameters

555 The results obtained during the cruise in June 2021 in the Red Sea coastal area, showed that the Gulf of Aqaba appears to be better oxygenated through the whole water column, from the surface to the bottom layer, while a decrease in oxygen near the bottom ($115\ \mu\text{mol/L}$), which is possibly connected to the organic material accumulated near the bottom, is recorded at the majority of the sampling stations. As recently reported by Povinec et al. (2023), in the Gulf of Aqaba, the first 300 m of the water column
560 indicate stable DO values of about $210\ \mu\text{mol/L}$, whereas DO of about $3.5\ \mu\text{mol/kg}$ was measured below the depth of 500 m. Conversely, in the open Red Sea, DO minimum values from 0.6 to $1.25\ \mu\text{mol/kg}$ were observed at depths from 300 to 450 m, showing a decreasing trend below $150\text{--}200$ m.

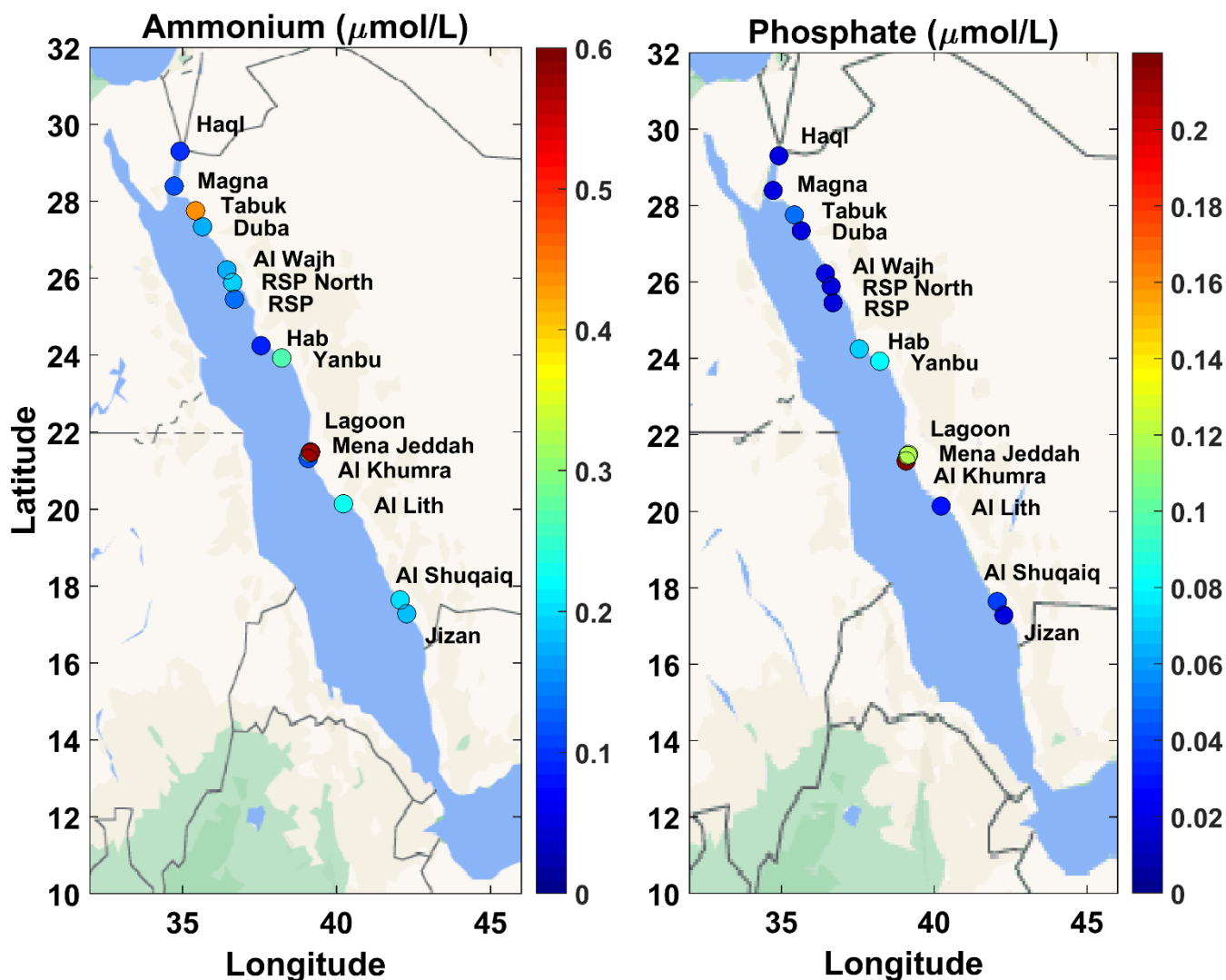
The assessment presented herein aims to identify the areas facing eutrophication and/or pollution problems. In general, in the Red Sea, north–south increasing gradients were evident for some of the
565 parameters studied, revealing a link between the hydrographic conditions and biogeochemical properties. Nutrients and organic carbon revealed high values at Jeddah Lagoon (Figs. 5 -7), which is a unique system with low water renewal and pollution mainly from domestic sewage ((Peña-García et al., 2014). The nitrite values at Jeddah Lagoon were high ($3.06\text{--}3.90\ \mu\text{mol/L}$) and the highest ammonium values (2.90

570 $\mu\text{mol/L}$) were found at the station (L03), whereas total dissolved nitrogen was extremely high at the same station, reaching $167 \mu\text{mol/L}$. At all other sites of the Red Sea, nitrate + nitrite was low in the euphotic zone, and increased with depth. Nitrate + nitrite values in the euphotic layer (approximately 0-100 m) ranged between below the LOQ and $2.30 \mu\text{mol/L}$, with the exception of two relatively high values detected at Al Khumra, close to the sewage outfall ($3.43 \mu\text{mol/L}$), and station AL1 of the Al Lith grid ($5.78 \mu\text{mol/L}$). These values exceed the commonly observed values in coastal areas and could indicate
575 organic load from anthropogenic activity. Figs. 8 and 9 illustrate the distribution of Chl-a and selected pollutants (metals and organic) along the north–south section. Higher Chl-a values recorded in the southern Red Sea correlate with relatively higher nutrient concentrations, which are influenced by the Gulf of Aden Intermediate Water (GAIW); the inflow of nutrient-rich water entering the Red Sea from the Gulf of Aden through the Strait of the Bab-el-Mandeb (Churchill et al., 2014). In this survey, the Chl-
580 a concentrations did not exceed $1 \mu\text{g/L}$ at any site except from Jeddah Lagoon, where extremely high Chl-a values reaching $40 \mu\text{g/L}$ were sometimes measured within the Jeddah Lagoon System. The Kingdom of Saudi Arabia has set maximum allowable values only for ammonium ($5.5 \mu\text{mol/L}$), whereas it has not set maximum allowable values for Chl-a. The Abu Dhabi Quality and Conformity Council (2018) set 1 mg/L as the maximum allowable concentration of Chl-a for ambient marine waters, whereas in the Eastern
585 Mediterranean Sea the target values for the Good Environmental status is $0.53 \mu\text{g/L}$ (EC Decision 2018/229/EU). Regarding Chl-a distribution, it seems that the ecological status of the water at the southernmost site of the Red Sea, Jizan Economic City, is classified as poor, which corroborates the algal blooms observed in this area during summer and early Autumn 2021 (personal communications with the Emirate of Jazan Province). This area may be affected by water intrusion from the south and atmospheric
590 deposition. The deposition of material transferred by dust storm events may also influence the ecological quality of the water in the area, since during the summer period, the Tokar Gap frequently channels strong winds onto the sea surface, causing African dust storms spreading over the southern part of the Red Sea (Jiang et al., 2009; Garrison et al., 2010).

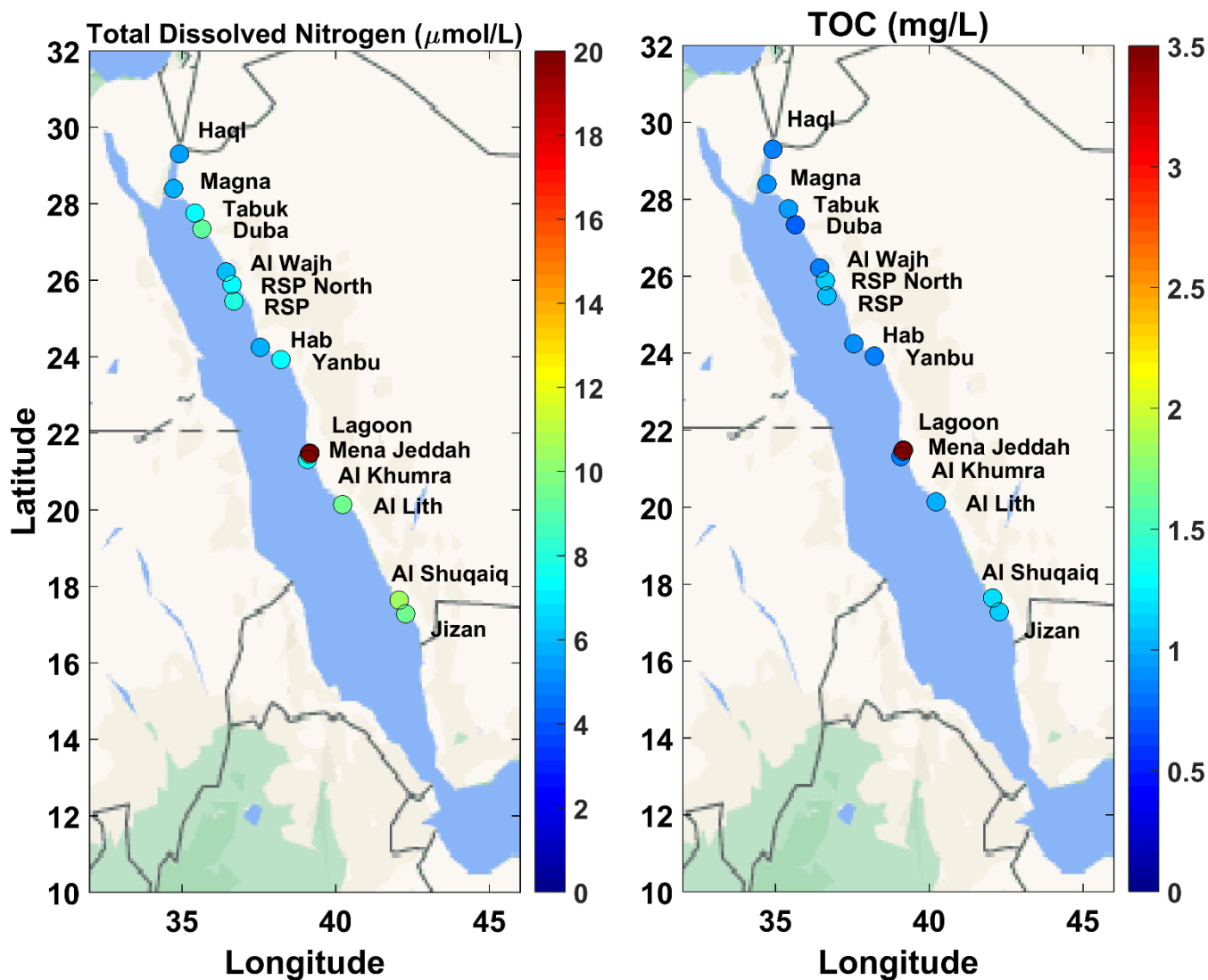
Sediments at all of the Red Sea study sites are found to be enriched in some metals (e.g., As). This finding
595 should be further investigated via sampling and analysis of sediment cores in order to define the geochemical background of the region. Moreover, AHC, PAH and PCB, which constitute important

classes of organic contaminants that may cause degradation and pose a risk of serious damage in the marine environment, are determined in surface sediments collected from the coastal zone of the Red Sea (Fig. 10). The examination of various indices reveals a chronic petroleum-associated anthropogenic pressure in Jeddah Lagoon System, Jeddah Sea Port (Mena Jeddah) and Al Khumrah, whereas some petroleum residues were also found at King Fahd Yanbu Port, Mena Jeddah, shrimp and fish farms near Al Lith and to a lesser extent at Magna.

Organic pollution in the Jeddah Lagoon System and at King Fahd Port of Yanbu is also confirmed by BOD values (4.5 mg/L inside the port to 7.7 mg/L in the lagoon), and fluoride values at the northern part of the Gulf of Aqaba confirmed the effect of the phosphate terminal in the Port of Aqaba in Jordan due to cross-border pollution. However, it seems that industrial activities probably enrich the coastal zone of the Red Sea with organic pollutants.



610 **Figure 5:** Average ammonium (left panel) and phosphate (right panel) concentrations in the sampled marine areas along the coastline of the Red Sea (© Google Maps, 2021). The mapping presents the average concentrations for each area (average from all stations sampled in the area, average of mean integrated concentrations of the stations included in each area). Ammonium values at Jeddah Lagoon are out of scale.



615 **Figure 6:** Average Total Dissolved Nitrogen (left panel) and organic carbon (right panel) concentrations in the sampled marine areas along the coastline of the Red Sea (© Google Maps, 2021). The mapping presents the average concentrations for each area (average from all stations sampled in the area, average of mean integrated concentrations of the stations included in each area). Jeddah Lagoon values are out of scale, since they ranged from 11.8 to 167 $\mu\text{mol/L}$ for total dissolved nitrogen and from 1 to 5.7 mg/L for total organic carbon.

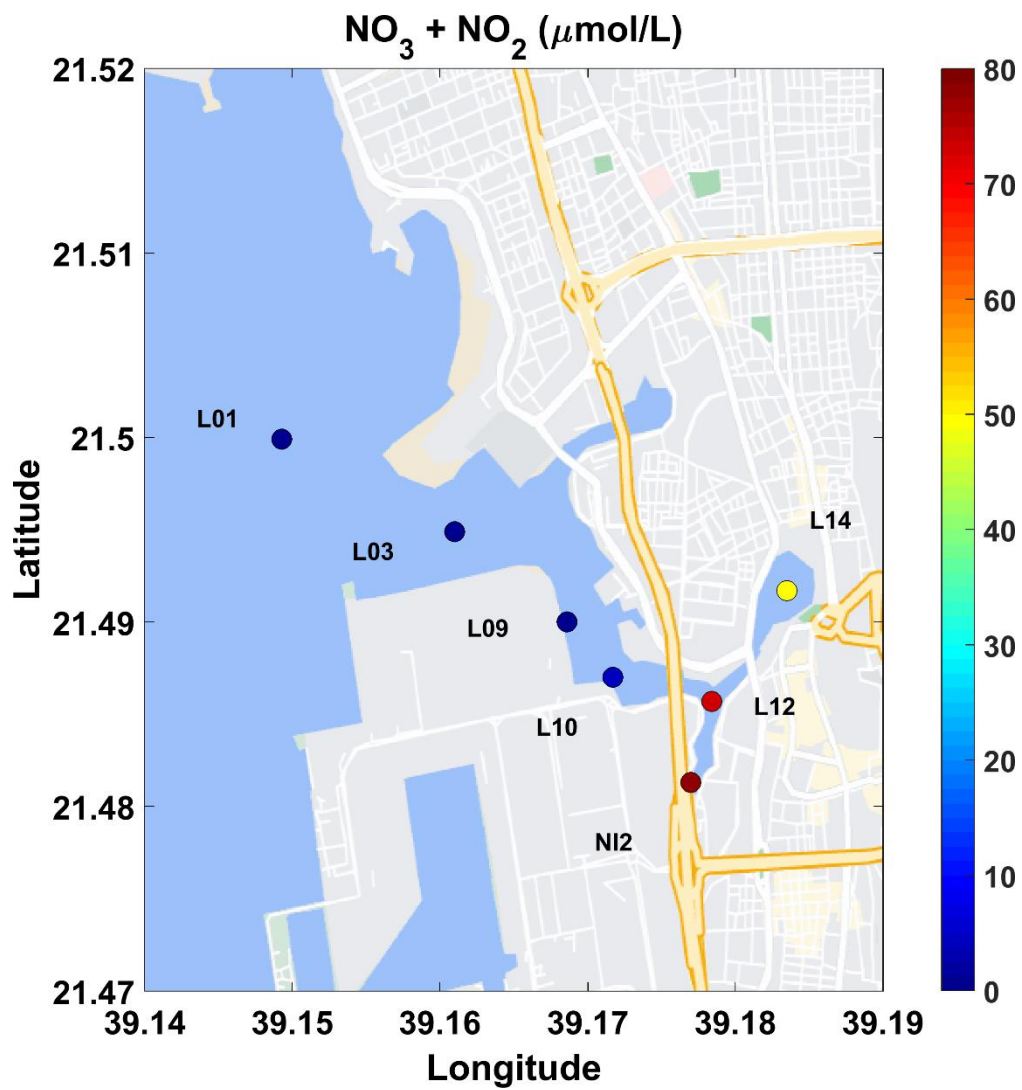
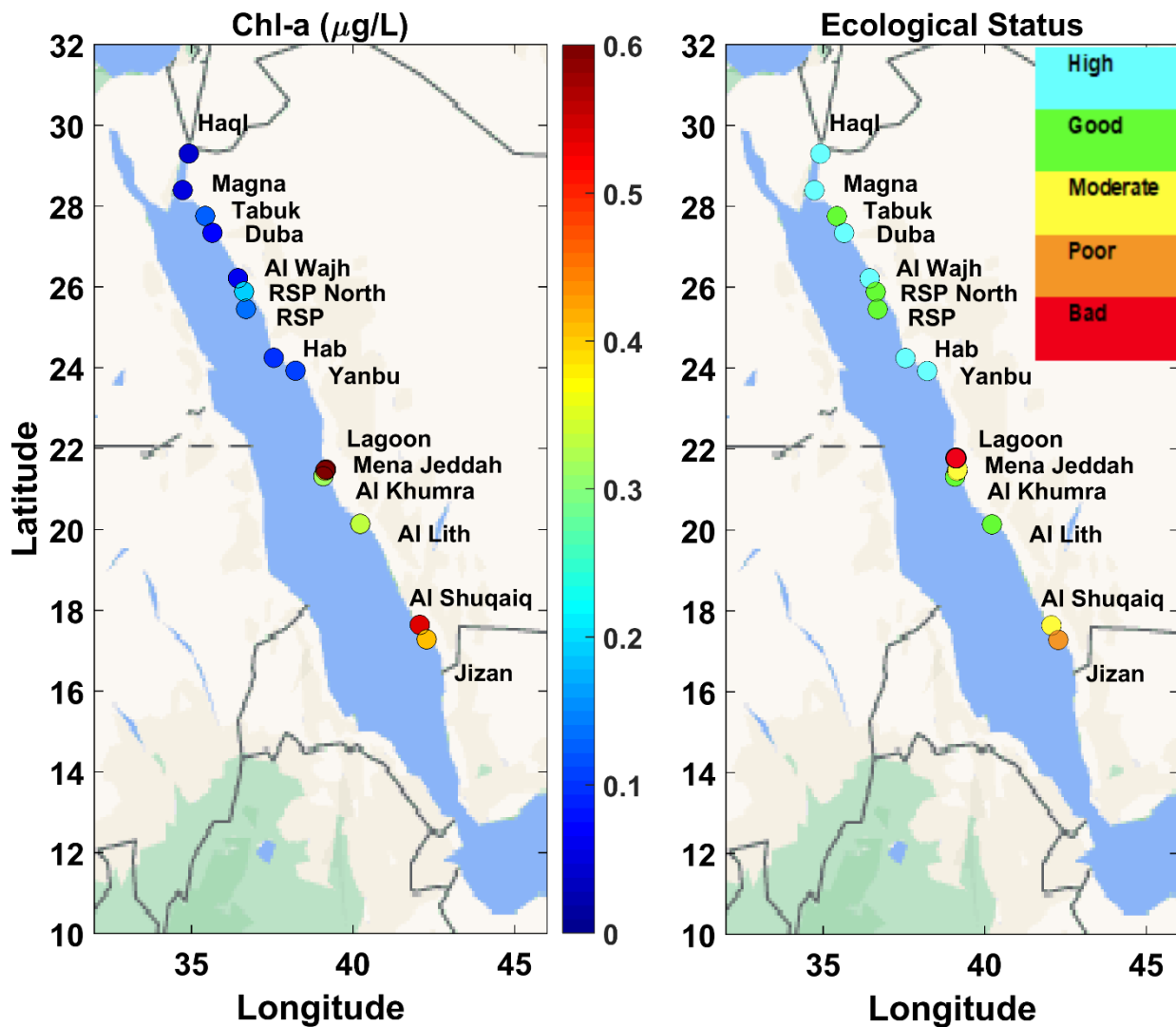
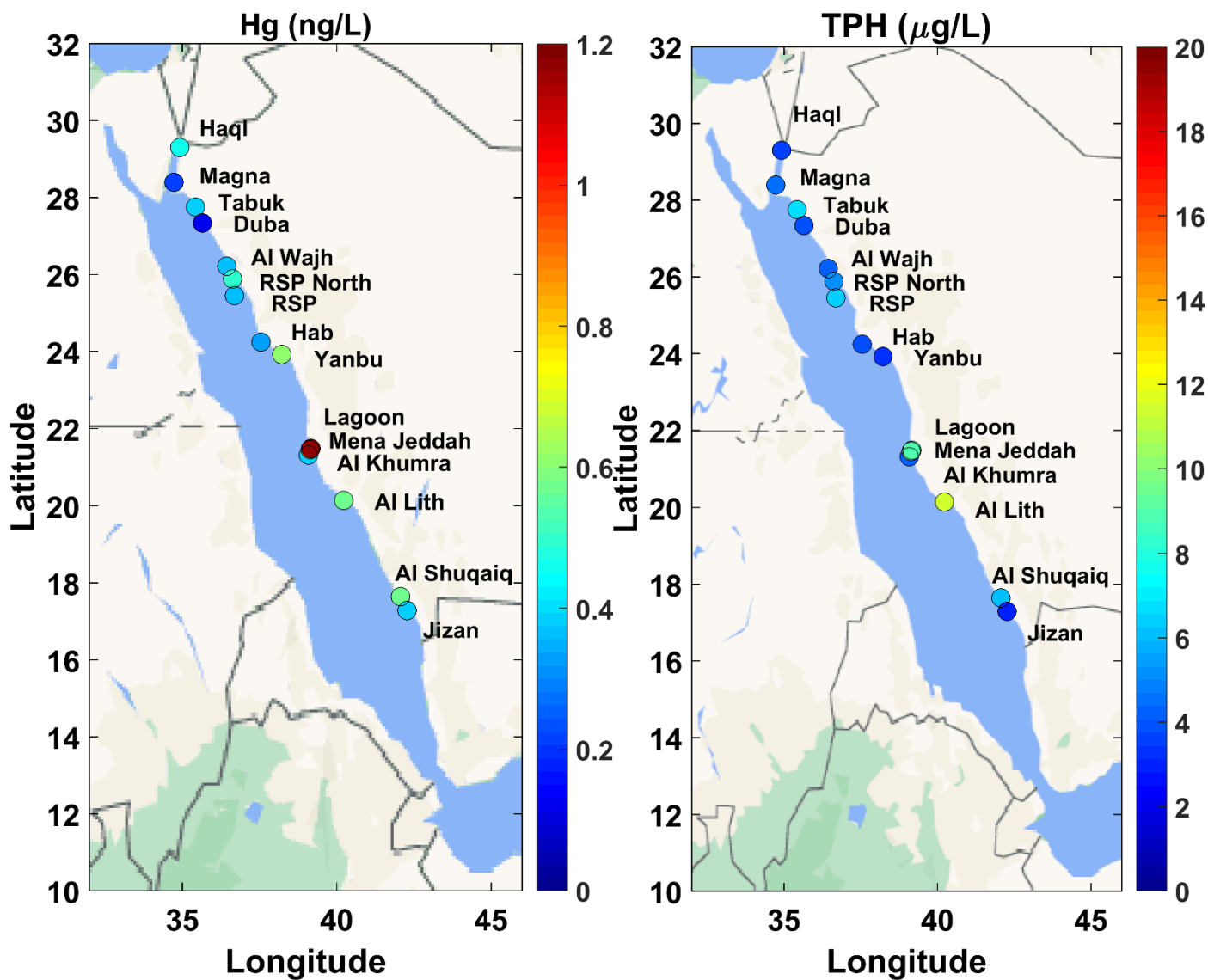


Figure 7: Nitrate + Nitrite concentrations in Jeddah Lagoon (© Google Maps, 2021) .



625 **Figure 8:** Average Chl-a concentrations in the sampled marine areas along the coastline of the Red Sea (left panel) and the indicative assessment of ecological status based on Chl-a concentrations according to the five-scale classification scheme for the Eastern Mediterranean (right panel). The mapping presents the average concentrations for each area (average from all stations sampled in the area, average of mean integrated concentrations of the stations included in each area) Chl-a values at Jeddah Lagoon (left panel) ranged from 0.61 to 44 µg/L (© Google Maps, 2021).



630 **Figure 9:** Average total mercury (Hg; ng/L) (left panel) and petroleum hydrocarbon (TPH) concentrations (µg/L) (right panel) at the stations sampled in the Red Sea (© Google Maps, 2021). The mapping presents the average concentrations for each area (average from all stations sampled in the area, average of mean integrated concentrations of the stations included in each area).

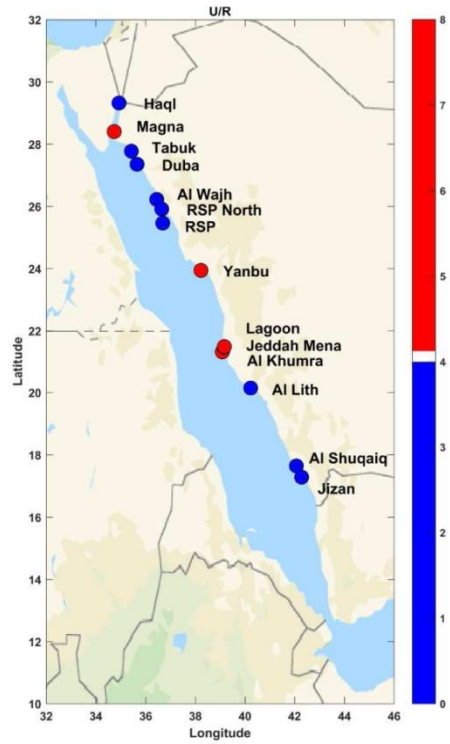
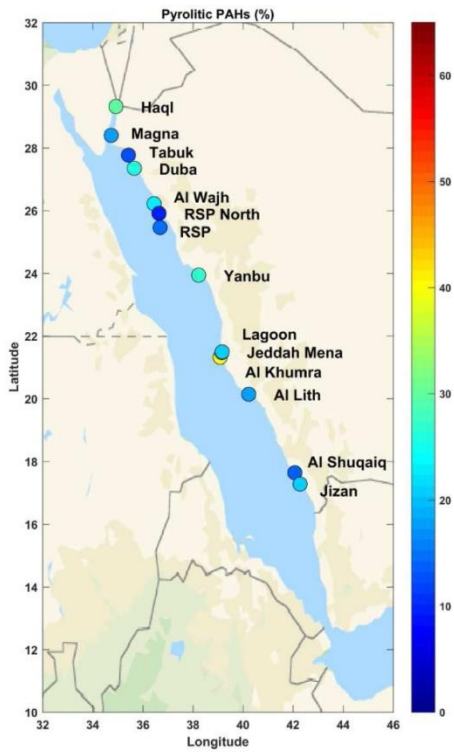
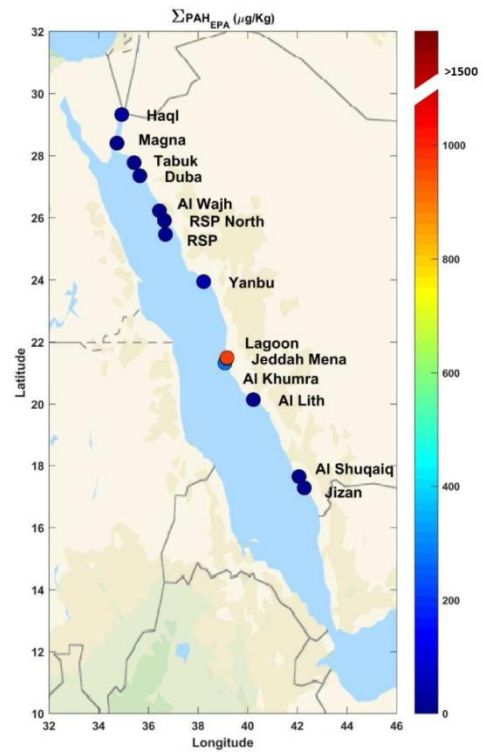
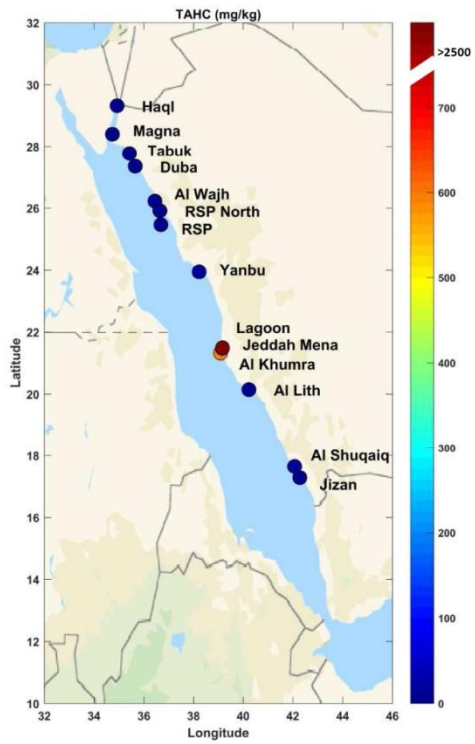


Figure 10: Total aliphatic hydrocarbon concentrations (TAHC; mg/kg), total EPA PAH concentrations ($\Sigma\text{PAH}_{\text{EPA}}$), U/R diagnostic ratio and percentage contribution of pyrolytic PAH in sediments for each site in the Red Sea (© Google Maps, 2021). The mapping presents the average concentrations for each area (average from all stations sampled in the area, average of mean integrated concentrations of the stations included in each area). For the U/R diagnostic ratio, the colour scale indicates average values >4 (red colour) or <4 (blue colour) for all study sites.

4.2. *Arabian Gulf*

4.2.1. *Physical Parameters*

Salinity is the main indicator for local differentiations in the Arabian Gulf. A broad range of salinity values is observed, with higher salinity close to the coastline at Ras Al Khair and, especially, at Al Khobar, reflecting the effects of the local desalination plants and their brine discharges. The CTD casts conducted during the survey are plotted in a T–S diagram (Fig. 11) with the different sampling sites distinguished by different colours. In general, temperature values ranged from 31.0 to 33.5 °C. The salinity measurements span a wide range of hypersaline values, from 40 to 52. The lowest salinity was measured at DM4, a station that can be considered as a reference for the Dammam and Al Khobar sea areas and as the most representative one for the regional open sea salinity values, which according to earlier studies are around 40 over the western part of the Gulf (John et al., 1990; Chao et al., 1992). Along with the hydrological characteristics of the gulf and the regional morphology, the presence of this desalination plant seems to be the major factor that leads to extremely high salinity values at the study site of Al Khobar (Fig 12). In Arabian Gulf, salinity increases >2 are rarely seen beyond a 400 m radius of the desalination plants's outfalls (Roberts et al., 2010) although in some cases they can extend to several kilometers, as in the case of Az Zour Power and Desalination Plant in South Kuwait (Uddin et al., 2011).

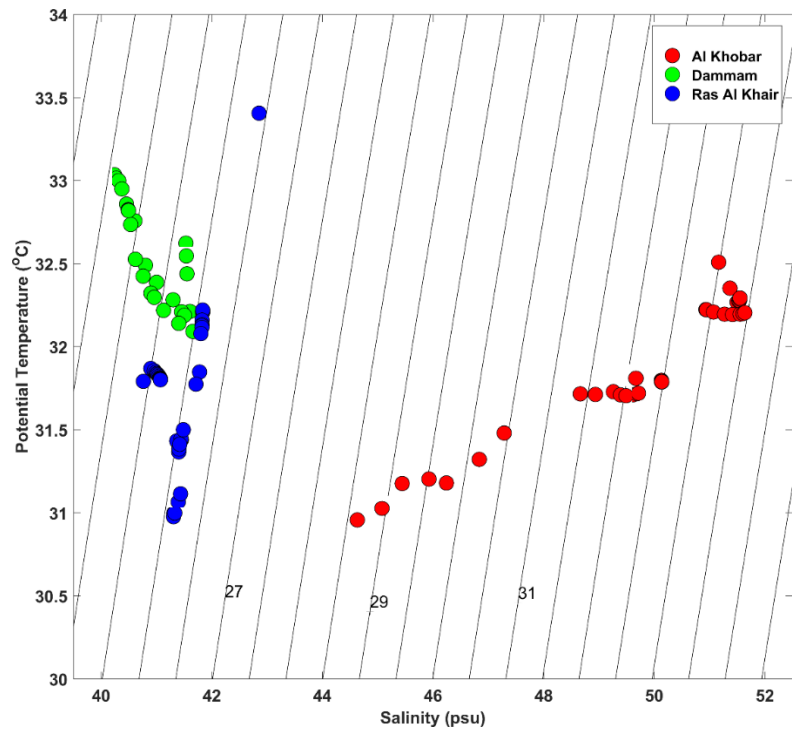
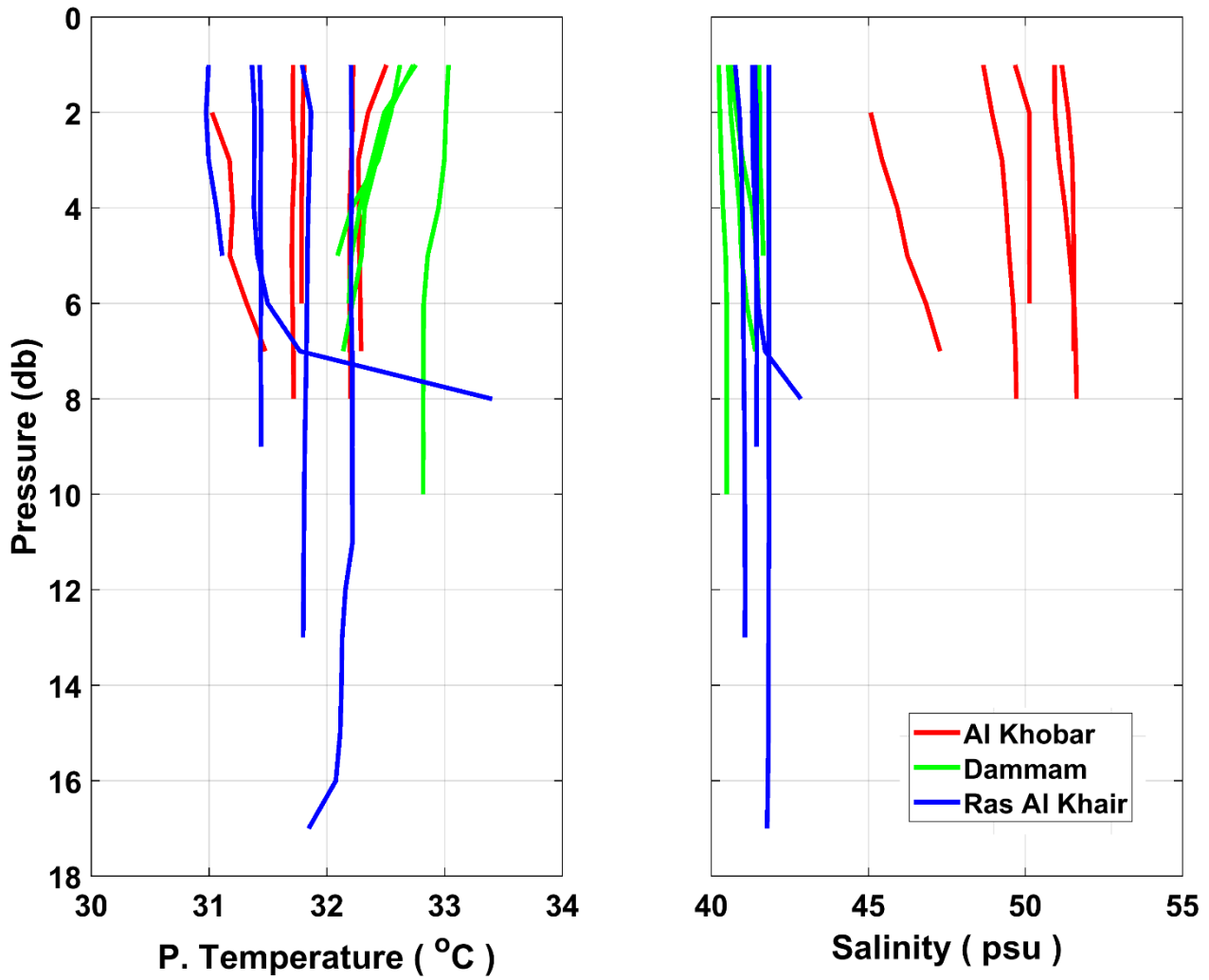


Figure 11: T–S diagram for all measured stations in the Arabian Gulf. The three colours of dots represent the three hotspot sites. Measurements are averaged every 1 m in the water column up to 0.5 m from the sea bottom.



665

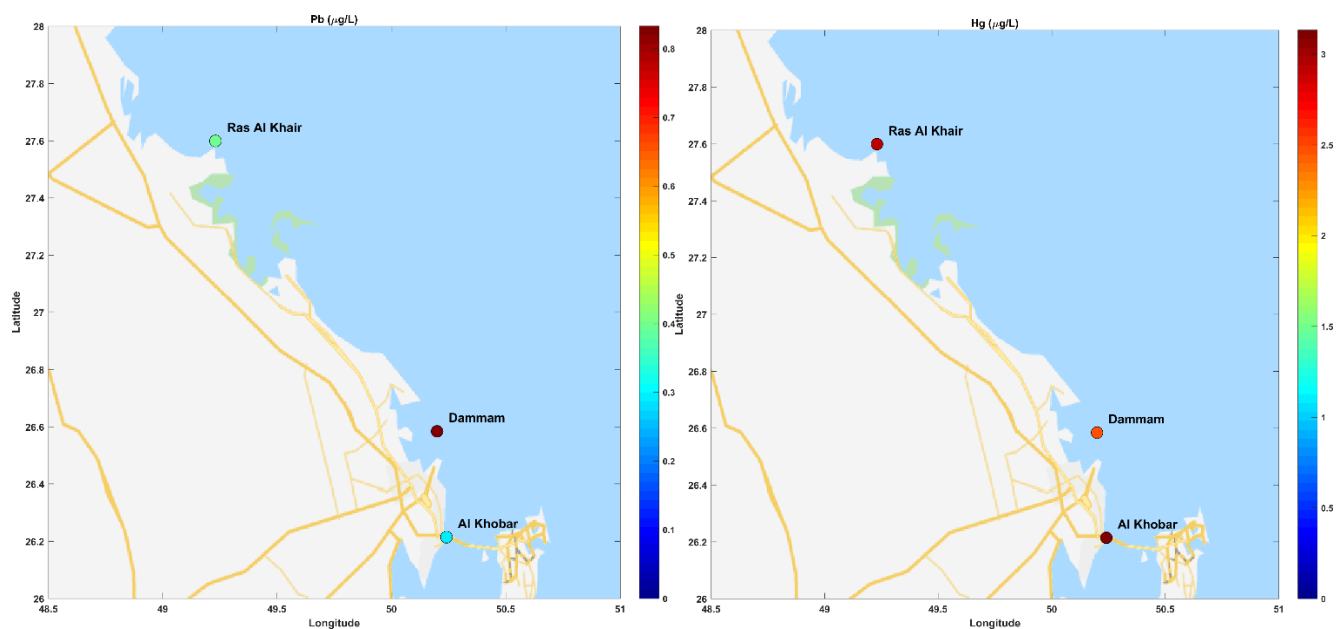
Figure 12: Vertical profiles of Potential Temperature and Salinity in the study areas of the Arabian Gulf

4.2.2. *Biogeochemical Parameters*

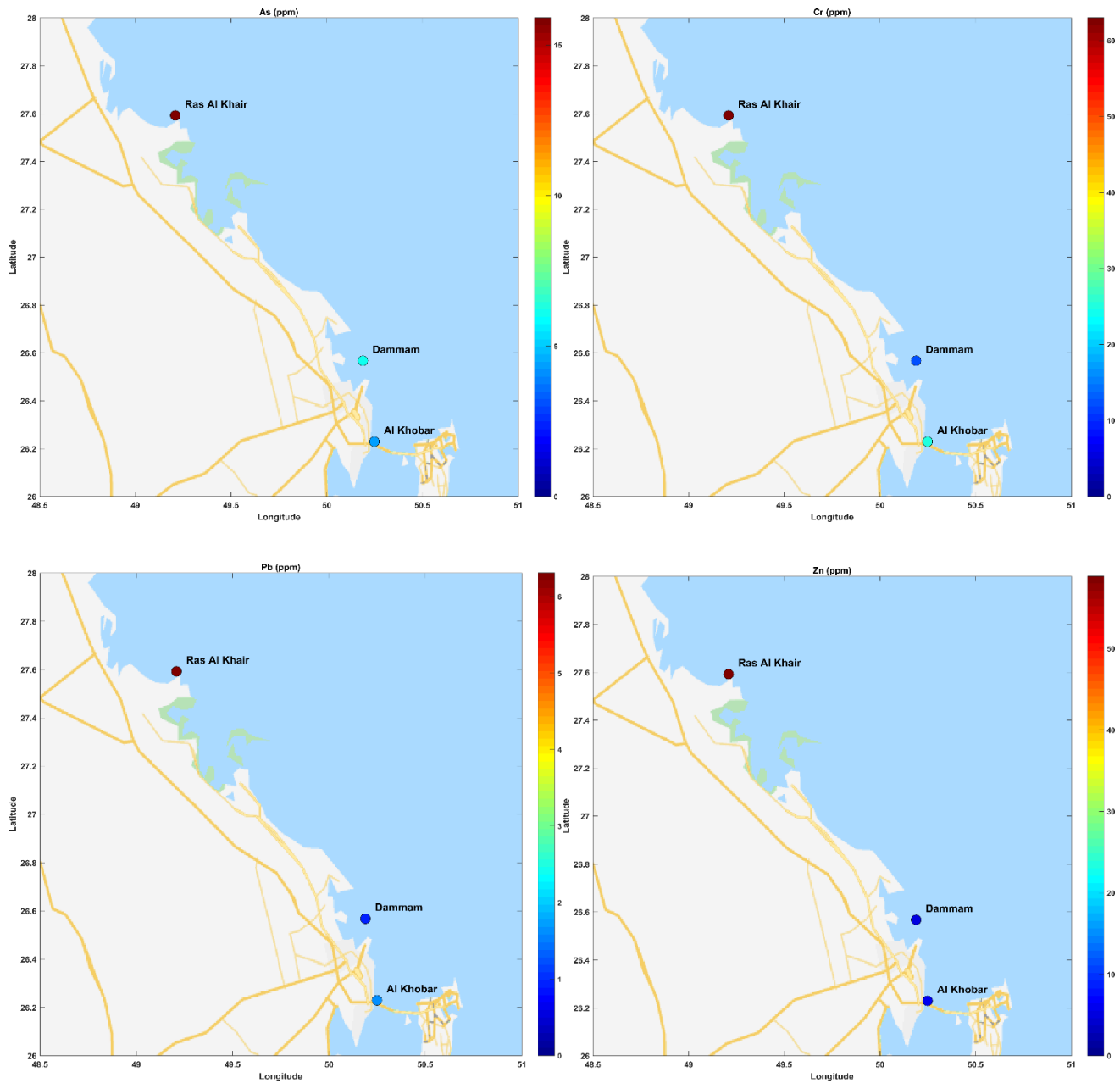
In terms of the eutrophication and pollution status of the three areas in the Arabian Gulf, the Dammam is
 670 supposed to be affected by wastewater discharges (Mahboob et al., 2023). The concentrations of inorganic
 nutrients and organic phosphorus are low at all three sites, indicating that eutrophication is not affecting
 these specific sites during the sampling period. However, dissolved organic nitrogen and carbon values
 are relatively high, reaching a maximum value of 18.8 $\mu\text{mol/L}$ for nitrogen and 477 $\mu\text{mol/L}$ for organic

carbon. Relatively higher Hg and Pb concentrations ($0.55 - 5.90 \mu\text{g L}^{-1}$ for Hg and $0.18 - 1.25 \mu\text{g L}^{-1}$ for Pb) were found in the water column (Fig. 11), which is probably linked to the industrial activities in these areas and/or atmospheric deposition (for Pb). However, it should be noted that this analysis only provides a snapshot of the status in the water column at one point in time and that eutrophication-related parameters exhibit strong seasonal variation.

The measurements showed that similar concentration ranges of metals were detected in the Arabian Gulf and Red Sea coastal waters in June 2021. It is noteworthy that TPH was low in the Arabian Gulf. However, sediments at Ras Al Khair were found to be polluted with metals and, in some cases, exceeded the allowable values set in the Abu Dhabi Specifications: 7.0 mg/L for As, 52 mg/L for Cr, 30 mg/L for Pb, 125 mg/L for Zn (Abu Dhabi Quality and Conformity Council, 2017) (Fig. 12). By contrast, TPH was surprisingly low in the Arabian Gulf. However, sediments at Ras Al Khair, and especially at Al Khobar, were found to be polluted with metals. Regarding the degree of contamination, it seems that sediments in the Arabian Gulf are severe-to-heavily (Al Khobar) metal-polluted. Thus, an additional, more detailed study of the Arabian Gulf, with finer coverage of the coastal zone from Khafji to Al Khobar, is highly recommended.



690 **Figure 11:** Average lead (Pb; mg/L) (left panel) and total mercury (Hg; ng/L) (right panel) in the Arabian Gulf (© Google Maps, 2021). The mapping presents the average concentrations for each area (average from all stations sampled in the area, average of mean integrated concentrations of the stations included in each area).



695 **Figure 12:** Average metals in sediments in the Arabian Gulf (© Google Maps, 2021). The mapping presents the average concentrations for each area (average from all stations sampled in the area).

5. Data Availability

Data described in this manuscript can be assessed at SEANOE. <https://doi.org/10.17882/96463> (Abualnaja et al., 2023).

700 6. Conclusions

This this is the first broad coverage study in a one-off sampling campaign in Saudi Arabian coastal zone. To the best of our knowledge, these cruises constitute the first multidisciplinary and geographically comprehensive survey of contaminants within the Saudi Arabian coastal waters and sediments, extending from near the Saudi-Jordanian border in the north of Red Sea to Al Shuqaiq and Jizan Economic City
705 (close to the Saudi-Yemen border) in the south, and in the Arabian Gulf, includes the areas of Al Khobar, Dammam, and Ras Al Khair. The assessment presented in this work, aimed to identify the areas facing eutrophication or/and pollution problems. In general, in the Red Sea, north-south increasing gradients were evident for some of the parameters studied, revealing a link between the hydrographic conditions and biogeochemical properties. Sediments at all of the Red Sea study sites were found to be enriched in
710 arsenic. In the Arabian Gulf, salinity was defined as the main indicator of local differentiation. A broad range of salinity values were observed, reflecting the effects of the local desalination plants and their brine discharges.

Competing Interests

The contacts authors have declared that none of the authors have any competing interests.

715 Acknowledgements

This publication is based on work supported by the funded project "Marine and Coastal Assessment Protection Study for the Kingdom of Saudi Arabia Coastline" (under contract number 062/475000300/284) made between the Saudi National Center for Environmental Compliance (NCEC) and King Abdullah University of Science and Technology (KAUST). Captain Theodoros Kanakaris, the
720 crew and the scientific staff of the R/V *AEGAEO* are acknowledged for their assistance and valuable support during the cruise. We especially appreciate the collaboration with and advice offered by the other

Marine and Coastal Assessment Protection Study Initiative members, who hail from different departments at the NCEC and KAUST.

References

725

Abu Dhabi Quality and Conformity Council (ADQCC). Ambient Marine Water and Sediments Specifications. Abu Dhabi Specification (ADS 18/2017), 2017.

Abualnaja Y, Pavlidou A, Churchill J, Hatzianestis I, Velaoras D, Kontoyiannis H, Papadopoulos V. P, Karageorgis A, Assimakopoulou G, Kaberi E, Kannelopoulos Th, Parinos C, Zeri Ch, Ballas D, Pitta E, Paraskevopoulou V, Adroni A, Chourdaki, Fioraki V, Iliakis S, Kabouri G, Konstantinopoulou A, Krokos G, Papageorgiou D, Papageorgiou A, Pappas G, Plakidi E, Rousselaki E, Stavrakaki I, Tzempelikou E, Zachioti P, Yfanti A, Zoulias Th, Al Amoudi A, Alshehri Y, Alharbi A, Alsulmi H, Boksmati T, Mutwalli R, Hoteit I (2023). Water and Sediment data in the coastal zone of the Red Sea and the Arabian (Persian) Gulf (Saudi Arabia). SEANOE. <https://doi.org/10.17882/96463>

Abualnaja, Y., Papadopoulos, V.P., Josey, S.A., Hoteit, I., Kontoyiannis, H. and Raitzos, D.E.: Impacts of climate modes on air–sea heat exchange in the Red Sea. *Journal of Climate*, 28(7), 2665–2681, 2015. <https://doi.org/10.1175/JCLI-D-14-00379.1>.

Abu-Zied, R. H., & Hariri, M. S. B. (2016). Geochemistry and benthic foraminifera of the nearshore sediments from Yanbu to Al-Lith, eastern Red Sea coast, Saudi Arabia. *Arabian Journal of Geosciences*, 9(4). <https://doi.org/10.1007/s12517-015-2274-9>

Al Azhar, M., Temimi, M., Zhao, J. and Ghedira, H.: Modeling of circulation in the Arabian Gulf and the Sea of Oman: Skill assessment and seasonal thermohaline structure. *Journal of Geophysical Research: Oceans*, 121(3), 1700–1720, 2016. <https://doi.org/10.1002/2015JC011038>.

Al-Farawati, R. K., Gazzaz, M. O., El Sayed, M. A., & El-Maradny, A. (2011). Temporal and spatial distribution of dissolved Cu, Ni and Zn in the coastal waters of Jeddah, eastern Red Sea. *Arabian Journal of Geosciences*, 4(7–8), 1229–1238. <https://doi.org/10.1007/s12517-010-0137-y>

Alharbi, T., & El-Sorogy, A. (2017). Assessment of metal contamination in coastal sediments of Al-Khobar area, Arabian Gulf, Saudi Arabia. *Journal of African Earth Sciences*, 129, 458–468. <https://doi.org/10.1016/j.jafrearsci.2017.02.007>

Alharbi, T., & El-Sorogy, A. (2017). Assessment of metal contamination in coastal sediments of Al-Khobar area, Arabian Gulf, Saudi Arabia. *Journal of African Earth Sciences*, 129, 458–468. <https://doi.org/10.1016/j.jafrearsci.2017.02.007>

Alharbi, T., & El-Sorogy, A. (2019). Assessment of seawater pollution of the Al-Khafji coastal area, Arabian Gulf, Saudi Arabia. *Environmental Monitoring and Assessment*, 191(6). <https://doi.org/10.1007/s10661-019-7505-1>

- Alharbi, T., Al-Kahtany, K., Nour, H. E., Giacobbe, S., & El-Sorogy, A. S. (2022). Contamination and health risk assessment of arsenic and chromium in coastal sediments of Al-Khobar area, Arabian Gulf, Saudi Arabia. *Marine Pollution Bulletin*, 185. <https://doi.org/10.1016/j.marpolbul.2022.114255>
- 755 Ali, A. M., Rønning, H. T., Al Arif, W. M., Kallenborn, R., & Kallenborn, R. (2017). Occurrence of pharmaceuticals and personal care products in effluent-dominated Saudi Arabian coastal waters of the Red Sea. *Chemosphere*, 175, 505–513. <https://doi.org/10.1016/j.chemosphere.2017.02.095>
- Ali, E. B., J. H. Churchill, K. Barthel, I. Skjelvan, A. M. Omar, T. E. de Lange and E. B. A. Eltaib. 2018. Seasonal variations of hydrographic parameters in the Sudanese coast of the Red Sea, 2009-2015. *Regional Studies in Marine Science*, 18, 1-10, 760 <https://doi.org/10.1016/j.rsma.2017.12.004>.
- Al-Kahtany, K., El-Sorogy, A., Al-Kahtany, F., & Youssef, M. (2018). Heavy metals in mangrove sediments of the central Arabian Gulf shoreline, Saudi Arabia. *Arabian Journal of Geosciences*, 11(7). <https://doi.org/10.1007/s12517-018-3463-0>
- Al-Kahtany, K., El-Sorogy, A., Al-Kahtany, F., & Youssef, M. (2018). Heavy metals in mangrove sediments of the central Arabian Gulf shoreline, Saudi Arabia. *Arabian Journal of Geosciences*, 11(7). <https://doi.org/10.1007/s12517-018-3463-0>
- 765 Al-Mur, B. A. (2020). Assessing nutrient salts and trace metals distributions in the coastal water of Jeddah, Red Sea. *Saudi Journal of Biological Sciences*, 27(11), 3087–3098. <https://doi.org/10.1016/j.sjbs.2020.07.012>
- Al-Mur, B. A., Quicksall, A. N., & Al-Ansari, A. M. A. (2017). Spatial and temporal distribution of heavy metals in coastal core sediments from the Red Sea, Saudi Arabia. *Oceanologia*, 59(3), 262–270. <https://doi.org/10.1016/j.oceano.2017.03.003>
- Alzahrani, H., El-Sorogy, A. S., Qaysi, S., & Alshehri, F. (2023). Contamination and Risk Assessment of Potentially Toxic 770 Elements in Coastal Sediments of the Area between Al-Jubail and Al-Khafji, Arabian Gulf, Saudi Arabia. *Water (Switzerland)*, 15(3). <https://doi.org/10.3390/w15030573>
- Amin, S. A., & Almahasheer, H. (2022). Pollution indices of heavy metals in the Western Arabian Gulf coastal area. *Egyptian Journal of Aquatic Research*, 48(1), 21–27. <https://doi.org/10.1016/j.ejar.2021.10.002>
- Asfahani, K., Krokos, G., Papadopoulos, V.P., Jones, B.H., Sofianos, S.S., Kheireddine, M. and Hoteit, I.: Capturing a mode 775 of intermediate water formation in the Red Sea. *Journal of Geophysical Research: Oceans*, 125(4), e2019JC015803, 2020. <https://doi.org/10.1029/2019JC015803>.
- Bantan, R. A., Khawfany, A. A., Basaham, A. S., & Gheith, A. M. (2020). Geochemical Characterization of Al-Lith Coastal Sediments, Red Sea, Saudi Arabia. *Arabian Journal for Science and Engineering*, 45(1), 291–306. <https://doi.org/10.1007/s13369-019-04161-6>
- 780 Brima, E. I., & AlBishri, H. M. (2017). Major and trace elements in water from different sources in Jeddah City, KSA. *Arabian Journal of Geosciences*, 10(19). <https://doi.org/10.1007/s12517-017-3221-8>
- Carpenter, J.H.: The accuracy of the Winkler method for dissolved oxygen analysis. *Limnology and Oceanography*, 10(1), 135–140, 1965a. <https://doi.org/10.4319/lo.1965.10.1.0135>.

- Carpenter, J.H.: The Chesapeake Bay Institute technique for dissolved oxygen method. *Limnology and Oceanography*, 10, 785 141–143, 1965b.
- Cauwet, G.: HTCO method for dissolved organic carbon analysis in seawater: influence of catalyst on blank estimation. *Marine Chemistry*, 47(1), 55–64, 1994. [https://doi.org/10.1016/0304-4203\(94\)90013-2](https://doi.org/10.1016/0304-4203(94)90013-2).
- Chao, S.-Y., Kao, T. W., and Al-Hajri, K. R.: A numerical investigation of circulation in the Arabian Gulf, *J. Geophys. Res.*, 97, 11,219– 11,236, 1992.
- 790 Churchill, J.H., Bower, A.S., McCorkle, D.C. and Abualnaja, Y.: The transport of nutrient-rich Indian Ocean water through the Red Sea and into coastal reef systems. *Journal of Marine Research*, 72, 165–181, 2014. <http://dx.doi.org/10.1357/002224014814901994>.
- Churchill, J.H., Lentz, S.J., Farrar, J.T., Abualnaja, Y. 2014. Properties of Red Sea coastal currents *Continental Shelf Research* 78, 51–61
- 795 Cline, J.D.: Spectrophotometric determination of hydrogen sulfide in natural 539 waters. *Limnology and Oceanography*, 14(3), 454–458, 1969.
- El Zokm, G. M., Al-Mur, B. A., & Okbah, M. A. (2022). Ecological risk indices for heavy metal pollution assessment in marine sediments of Jeddah Coast in the Red Sea. *International Journal of Environmental Analytical Chemistry*, 102(16), 4496–4517. <https://doi.org/10.1080/03067319.2020.1784888>
- 800 El-Maradny, A., Orif, M., AlKobati, A., Ghandourah, M., & Al-Farawati, R. (2023). Polycyclic aromatic hydrocarbons in the water column of three hot spot areas, Jeddah coast, eastern of Red Sea. *Regional Studies in Marine Science*, 64, 103047. <https://doi.org/10.1016/j.rsma.2023.103047>
- El-Sorogy, A. S., Youssef, M., & Al-Hashim, M. H. (2023). Water Quality Assessment and Environmental Impact of Heavy Metals in the Red Sea Coastal Seawater of Yanbu, Saudi Arabia. *Water (Switzerland)*, 15(1). <https://doi.org/10.3390/w15010201>
- 805 El-Sorogy, A., Al-Kahtany, K., Youssef, M., Al-Kahtany, F., & Al-Malky, M. (2018). Distribution and metal contamination in the coastal sediments of Dammam Al-Jubail area, Arabian Gulf, Saudi Arabia. *Marine Pollution Bulletin*, 128, 8–16. <https://doi.org/10.1016/j.marpolbul.2017.12.066>
- EPA method 1631, Revision E: Mercury in Water by Oxidation, Purge and Trap, and Cold Vapor Atomic Fluorescence Spectrometry. August 2002.
- 810 EPA method 1664, Revision B: n-Hexane Extractable Material (HEM; Oil and Grease) and Silica Gel Treated n-Hexane Extractable Material (SGT-HEM; Non-polar Material) by Extraction and Gravimetry. February 2010.
- EPA method 420.1: Phenolics (Spectrophotometric, Manual 4-AAP With Distillation). 1978.

- 815 EPA method 5021A: Volatile Organic Compounds in Various Sample Matrices using Equilibrium Headspace Analysis. July 2014 (Revision 2).
- EPA method 5210B: 5-days BOD test, Methods for the Examination of Water and Wastewater. 24th ed. Washington DC: APHA Press, 2023.
- EPA method 528: Determination of phenols in drinking water by solid phase extraction and capillary column gas chromatography/mass spectrometry (GC/MS). 2000.
- 820 EPA method 8260D: Volatile Organic Compounds by Gas Chromatography-Mass Spectrometry (GC/MS). June 2018 (Revision 4).
- Fallatah, M. M., Kavil, Y. N., Ibrahim, A. S. A., Orif, M. I., Shaban, Y. A., & Al Farawati, R. (2018). Hydrographic parameters and distribution of dissolved Cu, Ni, Zn and nutrients near Jeddah desalination plant. *Open Chemistry*, 16(1), 245–257. <https://doi.org/10.1515/chem-2018-0029>
- 825 Freije, A. M. (2015). Heavy metal, trace element and petroleum hydrocarbon pollution in the Arabian Gulf: Review. In *Journal of the Association of Arab Universities for Basic and Applied Sciences* (Vol. 17, pp. 90–100). University of Bahrain. <https://doi.org/10.1016/j.jaubas.2014.02.001>
- Garrison, V., Lamothe, P., Morman, S., Plumlee, G.S., 2010. Trace-metal concentrations in African dust: effects of long-distance transport and implications for human health. In: 19th World Congress of Soil Science, Book of Abstracts, pp. 33–36
- 830 Gherboudj, I. and Ghedira, H.: Spatiotemporal assessment of dust loading over the United Arab Emirates. *International Journal of Climatology*, 34(12), 3321–3335, 2014. <https://doi.org/10.1002/joc.3909>.
- Guo D., Kartadikaria, A., Zhan, P., Xie, J., Li, M. and Hoteit, I., 2018. Baroclinic Tides Simulation in the Red Sea: Comparison to Observations and Basic Characteristics, *Journal of Geophysical Research*, doi:10.1029/2018JC013970
- 835 Halawani, R. F., Wilson, M. E., Hamilton, K. M., Aloufi, F. A., Taleb, M. A., Al-Zubieri, A. G., & Quicksall, A. N. (2022). Spatial Distribution of Heavy Metals in Near-Shore Marine Sediments of the Jeddah, Saudi Arabia Region: Enrichment and Associated Risk Indices. *Journal of Marine Science and Engineering*, 10(5). <https://doi.org/10.3390/jmse10050614>
- Harper, D., Riley, J.P.: Determination of Low concentrations of Dissolved and Particulate Chromium in Natural Waters, Technical report TR 215, University of Liverpool, Department of Oceanography, 1985.
- 840 ISO 9377-2:2000: Water quality—Determination of hydrocarbon oil index—Part 2: Method using solvent extraction and gas chromatography.
- ISO/IEC 17025:2017: General Requirements for the competence of testing and calibration laboratories, 2018. <https://www.iso.org/obp/ui/#iso:std:iso-iec:17025:ed-3:v1:en>.

- Jiang, H., Farrar, J., Beardsley, R., Chen, R., Chen, C., 2009. Zonal surface wind jets across the Red Sea due to mountain gap forcing along both sides of the Red Sea. *Geophys. Res. Lett.* 36, L19605.
- 845 John, V., Coles, S., and Abozed, A.: Seasonal cycles of temperature, salinity, and water masses of the Western Arabian Gulf. *Oceanol. Acta*, 13, 273–282, 1990.
- Johns, W.E., Yao, F., Olson, D.B., Josey, S.A., Grist, J.P. and Smeed, D.A.: Observations of seasonal exchange through the Straits of Hormuz and the inferred heat and freshwater budgets of the Persian Gulf. *Journal of Geophysical Research*, 108(C12), 3391, 2003. <https://doi.org/10.1029/2003JC001881>.
- 850 Jones, D.A., Hayes, M., Krupp, F., Sabatini, G., Watt, I. and Weishar, L.: The impact of the Gulf War (1990–91) oil release upon the intertidal Gulf coast line of Saudi Arabia and subsequent recovery. In Abuzinada, A.H., Barth, H.J., Krupp, F., Böer, B., and Al Abdessalaam, T.Z. (Eds.), *Protecting the Gulf's Marine Ecosystems from Pollution* (pp. 237–254). Switzerland: Springer, 2008. https://doi.org/10.1007/978-3-7643-7947-6_13.
- Kahal, A., El-Sorogy, A. S., Qaysi, S., Almadani, S., Kassem, O. M., & Al-Dossari, A. (2020). Contamination and ecological risk assessment of the Red Sea coastal sediments, southwest Saudi Arabia. *Marine Pollution Bulletin*, 154. <https://doi.org/10.1016/j.marpolbul.2020.111125>
- Koroleff, F.: Revised version of "Direct determination of ammonia in natural waters as indophenol blue, *Int. Con. Explor. Sea*, C. M. 1969/C:9". ICES Information on Techniques and Methods for Sea Water Analysis Interlab. Rep. No 3, pp. 19–22, 1970.
- Mahboob, S., Ahmed, z., Muhammad Farooq Khan, M., Virik, P., Al-Mulhm, N., Baabbad, A.A.A. (2023). Assessment of heavy metals pollution in seawater and sediments in the Arabian Gulf, near Dammam, Saudi Arabia. *Journal of King Saud University – Science*, 34, 101677
- 860 Maillard, C., and G. Soliman, 1986. Hydrography of the Red Sea and exchanges with the Indian Ocean in summer. *Oceanol. Acta*, 9, 249–269.
- Mannaa, A. A., Khan, A. A., Haredy, R., & Al-Zubieri, A. G. (2021). Contamination evaluation of heavy metals in a sediment core from the al-salam lagoon, jeddah coast, Saudi Arabia. *Journal of Marine Science and Engineering*, 9(8). <https://doi.org/10.3390/jmse9080899>
- Milne, A., Landing, W., Bizimis, M. and Morton, P.: Determination of Mn, Fe, Co, Ni, Cu, Zn, Cd and Pb in seawater using high resolution magnetic sector inductively coupled mass spectrometry (HR-ICP-MS). *Anal. Chim. Acta.* 665, 200-207, 2010. doi: 10.1016/j.aca.2010.03.027
- 870 Murphy, J. and Riley, J. P.: A modified single solution method for the determination of phosphate in natural waters. *Analytica Chimica Acta*, 27, 31–36, 1962. [https://doi.org/10.1016/S0003-2670\(00\)88444-5](https://doi.org/10.1016/S0003-2670(00)88444-5).

- Murphy, K.R., Stedmon, C.A., Graeber, D. and Bro, R.: Fluorescence spectroscopy and multi-way techniques. *PARAFAC. Analytical Methods*, 5(23), 6557–6566, 2013. <https://doi.org/10.1039/C3AY41160E>.
- 875 Naser, H.A.: Assessment and management of heavy metal pollution in the marine environment of the Arabian Gulf: A review. *Marine Pollution Bulletin*, 72(1), 6–13, 2013. <https://doi.org/10.1016/j.marpolbul.2013.04.030>.
- Naser, H.A.: Marine ecosystem diversity in the Arabian Gulf: Threats and conservation. In Grillo, O. (Ed.), *Biodiversity - The Dynamic Balance of the Planet* (Chapter 12, pp. 297–328). Croatia: InTech, 2014. <http://dx.doi.org/10.5772/57425>.
- Naser, H.A.: The role of environmental impact assessment in protecting coastal and marine environments in rapidly developing islands: The case of Bahrain, Arabian Gulf. *Ocean & Coastal Management*, 104, 159–169, 2015. <https://doi.org/10.1016/j.ocecoaman.2014.12.009>.
- 880 Neelamani, S., Al-Osairi, Y., Al-Salem K. and Rakha, K., 2021. Some Physical Oceanographic Aspects of Kuwait and Arabian Gulf Marine Environment, in: *The Arabian Seas: Biodiversity, Environmental Challenges and Conservation Measures*. Laith A. Jawad (Eds). Springer Nature Switzerland AG 2021
- Neumann, A. C., and D. A. McGill, 1962. Circulation of the Red Sea in early summer. *Deep-Sea Research*, 8, 223-285.
- 885 Ospar. JAMP Guidelines for Monitoring of Contaminants in Seawater, Agreement 2013-03, 2013.
- Papadopoulos, V.P., Abualnaja, Y., Josey, S.A., Bower, A., Raitsos, D.E., Kontoyiannis, H. and Hoteit, I.: Atmospheric forcing of the winter air–sea heat fluxes over the northern Red Sea. *Journal of Climate*, 26, 1685–1701, 2013. <https://doi.org/10.1175/JCLI-D-12-00267.1>.
- Papadopoulos, V.P., Zhan, P., Sofianos, S.S., Raitsos, D.E., Qurban, M., Abualnaja, Y., Bower, A.S., Kontoyiannis, H., 890 Pavlidou, A., Ashraf, T.T.M., Zarokanellos, N. and Hoteit, I.: Factors governing the deep ventilation of the Red Sea. *Journal of Geophysical Research: Oceans*, 120(11), 7493–7505, 2015. <https://doi.org/10.1002/2015JC010996>.
- Paparella, F., D’Agostino, D., & A. Burt, J. (2022). Long-term, basin-scale salinity impacts from desalination in the Arabian/Persian Gulf. *Scientific Reports*, 12(1). <https://doi.org/10.1038/s41598-022-25167-5>
- Pavlidou, A., Hatzianestis, I., Papadopoulos, V.P., Parinos, K., Kaberi, E., Zeri, Ch., Tzempelikou, E., Pitta, E., 895 Assimakopoulou, G., Papageorgiou, D., Velaoras, Kannelopoulos, Th.: Marine and Coastal Environment Protection Initiative (MCEP) Task 6: Field Surveillance Report, 145 pp, 2021.
- Peña-García, D., Ladwig, N., Turki, A. J., Mudarris, M. S., 2014. Input and dispersion of nutrients from the Jeddah Metropolitan Area, Red Sea. *Mar Poll Bull*, 80:41-51.

- Povinec, P.P., Papadopoulos, V.P., Krokos, G., Abualnaja, Y., Pavlidou, A., Kontul, I., Kaizer, J., Cherkinsky, A., Molnár, A.,
900 Palcsu, L., Al Ghamdi, A.S., Anber, H.A., Al Othman, A.S. and Hoteit, I., 2023: Tritium and radiocarbon in the water column
of the Red Sea. *Journal of Environmental Radioactivity*, 256, 107051, 2023. <https://doi.org/10.1016/j.jenvrad.2022.107051>.
- Pugh, D. T. ,Abualnaja, Y., and Jarosz, E., 2019. *The Tides of the Red Sea*. Springer Nature Switzerland AG 2019. N. M. A.
Rasul and I. C. F. Stewart (eds.), *Oceanographic and Biological Aspects of the Red Sea*, Springer Oceanography,
https://doi.org/10.1007/978-3-319-99417-8_211
- 905 Rasul, N.M.A., Stewart, I.C.F. and Nawab, Z.A.: Introduction to the Red Sea: Its origin, structure, and environment. In Rasul,
N.M.A. and Stewart I.C.F. (Eds.), *The Red Sea: the Formation, Morphology, Oceanography and Environment of a Young
Ocean Basin* (pp. 1–28). UK: Springer, 2015. https://doi.org/10.1007/978-3-662-45201-1_20.
- Raventós, N., Macpherson, E., García-Rubies, A., 2006. Effect of brine discharge from a desalination plant on macrobenthic
communities in the NW Mediterranean. *Mar Environ Res* 62(1):1–14
- 910 Reynolds, R.M.: Physical oceanography of the Gulf, Strait of Hormuz, and the Gulf of Oman—Results from the *Mt Mitchell*
expedition. *Marine Pollution Bulletin*, 27, 35–59, 1993. [https://doi.org/10.1016/0025-326X\(93\)90007-7](https://doi.org/10.1016/0025-326X(93)90007-7).
[https://doi.org/10.1016/0025-326X\(93\)90007-7](https://doi.org/10.1016/0025-326X(93)90007-7).
- Schröder, C., Sánchez, A., Rodriguez, D., Abdul Malak, D.: *Marine and Coastal Assessment Protection Study for the Kingdom
of Saudi Arabia: Hotspot analysis. A report prepared by ETC-UMA for the King Abdullah University of Science and
915 Technology*, 118 pp, 2021.
- Sheppard, C., Al-Husiani, M., Al-Jamali, F., Al-Yamani, F., Baldwin, R., Bishop, J., Benzoni, F., Dutrieux, E., Dulvy, N.K.,
Durvasula, S.R., Jones, D.A., Loughland, R., Medio, D., Nithyanandan, M., Pilling, G.M., Polikarpov, I., Price, A.R., Purkis,
S., Riegl, B., Saburova, M., Namin, K.S., Taylor, O., Wilson, S. and Zainal, K.: *The Gulf: A young sea in decline*. *Marine
Pollution Bulletin*, 60(1), 13–38, 2010. <https://doi.org/10.1016/j.marpolbul.2009.10.017>.
- 920 Sheppard, C., Price, A. and Roberts, C.: *Marine Ecology of the Arabian Region: Patterns and Processes in Extreme Tropical
Environments*. Toronto: Academic, 1992.
- Smith, A.A., Carter, C. and Miller, B.B.: More test articles. *Journal of Advanced Research*, 35, 13–28, 2014.
<https://doi.org/10.2345/67890>.
- Sofianos, S. S., and W. E. Johns, 2007. Observations of the summer Red Sea circulation, *J. Geophys. Res.*, 112, C06025,
925 [doi:10.1029/2006JC003886](https://doi.org/10.1029/2006JC003886).
- Sofianos, S.S. and Johns, W.E.: An Oceanic General Circulation Model (OGCM) investigation of the Red Sea circulation: 2.
Three-dimensional circulation in the Red Sea. *Journal of Geophysical Research: Oceans*, 108(C3), 3066, 2003.
<https://doi.org/10.1029/2001JC001185>.

- Sofianos, S.S. and Johns, W.E.: Water mass formation, overturning circulation, and the exchange of the Red Sea with the adjacent basins. In Rasul, N.M.A. and Stewart, I.C.F. (Eds.), *The Red Sea: the Formation, Morphology, Oceanography and Environment of a Young Ocean Basin* (pp. 343–353). UK: Springer, 2015. https://doi.org/10.1007/978-3-662-45201-1_20.
- 930
- Sohaib, M., Al-Barakah, F. N. I., Migdadi, H. M., Alyousif, M., & Ahmed, I. (2023). Ecological assessment of physico-chemical properties in mangrove environments along the Arabian Gulf and the Red Sea coasts of Saudi Arabia. *Egyptian Journal of Aquatic Research*, 49(1), 9–16. <https://doi.org/10.1016/j.ejar.2022.11.002>
- 935
- Standard Methods for the Examination of Water and Wastewater. Cyanide 4500-CN⁻ E. Colorimetric Method. Washington, DC: American Public Health Association, 1992.
- Standard Methods for the Examination of Water and Wastewater. Total Residual Chlorine 4500-Cl G. DPD Colorimetric Method. Washington, DC: American Public Health Association, 1992.
- Strickland, J.D.H. and Parsons, T.R.: *A Practical Handbook of Seawater Analysis*. Bulletin 167. Ottawa: Fisheries Research Board of Canada, 1968.
- 940
- Sugimura, Y. and Suzuki, Y.: A high-temperature catalytic oxidation method for the determination of non-volatile dissolved organic carbon in seawater by direct injection of a liquid sample. *Marine Chemistry*, 24(2), 105–131, 1988. [https://doi.org/10.1016/0304-4203\(88\)90043-6](https://doi.org/10.1016/0304-4203(88)90043-6).
- Uddin, S., Al Ghadban, A.N., Khabbaz, A., 2011. Localized hyper saline waters in Arabian Gulf from desalination activity—
- 945 an example from South Kuwait. *Environ. Monit. Assess.* 181, 587–594.
- UNEP/IOC/IAEA. Determination of Petroleum Hydrocarbons in Sediments. Reference Methods for Marine Pollution Studies. No. 20, 75, 1992.
- Vaughan, G.O., Al-Mansoori, N. and Burt, J.A.: *The Arabian Gulf*. In Sheppard, C. (Ed.), *World Seas: An Environmental Evaluation*. Volume II: the Indian Ocean to the Pacific (2nd ed., pp. 1–23). UK, Elsevier, 2019. [https://doi.org/10.1016/B978-](https://doi.org/10.1016/B978-0-08-100853-9.00001-4)
- 950 [0-08-100853-9.00001-4](https://doi.org/10.1016/B978-0-08-100853-9.00001-4).
- Viswanadhapalli, Y., Dasari, H.P., Langodan, S., Challa, V.S. and Hoteit, I.: Climatic features of the Red Sea from a regional assimilative model. *International Journal of Climatology*, 37(5), 2563–2581, 2017. <https://doi.org/10.1002/joc.4865>.
- Willie, S.N., Iida, Y. and McLaren, J.W.: Determination of Cu, Ni, Zn, Mn, Co, Pb, Cd and V in seawater using flow-injection ICP-MS. *Atom. Spectrosc.* 19, 67-72, 1998.
- 955
- Yao, F. and Hoteit, I.: Rapid Red Sea deep water renewals caused by volcanic eruptions and the North Atlantic oscillation. *Science Advances*, 4(6), eaar5637, 2018. <https://doi.org/10.1126/sciadv.aar5637>.

Yao, F., Hoteit, I., Pratt, L.J., Bower, A.S., Zhai, P., Köhl, A. and Gopalakrishnan, G.: Seasonal overturning circulation in the Red Sea: 1. Model validation and summer circulation. *Journal of Geophysical Research: Oceans*, 119(4), 2238–2262, 2014. <https://doi.org/10.1002/2013JC009004>.

960 Youssef, M. (2015). Heavy metals contamination and distribution of benthic foraminifera from the Red Sea coastal area, Jeddah, Saudi Arabia. *Oceanologia*, 57(3), 236–250. <https://doi.org/10.1016/j.oceano.2015.04.002>

Zhai, P., Bower, A.S., Smethie Jr., W.M. and Pratt, L.J.: Formation and spreading of Red Sea Outflow Water in the Red Sea. *Journal of Geophysical Research: Oceans*, 120(9), 6542–6563, 2015. <https://doi.org/10.1002/2015JC010751>.

Zhan, P., Subramanian, A.C., Yao, F. and Hoteit, I.: Eddies in the Red Sea: A statistical and dynamical study. *Journal of Geophysical Research: Oceans*, 119(6), 3909–3925, 2014. <https://doi.org/10.1002/2013JC009563>.
965