

# **A new habitat map of the Lena Delta in Arctic Siberia based on field and remote sensing datasets**

Simeon Lisovski<sup>1,\*</sup>, Alexandra Runge<sup>2,\*</sup>, Iuliia Shevtsova<sup>1</sup>, Nele Landgraf<sup>3</sup>, Anne Morgenstern<sup>2</sup>,  
Ronald Reagan Okoth<sup>1,4</sup>, Matthias Fuchs<sup>2</sup>, Nikolay Lashchinskiy<sup>5,6</sup>, Carl Stadie<sup>2,7</sup>, Alison  
Beamish<sup>8</sup>, Ulrike Herzs Schuh<sup>1,9,10</sup>, Guido Grosse<sup>1,11</sup>, Birgit Heim<sup>1</sup>

\* Both authors contributed equally

<sup>1</sup> Alfred Wegener Institute Helmholtz Centre for Polar and Marine Research, Polar Terrestrial  
Environmental Systems, 14473 Potsdam, Germany

<sup>2</sup> Alfred Wegener Institute Helmholtz Centre for Polar and Marine Research, Permafrost Research, 14473  
Potsdam, Germany

<sup>3</sup> Humboldt University, Department of Geosciences, 12489 Berlin, Germany

<sup>4</sup> Julius-Maximilians Universität Würzburg, Institute of Geography and Geology, Oswald-Külpe-Weg 86,  
97074 Würzburg, Germany

<sup>5</sup> Central Siberian Botanical Garden, Siberian Branch, Russian Academy of Sciences, Novosibirsk,  
630090 Russia

<sup>6</sup> Trofimuk Institute of Petroleum Geology and Geophysics, Siberian Branch, Russian Academy of  
Sciences, Novosibirsk, 630090 Russia

<sup>7</sup> University of Greifswald, Institute for Geography and Geology, Germany (current address: University of  
Copenhagen, Department of Earth Science and Nature Management, Denmark)

<sup>8</sup> GFZ German Research Centre for Geosciences, Helmholtz Centre Potsdam.

<sup>9</sup> University of Potsdam, Institute of Environmental Sciences & Geography, Karl-Liebknecht-Str. 24-25,  
14476 Potsdam, Germany

<sup>10</sup> University of Potsdam, Institute of Biochemistry and Biology, Karl-Liebknecht-Str. 24-25, 14476  
Potsdam, Germany

<sup>11</sup> University of Potsdam, Institute of Geosciences, Karl-Liebknecht-Str. 24-25, 14476 Potsdam, Germany

*Correspondence to:* Simeon Lisovski ([Simeon.Lisovski@awi.de](mailto:Simeon.Lisovski@awi.de)), Alexandra Runge  
([alexandra.runge@gfz-potsdam.de](mailto:alexandra.runge@gfz-potsdam.de)), Birgit Heim ([birgit.heim@awi.de](mailto:birgit.heim@awi.de))

**Abstract.** The Lena Delta is the largest river delta in the Arctic (about 30 000 km<sup>2</sup>) and prone to rapid changes due to climate warming, associated cryosphere loss and ecological shifts. The delta is characterized by ice-rich permafrost landscapes and consists of geologically and geomorphologically diverse terraces covered with tundra vegetation and of active floodplains, featuring approximately 6 500 km of channels and over 30 000 lakes. Because of its broad landscape and habitat diversity the delta is a biodiversity hotspot with high numbers of nesting and breeding migratory birds, fish, caribou and other mammals and was designated a State Nature Reserve in 1995. Characterizing plant composition, above ground biomass and application of field spectroscopy was a major focus of a 2018 expedition to the delta. These field data collections were linked to Sentinel-2 satellite data to upscale local patterns in land cover and associated habitats to the entire delta. Here, we describe multiple field datasets collected in the Lena Delta during summer 2018 including foliage projective cover (Shevtsova et al., 2021a), above ground biomass (Shevtsova et al., 2021b), and hyperspectral field measurements (Runge et al., 2022, <https://doi.pangaea.de/10.1594/PANGAEA.945982>). We further describe a detailed Sentinel-2 satellite image-based classification of habitats for the central Lena Delta (Landgraf et al., 2022), an upscaled classification for the entire Lena Delta (Lisovski et al., 2022), as well as a synthesis product for disturbance regimes (Heim and Lisovski, 2023, <https://doi.org/10.5281/zenodo.7575691>) in the delta that is based on the classification, the described datasets, and field expertise. We present context and detailed methods of these openly available datasets and show how their combined use can improve our understanding of the rapidly changing Arctic tundra system. The new Lena Delta habitat classification represents a first baseline against which future observations can be compared. The link between such detailed habitat classifications and disturbance regime may provide a better understanding of how Arctic lowland landscapes will respond to climate change and how this will impact land surface processes.

# 1 Introduction

Global warming has profound impacts on the polar regions (Serreze and Barry, 2011; Overland et al., 2019). Rapidly increasing temperatures and changing precipitation regimes result in declining sea ice, warming and thawing of permafrost, more frequent tundra fires, and changes in vegetation (e.g., Biskaborn et al., 2019; Hu et al., 2015; Mauclet et al., 2022; Box et al., 2019; Amap, 2021). The Arctic tundra biome, which is normally characterized by harsh living conditions and nutrient-deficiency, has experienced rapid phenological shifts, such as earlier green-up in spring, which is also associated with increasing shrubification rates (Mekonnen et al., 2021). Shifts in plant communities are also driven by changing nutrient availability in permafrost soils (Mekonnen et al., 2021; Mauclet et al., 2022), affecting the net primary productivity of tundra ecosystems.

Satellite-derived remote sensing can provide large-scale assessments of Arctic vegetation cover and changes therein (Bartsch et al., 2016). For example, the Circumpolar Arctic Vegetation Map (CAVM) project, from the Conservation of Arctic Flora and Fauna working group (CAFF), provided a first panarctic vegetation composition map based on Advanced Very-High Resolution Radiometer (AVHRR) false-color infrared (CIR) composites at a 1:4 million map scale (Walker, 1998; Raynolds et al., 2019). Later, higher resolution land cover maps became available across all spatial scales from national and international efforts such as the NASA Arctic-Boreal Vulnerability Experiment (ABoVE) providing open-source data collections from boreal and arctic regions (ABoVE Science Definition Team, 2014) specifically for Alaska, Canada, Northern Europe, and Western Siberia, providing a better bridge to field measurements. Such products greatly assist in monitoring and upscaling of patterns and dynamics of soil properties, land-atmosphere fluxes, ecosystem states, and changes therein (e.g., Walker, 1998; Beamish et al., 2020; Berner et al., 2020; Sweeney et al., 2022; Macander et al., 2022; Endsley et al., 2022). For selected Eastern Siberian tundra regions, land cover maps have been produced (e.g., Veremeeva and Gubin, 2009; Bartsch et al., 2019; Schneider et al., 2009), including the Lena Delta (Bartsch et al., 2019; Schneider et al., 2009).

Arctic river deltas represent distinct and vulnerable geomorphological and ecological regions at the marine-terrestrial boundary. River deltas have been studied intensively to better understand land cover and vegetation compositions (Jorgenson, 2000; Schneider et al., 2009; Frost et al., 2020; Bartsch et al., 2020), carbon pools and fluxes (Bartlett et al., 1992; Schneider et al., 2009; Sachs et al., 2008; Rossger et al., 2022), and land cover change caused by climate change impacts (Jorgenson, 2000; Pisaric et al., 2011; Lantz et al., 2015; Nitze and Grosse, 2016; Vulis et al., 2021; Juhls et al., 2021). With diverse habitats, Arctic river deltas are biodiversity hotspots (Gilg et al., 2000), but at the same time are prone to rapid changes (Walker, 1998; Overeem et al., 2022). Arctic

deltas are affected by permafrost thaw (e.g., Pisaric et al., 2011; Nitze and Grosse, 2016; Vulis et al., 2021), sea ice loss (Overeem et al., 2022), and increased sediment transport and organic load during spring floods (Piliouras and Rowland, 2020; Juhls et al., 2021). Arctic river deltas are very dynamic systems and high-resolution habitat information from these biodiversity hotspots is needed to assess and predict changes and implications of Arctic warming.

The Lena Delta is the largest Arctic river delta representing a typical lake-rich lowland permafrost landscape (Grigoriev, 1993). Over the past decades, the central Lena Delta became a place of intensive international research. In addition to long-term permafrost monitoring at the Research Station Samoylov Island (Hubberten et al., 2006; Boike et al., 2019), extensive records on meteorology, soil and ecosystem characteristics (Zibulski et al., 2016; Boike et al., 2019; Boike et al., 2008), hydrology (Fedorova et al., 2015), and greenhouse gas fluxes (Rossger et al., 2022; Holl et al., 2019) are available, setting an important benchmark for further assessments of changes in an Arctic river delta. During the summer season of 2018, an extensive field campaign to the Lena Delta led to an unprecedented amount of field datasets including vegetation cover recordings, above ground biomass estimates, and spectral characterisation of the different vegetation/land cover units. These in situ datasets provide improved thematic detail allowing the development of habitat classifications. In 2009, Schneider et al. (2009) developed the first land cover classification map for the entire delta at 30 m spatial resolution based on Landsat-7 ETM+ satellite summer images from 2000 and 2001 to quantify delta-wide methane emissions. The availability of Sentinel-2 (Sentinel-2) Multispectral Instrument (MSI) data from two orbiting satellite missions since 2016 and 2017 provide high quality multispectral satellite data with a higher spatial resolution in the Visible and Near Infrared wavelength of up to 10 m, and of 20 m in the Red Edge and the Short- Wave Infrared wavelength regions (Drusch et al., 2012, ESA 2015). Together with the extensive ground observations from the Lena Delta in 2018 this enables an updated classification, using the higher resolution Sentinel-2 images and improved thematic detail.

In the following study, field datasets as well as derived multispectral satellite images from the summer season 2018 for the Lena Delta were used to provide 1) an updated data-driven framework for plant communities and associated habitat classes in the Lena Delta, 2) a high-resolution habitat mapping product for the entire delta, and 3) a disturbance regime map linked to habitat classes. These datasets enhance our understanding of the Lena Delta system and will build a baseline and framework for future spatio-temporal analysis of more detailed processes and changes within this highly sensitive ecosystem.



## 2 Study Area

The Lena Delta is located in northeastern Siberia's continuous permafrost zone between 72° and 74°N and 123° to 130°E (Figure 1). With an area of about 30 000 km<sup>2</sup>, it is the largest delta in the Arctic and one of the largest in the world (Walker, 1998; Schneider et al., 2009). It is surrounded by the Laptev Sea to the west, north, and east, and the Chekanovsky and Kharaulakh mountain ranges border it to the south. The delta is characterized by numerous river channels and more than 1500 islands with a diverse geologic history (Grigoriev, 1993). Morphologically, the delta can be divided into three distinct geomorphological main terraces (Grigoriev, 1993; Schwamborn et al., 2002). The first main terrace, which comprises the Holocene fluvial terraces and the active floodplains, is the youngest and most active part of the delta (Schwamborn et al., 2023), and covers most of the east-northeastern areas as well as the southern and southwestern-most parts. This main terrace predominantly consists of ice wedge-polygonal tundra (Nitzbon et al., 2020) as well as of barren and vegetated floodplain areas (e.g., Rossger et al., 2022). The second main terrace, located in the northwestern part, contains mostly sandy, comparably well-drained soils with low ground-ice content (Schwamborn et al., 2002; Ulrich et al., 2009). Large, mostly north-to-south oriented lakes and depressions are abundant in this area (Morgenstern et al., 2008). The third and oldest main terrace consists mainly of remnants of a Late Pleistocene accumulation plain with ice- and organic-rich sediments (so-called Yedoma deposits) and is characterized by polygonal tundra with large ice wedges, deep thermokarst lake basins, and thermo-erosional valleys (Morgenstern et al., 2011; Morgenstern et al., 2021). The third terrace is found on islands in the southern delta region (Schirrmeister et al., 2003; Schirrmeister et al., 2011). Permafrost in the area has a thickness of about 500–600 m (Romanovskii and Hubberten, 2001). The active layer depth, i.e., the seasonally thawing upper soil layer, on the first terrace is usually in the range of 30 to 50 cm and 80 to 120 cm on the floodplains (Boike et al., 2019). The larger region is characterized by an Arctic continental climate with low mean annual air temperatures of –13 °C, a mean temperature in January of –32 °C, and a mean temperature in July of 6.5 °C. The mean annual precipitation is low and amounts to about 190 mm (World Weather Information Service).

As part of past Russian-German expeditions to the Lena Delta, most research during the last two decades has been carried out on the islands of Samoylov and Kurungnakh in the central delta (Figure 1). Samoylov Island (72°22' N, 126°29' E) covers an area of about 5 km<sup>2</sup> and is representative of the first terrace together with an active floodplain (Boike et al., 2019; Boike et al., 2008). The vegetation and soil types are diverse at local scales due to high lateral variability of the polygonal microrelief consisting of drier polygon rims, and moist to wet polygonal depressions and troughs (Nitzbon et al., 2020; Kienast and Tsherkasova, 2001). In contrast, Kurungnakh Island is

mainly composed of late Pleistocene Yedoma deposits that belong to the third delta terrace (Grigoriev, 1993) with elevation up to 55 m above sea level (m a.s.l.) (Morgenstern et al., 2013). Holocene cover deposits and peat-rich permafrost soils are distributed across the surface of the third Lena River terrace and especially concentrated in the deep thermokarst basins called “alases”. Alases are important landscape-forming features of the ice-rich Yedoma permafrost zone, which are mainly caused by extensive melting of excess ground ice in the underlying permafrost (Van Everdingen, 1998).

### 3 Datasets and methods

Several new datasets are presented for the Lena Delta that are spatially and thematically connected and support vegetation, habitat, and land cover applications for this region (Figure 1).

Two datasets feature field-measured vegetation data, providing information on foliage projective cover (Dataset 1) and above ground biomass (Dataset 2) recorded in the central Lena Delta in summer 2018 across 26 selected vegetation plot sites (supplementary table S1, S2). The field plots of 30 x 30 m (900 m<sup>2</sup>) were chosen to be representative for typical vegetation communities (vascular plants, moss and lichen cover) as largely homogenous sites representative for the surrounding area. In addition, a total of 28 in-situ, canopy-level hyperspectral field measurements were acquired in 30 x 30 m plots with homogeneous vegetation or barren to partially vegetated areas (spectral reflectance field measurements; Dataset 3). Of the 28 hyperspectral measurements, 15 were conducted at the vegetation plot sites of Datasets 1,2 three measurements were repeat measurements to capture vegetation senescence, and at 10 spectrometry plots we conducted hyperspectral field measurements without floristic inventories but with detailed plot documentation. Based on expert knowledge, we defined representative habitat classes and identified homogeneous regions within the central Lena Delta to train and apply a classifier using a Sentinel-2 satellite image from summer 2018 (Dataset 4). Due to the high reliability of the central Lena Delta vegetation classification and positive evaluation by field experts, we used this vegetation classification as a training dataset for a robust classifier that was subsequently applied to a Sentinel-2 image mosaic for the entire Lena Delta for 2018 to develop a new Lena Delta habitat map (Dataset 5).

Finally, using the habitat classes, probability maps for exposed sandbars and water distribution, and information from the in-situ dataset (Datasets 1 & 2), we extrapolated a classification of disturbance regimes across the delta (Dataset 6) as an application example for the habitat classes.

### 3.1 Foliage projective cover (Dataset 1)

A detailed description of plant composition for the 26 vegetation plots of the 2018 expedition to the Lena Delta was compiled (see supplementary table S1, S2, S3). Prior to the field work, the approximate site locations were defined for establishing representative vegetation plots based on field knowledge and evaluation of Landsat and Sentinel-2 satellite imagery. The aim was to cover representative vegetation communities of the central delta. There are vegetation communities with large area coverage that show high homogeneity within larger areas (10s of meters). Therefore, at each site location, we defined a 30 x 30 m square plot with a homogeneous or repetitive vegetation composition that was also representative of the wider land surface serving as an Elementary Sampling Unit (ESU). ESUs according to the Committee on Earth Observing Satellites Working Group on Calibration and Validation (Duncanson et al., 2021) serve as spatial training and validation units representative for the land surface for quantitative and qualitative remote sensing operations. In case of more patchy and heterogeneous vegetation structure we selected 30 x 30 m squares embedded in a minimum of 50 x 50 m square of the same vegetation composition.

The detailed floristic composition was recorded around the plot center in four successive rings of 50 cm diameter. In addition, the vegetation plot was mapped in detail from above with one Red-Green-Blue (RGB) and one Red-Green-Near Infrared (RGNIR) MAPIR camera using telescope stick-based field photography. The projective vegetation cover was recorded in at least three subplots (2 m x 2 m) within the plot. If the vegetation cover was highly homogenous three subplots were established. In the case of moisture differences, e.g. in polygonal tundra with dry rims and moist to wet depressions, we established higher numbers of subplots capturing moist as well as dry patches (see, Figure 2 & 3 describing the concept). We compiled the floristic composition to foliage projective cover by plant taxa on each 2 x 2 m subplot for the different canopy levels and extrapolated for the 30 m x 30 m plot. We used the RGB and NIR field photos to make an estimate on the share of moist and dry surface area to calculate an averaged projective vegetation cover. The ring survey data was not included in the plot average. The dataset of percentage foliage projective cover per vegetation plot is published in PANGAEA (Shevtsova et al., 2021a, <https://doi.pangaea.de/10.1594/PANGAEA.935875>).

### 3.2 Above ground plant biomass (Dataset 2)

Above-ground biomass (ABG) was sampled in the field in 25 of the 26 vegetation plots in 2018 (see supplementary table S1, S2, S3). Within each 2 x 2 m subplot a 0.5 m x 0.5 m representative plot

was selected for AGB sampling. AGB sampling for moss and lichens was conducted within 0.1 m x 0.1 m subplots inside the 0.5 m x 0.5 m subplots.

In total, 174 fresh AGB samples were collected and weighed in the field or subsequently at the Samoylov research station. AGB samples with a weight exceeding 15 g were subsampled. The plant samples were then dried for two to four days in a warm dry place and finally oven-dried for ca. 24 hours at a temperature of 60 °C before re-weighing. All AGB assessments per plant community type were upscaled to the 30 m x 30 m plot in g/m<sup>2</sup> using the foliage projective cover data. The dataset of AGB per vegetation plot has been published in PANGAEA (Shevtsova et al., 2021b, <https://doi.pangaea.de/10.1594/PANGAEA.935923>).

### **3.3 Hyperspectral field measurements (Dataset 3)**

Hyperspectral field measurements were conducted in the central Lena Delta in August 2018 with the aim to collect surface reflectance spectra of different homogeneous land cover units across a variety of delta land surfaces and vegetation composition. In total, we collected 28 hyperspectral field measurements in homogeneous 30 x 30 m spectrometry plots (Table S5), with 15 of them equalling the vegetation plots across Samoylov and Kurungnakh islands (see Dataset 1 & 2 and *supplementary table S4*), three as repeat measurements at the end of August to capture the change in spectral signature during senescence since the beginning of August and the remaining 10 field-spectroscopy plots focusing on non-vegetated areas such as sandy parts of the floodplain. We conducted the field-spectroscopy measurements with a Spectral Evolution SR-2500 field spectrometer with a 1.5 m Fiber Optic Cable. The instrument was calibrated to spectral radiance within a wavelength range of 350 to 2500 nm. Within the 30 x 30 m homogeneous spectrometry plots we acquired about 100 individual measurements, randomly scattered across the plot. Before and after each survey we conducted reference measurements by measuring the back reflected downwelling radiance from a Zenith Lite™ Diffuse Reflectance Target of 50% reflectivity to normalize to surface reflectance percentages per wavelength. The averaged individual measurements of the reflectance of each spectrometry plot was published in the PANGAEA data repository (Runge et al., 2022, <https://doi.pangaea.de/10.1594/PANGAEA.945982>).

### **3.4 Central Lena Delta habitat classification (Dataset 4)**

#### *3.4.1 Habitat classes*

Based on the vegetation plots (Dataset 1 & 2) and from field knowledge, different habitat classes characterized by distinct plant communities, moisture regimes and soil properties were defined. Non-

vegetated areas (e.g., sand) and water were added as additional classes using band thresholds (Table 1). During an iterative process within a Sentinel-2 based supervised classification, additional habitat classes that were not covered by the vegetation plots (Dataset 1 & 2) were added: i) The polygonal tundra complex could spectrally be separated into distinct classes related to different surface water abundance in the form of intra- and interpolygonal ponds, therefore, we implemented three different polygonal tundra complex classes, with up to 10%, 20%, 50% surface water cover respectively, and ii) one class of 'sparsely vegetated' representing the areas of transition zones between vegetated and barren. Table 1 provides details on habitat class descriptions and established methods to distinguish habitats.

#### *3.4.2 Satellite data processing*

The central Lena Delta habitat classification is based on one high quality cloudless Sentinel-2 image from August 6 in 2018, representing the late summer. The Sentinel-2 top of atmosphere reflectance (TOA) image data was processed by the German Space Agency DLR (B. Pflug, oral communication, 2019) to bottom of atmosphere (BOA) surface reflectance using the newest version of the atmospheric correction processor Sen2Cor later released as ESA Sen2Cor in 2020. Atmospheric correction processing was performed with the default rural aerosol model. All spectral bands were resampled to the 10 m pixel resolution bands. The 60 m pixel resolution bands (B1, B9, B10) that support atmospheric correction, but are not optimal for land surface classification, were removed. We added the normalized difference vegetation index (NDVI;  $\text{NIR-RED} / \text{NIR} + \text{RED}$ ) to the band collection.

#### *3.4.3 Central delta habitat classification*

Sentinel-2 pixels from the 30 x 30 m ESUs (dataset 1, Shevtsova et al. 2021a), and additional polygons (Figure A3) defined by expert knowledge, led to 8 626 labelled pixels for the habitat classification (labelled pixels are published in the Landgraf et al 2022a data collection). From those 8 626 pixels we randomly selected 50 % for the training and 50 % for validation. Polygons were defined by BH, based on high resolution RGB satellite images, and in areas that have been visited regularly during field expeditions. We tested several classifiers and different selected band combinations (spectral bands and NDVI). Water (transparent to turbid) and sandbanks were omitted in the classification processing by masking them as inactive using a band threshold; water mask was based on the NIR 10 m band 8 ( $\text{NIR} < 0.02$ ) and the sand mask was based on the blue 10 m band 2 ( $\text{Blue} > 0.07$ , Table 1). The classification was tuned to depict vegetation composition and was qualitatively assessed well known to the classification developers. Best results for the habitat classification were obtained using a random forest classification with a band combination of all

Sentinel-2 VIS, Red-Edge, NIR and SWIR bands, and the NDVI. The chosen classifier was able to distinguish between relevant classes (Table 1) and could even identify patchy spots of specific habitat classes. In addition to the defined water and sand classes, the final central Lena Delta classification contains 10 habitat classes (Table 1). The here defined central Lena Delta covers an area of 644.9 km<sup>2</sup> with a 55.2 % vegetation cover.

To assess the classification performance, we applied a cross-validation on an independent random selection of the training pixels (50 %). Based on a confusion matrix (supplementary table S5), the classification accuracy was 96.78 % (class-based accuracy shown in Table A1). However, this is partly due to autocorrelation resulting from pixel selection within polygons. More importantly, the accuracy was qualitatively tuned and evaluated based on ground-truthed knowledge of the development team. The published dataset of Landgraf et al. (2022, <https://doi.pangaea.de/10.1594/PANGAEA.945057>) provides the central Lena Delta habitat classification map, the ESUs and the polygons used to train the classifier. The training dataset includes data from 23 of the 26 vegetation plots (dataset 1). The dataset provides additional 69 ESUs defined with expert knowledge gathered during several field expeditions to the Lena Delta, labeled as pseudo ESUs for potential future investigations.

### **3.5 Lena Delta habitat classification (Dataset 5)**

#### *3.5.1 Lena Delta habitat classes*

In order to extend the habitat classification map to the entire Lena Delta (29873.7 km<sup>2</sup>), we included all the habitat classes covering the central Lena Delta (dataset 4, table 1). In addition, and based on expert knowledge as well as extensive visual satellite image investigations, we added one habitat class that is not present in the central Lena Delta: the second terrace in the northwest of the Lena Delta is lithologically and geomorphologically different from the other two terraces present in the central delta, and characterized by sandy substrates. In a hyperspectral CHRIS PROBA satellite-based geomorphological classification, Ulrich et al. (2009) described the second terrace featuring very dry elevated sandbanks, barren or poorly vegetated areas with isolated lichens, moss, herbs, dwarf shrubs or grasses (vegetation cover 0–60%, growth height: max. 20 cm, average active layer depth of 1 m on the upland plain with old, vegetation-arrested sand dunes). Based on photos taken at few locations in the field during past expeditions (see supplementary table S3) the habitat class shows well-drained areas dominated by sandy substrate and diverse, sparse vegetation cover; some areas are dominated by sedges, cotton grass and mosses with rare occurrences of lichens and dwarf shrubs, while some areas are dominated by the latter. Schneider et al. (2009) defined the same class as ‘dry moss-, sedge- and dwarf shrub-dominated tundra (DMSD)’. We selected 35 ESUs for this habitat class characterized by high SWIR reflectance (Sentinel-2 band 11) due to dry

land surface conditions. The habitat class was named 'dwarf shrub - herb communities' and was added as an additional habitat class to the training data set.

### *3.5.2 Satellite data processing*

The Lena Delta habitat classification was based on a Sentinel-2 mosaic (top of atmosphere (TOA) reflectance, Google Earth Engine Dataset) with images taken of the area between June 1 and September 15, 2018. The images (N = 1685, distributed across 15 Sentinel-2 tiles) were filtered to discard images with cloud cover above 20%. A cloud mask was applied to the remaining 262 images, masking pixels where the quality band 'QA60' indicates clouds (band 10) or cirrus (band 11). All spectral bands with 20 m resolution were resampled to match the 10 m resolution bands. Next, NDVI was computed (see 3.4) for each image and one high-quality mosaic of all images based on the maximum NDVI value per pixel was produced representing a snapshot of the peak summer vegetation period. Using the median NIR band values across the 262 cloud-masked images, we classified water with a threshold of  $< 0.07$  reflectance. The remaining non-vegetated areas defined by a threshold of  $\text{NDVI} < 0.4$  were classified as barren/sand. The water- and sand-masked image mosaics were then used in the classification pipeline with the following bands: B2 (blue), B3 (green), B4 (red), B5 (red edge 1), B6 (red edge 2), B7 (red edge 3), B8 (NIR), B11 (SWIR 1), B12 (SWIR 2), and NDVI.

### *3.5.3 Lena Delta Habitat classification*

From the central Lena Delta habitat classification (dataset 4) we sampled 7 500 random pixels to train a random forest classifier (smileRandomForest in Google Earth Engine). In addition, we added 35 pixels from the ESUs selected within the 'dwarf shrub - herb communities' of the north-western Lena Delta. Given the dominance of the 'dwarf shrub – herb communities' on the second terrace (north-eastern part of the Lena Delta), the confidence of selecting correct training pixels for this habitat was relative high (see also Figure S7). Unfortunately, no vegetation recording or monitoring schemes exist outside the central Lena Delta. We thus lack format independent validation of the classification across the Delta. Based on confusion matrix, the overall accuracy of the classifier based on its training data (i.e., resubstitution error) was 96.47 %. Habitat class accuracy varied between 91.89 % and 100 % (see complete confusion matrix in Table A2). Similar to the validation of the central Lena Delta habitat classification, the results were carefully checked to make sure that large-scale pattern, e.g., differences between the three terraces, are accurately separated, and that

the highly repetitive structures within terraces are also recognized by the classification (see Figures S6-S8).

Since the barren/sandy areas are highly dynamic with variable water levels mainly within (due to flooding in spring and decreasing river flow during the summer season) but also across years (discharge dynamics), we computed a sandbar probability map for the Lena Delta using cloud masked Sentinel-2 (TOA reflectance) images between April 1 and October 15 from 2015 to 2021 (6026 images). In each image, we labeled sandy pixels by  $NDVI < 0.4$  AND  $NDWI > 0.095$  AND  $NIR < 0.09$  reflectance. Next, for each pixel in the Lena Delta, we computed the percentage of sandy pixels across all images resulting in a sand probability map. The training dataset (random 7500 points, plus 35 points with label 'dwarf shrubs - herb communities'), the habitat classification, and the sandbar probability map was published in the PANGAEA repository (Figure 5, Lisovski et al., 2022, <https://doi.pangaea.de/10.1594/PANGAEA.946407>).

### **3.6 Lena Delta disturbance regimes (Dataset 6)**

The Lena Delta experiences different disturbance regimes, mapped and described in dataset 6. Mainly annual flooding, but also local rapid thaw processes on the land surface of the terraces with ice-rich permafrost, result in disturbance regimes forming distinct habitat classes (Table 2). The floodplains experience seasonal flooding as a regularly occurring disturbance in spring after ice-break up (the spring flood). Very high disturbance regimes due to the most intense scour, erosion and sedimentation result in barren sandbanks or in early-stage plant communities equalling the 'sparsely vegetated' habitat class. The classes 'moist to wet sedge communities', 'wet sedge communities', 'moist equisetum and shrubs', 'dry shrub communities', 'dry grass to wet sedge communities' represent the mid to advanced successional stages on the floodplain within areas of high disturbance that are also described as shifting habitat class (Stanford et al., 2005; Driscoll and Hauer, 2019).

In contrast to the high disturbance regimes on the floodplain, habitats on the first, second and third delta terraces are less extensively disturbed (low disturbance). In these areas typical mature-state tundra plant communities are able to develop; 'polygonal tundra complex', 'tussock tundra', and 'dwarsh shrub herb communities'. However, locally, high disturbance occurs by rapid thaw processes of ice-rich permafrost on the first and third delta terraces with habitats characterized by mid to advanced-stage plant succession; 'moist to wet sedge communities', 'wet sedge communities', 'dry shrub communities', and 'dry grass to wet sedge' communities. Very high disturbance due to intense rapid thaw processes occurs at eroding cliffs and lake margins, in steep valleys and actively developing gullies resulting in barren surfaces with rims of sparsely vegetated



transition zones. Given the link between plant communities and flooding as well as rapid thaw processes, we characterized the disturbance regimes for each habitat class (Table 2) and provide mapped disturbance based on the habitat class of dataset 5 and the corresponding disturbance regime for the entire Lena Delta (Figure 6, Heim and Lisovski, 2023, <https://doi.org/10.5281/zenodo.7575691>).

## 4 Results and Discussion

We deliver a detailed description and associated data products of the most prominent habitat classes in the largest Arctic river delta, the Lena Delta. Supported by ecological field data of plant composition, hyperspectral field measurements from the same sites, and regional expert knowledge collected over decades, we develop a high-resolution Sentinel-2 based habitat map for the entire delta. The compiled datasets provide the necessary baseline for future investigations of the biochemical processes, ecological dynamics, and responses to global warming within the Arctic tundra system of the delta.

### 4.1 Habitat classes of the Lena Delta

Based on the floristic composition and biomass of the vegetation plots (Dataset 1, 2), the spectral properties from hyperspectral field measurements (Dataset 3) as well as expert knowledge, we defined 11 distinct habitat classes linked to different vegetation composition for the Lena Delta (Figure 4). The selected Sentinel-2 spectral bands and the derived NDVI values allow a separation of the habitat classes into two distinct groups (the first separation level between habitat classes in Figure 4a, 1st hierarchical level). Three habitat classes ('wet sedge communities', 'moist Equisetum and shrub communities', 'dry grass to wet sedge communities') formed in areas of high disturbance by rapid thaw processes and regular flooding represent a distinct cluster with highest vegetation vitality (high NDVI), and separated from the more stable and mature tundra communities ('polygonal tundra complex', 'dry (tussock) tundra', and 'dry dwarf-shrub and herb communities'), and the other successional plant communities ('moist to wet sedge complex', 'dry low shrub communities' and 'sparsely vegetated') all characterised by a lower NDVI range. The 'dry dwarf-shrub and herb communities' form a separate cluster with the least overlap with other habitat classes within the two-dimensional non-metric multidimensional scaling (NMDS) space (2nd hierarchical level, Figure 3a; Figure 4c) due to very low vegetation vitality and surface moisture (lowest NDVI, high red and SWIR reflectance). There are two remaining habitat classes on the 3rd and 4th hierarchical level, which are successional plant communities, the 'moist to wet sedge complex' and 'dry low shrub communities'. The separation on the 3rd and 4th hierarchical level is mainly driven by higher NDVI of these

successional plant community classes in comparison with the mature state tundra plant communities with lower NDVI (Figure 4a-b). The 'dry grass to wet sedge communities' and the 'sparsely vegetated area' habitat class (not covered by vegetation plots but added during the classification process), show the largest overlap with the other habitat classes due to a high variability in vegetation cover, biomass and moisture. In general, the ordination method (Figure 4b) shows that distinct plant communities and the associated habitat classes are mostly separated by a biomass gradient for which the NDVI is a good approximator. A further separation linked to potential spectral proxies for biomass exists with the far red-edge and NIR bands (B6,7,8) but is less distinct than the NDVI axis. Together with the SWIR (B11,12) the red (B4) and near red-edge (B5) bands, and less strongly the blue and green bands (B2,3), the results indicate a habitat class separation based on moisture, biomass and vegetation colour characteristics.

The vegetation plot selection was made in relation to the most typical habitats (e.g., Mueller-Bombois and Ellenberg, 1974). For 15 of the 26 vegetation plots, we collected and provided hyperspectral surface reflectance data (Runge et al., 2021). These measurements cover a variety of landscape units including Yedoma uplands, floodplains (vegetated and non-vegetated), drained thermokarst lake basins (old and recently drained), and areas covered by low shrub layers. Comparing the hyperspectral surface reflectance with multispectral Sentinel-2 data, we found commonalities in the discrimination of habitat classes along moisture gradients. Unfortunately, the hyperspectral field measurements do not cover the biomass gradient. Plot measurements with the field spectrometer are conducted with the hand-held instrument held at shoulder height, hence it was not possible to acquire field spectroscopy measurements in disturbed patches with tall shrubs or very sloped terrain. This highlights the difficulty in deriving high spectral resolution surface reflectance measurements representative of fine scale differences between Arctic tundra habitat classes if the plot properties become too challenging to measure.

In general, mature-state tundra plant communities have relatively similar spectral properties due to low vascular plant cover (e.g., Beamish et al., 2017). In addition, the tundra vegetation communities contain a wide range of accessory pigment composition (carotenoids and anthocyanins) that result in a very similar spectral response (Beamish et al., 2018). Only the highly disturbed communities such as wetlands or areas with tall shrubs are more spectrally distinct due to a high NIR reflectance plateau (Buchhorn et al., 2013). Since the hyperspectral field measurements provide a higher spatial resolution and thus also a measure of variability within areas of the same general habitat type, we consider the measurements valuable for applications that aim at analysing ecological and biochemical processes within distinct habitats in more detail.

## **4.2 Sentinel-2 based habitat classification**

Based on the identified habitat classes (Table 1) we applied a random forest classifier to map habitat classes in the central Lena Delta and subsequently in the entire Lena Delta. Both maps represent the summer season of 2018 for which we could use a sufficient number of satellite images with low cloud cover.

The Lena Delta habitat map shows the ice-rich first and third terraces mainly covered by i) the 'polygonal tundra complex' due to impeded drainage on the terrace plateaus and by ii) drier tundra communities on well drained areas due to older degraded permafrost forms (detailed description in Morgenstern et al., 2008, 2011). On the second terrace, the classified 'dry dwarf shrub and herb communities' occur well separated from the moist habitat classes covering the floor of the alases. On the floodplains, the rich mosaic outlines a wide spectrum of very diverse classes, the dry versus moist and wet substrate habitats, in the active delta area.

Polygonal tundra is characterized by high spatial heterogeneity; at the decimeter to meter-scale plant composition and diversity is defined by the polygonal microrelief and water level (Whitaker and Woodwell, 1968; Forman and Godron, 1981; Zibulski et al., 2016; Nitzbon et al., 2020, Siewert et al., 2021). Therefore, within a single Sentinel-2 pixel, dry polygonal rims, moist slopes, wet patches and surface water can all be present. The spatial resolution of Sentinel-2 cannot capture the meter-scale, but captures the heterogeneity between the different surface water contributions of the 'polygonal tundra complex' on the first and third terrace. In the Lena Delta, the 'polygonal tundra complex with up to 50% surface water' represents the dominant habitat class with 25% of the delta area (about 7 434 km<sup>2</sup>). All other habitat classes represent 1-6% of the delta area with 'dwarf shrub-herb communities' and 'moist to wet sedge complex' reaching 5.4% and 5.9%, respectively (Figure 6). Based on the summer Sentinel-2 mosaic, the classes 'Water' and 'Sand' cover more than 40% of the delta. However, those two classes are extremely variable within and across years, depending on the river water level during image acquisition time. To provide information on this variability, we calculated how often each pixel in the delta (cloud free Sentinel-2 pixels from 2015 to 2022) was classified as sand (threshold approach). This led to an additional sand probability layer with values between 0-100%.

Despite extensive research within the area, only a few classification products are available for the Lena Delta. The new Lena Delta classification is a high-resolution (Sentinel-2, 10 m) map that focuses on the delta-specific habitat classes and emphasizes the high level of heterogeneity across the delta. We compared the Lena Delta habitat classification to existing classifications: the first published Lena Delta-wide land cover classification targeted towards tundra environments and the upscaling of methane emissions with 30 m resolution (Schneider et al., 2009), the global ESA Climate Change Initiative CCI land cover classification with 300 m resolution (Defourny, 2019), and a

circum-arctic standardized ESA GlobPermafrost land cover map of the Lena Delta with 20 m resolution (Bartsch et al., 2019). We sampled the classification results with a regular point grid of more than 3 million points which have an equal distance of 100 m to one another to compare the classification results. Figures and tables with more information on class comparisons can be found in the supplements (Table 1, Figure S3, S4m, S5). Overall, the classifications of the Lena Delta overlap well for 'water' (water bodies (Defourny, 2019), shallow water (Schneider et al., 2009), water (different depths and sediment yields, Bartsch et al. 2019)) and 'sand' (bare areas (Defourny, 2019), mainly non-vegetated areas (Schneider et al., 2009), sand, seasonally inundated and disturbed (Bartsch et al. 2019)) areas. Besides this, the mapped classes differ greatly from one another. For example, the dominant classes in the coarse ESA CCI land cover 2018 product (300 m) for the Lena Delta are 'shrub or herbaceous cover', 'flooded', 'fresh / saline / brackish water', 'sparse vegetation (tree, shrub, herbaceous cover) (<15%)', and 'mosaic tree and shrub (>50%)', 'herbaceous cover (>50%)'.

These broad classes describe the major land cover in the Arctic delta but fail to depict the heterogeneity of habitats and plant communities not only because of its coarse spatial resolution but also because of the broad class descriptions. Furthermore, smaller areas are classified as 'tree cover', 'needleleaved', 'evergreen / deciduous', 'closed to open (>15%)' and 'mosaic tree and shrub (>50%) / herbaceous cover (<50%)' which is an inaccurate depiction of the delta.

This habitat map and the land cover classification from Schneider et al. (2009) resemble each other more closely, however, this habitat map shows more differentiation in the classes and spatial resolution, 10 m to 30 m, respectively. The only class description that is identical in both classifications, besides water and sand / mainly non-vegetated areas, is 'dry tussock tundra'. However, there is only a small match between these classes in the point comparison and most 'dry tussock tundra' areas from the Schneider et al. (2009) classification fall into the PC\_50%, PC\_20%, 'moist wet sedge complex' and 'dwarf shrub-herb communities'. The habitat map shows the mosaic of habitats on the floodplain with 'moist equisetum and shrubs on floodplain', 'dry low shrub community', 'moist to wet sedge' and 'wet sedge complex' which match with 'moist to dry dwarf shrub-dominated tundra' in the land cover classification of Schneider et al. (2009). Also, for the polygonal tundra complex, our habitat map shows more differentiation with three classes of up to 50% 20% 10% surface water contribution versus two classes in Schneider et al. (2009) 'wet sedge and moss dominated tundra' and 'moist grass and moss dominated tundra'. The areas covered by 'PC\_50%' and 'PC\_20%' match with 'wet sedge- and moss-dominated tundra', and 'PC\_20%' and 'PC\_10%' match with 'moist grass and moss-dominated tundra'. The overall aim of both maps is to differentiate between dry to wet land cover habitats as these describe the heterogeneity in the delta

well and determine factors related to methane emissions (see Schneider et al. 2009) and the different habitat classes.

The land cover classification from ESA GlobPermafrost differentiates between 21 classes which are associated to eight broader groups, such as sparse vegetation, shrub tundra, forest, grassland, floodplain, disturbed, barren and water (Bartsch et al., 2019). With a spatial resolution of 20 m, the latter product is the closest to this habitat map. The major class 'wet ecotopes' of ESA GlobPermafrost match with our 'PC\_50%:' on the first terrace and the 'moist to wet sedge complex' on the floodplains. On the floodplain however, other classes show less agreement. The ESA GlobPermafrost one class 'floodplain mostly fluvial' does not differentiate the floodplain classes further, in contrast to our habitat map differentiating between 'moist to wet sedge complex', 'wet sedge complex', 'moist equisetum and shrubs' and 'dry low shrub community' on floodplain. Whereas the ESA GlobPermafrost class 'disturbed' (defined as forest fire scars, seasonally inundation and landslide scars can be found in 'PC\_50%' predominantly, in 'sand', 'PC\_20%' and 'sparsely vegetated areas' in our habitat map. This underlines the complex structure of match and mismatch between classifications.

The land cover map from Schneider et al. (2009) is based on two cloud-free Landsat images from June/July 2000 and 2001, the ESA CCI land cover 2018 map is based on summer images as well. Hence, the images used for this habitat classification were acquired at a similar time as for the ESA CCI product and we do not expect differences based on changes on the ground due to this temporal concurrence. In the almost 20-year difference between Schneider et al. (2009) and this habitat map we do expect changes in vegetation composition. Overall, it is challenging to obtain sufficient cloud-free images during the summer months to fully cover the entire Lena Delta for a classification project and to depict a specific phenological state. Therefore, we created a Sentinel-2 composite mosaic based on the maximum NDVI value per pixel from June to September. With this we ensure to have the peak vegetation and phenology season represented as input for the habitat classification as much as possible and increase comparability to other classification studies despite a temporal mismatch.

The habitat map gives an accurate and detailed description of the Arctic Lena Delta that incorporates extensive field data and expert knowledge. The habitat map is superior to the ESA CCI land cover map (2018) in both spatial resolution and class description as it depicts the heterogeneous habitat distribution. The 20m ESA GlobPermafrost classification matches the resolution of the habitat map closely but due to its wider geographical application with circum-Arctic standardized classes it does not optimally represent Lena Delta-specific habitats, such as the widely distributed polygonal tundra complex. Furthermore, the habitat map is an update to Schneider et al.

(2009), which was based on three Landsat images from 2000 and 2001 and shows further differentiation of habitats, specifically representing the floodplain mosaics of this Arctic delta. Note, that the lack of independent validation plots/pixels across the Lena Delta limits our ability to formally assess overall accuracy. This limitation might especially affect the smaller patchy habitat types, rather than the dominant types within the three terraces (see also visual evaluation in Figures S6-S8).

#### **4.3 Habitat linked disturbance regimes**

Parts of the Lena Delta are characterised by disturbances due to annual floodings or rapid permafrost thaw processes leading to specific habitat classes. We provide habitat linked disturbance regimes (describing the type and intensity of disturbances) across the delta. Our product (Dataset 6, Figure 6a) shows that the largest part of the vegetated delta (excluding 12 439 km<sup>2</sup> of 'sand' and 'water' classes) is impacted by low disturbance, resulting in mature-state plant communities on the terrace plateaus (Figure 6b, 72%, 12 806 km<sup>2</sup>). Specifically, the second terrace in the northwest of the delta, with low ice content, is least impacted by rapid thaw processes and not part of the active delta. In contrast, the habitats in the active delta are all linked to high disturbance (27%, 4 875 km<sup>2</sup>). The 'moist to wet sedge complex' (10% of the vegetated Lena Delta) is the largest class considered to be formed by high disturbance. This class is found in larger patch sizes on the riverine floodplains, smaller patches on the floor of thermo-erosional valleys. Overall, 27.5% of the vegetated area of the Lena Delta experiences some level of high disturbance from either regular spring floods or from rapid thaw processes.

Species richness, relative abundance and biomass characteristics are important habitat features that are influenced by landscape characteristics such as topography, water fluxes, soil types and disturbance regimes (Forman and Godron, 1981; Naiman et al., 1986; Pickett et al., 1989; Montgomery, 1999). Greig-Smith (1964), Woodwell and Whittaker (1968), and Forman and Godron (1981) described fragmentation of land surfaces due to disturbance (defined by type and intensities) and topography. In the Lena Delta, the terrace-related topography and active floodplain areas are major determinants of plant communities and habitat classes and are thus well reflected in the Lena Delta habitat map.

The high disturbance regime on floodplains results in 'shifting habitats' (Stanford et al., 2005; Driscoll and Hauer, 2019). The annual spring floods and rapid thaw processes result in areas of high disturbances, habitats of mid to advanced plant successional stages showing high vascular plant above ground biomass (Figure 6c) due to the higher nutrient availability, a deeper active layer and more moisture (e.g., Myers-Smith et al., 2020). Within the low disturbance habitat classes, a thick

moss layer as well as a low vascular plant coverage characterise the tundra community assemblages representing mature state plant communities. Because high disturbance patches are characterized by high vascular biomass, they can be well classified specifically in the NDVI, but also NIR and red edge bands of optical medium resolution sensors such as SENTINEL-2. Within the vegetation plots (Dataset 1), we did not find clear differences in species richness and in the Shannon diversity index between the disturbed and the undisturbed classes (Figure 6d). Since most disturbed habitat classes such as the 'moist to wet sedge', the 'wet sedge' as well as homogeneous patches of high shrubs (as part of the habitat class 'dry grass to wet sedge complex'), were not sampled in the field due to too challenging conditions, however they are clearly representing habitats with low species richness. In the extreme case disturbance can lead to barren and sparsely vegetated surfaces.

#### **4.4 Classification accuracy and representativeness**

The field data was acquired during a field trip in July-August 2018, primarily focusing on 30 m x 30 m homogeneous vegetation and land cover plots. Additionally, we relied on Sentinel-2 images for the different classifications that were also acquired in summer 2018, covering the same period as the field trip, and have a spatial resolution of 20 m. The temporal overlap of the field work and the satellite image acquisitions ensures consistency across the different datasets and represents a close relationship between datasets and products obtained in the field (dataset 1, 2 and 3) and the results derived from the satellite images that use the field data as input. As Sentinel-2 images have a small geolocation error, we could link our field plot locations directly with the satellite images. Furthermore, the sampling and measurement design of the plots with 30 m x 30 m ensured a reliable link to the satellite data with similar spatial resolution, as we followed the recommendations on ESU. The RGBNIR Sentinel-2 bands have a spatial resolution of 10 m and the red edge (NIR) and SWIR bands a spatial resolution of 20 m, and even if we downsampled the bands to 10 m the spectral information is sustained. More information on datasets and their spatial and temporal resolutions are provided in supplementary Table S3.

The presented datasets are limited by the regional in-situ observations and expert knowledge collected mainly in the central Lena Delta. The remoteness of the area and extremely difficult logistics to conduct research in the second terrace and the outer rims of the delta are major reasons for these limitations. However, the delta is relatively homogeneous in habitat classes that develop based on underlying geomorphology and the disturbance regime (annual flooding and permafrost thaw processes). Only one major habitat class is absent from the well studied central Lena Delta and only occurs across the second terrace. Thus, even though detailed knowledge and in-situ observations are derived from a relatively small subset of the Delta, we are confident that our

mapping results from the entire region are valuable and accurate. Also due to the inaccessibility of large areas of the delta, quantitative accuracy assessments of the classifier and the final mapping product are lacking. We had to rely on qualitative evaluation procedures by experts. Analysis of similarity of habitat classes and SENTINEL-2 spectral reflectance as well as NDVI values provide additional quantitative and qualitative assessments on the extent to which the different classes are identifiable and separated between classes.

In-situ observations (Datasets 1-3) as well as mapping products (Datasets 4-6) represent conditions and vegetation composition of 2018. The timing of the summer 2018 expedition coincided with a relatively high number of cloud free Sentinel-2 images necessary for a high quality habitat classification. Overall, the described datasets are of appropriate quality to serve as a basis for additional studies and most importantly as a baseline to identify changes in the future.

## 5 Conclusions

The described datasets provide coherent and complementary information of the major habitat classes in the Lena Delta in Arctic Siberia, the largest delta in the Arctic. Based on extensive knowledge collected during fieldwork that included habitat-related measurements of plant composition, biomass, and hyperspectral field measurements we provide a validated and high-resolution habitat classification map of the delta. In addition, we linked ecologically important characteristics of disturbances in the delta to habitat classes, providing a baseline for future studies of Arctic change as well as a foundation for potential upscaling of related processes such as biodiversity, ecosystem functions, and biochemical dynamics such as greenhouse gas emissions. With this update of previous land cover and habitat-related mapping products of the Lena Delta we strive to facilitate and promote future investigations leading to a better understanding of this highly sensitive arctic delta system.

## Acknowledgements

Field work in the Lena River Delta was conducted in the frame of the Russian-German LENA Expeditions based at Research Station Samoylov Island. We thank all colleagues and station staff involved in the organization and logistics for their great support.



## Code/Data availability

Dataset 1: Shevtsova et al., 2021a, <https://doi.pangaea.de/10.1594/PANGAEA.935875>, Foliage projective cover of 26 vegetation sites in the central Lena Delta from 2018, is published as Foliage projective cover for all major taxa estimated as percent, as tab-delimited text files.

Dataset 2: Shevtsova et al., 2021b, <https://doi.pangaea.de/10.1594/PANGAEA.935923>, Total above-ground biomass of 25 vegetation sites in the central Lena Delta from 2018, is published as biomass aboveground dry mass per major taxa, as well as for 'moss and lichen', 'litter' and the remaining minor taxa (called 'other plants') and the total biomass in the units [g/m<sup>2</sup>], as tab-delimited text.

Dataset 3: Runge et al., 2022, <https://doi.pangaea.de/10.1594/PANGAEA.945982>, Hyperspectral field spectrometry of Arctic vegetation units in the central Lena Delta, is published as an overview of the plot details and field spectrometer reflectance spectra in the unit [%] of 28 vegetation plots, as tab-delimited text files.

Dataset 4: Landgraf et al., 2022 a,b,c. The Sentinel-2-derived central Lena Delta land cover (habitat) classification consists of the following three data publications: i) Landgraf et al. 2022a, <https://doi.pangaea.de/10.1594/PANGAEA.945056>: a raster file with assigned land cover classes and an ESRI polygon shape file containing the 10 training classes representing the different vegetation compositions, as geotiff file. Both datasets are based on 2018 satellite images and informed by the in-situ vegetation plots and expert knowledge. Datasets are in Universe Transverse Mercator (UTM) Zone 52 North projection. ii) Landgraf et al. 2022b, <https://doi.pangaea.de/10.1594/PANGAEA.945054>. This data set includes training elements representing different vegetation composition in the form of Elementary Sampling Units ESUs: 69 pseudo ESUs set with expert knowledge from the field and from Lena Delta expedition field reports. iii) Landgraf et al. 2022c, <https://doi.pangaea.de/10.1594/PANGAEA.945055>. This data set includes training elements representing different vegetation composition in the form of Elementary Sampling Units ESUs: 23 true ESUs representing the LD18 vegetation plots.

Dataset 5: Lisovski et al., 2022, <https://doi.pangaea.de/10.1594/PANGAEA.946407>. The Lena Delta Habitat Map (2018, Sentinel-2) contains i) the Lena Delta habitat map (13 classes), ii) the sand probability map, both as geotiff files in WGS84 geographic projection, iii) the habitat class description as comma delimited csv table, and iv) the training dataset (n = 4 278 classified pixels) in geographic decimal coordinates comma delimited csv table. The data collection also contains the Lena Delta Region of Interest (ROI) ESRI shapefile outlining the Lena Delta including a coastal water buffer.

Dataset 6: Heim and Lisovski, 2023, <https://doi.org/10.5281/zenodo.7575691>. The Lena Delta habitat disturbance regime map is published in the form of two geotiff files (tiles) in WGS84 geographic projection.

Code developed in Google Earth Engine to derive habitat classes based in the central Lena Delta classification, as well as R code for figures can be accessed from the following repository: Lisovski, S. (2024). Code for 'A new habitat map of the Lena Delta in Arctic Siberia based on field and remote sensing datasets'. V0.1. Zenodo. 10.5281/zenodo.11197641.

## Competing interests

Birgit Heim is a member of the editorial board of ESSD. Otherwise, we declare no competing interests.

## Funding

SL acknowledges funding from the Geo.X Network for Geosciences in Berlin and Brandenburg. This study was supported by BMBF KoPf (Grant Number 03F0764B), KoPf Synthesis (Grant Number 03F0834B), and AWI base funds. AR was partially funded by ESA GlobPermafrost and an ESA CCI postdoctoral fellowship. BH acknowledges HGF REKLIM.

## Authors contribution

SL: Conceptual framework, habitat classification, data analysis, writing

AR: Conceptual framework, field work, spectral field data collection, habitat classification, spectral data processing, data analysis, writing

IS: Field work, biomass and projective cover measurement in vegetation plots, habitat classification

RRO: Habitat classification

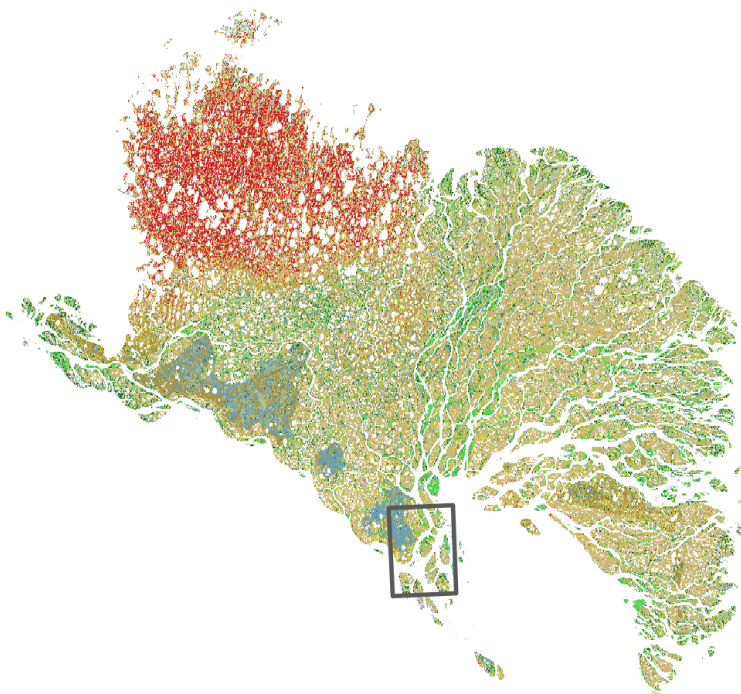
NL: habitat classification, spectral data processing

MF: Field work, spectral field data collection

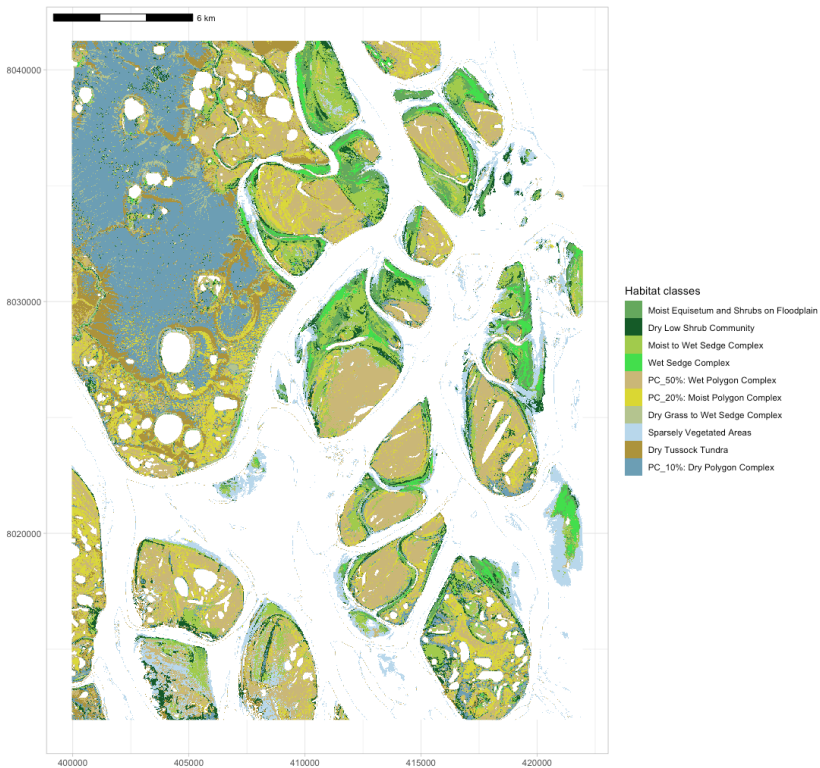
NiL: habitat class definition, field work

AM: Project management, writing

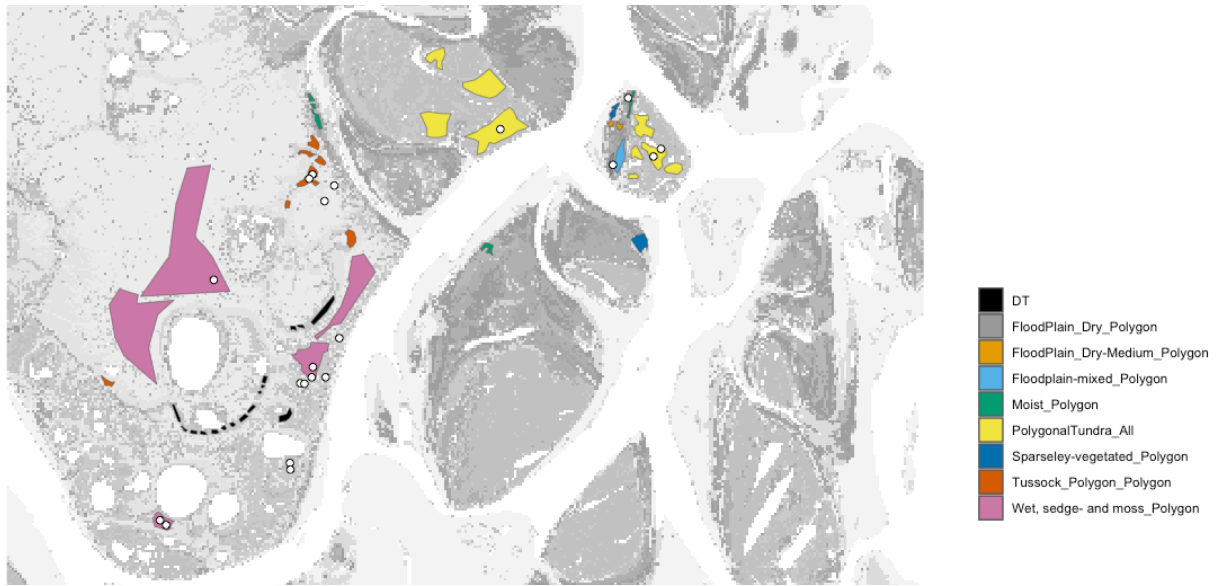
- 693 CS: Spectral data processing
- 694 AB: Spectral data processing
- 695 UH: Conceptual framework, project management
- 696 GG: Conceptual framework, project management, habitat classification, writing
- 697 BH: Conceptual framework, field work, habitat classification, project management, writing
- 698



700  
701 **Figure A1:** Location of the central Lena Delta (Dataset 4) in the Lena Delta (Dataset 5,6). WGS 84 projection.



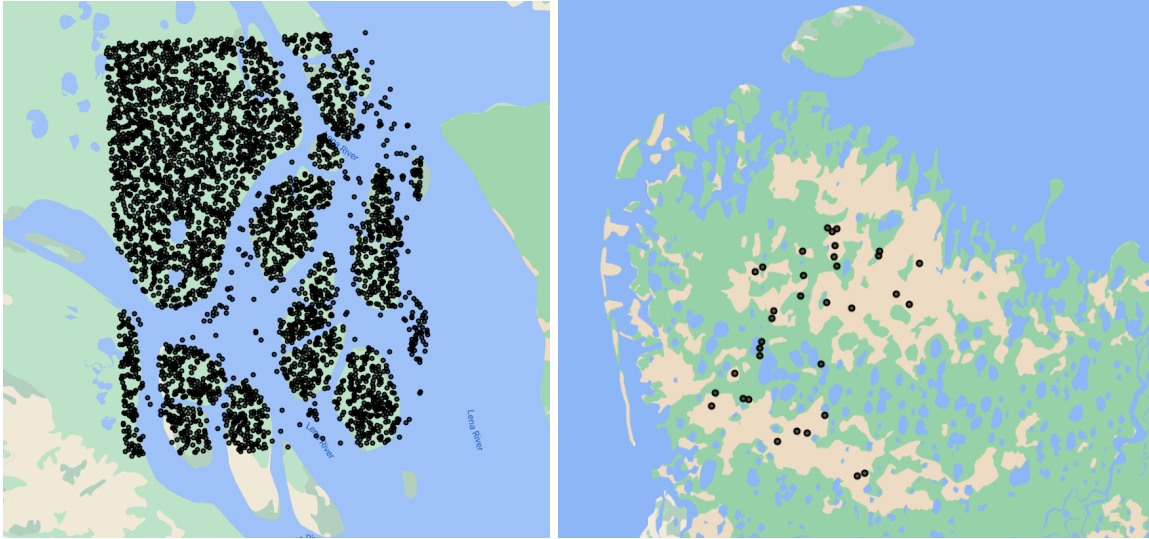
702  
703 **Figure A2:** Supervised habitat classification of the central Lena Delta based on a cloud-free Sentinel-2 August 2018 acquisition (Dataset 4). Numbers in legend correspond to the labels in published Dataset 4 (Landgraf et al. 2022). Universe Transverse Mercator Z52 on WGS 84 projection.



**Figure A3:** Subset of the central Lena Delta with 30 x 30 m ESUs (white points, dataset 1) and polygons defined by expert knowledge (published with dataset 4). Together the ESUs and polygons served areas to sample 8 626 training pixels for the central Lena Delta landcover/habitat classification (dataset 4, Landgraf et al. 2022a).

**Table A1:** Results of the class-based cross-validation for the central Lena Delta habitat classification, based in 50 % of the 8 626 labelled pixels, and the accuracy of the classifier (e.g., resubstitution error) of the entire Lena Delta habitat classifier.

Habitat class	Abbreviation	Accuracy – central Lena Delta	Accuracy – entire Lena Delta
Moist equisetum and shrub community	MESH	0.999	0.977
Dry shrub community	DSH	0.998	0.947
Moist to wet sedge community	MSWS	0.997	0.972
Wet sedge community	WS	0.991	0.947
Polygonal tundra (up to 50% surface water)	PC < 50%	0.988	0.978
Polygonal tundra (up to 20% surface water)	PC < 20%	0.986	0.925
Dry grass to wet sedge community	GSSH	0.990	0.918
Sparsely vegetated area	SPSH	0.999	0.948
Dry tunda (tussock tundra)	DT	0.993	0.94
Polygonal tundra (up to 10% surface water)	PC<10%	0.996	0.985
Dwarf shrub-herb community	DSC	-	0.999



**Figure A4:** Training pixels for the Lena Delta habitat classification (dataset 5). (Left) 7,500 random pixels samples across the habitat classes from the central Lena Delta landcover/habitat map (dataset 4). (Right) 35 pixels selected by expert knowledge for the 'dwarf shrub - herb communities' that are missing in the central Lena Delta.

## References

- AMAP: AMAP Arctic Climate Change Update 2021: Key Trends and Impacts. Arctic Monitoring and Assessment Programme (AMAP), Tromsø, Norway, viii+148pp, 2021.
- Bartlett, K. B., Crill, P. M., Sass, R. L., Harriss, R. C., and Dise, N. B.: Methane Emissions from Tundra Environments in the Yukon-Kuskokwim Delta, Alaska, *Journal of Geophysical Research-Atmospheres*, 97, 16645-16660, doi: 10.1029/91jd00610, 1992.
- Bartsch, A., Hofler, A., Kroisleitner, C., and Trofaier, A. M.: Land Cover Mapping in Northern High Latitude Permafrost Regions with Satellite Data: Achievements and Remaining Challenges, *Remote Sensing*, 8, 979. doi: 10.3390/rs8120979, 2016.
- Bartsch, A., Widhalm, B., Pointner, G., Ermokhina, K., Leibman, M., and Heim, B.: Landcover derived from Sentinel-1 and Sentinel-2 satellite data (2015-2018) for subarctic and arctic environments [dataset], <https://doi.org/10.1594/PANGAEA.897916>, 2019.
- Bartsch, A., Widhalm, B., Leibman, M., Ermokhina, K., Kumpula, T., Skarin, A., Wilcox, E. J., Jones, B. M., Frost, G. V., Hofler, A., and Pointner, G.: Feasibility of tundra vegetation height retrieval from Sentinel-1 and Sentinel-2 data, *Remote Sensing of Environment*, 237, 111515, doi: 10.1016/j.rse.2019.111515, 2020.
- Beamish, A., Raynolds, M. K., Epstein, H., Frost, G. V., Macander, M. J., Bergstedt, H., Bartsch, A., Kruse, S., Miles, V., Tanis, C. M., Heim, B., Fuchs, M., Chabrillat, S., Shevtsova, I., Verdonen, M., and Wagner, J.: Recent trends and remaining challenges for optical remote sensing of Arctic tundra vegetation: A review and outlook, *Remote Sensing of Environment*, 246, ARTN 111872, doi: 10.1016/j.rse.2020.111872, 2020.
- Beamish, A. L., Coops, N., Chabrillat, S., and Heim, B.: A Phenological Approach to Spectral Differentiation of Low-Arctic Tundra Vegetation Communities, North Slope, Alaska, *Remote Sensing*, 9, 1200, doi: 10.3390/rs9111200, 2017.
- Beamish, A. L., Coops, N. C., Hermosilla, T., Chabrillat, S., and Heim, B.: Monitoring pigment-driven vegetation changes in a low-Arctic tundra ecosystem using digital cameras, *Ecosphere*, 9, e02123, doi: 10.1002/ecs2.2123, 2018.

769 Berner, L. T., Massey, R., Jantz, P., Forbes, B. C., Macias-Fauria, M., Myers-Smith, I.,  
 770 Kumpula, T., Gauthier, G., Andreu-Hayles, L., Gaglioti, B. V., Burns, P., Zetterberg, P., D'Arrigo,  
 771 R., and Goetz, S. J.: Summer warming explains widespread but not uniform greening in the  
 772 Arctic tundra biome, *Nature Communications*, 11, 4621, doi: 10.1038/s41467-020-18479-5,  
 773 2020.

774 Biskaborn, B. K., Smith, S. L., Noetzli, J., Matthes, H., Vieira, G., Streletskiy, D. A., Schoeneich,  
 775 P., Romanovsky, V. E., Lewkowicz, A. G., Abramov, A., Allard, M., Boike, J., Cable, W. L.,  
 776 Christiansen, H. H., Delaloye, R., Diekmann, B., Drozdov, D., Etzelmuller, B., Grosse, G.,  
 777 Guglielmin, M., Ingeman-Nielsen, T., Isaksen, K., Ishikawa, M., Johansson, M., Johannsson, H.,  
 778 Joo, A., Kaverin, D., Kholodov, A., Konstantinov, P., Kroger, T., Lambiel, C., Lanckman, J. P.,  
 779 Luo, D. L., Malkova, G., Meiklejohn, I., Moskalenko, N., Oliva, M., Phillips, M., Ramos, M.,  
 780 Sannel, A. B. K., Sergeev, D., Seybold, C., Skryabin, P., Vasiliev, A., Wu, Q. B., Yoshikawa, K.,  
 781 Zheleznyak, M., and Lantuit, H.: Permafrost is warming at a global scale, *Nature*  
 782 *Communications*, 10, 264, doi: 10.1038/s41467-018-08240-4, 2019.

783 Boike, J., Wille, C., and Abnizova, A.: Climatology and summer energy and water balance of  
 784 polygonal tundra in the Lena River Delta, Siberia, *Journal of Geophysical Research-*  
 785 *Biogeosciences*, 113, G03025, doi: 10.1029/2007jg000540, 2008.

786 Boike, J., Nitzbon, J., Anders, K., Grigoriev, M., Bolshiyarov, D., Langer, M., Lange, S.,  
 787 Bornemann, N., Morgenstern, A., Schreiber, P., Wille, C., Chadburn, S., Gouttevin, I., Burke, E.,  
 788 and Kutzbach, L.: A 16-year record (2002-2017) of permafrost, active-layer, and meteorological  
 789 conditions at the Samoylov Island Arctic permafrost research site, Lena River delta, northern  
 790 Siberia: an opportunity to validate remote-sensing data and land surface, snow, and permafrost  
 791 models, *Earth System Science Data*, 11, 261-299, doi: 10.5194/essd-11-261-2019, 2019.

792 Box, J. E., Colgan, W. T., Christensen, T. R., Schmidt, N. M., Lund, M., Parmentier, F. J. W.,  
 793 Brown, R., Bhatt, U. S., Euskirchen, E. S., Romanovsky, V. E., Walsh, J. E., Overland, J. E.,  
 794 Wang, M. Y., Corell, R. W., Meier, W. N., Wouters, B., Mernild, S., Mard, J., Pawlak, J., and  
 795 Olsen, M. S.: Key indicators of Arctic climate change: 1971-2017, *Environmental Research*  
 796 *Letters*, 14, 045010, doi: 10.1088/1748-9326/aafc1b, 2019.

797 Buchhorn, M., Walker, D. A., Heim, B., Raynolds, M. K., Epstein, H. E., and Schwieder, M.:  
 798 Ground-Based Hyperspectral Characterization of Alaska Tundra Vegetation along  
 799 Environmental Gradients, *Remote Sensing*, 5, 3971-4005, doi: 10.3390/rs5083971, 2013.



800 Driscoll, K. P. and Hauer, F. R.: Seasonal flooding affects habitat and landscape dynamics of a  
801 gravel-bed river floodplain, *Freshwater Science*, 38, 510-526, doi: 10.1086/704826, 2019.

802 Drusch, M., Del Bello, U., Carlier, S., Colin, O., Fernandez, V., Gascon, F., Hoersch, B., Isola,  
803 C., Laberinti, P., Martimort, P., Meygret, A., Spoto, F., Sy, O., Marchese, F., Bargellini, P.,  
804 Sentinel-2: ESA's optical high-resolution mission for GMES operational services. *Rem. Sens.*  
805 *Environ.*, 120, 25–36, doi: 10.1016/j.rse.2011.11.026 , 2012.

806 Duncanson, L., Armston, J., Disney, M., Avitabile, V., Barbier, N., Calders, K., Carter, S.,  
807 Chave, J., Herold, M., MacBean, N., McRoberts, R., Minor, D., Paul, K., Réjou-Méchain, M.,  
808 Roxburgh, S., Williams, M., Albinet, C., Baker, T., Bartholomeus, H., Bastin, J. F., Coomes, D.,  
809 Crowther, T., Davies, S., de Bruin, S., De Kauwe, M., Domke, G., Dubayah, R., Falkowski, M.,  
810 Fatoyinbo, L., Goetz, S., Jantz, P., Jonckheere, I., Jucker, T., Kay, H., Kellner, J., Labriere, N.,  
811 Lucas, R., Mitchard, E., Morsdorf, F., Næsset, E., Park, T., Phillips, O. L., Ploton, P., Puliti, S.,  
812 Quegan, S., Saatchi, S., Schaaf, C., Schepaschenko, D., Scipal, K., Stovall, A., Thiel, C.,  
813 Wulder, M. A., Camacho, F., Nickeson, J., Román, M., and Margolis, H.: Aboveground Woody  
814 Biomass Product Validation Good Practices Protocol. Version 1.0, Land Product Validation  
815 Subgroup (WGCV/CEOS), doi:10.5067/doc/ceoswgcv/lpv/agb.001, 2021.

816 Endsley, K. A., Kimball, J. S., and Reichle, R. H.: Soil Respiration Phenology Improves Modeled  
817 Phase of Terrestrial net Ecosystem Exchange in Northern Hemisphere, *Journal of Advances in*  
818 *Modeling Earth Systems*, 14, e2021MS002804, doi: 10.1029/2021MS002804, 2022.

819 ESA, 2015. Sentinel-2 User Handbook. ESA Standard Document.

820 ESA Land Cover CCI project team; Defourny, P. (2019): ESA Land Cover Climate Change  
821 Initiative (Land\_Cover\_cci): Global Land Cover Maps, Version 2.0.7. Centre for  
822 Environmental Data Analysis, *downloaded 2022*, [dataset]  
823 <https://catalogue.ceda.ac.uk/uuid/b382ebe6679d44b8b0e68ea4ef4b701c>

824 Fedorova, I., Chetverova, A., Bolshiyarov, D., Makarov, A., Boike, J., Heim, B., Morgenstern,  
825 A., Overduin, P. P., Wegner, C., Kashina, V., Eulenburg, A., Dobrotina, E., and Sidorina, I.:  
826 Lena Delta hydrology and geochemistry: long-term hydrological data and recent field  
827 observations, *Biogeosciences*, 12, 345-363, doi: 10.5194/bg-12-345-2015, 2015.

828 Forman, R. T. T. and Godron, M.: Patches and Structural Components for a Landscape  
829 Ecology, Bioscience, 31, 733-740, doi 10.2307/1308780, 1981.

830 Frost, G. V., Loehman, R. A., Saperstein, L. B., Macander, M. J., Nelson, P. R., Paradis, D. P.,  
831 and Natali, S. M.: Multi-decadal patterns of vegetation succession after tundra fire on the  
832 Yukon-Kuskokwim Delta, Alaska, Environmental Research Letters, 15, 025003, doi:  
833 10.1088/1748-9326/ab5f49, 2020.

834 Gilg, O., Sané, R., Solovieva, D. V., Pozdnyakov, V. I., Sabard, B., Tsanos, D., Zöckler, C.,  
835 Lappo, E. G., Syroechkovski, J. E. E., and Eichhorn, G.: Birds and Mammals of the Lena Delta  
836 Nature Reserve, Siberia, ARCTIC, 53, 118-133, doi: 10.14430/arctic842, 2000.

837 Greig-Smith, P.: Quantitative plant ecology, Butterworths 1964.

838 Grigoriev, M. N.: Crio Morphogenesis in the Lena Delta, Permafrost Institute Press, Yakutsk  
839 1993.

840 Heim, B. and Lisovski, S.: Lena Delta habitat disturbance regimes (0.0) [dataset], Zenodo,  
841 <https://doi.org/10.5281/zenodo,7575691>, 2023.

842 Holl, D., Wille, C., Sachs, T., Schreiber, P., Runkle, B. R. K., Beckebanze, L., Langer, M., Boike,  
843 J., Pfeiffer, E. M., Fedorova, I., Bolshianov, D. Y., Grigoriev, M. N., and Kutzbach, L.: A long-  
844 term (2002 to 2017) record of closed-path and open-path eddy covariance CO<sub>2</sub> net ecosystem  
845 exchange fluxes from the Siberian Arctic, Earth System Science Data, 11, 221-240, doi:  
846 10.5194/essd-11-221-2019, 2019.

847 Hu, F. S., Higuera, P. E., Duffy, P., Chipman, M. L., Rocha, A. V., Young, A. M., Kelly, R., and  
848 Dietze, M. C.: Arctic tundra fires: natural variability and responses to climate change, Frontiers  
849 in Ecology and the Environment, 13, 369-377, doi: 10.1890/150063, 2015.

850 Hubberten, H.-W., Wagner, D., Pfeiffer, E.-M., Boike, J., and Gukov, A. Y.: The Russian-  
851 German research station samoylov, Lena delta -A key site for polar research in the Siberian  
852 arctic, Polarforschung, 2006.

853 Jorgenson, M. T.: Hierarchial organisation of ecosystems at multiple spatial scales on the  
854 Yukon-Kuskokwim Delta, Alaska, USA, Arctic Antarctic and Alpine Research, 32, 221-239, doi  
855 10.2307/1552521, 2000.

856 Juhls, B., Antonova, S., Angelopoulos, M., Bobrov, N., Grigoriev, M., Langer, M., Maksimov, G.,  
857 Miesner, F., and Overduin, P. P.: Serpentine (Floating) Ice Channels and their Interaction with  
858 Riverbed Permafrost in the Lena River Delta, Russia, *Frontiers in Earth Science*, 9, 689941, doi:  
859 10.3389/feart.2021.689941, 2021.

860 Kienast, F. and Tsherkasova, J.: Comparative botanical recent-studies in the Lena River Delta  
861 [Field Report], Alfred Wegener Institute, Germany, 2001.

862 Landgraf, N., Shevtsova, I., Pflug, B., and Heim, B. .: Sentinel-2 derived central Lena Delta land  
863 cover classification, PANGAEA [dataset], <https://doi.pangaea.de/10.1594/PANGAEA.945057>,  
864 2022a.

865 Landgraf, N., Shevtsova, I., Pflug, B., and Heim, B.: Raster file with assigned land cover classes  
866 and ESRI polygon shape file training classes representing different vegetation composition,  
867 PANGAEA [dataset], <https://doi.pangaea.de/10.1594/PANGAEA.945056>, 2022b.

868 Landgraf, N., Shevtsova, I., Pflug, B., and Heim, B.: 23 true Elementary Sampling Units (ESUs)  
869 set in the Lena Delta representing the LD18 vegetation plots, PANGAEA [dataset],  
870 <https://doi.pangaea.de/10.1594/PANGAEA.945055>, 2022c.

871 Landgraf, N., Shevtsova, I., Pflug, B., and Heim, B.: 69 pseudo Elementary Sampling Units  
872 (ESUs) set in the Lena Delta derived with expert knowledge, PANGAEA [dataset],  
873 <https://doi.pangaea.de/10.1594/PANGAEA.945054>, 2022d.

874 Lantz, T. C., Kokelj, S. V., and Fraser, R. H.: Ecological recovery in an Arctic delta following  
875 widespread saline incursion, *Ecological Applications*, 25, 172-185, doi: 10.1890/14-0239.1,  
876 2015.

877 Lisovski, S., Runge, A., Okoth, R. R., Shevtsova, I., and Heim, B.: Lena Delta Land Cover  
878 Classification (2018, Sentinel-2), PANGAEA [dataset], doi: 10.1594/PANGAEA.946407, 2022.

879 Lorang, M. S. and Hauer, F. R.: Fluvial geomorphic processes, in: *Methods in stream ecology*,  
880 edited by: Hauer, F. R., and Lamberti, G. A., Academic Press/Elsevier, San Diego, 145–168,  
881 2006.

882 Macander, M. J., Nelson, P. R., Nawrocki, T. W., Frost, G. V., Orndahl, K. M., Palm, E. C.,  
883 Wells, A. F., and Goetz, S. J.: Time-series maps reveal widespread change in plant functional

884 type cover across Arctic and boreal Alaska and Yukon, *Environmental Research Letters*, 17,  
885 ARTN 054042, doi: 10.1088/1748-9326/ac6965, 2022.

886 Mauclet, E., Agnan, Y., Hirst, C., Monhonval, A., Pereira, B., Vandeuren, A., Villani, M.,  
887 Ledman, J., Taylor, M., Jasinski, B. L., Schuur, E. A. G., and Opfergelt, S.: Changing sub-Arctic  
888 tundra vegetation upon permafrost degradation: impact on foliar mineral element cycling,  
889 *Biogeosciences*, 19, 2333-2351, doi: 10.5194/bg-19-2333-2022, 2022.

890 Mekonnen, Z. A., Riley, W. J., Berner, L. T., Bouskill, N. J., Torn, M. S., Iwahana, G., Breen, A.  
891 L., Myers-Smith, I. H., Criado, M. G., Liu, Y. L., Euskirchen, E. S., Goetz, S. J., Mack, M. C., and  
892 Grant, R. F.: Arctic tundra shrubification: a review of mechanisms and impacts on ecosystem  
893 carbon balance, *Environmental Research Letters*, 16, 053001, doi: 10.1088/1748-9326/abf28b,  
894 2021.

895 Montgomery, D. R.: Process domains and the river continuum, *Journal of the American Water*  
896 *Resources Association*, 35, 397-410, doi: 10.1111/j.1752-1688.1999.tb03598.x, 1999.

897 Morgenstern, A., Grosse, G., and Schirrmeister, L.: Genetic, morphological, and statistical  
898 characterization of lakes in the permafrost-dominated Lena Delta, Ninth International  
899 Conference on Permafrost, 2008.

900 Morgenstern, A., Grosse, G., Gunther, F., Fedorova, I., and Schirrmeister, L.: Spatial analyses  
901 of thermokarst lakes and basins in Yedoma landscapes of the Lena Delta, *Cryosphere*, 5, 849-  
902 867, doi:10.5194/tc-5-849-2011, 2011.

903 Morgenstern, A., Overduin, P. P., Gunther, F., Stettner, S., Ramage, J., Schirrmeister, L.,  
904 Grigoriev, M. N., and Grosse, G.: Thermo-erosional valleys in Siberian ice-rich permafrost,  
905 *Permafrost and Periglacial Processes*, 32, 59-75, doi: 10.1002/ppp.2087, 2021.

906 Morgenstern, A., Ulrich, M., Gunther, F., Roessler, S., Fedorova, I. V., Rudaya, N. A., Wetterich,  
907 S., Boike, J., and Schirrmeister, L.: Evolution of thermokarst in East Siberian ice-rich  
908 permafrost: A case study, *Geomorphology*, 201, 363-379, doi:  
909 10.1016/j.geomorph.2013.07.011, 2013.

910 Mueller-Bombois, D. and Ellenberg, H.: Aims and methods of vegetation ecology, *Wohn Wiley &*  
911 *Sons*, New York, USA1974.

912 Myers-Smith, I. H., Kerby, J. T., Phoenix, G. K., Bjerke, J. W., Epstein, H. E., Assmann, J. J.,  
 913 John, C., Andreu-Hayles, L., Angers-Blondin, S., Beck, P. S. A., Berner, L. T., Bhatt, U. S.,  
 914 Bjorkman, A. D., Blok, D., Bryn, A., Christiansen, C. T., Cornelissen, J. H. C., Cunliffe, A. M.,  
 915 Elmendorf, S. C., Forbes, B. C., Goetz, S. J., Hollister, R. D., de Jong, R., Loranty, M. M.,  
 916 Macias-Fauria, M., Maseyk, K., Normand, S., Olofsson, J., Parker, T. C., Parmentier, F. J. W.,  
 917 Post, E., Schaepman-Strub, G., Stordal, F., Sullivan, P. F., Thomas, H. J. D., Tommervik, H.,  
 918 Treharne, R., Tweedie, C. E., Walker, D. A., Wilmking, M., and Wipf, S.: Complexity revealed in  
 919 the greening of the Arctic, *Nature Climate Change*, 10, 106-117, doi: 10.1038/s41558-019-0688-  
 920 1, 2020.

921 Naiman, R. J., Melillo, J. M., and Hobbie, J. E.: Ecosystem Alteration of Boreal Forest Streams  
 922 by Beaver (*Castor-Canadensis*), *Ecology*, 67, 1254-1269, doi: 10.2307/1938681, 1986.

923 Nitzbon, J., Westermann, S., Langer, M., Martin, L. C. P., Strauss, J., Laboor, S., and BOike, J.:  
 924 Fast response of cold ice-rich permafrost in northeast Siberia to a warming climate, *Nature*  
 925 *Communications*, 11, 2201, doi: 10.1038/s41467-020-15725-8, 2020.

926 Nitze, I. and Grosse, G.: Detection of landscape dynamics in the Arctic Lena Delta with  
 927 temporally dense Landsat time-series stacks, *Remote Sensing of Environment*, 181, 27-41, doi:  
 928 10.1016/j.rse.2016.03.038, 2016.

929 Obu, J., Westermann, S., Barboux, C., Bartsch, A., Delaloye, R., Grosse, G., Heim, B.,  
 930 Hugelius, G., Irrgang, A., Kääb, A. M., Kroisleitner, C., Matthes, H., Nitze, I., Pellet, C., Seifert,  
 931 F. M., Strozzi, T., Wegmüller, U., Wieczorek, M., and Wiesmann, A.: ESA permafrost Climate  
 932 Change Initiative (permafrost\_cci): Permafrost extent for the Northern Hemisphere, v2.0  
 933 [dataset], <https://doi.org/10.5285/28E889210F884B469D7168FDE4B4E54F>, 2020.

934 Overeem, I., Nienhuis, J. H., and Piliouras, A.: Ice-dominated Arctic deltas, *Nature Reviews*  
 935 *Earth & Environment*, 3, 225-240, doi: 10.1038/s43017-022-00268-x, 2022.

936 Overland, J., Dunlea, E., Box, J. E., Corell, R., Forsius, M., Kattsov, V., Olseng, M. S., Pawlak,  
 937 J., Reiersen, L. O., and Wang, M. Y.: The urgency of Arctic change, *Polar Science*, 21, 6-13,  
 938 doi: 10.1016/j.polar.2018.11.008, 2019.

939 Pickett, S. T. A., Kolasa, J., Armesto, J. J., and Collins, S. L.: The Ecological Concept of  
 940 Disturbance and Its Expression at Various Hierarchical Levels, *Oikos*, 54, 129-136, doi:  
 941 10.2307/3565258, 1989.

942 Piliouras, A. and Rowland, J. C.: Arctic River Delta Morphologic Variability and Implications for  
 943 Riverine Fluxes to the Coast, *Journal of Geophysical Research-Earth Surface*, 125, ARTN  
 944 e2019JF005250, doi: 10.1029/2019JF005250, 2020.

945 Pisaric, M. F. J., Thienpont, J. R., Kokelj, S. V., Nesbitt, H., Lantz, T. C., Solomon, S., and Smol,  
 946 J. P.: Impacts of a recent storm surge on an Arctic delta ecosystem examined in the context of  
 947 the last millennium, *Proceedings of the National Academy of Sciences of the United States of*  
 948 *America*, 108, 8960-8965, doi: 10.1073/pnas.1018527108, 2011.

949 Raynolds, M. K., Walker, D. A., Balser, A., Bay, C., Campbell, M., Cherosov, M. M., Daniels, F.  
 950 J. A., Eidesen, P. B., Emiokhina, K. A., Frost, G. V., Jedrzejek, B., Jorgenson, M. T., Kennedy,  
 951 B. E., Kholod, S. S., Lavrinenko, I. A., Lavrinenko, O. V., Magnusson, B., Matveyeva, N. V.,  
 952 Metusalemsson, S., Nilsen, L., Olthof, I., Pospelov, I. N., Pospelova, E. B., Pouliot, D.,  
 953 Razzhivin, V., Schaepman-Strub, G., Sibik, J., Telyatnikov, M. Y., and Troeva, E.: A raster  
 954 version of the Circumpolar Arctic Vegetation Map (CAVM), *Remote Sensing of Environment*,  
 955 232, ARTN 111297, doi: 10.1016/j.rse.2019.111297, 2019.

956 Romanovskii, N. N. and Hubberten, H. W.: Results of permafrost modelling of the lowlands and  
 957 shelf of the Laptev Sea region, Russia, *Permafrost and Periglacial Processes*, 12, 191-202, doi:  
 958 10.1002/ppp.387, 2001.

959 Rossger, N., Sachs, T., Wille, C., Boike, J., and Kutzbach, L.: Seasonal increase of methane  
 960 emissions linked to warming in Siberian tundra, *Nature Climate Change*, 12, 1031-+, doi:  
 961 10.1038/s41558-022-01512-4, 2022.

962 Runge, A., Fuchs, M., Shevtsova, I., Landgraf, N., Heim, B., Herzsuh, U., and Grosse, G.:  
 963 Hyperspectral field spectrometry of Arctic vegetation units in the central Lena Delta [dataset],  
 964 <https://doi.org/10.1594/PANGAEA.945982>, 2022.

965 Sachs, T., Wille, C., Boike, J., and Kutzbach, L.: Environmental controls on ecosystem-scale  
 966 CH<sub>4</sub> emission from polygonal tundra in the Lena River Delta, Siberia, *Journal of Geophysical*  
 967 *Research-Biogeosciences*, 113, ArtN G00a03, doi: 10.1029/2007jg000505, 2008.

968 Schirrmeister, L., Grosse, G., Schwamborn, G., Andreev, A. A., Meyer, H., Kunitsky, V. V.,  
 969 Kuznetsova, T. V., Dorozhkina, M. V., Pavlova, E. Y., Bobrov, A. A., and Oezen, D.: Late  
 970 Quaternary History of the Accumulation Plain North of the Chekanovsky Ridge (Lena Delta,

971 Russia): A Multidisciplinary Approach, *Polar Geography*, 27, 277-319, doi: 10.1080/789610225,  
 972 2003.

973 Schirrmeister, L., Grosse, G., Schnelle, M., Fuchs, M., Krbetschek, M., Ulrich, M., Kunitsky, V.,  
 974 Grigoriev, M., Andreev, A., Kienast, F., Meyer, H., Babiy, O., Klimova, I., Bobrov, A., Wetterich,  
 975 S., and Schwamborn, G.: Late Quaternary paleoenvironmental records from the western Lena  
 976 Delta, Arctic Siberia, *Palaeogeography Palaeoclimatology Palaeoecology*, 299, 175-196, doi:  
 977 10.1016/j.palaeo.2010.10.045, 2011.

978 Schneider, J., Grosse, G., and Wagner, D.: Land cover classification of tundra environments in  
 979 the Arctic Lena Delta based on Landsat 7 ETM+ data and its application for upscaling of  
 980 methane emissions, *Remote Sensing of Environment*, 113, 380-391, doi:  
 981 10.1016/j.rse.2008.10.013, 2009.

982 Schwamborn, G., Rachold, V., and Grigoriev, M. N.: Late Quaternary sedimentation history of  
 983 the Lena Delta, *Quaternary International*, 89, 119-134, doi: 10.1016/S1040-6182(01)00084-2,  
 984 2002.

985 Schwamborn, G., Schirrmeister, L., Mohammadi, A., Meyer, H., Kartoziia, A., Maggioni, F., and  
 986 Strauss, J.: Fluvial and permafrost history of the lower Lena River, north-eastern Siberia, over  
 987 late Quaternary time, *Sedimentology*, 70, 235-258, doi: 10.1111/sed.13037, 2023.

988 Serreze, M. C. and Barry, R. G.: Processes and impacts of Arctic amplification: A research  
 989 synthesis, *Global and Planetary Change*, 77, 85-96, doi: 10.1016/j.gloplacha.2011.03.004,  
 990 2011.

991 Shevtsova, I., Laschinskiy, N., Heim, B., and Herzsuh, U.: Foliage projective cover of 26  
 992 vegetation sites of central Lena Delta from 2018 [dataset],  
 993 <https://doi.pangaea.de/10.1594/PANGAEA.935875>, 2021a.

994 Shevtsova, I., Heim, B., Runge, A., Fuchs, M., Melchert, J., and Herzsuh, U.: Total above-  
 995 ground biomass of 25 vegetation sites of central Lena Delta from 2018 [dataset],  
 996 <https://doi.pangaea.de/10.1594/PANGAEA.935923>, 2021b.

997 Stanford, J. A., Lorang, M. S., and Hauer, F. R.: The shifting habitat mosaic of river ecosystems,  
 998 *SIL Proceedings*, 1922-2010, 29, 123-136, doi: 10.1080/03680770.2005.11901979, 2005.

999 Sweeney, C., Chatterjee, A., Wolter, S., McKain, K., Bogue, R., Conley, S., Newberger, T., Hu,  
1000 L., Ott, L., Poulter, B., Schiferl, L., Weir, B., Zhang, Z., and Miller, C. E.: Using atmospheric  
1001 trace gas vertical profiles to evaluate model fluxes: a case study of Arctic-CAP observations and  
1002 GEOS simulations for the ABoVE domain, *Atmospheric Chemistry and Physics*, 22, 6347-6364,  
1003 doi: 10.5194/acp-22-6347-2022, 2022.

1004 Ulrich, M., Grosse, G., Chabrillat, S., and Schirrmeister, L.: Spectral characterization of  
1005 periglacial surfaces and geomorphological units in the Arctic Lena Delta using field spectrometry  
1006 and remote sensing, *Remote Sensing of Environment*, 113, 1220-1235, doi:  
1007 10.1016/j.rse.2009.02.009, 2009.

1008 van Everdingen, R. O.: Multi-language glossary of permafrost and related ground-ice terms,  
1009 Arctic Institute of North America University of Calgary, Calgary, Canada 1998.

1010 Veremeeva, A. and Gubin, S.: Modern Tundra Landscapes of the Kolyma Lowland and their  
1011 Evolution in the Holocene, *Permafrost and Periglacial Processes*, 20, 399-406, doi:  
1012 10.1002/ppp.674, 2009.

1013 Vulis, L., Tejedor, A., Zaliapin, I., Rowland, J. C., and Foufoula-Georgiou, E.: Climate  
1014 Signatures on Lake And Wetland Size Distributions in Arctic Deltas, *Geophysical Research*  
1015 *Letters*, 48, ARTN e2021GL094437, doi: 10.1029/2021GL094437, 2021.

1016 Walker, H. J.: Arctic deltas, *Journal of Coastal Research*, 14, 718–738, 1998.

1017 Whitaker, R. H. and Woodwell, G. M.: Dimension, and Production Relations of Trees and  
1018 Shrubs in the Brookhaven Forest, New York., *Journal of Ecology*, 56, 1-25, doi: 10.1038/2325,  
1019 1968.

1020 Zibulski, R., Herzsuh, U., and Pestryakova, L. A.: Vegetation patterns along micro-relief and  
1021 vegetation type transects in polygonal landscapes of the Siberian Arctic, *Journal of Vegetation*  
1022 *Science*, 27, 377-386, doi: 10.1111/jvs.12356, 2016.

1023



# Figures

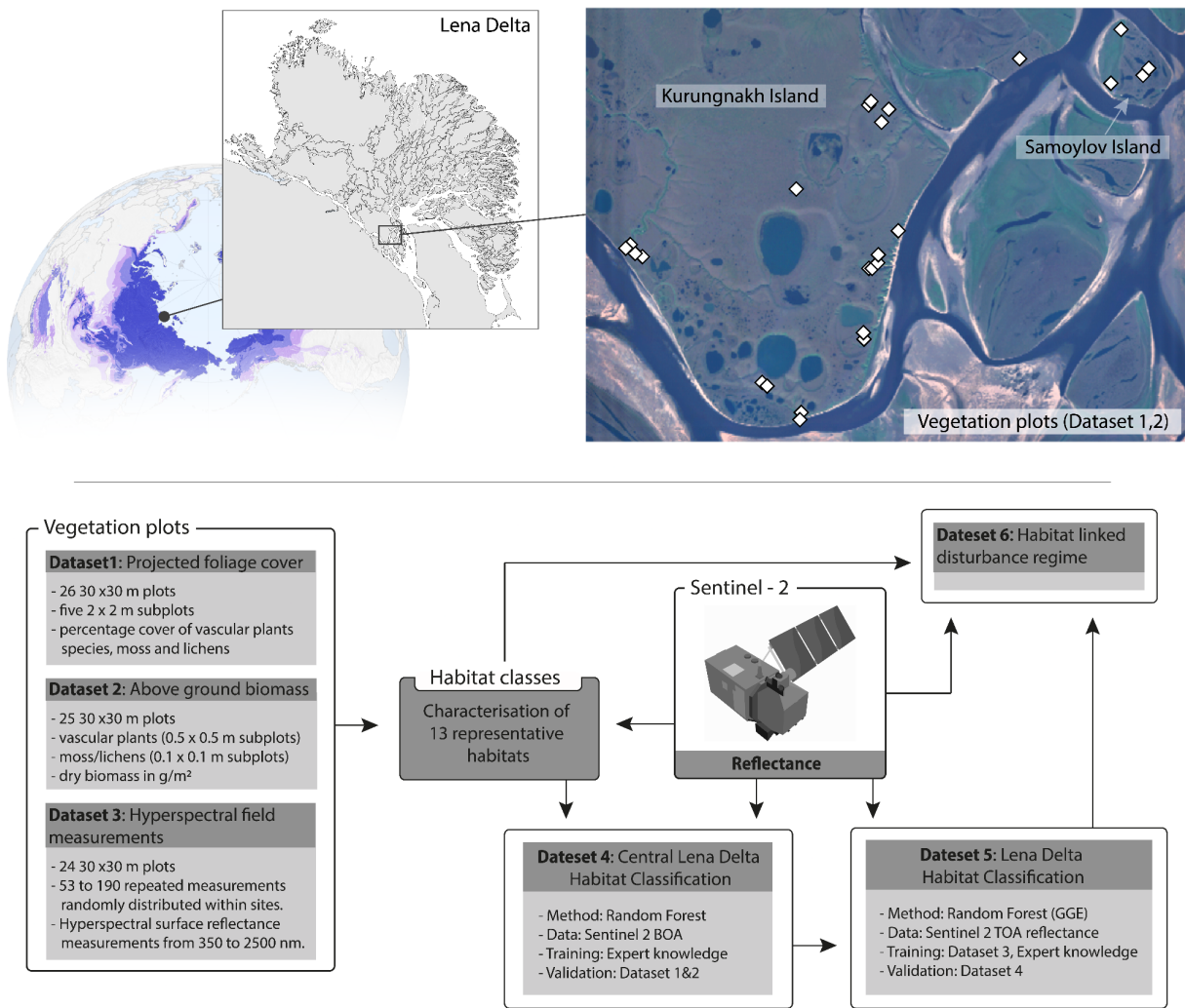


Figure 1: Geographic location of the Lena Delta in the Russian High Arctic (72.91°N, 126.90°E) and a Sentinel-2 RGB image (August 2018, bands 4-3-2) of the central Lena Delta showing the areas of the 26 vegetation plots where foliage projective cover and above ground biomass was determined. Panarctic overview map shows permafrost extent (colour scale indicates permafrost extent from continuous (dark purple) to isolated (light purple) (Obu et al., 2020). The grey-coloured Lena Delta land map created with Sentinel-1 water mask from Juhls et al. (2021). Bottom: Dataset characteristics and methodological links between the different datasets.

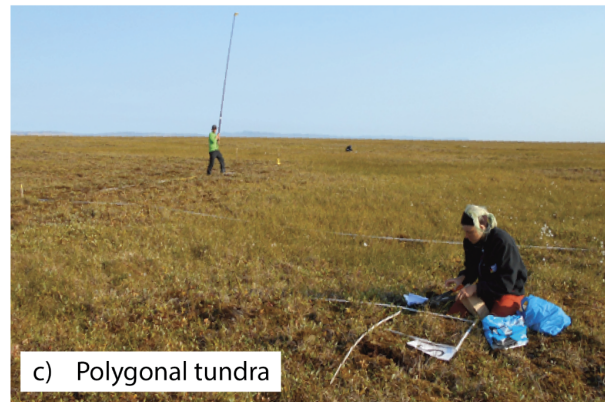
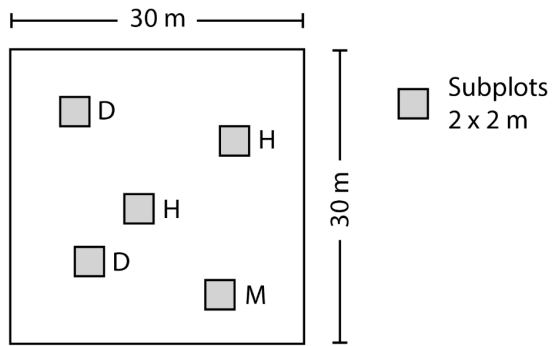
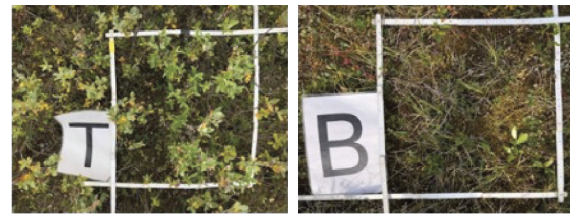
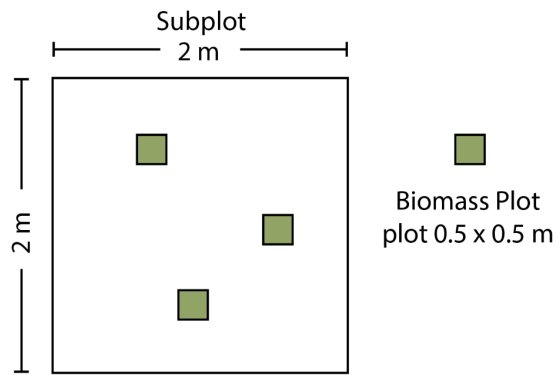


Figure 2. Vegetation plots (30 x 30 m) were established in different vegetation types across the central Lena Delta. For subplots (2 x 2 m), the projective vegetation cover was recorded and labeled according to vegetation and moisture properties (H-Type: homogeneous, M-Type: moist, D-Type: dry). Figures illustrate example plots in a) tussock tundra (VP14), b) dry shrub communities (VP05), c) polygonal tundra (VP13). Photos: AWI.



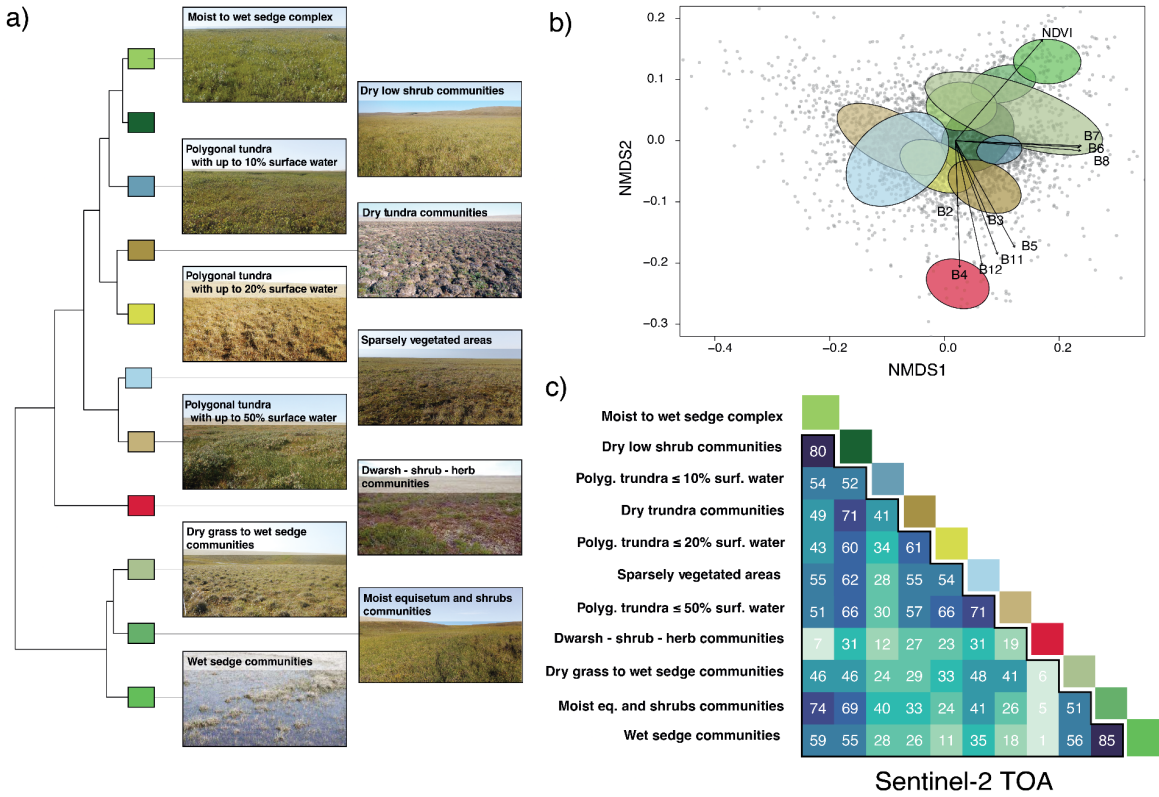
Wet biomass



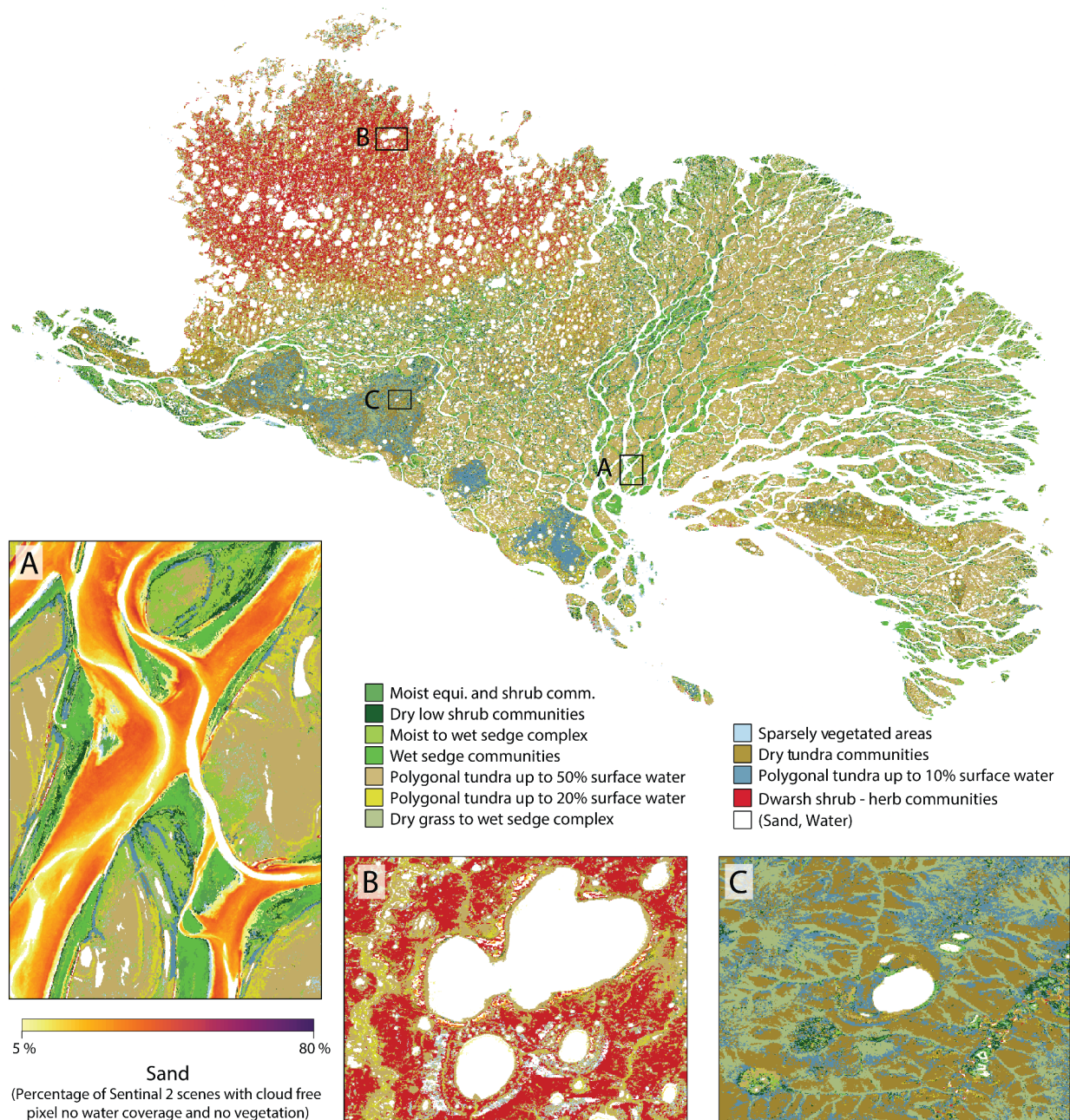
Dry biomass

1040

1041 Figure 3. Biomass was sampled in subplots of 0.5 x 0.5 m (and 0.1 x 0.1 m for moss and  
1042 lichens) distributed within the 2 x 2 m subplots described in Figure 2. Collected plants were  
1043 weighted (wet biomass), dried in an oven and again weighted (dry biomass). Fotos: AWI.







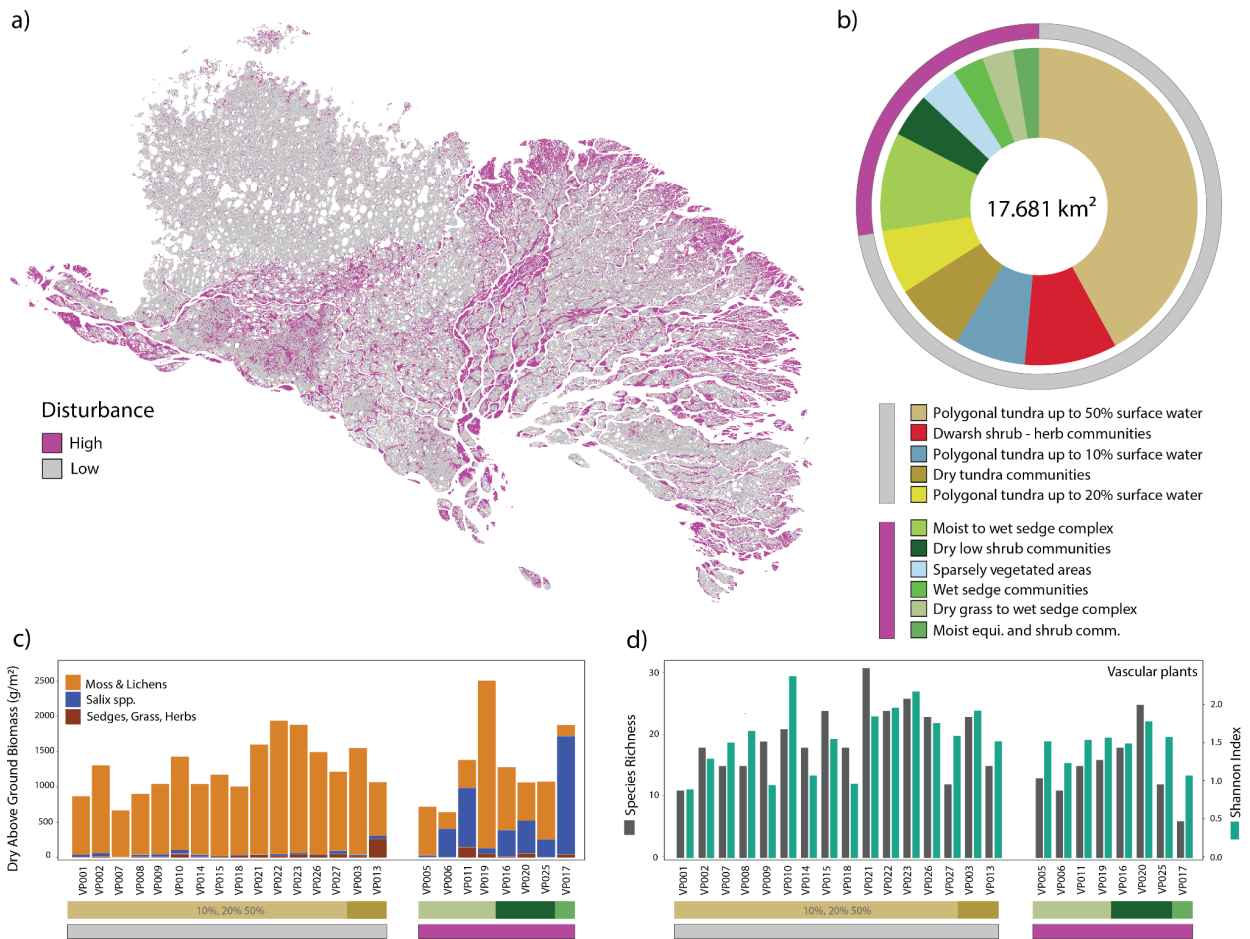


Figure 6: Habitat linked disturbance regimes across the Lena Delta. The map (a) includes all vegetated areas (excluding water and sand). The pie chart (b) shows the contribution of vegetated classes across the Lena Delta grouped by high and low disturbance regimes. The bottom panels show c) the measured dry above ground biomass (Dataset 2) and d) the species richness and Shannon index (from Dataset 1) of the vegetation plots for different habitat classes and disturbance regimes.

## Tables

Table 1: Habitat classes, descriptions as well as methods used to characterize the distinct habitats. In-situ vegetation plot numbers correspond to the vegetation plots of Dataset 1 and 2 (see also Table S1, S2, S3).

Habitat types	Description	Method
<b>Moist <i>Equisetum</i> and shrubs</b>	<i>Equisetum</i> and shrub communities form a early-to-middle successional stage growing on the active floodplain. Low moss contribution	In-situ vegetation plot (VP17); extended to representative larger polygon shape files using field knowledge.
<b>Dry shrub communities</b>	Patch forming shrub communities dominated by dwarf willow ( <i>Salix</i> ) thickets, frequently occurring on dry elevated areas on floodplains and stream floodplains and in topographically sheltered areas below basin and valley rims. Low moss contribution	In-situ vegetation plots (VP04, VP16); extended to representative larger polygon shape files using field knowledge.
<b>Polygonal tundra complex</b>  up to <ul style="list-style-type: none"> <li>- 10%</li> <li>- 20%</li> <li>- 50% surface water</li> </ul> (3 distinct classes)	Mature-state plant communities dominated by sedge, moss and herb species. Sparse vascular plant coverage (dwarf willows, dwarf birches) on thick continuous moss cover. Occurring on the plateaus of the ice-rich holocene and pleistocene terraces, and at the bottom of alases. Intersected by intra- and interpolygonal ponds resulting in up to 10%, 20%, 50% surface water contribution.	In-situ vegetation plots (VP01, VP02, VP07, VP08, VP14, VP15, VP18, VP21, VP22, VP23, VP26, VP27); extended to representative larger polygon shape files using field knowledge. The different surface water contributions were defined based on the result from unsupervised classification.

<b>Dry grass to wet sedge communities</b>	These early-to-middle successional plant communities cover unstable valley slopes and a young drained lake basin, they are mostly composed of sedges and grasses, but also willows ( <i>Salix</i> ) are part of this habitat.	In-situ vegetation plots (VP05, VP06, VP11, VP19, VP20); extended to representative larger polygon shape files using field knowledge.
<b>Dry tundra communities</b>	The mature-state dry tundra communities represent the zonal tundra type, one subclass is dominated by tussock forming <i>Eriophorum</i> and the other by less tussock forming dry-herb communities, dominated by <i>Dryas</i> . Occurring on well-drained slopes of valleys and alases, and other well-drained areas on the terraces. High moss contribution	In-situ vegetation plots (VP03, VP13) extended to representative, larger polygon shape files using field knowledge (including 'dry tundra communities type tussock' and 'dry tundra communities').
<b>Moist to wet sedge communities</b>	These mid to advanced successional plant communities occur on moist to water-logged soils characteristically mostly in topographic depressions on the floodplains, in valleys and alases. They constitute the rims of the wetland areas on the floodplains in more dynamic parts the moss ground cover is missing.	Polygon shape files derived from high resolution satellite image and ESRI GE with regional expert knowledge. No vegetation plots (too wet).
<b>Wet sedge communities</b>	These mid to advanced successional plant communities occur at permanently wet sites with stagnant water in the topographic depressions and are typical for wetland areas on the floodplains. In more dynamic parts the moss ground cover is missing.	Polygon shape files derived from high resolution satellite image and ESRI GE with regional expert knowledge. No vegetation plots (too wet).



<b>Sparsely vegetated areas</b>	These early successional plant communities are characterized by low vegetation establishment and coverage. No to low moss contribution	Defined based on the result from unsupervised classification, polygon shape files. No vegetation plots.
<b>Barren/Sand</b>	Representing the wide-open sand flats of the floodplain and barren ground on valley slopes or along cliffs. In a few cases, this class represents vegetation-free bedrock outcrops.	Threshold using high reflectance in S2-band 2 blue.
<b>Water</b>	Represents all surface water bodies in the delta: the Lena River with river branches, streams, lakes and large ponds.	Threshold using low reflectance in S2-band 8 NIR.

1070

1071 Table 2: Habitat class and description of disturbance regimes and the component stand  
 1072 structure in form of contributions of vascular plants, and moss to total biomass. \* (Driscoll and  
 1073 Hauer, 2019; Stanford et al., 2005), \*\* (Lorang and Hauer, 2006).

Habitat class	Disturbance regime	Stand structure
<b>Moist <i>Equisetum</i> and shrubs</b>	<b>High; regular (annually), predicted</b> - spring floodings, - shifting habitat * - advanced-stage regeneration **	high vascular plant growth, low abundance of moss & lichens.
<b>Dry shrub communities</b>	<b>High; mixed disturbance types:</b> -regular spring floodings -rapid thaw processes (permafrost degradation) - shifting habitat - advanced-stage regeneration	high vascular plant growth, low abundance of moss.
<b>Polygonal tundra complex</b>	<b>Low; mixed disturbance types</b> - low for most of the habitat, except for actively eroding shores of ponds and channels - mature-state plant community	low vascular plant growth, high abundance of moss.
<b>Dry grass to wet sedge communities</b>	<b>High; mixed disturbance types:</b> - regular spring floodings - rapid thaw processes (permafrost degradation) - shifting habitat	high vascular plant biomass, low abundance of moss.

	- advanced-stage regeneration	
<b>Dry tundra communities</b>	<b>Low; mixed disturbance types</b> - low for most of the habitat - mature-state plant community	low vascular plant biomass high abundance of moss.
<b>Moist to wet sedge communities</b>	<b>High; mixed disturbance types:</b> - regular spring floodings - rapid thaw processes (permafrost degradation) - shifting habitat - mid to advanced-stage regeneration	high vascular plant biomass Almost impossible to measure in-situ biomass (wet conditions and difficult access).
<b>Wet sedge communities</b>	<b>High; mixed disturbance types:</b> - regular spring floodings - rapid thaw processes (permafrost degradation) - shifting habitat - mid to advanced-stage regeneration	high vascular plant biomass. Almost impossible to measure in-situ biomass (wet conditions and difficult access).
<b>Dwarf shrub herb communities</b>	<b>Low; mixed disturbance types</b> - low for most of the habitat - mature-state plant community	low vascular plant biomass, high abundance of moss.

<b>Sparsely vegetated areas</b>	<b>Very high; mixed disturbance types</b> <ul style="list-style-type: none"> <li>- regular spring floodings</li> <li>- rapid thaw processes (permafrost degradation)</li> <li>- shifting habitat</li> <li>- early-stage regeneration</li> </ul>	lowest vascular plant biomass, no moss.
<b>Sand banks/barren</b>	<b>Very high: mixed disturbance types</b> <ul style="list-style-type: none"> <li>- regular spring floodings</li> <li>- rapid thaw processes (permafrost degradation)</li> <li>- shifting habitat</li> <li>- no regeneration</li> </ul>	Barren, constant shifting of sediments and movement of soils.

1074