

*Supplement of*

**National forest carbon harvesting and allocation dataset  
for the period 2003 to 2018**

**Daju Wang et al.**

*Correspondence to:* Wenping Yuan (yuanwp3@mail.sysu.edu.cn)

Supplement:

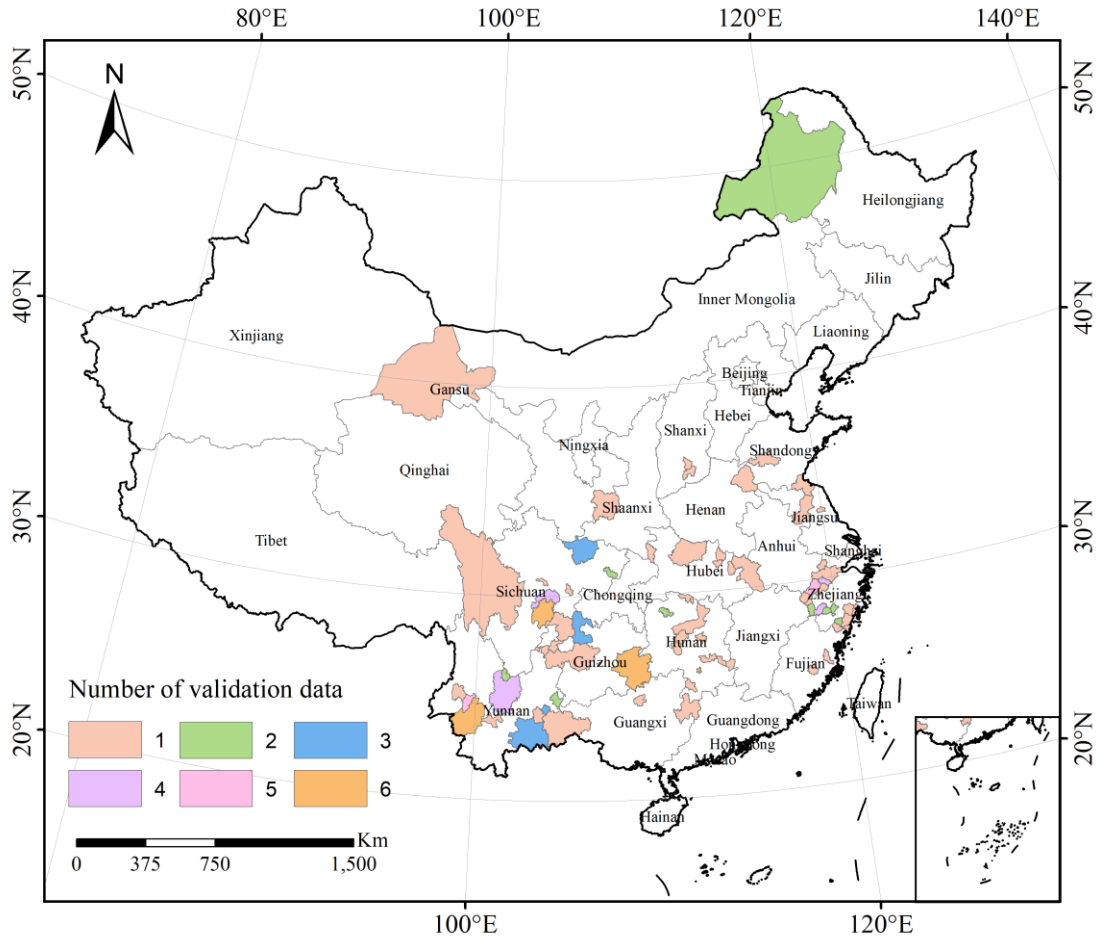


Figure S1: Distribution of city and county-level surveyed forest harvesting data.

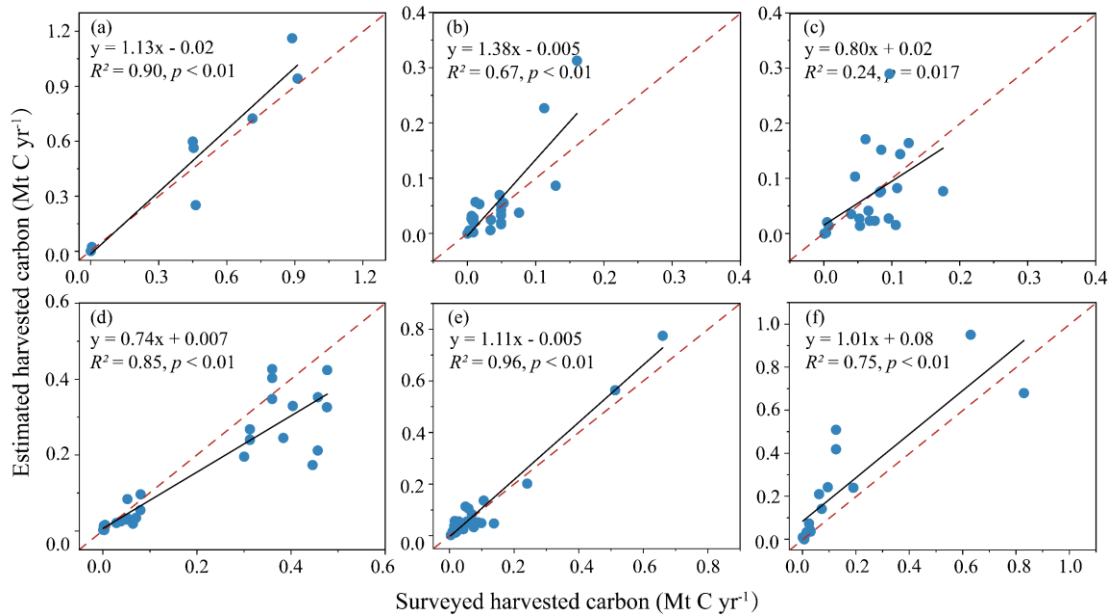
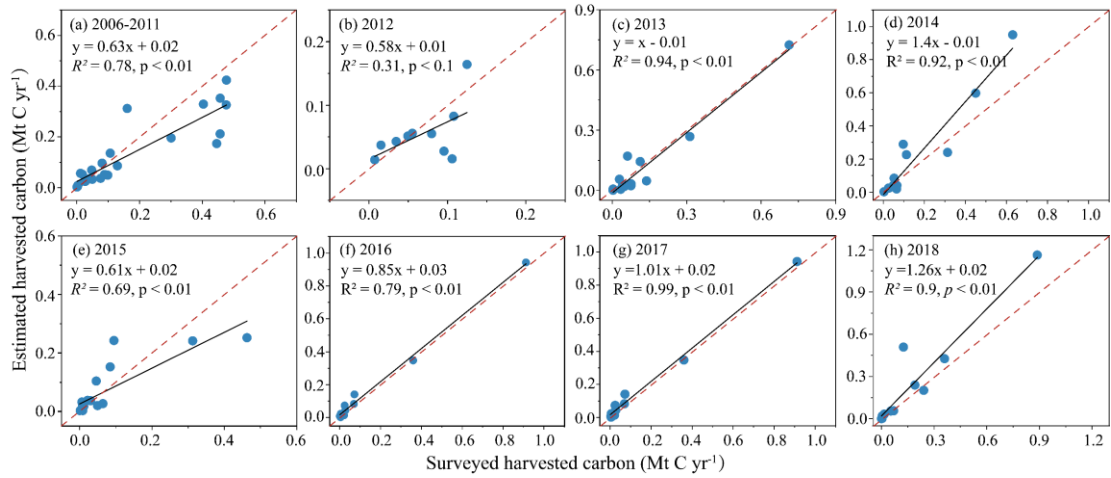
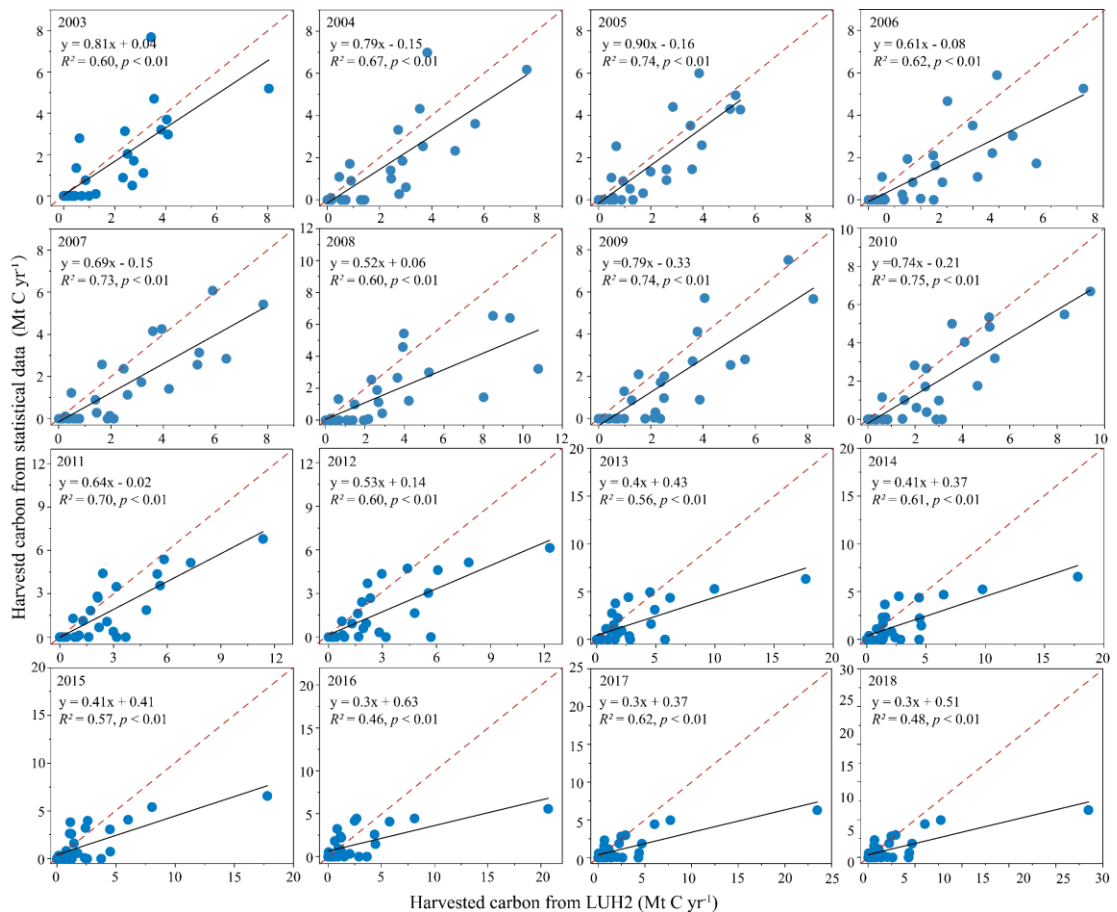


Figure S2: Comparison of estimated and surveyed harvested carbon at the city and county levels for each investigated province, (a) Guizhou, (b) Hubei & Hunan, (c) Sichuan, (d) Yunnan, (e) Zhejiang,

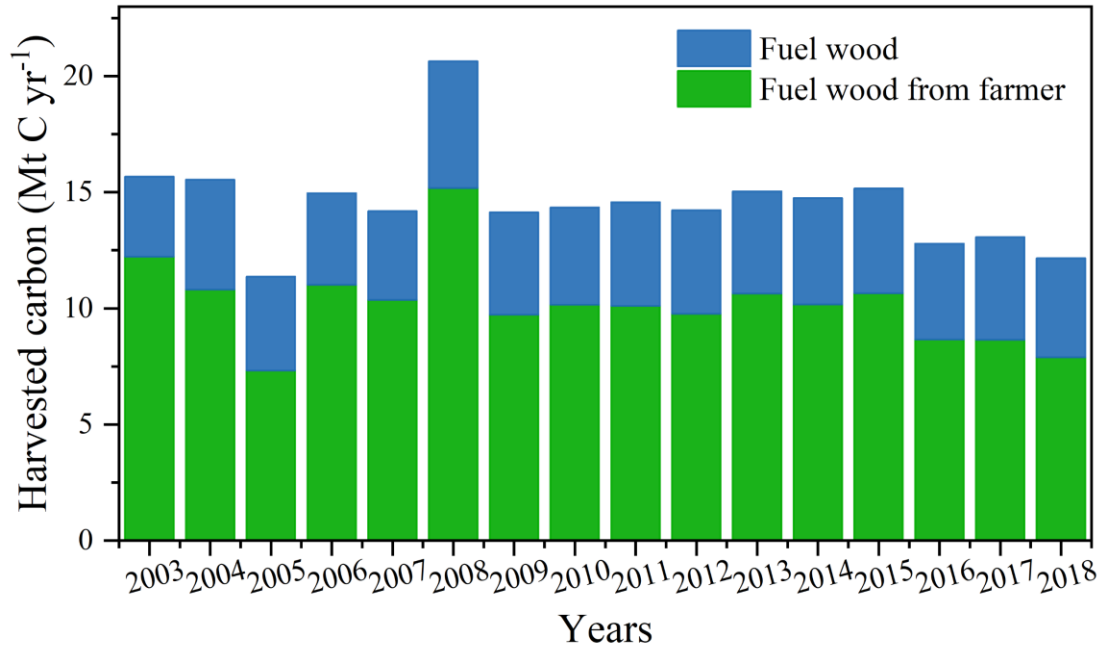
and (f) other provinces. The solid line indicates the regression lines and the red dashed line indicates the 1:1 line.



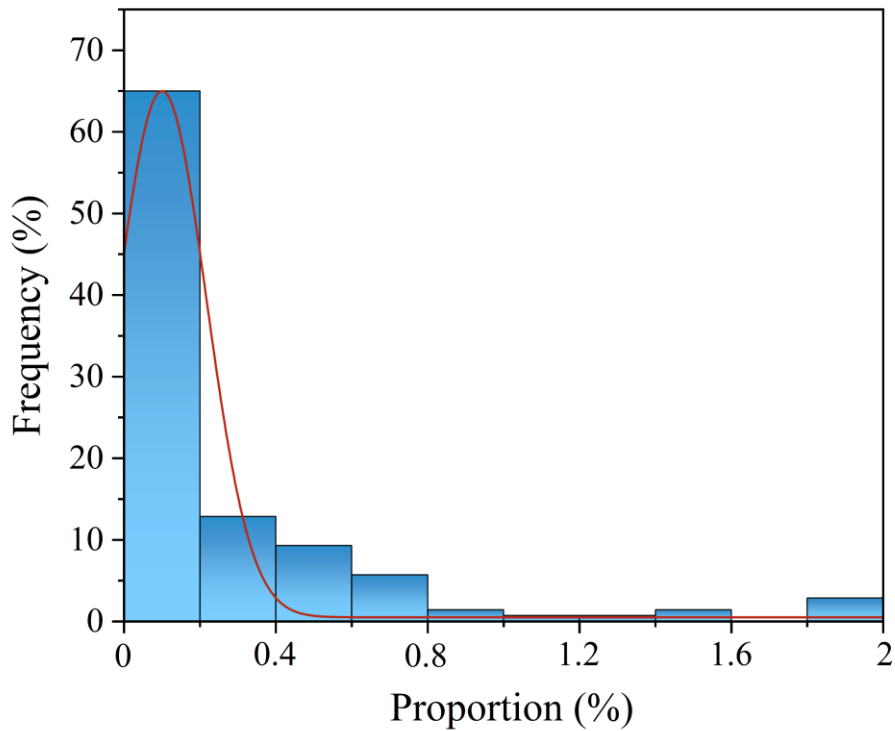
**Figure S3:** Comparison of estimated and surveyed harvested carbon at the city and county levels across each investigated year. The solid line indicates the regression lines and the red dashed line indicates the 1:1 line.



**Figure S4:** Comparisons between harvested carbon from statistical data and the LUH2 data for 2003 to 2018. Each point in each figure represents a province. The solid line indicates the regression lines and the red dashed line indicates the 1:1 line.



**Figure S5:** Long-term changes of harvested carbon of fuel wood and fuel wood from farmers from 2003 to 2018 over China.



**Figure S6:** Proportion of estimated harvested carbon exceeding AGB across all pixels where harvesting occurred at the province scale.

**Table S1:** Provincial *Coef* and lumber rate (*R*).

| Province       | <i>Coef</i> | Lumber rate ( <i>R</i> ) |
|----------------|-------------|--------------------------|
| Beijing        | 0.62        | 0.55                     |
| Tianjin        | 0.60        | 0.50                     |
| Hebei          | 0.52        | 0.51                     |
| Shanxi         | 0.68        | 0.57                     |
| Inner Mongolia | 0.42        | 0.55                     |
| Liaoning       | 0.40        | 0.70                     |
| Jilin          | 0.37        | 0.62                     |
| Heilongjiang   | 0.39        | 0.55                     |
| Shanghai       | 0.59        | 0.65                     |
| Jiangsu        | 0.58        | 0.66                     |
| Zhejiang       | 0.63        | 0.60                     |
| Anhui          | 0.55        | 0.64                     |
| Fujian         | 0.46        | 0.69                     |
| Jiangxi        | 0.55        | 0.62                     |
| Shandong       | 0.60        | 0.60                     |
| Henan          | 0.60        | 0.65                     |
| Hubei          | 0.53        | 0.65                     |
| Hunan          | 0.52        | 0.64                     |
| Guangdong      | 0.48        | 0.63                     |
| Guangxi        | 0.48        | 0.66                     |
| Hainan         | 0.43        | 0.68                     |
| Chongqing      | 0.49        | 0.53                     |
| Sichuan        | 0.30        | 0.50                     |
| Guizhou        | 0.44        | 0.66                     |
| Yunnan         | 0.40        | 0.65                     |
| Tibet          | 0.29        | 0.33                     |
| Shaanxi        | 0.52        | 0.48                     |
| Gansu          | 0.47        | 0.50                     |
| Qinhai         | 0.73        | 0.63                     |
| Ningxia        | 0.71        | 0.65                     |
| Xinjiang       | 0.43        | 0.54                     |