

# National forest carbon harvesting and allocation dataset for the period 2003 to 2018

Daju Wang<sup>1</sup>, Peiyang Ren<sup>1</sup>, Xiaosheng Xia<sup>1</sup>, Lei Fan<sup>2</sup>, Zhangcai Qin<sup>1</sup>, Xiuzhi Chen<sup>1</sup>, Wenping Yuan<sup>1</sup>

5 <sup>1</sup>School of Atmospheric Sciences, Guangdong Province Data Center of Terrestrial and Marine Ecosystems Carbon Cycle, Sun Yat-sen University, Zhuhai, Guangdong 510245, China.

<sup>2</sup>Chongqing Jinpo Mountain Karst Ecosystem National Observation and Research Station, School of Geographical Sciences, Southwest University, Chongqing 400715, China

*Correspondence to:* Wenping Yuan ([yuanwp3@mail.sysu.edu.cn](mailto:yuanwp3@mail.sysu.edu.cn))

10 **Abstract.** Forest harvesting is one of the anthropogenic activities that most significantly affect the carbon budget of forests. However, the absence of explicit spatial information on harvested carbon poses a huge challenge in assessing forest harvesting impacts, as well as the forest carbon budget. This study utilized provincial-level statistical data on wood harvest, the tree cover loss (TCL) dataset, and a satellite-based vegetation index to develop a Long-term harvEst and Allocation of Forest Biomass (LEAF) dataset. The aim was to provide the spatial location of forest harvesting with a spatial resolution of 30 m and quantify the post-harvest carbon dynamics. The validations against the surveyed forest harvesting at 133 cities and counties indicated a good performance of the LEAF dataset in capturing the spatial variation of harvested carbon, with a coefficient of determination ( $R^2$ ) of 0.83 between the identified and surveyed harvested carbon. The linear regression slope was up to 0.99. Averaged from 2003 to 2018, forest harvesting removed  $68.3 \pm 9.3$  Mt C yr<sup>-1</sup>, of which more than 80% was from selective logging. Of the harvested carbon,  $19.6 \pm 4.0\%$ ,  $2.1 \pm 1.1\%$ ,  $32.8 \pm 11.8\%$ ,  $7.0 \pm 0.4\%$ ,  $19.4 \pm 0.4\%$ , and  $19.1 \pm 9.8\%$  entered the fuelwood, paper and paperboard, wood-based panels, furniture, constructions, and residues pools, respectively. Direct combustion of fuelwood was the primary source of carbon emissions after wood harvest. However, carbon can be stored in wood products for a long time, and by 2100, almost 40% of the harvested carbon during the study period will still be retained. This dataset is expected to provide a foundation and reference for estimating the forestry and national carbon budgets. The 30 m × 30 m harvested carbon dataset from forests in China can be downloaded at <https://doi.org/10.6084/m9.figshare.23641164.v2> (Wang et al., 2023).

15  
20  
25

## 1. Introduction

30 As a critical terrestrial ecosystem type, forests play a pivotal role in regulating the global carbon cycle (Dixon et al., 1994). Over the period 2001 to 2019, global forests sequestered 2.07 Gt C yr<sup>-1</sup> from the atmosphere (Harris et al., 2021), contributing more than 70% of the global terrestrial carbon sinks (Friedlingstein et al., 2022). Forests also provide numerous important ecosystem services to society (Costanza et al., 1997), which may substantially impact the forests carbon sink (Lal et al., 2013). One of  
35 the most important services is the provision of wood products (Deal and White, 2012), which results in the transference of carbon from forest ecosystems into the social system. The carbon harvested from forests is typically transferred into the pools of Harvested Wood Products (HWPs) through their usage of wood for constructions, furniture, and fine papers, among others. These products are eventually decomposed and emitted into the atmosphere with different turnover times (IPCC, 2014, 2019a). For  
40 example, when harvested wood is used to make paper, the carbon within the paper decomposes and returns to the atmosphere within several years (Brunet-Navarro et al., 2017). On the contrary, the harvested carbon entering the wood used for constructions has a slow turnover rate and can be stored for many years (Brunet-Navarro et al., 2017). Previous studies have highlighted the large uncertainties in estimating carbon emissions of wood post-harvest due to a lack of information about the proportion of  
45 wood entering various wood pools (Skog et al., 2004).

In China, forests are playing an increasingly important role in terrestrial carbon sinks benefiting from long-term afforestation projects (Liu et al., 2014). A recent study based on satellite data revealed that China is one of the few countries experiencing persistent greening over the past decades (Chen et al., 2019; Yuan et al., 2019). Unlike India, where croplands dominate greening, nearly half of China's  
50 greening comes from forests (Chen et al., 2019). However, despite these positive trends, China ranks as the second-largest timber consumer and the largest wood importer globally (Research and Market, 2019). In 2017, the consumption of wood in China reached 192.5 million cubic meters, with 43.6% of that consumption being supplied by domestic harvests (Research and Market, 2019). A previous study has highlighted that harvesting is the primary cause of forest disturbance in China, accounting for 85% of the  
55 average annual forest loss (Curtis et al., 2018). However, the impacts of forest harvesting on the terrestrial carbon cycle has not been estimated yet due to a lack of available data on harvested carbon. Accurate forest harvesting data are crucial for measuring the national carbon sink-source balance, an important

component of national carbon budget analysis related to forest resources and wood utilization (Winjum, et al., 1997).

60        Although some efforts have been made, there are still large uncertainties in estimating harvested carbon in forest ecosystems (Hurtt et al., 2011, 2020). For example, the Land-Use Harmonization 2 (LUH2) dataset provides annual harvested biomass carbon data from primary and secondary forests (Hurtt et al., 2011, 2020). However, the spatial resolution of the LUH2 dataset ( $0.25^{\circ} \times 0.25^{\circ}$ ) is too coarse to analyze the dynamics of forest ecosystems at the regional or local scales, and its performance  
65        in assessing carbon harvest has not been examined in China. In addition, to our knowledge, no studies have been conducted to quantify the proportion of harvested wood or carbon entering various wood pools, which is crucial for estimating carbon emissions returning to the atmosphere (Skog et al., 2004; Johnston and Radeloff, 2019). Over the past decades, construction, papermaking, and furniture manufacturing have shown substantial changes in China (Zhang et al., 2019; FAO, 2023), largely influencing the  
70        proportion of harvested carbon among various wood pools and the magnitude of emissions.

      In this study, we developed a Long-term harvEst and Allocation of Forest Biomass (LEAF) dataset to provide: (1) the spatial location of harvested carbon with a high resolution of 30 m; (2) the proportion of harvested carbon allocated into various wood pools; and (3) the lagged carbon emissions of harvested carbon from the aforementioned wood pools. The tree cover loss (TCL) dataset developed by Hansen et  
75        al. (2013) and the interannual variation of a satellite-based vegetation index were used to determine the location of harvested carbon, and the provincial statistical biomass storage provided by the China Forestry and Grassland Statistical Yearbook was used to quantify the magnitude of harvested carbon. Post-harvest carbon dynamics were estimated based on a first-order decay (FOD) function according to the post-harvest wood use provided by the statistical data (IPCC, 2014, 2019a).

## 80    2.    **Methods and Materials**

      This study aimed to generate a Long-term harvEst and Allocation of Forest Biomass (LEAF) dataset, which is a component of the Terrestrial Ecosystem Disturbance (TED) dataset, named as TED-LEAF. The LEAF dataset includes the location and magnitude of forest harvesting and the estimates of post-harvest carbon dynamics. The identification of forest harvesting was based on the detection of changes  
85        in multi-temporal vegetation indices. Combined with statistical harvest data, the forest harvesting and

other disturbances causing such changes could be separated. Utilizing the classification of HWPs provided by statistical data, we estimated the delayed carbon emissions by 2100 from HWPs based on IPCC methodologies with China-specific activity data.

## 2.1 Method of calculating harvested carbon

90 We aimed to identify two types of forest harvesting: clear-cutting and selective logging (Fig. 1). In this study, clear-cutting is the harvesting of an entire stand at once on a scale of 30 m × 30 m, while selective logging is the harvesting of a portion of the stand within that area that is suitable and should be harvested.

For clear-cutting, the location was determined using the TCL dataset produced by Hansen et al. 95 (2013). The TCL dataset indicates stand replacement disturbance or the complete removal of tree cover canopy at a scale of 30 m × 30 m. It has been widely used to identify deforestation globally or in multiple regions (Hansen et al., 2013; Curtis et al., 2018). To calculate the harvested carbon from clear-cutting, it was necessary to determine the above-ground biomass carbon (AGB, t C) storage for each pixel. Only the 9<sup>th</sup> National Forest Inventory (NFI) provided both provincial forest AGB density ( $CD$ , t C ha<sup>-1</sup>) and 100 forest area ( $S$ , ha). Then, we calculated pixel-level (30 m × 30 m) AGB storage for 2014 to 2018 as:

$$AGB_j = CD \times S \times \frac{NDVI_j}{SNDVI} \quad (1)$$

where  $AGB_j$  indicates the AGB of the  $j$ th forest pixel in a given province and year;  $NDVI_j$  denotes the Normalized Difference Vegetation Index (NDVI) of the  $j$ th forest pixel in that province for that year;  $SNDVI$  is the sum of NDVI of all forest pixels in that province for that year. According to the province- 105 level biomass storage ( $V$ , m<sup>3</sup>) provided by the 6<sup>th</sup> to 8<sup>th</sup> NFIs covering 1998 to 2013 at 5-year intervals, this study used the following method to calculate pixel-level (30 m × 30 m) AGB storage for 2003 to 2013:

$$AGB_j = V \times \frac{NDVI_j}{SNDVI} \times Coef \quad (2)$$

where  $Coef$  (t C m<sup>-3</sup>) is the coefficient that converts biomass storage ( $V$ ) to biomass carbon (AGB). 110 Combining the provincial forest biomass storage ( $V_9$ , m<sup>3</sup>) from the 9<sup>th</sup> NFI, we calculated the provincial  $Coef$  (Table S2) as:

$$Coef = \frac{CD \times S}{V_9} \quad (3)$$

Then, the harvested carbon was calculated for all pixels corresponding to clear-cutting derived from the

TCL dataset. The total harvested carbon from clear-cutting ( $HC_C$ , t C) in a given province can be  
115 calculated by aggregating all pixels occurring tree cover loss.

For selective logging, we developed a satellite-based method to identify the location and magnitude  
of selective logging. The method was based on the principle of multitemporal satellite-based vegetation  
index analysis and detected the changes of NDVI between two adjacent years. This approach relied on  
two fundamental assumptions. First, we assumed that NDVI values decreased resulting from selective  
120 logging. Therefore, we calculated the NDVI difference ( $NDVI_{diff}$ ) between the current year ( $NDVI_t$ ) and  
subsequent year ( $NDVI_{t+1}$ ) at all pixels (Eq. (4)) and determined the possible logging locations with  
decreased  $NDVI_{diff}$ , where  $NDVI_{diff} < 0$  indicated potential selective logging.

$$NDVI_{diff} = NDVI_{t+1} - NDVI_t \quad (4)$$

Second, we assumed that the reductions in NDVI values resulting from selective logging would be  
125 more significant compared to the decreases caused by other factors such as droughts, heatwaves, ice  
storms, and insect outbreaks (Yuan et al., 2014), without considering fires due to their low frequency in  
China (Curtis et al., 2018). Changes in vegetation coverage caused by logging activities were expected  
to have a drastic and rapid impact on ecosystems compared to other environmental changes and  
disturbances. Therefore, the decreased magnitude of NDVI values due to selective logging was assumed  
130 to be the largest. Based on this assumption, we can identify selective logging areas by focusing on pixels  
exhibiting larger  $NDVI_{diff}$ . For a specific province, all pixels with negative  $NDVI_{diff}$  values were sorted by  
ascending order in  $NDVI_{diff}$ . The pixels at the front of the sorted list had more negative  $NDVI_{diff}$  values  
and a larger likelihood of being logging locations. Thereby, a threshold of  $NDVI_{diff}(NDVI_{Th})$  was needed  
to distinguish selective logging from other disturbed pixels. Selective logging was considered to have  
135 occurred only when  $NDVI_{diff} < NDVI_{Th}$ . Then, the harvested carbon ( $HC_S$ , tC) was calculated in all pixels  
corresponding to selective logging according to Eq. (5):

$$HC_{Sj} = \frac{NDVI_{diffj}}{NDVI_j} \times AGB_j \quad (5)$$

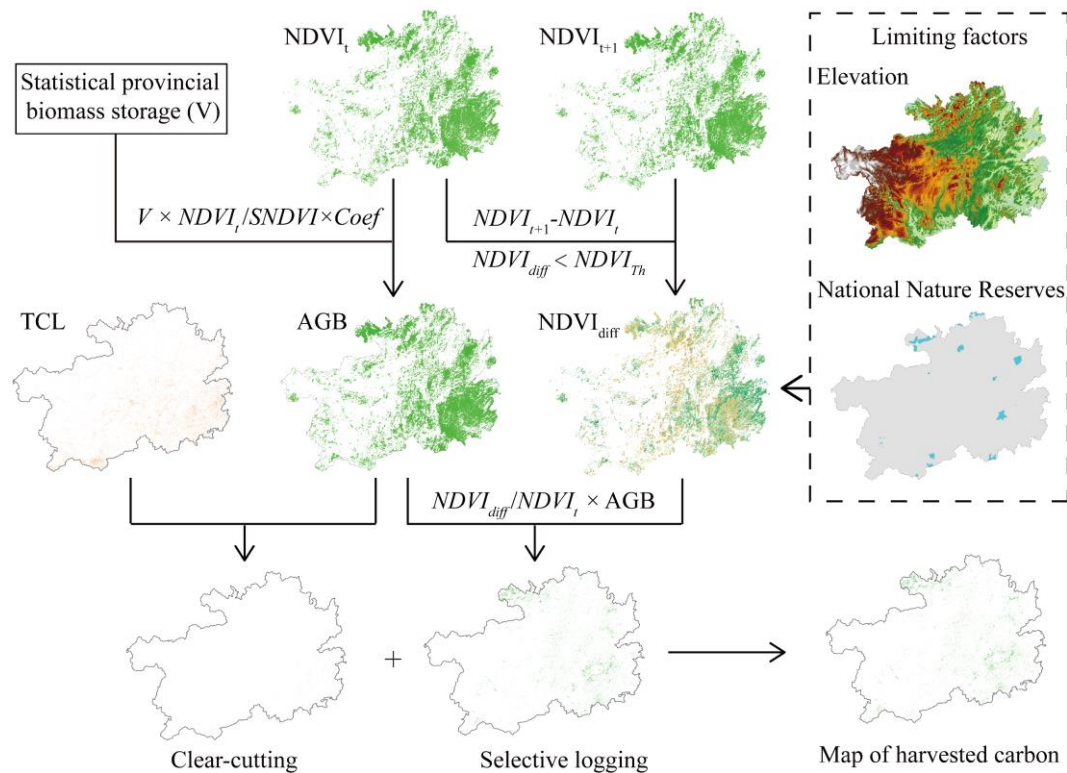
Therefore, the province-level statistical harvested carbon (SHC) was used to determine the  $NDVI_{Th}$  of  
each province, which made the sum of  $HC_C$  and  $HC_S$  equal to SHC. Theoretically, the determined  $NDVI_{Th}$   
140 should be less than 0. However, in several provinces, when  $NDVI_{Th}$  was set to 0, the sum of  $HC_C$  and  
 $HC_S$  (identified harvested carbon) was still lower than SHC (e.g., Anhui), implying that the identified  
harvested carbon was underestimated. Then we assigned the unidentified harvested carbon ( $SHC - HC_C -$

HC<sub>S</sub>) to pixels where selective logging occurred.

$$HC_{s1j} = (SHC - HC_C - HC_S) \times \frac{NDVI_{diffj}}{SNDVI_{diff}} \quad (6)$$

145 where  $HC_{s1j}$  is the harvested carbon added by the  $j$ th pixel where selective logging occurred;  $NDVI_{diffj}$  indicates the  $NDVI_{diff}$  of the  $j$ th pixel, and  $SNDVI_{diff}$  is the sum of  $NDVI_{diff}$  of all pixels where selective logging occurred in that province. This approach increased the harvested carbon for all pixels where selective logging occurred, so we also examined whether the harvested carbon exceed their AGB at the pixel scale. If so, we counted these pixels as clear-cutting. To assess the accuracy and validity of the  
150 dataset, we additionally quantified the proportion of pixels with harvested carbon exceeding their AGB compared to the total number of harvested pixels at the province level.

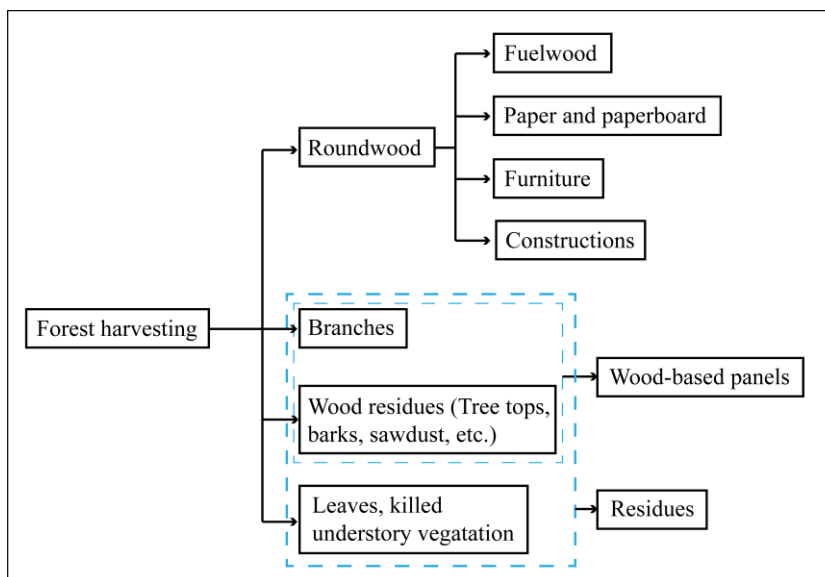
In addition, this study assumed that forest harvesting did not occur in the National Nature Reserves and high-altitude regions because of high transport costs and harvesting expenses. For the Tibetan Plateau and Yunnan Province, we assumed no harvesting at elevations higher than 2,500 m. In the other provinces,  
155 harvesting was assumed to be absent at elevations higher than 1,500 m, according to Nabuurs et al., (2019).



**Figure 1:** Flowchart for mapping forest carbon harvesting.

## 2.2 Annual carbon changes from HWPs in-use and end-use

160 The harvested wood was allocated into six wood pools (Fig. 2). (1) Fuelwood pool, where the wood is burned as fuel, resulting in immediate carbon emissions through combustion; (2) paper and paperboard pool, including household paper, printing paper, packaging paper, etc.; (3) wood-based panels pool, including fiberboard and particle board made from wood residues (such as barks, branches, sawdust) or small stems bonded with adhesives, are commonly used as decorative panels for various applications like wall cladding and ceiling finishes; (4) furniture pool, referring to wooden household items such as tables, chairs, wood beds, etc.; (5) constructions pool, referring to the structural components used to support buildings, such as beams, columns, and trusses; and (6) residues pool, including leaves, killed understory vegetation, and unutilized wood residues, which are typically left on the logging site or treated as fuel (Lippke et al., 2011; Stockmann et al., 2012), and were assumed as fuel in this study. The wood pools of 165 (2), (3), (4), and (5) belong to HWPs pool, where the carbon will remain stored until the products are either retired from use or reach the end of their service life (Table S4) and are consequently discarded. Subsequently, these discarded products are then sent directly to landfill, where they decompose (Stockmann et al., 2012; IPCC, 2019a).



175 **Figure 2:** The allocation of post-harvest wood to the six wood pools.

In this study, the volume ( $m^3$ ) of fuelwood, pulpwood (wood for paper and paperboard), wood-based panels, and the sum volume ( $m^3$ ) of wood for furniture and constructions can be obtained directly from the China Forestry Statistical Yearbook. The constructions and furniture pools were allocated as the percentage of  $74.6 \pm 6.2\%$  and  $25.4 \pm 6.2\%$  from their sum, respectively, according to China Timber and

180 Wood Products Distribution Industry Yearbook. The wood in pools (1) to (5) was converted into carbon, with conversion factors listed in Table S3. Then, the carbon entering the residues pool can be calculated by subtracting the carbon in pools (1) to (5) from the total harvested carbon (Sect. 2.3.2).

### 2.2.1 Annual carbon changes in “HWPs in use”

Carbon stocks and decays from in-use HWPs were calculated using the methodologies for  
 185 estimating carbon removal from HWPs described in the “2006 IPCC Guidelines for National Greenhouse Gas Inventories” (IPCC, 2006a) and the “2013 Revised Supplementary Methods and Good Practice Guidance Arising from the Kyoto Protocol” (IPCC, 2014). “Decay” in this paper refers to the discarding of HWPs from end uses (and sent to landfill), not biological decay. Moreover, here we focused on the carbon fate of wood harvested in China, the imports and exports were not considered. The FOD method  
 190 (Pingoud and Wagner, 2006) was used to estimate the carbon change in the HWPs pool as:

$$C(i + 1) = e^{-k} \times C(i) + \left[ \frac{(1 - e^{-k})}{k} \right] \times Inflow(i) \quad (7)$$

$$\Delta C(i) = C(i + 1) - C(i) \quad (8)$$

where  $i$  denotes the year;  $C(i)$  is the carbon stock in the HWPs pool at the beginning of year  $i$ ; and  $k$  ( $k = \ln(2)/HL$ ) is the decay constant ( $\text{yr}^{-1}$ ). HL is the number of years it takes to lose half of the existing  
 195 material in the pool, which is a function of the country-specific service life of particular HWPs ( $HL = \text{service life} \times \ln(2)$ ) (IPCC, 2019b).  $k$  for paper and paperboard, wood-based panels, furniture, and constructions were calculated as 0.333, 0.125, 0.067, and 0.025, respectively.  $Inflow(i)$  is the inflow to the HWPs pool during year  $i$ , and  $\Delta C(i)$  represents the carbon stock change of the HWPs pool during year  $i$ . Next, the amount of discarded organic carbon ( $DOC$ ) deposited in the landfill, as the HWPs go  
 200 out of use in year  $i$ , was calculated using Eq. (9):

$$DOC_i = Inflow(i) - \Delta C_i \quad (9)$$

### 2.2.2 Annual carbon changes in landfill

The  $DOC$  deposited in landfill was divided into three parts, (1)  $DOC$  for aerobic decomposition ( $DOC_{ar}$ ), producing  $\text{CO}_2$  until all available oxygen has been used up; (2)  $DOC$  for anaerobic  
 205 decomposition ( $DOC_{an}$ ), producing both  $\text{CH}_4$  and  $\text{CO}_2$ ; (3)  $DOC$  that will not be decomposed but stored long-term in the landfill ( $DOC_b$ ).

The  $DOC_{ar}$  was calculated as:



$$DOC_{ar_i} = DOC_i \times f_{ar} \quad (10)$$

where  $f_{ar}$  denotes the proportion of  $DOC$  undergoing aerobic decomposition. Based on the landfill  
 210 situation in China, the  $f_{ar}$  was assumed to be  $0.28 \pm 0.15$  (Table S5). The  $DOC_{ar_i}$  undergoes aerobic  
 decomposition and releases as  $CO_2$  in year  $i$ :

$$CO_{2\ ar_i} = DOC_{ar_i} \times \frac{44}{12} \quad (11)$$

The  $DOC_{an}$  is calculated with Eq. (12), as:

$$DOC_{an_i} = DOC_i \times (1 - f_{ar}) \times DOC_f \quad (12)$$

215 where  $DOC_f$  indicates the fraction of  $DOC$  that can be decomposed under anaerobic conditions (Table  
 S6). The annual carbon change of  $DOC_{an}$  in the landfill was calculated according to the FOD method  
 (Pingoud and Wagner, 2006).

$$DOC_{an\ a_i} = DOC_{an_i} + DOC_{an\ a_{i-1}} \times e^{-k} \quad (13)$$

$$DOC_{an\ decomp_i} = DOC_{an\ a_{i-1}} \times (1 - e^{-k}) \quad (14)$$

220 where  $DOC_{an\ a_i}$  represents the  $DOC_{an}$  accumulated in the landfill at the end of year  $i$ ;  $DOC_{an\ decomp_i}$  denotes  
 $DOC_{an}$  decomposed in the landfill in year  $i$ ; the anaerobic decomposition generally occurs in the  
 following year of deposition.  $k$  is the decay constant ( $yr^{-1}$ ), estimated based on the environmental  
 conditions of landfill in China (Table S6). Then, the potentials to generate  $CH_4$  and  $CO_2$  from the  
 anaerobic decomposition of  $DOC_{an}$  were:

$$225\ CH_{4_i} = DOC_{an\ decomp_i} \times F \times \frac{16}{12} \times (1 - R_T) \times (1 - OX_T) \quad (15)$$

$$CO_{2\ an_i} = [DOC_{an\ decomp_i} \times (1 - F)] \times \frac{44}{12} \quad (16)$$

where  $CH_{4_i}$  and  $CO_{2\ an_i}$  are  $CH_4$  and  $CO_2$  produced by anaerobic decomposition in landfill in year  $i$ .  $F$   
 denotes the volume fraction of  $CH_4$  in the generated landfill gas, with a value of  $0.5 \pm 0.1$  (Cai et al.,  
 2018).  $R_T$  and  $OX_T$  are the recovery rate and oxidation rate of  $CH_4$  in China (Table S5). The total  $CO_2$   
 230 decomposed from  $DOC$  in year  $i$  was the sum of  $CO_{2\ ar_i}$  and  $CO_{2\ an_i}$ . The  $CH_4$  emissions were transformed  
 to  $CO_2$  equivalents ( $CO_2e$ ) to harmonize calculations of the overall global warming potential (IPCC,  
 2023).

The  $DOC_{ls}$  can be calculated as:

$$DOC_{ls_i} = DOC_i - DOC_{ar_i} - DOC_{an_i} \quad (17)$$

235 Then, the carbon stock in the landfill at the end of year  $i$  was calculated as:

$$DOC_{s_i} = \sum_0^i DOC_{ls_i} + DOC_{an\ a_i} \quad (18)$$

## 2.3 Datasets

### 2.3.1 National Forest Inventories

The NFIs provided nine periods of provincial biomass storage for 1973-1976, 1977-1981, 1984-  
240 1988, 1989-1993, 1994-1998, 1999-2003, 2004-2008, 2009-2013, and 2014-2018 (National Forestry and  
Grassland Administration, 2019). We used the biomass storage data during the 6<sup>th</sup>-9<sup>th</sup> NFIs to generate  
the distribution of AGB for 2003-2018.

### 2.3.2 Statistical forest harvesting data

The annual provincial wood output (m<sup>3</sup>), extracted from the China Forestry and Grassland Statistical  
245 Yearbook, was categorized into two main types: commercial and non-commercial wood. Commercial  
wood was further divided into roundwood, pulpwood, and fuelwood. Non-commercial wood included  
the volume of wood logged ( $F_{log}$ ) by farmers for burning and for their personal consumption. Commercial  
wood refers to wood output ( $W_{output}$ ), not the actual logging volume ( $W_{log}$ ).  $W_{log}$  refers to the total volume  
of wood cut from the forest, regardless of whether it was further processed into commercial wood.  $W_{output}$   
250 refers to the volume of wood that can be used for further production and sale after preliminary processing  
(such as peeling, sawing, etc.). Meanwhile, this process may eliminate some unusable or poor-quality  
wood, the  $W_{output}$  is generally less than the  $W_{log}$  (National Forestry Administration, 2000). Based on the  
provincial wood output rates ( $R$ , i.e., the ratio of  $W_{output}$  to  $W_{log}$ ) provided by China's timber production  
plan from the National Bureau of Statistics (Table S2), we calculated the actual annual  $W_{log}$  of  
255 commercial wood for each province as:

$$W_{log} = \frac{W_{output}}{R} \quad (19)$$

Then, the total harvested carbon (i.e., the SHC in Sect. 2.1) for a given province was calculated as:

$$SHC = (W_{log} + F_{log}) \times Coef \quad (20)$$

### 2.3.3 Surveyed forest harvesting data

260 The surveyed forest harvesting data, i.e., the harvested volume at the city and county-level, was  
retrieved from the official website of each provincial Forestry Bureau. To ensure the effective  
implementation of the forest harvesting quota system, the provincial Forestry Bureau randomly selects  
several cities and/or counties, conducting comprehensive field inspections of the annual forest harvesting.  
The actual annual harvest volume of a specific city or county is determined through comprehensive cross-

265 validation of multiple methods, including declaration and approval records reviewing, on-site  
measurements, and remote sensing monitoring, etc. These techniques are employed to ensure the  
accuracy and reliability of the obtained harvest data. There were 133 records nationwide available from  
2006 to 2018, concentrated in the provinces of Guizhou, Yunnan, Zhejiang, and Sichuan (Fig. S1).

#### **2.3.4 Forest cover map**

270 The Chinese Forest Cover Dataset, reconstructed by fusing the NFIs and twenty Land Use and Land  
Cover datasets, was used as the forest cover base map. This forest cover accurately depicts the historical  
changes in China's forest cover in the period of 1980-2015, with overall accuracy from 76.9% to 99.4%  
(Xia et al., 2023).

#### **2.3.5 Satellite-based vegetation index**

275 The NDVI dataset from 2000 to 2020 calculated by Dong et al (2021) was applied to allocate AGB  
and identify selective logging. This NDVI dataset was calculated using all Landsat5/7/8 remote sensing  
data for the whole year, the NDVI maxima in each image year were obtained by data pre-processing and  
data smoothing (Dong et al., 2021).

#### **2.3.6 Mask data**

280 This study used the elevation and National Nature Reserves to exclude the regions where rarely  
occur harvesting. The elevation dataset was obtained from the Resource and Environment Science and  
Data Center of the Chinese Academy of Sciences (<https://www.resdc.cn/>) and the distribution of National  
Nature Reserves was provided by the National Earth System Science Data Center, National Science &  
Technology Infrastructure of China (<http://www.geodata.cn>).

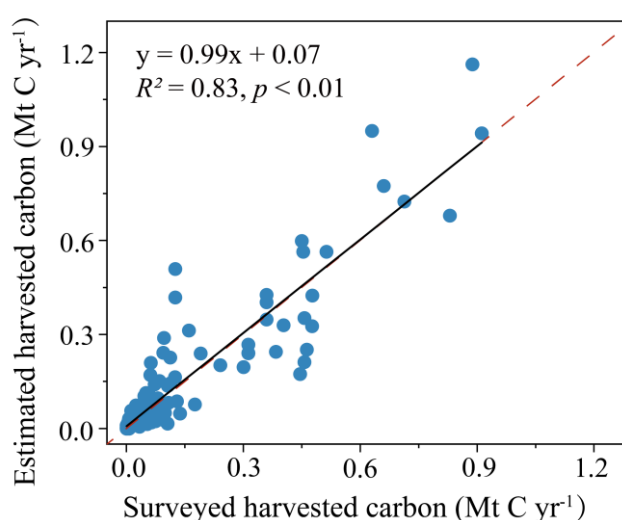
### **285 2.4 Accuracy assessment**

The surveyed forest harvesting data at city and county-level were employed to validate the accuracy  
of the LEAF dataset by conducting a comparison with the estimated harvested carbon. The relationships  
between the estimated harvested carbon and the corresponding surveyed harvested carbon were assessed  
by linear regression. Then the coefficient of determination ( $R^2$ ) and slope of linear regression can be  
290 calculated, and the closer these two values are to 1, the better the estimates.

### 3. Results

#### 3.1 Accuracy evaluation of LEAF dataset

Accuracy evaluation of the LEAF dataset generated from this study showed good performance in indicating spatial variations of harvested carbon in China. This study used province-level statistical harvested carbon to determine the threshold for identifying selective logging and used city and county-level surveyed harvested carbon ranging from 2006 to 2018 to examine the performance. The estimated harvested carbon showed high consistency with surveyed harvested carbon, with  $R^2$  of 0.83 and a linear regression slope of 0.99 (Fig. 3).

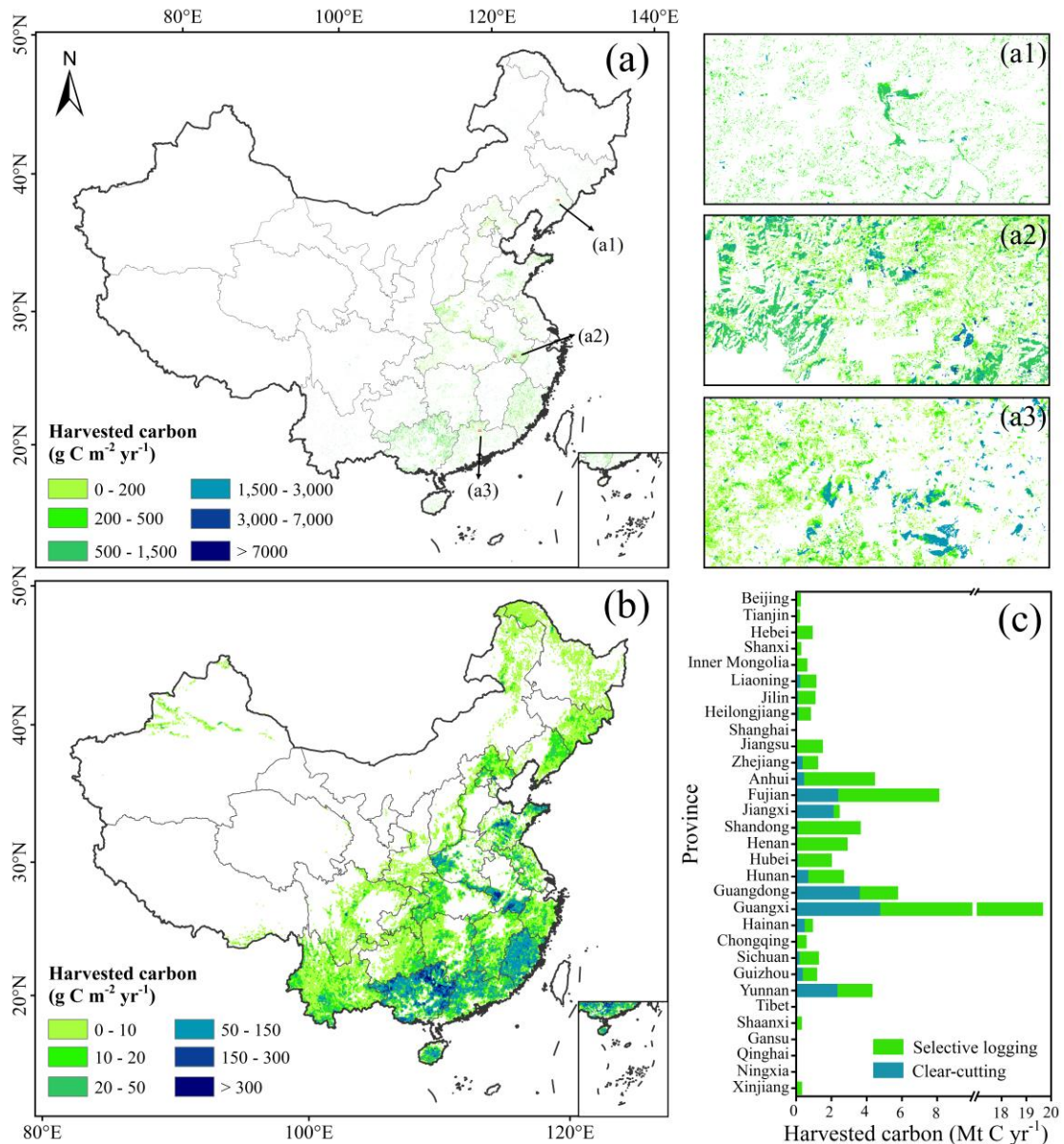


300 **Figure 3:** Comparison of estimated and surveyed harvested carbon from the official website of each provincial forestry bureau at the city and county levels across all investigated provinces. The solid line indicates the regression lines, and the red dashed line indicates the 1:1 line.

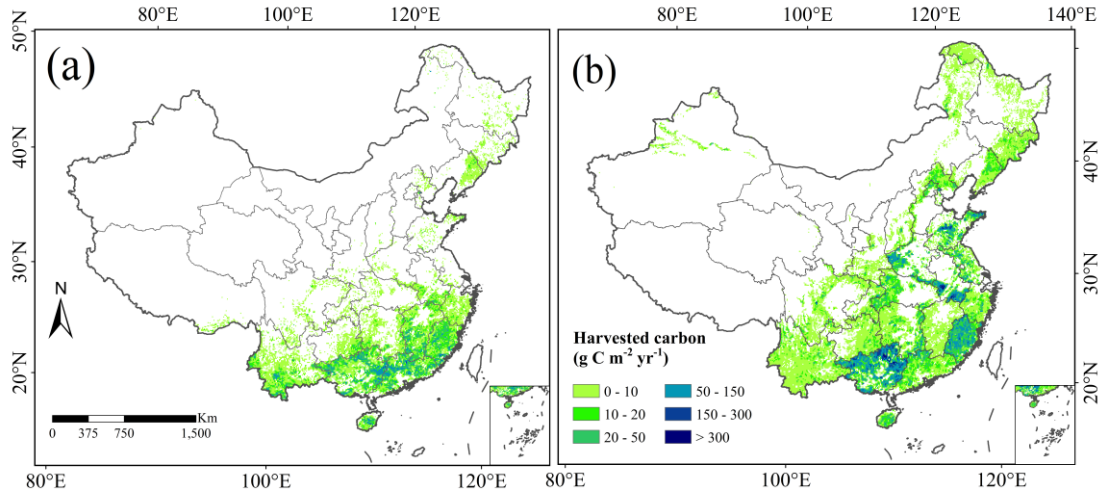
The validation also showed the performance of the LEAF dataset across various provinces and periods. The dataset exhibited excellent skill in simulating the spatial variation of harvested carbon across all surveyed provinces, with  $R^2$  between estimates and surveyed data ranging from 0.24 to 0.96 (Fig. S2). Zhejiang performed the best (Fig. S2e), while Sichuan's performance was relatively low, with  $R^2$  less than 0.5 (Fig. S2c). The LEAF dataset also effectively reproduced the spatial variations of harvested carbon across different periods, with  $R^2$  values ranging from 0.31 to 0.99 (Fig. S3). The estimates for 2013 and 2017 demonstrated superior performance, with both linear regression slopes approximating 1 (Fig. S3c and g). However, except for 2016, estimates from other periods displayed varying degrees of underestimation or overestimation (Fig. S3).

### 3.2 Spatial and temporal patterns of harvested carbon in China

There was a large heterogeneity in harvested carbon over the regional scale. Harvesting mainly occurred in Eastern and Southern China, and rarely in Northwest China (Fig. 4a and b). Guangxi Province recorded the highest harvested carbon, constituting approximately 30% of China's annual total harvested carbon. This volume is 2.5 times larger than that of Fujian, the province with the second highest harvested carbon (Fig. 4c). In terms of harvesting ways, over 80% of the nationwide clear-cutting harvested carbon originated from Guangxi, Guangdong, Fujian, Yunnan, and Jiangxi (Fig. 4c). Forest harvesting in Jiangxi, Guangdong, Yunnan, and Hainan was dominated by clear-cutting, in these provinces, harvested carbon from clear-cutting comprised more than 50% of the total harvested carbon (Fig. 4c, Fig. 5a). For other provinces, selective logging was the main way of forest harvesting (Fig. 5b).

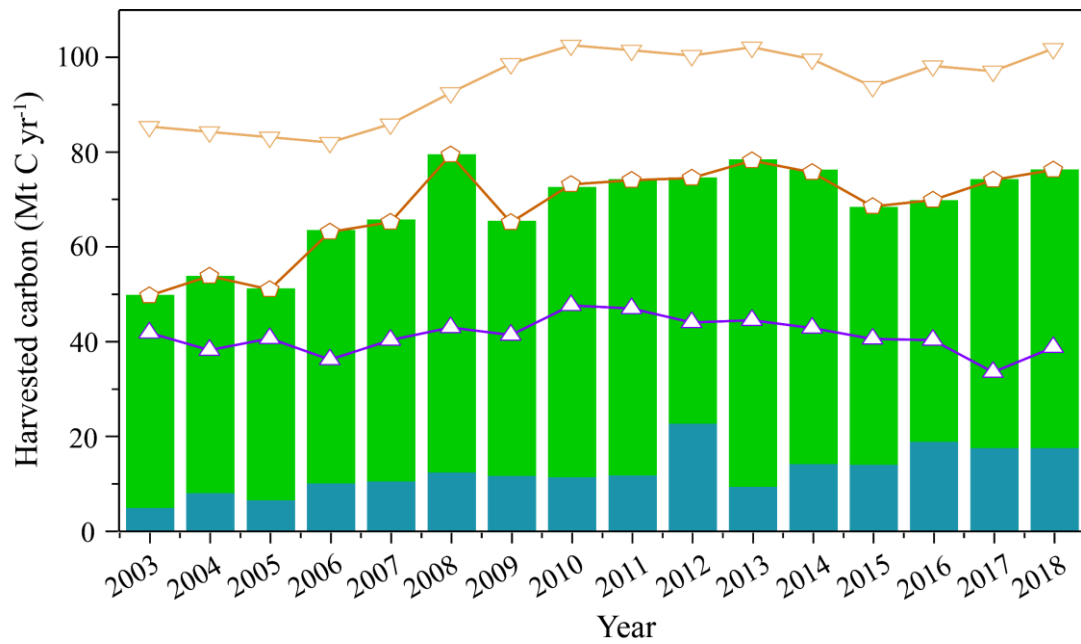


**Figure 4:** Map of forest harvested carbon for China in 2016 at (a) 30 m and (b) 0.1° resolution and the zoomed-in view of the example areas of (a) (a1, a2, and a3), the map at 0.1° was derived from a 30 m data upscaling, and (c) shows the harvested carbon from clear-cutting and selective logging by province in 2016.



**Figure 5:** Map of forest harvested carbon from (a) clear-cutting and (b) selective logging for China in 2016 at 0.1° resolution.

China experienced an overall upward trend in forest carbon harvesting, with average harvesting of  $68.3 \pm 9.3 \text{ Mt C yr}^{-1}$  from 2003 to 2018 (Fig. 6). The most substantial growth in harvested carbon was observed from 2003 to 2008, increasing approximately 1.6 times from  $49.8 \text{ Mt C yr}^{-1}$  in 2003 to  $79.5 \text{ Mt C yr}^{-1}$  in 2008 (Fig. 6). Among all surveyed years, the harvested carbon peaked in 2008, primarily driven by an uptick in fuelwood harvest (Fig. 7). In subsequent years, the harvested carbon generally plateaued, with minor fluctuations. Selective logging was the main way of forest harvesting (Fig. 6). Averaged from 2003 to 2018, there was  $55.6 \pm 7.2 \text{ Mt C yr}^{-1}$  from selective logging, accounting for around 82% of the total harvested carbon (Fig. 6). Nevertheless, the proportion of harvested carbon from clear-cutting was overall on the rise, reaching its peak in 2012 when it constituted 30% of the total harvested carbon for that year (Fig. 6).



340      —○— Statistical    —△— LUH2      —▽— FAO      ■ Selective logging      ■ Clear-cutting

**Figure 6:** Long-term changes of harvested carbon in China between 2003 and 2018 from statistical, LUH2, FAO, and LEAF datasets.

### 3.3 Allocation of harvested carbon into the various wood pools

This study also provides the allocation of harvested carbon into the various wood pools with  
 345 different lifetimes, including fuelwood pool, paper and paperboard pool, wood-based panels pool, furniture pool, constructions pool, and residues pool (Sect. 2.2). Averaged from 2003 to 2018, over the entire China, harvested carbon was allocated into six pools with  $19.6 \pm 4.0\%$ ,  $2.1 \pm 1.1\%$ ,  $32.8 \pm 11.8\%$ ,  $7.0 \pm 0.4\%$ ,  $19.4 \pm 0.4\%$ , and  $19.1 \pm 9.8\%$ , respectively (Fig. 7). Wood for HWP's mainly came from Southern China, with Guangxi contributing more than 20% of the national wood for HWP's annually,  
 350 followed by Fujian (7.5%). Meanwhile, Guangxi also contributed up to 45.5% of the wood used for paper production (Fig. 8). Over 50% of the wood in Fujian was used for fuelwood, contributing nearly 30% of the national fuelwood. Similar to Fujian, more than 50% of the wood in Yunnan was used for fuelwood, making Yunnan the second-largest province in terms of wood supply for fuelwood (Fig. 8). From 2003 to 2018, wood harvesting has been increasing, while wood for fuel has been decreasing, with its share  
 355 decreasing from 29% to 13%. More wood was used for HWP's production. The wood residues decreased from 2003 to 2018 (Fig. 7).

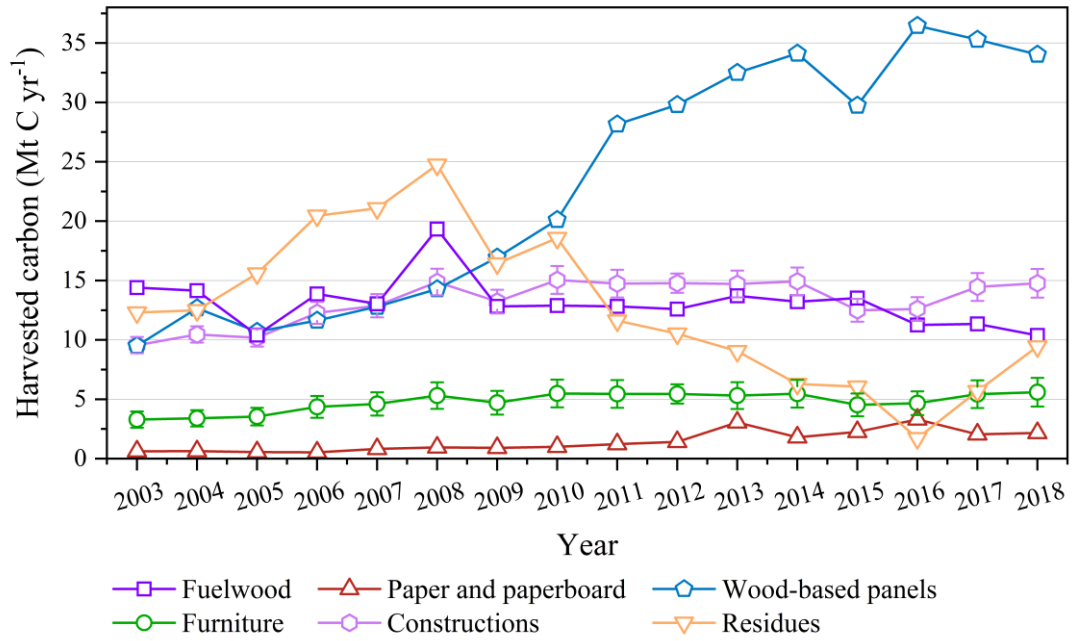


Figure 7: Long-term changes of different pools of harvested carbon from 2003 to 2018 in China.

360

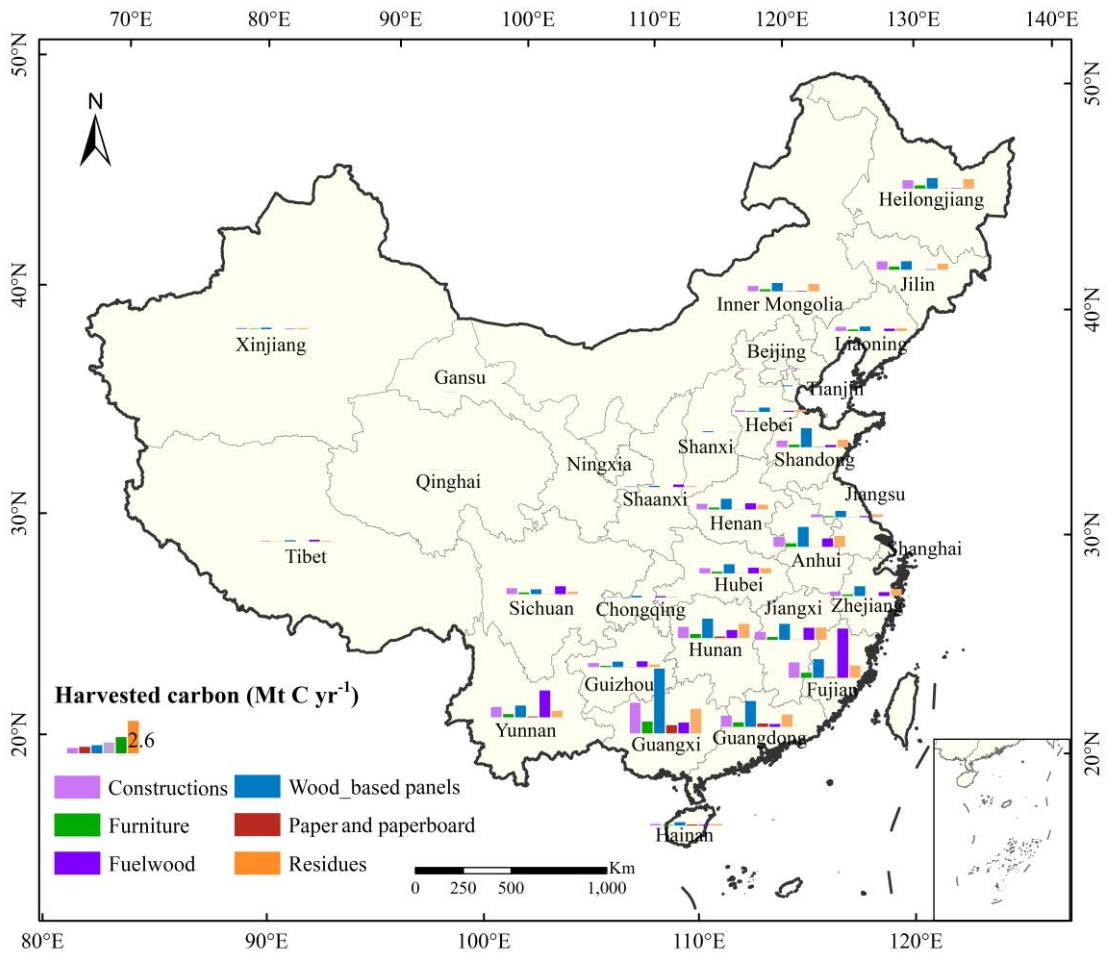
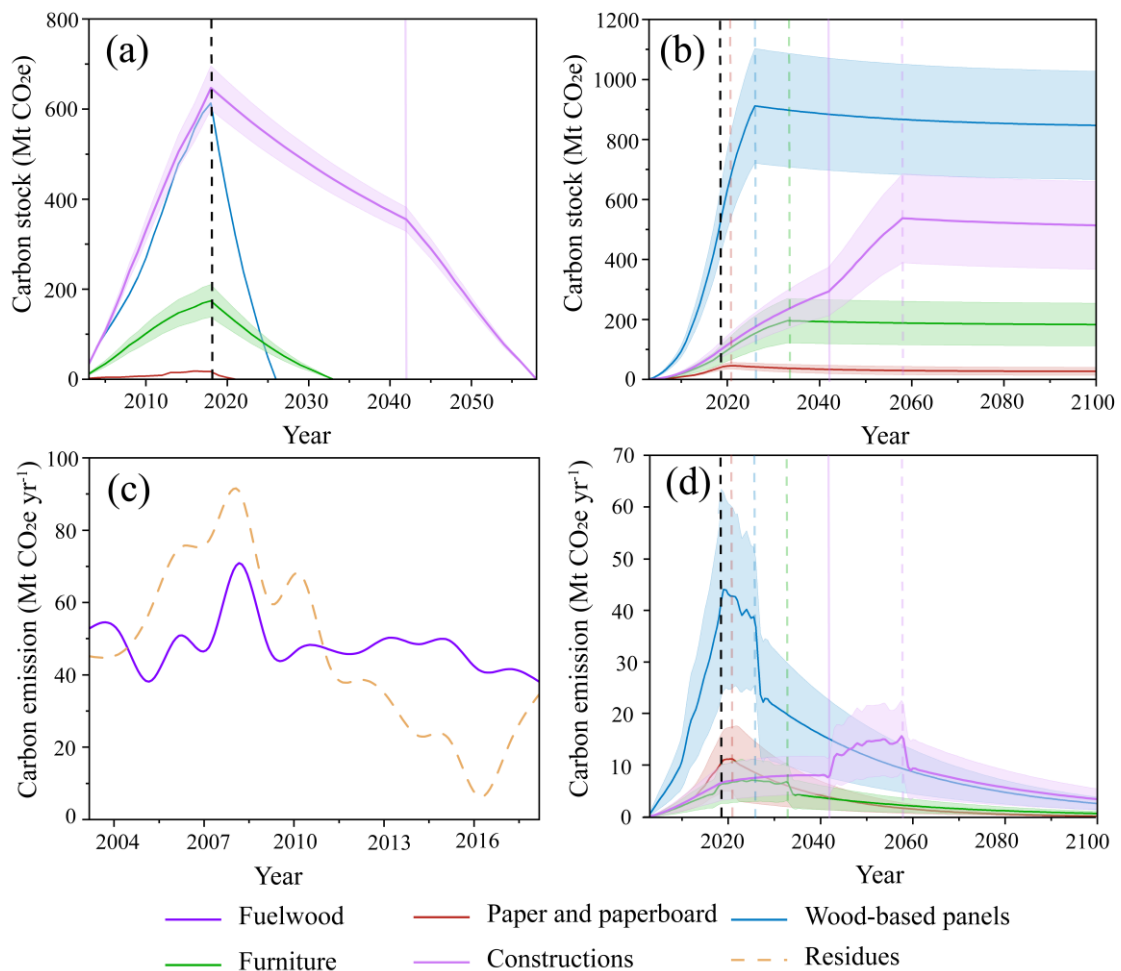


Figure 8: Pools of provincial harvested carbon averaged from 2003 to 2018.



We further quantified the delayed emissions of harvested carbon in various pools. Combustion of fuelwood resulted in major carbon emissions, and wood-based panels contributed a major share of carbon stock (Fig. 9). Fuelwood was typically burned for a short period of time (1 year), resulting in average emissions of  $48.1 \pm 7.4$  Mt CO<sub>2</sub>e yr<sup>-1</sup> from 2003-2018 (Fig. 9c). Additionally, discarded HWPs that enter landfill undergo gradual decomposition, releasing an average of  $3.1 \pm 3.0$  Mt CO<sub>2</sub>e yr<sup>-1</sup>,  $13.3 \pm 11.2$  Mt CO<sub>2</sub>e yr<sup>-1</sup>,  $2.0 \pm 1.2$  Mt CO<sub>2</sub>e yr<sup>-1</sup>, and  $3.7 \pm 1.7$  Mt CO<sub>2</sub>e yr<sup>-1</sup> for paper and paperboard, wood-based panels, furniture, and constructions, respectively, from 2003 to 2100 (Fig. 9d). The total carbon stock sustained an upward trend, peaking at  $2141.3 \pm 195.7$  Mt CO<sub>2</sub>e in 2018 (Fig. 9a, b). As products were discarded and/or retired, the carbon stock in currently used products persistently declines without ongoing wood inputs (Fig. 9a). Furthermore, most of the waste products that enter landfill do not decompose and become a permanent carbon sink (Fig. 9b). About  $39.2\% \pm 10.3\%$  of harvested carbon during 2003-2018 will still be stored in the HWPs by 2100 (Fig. 9b).



**Figure 9: The post-harvest carbon dynamics:** (a) the accumulated carbon stock of HWPs in-use; (b) the accumulated carbon stock in landfill; (c) annual carbon emissions of fuelwood and residues, since

the burning of residues is not a definite fact, we represented it using dashed lines; (d) annual carbon emissions in landfill. The black dashed line indicates the year of 2018, when there is no new wood inflow in the HWP, the other dashed lines in (b) and (d) indicate the year when the corresponding products were all discarded, and the purple solid line indicates the year when the first construction wood reached its service life. Since paper and paperboard, wood-based panels, and furniture have a service life of less than 16 years, carbon stock of emissions has no sharp changes before and after the year reached service life. The shaded area represents the variation range.

## 385 4. Discussion

### 4.1 Implications for simulating the carbon sink in China

Forest harvesting is one of the most important human activities determining the terrestrial ecosystem carbon budget (Liu et al., 2011; Pan et al., 2011). Forest harvesting largely decreases the leaf area index, increases litter biomass, and alters stand temperature and moisture, strongly impacting the structure and function of ecosystems (Nepstad et al., 1999; Liu et al., 2011; Jian et al., 2022). Harvesting causes damage to the forest canopy and soils, leading to temporary increases in litter carbon stock. It ultimately results in a net loss of soil carbon due to the damages inflicted on the forest canopy and soil. Following a disturbance, soil carbon loss can exceed carbon gain in above-ground biomass (Kowalski et al., 2004). Pennock and van Kessel (1997) found that soil carbon decreased by 5 to 20 t C ha<sup>-1</sup> over a 20-year period following clear-cutting, a significant loss compared to the carbon accumulated in a maturing forest's biomass (Pennock and Van Kessel, 1997).

Forest harvesting is a type of human activity that cannot be simulated by ecosystem modeling. Therefore, the development of regional and global datasets is necessary for quantifying the impacts of forest harvesting. The LUH2 dataset is an important source of data for indicating global forest harvesting and has been widely used to simulate the impacts of forest harvesting on the terrestrial carbon sink (Harper et al., 2018; Hurtt et al., 2020; Friedlingstein et al., 2022). However, our results showed that the LUH2 dataset underestimated harvested carbon by about 38.5% on average for China, compared with the statistical data (Fig. 5, Fig. S4). The LUH2 dataset used national wood volume harvest data from the Food and Agriculture Organization (FAO, 2020). Across all of China, the harvested carbon data from the FAO were approximately 40% higher compared to the statistical data averaged from 2003 to 2018, caused by the different statistical methodologies and data sources used in FAO and the China's statistical data. Nevertheless, in LUH2, the wood from agricultural expansion has been subtracted, the remaining national wood was then explicitly harvested (Hurtt et al., 2020). However, according to LUH2, the

cropland area has increased by 41 million hectares since 1980 in China, which significantly deviates from  
410 the actual situation (i.e., decreased by 14 million hectares) (Yu et al., 2022). Therefore, LUH2 has  
overestimated wood harvests due to agricultural expansion, leading underestimated of wood from forest  
harvesting. And after 2000, the spatial pattern of forest harvesting was constrained using the Landsat  
forest loss data (i.e., TCL) (Hansen et al., 2013) by verifying if the annualized gridded forest loss derived  
from the Landsat data matched the forest harvesting information in the LUH2 dataset. However, the TCL  
415 dataset only indicates clear-cutting and does not include selective logging. Our result showed that there  
was a large proportion of selective logging (Fig. 6), indicating that the LUH2 dataset largely  
underestimates the harvest area.

This study not only represents the temporal and spatial patterns of harvested carbon, but also  
provides the allocation of harvested carbon among the pools. Unlike harvested crop carbon, which will  
420 emit into the atmosphere at a faster rate, harvested forest carbon is stored in various HWP pools, and  
emits back into the atmosphere with different lifetimes (Skog, 2008; IPCC, 2019a). As an extension of  
forest resources, the carbon dynamics of HWPs in use and after use have multiple impacts on national  
greenhouse gas (GHG) inventories (Johnston and Radeloff, 2019). Clarifying the proportion of post-  
harvest carbon allocated to different pools is the key to accurately assessing carbon dynamics. In addition,  
425 previous studies focused more on the carbon stored in HWPs (Stockmann et al., 2012; Matsumoto et al.,  
2022; Wei et al., 2023). However, the assessment of the global potential of HWPs as a carbon sink is  
subject to the balance between carbon inflows and outflows (Johnston and Radeloff, 2019). In particular,  
waste products emit non-CO<sub>2</sub> GHG such as CH<sub>4</sub>, contributing to climate change (Cai et al., 2018).  
Moreover, the carbon emissions from harvested wood exhibit delayed and long-term effects. Tracking  
430 the long-term dynamics of carbon and assessing the future climate mitigation potential can provide a  
better foundation for GHG management in the forestry sector.

#### **4.2 Spatio-temporal changes of harvested carbon and allocation in China**

The spatial heterogeneity of forest harvesting is influenced by the distribution of forest resources in  
China (Fig. 4). Intensive harvesting in Southern China (e.g., Guangxi and Fujian) indicates a demand for  
435 specific tree species, such as *Eucalyptus* and *Cunninghamia lanceolata* (Yu et al., 2020). As the total  
harvesting increased, both clear-cutting and selective logging exhibited a general upward trend (Fig. 6),  
mirroring the dynamic equilibrium in the allocation of harvesting ways across China's forests. The rate

of increase in clear-cutting significantly outpaced that of selective logging (Fig. 6). A growing demand for wood is driving an upward in large-scale forest harvesting. Nevertheless, selective logging has remained the principal way of forest harvesting in China. Moreover, selective logging is a widely employed silvicultural practice that plays a central role in forest management worldwide (Liu et al., 2011). In the United States, the area covered by selective logging is approximately 61% of that occupied by clear-cutting (Masek et al., 2011). In Brazil, selective logging doubles the previous estimates of the total forest degraded by human activities (Asner et al., 2005). Selective logging is a more diffuse disturbance than forest clearance (Fisher et al., 2014) and is mostly invisible to satellites (Asner et al., 2005; Matricardi et al., 2010; Hethcoat et al., 2019). Despite many efforts to address the challenge of estimating selective logging using satellite data through image classification, it is still difficult to monitor low-intensity selective logging due to the coarse resolution of satellite imagery (Asner et al., 2005; Matricardi et al., 2010; Hethcoat et al., 2019). Objective spatially explicit reporting on selective logging is the basis for model-based assessment of the impact of forest harvesting on the carbon budget.

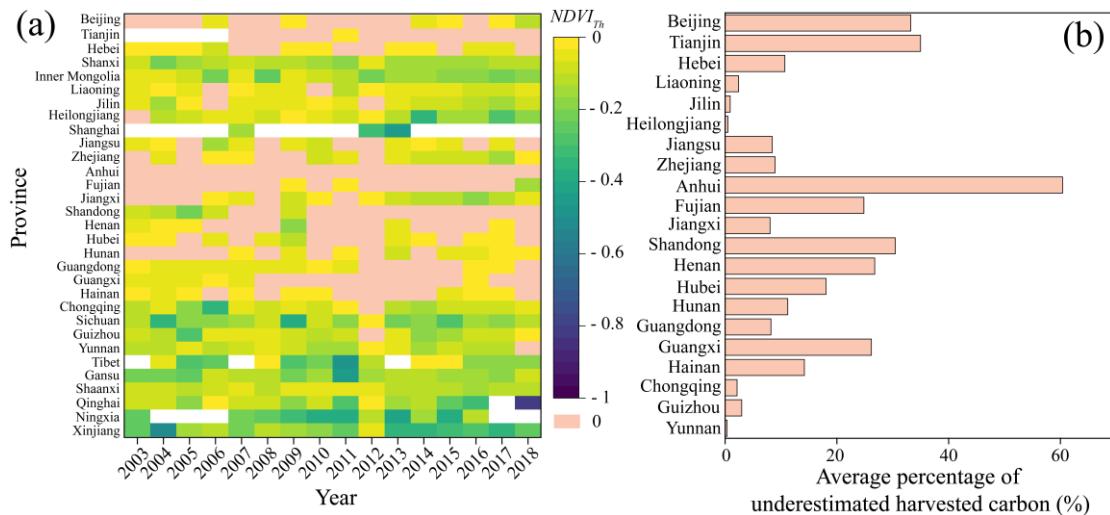
Forest harvesting in China continued to increase during the study period. However, the wood for fuel declined by nearly 23%, especially the harvesting for burning from farmers, contributing an average of nearly 70% of burned timber annually, decreased by nearly 35% (Fig. S5). This rapid decline in rural areas indicates that China is successful in the rural energy transition, benefiting the mitigation of air pollution and climate change (Chen et al., 2016; Tao et al., 2018). Production of wood and paper products in China was on the rise (Fig. 7), constituting a carbon pool that delays carbon release (Fig. 9). HWPs in use rarely emit carbon if there was no decay or combustion (e.g., building fire), being a stable carbon sink during their lifespan, especially wood used for constructions (Profft et al., 2009; Churkina et al., 2020). Although the CO<sub>2</sub> emitted in landfill is considered carbon neutral (Van Ewijk et al., 2020), CH<sub>4</sub> emissions from landfill are detrimental to climate due to their higher global warming potential (IPCC, 2023). Promoting an increase in carbon storage and a reduction of carbon emissions can be achieved by extending the lifespan and improving the recycling rate of HWPs (Brunet-Navarro et al., 2017). However, this approach may not be as effective for paper products, as they often have low or even negative recycling benefits (Van Ewijk et al., 2020). Therefore, recommendations in the wood sector prioritize allocating harvested wood to long-lasting products (Fortin et al., 2012; Smyth et al., 2014) and products with high recycling rates (Brunet-Navarro et al., 2016; Werner et al., 2010). Improving the efficiency of wood harvesting and processing processes, as well as enhancing forest ecological management, is also

necessary for the reduction of carbon emissions.

### 4.3 Uncertainties of the LEAF dataset

470 Although the LEAF dataset demonstrated a good performance in capturing the spatial variability of harvested carbon in China, several potential uncertainties exist. First, currently, the use of forest wood was majorly extracted from the aboveground components. Typically, roots of logged trees will be disposed by several ways, including decay stimulation, sprout regeneration, combustion, and the production of small boards (Li et al., 2012). There are no detailed information regarding to roots  
475 due to large differences over the regions and species. Therefore, this study did not include the root biomass in the entire estimate, which may result in underestimation of HWPs and its subsequent emissions.

Second, the harvested carbon was found to be underestimated in several provinces over several years. Among the estimates covering a span of 16 years across 31 provinces, approximately 28% of them  
480 were underestimated, with the highest frequency of underestimation occurring in southern provinces (Fig. 10a). Compared to statistical values, the harvested carbon was underestimated by an average of 0.4-60.4% from 2003 to 2018 across these investigated provinces (Fig. 10b). Anhui Province had the highest degree of underestimation, with underestimation occurring in all years (Fig. 10). To avoid this underestimation, we assigned the unidentified harvested carbon to the pixels where selective logging occurred, increasing  
485 the harvested carbon of these pixels (Sect. 2.1, Eq. (6)), resulting in an estimation of more harvested carbon than the actual AGB at several pixels. We examined the number of pixels where the harvested carbon exceeded its AGB at the province level. The results showed that the number of pixels where harvested carbon exceeded its AGB was less than 2% of the number of pixels where harvesting occurred for each province annually (Fig, S6).



**Figure 10:** (a) Annual  $NDVI_{diff}$  thresholds ( $NDVI_{Th}$ ) for each province. An  $NDVI_{Th}$  of 0 indicates that the province's harvested carbon was underestimated that year and a blank  $NDVI_{Th}$  denotes that there was no harvesting in that province that year according to the statistics. (b) Average percentage of underestimated harvested carbon in the provinces where underestimation occurred from 2003 to 2018.

490

495 The underestimation of harvested carbon is closely related to the accuracy of identifying both selective logging and clear-cutting. AGB is an important potential cause. After forest harvesting, trees regeneration would form new biomass. This study used the national forest inventory datasets to estimate AGB, which were conducted at a five-year interval. With this five-year period, the forest inventory can't include the increased biomass due to trees regeneration, which will lead to an underestimation of AGB.

500 The conversion of biomass storage to AGB ( $Coef$ ) exhibited significant variations among provinces, possibly due to different dominant vegetation types and growing stock levels across provinces. The default biomass conversion and expansion factors (BCEF, equivalent to  $Coef$  in this study) provided by IPCC also confirmed the significant differences in  $Coef$  across vegetation types and growing stock levels (IPCC, 2006b). However, compared to IPCC's coarse regional classification, the provincial-level  $Coef$

505 we utilized in this study is more detailed. The quality of selective logging identification largely depends on the quality and performance of NDVI. The accuracy is largely impacted by low data quality in cloudy and rainy southern areas. In addition, NDVI is sensitive to green vegetation cover but not dense vegetation (Huete et al., 2002), and begins to saturate over dense vegetation with AGB values higher than 25 t C ha<sup>-1</sup> (Chang et al., 2023), contributing to the underestimation of AGB. Overlooking the continued

510 growth after harvesting within a pixel and the regional-scale climate impacts led to an underestimation of  $NDVI_{diff}$ . Consequently, the harvested carbon may be underestimated at regional scales, particularly in provinces with substantial forest coverage (e.g., Guangxi). The estimation of clear-cutting was primarily

limited by the performance of the TCL dataset generated by Hansen et al. (2013). In subtropical and temperate regions, the producer's accuracy and user's accuracy of TCL are both approximately 80%,  
515 indicating that the dataset can identify tree cover loss with relatively high accuracy. However, there is still a 20% level of uncertainty (Hansen et al., 2013), and further efforts are needed to improve the identification of clear-cutting.

Third, we compared our estimates of carbon stocks of HWP with previous studies. Zhang et al. (2019) estimated the carbon stock of HWP to be 1.7 Gt CO<sub>2</sub>e for the period of 2003-2016, which is 1.3  
520 times higher than our estimates for the same period (Fig. 8b). Zhang et al. (2019) used statistical data of HWP provided by FAO, which has a significant disparity to China's official figures (Fig. 6). Zhang et al. (2018) estimated carbon stocks of HWP from 1950 to 2015 using China's official data, but which also included the imported HWP. As the China's wood imports are considerable, the estimates of Zhang et al. (2018) for 2003-2015 is nearly 1.8 times of our estimates. This study aims to quantify the  
525 contribution of harvested wood to national CO<sub>2</sub> emission in China; therefore, we excluded the imported wood according to the IPCC standard. Moreover, these previous estimates depended on default factors recommend by IPCC inventory method to calculate CO<sub>2</sub> emission and stock in HWP, and which showed large differences with specific factors in China used by this study. In addition, this study also provides estimates of stock and CO<sub>2</sub> emission dynamics, which is quite important for understanding its long-term  
530 contributions. Nevertheless, information on the end products of harvested wood (i.e., bathroom tissue, tableware, types of furniture, columns, etc.) is unavailable (Profft et al., 2009), leading to rough estimates of wood destination and product service life. In this study, all residual wood was assumed to be burned as fuelwood would induce an overestimation of carbon emissions. Meanwhile, this study ignored recycled wood products, which may extend the carbon storage in products (Brunet-Navarro et al., 2017),  
535 causing an underestimation of carbon stock in products in use. More efforts are needed to track the production and end use of the harvested wood, as they play a key role in the estimation of the effects on national GHG inventories (White et al., 2005; Johnston and Radeloff, 2019).

## 5. Data availability

The 30 m × 30 m Long-term harvEst and Allocation of Forest Biomass (LEAF) dataset is available  
540 at <https://doi.org/10.6084/m9.figshare.23641164.v2>.(Wang et al., 2023).

The file format of the product is GeoTIFF with the spatial reference of WGS84 (EPSG:4326). Each GeoTIFF file represents annual harvested forest carbon (unit:  $\text{g C m}^{-2}\text{yr}^{-1}$ ), the absolute harvested carbon per pixel is obtained by multiplying by the corresponding pixel area.

## **6. Conclusion**

545 This study produced a Long-term harvest and Allocation of Forest Biomass (LEAF) dataset, which provides spatial information on forest harvesting at a resolution of 30 m. The validation results demonstrated the accuracy and reliability of the LEAF dataset in capturing the spatial variation of harvested carbon. From 2003 to 2018, harvested carbon showed an increased trend. Additionally, our dataset showed that selective logging resulted in more than 80% of the total harvested carbon. The carbon  
550 taken away from forest harvesting was allocated to four wood pools, with the direct combustion of fuelwood as the primary source of carbon emissions after harvesting. However, it is important to highlight that the carbon stored in wood products has the potential for long-term retention. In summary, the development of the LEAF dataset enhances our understanding of the spatial patterns of forest harvesting and post-harvest carbon dynamics in China. The LEAF dataset generated by this study is an important  
555 data source for estimating the carbon budget of forest ecosystems in China, which can also provide essential insights for sustainable forest management and climate change mitigation efforts.

### **Author contributions**

WY and DW designed the research, performed the analysis, and wrote the paper; PR, and XX performed the analysis; LF, ZQ, and XC edited and revised the manuscript.

### **560 Competing interests**

The authors declare that they have no conflict of interests.

### **Financial support**

This research was supported by the key project of the National Natural Science Foundation of China (42141020).



565 **References**

- Asner, G. P., Knapp, D. E., Broadbent, E. N., Oliveira, P. J. C., Keller, M., and Silva, J. N.: Selective logging in the Brazilian Amazon, *Science*, 310, 480–482, <https://doi.org/10.1126/science.1118051>, 2005.
- Brunet-Navarro, P., Jochheim, H., and Muys, B.: Modelling carbon stocks and fluxes in the wood product sector: a comparative review, *Glob. Change Biol.*, 22, 2555–2569, <https://doi.org/10.1111/gcb.13235>,  
570 2016.
- Brunet-Navarro, P., Jochheim, H., and Muys, B.: The effect of increasing lifespan and recycling rate on carbon storage in wood products from theoretical model to application for the European wood sector, *Mitig. Adapt. Strateg. Glob. Change*, 22, 1193–1205, <https://doi.org/10.1007/s11027-016-9722-z>, 2017.
- Cai, B., Lou, Z., Wang, J., Geng, Y., Sarkis, J., Liu, J., and Gao, Q.: CH<sub>4</sub> mitigation potentials from China  
575 landfills and related environmental co-benefits, *Sci. Adv.*, 4, eaar8400, <https://doi.org/10.1126/sciadv.aar8400>, 2018.
- Chen, C., Park, T., Wang, X., Piao, S., Xu, B., Chaturvedi, R. K., Fuchs, R., Brovkin, V., Ciais, P., Fensholt, R., Tømmervik, H., Bala, G., Zhu, Z., Nemani, R. R., and Myneni, R. B.: China and India lead in greening of the world through land-use management, *Nat. Sustain.*, 2, 122–129,  
580 <https://doi.org/10.1038/s41893-019-0220-7>, 2019.
- Chen, Y., Shen, H., Zhong, Q., Chen, H., Huang, T., Liu, J., Cheng, H., Zeng, E. Y., Smith, K. R., and Tao, S.: Transition of household cookfuels in China from 2010 to 2012, *Appl. Energy*, 184, 800–809, <https://doi.org/10.1016/j.apenergy.2016.07.136>, 2016.
- Churkina, G., Organschi, A., Reyer, C. P. O., Ruff, A., Vinke, K., Liu, Z., Reck, B. K., Graedel, T. E., and  
585 Schellnhuber, H. J.: Buildings as a global carbon sink, *Nat. Sustain.*, 3, 269–276, <https://doi.org/10.1038/s41893-019-0462-4>, 2020.
- Costanza, R., d’Arge, R., de Groot, R., Farberl, S., Grasso, M., Hannon, B., Limburg, K., Naeem, S., O’Neil, R. V., Paruelo, J., Raskin, R. G., Suttonl, P., and van den Belt, M.: The value of the world’s ecosystem services and natural capital, *Nature*, 387, 253–260, [https://doi.org/10.1016/S0921-8009\(98\)00020-2](https://doi.org/10.1016/S0921-8009(98)00020-2), 1997.  
590
- Curtis, P. G., Slay, C. M., Harris, N. L., Tyukavina, A., and Hansen, M. C.: Classifying drivers of global forest loss, *Science*, 361, 1108–1111, <https://doi.org/10.1126/science.aau3445>, 2018.
- Deal, R. L. and White, R.: Integrating forest products with ecosystem services: A global perspective, *For.*

Policy Econ., 17, 1–2, <https://doi.org/10.1016/j.forpol.2012.02.014>, 2012.

595 Dixon, R. K., Solomon, A. M., Brown, S., Houghton, R. A., Trexler, M. C., and Wisniewski, J.: Carbon pools and flux of global forest ecosystems, *Science*, 263, 185–190, <https://doi.org/10.1126/science.263.5144.185>, 1994.

Dong, J., Zhou, Y., and You, N.: A 30 m annual maximum NDVI dataset for China from 2000 to 2020 [DB/OL]. National Ecosystem Science Data Center, <https://doi.org/10.12199/nesdc.ecodb.rs.2021.012>,  
600 2021.

FAO: Forestry data, FAOSTAT Database, Food and Agriculture Organization of the United Nations, Rome, Italy, Available at: <https://www.fao.org/faostat/en/#data/FO>, 2020, last access: 25 June 2023.

Fisher, B., Edwards, D. P., and Wilcove, D. S.: Logging and conservation: Economic impacts of the stocking rates and prices of commercial timber species, *For. Policy Econ.*, 38, 65–71,  
605 <https://doi.org/10.1016/j.forpol.2013.05.006>, 2014.

Fortin, M., Ningre, F., Robert, N., and Mothe, F.: Quantifying the impact of forest management on the carbon balance of the forest-wood product chain: A case study applied to even-aged oak stands in France, *For. Ecol. Manag.*, 279, 176–188, <https://doi.org/10.1016/j.foreco.2012.05.031>, 2012.

Friedlingstein, P., O’Sullivan, M., Jones, M. W., Andrew, R. M., Gregor, L., Hauck, J., Le Quéré, C.,  
610 Luijkx, I. T., Olsen, A., Peters, G. P., Peters, W., Pongratz, J., Schwingshackl, C., Sitch, S., Canadell, J. G., Ciais, P., Jackson, R. B., Alin, S. R., Alkama, R., Arneeth, A., Arora, V. K., Bates, N. R., Becker, M., Bellouin, N., Bittig, H. C., Bopp, L., Chevallier, F., Chini, L. P., Cronin, M., Evans, W., Falk, S., Feely, R. A., Gasser, T., Gehlen, M., Gkritzalis, T., Gloege, L., Grassi, G., Gruber, N., Gürses, Ö., Harris, I., Hefner, M., Houghton, R. A., Hurtt, G. C., Iida, Y., Ilyina, T., Jain, A. K., Jersild, A., Kadono, K., Kato,  
615 E., Kennedy, D., Klein Goldewijk, K., Knauer, J., Korsbakken, J. I., Landschützer, P., Lefèvre, N., Lindsay, K., Liu, J., Liu, Z., Marland, G., Mayot, N., McGrath, M. J., Metzl, N., Monacci, N. M., Munro, D. R., Nakaoka, S.-I., Niwa, Y., O’Brien, K., Ono, T., Palmer, P. I., Pan, N., Pierrot, D., Pockock, K., Poulter, B., Resplandy, L., Robertson, E., Rödenbeck, C., Rodriguez, C., Rosan, T. M., Schwinger, J., Séférian, R., Shutler, J. D., Skjelvan, I., Steinhoff, T., Sun, Q., Sutton, A. J., Sweeney, C., Takao, S.,  
620 Tanhua, T., Tans, P. P., Tian, X., Tian, H., Tilbrook, B., Tsujino, H., Tubiello, F., Van Der Werf, G. R., Walker, A. P., Wanninkhof, R., Whitehead, C., Willstrand Wranne, A., et al.: Global Carbon Budget 2022, *Earth Syst. Sci. Data*, 14, 4811–4900, <https://doi.org/10.5194/essd-14-4811-2022>, 2022.

Hansen, M. C., Potapov, P. V., Moore, R., Hancher, M., Turubanova, S. A., Tyukavina, A., Thau, D.,

Stehman, S. V., Goetz, S. J., Loveland, T. R., Kommareddy, A., Egorov, A., Chini, L., Justice, C. O., and  
625 Townshend, J. R. G.: High-resolution global maps of 21st-century forest cover change, *Science*, 342,  
850–853, <https://doi.org/10.1126/science.1244693>, 2013.

Harper, A. B., Powell, T., Cox, P. M., House, J., Huntingford, C., Lenton, T. M., Sitch, S., Burke, E.,  
Chadburn, S. E., Collins, W. J., Comyn-Platt, E., Daioglou, V., Doelman, J. C., Hayman, G., Robertson,  
E., Van Vuuren, D., Wiltshire, A., Webber, C. P., Bastos, A., Boysen, L., Ciais, P., Devaraju, N., Jain, A.  
630 K., Krause, A., Poulter, B., and Shu, S.: Land-use emissions play a critical role in landbased mitigation  
for Paris climate targets, *Nat. Commun.*, 9, 2938, <https://doi.org/10.1038/s41467-018-05340-z>, 2018.

Harris, N. L., Gibbs, D. A., Baccini, A., Birdsey, R. A., De Bruin, S., Farina, M., Fatoyinbo, L., Hansen,  
M. C., Herold, M., Houghton, R. A., Potapov, P. V., Suarez, D. R., Roman-Cuesta, R. M., Saatchi, S. S.,  
Slay, C. M., Turubanova, S. A., and Tyukavina, A.: Global maps of twenty-first century forest carbon  
635 fluxes, *Nat. Clim. Change*, 11, 234–240, <https://doi.org/10.1038/s41558-020-00976-6>, 2021.

Hethcoat, M. G., Edwards, D. P., Carreiras, J. M. B., Bryant, R. G., França, F. M., and Quegan, S.: A  
machine learning approach to map tropical selective logging, *Remote Sens. Environ.*, 221, 569–582,  
<https://doi.org/10.1016/j.rse.2018.11.044>, 2019.

Hurt, G. C., Chini, L. P., Frohking, S., Betts, R. A., Feddema, J., Fischer, G., Fisk, J. P., Hibbard, K.,  
640 Houghton, R. A., Janetos, A., Jones, C. D., Kindermann, G., Kinoshita, T., Klein Goldewijk, K., Riahi,  
K., Shevliakova, E., Smith, S., Stehfest, E., Thomson, A., Thornton, P., Van Vuuren, D. P., and Wang, Y.  
P.: Harmonization of land-use scenarios for the period 1500–2100: 600 years of global gridded annual  
land-use transitions, wood harvest, and resulting secondary lands, *Clim. Change*, 109, 117–161,  
<https://doi.org/10.1007/s10584-011-0153-2>, 2011.

Hurt, G. C., Chini, L., Sahajpal, R., Frohking, S., Bodirsky, B. L., Calvin, K., Doelman, J. C., Fisk, J.,  
Fujimori, S., Klein Goldewijk, K., Hasegawa, T., Havlik, P., Heinemann, A., Humpenöder, F., Jungclaus,  
J., Kaplan, J. O., Kennedy, J., Krisztin, T., Lawrence, D., Lawrence, P., Ma, L., Mertz, O., Pongratz, J.,  
Popp, A., Poulter, B., Riahi, K., Shevliakova, E., Stehfest, E., Thornton, P., Tubiello, F. N., Van Vuuren,  
D. P., and Zhang, X.: Harmonization of global land use change and management for the period 850–2100  
650 (LUH2) for CMIP6, *Geosci. Model Dev.*, 13, 5425–5464, <https://doi.org/10.5194/gmd-13-5425-2020>,  
2020.

IPCC: 2006 IPCC Guidelines for National Greenhouse Gas Inventories. Volume 4: Agriculture, Forestry  
and Other Land Use. Chapter 12: Harvested Wood Products, Available at: <https://www.ipcc->

nggip.iges.or.jp/support/Primer\_2006GLs.pdf, 2006a, last access: 25 June 2023.

655 IPCC: 2013 revised supplementary methods and good practice guidance arising from the Kyoto Protocol, Intergovernmental Panel on Climate Change, Geneva, Switzerland, 2014.

IPCC: Climate Change 2021 – The Physical Science Basis: Working Group I Contribution to the Sixth Assessment Report of the Intergovernmental Panel on Climate Change, 1st ed., Cambridge University Press, <https://doi.org/10.1017/9781009157896>, 2023.

660 IPCC: 2006 IPCC Guidelines for National Greenhouse Gas Inventories. Volume 4: Agriculture, Forestry and Other Land Use. Chapter 4: Forest Land, Available at: [https://www.ipcc-nggip.iges.or.jp/public/2006gl/pdf/4\\_Volume4/V4\\_04\\_Ch4\\_Forest\\_Land.pdf](https://www.ipcc-nggip.iges.or.jp/public/2006gl/pdf/4_Volume4/V4_04_Ch4_Forest_Land.pdf), 2006b, last access: 27 December 2023.

IPCC: Refinement to the 2006 IPCC Guidelines for National Greenhouse Gas Inventories. Volume 4: Agriculture, Forestry and Other Land Use. Chapter 12: Harvested Wood Products, Available at: [https://www.ipcc-](https://www.ipcc-nggip.iges.or.jp/public/2019rf/pdf/4_Volume4/19R_V4_Ch12_HarvestedWoodProducts.pdf)  
665 [https://www.ipcc-](https://www.ipcc-nggip.iges.or.jp/public/2019rf/pdf/4_Volume4/19R_V4_Ch12_HarvestedWoodProducts.pdf)  
[nggip.iges.or.jp/public/2019rf/pdf/4\\_Volume4/19R\\_V4\\_Ch12\\_HarvestedWoodProducts.pdf](https://www.ipcc-nggip.iges.or.jp/public/2019rf/pdf/4_Volume4/19R_V4_Ch12_HarvestedWoodProducts.pdf), 2019b, last access: 27 December 2023.

IPCC: Refinement to the 2006 IPCC Guidelines for National Greenhouse Gas Inventories. Volume 5: Waste. Chapter 3: Solid Waste Disposal, Available at: [https://www.ipcc-](https://www.ipcc-nggip.iges.or.jp/public/2019rf/pdf/5_Volume5/19R_V5_3_Ch03_SWDS.pdf)  
670 [nggip.iges.or.jp/public/2019rf/pdf/5\\_Volume5/19R\\_V5\\_3\\_Ch03\\_SWDS.pdf](https://www.ipcc-nggip.iges.or.jp/public/2019rf/pdf/5_Volume5/19R_V5_3_Ch03_SWDS.pdf), 2019a, last access: 25 June 2023.

Jian, X., Zhang, X., Liu, Y., Liu, X., Chen, K., Wang, L., Li, J., Zhao, Y., Luo, J., Zhugu, R., and Ma, J.: The response of radiative forcing to high spatiotemporally resolved land-use change and transition from  
675 1982 to 2010 in China, *Geophys. Res. Lett.*, 49, <https://doi.org/10.1029/2022GL099003>, 2022.

Johnston, C. M. T. and Radeloff, V. C.: Global mitigation potential of carbon stored in harvested wood products, *Proc. Natl. Acad. Sci.*, 116, 14526–14531, <https://doi.org/10.1073/pnas.1904231116>, 2019.

Kowalski, A. S., Loustau, D., Berbigier, P., Manca, G., Tedeschi, V., Borghetti, M., Valentini, R., Kolari, P., Berninger, F., Rannik, Ü., Hari, P., Rayment, M., Mencuccini, M., Moncrieff, J., and Grace, J.: Paired  
680 comparisons of carbon exchange between undisturbed and regenerating stands in four managed forests in Europe: Carbon exchange in mature and regenerating forest, *Glob. Change Biol.*, 10, 1707–1723, <https://doi.org/10.1111/j.1365-2486.2004.00846.x>, 2004.

Lal, R., Lorenz, K., Hüttl, R. F., Schneider, B. U., and Von Braun, J. (Eds.): Ecosystem services and the

global carbon cycle. In: Lal, R., Lorenz, K., Hüttl, R. F., Schneider, B.U., von Braun, J. (eds) Ecosystem  
685 services and carbon sequestration in the biosphere, Springer Netherlands, Dordrecht, 151–181 pp.,  
<https://doi.org/10.1007/978-94-007-6455-2>, 2013.

Li, F., He, B., and Yang, Z.: Progress of research on tree felling root treatment and application technology.,  
Pract. For. Technol., 9–11, <https://doi.org/10.13456/j.cnki.lykt.2012.08.017>, 2012.

Lippke, B., Oneil, E., Harrison, R., Skog, K., Gustavsson, L., and Sathre, R.: Life cycle impacts of forest  
690 management and wood utilization on carbon mitigation: knowns and unknowns, Carbon Manag., 2, 303–  
333, <https://doi.org/10.4155/cmt.11.24>, 2011.

Liu, D., Chen, Y., Cai, W., Dong, W., Xiao, J., Chen, J., Zhang, H., Xia, J., and Yuan, W.: The contribution  
of China's Grain to Green Program to carbon sequestration, Landsc. Ecol., 29, 1675–1688,  
<https://doi.org/10.1007/s10980-014-0081-4>, 2014.

695 Liu, S., Bond-Lamberty, B., Hicke, J. A., Vargas, R., Zhao, S., Chen, J., Edburg, S. L., Hu, Y., Liu, J.,  
McGuire, A. D., Xiao, J., Keane, R., Yuan, W., Tang, J., Luo, Y., Potter, C., and Oeding, J.: Simulating  
the impacts of disturbances on forest carbon cycling in North America: Processes, data, models, and  
challenges, J. Geophys. Res., 116, G00K08, <https://doi.org/10.1029/2010JG001585>, 2011.

Masek, J. G., Cohen, W. B., Leckie, D., Wulder, M. A., Vargas, R., De Jong, B., Healey, S., Law, B.,  
700 Birdsey, R., Houghton, R. A., Mildrexler, D., Goward, S., and Smith, W. B.: Recent rates of forest harvest  
and conversion in North America, J. Geophys. Res., 116, G00K03,  
<https://doi.org/10.1029/2010JG001471>, 2011.

Matricardi, E. A. T., Skole, D. L., Pedlowski, M. A., Chomentowski, W., and Fernandes, L. C.:  
Assessment of tropical forest degradation by selective logging and fire using Landsat imagery, Remote  
705 Sens. Environ., 114, 1117–1129, <https://doi.org/10.1016/j.rse.2010.01.001>, 2010.

Matsumoto, R., Kayo, C., Kita, S., Nakamura, K., Lauk, C., and Funada, R.: Estimation of carbon stocks  
in wood products for private building companies, Sci. Rep., 12, 18112, <https://doi.org/10.1038/s41598-022-23112-0>, 2022.

Nabuurs, G.-J., Verweij, P., Van Eupen, M., Pérez-Soba, M., Pülzl, H., and Hendriks, K.: Next-generation  
710 information to support a sustainable course for European forests, Nat. Sustain., 2, 815–818,  
<https://doi.org/10.1038/s41893-019-0374-3>, 2019.

National Forestry Administration: The definition of China forestry statistic indicators, China Forestry  
Press, Beijing, pp: 117-137, 2000.

- National Forestry and Grassland Administration: China Forest Resources Report in 2014-2018, China  
715 Forestry Publishing, 2019.
- Nepstad, D. C., Nobre, C., Lima, E., Lefebvre, P., Schlesinger, P., Potter, C., Mendoza, E., Cochrane, M.,  
and Brooks, V.: Large-scale impoverishment of Amazonian forests by logging and fire, 398, 1999.
- Pan, Y., Birdsey, R. A., Fang, J., Houghton, R., Kauppi, P. E., Kurz, W. A., Phillips, O. L., Shvidenko, A.,  
Lewis, S. L., Canadell, J. G., Ciais, P., Jackson, R. B., Pacala, S. W., McGuire, A. D., Piao, S., Rautiainen,  
720 A., Sitch, S., and Hayes, D.: A large and persistent carbon sink in the world's forests, *Science*, 333, 988–  
993, <https://doi.org/10.1126/science.1201609>, 2011.
- Pennock, D. J. and Van Kessel, C.: Clear-cut forest harvest impacts on soil quality indicators in the  
mixedwood forest of Saskatchewan, Canada, *Geoderma*, 75, 13–32, [https://doi.org/10.1016/S0016-  
7061\(96\)00075-4](https://doi.org/10.1016/S0016-7061(96)00075-4), 1997.
- 725 Pingoud, K. and Wagner, F.: Methane emissions from landfills and carbon dynamics of harvested wood  
products: The First-Order Decay revisited, *Mitig. Adapt. Strateg. Glob. Change*, 11, 961–978,  
<https://doi.org/10.1007/s11027-006-9029-6>, 2006.
- Profft, I., Mund, M., Weber, G.-E., Weller, E., and Schulze, E.-D.: Forest management and carbon  
sequestration in wood products, *Eur. J. For. Res.*, 128, 399–413, [https://doi.org/10.1007/s10342-009-  
0283-5](https://doi.org/10.1007/s10342-009-0283-5), 2009.
- 730 Research and Market: Research report on timber import in China, 2019-2023, China Research &  
Intelligence, 2019.
- Skog, K. E.: Sequestration of carbon in harvested wood products for the United States, *For. Prod. J.*, 58,  
2008.
- 735 Skog, K. E., Pingoud, K., and Smith, J. E.: A method countries can use to estimate changes in carbon  
stored in harvested wood products and the uncertainty of such estimates, *Environ. Manage.*, 33,  
<https://doi.org/10.1007/s00267-003-9118-1>, 2004.
- Smyth, C. E., Stinson, G., Neilson, E., Lemprière, T. C., Hafer, M., Rampley, G. J., and Kurz, W. A.:  
Quantifying the biophysical climate change mitigation potential of Canada's forest sector,  
740 *Biogeosciences*, 11, 3515–3529, <https://doi.org/10.5194/bg-11-3515-2014>, 2014.
- Stockmann, K. D., Anderson, N. M., Skog, K. E., Healey, S. P., Loeffler, D. R., Jones, G., and Morrison,  
J. F.: Estimates of carbon stored in harvested wood products from the United States forest service  
northern region, 1906-2010, *Carbon Balance Manag.*, 7, 1, <https://doi.org/10.1186/1750-0680-7-1>, 2012.

- Tao, S., Ru, M. Y., Du, W., Zhu, X., Zhong, Q. R., Li, B. G., Shen, G. F., Pan, X. L., Meng, W. J., Chen,  
745 Y. L., Shen, H. Z., Lin, N., Su, S., Zhuo, S. J., Huang, T. B., Xu, Y., Yun, X., Liu, J. F., Wang, X. L., Liu,  
W. X., Cheng, H. F., and Zhu, D. Q.: Quantifying the rural residential energy transition in China from  
1992 to 2012 through a representative national survey, *Nat. Energy*, 3, 567–573,  
<https://doi.org/10.1038/s41560-018-0158-4>, 2018.
- Van Ewijk, S., Stegemann, J. A., and Ekins, P.: Limited climate benefits of global recycling of pulp and  
750 paper, *Nat. Sustain.*, 4, 180–187, <https://doi.org/10.1038/s41893-020-00624-z>, 2020.
- Wang, D., Ren, P., Xia, X., Fan, L., Qin, Z., Chen, X., and Yuan, W.: National forest carbon harvesting  
and allocation dataset for the period 2003 to 2018. *figshare. Dataset.*,  
<https://doi.org/10.6084/m9.figshare.23641164.v2>, 2023.
- Wei, X., Zhao, J., Hayes, D. J., Daigneault, A., and Zhu, H.: A life cycle and product type based estimator  
755 for quantifying the carbon stored in wood products, *Carbon Balance Manag.*, 18, 1,  
<https://doi.org/10.1186/s13021-022-00220-y>, 2023.
- Werner, F., Taverna, R., Hofer, P., Thürig, E., and Kaufmann, E.: National and global greenhouse gas  
dynamics of different forest management and wood use scenarios: a model-based assessment, *Environ.  
Sci. Policy*, 13, 72–85, <https://doi.org/10.1016/j.envsci.2009.10.004>, 2010.
- 760 White, M. K., Gower, S. T., and Ahl, D. E.: Life cycle inventories of roundwood production in northern  
Wisconsin: Inputs into an industrial forest carbon budget, *For. Ecol. Manag.*, 219, 13–28,  
<https://doi.org/10.1016/j.foreco.2005.08.039>, 2005.
- Winjum, J. K., Brown, S., and Schlamadinger, B.: Forest harvests and wood products: Sources and sinks  
of atmospheric carbon dioxide, *For. Sci.*, 44, 272–284, 1998.
- 765 Xia, X., Xia, J., Chen, X., Fan, L., Liu, S., Qin, Y., Qin, Z., Xiao, X., Xu, W., Yue, C., Yue, X., and Yuan,  
W.: Reconstructing long-term forest cover in China by fusing national forest inventory and 20 land use  
and land cover data sets, *J. Geophys. Res. Biogeosciences*, 128, e2022JG007101,  
<https://doi.org/10.1029/2022JG007101>, 2023.
- Yu, Z., Zhao, H., Liu, S., Zhou, G., Fang, J., Yu, G., Tang, X., Wang, W., Yan, J., Wang, G., Ma, K., Li,  
770 S., Du, S., Han, S., Ma, Y., Zhang, D., Liu, J., Liu, S., Chu, G., Zhang, Q., and Li, Y.: Mapping forest  
type and age in China's plantations, *Sci. Total Environ.*, 744, 140790,  
<https://doi.org/10.1016/j.scitotenv.2020.140790>, 2020.
- Yu, Z., Ciais, P., Piao, S., Houghton, R. A., Lu, C., Tian, H., Agathokleous, E., Kattel, G. R., Sitch, S.,

- Goll, D., Yue, X., Walker, A., Friedlingstein, P., Jain, A. K., Liu, S., and Zhou, G.: Forest expansion  
775 dominates China's land carbon sink since 1980, *Nat. Commun.*, 13, 5374,  
<https://doi.org/10.1038/s41467-022-32961-2>, 2022.
- Yuan, W., Li, X., Liang, S., Cui, X., Dong, W., Liu, S., Xia, J., Chen, Y., Liu, D., and Zhu, W.:  
Characterization of locations and extents of afforestation from the Grain for Green Project in China,  
*Remote Sens. Lett.*, 5, 221–229, <https://doi.org/10.1080/2150704X.2014.894655>, 2014.
- 780 Yuan, W., Zheng, Y., Piao, S., Ciais, P., Lombardozzi, D., Wang, Y., Ryu, Y., Chen, G., Dong, W., Hu, Z.,  
Jain, A. K., Jiang, C., Kato, E., Li, S., Lienert, S., Liu, S., Nabel, J. E. M. S., Qin, Z., Quine, T., Sitch, S.,  
Smith, W. K., Wang, F., Wu, C., Xiao, Z., and Yang, S.: Increased atmospheric vapor pressure deficit  
reduces global vegetation growth, *Sci. Adv.*, 5, eaax1396, <https://doi.org/10.1126/sciadv.aax1396>, 2019.
- Zhang, L., Sun, Y., Song, T., and Xu, J.: Harvested wood products as a carbon sink in China, 1900–2016,  
785 *Int. J. Environ. Res. Public Health*, 16, 445, <https://doi.org/10.3390/ijerph16030445>, 2019.
- Zhang, X., Yang, H., and Chen, J.: Life-cycle carbon budget of China's harvested wood products in 1900–  
2015, *For. Policy Econ.*, 92, 181–192, <https://doi.org/10.1016/j.forpol.2018.05.005>, 2018.