

A 12-Year Climate Record of Wintertime Wave-Affected Marginal Ice Zones in the Atlantic Arctic based on CryoSat-2

Weixin Zhu¹, Siqi Liu¹, Shiming Xu^{1,2}, and Lu Zhou^{3,4}

¹Department of Earth System Science, Tsinghua University, Beijing, China

²University Corporation of Polar Research, Beijing, China

³Department of Earth Science, University of Gothenburg, Gothenburg, Sweden

⁴Institute for Marine and Atmospheric Research, Department of Physics, Utrecht University, Utrecht, Netherlands

Correspondence: Shiming Xu (xusm@tsinghua.edu.cn)

Abstract. Wave-affected marginal ice zone (MIZ) is an essential part of the sea ice cover and key to the atmosphere-ice-ocean interaction in the polar region. While we mainly rely on in-situ campaigns for studying MIZs, great challenges still exist for the remote sensing of MIZs by satellites. In this study we develop a novel retrieval algorithm for wave-affected MIZs based on the delay-Doppler radar altimeter onboard CryoSat-2 (CS2). CS2 waveform power and the waveform stack statistics are used to determine the part of the ice cover affected by waves. Based on the CS2 data since 2010, we generate a climate record of wave-affected MIZs in the Atlantic Arctic, spanning 12 winters between 2010 and 2022. As indicated by the MIZ record, no significant change of either the mean MIZ width or the extreme width is detected, although large temporal and spatial variability is present. In particular, extremely wide MIZs (over 300 km) are observed in the Barents Sea, while in other part of the Atlantic Arctic, MIZs are generally narrower. We also compare the CS2-based retrieval with those based on the laser altimeter of ICESat2 and the synthetic aperture radar images from Sentinel-1. Under spatial and temporal collocation, we attain good agreement among the MIZ retrievals based on the three different types of satellite payloads. Moreover, the traditional sea ice concentration based definition MIZ yields systematically narrower MIZs than CS2, and there is no statistically significant correlation between the two. Besides CS2, the proposed retrieval algorithm can be adapted for various historical and future radar altimetry campaigns. The synergy of multiple satellites can further improve the spatial and temporal representation of the altimeters' observation of the MIZs.

Copyright statement. TEXT

1 Introduction

Marginal ice zone (MIZ) is the region of the sea ice edge that is affected by the open ocean (Wadhams, 2013). Waves and swells develop over open ocean, and propagate into the ice edge, with the ensuing sea ice break-up and the modification of the floe sizes (Asplin et al., 2012). Consequently, the sea ice cover undergoes complex dynamic and thermodynamic processes, promoting air-sea exchange of heat and moisture within the MIZ (Doble et al., 2015; Alberello et al., 2022). Furthermore, in

the marginal ice zone, wave energy attenuation is predominantly governed by a diversity of processes, which can mainly focus on two mechanisms: dissipation due to interactions between ice floes and the ocean (Doble et al., 2015; Arduin et al., 2020; Voermans et al., 2021) and redistribution of energy through the floe-induced wave scattering (Kohout and Meylan, 2006; Squire, 25 2020). With the ongoing polar climate changes (Stroeve and Notz, 2018), MIZs play even more important roles by potentially inducing positive feedback on the sea ice cover (Asplin et al., 2012). Furthermore, it is also a critical region for human activities, including fishing, tourism, and navigation, due to its distinctive oceanic and ice conditions and unique ecosystem (Palma et al., 2019).

Although MIZs are important for both scientific research and marine operations, the direct observation of wave-affected MIZ 30 is still very limited. In-situ campaigns in MIZs, in spite of the great challenges, provide us with the direct evidence of the wave's propagation and attenuation in the sea ice cover. However, in order to observe the MIZs at large scale, we mainly need satellite remote sensing techniques. A commonly used definition of the MIZ is the area with the satellite-observed sea ice concentration (SIC) between 15% and 80% (Strong and Rigor, 2013), with the threshold value of 80% representing the 'closed ice' by the WMO's nomenclature. However, SIC products are usually generated from Passive Microwave Imaging (PMI) satellite 35 payloads, which have limited spatial resolutions and are highly uncertain in the MIZ (Nose et al., 2020). More importantly, the SIC-based MIZ definition does not reflect the ocean's processes that govern the MIZ, such as the wave propagation and interaction with the sea ice. For example, waves are found to propagate hundreds of kilometers into the fully-packed ice cover (i.e., SIC close to 100%) during various in-situ campaigns (Kohout et al., 2020; Alberello et al., 2022). In this regard, there are growing efforts in the community for better and more physical definitions of the MIZs (Kohout et al., 2014; Horvat et al., 40 2020).

To resolve waves in the MIZ, high-resolution satellite payloads are typically required, including various optical sensors, Synthetic Aperture Radar (SAR), and laser altimetry of ICESat2 (Markus et al., 2017; Horvat et al., 2020; Collard et al., 2022). These advanced payloads facilitate detailed analysis of sea ice characteristics in the MIZ, including the floe size distribution as well as the wave propagation and attenuation in ice-covered regions (Wadhams et al., 2018; De Carolis et al., 2021; Stopa et al., 45 2018). The effective footprint should be at least finer than half of the wavelength, which is no more than a few hundred meters. Besides, the instantaneous observation of MIZs by satellites is further limited in terms of the temporal representation of the MIZs, mainly due to their highly variant nature. In general, although satellite-based observation is indispensable for large-scale survey of MIZs, current satellite payloads and datasets are insufficient for systematic coverage of MIZs in both polar regions. Especially, the lack of a long-term record for the wave-affected MIZs limits both process studies and the detection of potential 50 changes of the MIZs with global warming.

In this study, we use ESA's CryoSat-2 satellite (CS2) for the retrieval of wave-affected MIZs, focusing on the region of Atlantic Arctic. Within the Atlantic Arctic, including Barents Sea and the Greenland Sea, there exist a variety of sea ice conditions, such as the young and first-year ice (FYI), as well as the thick, multiyear ice (MYI) advected from the Arctic Basin. Also, frequent storms pass through the sea ice edge during winter, making it a good study area for wave-affected MIZs 55 (Rinke et al., 2017). Besides, the Atlantic Arctic is an important region for human activities, which is highly variant and susceptible to changes with the ongoing Atlantification (Polyakov et al., 2017). In order to study the wave-affected MIZs, we

design the retrieval algorithm based on the delay-Doppler radar altimetry, and generate a long-term record for the Atlantic Arctic based on CryoSat-2 for the twelve winters from 2010 to 2022. The paper is organized as follows. In Section 2 we introduce the CS2 dataset and other related datasets that are used in this study, including IS2, SIC, and Sentinel-1 SAR data. Section 3 covers the retrieval algorithm and the analysis of two typical cases of retrieval. Further in Section 4, we compare the MIZ retrieval with CS2 with that based on IS2 (Horvat et al., 2020) and SAR images (details of the spectral analysis in Sec. B). Section 5 introduces the 12-year record of the wintertime MIZs in the Atlantic Arctic and carries out related analysis. Specifically, as shown through intercomparisons, the traditional SIC-based MIZ definition yields much narrower MIZs than our retrieval. Finally, in Section 6 we summarise the paper and discuss related topics of the satellite-based observations of the MIZ.

2 Data for MIZ retrieval and analysis

2.1 CryoSat-2

Since 2010, the CryoSat-2 satellite (CS2) has been constantly observing the earth’s cryosphere for over 12 years, and it constitutes one of the most important sources of information for sea ice mass balance (Wingham et al., 2006). The main payload onboard CryoSat-2, SIRAL, is a Ku-band delay-Doppler radar altimeter. Within polar waters, CS2 (or SIRAL) mainly works in SAR or SARIn mode. By using the Doppler frequency shift from consecutive radar signals, we can differentiate the backscatter from different along-track positions of the satellite. As a result, the along-track resolution (or the effective footprint size) is greatly enhanced to about 400 *m*, much improved from traditional pulse-limited altimeters. Furthermore, besides the traditional gated waveform power, the waveform stack describes how the backscatter radar signal for the same footprint changes with different look angles. The waveform stack also contains extra information on the ocean’s surface. Traditionally, CS2’s observation over sea ice is mainly used for the retrieval of the water level and the sea ice thickness (Meloni et al., 2020). The range retracking, the classification of surface types, the retrieval of the radar freeboard and the conversion into ice thickness are carried out. However, due to the relative coarse resolution of CS2 with respect to the typical wavelength of surface gravity waves in MIZs, as well as the range uncertainties (Xu et al., 2020), CS2 has not been applied to the study of MIZs.

The schematics of CS2’s observation in the polar ocean are shown in Figure 1, with the satellite’s ground track traversing the open ocean, through the MIZ, and into the ice pack. The wind waves and swells, generated from the open ocean, propagate into the ice edge and interact with the sea ice. This process could break the sea ice into smaller floes and further attenuate the wave energy. Given that the ground speed of CS2 is about 8 *km/s*, we consider that for each satellite pass, CS2 captures the instantaneous status of the underlying MIZ.

CS2 waveforms and waveform stacks from an example track in the Barents Sea are also shown in Figure 1. We further examine the following waveform parameters of CS2 for the MIZ retrieval. First, the beginning location of the MIZ along the track can be detected through the change of the waveform power, mainly due to the difference in the backscatter properties between the ocean water and the sea ice. Even partial coverage of sea ice within the CS2 footprint (400 *m* by 1500 *m*) can greatly affect the overall backscatter coefficient (σ_0 , in dB). Second, within the wave-affected MIZ, wind waves and swells

90 modulate the surface topography, and with the gradual wave attenuation in the MIZ, the wave power is more concentrated towards the low-frequency, long-wavelength components (Brouwer et al., 2022; Arduin et al., 2017; Horvat et al., 2020; Robin, 1963). The wave-modulated ice topography in the MIZ mainly has two features: (1) the wave amplitude-related height distribution, which is highly different from the typical sea ice cover, and (2) the slope of the surface modulated by both wave power and wavelength. Third, in the inner ice pack which is not affected by the waves, the surface topography mainly follows
95 the positively skewed distribution (due to ice thickness distribution), with intermittent, low-lying sea ice leads. On the sea ice, the volume scattering is also highly variable, with more prominent backscatter on the MYI than FYI, as well as highly reflective at nadir looks for sea ice leads.

Therefore, CS2 waveforms on the wave-affected MIZs have the following characteristics (Fig. 1). Due to the wave-induced sloping, for the CS2 waveform stack, the power deviation from different looks (i.e., slant looks) is smaller than that on the
100 sea ice, and comparable to that on the ocean. This characteristic is directly indicated by the Stack Standard Deviation (SSD) parameter, which is computed as the standard deviation of the Gaussian fit to the range-integrated waveform stack power (in watts). Besides, due to the large elevation variability in the MIZ, the trailing edge is much wider than that of the typical waveforms on the sea ice, which is usually dominated by snow and ice volume scattering [see examples in Rapley (Rapley, 1984)]. The Trailing Edge Shape (TES) parameter of the waveform describes the speed of the power decrease of the look-
105 integrated waveform after the peak power. Specifically in this study, TES is redefined as the fitted e -folding parameters of the waveform power decay in the waveform's trailing edge between 80% and 5% the highest power: $P(x) = P^* \cdot e^{-\frac{x}{TES}}$, where x is the gate number, $P(x)$ the waveform power within the specified range of the gates, and P^* and TES the two parameters to be determined. As shown in Figure 1, while the backscatter is similarly strong on ice-covered regions, the value of the SSD and TES within the MIZ lies between those on the open-ocean and those on the inner part of the ice cover. For this study, we use
110 the SSD as provided in ESA's baseline of CS2 (baseline-D for the period before April, 2021, and baseline-E for afterwards). For the TES parameter, we compute its value for each CS2 waveform.

2.2 Auxiliary input datasets

Daily sea ice concentration (SIC) maps are usually generated with passive microwave imaging payloads, and the continuous observation dates back to October, 1987 and constitutes one of the longest records of sea ice. For MIZ studies, in Strong and
115 Rigor (2013) the region with SIC between 15% and 80% is used as the proxy for the MIZ. In this research, for the CS2 era, we use the SIC product generated at the University of Bremen, which is mainly based on the payload of Advanced Microwave Scanning Radiometer 2 (AMSR2) and the ARTIST Sea Ice (ASI) algorithm (Sprenn et al., 2008). For the study period without AMSR2 data (i.e., before 2012), we use the SIC product that is also hosted at the University of Bremen and based on the Special Sensor Microwave Imager/Sounder (SSMIS). By default, the 6.25 km resolution SIC product is used, which is sufficient for
120 various analyses in this study, including the determination of large-scale sea ice edge, as well as the intercomparison with the MIZ width defined by SIC.

For the atmospheric and wave conditions during the CS2's observations, we mainly rely on the global ERA5 reanalysis product (Hersbach et al., 2018). Specifically, hourly sea-surface pressure fields (0.25° resolution) and the wave spectra (0.5°

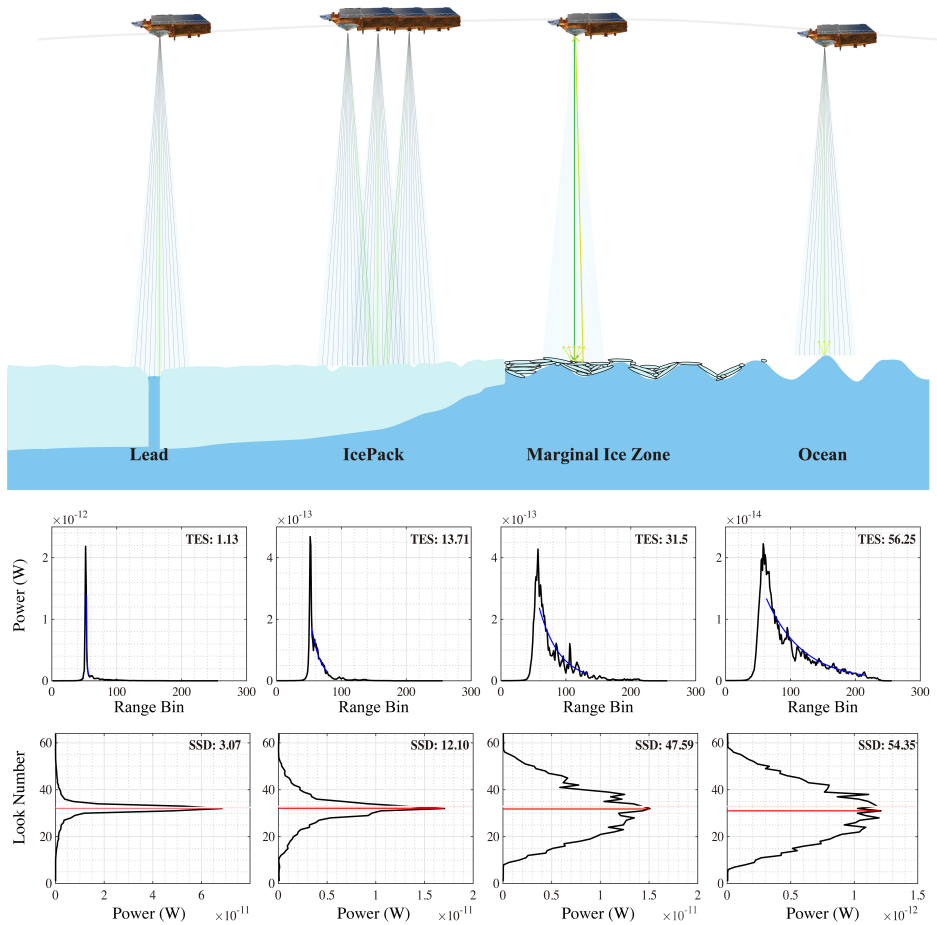


Figure 1. CryoSat-2 (CS2) observation of the polar ocean (top panel). CS2 SAR mode waveforms are shown for the 4 typical surface types in lower panels, including open ocean (right column), wave-affected marginal ice zone (MIZ, second to the right), ice floe (second to the left), and sea ice lead (left). The waveforms are chosen from the CS2 track in Fig. 4. The multilooked waveforms (second row) are shown with the exponential fitting of the power decay in the trailing edge and the fitted parameter of the Trailing Edge Shape (TES). Correspondingly, the Range Integrated power waveform and the waveform Stack Standard Deviation (SSD) are shown in the bottom row.

resolution, defined over regions with SIC<15%) are used. Although ERA5 does not include an interactive sea ice component, its wave product over the ocean is extensively validated with in-situ wave measurements globally (Wang and Wang, 2022). The wave product is also well validated and further used in various studies of the MIZ and polar oceans (Vichi et al., 2019; Alberello et al., 2022).

2.3 Other satellites for the MIZ retrieval

2.3.1 Sentinel-1

Sentinel-1 (S1) is a polar-orbiting, C-band (5.4GHz) Synthetic Aperture Radar (SAR) satellite constellation by the European Space Agency (ESA) and a part of the Copernicus program. The two satellites, Sentinel-1A (launched in April, 2014) and Sentinel-1B (launched in April, 2016) mainly work in the dual-polarization (HH and HV) and Extra-Wide (EW) swath mode in the Arctic region, providing a comprehensive coverage of the Atlantic Arctic. In this study, we mainly use the Ground Range Detected (GRD) product of the EW mode, and the satellites' swath width is about 400 km, and the spatial resolution is 40 m. For pre-processing the images, we also apply orbit files, thermal noise correction, radiometric calibrations, and terrain correction and convert the backscatter intensity to decibels (dB) with ESA's Sentinel Application Platform (SNAP).

At 40 m resolution, only waves/swells with long wavelengths are identifiable, which potentially limits the use of EW SAR images to the cases with strong, deep-penetrating waves and wide MIZs (Brouwer et al., 2022; Ardhuin et al., 2017). For comparison, under the wave mode of S1 satellites (5 m resolution), the wave spectra and its components can be better studied (Sutherland and Dumont, 2018; Huang and Li, 2022). For the detection of waves in ice with SAR images, we use both visual inspection and the spectral analysis method. Specifically, within the sea ice covered region of the SAR image, we identify wave patterns with interleaving bright/dark stripes of the radar backscatter and reasonable wavelengths (Collard et al., 2022). Furthermore, the quantitative spectral analysis is also carried out on local parts of the SAR image (30 km window size), and the spectral peak is identified and associated with the wave in sea ice. In Appendix B we introduce the method in detail, and SAR images that collocate with CS2 tracks are used for the analysis and the validation of the CS2-based retrieval in Section 4.2 and the supplementary material.

2.3.2 ICESat2 and the CRYO2ICE campaign

Compared with the CS2 radar altimeter, NASA's ICESat2 (IS2) is a photon-counting laser altimeter which was launched in the autumn of 2018 (Markus et al., 2017). Over the sea ice, the laser altimeter mainly measures the range/height of the snow surface, while the Ku-band radar signals of CS2 usually penetrate a significant part of the snow cover. In order to better evaluate the synergy of the two altimeters for improved snow and ice thickness retrievals (Bagnardi et al., 2021), the CS2 orbit was raised in July, 2020 to attain collocating tracks with IS2. These collocating tracks are available through the CRYO2ICE campaign (<http://cryo2ice.org>). In the Atlantic Arctic, we attain 21 collocating track pairs between CS2 and IS2 during the two winters (November to April) of 2020-2021 and 2021-2022 (track information in Appendix A).

155 On the sea ice, the nominal spatial resolution of the beam segments of the ATL07 product for IS2 strong beams (SB) is about 17 m (cross-track) and less than 20 m (along-track). Therefore, IS2 is capable to resolve the long-wavelength swells in the sea ice and identify the MIZ. Specifically, in this study, we apply the MIZ retrieval algorithm in Horvat et al. (2020) to the collocating track pairs, and compare the result with that based on CS2.

3 Retrieving wave-affected MIZ with CS2

160 3.1 Retrieval algorithm

Based on the CS2 waveform properties in the polar ocean, we design the following MIZ retrieval algorithm in Figure 2. The algorithm mainly uses two parameters: the backscatter (σ_0) and the SSD. First, we detect the beginning of the MIZ with σ_0 through its contrast between the ocean and the sea ice. In particular, we use the in-situ σ_0 over the ocean and its variability (i.e., the standard deviation of σ_0 , denoted SD) to account for the variant ocean condition. When the backscatter is anomalously high (i.e., over 3-SD), we detect the presence of sea ice, and mark the location as the outer boundary of the MIZ.

165 Second, among the various waveform parameters, we adopt the SSD as the indicator to determine the along-track transition from the wave-affected part (i.e., the MIZ) to the inner ice pack. To determine the inner boundary of the MIZ, we conducted statistical tests with the distributions of SSD. Specifically, we search for the first lead waveform (available from ESA's baseline product) in the along-track direction and record the sample-based distribution of SSD from the location of the sea ice lead to 170 100 km in length (containing over 300 CS2 footprints). Here, the lead is a flat surface with a high speckle return, observed by CS2. Thus, the wave-affected MIZ cannot extend beyond the location of the first lead. Then, the recorded SSD distribution is used as the benchmark for further determination of the MIZ's inner boundary.

Third, we restart the along-track search from the MIZ's outer boundary. At each step, we advance into the sea ice direction, and record the SSD distribution around the search point. A statistical test is carried out for comparing the current SSD 175 distribution and that of the inner part of the ice pack. Specifically, the Kolmogorov-Smirnov test (KS-test) is adopted for the comparison of the two sample-based distributions. The Null-Hypothesis (NP) is that the two sets of SSD samples follow the same distribution, and it is rejected at the prescribed significance level of 0.05. For determining the inner boundary of the MIZ, we stop the along-track search until: (1) the NP of the KS-test is *not* rejected, indicating that the SSD distribution at the current location is consistent with that of the inner ice pack, or (2) the lead previously recorded is encountered.

180 The SSD distribution of the local part of the track is based on a prescribed window size of 10 km, containing over 30 CS2 footprints. For larger window sizes, more local samples of SSD are included, hence reducing the potential of Type-II errors (i.e., premature termination of the search process and the underestimation of the MIZ length/width). However, larger window sizes inevitably compromise the spatial resolution of the retrieval. Section 3.4 contains the sensitivity study of the window size and the trade-offs.

185 It is worth noting that, other waveform (stack) parameters, including TES, are found to be synonymous with SSD. As shown in Figure 1 and the following typical retrieval scenarios (i.e., Fig. 3 and 4), larger SSD (in MIZ as compared with ice pack) corresponds to less power drop in the slant looks, which indicates lower sensitivity of backscatter to along-track look

angle. Coincidentally, higher TES is indicative of the slower decay of waveform power with respect to gate (or time), which is promoted by both larger height variability and the more 'effective' volume scattering typical to the wave-modulated surfaces.

190 For comparison, the retrieval algorithm as proposed in Rapley (1984) with the pulse-limited altimeter on SEASAT is based on the (along-track smoothed) Significant Wave Height (SWH), which mainly relied on the leading edge of the waveform. In this study we choose SSD over TES (or other parameters) mainly due to the larger contrast of SSD between MIZ and the ice pack (regarding their respective variability). To summarise, the proposed algorithm based on SSD has the following advantages: (1) the multi-look capability of CS2 over traditional pulse-limited altimeters; (2) the much enhanced along-track resolution of about 400 *m* with delay-Doppler treatments; (3) the higher sensitivity for MIZ retrieval with SSD than TES or other waveform parameters. Other retrieval options for historical and future radar altimetry campaigns are further discussed in Section 6.

Fourth, after the inner and outer boundary of the MIZ are determined, we compute the along-track length of the MIZ and compute the MIZ width by projecting onto the normal direction of the local sea ice edge. The determination of the projection angle is based on the sea ice concentration (SIC) maps and introduced below. The projection process is introduced to accommodate the sampling of the CS2 satellite, because there exist arbitrary intersection angles of its ground tracks and the local sea ice edge in the Atlantic Arctic region.

200

3.2 Projection and the computation of MIZ width

In order to determine the intersection angle of the CS2 ground track and the local sea ice edge, we need two directions: (1) the ground track's direction which is readily available from the CS2 product, and (2) that of the local sea ice edge, denote ξ .

205 For each MIZ-traversing CS2 track, the daily SIC map corresponding to the CS2's visit time is used to determine the value of ξ . Specifically, we first attain all locations with $SIC > 15\%$ that are adjacent (i.e., within 100 *km*) to the ground track's entry point into the ice pack. Second, we scan the entire range of the potential values of ξ (from 0 to π , relative to the east). For each possible value of ξ , we constructed a local intersection line that separated the aforementioned local area into two parts and computed the accumulated sea ice extent (SIE) for both sides of the intersection line. Then, we defined the final ξ as the angle under which the SIE difference of the two sides is maximum. The method above, including its parameters, is designed to accommodate: (1) the inherent fractal characteristics of the sea ice edge, and (2) the resolution limitation of the SIC product.

210

With ξ and the CS2 track direction, we compute the angle of θ , which is the intersection angle for the projection. The width of the MIZ, $W_{MIZ-CS2}$, is then computed as: $W_{MIZ-CS2} = L_{MIZ-CS2} \cdot \sin(\theta)$, where $L_{MIZ-CS2}$ is the along-track length of the MIZ retrieved from CS2. The value θ in the Atlantic Arctic region is generally larger than 45° (Fig. S1), mainly thanks to the high inclination angle of CS2's orbit at 92° . However, in the Greenland sea, there exist 25% cases with θ smaller than 30° .

215 For smaller values of θ , the projection process will incur higher uncertainty in the MIZ width, as further discussed in Section 3.4.

3.3 Typical scenarios

We investigate two typical scenarios of MIZ retrieval with CS2. On 2015-Feb-14 (Fig. 3), a CS2 track traversed the sea ice edge in the Barents Sea, and no storm was present in the region of study. The normal direction to the local sea ice edge is

220

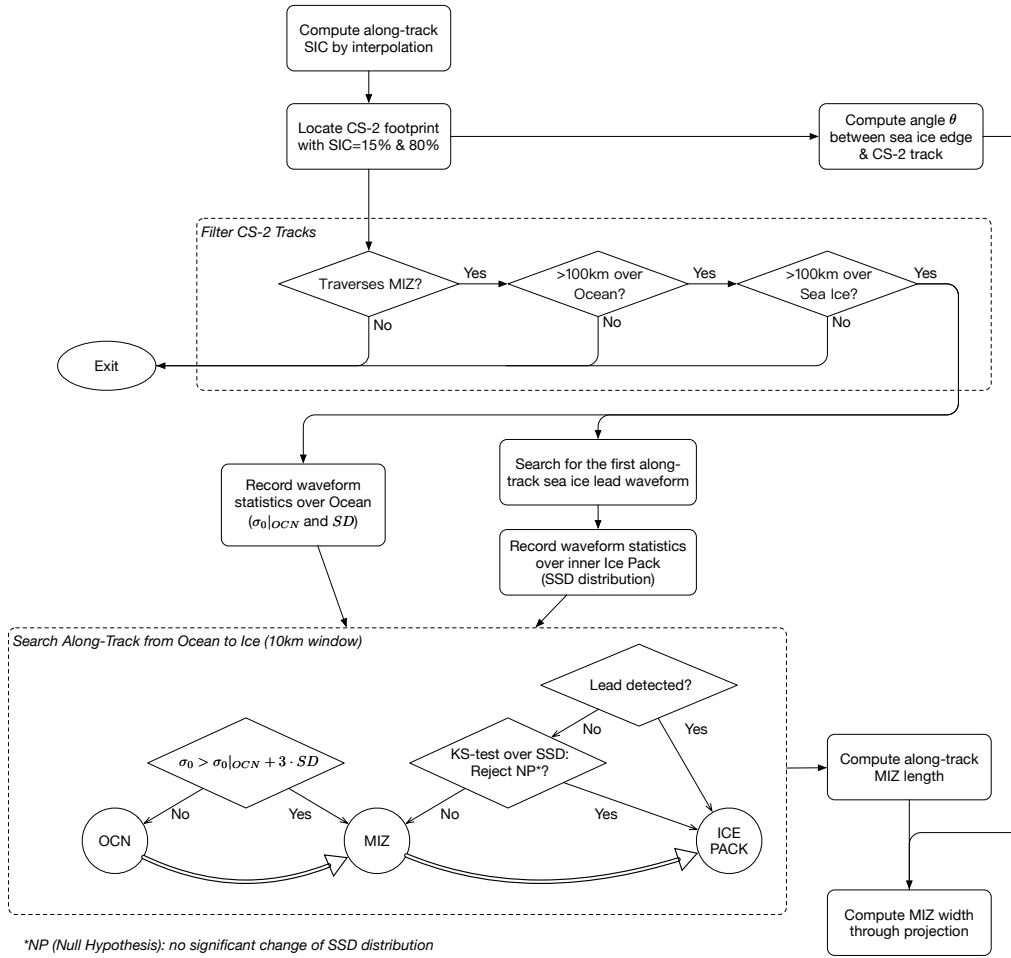


Figure 2. Flow chart of the retrieval algorithm.

almost meridional. As indicated by the ERA5 reanalysis (Hersbach et al., 2018), the total (swell) SWH is about 1.7 *m* (1.15 *m*) near the sea ice edge. Based on the daily SIC map (6.25 *km* resolution, produced at University of Bremen with AMSR2), we compute the along-track locations with SIC between 15% and 80%. By projecting onto the normal direction of the local sea ice edge, we compute the SIC-based MIZ width of about 20 *km*.

225 The waveform power measured by CS2 increase from the ocean to the sea ice at about 76.58° *N*, which is considered as the starting location of the MIZ. While TES remained stable over the ocean (55 ± 3), it showed: (1) much larger variability on the sea ice and (2) the overall decrease towards the inner part of the ice pack. The overall smaller TES on sea ice indicates a relatively stronger waveform peak, as well as much faster waveform power decay with respect to time (or gate number). Consistent with the changes in TES, the value of SSD also decreased (from over 50 looks on the ocean to less than 20 looks

230 on the inner ice pack), indicating stronger central looks relative to slant-looking ones in the ice pack. Slight shift in the stack center angle is also present, as a result of the gradual decrease of surface height to the north.

For comparison, in Figure 4 we show the case on 2015-Feb-17 with a heavy storm passing around Svalbard (3 days later than the case in Fig. 3). The same storm event is also recorded during the in-situ campaign of N-ICE2015 [denoted M3 in Graham et al. (2019)]. The total SWH is over 3.9 *m*, with the swell power consists over 94% of the total power. The CS2 track entered the sea ice cover at 76.6° *N*, and the waveform parameters all showed a gradual transition over a long distance to the relatively calm ice pack in the north. Within the MIZ, both SSD and TES show not only gradual decrease, but also larger spatial variability than both the ocean and the inner part of the ice pack. The sharp contrast of waveforms in the MIZ to those on the ocean or the inner ice pack is also evident in the overall waveform profile (bottom panel of Fig. 4). Based on SSD and the retrieval algorithm in Section 3.1, we determine that the along-track MIZ terminates at about 79.1° *N*. The retrieved along-track MIZ length is over 270 *km* (yellow shading in Fig. 4). The CS2 observed MIZ length is much larger than that based on along-track SIC (purple shading), which is only 35 *km*.

The nearest available SAR image from Sentinel-1 (Extra-Wide swath mode, 40-*m* resolution) is 3.1 hours after CS2's observation (Fig. 5). The time difference is within the typical temporal scale of MIZs of 6 hours, hence good collocation between the two satellites (Brouwer et al., 2022). Swells in the ice pack are evident from the SAR image, with the apparent wavelength of about 400 *m*. Based on the SAR images, MIZ is identified by the outstanding peak of the spectrum of the local backscatter map, with consistent estimation of the wavelength (i.e., Fig. 5.d and e). The intersection angle of the dominant swell propagation direction and CS2 ground track is about 47°. As shown in Figure 5.c, the spectral peak that corresponds to the wave structure diminishes to the north of the retrieved MIZ. The CS2 retrieved MIZ termination location is off from that based on the spectral analysis by less than 10 *km* (4% of the along-track MIZ length). Given the 3-hour difference between the two satellites' visit times, we consider that the CS2 retrieval of the wave-affected MIZ is consistent with that based on SAR images.

Interestingly, the stack center angle of CS2 shows an oscillatory pattern towards the northern end of the MIZ at 79° *N* (Fig. 4.d). The central look (with a Gaussian fitting) is off from the nominal location by as much as 1600 *m* from the nadir location in the along-track direction. Similar phenomenon is witnessed for many stormy events (another example in Fig. 6). The apparent wavelength of this oscillatory pattern is of the order of kilometers, which is much larger than the swell wavelength (Fig. 5). According to the CS2 dataset, the aircraft yawing and/or pitching is not the main cause. We conjecture it an aliasing effect, caused by both long-wavelength swells and the misalignment of their propagation direction to the CS2 track.

3.4 Sensitivity of retrieval to algorithm parameters

We consider the uncertainty of the retrieval caused by two key parameters: (1) the window size for accumulating the statistics of SSD, and (2) the intersection angle of θ for the projection. We first evaluate the effect of window size on the retrieved lengths of the MIZ in the along-track direction. Other than the default window size of 10 *km*, we test two extra window sizes: 5 *km* (or 15 CS2 footprints) and 20 *km* (or 60 CS2 footprints). With larger window sizes, we generally attain larger values of the MIZ width (Fig. S2). Since more SSD samples are available with larger windows, the false rejection of the Null Hypothesis

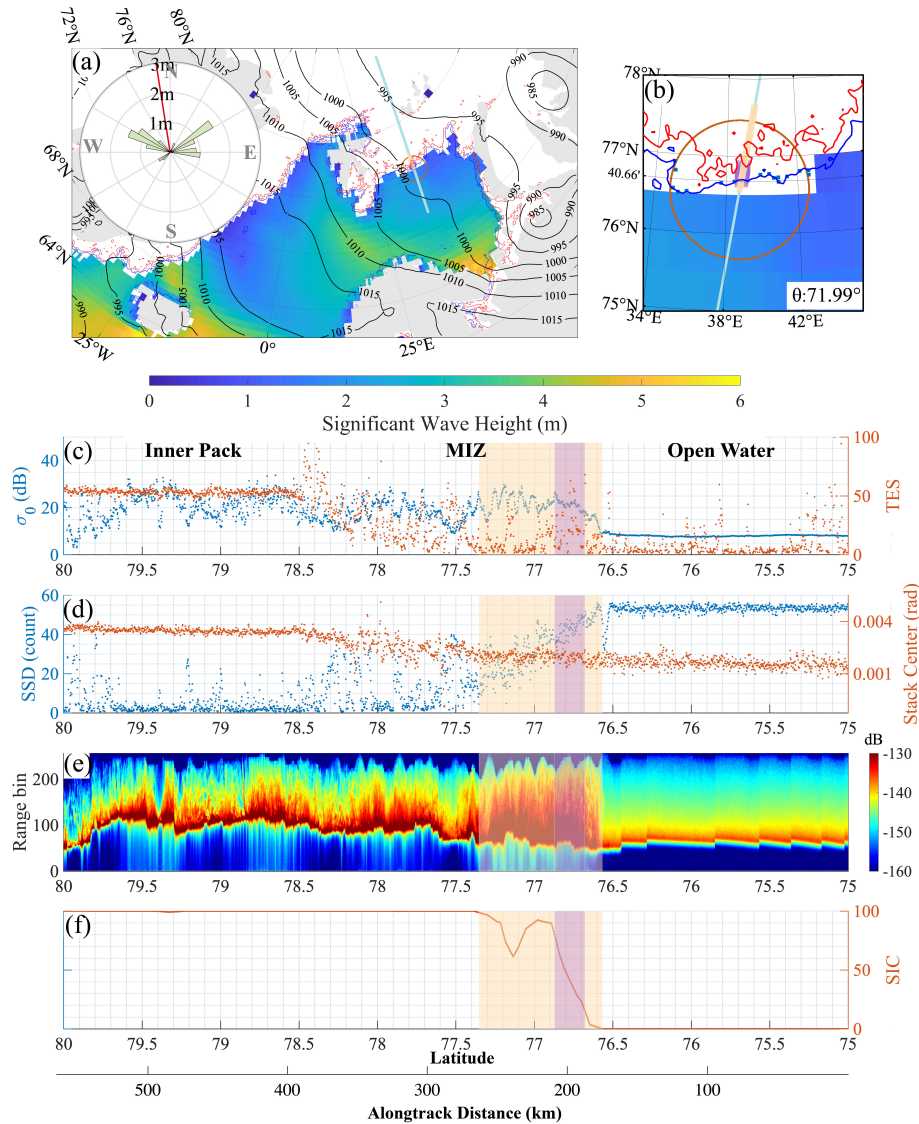


Figure 3. CS2 observation of the MIZ in the Barents Sea on 2015-Feb-14 (at 00:06 UTC). In the top panels (a and b), the hourly total SWH (filled contour) and sea-level pressure (labeled contour lines) are both derived from ERA5 data. The SIC of 15% and 80% are represented by blue and red contour lines, respectively. The CS2 track is shown by the thin light blue line, with the SIC-based (or CS2-retrieved) MIZ highlighted by thick purple (or yellow) line. The inlet rose map shows the swell power/direction spectra near the entry point of the CS2 track into the ice pack (within the circle in panel b), as well as the normal direction into the sea ice edge (red line, details in Sec. 3.2). Additionally, the intersection angle (θ) between the sea ice edge and the CS2 track is shown in the zoomed-in view of panel b. Along-track CS2 waveform and waveform stack parameters are shown in lower panels, including: (1) backscatter (σ_0) and TES in panel c; (2) SSD and stack center angle in panel d; (3) the waveform power in panel e; and (4) the along-track SIC in panel e. In lower panels (c to f), the MIZs retrieved with SIC and CS2 are also marked with the same colors as in the top panels.

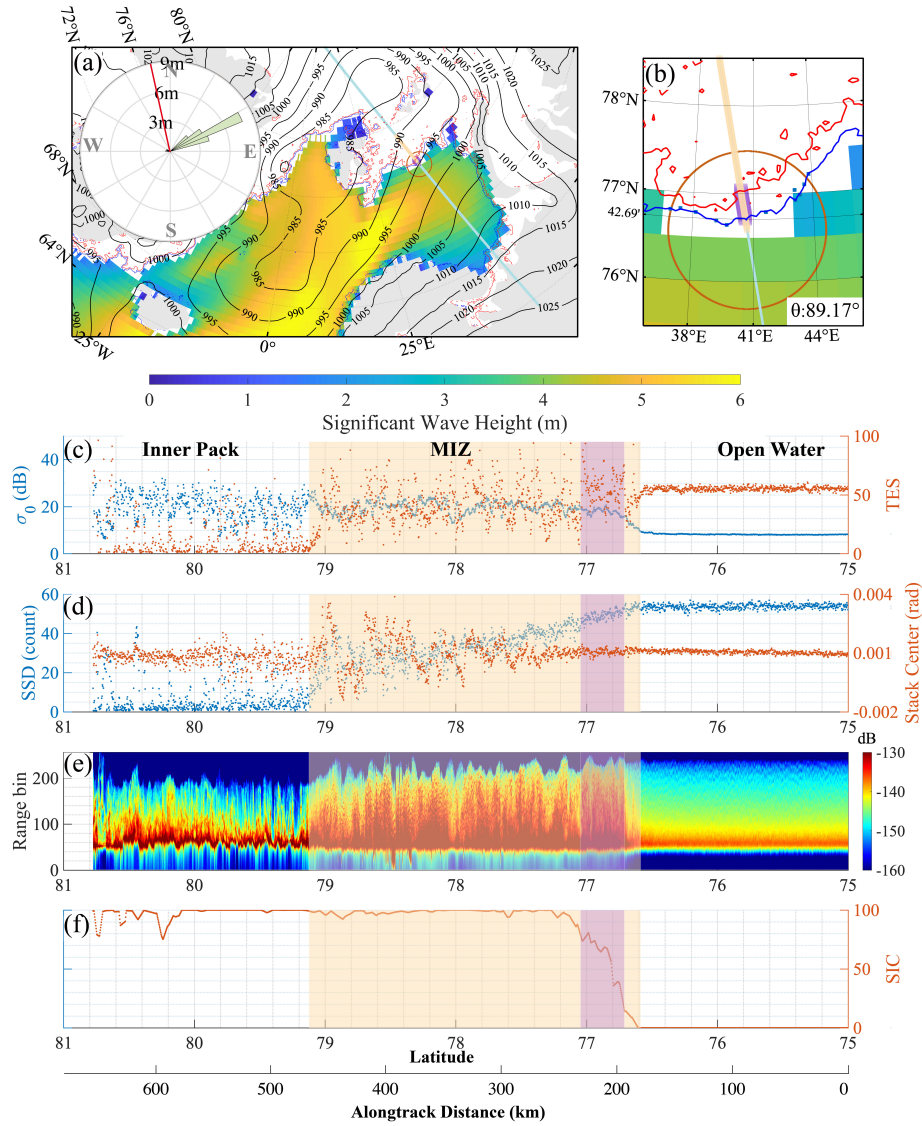


Figure 4. CS2 observation of MIZ in Barents Sea on 2015-Feb-17 (at 10:41 UTC). The layout is the same as Fig. 3. Contrary to the conditions observed three days earlier (i.e., Fig. 3), this figure shows a strong storm with waves/swells propagating far into the ice pack.

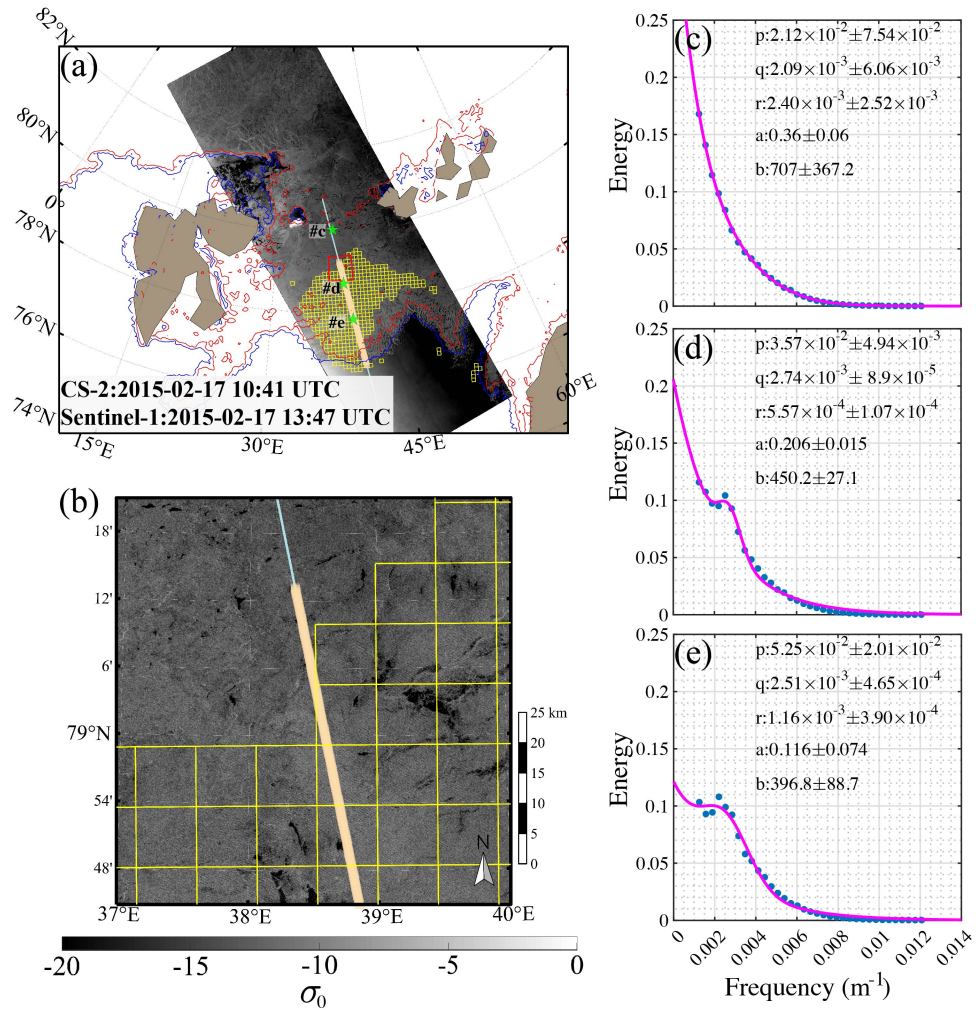


Figure 5. Collocating SAR images from Sentinel-1 (EW mode, panel a) for the MIZ in Fig. 4 and the northern end (red box in panel a) of the CS2-retrieved MIZ shown in detail (panel b). The region with detected wave-in-ice by spectral analysis (Appendix B) on the SAR image is marked by yellow boxes (10 km scale). The spectra of the Sentinel-1 backscatter map of three typical regions (green dots in panel a, for the (c)-(e) corresponding to the northernmost, the middle, and the southernmost) are shown on the right, along with the respective fitted parameters and their uncertainties in Eqs. B1.

is reduced during the KS-test (Fig. 2), resulting in wider MIZs. However, the retrieval results with 10 *km* and 20 *km* window sizes are highly consistent, with the correlation coefficient at 0.99, the fitting slope at 1, and only 1-*km* difference in the MIZ length. Also, at larger window sizes, the spatial resolution of the retrieved MIZ is potentially compromised. Therefore, we choose the window size of 10 *km* by default for all the retrieval studies.

We also estimate the relative uncertainty in the MIZ width that is incurred by that in θ . The uncertainty of θ originates from the sea ice concentration map around the entrance of the CS2's ground track into the ice edge. Through perturbation analysis, we estimate that the uncertainty, denoted $\Delta\theta$, is on average 6.5° in the Atlantic Arctic region. The relative uncertainty of L_{MIZ} due to θ , under the small-angle assumptions, is then computed as:

$$\frac{\Delta\theta \cdot \frac{dL_{MIZ}}{d\theta}}{L_{MIZ}} = \Delta\theta \cdot \cot\theta. \quad (1)$$

Among all the tracks, the majority of θ is larger than 30° (e.g., Fig. S1), and the relative uncertainty is lower than 20%. Furthermore, in order to ensure 10% or lower relative uncertainty, the value of θ should be larger than 45° . For the BS, the NS and the GS region, 88%, 82% and 37% tracks satisfy this criterion, respectively. For satellites with different orbit inclination angles than CS2, the distribution of θ is different and potentially complementary to that of CS2, especially in the GS region.

4 Validation of MIZ observations by other satellites

4.1 Validation with ICESat2 from CRYO2ICE campaign

Based on collocating tracks between CS2 and IS2 from the CRYO2ICE program (Bagnardi et al., 2021), we compare the along-track MIZ lengths retrieved with the two satellites. We limit the analysis to the track pairs with the distance between the ground tracks less than 50 *km*. This in effect eliminates the track pairs without actual collocation in the Atlantic Arctic region. Besides, given the highly variant conditions of MIZ, we only study the track pairs with the observation time difference less than 3 hours. Finally, we attain 21 track pairs in the Atlantic Arctic for the two winters of 2020-2021 and 2021-2022 (track information in Tab. A1). For each track pair, we retrieve the MIZ's boundaries with HC20 and the strong beams (SB) in the ATL07 dataset of IS2 (release 5).

In Figure 6, we show an example of MIZ affected by a storm in the Barents Sea, which is observed by a pair of collocating tracks of CS2 and IS2. The two satellites' visit time is separated by 3 hours. Strong swells (swell SWH=1.95 *m*, and the total SWH=2.62 *m*) propagated into the ice pack, with the CS2 observed MIZ length over 170 *km*. Different from the case in Figure 4, the SIC-based MIZ is comparable to that based on CS2, mainly due to a wide and loose ice edge. For IS2, the observation of MIZ mainly relies on the high-resolution, high-precision elevation measurements over sea ice, which allows direct sampling of waves with relatively long wavelengths (Horvat et al., 2020; Brouwer et al., 2022). The surface elevation measurement in ATL07 product of IS2 only contains valid photon segments over sea ice (i.e., no data on ocean, last panel in Fig. 6). The large oscillatory, wave-like structure of the surface elevation (i.e., periodic signals with amplitude over 50 *cm*) is evident, indicating the wave-affected MIZ. The gradual decrease of the wave amplitude towards the north implies the wave attenuation within

295 the MIZ. We retrieve the northern end of the MIZ with the algorithm proposed in Horvat et al. (2020) (denoted by HC20 hereinafter). The location of the MIZ's northern boundary as retrieved by IS2 is offset from the CS2 retrieval by only about 1 km ($< 1\%$ of the total MIZ length). Since the ATL07 product only includes valid measurements on sea ice, we treat the south-most photon segment with a valid elevation in ATL07 as the MIZ's southern end observed by IS2. It is worth to note that, for this specific case, the photon segments are not continuous near the MIZ's southern end, probably due to: (1) the cloud
300 contamination and/or (2) the relatively fine footprints of IS2. In general, we consider the CS2 and the IS2 retrieval of MIZ consistent, especially given the fast changing nature of MIZ and the 3-hour difference of the visit times.

Similar to the case in Figure 4 and 5, we also carry out spectral analysis of the case in Figure 6 (results shown in Fig. S8). The visit time of Sentinel-1 is about 2.5 hours ahead of IS2, and 5.5 hours ahead of CS2. The apparent wave structure on the SAR image covers over 150 km into the ice pack and terminates at $78^\circ N$, which is also well captured by the spectral analysis.
305 The location of wave's presence in the sea ice is highly consistent among the three satellites (all within 10 km).

Using all the 21 collocating tracks from CRYO2ICE campaign, we compare the location of the retrieved MIZs by CS2 and IS2 (the nearest SB to the respective CS2 track). The MIZs' southern boundaries and the northern boundaries are shown in Figure 7 (left and middle panel, respectively). Specifically, we compare the latitudes of the boundaries, given that these tracks are almost meridional in this region. As shown, very high statistical correlations (Pearson's r over 0.99) are attained for both
310 the southern and the northern boundaries of the MIZs. Furthermore, for the along-track MIZ length (right panel of Fig. 7), the retrieval with CS2 and that based on IS2 are also highly consistent ($r=0.86$). The linear regression between CS2 and IS2 yields a fitting slope of 0.87 ± 0.25 , indicating that there is no systematic difference between the two. Besides, the correlation is higher in the Barents Sea than in Greenland Sea, which may be due to a more mobile and spatially non-continuous sea ice cover in the latter. The along-track MIZ length is in the range of 5 km and 180 km, indicating that various MIZ conditions are covered,
315 including both calm cases and stormy ones which are associated with wide MIZs (e.g., Fig. 6).

It is worth to note that MIZ retrieval with CS2 and IS2 are based on different approaches. For IS2 the retrieval relies on the direct observation of wave structures by high-resolution sampling of photon segments. Rather than directly resolving the waves, the retrieval with CS2 is mainly based on the aggregate behavior of radar waveforms over the wave-modulated sea ice cover. One common characteristic to both CS2- and IS2-based MIZ retrieval is that the spatial representation of altimeter is
320 inherently limited. Related issues including the quantification of representation uncertainty are further discussed in Section 6.

4.2 Analysis with collocating Sentinel-1 images

Based on the 21 collocating tracks from the CRYO2ICE campaign, we further find available collocating Sentinel-1 images (EW mode). In order to ensure temporal collocation, we limit the observation time of the Sentinel-1 satellites to be within 6 hours of that by CS2. In total, there are 9 cases with the collocating observation of all three satellites (an example in Fig. 6).
325 We carry out visual inspection as well as spectral analysis for all the SAR images, and the results are listed in Table 1 and supplementary figures (Fig. S3 to S11).

Among the 9 cases, there are 6 with evident wave penetration in the sea ice cover. The spectral analysis successfully identifies 4 out of the 6 cases, with good consistency among the retrieval results by CS2, IS2 and S1 (case #2 #3 #4 and #6). Case #5 (Fig.

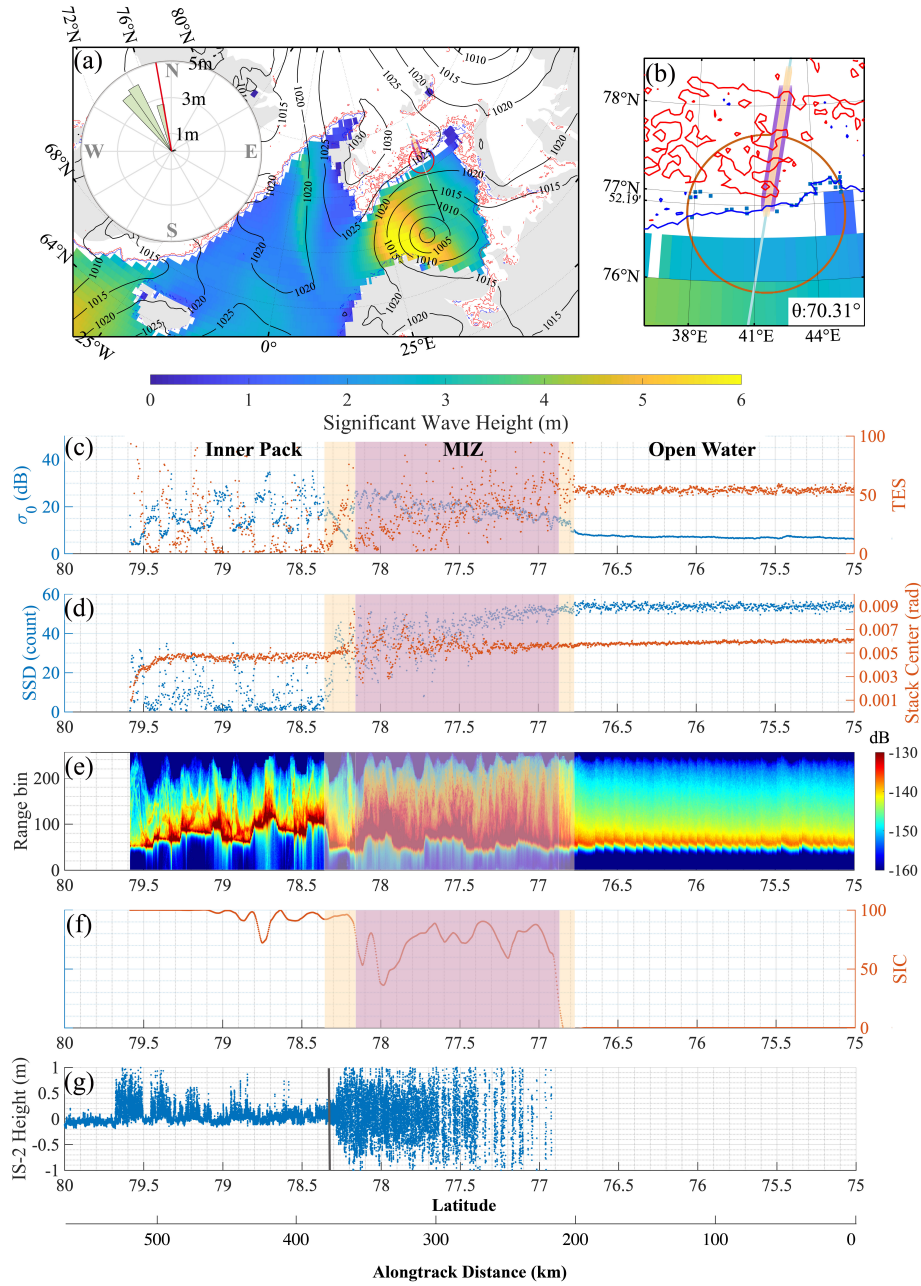


Figure 6. CS2 and IS observation of the MIZ in Barents Sea on 2021-Mar-17. Similar to Fig. 4, strong swells propagate into the ice pack, with the MIZ width over 170 km. The MIZ is sampled by a pair of collocating tracks by CS2 (at 09:40 UTC) and IS2 (at 06:40 UTC), with the time difference of 3 hours. The added panel f shows the along-track IS2 elevation, as well as the retrieved northern boundary of the MIZ with HC20 (black vertical line around 78.4° N).

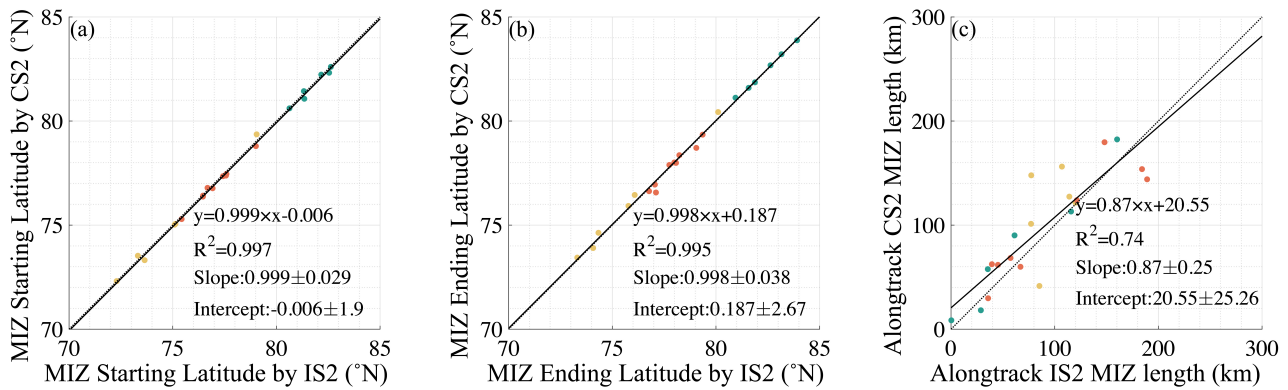


Figure 7. Comparison of along-track MIZ retrievals with collocating tracks of CS2 and IS2 in Atlantic Arctic during the winters of 2020-2021 and 2021-2022. Each dot represents a track pair, with 21 pairs in total. The dots are color-coded according to the track locations: orange for those in Barents Sea, yellow for those in Greenland Sea and green for other tracks around Svalbard. The representation ranges of these locations are the same as Fig. 8. The comparison of the along-track MIZ starting and stopping latitudes are shown (left and middle panel respectively), with that for along-track MIZ lengths (right panel). The linear regression line (solid, black) and the fitting parameters are shown in each panel, together with the 1:1 line (dotted, black).

S7) features an inhomogeneous ice edge and the mixture of ice floes and open water. Although the visual inspection reveals evident wave structures over the ice covered region, the spectral analysis fails to detect any outstanding peak in the spectrum. Also, for case #9 (Fig. S11), the MIZ detected by CS2 is further to the north of both the IS2 retrieval and the spectral analysis based on the S1 image.

For the other 4 cases without any waves detected (by either visual inspection or spectral analysis), the dominating processes are from the ocean. For example, for case #1, the frazil streaks governed by new ice formation and Langmuir circulation forms the MIZ and it is successfully identified by both CS2 and IS2. For the ocean turbulence dominated ice edges (i.e., case #4, #7 and #8), the regions with sea ice free drift are also correctly retrieved by both altimeters. The reason why spectral analysis fails to identify waves for these cases may be due to the coarse resolution of the S1 EW image (40 m resolution), as well as the complex, inhomogeneous ice edge.

5 Wintertime MIZ climate record in the Atlantic Arctic

Based on the retrieval for the wintertime CS2 observations, in this section we report the climate record of MIZ in the Atlantic Arctic region for the years from 2010 to 2022. We divide the Atlantic Arctic into 3 sub-regions: Barents Sea (BS, south of $80^{\circ}N$ and east of $15^{\circ}E$), north and northwest of Svalbard (NS, region east of $0^{\circ}E$ except BS), and Greenland Sea (GS, $30^{\circ}W$ to $0^{\circ}W$). In total, there are 2818, 3007 and 3160 valid CS2 tracks for BS, NS and GS, respectively. Temporally, we investigate both the whole winter and the two periods of the winter: the first half from November to January, and the second half from February to April. In Section 5.1 we report the basic statistics of the retrieved MIZ width, and in Section 5.2 its inter-annual

variability and the study of typical winters. Finally in Section 5.3 we compare the CS2-based retrieval with the traditional definition of MIZ based on SIC.

5.1 Statistics of MIZ widths

In Table 2 we show the general statistics of MIZ width (i.e., W_{MIZ}) of all the 12 winters, and in Figure 8 for every 3-month
350 period. MIZ width follows a skewed distribution in all regions, with mean width of 78.55 km, 41.03 km and 55.98 km in BS, NS and GS, respectively. The modal MIZ widths, which are representative of the typical, non-stormy conditions, are: 32.04 km (BS), 11.20 km (NS), and 39.53 km (GS) respectively. Correspondingly, the distribution of W_{MIZ} is highly skewed, and the cases of wide MIZs associated with storm events (examples in Fig. 4 and 6).

Among the three regions, the widest MIZs manifest in BS, with the largest width reaching over 250 km in most winters.
355 Also, within each winter of the BS region, the MIZ width generally decreases in the later stage of the winter. This phenomenon is not observed for the other two regions. The potential reason may be due to ice thickening as the winter progresses, which is more evident in BS.

In NS, the MIZ is generally narrower than in BS and GS. Especially, for certain years (such as 2014-2015), the sea ice edge is only present to the west of Svalbard (i.e., no ice edge north of Svalbard). Sea ice in NS mainly originates from within the
360 Arctic Ocean, due to the ice advection through the transpolar drift and the interaction with the Atlantic inflow. It is usually older and thicker than the locally grown sea ice during the freeze-up season. Consequently, the swell's penetration into the ice pack is potentially limited due to higher ice thickness, and the MIZ is generally narrower in NS.

Among the three regions, GS shows overall the largest modal MIZ widths. On the other hand, the mean MIZ width is smaller in GS than BS, mainly due to the extremely wide MIZs, which are more common in BS. Coincidentally, the skewness of the
365 MIZ width distribution is also the lowest in GS. This is mainly due to the generally loose ice pack in GS, as a result of the south-bound, fast ice drift and divergence.

During the study period from 2010 to 2022, we do not observe statistically significant change in the wintertime MIZ width. Similarly, there is no significant change in extreme cases of MIZ width (i.e., top 5%) for the three regions of the Atlantic Arctic. For comparison, no significant change of SIC-based MIZ width is observed for the same period (2010 to 2022) either, despite
370 that it is generally much lower than the CS2-based retrieval.

5.2 Inter-annual variability and typical winters

Although no change in MIZ width is detected, there exists large temporal variability, both inter-annually and intra-seasonally. In particular, in Figure 9 we show that there is pronounced inter-annual variability (IAV, 2-year cycle) of the extreme MIZ widths (top 10%) in the Barents Sea. For comparison, the modal width in the Barents Sea (e.g., non-stormy condition) does
375 not show similar variability. Collaterally, the mean width shows similarly pronounced IAV, caused by the cases with extremely large widths.

The extremely wide MIZs are caused by various factors, including strong storm events, relatively thinner/looser ice edges, etc. We would like to note that, in the Barents Sea, the IAV of the widest MIZs coincides with the statistically significant

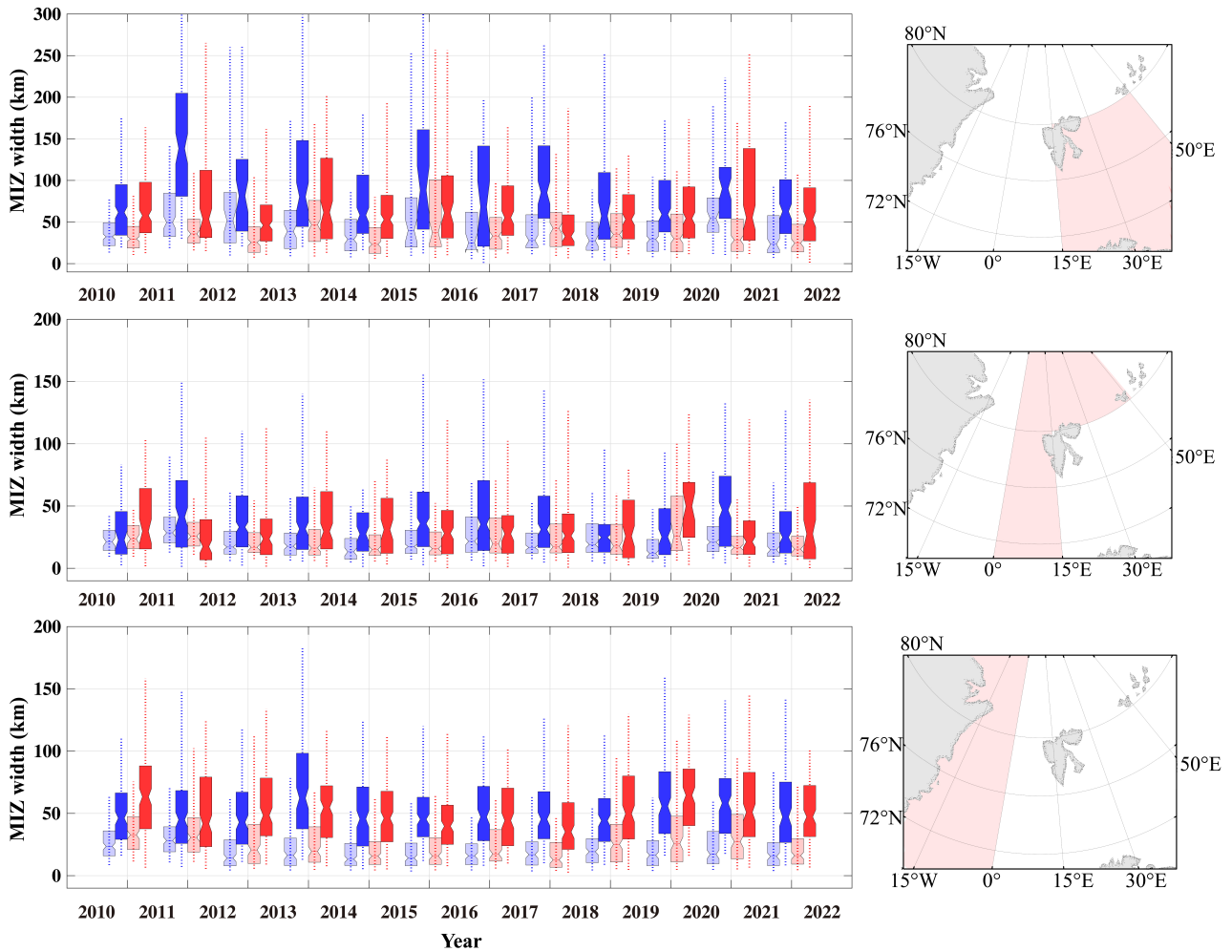


Figure 8. Statistics of wintertime MIZ width from 2010 to 2022. Two 3-month periods of each winter (Nov.-Jan. in blue and Feb.-Apr. in red) are shown for Barents Sea (BS, top panel), north/northwest of Svalbard (NS, middle panel) and Greenland Sea (GS, bottom panel), separately. The median, the inter-quartiles (box), and the 5th and the 95th percentiles (vertical line) of MIZ width distribution are shown. Statistics of SIC-based MIZ width on the same CS2 tracks are shown in lighter colors.

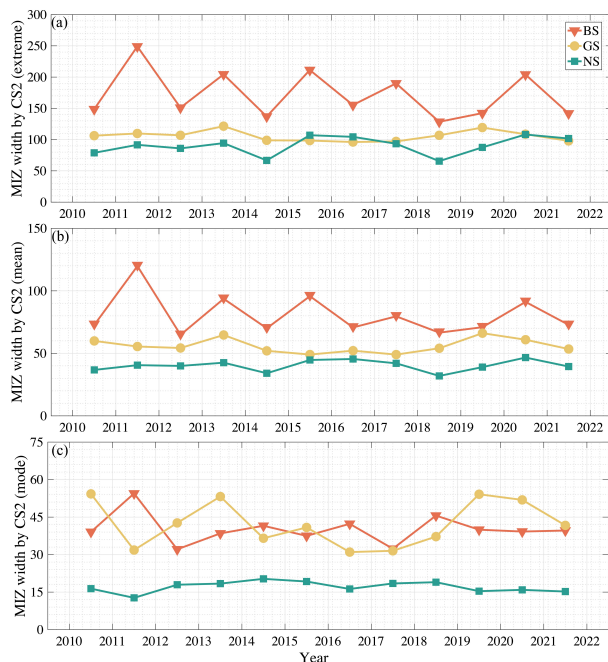


Figure 9. The extreme (a), the mean (b), and the modal MIZ widths (c, in *km*) of each winter from 2010 to 2022. Specifically, the extreme MIZ width is computed as the mean MIZ width of the widest 10% MIZs of each winter. Note the difference in the MIZ width ranges (from 300 *km* in panel a to 75 *km* in panel c).

correlation of seasonal mean MIZ widths between the CS2-based retrieval and that based on SIC (details in Sec. 5.3). For
 380 winters with a relatively loosely packed ice edge in the Barents Sea, the SIC-based MIZs tend to be wider, and the ice edge
 is also more susceptible to storms and wave intrusion. However, the quantitative role of these contributing factors, including
 the IAV of storms and the ice thickness, is beyond the scope of this study and planned for future work. For comparison, in the
 other two regions (BS and NS), we have much lower inter-annual variability in the extreme MIZ widths than the Barents Sea.

Due to the large IAV of the MIZ width, we examine in detail two winters for comparative study: 2012-2013 and 2014-2015,
 385 the results shown in Figure 10. The winter of 2012-2013 followed the record minimum of Arctic sea ice extent in September
 2012. Besides, it was a relatively calm winter in the Atlantic Arctic, with very weak storms throughout the season (Rinke et al.,
 2017). The sea ice coverage gradually increased in the Barents Sea as the winter progressed from November to January (top
 panels of Fig. 10), mainly due to the in-situ ice growth, assisted by the advection from the north. During this period, although
 only weak storm events were present, yet wave-affected MIZs extended as far as 85°N (i.e., 600 *km* north of Svalbard). For
 390 the latter 3 months of the 2012-2013 winter, the wave-affected MIZ around Svalbard is not prominent as the former period,
 only manifesting in the Barents Sea.

Since the sea ice minimum in September, 2012, the Arctic sea ice cover had undergone recovery up to 2015, with both
 larger ice coverage and thicker ice (Tilling et al., 2015). Furthermore, the winter of 2014-2015 witnessed frequent storms in the

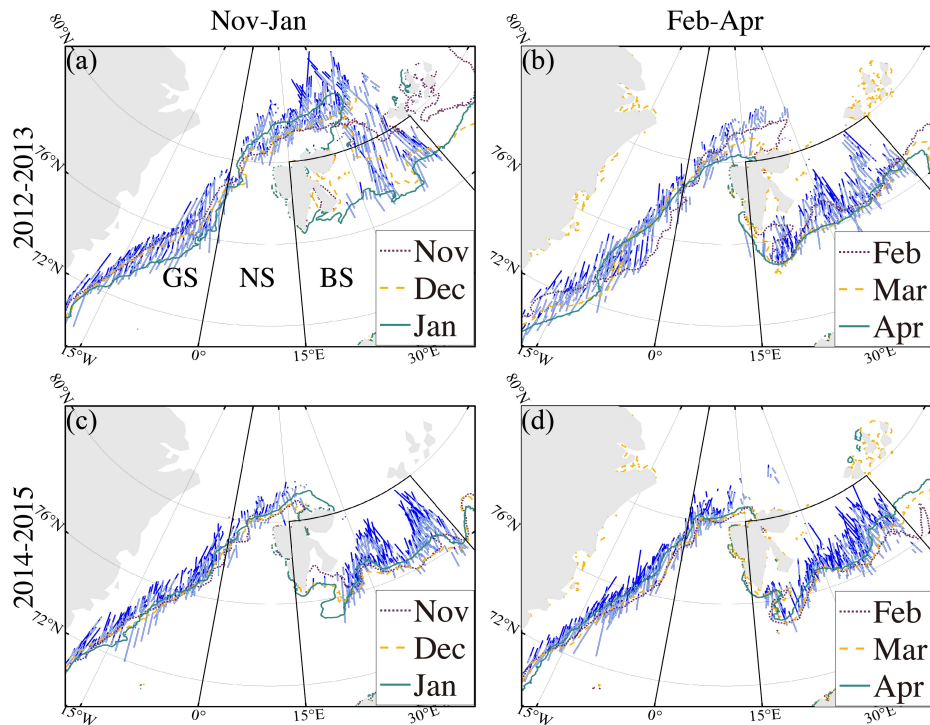


Figure 10. Along-track CS2 retrieved MIZ of two typical winters: 2012-2013 (top row) and 2014-2015 (bottom row). The two periods of the winter (Nov.-Jan. and Feb.-Apr.) are shown on the left and right panels, respectively. The monthly mean sea ice edge is shown for each month with contour lines in all panels. For each CS2 track, the part with (daily) along-track SIC lower than 80% are shown in light blue, and those over 80% in dark blue.

Atlantic Arctic region (Graham et al., 2019). These characteristics are also reflected in the wave-affected MIZs (lower panels in Fig. 10). Contrast to the winter of 2012-2013, there was already large ice coverage in the Barents Sea ($77^{\circ}N$) since November 2014. The sea ice coverage generally remained high throughout the winter. However, due to frequent storm activities, CS2 observed MIZ extends into the ice pack of over 250 km in both the Barents Sea and the Greenland Sea. Besides, given the larger ice coverage and potentially thicker ice than the winter of 2012-2013, we do not observe any MIZ beyond $82.5^{\circ}N$ during the whole winter of 2014-2015.

400 5.3 Comparison with SIC-based MIZ

We carry out systematic comparison between the CS2-based MIZ width retrieval and the traditional MIZ definition based on SIC [i.e., SIC between 15% and 80%, as in Strong and Rigor (2013)]. Specifically, two SIC-based MIZ widths are computed. The first method is demonstrated in the examples in Figure 3, 4 and 6, which is based on the SIC along the CS2 track. I.e., for each CS2 track, we attain the along-track SIC and compute the distance between SIC=15% and SIC=80% as the along-track MIZ length. Then the MIZ width is computed with the same projection method as in Section 3.2. The second method is: for

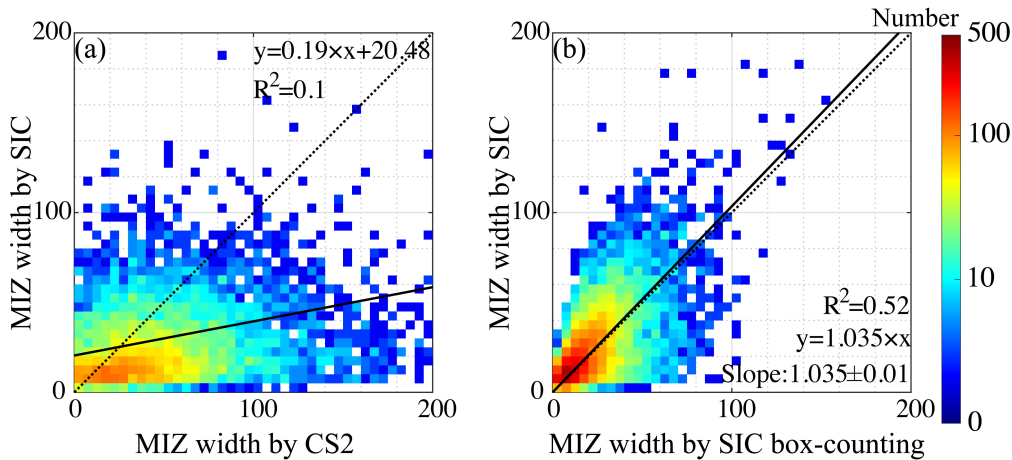


Figure 11. Comparison of MIZ width based on CS2 retrieval and the along-track SIC (a), and that of the SIC-based MIZ width retrieved with along-track SIC and the box-counting method (b).

each CS2 track, we compute the MIZ width based on the aggregate area with SIC between 15% and 80% in the adjacency of the track (within 100 km of the track). This method is inherently based on box-counting and it is free from the potential representation issues with altimetric scans of the MIZ.

Both Table 2 and Figure 8 compare the SIC-based retrievals with the first method. As shown, the SIC-based MIZ width also follows a highly skewed distribution. However, the MIZ defined with SIC is systematically narrower than the CS2 retrieval, including both mean and extreme widths. For example, for BS, GS and NS, the mean width is lower by 43%, 52% and 39%, respectively. More importantly, there is only weak statistical correlation between the SIC and the CS2-based MIZ widths (10% common variance, Fig. 11.a).

At larger temporal scales (i.e., 3-month), the mean MIZ width based on SIC correlates with that based on CS2 only in the BS region (with the correlation coefficient r of 0.62 and the p -value < 0.01), but not in the GS or NS regions. For the BS region, the correlation is significant at the monthly and the inter-annual scales ($r=0.57$ and $r=0.75$ respectively, and the p -values both lower than 0.05). This statistical relationship may *not* be due to the inherent physical relationship between the wave-affected MIZ and the daily SIC, but the large-scale sea ice conditions, including ice edge advance and ice thickening throughout the winter.

Between the two SIC-based retrievals, there is overall consistency between two ($R^2 = 0.52$, Fig. 11.b). The box-counting method yields slightly lower MIZ widths (by about 3.5%), and we consider it as a minor issue due to the practical way for the computation of the area with $15% < \text{SIC} < 80%$. More importantly, the comparison in Figure 11.b reveals the representation uncertainty with altimetric observations of the MIZs. It is worth to note that, similar to the intercomparison between CS2 and IS2 retrievals (Sec. 4.1), both temporal and spatial representation should be accounted for during the altimetric observations of the MIZ. The representation issue and the potential with the synergy of multiple altimetry campaigns are further discussed in Section 6.

6 Summary and discussions

In this study, we design a new retrieval method for the wave-affected marginal ice zones with the radar altimeter of CryoSat-2. The waveform and the waveform stack parameters of CS2 are used to retrieve the along-track locations of the MIZs. Based on the available CS2 dataset spanning the years of 2010 to 2022, we carry out the retrieval for the winter months in the Atlantic Arctic region. The retrieval is validated with collocating observations of ICESat2 and Sentinel-1. The new dataset contains over 8985 MIZ-traversing CS2 tracks, and yields good spatial and temporal coverage of the MIZs in the Atlantic Arctic (Zhu et al., 2023).

Based on the new dataset, we investigate the status and potential changes of the wave-affected MIZs in the Atlantic Arctic. No evident change in the mean MIZ width or the widest MIZs' widths is detected during the period of 2010-2022, but large spatial (region-to-region) and temporal (e.g., inter-annual) variability is present. The three regions of the Atlantic Arctic, distinct in their respective sea ice conditions, show drastically different properties of the MIZs. In the Barents Sea, despite the modal MIZ width of 32 km, the wave-affected MIZs can reach over 300 km into the ice pack. In particular, there exists pronounced, 2-year cycle inter-annual variability of the extremely wide MIZs in the Barents Sea. The attribution to storms and sea ice conditions is planned for future work. The modal MIZ width in the Greenland Sea is generally the largest, and the width distribution shows the lowest skewness. The region around Svalbard contains the overall narrowest MIZs, mainly due to higher ice concentration and thicker ice. Comparison also indicates that the traditional definition of MIZ based on SIC inherently underestimates the wave-affected MIZ width. More importantly, the (daily) SIC maps are not indicative of the wave-affected MIZs (i.e., no statistically significant correlation).

6.1 On the SIC-based MIZ definition

Although the daily SIC maps are not indicative of the wave-affected MIZs, there is a statistically significant correlation between the mean MIZ width based on CS2 retrieval and that based on SIC at larger temporal scales. In particular, only in the Barents Sea the mean MIZ width based on SIC correlates with that based on CS2 retrievals, although the former is much narrower by 43%. As analysed in Section 5.3, we conjecture this as the result of large-scale sea ice conditions. During many winters, the sea ice edge advance in the Barents Sea ensures large SIC variability on the monthly or larger scales. New ice forms during the sea ice edge advance, and it is more susceptible to wave/swell's effects due to the low thickness. As a result, a more loosely-packed and mobile ice cover forms, which coincides with a wider MIZ.

Given the large sea ice edge changes throughout the winter, if SIC maps at coarser temporal resolutions were used to generate the MIZ maps (same threshold values of 15% and 80%), we could attain a wider MIZ by SIC. On the other hand, if the SIC variability (instead of mean SIC) is used, we also witness a systematic increase in the retrieved MIZ width. However, we cannot directly resolve the wave's effect on MIZ with either mean SIC or SIC variability. Similarly Vichi (2022) explored defining MIZ based on SIC variability in the Southern Oceans (SO). In our study of the period between 2010 and 2022, with the ongoing Atlantification, the Barents Sea is similar to Southern Oceans in terms of the ice type, thickness, as well as the seasonal ice edge advance. Based on the analysis above, we consider the SIC at coarser temporal scales is only statistically

460 indicative of the wave-affected MIZs under limited sea ice conditions (i.e., BS, SO). More study is needed to better understand the general applicability of using SIC maps for defining MIZs, especially for future climate changes in the polar regions.

6.2 Representation issues for the altimetry-based MIZ observations

Traditional approaches for observing waves in MIZ with satellites are usually based on imaging payloads (Ardhuin et al., 2017; Stopa et al., 2018; Collard et al., 2022). Observing the MIZ with altimeters is inherently limited in terms of the per-pass spatial
465 coverage, which applies to both CryoSat-2 and ICESat2. Although waves and swells are driven by the atmospheric weather systems and hence has larger spatial structures, the sea ice cover being affected potentially features larger variability with finer structures. The analysis with along-track SIC retrieval and the comparison with the box-counting method (Sec. 5.3) reveals that there exists no systematic bias, but inherent representation uncertainty of altimetric scans of the MIZ. On the other hand, the temporal representation for observing wave-affected MIZ is also limited, especially for the fast on-set process of the MIZs
470 (Collins III et al., 2015).

We further analyze the representation uncertainty, starting with the spatial representation based on different beams of IS2. On the ground, the three strong beams are about 3.3-*km* apart in the cross-track direction. We compute the along-track lengths of the MIZ for each of the strong beams (for all the CS2-IS2 track pairs in Sec. 4.1), and further evaluate the statistical relationship between each pair among the three beams. The common variance of MIZ lengths between the beam pairs is
475 between 91% and 95%. Since the modal MIZ width (32 *km* in the BS region) is much larger than the IS2 beams' separation (3.3 *km* or 6.6 *km*), the remaining variance of about 7% serves as a lower bound of the spatial representation uncertainty for altimetric sampling. Note that there is 26% unexplained variability between the MIZ lengths of the CS2-IS2 track pairs (Fig. 7), for which the observation by CS2 and that by IS2 is generally separated by 3 hours. Potential limiting factors of the temporal representation include both the sea ice drift (on the order of 1*m/s* under strong forcings) and the fast changing nature of
480 the MIZs through wave-ice interaction (ice floe breaking, rafting, thermodynamic feedbacks, etc). We relate the drift-induced temporal representation uncertainty to the spatial representation, and estimate the temporal representation uncertainty in along-track MIZ width as 19% for the 3-hour time difference (i.e., 26% minus 7%). Given that there are only 21 track pairs in the analysis, better quantification of the aforementioned representation uncertainty can be carried out with more collocating tracks from the CRYO2ICE campaign in the future. Besides, existing MIZ studies with SAR images usually involve the data analysis
485 with each satellite pass. For the study of MIZs with cross-pass SAR images, the aforementioned temporal representation issues should also be accounted for.

6.3 Retrieving the MIZ with radar altimetry campaigns

Given the representation uncertainties due to limited coverage by altimeters, there lies great potential in the synergy of multiple altimetry campaigns for improved observations of the MIZ. The Sentinel-3A and 3B (S3A and S3B for short) both contain the
490 delay-Doppler radar altimeter as CS2, and they have a lower inclination angle of the orbit and cover up to 82°*N*. As a result, S3A and S3B provide complementary coverage to CS2 in the Atlantic Arctic, both temporally and spatially. The retrieval algorithm based on SSD and σ_0 in Section 3.1 can be directly applied to both S3A and S3B. Furthermore, the S3A and S3B

ground tracks are expected to include more orthogonal scans for the sea ice edge in the Greenland Sea, which could further reduce the uncertainty caused by the projection process (i.e., Sec. 3.4). Also in Collard et al. (2022), the authors demonstrated the signature of swells with the fully-focused treatment to S3A (Egido and Smith, 2017), and it serves as another important direction in using the delay-Doppler type radar altimeters for observing MIZs with both historical datasets and future campaigns such as CRISTAL (Kern et al., 2020).

Besides SSD, other parameters of CS2 waveforms are also shown to be indicative of the wave-affected MIZ in Section 3.1. For example, the TES parameter reflects the surface elevation variability which is modulated by waves, and it is found to be synonymous with SSD but has lower contrast among the open ocean, the MIZ, and the ice pack. In particular, the retrieval method based on TES resonates with Rapley (1984), in which the wave-in-ice is based on the SWH product generated from the Ku-band pulse-limited altimeter onboard the SEASAT satellite. Our retrieval method can also be adapted for the MIZ retrieval with the existing and historical pulse-limited altimeters, such as SARAL AltiKa (Verron et al., 2015) and ENVISAT (European Space Agency, 2018). However, the effect of altimeter mispointing on the radar waveform should be accounted for (Amarouche et al., 2004). Furthermore, a holistic model of the traditional and delay-Doppler radar altimeter waveforms is needed to better characterize both the ice pack and the wave-affected MIZ. Besides, the historical laser campaign of ICESat (Zwally et al., 2002), although limited in the along-track resolution (i.e., the Nyquist wavelength of 350 m), can also be synergized with collocating radar altimetry campaigns to construct the long-term record of MIZs in the polar oceans.

6.4 Summary of the dataset and outlook

We provide the MIZ dataset at: <https://zenodo.org/record/8176585> (last access: 24 July 2023), which contains the wintertime MIZs in the Atlantic Arctic region from 2010 to 2022. Specifically, two different data formats are provided. First, the raw information of the retrieval result for each CS2 track is provided. For each MIZ traversing track, the following information is provided: (1) the original CS2 track information; (2) the date (year, month, date) and time (hour) of the CS2 track; (3) the region of the CS2 track (BS, GS or NS); (4) the start location (latitude and longitude) of the retrieved MIZ; (5) the end location (latitude and longitude) of the retrieved MIZ. In total 8985 CS2 tracks are included. Second, we provide a gridded dataset for the MIZ presence on the monthly scale. The latitude-longitude grid is adopted, with the spatial resolution of 2° in the zonal direction and 1° in the meridional direction. Hence, the nominal spatial resolution of the dataset is about 100 km. For each MIZ-traversing CS2 track of the month, we mark all the grid cells that contain the retrieved MIZ locations along the track. In total, the gridded dataset includes 72 NetCDF files, each corresponding to a winter month from 2010 to 2022. Each file contains the following information/variables: (1) the time; (2) the region flag (i.e., BS, NS or GS); and (3) the MIZ flag (1 for the presence of MIZ within the month, and 0 for the case of no detected MIZ).

The MIZ dataset can be further used in both process studies of the MIZs and the validations of numerical models. Specifically, the wave/swell's decay within the MIZ is a key factor for the wave-ice interactions and the MIZ width. The efficacy of the linear and the exponential wave decay model, as well as how the decay rate is quantitatively modulated by the various sea ice parameters (Wadhams et al., 1988; Alberello et al., 2019; Brouwer et al., 2022), can be further explored with the new MIZ product, especially the along-track dataset. On the other hand, the wave-ice interaction models can be evaluated with

the product (Boutin et al., 2022; Roach et al., 2019). In particular, ocean–wave–sea-ice coupled simulations are carried out in the Arctic regions, which are forced by atmospheric reanalysis datasets. These model outputs between 2010 and 2022 can be directly validated in terms of the MIZ statistics, such as the spatial distribution of the MIZs and their response to passing
530 cyclones and winds.

In this paper, the proposed MIZ retrieval algorithm is based on CS2 and the SSD parameter of its waveforms. The algorithm can be adapted to work with other modern and legacy radar altimeters, in particular by using the TES parameter for pulse-limited altimeters (Sec. 6.3). By combining available altimeters, we can potentially achieve much better spatial and temporal coverage of the MIZs in the Atlantic Arctic. Especially in the Greenland Sea, the retrieval uncertainty due to low incidence
535 angles between the sea ice edge and the CS2 ground tracks can be greatly mitigated. The further improvement of the MIZ dataset in the Atlantic Arctic with the synergy of various satellite altimeters is planned as future work, along with the study of MIZs and wave-ice interactions in other polar regions such as the Southern Oceans.

7 Code and data availability

CryoSat-2 waveform data are accessed through the PDS system provided by European Space Agency (ESA), available at <http://science-pds.cryosat.esa.int/> (last access: 30 August 2022). Daily sea ice concentration maps for the study period of 2010-2022
540 are hosted at the Institute of Environmental Physics, University of Bremen: <https://seaice.uni-bremen.de/data-archive/> (last access: 25 October 2022). ERA-5 hourly atmospheric and wave spectra data are available on the Copernicus Climate Change Service (C3S) Climate Data Store, at: <https://cds.climate.copernicus.eu/cdsapp#!/dataset/reanalysis-era5-single-levels?tab=form> (last access: 02 November 2022). The collocating tracks between CS2 and IS2 can be downloaded through the online portal
545 of the CRYO2ICE program at: <https://cryo2ice.org/> (last access: 10 January 2023). ICESat-2 ATL07 dataset is available from the National Snow and Ice Data Center: <https://n5eil01u.ecs.nsidc.org/DP7/ATLAS/ATL07.005/> (last access: 6 October 2022). Sentinel-1 SAR images are openly accessible through ESA's Sentinel-1 data-hub via: <https://scihub.copernicus.eu/dhus/#/home> (last access: 29 June 2023).

The CS2-based MIZ product (Zhu et al., 2023) is publicly available at: <https://zenodo.org/record/8176585> (last access: 24
550 July 2023). The dataset contains two parts. First, the CS2 track information and the retrieved beginning and the end locations of the MIZ in the along-track direction of each track. In total 8985 CS2 tracks in the Atlantic Arctic region are included. Second, a monthly gridded dataset is also included, which is based on the along-track retrieval results and records the presence of MIZ within the month. Section 6.4 includes detailed description of the dataset.

The MATLAB codebase for the retrieval of MIZ along a single CS2 track is available at: https://github.com/weixinzhu7/miz_retrieval_cryosat2 (last access: 17 July 2023). The codebase includes the core retrieval algorithm, as well as exemplary
555 CS2 record on 14 February 2015 which is downloaded from the repository above.

Appendix A: Collocating tracks between CryoSat-2 and ICESat2 from CRYO2ICE campaign

Table A1 lists all the 21 collocating track pairs from the CRYO2ICE campaign in the Atlantic Arctic during the two winters of 2020-2021 and 2021-2022. In order to ensure both spatial and temporal collocation, we use the following two criteria for the selection of the track pairs: (1) the starting locations of each track pair are limited to be within 50 km to ensure spatial collocation, and (2) the visit times of each track pair to be within 3 hours.

Appendix B: Wave-in-ice detection based on spectral analysis of Sentinel-1 EW images

Sentinel-1 EW mode backscatter images are used for detecting wave structures in the sea ice with the spectral analysis method. Each of the image is of the resolution of 40 m and the size of 400 km by 400 km. In total, 21 images are attained for 9 of the collocating track pairs and the case in Figure 4. These images are further subjected to visual inspections and the following spectral analysis.

For each SAR image, we carry out the analysis on the local window of 30 km by 30 km (or 751 pixels in each direction). The local window is slided with the step size of 10 km in both directions to fully cover the whole SAR image. For the spectral analysis, first, a two-dimensional Hamming window is applied to the local window. Second, we carry out the two-dimensional Fourier transform on the local wind, and further compute the directional-independent spectrum (wavenumber bin of 0.0003 m^{-1}). Third, a band-pass filter is applied for the wavelength between 80 m and 800 m which is relevant for the detection of waves.

After we compute the spectrum, we apply the fitting in Eqs. B1 to detect any outstanding spectral peak. In Eqs. B1, x denotes the wavenumber, $f(x)$ the spectrum. The component of $a \cdot e^{-b \cdot x}$ implies the default spectrum of the red noise of the backscatter map, and that of $p \cdot e^{-\frac{(x-q)^2}{2r^2}}$ corresponds to the spectral peak, and the periodic signal in the image. When the fitted parameter of p is greater than 0 with statistical significance, we detect the periodic signal, and the local window is marked as part of the wave-affected MIZ. Besides, the fitted parameter of q indicates the central wavenumber of the detected wave in sea ice.

$$f(x) = a \cdot e^{-b \cdot x} + p \cdot e^{-\frac{(x-q)^2}{2r^2}} \quad (\text{B1})$$

Figure 5 shows the examples of the spectra in both MIZ and the inner part of the ice pack. The detected spectral peaks in different parts of the MIZ are consistent (pane d and e), with: (1) the wavenumber around $2.6 \times 10^{-3} m^{-1}$, and (2) the decrease of amplitude into the inner part of the MIZ (i.e., decrease in the value of p 's), indicating wave attenuation. Beyond the MIZ, we do not detect any spectral peak (panel c). Besides, the MIZ determined with the spectral analysis (i.e., p greater than 0 with statistical significance) is highly consistent with the retrieval with CS2. Other examples of the SAR-based MIZ retrievals are shown in Fig. S3 to S11.

585 *Author contributions.* SX conceived the overall retrieval framework. SX and WZ designed and implemented the retrieval algorithm. WZ, SX and SL carried out the overall data processing and analysis. All authors contributed to the writing of the manuscript.

Competing interests. The authors declare that they have no competing interests.

Acknowledgements. This work is supported by the joint project of INTERAAC co-funded by the National Key R & D Program of China (grant no.: 2022YFE0106700) and the Research Council of Norway (grant no.: 328957). SX is also partially supported by the National
590 Science Foundation of China (grant no.: 42030602), the International Partnership Program of Chinese Academy of Sciences (grant no.: 183311KYSB20200015), and the Research Council of Norway under the TARDIS project (grant no.: 325241).

References

- Alberello, A., Onorato, M., Bennetts, L., Vichi, M., Eayrs, C., MacHutchon, K., and Toffoli, A.: Brief communication: Pancake ice floe size distribution during the winter expansion of the Antarctic marginal ice zone, *The Cryosphere*, 13, 41–48, 2019.
- 595 Alberello, A., Bennetts, L. G., Onorato, M., Vichi, M., MacHutchon, K., Eayrs, C., Ntamba, B. N., Benetazzo, A., Bergamasco, F., Nelli, F., Pattani, R., Clarke, H., Tersigni, I., and Toffoli, A.: Three-dimensional imaging of waves and floes in the marginal ice zone during a cyclone, *Nature Communications*, 13, 1–11, 2022.
- Amarouche, L., Thibaut, P., Zanife, O., Dumont, J.-P., Vincent, P., and Steunou, N.: Improving the Jason-1 Ground Retracking to Better Account for Attitude Effects, *Marine Geodesy*, 27, 171–197, <https://doi.org/10.1080/01490410490465210>, 2004.
- 600 Ardhuin, F., Stopa, J., Chapron, B., Collard, F., Smith, M., Thomson, J., Doble, M., Blomquist, B., Persson, O., Collins, C. O., and Wadhams, P.: Measuring ocean waves in sea ice using SAR imagery: A quasi-deterministic approach evaluated with Sentinel-1 and in situ data, *Remote Sensing of Environment*, 189, 211–222, <https://doi.org/10.1016/j.rse.2016.11.024>, 2017.
- Ardhuin, F., Otero, M., Merrifield, S., Grouazel, A., and Terrill, E.: Ice Breakup Controls Dissipation of Wind Waves Across Southern Ocean Sea Ice, *Geophysical Research Letters*, 47, e2020GL087699, <https://doi.org/10.1029/2020GL087699>, e2020GL087699
605 10.1029/2020GL087699, 2020.
- Asplin, M. G., Galley, R., Barber, D. G., and Prinsenber, S.: Fracture of summer perennial sea ice by ocean swell as a result of Arctic storms, *Journal of Geophysical Research: Oceans*, 117, <https://doi.org/10.1029/2011JC007221>, 2012.
- Bagnardi, M., Kurtz, N. T., Petty, A. A., and Kwok, R.: Sea Surface Height Anomalies of the Arctic Ocean from ICESat-2: A First Examination and Comparisons With CryoSat-2, *Geophysical Research Letters*, 48, e2021GL093155, <https://doi.org/10.1029/2021GL093155>, 2021.
610
- Boutin, G., Williams, T., Horvat, C., and Brodeau, L.: Modelling the Arctic wave-affected marginal ice zone: a comparison with ICESat-2 observations, *Philosophical Transactions of the Royal Society A*, 380, 20210262, 2022.
- Brouwer, J., Fraser, A. D., Murphy, D. J., Wongpan, P., Alberello, A., Kohout, A., Horvat, C., Wotherspoon, S., Massom, R. A., Cartwright, J., and Williams, G. D.: Altimetric observation of wave attenuation through the Antarctic marginal ice zone using ICESat-2, *The Cryosphere*,
615 16, 2325–2353, <https://doi.org/10.5194/tc-16-2325-2022>, 2022.
- Collard, F., Marie, L., Nouguier, F., Kleinherenbrink, M., Ehlers, F., and Ardhuin, F.: Wind-Wave Attenuation in Arctic Sea Ice: A Discussion of Remote Sensing Capabilities, *Journal of Geophysical Research: Oceans*, 127, e2022JC018654, <https://doi.org/10.1029/2022JC018654>, e2022JC018654 2022JC018654, 2022.
- Collins III, C. O., Rogers, W. E., Marchenko, A., and Babanin, A. V.: In situ measurements of an energetic wave event in the Arctic marginal ice zone, *Geophysical Research Letters*, 42, 1863–1870, <https://doi.org/10.1002/2015GL063063>, 2015.
620
- De Carolis, G., Olla, P., and De Santi, F.: SAR image wave spectra to retrieve the thickness of grease-pancake sea ice using viscous wave propagation models, *Scientific Reports*, 11, 2733, 2021.
- Doble, M. J., De Carolis, G., Meylan, M. H., Bidlot, J.-R., and Wadhams, P.: Relating wave attenuation to pancake ice thickness, using field measurements and model results, *Geophysical Research Letters*, 42, 4473–4481, 2015.
- 625 Egido, A. and Smith, W. H. F.: Fully Focused SAR Altimetry: Theory and Applications, *IEEE Transactions on Geoscience and Remote Sensing*, 55, 392–406, <https://doi.org/10.1109/TGRS.2016.2607122>, 2017.
- European Space Agency: RA-2 Geophysical Data Record. Version 3.0, Tech. rep., ESA, <https://doi.org/10.5270/EN1-ajb696a>, 2018.

- Graham, R. M., Itkin, P., Meyer, A., Sundfjord, A., Spreen, G., Smedsrud, L. H., Liston, G. E., Cheng, B., Cohen, L., Divine, D., Fer, I., Fransson, A., Gerland, S., Haapala, J., Hudson, S. R., Johansson, A. M., King, J., Merkouriadi, I., Peterson, A. K., Provost, C., Randelhoff, A., Rinke, A., Rösel, A., Sennéchaël, N., Walden, V. P., Duarte, P., Assmy, P., Steen, H., and Granskog, M. A.: Winter storms accelerate the demise of sea ice in the Atlantic sector of the Arctic Ocean, *Scientific Reports*, 9, 9222, <https://doi.org/10.1038/s41598-019-45574-5>, 2019.
- Hersbach, H., Bell, B., Berrisford, P., Biavati, G., Horányi, A., Muñoz Sabater, J., Nicolas, J., Peubey, C., Radu, R., Rozum, I., et al.: ERA5 hourly data on single levels from 1979 to present, Copernicus Climate Change Service (C3S) Climate Data Store (CDS)[data set], 2018.
- Horvat, C., Blanchard-Wrigglesworth, E., and Petty, A.: Observing Waves in Sea Ice With ICESat-2, *Geophysical Research Letters*, 47, e2020GL087629, <https://doi.org/10.1029/2020GL087629>, 2020.
- Huang, B. and Li, X.: Study on Retrievals of Ocean Wave Spectrum by Spaceborne SAR in Ice-Covered Areas, *Remote Sensing*, 14, <https://doi.org/10.3390/rs14236086>, 2022.
- Kern, M., Cullen, R., Berruti, B., Bouffard, J., Casal, T., Drinkwater, M. R., Gabriele, A., Lecuyot, A., Ludwig, M., Midthassel, R., Navas Traver, I., Parrinello, T., Ressler, G., Andersson, E., Martin-Puig, C., Andersen, O., Bartsch, A., Farrell, S., Fleury, S., Gascoin, S., Guillot, A., Humbert, A., Rinne, E., Shepherd, A., van den Broeke, M. R., and Yackel, J.: The Copernicus Polar Ice and Snow Topography Altimeter (CRISTAL) high-priority candidate mission, *The Cryosphere*, 14, 2235–2251, <https://doi.org/10.5194/tc-14-2235-2020>, 2020.
- Kohout, A. L. and Meylan, M. H.: A model for wave scattering in the marginal ice zone based on a two-dimensional floating-elastic-plate solution, *Annals of Glaciology*, 44, 101–107, 2006.
- Kohout, A. L., Williams, M. J. M., Dean, S. M., and Meylan, M. H.: Storm-induced sea-ice breakup and the implications for ice extent, *Nature*, 509, 604–607, <https://doi.org/10.1038/nature13262>, 2014.
- Kohout, A. L., Smith, M., Roach, L. A., Williams, G., Montiel, F., and Williams, M. J.: Observations of exponential wave attenuation in Antarctic sea ice during the PIPERS campaign, *Annals of Glaciology*, 61, 196–209, 2020.
- Markus, T., Neumann, T., Martino, A., Abdalati, W., Brunt, K., Csatho, B., Farrell, S., Fricker, H., Gardner, A., Harding, D., Jasinski, M., Kwok, R., Magruder, L., Lubin, D., Luthcke, S., Morison, J., Nelson, R., Neuenschwander, A., Palm, S., Popescu, S., Shum, C., Schutz, B. E., Smith, B., Yang, Y., and Zwally, J.: The Ice, Cloud, and land Elevation Satellite-2 (ICESat-2): Science requirements, concept, and implementation, *Remote Sensing of Environment*, 190, 260–273, <https://doi.org/10.1016/j.rse.2016.12.029>, 2017.
- Meloni, M., Bouffard, J., Parrinello, T., Dawson, G., Garnier, F., Helm, V., Di Bella, A., Hendricks, S., Ricker, R., Webb, E., Wright, B., Nielsen, K., Lee, S., Passaro, M., Scagliola, M., Simonsen, S. B., Sandberg Sørensen, L., Brockley, D., Baker, S., Fleury, S., Bamber, J., Maestri, L., Skourup, H., Forsberg, R., and Mizzi, L.: CryoSat Ice Baseline-D validation and evolutions, *The Cryosphere*, 14, 1889–1907, <https://doi.org/10.5194/tc-14-1889-2020>, 2020.
- Nose, T., Waseda, T., Kodaira, T., and Inoue, J.: Satellite-retrieved sea ice concentration uncertainty and its effect on modelling wave evolution in marginal ice zones, *The Cryosphere*, 14, 2029–2052, <https://doi.org/10.5194/tc-14-2029-2020>, 2020.
- Palma, D., Varnajot, A., Dalen, K., Basaran, I. K., Brunette, C., Bystrowska, M., Korablina, A. D., Nowicki, R. C., and Ronge, T. A.: Cruising the marginal ice zone: climate change and Arctic tourism, *Polar Geography*, 42, 215–235, <https://doi.org/10.1080/1088937X.2019.1648585>, 2019.
- Polyakov, I. V., Pnyushkov, A. V., Alkire, M. B., Ashik, I. M., Baumann, T. M., Carmack, E. C., Goszczko, I., Guthrie, J., Ivanov, V. V., Kanzow, T., Krishfield, R., Kwok, R., Sundfjord, A., Morison, J., Rember, R., and Yulin, A.: Greater role for Atlantic inflows on sea-ice loss in the Eurasian Basin of the Arctic Ocean, *Science*, 356, 285–291, <https://doi.org/10.1126/science.aai8204>, 2017.
- Rapley, C.: First observations of the interaction of ocean swell with sea ice using satellite radar altimeter data, *Nature*, 307, 150–152, 1984.

- Rinke, A., Maturilli, M., Graham, R. M., Matthes, H., Handorf, D., Cohen, L., Hudson, S. R., and Moore, J. C.: Extreme cyclone events in the Arctic: Wintertime variability and trends, *Environmental Research Letters*, 12, 094006, <https://doi.org/10.1088/1748-9326/aa7def>, 2017.
- Roach, L. A., Bitz, C. M., Horvat, C., and Dean, S. M.: Advances in Modeling Interactions Between Sea Ice and Ocean Surface Waves, *Journal of Advances in Modeling Earth Systems*, 11, 4167–4181, <https://doi.org/10.1029/2019MS001836>, 2019.
- Robin, G. d. Q.: Ocean waves and pack ice, *Polar Record*, 11, 389–393, 1963.
- Spreen, G., Kaleschke, L., and Heygster, G.: Sea ice remote sensing using AMSR-E 89-GHz channels, *Journal of Geophysical Research: Oceans*, 113, <https://doi.org/https://doi.org/10.1029/2005JC003384>, 2008.
- Squire, V. A.: Ocean Wave Interactions with Sea Ice: A Reappraisal, *Annual Review of Fluid Mechanics*, 52, 37–60, <https://doi.org/10.1146/annurev-fluid-010719-060301>, 2020.
- Stopa, J. E., Sutherland, P., and Ardhuin, F.: Strong and highly variable push of ocean waves on Southern Ocean sea ice, *Proceedings of the National Academy of Sciences*, 115, 5861–5865, <https://doi.org/10.1073/pnas.1802011115>, 2018.
- Stroeve, J. and Notz, D.: Changing state of Arctic sea ice across all seasons, *Environmental Research Letters*, 13, 103001, <https://doi.org/10.1088/1748-9326/aade56>, 2018.
- Strong, C. and Rigor, I. G.: Arctic marginal ice zone trending wider in summer and narrower in winter, *Geophysical Research Letters*, 40, 4864–4868, <https://doi.org/10.1002/grl.50928>, 2013.
- Sutherland, P. and Dumont, D.: Marginal Ice Zone Thickness and Extent due to Wave Radiation Stress, *Journal of Physical Oceanography*, 48, 1885 – 1901, <https://doi.org/10.1175/JPO-D-17-0167.1>, 2018.
- Tilling, R. L., Ridout, A., Shepherd, A., and J. Wingham, D.: Increased Arctic sea ice volume after anomalously low melting in 2013, *Nature Geoscience*, 8, 643–646, <https://doi.org/10.1038/ngeo2489>, 2015.
- Verron, J., Sengenès, P., Lambin, J., Noubel, J., Steunou, N., Guillot, A., Picot, N., Coutin-Faye, S., Sharma, R., Gairola, R. M., Murthy, D. V. A. R., Richman, J. G., Griffin, D., Pascual, A., Ramy, F., and Gupta, P. K.: The SARAL/AltiKa Altimetry Satellite Mission, *Marine Geodesy*, 38, 2–21, <https://doi.org/10.1080/01490419.2014.1000471>, 2015.
- Vichi, M.: An indicator of sea ice variability for the Antarctic marginal ice zone, *The Cryosphere*, 16, 4087–4106, <https://doi.org/10.5194/tc-16-4087-2022>, 2022.
- Vichi, M., Eayrs, C., Alberello, A., Bekker, A., Bennetts, L., Holland, D., de Jong, E., Joubert, W., MacHutchon, K., Messori, G., Mojica, J. F., Onorato, M., Saunders, C., Skatulla, S., and Toffoli, A.: Effects of an Explosive Polar Cyclone Crossing the Antarctic Marginal Ice Zone, *Geophysical Research Letters*, 46, 5948–5958, <https://doi.org/10.1029/2019GL082457>, 2019.
- Voermans, J. J., Liu, Q., Marchenko, A., Rabault, J., Filchuk, K., Ryzhov, I., Heil, P., Waseda, T., Nose, T., Kodaira, T., Li, J., and Babanin, A. V.: Wave dispersion and dissipation in landfast ice: comparison of observations against models, *The Cryosphere*, 15, 5557–5575, <https://doi.org/10.5194/tc-15-5557-2021>, 2021.
- Wadhams, P.: *The Geophysics of Sea Ice*, chap. The seasonal ice zone, pp. 825–830, Springer, 2013.
- Wadhams, P., Squire, V. A., Goodman, D. J., Cowan, A. M., and Moore, S. C.: The attenuation rates of ocean waves in the marginal ice zone, *Journal of Geophysical Research: Oceans*, 93, 6799–6818, 1988.
- Wadhams, P., Aulicino, G., Parmiggiani, F., Persson, P. O. G., and Holt, B.: Pancake Ice Thickness Mapping in the Beaufort Sea From Wave Dispersion Observed in SAR Imagery, *Journal of Geophysical Research: Oceans*, 123, 2213–2237, <https://doi.org/https://doi.org/10.1002/2017JC013003>, 2018.

- Wang, J. and Wang, Y.: Evaluation of the ERA5 Significant Wave Height against NDBC Buoy Data from 1979 to 2019, *Marine Geodesy*, 45, 151–165, 2022.
- 705 Wingham, D., Francis, C., Baker, S., Bouzinac, C., Brockley, D., Cullen, R., de Chateau-Thierry, P., Laxon, S., Mallow, U., Mavrocordatos, C., Phalippou, L., Ratier, G., Rey, L., Rostan, F., Viau, P., and Wallis, D.: CryoSat: A mission to determine the fluctuations in Earth's land and marine ice fields, *Advances in Space Research*, 37, 841–871, <https://doi.org/10.1016/j.asr.2005.07.027>, 2006.
- Xu, S., Zhou, L., and Wang, B.: Variability scaling and consistency in airborne and satellite altimetry measurements of Arctic sea ice, *The Cryosphere*, 14, 751–767, <https://doi.org/10.5194/tc-14-751-2020>, 2020.
- 710 Zhu, W., Xu, S., Liu, S., and Zhou, L.: Climate Record of Wintertime Wave-Affected Marginal Ice Zones in the Atlantic Arctic based on CryoSat-2, 2010-2022, <https://doi.org/10.5281/zenodo.8176585>, 2023.
- Zwally, H., Schutz, B., Abdalati, W., Abshire, J., Bentley, C., Brenner, A., Bufton, J., Dezio, J., Hancock, D., Harding, D., Herring, T., Minster, B., Quinn, K., Palm, S., Spinhirne, J., and Thomas, R.: ICESat's laser measurements of polar ice, atmosphere, ocean, and land, *Journal of Geodynamics*, 34, 405–445, [https://doi.org/10.1016/S0264-3707\(02\)00042-X](https://doi.org/10.1016/S0264-3707(02)00042-X), 2002.

Table 1. Analysis of the collocating observation by Sentinel-1 with the track pairs from the CRYO2ICE campaign. The type of the ice edge in each case is determined by visual analysis of the Sentinel-1 image.

Index	Region	Date	L_{MIZ} by CS2 (<i>km</i>)	L_{MIZ} by IS2 (<i>km</i>)	Total SWH (<i>m</i>)	Type of ice edge	Wave-in-ice?	Figure
1	NS	09-Nov-2020	113.08	116.08	1.19	Frazil streaks	No	S3
2	NS	13-Nov-2020	182.37	157.93	2.53	Wave-affected MIZ	Yes [#]	S4
3	NS	30-Nov-2020	57.7	75.51	2.24	Wave-affected MIZ	Yes [#]	S5
4	GS	11-Dec-2020	41.55	49.47	2.09	Eddy/turbulence on ice edge	Yes [#]	S6
5	BS	17-Dec-2020	68.42	40.78	1.90	Inhomogeneity ⁺	Yes	S7
6	BS	17-Mar-2021	179.64	148.18	2.79	Wave-affected MIZ	Yes [#]	S8
7	NS	21-Dec-2021	18.19	2.87	0.51	Eddy/turbulence on ice edge	No	S9
8	NS	21-Dec-2021	62.43	35.1	1.05	Eddy/turbulence on ice edge	No	S10
9	GS	24-Jan-2022	147.86	58.95	3.64	Wave-affected MIZ	Yes	S11

[#] wave-in-ice detected by spectral analysis on the backscatter map of S1 EW image (see Appendix B).

⁺ inhomogeneous ice edge with the mixture of ice floes and open water, with waves only visible on ice patches.

Table 2. Statistics of wintertime MIZ width based on CS2 and the along-track SIC during the period of 2010 to 2022.

W_{MIZ}	CS2 retrieval			SIC retrieval		
Region	BS	NS	GS	BS	NS	GS
Mean (<i>km</i>)	78.55	41.03	55.98	44.51	25.06	26.67
Mode (<i>km</i>)	32.04	11.20	39.53	18.13	11.94	8.30
Median (<i>km</i>)	58.44	29.54	47.88	32.21	18.27	19.62
SD (<i>km</i>)	65.21	39.95	39.39	42.24	20.42	24.38
Skewness	1.72	2.02	1.55	2.81	2.67	2.48

Table A1. Information of the collocating tracks in the Atlantic Arctic from CRYO2ICE.

Date	CryoSat-2 Track	ICESat2 Track	Region
9-Nov-2020	CS_OFFL_SIR_SARI2_20201109T032024_20201109T032943_D001	ATL07-01_20201109000652_07000901_005_01	NS
13-Nov-2020	CS_OFFL_SIR_SARI2_20201113T031635_20201113T032600_D001	ATL07-01_20201112235833_07610901_005_01	NS
30-Nov-2020	CS_OFFL_SIR_SARI2_20201130T035100_20201130T035857_D001	ATL07-01_20201130003353_10210901_005_01	NS
2-Dec-2020	CS_OFFL_SIR_SARI2_20201202T152803_20201202T153045_D001	ATL07-01_20201202121654_10590901_005_01	NS
11-Dec-2020	CS_OFFL_SIR_SARI2_20201211T174754_20201211T175338_D001	ATL07-01_20201211144312_11980901_005_01	GS
17-Dec-2020	CS_OFFL_SIR_SARI2_20201217T010445_20201217T011327_D001	ATL07-01_20201216220040_12790901_005_01	BS
27-Dec-2020	CS_OFFL_SIR_SARI2_20201227T123648_20201227T123803_D001	ATL07-01_20201227092701_00521001_005_01	BS
5-Jan-2021	CS_OFFL_SIR_SARI2_20210105T163428_20210105T164011_D001	ATL07-01_20210105132734_01921001_005_01	GS
17-Jan-2021	CS_OFFL_SIR_SARI2_20210117T130500_20210117T130755_D001	ATL07-01_20210117095358_03731001_005_01	BS
26-Jan-2021	CS_OFFL_SIR_SARI2_20210126T152452_20210126T153941_D001	ATL07-01_20210126122019_05121001_005_01	GS
30-Jan-2021	CS_OFFL_SIR_SARI2_20210130T115637_20210130T120608_D001	ATL07-01_20210130090326_05711001_005_01	BS
14-Mar-2021	CS_OFFL_SIR_SARI2_20210314T201925_20210314T202942_D001	ATL07-01_20210314172315_12331001_005_01	BS
17-Mar-2021	CS_OFFL_SIR_SARI2_20210317T094112_20210317T094316_D001	ATL07-01_20210317064029_12721001_005_01	BS
1-Nov-2021	CS_OFFL_SIR_SARI2_20211101T114343_20211101T115230_E001	ATL07-01_20211101092023_06101301_005_01	GS
21-Dec-2021	CS_OFFL_SIR_SARI2_20211221T073819_20211221T074617_E001	ATL07-01_20211221051453_13711301_005_01	NS
21-Dec-2021	CS_OFFL_SIR_SARI2_20211221T091645_20211221T092544_E001	ATL07-01_20211221064911_13721301_005_01	BS
24-Jan-2022	CS_OFFL_SIR_SARI2_20220124T083803_20220124T084434_E001	ATL07-01_20220124062532_05041401_005_01	GS
26-Feb-2022	CS_OFFL_SIR_SARI2_20220226T040343_20220226T041348_E001	ATL07-01_20220226014442_10051401_005_01	BS
28-Feb-2022	CS_OFFL_SIR_SARI2_20220228T172132_20220228T172443_E001	ATL07-01_20220228150200_10441401_005_01	BS
19-Mar-2022	CS_OFFL_SIR_SARI2_20220319T011701_20220319T012205_E001	ATL07-01_20220318230308_13241401_005_01	NS
28-Mar-2022	CS_OFFL_SIR_SARI2_20220328T051338_20220328T051615_E001	ATL07-01_20220328030343_00771501_005_01	GS