

Supplemental material for “A decade-long cruise time-series (2008–2018) of physical and biogeochemical conditions in the southern Salish Sea, North America”

5

Simone R. Alin¹, Jan A. Newton^{2,3}, Richard A. Feely¹, Dana Greeley¹, Beth Curry^{2,4}, Julian Herndon⁵, and Mark Warner³

10 ¹ Pacific Marine Environmental Laboratory, National Oceanic and Atmospheric Administration, 7600 Sand Point Way NE, Seattle, Washington 98115, USA

² Applied Physics Laboratory, University of Washington, Box 355640, Seattle, Washington 98105, USA

³ School of Oceanography, University of Washington, 1492 NE Boat St., Seattle, Washington 98105, USA

⁴ Currently at: MRV Systems, LLC, 6165 Greenwich Dr., San Diego, California 92122, USA

15 ⁵ Cooperative Institute for Climate, Ocean, and Ecosystem Studies, University of Washington, 3737 Brooklyn Ave NE, Seattle, Washington 98105, USA

ORCID IDs

Alin: 0000-0002-8283-1910

Newton: 0000-0002-2551-1830

20 Feely: 0000-0003-3245-3568

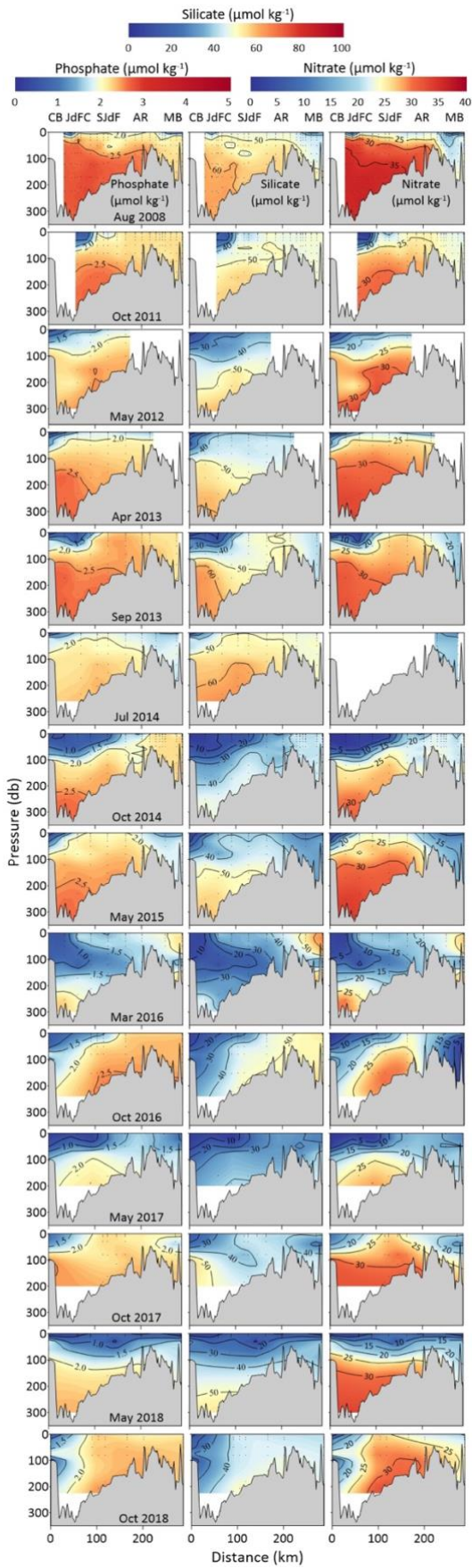
Greeley: 0000-0003-4356-5899

Curry: 0000-0002-6534-4475

Herndon: 0009-0001-9820-9026

Warner: 0000-0001-7678-441X

25 *Correspondence to: Simone R. Alin (simone.r.alin@noaa.gov)*



30 **Figure S1:** Depth transect plots from Sound-to-Sea cruises for phosphate, silicate, and nitrate content ($\mu\text{mol kg}^{-1}$). Figure organization is the same as in Figure 3.

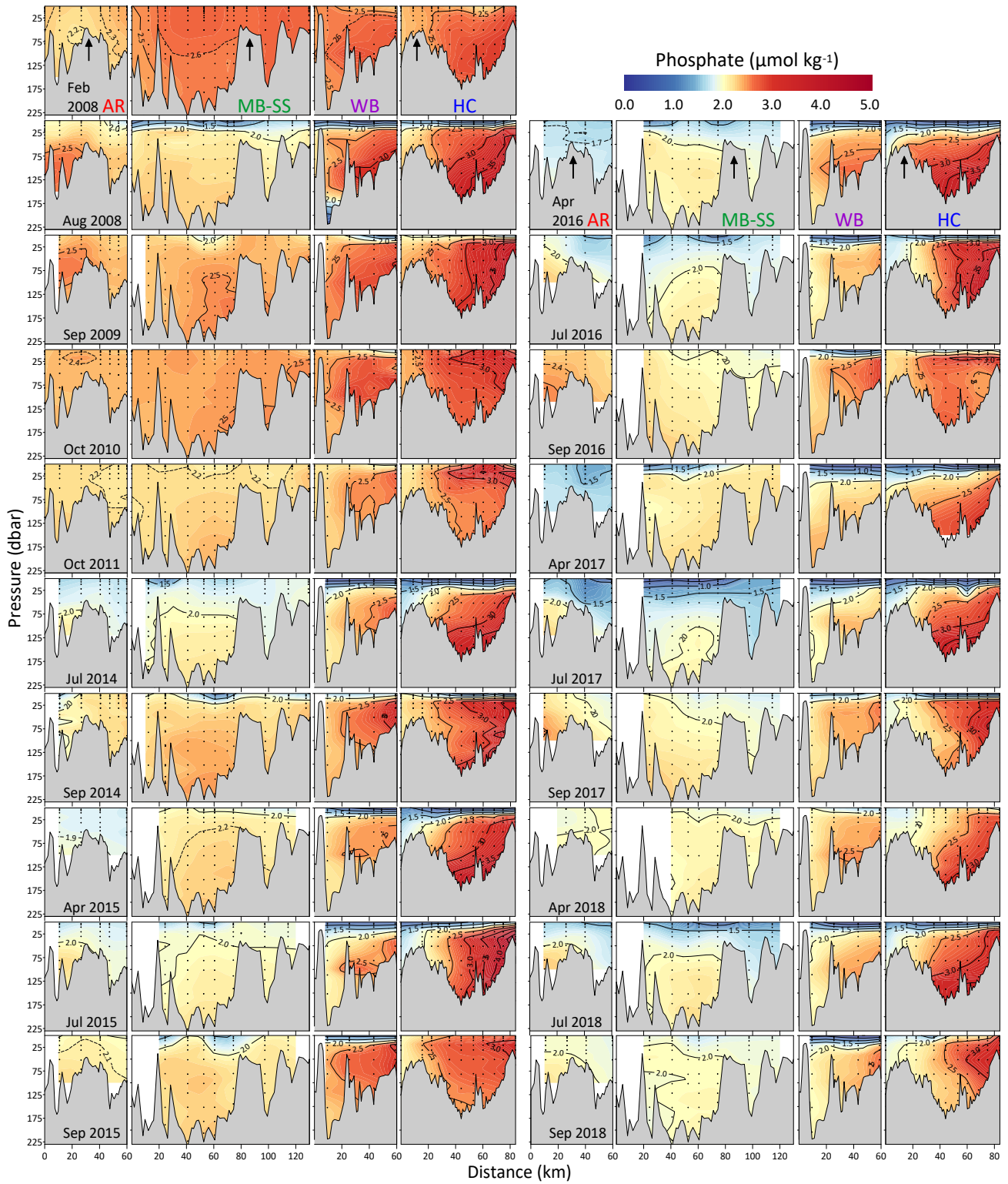
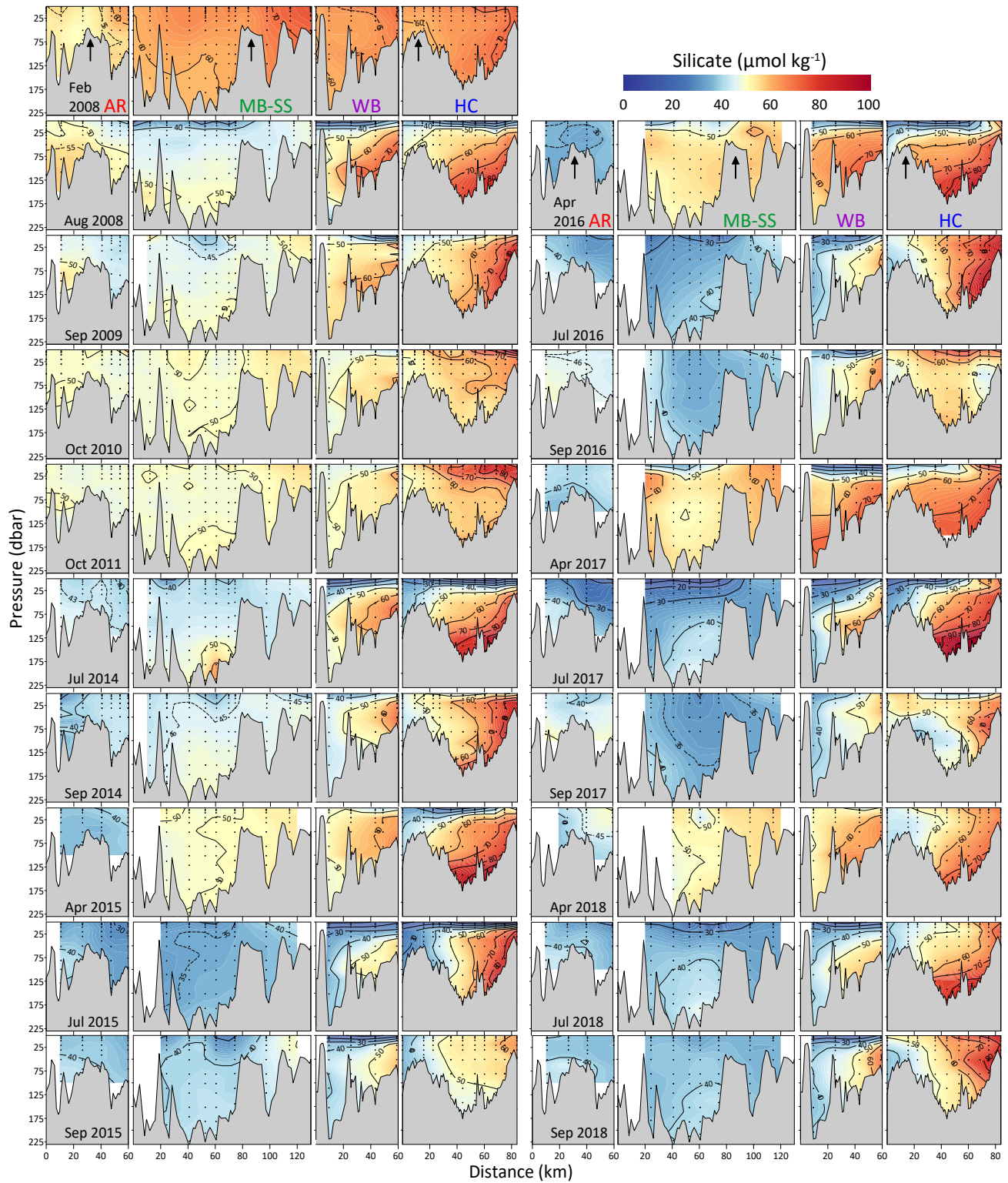


Figure S2: Depth transect plots from all Puget Sound cruises for phosphate content ($\mu\text{mol kg}^{-1}$). Figure organization is the same as in Figure 3.



35

Figure S3: Depth transect plots from all Puget Sound cruises for silicate content ($\mu\text{mol kg}^{-1}$). Figure organization is the same as in Figure 3.

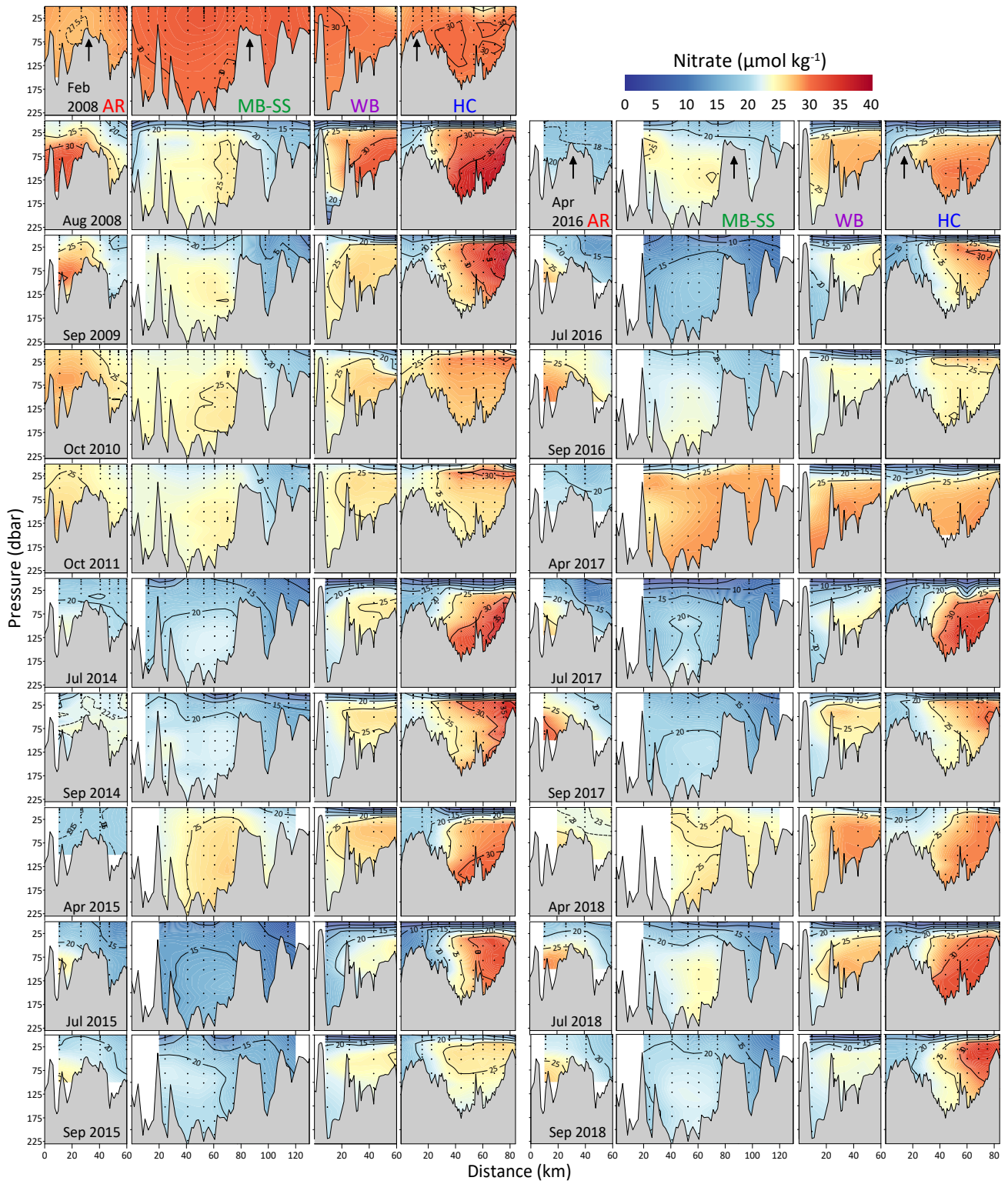


Figure S4: Depth transect plots from all Puget Sound cruises for nitrate content ($\mu\text{mol kg}^{-1}$). Figure organization is the same as in Figure 3.