

GloCAB: Global Cropland Burned Area from Mid-2002 to 2020

Joanne V. Hall¹, Fernanda Argueta¹, Maria Zubkova¹, Yang Chen², James T. Randerson², Louis Giglio¹

¹University of Maryland, Department of Geographical Sciences, College Park, MD, USA

²Department of Earth System Science, University of California, Irvine, CA, USA

5 *Correspondence to:* Joanne Hall (jhall1@umd.edu)

Abstract. Burned area estimates are an essential component of cropland management systems, inventory-based fire emission calculations, and air quality models, and any inaccuracies in those estimates propagate into the final outputs and decision-making process. While satellite-based global burned area and fire emission datasets (e.g. GFED, FireCCI51, and MCD64A1) are frequently cited within the scientific literature and used by a range of users from atmospheric and carbon modelers to policy-makers, they are generally not optimized for cropland burning – a quintessential small-fire type. Here we describe a new dataset (GloCAB; Global Cropland Area Burned) which represents the first attempt at a global cropland-focused burned area product. The GloCAB dataset provides global, monthly cropland burned area at 0.25° spatial resolution from July 2002 – December 2020. Crop-specific burned area conversion factors for several widespread burnable crops (winter wheat, spring wheat, maize, rice, and sugarcane) were calculated from extensively-mapped cropland reference regions spanning 191,560 fields over 5 different countries. We found global annual cropland burned area (2003 – 2020) ranged between 64 Mha (2018) and 102 Mha (2008) with an average of 81 Mha using our lower-bound estimates which are substantially higher than the annual average of 32 Mha in the MCD64A1 C6 product. Region-specific trend analysis found some areas with significant increasing trends (northwest India), while the heterogeneity of many other regions found no burned area trends.

1 Introduction

20 Burned area estimates are an essential component of inventory-based fire emission calculations (e.g., Seiler and Crutzen, 1980; UNFCCC, 2022), and any inaccuracies in this component contribute to uncertainties in estimates of emissions and fire impacts on atmospheric composition. Satellite-based global burned area and fire emission datasets are generally not optimized for cropland burning – a quintessential small fire type – yet these datasets are frequently employed by a broad range of users from atmospheric and carbon modelers to policy-makers in the context of cropland fire monitoring. Reliable remotely sensed fire products are required to quantify trends in fire occurrence and behavior, assess impacts of biomass burning on social and environmental systems, characterize fire behavior and potential future risks, and provide key inputs to fire emission and air quality models. Cropland burned area and associated emissions estimates have been incorporated into socio-economic decisions, such as economic incentives to reduce crop residue burning (Jack et al., 2022), extension service programs (e.g., ABC-iCAP, 2022), public health policy (e.g., USDA, 1999), and national emission inventories (e.g., UNFCCC, 2022). Despite

30 the widespread use of cropland burned area and emissions estimates, the methodologies used to produce these estimates are often not well adapted to the complications that are specific to agricultural fires.

Fire management within agricultural landscapes typically occur either before planting a new crop or after harvest, depending on a range of factors that include, crop-type, double-cropping, available machinery, pest control, and socio-economic
35 circumstances (e.g. McCarty et al., 2007). For example, sugarcane is typically burned before harvest to get rid of pests before it is (often) manually-harvested, however, there has been a growing trend toward harvesting “green cane” as mechanization has improved in many areas around the world (Leal, et al., 2013; Pryor et al., 2017). This socio-economic shift towards reducing burning has implications for mapping products that employ assumptions about the burning characteristics within this heterogeneous landscape. Further, double-cropping areas, such as the rice/corn rotations in Arkansas, United States, often
40 result in burning of the rice residue after harvest and before planting of the corn. Despite the level of mechanization within this area, burning still helps clear the fields quickly before the next planting. The heterogeneity of cropland fire types, the small field sizes, and the quick nature of these burns results in a very difficult mapping problem that requires a specialized methodology to help improve the accuracy of these burns within burned area and emissions products.

45 Although a single cropland fire has negligible emissions compared to a large wildfire, improved representation of crop-residue burned area and emissions is essential for detection and attribution of trends in air quality in many regions (e.g., Yevich & Logan, 2003; Liu et al., 2021). Post-harvest and/or pre-planting agricultural fires are recurrent, typically occurring once or twice a year (McCarty et al., 2009; Zhang et al., 2018). Due to similar local weather conditions and planting/harvesting cycles
50 in many areas, these fires often occur on or around the same day leading to a pulse of emissions across a region. Given the proximity of cropland fields to population centers and the magnitude of these emission pulses, health impacts related to exposure from repeated crop-residue burning can be extensive (e.g., Argarwal et al., 2013; Saggiu et al., 2018). In addition, despite the low atmospheric injection heights of these burns, crop-residue emissions have the potential to travel great distances and impact locations far beyond the cropland area (Zhou et al., 2018; Hall and Loboda, 2017). For example, Hall and Loboda
55 (2017) found black carbon emissions from crop-residue fires in Russia – as far south as 40°N – were transported to the Arctic and deposited on snow- and ice-covered areas. Due to the seasonal timing of the spring pre-planting fires in Russia, the black carbon contributed to the accelerated melting of snow and sea ice (Hall and Loboda, 2017; Hall and Loboda, 2018). Finally, the widespread use of global burned area and emissions products, such as the Global Fire Emissions Database (GFED; van der Werf et al., 2017), within the scientific community (e.g., Friedlingstein et al., 2020; Gao et al., 2018; Kong et al., 2021; Lin et al., 2020) can compound systematic and random errors in cropland burned area and emissions estimates. The increasing
60 conversion to cropland observed around the world (particularly in Africa; e.g., Brinks et al., 2014; Abera et al., 2020; Li et al., 2019) will likely further increase the need for crop-specific remote sensing approaches that take into account regional and crop-specific differences in management practice and satellite detection efficiencies.

65 Many factors make accurate satellite-based mapping of crop-residue burned area particularly challenging, including i) the heterogeneity of the global agricultural landscape, ii) the rapid nature of these burns and possible subsequent plowing and/or seeding, and iii) the human-driven changes in fire timing. To effectively map the spatial extent of these small fires, it is ideal to have remote sensing data with high temporal resolution (e.g., less than 2 hours between observations [Hall et al., 2021]), high spatial resolution (less than 10 m to capture pile burns and partial field burns), and appropriate spectral bands. Even using
70 a combination of Landsat, Sentinel, and Planet imagery would not provide adequate coverage to capture the vast majority of these burns. Furthermore, unlike the 22-year Moderate Resolution Imaging Spectroradiometer (MODIS) record, the longevity and temporal coverage of the Sentinel and Planet platforms is not adequate for long-term studies. Therefore, designing a long-term, global cropland burned area dataset requires a methodology that could balance these requirements while ensuring the magnitude of these fires is adequately captured.

75

Our new dataset (GloCAB; Global Cropland Area Burned) provides global, monthly cropland burned area at 0.25° spatial resolution from July 2002 to December 2020, encompassing the Aqua and Terra time period. Unlike many remotely-sensed burned area datasets such as MCD64A1 (Giglio et al., 2018) and FireCCI51 (Lizundia-Loiola et al., 2020; Pettinari et al., 2021), our methodology does not attempt to directly map burned area. Instead, it aims to estimate the area of cropland burned
80 in each grid cell based on a combination of MODIS active fire observations and our novel high-resolution database of mapped field-level burned area conversion factors. GloCAB presents a unique resource to improve the overall representation of cropland burning within global burned area and fire emissions datasets. Version 1 presented here is a stepping stone toward addressing this gap by way of a crop-type-focused burned area methodology that addresses several of the limitations found in other global burned area products. Firstly, the active fire product is used as the primary fire input and offers both an accurate
85 time of burning and is also able to identify fires that are much smaller than the minimum size that can be mapped with the MODIS burned area product (Giglio et al., 2003; McCarty et al., 2009). Although the Visible Infrared Imaging Radiometer Suite (VIIRS) 375-m active fire product (Schroeder et al., 2014) is even better suited for identifying small fires, the MODIS product has the longevity required for long-term analyses. Secondly, GloCAB is designed around a specialized cropland burned area reference dataset, comprised of almost 200,000 manually classified cropland fields. This unique dataset allowed us to
90 develop a new technique to estimate burned area from this highly ephemeral fire type. Finally, the use of MODIS data as the primary input allows for analysis of the impacts from changes in agricultural management practises over a period spanning more than two decades. Going forward, since the MODIS instruments will be decommissioned in the next several years, an inter-calibrated MODIS-VIIRS input data stream will be used to produce later versions of GloCAB as the forthcoming Collection 2 VIIRS land products become publicly available.

95 Here we first present a description of the GloCAB methodology, followed by an intercomparison with the MODIS MCD64A1 burned area product (the primary input for the burned area component of GFED), global and regional assessments, and finally product caveats and conclusions.

2 Data

2.1 MODIS Land Cover Product

100 The Collection-6 MODIS 500-m Land Cover Type (MCD12Q1; Sulla-Menashe and Friedl, 2022) annual International
Geosphere-Biosphere Programme (IGBP) classification product (2002 – 2020) Class 12 (Croplands) and Class 14
(Cropland/Natural Vegetation Mosaic) was used as the base cropland extent. Although other global products exist at a higher
spatial scale (e.g., GFSAD30; Phalke et al., 2020), or are delineated by crop type for a single year (e.g., SPAM; International
Food Policy Research Institute, 2019), the annual layers of the MCD12Q1 product have a temporal advantage given the nearly
105 20-year timespan of this analysis. For this analysis, it was assumed that the MODIS IGBP cropland classes represented the full
extent of cropland area each year. As with all remotely-sensed land cover classification data sets, the product contains both
omission and commission errors (e.g., Tsendbazar et al., 2016; Zubkova et al., 2023) that represent a significant source of
uncertainty in our regional and global burned area estimates.

2.2 MODIS and VIIRS Active Fire Products

110 The 1-km MODIS Aqua and Terra active fire location product (MCD14ML C6 V3; Giglio et al., 2016) served as the primary
input dataset for GloCAB and was obtained from the University of Maryland’s SFTP server (sftp://fuoco.geog.umd.edu; Giglio
et al., 2020). The MCD14ML product contains multiple variables including latitude, longitude, date, time, and type for each
fire pixel. Active fire pixels were filtered to include only presumed vegetation fires (type = 0) having a center within 500-m of
an MCD12Q1 IGBP class-12 or class-14 cropland grid cell. Filtering by pixel-center locations (versus spatially buffered active
115 fire pixel boundaries) helped reduce the double-counting of active fires associated with neighboring land cover classes. The
presumed cropland active fire points were summed per month within 0.25° grid cells. To account for the impact of latitude on
the sampling frequency, and hence the number of active fires mapped, the monthly active fire counts per 0.25° grid cell (AF_{count})
were adjusted using Eq. (1) assuming a reference latitude of 40°N or, equivalently, 40°S (Giglio et al., 2006):

$$AF_{\text{corrected}} = AF_{\text{count}} \times \frac{\cos(\text{latitude})}{\cos(40^\circ)} \quad (1)$$

120 The adjusted MODIS Aqua and Terra monthly active fire counts ($AF_{\text{corrected}}$) were used in the calculation of the effective burned
area per fire pixel per cropland burning reference region (see Sect. 3.1 for details) and the monthly adjusted burned area (Sect.
3.4).

The 0.25-degree, monthly MODIS Aqua and Terra Active Fire Climate Modeling Grid (CMG) Collection-6 products
125 (MOD14CMQ/MYD14CMQ; Giglio et al., 2006) were used to obtain the mean monthly cloud fraction over all cropland land
cover pixels. The CMG products contain gridded summaries that include corrected fire pixel counts, mean cloud fraction, and
mean fire radiative power.

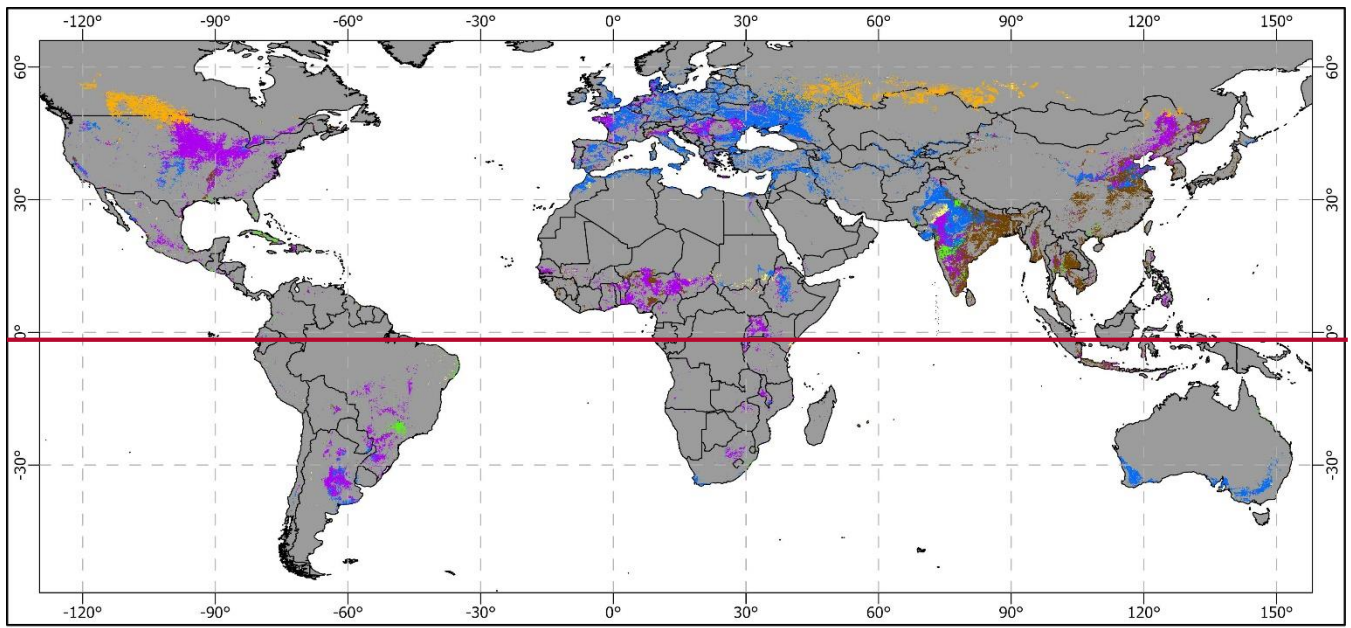
The Collection-1 375-m VIIRS fire location product from Suomi NPP (VNP14IMGML; Schroeder et al., 2014) was also
130 obtained from the University of Maryland's SFTP server. All active fire locations contain a number of attributes, including the
latitude, longitude, date, and UTC time to the nearest minute. The VNPIMG14ML product was only used in the creation of
the cropland burned area reference maps (see Sect. 3.1 for details) using the same approach as Hall et al. (2021).

2.3 Global Crop Type Maps

We focused on five burnable crop types: winter wheat, maize, rice, spring wheat, and sugarcane. Although there are other crop
135 types that burn (e.g., soybean and cotton), and other agricultural landscapes (e.g., pastures and orchards) within each 0.25°
grid cell, we focused on these main crop types due to their larger global extent and greater proportion of under-represented fire
activity (e.g. Becker-Reshef et al., 2023; Blickensdorfer et al., 2022; McCarty et al., 2009). Global crop type maps were used
to assign each 500-m MCD12Q1 IGBP cropland pixel a specific crop type. The crop type data will be used to assign crop-
specific burned area conversion factors and emission coefficients (Hall et al., 2022) in later steps, and are an improvement
140 over the generic agricultural waste models often used in previous studies (e.g., GFED4.1s; van der Werf et al., 2017; Randerson
et al., 2018).

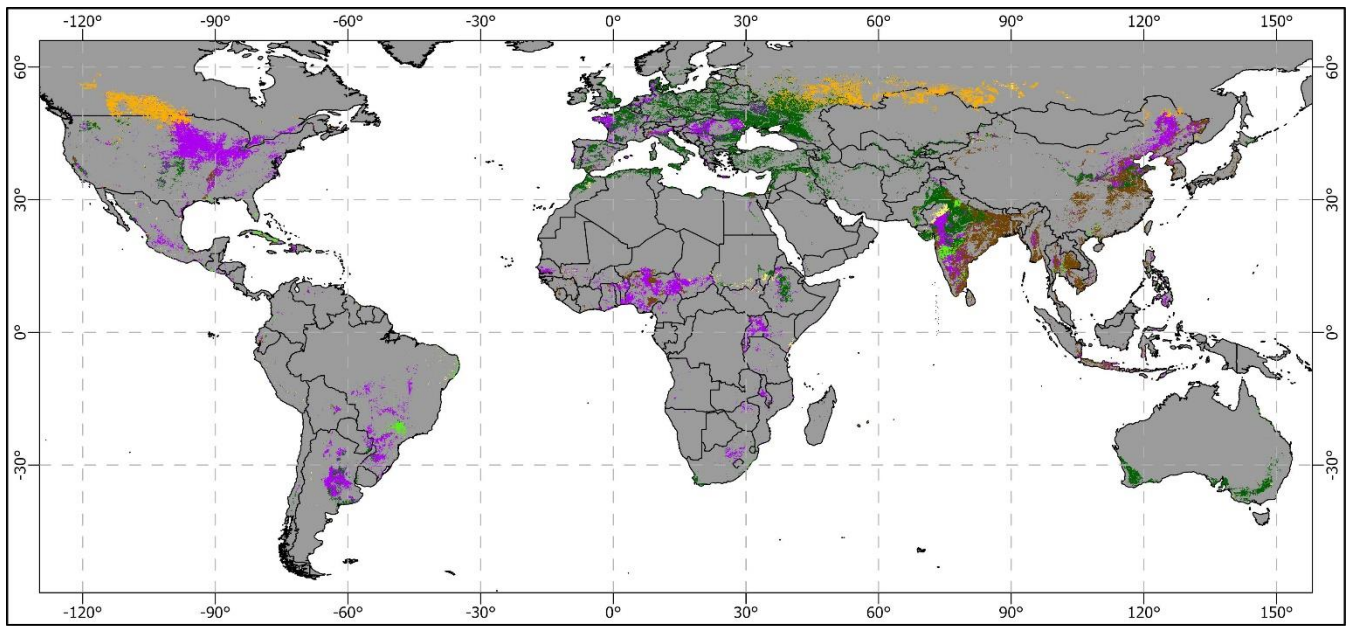
The GEO Global Agricultural Monitoring (GEOGLAM) Best Available Global Crop-Specific Maps (BACS) are available for
several crops, including winter wheat, spring wheat, maize, and rice at 0.05° resolution (Becker-Reshef et al., 2020; Whitcraft
145 et al., 2019). These crop percentage maps are continually updated and are only available as one layer per crop type. The
GEOGLAM initiative is mainly focused on gathering data for the major crop-producing countries participating in the
Agricultural Market Information System (AMIS): United States of America, Canada, Mexico, Brazil, Argentina, EU-28,
Egypt, Nigeria, South Africa, Turkey, Saudi Arabia, Ukraine, Russia, Kazakhstan, China, India, Thailand, Viet Nam,
Philippines, Indonesia, and Australia. These maps use a combination of the best-available remotely sensed crop maps for each
150 region and crop type. These crop maps were resampled and projected to match the 500-m sinusoidal MCD12Q1 IGBP cropland
layers. The GEOGLAM-BACS does not map sugarcane, therefore the 2010 Spatial Production Allocation Model (SPAM)
global sugarcane physical area (0.08333° spatial resolution) data layer was also resampled and projected to match the
MCD12Q1 cropland layers (International Food Policy Research Institute, 2019).

155 Any areas where the crop type maps and the MCD12Q1 cropland did not agree were either assigned as a “generic” crop or
were eliminated at the 500-m scale. Specifically, if the MCD12Q1 product labeled a pixel as cropland, and none of the five
crop type maps had an associated crop percentage, then that 500-m grid cell was recorded as a “generic” crop type. These 500-
m crop type maps (Figure 1) are used in the calculation of the majority crop type that burns per month per 0.25° grid cell (Sect.
3.3 for details).



160

■ winter wheat
 ■ maize
 ■ rice
 ■ spring wheat
 ■ sugarcane
 ■ generic/other



■ winter wheat
 ■ maize
 ■ rice
 ■ spring wheat
 ■ sugarcane
 ■ generic/other

Figure 1: Example of a 500-m converted crop type MODIS MCD12Q1 cropland layer. The coarser-resolution crop type data from GEOGLAM-BACS and SPAM were used in the creation of these 500-m annual layers. These annual layers, in conjunction with the MODIS active fire location product, are used in the generation of the majority crop type that burns per month per 0.25° grid cell (Sect. 3.3 for details).

165

3 Methods

3.1 Cropland Burning Reference Areas

Twenty-four cropland burning reference areas were manually digitized and each polygon classified to create highly detailed cropland field maps over a range of countries, crop types, and dates (Table 1; Figure 2). These reference areas, in conjunction with the MODIS active fire data, were used to calculate the effective burned area per fire pixel (α), which ultimately serves as a conversion factor that is used to extrapolate our reference areas to much larger regions (Giglio et al., 2006; see Sect. 3.2). These regions are an extension of previously created cropland field-level burned area maps within Ukraine (Hall et al., 2021a, Hall et al., 2021b) using a combination of all available 20-m Sentinel-2 Multi-Spectral Instrument (MSI), 30-m Landsat-8 Operational Land Imager (OLI), and 3-m PlanetScope imagery (www.planet.com), in conjunction with filtered VIIRS (VNP14IMGML) and MODIS (MCD14ML) active fire location data. The creation of the reference regions used the more sensitive 375-m VIIRS active fires alongside the 1-km MODIS active fires as an independent verification for some of the burned fields.

Each digitized polygon was classified via visual interpretation of all available imagery and attributed with the following field classification: 1 = active flame/smoke or burned area with corresponding active fire polygon (i.e., an overlapping polygon with a date aligned with the visual change on the field); 2 = definite burned area but with no flame/smoke or active fire point; 3 = ambiguous (a distinct darkening occurred on the field, but the analysts are unsure if the field was burned then plowed or only plowed); 4 = definitely unburned; 5 = not cropland or fields are too small that land cover conditions were difficult to determine on very high resolution (3-m) imagery. Each Class 1, 2, and 3 polygon was also tagged with the fraction burned (see Hall et al., 2021a for details). For the sake of clarity, the classes will hereafter be referenced using the following naming convention: definite burn (Class 1 and Class 2), possible burn (Class 3), unburned (Class 4), and non-cropland/other (Class 5). In total, 191,560 cropland fields were manually digitized by a team of 20 trained analysts and classified as either a definite burn, possible burn, or unburned.

Table 1: Summary information on the twenty training reference areas used in the burned area conversion factor analysis and the four validation reference regions. The locations of reference areas are shown in Figure 2.

Reference area (Country_ID)	Mapping start date	Mapping end date	Predominant crop type	Mapped cropland area (km ²)	Cropland fields classified
Training Regions					
Brazil_A	15 Aug 2019	15 Oct 2019	Sugarcane	1,104	4,523
Brazil_B	1 Jul 2019	15 Sep 2019	Maize	1,361	1,219
Canada_A	1 May 2018	30 Jun 2018	Spring Wheat	1,016	569
Russia_A	15 Jul 2019	31 Aug 2019	Winter Wheat	1,165	1,740
Russia_B	15 Aug 2019	30 Sep 2019	Winter Wheat	4,601	2,295
Russia_C	1 Apr 2019	15 May 2019	Spring Wheat	1,309	1,116
Russia_D	15 Apr 2019	31 May 2019	Spring Wheat	3,362	1,362
Ukraine_A	1 Mar 2017	31 Mar 2017	Maize	1,498	3,995
Ukraine_B	1 Mar 2017	31 Mar 2017	Maize	3,569	6,168

Ukraine_C	1 Jul 2017	4 Aug 2017	Winter Wheat	3,862	9,327
Ukraine_D	1 Aug 2016	31 Aug 2016	Winter Wheat	2,519	5,091
Ukraine_E	15 Jul 2017	15 Aug 2017	Winter Wheat	2,480	5,433
Ukraine_F	1 Jun 2017	27 Jul 2017	Winter Wheat	1,300	2,758
Ukraine_G	15 Jun 2017	31 Jul 2017	Winter Wheat	2,810	10,161
Ukraine_H	1 Jul 2020	7 Aug 2020	Winter Wheat	38,377	123,726
USA_A	1 Nov 2018	31 Dec 2018	Sugarcane	74	1,091
USA_B	1 Oct 2019	30 Nov 2019	Sugarcane	155	2,404
USA_C	15 Apr 2018	15 Jun 2018	Spring Wheat	1,610	1,344
USA_D	1 Sep 2020	31 Oct 2020	Rice	294	746
USA_E	1 Sep 2017	3 Nov 2017	Rice	304	1,501
Validation Regions					
Australia_A	1 Mar 2019	31 Mar 2019	Winter Wheat	578	627
South_Africa_A	1 Dec 2018	31 Dec 2018	Winter Wheat	84	283
Russia_E	1 Oct 2018	31 Oct 2018	Winter Wheat	404	2,614
USA_F	1 Sep 2017	31 Oct 2017	Rice	497	1,467

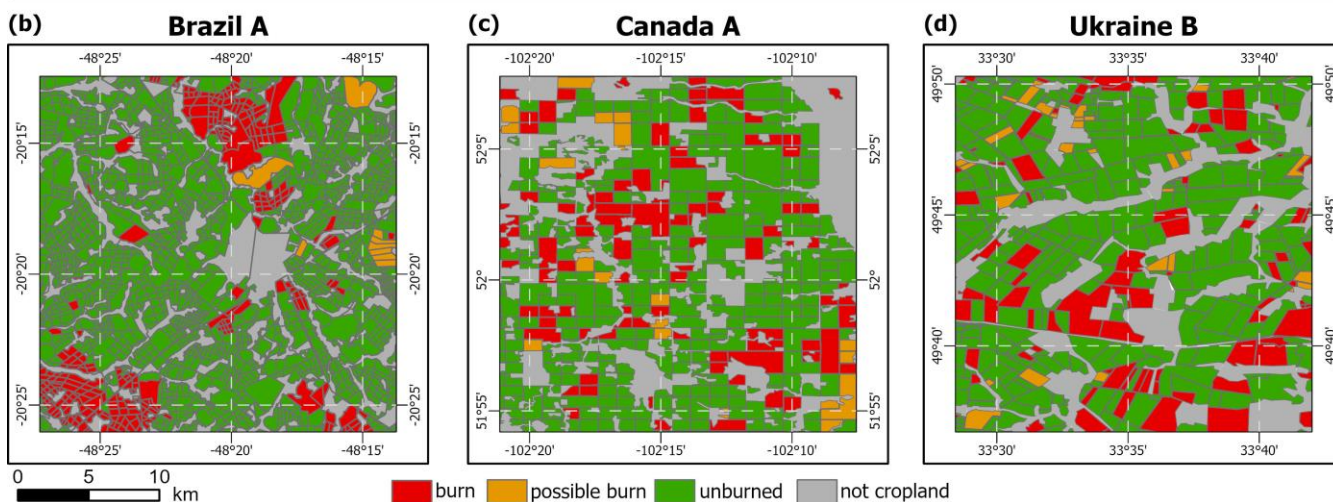
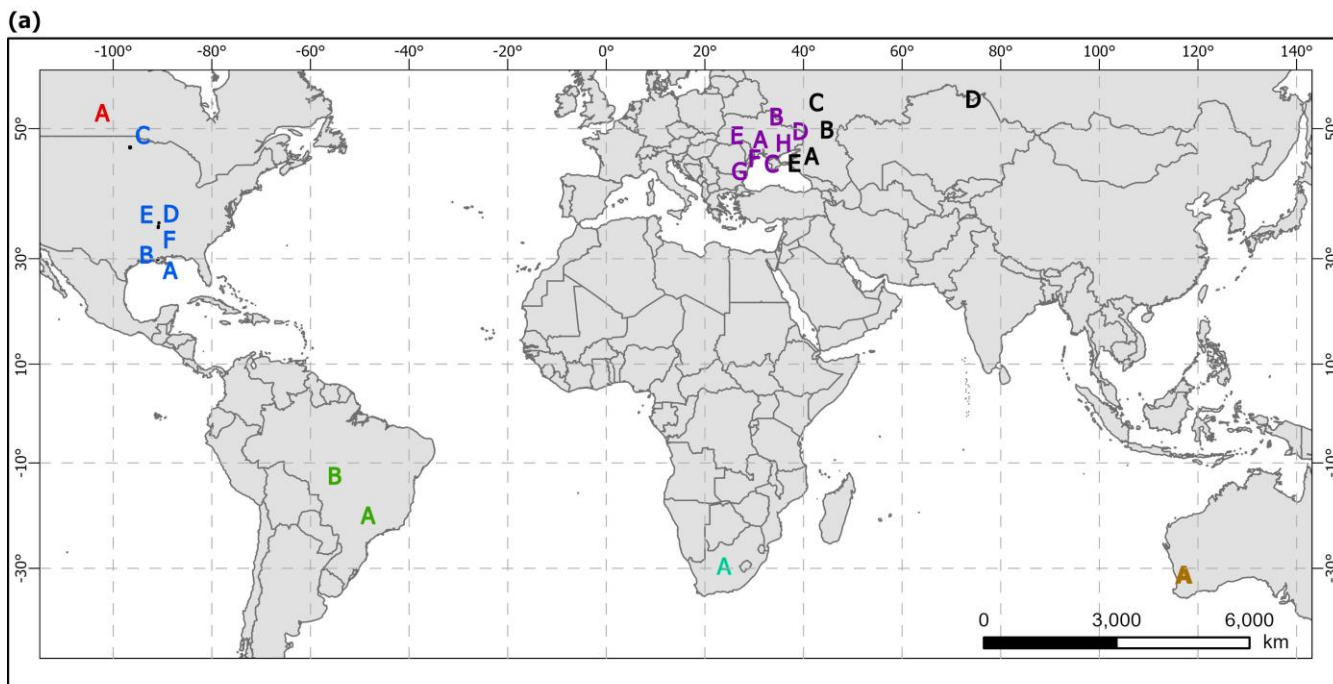


Figure 2: Location of the twenty-four mapped reference areas (top) with examples of the field-level mapped reference regions from Brazil (bottom left; 15 August 2019 – 15 October 2019), Canada (middle bottom; 1 May 2018 – 30 June 2018), and Ukraine (bottom right; 1 March 2017 – 31 March 2017). These examples illustrate the variety in cropland fields witnessed during the mapping process. For visual distinction, the colored letters (top) represent each individual country: green (Brazil), blue (USA), red (Canada), purple (Ukraine), black (Russia), cyan (South Africa), and brown (Australia).

195

3.2 Effective Burned Area Per Fire Pixel

As in Hall et al. (2021a), the conversion factor α was used to extrapolate our high-resolution reference areas to much larger regions. Because our high-resolution reference areas include an indeterminate label (class 3) for fields that could not be

200 unambiguously labeled as burned or unburned, we calculated a lower limit conversion factor (α_L) using only the fields with definitive burns (classes 1 and 2) and an upper limit conversion factor (α_H) using the definitive burns (classes 1 and 2) and the ambiguously labeled burned fields (class 3). Each burned field's area for classes 1, 2 and 3 was weighted by its burned area fraction, summed, and then divided by the total number of cropland-filtered MODIS active fire points within the spatial and temporal constraints of each reference area, i.e.,

205

$$\alpha = \frac{\Sigma(\text{field area} \times \text{fraction of field burned})}{\text{number of adjusted MODIS active fire points}} \quad (2)$$

Although care was taken to account for different crop burning seasons, crop types, and spatial locations within the twenty training reference areas, several challenges limited the mapping. Most importantly, small fields and poor air quality in several countries (e.g. India and Thailand) prevented the analysts from observing changes in the fields even with 3-m Planet data. This resulted in the spatial distribution of our 24 reference areas to be focused in high-density cropland regions with fields large enough to confidently identify the changing conditions (Figure 2). Therefore, the final α_L and α_H values for each crop type were based on the median values of a particular combination of reference regions (see Table 2 and Table 3); the generic crop type was assigned the median value of all twenty training reference regions. We chose the median value over the mean to reduce the impact of any outliers.

215

Table 2: Low (α_L) and high (α_H) conversion factors and the adjusted sum of MODIS Aqua and Terra (A&T) active fire counts for each reference area. The lower limit conversion factor (α_L) represents the effective burned area per fire pixel when only including the fields with definitive burns (Class 1 and Class 2), whereas, the higher limit conversion factor (α_H) includes both the definite burned fields and the ambiguous fields (Class 3). The locations of the reference areas are shown in Figure 2.

Training Reference area (Country_ID)	α_L (MODIS A&T)	α_H (MODIS A&T)	Adjusted active fire count (MODIS A&T)
Brazil_A	2.11	2.30	31.8
Brazil_B	4.69	5.33	8.9
Canada_A	3.92	4.55	40.9
Russia_A	4.02	4.66	46.1
Russia_B	3.69	4.12	54.3
Russia_C	0.29	0.40	113.9
Russia_D	7.81	8.75	45.6
Ukraine_A	1.84	1.96	29.5
Ukraine_B	1.67	2.06	223.5
Ukraine_C	1.38	1.69	226.5
Ukraine_D	1.56	1.80	156.2
Ukraine_E	1.54	1.69	120.3
Ukraine_F	2.22	2.57	91.4
Ukraine_G	1.84	1.96	448.2
Ukraine_H	1.67	2.06	806.2
USA_A	1.02	1.31	11.3
USA_B	0.89	1.14	49.8
USA_C	2.69	7.54	20.3
USA_D	1.85	2.25	13.8

USA_E	1.31	1.43	81.2
-------	------	------	------

220

Table 3: Low (α_L) and high (α_H) conversion factors for each crop type used in the calculation of the monthly adjusted burned area.

Crop type	α_L (MODIS A&T)	α_H (MODIS A&T)
Winter Wheat ^A	1.76	2.01
Spring Wheat ^B	3.30	6.05
Maize ^C	1.45	2.70
Sugarcane ^D	1.02	1.31
Rice ^E	1.58	1.84
Generic ^F	1.76	2.16

^A – Median Ukraine (C – H) and Russia (A and B) summer reference areas

^B – Median Russia (C and D) spring, Canada (A), and United States (C) reference areas

^C – Median Ukraine (A and B) spring and Brazil (B) reference areas

^D – Median United States (A and B) and Brazil (A) reference areas

^E – Median United States (D and E) reference areas

^F – Median of all training reference regions

225

3.3 Monthly Majority Crop Type That Burns in 0.25° Grid Cells

To assign the appropriate value of α to the larger 0.25° grid cell, we first identified the majority crop type (winter wheat, spring wheat, maize, rice, sugarcane, or other/generic) associated with burning – at the 500-m scale – within the grid cell each month. The 500-m sinusoidal crop type maps (Sect. 2.3) were reprojected and resampled to 0.005° to nest inside the larger 0.25° grid cell. The filtered MCD14ML fire pixels were then associated with these 0.005° crop-type grid cells to identify the crop types that burned that month. The majority crop type within a 0.25° grid cell was chosen based on the number of “burned” 0.005° cells. If there was a tie (i.e., more than one crop type had the same number of active fires) then the majority crop type for that 0.25° grid cell was assigned the crop type with the lowest ObjectID (ArcGIS Shapefile database) of those tied classes. This data layer is used to not only assign the crop type α values (Sect. 3.2) but will also be used in a later emissions analysis to assign crop-specific emission factors and combustion completeness.

230

235

3.4 Monthly Adjusted Burned Area in 0.25° Grid Cells

Monthly burned area was estimated by multiplying the crop-specific α values by the adjusted active fire counts per 0.25° grid cell. Adjustments to these layers were needed to ensure the burned area did not exceed the crop area. Typically, crop-residue burning occurs once or twice a year depending on the crop type and agricultural practices. Depending on the crop type, the two main burning periods occur either before planting and/or after harvest (e.g., Lasko & Vadrevu, 2018; McCarty et al., 2007; Rangel et al., 2018) and often occur in spring and late summer/fall seasons. To account for any double burning within a 12-month period, the final burned area was adjusted to ensure the 6-month cumulative sum (centered on the peak burning month) did not exceed the crop area within the 0.25° grid cell. The peak burning month was calculated over larger 1° grid cells to identify the month with the largest number of fires on average between July 2002 and December 2020 and this formed the “middle” month of the initial 6-month window. For example, if a 1° cell’s peak month was August, the first 6-month window

240

245

quantified the cumulative burned area between May and October (encompasses the peak in the middle) and compared that to the cropland area, while the second 6-month window quantified the cumulative burned area between November and April (encompasses a second smaller peak if there was double burning in that region). If there was a tie for peak month, the earliest month was chosen. Quality assessment layers were created to identify the grid cells that were scaled to match the crop area within the 6-month window.

3.5 Cloud Cover Analysis

An implicit assumption in estimating burned area with counts of active fire pixels (Sect. 3.4) is that the proportion of fire pixels obscured by cloud (and which were therefore not reported in the MODIS fire product) is approximately the same each burning season. Here it is important to distinguish between raining versus non-raining clouds, and during the cropland burning season we are primarily dealing with the latter, thus for this category of burning clouds must be treated as a source of missed rather than suppressed fires. To understand the potential impact of cloud obscuration on the burned area estimates, the mean cloud fraction for each cropland grid cell was extracted over the burning season (nominally peak burning month ± 1 month, but in some cases longer). We examined the resulting regional mean cloud fraction (MCF) time series for trends and/or anomalous years that could potentially distort our burned area estimates and trends.

4 Results and Discussion

4.1 Product Intercomparison and Accuracy Assessment

Validating a cropland burned area dataset requires a more stringent standard than the paired reference-image approach (Boschetti et al., 2009) recommended in the Committee on Earth Observing Satellites Working Group on Calibration and Validation (CEOS) Land Product Validation (LPV; <https://lpvs.gsfc.nasa.gov/>) protocol. That approach is suitable for more persistent burn scars (e.g., forest fires) but is unsuitable for small and comparatively fleeting cropland fires (Boschetti et al., 2019; Hall et al., 2021b). Given the enormous undertaking required to create the high-resolution reference maps, a large-scale validation assessment is not feasible. Furthermore, given i) the high omission errors within cropland burned area studies, ii) the inappropriate mapping methodologies typically used for this fire type in previous studies, and iii) the differences in spatial resolution (0.25° in this study compared to 10-30 m resolution in other higher-resolution studies), even a seemingly straightforward product intercomparison is also difficult. Therefore, we conducted several different assessments using two different methods to help understand the accuracy of this product.

For the first accuracy assessment, we compared the manually mapped burned area within four validation regions and the corresponding 0.25° grid cells over the same time period (Figure 3; Table 4). Given the high cost to create the high-resolution cropland reference regions, our Stage 1 accuracy assessment (Boschetti et al., 2009) was limited to just five 0.25° reference grid cells. Only four out of twenty-four reference regions were chosen for an initial accuracy assessment to ensure sufficient

280 global coverage for the generation of the GloCAB product. We recognize that this sample is much too small to yield statistically
 meaningful results, and this proof of concept demonstrates the difficulty in validating cropland burning given the heterogeneity
 of the landscape. The first validation grid cell was within a predominantly rice area in the United States between 1 September
 2017 and 31 October 2017. The average field size within this grid cell was 0.3 km², which is comparable to the 0.37 km²
 average size of fields with the 24 reference regions. The second grid cell was located in a predominantly winter wheat area in
 Russia between 1 October 2018 and 31 October 2018 with a much smaller average field size of 0.08 km². The third grid cell
 285 contained primarily winter wheat fields (0.9 km² average) in Australia, mapped between 1 March 2019 and 31 March 2019.
 The final validation region in South Africa covered two grid cells and contained predominantly winter wheat, irrigated fields
 (0.3 km² average) and was mapped between 1 December 2018 and 31 December 2018.

Table 4: Lower and upper limits of grid cell-level validation analysis.

Year	Cropland burned area (km ²)			
	<i>Lower Limit</i>		<i>Upper Limit</i>	
	GloCAB	Validation Region	GloCAB	Validation Region
Australia_A	70	58	80	70
South_Africa_A	23	23	35	43
Russia_E	185	69	211	81
USA_F	92	75	107	84

290

Our validation analysis found the South Africa, Australia, and USA grid cells showed close agreement to the reference burned
 area, while within the Russian grid cell, the estimated burned area was approximately double the reference burned area. There
 are several possible explanations for this discrepancy, including a lack of reference training data within areas with very small
 fields (i.e., the inability to view the fields using Planet or Sentinel-2 limited our scope in the dataset creation). Furthermore,
 295 the mapped burned area agreement in South Africa and Australia is promising since these areas did not contain any nearby
 training reference regions.

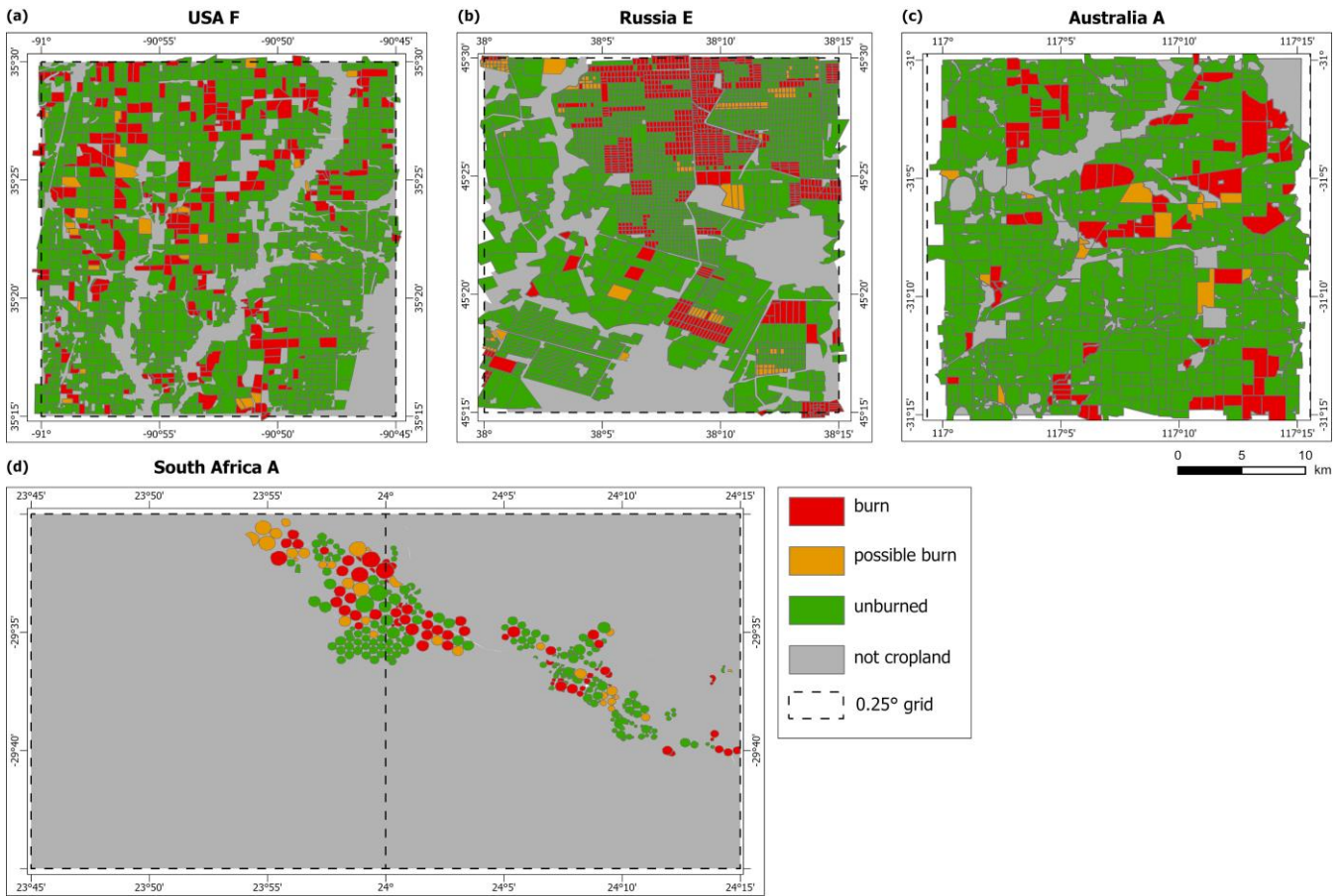


Figure 3: Maps of the four validation reference regions in the USA (a), Russia (b), Australia (c), and South Africa (d).

Given that the GloCAB product is designed to be used at a much larger scale than an individual grid cell, we also undertook two regional accuracy assessments in Ukraine and Turkey. The first compared the estimated annual cropland burned area totals for 2016 and 2017 in Ukraine with those calculated in a previous study (Hall et al., 2021b) using higher resolution datasets and a similar methodology but one designed specifically for Ukraine cropland (Table 5). Unsurprisingly, the values in this study's 0.25° output are higher (8 – 11% higher for the lower-limit estimate) compared to the previous study. This is expected given i) the different reference regions used to derive α values, ii) the coarser 500-m resolution of the MODIS land cover data versus the 10-m land cover map used in the Ukraine-specific study, and iii) the use of MODIS active fires in this study compared to the highly-filtered VIIRS active fire data in the Ukraine-specific study. Visual assessment of both cropland burned area products also show similar spatial and temporal burning patterns – i.e., predominantly maize springtime burning in northern and central Ukraine and predominantly winter wheat burning in southern Ukraine.

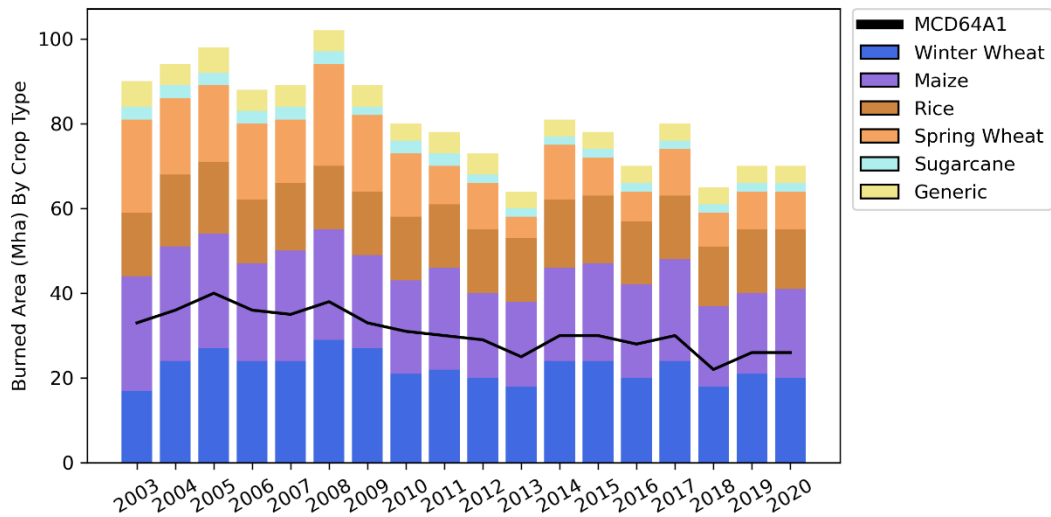
Table 5: Lower and upper limits of 2016 and 2017 estimated annual cropland burned area within Ukraine derived from this study and a previous Ukraine-focused analysis (Hall et al., 2021b).

	Ukraine cropland burned area (km ²)			
Year	<i>Lower Limit</i>		<i>Upper Limit</i>	
	This Study	Hall et al., 2021b	This Study	Hall et al., 2021b
2016	31,000	28,000	37,000	34,000
2017	42,000	35,000	50,000	45,000

315 The second regional assessment compared the May - November 2019 cropland burned area in the southeastern Anatolia Region of Turkey. Bahsi et al. (2022) estimated cropland burned area through calculating burn severity (difference in Normalized Burn Ratio, dNBR) using Sentinel-2A/B imagery (10-30m spatial resolution; ~5-day revisit time). Their study estimated 5,100km² compared to GloCAB's estimates of 5,200km² (lower limit) and 5,800km² (upper limit). Given the temporal revisit time of the Sentinel-2 constellation and the propensity for farmers to manipulate their fields shortly after burning (e.g., plowing), it is not surprising that Bahsi et al.'s (2022) values are lower than the GloCAB results. Nevertheless, our cropland
320 burned area estimates are very similar, and given the different methodologies (active fire based versus dNBR-based), lends credibility to these results.

4.2 Spatial Distribution and Annual Time Series

Our study found global annual cropland burned area (January 2003 – December 2020) ranged between 64 Mha (2018) and 102 Mha (2008), with an average of 81 Mha using our lower-bound estimates compared to an annual average of 32 Mha in the
325 MCD64A1 Collection 6 product (Figure 4; Table S1). This 2.7-fold increase in annual average cropland burned area is unsurprising given the known limitations of the MCD64A1 product within cropland regions (e.g., Giglio et al., 2018; Zhang et al., 2022) and the high omission errors associated with small fires. Breaking these results down by crop type highlights the important contribution of winter wheat and maize burning to global annual cropland burned area, and spring wheat as a contributor to the declining trend.



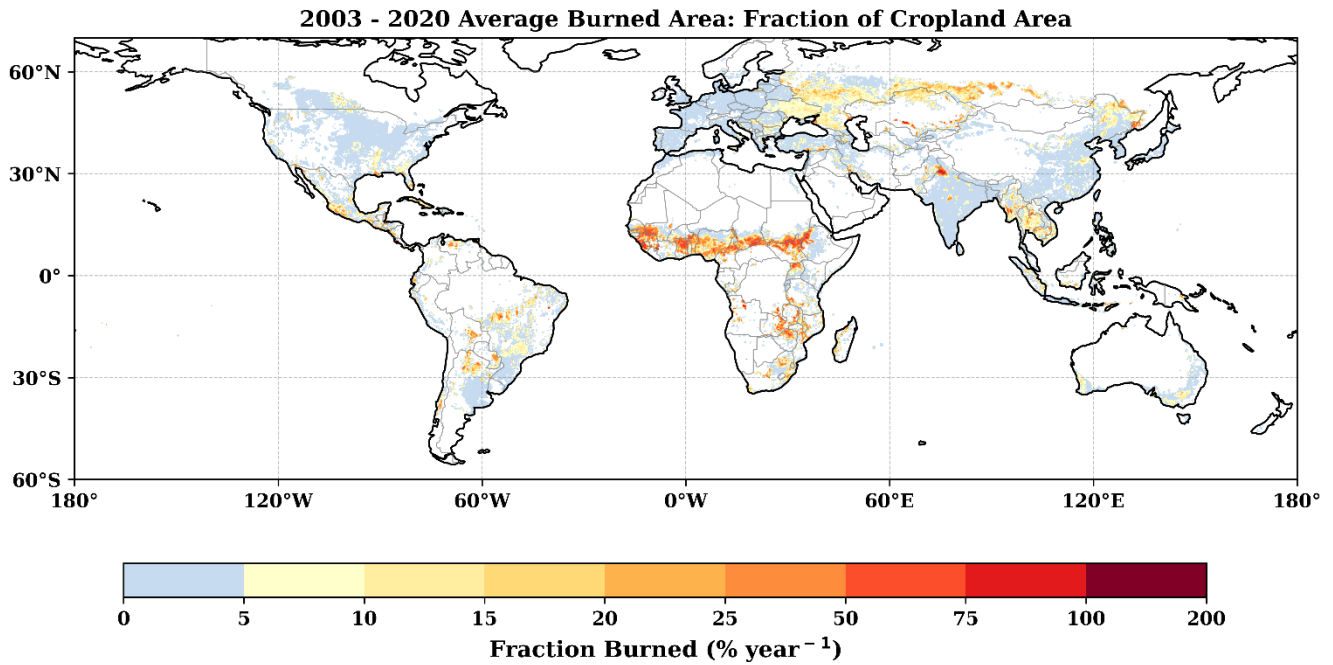
330

Figure 4: Annual burned area (Mha) by global cropland burning fire year (June - May) segmented by crop type and overlaid by MCD64A1 (black line).

Visualizing the annual average burned area (2003 – 2020) both as a fraction of the cropland area within each 0.25° grid cell (Figure 5) and as an absolute area (Figure 6) highlights i) the geographic hot-spots of cropland burning, ii) areas with double-cropping, and iii) areas where neighboring fields with varying harvest cycles are within the same 0.25° grid cell (i.e., fires are recorded in the two crop residue burning seasons but were on different fields). For example, the prevalent wheat and rice crop-residue burning in the double-cropped areas within northern India (e.g., Singh et al., 2020; Sahu et al., 2021), sugarcane burning in Florida and Louisiana, USA (e.g., Hiscox et al., 2015; Sevimoğlu et al., 2019), sugarcane burning in Thailand (e.g., Kumar et al., 2020), and spring wheat burning in central Russia (e.g., McCarty et al., 2012) are all visible. The figures also highlight the prevalence and spatial extent of cropland burning within Ukraine where over 70% of the land area is associated with sown/cropped fields (Hall et al., 2021a). Since the MCD12Q1 IGBP class 12 and 14 pixels also include other agricultural landscapes, certain regions (e.g., Africa) will include more fire activity associated with land clearing and wildfires within pastures as opposed to crop-residue burning. A future refinement will include a separate methodology for non-cropped agricultural landscapes.

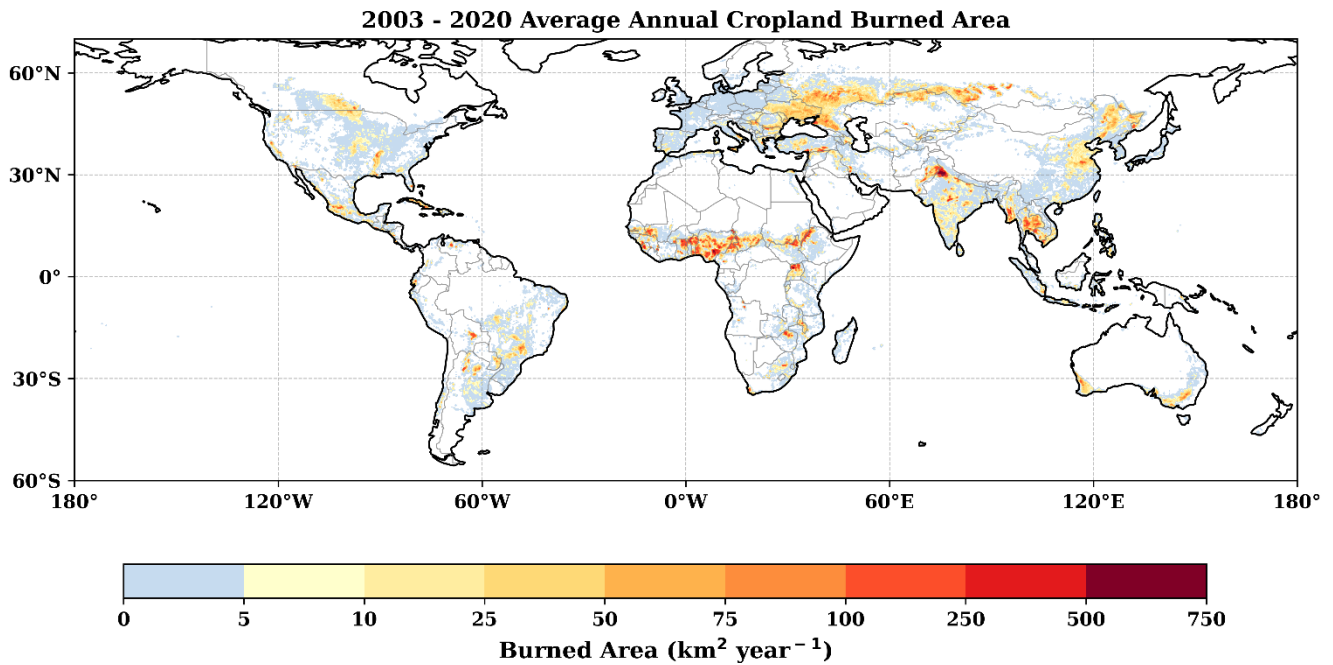
335

340



345

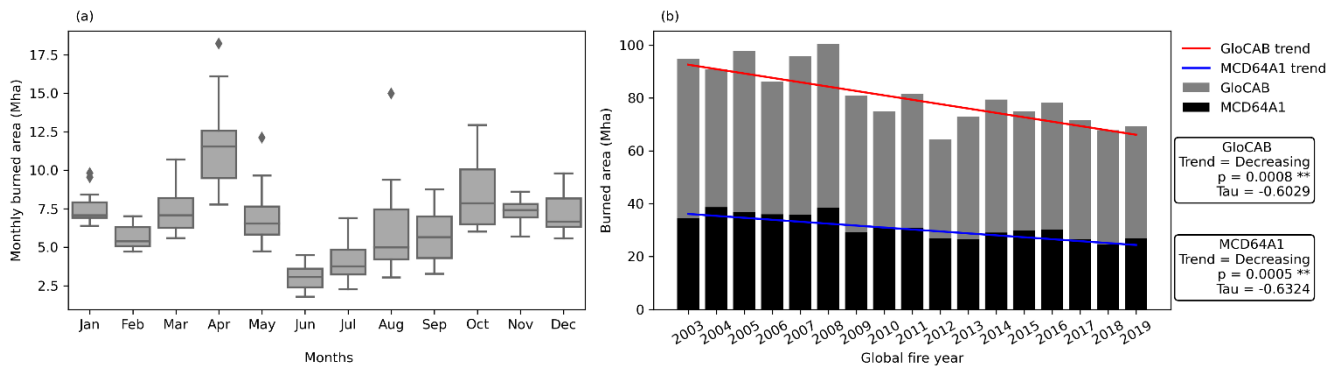
Figure 5: Average annual area burned (2003 – 2020), expressed as the fraction of cropland within each 0.25° grid cell that burns each calendar year. Grid cells with more than 100% cropland burned area are seen within double-cropping regions or within grid cells where neighboring fields are on different harvest cycles.



350 Figure 6: 2003 – 2020 average annual cropland area burned (units: km²/y) per 0.25° grid cell.

4.3 Cropland Burned Area Trends, Interannual Variability, and Cloud Cover

Analyzing the annual cropland burned area trends requires an understanding of the interannual variability in the timing of the post-harvest/pre-planting burning cycles, the magnitudes of the burned area within broad agricultural regions (see supplementary Figure S1 for monthly burned area trends in the GFED regions), as well as the variability and trends in cloud cover over the peak burning months. Given the complexities (e.g., different crop types, burning practices, and local climates) and heterogeneity within the cropland land cover class, we selected a subset of 6 agricultural regions, including a global extent, representing a range of majority crop types to analyze. For this representative subset, we apply knowledge from a variety of sources including our previous studies (e.g., Hall et al., 2016; Hall et al., 2021a), information gleaned from the 22 manually mapped regions, and scientific and government literature. For each broad agricultural region (and the global estimate) we defined the crop fire year with the month of minimum fire activity indicating the start of the fire year (Giglio et al., 2013). For example, if the month with the least fire activity on average between 2003 and 2020 was September, then the 2003 fire year will run from September 2003 through August 2004. The definition of the cropland fire year will change based on the scale of analysis, and users are therefore encouraged to employ crop fire seasons appropriate for their area of interest. Furthermore, in regions with two distinct cropping cycles, additional trend information can be gleaned by dividing the analysis into 6-month segments – ensuring the two peaks are in the middle of the 6-month window. Finally, only fire years containing all 12 months were used in trend calculations, therefore, some regions contain an extra year of data depending on their monthly burned area distributions.



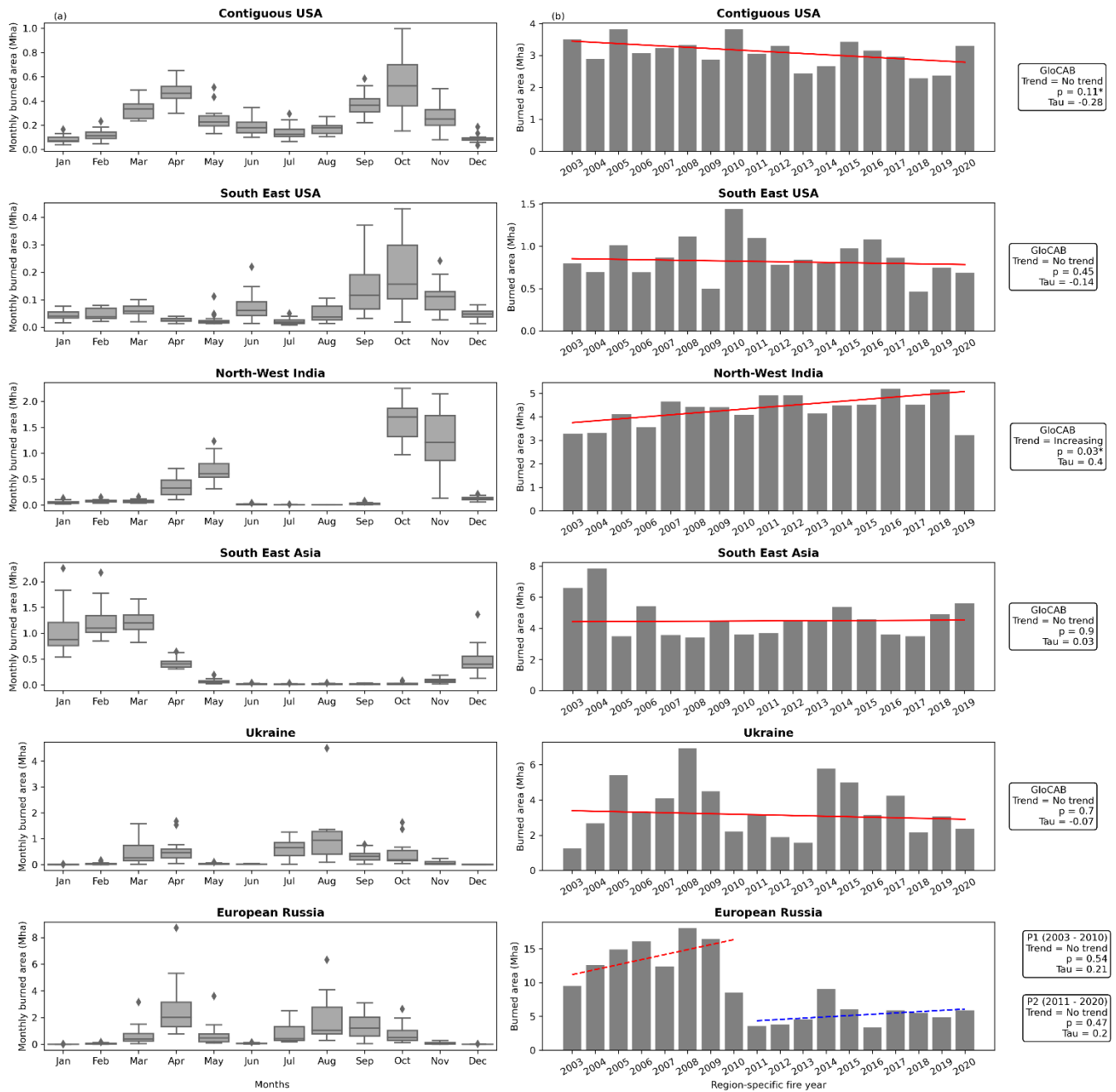
370 **Figure 7: (a) Global monthly distribution of cropland burned area between July 2002 and December 2020 (units: Mha). Outliers (diamonds) are defined as monthly burned area values greater than 1.5 times the interquartile range above the upper quartile ($Q3 + 1.5 \times IQR$). The monthly median values are represented by the solid line. (b) Global cropland burned area by global fire year (June – May) overlaid with Theil-Sen estimator trend lines with 95% confidence for this study (grey; red) and MCD64A1 (black; blue). Tau represents the ordinal association between two measured quantities.**

375 Figure 7 shows the global monthly cropland burned area (2003 – 2020) and the annual fire year (June – May) burned area for the lower-limit (α_L -based) estimates, alongside the corresponding burned area reported in the MCD64 burned area product, with associated Theil-Sen estimator trend lines and significance statistics (95% confidence). Analysis of the autocorrelation

function (ACF) plot and the Durbin-Watson statistic (Durbin and Watson, 1950) confirmed the data were not autocorrelated. Despite the difference in the magnitude of the two time series, both products show a statistically significant decreasing trend for fire years 2003 through 2019. Figure S2 highlights the annual global burned area and trends excluding Africa. Typically, Africa accounts for ~70% of the global burned area within all land cover types (Giglio et al., 2010; Zubkova et al., 2023), therefore, this fire-prone continent has which tends to dominate the a large impact on the globally-averaged burned area trend. However, within cropland, the burned area is predominantly within Africa only accounts for 27% (27%; GFED regions NHAF and SHAF) and followed by Central Asia (25%; GFED region: CEAS). Therefore, Removing Africa from the analysis only shows a minor adjustment in the overall burned area trends. However Nevertheless, the year-to-year variability in the MCD12Q1 land cover product cropland classes, especially in Africa (e.g., Wei et al., 2020), will have an impact on the burned area trend that is unrelated to the true burned area patterns (e.g., Verburg et al., 2011; Zubkova et al., 2023). Additional uncertainties stem from the overall small field sizes within the regions with the majority of cropland burned area. Furthermore, given the limited availability of global crop type datasets, this analysis assumes crop types are constant. Therefore, caution is required when analyzing crop-type land-cover-specific burned area trends by also studying the underlying ancillary datasets within their area of interest to ensure any artificial signals are minimized.

Although the globally-aggregated trend is consistent with several other broader studies (e.g., Andela et al., 2017; Arora & Melton, 2018) the heterogeneity within cropland regions is lost at the global scale. Therefore, a regional analysis was undertaken highlighting the differing seasonal cycles and overall annual trends within regional cropland areas (Figure 8). For example, northwest India shows a strong increasing trend and a distinct drop in burned area in the 2019 fire year (August 2019 – July 2020), which likely corresponded to a combination of the Covid-19 pandemic and the 2019 financial incentives (2,400 rupees; \$32 per acre) imposed by India's Supreme Court to help reduce the stubble burning in the northern states (BBC, 2020; News, 2021). In contrast, other regions showed no significant trend. Partitioning the burned area estimates into smaller cropland regions further highlights the difficulty of applying trend lines to these data. For example, the oscillating time series in Ukraine and the abrupt decline in burning in European Russia since 2010 clearly fall outside the domain of a simple linear trend analysis (Figure 8).

Assessing changes in annual cloud cover fraction provided evidence that none of the regional burned area trends were driven by trends in cloud cover or anomalous cloud cover at the beginning or end of the time series. While not a large effect, variations in cloud cover did contribute to the interannual variability in burned area, e.g., in European Russia (with an annual cloud fraction of 30% to 60% during the peak cropland burning months), in 2014 (Figure 9a, bottom) and 2019 (Figure 9b, bottom).



410

Figure 8: (a) Regional cropland monthly burned area (July 2002 – December 2020; Mha) and (b) cropland burned area by region-specific fire year, with respective Theil-Sen estimator trend lines with 95% confidence. Note the difference in vertical axis scales. European Russia had a distinct change in burned area, therefore, the trend lines were subdivided into two periods: 2003 – 2010 (P1; red dashed line) and 2011 – 2020 (P2; blue dashed line).

415

It is beneficial to subdivide the trend analysis into crop harvest seasons when further information on the burning of predominant crop types (for that time period and geographic location) is warranted. Particular care is required when inferring local patterns with coarse-resolution global products such as GFED and MCD64A1 aggregated to a 0.25° climate modeling grid. Figure 9 shows the differing magnitudes, spatial patterns, and trends within the contiguous cropland regions of the United States and European Russia for two periods approximately representing the predominant spring and fall burning seasons: January – June and July – December. It is clear that the “decreasing trend” in European Russia is driven by the distinct change in the summer (predominantly winter wheat) burning season compared to the spring burning season (predominantly spring wheat). This distinct change in burning in 2010 is likely caused by i) the agricultural machinery deficit between 1990 and 2010, which in turn drove a widespread need to remove crop residue from the fields after harvest prior to 2010 (Sidorenko et al., 2017), ii) the rise in agro-holdings (i.e., corporate farms) since the early 2000s that led to large parcels of cropped land no longer being burned and instead efficiently managed with new machinery (Rada et al., 2017), and iii) the widespread administrative and legal action banning open burning (e.g., Decree of the Government of the Russian Federation of November 20, 2015, no. 1213; <http://government.ru/docs/20511/>) after the devastating 2010 fires (Bondur et al., 2020; Loboda et al., 2017). Figure 8 also shows the seasonal interannual variability within the contiguous U.S. summer/fall cropland burned area (predominantly post-harvest burning) compared to the relatively stable burning pattern within the springtime burning seasons (predominantly pre-planting burning).

435

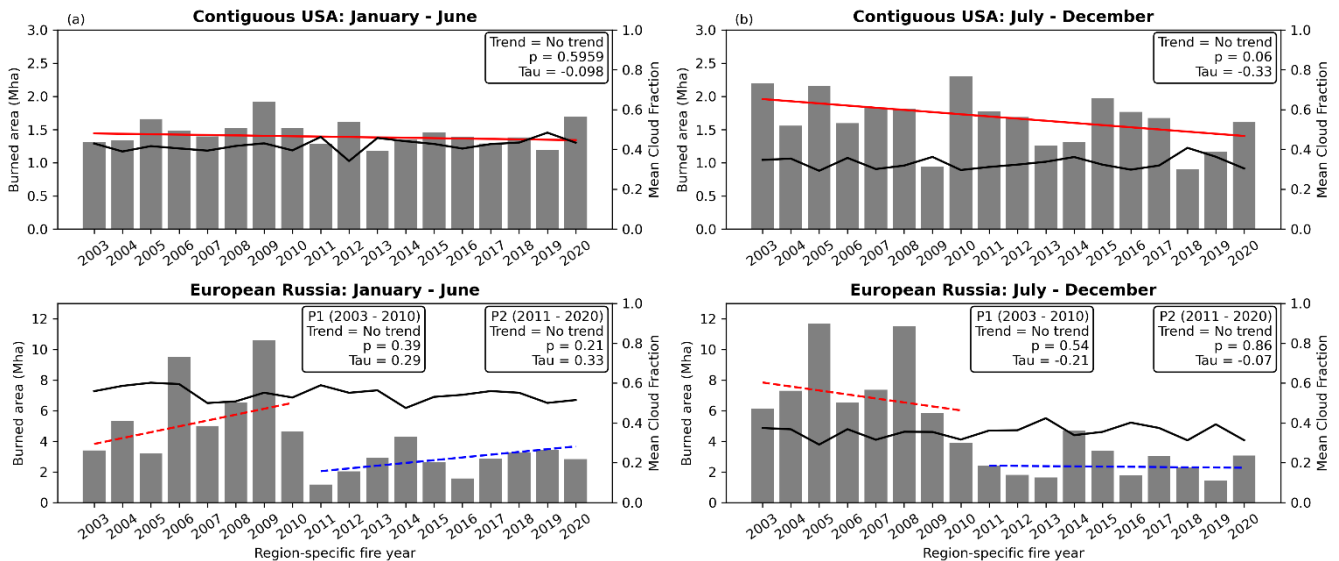


Figure 9: (a) January – June and (b) July – December cropland burned area time series (grey bars), burned area trends (blue and red lines), and burning-season mean cloud fraction (black lines) for the Contiguous United States (top) and European Russia (bottom). The fire year for the contiguous USA and European Russia runs from January to December. European Russia had a

440 **distinct change in burned area, therefore, the trend lines were subdivided into two periods: 2003 – 2010 (P1; red dashed line) and**
2011 – 2020 (P2; blue dashed line).

5 Caveats and Limitations

Several caveats and limitations apply to the input datasets and our methodology. First, this study uses static crop-type maps. Higher-resolution, annual crop-type global maps once they become available (e.g., the 30-m Cropland Data Layer for the
445 United States) will improve the identification of cropland areas, including those with either double cropping or crop-rotation practices. For this initial version, the GEOGLAM crop-type maps (<https://cropmonitor.org/>) were chosen as they are widely used by multiple international humanitarian, government, academic, and research partners and created using the best available data with involvement from local partners within each country (Becker-Reshef et al., 2020; Whitcraft et al., 2019). More accurate and dynamic land-cover data and agricultural-specific maps will help differentiate between field (cropland) and non-
450 field agricultural burning and applying suitable conversion factors and methodologies to each. Further, including a more adaptable partitioning of the crop calendar (i.e., the peak month analysis windows) alongside a more dynamic approach that can adapt to changes in the cropping calendars over time will further refine these results.

Secondly, our results are influenced by the choice of land cover product used as a base cropland extent. While MCD12Q1 was
455 selected since it offers yearly global land cover maps, its coarse resolution might limit the overall accuracy of the estimated cropland burned area, especially within regions where agricultural fields are smaller than MODIS pixel size (500m). Inconsistencies between cropland extents based on various global land cover products in Africa were reported by Zubkova et al. (2023), demonstrating substantial variations in spatial distribution and year-to-year variability. An analysis of springtime burned area in Russia (Glushkov et al., 2021) also highlighted the variability in burned area by land cover class when
460 comparing three separate global land cover products of varying spatial resolutions. Therefore, the availability of higher-resolution yearly land cover products in the future can enhance the proposed methodology, however, the accuracy of those input products will always be an underlying limitation.

Third, initial analysis found the 22 reference regions did not provide sufficient sampling and required too many assumptions
465 for application to the Terra-only period. Additional cropland burned area reference data are required (created using a consistent methodology that is appropriate for cropland burning) over a broader selection of burnable crop types and geographic domains, particularly within areas with predominantly small (average size within 22 reference regions = 0.37 km²) field sizes. Further, the cropland burned area reference data should also span additional years as farming practices change over time and farmers may alter their daily burn times, which could in turn alter the active fire signal. Unfortunately, high-resolution, daily
470 PlanetScope imagery is only widely available from ~2016, as are Sentinel-2 data, thus alternate solutions are needed for the earlier years of the MODIS record. Finally, future work will extend the GloCAB dataset to the Terra-only period from November 2000 – June 2002.

6 Data Availability

GloCAB is comprised of lower (low) and upper (high) cropland burned area estimates per month between July 2002 and
475 December 2020 (Hall et al., 2023). The monthly, 0.25° GloCAB burned area (units: km²) data are available as annual GeoTIFF
stacks: 12 monthly layers per stack between 2003 and 2020 and 6 layers (July – December) for 2002. The preliminary GloCAB
dataset is publically available on the open repository Zenodo (<https://doi.org/10.5281/zenodo.7860452>).

7 Conclusions

Our new GloCAB dataset provides a global cropland-focused burned area product (0.25°; monthly-time step). GloCAB's
480 specifications (0.25°; monthly-time step) were selected to match the forthcoming GFEDv5 product (Chen et al., in press), as
GloCAB will be the source of cropland burned area in the updated GFED product. However, GloCAB's specifications are
designed to be useful for other products and applications, and modifications to the methodology can be applied for specific
case-studies. Using twenty exhaustively-mapped field-level reference regions within five countries, the effective burned area
per MODIS active fire pixel (α) was calculated for several crop types that are generally associated with burning: winter wheat,
485 spring wheat, maize, rice, sugarcane, and other/generic. Using these active-fire-to-burned-area conversion factors (Table 3),
we generated lower (α_L) and upper (α_H) cropland burned area estimates per month between July 2002 and December 2020.
With these data we found the lower-limit global annual cropland burned area (2003 – 2020) ranged between 64 Mha (2018)
and 102 Mha (2008) with an average of 81Mha compared to an annual average of 32 Mha in the MCD64A1 Collection 6
product. This increase in annual mean burned area compared to MCD64A1 is unsurprising given the GloCAB product is
490 specifically designed for cropland burning. Subdividing by crop type also highlighted the substantial contribution of winter
wheat and maize to global cropland burned area. Our analysis also highlighted the heterogeneity within cropland regions and
how burned area trends can be impacted depending on the area of interest, while also discussing the impacts of cloud cover on
burned area totals.

495 Finally, our next steps include gathering crop-specific emission factors and combustion efficiencies that will be applied to the
monthly majority crop type data layers created in this study. This next step will illuminate the contribution of crop types to
emissions as the proportion of emissions compared to burned area will vary by crop type. Despite the current limitations, this
study set out to develop a crop-specific global burned area methodology that was grounded in high-quality reference data
gathered for this unique fire type. Although burned area reference datasets have recently become available (e.g., Franquesa et
500 al., 2020), they are either developed for non-cropland fires, or are sporadic/opportunistic-based on field-work, surveys, etc.
(e.g., Liu et al., 2020; Hall et al., 2016) and are therefore not appropriate for this methodology. In general, cropland emissions
are severely underestimated, primarily due to the omission errors within burned area products. Understanding the temporal
and spatial patterns of emissions can help stakeholders identify regions for focused mitigation efforts; therefore, this global
cropland burned area product is the first step towards improving global cropland burning emissions.

505 Author Contributions

JH and LG conceptualized the paper. JH developed the algorithm. FA and JH created the reference data sets. MZ helped with quality checking. LG and JH conducted the cloud cover analysis. LG and JR procured funding. All co-authors contributed to methodology improvements and provided resources for deriving GloCAB. JH prepared the manuscript with contributions from all the co-authors.

510 Competing Interests

The authors declare that they have no conflict of interest.

Acknowledgments

This work was supported by NASA grants 80NSSC18K0619, 80NSSC18K0739, 80NSSC21K1961, 80NSSC21K1657, and 80NSSC18K0179, and United States Department of the Air Force contract FA8810-18-C-0017. Y. Chen and J. Randerson
515 acknowledge support from NASA's Modeling, Analysis, and Prediction (MAP) program (80NSSC21K1362), SERVIR Applied Sciences Team (80NSSC20K0590), and NASA's Earth Information System (EIS-Fire).

References

- 520 ~~Abera, T. A., Heiskanen, J., Pellikka, P. K. E., Adhikari, H., & Maeda, E. E. (2020). Climatic impacts of bushland to cropland conversion in Eastern Africa. In *Science of The Total Environment* (Vol. 717, p. 137255). Elsevier BV. <https://doi.org/10.1016/j.scitotenv.2020.137255>~~
- 525 ~~Agarwal, R., Awasthi, A., Singh, N., Mittal, S. K., & Gupta, P. K. (2013). Epidemiological study on healthy subjects affected by agriculture crop residue burning episodes and its relation with their pulmonary function tests. In *International Journal of Environmental Health Research* (Vol. 23, Issue 4, pp. 281-295). Informa UK Limited. <https://doi.org/10.1080/09603123.2012.733933>~~
- 530 ~~Andela, N., Morton, D. C., Giglio, L., Chen, Y., van der Werf, G. R., Kasibhatla, P. S., DeFries, R. S., Collatz, G. J., Hantson, S., Kloster, S., Bachelet, D., Forrest, M., Lasslop, G., Li, F., Mangeon, S., Melton, J. R., Yue, C., & Randerson, J. T. (2017). A human driven decline in global burned area. In *Science* (Vol. 356, Issue 6345, pp. 1356-1362). American Association for the Advancement of Science (AAAS). <https://doi.org/10.1126/science.aal4108>~~
- 535 ~~Arctic Black Carbon impacting on Climate and Air Pollution (ABC iCAP), 2022. Action 7.1: Mitigate open biomass burning on cropland. <https://bc-policy-landscape.amap.no/action/action-7-1-mitigate-open-biomass-burning-on-cropland>. Last accessed 2/11/2023.~~
- ~~Arora, V. K., & Melton, J. R. (2018). Reduction in global area burned and wildfire emissions since 1930s enhances carbon uptake by land. In *Nature Communications* (Vol. 9, Issue 1). Springer Science and Business Media LLC. <https://doi.org/10.1038/s41467-018-03838-0>~~

- 540 Bahşi, K., Ustaoglu, B., Aksoy, S., & Sertel, E. (2023). Estimation of emissions from crop residue burning in Türkiye using remotely sensed data and the Google Earth Engine platform. In *Geocarto International*, 38(1), 2157052.
- BBC (2020). Stubble burning: Why it continues to smother north India. <https://www.bbc.com/news/world-asia-india-54930380>. Last accessed May 2022
- 545 Becker Reshef, I., Justice, C., Barker, B., Humber, M., Rembold, F., Bonifacio, R., Zappacosta, M., Budde, M., Magadzire, T., Shitote, C., Pound, J., Constantino, A., Nakalembe, C., Mwangi, K., Sobue, S., Newby, T., Whiteraft, A., Jarvis, I., & Verdin, J. (2020). Strengthening agricultural decisions in countries at risk of food insecurity: The GEOGLAM Crop Monitor for Early Warning. In *Remote Sensing of Environment* (Vol. 237, p. 111553). Elsevier BV. <https://doi.org/10.1016/j.rse.2019.111553>
- 550 Blickensdörfer, L., Schwieder, M., Pflugmacher, D., Nendel, C., Erasmí, S., & Hostert, P. (2022). Mapping of crop types and crop sequences with combined time series of Sentinel 1, Sentinel 2 and Landsat 8 data for Germany. *Remote sensing of environment*, 269, 112831. <https://doi.org/10.1016/j.rse.2021.112831>
- 555 Boschetti, L., Roy, D. P., & Justice, C. O. (2010). International Global Burned Area Satellite Product Validation Protocol, Part I — production and standardization of validation reference data. <https://lpvs.gsfc.nasa.gov/PDF/BurnedAreaValidationProtocol.pdf>.
- Boschetti, L., Roy, D. P., Giglio, L., Huang, H., Zubkova, M., & Humber, M. L. (2019). Global validation of the collection 6 MODIS burned area product. In *Remote Sensing of Environment* (Vol. 235, p. 111490). Elsevier BV. <https://doi.org/10.1016/j.rse.2019.111490>
- 560 Bondur, V. G., Voronova, O. S., Cherepanova, E. V., Tsidilina, M. N., & Zima, A. L. (2020). Spatiotemporal Analysis of Multi Year Wildfires and Emissions of Trace Gases and Aerosols in Russia Based on Satellite Data. In *Izvestiya, Atmospheric and Oceanic Physics* (Vol. 56, Issue 12, pp. 1457-1469). Pleiades Publishing Ltd. <https://doi.org/10.1134/s0001433820120348>
- 565 Brink, A. B., Bodart, C., Brodsky, L., Defourney, P., Ernst, C., Donney, F., Lupi, A., & Tuckova, K. (2014). Anthropogenic pressure in East Africa — Monitoring 20 years of land cover changes by means of medium resolution satellite data. In *International Journal of Applied Earth Observation and Geoinformation* (Vol. 28, pp. 60-69). Elsevier BV. <https://doi.org/10.1016/j.jag.2013.11.006>
- 570 Chen, Y., Hall, J.V., van Wees, D., Andela, N., Hantson, S., Giglio, L., van der Werf, G., Morton, D., & Randerson, J. (in press). Multi decadal trends and variability in burned area from the 5th version of the Global Fire Emissions Database (GFED5). *Earth System Science Data*.
- 575 Durbin, J., & Watson, G. S. (1971). Testing for serial correlation in least squares regression.III. *Biometrika* (Vol. 58, Issue 1, pp. 1-19). Oxford University Press (OUP). <https://doi.org/10.1093/biomet/58.1.1>
- 580 Franquesa, M., Vanderhoof, M. K., Stavrakoudis, D., Gitas, I. Z., Roteta, E., Padilla, M., & Chuvieco, E. (2020). Development of a standard database of reference sites for validating global burned area products. In *Earth System Science Data* (Vol. 12, Issue 4, pp. 3229-3246). Copernicus GmbH. <https://doi.org/10.5194/essd-12-3229-2020>
- 585 Friedlingstein, P., O'Sullivan, M., Jones, M. W., Andrew, R. M., Hauck, J., Olsen, A., Peters, G. P., Peters, W., Pongratz, J., Siteh, S., Le Quéré, C., Canadell, J. G., Ciais, P., Jackson, R. B., Alin, S., Aragão, L. E. O. C., Arneeth, A., Arora, V., Bates, N. R., ... Zaehle, S. (2020). Global Carbon Budget 2020. In *Earth System Science Data* (Vol. 12, Issue 4, pp. 3269-3340). Copernicus GmbH. <https://doi.org/10.5194/essd-12-3269-2020>
- Gao, M., Beig, G., Song, S., Zhang, H., Hu, J., Ying, Q., Liang, F., Liu, Y., Wang, H., Lu, X., Zhu, T., Carmichael, G. R., Nielsen, C. P., & McElroy, M. B. (2018). The impact of power generation emissions on ambient PM2.5 pollution and human

- 590 health in China and India. In *Environment International* (Vol. 121, pp. 250–259). Elsevier BV. <https://doi.org/10.1016/j.envint.2018.09.015>
- Giglio, L., Csizsar, I., & Justice, C. (2006). Global distribution and seasonality of active fires as observed with the Terra and Aqua Moderate Resolution Imaging Spectroradiometer (MODIS) sensors. In *Journal of geophysical research: Biogeosciences* (Vol. 111, No. G2). <https://doi.org/10.1029/2005JG000142>
- 595 Giglio, L., Desloitures, J., Justice, C. O., & Kaufman, Y. J. (2003). An Enhanced Contextual Fire Detection Algorithm for MODIS. In *Remote Sensing of Environment* (Vol. 87, Issues 2–3, pp. 273–282). Elsevier BV. [https://doi.org/10.1016/s0034-4257\(03\)00184-6](https://doi.org/10.1016/s0034-4257(03)00184-6)
- 600 Giglio, L., Randerson, J. T., Van der Werf, G. R., Kasibhatla, P. S., Collatz, G. J., Morton, D. C., & DeFries, R. S. (2010). Assessing variability and long-term trends in burned area by merging multiple satellite fire products. *Biogeosciences*, 7(3), 1171–1186. <https://doi.org/10.1002/jgrg.20042>
- 605 Giglio, L., Randerson, J. T., & van der Werf, G. R. (2013). Analysis of daily, monthly, and annual burned area using the fourth-generation global fire emissions database (GFED4). In *Journal of Geophysical Research: Biogeosciences* (Vol. 118, Issue 1, pp. 317–328). American Geophysical Union (AGU). <https://doi.org/10.1002/jgrg.20042>
- 610 Giglio, L., Loboda, T., Roy, D. P., Quayle, B., & Justice, C. O. (2009). An active-fire-based burned area mapping algorithm for the MODIS sensor. In *Remote Sensing of Environment* (Vol. 113, Issue 2, pp. 408–420). Elsevier BV. <https://doi.org/10.1016/j.rse.2008.10.006>
- 615 Giglio, L., Schroeder, W., & Justice, C. O. (2016). The collection 6 MODIS active fire detection algorithm and fire products. In *Remote Sensing of Environment* (Vol. 178, pp. 31–41). Elsevier BV. <https://doi.org/10.1016/j.rse.2016.02.054>
- Giglio, L., Boscchetti, L., Roy, D. P., Humber, M. L., & Justice, C. O. (2018). The Collection 6 MODIS burned area mapping algorithm and product. In *Remote Sensing of Environment* (Vol. 217, pp. 72–85). Elsevier BV. <https://doi.org/10.1016/j.rse.2018.08.005>
- 620 Glushkov, I., Zhuravleva, I., McCarty, J.L., Komarova, A., Drozdovsky, A., Drozdovskaya, M., Lupachik, V., Yaroshenko, A., Stehman, S.V. & Prishchepov, A.V. (2021). Spring fires in Russia: Results from participatory burned area mapping with Sentinel-2 imagery. In *Environmental Research Letters*, 16(12), p.125005.
- 625 Hall, J. V., Loboda, T. V., Giglio, L., & McCarty, G. W. (2016). A MODIS based burned area assessment for Russian croplands: Mapping requirements and challenges. In *Remote Sensing of Environment* (Vol. 184, pp. 506–521). Elsevier BV. <https://doi.org/10.1016/j.rse.2016.07.022>
- 630 Hall, J. V., & Loboda, T. V. (2017). Quantifying the Potential for Low-Level Transport of Black Carbon Emissions from Cropland Burning in Russia to the Snow-Covered Arctic. In *Frontiers in Earth Science* (Vol. 5). Frontiers Media SA. <https://doi.org/10.3389/feart.2017.00109>
- 635 Hall, J., & Loboda, T. (2018). Quantifying the variability of potential black carbon transport from cropland burning in Russia driven by atmospheric blocking events. In *Environmental Research Letters* (Vol. 13, Issue 5, p. 055010). IOP Publishing. <https://doi.org/10.1088/1748-9326/aabf65>
- Hall, J. V., Zibitsev, S. V., Giglio, L., Skakun, S., Myroniuk, V., Zhuravel, O., Goldammer, J. G., & Kussul, N. (2021). Environmental and political implications of underestimated cropland burning in Ukraine. In *Environmental Research Letters* (Vol. 16, Issue 6, p. 064019). IOP Publishing. <https://doi.org/10.1088/1748-9326/abfc04>

- 640 Hall, J. V., Argueta, F., & Giglio, L. (2021). Validation of MCD64A1 and FireCCI51 cropland burned area mapping in Ukraine. In *International Journal of Applied Earth Observation and Geoinformation* (Vol. 102, p. 102443). Elsevier BV. <https://doi.org/10.1016/j.jag.2021.102443>
- 645 Hall, J., Argueta, F., & Giglio, L. (2022). Crop Residue Burning Emission Coefficients (Version 1) [Data set]. Zenodo. <https://doi.org/10.5281/ZENODO.7013656>
- Hall, J., Argueta, F., Zubkova, M., Chen, Y., Randerson, J., & Giglio, L. (2023). GloCAB: Global Cropland Area Burned (Version 1) [Data set]. Zenodo. <https://doi.org/10.5281/zenodo.7860452>
- 650 Hiscox, A. L., Flecher, S., Wang, J. J., & Viator, H. P. (2015). A comparative analysis of potential impact area of common sugar cane burning methods. In *Atmospheric Environment* (Vol. 106, pp. 154–164). Elsevier BV. <https://doi.org/10.1016/j.atmosenv.2015.02.005>
- 655 International Food Policy Research Institute. (2019). Global Spatially Disaggregated Crop Production Statistics Data for 2010 Version 2.0 [Data set]. Harvard Dataverse. <https://doi.org/10.7910/DVN/PRFF8V>
- Jack, B. K., Jayachandran, S., Kala, N., & Pande, R. (2022). Money (Not) to Burn: Payments for Ecosystem Services to Reduce Crop Residue Burning. *National Bureau of Economic Research*. <https://doi.org/10.3386/w30690>
- 660 Kong, L., Tang, X., Zhu, J., Wang, Z., Li, J., Wu, H., Wu, Q., Chen, H., Zhu, L., Wang, W., Liu, B., Wang, Q., Chen, D., Pan, Y., Song, T., Li, F., Zheng, H., Jia, G., Lu, M., Wu, L., Carmichael, G. R. (2021). A 6-year long (2013–2018) high-resolution air quality reanalysis dataset in China based on the assimilation of surface observations from CNEMC. In *Earth System Science Data* (Vol. 13, Issue 2, pp. 529–570). Copernicus GmbH. <https://doi.org/10.5194/essd-13-529-2021>
- 665 Kumar, I., Bandaru, V., Yampracha, S., Sun, L., & Fungtammasan, B. (2020). Limiting rice and sugarcane residue burning in Thailand: Current status, challenges and strategies. In *Journal of Environmental Management* (Vol. 276, p. 111228). Elsevier BV. <https://doi.org/10.1016/j.jenvman.2020.111228>
- 670 Lasko, K., & Vadrevu, K. (2018). Improved rice residue burning emissions estimates: Accounting for practice specific emission factors in air pollution assessments of Vietnam. In *Environmental Pollution* (Vol. 236, pp. 795–806). Elsevier BV. <https://doi.org/10.1016/j.envpol.2018.01.098>
- 675 Laso-Bayas, J., See, L., Perger, C., Justice, C., Nakalembe, C., Dempewolf, J., & Fritz, S. (2017). Validation of Automatically Generated Global and Regional Cropland Data Sets: The Case of Tanzania. In *Remote Sensing* (Vol. 9, Issue 8, p. 815). MDPI AG. <https://doi.org/10.3390/rs9080815>
- Leal, M. R. L., Galdos, M. V., Scarpere, F. V., Seabra, J. E., Walter, A., & Oliveira, C. O. (2013). Sugarcane straw availability, quality, recovery and energy use: a literature review. *Biomass and Bioenergy*, 53, 11–19.
- 680 Li, Y., Tan, M., & Hao, H. (2019). The impact of global cropland changes on terrestrial ecosystem services value, 1992–2015. In *Journal of Geographical Sciences* (Vol. 29, Issue 3, pp. 323–333). Springer Science and Business Media LLC. <https://doi.org/10.1007/s11442-019-1600-7>
- 685 Lin, H., Feng, X., Fu, T. M., Tian, H., Ma, Y., Zhang, L., Jacob, D. J., Yantosca, R. M., Sulprizio, M. P., Lundgren, E. W., Zhuang, J., Zhang, Q., Lu, X., Zhang, L., Shen, L., Guo, J., Eastham, S. D., & Keller, C. A. (2020). WRF-GEOS-Chem (v1.0): online coupling of WRF (v3.9.1.1) and GEOS-Chem (v12.2.1) for regional atmospheric chemistry modeling—Part 1: Description of the one-way model. In *Geoscientific Model Development* (Vol. 13, Issue 7, pp. 3241–3265). Copernicus GmbH. <https://doi.org/10.5194/gmd-13-3241-2020>

- 690 Liu, T., Marlier, M. E., Karambelas, A., Jain, M., Singh, S., Singh, M. K., Gautam, R., & DeFries, R. S. (2019). Missing emissions from post monsoon agricultural fires in northwestern India: regional limitations of MODIS burned area and active fire products. In *Environmental Research Communications* (Vol. 1, Issue 1, p. 011007). IOP Publishing. <https://doi.org/10.1088/2515-7620/ab056e>
- 695 Liu, T., Mickley, L. J., Singh, S., Jain, M., DeFries, R. S., & Marlier, M. E. (2020). Crop residue burning practices across north India inferred from household survey data: Bridging gaps in satellite observations. In *Atmospheric Environment: X* (Vol. 8, p. 100091). Elsevier BV. <https://doi.org/10.1016/j.aeaoa.2020.100091>.
- 700 Liu, T., Mickley, L. J., Gautam, R., Singh, M. K., DeFries, R. S., & Marlier, M. E. (2021). Detection of delay in post-monsoon agricultural burning across Punjab, India: potential drivers and consequences for air quality. In *Environmental Research Letters*, 16(1), 014014. <https://doi.org/10.1088/1748-9326/abce28>
- Lizundia-Loiola, J., Otón, G., Ramo, R., & Chuvieco, E. (2020). A spatio-temporal active fire clustering approach for global burned area mapping at 250 m from MODIS data. *Remote Sensing of Environment*, 236, 111493.
- 705 Loboda, T., Krankina, O., Savin, I., Kurbanov, E., & Hall, J. (2016). Land Management and the Impact of the 2010 Extreme Drought Event on the Agricultural and Ecological Systems of European Russia. In *Land Cover and Land Use Changes in Eastern Europe after the Collapse of the Soviet Union in 1991* (pp. 173–192). Springer International Publishing. https://doi.org/10.1007/978-3-319-42638-9_8.
- 710 McCarty, J., Justice, C., & Korontzi, S. (2007). Agricultural burning in the Southeastern United States detected by MODIS. In *Remote Sensing of Environment* (Vol. 108, Issue 2, pp. 151–162). Elsevier BV. <https://doi.org/10.1016/j.rse.2006.03.020>
- 715 McCarty, J. L., Korontzi, S., Justice, C. O., & Loboda, T. (2009). The spatial and temporal distribution of crop residue burning in the contiguous United States. In *Science of The Total Environment* (Vol. 407, Issue 21, pp. 5701–5712). Elsevier BV. <https://doi.org/10.1016/j.scitotenv.2009.07.009>
- 720 McCarty, J. L., Ellicott, E. A., Romanenkov, V., Rukhovitch, D., & Koroleva, P. (2012). Multi year black carbon emissions from cropland burning in the Russian Federation. In *Atmospheric Environment* (Vol. 63, pp. 223–238). Elsevier BV. <https://doi.org/10.1016/j.atmosenv.2012.08.053>
- 725 News18 (2021). Why Farmers in Delhi's Neighbouring States Burn Stubble Despite Ban. <https://www.news18.com/news/opinion/why-farmers-in-delhis-neighbouring-states-burn-stubble-despite-ban-4441712.html>. Last accessed May 2022.
- 730 Padilla, M., Stehman, S. V., Ramo, R., Corti, D., Hantson, S., Oliva, P., Alonso-Canas, I., Bradley, A. V., Tansey, K., Mota, B., Pereira, J. M., & Chuvieco, E. (2015). Comparing the accuracies of remote sensing global burned area products using stratified random sampling and estimation. In *Remote Sensing of Environment* (Vol. 160, pp. 114–121). Elsevier BV. <https://doi.org/10.1016/j.rse.2015.01.005>
- Pettinari, M. L., Lizundia-Loiola, J., & Chuvieco, E. (2021) ESA CCI ECV Fire Disturbance: D4.2.1 Product User Guide—MODIS, version 1.1. Available at: <https://climate.esa.int/en/projects/fire/key-documents/>
- 735 Pryor, S. W., Smithers, J., Lyne, P., & van Antwerpen, R. (2017). Impact of agricultural practices on energy use and greenhouse gas emissions for South African sugarcane production. *Journal of Cleaner Production*, 141, 137–145.
- Rada, N., Liefert, W., Liefert, O., Rada, N., Liefert, W., & Liefert, O. (2017). Productivity Growth and the Revival of Russian Agriculture. *Economic Research Report Number 228*. <https://doi.org/10.22004/AG.ECON.256716>

- 740 Randerson, J.T., G.R. van der Werf, L. Giglio, G.J. Collatz, and P.S. Kasibhatla. 2018. Global Fire Emissions Database, Version 4.1 (GFEDv4). ORNL-DAAC, Oak Ridge, Tennessee, USA. <https://doi.org/10.3334/ORNLDAAC/1293>
- Rangel, M. G. L., Henriquez, J. R., Costa, J. A. P., & de Lira Junior, J. C. (2018). An assessment of dispersing pollutants from the pre-harvest burning of sugarcane in rural areas in the northeast of Brazil. In *Atmospheric Environment* (Vol. 178, pp. 265–281). Elsevier BV. <https://doi.org/10.1016/j.atmosenv.2018.02.006>
- 745 Saggi, G. S., Mittal, S. K., Agarwal, R., & Beig, G. (2018). Epidemiological Study on Respiratory Health of School Children of Rural Sites of Malwa Region (India) During Post-harvest Stubble Burning Events. In *MAPAN* (Vol. 33, Issue 3, pp. 281–295). Springer Science and Business Media LLC. <https://doi.org/10.1007/s12647-018-0259-3>
- 750 Sahu, S. K., Mangaraj, P., Beig, G., Samal, A., Chinmay Pradhan, Dash, S., & Tyagi, B. (2021). Quantifying the high-resolution seasonal emission of air pollutants from crop residue burning in India. In *Environmental Pollution* (Vol. 286, p. 117165). Elsevier BV. <https://doi.org/10.1016/j.envpol.2021.117165>
- 755 Schroeder, W., Oliva, P., Giglio, L., & Csiszar, I. A. (2014). The New VIIRS 375 m active fire detection data product: Algorithm description and initial assessment. In *Remote Sensing of Environment* (Vol. 143, pp. 85–96). Elsevier BV. <https://doi.org/10.1016/j.rse.2013.12.008>
- 760 Seiler, W., & Crutzen, P.J. (1980). Estimates of gross and net fluxes of carbon between the biosphere and the atmosphere from biomass burning. In *Climatic change*, 2(3), pp.207–247. <https://doi.org/10.1007/BF00137988>
- Sevimoğlu, O., & Rogge, W. F. (2019). Seasonal variations of PM10—Trace elements, PAHs and Levoglucosan: Rural sugarcane growing area versus coastal urban area in Southeastern Florida, USA. Part II: Elemental concentrations. In *Particuology* (Vol. 46, pp. 99–108). Elsevier BV. <https://doi.org/10.1016/j.partic.2019.05.001>
- 765 Singh, T., Biswal, A., Mor, S., Ravindra, K., Singh, V., & Mor, S. (2020). A high-resolution emission inventory of air pollutants from primary crop residue burning over Northern India based on VIIRS thermal anomalies. In *Environmental Pollution* (Vol. 266, p. 115132). Elsevier BV. <https://doi.org/10.1016/j.envpol.2020.115132>
- 770 Sidorenko, S., Trubilin, E., Kolesnikova, E., & Hasegawa, H. (2017). Current situation, issues and trends of mechanization for grain harvesting in the Russian Federation. *AMA, Agricultural Mechanization in Asia, Africa and Latin America*, 48(2), 31–35.
- 775 Sulla Menashe, D., & Friedl, M. A. (2022). User guide to collection 6 MODIS land cover (MCD12Q1 and MCD12C1) product. *Usgs: Reston, Va, Usa, 1*, 18. https://lpdaac.usgs.gov/documents/1409/MCD12_User_Guide_V61.pdf
- 780 Tsendbazar, N. E., de Bruin, S., Mora, B., Schouten, L., & Herold, M. (2016). Comparative assessment of thematic accuracy of GLC maps for specific applications using existing reference data. In *International Journal of Applied Earth Observation and Geoinformation* (Vol. 44, pp. 124–135). Elsevier BV. <https://doi.org/10.1016/j.jag.2015.08.009>
- United Nations Framework Convention on Climate Change (UNFCCC). (2022). Ukraine National Inventory Report. <https://unfccc.int/documents/476868>
- 785 U.S. Department of Agriculture (USDA) Agricultural Air Quality Task Force. (1999). AAQTF Agricultural Burning Policy Recommendations. <https://www.nres.usda.gov/conservation-basics/natural-resource-concerns/air/usda-agricultural-air-quality-task-force/pre-2005-agricultural-air-quality-research-task-force/aaqtf-agricultural-burning-policy-recommendations>. Last accessed 2/11/2023

- 790 van der Werf, G. R., Randerson, J. T., Giglio, L., van Leeuwen, T. T., Chen, Y., Rogers, B. M., Mu, M., van Marle, M. J. E.,
Morton, D. C., Collatz, G. J., Yokelson, R. J., & Kasibhatla, P. S. (2017). Global fire emissions estimates during 1997–2016.
In *Earth System Science Data* (Vol. 9, Issue 2, pp. 697–720). Copernicus GmbH. <https://doi.org/10.5194/essd-9-697-2017>
- 795 Verburg, P. H., Neumann, K., & Nol, L. (2011). Challenges in using land use and land cover data for global change studies.
In *Global Change Biology* (Vol. 17, Issue 2, pp. 974–989). Wiley. <https://doi.org/10.1111/j.1365-2486.2010.02307.x>
- 800 Wei, Y., Lu, M., Wu, W., & Ru, Y. (2020). Multiple factors influence the consistency of cropland datasets in Africa. In
International Journal of Applied Earth Observation and Geoinformation (Vol. 89, p. 102087). Elsevier BV.
<https://doi.org/10.1016/j.jag.2020.102087>
- 805 Whitercraft, A. K., Becker-Reshef, I., Justice, C. O., Gifford, L., Kavvada, A., & Jarvis, I. (2019). No pixel left behind: Toward
integrating Earth Observations for agriculture into the United Nations Sustainable Development Goals framework. In *Remote
Sensing of Environment* (Vol. 235, p. 111470). Elsevier BV. <https://doi.org/10.1016/j.rse.2019.111470>
- 810 Zhang, T., Wooster, M., de Jong, M., & Xu, W. (2018). How Well Does the ‘Small Fire Boost’ Methodology Used within the
GFED4.1s Fire Emissions Database Represent the Timing, Location and Magnitude of Agricultural Burning? In *Remote
Sensing* (Vol. 10, Issue 6, p. 823). MDPI AG. <https://doi.org/10.3390/rs10060823>
- 815 Zhang, S., Zhao, H., Wu, Z., & Tan, L. (2022). Comparing the Ability of Burned Area Products to Detect Crop Residue
Burning in China. In *Remote Sensing* (Vol. 14, Issue 3, p. 693). MDPI AG. <https://doi.org/10.3390/rs14030693>
- Zhuang, Y., Li, R., Yang, H., Chen, D., Chen, Z., Gao, B., & He, B. (2018). Understanding Temporal and Spatial Distribution
of Crop Residue Burning in China from 2003 to 2017 Using MODIS Data. In *Remote Sensing* (Vol. 10, Issue 3, p. 390). MDPI
AG. <https://doi.org/10.3390/rs10030390>
- Abera, T. A., Heiskanen, J., Pellikka, P. K. E., Adhikari, H., and Maeda, E. E.: Climatic impacts of bushland to cropland
conversion in Eastern Africa, *Sci. Total Environ.*, 717, 137255, <https://doi.org/10.1016/j.scitotenv.2020.137255>, 2020
- 820 Agarwal, R., Awasthi, A., Singh, N., Mittal, S. K. and Gupta, P. K.: Epidemiological study on healthy subjects affected by
agriculture crop-residue burning episodes and its relation with their pulmonary function tests, *International Journal of
Environmental Health Research*, 23(4), 281–295, <https://doi:10.1080/09603123.2012.733933>, 2013.
- 825 Andela, N., Morton, D. C., Giglio, L., Chen, Y., van der Werf, G. R., Kasibhatla, P. S., DeFries, R. S., Collatz, G. J.,
Hantson, S., Kloster, S., Bachelet, D., Forrest, M., Lasslop, G., Li, F., Mangeon, S., Melton, J. R., Yue, C. and Randerson, J.
T.: A human-driven decline in global burned area, *Science*, 356(6345), 1356–1362, <https://doi:10.1126/science.aal4108>,
2017.
- Arctic Black Carbon impacting on Climate and Air Pollution (ABC-iCAP). Action 7.1: Mitigate open biomass burning on
cropland. <https://bc-policy-landscape.amap.no/action/action-7-1-mitigate-open-biomass-burning-on-cropland>, 2022.
- 830

- Arora, V. K. and Melton, J. R.: Reduction in global area burned and wildfire emissions since 1930s enhances carbon uptake by land. <https://doi:10.1038/s41467-018-03838-0>, 2018.
- 835 [Bahşi, K., Ustaoglu, B., Aksoy, S., & Sertel, E.: Estimation of emissions from crop residue burning in Türkiye using remotely sensed data and the Google Earth Engine platform. In Geocarto International, 38\(1\), 2157052. BBC. Stubble burning: Why it continues to smother north India. <https://www.bbc.com/news/world-asia-india-54930380>, 2023](#)
- 840 [Becker-Reshef, I., Justice, C., Barker, B., Humber, M., Rembold, F., Bonifacio, R., Zappacosta, M., Budde, M., Magadzire, T., Shitote, C., Pound, J., Constantino, A., Nakalembe, C., Mwangi, K., Sobue, S., Newby, T., Whitcraft, A., Jarvis, I., & Verdin, J.: Strengthening agricultural decisions in countries at risk of food insecurity: The GEOGLAM Crop Monitor for Early Warning. In Remote Sensing of Environment \(Vol. 237, p. 111553\). <https://doi.org/10.1016/j.rse.2019.111553>, 2020](#)
- 845 [Blickensdörfer, L., Schwieder, M., Pflugmacher, D., Nendel, C., Erasmi, S. and Hostert, P.: Mapping of crop types and crop sequences with combined time series of sentinel-1, sentinel-2 and Landsat 8 data for Germany. Remote Sensing of Environment, 269, 112831, <https://doi:10.1016/j.rse.2021.112831>, 2022.](#)
- 850 [Boschetti, L., Roy, D. P., & Justice, C. O.: International Global Burned Area Satellite Product Validation Protocol, Part I – production and standardization of validation reference data. <https://lpvs.gsfc.nasa.gov/PDF/BurnedAreaValidationProtocol.pdf>, 2010.](#)
- 855 [Boschetti, L., Roy, D. P., Giglio, L., Huang, H., Zubkova, M., & Humber, M. L.: Global validation of the collection 6 MODIS burned area product. In Remote Sensing of Environment \(Vol. 235, p. 111490\). <https://doi.org/10.1016/j.rse.2019.111490>, 2019.](#)
- 860 [Bondur, V. G., Voronova, O. S., Cherepanova, E. V., Tsidilina, M. N., & Zima, A. L.: Spatiotemporal Analysis of Multi-Year Wildfires and Emissions of Trace Gases and Aerosols in Russia Based on Satellite Data. In Izvestiya, Atmospheric and Oceanic Physics \(Vol. 56, Issue 12, pp. 1457–1469\). <https://doi.org/10.1134/s0001433820120348>, 2020.](#)
- [Brink, A. B., Bodart, C., Brodsky, L., Defourney, P., Ernst, C., Donney, F., Lupi, A., & Tuckova, K.: Anthropogenic pressure in East Africa—Monitoring 20 years of land cover changes by means of medium resolution satellite data. In International Journal of Applied Earth Observation and Geoinformation \(Vol. 28, pp. 60–69\). <https://doi.org/10.1016/j.jag.2013.11.006>, 2014.](#)

- 865 [Chen, Y., Hall, J.V., van Wees, D., Andela, N., Hantson, S., Giglio, L., van der Werf, G., Morton, D., & Randerson, J.: Multi-decadal trends and variability in burned area from the 5th version of the Global Fire Emissions Database \(GFED5\). <https://doi.org/10.5194/essd-15-5227-2023>, 2023.](#)
- [Durbin, J., & Watson, G. S.: Testing for serial correlation in least squares regression.III. *Biometrika* \(Vol. 58, Issue 1, pp. 1–](#)
- 870 [19\). <https://doi.org/10.1093/biomet/58.1.1>, 1971.](#)
- [Franquesa, M., Vanderhoof, M. K., Stavrakoudis, D., Gitas, I. Z., Roteta, E., Padilla, M., & Chuvieco, E.: Development of a standard database of reference sites for validating global burned area products. In *Earth System Science Data* \(Vol. 12, Issue 4, pp. 3229–3246\). <https://doi.org/10.5194/essd-12-3229-2020>, 2020.](#)
- 875 [Friedlingstein, P., O’Sullivan, M., Jones, M. W., Andrew, R. M., Hauck, J., Olsen, A., Peters, G. P., Peters, W., Pongratz, J., Sitch, S., Le Quéré, C., Canadell, J. G., Ciais, P., Jackson, R. B., Alin, S., Aragão, L. E. O. C., Arneeth, A., Arora, V., Bates, N. R., ... Zaehle, S.: Global Carbon Budget 2020. In *Earth System Science Data* \(Vol. 12, Issue 4, pp. 3269–3340\). <https://doi.org/10.5194/essd-12-3269-2020>, 2020.](#)
- 880 [Gao, M., Beig, G., Song, S., Zhang, H., Hu, J., Ying, Q., Liang, F., Liu, Y., Wang, H., Lu, X., Zhu, T., Carmichael, G. R., Nielsen, C. P., & McElroy, M. B.: The impact of power generation emissions on ambient PM_{2.5} pollution and human health in China and India. In *Environment International* \(Vol. 121, pp. 250–259\). <https://doi.org/10.1016/j.envint.2018.09.015>, 2018.](#)
- 885 [Giglio, L., Csizsar, I., & Justice, C.: Global distribution and seasonality of active fires as observed with the Terra and Aqua Moderate Resolution Imaging Spectroradiometer \(MODIS\) sensors. In *Journal of geophysical research: Biogeosciences* \(Vol. 111, No. G2\). <https://doi.org/10.1029/2005JG000142>, 2006.](#)
- 890 [Giglio, L., Descloitres, J., Justice, C. O., & Kaufman, Y. J.: An Enhanced Contextual Fire Detection Algorithm for MODIS. In *Remote Sensing of Environment* \(Vol. 87, Issues 2–3, pp. 273–282\). \[https://doi.org/10.1016/s0034-4257\\(03\\)00184-6\]\(https://doi.org/10.1016/s0034-4257\(03\)00184-6\), 2003.](#)
- [Giglio, L., Randerson, J. T., Van der Werf, G. R., Kasibhatla, P. S., Collatz, G. J., Morton, D. C., & DeFries, R. S.:](#)
- 895 [Assessing variability and long-term trends in burned area by merging multiple satellite fire products. *Biogeosciences*, 7\(3\), 1171–1186. <https://doi.org/10.1002/jgrg.20042>, 2010.](#)

- 900 Giglio, L., Randerson, J. T., & van der Werf, G. R.: Analysis of daily, monthly, and annual burned area using the fourth-generation global fire emissions database (GFED4). In Journal of Geophysical Research: Biogeosciences (Vol. 118, Issue 1, pp. 317–328). <https://doi.org/10.1002/jgrg.20042>, 2013.
- Giglio, L., Loboda, T., Roy, D. P., Quayle, B., & Justice, C. O.: An active-fire based burned area mapping algorithm for the MODIS sensor. In Remote Sensing of Environment (Vol. 113, Issue 2, pp. 408–420). <https://doi.org/10.1016/j.rse.2008.10.006>, 2009.
- 905 Giglio, L., Schroeder, W., & Justice, C. O.: The collection 6 MODIS active fire detection algorithm and fire products. In Remote Sensing of Environment (Vol. 178, pp. 31–41). <https://doi.org/10.1016/j.rse.2016.02.054>, 2016.
- Giglio, L., Boschetti, L., Roy, D. P., Humber, M. L., & Justice, C. O.: The Collection 6 MODIS burned area mapping algorithm and product. In Remote Sensing of Environment (Vol. 217, pp. 72–85). <https://doi.org/10.1016/j.rse.2018.08.005>, 2018.
- 910 Glushkov, I., Zhuravleva, I., McCarty, J.L., Komarova, A., Drozdovsky, A., Drozdovskaya, M., Lupachik, V., Yaroshenko, A., Stehman, S.V. & Prishchepov, A.V.: Spring fires in Russia: Results from participatory burned area mapping with Sentinel-2 imagery. In Environmental Research Letters, 16(12), p.125005. <https://doi.org/10.1088/1748-9326/ac32872021>, 2021.
- 915 Hall, J. V., Loboda, T. V., Giglio, L., & McCarty, G. W.: A MODIS-based burned area assessment for Russian croplands: Mapping requirements and challenges. In Remote Sensing of Environment (Vol. 184, pp. 506–521). <https://doi.org/10.1016/j.rse.2016.07.022>, 2016.
- Hall, J. V., & Loboda, T. V.: Quantifying the Potential for Low-Level Transport of Black Carbon Emissions from Cropland Burning in Russia to the Snow-Covered Arctic. In Frontiers in Earth Science (Vol. 5). <https://doi.org/10.3389/feart.2017.00109>, 2017.
- 925 Hall, J., & Loboda, T.: Quantifying the variability of potential black carbon transport from cropland burning in Russia driven by atmospheric blocking events. In Environmental Research Letters (Vol. 13, Issue 5, p. 055010). <https://doi.org/10.1088/1748-9326/aabf65>, 2018.

- 930 [Hall, J. V., Zibtsev, S. V., Giglio, L., Skakun, S., Myroniuk, V., Zhuravel, O., Goldammer, J. G., & Kussul, N.: Environmental and political implications of underestimated cropland burning in Ukraine. In *Environmental Research Letters* \(Vol. 16, Issue 6, p. 064019\). <https://doi.org/10.1088/1748-9326/abfc04>, 2021.](#)
- [Hall, J. V., Argueta, F., & Giglio, L.: Validation of MCD64A1 and FireCCI51 cropland burned area mapping in Ukraine. In](#)
- 935 [International Journal of Applied Earth Observation and Geoinformation](#) (Vol. 102, p. 102443). <https://doi.org/10.1016/j.jag.2021.102443>, 2021.
- [Hall, J., Argueta, F., & Giglio, L.: Crop Residue Burning Emission Coefficients \(Version 1\) \[Data set\].](#)
- <https://doi.org/10.5281/ZENODO.7013656>, 2022.
- 940
- [Hall, J., Argueta, F., Zubkova, M., Chen, Y., Randerson, J., & Giglio, L.: GloCAB: Global Cropland Area Burned \(Version 1\) \[Data set\]. <https://doi.org/10.5281/zenodo.7860452>, 2023.](#)
- [Hiscox, A. L., Flecher, S., Wang, J. J., & Viator, H. P.: A comparative analysis of potential impact area of common sugar](#)
- 945 [cane burning methods. In *Atmospheric Environment* \(Vol. 106, pp. 154–164\). <https://doi.org/10.1016/j.atmosenv.2015.02.005>, 2015.](#)
- [International Food Policy Research Institute.: Global Spatially-Disaggregated Crop Production Statistics Data for 2010](#)
- [Version 2.0 \[Data set\]. <https://doi.org/10.7910/DVN/PRFF8V>, 2019.](#)
- 950
- [Jack, B. K., Jayachandran, S., Kala, N., & Pande, R.: Money \(Not\) to Burn: Payments for Ecosystem Services to Reduce](#)
- [Crop Residue Burning. <https://doi.org/10.3386/w30690>, 2022.](#)
- [Kong, L., Tang, X., Zhu, J., Wang, Z., Li, J., Wu, H., Wu, Q., Chen, H., Zhu, L., Wang, W., Liu, B., Wang, Q., Chen, D.,](#)
- 955 [Pan, Y., Song, T., Li, F., Zheng, H., Jia, G., Lu, M., Wu, L., Carmichael, G. R.: A 6-year-long \(2013–2018\) high-resolution](#)
- [air quality reanalysis dataset in China based on the assimilation of surface observations from CNEMC. In *Earth System*](#)
- [Science Data](#) (Vol. 13, Issue 2, pp. 529–570). <https://doi.org/10.5194/essd-13-529-2021>, 2021.
- [Kumar, I., Bandaru, V., Yampracha, S., Sun, L., & Fungtammasan, B.: Limiting rice and sugarcane residue burning in](#)
- 960 [Thailand: Current status, challenges and strategies. In *Journal of Environmental Management* \(Vol. 276, p. 11228\). <https://doi.org/10.1016/j.jenvman.2020.111228>, 2020.](#)

- 965 Lasko, K., & Vadrevu, K.: Improved rice residue burning emissions estimates: Accounting for practice-specific emission factors in air pollution assessments of Vietnam. In Environmental Pollution (Vol. 236, pp. 795–806). <https://doi.org/10.1016/j.envpol.2018.01.098>, 2018.
- 970 Laso Bayas, J., See, L., Perger, C., Justice, C., Nakalembe, C., Dempewolf, J., & Fritz, S.: Validation of Automatically Generated Global and Regional Cropland Data Sets: The Case of Tanzania. In Remote Sensing (Vol. 9, Issue 8, p. 815). <https://doi.org/10.3390/rs9080815>, 2017.
- 975 Leal, M. R. L., Galdos, M. V., Scarpore, F. V., Seabra, J. E., Walter, A., & Oliveira, C. O.: Sugarcane straw availability, quality, recovery and energy use: A literature review, Biomass and Bioenergy https://www.academia.edu/15052877/Sugarcane_straw_availability_quality_recovery_and_energy_use_A_literature_review, 2021.
- 980 Li, Y., Tan, M., & Hao, H.: The impact of global cropland changes on terrestrial ecosystem services value, 1992–2015. In Journal of Geographical Sciences (Vol. 29, Issue 3, pp. 323–333). <https://doi.org/10.1007/s11442-019-1600-7>, 2019.
- 985 Lin, H., Feng, X., Fu, T.-M., Tian, H., Ma, Y., Zhang, L., Jacob, D. J., Yantosca, R. M., Sulprizio, M. P., Lundgren, E. W., Zhuang, J., Zhang, Q., Lu, X., Zhang, L., Shen, L., Guo, J., Eastham, S. D., & Keller, C. A.: WRF-GC (v1.0): online coupling of WRF (v3.9.1.1) and GEOS-Chem (v12.2.1) for regional atmospheric chemistry modeling – Part 1: Description of the one-way model. In Geoscientific Model Development (Vol. 13, Issue 7, pp. 3241–3265). <https://doi.org/10.5194/gmd-13-3241-2020>, 2020.
- 990 Liu, T., Marlier, M. E., Karambelas, A., Jain, M., Singh, S., Singh, M. K., Gautam, R., & DeFries, R. S.: Missing emissions from post-monsoon agricultural fires in northwestern India: regional limitations of MODIS burned area and active fire products. In Environmental Research Communications (Vol. 1, Issue 1, p. 011007). <https://doi.org/10.1088/2515-7620/ab056c>, 2019.
- 995 Liu, T., Mickley, L. J., Singh, S., Jain, M., DeFries, R. S., & Marlier, M. E.: Crop residue burning practices across north India inferred from household survey data: Bridging gaps in satellite observations. In Atmospheric Environment: X (Vol. 8, p. 100091). <https://doi.org/10.1016/j.aeaoa.2020.100091>, 2020.
- Liu, T., Mickley, L. J., Gautam, R., Singh, M. K., DeFries, R. S., & Marlier, M. E.: Detection of delay in post-monsoon agricultural burning across Punjab, India: potential drivers and consequences for air quality. In Environmental Research Letters, 16(1), 014014. <https://doi.org/10.1088/1748-9326/abcc28>, 2021.

- 1000 [Lizundia-Loiola, J., Otón, G., Ramo, R. and Chuvieco, E.: A spatio-temporal active-fire clustering approach for global burned area mapping at 250 m from Modis Data, Remote Sensing of Environment, 236, 111493,
<https://doi.org/10.1016/j.rse.2019.111493>, 2020.](#)
- 1005 [Loboda, T., Krankina, O., Savin, I., Kurbanov, E., & Hall, J.: Land Management and the Impact of the 2010 Extreme Drought Event on the Agricultural and Ecological Systems of European Russia. In Land-Cover and Land-Use Changes in Eastern Europe after the Collapse of the Soviet Union in 1991 \(pp. 173–192\). <https://doi.org/10.1007/978-3-319-42638-9> 8, 2016.](#)
- 1010 [McCarty, J., Justice, C., & Korontzi, S.: Agricultural burning in the Southeastern United States detected by MODIS. In Remote Sensing of Environment \(Vol. 108, Issue 2, pp. 151–162\). <https://doi.org/10.1016/j.rse.2006.03.020>, 2007.](#)
- [McCarty, J. L., Korontzi, S., Justice, C. O., & Loboda, T.: The spatial and temporal distribution of crop residue burning in the contiguous United States. In Science of The Total Environment \(Vol. 407, Issue 21, pp. 5701–5712\). <https://doi.org/10.1016/j.scitotenv.2009.07.009>, 2009.](#)
- 1015 [McCarty, J. L., Ellicott, E. A., Romanenkov, V., Rukhovitch, D., & Koroleva, P.: Multi-year black carbon emissions from cropland burning in the Russian Federation. In Atmospheric Environment \(Vol. 63, pp. 223–238\). <https://doi.org/10.1016/j.atmosenv.2012.08.053>, 2012.](#)
- 1020 [Mittal, AS.: Why Farmers in Delhi's Neighbouring States Burn Stubble Despite Ban. <https://www.news18.com/news/opinion/why-farmers-in-delhis-neighbouring-states-burn-stubble-despite-ban-4441712.html>, 2021.](#)
- 1025 [Padilla, M., Stehman, S. V., Ramo, R., Corti, D., Hantson, S., Oliva, P., Alonso-Canas, I., Bradley, A. V., Tansey, K., Mota, B., Pereira, J. M., & Chuvieco, E.: Comparing the accuracies of remote sensing global burned area products using stratified random sampling and estimation. In Remote Sensing of Environment \(Vol. 160, pp. 114–121\). <https://doi.org/10.1016/j.rse.2015.01.005>, 2015.](#)
- [Pettinari, M. L., Lizundia-Loiola, J., & Chuvieco, E.: ESA CCI ECV Fire Disturbance: D4.2.1 Product User Guide - MODIS, version 1.1. Available at: <https://climate.esa.int/en/projects/fire/key-documents/>, 2021.](#)

- 1030 Pryor, S. W., Smithers, J., Lyne, P. and van Antwerpen, R.: Impact of agricultural practices on energy use and greenhouse gas emissions for South African sugarcane production, Journal of Cleaner Production, 141, 137–145, <https://doi.org/10.1016/j.jclepro.2016.09.069>, 2017.
- Rada, N., Liefert, W., Liefert, O., Rada, N., Liefert, W., & Liefert, O.: Productivity Growth and the Revival of Russian Agriculture. Economic Research Report Number 228. <https://doi.org/10.22004/AG.ECON.256716>, 2017.
- 1035 Randerson, J.T., G.R. van der Werf, L. Giglio, G.J. Collatz, and P.S. Kasibhatla.: Global Fire Emissions Database, Version 4.1 (GFEDv4). <https://doi.org/10.3334/ORNLDAAC/1293>, 2018.
- 1040 Rangel, M. G. L., Henríquez, J. R., Costa, J. A. P., & de Lira Junior, J. C.: An assessment of dispersing pollutants from the pre-harvest burning of sugarcane in rural areas in the northeast of Brazil. In Atmospheric Environment (Vol. 178, pp. 265–281). <https://doi.org/10.1016/j.atmosenv.2018.02.006>, 2018.
- 1045 Saggu, G. S., Mittal, S. K., Agarwal, R., & Beig, G.: Epidemiological Study on Respiratory Health of School Children of Rural Sites of Malwa Region (India) During Post-harvest Stubble Burning Events. In MAPAN (Vol. 33, Issue 3, pp. 281–295). <https://doi.org/10.1007/s12647-018-0259-3>, 2018.
- 1050 Sahu, S. K., Mangaraj, P., Beig, G., Samal, A., Chinmay Pradhan, Dash, S., & Tyagi, B.: Quantifying the high resolution seasonal emission of air pollutants from crop residue burning in India. In Environmental Pollution (Vol. 286, p. 117165). <https://doi.org/10.1016/j.envpol.2021.117165>, 2021.
- Schroeder, W., Oliva, P., Giglio, L., & Csiszar, I. A.: The New VIIRS 375 m active fire detection data product: Algorithm description and initial assessment. In Remote Sensing of Environment (Vol. 143, pp. 85–96). <https://doi.org/10.1016/j.rse.2013.12.008>, 2014.
- 1055 Seiler, W., & Crutzen, P.J.: Estimates of gross and net fluxes of carbon between the biosphere and the atmosphere from biomass burning. In Climatic change, 2(3), pp.207-247. <https://doi.org/10.1007/BF00137988>, 1980.
- 1060 Sevimoğlu, O., & Rogge, W. F.: Seasonal variations of PM10 — Trace elements, PAHs and Levoglucosan: Rural sugarcane growing area versus coastal urban area in Southeastern Florida, USA. Part II: Elemental concentrations. In Particuology (Vol. 46, pp. 99–108). <https://doi.org/10.1016/j.partic.2019.05.001>, 2019.

- 1065 Singh, T., Biswal, A., Mor, S., Ravindra, K., Singh, V., & Mor, S.: A high-resolution emission inventory of air pollutants from primary crop residue burning over Northern India based on VIIRS thermal anomalies. In Environmental Pollution (Vol. 266, p. 115132). <https://doi.org/10.1016/j.envpol.2020.115132>, 2020.
- 1070 Sidorenko, S., Trubilin, E., Kolesnikova, E., & Hasegawa, H.: Current situation, issues and trends of mechanization for grain harvesting in the Russian Federation. AMA, Agricultural Mechanization in Asia, Africa and Latin America, 48(2), 31-35. <https://www.researchgate.net/publication/317972041> Current situation issues and trends of mechanization for grain harvesting in the Russian Federation, 2017.
- 1075 Sulla-Menashe, D., & Friedl, M. A.: User guide to collection 6 MODIS land cover (MCD12Q1 and MCD12C1) product. Usgs: Reston, Va, Usa. https://lpdaac.usgs.gov/documents/1409/MCD12_User_Guide_V61.pdf, 2022.
- 1080 Tsendbazar, N. E., de Bruin, S., Mora, B., Schouten, L., & Herold, M.: Comparative assessment of thematic accuracy of GLC maps for specific applications using existing reference data. In International Journal of Applied Earth Observation and Geoinformation (Vol. 44, pp. 124–135). <https://doi.org/10.1016/j.jag.2015.08.009>, 2016.
- 1085 United Nations Framework Convention on Climate Change (UNFCCC): Ukraine National Inventory Report. <https://unfccc.int/documents/476868>, 2022.
- 1090 U.S. Department of Agriculture (USDA) Agricultural Air Quality Task Force.: <https://www.nrcs.usda.gov/conservation-basics/natural-resource-concerns/air/usda-agricultural-air-quality-task-force/pre-2005-agricultural-air-quality-research-task-force/aaqtf-agricultural-burning-policy-recommendations>, 1999.
- 1095 van der Werf, G. R., Randerson, J. T., Giglio, L., van Leeuwen, T. T., Chen, Y., Rogers, B. M., Mu, M., van Marle, M. J. E., Morton, D. C., Collatz, G. J., Yokelson, R. J., & Kasibhatla, P. S.: Global fire emissions estimates during 1997–2016. In Earth System Science Data (Vol. 9, Issue 2, pp. 697–720). <https://doi.org/10.5194/essd-9-697-2017>, 2017.
- 1090 Verburg, P. H., Neumann, K., & Nol, L.: Challenges in using land use and land cover data for global change studies. In Global Change Biology (Vol. 17, Issue 2, pp. 974–989). <https://doi.org/10.1111/j.1365-2486.2010.02307.x>, 2011.
- 1095 Wei, Y., Lu, M., Wu, W., & Ru, Y.: Multiple factors influence the consistency of cropland datasets in Africa. In International Journal of Applied Earth Observation and Geoinformation (Vol. 89, p. 102087). <https://doi.org/10.1016/j.jag.2020.102087>, 2020.

Whitcraft, A. K., Becker-Reshef, I., Justice, C. O., Gifford, L., Kavvada, A., & Jarvis, I.: No pixel left behind: Toward integrating Earth Observations for agriculture into the United Nations Sustainable Development Goals framework. In *Remote Sensing of Environment* (Vol. 235, p. 111470). <https://doi.org/10.1016/j.rse.2019.111470>, 2019.

100

Zhang, T., Wooster, M., de Jong, M., & Xu, W.: How Well Does the ‘Small Fire Boost’ Methodology Used within the GFED4.1s Fire Emissions Database Represent the Timing, Location and Magnitude of Agricultural Burning? In *Remote Sensing* (Vol. 10, Issue 6, p. 823). <https://doi.org/10.3390/rs10060823>, 2018.

105

Zhang, S., Zhao, H., Wu, Z., & Tan, L.: Comparing the Ability of Burned Area Products to Detect Crop Residue Burning in China. In *Remote Sensing* (Vol. 14, Issue 3, p. 693). <https://doi.org/10.3390/rs14030693>, 2022.

110

Zhuang, Y., Li, R., Yang, H., Chen, D., Chen, Z., Gao, B., & He, B.: Understanding Temporal and Spatial Distribution of Crop Residue Burning in China from 2003 to 2017 Using MODIS Data. In *Remote Sensing* (Vol. 10, Issue 3, p. 390). <https://doi.org/10.3390/rs10030390>, 2018.