

Multi-decadal trends and variability in burned area from the 5th version of the Global Fire Emissions Database (GFED5)

Yang Chen¹, Joanne Hall², Dave van Wees³, Niels Andela⁴, Stijn Hantson⁵, Louis Giglio², Guido R. van der Werf³, Douglas C. Morton⁶, James T. Randerson¹

5 ¹Department of Earth System Science, University of California, Irvine, CA, USA

²Department of Geographical Sciences, University of Maryland, College Park, MD, USA

³Faculty of Science, Vrije Universiteit Amsterdam, Amsterdam, Netherlands

⁴BeZero Carbon, London, UK

⁵Earth System Science Program, Faculty of Natural Sciences, Universidad del Rosario, Bogota, Colombia

10 ⁶Biospheric Sciences Laboratory, NASA Goddard Space Flight Center, Greenbelt, MD, USA

Correspondence to: Yang Chen (yang.chen@uci.edu)

Abstract. Long-term records of burned area are needed to understand wildfire dynamics, assess fire impacts on ecosystems and air quality, and improve fire forecasts. Here, we fuse multiple streams of remote sensing data to create a 24-year (1997-2020) dataset of monthly burned area as a component of the 5th version of the Global Fire Emissions Database (GFED5). During 2001-2020, we use the Moderate Resolution Imaging Spectroradiometer (MODIS) MCD64A1 burned area product and adjust for the errors of commission and omission. Adjustment factors are estimated based on region, land cover, and tree cover fraction, using spatiotemporally aligned burned area from Landsat or Sentinel-2. Burned area in croplands, peatlands, and deforestation regions is estimated from MODIS active fire detections. Along Track Scanning Radiometer (ATSR) and Visible and Infrared Scanner (VIRS) active fire data are used to extend the time series back to 1997. Global annual burned area during 2001-2020 is estimated to be 774 ± 63 Mha yr^{-1} or $5.9 \pm 0.5\%$ of ice-free land. Burned area declined by $1.21 \pm 0.66\% \text{ yr}^{-1}$, a cumulative decrease of $24.2 \pm 13.2\%$ over 20 years. The global reduction is primarily driven by decrease of fires in savannas, grasslands, and croplands. Forest, peat, and deforestation fires did not exhibit significant long-term trends. GFED5 global burned area is 93% higher than MCD64A1, 61% higher than GFED4s, and in closer agreement with products from higher resolution satellite sensors. These data may reduce discrepancies between fire emission estimates from activity-based and atmospheric-based approaches, and improve understanding of global fire impacts on the carbon cycle and climate system.

1 Introduction

30 Wildfire is an integral part of the Earth system (Bowman et al., 2009), influencing the structure and functioning of many terrestrial ecosystems (Beerling and Osborne, 2006; Bond, 2016). Humans have a long history of using fire to enhance ecosystem services (Bowman et al., 2011), including the use of prescribed fire to maintain habitat for animal and plant species, increase crop productivity, and control plant disease (Pyne, 2020). Fires on Earth exhibit substantial temporal and spatial variability on regional
35 to global scales as a consequence of both natural variability and human influence. In particular, changes in factors such as fire occurrence, fuel amount, fuel moisture, fuel continuity, fire spread, fire severity,

Deleted: correct

Deleted: cropland, peatland

Deleted: during 2001-2020

Deleted: decreases

Deleted: fire within

Deleted: burned area

Deleted: -

Deleted: top-down

Deleted: bottom-up

Deleted: key

Deleted: diseases

and fire suppression, resulting from multiple global change drivers, have significantly altered fire regimes in recent decades (Archibald et al., 2013; van der Werf et al., 2017).

50 The areal extent of burning is an essential fire characteristic that regulates the amount of gas and particulate matter released into the atmosphere (Seiler and Crutzen, 1980), and the scope of fire impacts on ecosystem function. Accurate delineation of burned area can improve our understanding of fire impacts on the global carbon cycle, atmospheric composition, and climate (van der Werf et al., 2017); fire predictions on daily, seasonal, interannual, and decadal timescales (Chen et al., 2016; Taylor et al., 2013);
55 the development and validation of prognostic fire models (Pereira et al., 2022); and the identification of important climate, ecosystem, and human fire mechanisms that are responsible for variability and trends in fire dynamics (Andela et al., 2017). In this context, burned area mapping provides essential information for a broad community of science and management stakeholders interested in ecosystem conservation, climate mitigation, and approaches for limiting fire impacts on human health and infrastructure.

60 Before the satellite era, burned area was often estimated using field surveys, aerial photographs, and expert opinion, often with statistics aggregated to regional, state, or country-wide areas by workers in fire management agencies (Crutzen and Andreae, 1990). Recent advances in satellite remote sensing have provided an alternative approach for mapping burned areas in a consistent and timely manner (Chuvieco et al., 2019; Giglio et al., 2009). Satellite-based detection has also considerably increased the spatial
65 coverage and resolution of burned area mapping. Most satellite-based algorithms compare the spectral surface reflectance of post-fire images with those of pre-fire images to map burned areas, often using fire-specific vegetation indices in the change detection algorithm (Alonso-Canas and Chuvieco, 2015; Eidenshink et al., 2007; Giglio et al., 2009; Roy et al., 2008). The quality of different satellite-derived burned area products, including the accuracy, uncertainty, frequency, coverage, and resolution, can vary
70 considerably and is dependent on factors such as sensor design, orbit characteristics, and retrieval algorithms (Chuvieco et al., 2019; ~~Mouillot et al., 2014~~).

At a global scale, near-daily repeat coverage from the Moderate Resolution Imaging Spectroradiometer (MODIS) instruments onboard the Terra and Aqua satellites enabled important advances in burned area mapping. High-quality near infrared and shortwave infrared bands at a 500-m spatial resolution provided
75 the basis for change detection using surface reflectance indices sensitive to the impact of fire on vegetation (Giglio et al., 2009; Roy et al., 2008). At the same time, analysis of MODIS mid-infrared and thermal infrared bands (and information from other wavelengths) provided a concurrent set of active fire observations (Giglio et al., 2016), which have been shown to be highly effective in providing training data needed to separate burned and unburned areas in a locally-adaptive manner (Giglio et al., 2018).
80 Analysis of these MODIS fire products has enabled the characterization of long-term burned area trends (Andela et al., 2017), regional variations in fire number and fire size (Andela et al., 2019), and the effects of climate on fire occurrence, expansion, and duration (Balch et al., 2022; Gutierrez et al., 2021).

More recently, a revolution is underway in estimating regional and global burned area using ~~finer-~~
resolution satellite imagery from Landsat (Hawbaker et al., 2017) and Sentinel-2 (Roteta et al., 2019).
85 Several technical advances have made it practical to map burned areas at continental scales at 20-m (Sentinel-2) or 30-m (Landsat) spatial resolution. First, with two Sentinel-2 satellites launched in 2015 and 2017 in complementary orbits, the revisit time for tropical areas is now less than 5 days (Drusch et

Deleted:).

Deleted: higher

90 al., 2012). This more frequent coverage is essential for mapping fires in tropical areas where there is
considerable cloud cover and the imprint of a grassland fire on land surface reflectance may persist only
for a period of several weeks, depending on the timing of the fire relative to the onset of the wet season
(Melchiorre and Boschetti, 2018). Second, improved computation and data infrastructure, including
cloud computing and the software infrastructure provided by the Google Earth Engine and other online
95 services, has made it easier to work with the large data volumes required for burned area mapping at this
resolution (Franquesa et al., 2020; Roteta et al., 2021). Third, a new generation of thermal anomaly and
active fire detection from the Visible and Infrared Imaging Spectroradiometer (VIIRS) on Suomi-NPP
and NOAA-20 satellites at a 375-m resolution (Schroeder et al., 2014) provides access to a ~~finer~~
100 resolution and more sensitive set of fire detections for use in the design and validation of burned area
mapping algorithms. Compared to the coarser-resolution burned area products from MODIS, the Landsat
and Sentinel-2 burned area products are more effective in mapping burned areas from small fires. Analysis
of the Sentinel-2 burned area product from Africa has revealed an 80% increase relative to the standard
MODIS-based NASA burned area product (MCD64A1 C6) for ~~2016~~ (Ramo et al., 2021; Roteta et al.,
2019).

Deleted: higher

Deleted: the year

105 However, within cropland - a quintessential small fire landscape - there are still technological limitations
that impact the ability to accurately map the full extent of burned area. These fires occur on a
heterogeneous, managed landscape where the burn scar is often manipulated by plowing or seeding within
hours or days after the fire (Hall et al., 2021a). Therefore, the 3-5 day combined Sentinel-2 and Landsat
revisit time is often too long to capture all the burns. While MODIS data has more temporal coverage,
110 field sizes are typically smaller than 1-2 MODIS pixels, so the spectral reflectance change induced by fire
is often not strong enough to trigger thresholds in the burned area detection algorithm. This leads to an
underestimation from MODIS-based burned area products (Hall et al., 2016; Hall et al., 2021b).
Consequently, active fire products are very useful for identifying these small burns, although the timing
and short duration of actively burning fires may impact the ability to map the full extent of agricultural
115 burns with the current generation of satellite sensors.

While the future of global burned area mapping is likely to occur at the ~~fine~~ resolution of 20-30 m,
leveraging the combined information provided by Sentinel-2 and Landsat (Claverie et al., 2018), the time
series of more frequent observations required for burned area mapping in many tropical areas is quite
limited. There is a need to understand longer-term trends and variability in burned area for many science
and management applications. An important challenge in this regard is to find ways to harmonize the
120 information contained in the earlier (and coarser-resolution) fire products with the information provided
by the new Sentinel-2 and Landsat data, drawing upon the higher sensitivity to fire detection but shorter
duration (and limited spatial coverage) of the newer products.

Deleted: higher

125 In this study, we combine information from coarser (MODIS) and finer (Landsat and Sentinel-2)
resolution satellite imagery time series to create a 24-year (1997-2020) record of global burned area at
0.25° (or 1°) spatial and monthly temporal resolution, as a component of the 5th version of the Global
Fire Emissions Database (GFED5). The 20-year (2001-2020) MODIS active fire (Giglio et al., 2016) and
burned area (Giglio et al., 2018) products serve as the backbone of the time series we develop. By
comparing spatiotemporally aligned burned area estimates for selected reference scenes, we derive
130 region- and vegetation-specific corrections for reducing omission and commission errors in the 500-m

MODIS burned area. An explicit cropland-specific burned area methodology that relies on active fire detections is used to improve the quantification of crop-residue burned area (Hall et al., 2023). We also use active fire detections from the Along Track Scanning Radiometer (ATSR) (Arino et al., 1999) and the Visible and Infrared Scanner (VIRS) (Giglio et al., 2003) to extrapolate the adjusted burned area to include the pre-MODIS era (1997-2000), although the spatiotemporal variability is not as well preserved as during the MODIS era.

The details of the algorithms and data used for deriving the burned area are presented in Section 2. In Section 3, we report long-term trends and variability of regional and global burned area with our new time series. We also compare our data with multiple independent regional and global burned area products. In Section 4, we discuss the implications and uncertainty of the new dataset and identify directions for future research. After presenting data availability in Section 5, we describe our main conclusions in Section 6.

2 Data and method

2.1 Method overview

Our approach to estimate GFED5 global burned area (Fig. S1) at 0.25° spatial resolution and monthly time step during the MODIS era (2001-2020) takes advantage of the high spatial resolution and detection sensitivity of burned area products from Landsat and Sentinel-2. Additionally, it leverages more frequent observations, global coverage, and extensive time series provided by the Terra and Aqua MODIS fire products, surpassing the temporal capabilities of Landsat and Sentinel-2. We separately derived the burned area for fires over normal land cover types, croplands, tropical peatlands, and deforestation regions in each 0.25° grid cell (x) and month (t) during 2001-2020 (Eq. 1).

$$BA_{GFED5}(x, t) = \sum_v BA_{GFED5-norm}(x, t, v) + BA_{GFED5-crop}(x, t) + BA_{GFED5-peat}(x, t) + BA_{GFED5-defo}(x, t) \quad (1)$$

The total GFED5 burned area, $BA_{GFED5}(x, t)$, was estimated as the sum of the adjusted normal burned area (based on Eq. 2 below) aggregated over all land cover types ($\sum_v BA_{GFED5-norm}(x, t, v)$), and the additional burned area from cropland fires ($BA_{GFED5-crop}(x, t)$), peat fires ($BA_{GFED5-peat}(x, t)$), and deforestation fires ($BA_{GFED5-defo}(x, t)$). The normal land cover types (v) are defined as the 17 vegetation classes as shown in Table S1.

$$BA_{GFED5-norm}(x, t, v) = \sum_{tc} (BA_{MCD64A1}(x, t, v, tc) \times \alpha(v, tc, reg) + AF_{MODIS,out}(x, t, v, tc) \times \beta(v, tc, reg)) \quad (2)$$

The core input dataset for GFED5 monthly normal burned area ($BA_{GFED5-norm}(x, t, v)$) during the MODIS era is the 500-m MODIS MCD64A1 burned area product ($BA_{MCD64A1}(x, t, v, tc)$; see Section 2.2.1 for detail). By comparing this dataset with a suite of finer-resolution reference burned area datasets derived from Landsat or Sentinel-2 imagery (Section 2.3), we made two adjustments to account separately for commission and omission errors at the coarser 0.25° resolution. Within MODIS burned perimeters, we expected the presence of sub-pixel unburned islands, considering that not all the area within a 500-m cell is required to burn in order for the MODIS burned area algorithm to flag a pixel as burned (Giglio et al., 2018). We adjusted for this commission error by multiplying the MCD64A1 burned area with a

Deleted: submitted

Deleted: section

Deleted: section

Deleted: section

Deleted: We

Deleted: section 5

Deleted: higher

Deleted: , as well as the higher temporal frequency

Deleted: long

Deleted: of

Deleted: β
For most and

Moved (insertion) [1]

Deleted: (denoted as normal

Deleted:), we used the monthly

Deleted:) as the basis for estimating GFED5 burned area in each $0.25^\circ \times 0.25^\circ$ grid cell (x) and monthly time step (t), as shown by the $BA_{MCD64A1}$ term in Eq. (1).

Deleted: expect

correction scalar (α) derived from fine-resolution burned area and spatiotemporally aligned MCD64A1 burned area images, allowing α to vary as a function of vegetation type (v), tree cover fraction bin (tc), and continental-scale GFED region (reg). The scalar α is unitless (the ratio of two different areas) and typically varies from 0.5 to 0.9. The overall correction for commission errors using information from α is given by the first term in the right-hand side of Eq. 2, with 1 minus α representing the fraction of unburned islands within the MCD64A1 burned area according to the fine-resolution burned area data. At the same time, there are also small fires or incompletely mapped burned areas by the MCD64A1 burned area algorithm, mostly due to its coarser spatial resolution. These omission errors have been shown to contribute to low biases in burned area at regional and global scales, especially at the beginning and end of the fire season (Ramo et al., 2021; Randerson et al., 2012). We corrected for omission errors by multiplying the surface area of MODIS active fire detections outside the perimeter of 500-m MCD64A1 burned area pixels ($AF_{MODIS,out}$) with a scalar, β , derived from the ratio of Landsat or Sentinel-2 reference burned area to the corresponding $AF_{MODIS,out}$, again as a function of vegetation type, tree cover fraction bin, and GFED region. The scalar β is also unitless (the ratio of two different areas) and typically varies between 0.5 and 4.0. The overall term describing the omission error correction using β is given by the second term in the right-hand side of Eq. 2. The two sets of correction scalars α and β used in Eq. 2 were derived using the aggregated sums of burned area and active fires from MODIS, as well as the fine-resolution burned data from Landsat or Sentinel-2 in different reference tiles (Table 1).

Eq. 2 was only used to estimate *normal* burned area ($BA_{GFED5-norm}$), which does not include vegetation burning in croplands ($BA_{GFED5-crop}$), tropical peatlands ($BA_{GFED5-peat}$), or that associated with deforestation ($BA_{GFED5-defo}$). Burned areas for these fire types are often difficult to map using MODIS surface reflectance imagery, so we used specific approaches that rely on the scaling of active fire detections (AF_{MODIS}) to calculate the GFED5 burned area for these cases, (Eq. 3).

$$BA_{GFED5-[crop,peat,defo]}(x,t) = AF_{MODIS,[crop,peat,defo]}(x,t) \times \gamma_{[crop,peat,defo]} \quad (3)$$

For cropland burned area estimates, we used the Global Cropland Area Burned (GloCAB; Hall et al., 2023) product which scales MODIS active fire pixels to match manually mapped crop-specific burned area reference data (Hall et al., 2021a) across major global agricultural regions. The scalar for peatland burning was derived by comparing the surface area of MODIS active fire detections with burned area mapped using Landsat imagery in the peatlands of Mawas, Central Kalimantan, Indonesia. Peat areas where the algorithm was applied both within Mawas and across the tropics as a whole were identified using version 2 of the Global Wetlands map (Gumbrecht et al., 2017). The scalar for deforestation burning was derived by comparing the cumulative surface area of MODIS active fire detections in deforestation areas with the long-term deforestation area reported by PRODES (Programa de Monitoramento da Floresta Amazônica Brasileira por Satélite) for the Brazilian Legal Amazon (Almeida et al., 2022). For more information on how each term in Eqs. 1 – 3 was estimated, see Section 2.4.

Prior to the MODIS era (1997-2000), we scaled active fire detections from two other satellite sensors, ATSR or VIRS, to approximate the monthly burned area at a coarser spatial resolution (1°). The scaling coefficients were derived from $BA_{GFED5}(x,t) = \sum_v BA_{GFED5-norm}(x,t,v) + BA_{GFED5-crop}(x,t) + BA_{GFED5-peat}(x,t) + BA_{GFED5-defo}(x,t)$ linear regressions between GFED5 burned area (including contributions from all fire types) and active fire detections from the ATSR or VIRS during years when

Deleted: higher

Deleted: (1),

Deleted: higher

Deleted: †

$$BA_{GFED5-norm}(x,t,v) = \sum_{tc} (BA_{MCD64A1}(x,t,v,tc) \times \alpha(v,tc,reg) + AF_{MODIS,out}(x,t,v,tc) \times \beta(v,tc,reg)) \quad (1)$$

Deleted: (1).

Deleted: (1)

Deleted: (in each 0.25° grid cell)

Deleted: and

Deleted: higher

Deleted: (

Deleted:)

Deleted: (1)

Deleted: .

Deleted: submitted

Deleted: The total GFED5 burned area for each 0.25° grid cell during the MODIS era (2001-2020) was estimated as the sum of the adjusted MODIS *normal* burned area aggregated over all vegetation types, and the additional burned area from cropland fires, peat fires, and deforestation fires (Eq. (2)).

Moved up [1]: †

$$BA_{GFED5}(x,t) = \sum_v BA_{GFED5-norm}(x,t,v) + BA_{GFED5-crop}(x,t) + BA_{GFED5-peat}(x,t) + BA_{GFED5-defo}(x,t) \quad ($$

these datasets overlap. [The detailed approach for estimating](#) GFED5 burned area [for](#) the 1997-2000 period [is described in](#) Section 2.5.

2.2 Primary datasets for burned area development

255 We used several datasets at the MODIS spatial resolution (500-m) for the purpose of global burned area estimation and adjustment. A list of the datasets used in this study is summarized in Table 2 and described in detail below.

2.2.1 MODIS 500-m burned area

260 The MODIS instruments on NASA's Terra and Aqua satellites have provided global fire data for [over](#) two decades. In this study, we used the Terra and Aqua combined Collection 6 monthly Burned Area data product (MCD64A1) (Giglio et al., 2018) as the core basis for deriving the GFED5 burned area dataset during 2001-2020. The MODIS MCD64A1 burned area data also served as a spatial mask to separate the [fine](#)-resolution burned area images from Landsat or Sentinel-2 and MODIS active fire data into two classes (denoted as *in* or *out*). Landsat or Sentinel-2 burned area within (overlapping with) the MCD64A1 pixels were used to derive commission correction factors. Landsat or Sentinel-2 burned area data and MODIS active fires outside of the perimeter of MCD64A1 pixels were used together to estimate the omission correction factors. MCD64A1 data are available from NASA and the University of Maryland fuoco sftp site ([sftp://fuoco.geog.umd.edu](http://fuoco.geog.umd.edu)). All data files are in Hierarchical Data Format (*hdf*) at MODIS sinusoidal projection, and contain data layers of burn date, burn data uncertainty, quality assurance, and other attributes.

2.2.2 MODIS active fires

275 In addition to the MODIS burned area, we also used the Terra and Aqua MODIS Collection 6 Thermal Anomalies/Fire locations 1-km data product (MCD14ML) (Giglio et al., 2016). The MCD14ML product records actively burning fires, considerably smaller than those detected by the MODIS burned area algorithm (Giglio et al., 2006a). The monthly MCD14ML text files record multiple attributes associated with each active fire pixel detected by MODIS. Each record contains the center latitude and longitude location, the date and time of the detection, the satellite platform (Terra or Aqua), the along-scan sample position, the hot spot type, confidence level, and other attribute fields. The spatial resolution of the MODIS active fire product varies from 1 km × 1 km at nadir to 4.8 km × 2.0 km at the scan edge. We only used active fire pixels with fire type marked as '*presumed vegetation fire*'. In [calculating](#) non-crop type burned areas, we [filtered](#) out pixels with confidence [levels](#) smaller than 30% and scan angles greater than 0.5 radians (30°) (corresponding to a maximum pixel area of ~1.7 km²) to reduce the geolocation error.

285 MODIS MCD14ML fire location data was used in this study for deriving scalars and estimating burned area (for all types of burning as shown in Eq. 2). We also used the MCD14ML data to calculate annual fire persistence (Chen et al., 2013), which in turn was used to estimate the deforestation mask and derive burned area for fires associated with deforestation (see [Section](#) 2.2.6 for more information). For ease of

Deleted: in time. We used coefficients from these regressions along with ATSR and VIRS active fire data from the pre-MODIS era to extrapolate the

Deleted: over

Deleted: (

Deleted:).

Deleted: more than

Deleted: higher

Deleted: ,

Deleted: that are

Deleted: the calculation of

Deleted: also

Deleted: level

Deleted: (

Deleted:).

Deleted: section

Deleted: the

305 comparison with other MODIS data, we converted the original active fire location data to monthly 500-
m rasterized images of active fire area masks (AF_{MODIS}). In order to do this, we first determined the 500-
m sinusoidal grid cell that contains each valid active fire detection. We then marked this grid cell and the
8 surrounding cells as the active fire area, considering that about 10% of the MODIS active fires were
outside but within 1500 m of the boundary of the burned area patch (Hantson et al., 2013). While this
310 assumption may not have a substantial impact on the total burned area estimate (as we used fine-resolution
burned area to calibrate the scaling coefficients), it does not translate into a constant distance buffer across
all tiles of the sinusoidal grid. According to the source of the satellite, we created three active fire datasets
(1 for Terra only, 1 for Aqua only, and 1 for Terra and Aqua combined) for each month.

The orbital dynamics for Terra and Aqua satellites provide denser spatial coverage toward the poles (and
315 more daily overpasses), which changes the absolute number of active fires that are detected for a fire of
the same size, intensity, and duration (Giglio et al., 2006b). Thus, MODIS active fire observations have
systematic differences in their fire detection efficiency over different latitudinal bands. This becomes an
issue when we derive scalars for use in a single GFED region that spans a wide range of latitudes. To
correct this effect, we adjusted the MODIS-derived active fire area by multiplying it with a latitude-
320 dependent overpass coefficient ($AF_{MODIS,adj} = AF_{MODIS,ori} \times \cos(\text{latitude})$). After the adjustment with this
unitless coefficient, the AF_{MODIS} data are normalized to the overpass frequency at the equator. Note that
this adjustment was performed during the process of deriving the omission error correction scalar, and
also during the GFED5 burned area estimation by converting MODIS active fire data to burned area.

2.2.3 Land cover type

325 In this study, we used the Collection 6 MODIS land cover type product (MCD12Q1) derived using a
supervised classification of MODIS reflectance data (Friedl et al., 2010). The MCD12Q1 product maps
annual global land cover at 500-m resolution using multiple land cover classification schemes. We
reclassified the IGBP classification in MCD12Q1 to include 20 land cover types (Table S1 of van Wees
et al., 2022) with additional masks coming from the FAO Global Ecological Zones (GEZ) 2010 update
330 (FAO, 2012) for separating the tropical, temperate, and boreal zones. The reclassified 500-m land cover
type (LCT) files were saved in GeoTIFF format with a MODIS sinusoidal projection and used in this
study to assign burned area and active fire pixels according to normal vegetation burning types. Active
fires sampled in pixels of classes 12, 14, and 19 (Table S1) were aggregated and used with ancillary
information to estimate cropland burned area. All pixels within the mask of peatland (see Section 2.2.5)
335 or the annual area of active deforestation (see Section 2.2.6) were considered as special types of burning,
regardless of their original MODIS-based land cover type.

2.2.4 MODIS 250m vegetation cover data

For a given land cover type, there can be significant variations in the density of vegetation that influences
the relationship between active fire detection and burned area and the efficacy of burned area detection.
340 Here we used the annual Fractional Tree Cover (FTC) layer in the 250-m Terra and Aqua combined
Collection 6 Vegetation Continuous Fields product (MOD44B) (DiMiceli et al., 2021; Hansen et al.,
2005) to further aggregate burned pixels into FTC (t_c) bins (a total of 10 bins, each with a width of 10%)

Deleted: taking into account

Deleted: higher

Deleted: both

Deleted: for

Deleted: bias

Deleted: that was

Deleted: at

Deleted: As described below, areas in peatlands

Deleted: undergoing

Deleted: separately identified and used to replace the modified

Deleted: types shown in Table S1.

355 for the purpose of estimating commission and omission corrections. The original data from USGS Land
Processes Distributed Active Archive Center (LP DAAC, <https://lpdaac.usgs.gov/products/mod44bv006/>)
were resampled to 500-m resolution at the MODIS sinusoidal projection to be compatible with other data.

2.2.5 Tropical and subtropical peatland map

360 The Global Wetlands Map was produced by the Sustainable Wetlands Adaptation and Mitigation Program
(SWAMP) using a hydro-geomorphological model based on an Expert System approach (Gumbricht et
al., 2017). Here, we used version 2 of the Global Wetlands Map that is available for downloading at the
Center for International Forestry Research (CIFOR) website (<https://www2.cifor.org/global-wetlands/>).
Specifically, we combined the peatland cover layer in this dataset with MODIS data to extract the burned
area and active fire area in tropical and subtropical peatland areas. The original 231-m GeoTIFF data was
365 reprojected, cropped to **latitudinal bands of 60°S - 40°N, and aligned** with the 500-m MODIS sinusoidal
grid.

Deleted: for tropical and subtropical regions (60°S - 40°N)

Deleted: and

Deleted: align

2.2.6 Fire persistence and deforestation mask

370 MODIS active fire data were also used for deriving deforestation masks in this study. Fire persistence
(FP), defined as the mean number of days with active fire detections within a region during a calendar
year, has been shown to be a good indicator of aggregated burning and often used for classifying
deforestation fires (Chen et al., 2013; Giglio et al., 2006a; Morton et al., 2008). Here we counted the
number of active pixels at 500-m resolution for each year using the MODIS active fire data (recorded by
both Terra and Aqua), and then calculated mean FP values for each 5-km and 0.25° grid cell, respectively.
The annual fire persistence data, together with the yearly MODIS FTC data (from MOD44B), were used
to derive a 5-km annual mask for tropical deforestation. All active fire area (AF_{MODIS}) located within this
375 mask were considered burning associated with deforestation fires. The deforestation mask was created
only for 0.25° grid cells within the tropical forest biome, with a mean fractional tree cover greater than
20%, and a mean fire persistence greater than 1.2. Within these cells, the 5-km sub-pixels with mean FP
greater than 1.5 were used as the tropical deforestation mask. During 2001-2002, the FP value was derived
using active fire detections recorded by Terra MODIS only. To adjust for the period with Terra-only data,
380 we lowered the 0.25° FP threshold from 1.2 to 1.08 and the 5-km FP threshold from 1.5 to 1.23 in the
calculation of the tropical deforestation mask for 2001 and 2002. These new thresholds were optimized
using the 2003-2020 period for which both Terra and Aqua data were available, so that the total
deforestation area from Terra (summed over the tropics) was the same as that derived using both Terra
and Aqua data.

385 2.3 Landsat and Sentinel-2 burned area datasets

390 In recent decades, Landsat or Sentinel-2 imagery has been used to generate burned area products in many
regions for various purposes (Franquesa et al., 2020; Gaveau et al., 2021; Glushkov et al., 2021; Goodwin
and Collett, 2014; Hall et al., 2020; Hawbaker et al., 2020; Roteta et al., 2019; Souza et al., 2020; Vetrina
and Cochrane, 2019). We gathered multiple sources of Landsat or Sentinel-2 burned area products (Table
1) for use in calibrating scaling coefficients and validating our GFED5 burned area time series. Among

Deleted: at higher spatial resolution

395 these high-resolution products, some have been manually inspected and quality assured, while others have
been derived using an automated burned area algorithm.

2.3.1 Reference datasets from BARD

400 The Burned Area Reference Database (BARD) was created and compiled by the European Space
Agency's (ESA) Climate Change Initiative (CCI) program (Franquesa et al., 2020). This publicly
available database includes several global and regional burned area reference datasets from multiple
international projects (Franquesa et al., 2020). These datasets were derived from Landsat or Sentinel-2
imagery, have undergone internal quality checks including visual inspection, and have been reprojected
and reformatted with a uniform set of attributes and metadata descriptors. The BARD database is available
405 for download from the e-cienciaDatos repository (<https://doi.org/10.21950/BBQU7>). The initial BARD
database included 6 reference datasets, with image tiles located in a continental or sub-continental region
(NOFFi data in Greece, AFR and AFRS2 in Africa, and CONUS data in the USA), or distributed across
the globe (FireCCI Global 2008 and FireCCI Global 2003-2014). Another global dataset (C3S) was added
to BARD in 2021 (Lizundia-Loiola et al., 2021).

410 The BARD burned area perimeters are stored in shapefile format in UTM/WGS84 projection. Each
dataset includes a summary metadata csv file (which contains the acquisition dates of the pre-fire and
post-fire images), a shapefile of all image locations for each project, and shapefiles of all vectors within
each image boundary that indicate the status of burning: (1) burned area, (2) undetected area, and (3)
unburned area.

2.3.2 Automated datasets

415 The reference datasets in BARD are quality-assured, but their spatiotemporal coverage is often limited.
In addition to the reference datasets in BARD, we used several regional or global burned area products
| ~~derived from automated algorithms developed for Landsat or Sentinel 2 imagery.~~

Deleted: that were

420 The National Burned Area Composite (NBAC) is a GIS database and system developed by the Canada
Centre for Mapping and Earth Observation and the Canadian Forest Service (Hall et al., 2020). By using
the best data source(s) available for each fire event, including field maps, airborne maps, 30-m Landsat
imagery, and 1-km MODIS hotspots, this tool produced the area of forest burned in Canada for each year
since 1986. Note that burned area in cropland is excluded from this dataset. The annual burned area data
| in shapefiles can be downloaded from the [Canadian Wildland Fire Information System \(CWFIS\)](https://www.cwfis.org/)
Datamart (<https://cwfis.cfs.nrcan.gc.ca/datamart>).

Deleted: CWFIS

425 An automated approach based on the time series of Landsat 5, 7, 8 and Sentinel-2A imagery was recently
developed to classify burned area in the state of Queensland (QLD), Australia (Goodwin and Collett,
2014). This approach combines the spectral, thermal, temporal and contextual information from satellite
imagery. The monthly burned area data across QLD over 1987-2016 (Collett, 2022) are available for
download at the Terrestrial Ecosystem Research Network (<https://portal.tern.org.au/annual-scars-landsat-qld-coverage/22979>). Each annual data file (in GeoTIFF format) contains the month of first detection for
430 pixels at Landsat resolution (30-m).

435 The MAWAS dataset provides maps of annual burned area for part of the Mawas conservation program
in Central Kalimantan, Indonesia from 1997 through 2015 (no fires were recorded in 2008 and 2010)
(Vetrita and Cochrane, 2019). Landsat imagery (TM, ETM+, OLI/TIR) at 30-m resolution serves as the
primary imagery used for the burned area classification. A random forest classifier was used to separate
burned and unburned 30-m pixels with inputs of composites of Landsat indices and thermal bands, based
440 on the pre- and post-fire values. Annual burned area shapefiles are available for download at Oak Ridge
National Laboratory Distributed Active Archive Center (<https://doi.org/10.3334/ORNLDAAC/1708>).

Drawing on time series analysis of Sentinel-2 imagery, Gaveau et al. (2021) created a new burned area
dataset for 2019 in Indonesia (IDNS2) using a supervised random forest classification algorithm. An
independent reference dataset (IDNS2Ref) was also developed by randomly sampling burned and
unburned sites, and visually detecting a smoke plume, burn, or heat source from the archive of original
445 Sentinel-2 images. Both the burned area dataset and the reference dataset are in shapefile format. The
burned area dataset contains annual burned polygons across the region, while the reference dataset
contains the locations of reference points. Both datasets can be downloaded at the open access data
repository Zenodo (<https://doi.org/10.5281/zenodo.4551243>).

An algorithm combining Sentinel-2 MSI images and MODIS active fire detections was developed and
450 implemented by ESA CCI to generate the Small Fire Database which contains 20-m burned area
estimations covering the Sub-Saharan region in Africa (Roteta et al., 2019). Version 1.1 product
(FireCCISFD11) contains monthly burned area (in *GeoTIFF* format) is available for 2016 at pixel or grid
resolutions at the Centre for Environmental Data Analysis (CEDA) archive
(<https://catalogue.ceda.ac.uk/uuid/065f6040ef08485db989cbd89d536167>). The updated version 2
455 product covers Sub-Saharan Africa for the year 2019.

MapBiomias is a multi-disciplinary network aiming to reconstruct annual land use and land cover
information between 1985 and 2020 for Brazil (Souza et al., 2020). MapBiomias mapped fire scars in
Brazil using mosaics of Landsat images and a classification algorithm based on deep neural networks
(Alencar et al., 2022). We downloaded the 2019 MapBiomias burned area product (MAPB) from the
460 Mapbiomas website (<https://mapbiomas.org/en/colecoes-mapbiomas-1>).

Imagery from different generations of satellites in the Landsat program has been used by the United States
Geological Survey (USGS) to generate annual burned area products in the contiguous United States
(CONUS) (Hawbaker et al., 2020; Vanderhoof et al., 2017) for years since 1984. Here we used the
Collection 1 CONUS Landsat Burned area dataset
465 (<https://www.sciencebase.gov/catalog/item/587017d7e4b01a71ba0c5ff7>) that was derived from an
updated algorithm (Hawbaker et al., 2020) from the earlier Landsat Burned Area Essential Climate
Variable (BAECV) algorithm. Note that burned area mapping using Landsat has been shown to be
challenging in many agricultural and rangeland ecosystems (Vanderhoof et al., 2017).

Using Sentinel-2 optical satellite imagery, a spring-specific burned area dataset was created on the
470 territory of the Russian Federation from January 1 to May 15, 2020 (Glushkov et al., 2021). The mapping
was based on a participatory crowdsourcing digitizing approach that was specifically designed for rapid
land-change assessment. This burned area dataset (RUSS2) is available at the Greenpeace website in
shapefile format (https://maps.greenpeace.org/maps/spring_fires_2020).

2.3.3 Geospatial data pre-processing

475 The Landsat and Sentinel-2 burned area datasets (reference or automated) described above have different
data formats and resolutions. Before using them for adjusting MCD64A1 burned area, we processed these
datasets and converted them into a uniform format. Specifically, for data in vector shapefile format, we
first rasterized each reference image at 20-m resolution (close to the resolution of Sentinel-2 multispectral
instrument MSI). The output GeoTIFF files have a sinusoidal projection, compatible with the sinusoidal
480 grids used by the MODIS land data products. We then aggregated the 20-m images to 500-m resolution
(still in sinusoidal projection) by calculating the total area of burned scars (BA), unburned regions (UBA),
and undetected regions (UDA) (if available in the original dataset) within each 500-m pixel. This
preprocessing of the higher resolution burned area data enabled an easier spatial alignment with the
MODIS data and facilitated the derivation of correction scalars used for adjusting MCD64A1 burned area
485 described below.

2.4 Estimating burned area for the MODIS era (2001-2020)

2.4.1 Deriving correction scalars for commission and omission errors

To estimate and account for commission and omission errors within the MCD64A1 burned area product
(for the *normal* type burning), we calculated two sets of correction scalars (α and β in Eq. 2) using the
490 area sums derived from resized Landsat or Sentinel-2 burned area and spatiotemporally aligned MODIS
data at 500-m resolution. For each fine resolution burned area image used for calibration, we extracted
the MODIS burned area, active fire area, as well as land cover type data (including the derived masks for
croplands, deforestation and tropical peatlands) and fractional tree cover data that overlapped spatially
495 and temporally with the reference burned area (Figure 1). Note the same year data of vegetation and
deforestation masks were used for pixel classification. If the detection date of a MODIS burned area pixel
is within the temporal range defined by the pre-burning and post-burning dates of the reference image,
this pixel will be marked as burned. We summed up the total burned area from MODIS MCD64A1
($BA_{MCD64A1}$). Similarly, a 500-m resampled active fire grid cell is marked as burned if the recording date
is within the temporal range of the Landsat or Sentinel-2 reference data. By using the MODIS image
500 corresponding to each reference tile, we defined two masks representing the area within (*'in'*) and outside
(*'out'*) of the MODIS burned scar. Note that all pixels marked as 'UDA' (undetected area) were explicitly
excluded from both masks. With these masks, we summed up the total fine resolution burned areas ($BA_{hr,in}$
and $BA_{hr,out}$) and MODIS active fire areas ($AF_{MODIS,in}$ and $AF_{MODIS,out}$) for each land cover type and each
tree cover fraction bin (based on MODIS vegetation cover data). When calculating the $AF_{MODIS,out}$ sum,
505 we excluded all active fire pixels within the 500-m buffer of a MODIS MCD64A1 burned pixel (i.e., the
8 pixels surrounding each burned area pixel).

A look-up table of correction scalars for *normal* type burned area (α and β in Eq. 2) was derived using
aggregation of these area sums from different reference data sets (Table 1). The commission scalar α
was calculated as the ratio of total $BA_{hr,in}$ to total $BA_{MCD64A1}$. The omission scalar β was defined as the ratio
510 of total $BA_{hr,out}$ to total $AF_{MODIS,out}$. To enable the calculation for cases when either Terra or Aqua data
are unavailable (see Section 2.4.4 for detail), we created three sets of β using AF_{out} from Terra only (T),

Deleted: higher resolution

Deleted: (1)

Deleted: higher-

Deleted: are

Deleted: overlapped

Deleted: burning

Deleted: higher-

Deleted: fires

Deleted: that were

Deleted: (1)

Deleted: Sect.

525 from Aqua only (A), and from both Terra and Aqua MODIS (M). Burning pixels within the masks of cropland, tropical peatlands, and deforestation were excluded from summation of areas and derivation of α and β in Eq. 2.

530 Considering the balance between representativeness and sampling density soundness, we computed α and β as a function of GFED region (14 in total, Figure 2), *normal* land cover type (17 in total, Table S1), and fractional tree cover bin (10 in total). For each GFED region, we selected several reference datasets for deriving correction scalars (Table S2) and left others for independent validation of the adjusted burned area (Table 1). We preferentially used reference tiles with higher quality (in particular those from the BARD database), spatial coverage, and sampling for the calculation of scalars in each region. The reference scenes we selected spanned all major regions of vegetation fires (Figure 2) and were relatively evenly distributed across the globe. Since the Middle East (MIDE) and northern hemisphere South America (NHSA) regions did not have enough reference burned area samples, we merged the region 535 MIDE with northern hemisphere Africa (NHAF) and the region NHSA with southern hemisphere South America (SHSA), respectively (Table S2). For each region, we derived scalars α and β as a function of land cover type and tree cover fraction bin using the area sums from all valid reference tiles. For each unique combination of FTC bin (tc) and land cover type (v) where total recorded data did not have sufficient samples (*i.e.*, $BA_{MCD14A1}$ or $AF_{MODIS,out} < 20 \text{ km}^2$), we generated a global look-up table of the two scaling coefficients (also as a function of v and tc) using all available reference data (Figure 3) and filled in the gaps. 540

545 For each GFED region, fires occur only in a subset of vegetation types and fractional tree cover bins. For the core period from 2003-2020, when Aqua and Terra data are available, the upper bound on the total possible number of α and β parameters (Eq. 2) estimated from the reference data is: 13 regions (14 GFED regions - 2 regions merged to others + 1 global region) \times 17 vegetation types \times 10 fractional tree cover bins \times 2 parameters = 4420. After consideration of the limited distribution of vegetation types within each region and the limited set of fractional tree cover bins for each vegetation type, the total number of actual parameters drops to 724. The area of reference tiles used to estimate these parameters for each GFED region is shown in Table S2. Although we used independent time series to verify the performance of our overall approach (as described below), an important next step is to develop quantitative uncertainty ranges for the parameters using cross-validation or a similar technique. 550

2.4.2 Deriving scalars for cropland, peatland, and deforestation fires

555 In this study, we separately estimated burned areas associated with three additional fire types other than the *normal* vegetation burning: fires in croplands, fires in tropical and subtropical peatlands, and fires associated with deforestation. For these special burning types, large omission errors prevent the direct use of MCD64A1 burned area product. Instead, we derived correction scalars from the reference data and estimated burned area by scaling the active fire data from MODIS.

560 We used the GloCAB product to estimate the burned area associated with agricultural burning (Hall et al., 2023). In the GloCAB algorithm, crop type conversion factors (γ_{crop}) were calculated for several widespread burnable crops, including winter wheat, spring wheat, maize, rice, sugarcane, and generic/other (Table S3). The crop type conversion factors were derived from manually mapped cropland

Deleted: (1).

Deleted: used

Deleted: for agricultural purposes

Deleted: dataset

Deleted: submitted

burned area reference data regions spanning about 190,000 fields (about 72,000 km²) over five countries: Russia, Ukraine, the United States, Canada, and Brazil. These field-level, cropland-specific burned area reference data were created using a combination of all available 20-m Sentinel-2 Multi-Spectral Instrument (MSI), 30-m Landsat-8 Operational Land Imager (OLI), and 3-m PlanetScope imagery (www.planet.com), in conjunction with filtered VIIRS (VNP14IMGML) and MODIS (MCD14ML) active fire data. Assuming that each reference data region is associated with a majority crop type, conversion factors were calculated by weighting each burned field by its burned area fraction, summing all burned fields within the region, and dividing by the total number of cropland-filtered, latitudinally-adjusted MODIS active fire detections within the spatial and temporal constraints of each reference area. Global crop type specific γ_{crop} scalars in Eq. 3 were calculated based on the median values of a combination of reference regions (see Table S3 for the crop-type reference region combinations). We refer to Hall et al. (2021a) and Hall et al. (2023) for more details about the cropland burned area reference regions and the GloCAB product.

Deleted: different

For the peatland burning, we derived a scalar (γ_{peat}) based on the Landsat-derived burned area data (MAWAS) in Mawas, Indonesia. Using the MAWAS dataset, we tallied the total burned area during 2003-2015 (when Terra and Aqua data are also available) within the peatland mask. Note the MAWAS data contained unlabeled areas that were not mapped due to cloud obscuration and/or Landsat 7 ETM+ Scan Line Corrector gaps, and here we assumed these areas were unburned. We then summed up the total active fire area recorded by MODIS (Terra and Aqua combined) within the same study region during the same years, and calculated the mean burned area associated with unit active fire area. Without the availability of data over global peatland, we assume the scalar derived from this high-quality regional data represents the mean burned area in peatlands associated with unit area of MODIS active fire.

Deleted: submitted

Similarly, we used a regional dataset to derive a scalar (γ_{defo}) that converts MODIS active fire area to burned area associated with tropical deforestation. By analyzing Landsat images, the National Institute for Space Research of Brazil (INPE) reported yearly gross primary forest deforestation statistics through the PRODES project since 1988 (<http://www.obt.inpe.br/OBT/assuntos/programas/amazonia/prodes>). We separately summed the total area of deforestation and cumulative MODIS active fire areas within the deforestation mask in the Legal Amazon of Brazil during 2003-2020. While the deforestation and burned areas may not match on the annual scale since the burning of biomass can occur in multiple years following the deforestation or forest loss detection can be delayed (van Wees et al., 2021), we assume that over a long period they should be roughly the same. The ratio of the cumulative area of deforestation to the total area of active fire was used as a scalar to convert monthly MODIS active fire areas to GFED5 burned area associated with deforestation in the tropics.

Deleted: def

2.4.3 Using scalars to estimate GFED5 burned area during the MODIS era

As mentioned in Section 2.1, for each month during the MODIS era (2001-2020), we partitioned 500-m burned pixels (BA_{MODIS}) into different categories based on vegetation type, tree cover fraction bin, and fire type. By counting the burned pixels located outside cropland, peat, and the deforestation masks, we calculated the area sums for *normal* type vegetation burning (BA_{MCD64A1}) over separate unique combinations of vegetation type and tree cover fraction bin in each 0.25° grid cell. Similarly, we also

Deleted: For

Deleted: types

Deleted: of the

Deleted: mask (with reclassified landcover type code equals to 12, 14, and 19), peatland mask

Deleted: mask

615 summed up the total area of active fire pixels located outside of the monthly MODIS area ($AF_{MODIS,out}$) for each bin in each 0.25° grid cell. These monthly MODIS burned area and active fire data were then either combined with pre-calculated correction scalars for commission errors (α , as described above) or omission errors (β) to estimate the adjusted burned area for *normal* burning (Eq. 2).

Deleted: that are

Deleted: (1)).

620 For each 0.25° grid cell, the cropland burned area was extracted from the GloCAB product. GloCAB calculates the effective cropland burned area by multiplying latitudinally-adjusted MODIS active fires (within the cropland mask) with crop type scalars (γ_{crop} ; see Section 2.4.2). The GEO Global Agricultural Monitoring (GEOGLAM) Best Available Global Crop-Specific Maps (BACS) (Becker-Reshef et al., 2020; Whitcraft et al., 2019) were used for identifying winter wheat, spring wheat, maize, and rice, and the 2010 Spatial Production Allocation Model (SPAM; <https://www.mapspam.info/>) was used for assigning sugarcane to individual MODIS cropland pixels. Any active fire occurring on a cropland pixel not classified as winter wheat, spring wheat, maize, rice, or sugarcane was assigned a “generic/other” scalar (Table S3) to estimate burned area. To account for any double burning within a 12-month period, the final monthly burned area is adjusted to ensure the 6-month cumulative sum (centered on the peak burning month) does not exceed the crop area within the 0.25° grid cell.

Deleted: Sect.

630 For fires associated with peat burning and deforestation burning, we calculated the monthly total area of active fires in each grid cell ($AF_{MODIS-peat}$ and $AF_{MODIS-defo}$). By multiplying the active fire data with the pre-calculated adjusting scalars (γ_{peat} and γ_{defo}), we can estimate the total burned area associated with these two fire types.

635 To compute the total GFED burned area in a given grid cell, we aggregated the burned areas recorded in all fractional tree cover bins from *normal* burning, and added the burned area estimations from croplands, peatland and deforestation burning (Eq. 1).

Deleted: derive

Deleted: final GFED5

Deleted: product

Deleted: (2)).

2.4.4 Estimating GFED5 burned area when MODIS data are incomplete or unavailable

640 Between 2003 and 2020, MODIS active fire data from both Terra and Aqua are available for the majority of the time period. As described above, we estimated the *normal* type burned area outside of the MODIS burned area (second term in the right-hand side of Eq. 2) in each month during these years using the total $AF_{MODIS,out}$ (as well as the correction scalars for omission errors β) from both MODIS instruments on Terra and Aqua. Since the full-year Aqua data started from 2003, we used $AF_{MODIS,out}$ derived from Terra MODIS only for the omission error adjustment in years 2001 and 2002. The omission error correction scalars (β) were also derived using Terra MODIS data only. Note the use of Terra-only data does not bring systematic biases over large spatial scales since all sets of correction scalars were derived using the same reference data (Figure S2, Table S4).

Deleted: (1))

645 Similarly, the scalars used for special fire types (cropland burning, peatland burning, and deforestation burning) were also derived using the combined detections by Terra and Aqua MODIS for the calculation of burned area (Eq. 3) in 2003-2020. During 2001-2002 when the Aqua MODIS data were not available, we multiplied the Terra-only active fire data with region-specific coefficients (γ_{cropT} , γ_{peatT} , and γ_{defoT}) to estimate the monthly burned area for these fire types ($BA_{GFED5-crop}$, $BA_{GFED5-peat}$, $BA_{GFED5-defo}$). These coefficients were derived by combining previously-derived GFED5 burned area and active fire

Deleted: higher resolution burned area as the

Deleted: target

665 area recorded by the Terra MODIS for the period of 2003-2020. This adjustment ensures that there was no significant bias between regional or global burned area sums after scaling using Terra-only data and using data from both Terra and Aqua (Figure S3). We derived a global map of the adjustment coefficient at 0.25° grid level. For grid cells with insufficient burned area during the Terra and Aqua period ($< 2 \text{ km}^2 \text{ yr}^{-1}$), we assigned the mean value derived using the area sums over the corresponding GFED region.

670 There were major science data outages for Terra (Jun 15 - Jul 3, 2001) and Aqua (Aug 16 - Sep 2, 2020) MODIS observations, which may have resulted in substantial underestimation of active fire detections, and therefore the $AF_{MODIS,out}$ estimation in June 2001 and August 2020. To address this issue, during the second gap when only Terra data were available (August 2020), we used the Terra active fire data to calculate burned area outside of the MODIS burned area (using the same approach as for 2001-2002). During the first gap when neither Terra nor Aqua data were available, we first adjusted the Terra active fire data for June 2001 by assuming the active fire detection frequency during the gap remained the same as it was in the first half of the month when data were available. The same Terra-only correction approach
675 was then used to derive the $AF_{MODIS,out}$ for June 2001.

2.5 Estimating burned area for the pre-MODIS era (1997-2000)

During the pre-MODIS era (including November-December 2000 when Terra MODIS data were available but fire persistence was not derived), we used active fire data recorded by VIRS, or ATSR, to estimate GFED5 burned area. VIRS was aboard the Tropical Rainfall Measuring Mission (TRMM) satellite, and monthly active fire data products were produced for pan-tropical regions (38° S - 38° N) during 1998-2010 (Giglio et al., 2003). Nighttime ATSR (onboard the ERS-2) and AATSR (Advanced ATSR onboard the Envisat satellites) imagery have been used to generate monthly global active fire maps (World Fire Atlas) for June 1995 - March 2012 (Le Page et al., 2008). We resampled the VIRS active fire data and binned the ATSR active fire locations to 1° resolution (without an overpass correction) to reflect the higher uncertainty and lower spatial resolution of available active fire datasets.

We used a 2-step approach similar to that described in van der Werf et al. (2017) to estimate monthly GFED5 burned area during 1997-2000. First, based on the common era (2001-2010 for VIRS and 2001-2011 for ATSR) when GFED5 BA data have been estimated from MODIS (Eq. 1) and active fire data were available from VIRS/ATSR, we derived a linear relationship between active fires and burned area sums over each GFED region (reg), for each dominant vegetation class (vc) (Table S1), and for each of the 3 seasonal periods (ss ; Early season: 1-6 months prior to the peak burning month; Middle season: peak fire month; Late season: 1-5 months after the peak burning month). We forced the regressions with an intercept of zero to reduce biases at low values. We assumed that in each region, the burned area from the regression (BA_{reg}) was more reliable when the adjusted $r_{reg,vc,ss}^2$ value (representing the goodness-of-fit) was higher during the overlap period. When the regional sums of VIRS/ATSR active fires and GFED5 BA had a low covariation (small $r_{reg,vc,ss}^2$) during the common era, we instead relied more on the burned area climatology ($BA_{MODIS,clim}$) at each calendar month (m) to approximate the burned area in the pre-MODIS era. The total regional sums of the burned area (aggregated over all vegetation classes), determined by combining BA_{reg} and $BA_{MODIS,clim}$ (Eq. 4), were estimated for each monthly time step (t) during the pre-MODIS era (1997-2000).

Deleted: the Visible and Infrared Scanner (

Deleted:)

Deleted: the Along Track Scanning Radiometers (

Deleted:)

Deleted: (2)

Deleted: dominated

Deleted: (3),

$$BA_{preMOD}(reg, t) = \sum_{vc}((r_{reg,vc,ss(t)}^2 \times BA_{regr}(reg, vc, t) + (1 - r_{reg,vc,ss(t)}^2) \times BA_{MODIS,clim}(reg, vc, m(t))) \quad (4)$$

The preference of using VIRS or ATSR active fire data depends, in part, on the data availability. In tropical regions the VIRS-based regressions were found to have better performance than the ATSR-based approach. Therefore, when both ATSR and VIRS were available (1998-2000), we used VIRS data to estimate the burned area in Africa, Southeast Asia, Equatorial Asia, and Australia. We used ATSR for other regions and when VIRS data were unavailable prior to 1998. If the ATSR or VIRS active fires for any given month were outside of the seasonal dynamic range of active fires during the MODIS era, we instead used parameters from a linear regression derived from all of the monthly data during the MODIS era for that region.

In a second step, we distributed the derived monthly regional sum of burned area ($BA_{preMOD}(reg, t)$) to each 1° grid cell within a region. We assumed that the spatial distribution of monthly burned area within each GFED region area can be represented by two spatial distribution functions (SDFs) (Eq. 5).

$$BA_{preMOD}(x, t) = BA_{preMOD}(reg, t) \times ((r_{reg,m(t)}^2 \times SDF_{AF}(reg, x, t) + (1 - r_{reg,m(t)}^2) \times SDF_{BA,clim}(reg, x, m(t))) \quad (5)$$

The first spatial distribution, $SDF_{AF}(reg, x, t)$, is characterized by the number of active fires detected by ATSR and VIRS within a GFED region (reg) during each month (t). VIRS has a coarse spatial resolution (2 km at nadir), and ATSR can only detect fires, at night. The approach of using ATSR or VIRS active fires may lead to a bias toward large fires, which generally burn longer and emit higher radiative energy. Therefore, we also used a second spatial distribution function $SDF_{BA,clim}(reg, x, m(t))$, to better account for contributions from small, ‘background’ fires that were not detected by ATSR or VIRS. This climatological SDF was derived from the GFED5 burned area (which contains more information from small fires than ATSR and VIRS) averaged over 2003-2020. The weights, representing the relative contributions of these two SDFs, were determined by the spatial correlations between GFED5 burned area and ATSR/VIRS active fires ($r_{reg,m(t)}$) (i.e., the performance level of the regression model based on ATSR/VIRS active fires during the overlap period).

Eq. 5 is similar to the pre-MODIS era burned area estimation algorithm described by van der Werf et al. (2017) but uses r^2 instead of r to partition burned area between the distribution of active fires and a MODIS-era climatology. It is important to keep in mind that the ATSR and VIRS instruments were not specifically designed for fire detection, and they are less efficient at detecting active fires than MODIS. Therefore, the quality of the GFED5 data during 1997-2000 is not on par with data from the MODIS era (Figures S4 and S5). Specifically, the spatial variability of burned area (derived from ATSR and VIRS active fires) was not well resolved in many regions (Table S4). For the above reason, in the pre-MODIS era, we only reported the total GFED5 burned area summed over all land cover types (i.e., normal, cropland, peatland, and deforestation types combined) at a coarser resolution grid ($1^\circ \times 1^\circ$).

We recommend that users carefully consider the discontinuities in the GFED5 data stream for their specific application. Quantitative trend analysis for a single grid cell or small group of grid cells is not advised prior to the MODIS era due to discontinuities in the density of active fires. While we have attempted to account for these discontinuities at a regional scale in building the cross-sensor time series, attribution of burned area to individual grid cells is affected by changes in the density of active fire observations.

Deleted: 3

Deleted: burned areas in

Deleted: based on

Deleted:). These SDFs were normalized so that their individual sums are 1 within each GFED region. $SDF_{AF}(\$

Deleted:) represents the

Deleted: . Since ATSR and

Deleted: have high omission errors for small

Deleted: , the distribution from this SDF was likely biased

Deleted: grid cells where

Deleted: occurred. In order

Deleted: capture the

Deleted: , we also used a climatological distribution $SDF_{BA,clim}(reg, x, m(t))$, which was derived from MODIS burned area ...

Deleted: As shown in Eq. (4), the

Deleted: $BA_{preMOD}(x, t) = BA_{preMOD}(reg, t) \times ((r_{reg,m(t)}^2 \times SDF_{AF}(reg, x, t) + (1 - r_{reg,m(t)}^2) \times SDF_{BA,clim}(reg, x, m(t)))$
(4)

Deleted: (4)

Deleted: that in

Deleted: of trends

770 3 Results

3.1 Global total and spatial pattern

During the MODIS era (2001-2020), when higher quality remote sensing data are available, the total GFED5 burned area over the globe is estimated to be 774 (multi-year mean) \pm 63 (standard deviation of interannual variability) Mha per year or 5.9 \pm 0.5% of the global burnable area (defined as the global land area not permanently covered by snow or ice). The spatial distribution of burned area is highly heterogeneous, with high levels of burning occurring in the tropics and northern hemisphere temperate regions (Figure 4). Among the 14 GFED regions, northern hemisphere Africa (NHAF; 242 \pm 25 Mha yr⁻¹) and southern hemisphere Africa (SHAF; 245 \pm 13 Mha yr⁻¹) together contribute to about 63% of global annual burned area (Table 3). Other tropical and southern hemisphere regions, including southeast Asia (SEAS; 59 \pm 8 Mha yr⁻¹), southern hemisphere South America (SHSA; 54 \pm 12 Mha yr⁻¹), Australia (AUST; 56 \pm 23 Mha yr⁻¹), central America (CEAM; 13 \pm 2 Mha yr⁻¹), northern hemisphere South America (NHSA; 9.4 \pm 1.7 Mha yr⁻¹), and equatorial Asia (EQAS; 3.7 \pm 2.0 Mha yr⁻¹) combined contribute an additional 25% of burning each year. In the northern hemisphere, most burning occurs in central Asia (CEAS; 43 \pm 11 Mha yr⁻¹), boreal Asia (BOAS; 32 \pm 11 Mha yr⁻¹), and temperate North America (TENA; 6.4 \pm 0.9 Mha yr⁻¹), and these regions together account for 11% of global burned area. The other three temperate and boreal regions of the northern hemisphere, including Europe (EURO; 4.3 \pm 1.3 Mha yr⁻¹), boreal North America (BONA; 4.1 \pm 1.3 Mha yr⁻¹), and the Middle East (MIDE; 3.1 \pm 0.8 Mha yr⁻¹), contribute to the remaining 1% of annual global burned area.

Herbaceous plants and shrubs are the dominant vegetation types that burn globally, with about 60% of annual burned area occurring in open savanna (260 \pm 17 Mha yr⁻¹) and tropical grassland (203 \pm 22 Mha yr⁻¹) vegetation classes (Table 3). Around 81% of the burning in these ecosystems (374 \pm 34 Mha yr⁻¹) is located in Africa (Figure S6). Major forest fires occur around the perimeter of tropical rainforests and in many seasonally dry boreal and temperate forests. Tropical forest and woodland fires account for 9% (71 \pm 6 Mha yr⁻¹) of global burned area, with the largest contributions occurring in southern hemisphere Africa (SHAF; 26 \pm 2 Mha yr⁻¹), southeast Asia (SEAS; 22 \pm 4 Mha yr⁻¹), and northern hemisphere Africa (NHAF; 15 \pm 2 Mha yr⁻¹). Burning in croplands (83 \pm 14 Mha yr⁻¹) is similar in magnitude to that in forests, with hotspots in central Asia (CEAS; 21 \pm 6 Mha yr⁻¹), northern hemisphere Africa (NHAF; 21 \pm 6 Mha yr⁻¹), and southeast Asia (SEAS; 13 \pm 2 Mha yr⁻¹).

The global distribution of crop burning is broadly consistent with spatial patterns of agricultural land use and crop yield (Lobell et al., 2011). While the area burned associated with peatland fires (2.7 \pm 0.5 Mha yr⁻¹) and deforestation (3.8 \pm 1.2 Mha yr⁻¹) accounts for only a small fraction (< 1%) of the global annual total, fuel consumption and the emissions of trace gases and aerosol particles associated with these fires can be substantial as a result of high fuel loading (Andela et al., 2022; van Leeuwen et al., 2014; Turetsky et al., 2015; van der Werf et al., 2017; van Wees et al., 2022). Further, these fire types often are not balanced by regrowth or ecosystem recovery, and as a consequence they contribute significantly to land use carbon emissions and the build-up of atmospheric CO₂ in the atmosphere (Friedlingstein et al., 2022).

Deleted:)

Deleted: (

Deleted: ,

Deleted: forests

Deleted: woodlands

Deleted: Mha yr⁻¹) and peatland burning (2.7 \pm 0.5

Deleted:).

3.2 Long-term trends and interannual variability

815 From 2001-2020, global burned area declined by $-1.21 \pm 0.66\%$ yr^{-1} ($p < 2e7$), corresponding to a
cumulative loss of 24.2% or 187 Mha yr^{-1} over the 20-year span (Table 4, Figure 5). Considering the
longer but more uncertain 1997-2020 period, which draws upon VIRS and ATSR active fire observations
for the pre-MODIS period, the decreasing trend from 1997-2020 is $-0.91 \pm 0.79\%$ yr^{-1} (Figure 5a), with a
cumulative change over this interval of -21.8%. Our time series provides evidence that the global decline
820 in burned area reported by Andela et al. (2017) for the 1997-2015 period has continued for the more recent
2016-2020 period and is visible in both the GFED5 **product** and underlying MODIS burned area time
series. The annual declining trend during the MODIS era is slightly weaker than that reported in Andela
et al. (2017) when measured as a relative change, primarily because the adjustments here for omission
errors allowed us to include many more small fires each year for which burned area seems to have declined
825 less than for larger fires over the time period. This is illustrated in Figure 5a by the different trends shown
for MCD64A1 and GFED5 and in Figure S7 by a positive trend in the ratio of GFED5 relative to the
underlying MODIS MCD64A1 burned area.

The main regions driving the global declining trend in burned **areas** are tropical north Africa, northern
Australia, southern hemisphere South America, and the Eurasian Steppe (Figures 6 and 7). Burned area
830 in some boreal regions (e.g., eastern Siberia and western Canada) and temperate regions (e.g., croplands
in China and India, forests in southern Australia) shows an increasing trend during 2001-2020, but their
contributions at a global scale are relatively small (Table 4). The northern boreal region north of 60°N
has a non-significant positive trend of $2.5 \pm 3.0\%$ yr^{-1} . In all other latitude bands, burned area has
significant negative trends, with the most rapid decline ($-2.7 \pm 2.1\%$ yr^{-1}) occurring in northern hemisphere
835 mid-latitudes (Figure 5).

By fire type, savanna ($-1.0 \pm 0.8\%$ yr^{-1}), grass ($-1.7 \pm 0.9\%$ yr^{-1}), and cropland ($-2.5 \pm 1.6\%$ yr^{-1}) fires have
840 **the strongest** decreasing trends, while forest ($0.2 \pm 1.4\%$ yr^{-1}), deforestation ($0.5 \pm 5.4\%$ yr^{-1}), and peatland
($-0.1 \pm 3.1\%$ yr^{-1}) fires do not show significant changes at a global scale during the past two decades. Even
though the total amount of burned area in forests is considerably lower than in savannas or grasslands,
these biomes typically have high fuel loading, and therefore the increasing fire emissions in **forest** areas
may partly offset the decreasing emissions from herbaceous and shrub burning (Zheng et al., 2021).

3.3 Characterization of seasonal variability

Seasonal patterns of burned area from GFED5 differ significantly in many regions compared to other
burned area products (Figure 8). In many tropical areas, increases in burned **areas** in GFED5 relative to
845 other products are strongest at the end of the fire season. We also **find** that the relative change in burned
area from MODIS MCD64A1 to GFED5 (defined as the enhancement ratio, $(BA_{GFED5} - BA_{MCD64A1}) /$
 $BA_{MCD64A1}$) varies monthly and is typically smallest near the peak burning month and higher at the edges
of the peak season (Figure 9). This pattern is consistent with the monthly variations of the active fire area,
which have a larger fraction located outside of MCD64A1 burned area near the beginning and end of the
fire season (Figure S8). We also observe that the burned area in the late fire season occurs in areas with
850 higher fractional tree cover (Figure S9). The mean fractional tree cover for burning pixels is generally

Deleted: -

Deleted: area

Deleted: located in

Deleted: strong

Deleted: forested

Deleted: area

Deleted: found

Deleted: an important biophysical parameter describing the Earth's surface vegetation) (Figure S9).

865 higher after the month of peak burning, suggesting that burning into ecosystems with higher fuel loadings is likely to occur later in the dry season as fuels in areas with denser vegetation cover (and deeper roots) take longer to dry out. With the exception of boreal North America (BONA), the active fire pixels outside of the burned area have slightly higher mean fractional tree cover than those located inside MCD64A1 burned area. Including burned areas associated with these 'out' fires with higher fractional tree cover may further modify burned area and emissions seasonality.

870 Some GFED5 regions, such as boreal Asia (BOAS), central Asia (CEAS), and temperate North America (TENA), have multiple peaks of burning, with one or more of the peaks associated with agricultural and prescribed fire. The agricultural fires are small and tend to occur in pulses during the pre-planting or post-harvest time periods. Large amplification of burned area for these small fire classes considerably modifies the annual cycle of burned area within each region (Figure S8). Better representation of these fire types improves the agreement between GFED5 and regional high-resolution products (see Section 3.4 below).

3.4 Comparison with validation datasets

885 We used regional burned area products derived from fine-resolution satellite imagery (Landsat and Sentinel-2) to assess the quality of the GFED5 burned area product derived in this study. As described above, these higher-resolution products were intentionally excluded from our reference data list used for deriving scalars to correct for omission and commission errors.

880 The comparisons have been performed in major fire regions across the globe (Figure 10). It is clear that, relative to the unadjusted MCD64A1 burned area, the GFED5 data generally has a significantly higher magnitude, although with variable enhancement ratios in different regions. The boost is particularly evident in tropical regions (including Africa, Indonesia, and Brazil) where small fires and understory fires are frequent and fire mapping is difficult with coarse resolution sensors. For most regions, this enhancement leads to better agreement with the high resolution burned area data used for validation.

885 The GFED5 burned area also has good agreement with the validation data in terms of interannual variability (Figure S10) and regional spatial variability (Figure 11). Over the whole of Indonesia, the annual burned area in 2019 from MCD64A1 (2.2 Mha) is smaller than that derived from Sentinel-2 (3.1 Mha) (Gaveau et al., 2021). After adjustment, the 2019 GFED5 burned area in Indonesia increases to 3.8 Mha, and the bias has been substantially reduced in the interior tropical forests of Borneo and Sumatra (Figure 11).

890 Africa contributes about 63% of the global burned area (Table 3). Recently, Ramo et al. (2021) and Roteta et al. (2019) published a new burned area product (FireCCI-SFD11) that was developed from 20-m Sentinel-2 imagery and covers the whole of sub-Saharan Africa for the year 2016. The total 2016 burned area in sub-Saharan Africa from GFED5 is 509 Mha after correction for commission and omission errors, which is considerably larger in magnitude than MCD64A1 (270 Mha). Compared to the SFD11 data, with the annual burned area of 489 Mha (Ramo et al., 2021), the GFED5 data reduces the overall bias from -45% to +3.8%. In addition, the non-uniform boost also increases the spatial correlation of the burned area to the SFD11 pattern (r^2 increases from 0.57 for MCD64A1 to 0.71 for GFED5 (Figure 11)).

Deleted: more severe fires are

Deleted: dense

Deleted: with

Deleted: takes

Deleted: of the

Deleted: The inclusion of

Deleted: the

Deleted: , which

Deleted: generally

Deleted: fires but

Deleted: fires has been found to change

Deleted: seasonal variations in the

Deleted: Such modification of seasonality likely

Deleted: section

Deleted: from higher resolution burned area products

Deleted: higher

Deleted: higher resolution

Deleted: to

Annual MCD64A1 burned area in Queensland for the year 2016 is 7.0 Mha, which is 30% lower than the burned area sum derived from Landsat (9.9 Mha) (Goodwin and Collett, 2014). After adjustment for omission and commission errors, GFED5 burned area over Queensland in this year is 10.2 Mha, which is very close to the Landsat-derived estimate.

920 The total burned area in Brazil in 2019 as estimated by GFED5 is 31 Mha, which represents a 61% increase compared to the MCD64A1 burned area estimate. Relative to the Landsat-derived MapBiomass data (Alencar et al., 2022), the GFED5 burned area exhibits a positive bias in most regions of Brazil, with the exception of the central Amazon, Caatinga, and temperate Pampa region (Figure 11). GFED5 also has a significant increase in the number of grid cells ($0.25^\circ \times 0.25^\circ$) with non-zero burned area compared to the MCD64 data (8630 vs. 5725). This number is closer to the number derived from Landsat data (9784).

925 Glushkov et al. (2021) used Sentinel-2 imagery to map burned area across the Russian Federation for the spring of 2020. Their product showed that there was five times more burned area compared to the MCD64A1 burned area estimate, likely due to Sentinel-2's higher sensitivity to small fires in croplands, grasslands, and abandoned croplands. Our approach, which ingests a cropland-focused burned area product, also resulted in a nearly 5-fold increases in the burned area for the spring of 2020 (Figure S11).
930 The total burned area for the spring of 2020 (Jan - May) increased from 3.3 Mha as reported by MCD64A1 to 15.8 Mha. The GFED5 product is much closer in magnitude to the burned area derived from Sentinel-2 data (13.4 Mha) (Figure 10).

3.5 Comparison with other global fire products

935 Relative to the original MCD64A1 data, our adjustment for commission errors tends to exclude unburned islands and decrease the total burned area, while the adjustment to correct for omission errors adds information from undetected fires and increases the burned area estimation. During the 20 years in the MODIS era (2001-2020), our estimation of global burned area (774 Mha yr^{-1}) is 93% higher than that from MCD64A1 (401 Mha yr^{-1}) (Table 5, Figure S12). Around 58% of the increase in mean burned area
940 (220 Mha yr^{-1}) is associated with burning in Africa. The basis for this amplification is tied closely to active fire detections that are outside of MCD64A1 fire perimeters, and for which fine resolution satellite imagery shows significant levels of burning. Active fire detections located outside of the MCD64A1 burned perimeter are significantly higher than those within the burned area perimeter in Southeast Asia, Equatorial Asia, Central Asia, Central America, and temperate North America (Figure S13). Accounting
945 for burned area associated with these small fires increases the burned area estimates in these regions substantially. The enhancement ratio from MCD64A1 to GFED5 burned area is also found to be related to the burning type and land cover type (Figure S14). The burned area in savanna and grassland has a relatively smaller amplification (less than 100%) than burning in forests and croplands.

In addition to the Collection 6 MCD64A1 data, we also compared the GFED5 burned area with historical versions of GFED (GFED4s) (van der Werf et al., 2017) and MCD64A1 (Collection 5) (Figure 12). There are four main differences between GFED4s and GFED5. First, GFED4s was based on the Collection 5 MCD64A1 burned area data. The MCD64A1 burned area mapping algorithm was subsequently improved
950 in collection 6 to offer better detection of small burns (Giglio et al., 2018). The resulting Collection 6 MCD64A1 burned area product detects more global burned area (26%) than Collection 5 data. Second,

Deleted: higher

in the GFED4s algorithm, each active fire detection outside of the MCD64A1 burned area was assumed to be associated with a certain area of burning. This scaling factor, which is a function of region, season, and vegetation type, was estimated by comparing the mean difference normalized burn ratio of active-fire pixels observed outside and inside the MCD64A1 burned perimeter (Randerson et al., 2012). While this approach helps capture some burned areas associated with small fires and boosted the global burned area estimates by about 40%, the GFED4s burned area was still likely conservative on the global scale considering the spectral signal for small fires is often hard to detect at MODIS resolution. Third, in addition to correcting the omission error that arises mainly from small fires, the GFED5 algorithm also explicitly adjusts the overestimation of MCD64A1 burned area by excluding the unburned islands. Fourth, the cropland burned area methodology in GFED5 is completely new and based on a more comprehensive training data of burned area derived from high resolution Landsat, Sentinel-2, and PlanetScope imagery. By comparing GFED5 data with GFED4s, we find the GFED5 burned area is able to account for more small fires in many regions of the world (Figure 12). Relatively speaking, the long-term trend of global burned area from GFED5 is less negative than that from the GFED4s and MCD64A1 Collection 6 products (Table 5).

4 Discussion

4.1 Implication for reconciling fire emissions estimates from activity-based and atmospheric-based approaches

In recent decades, several global fire emission inventories have been created to assess better the impact of fire on climate and air quality, to understand how climate change affects the frequency and intensity of wildfires, and to develop better strategies to manage wildfires. Burned area is a key driver in the multiplicative approach proposed by Seiler and Crutzen (1980) for estimating emissions from biomass burning. Inventories derived using this activity-based approach include various versions of GFED (van der Werf et al., 2006; van der Werf et al., 2010; van der Werf et al., 2017), the Fire Locating and Modeling of Burning Emissions (FLAMBE) model (Reid et al., 2009), and the Fire Inventory from NCAR (FINN, Wiedinmyer et al., 2011; Wiedinmyer et al., 2023). Thermal radiation measured by satellites at the top of the atmosphere is used in other global emissions inventories, such as the Global Fire Assimilation System (GFAS, Kaiser et al., 2012), the Quick Fire Emissions Dataset (QFED, Koster et al., 2015), and the Fire Energetics and Emissions Research (FEER, Ichoku and Ellison, 2014), drawing upon the linear relationship between the integral of fire radiative power and fuel consumption (Wooster., 2002).

There are multiple lines of evidence that current activity-based global fire emission inventories may have underestimated fire emissions, particularly particulate matter emissions, in many regions. Model-simulated pollutant concentrations are often found to be lower than satellite and in-situ measurements in the fire-affected regions (Reddington et al., 2016). To match observations of aerosol optical depth from surface or satellite data, fire emissions from inventories often have to be increased by a factor of 2-4 (Johnston et al., 2012; Kaiser et al., 2012; Pan et al., 2020; Xu et al., 2021). There is also a substantial gap between activity-based estimates of fire emissions and those inversely derived from atmospheric-

Deleted: of

Deleted: to estimate

Deleted: , which can then be

Deleted: atmospheric models to simulate the transport of trace gases and aerosols emitted by fires.

Deleted: 3

1000 based approaches that assimilate trace gas and aerosol optical depth observations (Ichoku and Ellison, 2014; van der Velde et al., 2021; Naus et al., 2022).

1005 Many factors can contribute to the gap between activity-based and atmospheric-based estimates of fire emissions. Some are due to underestimation of various processes, such as fuel combustion (van Wees et al., 2022; Potter et al., 2022) and emission factors (Jayarathne et al., 2018; Stockwell et al., 2016; Wiggins et al., 2021; Wooster et al., 2018). Others may be related to the model deficiencies in accurately resolving the physics and chemistry of fire pollutants in the atmosphere, such as the calculation of aerosol optical depth (Reddington et al., 2019). Our analysis and the development of the GFED5 burned area product suggest that the burned area data in several widely used global emission inventories is substantially underestimated, largely due to the difficulty of detecting and measuring burned area associated with small fires (Randerson et al., 2012). As a result, fire emissions and associated impacts on atmospheric composition may have been underestimated in past work that relied on global inventories, such as GFED4s, in many regions. Our work suggests that an amplification may be expected in many other continental-scale regions. The improved characterization of burned area in this study will contribute to a higher estimation of fire emissions in the next generation of GFED.

1015 We also find that the imbalanced increase in the burned area during different stages of the fire season may help reduce the seasonal cycle bias in modeled trace gasses such as CO. For example, atmospheric inversion-constrained estimates of emissions, using MOPITT observations (van der Werf et al., 2006; Zheng et al., 2018), have identified a fire seasonal cycle in Africa that peaks later than that from activity-based approaches. Ramo et al. (2021) found that improved detection of small fires prolongs the fire season in Africa, as more small fires occur in the shoulder seasons (beginning and end of the fire season) when the atmosphere is more humid. Our analysis shows that in many regions, the relative increases in burned area from MCD64A1 to GFED5 are higher in the early and late phases of the fire seasons than during the peak burning month (Figure 9a). Relatively more MODIS active fires are detected outside of the MCD64A1 burned perimeter (Figure 9b) near the edges of the fire season, particularly in the later fire season, and these fires occur over types with higher fractional tree cover. The inclusion of small fire contribution in the GFED5 burned area product is, therefore, likely to reduce the seasonal variability of fire emissions, which is more consistent with the atmospheric-based estimates.

4.2 Implications for fire science and global carbon studies

1030 We have developed a multi-decadal time series of global burned areas that includes the contributions from small fires and has a better representation of cropland burning. The GFED5 burned area dataset is expected to contribute to fire science and global carbon studies in several ways.

1035 First, a longer and higher quality time series may improve fire prediction on subseasonal-to-seasonal (S2S) time scales. Machine learning techniques (Cohen et al., 2019) used in S2S fire forecasts require information input from multiple sources, such as the seasonality, long-term trends, recent fire observations, and external climate drivers (Anderson et al., 2022; Chen et al., 2020). The forecast skill depends heavily on the quality and duration of the training data. We expect that the temporally consistent, higher-quality burned time series from GFED5 can enhance the accuracy of S2S fire forecasting systems in many regions where higher-resolution time series from Landsat or government records are unavailable.

Deleted: There are many

Deleted: that may

Deleted: , including the calculation of aerosol optical depth (Reddington et al., 2019) as well as the

Deleted: the fire

Deleted: top-down

Deleted: atmospheric CO

Deleted:)

Deleted: is likely to prolong

Deleted: ending months)

Deleted: area

Deleted: skill of the

Deleted: not available

Second, the GFED5 burned area can be used to evaluate or improve the performance of prognostic fire models. Current fire models, such as those from the Fire Model Intercomparison Project (FireMIP), often use satellite observations to constrain the simulation. Therefore, the global burned areas from these models are shown to converge to the value representing historical satellite data (Hantson et al., 2020).

1055 However, these models are often **unable** to adapt well to the changes in factors that influence the burned area. For example, they have been shown to be unable to reproduce the observed decline in global burned area (Andela et al., 2017) and may also underestimate the fire impacts on **the** carbon cycle and vegetation distribution (Lasslop et al., 2020). An improved global burned area such as GFED5 may help calibrate the parameters used in these models and reduce the differences between observations and **model** results.

1060 Third, the GFED5 burned area dataset may also be used to improve our understanding of the climate and human controls on the interannual variability of global fires. By tracking burned areas globally for four different burning types and 17 different non-crop land cover types (Tables 3 and 4), this new dataset reveals variable patterns and trends in burned **areas** over different regions. The GFED5 time series of burned area confirms the decline of fire in many ancient grassland ecosystems that are under threat (Buisson et al., 2022). The new time series also indicates that burning in cropland regions has declined considerably in many regions and at a global-scale. The economic and technological drivers behind the cropland trends require further study. At the same time, our analysis reveals a positive trend in the burned area in many high northern boreal ecosystems, including Siberia. These findings will help connect variability and long-term trends of fires to underlying climate, land use, and socio-economic data (Andela et al., 2017). An improved understanding of the factors controlling the burned area variability may also contribute to a better projection of future changes in fire risk in response to global environmental change (Knorr et al., 2016).

1075 Fourth, the global burned area data is an important piece of information for understanding the impact of fires on trends in atmospheric composition and radiative forcing. During the process of combustion, fires release large amounts of trace gasses and particulate matter into the atmosphere, changing the composition and air quality of the atmosphere and modifying the radiative balance of the Earth system. The GFED5 data is expected to help quantify the effect of smoke from fires on air quality and **mortality** rates, and validate trends in atmospheric chemical composition as well as the radiative forcing from prognostic fire models used within global earth system models (Li et al., 2019).

1080 **Fifth, in contrast to previous iterations of GFED, the GFED5 dataset incorporated fine-resolution data products and accounted for a broader spectrum of smaller-scale fires. In addition, we separately adjusted burned areas associated with typical landscape fires and special fire activity within croplands, peatlands, and deforested regions. These enhancements provide GFED5 with improved attributes compared to its predecessors, making it more valuable for many of the applications mentioned above, including the fire and smoke forecast, evaluating model performance across seasons, facilitating inversion-based studies, and improving the accuracy of long-term trend assessments.**

4.3 Uncertainties and **Limitations**

Our study improves the quantification of long-term global burned area trends by reducing the biases associated with unburned islands and small fires. Specifically, compared to the earlier GFED4s version,

Deleted: not able

Deleted: modeled

Deleted: area

Deleted: mortalities

Deleted: limitations

1095 which used normalized burn ratio calculations (Randerson et al., 2012), the algorithm for adjusting
omission errors has been considerably improved. However, there are still important limitations. These
limitations stem from uncertainties in the input MODIS datasets for burned area and active fire time series
and from the limited spatial extent (and accuracy) of fine resolution reference burned area datasets we
used to estimate corrections for commission and omission errors. Additional discontinuities are
1100 introduced when we attempted to harmonize the global time series across time periods when only ATSR,
VIRS, or MODIS Terra observations were available.

Measurements by MODIS instruments aboard Terra and Aqua provide the basis for GFED5 burned area
estimation during 2001-2020. Although the Collection 6 MODIS active fire detection algorithm is an
improvement compared to Collection 5, the presence of omission errors (from fires obscured by thick
1105 smoke) and commission errors (false alarms in tropical ecosystems) in the MODIS active fire data (Giglio
et al., 2016) may still contribute to uncertainties in the distribution of burned area estimation outside of
the MCD64A1 burned area.

We used regional burned area products derived from Sentinel-2 or Landsat measurements to adjust the
MCD64A1 burned area. These fine-resolution products are able to map areas from small and fragmented
burning, but they also have quality and representativity issues. In particular, the longer revisit time of
these sensors may impair or impede the detection of fires in regions with frequent cloud cover and rapid
vegetation regeneration (Hawbaker et al., 2017; Padilla et al., 2015). In addition, the spatial and temporal
coverage of these high-resolution data is often limited. Therefore, spatial and temporal sampling designs
that balance the quantity and quality of reference images are needed to make the best use of these data.
1115 In this study, we derive a significant number of omission and commission scalars, each tailored to specific
fire types, land cover categories, and fractional tree cover levels, and calculated separately for each GFED
region (Table S2). It is important to note that in certain cases, these scalars were based on relatively
limited sample sizes, which can introduce considerable uncertainties in the derived burned area. We
particularly highlight the need for improved reference datasets, especially in regions that are currently
1120 underrepresented, such as Siberia, Central America, and South America. Enhancing the quality and
availability of reference data in these areas is paramount for reducing uncertainties in the methodology.
With the current algorithm, we also assume that these scalars remain the same during different stages of
the fire season, which ignores possible seasonal variations in fire size and severity due to changes in fire
weather and fuel moisture.

1125 During the pre-MODIS era, the GFED5 burned area data is estimated using active fire detections from
ATSR or VIRS, and an additional 336 parameters to convert these time series into burned area. This
extrapolation is uncertain but does not appear to introduce significant bias in many continental or sub-
continental scales (Figure S4, Table S4). For GFED regions with the largest burned area (northern
hemisphere Africa, southern hemisphere Africa, Southeast Asia, southern hemisphere South America,
and Australia), the time series of regional burned area derived from ATSR or VIRS active fires generally
have a high correlation ($r^2 > 0.89$) with the GFED5 time series derived from MODIS observations. The
correlation is somewhat lower in other continental regions, including temperate North America, Europe,
and central Asia (r^2 between 0.66 - 0.86), likely due to the low sensitivity of ATSR to small fires in these
1130 regions. The spatial distribution of burned area is less well resolved in many regions, particularly in boreal
and temperate regions (Table S4). Therefore, we suggest using the pre-MODIS GFED5 burned area data
1135

Deleted: higher-

Deleted: higher

Deleted: as a function of

Deleted: type

Deleted: type

Deleted: ,

Deleted: separately. In some of

Deleted: aggregations the

Deleted: size is small

Deleted: may lead to large uncertainty

Deleted: scalars. Higher quality

Deleted: in

Deleted: regions

Deleted: central

Deleted: northern hemisphere

Deleted: are especially needed for better calibration. In

Deleted: at

Deleted: as a consequence of

Deleted: .

Deleted:)

time series with caution, particularly with respect to spatial patterns and temporal variability in small regions. Further analysis and integration of Advanced Very High Resolution Radiometer (AVHRR) (Giglio and Roy, 2020) and Landsat imagery and burned area product (e.g. Schroeder et al., 2016) may reduce uncertainties during this period.

1160 The time series we developed here provides further confirmation that burned area is declining at a global scale. In the context of interpreting the global cumulative loss of $24.2 \pm 13.2\%$ during 2001-2020, and trends at finer levels of disaggregation, several key sources of uncertainty require careful consideration. First, in many areas where fires are being lost from the landscape, the largest fires are declining at a faster rate. This may be a consequence of landscape fragmentation (Andela et al., 2017), and evidence for this is shown in Figure 5, where the coarser resolution MCD64A time series declines faster than GFED5. As fires become smaller, they become more difficult to detect, which in turn introduces higher levels of uncertainty in trend estimates. Second, as the record length grows, the cumulative effects of climate change may begin to influence satellite fire detection and burned area algorithm performance. In this context, a key future step is to quantify trends in cloud cover and how they may influence the efficacy of our retrieval algorithms. Third, as previously described, spatial discontinuities from the harmonization of time series across periods with different sensor availability restrict our ability to estimate trends for individual grid cells or small groups of cells. For this reason, in Figure 6, we only present a map of trends for the 2003-2020 period when consistent data from Aqua and Terra were active. Finally, we note that we used ordinary least squares regression to estimate the slope and uncertainty of the slopes reported here; the assumption of a Gaussian distribution of errors around the fitted line is unlikely to apply in all locations.

4.4 Future directions

Terra and Aqua, two NASA platforms that provide MODIS data, have already passed their design lives and are expected to be retired within the next few years. In order to continue to understand long-term fire trends and produce consistent global burned area data after the MODIS era, we need to combine the active fire data from other remote sensors, such as VIIRS, with finer resolution Landsat/Sentinel-2 burned area datasets. Key challenges toward this goal include 1) building global wall-to-wall burned area maps from 20- and 30-m data and fusing them with earlier MODIS records, 2) creating new maps of global land cover classes and continuous fields of tree/shrub/grass vegetation fractional cover, and fusing these products with earlier MODIS records, and 3) understanding the differences between VIIRS and MODIS active fire products and the implications for long-term trends. In particular, the higher spatial resolution and better geolocation accuracy of VIIRS may lead to a more accurate representation of small fires over different land cover types.

1190 Another pivotal avenue of research should involve the acquisition of supplementary reference burned area datasets generated from fine-resolution sensors. The inclusion of such datasets can significantly enhance the precision of adjustments applied to MODIS-based products. Additionally, it is essential to delve into enhanced techniques for mitigating spatial variability in both omission and commission errors. The accumulation of a substantial volume of high-quality reference data presents an opportunity to explore innovative machine learning approaches that can operate with fewer parameters, all while retaining the capability to perform cross-region adjustments. This endeavor holds the potential to alleviate issues

Deleted: at a

Deleted: rate

Deleted: in size

Deleted: long term

Deleted: use

Deleted: gaussian

Deleted: may

related to over-fitting and ultimately augment the accuracy and applicability of wildfire burned area estimation methods.

In recent years, there have been efforts to aggregate pixel-based fire detections (active fire or burned area) into individual fire objects in order to track the evolution and associated attributes of individual fire events (Andela et al., 2019; Artés et al., 2019; Balch et al., 2020; Chen et al., 2022; Laurent et al., 2018). An important future direction is to create a fire event dataset that tracks the spatiotemporal evolution of burned area, radiative energy, and emissions associated with individual large fires. The emissions estimation for individual fires can benefit from recent advances in fuel consumption quantification at 500-m spatial resolution (van Wees et al., 2022). Combining gridded GFED5 burned area data with event-based data will likely provide a more comprehensive and detailed view of fire regime changes over the past few decades and potential insight about future trajectories.

5 Data availability

The monthly GFED5 burned area data produced in this study are available in netCDF files. For years between 2001 and 2020, five layers of burned area (Norm: normal type, Crop: cropland burning, Defo: deforestation burning, Peat: peatland burning, Total: the sum of all burning) are provided at 0.25°×0.25° resolution. The ‘Norm’ layer contains burned areas in each grid cell (in km²) separated by 17 major land cover types. For the pre-MODIS era (1997-2000), only the ‘Total’ burned area layer with reduced spatial resolution (1°×1°) is provided. We also provide two global maps of burnable area (with water and snow/ice cover excluded) in each grid cell (0.25°×0.25° for the MODIS era and 1°×1° for the pre-MODIS era). The GFED5 burned area dataset is publicly available on the open repository zenodo (<https://doi.org/10.5281/zenodo.7668423>) (Chen et al., 2023). We will deposit the GFED5 data on the GFED website (<https://www.globalfiredata.org>) and Oak Ridge National Laboratory Distributed Active Archive Center for Biogeochemical Dynamics (<https://daac.ornl.gov>). All data sources used to derive the GFED5 burned area are described in the text and in Tables 1 and 2.

6 Conclusions

In this study, we develop the fifth version of the Global Fire Emissions Database (GFED5) monthly burned area data spanning the 24-year period from 1997-2020 by fusing multiple coarse- and high-resolution data streams.

During the period of 2001-2020, we adjust the Collection 6 MODIS MCD64A1 burned area by correcting for both commission (unburned islands) and omission (incomplete detection of small fires) errors in all land cover types excluding croplands. The commission error scaling factors are derived by aligning burned area images from MODIS with higher resolution Landsat or Sentinel-2 reference datasets. Omission errors are corrected by multiplying the MODIS active fire data with the Landsat or Sentinel-2 burned area data, both sampled outside of the MCD64A1 burned area. In addition, a cropland-specific burned area product was used to improve the representation of small fires within croplands. Accounting for both corrections, the derived GFED5 global burned area (774 Mha yr⁻¹) is 93% higher than the

Deleted: A

Deleted: is

Deleted: to

Deleted: also

Deleted: stated

Deleted: with spatiotemporally aligned

Deleted: and from

Deleted: cropland

MCD64A1 burned area, with the largest enhancements over crop and forest regions, and during non-peak burning months. Global burned area shows a decreasing trend of 1.21% per year over the 20-year span of MODIS era (2001-2020), and a smaller decreasing trend of 0.91% per year over 1997-2020.

Relative to MCD64A1 and other global burned area products, the GFED5 burned area has a better agreement with independent estimations from finer resolution data, and may substantially reduce the disparity between the activity-based and atmospheric-based estimates of fire emissions. An important next step is to use these data with improvements in emissions modeling (van Wees and van der Werf, 2019; van Wees et al., 2022) and emission factor observations (Wiggins et al., 2021) to generate a GFED5 emissions product to advance climate, atmospheric chemistry, and global carbon cycle studies.

Deleted: high

Deleted: top-down

Deleted: bottom-up

1255 Author contribution

YC and JTR conceptualized the paper, with input from the other co-authors. YC developed the algorithm, and created and validated the data set. JH developed the algorithm and derived the burned area product for cropland burning. DVW developed the land cover type data. All co-authors contributed to the methodology improvements, and provided data resources for deriving the GFED5 burned area. YC prepared the manuscript with contributions from all the co-authors.

Deleted: .

Deleted: sets

Deleted: ,

Deleted: used

Competing interests

The contact author has declared that none of the authors has competing interests.

Deleted: any

Acknowledgements

This work was supported by NASA's Modeling Analysis and Prediction program (80NSSC21K1362) and SERVIR Applied Sciences Team (80NSSC20K0590). Additional support was provided by NASA's Earth Information System (EIS-Fire) and the Netherlands Organisation for Scientific Research (NWO); Vici scheme research programme, no. 016.160.324. Support for J. Hall and L. Giglio was provided under NASA Carbon Monitoring System (CMS) grant 80NSSC18K0179.

1270

1280 **References**

- Alencar, A. A. C., Arruda, V. L. S., Silva, W. V. da, Conciani, D. E., Costa, D. P., Crusco, N., et al.: Long-term Landsat-based monthly burned area dataset for the Brazilian biomes using deep learning, *Remote Sens.*, 14(11), 2510, doi:10.3390/rs14112510, 2022.
- Almeida CA, Maurano LEP, Valeriano DM et al.: Metodologia utilizada nos sistemas PRODES e DETER - 2A Edição. Instituto Nacional de Pesquisas Espaciais (INPE), São José dos Campos, SP, Brasil. <http://urlib.net/8JMKD3MGP3W34T/47GAF6S>, 2022.
- Alonso-Canas, I., and Chuvieco, E.: Global burned area mapping from ENVISAT-MERIS and MODIS active fire data, *Remote Sens. Environ.*, 163, 140–152, doi:10.1016/j.rse.2015.03.011, 2015.
- Andela, N., Morton, D. C., Giglio, L., Chen, Y., van der Werf, G. R., Kasibhatla, P. S., et al.: A human-driven decline in global burned area, *Science*, 356(6345), 1356–1362, doi:10.1126/science.aal4108, 2017.
- Andela, N., Morton, D. C., Giglio, L., Paugam, R., Chen, Y., Hantson, S., et al.: The Global Fire Atlas of individual fire size, duration, speed and direction, *ESSD*, 11(2), 529–552, doi:10.5194/essd-11-529-2019, 2019.
- Andela, N., Morton, D. C., Schroeder, W., Chen, Y., Brando, P. M., and Randerson, J. T.: Tracking and classifying Amazon fire events in near real time, *Sci. Adv.*, 8(30), doi:10.1126/sciadv.abd2713, 2022.
- Anderson, L. O., Burton, C., dos Reis, J. B. C., Pessôa, A. C. M., Bett, P., Carvalho, N. S., et al.: An alert system for Seasonal Fire probability forecast for South American Protected Areas, *Climate Resilience and Sustainability*, 1(1), doi:10.1002/cli2.19, 2022.
- Archibald, S., Lehmann, C. E. R., Gómez-Dans, J. L., and Bradstock, R. A.: Defining pyromes and global syndromes of fire regimes, *PNAS*, 110(16), 6442–6447, doi:10.1073/pnas.1211466110, 2013.
- Arino, O., Rosaz, J. M., and Goloub, P.: The ATSR World Fire Atlas. A synergy with “Polder” aerosol products. *Earth Obs. Quarterly*, 1–6, 1999.
- Artés, T., Oom, D., de Rigo, D., Durrant, T. H., Maianti, P., Libertà, G., and San-Miguel-Ayanz, J.: A global wildfire dataset for the analysis of fire regimes and fire behaviour, *Sci. Data*, 6(1), 296, doi:10.1038/s41597-019-0312-2, 2019.
- Balch, J. K., St Denis, L. A., Mahood, A. L., Mietkiewicz, N. P., Williams, T. M., McGlinchy, J., and Cook, M. C.: FIREED (Fire Events Delineation): An open, flexible algorithm and database of US fire events derived from the MODIS burned area product (2001–2019), *Remote Sens.*, 12(21), 3498, doi:10.3390/rs12213498, 2020.
- Balch, J. K., Abatzoglou, J. T., Joseph, M. B., Koontz, M. J., Mahood, A. L., McGlinchy, J., et al.: Warming weakens the night-time barrier to global fire, *Nature*, 602(7897), 442–448, doi:10.1038/s41586-021-04325-1, 2022.

- Becker-Reshef, I., Justice, C., Barker, B., Humber, M., Rembold, F., Bonifacio, R., et al.: Strengthening agricultural decisions in countries at risk of food insecurity: The GEOGLAM Crop Monitor for Early Warning, *Remote Sens. of Environ.*, 237, 111553, doi:10.1016/j.rse.2019.111553, 2020.
- 1315 Beerling, D. J., and Osborne, C. P.: The origin of the savanna biome, *Global Change Biol.*, 12(11), 2023–2031, doi:10.1111/j.1365-2486.2006.01239.x, 2006.
- Bond, W. J.: Ancient grasslands at risk, *Science*, 351(6269), 120–122, doi:10.1126/science.aad5132, 2016.
- 1320 Bowman, D. M. J. S., Balch, J. K., Artaxo, P., Bond, W. J., Carlson, J. M., Cochrane, M. A., et al.: Fire in the Earth system, *Science*, 324(5926), 481–484, doi:10.1126/science.1163886, 2009.
- Bowman, D. M. J. S., Balch, J., Artaxo, P., Bond, W. J., Cochrane, M. A., D’Antonio, C. M., et al.: The human dimension of fire regimes on Earth, *J Biogeogr.*, 38(12), 2223–2236, doi:10.1111/j.1365-2699.2011.02595.x, 2011.
- 1325 Buisson, E., Archibald, S., Fidelis, A., and Suding, K. N.: Ancient grasslands guide ambitious goals in grassland restoration, *Science*, 377(6606), 594–598, doi:10.1126/science.abo4605, 2022.
- Chen, Y., Morton, D. C., Jin, Y., Collatz, G. J., Kasibhatla, P. S., van der Werf, G. R., et al.: Long-term trends and interannual variability of forest, savanna and agricultural fires in South America, *Carbon Manage.*, 4(6), 617–638, doi:10.4155/cmt.13.61, 2013.
- 1330 Chen, Y., Morton, D. C., Andela, N., Giglio, L., and Randerson, J. T.: How much global burned area can be forecast on seasonal time scales using sea surface temperatures? *Environ. Res. Lett.*, 11(4), 045001, doi:10.1088/1748-9326/11/4/045001, 2016.
- Chen, Y., Randerson, J. T., Coffield, S. R., Foufoula-Georgiou, E., Smyth, P., Graff, C. A., et al.: Forecasting global fire emissions on subseasonal to seasonal (S2S) time scales, *J Adv. Model. Earth Syst.*, 12(9), e2019MS001955, doi:10.1029/2019MS001955, 2020.
- 1335 Chen, Y., Hantson, S., Andela, N., Coffield, S. R., Graff, C. A., Morton, D. C., et al.: California wildfire spread derived using VIIRS satellite observations and an object-based tracking system, *Sci. Data*, 9(1), 249, doi:10.1038/s41597-022-01343-0, 2022.
- Chen, Y., Hall, J., van Wees, D., Andela, N., Hantson, S., Giglio, L., van der Werf, G. R., Morton, D. C., and Randerson, J. T., Global Fire Emissions Database (GFED5) Burned Area (0.1) [Data set]. Zenodo. <https://doi.org/10.5281/zenodo.7668423>, 2023.
- 1340 Chuvieco, E., Mouillot, F., van der Werf, G. R., San Miguel, J., Tanasse, M., Koutsias, N., et al.: Historical background and current developments for mapping burned area from satellite Earth observation, *Remote Sens. Environ.*, 225, 45–64, doi:10.1016/j.rse.2019.02.013, 2019.
- 1345 Claverie, M., Ju, J., Masek, J. G., Dungan, J. L., Vermote, E. F., Roger, J.-C., et al.: The Harmonized Landsat and Sentinel-2 surface reflectance data set, *Remote Sens. Environ.*, 219, 145–161, doi:10.1016/j.rse.2018.09.002, 2018.

- Cohen, J., Coumou, D., Hwang, J., Mackey, L., Orenstein, P., Tetz, S., and Tziperman, E.: S2S reboot: An argument for greater inclusion of machine learning in subseasonal to seasonal forecasts, *WIREs: Climate Change*, 10(2), e00567, doi:10.1002/wcc.567, 2019.
- 1350 Collett, L.: Annual Fire Scars - Landsat, QLD DES algorithm, QLD coverage, Retrieved from <http://geonetwork.tern.org.au/geonetwork/srv/eng/catalog.search#/metadata/461074b3-5272-4e4e-886f-df26bd2426ad>, <https://portal.tern.org.au/annual-scars-landsat-qld-coverage>, 2022.
- Crutzen, P. J., and Andreae, M. O.: Biomass burning in the tropics: impact on atmospheric chemistry and biogeochemical cycles, *Science*, 250(4988), 1669–1678, doi:10.1126/science.250.4988.1669, 1990.
- 1355 DiMiceli, C., Townshend, J., Carroll, M., and Sohlberg, R.: Evolution of the representation of global vegetation by vegetation continuous fields, *Remote Sens. Environ.*, 254, 112271, doi:10.1016/j.rse.2020.112271, 2021.
- Drusch, M., Del Bello, U., Carlier, S., Colin, O., Fernandez, V., Gascon, F., et al.: Sentinel-2: ESA's Optical High-Resolution Mission for GMES Operational Services, *Remote Sens. Environ.*, 120, 25–36, doi:10.1016/j.rse.2011.11.026, 2012.
- 1360 Eidenshink, J., Schwind, B., Brewer, K., Zhu, Z.-L., Quayle, B., and Howard, S.: A project for monitoring trends in burn severity, *Fire Ecol.*, 3(1), 3–21, doi:10.4996/fireecology.0301003, 2007.
- FAO: Global ecological zones for FAO forest reporting: 2010 update, FAO: Rome, Italy, 2012
- 1365 Franquesa, M., Vanderhoof, M. K., Stavrakoudis, D., Gitas, I. Z., Roteta, E., Padilla, M., and Chuvieco, E.: Development of a standard database of reference sites for validating global burned area products, *ESSD*, 12(4), 3229–3246, doi:10.5194/essd-12-3229-2020, 2020.
- Friedlingstein, P., O'Sullivan, M., Jones, M. W., Andrew, R. M., Gregor, L., Hauck, J., et al.: Global carbon budget 2022, *ESSD*, 14(11), 4811–4900, doi:10.5194/essd-14-4811-2022, 2022.
- 1370 Friedl, M. A., Sulla-Menashe, D., Tan, B., Schneider, A., Ramankutty, N., Sibley, A., and Huang, X., MODIS Collection 5 global land cover: Algorithm refinements and characterization of new datasets, *Remote Sens. Environ.*, 114(1), 168–182, doi:10.1016/j.rse.2009.08.016, 2010.
- Gaveau, D. L. A., Descals, A., Salim, M. A., Sheil, D., and Sloan, S.: Refined burned-area mapping protocol using Sentinel-2 data increases estimate of 2019 Indonesian burning, *ESSD*, 13(11), 5353–5368, doi:10.5194/essd-13-5353-2021, 2021.
- 1375 Giglio, L., Kendall, J. D., and Mack, R.: A multi-year active fire dataset for the tropics derived from the TRMM VIRS, *Int. J. Remote Sens.*, 24(22), 4505–4525, doi: 10.1080/0143116031000070283, 2003.
- Giglio, L., van der Werf, G. R., Randerson, J. T., Collatz, G. J., and Kasibhatla, P.: Global estimation of burned area using MODIS active fire observations, *Atmos. Chem. Phys.*, 6, 957–974, doi:10.5194/acp-6-957-2006, 2006a.
- 1380

- Giglio, L., Csiszar, I., and Justice, C. O.: Global distribution and seasonality of active fires as observed with the Terra and Aqua Moderate Resolution Imaging Spectroradiometer (MODIS) sensors, *J. Geophys. Res.*, 111(G02016), doi:10.1029/2005JG000142, 2006b.
- 1385 Giglio, L., Loboda, T., Roy, D. P., Quayle, B., and Justice, C. O.: An active-fire based burned area mapping algorithm for the MODIS sensor, *Remote Sens. of Environ.*, 113(2), 408–420, doi:10.1016/j.rse.2008.10.006, 2009.
- Giglio, L., Schroeder, W., and Justice, C. O.: The collection 6 MODIS active fire detection algorithm and fire products, *Remote Sens. Environ.*, 178, 31–41, doi:10.1016/j.rse.2016.02.054, 2016.
- 1390 Giglio, L., Boschetti, L., Roy, D. P., Humber, M. L., and Justice, C. O.: The Collection 6 MODIS burned area mapping algorithm and product, *Remote Sens. Environ.*, 217, 72–85, doi:10.1016/j.rse.2018.08.005, 2018.
- Giglio, L., and Roy, D. P.: On the outstanding need for a long-term, multi-decadal, validated and quality assessed record of global burned area: Caution in the use of Advanced Very High Resolution Radiometer data, *Science of Remote Sensing*, 2, 100007, doi:10.1016/j.srs.2020.100007, 2020.
- 1395 Glushkov, I., Zhuravleva, I., McCarty, J. L., Komarova, A., Drozdovsky, A., Drozdovskaya, M., et al.: Spring fires in Russia: results from participatory burned area mapping with Sentinel-2 imagery, *Environ. Res. Lett.*, 16(12), 125005, doi:10.1088/1748-9326/ac3287, 2021.
- Goodwin, N. R., and Collett, L. J.: Development of an automated method for mapping fire history captured in Landsat TM and ETM plus time series across Queensland, Australia, *Remote Sens. Environ.*, 148, 206–221, doi:10.1016/j.rse.2014.03.021, 2014.
- 1400 Gumbrecht, T., Roman-Cuesta, R. M., Verchot, L., Herold, M., Wittmann, F., Householder, E., et al.: An expert system model for mapping tropical wetlands and peatlands reveals South America as the largest contributor, *Global Change Biol.*, 23(9), 3581–3599, doi:10.1111/gcb.13689, 2017.
- Gutierrez, A. A., Hantson, S., Langenbrunner, B., Chen, B., Jin, Y., Goulden, M. L., and Randerson, J. T.: Wildfire response to changing daily temperature extremes in California’s Sierra Nevada, *Sci. Adv.*, 7(47), eabe6417, doi:10.1126/sciadv.abe6417, 2021.
- 1405 Hall, J. V., Loboda, T. V., Giglio, L., and McCarty, G. W.: A MODIS-based burned area assessment for Russian croplands: Mapping requirements and challenges, *Remote Sens. Environ.*, 184, 506–521, doi:10.1016/j.rse.2016.07.022, 2016.
- 1410 Hall, J. V., Zibtsev, S. V., Giglio, L., Skakun, S., Myroniuk, V., Zhuravel, O., et al.: Environmental and political implications of underestimated cropland burning in Ukraine, *Environ. Res. Lett.*, 16(6), 064019, doi:10.1088/1748-9326/abfc04, 2021a.
- Hall, J. V., Argueta, F., and Giglio, L.: Validation of MCD64A1 and FireCCI51 cropland burned area mapping in Ukraine, *Inter. J. Appl. Earth Obs.*, 102, 102443, doi:10.1016/j.jag.2021.102443, 2021b.
- 1415 Hall, J. V., Argueta, F., Zubkova, M., Chen, Y., Randerson, J. T., and Giglio, L.: GloCAB: Global cropland burned area from mid-2002 to 2020, [Earth Syst. Sci. Data, 2023](#).

Deleted: AGU Adv., submitted

- 1420 Hall, R. J., Skakun, R. S., Metsaranta, J. M., Landry, R., Fraser, R. H., Raymond, D., et al.: Generating annual estimates of forest fire disturbance in Canada: The National Burned Area Composite, *Inter. J. Wildland Fire*, 29(10), 878–891, doi: 10.1071/WF19201, 2020.
- Hansen, M. C., Townshend, J. R. G., DeFries, R. S., and Carroll, M.: Estimation of tree cover using MODIS data at global, continental and regional/local scales, *Inter. J. Remote Sens.*, 26(19), 4359–4380, doi:10.1080/01431160500113435, 2005.
- 1425 Hantson, S., Padilla, M., Corti, D., and Chuvieco, E.: Strengths and weaknesses of MODIS hotspots to characterize global fire occurrence, *Remote Sens. Environ.*, 131, 152–159, doi:10.1016/j.rse.2012.12.004, 2013.
- Hantson, S., Kelley, D. I., Arneith, A., Harrison, S. P., Archibald, S., Bachelet, D., et al.: Quantitative assessment of fire and vegetation properties in simulations with fire-enabled vegetation models from the Fire Model Intercomparison Project, *Geosci. Model Dev.*, 13(7), 3299–3318, doi:10.5194/gmd-13-3299-2020, 2020.
- 1430 Hawbaker, T. J., Vanderhoof, M. K., Beal, Y.-J., Takacs, J. D., Schmidt, G. L., Falgout, J. T., et al.: Mapping burned areas using dense time-series of Landsat data, *Remote Sens. Environ.*, 198, 504–522, doi:10.1016/j.rse.2017.06.027, 2017.
- 1435 Hawbaker, T. J., Vanderhoof, M. K., Schmidt, G. L., Beal, Y.-J., Picotte, J. J., Takacs, J. D., et al.: The Landsat Burned Area algorithm and products for the conterminous United States, *Remote Sens. Environ.*, 244, 111801, doi:10.1016/j.rse.2020.111801, 2020.
- Ichoku, C., and Ellison, L.: Global top-down smoke-aerosol emissions estimation using satellite fire radiative power measurements, *Atmos. Chem. Phys.*, 14(13), 6643–6667, doi:10.5194/acp-14-6643-2014, 2014.
- 1440 Jayarathne, T., Stockwell, C. E., Gilbert, A. A., Daugherty, K., Cochrane, M. A., Ryan, K. C., et al.: Chemical characterization of fine particulate matter emitted by peat fires in Central Kalimantan, Indonesia, during the 2015 El Niño, *Atmos. Chem. Phys.*, 18(4), 2585–2600, doi:10.5194/acp-18-2585-2018, 2018.
- 1445 Johnston, F. H., Henderson, S. B., Chen, Y., Randerson, J. T., Marlier, M., Defries, R. S., et al.: Estimated global mortality attributable to smoke from landscape fires, *Environ. Health Persp.*, 120(5), 695–701, doi:10.1289/ehp.1104422, 2012.
- [Kaiser, J. W., Heil, A., Andreae, M. O., Benedetti, A., Chubarova, N., Jones, L., Morcrette, J. J., Razinger, M., Schultz, M. G., Suttie, M. and van der Werf, G. R., Biomass burning emissions estimated with a global fire assimilation system based on observed fire radiative power, *Biogeosciences*, 9\(1\), 527-554, 2012.](#)
- 1450 Knorr, W., Arneith, A., and Jiang, L.: Demographic controls of future global fire risk, *Nat. Clim. Change*, 6(8), 781–785, doi:10.1038/nclimate2999, 2016.
- [Koster, R. D., Darmenov, A. S., & da Silva, A. M.: The quick fire emissions dataset \(QFED\): Documentation of versions 2.1, 2.2 and 2.4 \(No. NASA/TM-2015-104606/Vol. 38\), 2015.](#)

- 1455 Lasslop, G., Hantson, S., Harrison, S. P., Bachelet, D., Burton, C., Forkel, M., et al.: Global ecosystems and fire: Multi-model assessment of fire-induced tree-cover and carbon storage reduction, *Global Change Biol.*, 26(9), 5027–5041, doi:10.1111/gcb.15160, 2020.
- Laurent, P., Mouillot, F., Yue, C., Ciais, P., Moreno, M. V., and Nogueira, J. M. P.: FRY, a global database of fire patch functional traits derived from space-borne burned area products, *Sci. Data*, 5, 180132, doi:10.1038/sdata.2018.132, 2018.
- 1460 van Leeuwen, T. T., van der Werf, G. R., Hoffmann, A. A., Detmers, R. G., Rücker, G., French, N. H. F., et al.: Biomass burning fuel consumption rates: a field measurement database, *Biogeosciences*, 11(24), 7305–7329, doi:10.5194/bg-11-7305-2014, 2014.
- Le Page, Y., Pereira, J. M. C., Trigo, R., da Camara, C., Oom, D., and Mota, B.: Global fire activity patterns (1996-2006) and climatic influence: an analysis using the World Fire Atlas, *Atmos. Chem. Phys.*, 8(7), 1911–1924, doi:10.5194/acp-8-1911-2008, 2008.
- 1465 Lizundia-Loiola, J., Franquesa, M., Boettcher, M., Kirches, G., Pettinari, M. L., and Chuvieco, E.: Implementation of the burned area component of the Copernicus climate change service: from MODIS to OLCI data., *Remote Sens.*, 13(21), 4295, 2021.
- Li, F., Val Martin, M., Andreae, M. O., Arneth, A., Hantson, S., Kaiser, J. W., et al.: Historical (1700–2012) global multi-model estimates of the fire emissions from the Fire Modeling Intercomparison Project (FireMIP), *Atmos. Chem. Phys.*, 19(19), 12545–12567, doi:10.5194/acp-19-12545-2019, 2019.
- Melchiorre, A., and Boschetti, L.: Global analysis of burned area persistence time with MODIS Data, *Remote Sens.*, 10(5), 750, doi:10.3390/rs10050750, 2018.
- 1475 Morton, D. C., Defries, R. S., Randerson, J. T., Giglio, L., Schroeder, W., and Van Der Werf, G. R.: Agricultural intensification increases deforestation fire activity in Amazonia, *Global Change Biol.*, 14(10), 2262–2275, doi:10.1111/j.1365-2486.2008.01652.x, 2008.
- 1480 [Mouillot, F., Schultz, M. G., Yue, C., Cadule, P., Tansey, K., Ciais, P., & Chuvieco, E.: Ten years of global burned area products from spaceborne remote sensing—A review: Analysis of user needs and recommendations for future developments. *International Journal of Applied Earth Observation and Geoinformation*, 26, 64-79, 2014.](#)
- Naus, S., Domingues, L. G., Krol, M., Luijkx, I. T., Gatti, L. V., Miller, J. B., ... and Peters, W.: Sixteen years of MOPITT satellite data strongly constrain Amazon CO fire emissions, *Atmos. Chem. Phys.*, 22(22), 14735–14750, 2022.
- 1485 Padilla, M., Stehman, S. V., Ramo, R., Corti, D., Hantson, S., Oliva, P., et al.: Comparing the accuracies of remote sensing global burned area products using stratified random sampling and estimation, *Remote Sens. Environ.*, 160, 114–121, doi:10.1016/j.rse.2015.01.005, 2015.
- [Pan, X., Ichoku, C., Chin, M., Bian, H., Darmenov, A., Colarco, P., ... & Cui, G.: Six global biomass burning emission datasets: intercomparison and application in one global aerosol model. *Atmospheric Chemistry and Physics*, 20\(2\), 969-994, 2020.](#)

- 1490 Pereira, J., Mendes, J., Júnior, J. S. S., Viegas, C., and Paulo, J. R.: A review of genetic algorithm approaches for wildfire spread prediction calibration, *Mathematics*, 10(3), 300, doi:10.3390/math10030300, 2022.
- Potter, S., Cooperdock, S., Veraverbeke, S., Walker, X., Mack, M. C., Goetz, S. J., et al.: Burned area and carbon emissions across northwestern boreal North America from 2001–2019, *EGUsphere*, 1495 doi:10.5194/egusphere-2022-364, 2022.
- Pyne, S. J.: From Pleistocene to Pyrocene: fire replaces ice, *Earth's Future*, doi:10.1029/2020EF001722, 2020.
- Ramo, R., Roteta, E., Bistinas, I., van Wees, D., Bastarrika, A., Chuvieco, E., and van der Werf, G. R.: African burned area and fire carbon emissions are strongly impacted by small fires undetected by coarse resolution satellite data, *PNAS*, 118(9), doi:10.1073/pnas.2011160118, 2021.
- 1500 Randerson, J. T., Chen, Y., van der Werf, G. R., Rogers, B. M., and Morton, D. C.: Global burned area and biomass burning emissions from small fires, *J. Geophys. Res.*, 117, G04012, doi:10.1029/2012JG002128, 2012.
- Reddington, C. L., Spracklen, D. V., Artaxo, P., Ridley, D. A., Rizzo, L. V., and Arana, A.: Analysis of particulate emissions from tropical biomass burning using a global aerosol model and long-term surface observations, *Atmos. Chem. Phys.*, 16(17), 11083–11106, doi:10.5194/acp-16-11083-2016, 2016.
- 1505 Reddington, C. L., Morgan, W. T., Darbyshire, E., Brito, J., Coe, H., Artaxo, P., et al.: Biomass burning aerosol over the Amazon: analysis of aircraft, surface and satellite observations using a global aerosol model, *Atmos. Chem. Phys.*, 19(14), 9125–9152, doi:10.5194/acp-19-9125-2019, 2019.
- 1510 [Reid, J. S., Hyer, E. J., Prins, E. M., Westphal, D. L., Zhang, J., Wang, J., ... & Hoffman, J. P.: Global monitoring and forecasting of biomass-burning smoke: Description of and lessons from the Fire Locating and Modeling of Burning Emissions \(FLAMBE\) program. *IEEE Journal of Selected Topics in Applied Earth Observations and Remote Sensing*, 2\(3\), 144-162, 2009.](#)
- Roteta, E., Bastarrika, A., Padilla, M., Storm, T., and Chuvieco, E.: Development of a Sentinel-2 burned area algorithm: Generation of a small fire database for sub-Saharan Africa, *Remote Sens. Environ.*, 222, 1–17, doi:10.1016/j.rse.2018.12.011, 2019.
- 1515 Roteta, E., Bastarrika, A., Franquesa, M., and Chuvieco, E.: Landsat and Sentinel-2 based burned area mapping tools in Google Earth Engine, *Remote Sens.*, 13(4), 816, doi:10.3390/rs13040816, 2021.
- Roy, D. P., Boschetti, L., Justice, C. O., and Ju, J.: The collection 5 MODIS burned area product — Global evaluation by comparison with the MODIS active fire product, *Remote Sens. Environ.*, 112(9), 3690–3707, doi:10.1016/j.rse.2008.05.013, 2008.
- 1520 Schroeder, W., Oliva, P., Giglio, L., and Csizsar, I. A.: The New VIIRS 375m active fire detection data product: Algorithm description and initial assessment, *Remote Sens. Environ.*, 143, 85–96, doi:10.1016/j.rse.2013.12.008, 2014.

- 1525 Schroeder, W., Oliva, P., Giglio, L., Quayle, B., Lorenz, E., and Morelli, F.: Active fire detection using Landsat-8/OLI data, *Remote Sens. Environ.*, 185, 210–220, doi:10.1016/j.rse.2015.08.032, 2016.
- Seiler, W., and Crutzen, P. J.: Estimates of gross and net fluxes of carbon between the biosphere and the atmosphere from biomass burning, *Clim. Change*, 2(3), 207–247, doi:10.1007/BF00137988, 1980.
- 1530 Souza, C. M., Z. Shimbo, J., Rosa, M. R., Parente, L. L., A. Alencar, A., Rudorff, B. F. T., et al.: Reconstructing three decades of land use and land cover changes in Brazilian biomes with Landsat archive and earth engine, *Remote Sens.*, 12(17), 2735, doi:10.3390/rs12172735, 2020.
- Stockwell, C. E., Jayarathne, T., Cochrane, M. A., Ryan, K. C., Putra, E. I., Saharjo, B. H., et al.: Field measurements of trace gases and aerosols emitted by peat fires in Central Kalimantan, Indonesia, during the 2015 El Niño, *Atmos. Chem. Phys.*, 16(18), 11711–11732, doi:10.5194/acp-16-11711-2016, 2016.
- 1535 Taylor, S. W., Woolford, D. G., Dean, C. B., and Martell, D. L.: Wildfire prediction to inform fire management: statistical science challenges, *Stat. Sci.*, 28(4), 586–615, doi:10.1214/13-STS451, 2013.
- Turetsky, M. R., Benscotter, B., Page, S., Rein, G., van der Werf, G. R., and Watts, A.: Global vulnerability of peatlands to fire and carbon loss, *Nat. Geosci.*, 8(1), 11–14, doi:10.1038/ngeo2325, 2015.
- 1540 Vanderhoof, M. K., Fairaux, N., Beal, Y. J. G., and Hawbaker, T. J.: Validation of the USGS Landsat Burned Area Essential Climate Variable (BAECV) across the conterminous United States, *Remote Sens. Environ.*, 198, 393–406, doi:10.1016/j.rse.2017.06.025, 2017.
- van der Velde, I. R., van der Werf, G. R., Houweling, S., Maasakkers, J. D., Borsdorff, T., Landgraf, J., et al.: Vast CO₂ release from Australian fires in 2019-2020 constrained by satellite, *Nature*, 597(7876), 366–369, doi:10.1038/s41586-021-03712-y, 2021.
- 1545 Vetrita, Y., and Cochrane, M. A.: Annual Burned Area from Landsat, Mawas, Central Kalimantan, Indonesia, 1997-2015. Retrieved March 23, 2022, from doi:10.3334/ORNLDAAC/1708, 2019.
- van Wees, D., and van der Werf, G. R.: Modelling biomass burning emissions and the effect of spatial resolution: a case study for Africa based on the Global Fire Emissions Database (GFED), *Geosci. Model Dev.*, 12(11), 4681–4703, doi:10.5194/gmd-12-4681-2019, 2019.
- 1550 van Wees, D., van der Werf, G. R., Randerson, J. T., Andela, N., Chen, Y., and Morton, D. C.: The role of fire in global forest loss dynamics, *Global Change Biol.*, 27(11), 2377–2391, doi:10.1111/gcb.15591, 2021.
- van Wees, D., van der Werf, G. R., Randerson, J. T., Rogers, B. M., Chen, Y., Veraverbeke, S., et al.: Global biomass burning fuel consumption and emissions at 500-m spatial resolution based on the Global Fire Emissions Database (GFED), *Geosci. Model Dev.*, 15, 8411–8437, doi:10.5194/gmd-15-8411-2022, 2022.
- 1555 van der Werf, G. R., Randerson, J. T., Giglio, L., Collatz, G. J., Kasibhatla, P. S., and Arellano, A. F.: Interannual variability in global biomass burning emissions from 1997 to 2004, *Atmos. Chem. Phys.*, 6(11), 3423–3441, doi:10.5194/acp-6-3423-2006, 2006.

- 1560 van der Werf, G. R., Randerson, J. T., Giglio, L., [Collatz, G. J., Mu, M., Kasibhatla, P. S., et al.: Global fire emissions and the contribution of deforestation, savanna, forest, agricultural, and peat fires \(1997-2009\), Atmospheric Chemistry and Physics, 10, 11707-11735, 2010.](#)
- [van der Werf, G. R., Randerson, J. T., Giglio, L., van Leeuwen, T. T., Chen, Y., Rogers, B. M., et al.: Global fire emissions estimates during 1997–2016, Earth Syst. Sci. Data, 9\(2\), 697–720, doi:10.5194/essd-9-697-2017, 2017.](#)
- Whitcraft, A. K., Becker-Reshef, I., Justice, C. O., Gifford, L., Kavvada, A., and Jarvis, I.: No pixel left behind: Toward integrating Earth Observations for agriculture into the United Nations Sustainable Development Goals framework, Remote Sens. Environ., 235, 111470, doi:10.1016/j.rse.2019.111470, 2019.
- 1570 [Wiedinmyer, C., Akagi, S. K., Yokelson, R. J., Emmons, L. K., Al-Saadi, J. A., Orlando, J. J., & Soja, A. J.: The Fire INventory from NCAR \(FINN\): A high resolution global model to estimate the emissions from open burning, Geoscientific Model Development, 4\(3\), 625-641, 2011.](#)
- [Wiedinmyer, C., Kimura, Y., McDonald-Buller, E. C., Emmons, L. K., Buchholz, R. R., Tang, W., ... & Yokelson, R.: The Fire Inventory from NCAR version 2.5: An updated global fire emissions model for climate and chemistry applications, EGU sphere, 2023, 1-45, 2023.](#)
- 1575 Wiggins, E. B., Anderson, B. E., Brown, M. D., Campuzano-Jost, P., Chen, G., Crawford, J., et al.: Reconciling assumptions in bottom-up and top-down approaches for estimating aerosol emission rates from wildland fires using observations from FIREX-AQ, J Geophys Res-Atmos, 126(24), doi:10.1029/2021JD035692, 2021.
- 1580 [Wooster, M. J.: Small-scale experimental testing of fire radiative energy for quantifying mass combusted in natural vegetation fires, Geophysical Research Letters, 29\(21\), 23-1, 2002.](#)
- [Wooster, M., Gaveau, David., Salim, M., Zhang, T., Xu, W., Green, D., et al.: New tropical peatland gas and particulate emissions factors indicate 2015 Indonesian fires released far more particulate matter \(but less methane\) than current inventories imply, Remote Sens., 10\(4\), 495, doi:10.3390/rs10040495, 2018.](#)
- 1585 Xu, L., Zhu, Q., Riley, W. J., Chen, Y., Wang, H., Ma, P.-L., and Randerson, J. T.: The influence of fire aerosols on surface climate and gross primary production in the Energy Exascale Earth System Model (E3SM), J. Climate, 1–60, doi: 10.1175/JCLI-D-21-0193.1, 2021.
- Zheng, B., Chevallier, F., Ciais, P., Yin, Y., and Wang, Y.: On the role of the flaming to smoldering transition in the seasonal cycle of African fire emissions, Geophys. Res. Lett., 45(21), 11,998-12,007, doi:10.1029/2018GL079092, 2018.
- 1590 Zheng, B., Ciais, P., Chevallier, F., Chuvieco, E., Chen, Y., and Yang, H.: Increasing forest fire emissions despite the decline in global burned area, Sci. Adv., 7(39), eabh2646, doi:10.1126/sciadv.abh2646, 2021.

Table 1. Multiple burned area datasets derived from Landsat (LS) or Sentinel 2 (S2) imagery that are used to calibrate scaling coefficients or validate the GFED5 burned area time series. The term ‘Ref’ refers to datasets with manual quality inspection such as those reported in the Burned Area Reference Database (BARD). The term ‘Auto’ refers to datasets created using an automatic approach based on machine

1600 learning.

Name	Type	Satellite	Years	Region	Original data name	Reference	Data source	DOI
Datasets used for calibration								
AFRS2	Ref	S2	2016	Sub-Saharan Africa	BARD - FireCCI Africa S2	Franquesa et al., 2020	e-scienceData	10.21950/BBQQU7
GLB0314	Ref	LS	2003-2014	Global	BARD - FireCCI global 2003-2014	Franquesa et al., 2020	e-scienceData	10.21950/BBQQU7
GLB08	Ref	LS	2008	Global	BARD - FireCCI global 2008	Franquesa et al., 2020	e-scienceData	10.21950/BBQQU7
C3S	Ref	LS	2017-2019	Global	BARD - C3S global	Franquesa et al., 2020	e-scienceData	10.21950/BBQQU7
GREECE	Ref	LS	2016-2018	Greece	BARD - NOFFi	Franquesa et al., 2020	e-scienceData	10.21950/BBQQU7
USA	Ref	LS	2003, 2008, 2013	CONUS	BARD - CONUS	Franquesa et al., 2020	e-scienceData	10.21950/BBQQU7
NBAC	Auto	LS	2018	Canada	National Burned Area Composite	Hall et al, 2020	CWFIS	10.1071/WF19201
IDNS2Ref	Ref	S2	2019	Indonesia	Indonesia BA S2	Gaveau et al., 2021	Zenodo	10.5281/zenodo.4551243
MAWAS	Auto	LS	2001-2015	Mawas in Indonesia	Mawas Landsat	Vetrita and Cochrane, 2019	ORNL DAAC	10.3334/ORN LDAAC/1708- Deleted: .
Datasets used for validation								
NBAC	Auto	LS	2016	Canada	National Burned Area Composite	Hall et al, 2020	CWFIS	10.1071/WF19201
AFR	Ref	LS	2016	Sub-Saharan Africa	BARD - FireCCI Africa	Franquesa et al., 2020	e-scienceData	10.21950/BBQQU7
QLD	Auto	LS and S2	2016	Queensland in Australia	Queensland Landsat	Goodwin and Collett, 2014	TERN	10.1016/j.rse.2014.03.021
SFD	Auto	S2	2016	Sub-Saharan Africa	FireCCI SFD11	Roteta et al., 2019	CEDA	10.5285/065f6040ef08485db989cbd89d536167
USGS	Auto	LS	2003-2018	CONUS	CONUS BA Landsat	Hawbaker et al., 2020	EarthExplorer	10.5066/F7T151VX
MAPB	Auto	LS	2019	Brazil	Mapbiomas BA Landsat	Souza et al., 2020	Mapbiomas	10.3390/rs12060924
RUSS2	Auto	S2	2020 spring	Russia	Russia BA S2	Glushkov et al., 2021	Greenpeace	10.1088/1748-9326/ac3287
IDNS2	Auto	S2	2019	Indonesia	Indonesia BA S2	Gaveau et al., 2021	Zenodo	10.5281/zenodo.4551243

Table 2. Primary coarse-resolution datasets used in this study to derive the GFED5 burned area.

Name	Origin	Product/method	Res.	Purpose	Reference	Data source	DOI
MODIS burned area (BA _{MCD64A1})	MODIS	C6 MCD64A1	500m	Derive 0.25° BA, for Separate AF _{in} and AF _{out}	Giglio et al., 2018	Fuoco	10.5067/MODIS/MCD64A1.006
MODIS active fire (AF _{MODIS})	MODIS	C6 MCD14ML	1 km	Derive BA outside of BA _{MCD64A1}	Giglio et al., 2016	Fuoco	10.5067/FIRMS/MODIS/MCD14ML
Land cover type (LCT)	MODIS	Reclassified C6 MCD12Q1	500m	Separate BA over LCT bins	Van Wees et al., 2022	Van Wees et al., 2022	10.1111/gcb.15591
Fractional tree cover (FTC)	MODIS	C6 MOD44B	250m	Separate BA over FTC bins	Dimiceli et al., 2021	LPDAAC	10.5067/MODIS/MOD44B.006
Peatland cover (PeatM)	CIFOR	Tropical and Subtropical Wetlands Distribution V2	231m	Separate peatland BA	Gumbricht, 2012	CIFOR	10.17528/CIFOR/ATA.00058
VIRS active fire (AF _{VIRS})	VIRS	VIRS AF	0.5°	Estimate BA in pre-MODIS era	Giglio et al., 2003	Fuoco	10.1080/0143116031000070283
ATSR active fire (AF _{ATSR})	ATSR	World Fire Atlas Alg1	0.5°	Estimate BA in pre-MODIS era	Arino et al., 2012	ESA DUE	-
Fire persistence (FP)	MODIS	Derived from AF _{MODIS}	5km	Derive deforestation mask	Randerson et al., 2012	This study	-
Deforestation mask (DefoM)	MODIS	Derived from FP, LCT, FTC	5km	Separate deforestation BA	This study	This study	-
Cropland burned area	Multiple satellite data	GloCAB	0.25°	Used for cropland BA estimation	Hall et al. 2023	Zenodo	10.5281/zenodo.7860452

Deleted: Hall et al. submitted
Deleted: -
Deleted: submitted

1610 **Table 3.** Annual mean GFED5 burned area (in Mha yr⁻¹) for different GFED regions, different burning types, and different land cover types (for the normal burning) during 2001-2020.

Region	Total	Normal land cover type												Crop	Peat	Defo	
		Tundra forest	Sparse boreal forest	Boreal forest	Temp. grass	Temp. shrub	Temp. mosaic	Temp. forest	Trop. grass	Trop. shrub	Open savanna	Woody savanna	Trop. forest				Other
BONA	4.12	0.16	0.97	1.40	0.01	0	0.12	0.06	0	0	0	0	0	0.04	1.37	0	0
TENA	6.37	0	0	0	1.92	0.10	0.76	0.27	0	0	0.06	0	0	0.13	3.09	0.02	0.01
CEAM	12.62	0	0	0	0.30	0.13	0.59	0.09	1.02	0.01	2.08	3.30	2.49	0.04	2.44	0.08	0.11
NHSA	9.44	0	0	0	0	0	0	0	3.38	0.01	3.99	1.01	0.42	0.03	0.36	0.22	0.06
SHSA	53.89	0	0	0	1.58	0.28	3.00	0.12	12.46	0.46	21.35	3.92	4.10	0.29	4.35	0.58	1 Deleted: 1
EURD	4.26	0.02	0.04	0.06	0.37	0.03	0.73	0.10	0	0	0	0	0	0.08	2.82	0	0 Deleted: 1
MIDE	3.14	0	0	0	0.26	0.08	0.05	0.02	0.03	0.03	0	0	0	0.06	2.60	0	0
NHAF	242.1	0	0	0	0	0	0	0	98.32	0.05	100.7	7.28	14.63	0.15	20.52	0.33	0.31
SHAF	244.5	0	0	0	1.51	0.12	0.23	0.06	58.02	4.35	116.9	33.09	26.40	0.29	2.47	0.56	0 Deleted: 4
BOAS	32.38	1.84	5.71	4.82	2.73	0	9.26	1.56	0	0	0	0	0	0.17	6.29	0	0
CEAS	42.85	0.09	0.21	0.15	17.34	0.03	2.18	0.51	0.02	0	0.11	0.16	0.14	0.46	21.39	0.02	0.04
SEAS	59.03	0	0	0	0.06	0.02	0.10	0.03	3.74	0.09	8.24	10.49	22.35	0.13	13.27	0.30	0 Deleted: 3
EQAS	3.71	0	0	0	0	0	0	0	0.06	0	0.69	0.82	0.52	0.03	0.64	0.56	0.39
AUST	55.54	0	0	0	0.88	3.83	0.76	0.38	25.70	16.28	5.60	0.06	0.07	0.03	1.80	0.03	0 Deleted: 7
GLOBAL	774.0	2.3	6.9	6.4	27.0	4.6	17.8	3.2	202.7	21.3	259.7	60.1	71.1	1.9	83.4	2.7	3 Deleted: 6

1635 **Table 4.** Long-term relative trends of GFED5 burned area (% yr⁻¹) for different GFED regions, different burning types, and different land cover types (for the normal burning) during 2001-2020. The trends are calculated using the Ordinary Least Squares (OLS) regression method. Significant trends (p < 0.05) are highlighted in bold.

Region	Total	Normal land cover type												Crop	Peat	Defo		
		Tundr a	Sparse boreal forest	Boreal forest	Temp. grass	Temp. shrub	Temp. mosaic	Temp. forest	Trop. grass	Trop. shrub	Open savanna	Woody savanna	Trop. forest				Other	
HONA	-0.91	-3.19	-1.16	0.28	2.45	-	5.23	4.92	-	-	-	-	-	-1.41	-2.50	-	Deleted: 5	
TENA	0.19	-	-	-	1.57	0.61	0.93	2.84	-	-	-3.31	-	-	-0.40	-0.97	-2.66	0.57	
CEAM	-0.68	-	-	-	1.64	4.01	-0.56	-0.27	-0.47	-1.40	-1.22	-1.11	0.08	1.99	-1.22	-0.01	1.14	
NHSA	-0.89	-	-	-	-	-	-	-	0.49	-0.96	-2.40	-0.91	0.74	1.02	-0.10	-0.21	1.71	Deleted: 1
SHSA	-2.07	-	-	-	-4.44	-4.88	-1.71	0.94	-1.85	-4.84	-2.00	-0.93	-1.45	1.44	-3.62	-0.28	-3.27	
EURO	-3.44	-1.95	-3.56	-3.82	-2.12	-0.30	-0.95	0.23	-	-	-	-	-	-0.04	-4.53	-	-	
MIDE	1.49	-	-	-	2.91	3.85	2.14	2.96	3.64	4.39	-	-	-	2.09	1.19	-	-	
NHAF	-1.23	-	-	-	-	-	-	-	-1.39	1.39	-1.16	2.42	0.63	1.04	-3.58	0.52	4.88	
SHAF	-0.39	-	-	-	-1.77	0.59	0.74	3.37	-1.41	-1.17	0.02	-0.72	0.60	1.45	-2.30	0.70	4.69	Deleted: 3
BOAS	-3.55	-6.62	1.00	-0.99	-3.04	-9.12	-4.88	-4.21	-	-	-	-	-	-1.39	-6.93	-	Deleted: 7	
FEAS	-3.28	-5.97	-0.76	-7.40	-3.95	3.89	-1.92	-1.19	-4.55	-3.23	-4.77	-8.62	-6.71	5.51	-3.06	1.20	5.92	Deleted: 2
SEAS	0.56	-	-	-	1.77	5.47	2.55	2.83	0.91	2.50	-0.03	0.65	0.15	3.85	1.33	0.71	3.42	Deleted: 8
EQAS	-2.51	-	-	-	-	-	-	-	0.05	-	-2.01	-2.92	-2.44	1.10	-5.05	-1.23	-1.05	Deleted: 1
AUST	-3.08	-	-	-	-1.97	-4.81	1.50	5.11	-2.74	-4.47	-2.35	-0.09	0.48	-0.19	0.80	0.79	8.10	Deleted: 21
GLOBAL	-1.2	-6.2	0.6	-0.9	-3.1	-4.0	-3.0	-1.2	-1.5	-3.8	-0.7	-0.2	0.3	2.1	-2.5	-0.1	0.8	Deleted: 20

1640

Deleted: 5

Deleted: 1

Deleted: 3

Deleted: 7

Deleted: 2

Deleted: 8

Deleted: 1

Deleted: 21

Deleted: 20

Deleted: 62

Deleted: 90

Deleted: 13

Deleted: 03

Deleted: 2.96

Deleted: 15

Deleted: 51

Deleted: 75

Deleted: 71

Deleted: 19

Deleted: 29

Deleted: 05

Deleted: 48

Deleted: 05

Deleted: 52

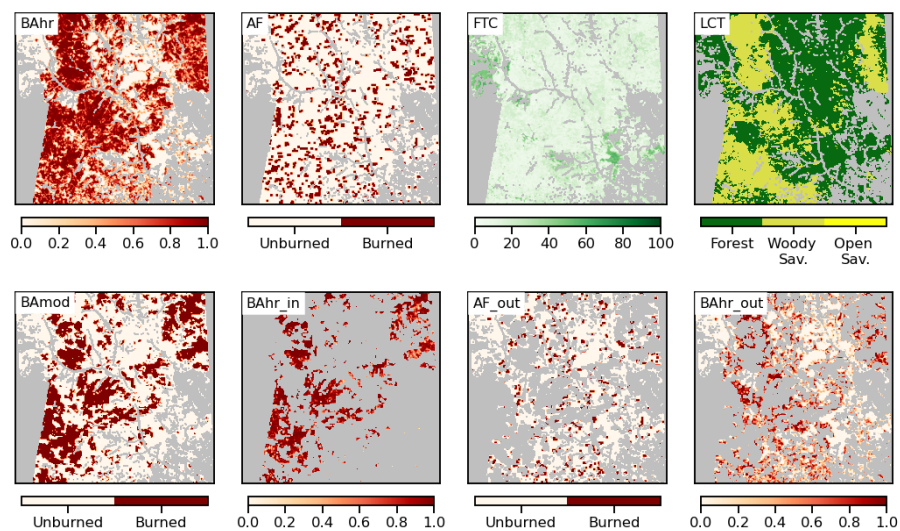
Table 5. Comparison of GFED5 mean annual burned area (Mha yr⁻¹) and long-term relative trends (% yr⁻¹, in parentheses) globally and in different GFED regions (See Figure 2 for locations) with other global burned area estimates. Significant trends (p < 0.05) are highlighted in bold.

Region	GFED5 (1997-2020)	GFED5 (2001-2020)	MCD64A1 C6 (2001-2020)	GFED5 (2001-2016)	GFED4s (2001-2016)
BONA	4.13 (-0.80)	4.12 (-0.91)	2.23 (-0.45)	4.11 (0.45)	2.83 (1.72)
TENA	6.52 (0.51)	6.37 (0.19)	2.80 (2.60)	5.95 (0.17)	2.86 (2.01)
CEAM	13.40 (-1.12)	12.62 (-0.68)	2.68 (-0.59)	11.89 (-1.26)	2.97 (-0.85)
NHSA	9.36 (-0.28)	9.44 (-0.89)	5.42 (-0.04)	8.94 (-2.46)	5.25 (-1.88)
SHSA	53.59 (-1.05)	53.90 (-2.07)	28.85 (-1.22)	52.51 (-2.73)	25.97 (-2.00)
EURO	4.42 (-2.59)	4.26 (-3.44)	0.91 (-3.45)	4.26 (-4.36)	1.19 (-4.08)
MIDE	3.01 (2.10)	3.14 (1.49)	1.00 (1.91)	2.90 (2.47)	1.27 (2.00)
NHAF	253.3 (-1.49)	242.1 (-1.23)	123.6 (-1.89)	236.7 (-1.18)	151.4 (-2.24)
SHAF	243.1 (-0.09)	244.5 (-0.39)	147.3 (-0.61)	232.0 (-0.23)	172.9 (-0.71)
BOAS	31.70 (-1.65)	32.38 (-3.55)	9.27 (-0.86)	33.04 (-3.76)	9.34 (-2.00)
CEAS	40.54 (-1.50)	42.85 (-3.28)	17.5 (-4.26)	43.28 (-3.81)	22.06 (-3.35)
SEAS	59.26 (0.83)	59.03 (0.56)	13.9 (1.30)	55.41 (1.07)	14.88 (1.81)
EQAS	4.45 (-4.34)	3.71 (-2.51)	1.43 (-2.20)	3.95 (-0.71)	2.05 (-1.11)
AUST	58.45 (-2.55)	55.54 (-3.08)	44.52 (-3.42)	55.53 (-3.77)	50.43 (-3.48)
GLOBAL	785.2 (-0.91)	774.0 (-1.21)	401.4 (-1.43)	750.4 (-1.27)	465.4 (-1.64)

- Deleted: MCD64A1 C6
- Deleted: GFED5+ ... [1]
- Deleted: REGION
- Deleted: 2001
- Deleted: 12...3 (-0.91) ... [2]
- Deleted: 2.23...12 (-0.45) ... [3]
- Deleted: 4.13...23 (-0.80) ... [4]
- Deleted: 37...2 (0.19) ... [5]
- Deleted: 2.80 (2.60)
- Deleted: 6.52 (0.51)
- Deleted: .62 (-0.68)
- Deleted: 2.68...2.62 (-0.59) ... [6]
- Deleted: 13.40 (-1.12)
- Deleted: 44...6 (-0.89) ... [7]
- Deleted: 5.42...44 (-0.04) ... [8]
- Deleted: 9.36...42 (-0.28) ... [9]
- Deleted: 90 (-2.07)
- Deleted: 28.85 (-1.22)
- Deleted: 53.59...8.85 (-1.05) ... [10]
- Deleted: 26 (-3.44)
- Deleted: 0.91...26 (-3.45) ... [11]
- Deleted: 4.42 (-2.59)
- Deleted: 14 (1.49)
- Deleted: 00 (1.91)
- Deleted: 3.01 (2.10)
- Deleted: 242...53.3 (-1 (-1.23) ... [12]
- Deleted: 123.6 (...42.1.89) ... [13]
- Deleted: 253.3...23.6 (-1.49) ... [14]
- Deleted: 244.5...43.1 (-0.39) ... [15]
- Deleted: 147.3...44.5 (-0.61) ... [16]
- Deleted: 243.1...47.3 (-0.09) ... [17]
- Deleted: 32.38 (-3.55)
- Deleted: 9.27 (-0.86)
- Deleted: 31.70 (-1.65)
- Deleted: 42.85 (-3.28)
- Deleted: 17.5 (-4.26)
- Deleted: 40.54 (-1.50)
- Deleted: 03...6 (0.56) ... [18]
- Deleted: 13.9 (1.30)
- Deleted: 59.26 (0.83)
- Deleted: 3.71 (-2.51)
- Deleted: 1.43...71 (-2.20) ... [19]
- Deleted: 4.45 (-4.34)
- Deleted: .54 (-3.08)
- Deleted: 44.52...5.54 (-3.42) ... [20]
- Deleted: 58.45 (-2.55)
- Deleted: 774...85.2 (-0 (-1.21) ... [21]
- Deleted: 401.4...74.0 (-1.43) ... [22]
- Deleted: 785.2 (-0.91)

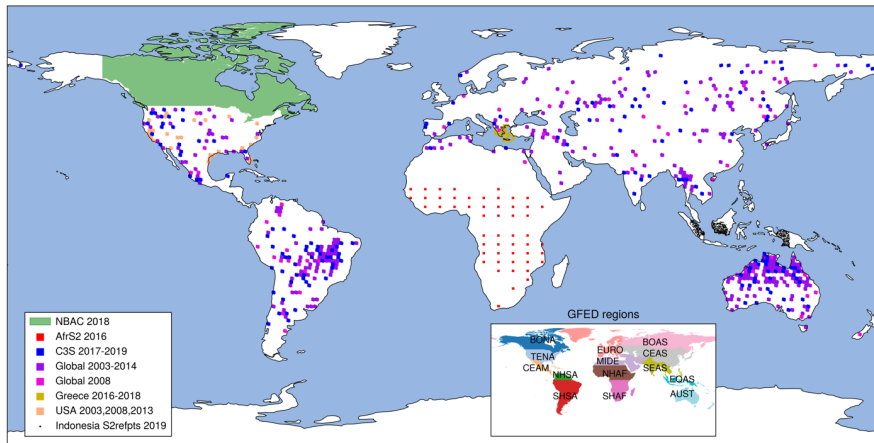
Figures

1795 **Figure 1.** Example images used for adjusting burned area for *normal* fire type. The 20-m burned area
data from the 2016 FireCCI Africa Sentinel-2 dataset (for tile T34NEP) is aggregated to a 500m resolution
burned fraction image (BAhr). The MODIS 500-m data (AF: active fire area; FTC: fractional tree cover
(%); LCT: land cover type, BAmo: MCD64A1 burned mask) is used to create images that are
spatiotemporally aligned with the BAhr image. The BAhr and AF pixels are further separated into those
1800 within (BAhr_in) and outside of (BAhr_out, AF_out) the MODIS burned perimeter.



1805

Figure 2. A global map of Landsat and Sentinel-2 reference burned area scenes used in this study to derive regional omission and commission scaling coefficients for *normal* fire type. Detailed information about the datasets can be found in Table 1 and Table S2. The inset shows the locations of 14 GFED regions.

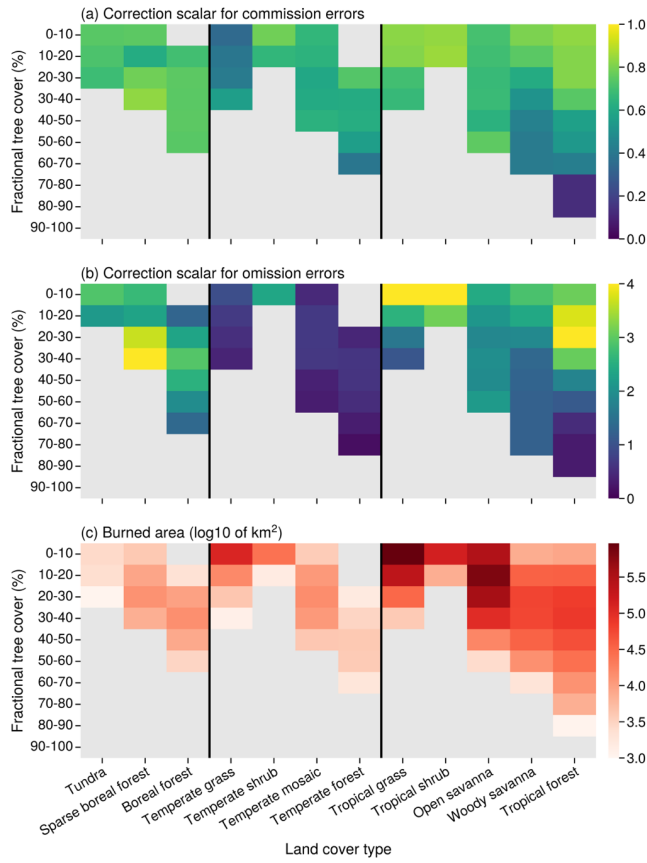


1810

1815

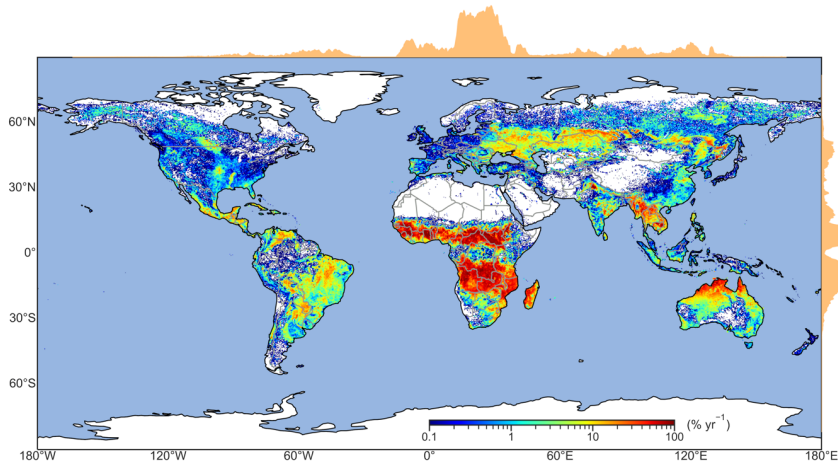
Figure 3. Mean values of commission scalars, omission scalars and burned areas for dominant normal type fires in each bin combination of fractional tree cover (FTC, in percent) and land cover type (LCT) were derived globally (shown here) and for each GFED region (not shown) using reference burned area data as shown in Table 1 and Figure 2. Note the bins with small burned area ($BA_{MODIS,64A1} < 500 \text{ km}^2 \text{ yr}^{-1}$, for commission scalar) or active fire areas outside of the burned area ($AF_{MODIS,out} < 500 \text{ km}^2 \text{ yr}^{-1}$, for omission scalar) are shown in gray. Scalars over Water, Wetlands, Urban, Snow/Ice, and Barren LCTs were not derived due to insufficient data samples.

Deleted: area



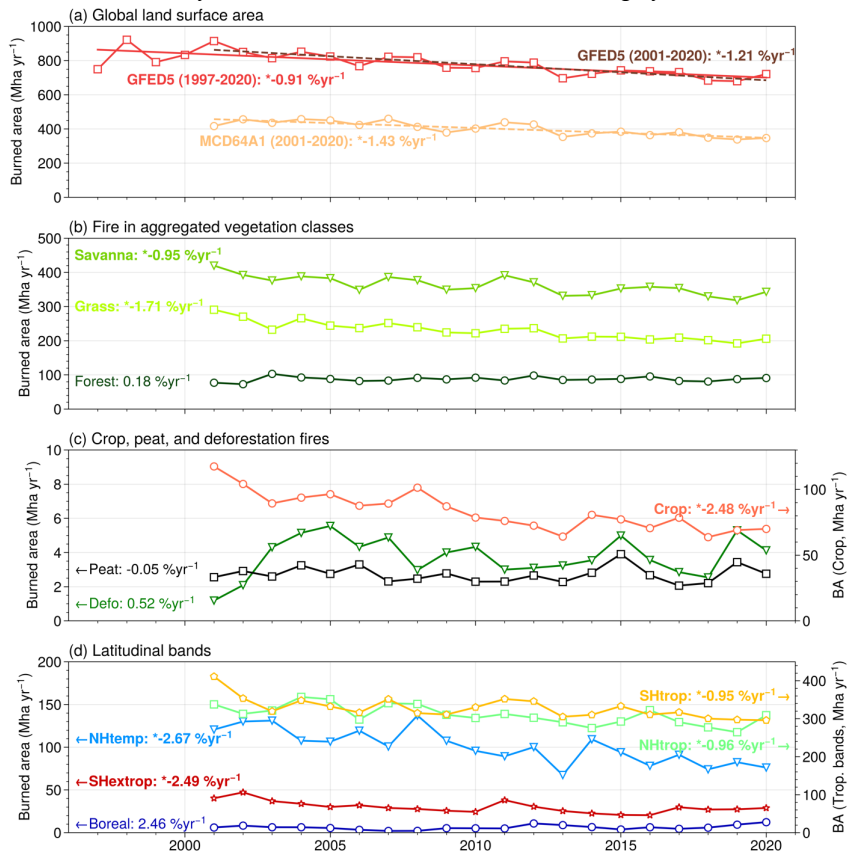
1820

1825 **Figure 4.** Global distribution of the mean annual GFED5 burned area, expressed as a percentage of the burnable land area in each $0.25^\circ \times 0.25^\circ$ grid cell, from 2001 to 2020. The two area charts displayed above and to the right of the map provide a visual representation of the relative fractions of burned area along the longitude and latitude axes, respectively.



1830

Figure 5. Long-term trends in global burned area from GFED5 (in % yr⁻¹), normalized by the annual mean, for a) different time intervals and data products, b) normal type fires in aggregated vegetation classes, c) crop, peat and deforestation fires, and d) five latitudinal bands: Boreal (60°N-90°N), NHtemp (Northern Hemisphere temperate, 23.5°N-60°N), NHtrop (Northern Hemisphere tropical, EQ-23.5°N), SHtrop (Southern Hemisphere tropical, 23.5°S-EQ), and SHextrop (Southern Hemisphere extra-tropical, 90°S-23.5°S). Sign ** before the number indicates a significant (p < 0.05) trend value. Labels and arrows on panels c & d denote the y-axis scale for each GFED5 burned area category.

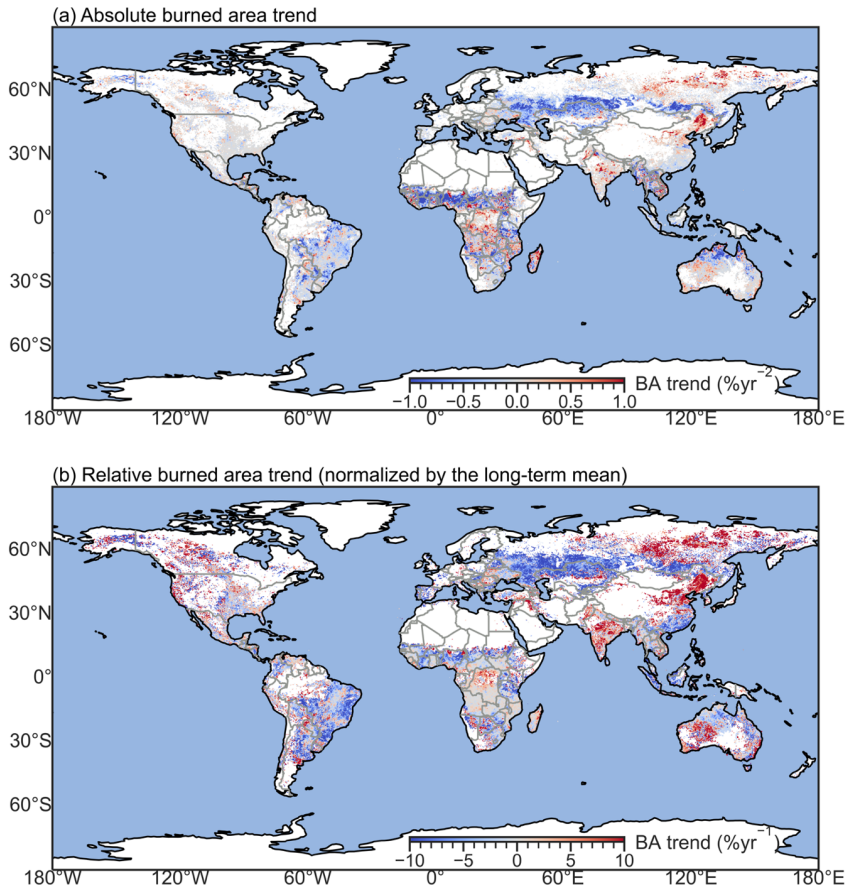


1835

1840

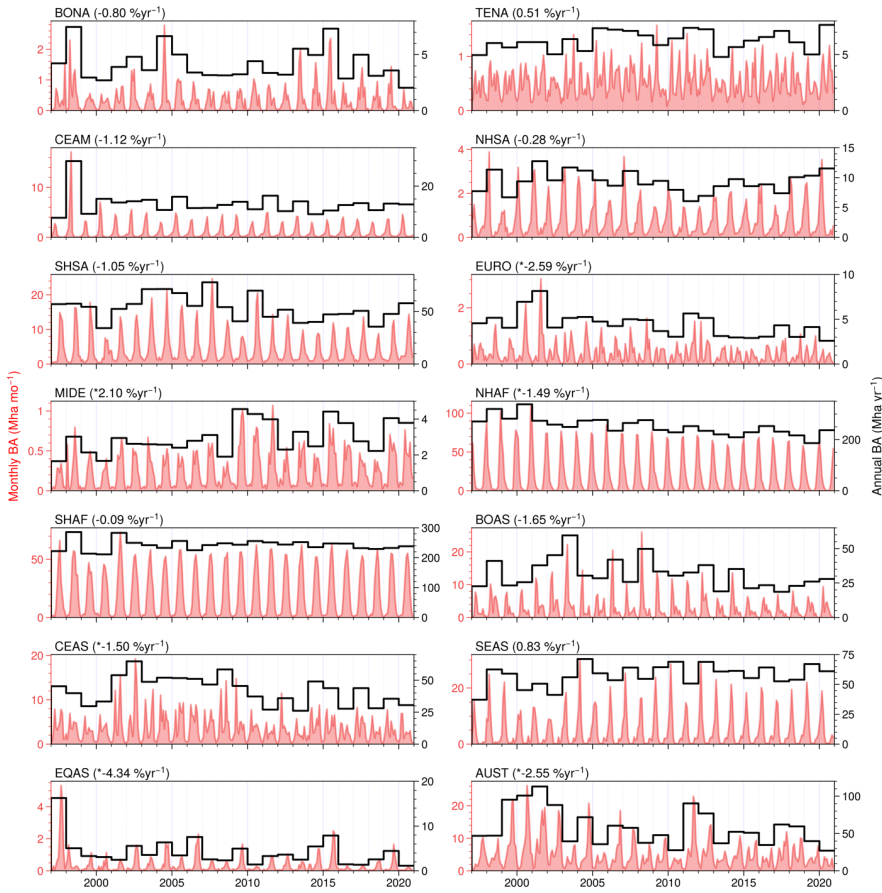
1845

Figure 6. Global maps of GFED5 burned area trends during 2003-2020. (a) Map of the linear trend in units of absolute change in percent burned area for each 0.25° grid cell (% burned area yr⁻²); (b) map of relative burned area trend in each grid cell (% yr⁻¹). The values in panel (b) were estimated by dividing the values in panel (a) by the all-year mean burned area shown in Figure 4.



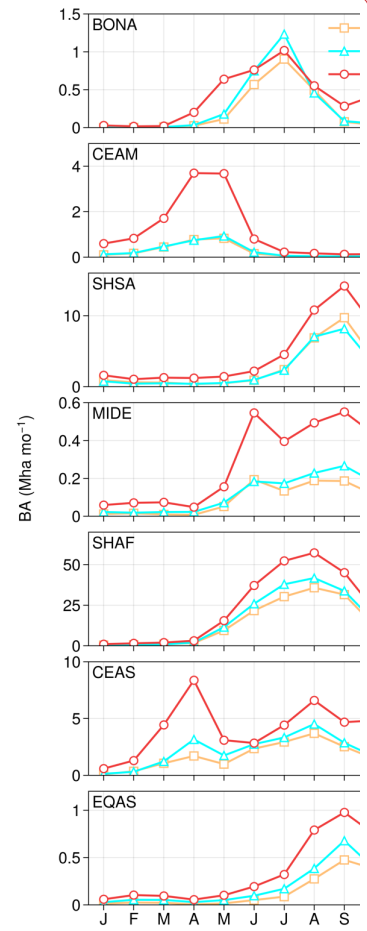
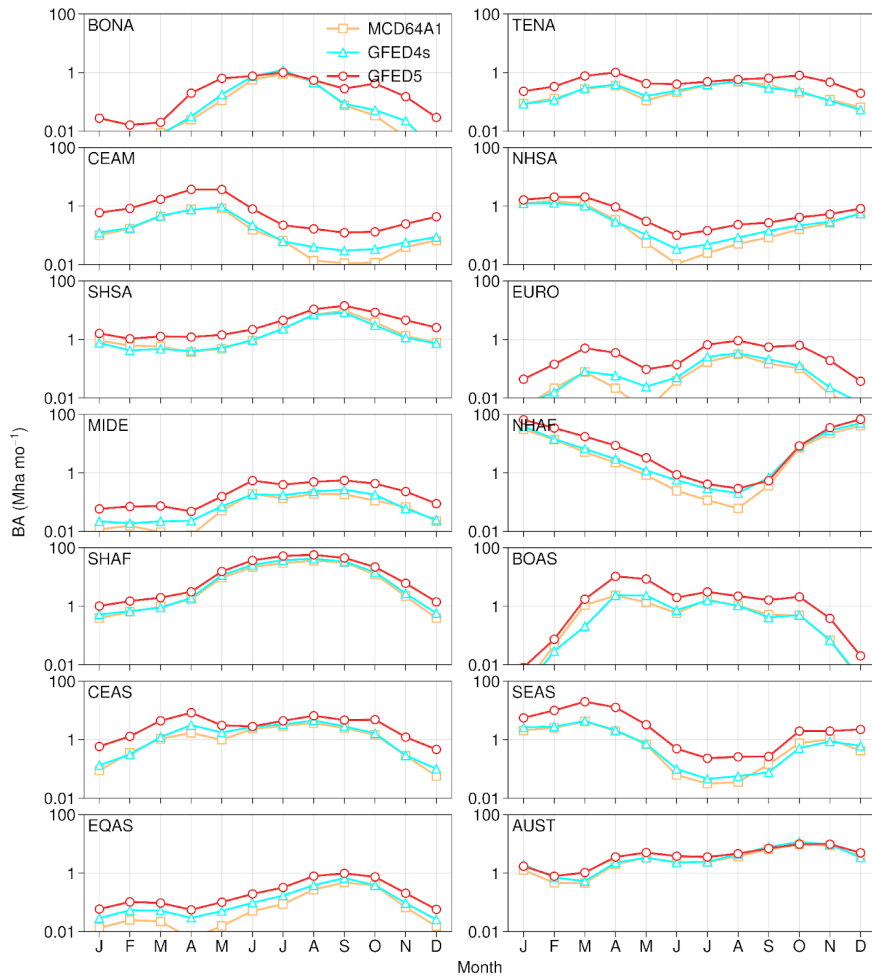
1850

Figure 7. Time series of monthly (red lines) and annual (black lines) GFED5 burned area in 14 GFED regions from 1997 to 2020. The values in parentheses (in %yr⁻¹) are long-term trends during this period, normalized by the all-year mean values. Sign ‘*’ before the number indicates a significant (p < 0.05) trend value.



1855

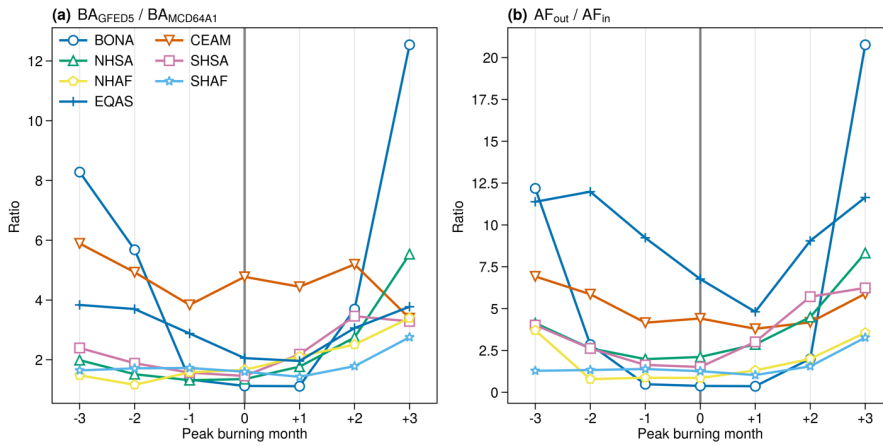
Figure 8. Comparison of the regional burned area seasonality from GFED5, MCD64A1, and GFED4s. The climatological monthly GFED5 and MCD64A1 burned area values are based on data from 2001 to 2020, and the GFED4s values are based on data from 2001 to 2016. Note the y-axes are plotted on a log₁₀ scale.



Deleted:

1865 **Figure 9.** The ratios of (a) burned area from GFED5 to that from MODIS MCD64A1 ($BA_{GFED5}/BA_{MCD64A1}$), and (b) MODIS active fire area that is located out of the burned area to that located within the burned area (AF_{out}/AF_{in}). Each data point represents the mean monthly value, averaged in each GFED region over the 7-month period from 3 months before the peak burning month to 3 months after the peak burning month, for the 2001-2020 time period. Regions with multiple or no major fire seasons are not shown.

1870



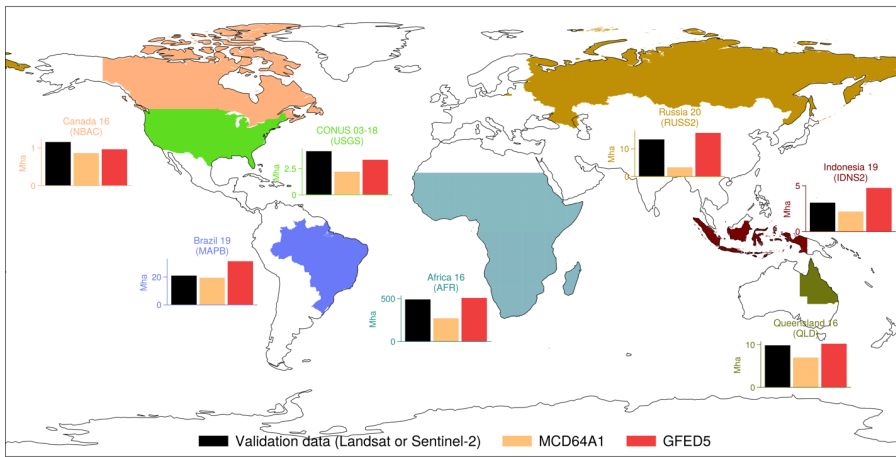
1875

1880

1885

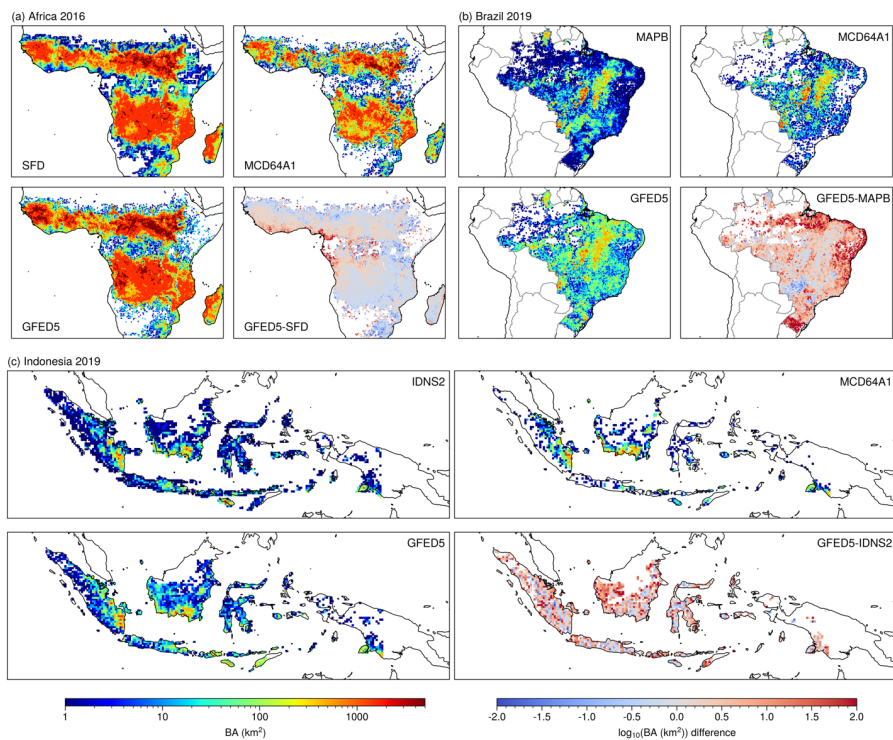
Figure 10. Evaluation of GFED5 burned area using independent products from higher-resolution imagery. For each source of Landsat or Sentinel-2 data (the datasets are listed in Table 1), the total burned areas (in Mha) from GFED5 and MCD64A1 are calculated over the same region and periods as in the higher-resolution reference images. The regional burned area sums are compared in the inset bar charts, with the title indicating the region name, the year(s) of the measurements, and the name of the higher-resolution data source (in the parenthesis). In the comparison with Landsat data in CONUS and the NBAC data in Canada, we excluded the MCD64A1 and GFED5 burned area over croplands. We note that the GFED5 burned area and the higher-resolution datasets are not always directly comparable in this respect, as the burned area mapping from high-resolution datasets may be incomplete due to persistent cloud cover or sensor failure.

Deleted: to



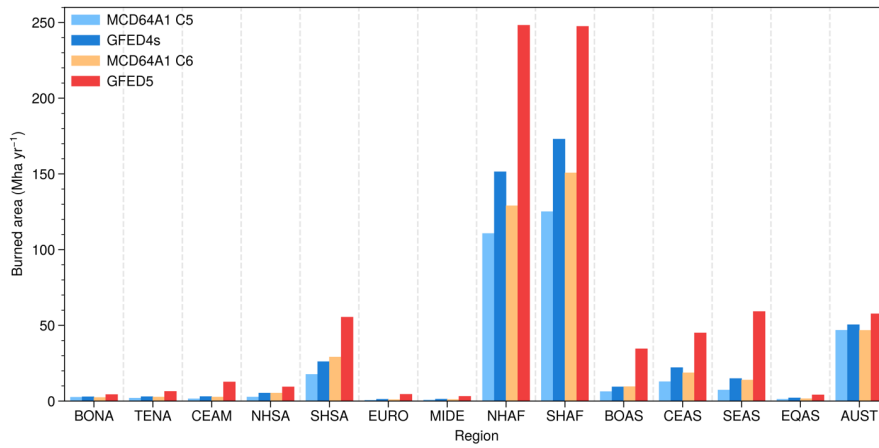
1890

Figure 11. A spatial ($0.25^\circ \times 0.25^\circ$) comparison of burned area from GFED5 with burned area from MCD64A1 and higher resolution satellites (SFD for Africa, MAPB for Brazil, IDNS2 for Indonesia; see Table 1 for details) is shown for (a) Africa, (b) Brazil, (c) Indonesia.



1900

1905 **Figure 12.** Comparison of GFED5 burned area to GFED4s and different versions of the MODIS MCD64A1 burned area product (Collections 5 and 6) for the 14 GFED regions, based on the average burned area over 2001-2016.



1910

Page 41: [1] Deleted Yang Chen 10/17/23 4:18:00 PM

Page 41: [2] Deleted Yang Chen 10/17/23 4:18:00 PM

Page 41: [2] Deleted Yang Chen 10/17/23 4:18:00 PM

Page 41: [3] Deleted Yang Chen 10/17/23 4:18:00 PM

Page 41: [3] Deleted Yang Chen 10/17/23 4:18:00 PM

Page 41: [4] Deleted Yang Chen 10/17/23 4:18:00 PM

Page 41: [4] Deleted Yang Chen 10/17/23 4:18:00 PM

Page 41: [5] Deleted Yang Chen 10/17/23 4:18:00 PM

Page 41: [5] Deleted Yang Chen 10/17/23 4:18:00 PM

Page 41: [6] Deleted Yang Chen 10/17/23 4:18:00 PM

Page 41: [6] Deleted Yang Chen 10/17/23 4:18:00 PM

Page 41: [7] Deleted Yang Chen 10/17/23 4:18:00 PM

Page 41: [7] Deleted Yang Chen 10/17/23 4:18:00 PM

Page 41: [8] Deleted Yang Chen 10/17/23 4:18:00 PM

Page 41: [8] Deleted Yang Chen 10/17/23 4:18:00 PM

Page 41: [9] Deleted Yang Chen 10/17/23 4:18:00 PM

Page 41: [9] Deleted Yang Chen 10/17/23 4:18:00 PM

Page 41: [10] Deleted Yang Chen 10/17/23 4:18:00 PM

Page 41: [10] Deleted Yang Chen 10/17/23 4:18:00 PM

Page 41: [11] Deleted Yang Chen 10/17/23 4:18:00 PM

Page 41: [11] Deleted	Yang Chen	10/17/23 4:18:00 PM
Page 41: [12] Deleted	Yang Chen	10/17/23 4:18:00 PM
Page 41: [12] Deleted	Yang Chen	10/17/23 4:18:00 PM
Page 41: [13] Deleted	Yang Chen	10/17/23 4:18:00 PM
Page 41: [13] Deleted	Yang Chen	10/17/23 4:18:00 PM
Page 41: [14] Deleted	Yang Chen	10/17/23 4:18:00 PM
Page 41: [14] Deleted	Yang Chen	10/17/23 4:18:00 PM
Page 41: [15] Deleted	Yang Chen	10/17/23 4:18:00 PM
Page 41: [15] Deleted	Yang Chen	10/17/23 4:18:00 PM
Page 41: [16] Deleted	Yang Chen	10/17/23 4:18:00 PM
Page 41: [16] Deleted	Yang Chen	10/17/23 4:18:00 PM
Page 41: [17] Deleted	Yang Chen	10/17/23 4:18:00 PM
Page 41: [17] Deleted	Yang Chen	10/17/23 4:18:00 PM
Page 41: [18] Deleted	Yang Chen	10/17/23 4:18:00 PM
Page 41: [18] Deleted	Yang Chen	10/17/23 4:18:00 PM
Page 41: [19] Deleted	Yang Chen	10/17/23 4:18:00 PM
Page 41: [19] Deleted	Yang Chen	10/17/23 4:18:00 PM
Page 41: [20] Deleted	Yang Chen	10/17/23 4:18:00 PM
Page 41: [20] Deleted	Yang Chen	10/17/23 4:18:00 PM
Page 41: [21] Deleted	Yang Chen	10/17/23 4:18:00 PM

Page 41: [21] Deleted Yang Chen 10/17/23 4:18:00 PM

Page 41: [22] Deleted Yang Chen 10/17/23 4:18:00 PM

Page 41: [22] Deleted Yang Chen 10/17/23 4:18:00 PM