

Low-level mixed-phase clouds at the high Arctic site of Ny-Ålesund: A comprehensive long-term dataset of remote sensing observations

Giovanni Chellini¹, Rosa Gierens¹, Kerstin Ebell¹, Theresa Kiszler¹, Pavel Krobot¹,
Alexander Myagkov², Vera Schemann¹, and Stefan Kneifel^{1,3}

¹Institute for Geophysics and Meteorology, University of Cologne, Cologne, Germany

²Radiometer Physics GmbH, Meckenheim, Germany

³Meteorological Institute, Ludwig-Maximilians-University Munich, Munich, Germany

Correspondence: Giovanni Chellini (g.chellini@uni-koeln.de)

Abstract. We present a comprehensive quality-controlled 15-month dataset of remote sensing observations of low-level mixed-phase clouds (LLMPCs) taken at the high Arctic site of Ny-Ålesund, Svalbard, Norway. LLMPCs occur frequently in the Arctic region, and extensively affect the energy budget. However, our understanding of the ice microphysical processes taking place in these clouds is incomplete. The dual-wavelength and polarimetric Doppler cloud radar observations, which are the cornerstones of the dataset, provide valuable fingerprints of ice microphysical processes, and the high number of cases included allows for the compiling of robust statistics for process studies. The radar data are complemented with thermodynamic retrievals from a microwave radiometer, liquid base height from a ceilometer and wind fields from large-eddy simulations. All data are quality controlled, especially the cloud radar data, which are accurately calibrated, matched, and corrected for gas and liquid-hydrometeor attenuation, ground clutter and range folding. We finally present an analysis of the temperature dependence of Doppler, dual-wavelength, and polarimetric radar variables, to illustrate how the dataset can be used for cloud microphysical studies. The dataset has been published in Chellini et al. (2023) and is freely available at: www.doi.org/10.5281/zenodo.7803064.

1 Introduction

Clouds are an essential component of the Earth system, considerably impacting the energy budget and driving the hydrological cycle (Wallace and Hobbs, 2006). As such, they are thought to play a role in the enhanced warming observed in the Arctic region in the past decades, termed Arctic Amplification (Shupe and Intrieri, 2004; Serreze and Barry, 2011; Matus and L'Ecuyer, 2017; Tan and Storelvmo, 2019). Clouds in the Arctic display features unique to this region, in particular the widespread and frequent occurrence of low-level mixed-phase clouds (LLMPCs) (Morrison et al., 2012; Mioche et al., 2015; de Boer et al., 2009; Shupe, 2011). Arctic LLMPCs are typically characterized by a shallow liquid layer at cloud top, where ice crystals form and grow into precipitation (Shupe et al., 2006; Morrison et al., 2012; Chellini et al., 2022). The liquid layer sustains itself from the continuous mass loss due to precipitation via turbulence-driven condensation; turbulence and updrafts being in turn produced buoyantly by cloud-top radiative cooling (Solomon et al., 2011; Morrison et al., 2012).

A variety of questions on the macro- and microphysical processes determining the radiative and thermodynamic characteristics, as well as the organization, phase-partitioning, and precipitation intensity of Arctic LLMPCs remains unanswered (Shupe et al., 2022; Wendisch et al., 2023). In particular, ice microphysical processes and their interaction with the liquid phase and turbulence are expected to affect precipitation, and therefore to determine the mass sink of the cloud layer (Morrison et al., 2012; Solomon et al., 2014, 2015). Harrington and Olsson (2001) and Simpfendorfer et al. (2019) have in fact suggested lower cloud fractions and faster dissipation for Arctic mixed-phase stratocumuli that develop precipitation. It is speculated that precipitation-induced cold pools at the surface lead to thinning and break-up of the organization in Arctic stratocumuli (Abel et al., 2017; Eirund et al., 2019). Moreover, model sensitivity experiments have shown that the phase partitioning of Arctic LLMPCs is strongly sensitive to the assumptions on the habits of the ice particles, via mass-size, and size-fall speed relations (Avramov and Harrington, 2010). ~~Sotiropoulou et al. (2022) recently showed that a more realistic representation of secondary ice production and ice aggregation processes in the NorESM2 climate model leads to an improvement in the degree of agreement with observations, especially ice water content (IWC) retrievals.~~ Furthermore, the magnitude of Arctic Amplification itself in the Community Earth System Model (CESM) has been showed to be sensitive to the size of ice particles in Arctic LLMPCs; owing to a stronger cloud-phase feedback the larger the ice particles (Tan and Storelvmo, 2019). Achieving a complete understanding of ice microphysical processes in Arctic LLMPCs is therefore necessary in order to reach a correct representation of these unique clouds, together with their radiative effect, in climate models.

Millimeter-wavelength radars can effectively provide robust observational fingerprints to constrain cloud microphysical processes (e.g., Kollias et al., 2007; von Terzi et al., 2022). Cloud radars with Doppler capabilities have been widely used to gain insights into macrophysical characteristics (Shupe et al., 2006; Nomokonova et al., 2019), precipitation characteristics (Zhao and Garrett, 2008; Schoger et al., 2021), phase partitioning (De Boer et al., 2011; Kalesse et al., 2016; Griesche et al., 2020; Gierens, 2021), and dynamics and turbulence (Shupe et al., 2008; Mages et al., 2023) in Arctic clouds. The addition of polarimetric and multi-frequency capabilities can further expand the spectrum of obtainable fingerprints. Linear depolarization and dual polarization observations can in fact provide strong constraints for the shape and concentration of ice particles (Oue et al., 2015; von Terzi et al., 2022) (Oue et al., 2015; von Terzi et al., 2022; Billault-Roux et al., 2023). At the same time, millimeter-radar observations at multiple wavelengths provide robust constraints for the size of ice particles: the ratio of the radar reflectivities measured at two separate wavelengths, named the dual-wavelength ratio (DWR), can be related to the characteristic size of the ice particle population (Hogan et al., 2000; Dias Neto et al., 2019). Furthermore, ice microphysical processes are highly sensitive to temperature (Pruppacher and Klett, 2012), hence matching radar observations with accurate thermodynamic information can further constrain the microphysical processes generating the radar fingerprints (Barrett et al., 2019; von Terzi et al., 2022).

Here, we present a quality-controlled dataset including dual-wavelength, polarimetric, Doppler cloud radar observations of LLMPC events taken at the high Arctic site of Ny-Ålesund, Svalbard, Norway, from 10 October 2021 until 31 December 2022. Observations from a zenith-pointing 94 GHz cloud radar, and a 35 GHz dual-polarization scanning cloud radar are complemented with thermodynamic retrievals from a microwave radiometer, cloud base height from a ceilometer and wind fields from large-eddy simulations. The objective is to provide a quality-controlled, ready-to-use, comprehensive dataset for

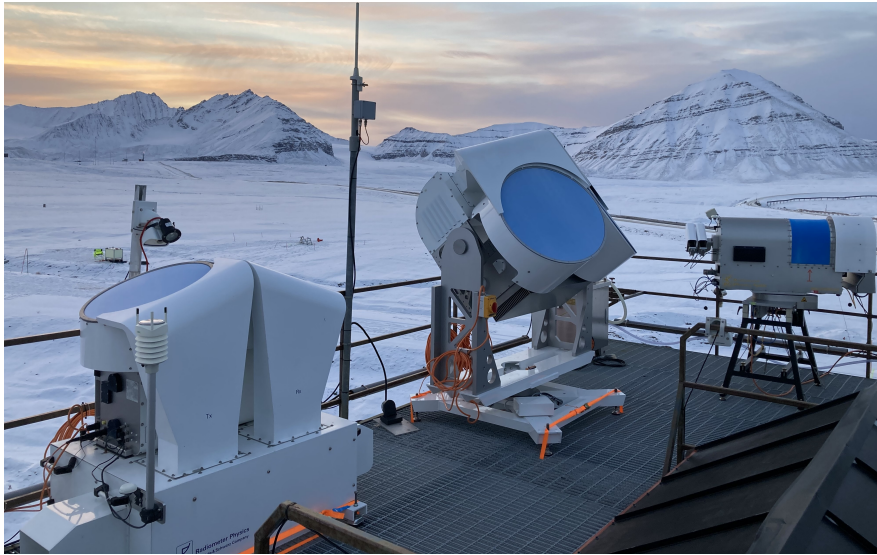


Figure 1. [Measurement set-up at the AWIPEV observatory in Ny-Ålesund.](#) From left to right: JOYRAD-94, NyRAD-35, HATPRO.

microphysical studies of LLMPCs, taken at a site where such observations were not available until now. To our knowledge, similar datasets featuring multi-frequency polarimetric Doppler cloud radar observations in the Arctic, coupled with thermo-
60 dynamic information, are only available at the site of Utqiagvik (Verlinde et al., 2016), in the American high Arctic, and for the MOSAiC expedition (Shupe et al., 2022), which took place in the central Arctic. We thus believe that this dataset will be a valuable addition to the already publicly available datasets, providing a tool for microphysical studies of Arctic LLMPCs in the European high Arctic, where Arctic Amplification has been shown to be the most intense (Dahlke and Maturilli, 2017). The dataset was published in Chellini et al. (2023) and is freely available at www.doi.org/10.5281/zenodo.7803064.

65 2 Measurement site and instruments

Observations were carried out at the observatory of the Arctic research station AWIPEV in Ny-Ålesund (Fig. 1), located at 79°N along the coast of the Kongsfjorden, a fjord on the west side of Spitzbergen, the main island of the Svalbard archipelago. The area features a mountainous terrain, with peaks reaching 700 m. The observatory is located at 11 meters above sea level, within 500 meters from the sea and 2 km from the Zeppelin mountain (556 meters high). The Kongsfjorden is surrounded by
70 several glaciers, and the surface is of the tundra type. [An overview of the local orography surrounding the site is given in Fig. 2.](#) During the observational period the sea surface inside the fjord remained for the most part ice-free.

The orography often channels surface wind along the fjord axis, at 120° (southeasterly) (Beine et al., 2001; Esau and Repina, 2012; Graßl et al., 2022). The surface wind layer thickness has been estimated to be comparable to the height of the surrounding mountains, with a yearly cycle of 500 m in summer and 1000 m in winter (Esau and Repina, 2012). The free troposphere above
75 generally displays a westerly flow (Maturilli and Kayser, 2017).

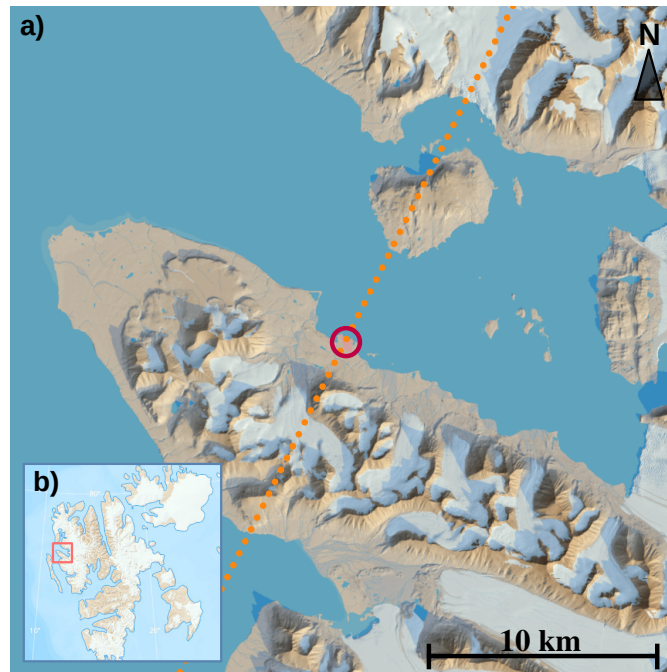


Figure 2. Map depicting the orography surrounding Ny-Ålesund (panel a). The red circle indicates the location of the measurement site, while the dotted line indicates the azimuth direction of the elevation scans of NyRAD-35, the 35-GHz scanning cloud radar. Figure edges are aligned with cardinal directions. Panel b depicts the position of the area shown in panel a within the larger Svalbard archipelago. Map data and visualization courtesy of the Norwegian Polar Institute.

Mean monthly surface air temperature peaks in July, at 5.8°C, and has its minimum in March at -12.0°C (Maturilli et al., 2013). Median monthly values of integrated water vapor (IWV) display a similar yearly cycle, with a March minimum of 3 kg m⁻² and a July maximum of 13 kg m⁻² (Nomokonova et al., 2020). Temperature and moisture inversions are a frequent feature of the lower troposphere at Ny-Ålesund, observed respectively in 75 and 84% of the daily radiosondes launched between 1993 and 2014 (Maturilli and Kayser, 2017).

Cloud characteristics at the site have been reported by a number of studies, including Nomokonova et al. (2019), Vassel et al. (2019), Koike et al. (2019), Nomokonova et al. (2020), Gierens et al. (2020), Ebell et al. (2020) and Chellini et al. (2022). Nomokonova et al. (2019) reported a frequency of occurrence of 20.6% for single-layer MPCs, with no restriction on height, while Gierens et al. (2020) estimated the occurrence of single-layer LLMPCs lasting more than 1 hour to be 23%. Chellini et al. (2022) observed an occurrence of LLMPCs lasting more than 1 hour, with no restriction on the number of liquid layers, of 30.7%.

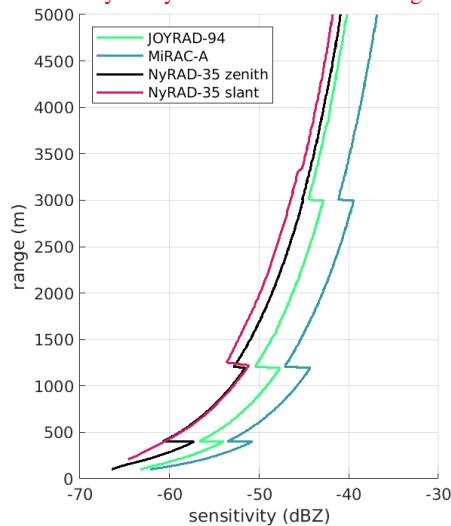


Figure 3. Median profiles of the sensitivity limit of all radar systems and chirp programs used in the study.

2.1 Cloud radars

Three cloud radar systems were used to collect the data included in the dataset. All systems are frequency-modulated continuous-wave (FMCW) radars, manufactured by Radiometer Physics GmbH (RPG): JOYRAD-94 and MiRAC-A, which are 94 GHz single-polarization zenith-pointing radars (model RPG-FMCW-94-SP, hereafter referred to as W-band), and NyRAD-35, a 35 GHz dual-polarization scanning radar (model RPG-FMCW-35-DP, hereafter referred to as Ka-band).

~~Contrary to the more commonly used pulsed radars,~~ FMCW radars transmit a continuous wave, which is modulated in frequency around the central frequency (i.e., 35 or 94 GHz for the radars employed in this study). The signal is modulated in a saw-tooth pattern, with each individual ramp step typically referred to as chirp. Multiple chirps are combined into a chirp sequence, and target ranging is performed by determining the frequency difference between the transmitted and the received chirp sequence, named intermediate frequency (IF). In practice, due to a limited IF bandwidth, a number of chirp sequences is required in order to sample the whole troposphere. The radar transmits the chirp sequences in succession, with the total time resolution being determined by the sum of the sampling time needed for each chirp sequence. We refer to a group of chirp sequences as chirp program, and the timestamp indicated in the files refers to the end of each execution of a chirp program.

The exact chirp program settings can be defined by the user, and the values used to collect the data are reported in Table 2. The sensitivity profiles associated with the different chirp programs and instruments are displayed in Fig. 3.

~~The Ka-band was operated throughout the whole dataset period, while~~ JOYRAD-94 was operated until 22 June 2022, when it was replaced by MiRAC-A. The technical characteristics of JOYRAD-94 are described in Küchler et al. (2017), while MiRAC-A is described in Mech et al. (2019). The details regarding the processing of data from both W-band radars, in particular the noise removal and Doppler aliasing correction, are presented in Küchler et al. (2017). The two W-band systems are similar

in most aspects, the major differences being the larger beam width of MiRAC-A (0.85°) compared to JOYRAD-94 (0.5°), and the longer time resolution of JOYRAD-94, which despite using the same chirp program settings as MiRAC-A during the study period, needs an extra 0.4 seconds to reinitialize the measurements before the first chirp sequence of each chirp program. Nonetheless, the effective integration time is the same for both instruments in a given chirp sequence, and ranges between 0.27 and 0.37 s. Data from both W-band radars have already been used in a number of studies, including Dias Neto et al. (2019), Wendisch et al. (2019), Gierens et al. (2020), and Schween et al. (2022).

~~Data from~~ NyRAD-35, the Ka-band radar, ~~are instead first used~~ was operated throughout the whole dataset period. Data from the instrument are used for the first time in this dataset, and more details on the instrument itself, as well as the data processing will be given. NyRAD-35 is a dual-polarization simultaneous transmission simultaneous reception (STSR; also referred to as hybrid-mode, or STAR, simultaneous transmission and reception) radar, with elevation-scanning capabilities. The scanner can perform full 180° scans in elevation, and is operated at a constant azimuth of approximately 27° , i.e., along the north-north-east to south-south-west direction. STSR radars receive at horizontal and vertical polarization, but transmit a signal that is linearly polarized along the 45° direction between vertical and horizontal directions. This allows both for linear depolarization ratio (LDR) observations in zenith and typical dual-polarization variable observations at low elevations. The radar was set up to perform a scan cycle that includes zenith observations and lower elevation observations (30° - 40° elevation). For optimal matching with the W-band radars, the chirp program during zenith observations was set up with the same range resolution as the W-band radars. Matching Ka- and W-band observations in zenith allows for the calculation of the DWR, in order to obtain information on the characteristics size of the ice particle population. The slanted observations are instead used to obtain dual-polarization variables, such as differential reflectivity (Z_{DR}) or specific differential phase (K_{DP}). A different chirp program is used for low elevation observations, with a constant range resolution of 29.8 m. Similarly to the W-band radars, the noise level is determined with the widely-used approach by Hildebrand and Sekhon (1974). Aliasing is instead not corrected, since the Nyquist range is large enough not to produce aliasing in zenith observations in most conditions (see Table 2), while velocity information is not of interest at lower elevations, since a radial component of the horizontal wind is present in the observed Doppler velocity. At low elevation Ka-band observations are affected by ground clutter, namely artefacts caused by backscattering of the signal by the ground surface, and range folding, i.e., the incorrect ranging of targets located beyond the maximum unambiguous range of the measurements. The correction of such artefacts is described in detail in sections 4.3 and 4.4.

2.2 Microwave radiometer

Radar observations are complemented with thermodynamic information from a Humidity and Temperature Profiler (HATPRO; generation 2) microwave radiometer (Rose et al., 2005). HATPRO records brightness temperatures (BTs) in 14 channels, 6 located in the K-band close to the 22-GHz water vapour absorption line, one located in the Ka-band in the atmospheric window at 31.4 GHz, and the remaining 7 in the V-band close to the 60-GHz oxygen absorption line. Liquid water path (LWP), integrated water vapour (IWV) and temperature profiles are retrieved from BT observations using the multivariable linear regression approach described in Nomokonova et al. (2019). Temperature in particular is retrieved using the approach by

	JOYRAD-94	MiRAC-A	NyRAD-35
Central frequency	94.0 GHz	94.0 GHz	35.0 GHz
Time res.	2.4 s	2.0 s	6.0/4.0 s
Beam width (half power)	0.5°	0.85°	1.0°
Polarimetry	single pol.	single pol.	dual pol. (STSR)
Orientation	zenith only	zenith only	scanning
Data availability	10.10.21-22.06.22	23.06.22-31.12.22	10.10.21-31.12.22
Variables	Doppler moments	Doppler moments	Doppler moments, LDR (zenith), polarimetry (low elevation)
Aliasing corrected	yes	yes	no

Table 1. Selected specifications of the three radar systems used in this study: two W-band cloud radars, JOYRAD-94 and MiRAC-A, and a Ka-band cloud radar, NyRAD-35.

140 Crewell and Löhnert (2007), which exploits BTs observed at multiple elevations, so called boundary-layer scans, to improve
the accuracy of the retrieval, especially in the lowest 1 km. The accuracy of this technique was assessed by Gierens et al.
(2020) in single-layer LLMPCs at Ny-Ålesund against radiosondes, and they reported an RMSE of 0.7 K at the surface, that
increases to 1.6 K (2.0 K) at the base of the liquid layer (cloud top) of the LLMPC. HATPRO performs a 30-minute scan
cycle, starting every hour at :00 and :30 past; it is composed of a full 360° azimuth scan at 30° elevation lasting 2-3 minutes,
145 followed by a boundary layer scan for the temperature retrieval, and zenith observations for the remaining part of the scan
cycle (ca. 23 minutes). During the zenith observations a second boundary layer scan is performed, approximately 15 minutes
after the previous one. The LWP and IWV values included in the dataset are recorded during the azimuth scans and the zenith
observations: off-zenith values are multiplied by the sine of the elevation angle to obtain the corresponding vertical value.
The temperature profiles included in the dataset are only taken from the boundary layer scans, and interpolated to a finer time
150 resolution.

Retrievals from HATPRO are quality controlled via two separate approaches: by eliminating data points where rain was
recorded by the instrument’s weather station, and by using a spectral consistency check. The first approach consists in elim-
inating all data points when the weather station simultaneously detected precipitation and temperature above 0°C, as rain
depositing on the instrument’s radome might invalidate the BT observations. A further sanity check is performed by retrieving
155 the BT for each channel individually based on BTs observed by all other channels: if the simulated and observed BTs do not
match within a certain tolerance, the data point is assumed invalid and removed from the dataset. The exact criteria used to
remove unreliable data points were determined empirically, and are as follows:

- at K- and Ka-band the sum of the absolute differences between channels 2 through 7 is larger than 3 K,
- at V-band the sum of the absolute differences between all channels is larger than 10 K,
- 160 – at V-band 4 or more channels have absolute differences larger than 2 K.

	W-band	Ka-band zenith	Ka-band off-zenith
Chirp Seq. 1:			
Min range [m]	100	100	200
Max range [m]	400	400	1243
Range res. [m]	3.2	3.2	29.8
Nyquist range [m s ⁻¹]	5.1	23.3	28.4
Doppler res. [m s ⁻¹]	0.020	0.045	0.055
Integration time [s]	0.37	1.47	0.37
Tot. sampling time [s]	0.64	1.51	1.24
Chirp Seq. 2:			
Min range [m]	400	400	1243
Max range [m]	1200	1200	3329
Range res. [m]	7.5	7.5	29.8
Nyquist range [m s ⁻¹]	5.1	22.0	19.1
Doppler res. [m s ⁻¹]	0.020	0.043	0.075
Integration time [s]	0.27	1.47	0.78
Tot. sampling time [s]	0.48	1.60	0.98
Chirp Seq. 3:			
Min range [m]	1200	1200	3329
Max range [m]	3000	3000	6309
Range res. [m]	9.7	9.7	29.8
Nyquist range [m s ⁻¹]	3.2	10.8	9.7
Doppler res. [m s ⁻¹]	0.013	0.042	0.076
Integration time [s]	0.37	1.74	0.69
Tot. sampling time [s]	0.50	1.94	0.85
Chirp Seq. 4:			
Min range [m]	3000	3000	6309
Max range [m]	13000	13000	14000
Range res. [m]	23.8	23.8	29.8
Nyquist range [m s ⁻¹]	3.2	8.1	4.7
Doppler res. [m s ⁻¹]	0.025	0.063	0.037
Integration time [s]	0.27	0.64	0.73
Tot. sampling time [s]	0.38	0.95	0.92

Table 2. Chirp program settings for the radar observations reported in this study: the chirp program reported for W-band was used both for JOYRAD-94 and MiRAC-A. Two separate chirp programs were used for NyRAD-35 (Ka-band) depending on elevation.

Data are removed if any of the listed criteria is satisfied. This approach is especially useful after periods of rain, when precipitation has stopped, but the radome is still wet, thus effectively rendering the BTs unreliable.

2.3 Cloudnet target classification product

In order to obtain cloud phase information, used to determine whether a certain cloud event is a LLMPC, ~~and together with~~ information on the height of the liquid base of LLMPCs, we use the Cloudnet target classification product (Hogan and O'Connor, 2004; Illingworth et al., 2007). The Cloudnet target classification has been widely used to classify and study mixed-phase clouds based on remote sensing observations (e.g., Bühl et al., 2016; Nomokonova et al., 2019; Achtert et al., 2020; Gierens et al., 2020; Griesche et al., 2021). The product combines data from the W-band cloud radars, microwave radiometer, and a ceilometer (model Vaisala CL51; Maturilli and Ebell (2018)), together with output from the ICOSahedral Nonhydrostatic weather model (ICON; Zängl et al. (2015)), in its global numerical weather prediction mode (ICON-NWP), to classify the phase associated with radar and ceilometer echoes. It distinguishes between: cloud droplets, supercooled cloud droplets, and cloud ice, as well as drizzle or rain. The algorithm determines the presence of liquid at sub-zero temperatures based on ceilometer echoes, as layers composed of liquid droplets produce intense backscattering, and subsequent attenuation, of the ceilometer signal. The Cloudnet algorithm in fact flags ceilometer echoes as originating from liquid droplets when the attenuated backscatter coefficient β' rises above a specific threshold, and subsequently drops by a value larger than a second threshold within 250 m of the initial increase. Further details can be found in Hogan and O'Connor (2004, section 3.4.2). The determination of the presence of liquid droplets by Cloudnet is in most aspects similar to other ceilometer- or lidar-based approaches proposed in the literature (e.g., Shupe, 2007; Griesche et al., 2021). We employ the phase information in the Cloudnet product to determine the presence of LLMPCs, as described in section 4.2. Additionally, we extract from the Cloudnet product the height of the base of the lowest liquid layer in LLMPCs, and include it in the dataset.

2.4 ICON-LEM setup

Additional meteorological variables not obtainable via our observations were needed in the dataset, especially humidity and pressure profiles, necessary to correct the radar data for attenuation. For these purposes we extract background thermodynamic profiles, as well as wind fields, from the output of the ICON model, ran in its large-eddy version (ICON-LEM; Dipankar et al., 2015; Schemann et al., 2020). ICON-LEM uses a 3D Smagorinsky turbulence scheme, and is ran in a circular domain with 110 km diameter centered around Ny-Ålesund, 600 m horizontal resolution and ~~100–150~~ vertical levels. The vertical grid spacing increases with height, starting at 20 m at the surface, increasing to 90 m at 2500 m height. The domain of the LEM is nested in a larger domain, where ICON is run in the numerical weather prediction (ICON-NWP) mode, which is used as forcing. Simulations start daily at 00 UTC, and run for 24 hours, until 00 UTC on the following day. The full details on the model set-up can be found in Schemann and Ebell (2020) and Kiszler et al. (2023). Compared to their set-up a slight modification in the microphysical scheme was applied, which does not significantly impact the variables used in this dataset. Kiszler et al. (2023) in particular validated the model output against radiosondes and HATPRO retrievals and found strikingly good agreement between simulated and observed wind and humidity fields. Wind fields from ICON-LEM are interpolated to

the same range and time resolution as the radar data, and included in the dataset. The wind data from the first three hours after
 195 the start of each simulation (daily-at-midnight, i.e., 00 to 03 UTC) are not included, as they might not be reliable.

3 Derivation of polarimetric variables from STSR-mode cloud radars

STSR cloud radars are still not largely used, and the derivation of certain polarimetric variables, especially the correlation
 coefficient between the received signals at horizontal and vertical polarization ρ_{HV} and the linear depolarization ratio (LDR),
 can be approached with a variety of methods. Hence, in this section we provide a brief summary of how we derive typical
 200 polarimetric variables from STSR radar observations. Cloud radars operating at STSR mode (also called hybrid mode) measure
 the so-called coherency matrix \mathbf{B} . The calculation of the coherency matrix follows Eq. 3.146 in Bringi and Chandrasekar
 (2001), given for the processing of a pulse train in weather radars. In contrast, cloud radars compute the coherency matrix
 for each spectral line of a Doppler spectrum. For a spectral line at a given range the coherency matrix \mathbf{B} can be expressed as
 function of the received electric field:

$$205 \quad \mathbf{B} = \langle \mathbf{E}\mathbf{E}^\dagger \rangle = \begin{pmatrix} \langle E_h E_h^* \rangle & \langle E_h E_v^* \rangle \\ \langle E_v E_h^* \rangle & \langle E_v E_v^* \rangle \end{pmatrix}, \quad (1)$$

where \mathbf{E} is a column vector that indicates the complex amplitude of the received electric field, and E_h and E_v respectively
 its horizontal and vertical components. The complex conjugate is indicated with $*$, the conjugate transpose with \dagger , and the $\langle \cdot \rangle$
 brackets indicate averaging across multiple samples. The elements of the spectral coherency matrix can then be expressed as:

$$\mathbf{B} = \begin{pmatrix} B_{hh} & \dot{B}_{hv} \\ \dot{B}_{hv}^* & B_{vv} \end{pmatrix}, \quad (2)$$

210 where B_{hh} and B_{vv} are real numbers proportional to the power received at horizontal and vertical polarization, respectively;
 \dot{B}_{hv} is instead the complex covariance between the two received components. Here all components of \mathbf{B} are rescaled to have
 the typical units of the equivalent radar reflectivity factor in linear scale, i.e., $\text{mm}^6 \text{m}^{-3}$.

Before radar variables are calculated, spectral lines containing signal have to be detected. For the detection we use the
 approach described in (Görsdorf et al., 2015, see Sec. 3.3. therein). For the threshold we used 6 standard deviations of noise
 215 above the mean spectral noise level. In this dataset the mean spectral noise level determination is performed with the algorithm
 by Hildebrand and Sekhon (1974). In the following \tilde{B}_{hh} and \tilde{B}_{vv} indicate a spectral line exceeding the threshold and having the
 mean spectral noise level subtracted in the horizontal and vertical channel, respectively. Reflectivity at horizontal and vertical
 polarization directions can be expressed as:

$$Z_{eH} = \sum \tilde{B}_{hh}, \quad Z_{eV} = \sum \tilde{B}_{vv}, \quad (3)$$

220 where \sum indicates summation over all spectral lines detected in a Doppler spectrum. Differential reflectivity can be expressed
 as:

$$Z_{DR} = \frac{\sum \tilde{B}_{hh}}{\sum \tilde{B}_{vv}} = \frac{Z_{eH}}{Z_{eV}}. \quad (4)$$

Following von Terzi et al. (2022) we include in the dataset the maximum spectral Z_{DR} as well:

$$sZ_{DR\max} = \max(sZ_{DR}) = \max\left(\frac{\tilde{B}_{hh}}{\tilde{B}_{vv}}\right), \quad (5)$$

225 where the maximum is calculated across all Doppler spectral lines with $\tilde{B}_{hh,vv} > 0$. Similarly to von Terzi et al. (2022), in order to reduce the noise-induced variance of the variable we calculate the maximum in eq. 5 only across spectral lines with spectral signal-to-noise ratio (sSNR) higher than 10 dB in both polarimetric channels. Here sSNR is defined as the ratio of $\tilde{B}_{hh,vv}$ over the corresponding mean spectral noise level, i.e., the total noise power divided by the number of Doppler bins. Furthermore, in order to achieve higher consistency between different chirp sequences $sZ_{DR} = \tilde{B}_{hh}/\tilde{B}_{vv}$ is linearly interpolated (in log-scale) 230 on a common Doppler resolution of 0.1 m s^{-1} before calculating the maximum.

The phase shift between the horizontal and vertical components of the received electric fields can be expressed as:

$$\Phi_{DP} = \text{phase}\left(\sum \dot{B}_{hv}^*\right) \doteq \arctan\left(\frac{\text{Im}(\sum \dot{B}_{hv}^*)}{\text{Re}(\sum \dot{B}_{hv}^*)}\right), \quad (6)$$

where $\text{Re}(z)$ and $\text{Im}(z)$ indicate the real and imaginary parts of the complex number z . Note that here the summation is performed only over spectral lines where the signal is detected at both polarizations. By calculating the half range derivative of 235 Φ_{DP} one obtains the specific differential phase K_{DP} . K_{DP} typically displays large noise-induced fluctuations (e.g., Trömel et al., 2013) (e.g., Trömel et al., 2013), hence additional processing needs to be performed in order to reduce its variance. Here we calculate Φ_{DP} by including a sSNR threshold of 10 dB in the summation in eq. 6, and K_{DP} is further smoothed by applying a moving average in range (10 range gates, or 298 m) and time (5 minutes), similarly to von Terzi et al. (2022). Typically in weather radar processing the estimate of KDP has a higher degree of complexity than the method here adopted 240 (e.g., Hubbert and Bringi, 1995). This is due to weather radar observations typically being characterized by much lower SNR compared to cloud radars, and to the need for the removal of the backscatter differential phase δ contribution to Φ_{DP} (Hubbert and Bringi, 1995; Trömel et al., 2013). It has been shown that at cloud radar wavelengths δ produced by dry ice particles is negligible (Lu et al., 2015; von Terzi et al., 2022).

3.1 Correlation coefficient calculation

245 The correlation coefficient between the horizontal and vertical components of the received electric field ρ_{HV} is typically computed with the formula (Bringi and Chandrasekar, 2001, eq. 6.110a):

$$\rho_{HV} = \frac{|\sum \dot{B}_{hv}|}{\sqrt{(\sum B_{hh}) \cdot (\sum B_{vv})}}. \quad (7)$$

Note that here the summation is performed only over spectral lines where the signal is detected at both polarizations. According to Bringi and Chandrasekar (2001, Eq. 6.122 therein) ρ_{HV} calculated this way is prone to a bias due to the signal-to-noise ratio 250 (SNR). This often leads to apparent signatures in ρ_{HV} which are not caused by cloud microphysics but rather by a low SNR. One possible solution to this problem is to subtract the corresponding mean noise level from the power estimates in the

denominator of Eq. 7:

$$\rho_{\text{HV}} = \frac{|\sum \dot{B}_{hv}|}{\sqrt{(\sum \tilde{B}_{hh}) \cdot (\sum \tilde{B}_{vv})}}. \quad (8)$$

Myagkov and Ori (2022) noted however that this approach often leads to inaccurate ρ_{HV} values, due to the removed noise level being an estimate which might not exactly correspond with the true noise power. In some occasions ρ_{HV} values computed with eq. 8 might in fact exceed 1. Here we propose a modification to eq. 8 that has the potential to circumvent the effects of an incorrect noise level estimation on ρ_{HV} . We use eq. 7 instead of eq. 8, and only perform the summation on spectral lines where ρ_{HV} is not strongly affected by noise contributions. We approach this by searching for spectral lines where the contributions from non-coherent antenna coupling (Myagkov et al., 2015) as well as particle depolarization exceed contributions from noise. We decompose the coherency matrix \mathbf{B} into non-coherent and fully coherent components following Born and Wolf (1975, Sec. 10.8 therein):

$$\mathbf{B} = 0.5A\mathbf{I} + \mathbf{C}, \text{ with } \det(\mathbf{C}) = 0, \quad (9)$$

where A is the non-coherent power, \mathbf{I} is a 2×2 unity matrix, \mathbf{C} is the coherency matrix of the fully coherent component, and \det is the matrix determinant.

Following Myagkov and Ori (2022, Sec. 3.1 therein) we represent the measurements in the basis in which the coherency matrix is diagonal, i.e., the orthogonal linear components of the received signal are not correlated:

$$\mathbf{D} = \begin{pmatrix} D_{cc} & 0 \\ 0 & D_{xx} \end{pmatrix} = 0.5A\mathbf{I} + \text{tr}(\mathbf{C}) \begin{pmatrix} 1 & 0 \\ 0 & 0 \end{pmatrix}, \quad (10)$$

where tr is the matrix trace. The elements D_{cc} and D_{xx} can be computed as the eigenvalues of the coherency matrix \mathbf{B} . As can be seen from Eq. 10, the element D_{xx} contains only the non-coherent component. The non-coherent component in general includes contributions by noise, by depolarization by cloud particles, and by the presence of non-coherent antenna coupling. By determining the spectral lines with signal in D_{xx} (same procedure as for B_{hh} and B_{vv}), we identify spectral lines with considerable contribution from non-coherent antenna coupling and depolarization by cloud particles. The correlation coefficient is then calculated as in Eq. 7 with the summations performed only over spectral lines where D_{xx} exceeds the threshold over the noise level.

We calculate the linear depolarization ratio (LDR) in zenith from ρ_{HV} following the approach given in Galletti and Zrnic (2011) and Galletti et al. (2011). Assuming the reflection symmetry (Nghiem et al., 1992) and that Z_{DR} is equal to 1 (in linear units), which is typically the case at vertical elevation, LDR can be computed by combining Eq. 12 in Galletti and Zrnic (2011) with Eq. 10 in Galletti et al. (2011), to obtain:

$$\text{LDR} = \frac{1 - \rho_{\text{HV}}}{1 + \rho_{\text{HV}}}. \quad (11)$$

We found that Eq. 11 at times produces LDR values below the integrated cross-polarization ratio (ICPR) of the instrument, which is the minimum LDR value that the radar can measure (Chandrasekar and Keeler, 1993; Myagkov et al., 2015). The

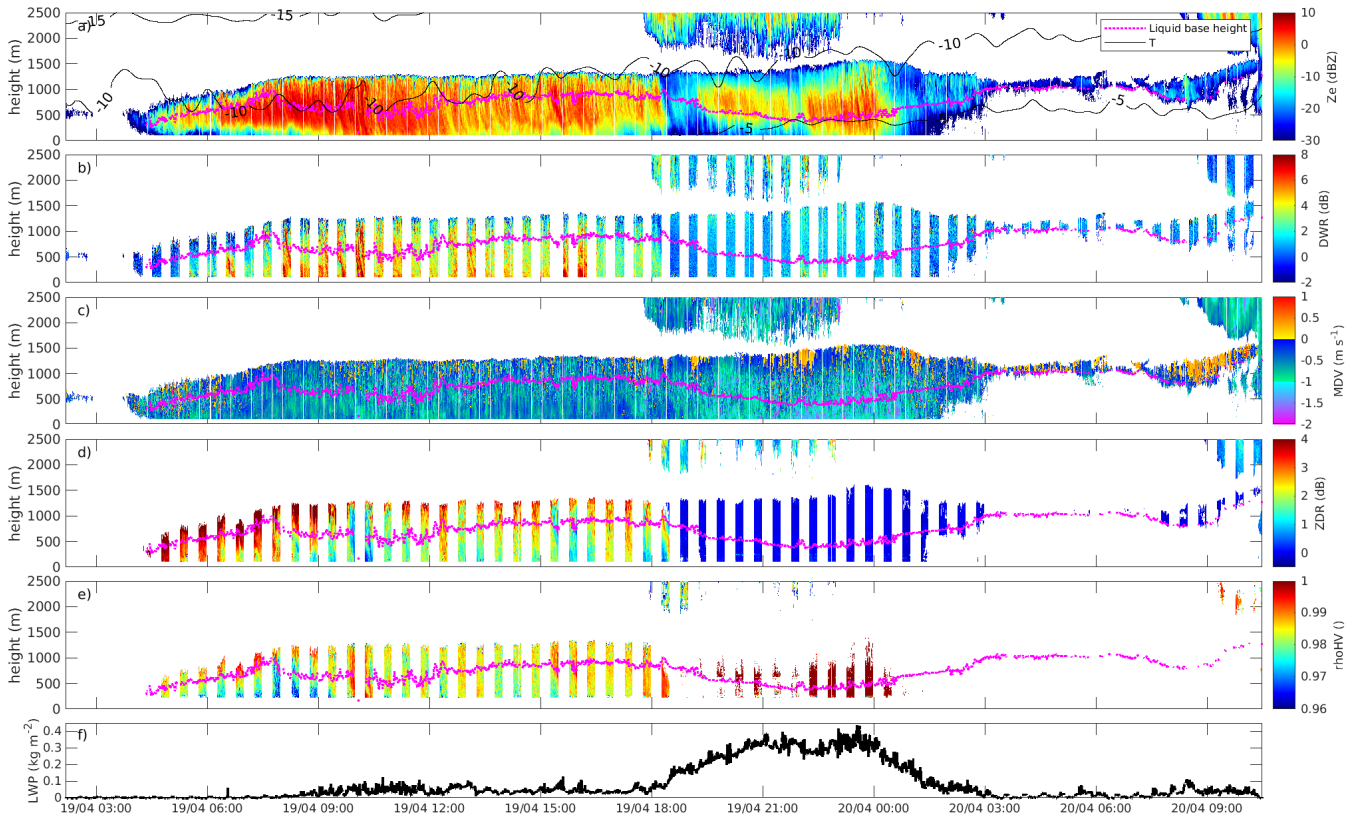


Figure 4. LLMPC event detected on 19-20 April 2022. Panels respectively display: reflectivity from W-band radar with temperature contours overlaid (a), dual-wavelength ratio (b), mean Doppler velocity from W-band radar (c), differential reflectivity (d), correlation coefficient (e), liquid water path (f). All radar variables were recorded at zenith elevation, except for differential reflectivity and correlation coefficient that were recorded at 30° elevation. The dotted magenta line on panels a through e indicates the base height of the lowest liquid layer.

radar manufacturer in fact declares that the ICPR is between -30 and -35 dB, and eq. 11 at times produces values below -35 dB, which is likely attributable to the uncertainty in the approximation given by Eq. 11. This uncertainty is caused by the signal variability due to non-coherent scattering. This effect is however is not an issue, since it is widely accepted in the cloud and
 285 weather radar community that high quality LDR observations are obtained when the ICPR is close to or lower than -30 dB. Therefore we set all LDR values below -30 dB obtained from eq. 11 to -30 dB.

4 Data processing

4.1 Dataset structure

The dataset is structured in the following way: each individual file contains data from all sources for one or multiple LLMPC
 290 event; multiple LLMPC events are included in the same file if they are less than 4 hours apart. The criteria used to detect

LLMPC events are described in the next section. The variables include Doppler moments from W-band and Ka-band in zenith, LDR in zenith from Ka-band, polarimetric variables from Ka-band at low elevation (30-40°), corrections applied to the radar data (calibration, liquid and gas attenuation), LWP, IWV and temperature profiles retrieved from HATPRO, liquid base height from the ceilometer, and horizontal wind information from ICON-LEM. All variables except low-elevation observations of the Ka-band radar are brought to the same time and range resolution of Ka-band zenith observations, for easier matching of data from different instruments. All corrections have already been applied to the data, and are included in case the user is interested in reconstructing the original uncorrected data. The user should be aware that a number of data gaps are present in the Ka-band and microwave radiometer data. These are due to software and data transfer issues, which did not affect the quality of the collected data. Such data gaps are filled with NaN values in the files. An example of an LLMPC event is given in Fig. 4, which displays a subset of the variables included in the dataset; the signatures displayed in the case study are further commented in section 5.

4.2 LLMPC event detection

LLMPC events were identified following the approach by Chellini et al. (2022), which is here summarized. A set of criteria are applied to the data to determine whether a given cloud event is a LLMPC:

1. Cloud top is at or below 2500 m. If multiple cloud layers are detected, at least one needs to have its top at or below 2500 m.
2. Cloudnet indicates presence of both liquid and ice in the cloud layer(s) with top below 2500 m.
3. Liquid and ice are detected by Cloudnet for at least 60 minutes with gaps allowed. The total duration of gaps in either ice or liquid phase needs to be lower than one sixth of the total duration of the LLMPC event.

During intense precipitation events ceilometer data is not always available. This is due to snow accumulating on the ceilometer aperture and leading to complete attenuation of the signal. Under these conditions Cloudnet only detects ice clouds, and criterion 2 is not satisfied even though a LLMPC might be present. These conditions are detected via the quality flags associated with ceilometer observations in the Cloudnet product. Under these circumstances LWP retrievals from HATPRO are instead used to determine the presence of the liquid phase, requiring that LWP is larger than 10 g m^{-2} .

The total number of events detected amounts to 554, accounting for a total duration of 3426 hours. The events are seasonally distributed as follows: 135 events or 878 hours in winter, 93 events or 670 hours in spring, 123 events or 662 hours in summer, and 224 events or 1371 hours in autumn, with seasons following the meteorological convention.

All data corresponding to a given LLMPC event are collected in the same file, together with the previous and following two hours, in order to provide information on the conditions leading to the onset and cessation of events. Two events are included in the same file if the two hours following a given event overlap with the two hours preceding the next event. As a consequence, all 554 events are collected into 247 files.

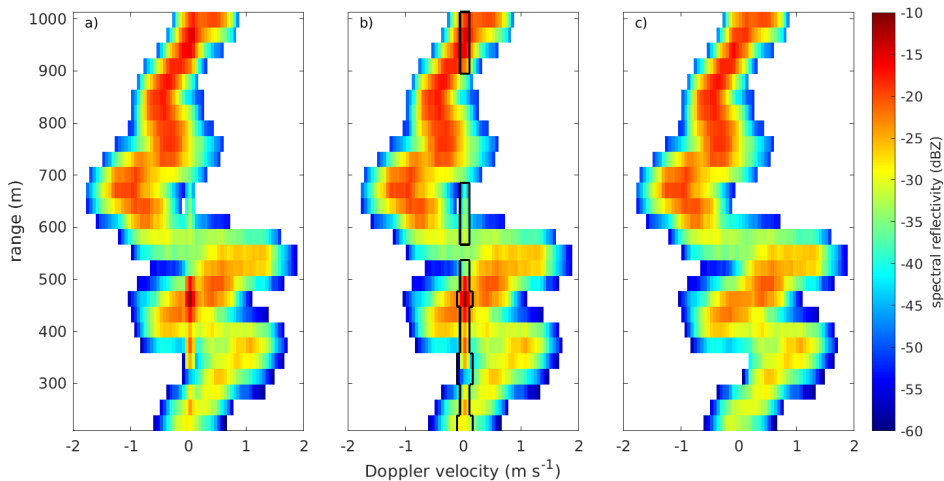


Figure 5. Example of the ground clutter mitigation procedure applied to Doppler spectra recorded at 30° elevation on 15 October 2022 at 21:23:38 UTC. Panel a depicts the original Doppler spectrum, while in panel b the contour indicates the Doppler bins detected as affected by ground clutter. Panel c displays the final spectrum after clutter removal.

4.3 Ka-band: ground clutter mitigation

We found the low elevation observations of the Ka-band radar to be contaminated with ground clutter, namely the presence of artefacts caused by backscattering of the radar signal by the ground. We correct the data using an approach similar to that developed by Williams et al. (2018). Thanks to the lack of moving clutter-generating targets, all clutter signal is only found either in the 0 m s^{-1} Doppler velocity spectral line, or in nearby lines. An example of a Doppler spectrum affected by ground clutter is shown in Fig. 5 panel a, while panel c displays the same spectrum after clutter removal. Indicating the spectral reflectivity in dBZ of the spectral line at 0 m s^{-1} as $sZ_e(i_0)$, the presence of clutter is determined when the two following criteria are satisfied:

1. $sZ_e(i_0) - \frac{1}{4}[sZ_e(i_0 - 2) + sZ_e(i_0 - 1) + sZ_e(i_0 + 1) + sZ_e(i_0 + 2)] > 2 \text{ dB}$;
2. $sZ_e(i_0) < -15 \text{ dBZ}$.

The second criterion was determined empirically, since we never observed ground clutter characterized by a spectral reflectivity higher than -15 dBZ . If ground clutter is identified, the three spectral lines $i_0 - 1$, i_0 , and $i_0 + 1$ are removed, and replaced with linearly interpolated values between $sZ_e(i_0 - 2)$ and $sZ_e(i_0 + 2)$. This procedure is applied independently to \tilde{B}_{hh} , \tilde{B}_{vv} , and the modulus of the off-diagonal component $|\tilde{B}_{hv}|$. If clutter is identified in $|\tilde{B}_{hv}|$, the corresponding spectral lines in phase(\tilde{B}_{hv}) are also removed, and replaced with the median value of phase(\tilde{B}_{hv}) across all spectral lines without clutter, and above the noise level. In the lowest 20 range gates (i.e., from 200 to 796 m range) we found, at times, the criteria listed above not to be sufficient, because in some cases ground clutter might also be present in the spectral lines $i_0 - 2$ and $i_0 + 2$, and might display

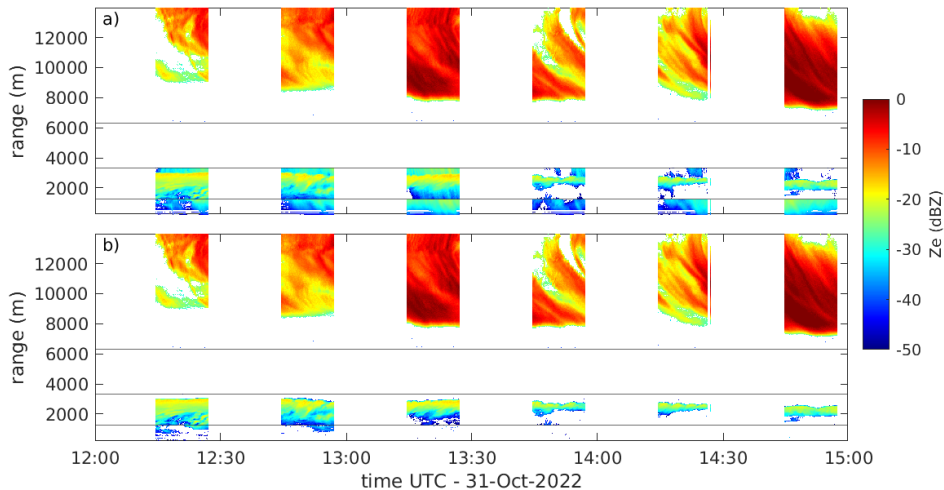


Figure 6. Reflectivity time-height display recorded at 30° elevation on 31 October 2022. Horizontal lines indicate boundaries between chirp sequences. Panel a depicts the original reflectivity values, affected by range folding (in the two lowest chirp sequences), while panel b displays reflectivity after the removal of range folding.

spectral reflectivity in the 0 m s^{-1} spectral line higher than -15 dBZ. After applying the criteria listed above, a second set of
 340 criteria is applied in the lowest 20 range gates, to detect possible residual clutter:

1. $sZ_e(i_0) - \frac{1}{4}[sZ_e(i_0 - 3) + sZ_e(i_0 - 2) + sZ_e(i_0 + 2) + sZ_e(i_0 + 3)] > 2 \text{ dB}$.
2. $sZ_e(i_0) < 5 \text{ dBZ}$.

For range gates satisfying these criteria the interpolation is also extended to $i_0 - 3$, $i_0 + 3$.

4.4 Ka-band: range folding correction

345 At low elevation angles, range folding was sometimes observed in the Ka-band data in the two lowest chirp sequences. Range folding is the incorrect ranging of targets located at ranges larger than the maximum unambiguous range of the radar measurements. The maximum unambiguous range for the two lowest chirp sequences is in fact 10000 m, which at 30° elevation corresponds to a height of 5000 m, above which it is likely to observe clouds. In RPG FMCW radars the apparent range r of a target affected by range folding is:

- 350
1. $r = R_{unamb} - (R - R_{max})$, when the actual range R is $R_{unamb} < R < R_{unamb} + R_{max} - R_{min}$,
 2. $r = R - (R_{unamb} + R_{max})$, when the actual range R is $R_{unamb} + R_{max} + R_{min} < R < R_{unamb} + 2 \cdot R_{max}$,

where R_{max} and R_{min} are the maximum and minimum ranges of the chirp sequence, as indicated in table 2, and R_{unamb} is the maximum unambiguous range. We found that in the first folding scenario $\text{phase}(\dot{B}_{hv})$ assumes unrealistic values, and events displaying folding of this type are easily corrected by including a sanity check $|\text{phase}(\dot{B}_{hv})| < 50^\circ$. Folding scenarios of

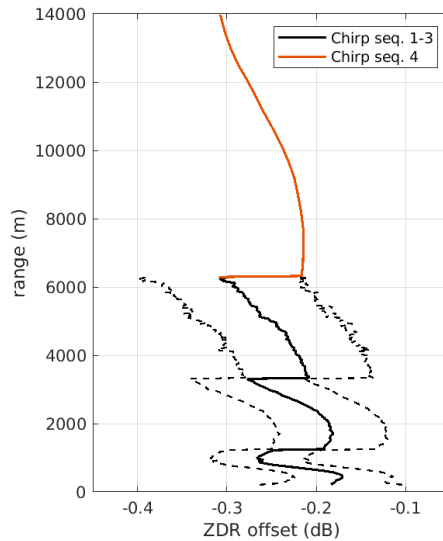


Figure 7. Differential reflectivity (Z_{DR}) offset profile. Black lines indicate values obtained for chirp sequences number 1 to 3, while the orange curve was extrapolated for chirp sequence 4. Dashed lines indicate the median value plus and minus one standard deviation.

355 the second type are more challenging to correct. We only observed folding of this type to occur in the first chirp sequence, and echoes affected by range folding in the first sequence are captured without range folding in the fourth chirp sequence. Therefore we developed the following procedure to remove range folding from the first chirp sequence when echoes are present in the fourth sequence:

1. Spectra from the first chirp sequences are interpolated to the same Doppler resolution as the fourth chirp sequence.
- 360 2. The interpolated spectra are then artificially brought to the same Nyquist range as the fourth chirp sequence by artificially velocity-folding them, as the Nyquist velocity of the fourth chirp sequence is lower than that of the first chirp sequence.
3. Spectral reflectivity from the fourth chirp sequence is rescaled by $r^2 \cdot R^{-2}$ to match the reflectivity of the range folded signal.
4. Spectra from the two chirp sequences are subtracted.
- 365 5. The resulting spectra are interpolated back to the original Doppler resolution.
6. Possible residual values below sensitivity and isolated spectral lines are removed.

An example of an event with folding is shown in Fig. 6, before and after the correction.

4.5 Ka-band: Z_{DR} and Φ_{DP} calibration

Radar systems receiving at two polarization directions might display slight offsets in Z_{DR} and Φ_{DP} , due e.g., to differences
 370 in antenna gain along the two polarimetric directions, or in the waveguides and feedhorns of the two polarimetric channels. In

FMCW systems such offsets might further display a dependency on range, as they might depend on the IF, as well as range resolution. Here we evaluate such offsets by exploiting Z_{DR} and Φ_{DP} observations in zenith, as we can expect them to be close to 0 dB and 0° respectively. Since such offsets can be dependent on the chirp program used, we evaluate them using the same chirp program that is used for low-elevation observations. When switching elevation positions the Ka-band radar in fact
375 performs RHI scans (not included in this dataset), that use the same chirp program. In order to derive the offsets, we compile Z_{DR} and Φ_{DP} profiles recorded at elevations between 85 and 95° , and calculate median profiles. The Z_{DR} offset obtained with this approach is displayed in Fig. 7 in black: the values range between -0.31 and -0.17 dB, with a standard deviation of 0.06 dB, that is constant with range. Due to the low number of observations in zenith at range above 6 km, the offset profile for chirp sequence number 4 could not be obtained. We instead used the Z_{DR} offset profile from chirp sequence number 1, expressed
380 it as function of IF, and then mapped it to chirp sequence number 4 by matching the IF to the range gates of chirp sequence number 4. The result of this procedure is shown in red in Fig. 7. The complete offset profile was then subtracted from all Z_{DR} and $sZ_{DR,max}$ data.

Contrary to Z_{DR} , the offset for Φ_{DP} was found not to vary with range, except for the lowest 8 range gates, and to vary with season, reaching values close to -4.0° in winter, and close to -1.5° in the summer. The latter dependency is likely attributable
385 to thermal expansion and contraction of components of the radar hardware. Due to the variability of the offset we decide not to correct for it, as the absolute value of Φ_{DP} is anyhow not of interest, but rather its change with range, expressed by K_{DP} . Nevertheless, we choose to remove ρ_{HV} and Φ_{DP} (and hence K_{DP}) data from the 8 lowest range gates, as it might contain spurious signals.

4.6 Ka- and W-band: temporal matching

390 In order to obtain reliable DWRs, accurate matching and calibration of the Ka- and W-band data needs to be performed. The chirp programs of the W-band and the zenith observations of the Ka-band were set up to have the same vertical grid. Temporal matching was performed by bringing the higher temporally-resolved W-band data to the same temporal resolution as the Ka-band observations. The central time of each sample was calculated for each Ka- and W-band chirp sequence, and each Ka-band sample was matched with the nearest available W-band sample, up to a maximum time difference equal to the time resolution
395 of the W-band measurements. By performing this temporal matching we found indications of inconsistencies between the timestamps of the two radars. We attributed them to slightly incorrect timestamps of the Ka-band radar due to errors in the recording of the timestamps by the instrument software. Daily time offsets were determined by shifting the Ka-band data in time, and selecting the time shift that minimized the variance in DWR. The attempted time shifts ranged from -120 seconds to $+60$ seconds, in steps of 0.25 seconds.

400 4.7 Ka- and W-band data: calibration

Biases in observed reflectivity might arise due to changes in the calibration constant of the instruments. Hence we evaluated the calibration of all radar systems. While the Ka-band radar was recently calibrated by the manufacturer in August 2021 using the technique from Myagkov et al. (2020, Sec. 4 therein), the W-band radars have not undergone any calibration in the recent

years. We evaluated the calibration of the Ka-band radar with a widely adopted disdrometer-based approach (e.g., Williams et al., 2005; Myagkov et al., 2020), while the W-band radars were cross-calibrated against the Ka-band radar using a DWR-based approach (Dias Neto et al., 2019; Chellini et al., 2022). Reflectivity from Ka-band zenith observations were compared with forward-simulated reflectivities obtained from drop size distributions (DSDs) measured during rain events by a Parsivel disdrometer (Löffler-Mang and Joss, 2000), which is located on the same platform as the radars, approximately 6 meters away from them. The rain events used for calibration were selected in July, August and September 2022 based on the following criteria:

- Surface temperature (from nearby weather station) is higher than 5°C, and Parsivel detects liquid precipitation.
- In order for the disdrometer measurements to be representative of the drop population, rain rate $\geq 0.1 \text{ mm h}^{-1}$ (following Williams et al. (2005)), and measurements contain at least 25 samples per minute.
- DSDs contain particles larger than 1 mm. Such criterion was included so that possible evaporation of the drops between the chosen radar range gate and the disdrometer doesn't affect the forward simulated reflectivities (following Myagkov et al. (2020)).
- Rain events satisfying the previous criteria need to last at least 1 hour, with gaps allowed for a total of one sixth of the duration of the event.

Reflectivities were forward simulated from the DSDs with the T-matrix method (Waterman, 1965; Leinonen, 2014), using a drop shape model from Thurai et al. (2007), with Gaussian distributed canting angles (with 0° mean value and a 10° standard deviation), following Huang et al. (2008). Attenuation due to liquid was simulated as well, and was subtracted from the forward simulated reflectivity values. The forward-simulated reflectivities were compared with observed reflectivities from the range gates between 120 and 150 m. The comparison was performed by calculating the median observed and simulated reflectivity across all calibration events. The calibration offset for the Ka-band radar was found to be -0.14 dB; since this value is well within the uncertainty associated with reflectivity measurements, we do not apply any corrections to Ka-band reflectivity, and consider it already well-calibrated.

The W-band radars are instead cross-calibrated using the Ka-band as reference. The approach consists in exploiting observations of low-reflectivity ice clouds or light snowfall, to ensure the presence of mostly Rayleigh scatterers, which produce similar reflectivities at Ka- and W-band (e.g., Dias Neto et al., 2019; Tridon et al., 2020). The data used in the cross-calibration were selected using the following criteria:

- Cloudnet indicates the presence of ice only clouds.
- LWP retrievals from HATPRO are lower than 10 g m^{-2} .
- Reflectivity from the Ka-band is between -30 dBZ and -10 dBZ, to ensure the presence of mostly Rayleigh scatterers (following Dias Neto et al. (2019)).

Date	12-Oct-2021	28-Oct-2021	14-Nov-2021	11-Dec-2021	07-Jan-2022	03-Feb-2022
Offset [dB]	0.7 ± 1.1	1.3 ± 1.2	0.5 ± 1.1	0.5 ± 1.0	0.4 ± 1.1	0.5 ± 1.1
Date	02-Mar-2022	29-Mar-2022	26-Apr-2022	20-May-2022	23-Jun-2022	21-Jul-2022
Offset [dB]	0.6 ± 1.3	0.5 ± 1.2	0.2 ± 1.0	0.7 ± 1.1	3.0 ± 1.1	3.3 ± 1.1
Date	19-Aug-2022	15-Sep-2022	12-Oct-2022	10-Nov-2022	05-Dec-2022	01-Jan-2023
Offset [dB]	2.7 ± 1.0	2.9 ± 1.1	2.4 ± 1.0	2.7 ± 1.1	1.9 ± 0.9	-

Table 3. Calibration offsets, and associated uncertainties, obtained for the W-band cloud radars. Positive values indicate an underestimation of reflectivity by the radar. Each offset was computed for the period starting on the date indicated, and ending on the day before the date indicated for the following offset. Values before 22 June 2022 refer to JOYRAD-94, while the remaining values refer to MiRAC-A.

435 DWR distributions for data points satisfying these criteria are compiled for a number of periods lasting approximately one month, and the mode of each distribution is taken as W-band reflectivity offset for the corresponding period. All offsets, together with the associated uncertainties, are indicated in Table 3. The uncertainty is calculated by taking the left-side standard deviation of the distribution with respect to the mode, as the right side might be affected by non-Rayleigh effects.

4.8 Ka- and W-band: gas and liquid attenuation correction

440 Millimeter-wavelength radar signal undergoes non-negligible attenuation due to atmospheric gases, especially molecular oxygen and water vapour, and to hydrometeors. Typical path-integrated attenuation for ice and snow at W-band has been estimated as 0.9 dB km^{-1} for ice water path (IWP) values of 1 kg m^{-2} (Nemarić et al., 1988): due to the typically far lower values of IWP observed in LLMPCs at Ny-Ålesund, in 75% of cases below 60 g m^{-2} (Gierens et al., 2020), we deem attenuation due to frozen hydrometeors negligible and do not correct for it. On the other hand attenuation due to liquid hydrometeors is highly
445 relevant at millimeter wavelengths, especially at W-band (e.g., Tridon et al., 2020). Hence we estimate the liquid water content (LWC) and correct the data for liquid attenuation.

Here we correct for gas attenuation using thermodynamic profiles from the ICON-LEM simulations, and simulating the associated attenuation with the Passive and Active Microwave Transfer model (PAMTRA; Mech et al., 2020). PAMTRA computes 2-way path-integrated attenuation profiles due to molecular nitrogen, molecular oxygen, and water vapour, taking
450 temperature, humidity and pressure profiles as input.

Attenuation due to liquid hydrometeors is estimated using a combination of observational and model data. We derive a theoretical scaled adiabatic LWC profile based on liquid base height and cloud top height from Cloudnet, LWP from the microwave radiometer and thermodynamic profiles from the ICON-LEM output. LWC profiles close to scaled adiabatic have been in fact reported in LLMPCs across the Greenland and Norwegian seas by Mioche et al. (2017). The procedure consists
455 in calculating an adiabatic LWC profile starting at the liquid base, until cloud top, using the thermodynamic profiles from ICON-LEM. The obtained adiabatic LWC profile is then rescaled by a vertically-constant factor to match the retrieved LWP. Liquid attenuation is then simulated using the water dielectric constant model by Rosenkranz (2014) and assuming that liquid droplets absorb in the Rayleigh regime, using eq. 5.18 in Bohren and Huffman (2008). This approach relies on the assumption

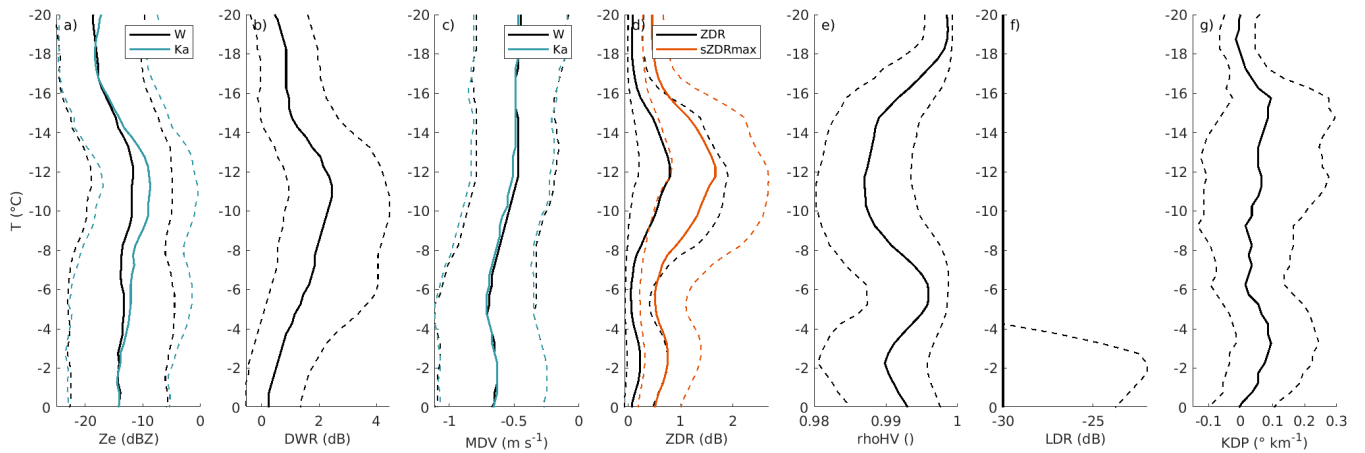


Figure 8. Contoured Frequency by Temperature Diagrams of radar variables in low-level MPCs detected at Ny-Ålesund during the study period. Solid lines indicate the median value in each temperature bin, while dashed lines indicate the 0.25 and 0.75 quantiles. The variables included are: radar reflectivity at W- and Ka-band (a), dual-wavelength ratio (b), mean Doppler velocity at W- and Ka-band (c), differential reflectivity and maximum spectral differential reflectivity (d), correlation coefficient (e), linear depolarization ratio (f), and specific differential phase (g). Temperature is obtained from HATPRO retrievals, temperature bins are 0.5°C wide.

that one continuous liquid layer is present between the liquid base indicated by the ceilometer and cloud top. This might not
 460 always be the case. Nonetheless, we deem this approach to be most sound possible with the information that we have available,
 since the ceilometer only provides the base height of the lowest liquid layer. Additionally the correction is set to 0 dB if LWP
 is below 20 g m^{-2} . It needs to be highlighted that no liquid correction is applied if either the liquid base information or LWP
 information are not available. Flags that indicate whether the liquid attenuation correction is available and has been applied
 have been included in the files. We recommend that the user makes full use of these flags to exclude from quantitative analyses
 465 reflectivity values that have not been corrected for liquid attenuation. This is especially relevant when calculating the DWR.

5 Characterization of ice particle formation and growth in LLMPCs at Ny-Ålesund

In this section we present and discuss the case study shown in Fig. 4, as well as a statistical analysis of the temperature
 dependence of observational fingerprints of microphysical processes obtained from radar measurements. Fig. 4 displays a
 number of variables recorded during a LLMPC event observed on 19-20 April 2022. The panels of the Figure display radar
 470 reflectivity from the W-band radar (a), dual wavelength ratio (b) calculated by subtracting the W-band reflectivity from the
 Ka-band reflectivity (both in log-scale), mean Doppler velocity from the W-band radar (c), differential reflectivity (d) and
 correlation coefficient (e) from 30° -elevation Ka-band observations, and LWP (f) retrieved from HATPRO observations. Liquid
 base height from the ceilometer is overlayed on all panels, while temperature contours are overlayed on panel a. From the onset
 of the event until 17:30 on 19 April Z_{DR} displays high values, above 2 dB, indicative of the presence of oblate ice particles.
 475 The temperature of the liquid layer, slightly colder than -10°C , is compatible with the growth of plate-like particles (e.g.,

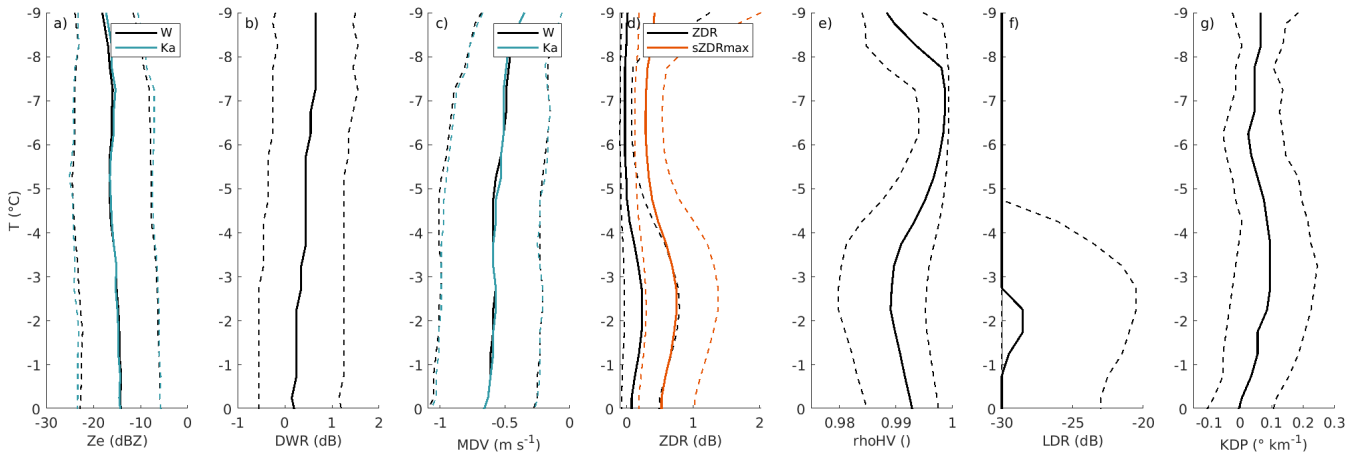


Figure 9. Same as in Fig. 8, but limited to only LLMPC events with cloud-top temperature warmer than -10°C .

Bailey and Hallett, 2009). Ice particles in fact nucleate in the liquid layer, hence their habit is strongly dependent on liquid layer temperature (Myagkov et al., 2016; Chellini et al., 2022). Z_{DR} decreases as particles sediment, and DWR increases, indicating the onset of aggregation, which increases the size of the ice particles (which in turn enhances DWR), and renders the particles more spherical (which in turn lowers Z_{DR}). In this first period MDV displays values close to 1 m s^{-1} , which are compatible with the presence of aggregates of plate-like particles (Locatelli and Hobbs, 1974; Heymsfield and Westbrook, 2010; Karrer et al., 2020). As already reported by Chellini et al. (2022) aggregation already onsets within the liquid layer of the LLMPC. After 17:30 the characteristics of the LLMCP change dramatically: LWP increases from values lower than 100 g m^{-2} to values close to 400 g m^{-2} , and precipitation is mostly composed of small, fast-falling, symmetrical particles. This is indicated respectively by MDV reaching values close to 2 m s^{-1} , ρ_{HV} close to 1, and Z_{DR} close to 0 dB. These factors together suggest the presence of rimed particles and/or drizzle. Interestingly this sudden change in precipitation regime is accompanied by cloud-top temperatures (CTT) rising to values slightly warmer than -10°C , and a higher cloud with base at 1500 to 2000 m. Temperatures between -10 and -8°C in particular have been associated with the growth of isometric particles with higher riming efficiency (Fukuta and Takahashi, 1999; Myagkov et al., 2016), that might explain the dramatic change in radar signatures at 17:30. After 23:00 on April 19th, LWP decreases again and the LLMPC reduces to a thin layer a few hundred meters deep (after 01:00 on April 20th), which does not produce any precipitation, as indicated by the liquid base from the ceilometer being close to the lowest range gates where radar reflectivity is displayed. The layer is likely composed mostly by liquid droplets, as reflectivity is below -20 dBZ .

5.1 Statistical analysis: temperature dependence of radar signatures

Ice microphysics is greatly dependent on temperature (Pruppacher and Klett, 2012), as such we can expect that observational fingerprints of microphysical processes display characteristic temperature dependencies. In order to illustrate these dependencies, in Fig. 8 we show contoured-frequency by temperature diagrams (CFTD; Yuter and Houze Jr, 1995) of most radar

variables introduced in the previous sections. Such diagrams illustrate how distributions of observed variables vary as temperature changes. In the Figure, radar variables for the whole study period are matched with temperature from HATPRO retrievals, and median and quantiles of each variable are then calculated in 0.5°C-wide temperature bins. In order to avoid contamination
500 by other cloud types, only timestamps flagged as containing a LLMPC, and only range gates below the cloud top of the LLMPC are included. The latter selection is performed by determining the lowest radar range gate without signal above the liquid base in each column; all range gates above are ignored, so that higher clouds do not contribute to the statistics. Only data points where the liquid attenuation correction is available are included in the reflectivity and DWR CFTDs.

As already noted by Myagkov et al. (2016) and Chellini et al. (2022), and highlighted when commenting the case study in
505 Fig. 4, in LLMPCs the habit of the ice particles produced is fully determined by the temperature of the liquid layer, where the ice particles nucleate and grow by depositional growth. This is in contrast to deeper cloud systems, where ice habits are less predictable due to particles growing in a number of temperature regimes as they sediment. The first temperature regime that we would like to highlight in Fig. 8 is the so-called dendritic-growth zone, namely the region between -20 and -10°C where plate-like particles grow (e.g., Bailey and Hallett, 2009; Bechini et al., 2013; von Terzi et al., 2022): inside this regime
510 stellar or fern-like dendritic particles are observed under liquid saturation conditions, and especially between -16 and -12°C (Takahashi, 2014). Rapid growth and aggregation of dendritic particles in this temperature regime has been widely reported (Takahashi, 2014; Barrett et al., 2019; Dias Neto et al., 2019). Dendritic particles in fact aggregate efficiently due mechanical entanglement of their dendritic branches (Connolly et al., 2012). Fingerprints of dendritic growth and subsequent aggregation can be especially inferred by examining the dual-wavelength, Doppler, and polarimetric radar variables in Fig. 8: DWR displays
515 a steady increase starting at -15°C and peaking at -11°C, while MDV slightly increases in the same temperature region, displaying median values close to -0.6 m s^{-1} ; Z_{DR} and sZ_{DRmax} both start increasing and reach their maxima at a slightly colder temperature than DWR (-16 and -12°C respectively), while K_{DP} , especially its 0.75 quantile, starts increasing at colder temperatures (-18°C), reaches its maximum at -15°C, then steadily decreases as particles fall towards warmer temperatures. In agreement with Chellini et al. (2022), the observed DWR and MDV values are compatible with low-density dendrite aggregates
520 (Locatelli and Hobbs, 1974; Heymsfield and Westbrook, 2010; Kneifel et al., 2015). Bands of enhanced K_{DP} and Z_{DR} at dendritic-growth temperatures have been widely reported in mid-latitude deep precipitating systems (Bechini et al., 2013; Schrom et al., 2015; Griffin et al., 2018; von Terzi et al., 2022). The maximum in K_{DP} at -15°C can be in fact related to the increase in number concentration of small asymmetric ice particles, and as such, a K_{DP} increase has been suggested to be a prerequisite for the onset of aggregation (Moisseev et al., 2015). The enhancement of Z_{DR} is instead typically interpreted as
525 originating from rapid growth of plate-like particles (Schrom and Kumjian, 2016; Griffin et al., 2018; von Terzi et al., 2022). Interestingly, in typical mid-latitude systems the maximum in Z_{DR} is observed above the maxima of K_{DP} and DWR, and K_{DP} is found to increase steadily from the top of the dendritic-growth zone until its base (von Terzi et al., 2022), while Fig. 8 paints a different picture. In the Figure the peak in K_{DP} , and therefore ice number concentration, at -15°C, is followed by increases in DWR and Z_{DR} at slightly warmer temperatures. These discrepancies might be connected to the limited depths associated
530 with Arctic LLMPCs, compared to mid-latitude deep precipitating systems. Moreover, fragmentation of dendritic and stellar crystals has been widely suggested in literature (e.g., Rangno and Hobbs, 2001; Schwarzenboeck et al., 2009; von Terzi et al.,

2022; Pasquier et al., 2022), and it might be associated with the increase in ice number concentration suggested by the sharp enhancement in K_{DP} at -15°C .

At CTT warmer than -10°C , LLMPCs at Ny-Ålesund typically produce smaller particles, characterized by DWR close to 0 dB (Chellini et al., 2022). This is confirmed by Fig. 9, which displays CFTDs of the same radar variables included in Fig. 8, but restricted to events with CTT warmer than -10°C . The Figure displays median DWRs lower than 1 dB, compatible with particles with sizes close to or smaller than 1 mm (e.g., Ori et al., 2020), fall velocities that steadily increase from -0.4 m s^{-1} at -10°C to -0.7 m s^{-1} at 0°C , typical for small ice crystals with low degree of riming. Prolate particles, such as columns and needles, typically grow in this temperature regime (e.g., Bailey and Hallett, 2009; Myagkov et al., 2016), and can be easily detected via their enhanced LDR (Oue et al., 2015; Bühl et al., 2016; Li et al., 2021): panel f in Fig. 9 displays that LDR values higher than -20 dB occurred less than 25% of the cases at temperatures between -4 and 0°C , with frequency dramatically decreasing at colder temperatures. They do not seem to produce large aggregates, as DWR remains low. The increase in K_{DP} between -6 and 0°C is compatible with the hypothesis of formation of needle particles in a portion of the cases, as it signals an increase in number concentration of asymmetric particles. Interestingly we can draw a parallel between the increase in Z_{DR} at dendritic growth temperatures, which is preceded by an increase in K_{DP} , and the increase in LDR at column growth temperatures, also preceded by an increase in K_{DP} . This might be due to the time needed for small K_{DP} -producing ice particles to grow either into larger Z_{DR} -producing plates or larger LDR-producing columns. At the same time, this second K_{DP} enhancement region could be an indication of secondary ice production, as it has been reported in Arctic LLMPCs at these temperatures (e.g., Luke et al., 2021; Pasquier et al., 2022). This second K_{DP} enhancement zone has in fact been observed in mid-latitude systems only in a limited fraction of cases by von Terzi et al. (2022), and to a far lesser extent, which supports the hypothesis that the observed enhancement might be attributable to mixed-phase-related secondary ice production, such as droplet shattering or rime splintering. The high fall velocities associated with the higher quartile in MDV could be indicative of riming (e.g., Kneifel and Moisseev, 2020), which is also compatible with low Z_{DR} , as well as high ρ_{HV} , especially observed between -8 and -5°C .

555 6 Conclusions

We present a comprehensive long-term dataset of remote sensing observations of low-level mixed-phase clouds (LLMPCs), taken at the high Arctic site of Ny-Ålesund, Svalbard, Norway. The dataset in particular features dual-wavelength and polarimetric Doppler cloud radars observations, which are especially suited for ice microphysical studies. Cloud radar observations are complemented by thermodynamic retrievals from a microwave radiometer (temperature, liquid water path, and integrated water vapor), liquid base height from a ceilometer, and wind fields from large-eddy simulations. LLMPCs were detected using criteria based on the persistence of ice and liquid phases, and only periods when LLMPCs were detected were included in the dataset. All variables have undergone extensive quality control, especially the cloud radar observations, that were calibrated, as well as corrected for attenuation, ground clutter, and range folding. Unreliable data from microwave radiometer retrievals

was also removed using precipitation information and a spectral consistency approach. All variables are brought to the same
565 time and range grids, for easier matching of data originating from different instruments.

The large number of radar variables, coupled with thermodynamic, liquid base height and wind field data, included in
the dataset allows for a comprehensive characterization of microphysical, as well as macrophysical, properties of LLMPCs.
Microphysical studies will especially benefit from the combination of this dataset with data from the Video In-Situ Snowfall
Sensor (VISSS; Maahn et al., 2023), which was operated at Ny-Ålesund during the same period. Additionally, the large
570 number of events included in the dataset (~~more than 600~~totalling 554) enables to compile robust statistics, especially for studies
of ice microphysical processes. We demonstrate this by performing a brief statistical analysis of the temperature dependence
of Doppler, dual-wavelength and polarimetric radar variables. Expanding upon results from previous studies, we show that
LLMPCs at temperatures between -18 and -10°C display dual-wavelength and polarimetric signatures compatible with the
rapid increase in number concentration, growth and subsequent aggregation of plate-like particles. We further show fingerprints
575 suggesting the formation of precipitating prolate particles at temperatures warmer than -5°C. The analysis highlighted that
LLMPCs are especially suited for process studies, as the ice habits involved can be easily inferred based on temperature, due
to the limited depth of such clouds. This makes the dataset an ideal testing environment for lagrangian particle models and
microphysical schemes.

7 Data availability

580 The full dataset has been published in Chellini et al. (2023), and is available at: www.doi.org/10.5281/zenodo.7803064.

Author contributions. GC processed the Ka-band radar data, including the developing of the range folding and ground clutter corrections,
performed the calibration and attenuation correction of all radar systems, matched the data from all instruments and compiled the final
files, all with the supervision of SK. RG processed the W-band data, and KE processed the HATPRO data and applied the Cloudnet target
classification. TK ran the ICON-LEM simulations, with the supervision of VS. GC, RG and PK operated the cloud radars, with support from
585 AM. PK handled the data transfer and storage. AM provided guidance on radar operation and data processing. SK and GC designed the
dataset, and GC wrote the manuscript and performed the analysis, with feedback from all authors.

Competing interests. The authors declare that they have no competing interests.

Acknowledgements. GC, RG, KE, TK, PK and VS gratefully acknowledge the funding by the Deutsche Forschungsgemeinschaft (DFG,
German Research Foundation)—Project no. 268020496—TRR 172, within the Transregional Collaborative Research Center “Arctic Ampli-
590 fication: Climate Relevant Atmospheric and SurfaCe Processes, and Feedback Mechanisms (AC)³.” Contributions by SK were partly funded

by the DFG under grant KN 1112/2-1 and KN 1112/2-2 as part of the Emmy-Noether Group “Optimal combination of Polarimetric and Triple Frequency radar techniques for Improving Microphysical process understanding of cold clouds” (OPTIMice).

595 The authors would like to express their gratitude to the Alfred Wegener Institute (AWI), and in particular Marion Maturilli and Christoph Ritter, for sharing their HATPRO and ceilometer data. The authors further wish to thank the AWIPEV staff for assisting with the operation of the instruments. The authors wish to thank Bernhard Pospichal, for sharing and applying his spectral consistency method to evaluate the reliability of microwave radiometer retrievals, and Davide Ori, for producing the scattering tables used in the disdrometer-based calibration, and providing assistance when setting up the PAMTRA forward simulations. The authors would like to further acknowledge the discussions with Leonie von Terzi, which helped improve the processing of polarimetric radar data. GC and TK also acknowledge the support from the Graduate School of Geosciences (GSGS) of the University of Cologne, as well as the Integrated Research Training Group (IRTG) of the
600 (AC)³ consortium.

References

- Abel, S. J., Boutle, I. A., Waite, K., Fox, S., Brown, P. R., Cotton, R., Lloyd, G., Choullarton, T. W., and Bower, K. N.: The role of precipitation in controlling the transition from stratocumulus to cumulus clouds in a Northern Hemisphere cold-air outbreak, *Journal of the Atmospheric Sciences*, 74, 2293–2314, <https://doi.org/10.1175/JAS-D-16-0362.1>, 2017.
- 605 Achtert, P., O'Connor, E. J., Brooks, I. M., Sotiropoulou, G., Shupe, M. D., Pospichal, B., Brooks, B. J., and Tjernström, M.: Properties of Arctic liquid and mixed-phase clouds from shipborne Cloudnet observations during ACSE 2014, *Atmospheric Chemistry and Physics*, 20, 14 983–15 002, <https://doi.org/10.5194/acp-20-14983-2020>, 2020.
- Avramov, A. and Harrington, J. Y.: Influence of parameterized ice habit on simulated mixed phase Arctic clouds, *Journal of Geophysical Research: Atmospheres*, 115, <https://doi.org/10.1029/2009JD012108>, 2010.
- 610 Bailey, M. P. and Hallett, J.: A comprehensive habit diagram for atmospheric ice crystals: Confirmation from the laboratory, AIRS II, and other field studies, *Journal of the Atmospheric Sciences*, 66, 2888–2899, <https://doi.org/10.1175/2009JAS2883.1>, 2009.
- Barrett, A. I., Westbrook, C. D., Nicol, J. C., and Stein, T. H. M.: Rapid Ice Aggregation Process Revealed through Triple-Wavelength Doppler Spectrum Radar Analysis, *Atmospheric Chemistry and Physics*, 19, 5753–5769, <https://doi.org/10.5194/acp-19-5753-2019>, 2019.
- Bechini, R., Baldini, L., and Chandrasekar, V.: Polarimetric radar observations in the ice region of precipitating clouds at C-band and X-band
615 radar frequencies, *Journal of Applied Meteorology and Climatology*, 52, 1147–1169, <https://doi.org/doi.org/10.1175/JAMC-D-12-055.1>, 2013.
- Beine, H., Argentini, S., Maurizi, A., Mastrantonio, G., and Viola, A.: The local wind field at Ny-Ålesund and the Zeppelin mountain at Svalbard, *Meteorology and Atmospheric Physics*, 78, 107–113, <https://doi.org/10.1007/s007030170009>, 2001.
- Billault-Roux, A.-C., Grazioli, J., Delanoë, J., Jorquera, S., Pauwels, N., Viltard, N., Martini, A., Mariage, V., Le Gac, C., Caudoux, C., et al.:
620 ICE GENESIS: Synergetic Aircraft and Ground-Based Remote Sensing and In Situ Measurements of Snowfall Microphysical Properties, *Bulletin of the American Meteorological Society*, 104, E367–E388, <https://doi.org/10.1175/BAMS-D-21-0184.1>, 2023.
- Bohren, C. F. and Huffman, D. R.: Absorption and scattering of light by small particles, John Wiley & Sons, 2008.
- Born, M. and Wolf, E.: Principles of optics: Electromagnetic theory of propagation, interference and diffraction of light, Pergamon Press, 1975.
- 625 Bringi, V. N. and Chandrasekar, V.: Polarimetric Doppler weather radar: principles and applications, Cambridge university press, 2001.
- Bühl, J., Seifert, P., Myagkov, A., and Ansmann, A.: Measuring ice-and liquid-water properties in mixed-phase cloud layers at the Leipzig Cloudnet station, *Atmospheric Chemistry and Physics*, 16, 10 609–10 620, <https://doi.org/10.5194/acp-16-10609-2016>, 2016.
- Chandrasekar, V. and Keeler, R. J.: Antenna pattern analysis and measurements for multiparameter radars, *Journal of Atmospheric and Oceanic Technology*, 10, 674–683, [https://doi.org/10.1175/1520-0426\(1993\)010<0674:APAAMF>2.0.CO;2](https://doi.org/10.1175/1520-0426(1993)010<0674:APAAMF>2.0.CO;2), 1993.
- 630 Chellini, G., Gierens, R., and Kneifel, S.: Ice Aggregation in Low-Level Mixed-Phase Clouds at a High Arctic Site: Enhanced by Dendritic Growth and Absent Close to the Melting Level, *Journal of Geophysical Research: Atmospheres*, 127, e2022JD036 860, <https://doi.org/10.1029/2022JD036860>, 2022.
- Chellini, G., Gierens, R., Ebell, K., Kiszler, T., and Kneifel, S.: Low-level mixed-phase clouds at the high Arctic site of Ny-Ålesund: A comprehensive long-term dataset of remote sensing observations, <https://doi.org/10.5281/zenodo.7803064>, 2023.
- 635 Connolly, P., Emersic, C., and Field, P.: A laboratory investigation into the aggregation efficiency of small ice crystals, *Atmospheric Chemistry and Physics*, 12, 2055–2076, <https://doi.org/10.5194/acp-12-2055-2012>, 2012.

- Crewell, S. and Löhnert, U.: Accuracy of boundary layer temperature profiles retrieved with multifrequency multiangle microwave radiometry, *IEEE Transactions on Geoscience and Remote Sensing*, 45, 2195–2201, <https://doi.org/10.1109/TGRS.2006.888434>, 2007.
- 640 Dahlke, S. and Maturilli, M.: Contribution of Atmospheric Advection to the Amplified Winter Warming in the Arctic North Atlantic Region, *Advances in Meteorology*, <https://doi.org/10.1155/2017/4928620>, 2017.
- de Boer, G., Eloranta, E. W., and Shupe, M. D.: Arctic mixed-phase stratiform cloud properties from multiple years of surface-based measurements at two high-latitude locations, *Journal of Atmospheric Sciences*, 66, 2874–2887, <https://doi.org/10.1175/2009JAS3029.1>, 2009.
- De Boer, G., Morrison, H., Shupe, M., and Hildner, R.: Evidence of liquid dependent ice nucleation in high-latitude stratiform clouds from surface remote sensors, *Geophysical Research Letters*, 38, <https://doi.org/10.1029/2010GL046016>, 2011.
- 645 Dias Neto, J., Kneifel, S., Ori, D., Trömel, S., Handwerker, J., Bohn, B., Hermes, N., Mühlbauer, K., Lenefer, M., and Simmer, C.: The TRIPLE-Frequency and Polarimetric Radar Experiment for Improving Process Observations of Winter Precipitation, *Earth System Science Data*, 11, 845–863, <https://doi.org/10.5194/essd-11-845-2019>, 2019.
- Dipankar, A., Stevens, B., Heinze, R., Moseley, C., Zängl, G., Giorgetta, M., and Brdar, S.: Large eddy simulation using the general circulation model ICON, *Journal of Advances in Modeling Earth Systems*, 7, 963–986, <https://doi.org/10.1002/2015MS000431>, 2015.
- 650 Ebell, K., Nomokonova, T., Maturilli, M., and Ritter, C.: Radiative Effect of Clouds at Ny-Ålesund, Svalbard, as Inferred from Ground-Based Remote Sensing Observations, *Journal of Applied Meteorology and Climatology*, 59, 3–22, <https://doi.org/10.1175/JAMC-D-19-0080.1>, 2020.
- Eirund, G. K., Lohmann, U., and Possner, A.: Cloud ice processes enhance spatial scales of organization in Arctic stratocumulus, *Geophysical Research Letters*, 46, 14 109–14 117, <https://doi.org/10.1029/2019GL084959>, 2019.
- 655 Esau, I. and Repina, I.: Wind climate in Kongsfjorden, Svalbard, and attribution of leading wind driving mechanisms through turbulence-resolving simulations, *Advances in Meteorology*, 2012, <https://doi.org/10.1155/2012/568454>, 2012.
- Fukuta, N. and Takahashi, T.: The growth of atmospheric ice crystals: A summary of findings in vertical supercooled cloud tunnel studies, *Journal of the atmospheric sciences*, 56, 1963–1979, [https://doi.org/10.1175/1520-0469\(1999\)056<1963:TGOAIC>2.0.CO;2](https://doi.org/10.1175/1520-0469(1999)056<1963:TGOAIC>2.0.CO;2), 1999.
- Galletti, M. and Zrníc, D. S.: Degree of polarization at simultaneous transmit: theoretical aspects, *IEEE Geoscience and Remote Sensing Letters*, 9, 383–387, <https://doi.org/10.1109/LGRS.2011.2170150>, 2011.
- 660 Galletti, M., Zrníc, D. S., Melnikov, V. M., and Doviak, R. J.: Degree of polarization: Theory and applications for weather radar at LDR mode, in: 2011 IEEE RadarCon (RADAR), pp. 039–044, IEEE, <https://doi.org/10.1109/RADAR.2011.5960495>, 2011.
- Gierens, R.: Observations of Arctic low-level mixed-phase clouds at Ny-Ålesund: Characterization and insights gained by high-resolution Doppler radar, Ph.D. thesis, Universität zu Köln, Köln, <https://kups.ub.uni-koeln.de/53900/>, 2021.
- 665 Gierens, R., Kneifel, S., Shupe, M. D., Ebell, K., Maturilli, M., and Löhnert, U.: Low-Level Mixed-Phase Clouds in a Complex Arctic Environment, *Atmospheric Chemistry and Physics*, 20, 3459–3481, <https://doi.org/10.5194/acp-20-3459-2020>, 2020.
- Görsdorf, U., Lehmann, V., Bauer-Pfundstein, M., Peters, G., Vavriv, D., Vinogradov, V., and Volkov, V.: A 35-GHz polarimetric Doppler radar for long-term observations of cloud parameters—Description of system and data processing, *Journal of Atmospheric and Oceanic Technology*, 32, 675–690, <https://doi.org/10.1175/JTECH-D-14-00066.1>, 2015.
- 670 Graßl, S., Ritter, C., and Schulz, A.: The Nature of the Ny-Ålesund Wind Field Analysed by High-Resolution Windlidar Data, *Remote Sensing*, 14, 3771, <https://doi.org/10.3390/rs14153771>, 2022.
- Griesche, H. J., Seifert, P., Ansmann, A., Baars, H., Barrientos Velasco, C., Bühl, J., Engelmann, R., Radenz, M., Zhenping, Y., and Macke, A.: Application of the shipborne remote sensing supersite OCEANET for profiling of Arctic aerosols and clouds during Polarstern cruise PS106, *Atmospheric Measurement Techniques*, 13, 5335–5358, <https://doi.org/10.5194/amt-13-5335-2020>, 2020.

- 675 Griesche, H. J., Ohneiser, K., Seifert, P., Radenz, M., Engelmann, R., and Ansmann, A.: Contrasting ice formation in Arctic clouds: surface-coupled vs. surface-decoupled clouds, *Atmospheric Chemistry and Physics*, 21, 10357–10374, <https://doi.org/10.5194/acp-21-10357-2021>, 2021.
- Griffin, E. M., Schuur, T. J., and Ryzhkov, A. V.: A polarimetric analysis of ice microphysical processes in snow, using quasi-vertical profiles, *Journal of Applied Meteorology and Climatology*, 57, 31–50, <https://doi.org/10.1175/JAMC-D-17-0033.1>, 2018.
- 680 Harrington, J. Y. and Olsson, P. Q.: On the potential influence of ice nuclei on surface-forced marine stratocumulus cloud dynamics, *Journal of Geophysical Research: Atmospheres*, 106, 27473–27484, <https://doi.org/10.1029/2000JD000236>, 2001.
- Heymsfield, A. J. and Westbrook, C.: Advances in the estimation of ice particle fall speeds using laboratory and field measurements, *Journal of the Atmospheric Sciences*, 67, 2469–2482, <https://doi.org/10.1175/2010JAS3379.1>, 2010.
- Hildebrand, P. H. and Sekhon, R.: Objective Determination of the Noise Level in Doppler Spectra, *Journal of Applied Meteorology and Climatology*, 13, 808–811, [https://doi.org/10.1175/1520-0450\(1974\)013<0808:ODOTNL>2.0.CO;2](https://doi.org/10.1175/1520-0450(1974)013<0808:ODOTNL>2.0.CO;2), 1974.
- 685 Hogan, R. J. and O’Connor, E. J.: Facilitating cloud radar and lidar algorithms: the Cloudnet Instrument Synergy/Target Categorization product, *Cloudnet documentation*, 14, 2004.
- Hogan, R. J., Illingworth, A. J., and Sauvageot, H.: Measuring crystal size in cirrus using 35- and 94-GHz radars, *Journal of Atmospheric and Oceanic Technology*, 17, 27–37, [https://doi.org/10.1175/1520-0426\(2000\)017<0027:MCSICU>2.0.CO;2](https://doi.org/10.1175/1520-0426(2000)017<0027:MCSICU>2.0.CO;2), 2000.
- 690 Huang, G.-J., Bringi, V. N., and Thurai, M.: Orientation Angle Distributions of Drops after an 80-m Fall Using a 2D Video Disdrometer, *Journal of Atmospheric and Oceanic Technology*, 25, 1717–1723, <https://doi.org/10.1175/2008JTECHA1075.1>, 2008.
- Hubbert, J. and Bringi, V.: An iterative filtering technique for the analysis of copolar differential phase and dual-frequency radar measurements, *Journal of Atmospheric and Oceanic Technology*, 12, 643–648, [https://doi.org/10.1175/1520-0426\(1995\)012<0643:AIFTFT>2.0.CO;2](https://doi.org/10.1175/1520-0426(1995)012<0643:AIFTFT>2.0.CO;2), 1995.
- 695 Illingworth, A., Hogan, R., O’connor, E., Bouniol, D., Brooks, M., Delanoë, J., Donovan, D., Eastment, J., Gaussiat, N., Goddard, J., et al.: Cloudnet: Continuous evaluation of cloud profiles in seven operational models using ground-based observations, *Bulletin of the American Meteorological Society*, 88, 883–898, 2007.
- Kalesse, H., de Boer, G., Solomon, A., Oue, M., Ahlgrimm, M., Zhang, D., Shupe, M. D., Luke, E., and Protat, A.: Understanding Rapid Changes in Phase Partitioning between Cloud Liquid and Ice in Stratiform Mixed-Phase Clouds: An Arctic Case Study, *Monthly Weather Review*, 144, 4805–4826, <https://doi.org/10.1175/MWR-D-16-0155.1>, 2016.
- 700 Karrer, M., Seifert, A., Siewert, C., Ori, D., von Lerber, A., and Kneifel, S.: Ice Particle Properties Inferred From Aggregation Modelling, *Journal of Advances in Modeling Earth Systems*, 12, e2020MS002066, <https://doi.org/10.1029/2020MS002066>, 2020.
- Kiszler, T., Ebell, K., and Schemann, V.: A Performance Baseline for the Representation of Clouds and Humidity in Cloud-Resolving ICON-LEM Simulations in the Arctic, *Journal of Advances in Modeling Earth Systems*, 15, e2022MS003299, <https://doi.org/10.1029/2022MS003299>, 2023.
- 705 Kneifel, S. and Moisseev, D.: Long-Term Statistics of Riming in Nonconvective Clouds Derived from Ground-Based Doppler Cloud Radar Observations, *Journal of the Atmospheric Sciences*, 77, 3495–3508, <https://doi.org/10.1175/JAS-D-20-0007.1>, 2020.
- Kneifel, S., Lerber, A., Tiira, J., Moisseev, D., Kollias, P., and Leinonen, J.: Observed Relations between Snowfall Microphysics and Triple-frequency Radar Measurements, *Journal of Geophysical Research: Atmospheres*, 120, 6034–6055, <https://doi.org/10.1002/2015JD023156>, 2015.
- 710

- Koike, M., Ukita, J., Ström, J., Tunved, P., Shiobara, M., Vitale, V., Lupi, A., Baumgardner, D., Ritter, C., Hermansen, O., et al.: Year-round in situ measurements of Arctic low-level clouds: Microphysical properties and their relationships with aerosols, *Journal of Geophysical Research: Atmospheres*, 124, 1798–1822, <https://doi.org/10.1029/2018JD029802>, 2019.
- 715 Kollias, P., Clothiaux, E., Miller, M., Albrecht, B., Stephens, G., and Ackerman, T.: Millimeter-wavelength radars: New frontier in atmospheric cloud and precipitation research, *Bulletin of the American Meteorological Society*, 88, 1608–1624, <https://doi.org/10.1175/BAMS-88-10-1608>, 2007.
- Küchler, N., Kneifel, S., Löhnert, U., Kollias, P., Czekala, H., and Rose, T.: A W-Band Radar–Radiometer System for Accurate and Continuous Monitoring of Clouds and Precipitation, *Journal of Atmospheric and Oceanic Technology*, 34, 2375–2392, <https://doi.org/10.1175/JTECH-D-17-0019.1>, 2017.
- 720 Leinonen, J.: High-Level Interface to T-Matrix Scattering Calculations: Architecture, Capabilities and Limitations, *Optics Express*, 22, 1655–1660, <https://doi.org/10.1364/OE.22.001655>, 2014.
- Li, H., Möhler, O., Petäjä, T., and Moisseev, D.: Two-year statistics of columnar-ice production in stratiform clouds over Hyttälä, Finland: environmental conditions and the relevance to secondary ice production, *Atmospheric Chemistry and Physics*, 21, 14 671–14 686, <https://doi.org/10.5194/acp-21-14671-2021>, 2021.
- 725 Locatelli, J. D. and Hobbs, P. V.: Fall speeds and masses of solid precipitation particles, *Journal of Geophysical Research*, 79, 2185–2197, <https://doi.org/10.1029/JC079i015p02185>, 1974.
- Löffler-Mang, M. and Joss, J.: An Optical Disdrometer for Measuring Size and Velocity of Hydrometeors, *Journal of Atmospheric and Oceanic Technology*, 17, 130–139, [https://doi.org/10.1175/1520-0426\(2000\)017<0130:AODFMS>2.0.CO;2](https://doi.org/10.1175/1520-0426(2000)017<0130:AODFMS>2.0.CO;2), 2000.
- Lu, Y., Aydin, K., Clothiaux, E. E., and Verlinde, J.: Retrieving cloud ice water content using millimeter-and centimeter-wavelength radar polarimetric observables, *Journal of Applied Meteorology and Climatology*, 54, 596–604, <https://doi.org/10.1175/JAMC-D-14-0169.1>, 2015.
- 730 Luke, E. P., Yang, F., Kollias, P., Vogelmann, A. M., and Maahn, M.: New insights into ice multiplication using remote-sensing observations of slightly supercooled mixed-phase clouds in the Arctic, *Proceedings of the National Academy of Sciences*, 118, <https://doi.org/10.1073/pnas.2021387118>, 2021.
- 735 Maahn, M., Moisseev, D., Steinke, I., Maherndl, N., and Shupe, M. D.: Introducing the Video In Situ Snowfall Sensor (VISSS), *EGU sphere*, 2023, 1–27, <https://doi.org/10.5194/egusphere-2023-655>, 2023.
- Mages, Z., Kollias, P., Zhu, Z., and Luke, E. P.: Surface-based observations of cold-air outbreak clouds during the COMBLE field campaign, *Atmospheric Chemistry and Physics*, 23, 3561–3574, <https://doi.org/10.5194/acp-23-3561-2023>, 2023.
- Maturilli, M. and Ebell, K.: Twenty-Five Years of Cloud Base Height Measurements by Ceilometer in Ny-Ålesund, Svalbard, *Earth System Science Data*, 10, 1451–1456, <https://doi.org/10.5194/essd-10-1451-2018>, 2018.
- 740 Maturilli, M. and Kayser, M.: Arctic warming, moisture increase and circulation changes observed in the Ny-Ålesund homogenized radiosonde record, *Theoretical and Applied Climatology*, 130, 1–17, <https://doi.org/10.1007/s00704-016-1864-0>, 2017.
- Maturilli, M., Herber, A., and König-Langlo, G.: Climatology and time series of surface meteorology in Ny-Ålesund, Svalbard, *Earth System Science Data*, 5, 155–163, <https://doi.org/10.5194/essd-5-155-2013>, 2013.
- 745 Matus, A. V. and L’Ecuyer, T. S.: The role of cloud phase in Earth’s radiation budget, *Journal of Geophysical Research: Atmospheres*, 122, 2559–2578, <https://doi.org/10.1002/2016JD025951>, 2017.

- Mech, M., Kliesch, L.-L., Anhäuser, A., Rose, T., Kollias, P., and Crewell, S.: Microwave Radar/Radiometer for Arctic Clouds (MiRAC): First Insights from the ALOUD Campaign, *Atmospheric Measurement Techniques*, 12, 5019–5037, <https://doi.org/10.5194/amt-12-5019-2019>, 2019.
- 750 Mech, M., Maahn, M., Kneifel, S., Ori, D., Orlandi, E., Kollias, P., Schemann, V., and Crewell, S.: PAMTRA 1.0: the Passive and Active Microwave radiative TRAnsfer tool for simulating radiometer and radar measurements of the cloudy atmosphere, *Geoscientific Model Development*, 13, 4229–4251, <https://doi.org/10.5194/gmd-13-4229-2020>, 2020.
- Mioche, G., Jourdan, O., Ceccaldi, M., and Delanoë, J.: Variability of mixed-phase clouds in the Arctic with a focus on the Svalbard region: a study based on spaceborne active remote sensing, *Atmospheric Chemistry and Physics*, 15, 2445–2461, <https://doi.org/10.5194/acp-15-2445-2015>, 2015.
- 755 Mioche, G., Jourdan, O., Delanoë, J., Gourbeyre, C., Febvre, G., Dupuy, R., Monier, M., Szczap, F., Schwarzenboeck, A., and Gayet, J.-F.: Vertical distribution of microphysical properties of Arctic springtime low-level mixed-phase clouds over the Greenland and Norwegian seas, *Atmospheric Chemistry and Physics*, 17, 12 845–12 869, <https://doi.org/10.5194/acp-17-12845-2017>, 2017.
- Moisseev, D. N., Lautaportti, S., Tyynela, J., and Lim, S.: Dual-polarization radar signatures in snowstorms: Role of snowflake aggregation, *Journal of Geophysical Research: Atmospheres*, 120, 12 644–12 655, <https://doi.org/10.1002/2015JD023884>, 2015.
- 760 Morrison, H., de Boer, G., Feingold, G., Harrington, J., Shupe, M. D., and Sulia, K.: Resilience of Persistent Arctic Mixed-Phase Clouds, *Nature Geoscience*, 5, 11–17, <https://doi.org/10.1038/ngeo1332>, 2012.
- Myagkov, A. and Ori, D.: Analytic characterization of random errors in spectral dual-polarized cloud radar observations, *Atmospheric Measurement Techniques*, 15, 1333–1354, <https://doi.org/10.5194/amt-15-1333-2022>, 2022.
- 765 Myagkov, A., Seifert, P., Wandinger, U., Bauer-Pfundstein, M., and Matrosov, S. Y.: Effects of antenna patterns on cloud radar polarimetric measurements, *Journal of Atmospheric and Oceanic Technology*, 32, 1813–1828, <https://doi.org/10.1175/JTECH-D-15-0045.1>, 2015.
- Myagkov, A., Seifert, P., Wandinger, U., Bühl, J., and Engelmann, R.: Relationship between temperature and apparent shape of pristine ice crystals derived from polarimetric cloud radar observations during the ACCEPT campaign, *Atmospheric Measurement Techniques*, 9, 3739–3754, <https://doi.org/10.5194/amt-9-3739-2016>, 2016.
- 770 Myagkov, A., Kneifel, S., and Rose, T.: Evaluation of the Reflectivity Calibration of W-Band Radars Based on Observations in Rain, *Atmospheric Measurement Techniques*, 13, 5799–5825, <https://doi.org/10.5194/amt-13-5799-2020>, 2020.
- Nemarich, J., Wellman, R. J., and Lacombe, J.: Backscatter and attenuation by falling snow and rain at 96, 140, and 225 GHz, *IEEE Transactions on Geoscience and Remote Sensing*, 26, 319–329, <https://doi.org/10.1109/36.3034>, 1988.
- Nghiem, S. V., Yueh, S. H., Kwok, R., and Li, F. K.: Symmetry properties in polarimetric remote sensing, *Radio Science*, 27, 693–711, <https://doi.org/10.1029/92RS01230>, 1992.
- 775 Nomokonova, T., Ebell, K., Löhnert, U., Maturilli, M., Ritter, C., and O’Connor, E.: Statistics on Clouds and Their Relation to Thermodynamic Conditions at Ny-Ålesund Using Ground-Based Sensor Synergy, *Atmospheric Chemistry and Physics*, 19, 4105–4126, <https://doi.org/10.5194/acp-19-4105-2019>, 2019.
- Nomokonova, T., Ebell, K., Löhnert, U., Maturilli, M., and Ritter, C.: The Influence of Water Vapor Anomalies on Clouds and Their Radiative Effect at Ny-Ålesund, *Atmospheric Chemistry and Physics*, 20, 5157–5173, <https://doi.org/10.5194/acp-20-5157-2020>, 2020.
- 780 Ori, D., Schemann, V., Karrer, M., Dias Neto, J., von Terzi, L., Seifert, A., and Kneifel, S.: Evaluation of ice particle growth in ICON using statistics of multi-frequency Doppler cloud radar observations, *Quarterly Journal of the Royal Meteorological Society*, 146, 3830–3849, <https://doi.org/10.1002/qj.3875>, 2020.

- Oue, M., Kumjian, M. R., Lu, Y., Verlinde, J., Aydin, K., and Clothiaux, E. E.: Linear Depolarization Ratios of Columnar Ice Crystals in a Deep Precipitating System over the Arctic Observed by Zenith-Pointing Ka-Band Doppler Radar, *Journal of Applied Meteorology and Climatology*, 54, 1060–1068, <https://doi.org/10.1175/JAMC-D-15-0012.1>, 2015.
- Pasquier, J. T., Henneberger, J., Ramelli, F., Lauber, A., David, R. O., Wieder, J., Carlsen, T., Gierens, R., Maturilli, M., and Lohmann, U.: Conditions favorable for secondary ice production in Arctic mixed-phase clouds, *Atmospheric Chemistry and Physics*, 22, 15 579–15 601, <https://doi.org/10.5194/acp-22-15579-2022>, 2022.
- Pruppacher, H. R. and Klett, J. D.: *Microphysics of Clouds and Precipitation: Reprinted 1980*, Springer, Dordrecht, <https://doi.org/10.1007/978-94-009-9905-3>, 2012.
- Rangno, A. L. and Hobbs, P. V.: Ice Particles in Stratiform Clouds in the Arctic and Possible Mechanisms for the Production of High Ice Concentrations, *Journal of Geophysical Research: Atmospheres*, 106, 15 065–15 075, <https://doi.org/10.1029/2000JD900286>, 2001.
- Rose, T., Crewell, S., Löhnert, U., and Simmer, C.: A Network Suitable Microwave Radiometer for Operational Monitoring of the Cloudy Atmosphere, *Atmospheric Research*, 75, 183–200, <https://doi.org/10.1016/j.atmosres.2004.12.005>, 2005.
- Rosenkranz, P. W.: A model for the complex dielectric constant of supercooled liquid water at microwave frequencies, *IEEE Transactions on Geoscience and Remote Sensing*, 53, 1387–1393, <https://doi.org/10.1109/TGRS.2014.2339015>, 2014.
- Schemann, V. and Ebell, K.: Simulation of mixed-phase clouds with the ICON large-eddy model in the complex Arctic environment around Ny-Ålesund, *Atmospheric Chemistry and Physics*, 20, 475–485, <https://doi.org/10.5194/acp-20-475-2020>, 2020.
- Schemann, V., Ebell, K., Pospichal, B., Neggers, R., Moseley, C., and Stevens, B.: Linking large-eddy simulations to local cloud observations, *Journal of Advances in Modeling Earth Systems*, 12, e2020MS002 209, <https://doi.org/10.1029/2020MS002209>, 2020.
- Schoger, S. Y., Moisseev, D., von Lerber, A., Crewell, S., and Ebell, K.: Snowfall-Rate Retrieval for K- and W-Band Radar Measurements Designed in Hyttiälä, Finland, and Tested at Ny-Ålesund, Svalbard, Norway, *Journal of Applied Meteorology and Climatology*, 60, 273–289, <https://doi.org/10.1175/JAMC-D-20-0095.1>, 2021.
- Schrom, R. S. and Kumjian, M. R.: Connecting microphysical processes in Colorado winter storms with vertical profiles of radar observations, *Journal of Applied Meteorology and Climatology*, 55, 1771–1787, <https://doi.org/10.1175/JAMC-D-15-0338.1>, 2016.
- Schrom, R. S., Kumjian, M. R., and Lu, Y.: Polarimetric radar signatures of dendritic growth zones within Colorado winter storms, *Journal of Applied Meteorology and Climatology*, 54, 2365–2388, <https://doi.org/doi.org/10.1175/JAMC-D-15-0004.1>, 2015.
- Schwarzenboeck, A., Shcherbakov, V., Lefevre, R., Gayet, J. F., Pointin, Y., and Duroure, C.: Indications for Stellar-Crystal Fragmentation in Arctic Clouds, *Atmospheric Research*, 92, 220–228, <https://doi.org/10.1016/j.atmosres.2008.10.002>, 2009.
- Schween, J. H., del Rio, C., García, J.-L., Osses, P., Westbrook, S., and Löhnert, U.: Life cycle of stratocumulus clouds over 1 year at the coast of the Atacama Desert, *Atmospheric Chemistry and Physics*, 22, 12 241–12 267, <https://doi.org/10.5194/acp-22-12241-2022>, 2022.
- Serreze, M. C. and Barry, R. G.: Processes and impacts of Arctic amplification: A research synthesis, *Global and planetary change*, 77, 85–96, <https://doi.org/10.1016/j.gloplacha.2011.03.004>, 2011.
- Shupe, M. D.: A ground-based multisensor cloud phase classifier, *Geophysical Research Letters*, 34, <https://doi.org/10.1029/2007GL031008>, 2007.
- Shupe, M. D.: Clouds at Arctic atmospheric observatories. Part II: Thermodynamic phase characteristics, *Journal of Applied Meteorology and Climatology*, 50, 645–661, <https://doi.org/10.1175/2010JAMC2468.1>, 2011.
- Shupe, M. D. and Intrieri, J. M.: Cloud radiative forcing of the Arctic surface: The influence of cloud properties, surface albedo, and solar zenith angle, *Journal of Climate*, 17, 616–628, [https://doi.org/10.1175/1520-0442\(2004\)017<0616:CRFOTA>2.0.CO;2](https://doi.org/10.1175/1520-0442(2004)017<0616:CRFOTA>2.0.CO;2), 2004.

- Shupe, M. D., Matrosov, S. Y., and Uttal, T.: Arctic Mixed-Phase Cloud Properties Derived from Surface-Based Sensors at SHEBA, *Journal of the Atmospheric Sciences*, 63, 697–711, <https://doi.org/10.1175/JAS3659.1>, 2006.
- Shupe, M. D., Kollias, P., Persson, P. O. G., and McFarquhar, G. M.: Vertical motions in Arctic mixed-phase stratiform clouds, *Journal of Atmospheric Sciences*, 65, 1304–1322, <https://doi.org/10.1175/2007JAS2479.1>, 2008.
- 825 Shupe, M. D., Rex, M., Blomquist, B., Persson, P. O. G., Schmale, J., Uttal, T., Althausen, D., Angot, H., Archer, S., Bariteau, L., et al.: Overview of the MOSAiC expedition: Atmosphere, *Elementa: Science of the Anthropocene*, 10, 00060, <https://doi.org/10.1525/elementa.2021.00060>, 2022.
- Simpfendorfer, L. F., Verlinde, J., Harrington, J. Y., Shupe, M. D., Chen, Y.-S., Clothiaux, E. E., and Golaz, J.-C.: Formation of Arctic stratocumuli through atmospheric radiative cooling, *Journal of Geophysical Research: Atmospheres*, 124, 9644–9664, <https://doi.org/10.1029/2018JD030189>, 2019.
- 830 Solomon, A., Shupe, M. D., Persson, P. O. G., and Morrison, H.: Moisture and Dynamical Interactions Maintaining Decoupled Arctic Mixed-Phase Stratocumulus in the Presence of a Humidity Inversion, *Atmospheric Chemistry and Physics*, 11, 10 127–10 148, <https://doi.org/10.5194/acp-11-10127-2011>, 2011.
- Solomon, A., Shupe, M. D., Persson, O., Morrison, H., Yamaguchi, T., Caldwell, P. M., and de Boer, G.: The sensitivity of springtime Arctic mixed-phase stratocumulus clouds to surface-layer and cloud-top inversion-layer moisture sources, *Journal of Atmospheric Sciences*, 71, 574–595, 2014.
- 835 Solomon, A., Feingold, G., and Shupe, M. D.: The role of ice nuclei recycling in the maintenance of cloud ice in Arctic mixed-phase stratocumulus, *Atmospheric Chemistry and Physics*, 15, 10 631–10 643, <https://doi.org/10.5194/acp-15-10631-2015>, 2015.
- Sotiropoulou, G., Lewinschal, A., Georgakaki, P., Phillips, V., Patade, S., Ekman, A. M., and Nenes, A.: Sensitivity of Arctic clouds to ice microphysical processes in the NorESM2 climate model, *Authorea Preprints*, <https://doi.org/1002/essoar.10512081.1>, 2022.
- 840 Takahashi, T.: Influence of liquid water content and temperature on the form and growth of branched planar snow crystals in a cloud, *Journal of the Atmospheric Sciences*, 71, 4127–4142, <https://doi.org/10.1175/JAS-D-14-0043.1>, 2014.
- Tan, I. and Storelvmo, T.: Evidence of strong contributions from mixed-phase clouds to Arctic climate change, *Geophysical Research Letters*, 46, 2894–2902, <https://doi.org/10.1029/2018GL081871>, 2019.
- 845 Thurai, M., Huang, G. J., Bringi, V. N., Randeu, W. L., and Schönhuber, M.: Drop Shapes, Model Comparisons, and Calculations of Polarimetric Radar Parameters in Rain, *Journal of Atmospheric and Oceanic Technology*, 24, 1019–1032, <https://doi.org/10.1175/JTECH2051.1>, 2007.
- Tridon, F., Battaglia, A., and Kneifel, S.: Estimating total attenuation using Rayleigh targets at cloud top: applications in multilayer and mixed-phase clouds observed by ground-based multifrequency radars, *Atmospheric Measurement Techniques*, 13, 5065–5085, <https://doi.org/10.5194/amt-13-5065-2020>, 2020.
- 850 Trömel, S., Kumjian, M. R., Ryzhkov, A. V., Simmer, C., and Diederich, M.: Backscatter differential phase—Estimation and variability, *Journal of Applied Meteorology and Climatology*, 52, 2529–2548, <https://doi.org/10.1175/JAMC-D-13-0124.1>, 2013.
- Vassel, M., Ickes, L., Maturilli, M., and Hoose, C.: Classification of Arctic multilayer clouds using radiosonde and radar data in Svalbard, *Atmospheric Chemistry and Physics*, 19, 5111–5126, <https://doi.org/10.5194/acp-19-5111-2019>, 2019.
- 855 Verlinde, J., Zak, B., Shupe, M., Ivey, M., and Stamnes, K.: The ARM North Slope of Alaska (NSA) sites, *Meteorological Monographs*, 57, 8–1, <https://doi.org/10.1175/AMSMONOGRAPHS-D-15-0023.1>, 2016.

- von Terzi, L., Dias Neto, J., Ori, D., Myagkov, A., and Kneifel, S.: Ice microphysical processes in the dendritic growth layer: A statistical analysis combining multi-frequency and polarimetric Doppler cloud radar observations, *Atmospheric Chemistry and Physics*, 22, 11 795–11 821, <https://doi.org/10.5194/acp-22-11795-2022>, 2022.
- 860 Wallace, J. M. and Hobbs, P. V.: *Atmospheric Science (Second Edition)*, Academic Press, San Diego, second edn., 2006.
- Waterman, P.: Matrix formulation of electromagnetic scattering, *Proceedings of the IEEE*, 53, 805–812, <https://doi.org/10.1109/PROC.1965.4058>, 1965.
- Wendisch, M., Macke, A., Ehrlich, A., Lüpkes, C., Mech, M., Chechin, D., Dethloff, K., Velasco, C. B., Bozem, H., Brückner, M., Clemen, H.-C., Crewell, S., Donth, T., Dupuy, R., Ebell, K., Egerer, U., Engelmann, R., Engler, C., Eppers, O., Gehrman, M., Gong, X.,
- 865 Gottschalk, M., Gourbeyre, C., Griesche, H., Hartmann, J., Hartmann, M., Heinold, B., Herber, A., Herrmann, H., Heygster, G., Hoor, P., Jafariserajehlou, S., Jäkel, E., Järvinen, E., Jourdan, O., Kästner, U., Kecorius, S., Knudsen, E. M., Köllner, F., Kretzschmar, J., Lelli, L., Leroy, D., Maturilli, M., Mei, L., Mertes, S., Mioche, G., Neuber, R., Nicolaus, M., Nomokonova, T., Notholt, J., Palm, M., van Pinxteren, M., Quaas, J., Richter, P., Ruiz-Donoso, E., Schäfer, M., Schmieder, K., Schnaiter, M., Schneider, J., Schwarzenböck, A., Seifert, P., Shupe, M. D., Siebert, H., Spreen, G., Stapf, J., Stratmann, F., Vogl, T., Welti, A., Wex, H., Wiedensohler, A., Zanatta, M., and Zeppenfeld,
- 870 S.: The Arctic Cloud Puzzle: Using ALOUD/PASCAL Multiplatform Observations to Unravel the Role of Clouds and Aerosol Particles in Arctic Amplification, *Bulletin of the American Meteorological Society*, 100, 841–871, <https://doi.org/10.1175/BAMS-D-18-0072.1>, 2019.
- Wendisch, M., Brückner, M., Crewell, S., Ehrlich, A., Notholt, J., Lüpkes, C., Macke, A., Burrows, J. P., Rinke, A., Quaas, J., Maturilli, M., Schemann, V., Shupe, M. D., Akansu, E. F., Barrientos-Velasco, C., Bärfuss, K., Blechschmidt, A.-M., Block, K., Bougoudis, I.,
- 875 Bozem, H., Böckmann, C., Bracher, A., Bresson, H., Bretschneider, L., Buschmann, M., Chechin, D. G., Chylik, J., Dahlke, S., Deneke, H., Dethloff, K., Donth, T., Dorn, W., Dupuy, R., Ebell, K., Egerer, U., Engelmann, R., Eppers, O., Gerdes, R., Gierens, R., Gorodetskaya, I. V., Gottschalk, M., Griesche, H., Gryanik, V. M., Handorf, D., Harm-Altstädter, B., Hartmann, J., Hartmann, M., Heinold, B., Herber, A., Herrmann, H., Heygster, G., Höschel, I., Hofmann, Z., Hölemann, J., Hünerbein, A., Jafariserajehlou, S., Jäkel, E., Jacobi, C., Janout, M., Jansen, F., Jourdan, O., Jurányi, Z., Kalesse-Los, H., Kanzow, T., Käthner, R., Kliesch, L. L., Klingebiel, M., Knudsen, E. M., Kovács,
- 880 T., Körtke, W., Krampe, D., Kretzschmar, J., Kreyling, D., Kulla, B., Kunkel, D., Lampert, A., Lauer, M., Lelli, L., von Lerber, A., Linke, O., Löhnert, U., Lonardi, M., Losa, S. N., Losch, M., Maahn, M., Mech, M., Mei, L., Mertes, S., Metzner, E., Mewes, D., Michaelis, J., Mioche, G., Moser, M., Nakoudi, K., Neggers, R., Neuber, R., Nomokonova, T., Oelker, J., Papakonstantinou-Presvelou, I., Pätzold, F., Pefanis, V., Pohl, C., van Pinxteren, M., Radovan, A., Rhein, M., Rex, M., Richter, A., Risse, N., Ritter, C., Rostosky, P., Rozanov, V. V., Donoso, E. R., Garfias, P. S., Salzmann, M., Schacht, J., Schäfer, M., Schneider, J., Schnierstein, N., Seifert, P., Seo, S., Siebert, H.,
- 885 Soppa, M. A., Spreen, G., Stachlewska, I. S., Stapf, J., Stratmann, F., Tegen, I., Viceto, C., Voigt, C., Vountas, M., Walbröl, A., Walter, M., Wehner, B., Wex, H., Willmes, S., Zanatta, M., and Zeppenfeld, S.: Atmospheric and Surface Processes, and Feedback Mechanisms Determining Arctic Amplification: A Review of First Results and Prospects of the (AC)3 Project, *Bulletin of the American Meteorological Society*, 104, E208 – E242, <https://doi.org/10.1175/BAMS-D-21-0218.1>, 2023.
- Williams, C. R., Gage, K. S., Clark, W., and Kucera, P.: Monitoring the reflectivity calibration of a scanning radar using a profiling radar and a disdrometer, *Journal of Atmospheric and Oceanic Technology*, 22, 1004–1018, <https://doi.org/https://doi.org/10.1175/JTECH1759.1>,
- 890 2005.
- Williams, C. R., Maahn, M., Hardin, J. C., and de Boer, G.: Clutter mitigation, multiple peaks, and high-order spectral moments in 35 GHz vertically pointing radar velocity spectra, *Atmospheric Measurement Techniques*, 11, 4963–4980, <https://doi.org/10.5194/amt-11-4963-2018>, 2018.

- 895 Yuter, S. E. and Houze Jr, R. A.: Three-dimensional kinematic and microphysical evolution of Florida cumulonimbus. Part II: Frequency distributions of vertical velocity, reflectivity, and differential reflectivity, *Monthly Weather Review*, 123, 1941–1963, [https://doi.org/10.1175/1520-0493\(1995\)123<1941:TDKAME>2.0.CO;2](https://doi.org/10.1175/1520-0493(1995)123<1941:TDKAME>2.0.CO;2), 1995.
- Zängl, G., Reinert, D., Rípodas, P., and Baldauf, M.: The ICON (ICOsahedral Non-Hydrostatic) Modelling Framework of DWD and MPI-M: Description of the Non-Hydrostatic Dynamical Core, *Quarterly Journal of the Royal Meteorological Society*, 141, 563–579, 900 <https://doi.org/10.1002/qj.2378>, 2015.
- Zhao, C. and Garrett, T.: Ground-based remote sensing of precipitation in the Arctic, *Journal of Geophysical Research: Atmospheres*, 113, <https://doi.org/10.1029/2007JD009222>, 2008.