

An extensive spatiotemporal water quality dataset covering four decades (1980-2022) in China

Jingyu Lin^{1,2}, Peng Wang³, Jinzhu Wang⁴, Youping Zhou⁵, Xudong Zhou⁶, Pan Yang^{1,2}, Hao Zhang⁷, Yanpeng Cai^{1,2*}, Zhifeng Yang^{1,2}

5 ¹Guangdong Provincial Key Laboratory of Water Quality Improvement and Ecological Restoration for Watersheds, School of Ecology, Environment and Resources, Guangdong University of Technology, Guangzhou, 510006, China

²Southern Marine Science and Engineering Guangdong Laboratory (Guangzhou), Guangzhou, 511458, China

³Coastal and Ocean Management Institute, College of the Environment and Ecology, Xiamen University, Xiamen 361102, China

10 ⁴School of Life and Environmental Sciences, Deakin University, Burwood, Vic, 3125, Australia

⁵Department of Ocean Science and Engineering, Southern University of Science and Technology (SUSTech), Shenzhen 518055, China

⁶Global Hydrological Prediction Center, Institute of Industrial Science, The University of Tokyo, Tokyo 153-8505, Japan

15 ⁷CAS Key Laboratory of Tropical Marine Bio-Resources and Ecology, South China Sea Institute of Oceanology, Chinese Academy of Sciences, Guangzhou, 510301, China

Correspondence to: Yanpeng Cai (yanpeng.cai@gdut.edu.cn)

Abstract Water quality data represents a critical resource for the evaluation of aquatic ecosystems' well-being and the assurance of clean water sources for human populations. While the availability of water quality datasets is growing, the absence of a publicly accessible national water quality dataset for both inland and ocean in China has been notable. To address this issue, we utilized R and Python programming languages to collect, tidy, reorganize, curate, and compile three publicly available datasets, thereby creating an extensive spatiotemporal repository of surface water quality data for China. Distinguished as the most expansive, clean, and easily accessible water quality dataset in China by now, this repository comprised over 330,000 observations encompassing daily (3,588), weekly (217,751), and monthly (114,954) records of surface water quality spanning the period from 1980 to 2022. It spanned 18 distinct indicators, meticulously gathered at 2384 monitoring sites, which were further categorized as daily (244 sites), weekly (149 sites), and monthly (1,991 sites), ranging from inland locations to coastal and oceanic areas. This dataset will support studies relevant to the assessment, modelling, and projection of water quality, ocean biomass, and biodiversity in China, and therefore make substantial contributions to both national and global water resources management.

This water quality dataset and supplementary metadata are available for download on figshare repository at <https://doi.org/10.6084/m9.figshare.22584742.v1> (Lin et al., 2023).

35 1 Introduction

The implications of the 2030 Agenda for Sustainable Development necessitate the utilization of high-quality monitoring data for the purpose of gauging progress and facilitating evidence-based policymaking (Allen et al.,

2021). Water, constituting the foundational pillar of sustainable development (UNESCO, 2019), bears a profound interconnection with numerous targets within the Sustainable Development Goals (SDGs), notably SDG 6 (Sadoff et al., 2020), which endeavors to ensure the universal availability and sustainable management of water and sanitation, and SDG 14, which focuses on the conservation and sustainable utilization of oceans, seas, and marine resources. With the campaign of ecological civilization and a series of marine policies (e.g., Maritime Power and Strategy, Chen et al., (2019)), China is committed to the preservation of water resources while simultaneously advancing resource management methodologies. To effectively accomplish the United Nations' SDGs and align with China's extensive policy frameworks, it is crucial to systematically compile water-related data across both inland and coastal/oceanic domains (Dai et al., 2022). Within the context of the Source-to-Sea (S2S) aquatic continuum, water quality data emerges as a pivotal factor in discerning pollution levels (Regnier et al., 2022). This information plays a critical role in the preservation of water resources and the provision of sanitation services (UNESCO, 2023).

Water quality refers to the selected physical, chemical, and biological characteristics of water that determine its suitability for a particular use (World Health Organization, 2017). There are some key properties widely recognized for measuring water quality. In terms of physical characteristics, key considerations include the color, temperature (TEMP), sediment content, turbidity, electrical conductivity, and the concentration of Total Suspended Solids (TSSs) (Oteng-Peprah et al., 2018). Chemical constituents play a significant role in the determination of water quality. These encompass parameters such as the Potential of Hydrogen (pH), acidity levels, and indicators reflecting nutrient levels, including Ammonia Nitrogen (NH₄N), Nitrite Nitrogen (NO₂N), and Nitrate Nitrogen (NO₃N), and various forms of phosphorus such as Dissolved Inorganic Phosphorus (DIP) and Total Phosphorus (TP). Additionally, the concentration of oxygen required for microorganisms to decompose organic matter is highly considered, which includes Biochemical Oxygen Demand (BOD), Chemical Oxygen Demand (COD), and Dissolved Oxygen (DO) (Hassan Omer, 2020). Biological indicators provide insights into the presence, condition, and abundance of various living organisms within water bodies, such as bacteria, algae, and pathogens. Overall, these indicators are crucial for assessing water quality and ensuring the health of aquatic ecosystems and human populations that rely on clean water sources.

Sustaining elevated water quality standards stands as an imperative requisite for the perpetuity of diverse spheres, encompassing natural ecosystems, public health, and socio-economic systems. Contaminants such as excessive nutrients that enter water bodies can have detrimental effects on the integrity, functioning, and biodiversity of both riverine and oceanic ecosystems which provide a habitat for a diverse array of flora and fauna (Morin and Artigas, 2023). For instance, the influx of pesticides into aquatic systems has been unequivocally associated with the diminishment of aquatic species and perturbations in food chains (Stehle et al., 2015). Consequently, the unwavering adherence to stringent water quality standards emerges as an imperative measure for ameliorating the adversative consequences, thereby safeguarding fragile habitats, and preserving ecological equilibrium (Hering et al.,2015). Furthermore, the assurance of clean water represents a fundamental safeguard against the outbreak of waterborne maladies (Gleick and Palaniappan, 2010), with direct implications for the preservation of public health (Prüss-Ustün et al., 2014) and the concomitant mitigation of healthcare expenditures. Maladies such as cholera, typhoid, and

75 hepatitis find direct causation in the inadequacy of water quality (Leju Celestino Ladu et al., 2018). Lastly, impaired water quality can have severe economic consequences, including reduced agricultural productivity, increased costs of water treatment, and damage to tourism industries reliant on pristine water bodies (United Nations, 2018).

The recognition of the significance of the water quality to nature, society, food, and security has accelerated the arising and availability of local, national, and global water quality datasets. For example, local water quality datasets include the water QUALity, DIScharge and Catchment Attributes providing data for 1386 German catchments for the purpose of studying the species of nitrogen, phosphorus, and organic carbon (Ebeling et al., 2022), a set of water chemistry measurements including carbon species, dissolved nutrients, and major ions to describe the biogeochemical conditions of permafrost-affected in Arctic watersheds (Shogren et al., 2022), catchment-wide biogeochemical monitoring platform for capturing water temperature, pH, alkalinity, suspended solid, chlorophyll concentrations, and nutrient and cation data of the Thames basin in the United Kingdom to promote drinking water resource management (Bowes et al., 2018). The Water Quality Portal (WQP) is comprising thousands of water quality variables encompassing physical conditions, chemical and bacteriological water analyses, chemical analyses of fish tissue, taxon abundance data, toxicity data, habitat assessment scores, and biological index scores, which was widely applied to lots of domains (e.g., to examine water clarity in lakes and reservoirs; Read et al., 2017). Aggregating five large water quality datasets, the Global River Water Quality Archive (GRQA) has significantly expanded both the geographic and historical reach of existing water quality datasets by incorporating 42 parameters related to nutrient species, carbon content, sediment composition, and oxygen levels (Virro et al., 2021).

Despite significant advances in open data science for water quality research globally, Asia lags far behind other regions in this regard (Virro et al., 2021; Lin et al., 2023). As the largest country in East Asia, China's water quality data are notably limited in the comprehensive global dataset, with a notable absence of data from coastal and oceanic regions. The publicly available data consists of only 3595 daily observations in total from 244 sites, spanning from 1980 to 2009, as documented in GRQA. This is far from being adequate for water quality analysis and modelling. Additionally, the water data available from open data centres are stored in a user-unfriendly format that require significant additional efforts to make them credible, editable, and reusable. For example, monthly water quality data spanning from 2006 to 2022 are presented as reports with figures derived from statistical analysis, instead of providing more reliable monitoring data. Although some studies have employed national-scale water quality data for assessment and modelling covering China (Ma et al., 2020a; Ma et al., 2020b; Huang et al., 2021; Zhang et al., 2022), these datasets are not publicly available due to licensing restrictions and/or government-sanctions (Lin et al., 2023). To date, there is no clean and publicly accessible national water quality dataset covering whole China.

105 Therefore, there is a pressing need to reorganize, curate, and manage the continuous, long-time series, standardized, well-organized, and consistent water quality datasets from inland to coastal/oceanic areas within China. These datasets stand as invaluable resources to support researchers and decision-makers. They enable an in-depth examination of water quality status, encompassing the entire spectrum from riverine environments to the vast expanse of the oceans. Furthermore, they provide the means to model various dimensions of water quality indicators

110 and forecast the ramifications of emergent water pollution phenomena (i.e., coastal eutrophication and oceanic
 harmful algal blooms due to additional nitrogen input from land and releases of radionuclides from inland redundant
 nuclear power plant accidents). It is also valuable to the effective management of water resources to support the
 United Nation Water Action Decade (2018-2028) and Ocean Decade (2021-2030; Folke et al., 2021). Our water
 quality dataset is thus initiated to meet the huge demand for Chinese water quality data, to boost national water data
 115 sharing, and to advance global water-related research and applications. It intends to collect non-sensitive and
 publicly available water quality data, to apply consistency to the formatting and curation, and to establish a
 standardized set of metadata for different water quality aspects.

2 Data and methods

2.1 Openly accessible data sources

120 The Chinese surface water quality dataset presented herein derived from three publicly accessible online data
 sources. Details of these original datasets were provided in Table 1.

Table 1. Source datasets for compiling China water quality dataset.

Name	Data Sources	Timestep	Original observations (source/China)	Timeframe	Number of the parameters	Number of the sites (source/China)
Global daily water quality data	Global River Water Quality Archive (GRQA)	Daily	17,000,000/3595	1898-2020	42	93,057/244
National weekly water quality data	China National Environmental Monitoring Centre (CNEMC)	Weekly (7-day moving average)	225,336/225,336	2007-2018	4	150/150
National monthly water quality data	National Marine Environmental Monitoring Center (NMEMC)	monthly	116,304/116,304	2017-2022	6	1991/1991

2.1.1 GRQA

125 As the most comprehensive water quality dataset, GRQA has incorporated inland water quality data from five
 existing sources, including the Canadian Environmental Sustainability Indicators program, Global Freshwater
 Quality Database, GLObal RIVER Chemistry database, European Environment Agency, and USGS WQP for selected
 42 water quality parameters (e.g., nutrients, carbon, oxygen, and sediments; Read et al., 2017; Virro et al., 2021)
 with globally 93,057 sites in total spanning from 1898 to 2020 (Table 1).

130 2.1.2 CNEMC

As the most advanced and complete environmental data center, the China National Environmental Monitoring
 Centre (CNEMC) is an online information system managed by the agency of the China Ministry of Ecology and
 Environment. The CNEMC was established in 1979 to monitor all environmental aspects (e.g., quality of air, water,
 soil), to provide publicly online data, to assess environmental impacts, and to report on water environment for local
 135 and national governments. Water quality data available from this center included yearly water quality reports

spanning from 2006 to 2022 (http://www.cnemc.cn/jcbg/ggdbsszyb/index_6.shtml), 7-day moving average (weekly) inland water quality data stored into individual WORD file or PDF file named by year with week number spanning from the year of 2007 to 2018 (Table 1), real-time water quality data for 11 indicators (TEMP, electrical conductivity, pH, DO, turbidity, COD_{Mn}, NH₄H, TP, TN, Chlorophyll, and algal density) with a frequency of 4 hours (<https://szzdjc.cnemc.cn:8070/GJZ/Business/Publish/Main.html>), and real-time water quality data with a frequency of 1 month for 25 indicators (TEMP, electrical conductivity, pH, DO, turbidity, COD_{Mn}, BOD, NH₄H, TP, TN, Fluorid, Cu, Zn, Se, As, Hg, Cd, Cr, Pb, Cyanide, Volatile Phenol, Total Petroleum Hydrocarbons (TPH), An-ionic Surfactant, and Sulfide) with data licensing and sharing restrictions. In this paper, we provided the digital weekly water quality data which is publicly available.

This weekly water quality data was collected and constructed by following the standards from the *Environmental Quality standards for surface water (GB3838-2002)*. Water samples were automatically collected at six intervals throughout the day, with a sampling frequency of one sample every four hours (00:00-04:00, 04:00-08:00, 08:00-12:00, 12:00-16:00, 16:00-20:00, 20:00-24:00). The weekly water quality dataset was derived through the computation of daily averages encompassing Monday through Sunday. This process yielded a single numerical value that served as a representative of a set of valid data samples. Specifically, a minimum of four data samples were aggregated to calculate the daily average, and five daily average data points were used to compute the weekly average.

2.1.3 NMEMC

Maintained by the China Ministry of Ecology and Environment since 2018, the National Marine Environmental Monitoring Center (NMEMC) is an agency of a history of 60 years that specialized in marine ecological and environmental monitoring and protection. Monthly coastal/oceanic water quality data were accessible via <http://ep.nmemc.org.cn:8888/Water/> that were recorded from the year 2017 to 2023 and kept updated until now. Meanwhile weekly water quality reports of some important beaches along the coastal areas of China from 2019-2022 were available via <http://www.nmemc.org.cn/hjzl/hsycszzb/index.shtml> and annual average ocean ecological environment bulletins <http://www.nmemc.org.cn/hjzl/sthjgb/>. Observation data were only available for monthly coastal/oceanic water quality data.

Guidelines in the *Specification for Offshore Environmental Monitoring (HJ 442-2008)* directed the methodologies, criteria, and quality assurance measures for monthly sampling of ocean water quality. Employing Niskin and Go-Flo water samplers, samples were collected multiple times annually, typically during the months of April through December, as illustrated in Figure 1. The acquisition of this dataset entailed the collection of various quality control samples, including matrix spikes, blanks, parallels, and quality control check samples, which underwent meticulous collection and subsequent intra-laboratory comparison.

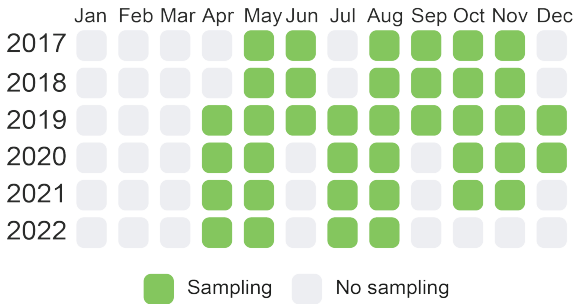


Figure 1. Sampling frequency for ocean water quality

170

2.2 Procedure for downloading and preprocessing source data

2.2.1 Data capturing

175

We extracted those sites located in China based on the geopolitical map after importing all coordinate data of the GRQA dataset into ArcGIS10.8. Afterwards, metadata information of countries/regions from GRQA were tidied and renamed for consistency. For instance, regions identified as “HK”, “Macao”, and “Taiwan” were renamed as “China”. Therefore, we obtained daily water quality data in China from GRQA, which consisted of 244 stations for 15 selected water quality indicators (i.e., BOD, DO, COD, DIP, Dissolved Oxygen Saturation (DOSAT), NH4N, NO2N, NO3N, pH, Total Dissolved Phosphorus (TDP), TEMP, TP, TSSs, Dissolved Organic Carbon (DOC), and Total Organic Carbon (TOC)).

180

Weekly water quality data were tidied up from the reports collection derived from <http://www.cnemc.cn/sss/szjdjczb/index.shtml>. To obtain all these files automatically, we inspected the elements of the webpage to locate the key nodes where *href* attribute specified the URL of the page the link goes for each report. Subsequently, a series of packages (i.e., *rvest*, *RSelenium*, *XML*, *purrr*) in R language were used to request remote URL and scrape the hyperlinks. A collection of hyperlinks was listed to download the original reports using *downloader* package. A total of 500 reports were identified, all of which were in WORD file format (i.e., DOC, DOCX, and PDF). These reports were originally designated with filenames that combined the year and the week number. Upon closer examination of the front-page summaries in each report, it came to our attention that certain original report filenames exhibited inconsistencies with the actual content within. An illustrative example was the report labeled as "2010 - 1st week," which erroneously contained observations from the 37th week of the same year.

185

190

A comparable situation arose with the reports for the 53rd week in the years 2011 and 2013, as revealed through an individual cross-referencing of filenames and report summaries. After the identification of these duplications, the affected files were expunged from the collection. Subsequently, a conversion process was undertaken to transform each of these files into editable CSV files. These CSV files were then amalgamated into a unified worksheet file, comprising 11 columns. These columns encompassed a serial number, information on the watersheds (*MonitoringLocationDescriptionText*), the site name (*MonitoringLocationName*), the monitoring location type (e.g., river, lake, and reservoir; *MonitoringLocationType*), indicator values, the water quality index for the current week,

195

the water quality index for the previous week, and descriptions on major pollutants. The columns related to the water quality index for the current week, the water quality index for the previous week, and major pollutants were omitted from the dataset, as they primarily consisted of descriptive text aimed at summarizing water quality information. The column containing the serial number was also excluded. The indicators featured in this dataset included DO, COD_{Mn}, NH₄N, and pH.

We have collected the monthly coastal/oceanic water quality data from the NMEMC manually for the years 2017, 2018, 2019, 2020, 2021, and 2022. All data were stored as CSV files and were appended into a single worksheet file, which consisted of 14 columns (i.e., ocean's name (*MonitoringLocationDescriptionText*), province (*ProvinceName*), city (*CityCode*), code of the monitoring station (*Source_MonitoringLocationCode*), longitude (*LongitudeMeasure_WGS84*), latitude (*LongitudeMeasure_WGS84*), monitoring date (*MonitoringDate*), values of the indicators, water quality index for the current month). The column of the water quality index for this observation was removed. Indicators of the coastal/oceanic water quality data included COD, Dissolved Inorganic Nitrogen (DIN), DO, DIP, pH, and TPH.

2.2.2 Coordinates of the monitoring sites

Information of longitude and latitude is the fundamental information for identifying the location of a monitoring site. They were used to export spatial point data and were overlapped with other maps to obtain metadata information.

For daily water quality data, the longitude and latitude information were given by the GRQA dataset. Site location for weekly water quality data was coded as plain text of the administrative address, lacking geographic coordinates (i.e., longitude, latitude). We first used geocoding API methods to find the address for a given place, thereby transforming the address into a corresponding geographic entity. Afterwards, we validated each of them by overlapping with the layers of watersheds and rivers according to the official maps obtained from the National Geomatics Center of China (<http://www.ngcc.cn/ngcc/html/1/391/392/16114.html>). All sites were confirmed to be located at the outlet of a river reach. As the geographic coordinates for the station labeled "Xuqiao" were unidentifiable from the provided information within the original files, the data associated with this station were excluded from the dataset.

General information for the monthly coastal/oceanic water quality data was findable via the NMEMC. However, there were some information inconsistencies in longitude and latitude for the same station or place. For example, the station with code number FJD10003 was recorded with 120.57 E and 26.84 N in the year 2021 but with 120.58 E and 26.84 N in 2022. In addition, some stations with the same longitude and latitude may have different code numbers. Therefore, we first grouped them by code numbers and computed the average value of the longitude and latitude of that station to replace the initial value. Subsequently, we removed the column of the code number to avoid the same stations. Finally, we dropped the duplicated rows to get the unique stations.

All the transferred longitude and latitude information was merged into a single table and then imported into ArcGIS as point shapefile in World Geodetic System 1984 (WGS84). After overlapping with the city-level administrative

map and watersheds delineation map obtained from the National Geomatics Center of China, we derived other metadata information such as city, sub-watersheds (*MonitoringLocationTypeName*), etc. The code for the province (*ProvinceCode*) and city (*CityCode*) was referred to the China Area Code and Zip code of Version 2021.

2.2.3 Data cleaning and technical validation

235 We undertook a comprehensive standardization process across all the above mentioned data providers. This harmonization encompassed the transformation of downloaded time series into a uniform file format, shifting from CSV files to R time series. Additionally, we ensured consistency in indicator selection, units, data structure, identification of missing values, and language.

240 Given the limited availability of indicators within the (sub)dataset, all of them were incorporated into our water quality dataset. This inclusive selection comprised both physical parameters (e.g., TEMP, TSSs) and chemical parameters (e.g., pH, BOD, COD, COD_{Mn}, DO, DOSAT, DIN, NH₄N, NO₂N, NO₃N, TDP, DIP, TP, TPH, DOC, TOC). We adopted GRQA as a reference for indicator abbreviations, with the aim of facilitating international compatibility when appending to global datasets. It is noteworthy that, except for temperature (°C), pH, and DOSAT (%), the original unit of measurements for all indicators in the (sub)dataset was milligrams per liter (mg L⁻¹), and we
245 retained this unit uniformity for consistency. Eight columns (i.e., *MonitoringLocationIdentifier*, *LongitudeMeasure_WGS84*, *LatitudeMeasure_WGS84*, *MonitoringDate* (with the format %d/%m/%y), *IndicatorsName*, *Value*, *Unit*, *SourceProvider*) were then included for structuring the full dataset. Column for *MonitoringLocationIdentifier* was created as an index to connect with the metadata file.

250 Some observations for different indicators were merged into a single column when converting the PDF file to editable files for weekly water quality data. Those columns were selected to be divided and tidied up into several columns via regular expression automatically and validation manually. Particularly, three additional columns were added to indicate the specific year (column *MonitoringYear*), week number (column *MonitoringWeek*), and Monitoring date (column *MonitoringDate*) for the weekly water quality data. The specific years and week numbers were subtracted from the filenames. The column of *MonitoringDate* for that specific week was estimated using R
255 according to the international standard ISO 8601 that Monday was considered the first day of a week. They were validated with the descriptive text on the cover of each report that was deleted later from the weekly water quality dataset. The column of *MonitoringDate* from ocean water quality data was assumed to occur on the first day of that month to keep consistency in the date format of other datasets.

260 In addition, duplicated rows were identified and removed by using distinct function in R based on the unique site, indicators, monitoring week/date, and values from the (sub)datasets that included 1776 site pairs from the weekly water quality dataset due to the file inconsistencies mentioned in 2.2.1. Negative values (with 7 observations) were omitted from the weekly water quality dataset. No duplicated rows and negative values were identified from the monthly water quality datasets. In cases where 7 sites provided two daily observations but lacked specific timestamp information from the GRQA, we substituted these records with the calculated average value of the two observations.
265 Missing (e.g., noted as '-') and empty data were replaced with *NA*, and were omitted from the dataset. Values that

falling below known detection limits were denoted as “< *DL*” within the monthly water quality datasets. COD, DO, DIN, DIP, and TPH detection limits were 0.15 mg/L, 0.32 mg/L, 0.001 mg/L, 0.001 mg/L, and 0.001 mg/L, respectively. The descriptions in the stations that were originally in Chinese were replaced with Hanyu Pinyin.

2.3 Methods for quality assurance

270 Since data quality will generate bias and uncertainty for the results despite conducting imputation (Tiyasha et al., 2020), it was a necessary step to conduct data quality assurance to determine the shortcomings, errors and issues of research results, and ensure robust study for different data users (Koelmans et al., 2019). In this paper, we used data availability and outliers for identifying quality assurance characteristics.

2.3.1 Availability

275 Data availability was characterized to assess the available records, both spatially and temporally. For each time series, we first counted the length of the records (*LengthofData*) to illustrate the general temporal coverage. Then, we assessed the data intensity, computed as the ratio between the length of the time series and the length of the time series without missing values. Furthermore, we used overall availability, longest availability, and continuity to measure the characteristics of availability following the methods from Crochemore et al. (2019).

280 2.3.2 Outliers detection and treatment

Outliers were detected by using the interquartile range (IQR) method. IQR is the range between the first (Q1) and third (Q3) quartile. Data points that fell below $Q1-1.5\times IQR$ and above $Q3+1.5\times IQR$ were considered outliers. Since it was difficult to determine whether an outlier is an error caused by faulty equipment or data entry errors or not, no observations were omitted from the original datasets.

285 3 Data Records

3.1 General information of metadata

All data were constructed in the form of CSV, while site information was provided with point shapefile (.shp) map (available for download at <https://figshare.com/s/4f4af7fa7b8457467ea7>). Referring to the inventory information of WQP, descriptions of the metadata for each time series of the water quality dataset were explained in Table 2.

290

Table 2. Metadata information for water quality data

Field name	General introduction	Descriptions	Data type
ID	/	Identifier for each indicator and each site	Int
WaterDataType	Water data type within a broader aspect	"W2" stands for water quality data	String
MonitoringLocationIdentifier	Identifier for monitoring location	Identifiers for the stations	Int
MonitoringLocationDescriptionText	Given by the data source		String
MonitoringLocationName	Given by the data source	Name of the station	String
MonitoringLocationType	Indicate the type of monitoring site	River, Lake, Reservoir, Ocean	String
MonitoringLocationTypeCode	Using code to indicate the type	River(R), Lake(L), Reservoir(V), Ocean(C)	Character
MonitoringLocationTypeName	Specific the name of that monitoring site	In which rivers, which lakes	String
Source_MonitoringLocationCode	Location code from the original datasets		String
LongitudeMeasure_WGS84			Float
LatitudeMeasure_WGS84			Float
ProvinceName	The acronym of a specific province		String
ProvinceCode	China area code and zip code		Int
CityCode	China area code and zip code		Int
IndicatorsName			String
IndicatorsUnit			String
ResolutionCode	Using numbers to identify the spatial resolution		Int
ResolutionName	Temporal resolution		String
CountryCode			String
StartDate			Date
EndDate			Date
LengthofData	Count of number of the time series' observations		Int
DataIntensity	Ratio between the length of the observation series and the length of the time series without missing values		Float
OverallAvailability	Length of the observation series, as a fraction of the dataset' longest period	Refers to Crochemore et al. (2019)	Float
LongestAvailability	Length of the longest observation series without gaps, as a fraction of the dataset' longest period	Refers to Crochemore et al. (2019)	Float
Continuity	Ratio between longest availability and overall availability	Refers to Crochemore et al. (2019)	Float
SourceProvider	Data source		String
SourceProviderID	To separate the type of data source	Classified as authoritative and non-authoritative	String

295

3.2 Spatial-temporal distribution of monitoring sites

Following cross-validation, it was observed that there was no spatial convergence among monitoring sites from different data sources (Figure 2). The dataset contained a large number of water quality monitoring sites for the coastal and oceanic areas obtained from NMENC (Figure 2). Inland water quality monitoring sites were primarily located on the River Class 1, 2, and 3 (with a total of 5 Classes) based on the Chinese river grade classification. Most GRQA sites were located in tributaries, while the CNEMC provided most of the stations from the mainstream.

300

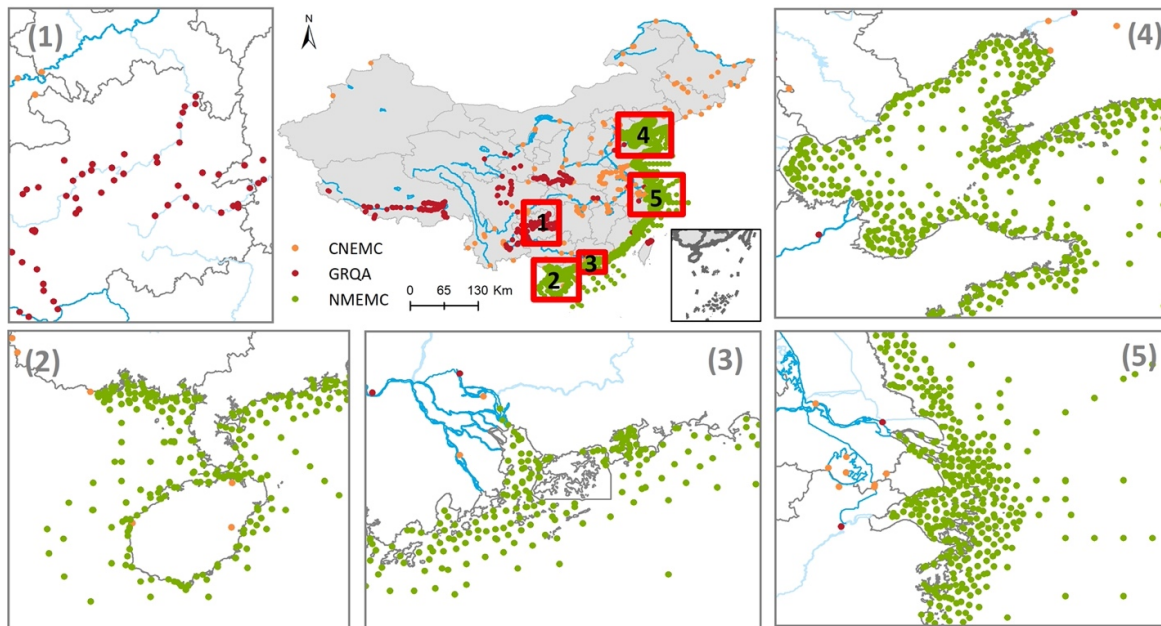


Figure 2. Spatial distribution of water quality monitoring sites from different sources with drainages in China.

305

Our dataset encompasses monitoring site records spanning from 1980 to 2022 (Figure 3). Number of sites for daily, weekly, and monthly observations were 244, 149, and 1991 respectively (*Supplementary Information Metadata and Statistics*). Notably, GRQA predominantly contributes observations from monitoring sites prior to 2006, with an average of 133 observations obtained from approximately 13 sites per year, as illustrated in Figure 3a and Figure 3b.

310

In contrast, CNEMC provides data from monitoring sites between 2007 and 2018, averaging around 126 sites per year, while NMEMC covers the period from 2017 to 2022 with an average of approximately 1249 sites per year. Despite CNEMC providing fewer monitoring sites, it consists of a comparable number of observations with an average of approximately 18,145 observations per year compared to NMEMC with an average of 19,369 observations. Comparatively, CNEMC and NMEMC datasets offer a greater number of records in comparison to GRQA. Temporal overlaps between various sources were identified on two occasions. The first instance transpired during the years 2007 to 2009, involving data from the GRQA and the CNEMC. The second temporal overlap was documented between CNEMC and NMEMC for the years 2017 to 2018. Overall, the number of monitoring sites with records exhibited a slight increase before 2016, followed by a significant surge after 2016.

315

320

325

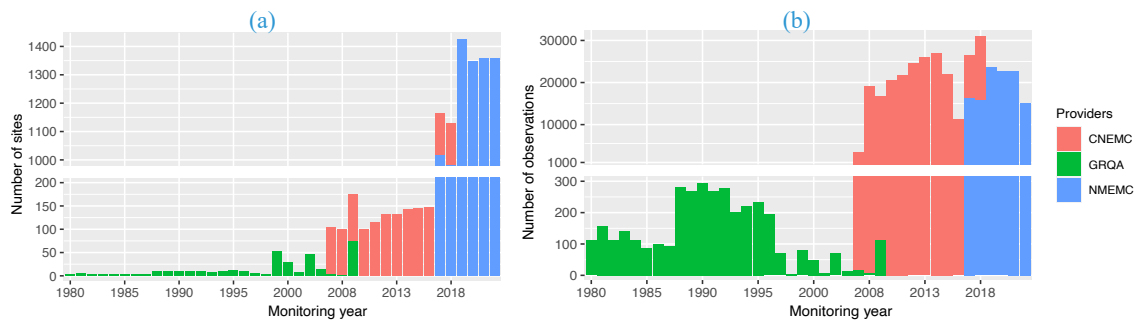


Figure 3. Distribution of monitoring sites (a) and observations (b) from different sources over time.

330 **3.3 Characteristics of time series**

The study has identified four distinct types of monitoring locations, comprising rivers, lakes, reservoirs, and coast/ocean (Table 3). The majority of the monitoring sites were located in the coast/ocean, with 1991 sites, followed by 365 sites in rivers that encompassed most of the indicators. Rivers from CNEMC demonstrated a considerable number of observations for COD_{Mn}, DO, NH₄N, and pH indicators, while COD, DIN, DIP, DO, pH, and TPH indicators have the most observations in the ocean. Despite having fewer sites and observations for most indicators, rivers had a longer time series period compared to other types. Indicators of COD, DIP, and TPH exhibited some values that fell below the detection limits. Approximately 12.6% of TPH observations were below the detection limits.

340 **Table 3. Stats for different types of the monitoring sites and indicators.**

Location Type	Sites in total	Indicators' number	Indicators' name	Sites	Observations	Start date	End date	Below limits(n)	Outliers (%)	Sources(n)
Coast/Ocean	1991	6	COD	1991	19,367	2017-05	2022-08	94	4.88	NMEMC
			DIN	1991	19,369	2017-05	2022-08	/	8.99	NMEMC
			DIP	1991	19,369	2017-05	2022-08	939	6.76	NMEMC
			DO	1991	18,143	2017-05	2022-08	/	2.78	NMEMC
			pH	1991	19,338	2017-05	2022-08	/	3.69	NMEMC
			TPH	1991	19,368	2017-05	2022-08	2453	2.88	NMEMC
River	366	15	BOD	10	432	1980-01-07	1997-11-27	/	6.71	GRQA
			COD	10	235	1988-01-03	1997-11-27	/	6.81	GRQA
			COD _{Mn}	122	45,491	2007-10-29	2018-12-24	/	4.59	CNEMC
			DIP	3	9	1981-08-06	1983-11-27	/	0.00	GRQA
			DO	135	45,932	1980-01-07	2018-12-24	/	3.99/3.59	CNEMC(45,459)/GRQA(473)
			DOC	5	16	1981-07-22	2008-05-21	/	0.00	GRQA
			DOSAT	24	31	1986-01-14	1999-02-11	/	3.23	GRQA
			NH ₄ N	123	45,567	1983-02-24	2018-12-24	/	12.28/0.00	CNEMC(45,562)/GRQA(5)
			NO ₂ N	13	334	1981-08-06	1997-11-10	/	7.19	GRQA
			NO ₃ N	119	388	1981-07-22	2009-09-05	/	6.96	GRQA
			pH	251	46,181	1980-01-21	2018-12-24	/	0.50/0.99	CNEMC(45,571)/GRQA(610)
			TDP	3	16	1994-04-12	1996-10-21	/	0.00	GRQA
			TEMP	92	520	1980-02-06	2009-04-05	/	0.00	GRQA
			TOC	1	1	1994-08-30	1994-08-30	/	0.00	GRQA
TP	10	196	1985-01-07	1996-10-17	/	15.31	GRQA			
TSSs	12	329	1980-01-08	1997-09-22	/	9.73	GRQA			
Lake	22	4	COD _{Mn}	22	6657	2007/10/29	2018/12/24	/	10.64	CNEMC

			DO	22	6656	2007/10/29	2018/12/24	/	2.48	CNEMC
			NH4N	22	6667	2007/10/29	2018/12/24	/	6.90	CNEMC
			pH	22	6661	2007/10/29	2018/12/24	/	0.05	CNEMC
Reservoir	5	4	COD _{Mn}	5	2231	2007/10/29	2018/12/24	/	8.70	CNEMC
			DO	5	2276	2007/10/29	2018/12/24	/	1.36	CNEMC
			NH4N	5	2268	2007/10/29	2018/12/24	/	11.02	CNEMC
			pH	5	2252	2007/10/29	2018/12/24	/	0.27	CNEMC

Availability (Figure 4a) and continuity (Figure 4b) plots were used to examine the temporal fragmentation of the time series. Some dominated indicators (i.e., COD_{Mn}, DO, NH4N, pH) were selected to present in Figure 4. Our analysis revealed that observations from inland rivers/lakes/reservoirs exhibited significantly higher availability and continuity than ocean. Specifically, for weekly water quality data, data availability for all indicators ranged from 40% to 80% (Figure 4a), indicating good data availability. In contrast, observations from the ocean showed moderate availability while exhibited low data continuity for most observations.

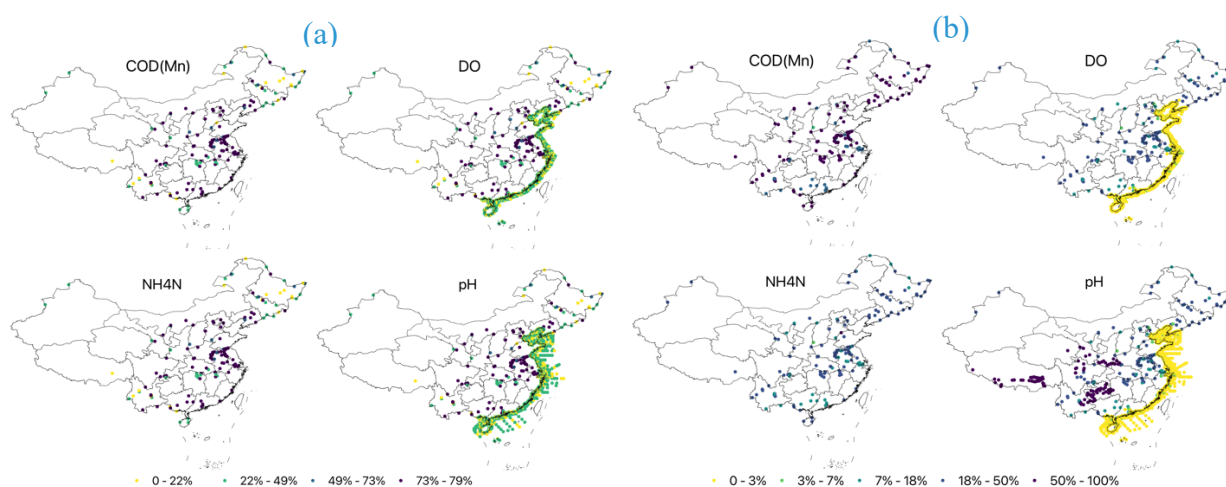
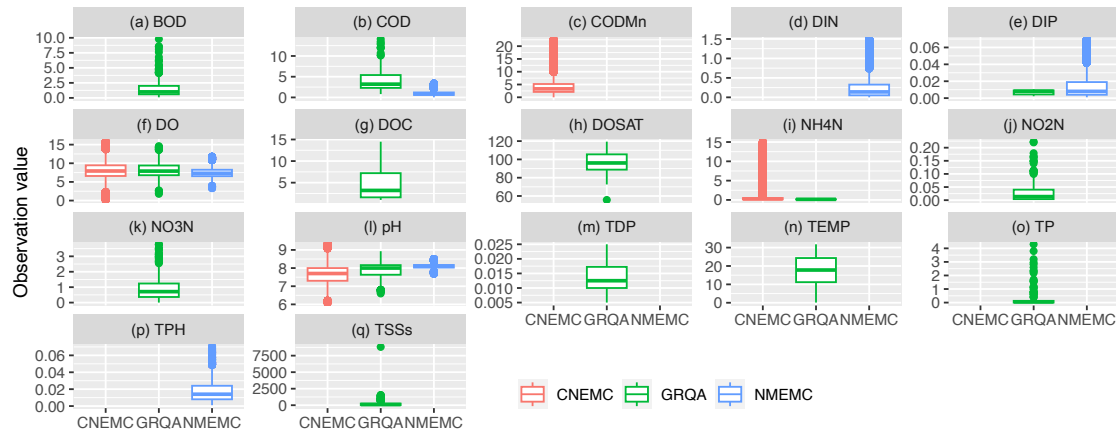


Figure 4. Overall availability (a) and continuity (b) for KMnO_4 chemical oxygen demand (COD_{Mn}), dissolved oxygen (DO), ammonia nitrogen (NH4N), and pH.

The presentation of outlier proportions was documented in Table 3. Among all indicator types, NH4N exhibited a higher proportion of outliers (Table 3). After the removal of outliers detected through the IQR test, boxplots were constructed for each indicator, illustrating a prominent positive skew in their distributions (Figure 5). However, in the case of the TOC indicator, the generation of a boxplot was not informative due to the presence of only a single data point (Table 3), and as such, it was omitted from presentation in this context. This skewness behavior was consistent with the characteristics observed in the GRQA dataset. Conversely, indicators of DO and pH demonstrated a significant normal distribution across all three data sources.



360

365

Figure 5. Boxplots for all indicators with (a) biochemical oxygen demand (BOD), (b) chemical oxygen demand (COD), (c) KMnO_4 chemical oxygen demand (COD_{Mn}), (d) dissolved inorganic nitrogen (DIN), (e) dissolved inorganic phosphorus (DIP), (f) dissolved oxygen (DO), (g) dissolved organic carbon (DOC), (h) dissolved oxygen saturation (DOSAT), (i) ammonia nitrogen (NH_4N), (j) nitrite nitrogen (NO_2N), (k) nitrate nitrogen (NO_3N), (l) potential of hydrogen (pH), (m) total dissolved phosphorus (TDP), (n) temperature (TEMP), (o) total phosphorus (TP), (p) total petroleum hydrocarbons (TPH), and (q) total suspended solids (TSSs). Outliers determined by the interquartile range (IQR) has been removed. The unit of indicators except TEMP ($^{\circ}\text{C}$), pH (%), and DOSAT (%) were mg L^{-1} .

4 Applications

370

Given the amount of metadata information included in our inventory and the observations, this database will be particularly useful and important for researchers and decision-makers in the fields of hydrology, environmental research, water resources management, ecological studies, climate change, policy development, public health, and oceanography. For example, the indicator of NH_4N can be used by hydrologists to develop predictive models, calibrate nitrogen models, and generate projections within China. The inland and coastal/oceanic water quality data can be connected to display the dynamic of water quality from land to ocean, thereby routing the import, transport, and export of pollutants. Researchers can use this data to analyze long-term trends and variations in surface water quality, which can be vital for understanding the impact of various factors such as climate change, pollution, and land use on aquatic ecosystems. Water resource managers can utilize this repository to assess the quality of water in different regions, helping to make informed decisions about water allocation, treatment, and conservation strategies.

375

380

Policymakers can rely on this repository to support evidence-based policy development related to water quality standards and regulations. Health officials can use this data to monitor the safety of water sources and assess potential health risks associated with waterborne contaminants. The high intensity of coastal/oceanic water quality data can be used to indicate coastal/oceanic water environment for food web (i.e., living conditions of plankton). For instance, phytoplankton and zooplankton communities are sensitive to the changes in water quality, and respond to low DO levels, high nutrient levels (i.e., DIN), and toxic contaminants (i.e., TPH). Therefore, such spatial continuous coastal/oceanic water quality dataset is helpful for characterizing the patterns of spatial-temporal distributions of plankton, assessing the status and trends of biodiversity, and predicting the population succession in the changing ocean world.

385

390 Certain studies have previously utilized specific segments of the original dataset. For instance, researchers have employed the weekly water quality data to examine the characteristics, trends, and seasonality of water quality in the Yangtze River (Di et al., 2019; Duan et al., 2018). It should be noted, however, that the complete dataset presented in this study has not been employed in any research thus far, which may limit the reliability of the dataset. In future, we plan to employ this dataset in upcoming research projects, where we will rigorously test its reliability.

5 Data availability

395 All data records can be found via the temporary link <https://doi.org/10.6084/m9.figshare.22584742.v1> (Lin et al., 2023).

6 Conclusions

400 This water quality dataset was developed to meet the huge demand for Chinese water quality data, to boost national water data sharing, and to advance global water-related research and applications. It provided a clean, editable, and sharable national water quality dataset within China, compiling three publicly available (sub)datasets from GRQA, CNEMC, and NMEMC. The current dataset included water quality data at 2384 sites for daily at 244 sites, weekly at 149 sites, and monthly at 1991 sites in the period of 1980-2022, with over 330,000 observations for 18 indicators across both inland and coastal/oceanic domains. The predominant share of observations, comprising approximately 98.9%, originates from the CNEMC and NMEMC, significantly expanding the global water quality dataset with a
405 notable emphasis on the Asian region.

This database will be particularly useful and important for researchers and decision-makers in the fields of hydrology, environmental management, and oceanography for advancing the assessment, modeling, and projection of water quality, ocean biomass, and biodiversity in China. Considering the extensive coverage of oceanic monitoring sites within this dataset, it has made a substantial contribution to the dissemination of coastal/oceanic water quality data, offering a comprehensive depiction of the aquatic environment, and facilitating researchers in
410 conducting in-depth investigations into ocean ecosystem. Due to its comprehensive temporal coverage of riverine water quality data, this dataset presented a valuable adjunct for research that demands substantial datasets and continuous information, particularly watershed modeling (e.g., water pollutants modeling and projection).

This water quality dataset will be regularly updated to incorporate any new publicly released government data in
415 China, ensuring prompt availability to the community for their immediate use. In light of the existing absence of biological parameters within the global water quality dataset, we have the intention to proactively incorporate relevant biological parameters in the event of new government data releases. This dataset also introduces the metadata framework for forthcoming national datasets, a comprehensive collection of water-related data throughout China that aims at providing free, clean, non-sensitive, coherent, and reliable water data within China for global
420 researchers to support the national water resources management and further promote Asian water data sharing in the future.

Competing interests

The contact author has declared that none of the authors has any competing interests.

Acknowledgements

425 This work was supported by the National Natural Science Foundation of China (grant number 52200213), the Program for Guangdong Introducing Innovative and Entrepreneurial Teams (grant number 2019ZT08L213), and the National Natural Science Foundation of China (grant numbers 52239005).

Author contributions

430 Yanpeng Cai and Zhifeng Yang were involved in planning and supervised the work. Jingyu Lin, Peng Wang, and Jinzhu Wang designed the code. Jingyu Lin carried out the data processing with contributions from Peng Wang and Jinzhu Wang. Jingyu Lin mapped the monitoring sites and developed the outlier detection strategy. Youping Zhou helped improve the grammar and flow of the manuscript. Jingyu Lin prepared the manuscript and Jinzhu Wang, Youping Zhou, Xudong Zhou, Pan Yang, and Hao Zhang provided critical feedback and helped shape the research, analysis, and manuscript.

435

References

- Allen, C.: A review of scientific advancements in datasets derived from big data for monitoring the Sustainable Development Goals, *Sustain. Sci.*, <https://doi.org/10.1007/s11625-021-00982-3>, 2021.
- 440 Altenau, E. H., Pavelsky, T. M., Durand, M. T., Yang, X., Frasson, R. P. de M., and Bendezu, L.: The Surface Water and Ocean Topography (SWOT) Mission River Database (SWORD): A Global River Network for Satellite Data Products, *Water Resour. Res.*, 57, <https://doi.org/10.1029/2021WR030054>, 2021.
- Bowes, M. J., Armstrong, L. K., Harman, S. A., Wickham, H. D., Nicholls, D. J. E., Scarlett, P. M., Roberts, C., Jarvie, H. P., Old, G. H., Gozzard, E., Bachiller-Jareno, N., and Read, D. S.: Weekly water quality monitoring data for the River Thames (UK) and its major tributaries (2009–2013): the Thames Initiative research platform, *Earth Syst. Sci. Data*, 10, 1637–1653, <https://doi.org/10.5194/essd-10-1637-2018>, 2018.
- 445 Cai, L. and Zhu, Y.: The challenges of data quality and data quality assessment in the big data era, *Data Sci. J.*, 14, 2, <https://doi.org/10.5334/dsj-2015-002>, 2015.
- Chen, J., Zheng, T., Garg, A., Xu, L., Li, S., and Fei, Y.: Alternative maritime power application as a green port strategy: barriers in China, *J. Clean. Prod.*, 213, 825–837, <https://doi.org/10.1016/j.jclepro.2018.12.177>, 2019.
- 450 Crochemore, L., Isberg, K., Pimentel, R., Pineda, L., Hasan, A., and Arheimer, B.: Lessons learnt from checking the quality of openly accessible river flow data worldwide, *Hydrol Sci J.*, 65, 699–711, <https://doi.org/10.1080/02626667.2019.1659509>, 2020.

- 455 Dai, M., Su, J., Zhao, Y., Hofmann, E. E., Cao, Z., Cai, W.-J., Gan, J., Lacroix, F., Laruelle, G. G., Meng, F., Müller, J. D., Regnier, P. A. G., Wang, G., and Wang, Z.: Carbon fluxes in the coastal ocean: synthesis, boundary processes, and future trends, *Annu. Rev. Earth Planet. Sci.*, 50, 593–626, <https://doi.org/10.1146/annurev-earth-032320-090746>, 2022.
- Di, Z., Chang, M., and Guo, P.: Water quality evaluation of the Yangtze River in China using machine learning techniques and data monitoring on different time scales, *Water*, 11, 339, <https://doi.org/10.3390/w11020339>, 2019.
- 460 Duan, W., He, B., Chen, Y., Zou, S., Wang, Y., Nover, D., Chen, W., and Yang, G.: Identification of long-term trends and seasonality in high-frequency water quality data from the Yangtze River basin, China, *PLoS ONE*, 13, e0188889, <https://doi.org/10.1371/journal.pone.0188889>, 2018.
- 465 Ebeling, P., Kumar, R., Lutz, S. R., Nguyen, T., Sarrazin, F., Weber, M., Büttner, O., Attinger, S., and Musolff, A.: QUADICA: water QUALity, DIScharge and Catchment Attributes for large-sample studies in Germany, *Earth Syst. Sci. Data*, 14, 3715–3741, <https://doi.org/10.5194/essd-14-3715-2022>, 2022.
- Folke, C., Polasky, S., Rockström, J., Galaz, V., Westley, F., Lamont, M., Scheffer, M., Österblom, H., Carpenter, S. R., Chapin, F. S., Seto, K. C., Weber, E. U., Crona, B. I., Daily, G. C., Dasgupta, P., Gaffney, O., Gordon, L. J., Hoff, H., Levin, S. A., Lubchenco, J., Steffen, W., and Walker, B. H.: Our future in the Anthropocene biosphere, *Ambio*, 50, 834–869, <https://doi.org/10.1007/s13280-021-01544-8>, 2021.
- 470 Gleick, P. H. and Palaniappan, M.: Peak water limits to freshwater withdrawal and use, *Proc. Natl. Acad. Sci. U.S.A.*, 107, 11155–11162, <https://doi.org/10.1073/pnas.1004812107>, 2010.
- Hassan Omer, N.: Water quality parameters, in: *Water Quality - Science, Assessments and Policy*, edited by: Summers, K., IntechOpen, <https://doi.org/10.5772/intechopen.89657>, 2020.
- 475 Hering, D., Borja, A., Carstensen, J., Carvalho, L., Elliott, M., Feld, C. K., Heiskanen, A.-S., Johnson, R. K., Moe, J., and Pont, D.: The European Water Framework Directive at the age of 10: A critical review of the achievements with recommendations for the future, *Sci. Total Environ.*, 408, 4007–4019, <https://doi.org/10.1016/j.scitotenv.2010.05.031>, 2010.
- Huang, J.: Characterizing the river water quality in China: Recent progress and on-going challenges, *Water Res.*, 201, 117309, <https://doi.org/10.1016/j.watres.2021.117309>, 2021.
- 480 Koelmans, A. A., Mohamed Nor, N. H., Hermsen, E., Kooi, M., Mintenig, S. M., and De France, J.: Microplastics in freshwaters and drinking water: Critical review and assessment of data quality, *Water Res.*, 155, 410–422, <https://doi.org/10.1016/j.watres.2019.02.054>, 2019.
- 485 Leju Celestino Ladu, J., L. Athiba, A., Tombe Venusto Lako, S., and Lomoro Alfred, M.: Investigation on the Impact of Water Pollution on Human Health in Juba County, Republic of South Sudan, *J. Environ. Pollut. Hum. Health*, 6, 89–95, <https://doi.org/10.12691/jephh-6-3-2>, 2018.
- Lin, J., Bryan, B. A., Zhou, X., Lin, P., Do, H. X., Gao, L., Gu, X., Liu, Z., Wan, L., Tong, S., Huang, J., Wang, Q., Zhang, Y., Gao, H., Yin, J., Chen, Z., Duan, W., Xie, Z., Cui, T., Liu, J., Li, M., Li, X., Xu, Z., Guo, F., Shu, L., Li, B., Zhang, J., Zhang, P., Fan, B., Wang, Y., Zhang, Y., Huang, J., Li, X., Cai, Y., and Yang, Z.:

490 Making China's water data accessible, usable and shareable, *Nat. Water*, <https://doi.org/10.1038/s44221-023-00039-y>, 2023.

Lin, J., Wang, P., Wang, J., Zhou, Y., Zhou, X., Yang, P., Zhang, H., Cai, Y., and Yang, Z.: A water quality dataset in China. *figshare. Dataset*. <https://doi.org/10.6084/m9.figshare.22584742.v1>, 2023.

Ma, T., Zhao, N., Ni, Y., Yi, J., Wilson, J. P., He, L., Du, Y., Pei, T., Zhou, C., Song, C., and Cheng, W.: China's improving inland surface water quality since 2003, *Sci. Adv.*, 6, eaau3798,
495 <https://doi.org/10.1126/sciadv.aau3798>, 2020a.

Ma, T., Sun, S., Fu, G., Hall, J. W., Ni, Y., He, L., Yi, J., Zhao, N., Du, Y., Pei, T., Cheng, W., Song, C., Fang, C., and Zhou, C.: Pollution exacerbates China's water scarcity and its regional inequality, *Nat. Commun.*, 11, 650,
<https://doi.org/10.1038/s41467-020-14532-5>, 2020b.

Mariño, J., Kasbohm, E., Struckmann, S., Kapsner, L. A., and Schmidt, C. O.: R packages for data quality
500 assessments and data monitoring: a software scoping review with recommendations for future developments, *Appl. Sci.*, 12, 4238, <https://doi.org/10.3390/app12094238>, 2022.

Morin, S. and Artigas, J.: Twenty years of research in ecosystem functions in aquatic microbial ecotoxicology, *Enviro Toxic and Chemistry*, 42, 1867–1888, <https://doi.org/10.1002/etc.5708>, 2023.

Oteng-Peprah, M., Acheampong, M. A., and deVries, N. K.: Greywater characteristics, treatment systems, reuse
505 strategies and user perception—a review, *Water Air Soil Pollut.*, 229, 255, <https://doi.org/10.1007/s11270-018-3909-8>, 2018.

Prüss-Ustün, A., Bartram, J., Clasen, T., Colford, J. M., Cumming, O., Curtis, V., Bonjour, S., Dangour, A. D., De France, J., Fewtrell, L., Freeman, M. C., Gordon, B., Hunter, P. R., Johnston, R. B., Mathers, C., Mäusezahl, D., Medlicott, K., Neira, M., Stocks, M., Wolf, J., and Cairncross, S.: Burden of disease from inadequate
510 water, sanitation and hygiene in low- and middle-income settings: a retrospective analysis of data from 145 countries, *Tropical Med. Int. Health*, 19, 894–905, <https://doi.org/10.1111/tmi.12329>, 2014.

Read, E. K., Carr, L., De Cicco, L., Dugan, H. A., Hanson, P. C., Hart, J. A., Kreft, J., Read, J. S., and Winslow, L. A.: Water quality data for national-scale aquatic research: The Water Quality Portal, *Water Resour. Res.*, 53,
1735–1745, <https://doi.org/10.1002/2016WR019993>, 2017.

515 Regnier, P., Resplandy, L., Najjar, R. G., and Ciais, P.: The land-to-ocean loops of the global carbon cycle, *Nature*, 603, 401–410, <https://doi.org/10.1038/s41586-021-04339-9>, 2022.

Sadoff, C. W., Borgomeo, E., and Uhlenbrook, S.: Rethinking water for SDG 6, *Nat. Sustain.*, 3, 346–347,
<https://doi.org/10.1038/s41893-020-0530-9>, 2020.

Shogren, A. J., Zarnetske, J. P., Abbott, B. W., Bratsman, S., Brown, B., Carey, M. P., Fulweber, R., Greaves, H. E.,
520 Haines, E., Iannucci, F., Koch, J. C., Medvedeff, A., O'Donnell, J. A., Patch, L., Poulin, B. A., Williamson, T. J., and Bowden, W. B.: Multi-year, spatially extensive, watershed-scale synoptic stream chemistry and water quality conditions for six permafrost-underlain Arctic watersheds, *Earth Syst. Sci. Data*, 14, 95–116,
<https://doi.org/10.5194/essd-14-95-2022>, 2022.

Stehle, S. and Schulz, R.: Agricultural insecticides threaten surface waters at the global scale, *Proc. Natl. Acad. Sci. U.S.A.*, 112, 5750–5755,
525 <https://doi.org/10.1073/pnas.1500232112>, 2015.

- Tiyasha, Tung, T. M., and Yaseen, Z. M.: A survey on river water quality modelling using artificial intelligence models: 2000–2020, *J. Hydrol.*, 585, 124670, <https://doi.org/10.1016/j.jhydrol.2020.124670>, 2020.
- United Nations: Sustainable Development Goals: Goal 6 - Clean Water and Sanitation. Retrieved from <https://www.un.org/sustainabledevelopment/water-and-sanitation/>, 2018.
- 530 UNESCO: The United Nations World Water Development Report 2019: Leaving no one behind, Paris, 186 pp., 2019.
- UNESCO: The United Nations World Water Development Report 2023: Partnerships and cooperation for water, Paris, 177 pp, 2023.
- Virro, H., Amatulli, G., Kmoch, A., Shen, L., and Uemaa, E.: GRQA: Global River Water Quality Archive, *Earth Syst. Sci. Data*, 13, 5483–5507, <https://doi.org/10.5194/essd-13-5483-2021>, 2021.
- 535 World Health Organization: Guidelines for drinking-water quality: fourth edition incorporating first addendum, 4th ed + 1st add., World Health Organization, Geneva, 541 pp., 2017.
- Zhang, F., Lin, L., Li, W., Fang, D., Lv, Z., Li, M., Ma, G., Wang, Y., Wang, L., and He, L.: Long-term study of monitoring history and change trends in surface water quality in China, *Water*, 14, 2134, <https://doi.org/10.3390/w14132134>, 2022.
- 540