

Ground- and ship-based microwave radiometer measurements during EUREC4A

Sabrina Schnitt¹, Andreas Foth², Heike Kalesse-Los², Mario Mech¹, Claudia Acquistapace¹, Friedhelm Jansen³, Ulrich Löhnert¹, Bernhard Pospichal¹, Johannes Röttenbacher², Susanne Crewell¹, and Bjorn Stevens³

¹Institute for Geophysics and Meteorology, University of Cologne, Cologne, Germany

²Leipzig Institute for Meteorology (LIM), Leipzig University, Leipzig, Germany

³Max Planck Institute for Meteorology, Hamburg, Germany

Correspondence: Sabrina Schnitt (s.schnitt@uni-koeln.de)

Abstract.

During the EUREC⁴A field study, microwave radiometric measurements were performed at Barbados Cloud Observatory (BCO) and aboard the RV Meteor and RV Maria S Merian [in the down-stream winter trades of the North Atlantic](#). We present retrieved Integrated Water Vapor (IWV), Liquid Water Path (LWP) and temperature and humidity profiles as a unified, quality-controlled, multi-site dataset on a three second temporal resolution for a core period between January 19, 2020 and February 14, 2020 in which all instruments were operational. ~~14-channel K- and V-band~~ [Multi-channel radiometric](#) measurements were performed at BCO and aboard the RV Meteor ~~, between 22 and combined 31 GHz (K-band), and 51 to 58 GHz (V-band).~~ [Combined](#) radar-radiometer measurements of a W-band Doppler radar with a single-channel radiometer instrument were conducted at 89 GHz onboard the RV Meteor and RV Maria S Merian. ~~Mean IWV~~ [We present a novel retrieval method to retrieve](#) [LWP from single-channel 89 GHz measurements, evaluate retrieved quantities with independent measurements and analyze retrieval uncertainties by site and instrument inter-comparison. Mean IWV conditions](#) of 31.8 kg m^{-2} ~~matches match~~ independent radiosoundings at BCO with a root-mean-square difference of 1.1 kg m^{-2} . Mean LWP conditions in confident [liquid](#) cloudy, non-precipitating conditions ranged between ~~66.5~~ [63.1](#) g m^{-2} at BCO to ~~40.4~~ [46.8](#) g m^{-2} aboard the RV Maria S Merian. Aboard the ships, 90% of LWP was below 120 g m^{-2} with ~~an uncertainty of a 30%~~ [at uncertainty for](#) LWP of 50 g m^{-2} . Up to ~~30~~ [20](#) % of confident [liquid](#) cloudy profiles ranged below the LWP detection limit due to optically thin clouds.

The data set comprises of processed raw-data (Level 1), full quality-controlled post-processed instrument data (Level 2), a unified temporal resolution (Level 3), and a ready-to-use multi-site time series of IWV and LWP (Level 4), available to the public via AERIS (<https://doi.org/10.25326/454>, ~~Schnitt et al., 2023a~~) (<https://doi.org/10.25326/454#v2.0>, [Schnitt et al., 2023a](#)). The data set complements the airborne LWP measurements conducted during EUREC⁴A and provides a [unique](#) benchmark tool for [satellite evaluation and](#) model-observation studies.

1 Introduction

The subtropical oceans are ubiquitously covered by shallow trade-wind cumulus clouds. While small in individual size and height, cloud fields are large in their extent, which makes them important for the radiative budget through the short-wave reflected radiation which is directly related to the liquid water amount and distribution in the cloud. Large inter-model spreads of climate sensitivity are thought to be related to the representation of these clouds in current climate models (Bony et al., 2015; Dufresne and Bony, 2008; Vial et al., 2013; Zelinka et al., 2020; Jahangir et al., 2021) and their potential role in mediating the long-wave radiative response to warming (Stevens and Kluft, 2023). Open questions include the interaction of these clouds with their environment, and their coupling to circulation and convection (Bony et al., 2017).

In order to elucidate the underlying processes of the interactions, high quality and fine resolution observations were gathered during the EUREC⁴A field study in January and February 2020 (Stevens et al., 2021) over the Tropical Atlantic windward and in the close vicinity of Barbados. A range of complementary atmospheric and oceanic measurements were performed by four different research aircraft (Konow et al., 2021; Bony et al., 2022; Pincus et al., 2021), and by ground- and ship-based observations (e.g. Acquistapace et al., 2022; Kalesse-Los et al., 2023). Microwave radiometric measurements were conducted at Barbados Cloud Observatory (BCO, Stevens et al., 2016), as well as aboard the RV Meteor (later referred to as Meteor) and the RV Maria S Merian (referred to as Merian). These measurements manifest an important contribution to the overall data set as they quantify cloud liquid water and water vapor amount statistically at high temporal resolution. Here, we present the data set of Integrated Water Vapor (IWV), Liquid Water Path (LWP) as well as profiles of temperature T and absolute humidity ρ_v retrieved from the measurements at BCO, and aboard the Meteor and Merian.

Passive microwave radiometry is widely in use from satellite, airborne platforms such as the High Altitude Long range (HALO) aircraft (Mech et al., 2014; Stevens et al., 2019), research vessels like the RV Polarstern (Walbröl et al., 2022), and ground-based supersites like the Atmospheric Radiation Measurement (ARM) program (Stokes and Schwartz, 1994) or CloudNet (Illingworth et al., 2007). ~~In EUREC⁴A's area of study, LWP conditions to continuously measure IWV and LWP.~~ LWP conditions in the Northern Atlantic winter trades have been previously measured ~~from HALO during the~~ during the RICO (Rain in shallow Cumulus over the Ocean Rauber et al., 2007) campaign. During the Next Generation Aircraft Remote Sensing for Validation Studies (NARVAL) I and II campaigns ~~in different seasons~~ (Stevens et al., 2019; Jacob et al., 2019; Schnitt et al., 2017). ~~A multi-decade climatology of LWP is available from satellite observations at a horizontal resolution of 0.25° (Elsaesser et al., 2017). During EUREC⁴A, airborne measurements were again,~~ airborne microwave radiometric measurements were performed by the HALO microwave package HAMP (HAMP, Mech et al., 2014), providing benchmark observations to elucidate cloud and precipitation properties in storm-resolving models (Jacob et al., 2020). During EUREC⁴A, airborne measurements were again performed by the HALO-HAMP as described in Konow et al. (2021) and available in Jacob (2021). Space-borne observations of LWP in warm oceanic clouds reveal large biases depending on the used sensor and retrieval approach (Seethala and Horvath, 2010; Elsaesser et al., 2017). The here presented ground- and ship-based MWR measurements therefore provide an important high-resolution data set of IWV and LWP to evaluate air- or space-borne retrievals and to benchmark existing and future modelling experiments.

55 As opposed to remote sensing in the visible or infrared parts of the spectrum, passive microwave radiometer (MWR) measurements are sensitive to the full vertical column as clouds are semi-transparent in the microwave frequencies. Water vapor, oxygen, and liquid water emit at characteristic frequencies. Emissions can be measured as brightness temperatures T_B following Planck's law. While water vapor and oxygen emit in distinct absorption bands in the K- and ~~V-band and F- and G-band, respectively~~ G-band (around 22.2 GHz and 183.3 GHz, respectively), and V- and F-band (60.0 GHz and 118.8 GHz, respectively), liquid water emissions increase with increasing frequency (Ulaby, 2014). Therefore, channels in the water vapor sensitive K-band ~~around the 22.24 GHz line~~ need to be paired with measurements from a window channel at around 31.4 GHz or 90 GHz to allow ~~simultaneous the a simultaneous~~ retrieval of IWV and LWP (Westwater, 1978; Löhnert and Crewell, 2003). Single-channel measurements around 90 GHz provide higher sensitivity to LWP, but require knowledge of IWV to solve the underdetermined inversion problem (e.g. Westwater et al., 2001; Billault-Roux and Berne, 2021). Absolute humidity profiles

60 with limited vertical resolution (Löhnert et al., 2009) can be derived if multiple channels are located along the wing of the 22.24 or 183 GHz line. Temperature profiles of better than 500 m vertical resolution can be obtained from the oxygen absorption complex around 50 GHz. A higher resolution can be achieved by scanning at different elevation angles (Crewell and Löhnert, 2007). A scattering contribution to the measured T_B only occurs if ice is present in clouds for frequencies above 90 GHz (e.g. Weng et al., 2003).

65 The T_B measured by the Humidity and Temperature PROfiler HATPRO (Rose et al., 2005) ~~is equipped with seven channels in the K-band and seven channels in the V-band, a fourteen-channel state-of-the-art microwave radiometer, allow the retrieval of IWV, LWP, as well as temperature and humidity profiles based on statistical regression techniques (Löhnert and Crewell, 2003), physical retrievals (Turner et al., 2007a; Maahn et al., 2020) or neural networks (Cadeddu et al., 2009; Jacob et al., 2019).~~ Measurements can only be obtained in non-precipitating conditions as a wet radome causes non-atmospheric liquid emissions. ~~The instruments are equipped with a blowing unit to mitigate the deposition of rain on the radomes during and after precipitation events. Retrieval methods based on statistical regression techniques (Löhnert and Crewell, 2003) or neural networks (Cadeddu et al., 2009; are applied to the T_B measurements to retrieve IWV, LWP and thermodynamic profiles.~~ A HATPRO is permanently installed at BCO (Stevens et al., 2016), here referred to as BCOHAT. During EUREC⁴A, BCOHAT measurements were complemented by HATPRO measurements aboard the Meteor performed by the Leipzig Institute for Meteorology (LIM), here referred to as

80 LIMHAT. Aboard the Meteor, a 94 GHz cloud radar (Küchler et al., 2017) was installed, equipped with a passive radiometer channel measuring T_B at 89 GHz (Kalesse-Los et al., 2023), here referred to as LIMRAD. A similar instrument was ~~stationed~~ operated aboard the Merian (Acquistapace et al., 2022), here referred to as MSMRAD. ~~These~~ As water vapor and liquid water both contribute to the single-channel ~~measurements are suitable to retrieve IWV in cloud-free conditions, and LWP in cloudy conditions if IWV is known, e.g. through radiosoundings or re-analysis~~ T_B , we retrieve IWV from LIMRAD and MSMRAD

85 only in clear-sky conditions. We use a novel retrieval method to derive cloudy LWP from the brightness temperature difference between cloudy and clear-sky T_B rather than from absolute T_B measurements.

This paper describes the network of continuous ground- and ship-based microwave radiometer measurements in a core period of January 19, 2020, until February 14, 2020, during which all four instruments were operational. We document setup and installation of the instruments (Sec 2), introduce the retrieval methods (Sec 3) and describe precipitation and cloud masking

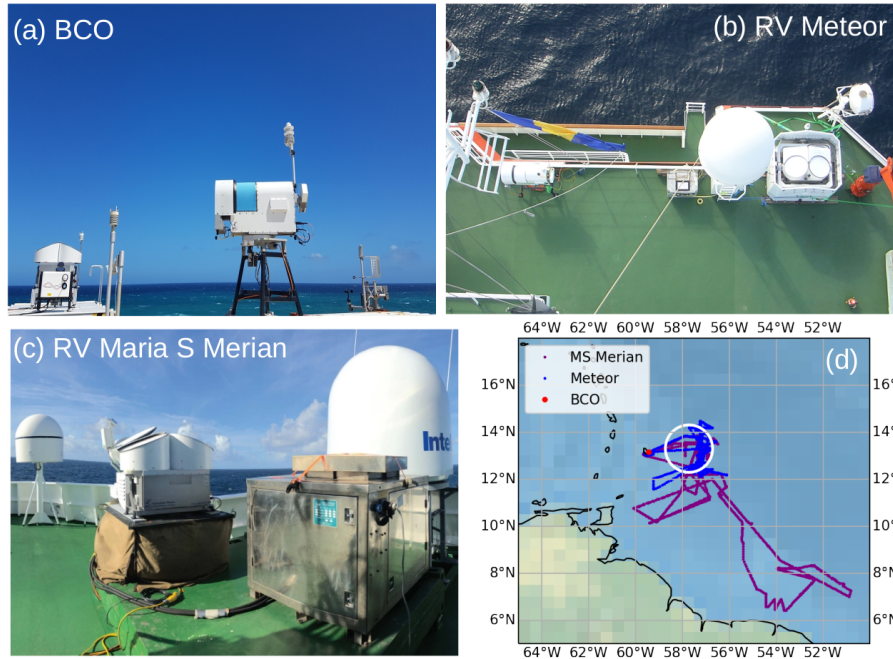


Figure 1. Installation of (a) MWR BCOHAT at BCO, (b) MWR LIMHAT and cloud radar LIMRAD aboard the Meteor, (c) cloud radar MSMRAD aboard the Merian, and (d) map of operations with BCO (red), and Meteor (blue) and Merian (purple) ship tracks, including the circle flown by the HALO aircraft (white) for orientation.

90 as well as data processing (Sec 4.2), and evaluate 4). We use independent measurements to derive and evaluate the retrieved
 IWV (Sec 5), LWP and analyze LWP conditions and uncertainties (Sec 6), as well as. Retrieved temperature and humidity
 profiles (See 7) are discussed in Sec 7. We conclude the paper (See 8) in Sec 8 by summarizing and highlighting further
 scientific applications for this data set.

2 MWR network

95 During EUREC⁴A, passive radiometer measurements were performed from BCO, the Meteor, and the Merian. The following
 subsections describe the installation details of the instruments at each site, respectively. Instruments' details and retrieved
 quantities are summarized in Tab-Table 1. Installation is and map of operations are shown in Fig 1. Microwave radiometer
 measurements were not performed aboard the RV Ronald H Brown.

100 Overview of passive microwave measurements performed during EUREC⁴A at BCO, aboard the Meteor and the Merian.
 Measured quantities, retrieved variables, each instrument's scan strategy as well as the covered time periods are given. BCO
 Merian instrument BCOHAT LIMHAT LIMRAD MSMRAD (Rose et al., 2005) (Kalesse-Los et al., 2023) (Acquistapace et al., 2022)
 T_B 22.24–31.4 GHz (7 channels) same as 89.0–89.0 measured at 51–58 GHz (7 channels) BCOHAT retrieved IWV, LWP

~~IWV, LWP clear-sky IWV, LWP clear-sky IWV, LWP quantities precipitation mask precipitation mask precipitation mask precipitation mask T, ρ_v profiles T, ρ_v profiles scan zenith zenith unstabilized zenith, stabilized zenith, stabilized strategy elevation scan every 15 min elevation scan full hour time January 01 January 15 January 17 January 16 coverage February 14, 2020 February~~ While an inter-platform comparison is generally performed statistically, two distinct periods of measurement allow a direct comparison of the ship-based measurements. On January 19, 2020 ~~February 19, 2020 February 19~~ between 00 and 12 UTC, both RVs were steaming next to one another from -58°W to -57.3°W between 13.8 and 13.75°N . On February 07, 2020

110 ~~Installation of (a) MWR BCOHAT at BCO, (b) MWR LIMHAT and cloud radar LIMRAD aboard the Meteor, (c) cloud radar MSMRAD aboard the Merian, and (d) map of operations with BCO (red), and Meteor (blue) and Merian (purple) ship tracks, including the circle flown by the HALO aircraft (white) for orientation. , the ships were collocated at -57.2°W and 12.4°N between 11 and 18 UTC.~~

2.1 BCO

115 The RPG-HATPRO Generation 5 multi-channel microwave radiometer BCOHAT is continuously installed on top of a container at ~~25m~~ 25 m asl in proximity to the island shore (~~see Fig 1(a) and Stevens et al., 2016~~)(see Fig 1a and Stevens et al., 2016). An absolute calibration with liquid nitrogen was performed before the start of the EUREC⁴A operations on January 14, 2020. BCOHAT measured according to the following regularly-occurring scan strategy: azimuth scans at 30° elevation angle were performed for the duration of 5 minutes every 40 minutes, followed by an elevation scan covering 11 elevation angles ($90. , 30,$
120 $19.2, 14.4, 11.4, 8.4, 6.6, 5.4, 4.8, 4.2^\circ$) at 0° azimuth position (later referred to as elevation scan, Crewell and Löhnert (2007)). Zenith measurements are performed for 15 minutes at ~~165° azimuth (ocean mode) and at 267° (island mode), respectively, during which measurements are performed every a temporal resolution of 2 seconds.~~ Due to technical difficulties with the scanning unit, the scanning strategy changed after February 1, 2020: azimuth scans were not performed, and ~~zenith operation was limited to ocean mode.~~ Elevation scans are operations were limited to zenith mode with elevation scans available every 15
125 minutes. These technical difficulties also affected the associated BCOHAT weather station. From January 26, 2020, onwards, data from the adjacent BCO weather station was used instead to flag measurements for precipitation (<https://doi.org/10.25326/54>). No measurements were performed between January 29 and 31, 2020, due to maintenance on the instrument. A blowing unit was operational to mitigate the deposition of rain on the radomes during and after precipitation events.

2.2 Meteor

130 ~~Onboard~~ Aboard the Meteor, the Leipzig Institute for Meteorology (LIM) of Leipzig University operated an MWR type RPG-HATPRO Generation 5 (here referred to as LIMHAT) and a radar-radiometer system of type RPG-FMCW-94 dual polarization (DP) operating actively in the W-band (94 GHz) and containing a passive radiometer channel at 89 GHz (Küchler et al., 2017; Kalesse-Los et al., 2023, here referred to as LIMRAD). Both instruments were placed 4.5 m apart on the navigation deck of the ship at 15.8 m above sea Level to avoid sea spray. LIMHAT operated at a temporal resolution of ~~1s~~ 1 s in zenith mode. Elevation

Table 1. Overview of passive microwave measurements performed during EUREC⁴A at BCO, aboard the Meteor and the Merian. Measured quantities, retrieved variables, each instrument’s scan strategy as well as the covered time periods are given.

| | <u>BCO</u> | <u>Meteor</u> | | <u>Merian</u> |
|---|---|---|---|--|
| <u>instrument</u> | <u>BCOHAT</u> (Rose et al., 2005) | <u>LIMHAT</u> | <u>LIMRAD</u> (Kalesse-Los et al., 2023) | <u>MSMRAD</u> (Acquistapace et al., 2022) |
| <u>T_B</u> <u>measured at</u> | 22.24 - 31.4 GHz (7 channels) 51 - 58 GHz (7 channels) | same as BCOHAT | 89.0 | 89.0 |
| <u>retrieved</u> <u>quantities</u> | IWV, LWP T, ρ_v profiles | IWV, LWP T, ρ_v profiles | clear-sky IWV, LWP | clear-sky IWV, LWP |
| <u>scan</u> <u>strategy</u> | zenith elevation scan every 15 min | zenith unstabilized elevation scan full hour | zenith, stabilized | zenith, stabilized |
| <u>time</u> <u>coverage</u> | January 01 - February 14, 2020 | January 15 - February 19, 2020 | January 17 - February 19, 2020 | January 16 - February 19, 2020 |

135 scans, as done by BCOHAT, were performed by LIMHAT every full hour. An absolute calibration with liquid nitrogen was performed on January 15, 2020.

LIMRAD was operated with two different ~~chirp programs radar settings as~~ specified in Kalesse-Los et al. (2023). Between January 17 and 29, 2020, and Jan 31 and February 28, 2020, the temporal resolution of LIMRAD was 2.9s and 1.6s, at a vertical resolution between 22 and 42 m, respectively. Radar absolute calibration was performed on January 16, 2020. Data gaps exist between January 27 and 31, 2020 when different radar chirp table settings were tested, and on February 03, 2020, when all instruments had to be turned off while the Meteor was near Trinidad. As explained in Kalesse-Los et al. (2023), LIMRAD was operated in a novel passive horizontal stabilization system (two-axle cardanic mount) to assure zenith-pointing of the instrument. Stabilization is required to eliminate the effect of horizontal wind on the radar Doppler velocities. Means and standard deviations of absolute values of radar attitude measurements amounted to $0.36^\circ \pm 0.31^\circ$. It should be noted that since LIMRAD was operated in a horizontal stabilization platform while LIMHAT was not, the exact (near-zenith) viewing direction of both instruments was not always the same. This effect should be negligible for retrieved IWV and LWP, however, as the larger opening angle of the LIMHAT (half-power beamwidth HPBW = 3.5°) covered the LIMRAD column (HPBW = 0.5°) even in events of slight mis-pointing.

~~Two distinct periods of measurement allow a direct comparison of the ship-based measurements. On January 19, 2020 between 00 and 12 UTC, both RVs were steaming next to one another from -58°W to -57.3°W between 13.8 and 13.75°N . On February 07, 2020, the ships were collocated at -57.2°W and 12.4°N between 11 and 18 UTC.~~

2.3 Merian

Aboard the Merian, the Institute for Geophysics and Meteorology of the University of Cologne operated a radar-radiometer system of the type RPG-FMCW-94 dual polarization (DP) ~~of the same kind as LIMRAD~~ which measures in the W-band (94 GHz)

155 and includes a passive radiometer channel at 89 GHz (Küchler et al., 2017, here referred to as MSMRAD). MSMRAD is of the same type as LIMRAD. The system was positioned on an active stabilization platform from the US-Atmospheric Radiation Measurement (ARM) program Mobile Facility 2 which keeps the radar in zenith position by adapting the table surface position to compensate for ship motions (see Acquistapace et al., 2022, for more information)(for more information see Acquistapace et al., 2022). As for LIMRAD, stabilization helps eliminate the effect of horizontal wind and ship roll and pitch tilting from the radar
 160 Doppler velocities. MSMRAD was operated with three chirp programs, established after initial testing, and worked for the entire campaign. The chirp programs had 0.846, 0.786, and 1.124 s integration time, respectively, with vertical resolution of 7 m in the boundary layer and 30 m in the free troposphere, resulting in brightness temperatures at 3 second temporal resolution (see Table 2 in Acquistapace et al., 2022). The data browser (<https://bit.ly/3ZcAusN>) displays availability and observational quality for every day of the entire campaign.

165 3 Retrievals

This section presents the statistical retrieval methods applied to the HATPRO and single-channel 89 GHz measurements. IWV, LWP, temperature and humidity profiles are retrieved from HATPRO, while the BCOHAT and LIMHAT, while LWP and clear-sky IWV are retrieved from LIMRAD and MSMRAD. We make use of a state-of-the-art retrieval using T_B from all fourteen HATPRO channels (Sec. 3.1). In order to disentangle water vapor and liquid contributions in the 89 GHz T_B retrieval,
 170 we retrieve IWV in clear-sky conditions only, and present a novel retrieval method to derive single-channel measurements provide estimates for LWP and LWP by retrieving from a T_B difference of cloudy T_B and closest clear-sky $IWV T_B$ (Sec. 3.2).

3.1 HATPRO multi-channel retrieval: BCOHAT and LIMHAT

IWV, LWP as well as coarse temperature and humidity profiles are retrieved using a from all fourteen T_B measurements by applying the statistical quadratic regression retrieval based on the measured T_B equation (see Eq. 1 with k indicating the
 175 number of channel and var indicating the retrieved variable). The seven K-band channels (22-31 GHz, channel 1-7) provide information for IWV, LWP and the absolute humidity profiles, while the seven V-band channels (51-58 GHz, channels 8-14) are used for temperature profiling. The IDL software *MWR PRO* was used to process the data (Löhnert, 2023).

$$\text{LWP var} = c_0 + \sum_{k=0}^{N=6} c_{1,k} \cdot T_{B,k} + c_{2,k} \cdot T_{B,k}^2 \quad (1)$$

The coefficients c_0 , c_1 and c_2 are derived from a climatological training data set linking atmospheric conditions to T_B acquired from a radiative transfer model as described in Löhnert and Crewell (2003) and, more recently, in Walbröl et al. (2022) –Details on the used radiative transfer model can be found in Walbröl et al. (2022) and references therein. A large data set was built on comprising of 10,871 daily radiosoundings launched from 1990 until 2018 from Grantley Adams International Airport (GAIA, station ID 78954 TBPB) in close vicinity to BCO. Sounding measurements were obtained from
 180

http://weather.uwyo.edu/upperair/sounding.html. During EUREC⁴A radiosoundings of the type GRAW DFM-09 were used
185 (~~if radiosounding relative humidity exceeded 95~~)

~~Following the approach by Löhnert and Crewell (2003) and, more recently, by Walbröl et al. (2022), we use a radiative transfer model to link atmospheric conditions with T_B . In the model, gas absorption is calculated according to Rosenkranz (1998) with modifications in the water vapor continuum (Turner et al., 2009) and 22 % - a GHz line (Liljegren et al., 2005). Liquid cloud absorption is calculated following Mätzler et al. (2006). A liquid water cloud was modeled~~ ~~in the respective vertical~~
190 ~~levels~~ using a modified adiabatic liquid water content approach following Karstens et al. (1994) ~~in vertical levels where radiosounding relative humidity exceeded 95 %~~. To imitate the instrument's noise, a random noise factor was added to the simulated T_B taken as a random sample from a Gaussian distribution with standard deviation of 0.4K (Maschwitz et al., 2013). For the temperature retrieval, only a linear regression was used as in Walbröl et al. (2022). To derive temperature profiles from the elevation scans, coefficients c_1 and c_2 were calculated by adjusting the angle for which radiative transfer was performed.
195 Theoretical LWP uncertainty scales with retrieved LWP, and is further discussed in Sec 6.2.

To further improve the ~~stand-alone~~ LWP retrieval, a clear-sky offset correction method is applied to the retrieved LWP (van Meijgaard and Crewell, 2005; Ebell et al., 2017). The correction scheme identifies a liquid-free condition if the standard deviation of LWP in a running 2-minute window, as well as the previous and subsequent 2-minute window, is below 2.5 gm^{-2} . The median LWP during the identified 2-minute clear-sky period is subsequently subtracted from all following LWP measure-
200 ments until the next clear-sky period. Note that due to the statistical retrieval approach, negative (unphysical) LWP values can occur. Remaining few negative LWP values are not set to zero to keep for statistical noise evaluation and to avoid biasing the overall statistical distribution of LWP. That way, the clear-sky LWP noise can be estimated by analyzing the LWP distribution in independently identified clear-sky periods as presented in Sec 6.2.

3.2 ~~Single-channel 89 GHz~~ single-channel retrieval: LIMRAD and MSMRAD

205 ~~For the passive 89 GHz channel of~~

~~As opposed to a multi-channel LWP retrieval, the retrieval of LWP from a single channel is underdetermined as both water vapor and liquid water contribute to the W-band cloud radars, a statistical retrieval is applied to derive LWP of the column above the instrument from the observed brightness temperatures T_B . The measured T_B (e.g. Westwater et al., 2001; Billault-Roux and Berne, 202~~
~~. In order to extract the LWP signal in T_B at 89 GHz, we present a novel retrieval approach based on the~~ difference in brightness
210 temperature ΔT_B between cloudy-sky T_B and the closest clear-sky $T_{B,0}$. ~~ΔT_B observation~~ is used in a third-order regression (Eq. 2) to estimate ~~the~~ LWP.

$$\text{LWP} = a \cdot \Delta T_B + b \cdot \Delta T_B^2 + c \cdot \Delta T_B^3 \text{ with } \Delta T_B = T_B - T_{B,0} \quad (2)$$

Instrument biases are reduced by using the difference in brightness temperatures, so that the unbiased portion of the signal from LWP remains. The clear-sky brightness temperature is obtained by selecting profiles not showing any radar reflectiv-
215 ity ~~. Additionally, through the cloud mask, excluding~~ measurements up to 5 min after rain events ~~were filtered out from the~~

~~clear-sky set to avoid sections where the radome might be still wet~~ to avoid biases due to wet radome conditions. The unknown coefficients of the regression (a , b , and c) are derived from a training data set compiled ~~of from~~ artificial LWPs and simulated brightness temperatures calculated with the forward model operator Passive and Active Microwave TRAnsfer model (PAMTRA; Mech et al., 2020) ~~on atmospheric profiles constructed from the~~. Atmospheric profiles were constructed from 401
220 radiosondes launched on the respective research vessels (Merian 182, Meteor 219) and artificial clouds between 0 and 5 km with LWPs up to 1 kgm^{-2} . To retrieve ~~the LWP-LWP from the measured~~ ΔT_B in non-precipitating conditions, the coefficients derived for the closest radiosounding were applied following Eq. 2 to ΔT_B which was in turn noised by a random number of a Gaussian distribution with width of 0.5K. ~~To exclude observations during rain, filtering for those was performed by applying the rain flags contained in the data sets.~~

225 ~~Clear-sky~~ I-WV is retrieved from the single channel T_B measurements only in clear-sky conditions as emissions then are dominated by water vapor. A quadratic regression is applied as in Eq. 1, weighed by variability of T_B around the radiosonde launch. By applying a weight to the regression, mis-identified clear-sky radiosoundings are excluded from the training. 120 and 65 clear-sky radiosoundings were identified aboard the Meteor and Merian, respectively, by applying a 98% relative humidity threshold, and were used to derive the coefficients linking T_B and I-WV. The ~~retrieval was applied to coefficients were then~~
230 applied to the measured T_B in clear-sky conditions as ~~identified using a radar reflectivity threshold of -50 dBZ. detected by the cloud masking algorithm presented in the following Section.~~

4 Masking and Data Processing ~~and Overview~~

This Section describes the processing of the data set as available on AERIS, (~~Schnitt et al., 2023a~~) <https://doi.org/10.25326/454#v2.0> (Schnitt et al., 2023a). Section 4.1 describes the precipitation and cloud masking and Sec. 4.2 summarizes the
235 processing of the measurements from Level 1 to Level 4.

4.1 Precipitation and Cloud Masking

Ground-based passive microwave radiometer measurements are not reliable during precipitation events due to additional liquid water emissions on the radome contributing to the column emissions. Flagging precipitation is, thus, crucial to guarantee a high-quality retrievals. The HATPRO precipitation mask is set to True when precipitation was detected by the internal HATPRO
240 or an adjacent weather station. Cloud radar measurements are added to the stand-alone precipitation flagging to improve the precipitation detection. At BCO, Ka-band (35 GHz) zenith-pointing radar measurements (Hirsch, 2022) are used. Aboard the ships, measurements of the LIMRAD and MSMRAD cloud radar operating at W-band (94 GHz) are added. Precipitation is flagged if any reflectivity above -50 dBZ was recorded below 350 m. This reflectivity threshold was chosen according to Klingebiel et al. (2019) to exclude sea salt aerosols from being mis-flagged as precipitation. Aboard the ships, precipitation
245 was also flagged if reflectivity exceeded 0 dBZ anywhere in the column (Kalesse-Los et al., 2023) or if a rain rate was derived by the radar.

Independent cloud masking was performed using the adjacent radar and, at BCO and aboard the Meteor, ceilometer measurements from a Jenoptik/Lufft CHM15k Nimbus ceilometer, respectively. Ceilometer measurements are identified as cloudy if a cloud base height above 100m is derived by the internal instrument software. If no valid cloud base height is derived, the scene is treated as clear. At BCO and aboard the Merian, radar measurements indicate cloudy conditions if a reflectivity of more than -50dBZ is recorded in more than two range gates above 300m. The reflectivity threshold was carefully chosen to exclude occurring sea-spray from being flagged as cloudy (Klingebiel et al., 2019). Due to the different radar chirp settings (see Sec. 2.2) and resulting radar sensitivities, a threshold of -40dBZ was applied to the LIMRAD measurements to optimally exclude sea spray and clutter. An additional liquid cloud mask is derived by enforcing that reflectivity above the respective threshold only occurred between 300 and 4000m. Clear-sky is identified if reflectivity is nan in all range bins. Due to MSMRAD's maximal range of 10km, high occurring cirrus clouds might not be detected and could be mis-flagged as clear conditions aboard the Merian.

In the presented analyses, the individual cloud masks are combined to a joint cloud mask as follows: *clear* conditions prevail if both ceilometer and radar flags are clear; *probably cloudy* conditions prevail if either ceilometer or radar sensed a cloud; and *confident cloudy* scenes refer to measurements in which both radar and ceilometer sensed a cloud. Making use of the additional liquid cloud flag allows to additionally derive *probably liquid cloudy* and *confident liquid cloudy* conditions to exclude scattering from ice in the LWP statistics. Probably cloudy occurrences are mainly due to sensor beam mismatch, platform motions, or sensitivity differences between the ceilometer and radar as outlined in Konow et al. (2021). Aboard the Merian, scenes were classified as clear or confident cloudy based solely on MSMRAD radar observations.

Missing data of ceilometer or radar led to discarding of 3.7%, 20% and 8.2% of all measurements as a cloud mask could not be determined at BCO, Meteor, Merian, respectively. The comparatively higher percentage aboard the Meteor is dominated by data availability of LIMRAD. For presented analyses, we additionally demand a valid IWV and LWP, as well as a valid cloud mask for a measurement to be considered, thus excluding scenes affected by precipitation or instrument measurement or retrieval quality. This reduces the availability of valid measurements to 50.5, 66.8, 69.5, and 83.1% of all 3 s measurements in the core period, dominated by instrument availability as shown in Fig 2.

Table 2 summarizes the respective cloud cover fractions of clear, probably (liquid) cloudy and (liquid) cloudy scenes relative to this subsample for all instruments. Clear-sky fraction is highest aboard the Merian, and lowest at BCO. We relate the highest clear-sky fraction of 75.2% aboard the Merian to the missing ceilometer and reduced sensitivity of the radar to optically thin and geometrically small clouds (Mieslinger et al., 2022). Compared to the airborne cloud cover products presented in Konow et al. (2021), the here presented ground-based derived confident cloudy cloud cover estimates are closest to the airborne lidar-derived cloud cover of 34%. Differences arise due to the fact that airborne operation was limited to selected days and daytime, and that airborne horizontal resolution is lower than when measured from ground. Here presented cloud cover matches the cloud cover observed at BCO from two years of measurements (Nuijens et al., 2014). More than 80% of detected clouds are classified as liquid.

Table 2. Cloud Mask Characteristics at BCO, aboard the Meteor and Merian. Scenes are *clear* if both ceilometer and radar sensed clear-sky; *probably cloudy* if either detected a cloud; and *confident cloudy* if both radar and ceilometer detected clouds. Fractions for respective liquid cloud occurrence are given in parenthesis. Percentages are relative to total number of non-precipitating measurement points with valid LWP and cloud mask. Liquid fraction refers percentage of liquid clouds of all clouds.

| <u>site</u> | <u>clear</u> <u>%</u> | <u>probably cloudy (liquid)</u> <u>%</u> | <u>confident cloudy (liquid)</u> <u>%</u> | <u>liquid fraction</u> <u>%</u> |
|---------------|--------------------------|---|--|------------------------------------|
| <u>BCOHAT</u> | <u>48.6</u> | <u>11.0 (13.5)</u> | <u>40.5 (33.5)</u> | <u>82.6</u> |
| <u>LIMHAT</u> | <u>59.0</u> | <u>19.0 (3.2)</u> | <u>22.1 (19.3)</u> | <u>87.7</u> |
| <u>LIMRAD</u> | <u>61.1</u> | <u>16.3 (1.5)</u> | <u>22.6 (21.5)</u> | <u>95.4</u> |
| <u>MSMRAD</u> | <u>75.2</u> | <u>0.0 (0.0)</u> | <u>24.8 (21.0)</u> | <u>84.5</u> |

280 4.2 Overview of Processing Levels

Level 1 Level 1 files are provided for each instrument and include the unfiltered instrument output on original time resolution. HATPRO measurements were processed by the MWR PRO software (see Sec 3.1), providing one daily file for IWV, LWP, T and q retrieval as well as for the T_B measurements. ~~Note that different LIMHAT retrieval output is available in (Kalesse-Los et al., 2020)~~The LIMHAT data set is also available in Kalesse-Los et al. (2020). The HATPRO quality flags include flags for visual inspection, sun influence in measurement beam, and a T_B threshold indicating poor measurement quality. For the W-band measurements, one file per day is produced by ~~RPG software (see Acquistapace et al., 2022)~~the manufacturer's software (see Acquistapace et al., 2022; Kalesse-Los et al., 2023).

Level 2 One Level 2 file is provided per instrument, concatenating the daily Level 1 HATPRO and hourly W-band files, respectively, in one single file. Measurements and retrieval products are given in the original instrument's time resolution. LWP is clear-sky corrected as described in Sec 3.1. The provided HATPRO quality mask indicates poor measurement and retrieval quality, respectively, combining single flags from Level 1 files in one flag. Poor measurement quality is ~~given flagged~~ if any of the Level 1 quality flags is True, ~~if episodes need to be excluded and as identified~~ manually due to maintenance on the instruments (see Sec 2). An additional check is performed by simulating T_B for each channel individually based on T_B observations of all other channels. If the difference between simulated and observed T_B is above a certain threshold, the spectrum is considered as unphysical and flagged. These unphysical spectra can be caused by rain, wet radome, or other external sources (such as radio-frequency interference, sun in beam, etc.). Threshold values were determined empirically, and are as follows: at K-band the sum of the absolute differences between channels 2 through 7 is larger than 3 K; at V-band the sum of the absolute differences between all channels is larger than 7 K. Poor retrieval quality is flagged for IWV, LWP, temperature, and humidity independently. In addition to the information given by the instrument's housekeeping data, IWV values larger than 60 kgm⁻², and LWP values larger than 1000 gm⁻² are ~~clipped flagged to additionally exclude poor retrieval quality or ice~~

scattering impacts leading to erroneously high retrieval results (see e.g. Jacob et al. (2019)). LWP clipping amounts to 4.3 % (BCOHAT), 1.5 % (LIMHAT), 2.2 % (LIMRAD), 1.5 % (MSMRAD) of all available retrieved LWP.

305 ~~Ground-based passive microwave radiometer measurements are not reliable during precipitation events due to additional liquid water emissions on the radome contributing to the column emissions. Flagging precipitation is, thus, crucial to guarantee a successful quality of the retrieved quantities. The HATPRO precipitation mask is set to True when precipitation was detected by the HATPRO weather station. At BCO, an independent weather station was additionally used to detect precipitation as the internal system broke (see Sec 2.1). Additional Ka-band zenith-pointing radar measurements (Hirsch, 2022) were used to improve precipitation detection, indicating precipitation if reflectivity at 250 m was above -50 dBZ. Aboard the Meteor and Merian, passive radiometer measurements were flagged for precipitation according to the simultaneous W-band radar measurements. Different conditions were used due to different radar chirp programs resulting in different sensitivity in the atmospheric boundary layer. Precipitation is flagged if any radar reflectivity larger than -40 dBZ occurred in range bins below 400 m (Meteor) or 250 m (Merian), if a radar reflectivity with more than 0 dBZ was detected in the atmospheric column, or if a rain rate was sensed by the radar weather station.~~

310 ~~Precipitation was flagged as outlined in the previous Section. As described in Sec 2, the HATPRO instruments performed different measurement strategies deviating from pure zenith measurements. A position mask included in Level 2 data indicates zenith measurement, azimuth scans, azimuth position (ocean or land) or elevation scan measurement. In order to obtain IWV from the IWV was derived from single-channel 89 GHz measurements, in clear-sky conditions are needed as identified by the simultaneous radar measurements. Clear-sky IWV is derived if no reflectivity above -50 dBZ occurred in the measurement column.~~ LIMRAD and MSMRAD measurements (see previous Section).

320 **Level 3** One Level 3 file is provided for each site, combining all available radiometer and single-channel measurements on a mutual 3 s time grid to facilitate inter-platform comparison. A core measurement period was defined ranging from January 19 until February 14, 2020, during which all instruments were operational. As illustrated in Fig 2, certain days did not contain measurements due to maintenance, and precipitation reduced the amount of available measurements. ~~Aboard the Meteor, HATPRO and Wband precipitation masks are combined to a single strict precipitation flag set to True if either instrument logged the occurrence of precipitation. Independent clear-sky measurements obtained from ceilometer observations were added to the BCO and Meteor data sets. A joint cloud mask derived from ceilometer and Ka- and W-band radar measurements indicates whether conditions were clear, probably cloudy or confident cloudy (see Sec. 4.1).~~ All following analyses, if not indicated differently, are based on the Level 3 data set.

330 ~~Timeline of measurement availability (color-coded)~~ Mean characteristics of the core period are summarized in Table 3. At BCO, aboard the Meteor, and the Merian, respectively, 9.1, in percent) in the identified core period between January 19-10.7 and February 14-14.6% of valid precipitation mask time steps were flagged as precipitating at ground. Scenes are flagged confident liquid cloudy in 33.5, 202019.3, and 21.0% of all valid measurements at BCO, Meteor and Merian, and are characterized by a mean LWP of 63.1, for 62.5 and 46.8 gm⁻², respectively.

335 **Level 4** Quality-controlled time series of IWV, LWP, precipitation and cloud mask are given in one file for all three sites. Level 4 estimates are based on BCOHAT, LIMHAT, and MSMRAD retrieved IWV and LWP. ~~Different~~ Additionally, different

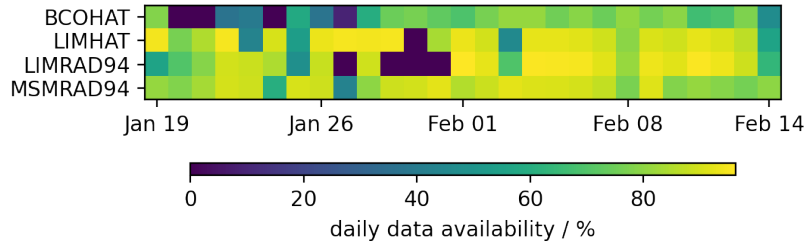


Figure 2. Timeline of measurement availability (color-coded, in percent) in the identified core period between January 19 and February 14, 2020, for each instrument. Percentages are calculated with respect to the optimal expected number of measurements on the 3 s temporal resolution grid.

Table 3. Characteristics of clouds, water vapor, precipitation and liquid cloud occurrence at each instrumentsite. Percentages Precipitation and liquid cloud cover are calculated with respect to the optimal expected number as temporal fraction of all valid measurements on within the 3 s temporal resolution grid core period. Mean LWP is calculated for confident liquid cloudy scenes.

| <u>site</u> | <u>mean IWV</u> <u>kgm⁻²</u> | <u>confident liquid cloudiness</u> <u>%</u> | <u>mean LWP</u> <u>gm⁻²</u> | <u>precip fraction</u> <u>%</u> |
|---------------|--|--|---|------------------------------------|
| <u>BCO</u> | <u>31.8</u> | <u>33.5</u> | <u>63.1</u> | <u>9.1</u> |
| <u>Meteor</u> | <u>30.3</u> | <u>19.3</u> | <u>62.5</u> | <u>10.7</u> |
| <u>Merian</u> | <u>33.3</u> | <u>21.0</u> | <u>46.8</u> | <u>14.6</u> |

files are provided for timelines of IWV and LWP sampled to different temporal resolution: 3 seconds (original), 1 minute, 30 minutes, 1,3, 6, 12 hours, and daily. The 6-hourly timeline of IWV, LWP, 6-hourly variability of LWP, as well as daily precipitation fraction are illustrated in Fig 3. Spikes in LWP and LWP variability are related to unidentified precipitation events. While IWV varies little when sampled daily, longer sampling times smooth the LWP distribution.

340 Mean characteristics of the core period are summarized in Tab 3 as derived from the Level 4 3-second resolution data set. At BCO, aboard the Meteor, and the Merian, respectively, 5.7, 6.9 and 8.7% of all measurement time steps were flagged as

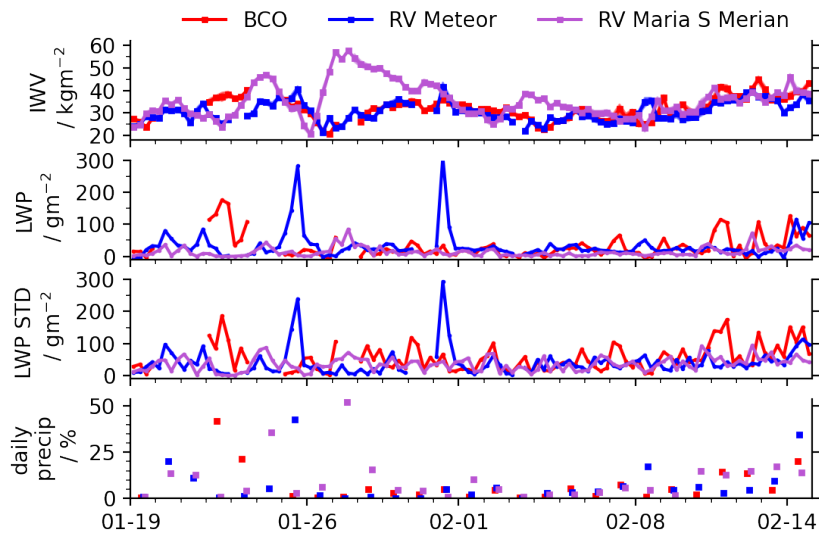


Figure 3. Timeline of 6-hourly (a) IWV, (b) LWP, (c) LWP standard deviation in a 6-hour window, (d) daily precipitation fraction, recorded at BCO (red), aboard the Meteor (blue) and Merian (purple) [based on the Level-4 data set](#).

precipitating-at-ground. Scenes are flagged confident cloudy in 33.2, 27.5, 30.6% of all valid measurements at BCO, Meteor and Merian, and are characterized by a mean LWP of 66.5, 56.4 and 40.4 gm⁻², respectively.

345 Characteristics of clouds, water vapor, precipitation and cloud occurrence at each site. Precipitation and cloud cover are calculated as temporal fraction of all valid measurements within the core period. Mean LWP is calculated for confident cloudy scenes. site mean IWV confident cloudy mean LWP precip fraction kgm⁻² % gm⁻² % BCO 31.8 33.2 66.5 5.8 Meteor 30.3 27.5 56.4 6.9 Merian 33.3 30.6 40.4 8.7

5 Integrated Water Vapor

350 [This Section presents the Integrated Water Vapor \(IWV\) conditions as measured by the different instruments at the different sites and uses independent soundings, Global Navigation Satellite System \(GNSS\) and ERA5 estimates to evaluate the MWR retrievals.](#)

The IWV conditions measured at each site by each instrument are illustrated in Fig 4. ~~Corresponding and corresponding~~ distribution parameters are summarized in ~~Tab 4~~.

[Table 4.](#)

355 At BCO, a mean IWV of 31.8 kgm⁻² was measured in the core period with a standard deviation of 5.0 kgm⁻². The conditions measured aboard the Meteor agree within the associated uncertainty with a mean IWV of 30.3 kgm⁻², but show slightly less variability (standard deviation of 4.5 kgm⁻²). The mean conditions aboard the Meteor measured by the LIMHAT and LIMRAD

Table 4. Characteristics of IWV conditions measured by each instrument at each site, including number of valid non-precipitating measurements, mean IWV, median IWV, standard deviation (STD) and skewness of IWV probability distribution. Note that single-channel LIMRAD and MSMRAD IWV is retrieved for clear-sky conditions only.

| site | N | mean IWV | median IWV | IWV STD | skewness |
|--------|--------|-----------------------------|-----------------------------|-------------------|----------|
| | - | kgm^{-2} | kgm^{-2} | kgm^{-2} | - |
| BCOHAT | 411643 | 31.8 | 31.8 | 5.0 | 0.3 |
| LIMHAT | 629753 | 30.3 | 29.7 | 4.5 | 0.4 |
| LIMRAD | 396974 | 30.1 <u>30.2</u> | 30.0 <u>30.1</u> | 3.5 | 0.1 |
| MSMRAD | 448666 | 33.3 | 32.3 | 6.3 | 0.6 |

agree, while the LIMRAD IWV distribution is slightly narrower and less skewed due to the fact that the retrieval is only applied in clear-sky conditions. As the Merian was additionally sampling further South over warmer waters with deeper convection, IWV conditions were moister with a mean IWV of 33.3 kgm^{-2} . High IWV conditions of more than 50 kgm^{-2} , untypical for winter Trade conditions, were observed close to Brazil from January 27 until 29, hence larger skewness2020, associated with a deep convective system. The skewness of all distributions indicates that the 2-month IWV conditions follow a lognormal distribution rather than a normal distribution which is also confirmed visually in Fig 4.

These results align with the results by Foster et al. (2006) who find lognormal distributions in IWV at many locations worldwide, in particular in the (sub-)tropics. Compared EUREC⁴A was slightly moister compared to the dry season conditions observed during Narval-1 with a mean IWV of 28 kgm^{-2} (Jacob et al., 2019), EUREC⁴A was slightly moister. The. Airborne mean IWV of 33.2 kgm^{-2} measured by the HAMP radiometers aboard HALO (Jacob et al., 2019) is higher than the ground-based estimates from Meteor which sampled a similar area which we relate to the different retrievals used.

We evaluate retrieved IWV by means of the root-mean-square-error (RMSE)root-mean-square-difference (RMSD), Pearson correlation coefficient, and bias (independent measurement - MWR) with independent IWV measurements derived from radiosoundings (Stephan et al., 2021) and Global Navigation Satellite System (GNSS) GNSS (Bock et al., 2021; Bossler et al., 2021), and compare to ERA5 re-analysis data (Fig 5 and Tab-Table 5). MWR and radiosoundings are compared in a 10-minute window around each 4-hourly sounding launch to minimize radiosounding drifting effects when comparing to the zenith column. GNSS and MWR measurements are averaged and compared in 15 minute time windows matching GNSS realistic temporal resolution. For the ERA5 intercomparison, MWR measurements are resampled to the full hour and compared to the closest ERA5 field.

Retrieved IWV is closely correlated with sounding IWV at all sites with correlation coefficients higher than 0.9. The RMSE RMSD for the HATPRO measurements at BCO is 1.1 kgm^{-2} , which is similar to the MWR-sounding RMSE RMSD that Steinke et al. (2015) find. The MWR measurements are on average drier than the radiosoundings' IWV as seen by the positive bias of 1.7 kgm^{-2} . A similar bias of 1.6 kgm^{-2} is found in the LIMHAT - sounding comparison, although the RMSE RMSD

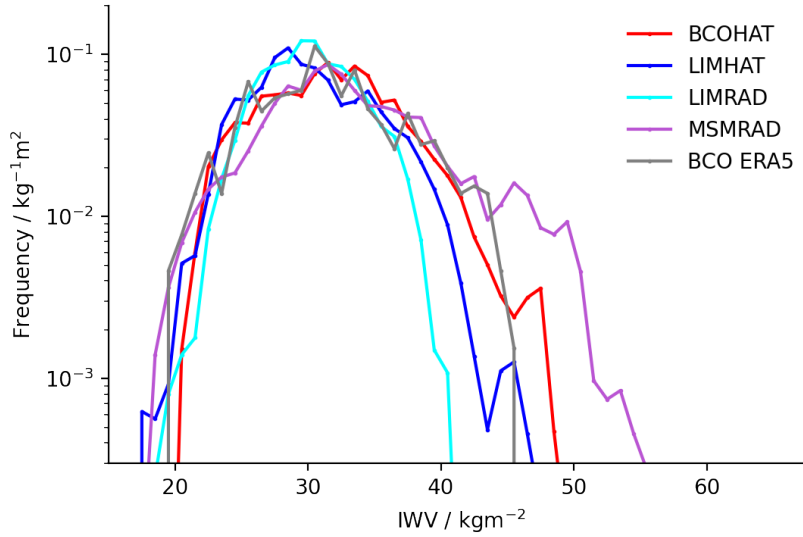


Figure 4. Frequency of Occurrence of IWV retrieved from HATPRO measurements at BCO (BCOHAT, red) and aboard Meteor (LIMHAT, blue), as well as from single-channel T_B aboard Meteor (LIMRAD, cyan) and Merian (MSMRAD, purple). The distribution of ERA5 values at BCO (gray) is added for comparison. Displayed frequencies are cut if calculated from less than 30 measurement points. Note that LIMRAD and MSMRAD IWV is only retrieved in clear-sky conditions.

is smaller than at BCO (0.7 kg m^{-2}). The dry bias between MWR measurements and radiosoundings at both BCO and Meteor could be related to the fact, that the statistical retrieval is trained on radiosoundings launched from Grantley International Airport. Bock et al. (2021) find that the airport radiosoundings exhibit a dry bias of 2.9 kg m^{-2} compared to the Vaisala MW41 radiosoundings used at BCO during EUREC⁴A (Stephan et al., 2021). Aboard the Meteor, the LIMHAT IWV data set can additionally be used to evaluate the dropsondes launched from HALO's circles (George et al., 2021) which were corrected for a dry bias compared to the radiosounding data set.

The MWR-sounding bias of clear-sky IWV retrieved from LIMRAD is reduced by 70% compared to the respective HATPRO derived IWV. The RMSE-RMSD of LIMRAD - radiosoundings (1.3) is slightly smaller than at BCO, while, the Merian measurements' RMSE-RMSD is higher than expected (3.6 kg m^{-2}). This increase in RMSE-RMSD might be related to the lower number of radiosoundings used for training and evaluation which could also explain the switch of bias sign to negative values. Single- and multi-channel clear-sky IWV retrievals can be directly intercompared using simultaneous LIMRAD and LIMHAT measurements aboard the Meteor. All core period measurements agree with an RMSE-RMSD of 1.2 kg m^{-2} , affected by a bias of 1 kg m^{-2} with LIMRAD being moister than LIMHAT.

~~Evaluation of MWR retrieved IWV from BCOHAT, LIMHAT, LIMRAD and MSMRAD using independent IWV measurements of radiosoundings, GNSS and closest ERA5 field through RMSE, bias and correlation coefficient. Note that LIMRAD and MSMRAD evaluation is performed in clear-sky conditions only. sounding-GNSS-ERA5-N-125-2013-514-BCO-RMSE-1.1-1.4~~

Table 5. Evaluation of MWR retrieved IWV from BCOHAT, LIMHAT, LIMRAD and MSMRAD relative to independent IWV measurements of radiosoundings, GNSS and closest ERA5 field through RMSD, bias and correlation coefficient. A positive bias refers to drier MWR conditions than measured by the respective independent IWV measurement. Note that LIMRAD and MSMRAD evaluation is performed in clear-sky conditions only.

| | | sounding | GNSS | ERA5 |
|--------|------|----------|------|------|
| | N | 125 | 2013 | 514 |
| BCO | RMSD | 1.1 | 1.4 | 2.2 |
| BCOHAT | bias | 1.7 | -0.1 | -1.0 |
| | corr | 0.97 | 0.96 | 0.90 |
| | N | 164 | 2377 | 427 |
| Meteor | RMSD | 0.7 | 1.5 | 2.3 |
| LIMHAT | bias | 1.6 | -1.1 | -0.1 |
| | corr | 0.99 | 0.95 | 0.86 |
| | N | 120 | 1779 | 394 |
| Meteor | RMSD | 1.3 | 1.8 | 2.4 |
| LIMRAD | bias | 0.5 | -1.9 | -0.7 |
| | corr | 0.97 | 0.90 | 0.79 |
| | N | 82 | 1632 | 392 |
| Merian | RMSD | 3.6 | 6.5 | 2.9 |
| MSMRAD | bias | -0.5 | -3.8 | -1.3 |
| | corr | 0.91 | 0.72 | 0.93 |

2.2 BCOHAT bias 1.7 -0.1 -1.0 corr 0.99 0.96 0.90 N 164 2377 427 Meteor RMSE 0.7 1.5 2.3 LIMHAT bias 1.6 -1.1 -0.1 corr 0.99 0.95 0.86 N 120 1805 401 Meteor RMSE 1.3 1.8 2.4 LIMRAD bias 0.5 -1.9 -0.6 corr 0.97 0.90 0.8 N 82 1632 392 Merian RMSE 3.6 6.5 2.9 MSMRAD bias -0.5 -3.8 -1.3 corr 0.91 0.72 0.93

400 At BCO, IWV obtained from GNSS and BCOHAT exhibit a **RMSE-RMSD** of 1.4 kgm^{-2} . As opposed to Bock et al. (2021), we do not find a bias between the measurements which could be attributed to different quality filtering mechanisms used in this analysis. Aboard the Meteor, the LIMHAT - GNSS **RMSE-RMSD** is similar (1.4 kgm^{-2}) but affected by a negative bias of -1.1 kgm^{-2} with GNSS measurements **moister-drier** than the MWR measurements. Bosser et al. (2021) report that the GNSS measurements aboard the Merian were of poor quality which explains the large **RMSE-RMSD** and bias when comparing to
405 MSMRAD IWV.

The two periods of ship collocation (see Sec. 2.2) allows a direct comparison of clear-sky IWV derived from LIMRAD, LIMHAT and MSMRAD. Comparing the radars from both ships, LIMRAD and MSMRAD are associated with an **RMSE**

RMSD of 1.1 kgm^{-2} , a correlation coefficient of 0.88, and a bias of -0.3 (LIMRAD moister than MSMRAD). Given this good agreement, MSMRAD IWV seems more accurate than the GNSS measurements, and closes the measurement gap of highly
 410 temporally resolved IWV measurements aboard the Merian.

As MWR measurements were not assimilated into re-analysis, a comparison to re-analysis ERA5 fields closest in time and space can give-provide further retrieval evaluation. Retrieved IWV and ERA5 RMSE-RMSD at BCO and Meteor agree to within 2.5 kgm^{-2} with slightly higher agreement aboard the Merian (2.9 kgm^{-2}). While LIMHATERA5's IWV is unbiased compared to ERA5, a dry bias of LIMHAT IWV aboard the Meteor, it is dry biased by -1.0 kgm^{-2} and -1.3 kgm^{-2} is-seen-at
 415 BCO and aboard Merian, respectively.

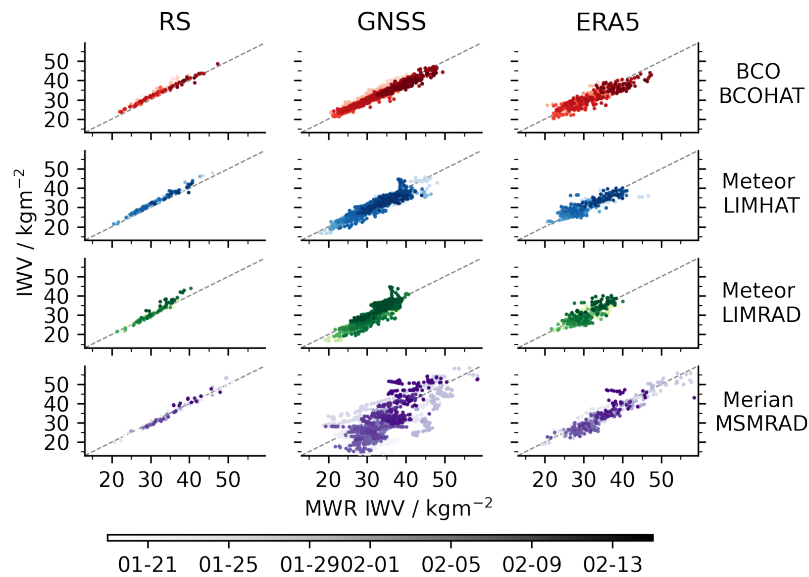


Figure 5. Pair-wise IWV evaluation of MWR retrieved IWV (x-axis) for four different instruments (rows) to independent measurements (y-axis) of radiosoundings (first column), GNSS (second column), ERA5 (third column), color-coded by time from January 19, 2020 (light) until February 14, 2020 (dark). Note that IWV from LIMRAD and MSMRAD is only available in clear-sky conditions.

6 Liquid Water Path

This section-Section describes the Liquid Water Path (LWP) conditions estimated-from-measurements-by-retrieved-from the different instruments in non-precipitating conditions. Separating conditions in clear-sky and cloudy sky requires a-cloud-mask, -which-is-built-on-independent-measurements-available-from-ceilometer-and-Ka-/W-band-radar-as-further-described-the-cloud
 420 mask-introduced in Sec 4.1. The resulting liquid cloudy LWP conditions are analyzed in Sec 6.1. Clear-sky identified scenes serve as base to characterize the clear-sky LWP noise, contributing to the overall LWP uncertainty and detection limit analysis presented in Sec 6.2)-

6.1 Cloud-Mask

425 A cloud mask was derived for each site based on ceilometer and Ka-band radar, ceilometer and active LIMRAD, and active MSMRAD measurements, respectively, for BCO, Meteor and Merian. The ceilometer is flagged clear if no backscatter is recorded. Due to the different radar systems and sensitivities at each site, the radar-based cloud masking differs as follows. At BCO, a scene is flagged clear if no reflectivity was recorded between 500 m and 8 km to exclude mis-flagging of sea spray affected scenes. Aboard the ships, the W-band cloud radar measurements are flagged clear if no reflectivity above a threshold of -50 dBZ was recorded in the column above the instrument.

430 A joint cloud mask at BCO and Meteor identifies scenes as *clear* if both ceilometer and radar flags are clear. Scenes are flagged as *probably cloudy* if either ceilometer or radar sensed a cloud. These occurrences are mainly due to sensor beam mismatch, platform motions, or sensitivity differences between the ceilometer and radar (see discussion in Konow et al., 2021). *Confident cloudy* scenes refer to measurements in which both radar and ceilometer sensed a cloud. Aboard the Merian, scenes were classified as clear or confident cloudy based on MSMRAD.

435 3.7%, 20% and 8.2% of all measurements were excluded at BCO, Meteor, Merian, respectively, due to missing data of ceilometer or radar. The comparatively higher percentage aboard the Meteor is dominated by data availability of LIMRAD. For further LWP analysis, we demand a valid LWP and a valid cloud mask for a measurement to be considered, thus excluding scenes affected by precipitation or MWR measurement quality. This reduces the availability of points to 50.5, 66.8, 69.5, and 83.1% of all 3 s measurements in the core period, dominated by instrument availability shown in Fig 2. Table 2 summarizes
440 the respective cloud cover fractions of clear, probably cloudy and cloudy scenes relative to this subsample for all instruments. Clear-sky fraction is highest aboard the Merian, and lowest at BCO. We relate the highest clear-sky fraction of 69.4% aboard the Merian to the missing ceilometer and reduced sensitivity of the radar to optically thin and geometrically small clouds (Mieslinger et al., 2022).

445 Cloud Mask Characteristics at BCO, aboard the Meteor and Merian. Scenes are *clear* if both ceilometer and radar sensed clear-sky; *probably cloudy* if either detected a cloud; and *confident cloudy* if both radar and ceilometer detected clouds. Percentages are relative to total number of non-precipitating measurement points with valid LWP and cloud mask. site clear probably cloudy confident cloudy %-%-% BCOHAT 45.8 21.0 33.2 LIMHAT 57.0 15.5 27.5 LIMRAD 59.8 14.9 25.3 MSMRAD 69.4 0 30.6

450 Compared to the airborne cloud cover products presented in Konow et al. (2021), the here presented ground-based derived confident cloudy cloud cover estimates are closest to the airborne lidar-derived cloud cover of 34%. Differences arise due to the fact that airborne operation was limited to selected days and daytime, and that airborne horizontal resolution is lower than when measured from ground. Here presented cloud cover matches the cloud cover found at BCO from 2 years of measurements (Nuijens et al., 2014). Inter-platform retrieval comparison is performed for two limited time periods in which the Meteor and Merian were measuring in close proximity (Sec. 6.3).

455 6.1 Cloudy LWP

Liquid cloud LWP is analyzed by applying the joint cloud mask (Sec. 4.1) to retrieved LWP. Fig 6 illustrates retrieved LWP distributions observed by BCOHAT, LIMHAT, LIMRAD and MSMRAD in confident liquid cloudy scenes. Corresponding distribution parameters are given in Tab 6. summarized in Table 6.

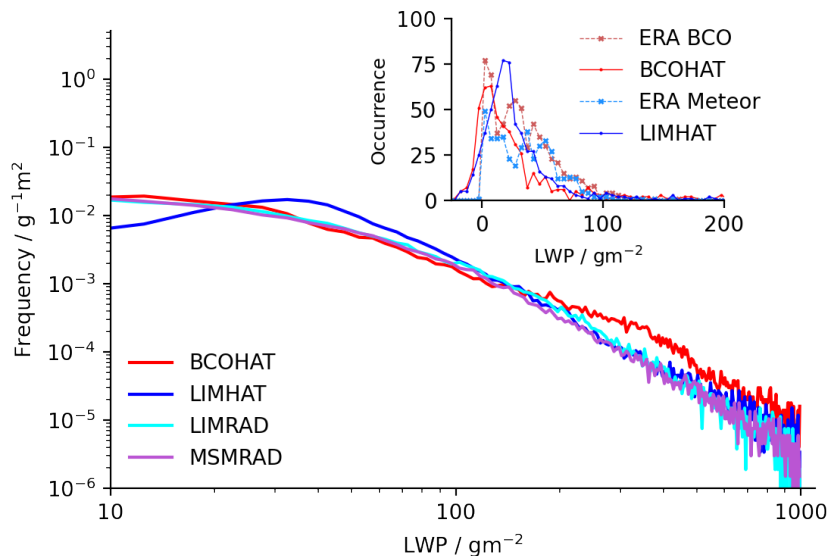


Figure 6. Distribution of LWP occurrence in confident cloudy, non-precipitating scenes at BCO (red), aboard the Meteor retrieved from LIMHAT (blue) and LIMRAD (cyan) measurements, as well as aboard the Merian with MSMRAD (purple). The inset displays the distribution of LWP re-sampled to the full hour from BCOHAT (red, solid) and LIMHAT (blue, solid), and the corresponding hourly-resolved ERA5 total column liquid water (dashed).

460 Mean LWP conditions in confident liquid cloudy conditions at BCO, aboard the Meteor and Merian were 66.5, 56.4, 46.4 and 40.4 gm⁻². The mean conditions at BCO and Meteor align well with the mean airborne LWP of 63 gm⁻² found observed during NARVAL-1 observed the same region in similar in similarly dry winter trade conditions (Jacob et al., 2019; Schnitt et al., 2017). As across the same region (Jacob et al., 2019; Schnitt et al., 2017). BCOHAT and LIMHAT retrieved mean LWP of 66.5 63.1 gm⁻² and 56.4 62.5 gm⁻² agree well within their associated LWP uncertainties (see Sec 6.2), it can be assumed that BCO and Meteor were on average exposed to similar cloud conditions driven by the trade winds. Even though similar mean LWP conditions were observed, more detailed trajectory analyses are necessary to investigate the effect of ocean surface and island impact on the cloud evolution between Meteor and BCO. Median and mean LWP differ as the mean LWP is influenced by single events of high LWP, e.g. through un-flagged precipitation or sea-spray, while the median is driven by the large amount of small LWP below the instruments' detection limit.

470 90% of observed confident liquid cloudy columns were associated with a LWP of less than 180 around 160, 120 and 103 110 gm⁻² at BCO, and aboard the Meteor and Merian, respectively. The higher comparatively higher LWP 90th per-

Table 6. Characteristics of non-precipitating LWP distribution, including mean, median, standard deviation, 10th and 90th percentile, skewness, as retrieved from BCOHAT, LIMHAT, LIMRAD and MSMRAD in confident [liquid](#) cloudy (confident and probably [liquid](#) cloudy) identified scenes.

| site | cloud cover % | mean gm^{-2} | median gm^{-2} | standard dev gm^{-2} | 10th gm^{-2} | 90th gm^{-2} |
|--------|---|---|---|--|--|--|
| BCOHAT | 33.2 (54.2 46.5) | 66.5 (46.4) 63.1 (62.6) | 27.6 (16.6) 27.5 (25.9) | 110.1 (93.4) 104.3 (106.4) | 2.2 (-1.8) 3.8 (2.2) | 179.9 (121.5) |
| LIMHAT | 27.5 (43.0) 19.3 (22.5) | 56.4 (41.8) 62.5 (63.4) | 37.5 (26.3) 41.6 (41.1) | 67.4 (58.0) 78.0 (79.5) | 11.5 (4.8) 15.3 (13.2) | 117.8 (90.3) |
| LIMRAD | 25.3 (40.2) 21.5 (23.0) | 46.4 (29.8) 52.4 (50.0) | 22.7 (8.1) 28.5 (26.1) | 74.5 (63.2) 77.4 (76.3) | 0.6 (-1.7) 2.6 (1.3) | 116.8 (83.4) |
| MSMRAD | 30.6 21.0 | 40.4 46.8 | 18.3 24.4 | 71.1 74.6 | -0.9 0.9 | 102.1 102.1 |

centile ~~as well as a higher LWP standard deviation of 110.1 gm^{-2} and standard deviation~~ at BCO are most probably related to wet radome conditions as the blower unit of BCOHAT was broken throughout ~~most~~ [some](#) of the core period (as opposed to the other instruments). We also suspect that the sea-spray altered, aged radome was less hygroscopic compared to the newer
475 LIMHAT radome, leading to additional moisture on the radome and longer drying times. An additional island impact triggering deeper convection in prevailing non-trade-wind conditions is in ongoing analysis. The ~~negative values of the close to zero~~ 10th percentile ~~reflect~~ [reflects](#) the fact that the statistical regression covers negative values to avoid biasing the overall distribution (see Sec 3.1), and indicates that the cloud mask did not perform [perfectly](#) well in all conditions. Likely, the wider field of view of the MWR compared to the active remote sensing instruments used for the cloud mask led to mis-identification of scenes.

480 Expanding the analysis to include *probably liquid cloudy* conditions [slightly](#) reduces mean and median LWP, as well as all other parameters of the distribution given in [Tab-Table 6](#), likely due to the fact that more mis-flagged clear-sky conditions impact the LWP distribution. This shift in distribution parameters illustrates the sensitivity of the derived LWP properties to the cloud mask performance.

At BCO and Meteor, retrieved LWP is compared to the ERA5 estimates by resampling BCOHAT and LIMHAT's LWP,
485 respectively, to every hour (see inlet in Fig 6). Instrument-derived mean LWP of ~~33.6 and 39.6~~[33.2 and 39.5](#) gm^{-2} agree well with ERA5 mean LWP of 34.5 gm^{-2} and 36.0 at BCO and Meteor, respectively. The measured LWP variability, here quantified as standard deviation, of ~~58.3~~[58.0](#) and 84.7 gm^{-2} is higher than the ERA5 variability of 27.9 and 26.4 gm^{-2} , respectively, which we attribute to the horizontal resolution of ERA and the small cloud sizes.

6.2 LWP Uncertainty and Detection Limit

490 Characterizing the uncertainty of the retrieved LWP by independent measurements is not straight forward as LWP retrieved from measurements by visible or infrared remote sensing techniques is not sensitive to the same column as the microwave measurements ([e.g. Turner et al., 2007b](#)). Therefore, a clear-sky LWP noise can be derived by analyzing retrieved LWP in independently classified clear-sky cases as a generally accepted strategy (Jacob et al., 2019; van Meijgaard and Crewell, 2005).

Table 7. Parameters of clear-sky LWP distribution at all sites, including clear-sky fraction of all valid LWP measurements, median, mean, standard deviation, 10th and 90th percentile. Additionally, mean and standard deviation of a Gaussian fit are given.

| site | clear-sky % | median -mean gm ⁻² | median gm ⁻² | standard dev gm ⁻² | 10th gm ⁻² | 90th gm ⁻² | fit mean gm ⁻² | fit standard dev gm ⁻² |
|--------|-----------------------------|---|---------------------------------------|----------------------------------|-----------------------------|-----------------------------|------------------------------|--------------------------------------|
| BCOHAT | 45.8 <u>49.0</u> | 4.9 <u>3.9</u> | 2.4 <u>2.1</u> | 25.4 <u>20.4</u> | -9.0 | 17.3 <u>16.2</u> | 3.0 <u>2.7</u> | 10.2 <u>9.9</u> |
| LIMHAT | 57.0 <u>59.0</u> | 10.3 <u>11.5</u> | 11.4 <u>12.6</u> | 11.7 <u>12.1</u> | -5.5 <u>-4.4</u> | 23.7 <u>25.3</u> | 10.3 <u>11.5</u> | 11.7 <u>12.0</u> |
| LIMRAD | 59.8 <u>61.1</u> | -0.4 | 0.0 | 4.0 | -3.1 | 1.1 <u>1.2</u> | -0.4 | 3.4 |
| MSMRAD | 69.4 <u>75.2</u> | 0.2 <u>0.6</u> | 0.0 | 8.1 <u>8.7</u> | -4.6 <u>-4.4</u> | 3.9 <u>5.2</u> | -0.2 <u>0.0</u> | 4.3 <u>4.5</u> |

Retrieval offsets to zero are due to the statistical nature of the retrieval approach, due to calibration artefacts, and radiometric noise. The lowest detectable LWP is then calculated from the clear-sky LWP noise for different water vapor conditions. Cloudy-sky LWP uncertainty can be estimated as a function of LWP by calculating a root-mean-square difference (RMSD) of true ~~vs~~ versus retrieved LWP. True LWP here refers to the LWP used to forward-model T_B in the radiative transfer calculations (see Sec 3), while retrieved LWP is the result of applying the respective retrieval equation to the same T_B .

The retrieved clear-sky LWP distribution at BCO is illustrated in Fig 7a, and ~~Tab-Table~~ Table 7 summarizes the distribution characteristics for all sites. ~~45.8, 57.0, 59.8 and 69.4~~49.0, 59.0, 61.1 and 75.2 % of all valid LWP BCOHAT, LIMHAT, LIMRAD and MSMRAD measurements, respectively, are identified as clear-sky. Note that the fractions disagree for LIMRAD and LIMHAT aboard the Meteor due to different ~~data-observational~~ gaps in the measurements. Applying a Gaussian fit to the distribution yields to a mean and standard deviation, which is interpreted as clear-sky LWP bias and clear-sky LWP noise, respectively. The Gaussian fit widths of ~~10.2~~9 gm⁻² and ~~11.7~~12.0 gm⁻² for BCOHAT and LIMHAT, respectively, quantify the clear-sky LWP noise, and match clear-sky noises previously identified for retrievals based on the similar channels (Jacob et al., 2019; Schnitt et al., 2017). The single-channel clear-sky LWP noises are smaller (~~3.9 and 4.3~~3.4 and 4.5 gm⁻², respectively), ~~as the retrieval approach is based on IWV is fixed due to retrieving from~~ the T_B difference of cloudy and clear-sky-; and as water vapor absorption is stronger at 89GHz compared to the lower frequencies used in BCOHAT and LIMHAT. The lowest detectable LWP depends on the vertical water vapor distribution which, in cloudy conditions, is not available ~~from-at~~ at any of the sites. Therefore, we estimate the smallest detectable LWP as the clear-sky LWP noise which, in turn, depends on the performance of the independent cloud masking algorithm.

~~76.4, 89.8, 82.7 and 73.9~~Quantifying the detection limit allows to analyze which clouds are missed by the different radiometers. 79.2, 92.8, 88.5 and 81.8 % of all confident liquid cloudy flagged measurements ~~are-contain~~ LWP above the respective detection limits of BCOHAT, LIMHAT, LIMRAD and MSMRAD (see ~~Tab-Table~~ Table 8). The remaining undetected LWP compared to the ceilometer-radar cloud mask is most likely associated to optically thin clouds with low water contents (e.g. Mieslinger et al., 2022) and to cloud mask performance. This reduction in cloud cover when derived from passive microwave sensors is also observed by the airborne cloud masks (Konow et al., 2021). One third of detected LWP is seen between detection limit

Table 8. Characteristics of confident liquid cloudy Level 3 LWP distribution considering each instrument’s detection limit. Fraction (relative to all valid confident liquid cloudy measurements) and mean LWP are calculated for the following LWP bins: LWP below detection threshold, LWP between detection threshold and 30 gm^{-2} , LWP between 30 and 100 gm^{-2} , and LWP above 100 gm^{-2} .

| | detection | LWP < detect | | detect < LWP < 30 | | 30 < LWP < 100 | | LWP > 100 | |
|--------|-----------------------------|-----------------------------|-----------------------------|-----------------------------|-----------------------------|-----------------------------|-----------------------------|-----------------------------|-------------------------------|
| | limit | fraction | mean | fraction | mean | fraction | mean | fraction | mean |
| | gm^{-2} | % | gm^{-2} | % | gm^{-2} | % | gm^{-2} | % | gm^{-2} |
| BCOHAT | 10.2 <u>9.9</u> | 23.6 <u>20.8</u> | 2.0 <u>2.4</u> | 29.2 <u>32.5</u> | 19.2 <u>19.1</u> | 29.1 <u>30.4</u> | 54.7 <u>54.0</u> | 18.1 <u>16.3</u> | 245.7 <u>244.9</u> |
| LIMHAT | 11.7 <u>12.0</u> | 10.2 <u>7.3</u> | 3.5 <u>4.7</u> | 28.0 <u>23.5</u> | 21.6 <u>22.2</u> | 48.7 <u>55.3</u> | 52.7 <u>52.9</u> | 13.2 <u>13.9</u> | 185.1 <u>199.2</u> |
| LIMRAD | 3.4 | 17.3 <u>11.5</u> | -1.3 <u>-1.0</u> | 40.6 <u>40.1</u> | 14.6 <u>15.4</u> | 29.5 <u>34.1</u> | 55.1 <u>55.3</u> | 12.6 <u>14.2</u> | 193.4 <u>193.5</u> |
| MSMRAD | 4.3 <u>4.5</u> | 26.1 <u>18.2</u> | -1.9 <u>-0.8</u> | 36.0 <u>37.6</u> | 14.9 <u>15.5</u> | 27.6 <u>32.5</u> | 55.5 | 10.4 <u>11.7</u> | 195.0 <u>196.5</u> |

and 30 gm^{-2} , as well as between 30 and 100 gm^{-2} , averaging to mean LWP conditions of ~~15 to 20~~ 19 to 22 gm^{-2} and around 55 gm^{-2} , respectively. ~~Less than 20 and 15~~ Only 11 to 16 % of detected LWP at BCO and aboard the ships, respectively, ~~is are~~ associated with thicker clouds of higher than 100 gm^{-2} .

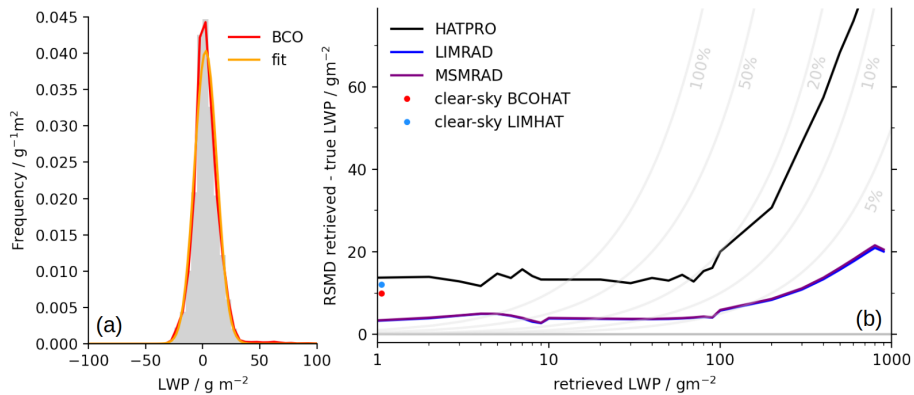


Figure 7. (a) Distribution of occurrence of BCOHAT LWP in clear-sky identified scenes (red) and respective Gaussian fit (orange), and (b) RMSD of retrieved vs true LWP for HATPRO (black) and single-channel retrieval (purple, blue), binned to retrieved LWP. Respective clear-sky Gaussian standard deviations are given for BCOHAT (red) and LIMHAT (blue).

Cloudy LWP uncertainty varies as function of retrieved LWP as illustrated in Fig 7b) binned to logarithmic bins of LWP. The mean RMSD for HATPRO derived LWPs below 20 gm^{-2} varies below 5 gm^{-2} , corresponding to a relative RMSD between 75 and 50%. For LWP between 20 and 100 gm^{-2} , the RMSD moderately reduces from 50 to 15% of retrieved LWP (15.8 at 50 gm^{-2}). Above LWP of 100 gm^{-2} , the relative uncertainty is better than 15% (e.g. 29.9 gm^{-2} at LWP of 200 gm^{-2}).

525 ~~High~~ Higher LWP values are in reality often affected by precipitation and, thus, not sensed by ground-/ship-based MWR

measurements. Jacob et al. (2019) find on average higher RMSDs which we relate to the additional uncertainty given by the background emission characterization for airborne LWP retrieval.

530 The single-channel retrieval, different in retrieval design and training data set compared to the multi-channel retrieval, is characterized by lower uncertainties and detection limit. Higher liquid water emissions in the 89GHz channel compared to the 31.4GHz channel used in the multi-frequency HATPRO retrieval leads to a higher sensitivity of the retrieval to smaller clouds with less liquid. This retrieval, however, strongly depends on the knowledge of IWV conditions and ~~accurate~~ accurate clear-sky flagging. ~~To be consistent between Meteor and BCO in terms of cloud sensitivity, the LWP time series provided in Level 4 is based on LIMHAT LWP~~ Relative LWP uncertainty for LWP between 10 and 100 gm^{-2} increases by few percentage points if closest clear-sky and cloudy IWV differ by 1 to 2 kgm^{-2} .

535 **6.3 Single-channel retrieval intercomparison**

The availability of both multi- and single-channel retrieval aboard the Meteor allows a direct comparison of the two different retrieval approaches. A direct intercomparison ~~reveals a RMSE of 25.7~~ in confident liquid cloudy conditions reveals a LWP RMSD of 31.3 gm^{-2} , a bias of -9.4-5.9 gm^{-2} (LIMHAT LWP higher than LIMRAD), and a high correlation of 0.92 (not shown). As LWP varies strongly in time and space, and sensors's fields of view are different, comparing the liquid cloudy LWP distributions through percentiles is a preferable method. The percentiles of the liquid cloudy LWP distribution of LIMRAD and LIMHAT, illustrated in Fig 8, show that LIMRAD-retrieved LWP is skewed to lower values compared to LIMHAT's LWP. The different clear-sky correction approaches in the two retrievals constitute themselves in the fact that ~~14th to 26th percentiles are 0 in LIMRAD, while they moderately increase up to 17.0 gm^{-2} in LIMHAT's distribution. Above LIMRAD LWP approaches zero when LIMHAT LWP ranges between 5 and 17 gm^{-2} , a~~ negative bias towards LIMRAD, showing less LWP than LIMHAT, moderately decreases towards higher LWP values.

~~(a) Percentiles of LIMHAT vs LIMRAD retrieved cloudy LWP distributions during EUREC⁴A core period. Intercomparison of LIMRAD and MSMRAD retrieved (b) LWP and (c) clear-sky IWV when Meteor and Merian steamed along the same trajectory (January 19, 2020, 00-12UTC), and measured at the same location (February 07, 2020, 11-18UTC).~~

550 Inter-platform evaluation of single-channel retrieved LWP and clear-sky IWV is performed for the two periods of ship collocation (see Sec. 2.2). Ships's visiting times at BCO could not be used as BCOHAT was not operational at those times. LWP obtained from LIMHAT, LIMRAD and MSMRAD are intercompared in a statistical way rather than directly as clouds might overpass with an unknown time shift.

555 Both LIMRAD and MSMRAD exhibit larger LWPs (median of ~~13.4 and 28.3~~ 50.4 and 42.6 gm^{-2} , respectively) than LIMHAT (19.28.4 gm^{-2}), confirming the percentile based comparison of LIMRAD and LIMHAT. Cloudy profiles of above 100 gm^{-2} were mostly seen by MSMRAD, which, however, might be related to single events that did not overpass the Meteor given the small sample size. Yet Additionally, both radars were operated with different chirp table settings, leading to different sensitivity to boundary layer clouds which, in turn, might affect the performance of the cloud mask. Given the uncertainties of each LWP product identified above in the previous Section and the uncertainty related to the applied cloud mask, the distributions match well and are suitable for site intercomparison. Clear-sky IWV, less variable in space and time, is compared point

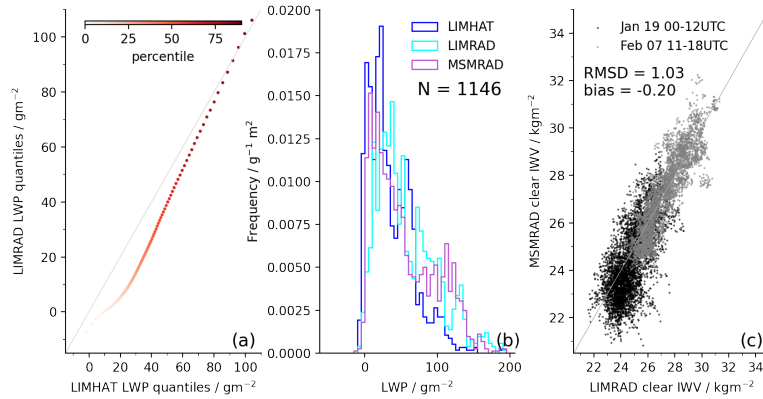


Figure 8. (a) Percentiles of LIMHAT and LIMRAD retrieved liquid cloudy LWP distributions during EUREC⁴A core period. Intercomparison of LIMRAD and MSMRAD retrieved (b) liquid cloudy LWP and (c) clear-sky IWV when Meteor and Merian steamed along the same trajectory (January 19, 2020, 00-12UTC), and measured at the same location (February 07, 2020, 11-18UTC).

560 to point, and exhibits a ~~RMSE of 1.1~~ RMSD of 1.0 and a bias of -0.2 kg m^{-2} (MSMRAD slightly drier). Both single-channel retrievals agree within the expected uncertainties.

Assuming that BCO and Meteor were exposed to similar conditions and given the fact, that multi-channel derived LWP is generally more reliable, we conclude that the LIMHAT measurements should be used as ‘truth’ for the Meteor site compared to the single-channel LIMRAD LWP. While LIMRAD single-channel LWP is biased by ~~-9.4~~ -5.9 gm^{-2} compared to the multi-
 565 channel LWP estimates, presumably due to a higher sensitivity towards smaller clouds, this bias cannot be directly translated to MSMRAD LWP due to absolute calibration differences of the two cloud radars. Clear-sky T_B are affected by a ~~RMSE~~ RMSD of 2.6K, a bias of ~~5.5~~ 5.6 K (Merian warmer), but correlation of ~~0.67~~ 0.66 is low due to temporal spatial mismatch. Given this T_B bias and assuming all other instrument characteristics being the same between LIMRAD and MSMRAD, Merian single-channel LWPs might in reality be lower. An extended analysis can help to quantify this bias, e.g. by comparing similar looking
 570 clouds as seen in the active cloud radar part.

7 Thermodynamical profiles

The multi-channel measurements by the HATPRO instruments are used to retrieve temperature (see Sec 7.1) and absolute humidity (see Sec 7.2) profiles at BCO and aboard the Meteor, respectively. Temperature profiles are obtained from zenith measurements and when elevation scans were performed (see Sec 3.1), while absolute humidity profiles are only available in
 575 zenith mode. Profiles are obtained on 43 height levels with vertical resolution decreasing from 50-100m in the moist layer to 200-500m above the trade inversion.

We use the EUREC⁴A sounding [Level-2](#) data set (Stephan et al., 2021) to evaluate the MWR retrieved profiles, assuming that the radiosoundings represent the best estimate of the true atmospheric conditions. To compare radiosoundings and MWR, we interpolate the radiosoundings to the MWR height grid and average MWR measurements 5 minutes around each sounding launch as conditions in the Tropics change on longer timescales. 182 and 219 radiosoundings are used for BCO and Meteor, respectively. We then calculate [RMSE-RMSD](#) and bias for each MWR height level. Positive biases here [indicates-indicate](#) an overestimation of MWR compared to [the](#) sounding value.

7.1 Temperature

The obtained temperature [RMSE-RMSD](#) and bias are illustrated in Fig 9. At both sites, zenith mode [RMSE-RMSD](#) increases throughout the moist layer from less than 0.5 K below Lifting Condensation Level (LCL) to 1.5 K at the trade inversion around 2 km.

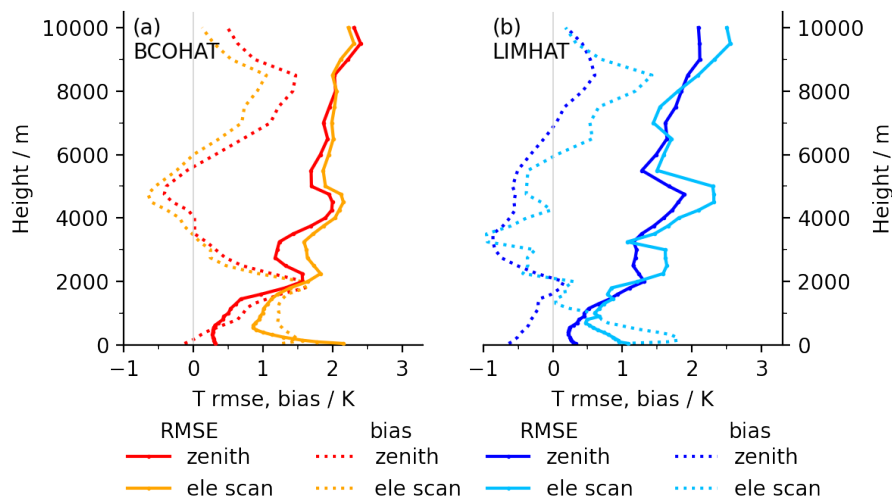


Figure 9. [RMSE-RMSD](#) (solid) and bias (dashed) of (a) BCOHAT and (b) LIMHAT temperature profiles from zenith (blue; red) and elevation scan (orange; cyan) operation compared to simultaneous sounding profiles.

As zenith HATPRO measurements generally contain [2-two](#) degrees of freedom (independent pieces of information) [for retrieving the temperature profile \(Löhnert et al., 2009\)](#), the retrieval information content is too low to resolve the trade temperature inversion. Rather, the MWR profiles smooth the inversion, resulting in on average warmer MWR conditions at the base of the inversion, and colder conditions at inversion top, similar to conditions found in the Arctic (Walbröl et al., 2022). Temperature information content is highest below 4 km (Löhnert and Maier, 2012), which makes the MWR insensitive to the conditions in the middle troposphere as seen by further increasing [RMSERMSD](#).

Elevation scans have been shown to improve the derived temperature profile in the lowest kilometer of the boundary layer (Crewwell and Löhnert, 2007; Walbröl et al., 2022). As illustrated in Fig 9, however, the BCOHAT and LIMHAT scans increase **RMSE-RMSD** and bias in the layers below 1 km. We suspect that the GAIA sounding data set used for training is impacted by the island surface, leading to warmer temperatures in the moist layer compared to the zenith column at BCO or over the ocean. Typically, when trade winds prevail, radiosoundings launched at GAIA or BCO drift westwards over the island when ascending through the sub-cloud layer. Paired with small seasonal temperature variations in the Tropics and, thus, little variability in the temperature training data set, this systematic training error translates into warm temperature biases of the retrieved temperature profiles compared to the launched radiosoundings. [A physical-iterative retrieval approach such as Optimal Estimation \(Rogers, 2000; Maahn et al., 2020\) would help to constrain the covariances of the prior temperature profile data set.](#) Elevation scans aboard the Meteor, and therein in particular the low elevation angle measurements, are additionally affected by ship motion as LIMHAT was not stabilized. The functionality of the HATPRO-attached weather station might additionally impact the quality of the temperature retrieval.

605 7.2 Absolute Humidity

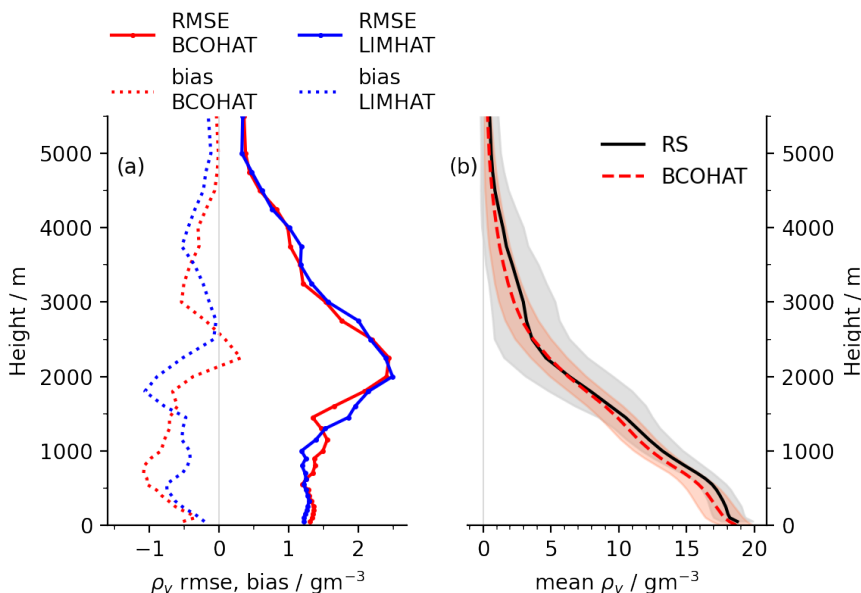


Figure 10. (a) BCOHAT (red) and LIMHAT (blue) **RMSE-RMSD** (solid) and bias (dashed) of retrieved absolute humidity ρ_v profiles compared to simultaneous sounding profiles, and (b) mean ρ_v profiles of radiosoundings (black) and BCOHAT (red), shaded by their respective standard deviation.

Comparing radiosoundings and MWR yields to the **RMSE-RMSD** and bias illustrated in Fig 10(a). At both sites, the **RMSE-RMSD** from ground to LCL is 1.3 gm^{-3} , and increases to 2.5 gm^{-3} in the area of the hydrolapse associated with the trade

inversion. The tendencies of the bias can be further understood when analyzing the mean profiles as illustrated in Fig 10(b). From ground towards hydrolapse, MWR underestimates the humidity, resulting in a negative bias of -1 gm^{-3} . Throughout
610 the hydrolapse, MWR and sounding profiles converge, which is due to the smoothing of the MWR profile. Depending on the strength of the hydrolapse, MWR overestimates the humidity in the dry layer balancing the overall profile to match overall IWV conditions. Above the hydrolapse in the free troposphere, dry conditions prevail, and MWR is not sensitive to elevated moist layers. While the MWR covers the variability of moist layer water vapor well as seen by similar standard deviations of sounding and MWR profile, it does not resolve the variability in the hydrolapse or free troposphere. The overall negative bias
615 in the absolute humidity profile translates into a dry bias in the IWV estimate (compared to the radiosoundings) which confirms the findings in Sec 5.

8 Conclusions

This study presents the ground- and ship-based passive MWR measurements performed during the EUREC⁴A field study. Between January 19 and February 14, 2020, continuous measurements of IWV, LWP, and coarse profiles of temperature
620 and absolute humidity were obtained in the vicinity of Barbados at 3 second resolution. 14-channel MWR measurements were performed at Barbados Cloud Observatory and aboard the Meteor with a HATPRO microwave radiometer, while single-channel measurements were performed at 89GHz aboard the Meteor and the Merian complementing W-band cloud radar measurements.

The here presented data set contributes key measurements to study the coupling of clouds to circulation and their environ-
625 ment, the overall goal of the EUREC⁴A field study (Bony et al., 2017; Stevens et al., 2021). The data set enables a continuous quantification of clouds' LWP in their immediate moisture environment, enables the characterization along spatial scales across the trade-driven Tropical Atlantic, and complements the airborne LWP measurements performed aboard HALO and the SAFIRE ATR42.

Similar mean IWV conditions of 31.8 and 30.3 kgm^{-2} at BCO and aboard the Meteor, respectively, support the hypothesis
630 that similar air masses were observed, evolving from Meteor towards BCO along the trade-wind driven region. The Merian sampled moister conditions on its track southward, leading to mean IWV conditions of 33.3 kgm^{-2} . The multi-channel retrieved IWV at BCO is affected by a ~~RMSE~~ ~~RMSD~~ of 1.1, 1.4 and 2.2 kgm^{-2} compared to radiosoundings, GNSS and ERA5 estimates, matching uncertainties identified in mid-latitudes (Steinke et al., 2015).

A precipitation and cloud mask are included in the data set, as derived from ~~an attached adjacent~~ weather station and
635 simultaneous cloud radar and ceilometer measurements. Cloudy scenes are additionally flagged for liquid cloud occurrence based on the radar observations. We find that ~~5.8, 6.9 and 8.7~~ 9.1, 10.7 and 14.6 % of all valid measurements contain ground-reaching precipitation at BCO, Meteor, Merian, respectively. Confident liquid cloudy scenes prevail in ~~33.2, 27.5 and 30.6~~ 33.5, 19.3 and 21.0 % of available profiles, respectively, matching cloud cover estimates in Nuijens et al. (2014). Confident liquid cloudy LWP distributions reveal a mean LWP of ~~66.5, 56.4 and 40.4~~ 63.1, 62.5 and 46.8 gm^{-2} at BCO, Meteor and Merian,
640 respectively, which align with findings in Jacob et al. (2019). 90 % of all confident liquid cloudy profiles contained ~~less than~~

~~180~~ around 160 and 120 gm^{-2} LWP at BCO and aboard the Meteor and Merian, respectively. Derived LWP statistics **strongly** depend on the performance of the cloud masking algorithm. When including probably cloudy identified scenes in the statistics, mean LWP and percentiles reduce ~~by 30%~~ slightly due to beam mismatches and resulting mis-identification of clear scenes.

Multi-channel retrieved LWP at BCO and aboard the Meteor is provided with an uncertainty of 30% at 50 gm^{-2} and better
645 than 15% above 100 gm^{-2} . Single-channel retrieved LWP uncertainty is reduced by 70% at 50 gm^{-2} but might in reality be higher as the retrieval requires accurate quantification of IWV and clear-sky identification. Clear-sky LWP noise reveals a detection limit of ~~10.2, 11.7~~ 9.9, 12.0, 3.4 and ~~4.3 4.5~~ gm⁻² for BCOHAT, LIMHAT, LIMRAD and MSMRAD. Up to ~~30~~ 20% of confident liquid cloudy tagged profiles are below the LWP detection limit presumably due to undetected optically thin clouds (Mieslinger et al., 2022).

650 We recommend using the Level 4 data set for non-expert users as ~~no additional flags need to be~~ quality and precipitation flags were applied to the provided IWV and LWP time series. Data are re-sampled to different temporal resolutions, facilitating model-observation intercomparison experiments. More experienced users will find more details in the Level 3 data set, including a liquid cloud flag and the temperature and humidity retrieval output. Future retrieval approaches could combine HATPRO and 89 GHz channel (Crewell and Löhnert, 2003) to advance the retrieval performance, ~~especially also by applying~~
655 ~~neural-network-based retrieval approaches (Jacob et al., 2019; Cadeddu et al., 2009)~~. More specifically, improvements are expected by applying neural network based (e.g. Jacob et al., 2019; Cadeddu et al., 2009) or physical (e.g. Löhnert et al., 2004; Turner et al., 2007a; retrieval approaches. The single-channel LWP retrieval can be used to evaluate the approach presented by Billault-Roux and Berne (2021). The spatial dimension of this data set ~~can be further exploited to characterize~~ are currently further exploited by characterizing LWP and IWV conditions in different mesoscale organization conditions (e.g. Schulz et al., 2021), and ~~to~~
660 evaluate by evaluating microwave and vis/IR satellite LWP products as well as climatologies (Elsaesser et al., 2017). Combining BCO and Meteor measurements can frame Lagrangian trajectory analyses targeting the evolution of air masses along the trade winds. Using this data set to benchmark cloud-resolving simulations will help ~~to answer~~ answering some of the central questions targeted by the EUREC⁴A field study on the interplay of clouds, circulation, convection and climate.

9 Code and data availability

665 The presented data set is available through AERIS (Schnitt et al., 2023a, <https://doi.org/10.25326/454#v2.0>). Processing and analysis code are available in Schnitt et al. (2023b) (<https://doi.org/10.5281/zenodo.8208499>).

Author contributions.

SaS led the study, developed the Barbados-specific HATPRO retrieval, and prepared data set, manuscript and figures. AF and HKL supported the conceptualization of the study and led the Meteor measurements and post-processing, supported by
670 JR. MM and SC developed and ran the single-channel retrieval. CA led the measurements aboard the Merian. UL provided

expertise on HATPRO retrieval and BP contributed the spectral flagging retrieval. FJ maintains the BCO measurements. BS led the ~~EUREC4A~~ EUREC⁴A campaign. All authors contributed to the manuscript.

Competing interests. The authors have no competing interests.

Acknowledgements. The data used in this publication was gathered in the ~~EUREC4A~~ EUREC⁴A field campaign and is made available
675 through ~~University of Cologne, University Leipzig~~, Max Planck Institute for Meteorology, ~~EUREC4A~~, University Leipzig, University of
Cologne. EUREC⁴A is funded with support of the European Research Council (ERC), the Max Planck Society (MPG), the German Re-
search Foundation (DFG), the German Meteorological Weather Service (DWD) and the German Aerospace Center (DLR). SaS' ~~EUREC4A~~
~~participating~~ EUREC⁴A participation was funded by a travel grant from Graduate School of Geosciences (GSGS), University of Cologne.
We thank the BCO team for maintaining the observatory, and the AERIS team, especially Vincent Douet, for their support in publishing the
680 data set. We thank two anonymous reviewers for their helpful comments.

References

- Acquistapace, C., Coulter, R., Crewell, S., Garcia-Benadi, A., Gierens, R., Labbri, G., Myagkov, A., Risse, N., and Schween, J. H.: EUREC⁴A's *Maria S. Merian* ship-based cloud and micro rain radar observations of clouds and precipitation, *Earth System Science Data*, 14, 33–55, <https://doi.org/10.5194/essd-14-33-2022>, 2022.
- 685 Billault-Roux, A.-C. and Berne, A.: Integrated water vapor and liquid water path retrieval using a single-channel radiometer, *Atmospheric Measurement Techniques*, 14, 2749–2769, <https://doi.org/10.5194/amt-14-2749-2021>, 2021.
- Bock, O., Bosser, P., Flamant, C., Doerflinger, E., Jansen, F., Fages, R., Bony, S., and Schnitt, S.: Integrated water vapour observations in the Caribbean arc from a network of ground-based GNSS receivers during EUREC⁴A, *Earth System Science Data*, 13, 2407–2436, <https://doi.org/10.5194/essd-13-2407-2021>, 2021.
- 690 Bony, S., Stevens, B., Frierson, D. M. W., Jakob, C., Kageyama, M., Pincus, R., Shepherd, T. G., Sherwood, S. C., Siebesma, A. P., Sobel, A. H., Watanabe, M., and Webb, M. J.: Clouds, circulation and climate sensitivity, *Nature Geoscience*, 8, 261–268, <https://doi.org/10.1038/ngeo2398>, 2015.
- Bony, S., Stevens, B., Ament, F., Bigorre, S., Chazette, P., Crewell, S., Delanoë, J., Emanuel, K., Farrell, D., Flamant, C., Gross, S., Hirsch, L., Karstensen, J., Mayer, B., Nuijens, L., Ruppert, J. H., Sandu, I., Siebesma, P., Speich, S., Szczap, F., Totems, J., Vogel, R., Wendisch, M., and Wirth, M.: EUREC4A: A Field Campaign to Elucidate the Couplings Between Clouds, Convection and Circulation, *Surveys in Geophysics*, 38, 1529–1568, <https://doi.org/10.1007/s10712-017-9428-0>, 2017.
- 695 Bony, S., Lathon, M., Delanoë, J., Coutris, P., Etienne, J.-C., Aemisegger, F., Albright, A. L., André, T., Bellec, H., Baron, A., Bourdinot, J.-F., Brilouet, P.-E., Bourdon, A., Canonici, J.-C., Caudoux, C., Chazette, P., Cluzeau, M., Cornet, C., Desbios, J.-P., Duchanoy, D., Flamant, C., Fildier, B., Gourbeyre, C., Guiraud, L., Jiang, T., Lainard, C., Le Gac, C., Lendroit, C., Lernoùd, J., Perrin, T., Pouvesle, F., Richard, P., Rochetin, N., Salaün, K., Schwarzenboeck, A., Seurat, G., Stevens, B., Totems, J., Touzé-Peiffer, L., Vergez, G., Vial, J., Villiger, L., and Vogel, R.: EUREC⁴A observations from the SAFIRE ATR42 aircraft, *Earth System Science Data*, 14, 2021–2064, <https://doi.org/10.5194/essd-14-2021-2022>, 2022.
- 700 Bosser, P., Bock, O., Flamant, C., Bony, S., and Speich, S.: Integrated water vapour content retrievals from ship-borne GNSS receivers during EUREC⁴A, *Earth System Science Data*, 13, 1499–1517, <https://doi.org/10.5194/essd-13-1499-2021>, 2021.
- 705 Cadeddu, M., Turner, D., and Liljegren, J.: A Neural Network for Real-Time Retrievals of PWV and LWP From Arctic Millimeter-Wave Ground-Based Observations, *IEEE Transactions on Geoscience and Remote Sensing*, <https://doi.org/10.1109/TGRS.2009.2013205>, 2009.
- Crewell, S. and Löhnert, U.: Accuracy of cloud liquid water path from ground-based microwave radiometry 2. Sensor accuracy and synergy, *Radio Science*, 38, <https://doi.org/10.1029/2002RS002634>, 2003.
- Crewell, S. and Löhnert, U.: Accuracy of Boundary Layer Temperature Profiles Retrieved With Multifrequency Multiangle Microwave Radiometry, *IEEE Transactions on Geoscience and Remote Sensing*, 45, 2195–2201, <https://doi.org/10.1109/TGRS.2006.888434>, 2007.
- 710 Dufresne, J.-L. and Bony, S.: An Assessment of the Primary Sources of Spread of Global Warming Estimates from Coupled Atmosphere–Ocean Models, *Journal of Climate*, 21, 5135–5144, <https://doi.org/10.1175/2008JCLI2239.1>, 2008.
- Ebell, K., Löhnert, U., Päschke, E., Orlandi, E., Schween, J. H., and Crewell, S.: A 1-D variational retrieval of temperature, humidity, and liquid cloud properties: Performance under idealized and real conditions, *Journal of Geophysical Research: Atmospheres*, 122, 1746–1766, <https://doi.org/10.1002/2016JD025945>, 2017.
- 715 Elsaesser, G. S., O'Dell, C. W., Lebsock, M. D., Bennartz, R., Greenwald, T. J., and Wentz, F. J.: The Multisensor Advanced Climatology of Liquid Water Path (MAC-LWP), *Journal of Climate*, 30, 10 193–10 210, <https://doi.org/10.1175/JCLI-D-16-0902.1>, 2017.

- Foster, J., Bevis, M., and Raymond, W.: Precipitable water and the lognormal distribution, *Journal of Geophysical Research: Atmospheres*, 111, <https://doi.org/10.1029/2005JD006731>, 2006.
- 720 George, G., Stevens, B., Bony, S., Pincus, R., Fairall, C., Schulz, H., Kölling, T., Kalen, Q. T., Klingebiel, M., Konow, H., Lundry, A., Prange, M., and Radtke, J.: JOANNE: Joint dropsonde Observations of the Atmosphere in tropical North atlaNtic meso-scale Environments, *Earth System Science Data*, 13, 5253–5272, <https://doi.org/10.5194/essd-13-5253-2021>, 2021.
- Hirsch, L.: Ka Band Cloud Radar Barbados Cloud Observatory, EUREC4A, AERIS [Dataset], <https://doi.org/https://doi.org/10.25326/55>, 2022.
- 725 Illingworth, A. J., Hogan, R. J., O’Connor, E. J., Bouniol, D., Brooks, M. E., Delanoé, J., Donovan, D. P., Eastment, J. D., Gaussiat, N., Goddard, J. W. F., Haeffelin, M., Baltink, H. K., Krasnov, O. A., Pelon, J., Piriou, J.-M., Protat, A., Russchenberg, H. W. J., Seifert, A., Tompkins, A. M., van Zadelhoff, G.-J., Vinit, F., Willén, U., Wilson, D. R., and Wrench, C. L.: Cloudnet: Continuous Evaluation of Cloud Profiles in Seven Operational Models Using Ground-Based Observations, *Bulletin of the American Meteorological Society*, 88, 883–898, <https://doi.org/10.1175/BAMS-88-6-883>, 2007.
- 730 Jacob, M.: Liquid water path and integrated water vapor over the tropical Atlantic during EUREC4A, AERIS [Dataset], <https://doi.org/10.25326/247>, 2021.
- Jacob, M., Ament, F., Gutleben, M., Konow, H., Mech, M., Wirth, M., and Crewell, S.: Investigating the liquid water path over the tropical Atlantic with synergistic airborne measurements, *Atmospheric Measurement Techniques*, 12, 3237–3254, <https://doi.org/10.5194/amt-12-3237-2019>, 2019.
- 735 Jacob, M., Kollias, P., Ament, F., Schemann, V., and Crewell, S.: Multilayer cloud conditions in trade wind shallow cumulus – confronting two ICON model derivatives with airborne observations, *Geoscientific Model Development*, 13, 5757–5777, <https://doi.org/10.5194/gmd-13-5757-2020>, 2020.
- Jahangir, E., Libois, Q., Couvreur, F., Vié, B., and Saint-Martin, D.: Uncertainty of SW Cloud Radiative Effect in Atmospheric Models Due to the Parameterization of Liquid Cloud Optical Properties, *Journal of Advances in Modeling Earth Systems*, 13, e2021MS002742, <https://doi.org/10.1029/2021MS002742>, 2021.
- 740 Kalesse-Los, H., Röttenbacher, J., Schäfer, M., and Emmanouilidis, A.: Microwave Radiometer Measurements RV Meteor, EUREC4A, AERIS [Dataset], <https://doi.org/doi.org/10.25326/77>, 2020.
- Kalesse-Los, H., Kötsche, A., Foth, A., Röttenbacher, J., Vogl, T., and Witthuhn, J.: The Virga-Sniffer – a new tool to identify precipitation evaporation using ground-based remote-sensing observations, *Atmospheric Measurement Techniques*, 16, 1683–1704, <https://doi.org/10.5194/amt-16-1683-2023>, 2023.
- 745 Karstens, U., Simmer, C., and Ruprecht, E.: Remote sensing of cloud liquid water, *Meteorology and Atmospheric Physics*, 54, 157–171, <https://doi.org/10.1007/BF01030057>, 1994.
- Klingebiel, M., Ghate, V. P., Naumann, A. K., Ditas, F., Pöhlker, M. L., Pöhlker, C., Kandler, K., Konow, H., and Stevens, B.: Remote Sensing of Sea Salt Aerosol below Trade Wind Clouds, *Journal of the Atmospheric Sciences*, 76, 1189–1202, <https://doi.org/10.1175/JAS-D-18-0139.1>, 2019.
- 750 Konow, H., Ewald, F., George, G., Jacob, M., Klingebiel, M., Kölling, T., Luebke, A. E., Mieslinger, T., Pörtge, V., Radtke, J., Schäfer, M., Schulz, H., Vogel, R., Wirth, M., Bony, S., Crewell, S., Ehrlich, A., Forster, L., Giez, A., Göttsche, F., Groß, S., Gutleben, M., Hagen, M., Hirsch, L., Jansen, F., Lang, T., Mayer, B., Mech, M., Prange, M., Schnitt, S., Vial, J., Walbröl, A., Wendisch, M., Wolf, K., Zinner, T., Zöger, M., Ament, F., and Stevens, B.: EUREC⁴A’s HALO, *Earth System Science Data*, 13, 5545–5563, <https://doi.org/10.5194/essd-13-5545-2021>, 2021.
- 755

- Küchler, N., Kneifel, S., Löhnert, U., Kollias, P., Czekala, H., and Rose, T.: A W-Band Radar–Radiometer System for Accurate and Continuous Monitoring of Clouds and Precipitation, *Journal of Atmospheric and Oceanic Technology*, 34, 2375–2392, <https://doi.org/10.1175/JTECH-D-17-0019.1>, 2017.
- 760 Liljegren, J., Boukabara, S.-A., Cady-Pereira, K., and Clough, S.: The effect of the half-width of the 22-GHz water vapor line on retrievals of temperature and water vapor profiles with a 12-channel microwave radiometer, *IEEE Transactions on Geoscience and Remote Sensing*, 43, 1102–1108, <https://doi.org/10.1109/TGRS.2004.839593>, 2005.
- Löhnert, U.: Ground-based microwave radiometer reprocessing mwr_pro, <https://doi.org/10.5281/zenodo.7973553>, 2023.
- Löhnert, U. and Crewell, S.: Accuracy of cloud liquid water path from ground-based microwave radiometry 1. Dependency on cloud model statistics, *Radio Science*, 38, 8041, <https://doi.org/10.1029/2002RS002654>, 2003.
- 765 Löhnert, U. and Maier, O.: Operational profiling of temperature using ground-based microwave radiometry at Payerne: prospects and challenges, *Atmospheric Measurement Techniques*, 5, 1121–1134, <https://doi.org/10.5194/amt-5-1121-2012>, 2012.
- Löhnert, U., Crewell, S., and Simmer, C.: An Integrated Approach toward Retrieving Physically Consistent Profiles of Temperature, Humidity, and Cloud Liquid Water, *Journal of Applied Meteorology*, 43, 1295–1307, [https://doi.org/10.1175/1520-0450\(2004\)043<1295:AIATRP>2.0.CO;2](https://doi.org/10.1175/1520-0450(2004)043<1295:AIATRP>2.0.CO;2), 2004.
- 770 Löhnert, U., Turner, D. D., and Crewell, S.: Ground-Based Temperature and Humidity Profiling Using Spectral Infrared and Microwave Observations. Part I: Simulated Retrieval Performance in Clear-Sky Conditions, *Journal of Applied Meteorology and Climatology*, 48, 1017–1032, <https://doi.org/10.1175/2008JAMC2060.1>, 2009.
- Maahn, M., Turner, D. D., Löhnert, U., Posselt, D. J., Ebell, K., Mace, G. G., and Comstock, J. M.: Optimal Estimation Retrievals and Their Uncertainties: What Every Atmospheric Scientist Should Know, *Bulletin of the American Meteorological Society*, pp. 1–34, <https://doi.org/10.1175/BAMS-D-19-0027.1>, 2020.
- 775 Maschwitz, G., Löhnert, U., Crewell, S., Rose, T., and Turner, D. D.: Investigation of ground-based microwave radiometer calibration techniques at 530 hPa, *Atmospheric Measurement Techniques*, 6, 2641–2658, <https://doi.org/10.5194/amt-6-2641-2013>, 2013.
- Mech, M., Orlandi, E., Crewell, S., Ament, F., Hirsch, L., Hagen, M., Peters, G., and Stevens, B.: HAMP – the microwave package on the High Altitude and LOng range research aircraft (HALO), *Atmospheric Measurement Techniques*, 7, 4539–4553, <https://doi.org/10.5194/amt-7-4539-2014>, 2014.
- 780 Mech, M., Maahn, M., Kneifel, S., Ori, D., Orlandi, E., Kollias, P., Schemann, V., and Crewell, S.: PAMTRA 1.0: the Passive and Active Microwave radiative TRAnSfer tool for simulating radiometer and radar measurements of the cloudy atmosphere, *Geoscientific Model Development*, 13, 4229–4251, <https://doi.org/10.5194/gmd-13-4229-2020>, 2020.
- Mieslinger, T., Stevens, B., Kölling, T., Brath, M., Wirth, M., and Buehler, S. A.: Optically thin clouds in the trades, *Atmospheric Chemistry and Physics*, 22, 6879–6898, <https://doi.org/10.5194/acp-22-6879-2022>, 2022.
- 785 Mätzler, C., Ellison, W., Thomas, B., Sihvola, A., and Schwank, M.: Dielectric properties of natural media, in: *Thermal Microwave Radiation: Applications for Remote Sensing*, pp. 427–506, IET Digital Library, https://doi.org/10.1049/PBEW052E_ch5, 2006.
- Nuijens, L., Serikov, I., Hirsch, L., Lonitz, K., and Stevens, B.: The distribution and variability of low-level cloud in the North Atlantic trades, *Quarterly Journal of the Royal Meteorological Society*, 140, 2364–2374, <https://doi.org/10.1002/qj.2307>, 2014.
- 790 Pincus, R., Fairall, C. W., Bailey, A., Chen, H., Chuang, P. Y., de Boer, G., Feingold, G., Henze, D., Kalen, Q. T., Kazil, J., Leandro, M., Lundry, A., Moran, K., Naeher, D. A., Noone, D., Patel, A. J., Pezoa, S., PopStefanija, I., Thompson, E. J., Warnecke, J., and Zuidema, P.: Observations from the NOAA P-3 aircraft during ATOMIC, *Earth System Science Data*, 13, 3281–3296, <https://doi.org/10.5194/essd-13-3281-2021>, 2021.

- Rauber, R. M., Stevens, B., Ochs, H. T., Knight, C., Albrecht, B. A., Blyth, A. M., Fairall, C. W., Jensen, J. B., Lasher-Trapp, S. G., Mayol-
795 Bracero, O. L., Vali, G., Anderson, J. R., Baker, B. A., Bandy, A. R., Burnet, E., Brenguier, J.-L., Brewer, W. A., Brown, P. R. A., Chuang,
R., Cotton, W. R., Girolamo, L. D., Geerts, B., Gerber, H., Göke, S., Gomes, L., Heikes, B. G., Hudson, J. G., Kollias, P., Lawson, R. R.,
Krueger, S. K., Lenschow, D. H., Nuijens, L., O'Sullivan, D. W., Rilling, R. A., Rogers, D. C., Siebesma, A. P., Snodgrass, E., Stith, J. L.,
Thornton, D. C., Tucker, S., Twohy, C. H., and Zuidema, P.: Rain in Shallow Cumulus Over the Ocean: The RICO Campaign, *Bulletin of
the American Meteorological Society*, 88, 1912–1928, <https://doi.org/10.1175/BAMS-88-12-1912>, 2007.
- 800 Rodgers, C. D.: *Inverse Methods for Atmospheric Sounding: Theory and Practice*, World Scientific, 2000.
- Rose, T., Crewell, S., Löhnert, U., and Simmer, C.: A network suitable microwave radiometer for operational monitoring of the cloudy
atmosphere, *Atmospheric Research*, 75, 183–200, <https://doi.org/10.1016/j.atmosres.2004.12.005>, 2005.
- Rosenkranz, P. W.: Water vapor microwave continuum absorption: A comparison of measurements and models, *Radio Science*, 33, 919–928,
<https://doi.org/10.1029/98RS01182>, 1998.
- 805 Schnitt, S., Orlandi, E., Mech, M., Ehrlich, A., and Crewell, S.: Characterization of Water Vapor and Clouds During the Next-Generation
Aircraft Remote Sensing for Validation (NARVAL) South Studies, *IEEE Journal of Selected Topics in Applied Earth Observations and
Remote Sensing*, 10, 3114–3124, <https://doi.org/10.1109/JSTARS.2017.2687943>, 2017.
- Schnitt, S., Foth, A., Kalesse-Los, H., Mech, M., and Acquistapace, C.: Ground- and ship-based microwave radiometer measurements during
EUREC4A, AERIS [Dataset], <https://doi.org/10.25326/454#v2.0>, 2023a.
- 810 Schnitt, S., Mech, M., Acquistapace, C., and Kalesse-Los, H.: Code for processing ground- and ship-based microwave radiometer measure-
ments during EUREC4A, Code, Zenodo, <https://doi.org/10.5281/zenodo.8208499>, 2023b.
- Schulz, H., Eastman, R., and Stevens, B.: Characterization and Evolution of Organized Shallow Convection in the Downstream North Atlantic
Trades, *Journal of Geophysical Research: Atmospheres*, 126, e2021JD034575, <https://doi.org/10.1029/2021JD034575>, 2021.
- Seethala, C. and Horvath, A.: Global assessment of AMSR-E and MODIS cloud liquid water path retrievals in warm oceanic clouds, *Journal
815 of Geophysical Research: Atmospheres*, 115, <https://doi.org/10.1029/2009JD012662>, 2010.
- Steinke, S., Eikenberg, S., Löhnert, U., Dick, G., Klocke, D., Di Girolamo, P., and Crewell, S.: Assessment of small-scale integrated water
vapour variability during HOPE, *Atmospheric Chemistry and Physics*, 15, 2675–2692, <https://doi.org/10.5194/acp-15-2675-2015>, 2015.
- Stephan, C. C., Schnitt, S., Schulz, H., Bellenger, H., de Szoeko, S. P., Acquistapace, C., Baier, K., Dauhut, T., Laxenaire, R., Morfa-Avalos,
Y., Person, R., Quiñones Meléndez, E., Bagheri, G., Böck, T., Daley, A., Güttler, J., Helfer, K. C., Los, S. A., Neuberger, A., Röttenbacher,
820 J., Raeke, A., Ringel, M., Ritschel, M., Sadoulet, P., Schirmacher, I., Stolla, M. K., Wright, E., Charpentier, B., Doerenbecher, A., Wilson,
R., Jansen, F., Kinne, S., Reverdin, G., Speich, S., Bony, S., and Stevens, B.: Ship- and island-based atmospheric soundings from the 2020
EUREC⁴A field campaign, *Earth System Science Data*, 13, 491–514, <https://doi.org/https://doi.org/10.5194/essd-13-491-2021>, 2021.
- Stevens, B. and Kluff, L.: A Colorful look at Climate Sensitivity, *EGUsphere*, pp. 1–24, <https://doi.org/10.5194/egusphere-2022-1460>, 2023.
- Stevens, B., Farrell, D., Hirsch, L., Jansen, F., Nuijens, L., Serikov, I., Brüggemann, B., Forde, M., Linne, H., Lonitz, K., and Prospero, J. M.:
825 The Barbados Cloud Observatory: Anchoring Investigations of Clouds and Circulation on the Edge of the ITCZ, *Bulletin of the American
Meteorological Society*, 97, 787–801, <https://doi.org/10.1175/BAMS-D-14-00247.1>, 2016.
- Stevens, B., Ament, F., Bony, S., Crewell, S., Ewald, F., Gross, S., Hansen, A., Hirsch, L., Jacob, M., Kölling, T., Konow, H., Mayer, B.,
Wendisch, M., Wirth, M., Wolf, K., Bakan, S., Bauer-Pfundstein, M., Brueck, M., Delanoë, J., Ehrlich, A., Farrell, D., Forde, M., Göttele,
F., Grob, H., Hagen, M., Jäkel, E., Jansen, F., Klepp, C., Klingebiel, M., Mech, M., Peters, G., Rapp, M., Wing, A. A., and Zinner,
830 T.: A High-Altitude Long-Range Aircraft Configured as a Cloud Observatory: The NARVAL Expeditions, *Bulletin of the American
Meteorological Society*, 100, 1061–1077, <https://doi.org/10.1175/BAMS-D-18-0198.1>, 2019.

- Stevens, B., Bony, S., Farrell, D., Ament, F., Blyth, A., Fairall, C., Karstensen, J., Quinn, P. K., Speich, S., Acquistapace, C., Aemisegger, F., Albright, A. L., Bellenger, H., Bodenschatz, E., Caesar, K.-A., Chewitt-Lucas, R., de Boer, G., Delanoë, J., Denby, L., Ewald, F., Fildier, B., Forde, M., George, G., Gross, S., Hagen, M., Hausold, A., Heywood, K. J., Hirsch, L., Jacob, M., Jansen, F., Kinne, S., Klocke, D., Kölling, T., Konow, H., Lothon, M., Mohr, W., Naumann, A. K., Nuijens, L., Olivier, L., Pincus, R., Pöhlker, M., Reverdin, G., Roberts, G., Schnitt, S., Schulz, H., Siebesma, A. P., Stephan, C. C., Sullivan, P., Touzé-Peiffer, L., Vial, J., Vogel, R., Zuidema, P., Alexander, N., Alves, L., Arixi, S., Asmath, H., Bagheri, G., Baier, K., Bailey, A., Baranowski, D., Baron, A., Barrau, S., Barrett, P. A., Batier, F., Behrendt, A., Bendinger, A., Beucher, F., Bigorre, S., Blades, E., Blossey, P., Bock, O., Böing, S., Bossler, P., Bourras, D., Bouruet-Aubertot, P., Bower, K., Branellec, P., Branger, H., Brennek, M., Brewer, A., Brilouet, P.-E., Brüggemann, B., Buehler, S. A., Burke, E., Burton, R., Calmer, R., Canonici, J.-C., Carton, X., Cato Jr., G., Charles, J. A., Chazette, P., Chen, Y., Chilinski, M. T., Choulaton, T., Chuang, P., Clarke, S., Coe, H., Cornet, C., Coutris, P., Couvreur, F., Crewell, S., Cronin, T., Cui, Z., Cuypers, Y., Daley, A., Damerell, G. M., Dauhut, T., Deneke, H., Desbios, J.-P., Dörner, S., Donner, S., Douet, V., Drushka, K., Dütsch, M., Ehrlich, A., Emanuel, K., Emmanouilidis, A., Etienne, J.-C., Etienne-Leblanc, S., Faure, G., Feingold, G., Ferrero, L., Fix, A., Flamant, C., Flatau, P. J., Foltz, G. R., Forster, L., Furtuna, I., Gadian, A., Galewsky, J., Gallagher, M., Gallimore, P., Gaston, C., Gentemann, C., Geyskens, N., Giez, A., Gollop, J., Gouirand, I., Gourbeyre, C., de Graaf, D., de Groot, G. E., Grosz, R., Güttler, J., Gutleben, M., Hall, K., Harris, G., Helfer, K. C., Henze, D., Herbert, C., Holanda, B., Ibanez-Landeta, A., Intrieri, J., Iyer, S., Julien, F., Kalesse, H., Kazil, J., Kellman, A., Kidane, A. T., Kirchner, U., Klingebiel, M., Körner, M., Kremper, L. A., Kretzschmar, J., Krüger, O., Kumala, W., Kurz, A., L'Hégaret, P., Labaste, M., Lachlan-Cope, T., Laing, A., Landschützer, P., Lang, T., Lange, D., Lange, I., Laplace, C., Lavik, G., Laxenaire, R., Le Bihan, C., Leandro, M., Lefevre, N., Lena, M., Lenschow, D., Li, Q., Lloyd, G., Los, S., Losi, N., Lovell, O., Luneau, C., Makuch, P., Malinowski, S., Manta, G., Marinou, E., Marsden, N., Masson, S., Maury, N., Mayer, B., Mayers-Als, M., Mazel, C., McGearry, W., McWilliams, J. C., Mech, M., Mehlmann, M., Meroni, A. N., Mieslinger, T., Minikin, A., Minnett, P., Möller, G., Morfa Avalos, Y., Muller, C., Musat, I., Napoli, A., Neuberger, A., Noisel, C., Noone, D., Nordsiek, F., Nowak, J. L., Oswald, L., Parker, D. J., Peck, C., Person, R., Philippi, M., Plueddemann, A., Pöhlker, C., Pörtge, V., Pöschl, U., Pologne, L., Posyniak, M., Prange, M., Quiñones Meléndez, E., Radtke, J., Ramage, K., Reimann, J., Renault, L., Reus, K., Reyes, A., Ribbe, J., Ringel, M., Ritschel, M., Rocha, C. B., Rochetin, N., Röttenbacher, J., Rollo, C., Royer, H., Sadoulet, P., Saffin, L., Sandiford, S., Sandu, I., Schäfer, M., Schemann, V., Schirmacher, I., Schlenczek, O., Schmidt, J., Schröder, M., Schwarzenboeck, A., Sealy, A., Senff, C. J., Serikov, I., Shohan, S., Siddle, E., Smirnov, A., Späth, F., Spooner, B., Stolla, M. K., Szkółka, W., de Szoeko, S. P., Tarot, S., Tetoni, E., Thompson, E., Thomson, J., Tomassini, L., Totems, J., Ubele, A. A., Villiger, L., von Arx, J., Wagner, T., Walther, A., Webber, B., Wendisch, M., Whitehall, S., Wiltshire, A., Wing, A. A., Wirth, M., Wiskandt, J., Wolf, K., Worbes, L., Wright, E., Wulfmeyer, V., Young, S., Zhang, C., Zhang, D., Ziemann, F., Zinner, T., and Zöger, M.: EUREC⁴A, Earth System Science Data, 13, 4067–4119, <https://doi.org/10.5194/essd-13-4067-2021>, 2021.
- Stokes, G. M. and Schwartz, S. E.: The Atmospheric Radiation Measurement (ARM) Program: Programmatic Background and Design of the Cloud and Radiation Test Bed, *Bulletin of the American Meteorological Society*, 75, 1201–1222, [https://doi.org/10.1175/1520-0477\(1994\)075<1201:TARMPP>2.0.CO;2](https://doi.org/10.1175/1520-0477(1994)075<1201:TARMPP>2.0.CO;2), 1994.
- Turner, D. D., Clough, S. A., Liljegren, J. C., Clothiaux, E. E., Cady-Pereira, K. E., and Gaustad, K. L.: Retrieving Liquid Water Path and Precipitable Water Vapor From the Atmospheric Radiation Measurement (ARM) Microwave Radiometers, *IEEE Transactions on Geoscience and Remote Sensing*, 45, 3680–3690, <https://doi.org/10.1109/TGRS.2007.903703>, 2007a.
- Turner, D. D., Vogelmann, A. M., Austin, R. T., Barnard, J. C., Cady-Pereira, K., Chiu, J. C., Clough, S. A., Flynn, C., Khaiyer, M. M., Liljegren, J., Johnson, K., Lin, B., Long, C., Marshak, A., Matrosov, S. Y., McFarlane, S. A., Miller, M., Min, Q., Minimis, P., O'Hirok, W.,

- Wang, Z., and Wiscombe, W.: Thin Liquid Water Clouds: Their Importance and Our Challenge, *Bulletin of the American Meteorological Society*, 88, 177–190, <https://doi.org/10.1175/BAMS-88-2-177>, 2007b.
- 870 Turner, D. D., Cadeddu, M. P., Löhnert, U., Crewell, S., and Vogelmann, A. M.: Modifications to the Water Vapor Continuum in the Microwave Suggested by Ground-Based 150-GHz Observations, *IEEE Transactions on Geoscience and Remote Sensing*, 47, 3326–3337, <https://doi.org/10.1109/TGRS.2009.2022262>, 2009.
- Ulaby, F. T.: *Microwave radar and radiometric remote sensing*, The University of Michigan Press, Ann Arbor, 2014.
- 875 van Meijgaard, E. and Crewell, S.: Comparison of model predicted liquid water path with ground-based measurements during CLIWA-NET, *Atmospheric Research*, 75, 201–226, <https://doi.org/10.1016/j.atmosres.2004.12.006>, 2005.
- Vial, J., Dufresne, J.-L., and Bony, S.: On the interpretation of inter-model spread in CMIP5 climate sensitivity estimates, *Climate Dynamics*, 41, 3339–3362, <https://doi.org/10.1007/s00382-013-1725-9>, 2013.
- Walbröl, A., Crewell, S., Engelmann, R., Orlandi, E., Griesche, H., Radenz, M., Hofer, J., Althausen, D., Maturilli, M., and Ebell, K.: 880 Atmospheric temperature, water vapour and liquid water path from two microwave radiometers during MOSAiC, *Scientific Data*, 9, 534, <https://doi.org/10.1038/s41597-022-01504-1>, 2022.
- Weng, F., Zhao, L., Ferraro, R. R., Poe, G., Li, X., and Grody, N. C.: Advanced microwave sounding unit cloud and precipitation algorithms, *Radio Science*, 38, <https://doi.org/10.1029/2002RS002679>, 2003.
- Westwater, E. R.: The accuracy of water vapor and cloud liquid determination by dual-frequency ground-based microwave radiometry, *Radio* 885 *Science*, 13, 677–685, <https://doi.org/10.1029/RS013i004p00677>, 1978.
- Westwater, E. R., Han, Y., Shupe, M. D., and Matrosov, S. Y.: Analysis of integrated cloud liquid and precipitable water vapor retrievals from microwave radiometers during the Surface Heat Budget of the Arctic Ocean project, *Journal of Geophysical Research: Atmospheres*, 106, 32 019–32 030, <https://doi.org/10.1029/2000JD000055>, 2001.
- Zelinka, M. D., Myers, T. A., McCoy, D. T., Po-Chedley, S., Caldwell, P. M., Ceppi, P., Klein, S. A., and Taylor, K. E.: Causes of Higher Cli- 890 mate Sensitivity in CMIP6 Models, *Geophysical Research Letters*, 47, e2019GL085 782, <https://doi.org/10.1029/2019GL085782>, 2020.