

# 12 years of continuous atmospheric O<sub>2</sub>, CO<sub>2</sub> and APO data from Weybourne Atmospheric Observatory in the United Kingdom

Karina E. Adcock<sup>1</sup>, Penelope A. Pickers<sup>1</sup>, Andrew C. Manning<sup>1</sup>, Grant L. Forster<sup>1,2</sup>, Leigh S. Fleming<sup>1,3</sup>, Thomas Barningham<sup>4</sup>, Philip A. Wilson<sup>1</sup>, Elena A. Kozlova<sup>5</sup>, Marica Hewitt<sup>1</sup>, Alex J. Etchells<sup>6</sup>, and Andy J. Macdonald<sup>1</sup>

<sup>1</sup>Centre for Ocean and Atmospheric Sciences, School of Environmental Sciences, University of East Anglia, Norwich, United Kingdom

<sup>2</sup>National Centre for Atmospheric Science, University of East Anglia, Norwich, United Kingdom

<sup>3</sup>Now at: GNS Science, Gracefield, Lower Hutt, 5040, New Zealand

<sup>4</sup>British Antarctic Survey, Natural Environment Research Council, Cambridge, United Kingdom

<sup>5</sup>Faculty of Environment, Science and Economy, University of Exeter, Exeter, United Kingdom

<sup>6</sup>Research and Specialist Computing, University of East Anglia, Norwich, United Kingdom

*Correspondence to:* Karina E. Adcock (Karina.Adcock@uea.ac.uk)

**Abstract.** We present a 12-year time series of continuous atmospheric measurements of O<sub>2</sub> and CO<sub>2</sub> at the Weybourne Atmospheric Observatory in the United Kingdom. These measurements are combined into the term Atmospheric Potential Oxygen (APO), a tracer that is invariant to terrestrial biosphere fluxes. The CO<sub>2</sub>, O<sub>2</sub> and APO datasets discussed are hourly averages between May 2010 and December 2021. We include details of our measurement system and calibration procedures, and describe the main long-term and seasonal features of the time series. The 2-minute repeatability of the measurement system is approximately  $\pm 3$  per meg for O<sub>2</sub> and approximately  $\pm 0.005$  ppm for CO<sub>2</sub>. The time series shows average long-term trends of 2.40 ppm yr<sup>-1</sup> (2.38 to 2.42) for CO<sub>2</sub>, -24.0 per meg yr<sup>-1</sup> for O<sub>2</sub> (-24.3 to -23.8) and -11.4 per meg yr<sup>-1</sup> (-11.7 to -11.3) for APO, over the 12-year period. The average seasonal cycle peak-to-peak amplitudes are 16 ppm for CO<sub>2</sub>, 134 per meg for O<sub>2</sub>, and 68 per meg for APO. The diurnal cycles of CO<sub>2</sub> and O<sub>2</sub> vary considerably between seasons. The datasets are publicly available at <https://doi.org/10.18160/Z0GF-MCWH> (Adcock et al., 2023) and have many current and potential scientific applications in constraining carbon cycle processes, such as investigating air-sea exchange of CO<sub>2</sub> and O<sub>2</sub>, and top-down quantification of fossil fuel CO<sub>2</sub>.

## 1 Introduction

Carbon dioxide (CO<sub>2</sub>) and oxygen (O<sub>2</sub>) vary in the atmosphere due to a range of processes including terrestrial biosphere exchange, combustion (e.g. fossil fuels and wild fires) and air-sea gas exchange with the oceans. Terrestrial biosphere fluxes of O<sub>2</sub> and CO<sub>2</sub> are strongly anti-correlated, with a stoichiometric exchange ratio of 1.05 – 1.10 moles of O<sub>2</sub> consumed per mole of CO<sub>2</sub> produced (or vice versa) (Severinghaus, 1995; Keeling and Manning, 2014). In fossil fuel combustion O<sub>2</sub> is consumed, and CO<sub>2</sub> is produced, with a globally weighted average stoichiometric exchange ratio of about 1.38 mol mol<sup>-1</sup> (Keeling and Manning, 2014). There is no fixed stoichiometric coupling between CO<sub>2</sub> and O<sub>2</sub> in ocean-atmosphere fluxes due to their different seawater chemistry properties (Keeling et al., 1993). Due to these varied relationships between CO<sub>2</sub> and

O<sub>2</sub>, measuring atmospheric O<sub>2</sub> concurrently to CO<sub>2</sub> provides a wealth of additional information on carbon biogeochemical cycles than can be achieved by measuring CO<sub>2</sub> alone.

Making high-precision measurements of O<sub>2</sub> mole fractions in the atmosphere is technically challenging as variations in O<sub>2</sub> are relatively very small compared to the atmospheric background (variations of the order of 10 ppm against a background of ~210,000 ppm). As such, atmospheric O<sub>2</sub> mole fractions are typically reported as changes in the ratio of O<sub>2</sub> to N<sub>2</sub>, relative to a reference O<sub>2</sub>/N<sub>2</sub> ratio (Keeling and Shertz, 1992).

$$\delta(O_2/N_2) = \frac{(O_2/N_2)_{sample} - (O_2/N_2)_{reference}}{(O_2/N_2)_{reference}} \quad (1)$$

This study uses a O<sub>2</sub>/N<sub>2</sub> reference derived from a suite of compressed air reference gases stored in high-pressure tanks and maintained but the Scripps Institution of Oceanography, U.S.A. (SIO; Sect. 2.2; Keeling et al., 2007). Given that variations of  $\delta(O_2/N_2)$  are small, the values are multiplied by 10<sup>6</sup> and expressed in ‘per meg’ units (Keeling and Shertz, 1992). Since mole fractions are relative to the total amount of air, changing the total number of molecules, for example by changing the number of CO<sub>2</sub> molecules, will make it appear as if the amount of O<sub>2</sub> and N<sub>2</sub> are changing even when they are not. This dilution effect is problematic for O<sub>2</sub> and N<sub>2</sub> because they are not trace gases, however, reporting O<sub>2</sub> as the O<sub>2</sub>/N<sub>2</sub> ratio circumvents this issue. The dilution effect also exists for trace gases but has a negligible effect. Natural variations in N<sub>2</sub> are much smaller than O<sub>2</sub> (Manning and Keeling, 2006) and therefore any changes in the O<sub>2</sub>/N<sub>2</sub> ratio can be assumed to be due to a change in O<sub>2</sub>. When measuring O<sub>2</sub>, CO<sub>2</sub> must also be measured concurrently, and a correction applied to account for changes in CO<sub>2</sub>. For simplicity, in this paper we refer to O<sub>2</sub> variations as O<sub>2</sub> mole fraction changes.

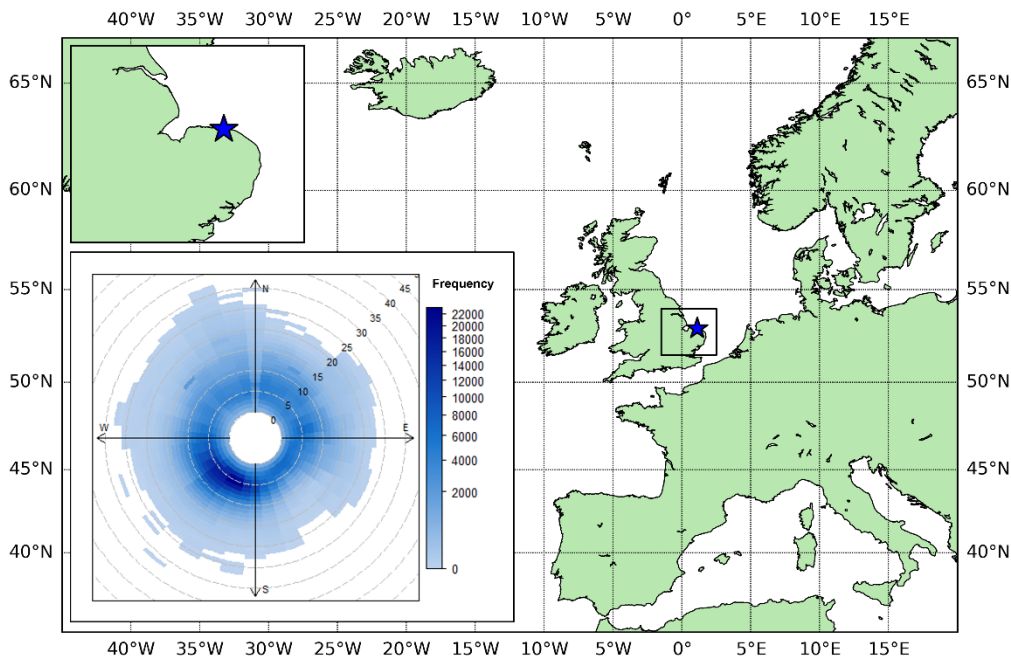
Atmospheric Potential Oxygen (APO) is a calculated term that is helpful to further investigate some of the processes that affect both O<sub>2</sub> and CO<sub>2</sub>, for example ocean processes (e.g. Ishidoya et al., 2022, Tohjima et al., 2015, Resplandy et al., 2019, Nevison et al., 2020, Pickers et al., 2017) and fossil fuel combustion (Pickers 2016; Chevallier et al., 2021; Pickers et al., 2022). APO is the sum of atmospheric O<sub>2</sub>, and atmospheric CO<sub>2</sub> multiplied by the O<sub>2</sub>:CO<sub>2</sub> molar exchange ratio of terrestrial biosphere-atmosphere exchange (Stephens et al., 1998). APO is thus invariant to terrestrial biosphere processes and is influenced by most fossil fuel emissions, due to their different exchange ratios, and by air-sea gas exchange of O<sub>2</sub> and CO<sub>2</sub>. APO is calculated according to:

$$APO = O_2 + \frac{\alpha_L \times (CO_2 - 350)}{S_{O_2}} \quad (2)$$

where  $\alpha_L$  is the global average terrestrial biosphere exchange ratio, 1.10 mol mol<sup>-1</sup> (Severinghaus, 1995),  $S_{O_2}$  is the standard atmospheric mole fraction of O<sub>2</sub>, 0.2095 (Machta and Hughes, 1970) and 350 is an arbitrary reference value used to express APO on the Scripps Institution of Oceanography (SIO) APO scale. CO<sub>2</sub> is the measured CO<sub>2</sub> mole fraction, expressed in

parts per million (ppm), and  $O_2$  is the measured  $O_2$  reported as  $\delta(O_2/N_2)$  ratio changes. Both APO and  $O_2$  are expressed in  
65 per meg units.

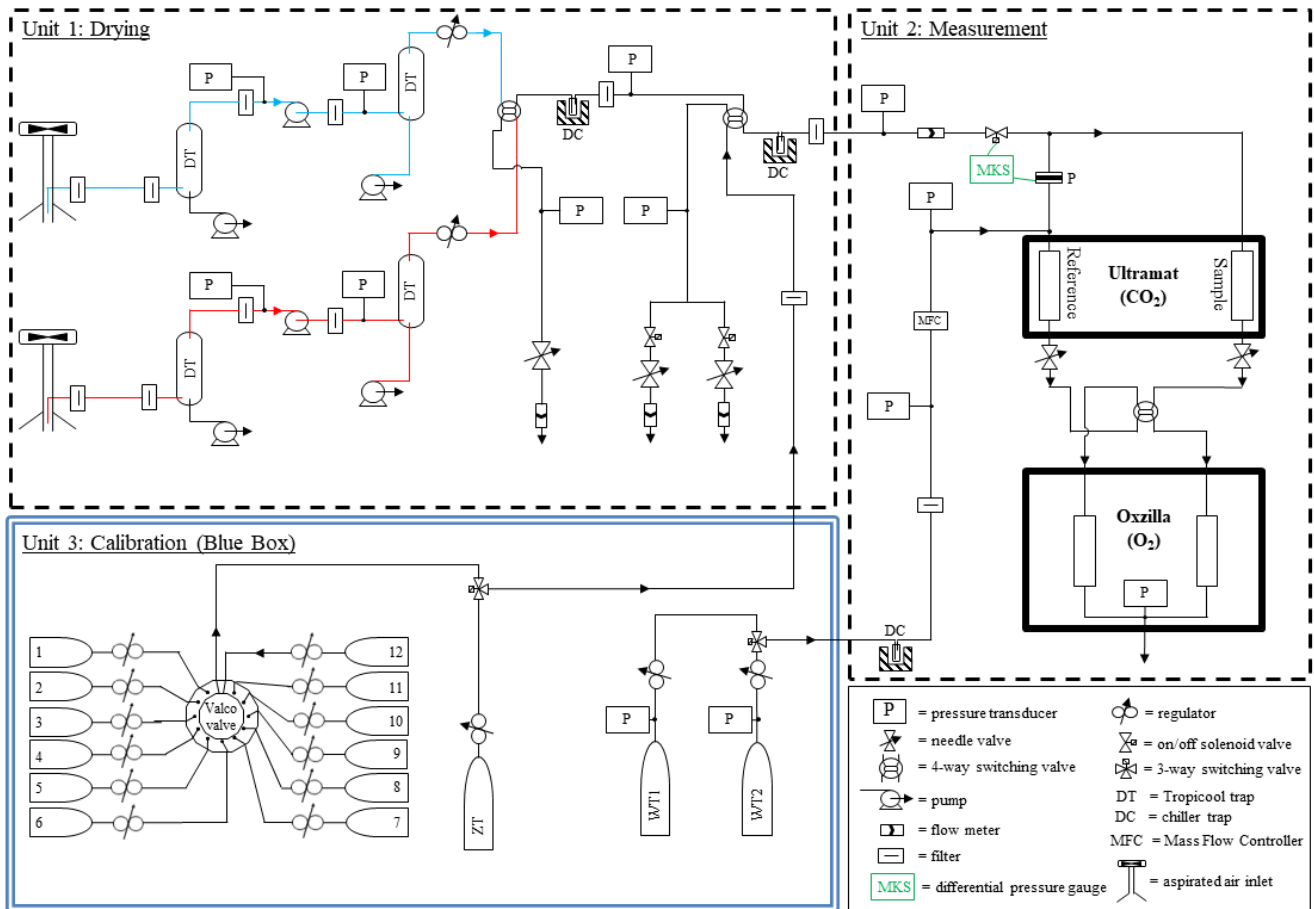
We present continuous in situ measurements of atmospheric  $O_2$  and  $CO_2$  mole fractions from Weybourne Atmospheric  
Observatory (WAO). WAO is a field station located on the north Norfolk coast in a rural part of the United Kingdom  
(52.95°N, 1.12°E, Fig. 1). The station was established in 1992 by the University of East Anglia (UEA) and is a United  
70 Nations World Meteorological Organization Global Atmosphere Watch (WMO/GAW) ‘Regional’ station, a UK National  
Centre for Atmospheric Science Atmospheric Measurement and Observation Facility (NCAS/AMOF), and a European  
Integrated Carbon Observation System (ICOS) ‘Class II’ station. The  $O_2$  and  $CO_2$  measurement system is housed in an air-  
conditioned concrete building. The sample inlets sit atop a 10 m mast, ~27 m above sea level and ~50 m inland from the  
North Sea coastline. In addition to continuous measurements of atmospheric  $O_2$  and  $CO_2$  other species routinely measured  
75 include CO, CH<sub>4</sub>, H<sub>2</sub>, O<sub>3</sub>, N<sub>2</sub>O, SF<sub>6</sub>, <sup>222</sup>Rn, NO, NO<sub>2</sub>, PM<sub>2.5</sub>, PM<sub>10</sub>, SO<sub>2</sub>, NH<sub>3</sub>,  $\delta^{13}C-CO_2$ ,  $\delta^{18}O-CO_2$ , and  $\delta^{17}O-CO_2$  as well  
as basic meteorological parameters ([www.weybourne.uea.ac.uk](http://www.weybourne.uea.ac.uk)).



**Figure 1: Map showing the location of the Weybourne Atmospheric Observatory (WAO, 52.95°N, 1.12°E) as a blue  
80 star. Bottom left inset: Polar frequency plot showing wind speed ( $m s^{-1}$ ) and wind direction at WAO averaged over  
the period 2016-2021. The frequency is the number of points with that wind speed and wind direction.**

In the remainder of this paper, Sect. 2 describes the measurement system and the seasonal decomposition methodologies, and Sect. 3 provides an assessment of the measurement system's performance via intercomparison programme results, and repeatability and compatibility measures. In Sect. 4, we present the main features of the dataset: long-term trends, seasonal cycles, and diurnal cycles of CO<sub>2</sub>, O<sub>2</sub> and APO. This analysis builds on work previously presented in the PhD theses of Wilson (2012) and Barningham (2018).

## 2 Methods



90 **Figure 2: Gas handling diagram of the Weybourne Atmospheric Observatory (WAO) O<sub>2</sub> and CO<sub>2</sub> measurement system. The drying, measurement, and calibration units are shown in separate boxes. The ‘red’ and ‘blue’ inlet lines are coloured accordingly, and the green colouring denotes the ‘MKS’ differential pressure gauge. The cylinders numbered 1-12 in the ‘Blue Box’ demonstrate the maximum capacity of the multi-position ‘Valco’ valve; these normally comprise of calibration cylinders, cylinders that are periodically measured as part of intercomparison programmes, Target Tanks (TTs), Zero Tanks (ZTs) and Working Tanks (WTs); see main text for details.**

95

## 2.1 Analytical set up

The CO<sub>2</sub> and O<sub>2</sub> measurement system used at WAO is similar to those described in Stephens et al. (2007), Thompson et al. (2007) and Pickers et al. (2017). The WAO measurement system was first described in Patecki and Manning (2007) before it was deployed at WAO; it was also described in Pickers et al. (2022) and in the PhD theses of Wilson (2012) and  
100 Barningham (2018). There have been many modifications and upgrades to the system since it was first installed. The following description and Fig. 2 present the system as it stands in 2023.

There are two inlet lines, and the measurement system alternates sampling air between these two inlet lines every two hours to diagnose for leaks, blockages, or other faults. The inlet lines are approximately 14 meters long and are made of Synflex  
105 type 1300 tubing with an outer diameter of 1/4". Each inlet line includes an aspirated air inlet (Aspirated Radiation Shield Model No. 43502, Read Scientific Ltd.), whereby the inlet samples from a moving airstream and shields the entrance from solar radiation, to avoid fractionation of O<sub>2</sub> molecules relative to N<sub>2</sub> (Blaine et al., 2006) and a small diaphragm pump (KNF Neuberger Inc.; model PM27653-N86ATE) to draw air through the inlet tubing at 100 mL min<sup>-1</sup>.

Air from the inlets passes through a two-stage drying system to dry the sample air to <1 ppm water vapour, which prevents dilution effects caused by water vapour that would otherwise bias the O<sub>2</sub> measurements (Stephens et al., 2007). The first stage of the drying system is a Peltier element thermo-electric cooler (Tropicool, model XC3000A), set at approximately 1 °C. Water condenses out of the air and is drained away by peristaltic pumps (Cole Parmer, Masterflex). The Tropicool consists of stainless-steel traps filled with 4 mm diameter Pyrex glass beads (to provide greater surface area to promote water  
115 condensation). Traps are positioned both upstream and downstream of the diaphragm pump; the downstream pump provides better water condensation because of the above ambient pressure provided by the pump (~3 bar), whereas the upstream pump prevents water build up in the pump itself. The second stage of the drying system is a VT490D cryogenic cooler (SP Scientific), which contains traps filled with 4mm diameter Pyrex glass beads in a 4 L ethanol bath, and achieves a dew point of approximately -80 °C.

120

The CO<sub>2</sub> mole fraction is measured by a non-dispersive infrared (NDIR) CO<sub>2</sub> analyser from Siemens Corp., model Ultramat 6E and the O<sub>2</sub> mole fraction is measured by an ‘Oxzilla’, a dual fuel cell O<sub>2</sub> analyser from Sable Systems International Inc. The fuel cells contain a gas-permeable membrane across which O<sub>2</sub> from the air permeates and undergoes electrochemical reduction in the cells, which contain a lead anode in an acidic electrolyte solution. The Ultramat and Oxzilla analysers are  
125 both differential analysers and are placed in series. Sample air flows through one side of the analysers and air from the Working Tank (WT, see Sect. 2.2) flows continuously through the other side of the analysers; air from calibration, quality control and intercomparison cylinders passes through the ‘sample’ side. The flow rate of the measurement system (both the sample and working reference sides) is set to 100 mL min<sup>-1</sup> using a mass flow controller (MFC, Fig. 2). The pressures and

flow rates are carefully balanced to be the same on both the sample air and WT air sides of the analysers. This balance is  
130 achieved with a differential pressure transducer (MKS Instruments, model Baratron 223B) which measures the pressure  
difference between the sample and WT air streams, and then adjusts the sample side pressure to match the pressure of the  
WT air using a fast-response solenoid valve (MKS Instruments Inc., 248A; Fig. 2).

A 4-way switching solenoid valve (Numatics, model TM series) immediately upstream of the Oxzilla switches the sample air  
135 and WT air between each of the fuel cells every 60 seconds. Switching between sample air and WT air helps to eliminate  
short-term drift and increases the signal to noise ratio, since the amplitude of the fuel cell difference is doubled, but the noise  
remains the same (Stephens et al., 2007). The first 30 seconds of data after every switch are discarded. Using the remaining  
30 seconds of data, the difference between the fuel cells is calculated. We refer to the fuel cell difference as the ‘double  
differential O<sub>2</sub> value’ and it is effectively twice the O<sub>2</sub> mole fraction (Stephens et al., 2007). The measurement system reports  
140 an O<sub>2</sub> and CO<sub>2</sub> measurement every 2 minutes.

As shown in Fig. 2, the measurement system includes several pressure transducers, flow meters, solenoid valves, a flow  
controller, and temperature sensors (not shown in Fig. 2) that are all connected to an electronics control box (custom built in-  
house). Bespoke software (custom built in-house) enables the automation of many of the routine processes and minimizes  
145 human intervention. The software’s automation functionality includes: measuring cylinders at predetermined intervals;  
switching between the two inlet sample lines; flushing sample or cylinder air prior to analysis, processing analyser signals to  
calculate calibrated mole fractions in near real-time; rejecting calibrations outside a set range and notifying the user when  
key diagnostics stray outside of acceptable ranges. The software also records all of the analyser and diagnostic data (i.e.  
pressure, flow and temperature data) and routinely backs up all data files. In addition, the system can be accessed and  
150 controlled remotely, with the software displaying most of the data in near real-time.

## 2.2 Calibration procedures

The measurement system includes a calibration unit, consisting of a thermally insulated housing for gas cylinder  
stabilisation, a so-called ‘Blue Box’, where high-pressure cylinders are stored horizontally, a requirement for high-precision  
155 O<sub>2</sub> measurements (Keeling et al., 2007) that minimizes thermal and gravitational fractionation of O<sub>2</sub> and N<sub>2</sub> molecules inside  
the cylinders. Our calibration procedures are similar to those detailed for O<sub>2</sub> and CO<sub>2</sub> in Kozlova and Manning (2009).  
Stored in the ‘Blue Box’ are Working Tanks (WTs), Working Secondary Standards (WSSes), Zero Tanks (ZTs) and Target  
Tanks (TTs), and occasionally cylinders that are part of intercomparison programmes.

160 A cylinder containing dry, compressed air, known as a Working Tank (WT), is continuously run through the reference side  
of the differential Ultramat and Oxzilla analysers. CO<sub>2</sub> and O<sub>2</sub> are measured by comparing the CO<sub>2</sub> and O<sub>2</sub> in the air from the

inlets (i.e. the sample side) to the CO<sub>2</sub> and O<sub>2</sub> in the air from the WT. By measuring the difference, any analyser response variability independent of the atmospheric mole fractions, for example from changes in room temperature or atmospheric pressure, is largely mitigated, since these changes will affect both the inlet air and WT air to roughly the same degree  
165 (Stephens et al., 2007).

A suite of three Working Secondary Standards (WSSes), which have high, medium and low mole fractions of O<sub>2</sub> and CO<sub>2</sub> spanning the typical range of mole fractions observed at the station, is used to calibrate the analysers every 47 hours (see calibration scale information below). The Ultramat exhibits a non-linear response to CO<sub>2</sub>, so a quadratic equation ( $y = ax^2 +$   
170  $bx + c$ ) is used in order to appropriately fit the analyser response function. The Oxzilla exhibits a linear response, so a linear equation is used ( $y = bx + c$ ). With the exception of the CO<sub>2</sub> c-term, the calibration coefficients are redetermined every 47 hours, and then these new values are used until the next calibration.

The CO<sub>2</sub> c-term (sometimes called the zero coefficient) is redetermined every 3 or 4 hours using a Zero Tank (ZT), which is  
175 a cylinder filled with ambient air, and is run immediately after every calibration and then every 3 or 4 hours afterwards. This CO<sub>2</sub> c-term adjustment is done to correct for baseline response drift in the Ultramat analyser, which is predominately due to room temperature fluctuations in-between calibrations. The ZT correction is only required for the CO<sub>2</sub> measurements, as the double differential switching accounts for analogous short-term temperature related drift in the O<sub>2</sub> analyser. A Target Tank (TT), also filled with ambient air, is typically measured every 11 hours as a quality control check on both the measurement  
180 system and the calibration procedures.

All cylinders used are 40L or 50L high-pressure aluminium cylinders (Luxfer Gas Cylinders Inc.) filled with very dry air (<1 ppm water vapour content) to ~200 bar, at the Cylinder Filling Facility (CFF) at the UEA before being deployed at WAO. The O<sub>2</sub> and CO<sub>2</sub> mole fractions in the WSSes and the TT are pre-determined at UEA's Carbon Related Atmospheric  
185 Measurement (CRAM) Laboratory, by measuring the cylinders using a bespoke Vacuum Ultraviolet (VUV) absorption analyser (Stephens et al., 2003) for O<sub>2</sub> and a Siemens Ultramat 6F analyser for CO<sub>2</sub>, against a suite of primary standards obtained from NOAA (National Oceanic and Atmospheric Administration), U.S.A. and Scripps Institution of Oceanography (SIO) (see calibration scale information below). The WSSes and TTs are used at WAO until the cylinder pressure is ~30 bar and the WTs and ZTs are used until the cylinder pressure is ~5 bar, as there is frequently outgassing of gases from cylinder  
190 walls at low cylinder pressures.

From its inception to June 2014, the WAO CO<sub>2</sub> data were reported on the SIO CO<sub>2</sub> calibration scale. From July 2014 to December 2021 the CO<sub>2</sub> data were reported on the WMO CO<sub>2</sub> X2007 scale. Presently, all the data from October 2007 to December 2021 have been transferred onto the WMO CO<sub>2</sub> X2019 scale using Equation 6 in Hall et al., (2021). The WMO  
195 CO<sub>2</sub> X2019 calibration scale is maintained by the Central Calibration Laboratory (CCL) at the NOAA Earth System

Research Laboratories (ESRL) Global Monitoring Laboratory (GML). The O<sub>2</sub> measurements are reported on the SIO ‘S2’ scale that was used by SIO from April 1995 to August 2017 (Keeling et al., 2020). For O<sub>2</sub> measurements there is no formally recognised scale but most laboratories within the global O<sub>2</sub> community use or are linked to the SIO scale.

200 The measurement system was first installed at WAO in October 2007, however, between October 2007 and May 2010 the system was still being developed and underwent major changes, leading to large gaps in the dataset and much of the data being of unknown quality and with calibration scale issues, therefore the data from this period have been excluded and only data from May 2010 to December 2021 are publicly available and are discussed in this paper.

### 2.3 Seasonal decomposition

205 The baselines of all three species were calculated from the hourly averages with the Robust Extraction of Baseline Signal (REBS) method using the RFBaseline function within the IDPMisc package in R (Ruckstuhl et al., 2012; 2020). The RFBaseline function has three adjustable parameters: span, bi-weight function (b), and the number of iterations (maxit). The span is the smoothing time period, based on the frequency of data points. We have used a value of 0.01, which applies a smoothing window with a period of approximately four weeks, which we think is the most appropriate for distinguishing  
210 regional and background variability. The bi-weight function uses asymmetrical weighting, which is appropriate for CO<sub>2</sub> and O<sub>2</sub>, where short-term excursions from the baseline are mostly uni-directional (positive for CO<sub>2</sub>; negative for O<sub>2</sub>), here we used 0.01 and the number of iterations used is (4,0).

The time series were decomposed using the REBS results and STL (Seasonal Trend decomposition using LOESS (locally weighted scatterplot smoothing); (Cleveland et al., 1990)), so that salient features in long-term trends and seasonality can be  
215 described and quantified. The STL function (in R) performs a moving average calculation to separate the trend, seasonal and random components of the time series. STL has two smoothing parameters: s.window, which is the number of years to use when estimating the seasonal component, and t.window, which is the number of consecutive observations to use when estimating the trend. We used an s.window of 5 years (this value is often used in other studies (Pickers and Manning, 2015)) and a t.window of 13149. Cleveland et al. (1990) suggests that the t.window should be approximately 1.5 to 2 times the  
220 number of observations in each year, for hourly data, that is 8766 hours per year ( $365.25 * 24 = 8766$ ), and  $1.5 * 8766 = 13149$ . The decomposed time series are shown in the supplement (Figs. S2-S4).

Since the currently available version of STL cannot handle gaps in the time series, the REBS results were interpolated using the na\_seadec function in the imputeTS package in R (algorithm = ‘interpolation’, option = ‘spline’), prior to decomposition  
225 using STL. Gap filling is to take account of times when sample air is not being measured because of routine cylinder analyses, because of scheduled system maintenance, or because of inadvertent downtimes owing to system faults. Figure S1 shows the baseline data with the interpolated values. In order to avoid possible end effects with the STL decomposition



(Pickers and Manning, 2015), the time series were extended by a year both forwards and backwards in time, by taking the interpolated data for the first year and the last year and adding/subtracting the average annual trends for each species (CO<sub>2</sub>: 230 2.31 ppm yr<sup>-1</sup>, O<sub>2</sub>: -24.1 per meg yr<sup>-1</sup>, APO: -12.0 per meg yr<sup>-1</sup>). These average annual trends were from an initial run of STL. After the seasonal decompositions were completed, these extended years were removed for all subsequent analyses (including recomputing average annual trends). The baselines, the interpolation of the datasets and the seasonal decompositions presented here are just one example of the methods and parameters that could be used, since time series decomposition can be susceptible to the choice of method and parameters (Pickers and Manning, 2015).

### 235 **3 Repeatability and compatibility of the measurement system**

The WMO/GAW sets compatibility goals for measurements of greenhouse gas and related species in the atmosphere based on what compatibility is scientifically desirable. Compatibility is a measure of the persistent bias between measurement records (Crotwell et al., 2020). These WMO compatibility goals are  $\pm 0.1$  ppm for CO<sub>2</sub> in the northern hemisphere and  $\pm 2$  per meg for O<sub>2</sub> globally. However, given current analytical capabilities, the O<sub>2</sub> goal is considered somewhat aspirational, as it is 240 not routinely achievable. The WMO also provide an extended compatibility goal of  $\pm 10$  per meg for studies where greater accuracy is not required (Crotwell et al., 2020), and which is routinely achievable for some laboratories. Nevertheless, for most applications of O<sub>2</sub> data from our WAO station, the extended compatibility goal is not sufficient, so we strive to get as close to the  $\pm 2$  per meg goal as we can. We can also quantify repeatability from our datasets. Repeatability is a measure of the closeness of the agreement between the results of successive measurements over a short period of time (Crotwell et al., 245 2020). Repeatability goals should be one half of the network compatibility goals, that is,  $\pm 0.05$  ppm for CO<sub>2</sub>, and  $\pm 1$  per meg for O<sub>2</sub> (or  $\pm 5$  per meg for the extended O<sub>2</sub> goal). We have several ways in which to quantify compatibility and repeatability from our WAO datasets, which we discuss in this section, including results from intercomparison programmes, analysing data from our TT, ZT and WT measurements, and examining the standard deviation of sample air data.

#### **3.1 Intercomparison programmes**

250 WAO has participated in three intercomparison programmes in order to assess the compatibility of WAO with other measurement sites. These intercomparison programmes are: ‘Cucumbers’ ([www.cucumbers.uea.ac.uk](http://www.cucumbers.uea.ac.uk)); ‘GOLLUM’ (Global Oxygen Laboratories Link Ultra-precise Measurements, [www.gollum.uea.ac.uk](http://www.gollum.uea.ac.uk)); and the WMO/IAEA Round Robin Comparison Experiment (World Meteorological Organization/International Atomic Energy Agency, [gml.noaa.gov/ccgg/wmorr/index.html](http://gml.noaa.gov/ccgg/wmorr/index.html)). These intercomparison programmes involve measuring the same high pressure 255 cylinders filled with dry air, circulated amongst different laboratories and field stations, and comparing the measurements. Each programme includes several trios of cylinders circulating amongst participants, except for the most recent WMO round (“Round 6”), where pairs of cylinders were circulated. The intercomparison results from WAO are shown in Fig. 3 and are plotted as the values measured at WAO minus the values from the first time the cylinders were measured at the central

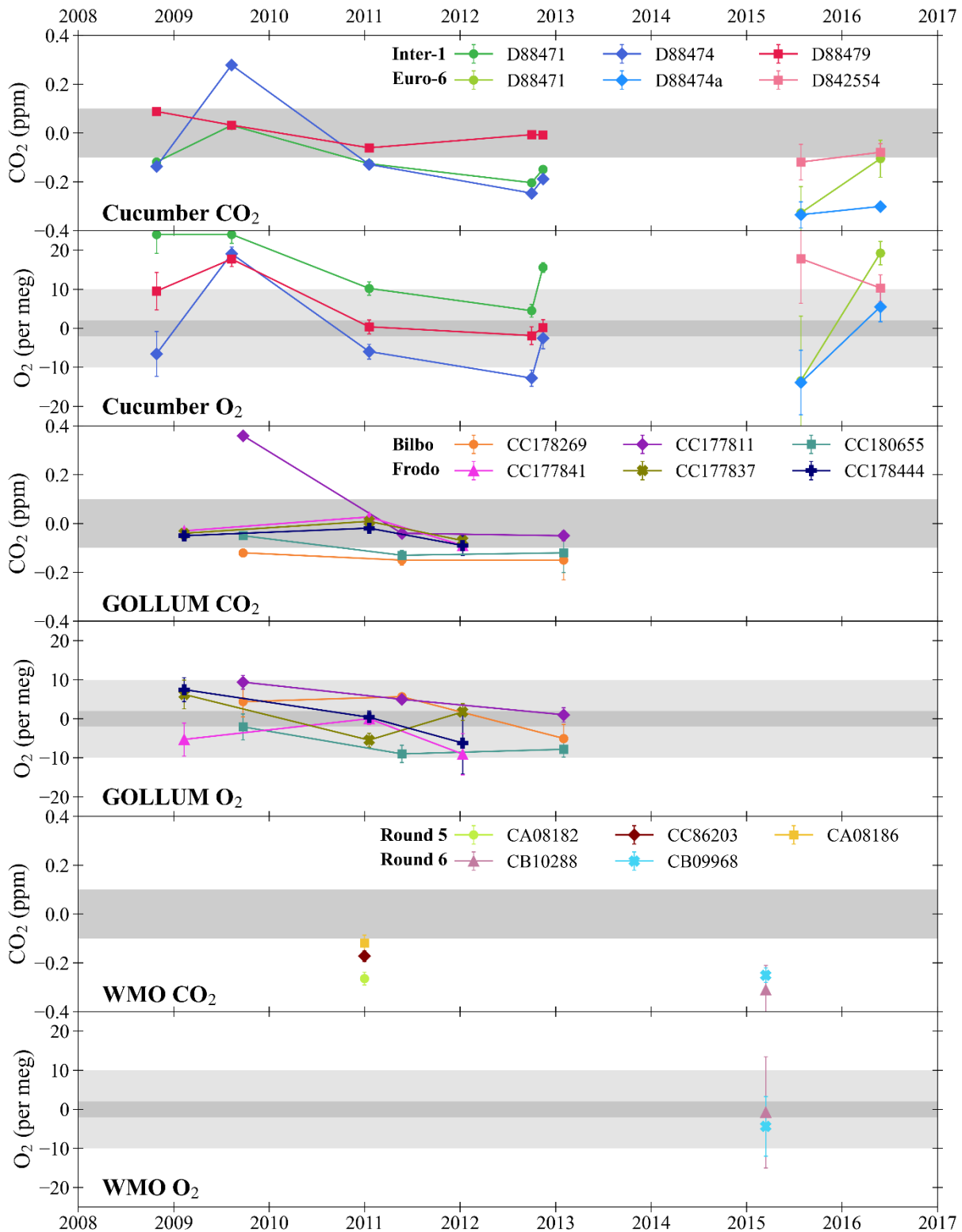
laboratories: Max Planck Institute for Biogeochemistry (MPI-BGC) for the Cucumbers; SIO for the GOLLUMs; and for the  
260 WMOs the NOAA/ESRL/GML for CO<sub>2</sub> and the National Center for Atmospheric Research (NCAR), U.S.A. for O<sub>2</sub>.

The average offsets at WAO relative to the initial central laboratory analysis, for CO<sub>2</sub> and O<sub>2</sub>, are shown in Table 1. The  
average offset for the GOLLUMs is within the WMO compatibility goal ( $\pm 0.1$  ppm) but the Cucumbers and WMOs average  
offsets are larger. The GOLLUMs and Cucumbers  $\pm 1\sigma$  standard deviations are slightly larger than  $\pm 0.1$  ppm, which implies  
265 that the WAO CO<sub>2</sub> measurements are not of sufficiently high precision to have confidence in the average offset. The WMOs  
 $\pm 1\sigma$  standard deviation is less than  $\pm 0.1$  ppm, suggesting that the WAO CO<sub>2</sub> measurements are offset from the NOAA CO<sub>2</sub>  
values, although this is based on only two sets of measurements (in 2010 and 2015). For the Cucumbers, 16 out of the 30  
sites involved in the programme, had a  $\pm 1\sigma$  standard deviation  $> \pm 0.1$  ppm (Manning et al., 2014). This demonstrates that,  
even for a gas such as CO<sub>2</sub>, where measurement precision is routinely achievable to WMO requirements, maintaining such  
270 compatibility at field stations over the long-term is still challenging owing to other gas handling and calibration effects, such  
as leaks, drifting mole fractions within cylinders, and disturbances to the ambient environment for instance room temperature  
control issues (Manning et al., 2014).

**Table 1: The average offsets at WAO relative to the initial central laboratory analysis for the three intercomparison  
275 programmes WAO participated in. These average offsets are the average of the cylinder differences and the  $\pm 1\sigma$   
standard deviation of the cylinder differences.**

Intercomparison programme	CO <sub>2</sub> (ppm)	O <sub>2</sub> (per meg)
GOLLUMs	$-0.04 \pm 0.11$	$-0.5 \pm 6.0$
Cucumbers	$-0.11 \pm 0.15$	$5.8 \pm 12.3$
WMOs	$-0.22 \pm 0.08$	$-2.6 \pm 2.6$

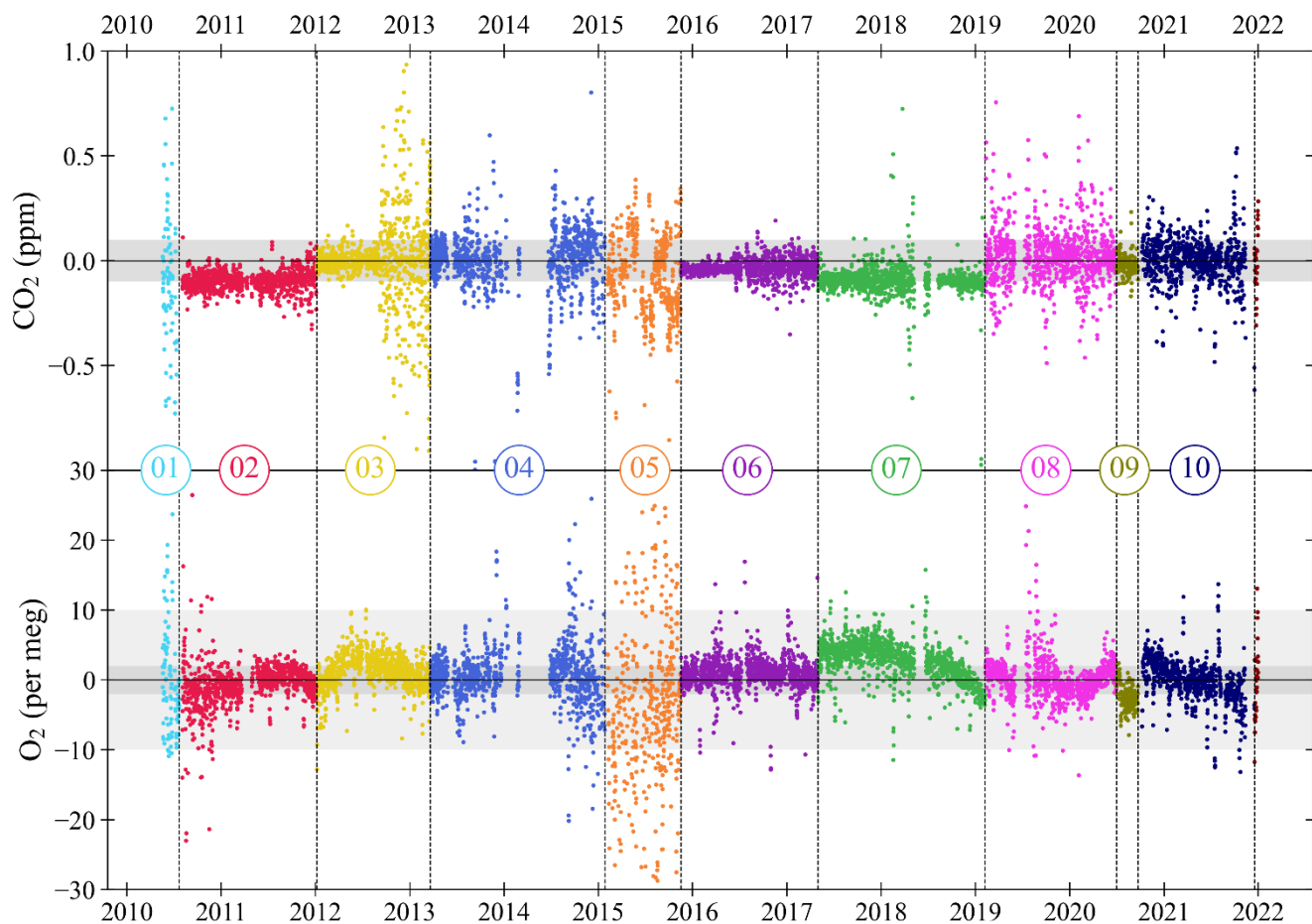
The WMO O<sub>2</sub> average offset is based on only one set of measurements of two cylinders (O<sub>2</sub> analysis was not an option with  
the WMO programme prior to Round 6). For Cucumbers none of the five sites measuring O<sub>2</sub> were within the  $\pm 2$  per meg  
280 goal and four of the five sites were within the  $\pm 10$  per meg goal (Manning et al., 2014). The measurements made in 2015  
have larger  $\pm 1\sigma$  standard deviations, since during this time the WAO O<sub>2</sub> analyser was performing less well (see Sect. 4.1).  
The GOLLUM cylinders tend to perform better than the Cucumber cylinders for O<sub>2</sub>, possibly because Cucumbers was not  
specifically focused on O<sub>2</sub> and therefore the laboratories that were not doing O<sub>2</sub> measurements may not have treated the  
cylinders in the way that is typically used for O<sub>2</sub> measurements (e.g., vertical storage and non-ideal pressure regulators) and  
285 that this could have influenced the O<sub>2</sub> mole fraction in the cylinders. Some of the intercomparison cylinders had O<sub>2</sub> and CO<sub>2</sub>  
mole fractions outside of the calibration range of our measurement system, which may have influenced the results. The  
results of the intercomparison programmes should be kept in mind when comparing WAO data to other stations.



**Figure 3: Cucumbers, GOLLUM and WMO intercomparison cylinder results for CO<sub>2</sub> and O<sub>2</sub> plotted as the WAO measurements minus the initial central laboratory measurements. The horizontal shaded grey bands represent the WMO compatibility goals:  $\pm 0.1$  ppm for CO<sub>2</sub>, and  $\pm 2$  per meg and  $\pm 10$  per meg for O<sub>2</sub>. The legends state the unique cylinder ID numbers. If the same cylinder was measured more than once throughout the programme, this is indicated by connecting symbols with lines. The error bars show the  $\pm 1\sigma$  standard deviation of the cylinder measurements and in some cases the error bars are smaller than the symbols. All programmes involve trios of cylinders, with the exception of ‘Round 6’ of the WMO programme for which there were pairs of cylinders. WAO was originally part of the ‘Inter-1’ Cucumbers rotation but later moved to the ‘Euro-6’ rotation; WAO participated in both the ‘Frodo’ and ‘Bilbo’ GOLLUM rotations concurrently; and WAO participated in ‘Round 5’ and ‘Round 6’ of the WMO Round Robins. The x-axis tick marks are at the beginning of each year.**

### 3.2 Stability of Target Tank mole fractions

The Target Tank (TT) is used to check the performance of the O<sub>2</sub> and CO<sub>2</sub> measurement system and is typically measured every 11 hours. The TT has a dual purpose: firstly, it is used to check how compatible the measurements at WAO are to the UEA CRAM Laboratory, where TT cylinders are usually analysed before being used at WAO. Secondly, the TT can also indicate the repeatability of the WAO CO<sub>2</sub> and O<sub>2</sub> analysers. Between May 2010 and December 2021, eleven TTs were measured at WAO, with a total of 8365 TT measurements, where we define a TT measurement as the mean of 7 consecutive two-minute measurements. TT measurements made when there were known technical issues have been removed, resulting in 961 O<sub>2</sub> and 878 CO<sub>2</sub> TT measurements removed, leaving 89% of the O<sub>2</sub> data and 90% of the CO<sub>2</sub> data. The TT does not pass through the inlet lines or the first stage of the drying system (Fig. 2) and therefore the repeatability of the TT measurements is not a quality control check on the whole measurement system but of the analysers, the internal calibration, and the gas handling system from the TT to the analysers.



315

**Figure 4: Target Tank (TT) measurements of CO<sub>2</sub> (top panel) and O<sub>2</sub> (bottom panel) at WAO between May 2010 and December 2021. Data are plotted as the difference from the UEA CRAM Laboratory ‘declared’ values (measured minus declared), with each cylinder plotted in a different colour and separated by vertical dashed lines. Cylinders are numbered in the order that they were used. Each TT measurement shown is the mean of 7 consecutive two-minute measurements of O<sub>2</sub> and CO<sub>2</sub>. Note that 10 and 18 measurements are off scale in the O<sub>2</sub> and CO<sub>2</sub> panels, respectively, out of more than 7,000 measurements shown for each species. The O<sub>2</sub> y-axis is not visually comparable on a mole per mole basis to the CO<sub>2</sub> y-axis. Horizontal black lines are at zero difference, and the horizontal shaded grey bands represent the WMO compatibility goals:  $\pm 0.1$  ppm for CO<sub>2</sub>,  $\pm 2$  per meg and  $\pm 10$  per meg for O<sub>2</sub>.**

325

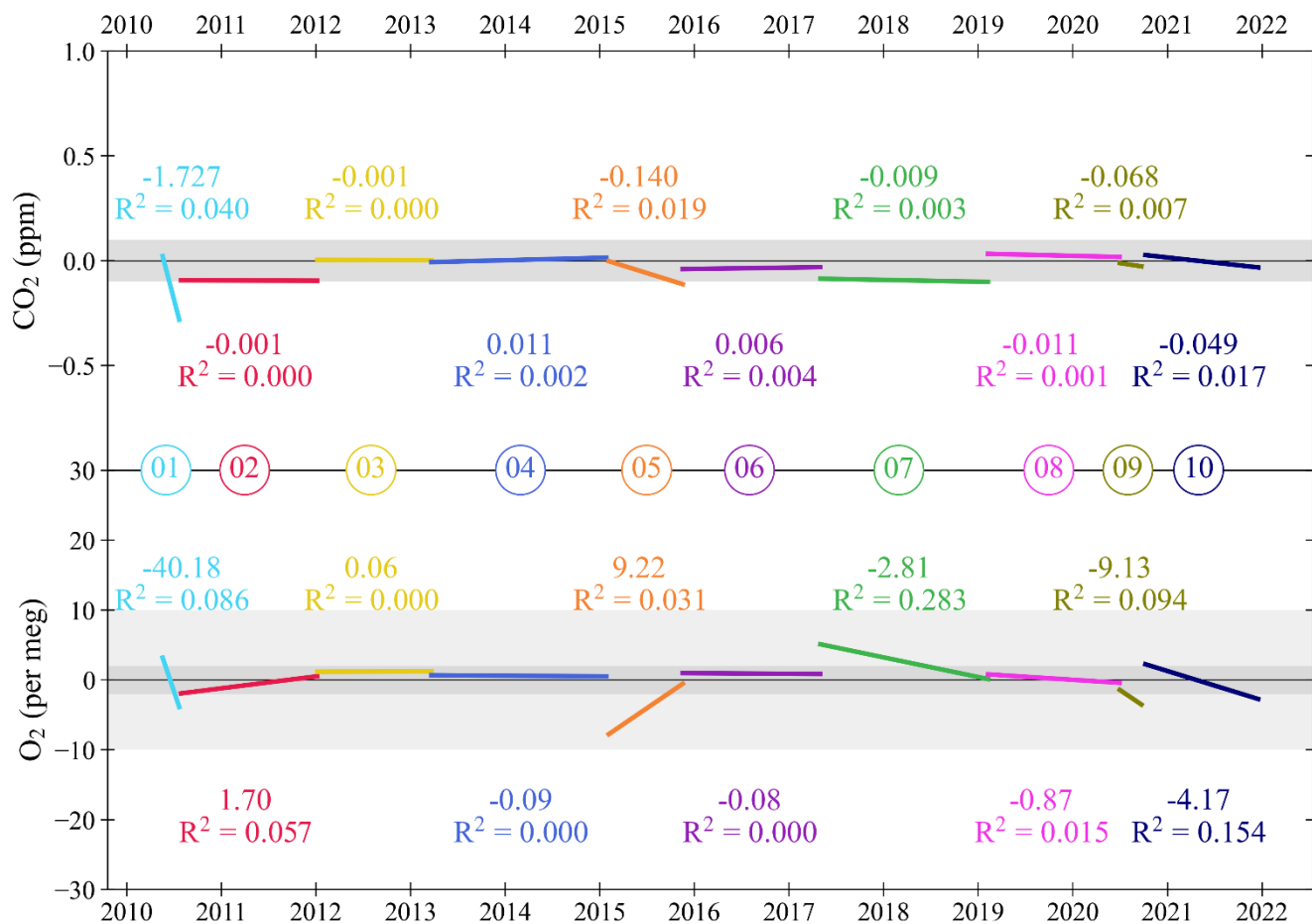


Figure 5: Linear trend lines for each Target Tank (TT), with slopes (in ppm year<sup>-1</sup> and per meg year<sup>-1</sup>, for CO<sub>2</sub> and O<sub>2</sub>, respectively) and R<sup>2</sup> of the Pearson correlation reported for each TT, for CO<sub>2</sub> (top panel) and O<sub>2</sub> (bottom panel) at WAO between May 2010 and December 2021. As in Fig. 4, cylinders are numbered in the order that they were used, horizontal black lines are at zero difference between WAO and UEA, and the horizontal shaded grey bands represent the WMO compatibility goals: ±0.1 ppm for CO<sub>2</sub>, ±2 per meg and ±10 per meg for O<sub>2</sub>. The 11<sup>th</sup> TT is not shown as the time period that it was in use is too short for meaningful results.

330

335 The CO<sub>2</sub> and O<sub>2</sub> TT results as differences from the UEA CRAM Laboratory declared values are shown in Fig. 4, and in Fig. 5, for each TT cylinder, we show the linear trend lines of the TT differences with their slope and Pearson correlation (R<sup>2</sup>). Ideally, both the slope of the linear trend line and the R<sup>2</sup> for each cylinder would be zero. Anything other than zero could indicate a drift in the calibration scales defined by the measurement system at WAO or a drift in the mole fractions in the TT itself.

340

The WAO CO<sub>2</sub> measurements for TT02 and TT07 are both approximately 0.1 ppm lower than the UEA CRAM Laboratory declared values (Fig. 5). For CO<sub>2</sub> TT01 and TT05 both have decreasing trends (Fig. 5), however, these TTs exhibited more variable measurements than the other TTs (Fig. 4), so it is possible that these trends are not robust. All the TTs, except TT01, have linear trend lines with slopes that are less than  $\pm 0.15$  ppm year<sup>-1</sup> and  $R^2 < 0.02$ , suggesting that there is no significant drift in CO<sub>2</sub> mole fractions. In September 2012 the TT CO<sub>2</sub> measurements were more variable due to decreased performance of the CO<sub>2</sub> analyser (Fig. 4).

For O<sub>2</sub>, there are 5 cylinders that have a slope greater than  $\pm 2$  per meg year<sup>-1</sup> (Fig. 5). TT01 has a decreasing trend and TT05 has an increasing trend, however, these TTs exhibited more variable measurements than the other TTs (Fig. 4), which may have influenced the perceived drifts in their values and they both have  $R^2 < 0.09$ . TT01 is a 20 L cylinder (all other TTs are between 40-50 L), and there is evidence that smaller cylinders have less stable mole fractions (Pickers 2016) and this cylinder was used, with no conditioning, immediately after it had been evacuated. TT05 was the TT being used in 2015 when the Oxzilla precision was poor. TT01 and TT05 are also the cylinders with the poorest compatibility and repeatability, excluding the final cylinder (Table 2). There are three remaining cylinders that show evidence of drift and have  $R^2 > 0.09$ . TT09 and TT10 both have decreasing O<sub>2</sub> mole fractions during the whole of their run, whereas TT07 O<sub>2</sub> mole fractions only start decreasing during the last 4 months of its run (Fig. 4). For these three cylinders the Zero Tank (ZT) O<sub>2</sub> measurements for the same time periods were investigated (see Sect. 3.3). The ZT is used to adjust the CO<sub>2</sub> calibration c-term but O<sub>2</sub> is also measured during these runs, because the analysers are connected in series. Therefore, if the ZT O<sub>2</sub> is also drifting then that would indicate that the measurement calibration is drifting, whereas if it is not drifting that would indicate that it is the mole fraction in the TT itself which is drifting. For TT07, TT09 and TT10 the ZT O<sub>2</sub> mole fractions were not drifting at the same time and therefore the drift is most likely caused by the TTs themselves.

**Table 2: Repeatability and compatibility of the WAO O<sub>2</sub> and CO<sub>2</sub> measurement system indicated by the Target Tanks (TT). Note, we report air measurements between May 2010 and December 2021, so we investigated TT measurements for the same time period, this means the first and last cylinders do not include the whole time period when they were used.**

Target Tank	Cylinder ID	Time period	No. of TT runs	Compatibility		Repeatability <sup>b</sup>	
				O <sub>2</sub> (per meg)	CO <sub>2</sub> (ppm)	O <sub>2</sub> (per meg)	CO <sub>2</sub> (ppm)
01	D88528	May 2010 - Jul 2010	129	— $\pm 7.5^a$	$-0.087 \pm 0.369$	$\pm 5.9 \pm 4.1$	$\pm 0.005 \pm 0.003$
02	D255734	Jul 2010 - Jan 2012	1050	$-0.7 \pm 3.1$	$-0.095 \pm 0.071$	$\pm 2.6 \pm 4.3$	$\pm 0.005 \pm 0.003$
03	D743657	Jan 2012 - Mar 2013	906	$1.2 \pm 2.4$	$0.003 \pm 0.216$	$\pm 1.7 \pm 1.1$	$\pm 0.004 \pm 0.002$
04	D743656	Mar 2013 - Jan 2015	1202	$0.6 \pm 3.9$	$0.003 \pm 0.151$	$\pm 3.3 \pm 5.5$	$\pm 0.005 \pm 0.003$
05	D273555	Feb 2015 - Nov 2015	669	$-3.6 \pm 11.4$	$-0.065 \pm 0.228$	$\pm 10.5 \pm 10.6$	$\pm 0.006 \pm 0.003$
06	D801298	Nov 2015 - May 2017	1212	$0.9 \pm 2.3$	$-0.036 \pm 0.040$	$\pm 2.3 \pm 2.4$	$\pm 0.003 \pm 0.003$
07	D073406	May 2017 - Feb 2019	1259	$2.8 \pm 2.7$	$-0.093 \pm 0.076$	$\pm 2.2 \pm 1.9$	$\pm 0.005 \pm 0.043$

<b>08</b>	D743656	Feb 2019 - Jun 2020	982	$0.2 \pm 3.0$	$0.025 \pm 0.133$	$\pm 2.8 \pm 3.7$	$\pm 0.008 \pm 0.043$
<b>09</b>	ND29112	Jun 2020 - Sep 2020	152	$-2.5 \pm 1.8$	$-0.019 \pm 0.050$	$\pm 3.0 \pm 1.6$	$\pm 0.004 \pm 0.002$
<b>10</b>	D089506	Oct 2020 - Dec 2021	773	$— \pm 3.3^a$	$— \pm 0.119^a$	$\pm 2.4 \pm 2.4$	$\pm 0.004 \pm 0.002$
<b>11</b>	D258964	Dec 2021 - Dec 2021	30	$— \pm 5.2^a$	$— \pm 0.144^a$	$\pm 9.1 \pm 4.6$	$\pm 0.004 \pm 0.002$
<b>Total</b>		<b>May 2010 - Dec 2021</b>	<b>8365</b>	<b><math>0.5 \pm 4.4</math></b>	<b><math>-0.037 \pm 0.146</math></b>	<b><math>\pm 3.0 \pm 4.6</math></b>	<b><math>\pm 0.005 \pm 0.023</math></b>

<sup>a</sup>These cylinders were not measured at the UEA CRAM Laboratory, so the compatibility cannot be calculated, but the average of the WAO measurements was used to calculate  $\pm 1\sigma$  standard deviation for each cylinder.

370 <sup>b</sup>Repeatability was calculated using the same method as Kozlova and Manning (2009) and Pickers et al. (2017), from the mean  $\pm 1\sigma$  standard deviations of the average of two consecutive 2-minute TT measurements. TT repeatability is reported with  $\pm 1\sigma$  uncertainty, which recognizes the fact that the measurement system repeatability varies over time.

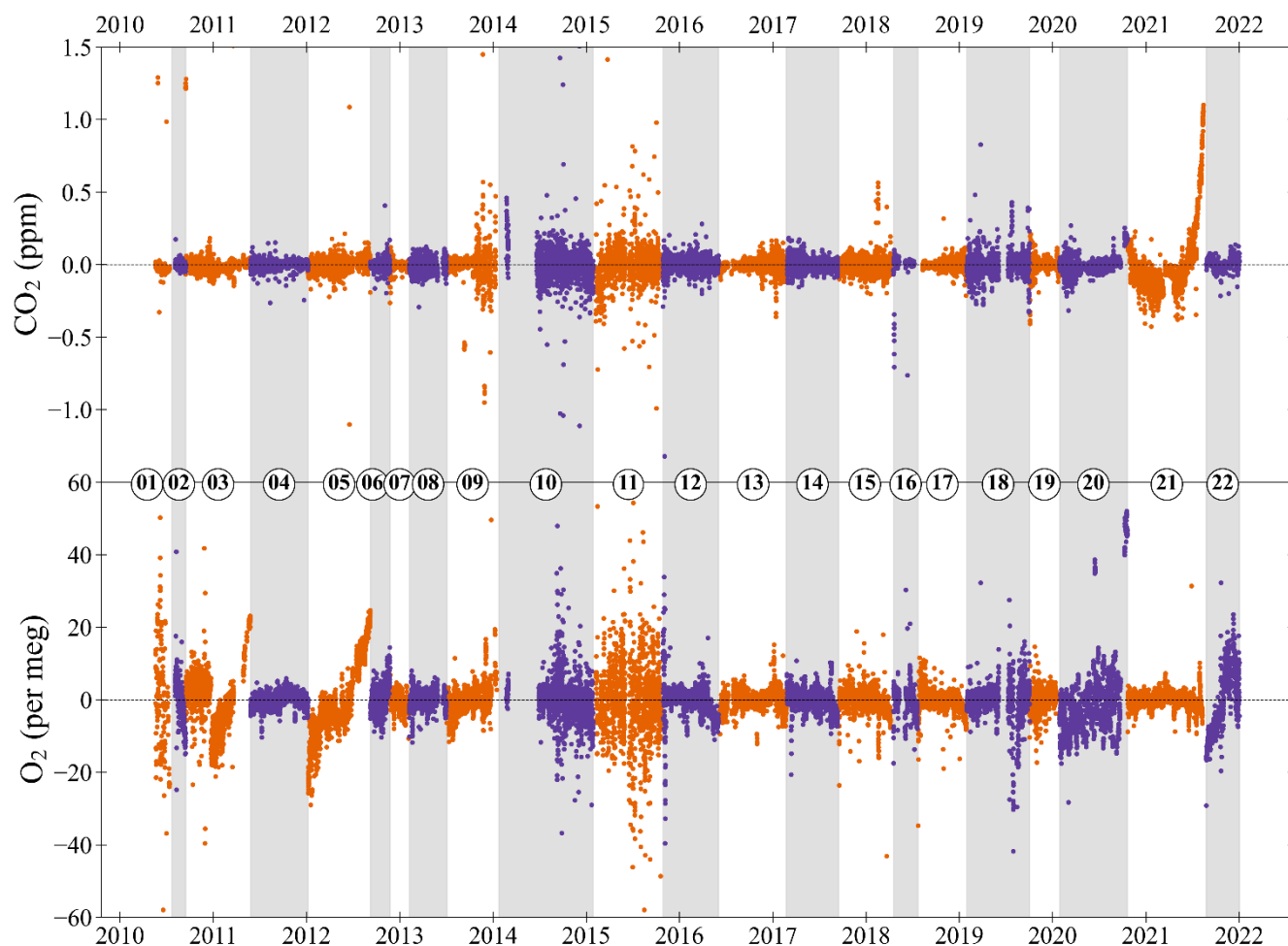
Table 2 shows the compatibility of the measurement system which is the average of the differences between the TT measured values and UEA CRAM Laboratory declared values and the  $\pm 1\sigma$  standard deviation. The UEA CRAM Laboratory calibration scales are traceable to the WMO CO<sub>2</sub> X2019 scale and the SIO O<sub>2</sub> scale (see Sect. 2.2). The overall compatibility for CO<sub>2</sub> is  $-0.037 \pm 0.146$  ppm which is within the WMO compatibility goal ( $\pm 0.1$  ppm), although the  $\pm 1\sigma$  standard deviation is slightly larger than the compatibility goal. The TT CO<sub>2</sub> compatibility is  $< \pm 0.1$  ppm for 67% of the measurements. The overall compatibility for O<sub>2</sub> is  $0.5 \pm 4.4$  per meg which is within the compatibility goal of  $\pm 2$  per meg, although the  $\pm 1\sigma$  standard deviation is larger than the compatibility goal. The TT O<sub>2</sub> compatibility is  $< \pm 2$  per meg for 54%,  $< \pm 5$  per meg for 375 87% and  $< \pm 10$  per meg for 96% of the measurements. The average overall compatibility is smaller than the  $\pm 1\sigma$  standard deviation for both O<sub>2</sub> and CO<sub>2</sub>, meaning there is not a statistically significant difference between the WAO measurement system and the UEA CRAM Laboratory.

Table 2 shows the repeatability of the TTs for each cylinder. Each TT data point is the mean of 7 consecutive 2-minute averages. We calculate the mean of  $\pm 1\sigma$  standard deviations for every two consecutive 2-minute averages for each TT run. This average of the  $\pm 1\sigma$  standard deviation for each TT run is then averaged together for each cylinder and for the whole time period to determine the repeatability. The TT repeatability is reported with the  $\pm 1\sigma$  standard deviations of the averages for each TT run. Ideally, the repeatability of a measurement system should be no more than half the compatibility goal, i.e.  $\pm 0.05$  ppm for CO<sub>2</sub> and  $\pm 1$  per meg /  $\pm 5$  per meg for O<sub>2</sub>.

390 Overall, the repeatability of the measurement system was  $\pm 0.005 \pm 0.023$  ppm for CO<sub>2</sub> which is an order of magnitude smaller than the repeatability goal. For O<sub>2</sub> the overall repeatability was  $\pm 3.0 \pm 4.6$  per meg which is greater than the  $\pm 1$  per meg ideal repeatability goal but is within the extended repeatability goal of  $\pm 5$  per meg. The CO<sub>2</sub> repeatability is smaller than the CO<sub>2</sub> compatibility,  $-0.037 \pm 0.146$  ppm, whereas the O<sub>2</sub> repeatability is larger than the O<sub>2</sub> compatibility,  $0.5 \pm 4.4$  per meg, because O<sub>2</sub> repeatability is much more technically challenging than CO<sub>2</sub> repeatability. The  $\pm 1\sigma$  standard deviations for 395 the O<sub>2</sub> repeatability and the O<sub>2</sub> compatibility are similar,  $\pm 4.6$  per meg and  $\pm 4.4$  per meg, respectively.



### 3.3 Stability of Zero Tank mole fractions



400 **Figure 6: The CO<sub>2</sub> (top panel) and O<sub>2</sub> (bottom panel) Zero Tank (ZT) mole fractions as the difference from the**  
**average mole fraction (measurement minus average) for each ZT at WAO between May 2010 and December 2021.**  
**The ZTs alternate between orange and purple, and alternate shaded grey bands, to show when the ZT changes. On**  
**the y-axes ‘zero’ is the average mole fraction for each ZT. The O<sub>2</sub> y-axis is not visually comparable on a mole per**  
**mole basis to the CO<sub>2</sub> y-axis. Cylinders are numbered in the order that they were used. Note that 7 and 7**  
405 **measurements are off scale in the O<sub>2</sub> and CO<sub>2</sub> panels, respectively, out of more than 20,000 measurements shown for**  
**each species.**

The Zero Tanks (ZTs) are used to adjust the intercept of the CO<sub>2</sub> calibration curve in-between calibrations to correct for baseline drift in the CO<sub>2</sub> analyser response caused by changes in temperature (see Sect. 2.2). The O<sub>2</sub> in the ZT is also measured but is not used as part of the calibration. The ZT mole fractions are not measured at the UEA before being sent to  
410 WAO and therefore the ZTs cannot be used to assess the compatibility of the WAO system with the UEA CRAM

Laboratory. The ZTs can be used to access the O<sub>2</sub> and CO<sub>2</sub> repeatability of the measurement system in the same way as the TTs (see Sect. 3.2).

415 The ZT is typically measured every 3 to 4 hours and between May 2010 and December 2021 there were 26,359 ZT measurements. Measurements made when the system was experiencing known technical issues have been removed: this was 2,672 measurements for CO<sub>2</sub> and 2,866 measurements for O<sub>2</sub>, leaving 90% of the CO<sub>2</sub> ZT data and 88% of the O<sub>2</sub> ZT data. The ZT mole fractions were between 354 ppm and 429 ppm for CO<sub>2</sub>. Excluding ZT20, which had an O<sub>2</sub> value of 294 per meg, the ZT O<sub>2</sub> values ranged from -478 per meg to -1363 per meg.

420 The O<sub>2</sub> and CO<sub>2</sub> ZT mole fractions are shown in Fig. 6 as the difference from the average mole fraction of each cylinder. Table 3 shows the average ZT repeatability calculated in the same way as the TT repeatability (see Sect. 3.2) and the drift in the ZT O<sub>2</sub> mole fractions over time. We can see that there were time periods when the system was more stable and when it was less stable. This in general is similar to the TTs, for example, the ZTs also show that 2015 had very noisy oxygen measurements due to poor Oxzilla performance.

425 ZT03, ZT05 and ZT22 have O<sub>2</sub> mole fractions that drift upwards over time because they were not always stored horizontally (Fig. 6). ZT03 was originally positioned horizontally but then in December 2010 it was moved out of the Blue Box and was positioned vertically, to make space for other cylinders, and this caused the ZT O<sub>2</sub> mole fractions to start drifting upwards. ZT05 was positioned vertically for the whole of its run so its O<sub>2</sub> mole fractions are drifting upwards the whole time. ZT22  
430 was original positioned vertically and then in November 2021 it was put horizontally, which is why the measurements for ZT22 drift upwards at the beginning and then stop. The ZT O<sub>2</sub> measurement is not used in the calibration so these drifts do not affect the measurement system performance. ZT02 has O<sub>2</sub> mole fractions that drift downwards over time. The TTs O<sub>2</sub> mole fractions were not drifting at the same time so it is likely that the ZT itself was drifting, not the measurement system. ZT01 shows a decreasing O<sub>2</sub> linear trend line, however, during this time the measurements were noisy, so we have low  
435 confidence in the slope of the trend.

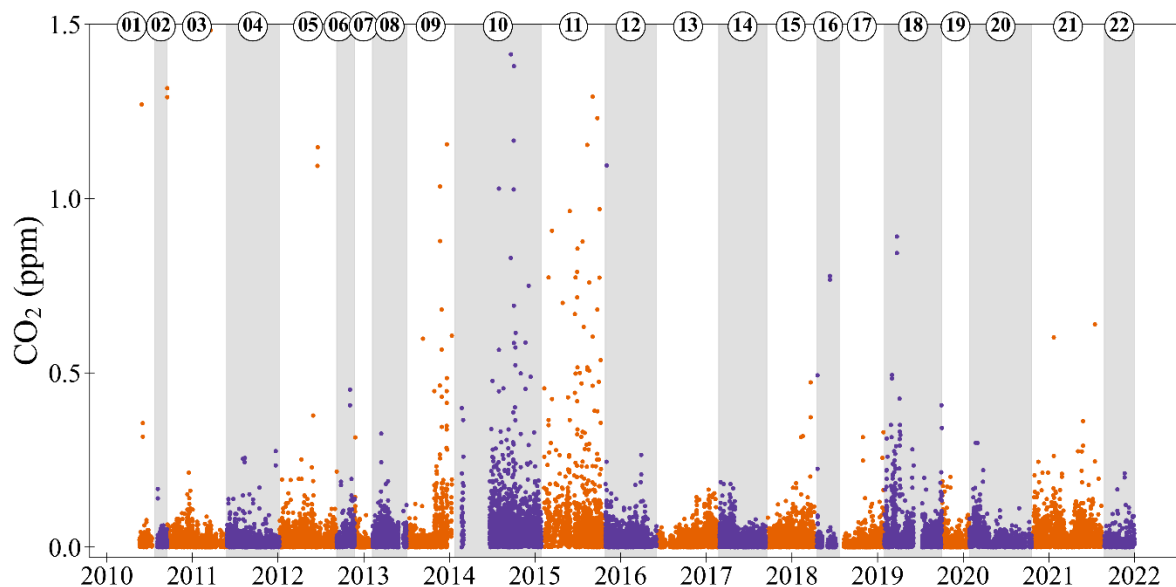
The CO<sub>2</sub> mole fraction of ZT21 drifts upwards at the end because the internal walls of this cylinder were cleaned using ‘sand blasting’ and it was then measured at WAO to investigate what effect this would have on the stability of the O<sub>2</sub> and CO<sub>2</sub>. It was found the CO<sub>2</sub> mole fractions in the cylinder drift upwards at lower pressures, but there was no noticeable effect on O<sub>2</sub>.  
440 The ZT is used to recalibrate the intercept every 3 to 4 hours, and the within-cylinder drift in this time period should be small enough to not affect the measurements. In order to be confident that there is no effect on the measurements, ‘sandblasted’ cylinders should not be used as ZTs once the internal pressure drops below 15 bar.

If we exclude the 3 ZTs that were vertical, the average CO<sub>2</sub> and O<sub>2</sub> repeatability based on the ZTs is  $\pm 0.005 \pm 0.019$  ppm and  $\pm 3.1 \pm 5.3$  per meg, respectively, which is similar to the CO<sub>2</sub> and O<sub>2</sub> repeatability based on the TTs ( $\pm 0.005 \pm 0.023$  ppm and  $\pm 3.0 \pm 4.6$  per meg, see Sect. 3.2). These results increase our confidence, that this is the repeatability of the measurement system.

**Table 3: Repeatability of the Zero Tank (ZT) O<sub>2</sub> and CO<sub>2</sub> measurements at WAO. We have calculated the O<sub>2</sub> linear trend line for the time period each ZT was used and report here the slope and R<sup>2</sup> of the Pearson correlation. Note, we report air measurements between May 2010 and December 2021, so we investigated ZT measurements for the same time period, this means the first and last cylinders do not include the whole time period when they were used.**

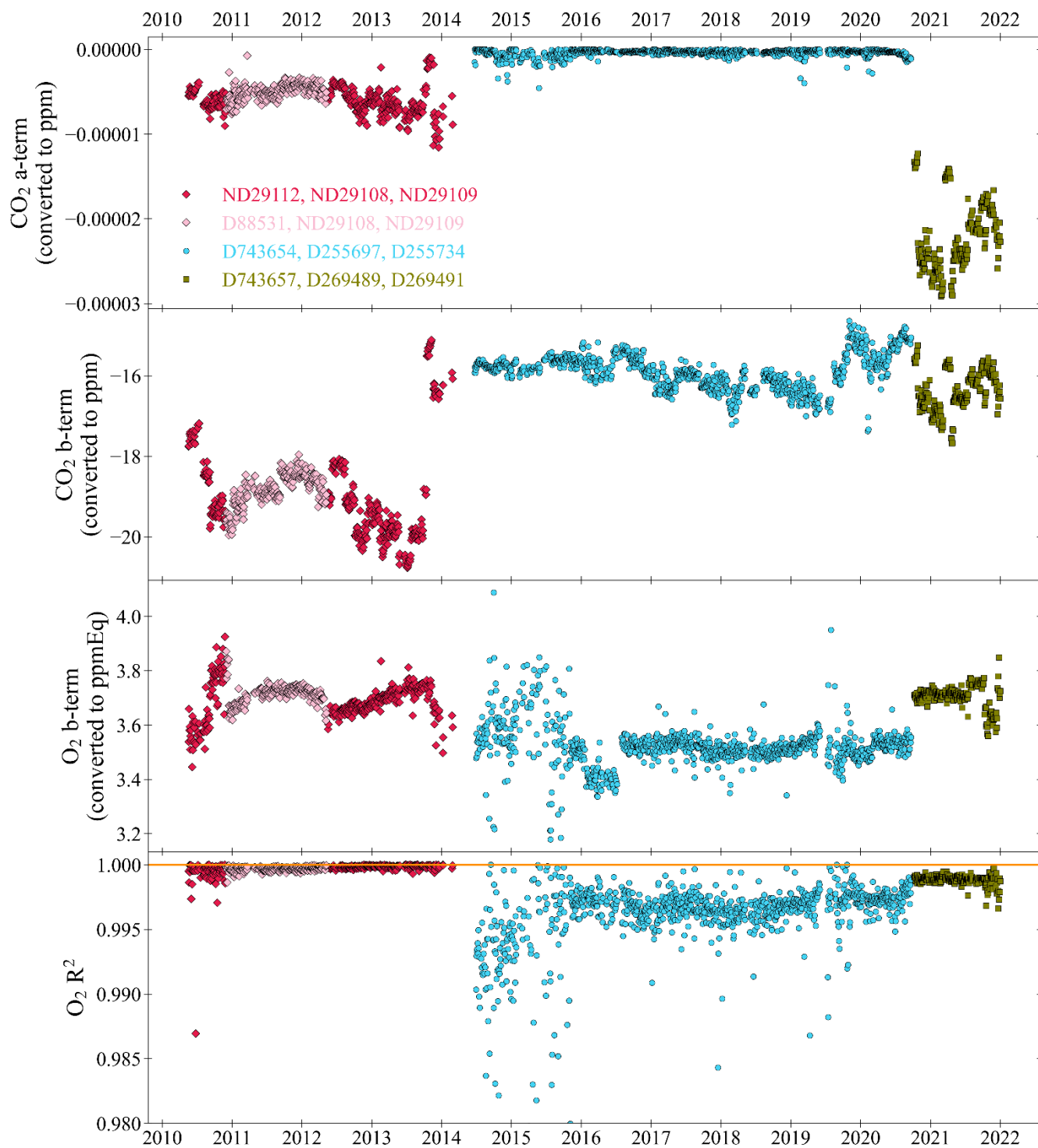
Zero Tank	Time period	No. of ZT runs	O <sub>2</sub> slope (per meg year <sup>-1</sup> )	O <sub>2</sub> R <sup>2</sup>	O <sub>2</sub> repeatability (per meg)	CO <sub>2</sub> repeatability (ppm)
01	May 2010 - Jul 2010	220	-127.5	0.099	$\pm 7.0 \pm 6.7$	$\pm 0.004 \pm 0.002$
02	Jul 2010 - Sep 2010	306	-150.0	0.373	$\pm 5.6 \pm 9.5$	$\pm 0.005 \pm 0.003$
03	Sep 2010 - May 2011	1407	1.3	0.001	$\pm 3.7 \pm 5.0$	$\pm 0.006 \pm 0.023$
04	May 2011 - Jan 2012	1276	3.0	0.076	$\pm 1.5 \pm 0.8$	$\pm 0.005 \pm 0.003$
05	Jan 2012 - Sep 2012	1323	46.4	0.791	$\pm 1.7 \pm 0.8$	$\pm 0.005 \pm 0.003$
06	Sep 2012 - Nov 2012	453	29.8	0.199	$\pm 1.8 \pm 0.9$	$\pm 0.003 \pm 0.002$
07	Nov 2012 - Feb 2013	948	-16.2	0.149	$\pm 1.8 \pm 0.9$	$\pm 0.003 \pm 0.001$
08	Feb 2013 - Jul 2013	1040	1.2	0.003	$\pm 1.8 \pm 1.3$	$\pm 0.004 \pm 0.002$
09	Jul 2013 - Jan 2014	1241	13.3	0.235	$\pm 2.3 \pm 1.7$	$\pm 0.006 \pm 0.031$
10	Jan 2014 - Jan 2015	1760	-7.1	0.058	$\pm 4.9 \pm 8.3$	$\pm 0.005 \pm 0.005$
11	Feb 2015 - Oct 2015	1903	-0.9	0.000	$\pm 10.8 \pm 12.3$	$\pm 0.006 \pm 0.003$
12	Oct 2015 - Jun 2016	1711	-7.7	0.089	$\pm 3.4 \pm 7.2$	$\pm 0.003 \pm 0.001$
13	Jun 2016 - Feb 2017	1624	1.1	0.007	$\pm 2.2 \pm 1.7$	$\pm 0.004 \pm 0.002$
14	Feb 2017 - Sep 2017	1588	-6.6	0.155	$\pm 2.2 \pm 1.7$	$\pm 0.003 \pm 0.002$
15	Sep 2017 - Dec 2017	1555	-5.7	0.086	$\pm 2.5 \pm 3.2$	$\pm 0.006 \pm 0.029$
16	Jun 2018 - Jul 2018	636	-10.2	0.047	$\pm 2.5 \pm 2.8$	$\pm 0.006 \pm 0.054$
17	Jul 2018 - Jan 2019	1401	-9.2	0.211	$\pm 2.0 \pm 2.0$	$\pm 0.003 \pm 0.009$
18	Jan 2019 - Oct 2019	1502	-0.1	0.000	$\pm 3.5 \pm 5.3$	$\pm 0.010 \pm 0.049$
19	Oct 2019 - Jan 2020	861	10.6	0.092	$\pm 3.0 \pm 3.2$	$\pm 0.004 \pm 0.002$
20	Jan 2020 - Oct 2020	1434	32.9	0.295	$\pm 2.2 \pm 1.5$	$\pm 0.003 \pm 0.001$
21	Oct 2020 - Aug 2021	1575	-0.6	0.005	$\pm 1.8 \pm 1.9$	$\pm 0.003 \pm 0.002$
22	Aug 2021 - Dec 2021	595	65.8	0.566	$\pm 5.7 \pm 5.2$	$\pm 0.004 \pm 0.013$

Figure 7 shows the absolute difference in the CO<sub>2</sub> mole fractions between the current ZT and the previous ZT (measured 3 to 4 hours earlier). The ZT is used to adjust the intercept of the CO<sub>2</sub> calibration curve in-between calibrations and it is assumed that the difference between the current ZT and the previous ZT is caused by drift in the baseline response of the CO<sub>2</sub> analyser. The average absolute difference in CO<sub>2</sub> is 0.03 ppm which is less than the  $\pm 0.05$  ppm repeatability goal, overall, 85% of the differences are  $< 0.05$  ppm. These differences suggest that the ZT is measured regularly enough that the drift in the baseline is kept small enough to not substantially effect the measurements.



465 **Figure 7: Absolute differences between the ZT CO<sub>2</sub> mole fraction and the previous ZT CO<sub>2</sub> mole fraction (current minus previous; typically measured 3 to 4 hours earlier). As in Fig. 6, the orange and purple alternating colours, and shaded grey bands, show when the ZT changes, and cylinders are numbered in the order that they were used. Note that 13 measurements are off scale, out of more than 20,000 measurements shown.**

### 3.4 Stability of calibration coefficients



480 **Figure 8: The CO<sub>2</sub> a and b terms, from the CO<sub>2</sub> calibration quadratic equation,  $y = ax^2 + bx + c$ , and the O<sub>2</sub> b-term and O<sub>2</sub> R<sup>2</sup>, from the O<sub>2</sub> calibration linear equation,  $y = bx + c$ , of the WSS calibrations at WAO between May 2010 and December 2021. The colours and symbols indicate different WSS sets of cylinders and 1.0 on the O<sub>2</sub> R<sup>2</sup> panel is indicated by a horizontal orange line. The c-terms for each species, equivalent to the WT mole fractions, are shown in Fig. 10. Note that 5 measurements are off scale in the O<sub>2</sub> R<sup>2</sup> panel, out of more than 1700 measurements shown.**

485

Three Working Secondary Standard (WSS) cylinders are used to calibrate the measurement system every 47 hours (see Sect. 2.2). The c-terms of these equations are discussed in Sect. 3.5. In this section we discuss the a-term and b-terms of the CO<sub>2</sub> and O<sub>2</sub> calibrations. We also discuss the Pearson's correlation coefficient, R<sup>2</sup>, of the measured O<sub>2</sub> mole fractions. Each of these parameters is shown in Fig. 8 as a time series. As three WSSes are used, and the CO<sub>2</sub> response is a quadratic equation the CO<sub>2</sub> R<sup>2</sup> is always exactly 1.0. The Ultramat and Oxzilla report uncalibrated raw values of CO<sub>2</sub> and O<sub>2</sub> in units of vpm and %, respectively. The calibration coefficient units were converted from ppm/vpm to ppm for CO<sub>2</sub> and ppmEq/% to ppmEq for O<sub>2</sub>. This conversion was done by multiplying the coefficients by the average analyser response of WSSes between June 2014 and September 2020: D255734 for CO<sub>2</sub> (399.37 ppm, -18.77 vpm) and D743654 for O<sub>2</sub> (-709.0 per meg, -122.7 ppmEq, 0.00072%). At WAO between May 2010 and December 2021, three sets of WSS cylinders were used (Table 4). In total, there were 2038 calibrations, calibrations when the system was experiencing known technical issues were excluded, this was 277 for CO<sub>2</sub> and 293 for O<sub>2</sub>, so this leaves 86% of the data.

If the calibration coefficient terms drift over time, this could indicate a drift in the analyser sensitivity or a drift in the calibration scale. A drift in the sensitivity of the analyser, may impact the precision and the accuracy. By calibrating frequently, the accuracy of the measurement should be less susceptible to drift in the analysers' sensitivity. However, a deterioration in the precision cannot be corrected for. A drift in the calibration scale may be caused by internal drift of the mole fractions in the calibration cylinders. This can only be determined by reanalysing the calibration cylinders after they have finished being measured at WAO. However, due to practical constraints this is not done on the calibration cylinders used at WAO. While, we cannot know if the calibration cylinders have drifted over time, if they had drifted we would expect to see a noticeable step change in the air measurements when the calibration cylinders are changed, and/or visible drift in the TT measurements (depending on the rate of the drift). In addition, we would expect to see evidence of long-term drift in our intercomparison programme results.

There are sometimes step changes in the calibration coefficients when the WSS cylinders are changed as the cylinders have different mole fractions in them. There are also sometimes step changes when the cylinders are not changed. These step changes are most likely caused by changes in the analyser response as it is very unlikely that the mole fractions in the cylinders would suddenly change very quickly and then stop. For example, the CO<sub>2</sub> b-term has a step change in October 2013, when the Ultramat analyser was changed.

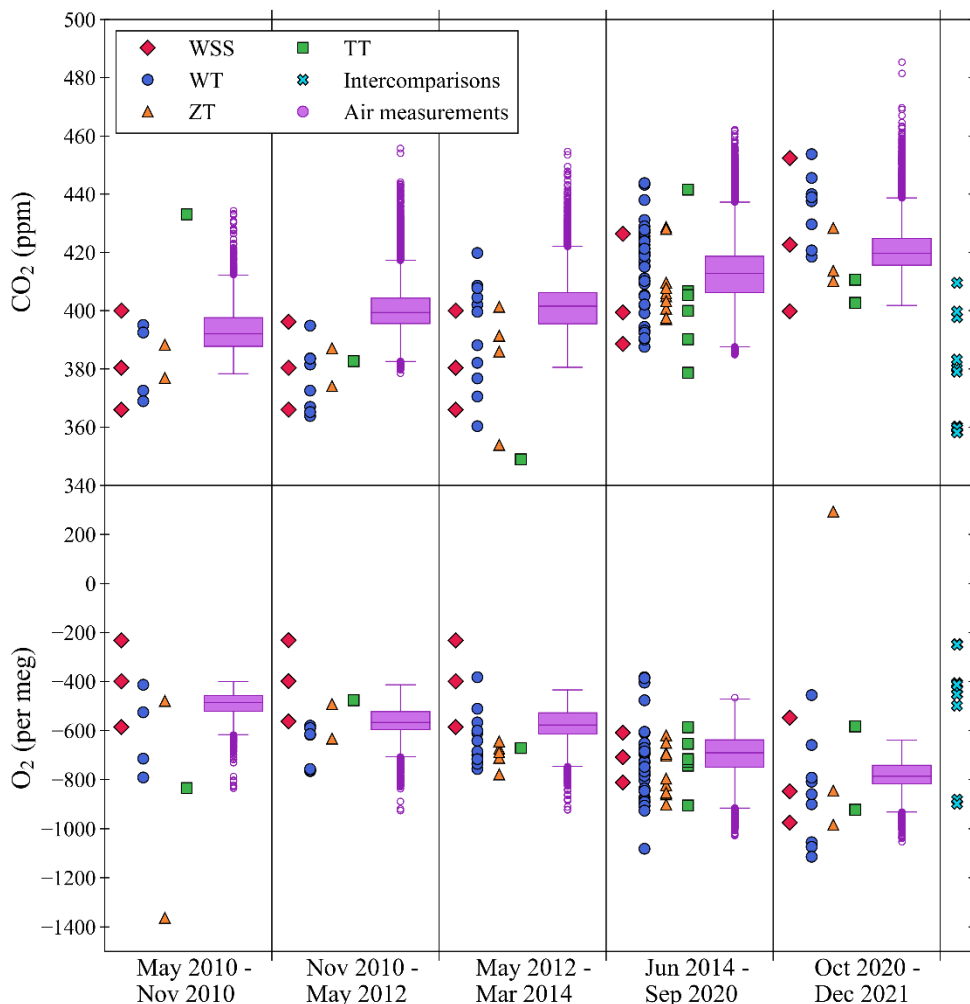
515 The drift in the calibration coefficients was calculated using the slope in the linear trend line for each of the five time periods  
WSSes were measured for (Table 4). The CO<sub>2</sub> a-term is small and therefore the drift in the CO<sub>2</sub> a-term is also small, less  
than  $\pm 4$  ppt year<sup>-1</sup>, indicating that the CO<sub>2</sub> analysers at WAO have a very linear response. There is a large drift between May-  
2010 and Nov-2010, the first time ND29112 (Set 1) was used, for both the CO<sub>2</sub> b-term (4.66 ppm year<sup>-1</sup>) and O<sub>2</sub> b-term (-3.6  
520 per meg year<sup>-1</sup>). The smallest drift in the CO<sub>2</sub> b-term, -0.01 ppm year<sup>-1</sup>, occurs between Jun-2014 and Sep-2020 when Set 2  
of the WSSes is used. For the O<sub>2</sub> b-term, three out of the five periods have drift that is less than  $\pm 0.3$  per meg year<sup>-1</sup>. The  
largest drift in the O<sub>2</sub> b-term, 4.1 per meg year<sup>-1</sup>, occurs when Set 2 of the WSSes is used, but this is strongly influenced by  
the calibrations in 2014 and 2015 when there were issues with the measurement system. If the slope is recalculated starting  
from Jan-2016 instead, then the drift decreases to -1.9 per meg year<sup>-1</sup>. The O<sub>2</sub> and CO<sub>2</sub> mole fractions in the TTs and ZTs  
were not drifting at the same time (see Sects. 3.2 and 3.3), therefore indicating that it is not the cylinders that are drifting, but  
525 the analyser sensitivity. The analyser sensitivity drifting should not affect the measurement results so long as the analyser  
response drift is not significant within a 47-hour time period.

**Table 4: All the cylinders that were used as WSSes at WAO. Three sets of WSS cylinders were used (Set 1: May 2010 - March 2014, Set 2: June 2014 - September 2020, Set 3: October 2020 - December 2021). In November 2010, ND29112 was replaced with D88531, then in May 2012 was changed back to ND29112. For each calibration parameter, we report the slope and R<sup>2</sup> of the linear trend line. The slopes of the CO<sub>2</sub> a-terms are in units of ppt year<sup>-1</sup> (parts per trillion per year). The slopes of the O<sub>2</sub> b-terms were multiplied by 6.05 to convert them from ppmEq year<sup>-1</sup> to per meg year<sup>-1</sup>.**

Set	Cylinder IDs	Start Date	End Date	CO <sub>2</sub> a-term		CO <sub>2</sub> b-term		O <sub>2</sub> b-term	
				Slope (ppt year <sup>-1</sup> )	R <sup>2</sup>	Slope (ppm year <sup>-1</sup> )	R <sup>2</sup>	Slope (per meg year <sup>-1</sup> )	R <sup>2</sup>
1	ND29112	May-2010	Nov-2010	-3.27	0.29	-4.66	0.82	-3.6	0.68
	ND29108								
	ND29109								
1	D88531	Nov-2010	May-2012	0.92	0.19	0.62	0.44	-0.1	0.03
	ND29108								
	ND29109								
1	ND29112	May-2012	Mar-2014	-1.09	0.08	0.79	0.07	-0.3	0.20
	ND29108								
	ND29109								
2	D743654	Jun-2014	Sep-2020	0.04	0.02	-0.01	0.00	4.1	0.20
	D255697								
	D255734								
3	D743657	Oct-2020	Dec-2021	2.54	0.05	0.42	0.09	-0.2	0.06
	D269489								
	D269491								

535 The O<sub>2</sub> R<sub>2</sub> varies over time. It is highest and most stable when Set 1 of the WSSes is being measured between 2010 and 2014, on average the O<sub>2</sub> R<sup>2</sup> during this time is 0.9997. In 2014 and 2015 there is additional evidence of the poorer performance of the Oxzilla analyser during this time, and the O<sub>2</sub> R<sup>2</sup> are smaller and much more variable. From 2016 to 2020 the O<sub>2</sub> R<sup>2</sup> is higher and more stable, although it is not as good as it was when Set 1 of the WSSes were being measured, on

average the  $O_2$   $R^2$  during this time is 0.9968. When Set 3 of the WSSes is being measured the  $O_2$   $R^2$  is higher and more stable than it was with Set 2 but still not as good as it was with Set 1, on average for Set 3 the  $O_2$   $R^2$  is 0.9988. Overall, from May-2010 to Dec-2021, the  $O_2$   $R^2$  is on average 0.9977 and is  $>0.995$ , 92% of the time.



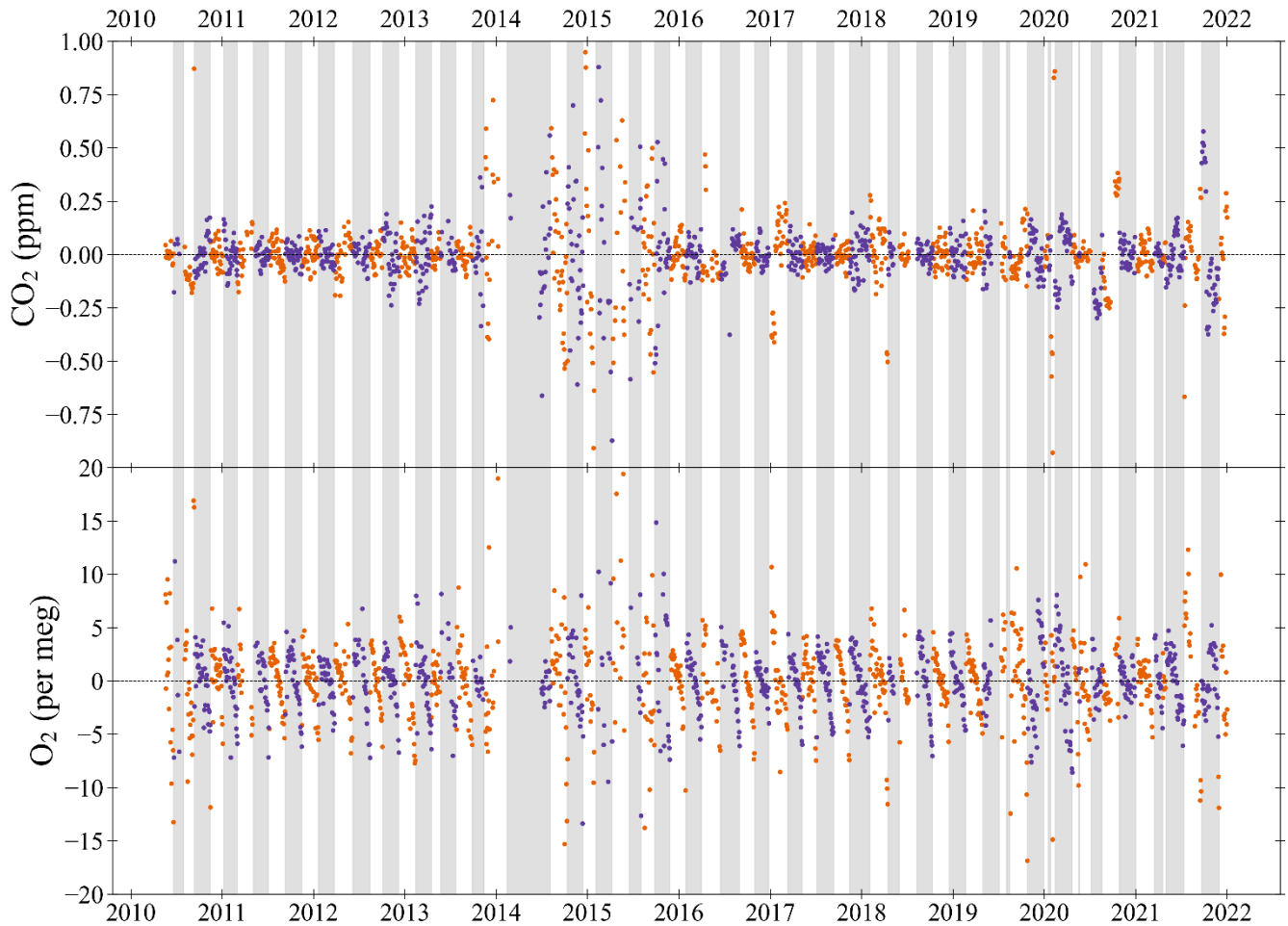
**Figure 9: The  $CO_2$  (top panel) and  $O_2$  (bottom panel) mole fractions of the WSSes, WTs, ZTs, TTs and intercomparison cylinders measured at WAO between May 2010 and December 2021. The air measurements made at WAO during this time are shown as box and whisker plots. The  $O_2$  y-axis is not visually comparable on a mole per mole basis to the  $CO_2$  y-axis.**

The calibration range is between the WSS cylinder with the highest mole fraction and the WSS cylinder with the lowest mole fraction. It is intended that the calibration range is large enough to cover the range of mole fractions likely to be measured in the air at WAO. For  $CO_2$ , 77% of the air measurements, 54 out of 73 WTs, 18 out of 22 ZTs and 7 out of 11



TTs are within the calibration range (Fig. 9). For O<sub>2</sub>, 74% of the air measurements, 31 out of 73 WTs, 9 out of 22 ZTs, and 7 out of 11 TTs, are within the calibration range (Fig. 9). We can have less confidence in the accuracy of mole fractions measured outside the calibration range, and the further away from our calibration range the measurement is, the less confidence we can have. This is more the case for CO<sub>2</sub>, for which the analyser has a non-linear response, than for O<sub>2</sub>, which has a linear response.

### 3.5 Stability of Working Tank mole fractions



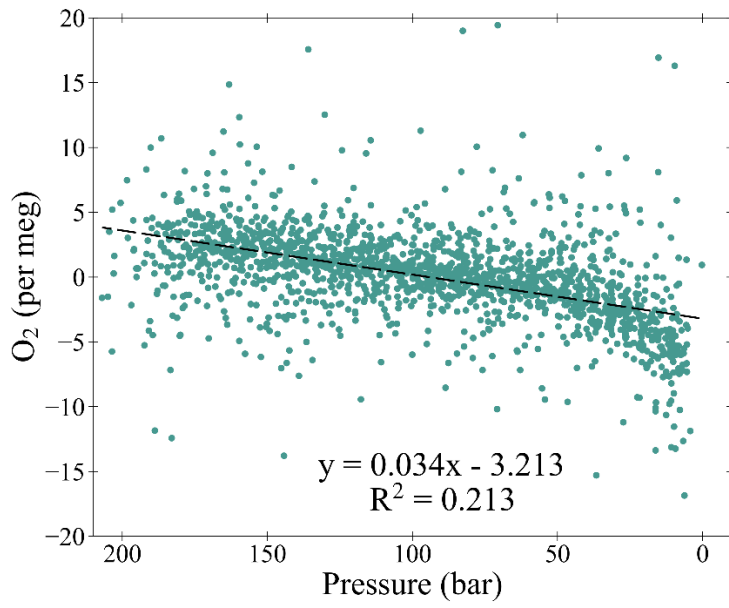
560 **Figure 10: The CO<sub>2</sub> (top panel) and O<sub>2</sub> (bottom panel) Working Tank (WT) mole fractions calculated from the calibrations as the difference from the average mole fraction for each WT (measurement minus average) at WAO between May 2010 and December 2021. The WTs alternate between orange and purple, and alternate shaded grey bands, to show when the WT changes. On the y-axes 'zero' is the average mole fraction for each WT (dashed line). The O<sub>2</sub> y-axis is not visually comparable on a mole per mole basis to the CO<sub>2</sub> y-axis. Note that 5 and 7 measurements are off scale in the O<sub>2</sub> and CO<sub>2</sub> panels, respectively, out of more than 1700 measurements shown for each species.**

565

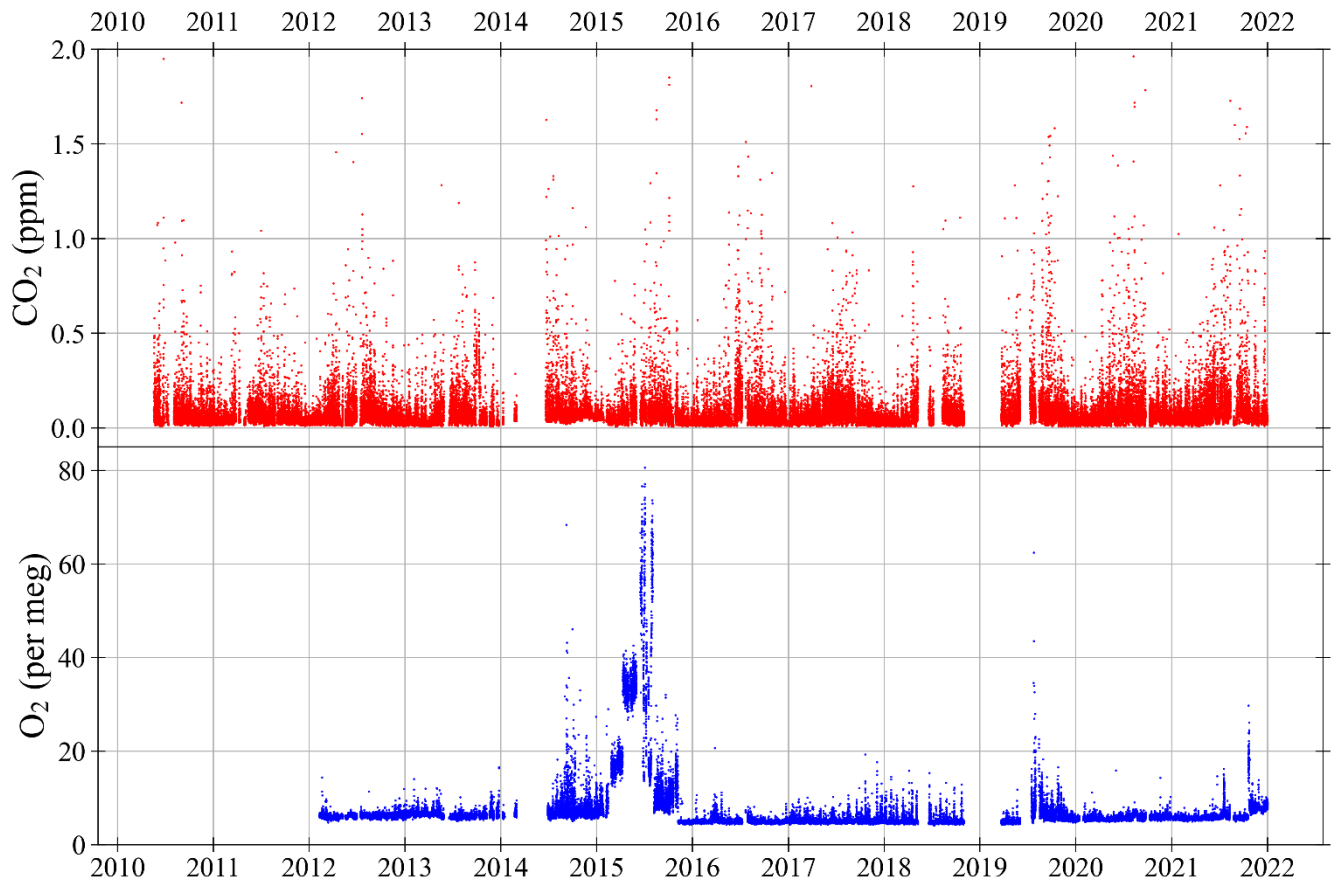
Since all measurements are taken against the reference of the Working Tank (WT) this means that the intercept (i.e., the c-term) of the calibration curves for both CO<sub>2</sub> and O<sub>2</sub> is the WT mole fraction at the point of calibration. Calibrations typically take place every 47 hours and the stability of the WT mole fraction over time provides another measure of system performance. Usually, WTs are 50L cylinders filled to ~200 bar, which are used until their pressure gets below ~5 bar. The measurement system flow rate is approximately 100 mL min<sup>-1</sup> and on average WTs last 55 days. Between May 2010 and December 2021, 76 Working Tanks were measured at WAO. In total there were 2038 calibrations between May 2010 and December 2021. Calibrations made when the system was experiencing known technical issues have been excluded. This leaves 1761 CO<sub>2</sub> calibrations and 1747 O<sub>2</sub> calibrations, or in other words 86% of the calibrations. WT mole fractions for CO<sub>2</sub> were between 360 ppm and 454 ppm and for O<sub>2</sub> were between -1115 per meg and -362 per meg.

Figure 10 shows the difference between the current WT mole fraction and the average WT mole fraction for each cylinder over its lifetime, as defined by the WSS calibrations. In 2014 and 2015 the WTs mole fractions were much more unstable than they typically are due to multiple technical issues (see Sect. 4.1). The absolute difference of the WT mole fraction between the current calibration and the previous calibration was on average  $2.1 \pm 3.3$  per meg for O<sub>2</sub>. This difference is above the WMO repeatability goal of  $\pm 1$  per meg, but below the extended repeatability goal of  $\pm 5$  per meg. For O<sub>2</sub>, the difference between successive calibrations indicates whether the calibration cycle is being run often enough to prevent significant baseline drift. For CO<sub>2</sub>, the absolute difference between calibrations is  $0.08 \pm 0.38$  ppm, which is above the repeatability goal of  $\pm 0.05$  ppm, however, this does not matter since the WT is redefined every time the ZT is run, so this merely confirms the need to run the ZT every 3 to 4 hours in order to correct for CO<sub>2</sub> baseline drift between calibrations.

The O<sub>2</sub> mole fraction decreases as the air in the cylinder is consumed (Figs. 10 and 11). This effect is most likely caused by the preferential desorption of N<sub>2</sub> relative to O<sub>2</sub> from the interior walls of the cylinders as the pressure decreases, owing to the difference in their molecular mass. This effect has been previously observed in other studies (Keeling et al., 1998; Manning 2001; Keeling et al., 2007; Kozlova and Manning 2009; Wilson 2012; Pickers 2016; Barningham 2018). On average for every 1 bar used O<sub>2</sub> decreases by 0.034 per meg (Fig. 11), assuming a WT starts at 200 bar and finishes at 5 bar this is a decrease of 6.6 per meg over the lifetime of the cylinder. Previous studies have found various depletion amounts: 5 per meg (Keeling et al., 1998), 6 per meg (Manning 2001), 1 per meg (Keeling et al., 2007), 30 per meg (Kozlova and Manning 2009), 12 per meg (Wilson 2012), 54 per meg (Pickers 2016), 6.6 per meg (Barningham 2018). Some of these differences can be explained by differences in pressures and flow rates between the different measurement systems (Barningham 2018), or using different types of cylinders (Pickers, 2016). The WT CO<sub>2</sub> does not change as the pressure decreases. The O<sub>2</sub> depletion is not an issue for WTs as their mole fractions are redefined after every WSS calibration (i.e., every 47 hours).



600 **Figure 11: An aggregate of all the O<sub>2</sub> Working Tank (WT) mole fractions determined during all of the calibrations, plotted as the difference from the average mole fraction for each WT (measurement minus average) at WAO between May 2010 and December 2021, plotted versus the WT pressure. The linear trend line is denoted as a dashed black line. Note that 5 measurements are off scale, out of more than 1700 measurements shown.**



610 **Figure 12: CO<sub>2</sub> (top panel) and O<sub>2</sub> (bottom panel)  $\pm 1\sigma$  standard deviation of air measurements at WAO between May 2010 and December 2021. The  $\pm 1\sigma$  standard deviations of the 2-minute data were not routinely calculated for O<sub>2</sub> until February 2012. Hourly averages of the  $\pm 1\sigma$  standard deviations of the 2-minute measurements. The O<sub>2</sub> y-axis is not visually comparable on a mole per mole basis to the CO<sub>2</sub> y-axis. Note that 4 measurements are off scale in the CO<sub>2</sub> panel, out of more than 70,000 measurements shown.**

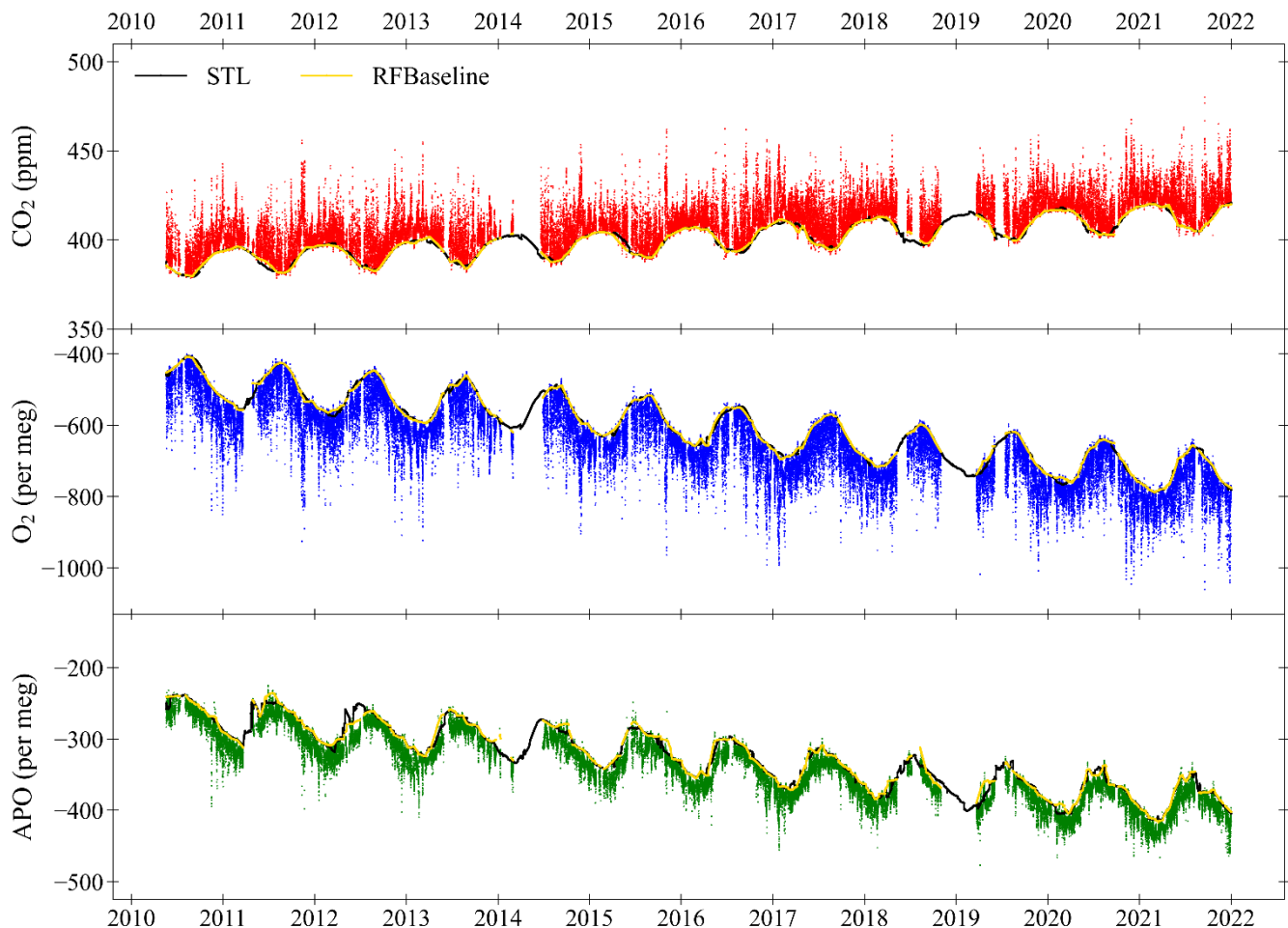
Figure 12 shows the hourly averages of the  $\pm 1\sigma$  standard deviation of the 2-minute measurements. For each 2-minute measurement there is a  $\pm 1\sigma$  standard deviation, which is determined from the 1-minute switching of WT and sample air, using 1-second data. These  $\pm 1\sigma$  standard deviations for each hour (30 data points if there are no gaps) are then used to calculate the mean. These  $\pm 1\sigma$  standard deviations include both the uncertainty in the measurement system and how much the actual CO<sub>2</sub> and O<sub>2</sub> mole fractions in the air vary over a 2-minute period. Therefore, these  $\pm 1\sigma$  standard deviations cannot be compared to the  $\pm 1\sigma$  standard deviations of the Target Tanks or to the repeatability goals.

620 The  $\pm 1\sigma$  standard deviation of the CO<sub>2</sub> measurements is very stable over time (Fig. 12). On average the CO<sub>2</sub>  $\pm 1\sigma$  standard deviation is  $\pm 0.08 \pm 0.10$  ppm and is  $< 0.2$  ppm 93% of the time. On average the O<sub>2</sub>  $\pm 1\sigma$  standard deviation is  $\pm 6.8 \pm 5.4$  per meg and is  $< 10$  per meg, 94% of the time. In 2014 and 2015 the O<sub>2</sub>  $\pm 1\sigma$  standard deviation were much higher and more variable than usual, due to multiple different technical problems in 2014 and poorer performance of the Oxzilla analyser in 2015 (see Sect. 4.1). The 2014 and 2015 O<sub>2</sub> measurements are still accurate, as far as we can tell, but they are not as precise.

625 In general, larger O<sub>2</sub>  $\pm 1\sigma$  standard deviations correspond to poorer performance of the Oxzilla analyser.

## 4 Key features of the WAO atmospheric CO<sub>2</sub>, O<sub>2</sub> and APO data

### 4.1 Time series of CO<sub>2</sub>, O<sub>2</sub> and APO



630 **Figure 13: Hourly averaged CO<sub>2</sub> (top panel), O<sub>2</sub> (middle panel) and APO (bottom panel) at WAO between May 2010 and December 2021. The baselines (yellow lines) are fitted using the RFbaseline function of Ruckstuhl et al. (2012) and the curve fits (black lines) are calculated using the STL function in R (see Sect. 2.3). The O<sub>2</sub> and CO<sub>2</sub> y-axes are**

scaled to be visually comparable on a mole per mole basis. The APO y-axis is zoomed in 2 times, compared to the O<sub>2</sub> y-axis on a mole per mole basis. The x-axis tick marks are at the beginning of each year.

Figure 13 shows a 12-year time series from May 2010 to December 2021 of continuous in situ measurements of CO<sub>2</sub>, O<sub>2</sub> and APO at WAO. Measurements continue to the present and are recorded every 2 minutes. There are gaps in the data caused by cylinder measurements (see Sect. 2.2), changing the WT, routine maintenance, and technical issues. Data collected when the system was experiencing known technical issues have been removed. In total there are 1,930,178 CO<sub>2</sub> measurements and 1,565,908 O<sub>2</sub> measurements (2-minute frequency), from 19<sup>th</sup> May 2010 to 31<sup>st</sup> December 2021. The data have been averaged to hours to make the dataset more useful for typical applications. Hourly averages are only calculated when there are at least five 2-minute measurements in an hour. There are 73,232 CO<sub>2</sub> hourly averages and 69,044 O<sub>2</sub> hourly averages meaning there are hourly measurements for 72% (CO<sub>2</sub>) and 68% (O<sub>2</sub>) of the time. Simultaneous measurements of both O<sub>2</sub> and CO<sub>2</sub> are needed to calculate APO.

The proportion of APO data missing in each year varies (Table 5). Measuring the WSSes, TTs and ZTs takes approximately 14% of the time in a year, so even if the measurement system ran perfectly, we would still not be able to measure air 100% of the time. The most complete year was 2017 with only 15% of the data missing. The year with the most missing data is 2014, where more than half (59%) of the data are missing, the years 2015, 2018 and 2019 also have a large amount of missing data, 42%, 46% and 47% respectively, due to multiple technical issues. All the other years have between 20% and 33% of the data missing (Table 5).

The technical issues in 2014 included: problems with the compressor that opened and closed the pneumatic valves (the on/off, 3-way and 4-way valves; Fig. 2), the pneumatic valves were replaced with solenoid valves in June 2014; in January/February there was no Ultramat signal because of a broken serial lead, and there was also no ZT; in May 2014 the WSS cylinders were changed; throughout the year there were electrical problems including with the USB hub, data acquisition boards and watchdog board; in June 2014 the red line inlet was blocked with sea salt; there was also a problem with the computer frequently crashing; the PC was replaced in November 2014. The year 2015 has a large amount of missing data, as this year also had technical issues and a different Oxzilla analyser was used in this year which was not as precise.

The years 2018 and 2019 have a large amount of missing data, because between March 2018 to March 2019 the diaphragm in the KNF pump was torn causing the pump to leak. During this time only one of the inlet lines was being used so this leak affected all the data. Some of these data, from March 2018 to October 2018, were adjusted using the O<sub>2</sub> measurement record at Cold Bay Alaska, where we were confident of the offset caused by the pump and where we were additionally able to cross-check our correction against an independent dataset from a similar latitude (Shetlands Island, Scotland). However, the size of the leak increased over time and data from November 2018 to March 2019 could not be adjusted with confidence and

were flagged and removed from the quality-controlled dataset. More information on this leaking pump adjustment is provide in supplement.

665 **Table 5: Annual mean of CO<sub>2</sub>, O<sub>2</sub> and APO data at WAO from May 2010 to December 2021. The percentage of APO data missing each year based on the hourly averages is also shown (the APO calculation requires simultaneous CO<sub>2</sub> and O<sub>2</sub> measurements).**

<b>Year</b>	<b>CO<sub>2</sub> (ppm)</b>	<b>O<sub>2</sub> (per meg)</b>	<b>APO (per meg)</b>	<b>Missing data (%)</b>
<b>2010</b>	388.11	-477.9	-265.5	30%
<b>2011</b>	389.88	-494.6	-273.0	30%
<b>2012</b>	391.97	-516.7	-283.8	23%
<b>2013</b>	394.44	-536.4	-292.8	33%
<b>2014</b>	396.74	-554.8	-303.8	59%
<b>2015</b>	398.85	-579.4	-313.2	42%
<b>2016</b>	401.53	-609.6	-327.3	29%
<b>2017</b>	403.98	-636.8	-342.4	15%
<b>2018</b>	406.30	-666.1	-357.6	46%
<b>2019</b>	408.80	-688.8	-368.7	47%
<b>2020</b>	411.57	-709.7	-375.1	20%
<b>2021</b>	413.86	-731.0	-383.8	24%

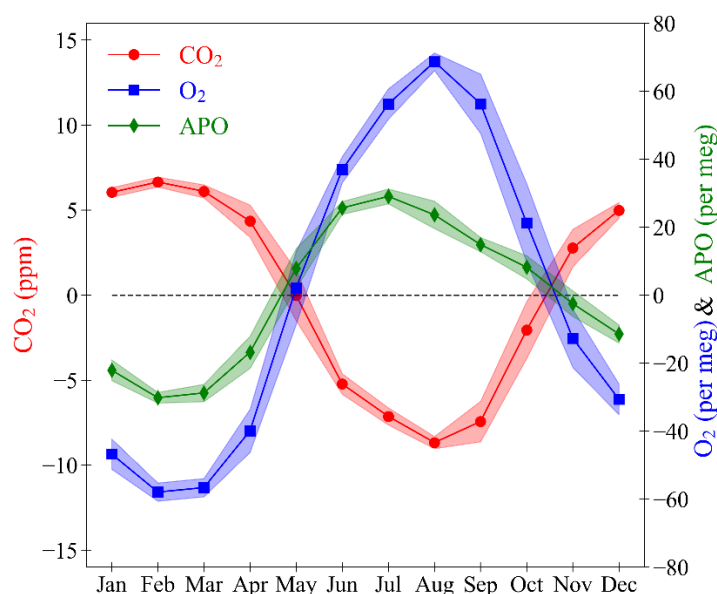
670 Most of the gaps in the data only last for short periods of time: 9% of the missing data are due to gaps lasting 1 hour and are usually caused by routine calibrations; 14% of the missing data are due to gaps lasting 2 hours; 26% of the missing data are due to gaps lasting less than a day; 47% of the missing data are due to gaps lasting less than a week; and 66% of the missing data are due to gaps lasting less than a month (Table 6). There are 6 gaps in the data that last longer than a month. The largest gap in the data is 5 months long and is it due to the data that had to be removed when the KNF pump was leaking between November 2018 and March 2019. The next longest gap is 4 months long and occurred in 2014 between 2<sup>nd</sup> March  
675 and 28<sup>th</sup> June due to the combination of technical problems described above.

**Table 6: Duration and number of gaps in the dataset, based on APO data.**

<b>Duration</b>	<b>No. of gaps</b>	<b>Percent</b>
<b>1 hour</b>	2619	9%
<b>2 hours</b>	685	14%
<b>3 hours - 1 day</b>	575	26%
<b>1 day - 1 week</b>	98	47%
<b>1 week - 1 month</b>	19	66%
<b>&gt;1 month</b>	6	100%

From Fig. 13 we can see there are long-term trends in all three species. On average, atmospheric CO<sub>2</sub> at WAO increased by 2.40 ppm yr<sup>-1</sup> (2.38 to 2.42; 95% confidence intervals), atmospheric O<sub>2</sub> decreased by 24.0 per meg yr<sup>-1</sup> (24.3 to 23.8) and APO decreased by 11.4 per meg yr<sup>-1</sup> (11.7 to 11.3). The long-term trends were calculated using the trend from the seasonal decomposition with STL (see Sect. 2.3) and the TheilSen function in the openair package in R (Carslaw and Ropkins, 2012; Carslaw 2019). These long-term trends are predominantly due to the burning of fossil fuels and land-use changes which release CO<sub>2</sub> and consume O<sub>2</sub>. Atmospheric O<sub>2</sub> is decreasing more quickly than CO<sub>2</sub> is increasing because the globally averaged O<sub>2</sub>:CO<sub>2</sub> exchange ratio for fossil fuel combustion is about 1.38 mol mol<sup>-1</sup> (Keeling and Manning, 2014) and the CO<sub>2</sub> increase is buffered by an increasing land carbon sink and ocean carbon sink, whereas the O<sub>2</sub> decrease is only buffered by an increasing land oxygen source and a small ocean oxygen source from O<sub>2</sub> outgassing (Keeling et al., 1996a).

#### 4.2 Seasonal cycles



690 **Figure 14: The seasonal cycles of CO<sub>2</sub> (red circles, left axis), O<sub>2</sub> (blue squares, right axis), and APO (green diamonds, right axis) at WAO. Individual points are the monthly means of the seasonal component of the STL decomposition (see Sect. 2.3). The shaded bands are the average of the  $\pm 1\sigma$  standard deviation of the monthly averages of the baseline data. The y-axes are scaled to be visually comparable on a mole per mole basis.**

695 The seasonal component of the WAO time series is obtained using the STL decomposition (see Sect. 2.3). The CO<sub>2</sub> mole fraction is higher during the northern hemisphere winter and lower during the summer due mostly to the terrestrial biosphere (Fig. 14). Vegetation takes in CO<sub>2</sub> in the spring and summer in order to grow and releases CO<sub>2</sub> in the autumn and winter as it decomposes (Heimann et al., 1989). There is also an influence from increased temperature and sunlight during the summer leading to increased photosynthesis (Heimann et al., 1989). The exchange of CO<sub>2</sub> between the atmosphere and the oceans takes ~1 year (Broecker and Peng, 1974), and O<sub>2</sub> fluxes from different ocean processes are reinforcing on seasonal

700



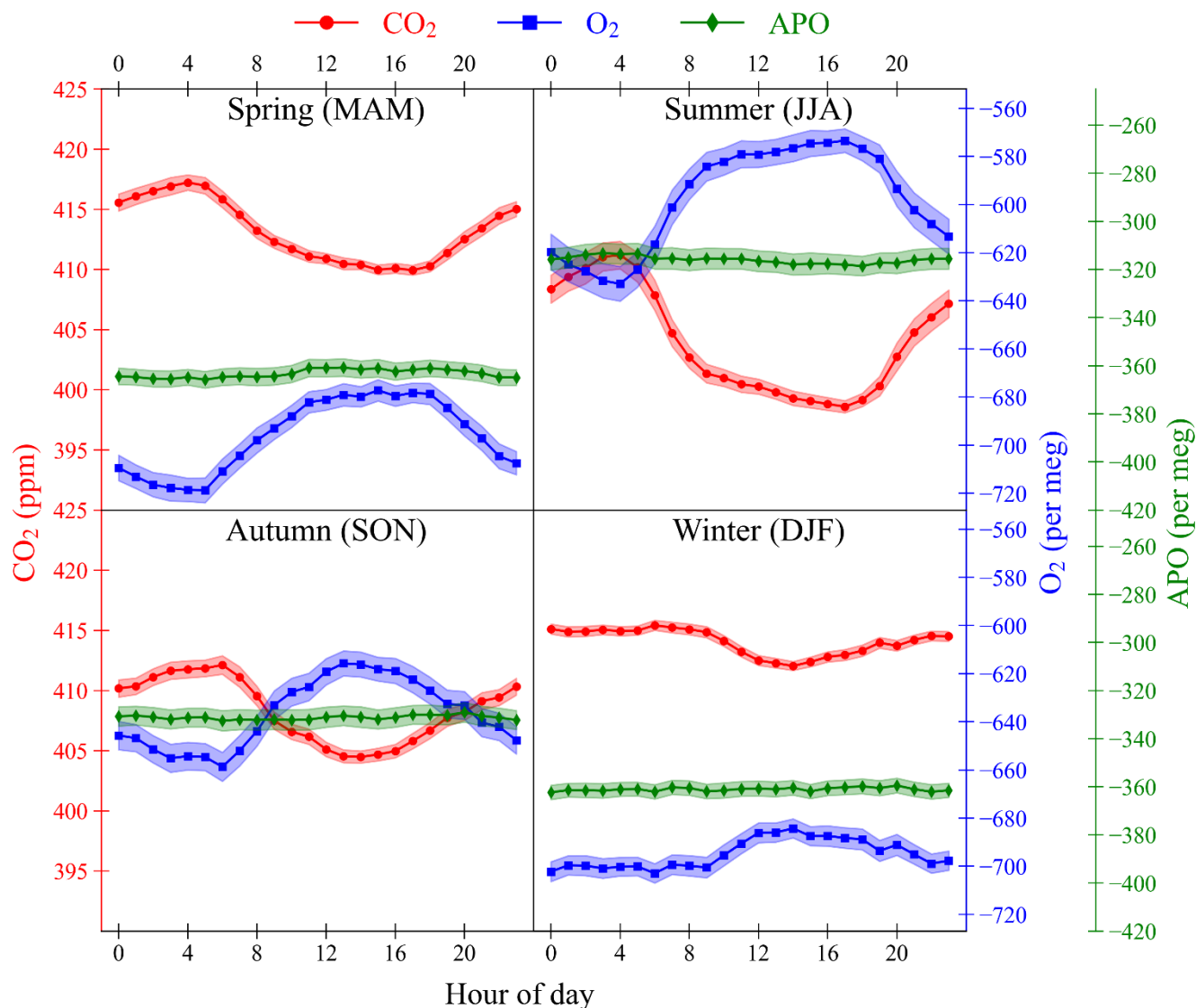
timescales whereas for CO<sub>2</sub> these counteract (Keeling and Manning, 2014). The combined effect of the CO<sub>2</sub> lag and counteracting CO<sub>2</sub> processes is that there is a minimal marine influence on the atmospheric CO<sub>2</sub> mole fraction seasonal cycle (Heimann et al., 1989; Randerson et al., 1997).

705 The O<sub>2</sub> mole fraction is lower during the winter and higher during the summer. O<sub>2</sub> is anti-correlated with CO<sub>2</sub> as they are involved in the same reactions, increased photosynthesis during the spring and summer releases O<sub>2</sub> and decomposition during the autumn and winter takes in O<sub>2</sub> (Keeling and Shertz, 1992). The air-sea gas exchange of O<sub>2</sub> is much quicker than for CO<sub>2</sub> and takes ~1 month (Broecker and Peng, 1974). During the summer O<sub>2</sub> is outgassed from the oceans and this enhances the O<sub>2</sub> seasonal cycle and makes it larger than the CO<sub>2</sub> seasonal cycle (Keeling and Shertz, 1992).

710 APO is lower during the winter and higher during the summer. The seasonal cycle of APO is correlated with the seasonal cycle of O<sub>2</sub> and anti-correlated with CO<sub>2</sub>. APO is invariant to terrestrial biosphere processes. The seasonal cycle of APO is mainly driven by ocean ventilation changes, marine productivity cycling and the changing solubility of O<sub>2</sub> in the oceans as temperature changes (Keeling et al., 1998). There is also a smaller effect on CO<sub>2</sub>, O<sub>2</sub> and APO from the seasonal cycle of fossil fuel emissions as more fossil fuel combustion takes place during the winter for heating and lighting (Steinbach et al., 2011). There is also a seasonal cycle in the height of the atmospheric boundary layer, that influences all three species  
715 (Stephens et al., 2000). The APO seasonal cycle is about half the size of the O<sub>2</sub> cycle ( $68/134 = 0.5$ ) indicating that about half of the O<sub>2</sub> seasonal cycle at WAO is due to terrestrial biosphere processes and about half is due to ocean processes and fossil fuel combustion.

720 The CO<sub>2</sub> maximum/O<sub>2</sub> minimum/APO minimum occur between January and March each year. The CO<sub>2</sub> minimum/O<sub>2</sub> maximum occur in August or September each year. The APO maximum is more variable and tends to occur earlier in the year between June and August. The peak-to-peak amplitude of the seasonal cycle for CO<sub>2</sub> is 16 ppm (15 ppm to 17 ppm), for O<sub>2</sub> it is 134 per meg (128 per meg to 139 per meg), and for APO it is 68 per meg (62 per meg to 73 per meg). A zero-crossing day is the date at which the detrended curve crosses zero on the y-axis (Keeling et al., 1996b). Spring zero crossings occur in April or May each year and the autumn zero crossings in October or November each year.

### 4.3 Seasonal variability of diurnal cycles



725

**Figure 15: The diurnal cycles of CO<sub>2</sub> (red circles, left axis), O<sub>2</sub> (blue squares, right axis), and APO (green diamonds, right axis) at WAO for each season: spring (MAM), summer (JJA), autumn (SON), and winter (DJF). Individual points are calculated using the 2-minute data from May 2010 to December 2021, with the timeVariation function in the OpenAir package in R (Carslaw and Ropkins, 2012). The shaded bands are the average of the  $\pm 1\sigma$  standard deviation of the hourly averages of the data. The y-axes are scaled to be visually comparable on a mole per mole basis.**

730

In general, CO<sub>2</sub> mole fractions are lower during the day and higher at night (Fig. 15). O<sub>2</sub> mole fractions are anti-correlated with CO<sub>2</sub> and are higher during the day and lower at night. APO variations do not exhibit a diurnal cycle at WAO. The diurnal cycles in CO<sub>2</sub> and O<sub>2</sub>, like the seasonal cycles, are influenced by changes in the terrestrial biosphere processes of

735 photosynthesis and respiration driven by changes in sunlight and temperature and are influenced by changes in the atmospheric boundary layer height (Stephens et al., 2000; Kozlova et al., 2008). The atmospheric boundary layer is higher during the day and lower during the night, which causes a dilution effect, as molecules during the day are spread out over a larger volume (Denning et al., 1996; Larson et al., 2008). This amplifies the diurnal cycles in O<sub>2</sub> and CO<sub>2</sub> mole fractions and is referred to as the diurnal rectifier effect. Temperature variations in the oceans that affect gas solubility are not observable  
740 on diurnal timescales due to the higher heat capacity of water that can buffer temperature changes.

APO at WAO does not have a diurnal cycle because it is not influenced by the terrestrial biosphere; atmospheric boundary layer effects tend to cancel for APO on diurnal scales, since APO is the sum of two strongly anti-correlated species; and WAO is too remote for APO at the site to be influenced by the diurnal cycle in fossil fuel sources.

There are differences in the diurnal cycles in different seasons. The average amplitude of the diurnal cycles of CO<sub>2</sub> and O<sub>2</sub>  
745 are largest in the summer (CO<sub>2</sub>: 12.6 ppm, O<sub>2</sub>: 60 per meg) and smallest in the winter (CO<sub>2</sub>: 3.4 ppm, O<sub>2</sub>: 19 per meg). This is due to the combined effect of the diurnal cycle and the seasonal cycle. In the summer, there are higher temperatures, more sunlight and longer days leading to more terrestrial biosphere productivity and larger changes in atmospheric boundary layer height as the differences in temperature between night and day are larger (Bakwin et al., 1995).

In the spring terrestrial productivity is starting to increase and in the autumn it is starting to decrease as plants die, lose their  
750 leaves and become less active. In the winter there are lower temperatures, less sunlight, and shorter days, leading to less activity in the terrestrial biosphere. Also, changes in atmospheric boundary layer height are smaller in the winter as the differences in temperature between the night and day are smaller so the diurnal rectifier effect is less pronounced (Bakwin et al., 1995). So, the amplitudes of the CO<sub>2</sub> and O<sub>2</sub> diurnal cycles are smallest in the winter.

There are more hours of sunlight during the summer than during the winter, so the summer has a broader peak/trough in  
755 O<sub>2</sub>/CO<sub>2</sub> during the day and a shorter peak/trough in the winter. This also affects the timing of the maxima and minima. The CO<sub>2</sub> maximum/O<sub>2</sub> minimum occurs earlier in the summer, at about 4am, than in the winter, at about 6am. The CO<sub>2</sub> minimum/O<sub>2</sub> maximum occurs later during the summer at about 5pm and earlier in winter at about 2pm. Winter CO<sub>2</sub> and O<sub>2</sub> are mostly flat during the night from about 9pm to 9am as the amount of respiration stays mostly the same during the day and the night.

## 760 **5 Conclusions**

We have presented a 12-year time series of continuous measurements of CO<sub>2</sub>, O<sub>2</sub> and APO at Weybourne Atmospheric Observatory (WAO) in the United Kingdom. The results from the GOLLUM, Cucumbers and WMO Round Robin intercomparison programmes show that WAO is sometimes but not always within the O<sub>2</sub> and CO<sub>2</sub> WMO compatibility goals

established by the high-precision greenhouse gas measurement community. Measurements of Target Tanks indicate that the  
765 2-minute O<sub>2</sub> repeatability is  $\pm 3.0 \pm 4.6$  per meg, averaged over the 12 years, which is within the extended repeatability goal  
of  $\pm 5$  per meg. Target Tanks CO<sub>2</sub> repeatability is  $\pm 0.005 \pm 0.023$  ppm which is an order of magnitude below the repeatability  
goal ( $\pm 0.05$  ppm). Measurements of Zero Tanks indicate that the O<sub>2</sub> repeatability is  $\pm 3.1 \pm 5.3$  per meg and the CO<sub>2</sub>  
repeatability is  $\pm 0.005 \pm 0.019$  ppm which are similar to the repeatability indicated by the Target Tank measurements. We  
also show that the calibration coefficients vary over time and the R<sup>2</sup> of the O<sub>2</sub> calibration fit is  $>0.995$ , 92% of the time. The  
770 Working Tanks show that O<sub>2</sub> mole fractions decrease in a cylinder as the pressure decreases. The  $\pm 1\sigma$  standard deviations of  
the air measurements for CO<sub>2</sub> are on average  $\pm 0.08 \pm 0.10$  ppm, based on the hourly averages, and are very stable for the  
whole time series, while the  $\pm 1\sigma$  standard deviations for the O<sub>2</sub> air measurements are more variable. Measurements are made  
every 2 minutes and between May 2010 and December 2021 there are 1,930,178 CO<sub>2</sub> measurements and 1,565,908 O<sub>2</sub>  
measurements. There are gaps in the dataset caused by regular calibrations, routine maintenance and technical issues, and  
775 there are 6 gaps over the 12-year period that last longer than a month. Multiple technical issues in 2014 and 2015 decreased  
the precision of the data. There are no periods when the Target Tanks, Zero Tanks and calibration coefficients are all drifting  
at the same time indicating that the calibration scale at WAO is likely stable. The time series shows average long-term trends  
of 2.40 ppm yr<sup>-1</sup> (2.38 to 2.42) for CO<sub>2</sub>, -24.0 per meg yr<sup>-1</sup> (-24.3 to -23.8) for O<sub>2</sub> and -11.4 per meg yr<sup>-1</sup> (-11.7 to -11.3) for  
APO. The average seasonal cycle peak-to-peak amplitude for CO<sub>2</sub> is 16 ppm (15 to 17), for O<sub>2</sub> it is 134 per meg (128 to  
780 139), and for APO it is 68 per meg (62 to 73). The average amplitude of the diurnal cycle in summer is 12.6 ppm for CO<sub>2</sub>  
and 60 per meg for O<sub>2</sub> and the amplitude of the diurnal cycle in winter is 3.4 ppm for CO<sub>2</sub> and 19 per meg for O<sub>2</sub>.

### **Data availability**

The accompanying database comprises one csv file. The file contains information on the CO<sub>2</sub>, O<sub>2</sub>, and APO data (values and  
associated uncertainties) from Weybourne Atmospheric Observatory.

785 The file is published by the ICOS Carbon Portal, and is available at <https://doi.org/10.18160/Z0GF-MCWH> (Adcock et al.,  
2023).

Other data presented in this paper are available upon request.

### **Author contribution**

ACM, EAK, AJM and AJE set up the original measurement system at the Weybourne Atmospheric Observatory. KEA, PAP,  
790 ACM, GLF, LSF, TB, PAW, EAK, MH, AJE and AJM have all been involved in keeping the measurement system running,  
performing upgrades and improvements, assessing data quality, and carrying out data curation, at various points in time.  
ACM conceived the design of the system and bespoke software. AJE created and maintains the bespoke software used to run

the measurement system. GLF manages the Weybourne Atmospheric Observatory. KEA wrote the original draft and KEA, PAP and ACM were involved in reviewing and editing the manuscript.

## 795 **Competing interests**

The authors declare that they have no conflict of interest.

## **Acknowledgements**

The automated in situ atmospheric O<sub>2</sub> and CO<sub>2</sub> measurement system at WAO was built and maintained with assistance from Nick Griffin, Dave Blomfield, Gareth Flowerdew, Stuart Rix, and Nicholas Garrard (all staff at the University of East  
800 Anglia). We are grateful to Michael Patecki (formerly at University of East Anglia), who played a key role in the original setup of the measurement system at WAO.

## **Financial Support**

Atmospheric O<sub>2</sub> and CO<sub>2</sub> measurements at WAO were funded by the U.K. Natural Environment Research Council (NERC) grants NE/C002504/1, NE/I013342/1, NE/I02934X/1, QUEST010005, NE/N016238/1, NE/S004521/1, and NE/R011532/1,  
805 and by the EU FP6 Integrated Project CarboOcean (grant agreement no. 511176 GOCE). The WAO atmospheric O<sub>2</sub> and CO<sub>2</sub> measurements have also been supported by the National Centre for Atmospheric Science (NCAS). P. Wilson was supported by a NERC PhD studentship (NE/F005733/1) from 2008 to 2012. P. Pickers was supported by a NERC PhD studentship (NE/K500896/1) from 2012 to 2016. T. Barningham was supported by a NERC PhD studentship (NE/L50158X/1) from 2014 to 2018. L. Fleming was supported by a NERC PhD studentship (NE/L002582/1) from 2018 to 2022. K. Adcock and P.  
810 Pickers received funding from the NERC project DARE-UK (NE/S004521/1). P. Pickers and A. Manning received funding from the European Union's Horizon 2020 Research and Innovation Programme under Grant Agreement No. 776186. K. Adcock, P. Pickers and A. Manning received funding from European Union's Horizon Europe Research and Innovation programme under HORIZON-CL5-2022-D1-02 Grant Agreement No. 101081430 - PARIS.

## **References**

815 Adcock, K., Manning, A., Pickers, P., Forster, G., Fleming, L., Baningham, T., Wilson, P., Kozlova, E., Hewitt, M., Etchells, A., MacDonald, A.: 12 years of continuous atmospheric O<sub>2</sub>, CO<sub>2</sub> and APO data from Weybourne Atmospheric Observatory in the United Kingdom [data set], <https://doi.org/10.18160/Z0GF-MCWH>, 2023.

- Barningham, T.: Detection and Attribution of Carbon Cycle Processes from Atmospheric O<sub>2</sub> and CO<sub>2</sub> Measurements at Halley Research Station, Antarctica and Weybourne Atmospheric Observatory, U.K., University of East Anglia, 820 <https://cramlab.uea.ac.uk/Publications.php>, 2018.
- Bakwin, P. S., Tans, P. P., Zhao, C., Ussler, W., and Quesnell, E.: Measurements of carbon dioxide on a very tall tower, *Tellus B*, 47, 535–549, <https://doi.org/10.1034/j.1600-0889.47.issue5.2.x>, 1995.
- Blaine, T. W., Keeling, R. F., and Paplawsky, W. J.: An improved inlet for precisely measuring the atmospheric Ar/N<sub>2</sub> ratio, *Atmospheric Chemistry and Physics*, 6, 1181-1184, 2006.
- 825 Broecker, W. S. and Peng, T.-H.: Gas exchange rates between air and sea, *Tellus* 26, 21–35, <https://doi.org/10.1111/j.2153-3490.1974.tb01948.x>, 1974.
- Carslaw, D. C. and Ropkins, K.: Openair - An r package for air quality data analysis, *Environmental Modelling and Software*, 27–28, 52–61, <https://doi.org/10.1016/j.envsoft.2011.09.008>, 2012.
- Carslaw, D.C.: The openair manual - open-source tools for analysing air pollution data. Manual for version 2.6-6, University 830 of York. <https://davidcarslaw.com/project/openair/>, 2019.
- Chevallier, F. and the WP4 CHE partners.: CO<sub>2</sub> Human Emissions (CHE) Project: D4.4 Sampling strategy for additional tracers, <https://www.che-project.eu/node/243>, 2021.
- Cleveland, R. B., Cleveland, W. S., McRae, J. E., and Terpenning, I.: STL: A seasonal-trend decomposition procedure based on Loess, *J. Off. Stat.*, 6, 3–73, 1990.
- 835 Crotwell, A., Lee, H., and Steinbacher, M. (Eds.): 20th WMO/IAEA Meeting on Carbon Dioxide, Other Greenhouse Gases and Related Measurement Techniques (GGMT-2019), Global Atmosphere Watch (GAW) Report No. 255, Jeju Island, South Korea, [https://library.wmo.int/doc\\_num.php?explnum\\_id=10353](https://library.wmo.int/doc_num.php?explnum_id=10353), 2020.
- Denning, A. S., Randall, D. A., Collatz, G. J., and Sellers, P. J.: Simulations of terrestrial carbon metabolism and atmospheric CO<sub>2</sub> in a general circulation model. Part 2: Simulated CO<sub>2</sub> concentrations, 840 <https://doi.org/10.3402/tellusb.v48i4.15931>, 1996.
- Hall, B. D., Crotwell, A. M., Kitzi, D. R., Mefford, T., Miller, B. R., Schibig, M. F., and Tans, P. P.: Revision of the World Meteorological Organization Global Atmosphere Watch (WMO/GAW) CO<sub>2</sub> calibration scale, 14, 3015–3032, <https://doi.org/10.5194/amt-14-3015-2021>, 2021.

- Heimann, M., Keeling, C. D., and Tucker, C. J.: A three dimensional model of atmospheric CO<sub>2</sub> transport based on observed winds: 3. Seasonal cycle and synoptic time scale variations, in: Aspects of Climate Variability in the Pacific and the Western Americas, Geophysical Monograph Series 55, 277–303, <https://doi.org/10.1029/GM055p0277>, 1989.
- Ishidoya, S., Tsuboi, K., Niwa, Y., Matsueda, H., Murayama, S., Ishijima, K., and Saito, K.: Spatiotemporal variations of the d(O<sub>2</sub>/N<sub>2</sub>), CO<sub>2</sub> and d(APO) in the troposphere over the western North Pacific, *Atmos. Chem. Phys.*, 22, 6953–6970, <https://doi.org/10.5194/acp-22-6953-2022>, 2022.
- 850 Keeling, R. and Shertz, S.: Seasonal and interannual variations in atmospheric oxygen and implications for the global carbon cycle, *Nature*, 358, 723–727, <https://doi.org/10.1038/358723a0>, 1992.
- Keeling, R. F., Walker, S. J., & Paplawsky, W.: Span Sensitivity of Scripps Interferometric Oxygen Analyzer. UC San Diego: Scripps Institution of Oceanography. Retrieved from <https://escholarship.org/uc/item/7tt993fj>, 2020.
- 855 Keeling, R. F. and Manning, A. C.: Studies of Recent Changes in Atmospheric O<sub>2</sub> Content, 2nd ed., Elsevier Ltd., 385–404 pp., <https://doi.org/10.1016/B978-0-08-095975-7.00420-4>, 2014.
- Keeling, R. F., Manning, A. C., Paplawsky, W. J., and Cox, A. C.: On the long-term stability of reference gases for atmospheric O<sub>2</sub>/N<sub>2</sub> and CO<sub>2</sub> measurements, *Tellus* 59, 3–14, <https://doi.org/10.1111/j.1600-0889.2006.00196.x>, 2007.
- Keeling, R. F., Najjar, R. P., Bender, M. L., and Tans, P. P.: What atmospheric oxygen measurements can tell us about the  
860 global carbon cycle, *Global Biogeochem. Cycles*, 7, 37–67, <https://doi.org/10.1029/92gb02733>, 1993.
- Keeling, R. F., Piper, S. C., and Heimann, M.: Global and hemispheric CO<sub>2</sub> sinks deduced from changes in atmospheric O<sub>2</sub> concentration, *Nature*, 381, 218–221, <https://doi.org/10.1038/381218a0>, 1996a.
- Keeling, C. D., Chin, J. F. S., and Whorf, T. P.: Increased activity of northern vegetation inferred from atmospheric CO<sub>2</sub> measurements, *Nature*, 382, 146–149, <https://doi.org/10.1038/382146a0>, 1996b.
- 865 Keeling, R. F., Stephens, B. B., Najjar, R. G., Doney, S. C., Archer, D., and Heimann, M.: Seasonal variations in the atmospheric O<sub>2</sub>/N<sub>2</sub> ratio in relation to the kinetics of air-sea gas exchange, *Global Biogeochem. Cycles*, 12, 141–163, <https://doi.org/10.1029/97GB02339>, 1998.
- Kozlova, E. A., Manning, A. C., Kisilyakhov, Y., Seifert, T., and Heimann, M.: Seasonal, synoptic, and diurnal-scale variability of biogeochemical trace gases and O<sub>2</sub> from a 300-m tall tower in central Siberia, *Global Biogeochem. Cycles*, 22,  
870 1–16, <https://doi.org/10.1029/2008GB003209>, 2008.

- Kozlova, E. A. and Manning, A. C.: Methodology and calibration for continuous measurements of biogeochemical trace gas and O<sub>2</sub> concentrations from a 300-m tall tower in central Siberia, *Atmos. Meas. Tech.*, 2, 205–220, <https://doi.org/10.5194/amt-2-205-2009>, 2009.
- Larson, V. E. and Volkmer, H.: An idealized model of the one-dimensional carbon dioxide rectifier effect, *Tellus, Ser. B Chem. Phys. Meteorol.*, 60, 525–536, <https://doi.org/10.1111/j.1600-0889.2008.00368.x>, 2008.  
875
- Machta, L. and Hughes, E.: Atmospheric Oxygen in 1967 to 1970, *Science* 168, 1582–1584, <https://doi.org/10.1126/science.168.3939.1582>, 1970.
- Manning, A. C.: Temporal variability of atmospheric oxygen from both continuous measurements and a flask sampling network: Tools for studying the global carbon cycle, Ph.D. thesis, University of California,  
880 <https://cramlab.uea.ac.uk/Publications.php>, 2001.
- Manning A. C., Schmidt M., Jordan A., Levin I., Hewitt M., Etchells A., Pickers P. A., Hammer S., Delmotte M., Vermeulen A., Alemanno M., Allison C., Apadula F., Arduini J., Barcza Z., Brand W., Chen H., Ernst M., Hall B. D., Haszpra L., Hatakka J., Huang L., Katsumata K., Kazan V., Keronen P., Langenfelds R., Lavric J., Leuenberger M. C., Lopez M., Machida T., Meinhardt F., Moncrieff J., Necki J., O’Doherty S., Piacentino S., Richter J., Ries L., Rothe M., Scheeren H. A.,  
885 Schibig M. F., Steele L. P., Szilagyi I., Wastine B., Wilson P. A., Worthy D. E., Yver C., Integrated non-CO<sub>2</sub> Observing System (InGOS) ‘Cucumbers’ intercomparison report, Compatibility of atmospheric greenhouse gas measurements in the InGOS network as assessed by the ‘Cucumbers’ intercomparison programme, [https://cucumbers.uea.ac.uk/documents/2014\\_InGOS\\_NA3\\_Cucumbers\\_Report.pdf](https://cucumbers.uea.ac.uk/documents/2014_InGOS_NA3_Cucumbers_Report.pdf), 2014.
- Manning, A. C. and Keeling, R. F.: Global oceanic and land biotic carbon sinks from the Scripps atmospheric oxygen flask  
890 sampling network, *Tellus, Ser. B Chem. Phys. Meteorol.*, 58, 95–116, <https://doi.org/10.1111/j.1600-0889.2006.00175.x>, 2006.
- Nevison, C. D., Munro, D. R., Lovenduski, N. S., Keeling, R. F., Manizza, M., Morgan, E. J., and Rodenbeck, C.: Southern Annular Mode Influence on Wintertime Ventilation of the Southern Ocean Detected in Atmospheric O<sub>2</sub> and CO<sub>2</sub> Measurements, *Geophys. Res. Lett.*, 47, <https://doi.org/10.1029/2019gl085667>, 2020.
- 895 Patecki, M. and Manning, A. C.: First results from shipboard atmospheric O<sub>2</sub> and CO<sub>2</sub> measurements over the North Atlantic Ocean, in: *Oceans 2007*, 1–6, <https://doi.org/10.1109/OCEANSE.2007.4302351>, 2007.
- Pickers, P. A. and Manning, A. C.: Investigating bias in the application of curve fitting programs to atmospheric time series, *Atmos. Meas. Tech.*, 8, 1469–1489, <https://doi.org/10.5194/amt-8-1469-2015>, 2015.



- Pickers, P.A.: New applications of continuous atmospheric O<sub>2</sub> measurements: meridional transects across the Atlantic Ocean, and improved quantification of fossil fuel-derived CO<sub>2</sub>, Ph.D. thesis, University of East Anglia, <https://cramlab.uea.ac.uk/Publications.php>, 2016.
- Pickers, P. A., Manning, A. C., Quéré, C. Le, Forster, G. L., Lujckx, I. T., Gerbig, C., Fleming, L. S., and Sturges, W. T.: Novel quantification of regional fossil fuel CO<sub>2</sub> reductions during COVID-19 lockdowns using atmospheric oxygen measurements, 8, <https://doi.org/10.1126/sciadv.abl9250>, 2022.
- 905 Pickers, P. A., Manning, A. C., Sturges, W. T., Le Quéré, C., Mikaloff Fletcher, S. E., Wilson, P. A., and Etchells, A. J.: In situ measurements of atmospheric O<sub>2</sub> and CO<sub>2</sub> reveal an unexpected O<sub>2</sub> signal over the tropical Atlantic Ocean, 31, 1289–1305, <https://doi.org/10.1002/2017GB005631>, 2017.
- Randerson, J. T., Thompson, M. V., Conway, T. J., Fung, I. Y., and Field, C. B.: The contribution of terrestrial sources and sinks to trends in the seasonal cycle of atmospheric carbon dioxide, 11, 535–560, <https://doi.org/10.1029/97GB02268>, 1997.
- 910 Resplandy, L., Keeling, R. F., Eddebbar, Y., Brooks, M., Wang, R., Bopp, L., Long, M. C., Dunne, J. P., Koeve, W., and Oeschies, A.: Quantification of ocean heat uptake from changes in atmospheric O<sub>2</sub> and CO<sub>2</sub> composition, *Sci. Rep.*, 9, <https://doi.org/10.1038/s41598-019-56490-z>, 2019.
- Ruckstuhl, A. F., Henne, S., Reimann, S., Steinbacher, M., Vollmer, M. K., O’Doherty, S., Buchmann, B., and Hueglin, C.: Robust extraction of baseline signal of atmospheric trace species using local regression, *Atmos. Meas. Tech.*, 5, 2613–2624, 915 <https://doi.org/10.5194/amt-5-2613-2012>, 2012.
- Ruckstuhl, A. F., Unternaehrer, T., and Locher, R.: IDPmisc: Utilities of Institute of Data Analyses and Process Design (<https://www.zhaw.ch/en/engineering/institutes-centres/idp/>), available at: <https://CRAN.R-project.org/package=IDPmisc>, last access: 09 March 2023, R package version 1.1.20, 2020.
- Severinghaus, J. P.: Studies of the Terrestrial O<sub>2</sub> and Carbon Cycles in Sand Dune Gases and in Biosphere 2, Ph.D. thesis, 920 Columbia University, <https://doi.org/10.2172/477735>, 1995.
- Steinbach, J., Gerbig, C., Rädenbeck, C., Karstens, U., Minejima, C., and Mukai, H.: The CO<sub>2</sub> release and Oxygen uptake from Fossil Fuel Emission Estimate (COFFEE) dataset: Effects from varying oxidative ratios, 11, 6855–6870, <https://doi.org/10.5194/acp-11-6855-2011>, 2011.

- Stephens, B. B., Bakwin, P. S., Tans, P. P., Teclaw, R. M., and Baumann, D. D.: Application of a differential fuel-cell  
925 analyzer for measuring atmospheric oxygen variations, *J. Atmos. Ocean. Technol.*, 24, 82–94,  
<https://doi.org/10.1175/JTECH1959.1>, 2007.
- Stephens, B. B., Keeling, R. F., and Paplawsky, W. J.: Shipboard measurements of atmospheric oxygen using a vacuum-  
ultraviolet absorption technique, 55, 857, <https://doi.org/10.3402/tellusb.v55i4.16386>, 2003.
- Stephens, B. B., Keeling, R. F., Heimann, M., Six, K. D., Murnane, R., and Caldeira, K.: Testing global ocean carbon cycle  
930 models using measurements of atmospheric O<sub>2</sub> and CO<sub>2</sub> concentration, *Global Biogeochem. Cycles*, 12, 213–230,  
<https://doi.org/10.1029/97GB03500>, 1998.
- Stephens, B. B., Wofsy, S. C., Keeling, R. F., Tans, P. P., and Potosnak, M. J.: The CO<sub>2</sub> budget and rectification airborne  
study: Strategies for measuring rectifiers and regional fluxes, *Inverse Methods in Global Biogeochem. Cycles Geophysical  
Monograph* 114, 311–324, <https://doi.org/10.1029/GM114p0311>, 2000.
- 935 Thompson, R. L., Manning, A. C., Lowe, D. C., and Weatherburn, D. C.: A ship-based methodology for high precision  
atmospheric oxygen measurements and its application in the Southern Ocean region, *Tellus, Ser. B Chem. Phys. Meteorol.*,  
59, 643–653, <https://doi.org/10.1111/j.1600-0889.2007.00292.x>, 2007.
- Tohjima, Y., Terao, Y., Mukai, H., Machida, T., Nojiri, Y., and Maksyutov, S.: ENSO-related variability in latitudinal  
distribution of annual mean atmospheric potential oxygen (APO) in the equatorial Western Pacific, *Tellus, Ser. B Chem.  
940 Phys. Meteorol.*, 67, <https://doi.org/10.3402/tellusb.v67.25869>, 2015.
- Wilson, P.: Insight into the Carbon Cycle from Continuous Measurements of Oxygen and Carbon Dioxide at Weybourne  
Atmospheric Observatory, UK, Ph.D. thesis, University of East Anglia, <https://cramlab.uea.ac.uk/Publications.php>, 2012.