

# A Dataset for Investigating Socio-ecological Changes in Arctic Fjords

Robert W. Schlegel<sup>1</sup>, Jean-Pierre Gattuso<sup>1,2</sup>

<sup>1</sup>Laboratoire d'Océanographie de Villefranche, Sorbonne University, CNRS, Villefranche-sur-mer, France

5 <sup>2</sup>Institute for Sustainable Development and International Relations (IDDRI-Sciences Po), Paris, France

Correspondence to: Robert W. Schlegel (robert.schlegel@imev-mer.fr)

**Abstract.** The collection of *in situ* data is generally a costly process, with the Arctic being no exception. Indeed, there has been a perception that the Arctic lacks for *in situ* sampling; however, after many years of concerted effort and international collaboration, the Arctic is now rather well sampled with many cruise expeditions every 10 year. For example, the GLODAP product has a greater density of *in situ* sample points within the Arctic than along the equator. While this is useful for open ocean processes, the fjords of the Arctic, which serve as crucially important intersections of terrestrial, coastal, and marine processes, are sampled in a much more *ad hoc* process. This is not to say they are not well sampled, but rather that the data are more difficult to source and combine for further analysis. It was therefore noted that the fjords of the Arctic are lacking in FAIR (Findable, 15 Accessible, Interoperable, and Reusable) data. To address this issue a single dataset has been created from publicly available, predominantly *in situ* data from 7 study sites in Svalbard and Greenland. After finding and accessing the data from a number of online platforms, they were amalgamated into a single project-wide standard, ensuring their interoperability. The dataset was then uploaded to PANGAEA so that it itself can be findable and reusable into the future. The focus of the data collection was driven by the key drivers of change in 20 Arctic fjords identified in a companion review paper. To demonstrate the usability of this dataset an analysis of the relationship between the different drivers was performed. Via the use of an Arctic biogeochemical model these relationships were projected forward to 2100 via RCP 2.6, 4.5, and 8.5. This dataset is a work in progress and as new datasets containing the relevant key drivers are released they will be added to an updated version planned for mid 2024.

25 The dataset ~~are~~ (Schlegel & Gattuso, 2022) is available on PANGAEA at:

<https://doi.pangaea.de/10.1594/PANGAEA.953115>~~{link provided once dataset is accepted}~~

A live version is available at the FACE-IT WP1 site by clicking the 'Data access' tab: <https://face-it-project.github.io/WP1/>

## 1 Introduction

30 The Arctic is a region of extreme contrasts. In the winter, life must contend with constant darkness, sea water that can freeze solid, and a pervasive silence punctuated only by violent gusts of wind. Whereas the summer has 24 h of daylight, dramatically warmer air temperatures, and the arrival of migratory seabirds for the noisy business of breeding (Descamps et al., 2019). While much of the Arctic tundra is relatively barren throughout the year compared to ecoregions further south, coastal Arctic waters can be teeming with life. Of these systems,

fjords ~~tend to~~ provide ~~the most~~ diverse range of habitats for many important species, ~~and~~ thereby acting both as sources for extractive human activities, as well as possible refuges against some of the oncoming ravages of climate change (Węśławski et al., 2011; Bonnet-Lebrun et al., 2022). The work outlined below focuses on the European Arctic. The definition for which is taken from Copernicus (<https://climate.copernicus.eu/european-arctic>), and closely matches the AMAP definition of the Arctic circle (<https://www.amap.no/about/geographical-coverage>).

The rate of loss for the Arctic cryosphere driven by the changing climate is alarmingly rapid (Schlegel et al., 2023), making it critical that Arctic fjord systems be as actively monitored as possible. Even though this monitoring in the polarextreme north is both challenging and costly, there has been a concerted international effort to maintain and increase it. The majority of ~~this resulting~~ in situ data collection, both at the surface and at depth, is ~~however done~~ conducted via large researcher ruise ships or autonomous platforms, and the sampling of data throughout all but the mouths of fjords tends to be limited due to their depth. The sampling of data within fjords is therefore carried out in a more *ad hoc* manner, with many smaller teams and experiments creating disparate datasets that suffer from issues of FAIR (Findability, Accessibility, Interoperability, and Reuse) data, and some fjords are sampled much more heavily than others (Bischof et al., 2019). This is a known issue and there has already been work done to create unified datasets for specific aspects of Arctic fjords (e.g. physical oceanography via UNIS CTD database; Skogseth et al., 2019; <https://data.npolar.no/dataset/39d9f0f9-af12-420c-a879-10990df2e22d>). There is not yet however a unified dataset that provides data for investigating the range of possible relationships throughout the entire socio-ecological fjord system. The dataset detailed in this report aims to address this shortcoming.

The combination of the many different socio-ecological datasets is not as simple as identifying the sources of *in situ* data and putting them together into a folder. With the exception of a network of meteorological stations operated by the Norwegian Meteorological Institute ([frost.met.no](http://frost.met.no)), and a few well established instrument installations (e.g. Fischer et al., 2020), there are precious few long running time series collected within or adjacent to the fjords of the EU Arctic. Because maintaining these stations in the Arctic is so expensive, and because the hostility of the terrain dramatically limits their potential size/scope, there is always much more demand for research support than can be given. This is managed in part by running seasonal projects (1-3 month duration). In order to extend the time series for these projects research teams may occasionally leave instrumentation in the field to continue sampling until the teams arrive the following year and they begin a new (though usually similar) project (Bartsch et al., 2022). While this has proven to be an effective strategy for optimising the available fieldwork time in the Arctic, it effectively creates many short time series, with a range of interoperability issues. There are now many well funded international projects and research institutions that are working to close knowledge gaps in Arctic systems, but they tend to continue to produce these smaller datasets.

75 A primary consideration therefore during the creation of an Arctic fjord dataset designed to allow for the investigation of the full socio-ecological system within fjords is how to combine many spatially and temporally disjointed datasets when they may not have the same units of measurement or have otherwise not been sampled with comparable methodologies. To begin to address this issue a panel of experts in a range of natural and social science fields identified the most relevant aspects of Arctic fjord socio-ecological systems (Schlegel et al., 2023). The structure of these systems were organised by: *category* -> *driver* -> *variable*. For example, the proportion of sea-ice cover within a fjord is a *variable* of the *driver* sea-ice, which is in the *category* of the cryosphere. This structure was used to guide the collection of data and to organise how the many small yet very important datasets in the Arctic were amalgamated. This structuring of the available data also allowed for better management and conversion of the different units and methodologies into a project-wide standard. [This structure did however prevent the inclusion of some data types that cannot be effectively stored as a column of values, such as glacier shapefiles and photographic transects.](#)

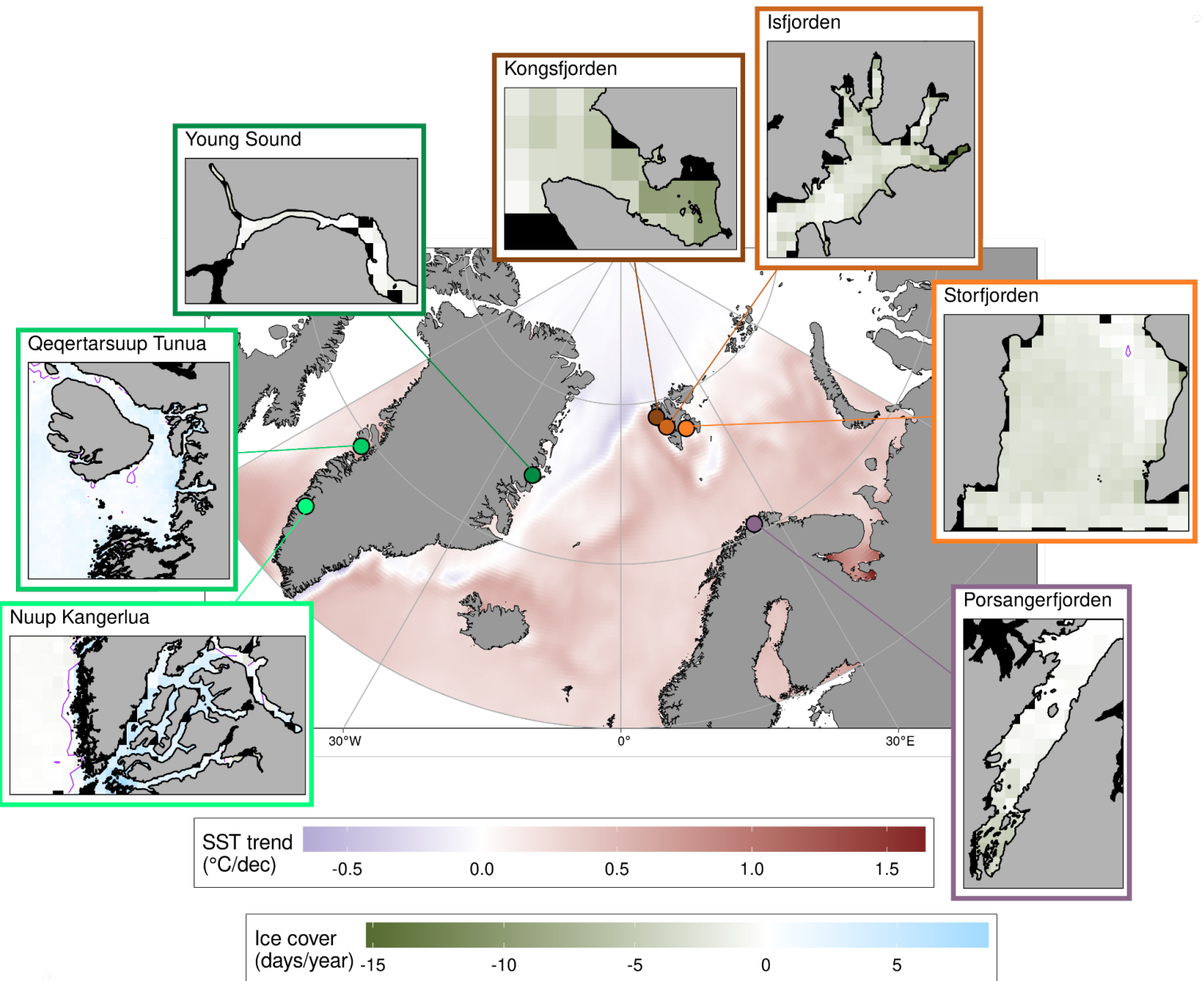
85 In the following text we first explain why certain study sites were focussed on when collecting the datasets that contained the variables of interest. We then document the methods by which these datasets were accessed, assembled, and quality controlled. A basic summary is then presented, based on the different categories of the data (e.g. cryosphere, biology, etc.). To demonstrate possible uses of this dataset, drivers with known important relationships (i.e. seawater temperature and sea-ice cover) are compared. ~~[Lastly, these relationships are projected into the future with the aid of model data that are external to the dataset documented here.](#)~~

## 2 Methods

### 2.1 Study sites

95 Many of the long running continuously sampled time series in EU Arctic fjords that contain the data of interest for socio-ecological systems are located in one of seven study sites. Across these sites one also finds a gradient in the effects of the changing climate on the Arctic cryosphere and all downstream processes. The future of what much of the Arctic may look like is represented by fjords in mainland Northern Norway, in this case Porsangerfjorden (Fig. 1). This fjord completely lacks a glacier, and frequently lasts the winter with little to no sea ice cover. There are then fjords further to the North on the Svalbard archipelago (e.g. Kongsfjorden, Isfjorden, and Storfjorden), which do have glaciers and sea ice, but at variously advanced rates of melt. Most projections show these fjords resembling those on the mainland at some point within the century (Hop & Wiencke, 2019). Different again from the Svalbard fjords are those found in Greenland. With the east coast (e.g. Young Sound) currently less influenced by warming coastal waters than the fjord systems on the west coast (e.g. Qeqertarsuup Tunua and Nuup Kangerlua). [For these reasons it was determined that the seven sites provide a scientifically useful basis for socio-ecological investigations, which is why a broader amalgamation of all possible data for all EU Arctic fjords was not performed.](#) Using the names of these seven sites (accounting for various different spellings) as well as their geographical coordinates, 105 the databases detailed below were queried to create individual data collections per site. The main city/research station was also used in queries for data at Kongsfjorden (Ny-Alesund/Ny Alesund/Ny- 110

Ålesund), Isfjorden (Longyearbyen), Young Sound (Zackenber), Qeqertarsuup Tunua (Qeqertarsuup), and Nuup Kangerlua (Nuuk). The search parameters were not case sensitive.



115 **Figure 1:** Decadal trends in sea surface temperature (SST) throughout the Arctic waters surrounding the seven study sites  
 (roughly 60° W - 60° E and 60° N - 90° N) and *annual* trends in sea ice cover. The colour of the pixels in the central panel  
 show the decadal rate of change from a simple linear model of the annual average temperatures during the period 1982-2021  
 from the daily NOAA OISST 0.25° gridded product (Huang et al., 2021). The location of the study sites are denoted with  
 coloured points and are shown with colour-coordinated inset windows. The rates of change in sea ice cover (days per year)  
 120 for each study site were determined with a simple linear model on the number of open water days per year from the MASIE  
 ~0.04° gridded product (NSIDC, 2022). The thin purple contours found in some windows show the 0 days/year contour line,  
 while pixels outside of the study site are shown as black. Note that the size of the study sites differ and this is not accurately  
 reflected by the size of the windows.

## 2.2 Categories -> drivers -> variables

125 Due to the diverse range of avenues of inquiry one must consider when amalgamating data across the scope of a socio-ecological system, it was necessary to establish a consistent terminology. Each individual variable of measurement of the natural and social world (e.g. the presence of ice, tourist arrivals, or nitrate concentration; Table SA1) was characterised into one of 14 drivers (*sensu* Möller et al., 2022), with each of these grouped into one of five categories (Table 1).

130

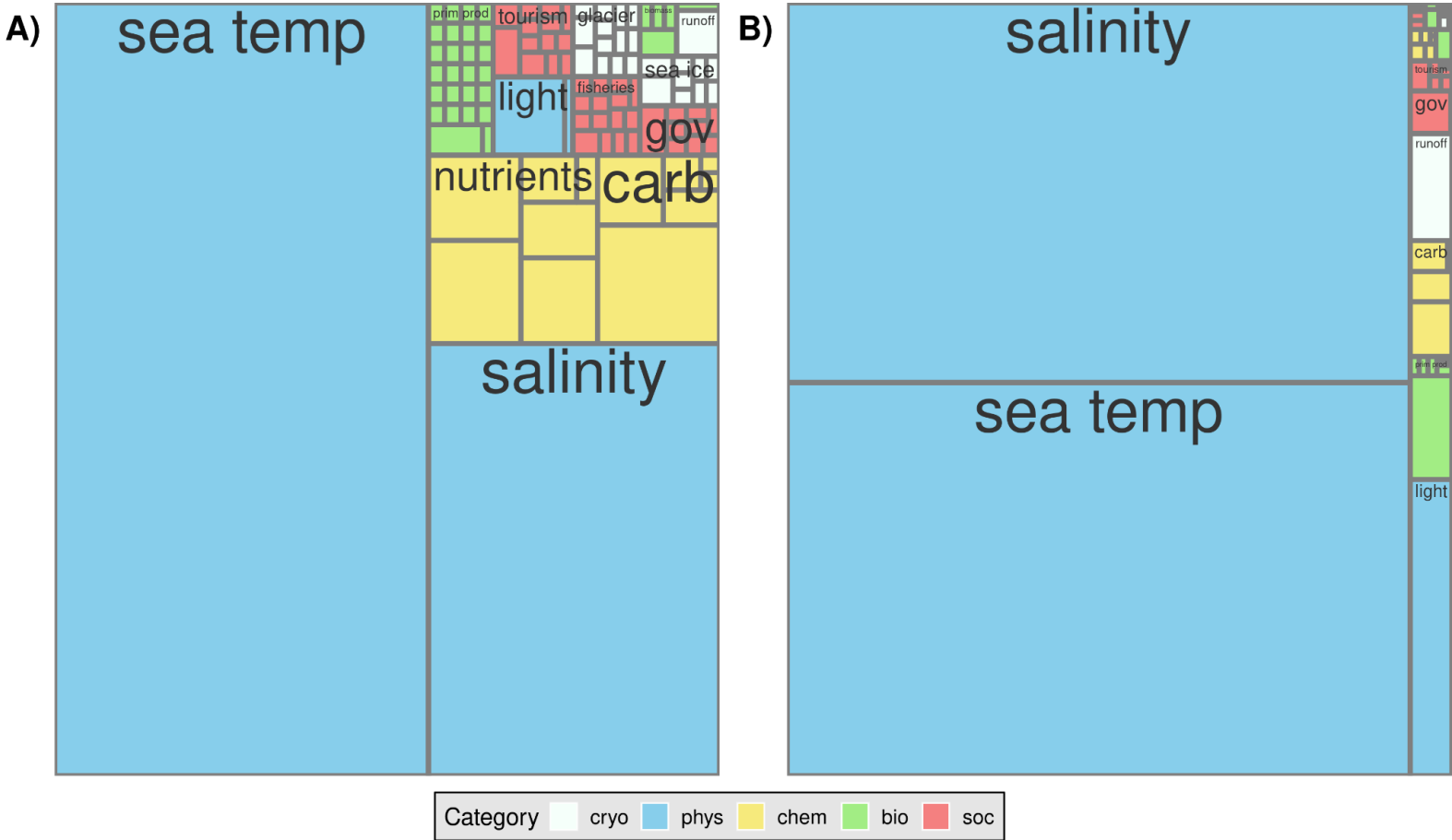
**Table 1:** Categories and drivers into which all data points in this dataset are classified. The categories are: cryo = cryosphere, phys = physics, chem = chemistry, bio = biology, soc = social. The drivers are: sea ice = sea ice cover, glacier = glacier mass balance, runoff = terrestrial runoff, sea temp = seawater temperature, light = spectral radiation (PAR + UV-B), carb = carbonate system, nutrients = nutrients, prim prod = primary production, biomass = biomass, spp rich = species richness, gov = governance, tourism = tourism, fisheries = fisheries.

135

<b>cryo</b>	<b>phys</b>	<b>chem</b>	<b>bio</b>	<b>soc</b>
sea ice	sea temp	carb	prim prod	gov
glacier	salinity	nutrients	biomass	tourism
runoff	light		spp rich	fisheries

The list of 14 drivers was not initially evident, nor was there a consensus on them from the start. At the outset of the project a long list of relevant variables was agreed upon and links to the necessary datasets were provided when possible. When no link was provided, a series of data sources ([see](#) Section 2.3) were queried using keywords or units of measure (e.g. sea water OR °C) from the list of variables. While all of the data originally identified were aggregated, a literature review performed for this same project revealed that the important interactions within socio-ecological systems would be better expressed as broad drivers, rather than individual variables (Schlegel et al., 2023). In reaction to this, further pruning of the dataset outlined here revealed that many of the variables from the initial list had little to no available data. After a couple rounds of editing and the final list of five categories, 14 drivers, and the variables therein were established. Thanks to the companion review paper (Schlegel et al., 2023), it was also possible to determine which relationships between drivers are the most important, and what the direction of those relationships are. It is these important dependent relationships that are used to demonstrate the utility of the product ([see](#) Section 4 and 5). Finally, it should be noted that not all variables have equally accessible amounts of data, and the collection of data was heavily skewed in favour of the well sampled variables of seawater temperature and salinity (Fig. 2). A total of 7,564,441 data points have been collected, with nearly half being seawater temperature (3,606,138), and the other half salinity (3,482,342). Of the 1,565 datasets that have been collected, 880 contain seawater temperature data. Of the 107 different variables, 81 of them [are only found in one](#) from a single dataset. These primarily being variables for biology, cryosphere, and social drivers (Fig. 2). [Finally, it must be noted that all of the data points presented here represent either daily, monthly, or annual values. When data are available at a higher temporal resolution than daily \(e.g. seawater temperature sampling made every minute on a mooring\), they are averaged into one daily value.](#)

155



160 **Figure 2:** Square tree plot showing the relative presence of the data collected for this dataset. Each box represents one  
 variable. The clusters of variables per driver are labelled, with the colour of the boxes indicating the category of the data. If  
 the number of data points for the variables constituting a driver are not numerous enough, no label is plotted. Definitions for  
 the contractions used here (e.g. “carb”, “sea temp”, etc.) -are given in Table 1. Panel A) shows the relative count of datasets  
 containing the indicated driver. Note that these boxes are not independent of one another because a single dataset could  
 potentially contain multiple drivers. Panel B) shows the relative count of individual daily data points per variable. These  
 boxes are independent of one another.

**2.3 Data sources**

The vast majority of the data aggregated for this dataset were publicly available and accessed via four data  
 repositories: 1) PANGAEA, 2) The Norwegian Polar Data Centre (NPDC), 3) The Norwegian Marine Data  
 Centre (NMDC), and 4) Greenland Ecosystem Monitoring (GEM) (Table 2). A description of these repositories  
 and how the datasets within each were accessed are detailed in the following subsections. Other notable  
 databases that provided important access to data are also mentioned below.

**Table 2:** The ‘Total’ count of datasets identified per site that contain data for the 14 drivers identified in this study. The  
 count of datasets contributed from the four largest sources are listed in individual columns: PANGAEA, NPDC (Norwegian  
 Polar Data Centre), NMDC (Norwegian Marine Data Centre), GEM (Greenland Ecosystem Monitoring), with the ‘Other’  
 minor sources combined into one column. The number of datasets containing data for a driver within one of the five  
 categories are also listed: cryosphere (cryo), physics (phys), chemistry (chem), biology (bio), and social (soc) are also  
 numerated. Note that a single dataset may contain data for multiple sites or categories.

Site	Total	cryo	phys	chem	bio	soc	PANGAEA	NPDC	GEM	NMDC	Other
Kongsfjorden	102	5	79	29	5	1	85	10	0	0	7
Isfjorden	110	4	97	17	3	2	98	4	0	2	6
Storfjorden	49	8	36	10	0	1	41	4	0	0	4
Young Sound	16	7	3	5	3	0	1	0	12	0	2
Qeqertarsuup Tunua	284	2	279	22	1	0	276	0	4	0	3
Nuup Kangerlua	458	7	443	36	4	0	445	0	9	0	4
Porsangerfjorden	243	2	239	3	1	0	196	0	0	42	4

### 2.3.1 PANGAEA

The PANGAEA data portal (<https://pangaea.de>) hosts a very large collection of datasets produced primarily via earth system research. It is an open access portal with only some datasets under password protected embargo while the authors are waiting for a corresponding research article to finish the publication process. The administrators of this portal provide an API through which one may programmatically interrogate the entire database of a few hundred thousand datasets using boolean search operators and keywords. While it must be noted that this data portal does not specialise in Arctic data, it is possible to filter data within a lon/lat range, ensuring that the search results remain relevant. For this particular project the R package ‘pangaeaR’ (Chamberlain et al., 2021) was used. Through the initial search process, 14,063 datasets were identified as potentially within the scope of the search for the key drivers and study sites. This first [filterprocess](#) was based primarily on which datasets were geolocated within the bounding boxes covering the seven sites (Fig. 1), as well as filtering out datasets that were specifically bathymetric, terrestrial, or aerial in nature. After downloading the datasets and amalgamating them, the list of parameters for PANGAEA data were consulted and those applying to the 14 drivers determined for this dataset were used as a second filter on the downloaded data. Through this process it was determined that 840 of the PANGAEA datasets would be aggregated, at least in part, with the final dataset.

### 2.3.2 NPDC

The Norwegian Polar Data Centre (NPDC; <https://data.npolar.no>) is designed to cater to the needs of the Arctic research community and specifically hosts datasets related to research conducted for, or funded by, Norwegian institutions. This portal provides a more classic user interface in which one has a search bar that understands boolean logic. Because the indexing of datasets on this website is tailored to Arctic research, it was not necessary to use the keywords for the drivers in searches. Rather it was sufficient to search just for the names of the study sites. 11 datasets were downloaded from this website and all of them were aggregated into the final dataset.

### 2.3.3 NMDC

The Norwegian Marine Data Centre (NMDC; <https://www.nmdc.no/>) is also designed to host Norwegian data, but focuses on the marine realm, and not necessarily Arctic. This is not however an issue as the database interface combines a keyword search bar, common categories that can be ex/included via radio buttons, as well as an interactive map that allows one to filter via spatial domain. In this way one can rapidly and accurately search for datasets containing drivers of interest within the predetermined spatial domains of the seven sites chosen for this project. 44 datasets were downloaded from this portal, all of which were included in the final dataset.

### 2.3.4 GEM

The Greenland Ecosystem Monitoring Database (GEM; <https://data.g-e-m.dk/>) focusses on the management and dissemination of data relevant specifically to the three Greenland study sites identified for this project. This database is therefore oriented around inquiries into one of these three sites, and while a search bar is available, it is generally more direct to follow the links provided for the individual sites and to use the file structures listed therein to find datasets of interest. Overall, 31 datasets were downloaded from this portal, however, due to the data portal requirements for acknowledging the use of each unique download, it is not possible to include these datasets in the final dataset presented in this paper.

### 2.3.5 Additional sources of note

The Svalbard Integrated Arctic Earth Observing System (SIOS; <https://sios-svalbard.org/>) is effectively a meta-search database of other Arctic databases that contain datasets specifically of interest to researchers on Svalbard. This data portal provides an advanced user interface, similar to the NMDC, in which a range of criteria may be imputed in some way in order to limit the resulting output. After searching through the NPDC and NMDC databases, SIOS was used to perform a meta-search of many additional databases to catch anything that was not hosted on the two primary Norwegian sites. Several datasets were discovered through this method, all of which were included in the final dataset.

Another database with a strictly Arctic focus that provides publicly accessible data is Environmental Monitoring of Svalbard and Jan Mayen (MOSJ; <https://mosj.no/en/>). This database has a drop-down tab menu that allows users to select broad categories like Climate -> Ocean. And therein one can select from several variables such as sea ice extent or sea level. One then directly downloads these data as.csv files. This website was of particular importance for direct and useful glacier mass balance data. But it also provides a full range of variables from the cryosphere, physics, and biology categories. In total 2 datasets were downloaded here, all of which were included in the database.

Governance data were provided exclusively via the national statistics websites of Norway (<https://www.ssb.no/en>) and Greenland (<https://bank.stat.gl/pxweb/en/Greenland/>). The Norwegian statistics website focuses more on the national concerns of an economy oriented around more developed service



industries, and therefore has fewer resources available for dedicated inquiry into the human impact on the marine realm. The Greenland national statistics website, in contrast, focuses more on the importance of the marine realm to the economy and therefore has a deeper range of available statistics of interest for the effect of governance on other drivers in Arctic fjord socio-ecological systems. Overall 8 datasets were downloaded for Norway, 16 for Greenland, and all were included in the database. It must be noted that the spatial scale of these data is much greater than the other categories. For example, the ‘site’ of collection for a [national](#) statistics is usually an entire province, not a single fjord. Where possible, the national scale sites are associated with their local scale fjord (e.g. Nuup Kangerlua is within the Sermersooq Municipality).

There are also a few very large datasets of interest to this project who are themselves an amalgamation of existing smaller datasets. The first of these is the UNIS database (Skogseth et al., 2019), which is a [compilation](#) of all of the [temperature and salinity profiles \(collected via ship transects and moorings\)](#) found ~~around throughout western~~ Svalbard (0-34°E and 75-83°N) ~~and consists primarily of salinity and temperature measurements~~, which partially explains the dominance of these two variables in the dataset (Fig. 2B). The other two datasets, SOCAT (Surface Ocean CO<sub>2</sub> Atlas; Bakker et al., 2016) and GLODAP (The Global Ocean Data Analysis Project; Lauvset et al., 2022), focus more on the carbonate system of the ocean. These are global products, but only the Arctic region encompassing the seven study sites (~60°W to 60°E, ~60°N to 90°N) has been amalgamated into the dataset for this project. Finally, the Norwegian Meteorological Institute (<https://www.met.no/en>) provided 13 very long and high quality multi-variable atmospheric time series generated by long-running MET stations, ~~however; Unfortunately~~ the final dataset for this project was limited to focussing directly on the marine realm, not ~~accounting for~~ the atmosphere, so these time series were not amalgamated.

## 2.4 Data assembly

Once the data portals had been thoroughly interrogated and the files ~~had been~~ downloaded and saved according to their data sharing permissions, they were combined into a single data product. Each of the data portals outlined above have their own requirements for the data they host, with some portals being more strict than others. Much of the aggregation of the hundreds of different datasets was aided by the very strict quality control for data hosted on PANGAEA. All of these datasets were first aggregated during the download process into a PANGAEA specific format, which was close to the final project-wide standard. The other data portals allow for a wider variety in which the raw data within the dataset may be oriented, as well as the different file types within which those data are stored. Using the R language (R Core Team, 2022), a series of scripts were written to create a pipeline that loaded first all of the PANGAEA files, then the individual files from the other data portals, before combining them into a single shared project-wide standard based on tidy data principles (Wickham, 2014). Each datum in the dataset therefore has the same corresponding columns of meta-data: (1) download date, (2) URL, (3) citation, (4) type of data (e.g. *in situ* or remotely sensed), (5) site (mostly one of the seven study sites; Fig. 1), (6) category, (7) driver, (8) variable (9) longitude, (10) latitude, (11) date of sampling, and (12) depth of sampling. Where possible, the URL provided for the data is the link to its digital object

280 identifier (DOI) page. Importantly, all values in the dataset are numeric so that they can be listed in one single  
column that extends along millions of rows of data. It should therefore be noted that non-numeric data were not  
amalgamated, and that data spanning multiple dates or depths were taken at either the mean date/depth or the  
max date/depth as would be appropriate for the data type. Once a single row of meta-data was finalised for each  
datum, any duplicate rows (i.e. hourly data) were averaged to a single value. This important decision was made  
because it was determined that for a data product of this scale it would not be beneficial to have sub-daily data.  
285 Indeed, seawater temperature already dominates this data product, and if it was left at its native resolution (often  
hourly values for moorings), then this would effectively be a seawater temperature/salinity product with <0.1%  
of the space dedicated to the other 12 drivers.

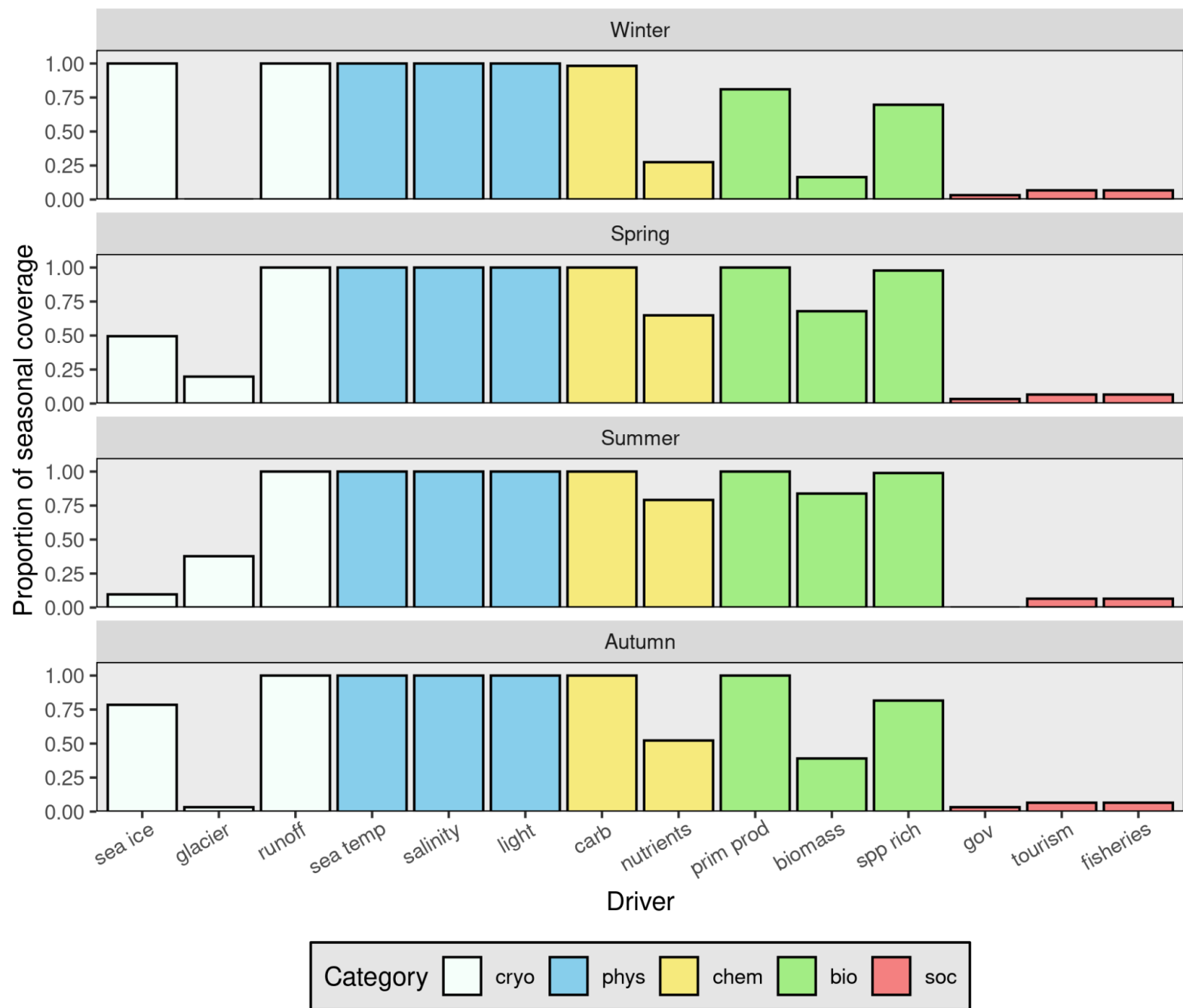
## 2.5 Quality control

290 Because all of the data aggregated for this dataset were taken from published sources, it was determined that  
they should not require the application of rigorous quality control (QC). Therefore the primary function of QC  
for this process was to ensure that the data aggregated into the final product could be classified into one of the  
14 drivers identified ~~above as being particularly relevant to Arctic fjord socio-ecological systems~~. This was  
necessary in part because many of the datasets listed at the outset of the project contained data for drivers  
outside of the final 14, ~~requiring that they be. So any data falling outside of this narrowed scope were~~ filtered  
295 during the amalgamation process. ~~This was relatively rare.~~

Even though this dataset is composed almost entirely of published data, it was noted while performing the  
example analyses below (Sections ~~4 and 5~~) that some issues persisted. When the issue was simply an anomalous  
data point (e.g. a negative chlorophyll value) it was removed and the data analyses carried on. However, there  
300 were cases when systemic issues were identified in a dataset (e.g. consistently low salinity values), ~~in which~~  
~~case the entire dataset was omitted~~. When possible the contact person for the dataset was notified ~~about the~~  
~~potentially erroneous data, and corrections were made according to their expert advice~~

## 3 Data Summary

305 One would generally assume that the availability of data within the Arctic would be highly seasonal, but with  
the exception of the cryosphere, this is not the case (Fig. 3). The coverage of sea ice data is much lower in  
Spring and Summer because a complete lack of sea ice cover is generally calculated as a missing value, rather  
than a 0. Curiously, glacier mass balance data are missing in the Winter. Upon closer inspection it was  
discovered that this is because sampling tends to end in September and resume in April. We also note that the  
values for social drivers (i.e governance, tourism and fisheries) are so low because these data are only available  
310 at monthly or annual rates, whereas the data from the other categories (i.e. not social data) are available at daily  
rates.

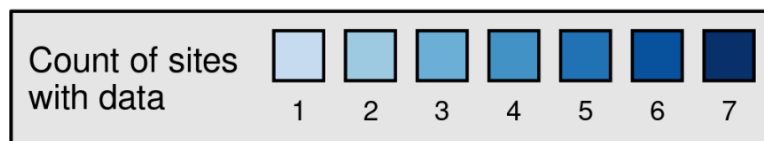
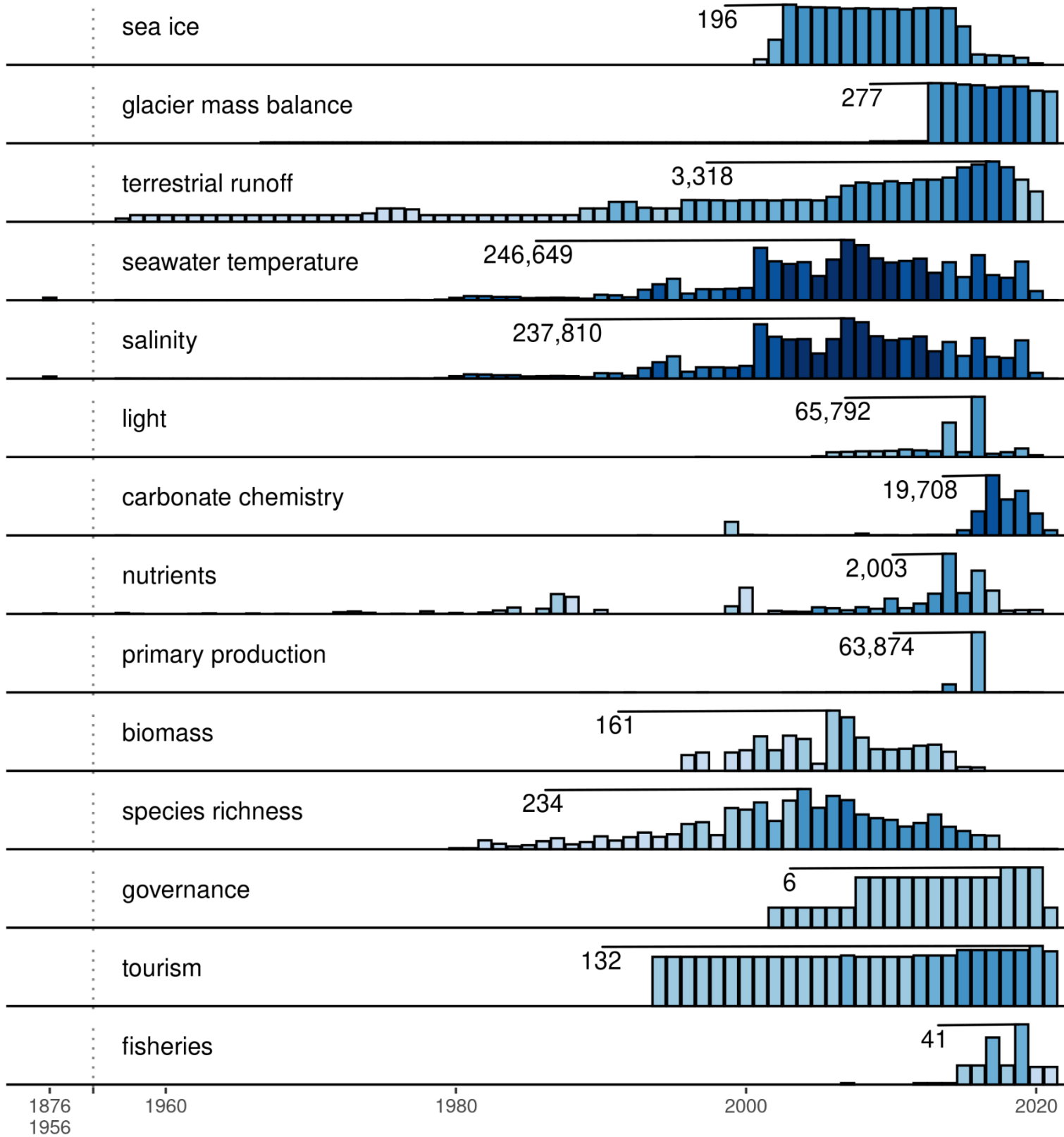


**Figure 3:** Summary of available data for the drivers identified for this project. Each panel shows the coverage per driver for the given season, with Winter containing January, February, and March. Seasonal coverage is calculated by the total number of unique days-of-year within a season that have at least one datum present for the given driver. The colours of the bars indicate the category to which the drivers belong. The very low social driver values indicate that these data are only available at a monthly or annual resolution, not daily like the other drivers.

Besides differences in seasonal coverage, some drivers have data available for a much longer period of time than others (Fig. 4). Seawater temperature and salinity are once again the most well sampled of the drivers, with data starting in 1876. Somewhat surprisingly though, nutrient data have been sampled since 1934. After that began the consistent measurement of carbonate chemistry, terrestrial runoff and glacier mass balance data in

1957, 1957, and 1967 respectively (Fig. 4). The measurement of the rest of the drivers tends to begin in the 1990's to 2000's. We may also see that data for all of the drivers tend not to be present at all seven study sites at the same time (Fig. 4). The data available for the 14 drivers within each of the five categories are summarised in the following sub-sections and any specific filtering or unit conversions made are detailed.

Count of data points



330 **Figure 4:** The annual count of data for each driver across the seven study sites in this data product. The colour of the bars shows how many total sites have data present in a given year, with the height showing the total count of the data. Note that the y-axes differ for each driver, with seawater temperature and salinity being much greater than the others. The year with the highest count of data for each driver is labelled. There is a break on the x-axis at 1957 denoted by a vertical dotted line. Seawater temperature and salinity have data going back from 1956 to 1876, and the sum of all of these annual values are shown as bars to the left of the dotted line.

### 335 3.1 Cryosphere drivers

Cryosphere data are readily available throughout the Arctic, though usually not at a daily resolution. Measurements of winter ice cover are generally available for all but the western Greenland sites. The glaciers for Svalbard and eastern Greenland have annual measurements available in August/September for Svalbard, and April/May for eastern Greenland. Conspicuously, there are no measurements of sea ice across sites using the same methods/units. Comparisons of *in situ* sea ice cover across the Arctic are thus not currently possible. The Global Runoff Data Centre (GRDC) provides a global database of river discharge values, though their data sharing restrictions prevent us from aggregating the data here. Likewise, there are many discharge values available for Greenland via GEM. The terrestrial runoff data that were subset from the larger GRDC database were determined by spatially filtering the time series whose lon/lat values fell within the bounding boxes of the study sites (Fig. 1). The number of datasets providing cryosphere data are relatively low compared to those for chemistry or physics data, but higher than for biology and social drivers (Table 2).

Due to its broad importance for the understanding of change within Arctic fjord socio-ecological systems, sea-ice cover is one of the two drivers in this data product for which remotely sensed data were included. Pixels were extracted from the MASIE 4 km resolution ice cover product (NSIDC, 2022) for the seven study sites (Fig. 1), and average daily sea-ice cover values were created from 2006-2021. This created only one additional time series per site, thereby avoiding to overrepresent remotely sensed data in this data product, which aims to be a collection of primarily *in situ* data. [While a 1 km product is available, it only starts in 2014, which is too short to be useful for trend analysis. A comparison was made between the 4 km and 1 km product for years of overlapping data in Kongsfjorden and the values were found to be very similar. For this reason it was decided that the lower resolution, longer time series was preferable. While sea ice thickness, rather than cover, would be preferable to include in this amalgamated dataset, at the time of this writing the authors were not aware of any such product on an Arctic scale.](#)

### 3.2 Physics drivers

360 Data measuring the physical properties of the EU Arctic are the most readily available (Fig. 2, Table 2). Seawater temperature measurements are available at daily to monthly resolution for all sites, with the most frequent taken at Kongsfjorden, and the least at Young Sound, where there are no values during the winter months. Salinity data are often sampled alongside seawater temperature, and so their availability largely matches the former. Light data, while important, are much more difficult to come by. There are many daily values available at Kongsfjorden, but only for one or two years. There have been a few years of summer light measurement in Young Sound, and the western Greenland sites have enough data to create a rough monthly climatology. No data have yet been sourced for northern Norway.

The importance of seawater temperature within Arctic fjords made it the second of the two drivers for which  
370 remotely sensed data were sourced. Data for the entire bounding box of the study area (Fig. 1) was subset from  
the daily NOAA OISST v2.1 0.25° resolution product (Huang et al., 2021). The pixels within the bounding  
boxes for the seven study sites were combined into a single daily time series from 1982 to 2021. However,  
while a resolution of 0.25° may be sufficient for ocean scale studies, for many of the fjords in this data product,  
this resolution is too coarse. Therefore, seawater temperatures for each site were also sourced from v2.1 of the  
375 Climate Change Initiative (CCI) daily 5 km resolution product produced by the European Space Agency  
(Merchant et al., 2019). Time series were created for the period 1982-2020 by averaging the daily values over  
all pixels found within the bounding boxes for the sites (e.g. Fig. 1).

### 3.3 Chemistry drivers

The chemical composition of seawater is generally well sampled in the Arctic with the study sites having data  
380 available for the carbonate system for all months of the year (Fig. 3). Daily carbonate system data are available  
for several years in Kongsfjorden, and to a lesser extent in Nuup Kangerlua. Nutrient data availability is greatest  
during the ice-free months (Fig. 3), particularly in Kongsfjorden and Young Sound. While less frequent, the  
western Greenland sites also have data available for much of the year. Datasets providing chemistry data are the  
second most numerous after physical data (Table 2).

385 The filtering and grouping of variables for the chemistry drivers required more consideration than the previously  
described categories because each of these drivers contained variables that were notably different from one  
another. For example, while sea ice cover data might be in units of % or km<sup>2</sup>, one can still filter through datasets  
for any reference or variable name containing 'ice'. However, the carbonate system encompasses the partial  
390 pressure of CO<sub>2</sub> (*p*CO<sub>2</sub>) in seawater, total alkalinity (TA or A<sub>T</sub>), dissolved inorganic carbon (DIC or C<sub>T</sub>), pH, and  
the saturation state of calcium carbonate. Likewise, nutrients contain nitrate (NO<sub>3</sub>), nitrite (NO<sub>2</sub>), ammonium  
(NH<sub>4</sub>), phosphate (PO<sub>4</sub>), and silicate (SiO<sub>4</sub>). All of the variables for these two drivers tend to come in a variety  
of units of measurement, so it was necessary to choose a standard unit and convert data as necessary. For the  
carbonate system this was either in units of μmol kg<sup>-1</sup> (TA, DIC), μatm (*p*CO<sub>2</sub>), and total scale (pH<sub>T</sub>) when  
395 possible (unfortunately many pH values have an unknown scale, which is noted in the units for the variable).  
For the nutrients, all values ~~are~~ ~~were~~ ~~in~~ ~~converted~~ ~~to~~ μmol l<sup>-1</sup>. While this does not match the established best  
practice of using μmol kg-1 for nutrient measurements (Jiang et al., 2022), one must have seawater  
temperature and salinity values to convert from litres to kilograms (Becker et al., 2020), and these data  
tend to be missing from datasets that report nutrients in units of litres, making ~~a~~ ~~n~~ ~~a~~ ~~c~~ ~~c~~ ~~u~~ ~~r~~ ~~a~~ ~~t~~ ~~e~~ ~~conversion~~  
400 impossible.

### 3.4 Biology drivers

Datasets providing data for biology drivers are not numerous (Table 2). Indeed, no FAIR datasets were  
identified for Storfjorden or Porsangerfjorden, with only primary production data in August available at

405 Qeqertarsuup Tunua. Nuup Kangerlua is the only site with data available for all of the biology drivers for all months of the year, with Young Sound having all drivers during some ice-free months. Isfjorden has primary production data available over the full calendar year with some daily datasets available. Note that seabird data exist for much of Svalbard (e.g. <https://data.npolar.no/dataset/0ea572cd-1e4c-47a3-b2a5-5d7cc75aaeb4>), but these were considered to be outside of the scope of the marine data collected for this dataset.

410 It is important to note that while the rate of primary production is known to be a very important driver in Arctic fjords, data for the direct measurement of this driver are almost non-existent, with the exception of Young Sound, ~~thanks to a recently published study~~ (Holding et al., 2019). Otherwise most primary production values come from personal communications (e.g. Hop et al., 2002) or from a couple of historic data points (e.g. Eilertsen et al., 1989). To address this shortcoming, the data collected for chlorophyll (Chl a [ $\mu\text{g l}^{-1}$ ]) were  
415 grouped with primary production. This is a potentially controversial choice, but was made because it was necessary to make additional compromises for the other biology drivers, which left primary production as the best classification for Chl-a data. One could argue that these data would be better placed in the biomass driver however, data for this driver were also lacking in public availability. Because of this, the data classified here as biomass are species survey data when the units are reported in individuals  $\text{m}^{-3}$  or cells  $\text{m}^{-3}$ . While not ideal,  
420 providing these data to the community still allows for researchers who know which species they are looking for to readily access them via this data product and to perform the biomass calculations for themselves. It is beyond the scope of the data amalgamation for this product to perform these calculations for the 751 species that have data available in this product. Lastly, that brings us to species richness. No publicly available data exist that report on this driver directly. To address this we removed the units (e.g. individuals  $\text{m}^{-3}$ ) from every measure of  
425 a species and tabulated them per site, day, and depth to get the count of species, which then forms the basis of what could be an investigation into species richness. The presence of the individual species per site, day, and depth were also maintained so that researchers can access this information. Again it was determined to be outside of the scope of the data amalgamation for this project to perform analysis on these data, such as calculation of Shannon Wiener diversity indices. [Future versions of this dataset will elaborate on the species richness driver by creating more meaningful groups by taxa or ecological function \(e.g. algae, zooplankton, etc.\).](#)  
430

### 3.5 Social drivers

Of all the categories of drivers identified in this study, datasets for social drivers were the most difficult to source. This is primarily due to the fact that there are no applicable social datasets on PANGAEA, which is by  
435 far the largest provider of data in this project (Table 2). Of the hundreds of datasets sourced, only 28 of them provide social data. Three provide monthly tourism values over the past several years ~~and~~ for Kongsfjorden and/or Isfjorden (Table 2, Fig. 3), one for ship AIS data in western Svalbard, 10 for monthly governance statistics for Greenland, and another 8 for Norway. Fisheries are a very well quantified driver, with a very well established body of statistical analyses for comparison with the natural world. Six such datasets were sourced



440 via national statistics websites for Greenland and three for Norway. There are 19 fisheries datasets available via the IMR site (<https://gbif.imr.no/ipt/>), three of which have been amalgamated.

More so than with the other categories of data, there is overlap in the variables for the drivers within this category. For example, boat traffic within the fjords is an important social consideration, but must be classified  
445 either into the tourism or fisheries drivers depending on the ship in question. The variable names are otherwise the same, which required that the reference in question be consulted in order to accurately rename them (i.e. ‘vessels - tourism [n]’ vs ‘vessels - commercial [n]’). The division and regrouping of these variables was by far the most time consuming of all of the categories due to how many small exceptions there were.

#### 4 Relationships between drivers

450 In order to illustrate the potential uses of this dataset, a comparison of the different drivers is outlined below. This is not an exhaustive comparison, nor is it meant to be proscriptive on the use of these data. That would depend on the question(s) being asked by a given researcher. It must also be noted that ~~any~~the values [determined in a course analysis of these data presented below](#) do not necessarily reflect the changes that exist within the fjord. ~~We have performed because~~as large aggregations of the data [have been made here](#) in the interest of  
455 simplifying the analysis, ~~in order to perform it across all of the categories/drivers of data.~~ [Additionally,](#) ~~it~~ would also not be ~~productive or~~ useful to compare every driver in this dataset to each other. Rather it is necessary to follow a guiding principle for which drivers are compared and why. This is found in Fig. 2 of Schlegel et al. (2023), which shows the key relationships between drivers and the direction of their interactions, as determined from the literature. Because the aim of this dataset is to allow for investigations of the interactions between  
460 drivers within a given Arctic fjord socio-ecological system, we did not compare data across sites, ~~but we did compare the interactions found within each site to those in other sites.~~ In order to [broadly quantify the maximise the amount of](#) comparisons that can be made for drivers within fjords, the data have been binned into a few consistent depth ranges, and averaged into monthly means. Time series with only annual values were not used, as these created skewed comparisons against other drivers for just the months of January or December  
465 accordingly, ~~and When data were available for two different comparisons at multiple different depth ranges (e.g. surface sea ice, and seawater temperature at 50 m) all of the possible depth range comparisons were made. Generally speaking, comparisons of data at the same depth will be the most interesting, but there are exceptions to this that are noted below.~~ ~~Finally,~~ comparisons were only made when there were at least three months of overlapping data ~~available~~, and only data from 1982 to 2020 were used as this is the period available for the CCI  
470 SST product.

It must be noted that even though the methodology used for data comparison is coarse, there are still many drivers with either no overlapping monthly values, or only a couple of sites that have overlap. For many sites there are almost no drivers that overlap with anything other than seawater temperature (Table 3). Of the 217  
475 relationships that exist between the variables within drivers, only one was able to be quantified across all of the seven sites contained within this dataset (Table 3, [Fig. S1](#)). 18 comparisons could be made between just two

different sites, seven between three sites, and seven more comparisons could be made between four or more sites. [For drivers comparable between at least four or more sites, the mean \(median\) number of overlapping months was 82 \(54\). With a minimum and maximum range of 6 to 360 months.](#)

480

**Table 3:** The drivers and variables with overlapping monthly data that could be compared within multiple sites. The independent drivers/variables are shown in the columns with an ‘x’, and the dependent drivers/variables in the columns with a ‘y’. The site count column shows the number of sites within which the indicated comparison could be made. Note that for seawater temperature and sea ice this includes remotely sensed data. [Note that ‘Q \[m3/s\] is a measure of flow rates. Here being a measurement of river runoff into a given fjord.](#)

485

driver x	driver y	variable x	variable y	site count
sea temp	sea ice	temp [°C]	sea ice cover [proportion]	7
runoff	salinity	Q [m3/s]	sal	6
runoff	sea temp	Q [m3/s]	temp [°C]	6
salinity	spp rich	sal	spp count [n]	5
sea temp	spp rich	temp [°C]	spp count [n]	5
runoff	light	Q [m3/s]	PAR [μmol m-2 s-1]	4
sea ice	light	sea ice cover [proportion]	PAR [μmol m-2 s-1]	4

### P3: Interesting relationships within sites

490

[The relationship between seawater temperature and sea ice cover was somewhat consistent across all sites \(except Young Sound\), with an increase of 1° C equating to a mean change \(± standard deviation\) in annual sea ice cover of -12% ± 0.22% \(Fig. 5A\). This relationship allows us to project this value into the future given different emissions pathways \(Section 5\). Another robust comparison available within this dataset is seawater temperature and species count, which shows a positive trend for most sites, with Young Sound again providing outliers \(Fig. 5B\).](#)

495

**Figure 5:** Boxplots showing the values for the slope of linear models that compare an independent and dependent variable within multiple sites, as shown in Table 3. The colour of the dots shows the site, which may have more than one dot as multiple depths were compared between variables.

500

## 65 Code and data availability

As detailed above, certain decisions were made about which variables to group into which categories and drivers that may not be agreed on by all researchers. Regardless, due to the meta-data columns attached to each datum in this data product, it is possible to quickly isolate which data are of interest and extract them. For research

505 projects making heavy use of data from a limited number of references for data within this product, it is advised that these sources be cited in addition to the citation of this larger data amalgamation. This advice is similar to that for the use of data within the SOCAT (Bakker et al., 2016) and GLODAP (Lauvset et al., 2022) datasets.

The code written for the sourcing, cleaning and amalgamating of this dataset may be found on GitHub at: <https://github.com/FACE-IT-project/WP1>. The code used for the figures and tables seen in this publication may be found at: [https://github.com/FACE-IT-project/WP1/blob/main/code/data\\_paper.R](https://github.com/FACE-IT-project/WP1/blob/main/code/data_paper.R).

515 A meta-database providing a high level summary of the individually sourced datasets in this data product (i.e. not scraped from PANGAEA) is available here: <https://face-it-project.github.io/WP1/metadatabase.html>. A user interface (UI) for the live version of the ~~to both the final data product, and the raw version,~~ may be accessed ~~on the same website by clicking the 'Data access' tab here: 193.50.85.104:4949/dataAccess/~~. The full data product is ~~published~~ hosted on PANGAEA at: <https://doi.pangaea.de/10.1594/PANGAEA.953115> ~~[link provided once DOI is generated]~~.

## 67 Conclusion

520 The data product described in this report was assembled in order to address the needs of researchers who are investigating the interactions between, and changes to, key drivers within Arctic fjord socio-ecological systems. This was accomplished by sourcing and amalgamating numeric data available for 14 different drivers categorised into either the cryosphere, physical oceanography, chemical oceanography, biology, or social science. These data begin to have regular sampling as far back as the 1950's (or even 1900's), but more consistently from the 1990's forward. The distribution of the available data is not equal between categories or drivers, with the majority of available data coming from seawater temperature and salinity.

530 There are enough overlapping data, both within and across the seven study sites, to allow for a range of transdisciplinary analyses. It must be noted however that most of these analyses across sites are aided by the inclusion of remotely sensed seawater temperature and sea-ice cover data. Without these the 'out-of-the-box' applicability of this amalgamated data product to Arctic research would be reduced. Within the individual sites however there is enough *in situ* collected data for many interesting analyses.

535 The *in situ* collected data for many of the drivers in this data product required additional filtering (e.g. terrestrial runoff) and in some cases the conversion of the units of measurement (e.g. carbonate system and nutrients). Most of the data classified into the biology drivers also required careful consideration as to how best to present the raw data to the user, while still maintaining a consistent project-wide standard for this dataset. This necessarily required the calculation of a species richness value, which was not present in any of the sourced datasets, ~~but which will be further improved upon in later versions of this data product. Also calculated to improve the usability of this dataset were per-site time series of seawater temperature and sea-ice cover from remotely sensed sources.~~

540

This data product represents the first version of a data collection effort that will be ongoing for the next two years. Central to this process is the expansion of efforts to collect biological and social datasets, which are currently underrepresented here. The quantification of interview data is also something that is being investigated and will be addressed in the future version of this dataset. The monitoring of the primary online databases that have contributed to this project is ongoing and as datasets therein are updated, they will be amalgamated here. The future versions of this dataset will also be published on PANGAEA, with backward references to this first version as is standard practice.

## Appendix

There are two important data sources referred to in this manuscript whose data cannot be shared directly in this product due to data access restrictions. Almost the entirety of terrestrial runoff data are found in the GRDC (Global Runoff Data Centre; [https://www.bafg.de/GRDC/EN/04\\_spcldtbss/41\\_ARDB/ardb\\_node.html](https://www.bafg.de/GRDC/EN/04_spcldtbss/41_ARDB/ardb_node.html)). Additionally, almost every source of coastal (non-social) data for Greenland is stored on the Greenland Ecosystem Monitoring database (GEM; <https://data.g-e-m.dk/>). No full socio-ecological analysis of Arctic fjords can be conducted without data from these sources.

[https://github.com/FACE-IT-project/WP1/blob/main/data/analyses/table\\_A1.csv](https://github.com/FACE-IT-project/WP1/blob/main/data/analyses/table_A1.csv)

**Table A1:** The list of categories, drivers, and the cleaned names for the individual variables contained within this dataset.

## Author contributions

The paper was conceived by JPG, with the data collection and analyses implemented by RWS. Both authors contributed to the writing and editing of the manuscript, which was submitted by RWS.

## Competing interests

The authors declare that they have no conflict of interest.

## Acknowledgements

This study is a contribution to the project FACE-IT (The Future of Arctic Coastal Ecosystems – Identifying Transitions in Fjord Systems and Adjacent Coastal Areas). We gratefully acknowledge the input of FACE-IT colleagues for pointing to relevant data repositories. Special thanks are due to Morten Skogen for supplying the NORWECOM model data. [Thanks are due to Jan Marcin Węśławski and an anonymous referee for their comments on an earlier version of this manuscript.](#)

## 570 **Financial support**

FACE-IT has received funding from the European Union's Horizon 2020 research and innovation programme under grant agreement no. 869154.

## **References**

- 575 Aksnes, D. L., Ulvestad, K. B., Baliño, B. M., Berntsen, J., Egge, J. K., & Svendsen, E. (1995). Ecological modelling in coastal waters: Towards predictive physical-chemical-biological simulation models. *Ophelia*, 41(1), 5–36. <https://doi.org/10.1080/00785236.1995.10422035>
- 580 Bakker, D. C. E., Pfeil, B., Landa, C. S., Metzl, N., O'Brien, K. M., Olsen, A., Smith, K., Cosca, C., Harasawa, S., Jones, S. D., Nakaoka, S., Nojiri, Y., Schuster, U., Steinhoff, T., Sweeney, C., Takahashi, T., Tilbrook, B., Wada, C., Wanninkhof, R., ... Xu, S. (2016). A multi-decade record of high-quality fCO<sub>2</sub> data in version 3 of the Surface Ocean CO<sub>2</sub> Atlas (SOCAT). *Earth System Science Data*, 8(2), 383–413. <https://doi.org/10.5194/essd-8-383-2016>
- 585 Bartsch, I., Paar, M., Fredriksen, S., Schwanitz, M., Daniel, C., Hop, H., & Wiencke, C. (2022). PAR measurements at Hansneset, Kongsfjorden, above and below kelp canopies from 2012 to 2013 (p. 118290 data points) [Text/tab-separated-values]. PANGAEA - Data Publisher for Earth & Environmental Science. <https://doi.org/10.1594/PANGAEA.945341>
- 590 Becker, S., Aoyama, M., Woodward, E. M. S., Bakker, K., Coverly, S., Mahaffey, C., & Tanhua, T. (2020). GO-SHIP Repeat Hydrography Nutrient Manual: The Precise and Accurate Determination of Dissolved Inorganic Nutrients in Seawater, Using Continuous Flow Analysis Methods. *Frontiers in Marine Science*, 7. <https://www.frontiersin.org/articles/10.3389/fmars.2020.581790>
- 595 Bischof, K., Convey, P., Duarte, P., Gattuso, J.-P., Granberg, M., Hop, H., Hoppe, C., Jiménez, C., Lisitsyn, L., Martinez, B., Roleda, M. Y., Thor, P., Wiktor, J. M., & Gabrielsen, G. W. (2019). Kongsfjorden as Harbinger of the Future Arctic: Knowns, Unknowns and Research Priorities. In H. Hop & C. Wiencke (Eds.), *The Ecosystem of Kongsfjorden, Svalbard* (pp. 537–562). Springer International Publishing. [https://doi.org/10.1007/978-3-319-46425-1\\_14](https://doi.org/10.1007/978-3-319-46425-1_14)
- 600 Bonnet-Lebrun, A.-S., Larsen, T., Thórarinnsson, T. L., Kolbeinnsson, Y., Frederiksen, M., Morley, T. I., Fox, D., Boutet, A., le Bouard, F., Deville, T., Hansen, E. S., Hansen, T., Roberts, P., & Ratcliffe, N. (2022). Cold comfort: Arctic seabirds find refugia from climate change and potential competition in marginal ice zones and fjords. *Ambio*, 51(2), 345–354. <https://doi.org/10.1007/s13280-021-01650-7>

- 605 Chamberlain, S., Woo, K., MacDonald, A., Zimmerman, N., & Simpson, G. (2021). *pangaear: Client for the 'Pangaea' Database*. <https://CRAN.R-project.org/package=pangaear>
- Descamps, S., Ramírez, F., Benjaminsen, S., Anker-Nilssen, T., Barrett, R. T., Burr, Z., Christensen-Dalsgaard, S., Erikstad, K.-E., Irons, D. B., Lorentsen, S.-H., Mallory, M. L., Robertson, G. J., Reiertsen, T. K., Strøm, H.,  
610 Varpe, Ø., & Lavergne, S. (2019). Diverging phenological responses of Arctic seabirds to an earlier spring. *Global Change Biology*, 25(12), 4081–4091. <https://doi.org/10.1111/gcb.14780>
- Eilertsen, H. C., Taasen, J. P., & Weslawski, J. M. (1989). Phytoplankton studies in the fjords of West  
Spitzbergen: Physical environment and production in spring and summer. *Journal of Plankton Research*, 11(6),  
615 1245–1260. <https://doi.org/10.1093/plankt/11.6.1245>
- Fischer, P., Brix, H., Baschek, B., Kraberg, A., Brand, M., Cisewski, B., Riethmüller, R., Breitbach, G., Möller, K. O., Gattuso, J.-P., Alliouane, S., van de Poll, W. H., & Witbaard, R. (2020). Operating Cabled Underwater  
Observatories in Rough Shelf-Sea Environments: A Technological Challenge. *Frontiers in Marine Science*, 7.  
620 <https://www.frontiersin.org/articles/10.3389/fmars.2020.00551>
- Holding, J. M., Markager, S., Juul-Pedersen, T., Paulsen, M. L., Møller, E. F., Meire, L., & Sejr, M. K. (2019).  
Seasonal and spatial patterns of primary production in a high-latitude fjord affected by Greenland Ice Sheet run-  
off. *Biogeosciences*, 16(19), 3777–3792. <https://doi.org/10.5194/bg-16-3777-2019>  
625
- Hop, H., Pearson, T., Hegseth, E. N., Kovacs, K. M., Wiencke, C., Kwasniewski, S., Eiane, K., Mehlum, F.,  
Gulliksen, B., Wlodarska-Kowalczyk, M., Lydersen, C., Weslawski, J. M., Cochrane, S., Gabrielsen, G. W.,  
Leakey, R. J. G., Lønne, O. J., Zajaczkowski, M., Falk-Petersen, S., Kendall, M., ... Gerland, S. (2002). The  
marine ecosystem of Kongsfjorden, Svalbard. *Polar Research*, 21(1), 167–208.  
630 <https://doi.org/10.3402/polar.v21i1.6480>
- Hop, H., & Wiencke, C. (2019). The Ecosystem of Kongsfjorden, Svalbard. In H. Hop & C. Wiencke (Eds.),  
*The Ecosystem of Kongsfjorden, Svalbard* (pp. 1–20). Springer International Publishing.  
[https://doi.org/10.1007/978-3-319-46425-1\\_1](https://doi.org/10.1007/978-3-319-46425-1_1)  
635
- Huang, B., Liu, C., Freeman, E., Graham, G., Smith, T., & Zhang, H.-M. (2021). Assessment and  
Intercomparison of NOAA Daily Optimum Interpolation Sea Surface Temperature (DOISST) Version 2.1.  
*Journal of Climate*, 34(18), 7421–7441. <https://doi.org/10.1175/JCLI-D-21-0001.1>
- 640 Jiang, L.-Q., Pierrot, D., Wanninkhof, R., Feely, R. A., Tilbrook, B., Alin, S., Barbero, L., Byrne, R. H., Carter,  
B. R., Dickson, A. G., Gattuso, J.-P., Greeley, D., Hoppema, M., Humphreys, M. P., Karstensen, J., Lange, N.,  
Lauvset, S. K., Lewis, E. R., Olsen, A., ... Xue, L. (2022). Best Practice Data Standards for Discrete Chemical

Oceanographic Observations. *Frontiers in Marine Science*, 8.

<https://www.frontiersin.org/articles/10.3389/fmars.2021.705638>

645

Lauvset, S. K., Lange, N., Tanhua, T., Bittig, H. C., Olsen, A., Kozyr, A., Alin, S. R., Álvarez, M., Azetsu-Scott, K., Barbero, L., Becker, S., Brown, P. J., Carter, B. R., da Cunha, L. C., Feely, R. A., Hoppema, M., Humphreys, M. P., Ishii, M., Jeansson, E., ... Key, R. M. (2022). *GLODAPv2.2022: The latest version of the global interior ocean biogeochemical data product* [Preprint]. ESSD – Ocean/Chemical oceanography.

650 <https://doi.org/10.5194/essd-2022-293>

Merchant, C. J., Embury, O., Bulgin, C. E., Block, T., Corlett, G. K., Fiedler, E., Good, S. A., Mittaz, J., Rayner, N. A., Berry, D., Eastwood, S., Taylor, M., Tsushima, Y., Waterfall, A., Wilson, R., & Donlon, C. (2019). Satellite-based time-series of sea-surface temperature since 1981 for climate applications. *Scientific*

655 *Data*, 6(1), Article 1. <https://doi.org/10.1038/s41597-019-0236-x>

Möller, V., van Diemen, R., Matthews, J., Méndez, C., Semenov, S., Fuglestedt, J., & Reisinger, A. (2022). Annex II: Glossary. In H.-O. Pörtner, D. C. Roberts, M. Tignor, E. S. Poloczanska, K. Mintenbeck, A. Alegría, M. Craig, S. Langsdorf, S. Löschke, V. Möller, A. Okem, & B. Rama (Eds.), *Climate Change 2022: Impacts, Adaptation and Vulnerability. Contribution of Working Group II to the Sixth Assessment Report of the Intergovernmental Panel on Climate Change: Vol. Climate Change 2022: Impacts, Adaptation and Vulnerability. Contribution of Working Group II to the Sixth Assessment Report of the Intergovernmental Panel on Climate Change* (pp. 2897–2930). Cambridge University Press.

665 NSIDC. (2022). U.S. National Ice Center and National Snow and Ice Data Center. Compiled by F. Fetterer, M. Savoie, S. Helfrich, and P. Clemente-Colón. 2010, updated daily. Multisensor Analyzed Sea Ice Extent—Northern Hemisphere (MASIE-NH), Version 1. 4km resolution. *NSIDC: National Snow and Ice Data Center*. <https://doi.org/10.7265/N5GT5K3K>

670 R Core Team. (2022). *R: A Language and Environment for Statistical Computing*. R Foundation for Statistical Computing. <https://www.R-project.org/>

Schlegel, R., Bartsch, I., Bischof, K., Bjørst, L. R., Dannevig, H., Diehl, N., Duarte, P., Hovelsrud, G. K., Juul-Pedersen, T., Lebrun, A., Meriliet, L., Miller, C., Ren, C., Sejr, M., Søreide, J. E., Vonnahme, T. R., & Gattuso, J.-P. (2023). Drivers of change in Arctic fjord socio-ecological systems: Examples from the European Arctic. *Cambridge Prisms: Coastal Futures*, 1, e13. <https://doi.org/10.1017/cft.2023.1>

675

Schlegel, R., & Gattuso, J.-P. (2022). *A Dataset for Investigating Socio-ecological Changes in Arctic Fjords*. PANGAEA. <https://doi.org/10.1594/PANGAEA.953115>

680

Skogen, M. D., & Søliland, H. (1998). *A user's guide to NORVECOM V2. 0. The norwegian ecological model system*. Havforskningsinstituttet.

685 Skogen, M. D., Svendsen, E., Berntsen, J., Aksnes, D., & Ulvestad, K. B. (1995). Modelling the primary production in the North Sea using a coupled three-dimensional physical-chemical-biological ocean model. *Estuarine, Coastal and Shelf Science*, 41(5), 545–565. [https://doi.org/10.1016/0272-7714\(95\)90026-8](https://doi.org/10.1016/0272-7714(95)90026-8)

690 Skogseth, R., Ellingsen, P., Berge, J., Cottier, F., Falk-Petersen, S., Ivanov, B., Nilsen, F., Søreide, J., & Vader, A. (2019). *UNIS hydrographic database*. Norwegian Polar Institute. <https://doi.org/10.21334/unis-hydrography>

Węśławski, J. M., Kendall, M. A., Włodarska-Kowalczyk, M., Iken, K., Kędra, M., Legezynska, J., & Sejr, M. K. (2011). Climate change effects on Arctic fjord and coastal macrobenthic diversity—Observations and predictions. *Marine Biodiversity*, 41(1), 71–85. <https://doi.org/10.1007/s12526-010-0073-9>

695 Wickham, H. (2014). Tidy Data. *Journal of Statistical Software*, 59, 1–23. <https://doi.org/10.18637/jss.v059.i10>