

# 1 **HMAGLOFDB v1.0 – a comprehensive and version controlled database** 2 **of glacial lake outburst floods in High Mountain Asia**

3 Finu Shrestha<sup>1</sup>, Jakob F Steiner<sup>1,9</sup>, Reeru Shrestha<sup>1,2</sup>, Yathartha Dhungel<sup>1,3</sup>, Sharad P Joshi<sup>1</sup>, Sam Inglis<sup>4</sup>,  
4 Arshad Ashraf<sup>5</sup>, Sher Wali<sup>6</sup>, Khwaja M Walizada<sup>7</sup>, Taigang Zhang<sup>8,10</sup>

5 <sup>1</sup>International Centre for Integrated Mountain Development (ICIMOD), 44700 Lalitpur, Nepal

6 <sup>2</sup>Department of Environmental Science and Engineering, School of Science, Kathmandu University, 45210 Dhulikhel, Nepal

7 <sup>3</sup>DPMM, Asian Institute of Technology, 12000 Pathum Thani, Thailand

8 <sup>4</sup>The ADM Capital Foundation (ADMCF), 999077 Hong Kong SAR, China

9 <sup>5</sup>Pakistan Agricultural Research Council, 44000 Islamabad, Pakistan

10 <sup>6</sup>Aga Khan Agency for Habitat, 44000 Islamabad, Pakistan

11 <sup>7</sup>Aga Khan Agency for Habitat, Kabul, Afghanistan

12 <sup>8</sup>College of Earth and Environmental Sciences, Lanzhou University, 730000 Lanzhou, China

13 <sup>9</sup>Department of Geography and Regional Science, University of Graz, Heinrichstraße 36, 8010 Graz, Austria

14 <sup>10</sup>State Key Laboratory of Tibetan Plateau Earth System, Environment and Resources (TPESER), Institute of Tibetan Plateau  
15 Research, Chinese Academy of Sciences, 100864 Beijing, China

16

17 *Correspondence to:* Finu Shrestha ([finu.shrestha@icimod.org](mailto:finu.shrestha@icimod.org)); Jakob F Steiner ([jff.steiner@gmail.com](mailto:jff.steiner@gmail.com))

18 **Abstract.** Glacial lake outburst floods (GLOFs) have been intensely investigated in High Mountain Asia (HMA) in recent  
19 years and are the most well-known hazard associated with the cryosphere. As glaciers recede and surrounding slopes become  
20 increasingly unstable, such events are expected to increase, although current evidence for an increase in events is ambiguous.  
21 Many studies have investigated individual events and while several regional inventories exist, they either do not cover all types  
22 of GLOF or are geographically constrained. Further, downstream impacts are rarely discussed. Previous inventories have relied  
23 on academic sources and have not been combined with existing inventories of glaciers and lakes. In this study, we present the  
24 first comprehensive inventory of GLOFs in HMA, including details on the time of their occurrence, processes of lake formation  
25 and drainage involved as well as downstream impacts. We document 697 individual GLOFs that occurred between 1833 and  
26 2022. Of these, 23% were recurring events from just three ephemeral ice-dammed lakes. In combination, the documented  
27 events resulted in 6906 fatalities of which 906 can be attributed to 24 individual GLOF events, which is three times higher  
28 than a previous assessment for the region. The integration of previous inventories of glaciers and lakes within this database  
29 will inform future assessments of potential drivers of GLOFs, allowing more robust projections to be developed. The database  
30 and future, updated versions, are traceable, version controlled and can be directly incorporated into further analysis. The  
31 database is available at <https://doi.org/10.5281/zenodo.7271187> (Steiner and Shrestha, 2023) while the code including a  
32 development version is available on GitHub.

### 33 **1 Introduction**

34 High Mountain Asia (HMA) has the largest expanse of glacier ice (~95000 glaciers) beyond the two poles (Guillet et al., 2022)  
35 and also has a large number (~30000) of glacial lakes, covering ~2000 km<sup>2</sup> (Wang et al., 2020). Glaciers in the region have  
36 retreated and lost mass between 0.06 and 0.4 m w.e. a<sup>-1</sup> across all mountain ranges since the 1960s (Bhattacharya et al., 2021),  
37 this retreat often leading the formation and rapid expansion of glacial lakes (Nie et al., 2017; Shugar et al., 2020; Zhang et al.,  
38 2021a). Numerous lakes have previously resulted in glacial lake outburst floods (GLOFs) (Carrivick and Tweed, 2013; Nie et  
39 al., 2018; Song et al., 2016; Veh et al., 2019b). GLOFs have been recorded in various parts of the world for decades (Emmer  
40 et al., 2022; Veh et al., 2022), including the European Alps (Huss et al., 2007), the Andes (Iribarren Anacona et al., 2014),  
41 North America (Wilcox et al., 2014) and the Hindu Kush Himalaya (HKH) (Ives et al., 2010; Mool et al., 2001; Rounce et al.,  
42 2017). Numerous studies suggest that glacial lakes in HMA have grown in total area and number since the 1990s (Chen et al.,  
43 2021; Shugar et al., 2020; Wang et al., 2020; Zhang et al., 2015; Zheng et al., 2021a). An overall increase of 5.9% in lake  
44 number and 6.8±0.1% in area was reported between 1990 and 2015 (Zheng et al., 2021a). Other studies find an increase by  
45 2916 and 273.65 km<sup>2</sup> between 1990 and 2018 (Wang et al., 2020) and by 3342 and 220.64 km<sup>2</sup> between 2009 and 2017 (Chen  
46 et al., 2020). Results suggest that the total area increase has been driven by the expansion of proglacial moraine-dammed lakes  
47 (Zheng et al., 2021a; Nie et al., 2013, Gardelle et al., 2011). The number of proglacial lakes in contact with glaciers increased  
48 by 31.3± 0.3% between 1990 and 2015 (Zheng et al., 2021a), and by 96.27 km<sup>2</sup> (57%) between 1990 and 2018 (Wang et al.,  
49 2020) in HMA.

50 Regional studies suggest that ongoing expansion of lakes (Gardelle et al., 2011; Shugar et al., 2020) is expected to create new  
51 hotspots of hazardous lakes (Furian et al., 2022; Linsbauer et al., 2015; Zhang et al., 2022a; Zheng et al., 2021a) with  
52 implications for GLOF hazards and risk (Haeberli et al., 2016). Numerous processes have been previously identified as direct  
53 or indirect triggers of GLOFs. Dynamic slope movements (ice/snow falls, rockfalls, or landslides) into a lake can rapidly  
54 displace lake water (Awal et al., 2010; Jiang et al., 2004), similarly to glacier calving creating a displacement wave that  
55 overtops the dam (Emmer and Cochachin, 2013; Westoby et al., 2014; Worni et al., 2014). Intense rainfall or ice melt leading  
56 to sudden increases in water levels also have the potential to strain dams (Allen et al., 2016; Cook et al., 2018; Worni et al.,  
57 2012). Seismic events can destabilize moraine dams, contributing to an eventual failure (Osti et al., 2011; Somos-Valenzuela  
58 et al., 2014; Westoby et al., 2014). Seepage, piping, and degradation of an ice-cored moraine can eventually lead to dam failure  
59 (Mool et al., 2001; Yamada and Sharma, 1993). Past global assessments indicated that GLOFs have caused more than 12,000  
60 fatalities in the last century alone and caused significant damages to infrastructure and farmland (Carrivick and Tweed, 2016).  
61 With growing populations, settlements, and infrastructural development in downstream areas, the exposure of communities  
62 and structures downstream of these lakes is rising (Li et al., 2022). Timely GLOF risk reduction measures and implementation  
63 of risk reduction strategies have become increasingly crucial but remain challenging, especially in politically sensitive regions  
64 (Allen et al., 2019; Khanal et al., 2015).

65 Several studies have focused on the causes, mechanisms and trends of GLOFs over the past few decades (Allen et al., 2016;  
66 Dwiwedi et al., 2000; Ives, 1986; Mool et al., 2001; Nie et al., 2020; Zheng et al., 2021c), and the number of individual studies,  
67 especially in HMA, has increased sharply over recent years (Emmer et al., 2022). A large number of these studies have focused  
68 on individual events. While some have attempted to collect information on GLOFs in HMA and have also made data accessible,  
69 they are often geographically constrained (Nie et al., 2018; Zhang et al., 2021b; Zheng et al., 2021b) or focus on certain types  
70 of GLOFs (Veh et al., 2019a). A recent global study has bridged this gap (Veh et al., 2022). However, it does not cover impacts.  
71 Recent studies have noted that a large number of GLOF events were omitted from previous records as they remained unreported  
72 or were recorded in local media and had not been documented in scientific literature (Veh et al., 2022; Zheng et al., 2021b).  
73 Studies with more detailed information on individual events either do not have accessible inventories, focus on only a certain  
74 type of GLOF (Veh et al., 2019a) or do not include more than type of lake and location (Zheng et al., 2021b). Developing  
75 more comprehensive datasets is crucial (Emmer et al., 2022), and these have become increasingly necessary as research has  
76 shifted from an evaluation of GLOF hazards to risks, including transboundary dimensions (Zheng et al., 2021a). As information  
77 on individual events may be added in future (e.g., on triggers or direct and indirect impacts) and continuously more GLOFs  
78 are reported, a database where changes can be traced and new releases are possible in the future (Blischak et al., 2016) is  
79 crucial and has been successfully employed for cryosphere data (Welty et al., 2020). Recent studies of the cryosphere have  
80 also made immense progress in demonstrating the potential benefits of traceable datasets to the scientific community and  
81 establishing standards that need to be followed to make records accessible (Mankoff et al., 2021; Welty et al., 2020).  
82 Additionally, a database with a clear structure should also be accessible by non-academic stakeholders who are not well versed  
83 in machine-readable data as well as scientists who may want to couple it to other regional datasets.  
84 In this study, we therefore attempt to (a) provide the first comprehensive dataset of GLOFs in HMA including their location,  
85 timing, associated processes, and downstream impacts; (b) complement records from scientific literature with a rigorous  
86 evaluation of local sources on previously unrecorded events; and (c) show the potential of making such a dataset fully  
87 accessible and interoperable to couple it to other geospatial datasets.

## 88 **2 Methods and data**

### 89 **2.1 Compilation of GLOF data**

90 Historical GLOF data were compiled by searching peer-reviewed articles, news articles, book chapters, technical reports, and  
91 personal communication with the final cut-off date 30<sup>th</sup> June 2022. The database covers entries from 115 publications,  
92 including 83 peer-reviewed journal articles, 16 book chapters, and 16 technical reports. Additionally, online news articles (9),  
93 and social media posts (3) were also assessed. Beyond this, events reported by anecdotal accounts from local sources were  
94 also included. These were collected during fieldwork in the respective affected localities by the authors.

95 Correctly identifying historical events is challenging. It is highly likely that previous estimates of GLOF numbers have  
96 underestimated actual occurrences, due to a lack of accessible reports as well as many GLOFs that occurred in remote areas

97 with no discernible impacts on livelihoods or infrastructure (Veh et al., 2022; Zheng et al., 2021b). In this study, we have  
98 included events previously reported in scientific literature as well as reports from regional media or records from local civil  
99 society organisations and citizens. This expanded list of sources allows to reduce inherent uncertainties in each single one of  
100 them. Reported cases from scientific literature may be biased towards research catchments where scientists have a good grasp  
101 of historic cases, but these cases provide good evidence for individual GLOF characteristics. For GLOFs in HMA this is the  
102 case for a few well studied examples like Merzbacher Lake (Kingslake and Ng, 2013) or Kyagar (Round et al., 2017). News  
103 reports tend to focus on GLOFs with considerable effects on critical infrastructure or human life, and in these cases provide  
104 valuable data on impacts. Satellite imagery covers events irrespective of their impact or research interest but provides limited  
105 evidence for events that happened before the end of the 20<sup>th</sup> century. Local knowledge provides insights any of the above  
106 sources may have missed but information may have become less accurate as memory fades or while being passed on between  
107 generations. Beyond the added number of recorded events, reliance on this expanded source list introduces an inherent risk of  
108 misidentification, which must be accounted for. When debris flows or even pluvial floods reach mountain settlements they are  
109 often identified as GLOFs, without proof of their source. This happened, for example, after the Chamoli rockslide (Shugar et  
110 al., 2021) and regularly happens when debris flows occur in the Upper Indus Basin. Verification of the source is, therefore,  
111 essential. If satellite imagery is available, we verified whether the typical v-shaped moraine breach as well as deposits are  
112 visible (Zheng et al., 2021b). If available, we checked rapid lake area changes, or exposed lake beds that were clearly visible.  
113 For historic events, we ascertained whether a GLOF is technically possible (i.e., if there are lakes in the upstream). High  
114 resolution 15 cm HD Maxar satellite images (available through ArcMap) were consulted to confirm doubtful events. For events  
115 that were previously not reported and for which dates are uncertain (e.g. if only visible from satellite imagery), we also provide  
116 the date and unique identifier of the earliest satellite imagery that holds evidence of the GLOF. Being able to rely on a variety  
117 of independent sources and check with stakeholders involved in hazard response in affected regions, we are able to corroborate  
118 between multiple sources. As a result, we discarded numerous previous events as unlikely or not verifiable in a separate table  
119 (/Database/GLOFs/HMAGLOFDB\_removed.csv) and did not include new events where we could not confirm local reports  
120 with satellite imagery or records from field visits.

121 We also record GLOFs that cannot be directly associated to a glacier, either because from the source or satellite imagery it is  
122 not clear which glacier upstream feeds into the lake or because there is no adjacent glacier in any of the available inventories.  
123 A number of regional delineations exist for HMA, including the one following RGI (Pfeffer et al., 2014), the HiMAP report  
124 (Bolch et al., 2019), an outline favoured by scientists focusing on the Tibetan Plateau (Nie et al., 2017) and the outline of the  
125 HKH by ICIMOD. None of these agree with each other, making comparisons of regional statistics very difficult. All our  
126 GLOFs are consequently georeferenced and the respective area codes for the RGI and HiMAP inventory are provided to allow  
127 aggregation. Discussing regional patterns is crucial when communicating data to policy makers, who may only feel responsible  
128 for a certain area within HMA. In the manuscript, we follow the HiMAP delineation, but bin together all subregions of the  
129 Tien Shan (inventory OBJECTIDs 1-4) to 'Tien Shan', Pamir and Alay (5 – 7) to 'Pamir', West (10) and Central (11) Himalaya  
130 to 'Himalaya West/Central', the Western Kunlun Shan (13) and the Karakoram (9) to 'Karakoram', Nyainqentanglha (18),

131 Gangdise Shan (17), Hengduan Shan (20) and Eastern Himalaya (12) to ‘Himalaya East/Hengduan Shan’ and all remaining  
132 subregions on the Tibetan Plateau and its fringes (14 – 16, 19, 21, 22) to ‘Tibet’.

## 133 **2.2 Data structure and recorded variables**

134 The database provides access to datafiles as well as code used to process data. All recorded GLOF events are stored in a single  
135 \*.csv file (/Database/GLOFs/HMAGLOFDB.csv), events that are doubtful or definitely not a GLOF are stored separately  
136 (/Database/GLOFs/HMAGLOFDB\_removed.csv). A separate metadata file in machine and human readable YAML (.yaml)  
137 format is provided as HMAGLOFDB\_Metadata.yaml, providing details on all data files and variables in the database. An  
138 overview over all recorded database variables is provided in Table 1. Each event has a unique numerical identifier, starting at  
139 1. Where available, the date of the event is provided up to the day of the event. Many GLOFs result in high flows or in some  
140 cases even repeated drainage over a number of days. In this case only the last day or day of peak flood is reported, whichever  
141 can be ascertained. When the exact year of the event is not known, we provide a range or a latest possible point in time based  
142 on what the original source reported (*Year\_approx*) or when it was first visible on satellite imagery. For events we present here  
143 for the first time, but where an exact year is not recorded, we provide imagery IDs for Landsat images, that allowed us to  
144 constrain the time of occurrence (*Sat\_evidence*). Local names of lakes and glaciers are provided if available, should however  
145 be used with caution for definite identification as often multiple names (or spellings) exist and sometimes different lakes are  
146 called by the same name. Where available, the coordinates of the GLOF’s source as well as the final impact location  
147 downstream are provided as these coordinates provide the potential to prepare hazard zonation map and allow for studies  
148 investigating actual reach of events, their impacts on downstream infrastructure, livelihoods, or ecosystems to analyse and  
149 evaluate associated risks. While coordinates for the source are relatively easy to establish and generally somewhere within the  
150 outline of a present or past lake, the final impact location is more difficult. We provide coordinates for the most downstream  
151 location where the flood was observed due to high flow or any recorded local impact (indicated in *Impact\_type* as *Observation*)  
152 or, if such information is not given, the furthest location where any deposits are visible from Maxar satellite imagery (*Deposit*).  
153 For the latter case it is hence likely that the flood reach estimate is conservative and has reached much further during the actual  
154 event. Elevation data is taken from the original source for the event and if that is not provided, extracted from the Shuttle Radar  
155 Topography Mission (SRTM) DEM, via the known coordinates. The type of lake (*Lake\_type*), namely whether it is dammed  
156 by a moraine or ice, or situated on bedrock, on top of (*supraglacial*) or inside a glacier (*water pocket*), is recorded, allowing  
157 for a distinction of patterns according to the source. We also record whether the GLOF is potentially of transboundary nature  
158 (*Transboundary*), i.e. whether the potential flow path would eventually cross a national border. It does not allow for a statement  
159 whether the GLOF has actually crossed the border, and irrespective of date of the event assumes national borders from 2022  
160 as given. This information is of importance as transboundary climate risks have received increased attention also for GLOFs  
161 and other mass flows (Allen et al., 2022; Steiner et al., 2023). Location data including the country, province, river basin as  
162 well as mountain region the source of the GLOF is located in are inherently also provided via the coordinates, however  
163 providing this data here allows for a fast aggregation of relevant data for stakeholders not familiar with GIS data.

164 Information related to the GLOF event, the initial driver that caused the lake to form (*Driver\_lake*) as well as the GLOF to  
165 occur (*Driver\_GLOF*) and what mechanism was at play during the drainage event (*Mechanism*) are important insights for both  
166 regional assessments of climate drivers of these events as well as indications for dedicated numerical modelling studies  
167 investigating drainage events. They are generally subject to great uncertainty or are simply not known at all (in both cases we  
168 refer to the variable as *unknown*), and often only known when the site of the lake was visited right after an event. Information  
169 on lake area (*Area*), volume drained during the flood (*Volume*), as well as flood discharge (*Discharge\_water* and  
170 *Discharge\_solid*) are provided from the original sources. This information is crucial for planning, designing and  
171 implementation of large-scale projects like hydroelectric power plants and other types of infrastructure, in order to ensure  
172 sustainable development. These values have been obtained sometimes by measurement, sometimes by rough estimate and  
173 uncertainties likely vary across sites, and are only rarely quantified (Kingslake and Ng, 2013; Veh et al., 2023). We finally  
174 report a variety of information on impacts on livelihoods and infrastructure aimed to conceptualise flood-induced coping  
175 mechanisms, enhance livelihood security, and foster self-reliance toward economic stability. This information is presented in  
176 quantitative as well as qualitative formats enabling the database to be read by machines for regional assessments, while  
177 retaining information that may not be readily quantifiable. Information on fatalities is categorized by gender and disabilities,  
178 as disasters impact women and those with disabilities differently than men (c.f. Zaidi and Fordham, 2021), and the Sendai  
179 framework on disaster risk reduction explicitly mentions the necessity of collecting "disaggregated data, including by sex, age  
180 and disability, as well as on easily accessible, up-to-date, comprehensible, science-based, non-sensitive risk information,  
181 complemented by traditional knowledge" (UNISDR, 2015). Differences in vulnerabilities have also been acknowledged in  
182 HMA (Resurrección et al., 2019) but studies in the domain of disaster risk reduction investigating gender dimensions remain  
183 rare (Halvorson, 2002; Thapa and Pathranarakul, 2019). These data are important for addressing gender inequality, cultural  
184 beliefs, and socio-economic factors, as well as advocating for the integration of gender perspectives into disaster risk  
185 management efforts. The lack of depth of data, i.e. when not more information is known than a total number of people killed,  
186 also provides evidence for data collection gaps that need to be addressed in future assessments. Impacts are also quantified  
187 through the total number of individual houses destroyed or damaged, any other infrastructure like roads or bridges impacted  
188 (*Infra*), hydropower infrastructure damaged or destroyed (*Hydropower*) and agricultural land covered in deposits (*Agriculture*)  
189 and large livestock killed (*Livestock*). For the few cases where records on total economic damage in monetary units exist they  
190 are recorded separately (*Econ\_damage*). Contrary to information on total fatalities, these data are less comprehensively  
191 recorded and remain likely incomplete at the time of writing. They provide however a potential indication for regional loss  
192 and damage assessments. Sources (scientific, media, oral) of all events are provided as full citations (*Ref\_scientific\_full*) or  
193 links to the newspaper sources (*Ref\_other*).

194 GLOFs that have been found in other sources but were found not to be associated to lake drainage or breach are stored in a  
195 separate \*.csv (HMAGLOFDB\_removed.csv) with the same format as described above. The file has an additional column that  
196 explains the reason for exclusion (*Removal\_reason*). It also contains a certainty column (*Certainty*) that differentiates between  
197 cases where we are certain it is not a GLOF, or cases where we cannot ascertain if it was one.

199 The database was developed keeping in mind interoperability with other datasets, enabling future local and regional risk  
 200 assessments, as well as investigations on how the occurrence of GLOFs can be explained on a regional, rather than an  
 201 individual level. Multiple datasets related to the cryosphere are readily accessible, including historic glacier outlines (Pfeffer,  
 202 2017; Soheb et al., 2022; Xie et al., 2023), elevation change (Brun et al., 2017; Hugonnet et al., 2021), glacial lakes (Chen et  
 203 al., 2021; Wang et al., 2020) and permafrost extents (Obu, 2021) These datasets can be easily combined with the GLOF  
 204 inventory for comprehensive analysis. Beyond the coordinates of lakes and downstream impact, that allow for a combination  
 205 with other spatial data, we also provide the GLIMS ID of the glacier (*G\_ID*) feeding into the lake that resulted in a GLOF as  
 206 well as the ID of glacial lakes (*GL\_ID*) as recorded in lake inventories.

207 Future events will be updated directly in the development version of the database on GitHub on a rolling basis, where additions  
 208 to the database will be visible as soon as they are updated. Each year when new events are reported, they will undergo detailed  
 209 quality check, including the documentation of information on impacts or processes that may become available weeks or months  
 210 after the event through fieldwork or detailed investigations. A new version of the database will be published under the same  
 211 database DOI (Digital Object Identifier) ensuring accurate and up-to-date information.

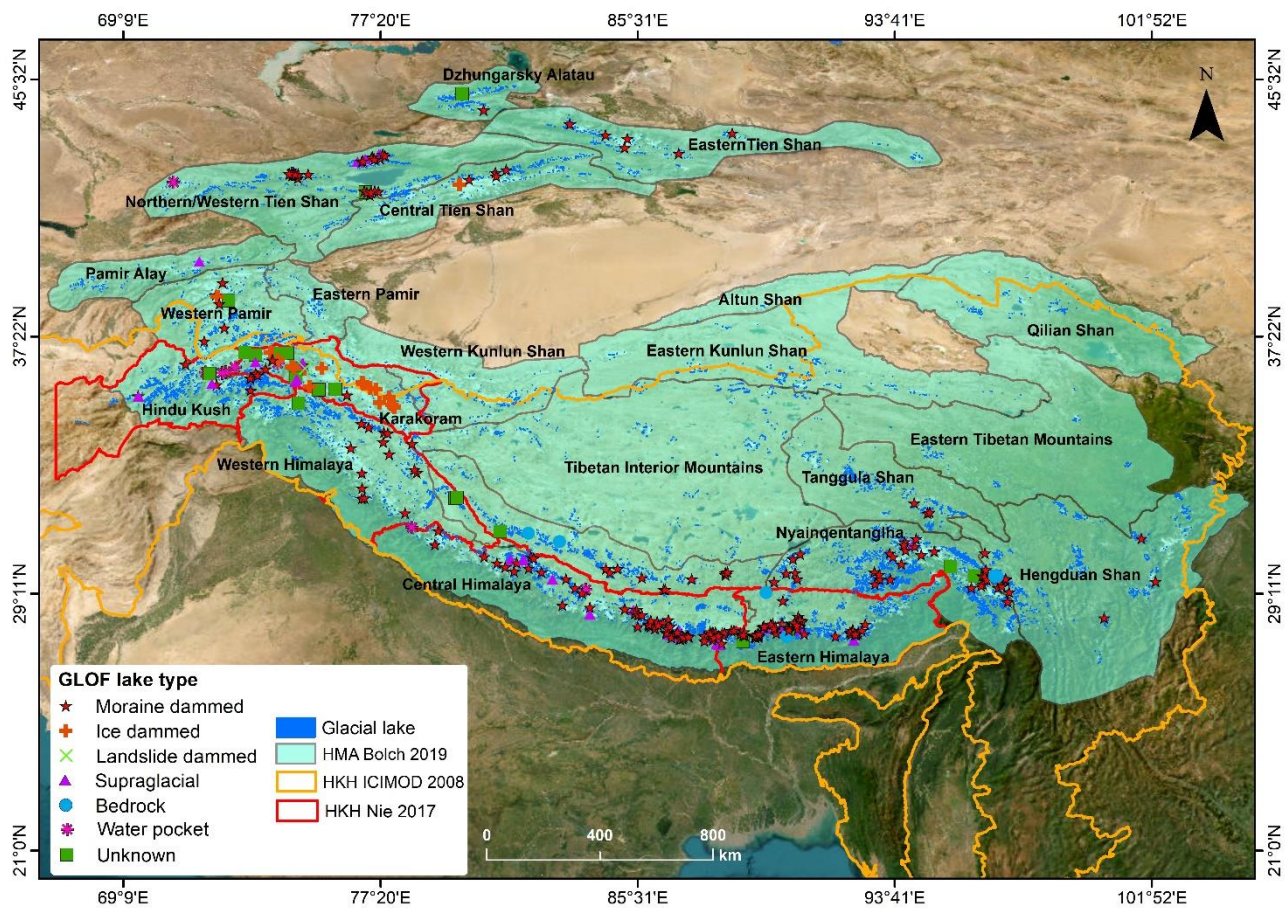
212 **Table 1: Variables for the GLOF database, as documented in the Metadata file. Format is either a string (*STR*, with \* marking cases  
 213 where only inputs from a predescribed list are possible) or an integer (*INT*). If an exact number is not available but is non-zero a '+'  
 214 is provided (e.g. 'multiple injured'). 'NA' is used for unknown input. Note that the Metadata file itself provides further details on  
 215 the individual variables as well as a discussion on naming.**

<i>Variable</i>	<i>Format</i>	<i>Description and unit</i>
GF_ID	INT	Unique identifier for each individual event, starting at 1
Year_approx	STR	Year of occurrence; given approximately if GLOF has been identified from imagery with no definite account
Year_exact	INT	Exact year of occurrence
Month	INT	Month of occurrence
Day	INT	Day of occurrence
Lake_name	STR	Local name of the lake, if available
Glacier_name	STR	Local name of the glacier associated with the lake, if available
GL_ID	STR	Unique identifier for the lake
G_ID	STR	Unique identifier for the glacier (GLIMS format) associated to the lake
LakeDB_ID	INT	Identifier in which lakes database the lake has been mapped
Lat_lake	INT	Decimal degrees latitude of lake [°, WGS 84]
Lon_lake	INT	Decimal degrees longitude of lake [°, WGS 84]
Elev_lake	INT	Elevation of lake [m a.s.l.]
Lat_impact	INT	Decimal degrees latitude of lowest known impact of the GLOF [°, WGS 84]

<i>Variable</i>	<i>Format</i>	<i>Description and unit</i>
Lon_impact	INT	Decimal degrees longitude of lowest known impact of the GLOF [°, WGS 84]
Elev_impact	INT	Elevation of lowest known impact of the GLOF [m a.s.l.]
Impact_type	STR*	Quality of impact record; ‘Observation’ refers to lowest observed high flow or damages; ‘Deposit’ refers to lowest visible deposit of sediments (from satellite imagery). Impacts are therefore conservative, and are likely always further downstream than recorded
Lake_type	STR*	Type of lake (e.g., moraine dammed, ice dammed, bedrock etc.)
Transboundary	STR*	Denotes if impact is potentially transboundary
Repeat	STR*	GLOF that occurred again in past or future
Country	STR	Current national borders (2022) the source lake lies in
Region_RGI	STR	Region ID as used in the RGI 6.0 (Pfeffer, 2017)
Region_HiMAP	INT	Region ID as used in the HiMAP report (Bolch et al., 2019)
Province	STR	1 <sup>st</sup> level province name
River Basin	STR	River basin the lake is located in
Driver_lake	STR*	Driver that caused the lake to form
Driver_GLOF	STR*	Driver that caused the GLOF to occur
Mechanism	STR*	Mechanism involved in lake breach or drainage
Area	INT	Lake area [m <sup>2</sup> ]
Volume	INT	Volume of the drained lake water [m <sup>3</sup> ]
Discharge_water	INT	Measured or estimated water discharge downstream [m <sup>3</sup> s <sup>-1</sup> ]
Discharge_solid	INT	Measured or estimated debris flow discharge downstream [m <sup>3</sup> s <sup>-1</sup> ]
Impact	STR	Narrative description of downstream impacts
Lives_total	INT	Total lives lost
Lives_male	INT	Total male lives lost
Lives_female	INT	Total female lives lost
Lives_disabilities	INT	Total lives of people with disabilities lost
Injured_total	INT	Total injured
Injured_male	INT	Total male injured
Injured_female	INT	Total female injured
Injured_disabilities	INT	Total people with disabilities injured
Displaced_total	INT	Total people displaced

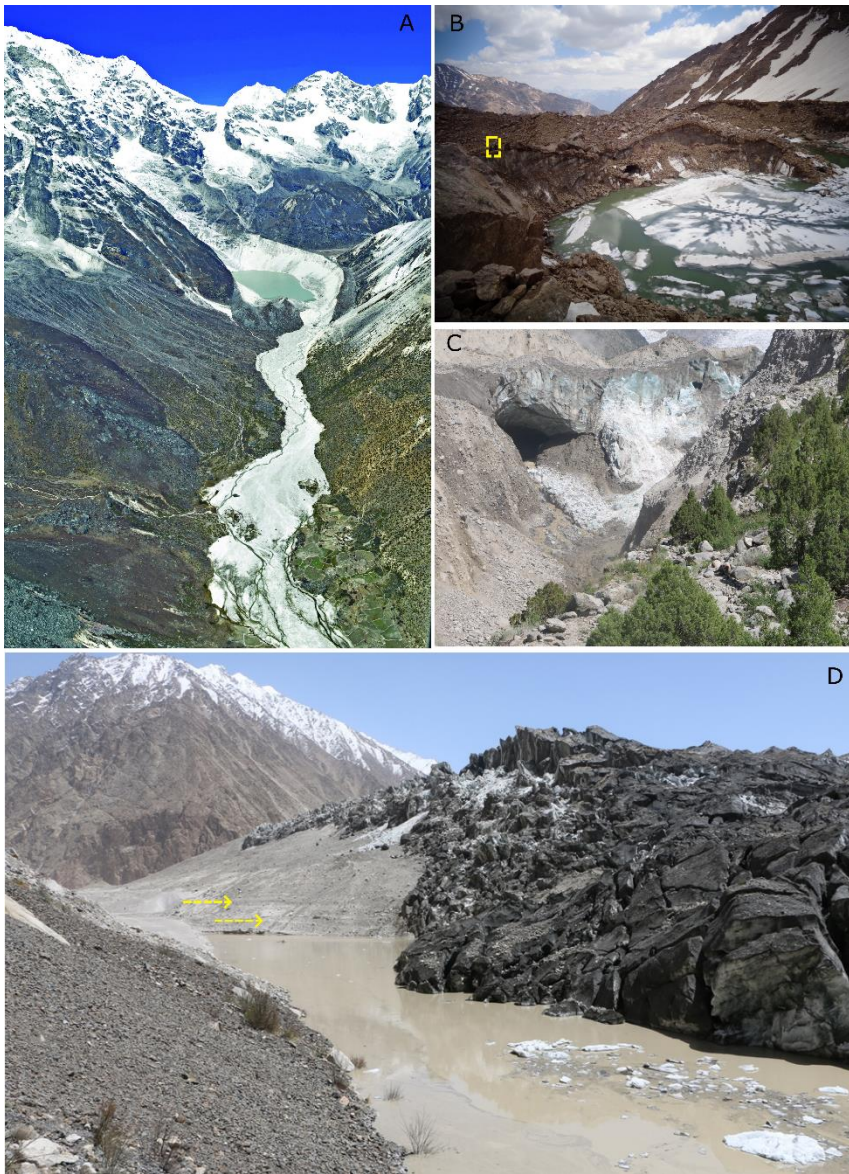


<i>Variable</i>	<i>Format</i>	<i>Description and unit</i>
Displaced_male	INT	Total male displaced
Displaced_female	INT	Total female displaced
Displaced_disabilities	INT	Total people with disabilities displaced
Livestock	INT	Livestock lost
Residential_destroyed	INT	Number of residential houses destroyed
Commercial_destroyed	INT	Number of commercial houses destroyed
Residential_damaged	INT	Number of residential houses damaged
Commercial_damaged	INT	Number of commercial houses damaged
Infra	STR	Other destroyed infrastructure
Agricultural	INT	Area of farmland destroyed [m <sup>2</sup> ]
Hydropower	INT	Installed hydropower capacity destroyed [MW]
Econ_damage	INT	Total economic damage [USD]
Sat_evidence	STR	Image IDs used as satellite imagery evidence
Ref_scientific	STR	Citation of scientific source
Ref_scientific_full	STR	Full references to the scientific sources
Ref_other	STR	Description of other sources
Remarks	STR	Any other remarks
Removal_reason	STR	Reason for removal (only for separate database of removed events)
Certainty	INT*	Certainty that the removed case is either definitely not a GLOF (0) or may be but was removed due to lack of evidence (1, only for separate database of removed events)



217

218 **Figure 1: Overview map showing all recorded GLOFs in HMA according to the lake type. The 2018 lake inventory shown here is**  
 219 **from ( Wang et al., 2020). The HMA outline used is following (Bolch et al., 2019). The external lake database (WangDB, ChenDB)**  
 220 **falls within this outline. The HKH outline is based on ICIMOD (<https://rds.icimod.org/Home/DataDetail?metadataId=3924>) and**  
 221 **(Nie et al., 2017)**

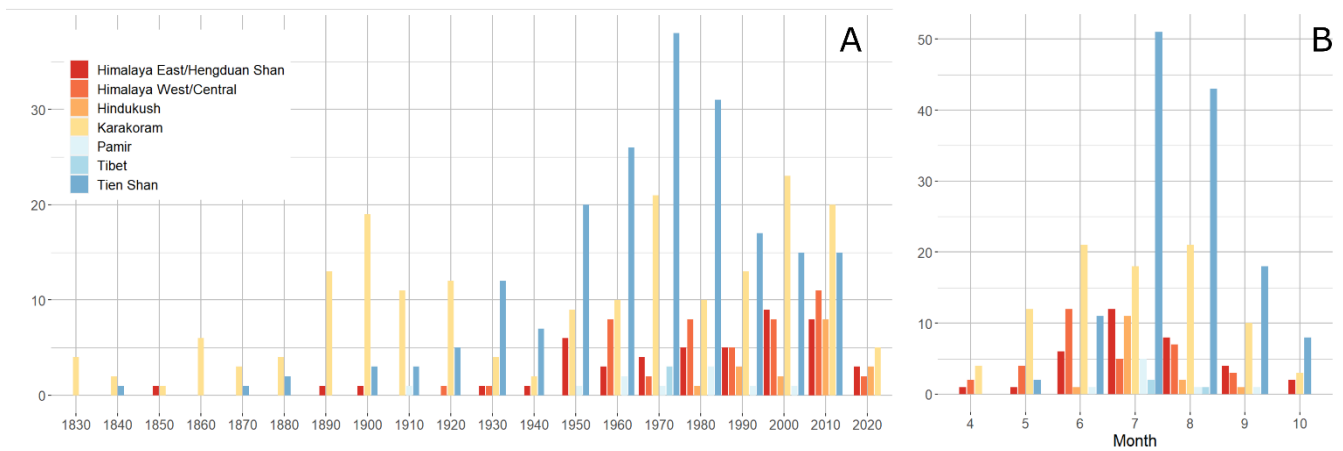


222

223 **Figure 2: (A) Dig Tsho GLOF (1985; database GF\_ID 322) in the Central Himalaya (Nepal) from a moraine-dammed lake. Note the**  
 224 **settlements and agricultural land impacted in the lower reach of the deposit. The photo was taken in 2009 (Photo credit: Sharad**  
 225 **Joshi). (B) Bam Tanab GLOF in the Hindu Kush (Afghanistan) in 2021 from a supraglacial lake (GF\_ID 510). The ice tunnel,**  
 226 **through which the lake drained is visible in the center. Note the two people sitting on top of the ice cliff (yellow square). The photo**  
 227 **was taken several days after the event (Photo credit: Milad Dildar). (C) Ice tunnel exit at the terminus of the tributary to Badswat**  
 228 **Glacier that caused a GLOF in 2018, eroding substantial amounts of the moraine in the immediate downstream (Karakoram,**  
 229 **Pakistan, GF\_ID 493; Photo credit: Sher Wali). (D) Ice dam at Khurdopin Glacier caused by a surge. The terminus moraine is**  
 230 **visible in light grey on the left, partly covered by the spillover ice from the surge. The lake at this location refills multiple times**  
 231 **after the surge, sometimes up to half of the moraine height (note the water line is slightly visible from a change of colour, yellow arrows).**  
 232 **Photo taken from the location where the lake drains under the surged ice (multiple events starting from GF\_ID 26; Photo credit:**  
 233 **Sher Wali).**

234





235

236 **Figure 3: (A) Temporal evolution of recorded GLOF occurrence per region and decade. (B) Seasonal occurrence of GLOFs. Months**  
 237 **November to March are not shown, with total events <5.**

238 Our database includes 697 individual GLOF events (Figure 1, Figure 2), recorded between 1833 (with 4 historic events before  
 239 that date, where any validation of processes is virtually impossible) and 2022 (Figure 3). 7% (46 of 697) of the reported GLOFs  
 240 here have not been documented in any previous study. Conversely, 101 previously reported GLOFs were removed based on  
 241 new evidence to the contrary (17) or a lack of strong evidence (84) for it being a GLOF.

242 28.4% of the events in the database were recorded in China, 24.7% in Kyrgyzstan, 21% in Pakistan, 8.5% in India, 7.6% in  
 243 Nepal, 4.9% in Kazakhstan, 2.9% in Bhutan, 1.6% in Tajikistan and 0.6% in Afghanistan. Following the RGI delineation, 30%  
 244 of the GLOFs were recorded in the Karakoram, 18% in the Eastern Himalaya and 29% in the Western Tien Shan. Due to  
 245 different choices in delineations, this looks considerably different for the HiMAP outlines where 28% are in the Karakoram,  
 246 17% in the Northern/Western Tien Shan, 14% in the Central Himalaya and 10% in the Eastern Himalaya, outlining the  
 247 sensitivity of statements regarding mountain ranges to the choice of delineation product.

248 For 325 events (47%) we know the month of occurrence and, of these, 74% took place between June and August (Figure 3B).  
 249 Only 3% of all GLOFs were recorded between November and March. For 275 events (39%) the day of the GLOF is known,  
 250 potentially allowing for an analysis of prevailing weather patterns preceding the outburst.

251 The mean elevation of individual lakes associated to a GLOF was 4598 m a.s.l. (336; min = 2562 m a.s.l., max = 5982 m a.s.l.).  
 252 For the GLOFs where impacts were recorded (459; 66%) the mean elevation difference between lake and lowest recorded  
 253 impact was 1161 m a.s.l. (min = 19 m a.s.l., max = 4431 m a.s.l.).

254 47% of GLOFs originated from moraine-dammed lakes, 34% from ice-dammed and 10% from supraglacial lakes (Figure 1).  
 255 Other types occurred infrequently, and particular glaciers were associated with repeated flood events, including englacial  
 256 outbursts from water pockets either deep in the ice or superficially around crevasses (3%), outbursts from bedrock lakes in  
 257 periglacial terrain (1%) and outbursts from landslide dammed lakes that formed downstream of glaciers (0.4%). Multiple  
 258 events in the Bagrot subbasin in the Upper Indus, as well as in the Ala Archa basin in Kazakhstan may be drainages from water  
 259 pockets, based on the nature of drainage and the lack of evidence for lakes on the glacier surface or the periglacial terrain, but

260 local evidence is too uncertain to confirm this. For the Ala Archa basin, we have removed many cases, as even previous authors  
261 did not insist on all being GLOFs (Medeu et al., 2016). These events all occurred at the terminus of very steep glacier tongues  
262 and some observed characteristics of these events (e.g. melt water to the base resulting in ice and terrain collapse) resemble  
263 glacier detachments (Kääb et al., 2018). However, the eventual runout as a debris flow with high water content is markedly  
264 different. For 4% of the cases, the lake type was unknown, especially for GLOFs for which no satellite imagery exists for  
265 validation.

266 Our knowledge of the mechanisms of how lakes are formed (known for 20% of the cases), triggering (12%) and failure  
267 mechanisms of the outburst (26%) remains limited (Figure 4). Even less is known about the drained total volume ( $\text{m}^3$ , 15%),  
268 discharge of water ( $\text{m}^3 \text{ s}^{-1}$ , 10%) or discharge of solids ( $\text{m}^3 \text{ s}^{-1}$ , 3%), important variables for modelling studies. Additionally,  
269 these reported values are often associated with large uncertainties.

270 Of all GLOFs, 2 were located in an area where no glacier could be found anywhere upstream. However, they are located in  
271 areas that were most likely glaciated. 22 GLOFs occurred below glaciers that were not mapped in RGI 6.0, showing the still  
272 considerable number of glaciers that are missed from this global inventory. Similarly, 10 GLOFs (at moraine-dammed lakes)  
273 were recorded where no lake was apparent in any satellite imagery. This is possible for GLOFs recorded before the satellite  
274 age. In 97 cases, a lake or depression was visible but not mapped in any of the inventories. In 196 cases (28%) the lake is  
275 ephemeral and hence not in any inventory, especially the case for ice-dammed or supraglacial lakes. Some ice-dammed lakes  
276 were in inventories if they were present at the time of the inventorization. However, when comparing these data to a GLOF,  
277 their area should be taken with caution, considering their rapid change with a change in meltwater availability.

278 25 GLOFs (4%) have 6906 recorded fatalities (Table 2), although 6000 were attributable to a single event in India in 2013,  
279 where fatalities were caused by a multitude of factors in a complex compound event (Allen et al., 2016). This latter event, until  
280 recently, accounted for nearly 50% of recorded global GLOF deaths (Carrivick and Tweed, 2016). Nearly all casualties have  
281 been attributable to GLOFs from moraine-dammed or supraglacial lakes, while no fatalities have been linked to ice-dammed  
282 lake breaches (Table 2), while there may of course have been unrecorded impacts (Hewitt and Liu, 2010). Numbers on injured  
283 or displaced remain rare, but are likely much higher, especially considering people moving away, many in the months after an  
284 event due to the long-term negative impacts of damaged infrastructure. Nearly 2000 livestock were reported killed. More than  
285 2200 residential and commercial buildings were reported destroyed or significantly damaged and numerous bridges were  
286 destroyed. At least 71  $\text{km}^2$  of agricultural land was destroyed and hydropower structures with a combined capacity of 164 MW  
287 were destroyed or heavily damaged. In only a few cases (13) were estimates of economic damages in monetary values  
288 attempted (5.3 billion USD). These were limited to damages associated with the flooding and did not include considerations  
289 of the longer-term economic toll of damaged infrastructure, disablement, destroyed farmlands, or the long-term impacts on  
290 accessibility of health, education, or market facilities due to impacts on transport infrastructure.

291

292 **Table 2: Number of GLOFs per region and type of lake with associated fatalities (N/fatalities).**

Lake type/Region	Pamir	Tien Shan	Tibet	Hindu Kush	Karakoram	Himalaya West/Central	Himalaya East/Hengduan Shan
<b>Moraine-dammed</b>	6/25	96/65	4/0	10/20	7/0	78/6236	129/454
<b>Ice-dammed</b>	4/0	86/0	0/0	0/0	144/0	0/0	0/0
<b>Supraglacial</b>	1/100	17/0	/0	3/0	26/1	19/0	6/0
<b>Others/unknown</b>	1/0	15/0	0/0	6/3	19/2	1/0	19/0
<b>TOTAL</b>	<b>12/125</b>	<b>214/65</b>	<b>4/0</b>	<b>19/23</b>	<b>196/3</b>	<b>98/6236</b>	<b>154/454</b>

293

294 338 lakes were associated with 697 GLOFs, with 61 (18%) of the lakes causing a GLOF more than once and the 17 (5%) lakes  
 295 releasing GLOFs at least five times, made up 43% of all GLOFs (Table 3). The return period of some of these GLOFs is rapid,  
 296 occurring repeatedly over consecutive years such as at Merzbacher or Khurdopin, while for others a GLOF may occur more  
 297 than decades apart. In many cases, for ice-dammed lakes, this is coupled with the return period of the respective glacier surge.  
 298 Many of these lakes have resulted in GLOFs until very recently and we hence consider *active*. Others, like the GLOFs at  
 299 Chong Kumden (ice-dammed), are considered inactive as the tongue has receded so far that even during a surge it cannot block  
 300 the valley anymore. For Salyk or Topkaragay (moraine-dammed), the tongue recession has presumably also resulted in a lack  
 301 of direct meltwater supply to the local depression. While the three lakes draining most frequently (and all still *active*) are all  
 302 ice-dammed, repeat GLOFs are common from all major types of glacial lakes (Table 3). However, repeat drainages are  
 303 decidedly uncommon in the Himalaya or the Tibetan Plateau.

304 190 (27%) were potentially transboundary GLOFs, i.e. their flood could have crossed a border further downstream, 55 of  
 305 which originated in China. Fewer than 10 of these GLOFs have however actually recorded impacts across borders (China to  
 306 Nepal and Uzbekistan to Kyrgyzstan).

307 **Table 3: Lakes with more or equal to five recurring GLOFs in HMA.**

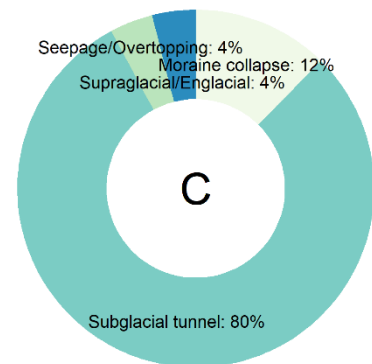
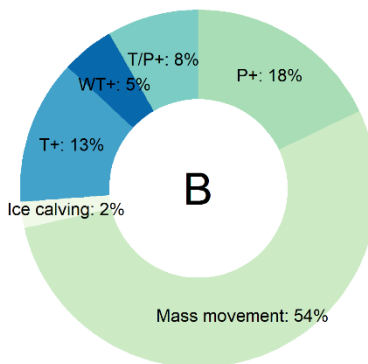
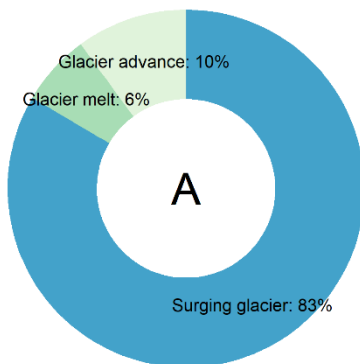
Lake/Glacier name	Lat (°)	Lon (°)	Elev (m a.s.l.)	Region	Outburst recurrence	Period of GLOFs	Lake type
Merzbacher/ Southern Inylshek	42.20	79.85	3271	Central Tien Shan	86	1902 - 2015	Ice-dammed
Khurdopin/Khurdopin	36.34	75.47	3482	Karakoram	37	1882 - 2021	Ice-dammed
Kyagar/Kyagar	35.68	77.19	4880	Karakoram	34	1880 - 2019	Ice-dammed
Unnamed/Aksay	42.53	74.54	3637	Northern/Western Tien Shan	30	1877 - 2015	Moraine-dammed

Lake/Glacier name	Lat (°)	Lon (°)	Elev (m a.s.l.)	Region	Outburst recurrence	Period of GLOFs	Lake type
Unnamed/Kuturgansuu	42.52	74.61	3470	Northern/Western Tien Shan	17	1846 - 2010	Moraine-dammed
Unnamed/Chong Kumden	35.17	77.70	4691	Karakoram	14	1533 - 1934	Ice-dammed
Hassanabad/Shisper (both names for lake and glacier)	36.39	74.51	3370	Karakoram	13	1894 - 2022	Ice-dammed
Karambar/Karambar	36.62	74.08	2935	Karakoram	11	1844 - 1994	Ice-dammed
Unknown/Teztor	42.54	74.43	3606	Northern/Western Tien Shan	11	1910 - 2012	Moraine-dammed
Ghulkin/Ghulkin	36.42	74.88	2692	Karakoram	8	1980 - 2009	Supraglacial
Lake number 6/ Glacier No 182/Bezmyannyi/TEU-Severny	43.14	77.28	3380	Northern/Western Tien Shan	8	1973 - 2014	Supraglacial
Unnamed/Halji	30.27	81.48	5347	Central Himalaya	6	2004 - 2011	Supraglacial
Unnamed/Salyk	42.52	74.72	3390	Northern/Western Tien Shan	6	1938 - 1980	Moraine-dammed
Unnamed/Topkaragay	42.49	74.52	3680	Northern/Western Tien Shan	6	1928 - 1993	Moraine-dammed
Unnamed/Central Rimo	35.42	77.61	5100	Karakoram	5	1976 - 2014	Ice-dammed
Unnamed/Batura	36.51	74.85	2713	Karakoram	5	1873 - 1974	Supraglacial
Unnamed/North Terong	35.25	77.31	4400	Karakoram	5	1975 - 2002	Ice-dammed

308

309

310



311

312 **Figure 4: Different drivers that caused the lake to form (139) (A), caused GLOF to occur (84) (B), and mechanisms involved in lake**  
313 **breach/drainage (178) (C). ‘Glacier melt’ refers simply to melt water provision from any adjacent glacier, irrespective of their state**  
314 **of retreat, advance or stability. T, P and WT+ stand for reported temperature, precipitation and water table and temperature**  
315 **increases, respectively. Mass movements include ice and rock avalanches as well as landslides, debris flows and other flood events.**  
316 **Moraine collapse is most often characterized by ice core thawing. ‘Seepage/Overtopping’ also includes piping through the dam.**

### 317 **3.1 Uncertainty of individual variables**

318 GLOFs often occur in remote areas, where reports are scant and confirming process chains and quantifying associated volumes  
319 and impacts is challenging. Here we discuss the uncertainties related to variables documented in this database. For many  
320 GLOFs (181; 26%) even the year of occurrence is uncertain, which is reflected in the database by either providing NA or a  
321 time window during which it must have happened. Days of occurrence (available for 39% of the records) are often also different  
322 between reports on the same event, either due to erroneous records or the magnitude of certain GLOFs resulting in floodwaters  
323 reaching areas over more than one day. Any recorded day hence likely has an uncertainty of +/-3 days. Coordinates of the  
324 source lake are correct if provided, however, do not reflect the exact location of the breach but any coordinate within the  
325 perimeter of the lake. Coordinates of the impact area are a lot more uncertain. If provided they show either the lowest location  
326 where deposits are still visible on Maxar imagery from 2021 (*Deposit*) or where high flow or damages were reported  
327 (*Observation*). Naturally, this is a conservative estimate and high flows have likely reached thousands of meters further  
328 downstream and with deposition or erosion occurring along the riverbed that may not be visible on imagery. Elevation values  
329 are generally retrieved via the coordinates from the Shuttle Radar Topography Mission (SRTM). Considering the steepness of  
330 the terrain across HMA, we expect an unknown uncertainty of the actual elevation of the source, and values should be  
331 considered an indication of the elevation range, rather than for example an exact input for a hydrodynamical model.

332 For a few events, the primary source is local informants, while for some events that have been reported in news articles or by  
333 other studies, local sources serve as a way of confirming the event and the associated recorded variables. While local sources  
334 have their own uncertainties, including misidentification of another mass flow event as a GLOF or misrepresentation of impacts  
335 to either gain attention for compensation (and hence exaggerating impacts) or dispelling concerns of potential tourists (hence  
336 underestimating impacts), they also can provide insights that other sources cannot. When the source lake is regularly visited  
337 due to agricultural activities or for leisure, locals are often able to make statements on what likely outburst mechanisms were  
338 or what caused the event in the first place. Observations on the discharge hydrograph, especially whether the discharge peak  
339 arrived rapidly or gradually, provide indications on the type of drainage mechanism.

340 When reporting areas of lakes associated with GLOFs, we refer to the reported value provided in the respective studies. For  
341 the few events we report here for the first time and if satellite imagery is available a few days before the event, we make  
342 estimates based on that imagery. Lakes linked to GLOFs often exhibit rapid areal changes in the weeks and days prior to  
343 eventual failure of the dam or opening of a tunnel. This is especially true for ephemeral ice-dammed lakes (Muhammad et al.,  
344 2021; Round et al., 2017; Steiner et al., 2018). Therefore, the lake area mapped many weeks or even months before a drainage  
345 event is not necessarily a good proxy for the actual water volume that drained. We report estimated drained volumes and  
346 sometimes even estimates of discharge exist. However, the accuracy of such estimates is impossible to verify and



347 measurements during GLOFs are rarely possible (Muhammad et al., 2021), and rating curves in fast changing river beds are  
348 unlikely to be accurate. Such data should hence be considered as first order indications of magnitude rather than accurate  
349 representations of actual discharge.

350 Estimates on impacts are conservative. Based on our observations from fieldwork and the concurrent reporting of hazards,  
351 media coverage often overlooks to report on remote villages and numbers of mortalities or valuations of infrastructure impacted  
352 are prone to deflation or inflation as a result of inaccurate transmission of information or wilful tampering with data. This can  
353 happen for various reasons, as evidenced through fieldwork across the region. The government not reporting impacts or making  
354 them look smaller than they are can be favourable as this would otherwise provide arguments for becoming more active in  
355 mitigation response, which they may not be able or willing to do. Reports on high impacts are often also perceived as damaging  
356 to tourism and hence discouraged. In light of financial reparations, either from the national to the local governments or  
357 communities or by the global community to a country, overreporting of impacts is naturally preferred. If impacts in doubtful  
358 cases could not be verified by additional sources, they were not reported. Reported data from scientific literature were  
359 dismissed in rare cases where for example a GLOF was reported twice within two days, and it was likely that this happened  
360 due to erroneous reporting dates.

## 361 **4 Discussion**

362 In the section below, we discuss the potential of the GLOF database for comparisons with existing and future data sources  
363 related to regional assessments and investigations of individual events. We then conclude by comparing the database to  
364 previous efforts and address its inherent limitations.

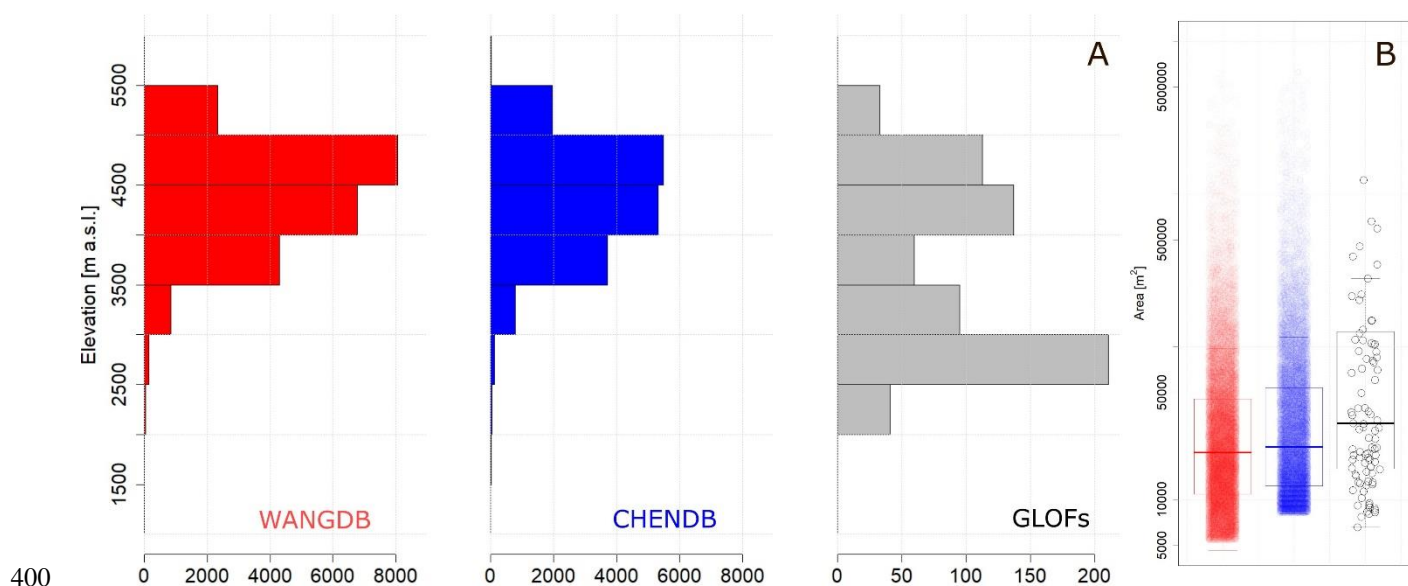
### 365 **4.1 Temporal and spatial trends**

366 The discussion on whether GLOFs are increasing with a changing climate trend has been dealt with elsewhere in detail  
367 (Harrison et al., 2018; Veh et al., 2022). Here, we only provide a brief discussion that stems from the compilation of the data,  
368 and that is crucial when using databases of hazard events in remote areas like mountains. As we rely on different source types,  
369 namely previous academic publications, news and technical reports, satellite imagery and local knowledge from involvement  
370 in fieldwork in numerous locations across HMA, we are able to complement the deficiency any single of these approaches  
371 may have and provide some perspectives on trends that may be due to observational bias. Figure 3A shows a clear and rapid  
372 increase of recorded events in the Tien Shan from the mid 20<sup>th</sup> century with a subsequent decrease in the 1990s. There is little  
373 indication for this being climate-related and we hypothesize this is a function of increased visibility thanks to the extensive  
374 efforts of scientists at the end of the Soviet era to monitor debris flows (and as a consequence related GLOFs), which died  
375 down as the Central Asian states became independent. This aligns exactly with the development and subsequent demise of  
376 cryosphere monitoring in the area between 1950 and 1990 (Hoelzle et al., 2019). Medeu et al. (2019) on the other hand argue,  
377 that at least for Kazakhstan a decrease in debris flows from glacial sources can be attributed to the successful monitoring and

378 lowering of lakes in the region since the late 1990s. Conversely, for the Karakoram, there are many peaks in observed events  
379 starting at the turn of the 19<sup>th</sup> century. This may be explained either by surge cycles occurring around the same time, resulting  
380 in ephemeral ice-dammed lakes, or the piqued interest of the British Empire around the turn of the century in the region during  
381 the Great Game (most reports on GLOFs stem from British officers stationed in the region, cf. Hewitt and Liu, 2010). Interest  
382 decreased until Independence and finally grew again towards the end of the century as seen in other areas with increased  
383 infrastructure development, starting with the construction of the Karakoram Highway between the 1960s and 1970s  
384 (Kreutzmann, 1991) and the arrival of media in remote areas. There is a relatively consistent increase of reported events in the  
385 Hindu Kush and the Himalaya region, albeit total events are much lower (i.e.  $<1$  event  $\text{yr}^{-1}$  for a whole region). We believe  
386 that our records of events have also increased due to an increase in interest in the topic in the region (Emmer et al., 2022),  
387 which led to more detailed documentation of individual events by various scientists.

388 The seasonal patterns (Figure 3B) are instructive as they show a clear earlier peak in the year for the Himalaya region, a more  
389 stretched out peak in the Karakoram and shift in the Tien Shan, influenced by Westerlies rather than the South Asian Monsoon,  
390 providing an indication for the potential of using such a dataset to investigate the importance of regional precipitation patterns  
391 for drivers of outburst floods.

392 The database records four GLOF events in Afghanistan, three of which for the first time in this database, with 15 fatalities and  
393 more than 300 houses destroyed, and one from a previous publication only based on geomorphic evidence with no recorded  
394 impacts. This puts the country on the map with respect to GLOF hazards and emphasizes the importance of local data for  
395 accurate assessments, considering that these events occurring between 2013 and 2021 remained previously unnoticed in  
396 literature. Due to the lakes located on a debris-covered surface draining englacially, hence leaving no clear evidence of a dam  
397 breach, potentially visible from satellite imagery, they also constitute examples that remain difficult to identify with automated  
398 approaches relying on satellite imagery only.



400 **Figure 5: (A) Elevational distribution of unique lakes recorded in databases, covering two years 1990 and 2018 (WANGDB, Wang**  
 401 **et al., 2020) and ten years between 2008 and 2017 (CHENDB, Chen et al., 2021), compared to only those lakes that resulted in GLOFs**  
 402 **(GLOFs). (B) Lake areas of unique lakes in the same databases as well as specifically for the lakes that resulted in GLOFs, where**  
 403 **available.**  
 404

405 Combining the lake and GLOF inventories allows for a comparison of topographic as well as meteorological conditions which  
 406 may have contributed to the occurrence of GLOFs and those that did not. This is useful for the identification of potentially  
 407 dangerous glacial lakes (Ahmed et al., 2022; Ashraf et al., 2021, 2012; Bajracharya et al., 2020; Bolch et al., 2008; Duan et  
 408 al., 2020; Zhang et al., 2022b). The evaluation of meteorological conditions would require an in depth discussion of the  
 409 respective datasets and wider synoptic conditions, attempted previously for mudflows (Mamadjanova et al., 2018). The  
 410 database suggests that mass movements in the lake’s vicinity, as well as intense precipitation immediately preceding the GLOF  
 411 are important drivers (Figure 4B), but only 12% of all entries record any driver and they are generally only based on local  
 412 assessments that may not provide the definite reason. As quality controlled reanalysis data becomes more readily available at  
 413 the kilometre scale for HMA (Wang et al., 2021), more comprehensive analysis of climate drivers become possible and would  
 414 elucidate, which climate variables are crucial to understand with respect to a changing climate, to anticipate changes in GLOF  
 415 occurrence.

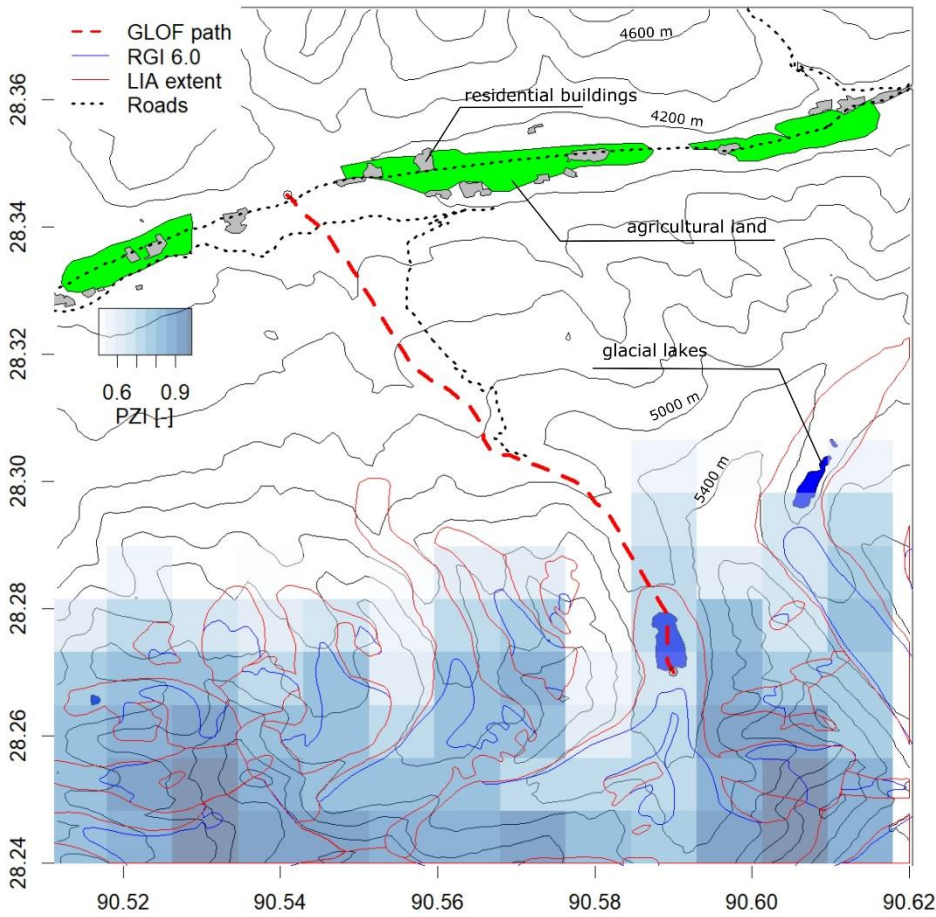
416 A comparison to already established inventories of glacial lakes is more straightforward. Figure 5 shows elevational and area  
 417 statistics of lakes from two different inventories (Chen et al., 2021; Wang et al., 2020). While both inventories rely on Landsat  
 418 data for identification, one follows a manual approach in identifying the outlines in 1990 and 2018 (Wang et al., 2020;  
 419 henceforth referred to as WANGDB), while the second delineates automatically at the 30 m pixel resolution (Chen et al., 2021;  
 420 CHENDB), allowing for decadal data between 2008 and 2017 but a coarser resolution of outlines. Both inventories include

421 lakes from different time steps, and we consider a lake that is present in more than one time step once, at whatever earliest  
422 year it appears. The GLOF database allows us to quickly visualize, that while lakes follow a unimodal distribution over altitude  
423 similar for both approaches of delineation, GLOFs are bimodally distributed with peaks above 2500 and 4000 m a.s.l. (Figure  
424 5A). This provides a clear indication of lakes at lower elevation being relatively more susceptible to an outburst, but no clear  
425 decrease of the risk with elevation. Of the 339 lakes that resulted in GLOFs, 99 (29%) appear in inventories at one point and  
426 we hence have an indication of their size (Figure 5B). While CHENDB covers more time steps, the minimum lake area it can  
427 detect (8100 m<sup>2</sup>) is nearly twice as large as for WANGDB (4600 m<sup>2</sup>). 9 out of the 99 lakes with area data that resulted in  
428 GLOFs, hence only appear in WANGDB. On top of the many lakes that do not appear in inventories at all (71%) due to their  
429 ephemeral nature or being present before the coverage of inventories, the possibility that potentially dangerous glacial lakes  
430 are completely missed by lake inventories relying on satellite imagery hence needs to be considered.

#### 431 **4.4 GLOF paths**

432 Records of the extent of GLOF events (459) allow for an evaluation of GLOF paths (Figure 6). Exploiting other spatial datasets,  
433 this can help in evaluating possible drivers as well as impacts. Repeat spatial products related to the cryosphere available in  
434 HMA include decadal glacier outlines (He and Zhou, 2022; Lee et al., 2021; Xie et al., 2023), distributed data on ice mass loss  
435 (Brun et al., 2017; Hugonnet et al., 2021), permafrost probability (Obu, 2021) and snow cover (Muhammad and Thapa, 2021).  
436 Such datasets can be compared with recorded GLOF events and lakes that have not resulted in GLOFs to evaluate potential  
437 drivers. The hazard of a GLOF is closely associated with moraine stability, which is linked to the immediate history of glacier  
438 retreat in the area. Areas of recent permafrost change are likely also more susceptible to mass movements, which have already  
439 been identified as important drivers of GLOF events (Figure 4). Rapid increase in local temperature is often recorded as a  
440 reason for GLOFs occurring (Figure 4), but to date no studies exist that establish a definite link between increased melt from  
441 either ice or snow that eventually results in the drainage of a lake or failure of a dam.

442 On the downstream, distributed datasets on infrastructure, population or ecosystems allow for assessments of impacts and  
443 vulnerabilities (Figure 6). Coupling of GLOF paths with distributed population data (Thornton et al., 2022) would allow for  
444 the computation of people potentially impacted, coupled with remotely sensed vegetation and agriculture data which would  
445 allow for estimates on local economic and ecological impacts. GLOF paths could also be used to develop hazard zonation  
446 maps, as is already standard practice for avalanches in many regions.



447

448

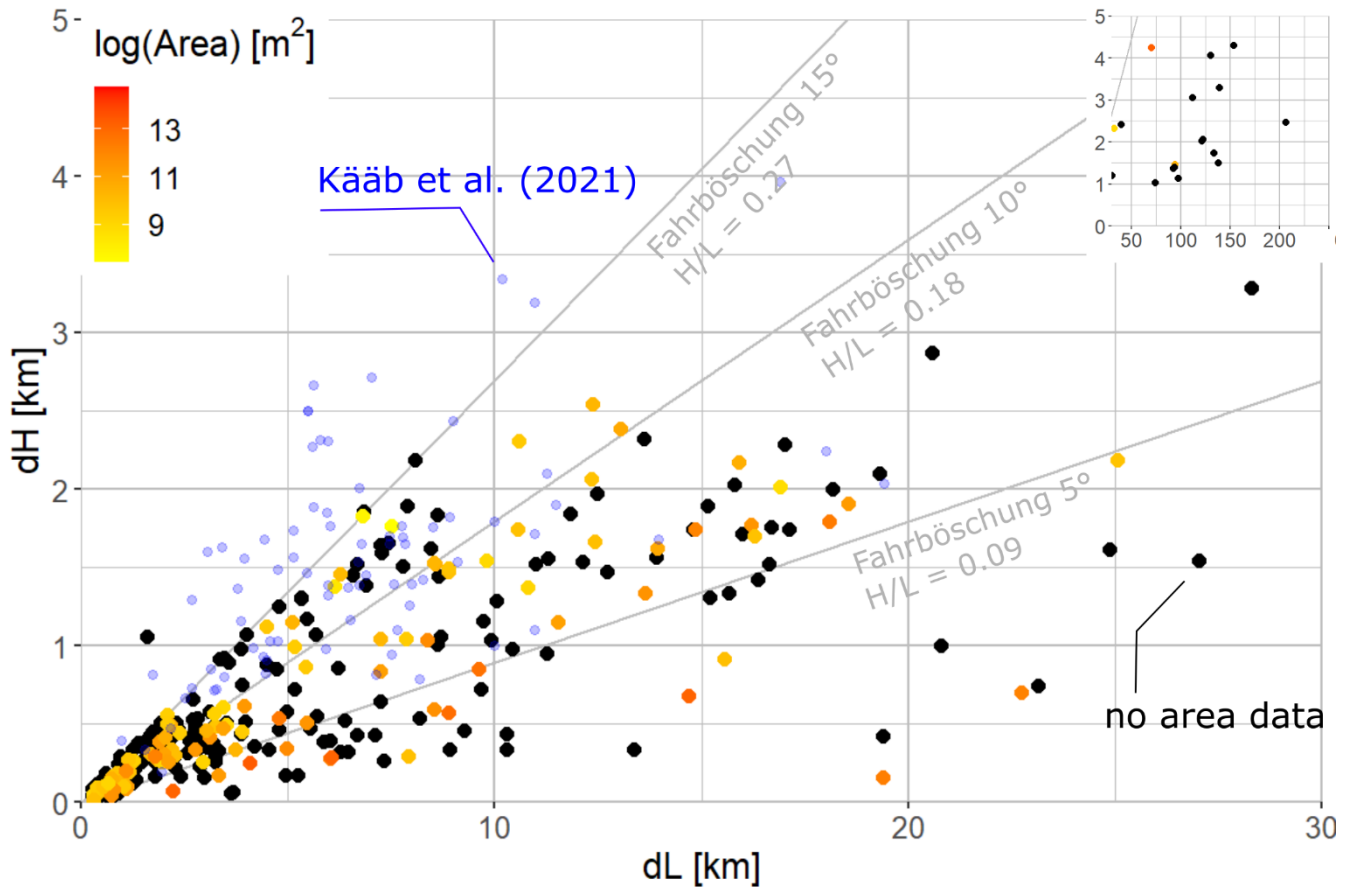
449

450

451

452

**Figure 6: Extracted GLOF path for one event (GF\_ID 651), showing the RGI 6.0 outline, the possible glacier extent during the little ice age (Lee et al., 2021) and probability of permafrost occurrence, with high values suggesting a likely and low values a less likely occurrence of permafrost (PZI, Obu, 2021). Shape files of roads are taken from Open Street Map (OSM), residential and agricultural areas are mapped from Maxar imagery. The figure can be directly created in the available R code from the database for any event.**



453

454 **Figure 7: Reach angles (*Fahrböschung*) for all GLOF events with recorded downstream impact location (459). Black dots are events**  
 455 **where no recorded lake areas exist. Shaded from yellow to red are GLOFs for which some record of lake area exists (either from**  
 456 **the original source or a lake database), that may not necessarily be the lake area just before the event. In light blue records from**  
 457 **Kääb et al. (2021) are shown, which largely relate to glacier detachments or historic large scale debris flows and GLOFs.**

458 For GLOFs where the location of the lake and the lowest recorded evidence of the outburst flood (either reported flood or  
 459 observed debris deposits), we are able to calculate reach angles, i.e. the elevation difference over the distance of the flood path  
 460 between start and end point (Figure 7). Current studies estimating the future exposure of downstream infrastructure and  
 461 livelihoods to potentially dangerous glacial lakes are based on estimated runouts (Schwanghart et al., 2016; Taylor et al., 2023;  
 462 Zheng et al., 2021a), without the ability to rely on actual expected reach. While a definite prediction of any future GLOF reach  
 463 will never be possible and even detailed numerical studies of individual events are sensitive to small changes in topography  
 464 (Muhammad et al., 2021; Westoby et al., 2014), the data presented here allows future studies to apply ranges of a potentially  
 465 likely reach, depending on glacier size and path topography. With a median runout length of 6.1 km (mean  $\mu = 32$  km, biased  
 466 towards a few events of exceptional reach; Figure 7 inset) and a median elevation drop of 1036 m ( $\mu = 1126$  m), the mean  
 467 reach angle is 0.14 ( $\sigma=0.09$ ; 8°). Nearly all of the events markedly cluster below a reach angle of 0.27 (15°, Figure 7),  
 468 considerably shallower than large scale mass flow events like glacier detachments (Kääb et al., 2021). For comparable drop

469 heights GLOFs hence travel considerably further than glacier detachments, but the data also suggests a limit in reach, that can  
470 provide an upper bound when assessing the potential reach of lakes at risk of an outburst in future. While it would be possible  
471 to establish lake volumes from lake areas (Cook and Quincey, 2015), the inherent uncertainties in these approaches and the  
472 discrepancy between date of lake mapping and GLOF event result in large overall uncertainties trying to establish a link  
473 between lake volumes and potential reach of GLOFs. We therefore only use areas from the available inventories or mapped  
474 areas from just before the event as a proxy (Figure 7). Lakes with an area larger than  $10^5 \text{ m}^2$  (123) result in median reach angles  
475 of 0.16 ( $9.0^\circ$ ), lakes smaller (107) in slightly steeper angles of 0.17 ( $9.8^\circ$ ), suggesting that the size of a GLOF holds some  
476 potential for projecting its reach, apart from the many other influencing factors.

#### 477 **4.5 Downstream impacts**

478 Excluding the single Kedarnath event in 2013, wherein 6000 people were reportedly killed by a combination of other hazards  
479 including but not limited to the GLOF, 906 people were reported to be killed directly by 24 GLOFs. This number is three times  
480 higher than the previous record of 300 (Carrivick and Tweed, 2016). Only considering the time until 2005 to cover the same  
481 periods, our database still records 854 fatalities. Only 25% (54) of all recorded events (216) in the region had previously any  
482 impact recorded (Carrivick and Tweed, 2016), while our database now has impacts on livelihoods or infrastructure noted for  
483 149 events (21%). Comparing this number to other mountain hazards in the region is difficult, as data are rare. Snow and ice  
484 avalanches (excluding mountaineering accidents) in the same region have resulted in more than 3000 fatalities, with records  
485 only starting in the 1970s (Acharya et al., 2023). Landslide fatalities for countries entirely in HMA suggest 67 deaths in  
486 Afghanistan, 50 in Bhutan, 809 in Nepal and 75 in Tajikistan between 2004 and 2010 (Petley, 2012), suggesting this hazard  
487 to be considerably more dangerous to human life.

488 Impacts beyond fatalities are often recorded, but socioeconomic valuations are lacking. In the few individual events with  
489 valuations of damage by the immediate event, this is typically focused on the value of expensive national infrastructure like  
490 hydropower projects. The value of agricultural land, residential or commercial buildings, or long-term damage due to damage  
491 to road, health or education infrastructure are rarely assessed. Infrastructure datasets that allow for a rapid assessment of  
492 damage are generally not available. Such an assessment was previously attempted for GLOFs globally (Carrivick and Tweed,  
493 2016). However, a more thorough discussion of available impact datasets for HMA is required. Many of these data are available  
494 in reports prepared for disaster response (e.g. for the Upper Indus basin, both Afghanistan and Pakistan, prepared by AKAH  
495 or UNDP (Ashraf et al., 2015; Gohar, 2014) or Kazakhstan prepared by scientists from local Universities (Medeu et al., 2016))  
496 but have so far not been compiled in a standardized manner.

497 A few GLOF events have now been recorded already that have reached urban (e.g. GF\_ID 131 south of Almaty, where dam  
498 structures were erected as adaptation measures) and semi-urban (e.g. GF\_ID 515 north of Melamchi) space. As more and more  
499 infrastructure is being built in upstream areas and close to river channels, vulnerabilities are expected to increase. Future studies  
500 should investigate potential flood impacts on built up areas as well as hydropower infrastructure, which often require different  
501 model setups than for environments with infrastructure only including roads and single houses (Fischer et al., 2022).

502 While nearly one-third of all GLOFs could potentially be transboundary (i.e. the downstream path eventually crosses a current  
503 national border), less than ten events have resulted in confirmed transboundary impacts. While a lot of attention has been given  
504 to transboundary climate risks in the recent past, our data suggests that it may be less the actual flood wave that is of  
505 transboundary concern and more the associated impacts in one country (e.g. road disruptions with impacts on trade) that could  
506 have knock-on effects across borders, including a disruption of trade, access to health care or education (Steiner et al., 2023).  
507 Mass flow events like GLOFs have been previously identified as an important part of the sediment balance in mountain rivers  
508 (Cook et al., 2018), with potential implications for landscape formation as well as hazards (Li et al., 2022). The database does  
509 include recorded values of discharge of water (72;  $\mu = 3248 \text{ m}^3 \text{ s}^{-1}$ ; min: 3.3 – max: 21300  $\text{m}^3 \text{ s}^{-1}$ ) as well as sediment (19;  $\mu$   
510  $= 620 \text{ m}^3 \text{ s}^{-1}$ ; 25 – 2000  $\text{m}^3 \text{ s}^{-1}$ ) but those observations are already associated to large uncertainties. An appraisal of the existing  
511 data and estimates of drained volumes based on satellite imagery from before and after the GLOF events could provide an  
512 approach to estimate the role this large number of GLOFs plays in overall sediment fluxes and could be a focus of future  
513 research.

#### 514 **4.6 Comparison to previous inventories and limitations**

515 The most comprehensive databases of GLOFs covering HMA were produced by Veh et al. (2019a), focusing on moraine-  
516 dammed lakes exclusively but identifying many previously unidentified events. Zheng et al. (2021b) also identified many  
517 events that had hitherto gone unidentified. Both studies have been consulted for this study. 144 GLOFs in this inventory (21%  
518 of the total) were previously only reported in (Zheng et al., 2021b), 15 (2%) in (Veh et al., 2019a). We also followed the  
519 approach of Zheng et al. (2021b) to question any previous records and keep a separate record of events that were initially  
520 identified as GLOFs but turned out not to be or cannot be ascertained to be. Future studies should investigate events we have  
521 identified as outbursts from water pockets (22 cases as well as potentially more in what we have discarded as GLOFs in a  
522 separate database), to better understand involved processes. None of these water pockets are visible before any event, and  
523 posterior evidence of their existence is limited to vast subglacial channels that appeared (e.g. Figure 2C) as well as apparent  
524 rapid lowering of glacier surfaces but sometimes simply the observation of previously filled crevasses at the snout where a  
525 debris flow suddenly emerged. In Switzerland, these types of outburst floods have been earlier estimated to account for 30 to  
526 40% of all glacier floods (Haeberli, 1983), but detailed investigations are limited to one especially disastrous case dating back  
527 to the 19<sup>th</sup> century (Vincent et al., 2015). All events in HMA originated at the terminus of relatively steep glacier tongues and  
528 may have some similarity in genesis to glacier detachments (Kääb et al., 2021, 2018) but runout properties – fast debris flows  
529 with no visible fraction of ice - are distinctly different. More comprehensive investigations into these cases will be required in  
530 future. Veh et al. (2022), a global study that also covers the region already provides an accessible database, however a  
531 considerable smaller number of recorded events (459; 11 events in our database were sourced from this database).  
532 A large motivation for GLOF studies has been the question of whether GLOFs have been increasing in the recent past with a  
533 change in climate. Recent global and regional studies on moraine-dammed lakes have shown that there is no apparent trend,  
534 but suggest a possible lag that may eventually result in an increase in such events (Harrison et al., 2018; Veh et al., 2019a). A



535 recent global study investigating all types of outbursts suggests a weak coupling of temperature rise and GLOF frequency (Veh  
536 et al., 2022). We can confirm findings from Veh et al. (2022) that currently available records likely do not cover all GLOFs  
537 that have actually occurred. The fact that we still overlook past events and the strong regional variability seem to make it  
538 challenging to find definite climate relations and any such statements should be treated with caution. For some individual lakes  
539 that have a documented history of draining since the end of the 19<sup>th</sup> century (e.g. Hassanabad/Shisper, Kyagar, Merzbacher,  
540 Karambar) no apparent trend is visible, while damages have likely increased due to increased exposure of infrastructure in  
541 high mountain areas (Li et al., 2022). Hotspots where ice-dammed lake outbursts have repeatedly been unleashed have, in  
542 some cases, even completely ceased to exist as the glacier tongues have receded so far that they cannot dam the main valley  
543 anymore (e.g. the Shyok glaciers). This is in line with a recent global study finding a decrease in extreme outburst floods from  
544 ice dammed lakes (Veh et al., 2023).

545 The attention that GLOFs in general have received in the region in the past (see Emmer et al., (2022) for a comparison of  
546 events versus actual studies globally, with a notable discrepancy for the Himalaya) has possibly led to the misidentification of  
547 GLOF events. Flash floods and debris flows where the source remains unclear are often immediately recorded as GLOFs in  
548 media (especially in the Western Himalaya, the Karakoram, and Hindu Kush), as this generally gives it more attention than  
549 the term ‘debris flow’ would. Conversely, due to a lack of records in unpopulated areas many GLOFs may have gone  
550 unrecorded (Veh et al., 2022; Zheng et al., 2021b) as confirmed in this study. What remains poorly documented so far are  
551 impacts in numerous dimensions. Not only are direct impacts poorly recorded in accessible format, secondary medium and  
552 long-term effects remain missing from the literature. People injured (qualitatively and quantitatively), people displaced  
553 temporarily and permanently, gender and age group of people affected are rarely reported. Effects on mental health have been  
554 recently reported but no studies exist in scientific literature (Ebrahim, 2022). With high rates of both erosion and deposition,  
555 GLOFs can cause damage to agricultural land as well as infrastructure for years after the actual event, eventually causing  
556 damage from the remaining devaluation of land or lack of access to health facilities, markets or education. Information on the  
557 severity of deposits would be needed for actual economic impacts and is crucial to further contextualize GLOFs in loss and  
558 damage frameworks (Huggel et al., 2019). To this end, it is crucial that future efforts rely on datasets that are transparent and  
559 accessible to all stakeholders to make decisions on adaptation that are targeted and sustainable.

## 560 **5 Data availability**

561 The GLOF database is published under <https://doi.org/10.5281/zenodo.7271187> (Steiner and Shrestha, 2023). The code to  
562 process data as well as the development version, where new events are added regularly, is available on GitHub  
563 (<https://github.com/fidelsteiner/HMAGLOFDB>). Events added in the development version will be quality checked before they  
564 are retained in further releases published on Zenodo. To provide an accessible version of the data to non-academic stakeholders,  
565 the database is also visualized on an interactive map accessible from the README file in the published database as well as  
566 the development version.

## 567 **6 Conclusion**

568 In this study, we present a comprehensive compilation of GLOF events in High Mountain Asia from the mid 19<sup>th</sup> century until  
569 2022. The inventory is machine-readable and version controlled and will be updated as information on new events become  
570 available in future. It includes basic information on time and location, involved processes and impacts and is linked to other  
571 inventories of glacial lakes and glaciers allowing for future investigations into drivers of outburst floods. Of 697 individual  
572 events, 47% have a known month of occurrence, allowing investigations into seasonality, and 39% have a recorded day of  
573 drainage, allowing future investigations of prevailing weather preceding the event. 52% of all GLOFs can be associated with  
574 a lake mapped in at least one glacial lake inventory, and 95% to a mapped glacier, allowing for straightforward analysis on  
575 how upstream glacier mass loss and lake area change influences the occurrence of outburst events. We have a good overview  
576 of what type of lakes were the source, revealing that large regional differences exist, with sparingly few ice-dammed lakes in  
577 the Himalaya and only very few moraine-dammed lakes in the Karakoram linked to GLOFs. The mechanisms of lake formation  
578 or drainage are documented for only very few events. Volumes of floods are not only seldom documented but also highly  
579 uncertain. However, the combination with lake inventories allows for approximate estimates, with lake area changes as a  
580 proxy. With a record of minimal potential reach of GLOF events in 66% of all cases we can show that GLOF events generally  
581 do not exceed reach angles of 15° (and events with higher volumes even less), information that can be useful for future hazard  
582 mapping.

583 Our dataset suggests that 906 deaths were directly associated to a GLOF event, three times as many as previously reported for  
584 the region. Compared to other mountain hazards in the region, GLOFs however have caused a relatively small loss of human  
585 life. Other impacts however remain relatively poorly documented.

586 With 7% of all events recorded here never mentioned in literature before coming from local and oral information rather than  
587 other academic publications. Our study emphasizes the importance of considering all types of sources and acknowledges the  
588 high likelihood, that our current records of GLOFs probably remain an underestimation of actual events. Conversely, we also  
589 emphasize the importance of cross-checking sources carefully, as mass flow events in the region have been previously  
590 mistakenly recorded as GLOFs without sufficient examination. While this is the first GLOF inventory to comprehensively  
591 address downstream impacts, much of this information has never been recorded. Injuries are rarely recorded nor are the  
592 monetary values of damaged property or the long-term economic effect of damaged infrastructure. Future studies should  
593 evaluate methods to estimate damages rapidly, which will require more interdisciplinary approaches including social scientists  
594 for field assessments and economists for ways to upscale risk and damage assessments. Further focus should also be given to  
595 documenting local and indigenous knowledge on GLOF hazards, which could reveal impacts that so far have been overlooked.  
596 As our understanding of the changing cryosphere in HMA is ever increasing, and with the expansion of our understanding of  
597 topics such as snow melt and permafrost, future studies should attempt to combine inventories of lakes and GLOFs with  
598 potential processes even further upstream that may result in cascading hazards in future. Such issues are expected to increase

599 in future. Other hazards should ideally also be documented in formats that make it possible to pair it with already existing  
600 inventories for regional studies and modelling attempts.

#### 601 **Author contributions**

602 FS incepted the study and compiled and analysed the database with JFS. FS and JFS wrote the manuscript. RS, YD, SPJ and  
603 SI helped with the initial compilation of the database. AA and SW helped with compilation of data from the Indus basin, KMW  
604 helped with data from Afghanistan and Central Asia and TZ provided input from Chinese events. All authors contributed to  
605 the final version of the manuscript.

#### 606 **Competing interests**

607 The authors declare that they have no conflict of interest.

#### 608 **Acknowledgements**

609 This study is supported by ICIMOD's Action Area A on managing cryosphere and water risks under Strategic Group 1:  
610 Reducing Climate and Environmental Risks. Action Area A works to address the challenges posed by climate change on  
611 cryosphere, water, and related hazard in the Hindu Kush Himalayan region. ICIMOD and its regional member countries --  
612 Afghanistan, Bangladesh, Bhutan, China, India, Myanmar, Nepal, and Pakistan -- gratefully acknowledge the support of  
613 Norway and Switzerland for funding the activity for this research. The views and interpretations in this publication are those  
614 of the authors and are not necessarily attributable to ICIMOD. The authors gratefully acknowledge the support of Prabhat  
615 Shrestha and Narayan Thapa in the development of an interactive dashboard for the database. We are grateful to Ethan Welty  
616 and two anonymous reviewers, who helped in considerably improving the manuscript.

#### 617 **Review statement**

618 This paper was edited by Katrin Lindback and reviewed by Ethan Welty and two anonymous referees.

#### 619 **References**

- 620 Acharya, A., Steiner, J.F., Walizada, K.M., Ali, S., Zakir, Z.H., Caisermann, A., and Watanabe, T.: Review article: Snow and  
621 ice avalanches in high mountain Asia – scientific, local and indigenous knowledge, *Nat. Hazards Earth Syst. Sci.*,23,  
622 2569-2592, <https://doi.org/10.5194/nhess-23-2569-2023>, 2023.
- 623 Ahmed, R., Ahmad, S.T., Wani, G.F., Mir, R.A., Almazroui, M., Bansal, J.K., and Ahmed, P.: Glacial lake changes and the  
624 identification of potentially dangerous glacial lakes (PDGLs) under warming climate in the Dibang River Basin,  
625 Eastern Himalaya, India, *Geocarto Int.*, 1–27, <https://doi.org/10.1080/10106049.2022.2134461>, 2022.

- 626 Allen, S.K., Rastner, P., Arora, M., Huggel, C., and Stoffel, M.: Lake outburst and debris flow disaster at Kedarnath, June  
627 2013: hydrometeorological triggering and topographic predisposition, *Landslides*, 13, 1479–1491,  
628 <https://doi.org/10.1007/s10346-015-0584-3>, 2016.
- 629 Allen, S.K., Zhang, G., Wang, W., Yao, T., and Bolch, T.: Potentially dangerous glacial lakes across the Tibetan Plateau  
630 revealed using a large-scale automated assessment approach, *Sci. Bull., SPECIAL TOPIC: The Second Tibetan  
631 Plateau Scientific Expedition and Research (I)* 64, 435–445, <https://doi.org/10.1016/j.scib.2019.03.011>, 2019.
- 632 Ashraf, A., Naz, R., and Roohi, R.: Glacial lake outburst flood hazards in Hindukush, Karakoram and Himalayan Ranges of  
633 Pakistan: implications and risk analysis, *Geomat. Nat. Haz. Risk*, 3, 113–132,  
634 <https://doi.org/10.1080/19475705.2011.615344>, 2012.
- 635 Ashraf, A., Naz, R., Mustafa, N., Iqbal, M.B., Ahmad, B., Jawad, A., and Ahmad, I.: Updating GLOF lake inventory of  
636 Northern Pakistan and establishment of community based early warning system in Bagrot and Bondo Gol valleys  
637 (Technical Report), Pakistan Agricultural Research Council (PARC), Islamabad, Pakistan, 2015.
- 638 Ashraf, A., Iqbal, M.B., Mustafa, N., Naz, R., and Ahmad, B.: Prevalent risk of glacial lake outburst flood hazard in the Hindu  
639 Kush–Karakoram–Himalaya region of Pakistan, *Environ Earth Sci.*, 80, 451, <https://doi.org/10.1007/s12665-021-09740-1>, 2021.
- 641 Awal, R., Nakagawa, H., Fujita, M., Kawaike, K., Baba, Y., and Zhang, H.: Experimental Study on Glacial Lake Outburst  
642 Floods Due to Waves Overtopping and Erosion of Moraine Dam, *Ann. Disaster Prev. Res. Inst.*, 53, 2010.
- 643 Bajracharya, S.R., Maharjan, S.B., Shrestha, F., Sherpa, T.C., Wagle, N., and Shrestha, A.B.: Inventory of glacial lakes and  
644 identification of potentially dangerous glacial lakes in the Koshi, Gandaki, and Karnali river basins of Nepal, the  
645 Tibet Autonomous Region of China, and India, ICIMOD, Kathmandu, Nepal, <https://doi.org/10.53055/ICIMOD.773>,  
646 2020.
- 647 Bhattacharya, A., Bolch, T., Mukherjee, K., King, O., Menounos, B., Kapitsa, V., Neckel, N., Yang, W., and Yao, T.: High  
648 Mountain Asian glacier response to climate revealed by multi-temporal satellite observations since the 1960s, *Nat.  
649 Commun.*, 12, 4133, <https://doi.org/10.1038/s41467-021-24180-y>, 2021.
- 650 Blischak, J.D., Davenport, E.R., and Wilson, G.: A Quick Introduction to Version Control with Git and GitHub, *PLOS Comput.  
651 Biol.*, 12, e1004668, <https://doi.org/10.1371/journal.pcbi.1004668>, 2016.
- 652 Bolch, T., Buchroithner, M.F., Peters, J., Baessler, M., and Bajracharya, S.: Identification of glacier motion and potentially  
653 dangerous glacial lakes in the Mt. Everest region/Nepal using spaceborne imagery, *Nat. Hazards Earth Syst. Sci.*, 8,  
654 1329–1340, <https://doi.org/10.5194/nhess-8-1329-2008>, 2008.
- 655 Bolch, T., Shea, J.M., Liu, S., Azam, F.M., Gao, Y., Gruber, S., Immerzeel, W.W., Kulkarni, A., Li, H., Tahir, A.A., Zhang,  
656 G., and Zhang, Y.: Status and Change of the Cryosphere in the Extended Hindu Kush Himalaya Region, in: *The  
657 Hindu Kush Himalaya Assessment: Mountains, Climate Change, Sustainability and People*, edited by: Wester, P.,  
658 Mishra, A., Mukherji, A., and Shrestha, A.B., Springer, Cham., 209–255, 2019.
- 659 Brun, F., Berthier, E., Wagnon, P., Käab, A., and Treichler, D.: A spatially resolved estimate of High Mountain Asia glacier  
660 mass balances from 2000 to 2016, *Nat. Geosci.*, 10, 668–673, <https://doi.org/10.1038/ngeo2999>, 2017.
- 661 Carrivick, J.L. and Tweed, F.S.: Proglacial lakes: character, behaviour and geological importance, *Quaternary Sci. Rev.*, 78,  
662 34–52, <https://doi.org/10.1016/j.quascirev.2013.07.028>, 2013.
- 663 Carrivick, J.L. and Tweed, F.S.: A global assessment of the societal impacts of glacier outburst floods. *Global Planet. Change*,  
664 144, 1–16, <https://doi.org/10.1016/j.gloplacha.2016.07.001>, 2016.
- 665 Chen, F., Zhang, M., Guo, H., Allen, S., Kargel, J.S., Haritashya, U.K., and Watson, C.S.: Annual 30 m dataset for glacial  
666 lakes in High Mountain Asia from 2008 to 2017, *Earth Syst. Sci. Data*, 13, 741–766, <https://doi.org/10.5194/essd-13-741-2021>, 2021.
- 668 Cook, K.L., Andermann, C., Gimbert, F., Adhikari, B.R., and Hovius, N.: Glacial lake outburst floods as drivers of fluvial  
669 erosion in the Himalaya, *Science*, 362, 53–57, <https://doi.org/10.1126/science.aat4981>, 2018.
- 670 Cook, S.J. and Quincey, D.J.: Estimating the volume of Alpine glacial lakes, *Earth Surf. Dynam.*, 3, 559–575,  
671 <https://doi.org/10.5194/esurf-3-559-2015>, 2015.
- 672 Duan, H., Yao, X., Zhang, D., Qi, M., and Liu, J.: Glacial Lake Changes and Identification of Potentially Dangerous Glacial  
673 Lakes in the Yi’ong Zangbo River Basin, *Water*, 12, 538, <https://doi.org/10.3390/w12020538>, 2020.
- 674 Dwiwedi, S.K., Acharya, M.D., and Simard, R.: The Tam Pokhari Glacier Lake outburst flood of 3 September 1998, *J. Nepal  
675 Geol. Soc.*, 22, 2000.

676 Ebrahim, Z.: Climate disasters trigger mental health crisis in Pakistan's mountains, *The Third Pole*,  
677 <http://globeistan.com/?p=101216>, 2022.

678 Emmer, A. and Cochachin, A.: The causes and mechanisms of moraine-dammed lake failures in the Cordillera Blanca, North  
679 American Cordillera, and Himalayas, *Auc. Geogr.*, 48, 5–15, <https://doi.org/10.14712/23361980.2014.23>, 2013.

680 Emmer, A., Allen, S.K., Carey, M., Frey, H., Huggel, C., Korup, O., Mergili, M., Sattar, A., Veh, G., Chen, T.Y., Cook, S.J.,  
681 Correas-Gonzalez, M., Das, S., Diaz Moreno, A., Drenkhan, F., Fischer, M., Immerzeel, W.W., Izagirre, E., Joshi,  
682 R.C., Kougkoulos, I., Kuyakanon Knapp, R., Li, D., Majeed, U., Matti, S., Moulton, H., Nick, F., Piroton, V., Rashid,  
683 I., Reza, M., Ribeiro de Figueiredo, A., Riveros, C., Shrestha, F., Shrestha, M., Steiner, J., Walker-Crawford, N.,  
684 Wood, J.L., and Yde, J.C.: Progress and challenges in glacial lake outburst flood research (2017 - 2021): a research  
685 community perspective, *Nat. Hazards Earth Syst. Sci.*, 22, 3041–3061, <https://doi.org/10.5194/nhess-22-3041-2022>,  
686 2022.

687 Fischer, M., Brettin, J., Roessner, S., Walz, A., Fort, M., and Korup, O.: Rare flood scenarios for a rapidly growing high-  
688 mountain city: Pokhara, Nepal, *Nat. Hazards Earth Syst. Sci.*, 22, 3105–3123, <https://doi.org/10.5194/nhess-22-3105-2022>, 2022.

690 Furian, W., Maussion, F., and Schneider, C.: Projected 21st-Century Glacial Lake Evolution in High Mountain Asia, *Frontiers  
691 in Earth Sci.*, 10, <https://doi.org/10.3389/feart.2022.821798>, 2022.

692 Gardelle, J., Arnaud, Y., and Berthier, E.: Contrasted evolution of glacial lakes along the Hindu Kush Himalaya mountain  
693 range between 1990 and 2009, *Global Planet. Change*, 75, 47–55, <https://doi.org/10.1016/j.gloplacha.2010.10.003>,  
694 2011.

695 Gohar, A.: Pre-intervention Survey on Knowledge, Attitudes and Practices (KAP) in the GLOF prone Valleys of Boni and  
696 Gollain in Chitral and the Sosot and Darkut Valleys Ghizar, Gilgit- Baltistan, Climate Change Division, Government  
697 of Pakistan, Islamabad, Pakistan, 2014.

698 Guillet, G., King, O., Lv, M., Ghuffar, S., Benn, D., Quincey, D., and Bolch, T.: A regionally resolved inventory of High  
699 Mountain Asia surge-type glaciers, derived from a multi-factor remote sensing approach, *The Cryosphere*, 16, 603–  
700 623, <https://doi.org/10.5194/tc-16-603-2022>, 2022.

701 Haeberli, W.: Frequency and Characteristics of Glacier Floods in the Swiss Alps, *Ann. Glaciol.*, 4, 1983.

702 Haeberli, W., Schaub, Y., and Huggel, C.: Increasing risks related to landslides from degrading permafrost into new lakes in  
703 de-glaciating mountain ranges, *Geomorphology*, <https://doi.org/10.1016/j.geomorph.2016.02.009>, 2016.

704 Halvorson, S.J.: Environmental Health Risks and Gender in the Karakoram-Himalaya, Northern Pakistan, *Geogr. Rev.*, 92,  
705 257–281, <https://doi.org/10.2307/4140973>, 2002.

706 Harrison, S., Kargel, J.S., Huggel, C., Reynolds, J., Shugar, D.H., Betts, R.A., Emmer, A., Glasser, N., Haritashya, U.K.,  
707 Klimeš, J., Reinhardt, L., Schaub, Y., Wiltshire, A., Regmi, D., and Vilímek, V.: Climate change and the global  
708 pattern of moraine-dammed glacial lake outburst floods, *The Cryosphere*, 12, 1195–1209, <https://doi.org/10.5194/tc-12-1195-2018>, 2018.

710 He, X. and Zhou, S.: An Assessment of Glacier Inventories for the Third Pole Region, *Front. Earth Sci.*, 10,  
711 <https://doi.org/10.3389/feart.2022.848007>, 2022.

712 Hewitt, K. and Liu, J.: Ice-Dammed Lakes and Outburst Floods, Karakoram Himalaya: Historical Perspectives on Emerging  
713 Threats, *Phys. Geogr.*, 31, 528–551, <https://doi.org/10.2747/0272-3646.31.6.528>, 2010.

714 Hoelzle, M., Barandun, M., Bolch, T., Fiddes, J., Gafurov, A., Muccione, V., Saks, T., and Shagedanova, M.: The status and  
715 role of the alpine cryosphere in Central Asia, in: *The Aral Sea Basin: Water for sustainable development in Central  
716 Asia*, Earthscan series on major river basins of the world, edited by: Xenarios, S., Schmidt-Vogt, D., Qadir, M.,  
717 Janusz-Pawletta, B., and Abduallev, I., Routledge, Abingdon, Oxon, 100-121,  
718 <https://doi.org/10.4324/9780429436475-8>, 2020.

719 Huggel, C., Muccione, V., Carey, M., James, R., Jurt, C., and Mechler, R.: Loss and Damage in the mountain cryosphere, *Reg.  
720 Environ. Change*, 19, 1387–1399, <https://doi.org/10.1007/s10113-018-1385-8>, 2019.

721 Hugonnet, R., McNabb, R., Berthier, E., Menounos, B., Nuth, C., Girod, L., Farinotti, D., Huss, M., Dussailant, I., Brun, F.,  
722 and Käab, A.: Accelerated global glacier mass loss in the early twenty-first century, *Nature*, 592, 726–731,  
723 <https://doi.org/10.1038/s41586-021-03436-z>, 2021.

724 Huss, M., Bauder, A., Werder, M., Funk, M., and Hock, R.: Glacier-dammed lake outburst events of Gornensee, Switzerland,  
725 *J. Glaciol.*, 53, 189–200, <https://doi.org/10.3189/172756507782202784>, 2007.

726 Iribarren Anacona, P., Norton, K.P., and Mackintosh, A.: Moraine-dammed lake failures in Patagonia and assessment of  
727 outburst susceptibility in the Baker Basin, *Nat. Hazards Earth Syst. Sci.*, 14, 3243–3259,  
728 <https://doi.org/10.5194/nhess-14-3243-2014>, 2014.

729 Ives, J.D.: Glacial Lake Outburst Floods and Risk Engineering in the Himalaya: A Review of the Langmoche Disaster,  
730 Khumbu Himal, 4 August 1985 (Occasional Paper No. 5), ICIMOD, Kathmandu, Nepal, 1986.

731 Ives, J.D., Shrestha, R.B., and Mool, P.K.: Formation of Glacial Lakes in the Hindu Kush-Himalayas and GLOF Risk  
732 Assessment, ICIMOD, Kathmandu, Nepal, 2010.

733 Jiang, Z., Cui, P., and Jiang, L.: Critical hydrologic conditions for overflow burst of moraine lake, *Chin. Geograph. Sc.*, 14,  
734 39–47, <https://doi.org/10.1007/s11769-004-0007-1>, 2004.

735 Käab, A., Leinss, S., Gilbert, A., Bühler, Y., Gascoïn, S., Evans, S.G., Bartelt, P., Berthier, E., Brun, F., Chao, W.-A., Farinotti,  
736 D., Gimbert, F., Guo, W., Huggel, C., Kargel, J.S., Leonard, G.J., Tian, L., Treichler, D., and Yao, T.: Massive  
737 collapse of two glaciers in western Tibet in 2016 after surge-like instability, *Nat. Geosci.*, 11, 114–120,  
738 <https://doi.org/10.1038/s41561-017-0039-7>, 2018.

739 Käab, A., Jacquemart, M., Gilbert, A., Leinss, S., Girod, L., Huggel, C., Falaschi, D., Ugalde, F., Petrakov, D., Chernomorets,  
740 S., Dokukin, M., Paul, F., Gascoïn, S., Berthier, E., and Kargel, J.: Sudden large-volume detachments of low-angle  
741 mountain glaciers - more frequent than thought, *The Cryosphere*, 15, 1751–1785, <https://doi.org/10.5194/tc-2020-243>, 2021.

743 Khanal, N.R., Hu, J.-M., and Mool, P.: Glacial Lake Outburst Flood Risk in the Poiqu/Bhote Koshi/Sun Koshi River Basin in  
744 the Central Himalayas, *Mt. Res. Dev.*, 35, 351–364, <https://doi.org/10.1659/MRD-JOURNAL-D-15-00009>, 2015.

745 Kingslake, J. and Ng, F.: Quantifying the predictability of the timing of jökulhlaups from Merzbacher Lake, Kyrgyzstan, *J.*  
746 *Glaciol.*, 59, 805–818, <https://doi.org/10.3189/2013JoG12J156>, 2013.

747 Kreutzmann, H.: The Karakoram Highway: The Impact of Road Construction on Mountain Societies, *Modern Asian Studies*,  
748 25, 711–736, <https://doi.org/10.1017/S0026749X00010817>, 1991.

749 Lee, E., Carrivick, J.L., Quincey, D.J., Cook, S.J., James, W.H.M., and Brown, L.E.: Accelerated mass loss of Himalayan  
750 glaciers since the Little Ice Age, *Sci. Rep.*, 11, 24284, <https://doi.org/10.1038/s41598-021-03805-8>, 2021.

751 Li, D., Lu, X., Walling, D.E., Zhang, T., Steiner, J.F., Wasson, R.J., Harrison, S., Nepal, S., Nie, Y., Immerzeel, W.W., Shugar,  
752 D.H., Koppes, M., Lane, S., Zeng, Z., Sun, X., Yegorov, A., and Bolch, T.: High Mountain Asia hydropower systems  
753 threatened by climate-driven landscape instability, *Nat. Geosci.*, 1–11, <https://doi.org/10.1038/s41561-022-00953-y>,  
754 2022.

755 Linsbauer, A., Frey, H., Haerberli, W., Machguth, H., Azam, M.F., and Allen, S.: Modelling glacier-bed overdeepenings and  
756 possible future lakes for the glaciers in the Himalaya - Karakoram region, *Ann. Glaciol.*, 57, 119–130,  
757 <https://doi.org/10.3189/2016AoG71A627>, 2015.

758 Mamadjanova, G., Wild, S., Walz, M.A., and Leckebusch, G.C.: The role of synoptic processes in mudflow formation in the  
759 piedmont areas of Uzbekistan, *Nat. Hazards Earth Syst. Sci.*, 18, 2893–2919, <https://doi.org/10.5194/nhess-18-2893-2018>, 2018.

761 Mankoff, K.D., Fettweis, X., Langen, P.L., Stendel, M., Kjeldsen, K.K., Karlsson, N.B., Noël, B., van den Broeke, M.R.,  
762 Solgaard, A., Colgan, W., Box, J.E., Simonsen, S.B., King, M.D., Ahlstrøm, A.P., Andersen, S.B., and Fausto, R.S.  
763 Greenland ice sheet mass balance from 1840 through next week, *Earth Syst. Sci. Data*, 13, 5001–5025,  
764 <https://doi.org/10.5194/essd-13-5001-2021>, 2021.

765 Medeu, A.R., Baimoldayev, T.A., and Kirenskiy, T.L.: Anthology debris flows and their processes, *Debris flows in the*  
766 *Southeast Kazakhstan*, Ministry of Education and Science Republic of Kazakhstan, Almaty, 2016.

767 Medeu, A.R., Blagoveshchenskiy, V.P., Gulyayeva, T.S., and Ranova, S.U.: Debris Flow Activity in Trans-Ili Alatau in the  
768 20th — Early 21st Centuries, *Geogr. Nat. Resour.*, 40, 292–298, <https://doi.org/10.1134/S1875372819030120>, 2019.

769 Mool, P.K., Bajracharya, S.R., and Joshi, S.P.: Inventory of Glaciers, Glacial Lakes and Glacial Lake Outburst Floods,  
770 ICIMOD, Kathmandu, Nepal, 2001.

771 Muhammad, S. and Thapa, A.: Daily Terra–Aqua MODIS cloud-free snow and Randolph Glacier Inventory 6.0 combined  
772 product (M\*D10A1GL06) for high-mountain Asia between 2002 and 2019, *Earth Syst. Sci. Data*, 13, 767–776,  
773 <https://doi.org/10.5194/essd-13-767-2021>, 2021.

- 774 Muhammad, S., Li, J., Steiner, J.F., Shrestha, F., Shah, G.M., Berthier, E., Guo, L., Wu, L., and Tian, L.: A holistic view of  
775 Shisper Glacier surge and outburst floods: from physical processes to downstream impacts. *Geomat. Nat. Haz. Risk*,  
776 12, 2755–2775, <https://doi.org/10.1080/19475705.2021.1975833>, 2021.
- 777 Nie, Y., Sheng, Y., Liu, Q., Liu, L., Liu, S., Zhang, Y., and Song, C.: A regional-scale assessment of Himalayan glacial lake  
778 changes using satellite observations from 1990 to 2015, *Remote Sens. Environ.*, 189, 1–13,  
779 <https://doi.org/10.1016/j.rse.2016.11.008>, 2017.
- 780 Nie, Y., Liu, Q., Wang, J., Zhang, Y., Sheng, Y., and Liu, S.: An inventory of historical glacial lake outburst floods in the  
781 Himalayas based on remote sensing observations and geomorphological analysis, *Geomorphology*, 308, 91–106,  
782 <https://doi.org/10.1016/j.geomorph.2018.02.002>, 2018.
- 783 Nie, Y., Liu, W., Liu, Q., Hu, X., and Westoby, M.J.: Reconstructing the Chongbaxia Tsho glacial lake outburst flood in the  
784 Eastern Himalaya: Evolution, process and impacts, *Geomorphology*, 370, 107393,  
785 <https://doi.org/10.1016/j.geomorph.2020.107393>, 2020.
- 786 Obu, J.: How Much of the Earth’s Surface is Underlain by Permafrost?, *J. Geophys. Res-Earth*, 126,  
787 <https://doi.org/10.1029/2021JF006123>, 2021.
- 788 Osti, R., Bhattarai, T.N., and Miyake, K.: Causes of catastrophic failure of Tam Pokhari moraine dam in the Mt. Everest region,  
789 *Nat. Hazards*, 58, 1209–1223, <https://doi.org/10.1007/s11069-011-9723-x>, 2011.
- 790 Petley, D.: Global patterns of loss of life from landslides, *Geology*, 40, 927–930, <https://doi.org/10.1130/G33217.1>, 2012.
- 791 Pfeffer, W.T., Arendt, A.A., Bliss, A., Bolch, T., Cogley, J.G., Gardner, A.S., Hagen, J.-O., Hock, R., Kaser, G., Kienholz, C.,  
792 Miles, E.S., Moholdt, G., Mölg, N., Paul, F., Radić, V., Rastner, P., Raup, B.H., Rich, J., and Sharp, M.J., The  
793 Randolph Consortium.: The Randolph Glacier Inventory: a globally complete inventory of glaciers, *J. Glaciol.*, 60,  
794 537–552, <https://doi.org/10.3189/2014JoG13J176>, 2014.
- 795 Pfeffer, W.T.: Randolph Glacier Inventory – A Dataset of Global Glacier Outlines: Version 6.0: Technical Report (No. 6.0),  
796 Colorado, USA, 2017.
- 797 Resurrección, B.P., Goodrich, C.G., Song, Y., Bastola, A., Prakash, A., Joshi, D., Liebrand, J., and Shah, S.A.: In the Shadows  
798 of the Himalayan Mountains: Persistent Gender and Social Exclusion in Development, in: *The Hindu Kush Himalaya*  
799 *Assessment: Mountains, Climate Change, Sustainability and People*, edited by: Wester, P., Mishra, A., Mukherji, A.,  
800 and Shrestha, A.B., Springer International Publishing, Cham, 491–516, 2019.
- 801 Rounce, D.R., Byers, A.C., Byers, E.A., and McKinney, D.C.: Brief communication: Observations of a glacier outburst flood  
802 from Lhotse Glacier, Everest area, Nepal, *The Cryosphere*, 11, 443–449, <https://doi.org/10.5194/tc-11-443-2017>,  
803 2017.
- 804 Round, V., Leinss, S., Huss, M., Haemmig, C., and Hajnsek, I.: Surge dynamics and lake outbursts of Kyagar Glacier,  
805 Karakoram, *The Cryosphere*, 11, 723–739, <https://doi.org/10.5194/tc-11-723-2017>, 2017.
- 806 Shugar, D.H., Burr, A., Haritashya, U.K., Kargel, J.S., Watson, C.S., Kennedy, M.C., Bevington, A.R., Betts, R.A., Harrison,  
807 S., and Strattman, K.: Rapid worldwide growth of glacial lakes since 1990, *Nat. Clim. Chang.*, 10, 939–945,  
808 <https://doi.org/10.1038/s41558-020-0855-4>, 2020.
- 809 Shugar, D.H., Jacquemart, M., Shean, D., Bhushan, S., Upadhyay, K., Sattar, A., Schwanghart, W., McBride, S., Vries,  
810 M.V.W. de, Mergili, M., Emmer, A., Deschamps-Berger, C., McDonnell, M., Bhambri, R., Allen, S., Berthier, E.,  
811 Carrivick, J.L., Clague, J.J., Dokukin, M., Dunning, S.A., Frey, H., Gascoin, S., Haritashya, U.K., Huggel, C., Käab,  
812 A., Kargel, J.S., Kavanaugh, J.L., Lacroix, P., Petley, D., Rupper, S., Azam, M.F., Cook, S.J., Dimri, A.P., Eriksson,  
813 M., Farinotti, D., Fiddes, J., Gnyawali, K.R., Harrison, S., Jha, M., Koppes, M., Kumar, A., Leinss, S., Majeed, U.,  
814 Mal, S., Muhuri, A., Noetzli, J., Paul, F., Rashid, I., Sain, K., Steiner, J., Ugalde, F., Watson, C.S., and Westoby,  
815 M.J.: A massive rock and ice avalanche caused the 2021 disaster at Chamoli, Indian Himalaya, *Science*,  
816 <https://doi.org/10.1126/science.abh4455>, 2021.
- 817 Soheb, M., Ramanathan, A., Bhardwaj, A., Coleman, M., Rea, B. R., Spagnolo, M., Singh, S., and Sam, L.: Multitemporal  
818 glacier inventory revealing four decades of glacier changes in the Ladakh region, *Earth Syst. Sci. Data*, 14, 4171–  
819 4185, <https://doi.org/10.5194/essd-14-4171-2022>, 2022.
- 820 Somos-Valenzuela, M.A., McKinney, D.C., Rounce, D.R., and Byers, A.C.: Changes in Imja Tsho in the Mount Everest region  
821 of Nepal, *The Cryosphere*, 8, 1661–1671, <https://doi.org/10.5194/tc-8-1661-2014>, 2014.

- 822 Song, C., Sheng, Y., Ke, L., Nie, Y., and Wang, J.: Glacial lake evolution in the southeastern Tibetan Plateau and the cause of  
823 rapid expansion of proglacial lakes linked to glacial-hydrogeomorphic processes, *J. Hydrol.*, 540, 504–514,  
824 <https://doi.org/10.1016/j.jhydrol.2016.06.054>, 2016.
- 825 Steiner, J.F., Kraaijenbrink, P.D.A., Jiduc, S.G., and Immerzeel, W.W.: Brief communication: The Khurdopin glacier surge  
826 revisited – extreme flow velocities and formation of a dammed lake in 2017, *The Cryosphere*, 12, 95–101,  
827 <https://doi.org/10.5194/tc-12-95-2018>, 2018.
- 828 Steiner, J. and Shrestha, F.: fidelsteiner/HMAGLOFDB: HMAGLOFDB v1.0.1 (v1.0.1), Zenodo,  
829 <https://doi.org/10.5281/zenodo.7271187>, 2023.
- 830 Steiner, J., Wester, P., Muccione, V., and Shrestha, A.B.: Transboundary climate risks for terrestrial shared natural resources,  
831 in: *The Global Transboundary Climate Risk Report*, edited by: Anisimov, A. and Magnan, A.M., The Institute for  
832 Sustainable Development and International Relations & Adaptation Without Borders, 33-39,  
833 <https://adaptationwithoutborders.org/>, 2023.
- 834 Taylor, C., Robinson, T.R., Dunning, S.A., Carr, J.R., and Westoby, M.J.: Glacial lake outburst floods threaten millions  
835 globally, *Nat. Commun.*, 14, <https://doi.org/10.1038/s41467-023-36033-x>, 2023.
- 836 Thapa, V. and Pathranarakul, P.: Gender inclusiveness in disaster risk governance for sustainable recovery of 2015 Gorkha  
837 Earthquake, Nepal, *Int. J. Disast. Risk Re.*, 34, 209–219, <https://doi.org/10.1016/j.ijdr.2018.11.019>, 2019.
- 838 Thornton, J.M., Sneathlge, M.A., Sayre, R., Urbach, D.R., Viviroli, D., Ehrlich, D., Muccione, V., Wester, P., Insarov, G., and  
839 Adler, C.: Human populations in the world’s mountains: Spatio-temporal patterns and potential controls, *PLOS ONE*,  
840 17, e0271466, <https://doi.org/10.1371/journal.pone.0271466>, 2022.
- 841 UNISDR.: Sendai Framework for Disaster Risk Reduction 2015–2030, Geneva, Switzerland, United Nations Office for  
842 Disaster Risk Reduction, [http://www.preventionweb.net/files/43291\\_sendai\\_frameworkfordrren.pdf](http://www.preventionweb.net/files/43291_sendai_frameworkfordrren.pdf), 2015
- 843 Veh, G., Korup, O., von Specht, S., Roessner, S., and Walz, A.: Unchanged frequency of moraine-dammed glacial lake outburst  
844 floods in the Himalaya, *Nat. Clim. Chang.*, 9, 379–383, <https://doi.org/10.1038/s41558-019-0437-5>, 2019a.
- 845 Veh, G., Korup, O., and Walz, A.: Hazard from Himalayan glacier lake outburst floods, *P. Natl. A. Sci.*,  
846 <https://doi.org/10.1073/pnas.1914898117>, 2019b.
- 847 Veh, G., Lützwow, N., Kharlamova, V., Petrakov, D., Hugonnet, R., and Korup, O.: Trends, Breaks, and Biases in the Frequency  
848 of Reported Glacier Lake Outburst Floods, *Earth’s Future*, 10, e2021EF002426,  
849 <https://doi.org/10.1029/2021EF002426>, 2022.
- 850 Veh, G., Lützwow, N., Tamm, J., Luna, L.V., Hugonnet, R., Vogel, K., Geertsema, M., Clague, J.J., and Korup, O.: Less extreme  
851 and earlier outbursts of ice-dammed lakes since 1900, *Nature*, 614, 701–707, [https://doi.org/10.1038/s41586-022-](https://doi.org/10.1038/s41586-022-05642-9)  
852 05642-9, 2023.
- 853 Vincent, C., Thibert, E., Gagliardini, O., Legchenko, A., Gilbert, A., Garambois, S., Condom, T., Baltassat, J.M., and Girard,  
854 J.F.: Mechanisms of subglacial cavity filling in Glacier de Tête Rousse, French Alps, *J. Glaciol.*, 61, 609–623,  
855 <https://doi.org/10.3189/2015JoG14J238>, 2015.
- 856 Wang, X., Guo, X., Yang, C., Liu, Q., Wei, J., Zhang, Yong, Liu, S., Zhang, Yanlin, Jiang, Z., and Tang, Z.: Glacial lake  
857 inventory of high-mountain Asia in 1990 and 2018 derived from Landsat images, *Earth Syst. Sci. Data*, 12, 2169–  
858 2182, <https://doi.org/10.5194/essd-12-2169-2020>, 2020.
- 859 Wang, X., Tolksdorf, V., Otto, M., and Scherer, D.: WRF-based dynamical downscaling of ERA5 reanalysis data for High  
860 Mountain Asia: Towards a new version of the High Asia Refined analysis. *Int. J. Climatol.*, 41, 743-  
861 762, <https://doi.org/10.1002/joc.6686>, 2021.
- 862 Welty, E., Zemp, M., Navarro, F., Huss, M., Fürst, J.J., Gärtner-Roer, I., Landmann, J., Machguth, H., Naegeli, K., Andreassen,  
863 L.M., Farinotti, D., Li, H., and GläThiDa Contributors.: Worldwide version-controlled database of glacier thickness  
864 observations, *Earth Syst. Sci. Data*, 12, 3039–3055, <https://doi.org/10.5194/essd-12-3039-2020>, 2020.
- 865 Westoby, M.J., Glasser, N.F., Brasington, J., Hambrey, M.J., Quincey, D.J., and Reynolds, J.M.: Modelling outburst floods  
866 from moraine-dammed glacial lakes, *Earth Sci. Rev.*, 134, 137–159, <https://doi.org/10.1016/j.earscirev.2014.03.009>,  
867 2014.
- 868 Wilcox, A.C., Wade, A.A., and Evans, E.G.: Drainage events from a glacier-dammed lake, Bear Glacier, Alaska: Remote  
869 sensing and field observations, *Geomorphology*, 220, 41–49, <https://doi.org/10.1016/j.geomorph.2014.05.025>, 2014.



870 Worni, R., Stoffel, M., Huggel, C., Volz, C., Casteller, A., and Luckman, B.: Analysis and dynamic modeling of a moraine  
871 failure and glacier lake outburst flood at Ventisquero Negro, Patagonian Andes (Argentina), *J. Hydrol.*, 444–445,  
872 134–145, <https://doi.org/10.1016/j.jhydrol.2012.04.013>, 2012.

873 Worni, R., Huggel, C., Clague, J.J., Schaub, Y., and Stoffel, M.: Coupling glacial lake impact, dam breach, and flood processes:  
874 A modeling perspective, *Geomorphology*, 224, 161–176, <https://doi.org/10.1016/j.geomorph.2014.06.031>, 2014.

875 Xie, F., Liu, S., Gao, Y., Zhu, Y., Bolch, T., Kääb, A., Duan, S., Miao, W., Kang, J., Zhang, Y., Pan, X., Qin, C., Wu, K., Qi,  
876 M., Zhang, X., Yi, Y., Han, F., Yao, X., Liu, Q., Wang, X., Jiang, Z., Shangguan, D., Zhang, Y., Grünwald, R.,  
877 Adnan, M., Karki, J., and Saifullah, M.: Interdecadal glacier inventories in the Karakoram since the 1990s, *Earth  
878 Syst. Sci. Data*, 15, 847–867, <https://doi.org/10.5194/essd-15-847-2023>, 2023.

879 Yamada, T. and Sharma, C.: Glacier lakes and outburst floods in the Nepal Himalaya, *IAHS Proceedings*, 319–330, 1993.

880 Zaidi, R.Z. and Fordham, M.: The missing half of the Sendai framework: Gender and women in the implementation of global  
881 disaster risk reduction policy, *Prog. Disaster Sci.*, 10, 100170, <https://doi.org/10.1016/j.pdisas.2021.100170>, 2021.

882 Zhang, G., Yao, T., Xie, H., Wang, W., and Yang, W.: An inventory of glacial lakes in the Third Pole region and their changes  
883 in response to global warming, *Global Planet. Change*, 131, 148–157,  
884 <https://doi.org/10.1016/j.gloplacha.2015.05.013>, 2015.

885 Zhang, M., Chen, F., Zhao, H., Wang, J., and Wang, N.: Recent Changes of Glacial Lakes in the High Mountain Asia and Its  
886 Potential Controlling Factors Analysis, *Remote Sens.*, 13, 3757, <https://doi.org/10.3390/rs13183757>, 2021a.

887 Zhang, T., Wang, W., Gao, T., An, B., and Shang, X.: Glacial lake outburst floods on the High Mountain Asia: a review, *J.  
888 Glaciol. Geocryol.*, 43, 1673–1692, <https://doi.org/10.7522/j.issn.1000-0240.2021.0066>, 2021b.

889 Zhang, T., Wang, W., An, B., Gao, T., and Yao, T.: Ice thickness and morphological analysis reveal the future glacial lake  
890 distribution and formation probability in the Tibetan Plateau and its surroundings, *Global Planet. Change*, 216,  
891 103923, <https://doi.org/10.1016/j.gloplacha.2022.103923>, 2022a.

892 Zhang, T., Wang, W., Gao, T., An, B., and Yao, T.: An integrative method for identifying potentially dangerous glacial lakes  
893 in the Himalayas, *Sci. Total Environ.*, 806, 150442, <https://doi.org/10.1016/j.scitotenv.2021.150442>, 2022b.

894 Zheng, G., Allen, S.K., Bao, A., Ballesteros-Cánovas, J.A., Huss, M., Zhang, G., Li, J., Yuan, Y., Jiang, L., Yu, T., Chen, W.,  
895 and Stoffel, M.: Increasing risk of glacial lake outburst floods from future Third Pole deglaciation, *Nat. Clim. Chang.*,  
896 11, 411–417, <https://doi.org/10.1038/s41558-021-01028-3>, 2021a.

897 Zheng, G., Bao, A., Allen, S., Ballesteros-Canovas, J., Yuan, Y., and Jiapaer, G.: Numerous unreported glacial lake outburst  
898 floods in the Third Pole revealed by high-resolution satellite data and geomorphological evidence, *Sci. Bull.*,  
899 <https://doi.org/10.1016/j.scib.2021.01.014>, 2021b.

900 Zheng, G., Mergili, M., Emmer, A., Allen, S., Bao, A., Guo, H., and Stoffel, M.: The 2020 glacial lake outburst flood at  
901 Jinwuco, Tibet: causes, impacts, and implications for hazard and risk assessment, *The Cryosphere*, 15, 3159–3180,  
902 <https://doi.org/10.5194/tc-15-3159-2021>, 2021c.

903