

1 HMAGLOFDB v1.0 – a comprehensive and version controlled database 2 of glacier lake outburst floods in High Mountain Asia

3 Finu Shrestha¹, Jakob F Steiner^{1,9}, Reeru Shrestha^{1,2}, Yathartha Dhungel^{1,3}, Sharad P Joshi¹, Sam Inglis⁴,
4 Arshad Ashraf⁵, Sher Wali⁶, Khwaja M Walizada⁷, Taigang Zhang⁸

5 ¹International Centre for Integrated Mountain Development (ICIMOD), Lalitpur, Nepal

6 ²Department of Environmental Science and Engineering, School of Science, Kathmandu University, Dhulikhel, Nepal

7 ³DPMM, Asian Institute of Technology, Bangkok, Thailand

8 ⁴The ADM Capital Foundation (ADMCF), Hong Kong SAR, China

9 ⁵Pakistan Agricultural Research Council, Islamabad, Pakistan

10 ⁶Aga Khan Agency for Habitat, Islamabad, Pakistan

11 ⁷Aga Khan Agency for Habitat, Kabul, Afghanistan

12 ⁸School of Earth and Environmental Sciences, Lanzhou University, Lanzhou, China

13 ⁹~~Institute~~Department of Geography and Regional Science, University of Graz, [Heinrichstraße 36, 8010 Graz](https://www.unigo.at/en/locations/heinrichstrasse-36), Austria

14

15 *Correspondence to:* Finu Shrestha (finu.shrestha@icimod.org); Jakob F Steiner (jff.steiner@gmail.com)

16 **Abstract.** Glacier lake outburst floods (GLOFs) have been intensely investigated in High Mountain Asia (HMA) in recent
17 years and are the most well-known hazard associated with the cryosphere. As glaciers recede and surrounding slopes become
18 increasingly unstable, such events are expected to increase, although current evidence for an increase in events is ambiguous.
19 Many studies have investigated individual events and while several regional inventories exist, they either do not cover all types
20 of GLOF or are geographically constrained. Further, downstream impacts are rarely discussed. Previous inventories have relied
21 on academic sources and have not been combined with existing inventories of glaciers and lakes. In this study, we present the
22 first comprehensive inventory of GLOFs in HMA, including details on the time of their occurrence, processes of lake formation
23 and drainage involved as well as downstream impacts. We document 697 individual GLOFs that occurred between 1833 and
24 2022. Of these, 23% were recurring events from just three ephemeral ice-dammed lakes. In combination, the documented
25 events resulted in 6906 fatalities of which 906 fatalities were from 24 events, which is three times higher than a previous
26 assessment for the region. The integration of previous inventories of glaciers and lakes within this database will inform future
27 assessments of potential drivers of GLOFs, allowing more robust projections to be developed. The database and future, updated
28 versions, are traceable, version controlled and can be directly incorporated into further analysis. The database is available at
29 <https://doi.org/10.5281/zenodo.7271187> <https://doi.org/10.5281/zenodo.7271188> (Steiner and Shrestha, 2022/2023) while the
30 [code including a](#) development version is available on [github](https://github.com) [GitHub](#).

31 1 Introduction

32 High Mountain Asia (HMA) has the largest expanse of glacier ice (~95000 glaciers) beyond the two poles (Guillet et al., 2022)
33 and also has a large number (~30000) of glacial lakes, covering ~2000 km² (Wang et al., 2020). Glaciers in the region have
34 retreated and lost mass between 0.06 and 0.4 m w.e. a⁻¹ across all mountain ranges since the 1960s (Bhattacharya et al., 2021),

35 this retreat often leading the formation and rapid expansion of glacial lakes (Nie et al., 2017; Shugar et al., 2020; Zhang et al.,
36 2021a). Numerous lakes have previously resulted in glacial lake outburst floods (GLOFs); (Carrivick and Tweed, 2013; Nie
37 et al., 2018; Song et al., 2016; Veh et al., 2019b). GLOFs have been recorded in various parts of the world for decades (Emmer
38 et al., 2022; Veh et al., 2022), including the European Alps (Huss et al., 2007), the Andes (Iribarren Anacona et al., 2014),
39 North America (Wilcox et al., 2014) and the Hindu Kush Himalaya (HKH) (Ives et al., 2010; Mool et al., 2001; Rounce et al.,
40 2017). Numerous studies suggest that glacial lakes in HMA have grown in total area and number since the 1990s (Chen et al.,
41 2021; Shugar et al., 2020; Wang et al., 2020; Zhang et al., 2015; Zheng et al., 2021a). An overall increase of 5.9% in lake
42 number and $6.8 \pm 0.1\%$ in area was reported between 1990 and 2015 (Zheng et al., 2021a). Other studies find an increase by
43 2916 and 273.65 km² between 1990 and 2018 (Wang et al., 2020) and by 3342 and 220.64 km² between 2009 and 2017 (Chen
44 et al., 2020). Results suggest that the total area increase has been driven by the expansion of proglacial moraine-dammed lakes
45 (Zheng et al., 2021a; Nie et al., 2013; Gardelle et al., 2011). The number of proglacial lakes in contact with glaciers increased
46 by $31.3 \pm 0.3\%$ between 1990 and 2015 (Zheng et al., 2021a), and by 96.27 km² (57%) between 1990 and 2018 (Wang et al.,
47 2020) in HMA.

48 Regional studies suggest that ongoing expansion of lakes (Gardelle et al., 2011; Shugar et al., 2020) is expected to create new
49 hotspots of hazardous lakes (Furian et al., 2022; Linsbauer et al., 2015; Zhang et al., 2022a; Zheng et al., 2021a) with
50 implications for GLOF hazards and risk (Haeberli et al., 2016). Numerous processes have been previously identified as direct
51 or indirect triggers of GLOFs. Dynamic slope movements (ice/snow falls, rockfalls, or landslides) into a lake can rapidly
52 displace lake water (Awal et al., 2010; Jiang et al., 2004), similarly to glacier calving creating a displacement wave that
53 overtops the dam (Emmer and Cochachin, 2013; Westoby et al., 2014; Worni et al., 2014). Intense rainfall or ice melt leading
54 to sudden increases in water levels also have the potential to strain dams (Allen et al., 2016; Cook et al., 2018; Worni et al.,
55 2012). Seismic events can destabilize moraine dams, contributing to an eventual failure (Osti et al., 2011; Somos-Valenzuela
56 et al., 2014; Westoby et al., 2014). Seepage, piping, and degradation of an ice-cored moraine can eventually lead to dam failure
57 (Mool et al., 2001; Yamada and Sharma, 1993). Past global assessments indicated that GLOFs have caused more than 12,000
58 fatalities in the last century alone and caused significant damages to infrastructure and farmland (Carrivick and Tweed, 2016).
59 With growing populations, settlements, and infrastructural development in downstream areas, the exposure of communities
60 and structures downstream of these lakes is rising (Li et al., 2022). Timely GLOF risk reduction measures and implementation
61 of risk reduction strategies have become increasingly crucial but remain challenging, especially in politically sensitive regions
62 (Allen et al., 2019; Khanal et al., 2015).

63 Several studies have focused on the causes, mechanisms and trends of GLOFs over the past few decades (Allen et al., 2016;
64 Dwiwedi et al., 2000; Ives, 1986; Mool et al., 2001; Nie et al., 2020; Zheng et al., 2021c), and the number of individual studies,
65 especially in HMA, has increased sharply over recent years (Emmer et al., 2022). A large number of these studies have focused
66 on individual events. While some have attempted to collect information on GLOFs in HMA and have also made data accessible,
67 they are often geographically constrained (Nie et al., 2018; Zhang et al., 2021b; Zheng et al., 2021b) or focus on certain types
68 of GLOFs (Veh et al., 2019a). A recent global study has bridged this gap (Veh et al., 2022). However, it does not cover impacts.

69 Recent studies have noted that a large number of GLOF events were omitted from previous records as they remained unreported
70 or were recorded in local media and had not been documented in scientific literature (Veh et al., 2022; Zheng et al., 2021b).
71 Studies with more detailed information on individual events either do not have accessible inventories, focus on only a certain
72 type of GLOF (Veh et al., 2019a) or do not include more than type of lake and location (Zheng et al., 2021b). Developing
73 more comprehensive datasets is crucial (Emmer et al., 2022), and these have become increasingly necessary as research has
74 shifted from an evaluation of GLOF hazards to risks, including transboundary dimensions (Zheng et al., 2021a). As information
75 on individual events may be added in future (e.g., on triggers or direct and indirect impacts) and continuously more GLOFs
76 are reported, a database where changes can be traced and new releases are possible in the future (Blischak et al., 2016) is
77 crucial and has been successfully employed for cryosphere data (Welty et al., 2020). Recent studies of the cryosphere have
78 also made immense progress in demonstrating the potential benefits of traceable datasets to the scientific community and
79 establishing standards that need to be followed to make records accessible (Mankoff et al., 2021; Welty et al., 2020).
80 Additionally, a database with a clear structure should also be accessible by non-academic stakeholders who are not well versed
81 in machine-readable data as well as scientists who may want to couple it to other regional datasets.
82 In this study, we therefore attempt to (a) provide the first comprehensive dataset of GLOFs in HMA including their location,
83 timing, associated processes, and downstream impacts; (b) complement records from scientific literature with a rigorous
84 evaluation of local sources on previously unrecorded events; and (c) show the potential of making such a dataset fully
85 accessible and interoperable to couple it to other geospatial datasets.

86 **2 Methods and data**

87 **2.1 Compilation of GLOF data**

88 Historical GLOF data was compiled by searching peer-reviewed articles, news articles, book chapters, technical reports, and
89 personal communication with the final cut-off date 30th June 2022. The database covers entries from 115 publications,
90 including 83 peer-reviewed journal articles, 16 book chapters, and 16 technical reports. Additionally, online news articles (9),
91 and social media posts (3) were also assessed. Beyond this, the authors also included events reported by anecdotal accounts
92 from local sources. These were collected during fieldwork in the respective affected localities by the authors.
93 Correctly identifying historical events is challenging. It is highly likely that previous estimates of GLOF numbers have
94 underestimated actual occurrences, due to a lack of accessible reports as well as many GLOFs that occurred in remote areas
95 with no discernible impacts on livelihoods or infrastructure (Veh et al., 2022; Zheng et al., 2021b). In this study, we have
96 included events previously reported in scientific literature as well as reports from regional media or records from local civil
97 society organisations and citizens. This expanded list of sources allows to reduce inherent uncertainties in each single one of
98 them. Reported cases from scientific literature may be biased towards research catchments where scientists have a good grasp
99 of historic cases but provide good evidence for individual GLOF characteristics. For GLOFs in HMA this is the case for a few
100 well studied examples like Merzbacher lake (Kingslake and Ng, 2013) or Kyagar (Round et al., 2017). News reports tend to

101 focus on GLOFs with considerable effects on critical infrastructure or human life, and in these cases provide valuable data on
102 impacts. Satellite imagery covers events irrespective of their impact or research interest but provides limited evidence for
103 events that happened before the end of the 20th century. Local knowledge provides insights any of the above sources may have
104 missed but information may have become less accurate as memory fades or while being passed on between generations.
105 Beyond the added number of recorded events, reliance on this expanded source list introduces an inherent risk of
106 misidentification, which must be accounted for. When debris flows or even pluvial floods reach mountain settlements they are
107 often identified as GLOFs, without proof of their source. This happened, for example, after the Chamoli rockslide (Shugar et
108 al., 2021) and regularly happens when debris flows occur in the Upper Indus Basin. Verification of the source is, therefore,
109 essential. If satellite imagery is available, we verified whether the typical v-shaped moraine breach as well as deposits are
110 visible (Zheng et al., 2021b). If available, we checked rapid lake area changes, or exposed lake beds that were clearly visible.
111 For historic events, we ascertained whether a GLOF is technically possible (i.e., if there are lakes in the upstream). High
112 resolution 15 cm HD Maxar satellite images (available through ArcMap) were consulted to confirm doubtful events. For events
113 that were previously not reported and for which dates are uncertain (e.g. if only visible from satellite imagery), we also provide
114 the date and unique identifier of the earliest satellite imagery that holds evidence of the GLOF. Being able to rely on a variety
115 of independent sources and check with stakeholders involved in hazard response in affected regions, we are able to corroborate
116 between multiple sources. As a result, we discarded numerous previous events as unlikely or not verifiable in a separate table
117 (/Database/GLOFs/HMAGLOFDB_removed.csv) and did not include new events where we could not confirm local reports
118 with satellite imagery or records from field visits.

119 We also record GLOFs that cannot be directly associated to a glacier, either because from the source or satellite imagery it is
120 not clear which glacier upstream feeds into the lake or because there is no adjacent glacier in any of the available inventories.
121 A number of regional delineations exist for HMA, including the one following RGI (Pfeffer et al., 2014), the HiMAP report
122 (Bolch et al., 2019), an outline favoured by scientists focusing on the Tibetan Plateau (Nie et al., 2017) and the outline of the
123 HKH by ICIMOD. None of these agree with each other, making comparisons of regional statistics very difficult. All our
124 GLOFs are consequently georeferenced and the respective area codes for the RGI and HiMAP inventory are provided to allow
125 aggregation. Discussing regional patterns, crucial when communicating data to policy makers, who may only feel responsible
126 for a certain area within HMA. We follow the delineation of the HiMAP report, but bin together all subregions of the Tien
127 Shan (inventory OBJECTIDs 1-4) to 'Tien Shan', Pamir and Alay (5 – 7) to 'Pamir', West (10) and Central (11) Himalaya to
128 'Himalaya West/Central', the Western Kunlun Shan (13) and the Karakoram (9) to 'Karakoram', Nyainqentanglha (18),
129 Gangdise Shan (17), Hengduan Shan (20) and Eastern Himalaya (12) to 'Himalaya East/Hengduan Shan' and all remaining
130 subregions on the Tibetan Plateau and its fringes (14 – 16, 19, 21, 22) to 'Tibet'.

131 **2.2 Data structure and recorded variables**

132 The database provides access to datafiles as well as code used to process data. All recorded GLOF events are stored in a single
133 *.csv file (/Database/GLOFs/HMAGLOFDB.csv), events that are doubtful or definitely not a GLOF are stored separately

134 (/Database/GLOFs/HMAGLOFDB_removed.csv). A separate metadata file in machine and human-readable YAML (.yaml)
135 format is provided as- HMAGLOFDB_Metadata.yaml, providing details on all data files and variables in the database. An
136 overview over all recorded database variables is provided in Table 1. Each event has a unique numerical identifier, starting at
137 1. Where available, the date of the event is provided up to the day of the event. Many GLOFs result in high flows or in some
138 cases even repeated drainage over a number of days. In this case only the last day or day of peak flood is reported, whichever
139 can be ascertained. When the exact year of the event is not known, we provide a range or a latest possible point in time based
140 on what the original source reported (*Year_approx*) or when it was first visible on satellite imagery. For events we present here
141 for the first time, but where an exact year is not recorded, we provide imagery IDs for Landsat images, that allowed us to
142 constrain the time of occurrence (*Sat_evidence*). Local names of lakes and glaciers are provided if available, should however
143 used with caution for definite identification as often multiple names (or spellings) exist and sometimes different lakes are
144 called by the same name. Where available, the coordinates of the GLOF's source as well as the final impact location
145 downstream are provided as these coordinates provide the potential to prepare hazard zonation map and allows for studies
146 investigating actual reach of events, their impacts on downstream infrastructure, livelihoods, or ecosystems to analyse and
147 evaluate associated risks. While coordinates for the source are relatively easy to establish and generally somewhere within the
148 outline of a present or past lake, the final impact location is more difficult. We provide coordinates for the most downstream
149 location where the flood was observed due to high flow or any recorded local impact (indicated in *Impact_type* as *Observation*)
150 or, if such information is not given, the furthest location where any deposits are visible from Maxar satellite imagery (*Deposit*).
151 For the latter case it is hence likely that the flood reach estimate is conservative and has reached much further during the actual
152 event. Elevation data is taken from the original source for the event and if that is not provided, extracted from the Shuttle Radar
153 Topography Mission (SRTM) DEM, via the known coordinates. The type of lake (*Lake_type*), namely whether it is dammed
154 by a moraine or ice, or situated on bedrock, on top of (*supraglacial*) or inside a glacier (*water pocket*), is recorded, allowing
155 for a distinction of patterns according to the source. We also record whether the GLOF is potentially of transboundary nature
156 (*Transboundary*), i.e. whether the potential flow path would eventually cross a national border. It does not allow for a statement
157 whether the GLOF has actually crossed the border, and irrespective of date of the event assumes national borders from 2022
158 as given. This information is of importance as transboundary climate risks have received increased attention also for GLOFs
159 and other mass flows (Allen et al., 2022; Steiner et al., 2023). Location data including the country, province, river basin as
160 well as mountain region the source of the GLOF is located in are inherently also provided via the coordinates, however
161 providing this data here allows for a fast aggregation of relevant data for stakeholders not familiar with GIS data.
162 Information related to the GLOF event, the initial driver that caused the lake to form (*Driver_lake*) as well as the GLOF to
163 occur (*Driver_GLOF*) and what mechanism was at play during the drainage event (*Mechanism*) are important insights for both
164 regional assessments of climate drivers of these events as well as indications for dedicated numerical modelling studies
165 investigating drainage events. They are generally subject to great uncertainty or are simply not known at all (in both cases we
166 refer to the variable as *unknown*), and often only known when the site of the lake was visited right after an event. Information
167 on lake area (*Area*), volume drained during the flood (*Volume*), as well as flood discharge (*Discharge_water* and

168 *Discharge_solid*) are provided from the original sources. This information is crucial for planning, designing and
169 implementation of large-scale projects like hydroelectric power plants and other types of infrastructure, in order to ensure
170 sustainable development. These values have been obtained sometimes by measurement, sometimes by rough estimate and
171 uncertainties likely vary across sites, and are only rarely quantified (Kingslake and Ng, 2013; Veh et al., 2023). We finally
172 report a variety of information on impacts on livelihoods and infrastructure aimed to conceptualise flood-induced coping
173 mechanisms, enhance livelihood security, and foster self-reliance toward economic stability. This information is presented in
174 quantitative as well as qualitative formats enabling the database to be read by machines for regional assessments, while
175 retaining information that may not be readily quantifiable. Information on fatalities is categorized by gender and disabilities,
176 as disasters impact women and those with disabilities differently than men (c.f. Zaidi and Fordham, 2021), and the Sendai
177 framework on disaster risk reduction explicitly mentions the necessity of collecting "disaggregated data, including by sex, age
178 and disability, as well as on easily accessible, up-to-date, comprehensible, science-based, non-sensitive risk information,
179 complemented by traditional knowledge" (UNISDR, 2015). Differences in vulnerabilities have also been acknowledged in
180 HMA (Resurrección et al., 2019) but studies in the domain of disaster risk reduction investigating gender dimensions remain
181 rare (Halvorson, 2002; Thapa and Pathranarakul, 2019). These data are important for addressing gender inequality, cultural
182 beliefs, and socio-economic factors, as well as advocating for the integration of gender perspectives into disaster risk
183 management efforts. The lack of depth of data, i.e. when not more information is known than a total number of people killed,
184 also provides evidence for data collection gaps that need to be addressed in future assessments. Impacts are also quantified
185 through the total number of individual houses destroyed or damaged, any other infrastructure like roads or bridges impacted
186 (*Infra*), hydropower infrastructure damaged or destroyed (*Hydropower*) and agricultural land covered in deposits (*Agriculture*)
187 and large livestock killed (*Livestock*). For the few cases where records on total economic damage in monetary units exist they
188 are recorded separately (*Econ_damage*). Contrary to information on total fatalities, these data are less comprehensively
189 recorded and remain likely incomplete at the time of writing. They provide however a potential indication for regional loss
190 and damage assessments. Sources (scientific, media, oral) of all events are provided as full citations (*Ref_scientific_full*) or
191 links to the newspaper sources (*Ref_other*).

192 GLOFs that have been found in other sources but were found not to be associated to lake drainage or breach are stored in a
193 separate *.csv (HMAGLOFDB_removed.csv) with the same format as described above. The file has an additional column that
194 explains the reason for exclusion (*Removal_reason*). It also contains a certainty column (Certainty) that differentiates between
195 cases where we are certain it is not a GLOF, or cases where we cannot ascertain if it was one.

196

197 The database was developed keeping in mind interoperability with other datasets, enabling future local and regional risk
198 assessments, as well as investigations on how the occurrence of GLOFs can be explained on a regional, rather than an
199 individual level. Multiple datasets related to the cryosphere are readily accessible, including historic glacier outlines (Pfeffer,
200 2017; Soheb et al., 2022; Xie et al., 2023), elevation change (Brun et al., 2017; Hugonnet et al., 2021), glacial lakes (Chen et
201 al., 2021; Wang et al., 2020) and permafrost extents (Obu, 2021) These datasets can be easily combined with the GLOF

202 inventory for comprehensive analysis. Beyond the coordinates of lakes and downstream impact, that allow for a combination
 203 with other spatial data, we also provide the GLIMS ID of the glacier feeding into the lake that resulted in a GLOF (*G_ID*) as
 204 well as the ID of glacial lakes (*GL_ID*) as recorded in lake inventories.

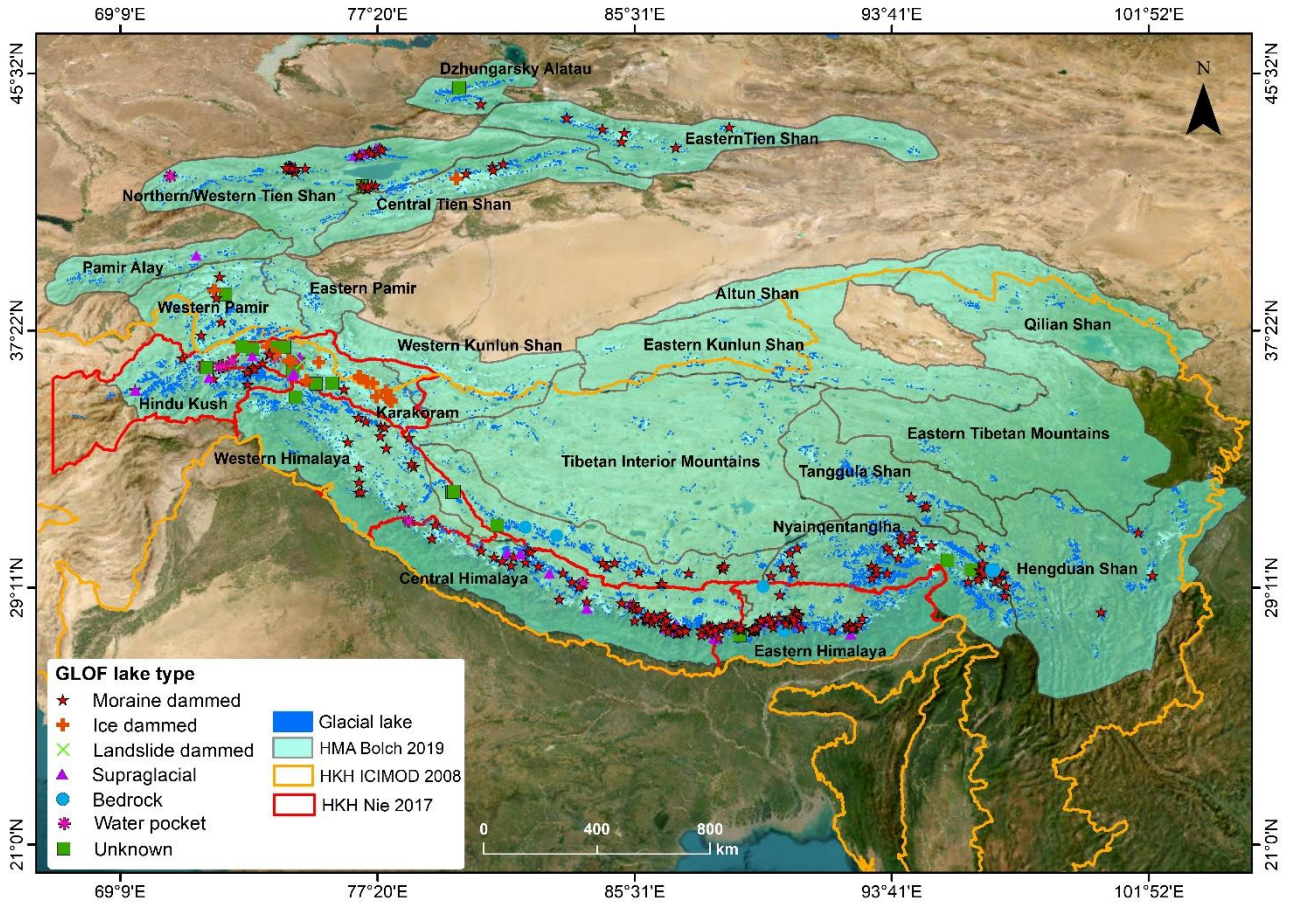
205 Future events will be updated directly in the development version of the database on [github/GitHub](#) on a rolling basis, where
 206 additions to the database will be visible as soon as they are updated. Each year when new events are reported, they will undergo
 207 detailed quality check, including the documentation of information on impacts or processes that may become available weeks
 208 or months after the event through fieldwork or detailed investigations. A new version of the database will be published under
 209 the same database DOI (Digital Object Identifier) ensuring accurate and up-to-date information.

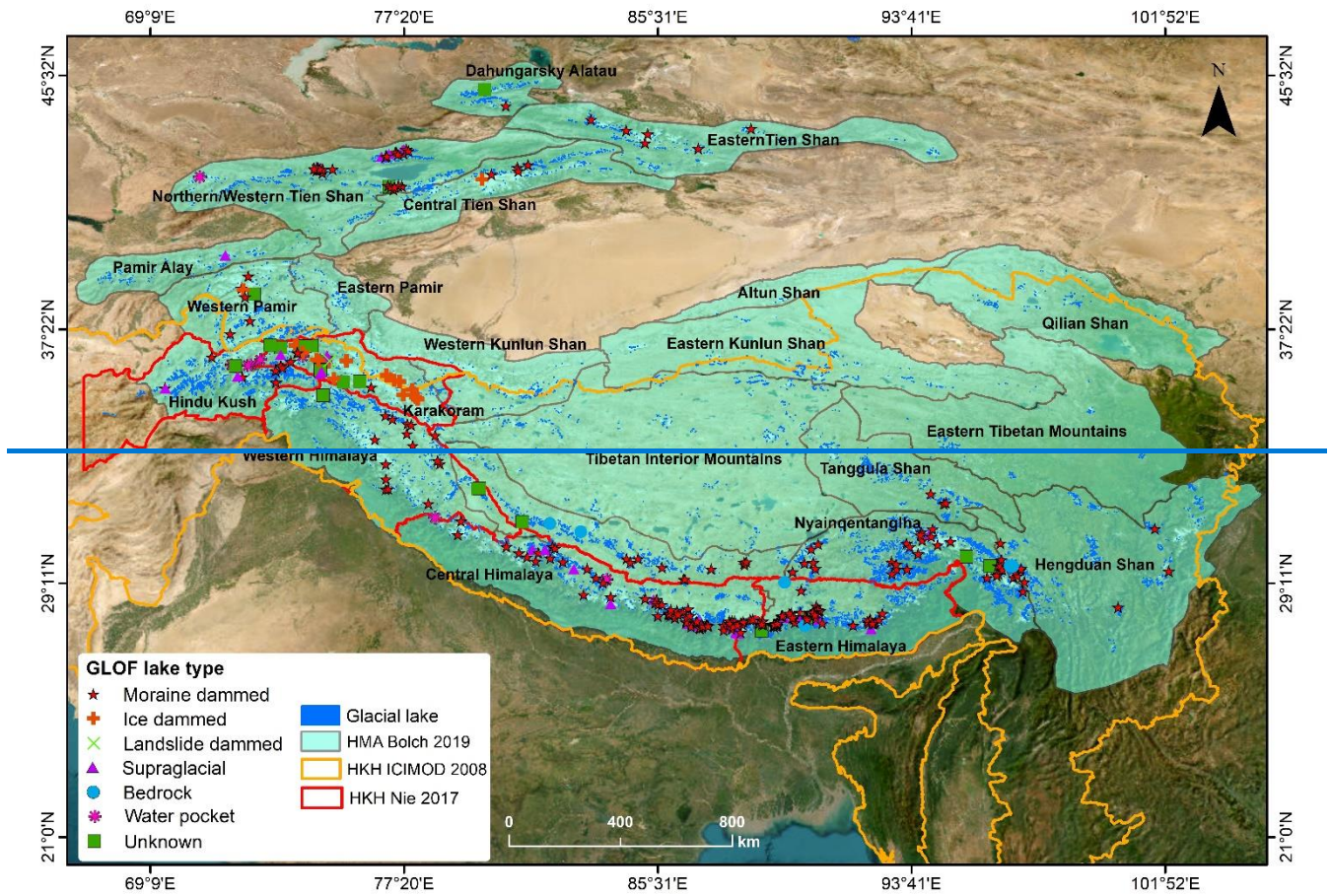
210 **Table 1: Variables for the GLOF database, as documented in the Metadata file. Format is either a string (*STR*, with * marking cases**
 211 **where only inputs from a predescribed list are possible) or an integer (*INT*). If an exact number is not available but is non-zero a '+'**
 212 **is provided (e.g. 'multiple injured'). 'NA' is used for unknown input. Note that the Metadata file itself provides further details on**
 213 **the individual variables as well as a discussion on naming.**

| <i>Variable</i> | <i>Format</i> | <i>Description and unit</i> |
|-----------------|---------------|--|
| GF_ID | INT | Unique identifier for each individual event, starting at 1 |
| Year_approx | STR | Year of occurrence; given approximately if GLOF has been identified from imagery with no definite account. |
| Year_exact | INT | Exact year of occurrence |
| Month | INT | Month of occurrence |
| Day | INT | Day of occurrence |
| Lake_name | STR | Local name of the lake, if available. |
| Glacier_name | STR | Local name of the glacier associated with the lake, if available. |
| GL_ID | STR | Unique identifier for the lake |
| G_ID | STR | Unique identifier for the glacier (GLIMS format) associated to the lake |
| LakeDB_ID | INT | Identifier in which lakes database the lake has been mapped |
| Lat_lake | INT | Decimal degrees latitude of lake [°, WGS 84] |
| Lon_lake | INT | Decimal degrees longitude of lake [°, WGS 84] |
| Elev_lake | INT | Elevation of lake [m a.s.l.] |
| Lat_impact | INT | Decimal degrees latitude of lowest known impact of the GLOF [°, WGS 84] |
| Lon_impact | INT | Decimal degrees longitude of lowest known impact of the GLOF [°, WGS 84] |
| Elev_impact | INT | Elevation of lowest known impact of the GLOF [m a.s.l.] |
| Impact_type | STR* | Quality of impact record; 'Observation' refers to lowest observed high flow or damages; 'Deposit' refers to lowest visible deposit of sediments (from satellite imagery). Impacts are therefore conservative, and are likely always further downstream than recorded |

| <i>Variable</i> | <i>Format</i> | <i>Description and unit</i> |
|------------------------|---------------|--|
| Lake_type | STR* | Type of lake (e.g., moraine dammed, ice dammed, bedrock etc.) |
| Transboundary | STR* | Denotes if impact is potentially transboundary |
| Repeat | STR* | GLOF that occurred again in past or future |
| Country | STR | Current national borders (2022) the source lake lies in |
| Region_RGI | STR | Region ID as used in the RGI 6.0 (Pfeffer, 2017) |
| Region_HiMAP | INT | Region ID as used in the HiMAP report (Bolch et al., 2019) |
| Province | STR | 1 st level province name |
| River Basin | STR | River basin the lake is located in |
| Driver_lake | STR* | Driver that caused the lake to form |
| Driver_GLOF | STR* | Driver that caused the GLOF to occur |
| Mechanism | STR* | Mechanism involved in lake breach or drainage |
| Area | INT | Lake area [m ²] |
| Volume | INT | Volume of the drained lake water [m ³] |
| Discharge_water | INT | Measured or estimated water discharge downstream [m ³ s ⁻¹] |
| Discharge_solid | INT | Measured or estimated debris flow discharge downstream [m ³ s ⁻¹] |
| Impact | STR | Narrative description of downstream impacts |
| Lives_total | INT | Total lives lost |
| Lives_male | INT | Total male lives lost |
| Lives_female | INT | Total female lives lost |
| Lives_disabilities | INT | Total lives of people with disabilities lost |
| Injured_total | INT | Total injured |
| Injured_male | INT | Total male injured |
| Injured_female | INT | Total female injured |
| Injured_disabilities | INT | Total people with disabilities injured |
| Displaced_total | INT | Total people displaced |
| Displaced_male | INT | Total male displaced |
| Displaced_female | INT | Total female displaced |
| Displaced_disabilities | INT | Total people with disabilities displaced |
| Livestock | INT | Livestock lost |
| Residential_destroyed | INT | Number of residential houses destroyed |
| Commercial_destroyed | INT | Number of commercial houses destroyed |

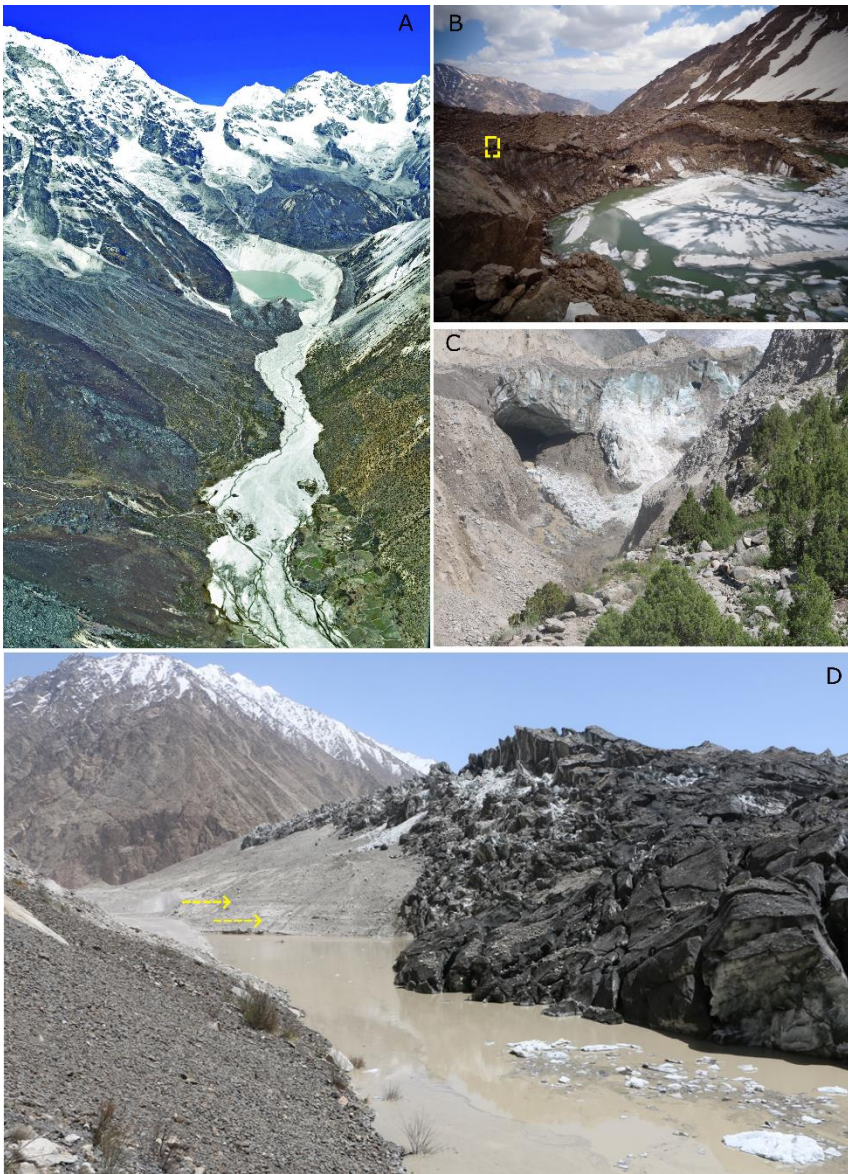
| <i>Variable</i> | <i>Format</i> | <i>Description and unit</i> |
|---------------------|---------------|---|
| Residential_damaged | INT | Number of residential houses damaged |
| Commercial_damaged | INT | Number of commercial houses damaged |
| Infra | STR | Other destroyed infrastructure |
| Agricultural | INT | Area of farmland destroyed [m ²] |
| Hydropower | INT | Installed hydropower capacity destroyed [MW] |
| Econ_damage | INT | Total economic damage [USD] |
| Sat_evidence | STR | Image IDs used as satellite imagery evidence |
| Ref_scientific | STR | Citation of scientific source |
| Ref_scientific_full | STR | Full references to the scientific sources |
| Ref_other | STR | Description of other sources |
| Remarks | STR | Any other remarks |
| Removal_reason | STR | Reason for removal (only for separate database of removed events) |
| Certainty | INT* | Certainty that the removed case is either definitely not a GLOF (0) or may be but was removed due to lack of evidence (1, only for separate database of removed events) |





216

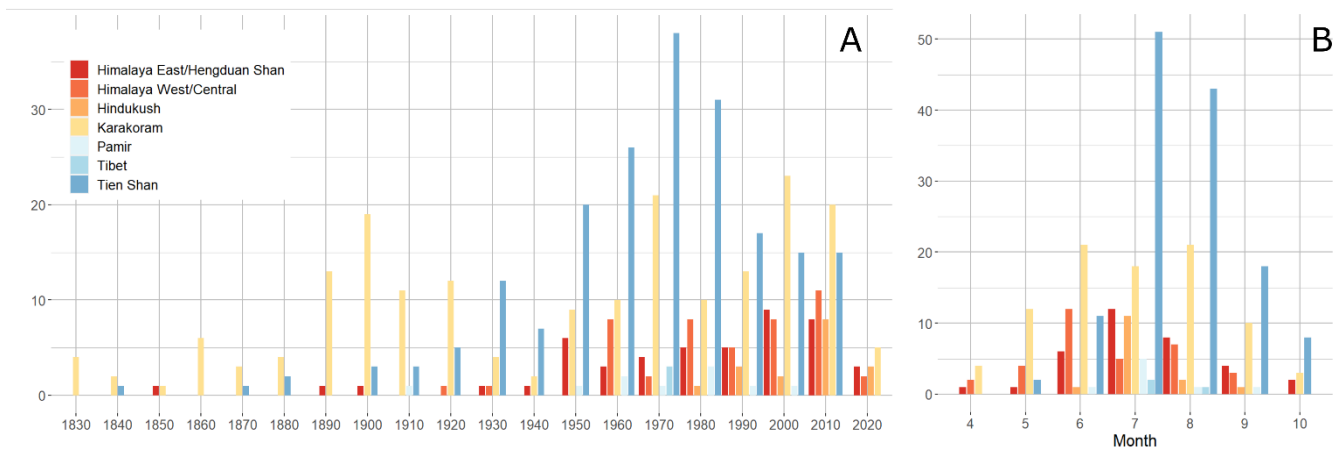
217 **Figure 1: Overview map showing all recorded GLOFs in HMA according to the lake type. The 2018 lake inventory shown here is**
 218 **from (Wang et al., 2020). The HMA outline used is following (Bolch et al., 2019). The external lake database (WangDB, ChenDB)**
 219 **falls within this outline. The HKH outline is based on ICIMOD (<https://rds.icimod.org/Home/DataDetail?metadataId=3924>) and**
 220 **(Nie et al., 2017)**



221

222 **Figure 2: (A) Dig Tsho GLOF (1985; database GF_ID 322) in the Central Himalaya (Nepal) from a moraine-dammed lake. Note the**
 223 **settlements and agricultural land impacted in the lower reach of the deposit. The photo was taken in 2009 (Photo credit: Sharad**
 224 **Joshi). (B) Bam Tanab GLOF in the Hindu Kush (Afghanistan) in 2021 from a supraglacial lake (GF_ID 510). The ice tunnel,**
 225 **through which the lake drained is visible in the center. Note the two people sitting on top of the ice cliff (yellow square). The photo**
 226 **was taken several days after the event (Photo credit: Milad Dildar). (C) Ice tunnel exit at the terminus of the tributary to Badswat**
 227 **Glacier that caused a GOF in 2018, eroding substantial amounts of the moraine in the immediate downstream (Karakoram,**
 228 **Pakistan, GF_ID 493; Photo credit: Sher Wali). (D) Ice dam at Khurdopin Glacier caused by a surge. The terminus moraine is**
 229 **visible in light grey on the left, partly covered by the spillover ice from the surge. The lake at this location refills multiple times**
 230 **after the surge, sometimes up to half of the moraine height (note the water line is slightly visible from a change of colour, yellow arrows).**
 231 **Photo taken from the location where the lake drains under the surged ice (multiple events starting from GF_ID 26; Photo credit:**
 232 **Sher Wali).**

233



234

235 **Figure 3: (A) Temporal evolution of recorded GLOF occurrence per region and decade. (B) Seasonal occurrence of GLOFs. Months**
 236 **November to March are not shown, with total events <5.**

237 Our database includes 697 individual GLOF events (Figure 1, Figure 2), recorded between 1833 (with 4 historic events before
 238 that date, where any validation of processes is virtually impossible) and 2022 (Figure 3). 7% (46 of 697) of the reported GLOFs
 239 here have not been documented in any previous study. Conversely, 101 previously reported GLOFs were removed based on
 240 new evidence to the contrary (17) or a lack of strong evidence (84) for it being a GLOF.

241 28.4% of the events in the database were recorded in China, 24.7% in Kyrgyzstan, 21% in Pakistan, 8.5% in India, 7.6% in
 242 Nepal, 4.9% in Kazakhstan, 2.9% in Bhutan, 1.6% in Tajikistan and 0.6% in Afghanistan. Following the RGI delineation, 30%
 243 of the GLOFs were recorded in the Karakoram, 18% in the Eastern Himalaya and 29% in the Western Tien Shan. Due to
 244 different choices in delineations, this looks considerably different for the HiMAP outlines where 28% are in the Karakoram,
 245 17% in the Northern/Western Tien Shan, 14% in the Central Himalaya and 10% in the Eastern Himalaya, outlining the
 246 sensitivity of statements regarding mountain ranges to the choice of delineation product.

247 For 325 events (47%) we know the month of occurrence and, of these, 74% took place between June and August (Figure 3B).
 248 Only 3% of all GLOFs were recorded between November and March. For 275 events (39%) the day of the GLOF is known,
 249 potentially allowing for an analysis of prevailing weather patterns preceding the outburst.

250 The mean elevation of individual lakes associated to a GLOF was 4598 m a.s.l. (336; min = 2562 m a.s.l., max = 5982 m a.s.l.).
 251 For the GLOFs where impacts were recorded (459; 66%) the mean elevation difference between lake and lowest recorded
 252 impact was 1161 m a.s.l. (min = 19 m a.s.l., max = 4431 m a.s.l.).

253 47% of GLOFs originated from moraine-dammed lakes, 34% from ice-dammed and 10% from supraglacial lakes (Figure 1).
 254 Other types occurred infrequently, and particular glaciers were associated with repeated flood events, including englacial
 255 outbursts from water pockets either deep in the ice or superficially around crevasses (3%), outbursts from bedrock lakes in
 256 periglacial terrain (1%) and outbursts from landslide dammed lakes that formed below glaciers (0.4%). Multiple events in the
 257 Bagrot subbasin in the Upper Indus, as well as in the Ala Archa basin in Kazakhstan may be drainages from water pockets,
 258 based on the nature of drainage and the lack of evidence for lakes on the glacier surface or the periglacial terrain, but local

259 evidence is too uncertain to confirm this. For the Ala Archa basin, we have removed many cases, as even previous authors did
260 not insist on all being GLOFs (Medeu et al., 2016). These events all occurred at the terminus of very steep glacier tongues and
261 some observed characteristics of these events (e.g. melt water to the base resulting in ice and terrain collapse) resemble glacier
262 detachments (Kääb et al., 2018). However, the eventual runout as a debris flow with high water content is markedly different.
263 For 4% of the cases, the lake type was unknown, in general, for GLOFs for which no satellite imagery exists for validation.
264 Our knowledge of the mechanisms of how lakes are formed (known for 20% of the cases), triggering (12%) and failure
265 mechanisms of the outburst is (26%) remains limited (Figure 4). Even less is known about the drained total volume (m^3 , 15%),
266 discharge of water ($\text{m}^3 \text{ s}^{-1}$, 10%) or discharge of solids ($\text{m}^3 \text{ s}^{-1}$, 3%), important variables for modelling studies. Additionally,
267 these reported values are often associated with large uncertainties.

268 Of all GLOFs, 2 were located in an area where no glacier could be found anywhere upstream. However, they are located in
269 areas that were most likely glaciated. 22 GLOFs occurred below glaciers that were not mapped in RGI 6.0, showing the still
270 considerable number of glaciers that are missed from this global inventory. Similarly, 10 GLOFs (at moraine-dammed lakes)
271 were recorded where no lake was apparent in any satellite imagery. This is possible for GLOFs recorded before the satellite
272 age. In 97 cases, a lake or depression was visible but not mapped in any of the inventories. In 196 cases (28%) the lake is
273 ephemeral and hence not in any inventory, especially the case for ice-dammed or supraglacial lakes. Some ice-dammed lakes
274 were in inventories if they were present at the time of the inventORIZATION. However, when comparing these data to a GLOF,
275 their area should be taken with caution, considering their rapid change with a change in meltwater availability.

276 25 GLOFs (4%) have 6906 recorded fatalities (Table 2), although 6000 were attributable to a single event in India in 2013,
277 where fatalities were caused by a multitude of factors in a complex compound event (Allen et al., 2016). This latter event, until
278 recently, accounted for nearly 50% of recorded global GLOF deaths (Carrivick and Tweed, 2016). Nearly all casualties have
279 been attributable to GLOFs from moraine-dammed or supraglacial lakes, while no fatalities have been linked to ice-dammed
280 lake breaches (Table 2), while there may of course have been unrecorded impacts (Hewitt and Liu, 2010). Numbers on injured
281 or displaced remain rare, but are likely much higher, especially considering people moving away, many in the months after an
282 event due to the long-term negative impacts of damaged infrastructure. Nearly 2000 livestock were reported killed. More than
283 2200 residential and commercial buildings were reported destroyed or significantly damaged and numerous bridges were
284 destroyed. At least 71 km^2 of agricultural land was destroyed and hydropower structures with a combined capacity of 164 MW
285 were destroyed or heavily damaged. In only a few cases (13) were estimates of economic damages in monetary values
286 attempted (5.3 billion USD). These were limited to damages associated with the flooding and did not include considerations
287 of the longer-term economic toll of damaged infrastructure, disablement, destroyed farmlands, or the long-term impacts on
288 accessibility of health, education, or market facilities due to impacts on transport infrastructure.

289

290 **Table 2: Number of GLOFs per region and type of lake with associated fatalities (N/fatalities).**

| Lake type/Region | Pamir | Tien Shan | Tibet | Hindu Kush | Karakoram | Himalaya West/Central | Himalaya East/Hengduan Shan |
|-----------------------|---------------|---------------|------------|--------------|--------------|-----------------------|-----------------------------|
| Moraine-dammed | 6/25 | 96/65 | 4/0 | 10/20 | 7/0 | 78/6236 | 129/454 |
| Ice-dammed | 4/0 | 86/0 | 0/0 | 0/0 | 144/0 | 0/0 | 0/0 |
| Supraglacial | 1/100 | 17/0 | /0 | 3/0 | 26/1 | 19/0 | 6/0 |
| Others/unknown | 1/0 | 15/0 | 0/0 | 6/3 | 19/2 | 1/0 | 19/0 |
| TOTAL | 12/125 | 214/65 | 4/0 | 19/23 | 196/3 | 98/6236 | 154/454 |

291

292 338 lakes were associated with 697 GLOFs, with 61 (18%) of the lakes causing a GLOF more than once and the 17 (5%) lakes
 293 releasing GLOFs at least five times, made up 43% of all GLOFs (Table 3). The return period of some of these GLOFs is rapid,
 294 occurring repeatedly over consecutive years such as at Merzbacher or Khurdopin, while for others a GLOF may occur more
 295 than decades apart. In many cases, for ice-dammed lakes, this is coupled with the return period of the respective glacier surge.
 296 Many of these lakes have resulted in GLOFs until very recently and we hence consider *active*. Others, like the GLOFs at
 297 Chong Kumden (ice-dammed), are considered inactive as the tongue has receded so far that even during a surge it cannot block
 298 the valley anymore. For Salyk or Topkaragay (moraine-dammed), the tongue recession has presumably also resulted from a
 299 lack of direct meltwater supply to the local depression. While the three lakes draining most frequently (and all still *active*) are
 300 all ice-dammed, repeat GLOFs are common from all major types of glacial lakes (Table 3). However, repeat drainages are
 301 decidedly uncommon in the Himalaya or the Tibetan Plateau.

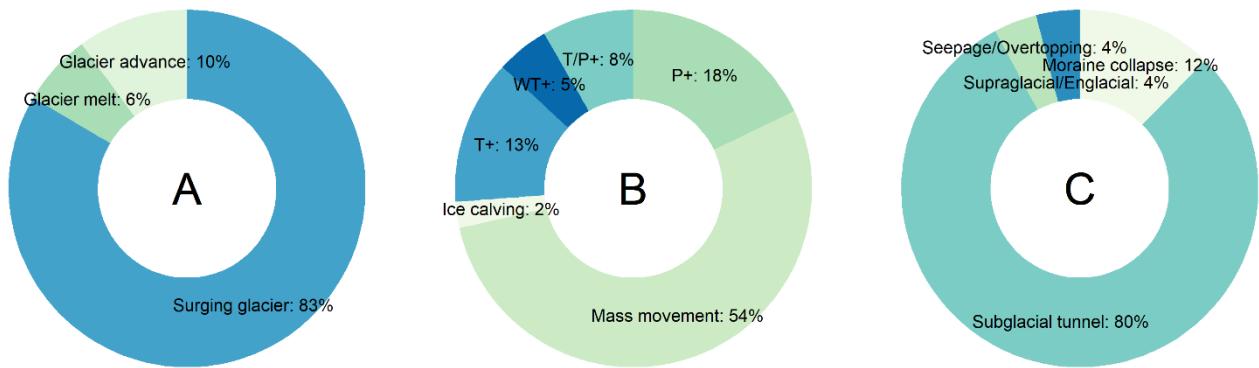
302 190 (27%) were potentially transboundary GLOFs, i.e. their flood could have crossed a border further downstream, 55 of
 303 which originated in China. Fewer than 10 of these GLOFs have however actually recorded impacts across borders (China to
 304 Nepal and Uzbekistan to Kyrgyzstan).

305 **Table 3: Lakes with more or equal to five recurring GLOFs in HMA.**

| Lake/Glacier name | Lat (°) | Lon (°) | Elev (m a.s.l.) | Region | Outburst recurrence | Period of GLOFs | Lake type |
|-------------------------------|---------|---------|-----------------|----------------------------|---------------------|-----------------|----------------|
| Merzbacher/ Southern Inylshek | 42.20 | 79.85 | 3271 | Central Tien Shan | 86 | 1902 - 2015 | Ice-dammed |
| Khurdopin/Khurdopin | 36.34 | 75.47 | 3482 | Karakoram | 37 | 1882 - 2021 | Ice-dammed |
| Kyagar/Kyagar | 35.68 | 77.19 | 4880 | Karakoram | 34 | 1880 -2019 | Ice-dammed |
| Unnamed/Aksay | 42.53 | 74.54 | 3637 | Northern/Western Tien Shan | 30 | 1877 - 2015 | Moraine-dammed |

| Lake/Glacier name | Lat (°) | Lon (°) | Elev (m a.s.l.) | Region | Outburst recurrence | Period of GLOFs | Lake type |
|--|---------|---------|-----------------|----------------------------|---------------------|-----------------|----------------|
| Unnamed/Kuturgansuu | 42.52 | 74.61 | 3470 | Northern/Western Tien Shan | 17 | 1846 - 2010 | Moraine-dammed |
| Unnamed/Chong Kumden | 35.17 | 77.70 | 4691 | Karakoram | 14 | 1533 - 1934 | Ice-dammed |
| Hassanabad/Shisper (both names for lake and glacier) | 36.39 | 74.51 | 3370 | Karakoram | 13 | 1894 - 2022 | Ice-dammed |
| Karambar/Karambar | 36.62 | 74.08 | 2935 | Karakoram | 11 | 1844 - 1994 | Ice-dammed |
| Unknown/Teztor | 42.54 | 74.43 | 3606 | Northern/Western Tien Shan | 11 | 1910 - 2012 | Moraine-dammed |
| Ghulkin/Ghulkin | 36.42 | 74.88 | 2692 | Karakoram | 8 | 1980 - 2009 | Supraglacial |
| Lake number 6/ Glacier No 182/Bezmyannyi/TEU-Severny | 43.14 | 77.28 | 3380 | Northern/Western Tien Shan | 8 | 1973 - 2014 | Supraglacial |
| Unnamed/Halji | 30.27 | 81.48 | 5347 | Central Himalaya | 6 | 2004 - 2011 | Supraglacial |
| Unnamed/Salyk | 42.52 | 74.72 | 3390 | Northern/Western Tien Shan | 6 | 1938 - 1980 | Moraine-dammed |
| Unnamed/Topkaragay | 42.49 | 74.52 | 3680 | Northern/Western Tien Shan | 6 | 1928 - 1993 | Moraine-dammed |
| Unnamed/Central Rimo | 35.42 | 77.61 | 5100 | Karakoram | 5 | 1976 - 2014 | Ice-dammed |
| Unnamed/Batura | 36.51 | 74.85 | 2713 | Karakoram | 5 | 1873 - 1974 | Supraglacial |
| Unnamed/North Terong | 35.25 | 77.31 | 4400 | Karakoram | 5 | 1975 - 2002 | Ice-dammed |

306
307
308



309
310 **Figure 4: Different drivers that caused the lake to form (139) (A), caused GLOF to occur (84) (B), and mechanisms involved in lake**
311 **breach/drainage (178) (C). ‘Glacier melt’ refers simply to melt water provision from any adjacent glacier, irrespective of their state**
312 **of retreat, advance or stability. T, P and WT+ stand for reported temperature, precipitation and water table and temperature**
313 **increases, respectively. Mass movements include ice and rock avalanches as well as landslides, debris flows and other flood events.**
314 **Moraine collapse is most often characterized by ice core thawing. ‘Seepage/Overtopping’ also includes piping through the dam.**

315 3.1 Uncertainty of individual variables

316 GLOFs often occur in remote areas, where reports are scant and confirming process chains and quantifying associated volumes
317 and impacts is challenging. Here we discuss the uncertainties related to variables documented in this database. For many
318 GLOFs (181; 26%) even the year of occurrence is uncertain, which is reflected in the database by either providing NA or a
319 time window during which it must have happened. Days of occurrence (available for 39% of the records) are often also different
320 between reports on the same event, either due to erroneous records or the magnitude of certain GLOFs resulting in floodwaters
321 reaching areas over more than one day. Any recorded day hence likely has an uncertainty of +/-3 days. Coordinates of the
322 source lake are correct if provided, however, do not reflect the exact location of the breach but any coordinate within the
323 perimeter of the lake. Coordinates of the impact area are a lot more uncertain. If provided they show either the lowest location
324 where deposits are still visible on Maxar imagery from 2021 (*Deposit*) or where high flow or damages were reported
325 (*Observation*). Naturally, this is a conservative estimate and high flows have likely reached thousands of meters further
326 downstream and with deposition or erosion occurring along the riverbed that may not be visible on imagery. Elevation values
327 are generally retrieved via the coordinates from the Shuttle Radar Topography Mission (SRTM). Considering the steepness of
328 the terrain across HMA, we expect an unknown uncertainty of the actual elevation of the source, and values should be
329 considered an indication of the elevation range, rather than for example an exact input for a hydrodynamical model.

330 For a few events, the primary source is local informants, while for some events that have been reported in news articles or by
331 other studies, local sources serve as a way of confirming the event and the associated recorded variables. While local sources
332 have their own uncertainties, including misidentification of another mass flow event as a GLOF or misrepresentation of impacts
333 to either gain attention for compensation (and hence exaggerating impacts) or dispelling concerns of potential tourists (hence
334 underestimating impacts). they also can provide insights that other sources cannot. When the source lake is regularly visited
335 due to agricultural activities or for leisure, locals are often able to make statements on what likely outburst mechanisms were
336 or what caused the event in the first place. Observations on the discharge hydrograph, especially whether the discharge peak
337 arrived rapidly or gradually provide indications on the type of drainage mechanism.

338 When reporting areas of lakes associated with GLOFs, we refer to the reported value provided in the respective studies. For
339 the few events we report here for the first time and if satellite imagery is available a few days before the event, we make
340 estimates based on that imagery. Lakes linked to GLOFs often exhibit rapid areal changes in the weeks and days prior to
341 eventual failure of the dam or opening of a tunnel. This is especially true for ephemeral ice-dammed lakes (Muhammad et al.,
342 2021; Round et al., 2017; Steiner et al., 2018). Therefore, the lake area mapped many weeks or even months before a drainage
343 event is not necessarily a good proxy for the actual water volume that drained. We report estimated drained volumes and
344 sometimes even estimates of discharge exist. However, the accuracy of such estimates is impossible to verify and
345 measurements during GLOFs are rarely possible (Muhammad et al., 2021), and rating curves in fast changing river beds are
346 unlikely to be accurate. Such data should hence be considered as first order indications of magnitude rather than accurate
347 representations of actual discharge.

348 Estimates on impacts are conservative. Based on our observations from fieldwork and the concurrent reporting of hazards,
349 media coverage often overlooks to report on remote villages and numbers of mortalities or valuations of infrastructure impacted
350 are prone to deflation or inflation as a result of inaccurate transmission of information or wilful tampering with data. This can
351 happen for various reasons, as evidenced through fieldwork across the region. The government not reporting impacts or making
352 them look smaller than they are can be favourable as this would otherwise provide arguments for becoming more active in
353 mitigation response, which they may not be able or willing to do. Reports on high impacts are often also perceived as damaging
354 to tourism and hence discouraged. In light of financial reparations, either from the national to the local governments or
355 communities or by the global community to a country, overreporting of impacts is naturally preferred. If impacts in doubtful
356 cases could not be verified by additional sources, they were not reported. Reported data from scientific literature we dismissed
357 in rare cases where for example a GLOF was reported twice within two days, and it was likely that this happened due to an
358 erroneous reporting dates.

359 **4 Discussion**

360 In the section below, we discuss the potential of the GLOF database for comparisons with existing and future data sources
361 related to regional assessments and investigations of individual events. We then conclude by comparing the database to
362 previous efforts and address its inherent limitations.

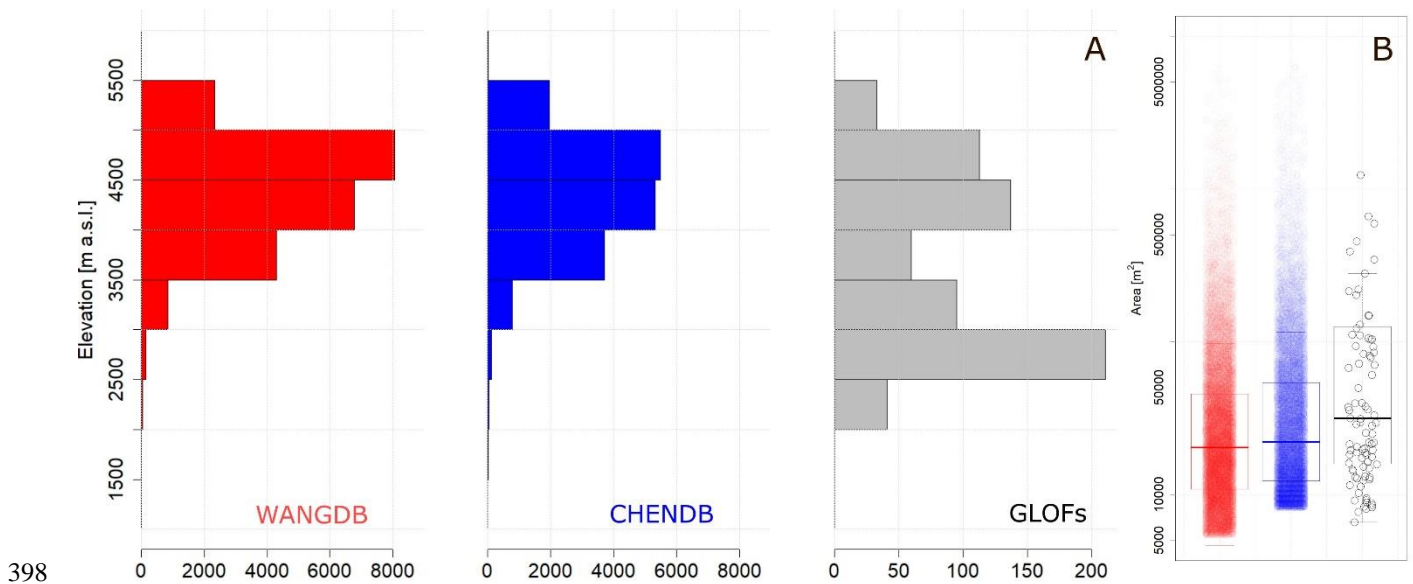
363 **4.1 Temporal and spatial trends**

364 The discussion on whether GLOFs are increasing with a changing climate trend has been dealt with elsewhere in detail
365 (Harrison et al., 2018; Veh et al., 2022). Here, we only provide a brief discussion that stems from the compilation of the data,
366 and that is crucial when using databases of hazard events in remote areas like mountains. As we rely on different source types,
367 namely previous academic publications, news and technical reports, satellite imagery and local knowledge from involvement
368 in field work in numerous locations across HMA, we are able to complement the deficiency any single of these approaches
369 may have and provide some perspectives on trends that may be due to observational bias. Figure 3A shows a clear and rapid
370 increase of recorded events in the Tien Shan from the mid 20th century with a subsequent decrease in the 1990s. There is little
371 indication for this being climate-related and we hypothesize this is a function of increased visibility thanks to the extensive
372 efforts of scientists at the end of the Soviet era to monitor debris flows (and as a consequence related GLOFs), which died
373 down as the Central Asian states became independent. This aligns exactly with the development and subsequent demise of
374 cryosphere monitoring in the area between 1950 and 1990 (Hoelzle et al., 2019). Medeu et al. (2019) on the other hand argue,
375 that at least for Kazakhstan a decrease in debris flows from glacial sources can be attributed to the successful monitoring and
376 lowering of lakes in the region since the late 1990s. Conversely, for the Karakoram, there are many peaks in observed events
377 starting at the turn of the 19th century. This may be explained either by surge cycles occurring around the same time, resulting
378 in ephemeral ice-dammed lakes, or the piqued interest of the British Empire around the turn of the century in the region during

379 the Great Game (most reports on GLOFs stem from British officers stationed in the region, cf. Hewitt and Liu, 2010). Interest
380 decreased until Independence and finally grew again towards the end of the century as seen in other areas with increased
381 infrastructure development, starting with the construction of the Karakoram Highway between the 1960s and 1970s
382 (Kreutzmann, 1991) and the arrival of media in remote areas. There is a relatively consistent increase of reported events in the
383 Hindu Kush and the Himalaya region, albeit total events are much lower (i.e. <1 event yr^{-1} for a whole region). We believe
384 that our records of events have also increased due to an increase in interest in the topic in the region (Emmer et al., 2022),
385 which led to more detailed documentation of individual events by various scientists.

386 The seasonal patterns (Figure 3B) are instructive as they show a clear earlier peak in the year for the Himalaya region, a more
387 stretched out peak in the Karakoram and shift in the Tien Shan, influenced by Westerlies rather than the South Asian Monsoon,
388 providing an indication for the potential of using such a dataset to investigate the importance of regional precipitation patterns
389 for drivers of outburst floods.

390 The database records four GLOF events in Afghanistan, three of which for the first time in this database, with 15 fatalities and
391 more than 300 houses destroyed, and one from a previous publication only based on geomorphic evidence with no recorded
392 impacts. This puts the country on the map with respect to GLOF hazards and emphasizes the importance of local data for
393 accurate assessments, considering that these events occurring between 2013 and 2021 remained previously unnoticed in
394 literature. Due to the lakes located on a debris-covered surface draining englacially, hence leaving no clear evidence of a dam
395 breach, potentially visible from satellite imagery, they also constitute examples that remain difficult to identify with automated
396 approaches relying on satellite imagery only.



398

399 **Figure 5: (A) Elevational distribution of unique lakes recorded in databases, covering two years 1990 and 2018 (WANGDB, Wang**
 400 **et al., 2020) and ten years between 2008 and 2017 (CHENDB, Chen et al., 2021), compared to only those lakes that resulted in GLOFs**
 401 **(GLOFs). (B) Lake areas of unique lakes in the same databases as well as specifically for the lakes that resulted in GLOFs, where**
 402 **available.**

403 Combining the lake and GLOF inventories allows for a comparison of topographic as well as meteorological conditions which
 404 may have contributed to the occurrence of GLOFs and those that did not. This is useful for the identification of potentially
 405 dangerous glacial lakes (Ahmed et al., 2022; Ashraf et al., 2021, 2012; Bajracharya et al., 2020; Bolch et al., 2008; Duan et
 406 al., 2020; Zhang et al., 2022b). The evaluation of meteorological conditions would require an in depth discussion of the
 407 respective datasets and wider synoptic conditions, attempted previously for mudflows (Mamadjanova et al., 2018).t The
 408 database suggests that mass movements in the lake’s vicinity, as well as intense precipitation immediately preceding the GLOF
 409 are important drivers (Figure 4B), but only 12% of all entries record any driver and they are generally only based on local
 410 assessments that may not provide the definite reason. As quality controlled reanalysis data becomes more readily available at
 411 the kilometre scale for HMA (Wang et al., 2021), more comprehensive analysis of climate drivers become possible and would
 412 elucidate, which climate variables are crucial to understand with respect to a changing climate, to anticipate changes in GLOF
 413 occurrence.

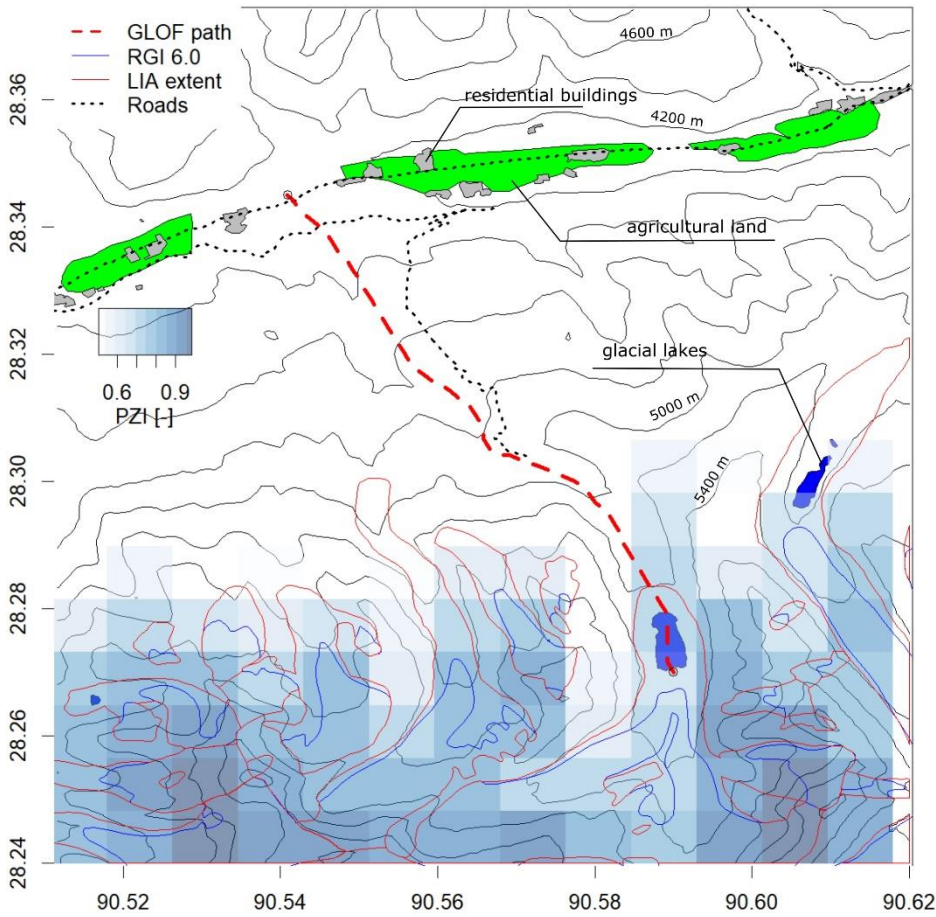
414 A comparison to already established inventories of glacial lakes is more straightforward. Figure 5 shows elevational and area
 415 statistics of lakes from two different inventories (Chen et al., 2021; Wang et al., 2020). While both inventories rely on Landsat
 416 data for identification,, one follows a manual approach in identifying the outlines in 1990 and 2018 (Wang et al., 2020;
 417 henceforth referred to as WANGDB), while the second delineates automatically at the 30 m pixel resolution (Chen et al., 2021;
 418 CHENDB), allowing for decadal data between 2008 and 2017 but a coarser resolution of outlines. Both inventories include

419 lakes from different time steps, and we consider a lake that is present in more than one time step once, at whatever earliest
420 year it appears. The GLOF database allows us to quickly visualize, that while lakes follow a unimodal distribution over altitude
421 similar for both approaches of delineation, GLOFs are bimodally distributed with peaks above 2500 and 4000 m a.s.l. (Figure
422 5A). This provides a clear indication of lakes at lower elevation being relatively more susceptible to an outburst, but no clear
423 decrease of the risk with elevation. Of the 339 lakes that resulted in GLOFs, 99 (29%) appear in inventories at one point and
424 we hence have an indication of their size (Figure 5B). While CHENDB covers more time steps, the minimum lake area it can
425 detect (8100 m²) is nearly twice as large as for WANGDB (4600 m²). 9 out of the 99 lakes with area data that resulted in
426 GLOFs, hence only appear in WANGDB. On top of the many lakes that do not appear in inventories at all (71%) due to their
427 ephemeral nature or being present before the coverage of inventories, the possibility that potentially dangerous glacial lakes
428 are completely missed by lake inventories relying on satellite imagery hence needs to be considered.

429 **4.4 GLOF paths**

430 Records of the extent of GLOF events (459) allow for an evaluation of GLOF paths (Figure 6). Exploiting other spatial datasets,
431 this can help in evaluating possible drivers as well as impacts. Repeat spatial products related to the cryosphere available in
432 HMA include decadal glacier outlines (He and Zhou, 2022; Lee et al., 2021; Xie et al., 2023), distributed data on ice mass loss
433 (Brun et al., 2017; Hugonnet et al., 2021), permafrost probability (Obu, 2021) and snow cover (Muhammad and Thapa, 2021).
434 Such datasets can be compared with recorded GLOF events and lakes that have not resulted in GLOFs to evaluate potential
435 drivers. The hazard of a GLOF is closely associated with moraine stability, which is linked to the immediate history of glacier
436 retreat in the area. Areas of recent permafrost change are likely also more susceptible to mass movements, which have already
437 been identified as important drivers of GLOF events (Figure 4). Rapid increase in local temperature is often recorded as a
438 reason for GLOFs occurring (Figure 4), but to date no studies exist that establish a definite link between increased melt from
439 either ice or snow that eventually results in the drainage of a lake or failure of a dam.

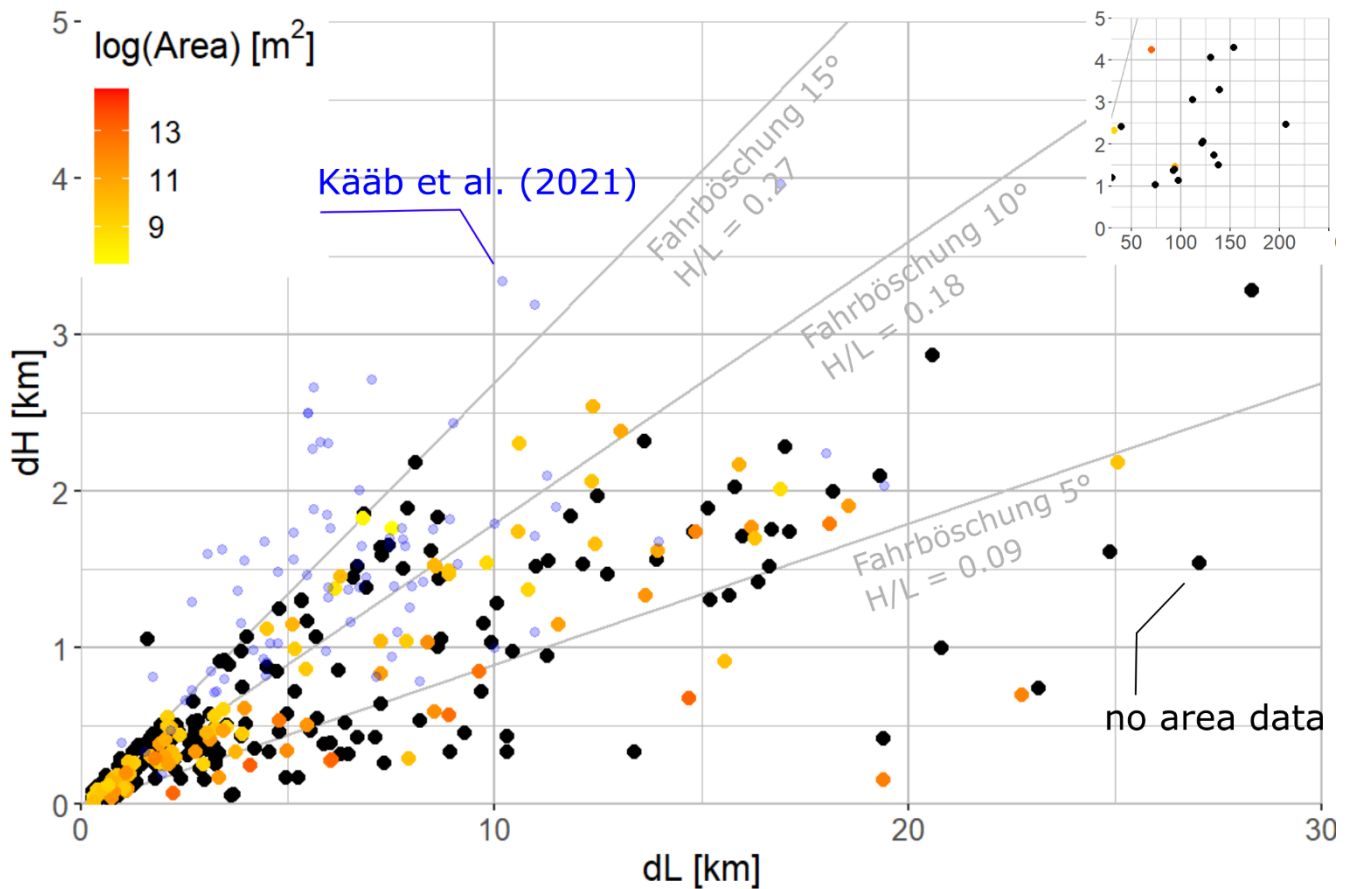
440 On the downstream, distributed datasets on infrastructure, population or ecosystems allow for assessments of impacts and
441 vulnerabilities (Figure 6). Coupling of GLOF paths with distributed population data (Thornton et al., 2022) would allow for
442 the computation of people potentially impacted, coupled with remotely sensed vegetation and agriculture data which would
443 allow for estimates on local economic and ecological impacts. GLOF paths could also be used to develop hazard zonation
444 maps, as is already standard practice for avalanches in many regions.



445

446 **Figure 6: Extracted GLOF path for one event (GF_ID 651), showing the RGI 6.0 outline, the possible glacier extent during the little**
 447 **ice age (Lee et al., 2021) and probability of permafrost occurrence, with high values suggesting a likely and low values a less likely**
 448 **occurrence of permafrost (PZI, Obu, 2021). Shape files of roads are taken from Open Street Map (OSM), residential and agricultural**
 449 **areas are mapped from Maxar imagery. The figure can be directly created in the available R code from the database for any event.**

450



451

452 **Figure 7: Reach angles (*Fahrböschung*) for all GLOF events with recorded downstream impact location (459). Black dots are events**
 453 **where no recorded lake areas exist. Shaded from yellow to red are GLOFs for which some record of lake area exists (either from**
 454 **the original source or a lake database), that may not necessarily be the lake area just before the event. In light blue records from**
 455 **Kääb et al. (2021) are shown, which largely relate to glacier detachments or historic large scale debris flows and GLOFs.**

456 For GLOFs where the location of the lake and the lowest recorded evidence of the outburst flood wave (either reported flood
 457 or observed debris deposits), we are able to calculate reach angles, i.e. the elevation difference over the distance of the flood
 458 path between start and end point (Figure 7). Current studies estimating the future exposure of downstream infrastructure and
 459 livelihoods to potentially dangerous glacial lakes are based on estimated runouts (Schwanghart et al., 2016; Taylor et al., 2023;
 460 Zheng et al., 2021a), without the ability to rely on actual expected reach. While a definite prediction of any future GLOF reach
 461 will never be possible and even detailed numerical studies of individual events are sensitive to small changes in topography
 462 (Muhammad et al., 2021; Westoby et al., 2014), the data presented here allows future studies to apply ranges of a potentially
 463 likely reach, depending on glacier size and path topography. With a median runout length of 6.1 km (mean $\mu = 32$ km, biased
 464 towards a few events of exceptional reach; Figure 7 inset) and a median elevation drop of 1036 m ($\mu = 1126$ m), the mean
 465 reach angle is 0.14 ($\sigma=0.09$; 8°). Nearly all of the marked cluster below a reach angle of 0.27 (15°, Figure 7), considerably
 466 shallower than large scale mass flow events like glacier detachments (Kääb et al., 2021). For comparable drop heights GLOFs

467 hence travel considerably further than glacier detachments, but the data also suggests a limit in reach, that can provide an upper
468 bound when assessing the potential reach of lakes at risk of an outburst in future. While it would be possible to establish lake
469 volumes from lake areas (Cook and Quincey, 2015), the inherent uncertainties in these approaches and the discrepancy between
470 date of lake mapping and GLOF event result in large overall uncertainties trying to establish a link between lake volumes and
471 potential reach of GLOFs . We therefore only use areas from the available inventories or mapped areas from just before the
472 event as a proxy (Figure 7). Lakes with an area larger than 10^5 m² (123) result in median reach angles of 0.16 (9.0°), lakes
473 smaller (107) in slightly steeper angles of 0.17 (9.8°), suggesting that the size of a GLOF holds some potential for projecting
474 its reach, apart from the many other influencing factors.

475 **4.5 Downstream impacts**

476 Excluding the single Kedarnath event in 2013, wherein 6000 people were reportedly killed by a combination of other hazards
477 including but not limited to the GLOF, 906 people were reported to be killed directly by 24 GLOFs. This number is three times
478 higher than the previous record of 300 (Carrivick and Tweed, 2016), only considering the time until 2005 to cover the same
479 periods our database still records 854 fatalities. Only 25% (54) of all recorded events (216) in the region had previously any
480 impact recorded (Carrivick and Tweed, 2016), while our database now has impacts on livelihoods or infrastructure noted for
481 149 events (21%). Comparing this number to other mountain hazards in the region is difficult, as data are rare. Snow and ice
482 avalanches (excluding mountaineering accidents) in the same region have resulted in more than 3000 fatalities, with records
483 only starting in the 1970s (Acharya et al., in review). Landslide fatalities for countries entirely in HMA suggest 67 deaths in
484 Afghanistan, 50 in Bhutan, 809 in Nepal and 75 in Tajikistan between 2004 and 2010 (Petley, 2012), suggesting this hazard
485 to be considerably more dangerous to human life.

486 Impacts beyond fatalities are often recorded, but socioeconomic valuations are lacking. In the few individual events with
487 valuations of damage by the immediate event, this is typically focused on the value of expensive national infrastructure like
488 hydropower projects. The value of agricultural land, residential or commercial buildings, or long-term damage due to damage
489 to road, health or education infrastructure are rarely assessed. Infrastructure datasets that allow for a rapid assessment of
490 damage are generally not available. Such an assessment was previously attempted for GLOFs globally (Carrivick and Tweed,
491 2016). However, a more thorough discussion of available impact datasets for HMA is required. Many of these data are available
492 in reports prepared for disaster response (e.g. for the Upper Indus basin, both Afghanistan and Pakistan, prepared by AKAH
493 or UNDP (Ashraf et al., 2015; Gohar, 2014) or Kazakhstan prepared by scientists from local Universities (Medeu et al., 2016))
494 but have so far not been compiled in a standardized manner.

495 A few GLOF events have now been recorded already that have reached urban (e.g. GF_ID 131 south of Almaty, where dam
496 structures were erected as adaptation measures) and semi-urban (e.g. GF_ID 515 north of Melamchi) space. As more and more
497 infrastructure is being built in upstream areas and close to river channels, vulnerabilities are expected to increase. Future studies
498 should investigate potential flood impacts on built up areas as well as hydropower infrastructure, which often require different
499 model setups than for environments with infrastructure only including roads and single houses (Fischer et al., 2022).

500 While nearly one-third of all GLOFs could potentially be transboundary (i.e. the downstream path eventually crosses a current
501 national border), less than ten events have resulted in confirmed transboundary impacts. While a lot of attention has been given
502 to transboundary climate risks in the recent past, our data suggests that it may be less the actual flood wave that is of
503 transboundary concern and more the associated impacts in one country (e.g. road disruptions with impacts on trade) that could
504 have knock-on effects across borders, including a disruption of trade, access to health care or education (Steiner et al., 2023).
505 Mass flow events like GLOFs have been previously identified as an important part of the sediment balance in mountain rivers
506 (Cook et al., 2018), with potential implications for landscape formation as well as hazards (Li et al., 2022). The database does
507 include recorded values of discharge of water (72; $\mu = 3248 \text{ m}^3 \text{ s}^{-1}$; min: 3.3 – max: 21300 $\text{m}^3 \text{ s}^{-1}$) as well as sediment (19; μ
508 = 620 $\text{m}^3 \text{ s}^{-1}$; 25 – 2000 $\text{m}^3 \text{ s}^{-1}$) but those observations are already associated to large uncertainties. An appraisal of the existing
509 data and estimates of drained volumes based on satellite imagery from before and after the GLOF events could provide an
510 approach to estimate the role this large number of GLOFs plays in overall sediment fluxes and could be a focus of future
511 research.

512 **4.6 Comparison to previous inventories and limitations**

513 The most comprehensive databases of GLOFs covering HMA were produced by Veh et al. (2019a), focusing on moraine-
514 dammed lakes exclusively but identifying many previously unidentified events. Zheng et al. (2021b) also identified many
515 events that had hitherto gone unidentified. Both studies have been consulted for this study. 144 GLOFs in this inventory (21%
516 of the total) were previously only reported in (Zheng et al., 2021b), 15 (2%) in (Veh et al., 2019a). We also followed the
517 approach of Zheng et al. (2021b) to question any previous records and keep a separate record of events that were initially
518 identified as GLOFs but turned out not to be or cannot be ascertained to be. Future studies should investigate events we have
519 identified as outbursts from water pockets (22 cases as well as potentially more in what we have discarded as GLOFs in a
520 separate database), to better understand involved processes. None of these water pockets are visible before any event, and
521 posterior evidence of their existence is limited to vast subglacial channels that appeared (e.g. Figure 2C) as well as apparent
522 rapid lowering of glacier surfaces but sometimes simply the observation of previously filled crevasses at the snout where a
523 debris flow suddenly emerged. In Switzerland, these types of outburst floods have been earlier estimated to account for 30 to
524 40% of all glacier floods (Haerberli, 1983), but detailed investigations are limited to one especially disastrous case dating back
525 to the 19th century (Vincent et al., 2015). All events in HMA originated at the terminus of relatively steep glacier tongues and
526 may have some similarity in genesis to glacier detachments (Kääb et al., 2021, 2018) but runout properties – fast debris flows
527 with no visible fraction of ice - are distinctly different. More comprehensive investigations into these cases will be required in
528 future. Veh et al. (2022), a global study that also covers the region already provides an accessible database, however a
529 considerable smaller number of recorded events (459; 11 events in our database were sourced from this database).
530 A large motivation for GLOF studies has been the question of whether GLOFs have been increasing in the recent past with a
531 change in climate. Recent global and regional studies on moraine-dammed lakes have shown that there is no apparent trend,
532 but suggest a possible lag that may eventually result in an increase in such events (Harrison et al., 2018; Veh et al., 2019a). A

533 recent global study investigating all types of outbursts suggests a weak coupling of temperature rise and GLOF frequency (Veh
534 et al., 2022). We can confirm findings from Veh et al. (2022) that currently available records likely do not cover all GLOFs
535 that have actually occurred. The fact that we still overlook past events and the strong regional variability seem to make it
536 challenging to find definite climate relations and any such statements should be treated with caution. For some individual lakes
537 that have a documented history of draining since the end of the 19th century (e.g. Hassanabad/Shisper, Kyagar, Merzbacher,
538 Karambar) no apparent trend is visible, while damages have likely increased due to increased exposure of infrastructure in
539 high mountain areas (Li et al., 2022). Hotspots where ice-dammed lake outbursts have repeatedly been unleashed have, in
540 some cases, even completely ceased to exist as the glacier tongues have receded so far that they cannot dam the main valley
541 anymore (e.g. the Shyok glaciers). This is in line with a recent global study finding a decrease in extreme outburst floods from
542 ice dammed lakes (Veh et al., 2023).

543 The attention that GLOFs in general have received in the region in the past (see Emmer et al., (2022) for a comparison of
544 events versus actual studies globally, with a notable discrepancy for the Himalaya) has possibly led to the misidentification of
545 GLOF events. Flash floods and debris flows where the source remains unclear are often immediately recorded as GLOFs in
546 media (especially in the Western Himalaya, the Karakoram, and Hindu Kush), as this generally gives it more attention than
547 the term ‘debris flow’ would. Conversely, due to a lack of records in unpopulated areas many GLOFs may have gone
548 unrecorded (Veh et al., 2022; Zheng et al., 2021b) as confirmed in this study. What remains poorly documented so far are
549 impacts in numerous dimensions. Not only are direct impacts poorly recorded in accessible format, secondary medium and
550 long-term effects remain missing from the literature. People injured (qualitatively and quantitatively), people displaced
551 temporarily and permanently, gender and age group of people affected are rarely reported. Effects on mental health have been
552 recently reported but no studies exist in scientific literature (Ebrahim, 2022). With high rates of both erosion and deposition,
553 GLOFs can cause damage to agricultural land as well as infrastructure for years after the actual event, eventually causing
554 damage from the remaining devaluation of land or lack of access to health facilities, markets or education. Information on the
555 severity of deposits would be needed for actual economic impacts and is crucial to further contextualize GLOFs in loss and
556 damage frameworks (Huggel et al., 2019). To this end, it is crucial that future efforts rely on datasets that are transparent and
557 accessible to all stakeholders to make decisions on adaptation that are targeted and sustainable.

558 **5 Data availability**

559 The GLOF database is published under <https://doi.org/10.5281/zenodo.7271187>~~<https://DOI:10.5281/zenodo.7271188>~~ (Steiner
560 and Shrestha, 2023~~2~~). The [code to process data as well as the development version, where new events are added regularly](#), is
561 available on [github](https://github.com/fidelsteiner/HMAGLOFDB) ~~GitHub~~ (<https://github.com/fidelsteiner/HMAGLOFDB>). [Events added in the development version will be](#)
562 [quality checked before they are retained in further releases published on Zenodo.](#) To provide an accessible version of the data
563 to non-academic stakeholders, the database is ~~also shared on the ICIMOD RDS (Regional Database System), where it will be~~

564 ~~updated annually (<https://doi.org/10.26066/RDS.1973283>) (ICIMOD, 2022)~~, also visualized on an interactive map accessible
565 ~~from the README file in the published database as well as the development version.~~

566 **6 Conclusion**

567 In this study, we present a comprehensive compilation of GLOF events in High Mountain Asia from the mid 19th century until
568 2022. The inventory is machine-readable and version-controlled and will be updated as information on new events become
569 available in future. It includes basic information on time and location, involved processes and impacts and is linked to other
570 inventories of glacial lakes and glaciers allowing for future investigations into drivers of outburst floods. Of 697 individual
571 events, 47% have a known month of occurrence, allowing investigations into seasonality, and 39% have a recorded day of
572 drainage, allowing future investigations of prevailing weather preceding the event. 52% of all GLOFs can be associated with
573 a lake mapped in at least one glacial lake inventory, and 95% to a mapped glacier, allowing for straightforward analysis on
574 how upstream glacier mass loss and lake area change influences the occurrence of outburst events. We have a good overview
575 of what type of lakes were the source, revealing that large regional differences exist, with sparingly few ice-dammed lakes in
576 the Himalaya and only very few moraine-dammed lakes in the Karakoram linked to GLOFs. The mechanisms of lake formation
577 or drainage are documented for only very few events. Volumes of floods are not only seldom documented but also highly
578 uncertain. However, the combination with lake inventories allows for approximate estimates, with lake area changes as a
579 proxy. With a record of minimal potential reach of GLOF events in 66% of all cases we can show that GLOF events generally
580 do not exceed reach angles of 15° (and events with higher volumes even less), information that can be useful for future hazard
581 mapping.

582 Our dataset suggests that 906 deaths were directly associated to a GLOF event, three times as many as previously reported for
583 the region. Compared to other mountain hazards in the region, GLOFs however have caused a relatively small loss of human
584 life. Other impacts however remain relatively poorly documented.

585 With 7% of all events recorded here never mentioned in literature before coming from local and oral information rather than
586 other academic publications. Our study emphasizes the importance of considering all types of sources and acknowledges the
587 high likelihood, that our current records of GLOFs probably remain an underestimation of actual events. Conversely, we also
588 emphasize the importance of cross-checking sources carefully, as mass flow events in the region have been previously
589 mistakenly recorded as GLOFs without sufficient examination. While this is the first GLOF inventory to comprehensively
590 address downstream impacts, much of this information has never been recorded. Injuries are rarely recorded nor are the
591 monetary values of damaged property or the long-term economic effect of damaged infrastructure. Future studies should
592 evaluate methods to estimate damages rapidly, which will require more interdisciplinary approaches including social scientists
593 for field assessments and economists for ways to upscale risk and damage assessments. Further focus should also be given to
594 documenting local and indigenous knowledge on GLOF hazards, which could reveal impacts that so far have been overlooked.

595 As our understanding of the changing cryosphere in HMA is ever increasing, and with the expansion of our understanding of
596 topics such as snow melt and permafrost, future studies should attempt to combine inventories of lakes and GLOFs with
597 potential processes even further upstream that may result in cascading hazards in future. Such issues are expected to increase
598 in future. Other hazards should ideally also be documented in formats that make it possible to pair it with already existing
599 inventories for regional studies and modelling attempts.

600 7 Acknowledgements

601 FS incepted the study and compiled and analysed the database with JFS. FS and JFS wrote the manuscript. RS, YD, SPJ and
602 SI helped with the initial compilation of the database. AA and SW helped with compilation of data from the Indus basin, KMW
603 helped with data from Afghanistan and Central Asia and TZ provided input from Chinese events. All authors contributed to
604 the final version of the manuscript. The authors gratefully acknowledge the support of ~~Sudip Pradhan~~, Prabhat Shrestha and
605 Narayan Thapa in the development of ~~the an regional database system and~~ interactive dashboard for the database. We are
606 grateful to Ethan Welty and two anonymous reviewers, who helped in considerably improving the manuscript. The views and
607 interpretations in this publication are those of the authors and are not necessarily attributable to ICIMOD. This study was made
608 possible with core funds from ICIMOD contributed by the governments of Afghanistan, Australia, Austria, Bangladesh,
609 Bhutan, China, India, Myanmar, Nepal, Norway, Pakistan, Switzerland, and the United Kingdom.

610 References

- 611 Acharya, A., Steiner, J.F., Walizada, K.M., Hussain, Z., Ali, S., Caisermann, A., and Watanabe, T.: Snow and ice avalanches
612 in high mountain Asia – a review of scientific, local and indigenous knowledge. *Nat. Hazards Earth Syst. Sci.*, in
613 review.
- 614 Ahmed, R., Ahmad, S.T., Wani, G.F., Mir, R.A., Almazroui, M., Bansal, J.K., and Ahmed, P.: Glacial lake changes and the
615 identification of potentially dangerous glacial lakes (PDGLs) under warming climate in the Dibang River Basin,
616 Eastern Himalaya, India, *Geocarto Int.*, 1–27, <https://doi.org/10.1080/10106049.2022.2134461>, 2022.
- 617 Allen, S.K., Rastner, P., Arora, M., Huggel, C., and Stoffel, M.: Lake outburst and debris flow disaster at Kedarnath, June
618 2013: hydrometeorological triggering and topographic predisposition, *Landslides*, 13, 1479–1491,
619 <https://doi.org/10.1007/s10346-015-0584-3>, 2016.
- 620 Allen, S.K., Zhang, G., Wang, W., Yao, T., and Bolch, T.: Potentially dangerous glacial lakes across the Tibetan Plateau
621 revealed using a large-scale automated assessment approach, *Sci. Bull.*, SPECIAL TOPIC: The Second Tibetan
622 Plateau Scientific Expedition and Research (I) 64, 435–445, <https://doi.org/10.1016/j.scib.2019.03.011>, 2019.
- 623 Ashraf, A., Naz, R., and Roohi, R.: Glacial lake outburst flood hazards in Hindukush, Karakoram and Himalayan Ranges of
624 Pakistan: implications and risk analysis, *Geomat. Nat. Haz. Risk*, 3, 113–132,
625 <https://doi.org/10.1080/19475705.2011.615344>, 2012.
- 626 Ashraf, A., Naz, R., Mustafa, N., Iqbal, M.B., Ahmad, B., Jawad, A., and Ahmad, I.: Updating GLOF lake inventory of
627 Northern Pakistan and establishment of community based early warning system in Bagrot and Bondo Gol valleys
628 (Technical Report), Pakistan Agricultural Research Council (PARC), Islamabad, Pakistan, 2015.
- 629 Ashraf, A., Iqbal, M.B., Mustafa, N., Naz, R., and Ahmad, B.: Prevalent risk of glacial lake outburst flood hazard in the Hindu
630 Kush–Karakoram–Himalaya region of Pakistan, *Environ Earth Sci.*, 80, 451, [https://doi.org/10.1007/s12665-021-](https://doi.org/10.1007/s12665-021-09740-1)
631 09740-1, 2021.

- 632 Awal, R., Nakagawa, H., Fujita, M., Kawaike, K., Baba, Y., and Zhang, H.: Experimental Study on Glacial Lake Outburst
633 Floods Due to Waves Overtopping and Erosion of Moraine Dam, *Ann. Disaster Prev. Res. Inst.*, 53, 2010.
- 634 Bajracharya, S.R., Maharjan, S.B., Shrestha, F., Sherpa, T.C., Wagle, N., and Shrestha, A.B.: Inventory of glacial lakes and
635 identification of potentially dangerous glacial lakes in the Koshi, Gandaki, and Karnali river basins of Nepal, the
636 Tibet Autonomous Region of China, and India, ICIMOD, Kathmandu, Nepal, <https://doi.org/10.53055/ICIMOD.773>,
637 2020.
- 638 Bhattacharya, A., Bolch, T., Mukherjee, K., King, O., Menounos, B., Kapitsa, V., Neckel, N., Yang, W., and Yao, T.: High
639 Mountain Asian glacier response to climate revealed by multi-temporal satellite observations since the 1960s, *Nat.*
640 *Commun.*, 12, 4133, <https://doi.org/10.1038/s41467-021-24180-y>, 2021.
- 641 Blischak, J.D., Davenport, E.R., and Wilson, G.: A Quick Introduction to Version Control with Git and GitHub, *PLOS Comput.*
642 *Biol.*, 12, e1004668, <https://doi.org/10.1371/journal.pcbi.1004668>, 2016.
- 643 Bolch, T., Buchroithner, M.F., Peters, J., Baessler, M., and Bajracharya, S.: Identification of glacier motion and potentially
644 dangerous glacial lakes in the Mt. Everest region/Nepal using spaceborne imagery, *Nat. Hazards Earth Syst. Sci.*, 8,
645 1329–1340, <https://doi.org/10.5194/nhess-8-1329-2008>, 2008.
- 646 Bolch, T., Shea, J.M., Liu, S., Azam, F.M., Gao, Y., Gruber, S., Immerzeel, W.W., Kulkarni, A., Li, H., Tahir, A.A., Zhang,
647 G., and Zhang, Y.: Status and Change of the Cryosphere in the Extended Hindu Kush Himalaya Region, in: *The*
648 *Hindu Kush Himalaya Assessment: Mountains, Climate Change, Sustainability and People*, edited by: Wester, P.,
649 Mishra, A., Mukherji, A., and Shrestha, A.B., Springer, Cham., 209–255, 2019.
- 650 Brun, F., Berthier, E., Wagnon, P., Käab, A., and Treichler, D.: A spatially resolved estimate of High Mountain Asia glacier
651 mass balances from 2000 to 2016, *Nat. Geosci.*, 10, 668–673, <https://doi.org/10.1038/ngeo2999>, 2017.
- 652 Carrivick, J.L. and Tweed, F.S.: Proglacial lakes: character, behaviour and geological importance, *Quaternary Sci. Rev.*, 78,
653 34–52, <https://doi.org/10.1016/j.quascirev.2013.07.028>, 2013.
- 654 Carrivick, J.L. and Tweed, F.S.: A global assessment of the societal impacts of glacier outburst floods. *Global Planet. Change*,
655 144, 1–16, <https://doi.org/10.1016/j.gloplacha.2016.07.001>, 2016.
- 656 Chen, F., Zhang, M., Guo, H., Allen, S., Kargel, J.S., Haritashya, U.K., and Watson, C.S.: Annual 30 m dataset for glacial
657 lakes in High Mountain Asia from 2008 to 2017, *Earth Syst. Sci. Data*, 13, 741–766, [https://doi.org/10.5194/essd-13-](https://doi.org/10.5194/essd-13-741-2021)
658 741-2021, 2021.
- 659 Cook, K.L., Andermann, C., Gimbert, F., Adhikari, B.R., and Hovius, N.: Glacial lake outburst floods as drivers of fluvial
660 erosion in the Himalaya, *Science*, 362, 53–57, <https://doi.org/10.1126/science.aat4981>, 2018.
- 661 Cook, S.J. and Quincey, D.J.: Estimating the volume of Alpine glacial lakes, *Earth Surf. Dynam.*, 3, 559–575,
662 <https://doi.org/10.5194/esurf-3-559-2015>, 2015.
- 663 Duan, H., Yao, X., Zhang, D., Qi, M., and Liu, J.: Glacial Lake Changes and Identification of Potentially Dangerous Glacial
664 Lakes in the Yi'ong Zangbo River Basin, *Water*, 12, 538, <https://doi.org/10.3390/w12020538>, 2020.
- 665 Dwiwedi, S.K., Acharya, M.D., and Simard, R.: The Tam Pokhari Glacier Lake outburst flood of 3 September 1998, *J. Nepal*
666 *Geol. Soc.*, 22, 2000.
- 667 Ebrahim, Z.: Climate disasters trigger mental health crisis in Pakistan's mountains, *The Third Pole*,
668 <http://globeistan.com/?p=101216>, 2022.
- 669 Emmer, A. and Cochachin, A.: The causes and mechanisms of moraine-dammed lake failures in the Cordillera Blanca, North
670 American Cordillera, and Himalayas, *Auc. Geogr.*, 48, 5–15, <https://doi.org/10.14712/23361980.2014.23>, 2013.
- 671 Emmer, A., Allen, S.K., Carey, M., Frey, H., Huggel, C., Korup, O., Mergili, M., Sattar, A., Veh, G., Chen, T.Y., Cook, S.J.,
672 Correas-Gonzalez, M., Das, S., Diaz Moreno, A., Drenkhan, F., Fischer, M., Immerzeel, W.W., Izagirre, E., Joshi,
673 R.C., Kougkoulos, I., Kuyakanon Knapp, R., Li, D., Majeed, U., Matti, S., Moulton, H., Nick, F., Piroton, V., Rashid,
674 I., Reza, M., Ribeiro de Figueiredo, A., Riveros, C., Shrestha, F., Shrestha, M., Steiner, J., Walker-Crawford, N.,
675 Wood, J.L., and Yde, J.C.: Progress and challenges in glacial lake outburst flood research (2017 - 2021): a research
676 community perspective, *Nat. Hazards Earth Syst. Sci.*, 22, 3041–3061, <https://doi.org/10.5194/nhess-22-3041-2022>,
677 2022.
- 678 Fischer, M., Brettin, J., Roessner, S., Walz, A., Fort, M., and Korup, O.: Rare flood scenarios for a rapidly growing high-
679 mountain city: Pokhara, Nepal, *Nat. Hazards Earth Syst. Sci.*, 22, 3105–3123, [https://doi.org/10.5194/nhess-22-3105-](https://doi.org/10.5194/nhess-22-3105-2022)
680 2022, 2022.

681 Furian, W., Maussion, F., and Schneider, C.: Projected 21st-Century Glacial Lake Evolution in High Mountain Asia, *Frontiers*
682 *in Earth Sci.*, 10, <https://doi.org/10.3389/feart.2022.821798>, 2022.

683 Gardelle, J., Arnaud, Y., and Berthier, E.: Contrasted evolution of glacial lakes along the Hindu Kush Himalaya mountain
684 range between 1990 and 2009, *Global Planet. Change*, 75, 47–55, <https://doi.org/10.1016/j.gloplacha.2010.10.003>,
685 2011.

686 Gohar, A.: Pre-intervention Survey on Knowledge, Attitudes and Practices (KAP) in the GLOF prone Valleys of Boni and
687 Gollain in Chitral and the Sosot and Darkut Valleys Ghizar, Gilgit- Baltistan, Climate Change Division, Government
688 of Pakistan, Islamabad, Pakistan, 2014.

689 Guillet, G., King, O., Lv, M., Ghuffar, S., Benn, D., Quincey, D., and Bolch, T.: A regionally resolved inventory of High
690 Mountain Asia surge-type glaciers, derived from a multi-factor remote sensing approach, *The Cryosphere*, 16, 603–
691 623, <https://doi.org/10.5194/tc-16-603-2022>, 2022.

692 Haeberli, W.: Frequency and Characteristics of Glacier Floods in the Swiss Alps, *Ann. Glaciol.*, 4, 1983.

693 Haeberli, W., Schaub, Y., and Huggel, C.: Increasing risks related to landslides from degrading permafrost into new lakes in
694 de-glaciating mountain ranges, *Geomorphology*, <https://doi.org/10.1016/j.geomorph.2016.02.009>, 2016.

695 Halvorson, S.J.: Environmental Health Risks and Gender in the Karakoram-Himalaya, Northern Pakistan, *Geogr. Rev.*, 92,
696 257–281, <https://doi.org/10.2307/4140973>, 2002.

697 Harrison, S., Kargel, J.S., Huggel, C., Reynolds, J., Shugar, D.H., Betts, R.A., Emmer, A., Glasser, N., Haritashya, U.K.,
698 Klimeš, J., Reinhardt, L., Schaub, Y., Wiltshire, A., Regmi, D., and Vilímek, V.: Climate change and the global
699 pattern of moraine-dammed glacial lake outburst floods, *The Cryosphere*, 12, 1195–1209, <https://doi.org/10.5194/tc-12-1195-2018>, 2018.

700 He, X. and Zhou, S.: An Assessment of Glacier Inventories for the Third Pole Region, *Front. Earth Sci.*, 10,
701 <https://doi.org/10.3389/feart.2022.848007>, 2022.

702 Hewitt, K. and Liu, J.: Ice-Dammed Lakes and Outburst Floods, Karakoram Himalaya: Historical Perspectives on Emerging
703 Threats, *Phys. Geogr.*, 31, 528–551, <https://doi.org/10.2747/0272-3646.31.6.528>, 2010.

704 Hoelzle, M., Barandun, M., Bolch, T., Fiddes, J., Gafurov, A., Muccione, V., Saks, T., and Shagedanova, M.: The status and
705 role of the alpine cryosphere in Central Asia, in: *The Aral Sea Basin: Water for sustainable development in Central*
706 *Asia, Earthscan series on major river basins of the world*, edited by: Xenarios, S., Schmidt-Vogt, D., Qadir, M.,
707 Janusz-Pawletta, B., and Abduallev, I., Routledge, Abingdon, Oxon, 100-121,
708 <https://doi.org/10.4324/9780429436475-8>, 2020.

709 Huggel, C., Muccione, V., Carey, M., James, R., Jurt, C., and Mechler, R.: Loss and Damage in the mountain cryosphere, *Reg.*
710 *Environ. Change*, 19, 1387–1399, <https://doi.org/10.1007/s10113-018-1385-8>, 2019.

711 Hugonnet, R., McNabb, R., Berthier, E., Menounos, B., Nuth, C., Girod, L., Farinotti, D., Huss, M., Dussailant, I., Brun, F.,
712 and Käab, A.: Accelerated global glacier mass loss in the early twenty-first century, *Nature*, 592, 726–731,
713 <https://doi.org/10.1038/s41586-021-03436-z>, 2021.

714 Huss, M., Bauder, A., Werder, M., Funk, M., and Hock, R.: Glacier-dammed lake outburst events of Gornesse, Switzerland,
715 *J. Glaciol.*, 53, 189–200, <https://doi.org/10.3189/172756507782202784>, 2007.

716 <https://doi.org/10.26066/RDS.1973283>, 2022.

717 **ICIMOD: GLOF database of High Mountain Asia [Data set], ICIMOD, <https://doi.org/10.26066/RDS.1973283>, 2022.**

718 Iribarren Anaconda, P., Norton, K.P., and Mackintosh, A.: Moraine-dammed lake failures in Patagonia and assessment of
719 outburst susceptibility in the Baker Basin, *Nat. Hazards Earth Syst. Sci.*, 14, 3243–3259,
720 <https://doi.org/10.5194/nhess-14-3243-2014>, 2014.

721 Ives, J.D.: Glacial Lake Outburst Floods and Risk Engineering in the Himalaya: A Review of the Langmoche Disaster,
722 Khumbu Himal, 4 August 1985 (Occasional Paper No. 5), ICIMOD, Kathmandu, Nepal, 1986.

723 Ives, J.D., Shrestha, R.B., and Mool, P.K.: Formation of Glacial Lakes in the Hindu Kush-Himalayas and GLOF Risk
724 Assessment, ICIMOD, Kathmandu, Nepal, 2010.

725 Jiang, Z., Cui, P., and Jiang, L.: Critical hydrologic conditions for overflow burst of moraine lake, *Chin. Geograph. Sc.*, 14,
726 39–47, <https://doi.org/10.1007/s11769-004-0007-1>, 2004.

727 Käab, A., Leinss, S., Gilbert, A., Bühler, Y., Gascoïn, S., Evans, S.G., Bartelt, P., Berthier, E., Brun, F., Chao, W.-A., Farinotti,
728 D., Gimbert, F., Guo, W., Huggel, C., Kargel, J.S., Leonard, G.J., Tian, L., Treichler, D., and Yao, T.: Massive
729 collapse of two glaciers in western Tibet in 2016 after surge-like instability, *Nat. Geosci.*, 11, 114–120,
730 <https://doi.org/10.1038/s41561-017-0039-7>, 2018.

- 731 Kääh, A., Jacquemart, M., Gilbert, A., Leinss, S., Girod, L., Huggel, C., Falaschi, D., Ugalde, F., Petrakov, D., Chernomorets,
732 S., Dokukin, M., Paul, F., Gascoin, S., Berthier, E., and Kargel, J.: Sudden large-volume detachments of low-angle
733 mountain glaciers - more frequent than thought, *The Cryosphere*, 15, 1751–1785, <https://doi.org/10.5194/tc-2020-243>, 2021.
- 734
735 Khanal, N.R., Hu, J.-M., and Mool, P.: Glacial Lake Outburst Flood Risk in the Poiqu/Bhote Koshi/Sun Koshi River Basin in
736 the Central Himalayas, *Mt. Res. Dev.*, 35, 351–364, <https://doi.org/10.1659/MRD-JOURNAL-D-15-00009>, 2015.
- 737 Kingslake, J. and Ng, F.: Quantifying the predictability of the timing of jökulhlaups from Merzbacher Lake, Kyrgyzstan, *J.*
738 *Glaciol.*, 59, 805–818, <https://doi.org/10.3189/2013JoG12J156>, 2013.
- 739 Kreuzmann, H.: The Karakoram Highway: The Impact of Road Construction on Mountain Societies, *Modern Asian Studies*,
740 25, 711–736, <https://doi.org/10.1017/S0026749X00010817>, 1991.
- 741 Lee, E., Carrivick, J.L., Quincey, D.J., Cook, S.J., James, W.H.M., and Brown, L.E.: Accelerated mass loss of Himalayan
742 glaciers since the Little Ice Age, *Sci. Rep.*, 11, 24284, <https://doi.org/10.1038/s41598-021-03805-8>, 2021.
- 743 Li, D., Lu, X., Walling, D.E., Zhang, T., Steiner, J.F., Wasson, R.J., Harrison, S., Nepal, S., Nie, Y., Immerzeel, W.W., Shugar,
744 D.H., Koppes, M., Lane, S., Zeng, Z., Sun, X., Yegorov, A., and Bolch, T.: High Mountain Asia hydropower systems
745 threatened by climate-driven landscape instability, *Nat. Geosci.*, 1–11, <https://doi.org/10.1038/s41561-022-00953-y>,
746 2022.
- 747 Linsbauer, A., Frey, H., Haerberli, W., Machguth, H., Azam, M.F., and Allen, S.: Modelling glacier-bed overdeepenings and
748 possible future lakes for the glaciers in the Himalaya - Karakoram region, *Ann. Glaciol.*, 57, 119–130,
749 <https://doi.org/10.3189/2016AoG71A627>, 2015.
- 750 Mamadjanova, G., Wild, S., Walz, M.A., and Leckebusch, G.C.: The role of synoptic processes in mudflow formation in the
751 piedmont areas of Uzbekistan, *Nat. Hazards Earth Syst. Sci.*, 18, 2893–2919, <https://doi.org/10.5194/nhess-18-2893-2018>, 2018.
- 752
753 Mankoff, K.D., Fettweis, X., Langen, P.L., Stendel, M., Kjeldsen, K.K., Karlsson, N.B., Noël, B., van den Broeke, M.R.,
754 Solgaard, A., Colgan, W., Box, J.E., Simonsen, S.B., King, M.D., Ahlstrøm, A.P., Andersen, S.B., and Fausto, R.S.
755 Greenland ice sheet mass balance from 1840 through next week, *Earth Syst. Sci. Data*, 13, 5001–5025,
756 <https://doi.org/10.5194/essd-13-5001-2021>, 2021.
- 757 Medeu, A.R., Baimoldayev, T.A., and Kirensky, T.L.: Anthology debris flows and their processes, *Debris flows in the*
758 *Southeast Kazakhstan*, Ministry of Education and Science Republic of Kazakhstan, Almaty, 2016.
- 759 Medeu, A.R., Blagoveshchenskiy, V.P., Gulyayeva, T.S., and Ranova, S.U.: Debris Flow Activity in Trans-Ili Alatau in the
760 20th — Early 21st Centuries, *Geogr. Nat. Resour.*, 40, 292–298, <https://doi.org/10.1134/S1875372819030120>, 2019.
- 761 Mool, P.K., Bajracharya, S.R., and Joshi, S.P.: *Inventory of Glaciers, Glacial Lakes and Glacial Lake Outburst Floods,*
762 *ICIMOD, Kathmandu, Nepal*, 2001.
- 763 Muhammad, S. and Thapa, A.: Daily Terra–Aqua MODIS cloud-free snow and Randolph Glacier Inventory 6.0 combined
764 product (M*D10A1GL06) for high-mountain Asia between 2002 and 2019, *Earth Syst. Sci. Data*, 13, 767–776,
765 <https://doi.org/10.5194/essd-13-767-2021>, 2021.
- 766 Muhammad, S., Li, J., Steiner, J.F., Shrestha, F., Shah, G.M., Berthier, E., Guo, L., Wu, L., and Tian, L.: A holistic view of
767 Shisper Glacier surge and outburst floods: from physical processes to downstream impacts. *Geomat. Nat. Haz. Risk*,
768 12, 2755–2775, <https://doi.org/10.1080/19475705.2021.1975833>, 2021.
- 769 Nie, Y., Sheng, Y., Liu, Q., Liu, L., Liu, S., Zhang, Y., and Song, C.: A regional-scale assessment of Himalayan glacial lake
770 changes using satellite observations from 1990 to 2015, *Remote Sens. Environ.*, 189, 1–13,
771 <https://doi.org/10.1016/j.rse.2016.11.008>, 2017.
- 772 Nie, Y., Liu, Q., Wang, J., Zhang, Y., Sheng, Y., and Liu, S.: An inventory of historical glacial lake outburst floods in the
773 Himalayas based on remote sensing observations and geomorphological analysis, *Geomorphology*, 308, 91–106,
774 <https://doi.org/10.1016/j.geomorph.2018.02.002>, 2018.
- 775 Nie, Y., Liu, W., Liu, Q., Hu, X., and Westoby, M.J.: Reconstructing the Chongbaxia Tsho glacial lake outburst flood in the
776 Eastern Himalaya: Evolution, process and impacts, *Geomorphology*, 370, 107393,
777 <https://doi.org/10.1016/j.geomorph.2020.107393>, 2020.
- 778 Obu, J.: How Much of the Earth’s Surface is Underlain by Permafrost?, *J. Geophys. Res-Earth*, 126,
779 <https://doi.org/10.1029/2021JF006123>, 2021.

- 780 Osti, R., Bhattarai, T.N., and Miyake, K.: Causes of catastrophic failure of Tam Pokhari moraine dam in the Mt. Everest region,
781 Nat. Hazards, 58, 1209–1223, <https://doi.org/10.1007/s11069-011-9723-x>, 2011.
- 782 Petley, D.: Global patterns of loss of life from landslides, *Geology*, 40, 927–930, <https://doi.org/10.1130/G33217.1>, 2012.
- 783 Pfeffer, W.T., Arendt, A.A., Bliss, A., Bolch, T., Cogley, J.G., Gardner, A.S., Hagen, J.-O., Hock, R., Kaser, G., Kienholz, C.,
784 Miles, E.S., Moholdt, G., Mölg, N., Paul, F., Radić, V., Rastner, P., Raup, B.H., Rich, J., and Sharp, M.J., The
785 Randolph Consortium.: The Randolph Glacier Inventory: a globally complete inventory of glaciers, *J. Glaciol.*, 60,
786 537–552, <https://doi.org/10.3189/2014JoG13J176>, 2014.
- 787 Pfeffer, W.T.: Randolph Glacier Inventory – A Dataset of Global Glacier Outlines: Version 6.0: Technical Report (No. 6.0),
788 Colorado, USA, 2017.
- 789 Resurrección, B.P., Goodrich, C.G., Song, Y., Bastola, A., Prakash, A., Joshi, D., Liebrand, J., and Shah, S.A.: In the Shadows
790 of the Himalayan Mountains: Persistent Gender and Social Exclusion in Development, in: *The Hindu Kush Himalaya*
791 *Assessment: Mountains, Climate Change, Sustainability and People*, edited by: Wester, P., Mishra, A., Mukherji, A.,
792 and Shrestha, A.B., Springer International Publishing, Cham, 491–516, 2019.
- 793 Rounce, D.R., Byers, A.C., Byers, E.A., and McKinney, D.C.: Brief communication: Observations of a glacier outburst flood
794 from Lhotse Glacier, Everest area, Nepal, *The Cryosphere*, 11, 443–449, <https://doi.org/10.5194/tc-11-443-2017>,
795 2017.
- 796 Round, V., Leinss, S., Huss, M., Haemmig, C., and Hajnsek, I.: Surge dynamics and lake outbursts of Kyagar Glacier,
797 Karakoram, *The Cryosphere*, 11, 723–739, <https://doi.org/10.5194/tc-11-723-2017>, 2017.
- 798 Shugar, D.H., Burr, A., Haritashya, U.K., Kargel, J.S., Watson, C.S., Kennedy, M.C., Bevington, A.R., Betts, R.A., Harrison,
799 S., and Strattman, K.: Rapid worldwide growth of glacial lakes since 1990, *Nat. Clim. Chang.*, 10, 939–945,
800 <https://doi.org/10.1038/s41558-020-0855-4>, 2020.
- 801 Shugar, D.H., Jacquemart, M., Shean, D., Bhushan, S., Upadhyay, K., Sattar, A., Schwanghart, W., McBride, S., Vries,
802 M.V.W. de, Mergili, M., Emmer, A., Deschamps-Berger, C., McDonnell, M., Bhambri, R., Allen, S., Berthier, E.,
803 Carrivick, J.L., Clague, J.J., Dokukin, M., Dunning, S.A., Frey, H., Gascoin, S., Haritashya, U.K., Huggel, C., Kääh,
804 A., Kargel, J.S., Kavanaugh, J.L., Lacroix, P., Petley, D., Rupper, S., Azam, M.F., Cook, S.J., Dimri, A.P., Eriksson,
805 M., Farinotti, D., Fiddes, J., Gnyawali, K.R., Harrison, S., Jha, M., Koppes, M., Kumar, A., Leinss, S., Majeed, U.,
806 Mal, S., Muhuri, A., Noetzli, J., Paul, F., Rashid, I., Sain, K., Steiner, J., Ugalde, F., Watson, C.S., and Westoby,
807 M.J.: A massive rock and ice avalanche caused the 2021 disaster at Chamoli, Indian Himalaya, *Science*,
808 <https://doi.org/10.1126/science.abh4455>, 2021.
- 809 Soheb, M., Ramanathan, A., Bhardwaj, A., Coleman, M., Rea, B. R., Spagnolo, M., Singh, S., and Sam, L.: Multitemporal
810 glacier inventory revealing four decades of glacier changes in the Ladakh region, *Earth Syst. Sci. Data*, 14, 4171–
811 4185, <https://doi.org/10.5194/essd-14-4171-2022>, 2022.
- 812 Somos-Valenzuela, M.A., McKinney, D.C., Rounce, D.R., and Byers, A.C.: Changes in Imja Tsho in the Mount Everest region
813 of Nepal, *The Cryosphere*, 8, 1661–1671, <https://doi.org/10.5194/tc-8-1661-2014>, 2014.
- 814 Song, C., Sheng, Y., Ke, L., Nie, Y., and Wang, J.: Glacial lake evolution in the southeastern Tibetan Plateau and the cause of
815 rapid expansion of proglacial lakes linked to glacial-hydrogeomorphic processes, *J. Hydrol.*, 540, 504–514,
816 <https://doi.org/10.1016/j.jhydrol.2016.06.054>, 2016.
- 817 Steiner, J.F., Kraaijenbrink, P.D.A., Jiduc, S.G., and Immerzeel, W.W.: Brief communication: The Khurdopin glacier surge
818 revisited – extreme flow velocities and formation of a dammed lake in 2017, *The Cryosphere*, 12, 95–101,
819 <https://doi.org/10.5194/tc-12-95-2018>, 2018.
- 820 Steiner, J. and Shrestha, F.: [fidelsteiner/HMAGLOFDB: HMAGLOFDB v1.0.1 \(v1.0.1\)](https://doi.org/10.5281/zenodo.7271187), [Zenodo](https://doi.org/10.5281/zenodo.7271187),
821 <https://doi.org/10.5281/zenodo.7271187>, 2023. ~~[fidelsteiner/HMAGLOFDB: HMAGLOFDB](https://doi.org/10.5281/zenodo.7271188),~~
822 ~~<https://doi.org/10.5281/zenodo.7271188>, 2022.~~
- 823 Steiner, J., Wester, P., Muccione, V., and Shrestha, A.B.: Transboundary climate risks for terrestrial shared natural resources,
824 in: *The Global Transboundary Climate Risk Report*, edited by: Anisimov, A. and Magnan, A.M., The Institute for
825 Sustainable Development and International Relations & Adaptation Without Borders, 33–39,
826 <https://adaptationwithoutborders.org/>, 2023.
- 827 Taylor, C., Robinson, T.R., Dunning, S.A., Carr, J.R., and Westoby, M.J.: Glacial lake outburst floods threaten millions
828 globally, *Nat. Commun.*, 14, <https://doi.org/10.1038/s41467-023-36033-x>, 2023.

- 829 Thapa, V. and Pathranarakul, P.: Gender inclusiveness in disaster risk governance for sustainable recovery of 2015 Gorkha
830 Earthquake, Nepal, *Int. J. Disast. Risk Re.*, 34, 209–219, <https://doi.org/10.1016/j.ijdr.2018.11.019>, 2019.
- 831 Thornton, J.M., Sneathlge, M.A., Sayre, R., Urbach, D.R., Viviroli, D., Ehrlich, D., Muccione, V., Wester, P., Insarov, G., and
832 Adler, C.: Human populations in the world’s mountains: Spatio-temporal patterns and potential controls, *PLOS ONE*,
833 17, e0271466, <https://doi.org/10.1371/journal.pone.0271466>, 2022.
- 834 UNISDR.: Sendai Framework for Disaster Risk Reduction 2015–2030, Geneva, Switzerland, United Nations Office for
835 Disaster Risk Reduction, http://www.preventionweb.net/files/43291_sendai_frameworkfordrren.pdf, 2015
- 836 Veh, G., Korup, O., von Specht, S., Roessner, S., and Walz, A.: Unchanged frequency of moraine-dammed glacial lake outburst
837 floods in the Himalaya, *Nat. Clim. Chang.*, 9, 379–383, <https://doi.org/10.1038/s41558-019-0437-5>, 2019a.
- 838 Veh, G., Korup, O., and Walz, A.: Hazard from Himalayan glacier lake outburst floods, *P. Natl. A. Sci.*,
839 <https://doi.org/10.1073/pnas.1914898117>, 2019b.
- 840 Veh, G., Lützwow, N., Kharlamova, V., Petrakov, D., Hugonnet, R., and Korup, O.: Trends, Breaks, and Biases in the Frequency
841 of Reported Glacier Lake Outburst Floods, *Earth’s Future*, 10, e2021EF002426,
842 <https://doi.org/10.1029/2021EF002426>, 2022.
- 843 Veh, G., Lützwow, N., Tamm, J., Luna, L.V., Hugonnet, R., Vogel, K., Geertsema, M., Clague, J.J., and Korup, O.: Less extreme
844 and earlier outbursts of ice-dammed lakes since 1900, *Nature*, 614, 701–707, <https://doi.org/10.1038/s41586-022-05642-9>, 2023.
- 846 Vincent, C., Thibert, E., Gagliardini, O., Legchenko, A., Gilbert, A., Garambois, S., Condom, T., Baltassat, J.M., and Girard,
847 J.F.: Mechanisms of subglacial cavity filling in Glacier de Tête Rousse, French Alps, *J. Glaciol.*, 61, 609–623,
848 <https://doi.org/10.3189/2015JoG14J238>, 2015.
- 849 Wang, X., Guo, X., Yang, C., Liu, Q., Wei, J., Zhang, Yong, Liu, S., Zhang, Yanlin, Jiang, Z., and Tang, Z.: Glacial lake
850 inventory of high-mountain Asia in 1990 and 2018 derived from Landsat images, *Earth Syst. Sci. Data*, 12, 2169–
851 2182, <https://doi.org/10.5194/essd-12-2169-2020>, 2020.
- 852 Wang, X., Tolksdorf, V., Otto, M., and Scherer, D.: WRF-based dynamical downscaling of ERA5 reanalysis data for High
853 Mountain Asia: Towards a new version of the High Asia Refined analysis. *Int. J. Climatol.*, 41, 743–
854 762, <https://doi.org/10.1002/joc.6686>, 2021.
- 855 Welty, E., Zemp, M., Navarro, F., Huss, M., Fürst, J.J., Gärtner-Roer, I., Landmann, J., Machguth, H., Naegeli, K., Andreassen,
856 L.M., Farinotti, D., Li, H., and GlaThiDa Contributors.: Worldwide version-controlled database of glacier thickness
857 observations, *Earth Syst. Sci. Data*, 12, 3039–3055, <https://doi.org/10.5194/essd-12-3039-2020>, 2020.
- 858 Westoby, M.J., Glasser, N.F., Brasington, J., Hambrey, M.J., Quincey, D.J., and Reynolds, J.M.: Modelling outburst floods
859 from moraine-dammed glacial lakes, *Earth Sci. Rev.*, 134, 137–159, <https://doi.org/10.1016/j.earscirev.2014.03.009>,
860 2014.
- 861 Wilcox, A.C., Wade, A.A., and Evans, E.G.: Drainage events from a glacier-dammed lake, Bear Glacier, Alaska: Remote
862 sensing and field observations, *Geomorphology*, 220, 41–49, <https://doi.org/10.1016/j.geomorph.2014.05.025>, 2014.
- 863 Worni, R., Stoffel, M., Huggel, C., Volz, C., Casteller, A., and Luckman, B.: Analysis and dynamic modeling of a moraine
864 failure and glacier lake outburst flood at Ventisquero Negro, Patagonian Andes (Argentina), *J. Hydrol.*, 444–445,
865 134–145, <https://doi.org/10.1016/j.jhydrol.2012.04.013>, 2012.
- 866 Worni, R., Huggel, C., Clague, J.J., Schaub, Y., and Stoffel, M.: Coupling glacial lake impact, dam breach, and flood processes:
867 A modeling perspective, *Geomorphology*, 224, 161–176, <https://doi.org/10.1016/j.geomorph.2014.06.031>, 2014.
- 868 Xie, F., Liu, S., Gao, Y., Zhu, Y., Bolch, T., Käab, A., Duan, S., Miao, W., Kang, J., Zhang, Y., Pan, X., Qin, C., Wu, K., Qi,
869 M., Zhang, X., Yi, Y., Han, F., Yao, X., Liu, Q., Wang, X., Jiang, Z., Shangguan, D., Zhang, Y., Grünwald, R.,
870 Adnan, M., Karki, J., and Saifullah, M.: Interdecadal glacier inventories in the Karakoram since the 1990s, *Earth
871 Syst. Sci. Data*, 15, 847–867, <https://doi.org/10.5194/essd-15-847-2023>, 2023.
- 872 Yamada, T. and Sharma, C.: Glacier lakes and outburst floods in the Nepal Himalaya, *IAHS Proceedings*, 319–330, 1993.
- 873 Zaidi, R.Z. and Fordham, M.: The missing half of the Sendai framework: Gender and women in the implementation of global
874 disaster risk reduction policy, *Prog. Disaster Sci.*, 10, 100170, <https://doi.org/10.1016/j.pdisas.2021.100170>, 2021.
- 875 Zhang, G., Yao, T., Xie, H., Wang, W., and Yang, W.: An inventory of glacial lakes in the Third Pole region and their changes
876 in response to global warming, *Global Planet. Change*, 131, 148–157,
877 <https://doi.org/10.1016/j.gloplacha.2015.05.013>, 2015.

878 Zhang, M., Chen, F., Zhao, H., Wang, J., and Wang, N.: Recent Changes of Glacial Lakes in the High Mountain Asia and Its
879 Potential Controlling Factors Analysis, *Remote Sens.*, 13, 3757, <https://doi.org/10.3390/rs13183757>, 2021a.

880 Zhang, T., Wang, W., Gao, T., An, B., and Shang, X.: Glacial lake outburst floods on the High Mountain Asia: a review, *J.*
881 *Glaciol. Geocryol.*, 43, 1673–1692, <https://doi.org/10.7522/j.issn.1000-0240.2021.0066>, 2021b.

882 Zhang, T., Wang, W., An, B., Gao, T., and Yao, T.: Ice thickness and morphological analysis reveal the future glacial lake
883 distribution and formation probability in the Tibetan Plateau and its surroundings, *Global Planet. Change*, 216,
884 103923, <https://doi.org/10.1016/j.gloplacha.2022.103923>, 2022a.

885 Zhang, T., Wang, W., Gao, T., An, B., and Yao, T.: An integrative method for identifying potentially dangerous glacial lakes
886 in the Himalayas, *Sci. Total Environ.*, 806, 150442, <https://doi.org/10.1016/j.scitotenv.2021.150442>, 2022b.

887 Zheng, G., Allen, S.K., Bao, A., Ballesteros-Cánovas, J.A., Huss, M., Zhang, G., Li, J., Yuan, Y., Jiang, L., Yu, T., Chen, W.,
888 and Stoffel, M.: Increasing risk of glacial lake outburst floods from future Third Pole deglaciation, *Nat. Clim. Chang.*,
889 11, 411–417, <https://doi.org/10.1038/s41558-021-01028-3>, 2021a.

890 Zheng, G., Bao, A., Allen, S., Ballesteros-Canovas, J., Yuan, Y., and Jiapaer, G.: Numerous unreported glacial lake outburst
891 floods in the Third Pole revealed by high-resolution satellite data and geomorphological evidence, *Sci. Bull.*,
892 <https://doi.org/10.1016/j.scib.2021.01.014>, 2021b.

893 Zheng, G., Mergili, M., Emmer, A., Allen, S., Bao, A., Guo, H., and Stoffel, M.: The 2020 glacial lake outburst flood at
894 Jinwuco, Tibet: causes, impacts, and implications for hazard and risk assessment, *The Cryosphere*, 15, 3159–3180,
895 <https://doi.org/10.5194/tc-15-3159-2021>, 2021c.

896