

Antarctic Bedmap data: FAIR sharing of 60 years of ice bed, surface and thickness data

Alice C. Frémand ^{1*}, Peter Fretwell ^{1*}, Julien Bodart ^{2,1*}, Hamish D. Pritchard ¹, Alan Aitken ³, Jonathan
5 L. Bamber ^{4,50}, Robin Bell ⁵, Cesido Bianchi ⁶, Robert G. Bingham ², Donald D. Blankenship ⁷, Gino
Casassa ^{8,57}, Ginny Catania ⁷, Knut Christianson ⁹, Howard Conway ⁹, Hugh F.J. Corr ¹, Xiangbin Cui ¹⁰,
Detlef Damaske ¹¹, Volkmar Damm ¹², Reinhard Drews ¹³, Graeme Eagles ¹⁴, Olaf Eisen ^{14,51}, Hannes
Eisermann ¹⁴, Fausto Ferraccioli ^{15,1}, Elena Field ¹, René Forsberg ¹⁶, Steven Franke ¹⁴, Shuji Fujita ¹⁷,
Yonggyu Gim ¹⁸, Vikram Goel ¹⁹, Siva Prasad Gogineni ²⁰, Jamin Greenbaum ^{21,7}, Benjamin Hills ²², †
10 deceased Richard C.A. Hindmarsh ¹, Andrew O. Hoffman ⁵, Per Holmlund ²³, Nicholas Holschuh ²⁴, John
W. Holt ²⁵, Annika N. Horlings ⁹, Angelika Humbert ^{14,51}, Robert W. Jacobel ²⁶, Daniela Jansen ¹⁴, Adrian
Jenkins ²⁷, Wilfried Jokat ^{14,51}, Tom Jordan ¹, Edward King ¹, Jack Kohler ²⁸, William Krabill ²⁹, Mette
Kusk Gillespie ⁴², Kirsty A. Langley ³⁰, Joohan Lee ³¹, German Leitchenkov ³², Carlton Leuschen ³³,
Bruce Luyendyk ³⁴, Joseph MacGregor ³⁵, Emma MacKie ^{36,52}, Kenichi Matsuoka ³⁷, Mathieu Morlighem
15 ³⁸, † deceased Jérémie Mouginot ^{39,53}, Frank O. Nitsche ⁵, Yoshifumi Nogi ¹⁷, Ole A. Nost ³⁷, John Paden
³³, Frank Pattyn ⁴⁰, Sergey V. Popov ⁴¹, Eric Rignot ^{39,54,18}, David M. Rippin ⁴³, Andrés Rivera ⁴⁴, Jason
Roberts ^{45,55}, Neil Ross ⁴⁶, Anotonia Ruppel ¹², Dustin M. Schroeder ^{36,56}, Martin J. Siegert ⁴⁷, Andrew
M. Smith ¹, Daniel Steinhage ¹⁴, Michael Studinger ⁴⁸, Bo Sun ¹⁰, † deceased Ignazio Tabacco ⁶, Kirsty
Tinto ⁵, Stefano Urbini ⁶, David Vaughan ¹, Brian C. Welch ²⁶, Douglas S. Wilson ⁴⁹, Duncan A. Young
20 ⁷, Achille Zirizzotti ⁶

¹British Antarctic Survey, Cambridge, UK.

²School of GeoSciences, University of Edinburgh, Edinburgh, UK.

³School of Earth Sciences, The University of Western Australia, Australia

25 ⁴School of Geographical Sciences, University of Bristol, UK

⁵Lamont-Doherty Earth Observatory of Columbia University, Palisades, USA

⁶Istituto Nazionale di Geofisica e Vulcanologia, Rome, Italy

⁷Institute for Geophysics, University of Texas at Austin, USA

⁸General Directorate of Water (DGA), Santiago, Chile

30 ⁹Earth and Space Sciences, University of Washington, Seattle, USA

¹⁰Polar Research Institute of China, Shanghai, China

¹¹Bundesanstalt für Geowissenschaften und Rohstoffe, Germany

¹²Federal Institute for Geosciences and Natural Resources, Hannover, Germany

¹³Tübingen University, Department of Geosciences, Tübingen, Germany

35 ¹⁴Alfred Wegener Institute, Helmholtz Centre for Polar and Marine Research, Bremerhaven, Germany

¹⁵Istituto Nazionale di Oceanografia e di Geofisica Sperimentale, Trieste, Italy

¹⁶DTU Space, Lyngby, Denmark

¹⁷National Institute of Polar Research, Tokyo, Japan

¹⁸Jet Propulsion Laboratory, California Institute of Technology, Pasadena, USA

40 ¹⁹National Centre for Polar & Ocean Research (NCPOR), Ministry of Earth Sciences, Vasco-da Gama, Goa - 403804, India

²⁰University of Alabama, Tuscaloosa, AL 35487, USA

- ²¹Scripps Institution of Oceanography, La Jolla, USA
²²Department of Earth and Space Sciences, University of Washington, Seattle, USA
²³Stockholm University, Stockholm, Sweden
45 ²⁴Amherst College, Amherst, USA
²⁵University of Arizona, Tucson, USA
²⁶St. Olaf College, Northfield, MN 55057, USA
²⁷Northumbria University, Newcastle, UK
²⁸Norwegian Polar Institute, Fram Centre, Tromsø, Norway
50 ²⁹NASA Wallops Flight Facility, Virginia, USA
³⁰Asiaq, Greenland Survey, Nuuk, Greenland
³¹Korean Polar Research Institute, Incheon, South Korea
³²Institute for Geology and Mineral Resources of the World Ocean, St. Petersburg, Russia
³³Centre for Remote Sensing of Ice Sheets, University of Kansas, Lawrence, USA
55 ³⁴Earth Research Institute, University of California in Santa Barbara, USA
³⁵Cryospheric Sciences Lab, NASA Goddard Space Flight Center, Greenbelt, Maryland, USA
³⁶Department of Geophysics, Stanford University, Stanford, CA, USA
³⁷Oceanbox.io, Norway
³⁸Department of Earth Sciences, Dartmouth College, Hanover, USA
60 ³⁹Department of Earth System Science, University of California Irvine, Irvine CA, USA
⁴⁰Laboratoire de Glaciologie, Université Libre de Bruxelles, Brussels, Belgium
⁴¹Polar Marine Geosurvey Expedition, St. Petersburg, Russia
⁴²Western Norway University of Applied Sciences, Bergen, Norway
⁴³Department of Environment and Geography, University of York, York, UK
65 ⁴⁴Departamento de Geografía, Universidad de Chile, Santiago, Chile
⁴⁵Australian Antarctic Program Partnership, Institute for Marine & Antarctic Studies, University of Tasmania, Hobart, Australia
⁴⁶School of Geography, Politics and Sociology, Newcastle University, Newcastle-upon-Tyne, UK.
⁴⁷Grantham Institute and Department of Earth Science and Engineering, Imperial College London, London, UK
70 ⁴⁸NASA Goddard Space Flight Center, Greenbelt, USA
⁴⁹Marine Science Institute, University of California Santa Barbara, USA
⁵⁰Department of Aerospace and Geodesy, Technical University of Munich, Germany
⁵¹Department of Geoscience, University of Bremen, Bremen, Germany
⁵²Department of Geological Sciences, University of Florida, USA
75 ⁵³University of Grenoble Alpes, CNRS, IRD, Grenoble INP, IGE, Grenoble, France
⁵⁴Department of Civil and Environmental Engineering, University of California Irvine, Irvine CA, USA
⁵⁵Australian Antarctic Division, Kingston, Australia
⁵⁶Department of Electrical Engineering, Stanford University, Stanford, CA, USA
⁵⁷University of Magallanes, Punta Arenas, Chile

80

*These authors contributed equally to this work.

Correspondence to: Alice C. Frémand (almand@bas.ac.uk) and Peter Fretwell (ptf@bas.ac.uk).

85

Abstract. One of the key components of this research has been the mapping of Antarctic bed topography and ice thickness parameters that are crucial for modelling ice flow and hence for predicting future ice loss and ensuing sea level rise. Supported by the Scientific Committee on Antarctic Research (SCAR), the Bedmap3 Action Group aims not only to produce new gridded maps of ice thickness and bed topography for the international scientific community, but also to standardize and make available all the geophysical survey data points used in producing the Bedmap gridded products. Here, we document the survey data used in the latest iteration, Bedmap3, incorporating and adding to all of the datasets previously used for Bedmap1 and Bedmap2, including ice-bed, surface and thickness point data from all Antarctic geophysical campaigns since the 1950s. More specifically, we describe the processes used to standardize and make these and future survey and gridded datasets accessible under the ‘Findable, Accessible, Interoperable and Reusable’ (FAIR) data principles. With the goals to make the gridding process reproducible and to allow scientists to re-use the data freely for their own analysis, we introduce the new SCAR Bedmap Data Portal (bedmap.scar.org, last access: 1 March 2023) created to provide unprecedented open access to these important datasets, through a webmap interface. We believe that this data release will be a valuable asset to Antarctic research and will greatly extend the life cycle of the data held within it. Data are available from the UK Polar Data Centre: <https://data.bas.ac.uk>.

100 **1 Introduction**

Detailed and extensive information on ice thickness and bed topography is needed to reconstruct the geological and geomorphic history of Antarctica, and to model ice flow in order to predict the ice sheet’s future contribution to sea level rise (Fretwell et al., 2013; DeConto and Pollard, 2016; Scambos et al., 2017; The IMBIE team, 2018; Rignot et al., 2019; Morlighem et al., 2020; DeConto et al., 2021; Fox-Kemper et al., 2021). This information has primarily been gathered using ground-based or airborne radio-echo sounding (RES) and seismic surveys conducted by over 50 institutions under multiple national programmes across Antarctica over the last 60 years. However, up until now, these survey datasets had not been held centrally nor been standardized, thus limiting their accessibility to the wider Antarctic community. Consequently, previous attempts to map the ice sheet on the continental scale, such as Bedmap 1 (Lythe et al, 2001), Bedmap2 (Fretwell et al., 2013) and Bedmachine Antarctica (Morlighem et al., 2020), have had to first find data, gain permissions, download, clean and standardize hundreds of datasets from survey campaigns of many different sources, before finally constructing the grids. These constraints have led to only a limited number of gridded products being made, often years apart and with a long lag after the surveys have been completed. Given the rapidity of change affecting large parts of the Antarctic Peninsula and threatening the stability of the West Antarctic Ice Sheet, and the urgency in predicting future ice loss (e.g. Mouginot et al., 2014; Golledge et al., 2015; DeConto & Pollard 2016; Gardner et al., 2018; Seroussi et al., 2020; Levermann et al., 2020), it is essential, beyond the legal imperative stated in the Section III 1 c of the Antarctic Treaty for these data to be freely available to the international community.

Supported by the Scientific Committee of Antarctic Research (SCAR) Bedmap3 Action Group, this paper presents the release of all of the underlying ice bed, surface and thickness survey data points that have been used in the previous and upcoming versions of Bedmap gridded products (Bedmap1, Bedmap2 and Bedmap3). We discuss the standardisation of the data following the Findable, Accessible, Interoperable and Reusable (FAIR) data principles (Wilkinson, 2016) and the use of consistent data formats and attributes, as agreed by the international community through the Bedmap project. Additionally, we introduce the SCAR Bedmap Data Portal (bedmap.scar.org, last access: 18 October 2022) which offers the ability to search individual datasets within one stand-alone map-based platform and increases the discoverability and accessibility of the data. Our aim is to make the gridding process as reproducible as possible by making the source survey data fully standardised, openly available and easily accessible through one portal. It is expected that the data presented in this paper will facilitate the creation of a range of new gridded products at different spatial resolutions, enable the application of emerging techniques such as machine learning and geostatistical techniques to fill gaps between direct measurements, and provide a common data sharing baseline for future geophysical surveying of Antarctica. A follow-up publication to this paper will introduce the new gridded products from Bedmap3.

Section 2 of this paper discusses the background and evolution of past surveying of Antarctica using geophysical techniques. Section 3 presents how the source data have been standardised. Section 4 details how the data are published following the FAIR data principles.

2. Background: evolution of the Bedmap products

2.1 1950 – 1980: First geophysical measurements of ice thickness in Antarctica

Prior to the start of radio echo-sounding (RES) measurements over Antarctica, ice thickness was primarily obtained from seismic techniques (Schroeder et al., 2020). RES was developed in the 1950s after studying the transparency of ice to specific radio frequencies and the realisation of its potential for glaciological research by Armory Waite and Stanley Evans (Turchetti et al., 2008). After several years of developments and tests, the first long-range airborne radio-echo sounding of the Antarctic Ice Sheet was undertaken by the Scott Polar Research Institute (SPRI), with support from the United States National Science Foundation and the Technical University of Denmark in the late 1960s (Robin et al., 1970). By 1975, the elevation data from the 1971-1975 Antarctic field seasons were compiled into a series of topographic maps of Antarctica (Drewry, 1975). These became the first comprehensive topographic maps of the Antarctic continent and would lead to more sophisticated compilation grids in the following years.

2.2 1980 – 1990: First compilation efforts to map Antarctica

By 1983, around 50% of the Antarctic ice sheet had at least some airborne RES survey measurements (i.e. within a 50 to 100 km square grid cell) (Drewry et al., 1982) and the first compilation bed elevation map was published. Sheets 3 and 4 in

the SPRI Glaciology and Geophysical Folio Series (Drewry, 1983) became a reference for bedrock surface and ice thickness
150 for Antarctica. The grid contours of bed elevation were drawn from ice thickness data collected on sparse surface traverses
and by airborne surveys over the entire continent, using state-of-the-art digital mapping techniques, although in many areas
survey lines were separated by hundreds of km. (Lythe et al., 2000).

2.3 1990 - 2020: The Bedmap era

In the mid-1990s, advances in radar data acquisition and development of modern Global Navigation Satellite Systems
155 (GNSS) led to substantial improvements in the coverage and accuracy of the data collected. Until then the positioning was
often inferred using the “unaided inertial navigation” technique which often had substantial positioning errors (Schroeder et
al. 2020).

In 1996, the first BEDMAP consortium group (here termed Bedmap1), was set up under the joint sponsorship of the
European Ice Sheet Modelling Initiative (EISMINT) and SCAR. It led to the publication of the first Bedmap products: a printed
160 map published in 2000 (Lythe et al., 2000) and its associate digital version in 2001 (Lythe et al, 2001). For more than a decade,
Bedmap1 played a crucial role in providing large-scale boundary conditions of the Antarctic Ice Sheet for observational and
modelling applications (e.g. Pollard and DeConto, 2009; Shepherd et al., 2012). The gridded map contained ice thickness data
from direct measurements, including ground-based and airborne RES but also from seismic and gravimetric measurements
(Lythe et al, 2001). Although pioneering, this first gridded product had a relatively low resolution of 5-km and suffered from
165 large data gaps particularly over East Antarctica, which resulted in low-confidence values in those areas (see Figure 1a).

Motivated by a wealth of newly acquired data over Antarctica and improved Geographic Information System techniques,
the second version of Bedmap was published in 2013 (Fretwell et al., 2013). The Bedmap2 product was composed of several
grids including ice bed, surface and thickness data for Antarctica and their associated uncertainties, in addition to several masks
(e.g. continental ice-edge, grounding line, ice-shelf extent, etc.) useful for ice-sheet modelling. This compilation included 25
170 million measurements, an order of magnitude more than were used in Bedmap1. This time, the ice thickness, bed and surface
elevation grids were provided at a uniform 1-km spacing, but still with a native interpolation resolution of 5-km to satisfy the
data providers’ conditions for use (Fretwell et al., 2013).

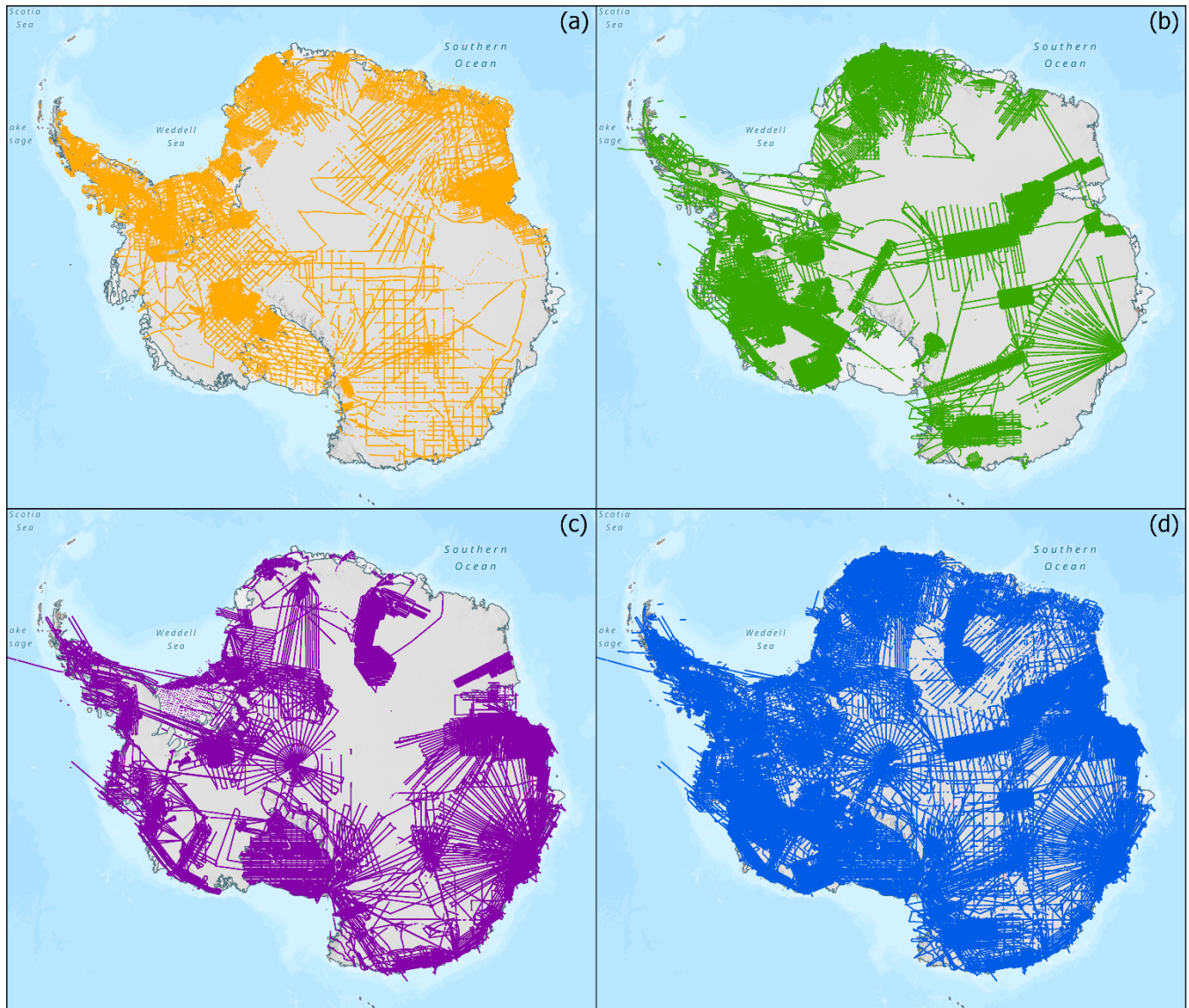
Since 2012, new RES datasets have been collected across Antarctica, with a particular focus on the ‘poles of ignorance’
identified in Bedmap2 (Pritchard, 2014), thus filling known data gaps in key areas of East Antarctica (see Sect. 3.1). In
175 addition, new hybrid compilation efforts such as BedMachine Antarctica have used a combined modelling-observation
approach, including a mass conservation method, to generate an improved bed topography and ice thickness in data-deficient
areas of the Antarctic coastline (Morlighem et al., 2020).

2.4 2020 - Present: General Approach for Bedmap3

In 2020, the SCAR Bedmap3 Action Group was tasked to produce an updated version of the Bedmap gridded products
180 and to improve the accessibility of the underlying survey datasets of Antarctic ice thickness and bed topography (see Figure

1a-c) through standardisation and dissemination of the data via a new SCAR Bedmap data Portal. This will serve as a common endpoint to discover and interact with all underlying Bedmap data.

The Bedmap3 gridded products will be constructed using a similar process to Bedmap2 but will offer a significant improvement in survey-data coverage, along with a newly updated grounding line, updated altimetry-derived surface topography, and updated ice extent and bathymetry. Each iteration of Bedmap contains large survey-data additions that have increased the accuracy of the gridded products. In total, Bedmap3 contains 77 million points and thus includes twice the number of new data points available to Bedmap2 (Figure 1d, Table 1 and S2).



Source: PGC, UMN, Esri, Esri, Garmin, FAO, NOAA, USGS
Spatial reference: WGS 1984 Antarctic Polar Stereographic (EPSG: 3031)

Figure 1: Data coverage for the three generations of Bedmap products. (a) Data coverage for Bedmap1. (b) Additional data coverage for Bedmap2. (c) Additional data coverage for Bedmap3. (d) Total combined coverage now available.

3. Source data, standardisation and pre-processing

3.1 Ice thickness, surface and bed elevation data

195 The primary source data consist of survey point measurements of ice thickness, bed elevation and surface elevation, which principally comes from airborne radar surveys and seismic soundings, and to a smaller extent from ground-based radar surveys. We present here the data compiled within each version of Bedmap.

Bedmap1 source data (1950s-1990s) often lack the campaign metadata available for more modern datasets, and so we present these as a single dataset. In total, the data standardised for Bedmap1 consists of almost 2 million points from 127
200 individual campaigns (Table 1). While the data coverage is substantial, especially over West Antarctica and the Antarctic Peninsula (Fig. 1a), the distance between individual flight lines and soundings is much larger than those of the Bedmap2 and Bedmap3 data. In addition, though efforts continue to leverage modern data to improve the geometric, positioning, and radiometric calibration for this archival data, the spatial accuracy of the survey data is poorer due to the use of older navigation techniques prior to the GNSS era (see Schroeder et al., 2019; Schroeder et al., 2021).

205 Additional Bedmap2 source data were acquired from 2000 to 2012 by 66 new surveys that contributed a further 27 million points (Table S1), filling major gaps over West Antarctica’s fast-flowing ice streams such as Pine Island (Vaughan et al., 2006) and Thwaites (Holt et al., 2006) glaciers, as well as over East Antarctica’s Gamburtsev Subglacial Mountains (Sun et al., 2009; Bell et al., 2011; Ferraccioli et al., 2011) and Wilkes Subglacial Basin (Frederick et al., 2016) (Fig. 1b).

Further new data available to Bedmap3 come from 84 new surveys by 15 data providers, representing an additional 52
210 million data points and 1.9 million line-kilometres of measurements (Table S2). These latest data have filled major gaps, particularly in key sector of East Antarctica, including the South Pole (Jordan et al., 2018) and Pensacola basin (Paxman et al., 2019), Dronning Maud Land, Recovery Glacier (Forsberg, 2017) and Dome Fuji (Eagles et al., 2018; Karlsson et al., 2018), and Princess Elizabeth Land (Cui et al., 2020; Popov, 2020). Additional data covering glacier troughs and floating ice shelves give insights into previously under-sampled sectors, such as over the Antarctic Peninsula, West Antarctic coastlines or over
215 the TransAntarctic Mountains as part of NASA Operation IceBridge (MacGregor et al., 2021).

Table 1: Comparison of data campaigns and coverage of the different Bedmap generations.

Bedmap Version	Cumulative campaigns	Cumulative data points	Cumulative data set volume
Bedmap1	127	2 million	213 MB

Bedmap2	193	29 million	7.2 GB
Bedmap3	277	82 million	22.8 GB

3.2 Standardisation

220 Due to the large number of data providers and lack of common protocols, the data received as part of Bedmap data calls came in various forms, including text files, CSV, ASCII, or Excel files. To ensure long-term accessibility, all submitted data files were standardised based upon a template agreed by the SCAR action group and converted to a specific Comma Separated Value (CSV) format. Open and easy-to-use, this format has been widely used in the scientific community and is well-suited to store tabular data.

225 As an ASCII-delimited file, the CSV format allows long-term preservation of the data thanks to its very simple structure. This format is often recommended (e.g., <https://www.gov.uk/government/publications/recommended-open-standards-for-government/tabular-data-standard>, last access: 1 March 2023) but no strict definition exists. One common definition is the RFC 4180 definition (<https://www.ietf.org/rfc/rfc4180.txt>, last accessed: 1 March 2023) which describes the CSV format as tabular data with 0 to 1 header rows, followed by the same number of field separated by commas. With only one row header, the metadata allowed by this definition is extremely poor. To add information, a solution is to repeatedly add the metadata to each data row, but at the cost of greatly increasing the file size. That is why, the CSV on the Web (CSVW) standard developed by the W3C working group (<https://www.w3.org/TR/tabular-data-primer/> <https://www.w3.org/TR/tabular-data-primer/>, last accessed: 1 March 2023) or NCCSV, a NetCDF-compatible ASCII CSV file (<https://coastwatch.pfeg.noaa.gov/erddap/download/NCCSV.html>, last accessed: 1 March 2023) developed by NOAA recommend adding the metadata or notes in a separated JSON or CSV file. Although the metadata as described by the CSVW or NCCSV recommendations are excellent in terms of machine-readability, the metadata are hidden in a complicated structure that compromises human-readability. For this reason, we used an extended version of CSV that purposely does not follow the RFC 4180 definition but provides the possibility to add metadata in the data file itself. Different definitions of such format exist such as the geoCSV format developed within the GeoWS project (<http://geows.ds.iris.edu/documents/GeoCSV.pdf>, last accessed: 1 March 2023) or the extCSV recommended by the World Ozone and Ultraviolet Radiation Data Centre (<https://woudc.org/about/formats.php>, last accessed: 1 March 2023).

240 The format used for the Bedmap Data Portal follows most of the geoCSV recommendation, headers are compliant with the CF convention (<https://cfconventions.org/>, last accessed: 1 March 2023) and include recommended attributes from the Attribute Convention for Data Discovery (ACDD, https://wiki.esipfed.org/Attribute_Convention_for_Data_Discovery_1-3, last accessed: 1 March 2023). As part of the standardisation, a specific header and structure consisting of identical variable names in a strict order for all the ice thickness data was developed in order to simplify access, particularly for programming purposes. The format consists of (i) an extended header section (ii) a header row composed of the column name following the

CF convention and units in parentheses; and finally (iii) the data using comma as the separator. The extended header consists of general information regarding each campaign such as the year, the name of the main investigator, funding and processing details as shown in Table 3. The complete list and order of the attributes and variables is given in Table 2.

The developed format is machine readable making the conversion of the files to CSVW or NCCSV standards straightforward if necessary.

Table 2. List of variable and attribute names provided in the CSV files To guarantee the machine readability of the variable names, the use of special characters was avoided. Conventions include the CF convention (<https://cfconventions.org/>, last accessed: 29 July 2022) and recommended attributes from the Attribute Convention for Data Discovery (ACDD, https://wiki.esipfed.org/Attribute_Convention_for_Data_Discovery_1-3, last accessed: 1 March 2023)

Variable or attribute name	Unit	Details	Convention
Extended header information			
project		Name of the project or campaign name	ACDD
time_coverage_start	Year	Start time of acquisition	ACDD
time_coverage_end	Year	End time of acquisition	ACDD
creator_name		Name of contact person or institute responsible for the creation of the dataset	ACDD
institution		The name of the institution principally responsible for originating this data	ACDD, CF
acknowledgement		Name of the funding agency	ACDD
source		Digital Object Identifier for where the original data is deposited	ACDD, CF
references		References pointing to the main publication or discussion of the dataset	ACDD
platform		Type of platform used for the survey: ground-based radar, airborne radar or seismic	CF
instrument		Name of the instrument system used for the acquisition	ACDD
history		Acquisition or processing lineage information	ACDD
electromagnetic_wave_speed_in_ice	meters/microseconds (m/ μ s)	Electromagnetic wave speed in ice	
firn_correction	Meters (m)	Firn correction	
centre_frequency	MegaHertz (MHz)	Centre frequency	
comment		Comment section used to give the Bedmap version	ACDD, CF
metadata_link		Link to the Bedmap Digital Object Identifier	ACDD
license		URL of the license used	ACDD
conventions		Name of the conventions used	ACDD
Variable names			
trajectory_id		Line or Flight ID	CF
trace_number		Trace number from the specific line given in Line_ID	

longitude	decimal degrees (east)	Longitude (WGS84 EPSG: 4326)	CF
latitude	decimal degrees (north)	Latitude (WGS84 EPSG: 4326)	CF
date	YYYY-MM-DD	Date following ISO 8601 format: YYYY: year, MM: month, DD: day	
time.UTC	HH:MM:SS	UTC time following ISO 8601 format: HH: hours, MM: minutes, SS: seconds	
surface_altitude	Meters (m)	Surface elevation or altitude (referenced to WGS84)	CF
land_ice_thickness	Meters (m)	Ice thickness	CF
bedrock_altitude	Meters (m)	Bed elevation or altitude (referenced to WGS84)	CF
two_way_travel_time	Seconds (s)	Two-way travel time	
aircraft_altitude	Meters (m)	Aircraft elevation or altitude when applicable (referenced to WGS84)	
along_track_distance	Meters (m)	Distance in the along-track direction	

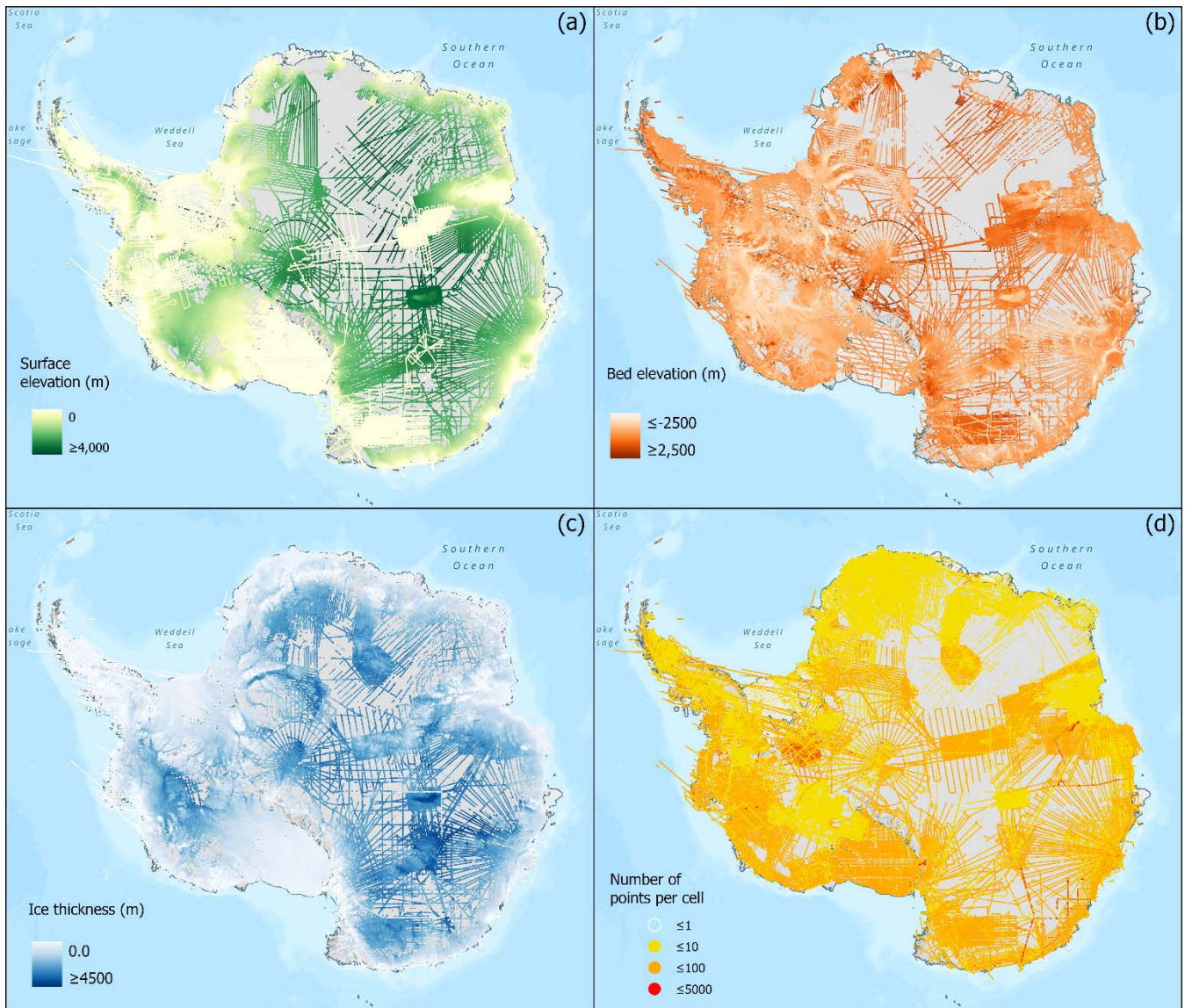
260 **Table 3 Example of header information provided for the 2018 Thwaites glacier radar data. The extended header section can be described as follows: (a) each line is introduced by a comment (“#”) character, (b) each line contains a single header item, (c) the colon character (“:”) is used as the key/value separator, (d) units are in parentheses, (e) attributes preferably use a common vocabulary such as the CF convention and includes attributes from the ACDD.**

```
#project: Thwaites Glacier (ITGC).
#time_coverage_start: 2018
#time_coverage_end: 2019
#creator_name: British Antarctic Survey.
#institution: British Antarctic Survey.
#acknowledgement: NERC/NSF International Thwaites Glacier Collaboration (ITGC).
#source: https://data.cresis.ku.edu/
#references: https://doi.org/10.5194/tc-14-2869-2020
#platform: airborne radar.
#instrument: PASIN.
#history: 2-D Synthetic Aperture Radar processing
#electromagnetic_wave_speed_in_ice: 168 (meters/microseconds)
#firn_correction: 10 (m)
#centre_frequency: 150 (MHz)
#comment: Part of Bedmap3
#metadata_link: https://doi.org/10.5285/91523ff9-d621-46b3-87f7-ffb6efcd1847
#license: https://creativecommons.org/licenses/by/4.0/
#Conventions: ACDD-1.3, CF-1.8
```

3.3 Summarised point data

In addition to providing standardised CSV data (see Section 3.1), we also provide the data as shapefile and geopackage lines and statistically-summarised points. Lines were calculated automatically from the point data and split each time a gap of more than 5 km between two data points was found. For Bedmap1, due to the sparsity of points, it was not possible to convert the data to shapefile or geopackage lines, thus, only the Bedmap1 shapefile points are provided as part of this data release. Please note also that the Bedmap1 data are not split per campaign as per the Bedmap2 and Bedmap3, and is only provided as a single geopackage or shapefile point files.

The spatial distribution of the full-resolution survey point data is heterogeneous with, for example, dense, metre-scale sampling along modern flight-lines that are often separated across-track by kilometres to hundreds of kilometres, and this heterogeneity varies between campaigns and data providers. Uneven data distribution can cause gridding algorithms to be overly weighted to those areas with the highest sampling frequency, to the detriment of adjacent areas with valid data but sparser sampling. To reduce the impact of data density on gridding, the statistically-summarised shapefile/geopackage point dataset (centred on a continent-wide 500 m x 500 m grid) reports the average values of the full-resolution survey data plus information on their distribution (Table 4). These summary statistics enable assessment of the confidence in the averaged data values and the variability of the measurements within each cell (e.g., bed roughness). Figure 2 gives an insight to the mean values of ice thickness, bed and surface elevation as well as the number of points per cells used for the calculation.



280 Source: PGC, UMN, Esri, Esri, Garmin, FAO, NOAA, USGS
 Spatial reference: WGS 1984 Antarctic Polar Stereographic (EPSG: 3031)

Figure 2 Statistically-summarised data points. (a) Mean surface elevation in meters over Antarctica. (b) Mean bed elevation in meters over Antarctica. (c) Mean ice thickness in meters over Antarctica. (d) Number of points per cell used for the calculation of ice thickness. All elevation values in (a-b) are given with reference to the WGS84 ellipsoid.

285 **Table 4. List of summary statistics calculated for each shapefile point. For each variable, we provide its short name, long name and associated unit when applicable. These statistics are calculated for each point of the shapefile points file.**

Short name	Long name	Units
Cnt_bed	Number of points for bed elevation	-

Cnt_surf	Number of points for surface elevation	-
Cnt_thick	Number of points for ice thickness	-
IQR_bed	Interquartile range for bed elevation points	Meters
IQR_surf	Interquartile range for surface elevation points	Meters
IQR_thick	Interquartile range for ice thickness points	Meters
Max_bed	Maximum value of bed elevation	Meters
Max_surf	Maximum value of surface elevation	Meters
Max_thick	Maximum value of ice thickness	Meters
Mean_bed	Mean value of bed elevation	Meters
Mean_dist	Mean distance between cell centre and points	Meters
Mean_surf	Mean value of surface elevation	Meters
Mean_thick	Mean value of ice thickness	Meters
Med_bed	Median value of bed elevation	Meters
Med_surf	Median value of surface elevation	Meters
Med_thick	Median value of ice thickness	Meters
Min_bed	Minimum value of bed elevation	Meters
Min_surf	Minimum value of surface elevation	Meters
Min_thick	Minimum value of ice thickness	Meters
SD_bed	Standard deviation of bed elevation	Meters
SD_surf	Standard deviation of surface elevation	Meters
SD_thick	Standard deviation of ice thickness	Meters
STE_bed	Standard error of bed elevation	Meters
STE_surf	Standard error of surface elevation	Meters
STE_thick	Standard error of ice thickness	Meters

3.4 Quality control and limitations

290

The purpose of this data release is to include all possible data collected over the last 60 years without discriminating on the quality of the data. Data has been directly compiled from the data providers, with only minimal quality checks: all non-value data were converted to -9999, including any negative ice thickness values and any points with clear outliers. We checked

the minimum and maximum values of each field to ensure the data are in a reasonable range and calculated mean and standard
295 deviation on each dataset to identify potential issues. For example, if longitude/latitude values did not fall within the expected
-180 to 180 or -50 to -90 degrees range respectively, the entire row was removed. When no ice thickness values were provided
but surface and bed elevation values existed, we simply calculated ice thickness by subtracting the surface value from the bed
value. At times, bed elevation was higher than surface elevation, likely due to issues with the semi-automatic picker used to
extract the surface and bed reflector or a lack of distinctive reflectors in areas of shallow ice. To prevent this affecting the
300 gridded product, we converted these values to -9999 for both the surface and the bed. Finally, we also conducted routine
checks on the ice thickness data by comparing the given ice thickness value with the inferred ice thickness calculated from
subtracting surface with bed. If these did not match, we placed -9999 on the ice thickness values.

File naming conventions were also used throughout to easily identify a specific dataset as follows:
DataProvider_Year_CampaignName_TypeofData_BM3. The type of data used was separated into three categories: Airborne
305 Radar (AIR), Ground-based Radar (GRN), and Seismic (SEI) data. The “BM3” abbreviation at the end identifies the datasets
was part of the Bedmap3 compilation to differentiate from the Bedmap 1 and 2 (BM1 and BM2) compilations. For instance,
the file named ‘NASA_2019_ICEBRIDGE_AIR_BM3.csv’ refers to the ICEBRIDGE airborne campaign led by NASA in
2019. Providing an overall uncertainty value for all the bed elevations compiled by Bedmap is challenging due to the amount
of data providers and radar systems used in the last 60 years (see Appendix tables). This uncertainty is often calculated as the
310 RMS error of bed elevation values at crossover points across a survey area (e.g. Fremand et al., 2022). This error typically
amounts to tens of meters and is constrained by changing bed characteristics, the radar system used and/or the processing of
the data, as well as the value used for the propagation of radar waves through ice which is used to convert the radar two-way
travel time to depth in meters. The metadata compiled by Bedmap for each survey provides information on whether any firn
correction has been applied to the elevation values and on the value used for speed of electromagnetic waves through the ice.

315 In order to address the uncertainty in elevations values for the entire Bedmap dataset, we provide standard deviation,
interquartile range, and standard error statistics parameters which are key to determine the variability of values in each
500mx500m cell. The standard deviation represents the typical deviation of each data point to the mean value of the specific
cell and thus can be used to assess how accurately the mean value is representative of the real values. The standard error gives
information about the variability across all the data points in the specific cell and is used to estimate how well a specific data
320 point is representative of the whole population. A high standard error indicates that the data within a specific cell are widely
spread around the population mean. The interquartile range calculates the difference between the first quartile and the third
quartile and is used to measure the variability of the middle 50% of all values. Contrary to the standard error and standard
deviation, the interquartile range is not affected by extreme outliers that are present in a specific cell. Together, these
parameters are used to assess the level of confidence in the data, where low values reflect a stronger fidelity in the data.

325 We also note that the spatial accuracy of datasets included in Bedmap2 and Bedmap3 is significantly higher than for
Bedmap1 due to the use of high-resolution GPS data, which have allowed for much better accuracy in the location of the
measurements for all surveys acquired from 1990s onwards. The accuracy of each bed elevation or ice thickness values can

330 vary from sub-meter accuracy for modern GPS measurements (Fremand et al., 2022) to several kilometres for data compiled
as part of the Bedmap1 dataset (Schroeder et al., 2019). As this spatial uncertainty directly impacts the position of the elevation
values and therefore their accuracy, the elevation uncertainty statistics parameters can be used to indirectly assess the
confidence in the spatial accuracy. However, the statistics parameters are only meaningful if a representative set of points are
used to calculate the ice thickness, bed and surface elevation.

335 As part of the follow-up publication to this paper introducing the new Bedmap3 gridded products, we will include the
final grids and maps that will study and exclude possible cross-over errors and other possible problems in order to provide
high-quality gridded products.

4. Publishing the Bedmap source data

The Bedmap source data are available via the UK Polar Data Centre (PDC, <https://www.bas.ac.uk/data/uk-pdc/>, last
accessed: 1 March 2023), a trusted repository whose purpose is to manage polar datasets. Part of the Environment Data Services
(EDS) of the Natural Environment Research Council (NERC) and certified by the CoreTrustSeal
(<https://www.coretrustseal.org/>, last access: 1 March 2023), PDC applies best data management practices and requirements to
facilitate reuse of the datasets stored on its data catalogue (<https://data.bas.ac.uk/>, last access: 1 March 2023). To increase the
discoverability of the datasets, a specific data portal – the SCAR BEDMAP data Portal (bedmap.scar.org, last access: 1 March
2023) has been developed by the Mapping And Geographic Information Centre (MAGIC) team from the British Antarctic
Survey. The publishing procedure described here is expected to be used for all upcoming versions of Bedmap with regular
updates allowing new source data to be easily accessible to the community.

345 Below, we discuss the release of the datasets centered around the FAIR data principles (Section 4.1), and present the data
portal infrastructure and its functionalities (Section 4.2).

4.1. FAIR data publishing

350 The source data for each version of Bedmap has been published as two separate Digital Object Identifier (DOI) datasets,
the first dataset contains all the standardised CSV files described in Section 3.1, the second dataset contains all the lines and
point shapefiles as discussed in Section 3.2.

The derived, gridded Bedmap products are also published as separate DOI datasets. Previously available through ftp
services, Bedmap1 and Bedmap2 products are now citable and properly stored for long-term preservation. Table 5 presents
the different links to the data for the different versions of Bedmap.

355

Table 5. List of references for the Bedmap products. For each Bedmap product (Bedmap1, Bedmap2 and Bedmap3), we provide
the link to the standardised CSV and shapefile data.

Bedmap version	Standardised CSV	Shapefile points
Bedmap1	https://doi.org/jg6q (Lythe et al. 2022)	https://doi.org/jg6s (Lythe et al. 2022)
Bedmap2	https://doi.org/jg6r (Fretwell et al., 2022)	https://doi.org/jg6t (Fretwell et al., 2022)
Bedmap3	https://doi.org/jg6n (Fremand et al., 2022)	https://doi.org/jg8b (Fremand et al., 2022)

To make the data findable, ISO 19115/19139 metadata are provided for each dataset. Each metadata record provides general information about the dataset and is registered and indexed accordingly in the UK Polar Data Centre (PDC) data catalogue Discovery Metadata System (<https://data.bas.ac.uk/>, last accessed: 1 March 2023) as well as the NERC data catalogue (<https://data-search.nerc.ac.uk/>, last accessed: 1 March 2023). More detailed information can be found in the extended header of the CSV data, such as the name of the data providers, the funding received, and a reference to cite the data. Although the metadata are succinct, it is possible to easily transform the CSV data to NetCDF with extended metadata as shown in the Geophysics Book (https://antarctica.github.io/PDC_GeophysicsBook/BEDMAP/Get_full_metadata_from_CSV_file.html, last accessed: 1 March 2023).

A DOI is provided for every Bedmap dataset (Table 5), making them retrievable and citable. For previously published datasets, the original DOI is provided in the source metadata (Section 3.2) to ensure traceability and should be used when the survey is used individually.

For universal accessibility, the data is downloadable through a standard HTTPS-protocol where no login account is required. We used the web-based RAMADDA (Repository for Archiving and MANaging Diverse DATA; <https://geodesystems.com/>) data repository system which is an open-source content and data management platform and works following a simple folder structure, with datasets organised by data-provider name to replicate the structure of the Data Portal.

To enhance interoperability and reusability, we published the underlying data using a specific CSV format, with detailed and standardised variable names coming from FAIR vocabularies (see Table 4 and Section 3.2). To be re-usable, the data is released under Creative Commons license CC-BY (<https://creativecommons.org/licenses/by/4.0/>, last accessed: 1 March 2023) which allows any user to use the data freely and with flexibility, whilst at the same time ensuring acknowledgment of those involved in the collection and processing of the data. Keywords from the Global Change Master Directory (GCMD, 2021) are used to describe the data in a consistent and comprehensive manner and increase the interoperability of the datasets. The end goal is to provide all the information necessary for effective, long-term data re-use. In addition, we developed interactive, open-source Jupyter Notebook tutorials written in Python to interact with the data programmatically. Codes to convert the standardised CSV files to the point and line files as described in section 3.3 are for example provided. These resources are

archived on the BAS GitHub repository and provided via an interactive web interface using Jupyter Book (https://antarctica.github.io/PDC_GeophysicsBook, last accessed: 1 March 2023). In addition, a specific python package allows to read and plot the specific CSV formatted data (<https://github.com/paul-breen/xcsv>, Paul Breen, 2022, last access: 1 March 2023). We believe these to be beneficial for assisting users in accessing the data and reproducing their own gridded products independently of the Bedmap project.

4.2. The SCAR Bedmap data portal

The newly-developed SCAR Bedmap Data Portal (bedmap.scar.org, last access: 1 March 2023) provides a common endpoint for interacting with the Bedmap source data and products. The webmap architecture is based upon the well-used SCAR Antarctic Digital Database webmap (<https://add.scar.org>, last access: 1 March 2023). The Data Portal is divided into five layer-menus: “Base layers”, “Topographic information”, “BEDMAP1”, “BEDMAP2”, and “BEDMAP3”. The first menu contains the gridded products: ice bed, surface and thickness grids for Antarctica, currently contains Bedmap2 grids; these will be updated with new Bedmap3 grids as they become available. The second menu contains general topographic information such as coastline and Ice-Land surface contours taken from the Antarctic Digital Database (<https://www.bas.ac.uk/project/add/>, last accessed: 1 March 2023). The three Bedmap tabs contain the shapefile layers for individual campaigns. When clicking on a point of the map, the user has direct access to the information of the survey and statistics for the specific point (see Table 4).

At the top of the interface several widgets are available, designed to help users with basic tasks such as measuring distances, areas and elevations or search for specific place names. The link to the direct download repository is also provided.

5. Conclusion

We have presented here the release of the source survey data on ice thickness, bed and surface elevation data used in Bedmap gridded products, including the upcoming Bedmap3. Altogether, this data release represents over 77 million data points collected as part of 277 campaigns since the 1950s. In addition to the previous Bedmap 1 and 2 datasets, we have here gathered new ice thickness data from 84 surveys, adding 50 million additional data points to those previous compilations. We have developed a standardised CSV format in order to ensure interoperability between the different datasets, which we have checked following a specific quality control procedure and summarised on a 500mx500m grid to provide key statistics at the scale needed for the Bedmap3 gridded products.

The data have been published following the FAIR data principles. In particular, we have provided extensive metadata with commonly-used keywords and have developed a data portal that provides a user-friendly interface to interact with and download the data. By providing and displaying both the source data and grids, the data portal allows any user to investigate the uncertainty of the gridding in specific areas and analyse differences between measurements and gridded interpolations.

We believe that this data release will benefit the glaciology and broader Earth science community, particularly in emerging fields such as machine learning and geostatistics which can now make use of this standardised data, and reproduce and create new compilation grids at different scales independently from the Bedmap grids. These standardised, freely available, and previously-unpublished datasets will lead to improved assessment of fundamental properties of the Antarctic Ice Sheet and predictions of its future contribution to sea level rise, increasing the value of these important data.

6. Data Availability

All the data included in this manuscript are freely available from the UK Polar Data Centre (<https://data.bas.ac.uk>, last access: 1 March 2023) and the SCAR Bedmap Data Portal (bedmap.scar.org, last access: 1 March 2023). Direct links to the metadata and data can be found in Table 5. The data can be downloaded directly from the RAMADDA interface by clicking on the 'GET DATA' link from the metadata page or using wget commands as documented in the following instructions: https://antarctica.github.io/PDC_GeophysicsBook/BEDMAP/Downloading_the_Bedmap_data.html (last access: 1 March 2023).

When using this data, please also cite the DOI citation provided in the source CSV metadata if this exists.

7. Code Availability

The user guide for the data portal and the Jupyter Notebook tutorials designed for reading the standardised CSV ice bed, elevation and thickness data or create the shapefiles are accessible on the Jupyter Book interface under the BEDMAP3 section (https://antarctica.github.io/PDC_GeophysicsBook, last accessed: 1 March 2023) or via the BAS GitHub repository (https://github.com/antarctica/PDC_GeophysicsBook, last accessed: 1 March 2023). A specific library called xcsv (<https://github.com/paul-breen/xcsv>, Paul Breen, 2022, last access: 1 March 2023) allows to read and plot data in the extended CSV format as described in Section 3.2.

8. Author contributions

Alice Frémand., Peter Fretwell, and Julien Bodart co-led this data release. A.F, Frémand and J.A. Bodart standardised the data. The Jupyter Notebook was developed by A.F. Frémand. P. Fretwell and H. Pritchard initiated the collaboration and P. Fretwell liaised with all the data providers. A.F. Frémand wrote the initial manuscript with input from P. Fretwell, J.A. Bodart and H. Pritchard. P. Fretwell designed and populated the web map. Elena Field helped with the design of the web map. Aitken, Bo, Eisen, Fretwell, Gillet-Chaulet, Greenbaum, Lee, Matsuoka, Morlighem, Pattyn, Popov, Pritchard, Roberts, Schroeder, Siegert, Steinhage, Tinto, Xiangbin and Young were all members of the Bedmap3 SCAR Core Group and contributed to the overall project and standardization criteria.

445 P. Fretwell, H. D. Pritchard, J.L. Bamber, R. Bell, C. Bianchi, R.G. Bingham, D. D. Blankenship, D. Callens, G.
Casassa, G. Catania, K. Christianson, H. Conway, H.F.J. Corr, X. Cui, D. Damaske, V. Damm, R. Drews, G. Eagles, O. Eisen,
H. Eisermann, F. Ferraccioli, R. Forsberg, S. Franke, S. Fujita, Y. Gim, V. Goel, P. Gogineni, J. Greenbaum, B. Hills, R.C.A.
Hindmarsh, P. Holmlund, N. Holschuh, J.W. Holt, A. Humbert, R.W. Jacobel, D. Jansen, A. Jenkins, W. Jokatz, T. Jordan, E.
King, J. Kohler, W. Krabill, K.A. Langley, J. Lee, G. Leitchenkov, C. Leuschen, B. Luyendyk, J MacGregor, E. MacKie, K.
450 Matsuoka, M. Morlighem, J. Mouginot, F.O. Nitsche, Y. Nogi, O.A. Nost, J. Paden, F. Pattyn, S.V. Popov, M. Riger-Kusk, E.
Rignot, D.M. Rippin, A. Rivera, N. Ross, A. Ruppel, D.M. Schroeder, M.J. Siegert, A.M. Smith, D. Steinhage, M. Studinger,
B. Sun, I. Tabacco, B.K. Tinto, S. Urbini, D. Vaughan, B.C. Welch, D.S. Wilson, D.A. Young, and A. Zirizzotti contributed
to the data. All the authors commented and contributed to the final edits of the manuscript prior to publication.

9. Acknowledgements

455 We would like to dedicate this paper to the many scientists who have collected geophysical field data in harsh and
extreme conditions over the Antarctic ice sheets over the last sixty years. Their commitment, dedication and drive has
populated this dataset and has greatly advanced Polar science.

Funding for the British Antarctic Survey staff has come from Natural Environment Research Council core funds.
460 Funding for the data collection has come from many grants, institutions and projects. These are individually cited where
appropriate in the metadata of the datasets.

10. Competing interests

At least one of the (co-)authors is a member of the editorial board of Earth System Science Data (ESSD)

References

465 Arndt, J. E., Schenke, H. W., Jakobsson, M., Nitsche, F. O., Buys, G., Goleby, B., Rebesco, M., Bohoyo, F., Hong, J.,
Black, J., Greku, R., Udintsev, G., Barrios, F., Reynoso-Peralta, W., Taisei, M., and Wigley, R.: The International Bathymetric
Chart of the Southern Ocean (IBCSO) Version 1.0—A new bathymetric compilation covering circum-Antarctic waters,
Geophysical Research Letters, 40, 3111–3117, <https://doi.org/10.1002/grl.50413>, 2013.

Attribute Convention for Data Discovery 1-3: https://wiki.esipfed.org/Attribute_Convention_for_Data_Discovery_1-3,
470 last access: 29 July 2022.

Bell, R. E., Ferraccioli, F., Creyts, T. T., Braaten, D., Corr, H., Das, I., Damaske, D., Frearson, N., Jordan, T., Rose, K., and Studinger, M.: Widespread persistent thickening of the East Antarctic Ice Sheet by freezing from the base, *Science*, 331, 1592–1595, <https://doi.org/10.1126/science.1200109>, 2011.

475 Bentley, M. J., Ó Cofaigh, C., Anderson, J. B., Conway, H., Davies, B., Graham, A. G. C., Hillenbrand, C.-D., Hodgson, D. A., Jamieson, S. S. R., Larter, R. D., Mackintosh, A., Smith, J. A., Verleyen, E., Ackert, R. P., Bart, P. J., Berg, S., Brunstein, D., Canals, M., Colhoun, E. A., Crosta, X., Dickens, W. A., Domack, E., Dowdeswell, J. A., Dunbar, R., Ehrmann, W., Evans, J., Favier, V., Fink, D., Fogwill, C. J., Glasser, N. F., Gohl, K., Golledge, N. R., Goodwin, I., Gore, D. B., Greenwood, S. L., Hall, B. L., Hall, K., Hedding, D. W., Hein, A. S., Hocking, E. P., Jakobsson, M., Johnson, J. S., Jomelli, V., Jones, R. S., Klages, J. P., Kristoffersen, Y., Kuhn, G., Leventer, A., Licht, K., Lilly, K., Lindow, J., Livingstone, S. J., Massé, G., McGlone, 480 M. S., McKay, R. M., Melles, M., Miura, H., Mulvaney, R., Nel, W., Nitsche, F. O., O'Brien, P. E., Post, A. L., Roberts, S. J., Saunders, K. M., Selkirk, P. M., Simms, A. R., Spiegel, C., Stollendorf, T. D., Sugden, D. E., van der Putten, N., van Ommen, T., Verfaillie, D., Vyverman, W., Wagner, B., White, D. A., Witus, A. E., and Zwart, D.: A community-based geological reconstruction of Antarctic Ice Sheet deglaciation since the Last Glacial Maximum, *Quaternary Science Reviews*, 100, 1–9, <https://doi.org/10.1016/j.quascirev.2014.06.025>, 2014.

485 Church, J. A., Clark, P. U., Cazenave, A., Gregory, J. M., Jevrejeva, S., Levermann, A., Merrifield, M. A., Milne, G. A., Nerem, R. S., Nunn, P. D., Payne, A. J., Pfeffer, W. T., Stammer, D., and Unnikrishnan, A. S.: *Sea level change*, P.M.Cambridge University Press, 2013.

Creative Commons — Attribution 4.0 International — CC BY 4.0: <https://creativecommons.org/licenses/by/4.0/>, last access: 29 July 2022.

490 Cui, X., Jeofry, H., Greenbaum, J. S., Guo, J., Li, L., Lindzey, L. E., Habbal, F. A., Wei, W., Young, D. A., Ross, N., Morlighem, M., Jong, L. M., Roberts, J. L., Blankenship, D. D., Bo, S., and Siegert, M. J.: Bed topography of Princess Elizabeth Land in East Antarctica, *Earth System Science Data*, 12, 2765–2774, <https://doi.org/10.5194/essd-12-2765-2020>, 2020.

495 DeConto, R. M. and Pollard, D.: Contribution of Antarctica to past and future sea-level rise, *Nature*, 531, 591–597, <https://doi.org/10.1038/nature17145>, 2016.

DeConto, R. M., Pollard, D., Alley, R. B., Velicogna, I., Gasson, E., Gomez, N., Sadai, S., Condrón, A., Gilford, D. M., Ashe, E. L., Kopp, R. E., Li, D., and Dutton, A.: The Paris Climate Agreement and future sea-level rise from Antarctica, *Nature*, 593, 83–89, <https://doi.org/10.1038/s41586-021-03427-0>, 2021.

500 Dorschel, B., Hehemann, L., Viquerat, S., Warnke, F., Dreutter, S., Tenberge, Y. S., Accettella, D., An, L., Barrios, F., Bazhenova, E., Black, J., Bohoyo, F., Davey, C., De Santis, L., Dotti, C. E., Fremant, A. C., Fretwell, P. T., Gales, J. A., Gao, J., Gasperini, L., Greenbaum, J. S., Jencks, J. H., Hogan, K., Hong, J. K., Jakobsson, M., Jensen, L., Kool, J., Larin, S., Larter, R. D., Leitchenkov, G., Loubrieu, B., Mackay, K., Mayer, L., Millan, R., Morlighem, M., Navidad, F., Nitsche, F. O., Nogi, Y., Pertuisot, C., Post, A. L., Pritchard, H. D., Purser, A., Rebesco, M., Rignot, E., Roberts, J. L., Rovere, M., Ryzhov, I., Sauli, C., Schmitt, T., Silvano, A., Smith, J., Snaith, H., Tate, A. J., Tinto, K., Vandenbossche, P., Weatherall, P., Wintersteller,

- 505 P., Yang, C., Zhang, T., and Arndt, J. E.: The International Bathymetric Chart of the Southern Ocean Version 2, *Sci Data*, 9, 275, <https://doi.org/10.1038/s41597-022-01366-7>, 2022.
- Drewry, D. J.: Radio echo sounding map of Antarctica, ($\sim 90^{\circ}\text{E}$ – 180°), *Polar Record*, 17, 359–374, <https://doi.org/10.1017/S0032247400032186>, 1975.
- Drewry, D. J.: Antarctica: glaciological and geophysical folio, University of Cambridge, Scott Polar Research Institute
510 Cambridge, United ..., 1983.
- Drewry, D. J. and Jordan, S. R.: Compilation of an Antarctic glaciological and geophysical folio, *Polar Record*, 20, 288–288, <https://doi.org/10.1017/S0032247400003466>, 1980.
- Drewry, D. J., Jordan, S. R., and Jankowski, E.: Measured Properties of the Antarctic Ice Sheet: Surface Configuration, Ice Thickness, Volume and Bedrock Characteristics, *Annals of Glaciology*, 3, 83–91,
515 <https://doi.org/10.3189/S0260305500002573>, 1982.
- Eagles, G., Karlsson, N.B., Ruppel, A., Steinhage, D., Jokat, W. and Läufer, A.: Erosion at extended continental margins: Insights from new aerogeophysical data in eastern Dronning Maud Land. *Gondwana Research*, 63, pp.105-116, <https://doi.org/10.1016/j.gr.2018.05.011>, 2018
- Ferraccioli, F., Finn, C. A., Jordan, T. A., Bell, R. E., Anderson, L. M., and Damaske, D.: East Antarctic rifting triggers
520 uplift of the Gamburtsev Mountains, *Nature*, 479, 388–392, <https://doi.org/10.1038/nature10566>, 2011.
- Forsberg, R., Olesen, A. V., Ferraccioli, F., Jordan, T. A., Matsuoka, K., Zakrajsek, A., Ghidella, M., and Greenbaum, J. S.: Exploring the Recovery Lakes region and interior Dronning Maud Land, East Antarctica, with airborne gravity, magnetic and radar measurements, Geological Society, London, Special Publications, 461, <https://doi.org/10.1144/SP461.17>, 2017.
- Frederick, B.C., Young, D.A., Blankenship, D.D., Richter, T.G., Kempf, S.D., Ferraccioli, F. and Siegert, M.J.:
525 Distribution of subglacial sediments across the Wilkes Subglacial Basin, East Antarctica. *Journal of Geophysical Research: Earth Surface*, 121(4), pp.790-813, <https://doi.org/10.1002/2015JF003760.2016>.
- Frémand, A.C., Bodart, J.A., Jordan, T.A., Ferraccioli, F., Robinson, C., Corr, H.F., Peat, H.J., Bingham, R.G. and Vaughan, D.G.: British Antarctic Survey's Aerogeophysical Data: Releasing 25 Years of Airborne Gravity, Magnetic, and Radar Datasets over Antarctica, *Earth Syst. Sci. Data*, 14, 3379–3410, <https://doi.org/10.5194/essd-14-3379-2022>, 2022.
- 530 Fremand, A., Fretwell, P., Bodart, J., Pritchard, H., Aitken, A., Bamber, J., Bell, R. E., Bianchi, C., Bingham, R., Blankenship, D., Casassa, G., Catania, G., Christianson, K., Conway, H., Corr, H., Cui, X., Damaske, D., Damm, V., Drews, R., ... Zirizzotti, A. : BEDMAP3 - Ice thickness, bed and surface elevation for Antarctica - standardised data points (Version 1.0) [Data set]. NERC EDS UK Polar Data Centre. <https://doi.org/10.5285/91523FF9-D621-46B3-87F7-FFB6EFC1847>, 2022
- 535 Fremand, A., Bodart, J., Fretwell, P., Pritchard, H., Aitken, A., Bamber, J., Bell, R. E., Bianchi, C., Bingham, R., Blankenship, D., Casassa, G., Catania, G., Christianson, K., Conway, H., Corr, H., Cui, X., Damaske, D., Damm, V., Drews, R., ... Zirizzotti, A. : BEDMAP3 - Ice thickness, bed and surface elevation for Antarctica - standardised shapefiles and

geopackages (Version 1.0) [Data set]. NERC EDS UK Polar Data Centre. <https://doi.org/10.5285/A72A50C6-A829-4E12-9F9A-5A683A1ACC4A>, 2022.

540 Fretwell, P., Pritchard, H. D., Vaughan, D. G., Bamber, J. L., Barrand, N. E., Bell, R., Bianchi, C., Bingham, R. G., Blankenship, D. D., Casassa, G., Catania, G., Callens, D., Conway, H., Cook, A. J., Corr, H. F. J., Damaske, D., Damm, V., Ferraccioli, F., Forsberg, R., Fujita, S., Gim, Y., Gogineni, P., Griggs, J. A., Hindmarsh, R. C. A., Holmlund, P., Holt, J. W., Jacobel, R. W., Jenkins, A., Jokat, W., Jordan, T., King, E. C., Kohler, J., Krabill, W., Riger-Kusk, M., Langley, K. A., Leitchenkov, G., Leuschen, C., Luyendyk, B. P., Matsuoka, K., Mouginot, J., Nitsche, F. O., Nogi, Y., Nost, O. A., Popov, S.
545 V., Rignot, E., Ripplin, D. M., Rivera, A., Roberts, J., Ross, N., Siegert, M. J., Smith, A. M., Steinhage, D., Studinger, M., Sun, B., Tinto, B. K., Welch, B. C., Wilson, D., Young, D. A., Xiangbin, C., and Zirizzotti, A.: Bedmap2: improved ice bed, surface and thickness datasets for Antarctica, *The Cryosphere*, 7, 375–393, <https://doi.org/10.5194/tc-7-375-2013>, 2013.

Fretwell, P., Fremand, A., Bodart, J., Pritchard, H., Vaughan, D., Bamber, J., Barrand, N., Bell, R. E., Bianchi, C., Bingham, R., Blankenship, D., Casassa, G., Catania, G., Callens, D., Conway, H., Cook, A., Corr, H., Damaske, D., Damm,
550 V., ... Zirizzotti, A. : BEDMAP2 - Ice thickness, bed and surface elevation for Antarctica - standardised data points (Version 1.0) [Data set]. NERC EDS UK Polar Data Centre. <https://doi.org/10.5285/2FD95199-365E-4DA1-AE26-3B6D48B3E6AC>, 2022.

Fretwell, P., Pritchard, H., Vaughan, D., Bamber, J., Barrand, N., Bell, R. E., Bianchi, C., Bingham, R., Blankenship, D., Casassa, G., Catania, G., Callens, D., Conway, H., Cook, A., Corr, H., Damaske, D., Damm, V., Ferraccioli, F., Forsberg, R.,
555 ... Bodart, J. : BEDMAP2 - Ice thickness, bed and surface elevation for Antarctica - standardised shapefiles and geopackages (Version 1.0) [Data set]. NERC EDS UK Polar Data Centre. <https://doi.org/10.5285/0F90D926-99CE-43C9-B536-0C7791D1728B>, 2022. Gardner, A. S., Moholdt, G., Scambos, T., Fahnestock, M., Ligtenberg, S., van den Broeke, M., and Nilsson, J.: Increased West Antarctic and unchanged East Antarctic ice discharge over the last 7 years, *The Cryosphere*, 12, 521–547, <https://doi.org/10.5194/tc-12-521-2018>, 2018.

560 Golledge, N. R., Kowalewski, D. E., Naish, T. R., Levy, R. H., Fogwill, C. J., and Gasson, E. G. W.: The multi-millennial Antarctic commitment to future sea-level rise, *Nature*, 526, 421–425, <https://doi.org/10.1038/nature15706>, 2015.

WOUDC File Formats: <https://woudc.org/about/formats.php>, last access: 29 July 2022.

Hassell, D., Gregory, J., Blower, J., Lawrence, B. N., and Taylor, K. E.: A data model of the Climate and Forecast metadata conventions (CF-1.6) with a software implementation (cf-python v2.1), *Geosci. Model Dev.*, 10, 4619–4646,
565 <https://doi.org/10.5194/gmd-10-4619-2017>, 2017.

Holt, J. W., Blankenship, D. D., Morse, D. L., Young, D. A., Peters, M. E., Kempf, S. D., Richter, T. G., Vaughan, D. G., and Corr, H. F.: New boundary conditions for the West Antarctic Ice Sheet: Subglacial topography of the Thwaites and Smith glacier catchments, *Geophys. Res. Lett.*, 33, L09502, <https://doi.org/10.1029/2005GL025561>, 2006.

IETF RFC 4180: Common Format and MIME Type for Comma-Separated Values (CSV) Files:
570 <https://www.ietf.org/rfc/rfc4180.txt>, last access: 29 July 2022.

IRIS: GeoCSV: Tabular text formatting for geoscience data, 2015.

Karlsson, N.B., Binder, T., Eagles, G., Helm, V., Pattyn, F., Van Liefferinge, B. and Eisen, O.: Glaciological characteristics in the Dome Fuji region and new assessment for “Oldest Ice”. *The Cryosphere*, 12(7), pp.2413-2424, 575 <https://doi.org/10.5194/tc-12-2413-2018>, 2018.

Le Brocq, A. M., Ross, N., Griggs, J. A., Bingham, R. G., Corr, H. F. J., Ferraccioli, F., Jenkins, A., Jordan, T. A., Payne, A. J., Rippin, D. M., and Siegert, M. J.: Evidence from ice shelves for channelized meltwater flow beneath the Antarctic Ice Sheet, *Nature Geosci*, 6, 945–948, <https://doi.org/10.1038/ngeo1977>, 2013.

Levermann, A., Winkelmann, R., Albrecht, T., Goelzer, H., Golledge, N. R., Greve, R., Huybrechts, P., Jordan, J., Leguy, 580 G., Martin, D., Morlighem, M., Pattyn, F., Pollard, D., Quiquet, A., Rodehacke, C., Seroussi, H., Sutter, J., Zhang, T., Van Breedam, J., Calov, R., DeConto, R., Dumas, C., Garbe, J., Gudmundsson, G. H., Hoffman, M. J., Humbert, A., Kleiner, T., Lipscomb, W. H., Meinshausen, M., Ng, E., Nowicki, S. M. J., Perego, M., Price, S. F., Saito, F., Schlegel, N.-J., Sun, S., and van de Wal, R. S. W.: Projecting Antarctica’s contribution to future sea level rise from basal ice shelf melt using linear response functions of 16 ice sheet models (LARMIP-2), *Earth System Dynamics*, 11, 35–76, <https://doi.org/10.5194/esd-11-35-2020>, 585 2020.

Lythe, M. B. and Vaughan, D. G.: BEDMAP-bed topography of the Antarctic, British Antarctic Survey, Natural Environment Research Council, 2000.

Lythe, M. B. and Vaughan, D. G.: BEDMAP: A new ice thickness and subglacial topographic model of Antarctica, *Journal of Geophysical Research: Solid Earth*, 106, 11335–11351, <https://doi.org/10.1029/2000JB900449>, 2001.

590 Lythe, M., Vaughan, D., BEDMAP 1, consortia, Fremant, A., & Bodart, J. : BEDMAP1 - Ice thickness, bed and surface elevation for Antarctica - standardised data points (Version 1.0) [Data set]. NERC EDS UK Polar Data Centre. <https://doi.org/10.5285/F64815EC-4077-4432-9F55-0CE230F46029>, 2022.

Lythe, M., Vaughan, D., BEDMAP 1, consortia, Fremant, A., & Bodart, J. : BEDMAP1 - Ice thickness, bed and surface elevation for Antarctica - standardised shapefiles and geopackages (Version 1.0) [Data set]. NERC EDS UK Polar Data Centre. 595 <https://doi.org/10.5285/925AC4EC-2A9D-461A-BFAA-6314EB0888C8>, 2022.

MacGregor, J. A., Boisvert, L. N., Medley, B., Petty, A. A., Harbeck, J. P., Bell, R. E., Blair, J. B., Blanchard-Wrigglesworth, E., Buckley, E. M., Christoffersen, M. S., Cochran, J. R., Csathó, B. M., De Marco, E. L., Dominguez, R. T., Fahnestock, M. A., Farrell, S. L., Gogineni, S. P., Greenbaum, J. S., Hansen, C. M., Hofton, M. A., Holt, J. W., Jezek, K. C., Koenig, L. S., Kurtz, N. T., Kwok, R., Larsen, C. F., Leuschen, C. J., Locke, C. D., Manizade, S. S., Martin, S., Neumann, T. 600 A., Nowicki, S. M. J., Paden, J. D., Richter-Menge, J. A., Rignot, E. J., Rodríguez-Morales, F., Siegfried, M. R., Smith, B. E., Sonntag, J. G., Studinger, M., Tinto, K. J., Truffer, M., Wagner, T. P., Woods, J. E., Young, D. A., and Yungel, J. K.: The Scientific Legacy of NASA’s Operation IceBridge, *Reviews of Geophysics*, 59, e2020RG000712, <https://doi.org/10.1029/2020RG000712>, 2021.

605 Morlighem, M., Rignot, E., Binder, T., Blankenship, D., Drews, R., Eagles, G., Eisen, O., Ferraccioli, F., Forsberg, R., Fretwell, P., Goel, V., Greenbaum, J. S., Gudmundsson, H., Guo, J., Helm, V., Hofstede, C., Howat, I., Humbert, A., Jokata,

- W., Karlsson, N. B., Lee, W. S., Matsuoka, K., Millan, R., Mougnot, J., Paden, J., Pattyn, F., Roberts, J., Rosier, S., Ruppel, A., Seroussi, H., Smith, E. C., Steinhage, D., Sun, B., Broeke, M. R. van den, Ommen, T. D. van, Wessem, M. van, and Young, D. A.: Deep glacial troughs and stabilizing ridges unveiled beneath the margins of the Antarctic ice sheet, *Nat. Geosci.*, 13, 132–137, <https://doi.org/10.1038/s41561-019-0510-8>, 2020.
- 610 Mougnot, J., Rignot, E., and Scheuchl, B.: Sustained increase in ice discharge from the Amundsen Sea Embayment, West Antarctica, from 1973 to 2013, *Geophysical Research Letters*, 41, 1576–1584, <https://doi.org/10.1002/2013GL059069>, 2014.
- Paxman, G. J. G., Jamieson, S. S. R., Ferraccioli, F., Jordan, T. A., Bentley, M. J., Ross, N., Forsberg, R., Matsuoka, K., Steinhage, D., Eagles, G., and Casal, T. G.: Subglacial Geology and Geomorphology of the Pensacola-Pole Basin, East Antarctica, *Geochemistry, Geophysics, Geosystems*, 20, 2786–2807, <https://doi.org/10.1029/2018GC008126>, 2019.
- 615 Pollard, D. and DeConto, R. M.: Modelling West Antarctic ice sheet growth and collapse through the past five million years, *Nature*, 458, 329–332, <https://doi.org/10.1038/nature07809>, 2009.
- Popov, S.: Fifty-five years of Russian radio-echo sounding investigations in Antarctica. *Annals of Glaciology*, 61(81), pp.14-24, <https://doi.org/10.1017/aog.2020.4>, 2020.
- 620 Pritchard, H. D.: Bedgap: where next for Antarctic subglacial mapping?, *Antarctic Science*, 26, 742–757, <https://doi.org/10.1017/S095410201400025X>, 2014.
- Rignot, E., Mougnot, J., Scheuchl, B., van den Broeke, M., van Wessem, M. J., and Morlighem, M.: Four decades of Antarctic Ice Sheet mass balance from 1979–2017, *Proceedings of the National Academy of Sciences*, 116, 1095–1103, <https://doi.org/10.1073/pnas.1812883116>, 2019.
- 625 Robin, G. D. Q., Swithinbank, C.W. M., and Smith, B. M. E.: Radio echo exploration of the Antarctic ice sheet, *International Association of Scientific Hydrology Publication*, 86, 97–115, 1970.
- Scambos, T. A., Bell, R. E., Alley, R. B., Anandakrishnan, S., Bromwich, D. H., Brunt, K., Christianson, K., Creyts, T., Das, S. B., DeConto, R., Dutrieux, P., Fricker, H. A., Holland, D., MacGregor, J., Medley, B., Nicolas, J. P., Pollard, D., Siegfried, M. R., Smith, A. M., Steig, E. J., Trusel, L. D., Vaughan, D. G., and Yager, P. L.: How much, how fast?: A science review and outlook for research on the instability of Antarctica’s Thwaites Glacier in the 21st century, *Global and Planetary Change*, 153, 16–34, <https://doi.org/10.1016/j.gloplacha.2017.04.008>, 2017.
- 630 Schroeder, D. M., Dowdeswell, J. A., Siegert, M. J., Bingham, R. G., Chu, W., MacKie, E. J., Siegfried, M. R., Vega, K. I., Emmons, J. R., and Winstein, K.: Multidecadal observations of the Antarctic ice sheet from restored analog radar records, *Proceedings of the National Academy of Sciences*, 116, 18867–18873, <https://doi.org/10.1073/pnas.1821646116>, 2019.
- 635 Schroeder, D.M., Bingham, R.G., Blankenship, D.D., Christianson, K., Eisen, O., Flowers, G.E., Karlsson, N.B., Koutnik, M.R., Paden, J.D. and Siegert, M.J.: Five decades of radioglaciology, *Ann. Glaciol.*, 61(81), pp.1-13, <https://doi.org/10.1017/aog.2020.11>, 2020.

- Schroeder, D. M., Broome, A. L., Conger, A., Lynch, A., Mackie, E. J. and Tarzona, A.: Radiometric analysis of digitized Z-scope records in archival radar sounding film, *Journal of Glaciology*. Cambridge University Press, 68(270), pp. 733–740. 640 <https://doi.org/10.1017/jog.2021.130>, 2021.
- Seroussi, H., Nowicki, S., Payne, A. J., Goelzer, H., Lipscomb, W. H., Abe-Ouchi, A., Agosta, C., Albrecht, T., Asay-Davis, X., Barthel, A., Calov, R., Cullather, R., Dumas, C., Galton-Fenzi, B. K., Gladstone, R., Golledge, N. R., Gregory, J. M., Greve, R., Hattermann, T., Hoffman, M. J., Humbert, A., Huybrechts, P., Jourdain, N. C., Kleiner, T., Larour, E., Leguy, G. R., Lowry, D. P., Little, C. M., Morlighem, M., Pattyn, F., Pelle, T., Price, S. F., Quiquet, A., Reese, R., Schlegel, N.-J., 645 Shepherd, A., Simon, E., Smith, R. S., Straneo, F., Sun, S., Trusel, L. D., Van Breedam, J., van de Wal, R. S. W., Winkelmann, R., Zhao, C., Zhang, T., and Zwinger, T.: ISMIP6 Antarctica: a multi-model ensemble of the Antarctic ice sheet evolution over the 21st century, *The Cryosphere*, 14, 3033–3070, <https://doi.org/10.5194/tc-14-3033-2020>, 2020.
- Shepherd, A., Ivins, E. R., A. G., Barletta, V. R., Bentley, M. J., Bettadpur, S., Briggs, K. H., Bromwich, D. H., Forsberg, R., Galin, N., Horwath, M., Jacobs, S., Joughin, I., King, M. A., Lenaerts, J. T. M., Li, J., Ligtenberg, S. R. M., Luckman, A., 650 Luthcke, S. B., McMillan, M., Meister, R., Milne, G., Mouginot, J., Muir, A., Nicolas, J. P., Paden, J., Payne, A. J., Pritchard, H., Rignot, E., Rott, H., Sørensen, L. S., Scambos, T. A., Scheuchl, B., Schrama, E. J. O., Smith, B., Sundal, A. V., van Angelen, J. H., van de Berg, W. J., van den Broeke, M. R., Vaughan, D. G., Velicogna, I., Wahr, J., Whitehouse, P. L., Wingham, D. J., Yi, D., Young, D., and Zwally, H. J.: A Reconciled Estimate of Ice-Sheet Mass Balance, *Science*, 338, 1183–1189, <https://doi.org/10.1126/science.1228102>, 2012.
- Sun, B., Siegert, M. J., Mudd, S. M., Sugden, D., Fujita, S., Xiangbin, C., Yunyun, J., Xueyuan, T., and Yuansheng, L.: 655 The Gamburtsev mountains and the origin and early evolution of the Antarctic Ice Sheet, *Nature*, 459, 690–693, <https://doi.org/10.1038/nature08024>, 2009.
- NCCSV: A NetCDF-Compatible ASCII CSV File Specification: <https://coastwatch.pfeg.noaa.gov/erddap/download/NCCSV.html>, last access: 29 July 2022.
- 660 CSV on the Web: A Primer: <https://www.w3.org/TR/tabular-data-primer/>, last access: 29 July 2022.
- The IMBIE team: Mass balance of the Antarctic Ice Sheet from 1992 to 2017, *Nature*, 558, 219–222, <https://doi.org/10.1038/s41586-018-0179-y>, 2018.
- Tabular data standard: <https://www.gov.uk/government/publications/recommended-open-standards-for-government/tabular-data-standard>, last access: 29 July 2022.
- 665 UK PDC Geophysics Book: https://antarctica.github.io/PDC_GeophysicsBook/welcome.html, last access: 29 July 2022.
- Turchetti, S., Dean, K., Naylor, S. & Siegert, M.: Accidents and Opportunities: A History of the Radio Echo Sounding (RES) of Antarctica, 1958-1979. *British Journal of the History of Science*, 41, 417-444, 2008. <https://doi.org/10.1017/S0007087408000903>
- Vaughan, D. G., Corr, H. F., Ferraccioli, F., Frearson, N., O’Hare, A., Mach, D., Holt, J. W., Blankenship, D. D., Morse, 670 D. L., and Young, D. A.: New boundary conditions for the West Antarctic ice sheet: Subglacial topography beneath Pine Island Glacier, *Geophys. Res. Lett.*, 33, L09501, <https://doi.org/10.1029/2005GL025588>, 2006.

Wilkinson, M. D., Dumontier, M., Aalbersberg, Ij. J., Appleton, G., Axton, M., Baak, A., Blomberg, N., Boiten, J.-W., da Silva Santos, L. B., Bourne, P. E., Bouwman, J., Brookes, A. J., Clark, T., Crosas, M., Dillo, I., Dumon, O., Edmunds, S., Evelo, C. T., Finkers, R., Gonzalez-Beltran, A., Gray, A. J. G., Groth, P., Goble, C., Grethe, J. S., Heringa, J., 't Hoen, P. A. C., Hooft, R., Kuhn, T., Kok, R., Kok, J., Lusher, S. J., Martone, M. E., Mons, A., Packer, A. L., Persson, B., Rocca-Serra, P., Roos, M., van Schaik, R., Sansone, S.-A., Schultes, E., Sengstag, T., Slater, T., Strawn, G., Swertz, M. A., Thompson, M., van der Lei, J., van Mulligen, E., Velterop, J., Waagmeester, A., Wittenburg, P., Wolstencroft, K., Zhao, J., and Mons, B.: The FAIR Guiding Principles for scientific data management and stewardship, *Sci Data*, 3, 160018, <https://doi.org/10.1038/sdata.2016.18>, 2016.