

Mammals in the Chernobyl Exclusion Zone's Red Forest: a motion activated camera trap study

Nicholas A. Beresford^{1,3}, Sergii Gashchak², Michael D. Wood³, Catherine L. Barnett¹

¹UK Centre for Ecology & Hydrology, Lancaster Environment Centre, Bailrigg, Lancaster, LA11 4AP, UK

5 ²Chernobyl Center for Nuclear Safety, Radioactive Waste & Radioecology, International Radioecology Laboratory, 77th Gvardiiska Dyviya Str.11, P.O. Box 151, 07100 Slavutyh, Kyiv Region, Ukraine

³School of Science, Engineering & Environment, University of Salford, Manchester, M5 4WT, UK

Correspondence to: Nicholas A. Beresford (nab@ceh.ac.uk)

Abstract

10 Since the accident at the Chernobyl nuclear power plant in 1986 there have been few studies published on medium/large mammals inhabiting the area from which the human population was removed (now referred to as the Chernobyl Exclusion Zone). The dataset presented in this paper describes a motion activated camera trap study (n=21 cameras) conducted from September 2016 - September 2017 in the Red Forest located within the Chernobyl Exclusion Zone. The Red Forest, which is likely the most anthropogenically contaminated radioactive terrestrial ecosystem on earth, suffered a severe wildfire in July
15 2016. The motion activated trap cameras were therefore in place as the Red Forest recovered from the wildfire. A total of 45859 images were captured and of these 19391 contained identifiable species or organism types (e.g. insects). A total of 14 mammal species were positively identified together with 23 species of birds (though birds were not a focus of the study).

20 Weighted absorbed radiation dose rate rates were estimated for mammals across the different camera trap locations; the number of species observed did not vary with estimated dose rate. We also observed no relationship between estimated weighted absorbed radiation dose rates and the number of triggering events for the four main species observed during the study (Brown hare, Eurasian elk, Red deer, Roe deer).

25 The data presented will be of value to those studying wildlife within the CEZ both from the perspectives of the potential effects of radiation on wildlife and also rewilding in this large, abandoned area. They may also have value in any future studies investigating the impacts of the recent Russian military action in the CEZ.

The data and supporting documentation are freely available from the Environmental Information Data Centre (EIDC) under the terms and conditions of a Creative Commons Attribution (CC BY) licence: <https://doi.org/10.5285/bf82cec2-5f8a-407c-bf74-f8689ca35e83> (Barnett et al. 2022a).
30

1 Introduction

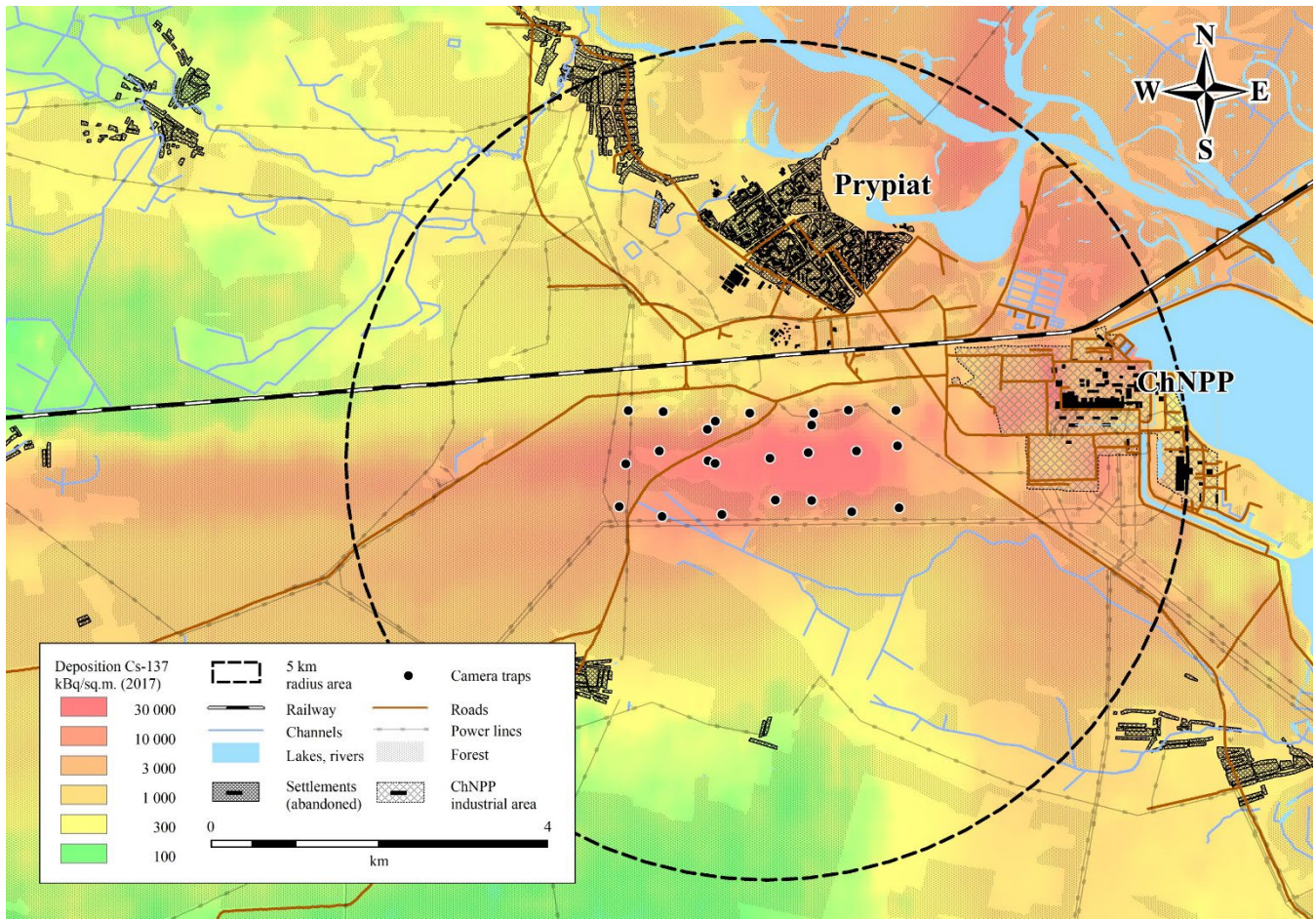
Following the 1986 Chernobyl nuclear power plant accident coniferous trees up to 4 km to the west of the reactor were killed by radiation over an area of approximately 4-6 km² (coniferous trees covered approximately 40 % of this area in 1986 (Kyiv Politech Institute's Museum 2022)). The area is now known as the 'Red Forest' and it is likely the most anthropogenically contaminated radioactive terrestrial ecosystem on earth. It has subsequently regenerated with understorey vegetation and, to some extent, with deciduous trees. Whilst over the years many studies have been conducted within the Red Forest (e.g. Geras'kin et al. 2008; Møller & Mousseau 2013; Møller et al. 2016; Lavrinienko et al. 2018 a,b; Antwis et al. 2021; Beresford et al. 2022) none has studied utilisation of the area by medium/large mammals. However, from the study site map within the original paper of Møller & Mousseau (2013) their mammal snow track study did include some sites in the Red Forest, as well as other sites in the CEZ; this study concluded that the abundance of mammals decreased with increasing radiation across the CEZ as a whole. Other studies across the wider CEZ have found no evidence of an influence of radiation on the distribution or abundance/diversity of small to large mammals (Baker et al. 1996; Deryabina et al. 2015; Webster 2016).

In July 2016 there was a severe fire within the Red Forest with approximately 80% of the forest being burnt (Beresford et al. 2021). In September 2016 as one of a number of studies (Antwis et al. 2021; Beresford et al. 2021; Jackson et al. in preparation) considering the effects of and recovery from the fire, we set-up a network of 21 motion activated camera traps across the Red Forest which were left in place to record primarily medium/large mammals for a period of approximately one year. This paper describes and discusses this study; all the photographs are freely available from <https://catalogue.ceh.ac.uk/documents/bf82cec2-5f8a-407c-bf74-f8689ca35e83> (Barnett et al. 2022a).

2 Materials and Methods

2.1 Motion activated digital trap camera deployment

Twenty-one Little Acorn 6210MC motion activated digital trap cameras, fitted with 8 Gb memory card to record images, were installed across the Red Forest in early September 2016; the cameras were operated for approximately a year until September 2017. The cameras were deployed using an approximate grid pattern with three rows of seven cameras (see Fig. 1). No bait was used to attract animals.



60 **Figure 1: Map showing the location of the study cameras overlaid on a ¹³⁷Cs deposition surface (decay corrected to 2017). The large circle is the 5 km radius area over which absorbed weighted dose rates were calculated. Figure produced by and published with the permission of the Chernobyl Center.**

When deploying each camera for the first time, approximately 20 poles (1 m high with markings at every 20 cm) were positioned in front of the camera in three parallel rows one metre apart; each row began three metres in front of the camera and ended eight metres away from the camera. The camera was then activated to capture an image of the poles *in situ*, and the poles were then removed (an image of the pole positions at sites where these were recorded has been included within the dataset associated with this study (Barnett et al., 2022a); some of these images contain images of co-authors with their permission). The images of the poles can be used to estimate animal height and distance from the camera should this be desired. Tree branches, tall grasses and bushes that were likely to obscure the camera or cause false activation by their movement were cleared from an area of about 40-60 m² in front of the camera at the initial set-up and when necessary, throughout the study.

65
70

Each camera was mounted at a height of approximately 0.7 m (typically attached to trees) to principally record images of medium/large mammals although images of small mammals, birds and occasional insects were also captured. The cameras were positioned such that they mostly faced north to shelter them from false activation caused by direct sunlight. When triggered by movement all the cameras were pre-set to take a three-image burst; the interval between these three images was <1 second. The time delay between one three-burst cycle and any immediate subsequent cycle was approximately 2-4 seconds; it was therefore possible that some animals may not have been captured if they were moving rapidly across the field of view during this time. All the cameras were capable of capturing images both day and night (and during the transition period in between) by using an infrared sensor and invisible infrared flash (850 or 940 nm, capable of lighting an area of up to 10 m in front of the camera); the appropriate day/night/transition setting is subjective as the camera automatically chooses the appropriate day/night/transition setting based on light level. All the cameras were inspected, and the data (images and image metadata) downloaded from the memory cards on three occasions during the study (March 2017, June 2017 and September 2017), these are referred to as setup 1-3 in the accompanying dataset; the cameras were also randomly inspected throughout the year to check functionality (and to ensure they had not been stolen). The images and image metadata were supplied to UKCEH by Chornobyl Center as .jpeg, .avi and MSEXcel files, respectively. The image catalogue described in Sect. 2.3 was then populated by UKCEH using these files.

Information related to each camera and each deployment period has been provided in file 'REDFIRE_Trap_Camera_Details_And_Image_Summary' which is included within the dataset associated with this study (Barnett et al., 2022a). The information provided includes: location (site number); numerical camera identifier; setup number (1, 2 or 3, see above); start date and time and end date; and time of each deployment period (most cameras were set to record at Eastern European summer time throughout with the exception of cameras 155 and 156 during setup 2 which were set to record at Eastern European winter time in error and cameras 161 and 174 from setup 1 where the time shown on the image was recorded incorrectly, the data related to date and time has therefore been manually corrected within the image catalogue to Eastern European summer time for these four cameras); the total number of days each camera was in-use during each deployment period; and any notes relevant to the cameras or their operation.

At sites 163, 168 and 169 the trap cameras were stolen during setup 1 and therefore no images from these cameras were recovered for that setup. The cameras were replaced at the start of setup 2 with new cameras located at nearby sites 362, 364 and 365, respectively. During setup 2 cameras from sites 157, 164, 170, 175 and 362 were stolen and not replaced and the memory cards from cameras 158 and 171 were changed part way through; during setup 3 camera 158 did not operate. In total, images were recovered from 18 cameras for setup 1, 16 cameras for setup 2 and 15 for setup 3. The camera located at site 172 was set to record video in error during setup 1 at a service visit in late October (photographs were recorded

105 September to October as for the other cameras); the videos (20 seconds each) are included in the image catalogue and have been analysed in the same way as the photographs (see Sect. 2.3).

2.2 Study site and site characteristics

The site descriptive parameters, recorded by the same person for every site in early September 2016, include: numerical site identifier and location (latitude and longitude, WGS84); ambient dose rate measured at a height 1 m above soil surface; an
110 evaluation of the fire damage as visible in September 2016 ('none', 'low and 'medium' and 'high') together with an estimate of the percentage of the area within 100 m of the site affected by the fire; an estimation of the density of grassy vegetation and undergrowth over a 20 m radius of the camera location; notes on habitat within a 100 m radius of the camera location; the dominant (>80%) tree species present and the approximate age of trees within a 100 m radius of the site and; the presence (or absence) of animal trails/tracks or water sources within 20 m of the site. The dataset also contains an
115 estimate of the Cs-137 and Sr-90 soil activity concentrations (kBq m⁻²) averaged over a 500 m radius centred on the camera site estimated from a spatial dataset (Shestopalov, 1996) and decay corrected to 1st March 2017. The Shestopalov (1996) data are presented as Bq m⁻²; to convert to Bq kg⁻¹ we assumed a soil bulk density of 1.14 g cm⁻³ dry mass estimated from data for the Red Forest (Barnett et al. 2021a) assuming a 10 cm soil depth as required for the subsequent estimation of estimated weighted absorbed dose rates (see below). This information is provided in the file
120 'REDFIRE_Trap_Camera_Site_Descriptions' within the dataset associated with this study (Barnett et al., 2022a).

2.3 Image catalogue

The image catalogue contains a description of information related to each image. The majority of the images obtained have been included within the dataset associated with this study (Barnett et al., 2022a). However, to protect privacy any images containing people have not been included, although observations of people (other than members of the research team setting
125 up and servicing the cameras) have been recorded in the catalogue. For cataloguing the images, a triggering event was assumed to begin when the camera motion sensor was triggered by an animal. A new triggering event was not assumed until at least 90 seconds had elapsed since an animal was last observed. However, there may be longer time periods between triggering events where images are obviously part of the same sequence (e.g. an animal lays down for a period of time).

130 Within the dataset associated with this study (Barnett et al., 2022a) all the images (including those which did not capture any animal) are located within three sub-folders called REDFIRE_Setup_1, REDFIRE_Setup_2, REDFIRE_Setup_3 and within each of these folders are multiple sub-folders (with the format e.g. 'Setup1_Site155_2317') which correspond to the 'Image_Location_Folder_Name' column within the image catalogue described below. Within each of these sub-folders are further sub-folders entitled the common species names of animals observed. The individual images of each animal are
135 located within these folders and are supplied as .jpg files and have the format e.g. IMAG0016. As noted in Sect. 2.2, at site

172 the camera was set, at a service visit in October, to record videos in error; the text 'Video' has been used within the notes column of the image catalogue to identify where video rather than photographs were recorded (camera 172 setup 1 only); the videos have been provided within the dataset.

140 In the file 'REDFIRE_Trap_Camera_Image_Catalogue', which is included within the dataset associated with this study (Barnett et al., 2022a), each image record (row) within the catalogue gives details of: setup number (1, 2 or 3, see Sect. 2.2), location (site number); numerical camera identifier; image location folder name (see above, e.g. Setup1_Site155_2317); image filename (e.g. IMAG0127); date, time and period of the day (day, night, transition) related to when the image was captured; the common name of species captured in the image; the number of animals visible in the image; the number of
145 animals seen per triggering event (cumulative; the triggering event number is recorded as 'n/a' for observations of people); triggering event number (sequential); the temperature when image was captured (°C, recorded by the camera at the start of each new triggering event (note this measurement is indicative only and not an absolute value (e.g. direct sun on the camera affects the temperature recorded)); A marker ('Y') identifying the start of each new triggering event; A marker ('Y') identifying if an obviously young animal is present within the image (this is subjective and may not always have been noted)
150 and; notes relating to the image (e.g. two species present within the image (where this occurs the data for the image is entered twice, once for the first species and again for the second species; the second species is allocated a new triggering event number). If the image was too poor to definitely identify the animal, the species common name has been recorded as 'Unidentifiable' occasionally for such images the potential species/animal type has been entered into the notes column. Images containing no images of animals are included within the dataset associated with this study; these are catalogued
155 separately.

2.4 Quality control

Data were entered into the image catalogue by UKCEH staff (who were not aware of the comparative contamination levels at the different camera sites), these data were then compared to a second set of data entered into a second catalogue by staff at the Chernobyl Centre for Nuclear Safety; any disparities were investigated and amended manually where necessary. Once
160 this check was completed a final check was conducted by further UKCEH staff to ensure the information within the catalogue matched the images included within the dataset.

2.5 Estimation of total weighted absorbed dose rate

Indicative total weighted absorbed dose rates (i.e. internal plus external exposures) have been estimated for example mammals in the study area using the ERICA Tool (v2.0; Brown et al., 2016). As inputs to the dose estimation, the ¹³⁷Cs and
165 ⁹⁰Sr soil activity concentrations estimated for a 500 m radius around each camera site (see above) were used. This area equates to the potential home range of Brown hare which is likely the species with the smallest home range of the most

commonly observed mammals (Schai-Braun & Hackländer 2014; CABI 2013). However, it is unlikely that the majority of mammal species observed would spend all of their time within the relatively small area of the Red Forest. Therefore, ¹³⁷Cs and ⁹⁰Sr soil activity concentrations were estimated over an area with a radius of 5 km, centred on the middle of the Red Forest, which may be appropriate for the larger species observed (e.g. Okarma et al., 1998; Ofstad et al., 2016). All soil radionuclide activity concentrations were decay corrected to 01/03/2017 (approximately the midpoint of the study). The ERICA Tool contains a default terrestrial organism ‘Mammal – large’ with dimensions equating to a large deer species (mass 245 kg) and total dose rates were estimated for this default organism. For comparison, an organism was created in the ERICA Tool equating to a Red fox, a regularly observed smaller species which may spend part of its time underground (assumed dimensions for the Red fox were 0.4 x 0.15 x 0.2 m with a mass of 6.6 kg (Pröhl. 2003)). The Large mammal geometry was assumed to spend 100 % of its time on the ground surface and the Red fox 10 % of time underground (Brown, et al., 2003). The probabilistic Tier 3 of the ERICA Tool was used inputting mean and standard deviation soil activity concentrations. Soil dry matter was assumed to be 100 %; this assumption seems reasonable given that measured soil dry matter percentages from other studies give typical values for the Red Forest of *circa* 90 % ranging from approximately 70 – 100 % (see Barnett et al., 2021a,b). The default mammal concentration ratios (and associated probability distribution functions) in the ERICA Tool were used to estimate whole-body radionuclide activity concentrations of the animals and consequently the internal dose rate; default radiation weighting factors of 3 for low energy beta emissions and 1 for other beta and gamma emissions were used. The resultant mean, variance and median estimates of total weighted absorbed dose rates were recorded for each of ¹³⁷Cs and ⁹⁰Sr (all estimates are presented in $\mu\text{Gy h}^{-1}$ in Barnett et al., 2022a).

185 3 Overview of images included within the catalogue

A total of 45857 images were captured (not including photographs recorded during camera set-up and servicing), of these 19391 contained identifiable species or organism types (e.g. insects), 565 recorded people, 349 were of poor quality such that the species could not be determined and 25552 images recorded no animals (i.e. predominantly false triggers due to vegetation movement, light etc. or potentially a triggering by an animal that was not captured). A total of 14 mammal species were positively identified together with 23 species of birds (Table 1).

Table 1. Species captured on the motion activated digital trap cameras.

Common species name	^a Latin species name
Mammals	
Brown hare	<i>Lepus europaeus</i>
Eurasian elk	<i>Alces alces</i>
Eurasian lynx	<i>Lynx lynx</i>

Common species name	^aLatin species name
European badger	<i>Meles meles</i>
Domesticated dog (feral)	<i>Canis lupus familiaris</i>
Grey wolf	<i>Canis lupus</i>
Marten sp.	Martes (Genus)
^b Mouse sp.	Muridae (Family)
Przewalski's horse	<i>Equus ferus przewalskii</i>
Raccoon dog	<i>Nyctereutes procyonoides</i>
Red deer	<i>Cervus elaphus</i>
Red fox	<i>Vulpes vulpes</i>
Red squirrel	<i>Sciurus vulgaris</i>
Roe deer	<i>Capreolus capreolus</i>
Wild boar	<i>Sus scrofa</i>
^c Unidentifiable	Not applicable
Birds	
Black grouse	<i>Lyrurus tetrix</i>
Common blackbird	<i>Turdus merula</i>
Common buzzard	<i>Buteo buteo</i>
^b Common quail	<i>Coturnix coturnix</i>
^b Common snipe	<i>Gallinago gallinago</i>
Common wood pigeon	<i>Columba palumbus</i>
^b Corncrake	<i>Crex crex</i>
Eurasian bittern	<i>Botaurus stellaris</i>
Eurasian hoopoe	<i>Upupa epops</i>
Eurasian Jay	<i>Garrulus glandarius</i>
Eurasian sparrowhawk	<i>Accipiter nisus</i>
Eurasian woodcock	<i>Scolopax rusticola</i>
European nightjar	<i>Caprimulgus europaeus</i>
European robin	<i>Erithacus rubecula</i>
Fieldfare	<i>Turdus pilaris</i>
Finch sp.	Fringillidae (Order)
Great egret	<i>Egretta alba</i>
Great grey shrike	<i>Lanius excubitor</i>

Common species name	^aLatin species name
Great spotted woodpecker	<i>Dendrocopos major</i>
Great tit	<i>Parus major</i>
Hazel grouse	<i>Tetrastes bonasia</i>
^b Marsh tit	<i>Poecile palustris</i>
Mistle thrush	<i>Turdus viscivorus</i>
Red backed shrike	<i>Lanius collurio</i>
Shrike sp.	<i>Lanius sp.</i>
Song thrush	<i>Turdus philomelos</i>
Thrush sp.	<i>Turdus sp.</i>
^c Unidentifiable bird	Not applicable
Other species	
Unidentifiable insect	Insecta (Class)
Butterfly or Moth	Lepidoptera (Order)
Dragonfly	Odonata (Order)
Spider	Araneae (Order)

^aIn some instances animals are identified at the Class, Order, Family level only. ^bSpecies is only mentioned within the notes column of the image catalogue (i.e. as a potential but not definitive observation). ^cMammal or bird which could not be positively identified at species/genus level.

195

A summary of the images within the catalogue (e.g. number of images with mammals, birds or insects, number of images with nothing in, number of images with people in) and the total number of triggering events recorded (by setup, by site, by camera) has been provided in the file ‘REDFIRE_Trap_Camera_Details_And_Image_Summary’ within the dataset associated with this study (Barnett et al., 2022a). The dataset also provides a summary for mammals (filename: ‘REDFIRE_Trap_Camera_Summary_Mammals’), by species, by camera and by setup of the number of triggering events and the mean, minimum and maximum of the number of individuals recorded per triggering event. For ease of comparing across setups triggering events are presented as events per 75 camera trap days; 75 days was the shortest deployment period (setup 3). A similar summary for birds (which were not the target of this study) can also be found in Barnett et al., 2022a (filename: ‘REDFIRE_Trap_Camera_Summary_Birds_And_Other’).

200

205

The mammalian species observed in the Red Forest (Table 1) included most of those observed in our other camera trapping studies across the CEZ (Wood & Beresford 2016). Exceptions were that we did not observe Brown bear (*Ursus arctos*), European bison (*Bison bonasus*) or Eurasian beaver (*Castor fiber*). The lack of these species in the Red Forest is to be expected:

210

- The Red Forest did not contain suitable habitat for beaver during the study period.
- Photographic evidence of European bison in the Ukrainian CEZ was first recorded in 2015 at a site close to the Belarussian border (the species having been introduced into the Belarussian CEZ in 1996) (Gashchak et al., 2017); only one individual bull was recorded by camera traps 2015-2016 in the Ukrainian CEZ.
- 215 • The numbers of brown bear in the Ukrainian CEZ are low with no recorded sightings in the vicinity of the Red Forest at the time of this study (Gashchak et al., 2016).

A number of images recorded small groups of feral (domesticated) dogs which we have not observed elsewhere in the CEZ. It is likely that these are animals fed by workers at the nearby nuclear power complex. Images of so called ‘stalkers’ (illegal 220 tourists) were also captured; these are not included in the dataset though they are identified in the image catalogue.

For mammals, Table 2 presents a summary by species and setup. For a number of species, Brown hare, Roe deer, Red deer, the number of triggering events was higher in setups 2 and 3; for Eurasian elk triggering were highest during setup 3 (Table 2). Whilst Wild boar and Przewalski's horse were observed during setups 1 and 2 none were recorded during setup 3. 225 Observations of Eurasian lynx, European badger and Raccoon dog were lowest during setup 1. Young (new born) Eurasian elk started to be observed in April/May 2017, with young Red and Roe deer being observed from June. Przewalski's horse were only observed in areas that had been burnt, potentially attracted by the new growth of grassy vegetation.

Table 2. Summary of medium/large mammal observations by setup.

Species	Setup 1 Number of cameras species observed on	Setup 1 Mean number triggering events per 75d	Setup 1 Mean/ Maximum number of animals recorded per triggering event	Setup 2 Number of cameras species observed on	Setup 2 Mean number triggering events per 75d	Setup 2 Mean/ Maximum number of animals recorded per triggering event	Setup 3 Number of cameras species observed on	Setup 3 Mean number triggering events per 75d	Setup 3 Mean/ Maximum number of animals recorded per triggering event
Brown hare	16	6.1	1.0/2	16	27.0	1.1/3	13	15.9	1.0/1
Eurasian elk	18	5.4	1.2/3	16	6.3	1.3/3	15	12.8	1.3/3
Eurasian lynx	6	0.6	1.2/2	2	1.5	1.0/1	1	2.0	1.0/1
European badger	3	0.5	1.0/1	4	2.7	1.0/1	2	1.5	1.0/1
Feral dog (domesticated)	4	1.0	2.1/4	6	1.5	6.0/4	3	2.0	1.7/5
Grey wolf	13	0.9	1.6/6	5	0.9	1.2/2	5	1.8	1.1/2
Przewalski's horse	6	1.5	1.2/5	5	1.5	1.2/3	n/a	n/a	n/a
Raccoon dog	2	0.8	1.0/1	8	2.3	1.0/2	8	3.4	1.0/2
Red deer	15	2.7	1.5/8	13	5.4	1.4/4	10	6.6	1.4/6
Red fox	9	2.1	1.1/2	9	3.9	1.0/1	7	3.1	1.0/1
Roe deer	15	1.4	1.3/4	16	8.1	1.1/1	13	7.1	1.2/3
Wild boar	5	0.8	2.0/6	6	1.4	2.5/7	n/a	n/a	n/a

230 Deployment periods were: Setup 1 September 2016 to March 2017; Setup 2 March 2017 – June 2017; Setup 3 June 2017 – September 2017. The total number of cameras operating in Setups 1, 2 and 3 were 18, 16 and 15 respectively. n/a not applicable, species not observed.

4 Estimated weighted absorbed dose rates

235 Table 3 presents a summary of estimated total (internal plus external) weighted absorbed radiation dose rates for the example large mammal and Red fox for each camera location assuming a home range of 0.5 km radius and also over a radius of 5 km centred on the middle of our study area as estimated using the ERICA Tool. All mean, and most median, estimated dose rates are above the lower end of the International Commission on Radiological Protections (ICRP) Derived Consideration Reference Level (DCRL) for mammals of 1 mGy d⁻¹ (approximately 40 µGy h⁻¹) (ICRP 2008). The DCRLs are one order of magnitude dose rate bands, for mammals 1 – 10 mGy d⁻¹, within which radiation effects may be expected to occur.

240

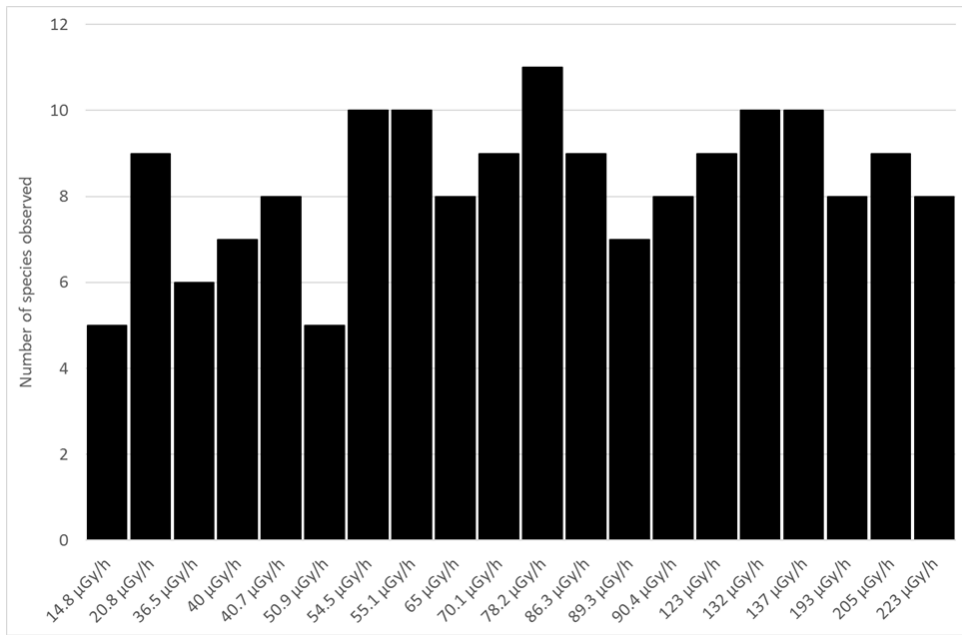
Table 3. Estimated weighted absorbed dose rates to mammals comparing those estimated for a large mammal (a deer) and a relatively small mammal spending some time underground (Red fox). Estimates are presented for an area of 5 km radius centred on the Red Forest and also for an area of 0.5 km radius centred on each camera site.

Site	Large mammal Total dose rate (µGy h ⁻¹) Mean	Large mammal Total dose rate (µGy h ⁻¹) SD	Large mammal Total dose rate (µGy h ⁻¹) Median	Red fox Total dose rate (µGy h ⁻¹) Mean	Red fox Total dose rate (µGy h ⁻¹) SD	Red fox Total dose rate (µGy h ⁻¹) Median
5 km radius area	47	123	17	40	100	16
155	94	188	44	81	150	40
156	197	366	99	168	281	89
157	90	166	45	78	131	41
158	132	270	61	113	216	55
159	413	675	227	348	512	205
160	171	363	77	145	282	70
161	293	543	146	247	412	132
162	448	725	247	377	550	223
164	95	222	40	80	171	37
165	386	620	215	324	469	193
166	262	463	136	221	349	123
167	183	299	100	154	226	90
170	182	322	97	150	233	86

Site	Large mammal Total dose rate ($\mu\text{Gy h}^{-1}$) Mean	Large mammal Total dose rate ($\mu\text{Gy h}^{-1}$) SD	Large mammal Total dose rate ($\mu\text{Gy h}^{-1}$) Median	Red fox Total dose rate ($\mu\text{Gy h}^{-1}$) Mean	Red fox Total dose rate ($\mu\text{Gy h}^{-1}$) SD	Red fox Total dose rate ($\mu\text{Gy h}^{-1}$) Median
171	131	211	72	109	158	65
172	105	177	57	86	129	50
173	164	282	87	134	204	78
174	55	132	23	46	98	21
175	40	98	29	33	71	15
364	277	452	152	230	336	137
365	130	270	60	109	199	55

245 Our results do not support the low mammal abundance at Red Forest sites reported from the 2009 snow track study of Møller & Mousseau (2013). Furthermore we observed no reduction in the abundance of mammals with increasing total weighted dose rate (which ranged over *circa* one order of magnitude). The number of species observed at camera locations was relatively consistent with estimated median weighted absorbed radiation dose rate (Fig. 2). We also observed no relationship between estimated median weighted absorbed radiation dose and the number of triggering events for the main species

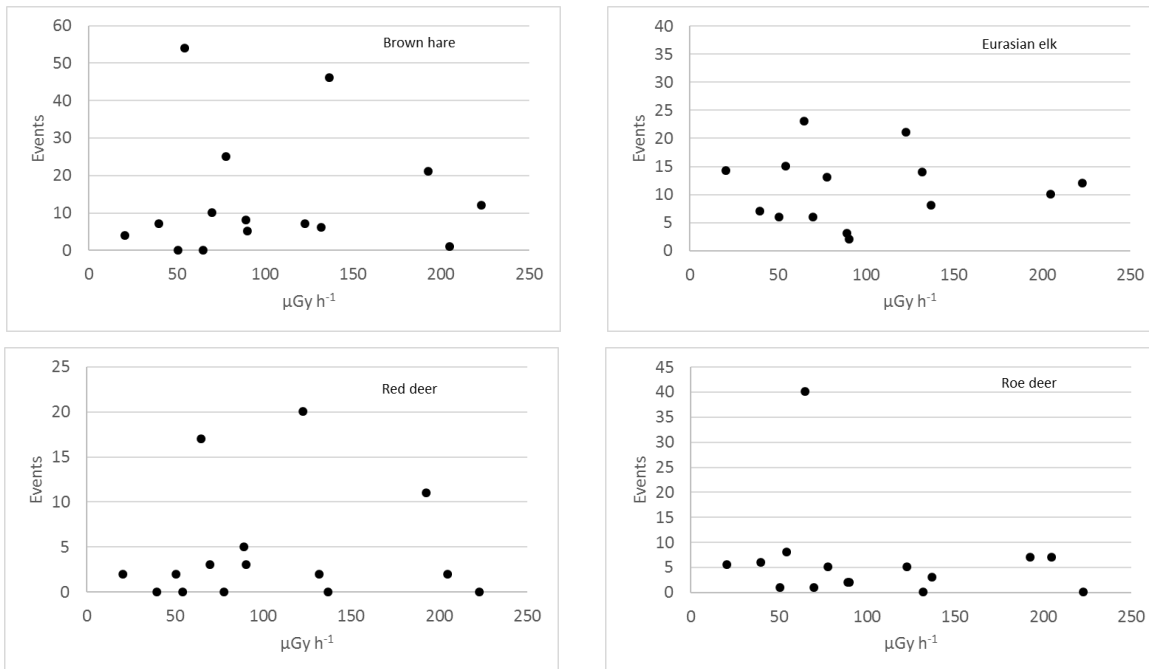
250 observed (Brown hare, Eurasian elk, Red deer, Roe deer) (see examples from setup 3 in Fig. 3).



255 **Figure 2: Number of species observed by estimated weighted absorbed dose rate (note the estimated weighted absorbed dose rates presented are those estimated for the geometry approximating to a Red fox).**

260

265



270 **Figure 3: Relationship between number of triggering events and estimated absorbed weighted dose rates (using that**
calculated for the Red fox geometry as an example); data presented are from setup 3.

5 Data availability

The data described here (<https://doi.org/10.5285/bf82cec2-5f8a-407c-bf74-f8689ca35e83>; Barnett et al. 2022a) are freely
 available from the Environmental Information Data Centre (<https://eidc.ac.uk/>, last access: 16 January 2023) under a
 275 Creative Commons Attribution (CC BY) licence.

6 Applications of data

The data presented will be of value to those studying wildlife within the CEZ both from the perspectives of the potential
 effects of radiation on wildlife and also rewilding in this large, abandoned area. Together with other trap camera data sets
 being published (e.g. Barnett et al., 2022b; Gashchak et al. 2022) the data will help in establishing a picture of wildlife across
 280 the CEZ. The data may also have value in any future studies investigating the impacts of recent Russian military action in the
 CEZ.

Author contribution

NAB and MDW secured funding for the study; NAB, MDW and SG defined the study protocols; SG conducted the fieldwork maintaining cameras and making field notes; CLB and SG, with input from NAB compiled and QC'd the image catalogue and accompanying documentation (Barnett et al., 2022a); NAB and CLB drafted the paper to which SG contributed and MDW reviewed.

Competing interests

The authors declare that they have no conflict of interest.

Acknowledgements

The authors are grateful to the following people for their assistance during the project: Eugene Guliachenko (Chornobyl Center) for assistance during fieldwork and Claire Wells (UKCEH) for assistance with data entry. We also thank Jacky Chaplow (UKCEH) for proof reading the manuscript.

Financial support

This study was funded by the Natural Environment Research Council (NERC) as part of the RED FIRE project (Radioactive Environment Damaged by Fire: a Forest in Recovery, <https://www.ceh.ac.uk/our-science/projects/red-fire-radioactive-environment-damaged-fire>, last accessed 26 March 2022; grant no. NE/P015212/1).

References

- Antwis, R.E., Beresford, N.A., Jackson, J.A., Fawkes, R., Barnett, C.L., Potter, E., Walker, L., Gaschak, S. and Wood, M.D. Impacts of radiation on the bacterial and fungal microbiome of small mammals in the Chernobyl Exclusion Zone, *J. Anim. Ecol.*, 90, 2172-2187, <https://doi.org/10.1111/1365-2656.13507>, 2021.
- Baker, R.J., Hamilton, M.J., Van Den Bussche, R.A., Wiggins, L.E., Sugg, D.W., Smith, M.H., Lomakin, M.D., Gaschak, S.P., Bundova, E.G., Rudenskaya, G.A. and Chesser, R.K.: Small mammals from the most radioactive sites near the Chernobyl nuclear power plant, *J. Mamm.*, 77, 155-170, <https://doi.org/10.2307/1382717>, 1996.
- Barnett, C.L., Gashchak, S., Wells, C., Guliachenko, E., Wood, M.D. and Beresford, N.A.: Motion-activated camera trap images of wildlife from the Red Forest, Chornobyl, Ukraine, 2016-2017, NERC EDS Environmental Information Data Centre, [Dataset], <https://doi.org/10.5285/bf82cec2-5f8a-407c-bf74-f8689ca35e83>, 2022a.

- Barnett, C.L., Gashchak, S., Wood, M.D. and Beresford, N.A.: Wildlife camera trap photographs from the Chernobyl Exclusion Zone, Ukraine (June 2020 - November 2020) following extensive wildfires, NERC EDS Environmental Information Data Centre, [Dataset], <https://doi.org/10.5285/9bd7754d-ea87-4b35-bec1-f39d5cc76db6>, 2022b.
- 310 Barnett, C.L., Gashchak, S., Wells, C., Maksimenko, A., Chaplow, J., Wood, M.D., Parekh, N.R. and Beresford, N.A.: Soil biological activity in the Chernobyl Exclusion Zone, Ukraine, September 2005 and spring 2016. NERC EDS Environmental Information Data Centre, [Dataset], <https://doi.org/10.5285/19babe1c-b3a3-488c-b4fe-ebb4ab9237d8>, 2021a.
- Barnett, C.L.; Gashchak, S., Maksimenko, A., Chaplow, J.S., Wood, M.D. and Beresford, N.A.: Soil and vegetation radionuclide activity concentrations and calculated dose rates from the Red Forest, Chernobyl, Ukraine, 2016-2017, NERC
315 Environmental Information Data Centre, [Dataset], <https://doi.org/10.5285/60782622-7bfa-4615-a9e3-0a802a9f4674>, 2021b.
- Beresford, N.A., Barnett, C.L., Gashchak, S., Kashparov, V., Kireev, S., Levchuk, S., Morozova, V., Smith, J.T. and Wood, M.D.: Wildfires in the Chernobyl Exclusion Zone – risks, consequences and management, Integr. Environ. Assess. Manag., 17, 6, 1141-1150, <https://doi.org/10.1002/ieam.4424>, 2021.
- Beresford, N.A., Wood, M.D., Gashchak, S., and Barnett, C.L.: Current ionising radiation doses in the Chernobyl Exclusion
320 Zone do not directly impact on soil biological activity, PLoS ONE, 17, e0263600, <https://doi.org/10.1371/journal.pone.0263600>, 2022.
- Brown, J., Strand, P., Hosseini, A. and Børretzen, P.: Handbook for assessment of the exposure of biota to ionising radiation from radionuclides in the environment, Framework for Assessment of Environmental Impact (FASSET), Deliverable 3, Contract No FIGE-CT-2000-00102,
325 https://wiki.ceh.ac.uk/download/attachments/115802176/fasset_d5.pdf?version=1&modificationDate=1263905014000&api=v2, 2003.
- Brown, J.E., Alfonso, B., Avila, R., Beresford, N.A., Copplestone, D. and Hosseini, A.: A new version of the ERICA tool to facilitate impact assessments of radioactivity on wild plants and animals, J. Environ. Radioact., 153, 141-148, <https://doi.org/10.1016/j.jenvrad.2015.12.011>, 2016.
- 330 CABI: Invasive Species Compendium, *Lepus europaeus* (European hare), 2013, <https://www.cabi.org/isc/datasheet/77227>, last access: 16 January 2023.
- Deryabina, T.G., Kuchmel, S.V., Nagorskaya, L.L., Hinton, T.G., Beasley, J.C., Lerebours, A. and Smith, J.T.: Long-term census data reveal abundant wildlife populations at Chernobyl, Curr. Biol., 25, R811-R826, <https://doi.org/10.1016/j.cub.2015.08.017>, 2015.

- 335 Gashchak, S., Gulyaichenko, Y., Beresford, N.A. and Wood, M.D.: Brown bear (*Ursus arctos* L.) in Chornobyl exclusion zone, Proceedings of the Theriological School, 14, 71-84, <http://www.terioshkola.org.ua/library/pts14/pts14-31-gaschak-bear.htm>, 2016.
- Gashchak, S., Gulyaichenko, Y., Beresford, N.A. and Wood, M.D.: European bison (*Bison bonasus*) in the Chornobyl exclusion zone (Ukraine) and prospects for its revival, Proceedings of the Theriological School, 15, 58-66.
- 340 <http://doi.org/10.15407/ptt2017.15.058>, 2017.
- Gashchak, S., Paskevych, S., Gulyaichenko, E., Vishnevskiy, D., Barnett, C.L. and Beresford, N.A.: Motion-activated camera trap images of Eurasian Lynx in the Ukrainian Chornobyl Exclusion Zone, 2012-2018, NERC Environmental Information Data Centre, [Dataset], <https://doi.org/10.5285/c099d04e-72e0-4ee9-ac72-11dc004ec1f6>, 2022.
- Geras'kin, S.A., Fesenko, S.V. and Alexakhin, R.M.: Effects of non-human species irradiation after the Chernobyl NPP accident, Environ. Int., 34, 880-897, <https://doi.org/10.1016/j.envint.2007.12.012>, 2008.
- 345 Jackson, J.A., Beresford, N.A., Fawkes, R., Barnett, C.L., Potter, E., Walker, L., Gaschak, S. and Wood, M.D.: Radiation exposure in the Chernobyl Exclusion Zone is associated with reduced ectoparasite burdens in small mammals, In preparation.
- Kyiv Politech Institute's Museum: <https://museum.kpi.ua/map/?d=chornobyl&l1=1972-01-24.US.KH.1202-1.47.F14&l2=&z=15&lon=30.103800&lat=51.389000>, last access: 16 January 2023.
- 350 Lavrinienko, A., Mappes, T., Tukanenko, E., Mousseau, T.A., Møller, A.P., Knight, R., Morton, J.T., Thompson, L.R. and Watts, P.C.: Environmental radiation alters the gut microbiome of the bank vole *Myodes glareolus*, ISME Journal, 12, 2801-2806, <https://doi.org/10.1038/s41396-018-0214-x>, 2018a.
- Lavrinienko, A., Tukanenko, E., Mappes, T. and Watts, P.C.: Skin and gut microbiomes of a wild mammal respond to different environmental cues, Microbiome, 6, 1-16, <https://doi.org/10.1186/s40168-018-0595-0>, 2018b.
- 355 Møller, A.P. and Mousseau, T.A.: Assessing effects of radiation on abundance of mammals and predator-prey interactions in Chernobyl using tracks in the snow, Ecol. Indic., 26, 112-116, <https://doi.org/10.1016/j.ecolind.2012.10.025>, 2013.
- Møller, A.P., Morelli, F., Mousseau, T.A. and Tryjanowski, P.: The number of syllables in Chernobyl cuckoo calls reliably indicate habitat, soil and radiation levels, Ecol. Indic., 66, 592-597, <https://doi.org/10.1016/j.ecolind.2016.02.037>, 2016.
- 360 Ofstad, E.G., Herfindal I., Solberg, J.E. and Sæther, B-E.: Home ranges, habitat and body mass: simple correlates of home range size in ungulates. Proc. R. Soc., B.2832016123420161234, <http://doi.org/10.1098/rspb.2016.1234>, 2016.
- Okarma, H., Jędrzejewski, W., Schmidt, K., Śnieżko, S., Bunevich, A.N. and Jędrzejewska, B.: Home ranges of wolves in Białowieża primeval forest, Poland, compared with other Eurasian populations. J. Mamm., 79, 842-852, <https://doi.org/10.2307/1383092>, 1998.

- 365 Pröhl, G. (Ed.): Dosimetric models and data for assessing radiation exposures to biota. Framework for Assessment of Environmental Impact (FASSET), Deliverable 3, Contract No FIGE-CT-2000-00102, https://wiki.ceh.ac.uk/download/attachments/115802176/fasset_d3.pdf?version=1&modificationDate=1263905014000&api=v2, 2003.
- Schai-Braun, S.C. and Hackländer, K.: Home range use by the European hare (*Lepus europaeus*) in a structurally diverse agricultural landscape analysed at a fine temporal scale, Acta. Theriol., 59, 277-287, <https://doi.org/10.1007/s13364-013-0162-9>, 2014.
- 370 Shestopalov, V. M.: Atlas of Chernobyl exclusion zone, Ukrainian Academy of Science, Kyiv, 1996. (Russian/English).
- Webster, S.C., Byrne, M.E., Lance, S.L., Lovel, C.N., Hinton, T.G., Shamovich, D. and Beasley, J.C.: Where the wild things are: influence of radiation on the distribution of four mammalian species within the Chernobyl Exclusion Zone, Front. Ecol. Environ., 14, 1-6. <https://doi.org/10.1002/fec.1227>, 2016.
- 375 Wood, M.D. and Beresford, N.A.: The wildlife of Chernobyl: 30 years without man, The Biologist, 63, 2, 16-19, <https://t.co/0IKjXLcif3>, 2016.