

An investigation of the global uptake of CO₂ by lime from 1930 to 2020

Longfei Bing^{1,2,3*}, Mingjing Ma^{1,4*}, Lili Liu⁵, Jiaoyue Wang^{1,2,3}, Le Niu^{1,4} and Fengming Xi^{1,2,3}

¹Institute of Applied Ecology, Chinese Academy of Sciences, Shenyang 110016, China

²Key Laboratory of Pollution Ecology and Environmental Engineering, Chinese Academy of Sciences, Shenyang 110016, China

³Key Laboratory of Terrestrial Ecosystem Carbon Neutrality, Liaoning Province, Shenyang 110016, China

⁴University of Chinese Academy of Sciences, Beijing 100049, China

⁵Search CO₂ (Shanghai) Environmental Science & Technology Co., Ltd, Shanghai 200232, China

*These authors contributed equally to this work.

10 *Correspondence:* Fengming Xi (xifengming@iae.ac.cn)

Abstract. A substantial amount of CO₂ is released into the atmosphere from the process of the high temperature decomposition of limestone to produce lime. However, during the life cycle of lime production, the alkaline components of lime will continuously absorb CO₂ from the atmosphere during use and waste disposal. Here, we adopt an analytical model describing the carbonation process to obtain regional and global estimates of carbon uptake from 1930 to 2020 using lime lifecycle use-based material data. The results reveal that the global uptake of CO₂ by lime increased from 9.16 Mt C yr⁻¹ (95% confidence interval, CI: 1.84–18.76 Mt C) in 1930 to ~~34.84 Mt C yr⁻¹ (95% CI: 23.50–49.81 Mt C)~~ 35.27 Mt C yr⁻¹ (95% CI: 23.63–50.39 Mt C) in 2020. Cumulatively, approximately 1444.70 Mt C (95% CI: 1016.24–1961.05 Mt C) were sequestered by lime produced between 1930 and 2020, corresponding to 38.83% of the process emissions during the same period, mainly contributed from the ~~utilisation~~-utilization stage (76.21% of the total uptake). We also fitted the missing lime output data of China from 1930 to 2001, thus compensating for the lack of China's lime production (cumulative 7023.30 Mt) and underestimation of its carbon uptake (467.85 Mt C) in the international data. Since 1930, lime-based materials in China have accounted for the largest proportion (about 63.95%) of the global total. Our results provide data to support including lime carbon uptake into global carbon budgets and scientific proof for further research of the potential of lime-containing materials in carbon capture and storage. The data utilized in the present study can be accessed at <https://doi.org/10.5281/zenodo.7896106>~~10.5281/zenodo.7759053~~ (Ma, 2023).

1 Introduction

According to the latest report (6th Assessment) of the Intergovernmental Panel on Climate Change (IPCC), anthropogenic activities are responsible for the unprecedented increase in the concentration of CO₂ in the atmosphere, which reached 415

ppm in 2021 (NOAA. ESRL, 2022.). In 2019, approximately 24% (14 Gt CO₂-eq) of the net global anthropogenic emissions originated from industrial sources, and lime production was the second highest industrial source after cement production (IPCC, 2021; Shan et al., 2016). Similar to cement, lime is mainly produced via the heating of limestone (CaCO₃) in a kiln at temperatures of 900–1200 °C. The CO₂ generated during this process is commonly released into the atmosphere (Greco-Coppi et al., 2021). During limestone decomposition, fossil fuel combustion, which is used to provide energy for the process, is an indirect source of CO₂, but this is often accounted for in the energy sector (IPCC, 2021).

The enormous quantity of lime produced in the world (~427 Mt in 2020; USGS, 2022) is mainly employed in the following sectors (Figure 1): (1) chemical industry, such as for the production of precipitated calcium carbonate (PCC), manufacturing of paper, and refining of sugar; (2) environmental remediation/treatment, including water treatment, acid mine drainage, and flue gas desulphurization; (3) metallurgical industry, for instance as a fluxing agent in the production of iron and steel; and (4) construction industry for building materials including lime mortar and lime-stabilised soil-asphalt mixtures (National Lime Association, 2020). Many lime-based materials, including wastes produced in different industries, re-absorb some of the released CO₂, and thereby sequester CO₂ throughout the lime cycle (carbonation), owing to the unstable calcium oxide in these materials (Cizer et al., 2012a). According to Renforth (2019), approximately 34% of lime can directly or indirectly remove CO₂ from the atmosphere and absorb CO₂ during the utilization stage. The carbonation process can be described using the following reactions:



Carbonation proceeds progressively from the exterior to the interior of lime-containing materials via the diffusion of CO₂ into particles, followed by its reaction with hydration products of calcium oxide (Cizer et al., 2012b; Despotou et al., 2016). Therefore, carbonation can be considered as a mineralisation technology for carbon capture, utilization, and storage (CCUS) (Lai et al., 2021; Snæbjörnsdóttir et al., 2020). Samari et al. (2020) indicated that lime-based materials have been proposed as solid sorbents in direct air capture (DAC) technologies (extraction CO₂ directly from the atmosphere). In practice, however, because of material and environmental factors, only 70–80% of the CaO in lime can be converted into CaCO₃ (Bhatia and Perlmutter, 1983). In previous studies, the carbonation process and factors influencing its rate (Ma et al., 2019), as well as strategies for improving the sequestration of carbon using lime-containing materials under controlled laboratory conditions (Pan et al., 2012; Baciocchi, 2017), have been examined. Pan et al. (2020), for instance, estimated the CO₂ reduction potential of lime-based solid wastes (e.g., lime mud, red mud and iron and steel slags) in mineralisation technologies, and highlighted a substantial potential for the storage of CO₂ in these wastes. The maximum achievable carbonation capacity of these solid wastes via direct mineralisation is approximately 310 Mt of CO₂ per year. Renforth (2019) estimated the global potential of CO₂ uptake through carbonation of lime and related alkaline materials up to the year 2100 (approximately 2.9–8.5 Gt of CO₂ per year) and indicated that this process can substantially mitigate CO₂ emissions during manufacturing of the associated

materials. However, existing studies are limited to estimation of the carbon reduction potential via accelerated carbonation
60 instead of carbon sequestration throughout the lime cycle under realistic conditions.

In the present study, a carbon sequestration analytical model was utilized to evaluate the global uptake of CO₂ by lime-
containing materials during the three stages (production, use and waste disposal process) of the lime cycle from 1930 to 2020.
The aims were to highlight the magnitude of the lime carbon sink on a global scale and to estimate the net CO₂ emission
associated with the production of lime. In addition, characteristics of the uptake of CO₂ by lime and the contribution to the
65 carbon cycle were examined. The present study significantly improves the global carbon uptake model and provides theoretical
support for the utilization of lime-containing materials in carbon capture and storage (CCS).

2 Data and Methods

2.1 Lime production, resources usage proportion and treatment

In this study, China and the United States (U.S.) were considered individually, while all other producers were grouped together
70 as “rest of the world” (ROW). The global lime production data came from Lime Statistics and Information (USGS, 2022),
but the data did not include the statistics of China's lime production between 1963 and 1984. In addition, the statistical value
of China's lime production from 1985 to 2001 was underestimated compared with the actual value (Cao et al., 2019), which
led that the statistical data of global lime production during 1963-2001 was significantly less than the actual production (Fig.
2b). The lime production data of China in this study were obtained from (China Construction Material Industry Yearbook,
75 2022). Considering that lime production data is available for the United States since 1930, which is much earlier than the
recorded data for China and the ROW, we filled gaps in the data using fitting methods, thereby extending the time scale of the
study to 1930.

First, we fitted China's lime production. The only source of China's lime production statistics is the "China Building Materials
Industry Yearbook", which records the lime production data from 1996 to 2020, of which the data from 2015 to 2018 is missing;
80 in addition, the statistical yearbook introduces the use of lime in various industries. From this, we know that the production of
lime in construction, steel, calcium carbide, and alumina in the downstream sector of lime accounts for more than 90% of lime
production. Therefore, we collected data on China's cement production (1930–2020), the completed area of housing in the
whole society (1963–2020), steel production (1949–2020), calcium carbide production (1949–2020), and alumina production
(1954–2020) and fitted them to the lime production data. Taking China's lime production as the dependent variable, the
85 stepwise linear regression method was used to construct a regression model. Since the completed area data of houses in the
whole society was only available from 1963, the model predicted lime production data from 1963 to 1995. Then, through the
ARIMA (0,1,0) model, with external control variables including the steel production, calcium carbide production, and cement
production, we fit the lime production in China from 1949 to 1962 (the steel and calcium carbide production data were only
extended to 1949). Finally, we used the ARIMA (2,2,0) model without external control variables to fit the lime production in
90 China from 1930 to 1948. From this, we obtained the fitted lime production data for China from 1930 to 2020 (Fig 2a). Fitted

coefficients of regression models and ARIMA models are shown in SI-2 Data 4.

After obtaining the Chinese lime production data, we corrected the global lime production data from the USGS from 1930 to 2020 (Fig 2b). The ARIMA (1,0,0) model was then used to fit the global lime production from 1930 to 1962 with global alumina production, steel production and cement production as external control variables.

95 Relatedly, according to data that were obtained from the USGS, approximately 15%–42% of lime resources in the U.S. are utilized in the chemical industry (mainly for petroleum refining and glass and rubber products production), whereas 30%–51% are employed in metallurgy (primarily in the production of crude steel), 5%–14% are used in the construction industry (principally for the production of lime stabilised soil and lime motor), and approximately 8%–43% are applied in environmental protection and other fields. In the ROW, data on the usage of lime resources in different sectors including the
100 industry were mostly obtained from publications (see the SI-2 Data 9 and SI-3 Data 1).

2.2 Estimation of emissions from processes

Regarding industrial processes, lime production is the second-highest source of carbon emissions after cement production, and thus, its contribution cannot be ignored (Shan et al., 2016). CO₂ emissions from lime production are mainly linked to the calcination stage, during which calcium oxide (CaO or quicklime) is formed from the decomposition of limestone by heat
105 (Despotou et al., 2016). Lime comes from the decomposition of limestone in shaft or rotary kiln, and the carbon emission of this industrial process can be estimated from using the IPCC method (IPCC, 2006). Considering the availability of lime production data, Method 1 (multiplication of the regional lime production by the CO₂ emission factor) from the IPCC Guidelines for National Greenhouse Gas Inventories was utilized to calculate CO₂ emissions from lime production processes in the present, and this can be expressed as follows:

$$CE_{l,i} = m_{l,i} \times EF_l \quad (1)$$

110 where $CE_{l,i}$ is the annual CO₂ emissions, $m_{l,i}$ represents the production of the lime industry, and EF_l denotes the CO₂ emission factor associated with the lime production process. l refers to different types of lime use, including PCC, sugar making, lime-stabilized soil and lime mortar, and i refers to different years.

Emission factors for the lime industry processes were determined using the composition of raw materials and the production technology. In the present study, 0.77-, 0.683-, and 0.75-ton CO₂ per ton of lime produced were adopted as emission factors
115 for the US, China, and ROW, respectively (IPCC, 2006). Emission factors for the U.S. and ROW were according to the IPCC guidelines, whereas that for China was from the National Development and Reform Commission of China (Guidelines for provincial greenhouse gas inventories, 2011).

2.3 Assessments of uptake during the lime cycle

Lime materials, which remove CO₂ from the atmosphere, belong to the following stages of the lime cycle: (1) production, (2)
120 service and (3) waste disposal (Fig. 1). Therefore, the CO₂ uptake by lime ($C_{l,total}$) was calculated using the following formula:

$$C_{l,total} = C_{l,pro} + C_{l,ser} + C_{l,wd} \quad (2)$$

where $C_{l,pro}$, $C_{l,ser}$, and $C_{l,wd}$ are the uptake components during the production, service and waste disposal stages, respectively. The uptake of CO₂ in different stages of the lime cycle is examined subsequently.

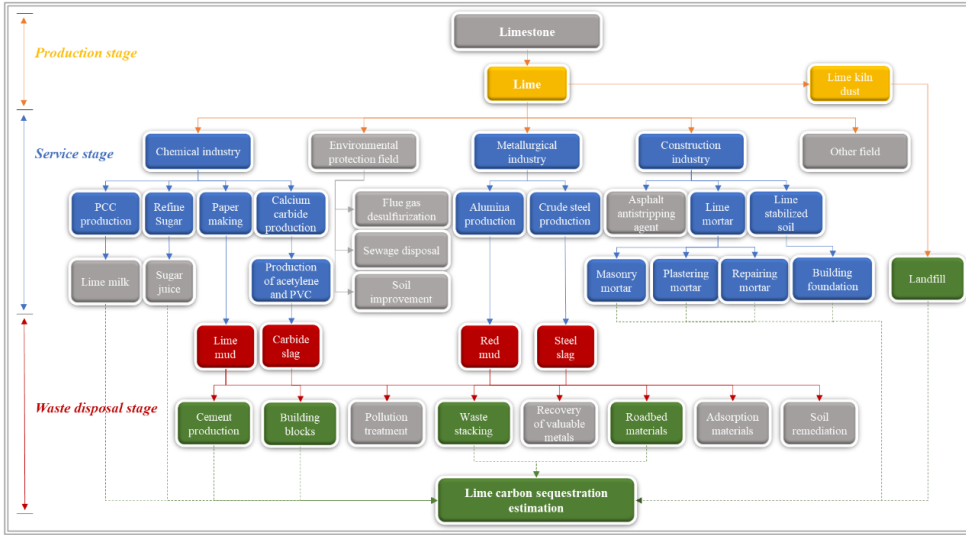


Figure 1: System boundary for the sequestration of carbon by lime. Solid arrows represent the material flow, dashed arrows indicate the carbon flow. (Yellow, blue, and red represent lime-based materials with carbon absorption capacity and their associated production processes, spanning from initial production through usage and waste disposal. Gray represents materials, production processes, or disposal methods with little carbon absorption capacity. Green represents the disposal method for lime-based waste that possesses carbon absorption potential.)

2.3.1 Assessment of uptake during the production stage

The carbon sink of the lime production stage refers to the uptake of CO₂ by lime kiln ash, and this can be quantified using the following expression:

$$C_{l,pro} = m_{l,i} \times r_{lkd} \times f_{lkd}^{CaO} \times \gamma_{lkd} \times \frac{M_C}{M_{CaO}} \quad (3)$$

where $m_{l,i}$ is the quantity of lime produced, r_{lkd} represents the output rate of lime kiln ash, f_{lkd}^{CaO} denotes the concentration of CaO in dust, γ_{lkd} is the rate of conversion of CaO to CaCO₃ in dust, and M_{CaO} and M_{CO_2} are molar masses of CaO and C, which in the present study are 56 and 12 g/mol, respectively.

135 **2.3.2 Assessment of uptake during the service stage**

Processes that can absorb CO₂ in the lime utilization stage principally comprise the production of precipitated calcium carbonate (PCC, $C_{pcc,i}$), carbonation sugar (SUG, $C_{sug,i}$), lime-stabilised soil (LSS, $C_{lss,i}$), and lime mortar (MOR, $C_{mor,i}$). The uptake of CO₂ in this stage can be calculated as follows:

$$C_{l,ser} = C_{pcc,i} + C_{sug,i} + C_{lss,i} + C_{mor,i} \quad (4)$$

(1) PCC and SUG

140 PCC is produced via the hydration of high-calcium quicklime, followed by a reaction of the resulting slurry and CO₂ (Wang *et al.*, 2002), and this reaction can be represented as follows: $\text{Ca(OH)}_2 + \text{CO}_2 = \text{CaCO}_3 \downarrow + \text{H}_2\text{O}$. According to the law of conservation of mass, the uptake of CO₂ by lime in PCC can be calculated as follows:

$$C_{pcc,i} = m_{l,i} \times L_1 \times a_1 \times f_l^{CaO} \times \frac{M_C}{M_{CaO}} \quad (5)$$

where L_1 is the proportion of lime that is used in the chemical industry, a_1 is the proportion of lime utilized in the chemical industry that is associated with PCC, and f_l^{CaO} is the concentration of CaO in lime. Similar to the principle of the carbon sink

145 in the production of PCC, the uptake of CO₂ linked to the production of carbonation sugars (SUG) can be calculated using the following expression:

$$C_{sug,i} = m_{l,i} \times L_1 \times a_2 \times f_{sug} \times f_l^{CaO} \times \frac{M_C}{M_{CaO}} \quad (6)$$

where a_2 is the proportion of lime used in the production of SUG in the industry and f_{sug} is the proportion of sugar produced using the lime-refining method.

(2) LSS

150 Under wet conditions, the carbonation rate of a LSS is approximately between 70%–80% over a duration of three months (Liu *et al.*, 2018b). Therefore, it is assumed that LSS can be carbonated within a year, and the uptake of CO₂ by LSS is quantified using the following expression:

$$C_{lss,i} = m_{l,i} \times L_2 \times a_3 \times f_l^{CaO} \times \gamma_{lss} \times \frac{M_C}{M_{CaO}} \quad (7)$$

where L_2 is the proportion of lime used in the construction sector, a_3 represents the proportion of lime employed in LSS in the construction sector, and γ_{lss} is the rate of conversion of CaO to CaCO₃ in LSS.

155 (3) MOR

MOR is mostly used for the plastering of interior walls, with a typical thickness of 20 mm (Almanac of China building materials industry, 2022). Under natural conditions, the estimated carbonation rate of MOR is 1 mm d^{-0.5} (Ventol *et al.*, 2011). Therefore, according to Fick's law of diffusion, a year is insufficient for the complete carbonation of a MOR layer. Consequently, the uptake of CO₂ by MOR is calculated using the following expressions:

$$C_{mor,i} = m_{l,i} \times L_2 \times a_4 \times f_{mor,i} \times f_l^{CaO} \times \gamma_{mor} \times \frac{M_C}{M_{CaO}} \quad (8)$$

$$d_{mor} = k_{mor} \times \sqrt{t_{mor}} \quad (9)$$

$$f_{mor,i} = (d_{mor,i} - d_{mor,i-1}) / d_T \quad (10)$$

160 where L_2 is the proportion of lime used in the construction sector, a_4 denotes the proportion of lime in MOR that is utilized
 in the construction sector, $f_{mor,i}$ represents the carbonation ratio of MOR in the i-th year, γ_{mor} is the rate of conversion of
 CaO to CaCO₃ in MOR, $d_{mor,i}$ represents the depth of carbonation of MOR in the i-th year; k_{mor} denotes the rate of
 carbonation of MOR, t_{mor} is the duration of carbonation of MOR and d_T is the thickness of MOR.

2.3.3 Assessment of uptake during the waste disposal stage

165 Lime employed in the production of paper, aluminium, calcium carbide, and steel generates by-products including lime mud
 (LM, $C_{LM,i}$), red mud (RM, $C_{RM,i}$), carbide slag (CS, $C_{CS,i}$), and steel slag (SS, $C_{SS,i}$), respectively. The alkaline component
 (CaO) in these wastes absorb CO₂ under natural conditions.

(1) LM and RM

170 Lime mud particles that are involved in the production of paper are usually fine and evenly distributed (Ma et al., 2021). In
 fact, particles < 40 μm account for 93%, and the associated water contents range from 39% to 60% (Qin et al., 2015). However,
 as a paste, the penetration of CO₂ to react with the lime mud is limited. Consequently, a year is usually insufficient for the
 complete carbonation of lime mud.

Red mud is also characterised by fine particles as well as a porous structure, high specific surface area, and good stability in
 water (Wang et al., 2019). Similar to the principle of the carbon sink for lime mud, a year is insufficient for the complete
 carbonation of red mud (Liu et al., 2018b). The amount of CO₂ absorbed by lime in lime mud and red mud can be calculated
 using the following expression. The uptake of CO₂ by lime in lime and red muds is calculated using the following expression:

$$\varepsilon_{m,ij} = m_{p,ij} \times r_{m,ij} \times f_{m,j}^{CaO} \quad (11)$$

where $\varepsilon_{m,ij}$ denotes the mass of CaO in wastes (m,j=lime mud or red mud) that can be carbonated in year i, $m_{p,ij}$ is the
 quantity of paper and paperboard/alumina that are produced in the i-th year, and p is the production. $r_{m,ij}$ is the output rate of
 waste j and $f_{m,j}^{CaO}$ represents the concentration of CaO in waste j.

180 According to Fick's law of diffusion, the depth of carbonation of waste j ($d_{m,ij}$) can be obtained from the carbonation rate
 ($k_{m,j}$) and carbonation time (t_i) using the following equations:

$$d_{m,ij} = k_{m,j} \times (\sqrt{t_i} - \sqrt{t_{i-1}}) \quad (12)$$

$$R_{m,ij} = \begin{cases} \frac{k_{m,j} \times \sqrt{t_i}}{h_{m,j}} & (t_i \leq t_{m,j}) \\ \frac{d_{m,ij}}{h_{m,j}} & (t_{m,j} < t_i < 100) \end{cases} \quad (13)$$

设置了格式: 下标

where $R_{m,ij}$ represents the fraction of waste j that is carbonated in the i -th year, $h_{m,j}$ is the height of the waste j pile and $t_{m,j}$ is the duration of the yard of the waste j . Accordingly,

$$C_{m,ij} = \varepsilon_{m,ij} \times (1 - f_{m,ij}^{use}) \times R_{m,ij} \times \gamma_{m,j} \times \frac{M_C}{M_{CaO}} \quad (14)$$

where $C_{m,ij}$ is the uptake of CO₂ uptake of waste j during the i -th year, $f_{m,ij}^{use}$ denotes the utilization rate of waste j and $\gamma_{m,j}$ is the rate of conversion of CaO to CaCO₃ in lime mud.

(2) CS

Carbide slag comprises particles that are dominantly between 10–50 μm , which usually contain moderate amounts of water (Lin et al., 2006). Stacking for approximately 15 d can reduce the concentration of CaO by approximately 50% (Hao et al., 2013). The uptake of CO₂ by CS can be calculated using the following expressions:

$$\varepsilon_{cs,i} = m_{l,i} \times L_1 \times a_5 \times p_l^{cs} \times r_{cs} \times f_{cs}^{CaO} \quad (15)$$

$$C_{cs,i} = \varepsilon_{cs,i} \times (1 - f_{cs}^{use}) \times \gamma_{cs} \times \frac{M_C}{M_{CaO}} \quad (16)$$

where $\varepsilon_{cs,i}$ is the mass of CaO in CS in the i -th year, a_5 denotes the proportion of lime in calcium carbide that is utilized in the chemical industry, p_l^{cs} represents the output of calcium carbide per ton of lime input, r_{cs} is the output rate of CS, f_{cs}^{CaO} is the concentration of CaO in CS, f_{cs}^{use} is the utilization rate of CS and γ_{cs} is the rate of conversion CaO to CaCO₃ in CS.

(3) SS

SS cannot be carbonated within a year because its hydration commonly requires more than 4 years (Wang and Yan, 2010). In the present study, the SS particle was approximated as a uniformly-densified sphere. The fraction ($R_{s,i}$) of SS that is carbonated can be estimated using the following expressions (Xi et al., 2016):

$$D_{ss,i} = 2d_{ss,i} = 2k_{ss} \times \sqrt{t_i} \quad (17)$$

$$R_{s,i} = \begin{cases} 100\% - \int_a^b \frac{\pi}{6} (D - D_{ss,i})^3 / \int_a^b \frac{\pi}{6} D^3 \times 100\% & (a > D_s) \\ 100\% - \int_{D_0}^b \frac{\pi}{6} (D - D_{ss,i})^3 / \int_a^b \frac{\pi}{6} D^3 \times 100\% & (a \leq D_{ss,i} \leq b) \\ 100\% & (b < D_s) \end{cases} \quad (18)$$

$$\Delta R_{s,i} = R_{s,i} - R_{s,i-1} \quad (19)$$

where $D_{ss,i}$ is the maximum diameter of SS that complete carbonation in the i -th year, $d_{ss,i}$ represents the depth of carbonation of SS in the i -th year, k_{ss} is the rate of carbonation of SS, t_i is the carbonation duration, D is the diameter of SS. a and b represent the corresponding minimum and maximum diameters of SS particles in a given size distribution. The annual carbonation of SS ($C_{ss,i}$) can then be calculated using the following expressions:

$$\varepsilon_{ss,i} = m_{s,i} \times r_{ss} \times f_{ss}^{CaO} \quad (20)$$

$$C_{ss,i} = \varepsilon_{ss,i} \times \Delta R_{s,i} \times f_{ss}^{use} \times \gamma_{ss} \times \frac{M_C}{M_{CaO}} \quad (21)$$

where $\varepsilon_{ss,i}$ is the mass of CaO in SS in the i -th year, $m_{s,i}$ represents the mass of crude steel that was produced in the i -th year, r_{ss} is the output rate of SS, f_{ss}^{CaO} is the concentration of CaO content in SS, f_{ss}^{use} is the ratio of SS utilized as stacking and roadbed material and γ_{ss} is the rate of conversion of CaO to CaCO₃ in SS.

2.4 Calculation of annual and cumulative uptakes

205 Even though the uptake of carbon can be estimated using alkaline materials in different stages of the lime cycle, the global and regional CO₂ absorption values were obtained via the aggregation of all alkaline materials. In global and regional carbon sink accounting, parameters such as the production of lime, proportion of lime utilized in different sectors, diffusion or carbonation coefficient, output rate, concentration of CaO, conversion ratio of CaO to CaCO₃, and particle size distribution and height of lime or red mud pile among others, were utilized as inputs for the model (see the SI-3 Data1). Basically, for the uptake of CO₂ in year t_i , the cumulative uptake of CO₂ in year t_i minus that for year t_{i-1} can be obtained from the following expression:

$$\Delta C_{l,total}^{t_i} = \sum C_{l,total}^{t_i} - \sum C_{l,total}^{t_{i-1}} \quad (22)$$

This allows contribution of the annual uptake of carbon to the total carbonation to be calculated.

2.5 Uncertainty analysis

We identified 16 groups of impact factors associated with the estimation of lime process carbon emission and carbon sequestration, which included 115 input-specific parameters, each with a specific statistical distribution (see the SI-3 Data1).

215 Due to the difficulty in obtaining the true values of the parameters, we employed the Monte Carlo approach recommended by the 2006 IPCC Guidelines for National Greenhouse Gas Inventories to access the uncertainties for the carbon emission and removal of lime materials. We fed the statistical characteristics of the 115 variables into our models, and the simulated carbon emission and removal results were obtained through 10,000 iteration Monte Carlo simulation. Subsequently, statistical analysis was then performed to derive the median and the corresponding lower and upper bounds of the 95% confidence intervals (CI) for the carbon uptake and emission of lime materials.

3 Results

3.1 Aggregated regional and global emissions from the production of lime

225 The lime yield of various countries is shown in Figure 2a. To compensate for the underestimation of carbon sink and carbon emissions caused by the lack of data as much as possible (Cao et al., 2019), different data interpolation methods and parameters (as mentioned in the Section 2.1) were adopted to fit the lime output for 1930–1948, 1949–1962, and 1963–1995. The different interpolation methods and parameters led to changes in the uncertainty range, as shown in Figure 2a, which was reflected in the sudden change of data in the node years of piecewise fitting (such as 1948, 1949, 1963).

Considering the shortcomings of the global lime output statistics, this paper has made corresponding corrections to the global

lime output data based on China's lime output data (Fig. 2b). From 1930 to 2001, the cumulative value of compensated global lime production in this study is 7023.30 Mt from the missing data of China. Since 2001, the lime production in this study is a slightly lower than that of USGS, due to the different reference sources of Chinese data. In general, the global lime output fluctuated and increased over time, from 139.62 Mt in 1930 to 394.93 Mt in 2019. In the early 1930s, the lime output decreased slightly, which may be due to the impact of the 'The Great Depression' and the closure of many factories, resulting in a decrease in the global lime output. In 2020, affected by the COVID-19, the lime production dropped slightly to 391.64 Mt (USGS: 427 Mt).

Figure 2c shows the estimated CO₂ emissions from lime production processes in China, the U.S., ROW and at a global scale from 1930 to 2020. According to our calculations, the global process CO₂ emissions increased from with 27.39 Mt C yr⁻¹ (95% Confident Interval, CI: 8.87–46.86 Mt C) in 1930 to 75.73 Mt C yr⁻¹ (95% CI: 69.18–82.33 Mt C) in 2020. In the early 1930s, carbon emissions slightly declined due to the impact of lime production and its uncertainty. The uncertainty of lime output can be transferred to the final simulation results of lime carbon emissions. The greater uncertainty of the parameters will lead to greater uncertainty in the simulation results. The results of the 10,000 iteration Monte Carlo simulation show the change trend (Figure 2c). On a global scale, emissions doubled from 44.63 Mt C yr⁻¹ in 2002 to 75.73 Mt C yr⁻¹ in 2020. During this period (2002–2018), the average annual rate of increase was 2.98%, which was significantly higher than the rate for 1930–2002 (0.68%). The cumulative emissions of CO₂ from 1930 to 2020 were 3720.16 Mt C (95% CI: 3166.18–4287.43 Mt C). Emissions decreased in 2009, which was likely caused by the global financial crisis in 2008, during which downstream lime industries experienced severe problems, such as excess produce, low production quantities, and stiff competition (Dong et al., 2010).

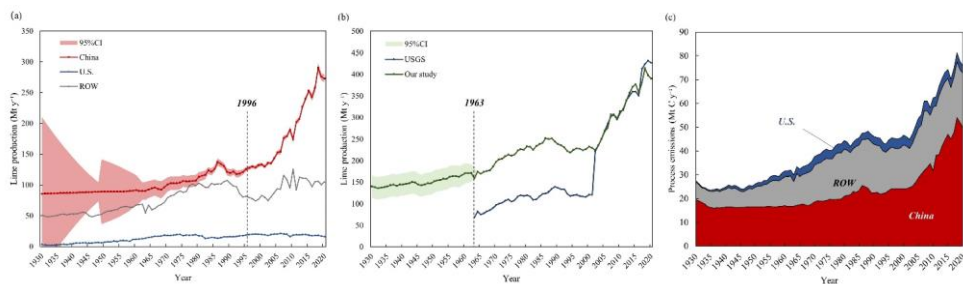


Figure 2: (a) Lime production in different countries or regions from 1930 to 2020. Shadows represent uncertainty ranges. CI: Confidence interval. (b) Global lime production from 1930 to 2020. (c) Annual CO₂ emissions from industrial processes.

CO₂ emissions from 1930 to 2020 in China account for approximately half of the global total. China was primarily responsible for the increase in the global emission from lime production processes during the studied period. In China, from 1930 to 2020, the average annual lime process CO₂ emission was 23.08 Mt C yr⁻¹, with 1.06% average annual growth rate. Notably, a rapid global increase in CO₂ emissions started in 2002. From 2002 to 2020, the average annual growth rate of carbon emissions from

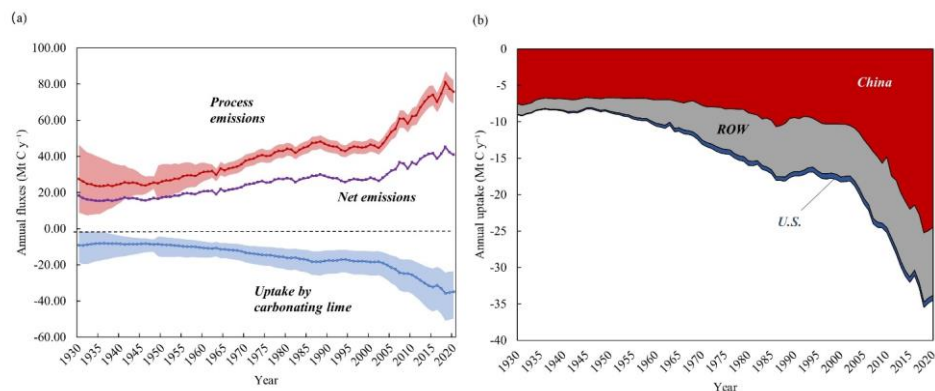
255 lime was 4.03%, which was far higher than that of 1930 to 2001 (0.32%). This was mainly due to the steady growth of China's
macro economy after 2002. This finding was consistent with estimates from studies on the uptake of carbon by cement carbon
based on similar approaches (Cui et al., 2019). These results are closely linked to the development of downstream sectors of
the lime industry in China, such as the iron and steel, light and chemical, construction and materials industries (Shan et al.,
2016b). In 2020, CO₂ emissions in China from lime production processes reached 49.93 Mt C yr⁻¹ (95% CI: 44.18–55.94 Mt
260 C), and the cumulative emission was 2100.39 Mt C (95% CI: 1606.96–2620.93 Mt), accounting for 56.33% of the global total.
The current figure exceeds the 46.91 Mt C yr⁻¹ forecasted for 2020 by Tong et al. (2019), which can be attributed primarily to
the emission reduction scenarios they considered, assuming a technology penetration rate of 5% for CCU in China by 2020.
However, it is important to note that as of 2020, CCU technology was seldom employed in China's lime industry. Therefore,
the actual amount of carbon emissions produced by lime manufacturing is likely to be higher than in the scenario considered
265 by Tong et al. Thus, our calculations are reasonable.

In the U.S., from 1930 to 2020, CO₂ emissions from lime production processes remained at around 2.72 Mt C yr⁻¹, and the
cumulative emissions by 2020 were approximately 247.30 Mt C, which represents 6.63% of the global total. This relatively
low value is because of a fairly stable production of lime in the U.S. and significant import of lime from Canada (USGS, 2022).
Relatedly, for the ROW, the cumulative emission was 1380.77 Mt C, which represents 37.03% of the global total.

270 3.2 Lime uptake of carbon by regions

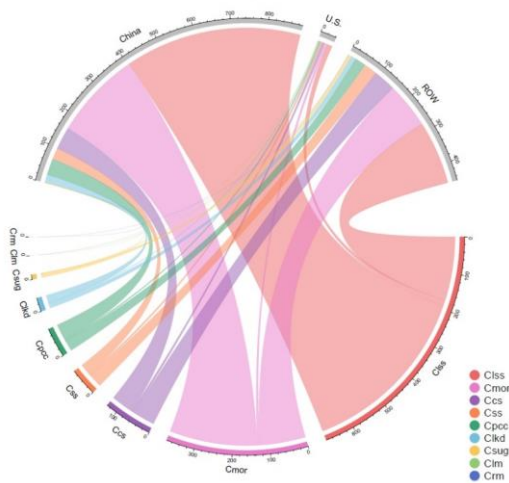
According to the lime carbon sequestration model, the global uptake of CO₂ by lime-containing materials increased from 9.16
Mt C (95% CI: 1.84–18.76 Mt C) in 1930 to 34.84 Mt C (95% CI: 23.50–49.81 Mt C) in 2020, representing an average annual
growth rate of 1.50% (Fig 3a). Figure 3b shows the annual uptake of CO₂ in different regions, where the area represents the
cumulative uptake in each region under natural conditions. In the early 1930s, the carbon sink of lime was affected by the
275 uncertainty of lime production parameters, and the trend was slightly decreased, which was similar to the change of carbon
emissions in lime industrial process. Cumulatively, 1444.70 Mt C (95% CI: 1016.24–1961.05 Mt C) were sequestered by lime-
containing materials between 1930 and 2020. This means that 38.83% of CO₂ emissions from the production process of
calcining limestone process were offset by lime carbon uptake at the same stage (1930–2020). The highest sequestration was
in China (~63.95%, 918.41 Mt C) because of the associated high production of lime materials (China Statistical Yearbook,
280 2022), followed by the ROW (~34.35%, 474.35 Mt C) and US (~3.01%, 43.28 Mt C). China's lime carbon sink is greatly
affected by lime production, so its change is actually similar to that of lime production. The change of China's lime carbon
sink was not obvious before the 20th century, fluctuating at 7.95 Mt C yr⁻¹. Until 2002, the total amount of carbon sink increased
year by year with the increase of lime production. As seen in Fig. 3a, in China, lime carbon uptake increased from 10.52 Mt C
in 2002 to 24.46 Mt C in 2020. Taking into account the data from 1930 to 2001 that we have fitted, we have compensated for
285 the underestimation of China's lime carbon sink (cumulative 467.85 Mt C). Affected by the COVID-19, the amount of China's
lime carbon sink decreased in 2020 compared with that in 2019 (about 24.94 Mt C). For other regions, lime carbon sinks in

the United States (from 0.08 Mt C in 1930 to 0.66 Mt C in 2020) and the ROW (from 1.49 Mt C in 1930 to 9.24 Mt C in 2020) showed an overall trend of increasing over time.



290 **Figure 3: (a) Net lime emissions from 1930 to 2020. Shadows represent uncertainty ranges. (b) Annual uptake of carbon dioxide by**
 295 **lime in different regions. ROW: Rest of World.**

The cumulative uptakes of CO₂ by lime materials in different regions are displayed in Fig. 4. Notably, the top three lime-containing materials (LSS, MOR and SS) accounted for 82.73% of the total global CO₂ uptake by lime. Regarding China, the cumulative uptake of CO₂ by all lime materials was 918.41 Mt C, and the amount of CO₂ that was removed by LSS (487.15 Mt C) exceeded the sum removed by all other materials. In the U.S., the uptake was dominated by carbonating SS, LSS, and 295
 300
 305
 310
 315
 320
 325
 330
 335
 340
 345
 350
 355
 360
 365
 370
 375
 380
 385
 390
 395
 400
 405
 410
 415
 420
 425
 430
 435
 440
 445
 450
 455
 460
 465
 470
 475
 480
 485
 490
 495
 500
 505
 510
 515
 520
 525
 530
 535
 540
 545
 550
 555
 560
 565
 570
 575
 580
 585
 590
 595
 600
 605
 610
 615
 620
 625
 630
 635
 640
 645
 650
 655
 660
 665
 670
 675
 680
 685
 690
 695
 700
 705
 710
 715
 720
 725
 730
 735
 740
 745
 750
 755
 760
 765
 770
 775
 780
 785
 790
 795
 800
 805
 810
 815
 820
 825
 830
 835
 840
 845
 850
 855
 860
 865
 870
 875
 880
 885
 890
 895
 900
 905
 910
 915
 920
 925
 930
 935
 940
 945
 950
 955
 960
 965
 970
 975
 980
 985
 990
 995
 1000
 1005
 1010
 1015
 1020
 1025
 1030
 1035
 1040
 1045
 1050
 1055
 1060
 1065
 1070
 1075
 1080
 1085
 1090
 1095
 1100
 1105
 1110
 1115
 1120
 1125
 1130
 1135
 1140
 1145
 1150
 1155
 1160
 1165
 1170
 1175
 1180
 1185
 1190
 1195
 1200
 1205
 1210
 1215
 1220
 1225
 1230
 1235
 1240
 1245
 1250
 1255
 1260
 1265
 1270
 1275
 1280
 1285
 1290
 1295
 1300
 1305
 1310
 1315
 1320
 1325
 1330
 1335
 1340
 1345
 1350
 1355
 1360
 1365
 1370
 1375
 1380
 1385
 1390
 1395
 1400
 1405
 1410
 1415
 1420
 1425
 1430
 1435
 1440
 1445
 1450
 1455
 1460
 1465
 1470
 1475
 1480
 1485
 1490
 1495
 1500
 1505
 1510
 1515
 1520
 1525
 1530
 1535
 1540
 1545
 1550
 1555
 1560
 1565
 1570
 1575
 1580
 1585
 1590
 1595
 1600
 1605
 1610
 1615
 1620
 1625
 1630
 1635
 1640
 1645
 1650
 1655
 1660
 1665
 1670
 1675
 1680
 1685
 1690
 1695
 1700
 1705
 1710
 1715
 1720
 1725
 1730
 1735
 1740
 1745
 1750
 1755
 1760
 1765
 1770
 1775
 1780
 1785
 1790
 1795
 1800
 1805
 1810
 1815
 1820
 1825
 1830
 1835
 1840
 1845
 1850
 1855
 1860
 1865
 1870
 1875
 1880
 1885
 1890
 1895
 1900
 1905
 1910
 1915
 1920
 1925
 1930
 1935
 1940
 1945
 1950
 1955
 1960
 1965
 1970
 1975
 1980
 1985
 1990
 1995
 2000
 2005
 2010
 2015
 2020



300 **Figure 4: Cumulative uptake of CO₂ uptake by lime-containing materials in different regions. ROW: Rest of World, Ccs: CO₂ uptake by carbide slag, Clkd: CO₂ uptake by lime kiln dust, Clss: CO₂ uptake by lime-stabilised soil, Cmor: CO₂ uptake by lime mortar, Cpsc: CO₂ uptake by Precipitated calcium carbonate, Crm: CO₂ uptake by red mud, Ccs: CO₂ uptake by steel slag, Csug: CO₂ uptake by carbonation sugar, Clm: CO₂ uptake by lime mud.**

3.3 Uptake of CO₂ in different stages of the lime cycle

305 Among the stages of the lime cycle, the service stage accounted for the highest uptake of CO₂ (1076.97 Mt C) from 1930 to 2020, representing 76.21% of the total. The uptake of CO₂ during the production and waste disposal stages were 36.95 and 299.19 Mt C, respectively (Fig. 5).

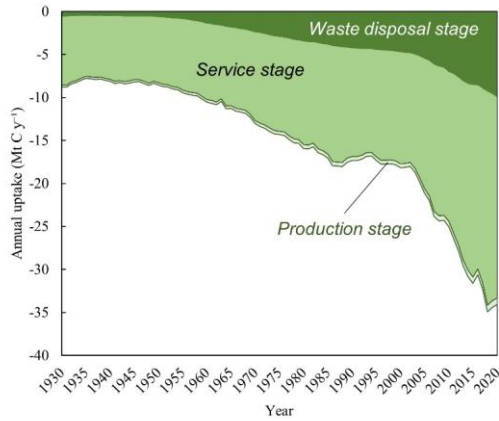


Figure 5: Global annual uptake of carbon dioxide by lime in different stages of its cycle.

Since 1930, the production stage is associated with a significant output of lime kiln dust (LKD), which is a by-product of the production of lime. The uptake of CO₂ by LKD in 2020 was 0.74 Mt C. This contribution is attributed to the development of the lime industry and increase in the disposal of LKD in landfills (Latif et al., 2015). The concentration of CaO in the ash of lime kilns is approximately 54.88%, and thus, this continuously absorbs CO₂ in landfills (Bobicki et al., 2012).

The annual and cumulative uptake of carbon by lime materials during the service stage varied significantly, but these produced the following trend: LSS > MOR > PCC > SUG (Table 1). As commonly used building materials, LSS and MOR correspondingly removed 629.43 and 316.89 Mt C. Considering the consumption of lime in the construction sector over the past five decades and its increasing utilization worldwide, especially in China and other developing countries, its uptake of CO₂ will certainly increase in the future (Renforth, 2019). The carbon fixation amounts of PCC and SUG of 84.98 and 45.68 Mt C, respectively, accounting for <10% of the total uptake during the utilization stage.

Table 1. Summary of the global uptake of CO₂ by lime-containing materials in different stages of its cycle

Stage	Types of lime materials	CO ₂ uptake in 2020 (Mt C)	Cumulative CO ₂ uptake from 1930 to 2020 (Mt C)
Production	LKD	0.76	36.95
	LSS	13.96	629.43
Service	MOR	6.88	316.89
	PCC	1.73	84.98
	SUG	0.74	45.68
Waste disposal	RM	0.002	0.05
	SS	8.31	225.67

Stage	Types of lime materials	CO ₂ uptake in 2020 (Mt C)	Cumulative CO ₂ uptake from 1930 to 2020 (Mt C)
	CS	1.67	73.39
	LM	0.003	0.09

320 **LKD: Lime Kiln Dust, LSS: Lime-Stabilized Soil, PCC: Precipitated Calcium Carbonate, SUG: Carbonation Sugar, RM: Red Mud, SS: Steel Slag, CS: Carbide Slag, LM: Lime Mud.**

Regarding the waste disposal stage, CO₂ absorption was mainly associated with carbonation of SS (Table 1). The cumulative uptake estimated in the present study was 225.67 Mt C. The iron and steel industry, which is a basic industry in industrialised countries, produces approximately 180–270 Mt of SS annually (Iron and Steel Slag, 2022). However, the alkaline content of SS is due to the high amount of lime used in the iron and steel making process. Therefore, SS sequesters a high amount of CO₂ in stockpiles and as roadbed material (Bobicki et al., 2012). Owing to its elevated concentration of Ca(OH)₂, high specific surface area and efficient carbonation process, CS is linked to the sequestration of approximately 73.39 Mt C (Huang et al., 2004; Hao et al., 2013). The total uptake of RM and LM is approximately 0.14 Mt C (Table 1). This low uptake is assigned to the high content of water in these wastes, which hinders the diffusion of CO₂ into their particles under exposure.

330 4. Discussion

Although the national greenhouse gas inventories guideline involves methods for quantifying CO₂ emissions that are linked to lime production processes, carbon sequestration of lime was not considered in the IPCC (IPCC, 2006). According to the analysis conducted in the present study, the uptake by lime-containing materials rapidly increased from 1930 to 2020 in all stages of the lime cycle. In 2020, the global uptake of CO₂ by lime was equivalent to 1.02% of the global industrial process emissions of CO₂; therefore, neglecting this sink caused an overestimation of the global carbon emission from industrial processes. The carbon sink increases over time, but this increase is due to an increase in production. It seems that both the increase in the sink and the emissions are proportional to each other. Our research results on carbon emissions and carbon absorption are significantly impacted by lime production. However, due to the lack of available data on annual lime production in China and worldwide during the early years, we used fitting methods to fill the gap of lime production and estimate it up to 340 1930. The statistically inferred 95% confidence interval was then used as the uncertainty range for lime production. To incorporate this uncertainty range into the accounting model for carbon sequestration and carbon emissions, we used Monte Carlo simulations, and after 10,000 iterations, we obtained the final accounting results for carbon sequestration and carbon emissions. Therefore, from the interpolation of production data to the final accounting of carbon sinks and carbon emissions, all potential sources of uncertainty have been fully considered in the accounting process. Thus, this is a crucial way to obtain 345 lime carbon sink and carbon emissions data from 1930 to 2020 under current data conditions. However, as our understanding of basic data and the mechanisms of lime production, carbon sequestration, and carbon emissions deepens, and as we improve our activity level data, such as lime-based material utilization, waste stacking, and recycling rates, and optimize carbonization

parameters under different exposure conditions, there is still considerable potential for improving the accuracy of long time series lime material carbon sequestration and carbon emission accounting.

350 Regarding the global carbon cycle, lime's annual carbon uptake is estimated to be approximately 1.09% of the average global land carbon sink from 2010 to 2020, which was approximately 3.18 Gt C yr⁻¹ (Global Carbon Budget, 2022). This indicates that CO₂ uptake by lime contributes to the global carbon cycle and should be taken into account for better accuracy in national emission inventories. This indicates that lime's contribution to the global carbon cycle is significant and should be taken into account when considering strategies to mitigate carbon emissions. Therefore, if the lime sink is incorporated, the global carbon budget, which already includes data for carbon sinks of the ocean, land, and cement can be improved.

355

Table 2. Comparison of CO₂ uptake by different types of materials

Region	Carbon sink type	Annual CO ₂ uptake (Mt C yr ⁻¹)	Source
Global	Carbonate	660–1120	(Li et al., 2018)
Global	Silicate	34.64	(Zhang et al., 2021)
Global	Lime	23.50–49.81	this-This study
Global	Cement	207.27–291.82	(Guo et al., 2021)
China	Steel slag	1.36	(Liu et al., 2018a)
China	Alkaline solid wastes	10.91–30	(Ma et al., 2022)

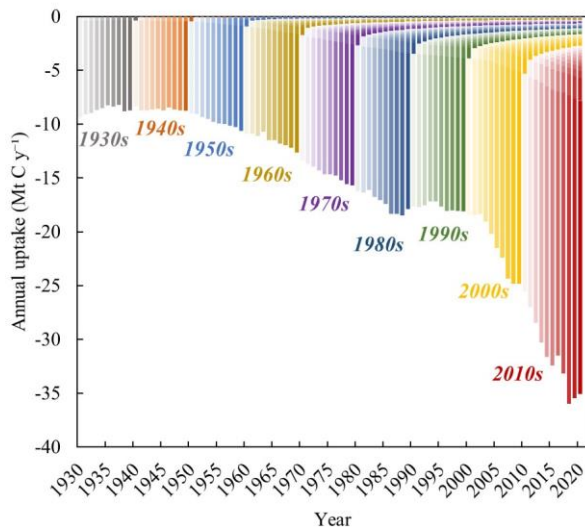
To further illustrate the function of lime as a carbon sink, the results obtained in the present study were compared with data for the uptake of CO₂ by materials containing different minerals (Table 2). Rocks containing silicate and carbonate minerals are abundant in nature and are continuously extracting CO₂ from the atmosphere. According to recent studies, the annual average amounts of carbon sequestered by natural carbonate and silicate minerals are 890 and 34.64 Mt C yr⁻¹ (Li et al., 2018; Zhang et al., 2021). However, the weathering of these minerals resulting in sequestration of CO₂ from the atmosphere occurs over a timescale of at least 10⁴ years (Berner et al., 1983).

360

设置了格式: 突出显示

设置了格式: 下标

设置了格式: 突出显示



365 **Figure 6: Worldwide annual uptake of atmospheric CO₂ by lime, disaggregated by years of production**

Obviously, compared to natural carbonate and silicate minerals, the carbonation process involving alkaline materials produced by human activities, such as cement, SS and other solid wastes, is relatively faster under natural conditions (Berner et al., 1983). Lime materials, such as MOR and SS, similar to cement and natural materials, also remove of CO₂ from the atmosphere for several years or decades (Fig. 6). The uptake of CO₂ in each year includes lime materials that were generated or consumed in previous and current years: the former accounts for 15.59% of the total uptake, whereas the latter accounts for 84.41%. These results contrast with those obtained for the cement carbon sink, where most of the carbon absorption is linked to previous years. This difference is attributed to the higher calcium content, smaller particle size, and more active chemical properties of lime materials. These characteristics suggest that lime-containing materials, especially LKD and SS, are suitable for carbon capture and storage via mineralisation. Furthermore, conducting optimization studies on carbonization parameters under different exposure conditions and exploring the feasibility of employing CCUS (carbon capture, utilization, and storage) technology for lime-based materials could significantly advance research on lime carbon sequestration and mitigate impacts of CO₂ emissions (Pan et al., 2020).

5. Data availability

All the original datasets of CO₂ uptake by lime are available at <https://doi.org/10.5281/zenodo.7896106> <https://doi.org/10.5281/zenodo.7759053> (Ma et al., 2023). This dataset contains three data files, including lime material production and uses, lime carbon emission and uptake results, and the uncertainty of lime carbon emission and uptake.

SI-1 Lime carbon emission and uptake results, 1930-2020

Data 1. Annual carbon uptake by lime material and region

Data 2. Global carbon uptake by lime material and stage

Data 3. Global carbon uptake by region

Data 4. Annual global carbon uptake by lime material and relevant lag time, 1930 to 2020

Data 5. Cumulative process CO₂ emissions from lime production by region and category, 1930 to 2020

Data 6. Global process CO₂ emissions from lime production and carbon uptake by lime materials carbonation from 1930 to 2020

SI-2 Lime material production and uses, 1930-2020

Data 1. Lime production by region, 1930 to 2020

Data 2. Estimated production of lime in China, 1930 to 2020

Data 3. Estimated global lime production, 1930 to 2020

Data 4. Parameters of lime production fitting model

Data 5. Paper and paperboard production by region, 1930 to 2020

Data 6. Steel production by region, 1930 to 2020

Data 7. Alumina production by region, 1930 to 2020

Data 8. Output rate by material

Data 9. Estimates of lime used for different industries by region

SI-3 Uncertainty of lime carbon emission and uptake, 1930-2020

Data 1. Variables considered in the uptake uncertainty analysis using a Monte Carlo method

Data 2. The uncertainty of CO₂ emissions from lime production

Data 3. The uncertainty of lime carbon uptake

6. Conclusion

In the present study, a carbon sequestration model was utilized to quantify the global uptake of CO₂ by lime-containing materials from 1930 to 2020. The national greenhouse gas inventories guideline and global carbon budgets could be improved by accounting for lime uptake, which can offset approximately 38% of emissions from industrial lime processes. The main findings of the present study are summarised below.

410 Global CO₂ uptake from lime production processes increased from 9.16 Mt C yr⁻¹ in 1930 to 34.8435.27 Mt C yr⁻¹ in 2020. However, the cumulative uptake of CO₂ by lime-containing materials (1444.70 Mt C) offset approximately 38.83% of these emissions. The uptake was highest in China (918.41 Mt C; 63.95% of global total) because of the associated elevated production and consumption of lime in recent decades. Uptake in the ROW and U.S. was 474.35 and 43.28 Mt C, respectively. The uptake of CO₂ by lime-containing materials varied significantly at different stages of the lime cycle. In the utilisation stage, 415 lime-containing materials, especially LSS and MOR, contributed the most to the total lime carbon sink (1076.97 Mt C). This was followed by sequestration in lime materials (mainly SS and CS) during the waste disposal stage (299.19 Mt C), whereas the production stage was associated with 36.95 Mt C. The sinks associated with the lime life cycle should not be neglected, and instead, they should be taken into account in future studies of the carbon cycle.

Historically, weathering of lime-containing materials was thought to occur over a large timescale. In the present study, it was 420 revealed that approximately 15.59% of the annual uptake of CO₂ originated from lime that was produced in previous decades; therefore, this absorption potential cannot be ignored. In the future, carbon capture and storage can be improved via the use of lime-containing materials (e.g., SS and LKD).

Author contributions. LB and MM designed the study and prepared the manuscript with assistance from FX, JW, and LL. LL and MM performed the analyses, with the help of FX and LB on the analytical approaches. MM, LN, and FC performed the post-processing and analysis of the data as well as the review of the paper. LL and LB established the lime carbon sink accounting database, whereas LB and FX wrote the code and performed simulations of the datasets, with assistance from LL, MM, and LN. FX conceptualised and supervised the study. 425

430 **Competing interests.** The authors declare that they have no conflict of interest.

Acknowledgements. Longfei Bing, Mingjing Ma, and Fengming Xi acknowledge funding from the National Natural Science Foundation of China (No. 41977290), CAS President's International Fellowship Initiative (2017VCB0004), Youth Innovation Promotion Association, Chinese Academy of Sciences (grant nos. 2020201 and Y202050), Liaoning Xingliao Talents Project (No. XLYC1907148), and Natural Science Foundation of Liaoning Province (2021-MS-025). 435

Financial support. This research was funded by the National Natural Science Foundation of China (No. 41977290), CAS President's International Fellowship Initiative (2017VCB0004), Youth Innovation Promotion Association, Chinese Academy of Sciences (grant nos. 2020201 and Y202050), Liaoning Xingliao Talents Project (No. XLYC1907148), and Natural Science Foundation of Liaoning Province (2021-MS-025). 440

References

- Baciacchi, R.: Carbonation of Industrial Residues for CCUS: Fundamentals, Energy Requirements and Scale-up Opportunities, CO₂ Summit III: Pathways to Carbon Capture, Utilization, and Storage Deployment, 2017.
- 445 Berner, R. A., Lasaga, A. C., and Garrels, R. M.: The carbonate-silicate geochemical cycle and its effect on atmospheric carbon dioxide over the past 100 million years., *American Journal of Science*, 283, 641–683, <https://doi.org/10.2475/AJS.283.7.641>, 1983.

- Bhatia, S. and Perlmutter, D.: Effect of the product layer on the kinetics of the CO₂-lime reaction, *AICHE Journal*, 29, 79–86, <https://doi.org/10.1002/AIC.690290111>, 1983.
- 450 Bobicki, E. R., Liu, Q., Xu, Z., and Zeng, H.: Carbon capture and storage using alkaline industrial wastes, *Progress in Energy and Combustion Science*, 38, 302–320, <https://doi.org/10.1016/J.PECS.2011.11.002>, 2012.
- Cao Z, Liu G, Duan H, Xi F, Yang Y: Unravelling the mystery of Chinese building lifetime: A calibration and verification based on dynamic material flow analysis. *Applied energy*, 238: 442-452. <https://doi.org/10.1016/j.apenergy.2019.01.106>, 2019.
- 455 China Construction Material Industry Yearbook. <https://data.cnki.net/yearBook/single?id=N2022040143>, 2022
- Cizer, Ö., Rodriguez-Navarro, C., Ruiz-Agudo, E., Elsen, J., van Gemert, D., and van Balen, K.: Phase and morphology evolution of calcium carbonate precipitated by carbonation of hydrated lime, *Journal of Materials Science*, 47, 6151–6165, <https://doi.org/10.1007/S10853-012-6535-7/FIGURES/9>, 2012a.
- Cizer, Ö., van Balen, K., Elsen, J., and van Gemert, D.: Real-time investigation of reaction rate and mineral phase modifications of lime carbonation, *Construction and Building Materials*, 35, 741–751, <https://doi.org/10.1016/J.CONBUILDMAT.2012.04.036>, 2012b.
- 460 Cui, D., Deng, Z., and Liu, Z.: China's non-fossil fuel CO₂ emissions from industrial processes, *Applied Energy*, 254, 113537, <https://doi.org/10.1016/J.APENERGY.2019.113537>, 2019.
- Despotou, E., Shtiza, A., Schlegel, T., and Verhelst, F.: Literature study on the rate and mechanism of carbonation of lime in mortars / Literaturstudie über Mechanismus und Grad der Karbonatisierung von Kalkhydrat im Mörtel, *Mauerwerk*, 20, 124–137, <https://doi.org/10.1002/DAMA.201500674>, 2016.
- 465 Dong, Y., Yupin, W., Wang, W., and Dehai, L.: Demonstration Analysis of Chinese Construction Industry Output under Global Financial Crisis, *Science and Technology Management Research*, 72–75, 2010.
- Almanac of China building materials industry: <https://data.oversea.cnki.net/chn/Trade/yearbook/single/N2021060085?zcode=Z005>, last access: 27 May 2022.
- 470 Data supplement to the Global Carbon Budget 2021: https://meta.icos-cp.eu/collections/88n-9-M7vk8jkXShAKj0RVL_, last access: 27 May 2022.
- Greco-Coppi, M., Hofmann, C., Ströhle, J., Walter, D., and Epple, B.: Efficient CO₂ capture from lime production by an indirectly heated carbonate looping process, *International Journal of Greenhouse Gas Control*, 112, 103430, <https://doi.org/10.1016/J.IJGGC.2021.103430>, 2021.
- 475 Guo, R., Wang, J., Bing, L., Tong, D., Ciais, P., Davis, S. J., Andrew, R. M., Xi, F., and Liu, Z.: Global CO₂ uptake by cement from 1930 to 2019, *Earth System Science Data*, 13, 1791–1805, <https://doi.org/doi.org/10.5194/essd-13-1791-2021>, 2021.
- Hao, J., Jiang, X., Yang, H., Yang, S., and Li, zhaoliang: Research Progress and Application of Carbide Slag, *Guangzhou Chemical Industry*, 41, 45–46, 2013.
- 480 Huang, C., Deng, Y., Xing, X., and Lu, J.: Comprehensive utilization of carbide slag, *Journal of Jiaozuo Institute of Technology (Natural Science)*, 23, 143–146, 2004.

- Intergovernmental Panel on Climate Change. IPCC guidelines for national greenhouse gas inventories. Hayama (Japan): Institute for Global Environmental Strategies (IGES); 2006.
- 485 Lai, Q. T., Habte, L., Thriveni, T., Seongho, L., and Ahn, J. W.: COVID-19 Impacts on Climate Change—Sustainable Technologies for Carbon Capture Storage and Utilization (CCUS), Minerals, Metals and Materials Series, 23–28, https://doi.org/10.1007/978-3-030-65257-9_3/FIGURES/3, 2021.
- Latif, M. A., Naganathan, S., Razak, H. A., and Mustapha, K. N.: Performance of Lime Kiln Dust as Cementitious Material, *Procedia Engineering*, 125, 780–787, <https://doi.org/10.1016/J.PROENG.2015.11.135>, 2015.
- 490 Li, H., Wang, S., Bai, X., Luo, W., Tang, H., Cao, Y., Wu, L., Chen, F., Li, Q., Zeng, C., and Wang, M.: Spatiotemporal distribution and national measurement of the global carbonate carbon sink, *Science of The Total Environment*, 643, 157–170, <https://doi.org/10.1016/j.scitotenv.2018.06.196>, 2018.
- Lin, Q., Wang, X., Cao, J., and Zhang, J.: Preparation of Nanosized Calcium Carbonate from Calcium Carbide Residue, *Guizhou Chemical Industry*, 3, 5–7, 2006.
- 495 Liu, L., Wang, J., Bing, L., Ling, J., Xu, M., and Xi, F.: Analysis of carbon sink of steel slag in China, *Chinese Journal of Applied Ecology*, 29, 3385–3390, 2018a.
- Liu, L. L., Ling, J. H., Li, T., Wang, J. Y., and Xi, F. M.: Review of lime carbon sink, *Chinese Journal of Applied Ecology*, 29, 327–334, 2018b.
- Ma, J., Chen, Y., Xu, D., Xu, F., Xue, S., Fan, B., Liu, D. kuan, and Ma, S.: Effects of Particle Size difference between White Mud and Limestone on Desulfurization Performance, *Journal of Chinese Society of Power Engineering*, 6, 497–504, 2021.
- 500 Ma, M. J., Ma, M. J., Xi, F. M., Ling, J. H., Ling, J. H., Wang, J. Y., and Quan, S. M.: Research progress on mineral carbonation of carbon dioxide, *Chinese Journal of Ecology*, 38, 3854–3863, <https://doi.org/10.13292/J.1000-4890.201912.002>, 2019.
- China Statistical Yearbook: <https://data.stats.gov.cn/easyquery.htm?cn=C01>, last access: 27 May 2022.
- China Chemical Industry Yearbook: <https://data.cnki.net/Trade/yearbook/single/N2021010132?zcode=Z023>, last access: 27 May 2022.
- 505 National Lime Association: RE: Comments of the National Lime Association on: Increasing Consistency and Transparency in Considering Benefits and Costs in the Clean Air Act Rulemaking Process, 2020.
- NOAA. ESRL: Global Monitoring Division—Global Greenhouse Gas Reference Network, n.d.
- Pan, S. Y., Chen, Y. H., Fan, L. S., Kim, H., Gao, X., Ling, T. C., Chiang, P. C., Pei, S. L., and Gu, G.: CO₂ mineralization and utilization by alkaline solid wastes for potential carbon reduction, *Nature Sustainability*, 3, 399–405, <https://doi.org/10.1038/s41893-020-0486-9>, 2020.
- 510 Pan, S. -Y., Chang, E. E., and Chiang, P.-C.: CO₂ capture by accelerated carbonation of alkaline wastes: a review on its principles and applications, *Aerosol and Air Quality Research*, 12, 770–791, 2012.
- PR China National Development and Reform ~~Commission~~Commission. ~~Guidelines~~Guidelines for provincial greenhouse gas inventories; 2011. [Chinese Document].

- 515 Qin, J., Cui, C., Cui, X., Hussain, A., Yang, C., and Yang, S.: Recycling of lime mud and fly ash for fabrication of anorthite ceramic at low sintering temperature, *Ceramics International*, 41, 5648–5655, <https://doi.org/10.1016/J.CERAMINT.2014.12.149>, 2015.
- Renforth, P.: The negative emission potential of alkaline materials, *Nature Communications*, 10, 1–8, <https://doi.org/10.1038/s41467-019-09475-5>, 2019.
- 520 Samari, M., Ridha, F., Manovic, V., Macchi, A., and Anthony, E. J.: Direct capture of carbon dioxide from air via lime-based sorbents, *Mitigation and Adaptation Strategies for Global Change*, 25, 25–41, <https://doi.org/10.1007/S11027-019-9845-0/FIGURES/7>, 2020.
- Shan, Y., Liu, Z., and Guan, D.: CO₂ emissions from China's lime industry, *Applied Energy*, 166, 245–252, <https://doi.org/10.1016/j.apenergy.2015.04.091>, 2016a.
- 525 Snæbjörnsdóttir, S., Sigfússon, B., Marieni, C., Goldberg, D., Gíslason, S. R., and Oelkers, E. H.: Carbon dioxide storage through mineral carbonation, *Nature Reviews Earth & Environment* 2020 1:2, 1, 90–102, <https://doi.org/10.1038/s43017-019-0011-8>, 2020.
- Tong, Q., Zhou, S., Guo, Y., Zhang, Y., and Wei, X.: Forecast and Analysis on Reducing China's CO₂ Emissions from Lime Industrial Process, *Int J Environ Res Public Health*, 16, <https://doi.org/10.3390/IJERPH16030500>, 2019.
- 530 Iron and Steel Slag. U.S. Geological Survey: <https://pubs.usgs.gov/periodicals/mcs2021/mcs2021-iron-steel-slag.pdf>, last access: 27 May 2022.
- Lime Statistics and Information. U.S. Geological Survey: <https://www.usgs.gov/centers/national-minerals-information-center/lime-statistics-and-information>, last access: 26 May 2022.
- Ventol, L., Vendrell, M., Giraldez, P., and Merino, L.: Traditional organic additives improve lime mortars: New old materials for restoration and building natural stone fabrics, *Construction and Building Materials*, 25, 3313–3318, <https://doi.org/10.1016/J.CONBUILDMAT.2011.03.020>, 2011.
- 535 Wang, L., Sun, N., Tang, H., and Sun, W.: A review on comprehensive utilization of red mud and prospect analysis, *Minerals*, 9, <https://doi.org/10.3390/MIN9060362>, 2019.
- Wang, Q. and Yan, P.: Characteristic of hydration products of steel slag, *Journal of the Chinese Ceramic society*, 38, 1731–1734, <https://doi.org/10.14062/j.issn.0454-5648.2010.09.030>, 2010.
- 540 Xi, F., Davis, S. J., Ciais, P., Crawford-Brown, D., Guan, D., Pade, C., Shi, T., Syddall, M., Lv, J., Ji, L., Bing, L., Wang, J., Wei, W., Yang, K. H., Lagerblad, B., Galan, I., Andrade, C., Zhang, Y., and Liu, Z.: Substantial global carbon uptake by cement carbonation, *Nature Geoscience*, 9, 880–883, <https://doi.org/10.1038/ngeo2840>, 2016.
- Zhang, S., Bai, X., Zhao, C., Tan, Q., Luo, G., Wang, J., Li, Q., Wu, L., Chen, F., Li, C., Deng, Y., Yang, Y., and Xi, H.: 545 Global CO₂ Consumption by Silicate Rock Chemical Weathering: Its Past and Future, *Earth's Future*, 9, <https://doi.org/10.1029/2020EF001938>, 2021.