

1 **An earthquake focal mechanism catalog for source and tectonic studies**
2 **in Mexico from February 1928 to July 2022.**

3
4
5 **Quetzalcoatl Rodríguez-Pérez¹, F. Ramón Zúñiga²**

6 ¹ Dirección de Desarrollo Científico, Consejo Nacional de Ciencia y Tecnología, Mexico City, Mexico

7 ² Centro de Geociencias, Universidad Nacional Autónoma de México, Juriquilla, Querétaro, Mexico

8
9 **Correspondence:** Quetzalcoatl Rodríguez-Pérez (quetza@geociencias.unam.mx)

10
11 **Abstract.** We present a focal mechanism catalog for earthquakes that occurred in Mexico and
12 surrounding areas reported from February 1928 to July 2022. The magnitude of the events varies from
13 -0.9 to 8.2. The hypocentral depth is in the range of $0 < Z < 270$ km. Focal mechanisms in this catalog
14 are associated with tectonic, geothermal, and volcanic environments. Reported focal mechanisms were
15 derived using different types of data at local, regional, and teleseismic distances and different methods
16 such as first motions, composite solutions, waveform analysis, and moment tensor inversion. So far,
17 focal mechanism data for earthquakes in Mexico are dispersed over many publications without any link
18 among them. For this reason, we collect and revise focal mechanism solutions previously reported by
19 different agencies and studies from published sources. Our catalog consists of 7664 focal mechanism
20 solutions for a total of 5701 events since we report all the available focal mechanisms obtained by
21 different authors and seismological agencies for each seismic event. Additionally, we classify the focal
22 mechanisms according to their fault types using the ternary diagrams of Kaverina-type classification.
23 We also rank the quality of the focal mechanism data into three categories: A, B, and C. A represents
24 good/reliable data, B represents regular, and C represents poor/questionable data according to a well-
25 defined criterion. The main goal of this study is to provide a comprehensive compilation of focal

1 mechanism data that can help in future source and tectonic studies in Mexico.

2

3 The earthquake focal mechanism catalog described in this article is available at
4 <https://doi.org/10.6084/M9.FIGSHARE.21663668.V1> (Rodríguez-Pérez and Zúñiga, 2022).

5

6 **1 Introduction**

7

8 Earthquake catalogs are used in several tasks by seismologists daily. In most cases, seismic catalogs
9 contain essential information such as origin time, hypocentral location, and magnitude of the events in
10 a particular region. In other cases, the catalogs also include specific information such as fault planes,
11 source duration, seismic wave phases, seismic source parameters, and finite-fault models (e.g., Ekström
12 et al., 2012; Mai and Thingbaijam, 2014; Vallé and Douet, 2016; Di Giacomo et al., 2018; Rodríguez-
13 Pérez et al., 2018). Studies related to seismicity and seismic hazard often require as input a seismic
14 catalog that, in ideal conditions, contains information that has been derived in a homogenous way using
15 the same procedures over some time (Cornell, 1968). Combining different datasets, and methods used
16 to estimate a specific parameter, such as location or focal mechanism, can be an alternative form to
17 increase the number of observations and enhance the resolution of an earthquake catalog. However,
18 when combining different datasets, it is important to know the type and quality of data used and the
19 advantages and limitations of the methods used to obtain a parameter reported in the catalogs. This
20 study is focused on a compilation of an extensive earthquake focal mechanism catalog. Focal
21 mechanisms describe the spatial fault orientation where earthquakes occur and the slip direction. Fault
22 plane solutions are essential to understanding seismotectonic processes, such as studying the stress field
23 in a given region. There are different methods available for determining focal mechanisms. One of the
24 most common is based on *P*-wave polarities (Knopoff and Gilbert, 1960). The moment tensor inversion

1 was introduced later, becoming one of the most popular methods nowadays (e.g., Dziewonski et al.,
2 1981; Pasyanos et al., 1996; Guilhem and Dreger, 2011).

3

4 Generally, the seismic source is considered as a point source located at the hypocenter, but in other
5 cases, the source can be assumed as a centroid. The size of the earthquake plays an essential role in the
6 source representation (Dziewonski and Woodhouse, 1983). For example, the difference between the
7 centroid and the location of the rupture initiation can be significant. As a result, focal mechanisms
8 derived from wave polarities and moment tensors differ not only from inadequate velocity models or
9 systematic errors. Focal mechanisms derived from *P*-wave polarities represent the geometry of the fault
10 at the beginning of the rupture. On the contrary, the moment tensor solutions provide the source
11 mechanism of the predominant component of the seismic rupture. The difference between wave
12 polarities and moment tensors is more drastic in the cases where the source deviates from a pure double
13 couple representation. Nevertheless, the seismic polarity method is still in use despite its limitations,
14 which can include incorrect polarity readings, inaccurate velocity models, and poor azimuthal coverage
15 of stations, due to its simplicity and affordability. First motion polarities are often the only method to
16 derive focal mechanisms for small to moderate earthquakes (e.g., seismic swarms and aftershock
17 sequences).

18

19 As a general practice, seismological observatories routinely compute moment tensors for earthquakes
20 above a certain threshold of magnitude and publish their solutions in online catalogs. The threshold
21 magnitudes of some of these agencies are $M_w = 5.0$ for the Global Centroid Moment Tensor (CMT)
22 project (Dziewonski et al., 1981; Ekström et al., 2012), $M_w = 4.5$ for the GEOFON Global Seismic
23 Network, and $M_w = 5.5$ for the National Earthquake Information Center (NEIC) of the USGS (Benz,
24 2017). Similarly, there are local and regional moment tensors catalogs with lower threshold magnitudes

1 (3.5 < M_w < 4.5). Some other online databases, such as the focal mechanism bulletin of the
2 International Seismological Centre (ISC) (Lentas and Harris, 2019; Lentas et al., 2019) contain both
3 moment tensor solutions and wave polarities of global seismicity. Focal mechanisms have been
4 computed and published in previous studies investigating seismotectonic features of specific regions.
5 Several authors have made a considerable effort to determine focal mechanisms reported in different
6 documents and also collect them in catalogs for specific areas to provide a set of revised information
7 (e.g., Whidden and Pankow, 2012; Franco et al., 2020; Saraò et al., 2021). Many focal mechanism
8 solutions are commonly spread in different documents and locations, making standardizing
9 information, checking, and selecting parameters a painstaking job.

10

11 In Mexico, seismological agencies responsible for providing information about earthquakes must report
12 focal mechanisms. The parameters routinely reported are the hypocentral location, magnitude, and
13 origin time. This fact highlights the need to have a robust focal mechanism catalog. For this purpose,
14 we study earthquakes with focal mechanisms in the region corresponding to the Mexican territory and
15 surrounding areas (latitude 12 – 33° N and longitude 120 – 88° W). Mexico is one of the most
16 seismically active regions in the World, where different tectonic environments concur (subduction
17 zone, transform fault zones, and intraplate regions). In Mexico, most of the seismic activity is due to
18 the interaction among five tectonic plates (North American, Pacific, Cocos, Rivera, and Caribbean
19 plates) and, to a lesser extent but not exempt of importance in terms of hazard, to the intraplate stresses
20 located inland at tectonic plates. The region has experienced several shallow crustal intraplate, thrust
21 subduction zone, and intra-slab earthquakes of great magnitude ($7.0 < M < 8.2$) over the past century,
22 causing extensive damage to the population centers as in the case of the 12 November 1912 Acambay
23 earthquake ($M \sim 7.0$), the 19 September 1985 Michoacan earthquake ($M = 8.2$), and the 19 September
24 2017 ($M = 7.1$) among others.

1

2 In virtue of the relevant seismic hazard in the region and its importance from the geodynamical
3 perspective, many authors have computed the focal mechanisms of seismic events using different data
4 and several techniques (e.g., Molnar and Sykes, 1969; Dean and Drake, 1978; Chael and Stewart, 1982;
5 LeFevre and McNally, 1985; Goff et al., 1987; Guzmán-Speziale et al., 1989; Doser and Rodriguez,
6 1993; Pacheco et al., 1993; Pardo and Suárez, 1993; Pardo and Suárez, 1995; Quintanar et al., 1999;
7 Rebollar et al., 1999; Quintanar et al., 2004; Rodríguez-Lozoya et al., 2008; Ortega and Quintanar,
8 2010; Pacheco and Singh, 2010; Sumy et al., 2013; Dougherty and Clayton, 2014; Abbott and
9 Brudzinski, 2015; Rodríguez-Pérez and Singh, 2016; Huesca-Pérez et al., 2022). National and
10 International observatories also provide focal mechanism solutions for seismic events generated in the
11 territory of Mexico (e.g., the Mexican Seismological Service, SSN; the Southern California Seismic
12 Network, SCSN; U.S. Geological Survey, USGS, among others). In this study, we aim to collect and
13 revise as many focal mechanisms as possible over time in a comprehensive catalog that can be a great
14 starting point for future seismotectonic and seismic hazard studies.

15

16 **2 Data and methods**

17 **2.1 Data**

18 To collect information on focal mechanisms in Mexico, we first conduct a bibliographic search in
19 libraries retrieving documents such as theses and reports. Secondly, the individual published articles are
20 found via different search engines such as google scholar, research gate, and Geoscienceworld. Finally,
21 we search for focal mechanism solutions in catalogs reported by different seismic agencies. After
22 examining information from several literature references and seismological agencies catalogs, we find
23 5701 earthquakes with at least one fault plane solution. We report all the available focal mechanisms
24 obtained by different authors and seismological agencies for each seismic event making 7664 the total

1 number of focal mechanisms. The compiled catalog has focal mechanism data from February 1928 to
2 July 2022; the lowest data density is in the time interval of 1928-1970 (125 focal mechanisms) (upper
3 panel in Fig. 1). Then, the number of focal mechanisms increased gradually between 1970 to 1995 (860
4 focal mechanisms) (Fig. 1). Since 1995, the number of focal mechanisms reported in Mexico has
5 increased significantly (6679 focal mechanisms) (Fig. 1). The magnitude of these events fluctuates
6 from -0.9 to 8.2, while the hypocentral depth is in the interval of $0 < Z < 270$ km. The negative
7 magnitude values are associated with microearthquakes in Sonora, located by Natali and Sbar (1982).
8 These microearthquakes were detected using a 10-station temporal seismic network with the
9 Hypoellipse program (Lahr, 1979). We classify the focal mechanisms into three categories regarding
10 the general geological nature: 1) tectonic or regular, 2) geothermal, and 3) volcanic events.

11

12 In our catalog, tectonic earthquakes comprise 7459 focal mechanisms reported in previous studies and
13 for different seismological observatories using different data and methods (Molnar and Sykes, 1969;
14 Thatcher and Brune, 1971; Molnar, 1973; Johnson et al., 1976; Jimenez-Jimenez, 1977; Dean and
15 Drake, 1978; Ebel et al., 1978; Jimenez, 1978; Kanamori and Stewart, 1978; Yamamoto, 1978; Reyes
16 et al., 1979; Astiz, 1980; Morales-Matamoros, 1980; Zúñiga and Valdés-González, 1980; Chael and
17 Stewart, 1982; Frohlich, 1982; Natali and Sbar, 1982; Domínguez-Reyes, 1983; Havskov et al., 1983;
18 Astiz and Kanamori, 1984; Beroza et al., 1984; Burbach et al., 1984; González and Suárez, 1984;
19 González et al., 1984; Lesage, 1984; Munguía and Brune, 1984; Yamamoto et al., 1984; LeFevre. and
20 McNally, 1985; Singh et al., 1985; González-Ruiz, 1986; Mota-Palomino et al., 1986; Ruiz-Kitcher,
21 1986; Suárez and Ponce, 1986; Yamamoto, 1986; Goff et al., 1987; González-Ruiz, 1987; Yamamoto
22 and Mota, 1988; Yamamoto and Mitchell, 1988; Guzmán-Speziale et al., 1989; Domínguez-Rivas,
23 1991; Doser, 1992; Doser and Rodriguez, 1993; Pacheco et al., 1993; Pardo and Suárez, 1993; Singh
24 and Pardo, 1993; Wolfe et al., 1993; Zúñiga et al., 1993; Cocco et al., 1994; Ruff and Miller, 1994;

1 Santoyo-García-Galeano, 1994; Delgado-Vazquez, 1995; Pardo and Suárez, 1995; UNAM and
2 CENAPRED Seismology group, 1995; Wong et al., 1997; Pacheco and Singh, 1998; Quintanar et al.,
3 1999; Rebollar et al., 1999; Singh et al., 1999; Terán-Mendieta, 1999; Campos-Enriquez et al., 2000;
4 Cruz-Jiménez, 2000; Singh et al., 2000a,b; Delgadillo-Peralta, 2001; Rebollar et al., 2001; Iglesias et
5 al., 2002; Yamamoto et al., 2002; Chavacán-Ávila, 2003, Pacheco et al., 2003; Sánchez-Alvaro, 2003;
6 Singh et al., 2003; Zúñiga et al., 2003; Aguilar-Rosales, 2004; García et al., 2004; Núñez-Cornú et al.,
7 2004; Quintanar et al., 2004; Hurtado-Díaz, 2005; Bernal-Esquia, 2006; González et al., 2006;
8 Chavacán-Ávila, 2007; Singh et al., 2007a,b; Huesca-Pérez, 2008; Rodríguez-Lozoya et al., 2008;
9 Ortega and Quintanar, 2010; Pacheco and Singh, 2010; Pérez-Campos et al., 2010; Rodríguez-Lozoya
10 et al., 2010; Vidal et al., 2010; Jaramillo and Suárez, 2011; Martínez-López, 2011; Okal and Borrero,
11 2011; Stella-Ramírez, 2011; Singh et al., 2012; Soto-Peredo, 2012; Bello-Segura, 2013; Clemente-
12 Chavez et al., 2013; Franco et al., 2013; Rutz-López et al., 2013; Sumy et al., 2013; UNAM
13 Seismology Group, 2013; Yamamoto et al., 2013; De la Vega, 2014; Dougherty et al., 2014; Abbott and
14 Brudzinski, 2015; Singh et al., 2015; Suárez and López, 2015; UNAM Seismology Group, 2015;
15 Yamamoto and Jiménez, 2015; Granados-Chavarría, 2016; Gómez-Arredondo et al., 2016; Munguía et
16 al., 2016a,b; Rodríguez-Cardozo, 2016; Rodríguez-Pérez and Singh, 2016; Suárez et al., 2016; Vallée
17 and Douet, 2016; Singh et al., 2017; Yela-Portilla, 2018; Chávez-Hernández, 2019; Domínguez-Reyes
18 et al., 2019; Quintanar et al., 2019; Méndez-Alarcón, 2020; Singh et al., 2020a,b; Mendoza-Zúñiga,
19 2021; Néquiz-Guillén, 2021; Núñez-Cornú et al., 2021; Sánchez-Lopez, 2021; Corona-Fernández and
20 Santoyo, 2022; Huesca-Pérez et al., 2022).

21

22 On the other hand, focal mechanisms of geothermal events include 151 events reported in the literature
23 (Albores et al., 1980; Fabriol and Munguía, 1997; González et al., 2001; Rebollar et al., 2003;
24 Antayhua-Vera, 2007; Suárez-Vidal et al., 2007; Romero-Domínguez, 2013; Pérez, 2017; Oregel-

1 Morales, 2019; GEMex project, 2020). Finally, the volcanic earthquakes part consists of 54 focal
2 mechanisms (Núñez-Cornú and Sánchez-Mora, 1998; Jimenez-Jimenez, 1999; Arámbula-Mendoza,
3 2007; Pinzón et al., 2017; Angulo-Carrillo, 2018; Núñez et al., 2022). Focal mechanisms reported in
4 this catalog were derived with the following techniques: 1) regional and teleseismic moment tensor
5 inversion (4747 fault plane solutions with $1.4 < M < 8.2$), 2) waveform analysis (208 fault plane
6 solutions with $1.4 < M < 8.1$), and 3) first-motion wave polarities of single or composite mechanisms
7 (2584 with $0.4 < M < 8.2$, and 125 with $-0.9 < M < 5.7$, fault plane solutions, respectively).

8

9 **2.2 Methods**

10 After carefully searching focal mechanism solutions in the literature, we classify all the focal
11 mechanisms in our catalog. For this purpose, we use the FMC's computer program (from Focal
12 Mechanisms Classification) (Álvarez-Gómez, 2019). The software uses the Kaverina-type
13 classification diagrams (Kaverina et al., 1996) to verify the rupture type of focal mechanism data. The
14 Kaverina-type ternary diagrams classify earthquakes into seven rupture types based on the plunges of
15 the P , B , and T principal axes: 1) normal (N), 2) normal – strike-slip (N-SS), 3) strike-slip – normal
16 (SS-N), 4) strike-slip (SS), 5) strike-slip – reverse (SS-R), 6) reverse – strike-slip (R-SS), and 7)
17 reverse (R) (lower panel in Fig. 1). Subsequently, we calculate the missing information of the
18 fault/auxiliary planes, and principal axes. At this stage, we use the code library “cmt” of seizmo
19 software (Euler, 2014). Seizmo is a collection of different Matlab libraries to perform different tasks in
20 seismology. In particular, we use the library called “cmt” which deals with obtaining auxiliary planes,
21 calculating fault angles, and converting focal mechanisms, principal axes, and moment tensors. This
22 library is made up of several functions, some of which we use and briefly describe below. We use the
23 function “auxplane.m” to calculate the auxiliary focal plane. The function “sdr2tpb.m” is used to
24 determine the principal axes of a focal mechanism. In some cases, we have to convert the moment

1 tensor and principal axes to strike, dip, and rake angles. For that purpose, we use the function
2 “tpb2sdr.m”. Transformations of moment tensors to strike-dip-rake are performed with the function
3 “mt2sdr.m”. In cases where only the strike and dip of the fault and auxiliary planes were reported, the
4 rake angles are calculated with the function “GetRake” of the RFOC software (Lees, 2018). The
5 package RFOC is written in *R* language and deals with graphics for statistics on a sphere, earthquake
6 focal mechanisms, radiation patterns, and ternary plots.

7

8 Our database merges focal mechanism solutions from different studies that used different
9 methodologies, each with a different uncertainty level. To address this variability in data and methods,
10 we rank the quality and reliability of the focal mechanisms in our catalog using the following criteria.
11 We assign a quality factor based on data availability and the calculation process. For data availability,
12 we consider the number of observations, quality of the records (e.g., digitized seismograms, type of
13 instrument), and their spatial distribution (hypocentral distance and station coverage). In the case of the
14 calculation process, we consider the uniformity of the method throughout the reported study, the
15 methodology's description, and the method's calibration (selection of input parameters for the method
16 chosen to calculate focal mechanisms or moment tensors). A good calibration considers a correct
17 selection of the medium's properties, especially the velocity model used to calculate travel times or
18 synthetic seismograms. Due to the lack of uncertainty estimates reported in several studies, we do not
19 consider them for assigning a quality factor in most fault plane solutions. The quality of the moment
20 tensor solutions is assigned based on the overall variance reduction (VR). The VR describes the
21 goodness of fit between observed and synthetic waveforms of the moment tensor inversion. We only
22 considered VR to assign a quality factor when it was available. Franco et al. (2020) studied seismic
23 moment tensors in Mexico, and they established that a value of $VR \geq 50\%$ is a reasonable threshold for
24 reliable focal mechanism solutions.

1

2 We classify the focal mechanism data into three categories: A, B, and C. A represents good/reliable
3 data, B represents regular, and C represents poor/questionable data. Category A has one or more of the
4 following situations: an adequate velocity structure, a VR of $> 70\%$, an adequate number of
5 observations, a good spatial distribution of observations, a uniform methodology (avoiding the use of
6 several methods to obtain parameters and mix the results), a good description of the method
7 (advantages and disadvantages of the technique used) and data processing, and modern seismic
8 instrumentation. Category B has one or more of the following situations: an adequate velocity model, a
9 VR range of $50\% < VR < 70\%$, few observations, a regular spatial distribution of observations, a
10 uniform methodology, and a good description of the method and data processing. Category C has one
11 or more of the following situations: a global/mean velocity model, a VR of $< 50\%$, few observations,
12 poor spatial distribution of observations, nonuniform methodology, a poor description of the method
13 and data processing, and analog instrumentation. Here, the term adequate velocity model refers to the
14 model being specific to the region where the earthquakes are generated. Since, in many cases, average
15 models are used that cover vast regions of the territory of Mexico. The quality criterium presented here
16 may help the user decide if the selected focal mechanisms are suitable for their analysis or study. For
17 each focal mechanism solution, we show all the magnitudes reported. An event can have a different
18 type of magnitude. Given all the different magnitude scales, compiling a unified magnitude scale is a
19 demanding task requiring further detailed analysis outside this study's scope. In addition, the main
20 objective of this study is the focal mechanisms per se.

21

22 We provide our catalog in ASCII and Excel files entitled "Focal_mechanisms_Mexico_1928-2022". In
23 this file, we provide the following information: 1) the number of the event, 2) the number of solutions
24 named as S-1, S-2, and S-*n*, where *n* is the number of a solution, 3) date of the event, 4) origin time, 5)

1 longitude of the epicenter, 6) latitude of the epicenter, 7) hypocentral depth, 8) magnitude for each of
2 the solutions, 9) rupture type (N, N-SS, SS-N, SS, SS-R, R-SS, and R) , 10) strike angle 1, 11) dip
3 angle 1, 12) rake angle 1, 13) strike angle 2, 14) dip angle 2, 15) rake angle 2, 16) plunge of the *T*-axis,
4 17) azimuth of the *T*-axis, 18) plunge of the *P*-axis, 19) azimuth of the *P*-axis, 20) plunge of the *B*-axis,
5 21) azimuth of the *B*-axis, 22) tectonic environment (tectonic, geothermal zone or volcanic), 23)
6 observations of the event (here we reported the type of magnitude for each of the solutions, M_s , m_b , M_w ,
7 M_L , and M_c), 24) method used to determine the focal mechanism (first arrivals, composite solution,
8 waveform analysis, moment tensor), 25) variance reduction when the information was available, 26)
9 quality of the event, and 27) bibliographical references or seismological agency. When the information
10 is missing (the origin time, the seismic magnitude, or the hypocentral depth), the database cell is
11 highlighted in red, and a question mark is also shown in the cell.

12

13 **3 Results**

14 The information in this catalog is presented in an easy-to-understand manner as an aid to the user. The
15 classification of the focal mechanisms in our catalog yielded 1750 events with normal-faulting (Fig. 2).
16 Earthquakes with N-SS faulting include 691 events (Fig. 3). On the other hand, reverse-faulting forms a
17 group of 2248 earthquakes (Fig. 4). R-SS faulting consists of 351 events (Fig. 5). Pure strike-slip
18 rupture is made up of 1320 seismic events (Fig. 6). SS-N faulting comprises a group of 792
19 earthquakes (Fig. 7). SS-R faulting is made up of 512 seismic events (Fig. 8). The earthquake
20 magnitude distribution for all types of faulting exhibits bimodal distributions (Figs. 2 to 8). Several
21 factors can explain this. On the one side, the earthquake detection capability of permanent seismic
22 networks has improved with new developments and densification of seismometers. On the other hand,
23 it is also due to the use of temporary networks used to study aftershock sequences and seismic swarms.

24

1 **4 Discussion**

2 In Figs. 9 to 15, we show the orientation of the pressure and tension axes. Some conspicuous
3 differences can already be distinguished among the different tectonic regimes. We provide some
4 statistics on P and T axes for each type (Table 1) which may serve as a first step to a more detailed
5 analysis since this is not the aim of this work. We interpret the large deviations from the main trends in
6 data presented in Table 1 as arising from the mixture of tectonic regimes involved in the average; these
7 should decrease when differentiating among such regimes. Nevertheless, the azimuths of the P and T
8 axes primarily reflect the expected conditions of subduction for events of the R type which dominate
9 this type of events, as well as the trends of transform faults in the case of SS type. N-type events
10 comprise a mixture of tectonic regimes which precludes identifying a particular regime as dominating
11 the whole data set. Even though a detailed tectonic analysis is out of the scope of this work, we believe
12 that the data presented here will make such a task more accessible and provide a basis for systematic
13 comparisons.

14

15 **5 Conclusions**

16 We collect and revise focal mechanism solutions previously reported by different agencies and studies
17 from published sources to compile a catalog of focal mechanisms for Mexico. Our catalog consists of
18 7664 solutions for 5701 local and regional events. From these, 1750 events correspond to normal
19 faulting, 691 events to N-SS, 2248 to pure-reverse, 351 to R-SS, 1320 to pure strike-slip, 792 to SS-N,
20 and 512 to SS-R faulting. These account for 32% of the solutions corresponding to normal in general,
21 34% to reverse, and 34% for the dominantly strike-slip type. Besides including all information about
22 the source of the data, we also ranked the quality of the focal mechanism data into three categories: A,
23 B, and C. A represents good/reliable data, B represents regular, and C represents poor/questionable data
24 according to a robust criterion. Moment tensor inversion involves many assumptions and constraints

1 that make evaluating confidence in fault planes difficult. For this reason, we present all the focal
2 mechanism solutions available for one event. In this way, the users can consider the variability of the
3 focal mechanisms in their analysis.

4

5 **6 Data availability**

6 Some focal mechanisms described in this article are available at the following data sources: 1) Global
7 Centroid Moment Tensor (Global CMT) via <https://www.globalcmt.org> (Dziewonski et al, 1981;
8 Ekström et al., 2012), 2) Mexican Global Centroid Moment Tensor via <http://132.248.6.13/cmt>, 3)
9 GEOFON Global Seismic Network via <https://geofon.gfz-potsdam.de/old/eqinfo/list.php?mode=mt>, 4)
10 International Seismic Centre (ISC) bulletin (<https://doi.org/10.31905/D808B830>, International
11 Seismological Centre, 2022), 5) U.S. Geological Survey (USGS) via <https://earthquake.usgs.gov>, 6)
12 Saint Louis University moment tensor catalog via http://www.eas.slu.edu/eqc/eqc_mt/MECH.NA, 7)
13 SCARDEC Source Time Functions Database via <http://scardec.projects.sismo.ipgp.fr> (Vallée and
14 Douet, 2016), and 8) Southern California Seismic Network (SCSN) earthquake catalogs via
15 http://www.eas.slu.edu/eqc/eqc_mt/MECH.NA (California Institute of Technology and United States
16 Geological Survey Pasadena, 1926). In all cases, last access: 17 September 2022.

17

18 **7 Code availability**

19 All figures were plotted by the Generic Mapping Tools software package ([https://www.generic-](https://www.generic-mapping-tools.org)
20 [mapping-tools.org](https://www.generic-mapping-tools.org); Wessel et al., 2013). Earthquake fault classification were performed with FMC
21 software (<https://github.com/Jose-Alvarez/FMC>; Álvarez-Gómez, 2019). Conversions among fault
22 planes, principal axes and/or moment tensors were performed with RFOC and seizmo cmt codes
23 (<https://github.com/cran/RFOC>; Lees, 2018; and <https://github.com/g2e/seizmo>).

24

1 **Author contributions.**

2 QRP and FRZ designed the idea and discussed the results. QRP was responsible for the data collection
3 and earthquake selection. The two authors contributed to the manuscript and approved the final version.

4
5 **Competing interests.**

6 The authors declare that they have no conflict of interest.

7
8 **Acknowledgements.**

9 Quetzalcoatl Rodríguez-Pérez was supported by the Mexican National Council for Science and
10 Technology (CONACYT) (Research - project 1126). Partial support for F. Ramón Zúñiga was obtained
11 from grant PAPIIT-UNAM IG101823 which is also acknowledged. Constructive reviews by two
12 anonymous reviewers helped to improve the manuscript.

13
14 **References.**

15
16 Abbott, E. R., and Brudzinski, M. R.: Shallow seismicity patterns in the northwestern section of the
17 Mexico Subduction Zone, *J. S. Am. Earth Sci.*, 63, 279-292,
18 <https://doi.org/10.1016/j.jsames.2015.07.012>, 2015.

19
20 Aguilar-Rosales, M. A.: Determinación del tipo de fuentes sísmicas dentro de la Cuenca de México y
21 sus relación con la geología local, B.Eng. thesis, UNAM, Mexico, 38 pp., 2004.

22
23 Albores, A., Reyes, A., Brune, J. N., Gonzalez, J., Garcilazo, L., and Suarez, F.: Seismicity studies in
24 the region of the Cerro Prieto Geothermal field, *Geothermics*, 9, 65-77, <https://doi.org/10.1016/0375->

1 [6505\(80\)90024-3](https://doi.org/10.1016/j.softx.2019.03.008), 1980.

2

3 Álvarez-Gómez, J. A.: FMC- Earthquake focal mechanisms data management, cluster and
4 classification, *Software X*, 9, 299-307, <https://doi.org/10.1016/j.softx.2019.03.008>, 2019.

5

6 Angulo-Carrillo, J.: Análisis de la actividad sísmica e hidrotermal del Volcán La Malinche, México,
7 M.S. thesis, UNAM, Mexico, 85 pp., 2018.

8

9 Antayhua-Vera, Y. T.: Sismicidad en el campo geotermico de los Humeros-Puebla (1997-2004), su
10 relacion con los pozos y la tectonica local, M.S. thesis, UNAM, Mexico, 225 pp., 2007.

11

12 Arámbula-Mendoza, R.: Estado de esfuerzos en el Volcán Popocatepetl obtenido con mecanismos
13 focales, en el periodo de actividad de 1996 a 2003, M.S. thesis, UNAM, Mexico, 122 pp., 2007.

14

15 Astiz, L. M.: Sismicidad en Acambay, Estado de Mexico. El temblor del 22 de febrero de 1979, B.Eng.
16 thesis, UNAM, Mexico, 130 pp., 1980.

17

18 Astiz, L. M., and Kanamori, H.: An earthquake doublet in Ometepec, Guerrero, Mexico, *Phys. Earth
19 and Planet. Int.*, 34, 24-45, [https://doi.org/10.1016/0031-9201\(84\)90082-7](https://doi.org/10.1016/0031-9201(84)90082-7), 1984.

20

21 Bello-Segura, D. I.: Parámetros de la fuente de sismos con epicentros en el Valle de México durante
22 2008-2012, M.S. thesis, UNAM, Mexico, 85 pp., 2013.

23

24 Benz, H.: Building a National Seismic Monitoring Center: NEIC from 2000 to the Present, *Seism. Res.*

1 Lett., 88, 457-461, <https://doi.org/10.1785/0220170034>, 2017.

2

3 Bernal-Esquia, Y. I.: Microzonificación sísmica de la Ciudad de Tlaxcala, Mexico, M.S. thesis, UNAM,
4 130 pp., 2006.

5

6 Beroza, G., Rial, J. A., and McNally, K. C.: Source mechanisms of the June 7, 1982 Ometepe, Mexico
7 earthquake, *Geophys. Res. Lett.*, 11, 689-692, <https://doi.org/10.1029/GL011i008p00689>, 1984.

8

9 Burbach, G., Frolich, C., Pennington, W., and Matumoto, T.: Seismicity and tectonics of the subducted
10 Cocos plate, *J. Geophys. Res.*, 89, 7719-7735, <https://doi.org/10.1029/JB089iB09p07719>, 1984.

11

12 California Institute of Technology and United States Geological Survey Pasadena: Southern California
13 Seismic Network, <https://doi.org/10.7914/SN/CI>, 1926.

14

15 Campos-Enriquez, J. O., Rodríguez, M., Delgado-Rodríguez, O., and Milán, M.: Contribution to the
16 tectonics of the northern portion of the central sector of the trans-Mexican Volcanic Belt, *Geol. Soc.
17 Am.*, Special Paper, 334, 223-235, <https://doi.org/10.1130/0-8137-2334-5.223>, 2000.

18

19 Chael, E. P., and Stewart, G. S.: Recent large earthquakes along the Middle American Trench and their
20 implications for the subduction process, *J. Geophys. Res.*, 87, 329-338,
21 <https://doi.org/10.1029/JB087iB01p00329>, 1982.

22

23 Chavacán-Ávila, M. R.: Catalogo de sismicidad local para la Cuenca de Mexico, M.S. thesis, UNAM,
24 Mexico, 159 pp., 2007.

1

2 Chavacán-Avila, M. R.: Parámetros de fuente asociados a la sismicidad del sistema de fallas de la
3 Sierra del Chichinautzin, B.Eng. thesis, UNAM, Mexico, 90 pp., 2003.

4

5 Chávez-Hernández, O. C.: Determinación de mecanismos focales en el Valle de México durante el
6 periodo 2014-2016, B.Eng. thesis, IPN, Mexico, 68 pp., 2019.

7

8 Clemente-Chavez, A., Figueroa-Soto, A., Zúñiga, F. R., Arroyo, M., Montiel, M., and O. Chavez, O.:
9 Seismicity at the northeast edge of the Mexican Volcanic Belt (MVB) and activation of an
10 undocumented fault: the Peñamiller earthquake sequence of 2010-2011, Querétaro, Mexico, Nat.
11 Hazards Earth Syst. Sci., 13, 2521-2531, <https://doi.org/10.5194/nhess-13-2521-2013>, 2013.

12

13 Cocco, M., Pacheco, J., Singh, S. K., and Courboux, F.: The Zihuatanejo, Mexico, earthquake of 1994
14 December 10 ($M = 6.6$): source characteristics and tectonic implications, Geophys. J. Int., 131, 135-
15 145, <https://doi.org/10.1111/j.1365-246X.1997.tb00600.x>, 1997.

16

17 Cornell, C. A.: Engineering seismic risk analysis, Bull. Seismol. Soc. Am., 58, 1583-1606,
18 <https://doi.org/10.1785/BSSA0580051583>, 1968.

19

20 Corona-Fernández, R.D., and Santoyo, M. A.: Re-examination of the 1928 Parral, Mexico earthquake
21 ($M6.3$) using a new multiplatform graphical vectorization and correction software for legacy seismic
22 data, Geosci. Data J. 00, 1-15, <https://doi.org/10.1002/gdj3.159>, 2022.

23

24 Cruz-Jiménez, H.: Análisis de las réplicas de los sismos del 3 ($M = 4.1$) y 5 ($M = 4.2$) de junio de 1996

1 en Bella Vista, Querétaro, B.Eng. thesis, IPN, Mexico, 95 pp., 2000.

2

3 Dean, B. W., and Drake, C. L.: Focal mechanism solutions and tectonics of the Middle America arc, J.

4 Geol., 86, 111-128, 1978.

5

6 De la Vega-Cabrera, O. O.: Un método de inversion del tensor de momento sismico: implementacion y

7 aplicacion a las replicas del temblor de 20 de marzo 2012, Ometepec, Guerrero, UNAM, Mexico,

8 B.Eng. thesis, 114 pp., 2014.

9

10 Delgadillo-Peralta, M.: Un estudio de sismicidad en el Valle de México durante el periodo de 1996 al

11 2000. B.Eng. thesis, UNAM, Mexico, 63 pp., 2001.

12

13 Delgado-Vazquez, M. A.: Zonificacion sismica para la zona urbana de Guadalajara, B.Eng. thesis,

14 UNAM, Mexico, 95 pp., 1995.

15

16 Di Giacomo, D., Engdahl, E. R., and Storchak, D. A.: The ISC-GEM Earthquake Catalogue (1904-

17 2014): status after the Extension Project, Earth Syst. Sci. Data, 10, 1877-1899,

18 <https://doi.org/10.5194/essd-10-1877-2018>, 2018.

19

20 Domínguez-Reyes, T.: Estudio del temblor de Tehuantepec del 22 de Junio de 1979 (m_b - 6.2, h-113 km)

21 mediante modelado de ondas de cuerpo, B.Eng. thesis, UNAM, Mexico, 48 pp., 1983.

22

23 Domínguez-Reyes, T., Rodríguez Lozoya, H. E., Reyes, G., Quintanar Robles, L., Aguilar Meléndez,

24 A., and Rodríguez Leyva, H. E.: Sorce parameters, focal mechanisms and stress tensor inversion from

1 moderate earthquakes and its relationship with subduction zone, *Geofis. Int.*, 58, 127-137,
2 <https://doi.org/10.22201/igeof.00167169p.2018.58.2.1965>, 2019.

3

4 Domínguez-Rivas, J.: Geometría de la Placa de Cocos en la región del río Balsas, Guerrero, B.Eng.
5 thesis, UNAM, Mexico, 72 pp., 1991.

6

7 Doser, D. I.: Faulting process of the 1956 San Miguel, Baja California, earthquake sequence, *Pure and*
8 *Appl. Geophys.*, 139, 3-16, 1992.

9

10 Doser, D. I., and J. Rodriguez, J.: The seismicity of Chihuahua, Mexico, and the 1928 Parral
11 earthquake, *Phys. of Earth and Planet. Int.*, 78, 97-104, [https://doi.org/10.1016/0031-9201\(93\)90086-O](https://doi.org/10.1016/0031-9201(93)90086-O),
12 1993.

13

14 Dougherty, S. L., and Clayton, R. W.: Seismicity and structure in central Mexico: evidence for a
15 possible slab tear in the South Cocos plate, *J. Geophys. Res.*, 119, 3424-3447,
16 <https://doi.org/10.1002/2013JB010883>, 2014.

17

18 Dziewonski, A. M., Chou, T. A., and Woodhouse, J. H.: Determination of earthquake source parameters
19 from waveform data for studies of global and regional seismicity, *J. Geophys. Res.*, 86, 2825-2852,
20 <https://doi.org/10.1029/JB086iB04p02825>, 1981.

21

22 Dziewonski, A. M. and Woodhouse, J. H.: An experiment in systematic study of global seismicity:
23 centroid-moment tensor solutions for 201 moderate and large earthquakes of 1981, *J. Geophys. Res.*,
24 88, 3247-3271, <https://doi.org/10.1029/JB088iB04p03247>, 1983.

1

2 Ebel, J. E., Burdick, L. J., and Stewart, G. S.: The source mechanism of the August 7, 1966 El Golfo
3 earthquake, *Bull. Seismol. Soc. Am.*, 68, 1281-1292, <https://doi.org/10.1785/BSSA0680051281>, 1978.

4

5 Ekström, G., Nettles, M., and Dziewonski, A. M.: The global CMT project 2004-2010: Centroid-
6 moment tensors for 13,017 earthquakes, *Phys. Earth Planet. Inter.*, 200-201, 1-9,
7 <https://doi.org/10.1016/j.pepi.2012.04.002>, 2012.

8

9 Escobedo-Zenil, D.: El sismo del 09 de Octubre de 1995 en Colima. Un estudio telesísmico, M.S.
10 thesis, UNAM, Mexico, 67 pp., 1997.

11

12 Euler, G. G.: Seizmo package. <https://github.com/g2e/seizmo>, 2014.

13

14 Franco, S. I., Canet, C., Iglesias, A., and Valdés-Gonzalez, C.: Seismic activity in the Gulf of Mexico. A
15 preliminary analysis, *Bol. Soc. Geol. Mex.*, 65, 447-455,
16 <http://dx.doi.org/10.18268/BSGM2013v65n3a2>, 2013.

17

18 Franco, S. I., Iglesias, A., and Fukuyama, E.: Moment tensor catalog for Mexican earthquakes: almost
19 two decades of seismicity, *Geofis. Int.*, 59, 54-82,
20 <https://doi.org/10.22201/igeof.00167169p.2020.59.2.2081>, 2020.

21

22 Fabriol, H., and Munguía, L.: Seismic activity at the Cerro Prieto geothermal area (Mexico) from
23 August 1994 to December 1995, and its relationship with tectonics and fluid exploitation, *Geophys.*
24 *Res. Lett.*, 24, 1807-1810, <https://doi.org/10.1029/97GL01669>, 1997.

1
2
3
4
5
6
7
8
9
10
11
12
13
14
15
16
17
18
19
20
21
22
23
24

Frohlich, C.: Seismicity of the central Gulf of Mexico, *Geology*, 10, 103-106,
[https://doi.org/10.1130/0091-7613\(1982\)10](https://doi.org/10.1130/0091-7613(1982)10), 1982.

García, D., Singh, S. K., Herrádiz, M., Pacheco, J. F., and Ordaz, M.: Inslab earthquakes of Central
Mexico: *Q*, source spectra, and stress drop, *Bull. Seismol. Soc. Am.*, 94, 789-802,
<https://doi.org/10.1785/0120030125>, 2004.

Guilhem, A., Dreger, D. S.: Rapid detection and characterization of large earthquakes using quasi-
finite-source Green's functions in continuous moment tensor inversion, *Geophys. Res. Lett.*, 38,
L13318, <https://doi.org/10.1029/2011GL047550>, 2011.

Goff, J. A., Bergman, E. A., and Solomon, S. C.: Earthquake source mechanisms and transform fault
tectonics in the Gulf of California, *J. Geophys. Res.*, 92, 10485-10510,
<https://doi.org/10.1029/JB092iB10p10485>, 1987.

GEMex project: Seismic structures of the Acoculco and Los Humeros geothermal fields, European
Union's Horizon 2020 programme for Research and Innovation, Open File Rep. D5.3, 128 pp., 2020.

Gómez-Arredondo, C. M., Montalvo-Arrieta, J. C., Iglesias-Mendoza, A., and Espindola-Castro, V. H.:
Relocation and seismotectonic interpretation of the seismic swarm of August - December of 2012 in the
Linares area, northeastern Mexico, *Geofis. Int.*, 55, 95-106,
<https://doi.org/10.22201/igeof.00167169p.2016.55.2.1714>, 2016.

1 González, J. J., and Suárez, F.: Geological and seismic evidence of a new branch of the Agua Blanca
2 Fault, Geophys. Res. Lett., 11, 42-45, <https://doi.org/10.1029/GL011i001p00042>, 1984.

3
4 González, J., Nava, F. A., and Reyes, C. A.: Foreshock and aftershock activity of the 1976 Mesa de
5 Andrade, Mexico, earthquake, Bull. Seismol. Soc. Am., 74, 223-233,
6 <https://doi.org/10.1785/BSSA0740010223>, 1984.

7
8 González, M., Munguía, L., Vidal, A., and Wong, V.: Two M_w 4.8 Cerro Prieto, Baja California,
9 México, earthquakes on 1 June and 10 September 1999: strong-motion observations, Bull. Seismol.
10 Soc. Am., 91, 1456-1470, <https://doi.org/10.1785/0120000033>, 2001.

11
12 González, M., Vidal, A., and Munguía, L.: An M_L scale for the La Paz-Los Cabos region, Baja
13 California Sur, Mexico, Bull. Seismol. Soc. Am., 96, 1296-1304, <https://doi.org/10.1785/0120050196>,
14 2006.

15
16 Gonzalez-Ruiz, L. C.: Patrones de sismicidad en Guerrero y peligro sismico, M.S. thesis, UNAM,
17 Mexico, 69 pp., 1987.

18
19 Gonzalez-Ruiz, J.: Earthquake source mechanics and tectonophysics of the middle America subduction
20 zone in Mexico, Ph.D. Thesis, U. of California, Santa Cruz., 1986.

21
22 Granados-Chavarría, I.: Analisis de los sismos de Julio de 2012 en el Valle de Chalco, Estado de
23 Mexico: estudios de fuente y efectos en superficie, B.Eng. thesis, UNAM, Mexico, 115 pp., 2016.

24

- 1 Guzmán-Speziale, M., Pennington, W. D., and Matumoto, T.: The triple junction of the North America
2 Cocos, and Caribbean plates: seismicity and tectonics, *Tectonics*, 8, 981-997,
3 <https://doi.org/10.1029/TC008i005p00981>, 1989.
- 4
- 5 Havskov, J., Singh, S. K., Nava, E., Dominguez, T., and Rodríguez, M.: Playa Azul, Michoacan,
6 Mexico, earthquake of 25 October 1981 ($M_s = 7.3$), *Bull. Seismol. Soc. Am.*, 73, 449-457,
7 <https://doi.org/10.1785/BSSA0730020449>, 1983.
- 8
- 9 Huesca-Pérez, E.: Sismicidad y el campo de esfuerzos en la Cuenca de Mexico, M.S. thesis, UNAM,
10 Mexico, 118 pp., 2008.
- 11
- 12 Huesca-Pérez, E., Gutierrez-Reyes, E., and Quintanar, L.: Seismic source processes of 25 earthquakes
13 ($M_w > 5$) in the Gulf of California, *Bull. Seismol. Soc. Am.*, 112, 714-733,
14 <https://doi.org/10.1785/0120210218>, 2022.
- 15
- 16 Hurtado-Díaz, A.: Geometria y estado de esfuerzos de la zona de Benioff de la placa de Rivera bajo el
17 Bloque de Jalisco, B.Eng. thesis, UNAM, Mexico, 61 pp., 2005.
- 18
- 19 Iglesias, A., Singh, S.K., Pacheco, J. F., and Ordaz, M.: A source and wave propagation study of the
20 Copalillo, Mexico, earthquake of 21 July 2000 (M_w 5.9): implications for seismic hazard in Mexico
21 City from inslab earthquakes, *Bull. Seismol. Soc. Am.*, 92, 1060-1071,
22 <https://doi.org/10.1785/0120010144>, 2002.
- 23
- 24 International Seismological Centre: On-line Bulletin, <https://doi.org/10.31905/D808B830>, 2022.

1

2 Jaramillo, S. H., and Suárez, G.: The 4 december 1948 earthquake (M_w 6.4): evidence of reverse
3 faulting beneath the Tres Mariás escarpment and its implications for the Rivera-North American
4 relative plate motion, *Geofis. Int.*, 50, 313-317,
5 <https://doi.org/10.22201/igeof.00167169p.2011.50.3.229>, 2011.

6

7 Jimenez-Jimenez, Z.: Mecanismo focal de siete temblores ($m_b \geq 5.5$) ocurridos en la región de Orizaba,
8 México, en el periodo de 1928 a 1973, B.Eng. thesis, UNAM, Mexico, 102 pp., 1977.

9

10 Jimenez, Z., and Ponce, L.: Focal mechanism of six large earthquakes in Northern Oaxaca, Mexico, for
11 the period 1928-1973, *Geofis. Int.*, 17, 379-386,
12 <https://doi.org/10.22201/igeof.00167169p.1978.17.3.1059>, 1978.

13

14 Jimenez-Jimenez, Z.: Evolución del proceso eruptivo del Volcán El Chichón de Marzo-Abril de 1982,
15 M.S. thesis, UNAM, Mexico, 102 pp., 1999.

16

17 Johnson, T.L., Madrid, J., and Koczyński, T.: A study of microseismicity in Northern Baja California,
18 Mexico, *Bull. Seismol. Soc. Am.*, 66, 1921-1929, <https://doi.org/10.1785/BSSA0660061921>, 1976.

19

20 Kanamori, H., and Stewart, G.: Seismological aspects of the Guatemala earthquake of February 4,
21 1976, *J. Geophys. Res.*, 83, 3427-3434, <https://doi.org/10.1029/JB083iB07p03427>, 1978.

22

23 Kaverina, A. N., Lander, A. V., and Prozorov, A. G.: Global creepex distribution and its relation to
24 earthquake-source geometry and tectonic origin, *Geophys. J. Int.*, 125, 249-265,

1 <https://doi.org/10.1111/j.1365-246X.1996.tb06549.x>, 1996.

2

3 Knopoff, L., and Gilbert, F.: First motions from seismic sources, *Bull. Seismol. Soc. Am.*, 50, 117-134,
4 <https://doi.org/10.1785/BSSA0500010117>, 1960.

5

6 Lahr, J. C.: A computer program for determining local earthquake hypocenter parameters, magnitude
7 and first motion pattern, U.S. Geol. Surv., Open-File Rept, 79-431, 52pp, 1979.

8

9 LeFevre, L. V. and McNally, K. C.: Stress distribution and subduction of aseismic ridges in the Middle
10 America subduction zone, *J. Geophys. Res.*, 90, 4495-4510, <https://doi.org/10.1029/JB090iB06p04495>,
11 1985.

12

13 Lees, J. M.: RFOC. Graphics for Spherical Distributions and Earthquake FocalMechanisms. *R* package,
14 2018.

15

16 Lentas, K., and Harris, J.: Enhanced performance of ISC focal mechanism computations as a result of
17 automatic first-motion polarity picking optimization, *J. Seismol.*, 23, 1141-1159,
18 <https://doi.org/10.1007/s10950-019-09862-x>, 2019.

19

20 Lentas, K., Di Giacomo, D., Harris, J., and Storchak, D. A.: The ISC Bulletin as a comprehensive
21 source of earthquake source mechanisms, *Earth Syst. Sci. Data*, 11, 565-578,
22 <https://doi.org/10.5194/essd-11-565-2019>, 2019.

23

24 Lesage, P.: Determinacion de parametros focales del temblor de Huajuapán de León, Oaxaca, del 24 de

1 Octubre de 1980, usando sismogramas sintéticos de ondas compresionales y un método de inversión
2 linealizada, *Geofis. Int.*, 23, 57-72, <https://doi.org/10.22201/igeof.00167169p.1984.23.1.796>, 1984.
3
4 Mai, P. M., and Thingbaijam, K. K. S.: SRCMOD: An online database of finite-fault rupture models,
5 *Seismol. Res. Lett.*, 85, 1348-1357, <https://doi.org/10.1785/0220140077>, 2014.
6
7 Martínez-López M. R.: Estudio sísmico de la estructura cortical en el bloque de Jalisco a partir de
8 registros locales del proyecto MARS, M.S. thesis, UNAM, Mexico, 129 pp., 2011.
9
10 Méndez-Alarcón, M. A.: Análisis del sismo del 19 de septiembre del 2017 y su secuencia de réplicas,
11 B.Eng. thesis, UNAM, Mexico, 108 pp., 2020.
12
13 Mendoza-Zúñiga, J.F.: Fallamiento asociado a la sismicidad mayor ocurrida en el Valle de México
14 durante 2017, B.Eng. thesis, UNAM, Mexico, 75 pp., 2021.
15
16 Molnar, P. and Sykes, L. R.: Tectonics of the Caribbean and Middle American region from focal
17 mechanisms and seismicity, *Geol. Soc. Am. Bull.*, 80, 1639-1684, [https://doi.org/10.1130/0016-](https://doi.org/10.1130/0016-7606(1969)80[1639:TOTCAM]2.0.CO;2)
18 [7606\(1969\)80\[1639:TOTCAM\]2.0.CO;2](https://doi.org/10.1130/0016-7606(1969)80[1639:TOTCAM]2.0.CO;2), 1969.
19
20 Molnar, P.: Fault plane solutions of earthquakes and direction of motion in the Gulf of California and
21 on the Rivera Fracture zone, *Geol. Soc. Am. Bull.*, 84, 1651-1658, [https://doi.org/10.1130/0016-](https://doi.org/10.1130/0016-7606(1973)84)
22 [7606\(1973\)84](https://doi.org/10.1130/0016-7606(1973)84), 1973.
23
24 Morales-Matamoros, L. D.: Microtemblores y sismotectónica de la Costa de Guerrero entre Acapulco y

1 Tecpan, Master Thesis, UNAM, 118 pp., 1980.

2

3 Mota-Palomino, R., Andrieux, J., and Bonnin, J.: Bosquejo sismotectónico del Sur de México, *Geofis.*
4 *Int.*, 25, 207-231, <https://doi.org/10.22201/igeof.00167169p.1986.25.1.805>, 1986.

5

6 Munguía, L., and Brune, J. N.: High stress drop events in the Victoria, Baja California earthquake
7 swarm of 1978 March, *Geophys. J. Int.*, 76, 725-752, [https://doi.org/10.1111/j.1365-](https://doi.org/10.1111/j.1365-246X.1984.tb01919.x)
8 [246X.1984.tb01919.x](https://doi.org/10.1111/j.1365-246X.1984.tb01919.x), 1984.

9

10 Munguía, L., González-Escobar, M., Navarro, M., Valdez, T., Mayer, S., Aguirre, A., Wong, V., and
11 Luna, M.: Active crustal deformation in the area of San Carlos, Baja California Sur, Mexico as shown
12 by data of local earthquakes sequences, *Pure and Appl. Geophys.*, 173, 3631-3644,
13 <https://doi.org/10.1007/s00024-015-1217-4>, 2016a.

14

15 Munguía, L., Mayer, S., Aguirre, A., Méndez, I., González-Escobar, M., and Luna, M.: The 2006 Bahía
16 Asunción earthquake swarm: seismic evidence of active deformation along the Western Margin of Baja
17 California Sur, Mexico, *Pure and Appl. Geophys.*, 173, 3615-3629, [https://doi.org/10.1007/s00024-015-](https://doi.org/10.1007/s00024-015-1184-9)
18 [1184-9](https://doi.org/10.1007/s00024-015-1184-9), 2016b.

19

20 Natali, S. G., and Sbar, M. L.: Seismicity in the epicentral region of the 1887 Northeastern Sonoran
21 earthquake, Mexico, *Bull. Seismol. Soc. Am.*, 72, 181-196, <https://doi.org/10.1785/BSSA0720010181>,
22 1982.

23

24 Néquiz-Guillén, B. A.: Estudio de las características focales de la sismicidad en el estado de Hidalgo,

1 B.Eng. thesis, UNAM, Mexico, 78 pp., 2021.

2

3 Núñez-Cornú, F. J., and Sánchez-Mora, C.: Stress field estimations for Colima Volcano, Mexico, based
4 on seismic data, *Bull. Volcanol.*, 60, 568-580, <https://doi.org/10.1007/s004450050252>, 1998.

5

6 Núñez-Cornú, F. J., Reyes-Dávila, G. A., Rutz Lopez, M., Trejo Gómez, E., Camarena-García, M. A.,
7 and Ramírez-Vazquez, C. A.: The 2003 Armería, México earthquake (M_w 7.4): mainshock and early
8 aftershocks, *Seismol. Res. Lett.*, 75, 734-743, <https://doi.org/10.1785/gssrl.75.6.734>, 2004.

9

10 Núñez-Cornú, F. J., Rengifo, W. M., Escalona Alcázar, F. J., Núñez, D., Quinteros Cartaya, C. B., and
11 Trejo Gómez, E.: The seismic sequences of December 2015 ($M_L = 4.3$) and May 2016 ($M_L = 4.9$) in
12 Guadalajara, Jalisco, México, *J. S. Am. Earth Sci.*, 108, 103201,
13 <https://doi.org/10.1016/j.jsames.2021.103201>, 2021.

14

15 Núñez, D., Núñez-Cornú, F. J., and Rowe, C. A.: Recent seismicity at Ceboruco Volcano (Mexico), *J.*
16 *Vol. Geotherm. Res.*, 421, 107451, <https://doi.org/10.1016/j.jvolgeores.2021.107451>, 2022.

17

18 Okal, E. A., and Borrero, J. C.: The 'tsunami earthquake' of 1932 June 22 in Manzanillo, Mexico:
19 seismological study and tsunami simulations, *Geophys. J. Int.*, 187, 1443-1459,
20 <https://doi.org/10.1111/j.1365-246X.2011.05199.x>, 2011.

21

22 Oregel-Morales, L.A.: Análisis de la sismicidad en el Campo Geotérmico de Humeros Puebla, México
23 en el marco del Proyecto GEMEX, B.S. thesis, UMSNH, Mexico, 105 pp., 2019.

24

1 Ortega, R., and Quintanar, L.: Seismic evidence of a ridge-parallel strike-slip fault off the transform
2 system in the Gulf of California, *Geophys. Res. Lett.*, 37, L06301,
3 <https://doi.org/10.1029/2009GL042208>, 2010.

4
5 Pacheco, J. F., Sykes, L. R., and Scholz, C. H.: Nature of seismic coupling along simple plate
6 boundaries of the subduction type, *J. Geophys. Res.*, 98, 14133-14159,
7 <https://doi.org/10.1029/93JB00349>, 1993.

8
9 Pacheco, J. F., and Singh, S. K.: Source parameters of two moderate Mexican earthquakes estimated
10 from single-station, near-source recording, and from MT inversion of regional data: a comparison of
11 the results, *Geofis. Int.*, 37, 95-102, <https://doi.org/10.22201/igeof.00167169p.1998.37.2.398>, 1998.

12
13 Pacheco, J. F., Bandy, W., Reyes-Dávila, G. A., Núñez-Cornú, F. J., Ramírez-Vázquez, C. A., and
14 Barrón, J. R.: The Colima, Mexico earthquake (M_w 5.3) of 7 March 2000: seismic activity along the
15 Southern Colima Rift, *Bull. Seismol. Soc. Am.*, 93, 1458-1467, <https://doi.org/10.1785/0120020193>,
16 2003.

17
18 Pacheco, J. F., and Singh, S. K.: Seismicity and state of stress in Guerrero segment of the Mexican
19 subduction zone, *J. Geophys. Res.*, 115, B01303, <https://doi.org/10.1029/2009JB006453>, 2010.

20
21 Pardo, M., and Suárez, G: Steep subduction geometry of the Rivera plate beneath the Jalisco Block in
22 Western Mexico, *Geophys. Res. Lett.*, 20, 2391-2394, <https://doi.org/10.1029/93GL02794>, 1993.

23
24 Pardo, M., and Suárez, G.: Shape of the subducted Rivera and Cocos plates in southern Mexico:

1 seismic and tectonic implications, *J. Geophys. Res.*, 100, 12357-12373,
2 <https://doi.org/10.1029/95JB00919>, 1995.

3

4 Pasyanos, M. E., Dreger, D. S., Romanowicz, B.: Toward real-time estimation of regional moment
5 tensors, *Bull. Seismol. Soc. Am.*, 86, 1255-1269, <https://doi.org/10.1785/BSSA0860051255>, 1996.

6

7 Pérez-Campos, X., Singh, S. K., Iglesias, A., Alcántara, L., Ordaz, M., and Legrand, D.: Intraslab
8 Mexican earthquakes of the 27 April 2009 (M_w 5.8) and 22 May 2009 (M_w 5.6): a source and ground
9 motion study, *Geofis. Int.*, 49, 153-163, <https://doi.org/10.22201/igeof.00167169p.2010.49.3.111>, 2010.

10

11 Pérez, J. L.: Estudio de microsismicidad en la caldera La Reforma del complejo volcanico Las Tres
12 Virgenes, Baja California Sur, Mexico, M.S. thesis, CICESE, Mexico, 88 pp., 2017.

13

14 Pinzón, J. I., Núñez-Cornú, F. J., and Rowe, C. A.: Magma intrusion near Volcan Tancítaro: evidence
15 from seismic analysis, *Phys. Earth Planet. Int.*, 262, 66-79, <https://doi.org/10.1016/j.pepi.2016.11.004>,
16 2017.

17

18 Quintanar, L., Yamamoto, J., and Jiménez, Z.: Source mechanism of two 1994 intermediate-depth-
19 focus earthquakes in Guerrero, Mexico, *Bull. Seismol. Soc. Am.*, 89, 1004-1018,
20 <https://doi.org/10.1785/BSSA0890041004>, 1999.

21

22 Quintanar, L., Rodríguez-González, M., and Campos-Enríquez, O.: A shallow crustal earthquake
23 doublet from the Trans-Mexican Volcanic Belt (Central Mexico), *Bull. Seismol. Soc. Am.*, 94, 845-855,
24 <https://doi.org/10.1785/0120030057>, 2004.

1

2 Quintanar, L., Ortega, R., Rodríguez-Lozoya, H. E., and Domínguez-Reyes, T.: The 4 January 2006
3 (M_w 6.6), San Pedro Martir earthquake: example of an earthquake for calibrating excitation and
4 attenuation studies, *Bull. Seismol. Soc. Am.*, 109, 2399-2414, <https://doi.org/10.1785/0120190146>,
5 2019.

6

7 Rebollar, C. J., Espíndola, V. H., Uribe, A., Mendoza, A., and Pérez-Vertti, A.: Distributions of stresses
8 and geometry of the Wadati-Benioff zone under Chiapas, Mexico, *Geofis. Int.*, 38, 95-106,
9 <https://doi.org/10.22201/igeof.00167169p.1999.38.2.386>, 1999.

10

11 Rebollar, C. J., Quintanar, L., Castro, R. R., Day, S. M., Madrid, J., Brune, J. N., Astiz, L., and Vernon,
12 F.: Source characteristics of a 5.5 magnitude earthquake that occurred in the transform fault system of
13 the Delfin Basin in the Gulf of California, *Bull. Seismol. Soc. Am.*, 91, 781-791,
14 <https://doi.org/10.1785/0120000077>, 2001.

15

16 Rebollar, C. J., Reyes, L. M., Quintanar, L., and Arellano, J. F.: Stress heterogeneity in the Cerro Prieto
17 Geothermal field, Baja California, Mexico, *Bull. Seismol. Soc. Am.*, 93, 783-794,
18 <https://doi.org/10.1785/0120020003>, 2003.

19

20 Reyes, A., Brune, J. N., and Lomnitz, C.: (1979). Source mechanism and aftershock study of the
21 Colima Mexico earthquake of January 30, 1973, *Bull. Seismol. Soc. Am.*, 69, 1819-1840,
22 <https://doi.org/10.1785/BSSA0690061819>, 1979.

23

24 Rodríguez-Cardozo, F. R.: Inversion del tensor de momento sísmicos asociado a eventos de magnitud

1 intermedia en Mexico, M.S. thesis, UNAM, Mexico, 84 pp., 2016.

2

3 Rodríguez-Lozoya, H. E., Quintanar Robles, L., Ortega, R., Rebollar, C. J., and Yagi, Y.: Rupture
4 process of four medium-sized earthquakes that occurred in the Gulf of California, *J. Geophys. Res.*,
5 113, B10301, <https://doi.org/10.1029/2007JB005323>, 2008.

6

7 Rodríguez-Lozoya, H. E., Quintanar Robles, L., Huerta López, C. I., Bojórquez-Mora, E., and León-
8 Monzón, I.: Source parameters of the July 30, 2006 (M_w 5.5) Gulf of California earthquake and a
9 comparison with other moderate earthquakes in the region, *Geofis. Int.*, 49, 119-129,
10 <https://doi.org/10.22201/igeof.00167169p.2010.49.3.108>, 2010.

11

12 Rodríguez-Pérez, Q., and Singh, S. K.: Seismic source parameters of normal-faulting inslab
13 earthquakes in Central Mexico, *Pure and Appl. Geophys.*, 173, 2587-2619,
14 <https://doi.org/10.1007/s00024-016-1329-5>, 2016.

15

16 Rodríguez-Pérez, Q., Márquez-Ramírez, V. H., Zúñiga, F. R., Plata-Martínez, R., and Pérez-Campos,
17 X.: The Mexican earthquake source parameter database: a new resource for earthquake physics and
18 seismic hazard analyses in Mexico, *Seismol. Res. Lett.*, 89, 1846-1862,
19 <https://doi.org/10.1785/0220170250>, 2018.

20

21 Rodriguez-Perez, Q. and Zúñiga, F. R.: Earthquake focal mechanism catalog for Mexico,
22 <https://doi.org/10.6084/M9.FIGSHARE.21663668.V1>, 2022.

23

24 Romero-Domínguez, J. C.: Estado de esfuerzos en la region geotermica de Tres Virgenes, B.C.S.,

1 B.Eng. thesis, UNAM, Mexico, 69 pp., 2013.

2

3 Ruiz-Kitcher, R.E.: Estudio del mecanismo de reajuste litostático posterior al evento de Oaxaca ($M_s =$
4 7.8) del 29 de Noviembre de 1978, Geofis. Int., 25, 587-608,
5 <https://doi.org/10.22201/igeof.00167169p.1986.25.4.780>, 1986.

6

7 Rutz-López, M., Núñez-Cornú, F. J., and Suárez-Placencia, C.: Study of seismic clusters at Bahía de
8 Banderas region, Mexico, Geofis. Int., 52, 59-72, [https://doi.org/10.1016/S0016-7169\(13\)71462-4](https://doi.org/10.1016/S0016-7169(13)71462-4),
9 2013.

10

11 Ruff, L.J., and Miller, A. D.: Rupture process of large earthquakes in the Northern Mexico subduction
12 zone, Pure and Appl. Geophys., 142, 101-171, <https://doi.org/10.1007/BF00875970>, 1994.

13

14 Sánchez-Alvaro, E.: Actividad sísmica en la vecindad de la central hidroeléctrica Aguamilpa un caso de
15 sismicidad inducida, B.Eng. thesis, UNAM, Mexico, 82 pp., 2003.

16

17 Sánchez-Lopez, G.: La secuencia sísmica de Ixtlán del río ¿Un caso de sismicidad disparada por
18 presas?, B.Eng. thesis, UNAM, Mexico, 78 pp., 2021.

19

20 Santoyo-García-Galeano, M. A.: Estudio del proceso de ruptura del sismo del 25 de abril de 1989
21 usando registros de movimientos fuertes y telesísmicos, M.S. thesis, UNAM, Mexico, 78 pp., 1994.

22

23 Saraò, A., Sugan, M., Bressan, G., Renner, G., and Restivo, A.: A focal mechanism catalogue of
24 earthquakes that occurred in the southeastern Alps and surrounding areas from 1928-2019, Earth Syst.

1 Sci. Data, 13, 2245–2258, <https://doi.org/10.5194/essd-13-2245-2021>, 2021.

2

3 Singh, S. K., Suárez, G., and Domínguez, T.: The Oaxaca, Mexico, earthquake of 1931: lithospheric
4 normal faulting in the subducted Cocos plate, *Nature*, 317, 56-58, <https://doi.org/10.1038/317056a0>,
5 1985.

6

7 Singh, S. K., and Pardo, M.: Geometry of Benioff zone and state of stress in the overriding plate in
8 Central Mexico, *Geophys. Res. Lett.*, 20, 1483-1486, <https://doi.org/10.1029/93GL01310>, 1993.

9

10 Singh, S. K., Ordaz, M., Pacheco, J. F., Quaas, R., Alcántara, L., Alcocer, S., Gutiérrez, C., Meli, R.,
11 and Ovando, E.: A preliminary report on the Tehuacán, Mexico earthquake of June 15, 1999 ($M_w = 7.0$),
12 *Seismol. Res. Lett.*, 70, 489-504, <https://doi.org/10.1785/gssrl.70.5.489>, 1999.

13

14 Singh, S. K., Ordaz, M., Pacheco, J. F., and Courboux, F.: A simple source inversion scheme for
15 displacement seismograms recorded at short distances, *J. of Seismol.*, 4, 267-284,
16 <https://doi.org/10.1023/A:1009849819475>, 2000a.

17

18 Singh, S. K., Ordaz, M., Alcántara, L., Shapiro, N., Kostoglodov, V., Pacheco, J. F., Alcocer, S.,
19 Gutiérrez, C., Quaas, R., Mikumo, T., and Ovando, E.: The Oaxaca earthquake of the 30 September
20 1999 ($M_w = 7.5$): a normal-faulting event in the subducted Cocos plate, *Seismol. Res. Lett.*, 71, 67-78,
21 <https://doi.org/10.1785/gssrl.71.1.67>, 2000b.

22

23 Singh, S. K., Pacheco, J. F., Alcántara, L., Reyes, G., Ordaz, M., Iglesias, A., Alcocer, S. M., Gutierrez,
24 C., Valdés, C., Kostoglodov, V., Reyes, C., Mikumo, T., Quaas, R., and Anderson, J. G.: A preliminary

1 report on the Tecomán, Mexico earthquake of 22 January 2003 (M_w 7.4) and its effects, *Seismol. Res.*
2 *Lett.*, 74, 279-289, <https://doi.org/10.1785/gssrl.74.3.279>, 2003.

3
4 Singh, S. K., Pérez-Campos, X., Espíndola, V. H., Cruz-Antieza, V. M., and Iglesias, A.: A report on the
5 Atoyac, Mexico, earthquake of 13 April 2007 (M_w 5.9), *Seismol. Res. Lett.*, 78, 635-648,
6 <https://doi.org/10.1785/gssrl.78.6.635>, 2007a.

7
8 Singh, S. K., Iglesias, A., García, D., Pacheco, J. F., and Ordaz, M.: Q of Lg waves in the Central
9 Mexican Volcaic Belt, *Bull. Seismol. Soc. Am.*, 97, 1259-1266, <https://doi.org/10.1785/0120060171>,
10 2007b.

11
12 Singh, S. K., Iglesias, A., Garduño, V. H., Quintanar, L., and Ordaz, M.: A source study of the October,
13 2007 earthquake sequence of Morelia, Mexico and ground-motion estimation from larger earthquakes
14 in the region, *Geofis. Int.*, 51, 73-86, <https://doi.org/10.22201/igeof.00167169p.2012.51.1.147>, 2012.

15
16 Singh, S. K., Pacheco, J. F., Pérez-Campos, X., Ordaz, M., and Reinoso, E.: The 6 September 1997 (M_w
17 4.5) Coatzacoalcos-Minatitlan, Veracruz, Mexico earthquake: implications for tectonic and seismic
18 hazard of the region, *Geofis. Int.*, 54, 191-199, <https://doi.org/10.1016/j.gi.2015.08.001>, 2015.

19
20 Singh, S. K., Arroyo, D., Pérez-Campos, X., Iglesias, A., Espíndola, V. H., and Ramírez, L.:
21 Guadalajara, Mexico, earthquake sequence of December 2015 and May 2016: source, Q , and ground
22 motions, *Geofis. Int.*, 56, 173-186, <https://doi.org/10.22201/igeof.00167169p.2017.56.2.1764>, 2017.

23
24 Singh, S.K., Quintanar-Robles, L., Arroyo, D., Cruz-Atienza, V. M., Espíndola, V. H., Bello-Segura, D.

1 I., and Ordaz, M.: Lessons from a small local earthquake (M_w 3.2) that produced the highest
2 acceleration ever recorded in Mexico City, *Seismol. Res. Lett.*, 91, 3391-3406,
3 <https://doi.org/10.1785/0220200123>, 2020a.

4

5 Singh, S.K., Pérez-Campos, X., Espindola, V.H., Iglesias, A., and Quintanar, L.: An intraslab
6 earthquake at a depth of 100 km in the subducting Cocos plate beneath Nevado de Toluca volcano,
7 *Geofis. Int.*, 59, 5-12, <https://doi.org/10.22201/igeof.00167169p.2020.59.1.2072>, 2020b.

8

9 Soto-Peredo, J.: Sismicidad en el Estado de Hidalgo durante 1997-2010, B.S. thesis, UNAM, Mexico,
10 67 pp., 2012.

11

12 Stella-Ramírez, L. M.: La actividad sísmica en el area de Huetamo Michoacan de Agosto de 2006 y sus
13 implicaciones en el peligro sísmico de la region, B.S. thesis, UNAM, Mexico, 53 pp., 2011.

14

15 Suárez, G., and Ponce, L.: Intraplate seismicity and crustal deformation in Central Mexico (abs): EOS
16 *Transactions of the American Geophysical Union*, 67, 1114, 1986.

17

18 Suárez, G., and López, A.: Seismicity in the southwestern Gulf of Mexico: evidence of active back arc
19 deformation, *Rev. Mex. Cien. Geol.*, 32, 77-83, 2015.

20

21 Suárez, G., Sánchez-Alvaro, E., Lomas-Delgado, E., and Arvizu-Lara, G.: The 2013 seismic swarm in
22 Chihuahua, Mexico: evidence of active extensional deformation in the Southern Basin and Range, *Bull.*
23 *Seismol. Soc. Am.*, 106, 2686-2694, <https://doi.org/10.1785/0120160179>, 2016.

24

1 Suárez-Vidal, F., Munguía-Orozco, L., González-Escobar, M., González-García, J., and Glowacka, E.:
2 Surface rupture of the Morelia fault near the Cerro Prieto geothermal field, Mexicali, Baja California,
3 Mexico, during the M_w 5.4 earthquake of 24 May 2006, *Seismol. Res. Lett.*, 78, 394-399,
4 <https://doi.org/10.1785/gssrl.78.3.394>, 2007.

5

6 Sumy, D.F., Gaherty, J. B., Kim, W. Y., Diehl, T., and Collins, J. A.: The mechanisms of earthquakes
7 and faulting in the Southern Gulf of California, *Bull. Seismol. Soc. Am.*, 103, 487-506,
8 <https://doi.org/10.1785/0120120080>, 2013.

9

10 Terán-Mendieta, L.F.: Estudio del proceso de ruptura del sismo del 10 de Diciembre de 1994 usando un
11 método de inversión, B.S. thesis, UNAM, Mexico, 47 pp., 1999.

12

13 Thatcher, W., and Brune, J. N.: Seismic study of an Oceanic Ridge earthquake swarm in the Gulf of
14 California, *Geophys. J. Int.*, 22, 473-489, <https://doi.org/10.1111/j.1365-246X.1971.tb03615.x>, 1971.

15

16 UNAM and CENAPRED Seismology group: The Milpa Alta earthquake of January 21, 1995, *Geofis.*
17 *Int.*, 34, 355-362, 1995.

18

19 UNAM Seismology Group: Ometepe-Pinotepa Nacional, Mexico earthquake of 20 March 2012 (M_w
20 7.5): a preliminary report, *Geofis. Int.*, 52, 173-196, [https://doi.org/10.1016/S0016-7169\(13\)71471-5](https://doi.org/10.1016/S0016-7169(13)71471-5),
21 2013.

22

23 UNAM Seismology Group: Papanaoa, Mexico earthquake of 18 April 2014 (M_w 7.3), *Geofis. Int.*, 54,
24 363-386, <https://doi.org/10.22201/igeof.00167169p.2017.56.1.1731>, 2015.

1

2 Vallée, M., and Douet, V.: A new database of source time functions (STFs) extracted from the
3 SCARDEC method, *Phys. Earth Planet. Inter.*, 257, 149-157,
4 <https://doi.org/10.1016/j.pepi.2016.05.012>, 2016.

5

6 Vidal, A., Munguía, L., and González-García, J. J.: Faulting parameters of earthquakes ($4.1 \leq M_L \leq$
7 5.3) in the Peninsular ranges of Baja California, Mexico, *Seismol. Res. Lett.*, 81, 44-52,
8 <https://doi.org/10.1785/gssrl.81.1.44>, 2010.

9

10 Wessel, P., Smith, W. H., Scharroo, R., Luis, J., and Wobbe, F.: Generic mapping tools: Improved
11 version released, *Eos Trans. AGU* 94, 45, 409-410, <https://doi.org/10.1002/2013EO450001>, 2013.

12

13 Whidden, K. M., and Pankow, K. L.: A catalog of regional moment tensors in Utah from 1998 to 2011,
14 *Seismol. Res. Lett.*, 83, 775-783, <https://doi.org/10.1785/0220120046>, 2012.

15

16 Wolfe, C.J., Bergman, E. A., and Solomon, S. C.: Oceanic transform earthquakes with unusual
17 mechanisms or locations: relation to fault geometry and state of stress in the adjacent lithosphere, *J.*
18 *Geophys. Res.*, 98, 16187-16211, <https://doi.org/10.1029/93JB00887>, 1993.

19

20 Wong, V., Frez, J., and Suárez, F.: The Victoria, Mexico, earthquake of June 9, 1980, *Geofis. Int.*, 36, 1-
21 14, 1997.

22

23 Yamamoto, J.: Rupture processes of some complex earthquakes in southern Mexico, PhD dissertation,
24 St. Louis University. St. Louis, MO, 203 pp., 1978.

1

2 Yamamoto, J., Jimenez, Z., and Mota, R.: El temblor de Huajuapán de León, Oaxaca, México del 24 de
3 Octubre de 1980, *Geofis. Int.*, 23, 83-110, <https://doi.org/10.22201/igeof.00167169p.1984.23.1.798>,
4 1984.

5

6 Yamamoto, J.: Evidences of the existence of an abnormal seismic signal attenuation in Southern
7 México, *Geofis. Int.*, 25, 521-536, <https://doi.org/10.22201/igeof.00167169p.1986.25.4.776>, 1986.

8

9 Yamamoto, J., and Mota R.: La secuencia de temblores del Valle de Toluca, México de Agosto 1980,
10 *Geofis. Int.*, 27, 279-298, <https://doi.org/10.22201/igeof.00167169p.1988.27.2.787>, 1988.

11

12 Yamamoto, J., and Mitchell, B. J.: Rupture mechanics of complex earthquakes in southern México,
13 *Tectonophysics*, 154, 25-40, [https://doi.org/10.1016/0040-1951\(88\)90226-0](https://doi.org/10.1016/0040-1951(88)90226-0), 1988.

14

15 Yamamoto, J., Quintanar, L., Rebollar, C. J., and Jiménez, Z.: Source characteristics and propagation
16 effects of the Puebla, México, earthquake of 15 June 1999, *Bull. Seismol. Soc. Am.*, 92, 2126-2138,
17 <https://doi.org/10.1785/0120010117>, 2002.

18

19 Yamamoto, J., González-Moran, T., Quintanar, L., Zavaleta, A. B., Zamora, A., and Espindola, V. H.:
20 Seismic patterns of the Guerrero-Oaxaca, México region, and its relationship to the continental margin
21 structure, *Geophys. J. Int.*, 192, 375-389, <https://doi.org/10.1093/gji/ggs025>, 2013.

22

23 Yamamoto, J., and Jiménez, Z.: A 2006 Colima rift earthquakes series and its relationship to the Rivera-
24 Cocos plate boundary, *Earth Sciences*, 4, 21-30, <https://doi.org/10.11648/j.earth.20150401.12>, 2015.

1
2
3
4
5
6
7
8
9
10
11
12
13
14
15
16
17
18
19
20
21
22
23
24

Yela-Portilla, J. D.: Análisis paramétrico del tensor de momento sísmico regional en México, M.S. thesis, UNAM, Mexico, 119 pp., 2018.

Zúñiga, F. R., and Valdés-González, C. M.: Analisis de las replicas del temblor de Petatlan del 14 de Marzo de 1979, B.Eng. thesis, UNAM, Mexico, 92 pp., 1980.

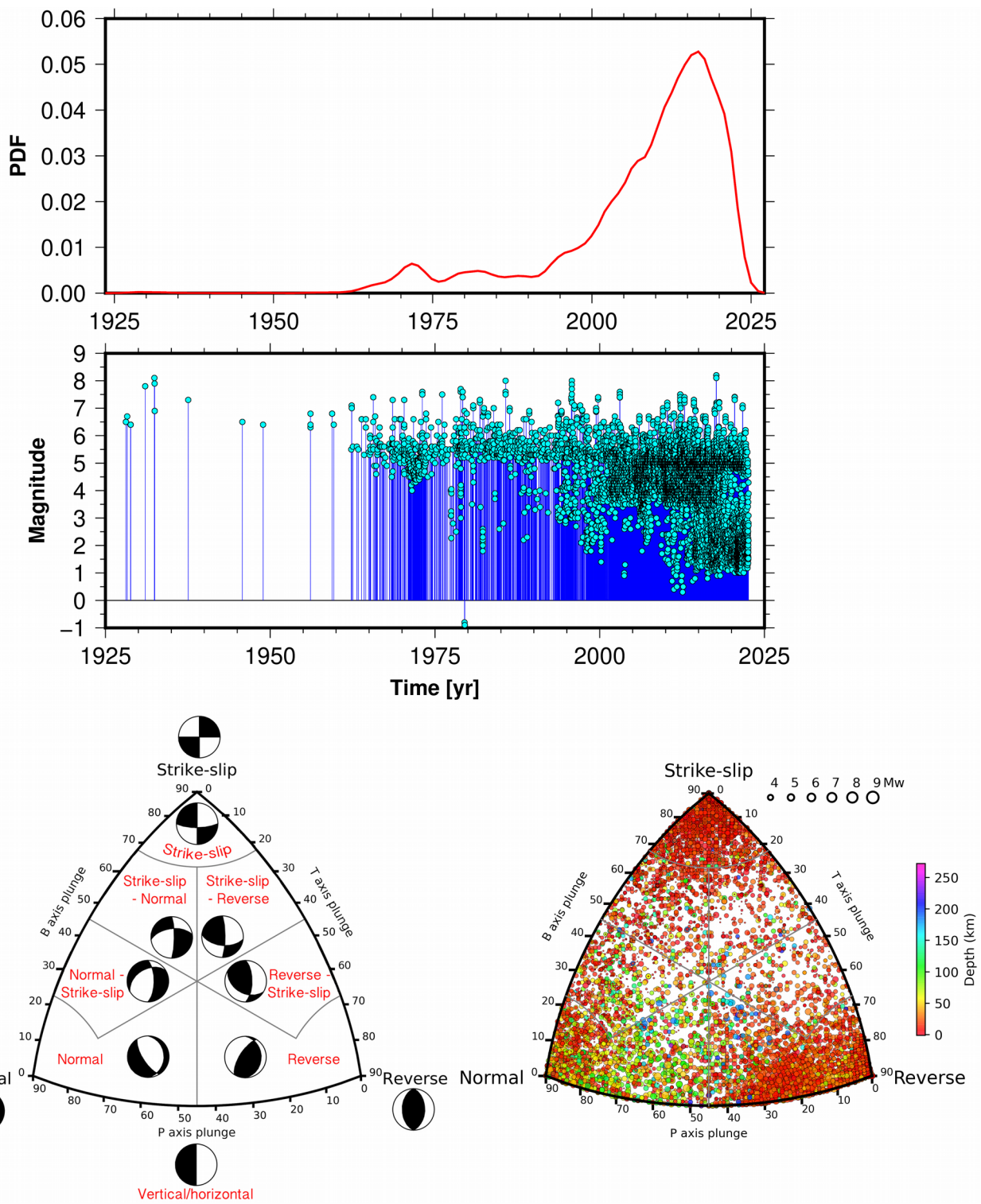
Zúñiga, F. R., Gutiérrez, C., Nava, E., Lermo, J., Rodríguez, M., and Coyoli, R.: Aftershocks of the San Marcos earthquake of April 25, 1989 ($M_s = 6.9$) and some implications for the Acapulco-San Marcos, Mexico, seismic potential, Pure and Appl. Geophys., 140, 287-300, <https://doi.org/10.1007/BF00879408>, 1993.

Zúñiga, F. R., Pacheco, F. J., Guzmán-Speziale, M., Aguirre-Díaz, G. J., Espíndola, V. H., and Nava, E.: The Sanfandila earthquake sequence of 1998, Queretaro, Mexico: activation of an undocumented fault in the northern edge of central Trans-Mexican Volcanic Belt, Tectonophysics, 361, 229-238, [https://doi.org/10.1016/S0040-1951\(02\)00606-6](https://doi.org/10.1016/S0040-1951(02)00606-6), 2003.

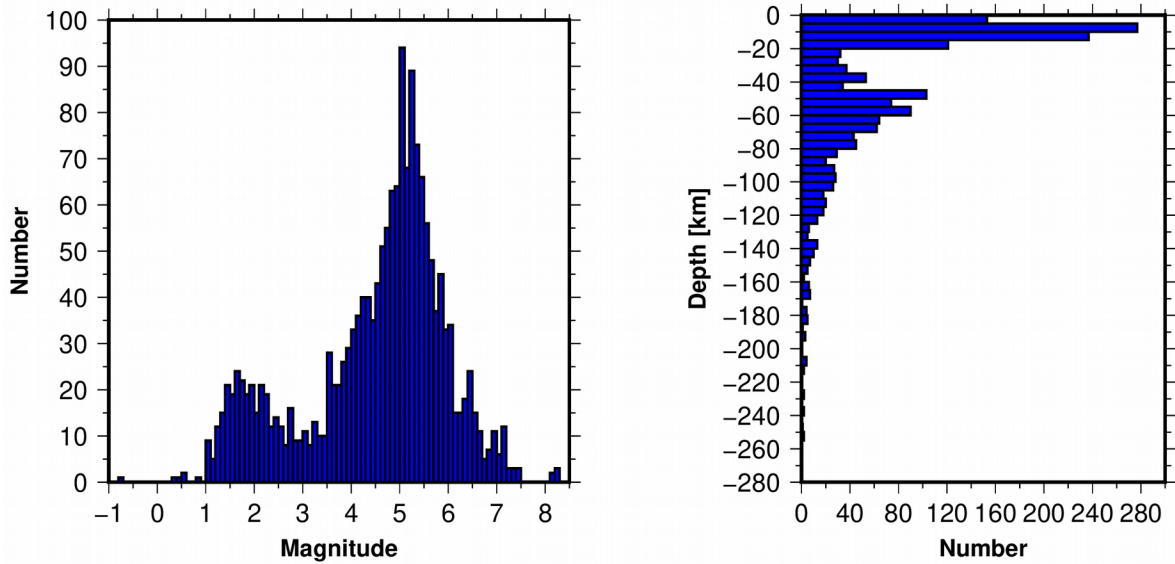
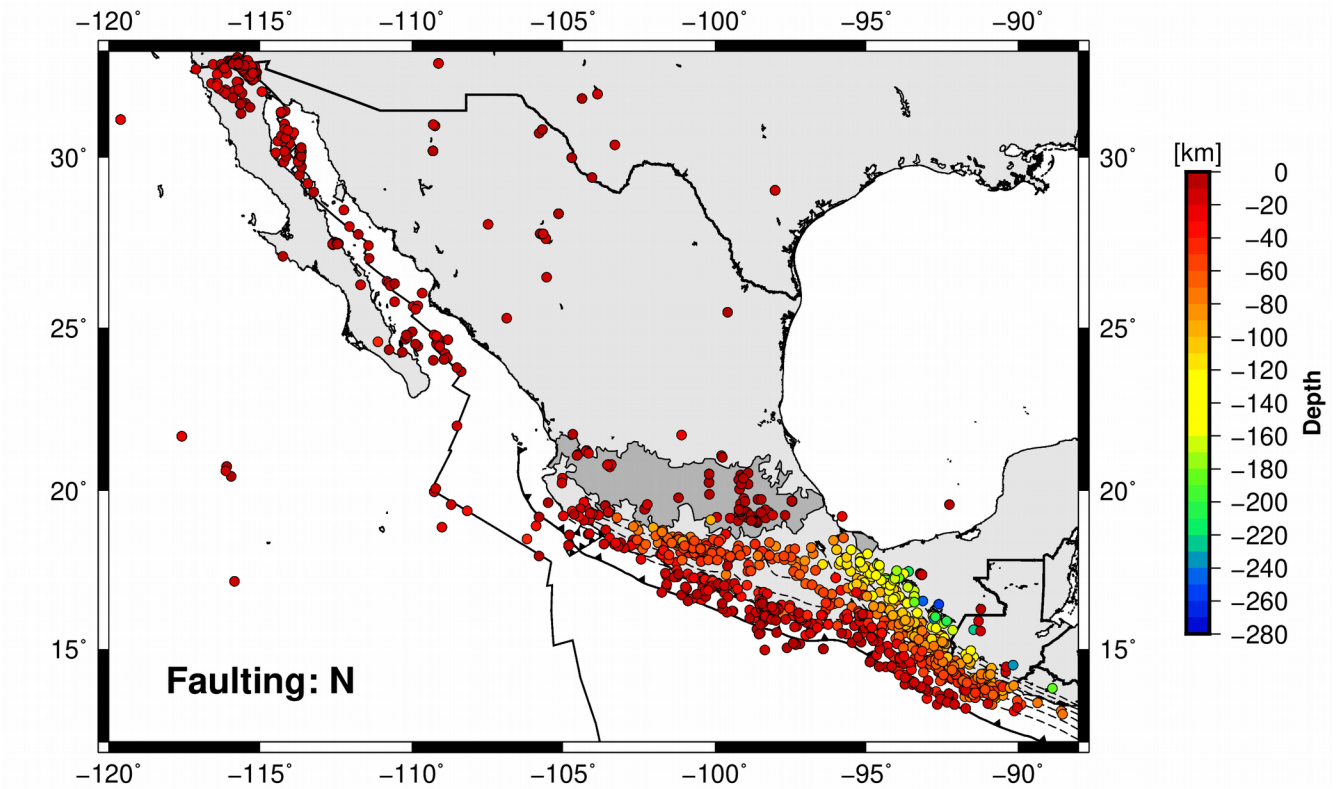
1 **Table 1.** Mean and standard deviations for the principal stress axes trends for each type of mechanism.

Type	<i>T</i> -axis plunge	<i>T</i> -axis azimuth	<i>P</i> -axis plunge	<i>P</i> -axis azimuth
N	66.81°±13.35°	184.71°±91.23°	19.02°±13.43°	146.82°±106.75°
N-SS	55.18°±7.35°	190.58°±92.75°	12.06°±7.34°	177.73°±102.20°
R	20.35°±12.27°	184.40°±78.51°	66.67°±12.23°	109.95°±102.42°
R-SS	14.10°±8.32°	185.00°±104.45°	54.38°±7.92°	173.10°±100.26°
SS	8.19°±6.07°	216.95°±111.41°	7.29°±5.60°	181.58°±96.02°
SS-N	30.65°±6.74°	196.09°±108.33°	11.82°±7.58°	190.12°±99.39°
SS-R	13.90°±8.85°	184.44°±113.30°	30.01°±7.37°	172.57°±102.16°

2
3
4
5
6
7
8
9
10
11
12
13
14
15
16
17
18
19

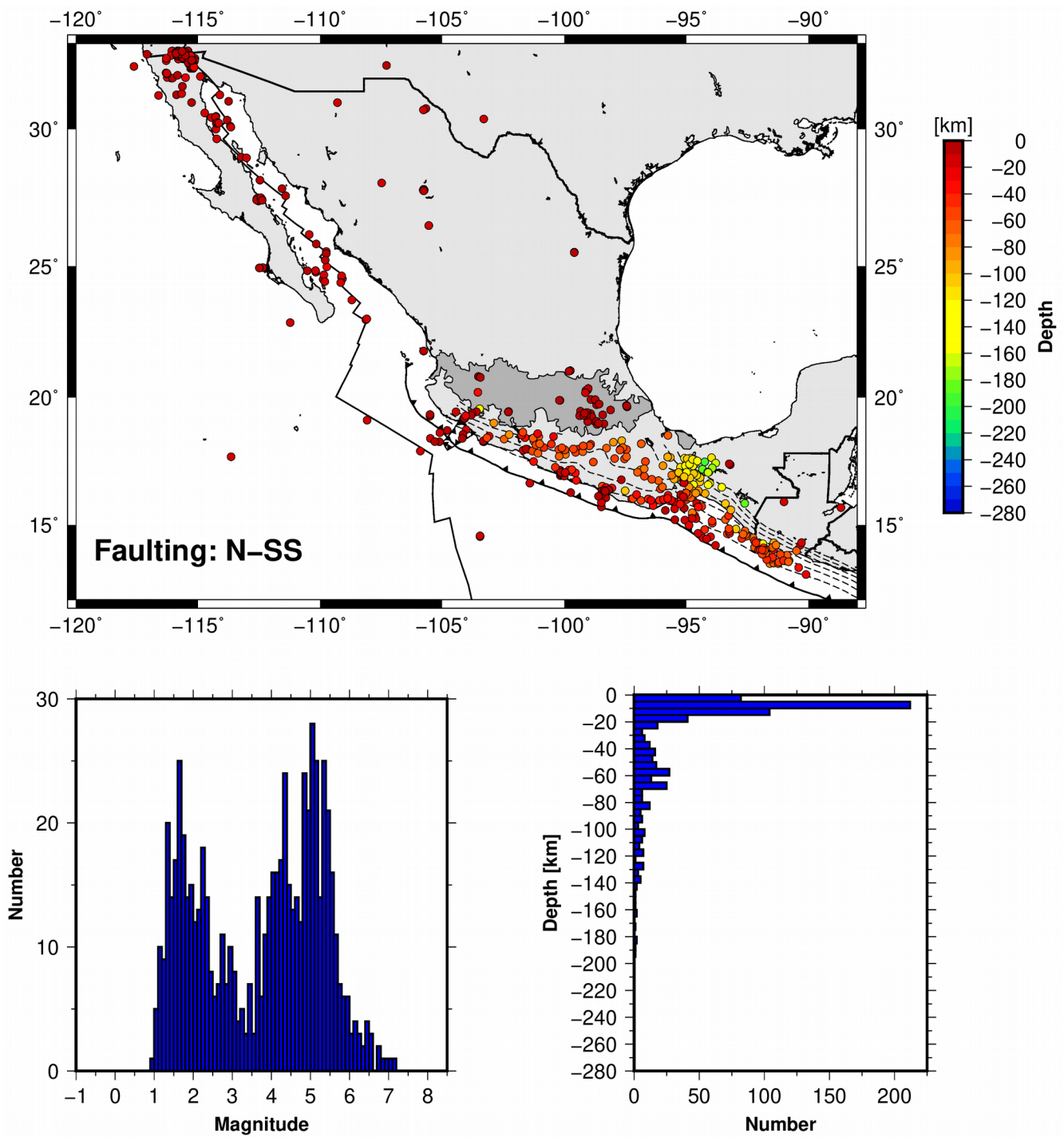


1
 2 **Figure 1.** Probability density function and magnitude time series of seismic events with at least one
 3 focal mechanism reported in this catalog (upper panels). The Kaverina rupture type classification
 4 ternary diagram (lower left panel). Classification of focal mechanisms (lower right panel).



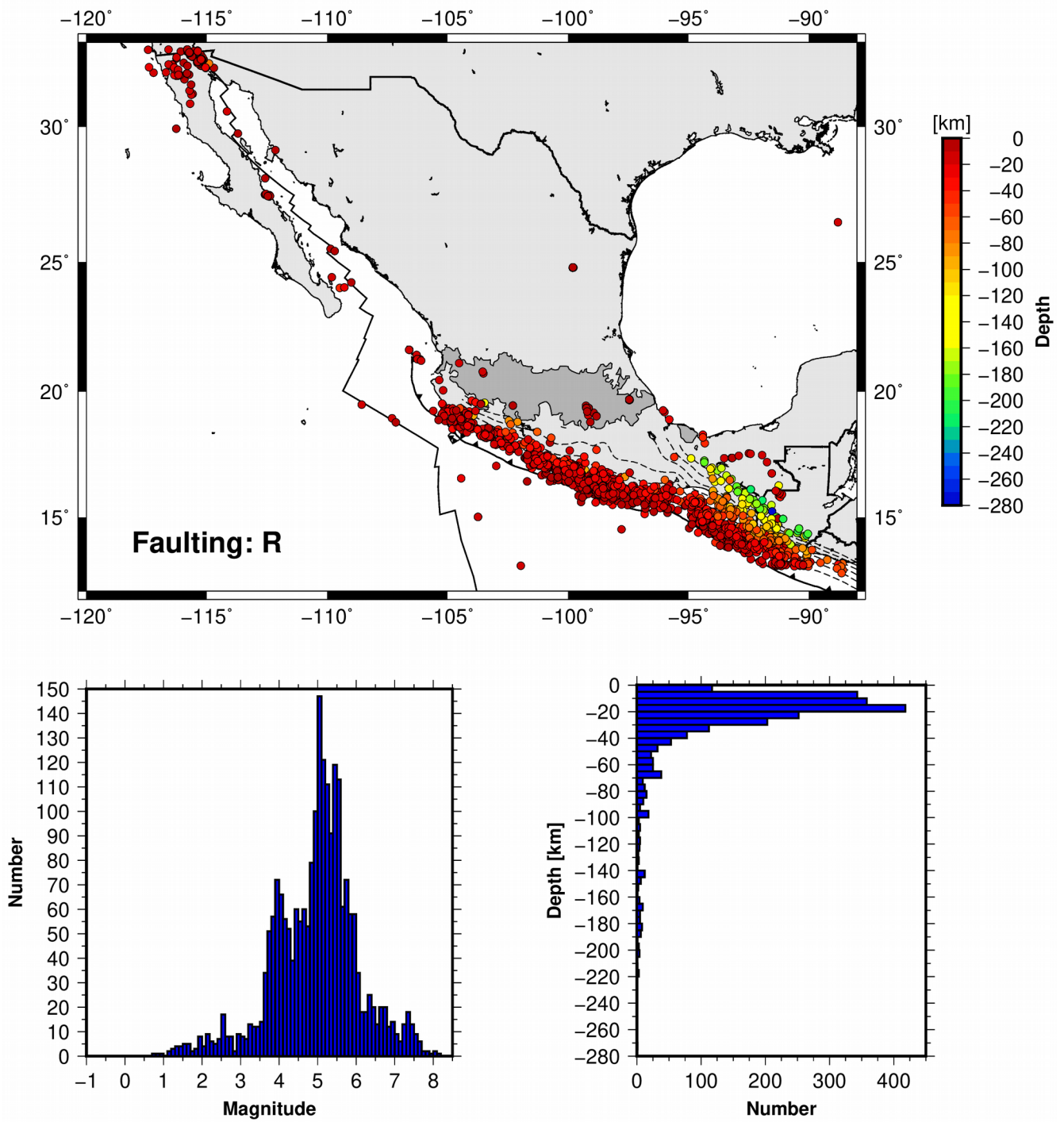
1
2
3
4
5

Figure 2. Hypocentral distribution of normal faulting earthquakes (N) (upper panel). Lower panels show magnitude and hypocentral depth distributions.



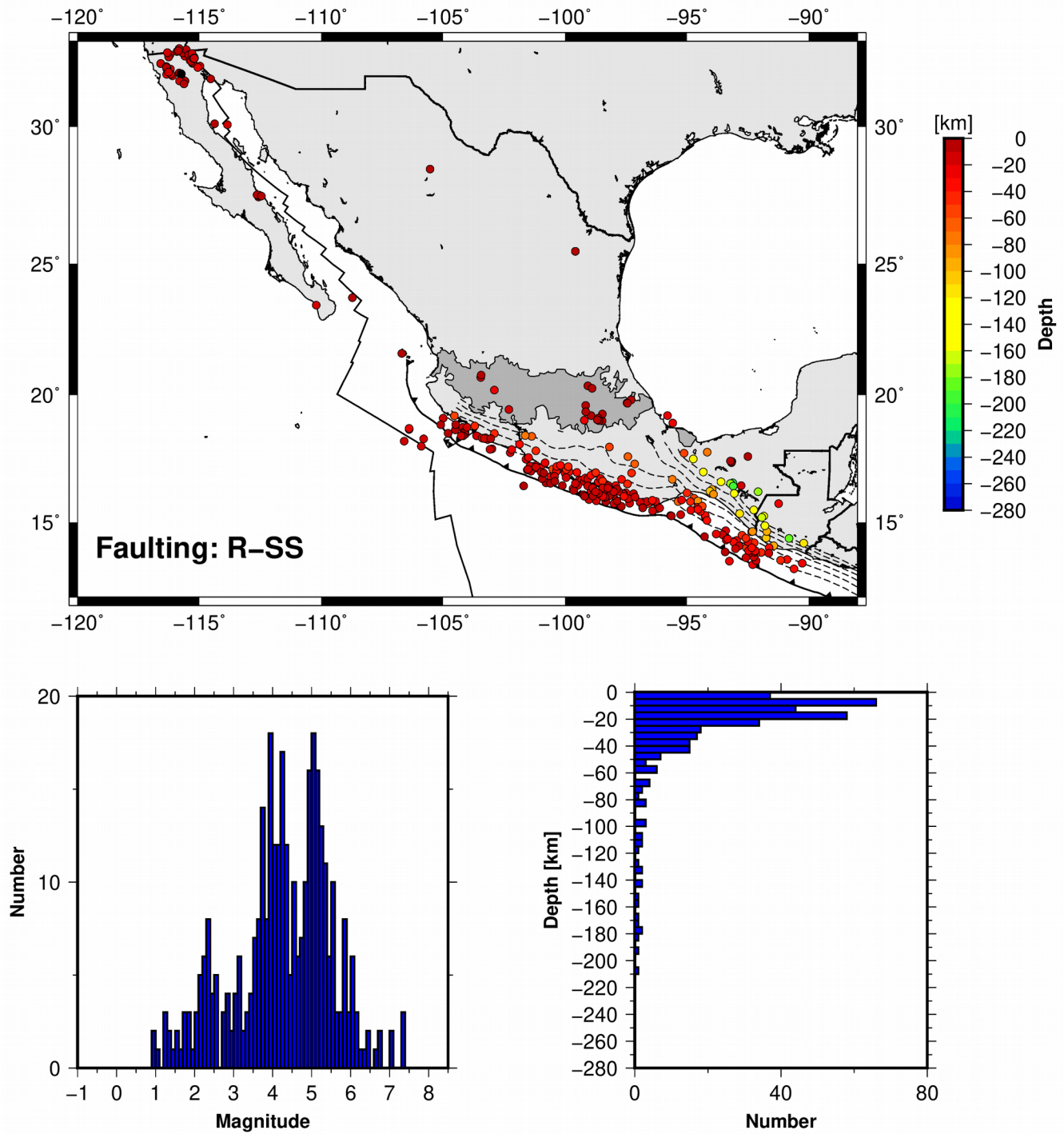
1
 2
 3 **Figure 3.** Hypocentral distribution of normal faulting with a strike-slip component earthquakes (N-SS)
 4 (upper panel). Lower panels show magnitude and hypocentral depth distributions.

5



1
2
3
4
5

Figure 4. Hypocentral distribution of reverse faulting (R) (upper panel). Lower panels show magnitude and hypocentral depth distributions.

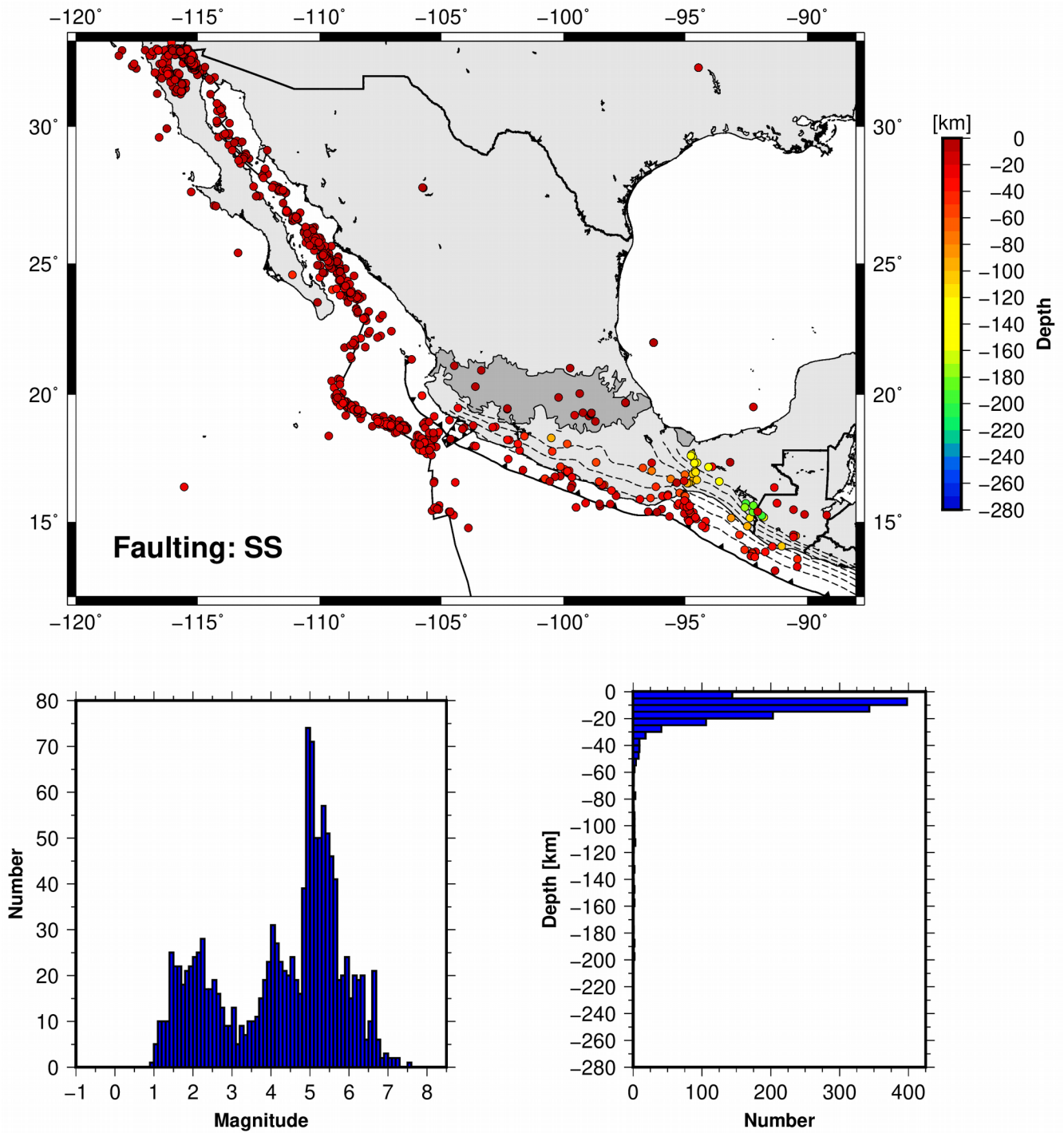


1

2

3 **Figure 5.** Hypocentral distribution of reverse faulting with a strike-slip component (R-SS) (upper
 4 panel). Lower panels show magnitude and hypocentral depth distributions.

5

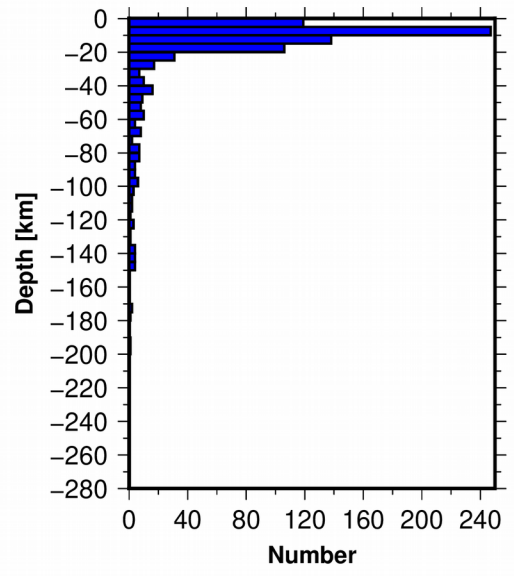
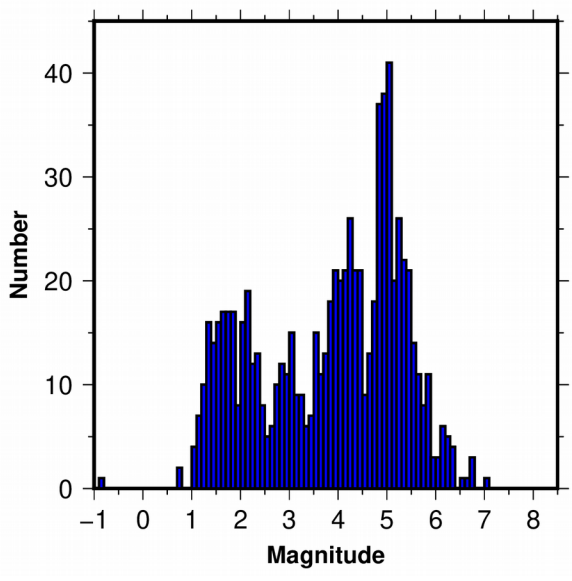
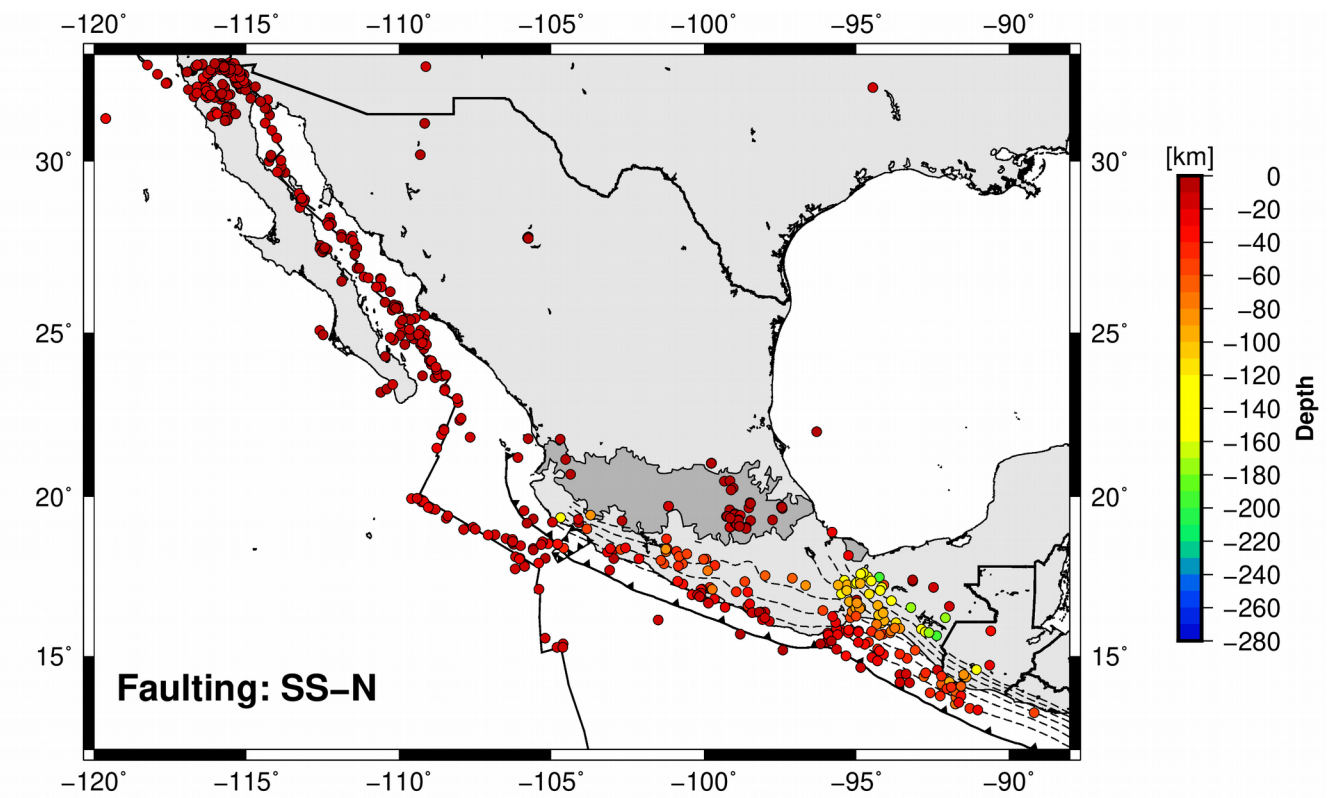


1

2

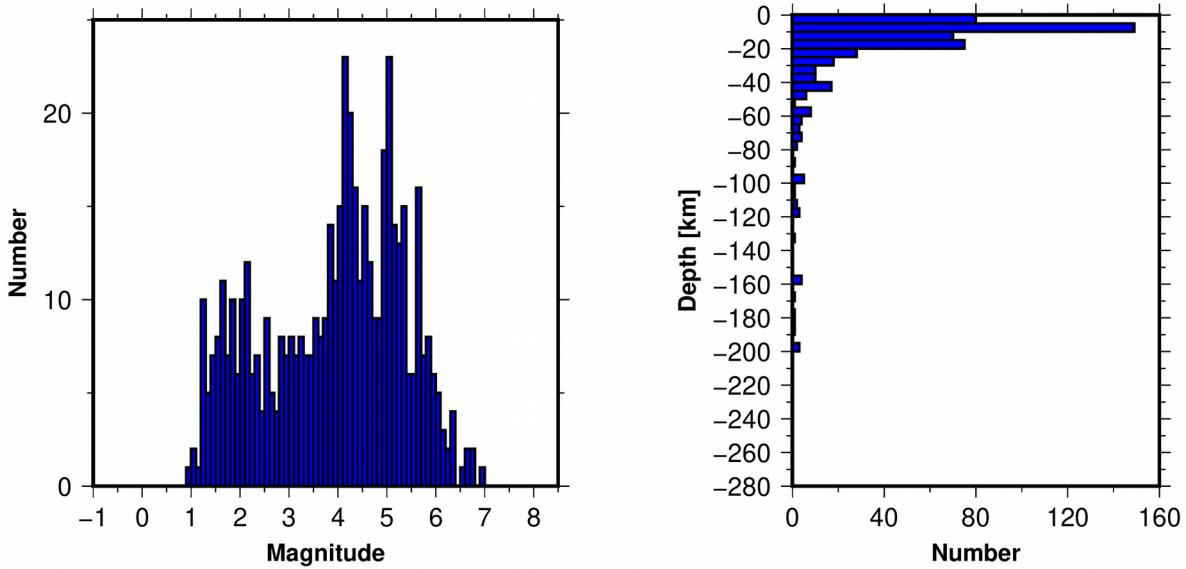
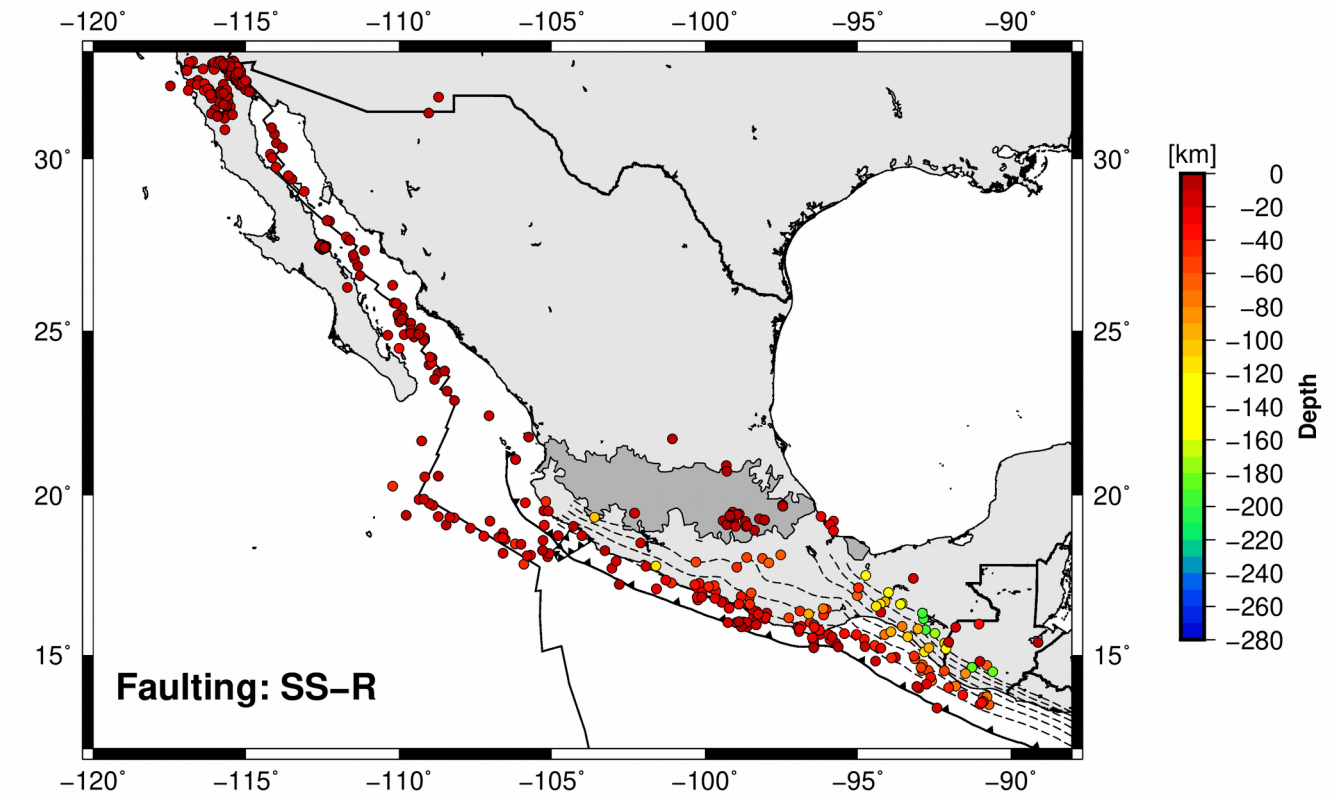
3 **Figure 6.** Hypocentral distribution of strike-slip faulting (SS) (upper panel). Lower panels show
 4 magnitude and hypocentral depth distributions.

5



1
2
3
4
5

Figure 7. Hypocentral distribution of strike-slip faulting with a normal component (SS-N) (upper panel). Lower panels show magnitude and hypocentral depth distributions.

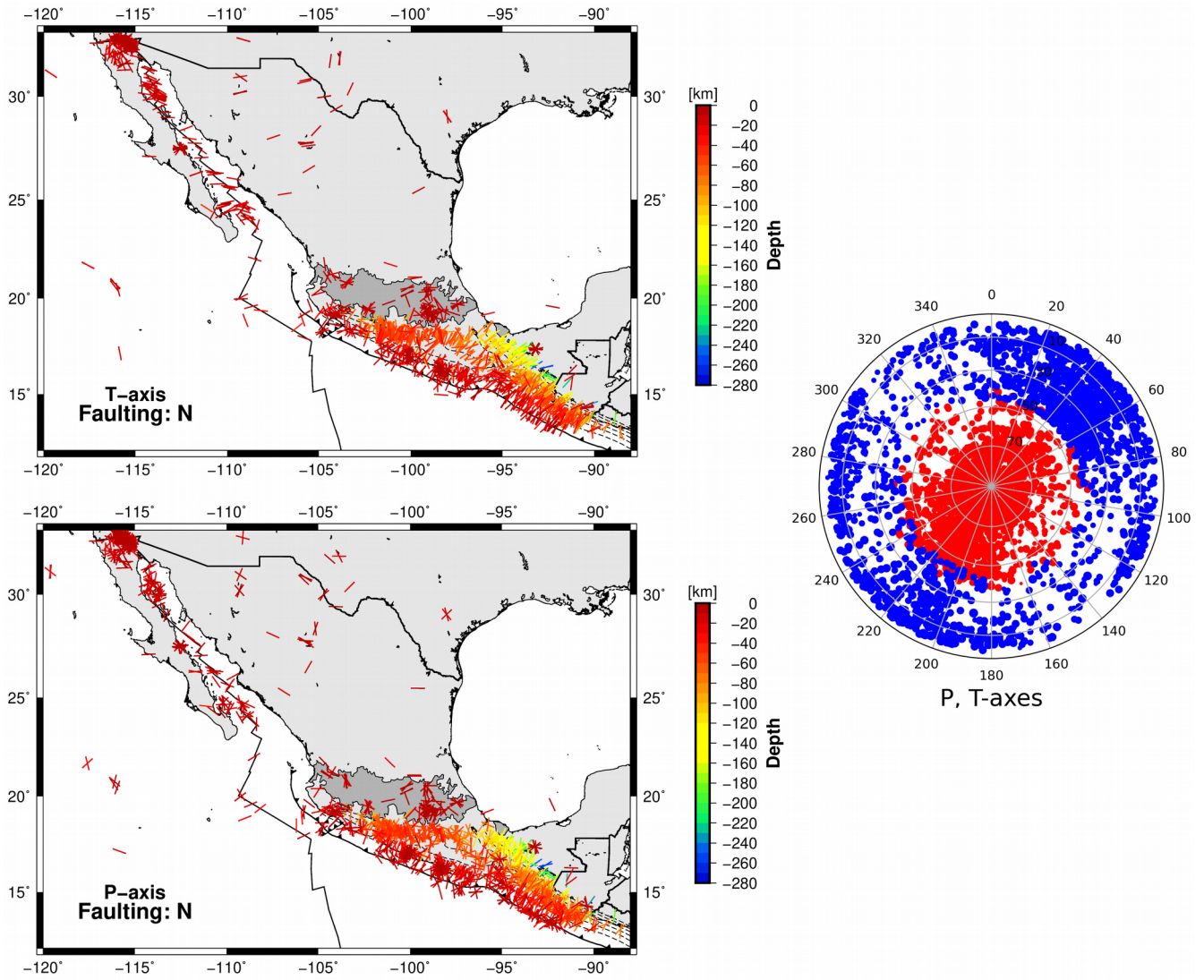


1

2

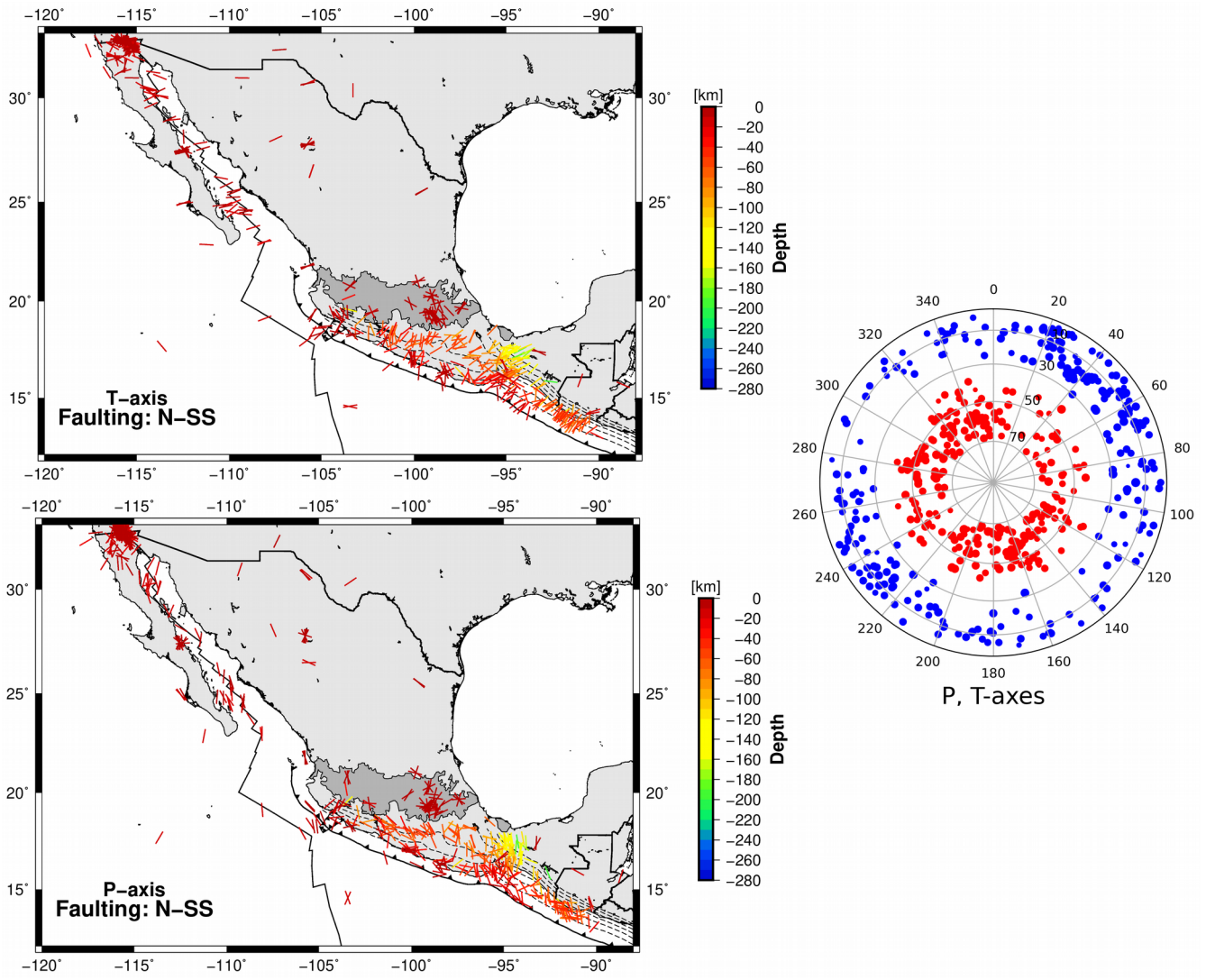
3 **Figure 8.** Hypocentral distribution of strike-slip faulting with a reverse component (SS-R) (upper
 4 panel). Lower panels show magnitude and hypocentral depth distributions.

5



1
2
3
4
5
6
7
8
9

Figure 9. Spatial distribution of P- and T- axes for normal faulting earthquakes (N) (lower and upper left panels, respectively). Distribution of P- and T- axes (red and blue colors, respectively) (right panel).



1

2

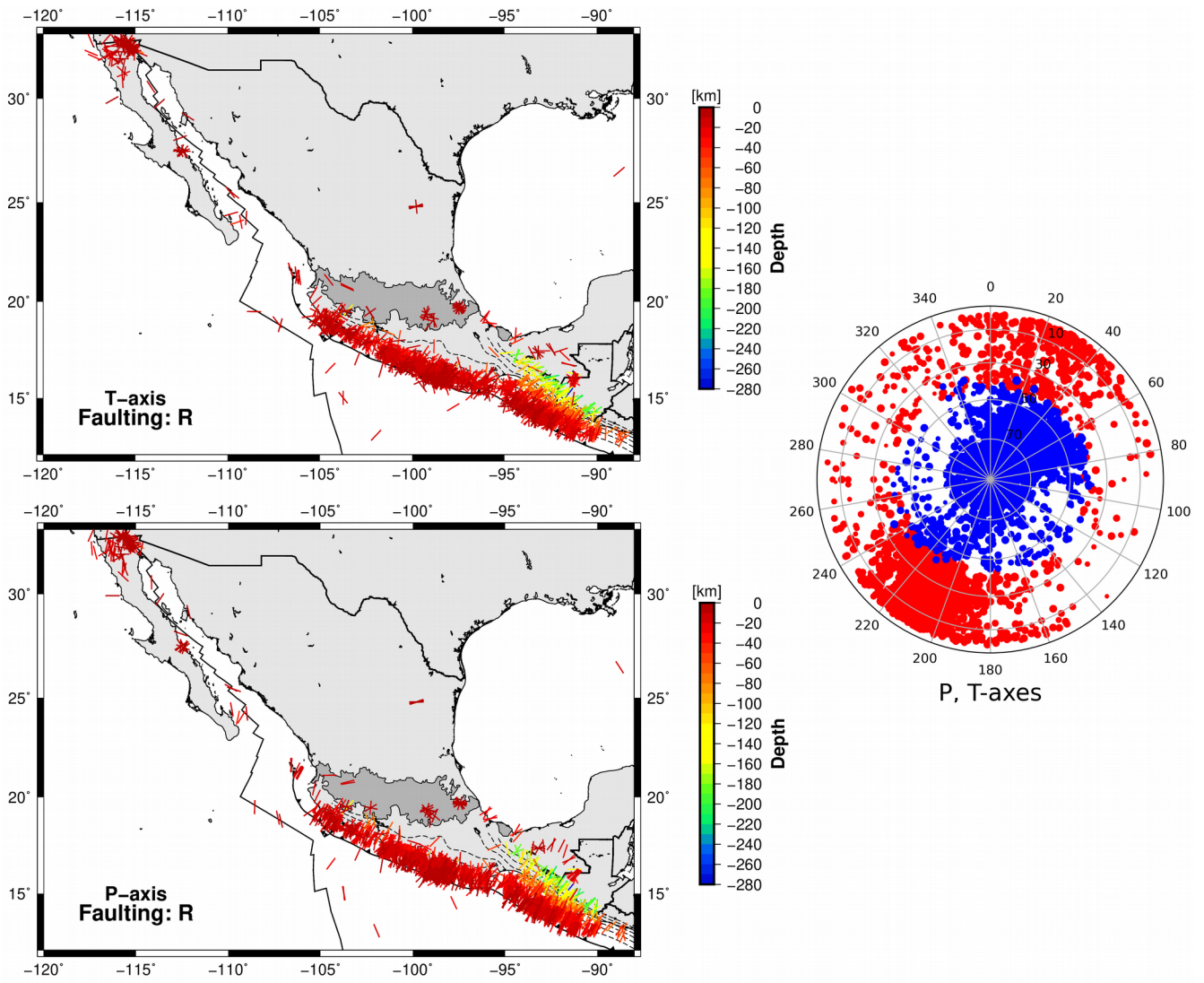
3 **Figure 10.** Spatial distribution of P- and T- axes for normal faulting with a strike-slip component
 4 earthquakes (N-SS) (lower and upper left panels, respectively). Distribution of P- and T- axes (red and
 5 blue colors, respectively) (right panel).

6

7

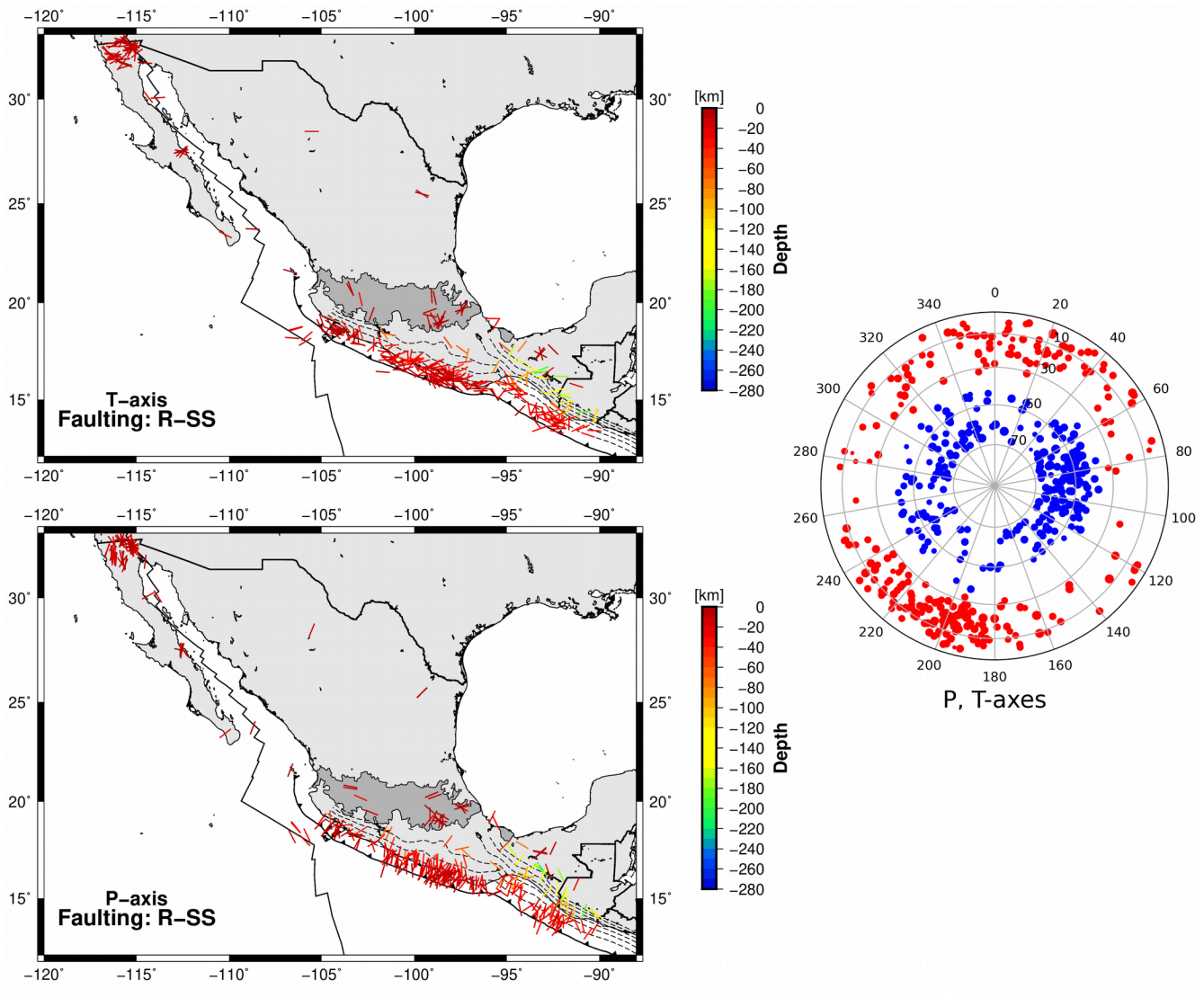
8

9



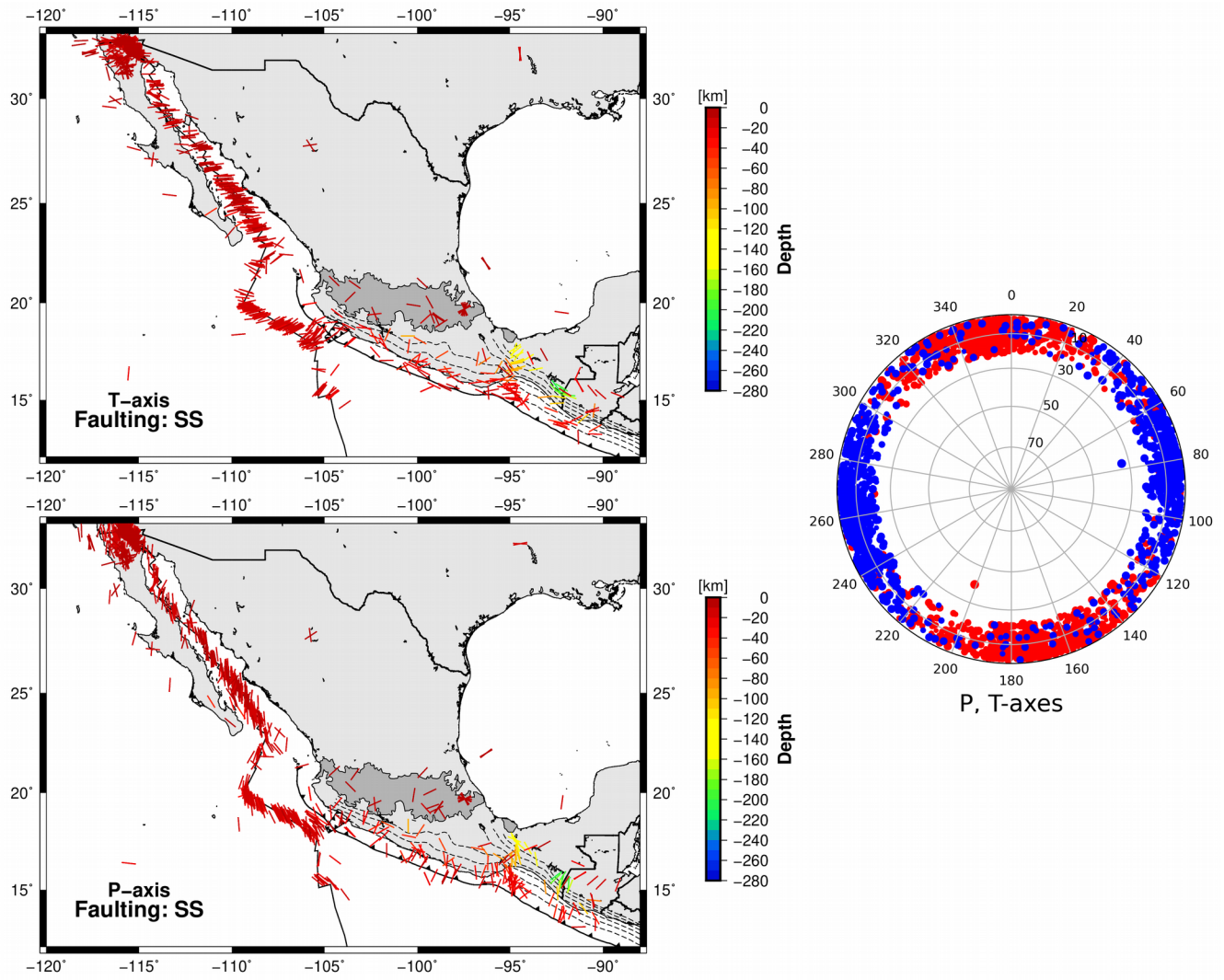
1
2
3
4
5
6
7
8
9

Figure 11. Spatial distribution of P- and T- axes for reverse faulting (R) (lower and upper left panels, respectively). Distribution of P- and T- axes (red and blue colors, respectively) (right panel).



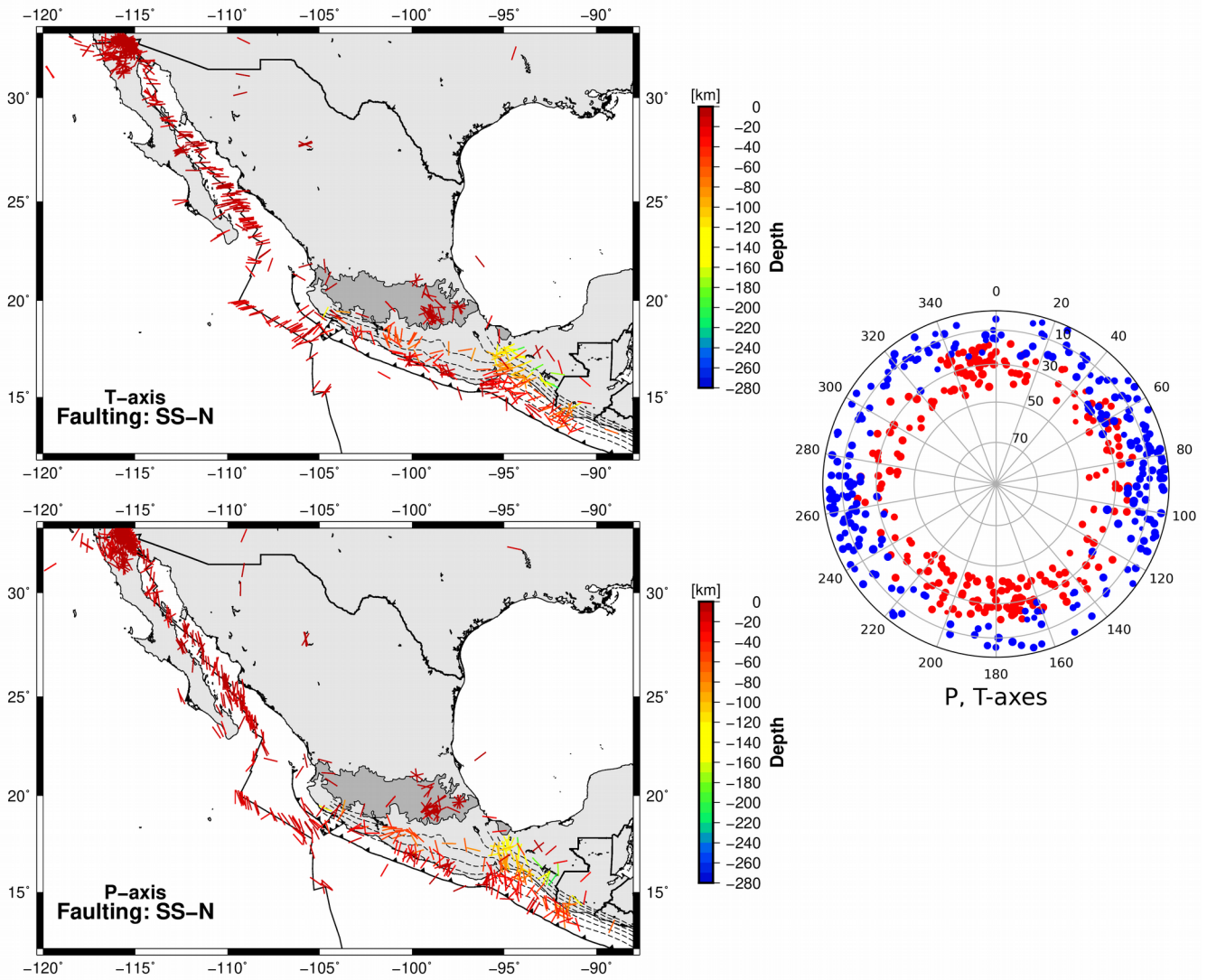
1
2
3
4
5
6
7
8
9

Figure 12. Spatial distribution of P- and T- axes for reverse faulting with a strike-slip component (R-SS) (lower and upper left panels, respectively). Distribution of P- and T- axes (red and blue colors, respectively) (right panel).



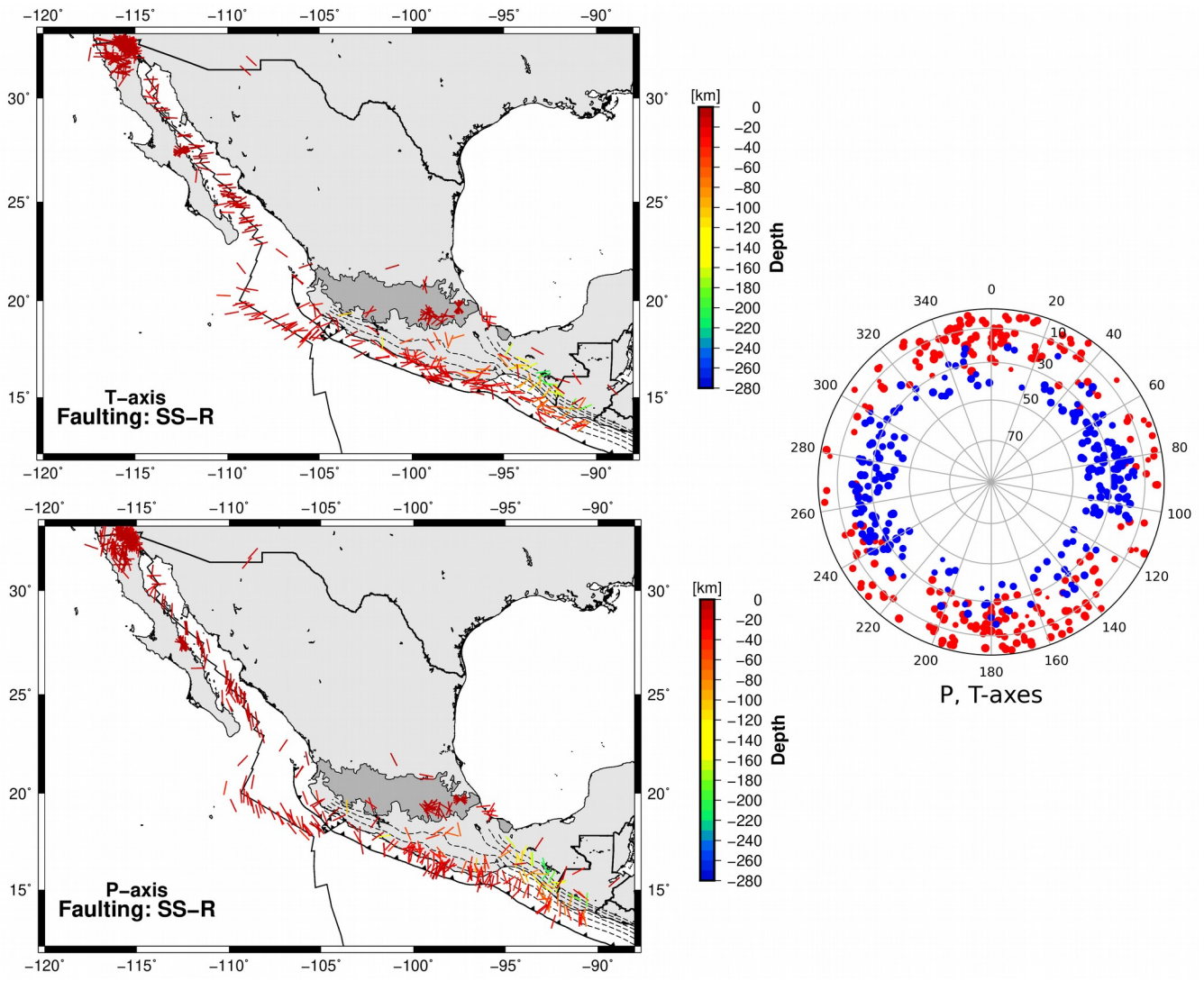
1
2
3
4
5
6
7
8
9
10

Figure 13. Spatial distribution of P- and T- axes for strike-slip faulting (SS) (lower and upper left panels, respectively). Distribution of P- and T- axes (red and blue colors, respectively) (right panel).



1
2
3
4
5
6
7
8
9

Figure 14. Spatial distribution of P- and T- axes for strike-slip faulting with a normal component (SS-N) (lower and upper left panels, respectively). Distribution of P- and T- axes (red and blue colors, respectively) (right panel).



1
2
3
4
5
6

Figure 15. Spatial distribution of P- and T- axes for strike-slip faulting with a reverse component (SS-R) (lower and upper left panels, respectively). Distribution of P- and T- axes (red and blue colors, respectively) (right panel).