

European primary emissions of criteria pollutants and greenhouse gases in 2020 modulated by the COVID-19 pandemic disruptions

Marc Guevara¹, Hervé Petetin¹, Oriol Jorba¹, Hugo Denier van der Gon², Jeroen Kuenen², Ingrid Super², Jukka-Pekka Jalkanen³, Elisa Majamäki³, Lasse Johansson³, Vincent-Henri Peuch⁴ and Carlos Pérez Garcia-Pando^{1,5}

¹ Barcelona Supercomputing Center, Barcelona, Spain

² TNO, Department of Climate, Air and Sustainability, Utrecht, the Netherland

³ Atmospheric Composition Research, Finnish Meteorological Institute, 00560 Helsinki, Finland

⁴ European Centre for Medium-Range Weather Forecasts, Reading, UK

⁵ ICREA, Catalan Institution for Research and Advanced Studies, Barcelona, Spain

Correspondence to: Marc Guevara (marc.guevara@bsc.es)

Abstract. We present a European dataset of daily-, sector-, pollutant- and country-dependent emission adjustment factors associated to the COVID-19 mobility restrictions for the year 2020. We considered metrics traditionally used to estimate emissions, such as energy statistics or traffic counts, as well as information derived from new mobility indicators and machine learning techniques. The resulting dataset covers a total of nine emission sectors, including road transport, energy industry, manufacturing industry, residential and commercial combustion, aviation, shipping, off-road transport, use of solvents, and fugitive emissions from transportation and distribution of fossil fuels. The dataset was produced to be combined with the Copernicus CAMS-REG_v5.1 2020 business-as-usual (BAU) inventory, which provides high resolution (0.1 x 0.05 deg.) emission estimates for 2020 omitting the impact of the COVID-19 restrictions. The combination of both datasets allows quantifying spatially- and temporally-resolved reductions in primary emissions from both criteria pollutants (NO_x, SO₂, NMVOC, NH₃, CO, PM₁₀ and PM_{2.5}) and greenhouse gases (CO₂ fossil fuel, CO₂ biofuel and CH₄), as well as assessing the contribution of each emission sector and European country to the overall emission changes. Estimated overall emission changes in 2020 relative to BAU emissions were as follows: -10.5% for NO_x (-602 kt), -7.8% (-260.2 Mt) for CO₂ from fossil fuels, -4.7% (-808.5 kt) for CO, -4.6% (-80kt) for SO₂, -3.3% (-19.1 Mt) for CO₂ from biofuels, -3.0% (-56.3 kt) for PM₁₀, -2.5% (-173.3 kt) for NMVOC, -2.1% (-24.3 kt) for PM_{2.5}, -0.9% (-156.1 kt) for CH₄ and -0.2% (-8.6 kt) for NH₃. The most pronounced drop in emissions occurred

Style Definition: Table copy

Formatted: Font colour: Text 1

Formatted: Font colour: Text 1

Formatted: Font colour: Text 1

30 in April (up to -32.8% on average for NO_x) when mobility restrictions were at their maxima. The emission
reductions during the second epidemic wave between October and December, were three to four times
lower than those occurred during the Spring lockdown, as mobility restrictions were generally softer (e.g.,
curfews, limited social gatherings). Italy, France, Spain, the United Kingdom and Germany were,
together, the largest contributors to the total EU27 + UK absolute emission decreases. At the sectoral
35 level, the largest emission declines were found for aviation (-51% to -56%), followed by road transport
(-15.5% to -18.8%), the latter being the main driver of the estimated reductions for the majority of
pollutants. The collection of COVID-19 emission adjustment factors (<https://doi.org/10.24380/k966-3957>, Guevara et al., 2022) and the CAMS-REG_v5.1 2020 BAU gridded inventory
(<https://doi.org/10.24380/eptm-kn40>, Kuenen et al., 2022a) have been produced in support of air quality
40 modelling studies.

1 Introduction

The COVID-19 pandemic lockdowns and mobility restrictions implemented across Europe have resulted
in an unprecedented drop in atmospheric anthropogenic emissions. Using satellite and in situ
observations, several studies have reported the associated changes in air pollutants (e.g., Balamuguran et
45 al., 2021; Barré et al., 2021; Grange et al., 2021; Petetin et al., 2020; Querol et al., 2021; Slezakova and
Pereira, 2021), mostly focusing on main criteria pollutants (i.e., mostly NO₂ and O₃, as well as PM₁₀ and
PM_{2.5} to a lesser extent) during the so-called Spring lockdowns and the immediate period thereafter (i.e.,
between mid-March and July). [Results from these any many other works \(more than 200\) have been
reviewed and summarised by Gkatzelis et al. \(2021\).](#) Further insights that complement these observational
50 studies can be obtained by quantifying the changes in primary emissions. Such quantification can unlock
many possibilities for numerical modelling studies, which require gridded emissions that account for the
effect of the pandemic. Also, understanding to what extent individual pollutant sources were affected
along with their associated emissions can provide valuable information to policy makers for the
development of future abatement strategies.

55

Up to now, the number of studies tackling the impact of COVID-19 upon primary emissions is low compared to those focusing on air quality. At the global scale, Le Quéré et al. (2020 and 2021), Liu et al. (2020a), Forster et al. (2020) and Doumbia et al. (2021) stand out. The first two focus on estimating the impact of the lockdowns on CO₂ emissions, while the other two quantify emission declines for both
60 criteria pollutants (NO_x, SO_x, NMVOCs, NH₃, PM₁₀ and PM_{2.5}) and greenhouse gases (GHGs, i.e., CO₂ and CH₄). In all cases, results are reported at the daily, country and pollutant sector level. The estimates provided in Liu et al. (2020a) are continuously updated using near real time information provided by the Carbon Monitor system (Liu et al., 2020b). In contrast, the datasets reported in Forster et al. (2020), Le Quéré et al. (2021) and Doumbia et al. (2021) focus on year 2020.

65 A common limitation in all the aforementioned works is related to the representativeness of certain datasets used to estimate changes in emissions. For instance, Forster et al. (2020) and Doumbia et al. (2021) estimated emission changes for several sectors (i.e., road transport, residential/commercial combustion, manufacturing industry) relying on the trends reported by the Google COVID-19
70 Community Mobility Reports (Google LLC, 2021). However, the significant deviations between these new mobility datasets and traditional proxies such as traffic counts or energy consumption statistics, suggest caution in their use to assess emission changes (e.g., Harkins et al., 2020; Gensheimer et al., 2021). In Liu et al. (2020a), changes in road transport emissions are based on changes in congestion levels reported by TomTom in 416 global cities in 57 countries. Since congestion levels do not directly reflect
75 changes in the number of circulating vehicles, Liu et al. (2020) used a sigmoid function to fit a relationship between TomTom congestion levels and traffic counts, using as a proxy real measured traffic counts obtained for the city of Paris. The relationship found for Paris city was then applied to the TomTom congestion levels reported for all other cities.

80 At the European scale, specific COVID-19 emission datasets have been developed mainly to perform air quality modelling studies. Menut et al. (2020) developed an emission scenario for western Europe that was limited to March 2020 and was set up using the Apple movement trends (Apple, 2021) to derive emission reductions for road transport, manufacturing industry, non-road transport and residential–

commercial combustion activities. Guevara et al. (2021) constructed a set of EU27 + UK daily COVID-19 emission adjustment factors for the most severe lockdown period (i.e., 21 February until 26 April 2020) and the sectors suffering the largest reductions in their activity: energy and manufacturing industry, road transport and aviation. [Adélaïde et al. \(2021\) constructed an emission dataset for France covering strict lockdown and gradual lifting periods \(i.e., March to June 2020\) using as a basis de adjustment factors from Guevara et al. \(2021\) together with finer calculations of emission variations by region for road traffic and a first estimate for the residential sector. Information on number of vehicles on the road and household electricity consumption was used to compute the variation of emissions for these two sectors.](#) In Matthias et al. (2021), the COVID-19 emission scenario was constructed for central Europe and a total of five sectors (i.e., public power, manufacturing industry, road transport, shipping and aviation) and for the months of January to June 2020. Other sources of information besides mobility reports were used in Guevara et al. (2021) and Matthias et al. (2021), such as airport traffic statistics, electricity demand statistics or volume indexes of industrial production, among others. Of all the aforementioned works, only Guevara et al. (2021) reported its final emission dataset in open access.

This work represents an extensive update and refinement of the effort initially described in Guevara et al. (2021), including: (i) an extension of the temporal coverage to estimate the overall impact of the COVID-19 restrictions on the 2020 European emissions, (ii) the inclusion of anthropogenic sources previously not considered and (iii) the consideration of pollutant-dependent emission adjustment factors for both criteria pollutants (NO_x, NMVOC, CO, SO₂, NH₃, PM₁₀, PM_{2.5}) and greenhouse gases (CO₂ from fossil fuel, later referred to as CO₂_ff, CO₂ biofuel, later referred to as CO₂_bf and CH₄). As a result, we present an open-source dataset of European COVID-19 emission adjustment factors for the year 2020 that vary per day of the year, country (or sea region), sector and pollutant. The final set of adjustment factors covers the period from 21 February 2020, the beginning of localized lockdown in Italy (region of Lombardy), to 31 December 2020 and the following anthropogenic sources: public energy and heat production industry, manufacturing industry, residential and commercial combustion activities, use of solvents, fugitive emissions from production and transportation of fossil fuels, road transport, shipping, aviation (landing and take-off cycles) and other off-road transport sources. Adjustment factors were calculated using a wide

range of open-access and near-real-time national measured activity data that resemble the effects of lockdown measures on emissions released from multiple sources. This includes the combination of traditional proxies with new mobility metrics, meteorological parameters and machine learning techniques, among others.

The dataset is designed to reflect the heterogeneous impact of the lockdowns and mobility restrictions across European countries and sectors, and to support the quantification of European primary emission changes. Accordingly, the emission adjustment factors were produced in a format consistent with the CAMS-REG gridded emission inventory (Kuenen et al., 2021a and b), developed under the Copernicus Atmosphere Monitoring Service (CAMS) in direct support of the European regional production chain (Marécal et al., 2015). The annual emissions reported by CAMS-REG v5.1 for 2018 were extrapolated per country, sector and pollutant to 2020 neglecting the impact of COVID-19 to produce a business-as-usual (BAU) scenario. The combination of both datasets allows to spatially and temporally quantify reductions in primary emissions linked to the COVID-19 restrictions, as well as to assess the contribution of each pollutant sector to the overall emission changes.

The paper is organized as follows. Section 2 [presents the methodology used to produce BAU emissions for 2020](#). Section 3 describes, for each sector, the approaches and sources of information used to construct the COVID-19 emission adjustment factors along with the resulting dataset. Section 4 compares the BAU and the COVID-19 emission scenarios. Section 5 provides a description of the data availability, and finally Sect. 6 presents the main conclusions of this work.

2 Business-as-usual 2020 emissions

A gridded emission BAU inventory for 2020 was developed based on the CAMS European regional emission inventory (CAMS-REG v5.1) time series, ranging from 2000 to 2018 (update from Kuenen et al., 2021b). The CAMS-REG v5.1 dataset makes use of official air pollutants and greenhouse emission inventories submitted by each country to EMEP, UNFCCC and the EU. Those country-level annual data form the basis of the emission inventory and are spatially disaggregated to a $0.1^\circ \times 0.05^\circ$ grid for use in

Deleted: Section 3 presents the methodology used to produce BAU emissions for 2020.

Moved (insertion) [1]

Deleted: Our adjustment factors were designed to be applied to

Deleted: a

145 chemical transport models. For each grid cell and country emissions are reported following the Gridded aggregated Nomenclature For Reporting (GNFR) system. Besides the 12 GNFR sectors for which the COVID-19 adjustment factors are prepared (Sect. 3, Table 1), the inventory also includes emissions from waste management (GNFR J), livestock (GNFR K) and other agricultural activities (GNFR L). Additional sub-sectors are also defined, as explained in Sect. 3 (Table 2). The methodology applied and sources of information used for the construction of the CAMS-REG emission inventory are described in detail in Kuenen et al. (2021b)

150 The main disadvantage of the CAMS-REG v5.1 gridded inventory is the 2-year lag in emission reporting. To overcome this limitation a method was developed to estimate emissions for recent years (y-1), which makes use of sector-specific activity data. We have updated this methodology to make a BAU emission estimate for 2020 to be combined with the COVID-19 adjustment factors described in Sect. 3. The method follows three steps:

- 155 • Estimate the activity data (AD) per sector, country and year. For this we gathered data from a range of sources, which are listed in Table 3. If activity data are available for 2020 we use it directly. Otherwise, if activity data are available for previous years (time series cover between 7 to 21 years for the different data sources) we examine whether a significant trend exists ($R^2 > 0.3$) and extrapolate that to 2020.
 - 160 • Estimate the emission factor (EF) per sector, country, year and pollutant. The emission factor is calculated by dividing the emissions for 2000-2018 by the AD. Again, if a significant trend in EF exists ($R^2 > 0.3$) we extrapolate that to 2020. Otherwise, the EF of the last reporting year is used (here: 2018).
 - 165 • Finally, we calculate the emissions for 2020 by multiplying AD and EF. If AD is missing this gives no result. In that case we examine whether a significant trend exists ($R^2 > 0.3$) in the emission time series of 2000-2018. If so, it is extrapolated to get an emission estimate for 2020. Otherwise, the emission of the last reporting year is used (here: 2018).
- 170

Formatted: Font colour: Text 1

Deleted: before

Deleted: 2.

Formatted: Font colour: Text 1

Deleted: 3

Deleted: 2

Formatted: Font colour: Text 1

175 Note that for the other stationary combustion activities (GNFR C), which includes emissions related to heating of buildings, the annual heating degree day sum is used as measure of the AD to derive 2020 BAU emissions. Thus, we can isolate the impact of 2020 temperatures, which were above the 1981–2010 average across all of Europe (C3S, 2021) and generally reduced the use of fuel for space-heating purposes, from the impact of COVID-19 stay-home orders, which increased the time people spent at home and are considered through the adjustment factors presented in Sect. 3.1.3. Additionally, we have included the impact of the 0.5% sulphur cap on (international) shipping fuels as of January 1, 2020 (IMO, 2019). For the North Sea, Baltic Sea and English Channel we assume no impact of the sulphur cap, as these sea regions are part of the Sulphur emission control areas (SECA) and already showed strong reductions before (Kattner et al., 2015). For all other sea regions, we assume a 75% reduction in SO₂ emissions compared to 2018. Also for PM we assume a 48% reduction compared to 2018 due to the reduction of SO₂.

Formatted: Font colour: Text 1

Formatted: Font colour: Text 1

180 For the 2020 BAU emission estimates we ignore all AD that is impacted by the COVID-19 lockdowns and mobility restrictions. We still use the AD for trend analyses though, as a trend caused by, for example, technological progress will continue in 2020 and therefore be part of the BAU emission estimates. Note that not all GNFR sectors are included in Table 3, for example due to absence of AD. In that case the emissions from 2018 are copied to 2020.

Formatted: Font colour: Text 1

Formatted: Font colour: Text 1

190 Figure 1_a shows the NO_x emission time series for Italy and Sweden from 2010 to 2020, where 2020 represents the BAU estimate. The percentages indicate the difference compared to 2018, which are caused by normal trends in activity and emission factors. We also provide an estimate where we do include AD affected by COVID-19 (separate bar). We find that NO_x emissions from road transport decreased since the start of the time series, but COVID-19 causes an even stronger decrease in emissions compared to 2018. The same is true for public power and manufacturing industry, although the trend in Sweden is weaker and also the COVID-19 impact on the manufacturing industry is less. Emissions from other stationary combustion activities show a slight increase in 2020 in Italy (+5%), because it was a bit colder than in 2018. In Sweden, 2020 was warm compared to 2018 and the opposite effect is visible (-15%).

Deleted: 6

195 Figure 1_a shows the NO_x emission time series for Italy and Sweden from 2010 to 2020, where 2020 represents the BAU estimate. The percentages indicate the difference compared to 2018, which are caused by normal trends in activity and emission factors. We also provide an estimate where we do include AD affected by COVID-19 (separate bar). We find that NO_x emissions from road transport decreased since the start of the time series, but COVID-19 causes an even stronger decrease in emissions compared to 2018. The same is true for public power and manufacturing industry, although the trend in Sweden is weaker and also the COVID-19 impact on the manufacturing industry is less. Emissions from other stationary combustion activities show a slight increase in 2020 in Italy (+5%), because it was a bit colder than in 2018. In Sweden, 2020 was warm compared to 2018 and the opposite effect is visible (-15%).

Deleted: n

205 This estimate is not affected by COVID-19, because it is purely based on the temperature (i.e., changes in the yearly degree days). Note that the estimate with COVID-19 is not comparable to the adjustment factors, as the AD used here do not necessarily capture the impact of the lockdowns. We merely use it to illustrate that the BAU estimate indeed represents a situation without COVID-19.

3 COVID-19 emission adjustment factors

210 The construction of the COVID-19 emission adjustment factors followed a data-driven approach. Changes in emissions are assumed to follow changes detected in measured time-series that represent the main activities of each pollutant sector at country level. For each sector, emission adjustment factors were calculated as a ratio between the activity data for a given day/week/month and the value of this activity over a pre-lockdown period (hereafter referred to as baseline).

215 The resulting dataset of adjustment factors were designed to be applied to the CAMS-REG_v5.1 2020 BAU emission inventory (Section 2) and therefore follow the GNFR sector classification system. We considered twelve GNFR sectors, corresponding to nine pollutant sectors with road transport emissions split into 4 fuel types: GNFR_A (energy industry), GNFR_B (manufacturing industry), GNFR_C (other stationary combustion activities), GNFR_D (fugitive emissions from fossil fuel production and transportation), GNFR_E (solvents), GNFR_F1 (road transport: gasoline exhaust), GNFR_F2 (road transport: diesel exhaust), GNFR_F3 (road transport: Liquified Petroleum Gas, LPG, exhaust), GNFR_F4 (road transport: non-exhaust), GNFR_G (shipping), GNFR_H (aviation) and GNFR_I (off road transport). Agricultural emissions (GNFR_K for livestock and GNFR_L for other activities including use of fertilizers and agricultural waste burning) were assumed to remain unaffected by the COVID-19 restrictions, as their activities were considered to be essential during the lockdown periods. This assumption is consistent with the surface measurement-based results reported by Lovarelli et al. (2020) and Zhang et al. (2021) as well as the results published by Elleby et al. (2020), which indicate that COVID-19 implied a reduction of direct GHGs from agriculture of only about 1% at the global scale.

230

- Deleted: 2
- Formatted: Font colour: Text 1
- Deleted: s
- Deleted: sector classification reported by the CAMS-REG-AP/GHG emission inventory, which corresponds to the Gridded aggregated Nomenclature For Reporting (
- Deleted:)
- Formatted: Font colour: Text 1

- Moved (insertion) [3]
- Deleted: This assumption is in line with the

subcategories considered for a given GNFR sector (e.g. 3 for GNFR_B, 4 for GNFR_C, according to Table 2).

270 As a result, pollutant-dependent adjustment factors were obtained for these seven GNFR sectors. The emission contributions from each subcategory to total GNFR emissions per country and pollutant (i.e., $S_{G01}(c, p)$, $S_{G02}(c, p)$) were computed using emissions from the GNFR B, GNFR C, GNFR D, GNFR E, GNFR F2, GNFR F4 and GNFR I sectors split following the subcategories listed in Table 2.

275 Figure 2 shows the resulting emission adjustment factors obtained per day, GNFR sector and selected pollutants. For all sectors except shipping, we show for illustrative purposes results for 6 European countries with different lockdown patterns (i.e., Italy, Spain, France, Germany, the United Kingdom and Sweden). Italy was the country where restrictions first started, followed by Spain and France, where national lockdowns were imposed on 14 and 17 March, respectively. In contrast to Italy, where the transition from low to high stringency levels was gradual, these two countries experienced abruptly severe restrictions on movements, and commercial and industrial activities. A similar pattern occurred in
280 Germany and the United Kingdom, where national lockdowns were imposed on the 20 and 23 March, respectively. Sweden, on the other hand, was one of the few European countries where no national lockdown was implemented and only national recommendations (e.g., relatively soft social distancing
285 measures) were provided to citizens.

The following subsections describe the data and methods for each sector along with the underlying assumptions. The resulting adjustment factors reported in Fig. 2 are also discussed in the corresponding subsection.

290 3.1.1 Public power industry

Changes in emissions from the public power sector (GNFR_A) were assumed to follow the changes observed in the electricity demand data reported by the European Network of Transmission System Operators for Electricity (ENTSO-E) transparency platform (Hirth et al., 2018; ENTSO-E, 2021). For

Formatted: Font colour: Text 1

Formatted: Font colour: Text 1

Formatted: Font colour: Text 1

Formatted: Font colour: Text 1

Formatted: Font colour: Text 1

Formatted: Font colour: Text 1

Formatted: Font colour: Text 1

Formatted: Font colour: Text 1

Deleted: 1

Deleted: 1

each country, we collected daily electricity demand data from January 2015 to December 2020. For Russia, Ukraine and Turkey we derived the electricity demand data from the corresponding national Transmission System Operators: SO-UPS (2021), UNEC (2021), and TEIAS (2021), respectively.

300 We first estimated the demand that would have occurred in the absence of COVID-19 under the same meteorological conditions, hereafter referred to as BAU. To estimate the BAU electricity demand we used gradient boosting machine (GBM) models trained and tuned independently for each country using daily data from January 2015 to December 2019. As inputs, we considered the following features: country-level daily population-weighted temperature ($T_{pop}(d)$), date index (number of days since 2015/01/01), 305 Julian date, day of week and a Boolean feature indicating the country-specific bank holidays. The models also consider bridge weekends, in the sense that when there is a holiday on Tuesday (resp. Thursday), the Monday (resp. Friday) is also set as a holiday. We replicated the GBM modelling and tuning strategy previously used in Guevara et al., (2021) with random search in the hyper-parameter space and rolling-origin cross-validation (appropriate for time series).

310 The $T_{pop}(d)$ is defined as follows (Eq. 2):

$$T_{pop}(d) = \frac{\sum_{x=1}^n \frac{T_{2m}(x,d) * Pop(x)}{\sum_{x=1}^n Pop(x)}}{2} \quad (2)$$

315 Where $T_{2m}(x, d)$ is the daily mean 2-meter outdoor temperature for grid cell x and day d [$^{\circ}C$]; $Pop(x)$ is the amount of population included in grid cell x [n $^{\circ}$ of inhabitants] and n is the total number of grid cells that corresponds to a specific country. Outdoor temperature information was obtained from the ERA5 reanalysis dataset for the years 2015 to 2020 (C3S, 2017), while gridded population was derived from the Gridded Population of the World, Version 4 (GPWv4; CIESIN, 2016).

320 The difference between the daily BAU and measured 2020 electricity demand levels were used to derive country-dependent daily emission adjustment factors, as described in Eq. 2:

Formatted: Font colour: Text 1

Formatted: Font colour: Text 1

Formatted: Font colour: Text 1

Formatted: Font colour: Text 1

Formatted: Font colour: Text 1

Formatted: Font colour: Text 1

Formatted: Font colour: Text 1

Formatted: Font colour: Text 1

Formatted: Font colour: Text 1

Formatted: Font colour: Text 1

Formatted: Font colour: Text 1

Formatted: Font colour: Text 1

Formatted: Font colour: Text 1

Formatted: Font colour: Text 1

Formatted: Font colour: Text 1

Formatted: Font colour: Text 1

Formatted: Font colour: Text 1

Formatted: Font colour: Text 1

Formatted: Font colour: Text 1

Formatted: Font colour: Text 1

$$EAF_{pub_pow}(d, c) = \left(\frac{ED_{measured}(d, c) - ED_{BAU}(d, c)}{ED_{BAU}(d, c)} \right) * 100 \quad (2)$$

where $EAF_{pub_pow}(d, c)$ is the final emission adjustment factor for the energy industry sector for day d and country c [%]; $ED_{BAU}(d, c)$ is the estimated BAU electricity demand for day d and country c [MW] and $ED_{measured}(d, c)$ is the measured electricity demand for day d and country c [MW].

Figure 2 shows the daily adjustment factors obtained for the GNFR A sector and selected countries (i.e., Spain, France, Germany, UK and Sweden). The resulting trends are consistent with the national lockdown calendars and levels of restriction implemented in each country. During the strictest period of the first lockdown, Italy experienced the largest reductions (-30%), followed by Spain (-25%) and France (-20%). For Sweden, positive values are observed during the same period, in line with the results reported by Le Queré et al. (2020). It is likely that in this country electricity demand from commercial services remained unperturbed as no national lockdowns were enforced. We also hypothesize that a voluntary self-isolation of a fraction of the population may have increased household electricity consumption. When confinement was eased, electricity demand shows the first signs of recovering in all countries. This trend is confirmed in summer, as governments softened even more lockdown measures. The most pronounced recovery occurs in Italy, where emissions reach levels above BAU during August. A second significant drop of emissions is observed in France and UK and, to a lesser extent, in Italy during November 2020 coinciding with the implementation of a second round of lockdowns. Emissions rebound sharply after that, and are back to BAU levels or even above during Christmas holidays.

3.1.2 Manufacturing industry

The adjustment factors for manufacturing industry (GNFR_B) are based on the monthly Industrial Production Index (IPI) values reported by Eurostat (2021a). We considered the seasonally and calendar adjusted data. Note that for UK the IPI values for November and December 2020 were derived from ONS (2021) as Eurostat only reports information until October 2020 for this country. The original IPI values reported for each individual economic activity (NACE Rev. 2) were grouped and averaged into the three

Formatted: Font colour: Text 1

Formatted: Font colour: Text 1

Formatted: Font colour: Text 1

Formatted: Font colour: Text 1

Formatted: Font colour: Text 1

Formatted: Font colour: Text 1

Formatted: Font colour: Text 1

Formatted: Font colour: Text 1

Formatted: Font colour: Text 1

Formatted: Font colour: Text 1

Formatted: Font colour: Text 1

Formatted: Font colour: Text 1

Formatted: Font colour: Text 1

Formatted: Font colour: Text 1

Formatted: Font colour: Text 1

Formatted: Font colour: Text 1

Formatted: Font colour: Text 1

Formatted: Font colour: Text 1

Formatted: Font colour: Text 1

Formatted: Font colour: Text 1

Formatted: Font colour: Text 1

Formatted: Font colour: Text 1

Formatted: Font colour: Text 1

Formatted: Font colour: Text 1

Formatted: Font colour: Text 1

Formatted: Font colour: Text 1

Formatted: Font colour: Text 1

Deleted: l

Deleted: Italy is where the recovery is more pronounced

Deleted: reaching

Deleted: the

subcategories listed in Table 2, according to the impacts of the COVID-19 restrictions observed on their activity (Fig. S2):

- GNFR_B1: Manufacture of petroleum refining products. This industrial branch was considered to be essential and therefore was less affected than other industries during the full lockdown phase. However, and due to the large decrease on the demand for finished petroleum products (e.g., jet fuel, motor gasoline), the recovery of its activity has been lower than in other sectors during the lockdown exit process.
- GNFR_B2: Manufacture of pharmaceutical, chemistry, food and beverages products. These industrial branches were also considered to be essential during the full lockdown phase, but in contrast to the petroleum industry, the demand associated to their products barely decreased or even increased during or after the lockdown, which is translated in a low decrease (slight increase) of their activity.
- GNFR_B3: Manufacture of other products (i.e., non-metallic mineral products, basic metals, paper and paper products and machinery and equipment). These industries were considered non-essential and therefore were heavily affected during the lockdown period as in the majority of cases were forced to close. Nevertheless, a sharp recovery is observed with the easing of lockdowns.

For the manufacturing industrial subcategories GNFR_B2 and GNFR_B3, the averaging of the IPI values was done considering the share of each industrial branch (i.e., pharmaceutical, chemistry, food and beverages products for GNFR_B2 and non-metallic mineral products, basic metals, paper and paper products and machinery and equipment for GNFR_B3) to the total fossil energy final consumption as reported by the Eurostat (2021b) energy balances. For GNFR_B3, the manufacture of basic metals and non-metallic mineral products are the largest energy intensive activities (almost 70% of total energy consumption), whereas manufacturing of paper and machinery and equipment represent approximately 30% of total energy consumption (Fig. S3). Note that other industrial branches originally included in GNFR_B3 (i.e., manufacture of wood, textiles and leather) were not considered in the final calculations

Deleted: For illustration, Fig. 2 shows the behaviour of the IPI monthly values from January 2019 until December 2020 for each of the three aforementioned manufacturing industrial subgroups for Germany, Spain, Italy and the UK. The dashed black line represents the general IPI for the overall manufacturing industry.

Deleted: 2

390 since the Eurostat IPI statistics for these industrial categories are incomplete. It is expected that the removal of these industrial branches won't have a major impact on final results as their total fossil fuel consumption is not predominant (i.e., 12% in total according to Fig. S3).

Deleted: 2

395 For each manufacturing industry subgroup, we computed monthly and country-specific adjustment factors from a baseline taken as the average value over the two months prior to the lockdown (January and February 2020). The computed monthly adjustment factors were translated into daily adjustment factors by considering the Oxford COVID-19 Government Response Tracker dataset (OxCGRT; Hale et al., 2021). The OxCGRT provides a systematic cross-national, cross-temporal measure to understand how government responses have evolved over the full period of the COVID-19 spread. We considered the indicator "workplace closing", which records the closings of workplaces according to four different scales of intensity: 0 – no measures, 1 – recommended closing, 2 - require closing (or work from home) for some sectors or categories of workers and 3 - require closing (or work from home) all-but-essential workplaces. We assumed that changes on industrial emissions during March started to happen in each country once the corresponding indicator reached a value of 2 or more.

400 Daily emission adjustment factors were computed as a weighted average of the adjustment factors obtained for each industrial subcategory (Eq. (1)), taking into account their relative contribution to total GNFR_B emissions (Fig. 3).

410 Figure 2 illustrates the resulting adjustment factors proposed for NO_x and NMVOC emissions, respectively. A common pattern is observed for the two pollutants, with the largest reductions occurring during April, when the restrictions were at their maximum and a large number of facilities were not allowed to operate. A pronounced recovery is observed from May onwards, coinciding with the easing of the lockdowns and the recovery of the industrial activity. For NO_x, the computed reductions are larger than for NMVOC, with Italy, France and Spain presenting the largest decrease (between -35% and -40% during April). Low reductions are observed for Sweden, where emissions never decreased more than -415 20%. Emission reductions reached levels close to BAU by the end of the year in almost all countries, as

Deleted: 1

the new curfews adopted around October/November/December did not affect the manufacturing industry. In the case of NMVOC, a general lower reduction than for NOx emissions is observed, with most countries presenting a maximum decrease below -30% during April. It is worth noting that some countries even experienced an increase in emissions during the beginning of the first lockdowns (up to 10%). The adjustments computed for NMVOC are different relative to NOx as its emissions are related to food, beverage, pharmaceutical and chemical industry branches (Fig. 3), which were less affected by the COVID-19 restrictions or even had to increase their productivity due to an increase in demand. The largest emissions reductions are reported for Italy, and the lowest ones for UK and Sweden, with the latter even showing emission values above BAU levels (i.e., up to 5%) during the second semester of 2020.

3.1.3 Other stationary combustion activities

This sector includes emissions from stationary combustion activities related to the commercial and institutional sector, the residential sector and other stationary sectors such as agriculture, forestry, fishing and military sectors.

Our emission adjustment assume that the COVID-19 restrictions only affected the combustion activities in the commercial/institutional and residential sectors. In the first case, significant emission reductions are expected as a result of the closure of schools, universities, public buildings, restaurants, and other non-essential businesses. In the second case, emission increases are expected due to the required household confinement during the lockdown period. Regarding the agriculture, forestry and fishing sectors, we assumed no changes occurred as they were considered to be essential.

The emission adjustment factors considered for this sector are based on Google COVID-19 Community Mobility Reports (Google LLC, 2021). The Google dataset reports daily movement trends over time by geography (country and region) across different categories of places (i.e. groceries and pharmacies, parks, transit stations, retail and recreation, residential and workplaces) based on aggregated and anonymized sets of data from users who have turned on the Location History setting for their Google Account on their mobile devices. Reductions for each day are calculated by Google from a baseline taken as the median

445 value, for the corresponding day of the week, over a 5-week period prior to the lockdowns (3 January to 6 February). For this sector, we used the mobility trends reported for the following categories:

- Retail and recreation: Mobility trends for places like restaurants, cafes, shopping centres, theme parks, museums, libraries, and movie theatres
- 450 • Grocery and pharmacy: Mobility trends for places like grocery markets, food warehouses, farmers markets, specialty food shops, drug stores, and pharmacies.
- Workplaces: Mobility trends for places of work.
- Residential: Mobility trends for places of residence

455 The mobility trends for retail and recreation, grocery and pharmacy and workplaces were used to derive an average trend for the commercial/institutional sector, while the mobility trends for places of residence were used for the residential sector.

These Google trends report changes in movements, which does not necessarily represent changes in
460 energy consumption (i.e., fossil fuels and biomass) and associated emissions. The increases in residential activity reported by Google are significantly larger than the ones reported in Le Quéré et al. (2020), which indicates an average increase of 5%, and a maximum increase of 10% during the most restrictive lockdown phase. The results reported in Le Quéré et al. (2020) inferred from UK smart meter data are consistent with the ones reported by the thermostat maker Tado (Tado, 2020), which indicates an average
465 increase of 14% in home heating consumption in Europe during March 2020 compared to March 2019. Considering the aforementioned results, the original Google trend values for the residential sector were scaled down for countries to have a maximum daily relative change of 10%. Our approach is limited by data availability and further constraints will require more data on residential energy consumption.

470 In the case of the commercial/institutional sector, we also adjusted the original daily decrease trends reported by Google making use of energy consumption statistics. We used information provided by IDAE (2018) on the energy consumption in the Spanish commercial/institutional sector. As shown in Table S2,

Deleted: e

Deleted: e

475 Spanish commercial buildings represent more than 40% of the total energy consumption (fossil fuels and biomass) in the commercial/institutional sector, followed by workplaces (26.5%), hospitals (11.6%), other buildings (8.8%, e.g., museums, public buildings and religious buildings), schools and universities (7.8%) and restaurants and hotels (4.3%). We hypothesized that the Spanish national lockdown restrictions implied a change in the energy consumption of: (i) -100% in schools and universities (all buildings were closed), (ii) -90% in hotels and restaurants (certain hotels were converted into temporary medical facilities), (iii) -80% in workplaces, commercial buildings and other buildings (supermarkets and other grocery stores remained opened during the entire lockdown, as well as certain workplaces that were considered to be essential) and (iv) +50% in hospitals (due to the increase in the number of patients to attend). We combined the aforementioned information and derived an overall maximum reduction in energy consumption across Spanish commercial/institutional buildings of -66.9%. Following the approach applied for the residential sector, we scaled up the original Google trend values for the commercial/institutional sector to set this minimum value.

Daily emission adjustment factors for the other stationary combustion sector were computed as a weighted average of the adjustment factors obtained for each GNFR_C subcategory (Eq. (1)), taking into account their relative contribution to total emissions (Fig. 3).

Figure 2 illustrates the resulting adjustment factors proposed for NOx and PM10 emissions, respectively. For NOx, major reductions are observed for the United Kingdom, France and Italy. In these three countries, maximum reductions between -15% and -20% were reached during the strictest lockdown period. On the contrary, and despite being under similar lockdown measures, in Spain the maximum relative reduction during the same period was only -10%. This is explained by the different contributions of agriculture, forestry and fishing subcategories (GNFR_C3) to the total GNFR_C NOx emissions. While in Spain this category represents around 40% of total NOx emissions, in France, Italy and the United Kingdom the contribution is lower than 10% (Fig. 3). Assuming that this category was not affected by the COVID-19 restrictions implies a lower overall emission reduction in Spain. In the case of Sweden, a slight emission increase is observed until the end of August, most. We hypothesize that this is a

Deleted: 1

Deleted: during the whole period of study

505 consequence of the likely small perturbation of the public and commercial service activity (i.e., non-
essential businesses were not forced to close) and a slight increase of the residential activity as a
consequence of a voluntary self-isolation of a fraction of the population. By the end of August most
countries reached or were about to reach their BAU levels, except for the United Kingdom, where
emissions were still -10% below pre-lockdown values. A second significant drop in emissions is observed
510 in France, United Kingdom and Italy during November, which is related to the forced closure of non-
essential business under the second epidemic wave.

For PM10, an increase in the business-as-usual levels is observed for all selected countries. This is
explained by the fact that a majority of total emissions are driven by changes in the residential sector (Fig.
515 3), which increased its activity due to the enforced confinement. Germany is the country that registered
the lowest increase in total emissions (maximum increase of approximately 2.5%) compared to the other
countries. This is again explained by the different contributions of subcategories to total GNFR_C
emissions. In this particular case, the German commercial/service subcategory represents around 10% of
total emissions, while in the other countries the contribution for this subcategory is less than 5% (Fig. 3).
520 By the end of August, all countries were close to reach the BAU levels again, and in some countries like
Italy emissions levels even reached values below BAU, as people started to spend more time outdoors. A
slight increase in emissions is observed during November, coincident with the introduction of new
additional mobility restrictions to curb the high incidence during the second wave of COVID-19 spread.

3.1.4 Fugitive emissions

525 This sector covers the release of emissions during the extraction and processing of fossil fuels along with
their delivery to the point of final use. The activities selected for the development of specific COVID-19
related emission adjustment factors were as follows: 1) Coal mining and handling, 2) Refining / storage
& venting and flaring and 3) Distribution of oil products (gasoline). Other subcategories included in this
sector were assumed to be unaffected by lockdowns and mobility restrictions.

530

The following sources of information were used to derive the adjustment factors:

535 • GNFR_D1; coal mining and handling: monthly indigenous production of hard and brown coal per country reported by Eurostat (2021c). We computed monthly and country specific adjustment factors from a baseline taken as the average value over the two months prior to the lockdown (January and February 2020). We then averaged the resulting monthly factors per month and country and derived daily adjustment factors using the “workplace closing” reported by OxCGRT, as detailed in Sect. [3.1.2](#).

540 • GNFR_D2; refining / storage & venting and flaring: monthly IPI related to the manufacture of petroleum refining products (Eurostat, 2021a). For this subcategory, we used the same adjustment factors as for GNFR_B1 of the manufacturing industry (see Sect. [3.1.2](#)).

545 • GNFR_D3; distribution of oil products (gasoline): we assumed that changes in this activity can be represented by changes in road fuel sales in filling stations, which at the same time can be linked to changes in road traffic activity. This hypothesis is illustrated in Fig. S4, which shows the relationship between monthly/weekly changes in petrol sales and traffic activity for selected countries. In all cases the Pearson correlation coefficient (PCC) is larger than 0.9, the intensity in the drop of petrol sales during the lockdown periods fairly coinciding with the decrease in traffic activity. Considering these results, for this activity we used the same emission adjustment factors for road transport gasoline exhaust emissions (see Sect. [3.1.6](#)).

550 GNFR sector-level daily emission adjustment factors were computed as a weighted average of the adjustment factors obtained for each subcategory (Eq. (1)), taking into account their relative contribution to total GNFR_D emissions (Fig. 3).

555 Figure 2 shows the adjustment factors for NMVOC fugitive emissions from fossil fuels. The pattern of emission decreases is significantly different from one country to another, mainly because of the effect of the individual subcategory that dominates total emissions in each country, and to a lesser extent due to the different levels and types of restrictions implemented. For instance, in UK almost 40% of total NMVOC emissions come from refining activities (storage, flaring) and therefore the decrease in emissions is largely driven by their decrease (Fig. 3). On the other hand, approximately 50% of total

Deleted: 3.1.22.1.2

Formatted: Font colour: Text 1

Formatted: Font colour: Text 1

Formatted: Font colour: Text 1

Deleted: 3.1.22.1.2

Formatted: Font colour: Text 1

Deleted: 3

Formatted: Font colour: Text 1

Deleted: 3.1.62.1.6

Formatted: Font colour: Text 1

Deleted: 1

565 NMVOC emissions in France comes from the distribution of oil products, and subsequently the drop in
emissions is similar to that of road traffic emissions, with two significant drops corresponding to the
lockdowns implemented during the Spring and Fall epidemic waves.

3.1.5 Use of solvents

570 The GNFR_E category includes NMVOC emissions coming from the residential/commercial and
industrial use of solvents. Our assumption for this sector is that the COVID-19 restrictions only affected
certain industrial subcategories, including: (i) GNFR_E1: the use of organic solvents to remove grease,
fats, oils, wax or soil from metal products and (ii) GNFR_E2: the use of inks in the printing industry.
Other industrial activities that involve the use of solvents (e.g., manufacturing of pharmaceutical products
or automobiles) could not be considered as they are not individually distinguished in the official
575 Nomenclature for Reporting (NFR) system, but rather reported as part of broader categories (e.g., 2.D.3.g:
Chemical products, 2.D.3.i: Other solvent use, 2.G: Other product use). Emissions from domestic and
commercial solvent use were assumed to remain constant due to the lack of specific activity data to
compute the adjustment factors and the limited number of categories considered in the NFR nomenclature.
We hypothesize that the potential increase in the use of certain products containing solvents, such as
580 cleaning products, was compensated by the potential decrease in the use of other products, such as car
products or cosmetics for personal care. We are aware that this hypothesis may be limited by the increased
use of the so-called “pandemic products” triggered by the COVID-19 (Steinemann et al., 2021), which
includes products intended to clean and disinfect, such as hand sanitizers or surface cleaners. However,
the lack of specific information does not allow us computing associated adjustment factors.

585 The adjustment factors for industrial solvent use are based on the monthly IPI values adjusted for seasonal
and calendar effects (Eurostat, 2021a). As already mentioned in Sect. 3.1.2, for UK the IPI values for
November and December 2020 were derived from ONS (2021). The “Manufacture of fabricated metal
products, except machinery and equipment” and “Manufacture of computer, electronic and optical
590 products” on the one hand, and the “Printing and reproduction of recorded media” on the other hand were
the industrial branches considered to quantify the impacts of restrictions on each of the two subcategories

Deleted: reporting nomenclature

Formatted: Font colour: Text 1

Deleted: 3.1.22.1.2

Formatted: Font colour: Text 1

595 considered. For each subcategory, we computed monthly and country specific adjustment factors from a
baseline taken as the average value over the two months prior to the lockdown (January and February
2020). The computed monthly adjustment factors were translated into daily adjustment factors by
considering the “workplace closing” reported by the OxCGRT, as detailed in Sect. [3.1.2](#).

600 Daily emission adjustment factors for the use of solvents sector were computed as a weighted average of
the adjustment factors obtained for each subcategory (Eq. (1)), taking into account their relative
contribution to total GNFR_E emissions (Fig. 3).

605 Figure 2 illustrates the resulting adjustment factors proposed for NMVOC emissions. Decrease in
emissions is generally low (i.e., below -10%) and mainly occurring during the Spring lockdowns. The
small reductions are due to the limited contribution of metal cleaning and printing industrial activities to
the overall emissions from this sector (Fig. 3). A pronounced recovery is observed from May onwards,
coinciding with the easing of the lockdowns and the recovery of the industrial activity.

3.1.6 Road transport

610 The emission adjustment factors considered for this sector are based on the Google COVID-19
Community Mobility Reports (Google LLC, 2021). We used the mobility trends reported for the transit
stations category, which includes places like public transport hubs such as subway, bus, and train stations.
We compared the Google movement trends against trends derived from measured traffic counts reported
by 18 European national road administrations. Table A1 summarises the countries covered, sources of
information and characteristics of the traffic count datasets considered, as well as the baseline considered
615 to derive traffic activity trends.

620 Figure 4 shows the results of the intercomparison at the country level for selected countries. Black lines
represent the Google mobility trends, while red and blue lines represent the measured-based trends
computed for Light duty vehicles (LDV) and heavy-duty vehicles (HDV). Similar patterns are observed
for all cases as a function of the period of study:

Formatted: Font colour: Text 1

Deleted: 3.1.22.1.2

Formatted: Font colour: Text 1

Deleted: 1

- 625 • First COVID-19 lockdown period (mid-March until mid-May): The Google dataset is capable of reproducing the LDV measured-based trends. Overall, the average reductions reported by each of the two datasets are fairly similar, with Google reporting in some cases reductions slightly larger than the measured ones, particularly in Scandinavian countries (e.g., Finland, Sweden, Norway). On the other hand, a large discrepancy is observed between Google results and the HDV measured-based trends, the former presenting larger reductions. In the UK for instance, the average reduction for HDV was of -35.6% between March and 26 April, almost two times lower than the one reported by Google (-69%, respectively).
- 630 • COVID-19 lockdown-exit process (mid-May until end of September): Differences between LDV and Google trends become larger, showing different rates of recovery. Google tends to underestimate the observed recovery of traffic activity. The discrepancies between measured trends and the Google dataset become larger with time. During summer (i.e., July, August), the LDV trends in the majority of countries are close or even above business-as-usual levels (e.g., Netherlands, Ireland), yet Google continues to report mobility values that are below business-as-usual levels. In the case of HDV trends, discrepancies with Google trends are reduced but still significant.
- 635 • Second COVID-19 lockdown period (beginning of October until end of December): Discrepancies between Google trends and LDV/HDV measured-based trends remain almost unchanged. Google trends are, qualitatively speaking, capable of reproducing the drops in traffic activity observed in the LDV measured-based trends during November and the Christmas season, but not quantitatively speaking, as reductions are systematically larger than the observed ones.

645 A comparison between averaged monthly adjustment factors reported by Google LLC (2021) and LDV measured-based trends per each of the countries listed in Table A1 show results in line with the patterns described above (Fig. S5). The differences observed between measured-based trends and the Google trends are mainly related to the fact that Google data refers to mobility trends in public transport hubs. As
 650 a result of COVID-19, people are now avoiding public transport as these can be considered places where

Deleted: Figure 5 shows

Deleted: a

Deleted: for road traffic

Deleted: . Discrepancies between Google and measured-based trends started to increase with the easing of the restrictions (May) and reached a maximum difference in September

Deleted: During this month, the average traffic reductions reported by the LDV measured-based trends are in a range between -20% and 0%, while in the case of Google reductions are between -40% and -10%. The overestimation of Google reductions when compared to measured-trends is somewhat reduced during November and December, coinciding with the implementation of new lockdowns, but large differences are still observed. The plot also shows how the decrease of traffic activity during April (first lockdown) was much larger than during the second wave of restrictions (i.e., November): In April, maximum traffic reduction was - 80% (Spain, ES), while in November the maximum drop was around -35% (France, FR).

Deleted: 4

670 it might be difficult to avoid contact with other passengers (De Vos, 2020). The adjustment factors
proposed by Google during the lockdown exit process are affected by this factor and therefore are
underestimating the observed changes in traffic activity during the lockdown exit process. This hypothesis
is illustrated in Fig. S6, where the traffic movement trends obtained in Rome are compared to the
evolution of the access to subway stations. The recovery of mobility in the subway system during the
lockdown exit process is very much in line with the Google trend and much lower than the one observed
675 for the private transport sector. On the other hand, the lower reduction observed in HDV's activity when
compared to Google is because these vehicles supported the delivery of essential goods and products
during the confinement (e.g., food, medical supplies), and subsequently their use decreased much less
than that of LDV.

680 In order to overcome the identified limitations of the original Google trends, we used the LDV and HDV
measured-based trends compiled for the different countries to produce two sets of European correction
factors: (i) HDV correction factors and (ii) LDV correction factors. In both cases, the correction factors
were computed as the ratio between the weekly average changes in traffic activity reported by the
measured trends and the weekly average changes in mobility reported by Google. The resulting country-
685 level weekly correction factors were then averaged to obtain a set of European weekly correction factors.
The countries considered to develop the European average weekly correction factors were the ones listed
in Table A1 except Poland and Estonia, as the number of traffic stations used to derive measured-based
trends for these two countries was small.

690 The two sets of correction factors were applied to the original Google mobility trends in order to derive
two new sets of adjustment factors for LDV and HDV emissions. Note that for those countries for which
we had daily traffic count datasets available (i.e., United Kingdom, Norway, France, Spain, Finland,
Ireland, Netherlands and Switzerland) we directly substitute the original Google trends for the ones
derived from traffic counts. Similarly, for countries with weekly and monthly traffic count datasets,
695 adjustments of the original Google trends were done by considering only the correction factors of the
corresponding country.

700 We applied the adjusted Google transit mobility trends with the LDV factors to the GNFR_F1 (exhaust
gasoline) and GNFR_F3 (exhaust LPG gas) sectors, as the contribution of HDV to their emissions is null
or almost residual. However, for the GNFR_F2 (exhaust diesel) and GNFR_F4 (non-exhaust) sectors, the
final emission adjustment factors were computed as a weighted average of the adjustment factors obtained
for LDV (GNFR_F21 and GNFR_F41) and HDV (GNFR_F22 and GNFR_F42) vehicle categories
following Eq. (1) and considering their relative contribution to total corresponding emissions (Fig. 3).

705 Figure 2 illustrates the adjustment factors for road transport diesel exhaust (GNFR_F2) NO_x and CO₂ ff
emissions. The patterns of the emission adjustment factors for the two species are very close. However,
the reductions reported during the Spring lockdowns (March and April 2020) are slightly lower for
CO₂ ff, especially in countries where the HDV emissions have a larger contribution to total emissions
710 such as Spain, Italy and France (Fig. 3). The decrease of the traffic activity in Italy started two days after
the implementation of the localized lockdown (23 February) and intensified once the national lockdown
was imposed on 12 March, reaching reductions of about -80%. In the case of Spain and France, similar
traffic reduction levels were reached just 3 days after the beginning of the corresponding national
lockdowns. For the UK and Germany, the largest reductions are around -70% and -50%, respectively.
715 The smaller reductions in Sweden (around -40%) are consistent with the lack of enforced mobility
restrictions in this country at any point. In all cases, the activity started recovering during the last week
of April, coinciding with the relaxation of the mobility restrictions. This trend is confirmed between May
and August, with a steady recovery observed in all countries except for Spain, where a slight decrease
occurs during July. This abrupt change in the upward trend corresponds to a sudden increase of infections
720 in this country and the subsequent implementation of additional measures to restrict mobility. In contrast,
large recovery rates were observed in Italy, Germany and UK, where values even exceeded BAU levels
during certain days in July and August. However, the introduction of new restrictions measures continued
to curb traffic activity in October. Strengthening measures caused a second significant drop in emission
during November, although it was ~50% lower than that of April (e.g., UK, Italy). The first weeks of
725 December were marked by a relaxation of the second lockdown measures and a subsequent recovery of

Deleted: 1

the traffic emissions. However, a third drop in emissions was observed during the Christmas season, as additional measures were implemented to restrict social gatherings.

730 3.1.7 Aviation

We derived the adjustment factors related to air traffic emissions during Landing and Take-Off cycles (LTO) in airports from statistics provided by EUROCONTROL (2021), which reports daily arrivals and departures by airport from January 2016 to December 2020. We computed day and country-specific flight operation reductions from a baseline taken as the average value for the corresponding day of the week (Monday to Sunday and National holidays) and month of the year from 2019.

Figure 2 illustrates the resulting emission adjustment factors for selected countries. For most countries the reductions in flight activity started some days before the implementation of the national lockdowns, as certain international flights (especially the ones coming from and going to Asia) were already being cancelled. It is observed that in almost all countries, the reduction levels reached values of -90% or more before the beginning of April. In contrast to road transport, the signs of recovery during May and June are very weak as the movements between countries were still restricted at that time. On the contrary, a general more pronounced recovery was observed during July and August as a consequence of the beginning of summer holidays and the lifting of restrictions to travel. This recovery was especially significant in Spain and France. However, most of the countries still presented reductions larger than -50% during summer. Strengthening measures linked to the second wave of infections negatively impacted European air traffic in November, when new drops were observed, especially in the UK and France. The end of the year, however, was marked by a recovery in air traffic operations, similarly to the one observed during summer, that can be attributed to the Christmas holidays.

750 3.1.8 Shipping

Emission adjustment factors for the shipping sector were based on the [Automatic Identification System \(AIS\)](#)-based gridded emissions computed by the STEAM model (Jalkanen et al., 2012 and 2016) under

Deleted: 1

Deleted: 1

755 CAMS (Granier et al., 2019). Weekly and sea-region dependent adjustment factors were derived as the ratio between the shipping emissions reported for a given week in 2020 and the emissions reported by the equivalent week in 2019. Estimated CO₂ emissions were used as a proxy to compute the adjustment factors, as this pollutant can give a more direct indication of the changes in the fuel used. The use of other pollutants such as SO₂ or PM would mask the impact of COVID-19 on 2020 emissions, as they were affected by the implementation of global 0.5% sulphur cap, as discussed in Sect. 2.

760 Figure 2 illustrates the adjustment factors produced for selected sea regions (i.e., Atlantic Ocean, ATL; Baltic Sea, BAS; English Channel, ENC; Mediterranean Sea, MED; North Sea, NOS and Norwegian Sea, NWS). In general terms, the decrease in shipping emissions began in week 12 (i.e., 16-22 March) and followed a downward trend until mid-June. From that point, a slight constant recovery was observed in most sea regions, with sporadic ups and downs (e.g., NWS). By the end of the year, some sea regions were already close to BAU levels (e.g., BAS, -5%). Overall, MED and NOS were the sea regions presenting the largest (i.e., -17%) and lowest reductions (i.e., -3%), respectively. The contrast in the results obtained for these two sea regions is very much related to the different contribution of passenger ships to total shipping traffic, which is larger in the MED than in NOS. As reported by EMSA (2021), cruise ships and Ro-Ro/passenger ships were the ship types mostly affected by COVID-19, showing reductions of 2020 ship calls in EU ports of -85% and -39% when compared to 2019 levels. These reductions were significantly larger than the ones reported for cargo ships (between -7% and -2%), which are dominant in NOS.

775 3.1.9 Off-road transport

The GNFR_I category reports emissions from non-road mobile machinery that is used in several sectors, including: (i) commercial (e.g., transportable equipment), (ii) residential (e.g., gardening and handheld equipment), (iii) agriculture/forestry/fishing (e.g., harvesters, cultivators), (iv) manufacturing industries and construction (e.g., excavators, loaders, bulldozers) and (v) other categories including military, land-based railways and recreational boats. In the present work, the impact of COVID-19 restrictions was

Formatted: Font colour: Text 1

Deleted: 23

Formatted: Font colour: Text 1

Deleted: 1

quantified for emissions related to mobile machines in the manufacturing industry and construction sector (GNFR_I1), while emission from the other subcategories (GNFR_I2) were assumed to remain unaffected.

The adjustment factors are based on seasonally and calendar adjusted monthly IPI values reported by Eurostat (2021a). We considered the IPI values reported for the general manufacturing and construction categories. As for the manufacturing industry, monthly and country specific adjustment factors were computed taking as a baseline the average value over January and February 2020. The translation from monthly to daily factors was done considering the evolution of the “workplace closing” indicator reported by OxCGRT.

Figure 2 shows the emission adjustment factors for NOx emissions. The decrease in emissions is generally low, with a maximum reduction of less than -15% in UK during April, and reductions between -2.5% and -5% in Germany and Spain during the same period. As showed in Fig. 3, the contribution of the manufacturing industry and construction machinery subcategory to total emissions is rather low (30% in average at the EU27 + UK level), which explains why reductions are not as large as the ones showed in e.g., the GNFR_B manufacturing industry sector. Emissions are reaching levels close to BAU by the end of the year in almost all countries, as the new virus-related curfews adopted during the second wave did not affect the industrial manufacturing and construction activities.

4 Discussion of the emission changes

This section presents the estimates of daily sector-, pollutant- and country-specific European emissions from January 1st to December 31st 2020 and compares them to the levels of emissions as expected in the BAU scenario described in Sect. 2. Emissions for 2020 (hereafter referred to as COVID-19 scenario) were obtained as a combination of the original CAMS-REG-v5.1 2020 BAU annual gridded emissions and the emission adjustment factors presented in Sect. 3. The original CAMS-REG-APv5.1 2020 BAU annual emissions were broken down into daily resolution using the sectoral dependent emission temporal profiles reported by Denier van der Gon et al. (2011). For the COVID-19 emission scenario, the emission adjustment factors were combined with these temporal profiles in order to model dynamic emission

Deleted: 1

Moved up [1]: Business-as-usual 2020 emissions

Our adjustment factors were designed to be applied to a gridded emission BAU inventory for 2020 developed based on the CAMS European regional emission inventory (CAMS-REG_v5.1) time series, ranging from 2000 to 2018 (update from Kuenen et al., 2021). The CAMS-REG_v5.1 dataset makes use of official air pollutants and greenhouse emission inventories submitted by each country to EMEP, UNFCCC and the EU. Those country-level annual data form the basis of the emission inventory and are spatially disaggregated to a $0.1^\circ \times 0.05^\circ$ grid for use in chemical transport models. Besides the 12 GNFR sectors for which the COVID-19 adjustment factors are prepared (Table 1), the inventory also includes emissions from waste management (GNFR_J), livestock (GNFR_K) and other agricultural activities (GNFR_L). Additional sub-sectors are also defined, as explained before in Sect. 2. The methodology applied and sources of information used for the construction of the CAMS-REG emission inventory are described in detail in Kuenen et al. (2021)

The main disadvantage of the CAMS-REG_v5.1 gridded inventory is the 2-year lag in emission reporting. To overcome this limitation a method was developed to estimate emissions for recent years (y-1), which makes use of sector-specific activity data. We have updated this methodology to make a BAU emission estimate for 2020 to be combined with the COVID-19 adjustment factors described in Sect. 2. The method follows three steps:

Formatted: Font colour: Text 1

Formatted: Font colour: Text 1

Formatted: Font colour: Text 1

Formatted: Font colour: Text 1

Formatted: Font colour: Text 1

Formatted: Font colour: Text 1

Formatted: Font colour: Text 1

Formatted: Font colour: Text 1

Formatted: Font colour: Text 1

Formatted: Font colour: Text 1

Formatted: Font colour: Text 1

Formatted: Font colour: Text 1

Deleted:

Formatted: Font colour: Text 1

Deleted: 2

Deleted: 3

Formatted: Font colour: Text 1

Deleted:

Formatted: Font colour: Text 1

Deleted: 3

Deleted: 2

Formatted: Font colour: Text 1

changes for each sector and country, as described in Guevara et al. (2021). The analysis of the results focuses on multiple aspects of the COVID-19 restrictions on emissions, including a description of the temporal evolution of emissions at the EU27 + UK level, per country, species and pollutant sector, as well as an analysis of the spatial distribution of the changes in total emissions.

4.1.1 European and country-level analysis

Figure 5 illustrates the COVID-related changes in the EU27 + UK daily emissions for criteria pollutants and GHGs between January 1st and December 31st 2020 as compared to the BAU scenario. Dotted and solid lines represent the BAU and COVID-19 daily emissions, respectively, and differences between them are illustrated with the shaded areas.

For all pollutants, the decrease in emissions started to occur during the first weeks of March, coinciding with the implementation of localized and national lockdowns to reduce mobility and social interactions. The greatest reductions are observed at the end of March and beginning of April, when the restrictions were at their maximum. During late April and the beginning of May, emissions began to recover in a persistent and continuous way, as national governments started to roll-back COVID-19 measures and the different economic activities resumed. By mid-September emissions of all pollutants were close to reaching again pre-lockdown levels. However, a second drop in emissions similar to that of June is observed during end of October and beginning of November, coinciding with the implementation of a new round of mobility restrictions to break the second wave of COVID-19 infections. Reductions in emissions remained almost unchanged until the end of the year, as restrictions were kept in place with a few exceptions during the Christmas holidays. It is important to note that the daily evolution of the emissions plotted in the charts is not only affected by the COVID-19 restrictions, but also by the inherent seasonality associated to emissions from each pollutant sector. For instance, emissions from other stationary combustion activities are mainly related to the combustion of fuels in households/commercial buildings for space heating, and therefore they decrease as winter ends and outdoor temperatures start to be higher. This fact can be observed with the daily evolution of PM_{2.5} and CO₂ emissions, as they are mainly driven by residential wood combustion emissions.

Deleted: 7

Deleted: greenhouse gases (

Deleted:)

950 In the aggregated, a reduction of -10.5% (-602 kt) was seen in NO_x emissions, followed by a -7.8% (-
260.2 Mt) in CO₂_ff, -4.7% (-808.5 kt) in CO, -4.6% (-80kt) in SO₂, -3.3% (-19.1 Mt) in CO₂_bf, -3.0%
(-56.3 kt) in PM₁₀, -2.5% (-173.3 kt) in NMVOC, -2.1% (-24.3 kt) in PM_{2.5}, -0.9% (-156.1 kt) in CH₄ and
-0.2% (-8.6 kt) in NH₃. The largest decline in European emissions was observed during the month of
955 April for all pollutants, with an abrupt -32.8% and -25.5% decrease in total NO_x and CO₂_ff emissions,
which corresponds to -157.3 kt and -70.2 Mt, respectively (Fig. S7). Around 25% of the total drop in
emissions occurred in 2020 took place during the month of April. As mentioned before, emission levels
in September were already close to the pre-lockdown levels, although still presenting a slight decrease
when compared to the BAU scenario (-4.8% and -3.9% for NO_x and CO₂_ff, respectively). The emission
reductions observed during November and December (i.e., up to -10.5% for NO_x and -6.5% for CO₂_ff)
were lower than those that occurred during the first epidemic wave because mobility restrictions
960 implemented by governments were generally slower and softer (e.g., curfews, limited social gatherings,
early closing times for restaurants and bars) and only had to be toughened in those countries affected by
a new and more contagious variant of the COVID-19 such as France, Germany, the UK and the
Netherlands.

965 Results shown in Fig. 5 and Fig. S7 allow illustrating the heterogeneous impact of the COVID-19
restrictions on total emission changes across pollutants. Worth noting is the large contrast between
decreases in NO_x (-10.5%) and PM₁₀/PM_{2.5} (-3% and -2.1%) emissions (see Sect. 4.1.2 for further
discussions). The almost null reduction reported for NH₃ and CH₄ emissions is linked to the fact that the
large majority of these emissions are related to agricultural and waste management activities (e.g., use of
970 fertilizers, manure management and livestock), which in the present work were supposed to remain
unaffected during the COVID-19 restrictions.

Figure 6 and 7 show the relative decline (%) in total emissions per country and species for criteria
pollutants and GHGs, respectively. Vertical lines indicate the average relative declines computed at the
975 EU27 + UK level for each species. Non-shaded marks highlight those countries/species where reductions

Deleted: (Fig. 8)

Deleted: 7

Deleted: and Fig. 8

Formatted: Font colour: Text 1

Deleted: 4.1.2

Formatted: Font colour: Text 1

Moved up [3]: This assumption is in line with the results published by Elleby et al. (2020), which indicate that COVID-19 implied a reduction of direct GHGs from agriculture of only about 1% at the global scale.

Deleted: 9

Deleted: 10

Deleted: greenhouse gases

were larger than the ones observed at the EU27 + UK level. A large variation in the relative declines of emissions is observed between countries due to 1) the heterogeneous levels and types of restrictions implemented across countries, and 2) the different contributions of each pollutant sector, particularly of the road transport sector and other stationary combustion activities, to total emissions in each country.

The most pronounced declines occur for NO_x and CO₂ fossil fuel emissions, Italy being the country where these two pollutants suffered the largest relative reduction (i.e., -15.1% and -11.4%, respectively). On the other hand, Malta presents the largest relative reductions of SO₂, CO, NMVOC and CO₂ biofuel emissions (between -17.2% and -6.8%). Despite not being among the countries where the strictest lockdowns and containment strategies took place, the contribution of road transport to total CO, NMVOC and CO₂ biofuel emissions in this country is significantly larger than what it is reported at the EU27 + UK level (i.e., 54.1% versus 14.8%, 87% versus 21.1%, 40.3% versus 7.5% and 69% versus 10.5%, respectively). A similar situation is observed in Cyprus, which presents the largest relative reduction of total PM_{2.5} emissions (-6.2%). This country reports the lowest fraction of PM_{2.5} emissions from other stationary combustion activities (4.9% versus 52.1% at the EU27 + UK level), a sector that suffered an increase in emissions during lockdown restrictions (see Sect. 4.1.2). For PM₁₀ emissions, the largest relative drop occurs in the UK (-6.5%), which is among the countries that suffered the strictest restrictions. In the case of CH₄ the largest reduction is observed in Romania (-4.1%) mainly due to the decrease of emissions from coal mining activities. Finally, for NH₃ most of the EU countries present relative reductions close to the average value and that are almost negligible (between -0.56% and -0.03%), as in all of them agricultural activities, which remained unaffected by COVID-19 restrictions, represent more than 90% of total NH₃ emissions. Results also show that for certain countries and species, emissions not only decreased but, in some cases, slightly increased due to the COVID-19 restrictions. This is the case, for instance, of PM_{2.5} emissions in Hungary and CO₂ biofuel emissions in Croatia (i.e., 0.4% in both cases). The observed increase in these two countries is a direct consequence of the large contribution of the other stationary combustion activities to total PM_{2.5} and CO₂ biofuel emissions, respectively. In Hungary, this sector represents 81.3% of total PM_{2.5} emissions, whereas in Croatia it represents 79.9% of total CO₂ biofuel

Formatted: Font colour: Text 1

Deleted: 4.1.2

Formatted: Font colour: Text 1

015 emissions. These values are much larger than the average contribution observed at the EU27 + UK level,
which is 52.1% and 39.1%, respectively.

4.1.2 Sectoral analysis

020 Figures 8 and 9 show the relative decline in emissions of criteria pollutants and GHGs by sector and
species in 2020 for EU27 + UK, while Fig. 13 illustrates the daily evolution of NO_x emission differences
per sector between January 1st and December 31st 2020.

The aviation sector presents the largest drop among all sectors, with a reduction of between -51 and -56%
in emissions during 2020. The second most affected sector is road transport, which presents a decline in
emissions between -15.5% and -18.8%, depending on the pollutant. These two are by far the sectors
025 affected the most by the COVID-19 restrictions, with NO_x emission declines reaching approximately -
90% and -60%, respectively, during April (Fig. 10). Despite showing drops of similar intensity, the
recovery of emissions differs significantly between these two sectors. For road transport emissions started
to gradually and steadily recover during late April and almost reached again BAU levels by September
(i.e., approximately -5% for NO_x). On the other hand, the drop in emissions from aviation remained almost
030 unchanged until the beginning of July, when a modest rebound is observed coinciding with the beginning
of the summer holidays. The introduction of new restrictions measures continued to curb road traffic
activity in October. Strengthening measures caused a second important drop in November, although a
~50% lower than in April. Strengthening measures linked to the second wave of infections also impacted
the European air traffic emissions in November, when new drops are observed. The end of the year,
035 however, was marked by a new slight recovery in emissions, similarly to the one observed during summer,
and that can be attributed to the Christmas holidays.

For the manufacturing industry and other stationary combustion activity sectors, a heterogeneous impact
of the COVID-19 restrictions is observed across the different pollutants. For the first sector, a lower
040 reduction is observed for NMVOC and NH₃ (between -2.8% and -3.5%) when compared to the other
pollutants (between -6.8% and -7.2%). This is due to NMVOC and NH₃ emissions being mostly driven

Deleted: 11

Deleted: 12

Deleted: 3

Deleted: heterogenous

050 by processes occurring in the food/beverage and chemistry industries, which were considered essential during the lockdown phase and were therefore less affected than other industry branches, such as the manufacturing of basic metals or mineral products (see Sect. 3.1.2). Similar to road transport, the largest drop in industrial emissions was reported during April (i.e., -25% for NO_x), when a significant number of facilities were not allowed to operate. However, emissions began to recover in late April and May, as industrial activities fully resumed in large part of Europe. As shown in Fig. 10, emissions from this sector quickly picked up again, approaching its pre-pandemic levels of activity during November (i.e., -1.1% for NO_x). The reason for this rapid recovery is the fact that, unlike other sectors such as road transport that were more limited by the measures to curb the second wave of infections, since spring there have
055 been hardly any restrictions directly affecting manufacturing industrial activities.

060 For the other stationary combustion activities, the pollutants that are mainly related to residential wood combustion processes (i.e., PM₁₀, PM_{2.5}, NH₃, NMVOC, CO, CO₂_bf and CH₄) experienced a slight increase (between 1.1% and 1.7%), while the rest of pollutants (i.e., NO_x, SO₂ and CO₂_ff) showed a modest decrease (between -0.4% and -2.9%). In both cases, the cumulative changes were not substantial and after the lockdowns in Spring, emissions were practically back to BAU levels by the end of July 2020 (Fig. 10). A new decrease in emissions is observed during November and December, coinciding with the new round of restrictions and the closure or limitation of working hours of non-essential commercial business such as restaurants or shopping stores.

065 In the public energy sector, the overall relative reduction in emissions during 2020 was approximately -3.3%. As for the previous sectors, large differences are observed between months: In September, public energy emissions in the COVID-19 scenario were only -2.5% lower than in the BAU scenario, compared to being -12% lower in April. As in the case of the manufacturing industry sector, emissions were barely
070 affected during the Fall restrictions and were almost back to BAU levels during December.

The shipping sector experienced a decrease in emissions of around -9.5% for all pollutants. The evolution of daily emissions in this sector indicates a slow recovery of the activity, which is partially linked to the

Deleted: 3.1.22.1.2

Formatted: Font colour: Text 1

Formatted: Font colour: Text 1

Deleted: 3

Deleted: 3

slow recovery of maritime passenger services. Decrease in emissions from off road transport emissions were between -3% and -1.8%. More than 50% of the total drop in emissions from this sector happened between April and May, when restrictions were at their maximum. After this period, a rapid recovery is observed, emissions being only -1% below BAU by the end of the year. Fugitive emissions from fossil fuel production and transportation show decreases of up to -10% for NMVOC and -6.7% for CH₄. Finally, the decrease of NMVOC emissions from use of solvents is very limited (-1.3%) as only metal cleaning and printing industrial activities were considered to be affected by COVID-19 restrictions.

The stacked area charts shown in Fig. 11 illustrate the changes in average NO_x and PM_{2.5} weekly emissions [t·week⁻¹] from individual sectors across time for EU27 + UK countries. The charts consist of multiple lines drawn to track the emission changes for various pollutant sectors, and the area below each line is coloured to represent the associated sector: Road transport (equivalent to GNFR_F), other stationary combustion activities (equivalent to GNFR_C), public energy (equivalent to GNFR_A), industry (equivalent to GNFR_B), aviation (equivalent to GNFR_H) and others (sum of emissions from all other sectors). Note that shipping emissions are not included in the results as they are not linked to any specific EU27 + UK country. A black solid line is used to represent the evolution of total emissions during the COVID-19 pandemic, and a dashed grey line is used to represent the evolution of total emissions under the BAU scenario.

The comparison between the charts produced for NO_x and PM_{2.5} allows understanding the heterogeneous impact of COVID-19 across pollutants presented in Sect. 4.1.1. As shown in the charts, these differences are mainly due to the fact that total emission changes were primarily driven by changes in road transport and other stationary combustion activities and the contribution of these two sectors to total emissions of each pollutant. In the case of NO_x, road transport is the largest contributor to total emissions and therefore the drop in total emissions is significant, while in the case of PM_{2.5} the main contributor to total emissions is other stationary combustion activities, which were practically not affected by the COVID-19 restrictions. As a matter of fact, more than 70% of the total drop in NO_x emissions occurred at the EU27 + UK level comes from the road transport sector.

Deleted: 4

Formatted: Font colour: Text 1

Deleted: 4.1.1

Formatted: Font colour: Text 1

4.1.3 Spatial analysis

Figure 12_a shows a map of cumulative NO_x emission declines [kg·cell⁻¹] between January 1st and December 31st as compared to the BAU scenario. The gridded emission results are provided at the same resolution as the CAMS-REG_v5.1 BAU inventory (i.e., 0.1x0.05 degrees). The main reductions occurred in urban areas and main interurban roads, especially within the most affected countries (i.e., Italy, Spain, France, and the United Kingdom). The pattern of the spatial emission difference is in line with the fact that most of the NO_x emission reductions are related to road transport, as previously shown in Fig. 11_a. Isolated and large emission drops can also be distinguished in certain grid cells (e.g., northwest of Spain or in the North Sea), which correspond to the decrease of emissions from individual industrial point sources.

Fig. 12_b illustrate the average and 5th and 95th percentiles (p05, p95) of the daily relative changes [%] in the gridded NO_x emissions for Italy and Germany, respectively. The results were computed considering all the grid cells within each of the countries. In Italy, the last 2 weeks of March and first 2 weeks of April show certain areas of the country reaching reductions up to -70 %, whereas in other areas less affected by anthropogenic (and particularly road transport) emissions the reductions were significantly lower (~-20%). During summer the range of relative changes becomes much lower, with emissions ranging between -10% below and 10% above BAU levels, as mobility restrictions were lifted and traffic activity reached values above BAU levels due to the increase of domestic tourism. This was also observed in France. The drop in emissions observed during November and associated to the second round of nationwide COVID-19 restrictions show relative changes between ~-26.5% and ~-7.2%, which are approximately two times lower than the ones observed during the first round of lockdowns. In the case of Germany, the relative changes during the lockdowns of Spring ranged approximately between -40 % (p95) and -10 % (p05). Similar to what is observed for Italy, during summer the relative decline of NO_x emissions is considerably reduced, ranging between -10% and 5% below and above BAU levels, respectively. A second significant drop in emissions is observed during the second half of December, when Germany had to go into a new hard lockdown as the number of deaths and infections from COVID-19 reached record levels. During this period of time, average emission reductions reached values of

Deleted: 5

Deleted: 4

Deleted: 5

Deleted: During summer the range of relative changes becomes much lower, emissions ranging between -10% below and 10% above BAU levels. These results are in line with the fact that during this period mobility restrictions were lifted and traffic activity reached values above BAU levels due to the increase of domestic tourism

145 between -4.5% (p05) and up to -24.5% (p95). As in the case of Italy, the reductions associated to the second round of restrictions is approximately two times lower than the ones observed during the Spring wave.

150 Fig. 13 illustrates the relative NO_x and NMVOC emission declines occurred in European high-density cluster urban centers, which are defined as urban regions with a density of at least 1 500 inhabitants per km² and a minimum population of 50 000. The discrimination of the CAMS-REG-AP/GHG gridded domain between urban and rural areas was derived from the Global Human Settlement Layer (GHSL) project (Pesaresi et al., 2019). The decline of NO_x urban emissions was in average 3.4 times larger than the one obtained for NMVOC (i.e., -11.3% versus -3.3%). These results coincide with the general increase of O₃ levels in urban areas observed during the spring COVID-19 lockdowns, which is attributed to the fact that the O₃ production is largely VOC-sensitive across European urban areas (Grange et al., 2021; 155 Querol et al., 2021). The largest differences between the NO_x and NMVOC emission declines was found in Spain (-15.6% versus -3.1%) and Portugal (-17.1% versus -3.9%). These results are in line with the relative changes in O₃ concentrations in traffic stations reported by Grange et al. (2021), which show that the largest O₃ increases occurred in Spain (61.9%) and Portugal (46.8%).

Deleted: 6

5 Data availability

160 Emission adjustment factors per country-, day of the year, sector and pollutant are provided in an Excel file through the CAMS Document Repository (<https://doi.org/10.24380/k966-3957>, Guevara et al., 2022). The CAMS-REG_v5.1 BAU 2020 gridded emission inventory (<https://doi.org/10.24380/eptm-kn40>, Kuenen et al., 2022a) is distributed as NetCDF (Network Common Data Format) files from the Emissions of atmospheric Compounds of Ancillary Data (ECCAD) system, which will be complemented with access 165 through the ECMWF Atmosphere Data Store (ADS) as soon as this is technically feasible. For review purposes, ECCAD has set up an anonymous repository where a sample of the emission file can be accessed directly (eccad.aeris-data.fr/essd-surf-emis-cams-reg/).

6 Conclusions

170 We present a dataset of daily sector-, country- and pollutant-dependent emission adjustment factors that
allows quantifying the impact of the COVID-19 restrictions on European primary emissions of criteria
pollutants and greenhouse gases for 2020. The dataset was constructed considering changes observed in
metrics traditionally used to estimate emissions, such as energy statistics or traffic counts, as well as
information derived from new mobility indicators. Meteorological data and machine learning techniques
175 were used to compute the differences between measured 2020 electricity demand levels and what would
have occurred in the absence of COVID-19. The resulting dataset allows reflecting the heterogeneous
impact of COVID-19 restrictions across countries on air pollutants and greenhouse gases levels for a total
of nine anthropogenic activity sectors, including road transport, energy industry, manufacturing industry,
residential and commercial combustion, aviation, shipping, off-road transport, use of solvents and fugitive
180 emissions from transportation and distribution of fossil fuels. To the authors knowledge, this is currently
the most comprehensive and complete European dataset for inferring changes in primary emissions
derived from the COVID-19 restrictions. It is worth noting the intercomparison exercise performed
between observed changes in traffic activity derived from governmental traffic flow data and from the
Google mobility trends, the latter being widely used in the current literature. Results indicate large
185 deviations between novel Google mobility and traditional traffic flow data, which in the present work
were reduced by constructing a set of adjustment factors to better reflect changes in emissions from light-
duty and heavy-duty vehicles.

We combined the resulting COVID-19 adjustment factors with the European CAMS-REG gridded (0.1 x
190 0.05 deg) emission inventory for 2020 following a business-as-usual (BAU) scenario, to spatially and
temporally quantify reductions in emissions from both criteria pollutants and greenhouse gases. The main
findings and conclusions are as follows:

- The largest decrease in European emissions in 2020 attributed to the COVID-19 lockdown
195 measures were found for NO_x (-10.5%) and CO₂ fossil fuel (-7.8%) emissions. For these two

Deleted: ,

Deleted: m

pollutants, the most pronounced drop in emissions was found during April (-32.8% and -25.5%) when the mobility restrictions were at their maximum.

- By the end of summer, the effect of COVID-19 measures on emissions diminished as lockdown restrictions relaxed, and emissions remained at values of -4.8% and -3.9% below business-as-usual levels for NO_x and CO₂_ff.
- The emission reductions observed during the second epidemic wave (October, November and December) were between three and four times lower than those occurred during the Spring lockdowns, up to -10.5% for NO_x and -6.5% for CO₂ fossil fuel, since mobility restrictions were generally softer and only had to be toughened in those countries affected by increasing rates of transmission such as France, Germany or the UK.
- Lower drops in emissions were found for PM₁₀ and PM_{2.5} (-3.0% and -2.1%), as these were modulated by residential combustion activities, which slightly increased during the lockdowns. NH₃ and CH₄ emissions, which are mainly linked to agricultural activities, were practically unaffected by COVID-19 restrictions (-0.9% and -0.2%).
- At the country level, the largest relative emission declines were reported for Italy, UK, Spain and France: between -15.1% and -13.5% for NO_x and -11.4% and -10.4% for CO₂ fossil fuel emissions.
- At the sectoral level, the largest emission declines were found for aviation (between -51 and -56%) and road transport (between -15.5% and -18.8%). A drop of similar intensity was observed for both sectors at the beginning of the pandemic. However, while aviation emissions remained almost unchanged, road transport started to gradually recover during late April and the beginning of May, and they reached values of around -5% below BAU by the end of September. A decrease ~50% lower than in April was observed during the second epidemic wave.
- For the other stationary combustion activities, the pollutants that are mainly related to residential wood combustion processes (i.e., PM₁₀, PM_{2.5}, NH₃, NMVOC, CO, CO₂_bf and CH₄) experienced a slight increase (between 1.1% and 1.7%), while the rest of pollutants (i.e., NO_x, SO₂ and CO₂_ff) showed a modest decrease (between -0.4% and -2.9%). Similarly, for the manufacturing industry a heterogeneous impact of the COVID-19 restrictions is observed across pollutants: a lower

Deleted: heterogenous

reduction is observed for NMVOC and NH₃ (between -2.8% and -3.5%) when compared to the other pollutants (between -6.8% and -7.2%) as these two are mostly driven by processes occurring in the food/beverage and chemistry industries, which were considered to be essential during the Spring lockdowns. Emissions from this sector quickly picked up again, approaching its pre-pandemic levels of activity during November. Unlike other sectors such as road transport, the manufacturing industry remained almost unaffected by the measures implemented to curb the second wave of infections

- The largest contributions to the EU27 + UK decrease in emissions comes from the road transport sector for the majority of pollutants: up to 70.5% for NO_x emissions.
- In terms of spatial analysis, the largest emissions reductions occurred in urban areas and main interurban roads. Isolated and significant emission drops were also observed where large point sources are located. The decline in NO_x urban emissions was in average 3.4 times larger than the one obtained for NMVOC (-11.3% versus -3.3%).

6.1 Limitations of the dataset

The collection of COVID-19 emission adjustment factors and the CAMS-REG_v5.1 2020 BAU inventory have been produced using state-of-the-art information and methods in support of air quality modelling studies. There exist, however, some limitations associated with the current version of the datasets that users should be aware of:

- The emission adjustment factors do not take into account potential variations within each country. This includes, for instance, the heterogeneous lockdown easing process across the different administration units, which may entail heterogeneous recovery rates of the road transport emissions. Similarly, within sea-regions the drop in passenger ship movements (e.g., cruise) during 2020 compared to 2019 has been significantly larger than the one observed for cargo ship movements. This fact implies that the COVID-19 impact on shipping emissions may not only vary per sea region, but also (and more significantly) per ship route. Last but not least, variations in residential combustion emissions have probably been heterogeneous within countries due to an

255 exodus from city centres toward rural areas during the sanitary crisis. This reallocation may have
caused, on the one hand, a decrease of emissions in very urbanized cities impacted by the COVID-
19 and, on the other, increases in the countryside, particularly in PM from wood burning activities.

260 • For the public power industry sector, we assumed that changes in the electricity demand were
affecting electricity generation levels homogeneously across all types of sources (i.e., a drop in
energy demand implies that both fossil fuel and renewable power plants reduce equally their
activity). However, a study by IEA (2021) suggests that during the first lockdown period changes
occurred not only in electricity demand levels but also on the electricity mix. In the case of Europe,
results indicate that the power mix slightly shifted towards renewables due to low operating costs
and priority access to the grid through regulations, among others. This effect was heterogeneous
across countries. The study also suggests that the electricity mix shifted back to the previous trend
with the easing of the restrictions.

265 • Adjustment factors for the residential and commercial stationary combustion sectors were derived
from Google mobility statistics, which may not necessarily represent changes in the energy
consumption of these two sources. However, we could not find any open access dataset that
provides near-real time and high temporal resolution information on European energy
consumption for the residential and commercial sectors separately. The closest dataset meeting
these characteristics is the ENTSO-G transparency platform (<https://transparency.entsog.eu/>, last
accessed March 2022), which reports data on EU daily natural gas flows toward distribution and
final consumption. However, the data does not separate commercial/public and residential
buildings and it is only available for a limited number of EU countries. There are other national
databases that face similar problems, such as GRTgaz
(<https://www.smart.grtgaz.com/en/consommation/GRTgaz>, last accessed March 2022), which
provides daily consumption of natural gas by industrial sites and the public network in France,
without distinguishing between commercial/institutional and residential sectors.

270
275
280 The current factors do not consider the potential impact on NMVOC emissions from residential use
of solvents derived from the increase on the consumption of the so-called pandemic products such as

Formatted: Indent: Left: 1.27 cm, No bullets or numbering

Formatted: Normal, Indent: Left: 0.63 cm, No bullets or numbering

hand sanitizers. In the present work, we only assessed the impact of COVID-19 on industrial use of solvents due to the lack of more detailed data.

- The methodology developed to calculate CAMS-REG gridded emissions for recent years has been validated against reported emissions and shows good results for most sectors and pollutants. The activity data captures a lot of the year-to-year variability, except sudden changes due to, e.g., the closing of a power plant. However, to get a BAU inventory we altered the methodology by ignoring all activity data that may see an impact from the COVID-19 restrictions. This means that, besides the COVID-19 impact, part of the normal year-to-year variability may also be lacking.

6.2 Future perspective

Despite the aforementioned limitations, we believe that these emission datasets will allow to refine our understanding of concentration changes observed by satellite and in situ observations, and pinpoint the effect of COVID-19-related measures more precisely. It will also allow accurate estimates of how far these temporary concentration changes have improved air quality and lowered the related morbidity and mortality. The results reported by Badía et al., (2021), Barré et al., (2021), Guevara et al., (2021) and Schneider et al. (2022), among others, which have made use of previous versions of the emission adjustment factors dataset presented in this work, are proof of that. In this sense, future works will include using the resulting emission datasets to extend current air quality simulations to the whole year 2020. We also expect to perform intercomparisons of our estimated emission changes against results reported by other existing datasets (e.g., Doumbia et al., 2021; Liu et al., 2020; Forster et al., 2020) as well as the 2020 national official reported emissions when available. This intercomparison exercise will allow us, on the one hand, to assess the consistency between emission results and, on the other hand, to compare and contrast emission results derived from traditional estimation methodologies used for official reporting against new methods that make use of mobility data sets and other types of near-real time information.

We quantified the impact of COVID-19 restrictions on emissions at the daily scale. A preliminary assessment of the impact upon the hourly variations in road traffic activity in Madrid city indicates a significant shift in the diurnal cycle during weekdays and weekends (Figure S8). Such shift was likely









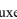









Deleted: 1

B10 driven by a decrease in work-related trips and nightlife activity, along with an increase in e-commerce activity and associated urban freight transport during the confinement. Future studies may elucidate how hourly emissions changed during lockdown periods and more importantly to what extent these patterns persisted after the easing of the restrictions. Finally, future works will also investigate the potential temporal extension of the emission adjustments factors to 2021, to include the effect of the restrictions and hard lockdowns that were still in place in specific countries such as UK or Germany during Winter time and that may have an effect on main modes of transport including road traffic or aviation.

Formatted: Font colour: Text 1, English (UK)

7 Appendix A

Table A1: Summary of the European traffic count datasets considered, including: country, source of information, temporal resolution of the traffic counts, vehicles categories included (LDV, Light duty vehicles; HDV, Heavy duty vehicles) and number of observations.

Country	Source of information	Temporal resolution	Vehicle categories	Observations
 Austria	ASFINAG (2021)	Monthly	LDV / HDV	~ 275 automatic traffic stations across Austrian road transport network
 Belgium	FTCC (2021)	Weekly	LDV / HDV	~ 400 traffic stations distributed over the Flemish Road transport network
 Denmark	DRD (2021)	Weekly	LDV / HDV	30 selected stations distributed over Danish Road transport network
 Estonia	ERA (2021)	Weekly	All	3 measurement stations representing urban, highway and recreational roads
 Finland	FTIA (2021)	Daily	All	~ 500 traffic measuring stations across Finnish road transport network
 France	CEREMA (2021)	Daily	All	Measurement stations located in the cities of Paris, Toulouse, Nantes, Strasbourg, Bordeaux, Marseille, Lyon and St. Etienne
 Germany	BASt (2021)	Monthly	LDV / HDV	~ 800 automatic traffic stations across national and federal German highways
 Ireland	THI (2021)	Daily	All	~ 445 automatic traffic stations across Irish road transport network
 Italy	ANAS (2021)	Monthly	LDV / HDV	~ 800 automatic traffic count sites across national highways in Italy
 Luxembourg	MMTP (2021)	Monthly	All	25 automatic traffic stations across national highways in Luxembourg
 Netherlands	NWD (2021)	Daily	LDV / HDV	~ 1600 automatic traffic station from national road network located near the cities of Amsterdam, Rotterdam, Eindhoven, Utrecht and The Hague
 Norway	NPRA (2021)	Daily	All	~ 720 automatic traffic station located in European and National roads in Norway
 Poland	Autostrady (2021)	Weekly	LDV / HDV	A-4 motorway section between Katowice and Kraków
 Portugal	IMT (2021)	Monthly	All	~ 600 automatic traffic stations across Portuguese national highways
 Spain	AM (2021), ATM (personal communication)	Daily	All	~ 60 automatic traffic stations located in the cities of Barcelona and Madrid
 Sweden	STA (2021)	Weekly	All	80 automatic traffic stations across the Swedish state road network
 Switzerland	OFROU (2021)	Daily	LDV / HDV	10 measurement stations across Swedish national road network
 United Kingdom	DfT (2021)	Daily	LDV / HDV	~ 275 automatic traffic stations across British national road network

Formatted: Font colour: Text 1

Formatted: Font colour: Text 1

Formatted: Font colour: Text 1

Formatted: Font colour: Text 1

Formatted: Font colour: Text 1

Formatted: Font colour: Text 1

Formatted: Font colour: Text 1

Formatted: Font colour: Text 1

Formatted: Font colour: Text 1

Formatted: Font colour: Text 1

Formatted: Font colour: Text 1

Formatted: Font colour: Text 1

Formatted: Font colour: Text 1

Formatted: Font colour: Text 1

Formatted: Font colour: Text 1

Formatted: Font colour: Text 1

Formatted: Font colour: Text 1

Formatted: Font colour: Text 1

8 Appendix B

List of acronyms and abbreviations

AD	Activity Data
ADS	Atmosphere Data Store
AIS	Automatic Identification System
ATL	Atlantic Ocean
BAS	Baltic Sea
BAU	Business-as-Usual
CAMS	Copernicus Atmosphere Monitoring Service
CH ₄	Methane
CO	Carbon monoxide
CO ₂	Carbon dioxide
CO ₂ bf	Carbon dioxide from biofuels
CO ₂ ff	Carbon dioxide from fossil fuels
COVID-19	Coronavirus disease 2019
ECCAD	Emissions of atmospheric Compounds of Ancillary Data
ECMWF	European Centre for Medium-Range Weather Forecasts
EF	Emission Factor
ENC	English Channel
ENTSO-E	European Network of Transmission System Operators for Electricity
EU27	European Union of 27 member states
GBM	Gradient Boosting Machine
GHGs	Greenhouse gases
GHSL	Global Human Settlement Layer
GNFR	Gridded aggregated Nomenclature For Reporting
HDV	Heavy Duty Vehicle
IPI	Industrial Production Index
LDV	Light Duty Vehicle
LPG	Liquified Petroleum Gas
LTO	Landing and Take-Off cycles
MED	Mediterranean Sea
NetCDF	Network Common Data Format

Formatted: Normal

Formatted: Font: 10 pt, Font colour: Text 1

Formatted: Font colour: Text 1

Formatted: Font colour: Text 1

Formatted: Font: 10 pt, Font colour: Text 1, English (US)

Formatted: Font: 10 pt, Font colour: Text 1

Formatted: Font: 10 pt, Font colour: Text 1

Formatted: Font: 10 pt, Font colour: Text 1

Formatted: Font: 10 pt, Font colour: Text 1

Formatted: Font colour: Text 1

Formatted: Font: 10 pt, Font colour: Text 1

Formatted: Font colour: Text 1

Formatted: Font colour: Text 1

Formatted: Font colour: Text 1

Formatted: Font colour: Text 1

Formatted: Font colour: Text 1

Formatted: Font colour: Text 1

Formatted: Font: 10 pt, Font colour: Text 1

Formatted: Font: 10 pt, Font colour: Text 1

Formatted: Font colour: Text 1

Formatted: Font colour: Text 1

Formatted: Font colour: Text 1

Formatted: Font: 10 pt, Font colour: Text 1

Formatted: Font colour: Text 1

Formatted: Font: 10 pt, Font colour: Text 1

Formatted: Font colour: Text 1

Formatted: Font: 10 pt, Font colour: Text 1

Formatted: Font: 10 pt, Font colour: Text 1

Formatted: Font: 10 pt, Font colour: Text 1

Formatted: Font colour: Text 1

Formatted: Font: 10 pt, Font colour: Text 1

Formatted: Font colour: Text 1

Formatted: Font: 10 pt, Font colour: Text 1

Formatted: Font: 10 pt, Font colour: Text 1

Formatted: Font colour: Text 1

Formatted: Font: 10 pt, Font colour: Text 1

Formatted: Font colour: Text 1

<u>NFR</u>	<u>Nomenclature for Reporting</u>
<u>NH₃</u>	<u>Ammonia</u>
<u>NMVOC</u>	<u>Non-methane volatile organic compounds</u>
<u>NOS</u>	<u>North Sea</u>
<u>NO_x</u>	<u>Nitrogen oxides</u>
<u>NWS</u>	<u>Norwegian Sea</u>
<u>O₃</u>	<u>Ozone</u>
<u>OxCGRT</u>	<u>Oxford COVID-19 Government Response Tracker</u>
<u>PM10</u>	<u>Particulate matter that are 10 microns or less in diameter</u>
<u>PM2.5</u>	<u>Particulate matter that are 2.5 microns or less in diameter</u>
<u>SECA</u>	<u>Sulphur Emission Control Areas</u>
<u>SO₂</u>	<u>Sulphur dioxide</u>
<u>UK</u>	<u>United Kingdom</u>

- Formatted: Font colour: Text 1
- Formatted: Font: 10 pt, Font colour: Text 1
- Formatted: Font colour: Text 1
- Formatted: Font: 10 pt, Font colour: Text 1
- Formatted: Font: 10 pt, Font colour: Text 1
- Formatted: Font: 10 pt, Font colour: Text 1
- Formatted: Font colour: Text 1
- Formatted: Font: 10 pt, Font colour: Text 1
- Formatted: Font colour: Text 1
- Formatted: Font: 10 pt, Font colour: Text 1
- Formatted: Font colour: Text 1
- Formatted: Font colour: Text 1
- Formatted: Font: 10 pt, Font colour: Text 1
- Formatted: Font: 10 pt, Font colour: Text 1
- Formatted: Font colour: Text 1
- Formatted: Font colour: Text 1
- Formatted: Font colour: Text 1

325

9 Authors contributions

MG conceived and coordinated the study as well as the development of the COVID-19 emission adjustment factors. J-PJ, EM and LJ provided the estimation of 2019 and 2020 shipping emissions using the STEAM model, which were used for the development of the shipping emission adjustment factors. HP developed the machine learning algorithm for computing business-as-usual electricity demand during 2020. HDvdG, JK and IS developed the CAMS-REG business-as-usual 2020 emission inventory and have provided comments about the work. VHP has provided comments about the work and ensured liaison with wider activities in CAMS related to COVID-19. OJ and CPGP helped conceive the COVID-19 emission adjustment factor dataset and supervised the work. MG prepared the manuscript with contributions from all co-authors.

10 Competing interests

The authors declare that they have no conflict of interest.

11 Acknowledgements

The research leading to these results has received funding from the Copernicus Atmosphere Monitoring Service (CAMS), which is implemented by the European Centre for Medium-Range Weather Forecasts (ECMWF) on behalf of the European Commission. We acknowledge support from the Ministerio de Ciencia, Innovación y Universidades (MICINN) as part of the BROWNING project RTI2018-099894-B-I00, from the VITALISE project (PID2019-108086RA-I00) funded by the MCIN/AEI /10.13039/501100011033, the MITIGATE project (PID2020-116324RA695 I00 / AEI / 10.13039/501100011033) from the Agencia Estatal de Investigación (AEI), the AXA Research Fund, and the European Research Council (grant no. 773051, FRAGMENT). This project has also received funding from the European Union's Horizon 2020 research and innovation programme under the Marie Skłodowska-Curie grant agreement H2020-MSCA-COFUND-2016-754433. [Jukka-Pekka Jalkanen, Elisa Majamäki and Lasse Johansson acknowledge the support received from SCIPPER project. The SCIPPER project has received funding from the European Union's Horizon 2020 research and innovation](#)

programme under grant agreement Nr.814893. TNO researchers acknowledge additional support from the European Commission through the H2020 European Research Council project 'VERIFY' (grant no. 776810). BSC researchers thankfully acknowledge the computer resources at Marenstrum and the technical support provided by Barcelona Supercomputing Center (RES-AECT-2021-1-0027, RES-AECT-2021-2-0001).

Formatted: Font colour: Text 1

12 References

Adélaïde, L., Medina, S., Wagner, V., de Crouy-Chanel, P., Real, E., Colette, A., Couvidat, F., Bessagnet, B., Alter, M., Durou, A., Host, S., Hulin, M., Corso, M., and Pascal, M.: Covid-19 Lockdown in Spring 2020 in France Provided Unexpected Opportunity to Assess Health Impacts of Falls in Air Pollution, *Frontiers in Sustainable Cities*, 3, doi: 10.3389/frsc.2021.643821, 2021.

AM: Madrid city council. Permanent traffic counts. Available at: <https://datos.madrid.es/portal/site/egob/menuitem.c05c1f754a33a9fbc4b2e4b284f1a5a0/?vgnextoid=fabbf3e1de124610VgnVCM2000001f4a900aRCRD&vgnnextchannel=374512b9ace9f310VgnVCM100000171f5a0aRCRD&vgnnextfmt=default> (last accessed, May 2021) 2021.

ANAS: National Autonomous Roads Corporation. Traffic observatory archive. Available at: <https://www.stradeanas.it/it/le-strade/osservatorio-del-traffico/archivio-osservatorio-del-traffico> (last accessed, May 2021) 2021.

Apple: COVID 19 mobility trends reports—Apple. Available at: <https://covid19.apple.com/mobility> (last accessed, September 2021), 2021.

ASFiNAG: Autobahn and highway financing stock corporation. Statistics of permanent counting stations. Available at: <https://www.asfinag.at/verkehr/verkehrszaehlung/> (last accessed, May 2021), 2021.

Autostrady: Impact of SARS-CoV-2 and COVID-19 on the activity of Stalexport Autostrady S.A. Capital Group. Available at: <https://www.stalexport-autostrady.pl/en/company/news> (last accessed, May 2021) 2021.

Badia, A., Langemeyer, J., Codina, X., Gilibert, J., Guilera, N., Vidal, V., Segura, R., Vives, M., and Villalba, G.: A take-home message from COVID-19 on urban air pollution reduction through mobility limitations and teleworking. *npj Urban Sustain* 1, 35, <https://doi.org/10.1038/s42949-021-00037-7>, 2021.

Formatted: Font colour: Text 1

Formatted: Font colour: Text 1

385 BaST: Federal Highway Research Institute. Traffic barometer. Available at:
https://www.bast.de/BASSt_2017/DE/Statistik/Verkehrsdaten/Verkehrsbarometer.html, (last accessed,
May 2010) 2021.

390 Balamurugan, V., Chen, J., Qu, Z., Bi, X.; Gensheimer, J., Shekhar, A., Bhattacharjee, S., and Keutsch,
F. N.: Tropospheric NO₂ and O₃ Response to COVID-19 Lockdown Restrictions at the National and
Urban Scales in Germany. *Journal of Geophysical Research: Atmospheres*, 126(19),
<https://doi.org/10.1029/2021JD035440>, 2021.

395 Barré, J., Petetin, H., Colette, A., Guevara, M., Peuch, V.-H., Rouil, L., Engelen, R., Inness, A.,
Flemming, J., Pérez García-Pando, C., Bowdalo, D., Meleux, F., Geels, C., Christensen, J. H., Gauss, M.,
Benedictow, A., Tsyro, S., Friese, E., Struzewska, J., Kaminski, J. W., Douros, J., Timmermans, R.,
Robertson, L., Adani, M., Jorba, O., Joly, M., and Kouznetsov, R.: Estimating lockdown-induced
European NO₂ changes using satellite and surface observations and air quality models, *Atmos. Chem.*
400 *Phys.*, 21, 7373–7394, <https://doi.org/10.5194/acp-21-7373-2021>, 2021.

CEREMA: Centre d'études et d'expertise sur les risques, l'environnement, la mobilité et l'aménagement.
Road traffic indicators in France. Available at: <https://dataviz.cerema.fr/trafic-routier/>, (last accessed,
May 2021) 2021.

405 CIESIN: Center for International Earth Science Information Network CIESIN Columbia University C.
Gridded Population of the World, Version 4 (GPWv4): Population Count. Palisades, NY: NASA
Socioeconomic Data and Applications Center (SEDAC); 2016. Available at:
<https://doi.org/10.7927/H4X63JVC> (last access: May 2020), 2016.

410

Formatted: Font colour: Text 1

Formatted: Font colour: Text 1

Deleted:

Copernicus Climate Change Service (C3S): ERA5: Fifth generation of ECMWF atmospheric reanalyses of the global climate. Copernicus Climate Change Service Climate Data Store (CDS), Available at: <https://cds.climate.copernicus.eu/cdsapp#!/home>, (last accessed, May 2021) 2017.

415

Copernicus Climate Change Service (C3S): Climate bulletin. European State of the Climate in 2020: Temperature. Available at: <https://climate.copernicus.eu/esotc/2020/temperature>. (last accessed, March 2022) 2021.

Formatted: Font colour: Text 1

420

De Vos, J: The effect of COVID-19 and subsequent social distancing on travel behavior, Transportation Research Interdisciplinary Perspectives, 5, <https://doi.org/10.1016/j.trip.2020.100121>, 2020.

Denier van der Gon, H. A. C., Hendriks, C., Kuenen, J., Segers, A., and Visschedijk, A. J. H.: Description of current temporal emission patterns and sensitivity of predicted AQ for temporal emission patterns, EU FP7 MACC deliverable report D_D-EMIS_1.3, 2011.

425

DfT: Department of Transport, UK. Transport use during the coronavirus (COVID-19) pandemic. Available at: <https://www.gov.uk/government/statistics/transport-use-during-the-coronavirus-covid-19-pandemic> (last accessed, March 2021), 2021.

430

Doumbia, T., Granier, C., Elguindi, N., Bouarar, I., Darras, S., Brasseur, G., Gaubert, B., Liu, Y., Shi, X., Stavrakou, T., Tilmes, S., Lacey, F., Deroubaix, A., and Wang, T.: Changes in global air pollutant emissions during the COVID-19 pandemic: a dataset for atmospheric modeling, Earth Syst. Sci. Data, 13, 4191–4206, <https://doi.org/10.5194/essd-13-4191-2021>, 2021.

435

DRD: Danish Road Directorate. Traffic development during the corona crisis. Available at: <https://www.vejdirektoratet.dk/side/trafikkens-udvikling-i-tal> (last accessed, May 2021), 2021.

440 Elleby, C., Domínguez, I.P., Adenauer, M. et al. Impacts of the COVID-19 Pandemic on the Global
Agricultural Markets. Environ Resource Econ 76, 1067–1079 (2020). <https://doi.org/10.1007/s10640-020-00473-6>.

Formatted: Font colour: Text 1

Formatted: Font colour: Text 1

EMSA: COVID-19 – impact on shipping. Available at: <http://www.emsa.europa.eu/newsroom/covid19-impact.html> (last accessed, May 2021), 2021.

Formatted: Font colour: Text 1

Formatted: Font colour: Text 1

445 ENTSO-E: Transparency Platform. Available at: <https://transparency.entsoe.eu/> (last accessed, July 2021), 2021.

EUROCONTROL: European Organisation for the Safety of Air Navigation. Operations at airports.
450 Available at: <https://ansperformance.eu/data/> (last accessed, March 2021), 2021.

Eurostat: Industrial Production Index overview. Available at: [https://ec.europa.eu/eurostat/statistics-explained/index.php/Industrial_production_\(volume\)_index_overview](https://ec.europa.eu/eurostat/statistics-explained/index.php/Industrial_production_(volume)_index_overview) (last accessed, May 2021), 2021a.

455 Eurostat: Energy balances – 2021 edition. Available at: <https://ec.europa.eu/eurostat/web/energy/data/energy-balances> (last accessed, July 2021), 2021b.

Eurostat: Final Energy Consumption in Transport. Available at: <https://ec.europa.eu/eurostat/databrowser/view/ten00126/default/table?lang=en> (last accessed, May
460 2021), 2021c.

Eurostat: Utilised Agricultural Area. Available at: <https://ec.europa.eu/eurostat/databrowser/view/tag00025/default/table?lang=en> (last accessed, April
465 2021), 2021d.

FAO: Crops and Livestock Products. Available at: <https://www.fao.org/faostat/en/#data/QCL> (last accessed, March 2021), 2021a

470 FAO: Fertilizers by Nutrient. Available at: <https://www.fao.org/faostat/en/#data/RFN> (last accessed, April 2021), 2021b

Forster, P.M., Forster, H.I., Evans, M.J. et al. Current and future global climate impacts resulting from COVID-19. *Nat. Clim. Chang.* 10, 913–919, <https://doi.org/10.1038/s41558-020-0883-0>, 2020.

475 FTIA: Finnish Transport Agency. Traffic monitoring system data. Available at: <https://vayla.fi/en/transport-network/data/open-data/road-network/tms-data> (last accessed, May 2021), 2021.

480 FTCC: Flanders Traffic Control Center. Impact measures corona crisis 2020/2021. Available at: <https://www.verkeerscentrum.be/studies/impact-maatregelen-coronacrisis-20202021> (last accessed, May 2021), 2021.

Gensheimer, J., Turner, A. J., Shekhar, A., Wenzel, A., Keutsch, F. N., and Chen, J.: What are the different measures of mobility telling us about surface transportation emissions during the Covid-19 pandemic? *Journal of Geophysical Research: Atmospheres*, 126(11), e2021JD034664. <https://doi.org/10.1029/2021JD034664>, 2021.

490 [Gkatzelis, G.I., Gilman, J.B., Brown, S.S., Eskes, H., Gomes, A.R., Lange, A.C., McDonald, B.C., Peischl, J., Petzold, A., Thompson, C.R., and Kiendler-Scharr, A.: The global impacts of COVID-19 lockdowns on urban air pollution. *Elementa: Science of the Anthropocene* 9, 00176. <https://doi.org/10.1525/elementa.2021.00176>, 2021.](#)

Formatted: Font colour: Text 1

Formatted: Font colour: Text 1

Formatted: Font colour: Text 1

Formatted: Font colour: Text 1

Google LLC. Google COVID-19 Community Mobility Reports. Available at: <https://www.google.com/covid19/mobility/> (last access: March 2021), 2021.

495

Grange, S. K., Lee, J. D., Drysdale, W. S., Lewis, A. C., Hueglin, C., Emmenegger, L., and Carslaw, D. C.: COVID-19 lockdowns highlight a risk of increasing ozone pollution in European urban areas, *Atmos. Chem. Phys.*, 21, 4169–4185, <https://doi.org/10.5194/acp-21-4169-2021>, 2021.

500

Granier, C., Darras, S., Denier van der Gon, H. A. C., Doubalova, J., Elguindi, N., Galle, B., Gauss, M., Guevara, M., Jalkanen, J.-P., Kuenen, J., Liousse, C., Quack, B., Simpson, D., and Sindelarova, K.: The Copernicus Atmosphere Monitoring Service global and regional emissions (April 2019 version), Copernicus Atmosphere Monitoring Service (CAMS) report, 2019, <https://doi.org/10.24380/d0bn-kx16>, 2019.

505

Guevara, M., Jorba, O., Soret, A., Petetin, H., Bowdalo, D., Serradell, K., Tena, C., Denier van der Gon, H., Kuenen, J., Peuch, V.-H., and Pérez García-Pando, C.: Time-resolved emission reductions for atmospheric chemistry modelling in Europe during the COVID-19 lockdowns, *Atmos. Chem. Phys.*, 21, 773–797, <https://doi.org/10.5194/acp-21-773-2021>, 2021.

510

Guevara, M., Jorba, O., Petetin, H., and Pérez García-Pando, C: CAMS-REG_EAF-COVID19 emission adjustment factors, Copernicus Atmosphere Monitoring Service, CAMS Document Repository [data set], <https://doi.org/10.24380/k966-3957>, 2022.

515

Hale, T., Angrist, N., Goldszmidt, R., Kira, B., Petherick, A., Phillips, T., Webster, S., Cameron-Blake, E., Hallas, L., Majumdar, S., and Tatlow, H.: A global panel database of pandemic policies (Oxford COVID-19 Government Response Tracker), *Nature Human Behaviour*. <https://doi.org/10.1038/s41562-021-01079-8>, 2021.

520 Harkins, C., McDonald, B.C., Henze, D.K., and Wiedinmyer, C.: A fuel-based method for updating mobile source emissions during the COVID-19 pandemic, Environ. Res. Lett., 16, 065018, <https://doi.org/10.1088/1748-9326/ac0660>, 2021.

Formatted: Font colour: Text 1

Hirth, L., Mühlenpfordt, J., and Bulkeley, M.: The ENTSO-E Transparency Platform – A review of Europe’s most ambitious electricity data platform, Appl. Energy, 225, 1054-1067, <https://doi.org/10.1016/j.apenergy.2018.04.048>, 2018.

530 IDAE. Institute for Diversification and Saving of Energy. Detail of service sector consumption. Available at: <https://www.idae.es/en/studies-reports-and-statistics> (last access: September 2020), 2018.

IEA: Covid-19 impact on electricity. Available at: <https://www.iea.org/reports/covid-19-impact-on-electricity> (last accessed: March 2022), 2021.

Formatted: Font colour: Text 1

535 IMO. International Maritime Organisation. Guidelines for Consistent Implementation of the 0.50% Sulphur Limit Under MARPOL Annex VI. MEPC 74/18/Add.1. Available at: [https://wwwcdn.imo.org/localresources/en/OurWork/Environment/Documents/MEPC.320\(74\).pdf](https://wwwcdn.imo.org/localresources/en/OurWork/Environment/Documents/MEPC.320(74).pdf) (last accessed: November 2021), 2019.

Formatted: Font colour: Text 1

540 IMT Institute of Mobility and Transport. Traffic reports. Available at: <http://www.imt-ip.pt/sites/IMTT/Portugues/InfraestruturasRodoviaras/RedeRodoviaria/Paginas/Relatorios.aspx> (last accessed: May 2021), 2021.

Jalkanen, J.-P., Johansson, L., Kukkonen, J., Brink, A., Kalli, J., and Stipa, T. Extension of an assessment model of ship traffic exhaust emissions for particulate matter and carbon monoxide Atmos. Chem. Phys. 545 2641-2659, <https://doi.org/10.5194/acp-12-2641-2012>, 2012

Jalkanen, J.-P., Johansson, L. and Kukkonen, J.: A comprehensive inventory of ship traffic exhaust emissions in the European sea areas in 2011 Atmos. Chem. Phys. 71-84, <https://doi.org/10.5194/acp-16-71-2016>, 2016

550

Kattner, L., Mathieu-Üffing, B., Burrows, J. P., Richter, A., Schmolke, S., Seyler, A., and Wittrock, F.: Monitoring compliance with sulfur content regulations of shipping fuel by in situ measurements of ship emissions, Atmos. Chem. Phys., 15, 10087–10092, <https://doi.org/10.5194/acp-15-10087-2015>, 2015.

555

Kuenen, J., Dellaert, S., Visschedijk, A., Jalkanen, J.-P., Super, I. and Denier van der Gon, H. : Copernicus Atmosphere Monitoring Service regional emissions version 5.1 business-as-usual 2020 (CAM5-REG-v5.1 BAU 2020), Copernicus Atmosphere Monitoring Service, ECCAD [data set], https://doi.org/10.24380/eptm-kn40_2022a.

560

[Kuenen, J., Dellaert, S., Visschedijk, A., Jalkanen, J.-P., Super, I., and Denier van der Gon, H.: CAM5-REG-v4: a state-of-the-art high-resolution European emission inventory for air quality modelling. Earth Syst. Sci. Data, 14, 491–515, <https://doi.org/10.5194/essd-14-491-2022>, 2022b.](#)

565

Le Quéré, C., R. B. Jackson, M. W. Jones, A. J. P. Smith, S. Abernethy, R. M. Andrew, A. J. De-Gol, D. R. Willis, Y. Shan, J. G. Canadell, P. Friedlingstein, F. Creutzig and G. P. Peters: Temporary reduction in daily global CO₂ emissions during the COVID-19 forced confinement. Nature Climate Change, <https://doi.org/10.1038/s41558-020-0797-x>, 2020.

570

Le Quéré, C., Peters, G.P., Friedlingstein, P., Andrew, R.M., Canadell, J.G., Davis, S.J., Jackson, R.B., and Jones, M.W.: Fossil CO₂ emissions in the post-COVID-19 era. Nat. Clim. Chang. 11, 197–199 (2021). <https://doi.org/10.1038/s41558-021-01001-0>, 2021.

Deleted: ¶

Deleted: Kuenen, J., Dellaert, S., Visschedijk, A., Jalkanen, J.-P., Super, I., and Denier van der Gon, H.: CAM5-REG-v4: a state-of-the-art high-resolution European emission inventory for air quality modelling. Earth Syst. Sci. Data Discuss. [preprint], <https://doi.org/10.5194/essd-2021-242>, in review, 2021.¶

Formatted: Font colour: Text 1

Formatted: Font colour: Text 1

Formatted: English (US)

Deleted: .

Formatted: English (UK)

Formatted: Font colour: Text 1

580 Liu, Z., Ciais, P., Deng, Z. et al. Near-real-time monitoring of global CO₂ emissions reveals the effects
of the COVID-19 pandemic. *Nat Commun* 11, 5172, <https://doi.org/10.1038/s41467-020-18922-7>,
2020a.

Formatted: Font colour: Text 1

Liu, Z., Ciais, P., Deng, Z. et al. Carbon Monitor, a near-real-time daily dataset of global CO₂ emission
585 from fossil fuel and cement production. *Sci Data* 7, 392. <https://doi.org/10.1038/s41597-020-00708-7>,
2020b.

Formatted: Font colour: Text 1

Formatted: Font colour: Text 1

Marécal, V., Peuch, V.-H., Andersson, C., Andersson, S., Arteta, J., Beekmann, M., Benedictow, A.,
Bergström, R., Bessagnet, B., Cansado, A., Chéroux, F., Colette, A., Coman, A., Curier, R. L., Denier
590 van der Gon, H. A. C., Drouin, A., Elbern, H., Emili, E., Engelen, R. J., Eskes, H. J., Foret, G., Friese, E.,
Gauss, M., Giannaros, C., Guth, J., Joly, M., Jaumouillé, E., Josse, B., Kadygrov, N., Kaiser, J. W.,
Krajsek, K., Kuenen, J., Kumar, U., Liora, N., Lopez, E., Malherbe, L., Martinez, I., Melas, D., Meleux,
F., Menut, L., Moinat, P., Morales, T., Parmentier, J., Piacentini, A., Plu, M., Poupkou, A., Queguiner,
S., Robertson, L., Rouil, L., Schaap, M., Segers, A., Sofiev, M., Tarasson, L., Thomas, M., Timmermans,
595 R., Valdebenito, Á., van Velthoven, P., van Versendaal, R., Vira, J., and Ung, A.: A regional air quality
forecasting system over Europe: the MACC-II daily ensemble production, *Geosci. Model Dev.*, 8, 2777–
2813, <https://doi.org/10.5194/gmd-8-2777-2015>, 2015.

Matthias, V., Quante, M., Arndt, J. A., Badeke, R., Fink, L., Petrik, R., Feldner, J., Schwarzkopf, D.,
600 Link, E.-M., Ramacher, M. O. P., and Wedemann, R.: The role of emission reductions and the
meteorological situation for air quality improvements during the COVID-19 lockdown period in central
Europe, *Atmos. Chem. Phys.*, 21, 13931–13971, <https://doi.org/10.5194/acp-21-13931-2021>, 2021.

Menut, L., Bessagnet, B., Siour, G., Mailler, S., Pennel, R., and Cholakian, A.: Impact of lockdown
605 measures to combat Covid-19 on air quality over western Europe, *Sci. Total Environ.*, 741, 140426,
<https://doi.org/10.1016/j.scitotenv.2020.140426>, 2020

MMTP: Bridges and Roads Administration. Traffic counting. Available at:
610 <https://travaux.public.lu/fr/infos-traffic/comptage.html> (last accessed, May 2021), 2021.

MWDB2: Micro World Data Bank 2, available at: <http://microworld-db-2.sourceforge.net/>, (last access:
July 2020), 2011.

NWD: National Data Warehouse. National Road Traffic Data Porta. Available at: <https://ndw.nu/en/> (last
615 accessed, May 2021), 2021.

NPRA: Norwegian Public Roads Administration's traffic data. Available at:
<https://www.vegvesen.no/trafikdata/start/om-trafikdata> (last accessed, May 2021), 2021.

620 OFROU: Federal Roads Office. New Coronavirus: evolution of traffic on the national road network.
Available at: [https://www.astra.admin.ch/astra/fr/home/documentation/donnees-et-produits-
information/donnees-concernant-le-traffic/donnees-et-publications/comptage-suisse-automatique-de-la-
circulation-routiere--csacr-/neues-coronavirus_verkehrsentwicklung-auf-dem-nationalstrassennetz.html](https://www.astra.admin.ch/astra/fr/home/documentation/donnees-et-produits-information/donnees-concernant-le-traffic/donnees-et-publications/comptage-suisse-automatique-de-la-circulation-routiere--csacr-/neues-coronavirus_verkehrsentwicklung-auf-dem-nationalstrassennetz.html)
(last accessed, May 2021), 2021.

625

ONS: Index of Production time series. Available at:
<https://www.ons.gov.uk/economy/economicoutputandproductivity/output/datasets/indexofproduction>
(last accessed, July 2021), 2021.

630 Pesaresi, M., Florczyk, A., Schiavina, M., Melchiorri, M., and Maffenini, L.: GHS settlement grid,
updated and refined REGIO model 2014 in application to GHS-BUILT R2018A and GHS-POP R2019A,
multitemporal (1975-1990-2000-2015), R2019A, European Commission, Joint Research Centre (JRC)
[Dataset] <https://doi.org/10.2905/42E8BE89-54FF-464E-BE7BBF9E64DA5218>, 2019.

635 Petetin, H., Bowdalo, D., Soret, A., Guevara, M., Jorba, O., Serradell, K., and Pérez García-Pando, C.: Meteorology-normalized impact of the COVID-19 lockdown upon NO₂ pollution in Spain, *Atmos. Chem. Phys.*, 20, 11119–11141, <https://doi.org/10.5194/acp-20-11119-2020>, 2020.

Querol, X., Massagué, J., Alastuey, A., Moreno, T., Gangoiti, G., Mantilla, E., Duéguéz, J.J., Escudero, M., Monfort, E., Pérez García-Pando, C., Petetin, H., Jorba, O., Vázquez, V., de la Rosa, J., Campos, A., Muñoz, M., Monge, S., Hervás, M., Javato, R., and Cornide, M. J.: Lessons from the COVID-19 air pollution decrease in Spain: Now what?, *Science of The Total Environment*, 779, 146380, <https://doi.org/10.1016/j.scitotenv.2021.146380>, 2021.

645 Schneider, R., Masselot, P., Vicedo-Cabrera, A. M., Sera, F., Blangiardo, M., Forlani, C., Douros, J., Jorba, O., Adani, M., Kouznetsov, R., Couvidat, F., Arteta, J., Raux, B., Guevara, M., Colette, A., Barré, J., Peuch, V.-H., and Gasparrini, A.: [Differential impact of government lockdown policies on reducing air pollution levels and related mortality in Europe](https://doi.org/10.1038/s41598-021-04277-6). *Sci Rep* 12, 726. <https://doi.org/10.1038/s41598-021-04277-6>, 2022.

650 SO-UPS: Performance indicators. Available at: <https://www.so-ups.ru/functioning/ees/ees-indicators/ees-gen-consump-hour/> (last accessed, July 2021), 2021.

Steinemann, A., Nematollahi, N., Rismanchi, B. Goodman, N., and Kolev, S.P.: Pandemic products and volatile chemical emissions. *Air Qual Atmos Health* 14, 47–53. <https://doi.org/10.1007/s11869-020-00912-9>, 2021.

655 Slezakova, K. and Pereira, M.C. 2020 COVID-19 lockdown and the impacts on air quality with emphasis on urban, suburban and rural zones. *Sci Rep* 11, 21336. <https://doi.org/10.1038/s41598-021-99491-7>, 2021.

Formatted: Font colour: Text 1

Formatted: Font colour: Text 1

Deleted: Association between COVID-19 lockdown policies and air pollution with associated mortality reduction in Europe. EMS Annual Meeting 2021, online, 6–10 Sep 2021, EMS2021-431, <https://doi.org/10.5194/ems2021-431>, 2021.

Deleted: ¶

Formatted: Font colour: Text 1

Formatted: Font colour: Text 1

Formatted: Font colour: Text 1

Formatted: Font colour: Text 1

Formatted: Font colour: Text 1

670 STA: Swedish Transport Administration. Weekly traffic changes on the state road. Available at:
<https://www.trafikverket.se/tjanster/trafiktjanster/Vagtrafik--och-hastighetsdata/trafikarbetets-forandring-pa-det-statliga-vagnatet-tf/trafikforandringar-per-vecka-pa-det-statliga-vagnatet/> (last accessed, May 2021), 2021.

675 Tado: Percent increase in home heating consumption. Available at: <https://www.current-news.co.uk/news/lockdown-causes-british-households-heating-use-to-soar> (last accessed, September 2020), 2020.

TEIAS: Load dispatch information system. Available at: https://ytbsbilgi.teias.gov.tr/ytbsbilgi/frm_istatistikler.jsf (last accessed, July 2021), 2021.

680 TII: Transport Infrastructure Ireland. Open Data Portal. Available at: <https://data.tii.ie/> (last accessed, May 2021), 2021.

685 UNEC: Daily schedule of electricity production / consumption. Available at: <https://ua.energy/peredacha-i-dyspetcheryzatsiya/dyspetcherska-informatsiya/dobovij-grafik-vyrobnystva-spozhyvannya-e-e/> (last accessed, July 2021), 2021.

Table 1. Summary of information sources used to compute the emission adjustment factors for each sector.

Sector	Description	Sources of information
GNFR_A	Public power industry	<ul style="list-style-type: none"> Electricity demand data: ENTSO-E (2021), SO-UPS (2021), TEIAS (2021), UNEC (2021) Outdoor temperature: ERA5 reanalysis (C3S, 2017) Population map: CIESIN (2016)
GNFR_B	Manufacturing industry	<ul style="list-style-type: none"> Industrial Production Index: Eurostat (2021a), ONS (2021) Energy balances: Eurostat (2021b) Oxford COVID-19 Government Response Tracker: Hale et al. (2021)
GNFR_C	Other stationary combustion activities	<ul style="list-style-type: none"> Google movement trend reports: Google (2021) Consumption by use for the commercial sectors: IDAE (2018)
GNFR_D	Fugitive emissions from fossil fuels	Industrial Production Index: Eurostat (2021a), ONS (2021)
GNFR_E	Solvents	Industrial Production Index: Eurostat (2021a), ONS (2021)
GNFR_F1, GNFR_F2, GNFR_F3 & GNFR_F4	Road Transport (gasoline , diesel , LPG & non-exhaust , respectively)	<ul style="list-style-type: none"> Google movement trend reports: Google LCC (2021) Traffic count datasets from national transport agencies (see Table A1 for complete list of references)
GNFR_G	Shipping	<ul style="list-style-type: none"> AIS-based shipping emissions: Jalkanen et al. (2012 and 2016)
GNFR_H	Aviation	Airport movement statistics: EUROCONTROL (2021)
GNFR_I	Off-road transport	Industrial Production Index: Eurostat (2021a), ONS (2021)

Formatted: Font colour: Text 1

Deleted: 1

Formatted: Font colour: Text 1

Formatted: Font colour: Text 1

Formatted: Font colour: Text 1

Formatted: Font colour: Text 1

Formatted: Font colour: Text 1

Formatted: Font colour: Text 1

Formatted: Font colour: Text 1

Table 2. Subcategories considered for the development of the adjustment factors for each GNFR sector

Sector	Subcategories
GNFR_B	<ul style="list-style-type: none"> GNFR_B1: Manufacture of petroleum refining products GNFR_B2: Manufacture of pharmaceutical, chemistry, food and beverages products GNFR_B3: Manufacture of other products (e.g., non-metallic mineral products, basic metals)
GNFR_C	<ul style="list-style-type: none"> GNFR_C1: Commercial/Institutional stationary combustion activities GNFR_C2: Residential combustion stationary activities GNFR_C3: Other combustion stationary activities (Agriculture/Forestry/Fishing)
GNFR_D	<ul style="list-style-type: none"> GNFR_D1: Fugitive emission from solid fuels: Coal mining and handling GNFR_D2: Fugitive emissions oil: Refining / storage & venting and flaring GNFR_D3: Distribution of oil products GNFR_D4: Other activities not affected by COVID-19 restrictions
GNFR_E	<ul style="list-style-type: none"> GNFR_E1: Degreasing GNFR_E2: Printing GNFR_E3: Other activities not affected by COVID-19 restrictions
GNFR_F2	<ul style="list-style-type: none"> GNFR_F21: Passenger cars, light duty vehicles, mopeds and motorcycles GNFR_F22: Heavy duty vehicles and buses
GNFR_F4	<ul style="list-style-type: none"> GNFR_F41: Passenger cars, light duty vehicles, mopeds and motorcycles GNFR_F42: Heavy duty vehicles and buses
GNFR_I	<ul style="list-style-type: none"> GNFR_I1: Mobile Combustion in manufacturing industries and construction GNFR_I2: Other activities not affected by COVID-19 restrictions

Formatted: Font colour: Text 1

Deleted: 2

Formatted: Font colour: Text 1

Deleted: /GNFR_F41

Deleted: GNFR_F4

Deleted: /GNFR_F42

Formatted: Font: 11 pt

Formatted: Font colour: Text 1

700 Table 3 Overview of activity data used for each emission sector and subcategory as defined in Table 1 and Table 2 to derive the BAU 2020 emissions and expected COVID-19 impact

<i>Sector/Subcategory</i>	<i>Activity data</i>	<i>COVID-19</i>
<i>GNFR A</i>	Electricity generation (non-renewable) ¹	Yes
<i>GNFR B1</i>	Refinery throughput ²	Yes
<i>GNFR B2</i>	Industrial production index (manufacturing) ³	Yes
<i>GNFR B3</i>	Industrial production index (manufacturing) ³	Yes
<i>GNFR C1</i>	Yearly degree day sum ⁴	No
<i>GNFR C2</i>	Yearly degree day sum ⁴	No
<i>GNFR C3</i>	Yearly degree day sum ⁴	No
<i>GNFR D1</i>	Coal production ²	Yes
<i>GNFR D2</i>	Refinery throughput ²	Yes
<i>GNFR D3</i>	Industrial production index (manufacturing) ³	Yes
<i>GNFR D4</i>	Industrial production index (manufacturing) ³	Yes
<i>GNFR F1, GNFR F21,</i>	Energy consumption in transport sector ⁵	Yes
<i>GNFR K (livestock)</i>	Animal numbers (cattle, swine, sheep, other) ⁶	No
<i>GNFR L (Application of manure and fertilizer)</i>	Total nutrient N from agricultural fertilizer use ⁷	No
<i>GNFR L (Other)</i>	Utilised agriculture area ⁸	No

¹ ENTSO-E (2021); ² BP (2020); ³ Eurostat (2021a); ⁴ C3S (2017); ⁵ Eurostat (2021c); ⁶ FAO (2021a); ⁷ FAO (2021b); ⁸ Eurostat (2021d)

Formatted: Font colour: Text 1

Deleted: 3

Formatted: Font colour: Text 1

Formatted: Font colour: Text 1

Formatted: Font colour: Text 1

Formatted: Font colour: Text 1

Formatted: Font colour: Text 1

Formatted: Font colour: Text 1

Formatted: Font colour: Text 1

Formatted: Font colour: Text 1

Formatted: Font colour: Text 1

Formatted: Font colour: Text 1

Formatted: Font colour: Text 1

Formatted: Font colour: Text 1

Formatted: Font colour: Text 1

Formatted: Font colour: Text 1

Formatted: Font colour: Text 1

Formatted: Font colour: Text 1

Formatted: Font colour: Text 1

Formatted: Font colour: Text 1

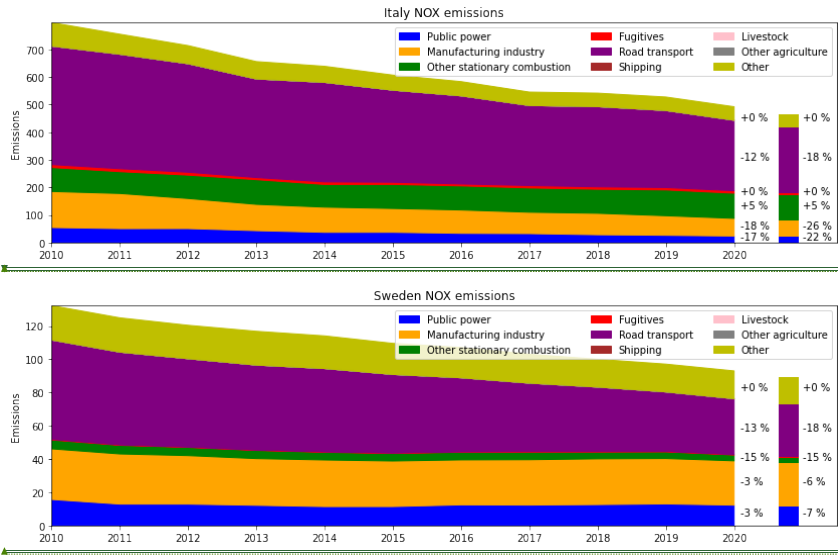


Figure 1: Time series of NO_x emissions [kg/year] for Italy and Sweden. Up to 2018 official reported emissions are used. For 2019 and BAU 2020 emissions are estimated. For 2020 a second estimate is made (separate bar on the right) that includes AD affected by COVID-19. Percentages refer to the difference compared to 2018.

Moved (insertion) [2]

Formatted: Font colour: Text 1

Formatted: Font colour: Text 1

Formatted: Font colour: Text 1

Formatted: Font colour: Text 1

Formatted: Font colour: Text 1

Deleted: 1

Formatted: Font colour: Text 1

Deleted: Figure 6

710

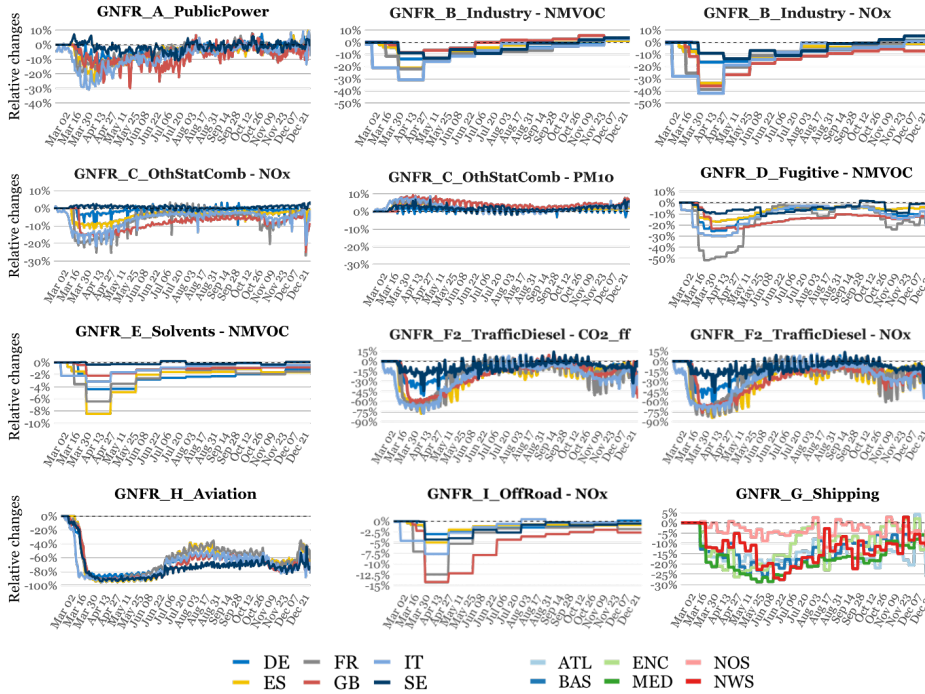


Figure 2: Daily COVID-19 emission adjustment factors computed per GNFR sector and pollutant for selected countries: Germany (DE), Spain (ES), France (FR), the United Kingdom (GB), Italy (IT) and Sweden (SE). For the shipping sectors, adjustment factors are reported for selected sea regions: Atlantic Ocean (ATL), Baltic Sea (BAS), English Channel (ENC), Mediterranean Sea (MED), North Sea (NOS) and Norwegian Sea (NWS). For the GNFR sectors A (public power), H (aviation) and G (shipping) the constructed adjustment factors are the same for all species. Adjustment factors are reported for the period 21 February to 31 December 2020.

Formatted: Font colour: Text 1

Formatted: Font colour: Text 1

Deleted: 21

Formatted: Font colour: Text 1

Formatted: Font colour: Text 1

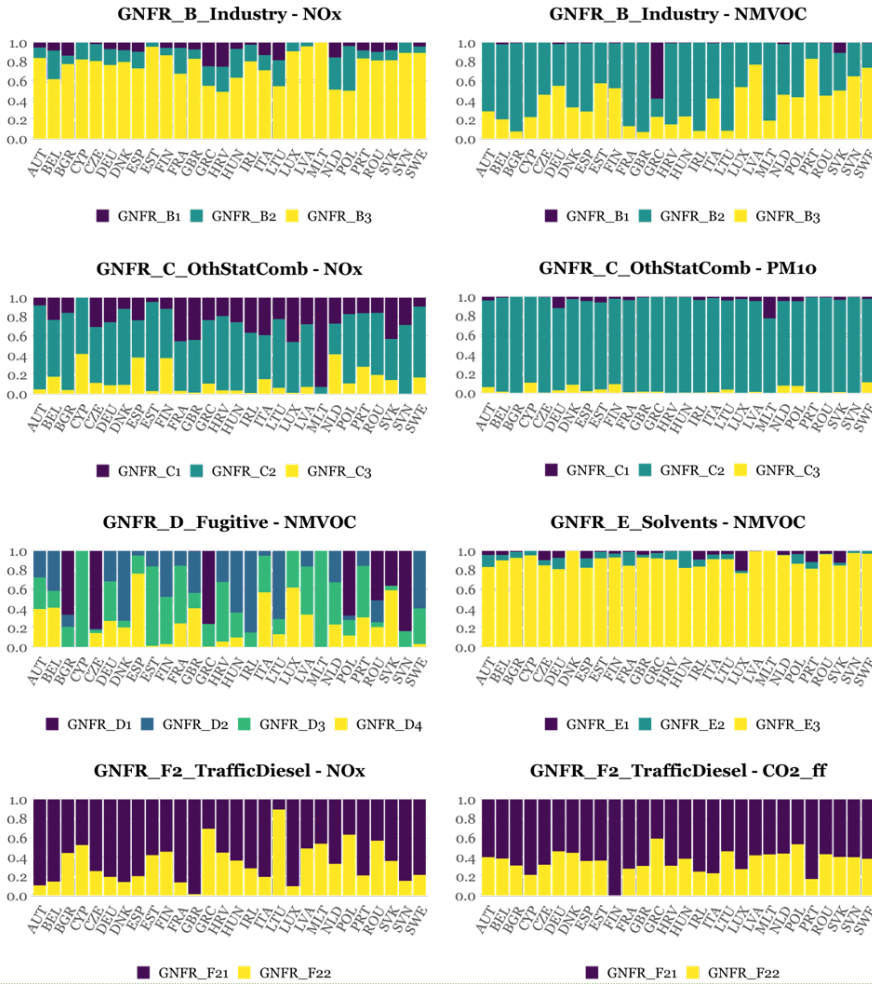
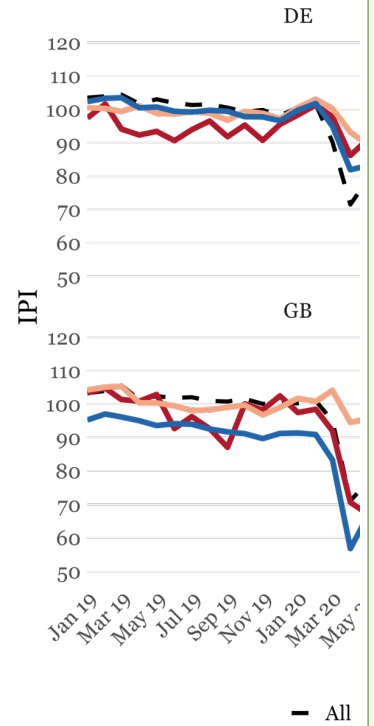


Figure 3. Average contribution of each GNFR subcategory (see definitions in Table 2) to total annual emissions for selected pollutants per country (EU27 + UK) for year 2020.



Deleted:
Figure 2 Evolution of the average monthly Industrial Production Index (IPI) values (January 2019 to December 2020) for four manufacturing categories: Group01 (petroleum refining products), Group02 (pharmaceutical, chemistry, food and beverages products), Group03 (non-metallic mineral products, basic metals, paper and machinery and equipment) and All (general index for all the manufacturing industry). Results are presented for Germany (DE), Spain (ES), Italy (IT) and the United Kingdom (GB). The IPI values are seasonally and calendar adjusted data (Eurostat, 2021a)

Formatted: Font colour: Text 1

Formatted: Font colour: Text 1

Formatted: Font colour: Text 1

Deleted: 33

Formatted: Font colour: Text 1

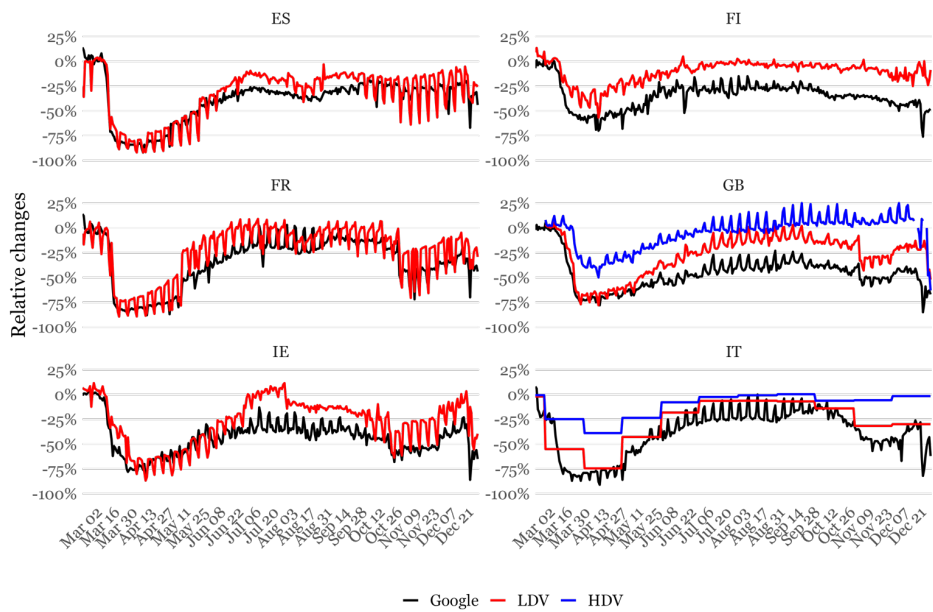
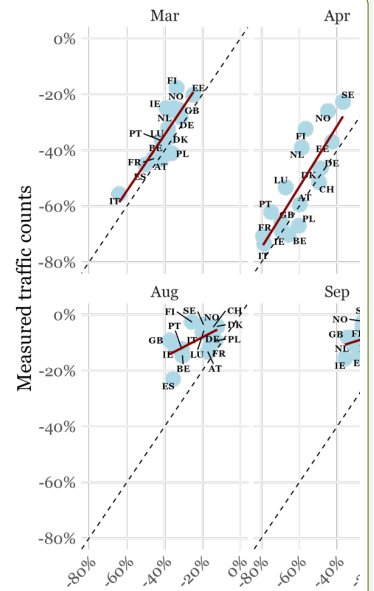


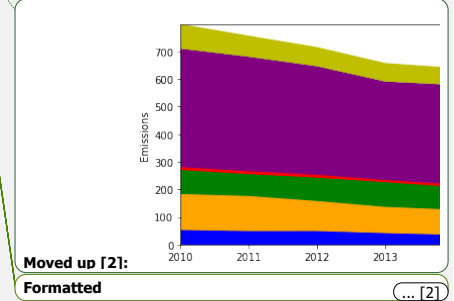
Figure 4 Comparison of traffic movement trends derived from Google COVID-19 Community Mobility Reports (Google LLC, 2021) and measured traffic counts for selected countries (see Table A1 for references), the latter one being distinguished by type of vehicle (i.e. heavy duty vehicles, HDV; light duty vehicles and cars, LDV), for the period 21 February to 31 December 2020.

745

Formatted: Font colour: Text 1
 Formatted: Font colour: Text 1
 Deleted: 44
 Formatted: Font colour: Text 1
 Formatted: Font colour: Text 1



Deleted: ... [1]



Moved up [2]:
 Formatted ... [2]

BAU versus COVID-19 daily emissions 2020 (EU-27 + UK)

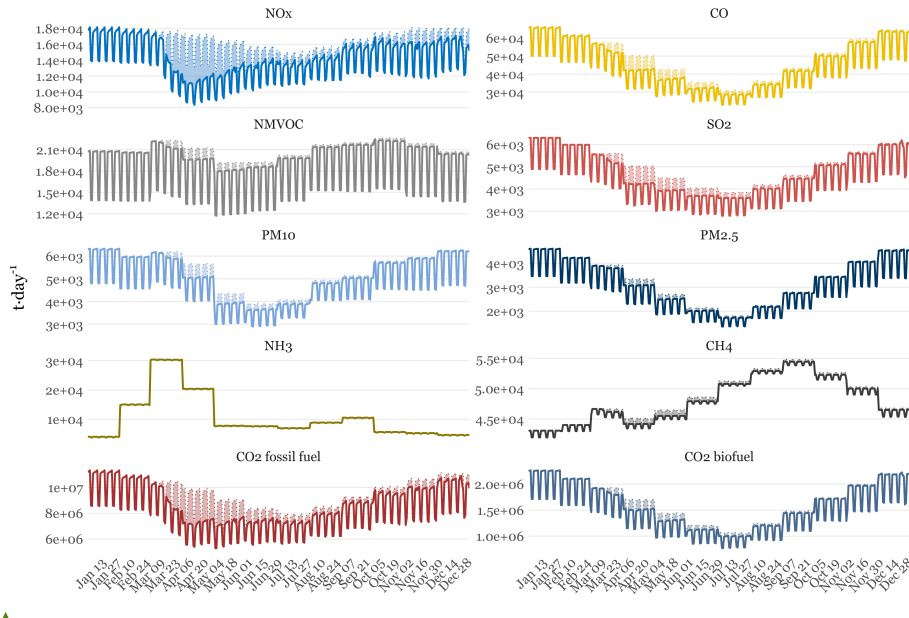


Figure 5. Daily emissions [t·day⁻¹] by pollutant computed for the 2020 business-as-usual (BAU) (dotted lines) and COVID-19 (solid lines) scenarios between January 1st and December 31st 2020 for EU27 + UK. The areas highlighted between the two lines represent the emission differences between scenarios.

Formatted: Font colour: Text 1

Formatted: Font colour: Text 1

Deleted: 57

Formatted: Font colour: Text 1

Formatted: Font colour: Text 1

Relative Emission Changes for Criteria Pollutants

Vertical lines indicate average changes for EU27 + UK

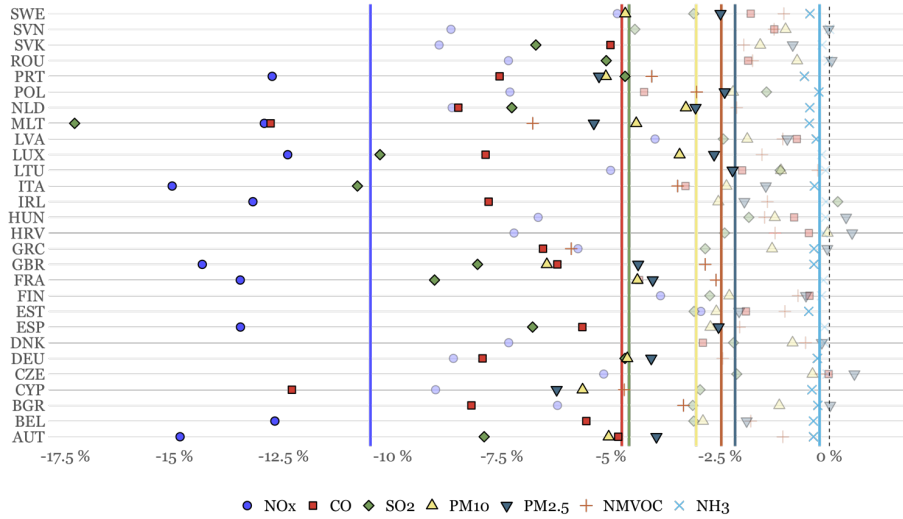
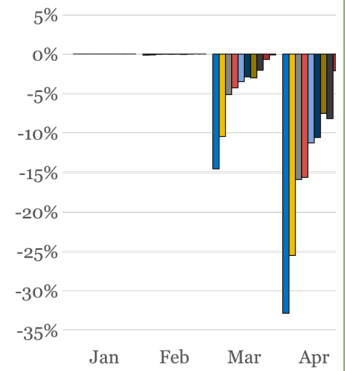


Figure 8 Relative decline in emissions of criteria pollutants [%] per species and country in 2020. The vertical lines indicate the average relative declines at the EU27 + UK level. Non-shaded marks highlight those countries/species for which reductions are larger than the ones computed at the EU27 + UK level.

Relative Emission Char

EU-27 + UK



Deleted:

Figure 8 Relative decline in monthly emissions [%] by pollutant between January and December 2020 for EU27 + UK.

↓

↓

Page Break

Formatted: Font colour: Text 1

Formatted: Font colour: Text 1

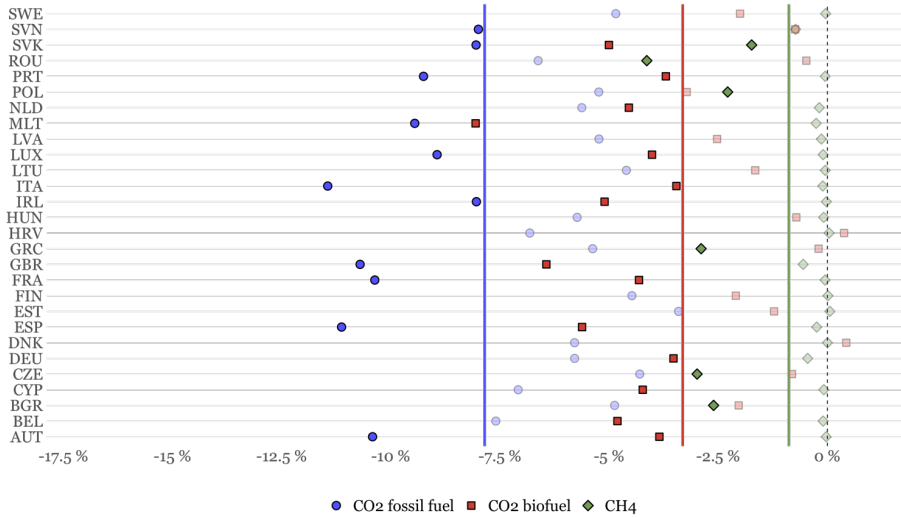
Formatted: Font colour: Text 1

Deleted: 69

Formatted: Font colour: Text 1

Relative Emission Changes for Greenhouse Gases

Vertical lines indicate average changes for EU27 + UK



Formatted: Font colour: Text 1

Formatted: Font colour: Text 1

Figure 7. Same as Figure 6 for greenhouse gases

Deleted: 710

Formatted: Font colour: Text 1

Formatted: Font colour: Text 1

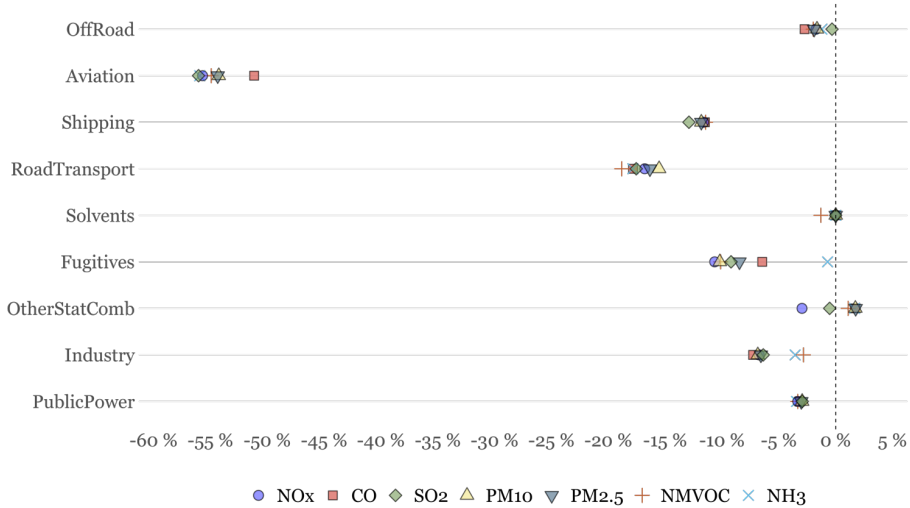
Formatted: Font colour: Text 1

Deleted: Figure 6Figure 9

Formatted: Font colour: Text 1

800

Relative Emission Changes for Criteria Pollutants EU27 + UK



Formatted: Font colour: Text 1

Formatted: Font colour: Text 1

805 **Figure 8** Relative decline in emissions of criteria pollutants [%] by sector and species between January 1st and December 31st 2020 for EU27 + UK. For the shipping sector the relative differences consider both inland and sea shipping sectors.

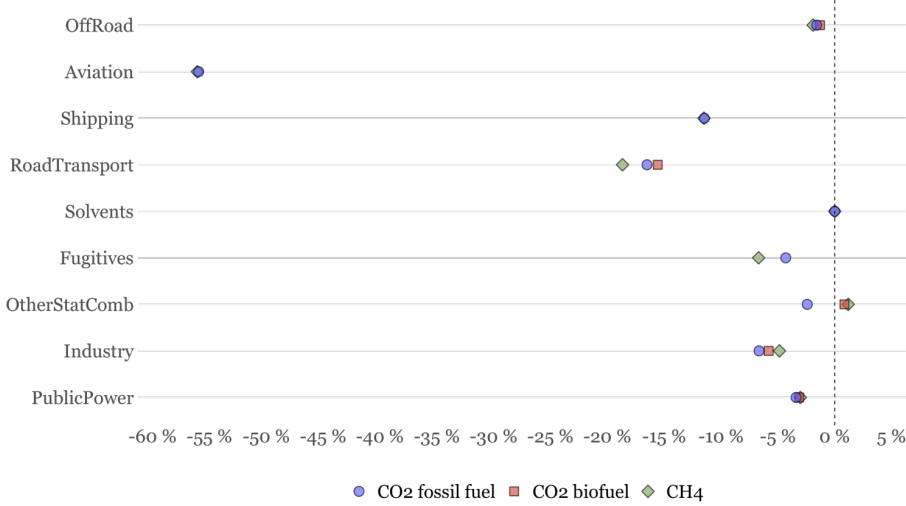
Deleted: 811

Formatted: Font colour: Text 1

Formatted: Font colour: Text 1

Relative Emission Changes for Greenhouse Gases

EU27 + UK



Formatted: Font colour: Text 1

Formatted: Font colour: Text 1

810 Figure 9. Same as Figure 8 for greenhouse gases. Note that for Aviation, shipping, use of solvents and fugitives no emissions are reported for CO₂ biofuel.

Deleted: 912

Formatted: Font colour: Text 1

Formatted: Font colour: Text 1

Formatted: Font colour: Text 1

Deleted: Figure 8Figure 11

Formatted: Font colour: Text 1

BAU versus COVID-19 daily NOx emissions 2020

EU-27 + UK

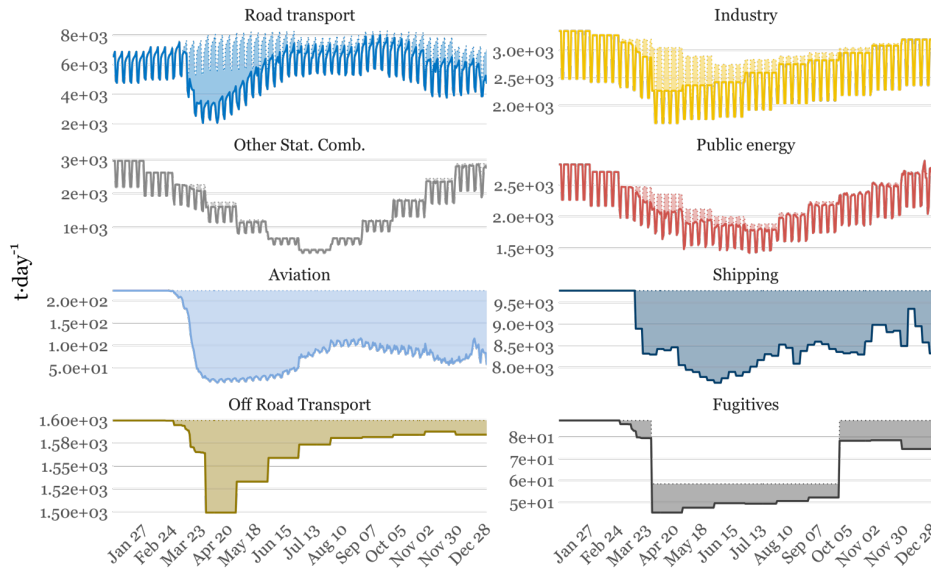


Figure 10. Daily NOx emissions [t-day⁻¹] by sector computed for the 2020 business-as-usual (dotted line) and COVID-19 (solid line) scenarios between January 1st and December 31st 2020 for EU27 + UK. For the shipping sector the relative differences consider both inland and sea shipping sectors. The areas highlighted between the two lines represent the emission differences between the two scenarios.

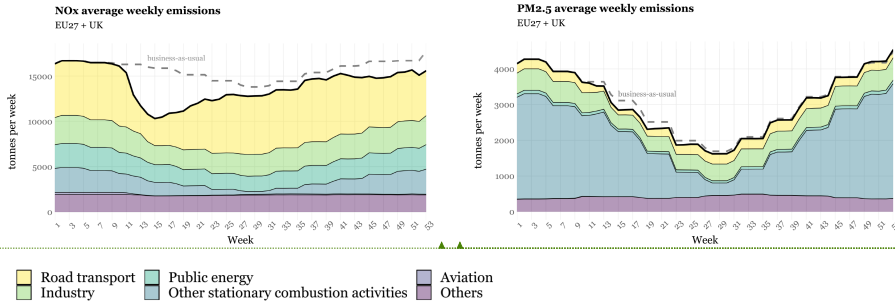
Formatted: Font colour: Text 1

Formatted: Font colour: Text 1

Deleted: 1013

Formatted: Font colour: Text 1

Formatted: Font colour: Text 1



Formatted: Font colour: Text 1

Formatted: Font colour: Text 1

Formatted: Font colour: Text 1

Formatted: Font colour: Text 1

Formatted: Font colour: Text 1

Formatted: Font colour: Text 1

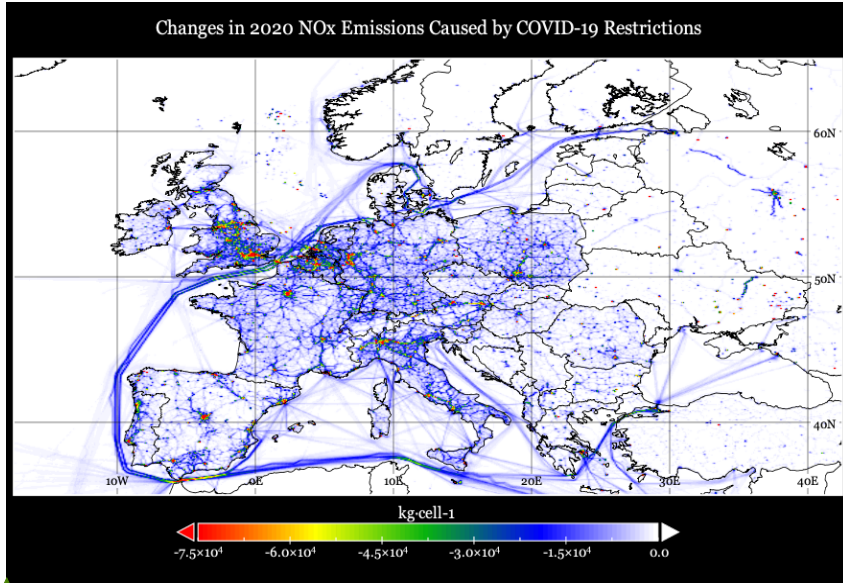
Formatted: Font colour: Text 1

Deleted: 1114

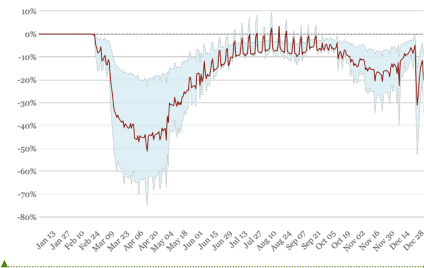
Formatted: Font colour: Text 1

Formatted: Font colour: Text 1

Figure 11 Stacked area charts representing the evolution of the average weekly emissions of NO_x (left) and PM_{2.5} (right) per pollutant sector in EU27 + UK during the COVID-19 pandemic per pollutant sector.



Relative Changes in Daily NOx Emissions due to COVID-19 Restrictions
Italy



Relative Changes in Daily NOx Emissions due to COVID-19 Restrictions
Germany

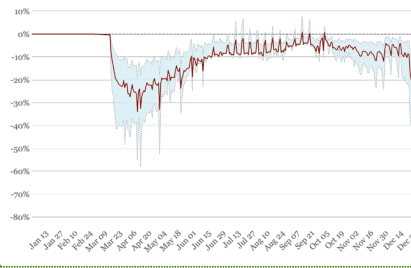


Figure 12. Map of the absolute cumulative NO_x emission decline [kg-cell⁻¹] in 2020 as compared to the business-as-usual scenario. Gridded emission changes are reported at a resolution of 0.1 x 0.05 degrees. Administrative boundaries are derived from the Micro World Data Bank (MWDB2, 2011). (Top), Average (dark red) and 5th and 95th percentiles (light blue shading) of the relative changes [%] in gridded NO_x emissions in Italy (bottom-left) and Germany (bottom-right) for the period 1 January to 31 December 2020.

Formatted: Font colour: Text 1

Formatted: Font colour: Text 1

Formatted: Font colour: Text 1

Formatted: Font colour: Text 1

Formatted: Font colour: Text 1

Formatted: Font colour: Text 1

Formatted: Font colour: Text 1

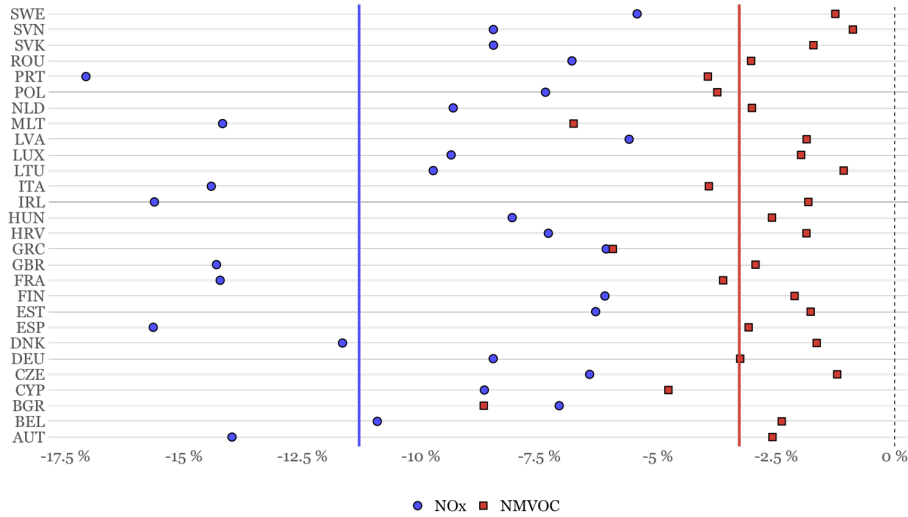
Deleted: 1215

Formatted: Font colour: Text 1

Formatted: Font colour: Text 1

Relative NOx and NMVOC Changes in High-density Urban Areas

Vertical lines indicate average changes for EU27 + UK



Formatted: Font colour: Text 1

Formatted: Font colour: Text 1

835 **Figure 13.** Relative NO_x and NMVOC emission declines [%] per country occurring in high-density urban areas between January 1st and December 31st 2020. High-density urban areas were defined according to the Global Human Settlement Layer (GHSL) project (Pesaresi et al., 2019). The blue and red solid lines represent the average NO_x and NMVOC emission declines at the EU27 + UK level, respectively.

Deleted: 1316

Formatted: Font colour: Text 1

Formatted: Font colour: Text 1

Page 65: [1] Deleted **Microsoft Office User** **09/03/2022 18:06:00**

▲
Page 65: [2] Formatted **Microsoft Office User** **11/03/2022 10:24:00**

Font colour: Text 1

▲
Page 65: [2] Formatted **Microsoft Office User** **11/03/2022 10:24:00**

Font colour: Text 1

▲
Page 65: [2] Formatted **Microsoft Office User** **11/03/2022 10:24:00**

Font colour: Text 1

▲
Page 65: [2] Formatted **Microsoft Office User** **11/03/2022 10:24:00**

Font colour: Text 1

▲
Page 65: [2] Formatted **Microsoft Office User** **11/03/2022 10:24:00**

Font colour: Text 1

▲
Page 65: [2] Formatted **Microsoft Office User** **11/03/2022 10:24:00**

Font colour: Text 1

▲
Page 65: [2] Formatted **Microsoft Office User** **11/03/2022 10:24:00**

Font colour: Text 1

▲
Page 65: [2] Formatted **Microsoft Office User** **11/03/2022 10:24:00**

Font colour: Text 1

▲
Page 65: [2] Formatted **Microsoft Office User** **11/03/2022 10:24:00**

Font colour: Text 1

▲
Page 65: [2] Formatted **Microsoft Office User** **11/03/2022 10:24:00**

Font colour: Text 1

▲